

*Studio*

KNITTING MACHINE

*"The Most Wanted Automatic Home Knitter"*

# NEWSLETTER

---

JULY/AUGUST, 1986

VOLUME 188

---





FROM THE DESK OF DAVE BRATZ . . . . .

Summer always seems to be a slower, laid back time of year. This is true of not only knitting, but of our usual vigor and activity in general.

Therefore, I thought it might be appropriate to bring a smile to your face and share with you a bit of prose that we accidentally came across. It was written by a Studio dealer of ours, Ardyce Uhrich, in Lawrence, Kansas, and was published in the June, 1983, New Yorker magazine. We sincerely thank her for allowing us to share this with you and hope you enjoy it as much as we have.

#### WHAT IS A SWEATER?

A sweater is a state of mind, A moment of truth, a promise.

A sweater is an extension of the woman who wears it, The appreciation of the man who sees her in it, The creative expression of the one who made it.

For the one who wears it, it is a status symbol, A social commentary, an emotional facade, a self revelation. A pride of individuality. A proof of taste. A yearning.

For the ones who see us in it, A sweater is an embellishment. A pit fall. An ambush. A subtlety. Mirage. Camouflage. Persiflage. An intoxication.

For those who make them, A sweater is an evolution, a sign of the times. A symphony of lines, a harmony of tones, A tribute to skills. A drip-dry. Hip-tie. Zip-shy masterpiece.

A sweater is an art-and-a-craft. A pull-on. A slip-on. A cardigan. A shirt.

A one-piece. Two-piece. Three piece. A no-peace. It is a vision, a trend, an interpretation. A guess. A hope. A prayer. A sketch. A swatch. A sample. It is 2 or 200 needles and 12,345 stitches.

It is the livable, breathable, wearable offspring of The shearer, the carder, the spinner, the dyer, the knitter, The designer, the pattern-maker, the button-baker, the order-taker.

It is snips of yarn. Sips of coffee.

It is a bid for immortality. It is the star to which hitch. The dreams and schemes of the fashion writers, advertisers, buyers, merchandisers, and ultimately, The one who wears it.

\*\*\*\*\*  
KNITTING MACHINE SEMINARS - The Corvallis Knitting Club will sponsor their Oregon Seminar October 10th, 11th and 12th, 1986. For further information, please call or write Jaxine Heatherington, 33043 Peoria Rd., Corvallis, OR 97333, phone (503)753-8000.

Advance notice - 1st annual Florida Gulf Coast Machine Knitters Seminar & Fashion Show - January 30, 31 and February 1, 1987, at the Holiday Inn, 14, Plant City, FL. Sponsored by 4 area Gulf Coast clubs. For more details send SASE to Florida Gulfcoast Machine Knitters, Box 14081, Bradenton, FL 34280.



From Lillie Davis, Roseburg, OR, comes Altered pattern. Knit following this pattern which is ideal for summer. dotted lines.

# SIMPLE 2-COLOR V-NECK WITH CENTER CABLE

Made on a Studio SK-360

Bust size - 34"

Length - 23"

auge: 8 rows = 1"      32 rows  
7 sts. = 1"      27 sts.

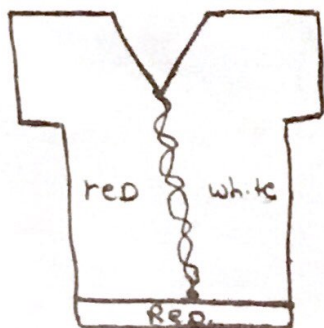
Main tension - 10, rib tension - 7

Pentex sport weight (on cone)

Red - 6 oz. approx.

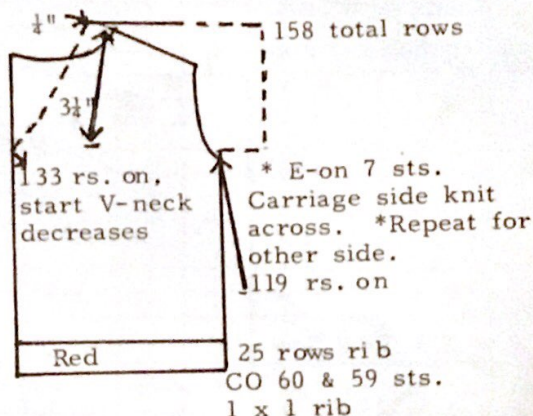
White - 6 oz. approx.

This is a size 34, but can be made in any size using technique that follows for redrawing pattern. I used size B pattern. To make larger or smaller just alter size A, C, D or E, same as for B.



Notes: I work a design on the front white side. The colors can be reversed for the back if you desire.

Pullover Original Machine Pattern  
(Contour)



Neck - new line drawn 1/4" smaller at inside shoulder line. V-shaping starts 3-1/4" below shoulder line.

Sleeve - When you reach armhole, mark new line 7 needles over from last needle you have knitting on.

Back and Front - With red cast on 60 and 59 sts. in 1 x 1 rib. Rib 25 rows. Transfer sts. to main bed. Use intarsia carriage throughout. Red on needles 0-60 left side of bed, white on 0-60 right side of bed. Cable center 6 sts. (needles 3 left, 3 right.) I transfer 3 right sts. first, then 3 left sts. throughout. Cable twist rows - 31 rows on (this includes 25 ribbing rows). 37, 43, 49, 61, 67, 73, 79, 85, 91, 97, 103, 109, 115, 121, 127, - last cable twist.

Knit even in stockinette following cable pattern to armhole (119 rows on)

Sleeve - \*E-on 7 sts. on carriage side. Knit across. \*Repeat for other sleeve. Now knit even in cable pattern until 127 rows on (last cable twist). Now knit even until 133 rows on.

V-Neck - Take off center 2 sts. Continue knitting, decreasing neck edge by following dotted line on pattern. Dec. neck edge to 21 sts., 158 rows on. Waste off. Use intarsia carriage and work both shoulders at the same time. Shoulder sts. are needles 21 - 67.

To finish- Sew shoulder & side seams. Neck and sleeve trim - Single crochet one row around (using red over red and white over white). Next row - slip stitch around. Fasten off.

\*\*\*\*\*



# VEST with KITTEN PATTERN

For 3-year-old  
21" chest

Row - Back neck

58 30 sts x 1 time

3 3 3 3 3

3 x 2 x 5

Row 52 - Start shoulder shaping

Use 2 strands 2/24 orlon  
wool blend yarn. Ten. 6

1 x 2 x 5

Ledger - sts. x row x times

2 x 2 x 4 Times

14 x 1

Row 24 - Shape front neck

1 x 2 x 5

000

5 x 1

Reset counter to 000

These two patterns  
which are pictured on  
the cover were designed  
by Noreen Drake, Eugene,  
OR, for her grand-  
children. Made on a  
Studio.

84 Ro

05

Row 25 Discontinue Pattern

000

Change Ten. to 6

Rib on 80 sts. - 40 on each bed.

Ten. 0 for 4 rows, 12 rows at

1 x 1 Ribbing Ten. 2/3

16 Ro

Reset counter 000, transfer  
ribber sts. to M.M. & start  
pattern.

Start Ribbing



18x48

9 8 7 6 5 4 3 2 1 18 17 16 15 14 13 12 11 10 9 8 7 6 5 4 3 2 1 18 17 16 15 14 13 12 11 10

1  
2  
3  
4  
5  
6  
7  
8  
9  
10  
11  
12  
13  
14  
15  
16  
17  
18  
19  
20  
21  
22  
23  
24  
25  
26  
27  
28  
29  
30  
31  
32  
33  
34  
35  
36  
37  
38  
39  
40  
41  
42  
43  
44  
45  
46  
47  
48

57  
56  
55  
54  
53  
52  
51  
50  
49  
48  
47  
46  
45  
44  
43  
42  
41  
40  
39  
38  
37  
36  
35  
34  
33  
32  
31  
30  
29  
28  
27  
26  
25  
24  
23  
22  
21  
20  
19  
18  
17  
16  
15  
14  
13  
12  
11  
10  
9  
8  
7  
6  
5  
4  
3  
2  
1

Fairisle  
cat



Discontinue

Change  
color

start

6 5 4 3 2 1 24 23 22 21 20 19 18 17 16 15 14 13 12 11 10 9 8 7 6 5 4 3 2 1 24 23 22 21 20 19

24x60



BACK NECK

Row 66 - 26 x 1

3 x 2 x 6

VEST with DUCK PATTERN

For 5-year-old  
24" chest

Row 60

Shape Shoulder

Ten. 6

2/24 orlon & wool

blend - use 2 strands

1 x 3 x 15 starting with  
center sts.

Row 30

Row 30 Shape front neck

1 x 2 x 5  
Ledger - sts. x row x times

1 x 2 x 5

000

9 x 1

Reset 000

NECK & ARM BANDS:  
Pick up sts. and  
work 1x1 ribbing  
for 10 rows.

94 Rows

Row 35

Row 35, discontinue  
pattern

000

\*

Reset 000, change Ten.  
to 6. Transfer rib. sts.  
to M.M & start pattern.

Rib. Ten.  $\frac{0}{1}$  for 4 rows & 12 rows at Ten.  $\frac{2}{3}$

16 Rows

1 X 1 Ribbing

Start rib. on 90 sts., 45  
on each bed.



18x48

9 8 7 6 5 4 3 2 1 18 17 16 15 14 13 12 11 10 9 8 7 6 5 4 3 2 1 18 17 16 15 14 13 12 11 10

1 2 3 4 5 6 7 8 9 10 11 12 13 14 15 16 17 18 19 20 21 22 23 24 25 26 27 28 29 30 31 32 33 34 35 36 37 38 39 40 41 42 43 44 45 46 47 48

57  
56  
55  
54  
53  
52  
51  
50  
49  
48  
47  
46  
45  
44  
43  
42  
41  
40  
39  
38  
37  
36  
35  
34  
33  
32  
31  
30  
29  
28  
27  
26  
25  
24  
23  
22  
21  
20  
19  
18  
17  
16  
15  
14  
13  
12  
11  
10  
9  
8  
7  
6  
5  
4  
3  
2  
1

Duck

Discontinue

Change Color

Start

6 5 4 3 2 1 24 23 22 21 20 19 18 17 16 15 14 13 12 11 10 9 8 7 6 5 4 3 2 1 24 23 22 21 20 19

24x60



Pattern on next page

PLACE ON BOLD LINE OF KNIT CO.

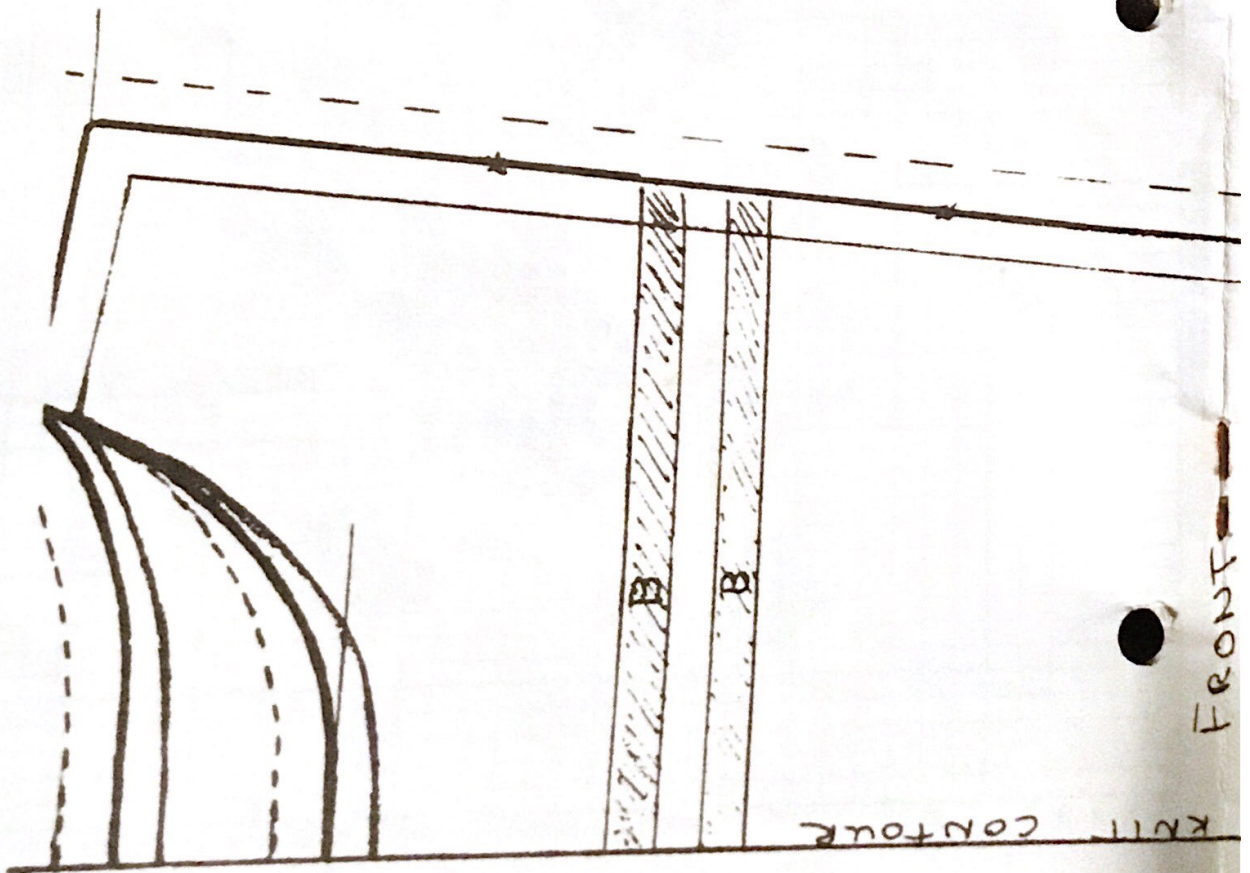
SIDE  
FRONT &  
BACK

B.

SIZE 12

SIZE 14

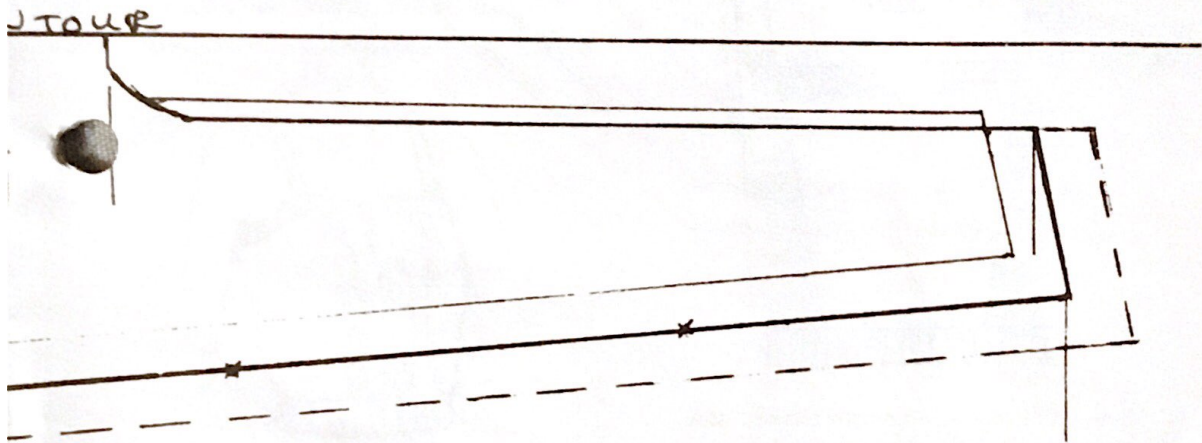
SIZE 16



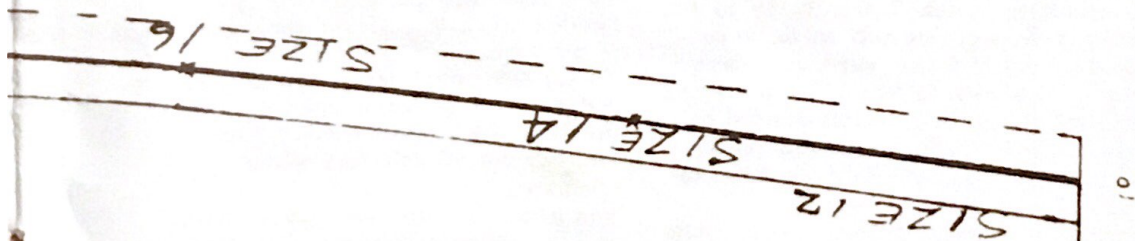


# Boys SLEEVELESS Top

SIZES 12, 14, & 16



Actual size - TRANSFER to  
Knit Contour SHEET

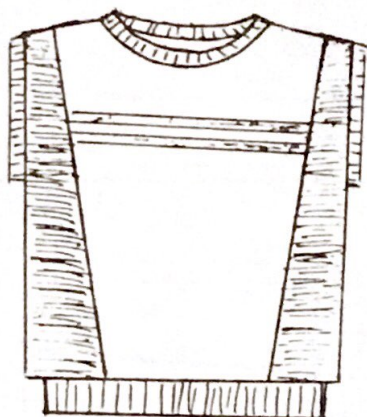


TOUR  
& BACK

A

PLACE ON BOLD LINE OF





Sue Dillenburg, Port Orchard, WA, brought in this pattern and the following one which look great for this time of year.

#### TEEN BOY'S SLEEVELESS TOP

Made on a Studio SK-360 with ribber  
The knit contour pattern for this is on pages 8 and 9.

Sizes    12 - 14 - 16  
          30 - 32 - 34

Yarn: A-Lur Frosty 2-1/2 oz.  
      B-Heirloom Carasoft  
          2-1/2 to 3 oz.

Transfer pattern to knit contour sheet.

Gauge: A with card #4 and tuck stitch T-5 30/58 to 4"

B-stocking stitch T-6...30/40 to 4"

Make a tension swatch to be sure.

Cast on with waste yarn and ravel cord. Change to A and set card and machine for Tuck. Knit according to pattern, for both front and back. With B cast on and knit 24 rows of 1x1 rib.

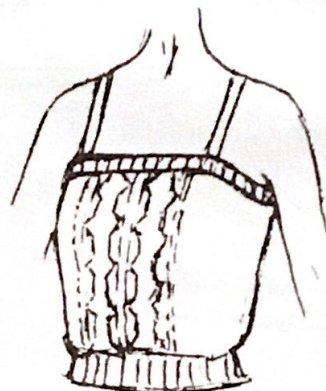
Transfer stitches to main bed. With wrong side out, place bottom of front on needles, starting at the right side. Latch tool bind off loosely to the last stitch and place the loop that's on the tool to that needle. Change tension and knit side according to pattern.

Do the ribbing and the back the same as the front. Sew up the seams and one shoulder seam. Place neckline stitches on the machine and do 10 rows of 1x1 ribbing. Hand bind off.

- 10 -

The armhole ribbing must be put on before the shoulder seams are put together. Use 10 rows, same as the neck ribbing.

\*\*\*\*\*



Sue's second pattern is this

#### CAMISOLE with DRIVE LACE

Made on a Studio SK-360 with ribber

Yarn: Lur Arista Size 32 takes approximately 4-1/2 oz.

Gauge: Drive lace (card #1) R2.

T 8/6...32/50 to 4"

Ribbing 1x1 T 2/3

Transfer pattern (on next 2 pages) to knit contour sheet.

Cast on 131 sts. for 1x1 rib. T-0 for 3 circular rows. Knit 24 rows at T 2/3. Transfer sts. to ribber for the front and to the main bed for the back. Refer to the ribber manual to set up for Drive Lace. To isolate the pattern, bring needles 24...0...25 on main bed to B position.

To do the short row work at the top, put the out of work needles into A position with ravel cord. Knit 1 row across all stitches when complete.

Transfer sts. for 1x1 rib, change T 2/3. Knit 11 rows. T-8 knit 1 row to the left and Hand Bind Off.

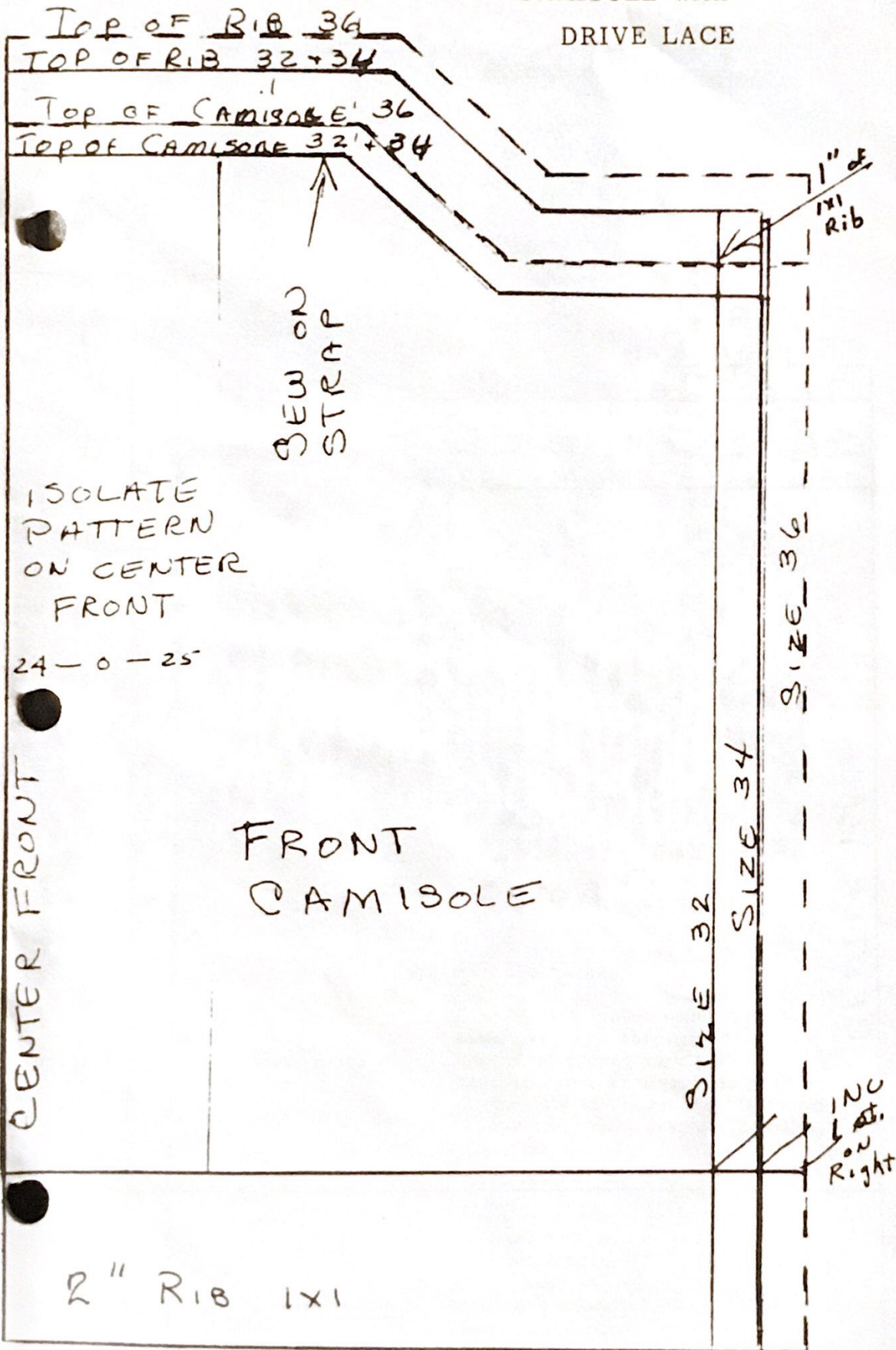
Shoulder straps: Set machine for circular knitting. Put 7 needles on each bed into work. Make straps to needed length. Sew into place.

This also works up nice with lace or cables.

Knit contour pattern on next 2 pages.

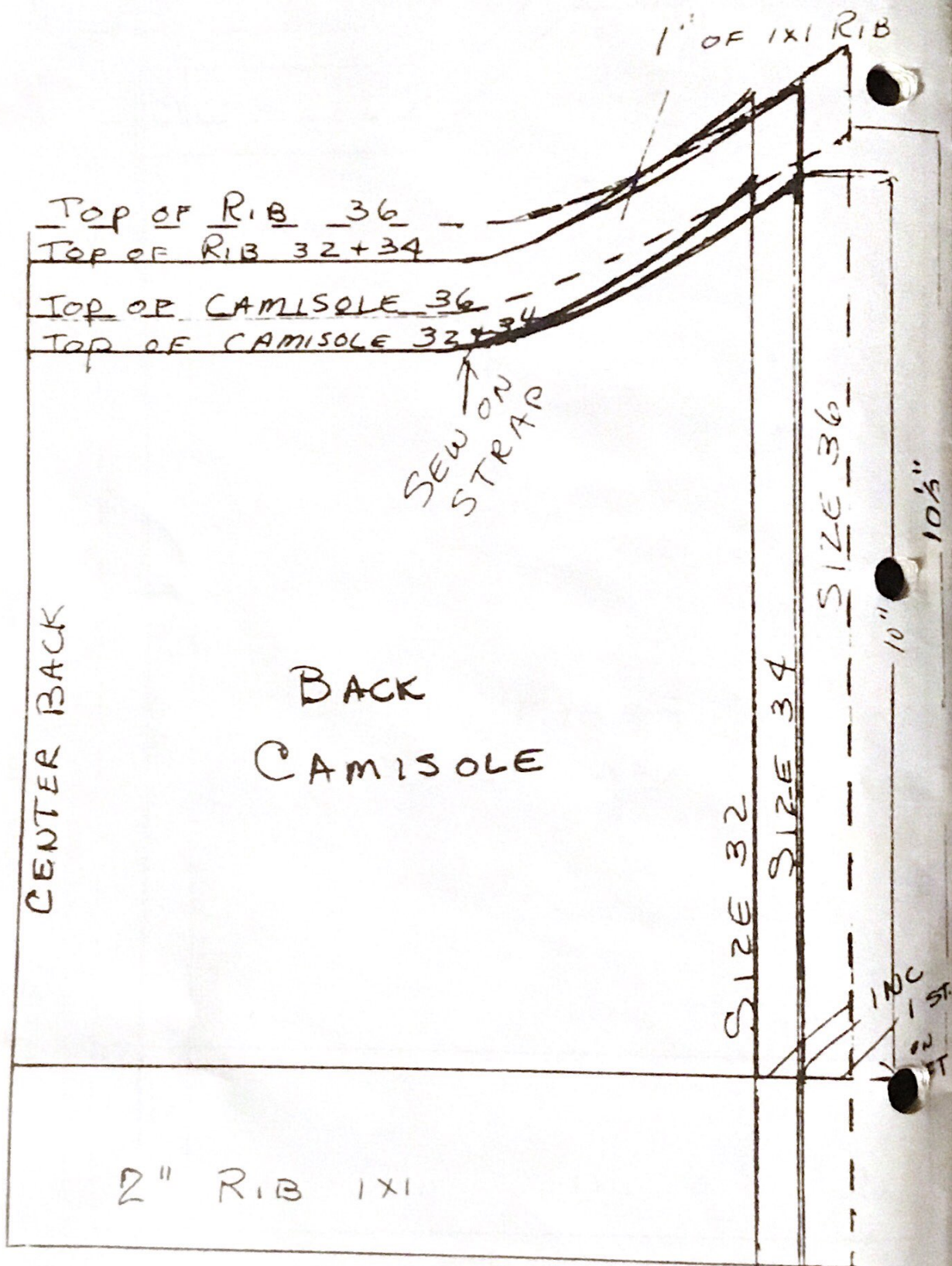


CAMISOLE with  
DRIVE LACE

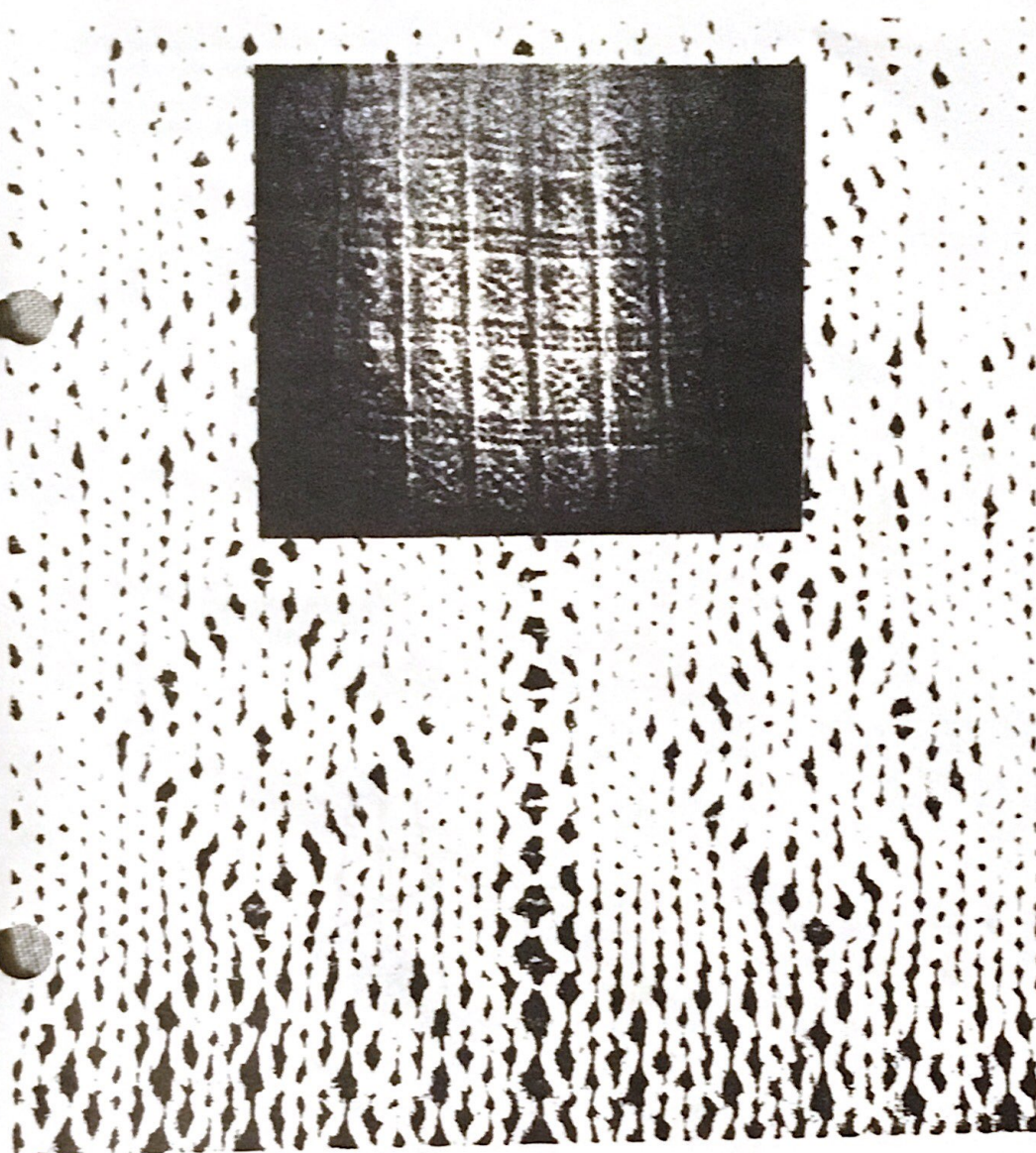




CAMISOLE with DRIVE LACE







Although the picture doesn't do it justice, we urge you to try this beautiful afghan pattern sent in by Zellah Dameron, our Studio dealer in Republic, MO.

#### DRIVE LACE AFGHAN

Knit on a Studio Chunky SK-155 and SR-155 Ribber

Using card #R4 that comes with the machine.

3/15 Foxfire Heirloom yarn - Three (3) pounds without fringe

Finished size - 90 x 60

Three panels

532 rows each panel

Main bed tension 3 Ribber tension 5

(this is very important).

Main bed needle set up E/N 42-0-42;

Ribber bed needle set up 43-0-43;

(two side panels)

Cast on as per instructions on page 37 of SR-155 ribber manual, with waste yarn knit through the first 5 rows of step one; with main color yarn start on row 1 of step two, your stitches will all be on the ribber bed. Change your main carriage settings as per manual; line 2 of step two. Repeat rows 1 through 5 of step two for the rest of the afghan until ready to end with waste yarn; do not bind off, just remove the yarn from feeder and knit across and knock the stitches off. These will be picked up with knitting needle after all three panels (Continued)



### Drive Lace Afghan (Cont.)

are finished. Needle set up for center panel; main bed E/N 41-0-41; ribber bed 42-0-42 (one center panel) For all panels knit 437 rows; ending with card on row 7 or 25 to complete the pattern on the card; turn card of all stitches are on ribber; knit 8 or 10 rows with waste yarn; remove yarn from feeder and run carriage across to remove stitches from machine.

To finish: Kitchner stitch the two side panels to the center panel; you will have one less stitch on each side of center panel, this will be a stockinette stitch. The side panels finish with an open lacy stitch. When these are put together you can't tell where they have been joined. This step makes a pattern repeat across the completed afghan.

Bottom and top finish: Pick up stitches of main color yarn with circular knitting needles (stitches from all three panels) and hand knit these stitches; purl stitch the first row; turn and purl the second row; turn and bind off with purl stitch. Add fringe if desired.

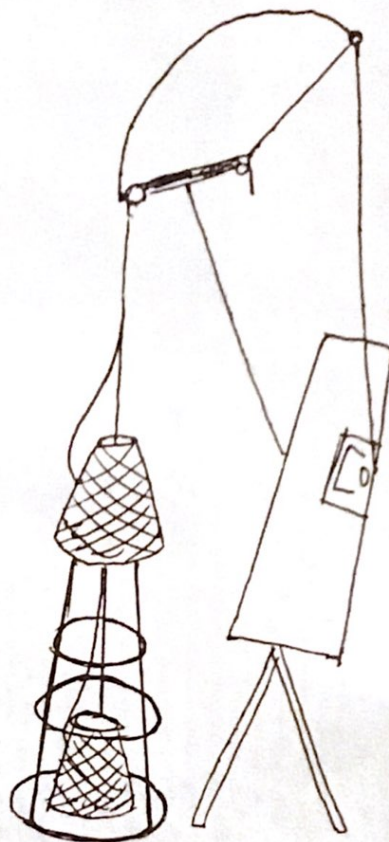
Side edge finish: Single crochet along both edges to keep them from curling. Steam lightly on edges only.

This is a beautiful afghan, and the drive lace is very easy to do - just takes a little concentration until you get the rhythm going, then it's a whiz. Try this, I think that you will enjoy it as much as I did. Six hours machine knitting time. The SK-155 Chunky and Ribber is absolutely a marvelous addition to the world of machine knitting.

\*\*\*\*\*

Janice Russak, our Studio dealer in DeLeon Springs, FL, sent us a helpful hint which her customer, Mr. Claire Siss, told her about. It's a great idea and simple to try, of the weaver's trick of twisting 2 yarns together by placing one cone above the other. This can be accomplished very easily and inexpensively by using a common, garden-variety tomato cage turned upside down. Thread the yarn of the bottom cone through the cone of the top yarn and then both strands together at the tension pole.

As the top yarn winds off the cone, it will naturally twist itself around the yarn from the bottom cone. (see dawning). For \$1 or less you have a yarn twister.



\*\*\*\*\*

More helpful hints come from Lillie Davis, Roseburg, OR.

She suggests to work a design on your sweater after it is finished, try doing a chain stitch with a yarn needle or crochet hook. I prefer these to a duplicate stitch. However, you must make your sweater larger than needed, as these stitches decrease the size. Always make a swatch and work design, then measure to get correct gauge. I always use the number of stitches and rows per inch multiplied by the width and length to get my gauge. Also, try embroidery stitches on sweater for designs.



This "Newsletter" is your publication. Help support it by submitting your original patterns and helpful hints, so other home knitters can learn from your experience. We would like to urge all of you with older machines to share your favorite originals with our other readers. Many of our readers write in requesting simple, beginner patterns. You will receive a gift of yarn for any original pattern or hint that is printed. When sending in your patterns, be sure to include the size of the garment and the knitting gauge (number of stitches and rows per inch) - this is most important - and the knitting machine for which your particular pattern was designed. It also helps if you know approximately how much yarn your pattern takes. Please check and recheck your patterns for errors and type or print clearly. We do not have time to knit each pattern sent in, so cannot check for mistakes. It also helps if you do not abbreviate, as many of your terms are unfamiliar to us and to other readers. A black and white snapshot and/or brief description of your garment will make it easier to visualize by other readers. A gift of yarn will be sent for snapshots (black and white) printed with the patterns.

\*\*\*\*\*

There is a wonderful opportunity awaiting you to become a STUDIO Knitting Machine and yarn dealer. Good money can be made in your spare time with only a small investment. We are interested in contacting men and women who would like to become a part of our growing group of STUDIO dealers throughout the United States. Our assistance and guidance can make this a very profitable venture for you, and our only requirements are that you know how to operate a knitting machine and that you have space available in which to set up your STUDIO shop, either in your home or place of business. You will find this a fascinating business which affords you the opportunity to become acquainted with new and interesting people. Contact Mr. David Bratz, Manager, STUDIO Yarn Farms, Inc., P.O. Box 46017, Seattle, WA 98146.

\*\*\*\*\*

If you are planning to move soon, let us know both your old and new addresses. Complete with zip codes. We cannot change your address without this information.

\*\*\*\*\*

Patterns submitted and published in this "Newsletter" are submitted by individuals and are purported to be original patterns.

\*\*\*\*\*

CANADIAN SUBSCRIBERS - Please remember, when sending in your subscription, all checks and money orders from Canada must be marked "Payable in U.S. Funds".

\*\*\*\*\*

Please Note - We always notify you when your subscription expires. Your last issue is stamped across the Subscription Order Blank on the back page in red, "Your subscription expires with this issue". This issue is then mailed to you in an envelope and sent by first class mail. If you miss an issue, without having received this notification, please let us know, because it means that your mail isn't reaching you, and we will send you another copy. All the "Newsletters" are mailed out, altogether, just as soon as the mailer receives them from the printer.