

Studio

KNITTING MACHINE

"The Most Wanted Automatic Home Knitter"

NEWSLETTER

JANUARY/FEBRUARY, 1987

VOLUME 191



FROM THE DESK OF DAVE BRATZ

Do the seasons get shorter each year, or is this a sign of something other than shorter days in the winter months. This year I didn't even get my Christmas tree down yet or the outside lights put away and the stores were already pushing Valentine's Day. I realize this type of thing has a habit of seeming to happen more frequently as we add years to our birthdays, but I also see some of the younger generation that obviously do not take time to "Smell the roses" along the path of life. It seems such a shame that they miss so many of the things in life that later years dreams are made of.

Enough nostalgia, now for something serious. I recently read an article in a trade magazine reviewing the reason for decline of sewing machine sales and could not help but see the same trend happening with knitting machines. The main gist of the decline seemed to be the cost of material rather than the initial cost of the machines themselves. Is this same thing happening with yarn prices?

An example - twenty years ago a good quality knitting machine (Model SK-303) sold for \$219.95 and yarn was \$3.00 or less per pound. Today a much more advanced machine (Model SK-700) sells for \$615.95 or less than three times increase. Yarns, however, are now \$20.00 - \$25.00 for an average priced pound of yarn. This is over seven to eight times increase in cost. Should this be something that all of us should give some serious thought?

I just thought this might be something a little worth considering and would appreciate any comments you might have.

KNITTING MACHINE SEMINARS -

NEW ENGLAND SEMINAR - Sponsored by Norma's Knitting Machine and Yarn -
March 28th and 29th, 1987, at the Hilton at Colonial - Wakefield, MA 01880
For more details, contact Norma at (617)535-5212.

SEATTLE MACHINE KNITTERS' SEMINAR - April 3, 4 and 5, 1987

Hosted by Knitting Machine Center, Inc., Seattle, WA

Will be held at the Red Lion Inn/Sea Tac. For further information and registration blanks, please contact the Knitting Machine Center at (206)522-3338.

MONTANA KNITTING MACHINE SEMINAR - April 25 and 26, 1987

Sponsored by Carla Bagdanov, Cnitting Bag, Bozeman, MT. Phone (406)587-2770 for more details. Please call between 6:00 p.m. - 9:00 p.m. weekdays or 9:00 a.m. - 9:00 p.m. weekends (please, no calls after 9:00 p.m.). Will be giving away a knitting machine (must attend both full days to be eligible).

Knitting machine seminars are always a lot of fun and very informative, so if you're in the area of one of these, do plan to attend. It's well worth it.

This article is reproduced from "Knits for Joy" with permission of Silver Knitting Institute, Tokyo, copyright holder 1978.

Even though the snow is still on the ground for many of us, it's not too early to turn our thoughts to spring wardrobes, and start knitting for the sunnier, warmer days. This issue features an elegant and simple woman's two-piece dress in an attractive punch lace pattern. It uses only simple techniques in spite of its sophisticated looks. By combining very fine thread and regular, light weight yarn, you can achieve fancier and more fashionable effects with your punch lace pattern.

SYMBOLS/ABBREVIATIONS

- SD ① — SD stands for Stitch Dial and the figure in circle indicates Stitch Dial number.
- SD ①. — Number and the dots indicate the position for Stitch Dial setting.
- pos. — position
- st. (sts.) — stitch or stitches
- Nd. (Nds.) — needle or needles
- CM — Card Memory Number of Punch Card.

Dress is pictured on cover.

TWO-PIECE DRESS

Finished measurements size: cm.

	A	B	C
Bust	94	100	106
Waist	60	66	72
Hip	86	92	98
Skirt length	68	70	72

Materials/others:

Yarn A: synthetic light weight yarn (white)

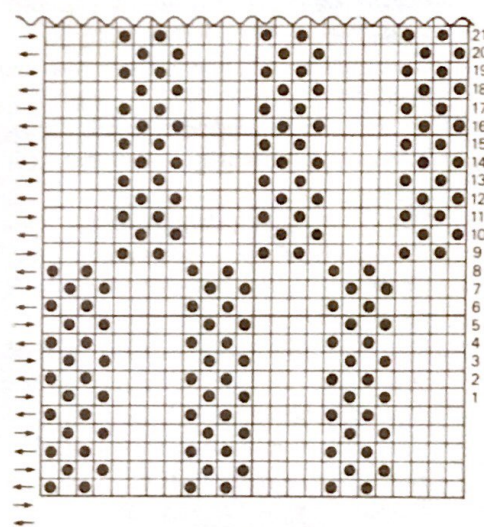
(Polyester 65%, wool 25%, nylon 10%).....500 — 600gs.

Yarn B: very fine yarn (white).....150gs.

Elastic band (3cm. wide, 70 — 80cm. long)

a pair of shoulder pads

Punch Card: punch as shown below.



Tension Gauge

32 stitches by 44 rows over the swatch of Punch Lace with the Stitch Dial at ⑤.

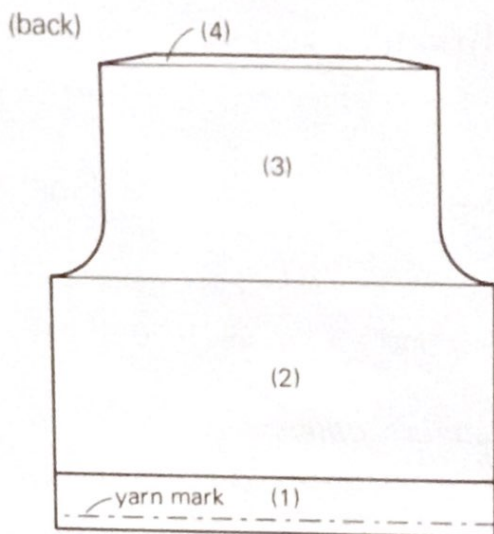
34 stitches by 45 rows over the swatch of Stockinet using yarn A with the Stitch Dial at ⑤.

TOP

Knit

Purl side is worn.

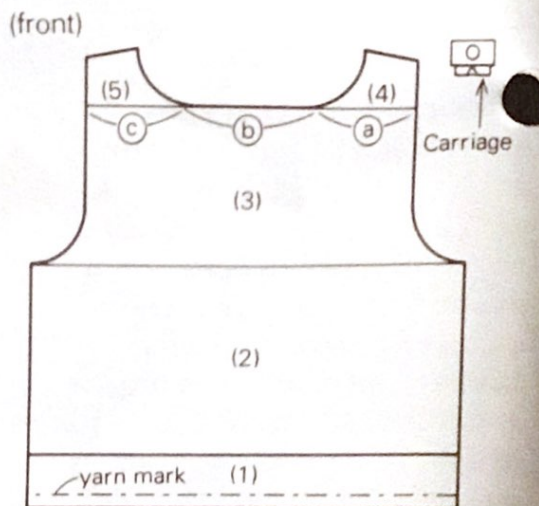
Knit back, front and sleeves following the patterns given on pages 8 — 9 and instructions below.



- (1) — Set the Pattern Paper for back and lock at starting line.
 - Set Punch Card and lock at CM1.
 - Arrange required number of Nds. in B pos.
 - Cast-on and knit several rows of waste knitting ending at the left side.
 - Knit 1 row with the Ravel Cord.
 - Push the working Nds. to D pos.
 - Wind yarn A around the Nds. anti-clockwise starting from the left side.
 - Place the yarn in Yarn Feeder.
 - SD ④, knit 4 rows with yarn A.
 - Exchange yarn A for B and knit 2 rows.
 - Knit 2 rows with yarn A and B together and put yarn mark through the row.
 - * Knit 6 rows with yarn A and B.
 - Knit 2 rows with yarn B.*
 - Repeat *to*, 4 times in all.
- (2) — Put yarn A into Yarn Feeder ① and yarn B into Yarn Feeder ②.
 - Set the Carriage as follows.

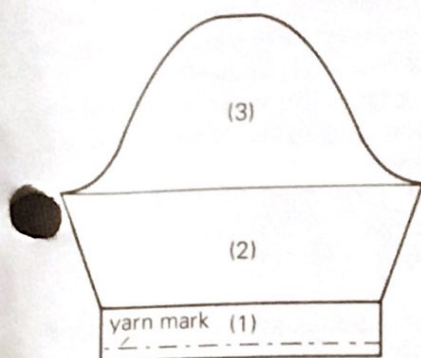
Cam Lever.....	Punch Lace
Stitch Dial.....	⑤
Russel Levers.....	I (left) & II (right)
 - Release Punch Card and Pattern Paper and knit up to beginning of armhole in Punch Lace referring to Operation Manual.
- (3) — Shape armhole at both sides following contour line by decreasing sts.
- (4) — Set both Russel Levers to I.

- Shape shoulder by partial knitting on both sides.
- Put yarn mark at the centre(0).
- Remove right shoulder, left shoulder and neck edge on waste knitting respectively.



- (1) — (3) — Work in the same manner as instructed (1) — (3) for back. Put yarn mark at the centre(0).
- (4) — Mark the CM on the Card.
 - Set Russel Levers to I and push Nds. in section (c) and (b) to D pos.
 - Following contour line, shape neckline by decreasing sts. and shoulder by partial knitting.
 - Remove the section on waste knitting.
 - Push back empty Nds. to A pos.
 - Return Pattern Paper to front neckline and lock it.
 - Return Punch Card to marked CM and lock it.
 - Remove section (b) on waste knitting.
 - Push back the empty Nds. to A position.
- (5) — Push Nds. in section (c) back to B pos. replacing sts. onto the Nd. hooks.
 - Release the Pattern Paper and Punch Card.
 - Work section (c) in the same manner as done for section (a) but reverse shapings.

(sleeve) — both alike —



- (1) — Set the Pattern Paper for sleeve and lock at starting line and knit in the same manner as (1) for back but repeat *to* 3 times in all.
- (2) — Release Pattern Paper and Punch Card
 - Set Carriage for Punch Lace.
 - SD ⑤, knit following contour line increasing underarm.
- (3) — Shape sleeve cap following contour line by decreasing sts.
 - Put yarn mark at centre(0) and cast off remaining sts.

(neckband)

Exchange the Stitch Scale for the one which has the number 10% less than the original one.

- Set Pattern Paper for neckband and lock at starting line.
- Arrange required number of Nds. for neckband.
- Cast-on and knit several rows of waste knitting.
- Knit 1 row with the Ravel Cord.
- Release Pattern Paper.
- SD ⑤, knit required number of rows in Stockinet using yarn A and B together.
- Remove neckband on waste knitting.

Make up

- Block out each piece to size and press with steam iron.

(join neckband to neckedge)

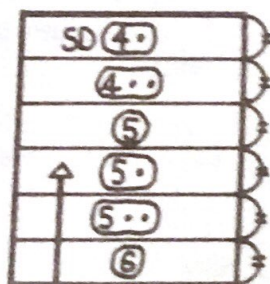
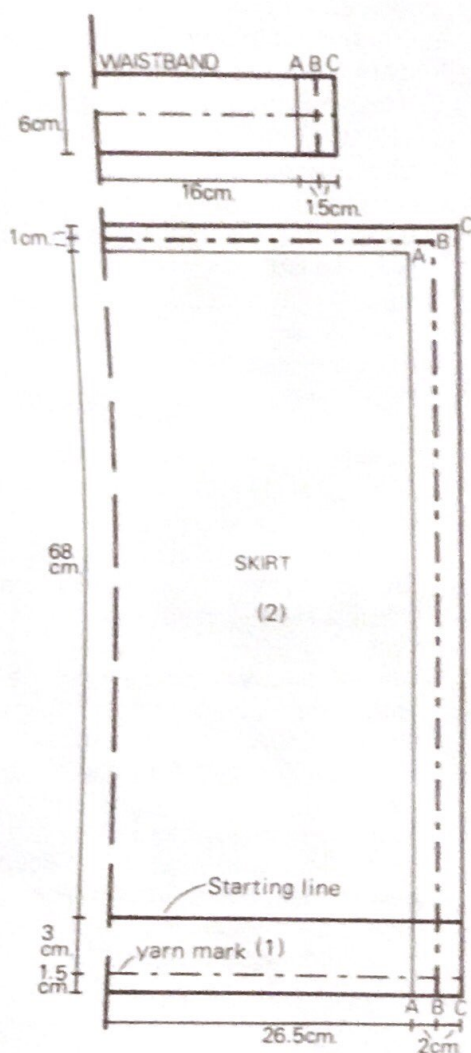
- Join right shoulder on the machine.
- Arrange the same number of Nds. as neckband to B pos.
- With right (purl) side facing you, pick up the sts. from the neckedge and place them onto the Nds.
- Push the working Nds. to D pos. and back to C pos.
 - The sts. are behind the latches.
- Unravel waste knitting.
- With wrong (knit) side facing you, pick up the sts. from the first row of neckband and place them onto the corresponding Nd. hooks.
- Push the Nds. in C pos. back to B pos.
 - The rear sts. will slip off the Nds.
- Remove waste knitting.
- Push the Nds. to D pos. and back to C pos.
 - The sts. are behind the latches.
- Turn up neckband and push the Nds. in C pos. back to B pos.
 - The rear sts. will slip off the Nds.
- Cast off the sts. by back stitch method.
- Unravel waste knitting.
- Join left shoulder on the machine.
- Join side seams, underarms and neckband seams by blind stitch.
- Set in sleeves gathering top of sleeve cap.
- Fold the hem at yarn mark onto the wrong (knit) side and stitch it down.
- Sew the shoulder pads in place.
- Sew in yarn ends.
- Give a final light press.



SKIRT

Purl side is worn.

Select one of those four sizes given to fit you, and draw it on the Blank Pattern Paper in 1/2 scale.



Knit

Knit 3 pieces alike.

- (1) — Set the Pattern Paper for skirt, lock at starting line and knit in the same manner as (1) for back of Top.
- (2) — Knit up to the waist line in Punch Lace changing Stitch Dial as shown.

— Put yarn mark at centre(0) and remove the fabric on waste knitting.

- Knit another 2 pieces in the same manner.
- Block out each piece to size and press with steam iron.

(waistband)

- Join side seams.
- Set Pattern Paper for waistband and arrange required number of Nds.
- With right (purl) side facing you, pick up sts. from the last row of one and a half panel of skirt, gathering the skirt to fit the waistband by placing 2 sts. or 3 sts. together onto a Nd. along the row.
- SD (5), with yarn A, knit required number of rows for waistband in Stockinet.
- Remove on waste knitting and leave the Nds. in B pos.
- Knit another half of waistband in the same manner.
- Join waistband seams leaving an opening for elastic.
- Graft the sts. on the last row and the first row of waistband.

Make up

- Fold hem at yarn mark onto the wrong side and stitch it down.
- Insert elastic band through the waistband and join both ends.
- Give a final press.

Knit Contour pattern for
Two-piece Dress.

Place this pattern at the top of knit contour pattern on page 8.

NECKBAND



Muriel Strand, Mound, MN,
sent in this pattern which
she describes as easy, fun,
attractive!

BULKY STOCKING CAP

Bulky Machine

Tension - 8

4 sts. & 4 rows per inch.

Cast on 60 sts. Knit 120
rows.

Cut long length of yarn.
Thread on needle and remove
sts. from machine (on yarn).
Draw up tightly to form
circle for outside top of
hat.

Close up and make tube.
With another long length
of yarn, gather up cast-on
edge to form circle. Match
to inside and sew together
firmly for top of cap.
Make pom-pom for top. Roll
cuff once or twice as
desired.

Makes up beautifully in a
fluffy mohair type yarn
(4-ply) using different
contrasting colors. Use 3-
ply yarns double strand and
knit as one strand.

Another pattern from Muriel
for the bulky machine is
this

LONG LACE-UP BOOTIE

As a beginner pattern, this
is a good chance to practice
the tuck stitch pattern.

Makes a thick, warm bootie.

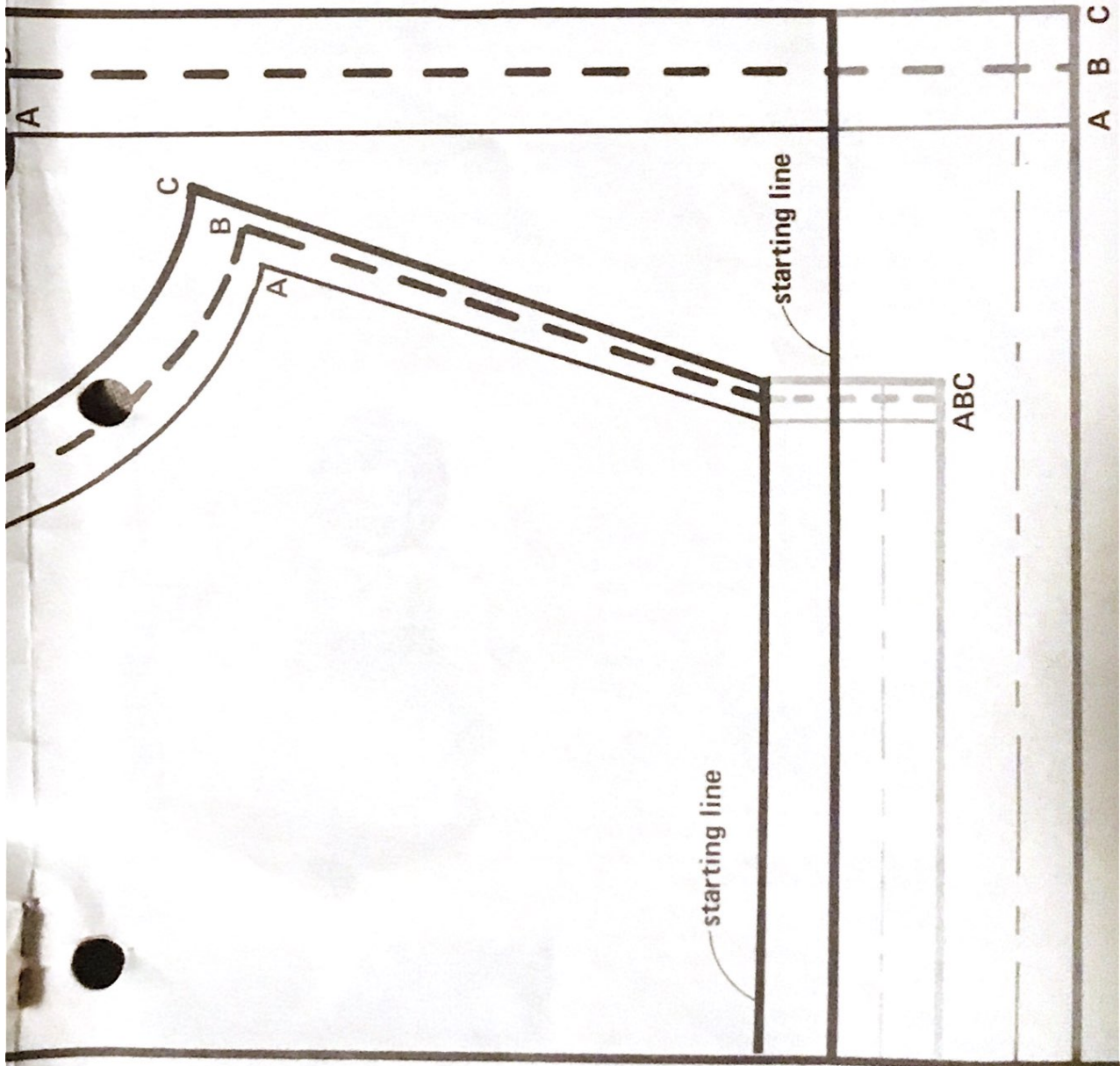
Tension - 8

4 sts. & 3 rows per inch is
gauge for tuck stitch pattern.
(Continued to page 10.)

KNIT CONTOUR PATTERN FOR TWO-PIECE DRESS SHOWN ON COV



VER



Trace the patterns on
blank pattern paper or set
this sheet in the Knit
Contour.

Long Lace-up Bootie (Cont. from page 7)

Use 2 colors - Main color, 4 oz.

Contrast color, 1 oz.

With contrast color, cast on every needle between 35 - 35 (70 needles).

Knit 5 rows stockinette stitch (Λ setting).

Make eyelet (To make eyelet, transfer with tool every 6th stitch to next needle -working from left to right, leave empty needles in working position) Now knit 2 rows.

Change to main color. Now you will knit with tuck stitch and pattern card No.1. (comes with Studio machine). Knit 76 rows with tuck pattern. On row 76 shut off pattern and return to stockinette stitch and change yarn to contrast color.

Knit 2 rows.

Make eyelet (refer to above).

Knit 5 rows and bind or latch hook off.

Now with yarn (main color), draw one end into circle and pull tight - secure sewing closed as this is your toe end.

Make long lace (knit or crochet cord) about 55 to 60 inches long and lace up front of bootie. Make pom-poms or tassels for cord ends.

XXXXXX



XXXXXX

X - white

O - yellow

■ - black

Main yarn - Red

Ruth Charlson, Battle Ground, WA, designed this pattern with a duck design. She has also made some variations of this with hearts, poodles and scotties.

JUMPER

Size 2 Made on a Studio SK-360

8 sts. and 12 rows = 1 inch

Artistic 100% acrylic yarn

Front - Cast on 168 sts. on ribber. Rib 4 rows Ten. 3. Place all sts. on main bed. Ten. 5, RC 000, knit 10 rows. Knit pattern, then continue to row 100. Take off on ravel cord and waste yarn or garter bar. Put back on 60 needles, 3 sts. on each needle, except 2 sts. on every 5th needle* Knit 1 row, transfer every other st. to ribber for 1x1 rib, rib 6 rows with double yarn. Transfer rib st. to main bed. (1) Continue with single yarn. RC 000, knit 9 rows, knit pattern, continue to row 56, place 40 sts. in hold, partial knit 20 sts. for 5 rows. Place 1 st. in hold opposite carriage each row until 6 sts. remain. Then put 1 st. back into work opposite carriage each row until 20 sts. are back in work. This makes facing. Now pick up every other st.



on main work, hanging them on sts. on the needles, and cast off. Cast off 20 of the sts. in hold for the neck, then work the last 20 sts. same as the other side.

*When you put 3 sts. on one needle, place 2 in the back and pull the 3rd st. through, as it would be too bulky otherwise.

Back - Work as front to (1).

Knit 56 rows, place 40 sts. in hold, knit 20 sts. for 56 rows, pick up every other st. about 3" back to form facing, cast off. Repeat on other side.

Sew skirt sides together, crochet all around top edges, working loop at top of fronts for buttonhole. Sew on buttons.

Enjoy dressing your little girl!



From Juanita Teigen, our Studio dealer in Safford, AZ, comes this pattern for a -

WESTERN VEST

Made on a Studio SK-700 and SRP-50
Ribber

Chest size 42" (blocked size 44")
Waist - 38"

2 strands 2/24 Tension - 5
Gauge - Approx. 8 sts. & 12 rows = 1"

Back - Cast on 151 sts. Work K1P1 at Ten. 3 for 25 rows. Transfer all sts. to main bed. Inc. 1 st. at 1 side to make 76 sts. each side of 0. Work 26 rows at Ten. 4. Hang hem from

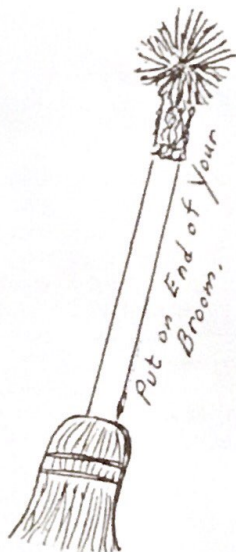
first row. RC 000. Change to Ten. 5. Increase 1 st. each side every 10 rows to row 70. (166 sts.) Then inc. every 6 rows to row 112 (180 sts.) Work even to row 124. Bind off 9 sts. at beginning of next 2 rows, then decrease 1 st. each side every row to 140 sts. then every 2 rows to 134 sts., then every 4 rows to 126 sts. Work even to row 260. Engage Russell levers and put 81 sts. opposite carriage in NOP. Dec. 1 st. at neck edge every row. At same time, put sts. in NOP on armhole side. First row will be 8 sts. to NOP then 5 sts. for 6 times. Remove shoulder sts. with scrap yarn. Remove center 36 sts. on scrap yarn also. Remove shoulder and neck sts. separately, of course. Work other side of neck and shoulder the same way.

Front - Cast on 76 sts. (closed edge) at Ten. 5. Work 2 rows even then set machine for short rows and work as heel of sock-- 2 sts. at a time until 2 sts. remain, then back out until all sts. are in work position. Be sure to wrap needles to prevent holes. Hang hem from cast-on row on every 3rd or 4th needle. RC 000. E wrap cast-on on 19 sts. at front edge for band, leaving #1 needle OOW. Work 12 rows even. Engage Russell levers and put 19 sts. at front plus next 25 sts. in NOP. Work 1 row. Put sts. 57-76 in NOP. Work 80 rows at Ten. 4 on the remaining 30 sts. for pocket. Reset RC to 13 and engage all needles again. Work even to row 26. Set RC 000. This corresponds to back where you set RC to 000. Increase at side same as back keeping 19 sts. for front band straight. Work armhole same as back. At row 142, decrease 1 st. at front edge by transferring the OOW needle and the 19 sts. over 1 needle. Decrease in this fashion every 6 rows to row 224, then do the same every 4 rows. At row 260, work shoulder same as back, keeping front band sts. knitting to row 319. Take the band 19 sts. off on scrap yarn also. Work second side the same.. in reverse. Work buttonholes at row 10 (before setting RC to 000) and at rows 14-44-74-104-and 134 on needles "6&7" and "15 & 16". Putting vest together... Hang shoulder sts. from one front back on machine (Cont.)

Western Vest (Cont.)

and hang corresponding sts. from Back over them (right sides together). Bind off. Repeat for second shoulder. Hang the 19 band sts. on machine (right sides together) and bind off. Pick up 38 sts. from scrap for back of neck plus 7 sts. on each side (right side facing you). Pick up 52 sts. from neck band and hang over neck sts. Then fold band and pick up sts. on other edge. You will have 3 sts. on each needle. Knit across loosely and bind off. Fold the front band and catch loosely where the #1 needle was out of work. Match button holes and work buttonhole stitch around them.

Armbands - Cast on 165 sts. K1P1 at Ten. 4 for 23 rows. Transfer all sts. to main bed. Hang hem. Hang armhole over the band and bind off. Sew side seams. Fold up pocket to form 1" cuff. Tack cuff to body and close side seams of pocket.



Wanda Rice, Middlebourne, WV, sent in this novel ideal for a

COBWEB DUSTER

A simple beginners pattern made on a Studio SK-360.

She suggests you can make them in your school colors or to match your kitchen colors. My broom handle was 3 inches around so I allowed 7 stitches per inch minus 1 stitch. I made mine 5 or 6 inches long. I used 2 strands

2/24 Acridel yarn

Tension #5 in stockinette

Weave - cast on 20 stitches.

Knit 50 rows (Mark place with waste yarn.)

Tension 7 - Knit 1 row

Tension 10 - Knit 1 row

Tension 7 - Knit 7 rows

Tension 4 - Knit 3 rows

Tension 7 - Knit 7 rows (Carriage on left)

Hang hem to waste yarn mark.

Tension 7 - Knit 1 row

Bind off with latch hook.

Seam up back (I put mine over the end of broom handle which makes it a lot easier to sew.)

I cut off about 12 inches of an old broom handle and keep it handy when I make these.

After sewing up sides, draw up cast-on thread. Fasten. Leave on broom handle while fastening on pom-pom. Make a 3-1/2 to 4-inch pom-pom and fasten on the end.

If I make one with red (main color)

I make the pom-pom in lots of red with black and white mixed into it.

You can use a lot of your waste yarn on your pom-pom. Don't be skimpy with yarn on the pom-pom. I use some 3 oz. or 4 oz. yarn to make the pom-pom and use my Acridel for contrast color. I buy my 3 oz. or 4 oz. yarn when I find it on sale.

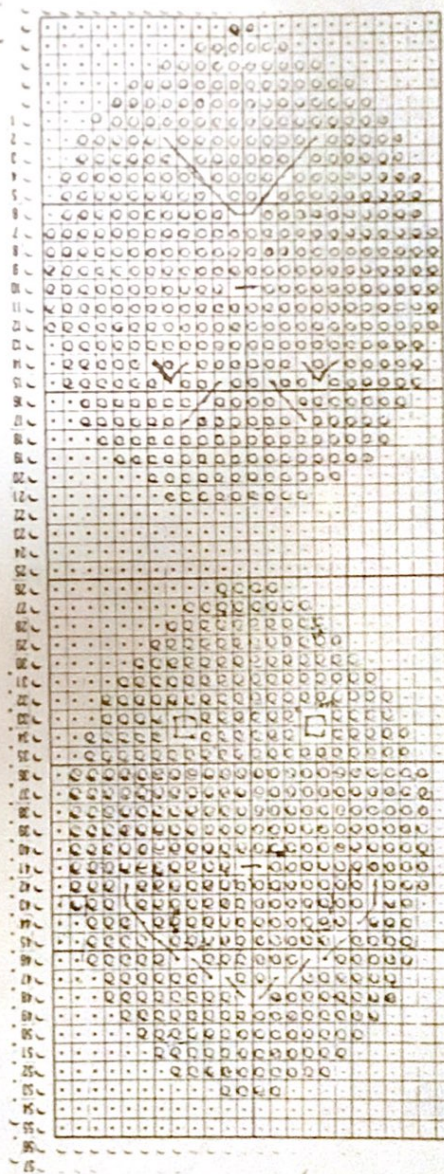
The cobweb duster works great around ceiling lights, in corners and hard-to-reach areas.

This is also a good-selling item for bazaars, etc.

Jewel Evans, our Studio dealer in Martinez, CA, wrote that she tried Pat Dack's baby blanket pattern (Sept. Oct., 1986, issue) in variegated yarn and it turned out very pretty. She also pushed up the ribber and used the same punch card in 1 strand of Acridel 2/24 both beds working 4/4 full needle cast-on and proceeded to do Punch Tuck Rib. It makes a very light baby blanket and comes out much larger.

Made on a Studio SK-360

Cast on 26 sts. (main color). Knit 4 rows. Engage card (with Happy Face). Use yellow as contrast. Knit all of Happy Face, then stop card and knit 4 rows. Change to yellow as main color and green as contrast. Knit balance of card plus 4 rows, then cast off.

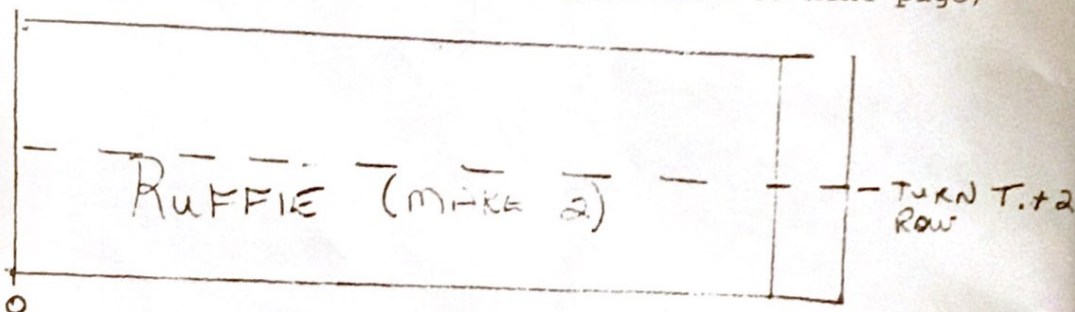


start here.

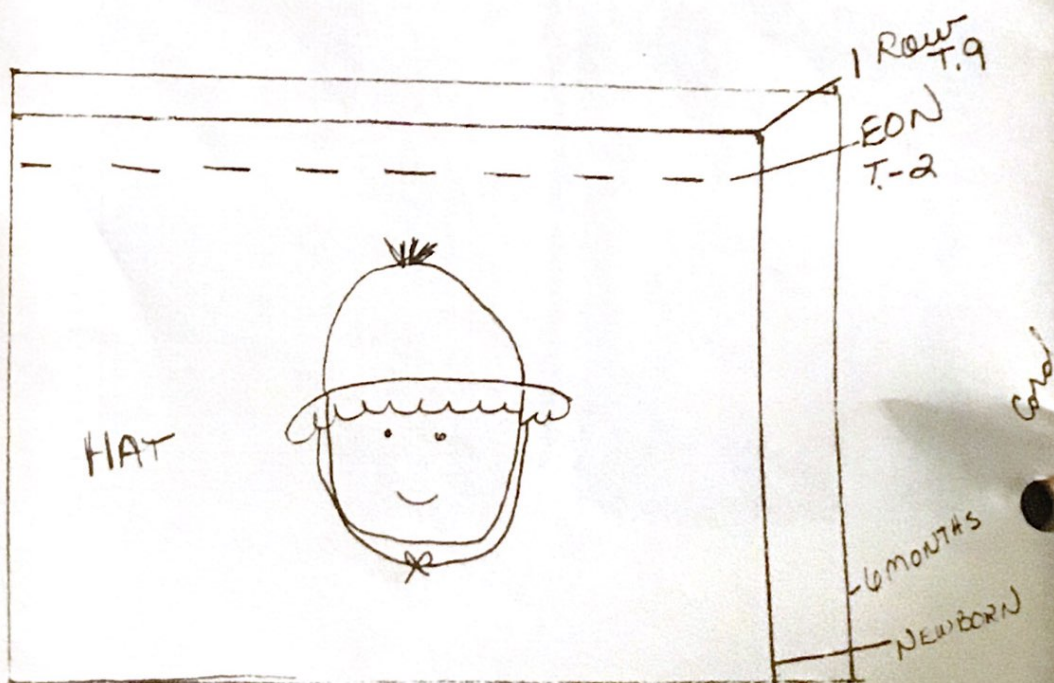
Cynthia Tazelaar, Berwyn, IL, submitted this cute hat pattern which she says is fast and easy.

GIRL'S RUFFLED HAT

Made on a Studio SK-360 Size - Newborn to 6 months
Tension - #6 8 sts. & 11 rows = 1 inch Yarn, 2/11
Ruffle (make 2) Make ruffle according to knit contour. At turn row make 1 row 2 full tensions higher (T.8), knit (M.T) to top of ruffle pattern & hang hem from c/o bar. Knit 2 rows & take off with ravel cord & waste yarn or garter bar.
Hat - Hang ruffles on machine. One ruffle left of 0, putting 2 sts. on one needle except for 1st st. Hang other ruffle to right of 0 with 1st st. on 1st st. of other ruffle (for seam) and 2 sts. on 1 needle for the rest. Knit hat according to pattern. A small Fairisle design may be put in approx. row 6. (Continued to next page)



Knit Contour pattern for Ruffled Hat



WE NEED YOUR ORIGINAL PATTERNS

1/87

This "Newsletter" is your publication. Help support it by submitting your original patterns and helpful hints, so other home knitters can learn from your experience. We would like to urge all of you with older machines to share your favorite originals with our other readers. Many of our readers write in requesting simple, beginner patterns. You will receive a gift of yarn for any original pattern or hint that is printed. When sending in your patterns, be sure to include the size of the garment and the knitting gauge (number of stitches and rows per inch) - this is most important - and the knitting machine for which your particular pattern was designed. It also helps if you know approximately how much yarn your pattern takes. Please check and recheck your patterns for errors and type or print clearly. We do not have time to knit each pattern sent in, so cannot check for mistakes. It also helps if you do not abbreviate, as many of your terms are unfamiliar to us and to other readers. A black and white snapshot and/or brief description of your garment will make it easier to visualize by other readers. A gift of yarn will be sent for snapshots (black and white) printed with the patterns.

There is a wonderful opportunity awaiting you to become a STUDIO Knitting Machine and yarn dealer. Good money can be made in your spare time with only a small investment. We are interested in contacting men and women who would like to become a part of our growing group of STUDIO dealers throughout the United States. Our assistance and guidance can make this a very profitable venture for you, and our only requirements are that you know how to operate a knitting machine and that you have space available in which to set up your STUDIO shop, either in your home or place of business. You will find this a fascinating business which affords you the opportunity to become acquainted with new and interesting people. Contact Mr. David Bratz, Manager, STUDIO Yarn Farms, Inc., P.O. Box 46017, Seattle, WA 98146.

If you are planning to move soon, let us know both your old and new addresses, complete with zip codes. We cannot change your address without this information.

Patterns submitted and published in this "Newsletter" are submitted by individuals and are purported to be original patterns.

CANADIAN SUBSCRIBERS - Please remember, when sending in your subscription, all checks and money orders from Canada must be marked "Payable in U.S. Funds".

Please Note - We always notify you when your subscription expires. Your last issue is stamped across the Subscription Order Blank on the back page in red, "Your subscription expires with this issue". This issue is then mailed to you in an envelope and sent by first class mail. If you miss an issue, without having received this notification, please let us know, because it means that your mail isn't reaching you, and we will send you another copy. All the "Newsletters" are mailed out, altogether, just as soon as the mailer receives them from the printer.

1's Ruffled Hat (Cont.) Knit to EON on pattern. On EON, set tension to 2 tensions lower (T.4). Knit to top of pattern and knit 1 row Ten. 9. Take off with double-eye needle and pull to gather top. Cords - Make 2, approx. 120 rows. Sew back seam of hat and ruffle front and back. Attach cords on sides. Make pom-pom. (To make larger hat, use higher tension.)
