

Studio

KNITTING MACHINE

"The Most Wanted Automatic Home Knitter"

NEWSLETTER

MARCH/APRIL

VOLUME 192



FROM THE DESK OF DAVE BRATZ. . . .

Spring is definitely very close and in many areas some welcome samples of what we have waited for all winter were lucky enough to come on a weekend.

It seems we are more and more in a changing world with nothing, including the weather, showing some drastic differences from the usual. In fashions the hems go up and then they go down. It seems right now the change is not as yet settled on either side of the fence and you can be in style with any kind of length. Even if the hem doesn't turn out evenly, no problem, you can call it the latest design. The same type of change has also begun in the knit garment type or texture of material. Several years back the new thing was to be able to knit bulkier, thicker and heavier. It now appears the pendulum has begun to swing back and the obvious will be a return to popularity of finer knits. It may take several years, but I am convinced the ball has started to roll.

The redeeming fact of any or all predictions, whether hems go up or down, whether garments are thick or thin, is still the popularity of knits. You can all be proud of the fact that with the possibilities you have with your very own knitting machine, you can be in on the ground floor of the latest and most up to date fashions.

Happy Knitting!!!!!!!

Important Seminar news on page 15.



Studio SK-700 Knitting Machine

Easy Knitting.

Take the effort out of your knitting today with the **Studio SK-700**. It's ball bearing carriage system makes knitting a breeze.

Easy Payment Terms.

Five models plus ribbing attachments are available on **Studio's** own Credit Plan. It's the only Credit Plan offered in the industry.

Call Today. For more information contact the Studio dealer nearest you or write Studio today. Make your next purchase easy with **Studio**.

Studio Yarn Farms, P.O. Box 46017, Seattle, WA 98146



Barbara Miller, our Studio dealer in Renton, WA, designed and knit this very attractive sweater which is also pictured on the cover.

SWEATER WITH SLIP STITCH PATTERN
AROUND NECK

Made on a Studio SK-700 with Ribber, but should work on any machine, ribber with charting device.

Yarn: Vellon by Millor - 2 cones

Size: Small, medium, large & extra large. Back length 25"

Stitch Gauge: 25 sts. & 36 rows to 10 cm. in stockinette, at st. dial 9.1.
25 sts. & 66 rows to 10 cm. in slip st. pattern, 10 rows at st. dial 9 and 4 rows at st. dial 6.

BACK - (1) Cast on for knit 2 purl 2 Rib. Do first row of cast-on on st. dial 0, then next three rows on 3. Rib at St. dial 7 to (2). Transfer ribber st. to main bed and knit in stockinette to (4) with st. dial at 9.1.
(4) Tie a marker on each side for sleeve. Knit to (5) and start neck shaping. At (6) start shoulder shaping. Remove shoulder stitches on scrap yarn. Turn back to (5) and knit other side. After second shoulder is removed on scrap yarn, knit one row. Remove on scrap yarn.

FRONT - Knit like back to (3). At (3) remove center stitches on scrap yarn.

This pattern must be used with the knit contour pattern which follows these written instructions.

Remove stitches opposite yarn on scrap yarn. Knit one side using a full fashion decrease at neck edge. At (4) tie marker on edge. At (6) start shoulder shaping. Remove shoulder sts. on scrap yarn. Rehang stitches on other side and knit like first side reversing shaping.

FRONT NECK INSERT - Hang front along decreased edge with right side facing you. Turn Knit Contour to (8). Put in punch card and lock on row 1. Set row dial for knit contour to 66. Set st. dial to 9 and knit 2 rows. Release punch card and set cam on slip.* Knit 10 rows, change st. dial to 6 and knit 4 rows *. Repeat from * to * to (9). End with 2 rows stockinette. (You can do a few more or less rows if you need to). Pull needles out to D position and with garment yarn do a latch tool cast-on in front of knitting. This makes a nice fold line. At st. dial 6 knit 10 rows of stockinette for facing. (10) Do a back st. bind-off. Hang the second side. Turn the punch card over and lock on first row of pattern. Knit like first side.

BACK NECK INSERT - Hang back neck stitches with knit side facing you, increasing a couple of sts. on each side to make fit knit contour for back neck insert. Pull needles to D position and do an E-wrap cast-on in front of knitting. Knit like front insert but decrease and increase on sides following pattern.

SHOULDERS - Hang front and back shoulder sts. that are on scrap yarn on to needles with right sides together. Pull front sts. through back sts. and bind off. Sew pattern part of shoulder together.

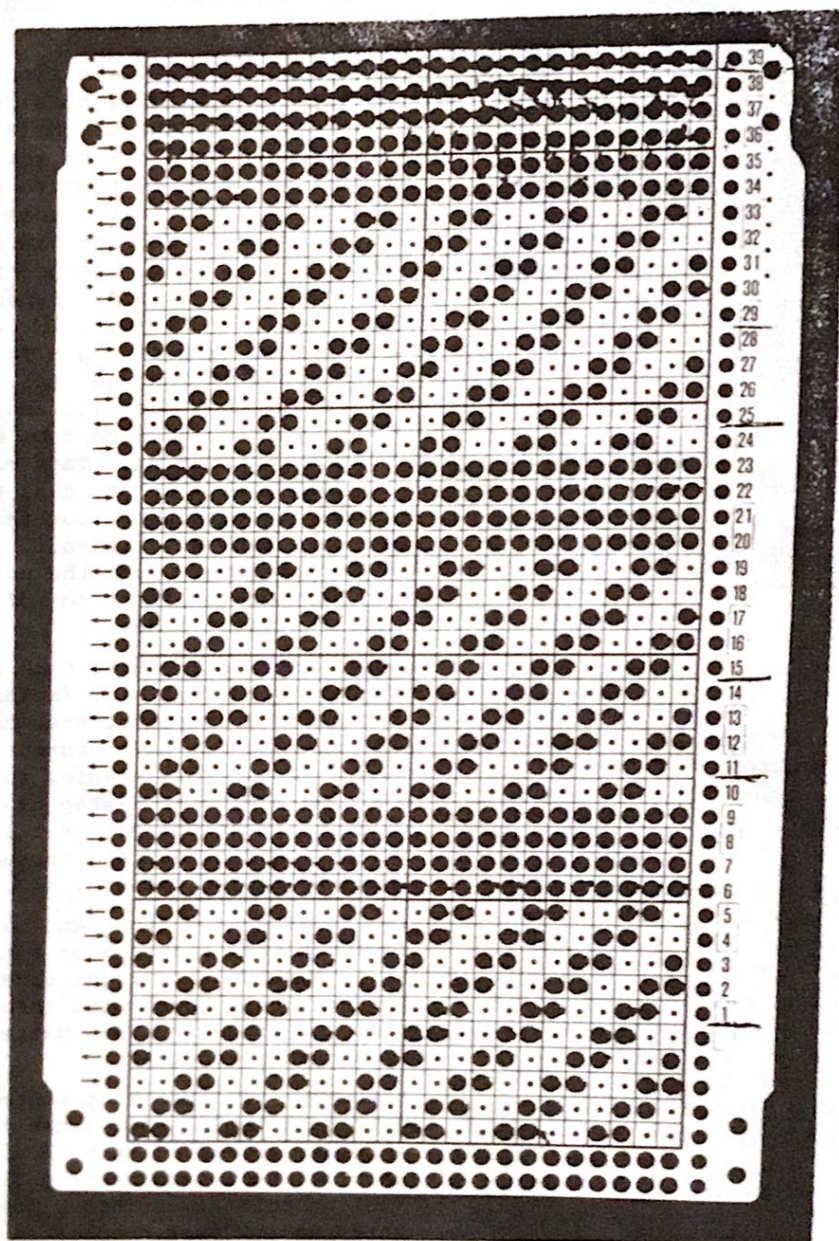
SLEEVES - (11) Set knit contour row dial back to 36. Hang sides from shoulder to marker on both sides of machine. Pull needles from (11) to (12) on both sides into D position. Knit one row over needles in work in center. Push needles opposite carriage from D to C position following knit contour from (12) to (13). Knit to (14). (Continued to next page.)

Sweater with Slip Stitch Pattern Around Neck (Continued)

Remove on scrap yarn and rehang doubling all but 2 edge sts. on both sides. Knit 1 row st. dial 9.1 and transfer sts. to ribber for 2 by 2 rib. Hang weights and knit to (16) at st. dial 7. Transfer to main bed and do a back-stitch bind-off, or knit the last row loose and slip st. bind-off.

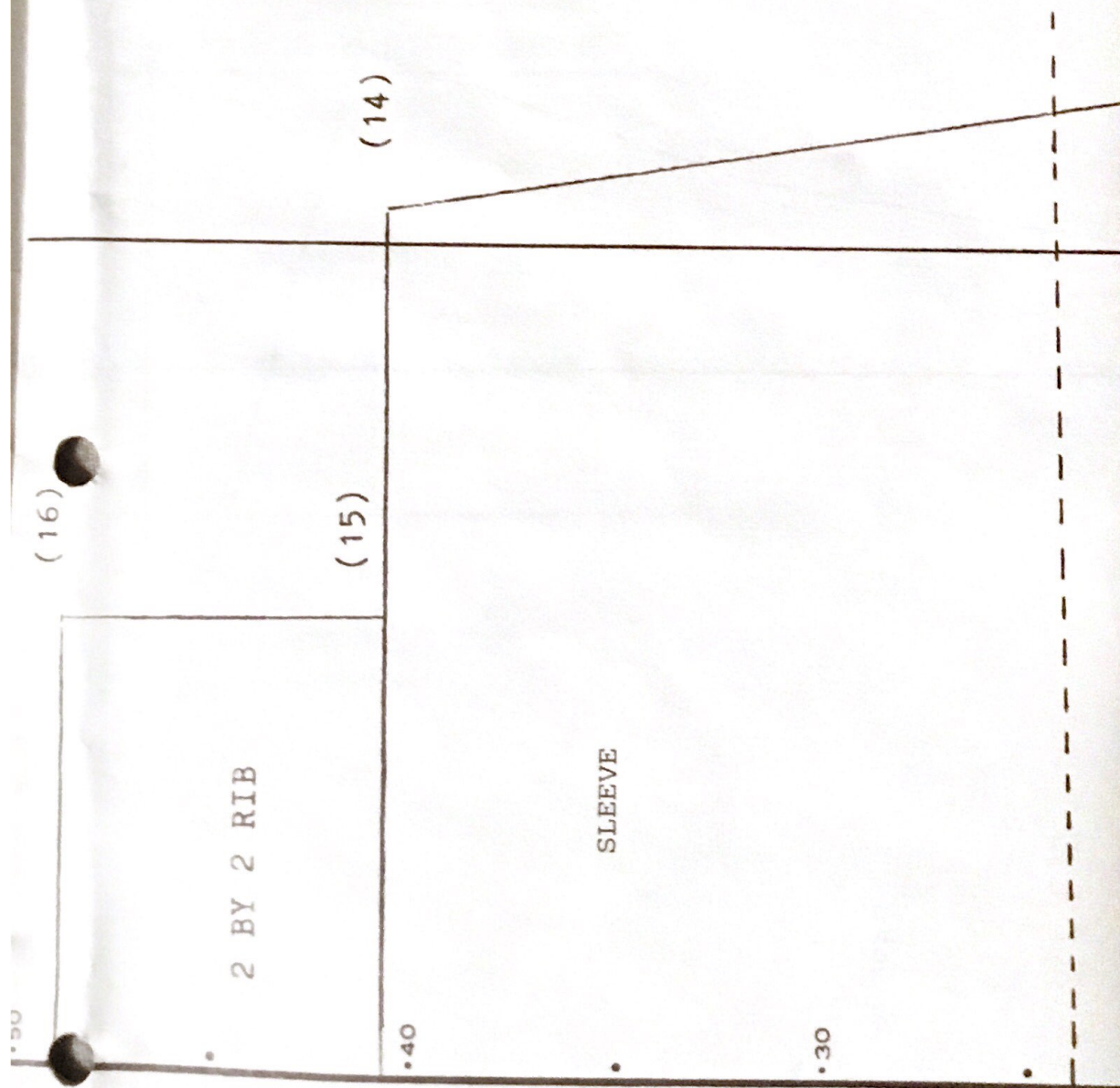
FINISHING - Sew edge of front neck insert to sts. on scrap yarn at center front. Be sure right front is on top. Fold facing back at fold line and sew down. Press garment.

This is the punch card used for the neck insert.

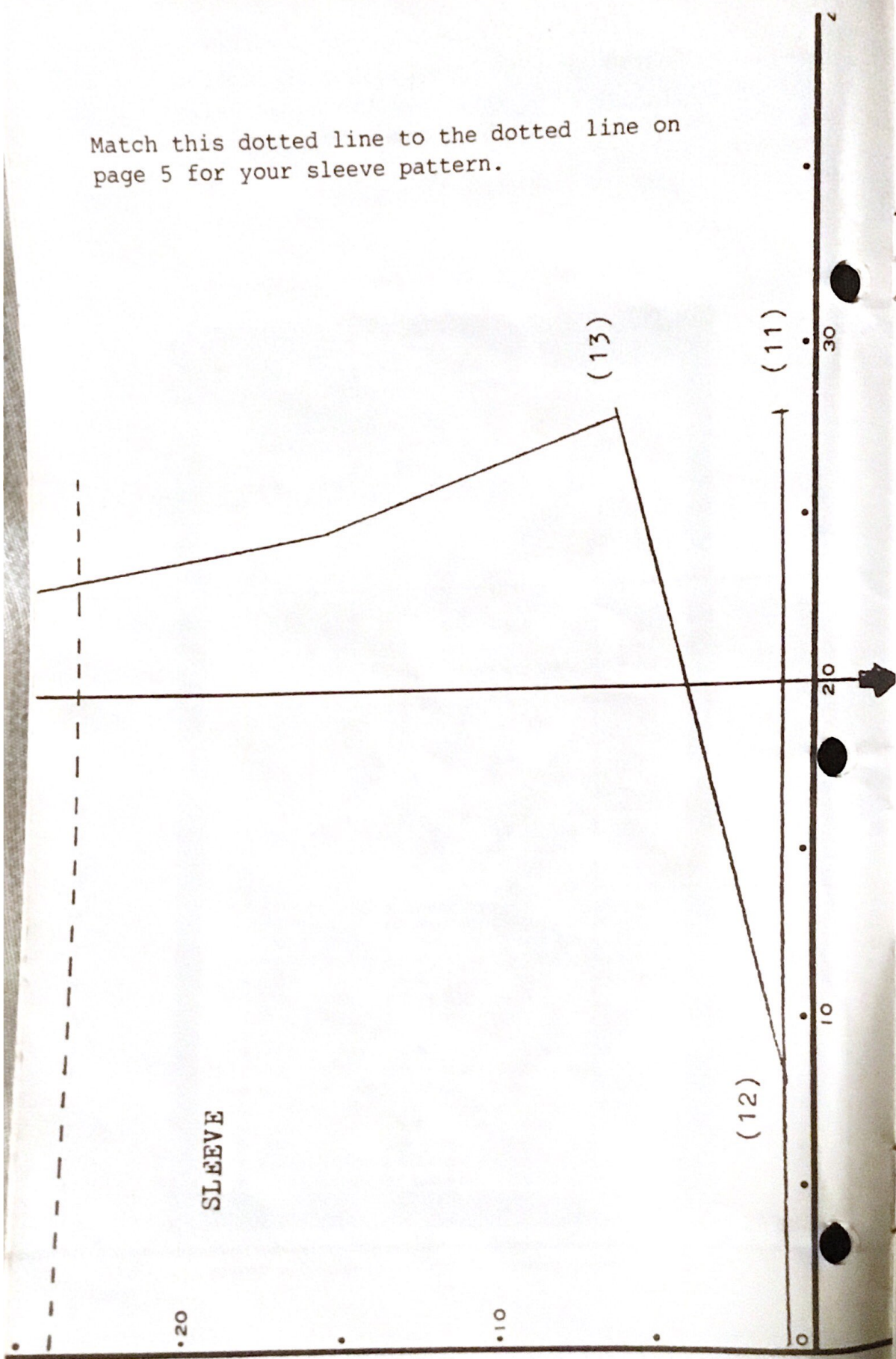


The knit contour patterns are on the following pages.

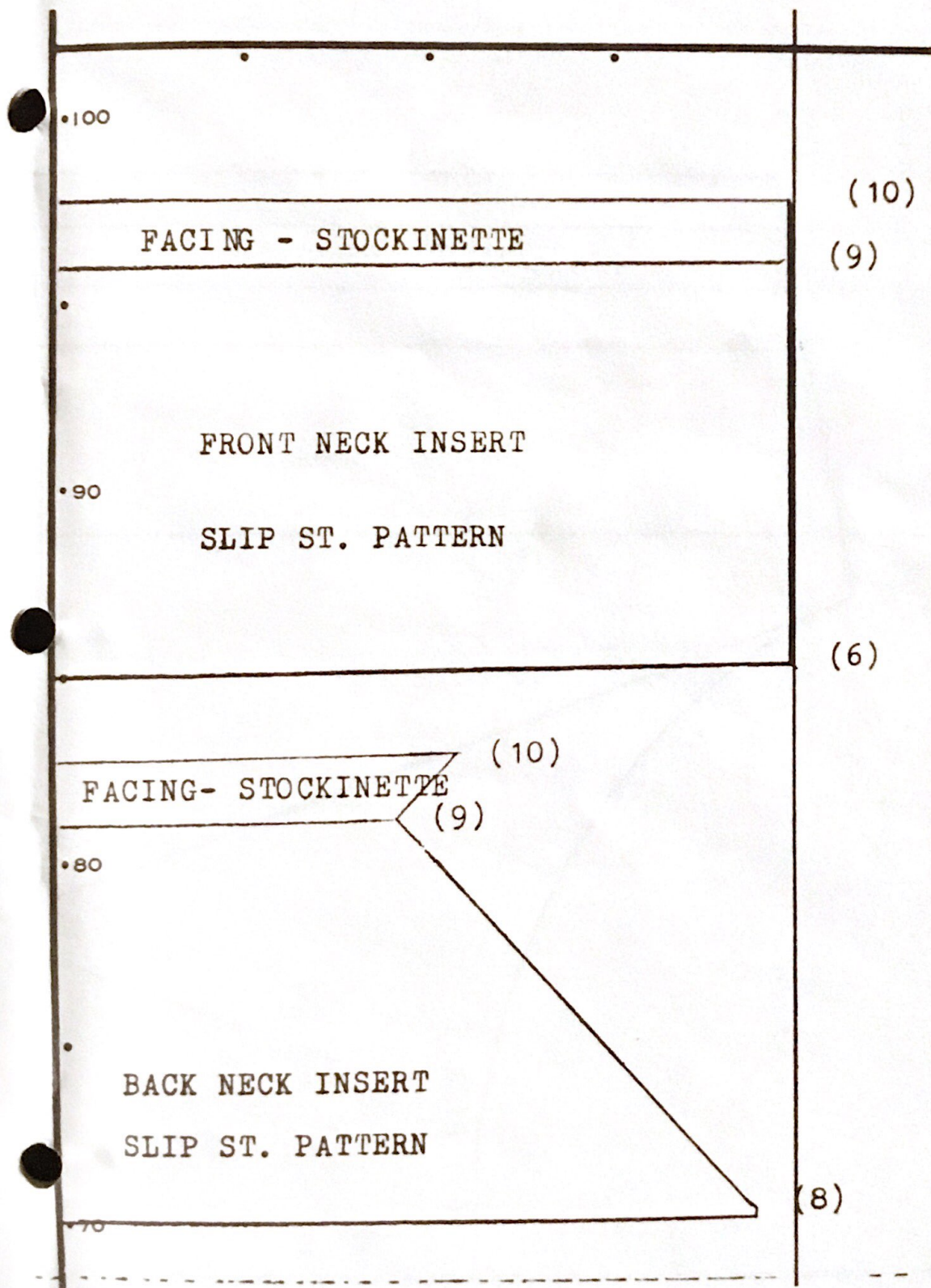
Match the dotted line on this page to the dotted line on page 6 and you will have the actual size to draw on your knit contour paper for your sleeve pattern.



Match this dotted line to the dotted line on page 5 for your sleeve pattern.



Draw this pattern at the top of your knit contour paper matching the dotted lines to those on page 8. The sleeve is drawn on one page and the neck inserts and sweater body is drawn on another sheet.



(Match to dotted line on page 7)

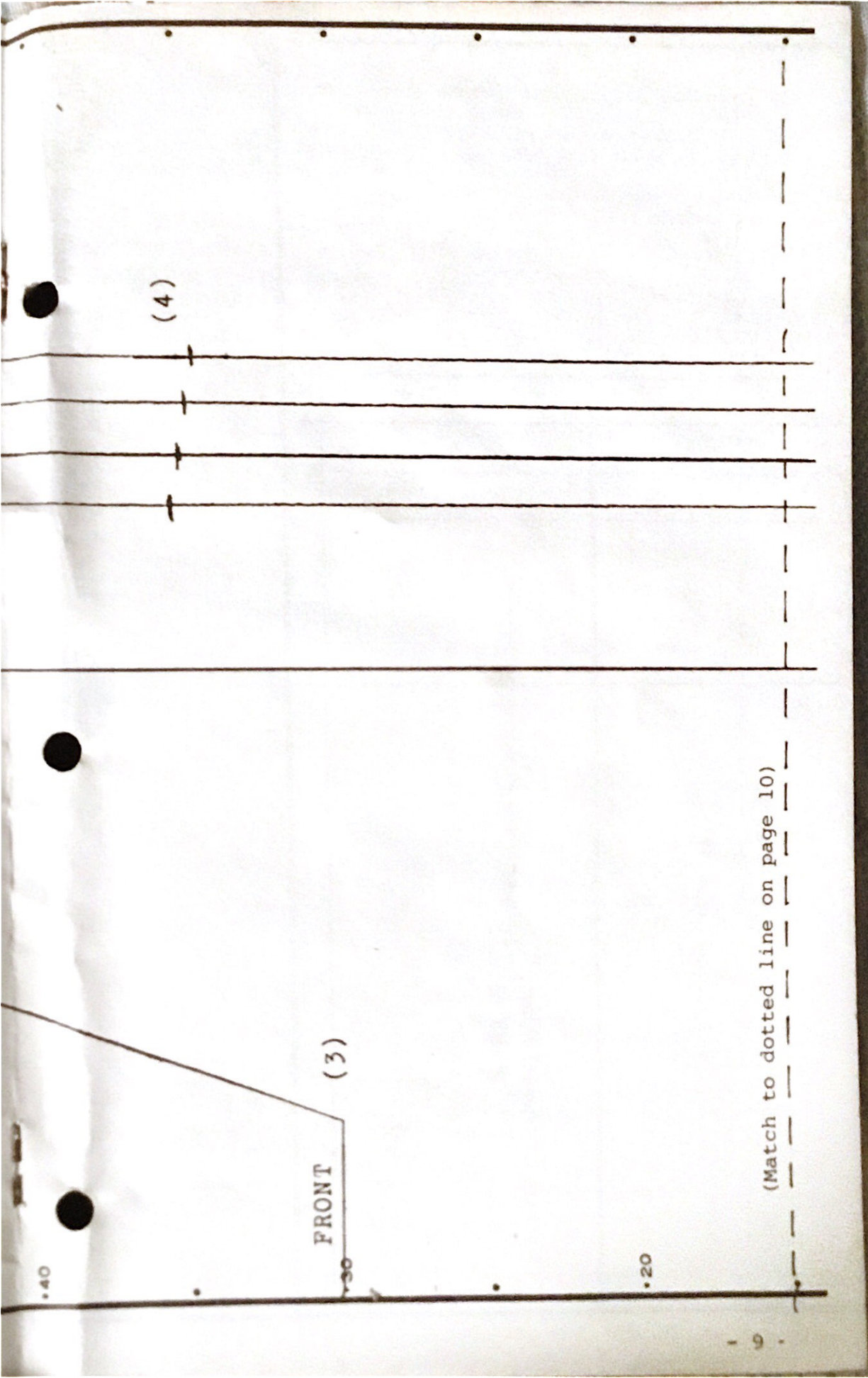
(7)

(6)

(5) BACK

•60

•50



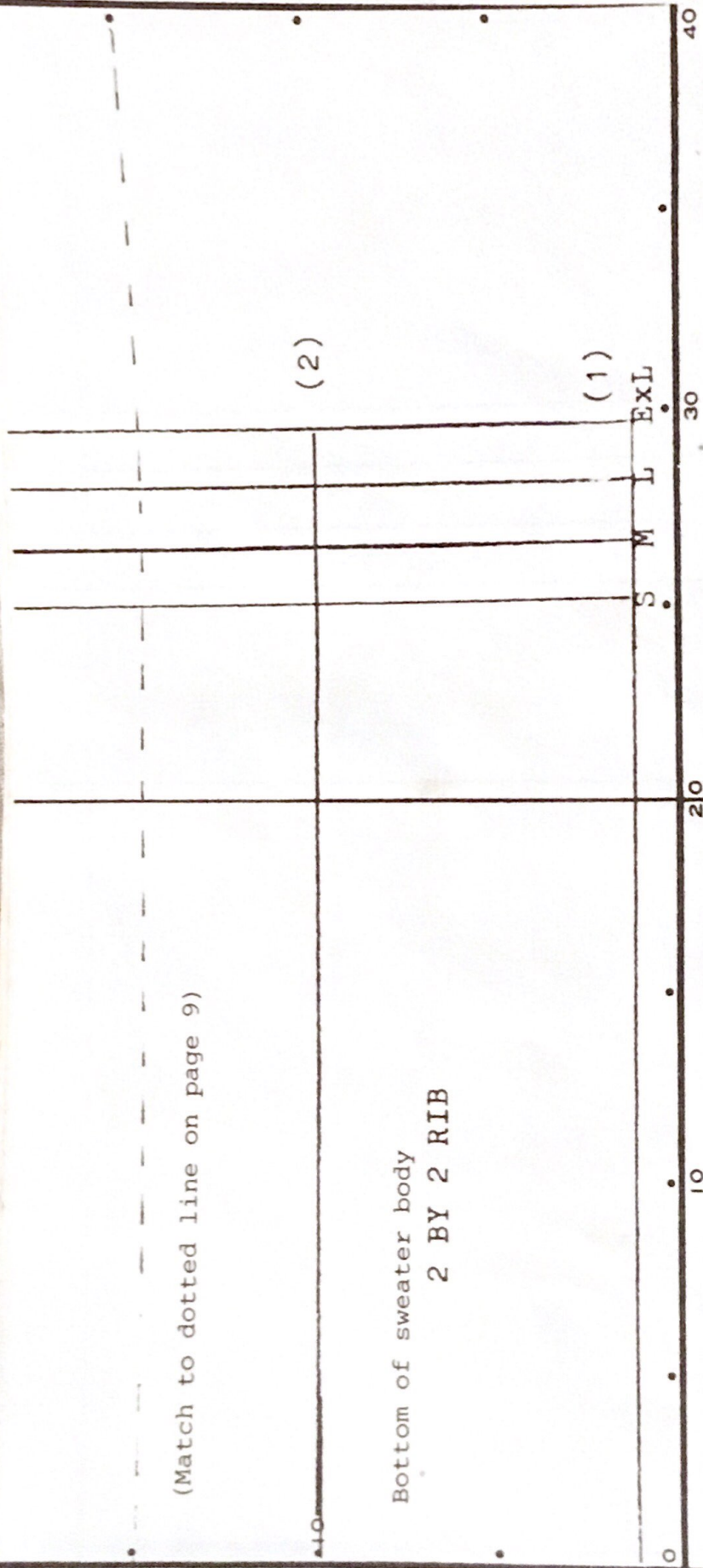
(4)

FRONT (3)

(Match to dotted line on page 10)

(Match to dotted line on page 9)

Bottom of sweater body
2 BY 2 RIB



This is the actual size knit contour
pattern to trace on your knit contour paper.

Consuelo Walker, Columbus, OH, sent us this pattern for a cotton dishcloth which makes a nice quick bazaar item or wedding gift. We've noticed these are becoming a very popular item at the bazaars.

ENGLISH RIB COTTON DISHCLOTH

Made on a Studio Bulky 120 machine

Material: Sugar & Cream Cotton Yarn

Amount: 2 2-oz balls

Tension: 3/3

Gauge: Unimportant

Cast on 1x1 rib 25 sts. each side of 0 on both beds Ten. 3/3 following cast-on in ribber book for bulky. Do English Rib for 80 rows following machine settings in ribber book for bulky. Transfer sts. to main bed. Bind off. Do a row of single crochet around edges to finish.

Arlene Robinson, Columbia Heights, MN, sent the following two patterns, along with this explanation:

"This scarf was taken from an old hand-knit pattern, to be used on the knitting machine. It comes off the machine, completed. It takes less than an oz. of 2/24. Can be made with 2/11 or Tranzado at the same tension. No gauge is needed. It was made on the Studio SK-360 with card 3A on tuck. I have also used other punch cards. It makes a nice neck scarf, and is a good gift item. There is also a very easy slipper pattern for quick gifts. This looks like a purse when it is finished. The slippers were made on the Bulky 8, but can be made on the regular machine using every other needle."

NECK SCARF

Made on an SK-360 Studio

Tension 9, tuck Tension 5, stockinette stitch

No gauge needed. 3A punch card
1 strand of 2/24 to make a light, lacy scarf, or 2/11, Trenzado.

Tension 9 cast on 4 sts. using e-cast-on. (Put card in and lock).

Knit 1 row, card on, put on tuck.

Increase 1 stitch carriage side every row until 35 or 40 stitches (if 35 sts. knit to row 92) (if 40 sts., knit to row 98).

Card off and turn card back to row 1. Lock card.

Knit 1 row stockinette stitch.

*Take every other needle off on scrap yarn. RC 000.

Tension 5, knit 16 rows in stockinette stitch on every other needle. Take off on scrap.

Rehang opp. E.O.N. on E.O.N. and knit 16 rows st. st. Rehang first set of E.O.N. back so all needles are back in Work. Ten. 9, knit 1 row st.st.* R.C. 000, card on, put in tuck and knit 170 rows or 130 rows in pattern. Card off. Knit 1 row st.st.

Repeat from * to *

RC 000

Card on, put in tuck, Ten. 9, knit 57 rows in pattern. Then decrease 1 st. carriage side every row down to 4 sts. Bind off.

To wear, pull one end through the st. casing.

TIE BULKY SLIPPER

1 4-oz skein 4-ply yarn makes one pair

Tension 5 on Bulky 8, every needle.

Tension 6 on tuck

Tension 9 on SK-360 E.O.N.

Tension 10 with punch card.

One size fits all.

Cast on with scrap yarn on every needle on bulky; every other needle on regular machine, 44 sts. Knit 6 rows, 1 row with ravel cord.

With main yarn knit 44 rows plain or use tuck on Bulky 8, or punch card on regular machine.

Take off on scrap yarn. Rehang on 22 sts. every needle (or E.O.N.) 2 on each needle.

*Knit 1 row.

Decrease 1 st. carriage side every row, down to 5 sts.

Knit 35 rows on 5 sts. Bind off.*

Rehang sts. from scrap and ravel cord (2 sts. on every needle, 22 sts.

Repeat from * to *.

Fold in half and sew up to where decrease starts each side. Put on and tie.

Muriel Strand, Mound, MN, designed the following two patterns which, as she says, are just right for spring. The lady's size goes over big tops because of the easy fit.

BULKY BOMBER (For Ladies)

Made on the SK-155 Chunky machine

Fits medium to (large)

Yarn used - 4-ply with one or two strands of 2/24 used as one strand. My favorite is 4-ply used with an orlon fuzzy fiber - inside of cone says 1/4 $\frac{1}{2}$ - used as one strand. Also beautiful done in thick and thin wintuk.

Amount - About 12 to 14 ozs.

Main body of sweater is made on machine in one piece so there are no shoulder seams.

Tension 5, RC 000, on left e-wrap 35 - 0. Knit 8 rows rib. (If you don't have a ribber, refer to manual to rib by hand on the machine.)

Change to Ten. 8. Knit to RC 65 (75). Start decrease for neck by trans. one stitch every other row. Last decrease made on needle 10. Needles 35 - 10 now in use. Knit to RC 125 (135). On row 125 (135) pull needles forward and set russell levers for hold. Make other side of front.

Ten. 5, RC 000, e-wrap 0 - 35. Knit 8 rows rib. Change to Ten. 8 and continue as on first half, reversing shaping.

On row 125 (135) e-wrap empty needles for back of neck. Reset carriage levers so all needles knit 35 - 35. RC 000, knit to row 117 (127), change to Ten. 5, knit 8 rows rib. Bind off.

Sleeve - Fold sweater body to find center where shoulder seam would be. Rehang side 40 - 40 with center on 0. RC 000, knit to row 18 (24). Now decrease 2 each side every 4 rows. On row 58 last decrease made. Knit to row 66 (70). Change to Ten. 5, knit 10 rows rib. Bind off. RC 76 (80). Knit other sleeve.

To finish, rehang sides and around neck and rib 6 rows. I like to hand knit, so I use size 3 or 5 circular knitting needles and pick up sts. around sides and neck and knit 6 rows of knit one, purl one - make button holes, if desired. Bind off.

Sew up under arm and side with sewing machine. Zipper foot attachment keeps yarn fibers from hanging up.

CHILD'S BULKY BOMBER (Size 5 - 6)

Yarn used - 4-ply with 2/24 or 4-ply with 1/4 $\frac{1}{2}$ used as one strand.

Ten. 5, RC 000, e-wrap needles 22 - 0, knit six rows rib.

Ten. 8, knit to row 40. Decrease one (on center) every other row. Last decrease made on row 52. Knit to row 70. Put in hold. Now e-wrap 0 - 22 to make other side to match, reversing shaping.

RC 000, now e-wrap empty needles for back of neck. Reset russell levers so all needles knit and knit 64 rows. Change to Ten. 5, knit 6 rows rib. Bind off.

Sleeve - Ten. 8, rehang side over 20 - 20.

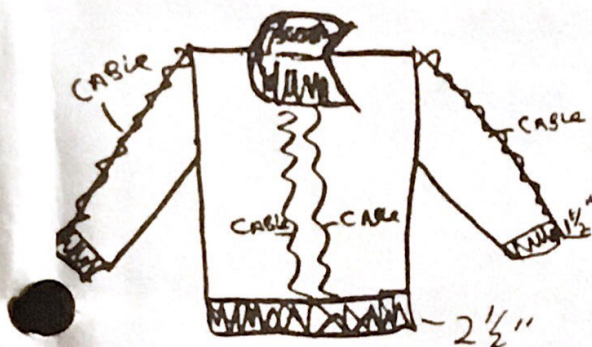
RC 000, knit 20 rows. Now decrease 1 each side every 4 rows. Last decrease made on row 46. Knit to row 56. Change to Ten. 5. Knit 6 rows rib. Bind off. Do other side.

To finish, refer to Lady's Bulky Bomber.

Helpful hints from Lillie Davis, Roseburg, OR.

To make nice seams on shoulders, neck or when ribbing has been worked separately - Shoulders - If possible, on back work last row of shoulders at two or three numbers larger tension. Rehang front shoulders on required needles (front facing you) put these stitches behind the latches. Wrong side facing, rehang back shoulder stitches on same needles in front of latches and manually pull these sts. through the ones behind the latches. Remove waste yarn. Back stitch these stitches together and remove from machine.

Collar - Work last row of ribbing two or three tensions looser. Rehang sweater neck edge (right side facing) and place behind latches. Hang collar on same needles in front of needles, pull through and back-stitch off.



Lillie Davis, Roseburg, OR, designed this pattern for an -

OPEN COWL NECK PULLOVER with
DOLMAN SLEEVES

Made on a Studio SK-360

Size - Bust - 44", Total length - 22"
Sleeve - 17", Wrist - 6-1/2"
Finished size after washing.

Yarn - Pentex Mohair - 14 oz. or
400 grams

Main Tension - 10 Rib at Ten. 4
Tension Pole - 2
Gauge - 28 sts. & 32 rows

Front - Cast on 146 sts. (each bed) and work 1x1 rib for 38 rows. Transfer to main bed. Center 2 cables on front. Knit even in stockinette to row 128. Mark edge stitches for sleeves. Continue until 170 rows on. Neck Shaping - Hold 1/2 of stitches plus 13 opposite carriage or take off on waste yarn. Work other side. *Decrease 1 stitch on neck edge every row 5 times, then decrease 1 stitch every other row 11 times, 198 rows on. Yarn on needles 30 - 73. Take off on waste yarn. Rehang neck center 13 - 13 stitches and waste yarn or cast off. Rehang other shoulder and work from *.

Back - Same as front except omit cables and continue to knit to 194 rows on.

Shape Neck - Hold 1/2 stitches plus 27 opposite carriage on waste yarn. Decrease 1 stitch every row 3 times. Knit one more row. 198 rows on waste off.

Collar - Cast on in K2 P2 rib 154 sts. (each bed). Carriage Dial 4, Ribber Dial 6. Rib until 84 rows on. Transfer to main bed and work 1 row stockinette at Dial 10. Take off

Sew one shoulder seam (sts. 30-73). Attach collar to neck edge, leaving several stitches free at left front collar to overlap after collar is sewn on. Left side is left open. Sew other shoulder seam. Overlap free stitches on wrong side. Sew in place.

Sleeves - Hang sleeve edge of sweater (wrong side facing) on needles 53 - 53. Work 1 cable down center of each sleeve. Decrease 1 stitch each side every 5th row 23 times. Knit 1 row, 116 rows on. Waste off.

Sleeve Rib - Cast on in 1x1 rib 60 stitches (each bed). Rib for 27 rows. Waste off. Attach to sleeve edge, decreasing sleeve edge 2 stitches on 1 needle.

Sew up sleeve and side seams. Collar just folds over.

Wash - cold water, gentle cycle
Partially dry at cool temperature
then lay flat to finish drying.

From Sue Johnson, Heiskell, TN, come these two solutions to the problem of ruffled edges on ribbing.

No. 1: After knitted piece is taken off the machine, just thread the double-eye transfer tool with a ravel cord and run it through the cast-on row, having 1 end of ravel cord left on each side. Take both ends of the ravel cord in hand and pull firmly. The stitches will pop right in place and give a very nice edge to the ribbing.

Mo. 2: E-wrap cast on stitches on main bed, then transfer selected stitches to ribber. Hang comb and weights, proceed with the knitting. Very pretty ribbed edges.

Another idea from Sue is the pattern for a

TABLE RUNNER 2 sizes

Made on a Studio SK-360 and Ribber

Yarn - 1 cone 2/24 knitted with 1 strand. Pattern cards 2, 4, 7, 9, 10 or 12.

Tension 3 on both beds.

Cast on 70 sts. each bed. Turn on card and set cam to tuck.

For 64 inch long table runner, knit to row 875. For 72 inch long table runner, knit to row 975. Bind off and fringe ends. ***** - 13 -

EASIEST ROUND NECKLINE IN PATTERN STITCH

June Reed, our Studio dealer in Beaverton, OR, is demonstrating this technique at the seminar in Seattle in April, and she wants to share it with all our readers.

This eliminates the need to note pattern card row and to memorize it when knitting the second half of the neckline. It is NOT a suggested technique for a V neckline.

Good technique for beginners that want to knit in pattern stitch, but do not yet understand the memorizing of the pattern.

Follow the contour to the neckline curve. With a separate piece of the main color yarn, bind off the center neck opening stitches. Continue the curve shaping by decreasing with the transfer tool on each side of the neck opening. Let the yarn carry across the neck stitches as in Picture No. 1.

Shoulder may be partial knit, or you may bind them off in steps, following the contour.

Block front and back when finished and put one shoulder seam together. (Method of your choice)

Cut through center of threads that carry across the neck opening. Leave them the longer length and proceed as follows:

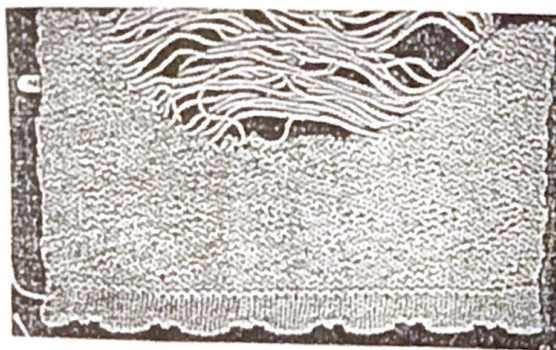
FINISHING METHODS - Always use tension changes for shaping on the method you chose. Start with larger tension, decrease tension to the fold, or 1/2 point, then increase tension back out to larger tension started with.

No. 1 - Determine the number of stitches needed for the neckband by holding the neckline to the needlebed. How many needles are needed to knit the ribbing for front and back as one piece? Knit that number of needles in 1x1 ribbing for 24 rows. Bind off or take off on scrap yarn. Whip ribbing down on the outside of garment. Trim carry threads to 1/2 inch and fold ribbing over to enclose the loose ends. Whip the ribbing down on the inside of the garment. The little cut ends are enclosed inside of the ribbing.

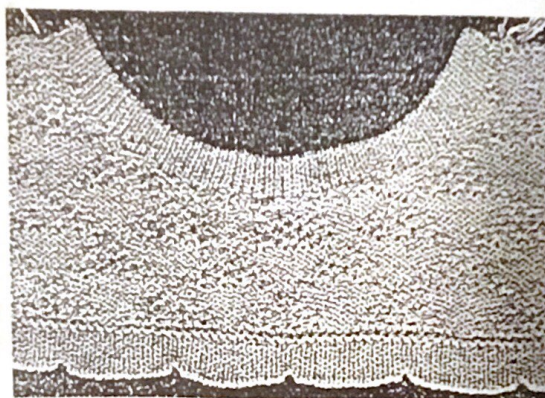
No. 2 - With inside of garment facing you pick up stitches along the neck edge through where your long carry threads are. Hang entire neckband. You may:

- A. Knit 1 Row, transfer to ribbing and rib the neck band.
- B. Knit 1 Row, transfer to Mock Ribbing and knit the neck band.
- C. Knit stockinette neck band (Picture No. 2, using Purl side as Outside of garment)

You may bind off your neckband or remove on scrap yarn, and whip down on the inside by hand. If you prefer, you may hang your first row of neckband back into the needles, (encasing your trimmed to 1/2 inch length carry threads) and bind off loosely, finishing on the machine.



PICTURE NO. 1



PICTURE NO. 2

WE NEED YOUR ORIGINAL PATTERNS

3/87

This "Newsletter" is your publication. Help support it by submitting your original patterns and helpful hints, so other home knitters can learn from your experience. We would like to urge all of you with older machines to share your favorite originals with our other readers. Many of our readers write in requesting simple, beginner patterns. You will receive a gift of yarn for any original pattern or hint that is printed. When sending in your patterns, be sure to include the size of the garment and the knitting gauge (number of stitches and rows per inch) - this is most important - and the knitting machine for which your particular pattern was designed. It also helps if you know approximately how much yarn your pattern takes. Please check and recheck your patterns for errors and type or print clearly. We do not have time to knit each pattern sent in, so cannot check for mistakes. It also helps if you do not abbreviate, as many of your terms are unfamiliar to us and to other readers. A black and white snapshot and/or brief description of your garment will make it easier to visualize by other readers. A gift of yarn will be sent for snapshots (black and white) printed with the patterns.

There is a wonderful opportunity awaiting you to become a STUDIO Knitting Machine and yarn dealer. Good money can be made in your spare time with only a small investment. We are interested in contacting men and women who would like to become a part of our growing group of STUDIO dealers throughout the United States. Our assistance and guidance can make this a very profitable venture for you, and our only requirements are that you know how to operate a knitting machine and that you have space available in which to set up your STUDIO shop, either in your home or place of business. You will find this a fascinating business which affords you the opportunity to become acquainted with new and interesting people. Contact Mr. David Bratz, Manager, STUDIO Yarn Farms, Inc., P.O. Box 46017, Seattle, WA 98146.

If you are planning to move soon, let us know both your old and new addresses, complete with zip codes. We cannot change your address without this information.

Patterns submitted and published in this "Newsletter" are submitted by individuals and are purported to be original patterns.

CANADIAN SUBSCRIBERS - Please remember, when sending in your subscription, all checks and money orders from Canada must be marked "Payable in U.S. Funds".

Please Note - We always notify you when your subscription expires. Your last issue is stamped across the Subscription Order Blank on the back page in red, "Your subscription expires with this issue". This issue is then mailed to you in an envelope and sent by first class mail. If you miss an issue, without having received this notification, please let us know, because it means that your mail isn't reaching you, and we will send you another copy. All the "Newsletters" are mailed out, altogether, just as soon as the mailer receives them from the printer.

Please note that subscriptions are accepted for 1 year only.

KNITTING MACHINE SEMINAR - Friday and Saturday, April 24 and 25, 1987, in Anaheim, California. 10:00 to 4:30 - Demonstrations and Free Fashion Show Friday night. \$2.50 per Demonstration. Contact Alvina Murdaugh, Aldea - 15 - Knits, Anaheim, CA 92801. Phone 714-870-4184.