

**SUPPLEMENTAL INSTRUCTION MANUAL**

**FOR**

**KH-910/KHC-820A & KH-910/KRC-830**

\*COLOUR CHANGERS KHC-820A FOR SINGLE BED USE AND KRC-830 FOR DOUBLE BED ARE SEPARATE ATTACHMENTS.

\*THIS SUPPLEMENT INDICATES ONLY ADDITIONAL INSTRUCTIONS FOR KH-910 WITH COLOUR CHANGER AND DIFFERENT POINTS FROM PUNCH CARD KNITTING MACHINE. THEREFORE, PLEASE READ THE ORIGINAL INSTRUCTION MANUAL TOGETHER WITH THIS SUPPLEMENT.

\*THOUGH THE PUNCH CARD SET IS PROVIDED FOR COLOUR CHANGER, PLEASE TRACE THE DESIGN AND COLOUR CHANGING MARKS WHICH ARE PRINTED ON THE LAST PAGES OF THIS SUPPLEMENT ONTO THE BLANK CARD FOR KH-910 BY USING THE SPECIAL PENCIL.

## KHC-820A

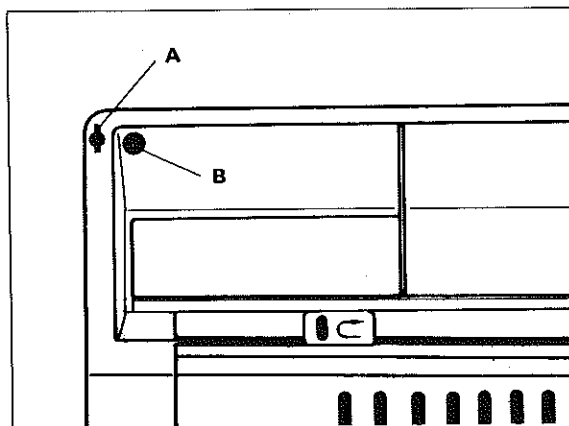
- As for the instructions for installing the colour changer to the KH-910, refer to the instruction manual for KHC-820A on pages 2 to 7.

However, set the second Yarn tension unit into the setting hole as illustrated.

(Please disregard the instructions for Yarn tension stand.)

A: KH-910

B: KH-910 + KL-116



- How to make pattern knitting

### \*Pattern card

Trace the design onto the Blank card by using the Special pencil.

Also trace the Yarn changing marks into the Memo window.

Adjust the row number of the pattern to the number of Memo window.

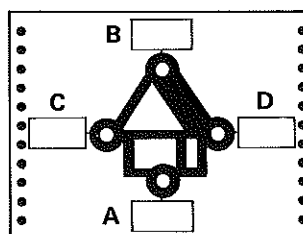
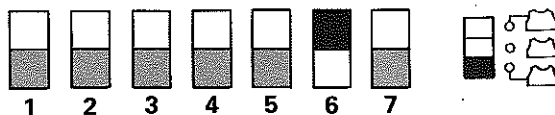
**PLEASE NOTE:** For Pattern No. 32, change the second colour yarn every 4 rows.  
 For Pattern No. 33, change the second colour yarn every 6 rows.  
 For Pattern No. 34, change the second colour yarn every 14 rows.  
 For Pattern No. 39, change the second colour yarn every 22 rows.

### \*Preparation for pattern knitting

**1** Set the Pattern card and turn on the Power switch.

**2** Pattern programming

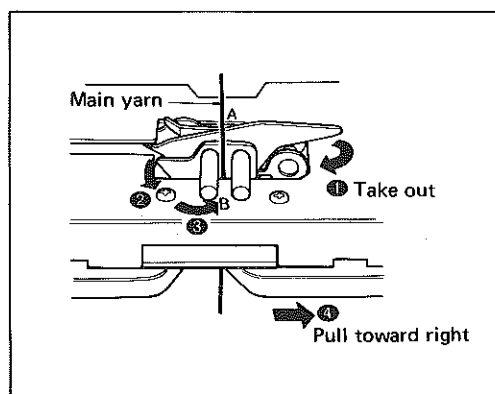
(1) Set the Pattern variation switches as follows;



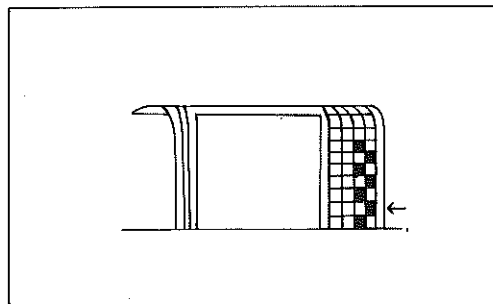
- (2) Set the Pattern selector switch according to your garment.
- (3) Enter the number for the steps **A** **B** **C** & **D** . If you set the Pattern selector switch at UPPER or MIDDLE position, enter the necessary numbers for each step. The READY lamp lights and the programming is finished.
- (4) Push **(CF)** key, the Pattern card feeds forward to the starting position.

**3 Fair-isle pattern (No. 31–39)**

- (1) Knit several rows with PLAIN by using the main yarn through the colour changer and place the carriage out side of the right turn mark.
- (2) Set the Change knob at KC I (or KC II) and push the MC button on the K carriage. (Make sure if the Holding cam lever is set on N.)
- (3) Take the main yarn in yarn feeder A out and pass it into the yarn feeder B. (See illustration)



- (4) Take the main yarn off the Roller ①, and cancel the changer button ①
- (5) Bring forward all knitting needles from B position to E position.
- (6) Move the carriage from right to left so as to select the needles.
- (7) K carriage is out side of left | C mark. Push the changer button for the yarn you want to knit.
- (8) Move the carriage form left to right.
- (9) Continue knitting and push the changer button when the Yarn changing mark appears at the Card inlet.



**4 TUCK stitch pattern (No. 40)**

- (1) Set the Rubber wheels on Sinker plate to working position.
  - (2) After knitting some rows with PLAIN by using the colour changer, put the carriage out side of the right turn mark and set the Change knob at KC I.
  - (3) Move the carriage from right to left end.
  - (4) Push both TUCK buttons.
  - (5) Start knitting after making sure that the yarn goes into the yarn feeder A.
  - (6) Continue knitting and push the changer button when the Yarn changing mark appears at the card inlet.
3. If you take the design from the Knitting book, Magazin, etc., and knit with the KHC-820A colour changer, set the PATTERN VARIATION switch No. 6 to UPPER position.
4. When tracing the design onto the Blank card, use the underlay or draw the Blank card on the firm board (desk or table).

## KRC-830

1. As for the instructions for installing the colour changer to the KH-910 and how to cast-on with colour changer, refer to the instruction manual for KRC-830 on pages 3 to 10.

### 2. How to make pattern knitting

- 1 Trace the design onto the Blank card by using the special pencil. Also trace the Yarn changing mark into the Memo window.

Adjust the row number of the pattern to the number of Memo window.

PLEASE NOTE: For Pattern No. 44, replace the colour No. 2 with No. 3 (No. 4) for second pattern.

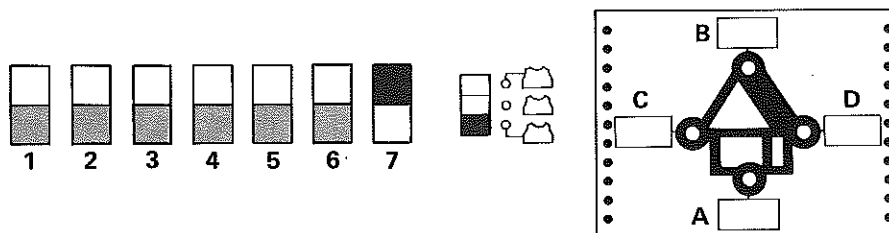
For Pattern No. 45, replace the colour No. 3 with No. 4 for second pattern.

For Pattern No. 49, replace the colour No. 2 with No. 3 (No. 4) for second pattern.

Set the Pattern card and turn on the Power switch.

#### 2 Pattern programming

- (1) Set the Pattern variation switches as follows;



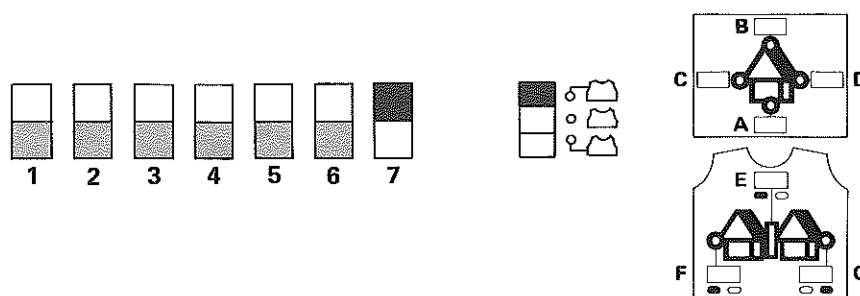
- (2) Set the Pattern selector switch according to your garment.
- (3) Enter the number for the steps **A** **B** **C** & **D**. If you set the Pattern selector switch at UPPER or MIDDLE position, enter the necessary number for each step. The READY lamp lights and the programming is finished.
- (4) Push **(CF)** key, the Pattern card feeds forward to the starting position.
- (5) The recommendable Tension Dial (TD) numbers for both carriages are as follows;

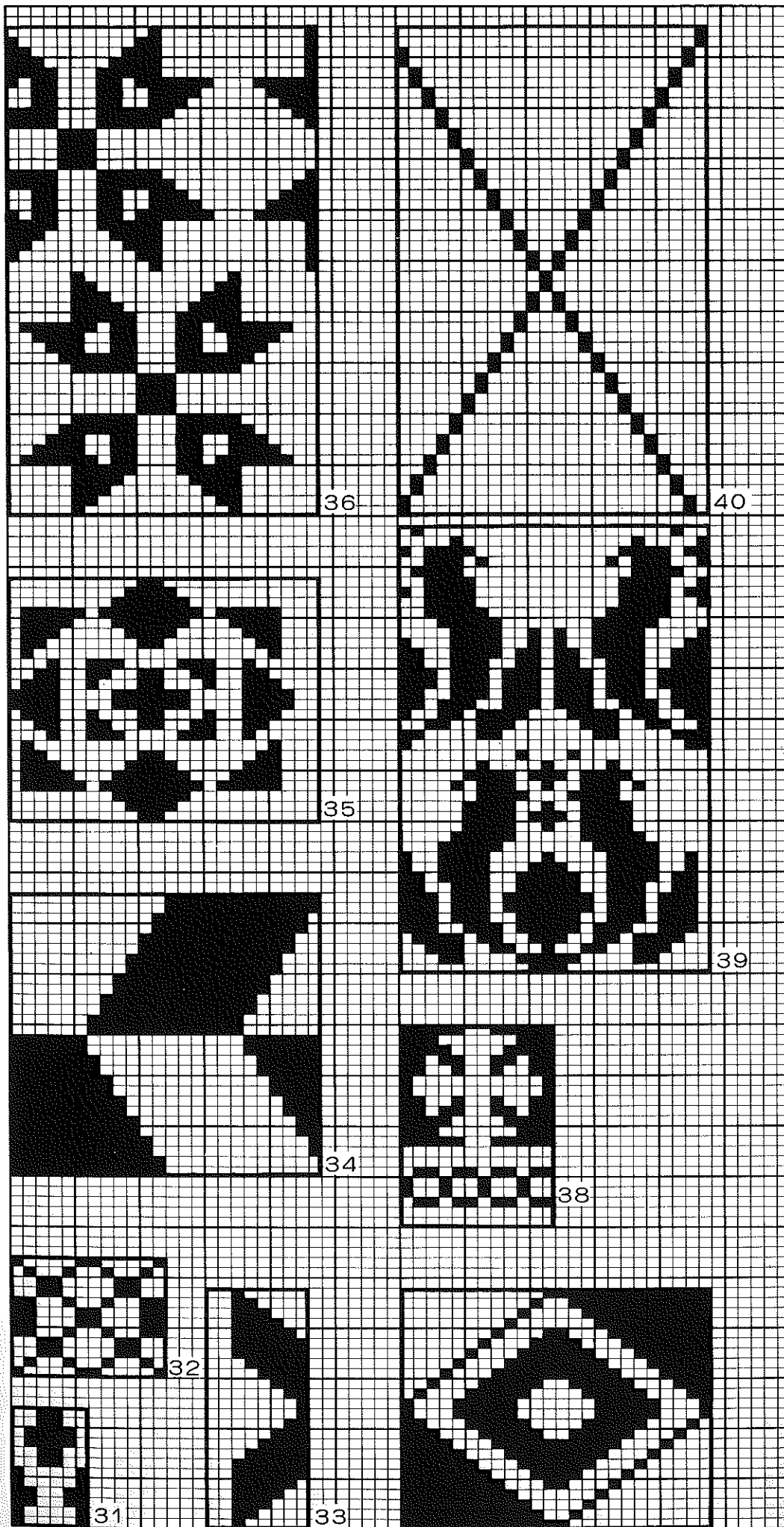
TD number \ Yarn	2 - 3 ply	3 - 4 ply
	KH-910/KR-830	2 - 3

- (6) Cast on by referring to the instruction manual for the KRC-830 on page 11, (1) to (3). Place the carriage out side of the left 1C mark.
- (7) Set the Change knob at KC II and move the carriage from left to right to select the needles.
- (8) Push both PART buttons.
- (9) Move the carriage from right to left until you hear click, push the changer button according to the mark in Memo window of Pattern card.
- (10) Continue knitting by changing the yarn.

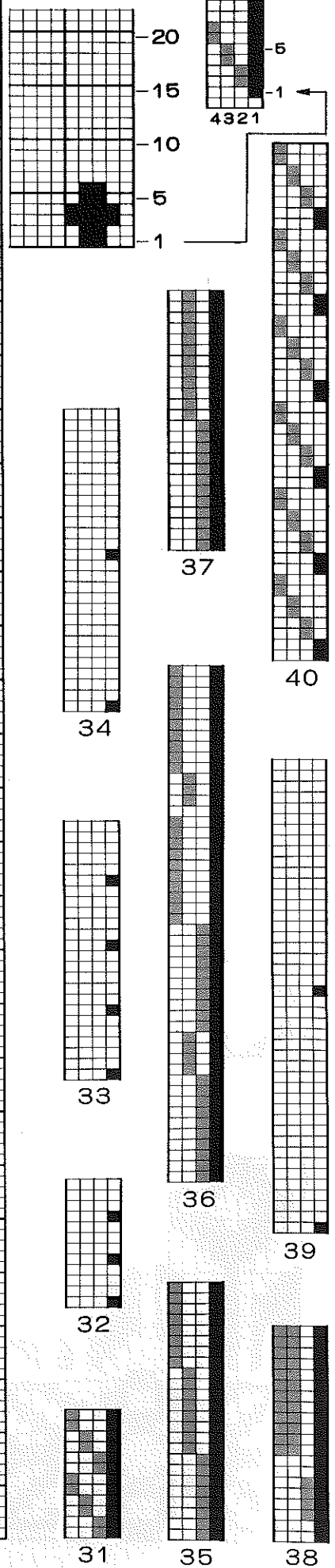
**3 One-point pattern**

- (1) Set the Pattern selector switch at UPPER position.
- (2) Enter the necessary number for each step.
- (3) The other instructions are the same as ordinary multi-colour rib knitting. The needles for One-point pattern (between F and G) are selected. Therefore, please disregard the instructions (1) to (3) on page 17 of instruction manual for KRC-830.

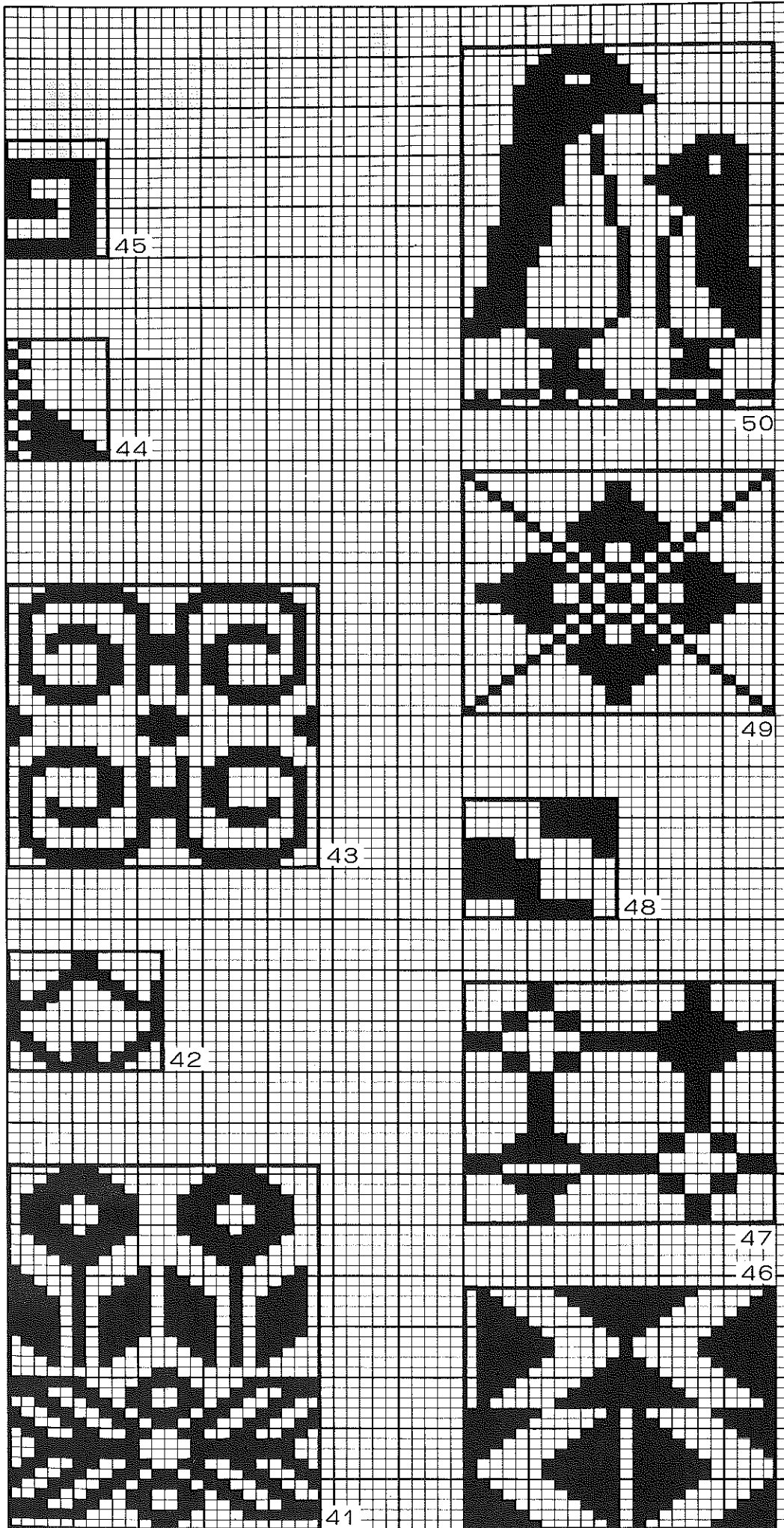




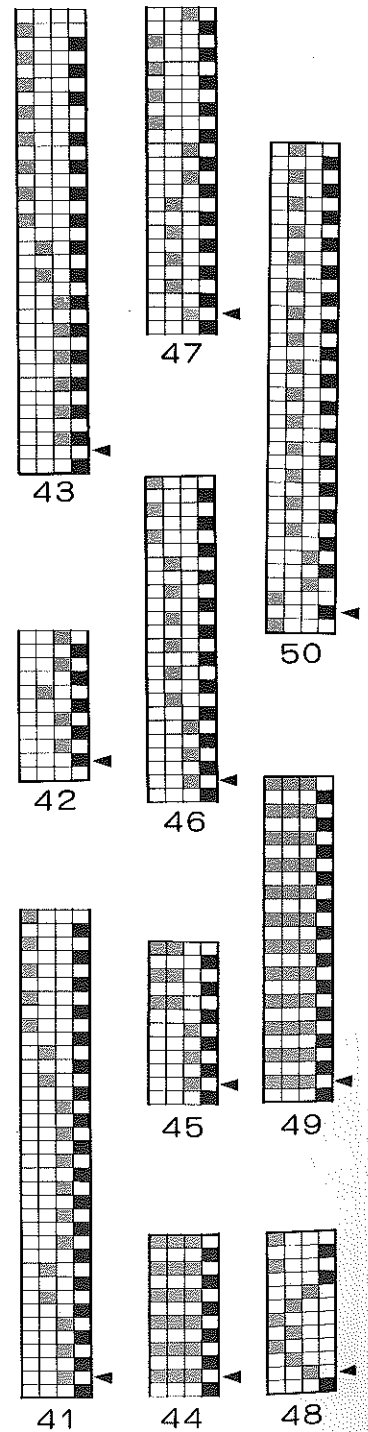
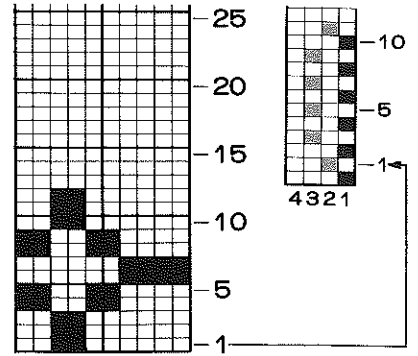
EXAMPLE







## EXAMPLE



KH910/KHC820  
KH910/KRC830  
491910051  
Printed in Japan