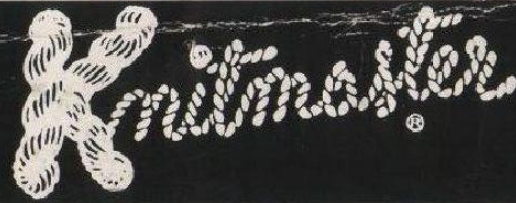
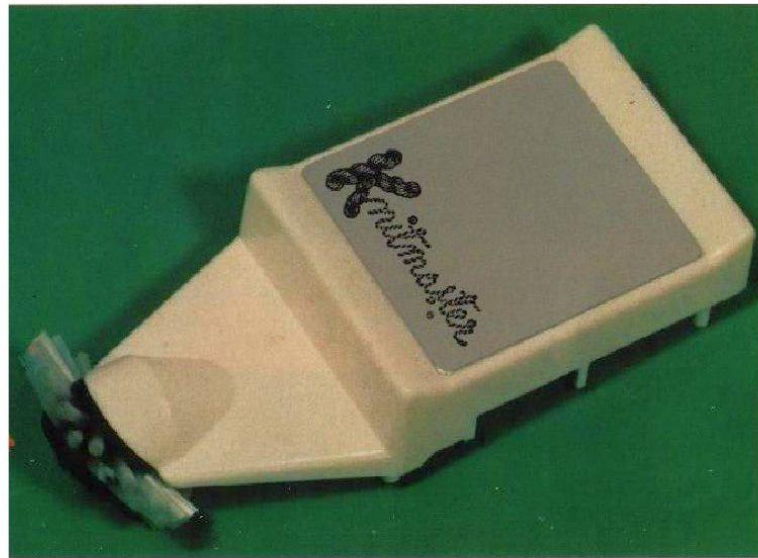


*weaving  
with  
your*



*302 Automatic*

10s 6d



## Weave with your *302 Automatic*

Knitmaster Ltd.,  
19 Buckingham Gate,  
London S.W.1.  
Telephone number: 01-828 7121

**Fashion** with that inspired touch of exclusivity —  
the envy of women the world over  
... Just that something different - Film Stars and Royalty  
pay fortunes for it (and still don't always get it).

**T**his can be yours and yours  
alone using your ideas of  
colour and design — these  
cannot be copied... that's what  
weaving on your 302 Automatic  
brings you and it's so simple and  
so easy to express your very own  
creative ideas of colour and  
pattern combination that can be  
produced in limitless variety.

**H**ere is the tremendous new  
excitement of adding a  
warp thread to your  
knitting — in any yarn you care to  
choose... Create marvellous  
effects with lurex and angora —  
or any one of the luxurious  
heavy contrast yarns you can  
buy these days. You can make  
up any new combination of  
yarns — for instance, a two-ply  
or boucle background with the  
woven-in thread in a chunky  
multicolour wool.

**Y**ou can now make non-  
stretch fabrics as well  
as exquisitely new and  
gorgeous non-stretch contrast  
borders and welts that can be  
used to achieve that professional  
finish to retain the styling so  
essential in fully-fashioned  
Knitwear. Nowhere in the world  
can you buy high fashion shaped  
Knitwear with non-stretch  
contrast woven borders and  
hems.

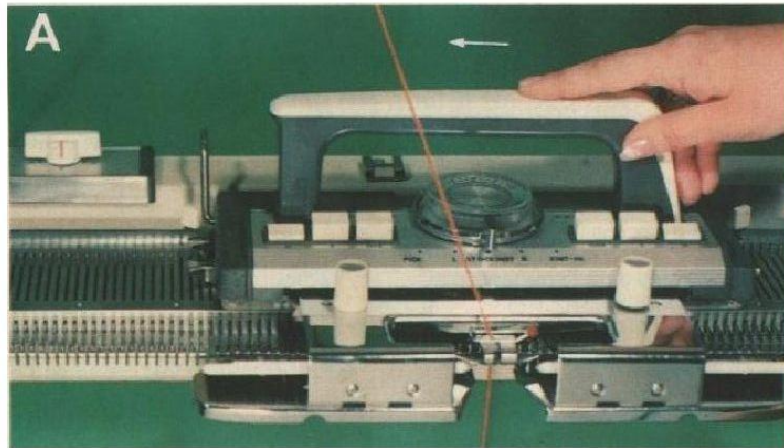
*By the time you've made up samples of the patterns in this little booklet you'll be well on your way to creating and experimenting with your own ideas of Colour, Pattern and Yarn combinations. As each and every new idea comes quickly to life you'll be more and more amazed and astonished at the truly incredible performance of your remarkable Knitmaster 302 Automatic.*

**S**o your garments will  
*always have* that touch of  
exclusivity — the envy of  
every woman.

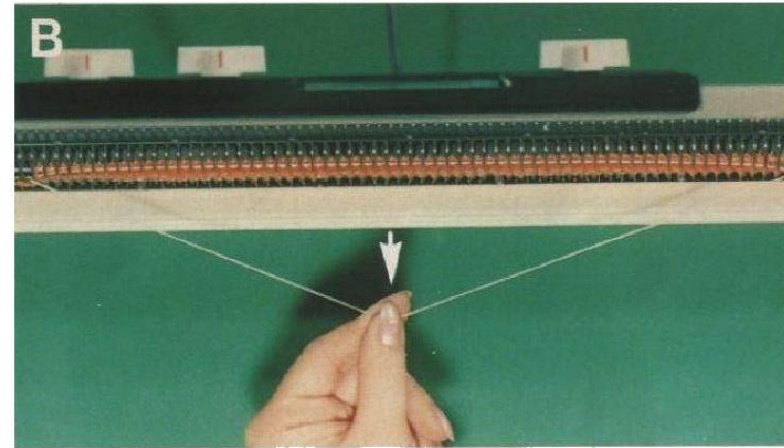
**T**he woven-in thread for  
borders and hems uses  
practically no yarn at all —  
so an ounce or so of even the  
most expensive will be all you'd  
need...

**Y**ou can also make non-  
stretch fabric for tailored  
jackets, coats and  
costumes, as well as all sorts of  
fancy weaves for beautiful Baby  
blankets, bed-covers, curtains,  
cushion covers, tablecloths and  
even rugs.

**W**e know you'll want to  
start weaving just as  
soon as you have  
glanced through this book and  
you'll find it's amazingly simple —  
**BUT**... Please don't be  
impatient; *don't start weaving  
before you can knit!* FIRST get  
the feel of your machine and  
when you are completely happy  
and at home with your 302 (it  
shouldn't take you long) THEN  
only will you really appreciate  
the fantastic new possibilities of  
weaving.



To practice, bring 60 needles from A into B position. Thread the machine in the usual way and knit one row.

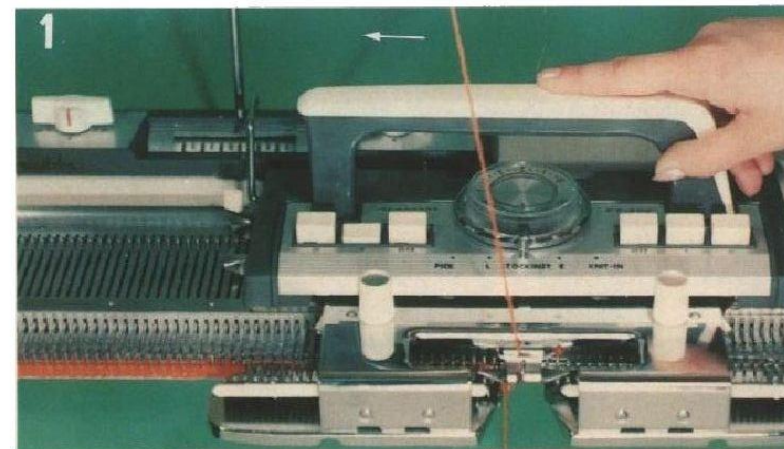


Cast on in the usual way, using nylon cord or odd yarn. Knit 5 rows and remove cast-on cord.

### C

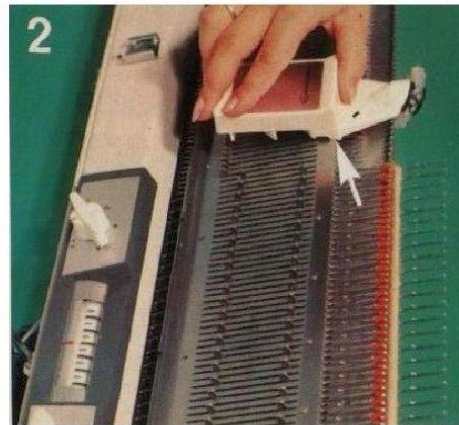
Order	YARN		PATTERN PANEL			CAML	PUSH BUTTONS		PATTERN LEVER	SIDE LEVER	ROWS + DIRECTION
	weaving	Feeder	1	0	1		2/1	1/2			
1	A	1	0	1	Stock	☐	☐	●	▼	←	
2	B	←-----									
3											
4											

Set your machine as above to produce your first woven material. In the first two columns (Yarn), the knitting yarn is A and the weaving yarn is B. The knitting yarn A is knitted through the yarn feeder, while the weaving yarn B is laid across the needles in D position by hand. Put Shift Dial to 1; Pattern Dial left to ●; Pattern Dial right to 1; Cam Lever Stockinet; Left Push Button 1 down; Pattern Lever ●; Side Levers V.

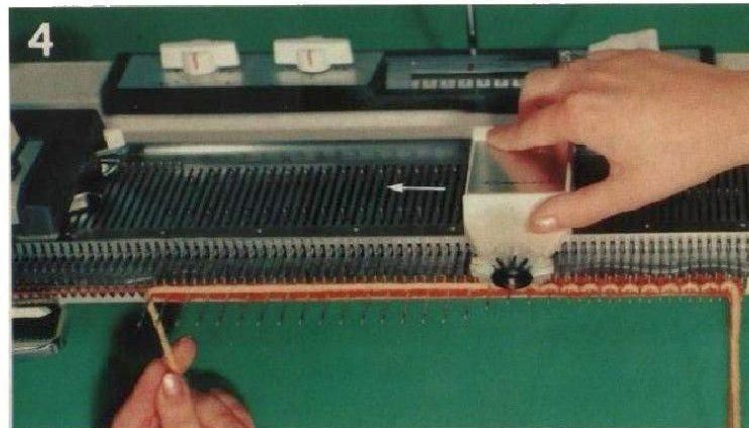


Knit 1 row, thus putting every other needle into D position.

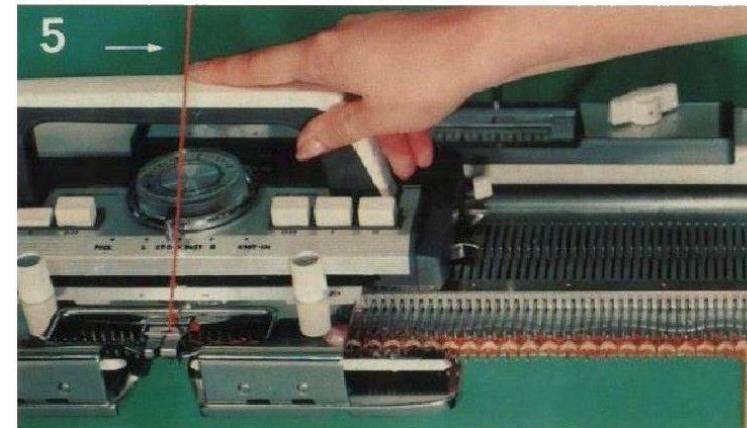
Lay weaving yarn, B, over the needles in D position from right to left (behind the latches but in front of the guard rail). With your right hand put the weaving attachment on the right side of the machine, so that the front edge of the attachment (Arrow) rests against the rail. *Always operate the Weaver from the same side as the weaving yarn.* Push Weaver lightly down and back against the rail and the needlebed.



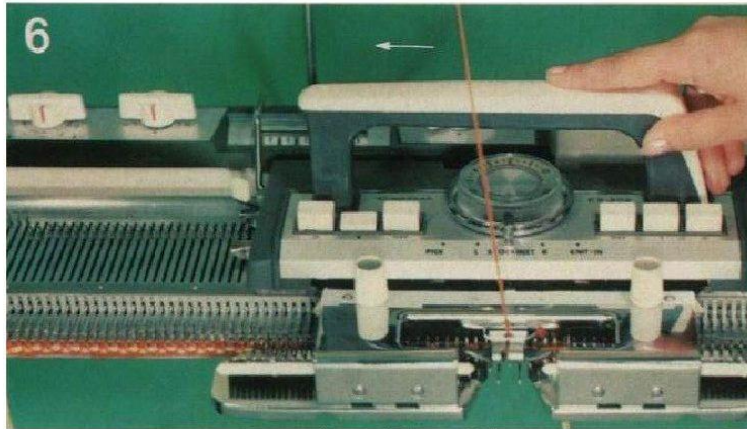
Tie the beginning of the weaving yarn onto the right clamp, and hold it with your left hand slightly taut.



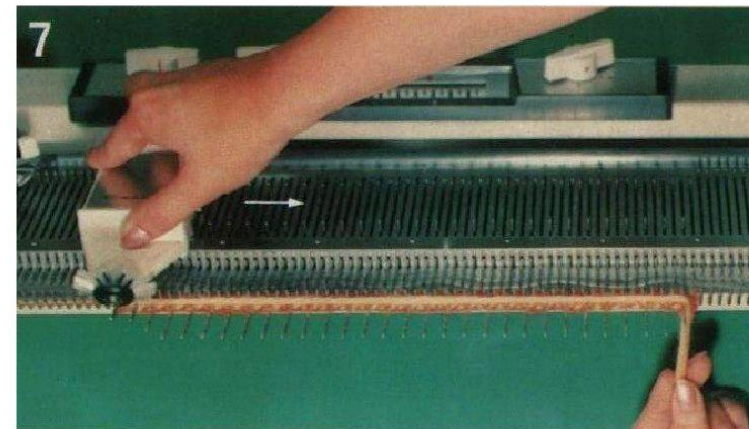
Press the weaver lightly onto the needlebed and push it from right to left, thus moving the needles, and the yarn will be woven in automatically.



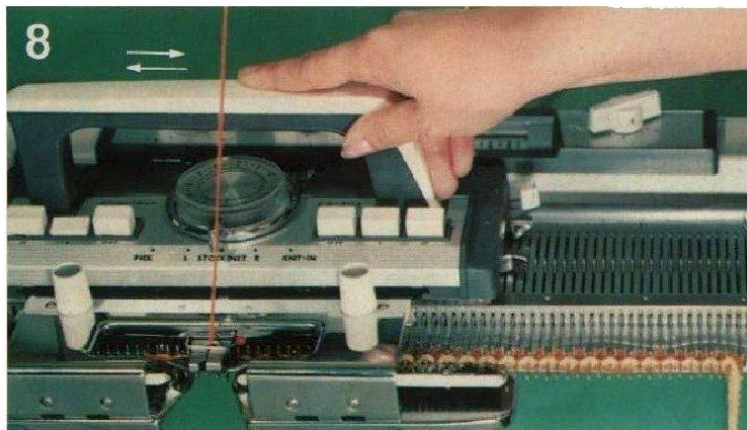
Move the Cam Box from left to right, thus knitting in the first row of weaving. If the Cam Box is difficult to move, the weaving yarn is too tight.



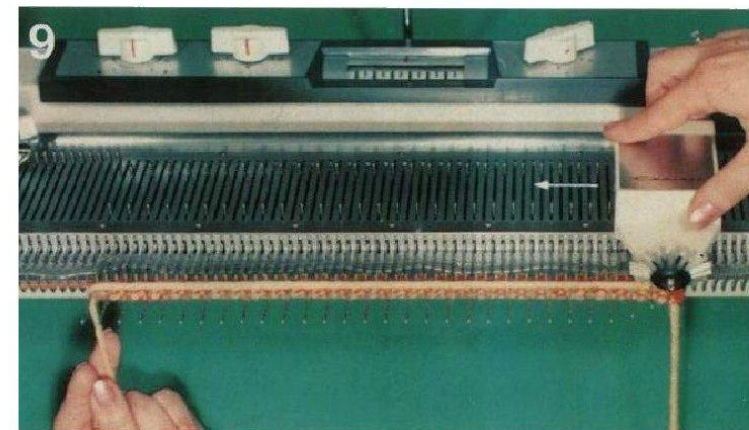
6 Push the Cam Box from right to left, automatically bringing the weaving pattern needles into D position.



7 Lay the weaving yarn over the needles from left to right. Hold it slightly taut, and push the weaver from left to right.



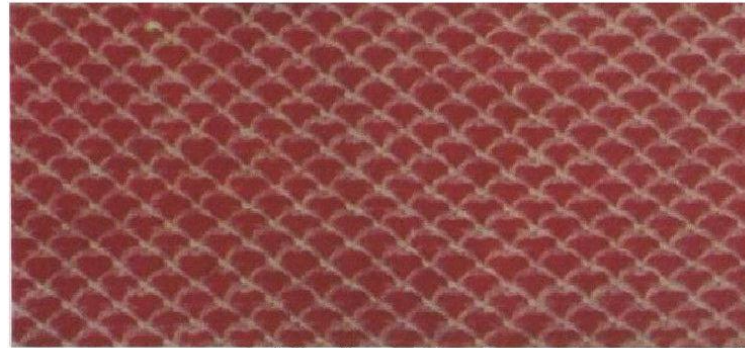
8 Knit two rows. The weaving yarn will be knitted in, and the weaving pattern needles will be in front again.



9 Lay the weaving yarn from right to left. Hold it slightly taut, and push the weaver from right to left. Repeat steps 5 – 9

The pattern charts for weaving are to be read the same way as the ones for pattern knitting.

In the first two columns of the charts the knitting and weaving yarns are called A, B and C. The knitting yarn A is always knitted through the yarn feed; number of rows and directions as on card. The weaving yarn B is put once from right to left or from left to right, as the arrow indicates. For multi-coloured weaving patterns the weaving yarns in different colours are indicated B and C. Use the different coloured yarns, B and C, as indicated in the charts. Use a Tension setting suitable for ordinary knitting with your knitting yarn A.



W 10



W 100

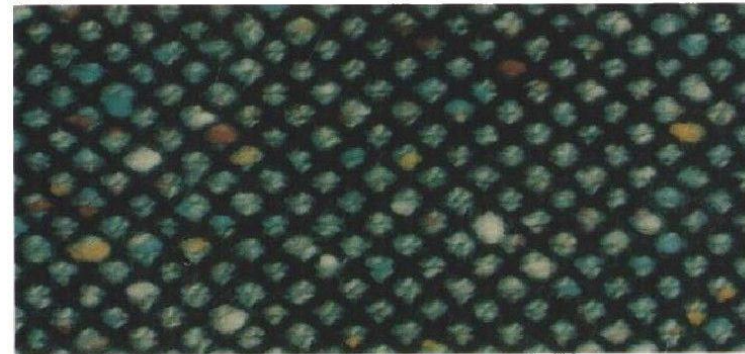
By using thick wool for weaving and thin wool for knitting, effective patterns suitable for cushions and blankets can be easily produced, as shown here.

Order	YARN weaving Feeder	PATTERN PANEL	CAM L	PUSH BUTTONS 2 1 1 2	PATTERN LEVER	SIDE LEVER	ROWS & DIRECTION
1	A	○ ● ↗	Stock	□ □	●	▼ ▼	←
2	B	←	←	←	←	←	←
3	A						→
4	A						←
5	B	→	→	→	→	→	→
6	A						→

W 100

Repeat rows 1-6 throughout.

W 101

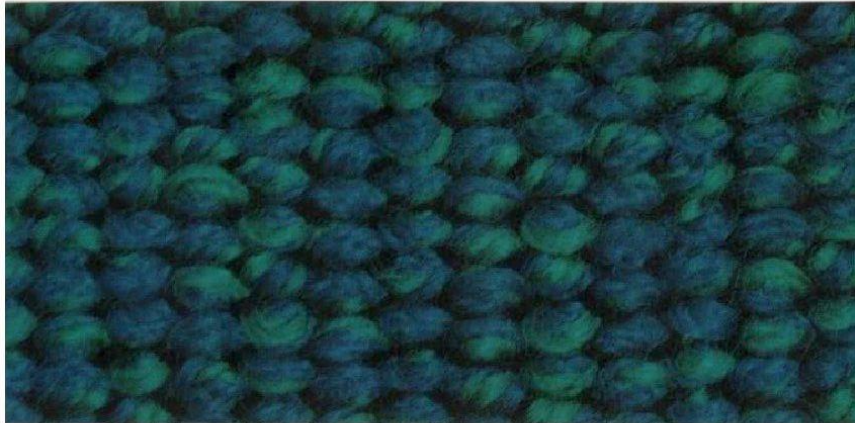


This simple weaving pattern is especially suitable for suits and coats. Two examples are shown using the same chart, but different yarns – Double Knitting or multi-coloured yarn.

Order	YARN weaving Feeder	PATTERN PANEL	CAM L	PUSH BUTTONS 2 1 1 2	PATTERN LEVER	SIDE LEVER	ROWS & DIRECTION
1	A	○ ● ↗	Stock	□ □	●	▼ ▼	←
2	B	←	←	←	←	←	←
3	A						→
4	A						←
5	B	→	→	→	→	→	→
6	A						→

W 101

Repeat rows 1-6 throughout.



W 102

In simple weaving patterns, very thick wool is especially effective. This fabric is ideal for sportswear. Even soft furniture can be covered with it.



W 103

As this material shows, you can also work with different needle settings. Irregular patterns are very effective for curtains.

Order	YARN web- ving Feeder	PATTERN PANEL	CAM L.	PUSH BUTTONS	PATTERN LEVER	SIDE LEVER	LEVER	ROWS & DIRECTION
1	A	⊙	2	Stock	□	□	●	▼
2	B	←						
3	A	⊙	⊙	⊙	⊙	⊙	⊙	→
4	A	⊙	⊙	⊙	⊙	⊙	⊙	←
5	A	⊙	⊙	⊙	⊙	⊙	⊙	→
6	B	←						
7	A	⊙	⊙	⊙	⊙	⊙	⊙	←
8	A	⊙	⊙	⊙	⊙	⊙	⊙	→

Repeat rows 1–8 throughout.

W 102

### Pattern Group

NEEDLE	B	A	B	B	B	B	A	B	B	B	B	B	B	B	A						
SETTING	10	9	8	7	6	5	4	3	2	1	0	1	2	3	4	5	6	7	8	9	10

Set first pattern group round centre "0" as shown and repeat as desired.

Order	YARN web- ving Feeder	PATTERN PANEL	CAM L.	PUSH BUTTONS	PATTERN LEVER	SIDE LEVER	LEVER	ROWS & DIRECTION
1	A	⊙	6	Stock	□	□	●	▼
2	B	←						
3	A	⊙	⊙	⊙	⊙	⊙	⊙	→
4	A	⊙	⊙	⊙	⊙	⊙	⊙	←
5	B	←						
6	A	⊙	⊙	⊙	⊙	⊙	⊙	→
7	A	⊙	⊙	⊙	⊙	⊙	⊙	←
8	B	←						
9	A	⊙	⊙	⊙	⊙	⊙	⊙	→
10	A	⊙	⊙	⊙	⊙	⊙	⊙	←
11	B	←						
12	A	⊙	⊙	⊙	⊙	⊙	⊙	→
13	A	⊙	⊙	1	⊙	⊙	⊙	←
14	B	←						
15	A	⊙	⊙	⊙	⊙	⊙	⊙	→

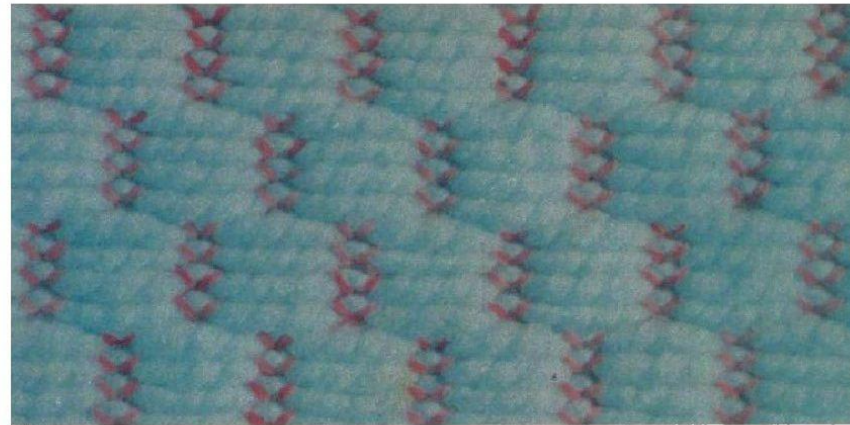
Repeat rows 13–15 three times, and start again at 1.

W 103

Order	YARN weaving Feeder	PATTERN PANEL Φ ○ ⚡	CAM L. ⚡	PUSH BUTTONS 2 1 1 2	PATTERN LEVER	SIDE LEVER	ROWS & DIREC- TION
1	A	○	⚡	●	Stock	□ □ □	←
2	B	○	⚡	●			←
3	A	○	⚡	●			→
4	A	○	⚡	●			←
5	B	○	⚡	●			→
6	A	○	⚡	●			→
7	A	○	⚡	●			←
8	B	○	⚡	●			←
9	A	○	⚡	●			→
10	A	○	⚡	●			←
11	B	○	⚡	●			→
12	A	○	⚡	●			→
13	A	○	⚡	●			←
14	B	○	⚡	●			←
15	A	○	⚡	●			→

Repeat rows 13–15 three times and start again at 1.

W 104



W 104

Even very thick blanket wool can be used for weaving on your 302 Automatic. This pattern and yarn can be attractively used for baby blankets or babies' coats.

Order	YARN weaving Feeder	PATTERN PANEL Φ ○ ⚡	CAM L. ⚡	PUSH BUTTONS 2 1 1 2	PATTERN LEVER	SIDE LEVER	ROWS & DIREC- TION
1	A	○	⚡	●	Stock	□ □ □	←
2	B	○	⚡	●			←
3	A	○	⚡	●			→
4	A	○	⚡	●			←
5	B	○	⚡	●			→
6	A	○	⚡	●			→
7	A	○	⚡	●			←
8	B	○	⚡	●			←
9	A	○	⚡	●			→
10	A	○	⚡	●			←
11	B	○	⚡	●			→
12	A	○	⚡	●			→
13	A	○	⚡	●			←
14	B	○	⚡	●			←
15	A	○	⚡	●			→

Repeat rows 13–15 three times and start again at 1.

W 105



W 105

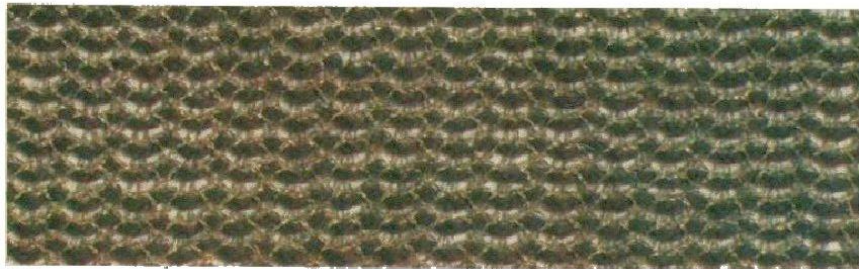
This woven fabric in two colours (a very simple pattern) is useful to make into small presents, such as kettle holders or tea cosies.





This zig-zag pattern shows up well in contrasting colours. Perhaps you need a new picnic or car rug for which you could use this idea.

W 106



This very attractive pattern uses Lurex yarn for knitting and wool for weaving.

W 107

Order	YARN wbs- vins Feeder	PATTERN PANEL Φ ○ □	CAML 1	PUSH BUTTONS 2 1 1 2	PATTERN LEVER	SIDE LEVER	ROWS & DIREC- TION
1	A	○ ● □	1	Stock	□ □	●	▼ ▼ ←
2	B	→					←
3	A	" "	" "	" "	" "	" "	→
4	A	" "	" "	" "	" "	" "	←
5	B	→					→
6	A	" "	" "	" "	" "	" "	→

Repeat rows 1-6 throughout.

W 107

Order	YARN wbs- vins Feeder	PATTERN PANEL Φ ○ □	CAML 1	PUSH BUTTONS 2 1 1 2	PATTERN LEVER	SIDE LEVER	ROWS & DIREC- TION
1	A	Φ ○ □	1	Stock	□ □	●	▼ ▼ ←
2	B	→					←
3	A	" "	" "	" "	" "	" "	→
4	A	" "	" "	" "	" "	" "	←
5	B	→					→
6	A	" "	" "	" "	" "	" "	→
7	A	" "	" "	" "	" "	" "	←
8	B	→					←
9	A	" "	" "	" "	" "	" "	→
10	A	" "	" "	" "	" "	" "	←
11	B	→					→
12	A	" "	" "	" "	" "	" "	→
13	A	" "	" "	" "	" "	" "	←
14	B	→					←
15	A	" "	" "	" "	" "	" "	→
16	A	" "	" "	" "	" "	" "	←
17	B	→					→
18	A	" "	" "	" "	" "	" "	→
19	A	" "	" "	" "	" "	" "	←
20	B	→					←
21	A	" "	" "	" "	" "	" "	→
22	A	" "	" "	" "	" "	" "	←
23	B	→					→
24	A	" "	" "	" "	" "	" "	→
25	A	" "	" "	" "	" "	" "	←
26	B	→					←
27	A	" "	" "	" "	" "	" "	→
28	A	" "	" "	" "	" "	" "	←
29	B	→					→
30	A	" "	" "	" "	" "	" "	→
31	A	" "	" "	" "	" "	" "	←
32	B	→					←
33	A	" "	" "	" "	" "	" "	→
34	A	" "	" "	" "	" "	" "	←
35	B	→					→
36	A	" "	" "	" "	" "	" "	→
37	A	" "	" "	" "	" "	" "	←
38	B	→					←
39	A	" "	" "	" "	" "	" "	→
40	A	" "	" "	" "	" "	" "	←
41	B	→					→
42	A	" "	" "	" "	" "	" "	→

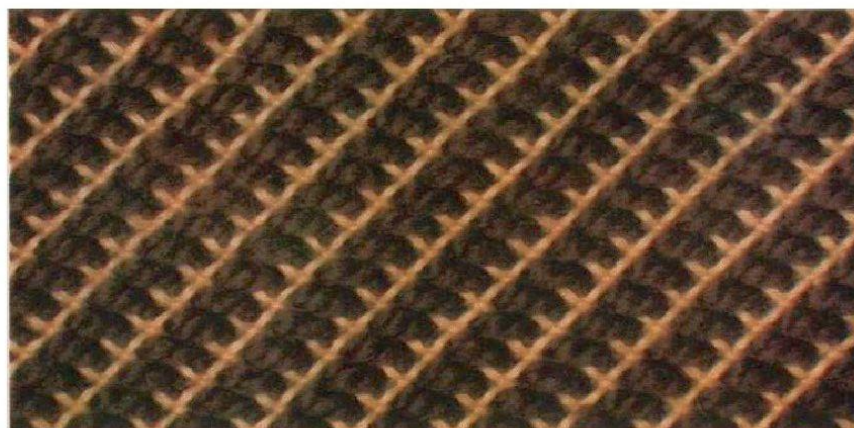
Repeat rows 1-42 throughout.

W 106

Order	YARN		PATTERN PANEL	CAM L.	PUSH BUTTONS	PATTERN LEVER	SIDE LEVER	ROWS & DIRECTION
	WIRE	Reeder						
1	A	4	⊕	Stock	2 1	1 2	▼	←
2	B							→
3	A	3	⊕					→
4	A	3	⊕					←
5	B							→
6	A	2	⊕					→
7	A	2	⊕					←
8	B							→
9	A	1	⊕					→
10	A	1	⊕					←
11	B							→
12	A							→

Repeat rows 1-12 throughout.

W 108



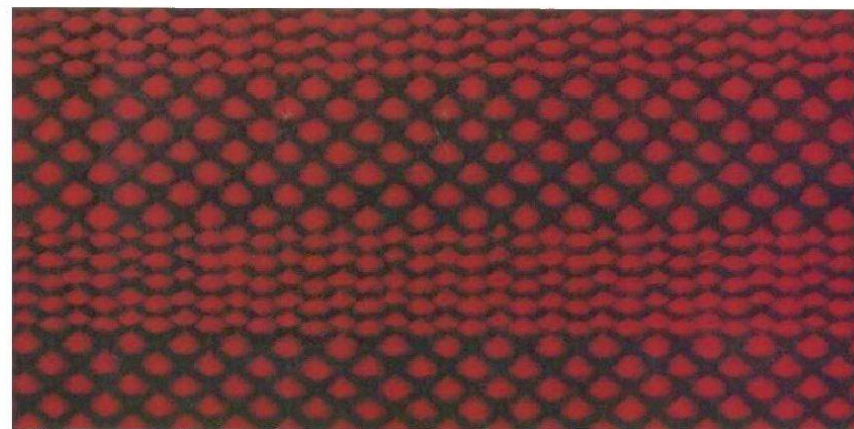
W 108

This diagonal stripe is a suggestion for the modern teenager – and gives a very unusual effect.

Order	YARN		PATTERN PANEL	CAM L.	PUSH BUTTONS	PATTERN LEVER	SIDE LEVER	ROWS & DIRECTION
	WIRE	Reeder						
1	A	1	⊕	Stock	2 1	1 2	▼	←
2	B							→
3	A		⊕					→
4	A		⊕					←
5	B							→
6	A		⊕					→
7	A		⊕					←
8	B							→
9	A		⊕					→
10	A		⊕					←
11	B							→
12	A		⊕					→
13	A		⊕					←
14	B							→
15	A		⊕					→
16	A		⊕					←
17	B							→
18	A		⊕					→
19	A	1	⊕					←
20	B							→
21	A		⊕					→
22	A	0	⊕					←
23	B							→
24	A		⊕					→

Repeat rows 19-24 three times and begin again at 1.

W 109



W 109

This striped pattern would be useful for a tablecloth. A few scatter cushions, in addition, would make a room cosy.



Woven in thick wool, this pattern looks striking used as a border for a dress or suit.

W 110



This pattern can be used in many ways. You can make dresses, coats and suits in various colours.

W 111

Order	YARN web- ving Feeder	PATTERN PANEL	CAM L.	PUSH BUTTONS	PATTERN LEVER	SIDE LEVER	ROWS + DIREC- TION
1	A	Φ ○ ● 2	Stock	□ □ □ □	●	▼ ▼	←
2	B	→					→
3	A	" "	" "	" "	" "	" "	→
4	A	2	" "	" "	" "	" "	←
5	B	→					→
6	A	" "	" "	" "	" "	" "	→

Repeat rows 1-6 throughout.

W 111

Order	YARN web- ving Feeder	PATTERN PANEL	CAM L.	PUSH BUTTONS	PATTERN LEVER	SIDE LEVER	ROWS + DIREC- TION
1	A	Φ ○ ● 1	Stock	□ □ □ □	●	▼ ▼	←
2	B	→					→
3	A	" "	" "	" "	" "	" "	→
4	A	1	" "	" "	" "	" "	←
5	B	→					→
6	A	" "	" "	" "	" "	" "	→
7	A	2	" "	" "	" "	" "	←
8	B	→					→
9	A	" "	" "	" "	" "	" "	→
10	A	3	" "	" "	" "	" "	←
11	B	→					→
12	A	" "	" "	" "	" "	" "	→
13	A	2	" "	" "	" "	" "	←
14	B	→					→
15	A	" "	" "	" "	" "	" "	→
16	A	2	" "	" "	" "	" "	←
17	B	→					→
18	A	" "	" "	" "	" "	" "	→
19	A	2	" "	" "	" "	" "	←
20	B	→					→
21	A	" "	" "	" "	" "	" "	→
22	A	2	" "	" "	" "	" "	←
23	B	→					→
24	A	" "	" "	" "	" "	" "	→
25	A	3	" "	" "	" "	" "	←
26	B	→					→
27	A	" "	" "	" "	" "	" "	→
28	A	2	" "	" "	" "	" "	←
29	B	→					→
30	A	" "	" "	" "	" "	" "	→
31	A	1	" "	" "	" "	" "	←
32	B	→					→
33	A	" "	" "	" "	" "	" "	→
34	A	1	" "	" "	" "	" "	←
35	B	→					→
36	A	" "	" "	" "	" "	" "	→
37	A	1	" "	" "	" "	" "	←
38	B	→					→
39	A	" "	" "	" "	" "	" "	→
40	A	1	" "	" "	" "	" "	←
41	B	→					→
42	A	" "	" "	" "	" "	" "	→
43	A	1	" "	" "	" "	" "	←

Order	YARN		PATTERN PANEL			CAM L.	PUSH BUTTONS		PATTERN LEVER	SIDE LEVER	ROWS DIRECTION
	W112	Feeder	Φ	○	□		2 1	1 2			
1	A		○	●	←	Stock	<input type="checkbox"/>	<input type="checkbox"/>	●	▽	←
2	B										←
3	A										→
4	A	1									←
5	B										→
6	A										→

Repeat rows 1-6 throughout.

W 112

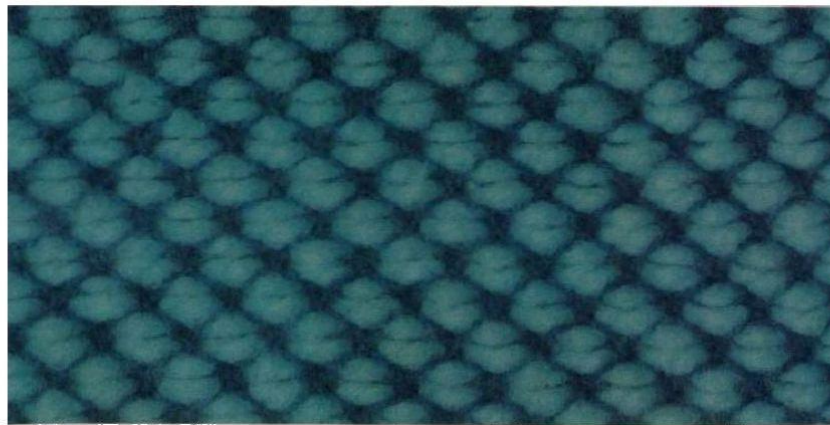
NEEDLE	B	A	B	A	B	A	B	A	B	A	0	B	A	B	A	B	A	B	A	B	
SETTING	10	9	8	7	6	5	4	3	2	1	0	1	2	3	4	5	6	7	8	9	10

Before beginning W112, put every other needle into "B" position on either side of centre "0" as shown.

Order	YARN		PATTERN PANEL			CAM L.	PUSH BUTTONS		PATTERN LEVER	SIDE LEVER	ROWS DIRECTION
	W113	Feeder	Φ	○	□		2 1	1 2			
1	A		5		1	Stock	<input type="checkbox"/>	<input type="checkbox"/>	●	▽	←
2	B										←
3	A										→
4	A	2									←
5	B										→
6	A										→
7	A	3									←
8	B										→
9	A										→
10	A	4									←
11	B										→
12	A										→
13	A	5									←
14	B										→
15	A										→
16	A	6									←
17	B										→
18	A										→
19	A	7									←
20	B										→
21	A										→
22	A	8									←
23	B										→
24	A										→

Repeat rows 1-24 throughout.

W 113



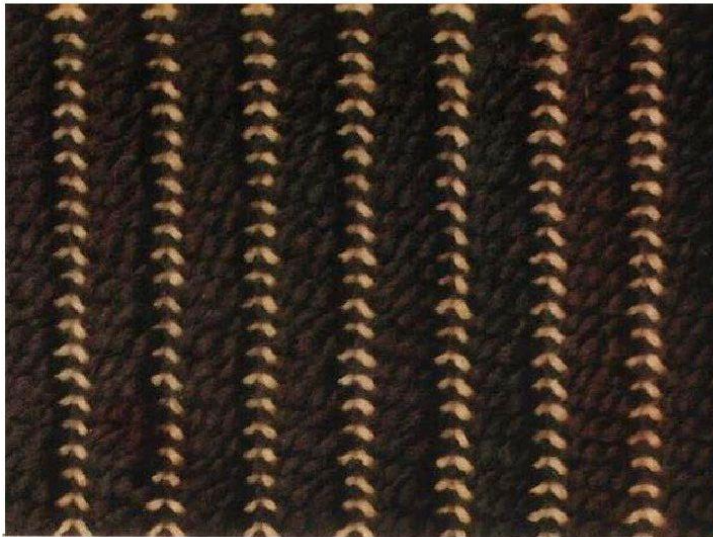
W 112

This pattern is knitted over every other needle. Thus it produces a looser fabric. Just the right thing for bedjackets or a shawl, soft and cosy.



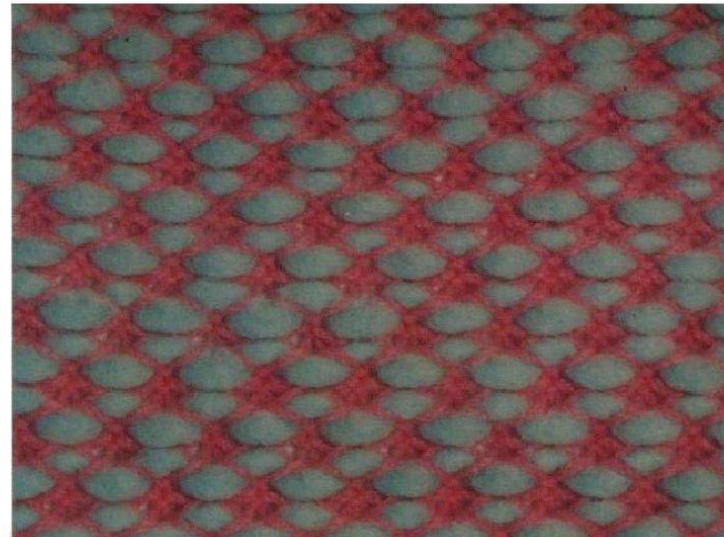
W 113

You are always well dressed in a suit or coat made of this charming material. Simple in cut, perhaps with the collar and front edge in one colour only, it would look very elegant.



W 114

How would you like a small rug or a bedside mat in this pattern? The thick ribs could also be done in two colours which would give a striped effect. Back the material with foam rubber.



W 115

Here also only every other needle is used, but this time with a racking pattern. This loosely woven material is very warm and ideal for winter wear.



Put every other needle into "B" position on either side of centre "0" as shown.

Order	YARN		PATTERN PANEL	CAM L.	PUSH BUTTONS	PATTERN LEVER	SIDE LEVER	ROWS DIRECTION
	Wool	Reeder						
			Φ ○ ○	○	2 1 1 1 2	○	⚡	Stock
1	A		○ ● ⚡		□ □ □	●	▼ ▼	←
2	B		←		←	←	←	←
3	A		□ □ □ □ □	□	□ □ □ □ □	□ □ □ □ □	□ □ □ □ □	→
4	A		□ □ □ □ □	□	□ □ □ □ □	□ □ □ □ □	□ □ □ □ □	←
5	B		→		→	→	→	→
6	A		□ □ □ □ □	□	□ □ □ □ □	□ □ □ □ □	□ □ □ □ □	→

Repeat rows 1-6 throughout.

W 114

Order	YARN		PATTERN PANEL	CAM L.	PUSH BUTTONS	PATTERN LEVER	SIDE LEVER	ROWS DIRECTION
	Wool	Reeder						
			Φ ○ ○	○	2 1 1 1 2	○	⚡	Stock
1	A		○ ● ⚡		□ □ □	□ □ □	●	▼ ▼
2	B		←		←	←	←	←
3	A		□ □ □ □ □	□	□ □ □ □ □	□ □ □ □ □	□ □ □ □ □	→
4	A		□ □ □ □ □	□	□ □ □ □ □	□ □ □ □ □	□ □ □ □ □	←
5	A		□ □ □ □ □	□	□ □ □ □ □	□ □ □ □ □	□ □ □ □ □	→
6	B		→		→	→	→	→
7	A		□ □ □ □ □	□	□ □ □ □ □	□ □ □ □ □	□ □ □ □ □	←
8	A		□ □ □ □ □	□	□ □ □ □ □	□ □ □ □ □	□ □ □ □ □	→

Repeat rows 1-8 throughout.

W 115

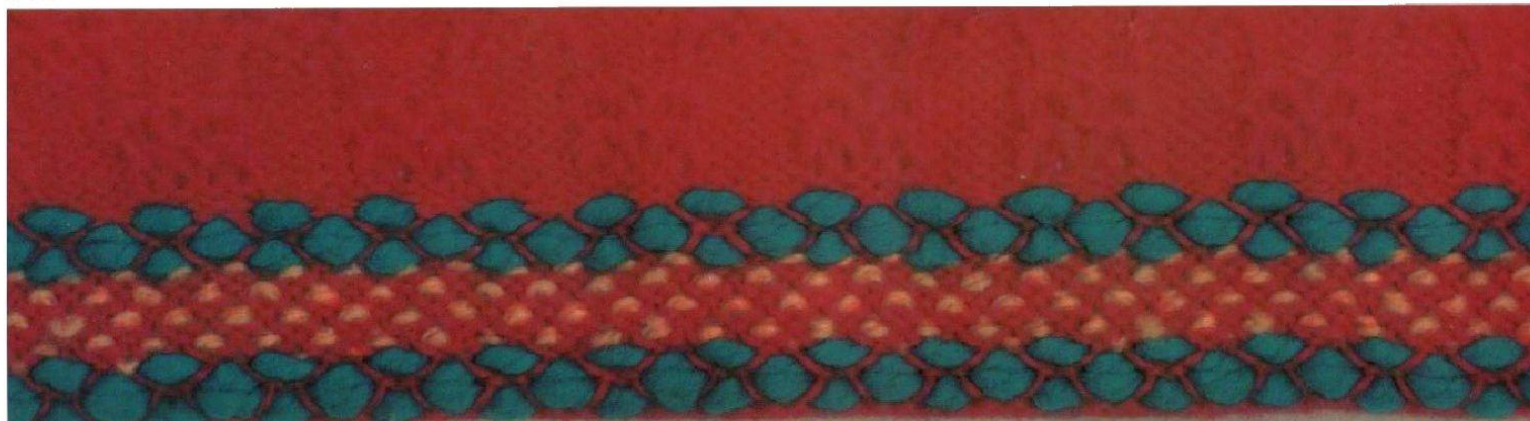
## Welts and Borders.

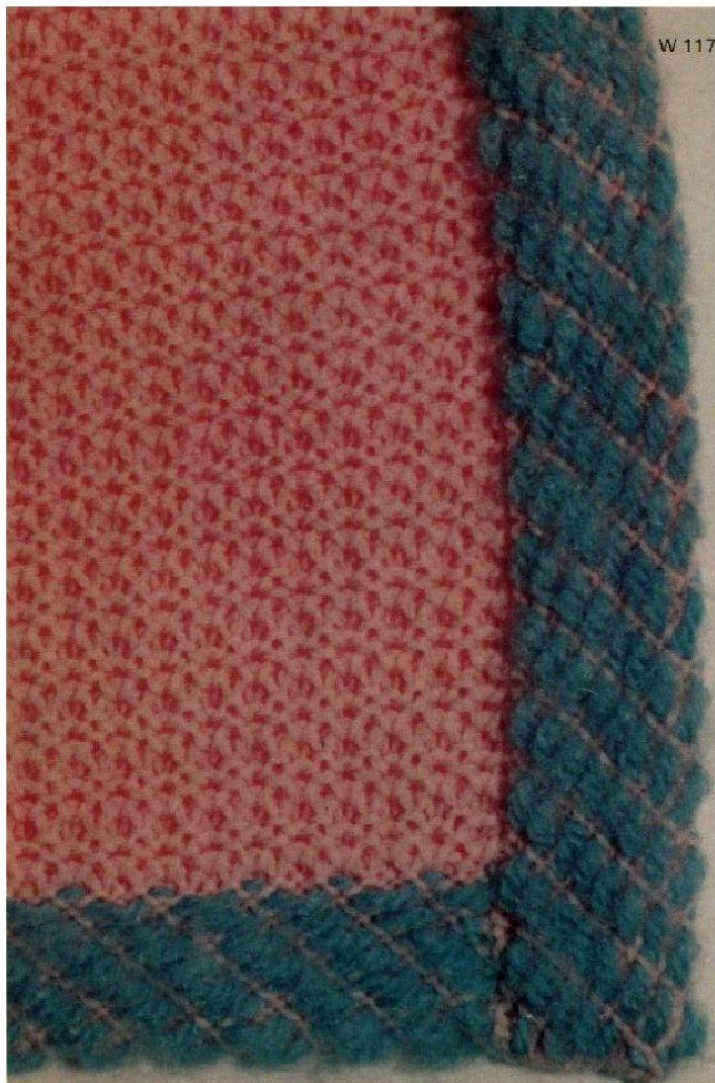
On the following pages are some ideas for woven borders to give your garments a really exclusive "couture" look. Experiment with contrasting and toning colours to get the effect you want.

For this pattern start the front with the required number of stitches, knit 6 rows in contrast and 14 rows in main colour. Proceed to weave the pattern according to the chart. Be careful when doing the weaving pattern to use weaving yarn B and C in the proper order. Continue in your chosen knitting pattern.

Order	YARN Weaving Reader	PATTERN PANEL	CAM L.	PUSH BUTTONS	PATTERN LEVER	SIDE LEVER	ROWS & DIRECTION
1	A	⊕ ○	2	Stock	□ □	●	←
2	B						←
3	A	" "	" "	" "	" "	" "	→
4	A	2	" "	" "	" "	" "	←
5	B						→
6	A	" "	" "	" "	" "	" "	→
7	A	○	1	" "	" "	" "	←
8	C						←
9	A	" "	" "	" "	" "	" "	→
10	A	1	" "	" "	" "	" "	←
11	C						→
12	A	○	" "	" "	" "	" "	→
13	A	○	" "	" "	" "	" "	←
14	C						←
15	A	" "	" "	" "	" "	" "	→
16	A	1	" "	" "	" "	" "	←
17	C						→
18	A	" "	" "	" "	" "	" "	→
19	A	○	2	" "	" "	" "	←
20	B						→
21	A	" "	" "	" "	" "	" "	→
22	A	2	" "	" "	" "	" "	←
23	B						→
24	A	" "	" "	" "	" "	" "	→

W 116





Start the front with the required number of stitches. Knit 6 rows contrast and 14 rows in main colour.

Proceed to weave the pattern according to the chart. Continue in chosen knitting pattern.

When the knitting is finished, sew the first row of stitches of the main colour onto the wrong side and unravel the contrast wool. To weave the front border hang the edge stitches of the front (pattern towards you) onto the needles. Knit two rows. Weave according to the chart. Knit 14 rows plain in main colour, 6 rows contrast. Sew the last row of main colour onto the wrong side.

Welts for sleeves are worked the same way as the bottom welt of jacket.

Order	YARN winding Feeder	PATTERN PANEL Φ ○ □	CAML. ○	PUSH BUTTONS 2 1 1 2	PATTERN LEVER	SIDE LEVER	ROWS & DIREC- TION
1	A	3	4	Stock			←
2	B						→
3	A						→
4	A	2					←
5	B						→
6	A						→
7	A	1					←
8	B						→
9	A						→
10	A	0					←
11	B						→
12	A						→
13	A						←
14	B						→
15	A						→
16	A						←
17	B						→
18	A						→
19	A						←
20	B						→
21	A						→
22	A						←
23	B						→
24	A						→

Start the welt with the required number of stitches. Knit 6 rows in contrast and 14 rows in main colour. Proceed to weave the pattern according to the chart. Continue in chosen knitting pattern.

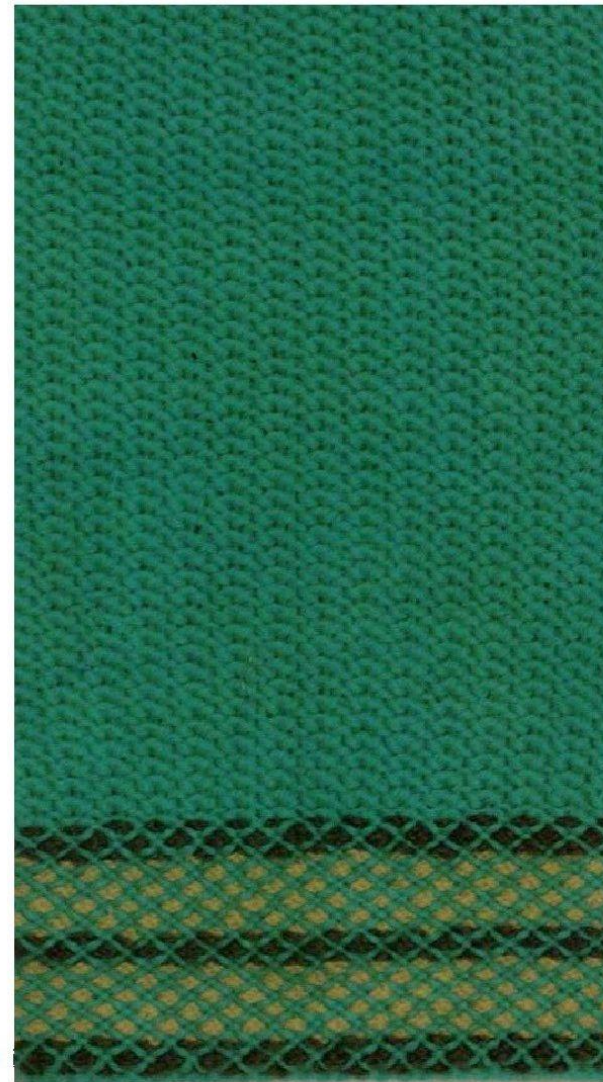
When the knitting is finished, sew the first row of stitches of the main colour onto the wrong side and unravel the contrast wool.

For woven welts and edges, you can use all kinds of wool. You may have a lot of odds and ends at home which have been useless up to now but which would be ideal for weaving. In Mohair, Boucle or Triple knitting, you can use even the smallest amount on your 302 Automatic.

Order	YARN	PATTERN PANEL	CAML	PUSH BUTTONS	PATTERN LEVER	SIDE LEVER	ROWS & DIRECTION
1	A	○ ● ↗	●	□ □ □	▼	▼	←
2	B	→					→
3	A	○ ● ↗					←
4	A	→					→
5	B	→					→
6	A	○ ● ↗					←
7	A	→					→
8	B	→					→
9	A	○ ● ↗					←
10	A	→					→
11	C	→					→
12	A	○ ● ↗					←
13	A	→					→
14	C	→					→
15	A	○ ● ↗					←
16	A	→					→
17	C	→					→
18	A	○ ● ↗					←
19	A	→					→
20	C	→					→
21	A	○ ● ↗					←
22	A	→					→
23	C	→					→
24	A	○ ● ↗					←

Repeat rows 1-9 and 9-24.

W 118



W 118





Starting with the Cam Box at the right, cast on over every other needle with spare yarn and knit 5 rows (Cam Box is at right). Thread yarn feed with main wool. Knit 1 row. Start weaving the pattern according to the chart (in this instance 40 rows). The Cam Box is at the right. Thread yarn feed with contrast wool and knit 7 rows. Take knitting off the needles, turn and with the wrong side of work facing, put the last row of main colour back onto the machine. Unravel contrast yarn. Bring empty needles in A position into B position. Hang the stitches of the first row of the welt, with the help of the transfer tool, onto empty needles. Continue knitting in stocking stitch or pattern as desired.

Order	YARN		PATTERN PANEL	CAM L.	PUSH BUTTONS		PATTERN LEVER	SIDE LEVER	ROWS & DIRECTION
	weaving	Reorder			2/1	1/2			
1		A	○ ● ◀	Stock	□ □	●	▼ ▼	←	
2	B		◀ ○ ●	"	□ □	●	▼ ▼	←	
3	A		◀ ○ ●	"	" "	" "	" "	→	
4	B		◀ ○ ●	"	" "	" "	" "	→	

Repeat rows 1-4 throughout.

W 119

Weaving with the 302 Automatic will give you a lot of pleasure, and you will find it fascinating and easy to create beautiful patterns to your own exclusive design.