

Brammwell's

FAMILY TUCK STITCH DESIGNS

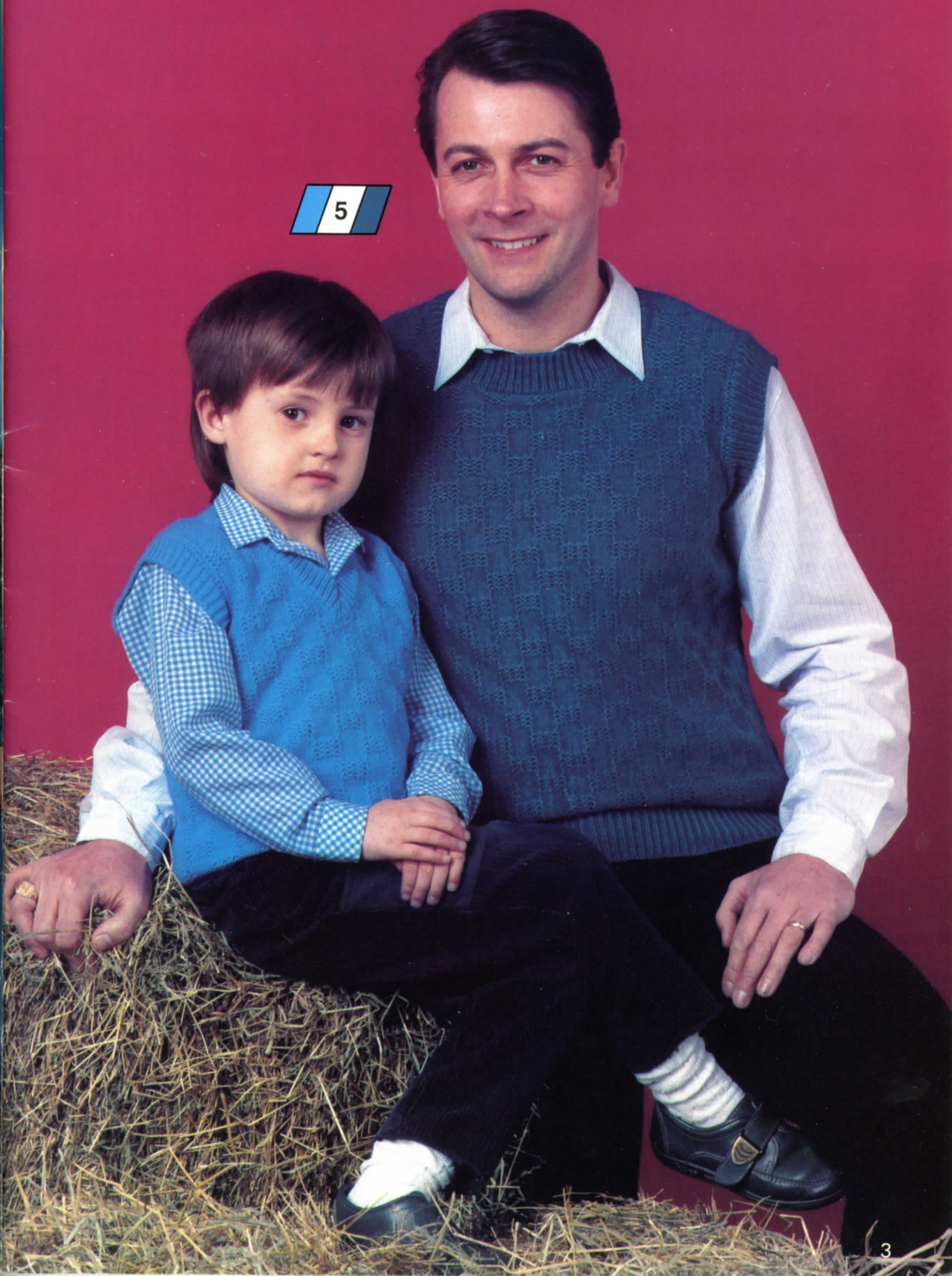


3

4



5



6

7



8



9





10

Bramwell's

FAMILY TUCK STITCH DESIGNS

So Simple to Knit for All the Family . . .

At last, the book you have all been waiting so patiently for — BRAMWELL'S FAMILY TUCK STITCH DESIGNS. Designs for everyone in yarns that are readily available from your local stockist. You will find the patterns so simple to follow on your punchcard machine that even the newcomer to machine knitting can confidently knit any of the garments in this book.

We, at Bramwell, are the leading suppliers of machine knitting yarns in the U.K. and our constant attention to detail over the years ensures that our yarns are always in first class condition.

Our Fashion Department is constantly researching the latest in colour and texture to ensure that you can be at the forefront of the fashion market. Our fine 4 ply range alone has 43 shades, so there is more than enough choice to cater for clothes to suit your very individual personality.

Pattern Numbers

Pattern Numbers	Page
1 Classic Set-in Sleeve Sweater, Bobble Tuck Stitch (Teens or Ladies) (<i>Outside Front Cover</i>)	8
2 Striped Raglan Sweater with Square Neck (Ladies or Gent's) (<i>Outside Front Cover</i>)	9
3 Ladies Round Neck Mandarin Jacket	10
4 Ladies Tuck Lace Sweater with White Collar and Black Bow Tie	10
5 Sleeveless Pullover in Round and V Neck Versions (Child's, Ladies or Gent's)	11
6 Saddle Shoulder Jacket with Collar (Ladies or Gent's)	12
7 Ladies Batwing Sweater with Roll Collar	13
8 Ladies Two Colour Tuck Sweater with Ribbed Yoke	14
9 Ladies Deep V Neck Sweater in Basketweave Tuck	15
10 Mock Aran Sweater (Child's, Ladies or Gent's)	15
11 Ladies Low V Front Cardigan in Tuck Lace with Set-in Sleeves	17
12 Ladies Suit. Ribbed Skirt with Set-in Sleeve Sweater	18
13 Ladies Sweater with Pintucked Yoke	19
14 Ladies Slash Neck Sweater with Three-Quarter Puffed Sleeves	20
15 Traditional Style Gansey (Child's, Ladies or Gent's)	20
16 Gent's Sweater in Basketweave Tuck and Three Colours	21
17 Ladies Tuck Lace Sweater with Slash Neck	22
18 Shirt Style Sweater (Child's, Ladies or Gent's)	23
19 Ladies Suit with Tuck Lace Top, Collared with Deep V Inset and Ribbon Trim (<i>Outside Back Cover</i>)	24
20 Ladies Tuck Stitch Sweater with Boat Neck and Collar with Two Button Trim (<i>Outside Back Cover</i>)	25

Important Notes

It is important to use the Bramwell yarns stated to achieve the correct tension. The yarn amounts stated are based on average requirements and are therefore approximate.

Instructions are given in the smallest size, larger sizes are in square brackets. Where only one figure is given, this applies to all sizes.

Washing Instructions

4 Ply Acrylic	Machine Washable	60°	Non Iron	
Roselan DK	Machine Washable	60°	Non Iron	
Artistic	Machine Washable	60°	Cool Iron	
Ivette	Hand Wash		Cool Iron	
Roseknit Pure Wool	Machine Washable	70°	Cool Iron	

Abbreviations

Alt.	Alternate	MT	Main Tension
Approx.	Approximately	MY	Main Yarn
Arr.	Arrange	N/s	Needle/s
Beg.	Beginning	NWP	Non working position
Carr.	Carriage	Opp.	Opposite
Cm/s	Centimetre/s	Patt.	Pattern
C. on	Cast on	RC	Row counter
C. off	Cast off	R/s	Row/s
Col.	Colour	Rel.	Release
Cont.	Continue	Rem.	Remaining
Dec.	Decrease	Rep.	Repeat
Ev.	Every	Rev.	Reversing
Foll.	Following	RH	Right Hand
HP.	Holding Position	St/s	Stitch/es
In/s	Inch/es	St. St.	Stocking stitch
Inc.	Increase	T.	Tension
K.	Knit	Transf.	Transfer
LH.	Left hand	UWP	Upper working position
Mach.	Machine	WP	Working position
MB	Main bed	WY	Waste Yarn
MC	Main colour	YM	Yarn mark

© All patterns, printed matter and photographs contained in this book are and remain the copyright of P.S. Design and may not be reproduced in whole or in part without the consent of the copyright holder.

PS. DESIGN

exclusive for F.W. Bramwell & Co. Ltd.

Knitwear by Susan Joan Knitwear Designs

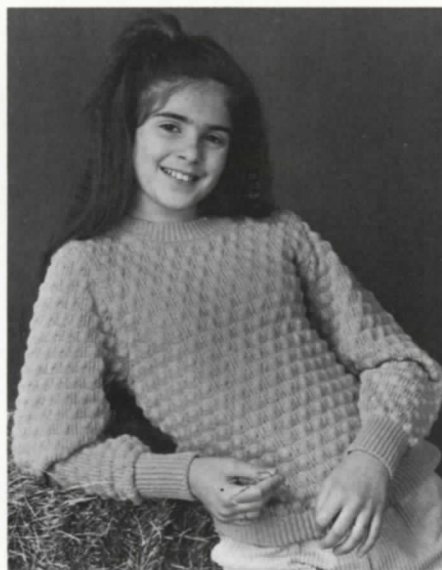
Printed and published in the U.K.

If you have any difficulty in obtaining any yarns used in this pattern book please write to:-

F.W. Bramwell & Co. Ltd., Holmes Mill, Greenacre Street, Clitheroe, Lancs.

Whilst every care is taken to ensure the accuracy of the patterns in this book, the publisher accepts no responsibility whatsoever for any damage, loss or the like, arising from their use.

Classic Set-in Sleeve Sweater, Bobble Tuck Stitch (Teens or Ladies)



K in tuck patt increasing 1 st at each end of next and ev foll 7th, [7th, 8th, 8th, 8th] row until inc to 112, [112, 114, 116, 116] sts. K straight to RC 218, [218, 224, 232, 232].

Shape Top

C. off 6, [6, 7, 8, 8] sts at beg next 2 rows.
Dec 1 st at each end of next 2 rows.
Dec 1 st at each end of next and ev foll alt row 35 times in all.
26 sts remain.
C. off 3 sts at beg next 4 rows.
C. off remaining 14 sts.

Neckband

Bring 110, [112, 116, 120, 120] Ns to WP on machine and ribber and arr for 1 x 1 rib. C. on and K 3 circular rows.
MT-4, K 6 rows.
MT-3, K 5 rows.
MT-2, K 5 rows.
Transfer sts to MB.
MT, K 1 row.
Release from machine onto WY.

Making Up

Sew first shoulder seam. Pin neckband in position around neck opening and backstitch through loops of last row in MY. Sew second shoulder and neckband seam. Set in sleeves. Sew side and sleeve seams.

MEASUREMENTS

To fit Bust

81	86	91	97	102	cms
32	34	36	38	40	ins

Finished garment measurement

86	91	97	102	107	cms
34	36	38	40	42	ins

Back neck length

61	61	62	64	64	cms
24	24	24½	25	25	ins

Side seam

38	38	39	41	41	cms
15	15	15½	16	16	ins

Sleeve seam

46	46	47	48	48	cms
18	18	18½	19	19	ins

MATERIALS

1 cone Bramwell Fine 4 ply
Punchcard No. B4

TENSION

25 stitches and 58 rows to 10 cms over tuck stitch pattern. (Knit side is right side). Approx TD 8

KNITTING INSTRUCTIONS

Back

★ Bring 106, [112, 118, 126, 132] Ns to WP on machine and ribber and arr for 1 x 1 rib.
C. on and K 3 circular rows.
MT-3, K 35 rows. Transfer sts to MB. Insert punchcard and lock on row 1.
MT. RC 000. K 1 row to select Ns.
Release card, set carr to tuck. K to RC 174, [174, 182, 188, 188].

Shape Armholes

C. off 6, [7, 7, 8, 8] sts at beg of next 2 rows.
Dec 1 st at each end of next and foll alt row 6, [7, 8, 10, 10] times in all ★★
K straight to RC 304, [304, 310, 314, 314].

Shape Shoulder

C. off 6, [7, 8, 8, 9] sts at beg next 4 rows.
C. off 7, [6, 6, 7, 7] sts at beg next 2 rows.
C. off remaining 44 sts.

Front

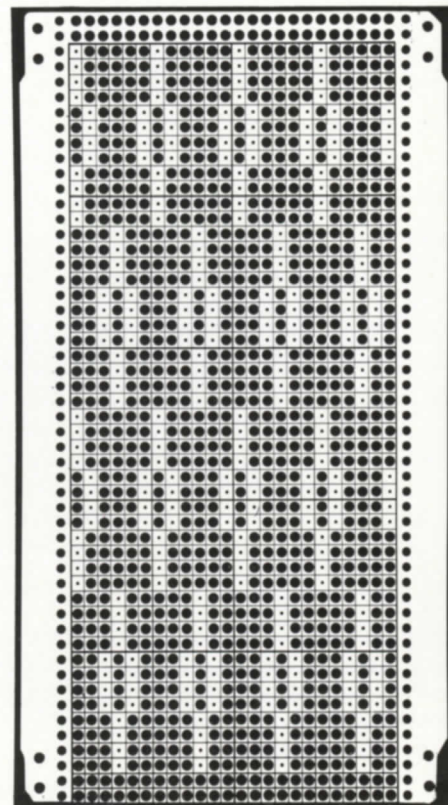
K as for back from ★ to ★★.
K straight to RC 260, [260, 266, 270, 270].

Shape Neck

Note patt. row on card
C. off centre 22 sts.
Put Ns at left to Hold. Set carr to Hold ★★★
Dec 1 st at neck edge on next and foll alt row 11 times in all.
K straight to RC 304, [304, 310, 314, 314].
C. off 6, [7, 8, 8, 9] sts at beg next and foll alt row.
C. off remaining 7, [6, 6, 7, 7] sts.
Return Ns at left to WP.
Reset RC to 260, [260, 266, 270, 270].
Carr on left.
Keeping tuck patt correct, by referring to patt row previously noted, K as from ★★★ reading left for right and vice versa.

Sleeves

Bring 56, [56, 60, 62, 62], Ns to WP on machine and ribber and arr for 1 x 1 rib.
C. on and K 3 circular rows.
MT-3, K 35 rows. Transfer sts to MB.
Insert punchcard and lock on row 1
MT. RC 000 K1 row to select Ns.
Release card, set carr. to tuck.



Punchcard No. B4

2

Striped Raglan Sweater with Square Neck (Ladies or Gent's)



MEASUREMENTS

To fit Chest/Bust

81	86	91	97	102	cms
32	34	36	38	40	ins

107	112	117	cms
42	44	46	ins

Finished garment measurement

86	91	97	102	107	cms
34	36	38	40	42	ins

112	117	122	cms
44	46	48	ins

Back neck length

59	60	62	64	65	cms
23	23½	24½	25	25½	ins

71	72	74	cms
28	28½	29	ins

Side seam

38	39	39	41	42	cms
15	15½	15½	16	16½	ins

46	47	48	cms
18	18½	19	ins

Sleeve seam

46	47	47	48	50	cms
18	18½	18½	19	19½	ins

53	55	56	cms
21	21½	22	ins

MATERIALS

1 cone Bramwell Fine 4 ply in Col. A
1 cone Bramwell Fine 4 ply in Col. B
1 cone Bramwell Fine 4 ply in Col. C.
Knitmaster punchcard No. 1 from basic set.

NOTE: This card is used on double length throughout.

TENSION

22 stitches and 65 rows to 10 cms over tuck stitch patt.

Tuck side is right side. (Approx. TD 8)

PATTERN NOTE: colour sequence:-

40 rows Col. A.
4 rows Col. B.
4 rows Col. C.
4 rows Col. B.

These 52 rows comprise the pattern. Remember that if you wish to lengthen the sleeves, the raglan seams should match, therefore the extra rows must be added at the beginning of the sleeve before the shaping is started.

KNITTING INSTRUCTIONS

Back

★ Bring 94, [100, 104, 110, 116, 122, 126, 132] Ns to WP on machine and ribber and arr for 1 x 1 rib.

Using Col. A, Cast on and K 3 circular rows. T 4/4, K31, [31, 31, 31, 31, 35, 35, 35] rows.

Transfer sts to MB. Insert punchcard and lock on row 1.

MT. RC 000 K 1 row to select Ns.

Release card, set carr to tuck.

K in patt to RC 194, [204, 204, 212, 220, 236, 244, 252].

Shape Raglan

C. off 6, [6, 6, 7, 7, 8, 8, 8] sts at beg of next 2 rows. ★★

Dec 1 st at each end of ev foll 6th row 10, [4, 8, 10, 4, 12, 8, 2] times then ev foll 4th row 17, [26, 24, 21, 30, 22, 28, 37] times.

C. off remaining 28, [28, 28, 34, 34, 38, 38, 38] sts.

Front

K as for back from ★ to ★★

Dec 1 st at each end of ev foll 6th row 10, [4, 8, 10, 4, 12, 8, 2] times then ev foll 4th row 9, [20, 18, 16, 25, 14, 21, 29] times.

44, [40, 40, 44, 44, 54, 52, 54] sts remain. Place a YM at either side of centre 28, [28, 28, 34, 34, 38, 38, 38] sts.

C. off.

Left Sleeve

Bring 56, [56, 56, 56, 56, 66, 66, 66] Ns to WP on machine and ribber and arr for 1 x 1 rib.

Using Col A, Cast on and K 3 circular rows. T 4/4, K 31, [31, 31, 31, 31, 35, 35, 35] rows. Transfer sts to MB.

Lock card on row 1.

MT. RC 000 K 1 row to select Ns.

Release card, set carr to tuck.

K 1 row, keeping colour sequence correct, Inc 1 st at each end of next and ev foll 14th, [15th, 16th, 11th, 12th, 13th, 13th, 13th] row until inc to 88, [88, 100, 100, 100, 110, 110, 110] sts.

K straight to RC 246, [256, 256, 264, 272, 288, 296, 304].

Shape Raglan

C. off 6, [3, 6, 7, 4, 8, 8, 5] sts at beg of next 2 rows.

Dec 1 st at each end of ev foll 6th row 10, [4, 8, 10, 4, 12, 8, 2] times then ev foll 4th row 11, [20, 18, 16, 25, 14, 21, 29] times.

Keeping left edge straight continue to decrease at right edge as before a further 8, [6, 6, 5, 5, 8, 7, 8] times.

26, [28, 30, 29, 29, 34, 29, 30] sts remain. C. off.

Right Sleeve

K as for left sleeve reading left for right and vice versa.

Neckband

Bring 120, [120, 120, 120, 120, 130, 130, 130] Ns to WP on machine and ribber and arr for 1 x 1 rib.

Using Col. A Cast on and K 3 circular rows.

T 5/5, K 5 rows.

T 4/4, K 5 rows.

T 3/3, K 12 rows.

T 4/4, K 5 rows.

T 5/5, K 5 rows. Transfer sts to MB. MT, K 1 row.

Release work from machine onto WY.

Making Up

Sew raglan seams, matching stripes and matching top of sleeves at yarn marks on front neck, easing in at corner.

Pin neckband in position around neck opening and backstitch through loops of last row in MY. Fold band to inside and slip stitch down.

Sew side and sleeve seams.

3

Ladies Round Neck Mandarin Jacket



MEASUREMENTS

To fit Bust

81	86	91	97	102 cms
32	34	36	38	40 ins

Finished garment measurement

86	91	97	102	112 cms
34	36	38	40	42 ins

Back neck length

62	62	64	65	65 cms
24½	24½	25	25½	25½ ins

Side seam

37	37	38	39	39 cms
14½	14½	15	15½	15½ ins

Sleeve seam

47	47	48	50	50 cms
18½	18½	19	19½	19½ ins

MATERIALS

1 cone Bramwell Fine 4 ply Col. A.
1 cone Bramwell Fine 4 ply Col. B.
1 button
Knitmaster punchcard No. 4A from basic set.

TENSION

24 stitches and 46 rows to 10 cms over tuck stitch pattern. Tuck side is right side. Approx. TD 8.

KNITTING INSTRUCTIONS

Back

Bring 102, [108, 114, 120, 126] Ns to WP on machine and ribber and ★ arr for full needle rib.
Using Col. A, C. on and K 3 circular rows. T 5/5 K 21 rows. Transfer sts to MB. Insert punchcard and lock on row 1. MT. RC 000. K 1 row to select Ns. Release card set carr to tuck.
K 2 rows Col. B, K 2 rows Col. A. These 4 rows comprise pattern.
Continue in pattern to RC 156, [156, 160, 166, 166] ★★

Shape Armholes

C. off 4, [4, 4, 5, 5] sts at beg of next 2 rows.
Dec 1 st at armhole edge on next and ev foll alt row 5 times in all.
84, [90, 96, 100, 106] sts remain.
K straight to RC 264, [264, 270, 276, 276].
C. off 7, [8, 9, 10, 10] sts at beg of next 4 rows.
C. off 7, [8, 9, 9, 12] sts at beg next 2 rows.
C. off rem 42 sts.

Left Front

Bring 50, [53, 55, 58, 60] Ns at right of centre O on machine and ribber to WP and K as for back from ★ to ★★.

Shape Armhole

C. off 4, [4, 4, 5, 5] sts at beg next row. K 1 row.
Dec 1 st at armhole edge on next and ev foll alt row 5 times in all.
K straight to RC 223, [223, 229, 235, 235].

Shape Neck

C. off 10 sts at beg next row.
Dec 1 st at neck edge on next and ev foll alt row 11 times in all.
K to RC 264, [264, 270, 276, 276].
C. off 7, [8, 9, 10, 10] sts at beg of next and foll alt row.
C. off rem 6, [7, 7, 7, 9], sts.

Right Front

K as for left front reading left for right and vice versa, and reversing shapings.

Sleeves

Bring 66 Ns to WP on machine and ribber and arr for Full Needle rib.
Using Col. A, C. on and K 3 circular rows. T 5/5 K 21 rows. Transfer sts to MB. Lock card on row 1.
MT. RC 000. K 1 row to select Ns. Release card, set carr to tuck.
K 1 row.
Keeping colour sequence correct, inc 1 st at each end of next and ev foll 7th row until inc to 120 sts.
K to RC 200 [200, 206, 212, 212].

Shape Top

C. off 7 sts at beg of next 2 rows.
Dec 1 st at each end of next and ev foll alt row until 50 sts remain.
C. off.

Front Bands

Bring 120, [120, 126, 130, 130] Ns to WP on machine and ribber, and arr for full needle rib.
Using Col. A, C. on and K 3 circular rows. RC 000. K 14 rows. Transfer sts to MB. MT. K 1 row. Release work from machine onto WY.

Neckband

Bring 120 Ns to WP on machine and ribber and arr for full needle rib.
Using Col. A, C. on and K 3 circular rows. T 3/3, K 6 rows.
T 4/4, make a buttonhole over 5th and 6th Ns from right edge on next 2 rows.
K 3 rows.
T 5/5, K 5 rows, Transfer sts to MB. MT. K 1 row. Release work from machine onto WY.

Making Up

Sew shoulder seams. Pin front bands in position and backstitch through loops of last row in MY. Unravel WY. Pin neckband in position around neck opening and backstitch through loops of last row in MY. Unravel WY. Set in sleeves. Sew side and sleeve seams. Sew on button.

4

Ladies Tuck Lace Sweater with White Collar and Black Bow Tie



MEASUREMENTS

To fit Bust

81	86	91	97	102 cms
32	34	36	38	40 ins

Finished garment measurement

91	97	102	107	112 cms
36	38	40	42	44 ins

Back neck length

61	61	62	64	65 cms
24	24	24½	25	25½ ins

Side seam

37	37	38	39	41 cms
14½	14½	15	15½	16 ins

Sleeve seam: (all sizes)

33	cms
13	ins

MATERIALS

1 cone Bramwell Fine 4 ply in main colour, approx 40gms Fine 4 ply in white, (for contrast).

1 metre ½" black satin ribbon.

Punchcard No. B1

TENSION

29 sts and 44 rows to 10 cms over tuck st pattern. (Approx TD 8.) Tuck side is right side.

KNITTING INSTRUCTIONS

Back

★ Bring 130, [138, 146, 152, 160] Ns to WP on machine and ribber and arr for 1 x 1 rib.

Using MC, cast on and K 3 circular rows. MT-4, K 41 rows.

Transfer sts to MB. Insert punchcard and lock on row 1.

RC 000. MT. K 1 row to select Ns.

Transfer sts for tuck lace as shown in diagram.



Release card, set carr to tuck.

K to RC 126, [126, 132, 138, 144] ★★

Shape Armholes

C. off 6 sts at beg of next 2 rows.

K to RC 229, [229, 235, 241, 247].

Place a YM on 26th, [26th, 26th, 30th, 30th] N at left of centre O, and on 27th, [27th, 27th, 31st, 31st] N at right of centre O. Set carr for st. st. K 1 row. C. off.

Front

K as for back from ★ to ★★

K to RC 192, [192, 198, 198, 204].

Shape Neck

Note patt row on card.

C. off centre 26, [26, 26, 30, 30] sts. Put Ns

at left to HP. Set carr to hold. Dec 1 st at neck edge on next 13, [13, 13, 15, 15] rows.

K straight to RC 230, [230, 236, 242, 248]. C. off.

Return Ns at left to WP. Reset RC to 192, [192, 198, 198, 204]. Carr on left.

Keeping pattern correct, by referring to patt. row previously noted, work as for first side reversing shapings.

Sleeves (all sizes alike)

Bring 94 Ns to WP on machine and ribber and arr for 1 x 1 rib. C. on and K 3 circular rows.

MT-4, K 21 rows.

Transfer sts to MB. Carr on right.

RC 000. MT. K 1 row to select Ns.

Transfer sts for tuck lace as before.

Release card, set carr to tuck.

K 1 row.

Keeping tuck lace patt correct, inc 1 st at each end of next and ev foll 5th row until inc to 138 sts.

K straight to RC 122. C. off.

Collar

Bring 120, [120, 120, 130, 130] Ns to WP on machine and ribber and arr for full needle rib.

Using white, (contrast yarn) cast on and K 3 circular rows.

MT-2 K 10 rows

MT-3 K 20 rows

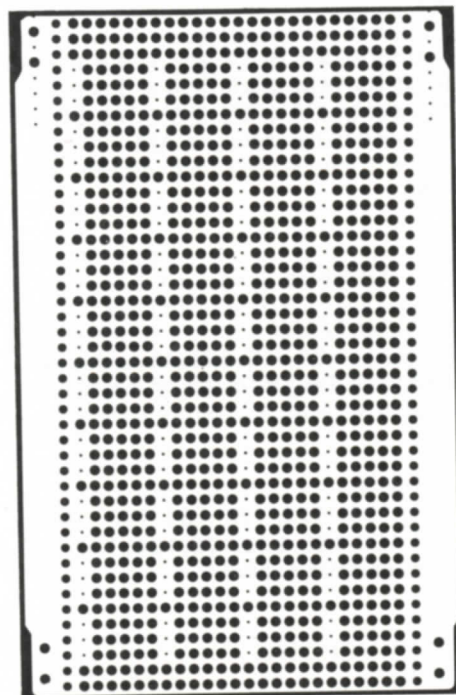
MT-4 K 14 rows

Transfer sts to MB.

MT. K 1 row. C. off.

Making Up

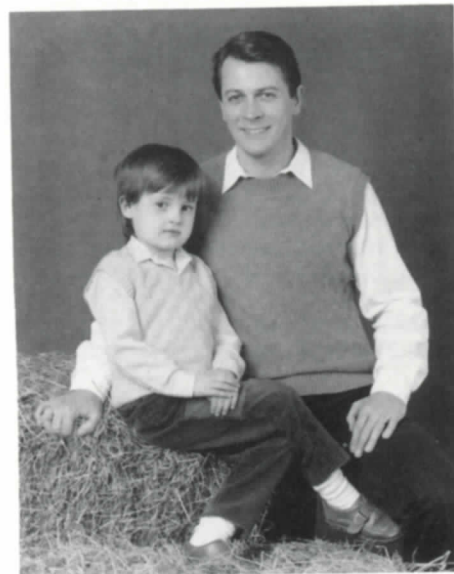
Sew shoulder seams matching at YM. Pin then sew collar in position. Set in sleeves. Sew side and sleeve seams. Attach ribbon and tie in a bow.



Punchcard No. B1

5

Sleeveless Pullover in Round and V Neck Versions (Child's, Ladies or Gent's)



MEASUREMENTS

To fit Chest/Bust

56	61	66	71	76	81	cms
22	24	26	28	30	32	ins

86	91	97	102	107	112	cms
34	36	38	40	42	44	ins

Finished garment measurement

61	66	71	76	81	86	cms
24	26	28	30	32	34	ins

91	97	102	107	112	117	cms
36	38	40	42	44	46	ins

Back neck length

34	38	43	48	51	60	cms
13½	15	17	19	20	23½	ins

60	62	65	66	70	71	cms
23½	24½	25½	26	27½	28	ins

Side seam

20	23	27	31	33	39	cms
8	9	10½	12	13	15½	ins

39	41	42	43	45	46	cms
15½	16	16½	17	17½	18	ins

Note: Round neck version from size 71 cms (28 ins) chest only.

MATERIALS

1 cone Bramwell Fine 4 ply.

Punchcard No. B3

TENSION

25 stitches and 51 rows to 10 cms over tuck stitch pattern. (Tuck side is right side) Approx TD8

KNITTING INSTRUCTIONS

Back (Both versions alike)

★ Bring 76, [82, 88, 94, 100, 106, 112, 118, 126, 132, 138, 144] Ns to WP on

machine and ribber and arr for 1 x 1 rib.
C. on and K 3 circular rows.
MT-3, K 21, [21, 25, 27, 29, 31, 31, 31, 35, 39, 39, 39] rows.
Transfer sts to MB.
Insert punchcard and lock on row 1. RC000.
MT. K 1 row to select Ns. Release card, set carr to Tuck.
K to RC 76, [90, 108, 128, 140, 160, 160, 166, 172, 178, 184, 192]. ★★

Shape Armholes

C. off 5, [6, 6, 6, 7, 7, 8, 8, 8, 9, 9], sts at beg of next 2 rows.
Dec 1 st at each end of next and ev foll alt row 5, [5, 6, 7, 7, 6, 7, 8, 8, 8, 10] times in all. ★★★
K straight to RC 144, [166, 190, 216, 230, 262, 262, 274, 286, 292, 310, 318].

Shape shoulders

C. off 4, [4, 5, 5, 6, 7, 7, 8, 8, 9, 9, 10] sts at beg of next 4 rows.
C. off 4, [6, 5, 7, 4, 3, 6, 6, 8, 7, 9, 8] sts at beg of next 2 rows.
C. off rem 32, [32, 34, 34, 40, 44, 44, 44, 46, 50, 50, 50] sts.

Front (Round Neck Version, from size 28 ins only)

K as for back from ★ to ★★★
K to RC -, [-, -, 178, 193, 218, 218, 230, 234, 240, 258, 260].

Shape Neck

Note patt. row on card.
C. off centre -, [-, -, 16, 20, 22, 22, 22, 24, 26, 26, 26] sts.
Put Ns at left in HP. Set carr to Hold.
Dec 1 st at neck edge on next -, [-, -, 9, 10, 11, 11, 11, 11, 12, 12, 12] rows.
K straight to RC -, [-, -, 216, 230, 262, 262, 274, 286, 292, 310, 318].

Shape Shoulder

C. off -, [-, -, 5, 6, 7, 7, 8, 8, 9, 9, 10] sts at beg of next and foll alt row.
C. off rem -, [-, -, 7, 4, 3, 6, 6, 8, 7, 9, 8] sts.
Return Ns at left to WP. Reset RC to -, [-, -, 178, 193, 218, 218, 230, 234, 240, 258, 260].
Carr on left.
Keeping tuck patt correct, by referring to patt. row previously noted, work as for first side reversing shapings.

Front (V Neck Version, all sizes)

Knit as for back from ★ to ★★ Note patt. row on card.
Put 38, [41, 44, 47, 50, 53, 56, 59, 63, 68, 69, 72] Ns at left to HP.
Set carr to Hold.
Dec 1 st at neck edge on next and ev foll 4th, [4th, 4th, 5th, 4th, 4th, 4th, 4th, 4th, 4th,

5th 5th] row 16, [16, 17, 17, 20, 22, 22, 22, 23, 25, 25, 25] times in all **AT THE SAME TIME** C. off 5, [6, 6, 6, 7, 7, 8, 8, 8, 8, 9, 9] sts at beg of next row.
K 1 row. Dec 1 st at armhole edge on next and foll alt row 5, [5, 6, 7, 7, 7, 6, 7, 8, 8, 8, 10] times in all.
Keeping shaping at neck edge correct cont. in patt to RC 144, [166, 190, 216, 230, 262, 262, 274, 286, 292, 310, 318].

Shape Shoulder

C. off 4, [4, 5, 5, 6, 7, 7, 8, 8, 9, 9, 10] sts at beg of next and foll alt row.
C. off rem 4, [6, 5, 7, 4, 3, 6, 6, 8, 7, 9, 8] sts.
Return Ns at left to WP. Reset RC to 76, [90, 108, 128, 140, 160, 160, 166, 172, 178, 184, 192].
Carr on left.
Keeping Tuck patt correct, by referring to patt. row previously noted, work as for first side reversing shapings.

Armbands

Bring 76, [82, 88, 94, 100, 106, 112, 118, 126, 132, 138, 144] Ns to WP and arr for 1 x 1 rib.
C. on and K 3 circular rows.
MT-3 K 4, [4, 4, 4, 4, 6, 6, 6, 6, 6, 6, 6] rows
MT-2 K 4, [4, 4, 4, 4, 5, 5, 5, 5, 5, 5, 5] rows
MT-1 K 4, [4, 4, 4, 4, 5, 5, 5, 5, 5, 5, 5] rows
Carr on left, transfer sts to MB.
MT, K 1 row. Release from machine onto WY.

Neckbands

Round Neck

Bring -, [-, -, 94, 100, 106, 112, 118, 126, 132, 138, 144] Ns to WP on machine and ribber.

V Neck

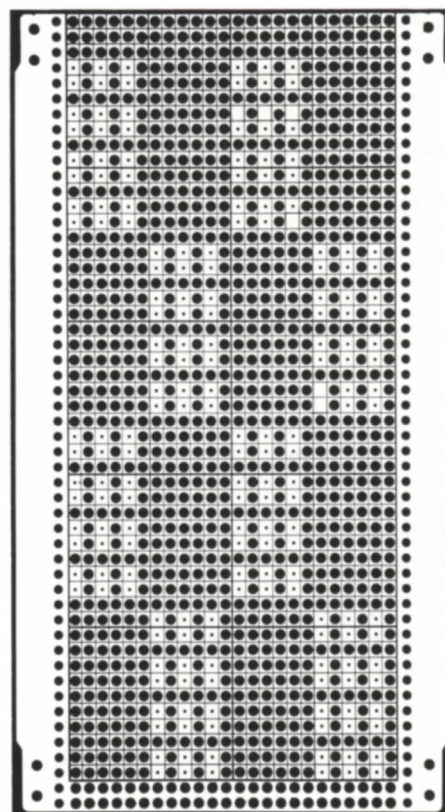
Bring 104, [122, 128, 134, 140, 146, 152, 158, 166, 172, 178, 184], Ns to WP. on machine and ribber.

Both Versions

Arr Ns for 1 x 1 rib.
C. on and K 3 circular rows.
MT-3 K 4, [4, 4, 4, 4, 6, 6, 6, 6, 6, 6, 6] rows
MT-2 K 4, [4, 4, 4, 4, 5, 5, 5, 5, 5, 5, 5] rows
MT-1 K 4, [4, 4, 4, 4, 5, 5, 5, 5, 5, 5, 5] rows
Carr on left. Transfer sts to MB. Release from machine onto WY.

Making Up

Sew shoulder seams. Pin neckband in position. (Round neck, with seam at left shoulder. V neck version with seam at V point).
Backstitch through loops of last row in MY. Unravel WY.
Round neck, sew neckband seam.
V neck, sew V point in a neat mitre shape and slip stitch flaps neatly back to neckband seam.
Pin armbands in position around armhole opening and back stitch through loops of last row in MY. Unravel WY.
Sew side seams.



Punchcard No. B3

6

Saddle Shoulder Jacket with Collar (Ladies or Gent's)



MEASUREMENTS

To fit Chest/Bust

81	86	91	97	102 cms
32	34	36	38	40 ins
107	112	cms		
42	44	ins		

Finished garment measurement

86	91	97	102	107	cms
34	36	38	40	42	ins

112	117	cms
44	46	ins

Back neck length

59	60	62	64	65	cms
23	23½	24½	25	25½	ins

71	72	cms
28	28½	ins

Side seam

38	39	39	41	42	cms
15	15½	15½	16	16½	ins

46	47	cms
18	18½	ins

Sleeve seam

46	47	47	48	50	cms
18	18½	18½	19	19½	ins

53	55	cms
21	21½	ins

MATERIALS

1, [1, 1, 1, 1, 2, 2] cones Bramwell Roselan DK.
5, [5, 6, 6, 6, 7, 7] buttons.
Knitmaster punchcard 11 from basic set.

TENSION

22 stitches and 42 rows to 10cms over tuck stitch pattern.
Approx TD 9. Tuck side is right side.

KNITTING INSTRUCTIONS**Back**

★ Bring 94, [100, 104, 110, 116, 122, 126] Ns to WP on machine and ribber and arr for 2 x 1 rib.
C. on and K 3 circular rows.
T 6/6, K 31 rows. Transfer sts to MB. Insert punchcard and lock on row 1.
MT. RC 000. K 1 row to select Ns.
Release card, set carr to tuck.
K in patt to RC 126, [132, 132, 136, 142, 158, 162].★★

Shape Armhole

C. off 4 sts at beg next 2 rows.
Dec 1 st at each end of next and ev foll alt row 4 times in all.
K straight to RC 190, [194, 204, 210, 216, 242, 246].

Shape Shoulder

C. off 6, [6, 7, 8, 10, 10, 12] sts at beg next 4 rows.
C. off 5, [8, 8, 9, 8, 11, 9] sts at beg next 2 rows.
C. off rem 44 sts.

Left Front

Bring 45, [48, 50, 53, 56, 59, 61] Ns to WP and knit as for back from ★ to ★★

Shape Armhole

C. off 4 sts at beg next row.
K 1 row. Dec 1 st at beg next and foll alt row

4 times in all.

K straight to RC 169, [173, 183, 189, 195, 221, 225].

Shape Neck

C. off 10 sts at beg next row.
Dec 1 st at neck edge on next and ev foll row 10 times in all.
K to RC 190, [194, 204, 210, 216, 242, 246].
C. off 6 [6, 7, 8, 10, 10, 12] sts at beg of next and foll alt row.
C. off rem 5 [8, 8, 9, 8, 11, 9] sts

Right Front

K as for left front reading left for right and vice versa, reversing shapings.

Left Sleeve

Bring 56, [56, 56, 56, 62, 66, 66] Ns to WP on machine and ribber and arr for 2 x 1 rib.
C. on and K 3 circular rows.
T 6/6, K 31 rows. Transfer sts to MB. Lock card on row 1.
MT. RC 000. K 1 row to select Ns.
Release card, set carr to tuck. K 1 row.
Inc 1 st at each end of next and ev foll 9th, [10th, 7th, 7th, 9th, 8th, 8th] row until inc to 88, [88, 100, 100, 100, 110, 110] sts.
K straight to RC 158, [164, 164, 168, 172, 188, 194].

Shape Top

C. off 4 sts at beg next 2 rows.
Dec 1 st at each end of next and ev foll row 10 times in all.
Dec 1 st at each end of next and ev foll alt row until 42, [42, 52, 52, 52, 52, 52] sts remain.
C. off 5 sts at beg next 4, [4, 6, 6, 6, 6, 6] rows.
22 sts remain.
RC 000. K to RC 30, [36, 40, 46, 50, 54, 60].
C. off 11 sts at beg next row.
K to RC 72, [78, 82, 88, 92, 96, 102].
C. off.

Right Sleeve

K as for left sleeve reversing shapings.

Collar and Front Bands

Bring 130 Ns to WP on machine and ribber and arr for 2 x 1 rib.
C. on and K 3 circular rows.
T 6/6, K 20 rows.
T 5/5, K 20 rows.
T 4/4, K 17 rows.
C. off centre 110 sts.
Working on sts at right for man's jacket, and sts at left for ladies jacket, re-arrange Ns for 1 x 1 rib.
Set both carriages to Hold. Put other group of Ns in HP.
Work buttonhole band thus:- ★★★
RC 000. K to RC 12, [16, 2, 6, 10, 4, 8].
Make a buttonhole on next and ev foll 24th row 5, [5, 6, 6, 6, 7, 7] times in all.
K straight to RC 142, [146, 154, 158, 162, 180, 184].
C. off.

Return other group of Ns to WP and work as for buttonhole band from ★★★ omitting buttonholes.

Making Up

Sew yoke back seam. Sew back to yoke and sleeves. Sew front to sleeves.
Pin, then sew collar and bands in position.
Sew side and sleeve seams. Sew on buttons.

7**Ladies Batwing Sweater with Roll Collar.****MEASUREMENTS****To fit Bust**

81/86	91/97	102/107	cms
32/34	36/38	40/42	ins

Back neck length

64	65	66	cms
25	25½	26	ins

MATERIALS

1 cone Bramwell Ivette 3 ply,
Punchcard No. B5.

TENSION

29 sts and 48 rows to 10 cms over tuck stitch pattern (tuck side is right side). Approx TD 6.

KNITTING INSTRUCTIONS**Back**

★ Bring Ns 13 to 66 inclusive at left of centre O to WP. (All sizes)
Using WY, K several rows ending with carr on right.
Insert punchcard (side A) and lock on row 1.
MY. MT K 2 rows.
Set carr to tuck. Release card, RC 000.
Increase 1 st at right hand side on next and ev foll alt row until increased to 144 sts (90 times in all) Carr on left, K 11, [15, 21] rows.
RC 000. C. on 6, [10, 12] sts at beg of next row. ★★

K straight to RC 67, [79, 91]. Place a YM on end LH needle.
K to RC 108, [120, 132].
Mark pattern row with a pencil. Take out punchcard and re-insert it back to front **NOT UPSIDE DOWN on the same pattern row**.
K to RC 149, [181, 173]. Place a YM on the end LH needle. ★★
K to RC 216, [240, 264].
C. off 6, [10, 12] sts at beg of next row.
K 11, [15, 21] rows.
Dec 1 st at right hand side on next and ev foll alt row 90 times in all.
54 sts remain.
K 2 rows. Release work from machine onto WY.

Front

K as for back from ★ to ★★. K straight to RC 67, [79, 91].

Shape Neck

C. off 20 sts at beg of next row.
Dec 1 st at neck edge on next and ev foll row 18 times in all.
K to RC 108, [120, 132]. Mark pattern row with a pencil.
Take out punchcard and re-insert it back to front **NOT UPSIDE DOWN on the same pattern row**, K to RC 129, [141, 153].
Inc 1 st at neck edge on next and ev foll row 18 times in all.
C. on 20 sts at beg next row. K as for Back from ★★

Cuffs

Sew shoulder seams matching neck at YMs.
Bring 54 Ns to WP on machine and ribber and arr for 2 x 1 rib.
C. on and K 3 circular rows.
T 3/3 K 36 rows. Transfer sts to MB. With K side facing pick up sts from cuff edge, 2 sts on each needle.
T 10, K 1 row. C. off.
Repeat for 2nd cuff.

Welts

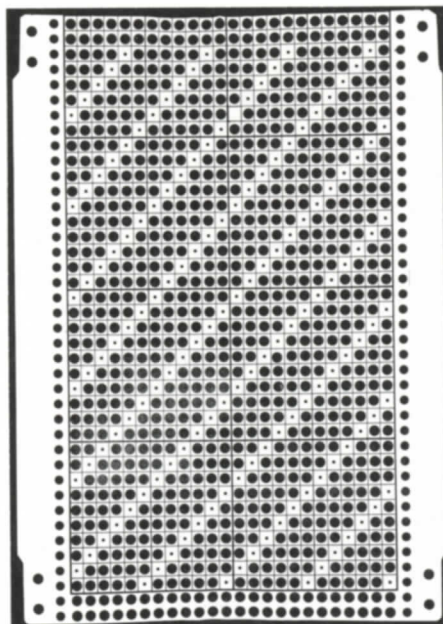
Bring 116, [130, 144] Ns to WP on machine and ribber and arr for 2 x 1 rib. C. on and K 3 circular rows, T 3/3 K 36 rows. Transfer sts to MB.
With K side facing pick up sts from lower front edge evenly.
T 10, K 1 row. C. off.
Repeat for other edge.

Collar

Bring 148 Ns to WP on machine and ribber and arr for 2 x 1 rib.
C. on and K 3 circular rows.
T 3/3, K 100 rows.
Transfer sts to MB. T6, K 1 row. Release work from machine onto WY.

Making Up

Sew side seams. With right side facing, pin collar in position around neck opening and backstitch through loops of last row in MY. Unravel WY. Sew collar seam, fold to inside and slip stitch down.
Allow collar to roll to right side.



Punchcard No. B5 (Side A)

8

Ladies Two Colour Tuck Sweater with Ribbed Yoke



MEASUREMENTS

To fit Bust

81/86	91/97	102/107	cms
32/34	36/38	40/42	ins

Finished garment measurement

91	102	107	cms
36	40	42	ins

Back neck length

64	65	66	cms
25	25½	26	ins

Side seam

39	41	42	cms
15½	16	16½	ins

Sleeve seam

46	47	48	cms
18	18½	19	ins

MATERIALS

1 cone Bramwell Fine 4 ply Col A
1 cone Bramwell Fine 4 ply Col B
Knitmaster card 3 A from basic set.

TENSION

Tuck stitch pattern 24 sts and 58 rows to 10 cms. (Tuck side is right side). Approx. TD 8.
2 x 1 rib pattern 35 sts and 38 rows to 10 cms (TD 6/6)

KNITTING INSTRUCTIONS

Back and Front (alike)

Bring 108, [120, 132] Ns to WP on machine and ribber, and arr for 1 x 1 rib.
Using Col A, C. on and K 3 circular rows.
T 4/4, K 41 rows.
Transfer sts to MB.
Insert punchcard and lock on row 1.
MT. RC 000. K 1 row to select Ns. Release card, set carr to tuck.
K 4 rows Col B.
K 4 rows Col A. These 8 rows comprise pattern.
Continue in pattern to RC 182, [188, 196].
C. off 6, [7, 8] sts at beg of next 2 rows.
K 14 rows, C. off.

Yoke Back

★Bring 140, [158, 174] Ns to WP on machine and ribber and arr for 2 x 1 rib.
Using Col A, C. on and K 3 circular rows.
T 6/6 ★★ K to RC 82. C. off.

Yoke Front

K as for yoke back from ★ to ★★.
K to RC 24
C. off centre 20 sts.

Shape Neck

Put Ns at left to HP. Set both carriages to Hold.
★★★C. off 1 st at neck edge on next and ev foll alt row 10 times in all.
K straight to RC 82. C. off.
Carr on left.
Return Ns at left to WP.
K as from ★★ for 2nd shoulder.

Sleeves

Bring 60 Ns to WP on machine and ribber and arr for 1 x 1 rib.
C. on and K 3 circular rows.
T 4/4, K 41 rows, transfer sts to MB.
Insert punchcard and lock on row 1.
MT. RC 000. K 1 row to select Ns.
Release card and set carr to tuck.

Keeping tuck patt correct inc 1 st at each end of next and ev foll 8th row until inc to 108 sts K straight to RC 232, [240, 246].
C. off.

Neckband

Bring 120 Ns to WP on machine and ribber and arr for 2 x 1 rib.
Using Col A, C. on and K 3 circular rows.
T 3/3 K 6 rows
T 4/4 K 5 rows
T 5/5 K 5 rows
Transfer sts to MB.
MT K 1 row. Release work from machine onto WY.

Making Up

Sew yoke sections to front and back. Sew shoulder seams. Set in sleeves. Sew side and sleeve seams. Pin neckband in position around neck opening and backstitch through loops of last row in MY. Unravel WY, sew neckband seam.

Sleeve seam

46	47	48	cms
18	18½	19	ins

MATERIALS

1 cone Bramwell Fine 4 ply.
Punchcard No. B2

TENSION

23 stitches and 52 rows to 10 cms over tuck stitch pattern. (Tuck side is right side).
Approx TD 8

KNITTING INSTRUCTIONS

Back

Bring 110, [122, 132] Ns to WP on machine and ribber and arr for 2 x 1 rib.
★C. on and K 3 circular rows.
MT-3, K 31 rows.
Transfer sts to MB.
Insert punchcard and lock on row 1.
MT. RC 000. K 1 row to select Ns.
Release card. Set carr to Tuck ★★
K to RC 162, [170, 176]
Place a YM on each end N.
K to RC 286, [292, 300].
C. off.

Front

Knit as for back from ★ to ★★
K to RC 118, [124, 130]

Shape neck

Note Patt. row on card.
Put 55, [61, 66] Ns at left of centre O to HP.
Set carr to Hold.
★★★ Dec 1 st at neck edge on next and ev foll 7th row 23 times in all, placing a YM at armhole edge on RC 162, [170, 176].
K to RC 286, [292, 300]. C. off rem 32, [38, 40] sts.
Return Ns at left to WP. Reset RC to 118, [124, 130]. Carr on left.
Keeping tuck pattern correct, by referring to patt. row previously noted, K as from ★★★ reading left for right and vice versa.

Sleeves

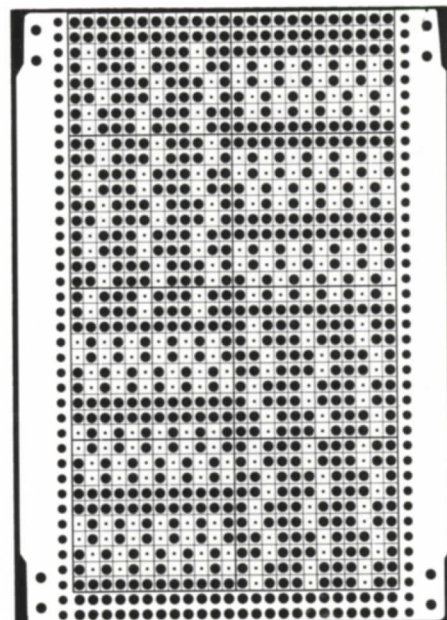
Bring 65 Ns to WP on machine and ribber and arr for 2 x 1 rib.
K as for back from ★ to ★★
Increase 1 st at each end of next and ev foll 8th row until inc. to 109 sts.
K straight to RC 196, [202, 208]. C. off.

Collar

Bring 152 Ns to WP on machine and ribber and arr for 2 x 1 rib.
C. on and K 3 circular rows.
MT-3 K 10 rows
MT-2 K 10 rows
MT-1 K 10 rows. Carr on left.
Transfer sts to MB.
MT. K 1 row.
K several rows WY and release from machine.

Making up

Sew shoulder seams. Pin collar in position and backstitch through loops of last row in MY. Overlap front right edge over left edge and stitch. Sew in sleeves between YMs. Sew side and sleeve seams.



Punchcard No. B2

9

Ladies Deep V Neck Sweater in Basketweave Tuck



MEASUREMENTS

To fit Bust

81/86	91/97	102/107	cms
32/34	36/38	40/42	ins

Finished garment measurement

97	107	117	cms
38	42	46	ins

Back neck length

64	65	66	cms
25	25½	26	ins

Side seam

39	41	42	cms
15½	16	16½	ins

10

Mock Aran Sweater (Child's, Ladies or Gent's)



MEASUREMENTS

To fit Chest/Bust

71	76	81	86	91	cms
28	30	32	34	36	ins

97	102	107	112	cms
38	40	42	44	ins

Finished garment measurement

76	81	86	91	97	cms
30	32	34	36	38	ins

102	107	112	117	cms
40	42	44	46	ins

Back neck length

48	53	62	62	64	cms
19	21	24½	24½	25	ins

65	69	70	71	cms
25½	27	27½	28	ins

Side seam

31	33	38	38	41	cms
12	13	15	15	16	ins

42	43	45	46	cms
16½	17	17½	18	ins

Sleeve seam

36	41	45	45	46	cms
14	16	17½	17½	18	ins

47	47	48	51	cms
18½	18½	19	20	ins

MATERIALS

1, [1, 1, 1, 2, 2, 2, 2, 2] cones Bramwell Roseknit 4 ply Pure Wool.

Punchcard No. B6 and Knitmaster punchcard No. 3A from basic set.

TENSION

26 sts and 58 rows to 10 cms over honeycomb tuck stitch pattern (Knitmaster Card 3A). Approx TD 7. Tuck side is right side.

KNITTING INSTRUCTIONS

Back (Knitted sideways)

★ Bring 66, [72, 82, 82, 84, 88, 91, 94, 98] Ns at right of centre O to WP and with carr on right, C. on by hand.

Insert punchcard 3A and lock on row 1.

MT. K 2 rows. Set carr to tuck. RC 000.

Release card.

K to RC 15, [15, 21, 21, 21, 21, 21, 21, 21].

C. on 45, [52, 58, 58, 58, 58, 65, 65, 65] sts at beg of next row using the E wrap method.

Bring these Ns forward to UWP on next 2 rows. 111, [124, 140, 140, 142, 146, 156, 159, 163] sts.

K to RC 57, [65, 71, 71, 79, 87, 93, 101, 109]. ★★

Place a YM on end N at left hand side.

K to RC 76, [84, 90, 98, 106, 112, 120, 126, 134].

Remove card 3A and insert card No B6, lock on row 1.

K 4 rows st. st.

Release card, set carr to tuck.

K straight to RC 140, [148, 154, 162, 170, 176, 184, 190, 198].

Remove card B6 and insert card 3A, lock on row 1.

K 4 rows stocking stitch. Release card, set carr to Tuck.

K straight to RC 163, [181, 187, 193, 201, 205, 215, 219, 227].

Place a YM at left hand edge.

★★★ K to RC 205, [221, 237, 243, 259, 271, 287, 299, 315]

C. off 45, [52, 58, 58, 58, 58, 65, 65, 65] sts at beg next row.

K to RC 220, [236, 258, 264, 280, 292, 308, 320, 336]. C. off.

Front

K as for back from ★ to ★★

Shape Neck

C. off 10 sts at beg next row. Dec 1 st at neck edge on next and ev foll row 10 times in all. K straight to RC 76, [84, 90, 98, 106, 112, 120, 126, 134].

Remove card 3A and insert card B6, lock on row 1, K 4 rows stocking stitch. Release card, set carr to tuck.

K to RC 140, [148, 154, 162, 170, 176, 184, 190, 198].

Remove card B6. Insert card 3A and lock on row 1.

K 4 rows stocking stitch.

Release card, set carr to tuck.

K in patt to RC 153, [171, 177, 183, 191, 195, 205, 209, 217].

Inc 1 st at neck edge on next and ev foll row 10 times in all.

C. on 10 sts at beg of next row.

Continue as for back from ★★★

Sleeves

Bring 46, [52, 58, 58, 58, 58, 66, 66, 66] Ns to WP on machine and ribber and arr for 2 x 1 rib.

C. on and K 3 circular rows.

T 4/4, K 25, [25, 35, 35, 35, 35, 35, 35, 35] rows.

Transfer sts to MB. Insert card 3A and lock on row 1.

MT. RC 000. K 1 row to select Ns. Release card, set carr to tuck.

K 1 row. Inc 1 st at each end of next and ev foll 7th, [6th, 7th, 7th, 7th, 7th, 6th, 7th, 7th] row 23, [26, 29, 29, 29, 29, 33, 33, 33] times in all.

92, [104, 116, 116, 116, 116, 132, 132, 132] sts.

K straight to RC 174, [174, 210, 210, 218, 224, 224, 232, 246].

Place a YM on each end N.

K straight to RC 188, [188, 230, 230, 238, 244, 244, 252, 266]. C. off.

Braid Trims

Arr Ns as illustrated and cast on by hand.

↓ Centre O
JJJ°°J°°JJJ

Insert card 3A and lock on row 1. (Card remains locked throughout).

K 1 row to select Ns.

★ K 5 rows tuck stitch, K 3 rows stocking stitch ★★

Repeat from ★ to ★★ 27, [30, 34, 34, 35, 36, 38, 39, 40] times then C. off for each of 2 back braid trims, and 21, [24, 28, 28, 29, 30, 32, 33, 34] times for each of 2 front braid trims.

Welts

Sew braid trims to front and back at point where tuck pattern changes.

Bring 98, [104, 110, 116, 122, 128, 134, 140, 146] Ns to WP on machine and ribber and arr for 2 x 1 rib.

C. on and K 3 circular rows.

T 4/4, K 24, [24, 34, 34, 34, 34, 34, 34] rows. Transfer sts to MB.

With wrong side facing pick up sts from lower front edge evenly ensuring that braid edge is picked up on Ns also.

T 10, K 1 row. C. off.

Repeat for back.

Neckband

Bring 120, [120, 130, 130, 130, 130, 138, 138, 138] Ns to WP on machine and ribber and arr for 2 x 1 rib.

C. on and K 3 circular rows.

T 5/5, K 6 rows.

T 4/4, K 5 rows.

T 3/3, K 14 rows.

T 4/4, K 5 rows.

T 5/5, K 6 rows.

Transfer sts to MB. MT K 1 row. Release work from machine onto WY.

Making Up

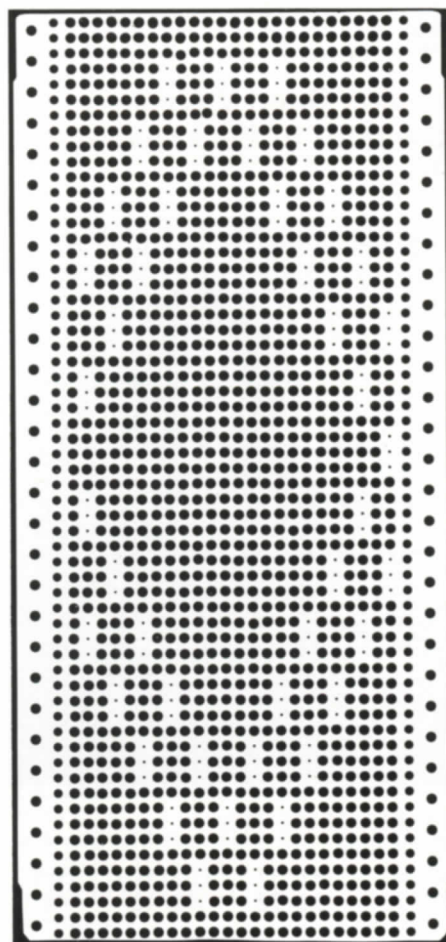
Sew shoulder seams. Pin neckband in position around neck opening overlapping braid edges, and backstitch through loops of last row in MY.

Sew neckband seam, fold neckband to inside and slip stitch down.

Set in sleeves matching armhole edge at YMs. Sew side and sleeve seams.

Crochet 1 bobble for centre of each front diamond as follows:

Make 1 chain ★ Yarn over hook, pull a loop through chain, yarn over hook, pull through first two loops on hook ★★. Repeat from ★ to ★★ 6 more times. Yarn over hook, pull through all loops on hook. Fasten off and stitch in place.



Punchcard No. B6

Ladies Low V Front Cardigan in Tuck Lace with Set-in Sleeves



MEASUREMENTS

To fit Bust

81	86	91	97	102	cms
32	34	36	38	40	ins

Finished garment measurement

86	91	97	102	107	cms
34	36	38	40	42	ins

Back neck length

62	62	64	65	65	cms
24½	24½	25	25½	25½	ins

Side seam

37	37	38	39	39	cms
14½	14½	15	15½	15½	ins

Sleeve seam

47	47	48	50	50	cms
18½	18½	19	19½	19½	ins

MATERIALS

1 cone Bramwell Ivette 3 ply.
3 1" buttons.
Knitmaster card 3A from basic set.

Pattern Note

Ns in NWP count as sts throughout. If end N should be in NWP, bring it to WP until a further increase or decrease is worked.

TENSION

28 stitches and 54 rows to 10 cms over tuck lace patt, Approx TD 7. **NOTE:** Knit side is right side.

KNITTING INSTRUCTIONS

Back

Bring 120, [128, 134, 140, 148], Ns to WP on machine and ribber and ★ arr for 1 x 1 rib. C. on and K 3 circular rows. MT-4, K 41 rows. Transfer sts to MB. Insert punchcard and lock on row 1.

MT. RC 000. K 1 row to select Ns. Transfer sts for tuck lace pattern as follows:-



Release card, set carr to tuck. ★★
K to RC 156, [156, 162, 168, 168].

Shape Armholes

C. off 7, [8, 8, 8, 8] sts at beg of next 2 rows.
Dec 1 st at each end of next and foll alt row 7, [7, 8, 9, 10] times in all.
K straight to RC 284, [284, 292, 298, 298].

Shape Shoulders

C. off 6, [7, 7, 8, 9], sts at beg next 4 rows.
C. off 6, [7, 9, 9, 10] sts at beg next 2 rows.
C. off rem. 56 sts.

Right Front

Bring 60, [64, 67, 70, 74] Ns at right of centre O to WP, on machine and ribber and K as for Back from ★ to ★★.
Carr on left. K to RC 54, [54, 60, 66, 66].

Shape Neck

Dec 1 st at neck edge on next and ev foll 8th row 28 times in all.
K to RC 156, [156, 162, 168, 168].

Shape Armholes

C. off 7, [8, 8, 8, 8] sts at beg of next row. K 1 row.
Dec 1 st at beg of next and foll alt row 7, [7, 8, 9, 10] times in all.
K to RC 284, [284, 292, 298, 298].

Shape Shoulder

C. off 6, [7, 7, 8, 9] sts at beg of next and foll alt row.
C. off rem 6, [7, 9, 9, 10] sts.

Left Front

Bring 60, [64, 67, 70, 74] Ns at left of centre O to WP, and starting with carr on right, work as for right front reading left for right and vice versa.

Sleeves

Bring 66, [66, 70, 70, 70] Ns to WP on machine and ribber and arr for 1 x 1 rib. K as for Back from ★ to ★★
K 1 row.
Keeping tuck lace pattern correct (see pattern notes), inc 1 st at each end of next and ev foll 5th, [5th, 6th, 6th, 6th] row until inc to 140 sts.
K to RC 210, [210, 216, 222, 222].

Shape Sleeve Top

C. off 7 sts at beg next 2 rows.
Dec 1 st at each end of next and foll alt row 23 times in all.
C. off 4 sts at beg next 8 rows.
C. off 6 sts at beg next 2 rows.
C. off rem 36 sts.

Right Front Band

Bring 160, [160, 170, 176, 176] Ns to WP on machine and ribber and arr for full needle rib.
C. on and K 3 circular rows. RC 000.
MT-2, K 8 rows.
Make 3 buttonholes at right side starting on 5th and 6th N from edge, and spacing 16, [16, 18, 20, 20] Ns apart.
K to RC 18. Carr on left.
Transfer sts to MB.
MT, K 1 row.
Release work from machine onto WY.

Left Front Band

K as for right front band omitting buttonholes.

Making Up

Sew shoulder seams. Sew band seam and pin in position around front and neck edge, placing seam at centre back neck. Backstitch through loops of last row in MY. Unravel WY. Set in sleeves. Sew side and sleeve seams. Sew on 3 buttons to lower left front.

Ladies Suit, Ribbed Skirt with Set-in Sleeve Sweater.



MEASUREMENTS

To fit Bust

81	86	91	97	102	cms
32	34	36	38	40	ins

To fit Hips

86	91	97	102	107	cms
34	36	38	40	42	ins

Finished garment measurement Sweater

Bust

86	91	97	102	107	cms
34	36	38	40	42	ins

Back neck length

55	55	56	57	61	cms
21½	21½	22	22½	24	ins

Side seam

39	39	41	42	43	cms
15½	15½	16	16½	17	ins

Sleeve seam

45	45	46	47	47	cms
17½	17½	18	18½	18½	ins

Skirt

Hips

91	97	102	107	112	cms
36	38	40	42	44	ins

Length (including waistband)

66	cms
26	ins

MATERIALS

2 [2, 2, 2, 3], cones Bramwell Roseknit Pure Wool 4 ply, approx 50 gms contrast colour. Knitmaster punchcard No 3A from basic set. 1" wide elastic to fit waist.

TENSION

Sweater — 26 stitches and 58 rows to 10 cms over tuck stitch pattern, (tuck side is right side). Approx TD 7.

Skirt — 29 stitches and 33 rows to 10 cms over rib pattern, (purl side is right side). Approx. TD 7.

KNITTING INSTRUCTIONS

Skirt (K two pieces alike)

Bring 134, [142, 148, 156, 164] Ns to WP on machine and ribber and arr for full needle rib.

C. on and K 3 circular rows.

T 7/7, K 2 further circular rows.

Counting from right, transfer first 5 sts from ribber to mainbed, miss next stitch, continue in this manner across NB.

MT. RC 000. K to RC 214 placing a YM at each end of every 20th row.

Transfer sts to MB.

Transfer every third st to adjacent N. MT-2, K 9 rows.

MT+1, K 1 row.

MT-2, K 10 rows, release work from machine onto WY.

Sweater

Back

★ Bring 110, [118, 124, 130, 136] Ns to WP on machine and ribber and arr for 2 x 1 rib.

C. on and K 3 circular rows. T 4/4, K 35 rows.

Transfer sts to MB. Insert punchcard and lock on row 1.

MT. RC 000. K 1 row to select Ns.

Release card, set carr to tuck.

K to RC 113.

K 4 rows contrast.

K 20 rows MC.

K 4 rows contrast.

K 8 rows MC.

K 4 rows contrast.

K 20 rows MC.

K 4 rows contrast.

Using MC K to RC 186, [186, 188, 196, 204].

Shape Armhole

C. off 4, [5, 5, 5, 5] sts at beg of next 2 rows. Dec 1 st at neck edge on next and ev foll alt row 5 times in all. ★★

92, [98, 104, 110, 116] sts remain.

K straight to RC 312, [312, 318, 326, 348].

Shape Shoulder

C. off 7, [8, 9, 10, 11] sts at beg of next 4 rows.

C. off 6, [7, 8, 9, 10] sts at beg of next 2 rows.

C. off remaining 52 sts.

Front

K as for back from ★ to ★★
K to RC 268, [268, 274, 282, 304].

Shape Neck

Note patt. row on card.

C. off centre 26 sts.

Put Ns at left to HP. Set carr to Hold.

K 2 rows. Dec 1 st at neck edge on next and ev foll alt row 13 times in all.

K straight to RC 312, [312, 318, 326, 348].

C. off 7, [8, 9, 10, 11] sts at beg next and foll alt row.

C. off rem 6, [7, 8, 9, 10] sts.

Return Ns at left to WP.

Keeping tuck patt correct by referring to patt. row previously noted, work 2nd shoulder as for first, reversing shapings.

Sleeves

Bring 58, [58, 58, 58, 66] Ns to WP on machine and ribber and arr for 2 x 1 rib.

C. on and K 3 circular rows.

T 4/4, K 35 rows, Transfer sts to MB.

Lock card on row 1.

MT. RC 000. K 1 row to select Ns.

Release card set carr to tuck.

K 1 row. Inc 1 st at each end of next and ev foll 7th, [7th, 7th, 7th, 6th] row 29, [29, 29, 29, 33] times in all. Inc to 116, [116, 116, 116, 132] sts.

K straight to RC 210, [210, 218, 224, 224].

Shape Top

C. off 4 sts at beg of next 2 rows.

Dec 1 st at each end of next and ev foll alt row until 62 sts rem. K 1 row. C. off 6 sts at beg of next 6 rows.

C. off rem sts.

Neckband

Bring 120 Ns to WP on machine and ribber and arr for 2 x 1 rib.

C. on and K 3 circular rows.

T 3/3, K 6 rows.

T 4/4, K 5 rows.

T 5/5, K 5 rows.

Transfer sts to MB. MT, K 1 row. Release work from machine onto WY.

Making Up

Pin, block and press according to manufacturer's instructions. Fold skirt bands to right side and backstitch through loops of last row in MY. Sew skirt seams, matching at yarn marks, and leaving a small opening in waistband for elastic. Cut elastic to fit waist and insert in waistband, sew opening.

Sew shoulder seams on sweater. Set in sleeves, sew side and sleeve seams. Pin neckband in position around neck opening and backstitch through loops of last row in MY. Sew neckband seam.

Ladies Sweater with Pintucked Yoke



MEASUREMENTS

To fit Bust

81/86	91/97	102/107	cms
32/34	36/38	40/42	ins

Finished garment measurement

91	102	112	cms
36	40	44	ins

Back neck length

64	65	66	cms
25	25½	26	ins

Side seam

39	41	42	cms
15½	16	16½	ins

Sleeve seam

46	47	48	cms
18	18½	19	ins

MATERIALS

1 cone Bramwell Fine 4 ply.
7 small pearl bead buttons.
Punchcard No. B4

TENSION

Tuck stitch pattern 25 sts and 58 rows to 10 cms. Tuck side is right side. Approx TD 8
Stocking stitch pattern 27 sts and 37 rows to 10 cms. Approx TD 8

Special pattern abbreviation

MPT - Make Pin Tuck. (as follows)
Mark next row by knitting a length of nylon cord in with yarn. K 6 rows. Transfer ev alt st to adjacent N leaving empty Ns in WP. K 7 rows. Make a hem by picking up sts from marked row and placing on Ns.

KNITTING INSTRUCTIONS

Back and Front (alike)

Bring 112, [126, 138] Ns to WP on machine and ribber and arr for 1 x 1 rib.
C. on and K 3 circular rows.
T 4/4, K 41 rows. Transfer sts to MB.
Insert punchcard and lock on row 1.
MT. RC 000. K 1 row to select Ns.
Release card, set carr to tuck.
K to RC 182, [188, 196].
C. off 6, [7, 8] sts at beg next 2 rows.
K 14 rows. C. off.

Yoke (1 piece knitted sideways)

Bring 114 Ns to WP on MB machine. C. on by hand using E wrap method.
MT. RC 000.
K 10, [20, 10] rows. MPT (See special abbreviation).
★K 18 rows. MPT★★. Repeat from ★ to ★★ 1, [1, 2] times.
K 14 rows.

Shape Neck

K 57 sts at left of centre O back to NWP by hand using nylon cord.

Working on Ns at right, K 4 rows, MPT.
Repeat from ★ to ★★ 3 times. K 4 rows.
Break off yarn.

K sts at right back to NWP by hand using nylon cord.

Bring Ns at left back to WP. Working on these Ns, C. off 10 sts at beg of next row.

Dec 1 st at neck edge on next 3 rows. MPT.
Dec 1 st at neck edge on next 5 rows.

K 13 rows. MPT.

K 9 rows, place a YM on each end N to mark centre front neck.

K 9 rows. MPT.

K 13 rows, inc 1 st at neck edge on next 5 rows. MPT.

Inc 1 st at neck edge on next 3 rows.

C. on 10 sts at beg next row.

Bring Ns at left back to WP.

Working over all Ns, K 14 rows. MPT.

Repeat from ★ to ★★ 1, [1, 2], times.

K 10, [20, 10] rows. C. off.

Neckband

Bring 110 Ns to WP on machine and ribber and arr for 1 x 1 rib.

C. on and K 3 circular rows.

T 3/3 K 6 rows.

T 4/4 K 5 rows.

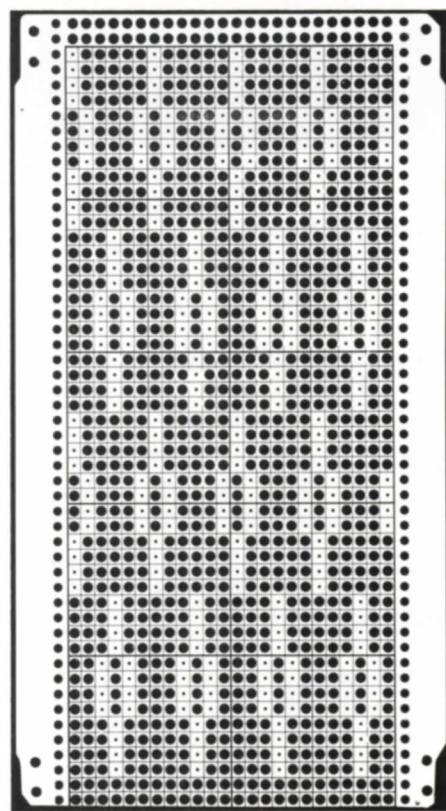
T 5/5 K 5 rows. Transfer sts to MB. MT.

K 1 row

Release work from machine onto WY.

Making Up

Sew front and back pieces to yoke. Pin neckband into position around neck opening with seam at centre front neck, backstitch through loops of last row in MY. Set in sleeves. Sew side and sleeve seams. Crochet frill around neckband by working 2 trebles in each stitch. Sew on buttons.



Punchcard No. B4

Sleeves

Bring 118 Ns to WP on MB.

K several rows using WY.

Lock card on row 1.

MY. MT. RC 000. K 1 row to select Ns.

Release card set carr to tuck.

K to RC 232, [240, 246]. C. off.

Cuffs

Bring 59 Ns to WP on machine and ribber and arr for 1 x 1 rib.

C. on and K 3 circular rows.

T 4/4, K 40 rows. Transfer sts to MB.

With K side facing pick up sts from sleeve edge - 2 loops on each N.

T 10, K 1 row. C. off.

14

Ladies Slash Neck Sweater with Three Quarter Puffed Sleeves



MEASUREMENTS

To fit Bust

81	86	91	97	102	cms
32	34	36	38	40	ins

Finished garment measurement

86	91	97	102	107	cms
34	36	38	40	42	ins

Back neck length

60	60	62	65	66	cms
23½	23½	24½	25½	26	ins

Side seam

39	39	41	42	43	cms
15½	15½	16	16½	17	ins

Sleeve seam

33	33	36	36	36	cms
13	13	14	14	14	ins

MATERIALS

1 cone Bramwell Fine 4 ply. Knitmaster card No 11 from basic set.

TENSION

23 stitches and 46 rows to 10 cms over tuck stitch pattern. (Tuck side is right side). Approx. TD 8.

KNITTING INSTRUCTIONS

Back and Front (alike)

Bring 98, [104, 110, 116, 120] Ns to WP on machine and ribber and arr for 1 x 1 rib. C. on and K 3 circular rows. T 4/4, K 41 rows. Transfer sts to MB. Insert punchcard and lock on row 1. MT. RC 000. K 1 row to select Ns. Release card, set carr to tuck. K to RC 144, [144, 150, 156, 162].

Shape Armholes

C. off 7, [7, 8, 8, 8] sts at beg of next 2 rows. Dec 1 st at each end of next and ev foll alt row 6, [6, 7, 7, 7] times in all. K straight to RC 206, [206, 216, 226, 230]. Set carr to st. st. MT-1, K 25 rows. Transfer ev alt st to adjacent N leaving empty Ns in WP. K 25 rows. Release work from machine onto WY.

Sleeves

Bring 92, [92, 98, 104, 104] Ns on MB to WP. Using WY, C. on and K several rows ending with carr on right. Lock punchcard on row 1. MY, MT, RC 000, K 1 row to select Ns. Release card, set carr to tuck. K to RC 138, [138, 150, 150, 150].

Shape Top

C. off 7, [7, 8, 8, 8] sts at beg next 2 rows. Dec 1 st at each end of next and ev foll alt row 6, [6, 7, 7, 7] times in all. K straight to RC 202, [202, 230, 234, 234]. Set carr to Hold. Always taking yarn under last N in HP next to carr, push 3, [3, 3, 4, 4] sts to HP at opp end to carr on next 12, [12, 12, 10, 10] rows. Push Ns at left to UWP. K 1 row. Set carr to stocking stitch, push Ns at right to UWP, K 1 row. Break off yarn leaving a long end and thread through sts using a tapestry needle.

Cuffs

Bring 50, [50, 56, 56, 56] Ns to WP on MB. With cuff edge uppermost, pick up sts from cuff edge evenly along Ns. Unravel WY carefully. MT-1, K 20 rows. Transfer ev alt st to adjacent N leaving empty Ns in WP K 20 rows. Release work from machine onto WY. Repeat for other sleeve.

Making Up

Fold top bands to right side and backstitch through loops of last row in MY. Sew along shoulder seam leaving sufficient opening for head. Fold cuffs to right side and backstitch through loops of last row in MY. Set sleeves into armholes, gathering sleeve head by pulling long thread and sew in position. Sew side and sleeve seams.

15

Traditional Style Gansey (Child's, Ladies or Gent's)



MEASUREMENTS

To fit Chest/Bust

71	76	81	86	91	cms
28	30	32	34	36	ins

97	102	107	112	cms
38	40	42	44	ins

Finished garment measurement

76	81	86	91	97	cms
30	32	34	36	38	ins

102	107	112	117	cms
40	42	44	46	ins

Back neck length

48	53	62	62	64	cms
19	21	24½	24½	25	ins

65	69	70	71	cms
25½	27	27½	28	ins

Side seam

31	33	38	38	41	cms
12	13	15	15	16	ins

42	43	45	46	cms
16½	17	17½	18	ins

Sleeve seam

36	41	45	45	46	cms
14	16	17½	17½	18	ins

47	47	48	51	cms
18½	18½	19	20	ins

MATERIALS

1, [1, 1, 1, 1, 1, 1, 2, 2], cones Bramwell Roseknit Pure Wool 4 ply. Punchcard No. B7

TENSION

Tuck stitch pattern 26 sts and 55 rows to 10 cms over tuck st pattern (tuck side is right side). Approx TD 7. Stocking stitch 28 sts and 35½ rows to 10cms. (Knit side is right side). approx TD 7.



Close up of Tuck Pattern

KNITTING INSTRUCTIONS

Back

★ Bring 106, [112, 120, 126, 134, 140, 148, 154, 160] Ns to WP on machine and ribber, and arr for 2 x 1 rib.

C. on and K 3 circular rows. T 4/4, K 29, [29, 35, 35, 35, 35, 35, 41, 41] rows.

Transfer sts to MB. Set carr to stocking stitch.

MT. RC 000. K to RC 88, [98, 110, 110, 116, 120, 124, 128, 134].

Release work from machine onto WY.

Bring 98, [104, 110, 118, 124, 130, 136, 144, 150] Ns to WP on MB and with Knit side facing replace sts evenly along row.

Insert punchcard and lock on row 1.

MT. RC 000. K 1 row to select Ns.

Release card, set carr to tuck ★★

K to RC 96, [110, 124, 124, 124, 124, 138, 138, 138]. C. off.

Front

K as for back from ★ to ★★.

K to RC 54, [68, 82, 82, 82, 82, 96, 96, 96].

Shape Neck

Note patt. row on card.

C. off centre 24, [24, 24, 24, 24, 24, 26, 26, 26] sts. Put Ns at left to HP.

Set carr to Hold. Working on sts at right, K 2 rows.

Dec 1 st at neck edge on next and ev foll alt row 11, [11, 11, 11, 11, 11, 13, 13, 13] times in all. K to RC 96, [110, 124, 124, 124, 124, 138, 138, 138]. C. off.

Return Ns at left to WP. Keeping tuck pattern correct, by referring to patt. row previously noted, work 2nd shoulder as for first, reversing shapings.

Sleeves

Bring 50, [56, 64, 64, 64, 64, 70, 70, 70] Ns to WP on machine and ribber and arr for 2 x 1 rib.

C. on and K 3 circular rows.

T 4/4, K 29, [29, 35, 35, 35, 35, 35, 41, 41] rows. Transfer sts to MB.

Set carr for stocking stitch.

MT. RC 000. Inc 1 st at each end of next and ev foll 4th row until inc to 100, [112, 128, 128, 128, 128, 140, 140, 140] sts.

K straight to RC 106, [124, 128, 132, 134, 138, 142, 142, 150].

C. off.

Neckband

Bring 120, [120, 130, 130, 130, 130, 138, 138, 138] Ns to WP on machine and ribber and arr for 2 x 1 rib.

C. on and K 3 circular rows,

T 3/3 K 6 rows.

T 4/4 K 5 rows.

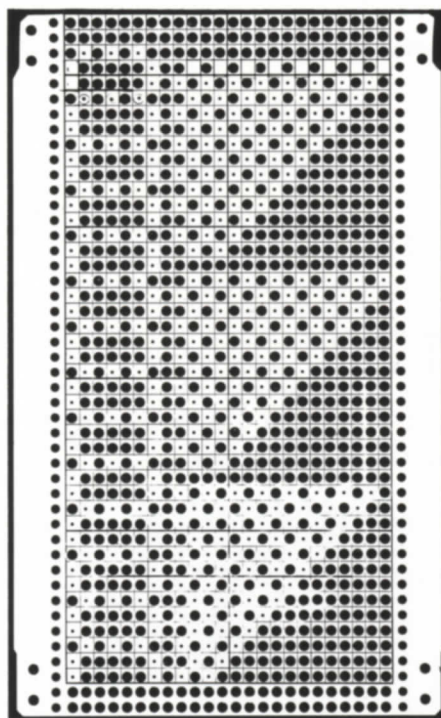
T 5/5 K 7 rows.

Transfer sts to MB. MT K 1 row.

Release work from machine onto WY.

Making Up

Pin, block and press according to manufacturer's instructions. Sew shoulder seams. Set in sleeves on tuck patterned yoke. Sew side and sleeve seams. Pin neckband in position around neck opening and backstitch through loops of last row in MY. Sew neckband seam.



Punchcard No. B7

16

Gents Sweater in Basket-weave Tuck and Three Colours



MEASUREMENTS

To fit Chest

91	97	102	107	112	cms
36	38	40	42	44	ins

Finished garment measurement

97	102	107	112	117	cms
38	40	42	44	46	ins

Back neck length

66	67	70	72	75	cms
26	26½	27½	28½	29½	ins

Side seam

42	43	45	46	47	cms
16½	17	17½	18	18½	ins

Sleeve seam

46	46	48	51	51	cms
18	18	19	20	20	ins

MATERIALS

1 cone Bramwell Fine 4 ply Col A

1 cone Bramwell Fine 4 ply Col B

Small amount Col C for stripes

Punchcard No B2

TENSION

24 stitches and 55 rows to 10 cms over tuck stitch pattern (Tuck side is right side.)

Approx. TD7.

KNITTING INSTRUCTIONS

Back

★ Bring 114, [120, 126, 132, 138] Ns to WP on machine and ribber and arr for 1 x 1 rib.

Using Col B, cast on and K 3 circular rows. MT-3. K 35 rows. Transfer sts to MB.

Insert punchcard and lock on row 1.

MT. RC 000. K 1 row to select Ns.
Release card, set carr to tuck.
K to RC 76.
Col C, K 8 rows. Col B, K 12 rows. Col C, K 8 rows.
Using Col A, continue to RC 186, [192, 200, 206, 214].
Place a YM on each end N. ★★
K to RC 306, [314, 328, 340, 354].
C. off 6, [7, 8, 9, 9] sts at beg next 8 rows.
C. off 9, [8, 7, 6, 9] sts at beg next 2 rows.
C. off remaining 48 sts.

Front

Work as for back from ★ to ★★
K to RC 260, [268, 282, 294, 308].

Shape Neck

Note Patt. row on card.
C. off centre 24 sts. Put Ns at left to HP.
Set carr to Hold.
Dec 1 st at neck edge on next 12 rows.
K to RC 306, [314, 328, 340, 354].
C. off 6, [7, 8, 9, 9] sts at beg next and foll alt rows 4 times in all.
C. off rem 9, [8, 7, 6, 9] sts.
Return Ns at left to WP.
Reset RC to 260, [268, 282, 294, 308].
Carr on left. Keeping tuck patt correct, by referring to patt. row previously noted, work as for first side reversing shapings.

Sleeves

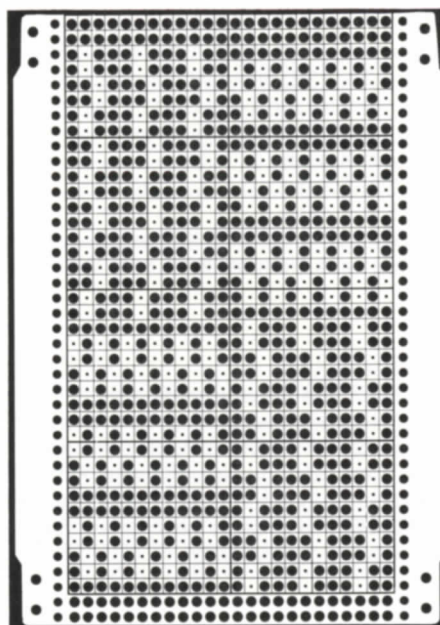
Bring 72, [72, 76, 80, 80] Ns to WP on machine and ribber and arr for 1 x 1 rib.
Using Col B, cast on and K 3 circular rows.
MT-3, K 35 rows. Transfer sts to MB.
Keeping tuck patt correct and colour sequence as on front and back, inc 1 st at each end of next and ev foll 9th, [9th, 8th, 10th, 9th] row until inc to 114, [114, 120, 126, 132] sts. K straight to RC 206, [206, 220, 234, 236].
C. off.

Neckband

Bring 120, [120, 130, 130, 130] Ns to WP on machine and ribber and arr for 1 x 1 rib.
Using Col A, Cast on and K 3 circular rows.
MT-2 K 5 rows.
MT-3 K 5 rows.
MT-4 K 10 rows.
MT-3 K 5 rows.
MT-2 K 5 rows.
Transfer sts to MB. MT, K 1 row.
Release work from machine onto WY.

Making Up

Sew shoulder seams. Pin neckband in position around neck opening and backstitch through loops of last row in MY. Sew neckband seam, fold to inside and slip stitch in place. Unravel WY.
Insert sleeves between YM. Sew side and sleeve seams.



Punchcard No. B2

17

Ladies Tuck Lace Sweater with Slash Neck



MEASUREMENTS

To fit Bust					
81	86	91	97	102	cms
32	34	36	38	40	ins

Finished garment measurement					
86	91	97	102	107	cms
34	36	38	40	42	ins

Back neck length					
66	66	67	69	69	cms
26	26	26½	27	27	ins

Side seam

41	41	42	43	43	cms
16	16	16½	17	17	ins

Sleeve seam

47	47	48	48	48	cms
18½	18½	19	19	19	ins

MATERIALS

1 cone Bramwell Fine 4 ply. Knitmaster card 3A from basic set.

TENSION

28 stitches and 47 rows to 10 cms over tuck lace pattern. Approx. TD 8

Pattern Note: Needles pushed to NWP are counted as stitches throughout. Tuck side is right side.

KNITTING INSTRUCTIONS

Back and Front (alike)

Bring 120, [128, 134, 140, 148] Ns to WP on machine and ribber and arr for 1 x 1 rib.
C. on and K 3 circular rows.
MT-4. K 41 rows. Transfer sts to MB.
Insert punchcard and lock on row 1.
MT. RC 000. K 1 row to select Ns.
Transfer sts for tuck lace patt as folls:-



Release card, set carr to tuck.
K to RC 152, [152, 158, 164, 164].

Shape Armholes

C. off 6, [6, 7, 8, 8] sts at beg of next 2 rows.
K straight to RC 260, [260, 266, 272, 272].
Set carr for stocking stitch.
MT-2 K 9 rows.
MT+2 K 1 row.
MT-1 K 10 rows.
Release work from machine onto WY.

Sleeves

Bring 70, [70, 74, 74, 74] Ns to WP on machine and ribber and arr for 1 x 1 rib.
C. on and K 3 circular rows.
MT-4, K 31 rows. Transfer sts to MB.
Lock punchcard on row 1.
MT. RC 000. K 1 row to select Ns.
Transfer sts for tuck lace as on front and back.
Release card, set carr for tuck.
K 1 row.
Keeping tuck lace patten correct, inc 1 st at each end of next and ev foll 5th row until inc to 140 sts.
K straight to RC 192, [192, 198, 198, 198].
C. off.

Making Up

Fold top bands on front and back to right side and backstitch through loops of last row in MY. Sew shoulder seams leaving sufficient opening for head.
Set in sleeves. Sew side and sleeve seams.

Shirt Style Sweater (Child's, Ladies or Gent's)



MEASUREMENTS

To fit Chest/Bust

56	61	66	71	76	cms
22	24	26	28	30	ins

81	86	91	97	102	cms
32	34	36	38	40	ins

107	112	117	cms
42	44	46	ins

Finished garment measurement

61	66	71	76	81	cms
24	26	28	30	32	ins

86	91	97	102	107	cms
34	36	38	40	42	ins

112	117	122	cms
44	46	48	ins

Back neck length

34	38	43	48	51	cms
13½	15	17	19	20	ins

60	60	62	65	66	cms
23½	23½	24½	25½	26	ins

70	71	73	cms
27½	28	28½	ins

Side seam

20	23	27	31	33	cms
8	9	10½	12	13	ins

39	39	41	42	43	cms
15½	15½	16	16½	17	ins

45	46	47	cms
17½	18	18½	ins

Sleeve seam

23	28	33	36	41	cms
9	11	13	14	16	ins

45	45	46	47	47	cms
17½	17½	18	18½	18½	ins

48	51	54	cms
19	20	21	ins

MATERIALS

1 cone Bramwell Ivette 3 ply in Col. A
1 cone Bramwell Ivette 3 ply in Col. B
Oddments Bramwell Ivette 3 ply in Col. C
Punchcard No. B5. 2 small buttons.

Note: This garment can also be knitted in one colour.

TENSION

29 sts and 48 rows to 10cms over tuck stitch pattern. Tuck side is right side. (Approx. TD 6)

KNITTING INSTRUCTIONS

Back

★ Bring 88, [94, 102, 108, 116, 124, 130, 138, 146, 152, 160, 166, 174] Ns to WP on machine and ribber and arr for 1 x 1 rib. Using Col. B, Cast on and K 3 circular rows. T 3/3, K 23, [23, 23, 23, 29, 29, 29, 29, 29, 35, 35, 35, 35] rows. Transfer sts to MB. Insert punchcard and lock on row 1. MT. RC 000. K 1 row to select Ns. Release card, set carr to tuck. K to RC 62, [74, 92, 110, 110, 140, 140, 146, 152, 152, 158, 164, 170]. Change to Col. C, K 8 rows. Change to Col. A, K 2 rows, then still using Col A:-

Shape Armholes

C. off 5, [5, 6, 7, 8, 8, 8, 9, 9, 10, 10, 10] sts at beg of next 2 rows.
Dec 1 st at each end of next and ev foll alt row 6, [6, 7, 7, 8, 9, 8, 9, 10, 9, 10, 11, 14] times in all. ★★
K straight to RC 138, [156, 180, 204, 204, 246, 246, 258, 270, 270, 288, 294, 300].

Shape Shoulder

C. off 5, [6, 5, 6, 6, 4, 4, 6, 6, 5, 6, 10, 10] sts at beg of next 4, [4, 4, 4, 4, 6, 6, 6, 6, 8, 8, 8] rows.
C. off 5, [6, 6, 6, 8, 7, 11, 7, 7, 9, 7, 14, 14] sts at beg next 2 rows.
C. off rem 36, [36, 44, 44, 44, 52, 52, 52, 58, 58, 58, 58, 66] sts.

Front

K as for back from ★ to ★★.
K straight to RC 100, [112, 130, 154, 154, 190, 190, 190, 202, 196, 214, 216, 210].

Shape Neck

Note patt. row on Card.

C. off centre 6, [6, 6, 6, 8, 8, 8, 8, 8, 10, 10, 10, 10] sts.

K sts at left of centre O back to NWP using nylon cord.

Working on sts at right, ★★★ K to RC 117, [135, 153, 177, 177, 213, 213, 219, 231, 231, 249, 255, 249].

Carr on left. C. off 8, [8, 9, 9, 8, 10, 10, 10, 12, 12, 12, 12, 14] sts at beg next row. K 1 row.

Dec 1 st at neck edge on next and ev foll alt row 7, [7, 10, 10, 10, 12, 12, 12, 13, 12, 12, 12, 14] times in all.

K straight to RC 138, [156, 180, 204, 204, 246, 246, 258, 270, 270, 288, 294, 300].

Shape Shoulder

C. off 5, [6, 5, 6, 6, 4, 4, 6, 6, 5, 6, 10, 10] sts at beg of next and foll alt rows 2, [2, 2, 2, 2, 3, 3, 3, 4, 4, 4, 4] times in all.

C. off rem 5, [6, 6, 6, 8, 7, 11, 7, 7, 9, 7, 14, 14] sts.

Return Ns at left to WP and keeping tuck pattern correct, by referring to patt. row previously noted, K as from ★★★ reading left for right and vice versa.

Sleeves

Bring 44, [44, 48, 50, 58, 66, 66, 72, 72, 80, 80, 80, 80] Ns to WP on machine and ribber and arr for 1 x 1 rib.

Using Col. A, Cast on and K 3 circular rows. T 3/3, K 23, [23, 23, 23, 29, 29, 29, 29, 29, 35, 35, 35, 35] rows.

Transfer sts to MB. RC 000.

Working in tuck pattern as before, inc 1 st at beg next and ev foll 4th, [4th, 4th, 5th, 6th, 6th, 6th, 6th, 6th, 5th, 5th, 6th] row until inc to 80, [88, 102, 102, 102, 116, 116, 124, 130, 130, 144, 144, 144] sts. K straight to RC 84, [108, 132, 144, 156, 174, 174, 180, 186, 180, 186, 198, 210].

Shape Top

C. off 5, [5, 6, 7, 8, 8, 8, 9, 9, 9, 10, 10, 10] sts at beg next 2 rows.

Dec 1 st at each end of next and ev foll alt row until 50, [58, 70, 68, 56, 70, 70, 76, 82, 74, 86, 86, 86] sts remain.

C. off 3, [3, 4, 4, 4, 4, 4, 4, 4, 5, 5, 5, 5] sts at beg of next 4, [4, 4, 4, 4, 6, 6, 6, 6, 6, 6, 6] rows.

C. off rem 38, [46, 54, 52, 40, 46, 46, 52, 58, 44, 56, 56, 56] sts.

Collar

Bring 60, [60, 60, 70, 70, 100, 100, 100, 100, 110, 110, 110, 110] Ns to WP on machine and ribber and arr for full needle rib. Using Col. A, Cast on and K 3 circular rows. T 5/5, K 6, [6, 6, 6, 6, 7, 7, 7, 7, 10, 10, 10] rows.

T 4/4, K 6, [6, 6, 6, 6, 7, 7, 7, 7, 10, 10, 10] rows.

T 3/3, K 6, [6, 6, 6, 6, 7, 7, 7, 7, 10, 10, 10] rows.

Transfer sts to MB. MT, K 1 row. Release work from machine onto WY.

Buttonhole Band

Bring 16, [16, 16, 20, 20, 20, 20, 20, 20, 26, 26, 26, 26] Ns to WP on machine and ribber and arr for full needle rib.

Using Col. A, Cast on and K 3 circular rows. RC 000.

K 4, [4, 4, 4, 6, 6, 6, 6, 6, 6, 6, 6, 6] rows. Make 2 evenly spaced buttonholes on next row.

K to RC 14, [14, 14, 14, 16, 16, 16, 16, 16, 16, 16, 16, 16]. Transfer sts to MB.

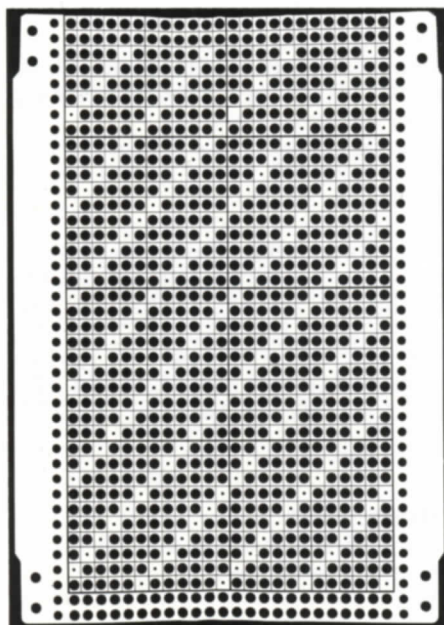
Release work from machine onto WY.

Button Band

K as for buttonhole band omitting buttonholes.

Making Up

Sew shoulder seams. Pin and sew button and buttonhole bands in position in front opening. Pin then sew collar in position around neck. Set in sleeves. Sew side and sleeve seams. Sew on buttons. Press garment lightly with a cool iron.



Punchcard No. B5

19

Ladies Suit with Tuck Lace Top, Collared with Deep V Inset and Ribbon Trim



MEASUREMENTS

To fit Bust

81	86	91	97	102	cms
32	34	36	38	40	ins

To fit Hips

86	91	97	102	107	cms
34	36	38	40	42	ins

Finished garment measurement

Top

86	91	97	102	107	cms
34	36	38	40	42	ins

Back neck length

61	61	62	64	64	cms
24	24	24½	25	25	ins

Side seam

38	38	39	41	41	cms
15	15	15½	16	16	ins

Sleeve seam (all sizes)

31	cms
12	ins

Skirt

Hips

91	97	102	107	112	cms
36	38	40	42	44	ins

Length (including waistband)

66	cms
26	ins Approx.

MATERIALS

2 cones Bramwell Artistic.
1" wide elastic to fit waist.
1 metre 1" wide satin ribbon to match.
Punchcard No. B1

TENSION

Skirt

2 x 1 rib. 35 stitches and 39 rows to 10 cms. (Knit side is right side). Approx TD 6/6

Top

Tuck lace. 36 stitches and 45 rows to 10 cms. (Tuck side is right side) Approx TD6

KNITTING INSTRUCTIONS

Skirt (Knit two pieces alike)

Bring 158, [167, 176, 185, 194] Ns to WP on machine and ribber and arr for 2 x 1 rib.

C. on and K 3 circular rows.

RC 000. MT+1, K to RC 86. Place YM on each end needle.

MT. K to RC 172, place a YM on each end needle.

MT-1, K to RC 258.

Transfer sts from ribber to corresponding needles on MB leaving every third needle on MB in NWP.

Carr on left.

MT-2, K 10 rows.

MT+2, K 1 row.

MT-2, K 12 rows.

C. off.

Tuck Lace Top

Back

★ Bring 156, [164, 172, 182, 190] Ns to WP on machine and ribber and arr for 1 x 1 rib.

C. on and K 3 circular rows.

MT-2 K 41 rows.

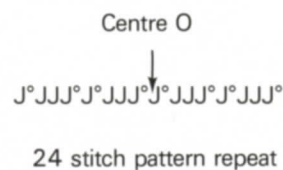
Transfer sts to MB.

Insert punchcard and lock on row 1.

RC 000. Carr on right.

MT. K 1 row to select Ns.

Transfer sts for tuck lace patt as follows:-



Set carr to tuck ★★

Release card and work in patt to RC 136, [136, 140, 146, 146].

Shape Armholes

Count Ns to NWP as stitches throughout.
C. off 6, [6, 7, 8, 8] sts at beg next 2 rows.
Dec 1 st at each end next and ev foll alt row 5, [5, 6, 7, 7] times in all. 134, [142, 146, 152, 160] sts remain.

K straight to RC 236, [236, 242, 248, 248].

Shape Shoulder

C. off 10, [11, 12, 13, 14] sts at beg next 4 rows.
C. off 11, [13, 13, 10, 12] sts at beg next 2 rows.
C. off rem 72, [72, 72, 80, 80] sts.

Front

K as for back from ★ to ★★
Release card and work in patt to RC 90, [90, 96, 102, 102]. ★★★

Shape Neck

Note patt. row on card.
Put Ns at left of centre O to HP
Set carr to Hold.
Dec 1 st at neck edge on next and ev foll 4th, [4th, 4th, 3rd, 3rd] row 36, [36, 36, 40, 40] times in all,
AT THE SAME TIME Continue in patt to RC 136, [136, 140, 146, 146].

Shape Armholes

C. off 6, [6, 7, 8, 8] sts at beg next row.
K 1 row.
Dec 1 st at beg next and foll alt row 5, [5, 6, 7, 7] times in all.
K to RC 236, [236, 242, 248, 248].

Shape Shoulder

C. off 10, [11, 12, 13, 14] sts at beg next and foll alt row.
C. off rem 11, [13, 13, 10, 12] sts.

Return Ns at left of centre O to WP.
Reset RC to 136, [136, 140, 146, 146].
Carr on left.
Keeping tuck patt correct, by referring to patt. row previously noted, work as from ★★★ reading left for right and vice versa.

Sleeves (All sizes alike)

Bring 118 Ns to WP on machine and ribber and arr for 1 x 1 rib.
C. on and K 3 circular rows.
MT-2 K 17 rows.
Transfer sts to MB.
Lock card on row 1, RC 000.
MT. K 1 row to select Ns.
Transfer sts for tuck lace as for back.
Release card, set carr to tuck.
K 1 row.
Keeping tuck lace patt correct, inc 1 st at beg next and ev foll 5th row until inc to 162 sts.
K straight to RC 124.

Shape Sleeve Top

C. off 10 sts at beg next 2 rows.
Dec 1 st at each end of next and ev foll alt row 6 times in all.
130 sts remain.
K straight to RC 160.
C. off 5 sts at beg next 10 rows.
Break off yarn leaving a long end and thread through sts using a tapestry needle. Remove from machine.

Collar (Knit two pieces alike)

Bring 100 Ns to WP on machine and ribber and arr for full needle rib.
C. on and K 3 circular rows.
MT. K 30 rows.
Transfer sts to MB.
MT+2. K 1 row. C. off loosely.

V Inset Piece

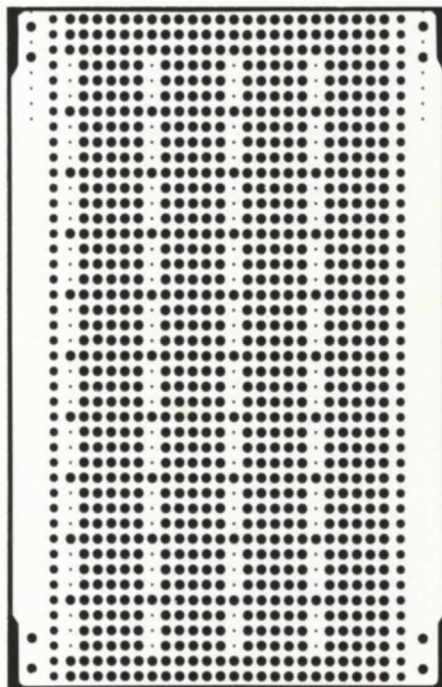
Bring 56 Ns to WP on machine and ribber and arr for 2 x 1 rib.
C. on and K 3 circular rows.
MT-1. K 5 rows.
Dec 1 st at each end of next and ev foll alt row until 2 sts remain.
C. off.

Making Up Skirt

Pin, block and press lightly using a cool iron over a dry cloth. Sew side seams, matching at yarn marks. Fold waistband to inside and slip stitch in position, leaving a small opening.
Cut elastic to fit waist, thread through waistband and sew. Sew opening. Press lightly once more and attach hanging tapes at waist if desired.

Top

Pin garment pieces to correct measurements and press with a cool iron over a dry cloth. (Do not press V inset piece).
Sew shoulder seams. Sew collar pieces together along one edge.
Pin in position around neck opening and sew in place.
Slip st V inset piece in position.
Set sleeves in armholes easing in by gathering long thread where necessary.
Sew side and sleeve seams.
Attach ribbon to front V and tie in a loose bow.



Punchcard No. B1

20

Ladies Tuck Stitch Sweater with Boat Neck and Collar with Two Button Trim



MEASUREMENTS

To fit Bust

81	86	91	97	102	cms
32	34	36	38	40	ins

Finished garment measurement

91	97	102	107	112	cms
36	38	40	42	44	ins

Back neck length

61	61	62	64	64	cms
24	24	24½	25	25	ins

Side seam

36	36	37	38	38	cms
14	14	14½	15	15	ins

Sleeve seam

47	47	48	48	48	cms
18½	18½	19	19	19	ins

MATERIALS

1 cone Bramwell Fine 4 ply Col. A
1 cone Bramwell Fine 4 ply Col. B
2 1" buttons
Knitmaster card 3A from basic set.

TENSION

24 stitches and 59 rows to 10 cms.
(Tuck side is right side). Approx. TD 8.

KNITTING INSTRUCTIONS

Back

★ Bring 108, [114, 120, 126, 132] Ns to WP on machine and ribber and arr for 1 x 1 rib.
Using Col. A, Cast on and K 3 circular rows.
T 4/4, K 41 rows. Transfer sts to MB.
Insert punchcard and lock on row 1. Carr on right. RC 000.

MT. K 1 row to select Ns. Release card, set carr. to Tuck K 4 rows Col. A, K 4 rows Col. B, these 8 rows comprise patt. Continue in patt to RC 188, [188, 196, 204, 204]. Place a YM on each end N.★★ Continue in patt to RC 321, [321, 329, 337, 337]. Carr on left.

Shape Neck

Note patt. row on card.
C. off centre 30 sts. Put 39, [42, 45, 48, 51] Ns at right to HP. Set carr to Hold. Dec 1 st at neck edge on next 10 rows.
K straight to RC 336, [336, 344, 352, 352]. C. off rem 29, [32, 35, 38, 41] sts.
Return Ns at right to WP, and keeping patt correct, by referring to patt. row previously noted, K as for first shoulder reversing shapings.

Front

K as for back from ★ to ★★. Continue in patt to RC 299, [299, 307, 315, 315]. Carr on left.

Shape Neck

Note patt. row on card.
C. off centre 30 sts. Put Ns at right to HP. Set carr to Hold.
Working on Ns at left, C. off 1 st at neck edge on next 10 rows.
K straight to RC 336, [336, 344, 352, 352]. C. off rem 29, [32, 35, 38, 41] sts.
Return Ns at right to WP. Keeping patt correct by referring to patt. row previously noted, K to match first shoulder reversing shapings.

Sleeves

Bring 60, [64, 68, 72, 76] Ns to WP on machine and ribber and arr for 1 x 1 rib. Using Col. A, Cast on and K 3 circular rows. T 4/4, K 41 rows.
Transfer sts to MB. Carr on right.
Insert punchcard and lock on row 1. RC 000.
MT. K 1 row to select Ns. Release card. Set carr to Tuck.
Continue in patt inc 1 st at each end of next and ev foll 8th, [9th, 10th, 10th, 11th] row until inc to 120 sts.

K straight to RC 254, [254, 262, 262, 262]. C. off.

Collar (knit two pieces alike)

Bring 80, [86, 92, 98, 104] Ns to WP on machine and ribber and arr for 1 x 1 rib. Using Col. A, Cast on and K 3 circular rows.
MT K 20 rows.
MT-1 K 20 rows.
MT-2 K 20 rows. Carr on left.
Transfer sts to MB.
MT. K 1 row. C. off.

Making Up

Sew right shoulder seam. Sew collar pieces together along one side. Pin, then sew collar in position around neck opening. Sew left shoulder and collar seam. Set in sleeves between YMs.
Sew side and sleeve seams.
Sew on two buttons to left front of collar to decorate.

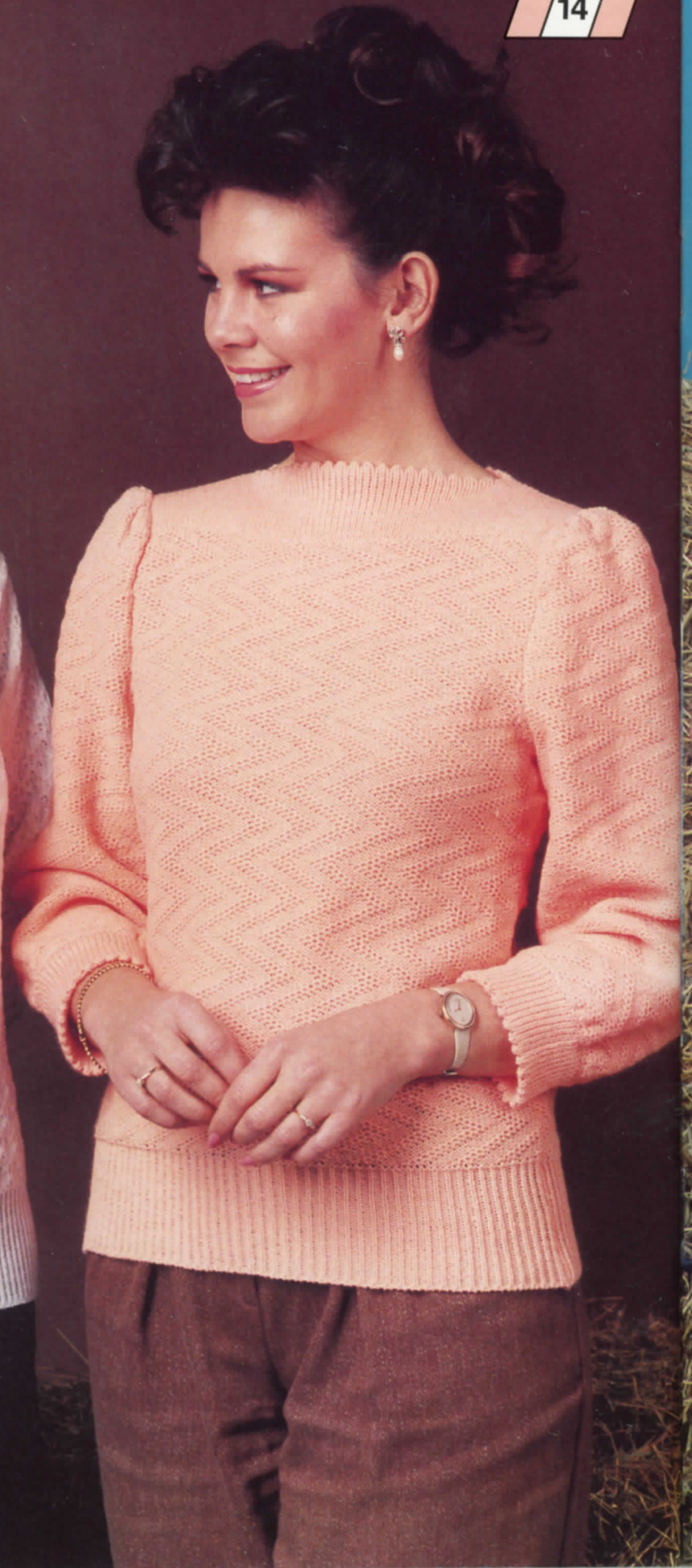
11

12



13

14

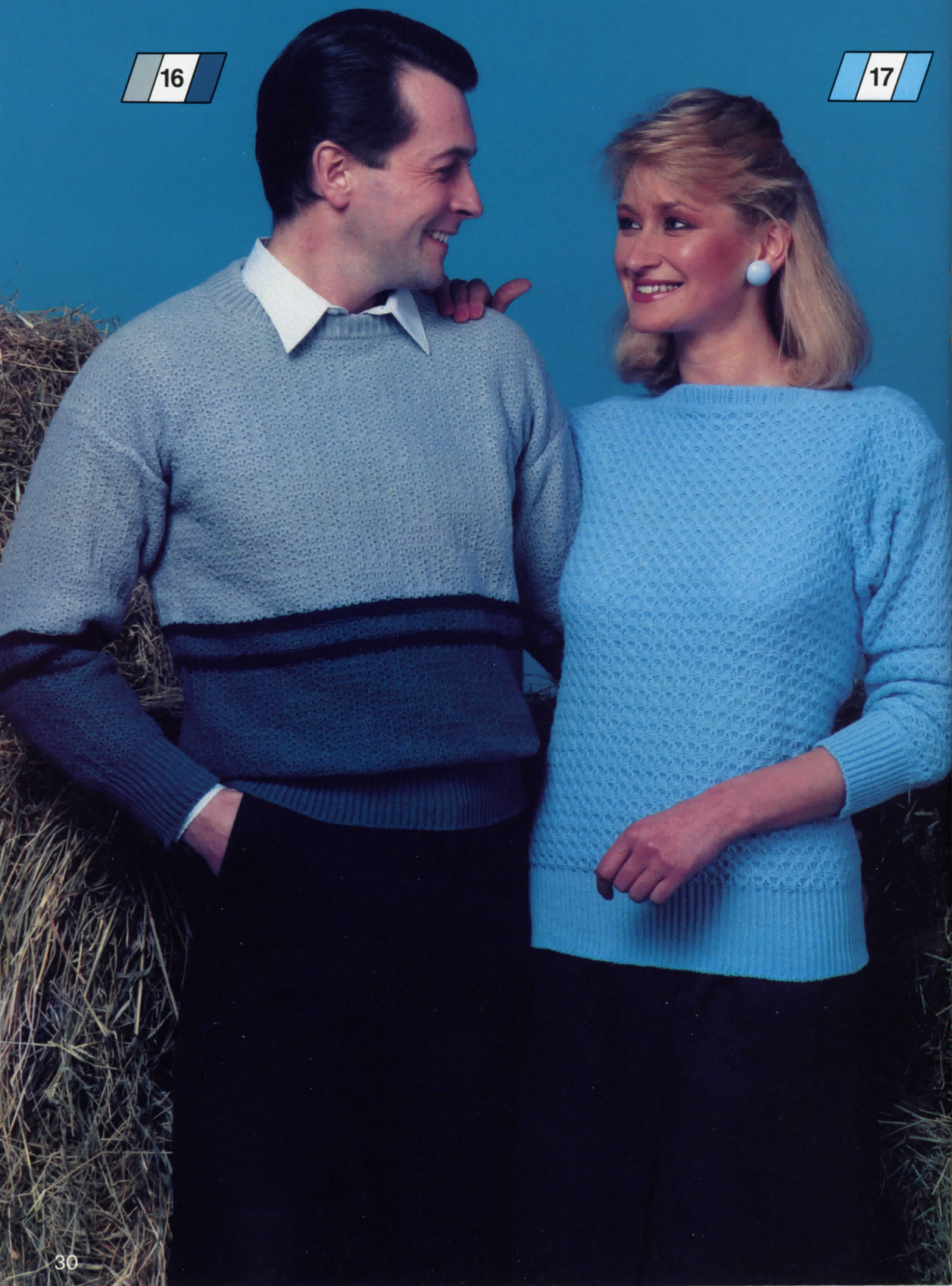


15



16

17



18

