

Needle Beetle II



***It is advisable to read through these directions before use to eliminate troubleshooting!**

The Needle Beetle needle selector will make fast work of placing your desired combination of needles into the correct position on the needle bed. Use when creating Tuck stitch, Slip stitch, Fair-isle, Lace, weaving, etc.

This needle selector can automatically select needles in combinations or groups of 8 needles (16 needles for the 4.5mm convertible machine option).

Simply push the first 8 (16) needles, by hand, in to the arrangement you want, then slide the Needle Beetle across the needle bed. The Needle Beetle doesn't knit any stitches, it pushes the selected needles to "E" position by sliding it across the needle bed. You would then use your main carriage or fair-isle carriage to knit the desired stitches.

Your Needle Beetle is set up for use with the Machine you specified when ordering, it will not work on other machines.

The Needle Beetle II will work on the following machines:

- 7mm machines are the **Brother KX-350** and **KX-355**
- Convertible 4.5/9mm machines are the **Brother KH-360, KX-390, KX-395, KH-400**

How to use the Needle Beetle – (an example)

As with any accessory it will work best when your machine is at it's best, a fresh spongebar, clean needles, dust free, etc.

**Proper usage includes keeping fingers and hand on top of the carriage while pushing across the needle bed. Keep out of reach of children as this carriage has a metal ramp attachment that can be slightly sharp.

1. The working needles should already be in **B** position.

2. Place the Needle Beetle onto the needle bed to the **right** of the needles in **B** position as shown below. Making sure to fit the groove “A” of the Needle Beetle to the rear rail of the needle bed.



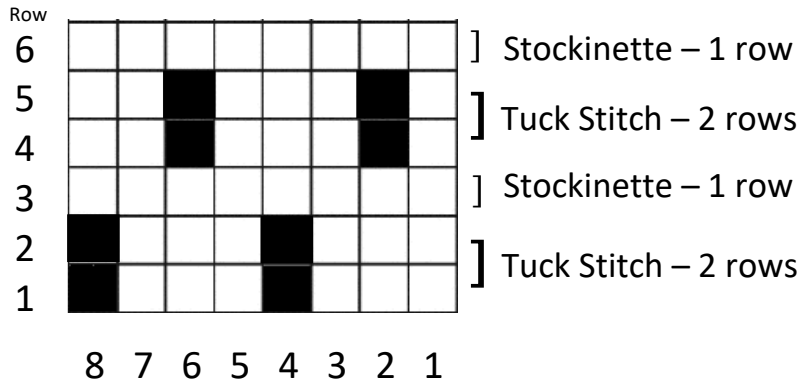
3. Leave the first 2 needles from the right in **B** position, push the next 2 needles to **D** position by hand, leave next 2 needles in **B** position, and then push 2 more needles to **D** position as shown.
*Remember: The Needle Beetle only selects needles in combinations/groups of 8 (16) needles.



4. Slide the Needle Beetle across the needle bed towards the left. *While sliding the Needle Beetle push the knitting against the machine by hand to hold it firmly in position. It will select the rest of the needles for you as it travels across the needle bed and pushes them into “E” position. *Remember the Needle Beetle will only work when started from the **right side and slid to the left side**.

Try some tuck stitch using the pattern below.

1. Cast on the required number of stitches and knit several rows with the main carriage. Push the main carriage to the right edge.
2. Push the needles corresponding to the black squares to **D** position by hand, over the first group of 8 (16) needles from the right as shown below.



■ - - - Push the needle to **D** position

3. Place the Needle Beetle onto the needle bed on the **right side** of the needles in B and D position and slide it across the needles towards the left.

*While sliding the Needle Beetle push the knitting against the machine by hand to hold it in position.

4. Set your main carriage for tuck knitting, on the KX machines and the KH machines set both cam levers to “H” then knit **2 rows** in Tuck Stitch.

5. Set cam levers to “N” and knit **1 row** in Stockinette:

Repeat steps 2-5 to desired length.

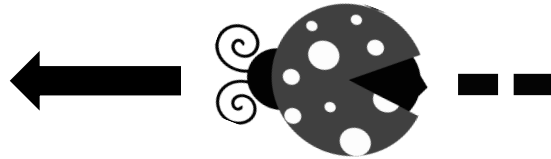
A Video Demonstration can be seen here: <https://www.youtube.com/watch?v=xikaWyfBLXk>

*this demonstration is shown on an LK-150 but usage is the exact same.

A few notes:

When knitting is so wide that the main carriage obstructs the operation of the Needle Beetle, release the Main Carriage from the needle bed and set aside.

You cannot operate the Needle Beetle from Left to Right. **Use only from Right to Left.**



Resources:

- Please be aware that there are a few stitch combinations that **won't** work, such as 2x1, 1x2, and 3x3. (the reason for this is that they can't equally equal 8). If you try those combinations the Needle Beetle will jam up and you won't be able to push it. Here is a list of possible stitch arrangements that will work when using your Needle Beetle:

<https://drive.google.com/file/d/1BUXRBXW0Ki7PCREIGpXvQwERBtT2VIm/view?usp=sharing>

- Here is a great site that lets you design your own pattern – great for tuck, slip, fairisle, intarsia, etc. <https://www.chart-minder.com/>
- There are a couple of old 8-stitch pattern books that are great resources. They are free to download on a website called machineknittingetc. Here are the 2 links. Just letting you know, they take a while to download as each book has over 300 pages!

<http://machineknittingetc.com/jones-knitting-pattern-book-8-stitch.html>

<http://machineknittingetc.com/jones-8-stitch-knitting-pattern-book.html>

- Check out my blog I have started a collection of tuck stitch patterns that you might try out: <https://auntekristy.blogspot.com/2020/10/needle-beetle-tuck-stitch-patterns-with.html>

Check out the kriskrafter.com website for more knitting machine accessories.

Happy Knitting!

Kris