



# Needle Beetle

*Needle Selector*

**!! It is advisable to read through these directions before use to eliminate troubleshooting!!**

The Needle Beetle needle selector will make fast work of placing your desired combination of needles into the correct position on the needle bed. Use when creating Tuck stitch, Slip stitch, Fairisle, Lace, etc.

This needle selector can automatically select needles in combinations or groups of 8 needles. Simply push the first 8 needles, by hand, in to the arrangement you want, then slide the Needle Beetle swiftly (not slowly) across the needle bed. The Needle Beetle doesn't knit any stitches, it pushes the selected needles to "D" position by sliding it across the needle bed. You would then use your main carriage or fairisle carriage to knit the desired stitches.

Your Needle Beetle is set up for use with the Machine you specified when ordering, 6.5mm machines are the **LK150/LK140, GK-370**, and the 9mm machine is the **LK100/Zippy 90**. If you should want to use it on a different machine, it can be done simply by flipping the cam over on the underside. First remove the screw and washer on the underside, remove Black parts, remembering the order in which you took them off, flip the largest piece, the Cam. (the one marked with 6.5 on one side and 9 on the other).

If your machine is a 6.5mm then you want the 6.5 facing upward, if your machine is the 9mm machine then you want the 9 facing up. Re-assemble the parts, place the washer on and screw in the screw. Be careful not to screw in too tight or this could affect how it works.

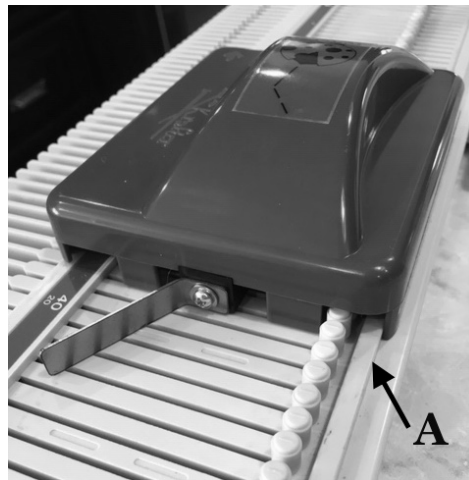
<https://www.youtube.com/watch?v=90iJqAUAAsw&t=1s>

## **How to use the Needle Beetle – (an example)**

\*\*Proper usage includes keeping fingers and hand on top of the carriage while pushing across the needle bed. Keep out of reach of children as this carriage has a metal ramp attachment that can be slightly sharp.

1. The working needles should already be in **B** position.

2. Place the Needle Beetle onto the needle bed to the **right** of the needles in B position as shown below. Making sure to fit the groove "A" of the Needle Beetle to the rear rail of the needle bed.



3. Leave the first 2 needles from the right in **B** position, push the next 2 needles to **C** position by hand, leave next 2 needles in **B** position, and then push 2 more needles to **C** position as shown.

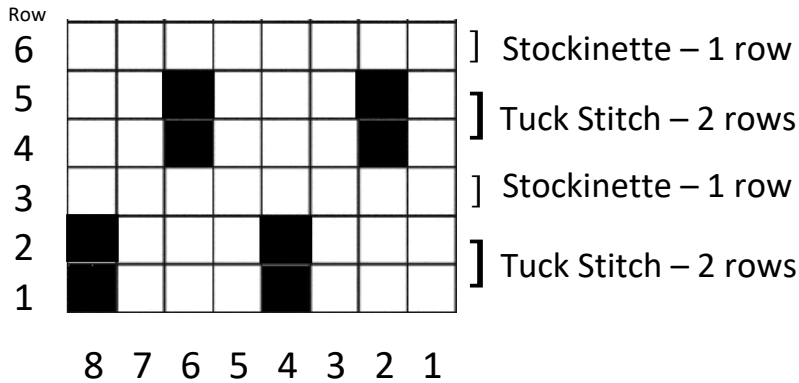
\*Remember: The Needle Beetle only selects needles in combinations/groups of 8 needles.



4. Slide the Needle Beetle across the needle bed towards the left. \*While sliding the Needle Beetle push the knitting against the machine by hand to hold it firmly in position. It will select the rest of the needles for you as it travels across the needle bed.  
\*Remember the Needle Beetle will only work when started from the **right side and slid to the left side**.

**Try some tuck stitch using the pattern below.**

1. Cast on the required number of stitches and knit several rows with the main carriage. Push the main carriage to the right edge.
2. Push the needles corresponding to the black squares to C position by hand, over the first group of 8 needles from the right as shown below.



■ - - - Push the needle to C position.

3. Place the Needle Beetle onto the needle bed on the **right side** of the needles in B and C position and slide it across the needles towards the left.

\*While sliding the Needle Beetle push the knitting against the machine by hand to hold it in position.

4. Set your main carriage for tuck knitting, on the LK140 or LK150 set both side levers to ▲ and Russel levers to I then knit **2 rows** in Tuck Stitch.

5. Knit **1 row** in Stockinette:

\*when knitting on the LK100 push the needles in D position back to C position.

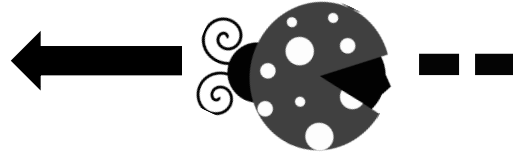
\*when knitting on the LK140/150 set Russel Lever on the side next to the knitting to II.

Repeat steps 2-5.

A Video Demonstration can be seen here: <https://www.youtube.com/watch?v=xikaWyfBLXk>

### A few notes:

- When knitting is so wide that the main carriage obstructs the operation of the Needle Beetle, release the Main Carriage from the needle bed and set aside.
- You cannot operate the Needle Beetle from Left to Right. **Use only from Right to Left.**



### Resources:

- Please be aware that there are a few stitch combinations that **won't** work, such as 2x1, 1x2, and 3x3. (the reason for this is that they can't equally equal 8). If you try those combinations the Needle Beetle will jam up and you won't be able to push it. Here is a list of possible stitch arrangements that will work when using your Needle Beetle: <https://drive.google.com/file/d/1BUXRBXW0Ki7PCREIGpXvQwERBtT2VIm/view>
- Here is a great site that lets you design your own pattern – great for tuck, slip, fairisle, intarsia, etc. <https://www.chart-minder.com/>
- There are a couple of old 8-stitch pattern books that are great resources. They are free to download on a website called machineknittingetc. Here are the 2 links. Just letting you know, they may take a while to download as each book has over 300 pages!

<http://machineknittingetc.com/jones-knitting-pattern-book-8-stitch.html>

<http://machineknittingetc.com/jones-8-stitch-knitting-pattern-book.html>

- Check out my blog I have started a collection of stitch patterns that you might try out: <https://auntekristy.blogspot.com/2020/10/needle-beetle-tuck-stitch-patterns-with.html>
- **For Troubleshooting go to:** [https://docs.google.com/document/d/1kMO3-as2WWkR7ta3VmxE20b47NXj\\_gmy/edit?usp=sharing&oid=116179587083298070526&rtpof=true&sd=true](https://docs.google.com/document/d/1kMO3-as2WWkR7ta3VmxE20b47NXj_gmy/edit?usp=sharing&oid=116179587083298070526&rtpof=true&sd=true)

Happy Knitting!

Kris