

brother fashion

Issue No. 1

UK £1.50

HFL 3.95

I £2.50

MASTER CLASS

- learn the
secrets of the
professionals

SPECIAL FEATURE

- simply
stocking stitch

STITCH LIBRARY

- beautiful stitch
designs for all
machines

FINAL ANALYSIS

- seasonal
fashion trends

NEW - FIRST ISSUE!



brother

CONTENTS

WOMANSWEAR

Fairisle sweater in chenille and wool, front cover and 5

Fairisle sweater and ribbed skirt in practical acrylic, 10 and 11

Fairisle and Garter Carriage stitch sweater, 12 and 13

Garter Carriage single motif, 22 and 23

Fairisle jacket in chenille and wool, 24 and 25

Stocking Stitch wool dress, 28

KIDDIE KNITS

Primrose yellow suit with single

motif and lace skirt, 29 and 30

SPECIAL FEATURES

Stitch Library, 8 and 9

Master Class - PPD, 21

Beginners Step-by-Step, 26

Fashion file, 18 and 19

Clubs and Classes, News and Views, 20

MENSWEAR

Two fairisle designs in rustic Shetland wool 6 and 7

BABY KNITS

Practical, pretty, and right up to the minute, baby range featuring fairisle and cable stitches, 15, 16 and 17

Dear Readers,

I am sure you will welcome the first issue of the new Brother Fashion. Our new, user friendly compact format will enable you to handle and follow the instructions without having to wrestle with an open or folded magazine. Subscribers won't have to worry about the magazine being damaged being put through the letterbox - unless you have a four legged friend waiting for it! And where possible, the garment instructions are featured next to the colour picture. In six issues a year we will be able to cover a lot more with regard to step-by-step features, and over the course of one year you will have a fine collection of knitting patterns.

Happy Knitting!
Susan Nutbeam.

ABBREVIATIONS

alt	alternate
beg	begin(ing)
[C]	children's izes
cm	centimetre(s)
COBH	cast on by hand
COL	carriage on left
Con Col	contrast colour
COR	carriage on right
cont	continue, continuing
dec	decrease, decreasing
FA	Feeder A
FB	Feeder B
FNR	full needle rib
foll	following
g	grammes
G-Carr	Garter Carriage
HP	holding or E position
inc	increase, increasing
K-Carr	Knitting Carriage
KH	main bed
KR	ribbing attachment

INTARSIA

Should you decide to use the Intarsia Carr for the intarsia design and the K-Carr for the plain knitting, beware! First obtain the correct intarsia tension and then match the st st adjusting accordingly. Our instructions are based on the intarsia tension.

[L]	ladies' sizes
L-Carr	Lace Carriage
[M]	men's sizes
M/C	machine
N(s)	needle(s)
NWP	non working or A position
patt	pattern
RC	row counter
rem	remain(ing)
000	set row counter to 000
sts	stitches
st	stocking stitch
T	tension setting
trans	transfer(ring)
UWP	upper working or D position
WP	working or B position
WY	waste yarn
Waste knit	-change to waste yarn, knit a few rows and release from machine

MACHINES

A: 4.5 mm gauge with punchcard facility (24 st patt repeat). B1: 9mm gauge (by hand selection). B2: 9 mm gauge with punchcard facility (24 st patt repeat). B3: 9mm gauge (up to 112 st patt repeat). C: 4.5mm gauge electronic with mylar sheet (up to 60 st patt repeat). D: 4.5mm gauge (200 st patt repeat).

SYMBOLS FOR HAND TRANSFER CHARTS

<input type="checkbox"/>	Plain stitch
<input type="checkbox"/>	Hole
<input checked="" type="checkbox"/>	Stitch trans to the right.
<input checked="" type="checkbox"/>	Stitch trans to the left.
<input checked="" type="checkbox"/>	Needle holds 3 sts one in normal position, one transferred from left and one from right.
<input type="checkbox"/>	Purl stitch

NOTES

All measurements are in centimetres. Always check tension before commencing as success depends on working to correct tension. G preceding a figure relates to Green (Right side of needlebed). Y preceding a figure relates to Yellow (Left side of needlebed) Between each figure on the Tension Dial there are 2 settings these are indicated in the garment instructions by °.

RIB

2 x 1 Pitch H: Needle arrangement:- (This rib give the appearance of a 2 x 2 rib).



©All patterns, printed matter and photographs contained in this magazine are and remain the copyright of BROTHER INDUSTRIES LTD and BROTHER INTERNATIONAL EUROPE LTD and may not be reproduced in whole or in part without the consent of the copyright holder by way of written consent of the Editor. *Brother Fashion* is published jointly by BROTHER INDUSTRIES LTD, 35,9-chome, Horita-Dori, Mizuho-ku, Nagoya 467, Japan, and BROTHER INTERNATIONAL EUROPE LTD, Brother House, 1 Tame Street, Audenshaw, Manchester M34 5JE. Tel: 061 330 6531. *Brother Fashion* cannot accept any responsibility for unsolicited manuscripts and photographs and whilst every care is taken to ensure the accuracy of the patterns, charts, drawings and editorial matter printed in this issue of *Brother Fashion* the publisher can accept no responsibility whatsoever for any damage, loss or the like arising from their use. We reserve the right to publish and edit any letters received.



LADY'S FAIRISLE CHENILLE AND WOOL SWEATER

MACHINES: C or D with KR.
MATERIALS: STANDARD 4-PLY CHENILLE AND WOOL. We used YEOMAN YARNS Chenille: A - 315 (325, 335, 345, 355)g (Soft Green 30) (100% acrylic 346m/100g) and YEOMAN YARNS Sport: B - 255 (265, 275, 285, 295)g (Mallard 36) (100% wool 400/1000g).

MEASUREMENTS: To fit bust 86 (91, 96, 101, 106)cm.
TENSION: Fairisle - 40 sts = 13.6cm and 60 rows = 15cm (approx T6). **RIB:** 1 x 1 T2/2.
NOTES: Fairisle St Patt - B in FA and A in FB throughout.

sts x 1, 4 st x 2, 3 st x 4, then dec 1 st x 10. Knit to RC240 and waste knit rem 33 (37, 41, 44, 48) sts. Return sts at left to Ns and knit to match right side reversing shaping. **WAIST RIBS:** Push 109 (115, 121, 127, 133) KH Ns into WP. With wrong side facing, place sts from waist edge onto Ns distributing them evenly along the row. Using A T8 knit 1 row. Trans to RIB, 000. Knit to RC29. T10/8 knit 1 row. Trans all sts to KH and latch cast off.

NECKBAND

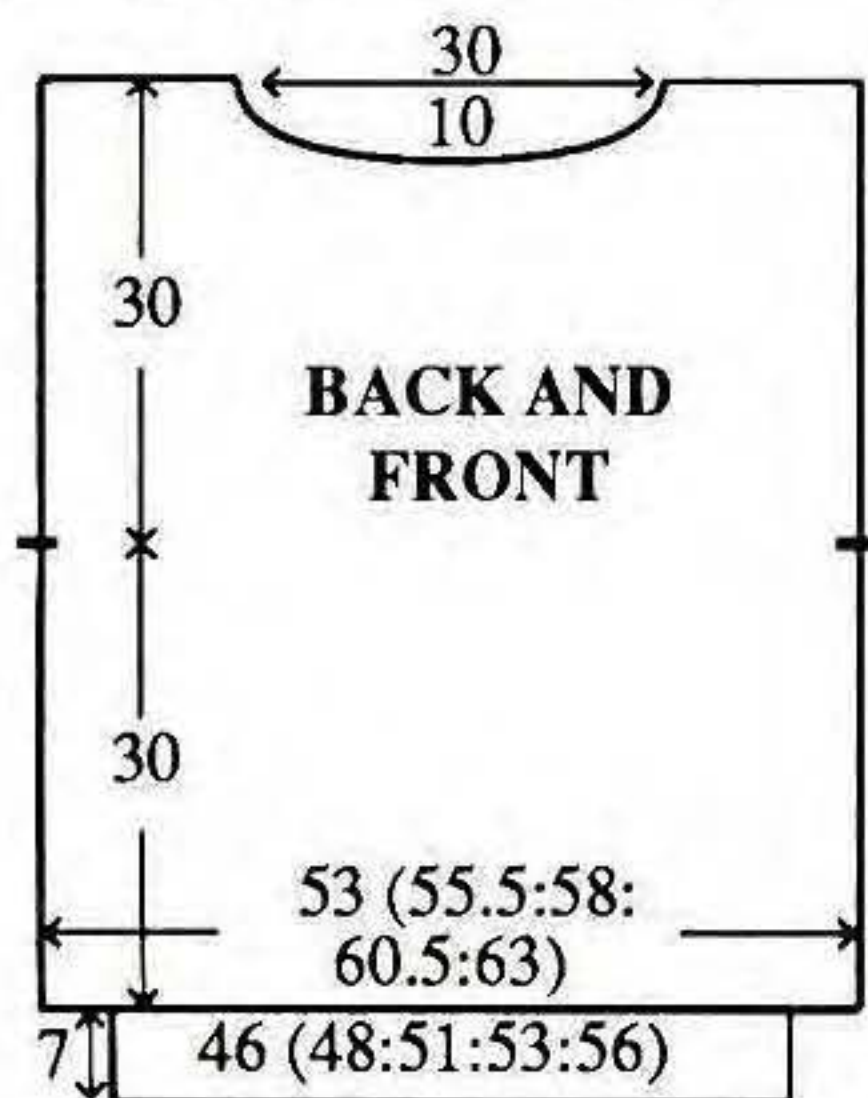
Join one shoulder by placing one set of shoulder sts back onto Ns with right sides together. Using A T10 knit 1 row and cast off. Using A cast on over 169 KH Ns as RIB, 000. T1/1 knit to RC10, T2/2 knit to RC20. Trans all sts to KH. T8 knit 1 row. With right side facing, pick up same number of sts evenly along neck edge and place onto Ns. Knit 4 rows and waste knit. Join second shoulder as first. Join NECKBAND seam and backstitch to garment through last row knitted in B.

SLEEVES

Push 174 KH Ns into WP. With wrong side facing, pick up same number of sts evenly along armhole edge between WY markers and place onto Ns, COL. Set for first row of Fairisle St Patt UPSIDE DOWN, and using B T6 knit 1 row to select Ns, 000. Working in Fairisle throughout (see NOTES) knit to RC18. Dec 1 st at each end of next and every foll 3rd row x 44. Knit to RC170 and waste knit rem 86 sts. **CUFFS:** Push 59 KH Ns into WP. With wrong side facing, place sts from cuff edge onto Ns distributing them evenly along the row. Using A T8 knit 1 row. Trans to RIB,



000. Knit to RC39. T10/8 knit 1 row. Trans all sts to KH and latch cast off.

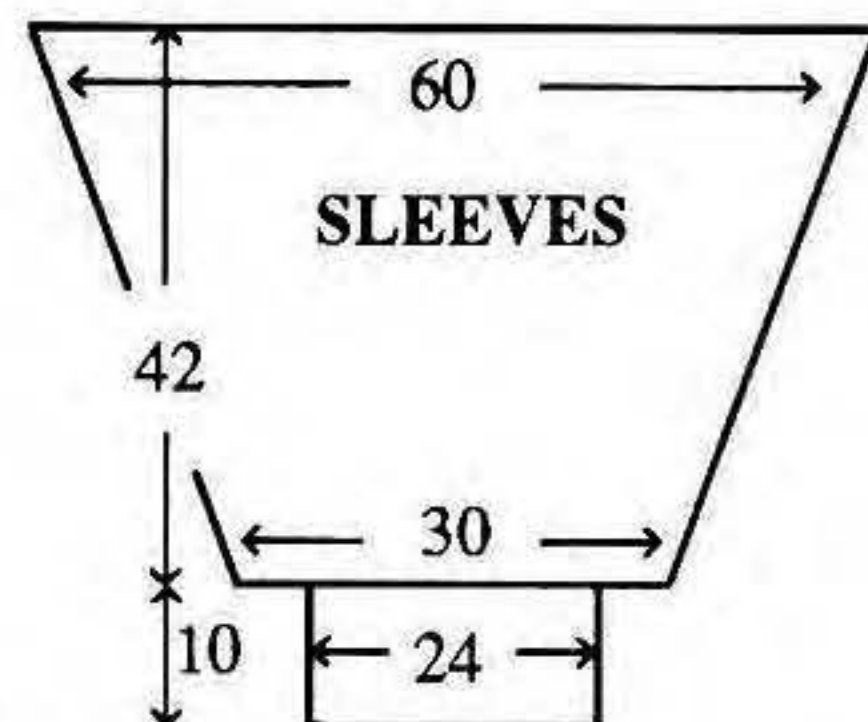


BACK/FRONT

Using WY cast on over 153 (161, 169, 175, 183) KH Ns and knit a few rows ending with COL, 000. Set for first row of Fairisle St Patt and using B T8 knit 1 row to select Ns, 000. Working in Fairisle throughout (see NOTES), knit to RC120. Place a WY marker at each end of work. Knit to RC200.

Neck shaping

(Note Patt position) Waste knit centre 17 sts. Waste knit sts at left, COR. Knit 1 row. At beg of next and every foll alt row cast off 5

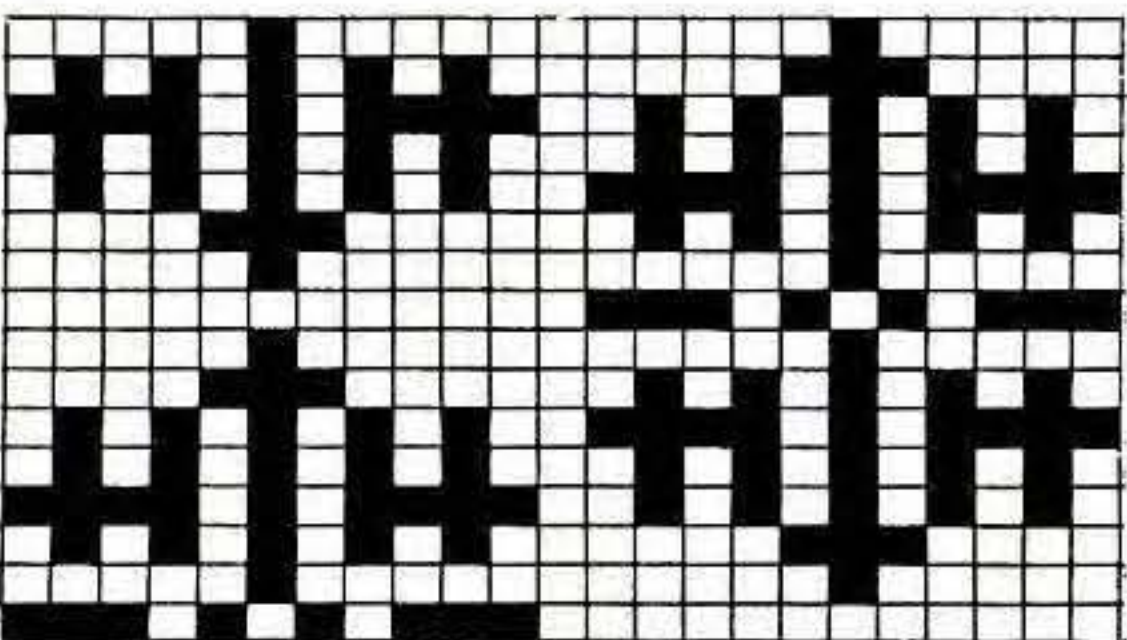
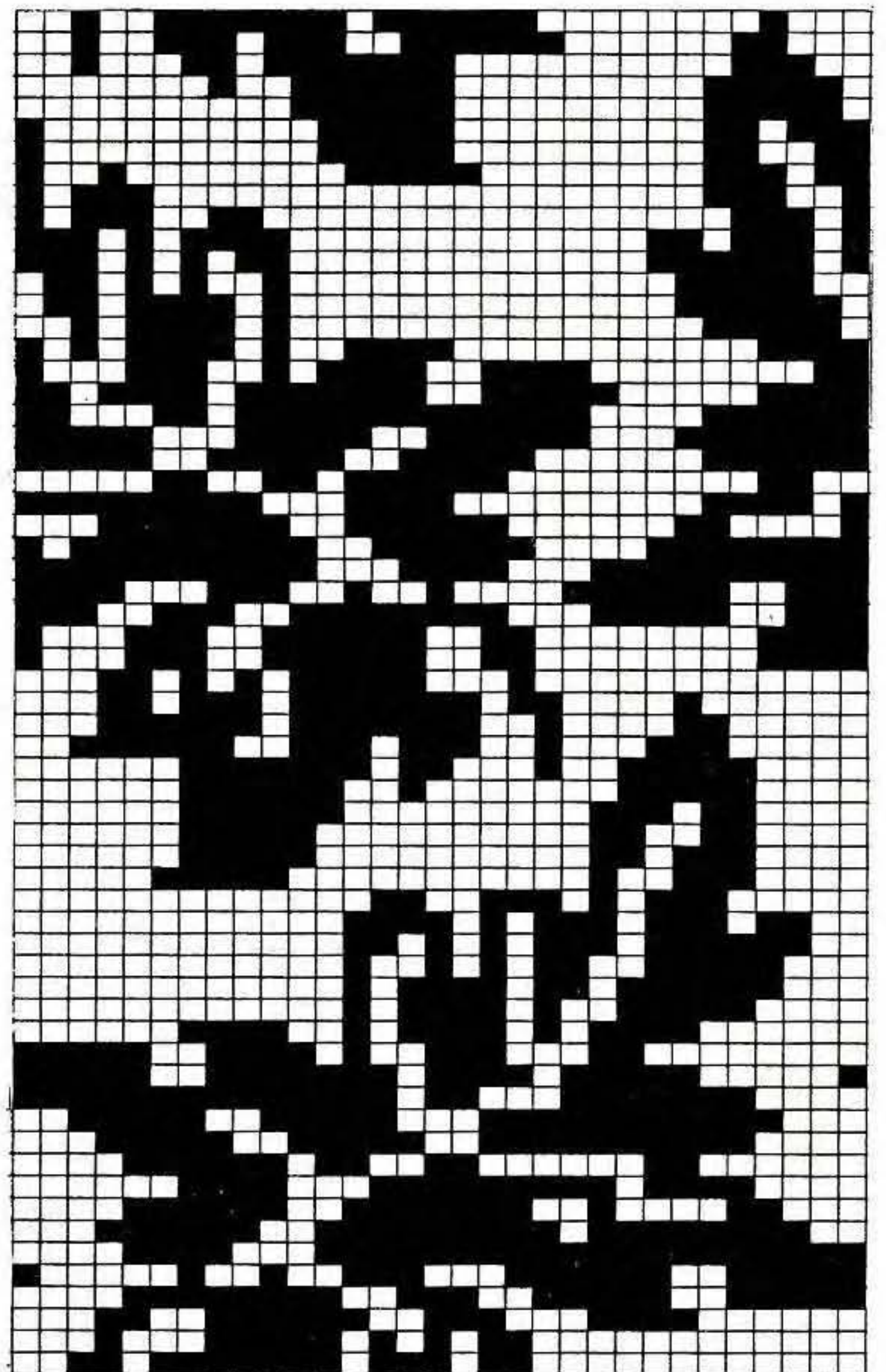
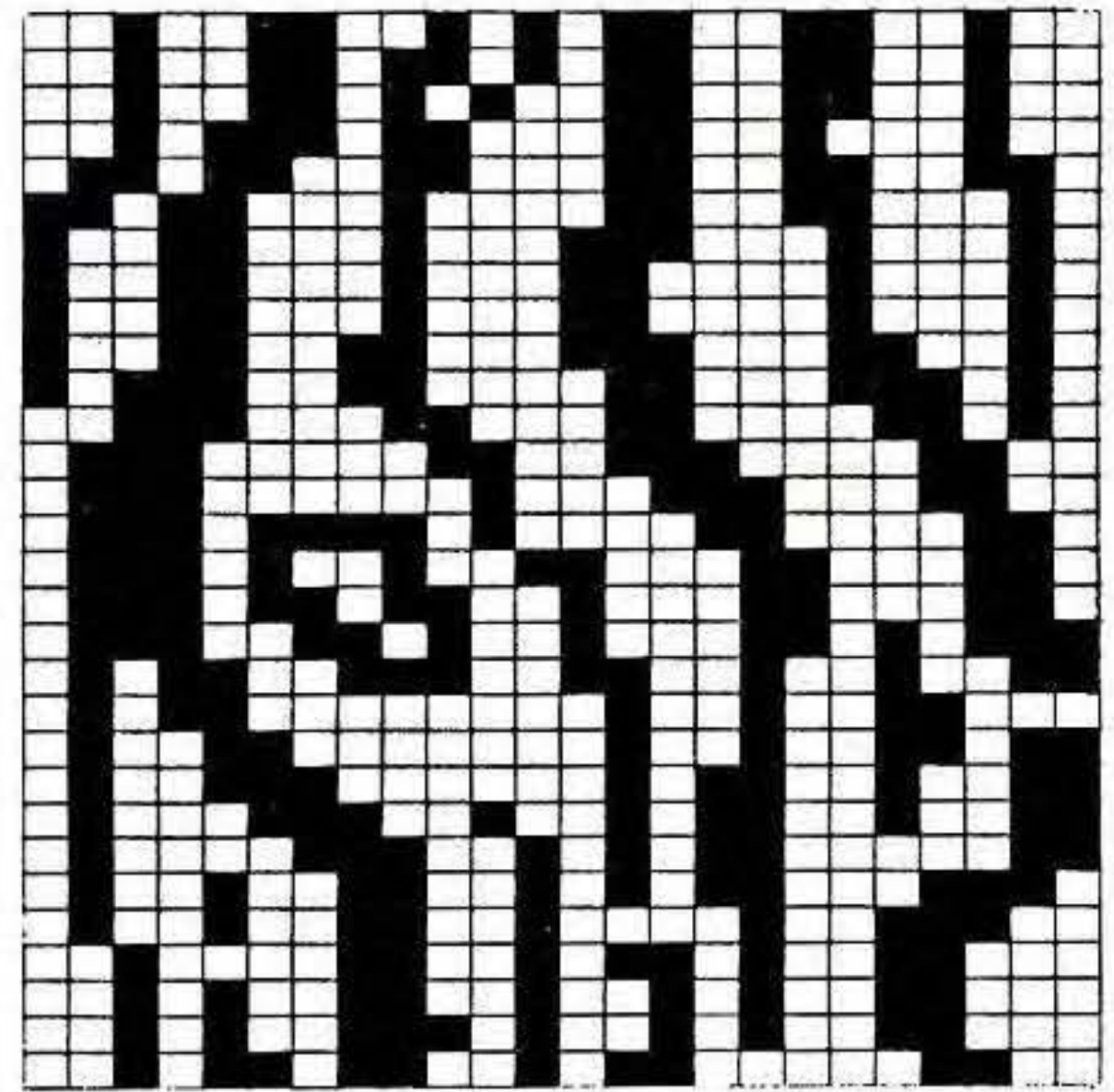
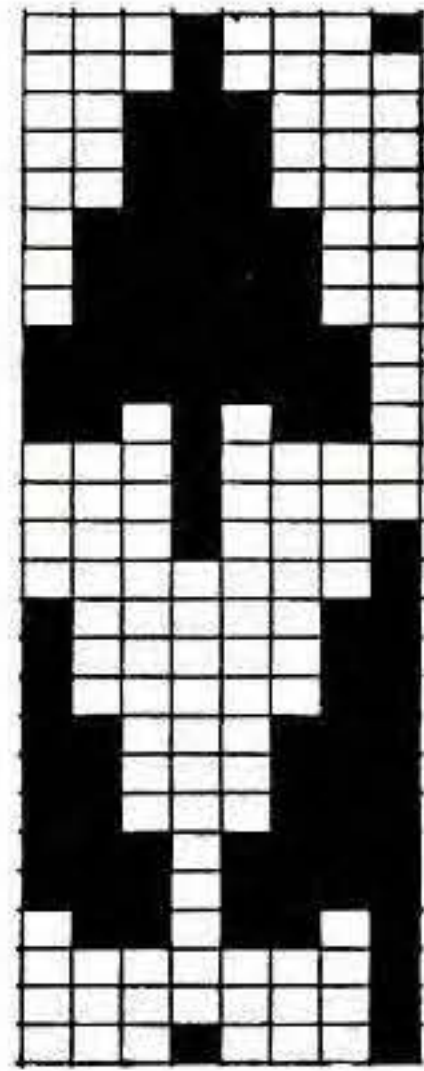
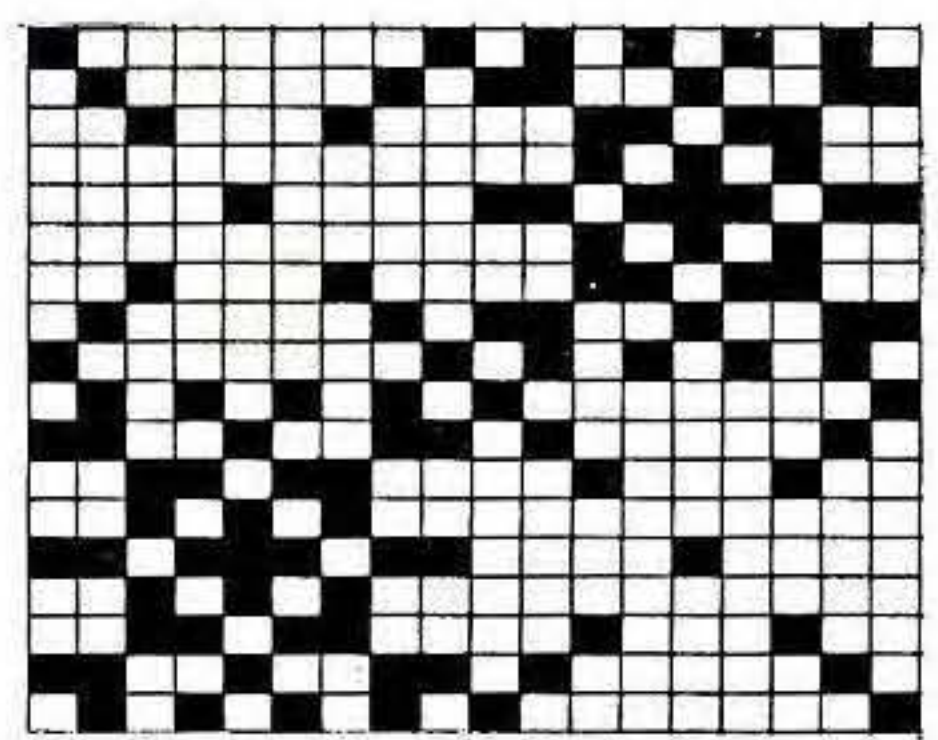
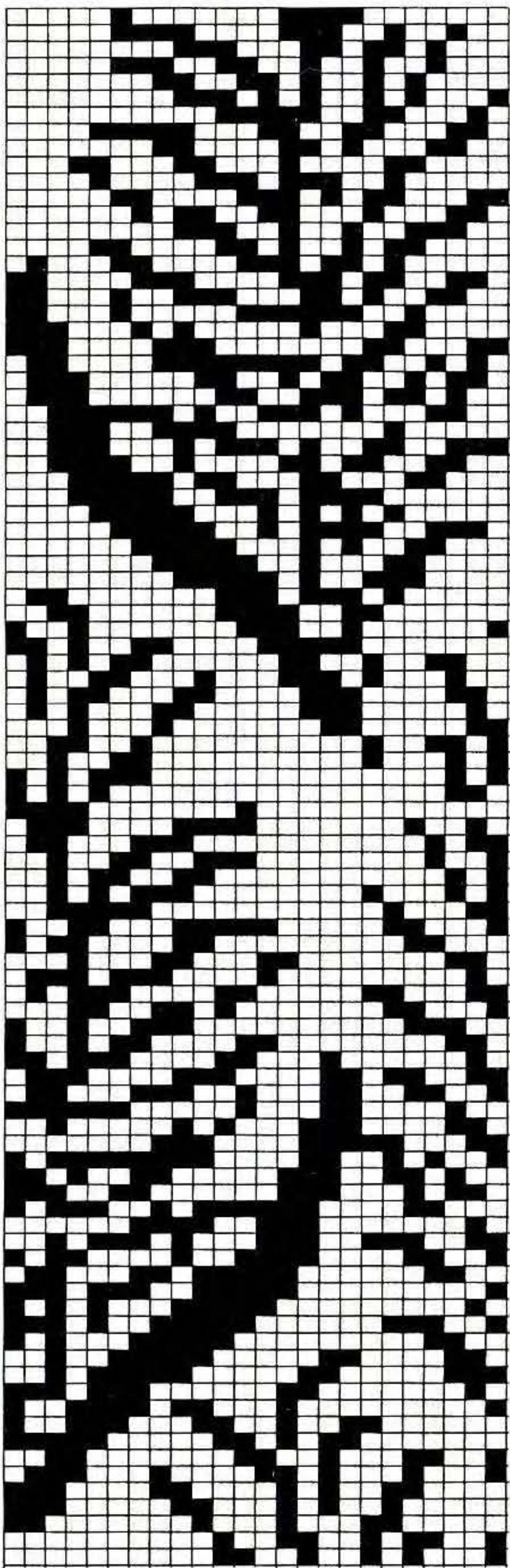


MAKE-UP

Press lightly on wrong side avoiding ribs. Join side and SLEEVE seam.

STITCH LIBRARY

Use these seasonal stitch samples for your own garments in your chosen colourways.





LADI'S FAIRISLE SWEATER WITH RIBBED SKIRT

MACHINES: A, C or D with KR. **MATERIALS:** STANDARD 4-PLY ACRYLIC, we used BRAMWELL 4-Ply Acrylic; **SWEATER - A - 245 (265, 285, 305, 325)g (Blue 397), B (Blonde) and C (Navy) - 100 (115, 130, 145, 160)g of each, D - 55 (65, 75, 85, 95)g (Brown 427) (1005 acrylic 480m/100g). SKIRT - D - 410 (430, 450, 470, 490)g. Elastic to fit waist + 2.5cm. MEASUREMENTS:** To fit bust 86 (91, 96, 101, 106)cm. **TENSION:** Fairisle St Patt - 40 sts = 13.3cm and 60 rows = 14.6cm (approx T7). **RIB:** 2 x 1 (see ABBREVIATIONS) T2/2. **NOTES:** Fairisle St Patt - with A in FA throughout, knit 4 rows C, 18 rows B, 4 rows D, 16 rows C and 4 rows D in FB.

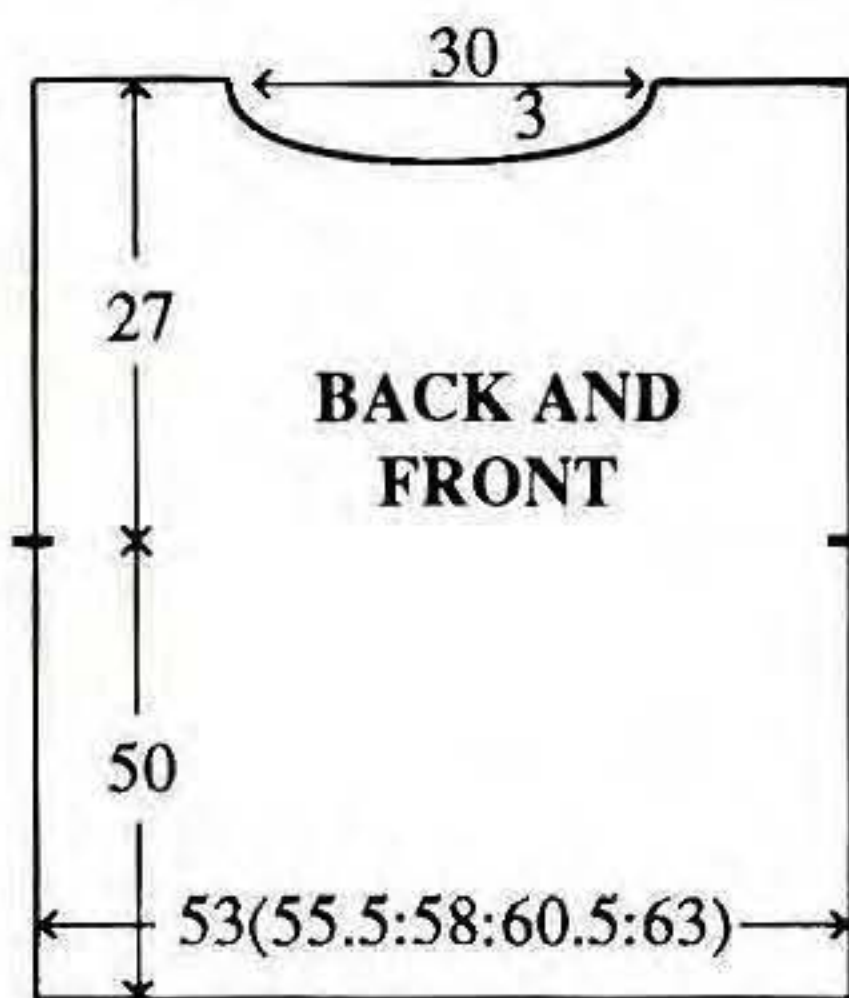
BACK/FRONT

Using A cast on over 160 (168, 174, 182, 190) KH Ns, 000. T5

Knit to RC15. Set for first row of Fairisle St Patt and using A T10 knit 1 row to select Ns, 000. T7 Working in fairisle throughout (see NOTES), knit to RC206. Place a WY marker at each end of work. Knit to RC306.

Neck shaping

(Note Patt position). Waste knit centre 40 sts. Waste knit sts at left, COR. Knit 1 row. At beg of next and every foll alt row cast off 5 sts x 5. Knit to RC318 and waste knit rem 35 (39, 42, 46, 50) sts. Return sts at left to Ns and knit to match right side reversing shaping.



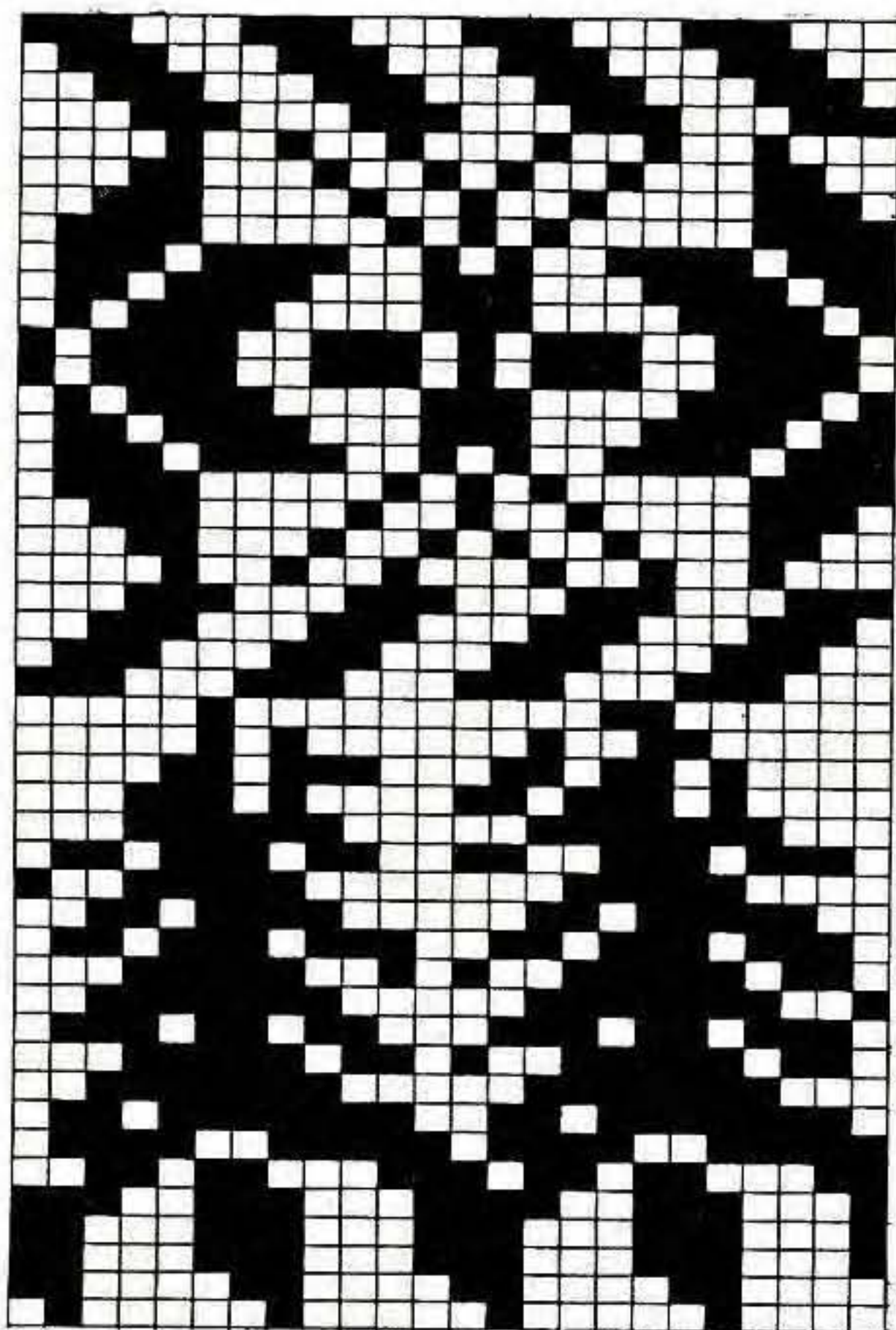
with wrong side facing, pick up same number of sts evenly along armhole edge between WY markers and place onto Ns, COL. Set for first row of Fairisle St Patt UPSIDE DOWN, and using A T7 knit 1 row to select Ns, 000. Working in Fairisle throughout (see NOTES) - knit to RC28. Dec 1 st at each end of next and every foll 4th row x 36. Knit to RC172 and waste knit rem 90 sts. **CUFFS:** Push 71 KH Ns into WP. With wrong side facing, place sts from cuff edge onto Ns distributing them evenly along the row. Using A T7 knit 1 row. Trans to RIB, 000. Knit to RC29. T10/8 knit 1 row. Trans all sts to KH and latch cast off each st individually.

MAKE-UP

Join side and SLEEVE seams. Turn up hem and stitch down loosely.

SKIRT BACK/FRONT

Using D cast on over 164 (173, 182, 191, 200) KH Ns as RIB, 000. Knit to RC450 (adjust length here). **WAISTBAND:** Trans to 2 x 1 Mock Rib (2 Ns in WP, 1 N in NWP). T5 Knit 25 rows. T10 knit 1 row and latch cast off.

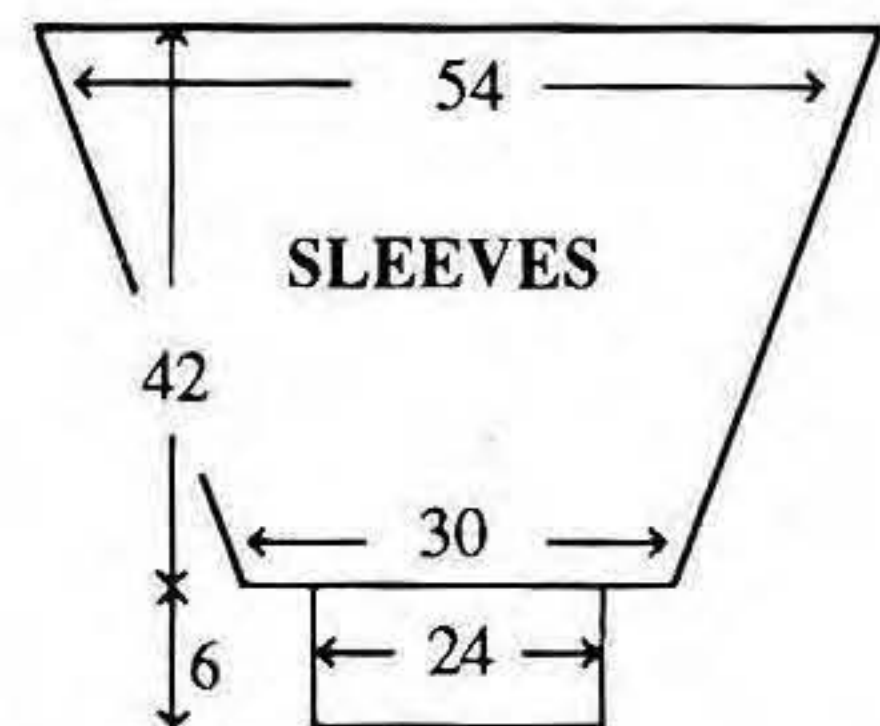


NECKBAND

Join one shoulder by placing one set of shoulder sts back onto Ns with right sides together. Using A T10 knit 1 row and cast off. Using D cast on over 192 KH Ns as RIB, 000. Knit to RC10. Trans all sts to KH. T7 knit 1 row. With wrong side facing, pick up same number of sts evenly along neck edge and place onto Ns. T10 knit 1 row and cast off. Join second shoulder as first. Join NECKBAND seam.

SLEEVES

Push 162 KH Ns into WP.



MAKE-UP

Join side seams. Fold WAISTBAND in half to inside and stitch down loosely encasing elastic.

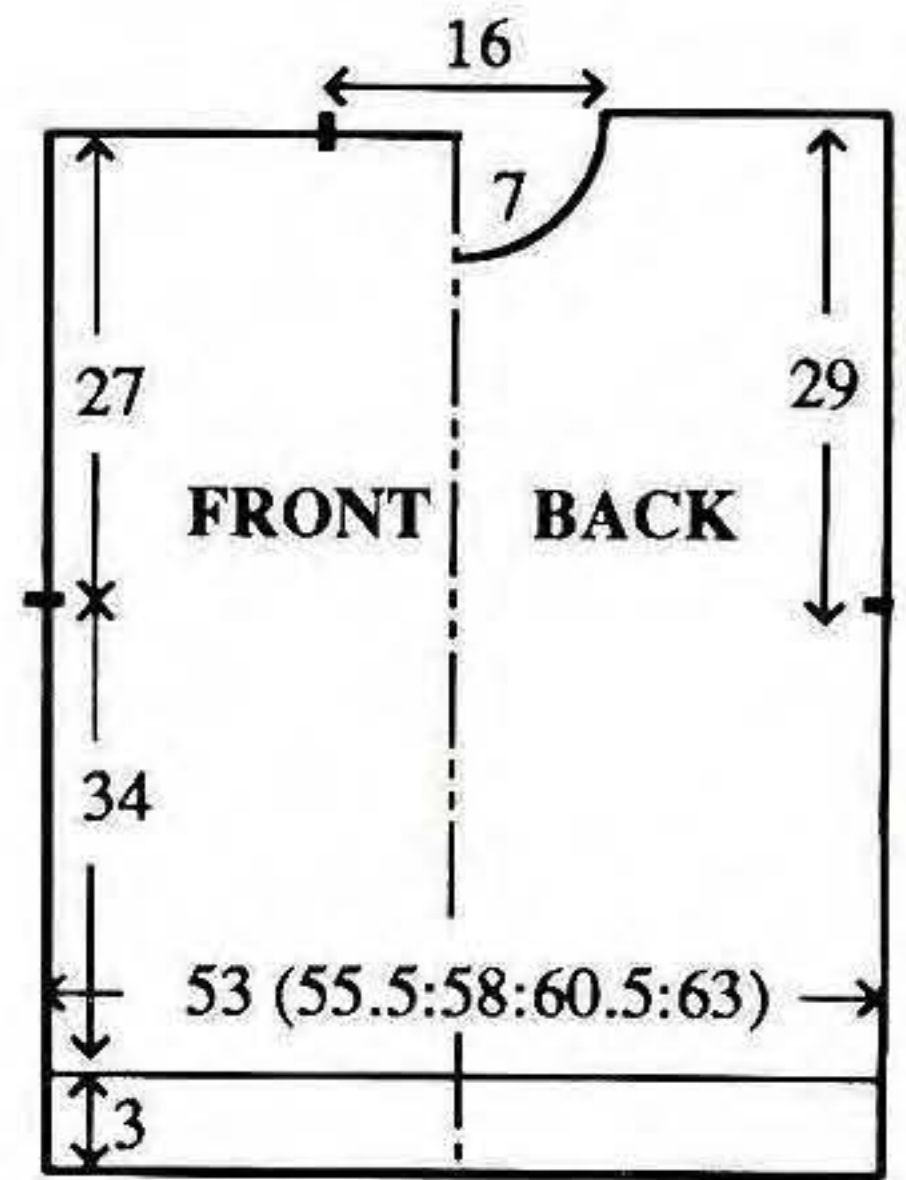


LADY'S FAIRISLE & GARTER CARRIAGE SWEATER

MACHINES: C or D with G-Carr. **MATERIALS:** STANDARD 4-PLY WOOL; A - 420 (440, 460, 480, 500)g (Aran 46). B - 90 (100, 110, 120, 130)g (Slate Blue 96) (100% wool 3 6 0 m / 2 0 0 g) . **MEASUREMENTS:** To fit bust 86 (91, 96, 101, 106)cm. **TENSION:** Garter St Patt 1 - 40 sts = 14cm and 60 rows = 14.5cm (approx T6), st st rows are worked using K-Carr with slightly looser setting. **RIB:** Hem - 2 x 4 T5, Collar and Cuffs 2 x 2 T4.

Stitch Patt 1

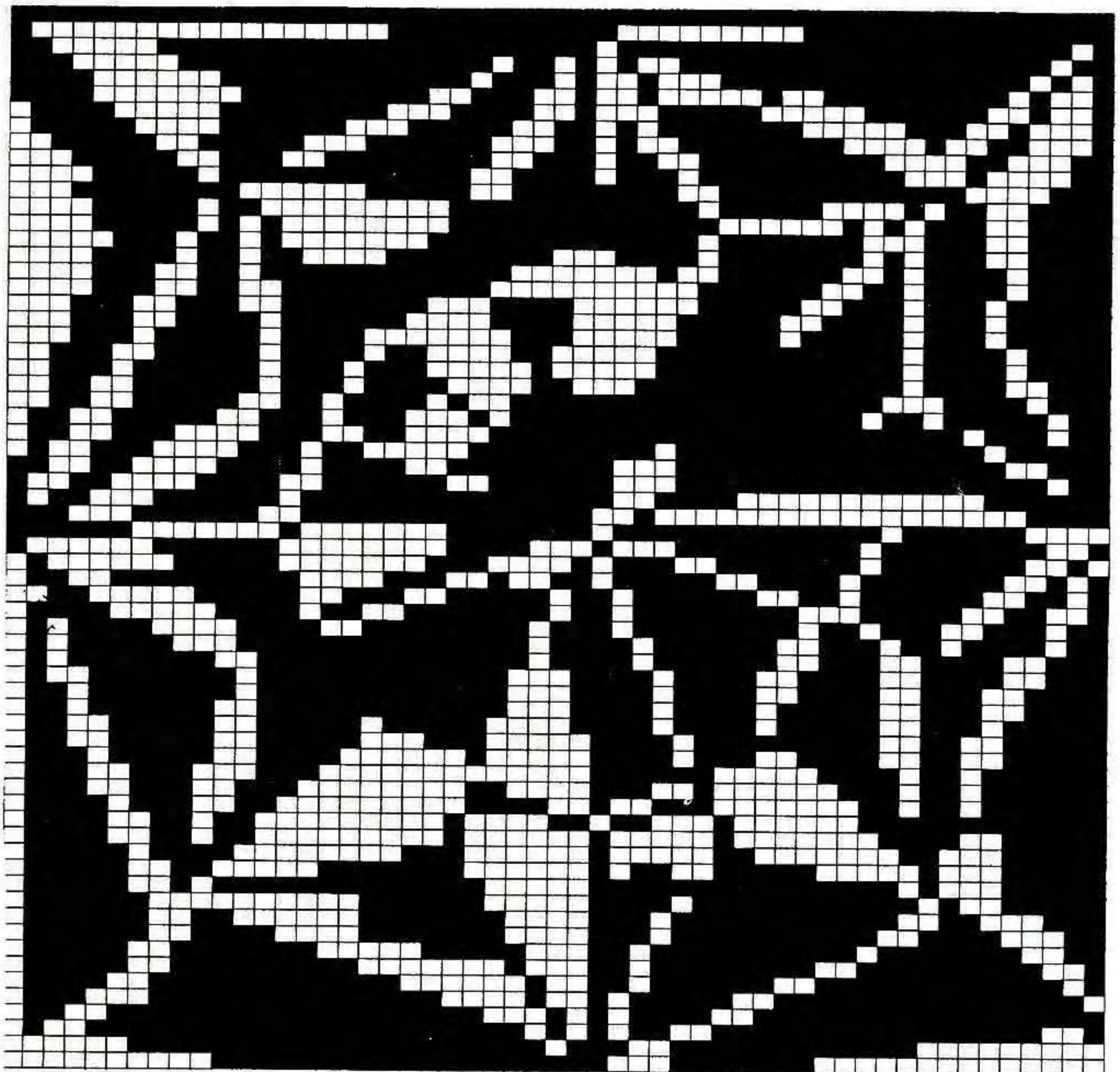
St Patt	FA	FB	No of rows
St st	A	-	2
1 G-Carr	A	-	132
(double width and double length)			
St st	A	-	2
2 Fairisle	A	B	9
St st	A	-	2
St st	B	-	4
3 G-Carr	B	-	32
(double width and double length)			
St st	B	-	4
St st	A	-	2
4 Fairisle	A	B	8
St st	A	-	2
5 G-Carr	A	-	15
(with cables - see St Patt)			
St st	A	-	2
6 Fairisle	A	B	8
St st	A	-	2
2 G-Carr	A	-	18



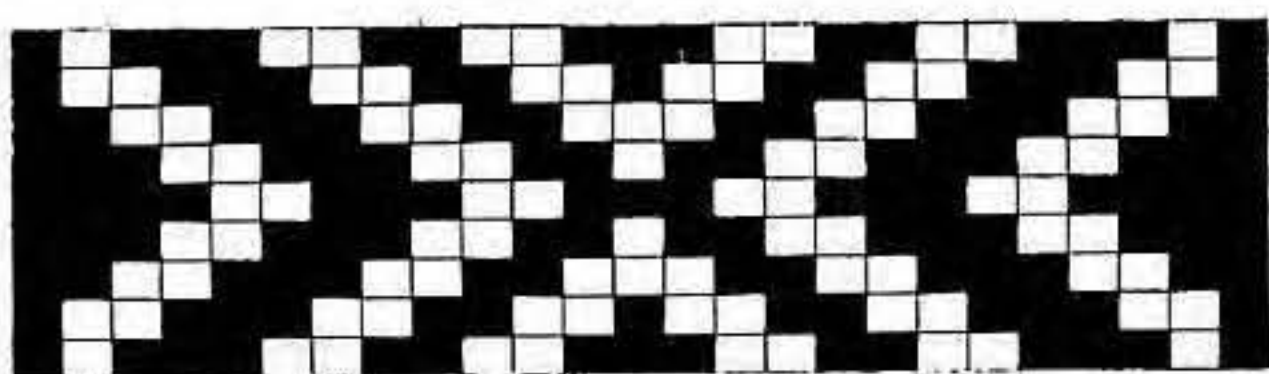
(double width and double length)
St st A -
To end.

BACK

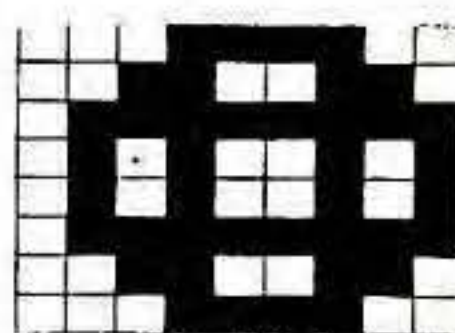
Using B COBH over 152 (158, 164, 170, 176) KH Ns. 000. T5



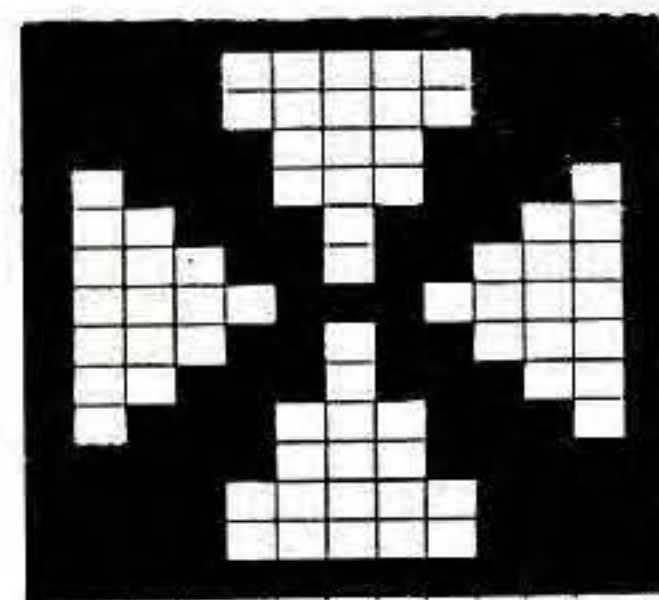




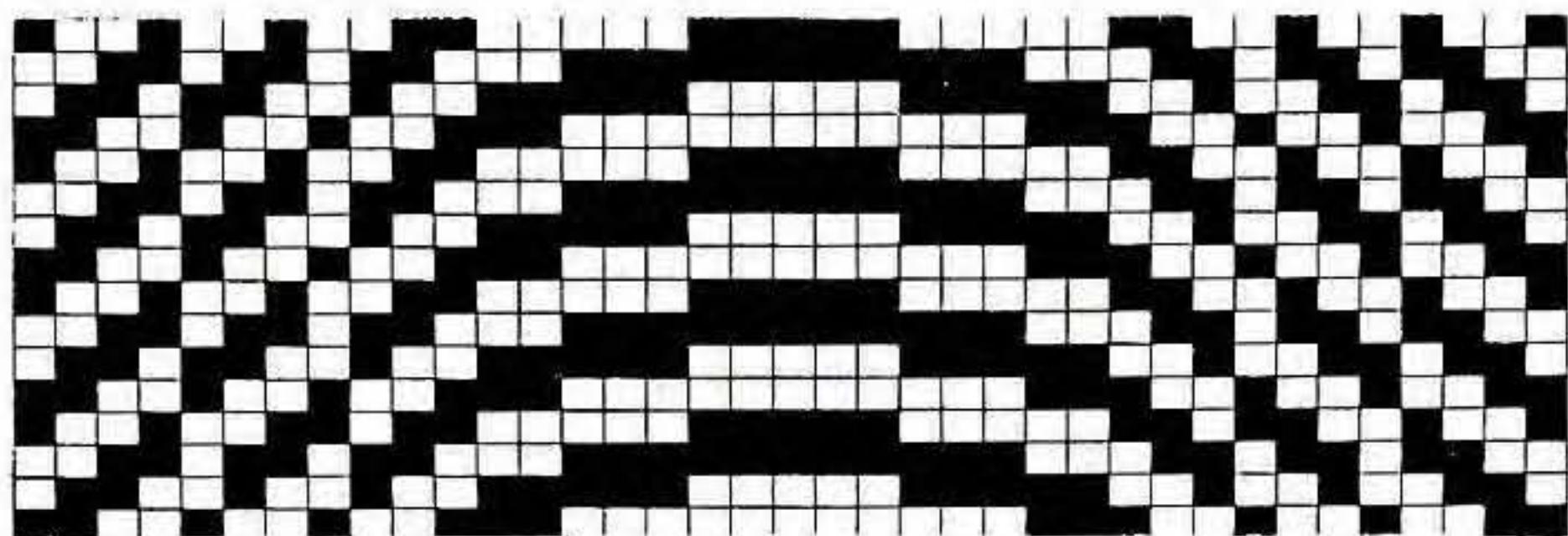
Stitch
Patt 2



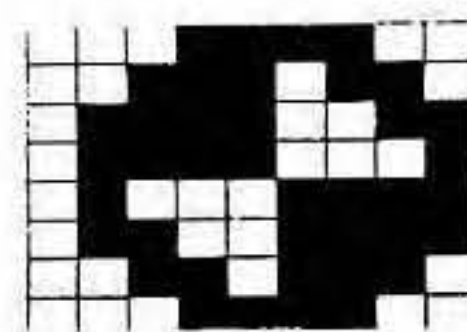
Stitch
Patt 4



Stitch
Patt 5



Stitch
Patt 3



Stitch
Patt 6

knit 5 rows. Using A knit to RC15, 000. Working in Stitch Pattern throughout (see NOTES) knit to RC147. Place a WY marker at each end of work. Knit to RC270. Waste knit centre 44 sts. Waste knit rem 54 (57, 60, 63, 66) sts at each end of work for shoulders.

FRONT

As BACK to RC248.

Neck shaping

Waste knit centre 14 sts. Waste knit sts at left. COR knit 1 row. At beg of next and every foll alt row cast off 4 sts x 1, 3 sts x 1, 2 sts x 2 then dec 1 st x 4. Knit to RC278 and waste knit rem 54 (57, 60, 63, 66) sts. Return sts at left to Ns and knit to match right side reversing shaping.

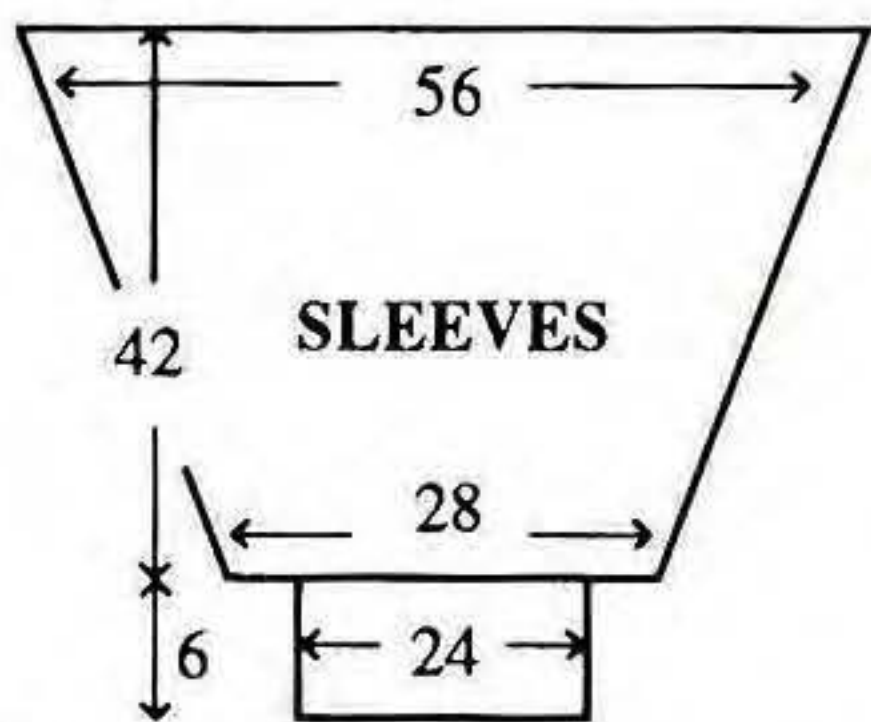
A knit to RC15. T6 knit 1 row St st. With right side facing, pick up same number of sts evenly along neck edge and place onto Ns. Using K-Carr knit 3 rows and waste knit. Join second shoulder as first. Join NECKBAND seam. Backstitch to garment through last row knitted in A.

SLEEVES

Push 159 KH Ns into WP. With wrong side facing, pick up same number of sts evenly along armhole edge between WY markers and place onto Ns. K-Carr on left. Using A T5° knit 1 row, 000. Working in Patt 1 G-Carr, set for double width and double length, throughout (see NOTES), knit to RC16. Dec 1 st at each end of next and every foll 4th row x 40. Knit to RC174 and waste knit rem 79 sts. CUFFS: Push 70 KH Ns into WP. With wrong side facing, place sts from cuff edge onto Ns distributing them evenly along the row. Using A T6 knit 1 row, 000. Working in RIB throughout, knit to RC26. Using B knit 4 rows. T10 knit 1 row and latch cast off.

BABY RANGE WITH FAIRISLE AND CABLE STITCH

MACHINES: A (see NOTES), C or D with KR. **MATERIALS:** STANDARD 4-PLY ACRYLIC, we used SPECTRUM Bouncing Babes 4-Ply; DRESS - A - 175 (190, 205)g (White), B - 25 (30, 35)g (Blue) and small amount of C (Light Brown). 3 Buttons. SWEATER - A - 65 (75, 85)g, B - 50 (60, 70)g and small amount of C. 3 Buttons. ROMPERS - A - 160 (175, 190)g and B - 50 (55, 60)g. 24cm zipper. (100% acrylic 3 9 0 m / 1 0 0 g) . **MEASUREMENTS:** To fit height 74 (80, 86)cm approx chest 49 (51, 53)cm. **TENSION:** St st - 40 sts = 13.3cm and 60 rows = 12.4cm (approx T7). Cable St Patt - 40 sts = 13.3cm and 60 rows = 13.6cm (approx T8). **RIB:** 1 x 1 T3/3. **NOTES:** A machines -

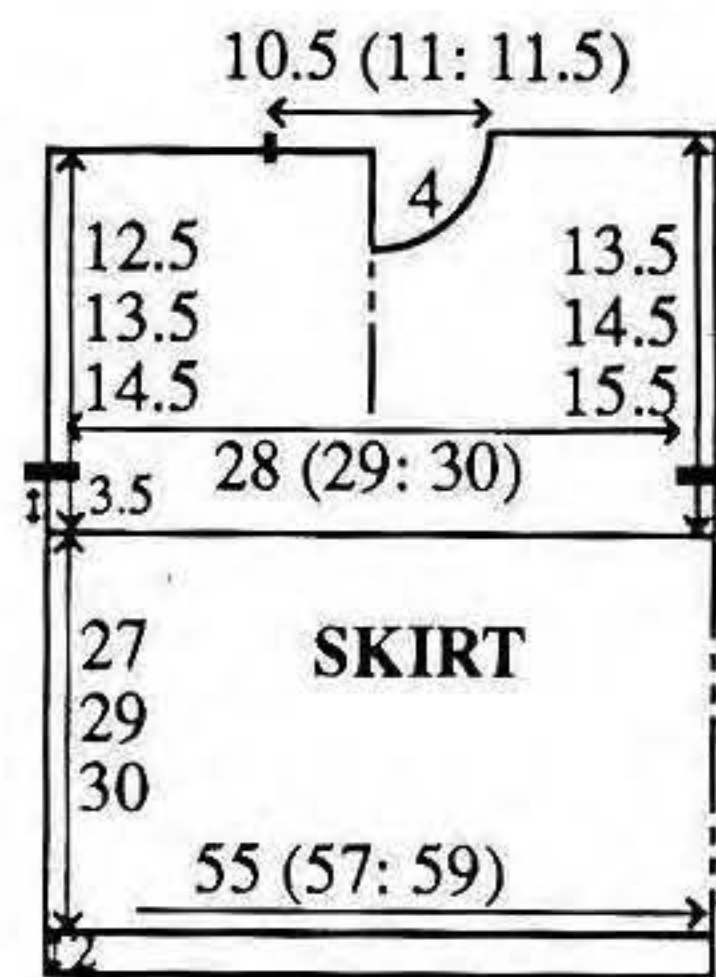


NECKBAND

Join one shoulder by placing one set of shoulder sts back onto Ns with right side together. Using A T10 knit 1 row and cast off. Using B COBH over 122 KH Ns as 2 x 2 rib, 000. T4 knit 5 rows. Using

MAKE-UP

Block and press. Join side and SLEEVE seams.



Motif may be hand selected. Fairisle St Patt - with C in FB throughout, knit 6 rows with each of A/B and B/A in FA. Motif - B in FA and C in FB. Cable St Patt - N arrangement:- 6 Ns in WP and 1 N in NWP. * **Knit 7 rows. Bring all Ns to WP and knit 1 row. Drop the loops and take back the Ns to NWP. Cable 3 x 3 over alt sets of 6 sts**. Repeat from ** to ** over alt sets of 6 sts*. Repeat from * to * throughout.

DRESS SKIRT BACK/FRONT

Using A cast on over 165 (171, 178) KH Ns as RIB, 000. T4/4 knit 6 rows. Trans all sts to KH. Dec 1 st. T8 Knit 2 rows, 000. Working in Cable St Patt throughout (see NOTES), knit to RC116 (122, 126) and waste knit.

BODICE BACK

Push 85 (87, 91) KH Ns to WP. With wrong side facing, return sts from waist edge of SKIRT BACK to Ns distributing them evenly along the row, 000. T7 using A knit 1 row. Set for first row of Fairisle St Patt and knit 1 row to select Ns. Working in Fairisle (see NOTES) knit to RC14. Place a WY marker at each end of work. Using B knit to RC76 (80, 84). Waste knit centre 31 (33, 35) sts. Waste knit rem 27 (27, 28) sts at each end of work for shoulders.

BODICE FRONT

As BODICE BACK to RC14. Place a WY marker at each end of work. Using B knit 1 row. Set for first row of Motif and knit 1 row to select Ns. Knit

Motif for 37 rows. Using B knit to RC56 (60, 64).

Neck shaping

Waste knit centre 11 (13, 15) sts. Waste knit sts at left. COR knit 1 row. At beg of next and every foll alt row cast off 4 sts x 1, 3 sts x 1, 2 sts x 1, then dec 1 st x 1. Knit to RC76 (80, 84) and waste knit rem 27 (27, 28) sts. Return sts at left to Ns and knit to match right side reversing shaping, EXCEPT knit to RC66 (70, 74) and waste knit rem 27 (27, 28) sts.

NECKBAND

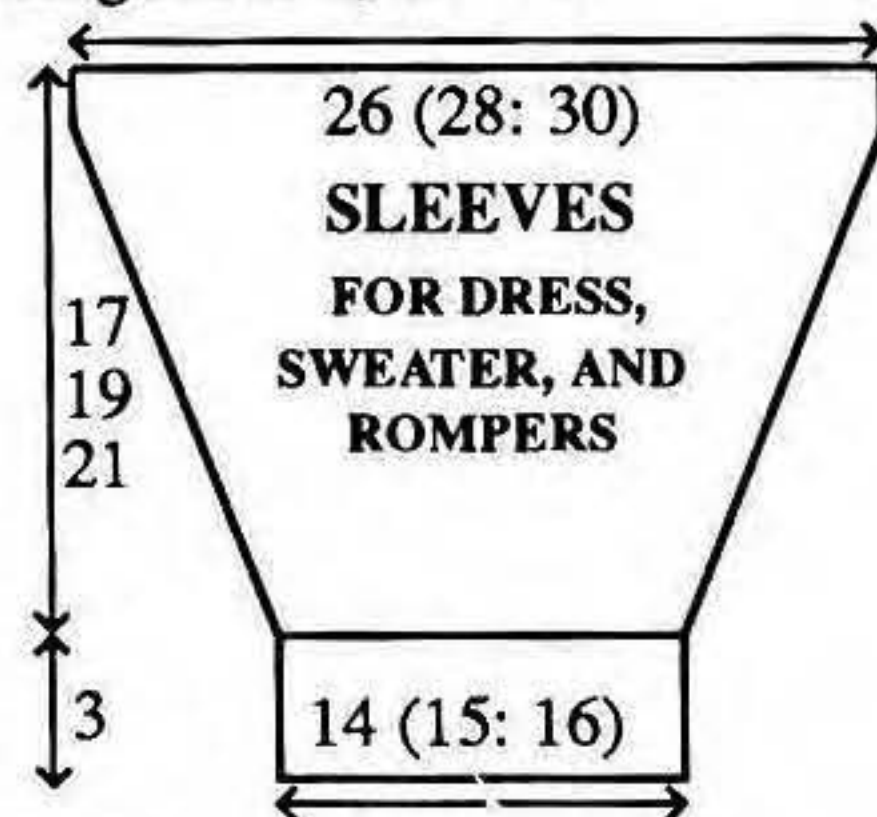
Join right shoulder by placing right set of shoulder sts back onto Ns with right sides together. Using B T10 knit 1 row and cast off. Using B cast on over 79 (83, 87) KH Ns as RIB, 000. Knit to RC8. Trans all sts to KH. T7 knit 1 row. With wrong side facing, pick up same number of sts evenly along neck edge and place onto Ns. T10 knit 1 row and cast off.

BUTTON BAND

Using B cast on over 35 (35, 37) KH Ns as RIB, 000. Knit to RC8. Trans all sts to KH. T7 knit 1 row. With wrong side of BACK Left shoulder facing, return sts to Ns plus pick up 8 sts from side edge of NECKBAND and place onto Ns. T10 knit 1 row and cast off.

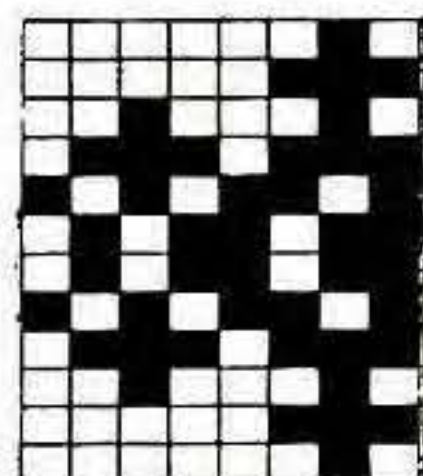
BUTTONHOLE BAND

As BUTTON band working 3 x 1 st buttonholes, evenly spaced along the row, at RC4.

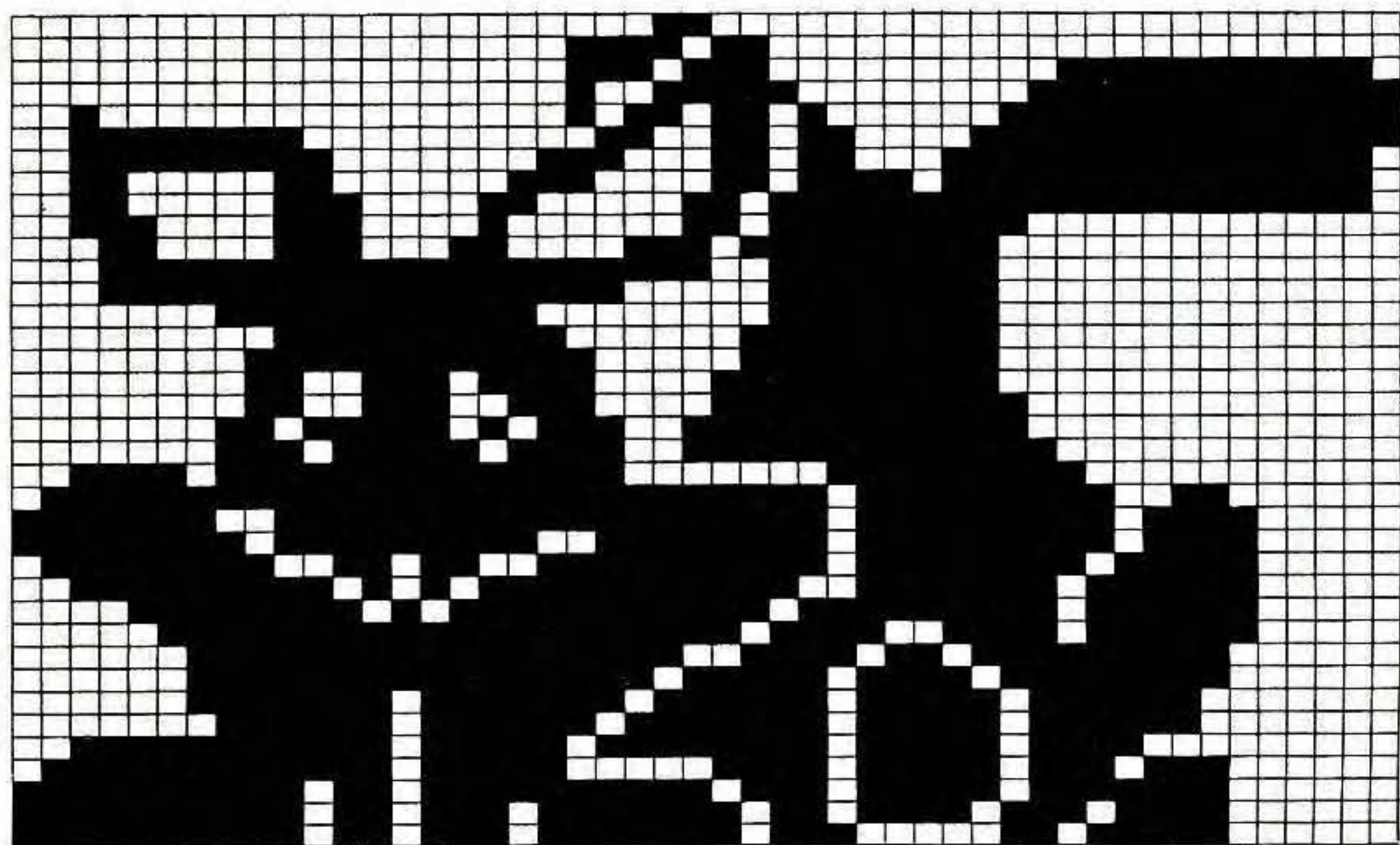


RIGHT SLEEVE

Push 78 (84, 90) KH Ns into WP. With wrong side facing, pick up same number of sts evenly along armhole edge between WY markers and place onto Ns, 000. T7 Using B knit 1 row. Set for first row of Fairisle St Patt and knit 1 row to select Ns. Working in Fairisle (see NOTES) knit to RC4 (8, 10). Dec 1 st at each end of next and every foll 4th row x 18 (19, 21) and AT THE SAME TIME at RC14, using A T8 knit 2 rows. Working in Cable St Patt to end (see NOTES) knit to RC75 (83, 93). Bring all Ns to WP and knit 1 row. Dec 1 st. CUFFS: Trans to RIB, 000. Knit to RC13. T10/8 knit 1 row. Trans all sts to KH and latch cast off.



Stitch Patt 2

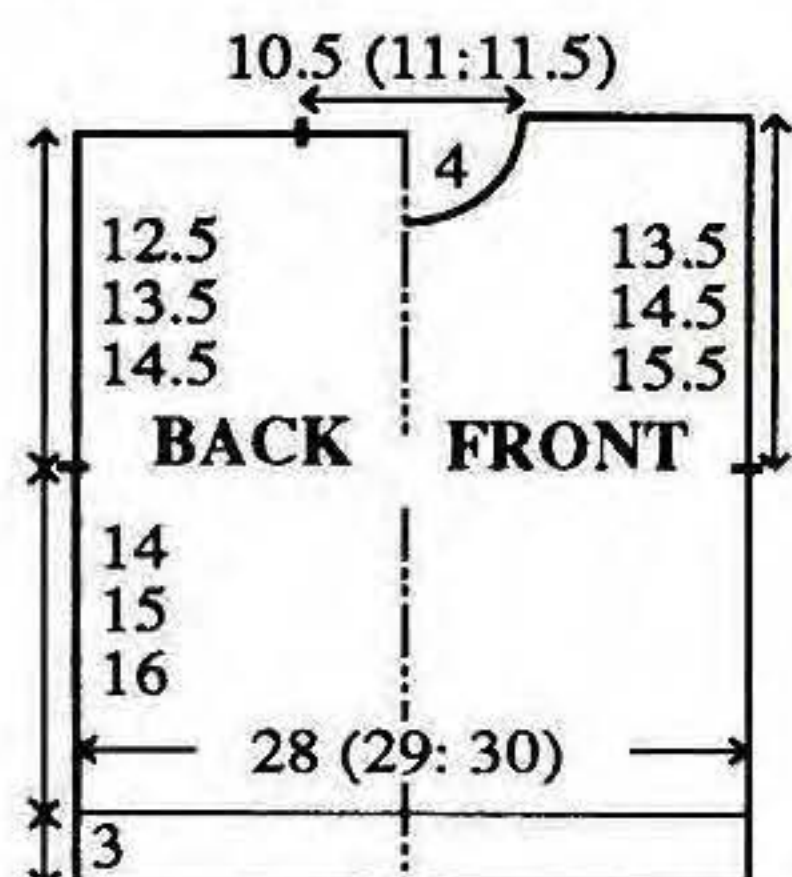


LEFT SLEEVE

As RIGHT SLEEVE but remember to overlap BANDS at shoulder.

MAKE-UP

Join side and SLEEVE seams. Sew on buttons at shoulder. Make a small Pom-pom and attach to Motif as illustrated.



SWEATER FRONT

Using A cast on over 85 (87, 91) KH Ns as RIB, 000. Knit to RC14. Trans all sts to KH. T8 knit 2 rows, 000. Working in Cable St Patt (see NOTES) knit to RC36 (36, 44). Bring all Ns to WP and knit 1 row. Set for first row of Fairisle St Patt and knit 1 row to select Ns. Working in Fairisle (see NOTES), knit 12 rows. Using B knit 1 row. Set for first row of Motif and knit 1 row to select Ns. Knit Motif and, AT THE SAME TIME, at RC66 (72, 76), place a WY marker at each end of work. Using B knit to RC94 (104, 112).

Neck shaping

Waste knit centre 19 (21, 23) sts. Waste knit sts at left, COR. Knit 1 row. At beg of next and every foll alt row cast off 4 sts x 1, 3 sts x 1, 2 sts x 2, then dec 1 st x 4. Knit to RC126 (136, 144) and waste knit rem 18 (18, 19) sts. Return sts at left to Ns and knit to match right side reversing shaping EXCEPT knit to RC116 (126, 134) and waste knit rem 18 (18, 19) sts.

FRONT YOKE

Using WY cast on over 66 (68, 70) KH Ns and knit a few rows, 000. Using B T8 knit 1 row. Set

for first row of Fairisle St Patt and knit 1 row to select Ns. Dec T by ° on next and foll alt rows, working in Fairisle (see NOTES) knit to RC14. Using A knit 2 rows and waste knit. With right side facing, return first row of sts to Ns. With wrong side facing, pick up same number of sts evenly along FRONT neck edge and place onto Ns. T10 knit 1 row and cast off.

BACK

As FRONT to RC50 (50, 58). Using B knit to RC122 (132, 140). Waste knit centre 31 (33, 35) sts. Waste knit rem 27 (27, 28) sts at each end of work for shoulders.

NECKBAND, BUTTON BAND AND BUTTONHOLE BAND:

As DRESS. SLEEVES: As DRESS SLEEVES, EXCEPT work in Cable St Patt throughout. MAKE-UP: as DRESS.

ROMPERS - RIGHT BACK LEG

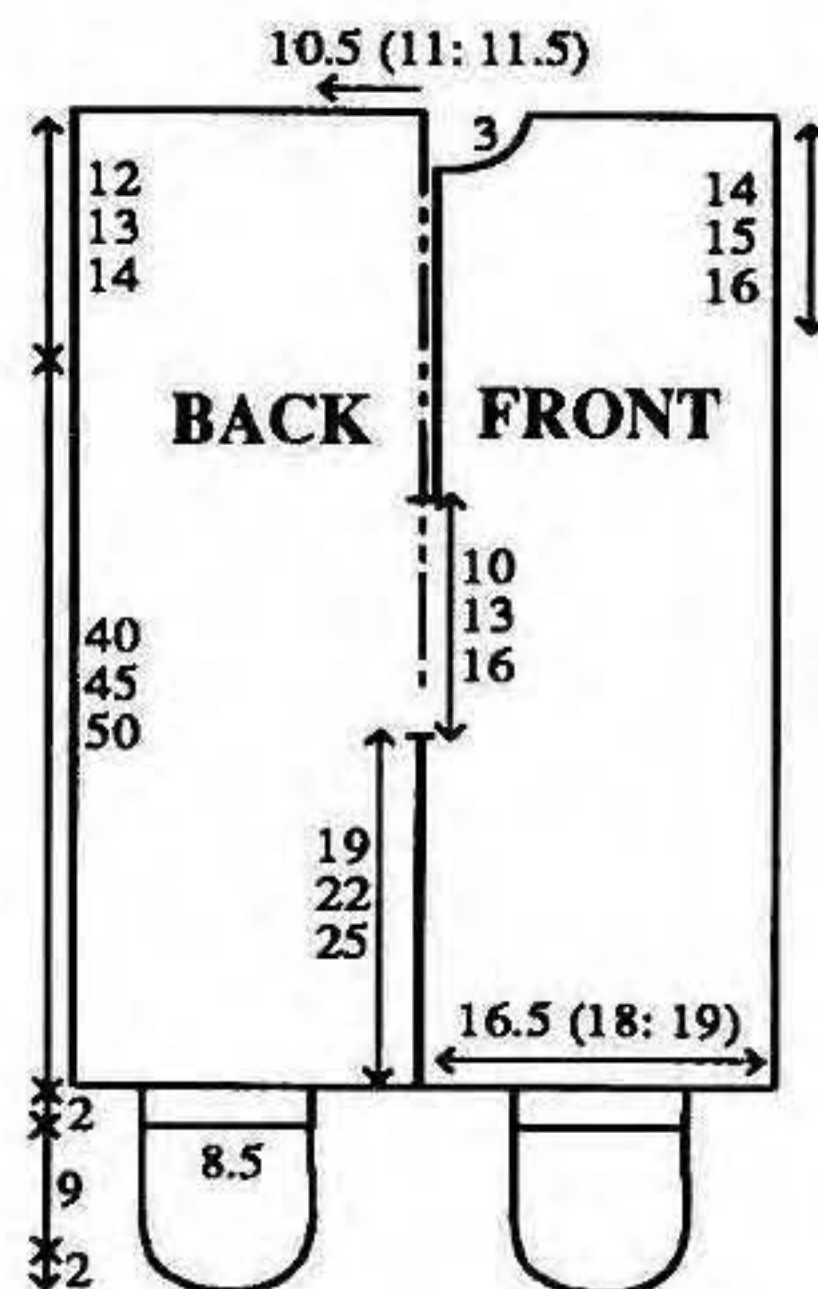
Using WY cast on over 52 (55, 59) KH Ns and knit a few rows ending with COR. Using B T7 knit 4 rows, 000. Knit 1 row. Set for first row of Fairisle St Patt and knit 1 row to select Ns. Working in Fairisle (see NOTES) knit to RC14. Using A T8 knit 2 rows. Working in Cable St Patt throughout (see NOTES), knit to RC84 (98, 110) and waste knit.

LEFT BACK LEG

As RIGHT BACK LEG EXCEPT DO NOT WASTE KNIT.

BACK

Push 49 (53, 57) KH Ns at left into WP. Arrange for Cable St Patt. With wrong side facing, place sts from RIGHT BACK LEG onto Ns at left, dec 2 centre sts [101 (108, 115) sts]. RC84 (98, 110). Knit to RC176 (198, 220). Place a WY marker at each end of work. ***Knit to RC196 (220, 240). Push all Ns into WP. T7 knit 1 row. Set for first row of Fairisle



St Patt and knit 1 row to select Ns. Working in Fairisle (see NOTES), knit 12 rows***. Using B knit to RC234 (262, 288). Waste knit centre 31 (34, 35) sts. Waste knit rem 35 (37, 40) sts at each end of work for shoulders.

ANKLE RIB AND BACK FOOT

Push 25 KH Ns into WP. With wrong side facing, return sts from ankle edge onto Ns distributing them evenly along the row. Using B T8 knit 1 row. Trans to RIB and knit 4 rows. Trans every 5th st to adjacent N leaving empty N in WP. Knit 4 rows. Trans all sts to KH, 000. T7 knit to RC44. Dec 1 st at each end of next and every foll alt row x 2. At beg of next and every foll row cast off 2 sts x 4, 3 sts x 2. Cast off rem 7 sts.

RIGHT FRONT

As LEFT BACK LEG. Place a WY marker at left end of work. Knit to RC128 (154, 180). Place a WY marker at left end of work (FRONT opening). Knit to RC176 (198, 220). Place a WY marker at right end of work. Repeat from *** to ***. Using B knit to RC227 (255, 279).

Neck shaping

COL, at beg of next and every foll alt row cast off 7 (8, 9) sts x 1, 3 sts x 1, 2 sts x 2, then dec 1 st x 3. Knit to RC242 (270, 294) and



waste knit rem 35 (37, 40) sts.

LEFT FRONT

As RIGHT FRONT reversing shaping. ANKLE RIB AND FRONT FOOT As BACK FOOT.

NECKBAND

Join both shoulders by placing both sets of shoulder sts back onto Ns with right sides together. Using B T10 knit 1 row and cast off. Push 73 (77, 79) KH Ns to WP. With wrong side facing, pick up same number of sts evenly along neck edge and place onto Ns. Using B T8 knit 1 row. Trans to RIB, 000. Knit 2 rows. Dec 1 st at each end of next and every foll

alt row x 4. Knit to RC12. Inc 1 st at each end of next and every foll alt row x 4. Knit to RC19. T10/8 knit 1 row. Trans all sts to KH and latch cast off. Fold in half to inside and stitch down loosely.

SLEEVES

As DRESS SLEEVES, EXCEPT place Fairisle Band at Cuff edge and knit the CUFF in B.

MAKE-UP

Set in zipper. Join side and SLEEVE seams. Join inside leg and feet seams. Using B make 2 cords and thread through holes at ankles. Using A make 4 small Pom-poms and attach to ends of

cords.

HAT

Using C cast on over 137 (143, 151) KH Ns as RIB, 000. Using B knit to RC31. Trans all sts to KH. T8° knit 1 row. Using A knit 2 rows, 000. Working in Cable St Patt throughout (see NOTES), knit to RC38 (38, 42). Trans every alt st to adjacent N leaving empty Ns in NWP. T4 knit 4 rows. Thread yarn through loops of sts and remove from Ns.

MAKE-UP

Join seam. Pull up yarn at crown and fasten off. Make a large Pom-pom and attach to crown.

FASHION

FILE

BLEND AND TRENDS

The move towards traditional fabrics, be them rustic - Donegals, Saxonies, Cheviots, flannels, chenilles, cords, velvets, meltons, bouclés and corduroys, or lush - chenille and velvet and wonderful bi-tone constructions, will be echoed in knitwear throughout 94 through into 95. Many of the yarns and fabrics currently being manufactured are a mixture of man-made fibres, but perhaps, the most satisfying of all the blends and trends, is the undisputed return of wool. Wool fell out of favour towards the end of the 80's, mainly due to its high price. Now, better priced and sometimes mixed with other fibres, wool is once again appreciated for the wonderful colour it holds, its warmth, durability, and fabulous feel. At the luxury end of the market, there is also a welcome back for cashmere, alpaca, llama and mohair.

COLOUR BOX

The natural colours currently seen in the shops will continue throughout this year and so it would be a good idea to invest in brown or tan accessories. The main emphasis is on stone with dark ginger, cocoa browns and deep winter fruit tones from burnt orange through to warm reds, along with bronze, yellow green and blue-greys.

WHO 'S USING KNITWEAR

Top designers consider knitwear to be high on their list of priorities. If we can't afford their prices we can certainly draw inspiration from them. Christian Lacroix who was perhaps one of the first designers to include knitwear in his evening wear collection some years ago, is currently showing 70's style stripes in a variety of colours. Mr. Lagerfeld's collection also includes striped knitwear, mainly in pastel oranges and blues in very skimpy cropped tops. Sonia Rykiel is really in her element this season. Her collection includes big jacket cardigans, drawstring pants, jump-suit dresses and tube skirts in fine ribs, and, it must be commented on, has not given up black in the slightest! Nicole Farhi who always uses natural colours and fabrics to best advantage also includes knitwear. The emphasis being on striped vest dresses and blazers.

SUMMING UP

Taking an interest in fashion can be a rather expensive hobby. However, having a knitting machine can really help out. To update a tunic style sweater knit a matching long rib skirt. Either close the seams completely or leave one open to the knee, at the side, in the back, or in the front! Look around for lovely pure wool, it may seem expensive to buy but with a little care, it will always give you its best. Choose natural colours and above all enjoy your knitting!

MASTER CLASS

PPD

{ADVANCED LESSON}

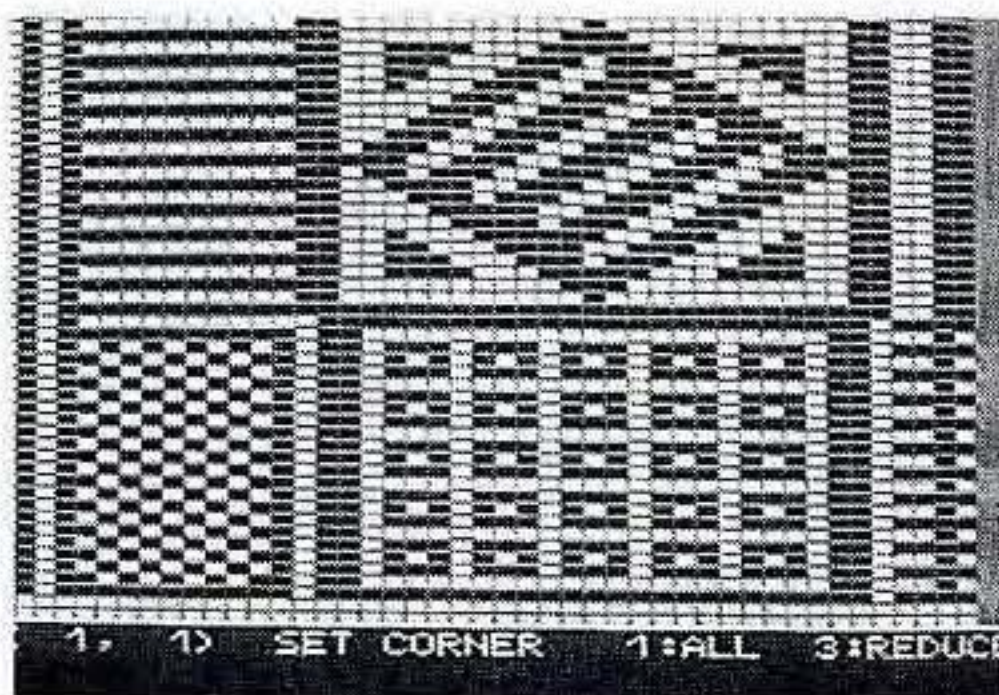
By using the PPD you can create one large stitch pattern which, once programmed into the machine, leaves you free to concentrate on the knitting side of things! By following our example here you can learn how to place a motif, be it G-Carr, fairisle or lace etc. on your garment piece. You may decide that where we have placed the motif is not right for you, so change it quickly and without fuss!

(See page 22)

STEP 1 - Input Design from Stitch Pattern Sheet which is 1/4 of whole Stitch Pattern design.

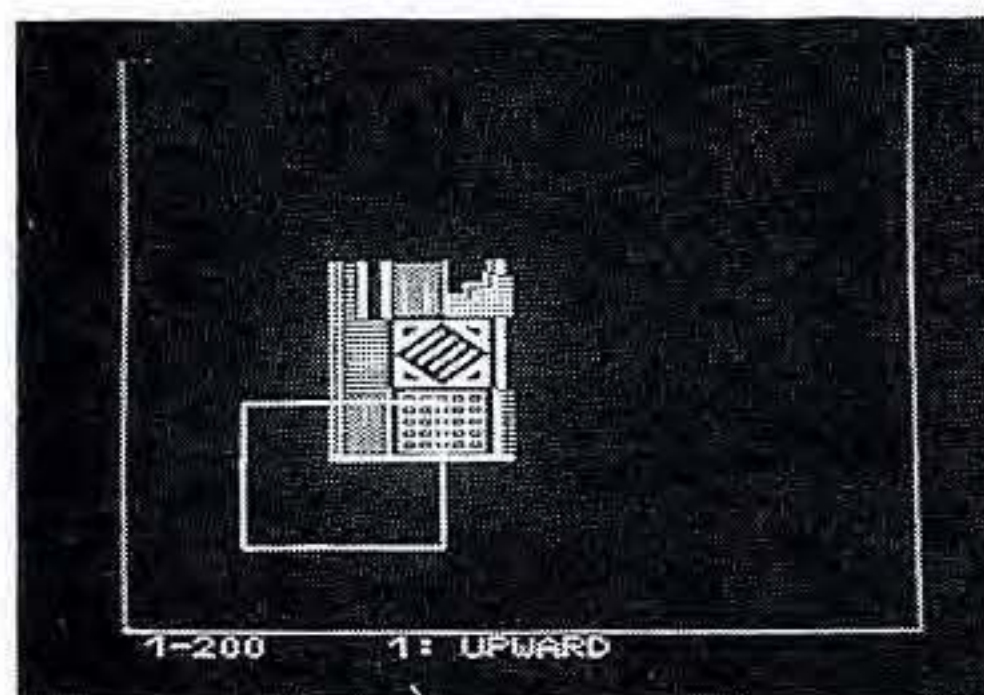
STEP 2 - Input a Grid the size of the sweater FRONT - 193 sts x 266 rows.

STEP 3 - **HELP** - Select 2 - **TRANSFER CURSOR** - **STEP** - Input St 52 Row 61 [193 sts - 90 sts = 103, halve this figure = 51 1/2 then round up to next whole number = 52 and we wish the motif to begin on row 61]. Screen now shows Grid with cursor flashing at 52,61.



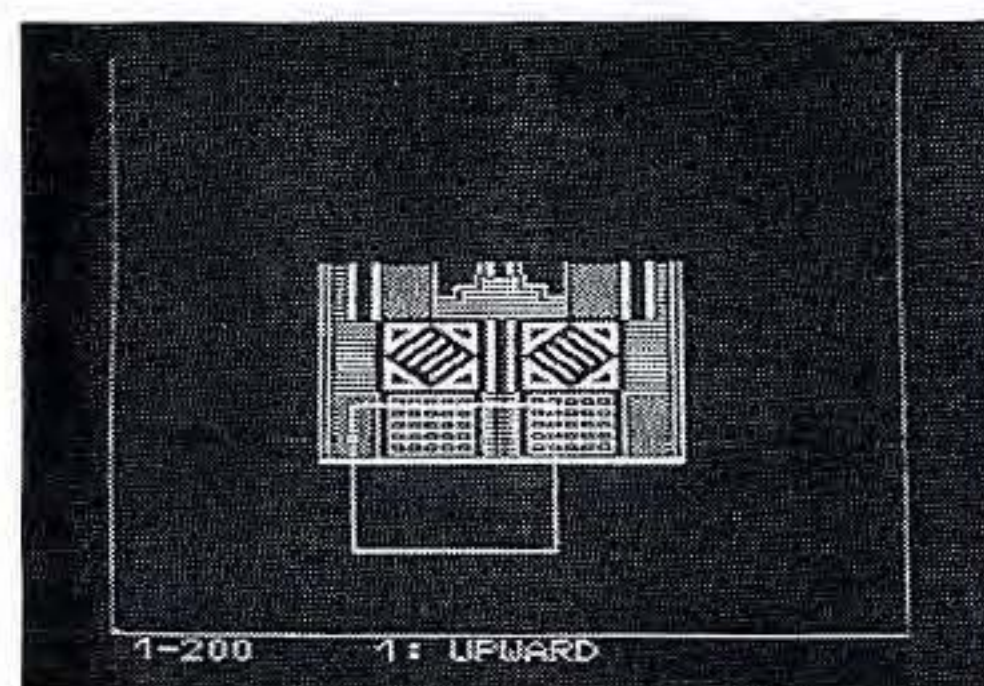
STEP 4 - **HELP** - Select 7 - **LOAD STORED PATTERN** - **STEP** - Select 1 - **BUILT-IN PATTERN** - **STEP** - Select 1 -

CREATED PATTERN - Input your Pattern Number of the design. **STEP** - Select 1 - **ALL**.



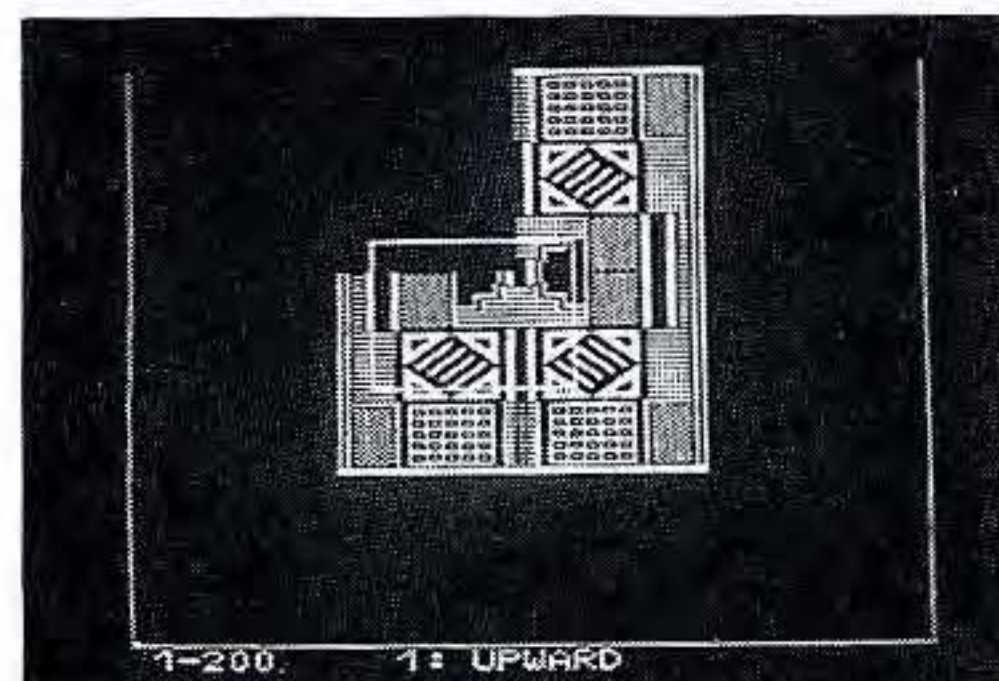
STEP 5. Screen now shows Grid with flashing cursor. **STEP** - Select 3 - **REDUCE** - **HELP** - Select 1: **YES**. **HELP** - Select 2 - **TRANSFER CURSOR** - Input St 96, Row 61 - **STEP** - Screen now shows cursor flashing 96,61.

STEP 6 - **HELP** - Select 8 - **VARIATIONS** - **STEP** - **REVERSE** - **ON**. **HELP** - **HELP** - Screen now shows cursor flashing st 96 row 61. **STEP** - Select 3 - **REDUCE** - you will now see the bottom half of the design. - **HELP** - Select 1: **YES**.

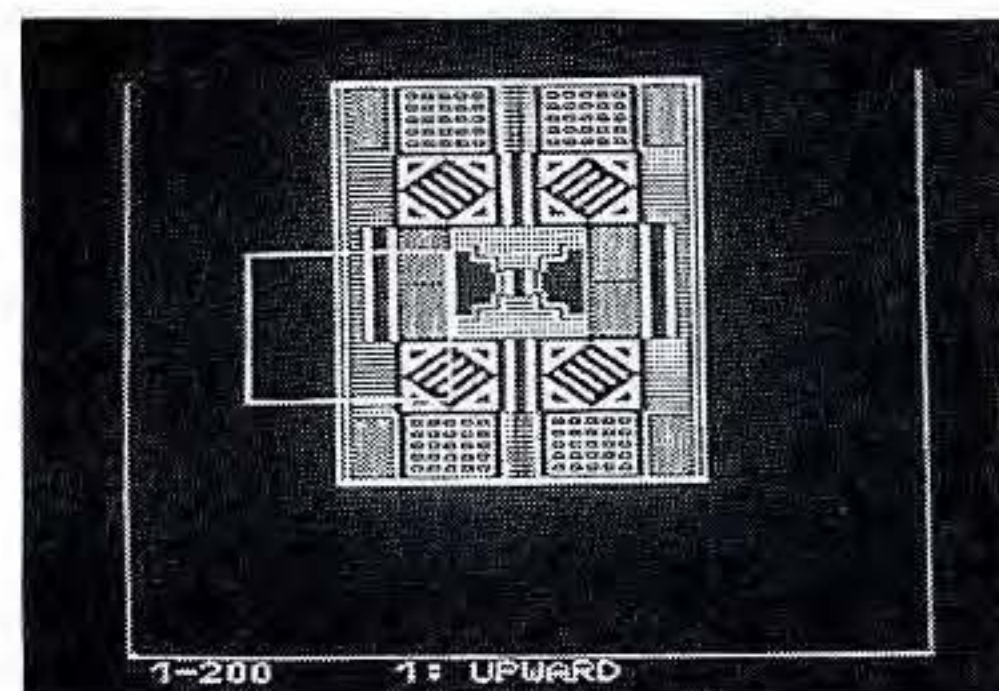


STEP 7 - **HELP** - Select 2 - **TRANSFER CURSOR** - **STEP** - Input st 96, Row 130 - **STEP** - Screen now shows cursor flashing 96,130.

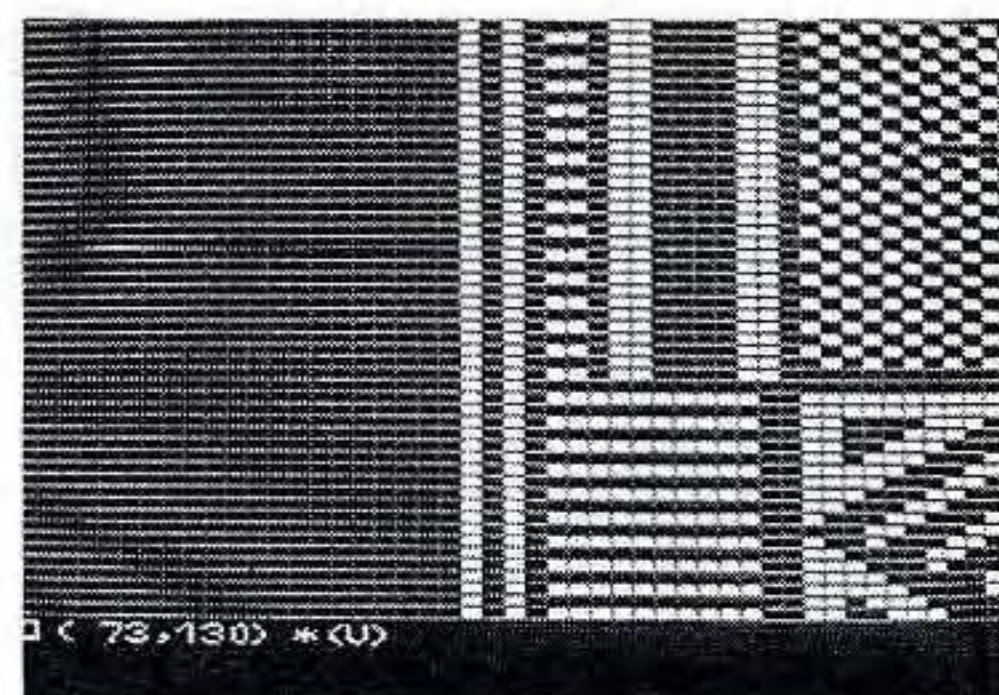
STEP 8 - **HELP** - Select 8 - **VARIATIONS** - **REVERSE ON**, **UPSIDE DOWN ON**. **HELP** - **HELP** - **STEP** - Select 3 - **REDUCE**. Screen now shows bottom half of design plus top right half of design. **HELP** - Select 1: **YES**.



STEP 9 - **HELP** - Select 2 - **TRANSFER CURSOR** - **STEP** - Input St 52, Row 130 - **STEP** - Screen now shows cursor flashing 52,130.



STEP 10 - **HELP** - Select 8 - **VARIATIONS** - **REVERSE OFF**, **UPSIDE DOWN ON**. **HELP** - **HELP** - **STEP** - Select 3 - **REDUCE**. Screen now shows completed design. **HELP** - Select 1: **YES**.



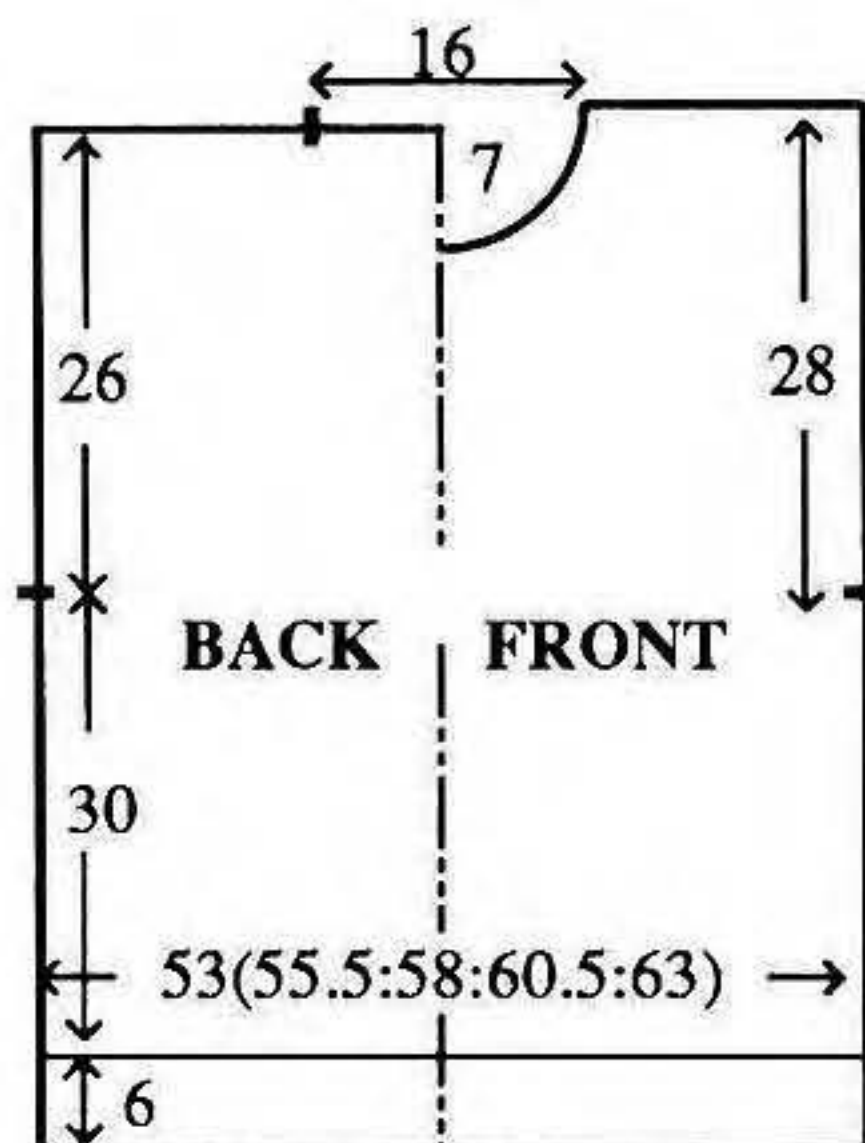
STEP 11 - Now you can complete the design by drawing in alternate sts on the centre row. Row 130. **HELP** - Select 1 - **END CREATION** - **STEP**.

DON'T MISS NEXT ISSUE
- HOW TO USE THE PPD
TO ENHANCE
NECKLINES!

LADY'S SWEATER WITH GARTER CARRIAGE MOTIF

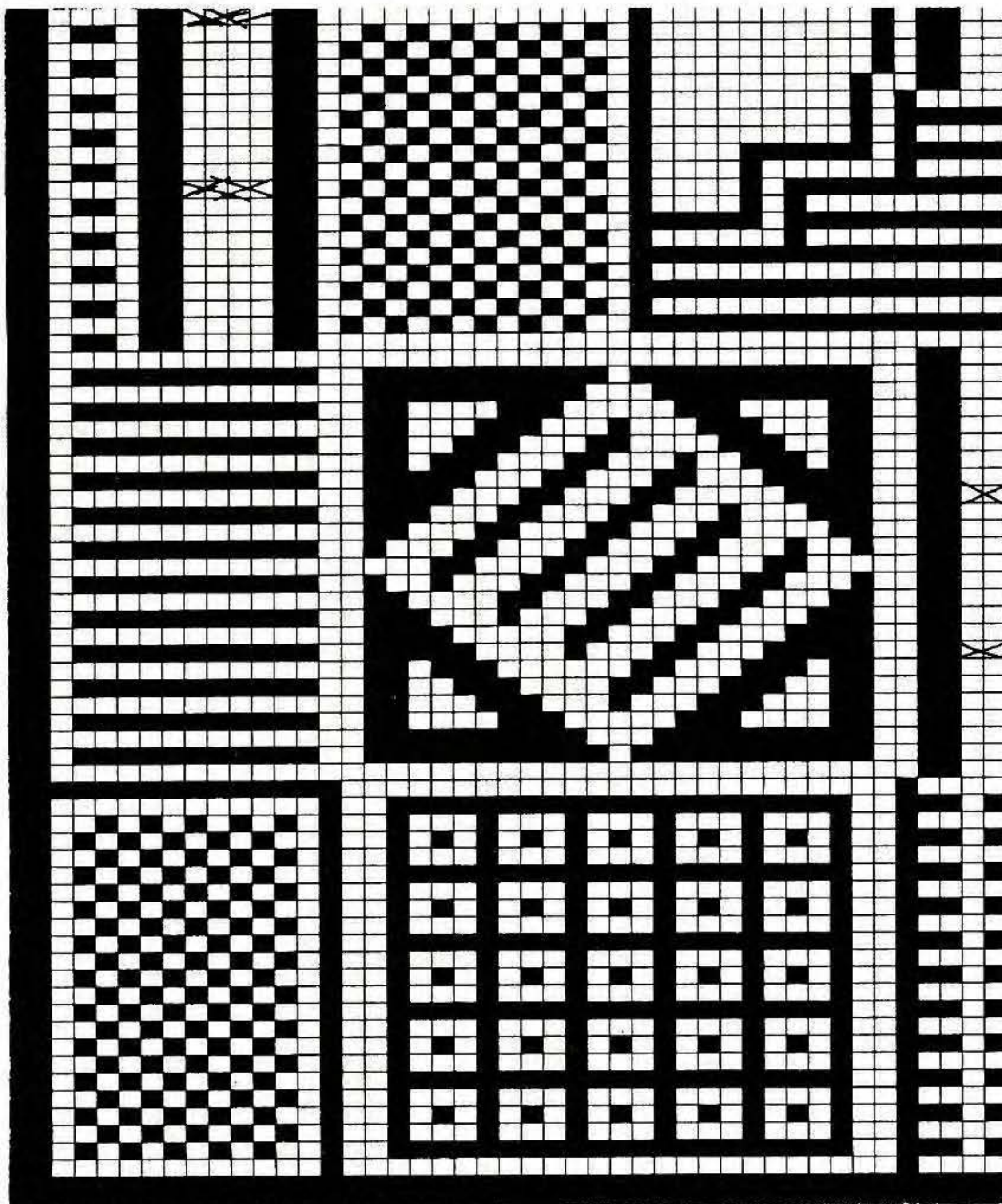
MACHINES: C or D with G-Carr (PPD owners see Master Class) **MATERIALS:** STANDARD 4-PLY WOOL; we used KING COLE Superspun Superwash 4-Ply; A - 520 (540, 560, 580, 600)g (Copper 109). (100% wool 360m/100g). **MEASUREMENTS:** To fit bust 86 (91, 96, 101, 106)cm. **TENSION:** Garter St Patt - 40 sts = 13.7cm and 60 rows 13cm (approx T6), St st (using G-Carr) - 40 sts = 13cm and 60 rows =

13.7cm (approx T6). **RIB:** 1 x 1 T2. **BACK** and **SLEEVES** are knitted in Garter St. Patt throughout. **SLEEVES** are knitted in Garter St Patt throughout. **FRONT** is knitted in St st with Garter St Motif and Cables. **FRONT** - [KH940, KH965 machines] - Program a black st and knit 60 rows in st st, then activate REVERSE facility and program 2 motifs in centre of Needlebed. *Knit 69 rows, activate UPSIDE DOWN facility and knit 70 rows. Cont in St st to end*. [KH910, KH950, KH950i machines] -program a black st and knit 60 rows in St st, then set for Pattern A + B and program Patt A



over Ns 045 - 045 - 01, VARIATION switch No 2 to upper position and program Patt B over Ns G1 - G1 - G45. Repeat from * to *.

Stitch Patt 1



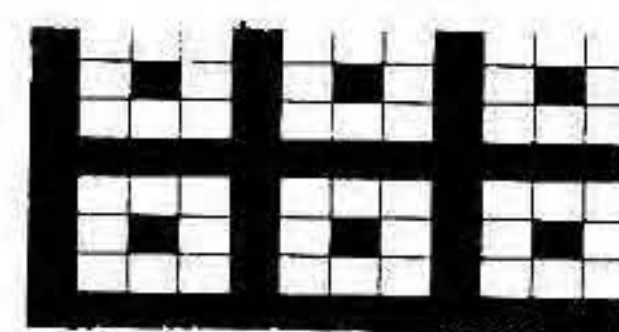
BACK

Using A COBH over 153 (161, 169, 175, 183) KH Ns, 000. T2 working in RIB, knit to RC31, 000, COR. Working in Garter St Patt throughout (see NOTES), knit to RC138. Place a WY marker at each end of work. Knit to RC258. Waste knit centre 47 sts. Waste knit rem 53 (57, 61, 64, 68) sts at each end of work for shoulders.

FRONT

Using A COBH over 163 (171, 179, 185, 193) KH Ns, 000. T2 working in RIB, knit to RC31, 000. COR working in St st knit to RC0. Work G-Carr Motif - Cables are worked as shown on Stitch Pattern, 2 over 2, on Rows 93, 102, 120, 130,

Stitch Patt 2



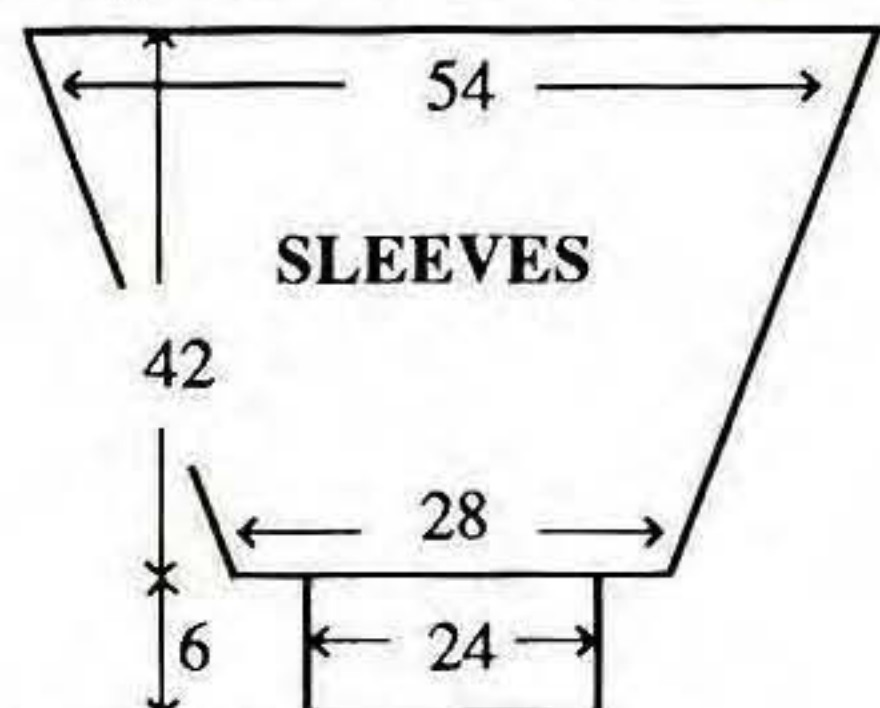
140, 157 and 166, and AT THE SAME TIME, at RC134. Place a WY marker at each end of work. Knit to RC228.

Front neck shaping

Waste knit centre 17 sts. Waste knit sts at left. COR. Knit 1 row. At beg of next and every foll alt row cast off 4 sts x 1, 3 sts x 1, 2 sts x 3 then dec 1 st x 3. Knit to RC226 and waste knit rem 57 (61, 65, 68, 72) sts. Return sts at left to Ns and knit to match right side reversing shaping.

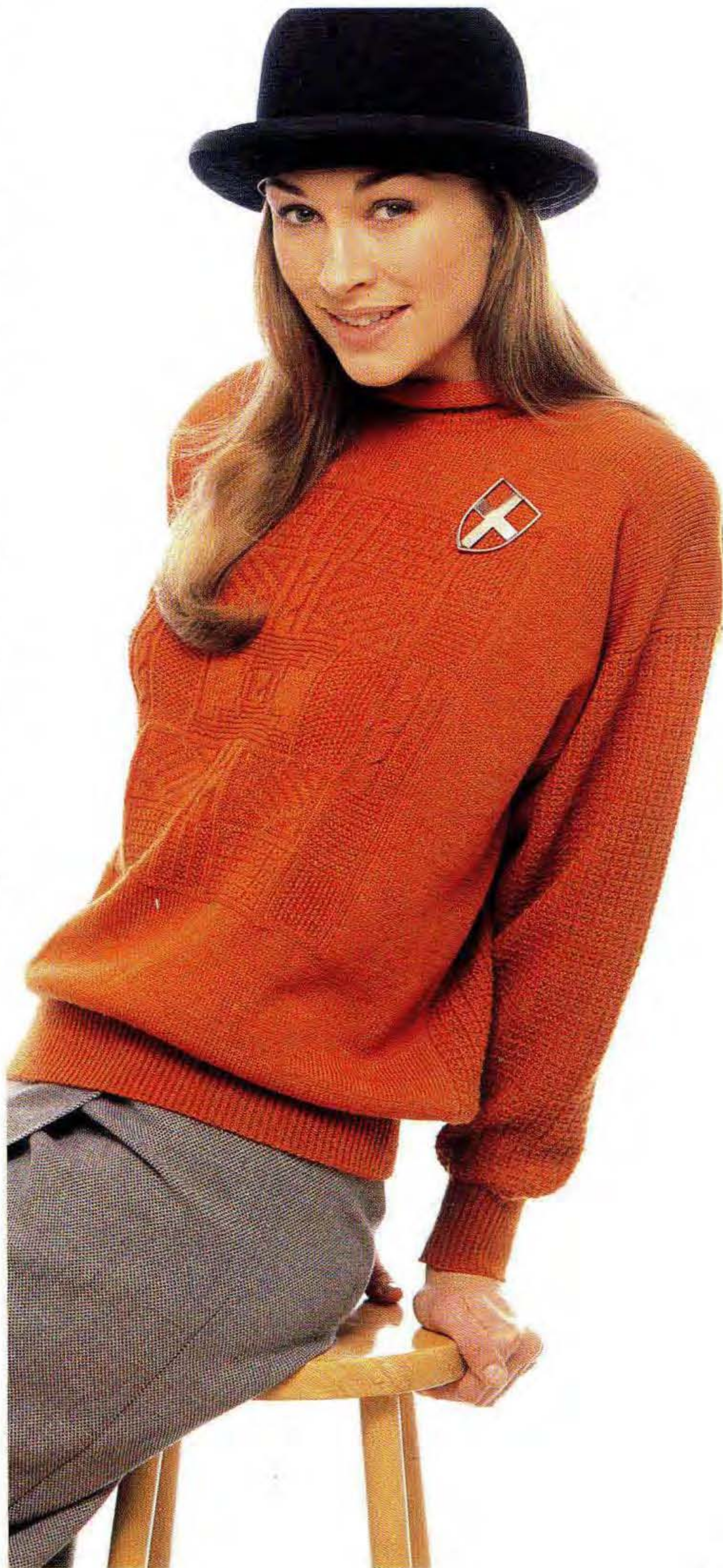
NECKBAND

Join one shoulder by placing one set of shoulder sts back onto Ns with right sides together (dec 4 sts evenly along FRONT shoulder). Using A T10 knit 1 row and cast off. Using A COBH over 133 KH Ns, 000. Using K-Carr. T6 knit to RC24. Working in RIB knit 14 rows. Using K-Carr T6 knit 1 row. With right side facing, pick up same number of sts evenly along neck edge and place onto Ns. Knit 3 rows and waste knit. Join second shoulder as first. Join NECKBAND seam. Backstitch to garment through last row knitted in A.



SLEEVES

Push 156 KH Ns into WP. With wrong side facing, pick up same number of sts evenly along armhole edge between WY markers and place onto Ns, COL. Using K-Carr, T6 knit 1 row, 000. Working in Garter St Patt throughout (see NOTES) knit to RC10. Dec 1 st at each end of



next and an every foll 5th row x 37. Knit to RC194 and waste knit rem 82 sts. **CUFFS:** Push 71 KH Ns into WP. With wrong side facing, place sts from cuff edge onto Ns distributing them evenly along the row. Using K-Carr T6 knit 1 row, 000. Working in RIB, knit to RC31. T10 knit 1 row and latch cast off.

MAKE-UP

Block and press. Join side and SLEEVE seams.

ONE SIZE FITS ALL LADY'S FAIRISLE LUXURY EVENING JACKET

MACHINES: C or D with KR.

MATERIALS: STANDARD 4-PLY WOOL; we used YEOMAN YARNS Sport; A - 750g (Black) (100% wool 400m/100g), STANDARD 4-PLY CHENILLE; we used YEOMAN YARNS Chenille; B - 300g (Plum), C - 150g (Red) and D - 250g (Nut) (100% Acrylic 360m/100g). **MEASUREMENTS:** One size to fit bust up to 106cm. **TENSION:** Fairisle St Patt - 40 sts = 14.6cm and 60 rows = 13.3cm (approx T8). **RIB:** 2 x 1 (see ABBREVIATIONS) T4/4.

NOTES: Fairisle St Patt - with A in FA throughout, knit 26 rows B, 14 rows C and 22 rows D in FB.

BACK

Using A cast on over 158 KH Ns as RIB, 000. Knit to RC17. Trans all sts to KH. Inc 1 st at each end of work. Set for first row of Fairisle St Patt and knit 1 row to select Ns, 000. Working in Fairisle (see NOTES) throughout, knit to RC200. Cast on 11 sts at beg of next 2 rows, knit to RC496. Place a WY marker at each end of work. Knit to RC614.

Waste knit 69 sts at each end of work for shoulders. Cast off rem 44 sts.

RIGHT FRONT

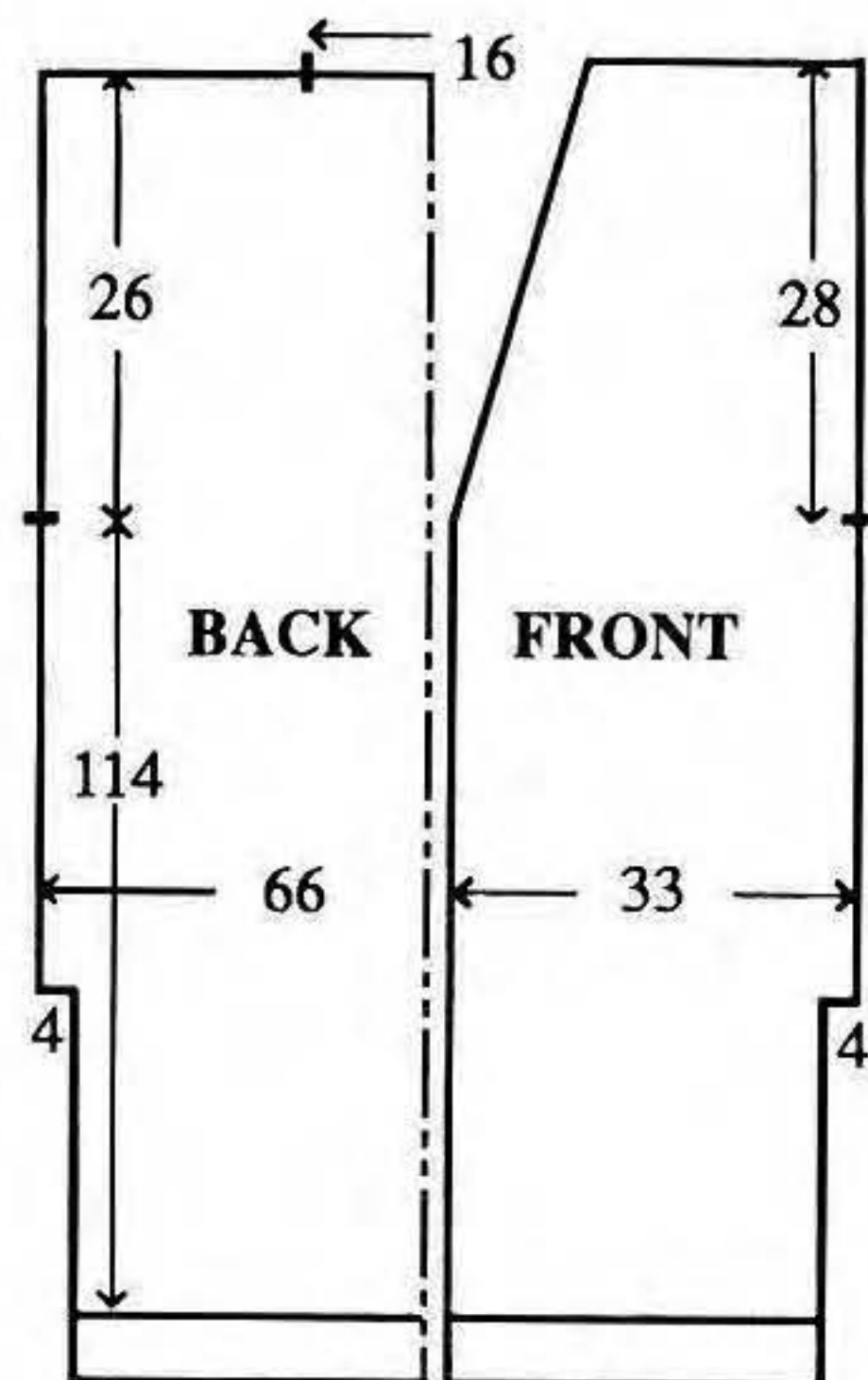
Using A cast on over 80 KH Ns as RIB, 000. Knit to RC17. Trans all sts to KH. Inc 1 st. Set for first row of Fairisle St Patt and knit 1 row to select Ns, 000. Working in Fairisle (see NOTES) throughout, knit to RC200. Cast on 11 sts at beg of next row. Knit to RC496. Place a WY marker at right end of work.

Neck shaping

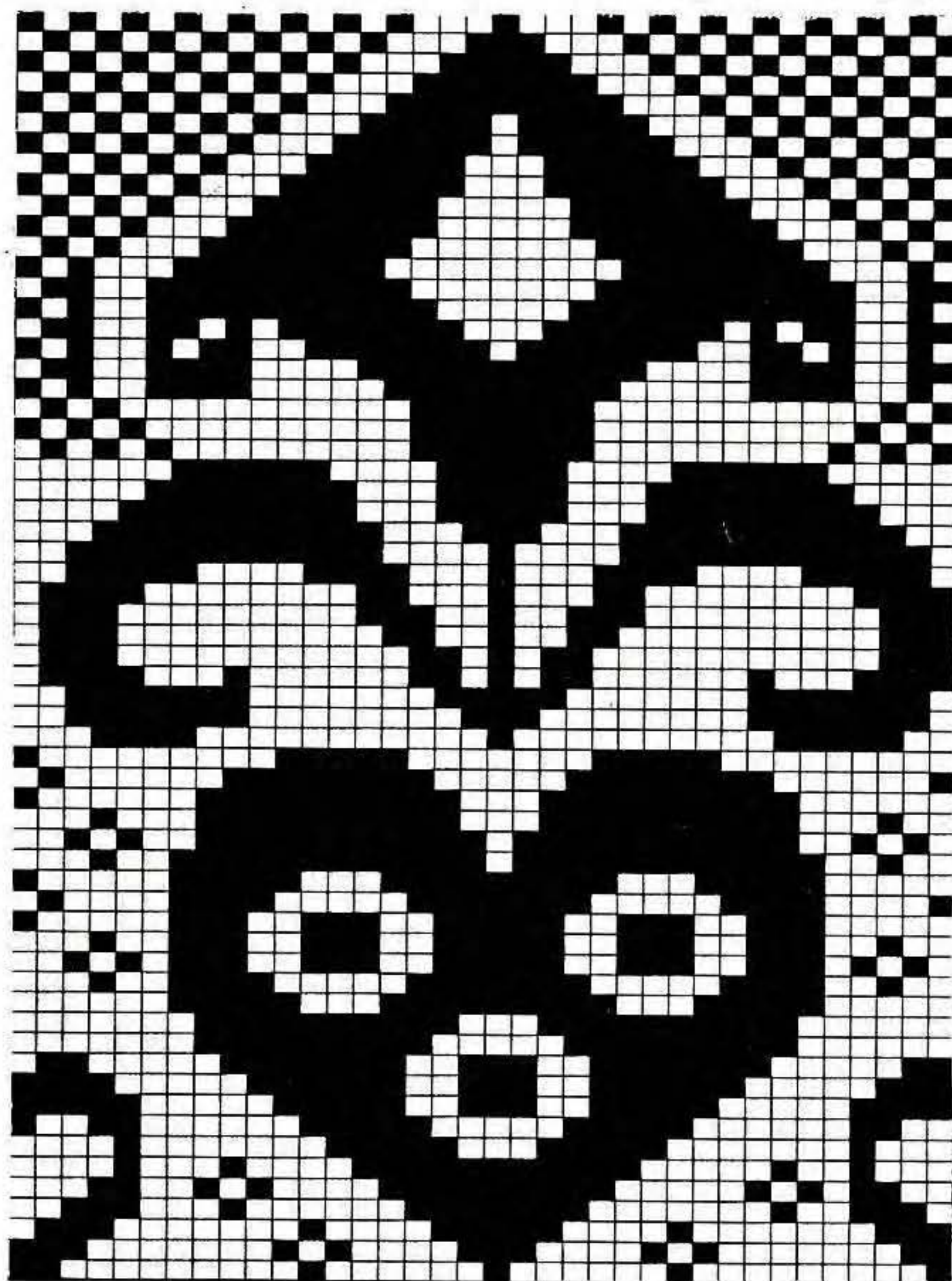
Dec 1 st at left on next and every foll 5th row x 23. Knit to RC620 and waste knit rem 69 sts.

SLEEVES

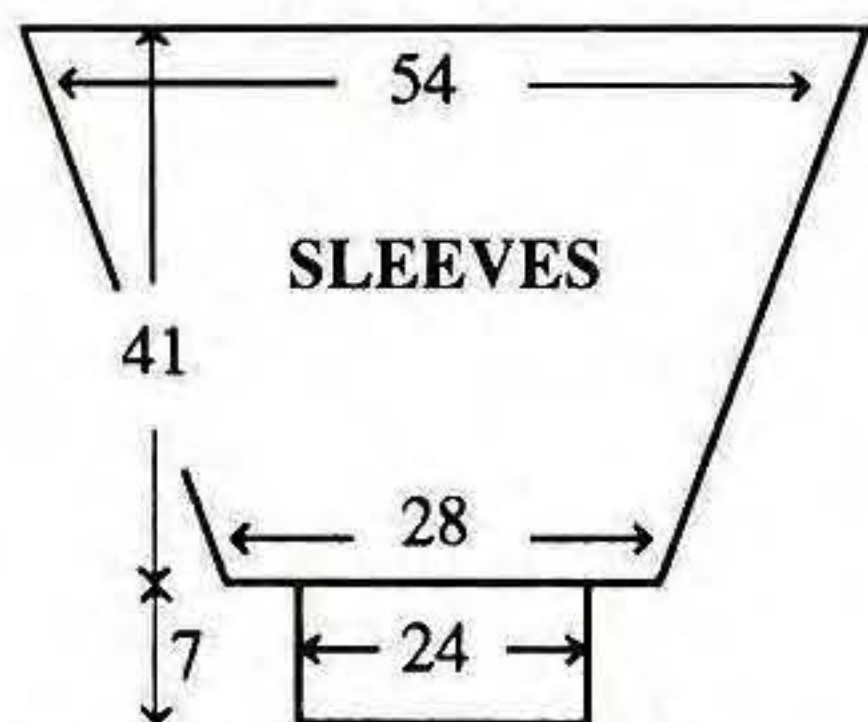
Join both shoulders by placing



both sets of shoulder sts back onto Ns with right sides together. Using A T10 knit 1 row and cast off. Push 147 KH Ns into WP. With wrong side facing, pick up



same number of sts evenly along armhole edge between WY markers and place onto Ns, COL. Set for first row of Fairisle St Patt - UPSIDE DOWN - and using A T8 knit 1 row to select Ns, 000. Working in Fairisle throughout (see NOTES), knit to RC10. Dec 1 st at each end of next and every foll 5th row x 35. Knit to RC186 and waste knit rem 77 sts. **CUFFS:** Push 65 KH Ns into WP. With wrong side facing, place sts from cuff edge onto Ns distributing them evenly along the row. Using A T8 knit 1 row. Trans to RIB, making sts as necessary, 000. T2/2 knit to RC35. T10/8 knit 1 row. Trans all sts to KH and latch cast off each st individually.



RIB BANDS FOR SIDE

SLITS (4)

Using A cast on over 23 KH Ns as RIB, 000. T3/3 knit to RC219. T10/8 knit 1 row. Trans all sts to KH and latch cast off each st individually. Stitch to BACK/FRONTS side edges.

FRONT OPENING BAND

As RIB BANDS EXCEPT knit 1346 rows. Attach to FRONT opening edges and BACK neck.

MAKE-UP

Block and press on the reverse side of the garment. Join side and SLEEVE seams.



BEGINNERS STEP-BY-STEP LESSON 1

AN INTRODUCTION TO BROTHER KNITTING PATTERNS

If you are new to machine knitting or Brother knitting machines you might be baffled by our garment instructions. In order to ensure that you are comfortable with them we breakdown and discuss every aspect of them.

The dress illustrated is made in exactly the same way as a sweater. In fact all the techniques used here are exactly the same for most classic knitwear. This issue we discuss the first paragraph of the garment instructions if you feel capable of completing the dress, do so. If not join us next issue for the detailed explanation.

The layout is designed so that you can see the instructions for the part of the garment you are knitting at a glance. The garment piece heading is in bold capital letters, the heading for the different operations you must complete when making that garment piece are also in bold, in upper and lower case. Abbreviations are used throughout the garment instructions so you will need to familiarise yourself with them. Sometimes when following a knitting pattern things don't seem to make sense, but when you are actually carrying out the instruction it all falls into place. So even if you don't completely understand the meaning of the instruction, try it.

MACHINES: A, C or D with KR.

The first paragraph gives information about what you need to make the garment. Each of the letters above represents a knitting machine which is capable of producing a pattern repeat with a particular number of stitches. Look at the Abbreviations and

decide if you have the correct machine with the correct pattern repeat. When KR is unqualified, ie there is no model number given, any standard gauge Brother ribber may be used. The garment was knitted on a 4.5mm gauge which is the standard for domestic knitting machines.

MATERIALS: STANDARD 4-PLY WOOL - we used KING COLE Superspun, Superwash 4-ply; A - 790 (815, 840, 865, 890)g (Wine 32) (100% wool 360m/100g).

One may be forgiven for thinking that the information "4-ply" is enough to match up yarns, but it really is not. A 4-ply wool has a completely different handle, weight, and metreage to a mixture of wool and nylon or an acrylic yarn. What is described as a wool 4-ply, can range from 300 to 500 metres to the 100g. Clearly the metreage for a 4-ply wool is going to be completely different to a 4-ply acrylic. It is recommended that beginners use wool. It may be more expensive than acrylics but it has far more resilience, and therefore, if necessary it may be unpicked and knitted again and again and will still be presentable at the end. And even if you press wool and have to unpick, it will still bounce back to a degree. This is not at all true of acrylics. The most accurate description of any yarn is the information we put in the last set of brackets. This is the composition of the yarn and the number of metres one can expect to get from 100g. You will also see that where we know the shade number we quote it for you. You must remember that when you need more than 1 cone or ball of yarn you must match up the dye

lots. You will find a number somewhere on the cone or on the label which tells you which dye lot the yarn has come from.

MEASUREMENTS: To fit bust 86 (91, 96, 101, 106)cm.

This measurement refers to actual body measurement in cms. The value before the bracket refers to the first size, the value after the bracket refers to the second size, and so on. Where there is only one value given in the instructions, this refers to all sizes. The measurements on the diagram are what size the knitted pieces will measure. The tolerance of the garment - how loose or tightly the garment fits - is the difference between the body measurements and the garment measurements. If you are between sizes and are not sure which to knit, calculate the tolerance and decide if you need less or more tolerance and knit the size up or down accordingly.

TENSION: St st - 40 sts = 13.3cm and 60 rows = 18.8cm (approx T6).

The only way the garment will be the correct size is when all the calculations along the way are exactly right. The tension information is the tension for the yarn quoted. (see MATERIALS). The tension square should be knitted over 100 sts x 100 rows to allow for the edge of the swatch curling up or stretching. You will be measuring over 40 sts and 60 rows for a standard gauge machine. Each machine is slightly different and we all handle the machine in a slightly different way so you can expect to make more than one tension swatch. For your first attempt set the tension dial to 6 as suggested in the

garment instructions and remember - it is only a suggestion. Leave your tension swatch to rest for a while before you measure it (overnight would be perfect). Press the tension swatch if you intend to press the garment. If your swatch does not match our's you will have to knit another one. Loosen (high numbers) or tighten (low numbers) the tension setting as required. The spots on the tension dial between the numbers are used for fine adjustment.

RIB: 2 x 1 (see Abbreviations), T4/4.

Unless the rib that you want on your garment is a full needle rib, which means every needle is in Working Position (WP) the rib will be made up from a pattern formed by little groups of needles being put into a certain formation, some on the main bed knitting machine (KH) and some on the ribbing attachment (KR). In this instance the group, or needle arrangement, consists of 2 Ns in WP and 1 in NWP on the main bed (KH) and 2 Ns in WP and 1 in NWP on the KR. In this case the KR is set to Half Pitch - see the layout in the Abbreviations. The group of Ns which form the pattern could be as small as 1 st in WP and 1 st in NWP on the KH and 1 st in WP and 1 st in NWP

Knit rows in contrast colour to mark the beginning and end of 60 rows. Use waste yarn to mark the 21st needle each side of '0'.

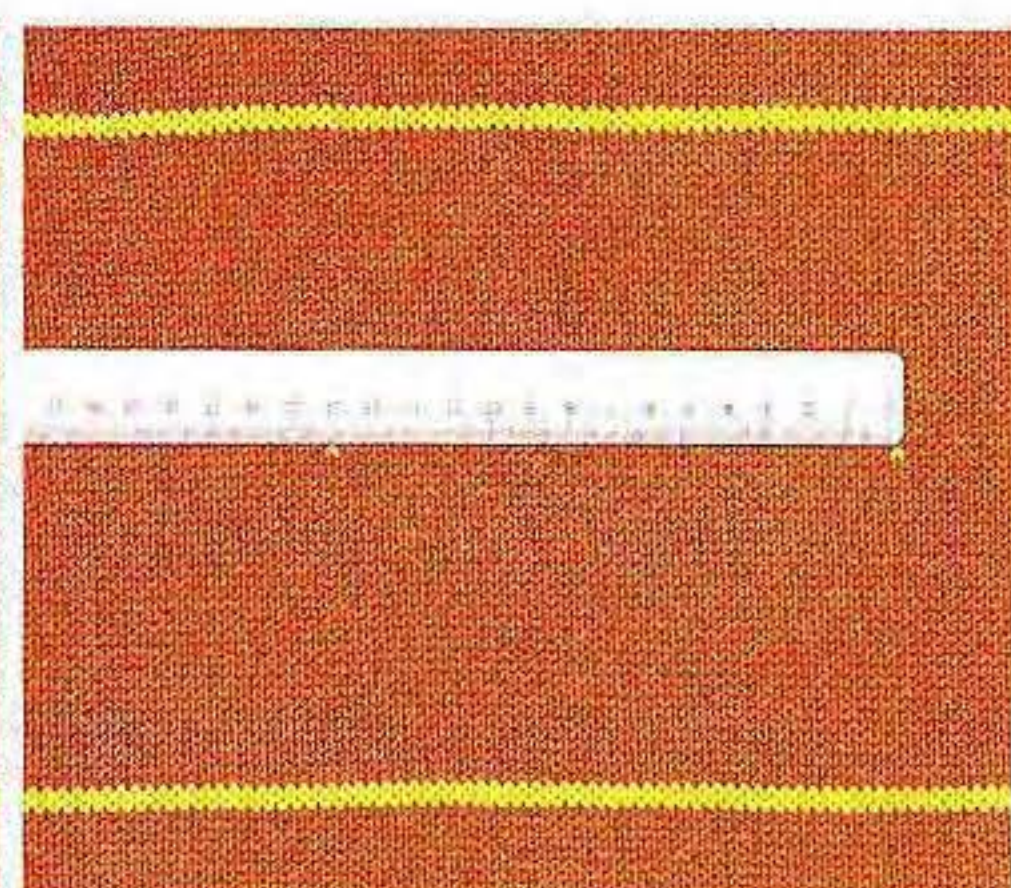
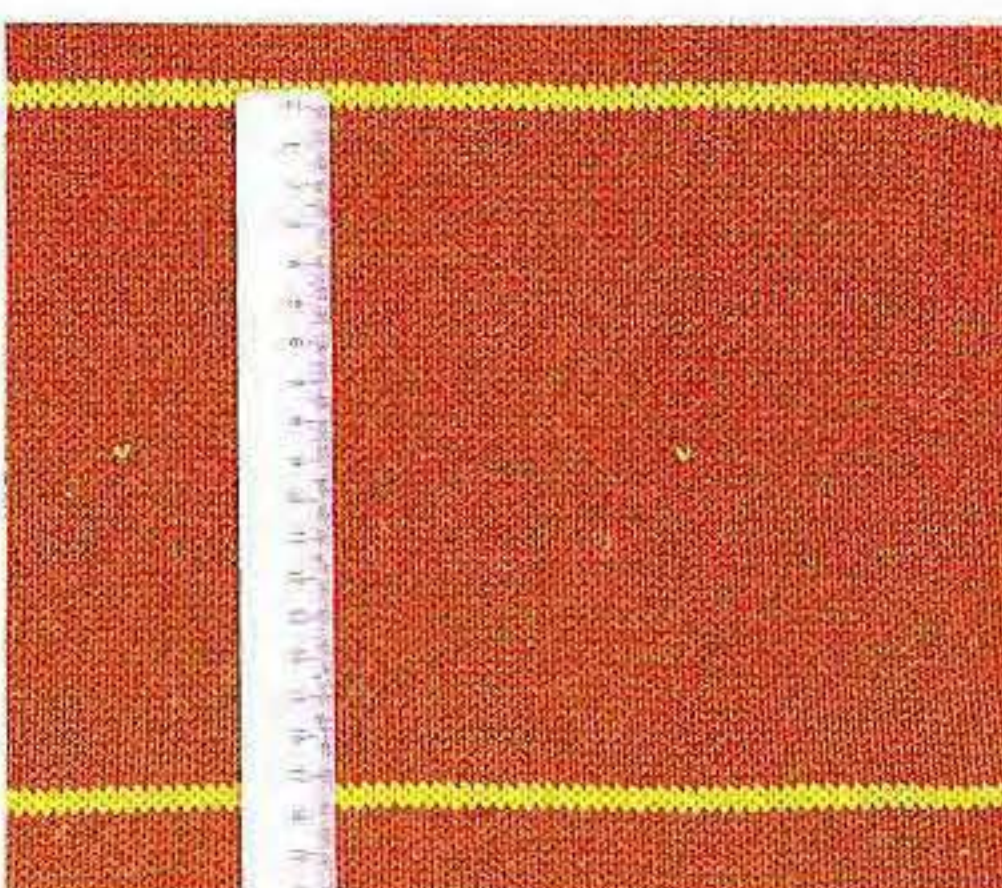
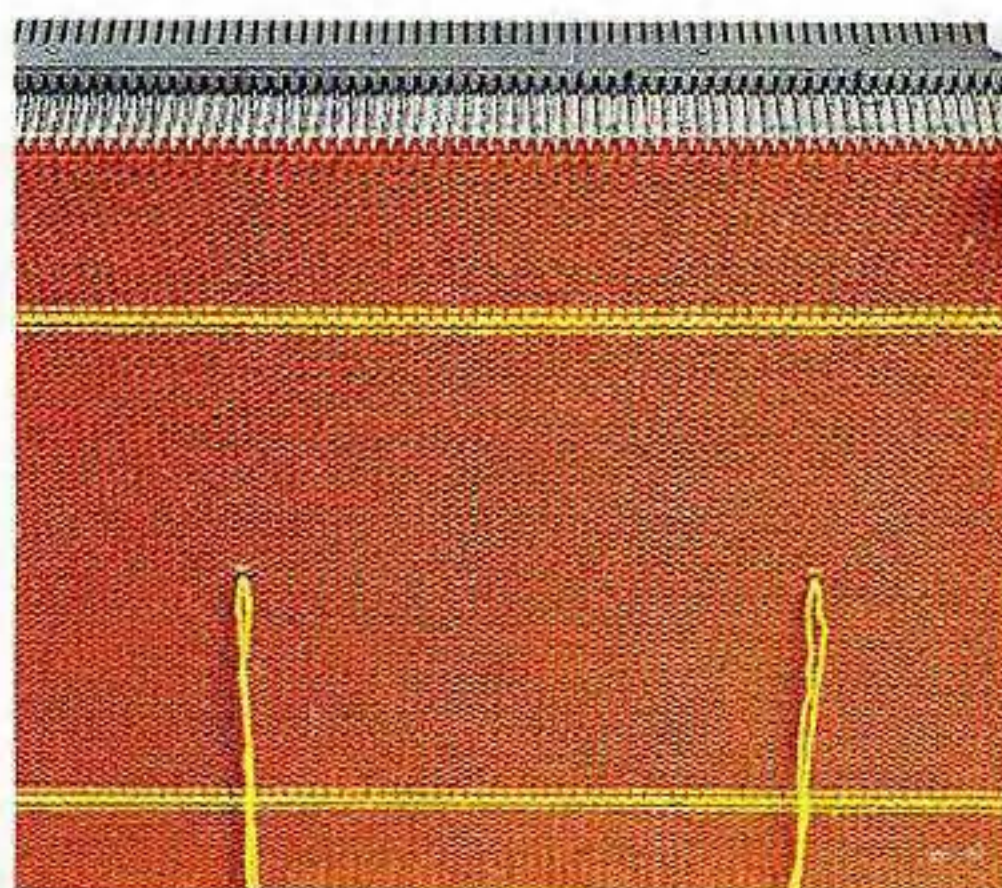


on the KR. Or it could be a number of Ns in almost any combination. The first figure after

“T” (Tension Dial Setting) is for the KH and the second is for the KR.

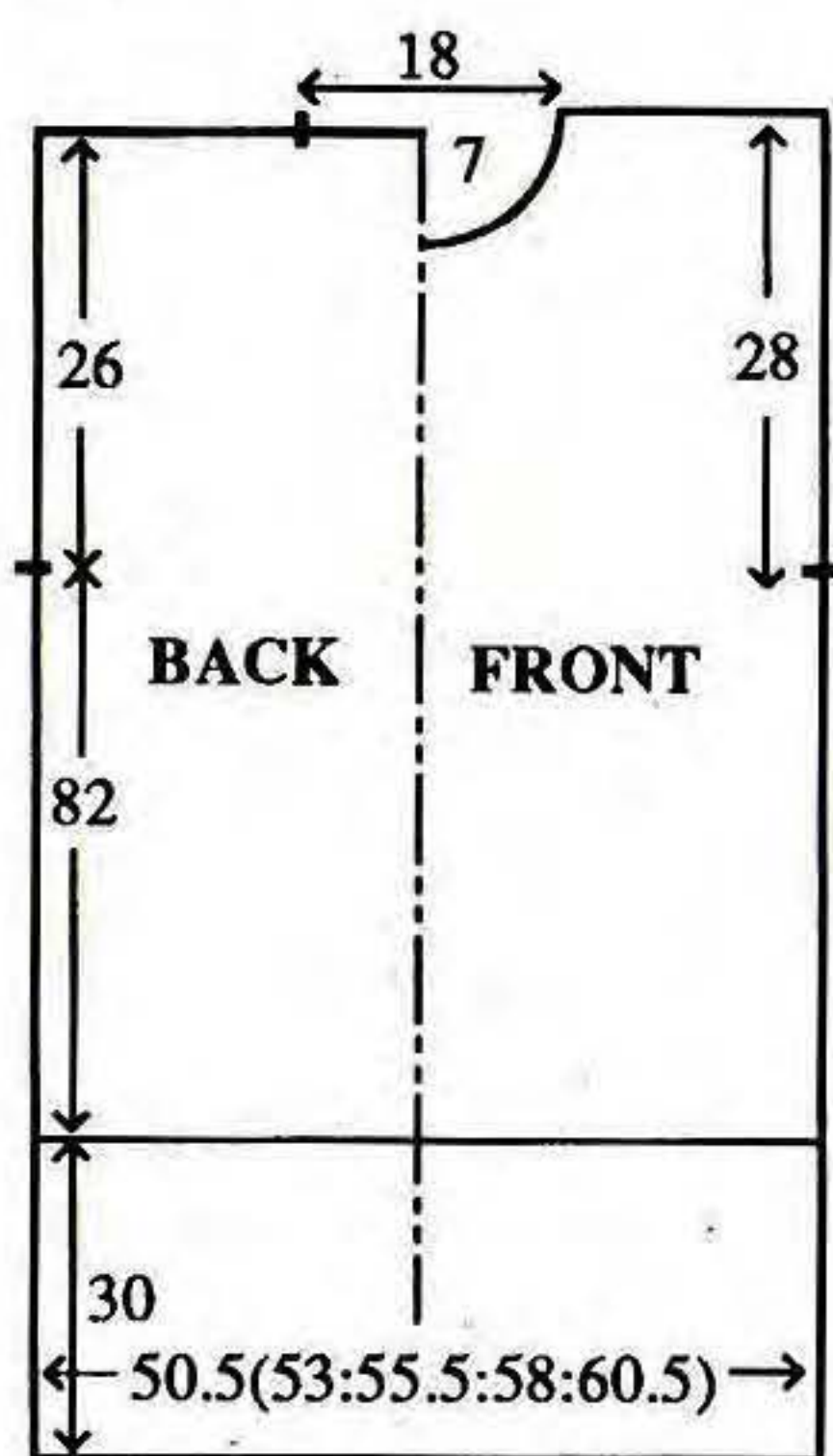
Measure between the rows of contrast colour.

Measure between the stitches marked with waste yarn.



SIMPLY STOCKING STITCH

MACHINES: A, C or D with KR. **MATERIALS:** STANDARD 4-PLY WOOL - we used KING COLE Superspun Superwash 4-Ply; A - 790 (815, 840, 865, 890)g (Wine 32) (100% wool 360m/100g). **MEASUREMENTS:** To fit bust 86 (91, 96, 101, 106)cm. **TENSION:** St st - 40 sts = 13.3cm and 60 rows = 13.8cm (approx T6). **RIB:** 2 x 1 (see ABBREVIATIONS) T4/4. 1 x 1 T1/1.



BACK

Using A cast on over 152 (158, 167, 173, 182) KH Ns as RIB, 000. Knit to RC130. Trans all sts to KH and set for st st, 000. Inc 0 (0, 1, 1, 0) sts. T6 knit to RC350 or to required length. Place a WY marker at each end of work. Knit to RC462. Waste knit 49 (52, 57, 60, 64) sts at at each end of work for shoulders. Waste knit rem 54 sts.

FRONT

As BACK to RC440.

Neck shaping

Waste knit centre 18 sts. Waste knit sts at left, COR. Knit 1 row.

At beg of next and every foll alt row cast off 4 sts x 1, 3 sts x 1, 2 sts x 3, then dec 1 st x 5. Knit to RC470 and waste knit rem 49 (52, 57, 60, 64) sts. Return sts at left to Ns and knit to match right side reversing shaping.

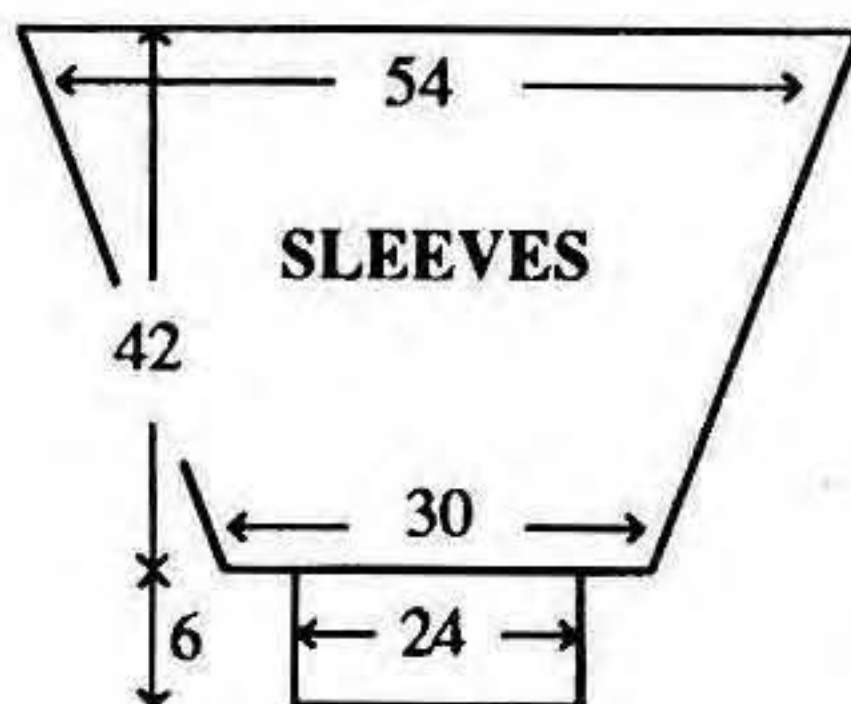
NECKBAND

Join one shoulder by placing one set of shoulder sts onto Ns with right sides together. Using A T10 knit 1 row and cast off.

Using A cast on over 135 KH Ns as 1 x 1 RIB, 000. T1/1 knit to RC26. Trans all sts to KH. T6 knit 1 row. With wrong side of garment facing pick up same number of sts evenly along neck edge and place onto Ns. T10 knit 1 row and latch cast off. Join second shoulder as first. Join NECKBAND seam, fold in half to inside and stitch down loosely.

SLEEVES

Push 162 KH Ns into WP. With wrong side facing, pick up same number of sts evenly along armhole edge between WY markers and place onto Ns. Using A T6 knit to RC3. Dec 1 st at each end of next and every foll 5th row x 36. Knit to RC180 and waste knit rem 90 sts. CVFFS: Push 71 KH Ns into WP. With wrong side facing, place return sts from cuff edge onto Ns distributing them evenly along the row. Trans to RIB, 000. T1/1 knit to RC30. T10/8 knit 1 row. Trans all sts to KH and latch cast off.



MAKE-UP

Block and press. Join side and SLEEVE seams.

LITTLE GIRLS SUIT

MACHINES: A, C or D with KR. **MATERIALS:** STANDARD 4-PLY WOOL; we used KING COLE Anti-Tickle Babywool 4-ply; SWEATER - a - 170 (185, 200, 215, 230)g (Primrose 3) and small amount in each of B (Grape 163), C - (Linden 165) and D (Sky 5). SKIRT - A - 100 (110, 120, 130, 140)g (100% wool 360m/100g). Length of elastic to fit waist + 2.5cm. **MEASUREMENTS:** To fit height 104 (110, 116, 122, 128)cm. Approx chest 57 (59, 61, 63, 66)cm. **TENSION:** St st - 40 sts = 13.3cm and 60 rows = 13.8cm (approx T6). **RIB:** 1 x 1 T1/1.

BACK

Using A cast on over 99 (103, 105, 109, 111) KH Ns as RIB, 000. Knit to RC26. Trans all sts to KH, 000. T6 working in st st throughout, knit to RC82 (90, 100, 108, 116). Place a WY marker at each end of work. Knit to RC146 (160, 172, 186, 198). Waste knit centre 33 sts. Waste knit rem 33 (35, 36, 38, 39) sts at each end of work for shoulders.

FRONT

As BACK to RC112 (124, 138, 150, 162) and, AT THE SAME TIME, at RC64 (76, 88, 98, 110) - working from Chart, trans sts to adjacent Ns leaving empty Ns in WP, and at RC67 (76, 88, 98, 110), set for first row of Single Motif and knit 1 row to select Ns. Working lace st and single Motif simultaneously change colours as illustrated.

Divide for Neck Opening

Dec 1 st in Centre. Waste knit sts at left. Knit to RC135 (147, 161, 173, 185).

Neck shaping

At beg of next and every foll alt



row cast off 4 sts x 1, 3 sts x 1, 2 sts x 3, then dec 1 st x 3. Knit to RC156 (168, 182, 194, 206) and waste knit rem 33 (35, 36, 38, 39) sts. Return sts at left to Ns and knit to match right side reversing shaping.

Neck opening trim

Push 34 KH Ns into WP. With right side facing, pick up 17 sts evenly along each side of Neck opening and place onto Ns, 000. T5 knit 6 rows and waste knit. Fold

to outside and backstitch to garment through last row knitted in A.

COLLAR

Join both shoulders by placing both sets of shoulder sts back onto Ns with right sides together. T10 knit 1 row and cast off. On KH push 77 Ns into WP. On KR push 76 Ns into WP. Pitch Lever to H. COR using A T7/7 knit 1 row. Hang on comb and weights, 000.

Starting with T7/7 and decT by °°° every 2 rows, knit to RC10. T2/2 knit 10 rows. Trans to 1 x 1 Rib. T4/4 knit 1 row. Change to circular knitting, 000. Knit to RC10. Knit 1 row Rib. Trans all sts to KH. T6 knit 1 row. With wrong side facing, starting at left side of Neck opening, *pick up 22 sts evenly along Left Front Neck edge and place onto Ns. Using a separate length of A, backstitch cast off these sts and remove from

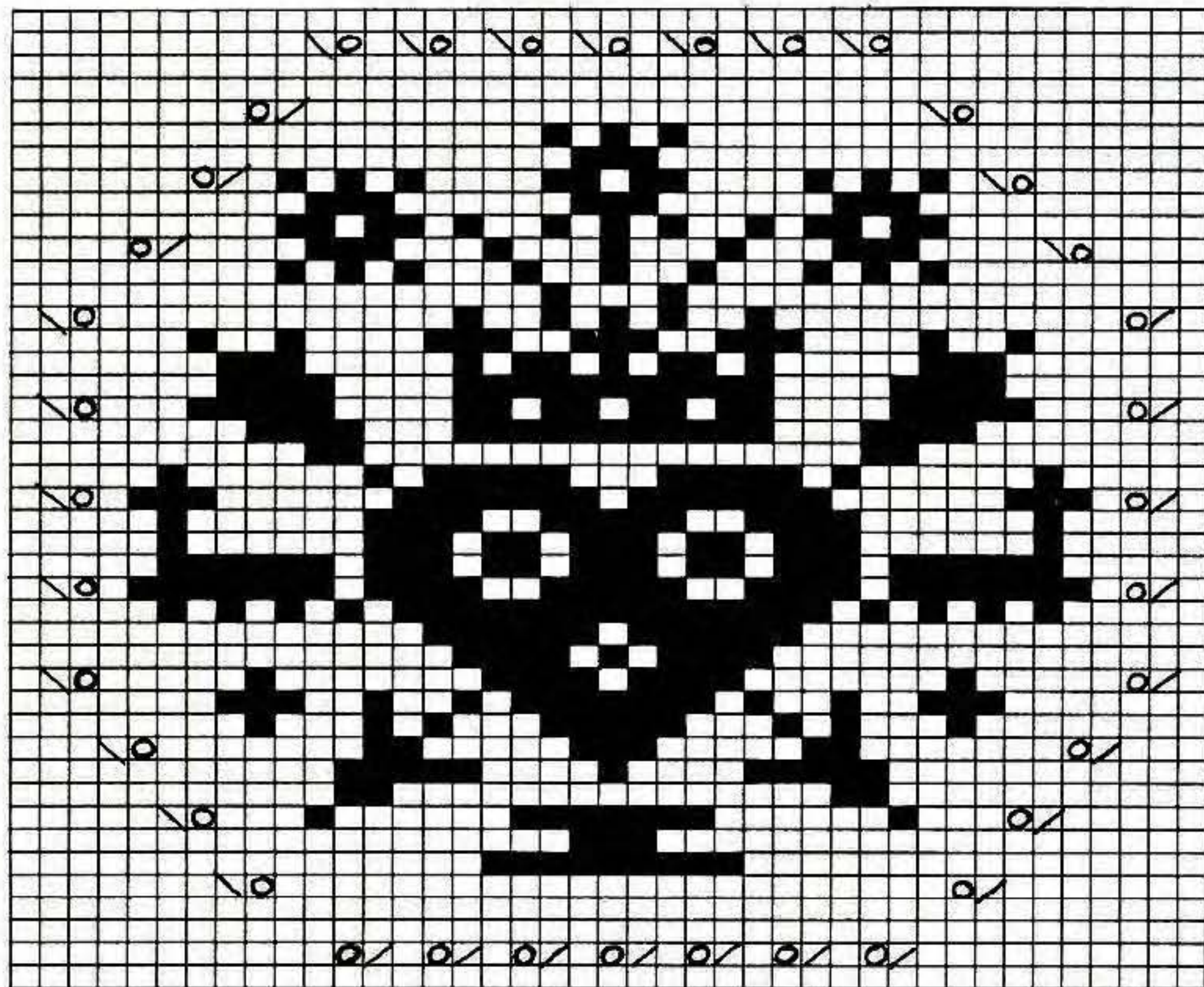
THE SOUTHERN KNITTING & NEEDLECRAFT EXHIBITION

Over 130 exhibitors will be heading for Bristol Exhibition Centre in mid-March to display and demonstrate their products to an anticipated 18,000 hand and machine knitters, sewers and needleworkers. For those with new products, new machines, yarns, designs and gadgets this will be an anxious time as many will be given their first public show at Bristol.

During the 3 days that the exhibition is open it is calculated that a product can be demonstrated anything between 100 - 1,000 times! And it's not just new products that will be competing for the attention of the Knitters, Needleworkers and Sewers of Wales and the South West. There will also be a whole host of old favourites and popular items on show and for sale.

In addition to new products and big names there will be established old favourites and small, specialist companies, designers and publishers. Yarns, sewing and knitting machines, spinning, weaving, accessories, literature and publications, knit kits, designer knitwear, fabrics, haberdashery, crochet, tapestry, embroidery, toy making, patchwork and quilting will all be on offer providing a wonderful opportunity for the enthusiast to see, try and buy the latest and best products in the knitting and needlework industry.

The 'Southern' is celebrating its 10th anniversary this year so the show will have a special birthday



Single Motif and hand transfer chart

Ns*. Repeat from * to * using 33 sts from Back Neck and 22 sts from Right Front Neck Edge.

SLEEVES

Push 90 (96, 102, 108, 114) KH Ns into WP. With wrong side facing, pick up same number of sts evenly along armhole edge between WY markers and place onto Ns, 000. COR working in Lace St Patt throughout, knitto RC10 (5, 10, 10, 10). Dec 1 st at each end of next and every foll 5th row x 19 (21, 22, 24, 25). Knit to RC102 (110, 118, 128, 136) and waste knit rem 52 (54, 58, 60, 64) sts. CUFFS: Push 41 (41, 45, 45, 49) KH Ns into WP. With wrong side facing place sts from cuff edge onto Ns distributing them evenly along the row. Using A T6 knit 1 row. Trans to RIB, 000. Knit to RC25. T10/8 knit 1 row. Trans all sts to KH and latch cast off.

MAKE-UP

Block and press. Join side and SLEEVE seams. Knit a cord and thread through neck edge of

COLLAR. 'BELLS' - using WY cast on over 13 KH Ns and knit a few rows. Using desired colour T6 knit 6 rows. Trans every alt st to adjacent N leaving empty Ns in WP. Knit 6 rows and waste knit. Join seam to form a tube. Thread yarn through first and last rows. With wrong sides together, fold in half. Thread cord onto 'BELL'. Knot end of cord and fasten 'BELL' to Cord.

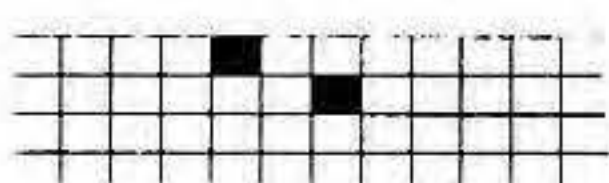
SKIRT BACK/FRONT

Using A cast on over 85 (89, 95, 97, 103) KH Ns as RIB, 000. Knit to RC26. Trans all sts to KH, 000. Working in Lace St Patt throughout, knit to RC132 (140, 148, 158, 166) [adjust length here]. Trans to RIB. T2/2 knit 9 rows. T10/8 knit 1 row. Trans all sts to KH and latch cast off.

MAKE-UP

Block and press. Join side seams. Fold Waistband in half to inside and stitch down loosely, encasing elastic.

Lace Stitch Patt



feel with lots of extra attractions and happenings to give the exhibition a real party atmosphere.

Four exciting fashion shows every day, in the 1,000 seater theatre, will certainly inspire knitters and sewers alike whilst, for those wanting to know more about their craft, the workshop and demonstration areas will be a great place to go in search of help and advice.

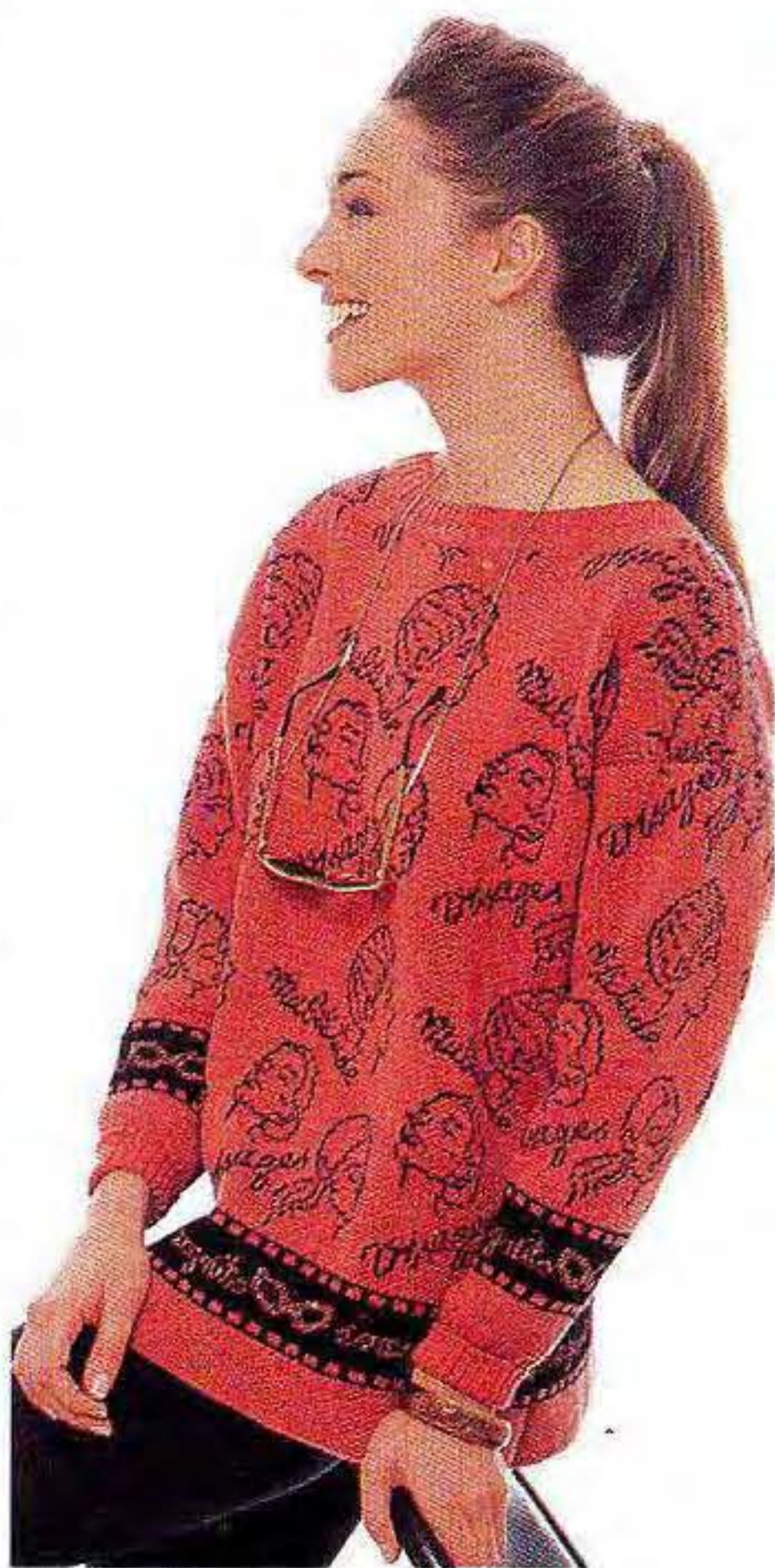
Free draws, competitions and special money saving show bargains will also be on offer every day. Full catering facilities, including a licensed restaurant, snack bars, licensed bar and special rest areas will be provided at the exhibitions, should you need to take a break! Free left luggage facilities, easy access from M5 and M32 (AA signposted in the city) and ample adjacent car parking are all designed to make your visit to THE SOUTHERN KNITTING & NEEDLECRAFT EXHIBITION an enjoyable and trouble free experience.

The 10th SOUTHERN KNITTING & NEEDLECRAFT EXHIBITION is organised by Nationwide Exhibitions (UK) Ltd., and is open from 10am to 6pm from Friday 18th to Sunday 20th March 1994.

Admission: Adults £4.50, OAP's £3.00, accompanied children under 14 years FREE. Save £1 on tickets purchased in advance from: Nationwide Exhibitions (UK) Ltd. PO Box 20, Fishponds, Bristol BS16 5QU. Access and Visa cards accepted: telephone (0272) 701370.

**COMING NEXT
ISSUE**

brother
fashion



**THIS FABULOUS
JACQUARD SWEATER
WITH STEP-BY-STEP
INSTRUCTIONS**

**FROM YOUR
LOCAL
DEALER**

OR DIRECT BY SUBSCRIPTION

DON'T MISS IT!

**ORDER
YOUR COPY
OF BROTHER
FASHION
TODAY!**

Name: _____

Address

Post Code _____

Tel: _____

(Please tick relevant boxes)

I would like one year's subscription (6 issues) to Brother Fashion at £9.00 inc P&P.

<input type="checkbox"/>	1	FB100 disks for
<input type="checkbox"/>	2	Brother Fashion
<input type="checkbox"/>	3	issues as
<input type="checkbox"/>	4	indicated - price
<input type="checkbox"/>	5	£6.00 per disk,
<input type="checkbox"/>	6	(inc. P&P).

I enclose my cheque/postal order to the value of
£ _____

Return to: Brother Fashion,
Clifton House, 83 Euston
Road, London, NW1 2RA,
together with your postal
order, or cheque made
payable to 'Brother
International Europe Ltd'.