

# brother fashion

Issue No.6

UK £1.50

HFL 3.95

I £2.50

**EVENING TWO  
PIECE** - Simple to  
knit - one size only

**ON OR OFF THE  
SLOPES** - Mens  
chunky intarsia  
sweater

**QUICK KNIT  
GIFT** - Hats  
and scarves

**GREETINGS  
CARDS** - Make  
your own

**PARTY  
SWEATERS** -  
Lurex teamed  
with black

**26 ITEMS  
TO KNIT**







Dear Readers,  
 We have not included a PPD Master Class or Beginners Lesson this issue, but don't despair they will be back in the next one. Instead, we show you how to make your own Greetings Cards and bring you a selection of Hats and Scarves. These items take up very little yarn so the cost is minimal, and gives you the chance to clear your cupboards of oddments and tension swatches, and produce something truly original!

If you haven't knitted anything for a while and need inspiration look at the top designers. More and more of them are including knitwear in their collections - cropped tops tightly fitted, long and loose coats, fine and floaty eveningwear, layers for daytime - all wonderful stuff! Machine knitting gives you so much choice - the stitch design, which goes with the yarn, which suits the texture, which sets off the colours. If you want the garment a bit longer - well just knit a few more rows! It's not just fashion that is giving your knitting machine a new lease of life. Most crafts are currently having a bit of a revival. Use your knitting machine to make cushion covers, rugs, wall hangings, lace curtains, tablecloths, bedspreads...the list is endless!  
 Happy Knitting,  
 Susan Nutbeam.

## CONTENTS

### WOMANSWEAR

Patchwork Fairisle and Lace sweater suit, 3 - 4

Fairisle evening sweater in chenille and lurex, 15 - 16

Tuck Stitch evening trousers and cardigan/jacket, 16 - 18

Tuck Stitch evening sweater in lurex, 18

Jacquard sweater, 22 - 27

### BABY KNITS

Tuck/Lace and fairisle, dress, rompers, cardigan and sweater, 3 - 8

### MENSWEAR

Sporty intarsia sweater, 20 - 23

## SPECIAL FEATURES

HOW TO MAKE YOUR OWN CARDS, 9 - 12

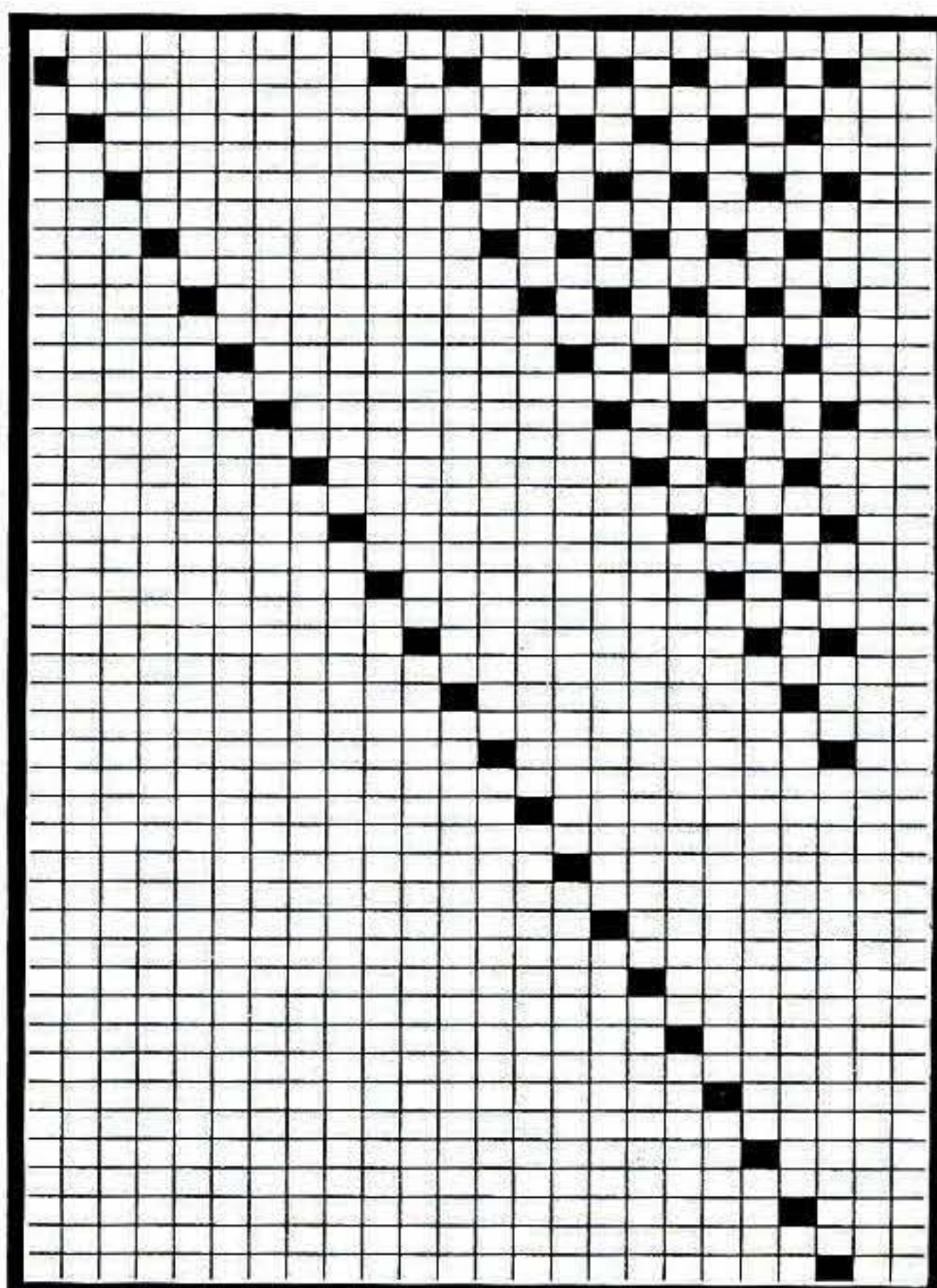
HATS AND SCARVES, 12 - 15



# PATCHWORK FAIRISLE/LACE SWEATER

**MACHINES:** C or D with KR.  
**MATERIALS:** STANDARD 4-PLY SHETLAND, we used JAMIESON and SMITH 2-Ply Jumper Weight; A - 370g (Green FC70) and B - 145g (Cream 1A). (100% shetland wool 280m/100g). **SKIRT:** A - 340 (360, 380, 400, 420)g. Waist length of elastic + 2.5cm.  
**MEASUREMENTS:** One size to fit bust up to 101 cm. Approx length of skirt = 90cm.  
**TENSION:** Fairisle and Lace St Patts - 40 sts = 15.7cm and 60 rows = 13.6cm. (approx T8 for Fairisle and T7 for Lace). Skirt rib - 40 sts = 11.4cm and 60 rows = 14.6cm (approx T2/2). **RIB:** 1 x 1 T2/2.  
**NOTES:** Panels are worked over 51 Ns. Fairisle Patch - knit 1 row, set for first fairisle row and knit 1 row to select Ns. With B in FA and A in FB, knit 84 rows fairisle. Change to st st and B, knit 2 rows. Lace Patch - Enter Stitch Pattern and Mirror Image, using A knit to PATTERN ROW 44. Set to knit Upside Down + Mirror Image and PATTERN ROW 41. Knit to complete motif - knit 88

rows. Panel A - Fairisle, Lace, Fairisle. Panel B - Lace, Fairisle, Lace.  
**SKIRT BACK/FRONT**  
 Using A cast on over 159 (169, 177, 185, 195) KH Ns as RIB, 000. Knit to RC 3 6 8 (adjust length here).



**WAIST-BAND:** Trans all sts to KH. Trans every alt st to adjacent N leaving empty Ns in NWP. T4 knit 23 rows. T10 knit 1 row and latch cast off.

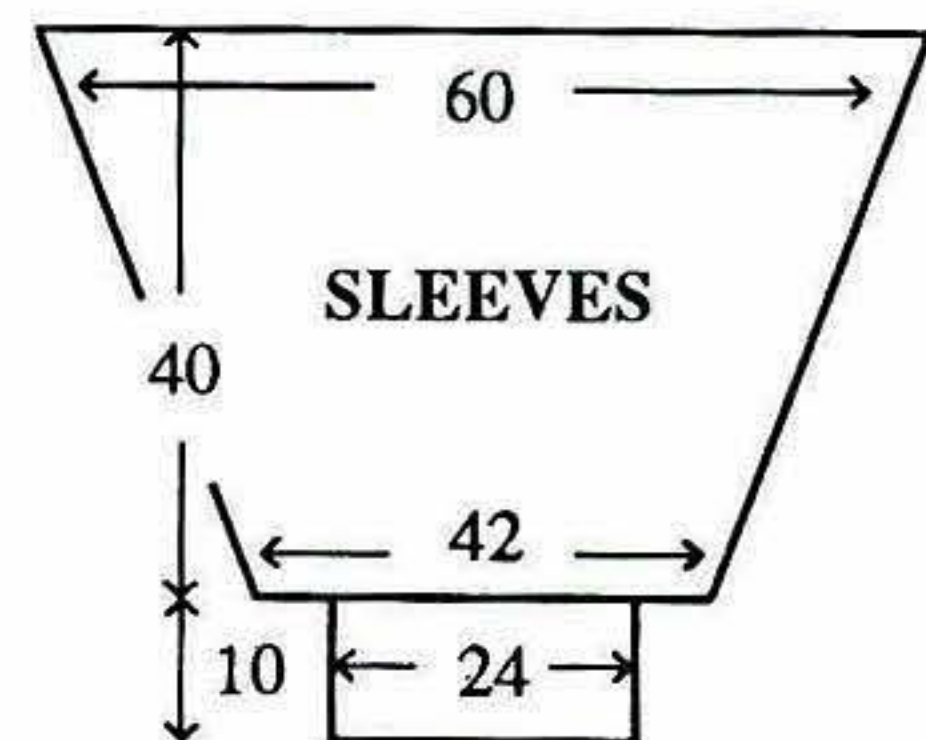
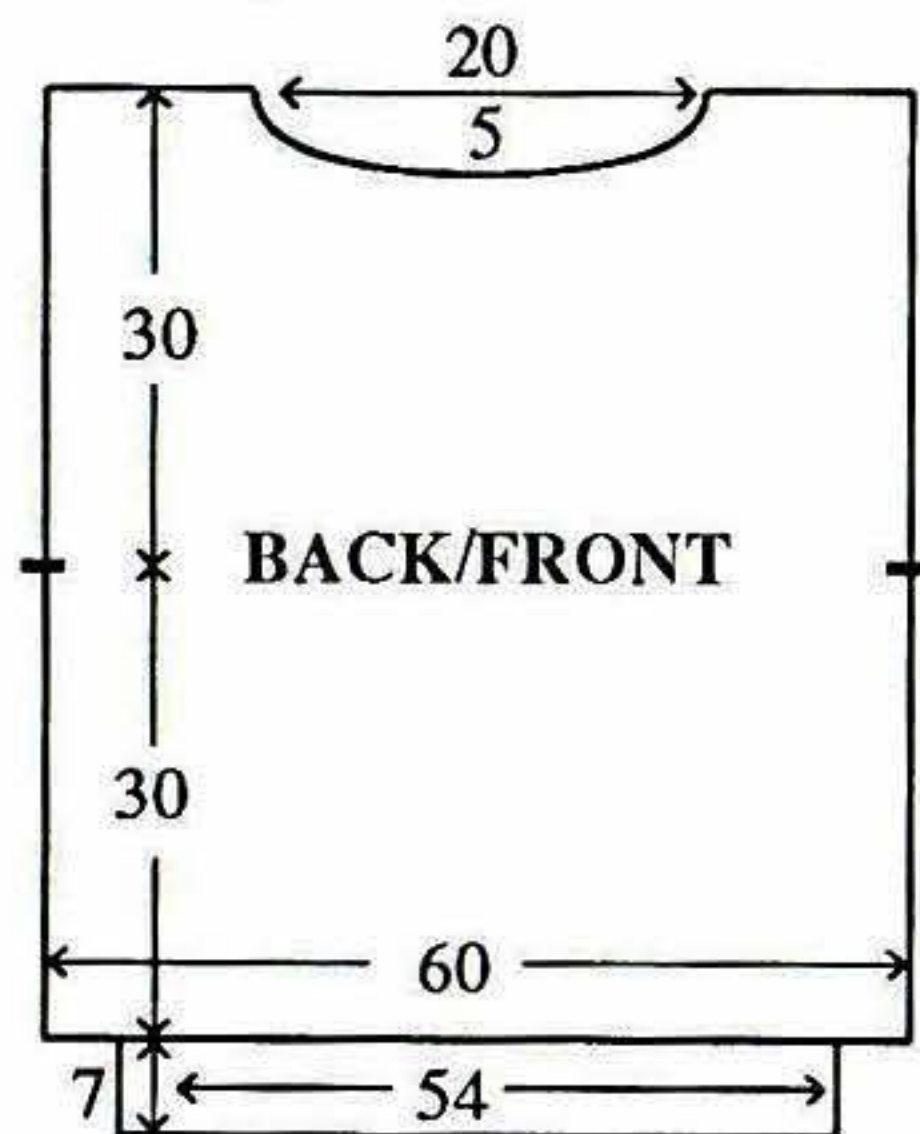
**MAKE UP**  
 Join side seams. Fold WAISTBAND in half to inside and stitch down loosely encasing elastic.

**SWEATER BACK/FRONT**  
 Starting and finishing with waste yarn, knit 2 A Panels and 2 B Panels, placing a WY marker on outside edge at RC88 of centre Patch. Centre Panels, starting with waste yarn, knit 1 B Panel and 1 A Panel to RC68 of 3rd Patch.

**Neck shaping**  
 (Note Patt position). Waste knit centre 15 sts. Waste knit sts at left, COR. Knit 1 row. At beg of next and every foll alt row cast off 2 sts x 9. Return sts at left to Ns and knit to match

right side reversing shaping. **WAIST RIBS:** Using mattress stitch, join 2 side panels to centre panel. Push 131 KH Ns to WP. With wrong side facing, place sts from waist edge onto Ns. Using A T7 knit 1 row. Trans to RIB, 000. Knit to RC35. T10/8 knit 1 row. Trans all sts to KH and latch cast off.

**NECKBAND**  
 Join one shoulder by placing one set of shoulder sts back onto Ns with right sides together. Using A T10 knit 1 row and cast off. Push 139 KH Ns to WP. With right side facing, pick up same number of sts evenly along neck edge and

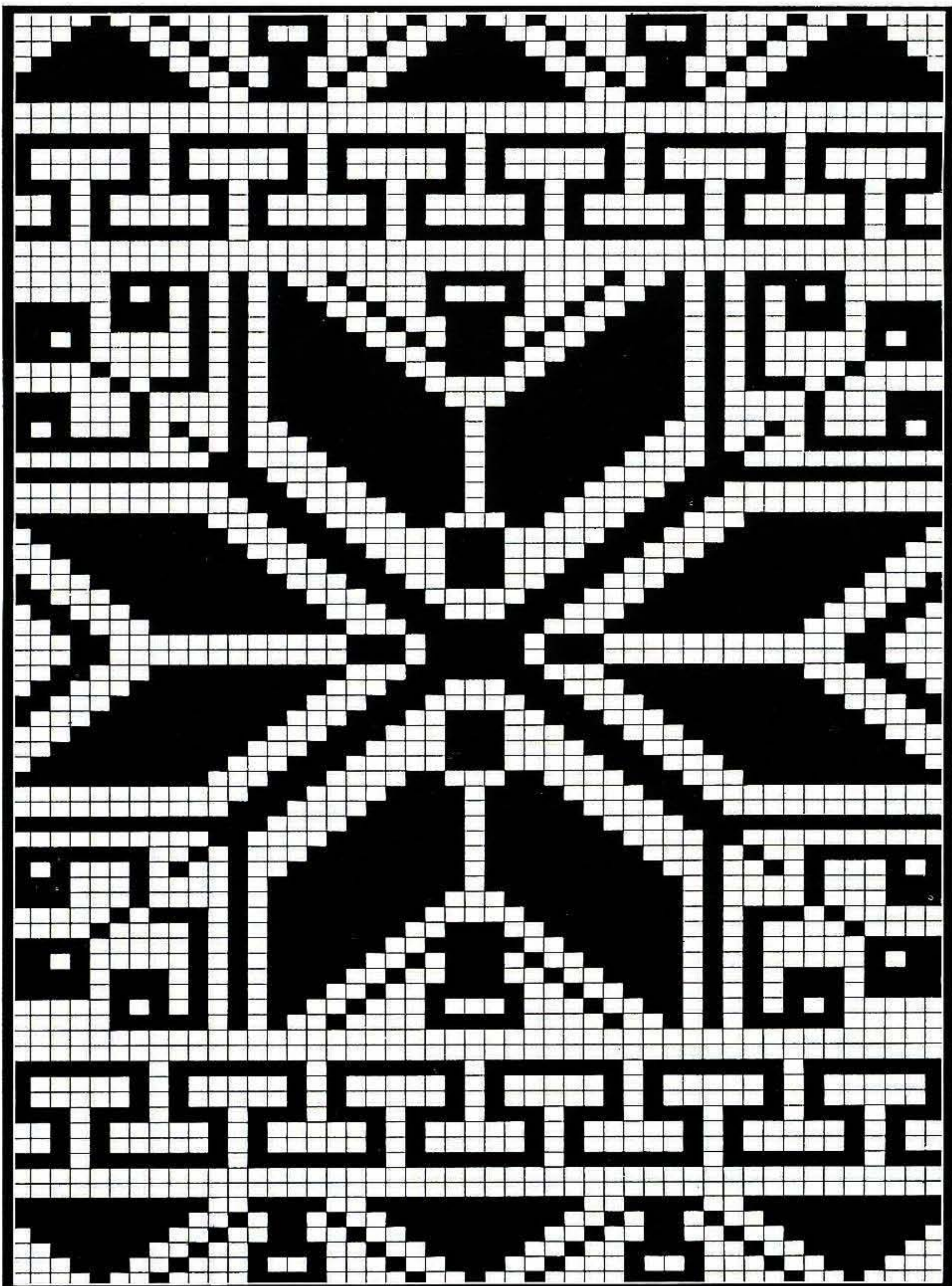




place onto Ns. Using A T7 knit 1 row. Trans to RIB, 000. Knit to RC50. Trans all sts to KH. T7 knit 2 rows and waste knit. Join second shoulder as first. Join N E C K - BAND seam, fold in half to outside and back-stitch to garment through last row knitted in A.

### SLEEVES

Push 51 KH Ns into WP. Pick up same number of sts evenly along armhole edge of shoulder seam Patch and place onto Ns. Alternating Fairisle and Lace Patches



as illustrated. Knit 2 Patches and waste knit [176 rows]. Push 26 KH Ns into WP. Pick up same number of sts evenly along armhole edge between Patch above and WY marker and place onto Ns. Knit 2 'Patches' as above and, AT THE SAME TIME, at RC14, dec 1 st at side edge on next

and every foll 7th row x 23. Knit to RC176 and waste knit rem 3 sts. CUFFS: Join Patch seams. Push 63 KH Ns to WP. With wrong side facing, place sts from cuff edge onto Ns distributing them evenly along the row. Using A T7 knit 1 row. Trans to RIB, 000. Knit to RC49. T10/8 knit 1 row. Trans

all sts to KH and latch cast off.

### MAKE-UP

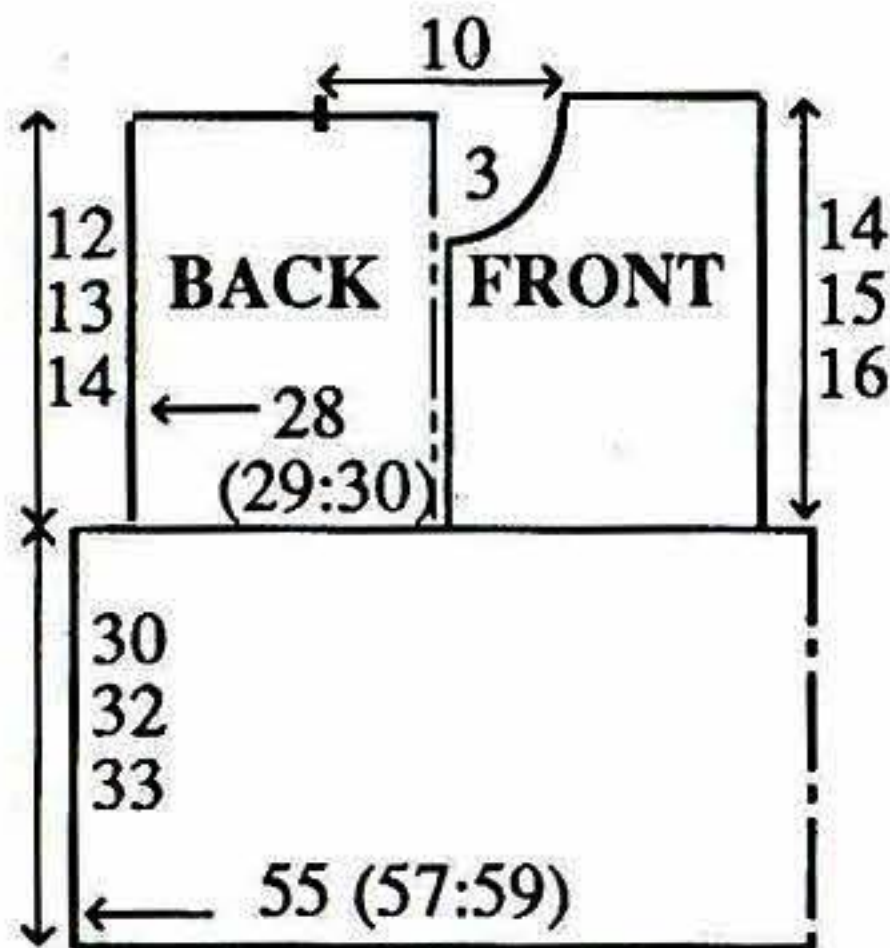
Block and press. Join side and SLEEVE seams.



# BABY RANGE IN TUCK/LACE AND FAIRISLE

(MACHINES: A, C or D with KR. MATERIALS: STANDARD 4-PLY ACRYLIC, we used SPECTRUM Detroit Vermont 4-Ply Perle; A (White), B (Matador) and C (Serpentine), (100% acrylic 420m/100g). DRESS - A - 165 (180, 195)g, B - 75 (85, 95)g and C - 25 (30, 35)g. 3 Buttons. ROMPERS - A - 165 (185, 205), B - 70 (80, 90)g and C - 25 (30, 35)g. 6 buttons. CARDIGAN - A - 65 (75, 85)g, B - 85 (100, 115)g and C - 10 (15, 20)g. 5 buttons. SWEATER - A - 30 (40, 50)g, B - 90 (105, 120)g and C - 10 (15, 20)g. 3 Buttons. MEASUREMENTS: To fit height 74 (80, 86)cm approx chest 49 (51, 53)cm. TENSION: Tuck/Lace St Patt - 40 sts = 16cm and 60 rows = 11.1cm (approx T9). Fairisle St Patt - 40 sts = 13.3cm and 60 rows = 13cm (approx T8). RIB: 1 x 1 T3/3. NOTES: Tuck/Lace St Patt - \*Operate Lace Carr for 6 movements (last return journey will select Ns for Tuck so remember to bring end Ns forward to D position). Set K-Carr to KC, Weaving Brushes to WP, Tuck Buttons to WP, knit 5 rows Tuck. Release Tuck Buttons and knit 1 row (end Ns will be in UWP so remember to take them back to WP before operating L-Carr)\*. Repeat from \* to \* throughout. Plain side of Tuck St Patt is used as right side. Fairisle St Patt - A in FA throughout, knit 10 rows

with B in FB then 4 rows with C in FB.



DRESS -

## SKIRT BACK/FRONT

Using A COBH over 165 (171, 177) KH Ns, 000. T7 knit 13 rows. Set for first row of Fairisle St Patt. T10 knit 1 row to select Ns, 000. T8 Working in Fairisle throughout (see NOTES) knit to RC140 (148, 154). Using A knit 1 row and waste knit.

## BACK BODICE

Using WY cast on over 71 (73, 75) KH Ns and knit a few rows ending with COR. Using A T9 knit 2 rows, 000. Working in Tuck/Lace St Patt throughout (see NOTES) knit to RC66 (72, 78). Waste knit centre 25 sts. Waste knit rem 23 (24, 25) sts at each end of work for shoulders.

## RIGHT FRONT BODICE

As BACK BODICE using 33 (34, 35) KH Ns, to RC61 (69, 73).

## Neck shaping

At beg of next and every foll alt row cast off 3 sts x 1, 2 sts x 2, then dec 1 st x 3. Knit to RC78 (84, 90) and waste knit rem 23 (24, 25) sts.

## LEFT FRONT BODICE

As RIGHT FRONT BODICE

reversing shaping.

## BUTTONHOLE BAND

Push 33 (37, 39) KH Ns to WP. With wrong side facing, pick up same number of sts evenly along RIGHT FRONT BODICE opening edge and place onto Ns. Using A T8 knit 1 row. Trans to RIB, 000. Knit to RC4. Work 3 x 1 st buttonholes evenly spaced along the row. Knit to RC8. Using B knit 1 row. T10/8 knit 1 row. Trans all sts to KH and latch cast off.

## BUTTON BAND

As BUTTONHOLE BAND omitting buttonholes.

## COLLAR

Join both shoulders by placing both sets of shoulder sts back onto Ns with right sides together. T10 knit 1 row and cast off. Using WY cast on over 75 KH Ns and knit a few rows ending with COR. Using A T9 knit 3 rows. Using B knit 1 row. Trans every alt st to adjacent N leaving empty Ns in WP. Knit 1 row. Using A knit 3 rows. Turn up hem and knit 1 row. Waste knit 9 sts at each end, 000, COR. Using A T9 and working in Tuck/Lace St Patt throughout, knit 1 row. At each end of work on next and every foll alt row pick up inside st from waste knitting and place onto end N. Knit to RC18 and waste knit. With right side facing, return sts to Ns. With right side facing, pick up same number of sts evenly along neck edge and place onto Ns. T8 knit 1 row. T10 knit 1 row and cast off.



## SLEEVES

Push 65 (70, 75) KH Ns to WP. With wrong side facing, pick up same number of sts evenly along armhole edge and place onto Ns, COR. Using A T9 knit 2 rows, 000. Working in Tuck/Lace St Patt throughout, knit to RC6 (6, 12). dec 1 st at each end of next and every foll 6th row x 15 (16, 17). Knit to RC92 (102, 114). Dec 0 (1, 0) st. **CUFFS:** Trans to RIB, 000. Knit to RC18. Using B knit 1 row. T10/8 knit 1 row. Trans all sts to KH and latch cast off.

## MAKE-UP

Push 71 (73, 75) KH Ns to WP. With right side facing, place sts from waist edge of BODICE onto Ns. With wrong side facing, place sts from waist edge of SKIRT onto Ns distributing them evenly along the row. Using A T8 knit 1 row. T10 knit 1 row and cast off. Join side and SLEEVE seams. Attach buttons.

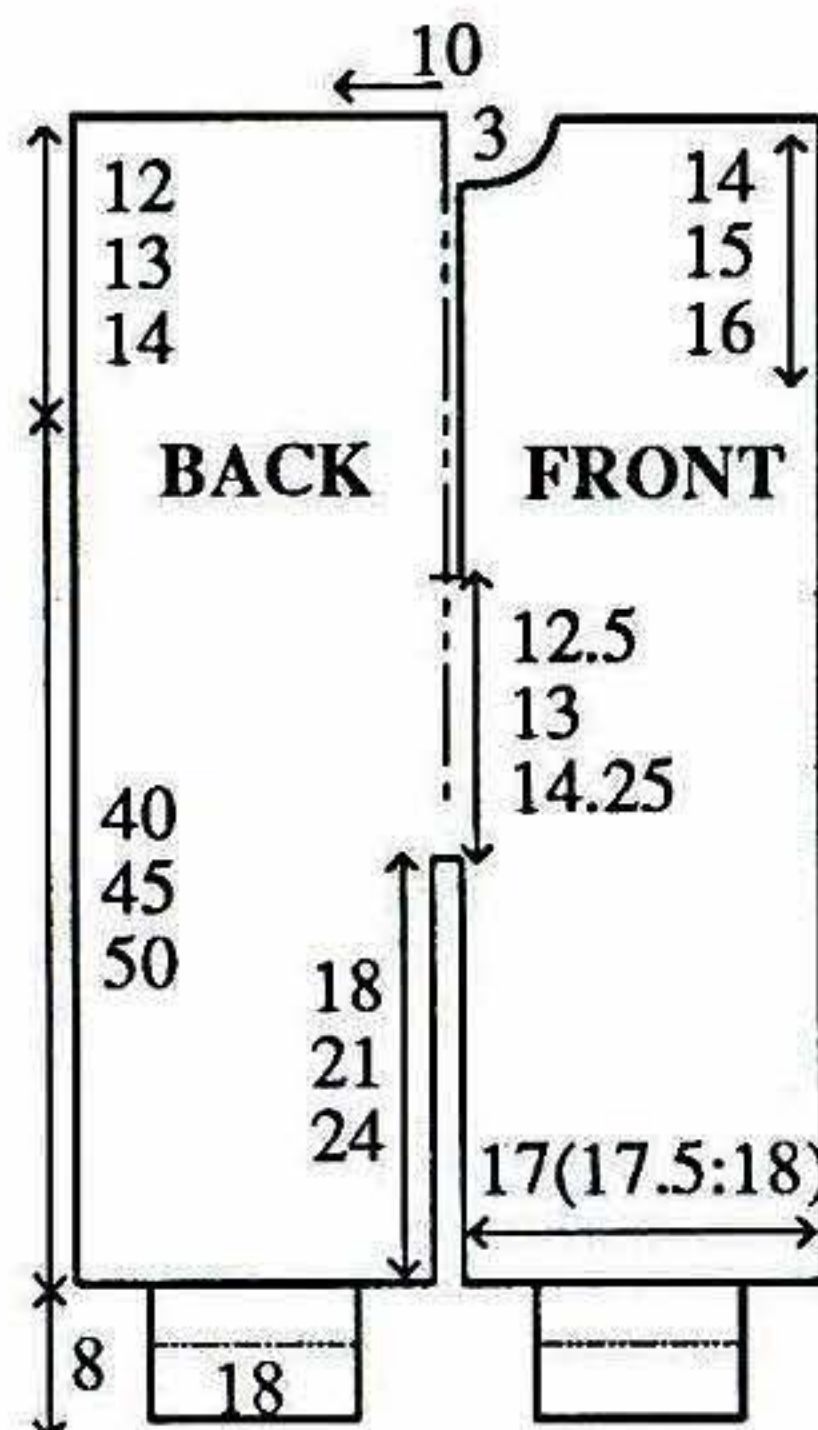
## ROMPERS -

### RIGHT BACK LEG

Using WY cast on over 52 (54, 55) KH Ns (51 (53, 54) Ns to left of '0' plus 1 N to right of '0') and knit a few rows ending with COL. Set for first row of Fairisle St Patt and using A T8 knit 1 row to select Ns, 000. Working in Fairisle, knit to RC82 (96, 110) and waste knit.

### LEFT BACK LEG

As RIGHT BACK LEG, EXCEPT cast on over sts to right of '0' and DO NOT WASTE KNIT. (Note Patt position).



### BACK

Dec 1 st at left. At left of '0', bring forward to WP 51 (53, 54) KH Ns. With wrong side facing, place sts from RIGHT BACK LEG onto Ns at left, dec 1 st at right. Push all Ns into WP, COL. Set for Noted Patt position. Both Part Buttons depressed, take K-Carr from left to right to select Ns, RC82 (96, 110). Working in Fairisle, knit to RC184 (206, 230) and waste knit. Push 85 (87, 89) KH Ns to WP. With wrong side facing, return sts to Ns distributing them evenly along the row. Using A T9 knit 2 rows, 000. Working in Tuck/Lace St Patt to end, knit to RC66 (72, 78). Waste knit centre 25 sts. Waste knit rem 30 (31, 32) sts at each end of work for shoulders.

### LEFT FRONT LEG

As RIGHT BACK LEG.

### RIGHT FRONT LEG

As LEFT BACK LEG.

### FRONT

As BACK to RC126 (146, 164).  
Divide for Front opening

(Note Patt position). Cast off centre 6 sts. **RIGHT FRONT:** Waste knit sts at left, COR. Knit to RC184 (206, 230) and waste knit. Push 39 (40, 41) KH Ns to WP. With wrong side facing, return sts to Ns distributing them evenly along the row. Using A T9 knit 2 rows, 000. Working in Tuck/Lace St Patt to end, knit to RC61 (67, 73).

### Neck shaping

At beg of next and every foll alt row cast off 3 sts x 1, 2 sts x 2, then dec 1 st x 2. Knit to RC78 (84, 90) and waste knit rem 30 (31, 32) sts. Return sts at left to Ns and knit to match right side reversing shaping.

### BUTTONHOLE BAND

As DRESS using 71 (75, 83) KH Ns and working 6 buttonholes.

### BUTTON BAND

As BUTTONHOLE BAND omitting buttonholes.

### COLLAR AND SLEEVES

As DRESS.

### ANKLE CUFFS

Join side and SLEEVE seams. Push 53 KH Ns to WP. With wrong side facing, place sts from ankle edge onto Ns distributing them evenly along the row. Using A T8 knit 1 row. Trans to RIB, 000. Knit to RC18. Using B knit 4 rows. Using A knit to RC39. T10/8 knit 1 row. Trans all sts to KH and latch cast off.

### MAKE-UP

Join inside leg seams. Fold ANKLE CUFFS in half to



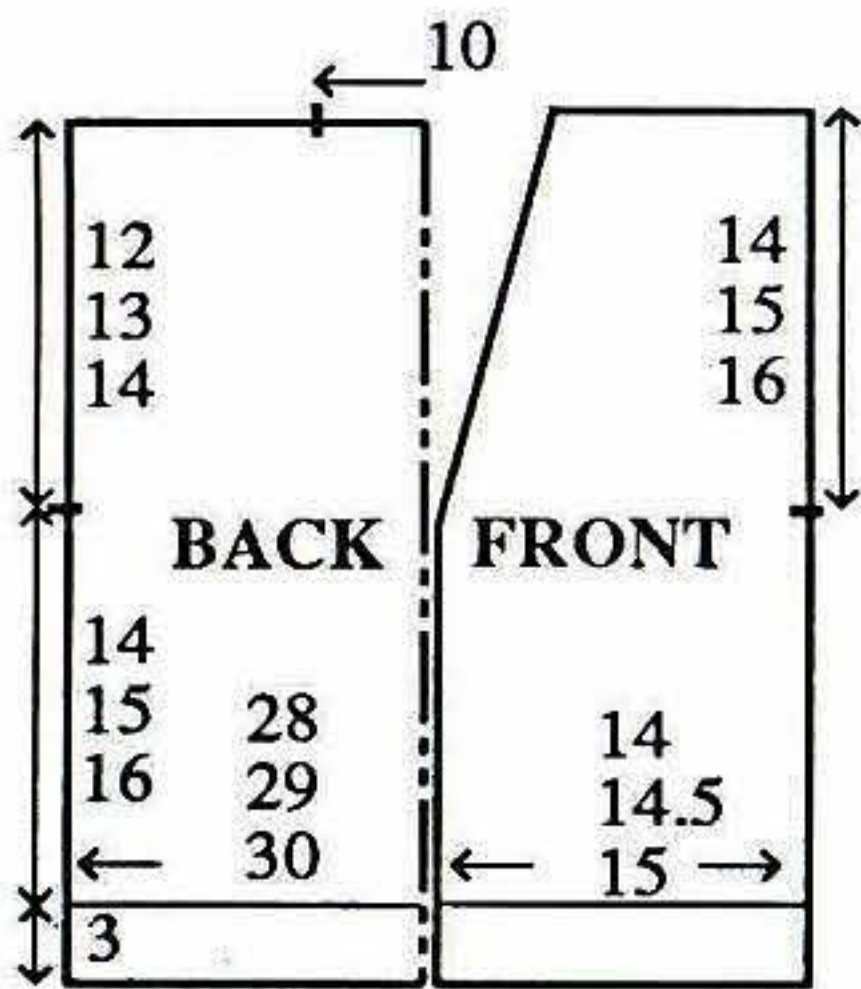




inside and stitch down loosely. Attach buttons.

### CARDIGAN BACK

\*\*Using B cast on over 83 (87, 91) KH Ns as RIB, 000. Knit 2 rows. Using A knit to RC15. Trans all sts to KH. Set for first row of Fairisle St Patt. T8 knit 1 row to select Ns, 000. Working in Fairisle throughout, knit to RC64 (70, 74). Place a WY marker at each end of work\*\*. Knit to RC120 (130, 138). Cast off centre 31 sts. Waste knit rem 26 (28, 30) sts at each end of work for shoulders.



### RIGHT FRONT

As BACK from \*\* to \*\* using 41 (43, 45) KH Ns.

#### Front shaping

At left on next and every foll 4th row dec 1 st x 15. Knit to RC128 (140, 148) and waste knit rem 26 (28, 30) sts.

### LEFT FRONT

As RIGHT FRONT reversing shaping.

### SLEEVES

Join both shoulders by placing both sets of shoulder sts back onto Ns with right sides together. Using A T10 knit 1 row and cast off. Continue as DRESS SLEEVES using B

throughout.

### BAND

Using B cast on over 13 KH Ns as RIB, 000. Knit to RC4. Work 1 x 1 st buttonhole at centre of next and



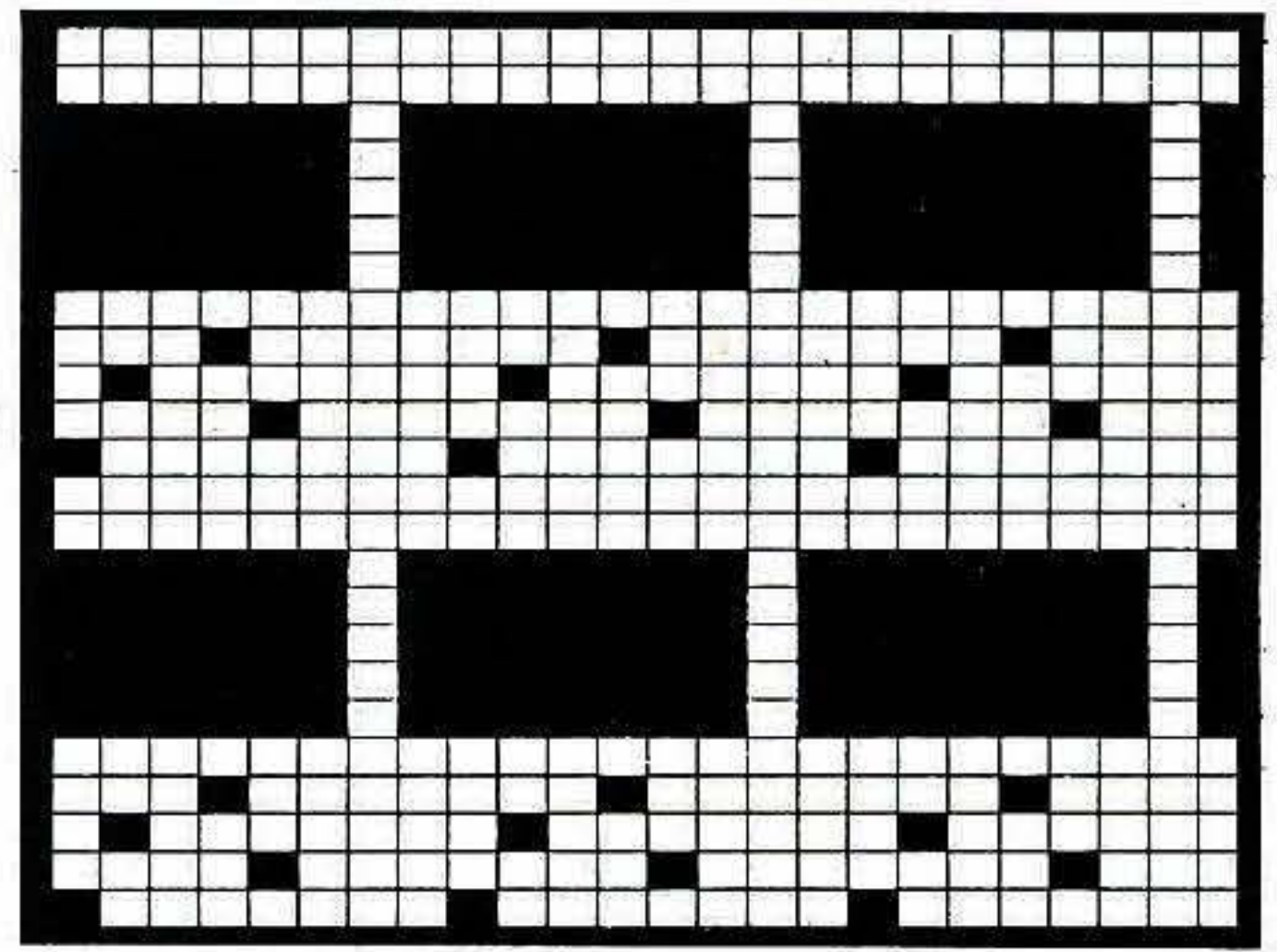
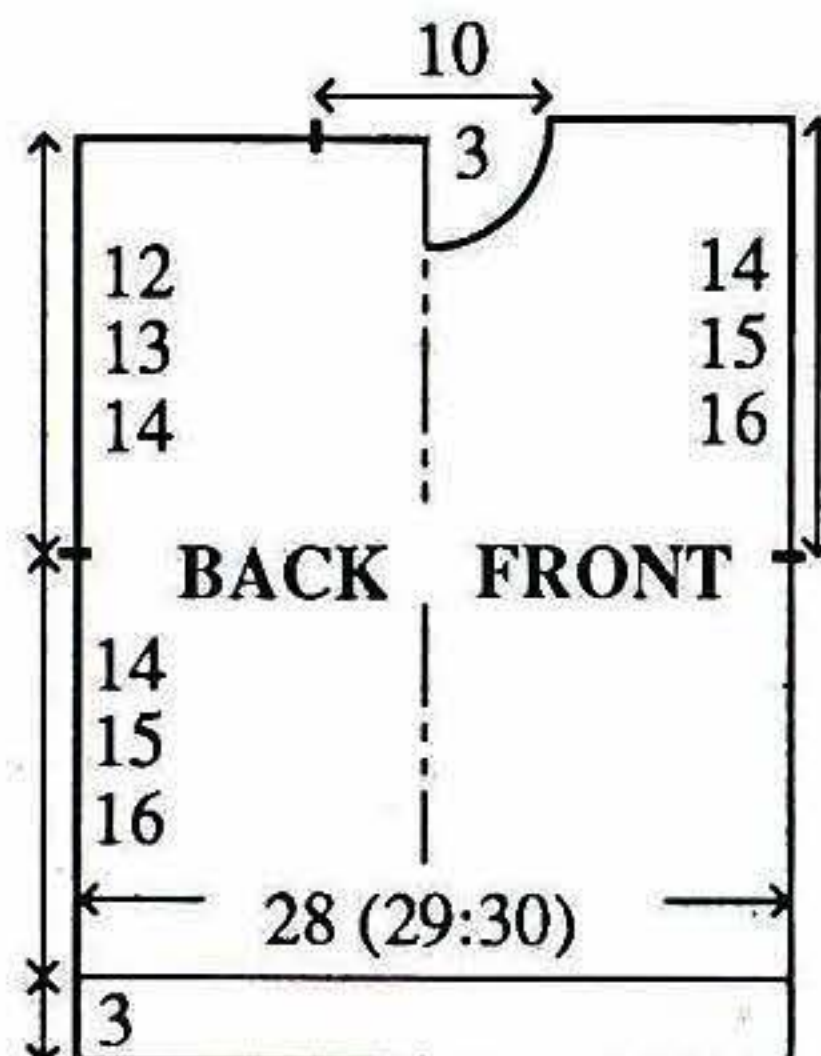
every foll 18th (20th, 21st) row x 5. Knit to RC333 (357, 373). T10/8 knit 1 row. Trans all sts to KH and latch cast off.

### MAKE-UP

Attach BAND to FRONT opening edges and BACK neck. Attach buttons. Join side and SLEEVE seams.

### SWEATER BACK

As CARDIGAN BACK from \*\* to \*\* and waste knit. Push 71 (73, 75) KH Ns to WP. With wrong side facing, return sts to Ns distributing them evenly along the row. Using B T9 knit 2 rows, 000. Working in Tuck/Lace St Patt throughout, knit to RC66 (72, 78). Waste knit centre 25 sts. Waste knit rem 23 (24, 25) sts at each end of work for shoulders.



### FRONT

As CARDIGAN BACK from \*\* to \*\*. Cast off centre 7 sts. Waste knit rem sts.

### RIGHT FRONT BODICE

Push 33 (34, 35) KH Ns to WP. With wrong side facing, return sts from RIGHT side to Ns distributing them evenly along the row, COR. Using B T9 knit 2 rows, 000. Working in Tuck/Lace St Patt throughout, knit to RC61 (69, 73).

#### Neck shaping

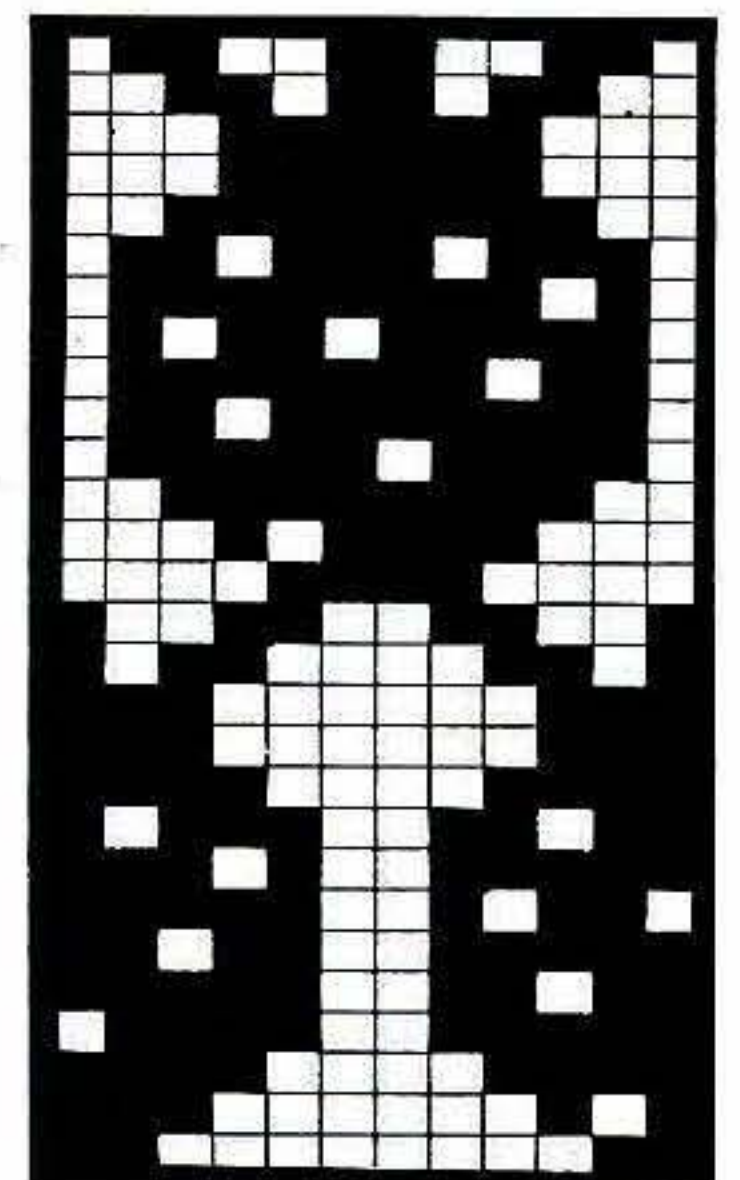
As Neck shaping of DRESS.

### LEFT FRONT BODICE

As RIGHT FRONT reversing shaping.

### BUTTONHOLE BAND, BUTTON BAND, COLLAR AND SLEEVES

As DRESS substituting B for A







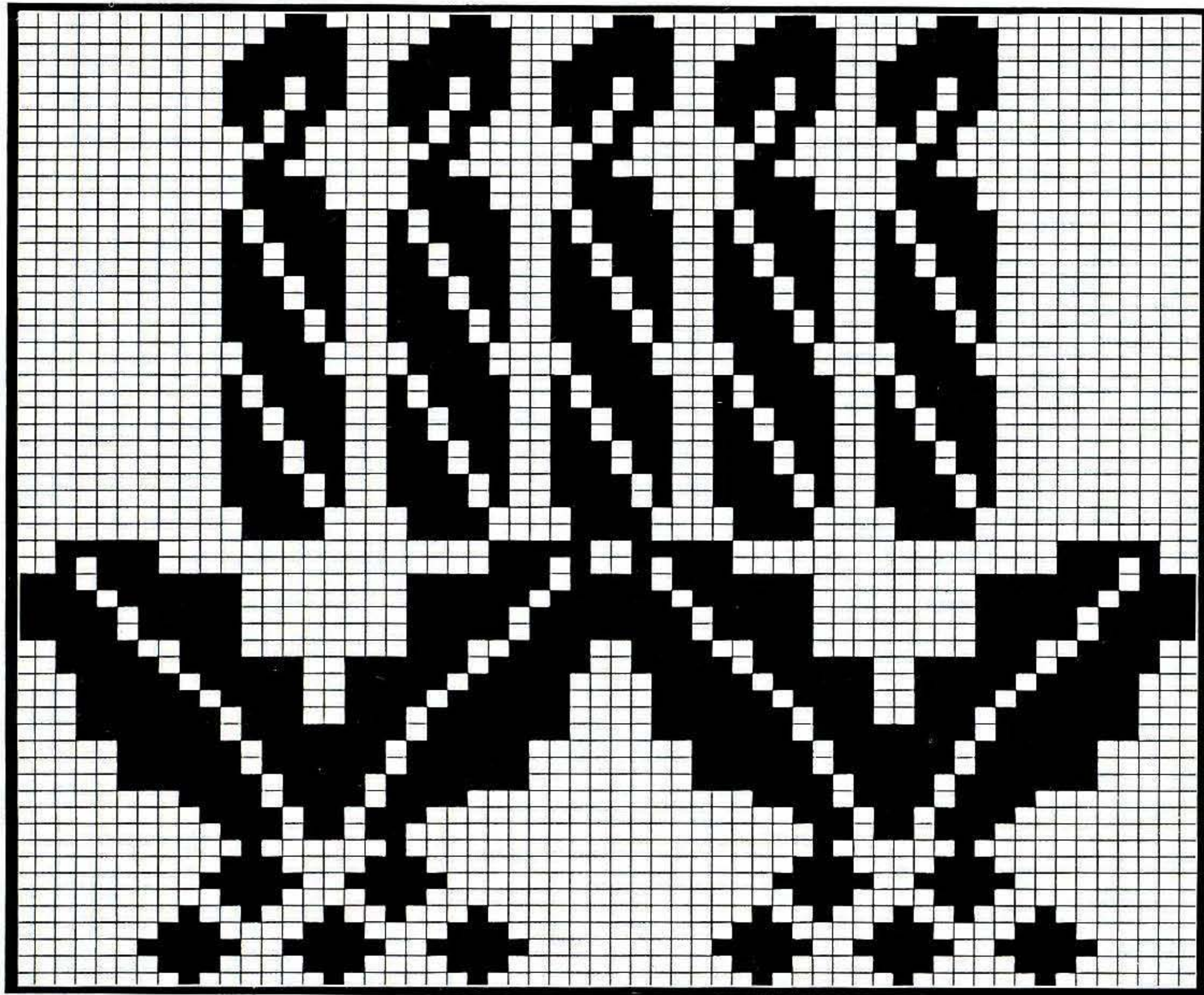
Nothing is more appreciated than a homemade gift. You can say exactly what you want in the manner you like. This could also be a good opportunity to use up oddments of yarn and any tension swatches you have accumulated! When making our Cards we found it more practical to plan 'backwards'. For

## MAKING YOUR OWN GREETINGS CARDS

example, if you are going to send your finished Card through the post you must decide if you are going to make the envelopes - we decided not to. Our cards were made to standard A4 size and so

will fit into the appropriate ready made envelopes. No envelopes are cheap, but the ready made ones really do rival making your own. If you are going to have a 'picture' like our Antelopes you will need to calculate the size of the finished picture. Try not to make the opening on the front too large in relation to the



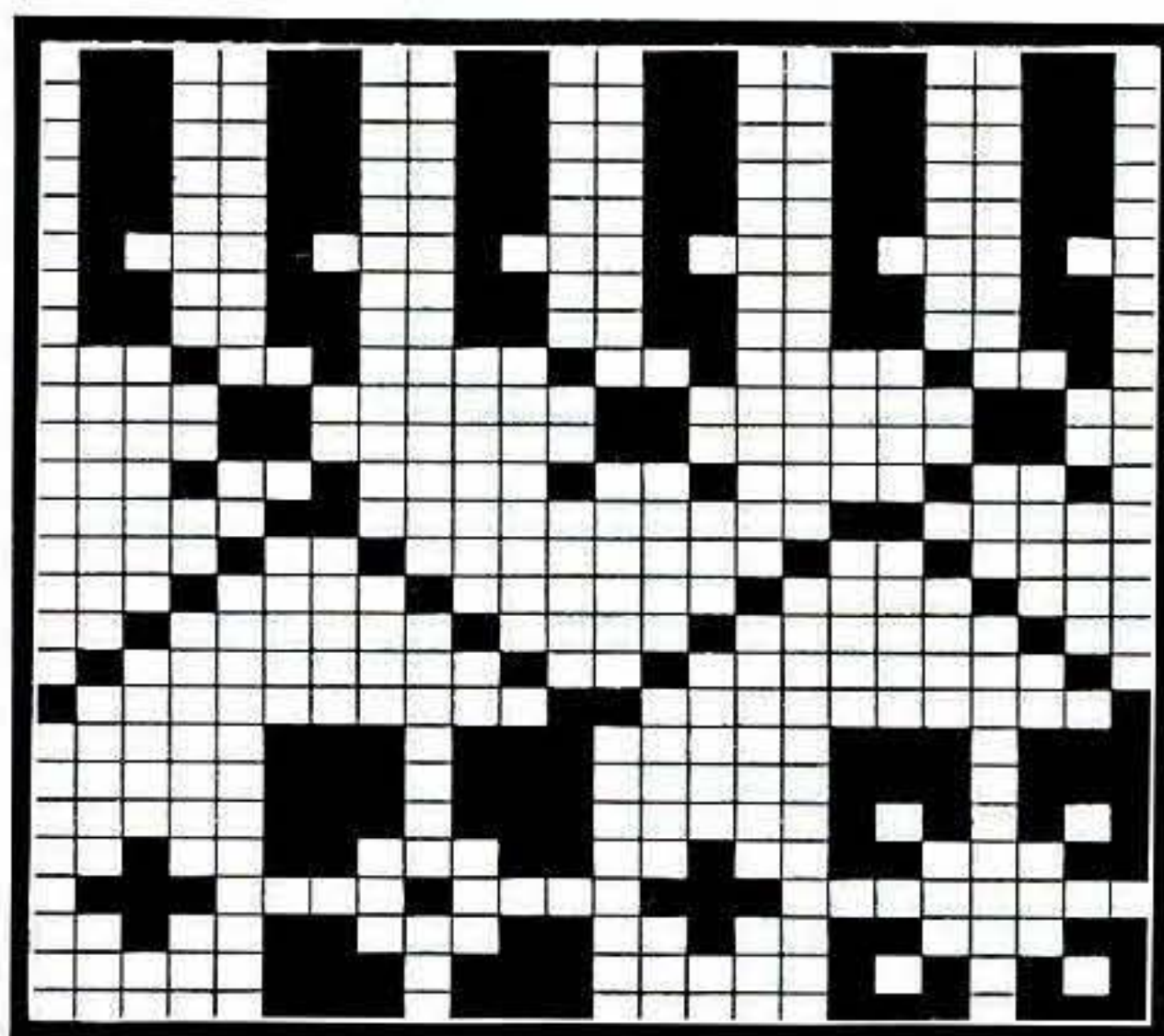


overall area. If you are going to use a picture or a motif, try out a few swatches first to get an idea of how big the motif is in your chosen yarn, and how big the opening in the card will need to be. The finer the yarn the more detail you can expect in your picture. We found that simple stitch designs lend themselves to a more elaborate cutout shape and intricate stitch designs, or pictures, are better with a simple cutout shape.

Portrait designs, like our Xmas tree, need a piece of card 3 x width and 1 x height. Landscape designs, like our Antelopes need a piece of card 3 x height and 1 x width. Fold the card into 3 sections - the

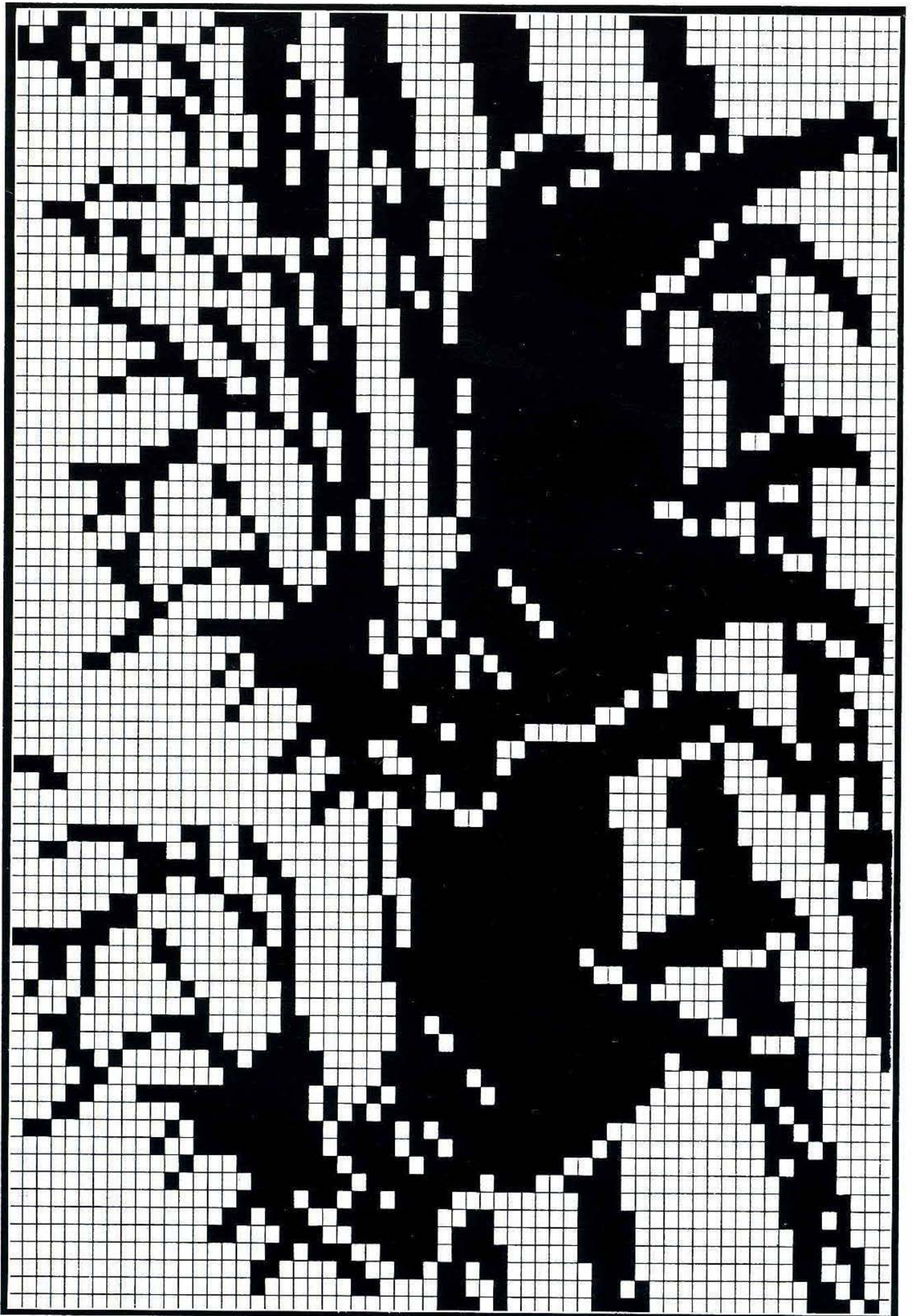
cutout will be on the middle one. Knit your swatch, press well, trim off any excess fabric and any ends but ensure that there is plenty of room to attach the fabric to the card around the edge of the cutout. As long as you

press your swatch well It is not necessary to have finished cast on and cast off edges. On the inside of the card front, spread glue around the edge of the cutout and around the outside of the swatch and place in position. Spread glue around

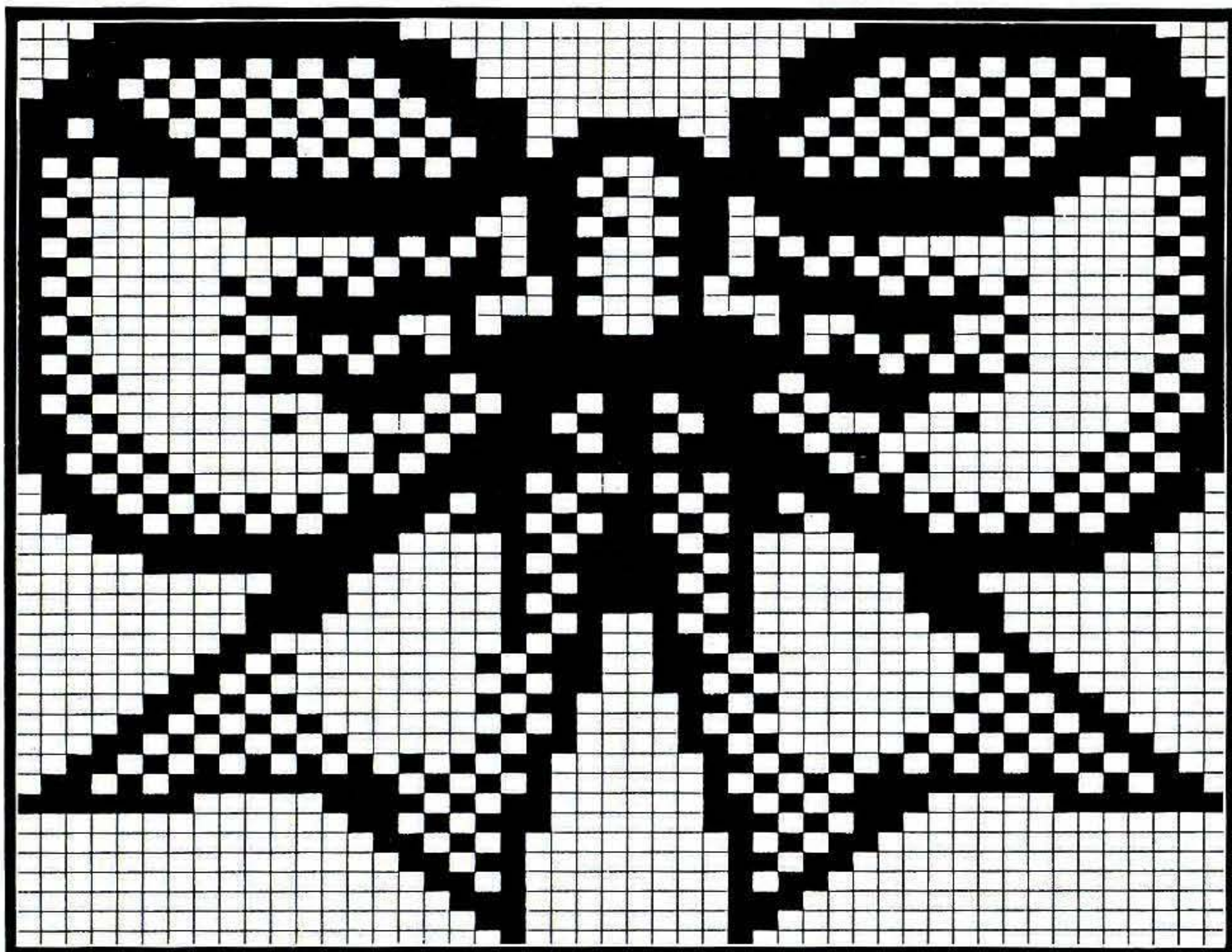


the edges of the middle card section. Fold the end section into position and press down firmly. The card may take a better hold if it is placed under a weight or two.









and C for B.

### MAKE-UP

Join side and SLEEVE seams.  
Attach buttons.

## HATS AND SCARVES

(Each scarf if approx 144cm in length, the square scarf is 78cm x 78cm).

### RIGHT BOTTOM ROW

**MACHINES:** A, C or D with G-Carriage. **MATERIALS:** STANDARD 4-PLY WOOL; we used KING COLE Superspun Superwash 4-Ply wool, A - (Copper 109), B - (Slate Blue 96), C - (Amber 10), D - (Sky 5), E - (Fawn 8) and F - (Bronze Green 43) - approx 30g of each. **TENSION:** Garter St Patt - 40 sts = 13.8cm and 60 rows =

12cm (approx T6). **NOTES:** Garter St Patt - 1 row knit, 1 row purl. **SCARF** - Garter/Stripe St Patt - Working in Garter St throughout, knit 30 rows in each of the 6 colours. **HAT** - Garter/Stripe St Patt - Working in Garter St throughout, knit 20 rows in each of the 6 colours.

**SCARF:** Using A COBH over 45 KH Ns, 000. Working in Garter/Stripe St Patt throughout (see NOTES), knit to RC720 and cast off. **HAT:** Using A COBH over 121 KH Ns, 000. Working in 1 x 1 Rib, T3 knit to RC50, 000. Starting with B and working in Garter/Stripe St Patt throughout (see NOTES), knit to RC80 and waste knit, 000.

**Shape Crown** - \*Push 101 KH Ns to WP. With wrong side facing, place sts onto Ns distributing them evenly along the row. Using F and working in

Garter St Patt knit 4 rows and waste knit\*. Work from \* to \* x 5 reducing number of sts by 20 each time. Knit to RC20. Thread yarn through rem 21 sts. **MAKE-UP:** Join seam. Pull up yarn at crown and fasten off.

### MIDDLE BOTTOM ROW

**MACHINES:** A, C or D with KR. **MATERIALS:** STANDARD 4-PLY SHET-LAND; we used JAMIESON and SMITH 2-Ply Jumper Weight, A - 105g (Shade 32). **TENSION:** Lace St Patt - 40 sts = 15.7cm and 60 rows = 15.8cm (approx T7). **RIB:** 1 x 1 T3/3. **NOTES:** Use Built-In Lace St Patt No 107 or any small lace stitch pattern design. **HAT:** Using A cast on over 111 KH Ns as RIB, 000. Knit to RC48. Trans all sts to KH, 000. T7 Knit 8 rows. Working in Lace St Patt throughout, knit to RC56 and







waste knit, 000. **Shape Crown:** \*Push 93 KH Ns to WP. With wrong side facing, place sts onto Ns distributing them evenly along the row. Working in St st knit 4 rows and waste knit\*. Work from \* to \* x 5 reducing the number of sts by 18 each time. Knit to RC20. Thread yarn through rem 21 sts. **SCARF:** Using A cast on over 199 KH Ns, 000. T7 working in Lace St Patt throughout, knit to RC295. T10 knit 1 row and latch cast off.

### LEFT BOTTOM ROW

**MACHINES:** A, C or D with KR. **MATERIALS:** STANDARD 4-PLY WOOL; we used KING COLE Superspun Superwash 4-Ply wool, A - 225g (Slate Blue 96). **TENSION:** Rib St Patt - 40 sts = 9.1cm and 60 rows = 15cm (approx T4/4). **NOTES:** Rib St Patt - 2 x 1 (see ABBREVIATIONS).

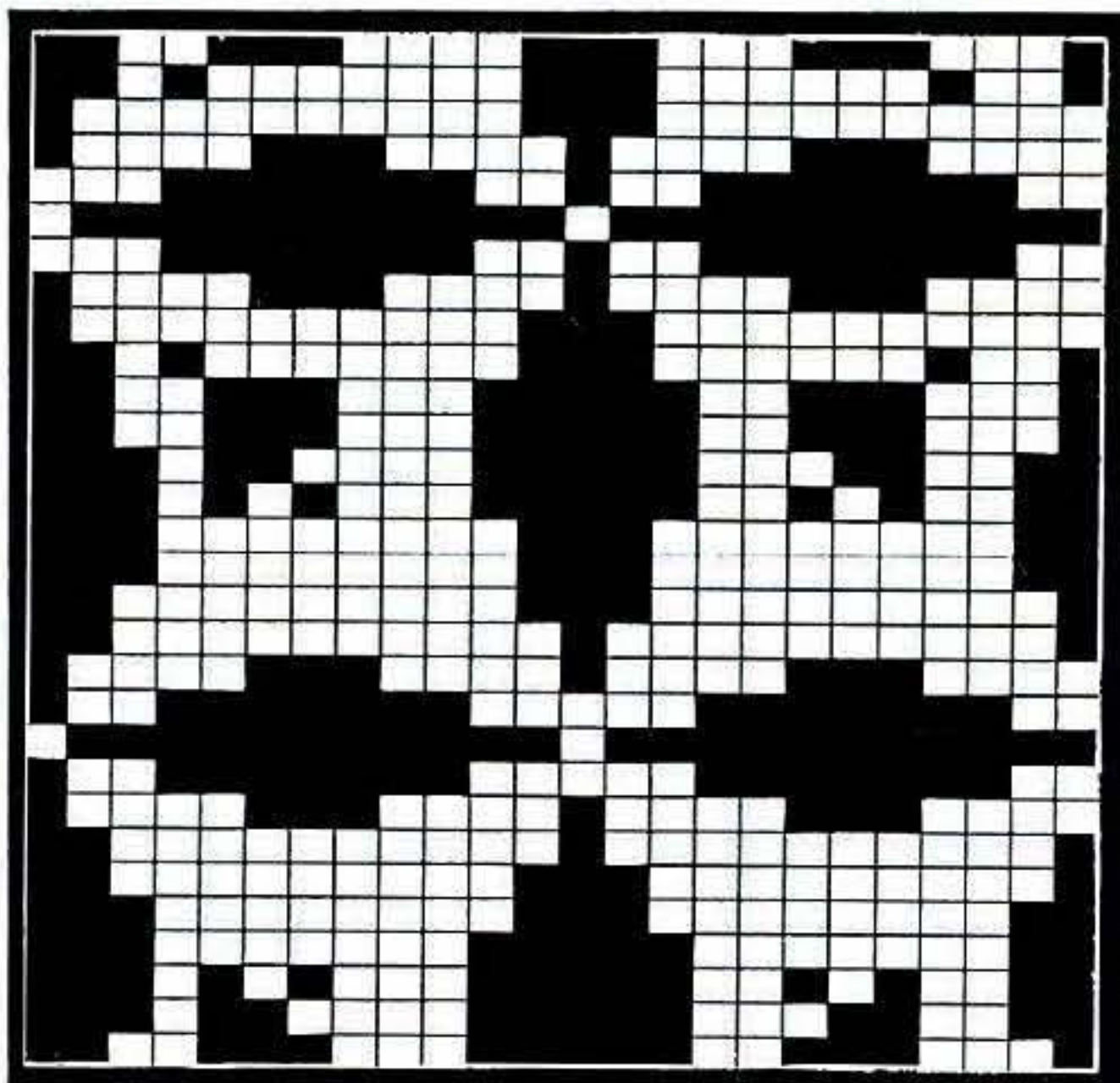
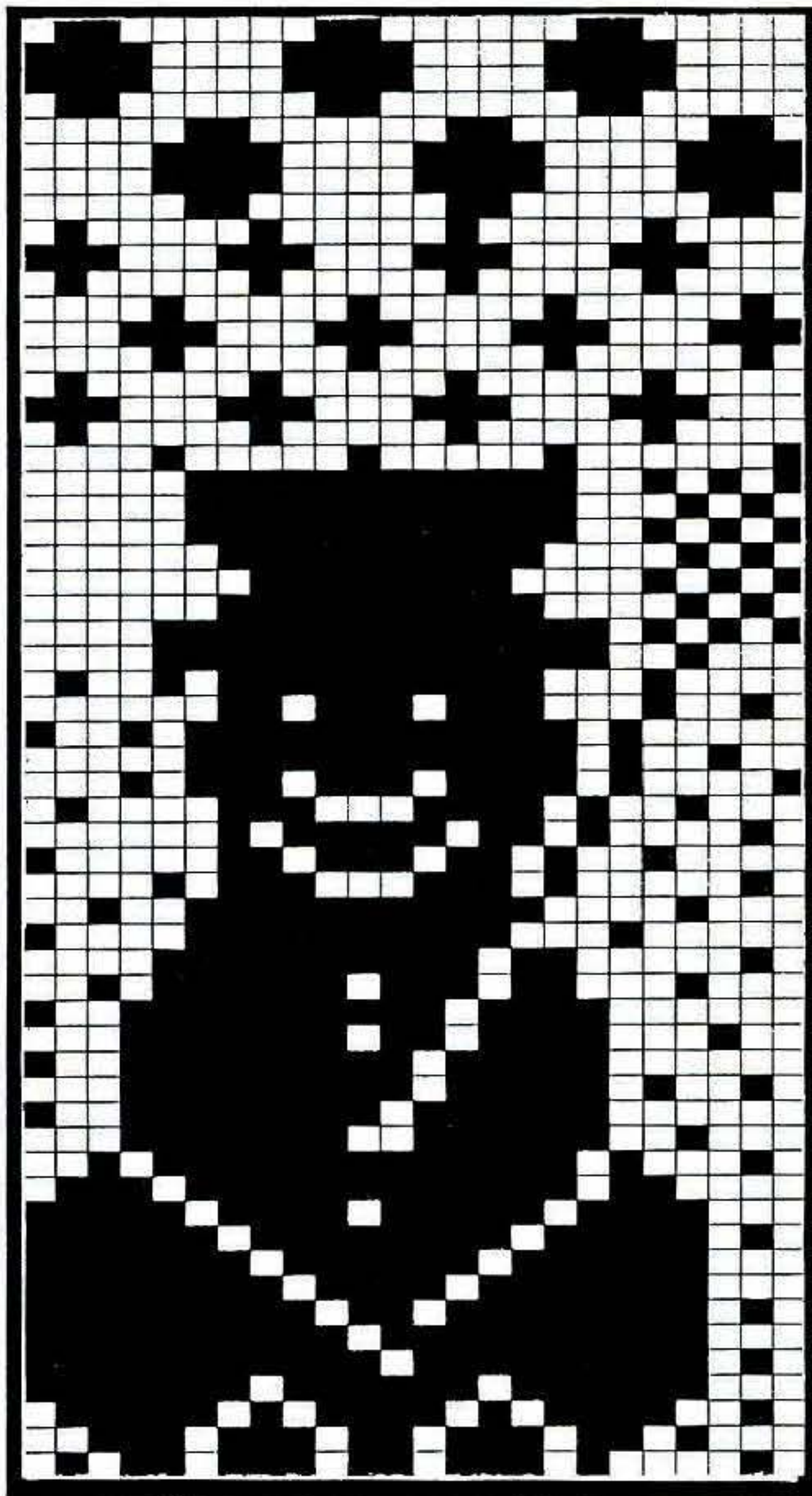
**HAT:** Using A cast on over 131 KH Ns as RIB, 000. T3/3 Knit to RC48. T4/4 Knit to RC108. **Shape Crown:** T3/3 knit 4 rows. T2/2 Knit 4 rows. Trans to 1 x 1 Rib. T2/2 Knit 4 rows. T1/1 Knit 4 rows. Trans all sts to KH. T2 Knit 4 rows. Thread yarn through sts. **MAKE-UP:** Join seam. Pull up yarn at crown and fasten off. **SCARF:** Using A cast on over 68 KH Ns as RIB, 000. Working in Rib St Patt throughout, knit to RC575. T10/8 knit 1 row. Trans all sts to KH and latch cast off each st individually.

### TOP LEFT

**MACHINES:** A, C or D with KR. **MATERIALS:** STANDARD 4-PLY WOOL; we used

KING COLE Superspun Superwash 4-ply wool, A - 300g (Sky 5), B - 320g (White 1) and C - 80g (Black 48). **TENSION:** Fairisle St Patt - 40 sts = 13.3cm and 60 rows = 14.6cm (approx T7). **RIB:** 1 x 1 T2/2. **NOTES:** Fairisle St Patt 1 (snowman) - A in FA throughout, knit 32 rows B, 8 rows C and 18 rows B in FB. Fairisle St Patt 2 (Snowflakes) - A in FA and B in FB throughout.

**HAT:** Using WY cast on over 147 KH Ns and knit a few rows ending with COR, 000. Using A T7 knit 80 rows. Trans to RIB, 000. Knit to RC72. Trans all sts to KH, 000. T7 knit 3 rows. Set for first row of Fairisle St Patt 1 and knit 1 row to select Ns. Knit to RC62. Using A knit 8 rows. T6 knit 4 rows. Trans every alt st to adjacent N leaving empty Ns in NWP. T6 knit 6 rows. Thread yarn through sts and remove from Ns. **MAKE-UP:** Block and press. Join seam. Thread yarn through sts of first row knitted in A. Pull up yarn at both ends and fasten off. Using C make a Pom-pom and



attach to crown. **SCARF:** Using A COBH over 99 KH Ns. T7 knit 1 row. Set for first row of Fairisle St Patt 1 and knit 1 row to select Ns, 000. Knit 58 rows in Fairisle St Patt



1, 475 rows in St Patt 2, then 58 rows in Fairisle St Patt 2 - UPSIDE DOWN. Using A knit 2 rows and cast off loosely. **MAKE-UP:** Block and press. Join seam and ends. Using C make tassels and attach as illustrated.

### TOP RIGHT

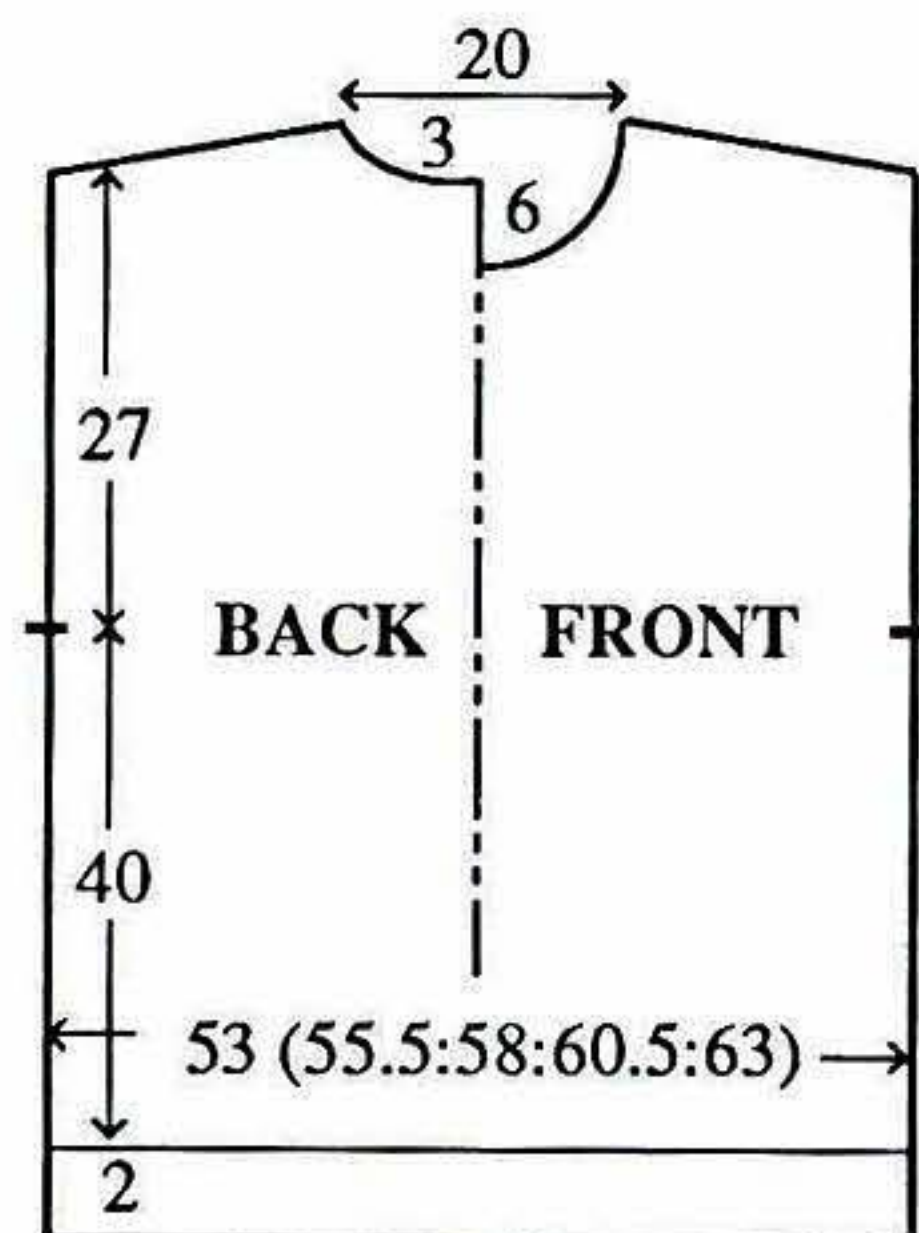
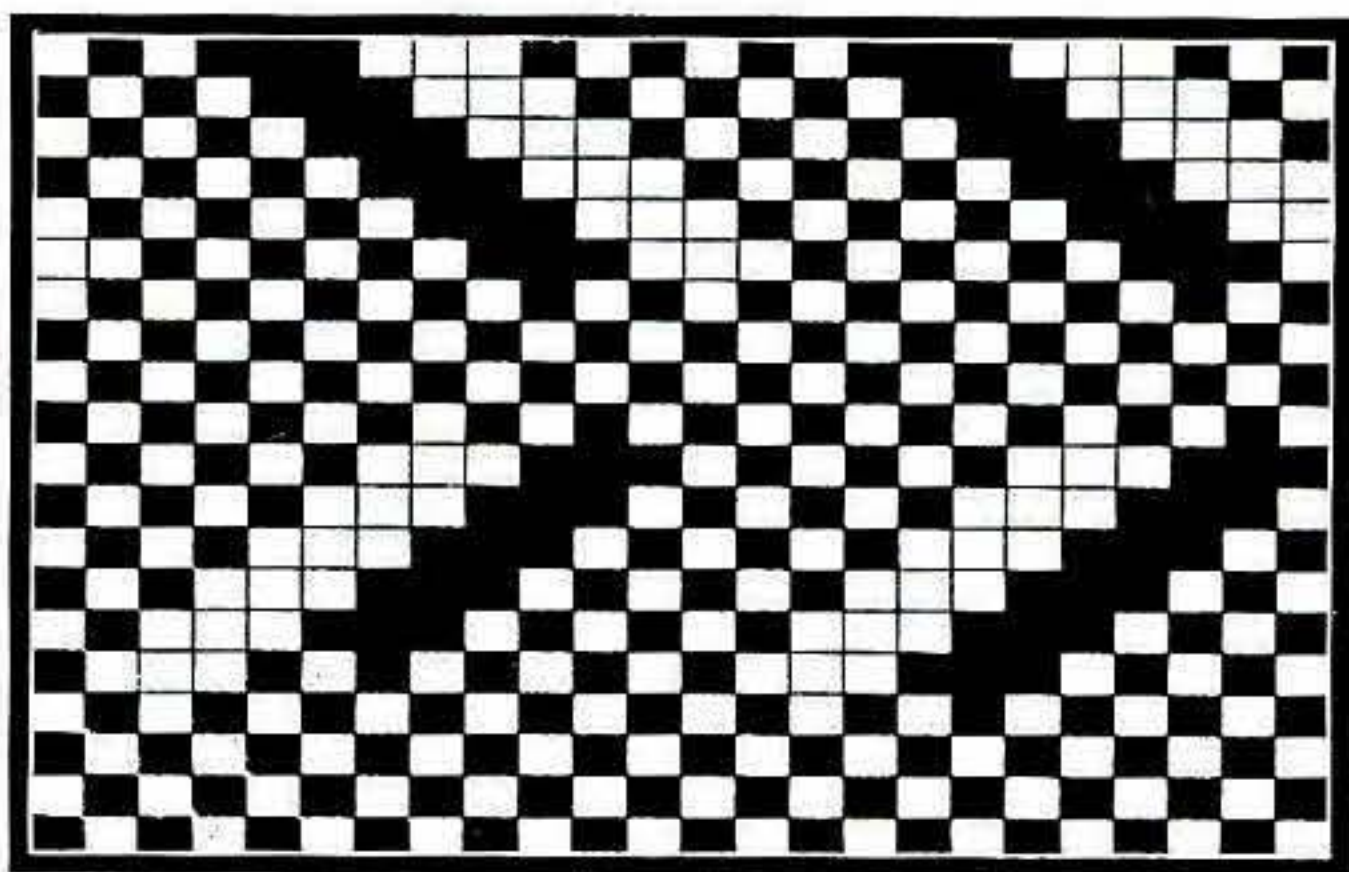
**MACHINES:** B2 or B3 with KR. **MATERIALS:** STANDARD MOHAIR; we used YORKSHIRE YARNS Kaleidescope - A - 190g (Tan). **TENSION:** Fisherman's Rib - 20 sts = 12.4cm and 30 rows = 8.8cm (approx T2/2). **RIB:** 1 x 1 T0/0.

**HAT:** Using A cast on over 67 KH Ns as RIB, 000. Knit to RC48, 000. Working in Fisherman's Rib throughout, knit to RC67. Knit 1 row Rib. Trans all sts to KH and thread yarn through sts. **MAKE-UP:** Join seam. Pull up yarn at crown and fasten off. **SCARF:** Using A cast on over 25 KH Ns, 000. Working in Fisherman's Rib throughout, knit to RC489. T10/10 knit 1 row. Trans all sts to KH and latch cast off.

## LADY'S FAIRISLE SWEATER

**MACHINES:** A, C or D with KR. **MATERIALS:** STANDARD 4-PLY CHENILLE, we used YEOMAN YARNS Chenille; A - 320 (340, 360, 380, 400)g (Black) (100% acrylic, 360m/100g). LUREX; B - 135 (145, 155, 165, 175)g (Copper). We used BROCKWELL YARNS Lurex Chainette (Lurex and polyester, 900m/100g). **MEASURE-**

**MENTS:** To fit bust 86 (91, 96, 101, 106)cm. **TENSION:** Fairisle St Patt - 40 sts = 13.2cm and 60 rows = 16.8cm (approx T8). **RIB:** 1 x 1 T5/5 for Waist Rib and COLLAR, T3/3 for Cuffs. **NOTES:** Fairisle St Pattern:- A in FA and B in FB throughout.



### BACK

Using A cast on over 161 (169, 177, 185, 193) KH Ns as RIB, 000. Knit to RC9. Trans all sts to KH. Set for first row of Fairisle St Patt. T8 Knit 1 row to select Ns, 000. Working in Fairisle throughout (see NOTES), knit to RC144. Place a WY marker at each end of work. Knit to RC240.

### Back Neck and shoulder shaping

(Note Patt position). Waste knit centre 31 sts. Waste knit sts at left, COR. At beg of next and every foll alt row cast off 8 (9, 9, 10, 11) sts x 5, 10 (9, 13, 12, 11) sts x 1 and, AT THE SAME TIME, at RC241, at beg of next and every foll alt row cast off 3

sts x 5. Return sts at left to Ns and knit to match right side reversing shapings.

### FRONT

As BACK to RC228.

### Front Neck shaping

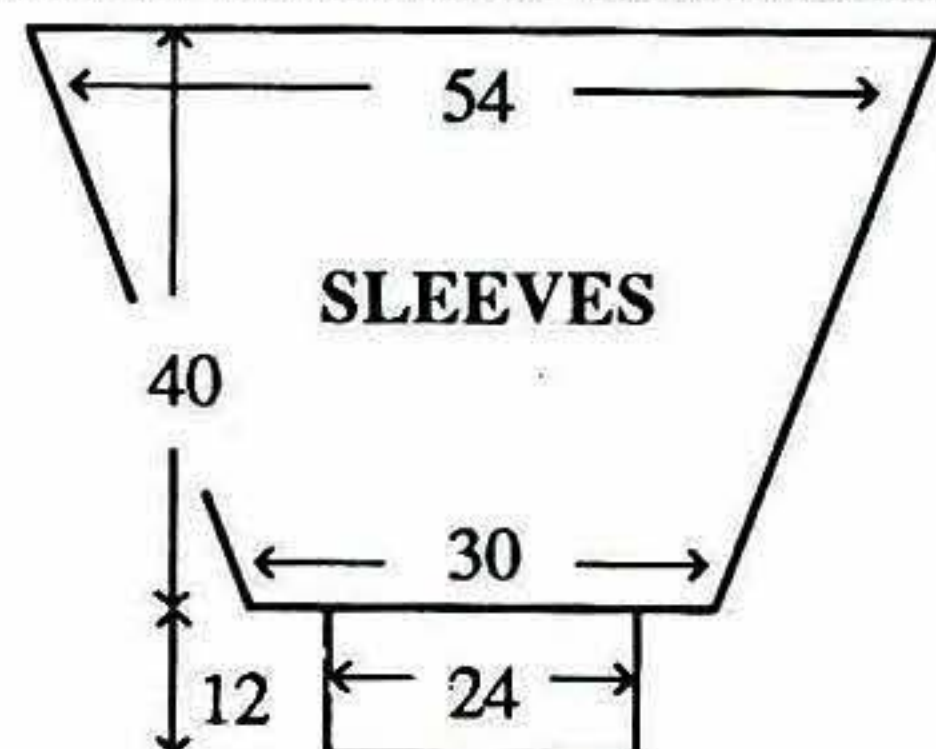
(Note Patt position). Waste knit centre 21 sts. Waste knit sts at left, COR. Knit 1 row. At beg of next and every foll alt row cast off 4 sts x 1, 3 sts x 2, 2 sts x 3, then dec 1 st x 4. Knit to RC240.

### Shoulder shaping

As BACK. Return sts at left to Ns and knit to match right side reversing shapings.

### COLLAR

Join one shoulder. Push 165 KH Ns to WP. With right side facing, pick up same number of sts evenly along neck edge and place onto Ns. Using A T8 knit 1 row. Trans to RIB, 000. Knit to RC60. Trans all sts to KH. T8 knit 1 row. Using B knit 3 rows and waste knit. Join second shoulder. Join NECKBAND seam and fold in half to outside and backstitch to





garment through last row knitted in B.

### SLEEVES

Push 163 KH Ns to WP. With wrong side facing, pick up same number of sts evenly along armhole edge between WY markers and place onto Ns, COL. Set for first row of Fairisle St Patt. Using A T8 knit 1 row to select Ns, 000. Working Fairisle throughout, knit to RC2. Dec 1 st at each end of next and every foll 4th row x 36. Knit to RC144 and waste knit rem 91 sts. **CUFFS:** Push 71 KH Ns to WP. With wrong side facing, place sts from cuff edge onto Ns distributing them evenly along the row. Using A T8 knit 1 row. Trans to RIB, 000. Knit to RC45. Using B knit 1 row. T10/8 knit 1 row. Trans all sts to KH and latch cast off.

### MAKE-UP

Join side and SLEEVE seams.

## LADY'S TUCK STITCH EVENING TROUSERS AND CARDIGAN

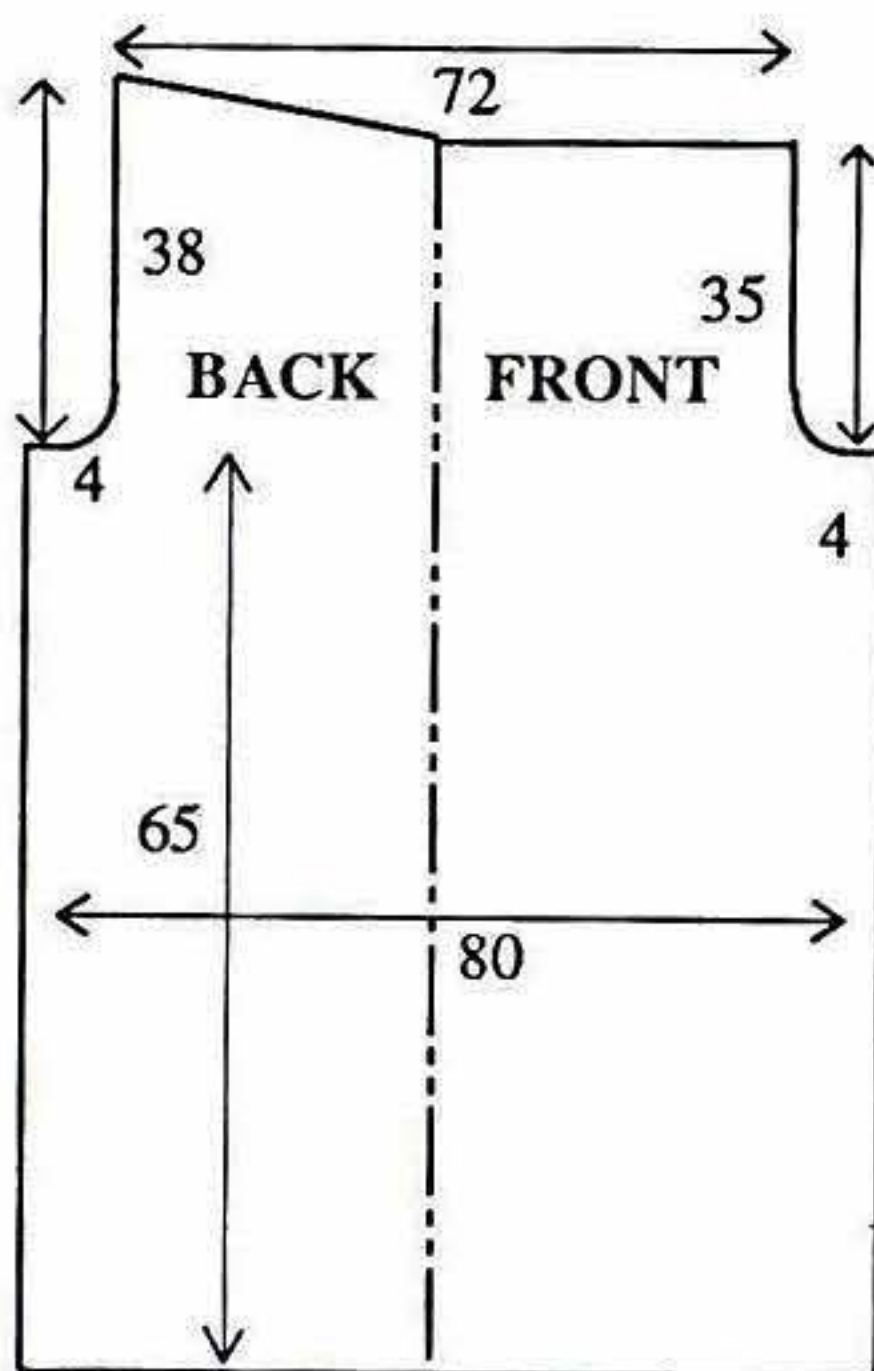
**MACHINES:** A, C or D with KR. **MATERIALS:** YEO-MAN YARNS Aurora; A (Black) (50% acrylic/30% wool/20% nylon, 500m/100g). **TROUSERS - A - 660g.** Elastic. **CARDIGAN - A - 730g.** **MEASUREMENTS:** One size to fit up to bust 106cm. **TENSION:** Tuck St Patt - 40 sts = 16cm and 60 rows = 9.3cm (approx T5). **RIB:** 1 x 1 T0/0. **NOTES:** See 148.

### TROUSERS-LEFT LEG

\*Using A cast on over 199 KH Ns and work Hem St Patt (see NOTES) to RC16. Trans all sts to KH. T5 knit 1 row. Set for first row of Tuck St Patt and knit 1 row to select Ns, 000. Working in Tuck throughout\*, knit to RC420.

#### Crotch shaping

At beg of next and every foll row cast off 3 sts x 2, 2 sts x 4, then dec 1 st at each end of alt rows x 3. Knit to RC646.



#### Back Waist shaping

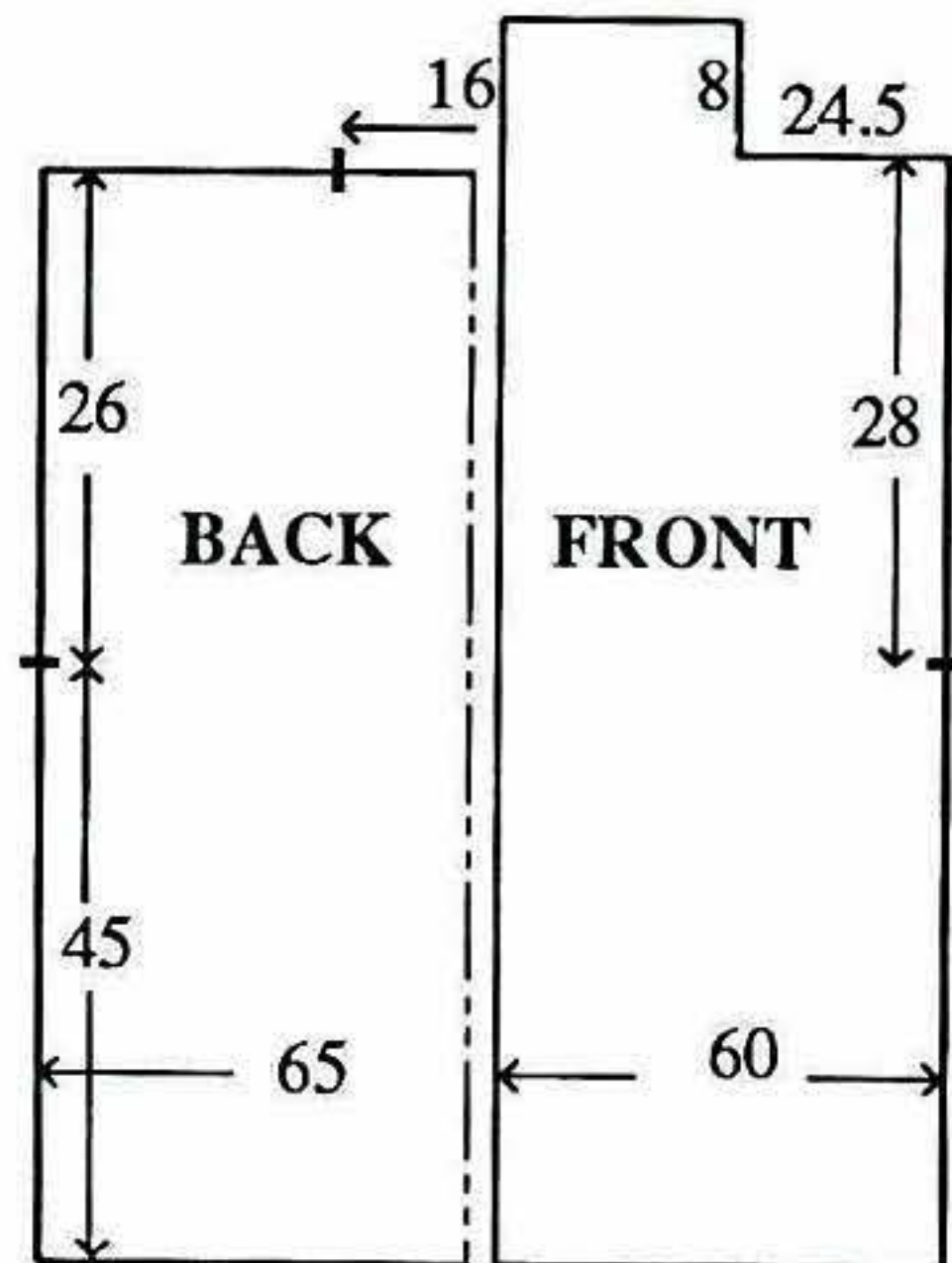
On side opposite K-Carr, on next and every foll alt rows, bring forward to HP 89 Ns x 1, 9 Ns x 10. Knit 1 row over all Ns. **WAISTBAND:** Trans to RIB, 000. Knit to RC29. T10/8 knit 1 row. Trans all sts to KH and latch cast off.

### RIGHT LEG

As LEFT LEG reversing shapings.

### MAKE-UP

Block and press. Join FRONT and BACK seams. Join inside leg seams.



Fold WAISTBAND in half to inside and stitch down loosely encasing elastic.

### CARDIGAN-BACK

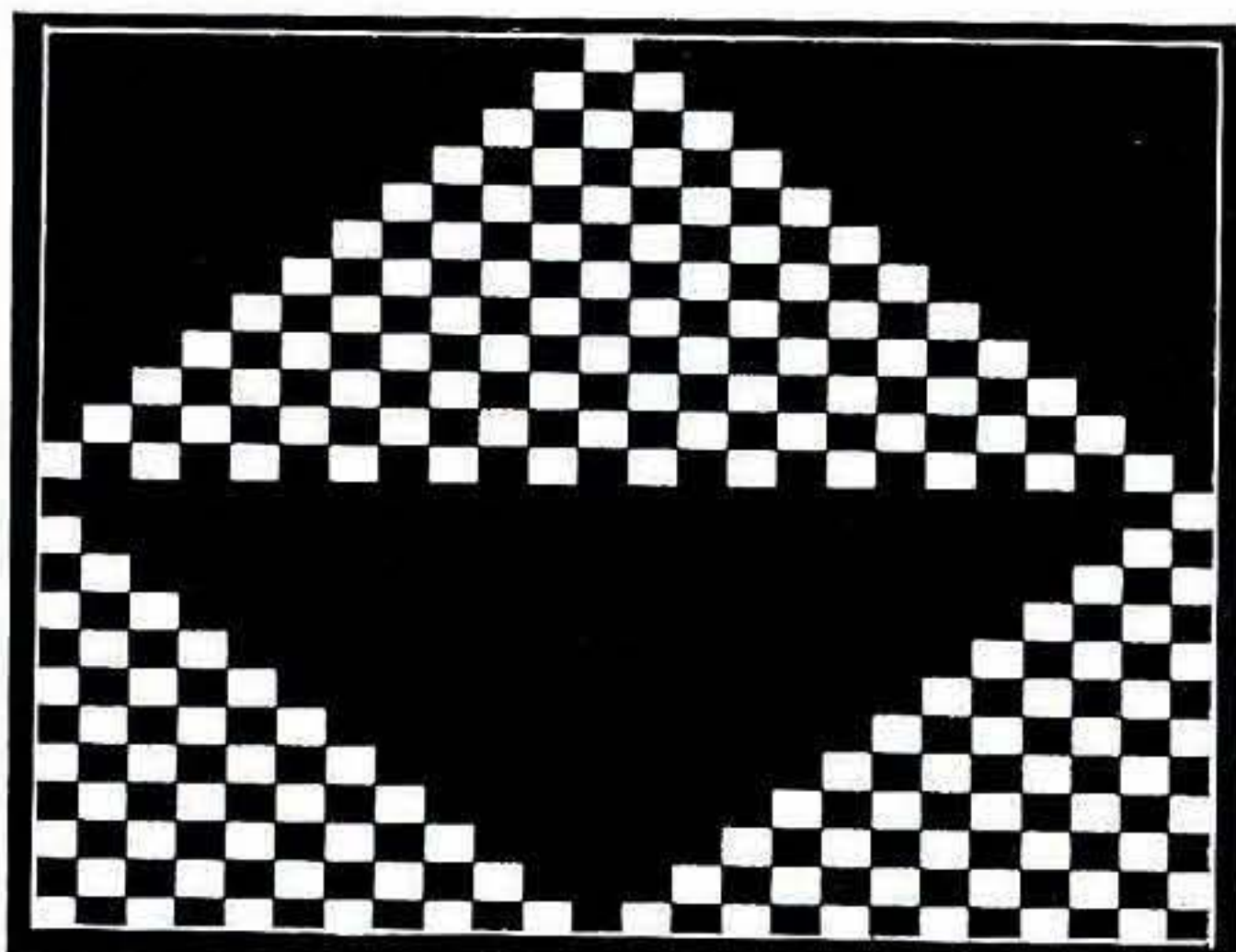
As TROUSERS from \* to \* using 163 KH Ns, knit to RC290. Place a WY marker at each end of work. Knit to RC458. Knit 1 row. Cast off centre 41 sts. Waste knit rem 61 sts at each end of work for shoulders.

### RIGHT FRONT

As TROUSERS \* to \* using 151 KH Ns, knit to RC290. Place a WY marker at left end of work. Knit to RC472. Waste knit 61 sts at left. **COLLAR:** On rem 90 sts, knit to RC523. Knit 1 row and waste knit.

### LEFT FRONT

As RIGHT FRONT reading

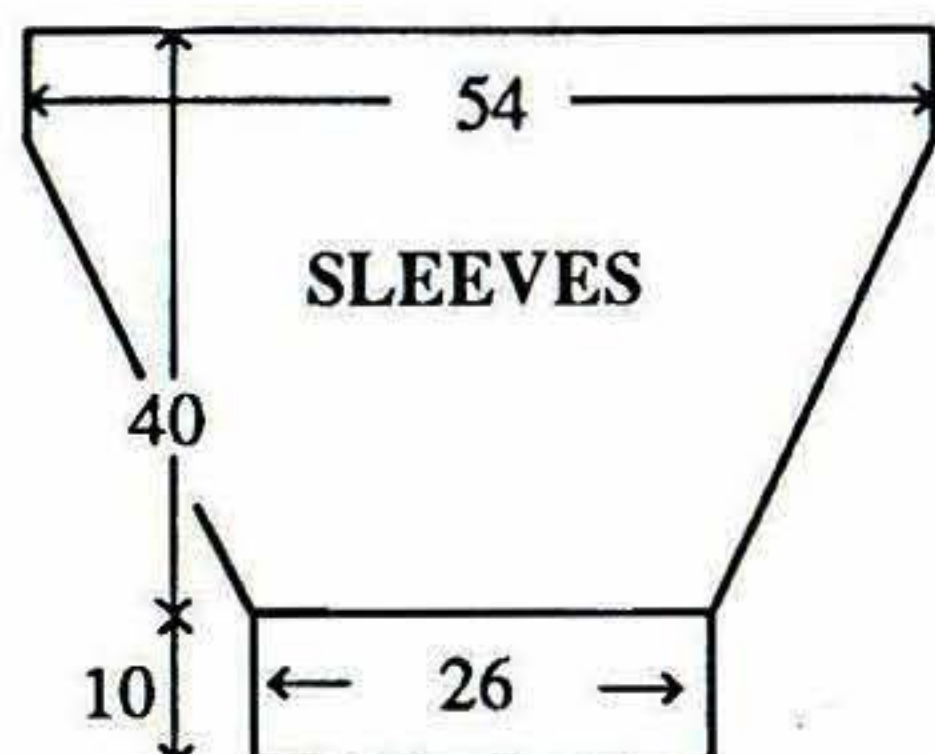








right for left and vice versa.



### SLEEVES

Join both shoulders by placing both sets of shoulder sts back onto Ns with right sides together. T10 knit 1 row and cast off. Using A cast on over 65 KH Ns as RIB, 000. Knit to RC59. Trans all sts to KH. Set for first row of Tuck St Patt. T5 knit 1 row to select Ns, 000. Working in Tuck throughout, knit to RC6. Inc 1 st at each end of next and every foll 6th row x 35. Knit to RC257. Knit 1 row. With wrong side facing, pick up same number of sts evenly along armhole edge between WY markers and place onto Ns. T10 knit 1 row and cast off.

### MAKE-UP

Block and press. Join side and SLEEVE seams. Join COLLAR seam and attach to BACK neck.

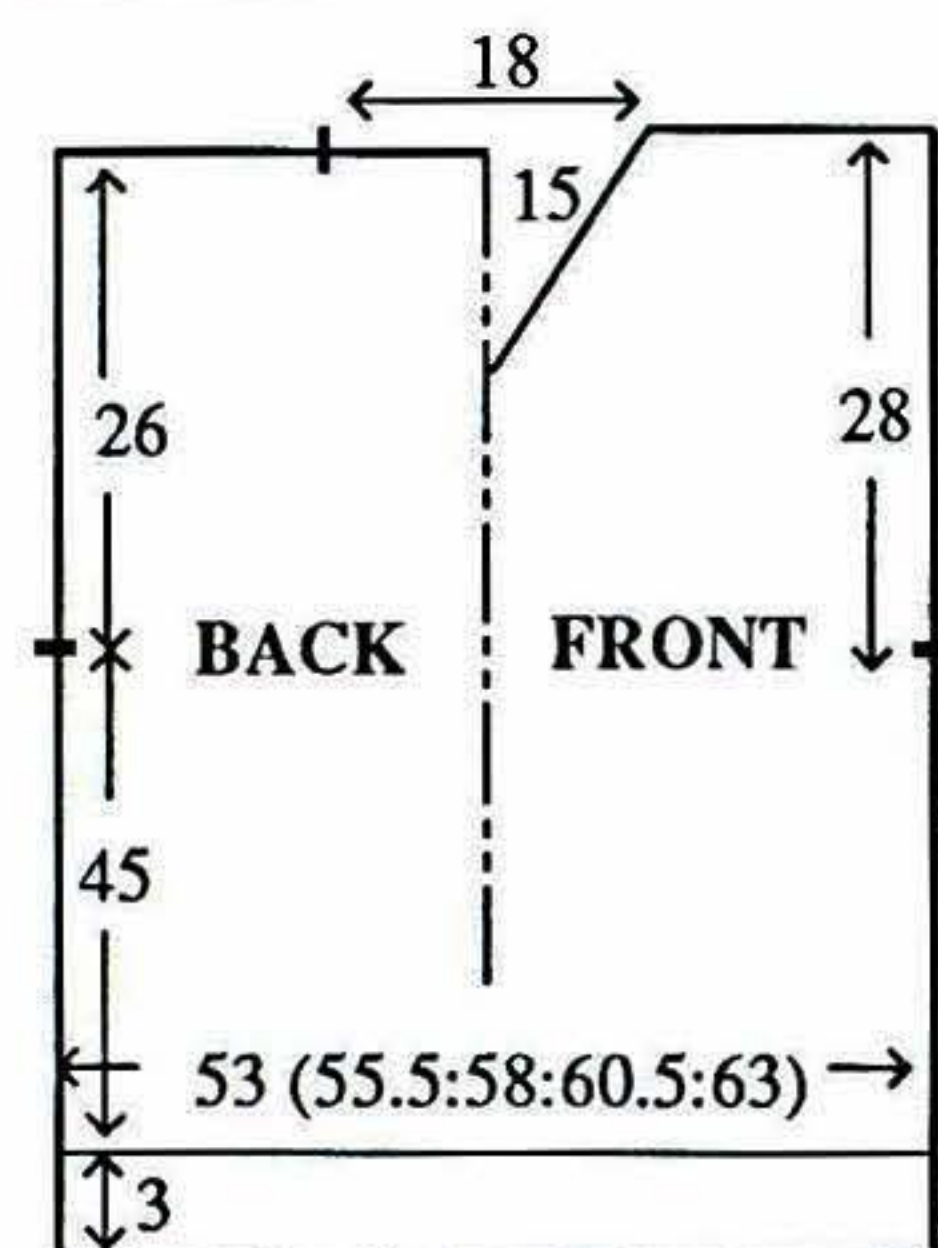
## TUCK STITCH LUREX EVENING TUNIC.

**MACHINES:** A, C or D with KR. **MATERIALS:** YEOMAN YARNS Manila Lame 2-Ply; A - 400 (410, 420, 430, 440)g (Silver) (75% viscose/15% nylon/10% polyester 1200m/100g). **MEASUREMENTS:** To fit bust 86

(91, 96, 101, 106)cm. **TENSION:** Tuck St Patt - 40 sts = 15cm and 60 rows = 9.2cm (approx T6) using 2 ends of A. **RIB:** 1 x 1 T0/0, using 2 ends of A. **NOTES:** Hem St Patt - Bring forward to WP required number of Ns for FNR. T4/4 knit 1 row, hang comb and weights, T3/3 knit 1 row. \*000 Bring forward to HP every 5th N on KH. Knit 3 rows. Knit 1 row over all Ns\*. Repeat from \* to \* throughout.

### BACK

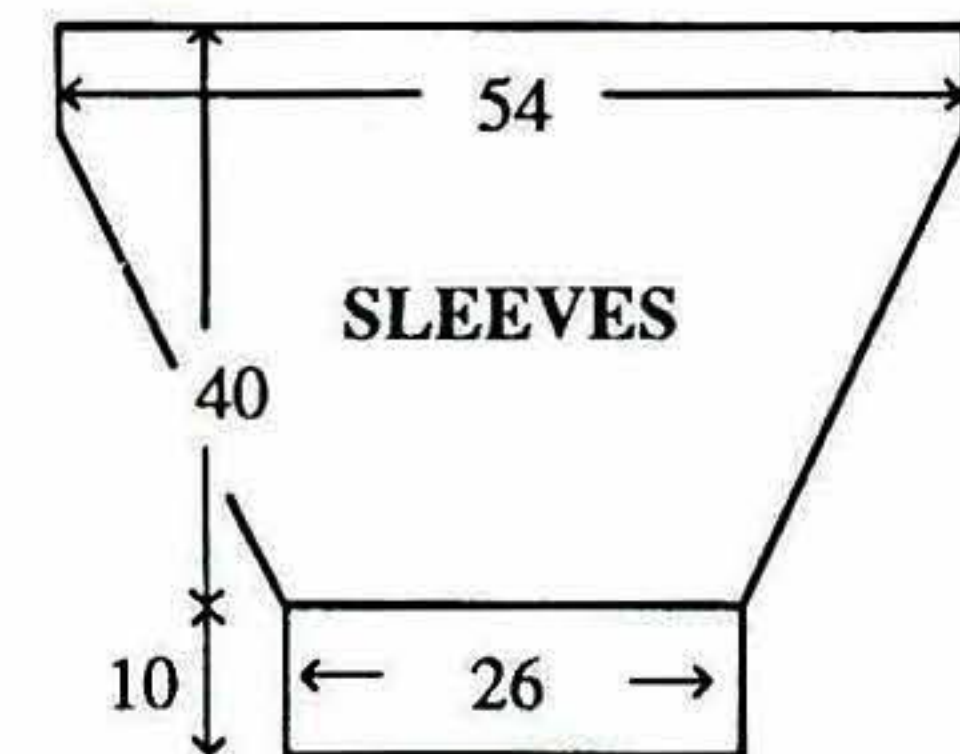
Using A cast on over 141 (147, 155, 161, 167) KH Ns and work Hem St Patt (see NOTES) to RC16. Trans all sts to KH. T6 knit 1 row. Set for first row of Tuck St Patt and knit 1 row to select Ns, 000. Working in Tuck throughout, knit to RC292. Place a WY marker at each end of work. Knit to RC462. Knit 1 row. Waste knit centre 47 sts. Waste knit rem 47 (50, 54, 57, 60) sts at each end of work for shoulders.



### FRONT

As BACK to RC376. **Neck shaping**  
Dec 1 st at centre. Waste knit

sts at left. Knit 4 rows. Dec 1 st at left on next and every foll 4th row x 23. Knit to RC476. Knit 1 row and waste knit rem 47 (50, 54, 57, 60) sts. Return sts at left to Ns and knit to match right side reversing shaping.



### SLEEVES

Join both shoulders by placing both sets of shoulder sts back onto Ns with right sides together. T10 knit 1 row and cast off. Using A cast on over 69 KH Ns as RIB, 000. Knit to RC59. Trans all sts to KH. Set for first row of Tuck St Patt. T6 knit 1 row to select Ns, 000. Working in Tuck throughout, knit to RC6. Inc 1 st at each end of next and every foll 6th row x 37. Knit to RC260. Knit 1 row. With wrong side facing, pick up same number of sts evenly along armhole edge between WY markers and place onto Ns. T10 knit 1 row and cast off.

### COLLAR

Using A cast on over 131 KH Ns and work Hem St Patt (see NOTES) to RC8. T1/1 working in FNR to end, knit to RC24. Trans all sts to KH. T6 knit 1 row. With wrong side facing, working from left to right and starting at centre FRONT, \*\*pick up 42 sts evenly along RIGHT FRONT neck edge and







place onto Ns. Bring these Ns forward to D position. Place yarn in hooks of Ns and manually take these Ns back to WP, knitting sts. Latch cast off these sts\*\*. Repeat from \*\* to \*\* using 47 sts for BACK neck and rem 42 sts for LEFT FRONT neck edge. Stitch side edges of COLLAR to garment as illustrated.

### MAKE-UP

Block and press. Join side and SLEEVE seams.

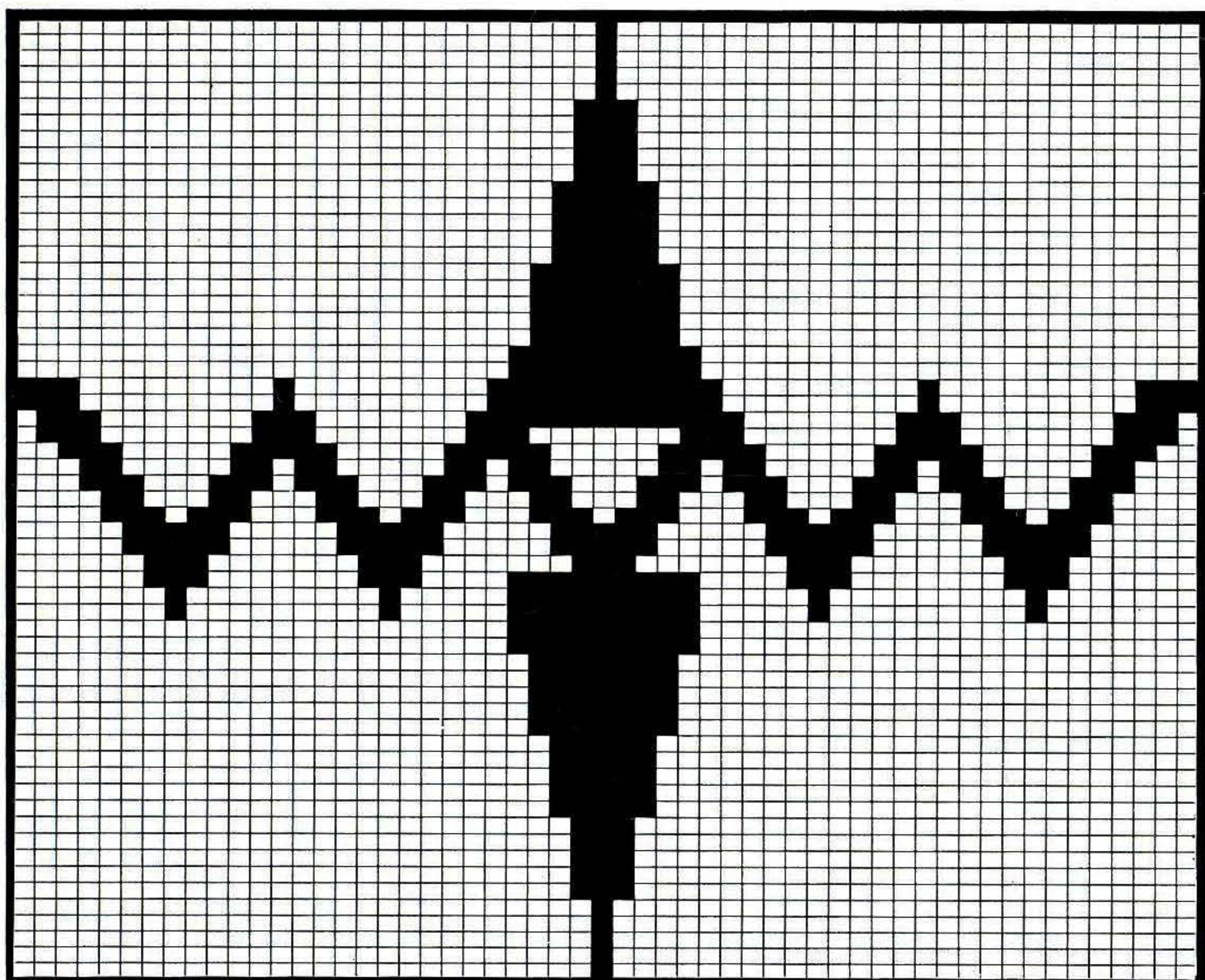
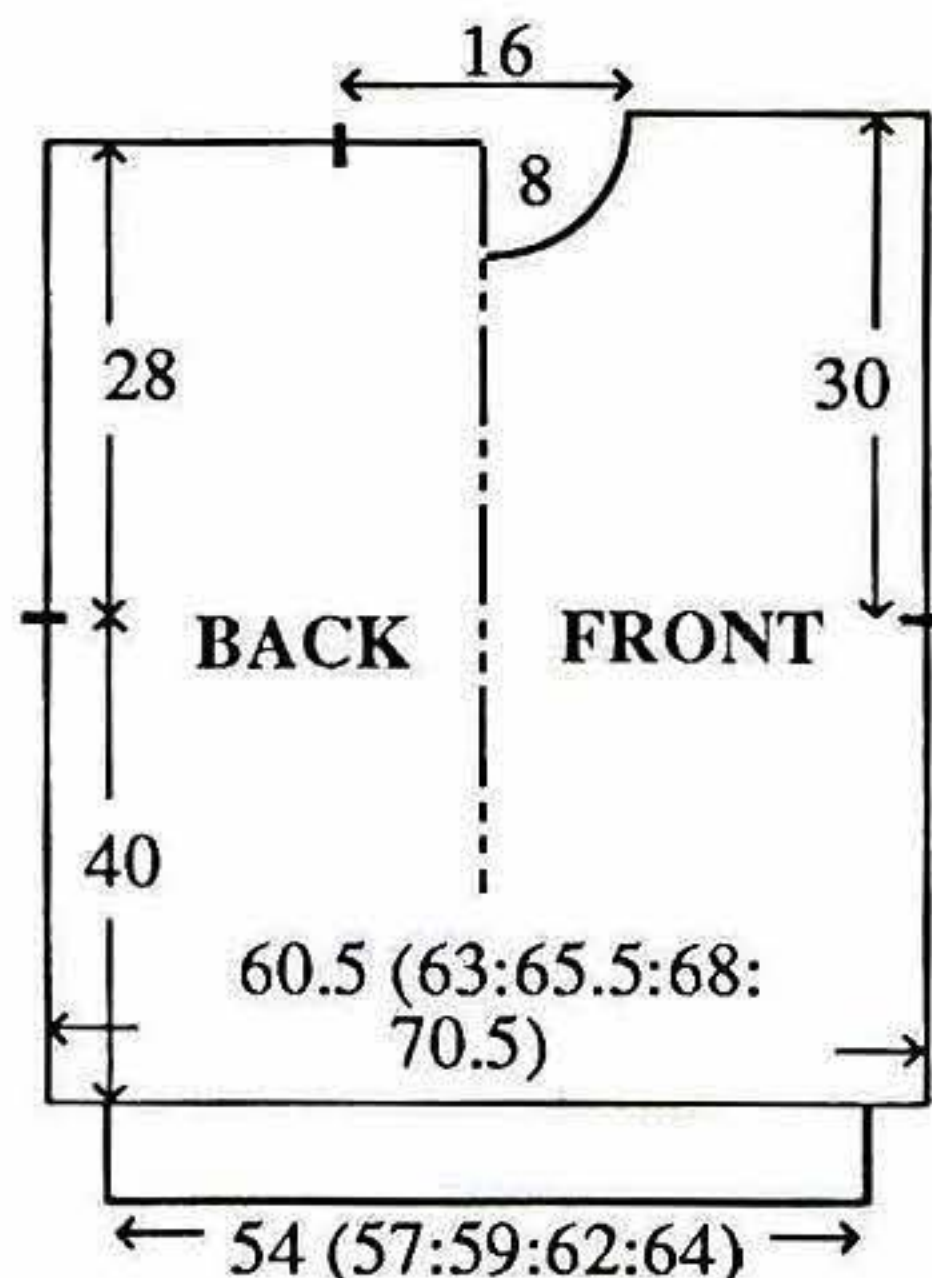
## MAN'S CHUNKY INTARSIA SWEATER

**MACHINES:** B2 or B3 with KR and Intarsia Carr.  
**MATERIALS:** STANDARD CHUNKY YARN we used SPECTRUM Strata Chunky; A - 750 (800, 850, 900, 950)g (French Navy 525) and B - 75g (Cream 250) (80% acrylic, 20% wool 140m/100g).  
**MEASUREMENTS:** To fit chest 91 (96, 101, 106, 111)cm.  
**TENSION:** St st/Intarsia (when making your tension swatch use Intarsia Carr if you intend to work garment with Intarsia Carr - Intarsia Carr and K-Carr tensions can be very different) - 20 sts = 13.3cm and 30 rows = 14.3cm (approx T8).  
**RIB:** 1 x 1 T1/1. **NOTES:** BACK and one SLEEVE are

knitted in St st only using the Intarsia Carriage.

### PROCEDURE

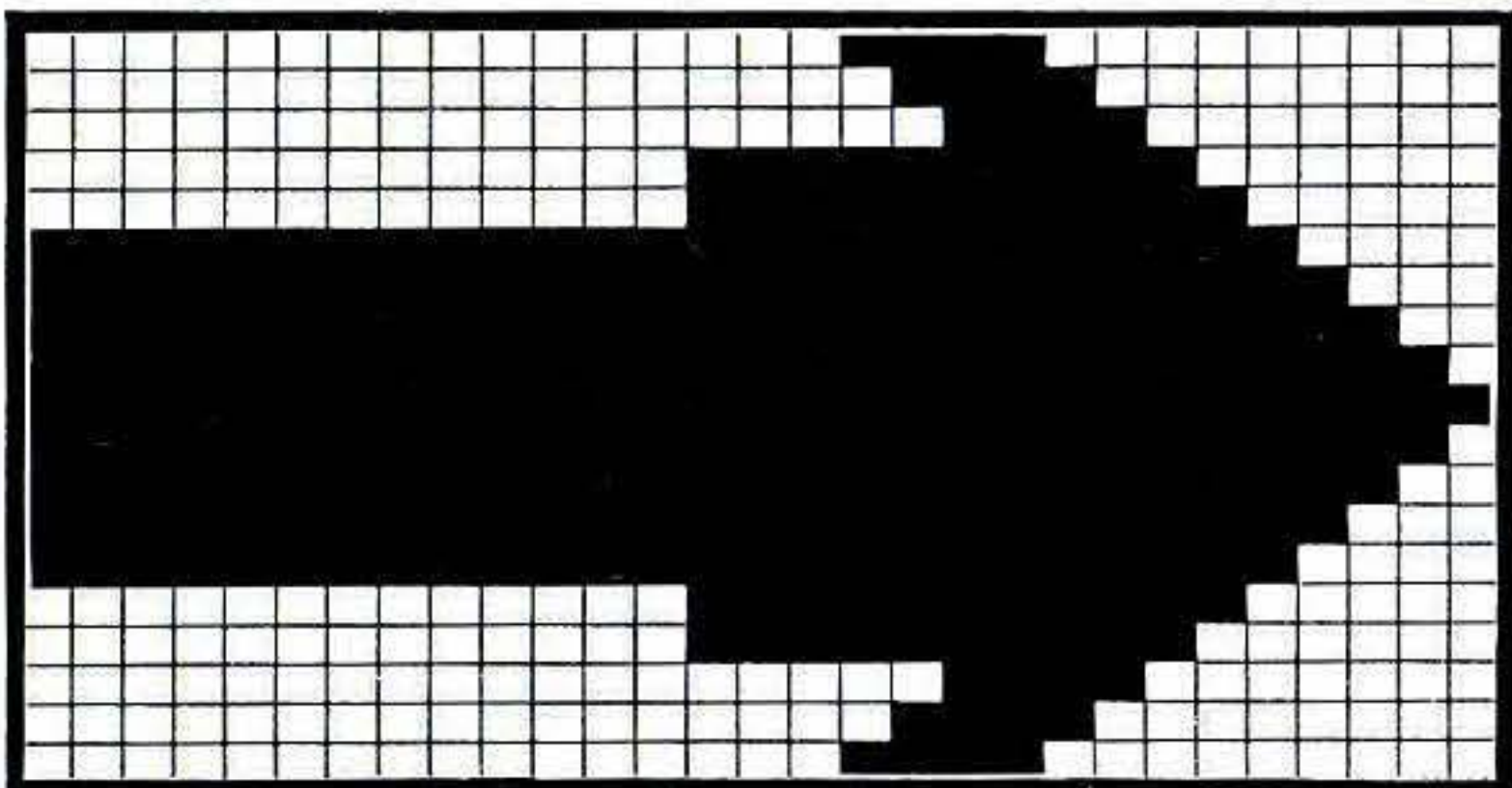
Make a tension swatch and set KL accordingly. Hand select intarsia design using Stitch







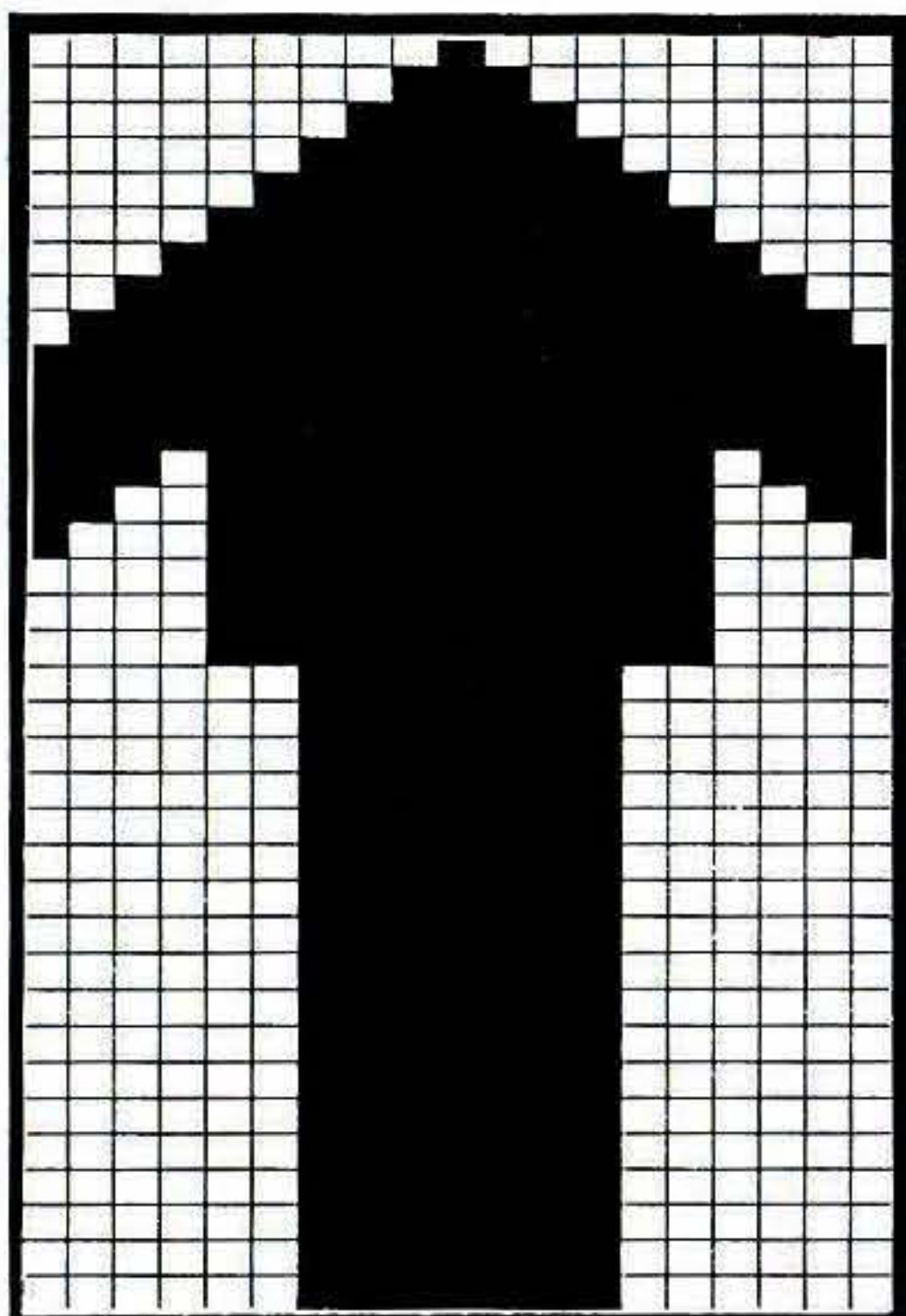




Patterns as a chart.

### BACK

Using WY cast on over 92 (96, 100, 104, 108) KH Ns and knit a few rows ending with COR, 000. Working in St st throughout, knit to RC84. Place a WY marker at each end of work. Knit to RC144. Waste knit centre 24 sts. Waste knit rem 34 (36, 38, 40, 42) sts at each end of work for shoulders. **WAIST RIB:** Push 81 (85, 89, 93, 97) KH Ns to WP. With wrong side facing place sts from waist edge onto Ns distributing them evenly along the row. Using A T8 knit 1 row. Trans to RIB, 000. Knit to RC23. T10/10 knit 1 row. Trans all sts to KH and latch cast off.



### FRONT

As BACK working in Intarsia throughout, to RC130.

### Neck shaping

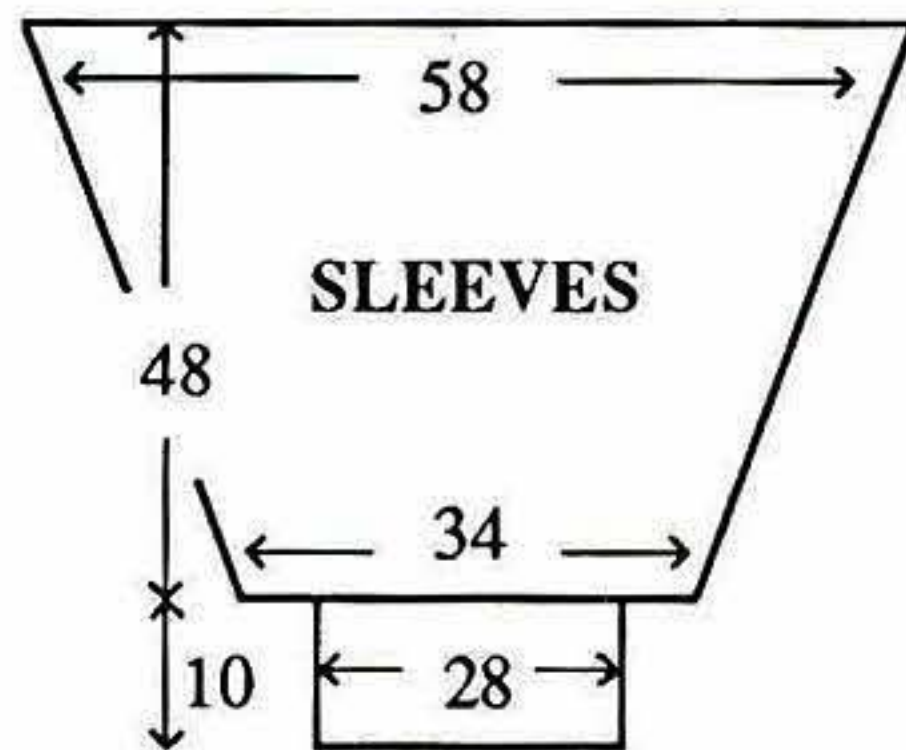
Waste knit centre 8 sts. Waste knit sts at left, COR. Knit 1 row. At beg of next and every foll alt row cast off 2 sts x 2, then dec 1 st x 4. Knit to RC148 and waste knit rem 34 (36, 38, 40, 42) sts. Return sts at left to Ns and knit to match right side reversing shaping.

### NECKBAND

Join one shoulder by placing one set of shoulder sts back onto Ns with right sides together. T10 knit 1 row and cast off. Using A COBH over 71 KH Ns. T8 knit 10 rows. Trans to RIB and knit 10 rows. Trans all sts to KH. T8 knit 1 row. With right side facing, pick up same number of sts evenly along neck edge and place onto Ns. Knit 3 rows and waste knit. Join second shoulder as first. Join NECKBAND seam and backstitch to garment through last row knitted in A.

### SLEEVES

Push 87 KH Ns to WP. With wrong side facing, pick up same number of sts evenly along armhole edge between WY markers and place onto Ns, COL. Using A T8 knit 1 row, 000. Working in Intarsia/St st throughout (see NOTES), knit to RC15. Dec 1



st at each end of next and every foll 5th row x 18. Knit to RC102 and waste knit rem 51 sts. **CUFFS:** As WAIST RIB using 41 KH Ns and knitting 30 rows.

### MAKE-UP

Join side and SLEEVE seams.

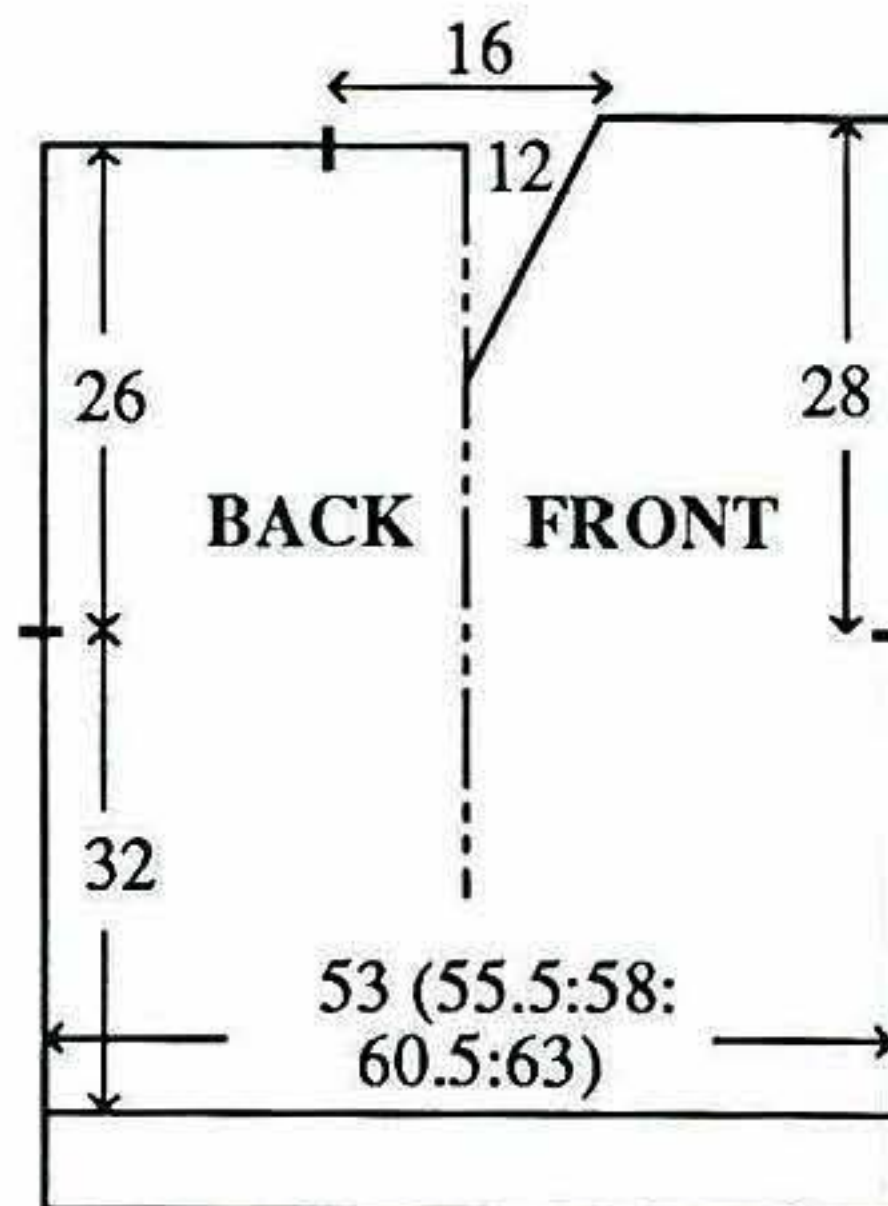
## LADY'S JACQUARD SWEATER

**MACHINES:** C or D with KR850 and KR Col Changer.

**MATERIALS:** STANDARD 2-PLY WOOL/ACRYLIC, we used YEOMAN YARNS Fifty-Fifty; A - 270 (285, 300, 315, 330)g (Mallard 83) and B - 150 (160, 170, 180, 190)g (Cream 99) (50% wool, 50% acrylic, 900m/100g). 2 Buttons.

**MEASUREMENTS:** To fit bust 86 (91, 96, 101, 106)cm.

**TENSION:** Jacquard St Patt - 40 sts = 13.6cm and 60 rows =









6cm (approx T2/2). **RIB:** 2 x 1 (see ABBREVIATIONS) T2/2 using 2 ends of A. **NOTES:** Use Fine Knit Bar throughout. **BACK/FRONT** - Knit 1 Patt repeat of Jacquard St Patt 1, then continue with Jacquard St Patt 2 to end. **SLEEVES** - \*Utilise UPSIDE DOWN facility and use the last 49 rows of Jacquard St Patt 1 - after 49 rows utilise REVERSE FACILITY\*, repeat from \* to \* throughout. When shaping, only Ns on KH are counted, adjust Ns on KR as necessary.

### BACK

Using 2 ends of A cast on over 158 (164, 170, 179, 188) KH Ns as RIB, 000. Knit to RC31, COL. Push all Ns into WP. Inc 1 (1, 1, 0, 1) st. Set for first row of Jacquard St Patt 1. T4/4 knit 1 row to select Ns, 000. Break 1 end of B. Working in Jacquard St Patt throughout (see NOTES), knit to RC320. Place a WY marker at each end of work. Knit to RC580. Trans all sts to KH. T4 knit 1 row. Waste knit 55 (58, 61, 65, 70) sts at each end of work for shoulders. Cast off rem 49 sts.

### FRONT

As BACK to RC480.

#### Neck shaping

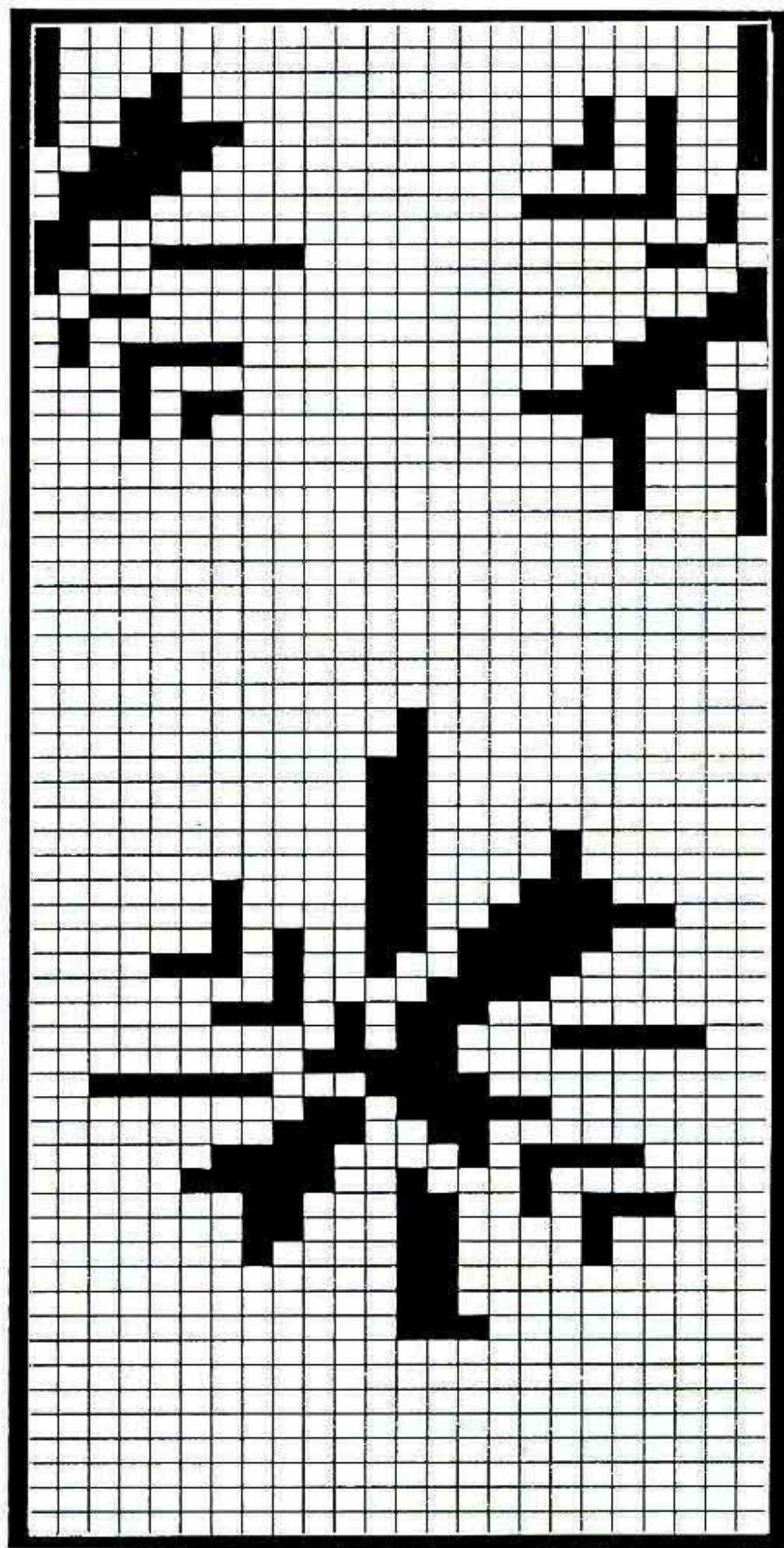
(Note Patt position). Dec 1 st at centre. Waste knit sts at left, COR. Knit 10 rows. Dec 2 st at left on next and every foll 10th row x 12. Knit to RC600. Trans all sts to KH. T4 knit 1 row and waste knit rem 55 (58, 61, 65, 70) sts. Return sts at left to Ns and knit to match right side reversing shaping.

### COLLAR

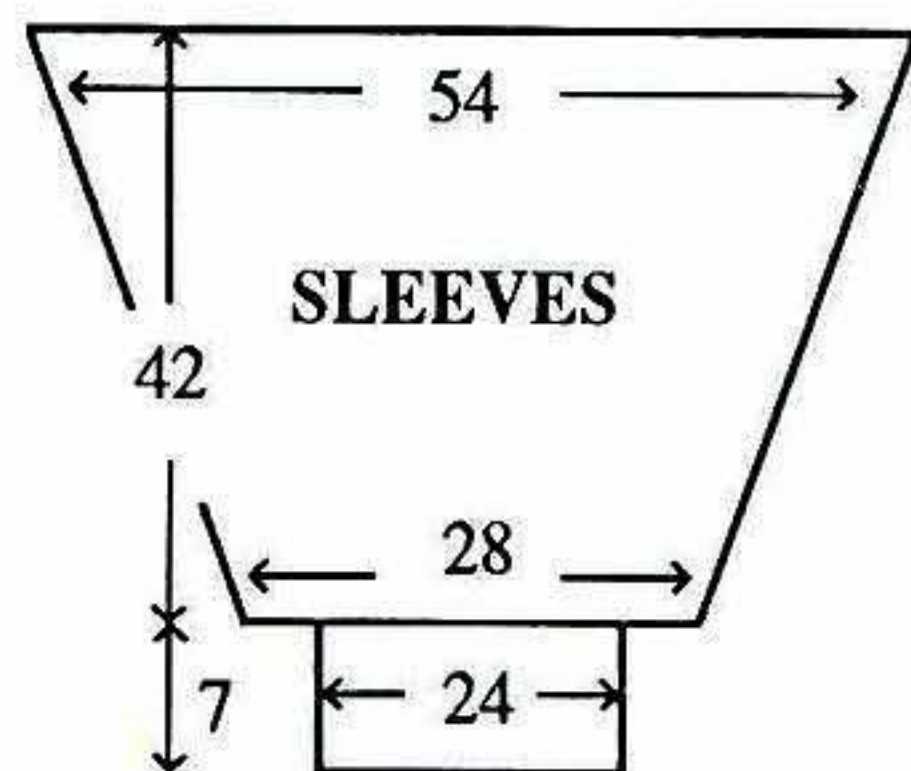
Join both shoulders by placing both sets of shoulder sts back onto Ns with right sides together. T10 knit 1 row and cast off. Using 2 ends of A cast on over 176 KH Ns as RIB, 000. Knit to RC30. Work 1 x 2 st buttonhole over the 8th and 9th sts at each end of work. Knit to RC59. Push all Ns into WP. T6/6 knit 1 row. Change to circular knitting, 000. T6/6 Knit to RC8 and waste knit. Backstitch COLLAR to neck edge first on the outside and then on the inside.

### SLEEVES

Using A cast on over 159 KH Ns as FNR. T2/2 knit 1 row, COL. Set for first row of Jacquard St Patt (see NOTES) and knit 1 row to select Ns, 000. Working in Jacquard throughout (see NOTES) knit to RC20. Dec 2 sts at each end of next and every foll 20th row x 19. Knit to RC420. Trans all sts to KH. T6 using 2 ends of A knit 1 row and waste knit rem 83 sts. **CUFFS:** Push 71 KH Ns to WP. With wrong side facing, return sts from cuff edge to Ns distributing them evenly along the row. T6 knit 1



row. Trans to RIB, making sts as necessary, 000. Knit to RC35. T10/8 knit 1 row. Trans all sts to KH and latch cast off each st individually.



### MAKE-UP

Set in SLEEVES. Join side and SLEEVE seams. Crochet a chain and attach to buttons for COLLAR.







