

brother fashion

Issue No.7

UK £1.50

HFL 3.95

I £2.50

MASTERCLASS

See the effect of using the same stitch design for Fairisle and Garter Carriage!

BEGINNERS

All the inside information about using cables with other stitches!

KNITTING AND PATCHWORK

Simple Fairisle rectangles joined to make the most superb Spring coat!

MOHAIR IS BACK

Full length Fairisle coat for Standard Punchcard Machines, Fairisle sweater for wide gauge machines!

7 garments for punchcard machines!



brother



Dear Readers,
 This issue we have concentrated on Cables and Cable effects. The Beginners Lesson discusses how best to incorporate cables with other stitches. The Master Class on the other hand, uses Fairisle and Garter Carriage stitch to simulate cables. Over the last few seasons interest in textured yarns has continued to grow - Mohair, Chenille and Bouclé leading the way. Fairisle which has been knitted with one textured yarn and one smooth yarn produces a fabric similar to a brocade - see our

patchwork coat. Remember that for the true look of patchwork, and to save money, you don't have to use uniform colours throughout the coat - odds and ends can be used up!
 If you like Mohair you'll love our fluffy sweater. But, if you find difficulty in wearing it next to your skin, our full length fairisle coat is the answer. The finer yarn, spun for standard guage machines, is ideal for this warm, light and sophisticated garment.

Happy Knitting,
 Susan Nutbeam.

CONTENTS

WOMANSWEAR

Tuck Stitch Waistcoat
 (Front Cover), 3

Tuck Stitch Cardigan
 (Front Cover), 4

Fairisle sideways knitted
 sweater, 4 and 5

Lace and Cable longline
 Sweater, 7 - 9

Fairisle Patchwork
 Jacket, 12 - 14

Fairisle and Garter Carriage
 Stitch Skirt Suit, 17 - 19

Fairisle Coat, 18 - 21

Chunky Fairisle
 Sweater, 22 - 25

MENSWEAR

Fairisle Sweater with
 Collar, 20 - 23

BEGINNERS

LESSON - Cables are used with a selection of different stitches for maximum effect, 8 - 11

MASTER CLASS - Continuing with the Cable theme, the PPD is used to place stitch designs onto a sweater for best effect. Also, a stitch design is rotated so that it may be used to make two completely different stitches, 15 - 19

***NEWS AND
 VIEWS*** - 27 - 29

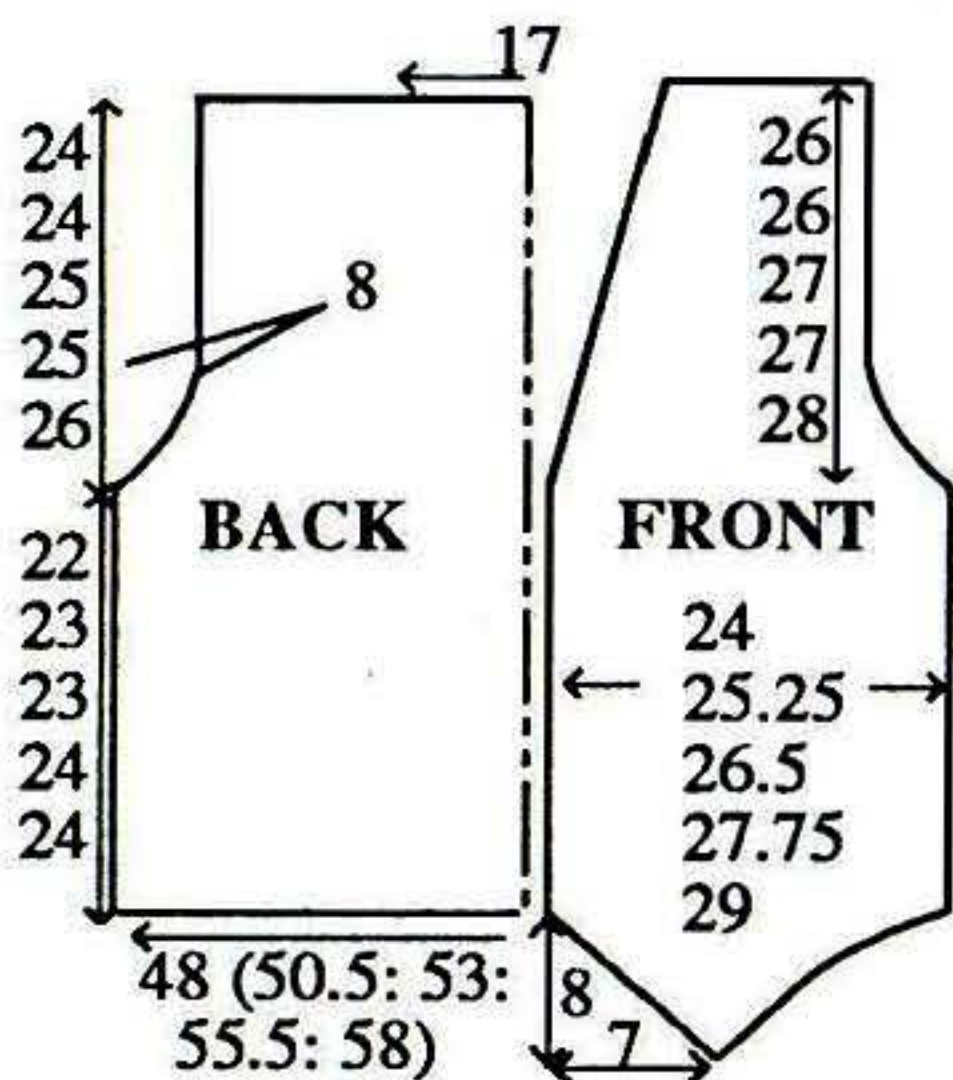
STRIPED TUCK WAISTCOAT



MACHINES: A, C or D.
MATERIALS: STANDARD 4-PLY WOOL, we used KING COLE Superspun Superwash 4-Ply Wool; A - 155 (175, 195, 215, 235)g (Black 48), B - (Fawn 8) and C - (Larkspur 13) - approx 45 (50, 55, 60, 65)g of each. (100% wool, 360m/100g). 4 buttons. **MEASUREMENTS:** To fit bust 86 (91, 96, 101, 106) cm. **TENSION:** Tuck St Pattern - 40 sts = 18.5cm and 60 rows = 11.7cm (approx T9). **NOTES:** Striped Tuck St Pattern - *6 rows B, 6 rows A, 6 rows C, 6 rows A*. Repeat from * to * throughout. Purl side is used as right side of garment.

BACK

Using WY cast on over 105 (109, 115, 121, 125) KH Ns and knit a few rows ending with COL. Using A T7 knit 10 rows. T10 knit 1 row. T7 knit 10 rows. Turn up hem, 000. Set for first row of Tuck St Pattern and knit 1 row to select Ns. Depress both TUCK buttons and knit 5 rows. Working in Striped Tuck throughout (see NOTES), knit to RC102 (108, 108, 114, 114).



Armhole shaping

At beg of next and every foll row cast off 4 sts x 2, 3 sts x 2, 2 sts x 6, then dec 1 st at each end of alt rows x 5. Knit to RC226 (229, 235, 243, 245). Knit 1 row St st. Waste knit centre 37 sts. Waste knit rem 16 (18, 21, 24, 26) sts at each end of work for shoulders.

LEFT FRONT

Using B COBH over 3 KH Ns, COR. T9 knit 2 rows, 000. Set for first row of Tuck St Pattern and knit 1 row to select Ns. Working in Striped Tuck throughout, knit 1 row, COR. At beg of next and every foll alt row cast on 1 st x 5, 2 sts x 14, 2 (4, 6, 10, 12) sts x 1 and AT THE SAME TIME at RC3, at left, inc 1 st on next and every foll 3rd row x 15. Knit to RC144 (150, 150, 156, 156).

Front and Armhole shaping

Armhole shaping as BACK. At left dec 1 st on next and every foll 6th row x 19 (19, 18, 19, 19). Knit to RC277 (281, 287, 295, 297) and waste knit rem 16 (18, 21, 24, 26) sts.

RIGHT FRONT

As LEFT FRONT reversing shapings.

ARMBANDS

Join both shoulders by placing both sets of shoulder sts back onto Ns with right sides together. T10 knit 1 row and cast off. As Back from ** to ** using 125 (125, 129, 129, 135) KH Ns. With wrong side facing, pick up same number of sts

evenly along armhole edge and place onto Ns. T7 knit 1 row. T10 knit 1 row and cast off.

FRONT WAIST EDGE BAND

Using WY cast on over 40 (42, 46, 48, 52) KH Ns and knit a few rows ending with COL, 000. Using A T7 Knit 2 rows. Inc 1 st at left on next and every foll row x 8. Knit to RC10. T10 knit 1 row. T7 knit 1 row. Dec 1 st at left on next and every foll row x 8. Knit to RC21. Turn up hem. With wrong side facing, pick up same number of sts evenly along FRONT waist edge from side seam to 'point' and place onto Ns. T7 knit 1 row. T10 knit 1 row and cast off. Work second BAND to match same reversing shaping.

BUTTON BAND AND BACK NECK BAND

As FRONT WAIST EDGE BAND using 176 (178, 180, 182, 184) KH Ns, working the shaping at the right. With wrong side facing, and working from right to left, pick up 24 sts evenly along shaped FRONT edge from point to end of shaping, 40 (42, 42, 44, 44) sts to start of FRONT slope, 73 (73, 75, 75, 77) sts for FRONT slope and remainder for BACK neck, and place onto Ns. T7 knit 1 row. T10 knit 1 row and cast off.

BUTTONHOLE BAND

As BUTTON BAND using 137 (139, 141, 143, 145) KH Ns and reversing shaping EXCEPT work 4 x 3 st buttonholes, evenly spaced, at RC5 then RC16 counting from the 25th st at left with 7 (7, 7,

8, 8) sts between each buttonhole.

MAKE-UP

Join BAND seams. Block and press. Join side seams. Attach buttons.

STRIPED TUCK STITCH JACKET

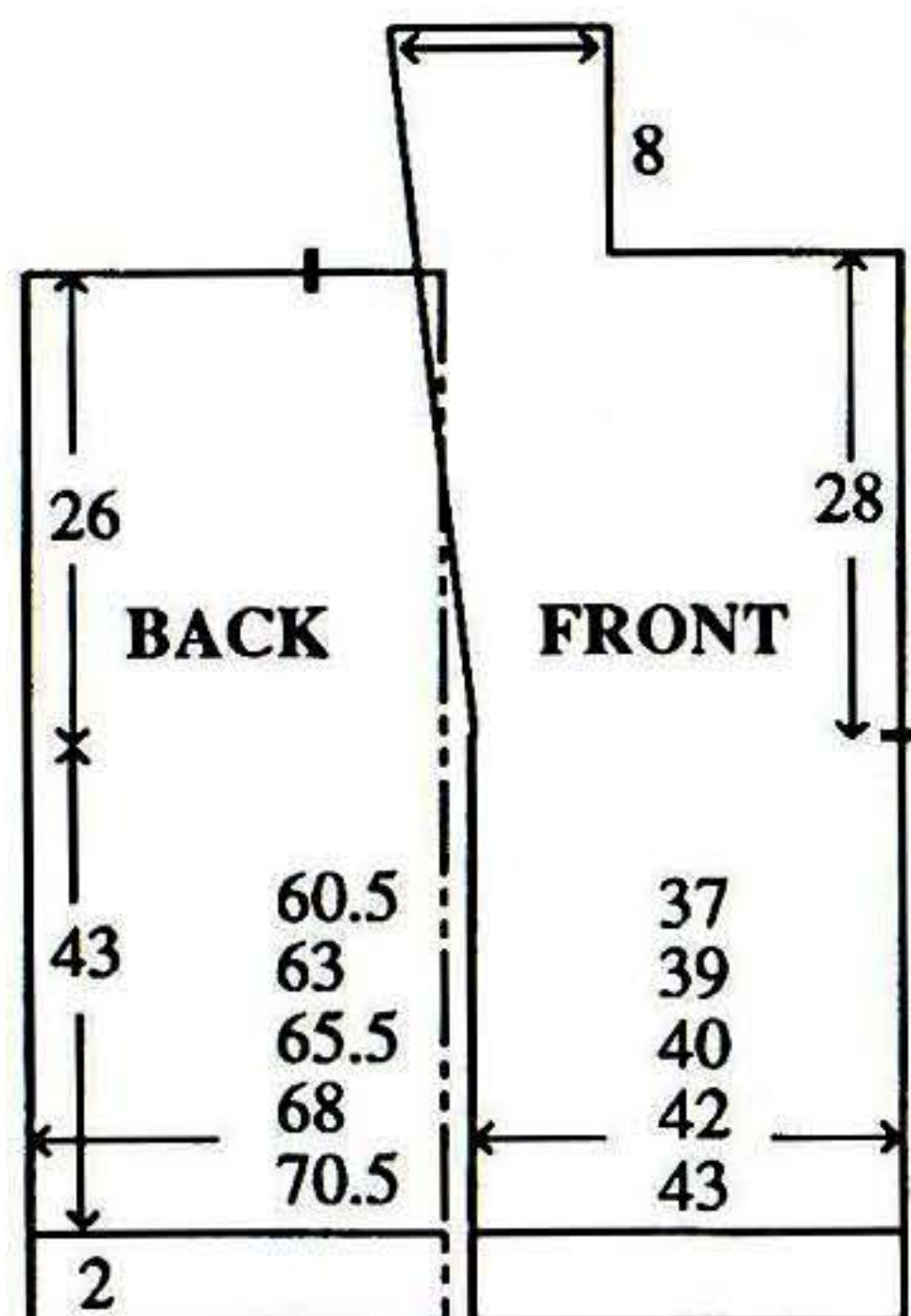
MACHINES: A, C or D.

MATERIALS: STANDARD 4-PLY WOOL, we used KING COLE Superspun Superwash 4-Ply Wool; A - 455 (475, 495, 515, 535)g (Black 48), B - (Fawn 8) and C - (Larkspur 13) - approx 60 (70, 80, 90, 100)g of each. (100% wool, 360m/100g).

MEASUREMENTS: To fit bust 86 (91, 96, 101, 106)cm. **TENSION:** Tuck St Pattern - 40 sts = 18.5cm and 60 rows = 11.7cm (approx T9).

NOTES: Striped Tuck St Pattern - *6 rows B, 6 rows A, 6 rows C, 30 rows A*. Repeat from * to * throughout. Purl side is used as right side of garment. See Waistcoat for Stitch Pattern

BACK



Using WY cast on over 131 (137, 141, 147, 153) KH Ns and knit a few rows ending with COL. Using A T7 knit 10 rows. T10 knit 1 row. T7 knit 10 rows. Turn up hem*, 000. Set for first row of Tuck St Pattern and knit 1 row to select Ns. Depress both TUCK buttons and knit 5 rows. Working in Striped Tuck throughout (see NOTES)**, knit to RC220. Place a WY marker at each end of work. Knit to RC353. Knit 1 row St st. Cast off centre 35 sts. Waste knit rem 48 (51, 53, 56, 59) sts at each end of work for shoulders.

RIGHT FRONT

As BACK using 81 (85, 87, 91, 93) KH Ns to RC220. Place a WY marker at each end of work.

Collar shaping

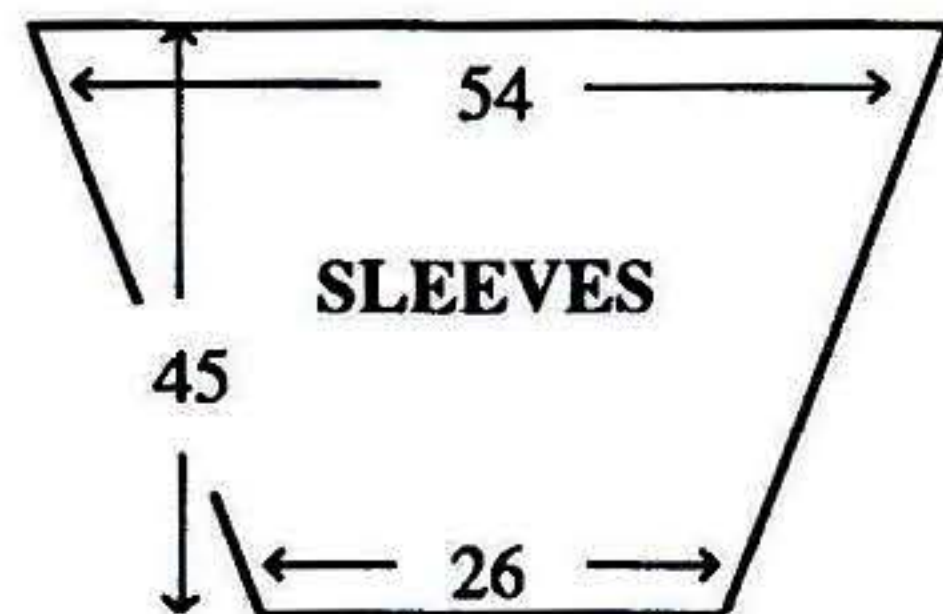
At right, inc 1 st on next and every foll 8th row x 17 and AT THE SAME TIME at RC364 waste knit 48 (51, 53, 56, 59) sts at left for shoulder. Knit to RC405. Knit 1 row St st and waste knit rem sts.

LEFT FRONT

As RIGHT FRONT reversing shapings.

SLEEVES

Join both shoulders by placing both sets of shoulder sts back onto Ns with right sides together. T10 knit 1 row and cast off. As BACK ** to ** using 57 KH Ns. Inc 1 st at each end of next and every foll 6th row x 31. Knit to RC221. Knit 1 row St st. With wrong side facing, pick up same number of sts evenly along



armhole edge between WY markers and place onto Ns. T7 knit 1 row. T10 knit 1 row and cast off.

FRONT BANDS

Work hem as BACK from ** to *** using 97 KH Ns. T7 knit 1 row. With wrong side facing, pick up same number of sts evenly along FRONT opening edge between WY marker and hem and place onto Ns. T7 knit 1 row. T10 knit 1 row and cast off.

COLLAR BAND (2)

Join centre BACK COLLAR seam. Stitch BACK COLLAR to BACK neck. Work hem as BACK from ** to *** using 130 KH Ns. T7 knit 1 row. With right side facing, pick up same number of sts evenly along FRONT slope between WY marker and centre BACK COLLAR and place onto Ns. T7 knit 1 row. T10 knit 1 row and cast off.

MAKE-UP

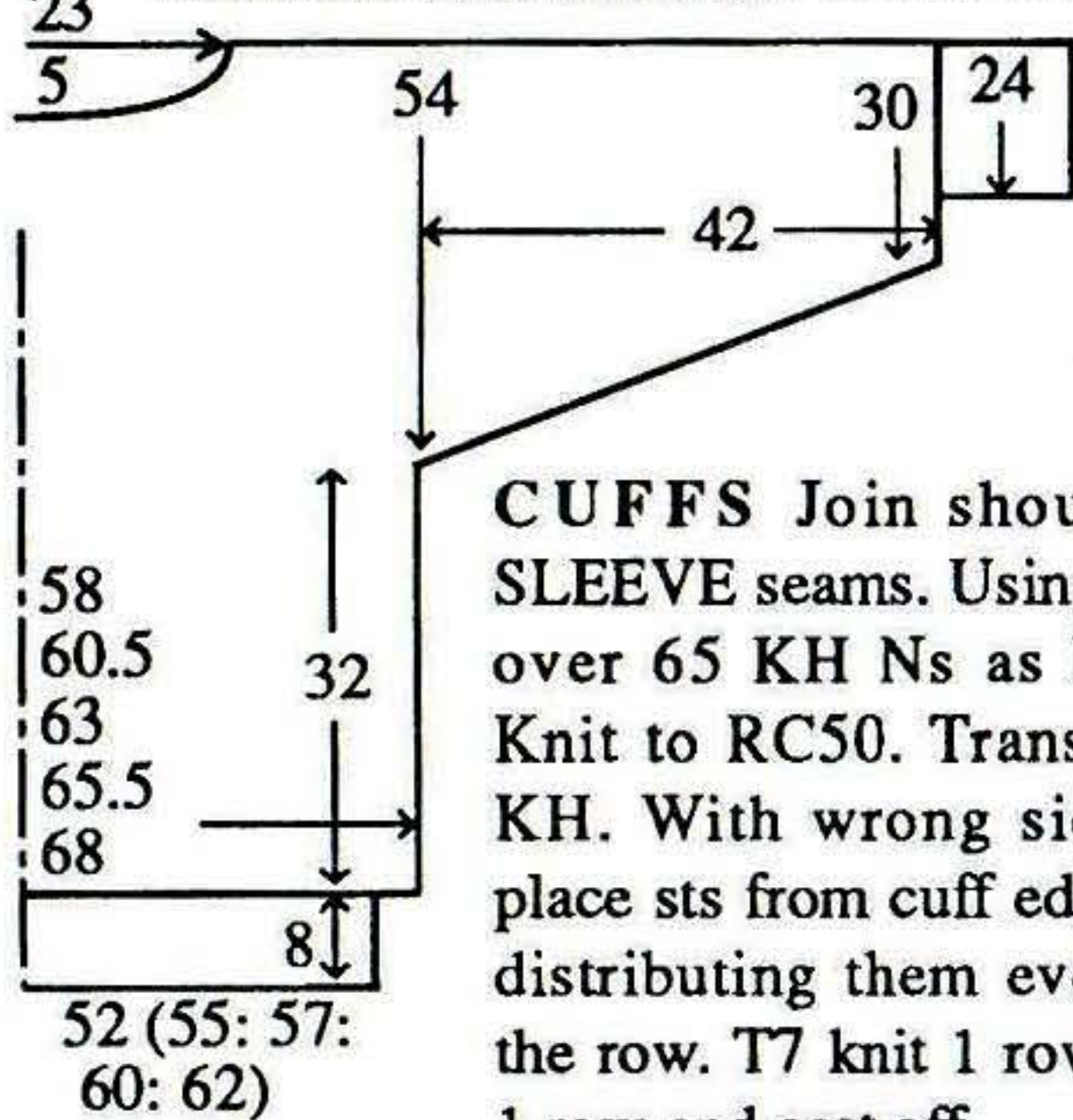
Join BAND seams. Block and press. Join side and SLEEVE seams.

SIDEWAYS KNITTED FAIRISLE SWEATER

MACHINES: A, C or D with KR. **MATERIALS:** STANDARD 4-PLY CHENILLE, we used YEOMAN YARNS Chenille; A - 325 (345, 365,



23 BACK/FRONT/HALF SLEEVE



CUFFS Join shoulder/upper SLEEVE seams. Using B cast on over 65 KH Ns as RIB, 000. Knit to RC50. Trans all sts to KH. With wrong side facing, place sts from cuff edge onto Ns distributing them evenly along the row. T7 knit 1 row. T10 knit 1 row and cast off.

385, 405)g (Black) (100% acrylic 360m/100g), STANDARD 4-PLY WOOL, we used KING COLE Superspun Superwash Wool; B - 120 (130, 140, 150, 160)g (Mink 42), C - 70 (80, 90, 100, 110)g (Copper 109) and D - 55 (65, 75, 85, 95)g (Aran 46) (100 wool 360m/100g). **MEASUREMENTS:** To fit bust 86 (91, 96, 101, 106)cm. **TENSION:** Fairisle St Patt - 40 sts = 14.8cm and 60 rows = 13.3cm (approx T7). **RIB:** 2 x 1 (see ABBREVIATIONS) T2/2. **NOTES:** Fairisle St Patt - A in FA throughout, alternate B, C and D in FB. When only the end Ns select, release MC button and knit 6 rows St st using A - LEAVE KC ON.

BACK/FRONT/SLEEVE: Counting from right to left, using WY cast on over 41 KH Ns starting at N85 to right of '0', and knit a few rows ending with COL. Set for first row of Fairisle St Patt and using A T7 knit 1 row to select Ns, 000. Working in Fairisle throughout

(see NOTES), knit to RC5. Inc 1 st at left on next and every foll 5th row x 32. Knit to RC189. Cast on 86 sts at beg of next row. Knit to RC190, 000.

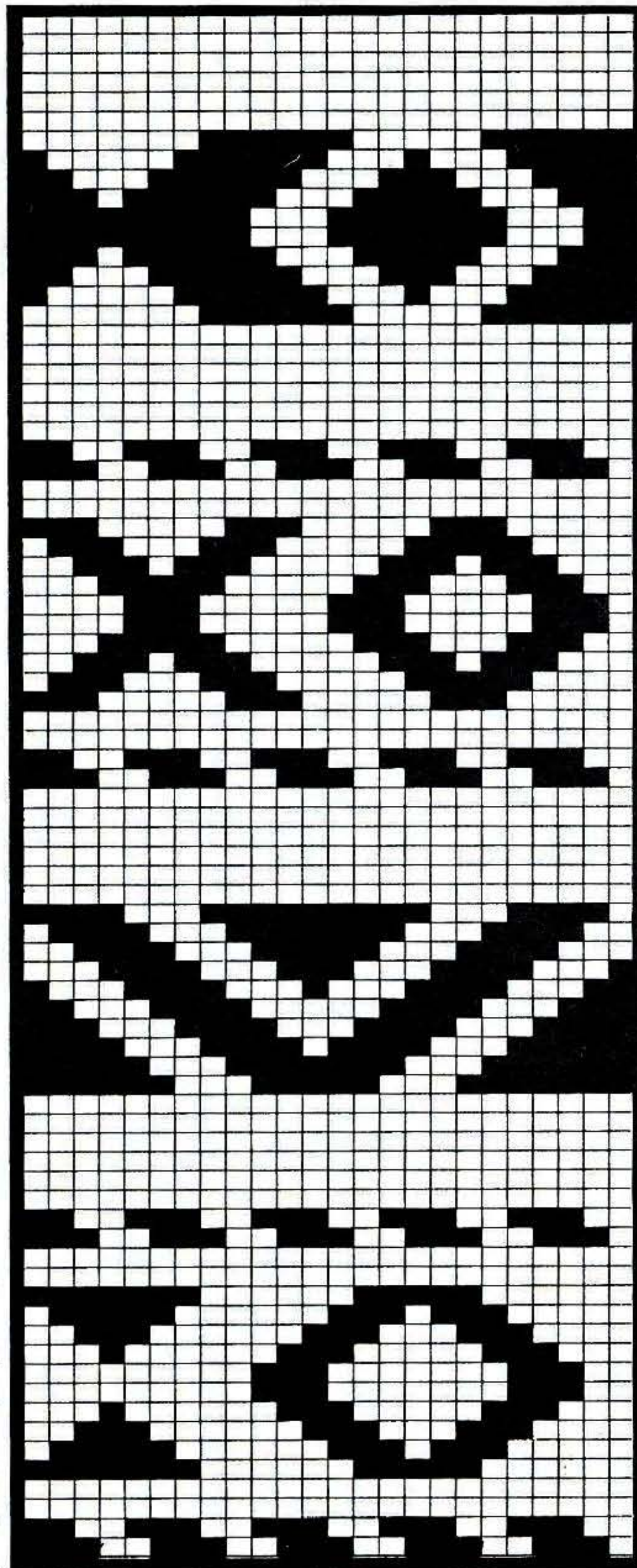
BACK/FRONT: Knit to RC78 (84, 90, 96, 102).

Neck shaping

Cast off 2 sts at beg of next row. Knit 1 row. Dec 1 st at right on next and every foll alt row x 8, then every foll 4th row x 4. Knit 40 rows. Inc 1 st at right on next and every foll 4th row x 5, then every foll alt row x 8, then cast on 2 sts. [RC182 (188, 194, 200, 206)]. Knit 78 (84, 90, 96, 102) rows, 000.

SLEEVE:

Knit 1 row. Cast off 86 sts at beg of next row. Knit to RC30. Dec 1 st at left on next and every foll 5th row x 32. Knit to



RC190 and waste knit rem 41 sts. **WAIST RIB:** Using B cast on over 143 (149, 155, 161, 167) KH Ns as RIB, 000. Knit to RC40. Trans all sts to KH. With wrong side facing, pick up same number of sts evenly along waist edge and place onto Ns. T7 knit 1 row. T10 knit 1 row and cast off. Knit a second piece to match reading

right as left and vice versa.

COLLAR

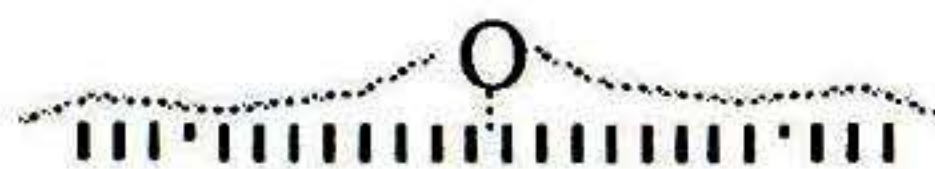
Using WY cast on over 56 KH Ns at extreme left of N bed and knit a few rows ending with COL. Set for first row of Fairisle St Patt and using A knit 1 row to select Ns, 000. Working in Fairisle throughout, knit 2 rows. On next and every foll alt row, inc 1 st at right and dec 1 st at left - knitting to RC240. Waste knit. With right sides together, return sts to Ns. T10 knit 1 row and cast off.

MAKE-UP

Join side and SLEEVE seams. With right sides together, stitch COLLAR to neck edge then fold in half to inside and stitch down loosely.

LACE SWEATER WITH CABLES AND CABLE RIBS

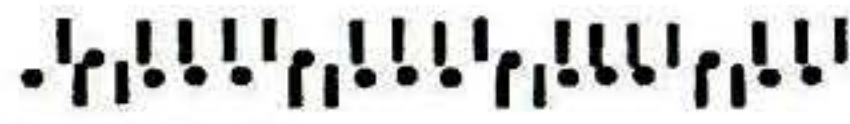
MACHINES: A, C or D with KR. **MATERIALS:** STANDARD 4-PLY WOOL, we used YEOMAN YARNS Sport, A - 500 (520, 540, 560, 580)g (Wine 01). (100% wool 4 0 0 m / 1 0 0 g). **MEASUREMENTS:** To fit bust 86 (91, 96, 101, 106)cm. **TENSION:** Lace/Cable St Patt - 40 sts = 14.5cm and 60 rows = 14.5cm (approx T7). **RIB:** Cable Rib T5/3. **NOTES:** Lace/Cable St Patt - N arrangement:-



*Knit 9 rows. Bring forward to WP all Ns in NWP. Knit 1 row. Work Lace Carriage movements. Take back empty

Ns to NWP. Cable 3 over 3 Ns marked 'x'. Repeat from * to * throughout.

Cable Rib - N arrangement:-



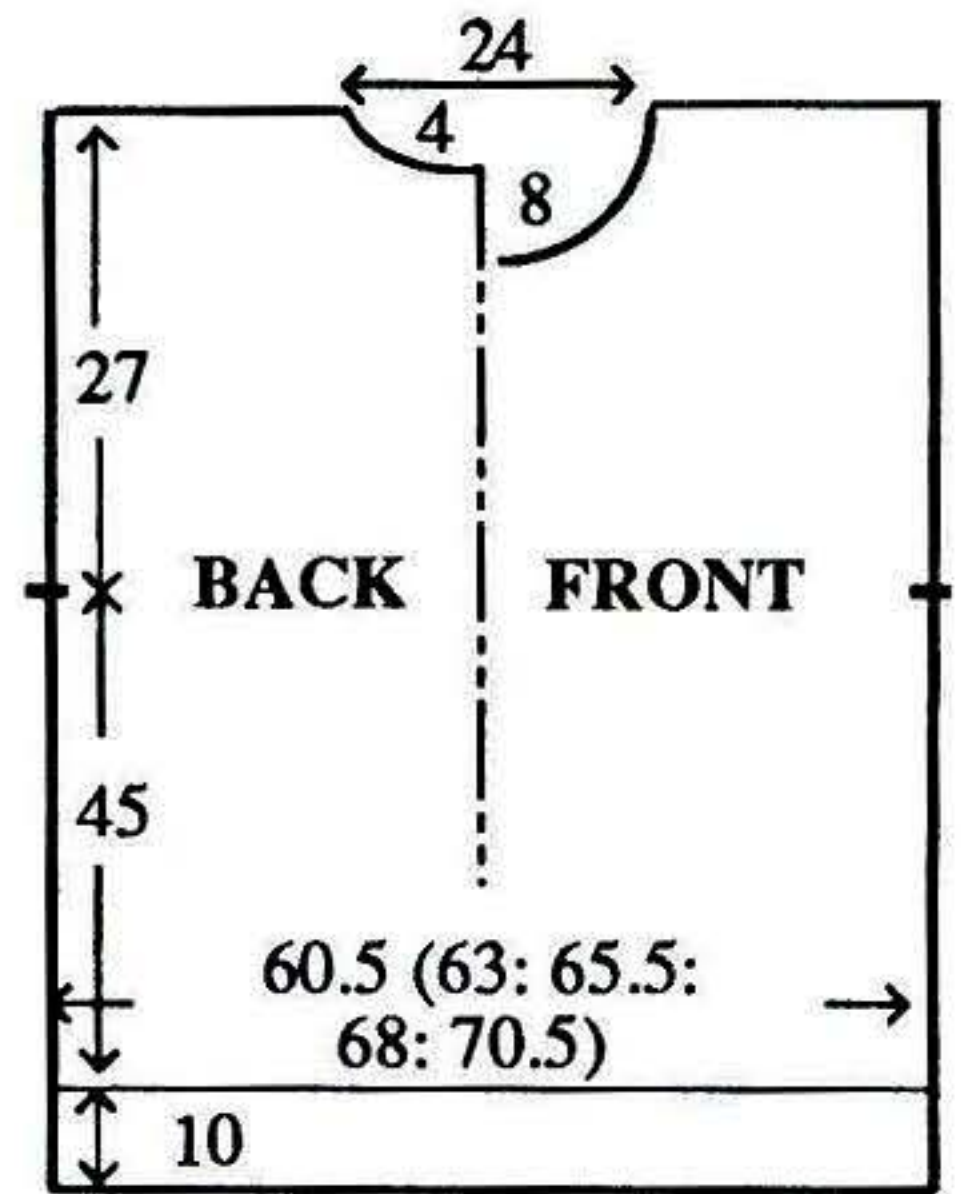
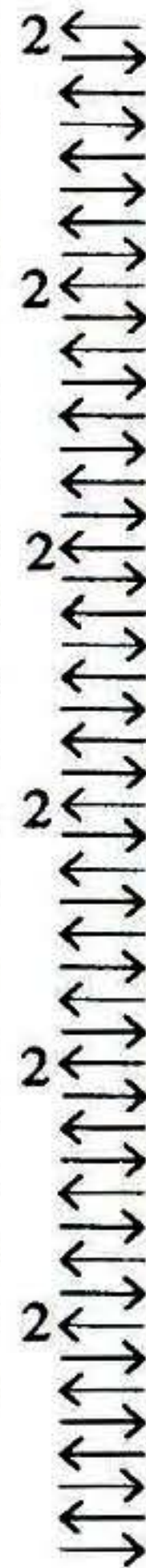
Knit 5 rows. On KR, push Ns marked 'x' into WP. Knit 1 row. Drop loops held and take Ns back to NWP. On KH, cable 2 over 2 on every group of 4 Ns. Repeat from ** to ** throughout.

BACK

Using A, T1/1, cast on over 163 (173, 178, 188, 193) KH Ns as FNR. Trans to N Arrangement, 000. Working in Cable/Rib (see NOTES), knit to RC48. Trans all sts to KH. Inc 3 (1, 2, 0, 1) sts, 000. Working in Lace/Cable St Patt throughout (see NOTES), knit to RC184. Place a WY marker at each end of work. Knit to RC280.

Back neck shaping

(Note Patt position) Waste knit centre 38 sts. Waste knit sts at left. Knit 1 row. At beg of next and every foll alt row cast off 2 sts x 7. Knit to RC296 and waste knit rem 50 (54, 57, 61, 64) sts. Return sts at left to Ns and knit to match right side reversing shaping.

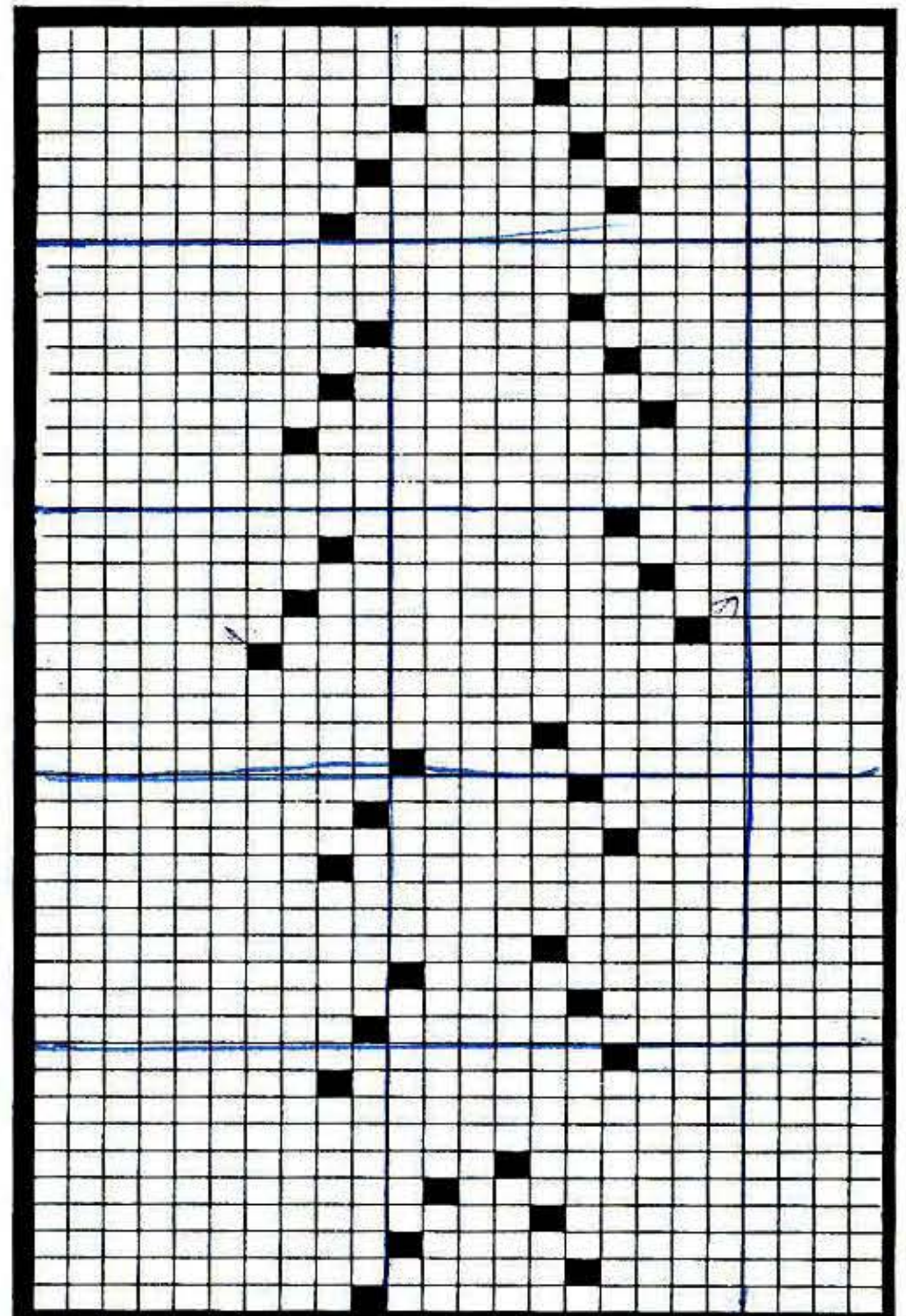


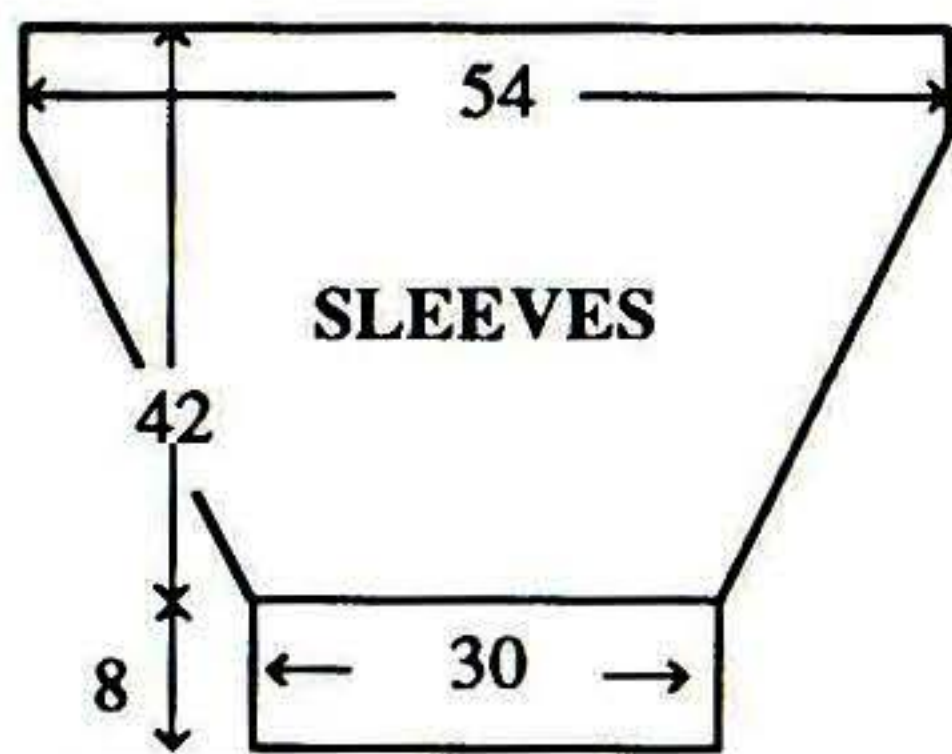
FRONT

As BACK to RC264.

Front neck shaping

(Note Patt position). Waste knit centre 26 sts. Waste knit sts at left, COR. Knit 1 row. At beg of next and every foll alt row cast off 4 sts x 1, 3 sts x 2, 2 sts x 3, then dec 1 st x 4. Knit to RC296 and waste knit rem 50 (54, 57, 61, 64) sts. Return sts at left to Ns and knit to match right side reversing shaping.





NECKBAND

Join one shoulder by placing one set of shoulder sts back onto Ns with right sides together. T10 knit 1 row and cast off. Using A, T1/1, cast on over 163 KH Ns as FNR. Trans to N arrangement, 000. Working in Cable Rib, knit to RC24. Trans all sts to KH. T7 knit 1 row. With right side facing, pick up same number of sts evenly along neck edge and place onto Ns. Knit 3 rows and waste knit. Join second shoulder as first. Join NECKBAND seam and backstitch to garment through last row knitted in A.

SLEEVES

Using A, T1/1, cast on over 78 KH Ns as FNR. Trans to N arrangement, 000. Working in Cable Rib, knit to RC36. Trans all sts to KH. Inc 4 sts, 000. Working in Lace/Cable throughout, knit to RC5. Inc 1 st at each end of next and every foll 5th row x 33. Knit to RC170 and waste knit rem 148 sts. With right side facing, return sts to Ns. With wrong side facing, pick up same number of sts evenly along armhole edge between WY markers and place onto Ns. T7 knit 1 row. T10 knit 1 row and cast off.

MAKE-UP

Block and press. Join side and SLEEVE seams.

BEGINNERS LESSON - INTRODUCTION TO CABLES

Currently high on the fashionable list, cables are being used to decorate sweaters, skirts, dresses and even trousers. They may be restricted to trims - collars, cuffs, hems, button bands and pocket tops - or they may be incorporated as part of the design of the main fabric of the garment. The most straightforward cable is used with stocking stitch, but there is nothing to stop you mixing cables with lace, fairisle, ribs and Garter Carriage stitch. It is possible to mix cables with tuck stitch too, but remember which side of the fabric you are going to use as the outside of the garment!

It is best to try out a few swatches before you decide where and how to use the cables. Once you have worked out where you want them you must ensure that the yarn, stitch, and tension allows you to do this. The major consideration is where the 'stress' is on the fabric. If you have too many cables concentrated in one area there may not be enough elasticity left in the yarn to allow the stitches to be lifted off their needles and placed elsewhere to form the Cable. The following tips may well help you.

Example No.1 (Middle left) - cables worked on stocking stitch.

In order to gain the best effect from the cable, we have left a needle out of Working Position each side of the group of six cable needles. The yarn we have chosen is slightly hairy and compliments the open stitch effect well. So that the stress created by the cross-over rows of the cables is evenly spread over the fabric, we have alternated them:-

Knit to the point where the cables are to begin, transfer every 7th st to its adjacent needle, and push the empty

needle back to Non-working position. (We first attempted to cable every group of six needles across the row, in the same row. The yarn would not allow us to do this due to lack of elasticity. To solve this problem we did two things. We decided that the cables looked in proportion to the stitch when they were made very 8th row. In order to stagger them the first cables had to be made on every alternate cable on the 4th row and then every remaining cable on the 8th row.) The second way to combat the lack of elasticity is, on the row before the cable row, to bring forward into Working-position, the needles in Non-working



position. Knit one row so that each needle brought forward has caught a loop. Drop the loop off the needle and take the needle back to Non-working position. Making the cables is easier and any slack will easily be taken up by them.

Example No. 2 (top right) Lace and cables.

Here the principle of having a needle out of work each side of the cable needles still applies (see Example 1). When working with lace you must ensure that the cable does not encroach on the lace in any way. Any stress on the lace stitches caused by the cable could result in the lace stitches not being transferred completely and stitches dropping. The best time to work the cables is when you have completed the Lace Carriage movements and are about to operate the Knitting Carriage. Sometimes it is necessary to pull the cable needles out to Holding Position

to ensure that the cable stitches do not slip off their needles - something you cannot do if you want to operate the Lace Carriage. When working with lace and cables together, even weighting of the fabric is very important.

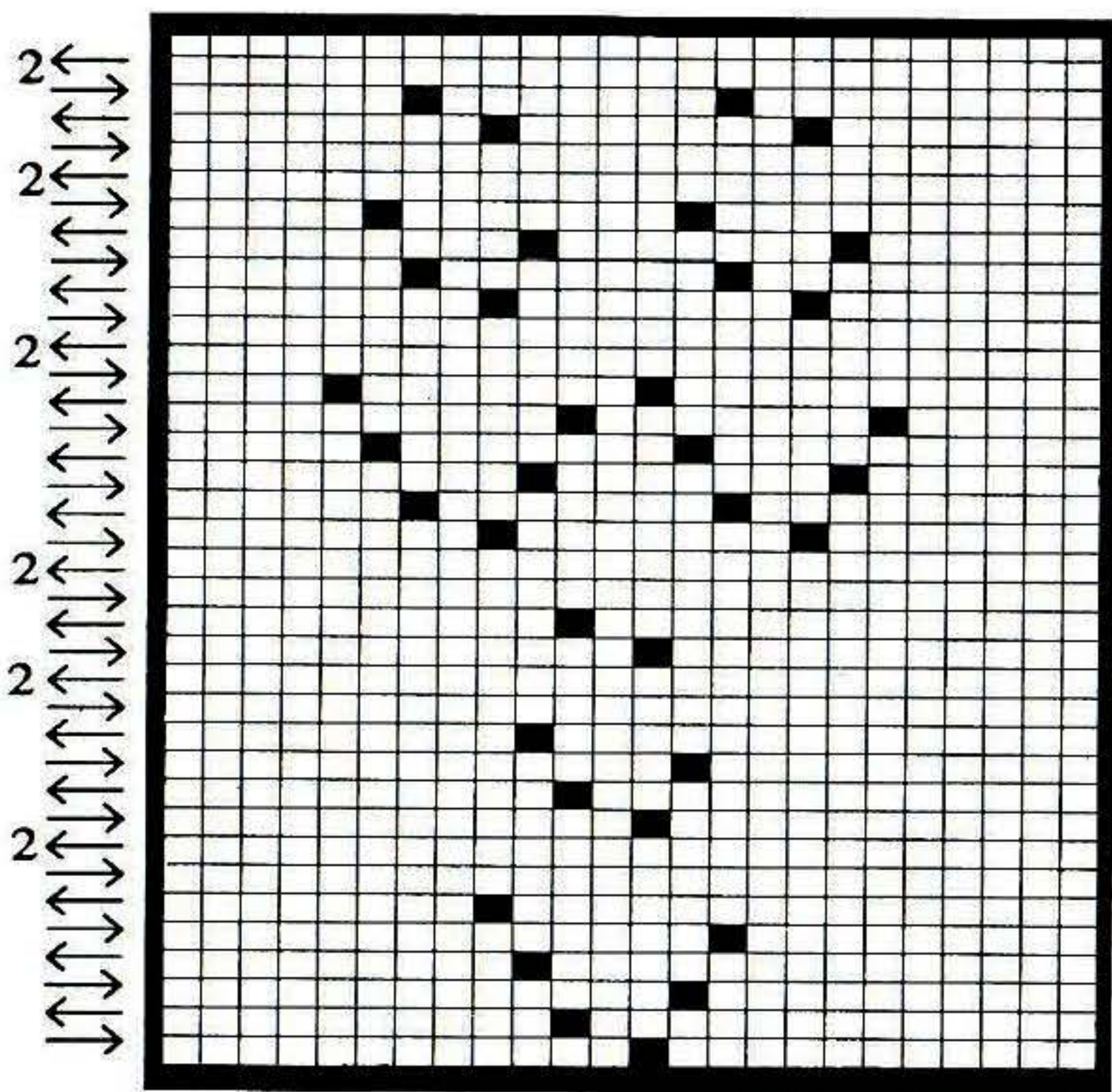
Example No. 3 (top left) Garter Carriage and Cables

Due to the way the Garter Carriage works - producing plain and purl stitches in the same row - the fabric produced closely resembles hand knitted fabric. Accordingly there is no need to have the needle out of work to accentuate the cable as in the two previous examples (indeed the Garter Carriage would not allow it) The cable can be made on plain stitches and be surrounded by purl stitches. Again, as mentioned previously, when you are cabling it is sometimes necessary to pull the needles out into Holding Position in order to ensure that the stitches do not slip off the needle. The

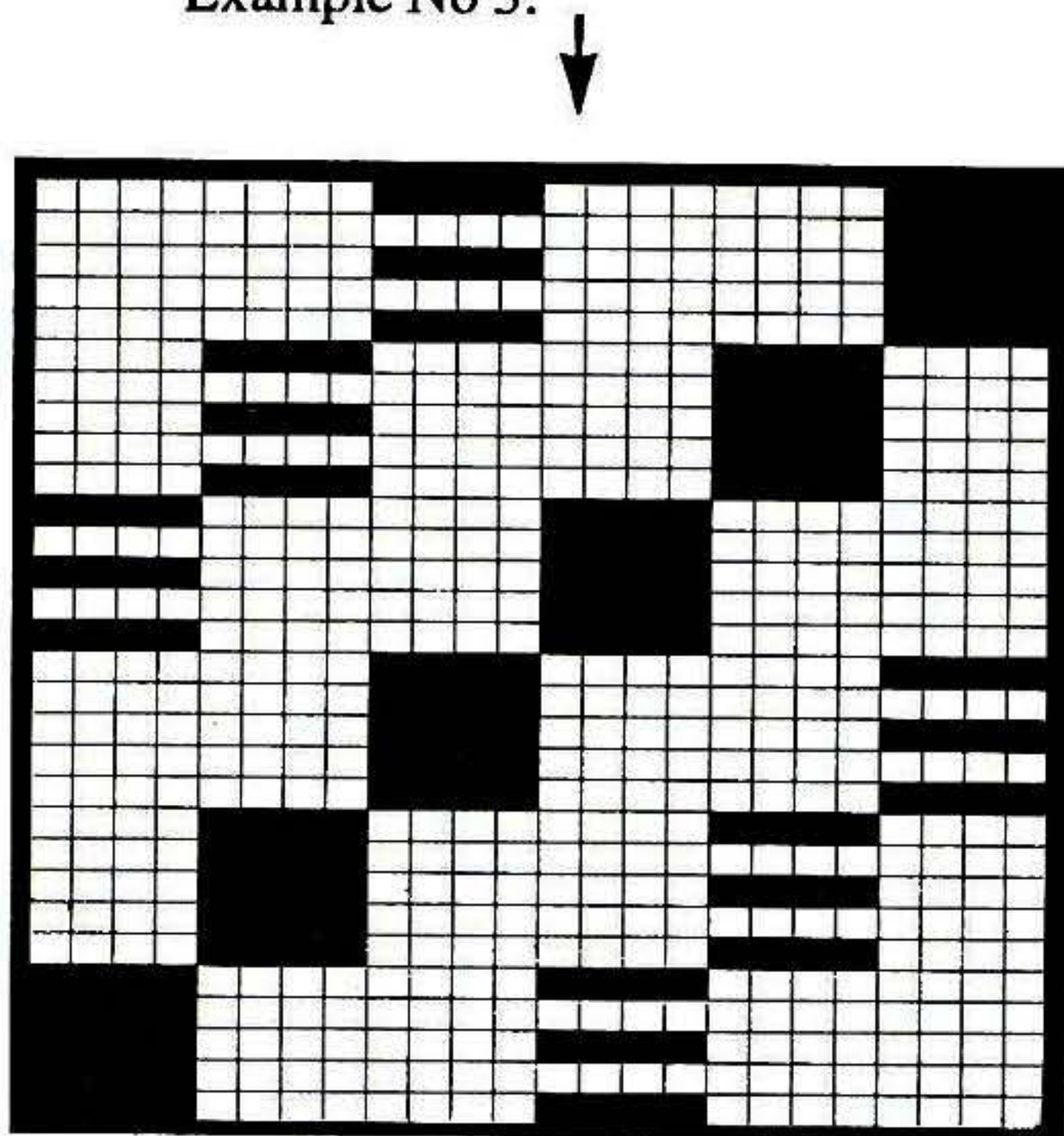
Garter Carriage will not operate over Needles in Holding Position or over needles where the stitches are under stress. In our example the cables are at short regular intervals across the fabric. We cabled the stitches, leaving the Ns in Holding Position, across the row. Then with a separate piece of yarn, went across the row, knitting back by hand those needles in Holding Position. If the design were different, perhaps the cables being vertically spaced too far apart to tolerate a loop of that length, it would be necessary to have a separate length of yarn for each cable and float the yarn up the fabric as opposed to across it.

Example No 4. (middle right) Mock Cable and Lace on Stocking Stitch

This sample is not a real cable and the Lace design through the centre is not made using the Lace Carriage. The design is made across 11 needles. The 2



← Example No 2.
Example No 3.





outside stitches are transferred to their adjacent Ns and the empty needles pushed back to Non-Working Position (9 needles). *Counting from left to right, stitches 4, 5 and 6 are transferred one place to the left onto needles 3, 4 and 5, knit 2 rows. Stitches 3, 4 and 5 are placed onto needles 2, 3 and 4, knit 2 rows. Stitches 2, 3 and 4 are placed onto needles 1, 2 and 3, knit 2 rows. Stitches 4, 5 and 6 are placed onto needles 5, 6 and 7, knit 2 rows. Stitches 5, 6 and 7 are placed onto needles 6, 7 and 8, knit 2 rows. Stitches 6, 7 and 8 are placed onto needles 7, 8 and 9, knit 2 rows.* Repeat from * to * throughout.

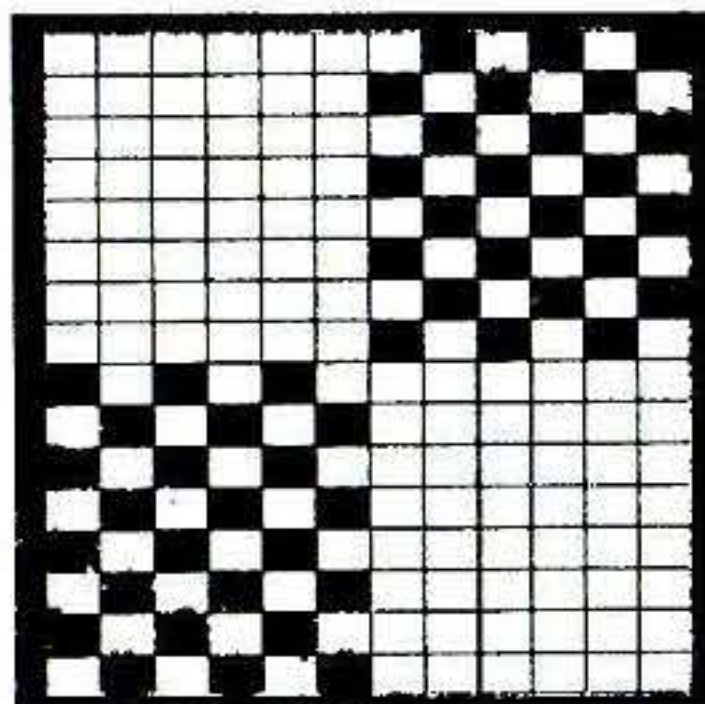
Example No 5 (bottom right) Cable and English Rib

There is no reason why you cannot make cables when knitting a rib. We set up the needles as the needle arrangement and cabled on the KH (Main Bed). It is advisable not to cable on the KR (Ribbing Attachment) but not impossible. Cables were made over the groups of 4 needles every 8 rows.

Example No 6 (bottom left) Cable and Fairisle

The cables are an integral part of this simple fairisle design giving almost a third dimension to the two colour fabric. The design consists of repeats of 16 rows. The cables are made on row 5 and row 13. This sets the centre of the cable in the centre of the plain square. In this situation we cannot have a needle out of work to give us the ability to move the stitches

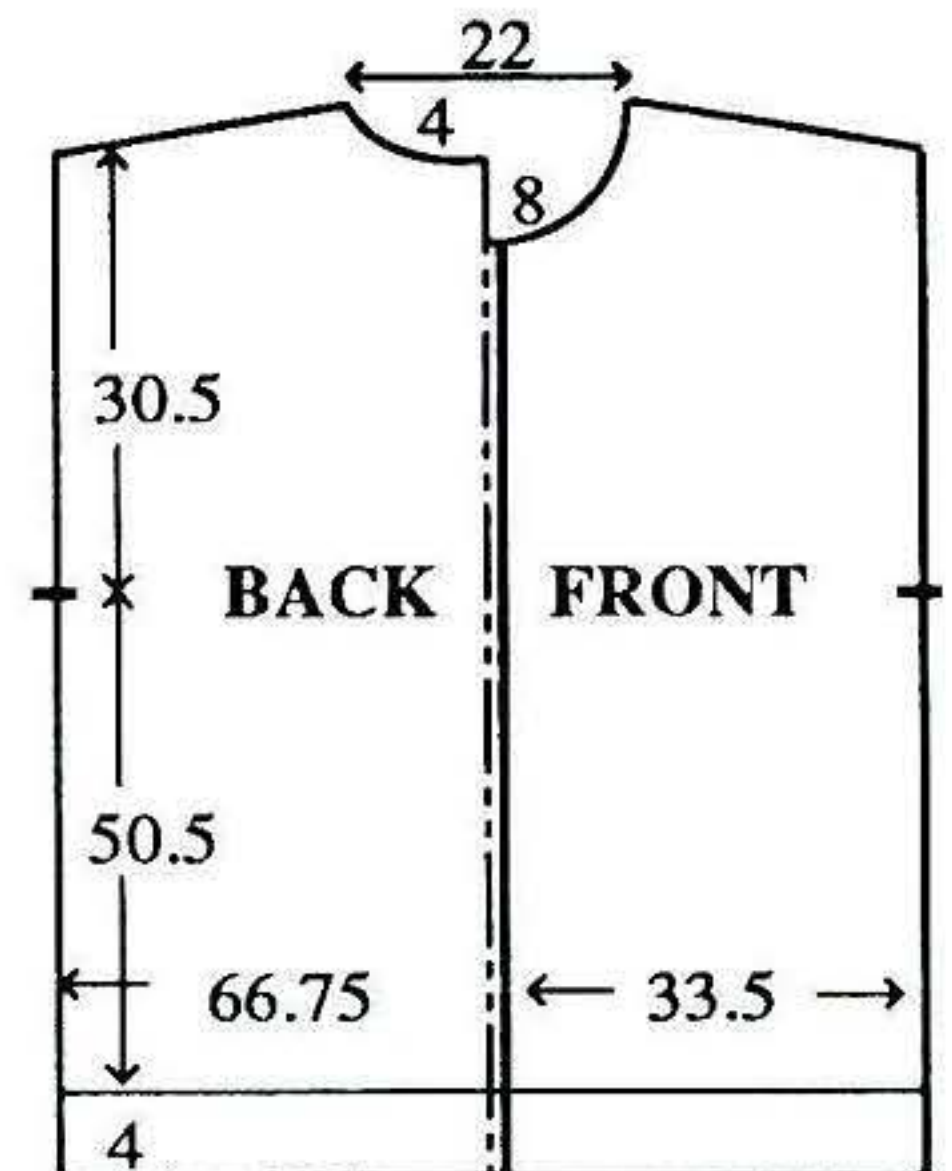
should the yarn prove too stable. We used another trick to ensure that the cable could be done. *From pattern row 1 to pattern row 4 we used the main tension (Tension 7) for the fabric. For row 5 we slackened the tension to Tension 10, knitted the row and then made the cable. Any slack in the fabric was taken up by the cable. Set for the main tension (Tension 7), knitted to pattern row 13, then slackened the tension to Tension 10 knitted the row and then made the cable. Knit to pattern row 16.* Repeat from * to * throughout.



PATCHWORK FAIRISLE JACKET

MACHINES: A, C or D with KR. **MATERIALS:** STANDARD 4-PLY WOOL; we used KING COLE Anti Tickle Superspun Superwash 4-Ply; A - 185g (Wild Rose 118), B - 195g (African Violet 136) (100% wool 360m/100g), STANDARD 4-PLY CHENILLE, we used YEOMAN YARNS Chenille; C - 280g (Plum), D - 200g (Nut) and E - 80g (Dk Jade) (100% acrylic, 360m/100g). 6 buttons. **MEASUREMENTS:** One size to fit bust up to 106cm. **TENSION:** Fairisle St Patt - 40 sts = 14.5cm and 60 rows = 15.2cm (approx T8). **RIB:** 2 x 1 (see ABBREVIATIONS)

T3/3. **NOTES:** 'Roses' - A in FA and C in FB throughout. '4 Diamonds Stripe Patt' - B in FA, knit 22 rows with each of C, D, E and C in FB. '2 Diamonds Stripe Patt' - B in FA, knit 22 rows with each of D and E in FB.



BACK - Left Side

Using WY cast on over 62 KH Ns and knit a few rows ending with COR. Using B T8 knit 2 rows. Working in 'Patches' of 88 rows, knit '4 Diamonds Stripe Patt', then 'Roses', then '4 Diamonds Stripe Patt', placing a WY marker after 22 rows. Knit 'Roses' to RC58.

Shoulder shaping

At beg of next and every foll alt row cast off 4 sts x 15. Cast off rem 2 sts.

Left Centre

Using WY cast on over 32 KH Ns and knit a few rows ending with COR. Using A T8 knit 2 rows. *Working in 'Patches' of 44 rows, knit 'Roses', then '2 Diamonds Stripe Patt'*. Work from * to * x 4 and, AT THE SAME TIME, at RC75 of 3rd Patt repeat.

Back Neck shaping

At beg of next and every foll alt row cast off 11 sts x 1, 3 sts x 7.



Right Centre

As Left Side alternating the 'Patches' by starting with 'Roses'. Knit to RC74 of the 4th 'Patch'.

Back Neck and shoulder shaping

At right on next and every foll alt row cast off 11 sts x 1, 3 sts x 7 and, **AT THE SAME TIME**, at left on alt rows cast off 4 sts x 7, 2 sts x 1.

Right Side

As Left Centre alternating the 'Patches' by starting with '2 Diamonds Stripe Patt'. Knit to RC59 of 8th 'Patch'.

Shoulder shaping

At beg of next and every foll alt row cast off 4 sts x 8.

BACK WAIST RIB

Join the 4 Panels. Push 158 KH Ns to WP. With wrong side facing, place sts from waist edge onto Ns distributing them evenly along the row. Trans to RIB, 000. Using D knit to RC19. T10/8 knit 1 row. Trans all sts to KH and latch cast off.

FRONT - Right side

As BACK Left Side.

Right Centre

As BACK Left Centre to RC59.

Neck shaping

At beg of next and every foll alt row cast off 6 sts x 1, 4 sts x 2, 3 sts x 2, 2 sts x 3, 1 st x 4. Knit to RC44 and cast off.

Left Centre

As BACK Right Centre to RC58.

Neck shaping

As Right Centre and **AT THE SAME TIME** at RC75.

Shoulder shaping

At beg of next and every foll alt row cast off 4 sts x 7, 2 sts x 1.

Left Side

As BACK Right Side.

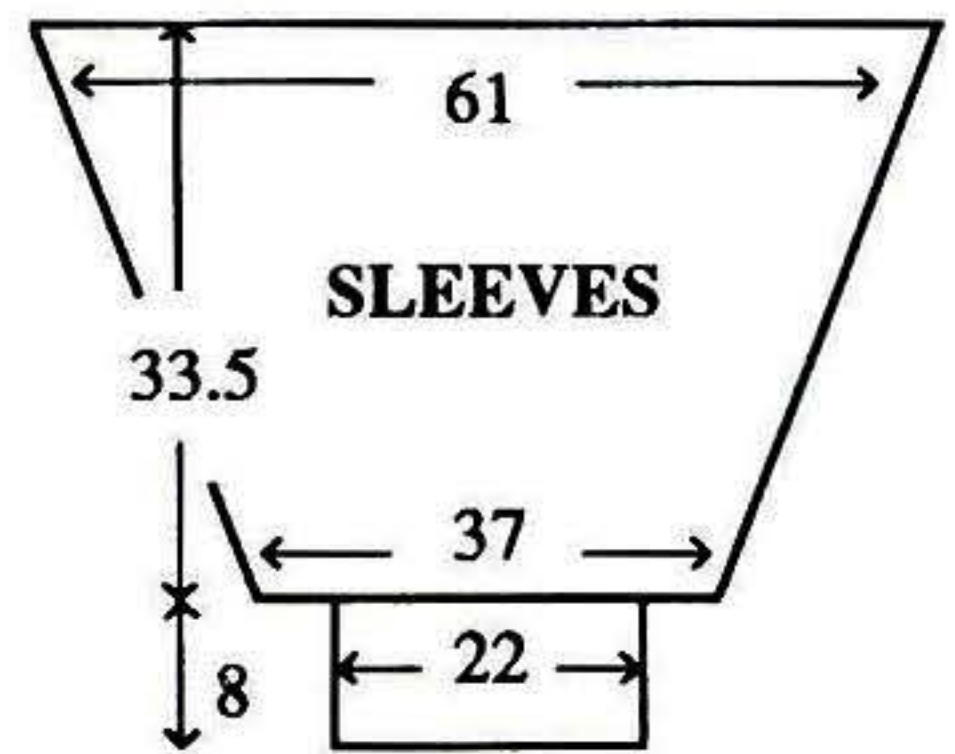
FRONT WAIST RIBS

As BACK WAIST RIBS using 80 KH Ns.

SLEEVES

Join shoulders. Push 167 KH Ns to WP. With wrong side facing, pick up same number of sts evenly along armhole edge between WY markers and place onto Ns, COL. Set for first row of 'Roses' and using A T8 knit 1 row to select Ns, 000.

Working 'Roses' for 88 rows, then '2 Diamonds Stripe Patt' and, **AT THE SAME TIME**, at RC4, dec 1 st at each end of next and every foll 4th



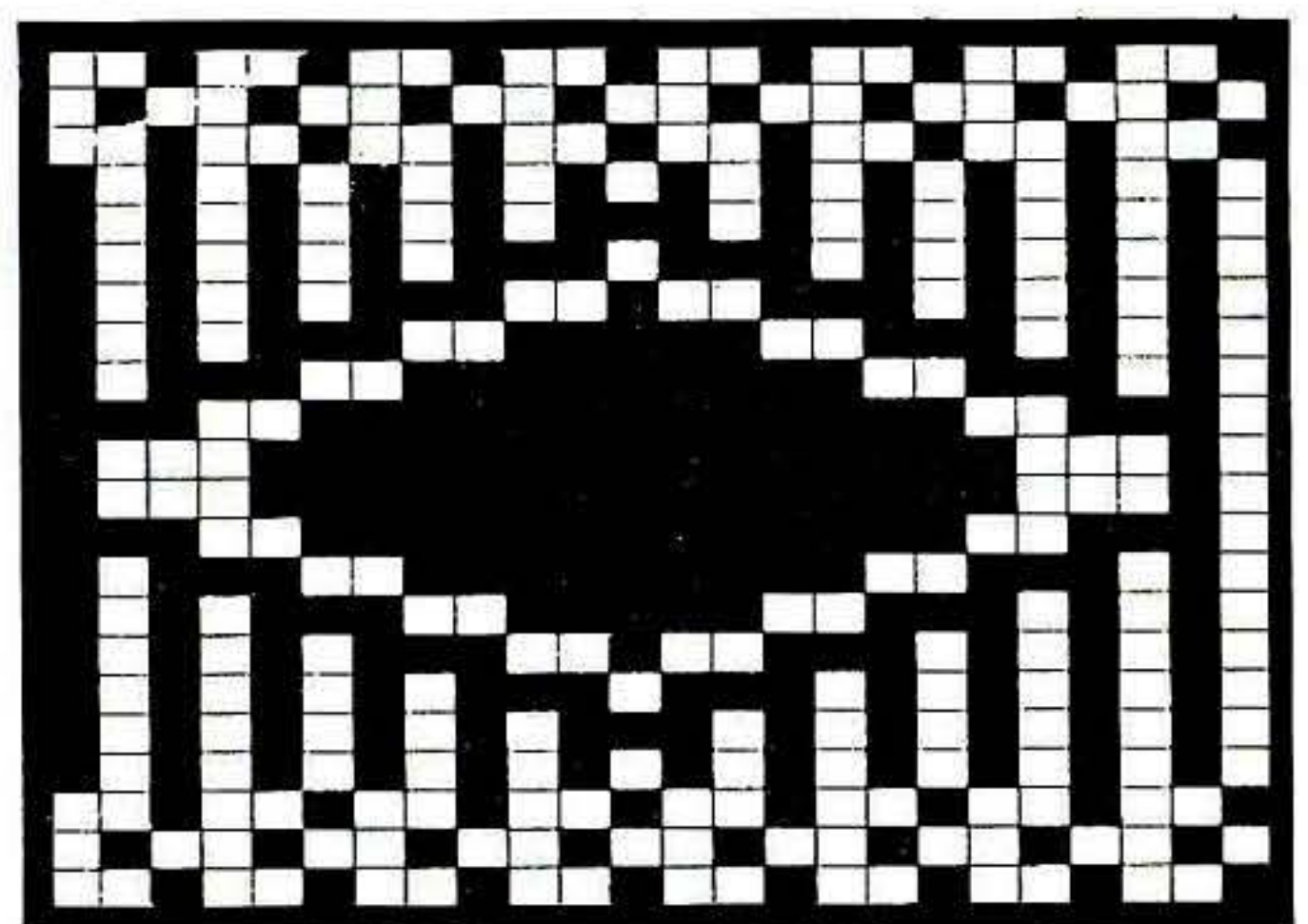
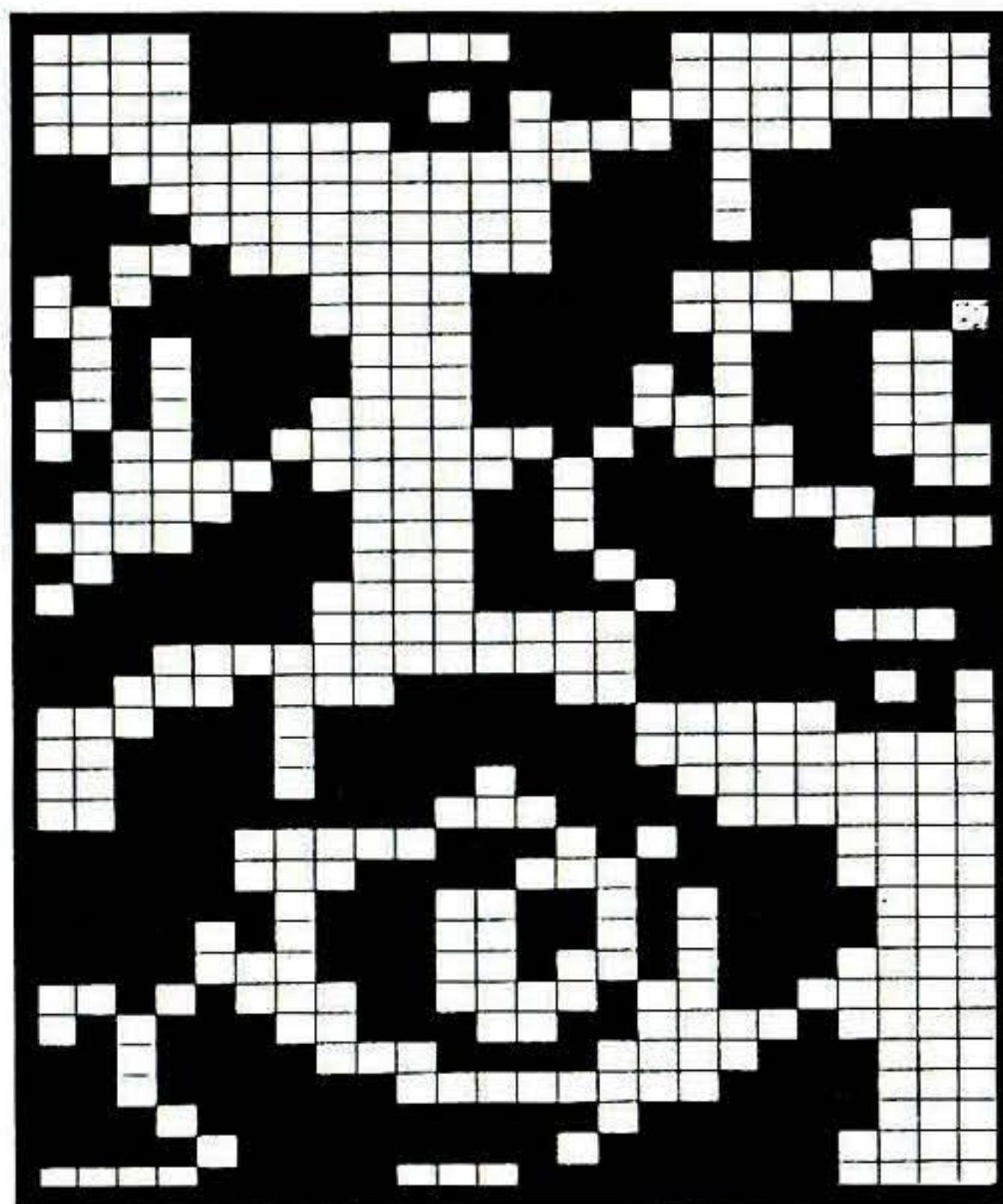
row x 32. Knit to RC132 and waste knit rem 103 sts. **CUFFS:** Push 62 KH Ns to WP. With wrong side facing, place sts from cuff edge onto Ns distributing them evenly along the row. Trans to RIB, 000. Knit to RC43. T10/8 knit 1 row. Trans all sts to KH and latch cast off each st individually. Work 2nd SLEEVE to match starting with '2 Diamonds Stripe Patt'.

COLLAR

Using B cast on over 140 KH Ns as RIB, 000. Knit to RC50. Using D knit to RC100. Trans all sts to KH. With wrong side facing, pick up same number of sts evenly along neck edge and place onto Ns. Using B T7 knit 1 row. T10 knit 1 row and cast off. Fold in half to inside and stitch down loosely.

BUTTONHOLE BAND

Using D cast on over 200 KH Ns as RIB, 000. Knit to RC10. Work 6 x 2 st buttonholes



evenly spaced along the row. Knit to RC20. Trans all sts to KH. T8 knit 1 row. With wrong side facing, pick up same number of sts evenly along RIGHT FRONT opening edge and place onto Ns. Using A T7 knit 1 row. T10 knit 1 row and cast off.

BUTTON BAND

As **BUTTONHOLE BAND** omitting buttonholes.

MAKE-UP

Block and press on reverse side. Join side and SLEEVE seams. Attach buttons.

STEP-BY-STEP PPD:- SIMULATED CABLES

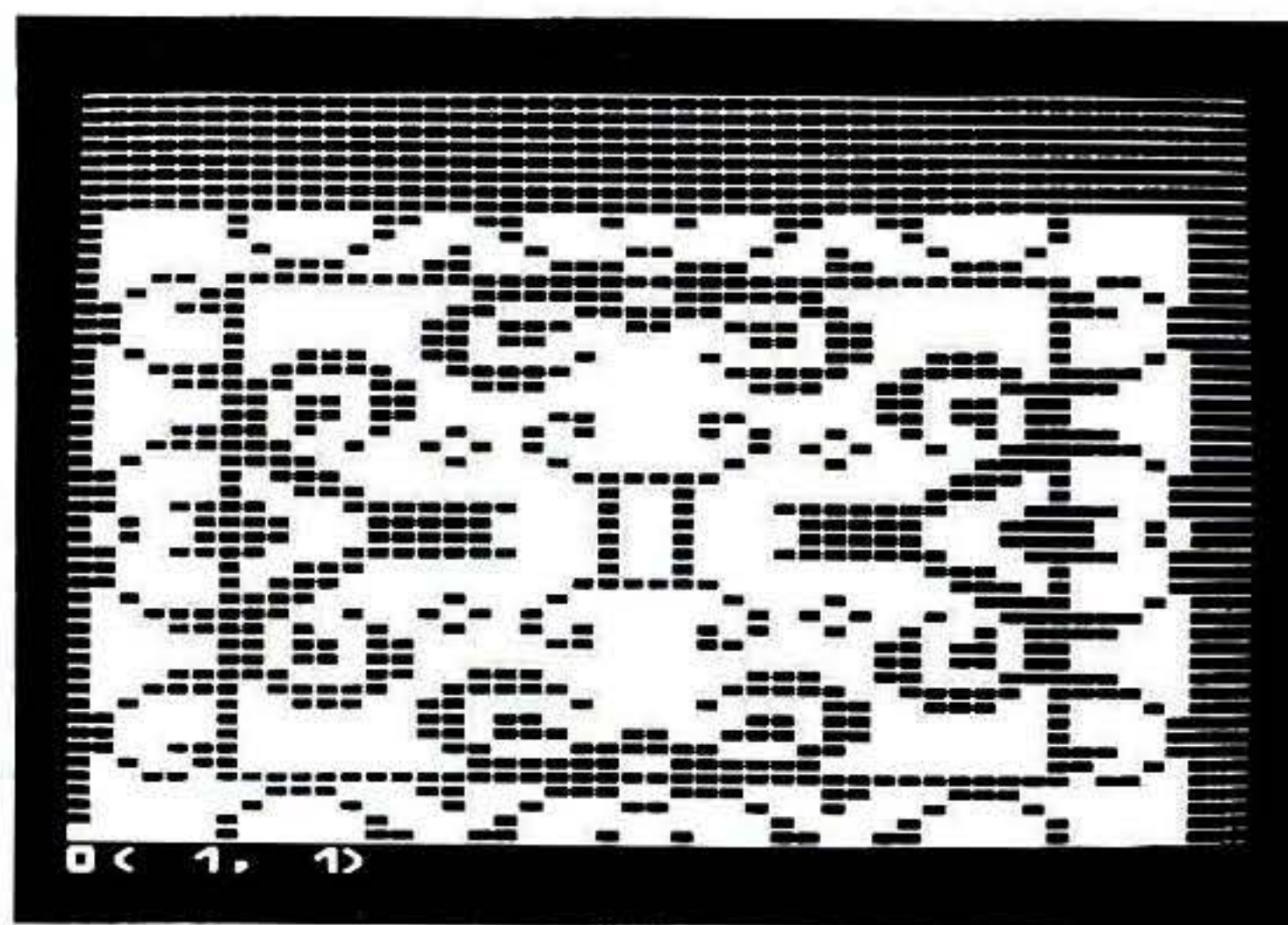
While it is easy enough to produce Cables on the Knitting Machine (see our Beginners Lesson if you have never tried it), there are occasions when the design calls for a much larger cable than can be produced quickly. Our featured sweater is knitted sideways - from cuff to cuff - and uses fairisle and Garter Carriage to achieve two different types of Cable effect. One which can be seen from some distance - the fairisle - and one which is apparent only in close proximity - the Garter Carriage. We have used contrasting colours so the fairisle design stands out. It is also possible to use two shades of the same colour to achieve a subtle 3D effect, more akin to the look of a real cable design. The skirt has been knitted with the Garter Carriage from the hem to the waistband. The "Cable" stitch pattern is the same as that used for the sweater but is used vertically in this case.

STEP 1. Input the three stitch pattern designs. (If you have PPD cartridge 3, then you can utilise the ROTATION facility, if not you will have to re-draw the Mock Cable St Pattern.)

STEP 2. Create a Grid 174 sts (total width from waist edge to shoulder) x 186 rows (total

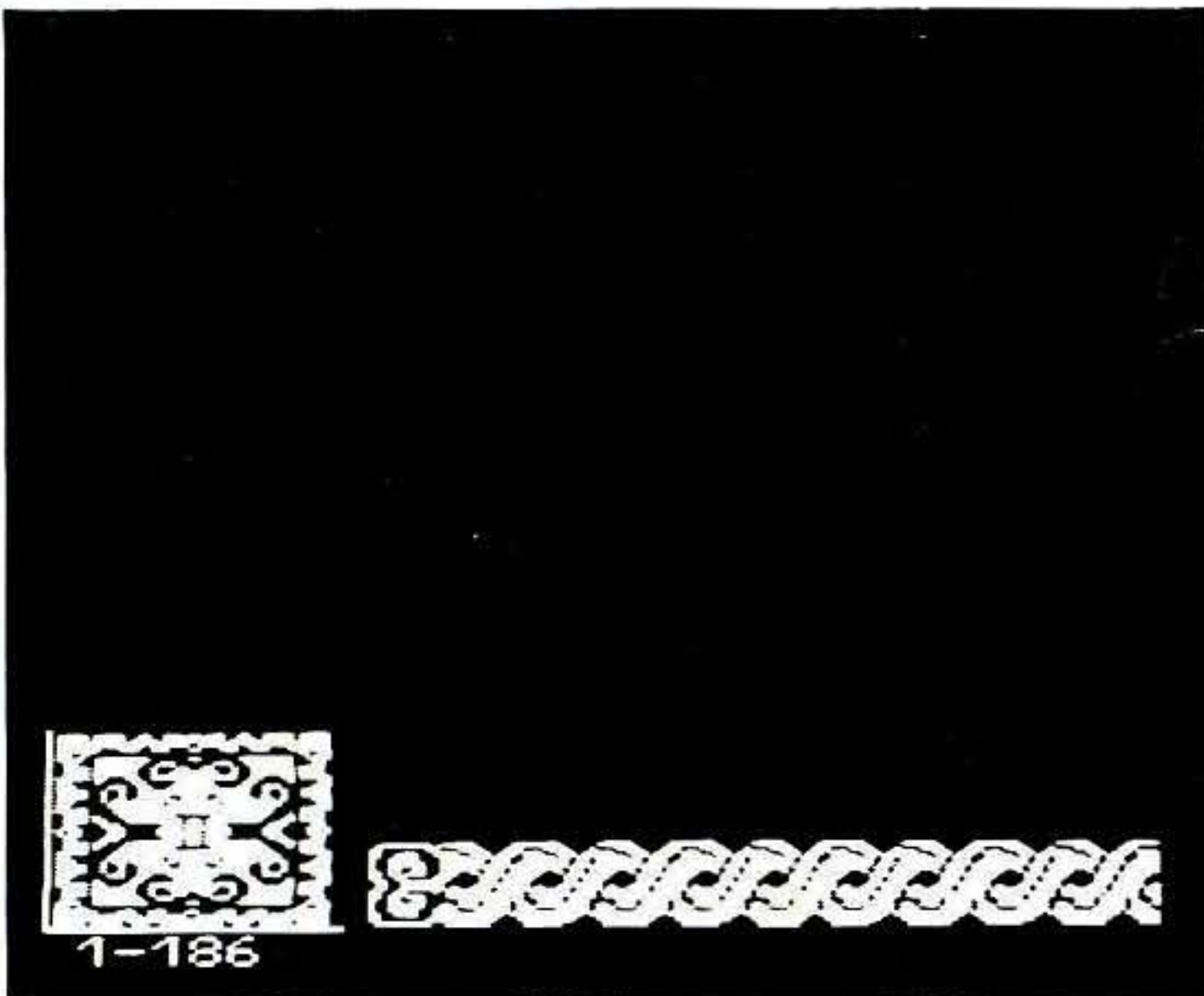
number of rows required for centre panel). Move cursor to St.2, Row 1 - this is the shoulder edge.

STEP 3. We are now going to input a 'Tile'. HELP. Select 7 - LOAD STORED PATTERN. Select 1 - FROM BUILT-IN PATTERN. Select 1 - CREATED PATTERN (CURRENT PAGE). Enter your pattern number of 1/4 'Tile'. Select 1: ALL. STEP. Select 1: YES (Bottom left hand corner of 'Tile'). Transfer cursor to (24,1). HELP. Select 8 - VARIATIONS. REVERSE: ON. HELP. HELP. STEP. Select 1: YES (Bottom half of 'Tile'). Transfer cursor to (24,22). HELP. Select 8 - VARIATIONS. UPSIDE DOWN: ON. HELP. HELP. STEP. Select 1: YES (Bottom half plus top right hand corner of 'Tile'). Transfer cursor to (2,22). HELP. Select 8 - VARIATIONS. REVERSE: OFF. HELP. HELP. STEP. Select 1: YES (Complete 'Tile').



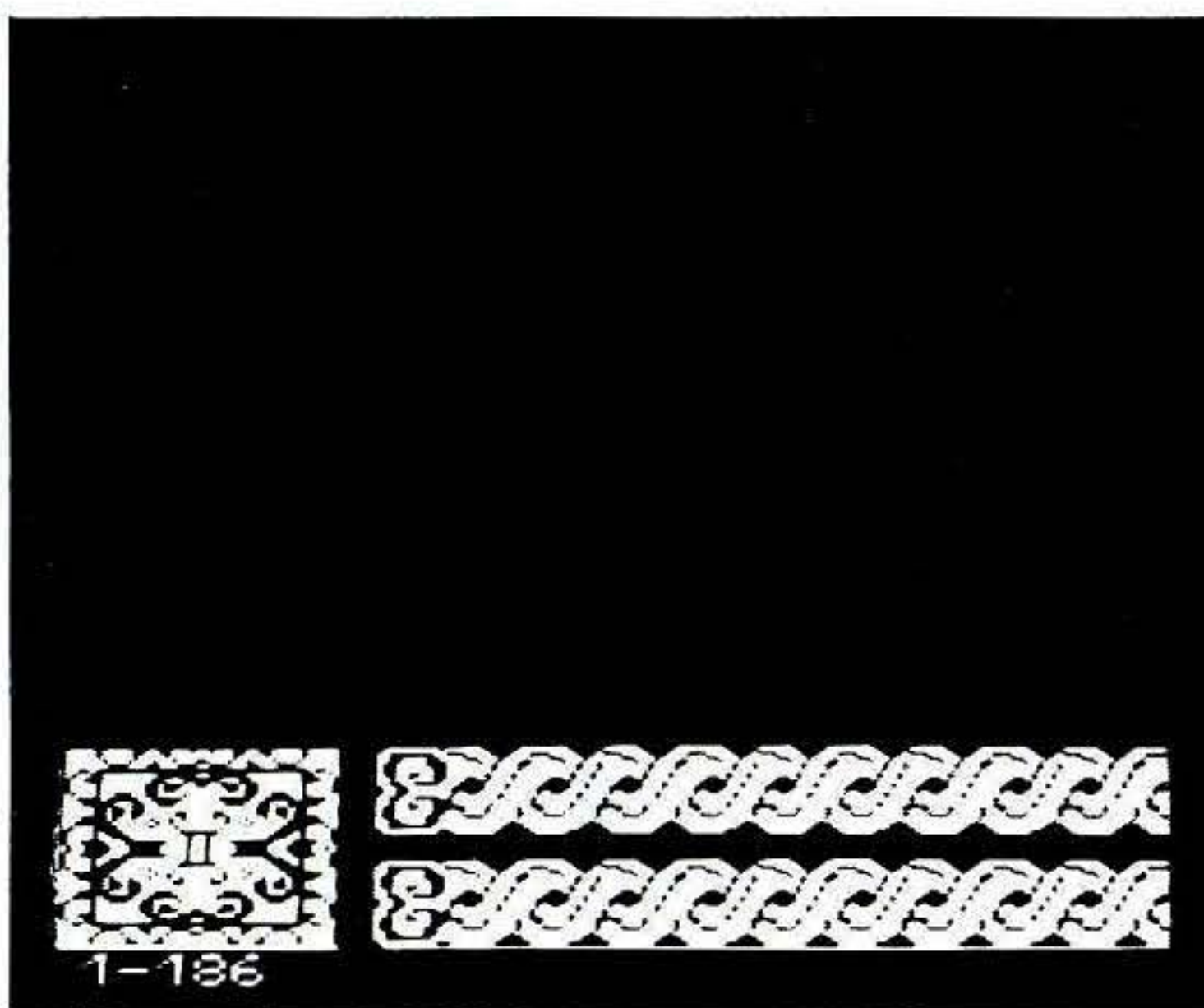
STEP 4. We are now going to input a 'Scroll' alongside the 'Tile' leaving 6 sts between. Transfer cursor to (52,1). HELP. Select 8 - VARIATIONS. UPSIDE DOWN: OFF. HELP. Select 7, then 1, then 1. Enter your Pattern number of 'scroll'. Select 1: ALL. STEP. Select 1: YES.

STEP 5. Now we must place several pattern repeats of Mock Cable alongside the 'scroll'. Transfer cursor to (63,1). HELP. Select 7, then 1, then 1. Enter your Pattern number of Mock cable. Select 1: ALL. STEP. Select 1: YES. *Move cursor to right by 24 rows. STEP. Select 1: YES*. Repeat from * to * until you have completed the row.



STEP 6. We can now place another 'Scroll' and Mock Cable Pattern, 6 rows above the first by repeating as above starting at St 52, Row 25 or as follows:-

Transfer cursor to (52,25). HELP. Select 7, then 1, then 1. Enter your Pattern number of Grid. Set corner to 52,1. STEP. Frame 123 x 18. STEP. STEP. Select 1: Yes.



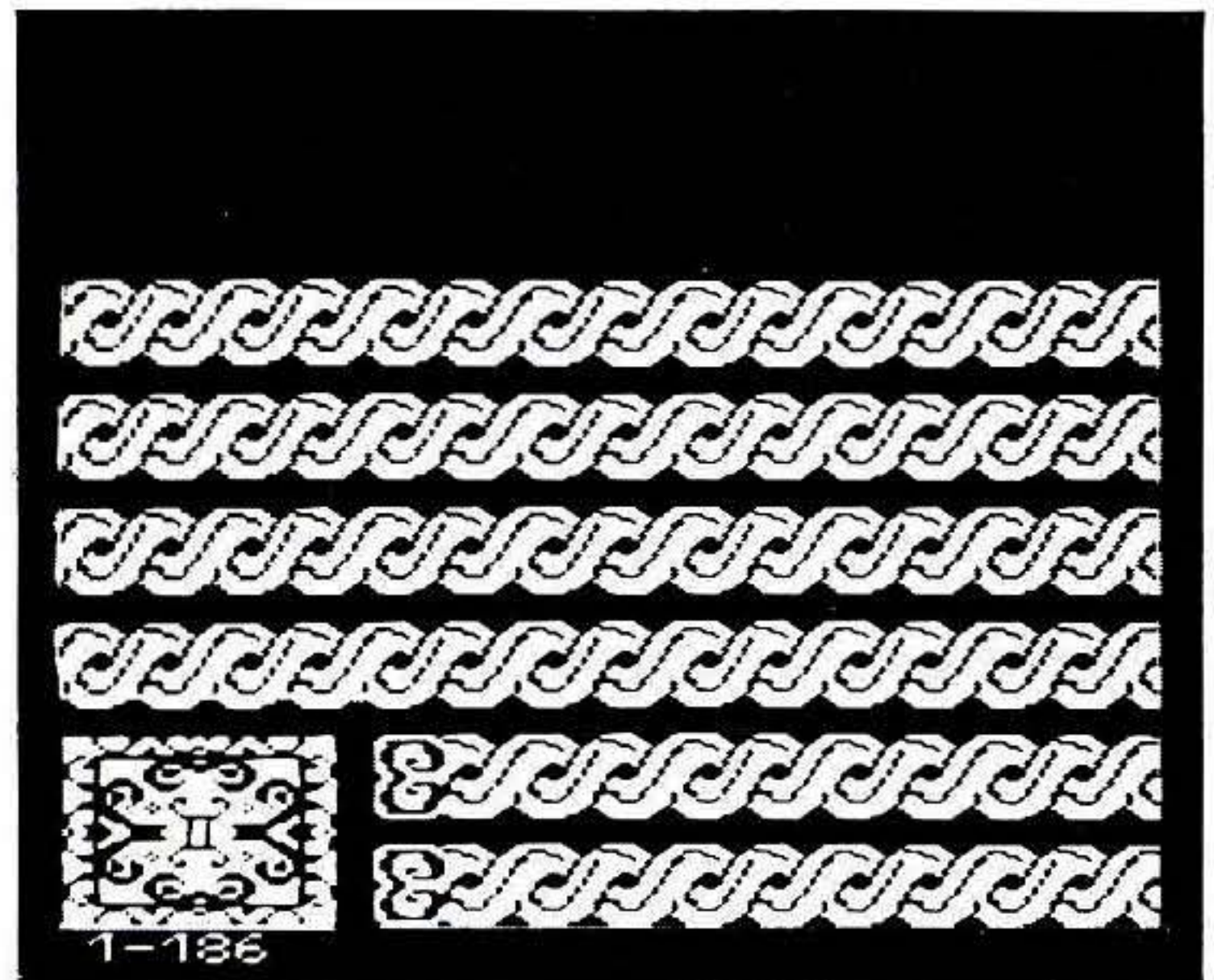
STEP 7. We have now completed the first section to be knitted in Fairisle. In the centre of the sweater there are 4 'panels' of Mock Cable which are knitted using the Garter Carriage. Programme the St design as an all-over pattern and knit 102 rows using the Garter Carriage or else you can input the St pattern onto the grid so that your first needle position remains the same:-

Transfer cursor to (63,49). HELP. Select 8 - VARIATIONS.SPREAD (HORIZONTAL): ON.

HELP. Select 7, then 1, then 1.

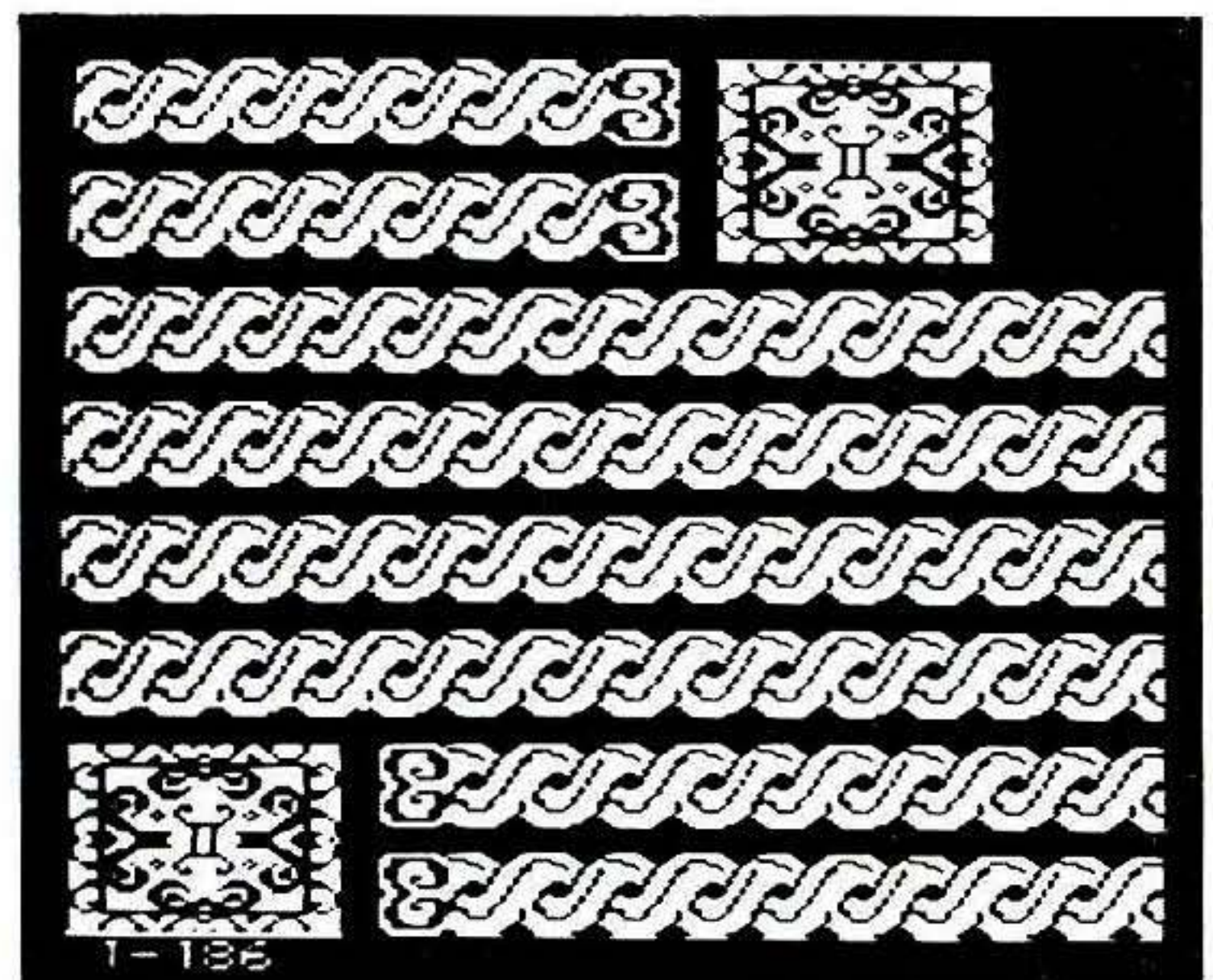
Enter your Pattern number of Mock cable. Select 1: ALL.

STEP. Select 1: YES. **Move cursor up by 24 rows. STEP. Select 1: YES**. Repeat from ** to ** until 4 Mock Cable panels have been placed.



STEP 8. Now we can place another 'Tile', 'Scroll' and Mock Cable panel as before by utilising the REVERSE and UPSIDE DOWN facilities:-

Transfer cursor to (1,145). HELP. Select 8 - VARIATIONS. REVERSE and UPSIDE DOWN: ON. SPREAD (HORIZONTAL): OFF. HELP. Select 7, then 1, then 1. Enter your Pattern number of Grid. Set corner to 2,1. STEP. Frame 147 x 42. STEP. STEP. Select 1: Yes.

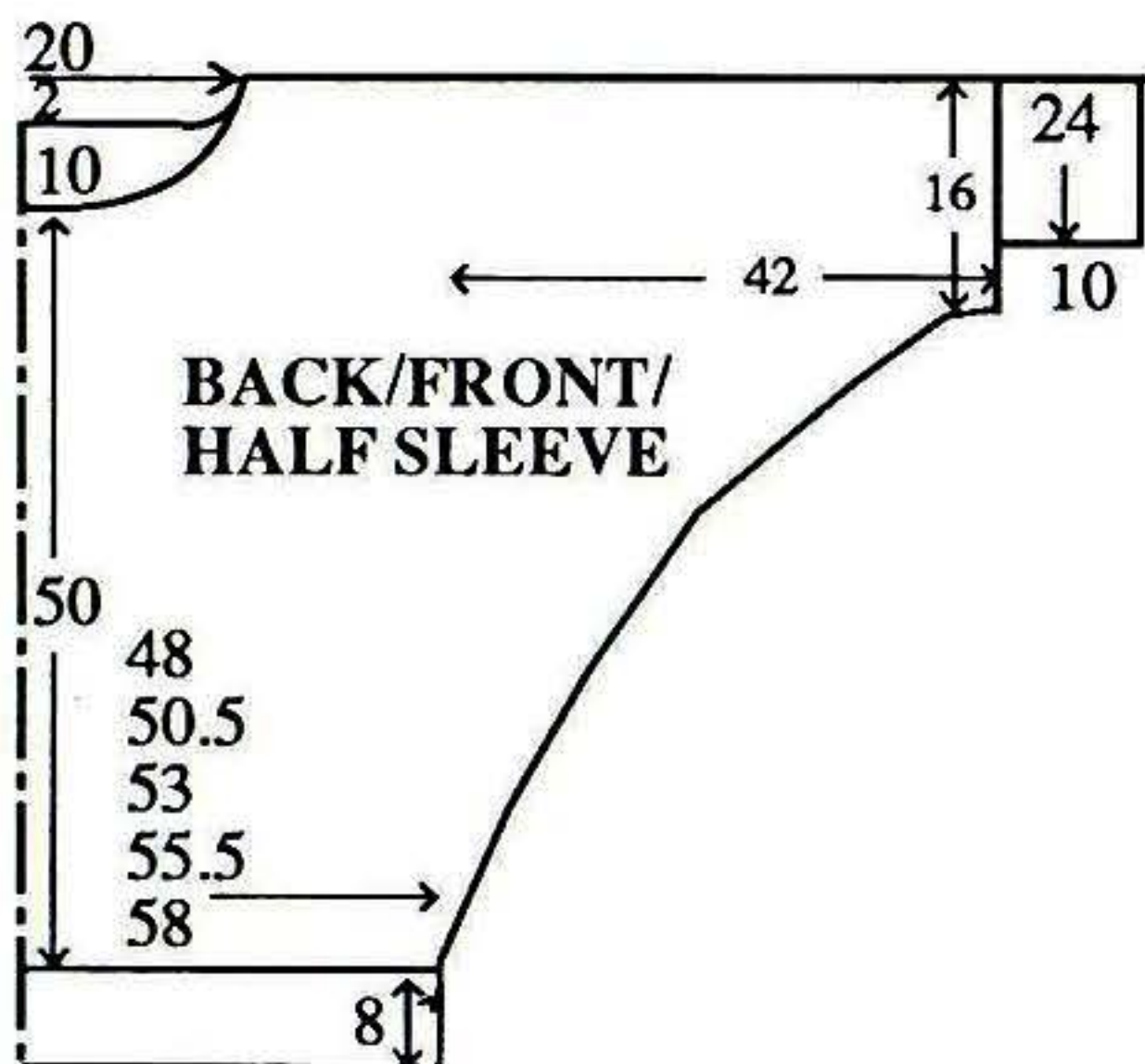


BATWING SWEATER WITH SKIRT

MACHINES: D with Garter Carriage, PPD and/or FB100 Disk Drive. **MATERIALS:** STANDARD 4-PLY BOTANY WOOL, we used BROCKWELL YARNS Botany 4-Ply; **SWEATER - A -** 380 (400, 420, 440, 460)g (Camel 233) and **B -** 120 (130, 140, 150, 160)g (Blue Slate 203) (100% wool, 413m/100g). **SKIRT - B -** 220 (240, 260, 280, 300)g. 2.5cm wide elastic to fit waist + 2.5cm. **MEASUREMENTS:** To fit bust 86 (91, 96, 101, 106)cm. **TENSION:** G-Carr St Patt - 40 sts = 13.8cm and 60 rows = 14cm (approx T7) after washing, blocking and pressing. **RIB:** 2 x 2 T5. **NOTES:** SKIRT - Worked in Garter Stitch Pattern throughout using B [Vertical Mock Cable]. **SWEATER -** Worked in Garter Stitch Pattern [Horizontal Mock Cable] using A, with Fairisle Panels either side of Neck [A in FA and B in FB].

SWEATER BACK

Using WY and counting from left to right, cast on over 46 KH



Ns, starting from N 87 to left of '0'. Knit a few rows ending with COL. Using A T7 knit 1 row, 000. Set for 14th (8th, 20th, 14th, 8th) row of G-Carr St Patt (Horizontal Mock Cable) and working in G-Carr St patt throughout, knit to RC20. At right, inc 1 st on next and every foll 3rd row x 15, every alt row x 34, then cast on 2 sts x 9, 3 sts x 15, 16 sts x 1. Knit to RC190 (196, 202, 208, 214). Set for first row of Centre Panel (STEP-BY-STEP) and using K-Carriage, knit 1 row to select Ns. Working in Fairisle, knit 42 rows. Working in Garter St Patt, knit 8 rows.

Back neck shaping

At left, dec 1 st on next and every foll 4th row x 6. Knit 46 rows. At left, inc 1 st on next and every foll 4th row x 6. *Knit 7 rows. Using K-Carr knit 1 row to select Ns for Fairisle. Working in Fairisle, knit 42 rows. Working in Garter St Patt to end, knit 12 (18, 24, 30, 36) rows.

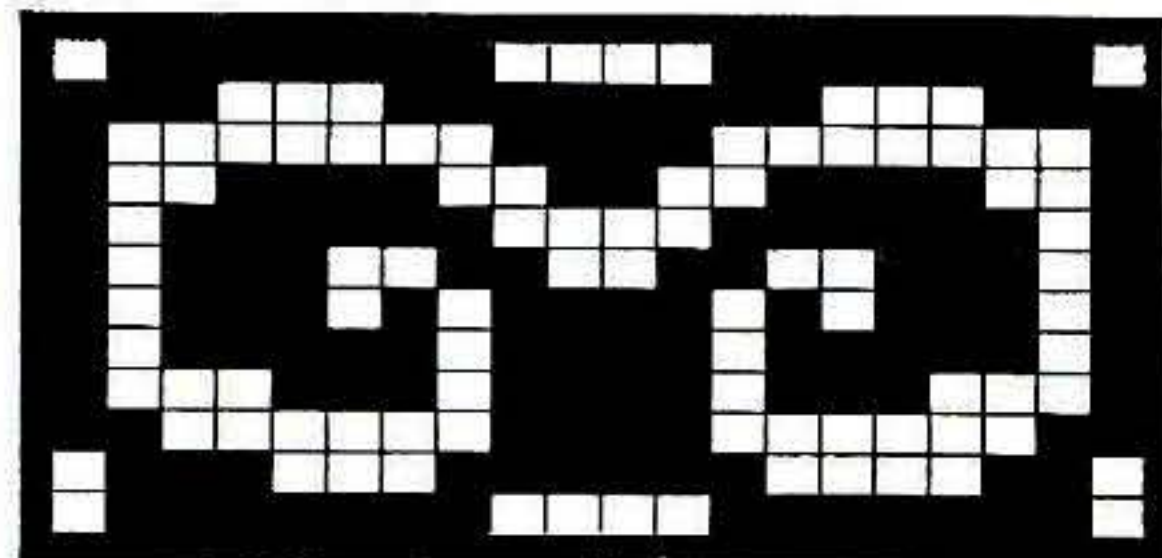
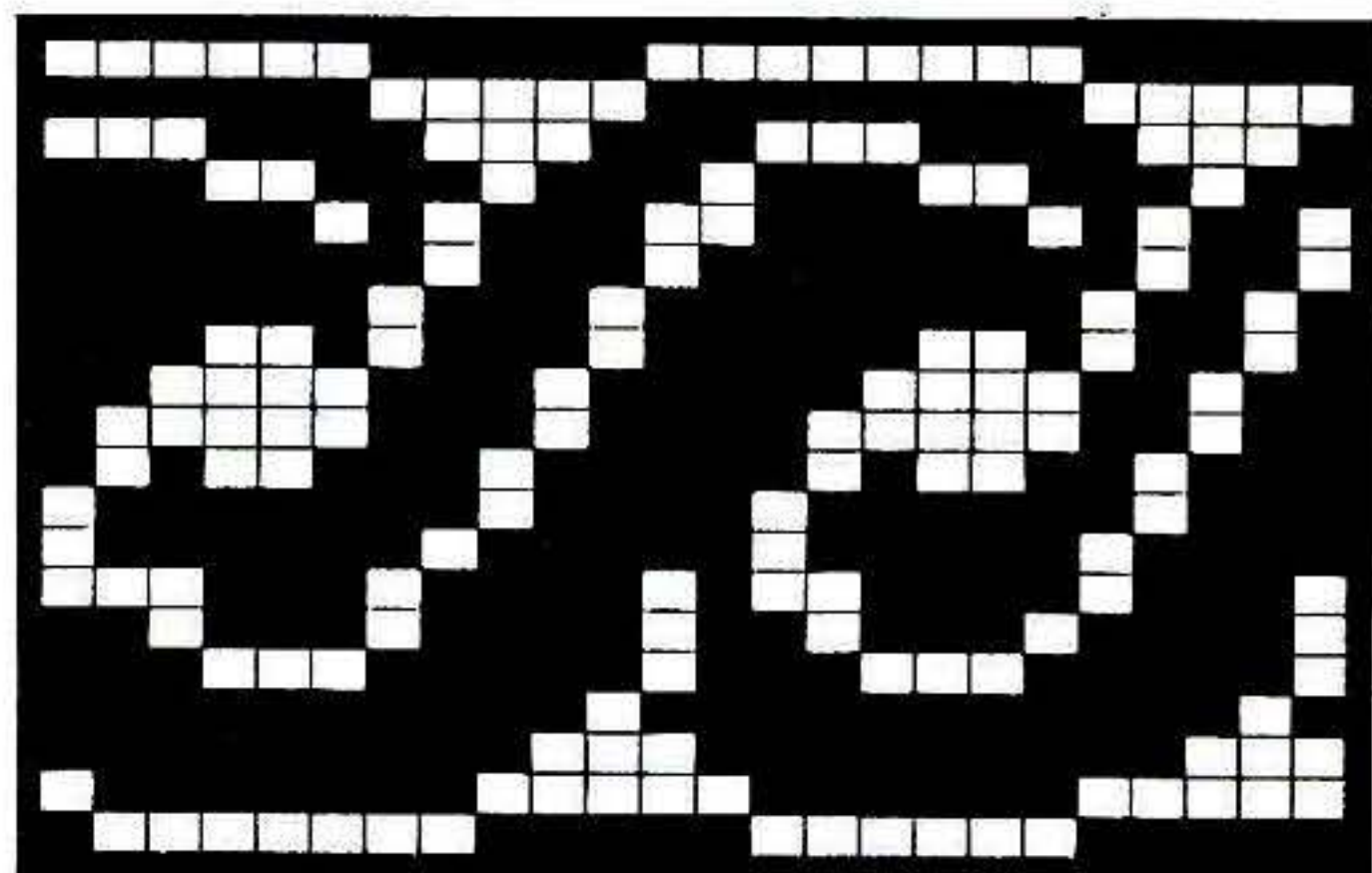
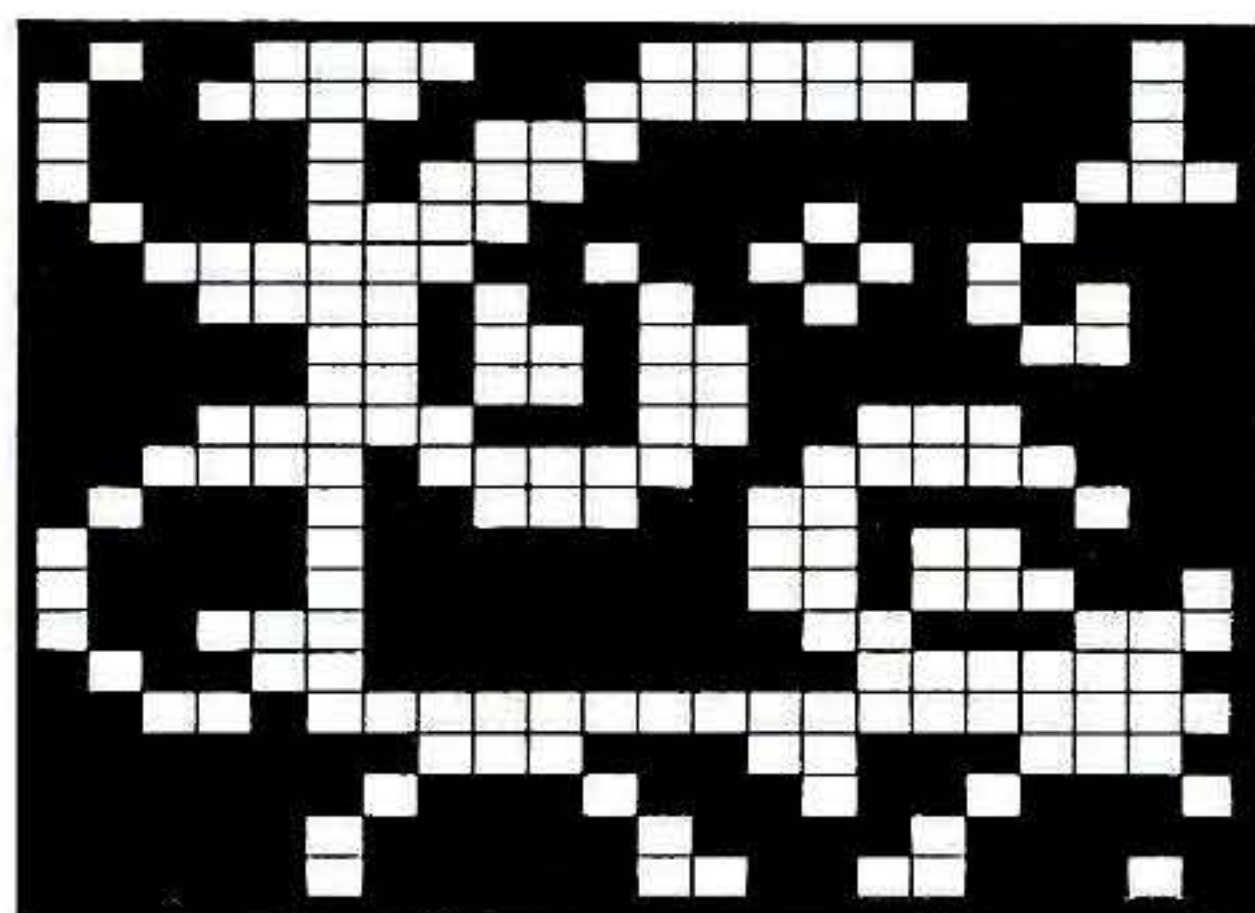
Side seam and Sleeve shaping
At beg of next and every foll alt row cast off 16 sts x 1, 3 sts x 15, 2 sts x 9, then dec 1 st x 34, then dec 1 st every foll 3rd row x 15. Knit 20 rows and waste knit. **WAIST RIB:** Push 138 (146, 154, 162, 170) KH Ns to WP. With wrong side facing, pick up same number of sts evenly along waist edge and place onto Ns. Using B T7 knit 1 row, 000. Working in RIB, knit to RC39. T10 knit 1 row and latch cast off.*

FRONT

As BACK to Neck shaping.

Front neck shaping

COL, at beg of next and every foll alt row cast off 4 sts x 1, 3 sts x 2, 2 sts x 4, then dec 1 st x 11. Knit 18 rows. At beg of



next and every foll alt row inc 1 st x 11, then cast on 2 sts x 4, 3 sts x 2, 4 sts x 1. Work as BACK from * to *.

NECKBAND

Join one shoulder/upper SLEEVE. Push 154 KH Ns to WP. With right side facing, pick up same number of sts evenly along neck edge and place onto Ns. Using B T7 knit 1 row, 000. Working in RIB, knit to RC70. T7 knit 2 rows St st and waste knit. Join second shoulder/upper SLEEVE. Attach NECKBAND, fold in half to outside and backstitch to garment through last row knitted in B.

CUFFS

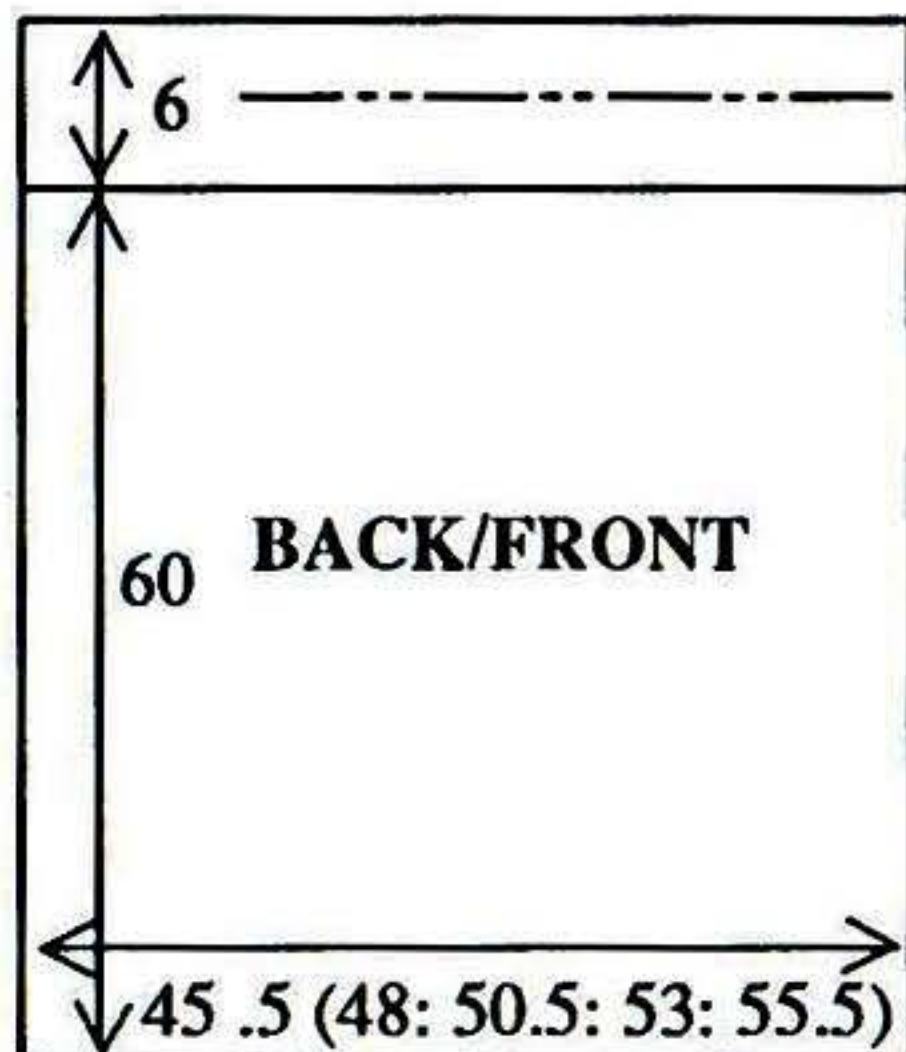
Push 74 KH Ns to WP. With wrong side facing, place sts from cuff edge onto Ns distributing them evenly along the row. Using B T7 knit 1 row, 000. Working in RIB, knit to RC49. T10 knit 1 row and latch cast off.

MAKE-UP

Wash, block and press. Join side/SLEEVE seams.

SKIRT BACK/FRONT

Using B COBH over 134 (142,



150, 158, 166) KH Ns, 000. Working in RIB, knit 11 rows, 000. Working in Garter St Patt throughout (Vertical Mock Cable), knit to RC248 (adjust length here). **WAISTBAND:** Working in 1 x 1 Rib, T4 knit 29 rows. T10 knit 1 row and latch cast off.

MAKE-UP

Wash, block and press. Join side seams. Fold WAISTBAND in half to inside and stitch down loosely encasing elastic.

FAIRISLE COAT

MACHINES: A, C or D with KR. **MATERIALS:** STANDARD 4-PLY MOHAIR, we used YEOMAN YARNS Jacky; A - 500g (Honey) and B - 500g (Taupe) (50% mohair, 50% acrylic 400m/-100g). 6 Buttons. **MEASUREMENTS:** One size fits all. **TENSION:** Fairisle St Patt - 40 sts = 13.6cm and 60 rows = 18.1cm (approx T9). **RIB:** Flat Rib - All Ns on KR and 1 x 1 Ns on KH in WP, T1/6. **NOTES:** Fairisle St Patt - A in FA and B in FB throughout. When shaping only Ns on KH are counted, adjust Ns on KR as necessary.

BACK

Using B cast on over 194 KH Ns as FNR. Trans to Flat Rib, 000. Knit to RC15. Trans all sts to KH. Set for first row of Fairisle St Patt and using B T9 knit 1 row to select Ns, 000. Working in Fairisle throughout (see NOTES), knit to RC244. Place a WY marker at each end of work. Knit to RC338. Waste knit centre 36 sts. Waste knit

rem 79 sts at each end of work for shoulders.

RIGHT FRONT

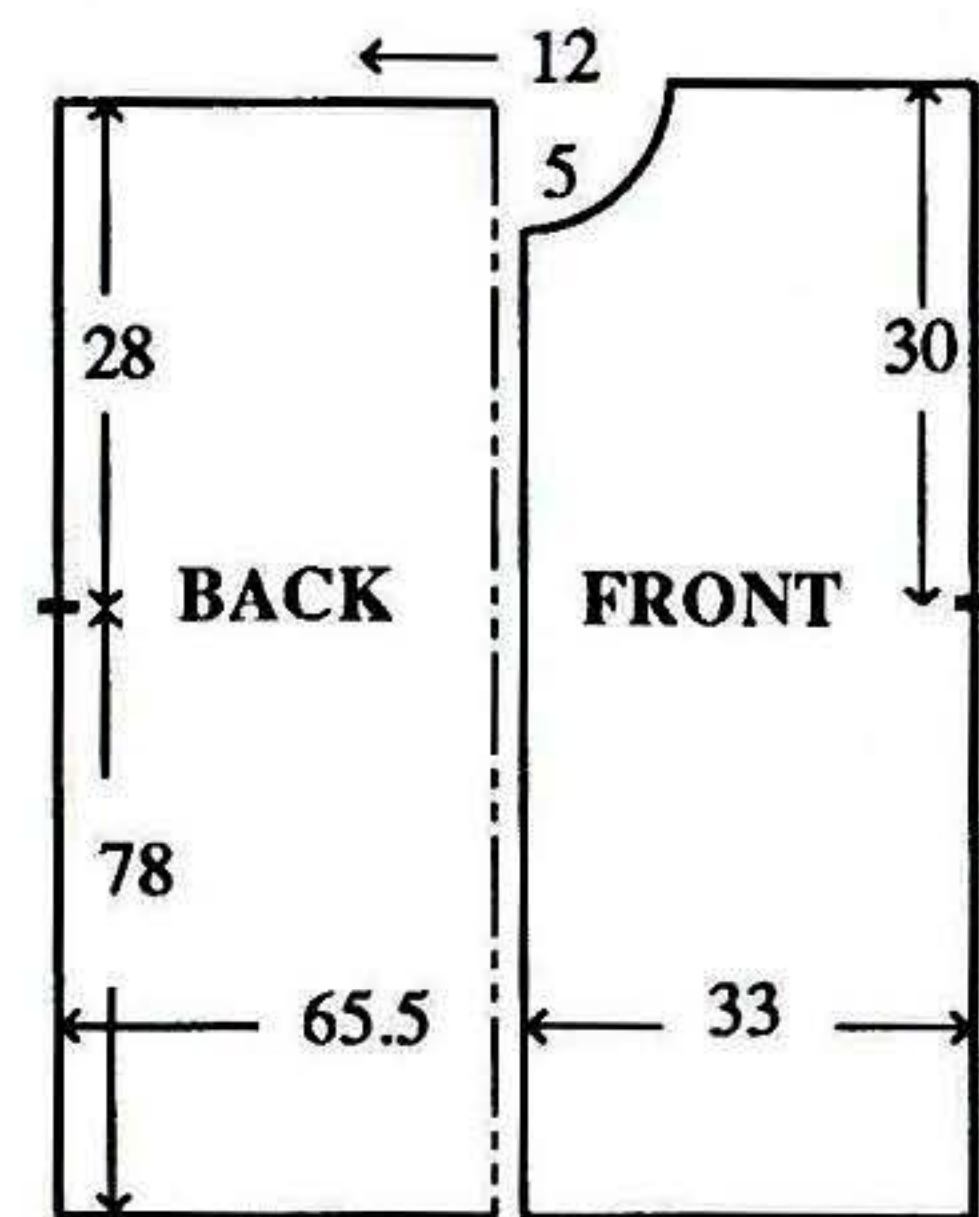
As BACK from * to * using 97 KH Ns EXCEPT place a WY marker at left end of work at RC72. Place a WY marker at right end of work. Knit to RC325.

Neck shaping

At beg of next and every foll alt row cast off 4 sts x 1, 3 sts x 2, 2 sts x 3, then dec 1 st x 2. Knit to RC344 and waste knit rem 79 sts.

LEFT FRONT

As RIGHT FRONT reversing shaping.

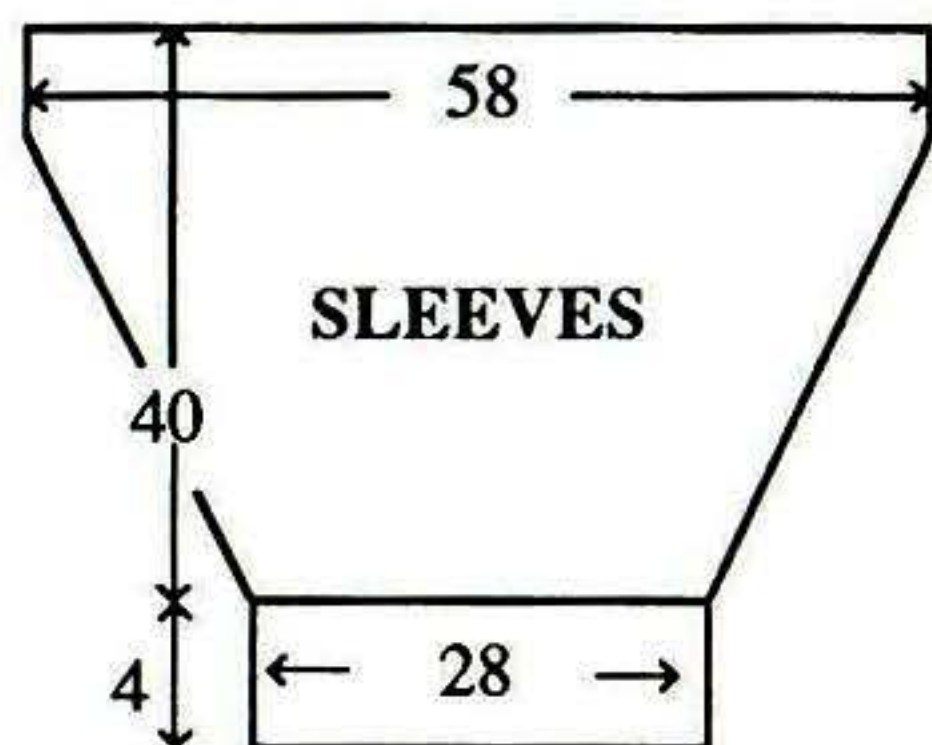


COLLAR

Join both shoulders by placing both sets of shoulder sts back onto Ns with right sides together. Using A T10 knit 1 row and cast off. Using B cast on over 114 KH Ns as FNR. Trans alt sts on KR to KH, 000. T6/1 knit to RC32, COR. Push centre 42 Ns into HP + all Ns at left. **Always taking yarn round inside N to prevent a hole forming, knit 2 rows. At left on next and every foll alt row, push into HP 4 Ns x 9**.



Break yarn, COL. Repeat from ** to ** reading right as left. Knit 1 row over all Ns. Trans all sts to KH. T8 knit 1 row. With right side facing, pick up same number of sts evenly along neck edge and place onto Ns. T7 knit 1 row. T10 knit 1 row and cast off.



BUTTONHOLE BAND

Using WY cast on over 200 KH Ns and knit a few rows ending with COR, 000. Using B T8 knit to RC8. ***Working from right to left, and starting at the 5th N at right, work 5 x 4 st buttonholes with 36 sts between each buttonhole***. Knit to RC24. Repeat from *** to ***. Knit to RC32. Place sts from first row onto Ns. Knit 1 row. With wrong side facing, pick up same number of sts evenly along RIGHT FRONT opening edge, from neck edge to WY marker, and place onto Ns. Knit 1 row. T10 knit 1 row and cast off. Using WY cast on over 68 KH Ns and knit a few rows ending with COR, 000. Using B T8 knit to RC32. Place

sts from first row onto Ns. Knit 1 row. With wrong side facing, pick up same number of sts evenly along RIGHT FRONT opening edge, from WY marker to hem, and place onto Ns. Knit 1 row. T10 knit 1 row and cast off. Neaten buttonholes. Stitch BAND seam leaving a horizontal opening for 6th button.

BUTTON BAND

As BUTTONHOLE BAND omitting buttonholes.

POCKETS (2)

Using A COBH over 51 KH Ns. T9 knit 1 row. Set for first row of Fairisle St Patt and knit 1 row to select Ns, 000. Working in Fairisle throughout, knit to RC54. **** Using B knit 1 row. Trans to Flat RIB, 000. T6/1 knit to RC30. Trans all sts to KH T8 knit 1 row and waste knit. Fold RIB in half to outside and backstitch through last row knitted in B ****. Attach POCKETS to FRONTS as illustrated.

SLEEVES

Push 171 KH Ns to WP. With wrong side facing, pick up same number of sts evenly along armhole edge between WY markers and place onto Ns, COL. Set for first row of Fairisle St Patt - UPSIDE DOWN - and using A T9 knit 1 row to select Ns, 000. Working in Fairisle throughout, knit 2 rows. Dec 1 st at each end of next and every foll 3rd row x 44. Knit to RC132.

Repeat from **** to ****.

MAKE-UP

Join side and SLEEVE seams. Attach buttons.

MAN'S FAIRISLE SWEATER WITH BUTTON COLLAR

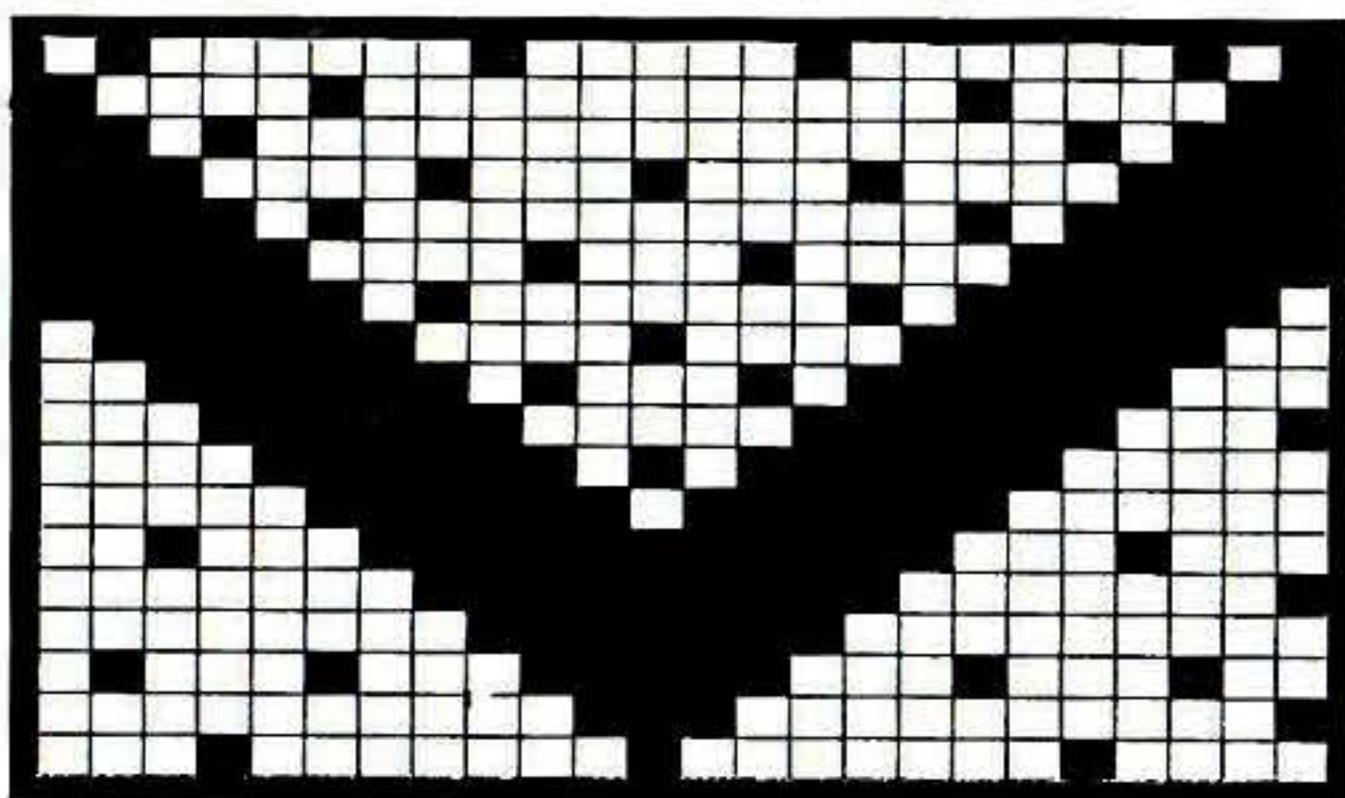
MACHINES: A, C or D with KR. **MATERIALS:** SHETLAND 4-PLY, we used JAMIESON and SMITH 2-Ply Jumper weight; A - 315 (330, 345, 360, 375)g (Fawn Mix FC67) and B - 210 (220, 230, 240, 250)g (Dk Green Mix FC70) (100% shetland wool 280m/100g). 3 Buttons. **MEASUREMENTS:** To fit chest 91 (96, 101, 106, 111)cm. **TENSION:** Fairisle St Patt - 40 sts = 13.8cm and 60 rows = 16.8cm (approx T7). **RIB:** 1 x 1 T1/1. **NOTES:** Fairisle St Patt - A in FA and B in FB throughout.

BACK

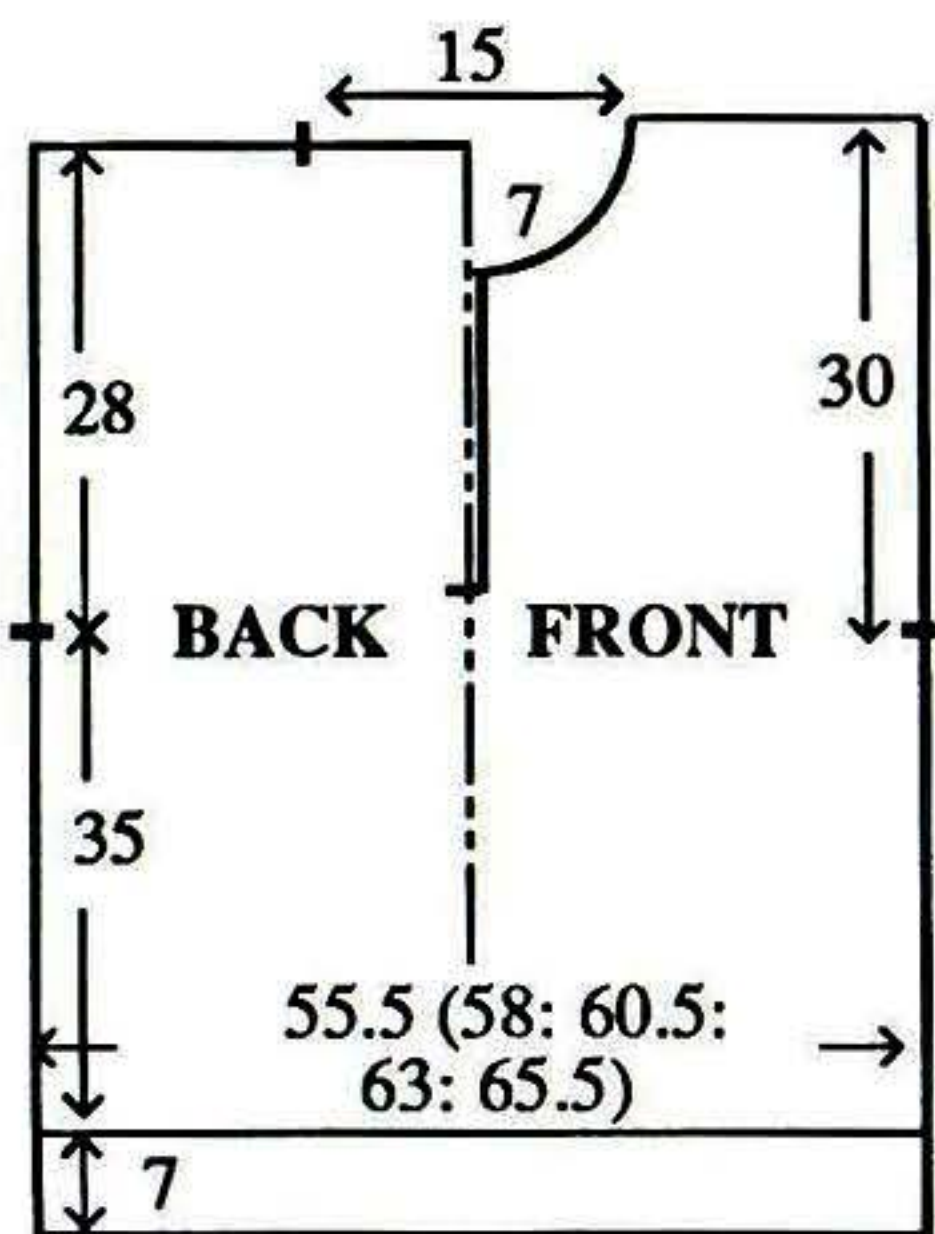
Using A cast on over 161 (169, 177, 183, 191) KH Ns as RIB, 000. Knit to RC35. Trans all sts to KH. Set for first row of Fairisle St Patt. T7 knit 1 row to select Ns, 000. Working in Fairisle throughout (see NOTES), knit to RC126. Place a WY marker at each end of work. Knit to RC226. Waste knit centre 43 sts. Waste knit rem 59 (63, 67, 70, 74) sts at each end of work for shoulders.

FRONT

As BACK to RC146. **Divide for Neck opening** (Note Patt position) Cast off centre 7 sts. Waste knit sts at







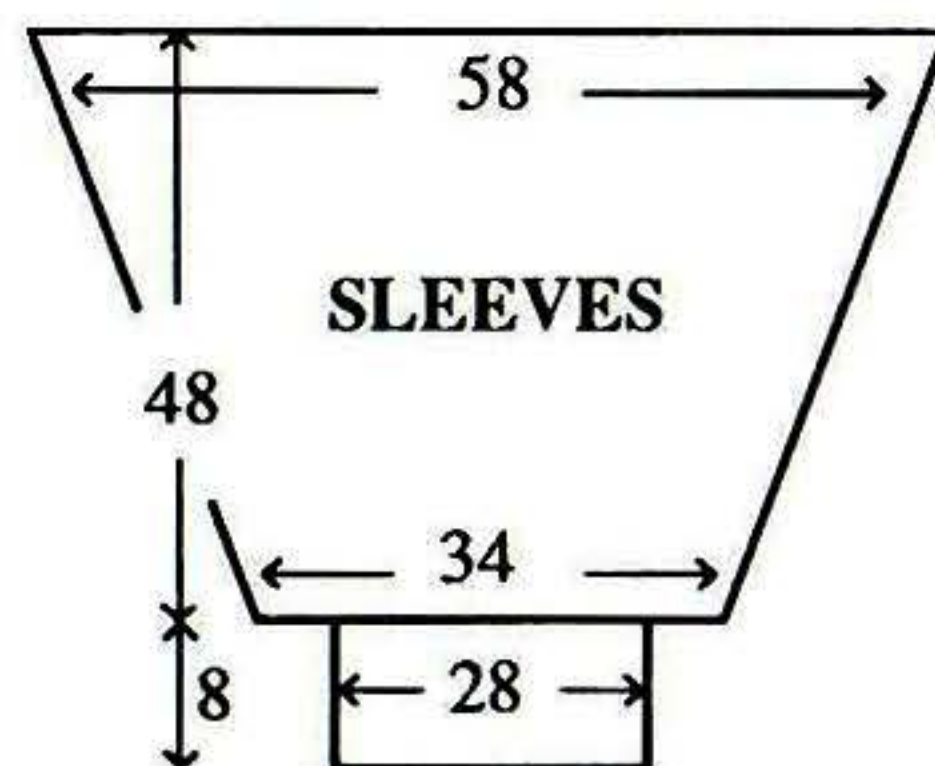
left, COR. Knit to RC207.

Neck shaping

At beg of next and every foll alt row cast off 4 sts x 1, 3 sts x 1, 2 sts x 3, then dec 1 st x 5. Knit to RC234 and waste knit rem 59 (63, 67, 70, 74) sts. Return sts at left to Ns and knit to match right side reversing shaping.

SLEEVES

Join both shoulders by placing both sets of shoulder sts back onto Ns with right sides together. Using A T10 knit 1 row and cast off. Push 168 KH Ns to WP. With wrong side facing, pick up same number of sts evenly along armhole edge between WY markers and place onto Ns, COL. Set for first row of Fairisle St Patt. Using A T7 knit 1 row to select Ns, 000. Working in Fairisle throughout, knit to RC32. Dec 1 st at each end of next and every foll 4th



row x 35. Knit to RC172 and waste knit rem 98 sts. **CUFFS:** Push 81 KH Ns to WP. With wrong side facing, place sts from cuff edge onto Ns distributing them evenly along the row. Using A T7 knit 1 row. Trans to RIB, 000. Knit to RC39. T10/8 knit 1 row. Trans all sts to KH and latch cast off.

BUTTONHOLE BAND

Using B cast on over 48 KH Ns as FNR, 000. T2/2 knit to RC6. Work 3 x 2 st buttonholes evenly spaced along the row. Knit to RC12. Trans all sts to KH. T7 knit 1 row. With wrong side facing, pick up same number of sts evenly along LEFT FRONT opening edge and place onto Ns. T10 knit 1 row and cast off.

BUTTON BAND

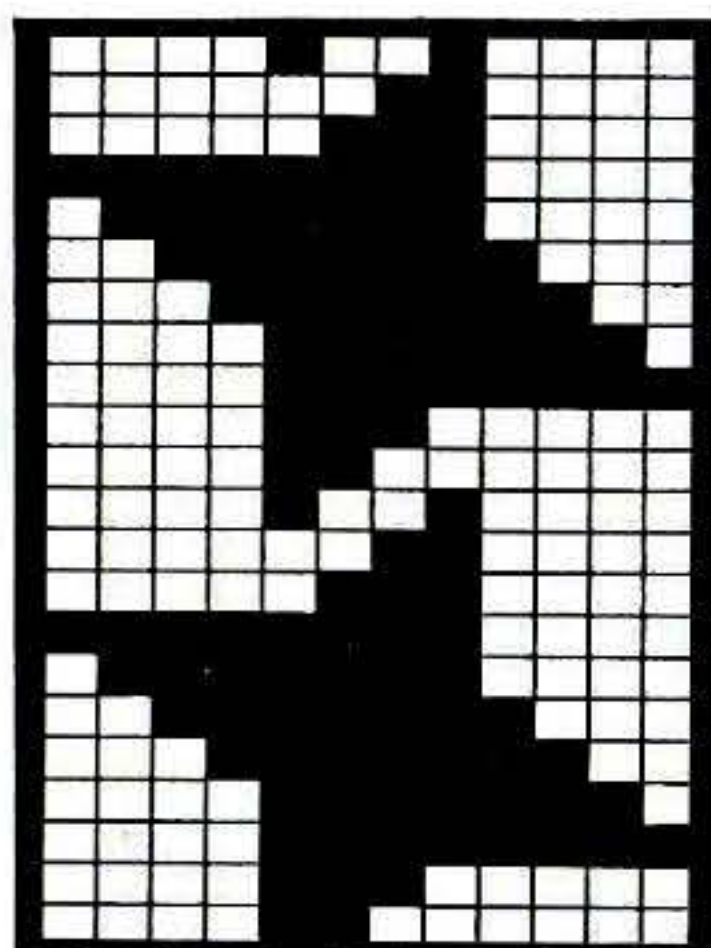
As BUTTONHOLE BAND omitting buttonholes.

COLLAR

Using A cast on over 105 KH Ns as FNR, 000. T2/2 knit to RC32. Trans all sts to KH. T7 knit 1 row. With wrong side facing, pick up same number of sts evenly along neck edge and place onto Ns. T10 knit 1 row and cast off.

MAKE-UP

Block and press. Join side and SLEEVE seams. Attach side edges of BANDS to cast off sts of FRONT. Attach buttons.



FAIRISLE MOHAIR SWEATER

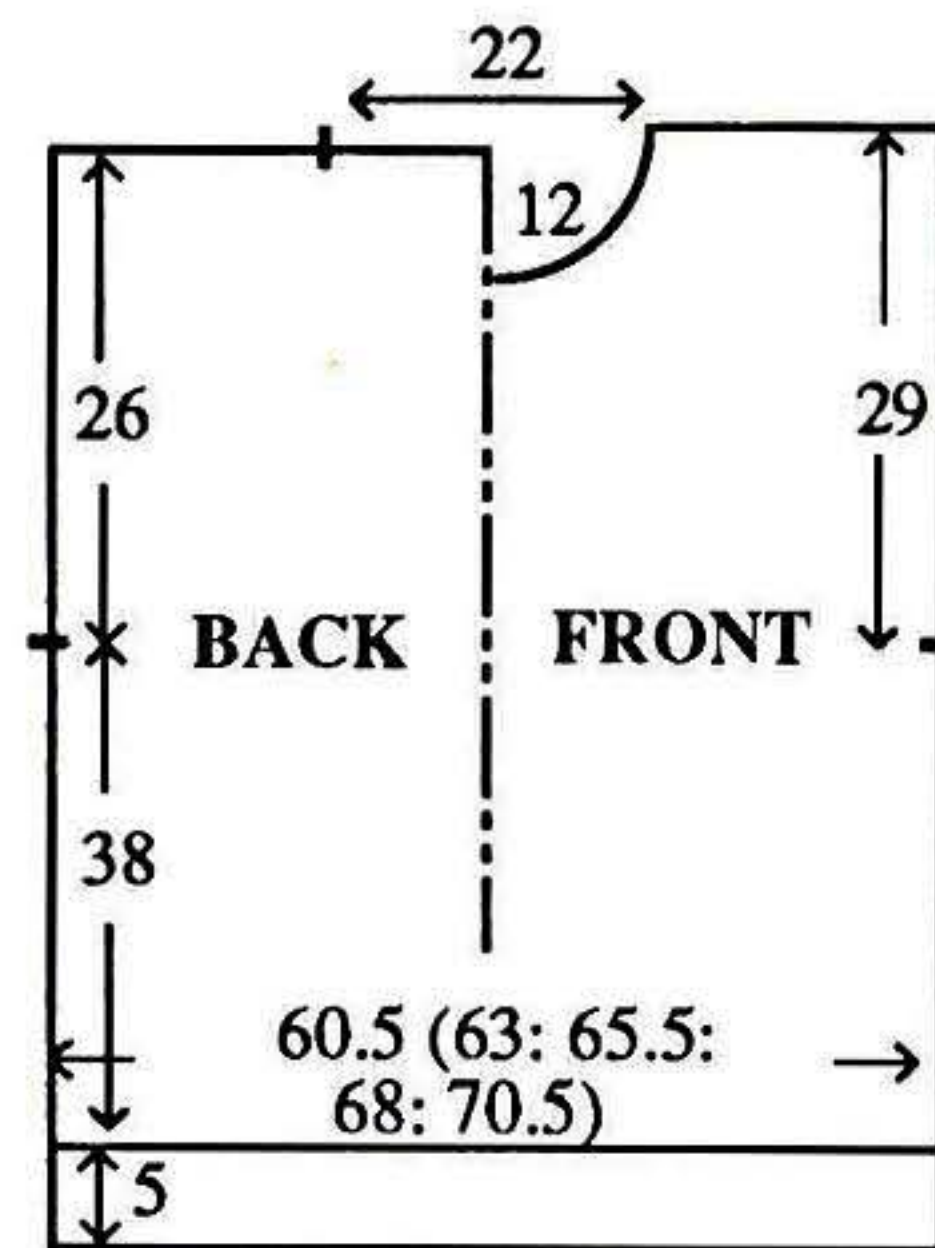
MACHINES: B2 or B3 with KR. **MATERIALS:** STANDARD MOHAIR, we used YORKSHIRE YARNS

Kaleidescope; A - 270 (280, 290, 300, 310)g (Taupe), B - 165 (175, 185, 195, 205)g (White), C - 25 (30, 35, 40, 45)g (Salmon) and D - 35 (40, 45, 50, 55, 60)g (Powder Blue) (83% mohair, 9% wool, 8% nylon. 200m/100g).

MEASUREMENTS: To fit bust 86 (91, 96, 101, 106)cm.

TENSION: Fairisle St Patt - 20 sts = 12.5cm and 30 rows = 15cm (approx T7).

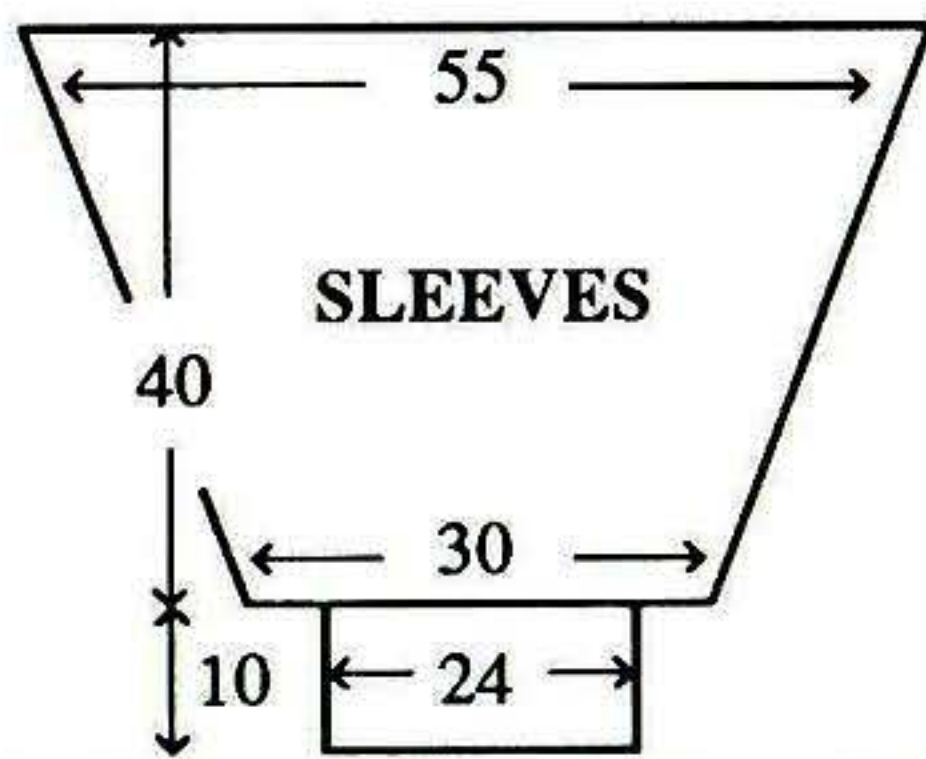
RIB: 1 x 1 T1/1. **NOTES:** Fairisle St Patt - A in FA throughout, knit 1 row C, 4 rows D, 1 row C, 26 rows B in FB.



BACK

Using A cast on over 97 (101, 105, 109, 113) KH Ns as RIB, 000. Knit to RC12. Trans all sts to KH. T7 knit 1 row. Set for first row of Fairisle St Patt and knit 1 row to select Ns. Working in Fairisle throughout (see NOTES), knit to RC76. Place a WY marker at each end of work. Knit to RC128. Waste





knit centre 35 sts. Waste knit rem 31 (33, 35, 37, 39) sts at each end of work for shoulders.

FRONT

As BACK to RC110.

Front Neck shaping

(Note Patt position). Waste knit centre 9 sts. Waste knit sts at left, COR. Knit 1 row. At beg of next and every foll alt row cast off 2 sts x 2, then dec 1 st x 9. Knit to RC134 and waste knit rem 31 (33, 35, 37, 39) sts. Return sts at left to Ns and knit to match right side reversing shapings.

NECKBAND

Join one shoulder by placing one set of shoulder sts back onto Ns with right sides together. T10 knit 1 row and cast off. Using B cast on over 87 KH Ns as RIB, 000. T3/3

knit to RC40. Trans all sts to KH. T7 knit 1 row. With right side facing, pick up same number of sts evenly along neck edge and place onto Ns. Set for first row of Fairisle St patt and knit 1 row to select Ns. Working in Fairisle, knit 6 rows and waste knit. Join second shoulder as first. Join NECKBAND seam and backstitch to garment through last row knitted in Fairisle. Fold NECKBAND in half to inside and stitch down loosely.

SLEEVES

Push 88 KH Ns to WP. With wrong side facing, pick up same number of sts evenly along armhole edge between WY markers and place onto Ns. COL Set for first row of Fairisle St Patt and knit 1 row to select Ns, 000. Working in Fairisle throughout, knit to RC2. Dec 1 st at each end of next and every foll 4th row x 20. Knit to RC80 and waste knit rem 48 sts. CUFFS: Push 37 KH Ns to WP. With wrong side facing, return sts from cuff edge onto Ns distributing them evenly along the row. Using A

T7 knit 1 row. Trans to RIB, 000. Knit to RC29. T10/8 knit 1 row. Trans all sts to KH and latch cast off.

MAKE-UP

Join side and SLEEVE seams.

