

# brother fashion

Issue No.8  
UK £1.50  
HFL 3.95  
I £2.50

**MASTERCLASS**  
*Using the PPD - how to knit one Lace Stitch Pattern next to another to decorate a neckline.*

**BEGINNERS**  
*What is the "Open Stitch" and why is it so important this season?*

**BROTHER KNITTING CLASSES**  
*Brother are holding a series of Knitting and Sewing Classes in Manchester and London.*

**CHILDREN'S KNITWEAR**  
*Summer brights in comfortable cottons*

**MOHAIR SWEATER IN 9 SIZES!**  
*Fits from around 3 years to around 14 years*

**8 garments for punchcard machines!**



# CONTENTS

## WOMANSWEAR

Striped classic shape sweater with Garter Carriage Motif - Front Cover, opposite 3 and 4

Fairisle sideways knitted skirt suit, 6, 8 and 9

Fisherman's Rib striped sweater, 10 and 11

Lace Pant suit, 12 - 16

Lace and Cable Summer sweater, 21, 22 and 23

## CHILDREN'S WEAR

Chunky Mohair sweater, 16, 17 and 18

Fairisle sport shirt style sweater with joggers, 22, 24 - 26

Tuck striped summer sport shirt, 25, 26 and 27

## MENSWEAR

Fairisle Cardigan, 4, 5 and 7  
Fairisle Slipover, 5, 6 and 7

## BEGINNERS AND STITCH LIBRARY

Meet the 'Open' Stitch, 18, 19 and 20

## MASTER CLASS

PPD Lace motif to decorate neckline, 12 - 16

## BROTHER KNITTING AND SEWING COURSES, 28 and 29

## ABBREVIATIONS, 30



Dear Readers,

It seems odd that knitting stitches could come into and out of fashion, but they do! Looking at the predictions for knitwear for summer through to autumn/ winter 1995/96 one can see that "Open" stitches have been siezed upon as the "latest" structure for knitting. Our Beginner's Lesson discusses, and the Stitch Library illustrates the Open Stitch. Learn how to mix it with other stitches for what top designers consider to be the up-to-the-minute look! Two of the children's items this issue use a simple Open Stitch design. Next issue we illustrate how to

use the Open stitch for women's knitwear.

We first mixed a number of lace stitches using the PPD in issue Number 4 Since then we have continued our exploration of mixing different lace stitches and have come up with a decorated neckline using similar principles. For those of you who have an FB100 Disk Drive only, the whole FRONT of the Sweater is on our Disk. Those who own the PPD follow the MASTER CLASS, this interesting technique opens the door for lots more design ideas.

Happy Knitting,  
Susan Nutbeam

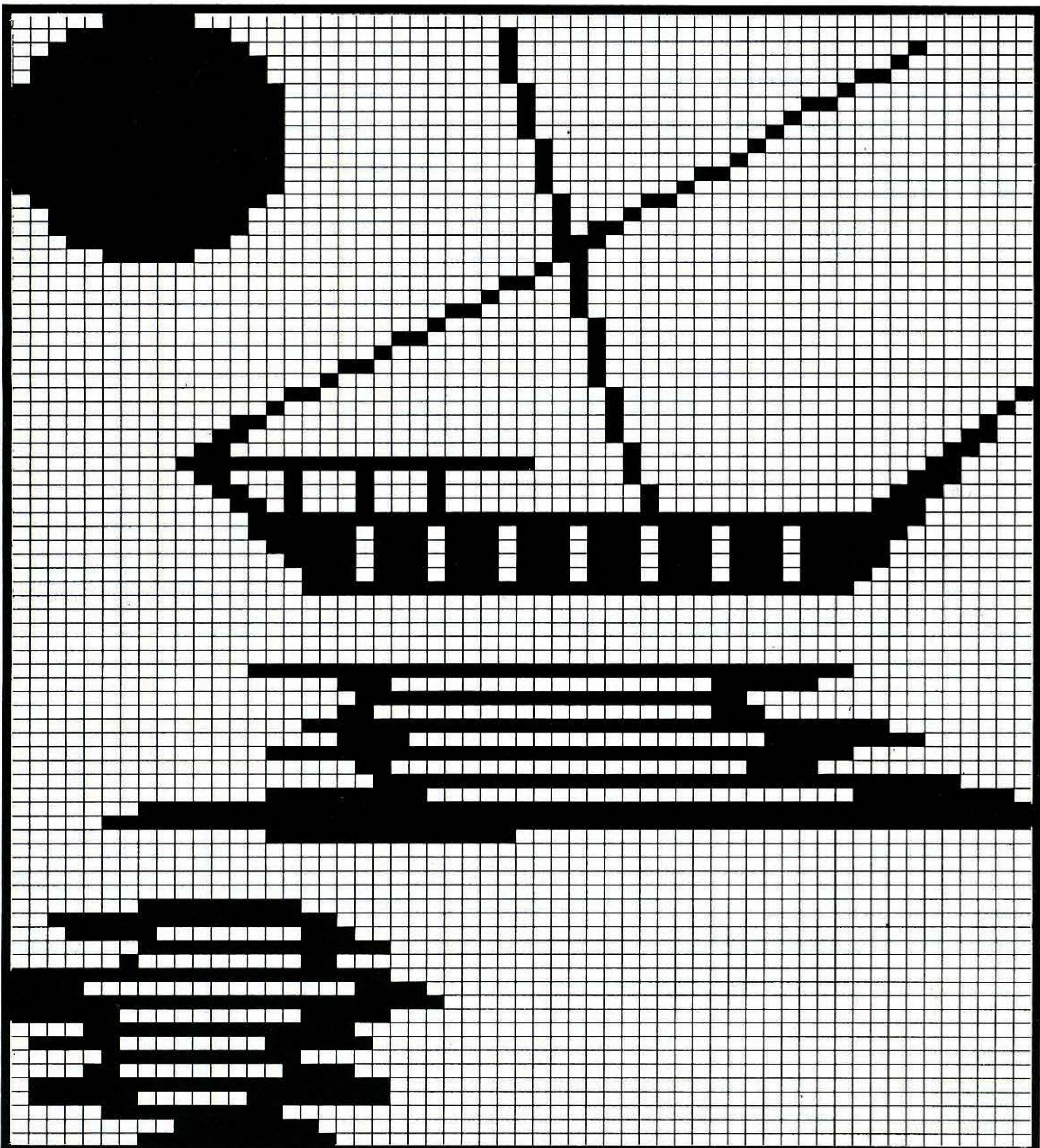
**NO 1 - GARTER  
STITCH PATTERN  
SWEATER IN COTTON**  
(See Front Cover)

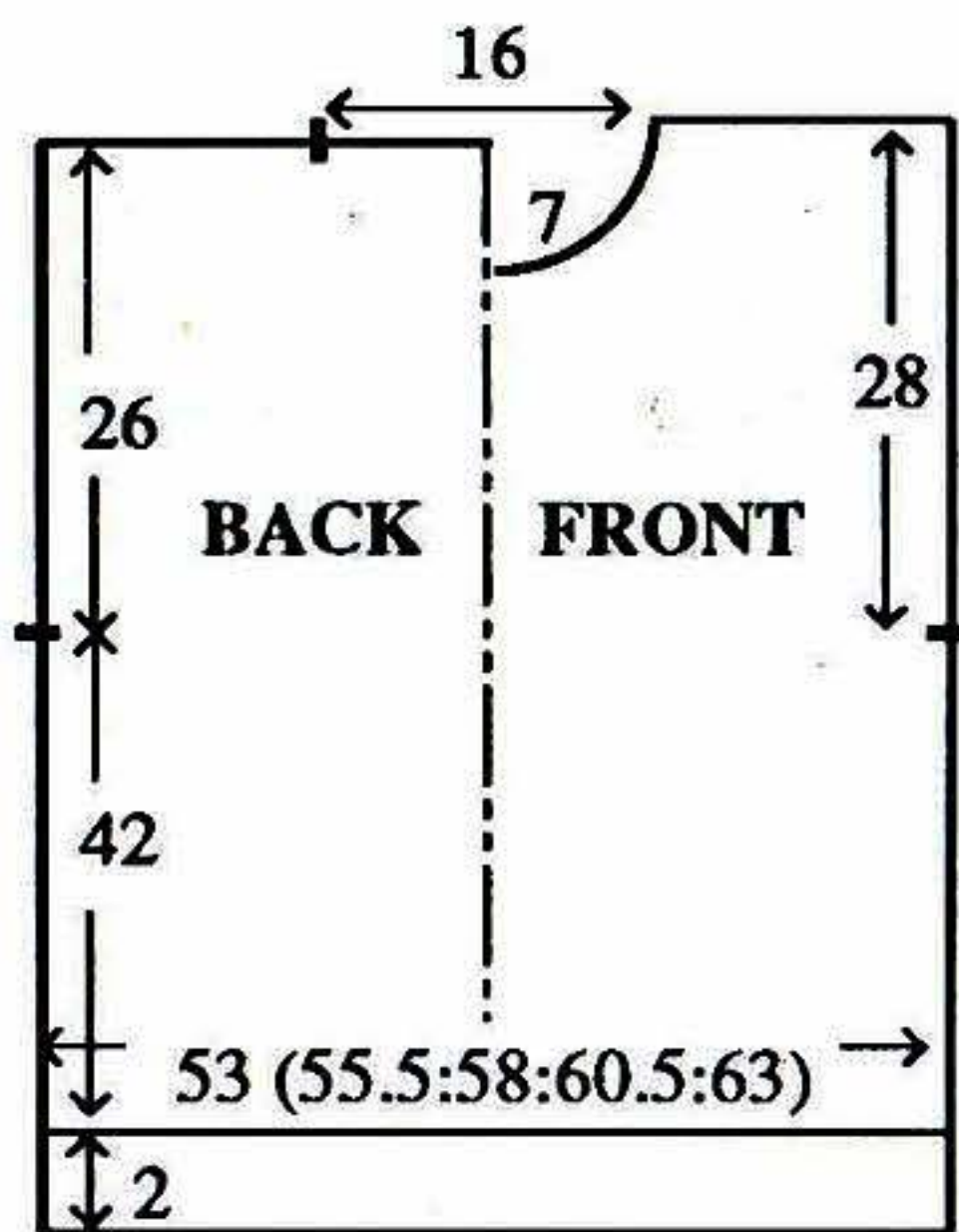
**MACHINES:** C or D with G-Carriage. **MATERIALS:** ANY 4-PLY COTTON, we used BROCKWELL Plain Cotton; A - 250 (270, 290, 310, 330)g (White) and B - 220 (240, 260,

280, 300)g (Aqua) (100% cotton, 340m/100g). **MEASUREMENTS:** To fit bust 86 (91, 96, 101, 106)cm. **TENSION:** St st - 40 sts = 15cm and 60 rows = 17cm (approx T8 using G-Carr and T8° using K-Carr). **RIB:** 2 x 2 T5. **NOTES:** St. Patt 1: \* 5 rows purl, 1 row plain \* repeat from \* to \* throughout.

**BACK**

Using A COBH over 142 (146, 154, 162, 170) KH Ns, 000. COL T6 Working in RIB, knit to RC7, 000. Working in St Patt 1, knit to RC36. Change to B and cont in st st stripes of 42 rows each as illustrated, and **AT THE SAME TIME**, at RC147, place a WY marker at each end of work. Knit to RC204. Set to





knit in St Patt 1, EXCEPT on 3rd row of each patt repeat, transfer the 5th st to adjacent N leaving empty Ns in WP. Knit to RC247. Waste knit centre 44 sts. Waste knit rem 49 (51, 55, 59, 63) sts at each end of work for shoulders.

### FRONT

As BACK to RC222, and AT THE SAME TIME at RC36 begin G-Carr Stitch Pattern motif - use VARIATION No 4 (DOUBLE LENGTH).

### Neck shaping

Waste knit centre 16 sts. Waste knit sts at left. COR, knit 1 row. At beg of next and every foll alt row cast off 4 sts x 1, 3 sts x 1, 2 sts x 2, then dec 1 st x 3. Knit to RC247 and waste knit rem 49 (51, 55, 59, 63) sts. Return sts at left to Ns and knit to match right side reversing shaping.

### NECKBAND

Join one shoulder by placing one set of shoulder sts back onto Ns with right sides together. Using B T10 knit 1 row and cast off. Using A COBH over 118 KH Ns, 000. Working in RIB, knit to RC11. T8° knit 1 row. With wrong side facing, pick up same

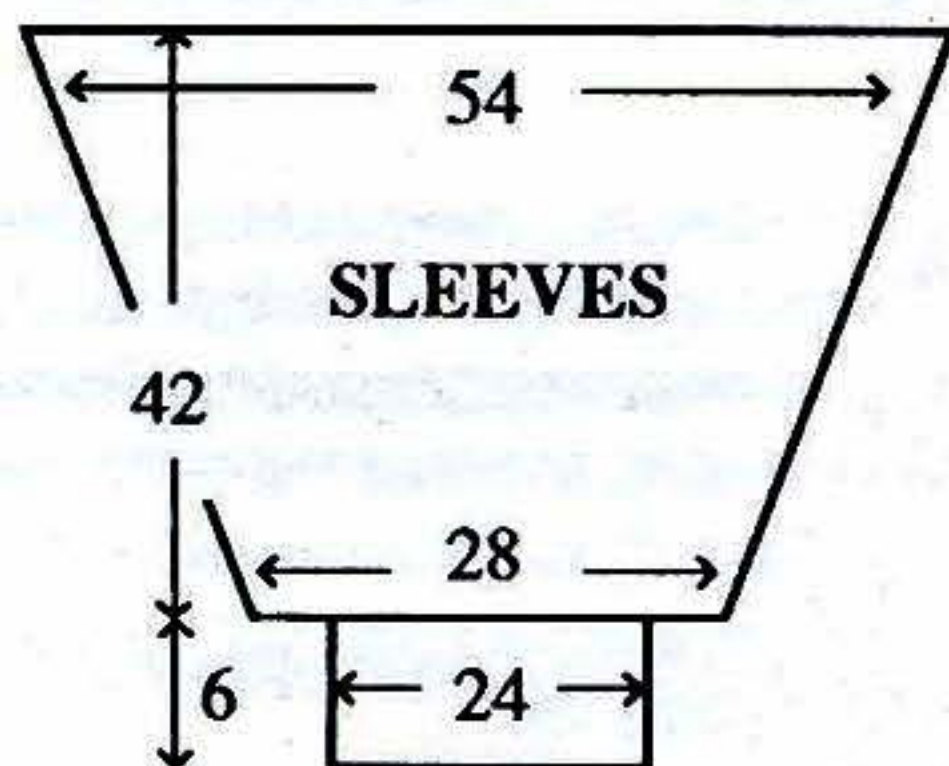
number of sts evenly along neck edge and place onto Ns. T10 knit 1 row and cast off. Join second shoulder as first. Join NECKBAND seam.

### SLEEVES

Push 143 KH Ns into WP. With wrong side facing, pick up same number of sts evenly along armhole edge between WY markers and place onto Ns, 000. Using A T8° knit to RC12. Dec 1 st at each end of next and every foll 4th row x 34 and, AT THE SAME TIME, at RC39 begin stripes of \*35 rows B in St Patt 1 and 39 rows A in st st\*. Repeat from \* to \* to end. Knit to RC148 and waste knit rem 75 sts. CUFFS: Push 62 KH Ns into WP. With wrong side facing, return sts from cuff edge onto Ns distributing them evenly along the row. Using A T8° knit 1 row, 000. Working in RIB knit to RC30. T10 knit 1 row and latch cast off.

### MAKE-UP

Block and press. Join side and SLEEVE seams.

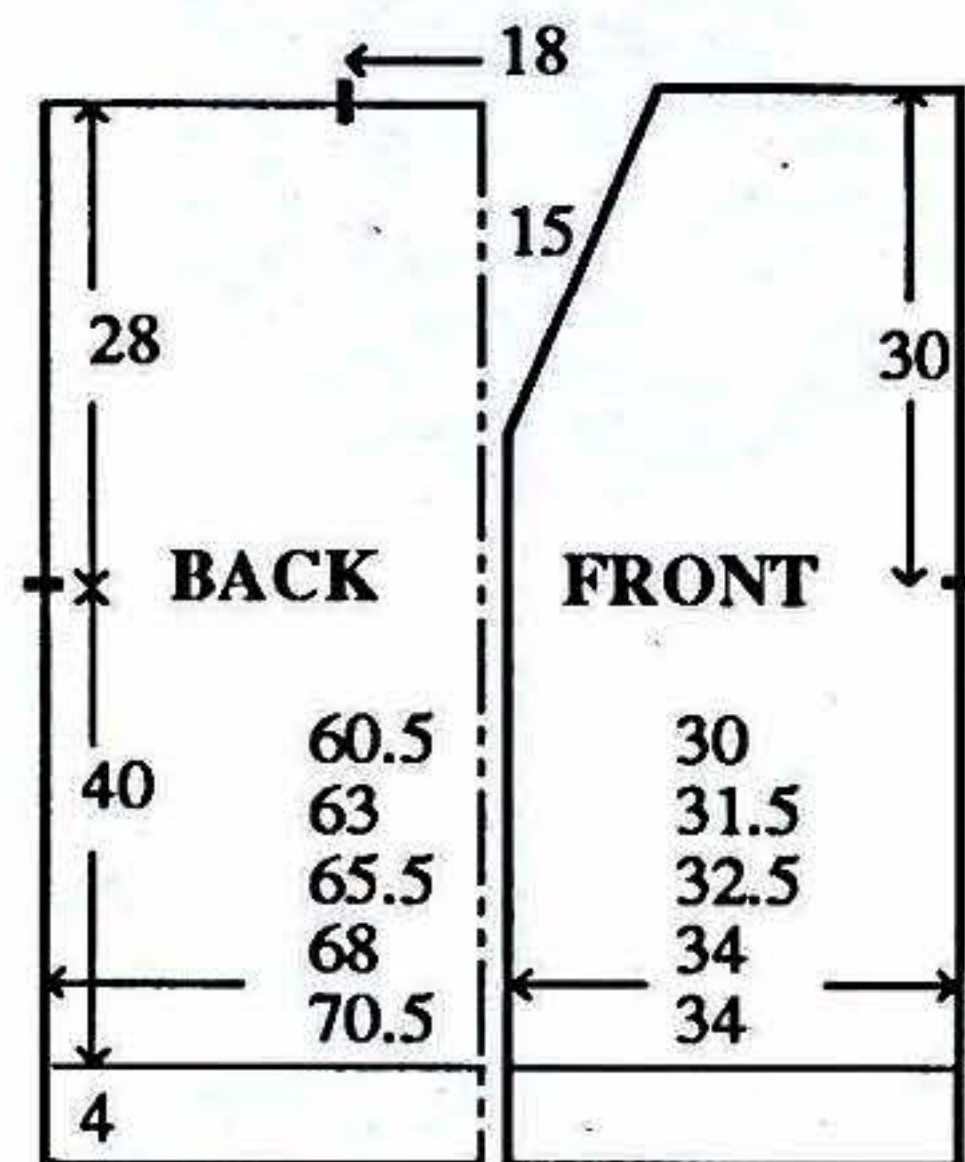


### No 2 -MAN'S FAIRISLE 'TWINSET'

### CARDIGAN

MACHINES: A, C or D with KR. MATERIALS: KING COLE Lotus 4-Ply; A - 190 (205, 220, 235, 250)g (Navy 25), B - 145 (160, 175, 190, 205)g (Mink 142) and C - 185

(200, 215, 230, 245)g (Swallow 96). (85% acrylic, 15% wool, 400m/100g). 7 buttons. MEASUREMENTS: To fit chest 91 (96, 101, 106, 111)cm. TENSION: Fairisle St Patt - 40 sts = 14.1cm and 60 rows = 14.4cm (approx T8). RIB: 2 x 1 (see ABBREVIATIONS) T3/3. NOTES: Fairisle St Patt - A in FA throughout, knit 6 rows C, 10 rows B, 2 rows C, 10 rows B, 6 rows C, 2 rows B, 2 rows C, 2 rows B in FB.



### BACK

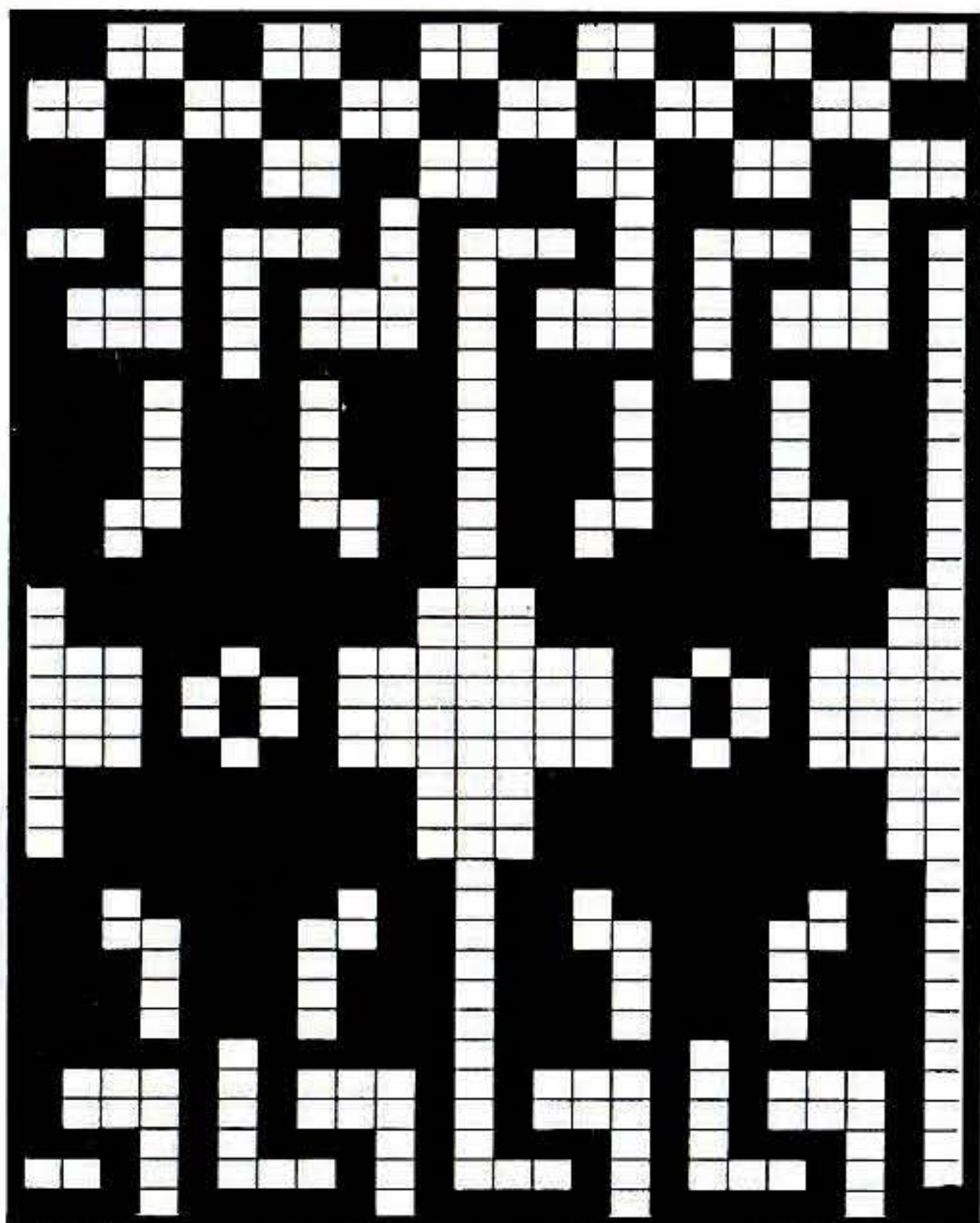
Using C cast on over 170 (179, 185, 191, 197) KH Ns as RIB, 000. Knit to RC19. Trans all sts to KH. Inc 1 (0, 0, 2, 2) sts. Set for first row of Fairisle St Patt and using C T8 knit 1 row to select Ns, 000. Working in Fairisle throughout (see NOTES), knit to RC166. Place a WY marker at each end of work. Knit to RC282. Waste knit centre 51 sts. Waste knit rem 60 (64, 67, 71, 74) sts at each end of work for shoulders.

### POCKET BAG (2)

Using A, COBH over 41 KH Ns, 000. T8 knit to RC124 and waste knit.

### RIGHT FRONT

Using C cast on over 83 (89, 92, 95, 98) KH Ns as RIB, 000.



place onto Ns. T10 knit 1 row and cast off. Stitchside edges of POCKET Rib to FRONT. Stitch cast on edge of POCKET BAG to first row of POCKET RIB and stitch side edges together.

### LEFT FRONT

As RIGHT FRONT reversing shaping.

### SLEEVES

Join both shoulders by placing both sets of shoulder sts back onto Ns with right sides together. T10

Trans to RIB, 000. Knit to RC47. T10/8 knit 1 row. Trans all sts to KH and latch cast off each st individually.

### BUTTONHOLE BAND

Using WY cast on over 179 KH Ns and knit a few rows ending with COR, 000. Using C T5 knit 7 rows. Work 7 x 4 st buttonholes evenly spaced along the row. Knit to RC23. Work 7 x 4 st buttonholes evenly spaced along the row. Knit to RC30. Turn up hem. T6 knit 1 row. With wrong side facing, pick up same number of sts evenly along LEFT FRONT opening edge from cast on edge to start of shaping, and place onto Ns. T10 knit 1 row and cast off.

### BUTTON BAND

As BUTTONHOLE BAND omitting buttonholes.

### BACK NECK AND FRONT SLOPE BAND

As BUTTON BAND using 149 KH Ns. Join BAND seams.

### MAKE-UP

Join side and SLEEVE seams. Attach buttons.

### SLIPOVER

**MACHINES:** A, C or D with KR. **MATERIALS:** KING COLE Lotus 4-Ply; A - 80 (90, 100, 110, 120)g (Navy 25), B - 80 (90, 100, 110, 120)g (Mink 142) and C - 100 (115, 130, 145, 160)g (Swallow 96). (85% acrylic, 15% wool 400m/100g). **MEASUREMENTS:** To fit chest 91 (96, 101, 106, 111)cm. **TENSION:** Fairisle St Patt - 40 sts = 14.1cm and 60 rows = 14.4cm (approx T8). **RIB:** 2 x 1 (see ABBREVIATIONS) T3/3. **NOTES:** Fairisle St Patt - A in FA throughout, knit 6

Knit to RC19. Trans all sts to KH. Inc 2 (0, 1, 2, 1) sts. Set for first row of Fairisle St Patt and using C T8 knit 1 row to select Ns, 000. Working in Fairisle throughout (see NOTES), knit to RC62.

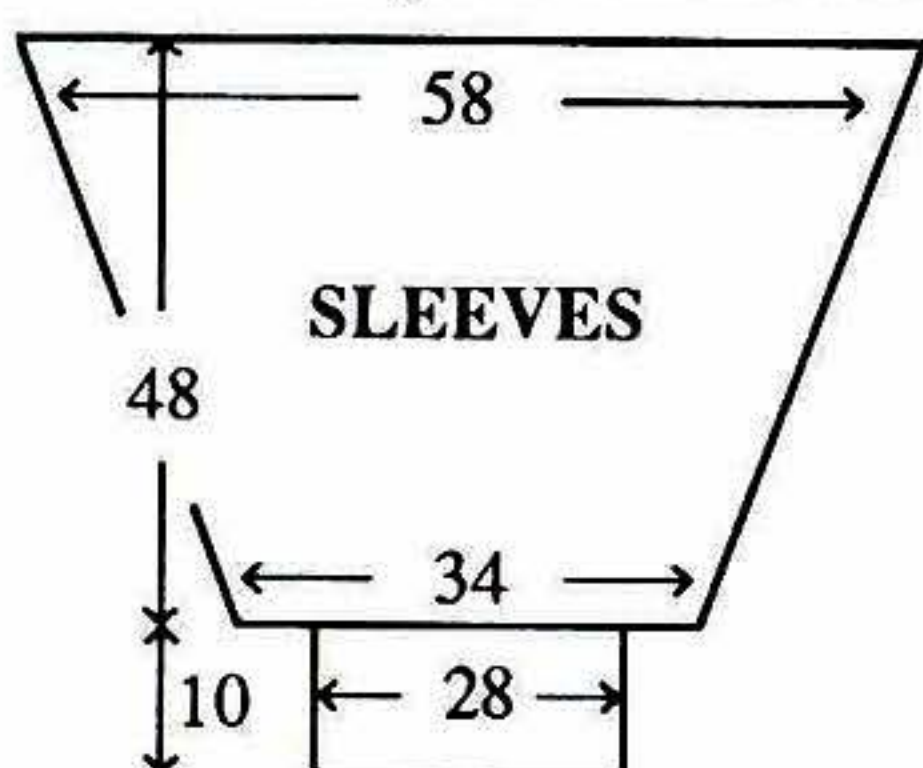
### Pocket opening

(Note Patt position). Waste knit centre 41 sts. With wrong side facing, place sts from POCKET BAG onto Ns. With all Ns in WP, COL. Both PART buttons depressed, take K-Carr from left to right to select Ns, RC62. Cont in Fairisle to end. Knit to RC166. Place a WY marker at right end of work. Knit to RC228.

### Neck shaping

At left, dec 1 st on next and every foll alt row x 25 (25, 26, 26, 25). Knit to RC290 and waste knit rem 60 (64, 67, 71, 74) sts. **POCKET RIB:** Using C cast on over 41 KH Ns as RIB, 000. Knit to RC10. Trans all sts to KH. T8 knit 1 row. With wrong side facing, pick up sts from Pocket opening and

knit 1 row and cast off. Push 164 KH Ns to WP. With wrong side facing, pick up same number of sts evenly along armhole edge between WY markers and place onto Ns, COL. Set for first row of Fairisle St Patt - UPSIDE DOWN - and using A knit 1 row to select Ns, 000. Working in Fairisle throughout in REVERSE order, knit to RC30. Dec 1 st at each end of next and every foll 5th row x 34. Knit to RC199. Using A knit 1 row and waste knit rem 96 sts. **CUFFS:** Push 77 KH Ns to WP. With wrong side facing, place sts from cuff edge onto Ns distributing them evenly along the row. Using C T8 knit 1 row.



rows C, 10 rows B, 2 rows C, 10 rows B, 6 rows C, 2 rows B, 2 rows C, 2 rows B in FB.

### BACK

Using C cast on over 158 (164, 170, 176, 185) KH Ns as RIB, 000. Knit to RC35. Trans all sts to KH. Inc 0 (0, 2, 2, 1) sts. Set for first row of Fairisle St Patt and using C T8 knit 1 row to select Ns, 000. Working in Fairisle throughout (see NOTES) knit to RC134.

### Armhole shaping

At beg of next and every foll row cast off 4 sts x 2, 3 sts x 4, 2 sts x 6, then dec 1 st at each end of alt rows x 6. Knit to RC242. Waste knit centre 56 sts. Waste knit rem 29 (32, 36, 39, 43) sts at each end of work for shoulders.

### FRONT

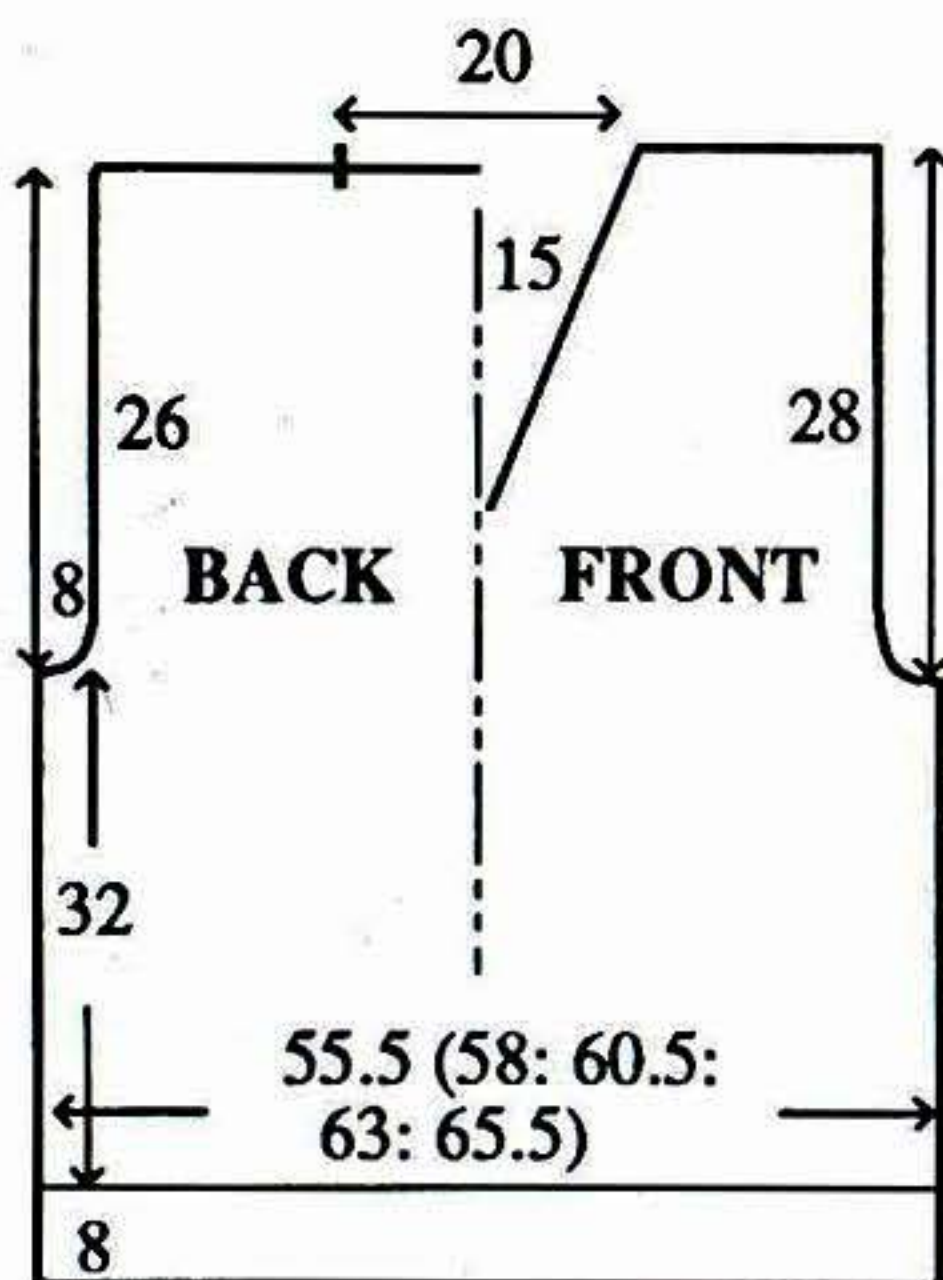
As BACK to RC188.

### Neck shaping

(Note Patt position). Waste knit sts at left of '0'. Knit 2 rows. Dec 1 st at left on next and every foll alt row x 28. Knit to RC250 and waste knit rem 29 (32, 36, 39, 43) sts. Return sts at left to Ns and knit to match right side reversingshaping.

### NECKBAND

Join both shoulders by placing



both sets of shoulder sts back onto Ns with right sides together. T10 knit 1 row and cast off. Using C cast on over 176 KH Ns as RIB, 000. Knit to RC12. Trans all sts to KH. T7 knit 1 row. Working from left to right and with wrong side facing, pick up 60 sts evenly along right side of neck opening and place onto Ns. \*Bring these Ns to HP. Place yarn into hooks of Ns and manually take Ns back to WP, knitting the sts. Latch cast off these sts\*. Place sts from BACK neck onto next 56 Ns and repeat from \* to \*. Pick up 60 sts evenly along left side of neck opening and place onto Ns. Repeat from \* to \*. Mitre centre FRONT of NECKBAND.

### ARMBANDS

Using C cast on over 155 KH Ns as RIB, 000. Knit to RC12. Trans all sts to KH. T7 knit 1 row. With wrong side facing, pick up same number of sts evenly along armhole edge and place onto Ns. T10 knit 1 row and cast off.

### MAKE-UP

Join side seams.

## NO 3 -SIDEWAYS KNITTED FAIRISLE SWEATER AND SKIRT

MACHINES: A, C or D with KR. MATERIALS: STANDARD 4-PLY ACRYLIC, we used BRAMWELL 4-Ply Acrylic; A - 320 (340, 360, 380, 400)g (Larch), B - 280 (300, 320, 340, 360)g (Navy) and C - 200 (220, 240, 260, 280)g (Blonde), (100% acrylic 480m/100g). 2.5cm wide elastic to fit waist + 2.5cm.

MEASUREMENTS: To fit bust 86 (91, 96, 101, 106)cm. TENSION: Fairisle St Patt - 40 sts = 13.6cm and 60 rows = 14.5cm (approx T6). RIB: 2 x 2 T3/3. NOTES: Fairisle St Patt:-

No of Rows	FA	FB
2	A	C
2	A	B
2	A	C
6	A	B
6	A	C
8	A	B
8	C	A
14	C	B
8	C	A
8	A	B
6	A	C
6	A	B
2	A	C
2	A	B
2	A	C

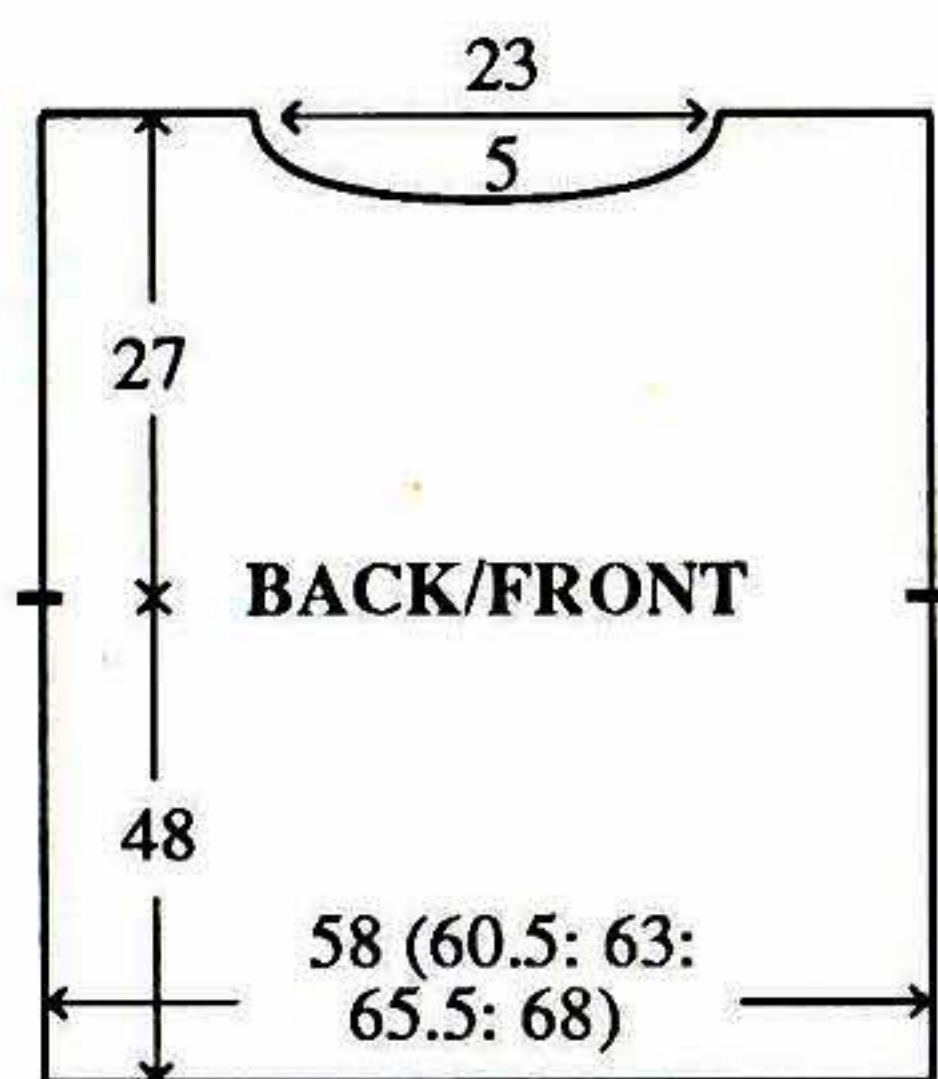
### BACK/FRONT

Using WY cast on over 191 KH Ns [97 to right of '0', 94 to left of '0'] and knit a few rows ending with COL. Set for 4th (80th, 76th, 70th, 66th) row of Fairisle St Patt and using WY knit 1 row to select Ns, 000. T6 Working in Fairisle throughout (see NOTES), knit to RC72 (78, 82, 88, 92).

### Neck shaping

Cast off 3 sts at beg of next row, knit 1 row. At right, dec 1 st x 4 every alt row, 1 st x 4 every 3rd row, 1 st x 4 every 4th row. Knit 26 rows. At right, inc 1 st on next and every foll 4th row x 4, every 3rd row x 4, every alt row x 4, then cast on 3 sts at beg of next row. Knit 72 (78, 82, 88, 92) rows and waste knit. Knit second side reading right as left and vice versa.



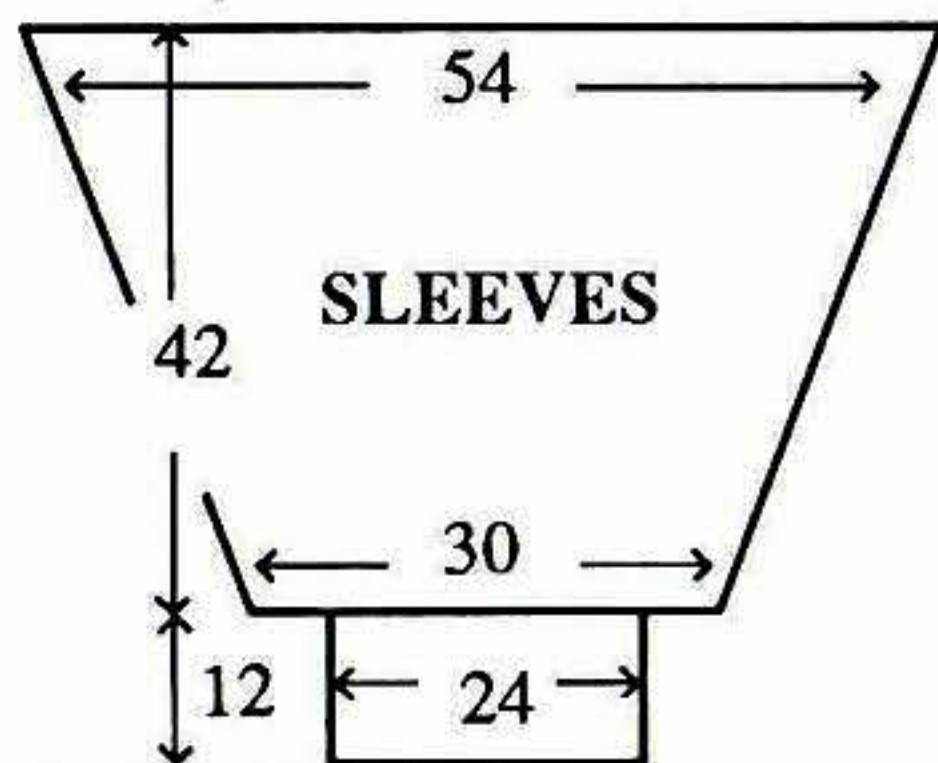


### FAIRISLE BORDER and WAIST RIB

Push 170 (178, 186, 194, 200) KH Ns to WP. With wrong side facing, pick up same number of sts evenly along waist edge and place onto Ns. Set for 27th row of Fairisle St Patt and using C T6 knit 1 row to select Ns, 000. Working in Fairisle, knit to RC30. Using B knit 1 row. Trans to RIB, 000. Knit to RC11. T10/8 knit 1 row. Trans all sts to KH and latch cast off.

### NECKBAND

Join one shoulder. Using B cast on over 174 KH Ns as RIB, 000. Knit to RC12. Trans all sts to KH. T6 knit 1 row. With wrong side facing, pick up same number of sts evenly along neck edge and place onto Ns. T10 knit 1 row and cast off. Join second shoulder. Join NECKBAND seam.



### SLEEVES

Push 158 KH Ns to WP. With

wrong side facing, working from the centre outwards, place sts from armhole edge onto Ns. DO NOT REMOVE WASTE YARN, COL. All Ns to WP. Set for 3rd (79th, 75th, 69th, 65th) row of Fairisle St Patt - UPSIDE DOWN. Both PART buttons depressed. Take K-Carr to right to select Ns, 000. Working in Fairisle, knit to RC32. Dec 1 st at each end of next and every foll 4th row x 35. Knit to RC172. Using B knit 1 row and waste knit. **CUFFS:** Push 70 KH Ns to WP. With wrong side facing, place sts from cuff edge onto Ns distributing them evenly along the row. T6 knit 1 row. Trans to RIB, 000. Knit to RC49. T10/8 knit 1 row. Trans all sts to KH and latch cast off.

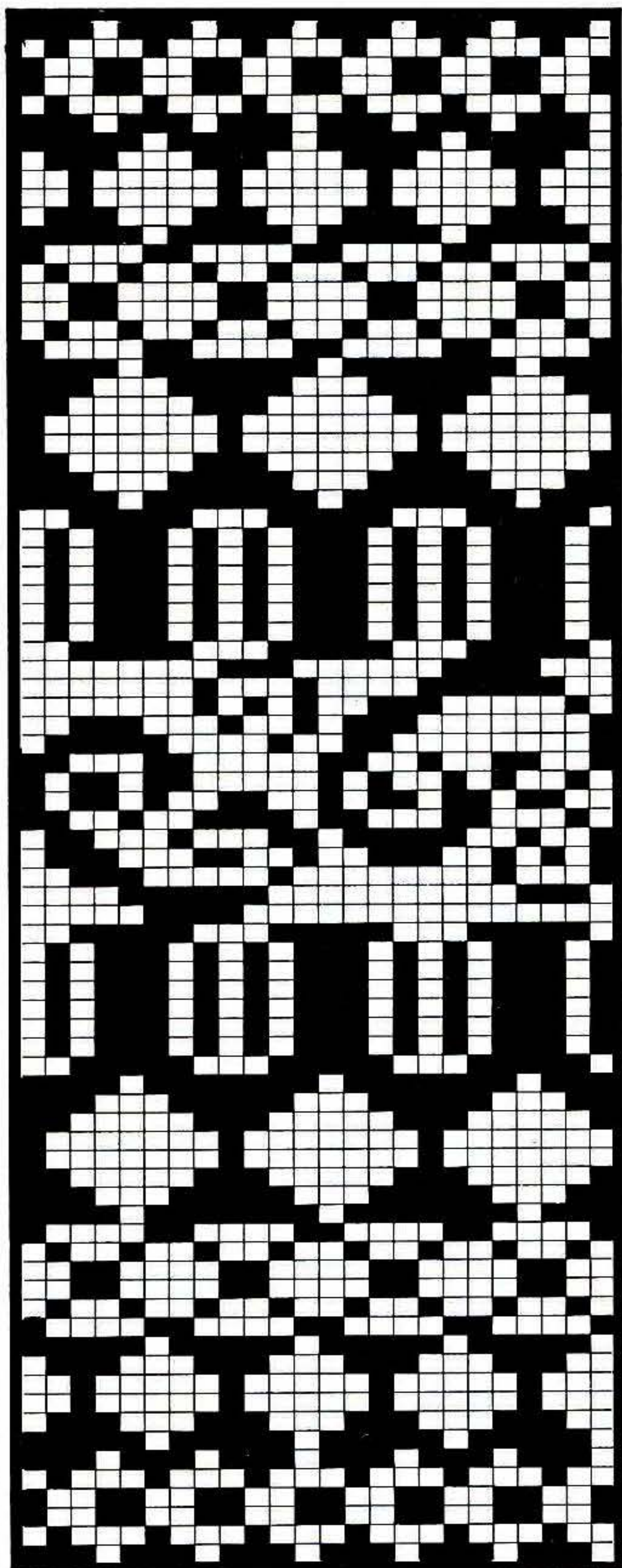
### MAKE-UP

Join side seams by placing both sets of sts back onto 112 KH Ns with right sides together. T10 knit 1 row and cast off. Join BORDER and WAIST RIB seams. Stitch SLEEVE seams.

### SKIRT

Using WY cast on over 169 KH Ns and knit a few rows ending with COL. Set for 18th (8th,

4th, 14th, 24th) row of Fairisle St Patt and using WY knit 1 row to select Ns, 000. T6 Working in Fairisle, knit to RC94 (99, 104, 109, 114). Place a WY marker at each end. Knit to RC282 (297, 312, 327, 342). Place a WY marker at each end of work. Knit to RC376 (396, 416, 436, 456) and waste knit.







## WAISTBAND

Using B cast on over 199 KH Ns as 1 x 1 Rib, 000. T2/2 knit to RC29. T10/8 knit 1 row. Trans all sts to KH and latch cast off.

## FRONT HEM

Join seam by placing sts from first and last rows knitted in Fairisle, back onto Ns with right sides together. T10 knit 1 row and cast off. Using B cast on over 134 (142, 150, 158, 160) KH Ns as RIB, 000. Knit to RC12. Trans all sts to KH. T6 knit 1 row. With wrong side facing, pick up same number of sts evenly along hem edge between WY markers and place onto Ns. T10 knit 1 row and cast off.

## BACK HEM

As FRONT HEM placing side seam at centre of work. Join HEM seams.

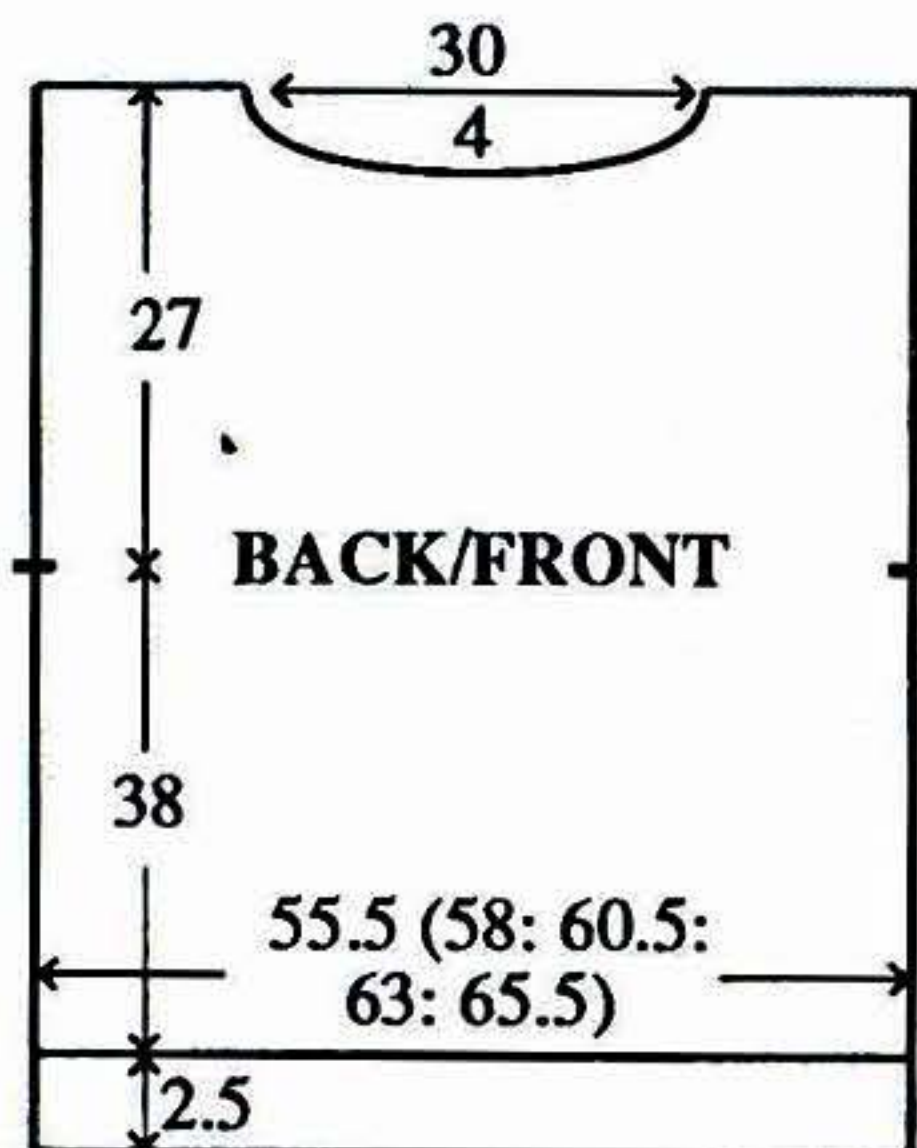
## MAKE-UP

Fold WAISTBAND in half to inside and stitch down loosely encasing elastic.

## NO 4 - LADY'S STRIPED FISHERMAN'S RIB SWEATER

**MACHINES:** A, C or D with KR and KR Colour Changer.  
**MATERIALS:** STANDARD 4-PLY ACRYLIC, we used BRAMWELL 4-Ply acrylic, A - 410 (430, 450, 470, 490)g (Larch), B - 55 (65, 75, 85, 95)g (Navy) and C - 80 (90, 100, 110, 120)g (Blonde). (100% acrylic, 480m/100g).  
**MEASUREMENTS:** To fit bust 86 (91, 96, 101, 106)cm.  
**TENSION:** Fisherman's Rib

St Patt - 40 sts = 15.4cm and 60 rows = 9.2cm (approx T2/2). **RIB:** 1 x 1 T1/1. **NOTES:** Striped St Patt - \*A - 30 rows, C - 4 rows, A - 40 rows, B - 4 rows, A - 20 rows, C - 4 rows, A - 20 rows, B - 4 rows, A - 40 rows, C - 20 rows, A - 20 rows, B - 4 rows, A - 40 rows, \*\*C - 4 rows, A - 4 rows, B - 4 rows, A - 4 rows\*\*, rep \*\* to \*\* x 9, C - 4 rows\*\*, A to end.



## BACK/FRONT

Using A cast on over 145 (151, 157, 163, 169) KH Ns as RIB, 000. Knit to RC13, 000. COL Working in Striped Fisherman's Rib throughout (see NOTES), knit to RC250. Place a WY marker at each end of work. Knit to RC410.

## Neck shaping

Waste knit centre 31 sts. Waste knit sts at right. Knit 1 row. At beg of next and every foll alt row cast off 2 sts x 12. Knit to RC436. Trans all sts to KH. T7 knit 1 row and waste knit rem 33 (36, 39, 42, 45) sts. Return sts at right to Ns and knit to match left side reversing shaping.

## NECKBAND x 2

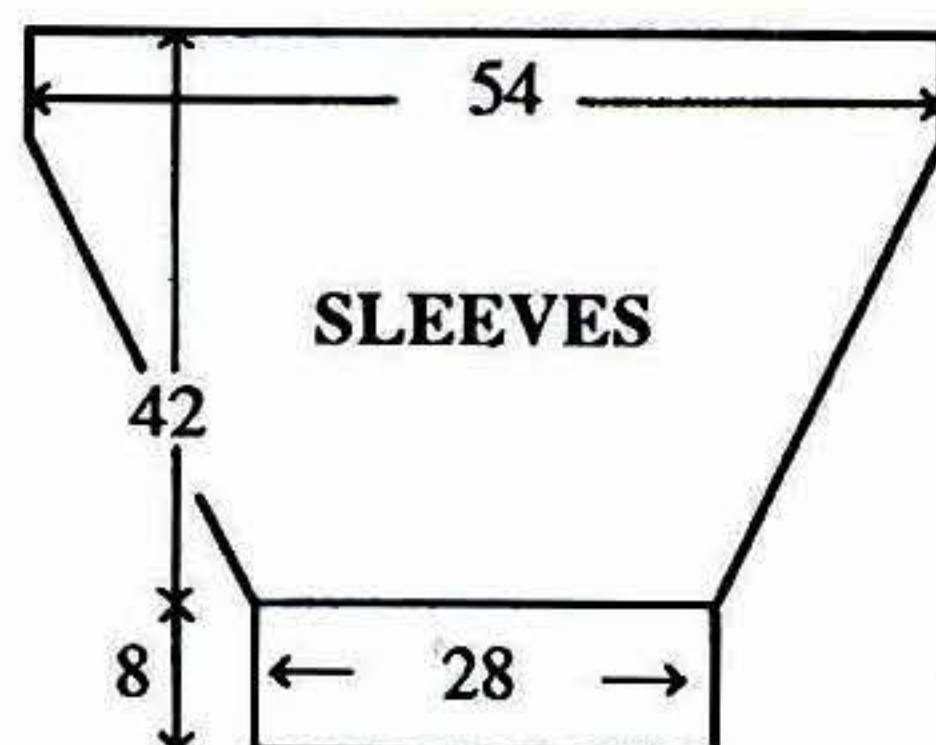
Push 105 KH Ns to WP. With right side facing, pick up same number of sts evenly along BACK/FRONT neck edge and place onto Ns. Using A T7 knit 1 row. Trans to RIB, 000. Knit to RC12. Trans all sts to KH. T7 knit 2 rows and waste knit. Join both shoulders by placing both sets of shoulder sts back onto Ns with right sides together. T10 knit 1 row and cast off. Join NECKBAND seams. Fold NECKBAND in half to outside and backstitch to garment through last row knitted in A.

## SLEEVES

Push 139 KH Ns to WP. With wrong side facing, pick up same number of sts evenly along armhole edge between WY markers and place onto Ns, COR. Using A T7 knit 1 row. Trans to RIB, 000. Working in Fisherman's Rib throughout, knit to RC16. Dec 2 sts at each end of next and every foll 16th row x 16 and, AT THE SAME TIME, at RC30, cont in Striped Fisherman's Rib St Patt - IN REVERSE ORDER - to end. Knit to RC272, 000. Working in RIB, knit to RC39. T10/8 knit 1 row. Trans all sts to KH and latch cast off.

## MAKE-UP

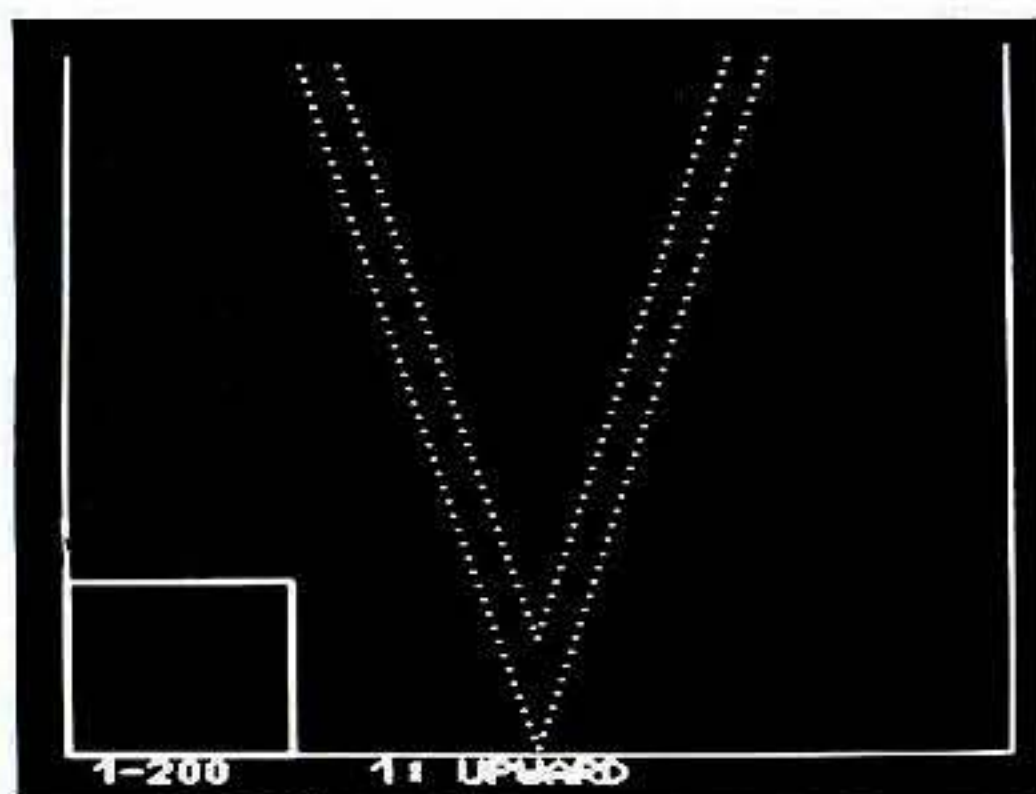
Join side and SLEEVE seams.





# PPD MASTERCLASS

The Brother Knitting Machine can knit as many different lace stitches in one row as you can program into the Machine, but there are two things you must remember: - First you must ensure that each stitch design does not collide with the stitch next to it, and, the knit rows of each stitch pattern coincide. Our example has 4 L-Carr movements to 2 knit rows for each of the stitch patterns we have used - with the exception of one, and we explain how to cater for this. Armed with this information we move on to the not so easy operation of getting the stitch patterns into the machine. This is where the PPD really does come into its own! Using the PPD you can place stitch patterns exactly where you want them, and if you change your mind, you can change their location in a moment. The whole of the Sweater FRONT is on our Disk, but PPD owners - don't cheat, learn the technique!



**STEP 1.** Input all Stitch Patterns. Input a Grid 199 sts x 212 rows.

**STEP 2.** We are going to start by 'drawing' the outside edge at the right of the Vee:-

Transfer the Cursor to (100,2). Press DRAW. \* Move cursor across to the right by 1 square and up by 4 rows\* (101,6). Repeat from \* to \* to the top of the Grid.

Now we can 'draw' the inside edge as above starting at St 100, Row 33 or as follows:-

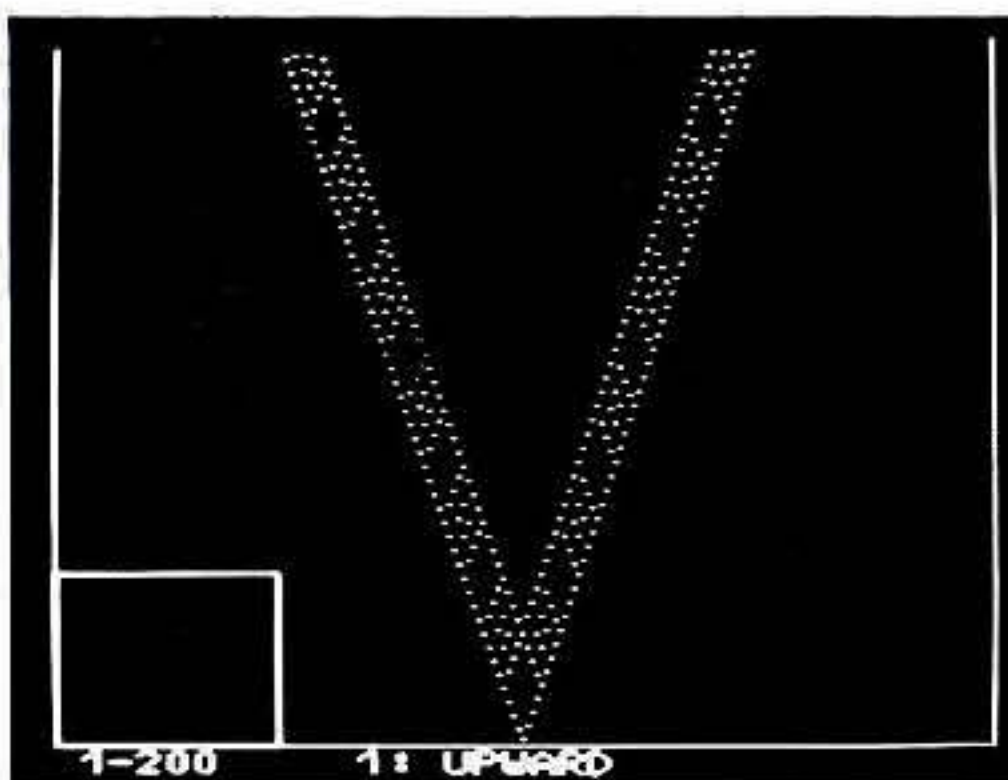
Transfer cursor to (100,33). HELP. Select 7 - LOAD STORED PATTERN

Select 1 - FROM BUILT-IN PATTERN. Select 1 - CREATED PATTERN (CURRENT PAGE). Input your pattern number of Grid. Set corner to 100,1. Frame 100 x 212. STEP. Select 1: YES.

**STEP 3.** We can now utilise

the REVERSE facility to place the left hand side of the Vee inset:-

Transfer Cursor to (1,5). HELP. Select 8 - VARIATIONS. REVERSE:ON HELP. Select 7, then 1, then 1. Input your Pattern number of Grid. Set corner to 101,6. Frame 99 x 207. STEP. STEP. Select 1: YES.



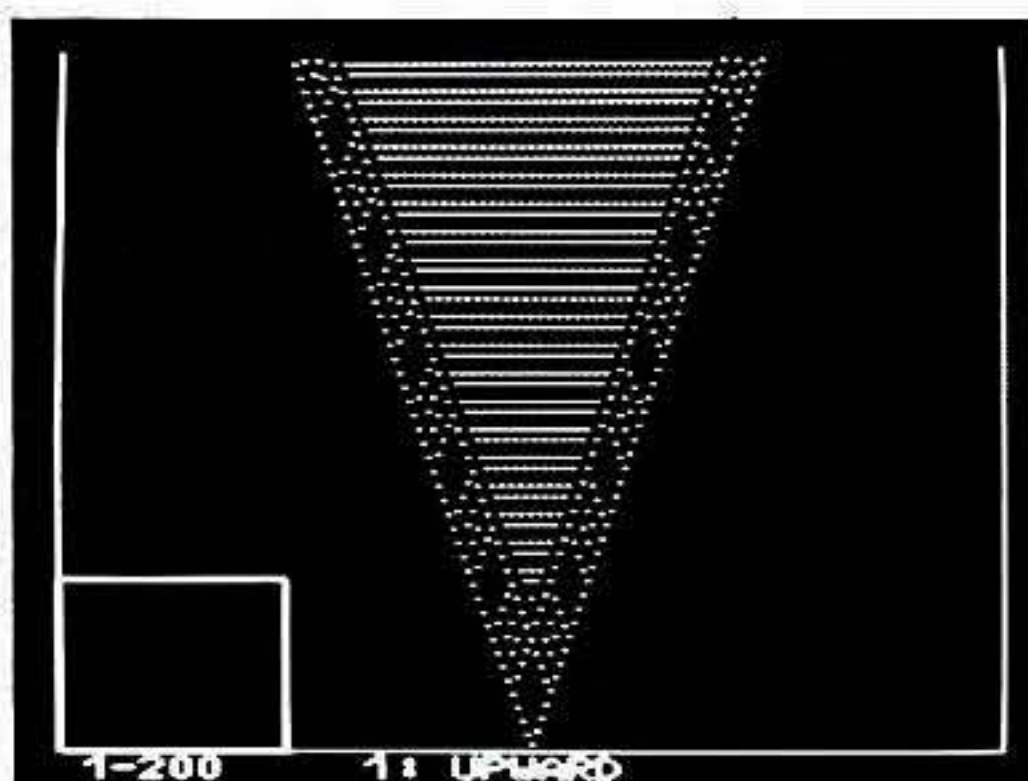
**STEP 4.** Lace Stitch Pattern within the Border - Right side:-

HELP. Select 8 - VARIATIONS. REVERSE:OFF. Transfer Cursor to (101,21). HELP. Select 7, then 1, then 1. Input your pattern number of Lace St Patt for Border. Select 1: ALL. STEP. Select 1: YES. \*\*Move cursor across to the right by 8 squares and up by 32 rows [109,53]. STEP. Select 1: YES\*\*. Repeat from \*\* to \*\* to top of Grid. Lace Stitch Pattern within the Border - Left side:- Transfer Cursor to

(93,21). HELP. Select 8 - VARIATIONS. REVERSE:ON. STEP. Select 1: YES. \*\*\* Move cursor across to the left by 8 squares and up by 32 rows [85,53]. STEP. Select 1: YES \*\*\*. Repeat from \*\*\* to \*\*\* to top of Grid.

**STEP 5.** Inside the Lace Border is an all-over (what we call 1 x 1) Lace St Pattern. This is easiest to achieve by drawing in the squares row by row:-

Start at the centre by transferring the cursor to (100,45) and 'drawing' one square. Move the cursor to (99,50) DRAW, (101,50) DRAW. Move the cursor to (98,53) DRAW, (100,53) DRAW, (102,53) DRAW. Cont in this manner moving up by 5 rows then 3 rows and increasing the number of 'filled-in' squares by 1 each time.



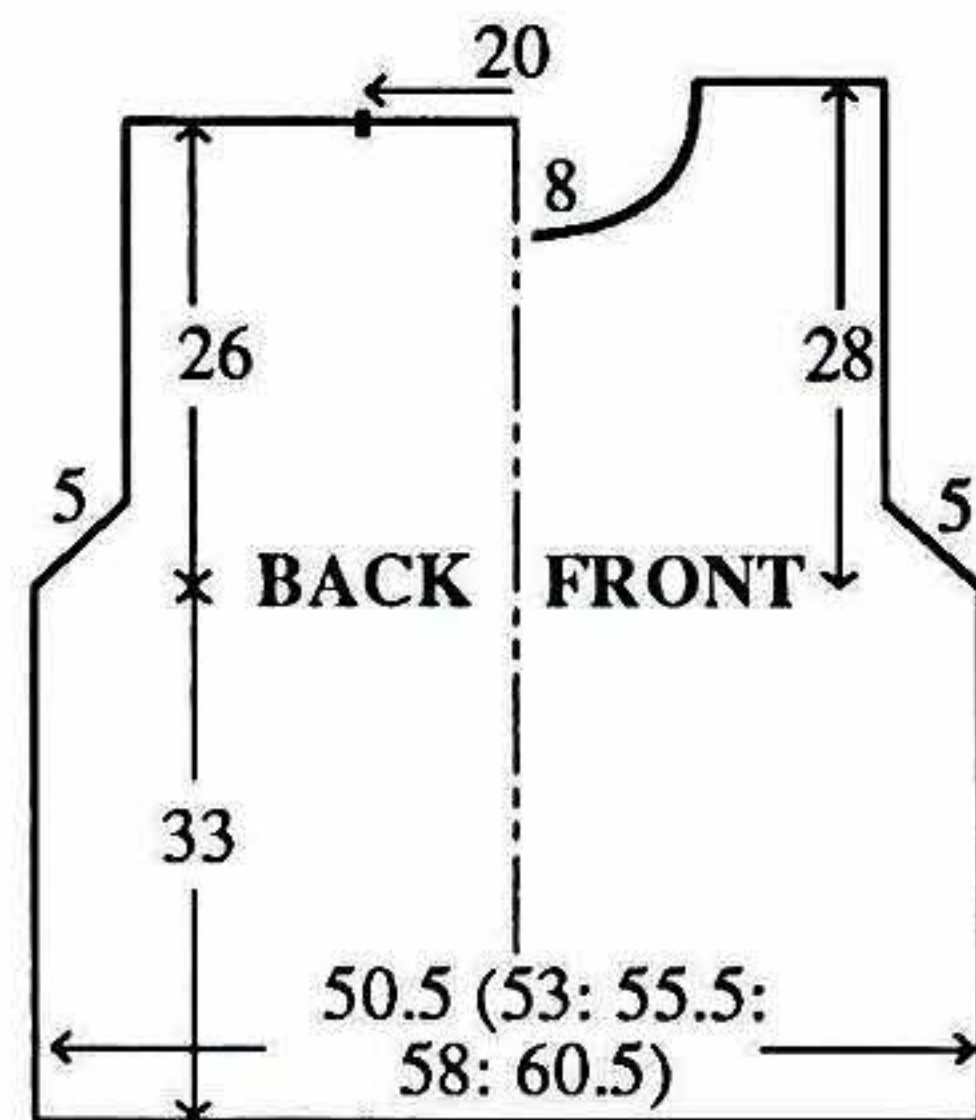
**STEP 6.** Stitch Pattern 5 (adapted from Stitch Pattern 2) is used for the area adjacent to the Lace Motif. It incorporates the extra movements of the L-Carriage and the 12 rows of St st which are knitted after each pattern repeat. **HELP.** Select 8 - **V A R I A T I O N S . REVERSE:OFF.** Transfer Cursor to (113,1). **HELP.** Select 7, then 1, then 1. Enter your pattern number for All-over Lace St Patt for top part of **FRONT.** Select 1:ALL. **STEP.** Select 1:YES. \*\*\*\* Move cursor across to the right by 16 squares [129,1]. **STEP.** Select 1:YES \*\*\*\*. Repeat from \*\*\*\* to \*\*\*\* until the row is complete. Move cursor to (129,65). **STEP.** Select 1:YES. Repeat from \*\*\*\* to \*\*\*\* until the row is complete. Move cursor to (145,129). **STEP.** Select 1:YES. Repeat from \*\*\*\* to \*\*\*\* until the row is complete. Move cursor to (161,193). **STEP.** Select 1:YES. Repeat from \*\*\*\* to \*\*\*\* until the row is complete.

**STEP 7.** For the left hand side of VEE, repeat as above using the **REVERSE** facility and starting with the cursor at (72,1) and moving across to the left by 16 squares and up by 64 rows.

**No 5 - PANT SUIT WITH LACE 'YOKE'**  
**MACHINES:** D with PPD and/or Disk Drive. **MATERIALS:** BRAMWELL Artistic; **SWEATER - A - 245 (265, 285, 305, 325)g (Mink) (100% acrylic, 450m/100g), TROUSERS - A - 390g. 2.5cm elastic to fit waist + 2.5cm.**  
**MEASUREMENTS:** **SWEATER -** To fit bust 86 (91, 96, 101, 106)cm. **TROUSERS -** One size fits all. **TENSION:** Lace St Patt - 40 sts = 14.8cm and 60 rows = 13.6cm (approx T6). St st - 40 sts = 14cm and 60 rows = 14.3cm (approx T6). **NOTES:** **BORDER STITCH PATTERN -** Using WY cast on required number of sts and knit a few rows ending with COR. Using A T6 knit 4 rows, T10 knit 1 row, T6 knit 4 rows. Turn up hem and knit 1 row. Push into HP all Ns except 1 at right. \*Knit 2 rows. At right, take back to UWP 1 N\*. Repeat from \* to \* until 5 Ns are in WP. \*\*At right, take the next 7 Ns to UWP and knit 1 row. Push all Ns at right to HP EXCEPT 2 and knit 1 row. On side opposite K-Carr, take back to UWP 1 N on next and every foll row x 10\*\*. Repeat from \*\* to \*\* to end of row. Knit 1 row over all Ns, 000. Set for Border Lace St Patt and work in Lace to RC24. **ALL-OVER LACE STITCH PATTERN -** Knit 12 rows before starting Lace and there are 12 rows at the end of each Pattern.

**SWEATER BACK**  
 Work **BORDER ST PATT** using 137 (143, 151, 157, 165) KH Ns (see NOTES), RC24.

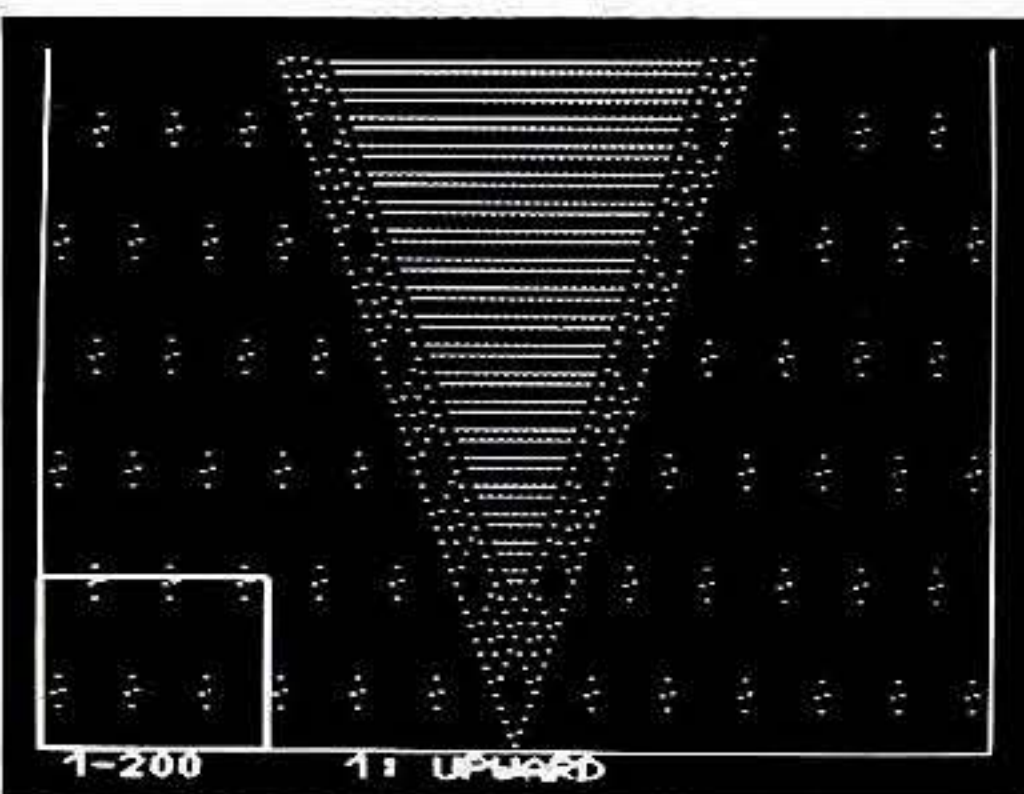
Cont in **ALL-OVER LACE ST PATT** to end. Knit to RC146.  
**Armhole shaping**  
 Cast off 4 sts at beg of next 2 rows. Dec 1 st at each end of next and every foll alt row x 10. Knit to RC260. Waste knit centre 55 sts. Waste knit rem 27 (30, 34, 37, 41) sts at each end of work for shoulders.



**FRONT**  
 As **BACK** to RC158. (See Step-by-Step PPD). Work **FRONT** Lace St Patt to end. Knit to RC236.

**Neck shaping**  
 (Note Patt position). Waste knit centre 21 sts. Waste knit sts at left. Knit 1 row. At beg of next and every foll alt row cast off 4 sts x 1, 3 sts x 2, 2 sts x 2, then dec 1 st x 3. Knit to RC270 and waste knit rem 27 (30, 34, 37, 41) sts. Return sts at left to Ns and knit to match right side reversing shaping.

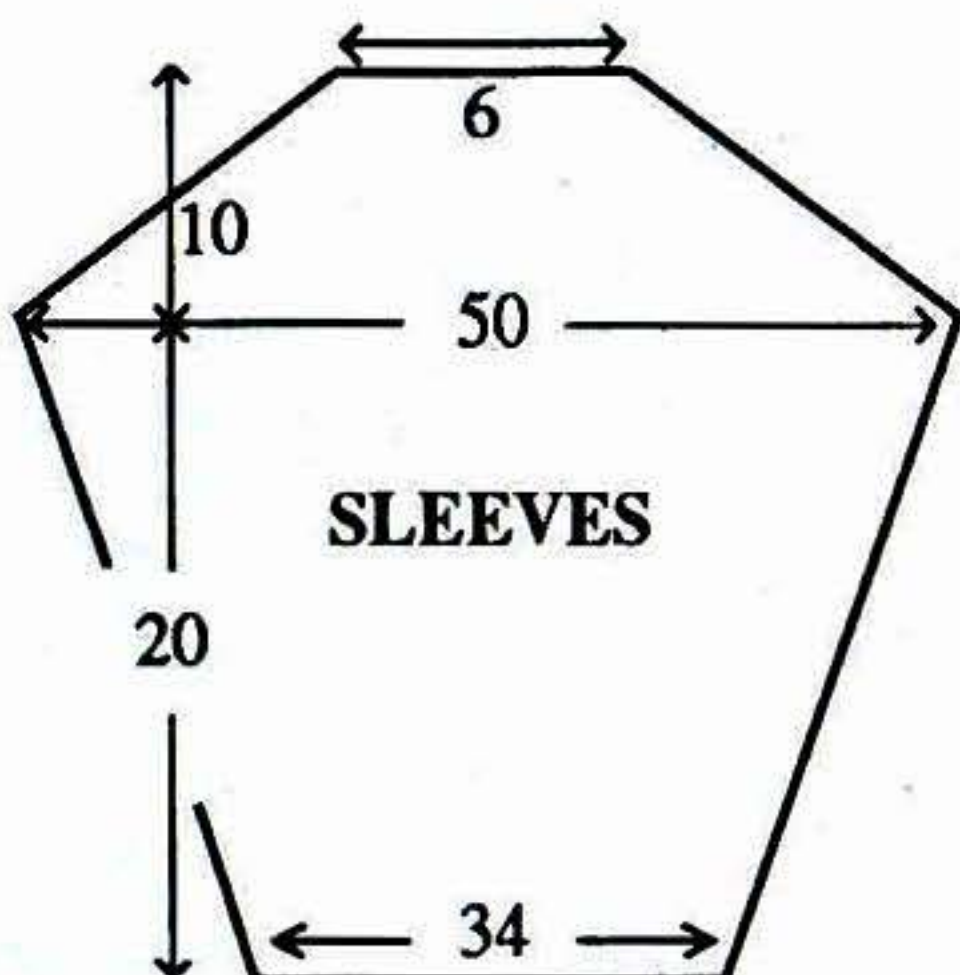
**NECKBAND**  
 Join one shoulder by placing one set of shoulder sts back onto Ns with right sides together. T10 knit 1 row and cast off. Push 150 KH Ns to WP. With right side facing, pick up same number of sts



No 5



evenly along neck edge and place onto Ns. Using A T6 knit 4 rows. T10 knit 1 row. T6 knit 5 rows and waste knit. Join second shoulder as first. Join NECKBAND seam and fold in half to outside and backstitch to garment through last row knitted in A.



### SLEEVES

Work BORDER ST PATT using 93 KH Ns, then cont with ALL-OVER LACE ST PATT to end, and AT THE SAME TIME at RC4, inc 1 st at each end of next and every foll 4th row x 20. Knit to RC84.

### Sleeve Head shaping

Cast off 4 sts at beg of next 2 rows. Dec 1 st at each end of next and every foll alt row x 10. Cast off 4 sts at beg of next 22 rows. Cast off rem 17 sts.

### MAKE-UP

Block and press all pieces. Set in SLEEVES to armhole edges. Join side and SLEEVE seams.

### TROUSERS - RIGHT LEG

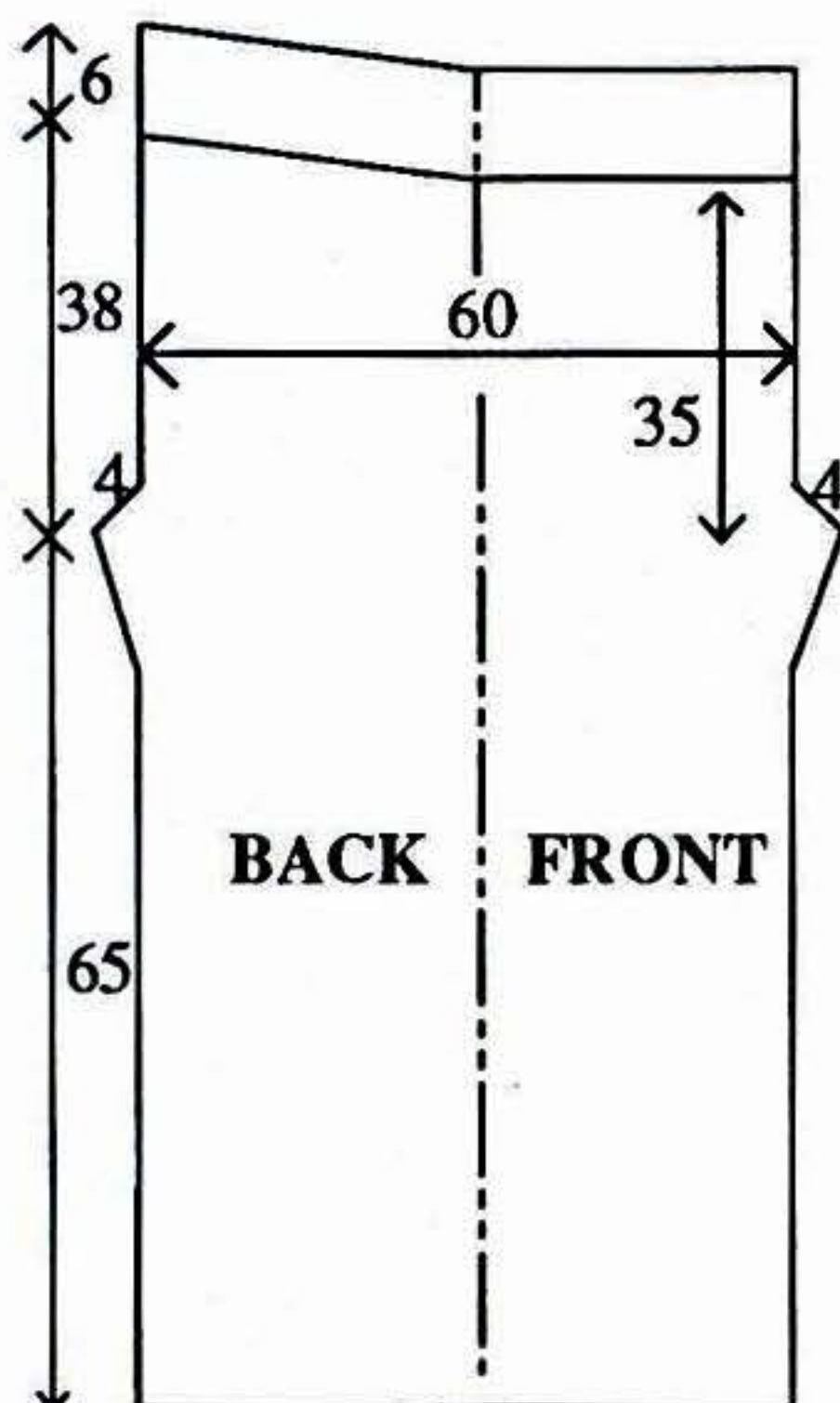
Work BORDER ST PATT using 170 KH Ns, then cont in St st to end. Knit to RC222. Inc 1 st at each end of next and every foll 4th row x 12. Knit to RC270.

### Crotch shaping

Cast off 4 sts at beg of next 2 rows. Dec 1 st at each end of next and every foll alt row x 8. Knit to RC416.

### Back Waist shaping

At left, on next and every foll alt row, bring forward to HP 86 sts x 1, 11 sts x 6. Knit 1 row over all sts. WAISTBAND: T10 knit 1 row. Trans every alt st to adjacent N leaving empty Ns in NWP, 000. T4 knit to RC24. Pick up sts from first row of WAISTBAND and place onto Ns. T7 knit 1 row. T10 knit 1 row and cast off loosely.



### LEFT LEG

As RIGHT LEG reversing shaping.

### MAKE-UP

Block and press. Stitch BACK/FRONT crotch seams and WAISTBAND seams leaving an opening for elastic. Join inside LEG seams. Thread elastic through WAISTBAND, join elastic and close openings.

## No 6 - GIRL'S MOHAIR STRIPED LONGLINE SWEATER

**MACHINE:** B1, B2 or B3 with KR. **MATERIALS:** STANDARD MOHAIR WEIGHT, we used YORKSHIRE YARNS Kaleidescope; A - 70 (80, 90, 100, 110, 120, 130, 140, 150)g (Raspberry), B - 50 (60, 70, 80, 90, 100, 110, 120, 130)g (Cerise), C - 40 (50, 60, 70, 80, 90, 100, 110, 120)g (White) (83% mohair, 9% wool, 8% nylon. 200m/100g) and small amount of D - DK or Chunky smooth yarn in Raspberry. **MEASUREMENTS:** To fit height 104 (110, 116, 122, 128, 134, 140, 146, 152)cm approx chest 57 (59, 61, 63, 66, 69, 72, 75, 78)cm. **TENSION:** St st with Ns in NWP - 20 sts = 15cm and 30 rows = 16.6cm (approx T10). **RIB:** 1 x 1 T0/0/. **NOTES:** When shaping, Ns in NWP are counted as stitches throughout.

Needle Arrangement:-



Striped St Patt - 6 rows A, 2 rows B, 2 rows C, 2 rows A, 6 rows B, 2 rows C, 2 rows A, 2 rows B, 6 rows C, 2 rows A, 2 rows B, 2 rows C.

### BACK

Using WY cast on over 47 (49, 51, 53, 55, 57, 59, 61, 63) KH Ns and knit a few rows ending with COR. T8 Using A knit 3 rows. T10 knit 1 row, 000. T8 knit 3 rows. Turn up hem. T10 knit 1 row. Trans to Needle Arrangement. Knit 2 rows A. Cont in Striped St Patt, starting from the 7th row, knit to RC66 (68, 72, 76, 80, 84, 86, 90, 94).





Place a WY marker at each end of work. Knit to RC92 (98, 104, 108, 114, 120, 124, 130, 136). Waste knit centre 17 (17, 17, 19, 19, 19, 21, 21, 21) sts. Waste knit rem 15 (16, 17, 17, 18, 19, 19, 20, 21) sts at each end of work for shoulders.

### FRONT

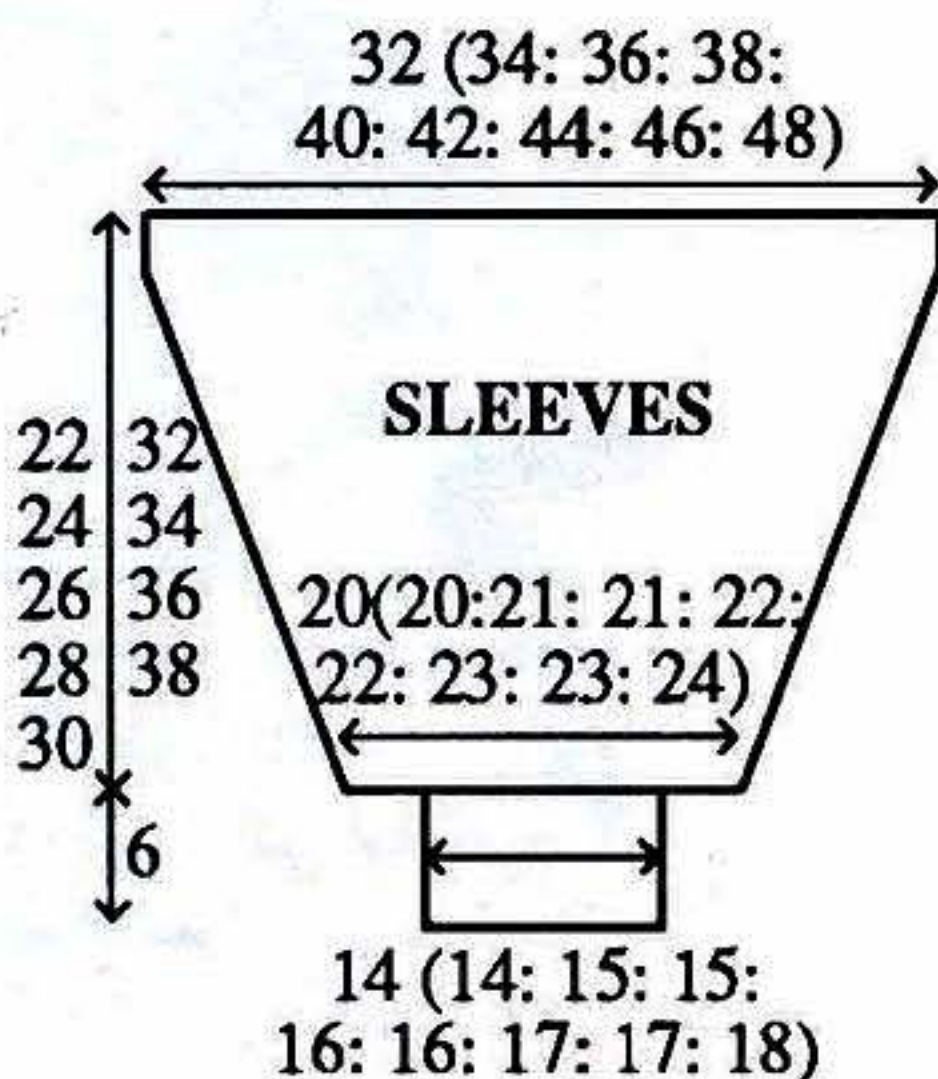
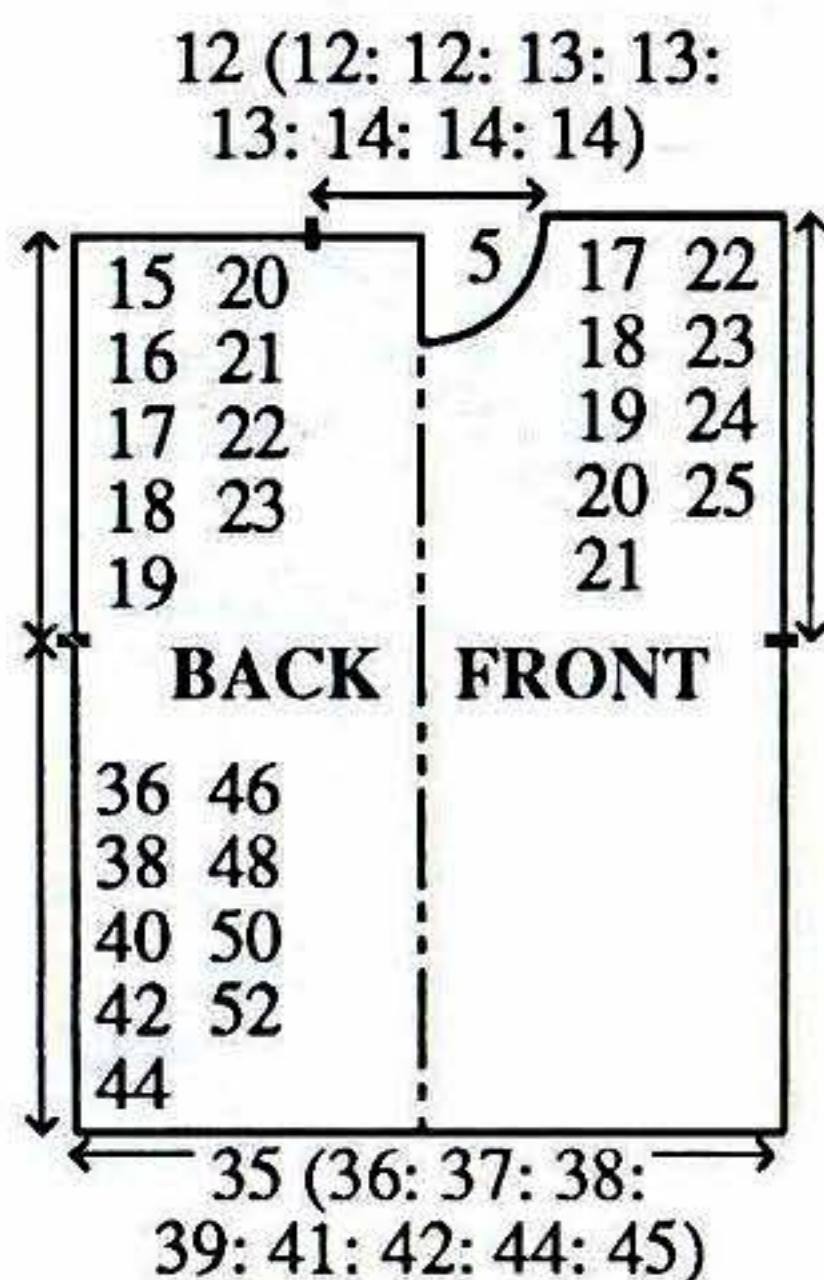
As BACK to RC96 (102, 108, 112, 118, 124, 128, 134, 140).

### Neck shaping

Waste knit centre 9 (9, 9, 11, 11, 11, 13, 13, 13) sts. Waste knit sts at left, COR. Knit 1 row. At beg of next and every foll alt row, cast off 2 sts x 1, then dec 1 st x 2. Knit to RC96 (102, 108, 112, 118, 124, 128, 134, 140) and waste knit rem 15 (16, 17, 17, 18, 19, 19, 20, 21) sts. Return sts at left to Ns and knit to match right side reversing shaping.

### COLLAR

Join one shoulder by placing one set of shoulder sts back onto Ns with right sides together. T10 knit 1 row and cast off. Push 50 (50, 50, 54, 54, 54, 58, 58, 58) KH Ns to WP. With right side facing, pick up same number of sts evenly along neck edge and place onto Ns. Using A T10



knit 1 row. Trans to N arrangement, 000. Working in Striped St Patt throughout, knit to RC24 and waste knit. Join second shoulder as first. Join COLLAR seam, fold in half to outside and backstitch to garment through last row knitted in Main Yarn.

### SLEEVES

Push 43 (45, 49, 51, 53, 57, 59, 61, 63) KH Ns to WP. With wrong side facing, pick up same number of sts evenly along armhole edge between WY markers and place onto

Ns. Using C T10 knit 1 row. Trans to N/A, 000. Working in Striped St Patt throughout in REVERSE order, knit to RC8 (8, 8, 6, 10, 6, 10, 10, 12). Dec 1 st at each end of next and every foll 4th row x 8 (9, 10, 11, 11, 13, 13, 14, 14). Knit to RC40 (44, 48, 50, 54, 58, 62, 66, 68) and waste knit rem 27 (27, 29, 29, 31, 31, 33, 33, 35) sts. CUFFS: Push 19 (19, 21, 21, 23, 23, 25, 25, 27) KH Ns to WP. With wrong side facing, place sts from cuff edge onto Ns distributing them evenly along the row. Using A T10 knit 1 row. Trans to RIB, 000. Knit to RC13. T10/8 knit 1 row. Trans all sts to KH and latch cast off.

### MAKE-UP

Using D, oversew the N marked 'x' every 3 rows as illustrated. Stitch side and SLEEVE seams. Using D make small tassels and attach to garment as illustrated.

## BEGINNERS MEET THE OPEN STITCH

Stocking stitch is produced by having every needle in WP (Working Position). Leaving needles back in NWP (Non-Working Position) when knitting a row will create a 'ladder'. When ladders are created at regular intervals, simple but effective patterns appear. The technique is so simple and yet the possibilities are endless. Different yarns lend themselves to different Needle Arrangements (N/A) - textured yarns are generally better used for wide ladders and smooth yarns for narrow ones, but the only way to find out is to experiment!



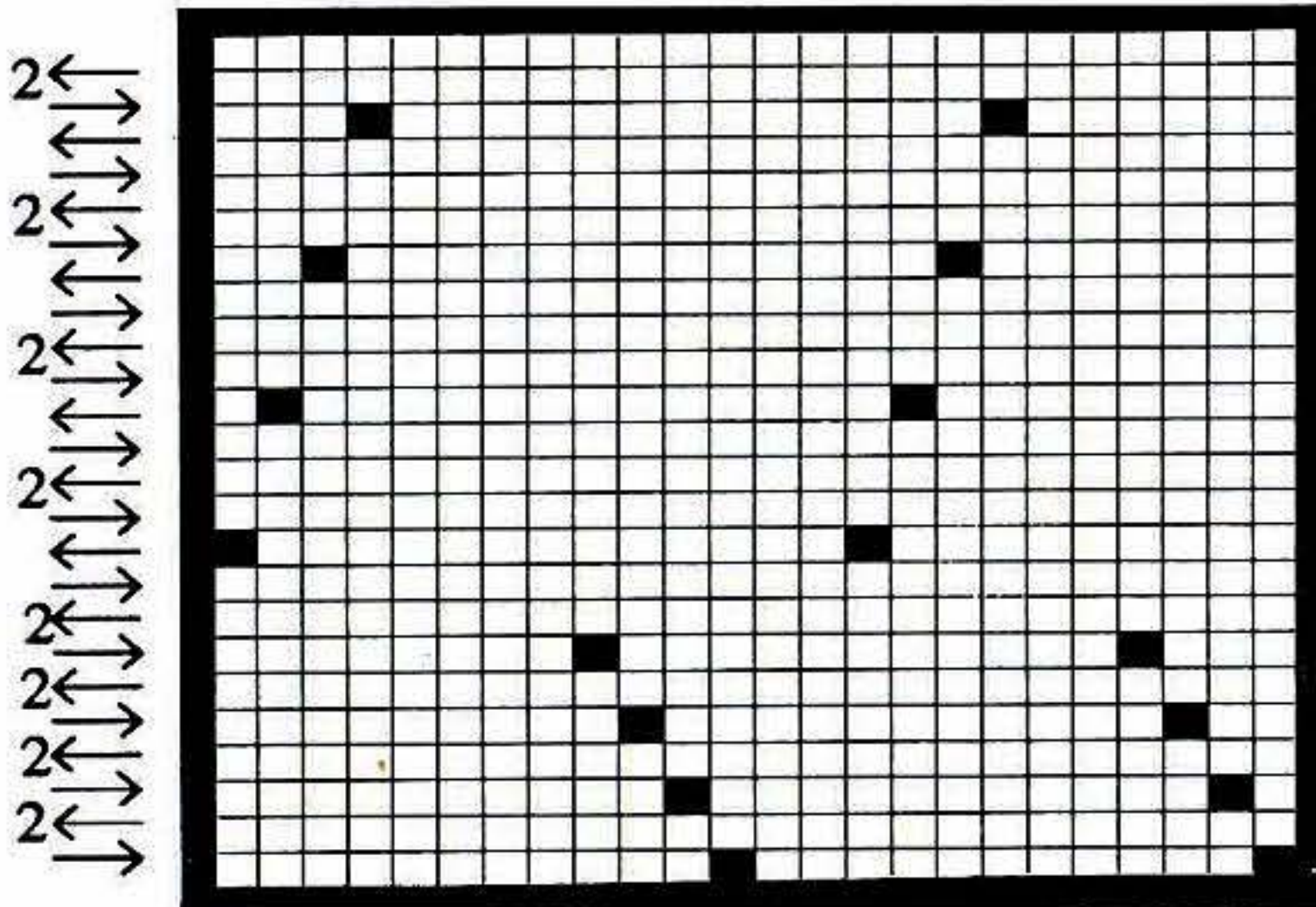
The first example (top left) shows simple ladders. There are 4 needles in WP and then 2 in NWP - this N/A is repeated across the row. We refer to this as a 4 x 2 N/A, one pattern repeat looks like this:



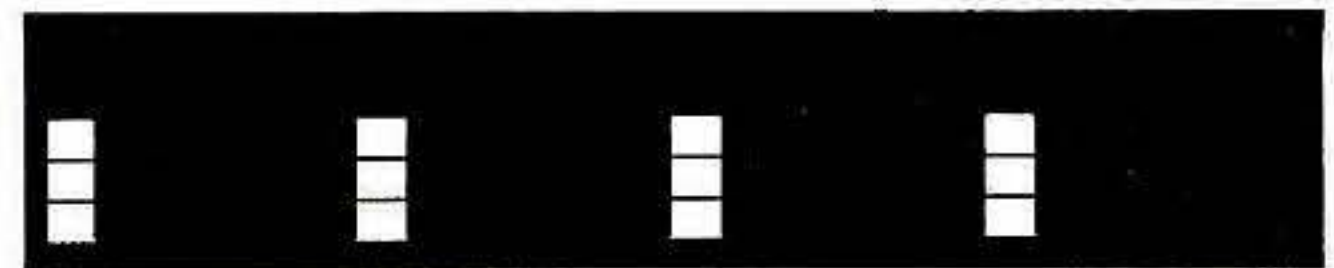
The line represents a N in WP and the spot represents a N in NWP. The pattern can start anywhere on the Needlebed.

The next example (middle left) is an Open Stitch with a difference. Here, the Ns are moved out of, and into, WP by hand during knitting. There is no N/A to start. To hasten the process we have devised a 'Lace' stitch pattern which transfers the sts. This is how it was done:-

\*\*\*\*\* Set for the First 'Lace' Pattern row.  
 \*Work 2 L-Carr movements. Push empty Ns to NWP. Knit 2 rows.\* Repeat from \* to \* 4 times in all. \*\*Working across the groups of 4 Ns in NWP, from right to left, push first N into WP, knit 2 rows.\*\* Repeat from \*\* to \*\* until all Ns are in WP. \*\*\*Work 4 L-Carr movements. Push empty Ns to NWP. Knit 2 rows\*\*\*. Repeat from \*\*\* to \*\*\* 4 times in all. \*\*\*\* Working across the groups of 4 Ns in NWP, from left to right, push the Frist N into WP, knit 2 rows \*\*\*\*. Repeat from \*\*\*\* to \*\*\*\* 4 times in all. \*\*\*\*\* Repeat from \*\*\*\*\* to \*\*\*\*\* throughout.

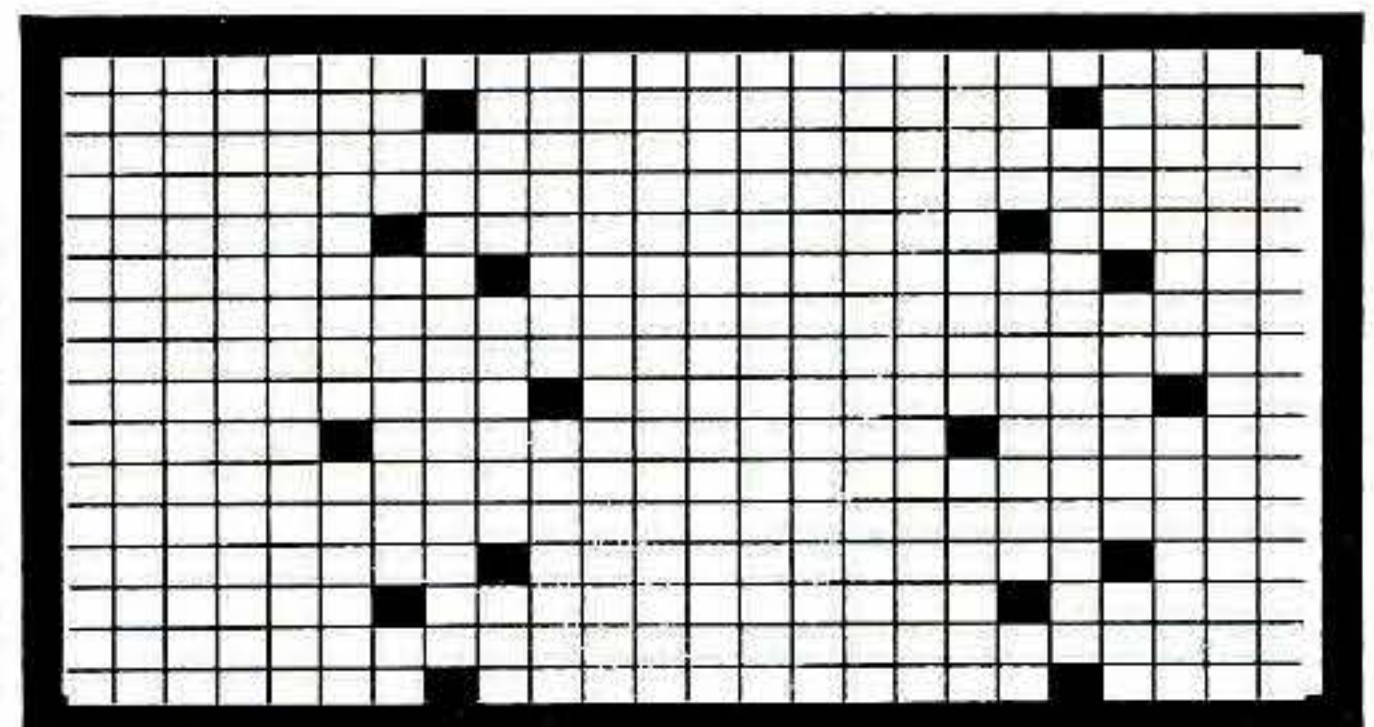
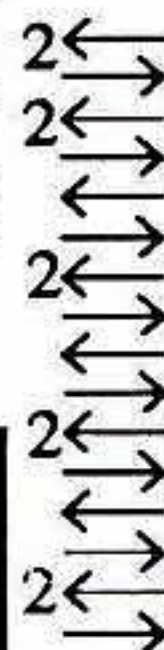


The next example has a tuck and Open Stitch together (bottom left). The N out of work exaggerates the tucking and gives an almost Lace like appearance. Here you must ensure that the N/A coincides correctly with the Stitch Pattern. When setting the Machine for all-over patterning the machine automatically places the

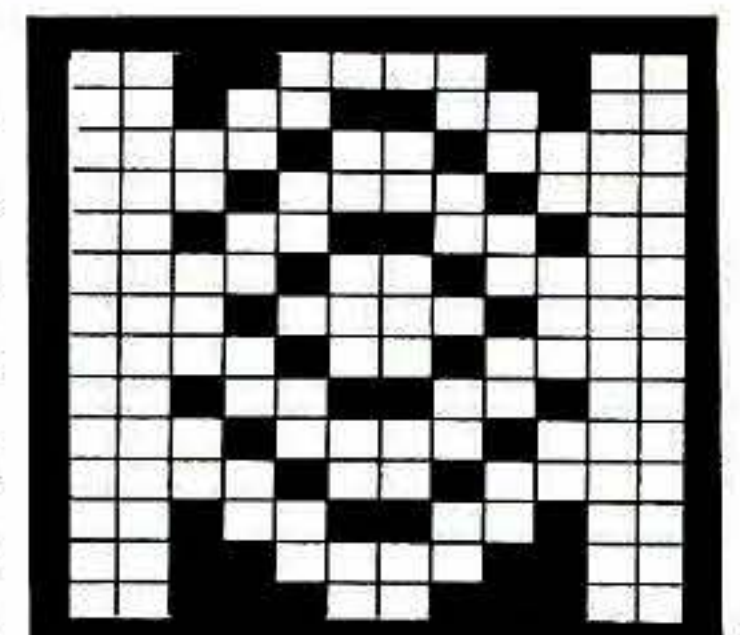


pattern across the centre of the Needlebed. The N/A therefore, must be centred across those same Ns. For this reason, when necessary the N/A shows the position of the '0' for the centre of the needlebed as a guide.

Lace can also be successfully mixed with the Open Stitch (bottom right). Apart from obvious things to remember, like there must be at the very least one stitch between the lace pattern and the ladder, you must also take into consideration the mechanism of the knitting machine when mixing Open Stitches and patterning. For example, if you have a number of Ladders across the knitting and then move the L-Carr across it with the Automatic End Needle Selector working, it will select every N each side of the Ladders. It is more convenient to disable the Automatic End Needle Selector and push back end Ns selected on the swatch to WP.



Some very interesting effects result from mixing fairisle with Open Stitches (middle right). The main yarn floats on top of the contrast colour down the Ladder. Once again you must carefully place the Ladders so they do not interfere with your fairisle pattern. Like the Lace Stitch above, you must decide whether or not to have the Automatic End Needle Selector working. If you do, you will find the Ns each side of the ladder



' ||||| ||||| '

(Continue on page 27)

# No 7 -LACE/CABLE SHORT SLEEVED SWEATER

**MACHINES:** C or D with KR.  
**MATERIALS:** BROCKWELL  
PLAIN COTTON; A - 450  
(470, 490, 510, 530)g (White  
504) (100% cotton,  
3 4 0 m / 1 0 0 g ) .

**MEASUREMENTS:** To fit  
bust 86 (91, 96, 101, 106)cm.

**TENSION:** Lace/Cable St Patt  
- 40 sts = 15.3cm and 60 rows  
= 14.4cm (approx T8), after  
washing, blocking and  
pressing. **RIB:** 1 X 1 T3/3.

**NOTES:** CABLE STRIP - N  
arrangement:-

**NNEDLE ARRANGEMENT  
TO COME HERE**

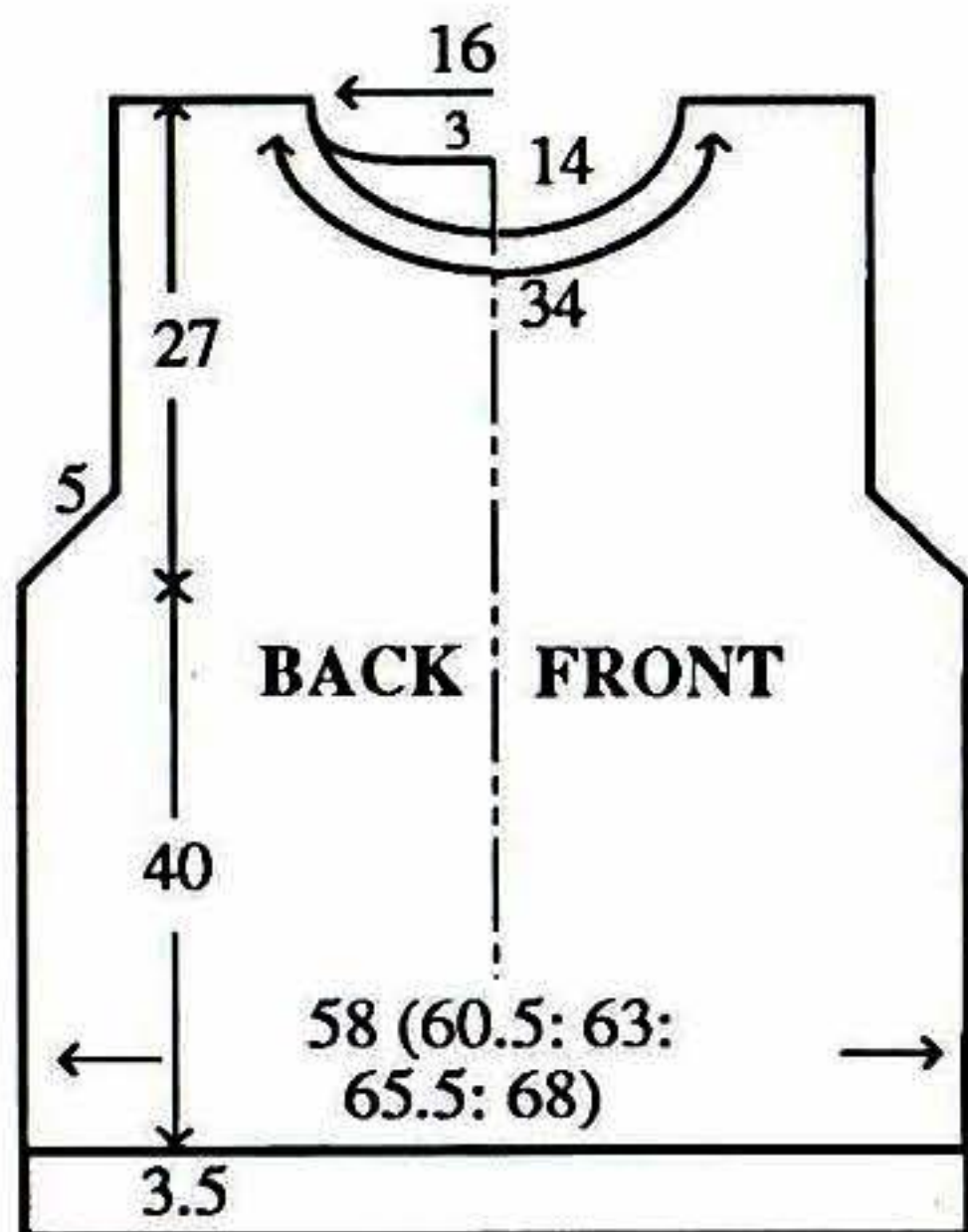
\*Knit 9 rows. Bring forward to  
WP, Ns marked 'x'. Knit 1 row.  
Cable 3 over 3 on KH\*. Repeat  
from \* to \* throughout.

## BACK

Using A cast on over 149 (157,  
163, 169, 177) KH Ns as RIB,  
000. Knit to RC16. Trans all sts  
to KH. Inc 1 st, 000. Working  
in Lace/Cable St Patt  
throughout, knit to RC164.

## Armhole shaping

Cast off 3 sts at beg of next 2  
rows. Dec 1 st at each end of

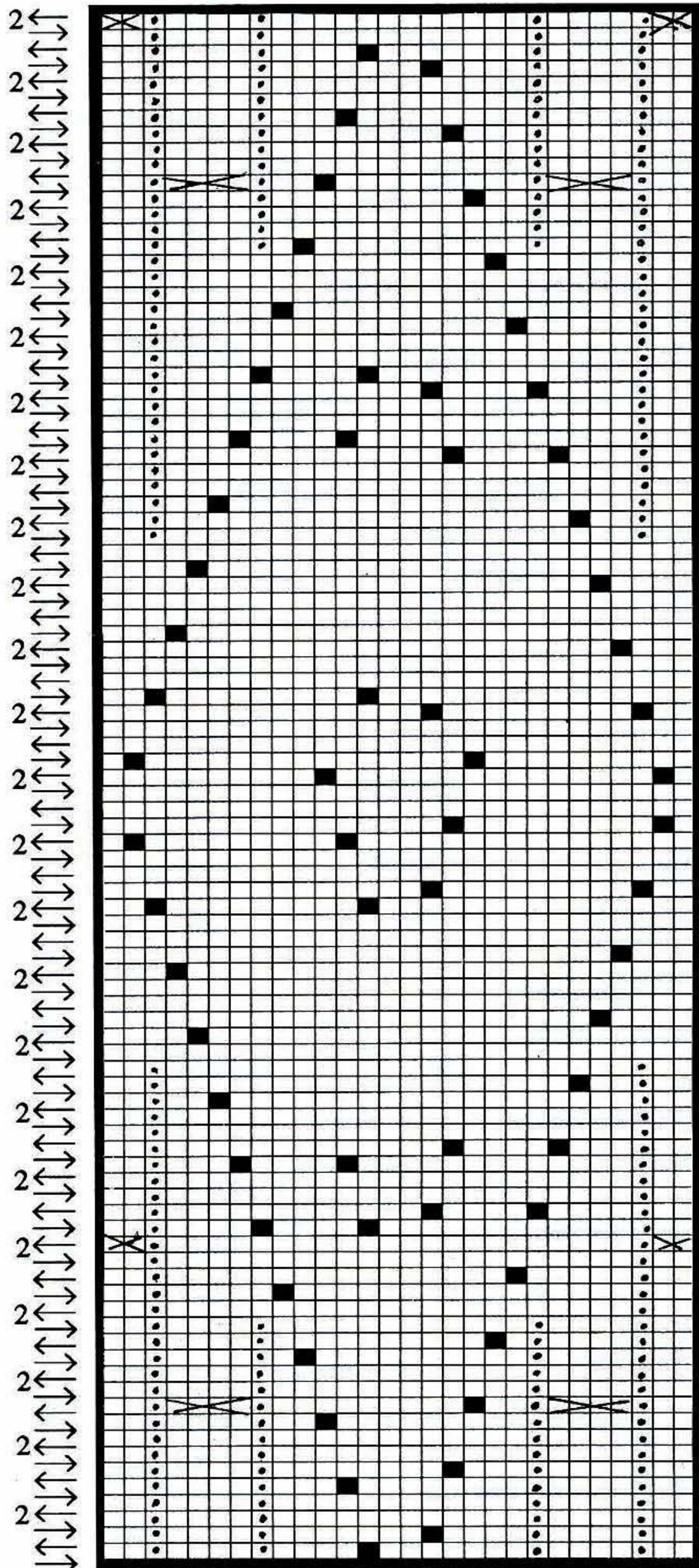


next and every foll alt row x 8.  
Knit to RC262.

## Back neck shaping

(Note Patt position). Waste knit

centre 22 sts. Waste knit sts at  
left, COR. Knit 1 row. At beg  
of next and every foll alt row  
cast off 2 sts x 5. Knit to



RC274 and waste knit rem 43 (47, 50, 53, 57) sts. Return sts at left to Ns and knit to match right side reversing shaping. **BACK NECKBAND:** Push 53 KH Ns into WP. With wrong side facing, pick up same number of sts evenly along BACK neck edge and place onto Ns. T8 knit 1 row. Trans to RIB, 000. Knit to RC11. T10/8 knit 1 row. Trans all sts to KH and latch cast off.

## FRONT

As BACK to RC216.

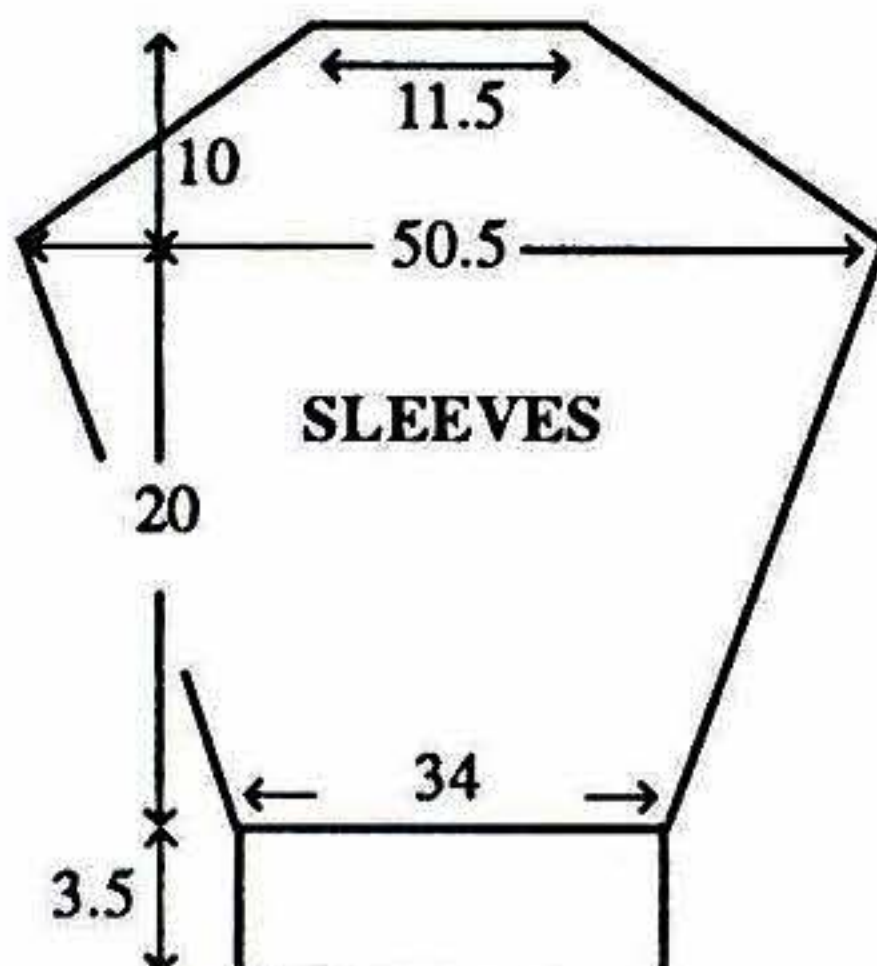
### Front Neck shaping

(Note Patt position). Waste knit centre 28 sts. Waste knit sts at left. Knit 1 row. At beg of next and every foll alt row cast off 4 sts x 2, 3 sts x 2, 2 sts x 4, then dec 1 st x 8. Knit to RC274 and waste knit rem 20 (24, 27, 30, 34) sts. Return sts at left to Ns and knit to match right side reversing shaping.

## FRONT NECKBAND

**CABLE STRIP:** Using A cast on over 14 KH Ns as FNR. Trans to Needle Arrangement, 000. T8/4 working in Cable St Patt throughout, knit to RC130 and cast off. Push 163 KH Ns into WP. With wrong side facing, pick up same number of sts evenly along FRONT neck edge and place onto Ns. T8 knit 2 rows. Trans to RIB, 000. Knit to RC6. Trans all sts to KH and waste knit. With right side facing, return sts to Ns. T8 knit 1 row and waste knit. Push 129 KH Ns into WP. With right side facing, return sts to Ns distributing them evenly along the row. T8 knit 1 row. Trans to RIB and knit 6 rows. Trans all

sts to KH. T8 knit 1 row and waste knit. Push 99 KH Ns into WP. With right side facing, return sts to Ns distributing them evenly along the row. T8 knit 1 row. With wrong side facing, pick up same number of sts evenly along side edge of CABLE STRIP and place onto Ns. T8 knit 1 row. T10 knit 1 row and cast off. Push 75 KH Ns into WP. With wrong side facing, pick up same number of sts evenly along side edge of CABLE STRIP and place onto Ns. T8 knit 1 row. Trans to RIB, 000. Knit to RC11. T10/8 knit 1 row. Trans all sts to KH and latch cast off.



## SLEEVES

Using A cast on over 89 KH Ns as RIB, 000. Knit to RC16. Trans all sts to KH. Inc 1 st, 000. Working in Lace/Cable St Patt throughout, knit to RC3, inc 1 st at each end of next and every foll 3rd row x 21. Knit to RC82.

### Sleeve Head shaping

Cast off 3 sts at beg of next 2 rows. Dec 1 st at each end of next and every foll alt row x 6. Cast off 3 sts at beg of next 28 rows. Cast off rem 30 sts.

## MAKE-UP

Join shoulders - Push 43 (47, 50, 53, 57) KH Ns into WP.

With right side facing, return sts from BACK shoulder to Ns. With wrong side facing, place sts from waste knitting onto Ns plus pick up rem sts evenly and place onto Ns. T10 knit 1 row and cast off. Join remaining NECKBAND seam. Wash, block and press all pieces. Set in SLEEVES to armholes. Join side and SLEEVE seams.

## No 8 -CHILD'S FAIRISLE RUGBY STYLE SHIRT AND JOGGING PANTS

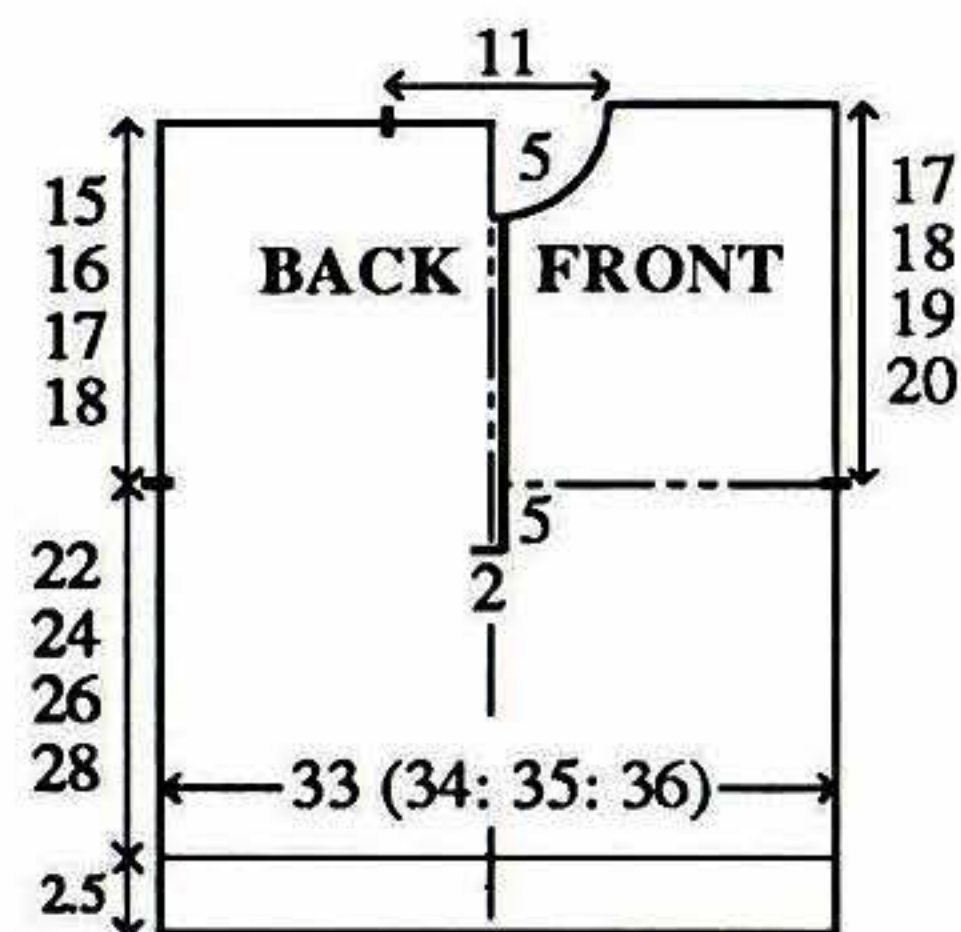
**MACHINES:** A, C or D with KR. **MATERIALS:** STANDARD 4-PLY COTTON, we used BROCKWELL Plain Cotton; Shirt - A - (Blue 521) and B - (Salmon 528) - 110 (120, 130, 140)g of each, C - 10 (15, 20, 25)g (Primrose 509) and D - 130 (140, 150, 160)g (Emerald 532). (100% cotton 340m/100g). 4 buttons. Jogging Pants - A - 260(280, 300, 320)g. 2.5cm wide elastic to fit waist + 2.cm. **MEASUREMENTS:** To fit height 98 (104, 110, 116)cm, approx chest 55 (57, 59, 61)cm. **TENSION:** Fairisle St Patt - 40 sts = 14.5cm and 60 rows = 14.3cm (approx T7). St st - 40 sts = 13.1cm and 60 rows = 13.2cm (approx T6). **RIB:** 1 x 1 T2/2. Flat Rib - 1 x 1 T5/2 (All Ns on KH and 1 x 1 Ns on KR in WP). **NOTES:** Fairisle St Patt - A in FA throughout, knit 8 rows B, 2 rows C, 8 rows B, 4 rows D in FB.

## SHIRT BACK

Using WY cast on over 91 (95, 97, 99) KH Ns and knit a few rows ending with COR, 000. Using D T6 knit to RC11. T10



knit 1 row. T6 knit to RC23. Turn up hem. Set for first row of Fairisle St Patt and using D T7 knit 1 row to select Ns, 000. Working in Fairisle throughout (see NOTES), knit to RC4 (14, 22, 30). Place a WY marker at each end of work [beginning of Pocket opening]. Knit to RC48 (58, 66, 74). Place a WY marker at each end of work [end of Pocket opening]. Knit to RC92 (102, 110, 118). Place a WY marker at each end of work. Knit to RC156 (168, 180, 194). Waste knit centre 31 sts. Waste knit rem 30 (32, 33, 34) sts at each end of work for shoulders.



### FRONT

As BACK to RC70 (80, 88, 96).

### Divide for Neck opening

(Note Patt position). Cast off centre 5 sts. Waste knit sts at left. On rem sts, knit to RC92 (102, 110, 118). Place a WY marker at right end of work. Knit to RC143 (155, 169, 181).

### Neck shaping

At beg of next and every foll alt row cast off 4 sts x 1, 3 sts x 1, 2 sts x 1, then dec 1 st x 4. Knit to RC164 (176, 188, 202) and waste knit rem 30 (32, 33, 34) sts. Return sts at left to Ns and knit to match right side reversing shaping.

### BUTTONHOLE BAND

Using D cast on over 52 (55, 58, 61) KH Ns as FNR. Trans to Flat Rib, 000. Knit to RC4. Work 4 x 2 st buttonholes evenly spaced along the row. Knit to RC8.

Trans all sts to KH.

T7 knit 1 row. With wrong side facing, pick up same number of sts evenly along Left Front opening edge and place onto Ns. T10 knit 1 row and cast off.

### BUTTON BAND

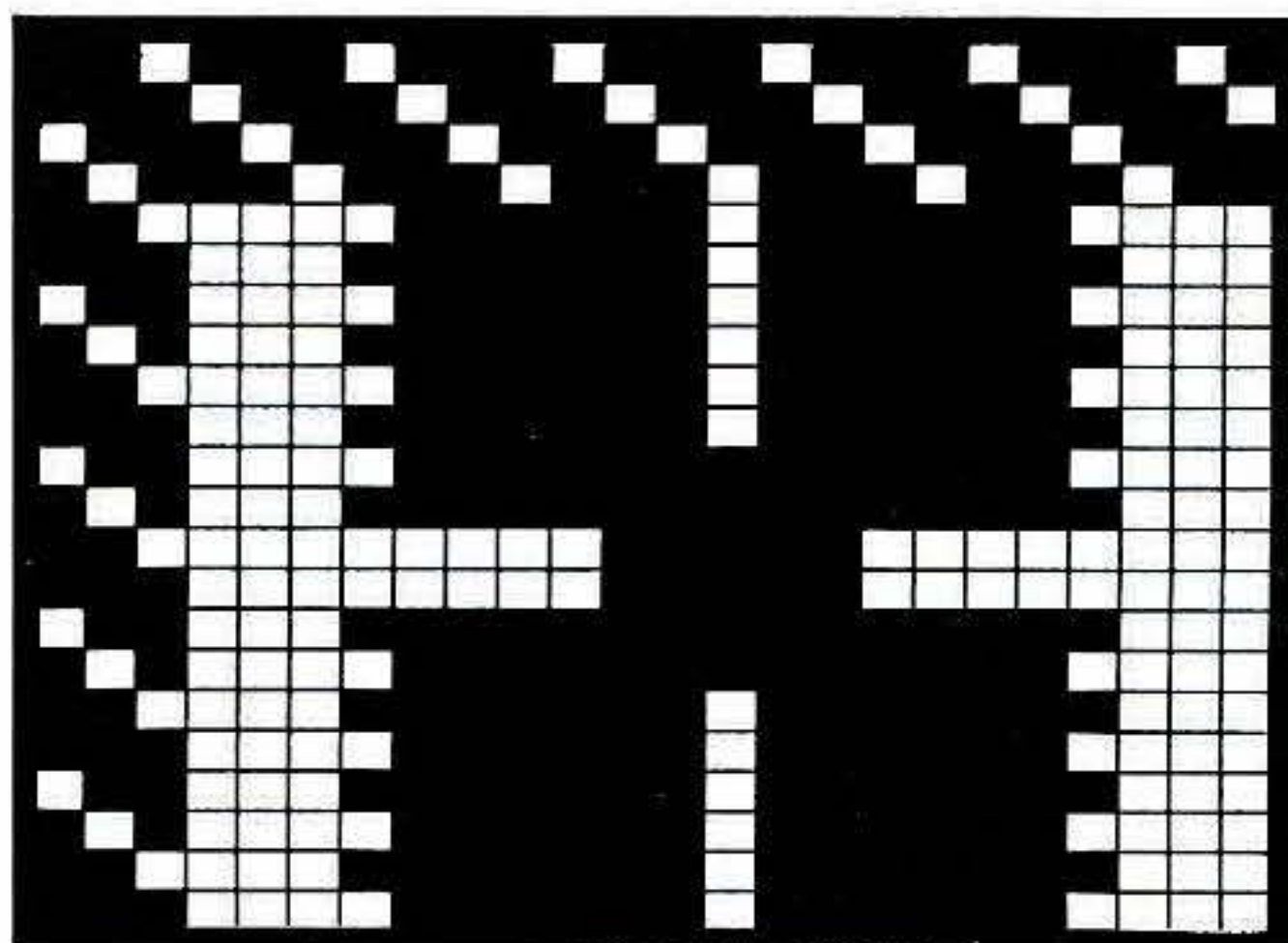
As BUTTONHOLE BAND omitting buttonholes. Stitch BANDS to cast off edge at centre FRONT.

### COLLAR

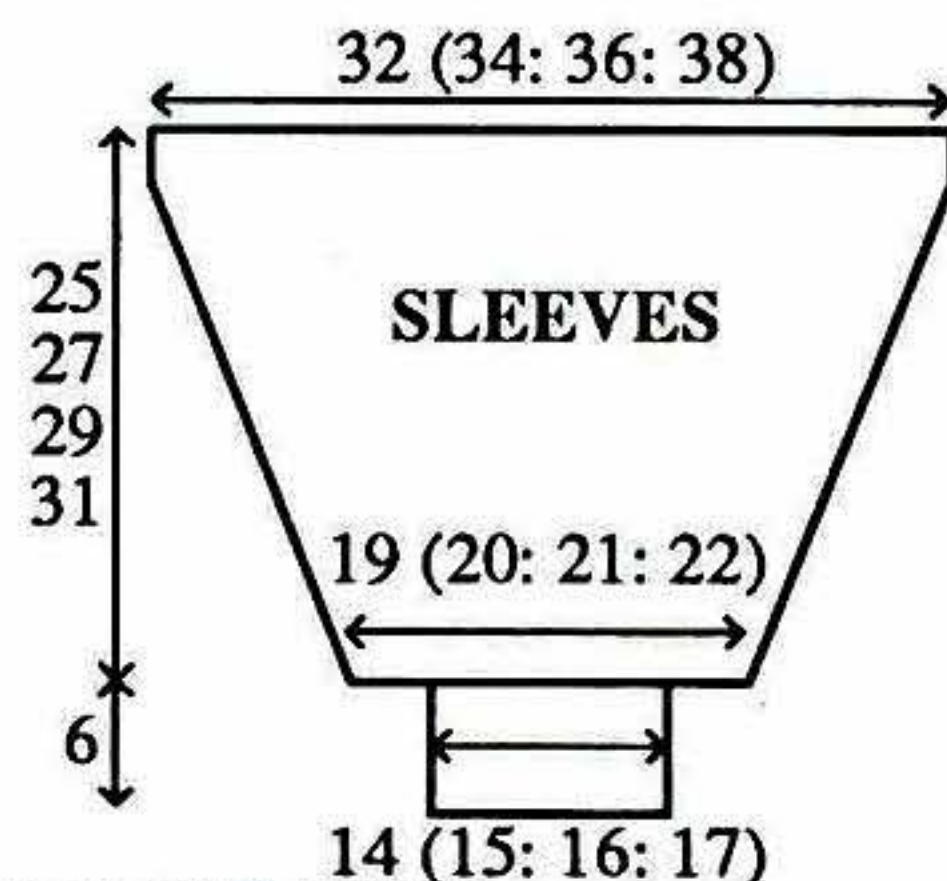
Join both shoulders by placing both sets of shoulder sts back onto Ns with right sides together. T10 knit 1 row and cast off. Using D cast on over 80 KH Ns as FNR. Trans to Flat Rib, 000. Knit to RC17. Trans all sts to KH. T7 knit 1 row. With right side facing, pick up same number of sts evenly along neck edge and place onto Ns. T7 knit 1 row. T10 knit 1 row and cast off.

### SLEEVES

Push 88 (94, 100, 106) KH Ns to WP. With wrong side facing, pick up same number of sts evenly along armhole edge between WY markers and place onto Ns. COL. Set for first row of Fairisle St Patt - UPSIDE DOWN - and using A T7 knit 1 row to select Ns, 000. Working



in Fairisle throughout - REVERSE ORDER - knit to RC15 (20, 20, 20). Dec 1 st at each end of next and every foll 5th row x 18 (19, 21, 22). Knit to RC104 (114, 122, 130) and waste knit rem 52 (56, 58, 62) sts. CUFFS: Push 39 (41, 43, 47) Kh Ns to WP. With wrong side facing, place sts from cuff edge onto Ns distributing them evenly along the row. Using D T7 knit 1 row. Trans to RIB, 000. Knit to RC29. T10/8 knit 1 row. Trans all sts to KH and latch cast off.



### LEFT FRONT POCKET BAG

Using D COBH over 31 KH Ns. T6 knit 6 rows. With wrong side facing, pick up same number of sts evenly along LEFT FRONT pocket opening and place onto Ns. Knit 1 row (knit 2 rows for RIGHT FRONT POCKET BAG). COL. At beg of next row cast on 3 (10, 15, 21) sts, 000. Knit





to RC26 (28, 30, 32). Dec 1 st at right on next and every foll alt row x 12 (13, 14, 15). Knit to RC50 (54, 58, 62) and cast off.

### RIGHT FRONT POCKET BAG

As LEFT FRONT POCKET BAG reversing shaping by reading right for left and vice versa.

### RIGHT BACK POCKET BAG

As LEFT FRONT POCKET BAG.

### LEFT BACK POCKET BAG

As RIGHT FRONT POCKET BAG.

### MAKE-UP

Block and press. Join side and SLEEVE seams. Stitch POCKET BAGS together. Attach buttons.

### JOGGING PANTS -

#### RIGHT LEG

Using WY cast on over 123 (129, 135, 141) KH Ns and knit a few rows ending with COR, 000. Using A T6 knit to RC142 (160, 178, 196) [adjust length here].

#### Crotch shaping

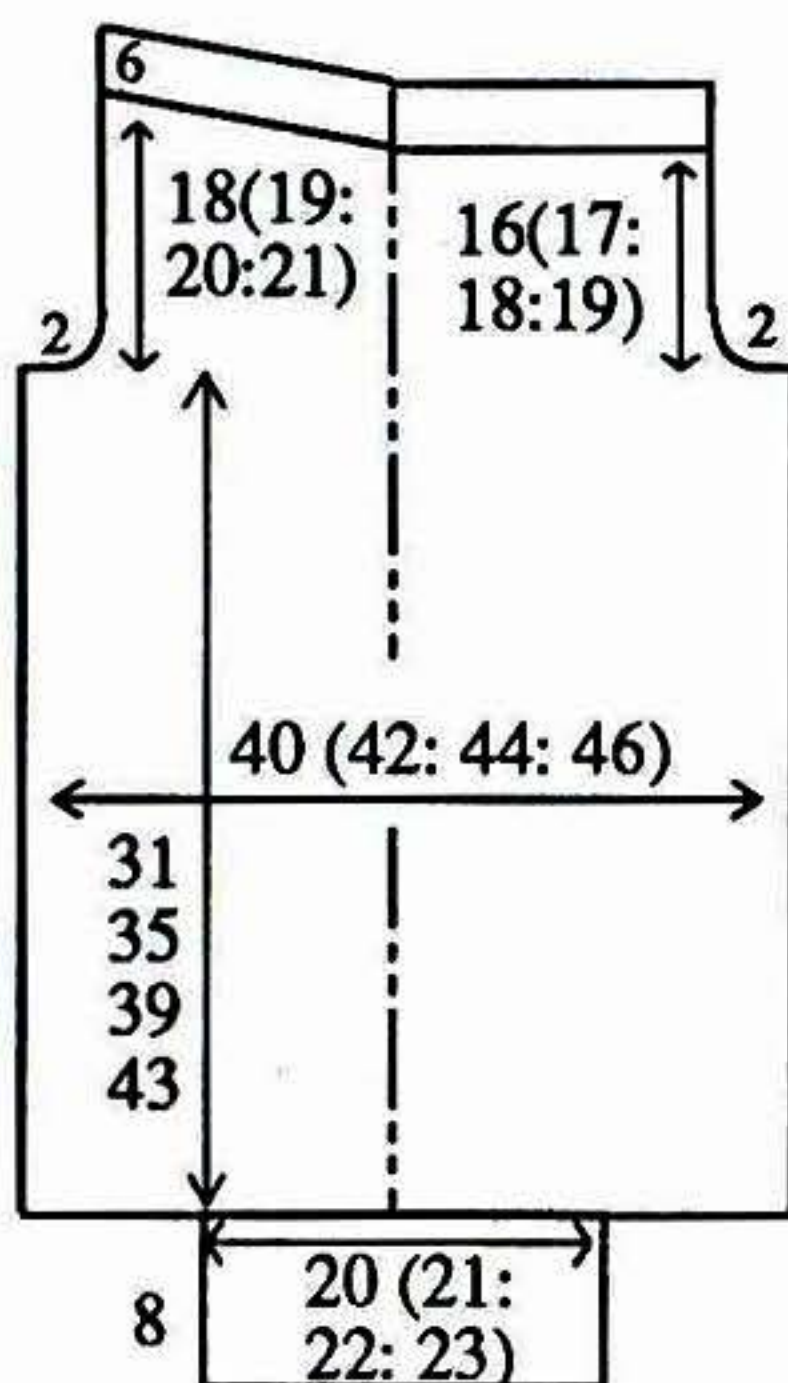
Cast off 2 sts at beg of next 2 rows. Dec 1 st at each end of next and every foll alt row x 4. Knit to RC214 (238, 260, 284).

#### Back waist shaping

COR, at left, on next and every foll alt row, push into HP 55 (58, 61, 64) Ns x 1, 12 Ns x 4. Knit 1 row over all Ns. **WAISTBAND:** Trans to RIB, 000. Knit to RC30. T10/8 knit 1 row. Trans all sts to KH and latch cast off.

#### ANKLE CUFFS

Push 61 (63, 67, 69) KH Ns to WP. With wrong side facing, place sts from ankle edge onto



Ns distributing them evenly along the row. T6 knit 1 row. Trans to RIB, 000. Knit to RC39. T10/8 knit 1 row. Trans all sts to KH and latch cast off.

#### LEFT LEG

As RIGHT LEG reversing shaping.

#### MAKE-UP

Block and press, avoiding ribbing. Join BACK/FRONT crotch seams. Join inside LEG seams. Fold WAISTBAND in half to inside and stitch down loosely encasing elastic. Fold ANKLE CUFFS in half to inside and stitch down loosely.

## No 9 CHILD'S STRIPED/TUCK 'FRED PERRY'

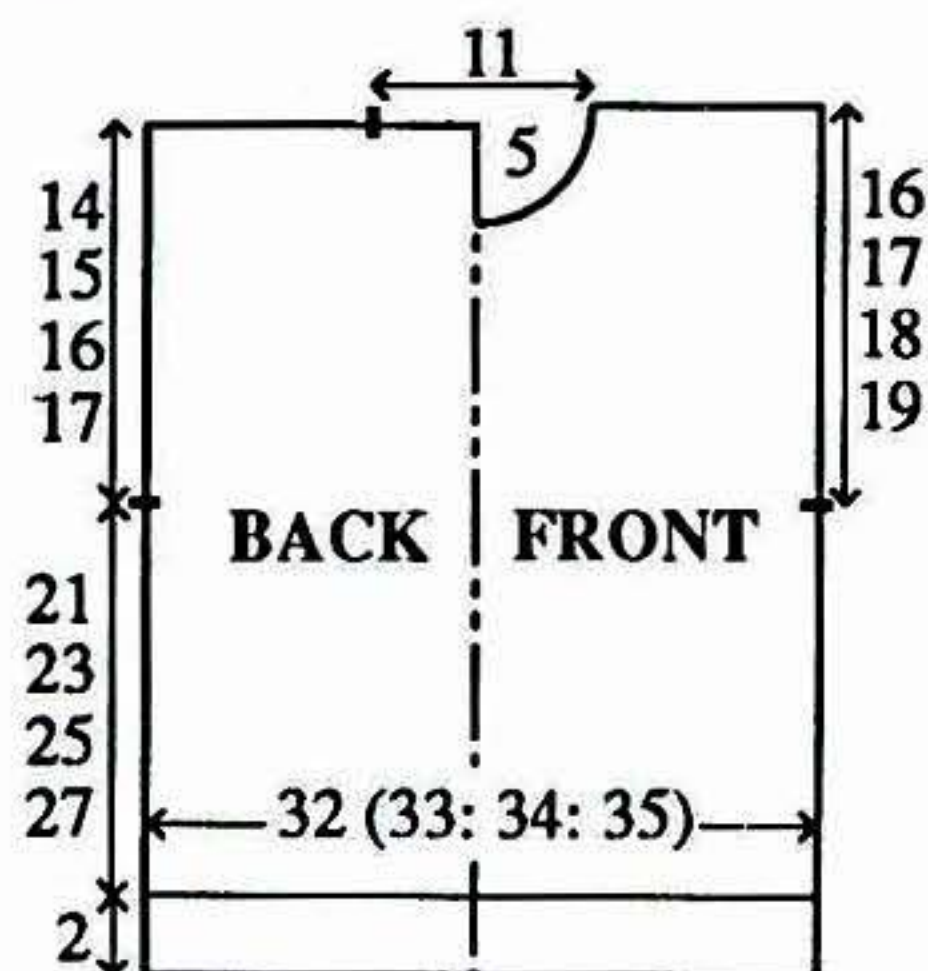
**MACHINES:** A, C or D with KR. **MATERIALS:** Standard 4-ply cotton, we used BROCKWELL Plain Cotton; A - 155 (170, 185, 200)g (Yellow 509) and B - 40 (45, 50, 55)g (Aqua 521). (100% cotton 340m/100g). 3 buttons. **MEASUREMENTS:** To fit height 98 (104, 110, 116)cm, approx chest 55 (57, 59, 61)cm. **TENSION:** Striped/Tuck St

Patt - 40 sts = 14cm and 60 rows = 13.4cm (approx T7). (Ns in NWP are counted as stitches throughout). **RIB:** Flat Rib 1 x 1 T5/2 (All Ns on KH and 1 x 1 Ns on KR in WP). **NOTES:** Striped/Tuck St Patt - 8 rows A, 2 rows B. N.arrangement:-



#### BACK

\*Using WY cast on over 91 (95, 97, 101) KH Ns and knit a few rows ending with COR. Using A T6 knit 9 rows. T10 knit 1 row. T6 knit 9 rows. Turn up hem. Set for first row of Tuck St Pattern and using A T7 knit 1 row to select Ns, 000. Trans to Needle Arrangement and working in Striped/Tuck St Patt throughout (see NOTES), knit to RC94 (104, 112, 122). Place a WY marker at each end of work\*. Knit to RC158 (170, 184, 198). Waste knit centre 31 sts. Waste knit rem 30 (32, 33, 35) sts at each end of work for shoulders.



#### FRONT

As BACK \* to \*. **Divide for Neck opening** (Note Patt position). Cast off centre 5 sts. Waste knit sts at left. On rem sts, knit to RC147 (159, 173, 187).

### Neck shaping

At beg of next and every foll alt row cast off 4 sts x 1, 3 sts x 1, 2 sts x 1, then dec 1 st x 4. Knit to RC168 (180, 194, 208) and waste knit rem 30 (32, 33, 35) sts. Return sts at left to Ns and knit to match right side reversing shaping.

### BUTTONHOLE BAND

Using B cast on over 36 (39, 42, 45) KH Ns as FNR. Trans to Flat Rib, 000. Knit to RC4. Work 3 x 2 st buttonholes evenly spaced along the row. Knit to RC8. Trans all sts to KH. T7 knit 1 row. With wrong side facing, pick up same number of sts evenly along Left Front opening edge and place onto Ns. T10 knit 1 row and cast off.

### BUTTON BAND

As BUTTONHOLE BAND omitting buttonholes. Stitch BANDS to cast off edge at centre FRONT.

### COLLAR

Join both shoulders by placing both sets of shoulder sts back onto Ns with right sides together. T10 knit 1 row and cast off. Using B cast on over 80 KH Ns as FNR. Trans to Flat Rib, 000. Knit to RC17. Trans all sts to KH. T7 knit 1 row. With right side facing, pick up same number of sts evenly along neck edge and place onto Ns. T7 knit 1 row. T10 knit 1 row and cast off.

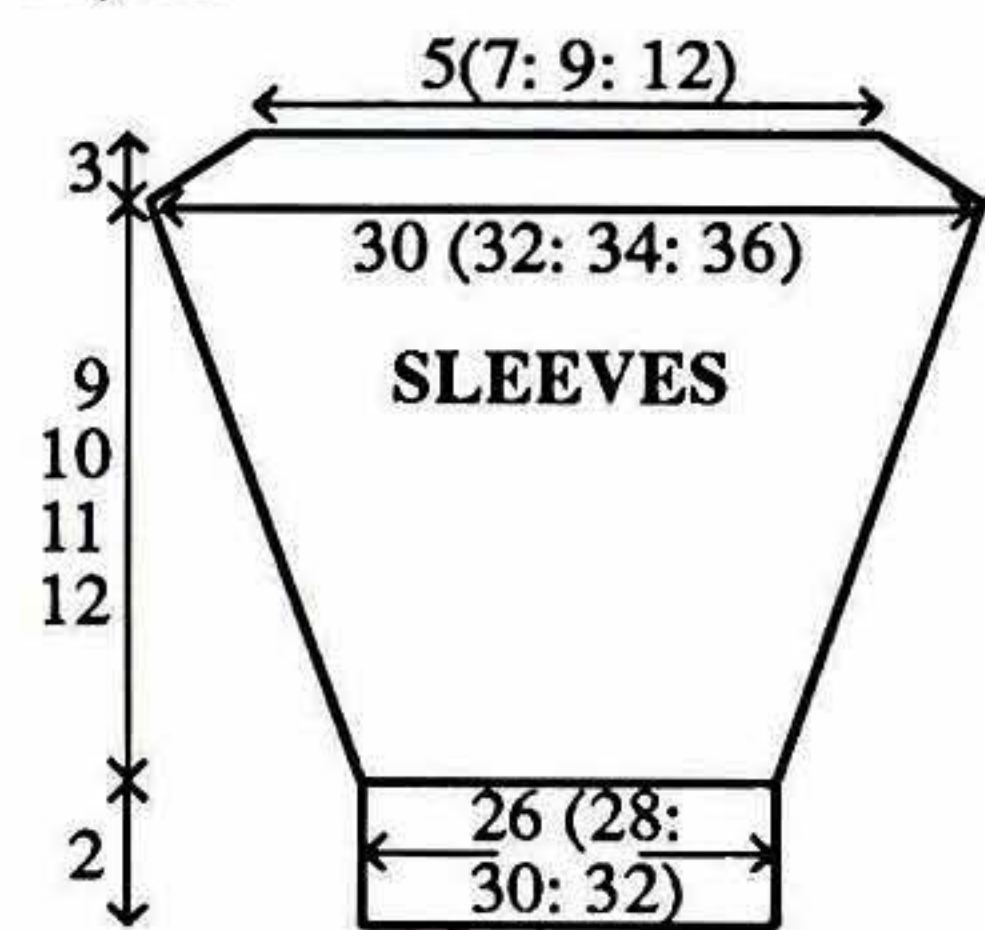
### SLEEVES

Using WY cast on over 64 (70, 74, 80) KH Ns and knit a few rows ending with COR. Using

A T6 knit 9 rows. T10 knit 1 row. T6 knit 9 rows. Turn up hem. T7 knit 1 row and waste knit. Push 73 (79, 85, 91) KH Ns to WP. Take back to NWP every 8th N as Needle Arrangement. With wrong side facing, return sts to Ns in WP, 000. Set for 2nd row of St Patt and working in Striped/Tuck St Patt throughout, knit to RC6. Inc 1 st at each end of next and every foll 6th row x 6. Knit to RC40 (44, 50, 54).

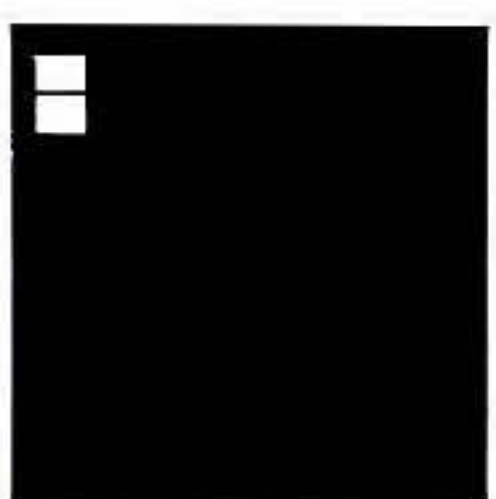
### Sleeve Head shaping

Cast off 5 sts at beg of next 14 rows. Cast off rem 15 (21, 27, 33) sts.



### MAKE-UP

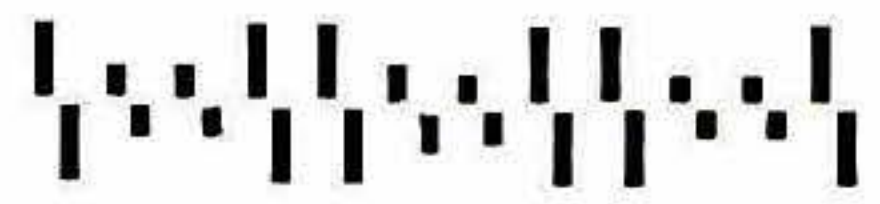
Block and press. Set SLEEVES into armholes between WY markers. Stitch side and SLEEVE seams. Attach buttons.



### (CONTINUATION FROM PAGE 20)

selected. If you have patterning on those needles it will not appear but be overridden by this selection process and become part of the background.

Last but not least is an Open stitch using the Ribbing Attachment (top right). This wonderful stitch is created by incorporating a N/A on both beds, Tuck stitch, and Racking. First set the Racking Indicator to centre. Set to Half Pitch Now set to this N/A:-



Cast on. Check in your Ribbing Attachment manual and set for Fisherman's Rib (this stitch may also be knitted on the Chunky machines). Set for Main Tension and knit 2 rows. \*\*\* \*Rack one place to left, knit 1 row, rack one place to right, knit 1 row.\* repeat from \* to \* 9 times in all. Rack one place to the left and knit 2 rows. \*\*Rack one place to the right, knit 1 row, rack one place to the left, knit 1 row\*\*. Repeat from \*\* to \*\* 9 times in all. Rack one place to the right, knit 2 rows.\*\*\* Repeat from \*\*\* to \*\*\* throughout.

## ABBREVIATIONS

alt	alternate
beg	begin(ing)
[C]	children's sizes
cm	centimetre(s)
COBH	cast on by hand
COL	carriage on left
Con Col	contrast colour
COR	carriage on right
cont	continue, continuing
dec	decrease, decreasing
FA	Feeder A
FB	Feeder B
FNR	full needle rib
fol	following
g	grammes
G-Carr	Garter Carriage
HP	holding or E position
inc	increase, increasing
K-Carr	Knitting Carriage
KH	main bed
KR	ribbing attachment
[L]	ladies' sizes
L-Carr	Lace Carriage
[M]	men's sizes
M/C	machine
N(s)	needle(s)
NWP	non working or A position
patt	pattern
RC	row counter
rem	remain(ing)
000	set row counter to 000
sts	stitches
st	stocking stitch
T	tension setting
trans	transfer(ing)
UWP	upper working or D position
WP	working or B position
WY	waste yarn
Waste knit	-change to waste yarn, knit a few rows and release from machine

## INTARSIA

Should you decide to use the Intarsia Carr for the intarsia design and the K-Carr for the plain knitting, beware! First obtain the correct intarsia tension and then match the st st adjusting accordingly. Our instructions are based on the intarsia tension.

## MACHINES

A: 4.5 mm gauge with punchcard facility (24 st patt repeat). B1: 9mm gauge (by hand selection). B2: 9 mm gauge with punchcard facility (24 st patt repeat). B3: 9mm gauge (up to 112 st patt repeat). C: 4.5mm gauge electronic with mylar sheet (up to 60 st patt repeat). D: 4.5mm gauge (200 st patt repeat).

## SYMBOLS FOR HAND TRANSFER CHARTS

- Plain stitch
- Hole
- Stitch trans to the right.
- Stitch trans to the left.
- Needle holds 3 sts one in normal position, one transferred from left and one from right.
- Purl stitch

## NOTES

All measurements are in centimetres.

Always check tension before commencing as success depends on working to correct tension.

G preceding a figure relates to Green (Right side of needlebed). Y preceding a figure relates to Yellow (Left side of needlebed)

Between each figure on the Tension Dial there are 2 settings these are indicated in the garment instructions by <sup>2</sup>.

## RIB

2 x 1 Pitch H: Needle arrangement:- (This rib give the appearance of a 2 x 2 rib).



©All patterns, printed matter and photographs contained in this magazine are and remain the copyright of BROTHER INDUSTRIES LTD and BROTHER INTERNATIONAL EUROPE LTD and may not be reproduced in whole or in part without the consent of the copyright holder by way of written consent of the Editor. *Brother Fashion* is published jointly by BROTHER INDUSTRIES LTD, 35,9-chome, Horita-Dori, Mizuho-ku, Nagoya 467, Japan, and BROTHER INTERNATIONAL EUROPE LTD, Brother House, 1 Tame Street, Audenshaw, Manchester M34 5JE. Tel: 061 330 6531. *Brother Fashion* cannot accept any responsibility for unsolicited manuscripts and photographs and whilst every care is taken to ensure the accuracy of the patterns, charts, drawings and editorial matter printed in this issue of *Brother Fashion* the publisher can accept no responsibility whatsoever for any damage, loss or the like arising from their use. We reserve the right to publish and edit any letters received.