

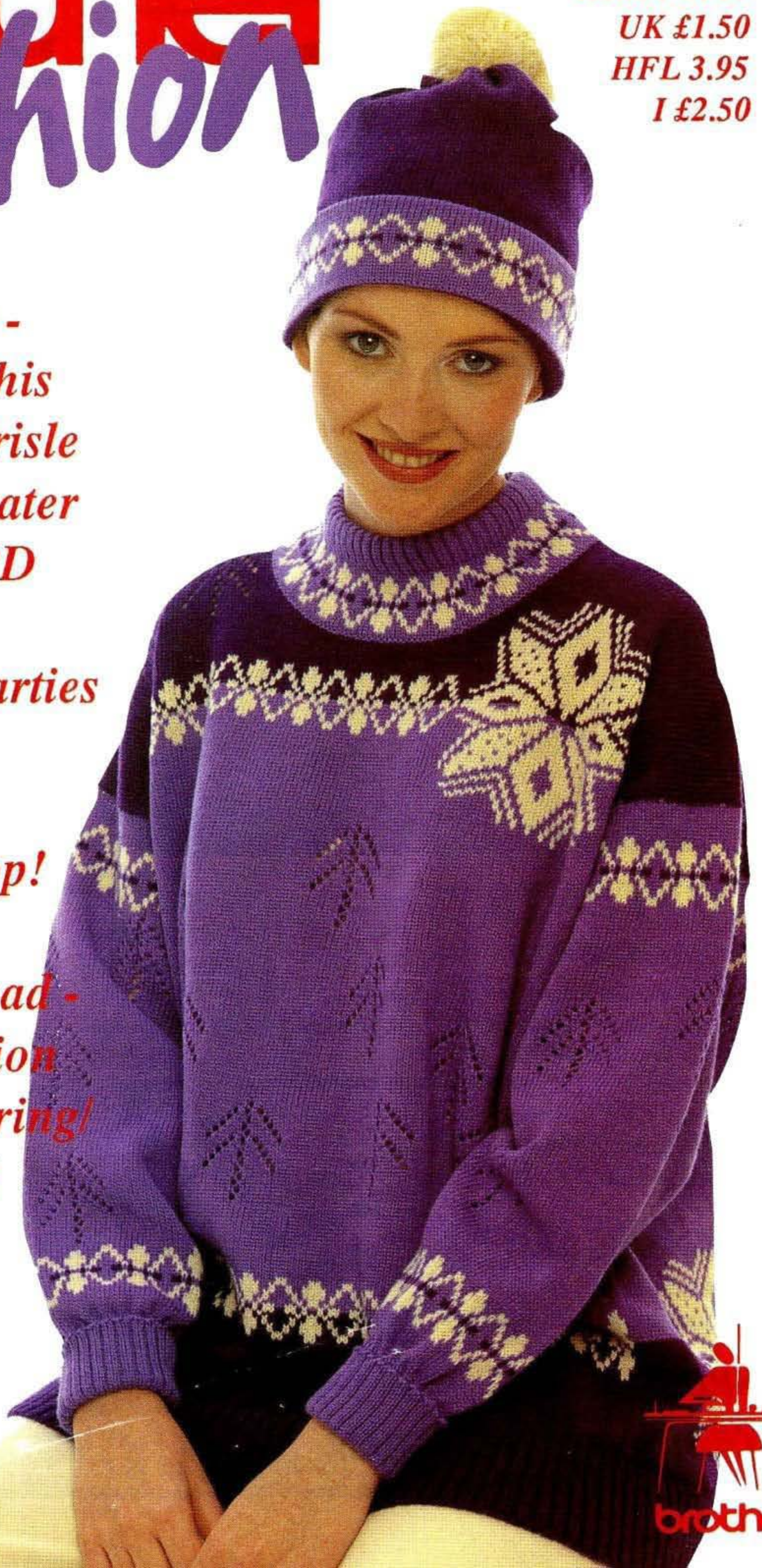
brother fashion

Issue No. 11
UK £1.50
HFL 3.95
I £2.50

*Step-by-Step -
how to knit this
beautiful fairisle
and lace sweater
using the PPD*

*Sparkle at parties
- see our
wonderful
sequinned top!*

*Looking ahead -
the full fashion
story for Spring/
Summer '96*





CONTENTS

WOMANSWEAR

- Fairisle and Lace sweater and hat, 3 - 7
- Chunky Mohair sweater, 8 - 10
- Fairisle Shetland sweater, 10 - 11
- Sequin top, 12 - 13
- Tuck and Lace waistcoat, 14 - 15
- Fairisle jacket, 15 - 18
- Fairisle sweater, 18 - 22

MENSWEAR

- Fairisle sweater, 18 - 22
- Fairisle sweater with cable ribs, 22 - 25

SPECIAL FEATURES

- PPD, 5 - 7
- Dates for your Diary, 25 - 27
- Summer Fashion File, 28 - 30

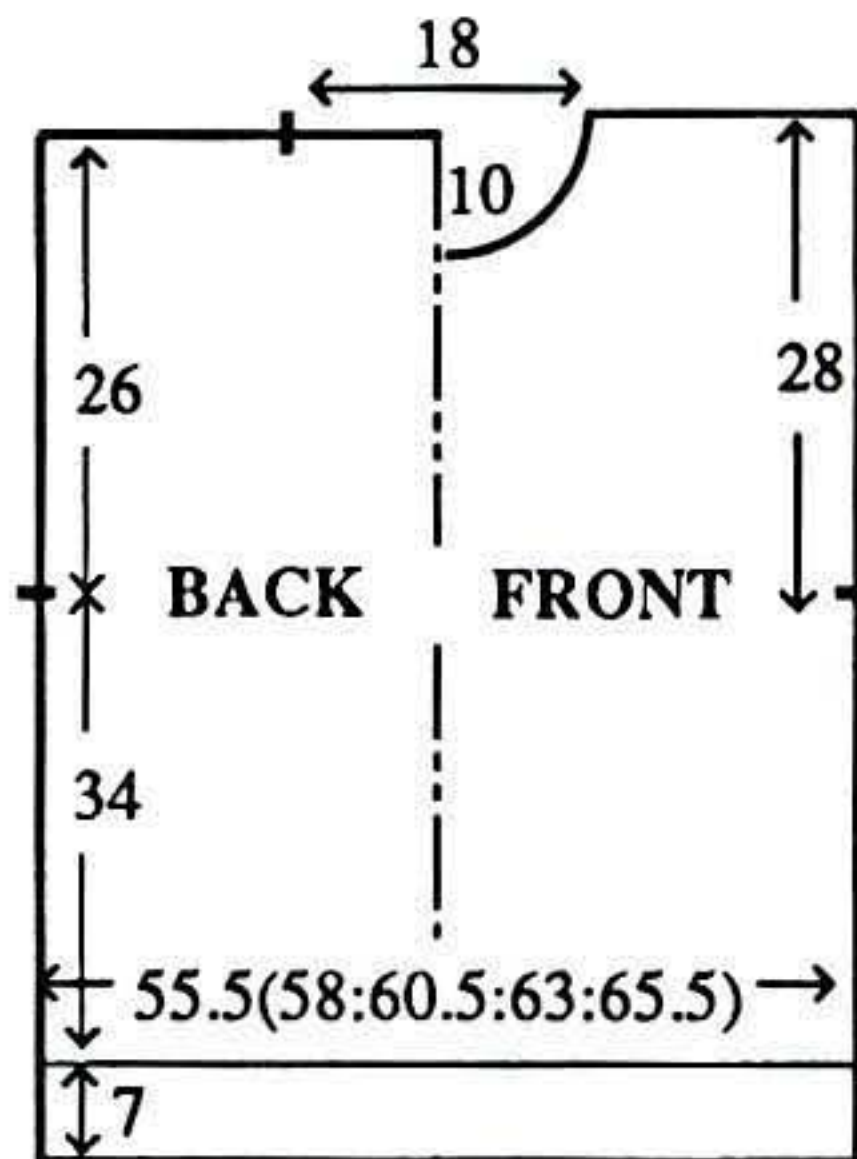
Dear Readers,
As this is the last issue of Brother Fashion we have tried to bring to you a selection of garments which will take you through the festive season with something to wear and something to give. If you are busy with lots of social engagements and want something especially stunning, see our silver and black "sax" jacket and waistcoat. The twosome may be worn together with skirt or pants, or the waistcoat may be worn alone with a tailored suit. For something to really make life sparkle see our sequined top - and not one sequin sewn on! We illustrate it with pants, but if you want a dress - mini, midi, or maxi - allow for your hip measurement and knit it longer. Our front cover sweater and matching hat was designed for those who plan to ski this winter, and of course those who enjoy the winter ambience without the hard work. Either way the sweater makes a lovely gift. If you are looking for a special gift for the man in your life, see our "French Horn" sweater. Classic lines and suitable for any age, the sweater is knitted in King Cole's latest colour addition to their Superspun Superwash Anit-Tickle range. Moving away from this season's festivities and looking ahead into '96, we bring you a bumper guide to what to expect from fashion trends in Spring/Summer. Happy Knitting,
Susan Nutbeam
Editor

**No 1 SNOWFLAKE AND
LACE TREE SWEATER
(PPD STEP-BY-STEP)**

MACHINES: D with KR and PPD and/or Disk Drive.
MATERIALS: Standard 4-ply wool, we used KING COLE Superspun Superwash 4-Ply; A - 320 (340, 360, 380, 400)g (Larkspur 13), B - 130 (140, 150, 160, 170)g (African Violet 136) and C - 50 (55, 60, 65, 70)g (Aran 46) (100% wool 360m/100g). **MEASUREMENTS:** To fit bust 86 (91, 96, 101, 106)cm. **TENSION:** St st with Lace - 40 sts = 13.3cm and 60 rows = 13.8cm (approx T6). **RIB:** 2 x 1 (see ABBREVIATIONS) T2/2. **NOTES:** See STEP-BY-STEP. ALWAYS WORK 4 MOVEMENTS OF THE LACE CARRIAGE. For BACK omit Lace 'Trees' at shoulder.

BACK

Using B cast on over 167 (173, 182, 188, 197) KH Ns as RIB, 000. Knit to RC36. Trans all sts to KH. Inc 0 (2, 1, 1, 0) sts, 000. Using B T6 knit to RC9. Set for first row of Stitch Pattern and knit 1 row to select Ns. With B in FA and C in FB,



working in Single Motif/Fairisle, knit to RC38. With A in FA and C in FB, knit to RC65. Set Change Knob to N, and depress MC button. Knit last row of Single Motif. Release MC button and working in Lace (see NOTES), using A, knit to RC144. Place a WY marker at each end of work. Cont in Lace to RC170. Knit 1 row. Change Knob to KC. Knit 1 row. Working in Single Motif/Fairisle with A in FA and C in FB, knit to RC200. With B in FA and C in FB knit to RC228. Using B to complete, knit to RC254. Waste knit centre 55 sts. Waste knit rem 56 (60, 64, 67, 71) sts at each end of work for shoulders.

FRONT

As BACK to RC220.

Neck shaping

(Note Patt position). Waste knit centre 17 sts. Waste knit sts at left, COR. Knit 1 row. At beg of next and every foll alt row, cast off 4 sts x 1, 3 sts x 2, 2 sts x 2, then dec 1 st x 5. Knit to RC262 and waste knit rem 56 (60, 64, 67, 71) sts. Return sts at left to Ns and working in lace knit to match right side reversing shaping.

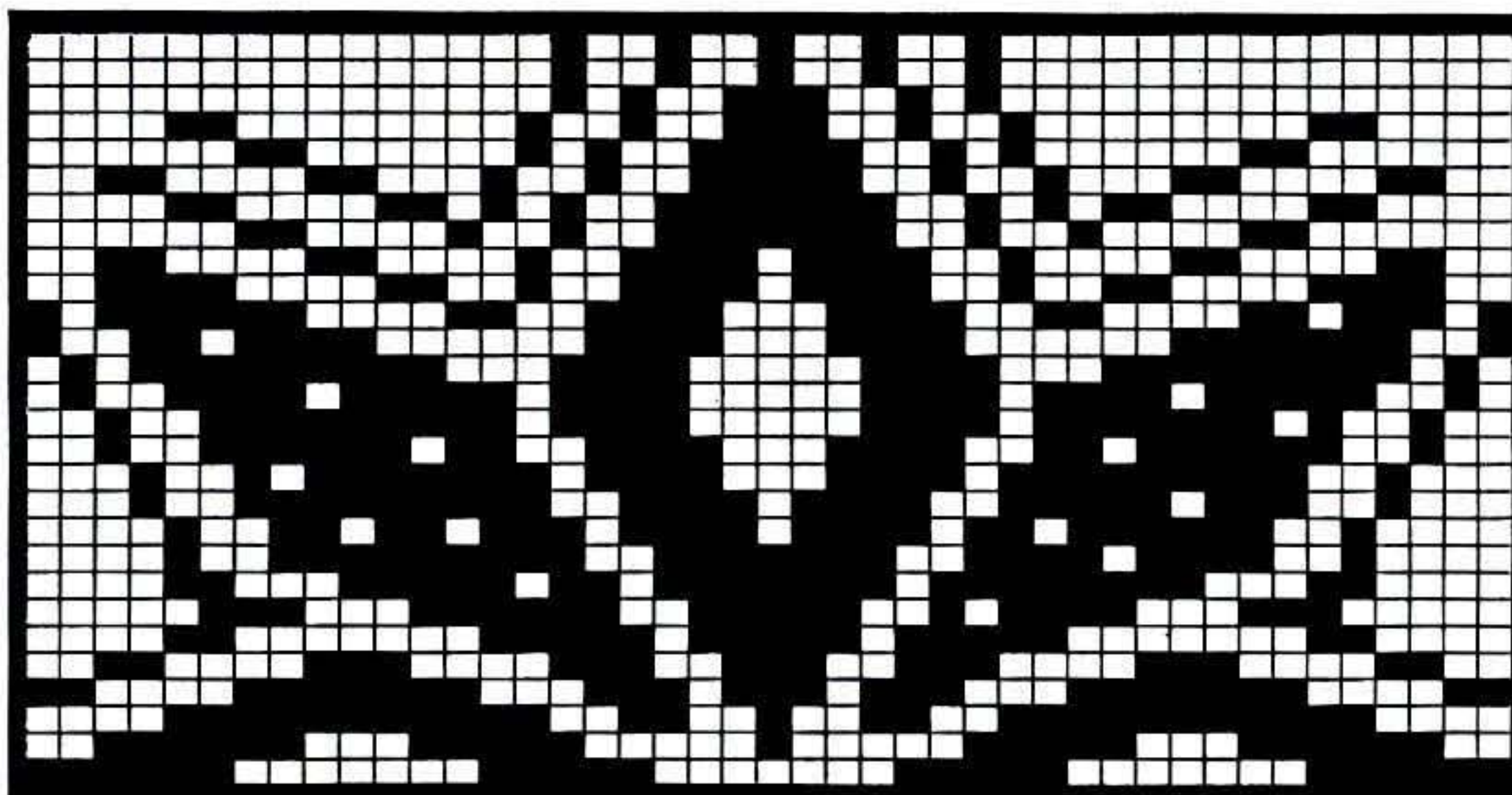
NECKBAND

Join one shoulder by placing one set of shoulder sts back onto Ns with right sides together. T10 knit 1 row and cast off. Push 158 KH Ns to WP. With right side facing, pick up same number of sts evenly along neck edge and place onto Ns. Using A T6 knit 2 rows. Trans to RIB, making sts as necessary, 000. Knit to RC46. Trans all sts to KH. T6 knit 1 row. *Set for first row of Border St Patt and knit 1 row to select Ns. With A in FA throughout, and FB as folls: knit 7 rows C, 2 rows B, and 7 rows C*. Change to st st and knit 2 rows A. Waste knit. Join second shoulder as first. Join NECKBAND seam, fold in half

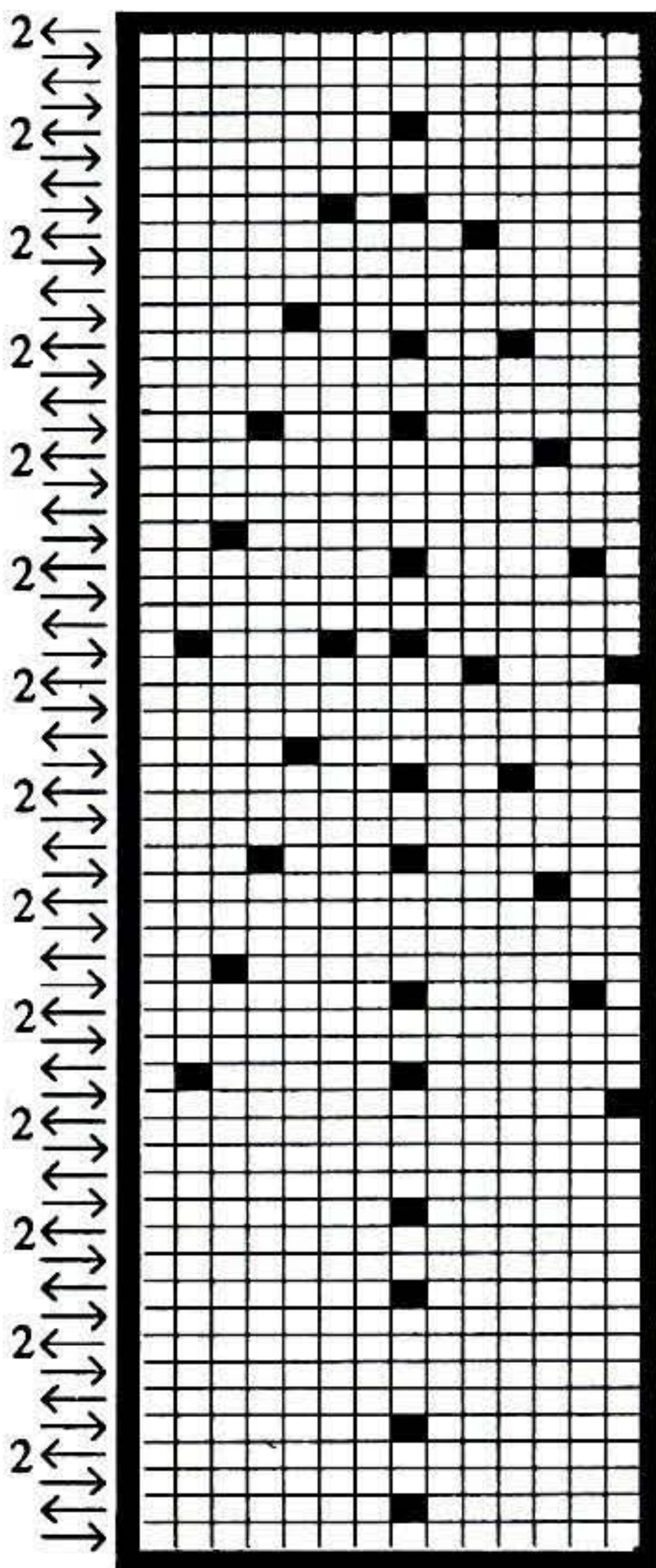
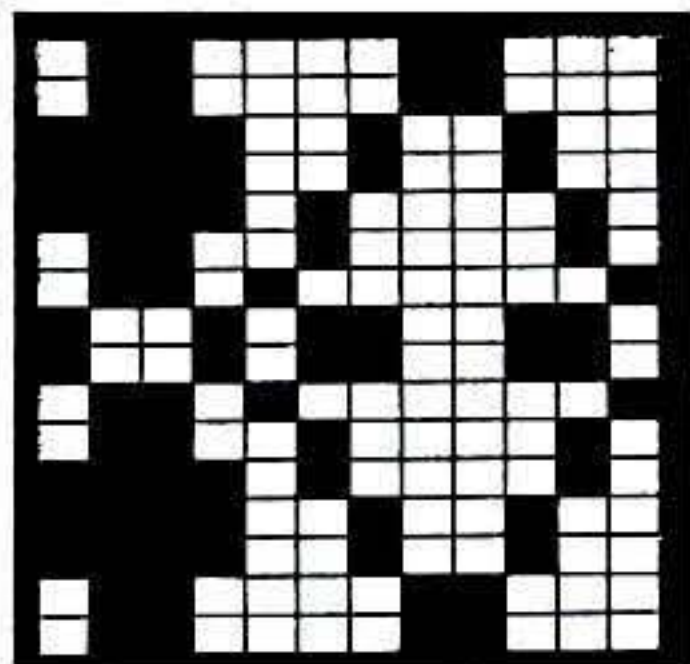
to outside and backstitch to garment through last row knitted in A.

SLEEVES

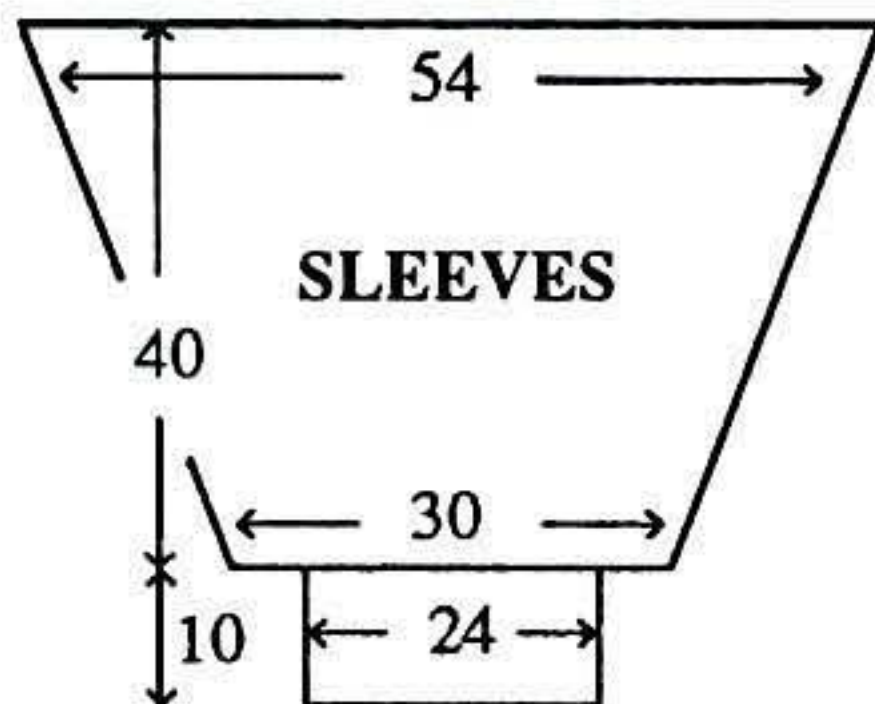
Push 162 KH Ns to WP. With wrong side facing, pick up same number of sts evenly along armhole edge between WY markers and place



onto Ns, 000. Using A T6 knit 9 rows, repeat from * to *, knit 2 rows, work Lace 'Trees' (see STEP-BY-STEP PPD) to RC144, knit 1 row, repeat from * to *, and AT THE SAME TIME at RC24, dec 1 st at each end of next and every foll 4th row x 36. Knit to RC168 and waste knit rem 90 sts. CUFFS: Push 71 KH Ns to WP. With wrong side facing, place sts from cuff edge onto Ns distributing them evenly along



the row. Using A T6 knit 1 row. Trans to RIB, making sts as necessary, 000. Knit to RC49. T10/8 knit 1 row. Trans all sts to KH and latch cast off each st individually.



MAKE-UP

Block and press. Join side and SLEEVE seams.

HAT

MATERIALS: B - 120g and small amounts of A and C. Push into WP 159 KH Ns. Take back to NWP every alt N. Using B T5 knit 1 row. Hang comb and claw weights. Bring all Ns to WP and knit 1 row, 000. Knit to RC100. Using A T10 knit 1 row. T5 knit 4 rows. Set for first row of Fairisle Border St Patt and knit 1 row to select Ns. With A in FA throughout, in FB knit 7 rows B, 2 rows C, and 7 rows B. Using A knit 6 rows. T10 knit 1 row. T5 knit 27 rows. Using B T2 knit 1 row. T6 knit to RC248. T5 knit 4 rows. Trans every alt st to adjacent N leaving empty Ns in NWP. T4 knit 4 rows. Thread yarn through sts and remove from Ns.

MAKE-UP

Block and press. Join seam and pull up yarn at crown and fasten off. Using C make a Pom-pon and attach to crown.

PPD STEP-BY-STEP FAIRISLE AND LACE SWEATER USING THE PPD.

When using the knitting machine alone we are able to knit a lace single motif, or a number of lace motifs anywhere we choose across the row. We are however limited when it comes to choosing which row to begin the motifs.

With the help of the PPD we are able to choose which stitch along the row we would like the motif or motifs to begin, as well as which row. The only restriction is that we must ensure that each motif has the same number of Lace Carriage movements. So when we are positioning the Motifs on the Grid, we must move the cursor up or down in multiples equal to the Lace Carriage movements.

When creating the Grid, we must allow sufficient rows to accommodate the Lace Carriage movements, e.g - If your motifs have 6 Lace Carriage movements for every 2 rows of knitting you must multiply the number of rows to be knitted x 3 to allow for the depth of the grid.

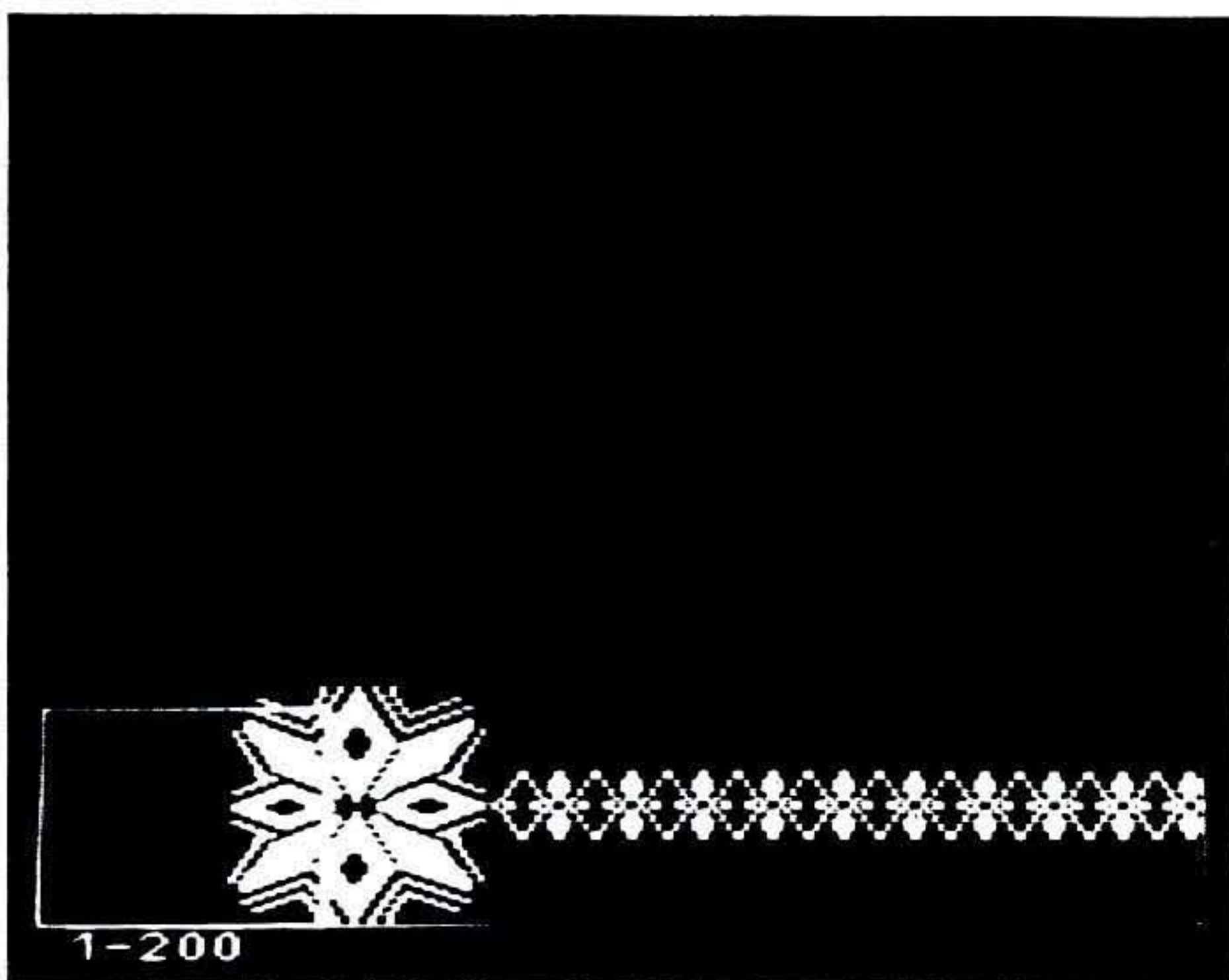
In this exercise, we are going to position the fairisle Snowflake at the end of the fairisle Border stitch pattern. Then we are going to place several Lace Trees followed by the whole Fairisle design in Reverse.

STEP 1. Enter the Border st patt, the half Snowflake single motif and the lace Tree single motif. Create a Grid 197 sts x 354 rows.

STEP 2. We are going to place the Border Stitch Pattern:- HELP. Select 8 - VARIATIONS. SPREAD (HORIZONTAL) to ON. HELP. Select 7 - LOAD STORED PATTERN. Select 1 - BUILT-IN PATTERN. Select 1 - CREATED PATTERN (CURRENT PAGE). Enter your Pattern number of Border St Patt. Select 1: ALL. Transfer Cursor to 82, 21. STEP. Select 1: YES.

STEP 3. We are now going to erase the left hand portion of the Border to enable us to place the Snowflake:- HELP. Select 6 - ERASE PART OF PATTERN. Set corner to 1, 21. STEP. FRAME 76 x 16. STEP. Select 1: YES.

STEP 5. We are now going to position the Single Motif and Border St Pattern near the top of our Grid and then fill in the



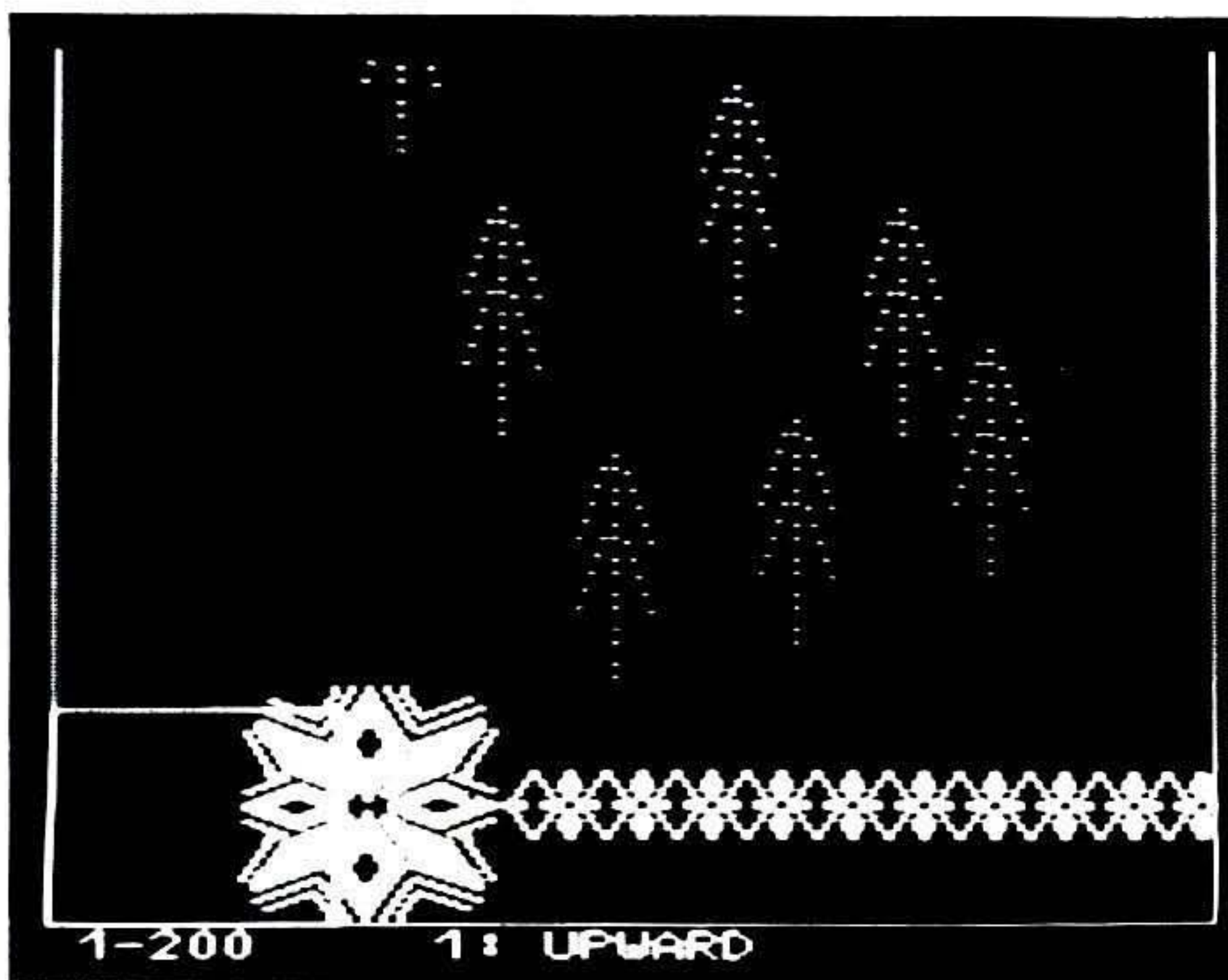
STEP 4. Now we can position the Half Snowflake:- HELP. Transfer Cursor to St. 33, Row No. 1. HELP. Select 8 - VARIATIONS. UPSIDE DOWN to ON and SPREAD (HORIZONTAL) to OFF. HELP. Select 7 then 1 then 1. Enter your

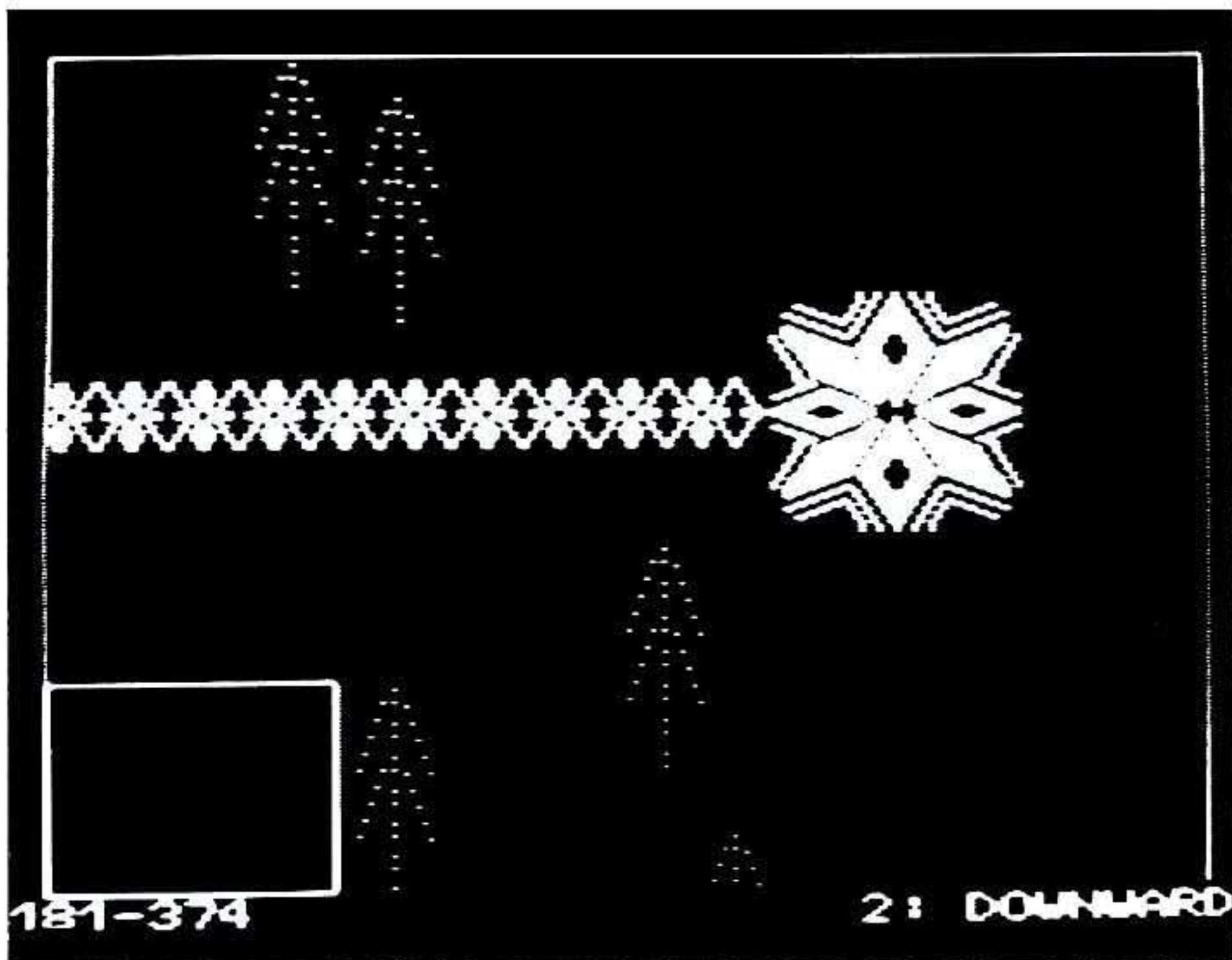
space between with Lace Motifs:- Transfer Cursor to St No 1, Row No 233. HELP. Select 8 - VARIATIONS.

Patt No of Half Snowflake. Select 1: All. STEP. Select 1: YES. HELP. Select 8 - VARIATIONS. UPSIDE DOWN to OFF. HELP. Select 2 - TRANSFER CURSOR. Enter St No. 33, Row No. 29. STEP. Select 1: YES.

REVERSE and UPSIDE DOWN to ON. HELP. Select 7 then 1 then 1. Enter your Pattern No of the Grid. STEP. Set corner to 1, 1. FRAME 197 x 56. STEP. STEP. Select 1: YES.

STEP 6. Now place the Lace Motifs:- HELP. Select 8 - VARIATIONS. REVERSE and UPSIDE DOWN to OFF. HELP. Select 7 then 1 then 1. Enter your Pattern No of the Lace Motif. Select 1: All. Move cursor to desired position and STEP. Select REDUCE to view the position and if you are satisfied with the position then select 1: YES if not select 2: NO and move the cursor. Keep working in this manner until you have the desired number of Lace Trees in position.





STEP 7. If desired, you can place 1 or 2 Lace Trees at top left:- Transfer cursor to St No 53, Row No 313. STEP. Move cursor to St No 35, Row No 321. STEP. You have now completed the design for the FRONT/BACK of the sweater.

For the SLEEVES we do not need to use the PPD to position the Fairisle Borders as we can just load them into our knitting machine and knit them when required. We just need to position the Lace Trees:- Create a Grid 90 sts x 232 rows. HELP. Select 8 - VARIATIONS. REVERSE and UPSIDE DOWN to ON. HELP. Select 7 then 1 then 1. Enter your Pattern No for Lace Tree. Set Corner to 1, 1. STEP. FRAME 14 x 54. STEP. Move cursor to required position. STEP. Select REDUCE to view the position. If you are satisfied with the position, select 1: YES. Keep working in this manner until you have the desired number of Trees in position.



No 1.



No 2 FAIRISLE MOHAIR SWEATER [DEER]

MACHINES: B2 or B3 with KR. **MATERIALS:** STANDARD MOHAIR, we used YORKSHIRE YARNS Kaleidescope; A - 260 (270, 280, 290, 300)g (Aubergine), B - 230 (240, 250, 260, 270)g (Mauve) and C - 85g (Olive). (83% mohair, 9% wool, 8% nylon. 200m/100g). **MEASUREMENTS:** To fit bust 86 (91, 96, 101, 106)cm. **TENSION:** St st - 20sts = 13.3cm and 30 rows = 14cm (approx T6). **RIB:** 1 x 1 T0/0. **NOTES:** Fairisle St Patt - A in FA, C in FB, knit 10 rows, B in FA, A in FB, knit 24 rows.

BACK/FRONT

Using A cast on over 71 (75, 79, 83, 87) KH Ns as RIB, 000. Knit to RC24. Trans all sts to KH. T6 knit 1 row. Set for first row of Fairisle St Patt and knit 1 row to select Ns. Working in Fairisle (see NOTES), knit to RC4. Inc 1 st at each end of next and every foll 4th row x 25 and AT THE SAME TIME

at RC34, using B and working in St st to end, knit 2 rows.

Divide for Vee

Dec centre st. Waste knit both sets of sts. Return sts at right to centre Ns. Cont to shape side seam every 4 rows and, AT THE SAME TIME, knit 2 rows. *Dec 1 st at left on next 2 rows, knit 1 row*. Repeat from * to * x 24 and, AT THE SAME TIME at RC53, place a WY marker at side edge. Knit to RC102.

Shoulder shaping

At beg of next and every foll alt row cast off 3 sts x 4. Cast off rem sts. Return sts at left to Ns and knit to match right side reversing shaping.

FAIRISLE BORDER

Push 72 KH Ns to WP. With wrong side facing pick up same number of sts evenly along one side of Neck opening and place onto Ns. Set for first row of Fairisle St Patt and using A T6 knit 1 row to select Ns, 000. Working in Fairisle throughout, knit 1 row. At neck edge repeat from * to * x 15. Knit to RC44. Using A knit 1 row. T10 knit 1

row and cast off. Work second side of Neck the same reversing shaping. Join centre BORDER seam.

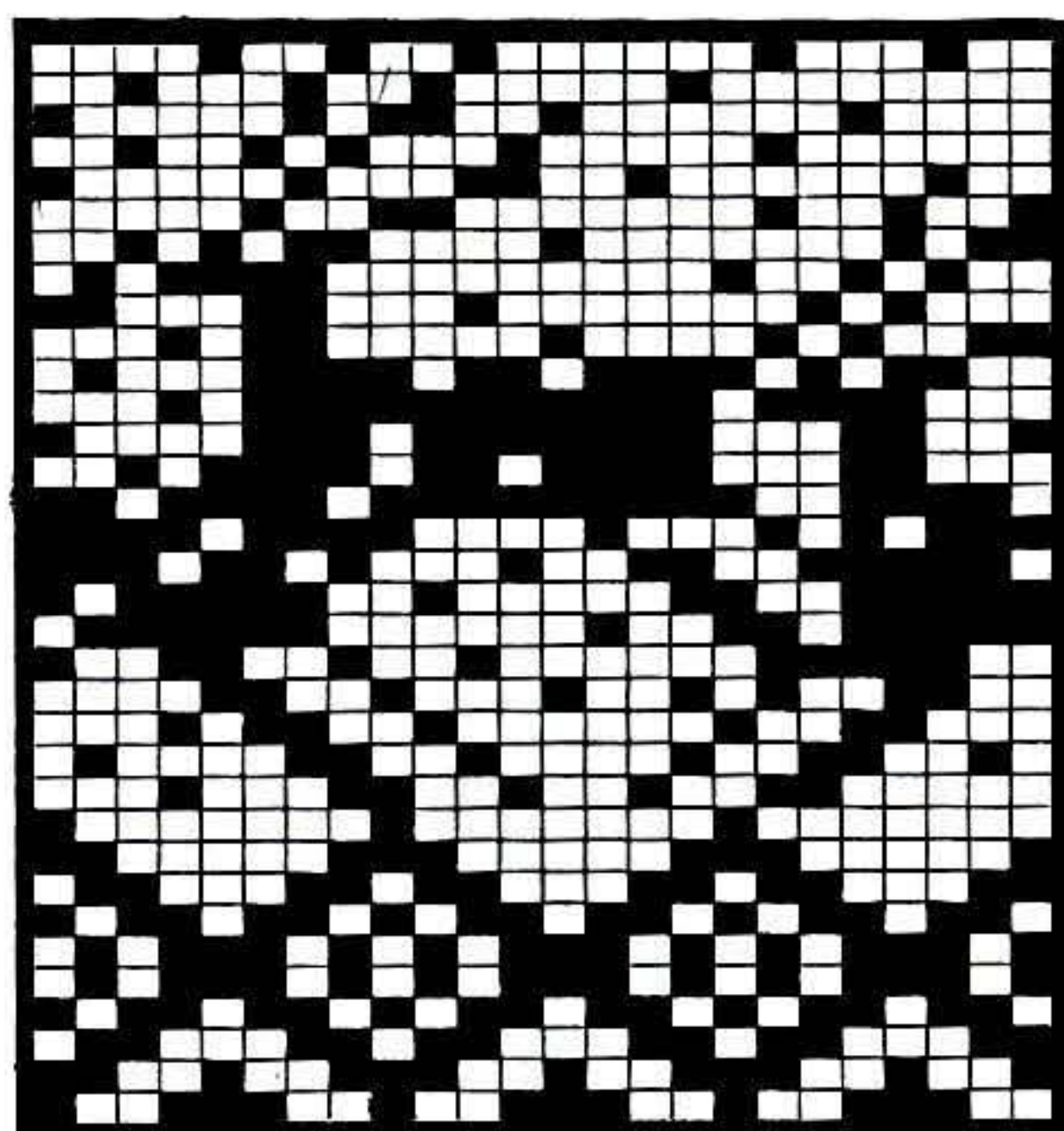
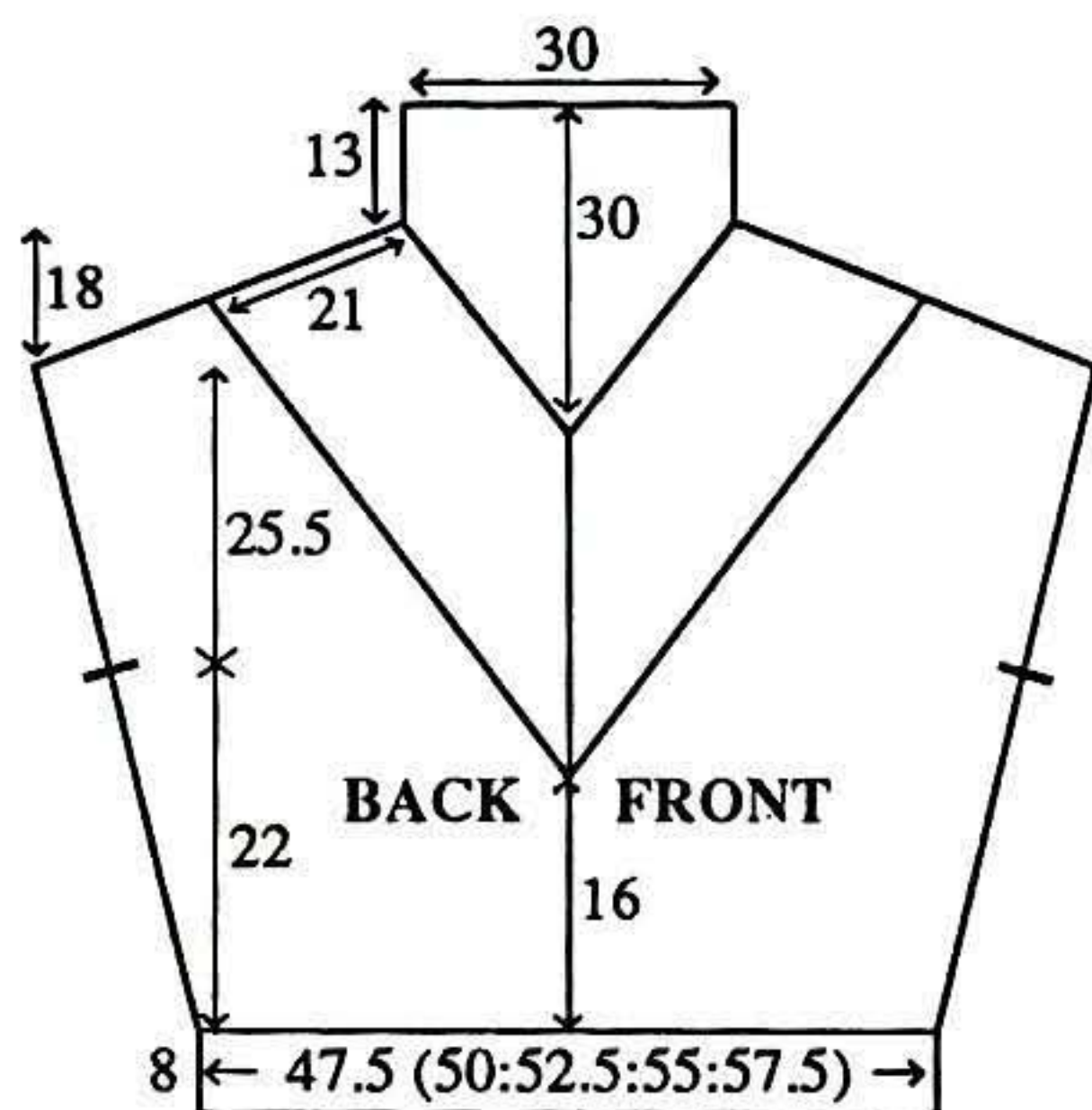
SLEEVES

Join shoulders. Push 77 KH Ns to WP. With wrong side facing, pick up same number of sts evenly along armhole edge between WY markers and place onto Ns, 000. Using B T6 knit 4 rows. Dec 1 st at each end of next and every foll 4th row x 16 and, AT THE SAME TIME, at RC31. Set for Fairisle St Patt - UPSIDE DOWN - and knit 1 row to select Ns. Working in Fairisle to end, knit to RC66 and waste knit rem 45 sts.

CUFFS: Push 35 KH Ns to WP. With wrong side facing, return sts from cuff edge to Ns distributing them evenly along the row. Using A T6 knit 1 row. Trans to RIB, 000. Knit to RC11. T10/8 knit 1 row. Trans all sts to KH and latch cast off.

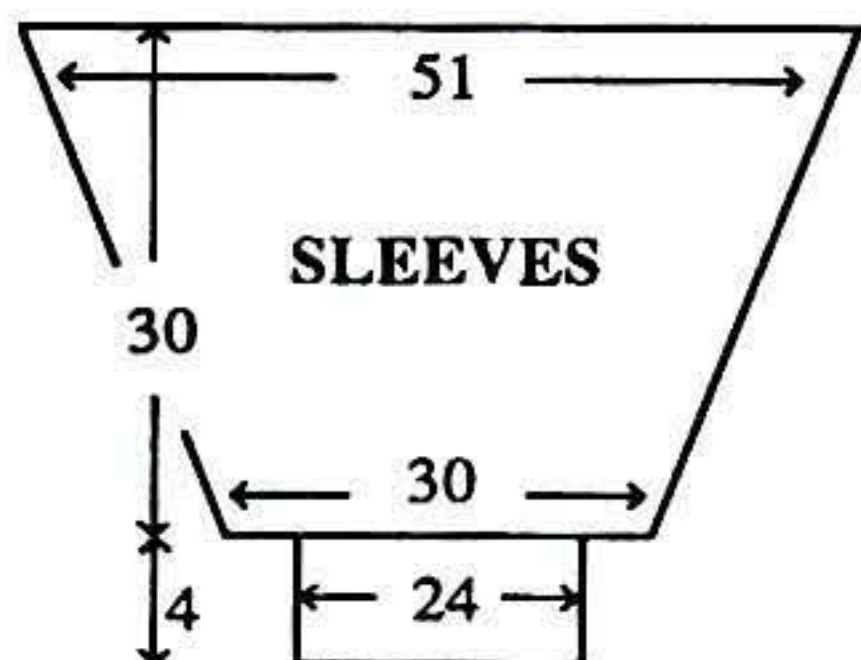
COLLAR and VEE INSET (2 pieces)

Using A cast on over 43 KH Ns





as FNR, 000. T3/3 knit to RC32. Dec 1 st at each end of next and every foll alt row x 20. Knit 2 rows and cast off rem 3 sts.



MAKE-UP

Join side and SLEEVE seams. Stitch COLLAR seams. Stitch inset to Fairisle BORDER as illustrated.

No. 3 LADY'S FAIRISLE SHETLAND SWEATER

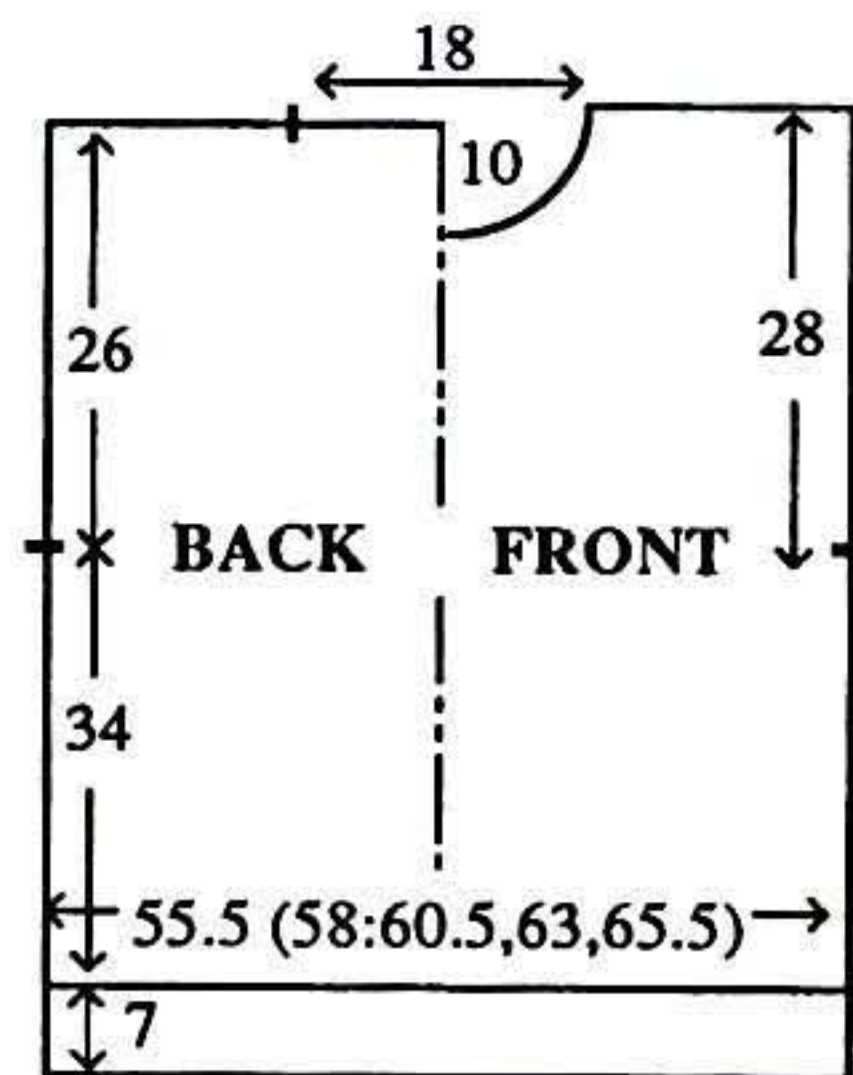
MACHINES: C or D with KR.

MATERIALS: Standard 4-ply shetland wool, we used JAMIESON and SMITH 2-Ply Jumper Weight; A - 225 (240, 255, 270, 285)g (Cerise Mix FC74), B - 200 (215, 230, 245, 260)g (Rust FC8) and C - 65 (70, 75, 80, 85)g (Purple Mix FC75) (100% wool 480m/-100g). **MEASUREMENTS:** To fit bust 86 (91, 96, 101, 106)cm. **TENSION:** Fairisle St Patt - 40 sts = 13.1cm and 60 rows = 17.5cm (approx 8). **RIB:** 1 x 1 T3/3. **NOTES:** All-over Fairisle St Patt - Utilise the NEGATIVE switch, B in FA throughout, knit 5 rows A, 4 rows C, 10 rows A, 4 rows C, 12 rows A, 4 rows C, 10 rows A, 4 rows C, 5 rows B. Fairisle Border St Patt - B in FA and C in FB.

BACK

Using A cast on over 171 (177, 185, 193, 199) KH Ns as RIB, 000. *Knit to RC10. **Trans

all sts to KH. Set for first row of Border St Patt. T8 knit 1 row to select Ns. Knit 8 rows**. Using A knit 1 row. Trans to RIB and knit 10 rows*. Trans all sts to KH. Set for first row of Fairisle St Patt. T8 knit 1 row to select Ns, 000. Working in Fairisle throughout (see NOTES), knit to RC118. Place a WY marker at each end of work. Knit to RC206. Waste knit centre 55 sts. Waste knit rem 58 (61, 65, 69, 72) sts at each end of work for shoulders.



FRONT

As BACK to RC179.

Neck shaping

(Note Patt position). Waste knit centre 17 sts. Waste knit sts at left, COR. Knit 1 row. At beg of next and every foll alt row cast off 4 sts x 1, 3 sts x 2, 2 sts x 2, then dec 1 st x 5. Knit to RC214 and waste knit rem 58 (61, 65, 69, 72) sts. Return sts at left to Ns and knit to match right side reversing shaping.

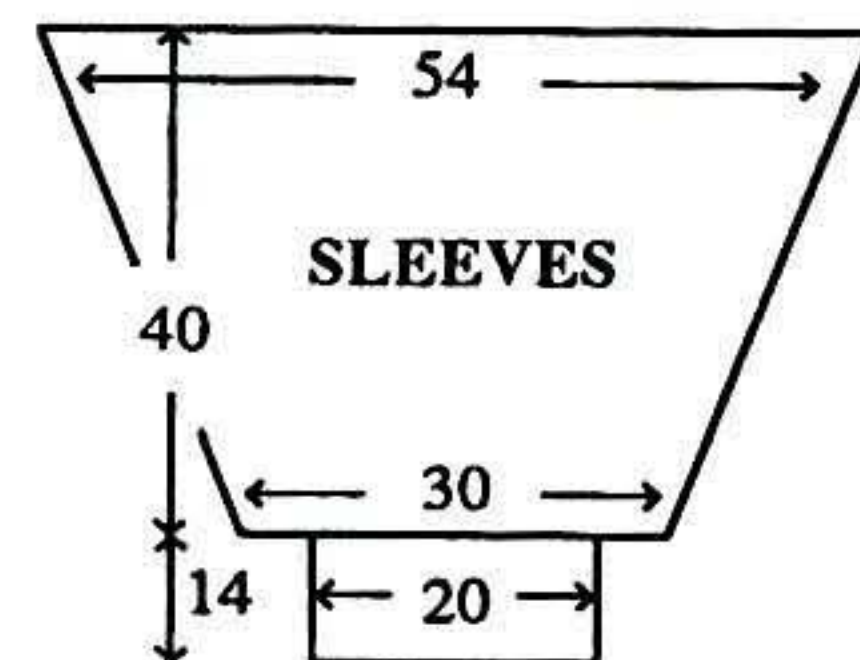
NECKBAND

Join one shoulder by placing one set of shoulder sts back onto Ns with right sides together. T10 knit 1 row and castoff. Push 157 KH Ns to WP. With right side facing,

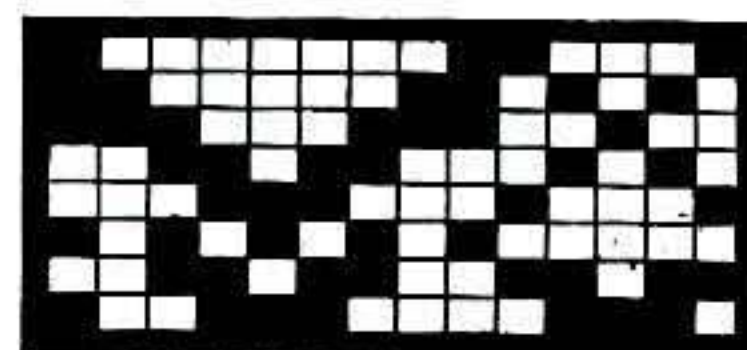
pick up same number of sts evenly along neck edge and place onto Ns. Using A T8 knit 1 row. Trans to RIB, 000. Knit to RC46. Repeat from ** to ** - UPSIDE DOWN. Using A knit 3 rows and waste knit. Join second shoulder as first. Join NECKBAND seam, fold in half to outside and backstitch to garment through last row knitted in A.

SLEEVES

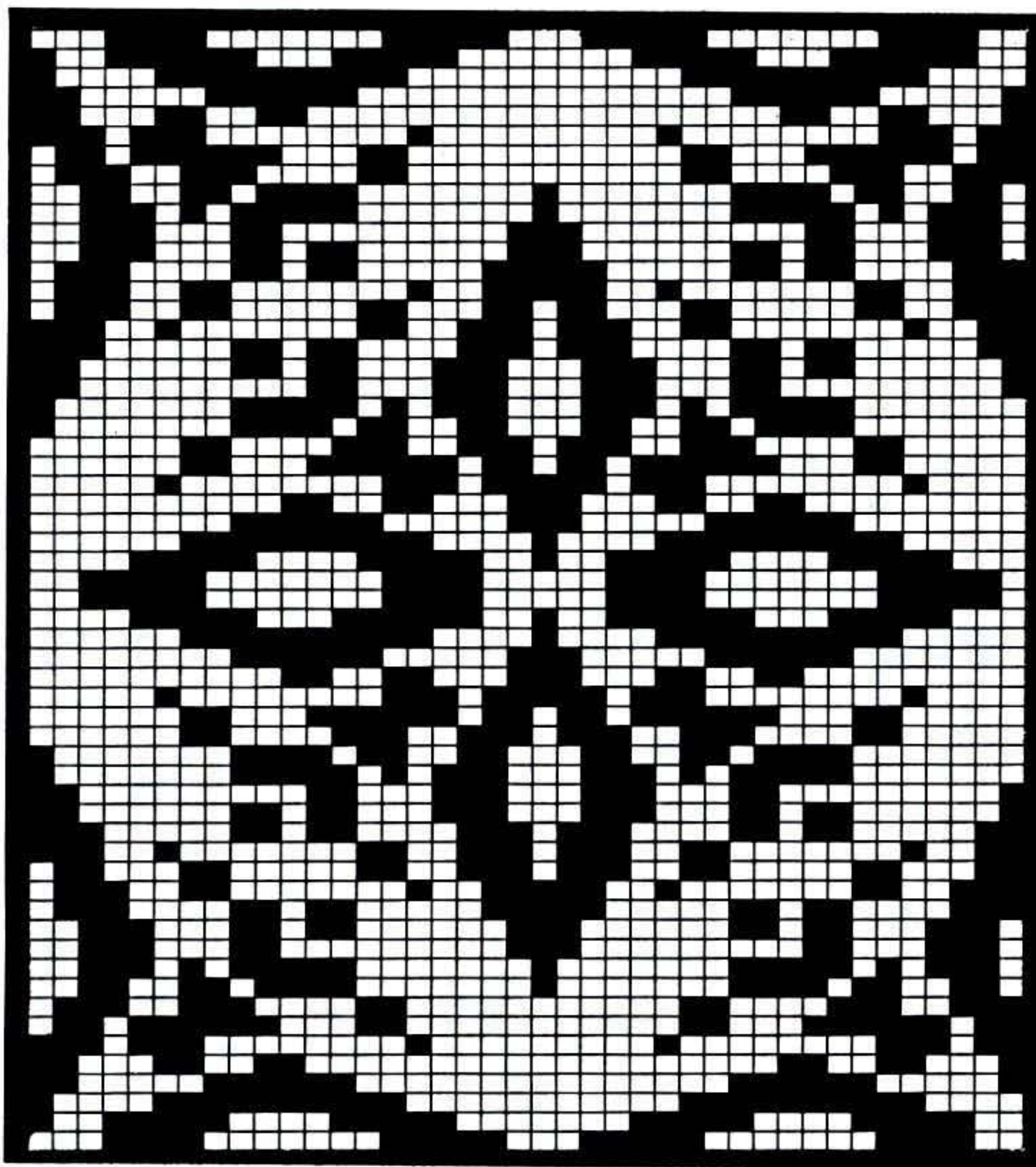
Push 163 KH Ns to WP. With wrong side facing, pick up same number of sts evenly along armhole edge between WY markers and place onto Ns. Set for first row of Fairisle St Patt and using B T8 knit 1 row to select Ns, 000. Working in Fairisle throughout (see NOTES), knit to RC30. Dec 1 st at each end of next and every foll 3rd row x 36. Knit to RC139. Using A T8 knit 1 row and waste knit rem 91 sts.



CUFFS: Push 61 KH Ns to WP. With wrong side facing, return sts from cuff edge to Ns distributing them evenly along the row. Using A T8 knit 1 row. Trans to RIB, 000. Repeat from * to * EXCEPT knit Fairisle St Patt UPSIDE DOWN. T2/2 knit 31 rows. T10/8 knit 1 row.







Working in St st with Sequins throughout (see NOTES), knit to RC90. Place a WY marker and inc 1 st at each end of work. Knit to RC242.

Armhole shaping

At beg of next and every foll row, cast off 4 sts x 2, 3 sts x 4, 2 sts x 6, then dec 1 st at each end of next and every foll alt row x 9. Knit to RC302 (306, 310, 314, 318).

Neck shaping

Waste knit centre 21 sts. Waste knit sts at left, COR. Knit 1 row. At beg of next and every foll alt row cast off 4 sts x 1, 3 sts x 1, 2 sts x 2, then dec 1 st x 3. Knit to RC330 (334, 338, 342, 346) and waste knit rem 17 (19, 23, 25, 29) sts. Return sts at left to Ns and knit to match right side reversing shaping.

Trans all sts to KH and latch cast off.

MAKE-UP

Block and press. Join side and SLEEVE seams. Fold CUFFS in half to inside and stitch down loosely.

No. 4 LADY'S

SEQUINNED TUNIC

MACHINES: A, C or D. **MATERIALS:** Standard 4-ply acrylic, we used BRAMWELL 4-Ply Acrylic; A - 220 (235, 250, 265, 280)g (Navy) (100% acrylic 480m/100g). Approx 2000 Sequins in each of Navy and White. **MEASUREMENTS:** To fit bust 86 (91, 96, 101, 106)cm. **TENSION:** St st

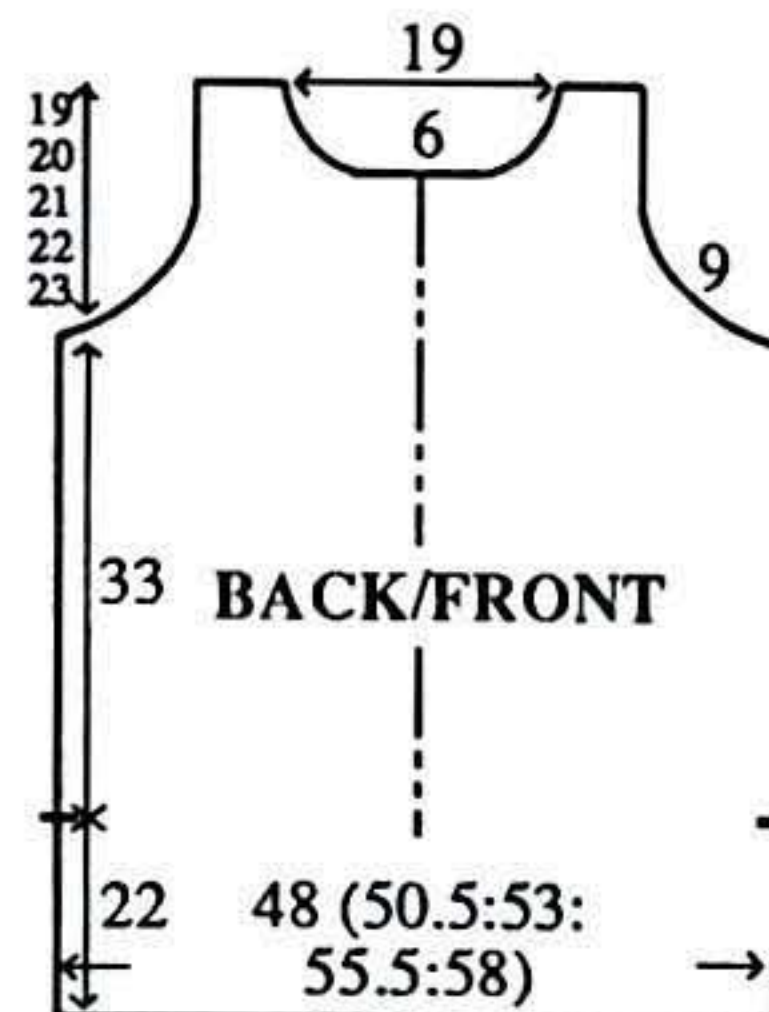
with Sequins - 40 sts = 15cm and 60 rows = 13cm (approx T7). **NOTES:** Sequins are placed on every 4th stitch in groups of 4 across x 4 high, alternating the colours. St st with Sequins. - *Place Sequin against knitting just below needles, using transfer tool pick up 1 st from 2 rows below and place it onto corresponding needle encasing sequin. Knit 6 rows*. Repeat from * to * throughout.

BACK/FRONT

Using WY cast on over 131 (135, 143, 147, 155) KH Ns and knit a few rows ending with COR. T6 knit 11 rows. T10 knit 1 row. T6 knit 11 rows. Turn up hem and knit 3 rows, 000.

MAKE-UP

Join both shoulders by placing both sets of shoulder sts back onto Ns with right sides together. T10 knit 1 row and cast off. Join side seams from between markers. Work crochet around neck edge.





No. 5 LADY'S TUCK/LACE/STOCKING STITCH WAISTCOAT

MACHINES: C or D.

MATERIALS: YEOMAN YARNS Manila Lamé 2-Ply; A -190 (205, 220, 235, 250)g (75% viscose, 15% nylon, 10% polyester 1200m/100g). 4 1.25cm buttons. **MEASUREMENTS:** To fit bust 81 (86, 91, 96, 101)cm. **TENSION:** Tuck/Lace St Patt - 40 sts = 11.9cm and 60 rows = 9.7cm (approx T4) Stocking St - 40 sts = 10.6cm and 60 rows = 11.2cm (approx T3). **NOTES:** Use 2 ends of A throughout. Tuck/Lace St Patt - *KC on - Both TUCK buttons depressed, knit 8 rows. KC off - release both TUCK buttons, knit 2 rows St st. Work 4 Lace Carr movements. Knit 2 rows St st. Work 4 Lace Carr movements*. Repeat from * to * throughout. **BUTTONHOLES - COR,** Leaving 21 (22, 22, 23, 23) KH Ns at right in WP, bring forward to HP all rem Ns. **Knit 8 rows over these 20 Ns. Bring these 20 Ns to HP and take back to UWP the next 20 Ns**. Repeat from ** to ** x 3. Knit 8 rows over rem sts at left.

BACK

Using WY cast on over 160 (170, 180, 190, 200) KH Ns and knit a few rows ending with COL. Using A T6 knit 1 row. T2 knit 17 rows. T10 knit 1 row. T2 knit 17 rows. T6 knit 1 row. Turn up hem, 000. T3 Working in St st throughout, knit to RC118 (124, 124, 130, 130).

Armhole shaping

At beg of next and every foll row. cast off 4 sts x 2, 3 sts x 4,

2 sts x 6, then dec 1 st at each end of alt rows x 14. Knit to RC248 (254, 260, 266, 272).

Back neck and shoulder shaping

Waste knit centre 38 sts. Waste knit sts at left, COR. At right on next and every foll alt row cast off 3 sts x 5, 1 (6, 11, 16, 21) sts x 1 and, AT THE SAME TIME, at left on next and every foll alt row cast off 3 sts x 5. Return sts at left to Ns and knit to match right side reversing shapings.

RIGHT FRONT

Repeat from *** to *** using 73 (77, 81, 85, 89) KH Ns. T4 knit 1 row. Set for first row of Tuck/Lace St Patt and knit 1 row to select Ns.

Hem shaping

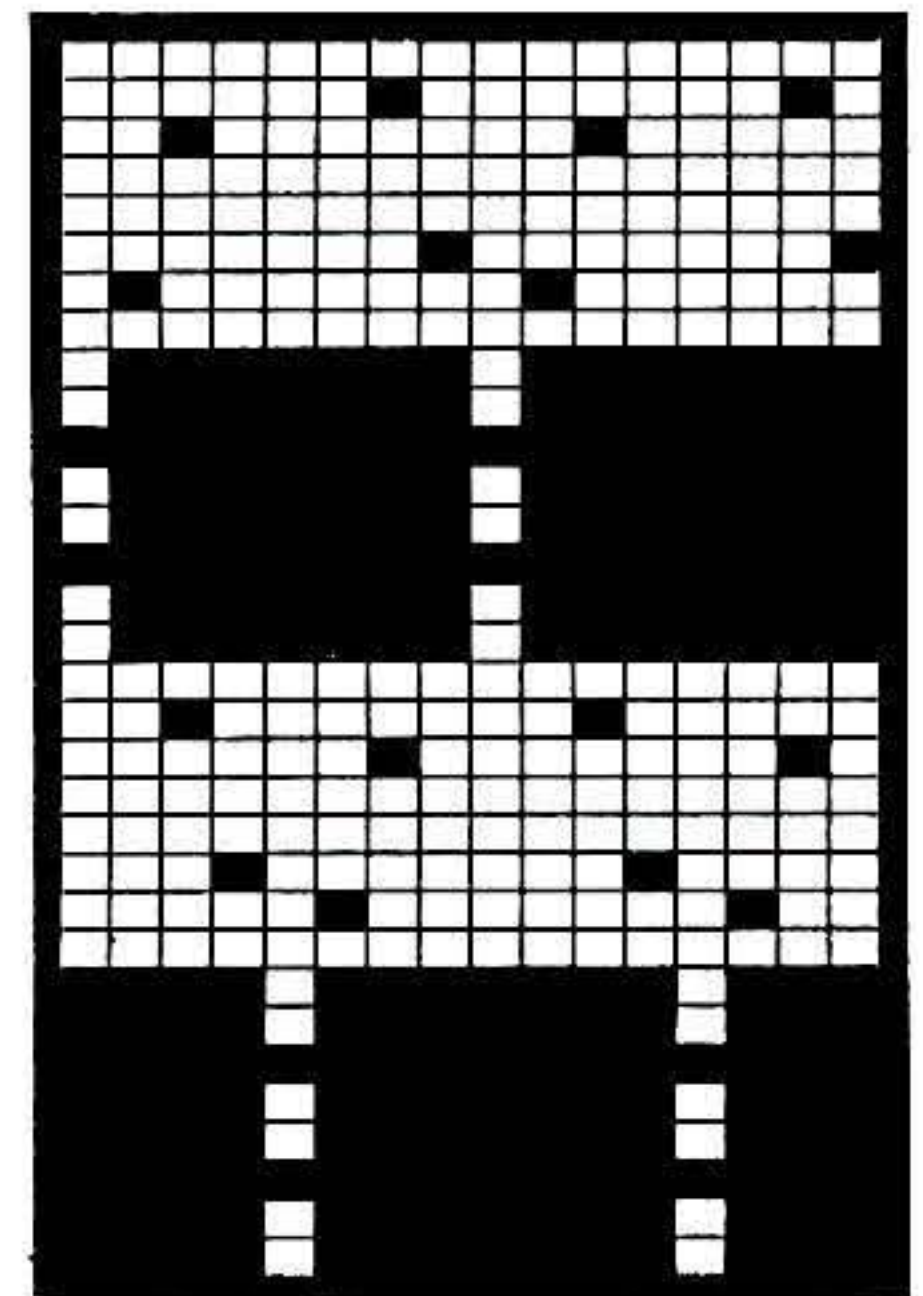
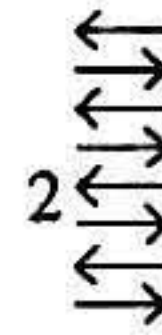
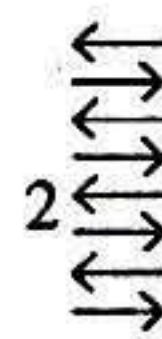
Working in Tuck/Lace St Patt throughout (see NOTES), and leaving 3 sts at right in WP, using ravel cord, take back to NWP all rem Ns. Knit 2 rows. On next and every foll alt row, bring forward to WP 4 inside Ns x 17, 5 (9, 13, 17, 21) Ns x 1, 000. Knit to RC136 (142, 142, 148, 148).

Armhole and Front slope shaping

Dec 1 st at right on next and every foll 5th row x 32 and, AT THE SAME TIME, at left on next and every foll alt row cast off 4 sts x 1, 3 sts x 2, 2 sts x 3, then dec 1 st x 11. Knit to RC 297 (303, 309, 315, 321).

Shoulder shaping

At beg of next and every foll alt row cast off 2 sts x 5 (0, 0, 0, 0), 3 sts x 0 (6, 5, 5, 5), 4(0, 7, 11, 16) sts x 1.

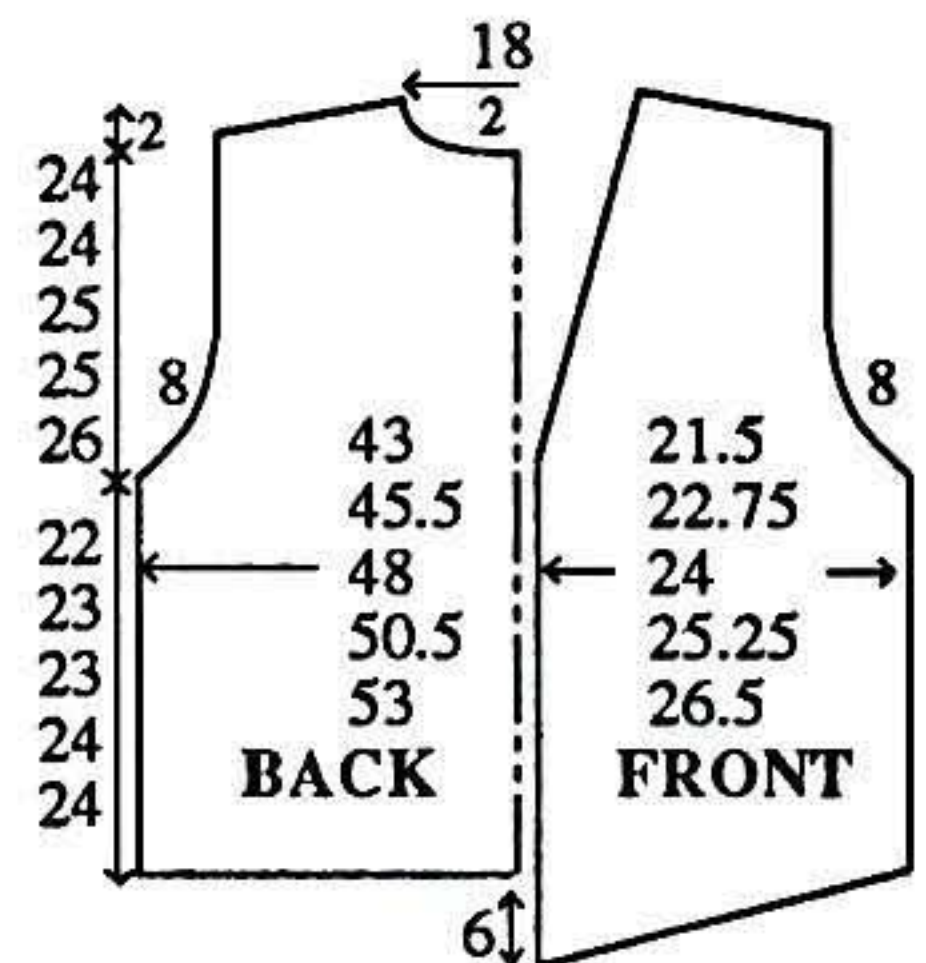


LEFT FRONT

As RIGHT FRONT reversing shapings. Join shoulders.

BANDS

Repeat from *** to *** using required number of sts. T6 knit 1 row. With wrong side facing, pick up same number of sts evenly along garment edge and place onto Ns. T10 knit 1 row and cast off. **ARMBANDS:** 177 (177, 183, 183, 189) KH Ns. **BUTTON BAND and LEFT FRONT SLOPE:** 182 (185, 188, 191, 195) KH Ns. **BACK NECK and RIGHT FRONT SLOPE:** 159 (159, 163, 163, 167) KH Ns. **BUTTONHOLE BAND:** 91 (94, 94, 97, 97) KH Ns, working Buttonholes as



No. 5 and 6





NOTES. Join all BAND seams leaving an opening for top Buttonhole. Neaten all Buttonholes.

MAKE-UP

Join side seams. Attach buttons.

**No. 6 LADY'S FAIRISLE
LONG LINE JACKET**

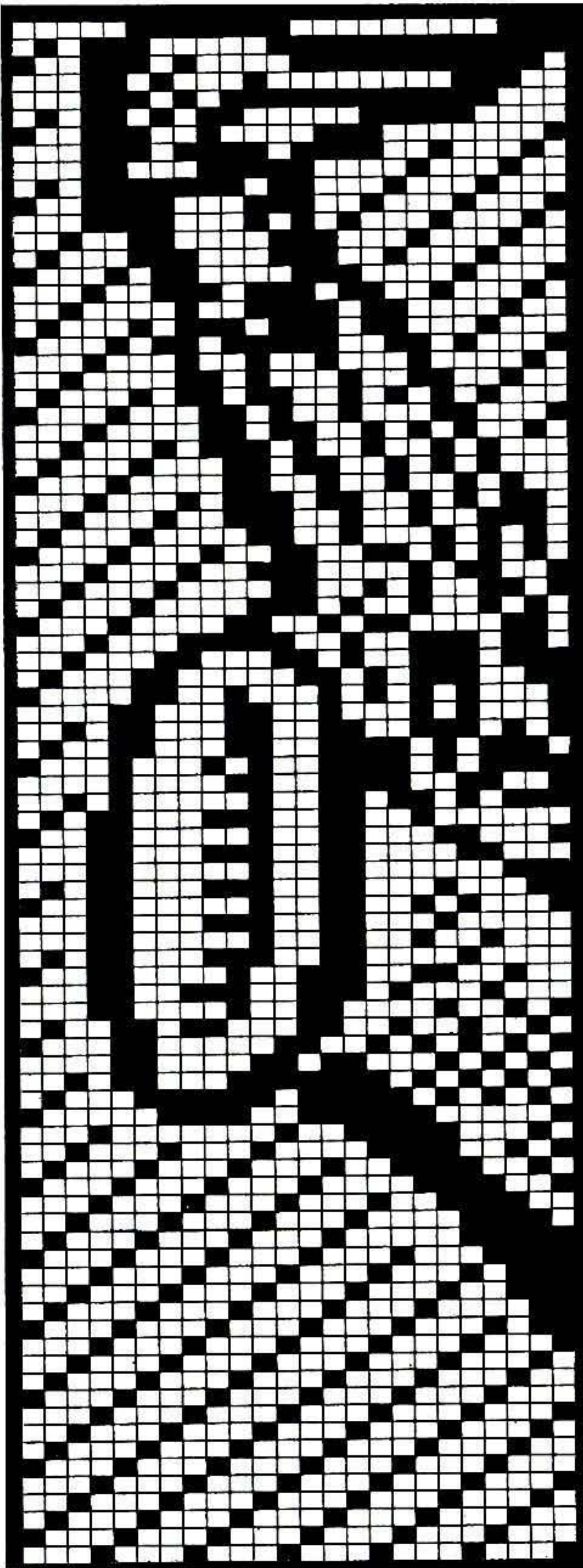
MACHINES: D.

MATERIALS: YEOMAN YARNS Chenille; A - 420 (440, 460, 480, 500)g (Black) (100% acrylic 360m/100g).

YEOMAN YARNS Manila Lane 2-Ply: B - 380 (400, 420, 440, 460)g (75% viscose, 15% nylon, 10% polyester 1200m/100g). 5 buttons.

MEASUREMENTS: To fit bust (86, 91, 96, 101, 106)cm.

TENSION: Fairisle St Patt -40



sts = 13.5cm and 60 rows = 12cm (approx T6). **NOTES:** Use 2 ends of B throughout. Fairisle St Patt - A in FA and B in FB throughout. **BUTTON-HOLES:-** COR, leaving 20 KH Ns at right in WP, push into HP all rem Ns. ***Knit 8 rows

UWP 14 Ns until there are only 14 Ns in HP, 000. Knit 6 rows over all Ns. At left dec 1 st on next and every foll 6th row x 30. Knit to RC230. Place a WY

over these 20 Ns. Bring these 20 Ns to HP and take back to UWP the next 20 Ns***. Repeat from *** to *** x 4. Knit 8 rows over 80 Ns at left.

RIGHT BACK

Using WY cast on over 129 (133, 137, 141, 145) KH Ns and knit a few rows ending with COR. * **Using B T6 knit 1 row. T2°° knit 17 rows. T10 knit 1 row. T2°° knit 17 rows**. T6 knit 1 row. Turn up hem*. Set for first row of Fairisle St Patt and using A knit 1 row to select Ns.

Hem shaping

COR, at left, bring forward to HP 84 KH Ns. Working in Fairisle throughout (see NOTES), a l w a y s taking yarn round inside N, knit 2 rows. At left, on next and every foll alt row take back to

marker at left end of work. Knit to RC370.

Back neck and shoulder shaping

At beg of next and every foll alt row cast off 17 sts x 1, 4 sts x 4 and AT THE SAME TIME at left on alt rows, cast off 13 sts x 4, 14 (18, 22, 26, 30) sts x 1.

LEFT BACK

As RIGHT BACK reversing shapings by reading right for left and vice versa. Join centre BACK seam.

LEFT FRONT

As RIGHT BACK to RC230.

Front slope shaping

Place a WY marker at each end of work. Dec 1 st at right on next and every foll 4th row x 33. Knit to RC371.

Shoulder shaping

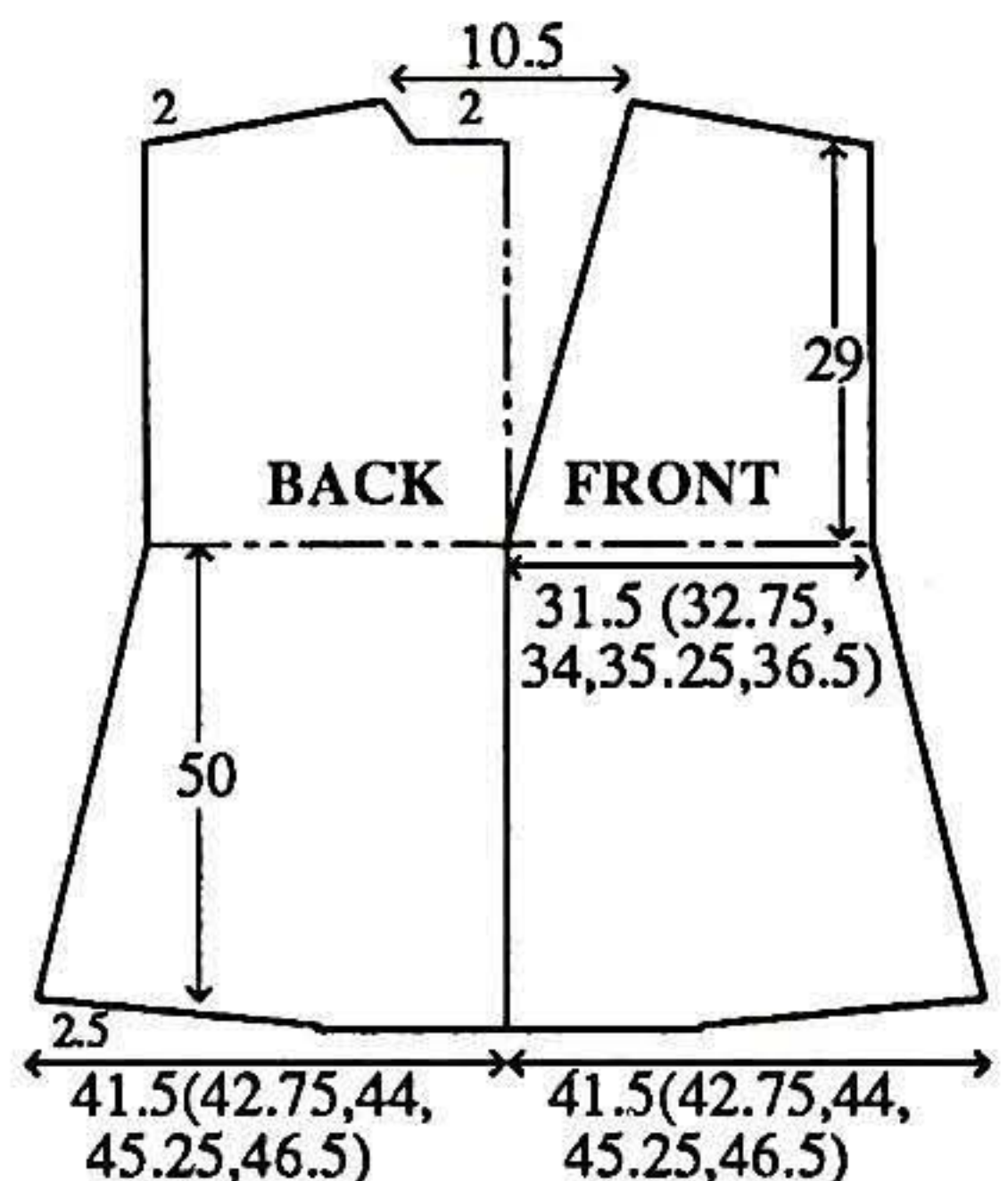
As BACK.

RIGHT FRONT

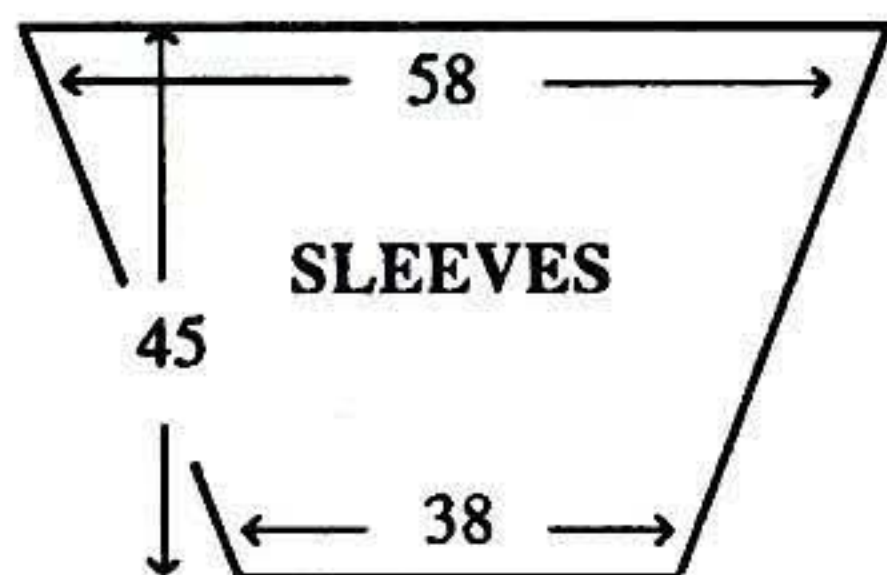
As LEFT FRONT reversing shapings by reading right for left and vice versa.

SLEEVES

Join both shoulders. Push 177 KH Ns to WP. With wrong side



facing, pick up same number of sts evenly along armhole edge between WY markers and place onto Ns, COL. Set for first row of Fairisle St Patt - UPSIDE DOWN and REVERSE - and using A T6 knit 1 row to select Ns, 000. Working in Fairisle throughout, knit to RC30. Dec 1 st at each end of next and every foll 6th row x 30. Knit to RC206. CUFF: Repeat from ** to **. Knit 1 row. T10 knit 1 row and cast off.



BAND

BUTTONHOLE SECTION: Using WY cast on over 160 KH Ns and knit a few rows ending with COL. Using B T6 knit 1 row. T2° knit 4 rows. Work buttonholes (see NOTES). Knit 5 rows. T10 knit 1 row. T2° knit 5 rows. Work buttonholes. Knit 4 rows. T6 knit 1 row. Turn up hem. With wrong side facing, pick up same number of sts evenly along RIGHT FRONT opening edge and place onto Ns. T6 knit 1 row. T10 knit 1 row and cast off. **BUTTON SECTION:** As **BUTTONHOLE SECTION** omitting buttonholes. **BACK NECK and RIGHT FRONT SLOPE SECTION:** As **BUTTON SECTION** using 164 KH Ns. **LEFT FRONT SLOPE SECTION:** As **BUTTON SECTION** using 100 KH Ns. Join all sections together. Neaten buttonholes.

MAKE-UP

Join side and SLEEVE seams. Fold CUFFS in half to inside and stitch down loosely. Sew on buttons.

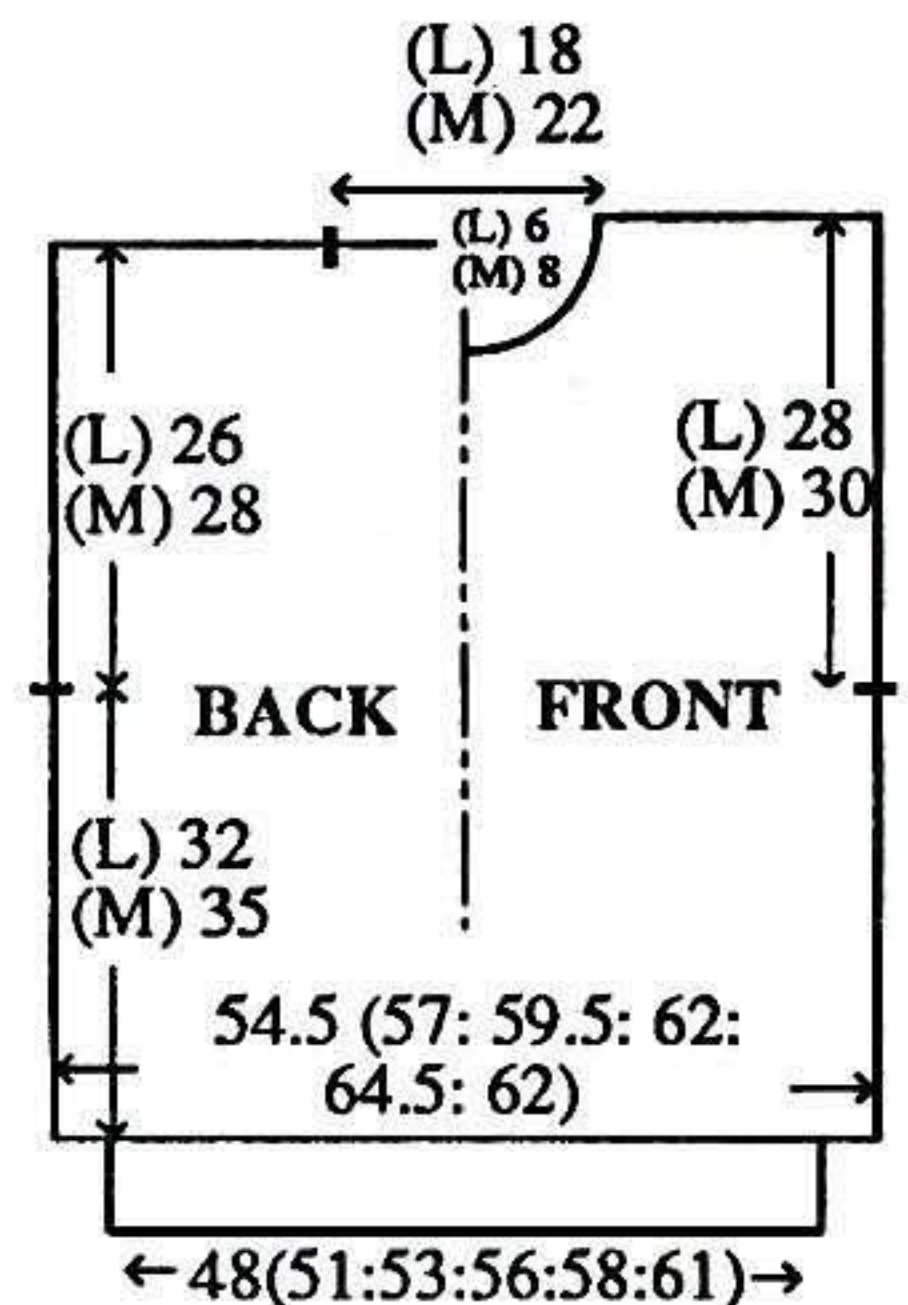
No. 7 UNISEX FAIRISLE SWEATER (FRENCH HORN)

MACHINES: D with KR. **MATERIALS:** Standard 4-ply wool, we used KING COLE Anti-Tickle Merino Blend Superwash Wool; [L] A - 320 (340, 360, 380, 400, 420)g (Bilberry 16) and B - 245 (260, 275, 290, 305, 320)g (Black 48) [M] A - 340 (360, 380, 400, 420, 440)g and B - 265 (280, 295, 310, 325, 340)g. (100% wool 360m/100g). **MEASUREMENTS:** To fit bust/chest 86 (91, 96, 101, 106, 111)cm. **TENSION:** Fairisle St Patt - 40 sts = 13.4cm and 60 rows = 14.6cm (approx T8). **RIB:** 1 x 1 T2/2. **NOTES:** Fairisle St Patt - A in FA and B in FB throughout.

BACK

Using WY cast on over 162 (170, 178, 186, 194, 200) KH Ns and knit a few rows ending with COR. Using A T8 knit 1 row. Set for first row of Fairisle St Patt and knit 1 row to select Ns, 000. Working in Fairisle throughout (see NOTES), knit to [L] RC132 [M] RC144. Place a WY marker at each end of work. Knit to [L] RC238 [M] RC258. Waste knit centre [L] 54 sts [M] 66 sts. Waste knit rem [L] 54 (58, 62, 66, 70, 73) sts [M] 48 (52, 56, 60, 64, 67)sts at each end of work for shoulders. **WAIST RIB:** Push 147 (155, 163, 171, 179, 187) KH Ns to WP. With wrong side

facing, return sts from waist edge to Ns distributing them



evenly along the row. Using A T8 knit 1 row. Trans to RIB, 000. Knit to RC35. T10/8 knit 1 row. Trans all sts to KH and latch cast off.

FRONT

As **BACK** to [L] RC220 [M] RC232.

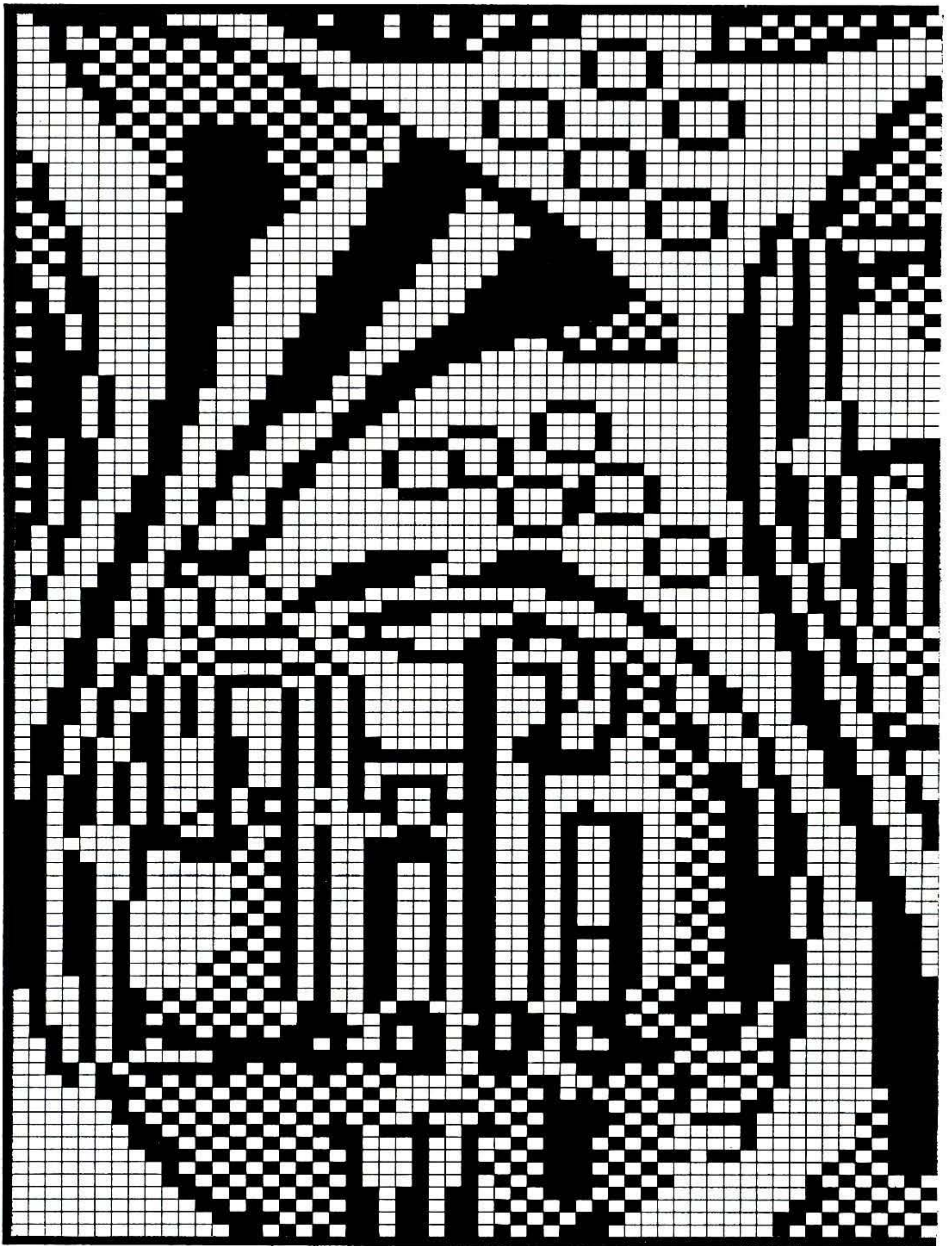
Neck shaping

(Note Patt position). Waste knit centre [L] 16 sts [M] 20 sts. Waste knit sts at left, COR. Knit 1 row. At beg of next and every foll alt row cast off 4 sts x 1, 3 sts x 2, 2 sts x 3, then dec 1 st x [L] 3 [M] 7. Knit to [L] RC246 [M] RC266 and waste knit rem [L] 54 (58, 62, 66, 70, 73) sts [M] 48 (52, 56, 60, 64, 67)sts. Return sts at left to Ns and knit to match right side reversing shaping.

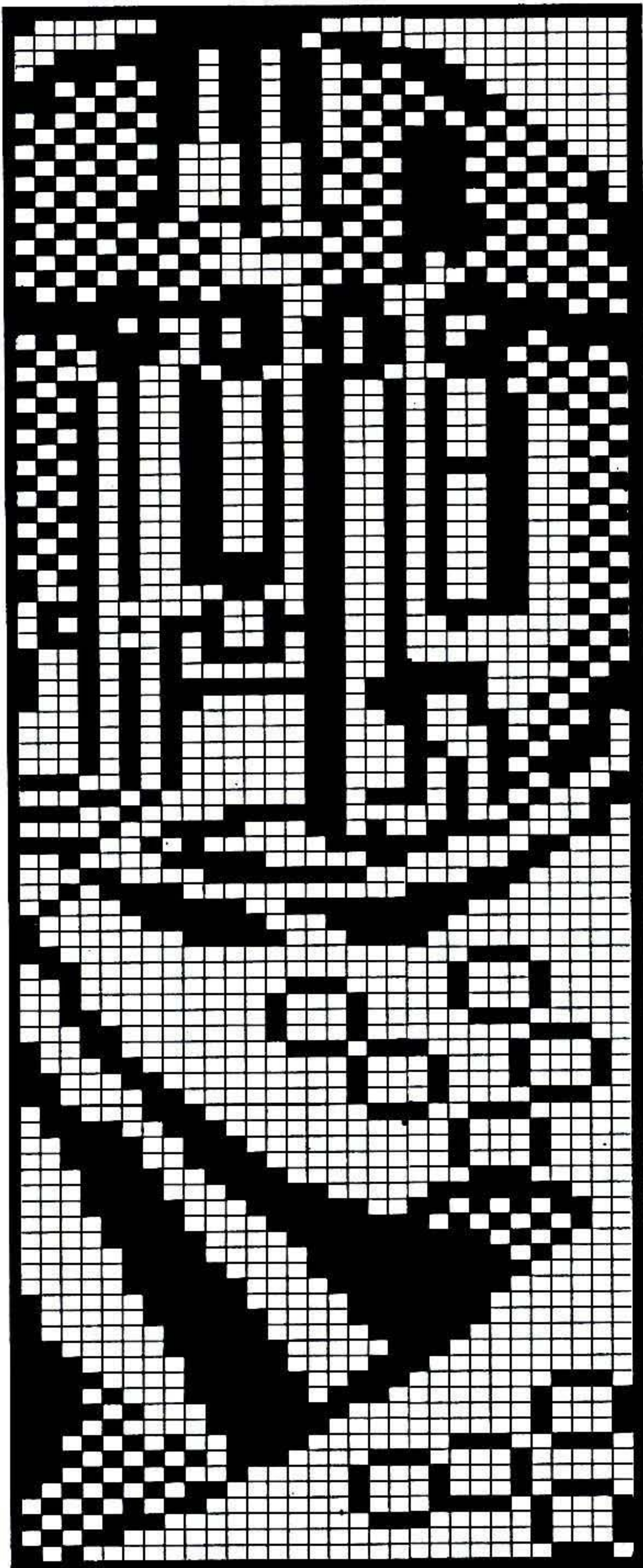
NECKBAND

Join one shoulder by placing one set of shoulder sts back onto Ns with right sides together. T10 knit 1 row and cast off. Using A cast on over [L] 155 KH Ns [M] 173 KH Ns





This stitch pattern includes that opposite.

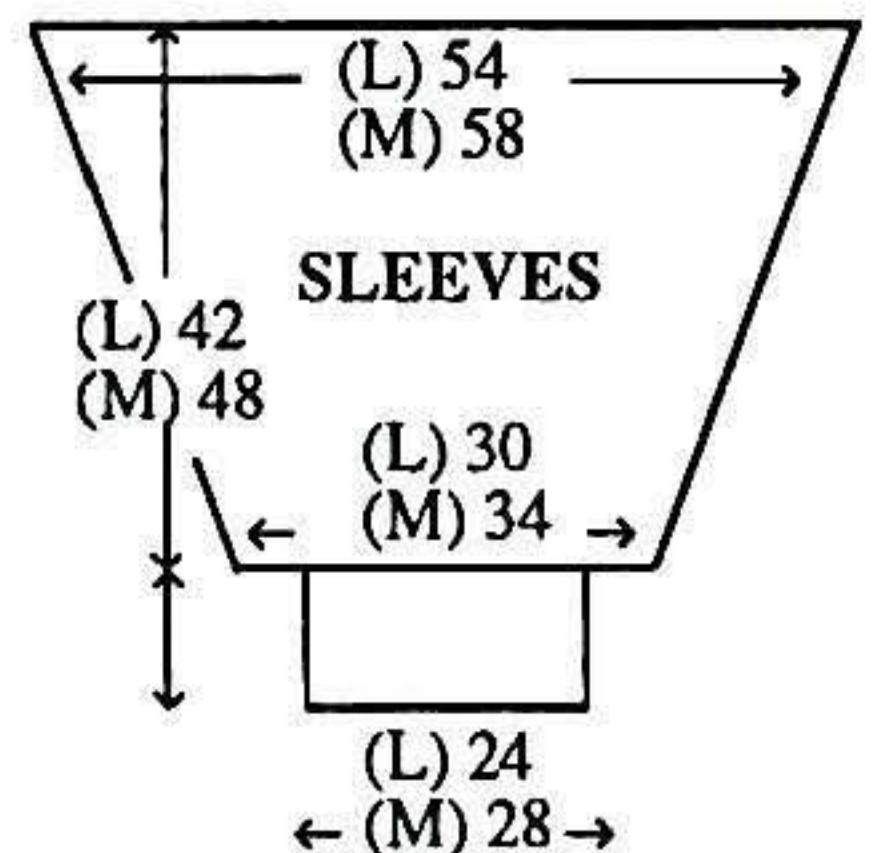


This stitch pattern includes that opposite.

as RIB, 000. Knit to RC12. Trans all sts to KH. T8 knit 1 row. With right side facing, pick up same number of sts evenly along neck edge and place onto Ns. Knit 4 rows and waste knit. Join second shoulder as first. Join NECKBAND seam and backstitch to garment through last row knitted in A.

SLEEVES

Push [L] 160 KH Ns [M] 172 KH Ns to WP. With wrong side facing, pick up same number of sts evenly along armhole edge between WY markers and place onto Ns. COL Set for first row of Fairisle St Patt - UPSIDE DOWN and REVERSE - and knit 1 row to select Ns, 000. Working in Fairisle throughout, knit to [L] RC32 [M] RC20. Dec 1 st at each end of next and every foll [L] 4th row [M] 5th row x 35. Knit to [L] RC172 [M] RC196 and waste knit rem [L] 90 sts [M] 102 sts. CUFFS: Push [L] 71 KH Ns [M] 83 KH Ns to WP. With wrong side facing, place sts from cuff edge onto Ns distributing them evenly along the row. Using A T8 knit 1 row. Trans to RIB, 000. Knit to RC49. T10/8 knit 1 row. Trans all sts to KH and latch cast off.

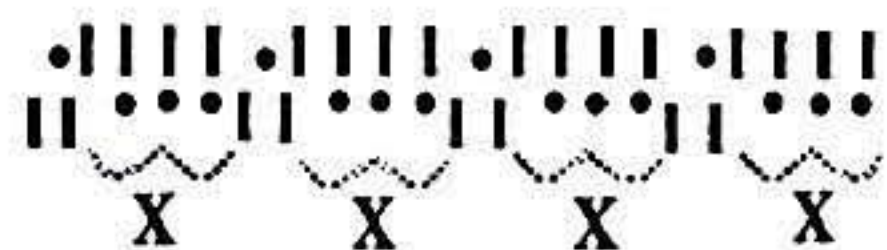


MAKE-UP

Block and press. Join side and SLEEVE seams.

No. 8 MAN'S FAIRISLE SWEATER WITH CABLE RIBS

MACHINES: A, C or D with KR. **MATERIALS:** Standard 4-ply acrylic, we used KING COLE Lotus 4-Ply; A - 250 (265, 280, 295, 310)g (Forest), B - 150 (160, 170, 180, 190)g (Mink) and C - 60 (70, 80, 90, 100)g (Navy). (85% acrylic, 15% wool 400m/100g). 25cm Zipper. **MEASUREMENTS:** To fit chest 91 (96, 101, 106, 111)cm. **TENSION:** Fairisle St Patt - 40 sts = 13.6cm and 60 rows = 14.4cm (approx T8). **RIB:** 4 x 2 Cable Rib T5/2. **NOTES:** Fairisle St Patt -with A in FA throughout, alternate yarns in FB as folls:- 4 rows C, 6 rows B, 4 rows C, 12 rows B, 8 rows C, 16 rows B, 6 rows C, 6 rows B. Cable Rib - N arrangement:-



Knit 5 rows. On KR, bring forward to WP all Ns marked 'x'. Knit 1 row. On KR, take back all Ns marked 'x' to NWP. On KH, cable 2 over 2 over every set of 4 Ns. Repeat from * to * throughout.

BACK

Using A cast on over 168 (173, 183, 193, 198) KH Ns as FNR. Trans to N Arrangement 000. Working in Cable Rib, knit to RC35. Trans all sts to KH. Inc 3 (4, 2, 0, 1) sts. Set for first row of Fairisle St Patt and knit 1 row to select Ns, 000.

Working in Fairisle throughout (see NOTES), knit to RC146. Place a WY marker at each end of work. Knit to RC262. Waste knit centre 59 sts. Waste knit rem 56 (59, 63, 67, 70) sts at each end of work for shoulders.

FRONT

As BACK to RC158.

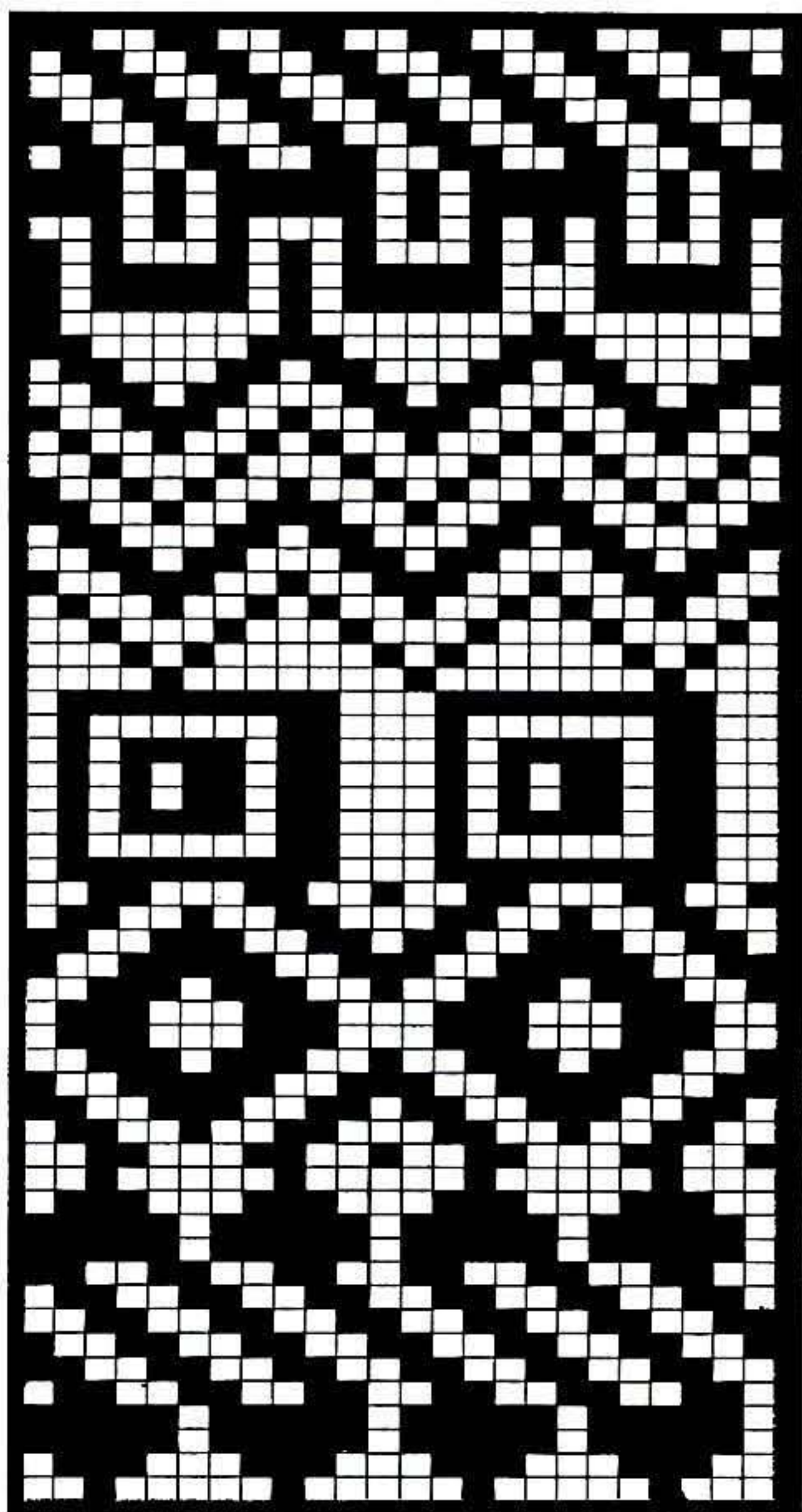
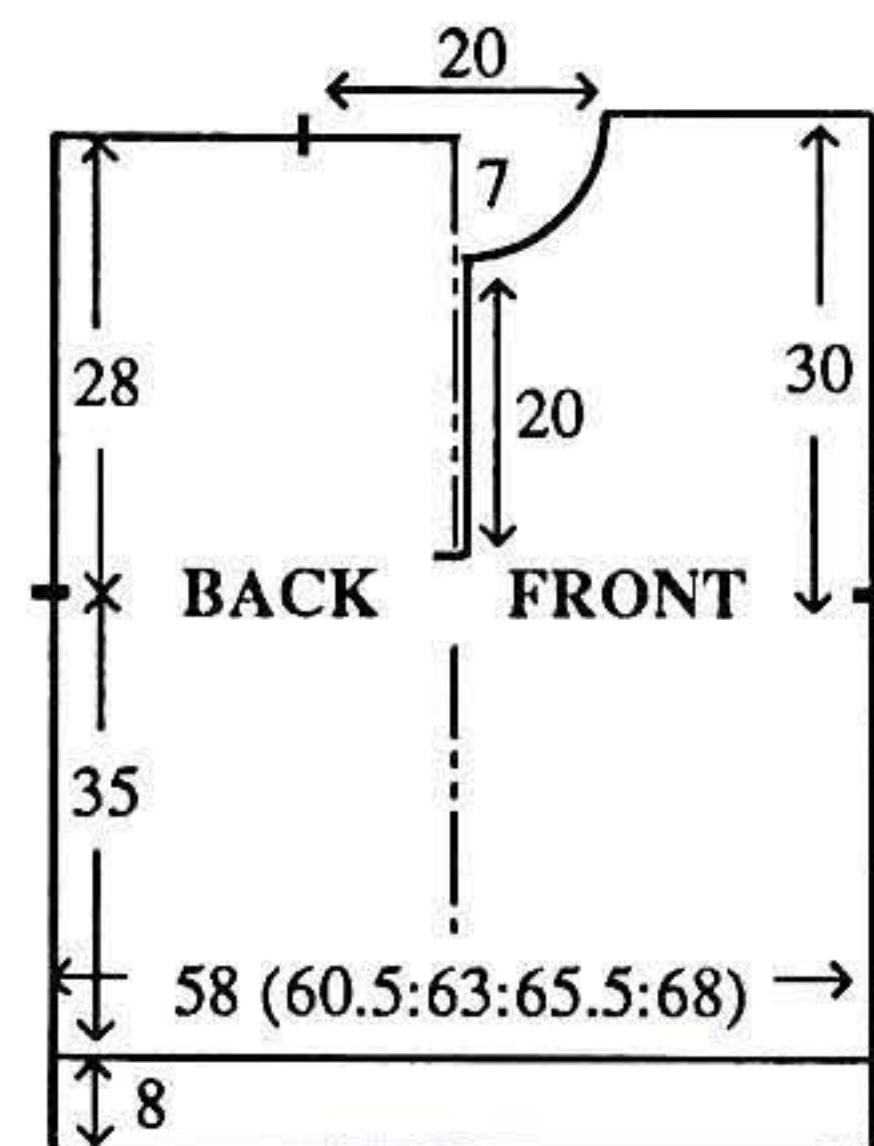
Divide for Front opening

(Note Patt position) Dec 1 st in centre. Waste knit sts at left. COR, knit to RC239.

Neck shaping

At beg of next and every foll alt row cast off 6 sts x 1, 4 sts x 1, 3 sts x 2, 2 sts x 4 then dec 1

st x 5. Knit to RC270 and waste knit rem 56 (59, 63, 67, 70) sts. Return sts at left to Ns and knit to match right side reversing shaping.



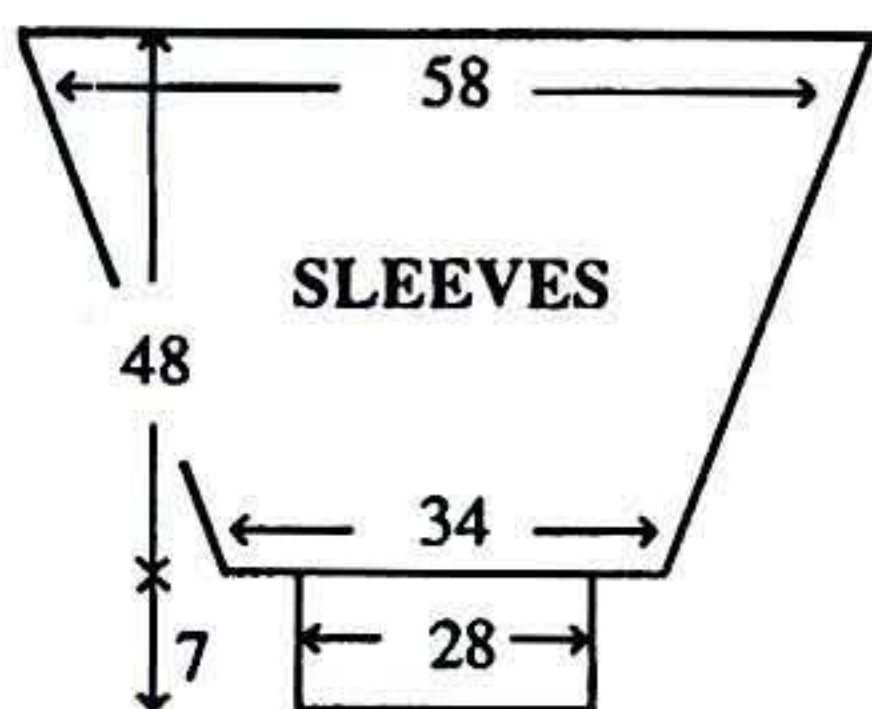
NECKBAND

Join both shoulders by placing both sets of shoulder sts back onto Ns with right sides together. T10 knit 1 row and cast off. Using A cast on over 133 KH Ns as FNR. Trans to N Arrangement, 000. Working in Cable Rib, knit to RC48. Trans all sts to KH. T8 knit 1 row. With right side facing, pick up same number of sts evenly along neck edge and place onto Ns. Knit 3 rows and waste knit. Backstitch to garment through last row knitted in A. Fold NECKBAND in half to inside and stitch down loosely.



SLEEVES

Push 169 KH Ns to WP. With wrong side facing, pick up same number of sts evenly along armhole edge between WY markers and place onto Ns, COL. Set for first row of Fairisle St Patt - UPSIDE DOWN - and knit 1 row to select Ns, 000. Working in Fairisle throughout in REVERSE order, knit to RC25. Dec 1 st at each end of next and every foll 5th row x 35. Knit to RC199. Using A knit 1 row and waste knit rem 99 sts. CUFFS: Push 83 KH Ns to WP. With wrong side facing, place sts from cuff edge onto Ns distributing them evenly along the row. T8 knit 1 row. Trans to N Arrangement (making sts as necessary), 000. Working in Cable Rib, knit to RC29. T10/8 knit 1 row. Trans all sts to KH and latch cast off each st individually.



MAKE-UP

Join side and SLEEVE seams.
Sew in zipper.