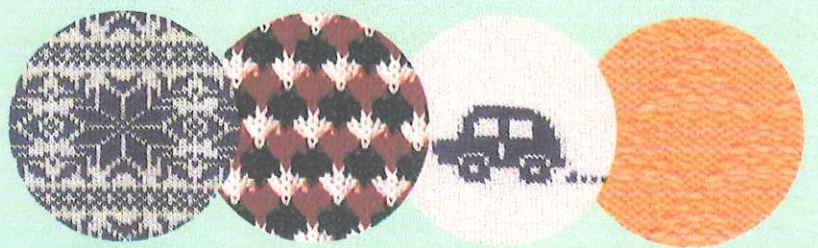


# PATTERN BOOK

MOD.580





# FAIR ISLE(KNIT-IN)

NO. 1-(1)

Legend: 0 0 0 0 0 0 0 XXXX 0

Scale: 0 6 12 18 24 30 36 42 48 54 60

NO. 1-(2)

Legend: 0 0 0 0 0 0 0 XXXX 0

Scale: 0 6 12 18 24 30 36 42 48 54 60

NO. 1-(3)

Legend: 0 0 0 0 0 0 0 XXXX 0

Scale: 0 6 12 18 24 30 36 42 48 54 60

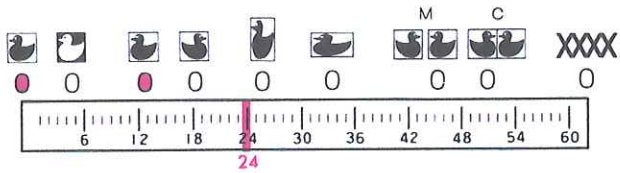
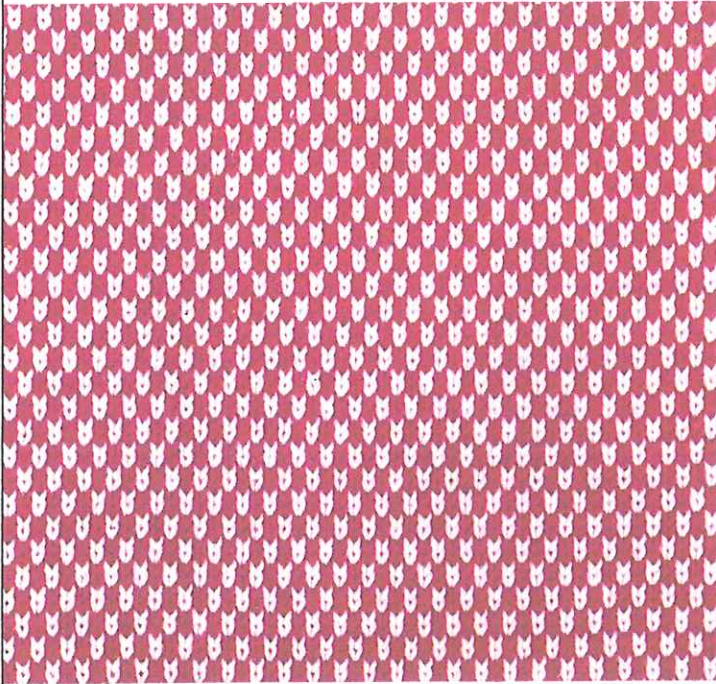
NO. 1-(4)

Legend: 0 0 0 0 0 0 0 XXXX 0

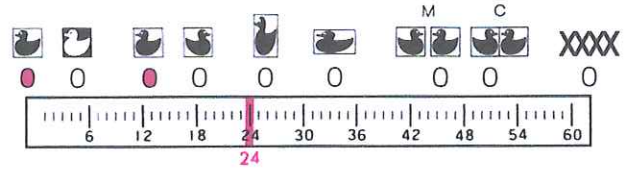
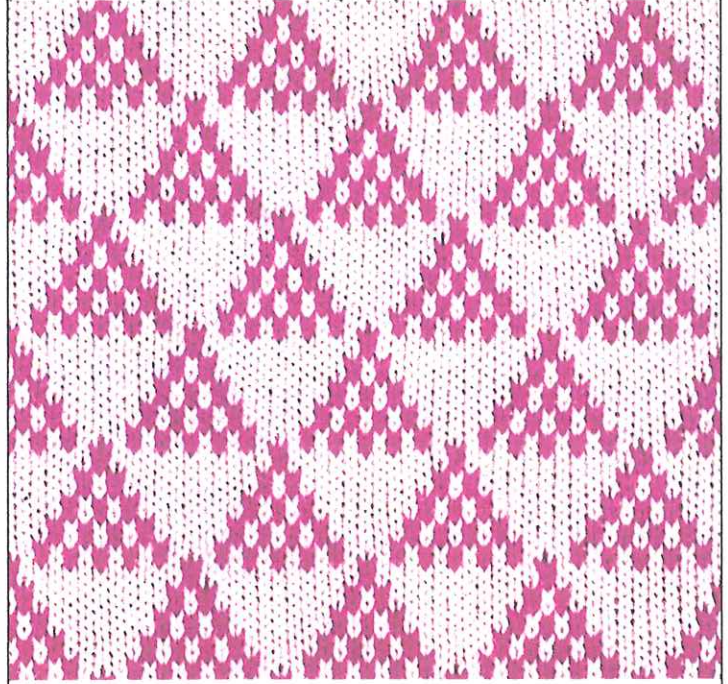
Scale: 0 6 12 18 24 30 36 42 48 54 60



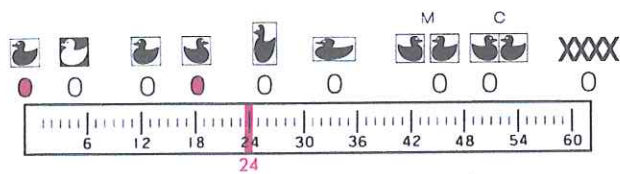
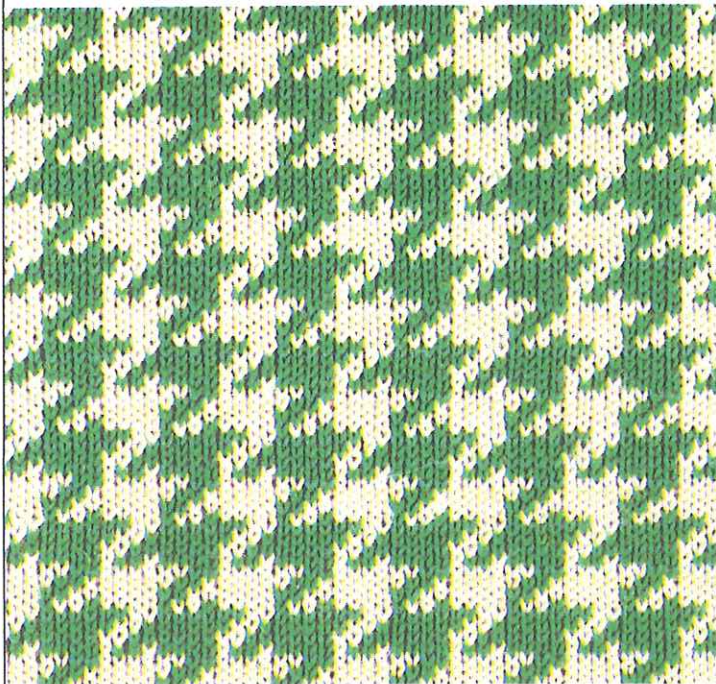
NO. 1-(5)



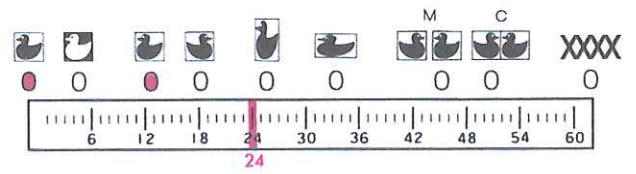
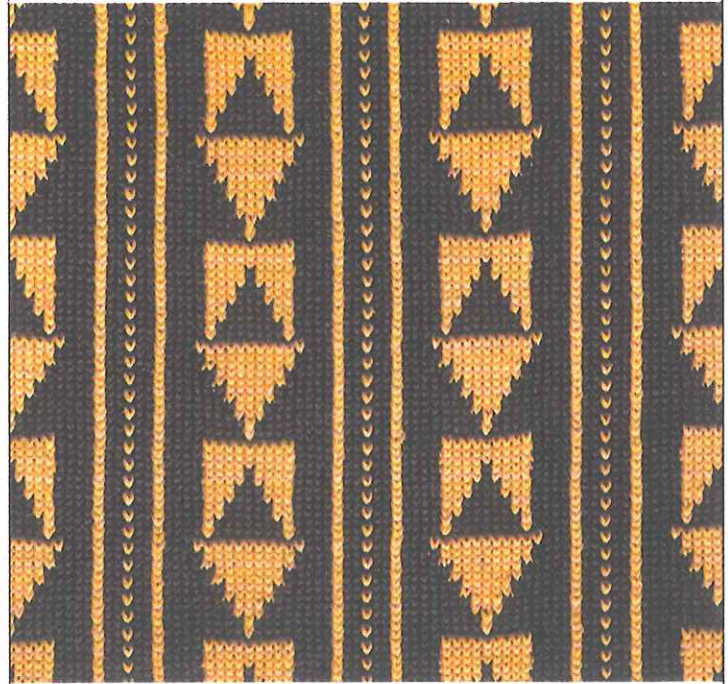
NO. 1-(6)



NO. 1-(7)

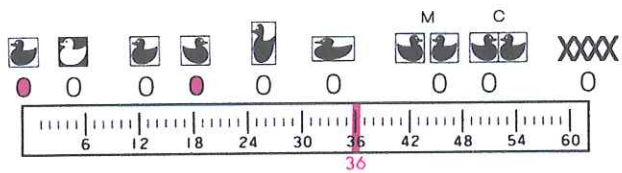
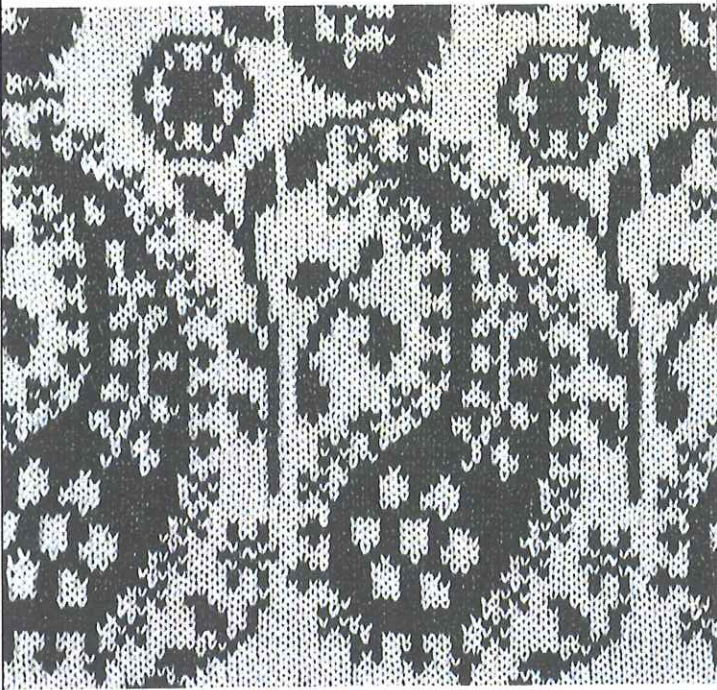


NO. 2-(9)

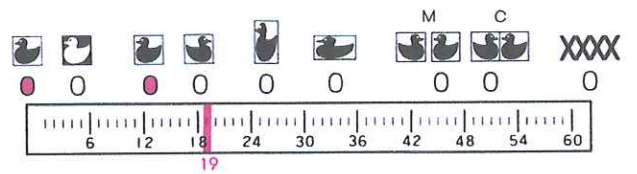




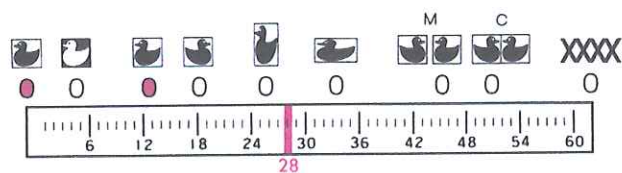
NO. 4-(12)



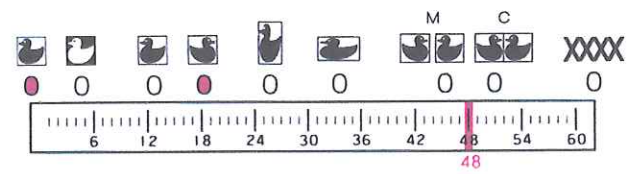
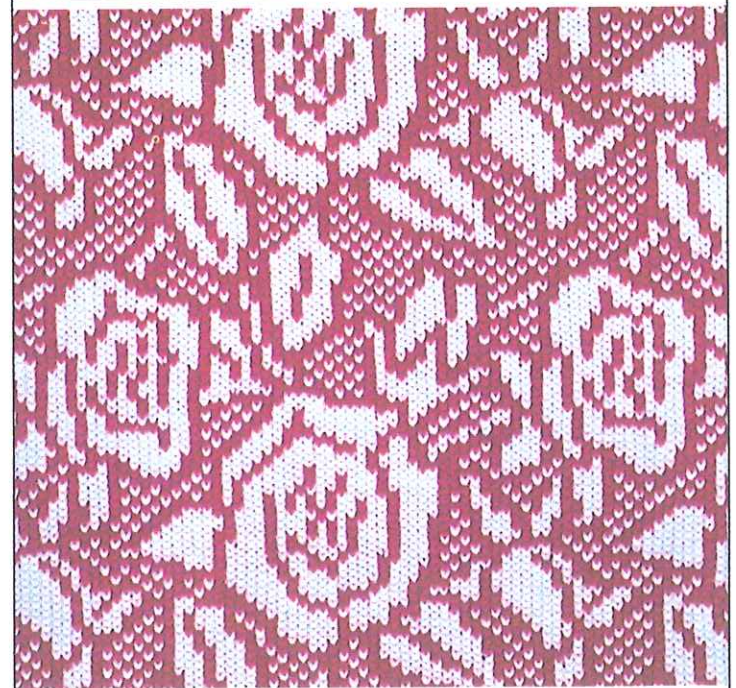
NO. 4-(13)



NO. 5-(14)



NO. 5-(15)





NO.6-(16)

Legend: XXXX

0 0 0 0 0 0 0 0 0

6 12 18 24 30 36 42 48 54 60

60

NO.6-(16)

Legend: XXXX

0 0 0 0 0 0 0 0 0

6 12 18 24 30 36 42 48 54 60

30

6 12 18 24 30 36 42 48 54 60

6

NO.6-(17)

Legend: XXXX

0 0 0 0 0 0 0 0 0

6 12 18 24 30 36 42 48 54 60

36

6 12 18 24 30 36 42 48 54 60

12

NO.7-(21)

Legend: XXXX

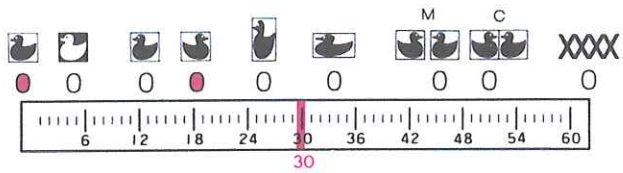
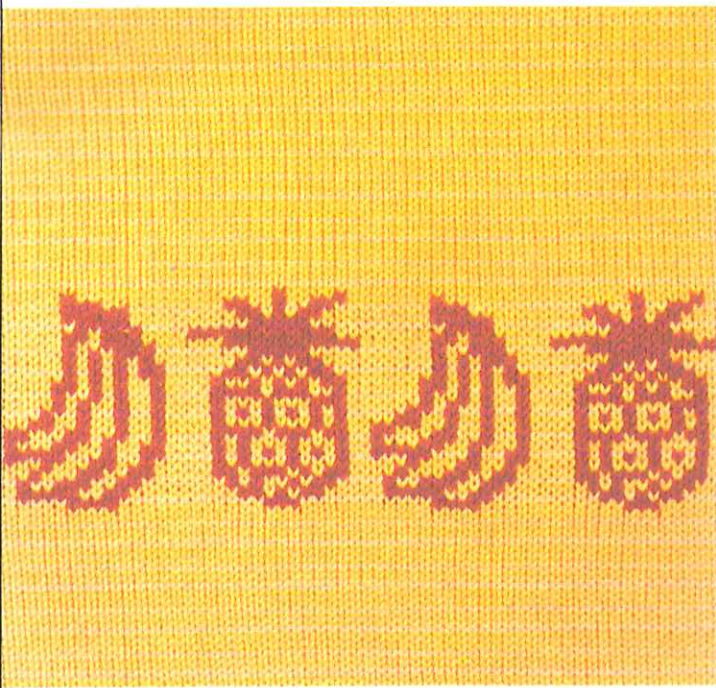
0 0 0 0 0 0 0 0 0

6 12 18 24 30 36 42 48 54 60

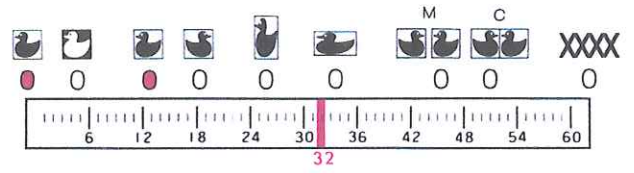
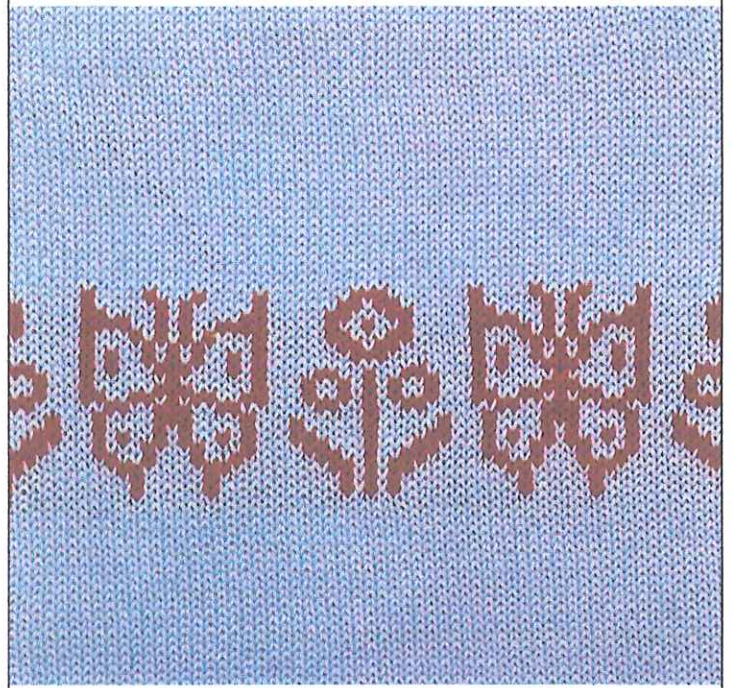
48



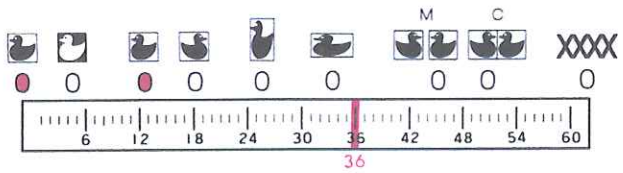
NO. 7-(22)



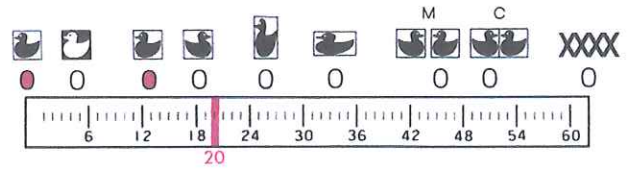
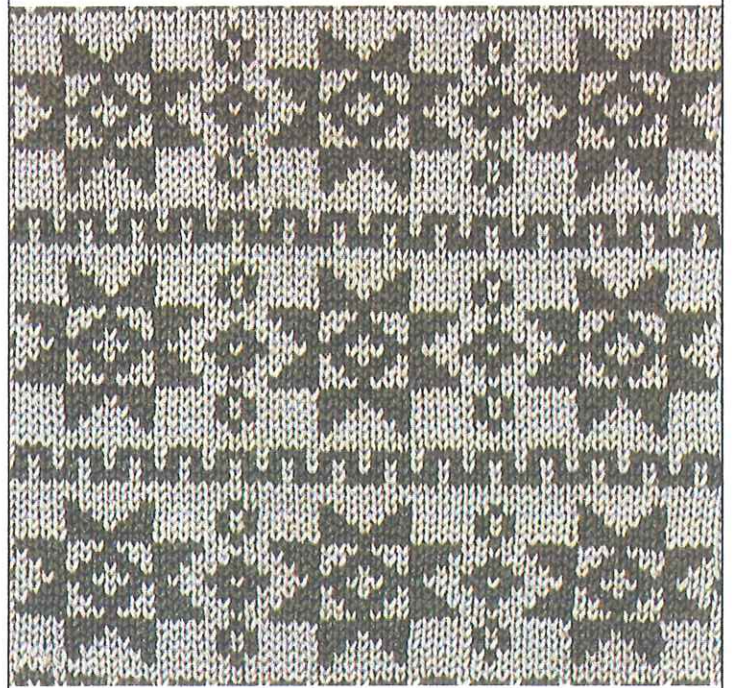
NO. 7-(23)



NO. 8-(24)

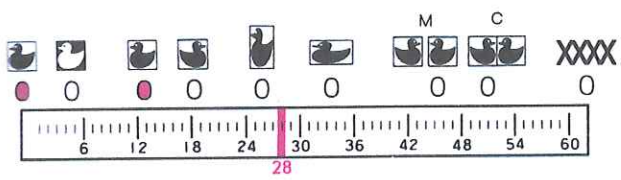


NO. 8-(25)

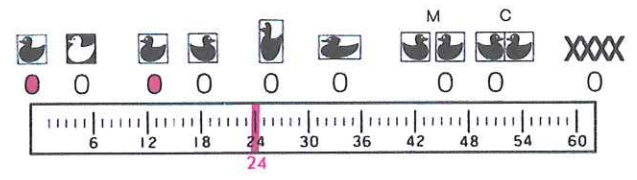
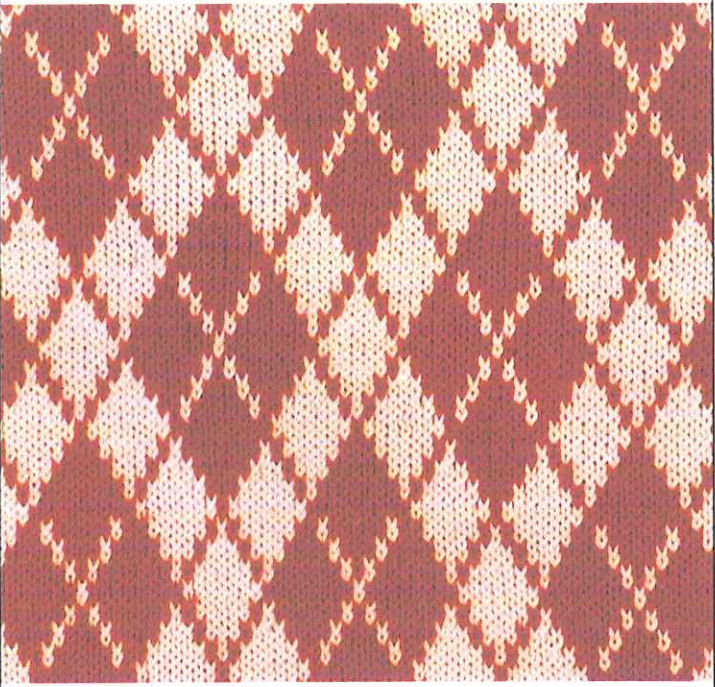




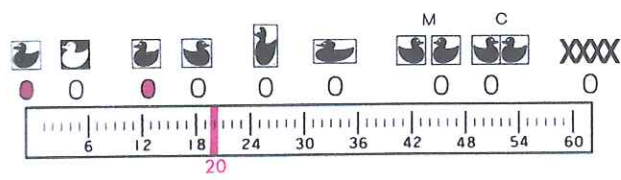
NO.8-(26)



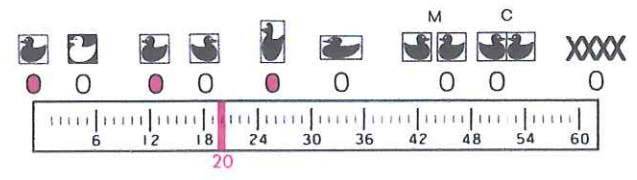
NO.9-(27)



NO.9-(28)

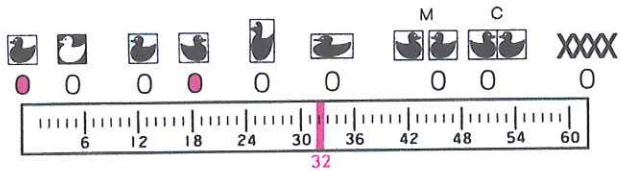
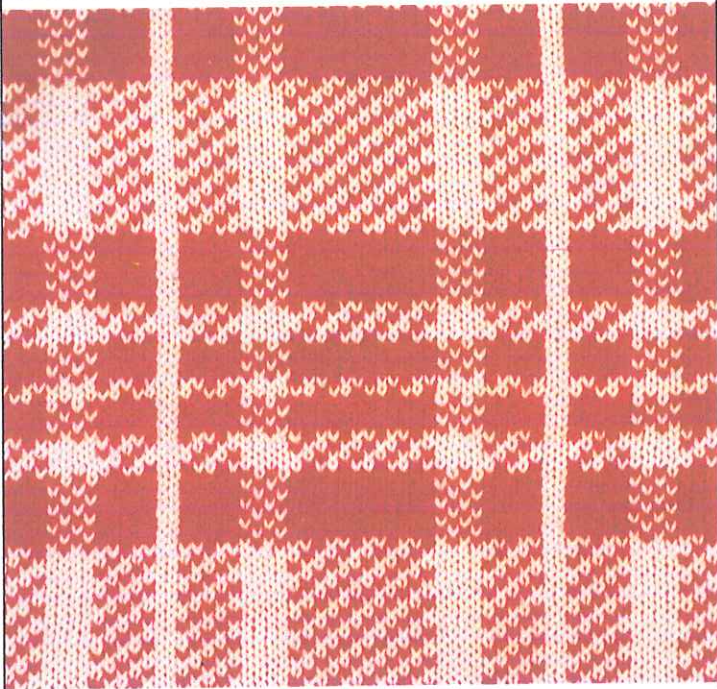


NO.9-(28)

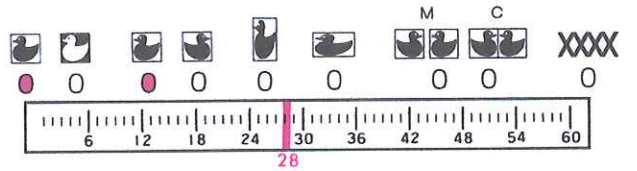
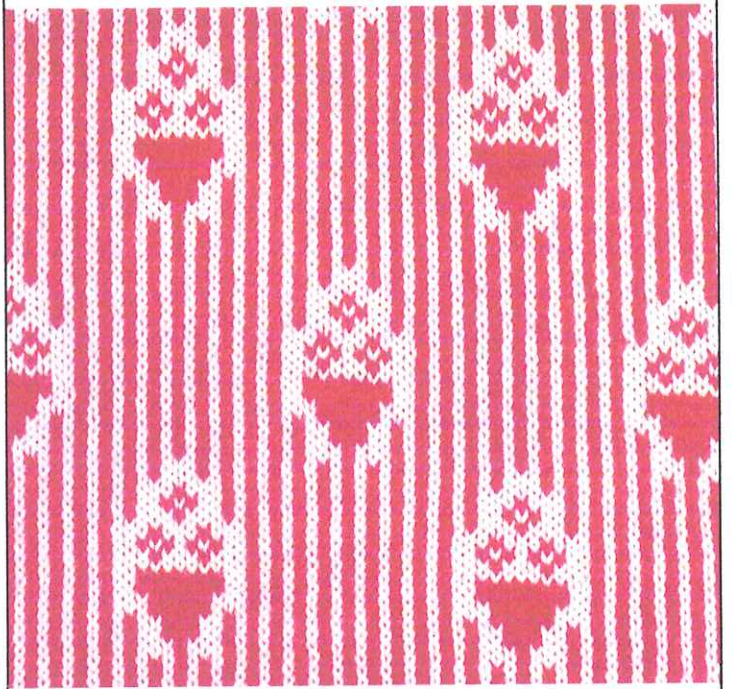




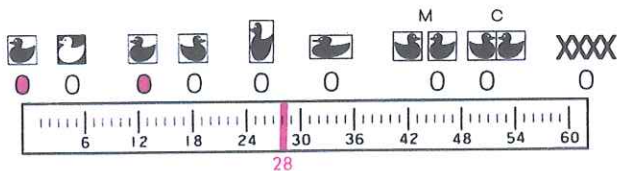
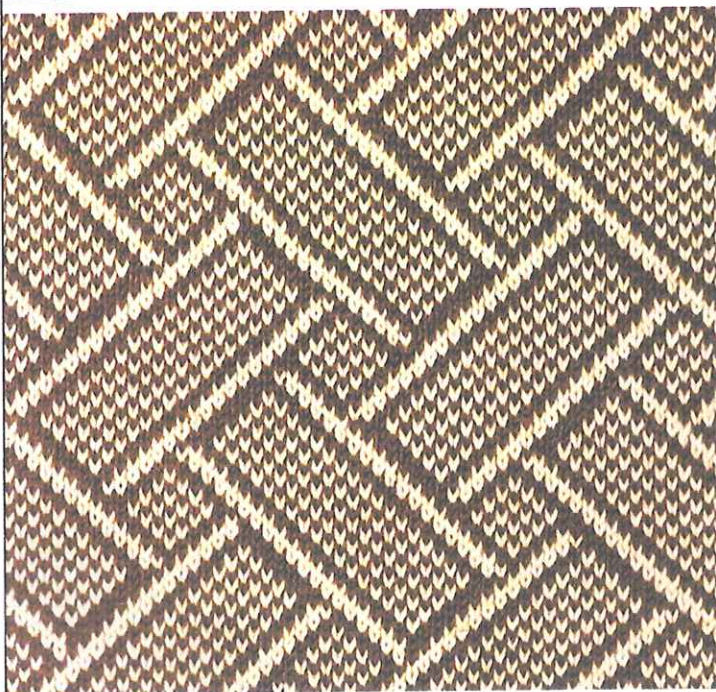
NO. 9-(29)



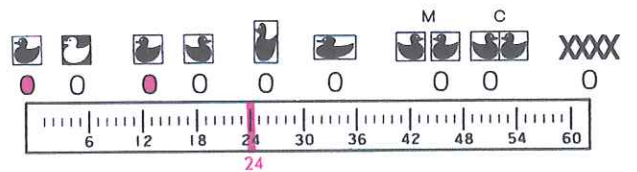
NO. 10-(30)



NO. 10-(31)

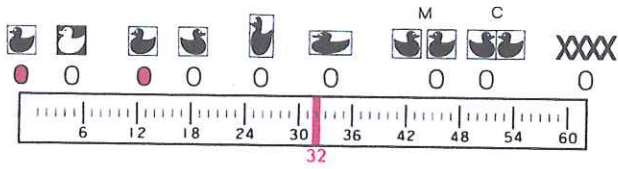


NO. 10-(32)

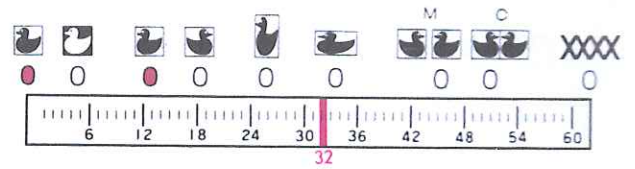
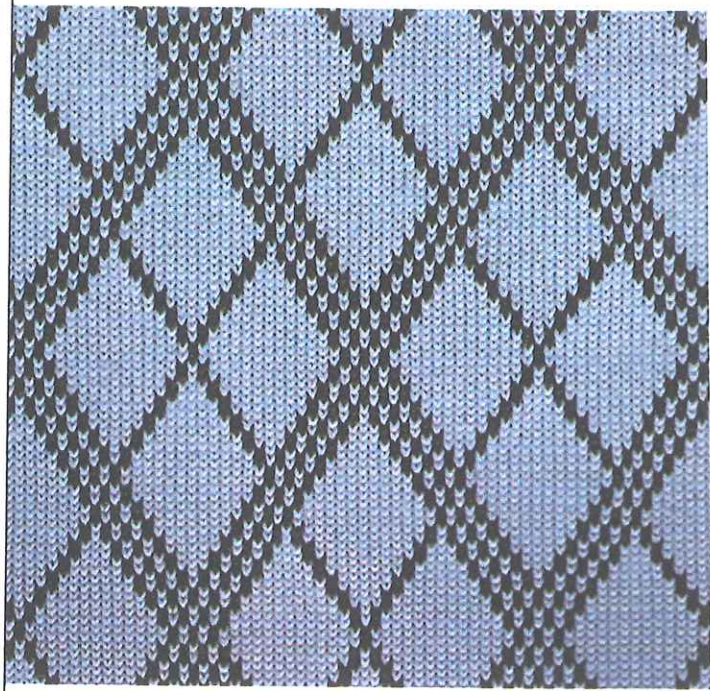




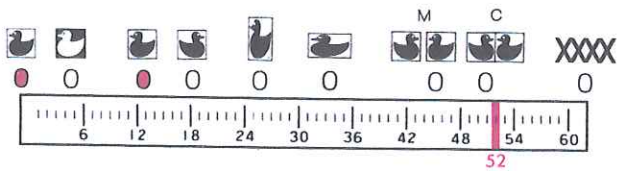
NO. 10-(33)



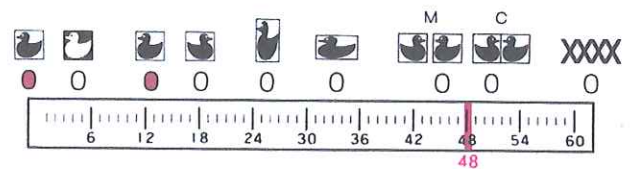
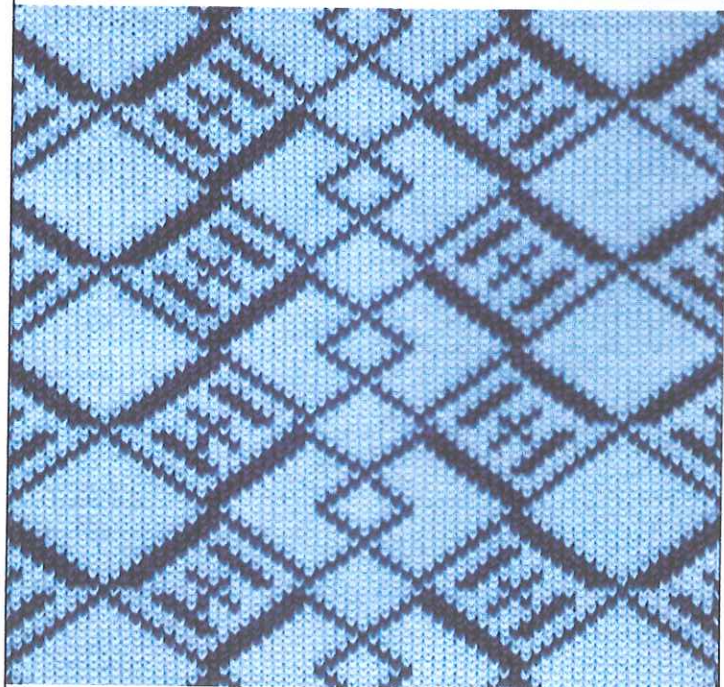
NO. 11-(34)



NO. 11-(35)



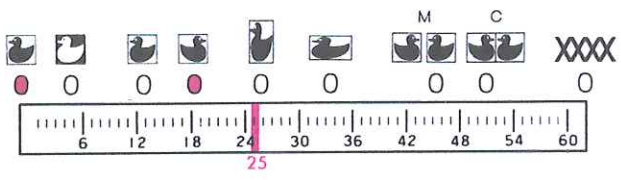
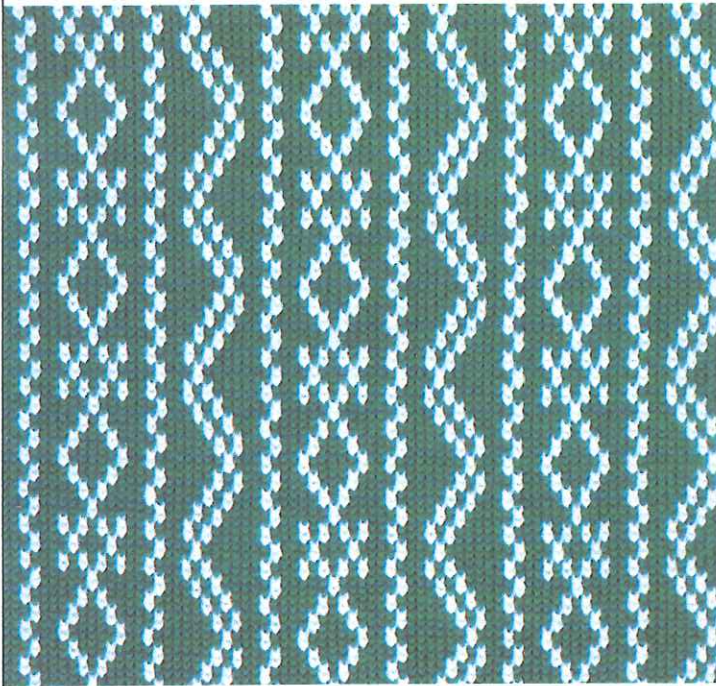
NO. 12-(37)



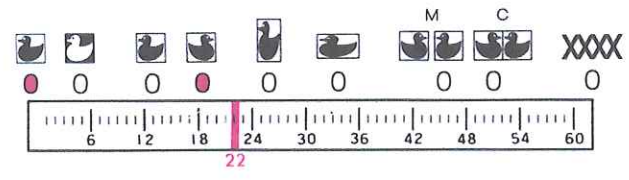
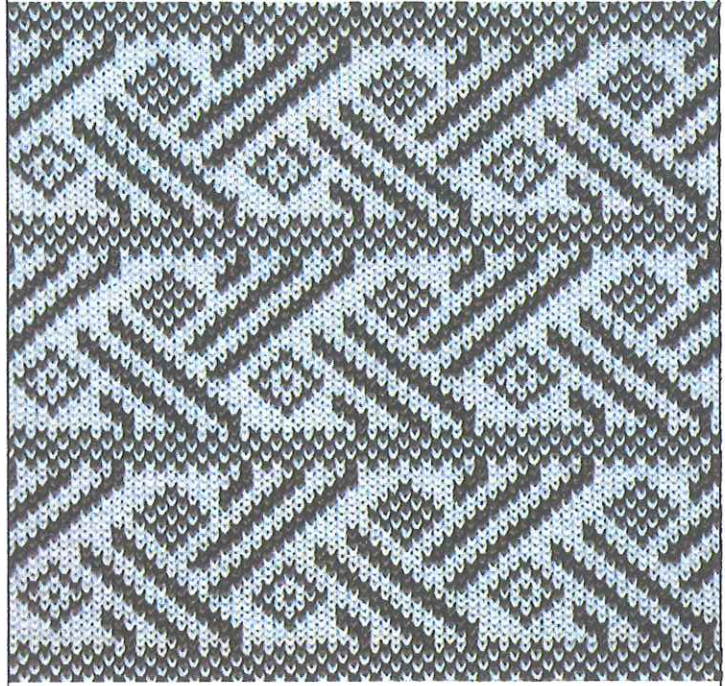


NO. 12-(38)

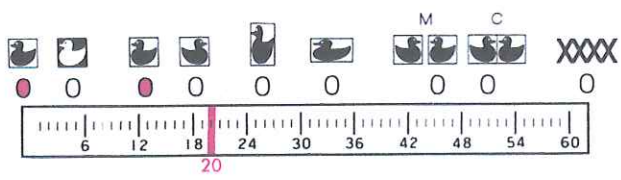
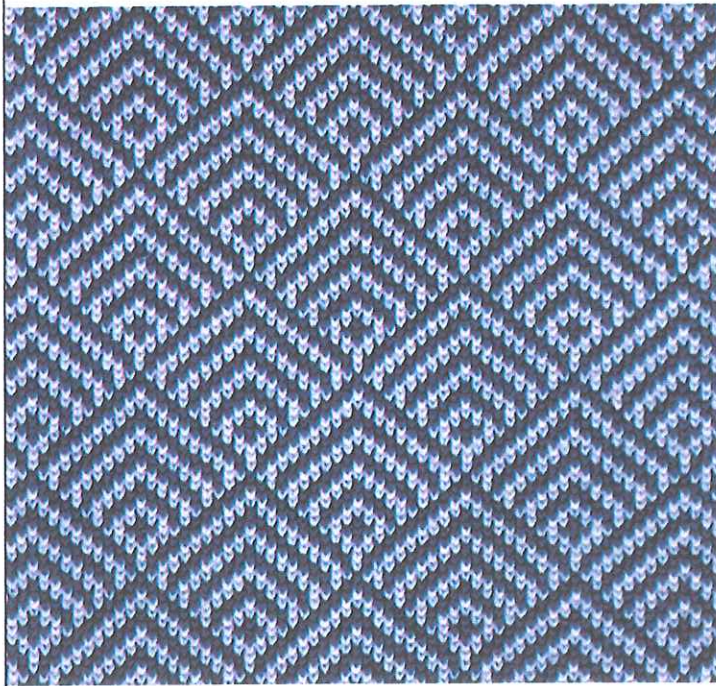
編込み



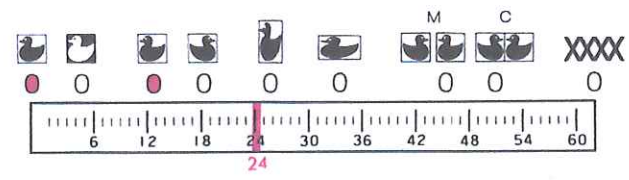
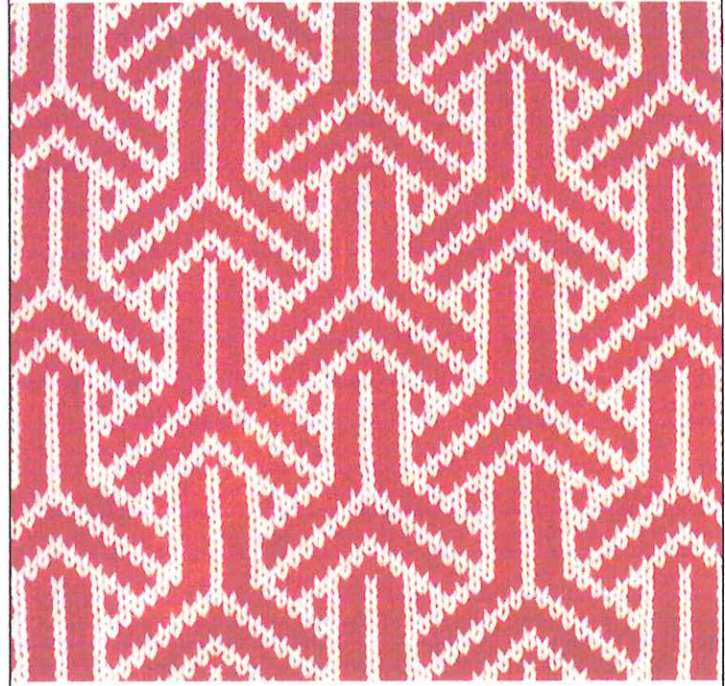
NO. 12-(39)



NO. 15-(47)

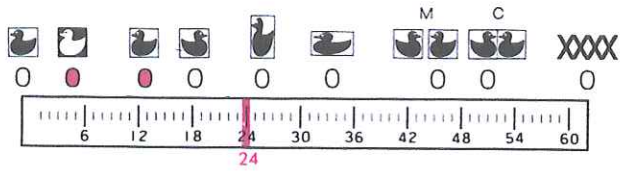
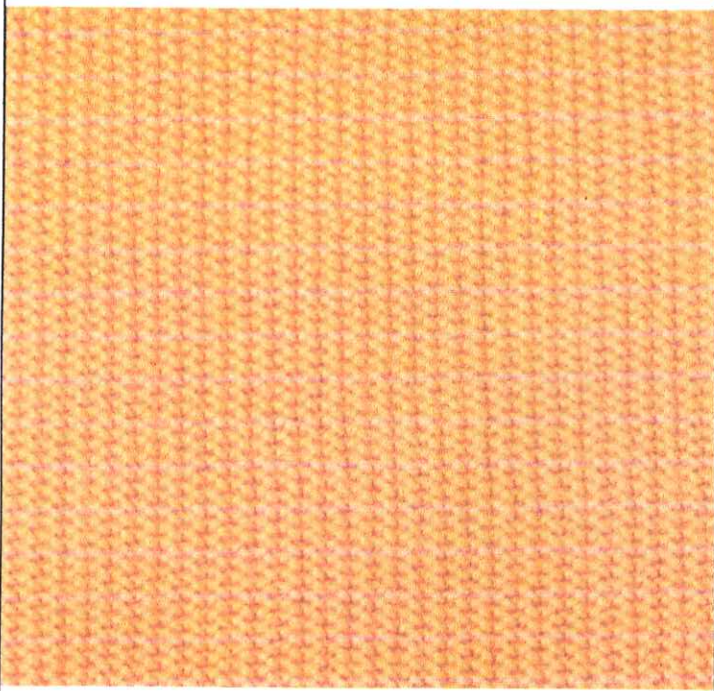


NO. 15-(48)

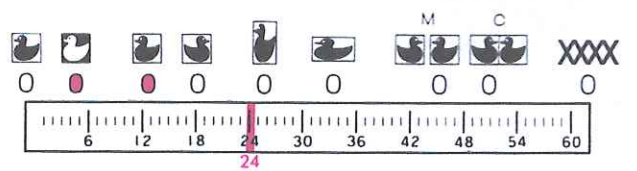
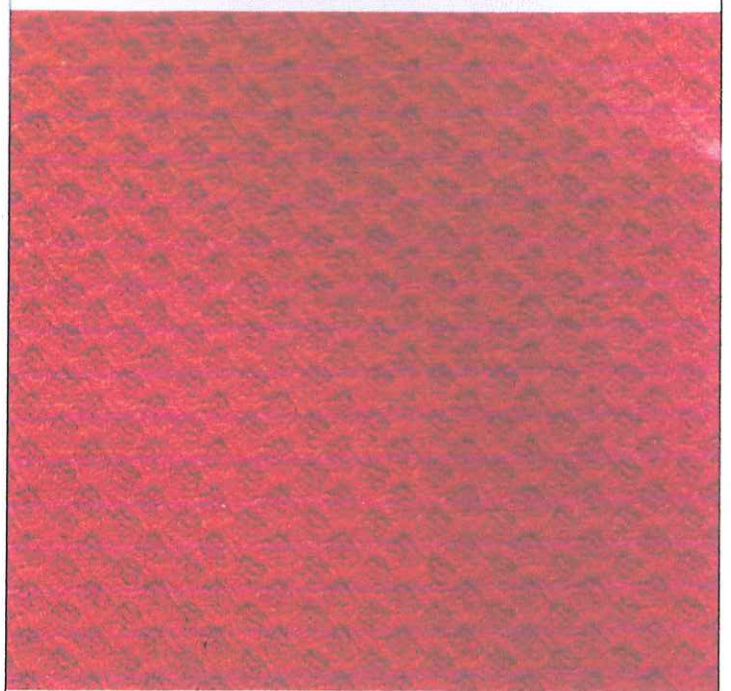




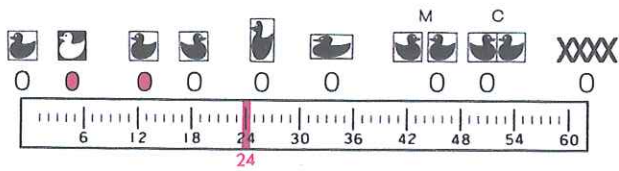
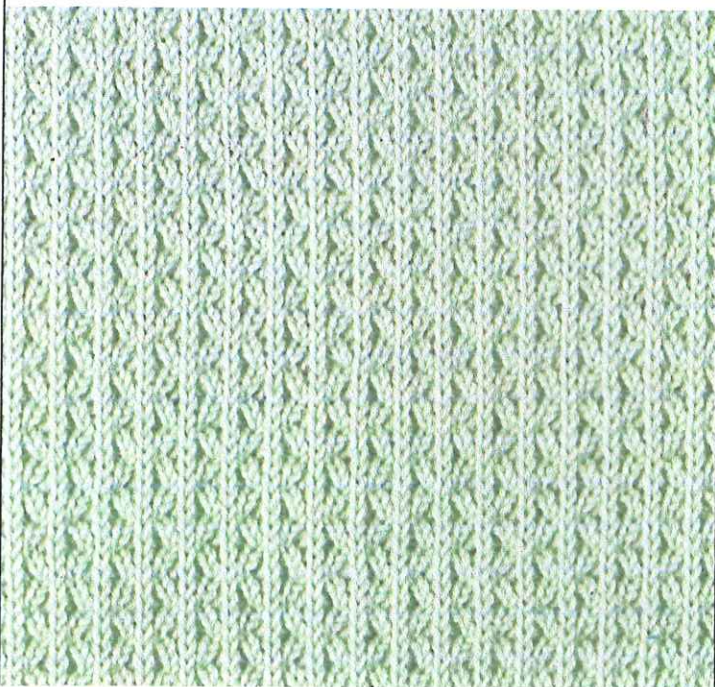
NO. 1-(1)



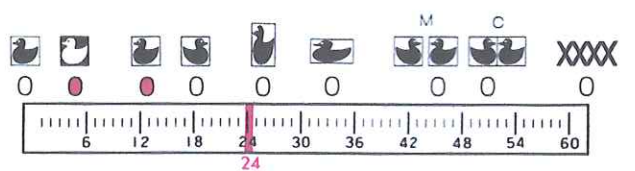
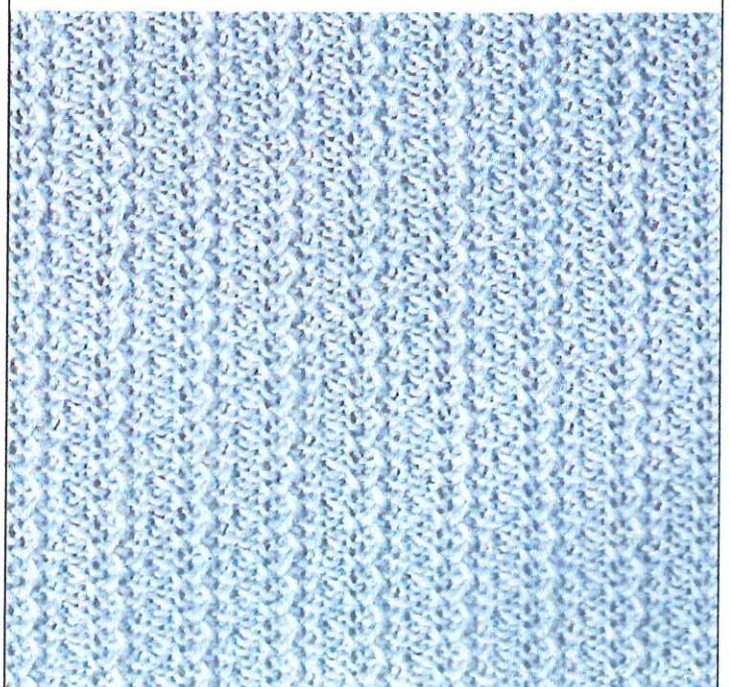
NO. 1-(3)



NO. 1-(3)

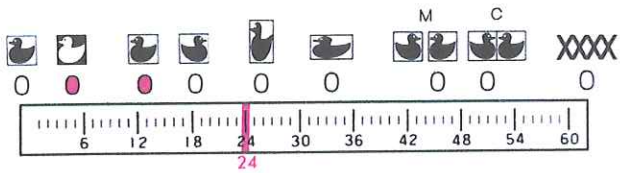
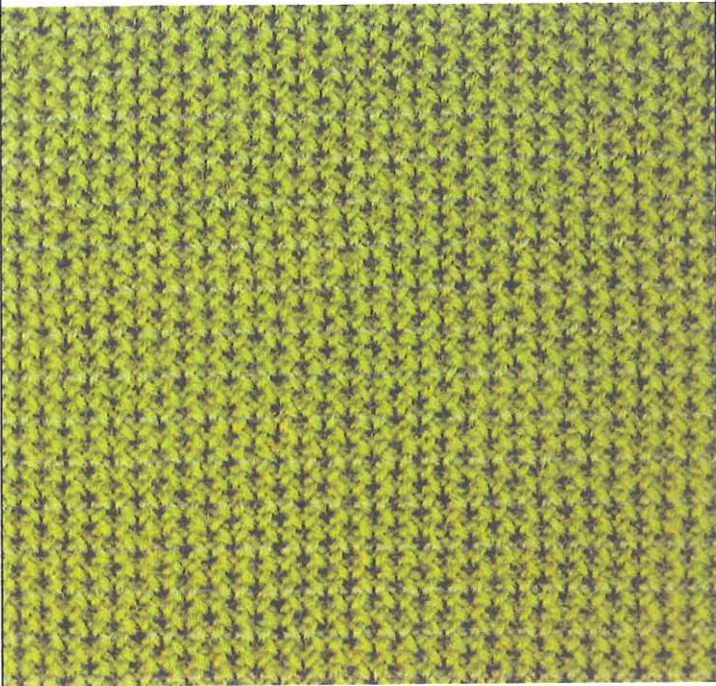


NO 1-(4)

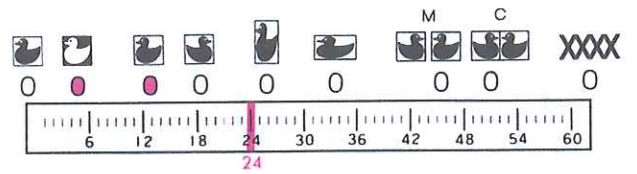
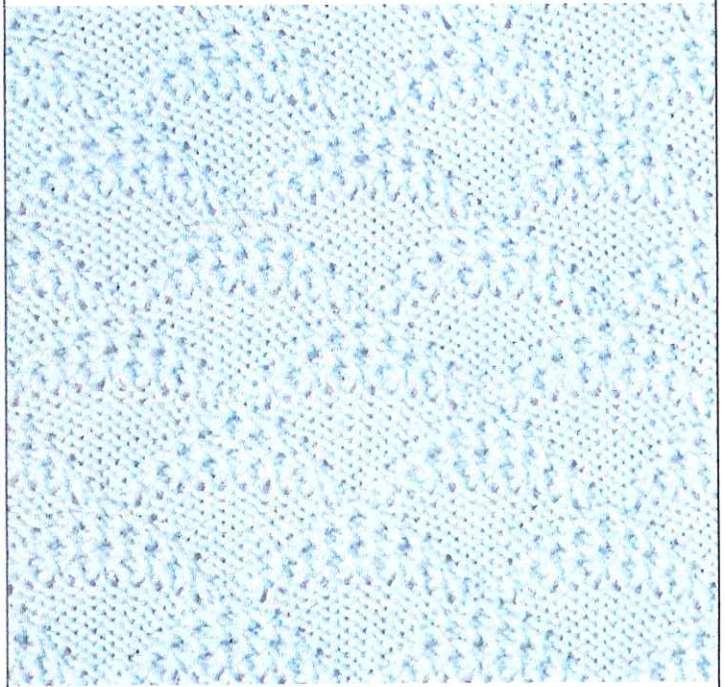




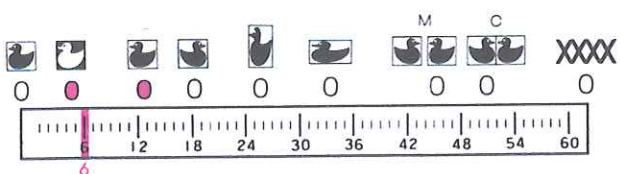
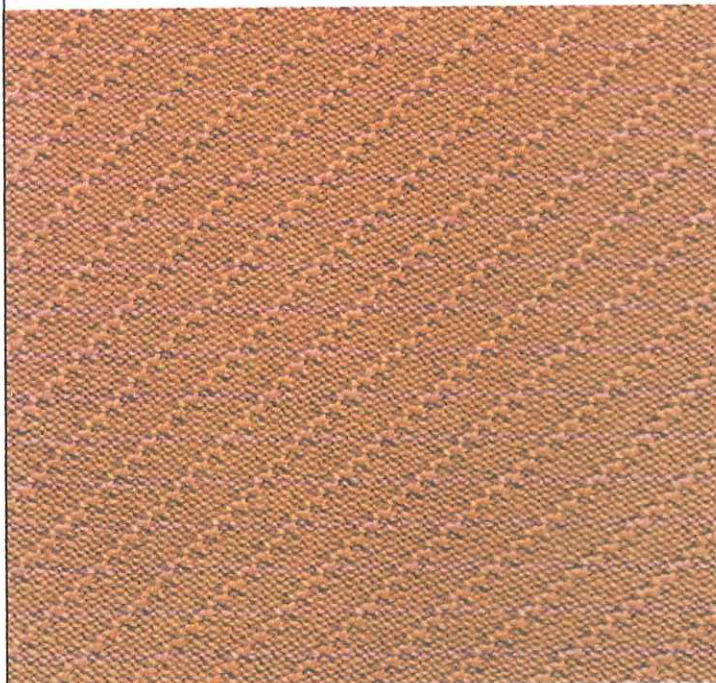
NO. 1-(5)



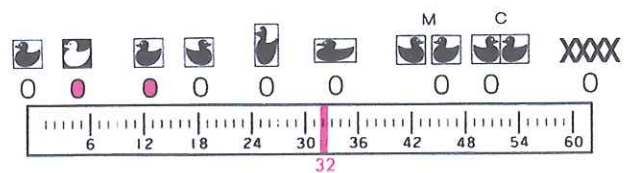
NO. 1-(6)



NO. 6-(16)

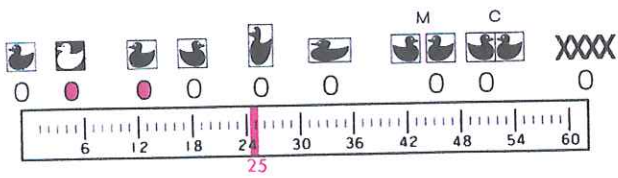
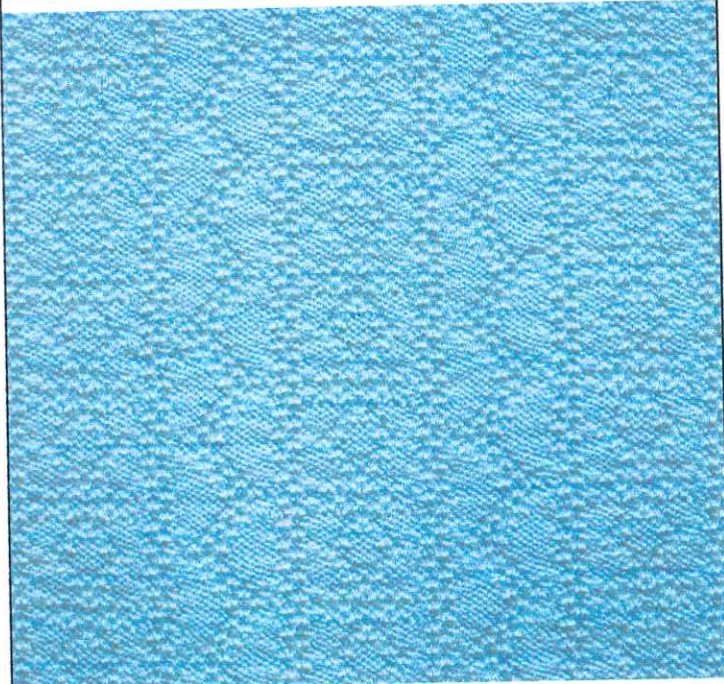


NO. 11-(34)

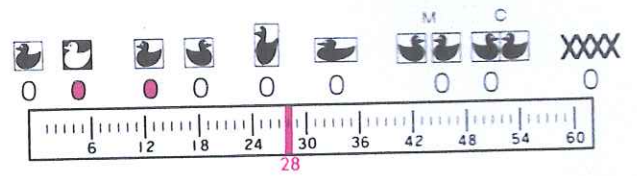
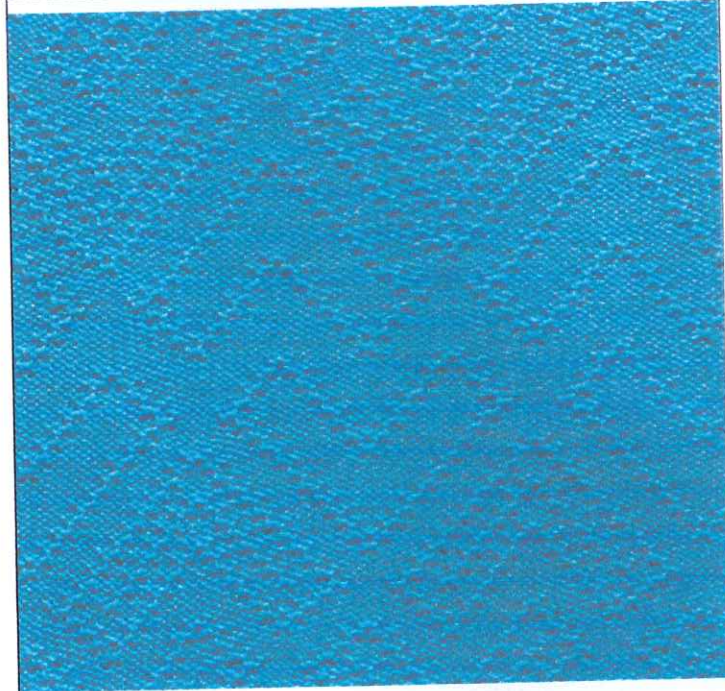




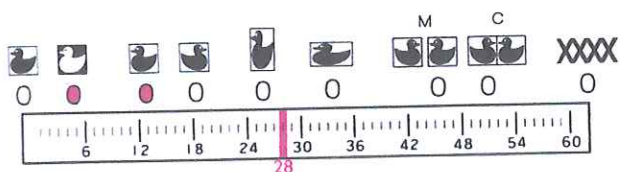
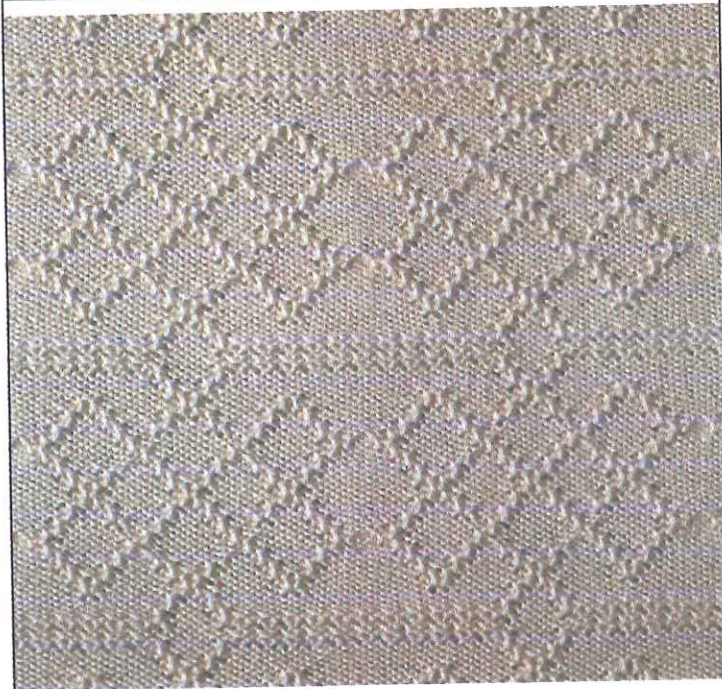
NO. 12-(38)



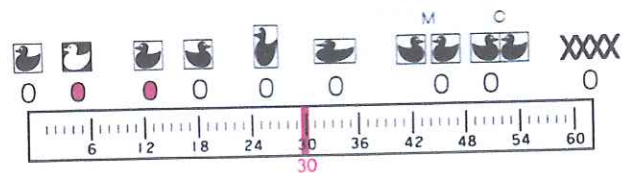
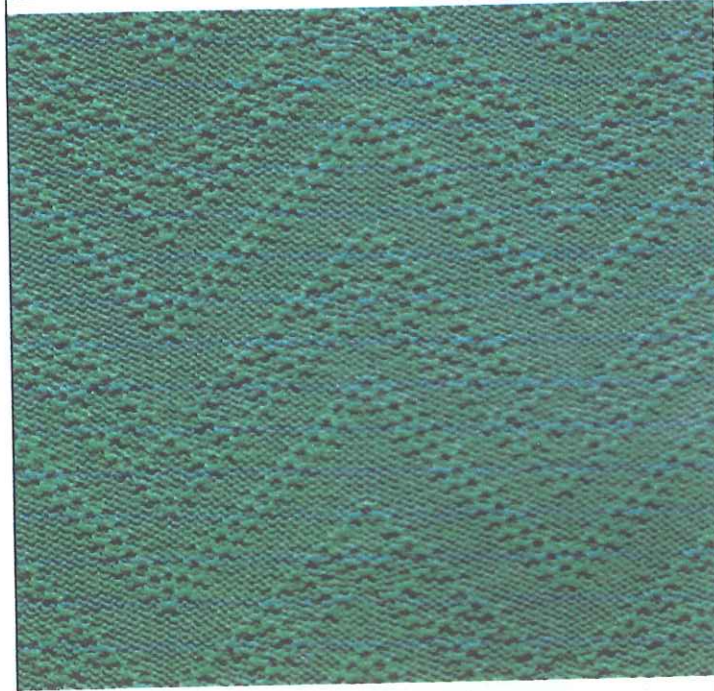
NO. 13-(40)



NO. 13-(41)



NO. 14-(43)





# TUCK STITCH IN COLOURS

NO. 1-(1)

Diagram for NO. 1-(1) showing a solid orange tuck stitch texture. Below the fabric is a row of symbols: 0, 0, 0, 0, 0, 0, M, C, XXXX, 0. Below the symbols is a ruler with markings from 0 to 60, with a red vertical line at 24. Below the ruler are two rows of arrows: the first row has two arrows pointing right labeled '2' and 'B' with a vertical ellipsis above; the second row has two arrows pointing left labeled '2' and 'A' with a vertical ellipsis above.

NO. 1-(3)

Diagram for NO. 1-(3) showing a repeating red and white geometric pattern. Below the fabric is a row of symbols: 0, 0, 0, 0, 0, 0, M, C, XXXX, 0. Below the symbols is a ruler with markings from 0 to 60, with a red vertical line at 24. Below the ruler are two rows of arrows: the first row has four arrows pointing right labeled '4' and 'B' with a vertical ellipsis above; the second row has four arrows pointing left labeled '4' and 'A' with a vertical ellipsis above.

NO. 1-(3)

Diagram for NO. 1-(3) showing a repeating red, white, and green geometric pattern. Below the fabric is a row of symbols: 0, 0, 0, 0, 0, 0, M, C, XXXX, 0. Below the symbols is a ruler with markings from 0 to 60, with a red vertical line at 24. Below the ruler are three rows of arrows: the first row has four arrows pointing right labeled '4' and 'C' with a vertical ellipsis above; the second row has four arrows pointing right labeled '4' and 'B' with a vertical ellipsis above; the third row has four arrows pointing left labeled '4' and 'A' with a vertical ellipsis above.

NO. 1-(5)

Diagram for NO. 1-(5) showing a dense green and white geometric pattern. Below the fabric is a row of symbols: 0, 0, 0, 0, 0, 0, M, C, XXXX, 0. Below the symbols is a ruler with markings from 0 to 60, with a red vertical line at 24. Below the ruler are two rows of arrows: the first row has two arrows pointing right labeled '2' and 'B' with a vertical ellipsis above; the second row has two arrows pointing left labeled '2' and 'A' with a vertical ellipsis above.



**NO. 1-(1)**

0 0 0 0 0 0 0 0 0 XXXX

M C

**NO. 1-(3)**

0 0 0 0 0 0 0 0 0 XXXX

M C

**NO. 1-(4)**

0 0 0 0 0 0 0 0 0 XXXX

M C

**NO. 1-(4)**

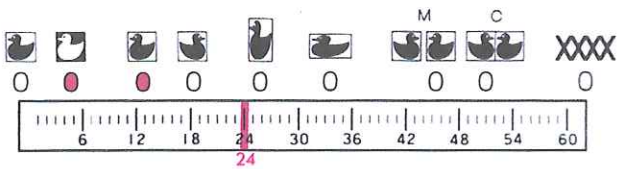
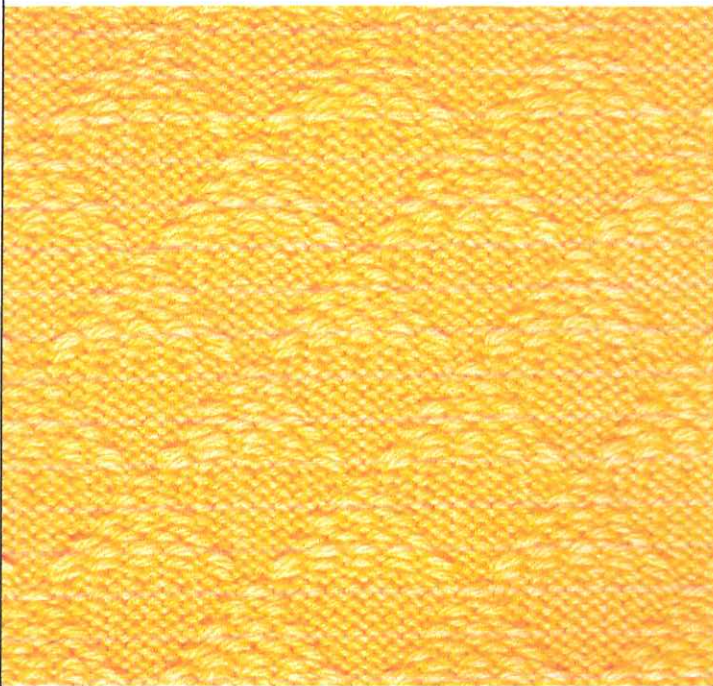
0 0 0 0 0 0 0 0 0 XXXX

M C

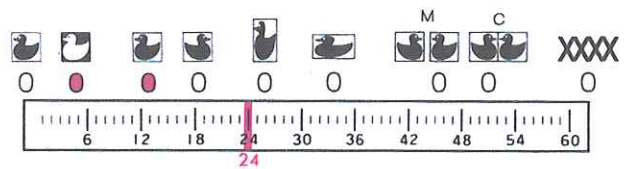
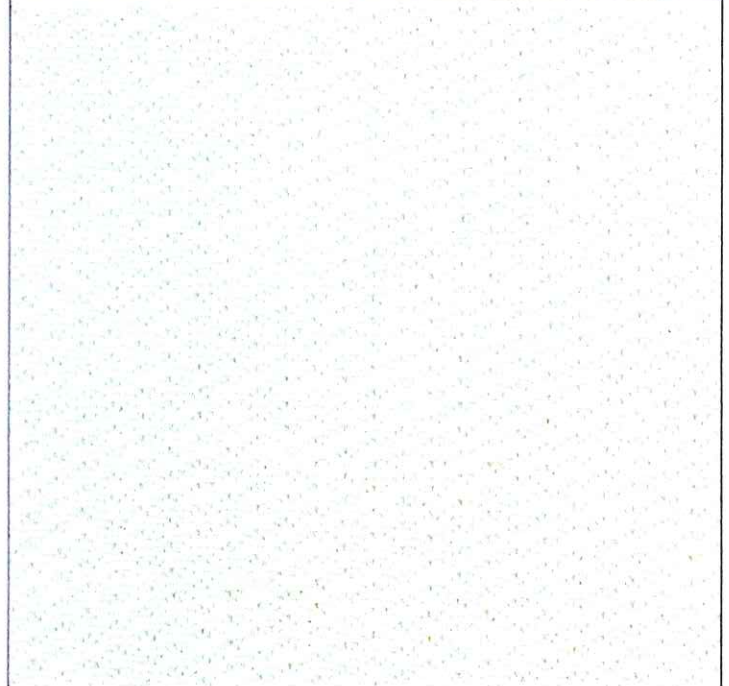


# SLIP STITCH

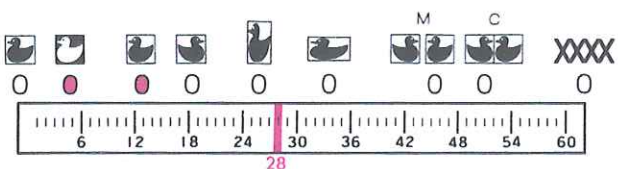
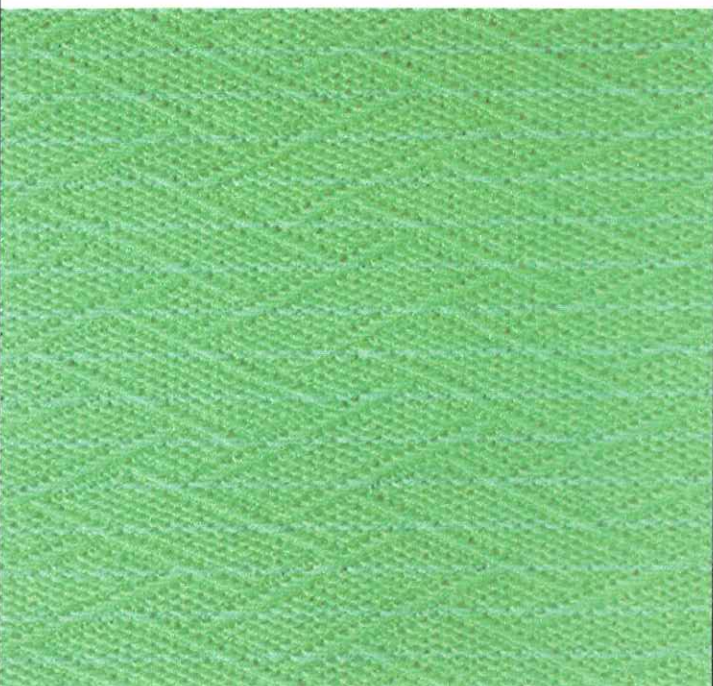
NO. 1-(6)



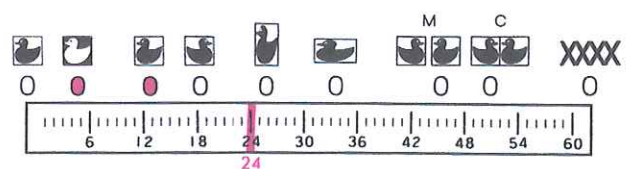
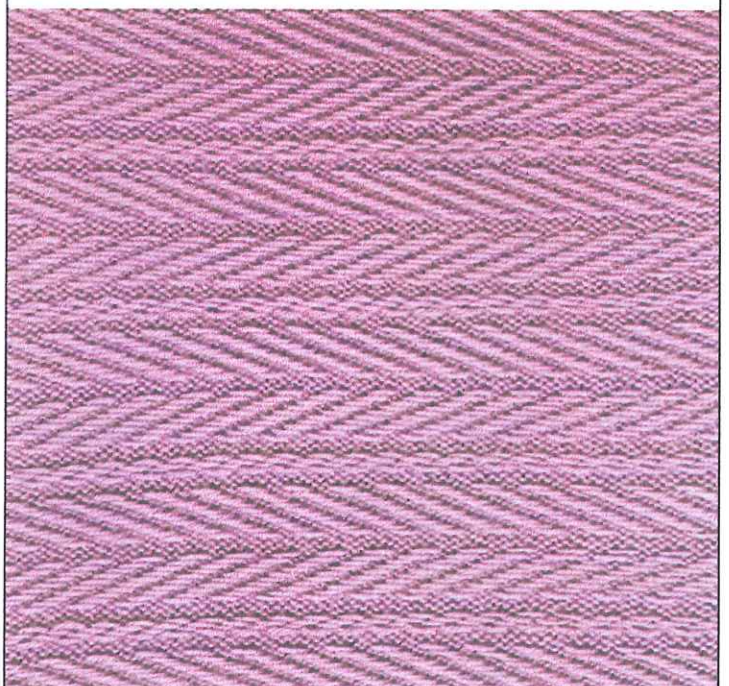
NO. 1-(2)



NO. 10-(31)

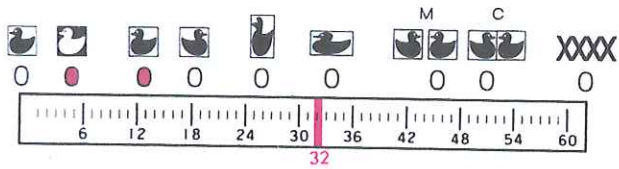
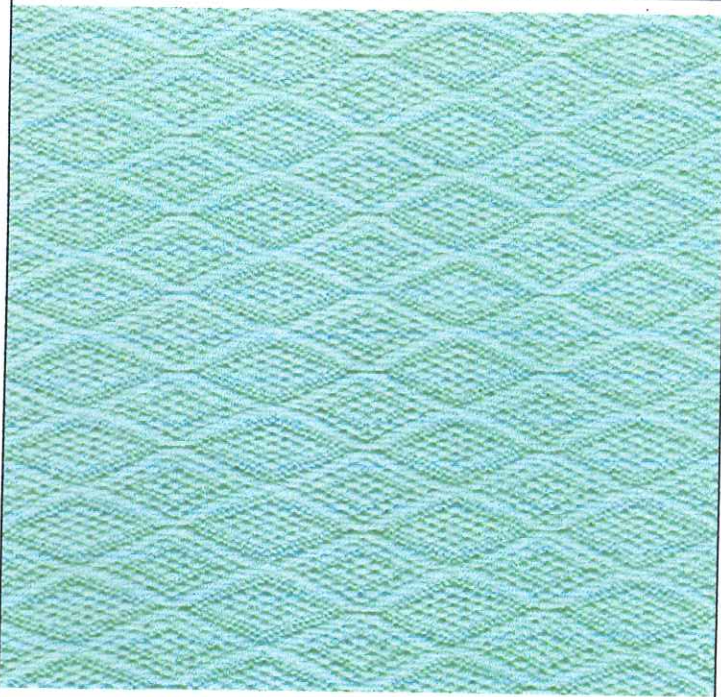


NO. 10-(32)

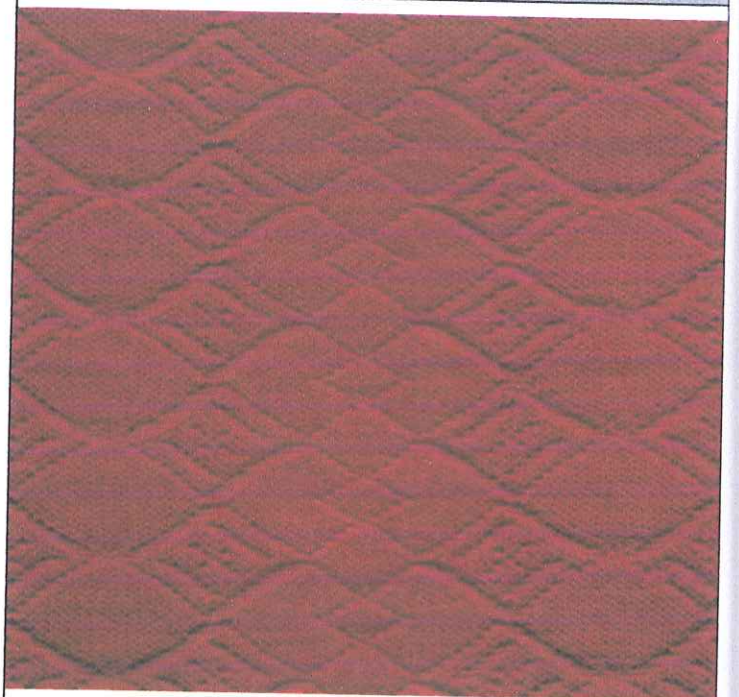




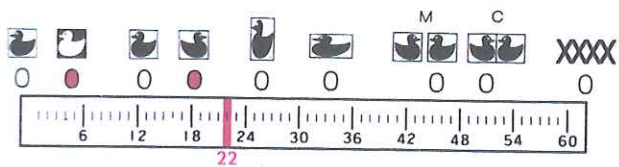
NO. 10-(33)



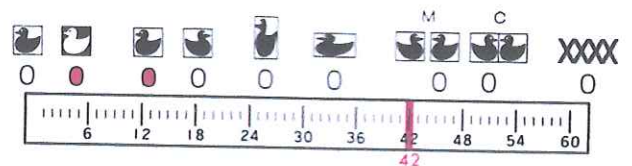
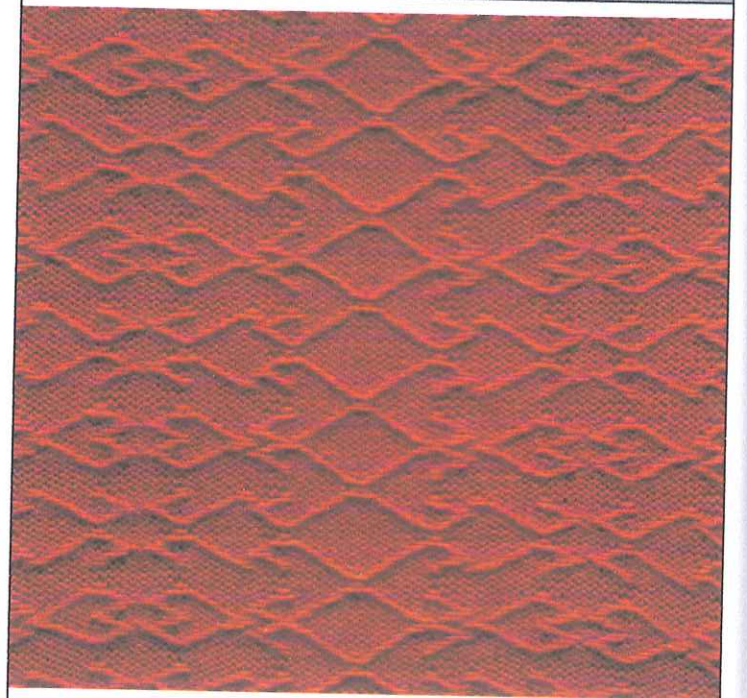
NO. 12-(37)



NO. 12-(39)



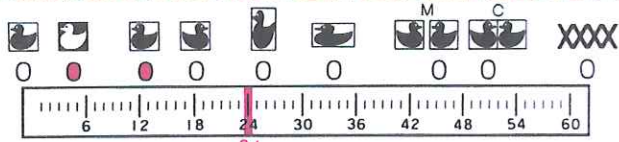
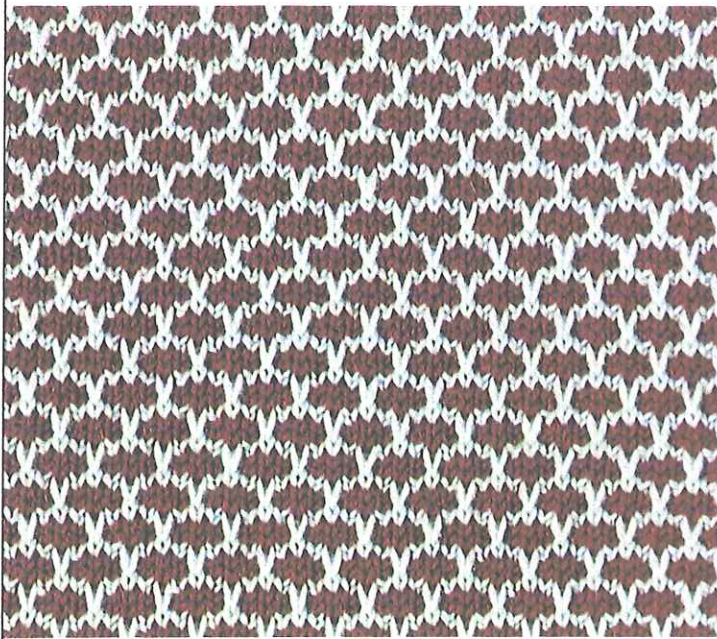
NO. 14-(44)



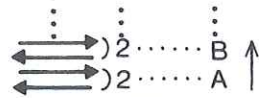
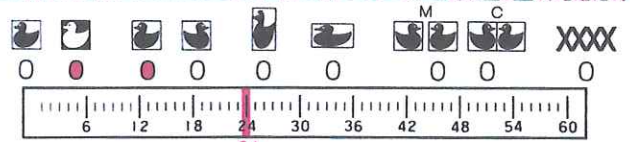
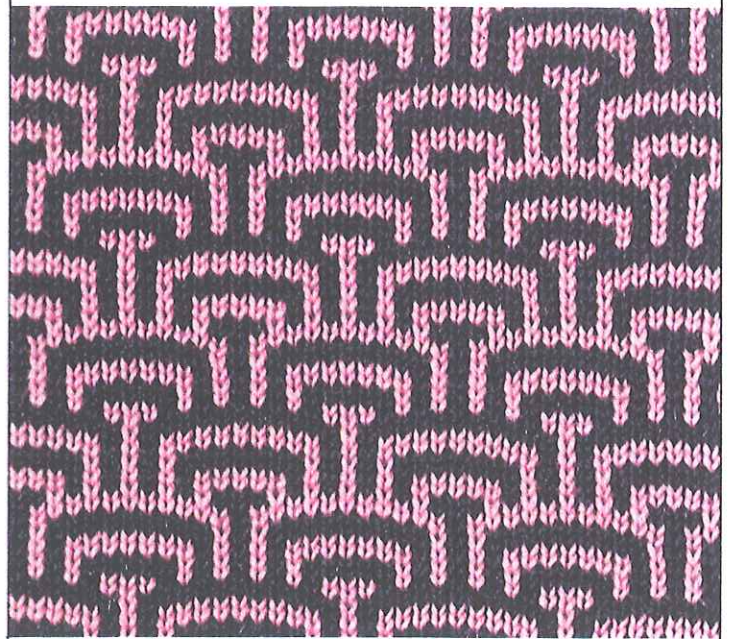


# SLIP STITCH IN COLOURS

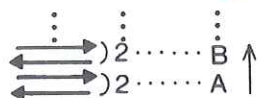
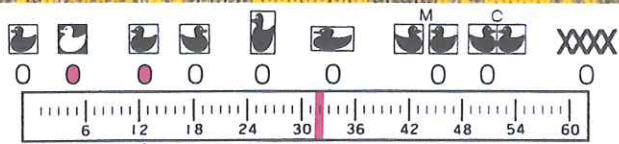
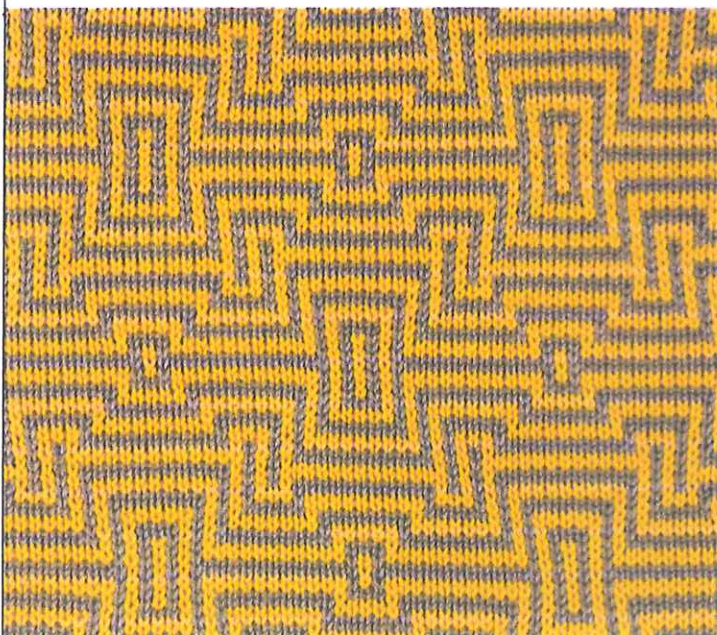
NO. 1-(3)



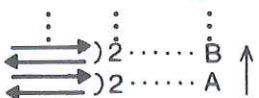
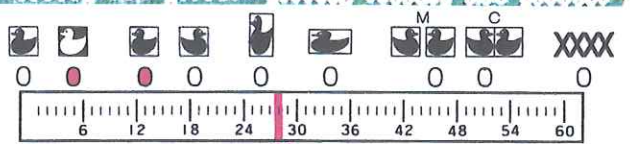
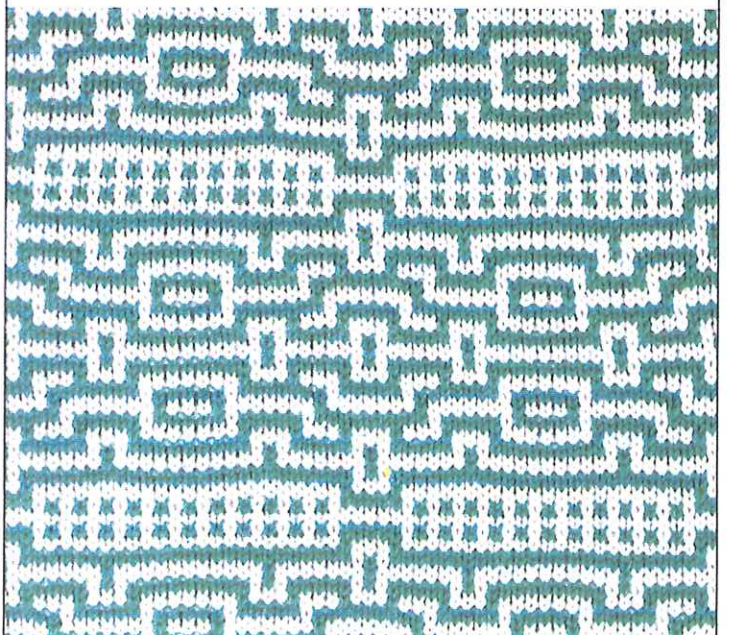
NO. 1-(6)



NO. 11-(34)



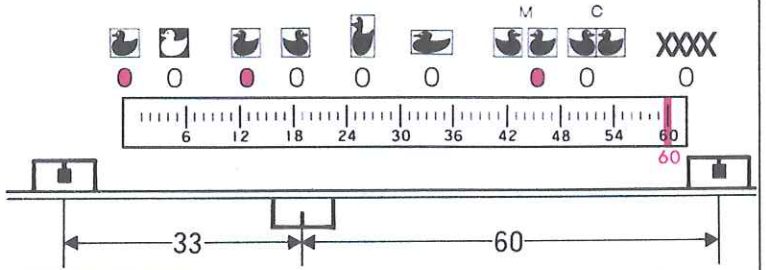
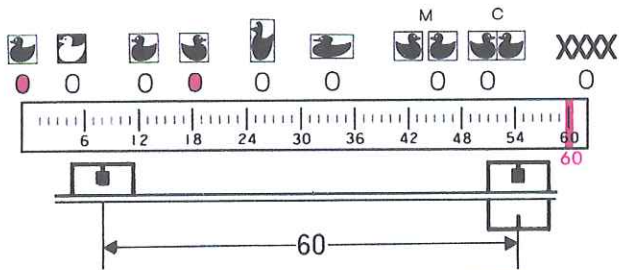
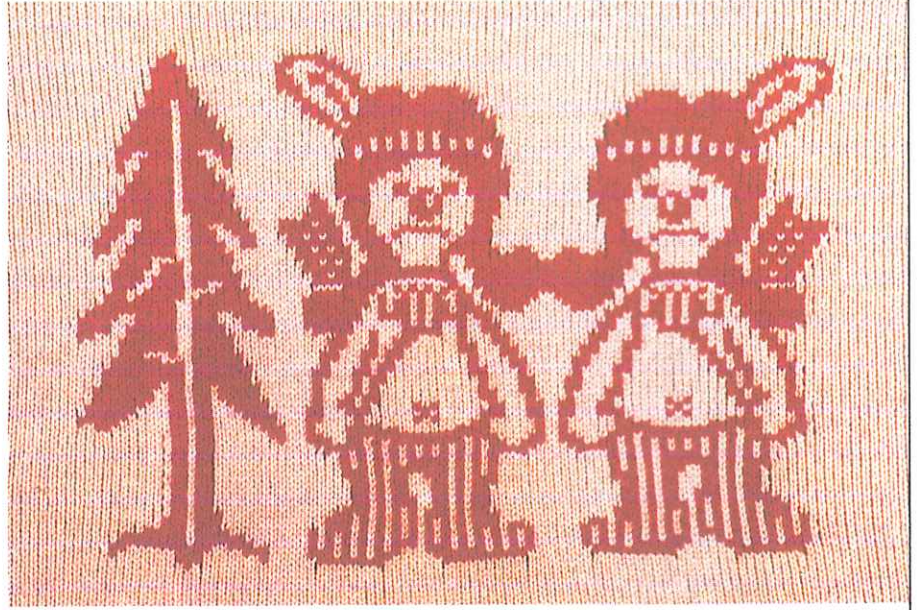
NO. 13-(41)



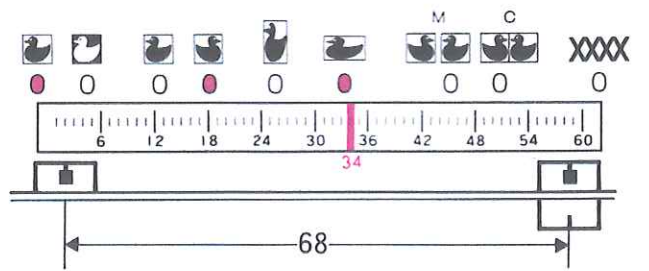
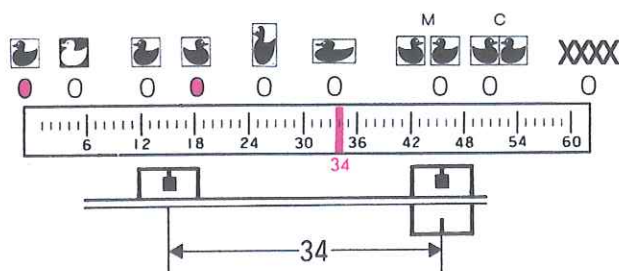


# SINGLE MOTIF

NO.3-(10)

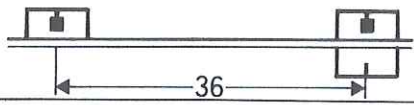
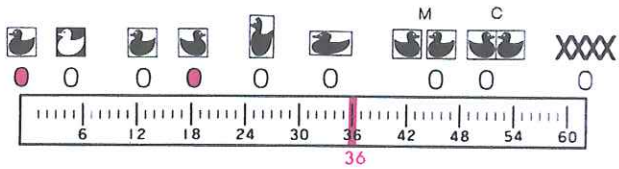


NO.3-(11)

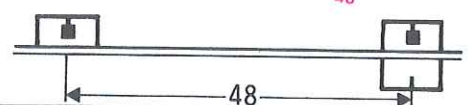
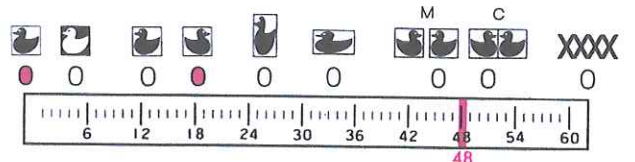




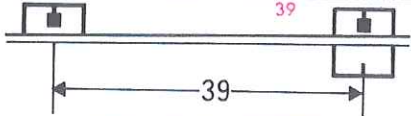
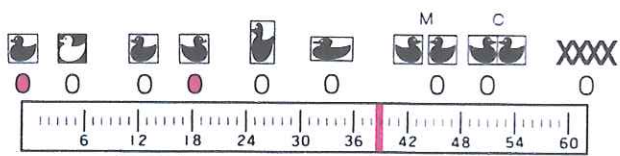
NO. 2-(8)



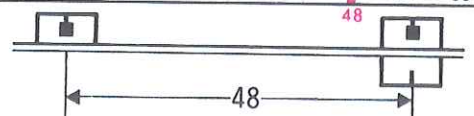
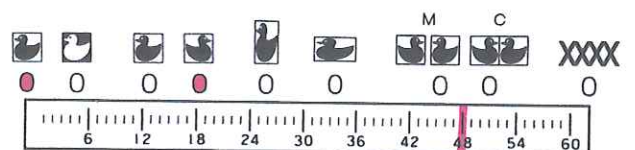
NO. 6-(18)



NO. 7-(19)



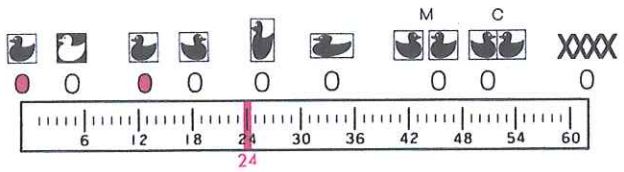
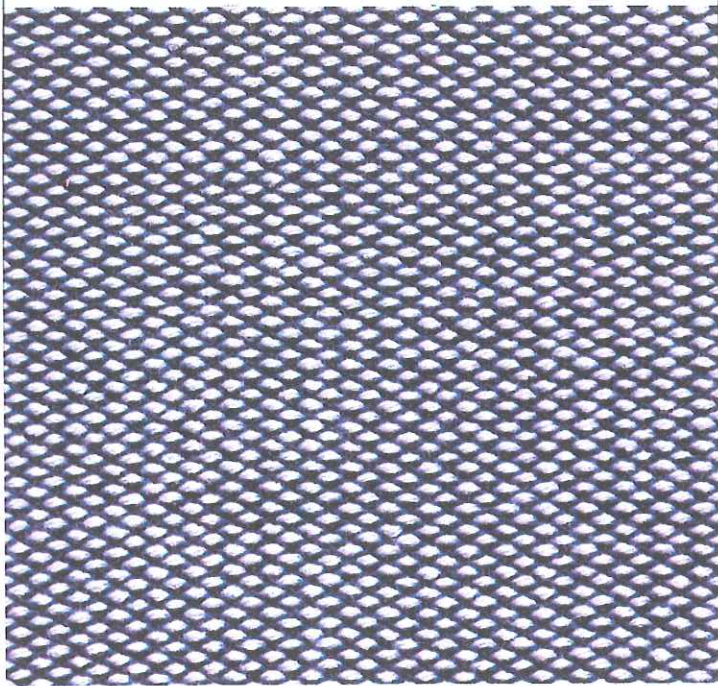
NO. 7-(20)



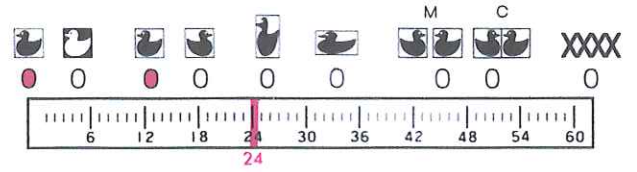
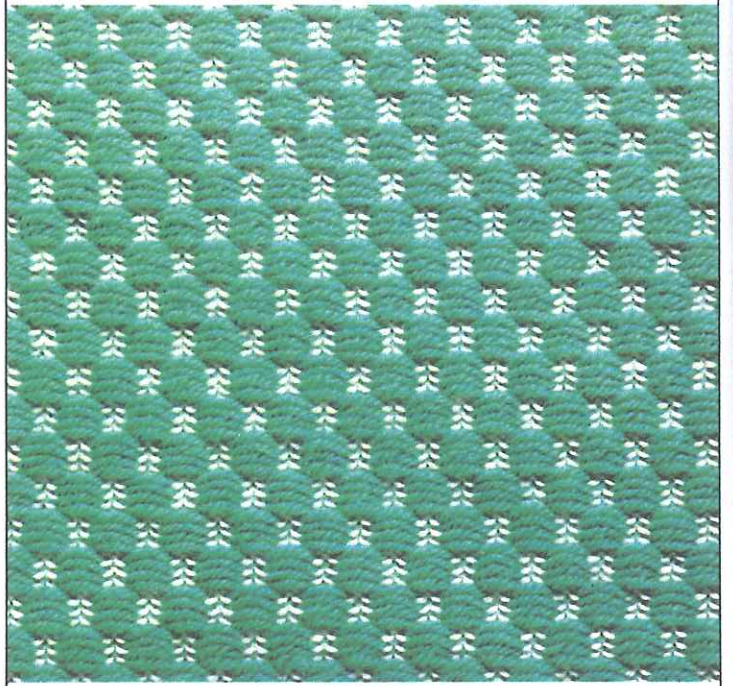


# WEAVING

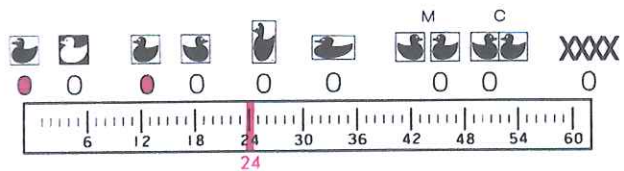
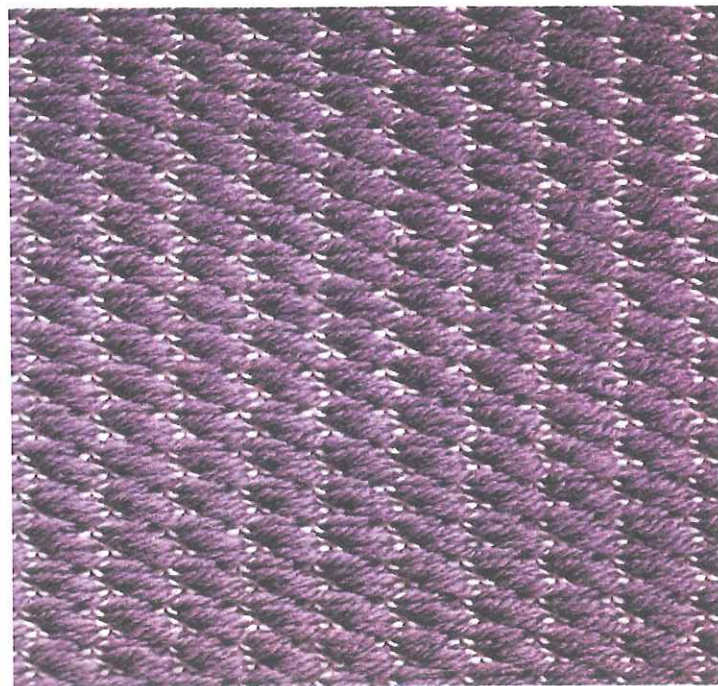
NO. 1-(1)



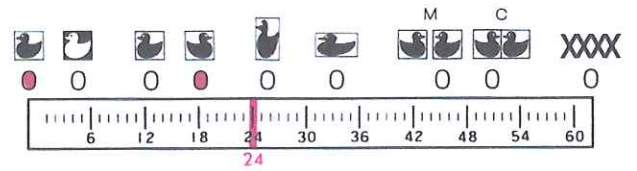
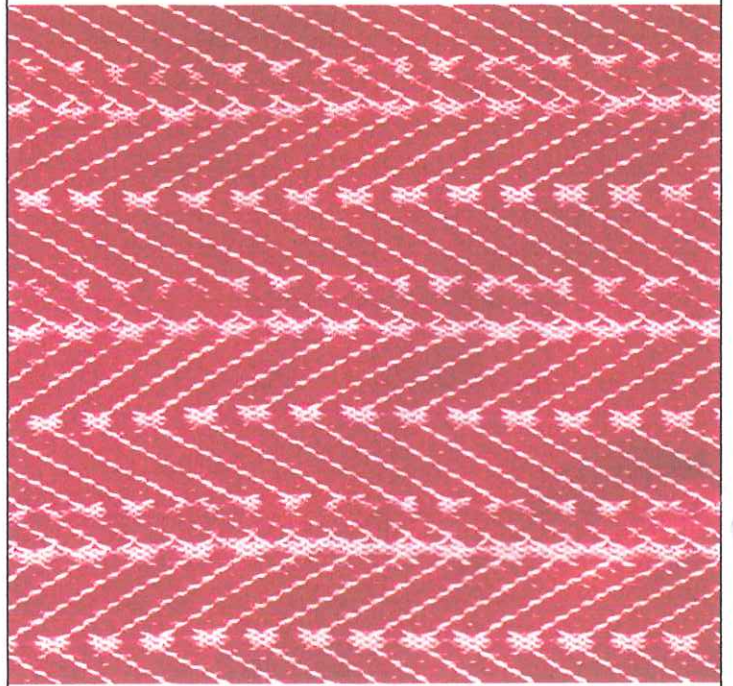
NO. 1-(3)



NO. 1-(4)



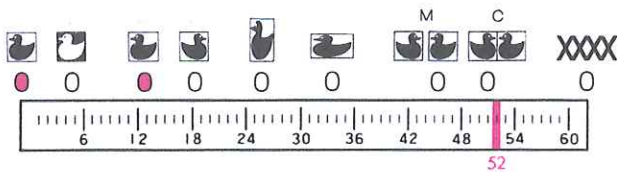
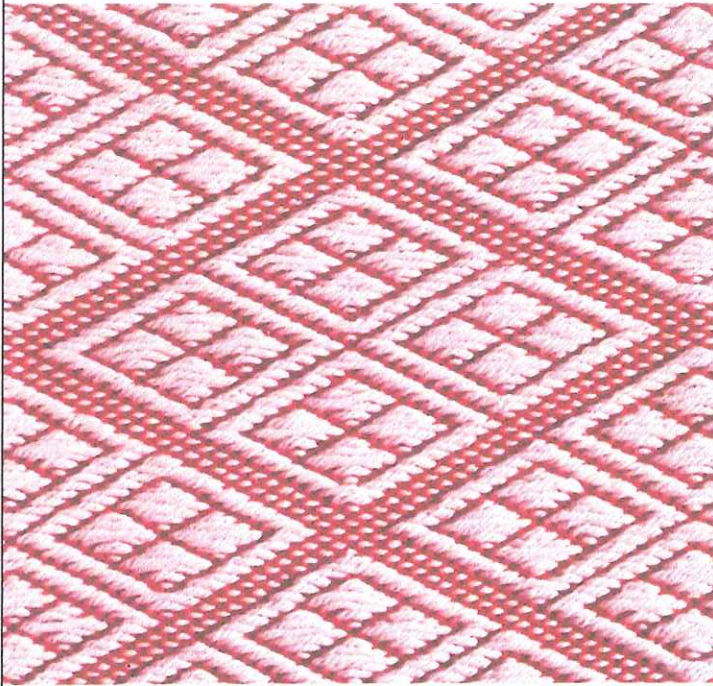
NO. 10-(32)



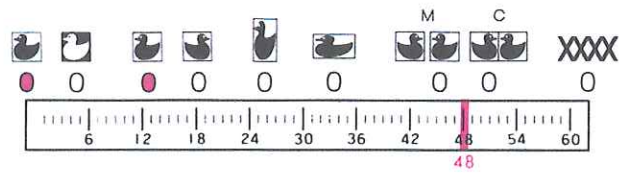
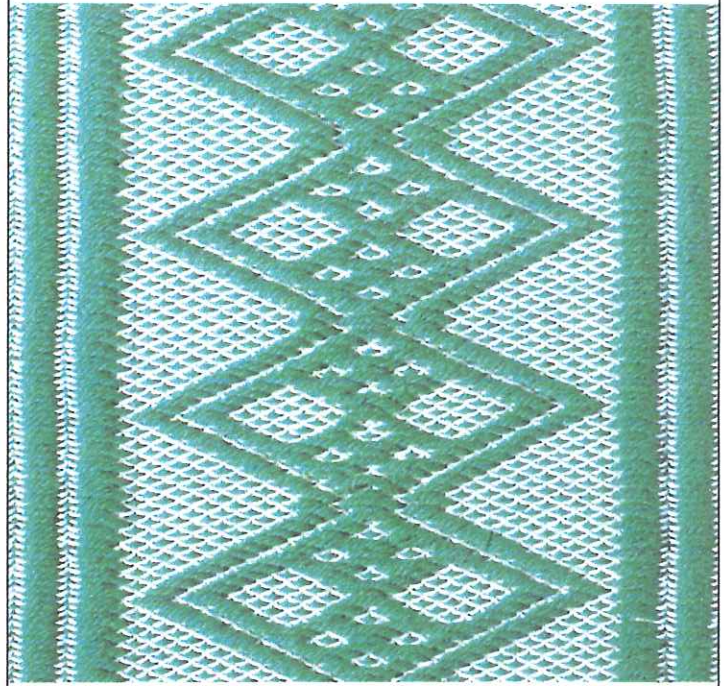


NO.12-(36)

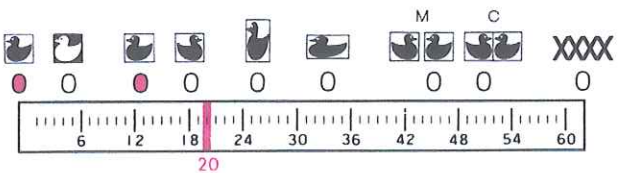
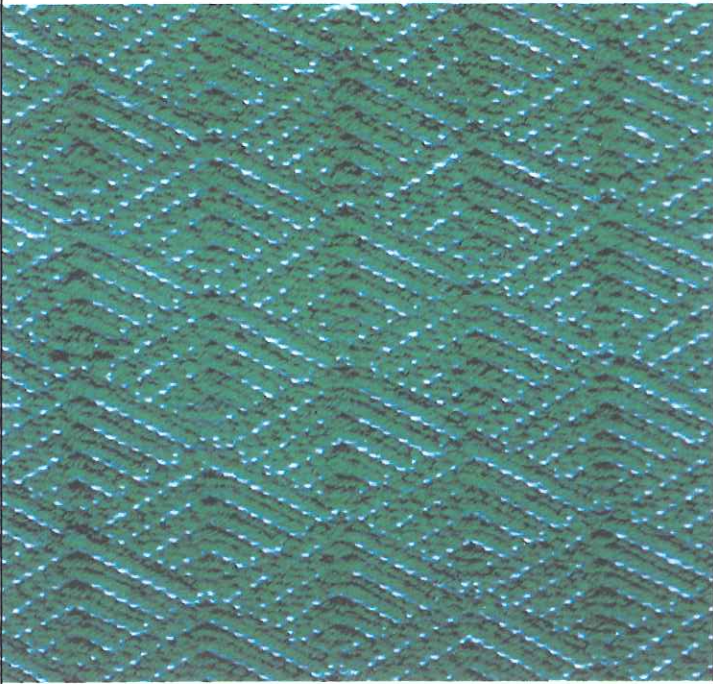
スレッド編



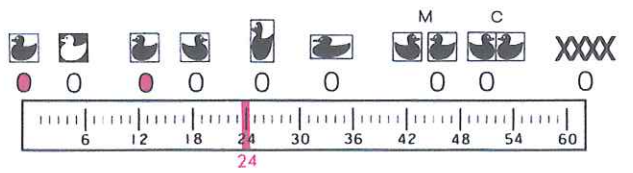
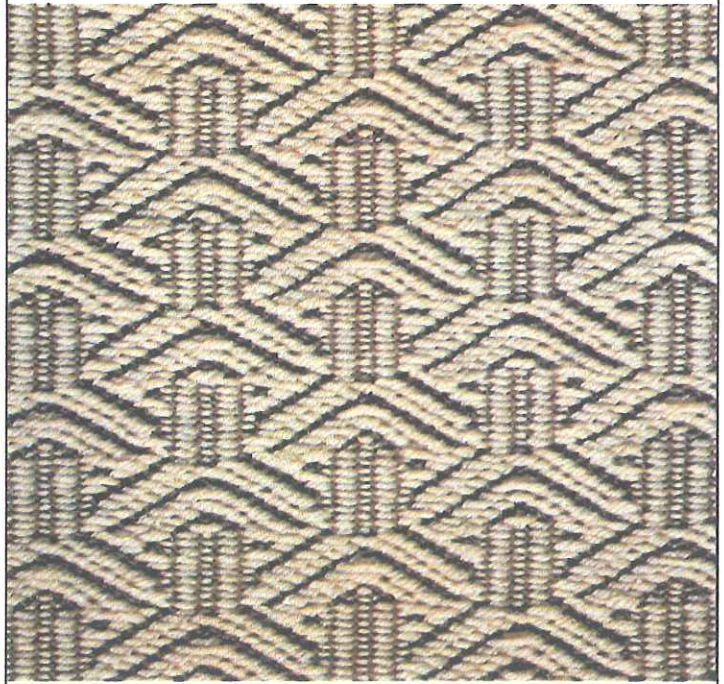
NO.15-(45)



NO.15-(47)



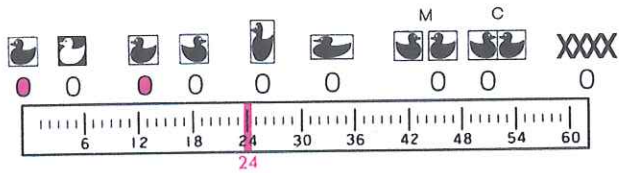
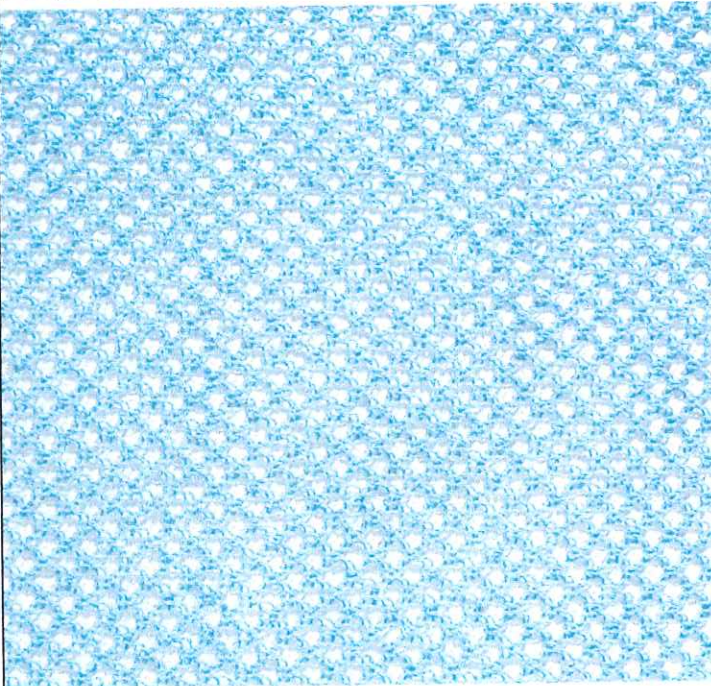
NO.15-(48)



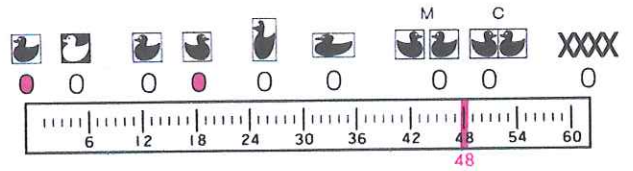
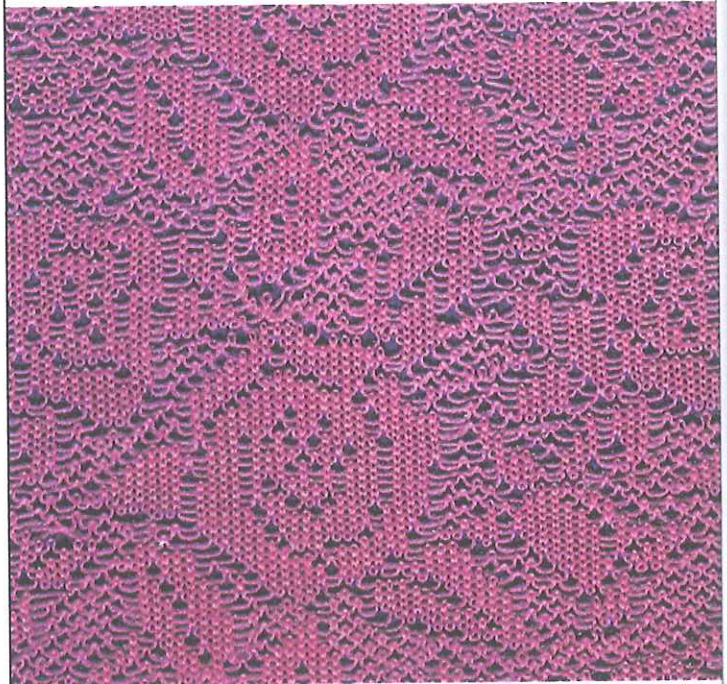


# PUNCH LACE

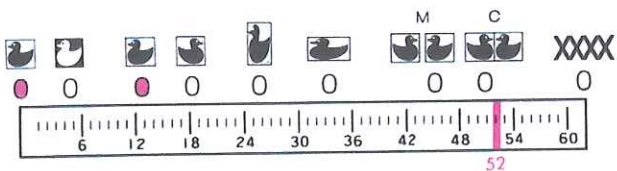
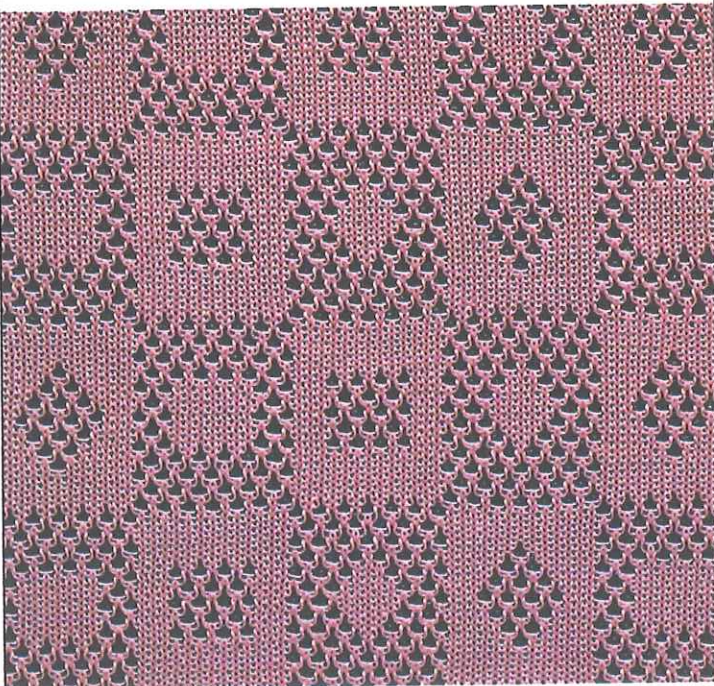
NO. 1-(5)



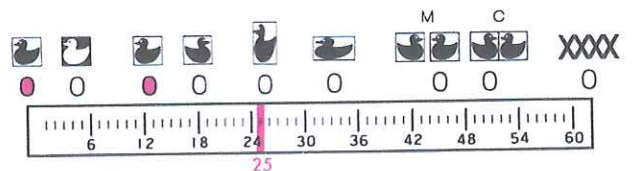
NO. 5-(15)



NO. 11-(35)



NO. 12-(38)



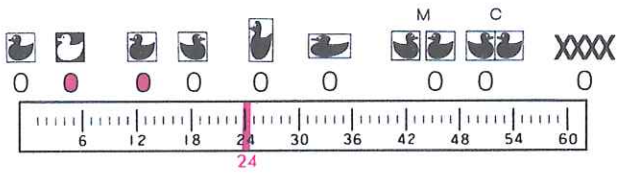
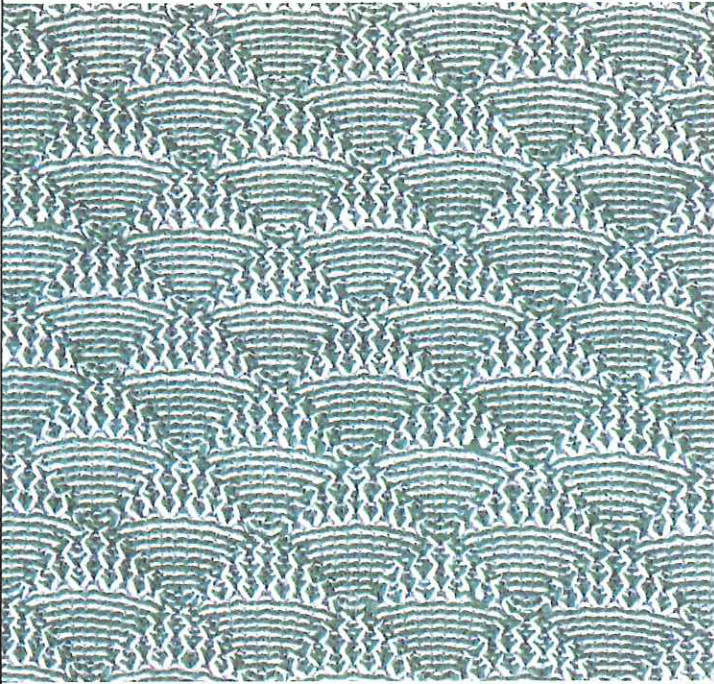




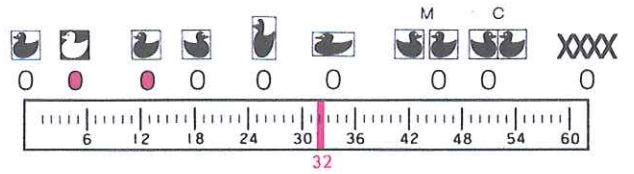
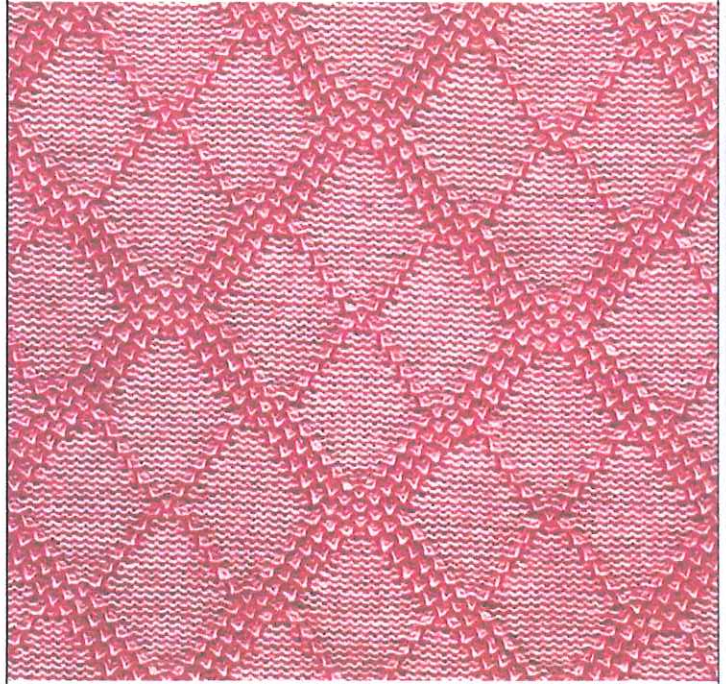


# PLATING

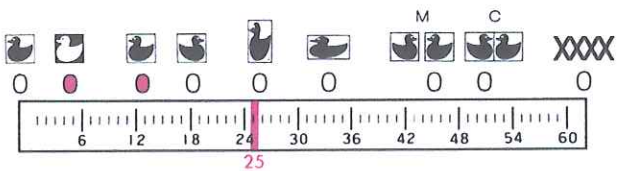
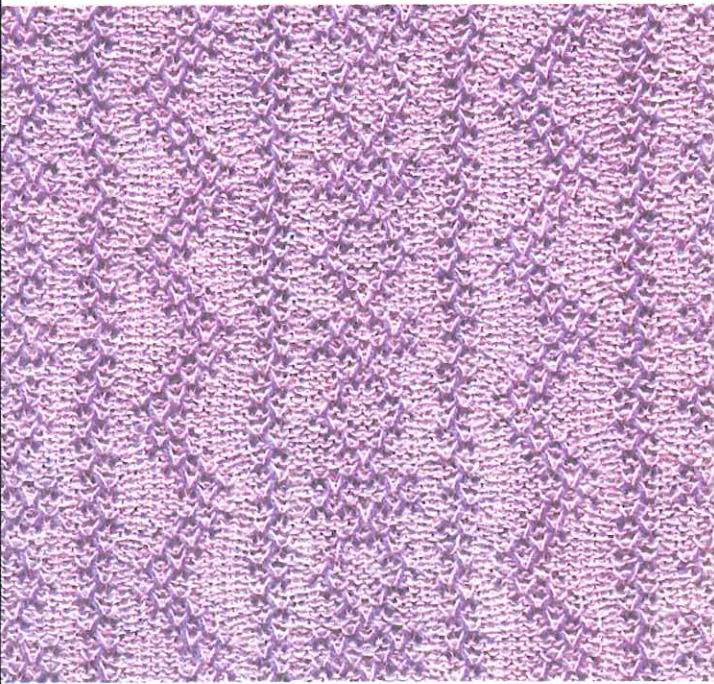
NO. 1-(6)



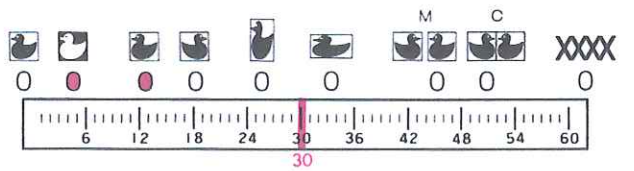
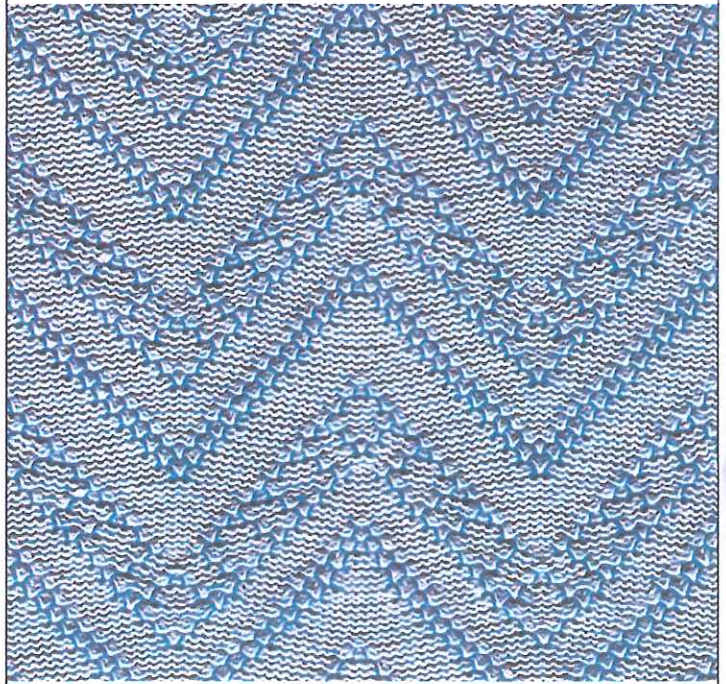
NO. 11-(34)



NO. 12-(38)



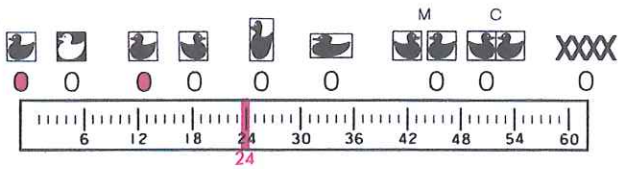
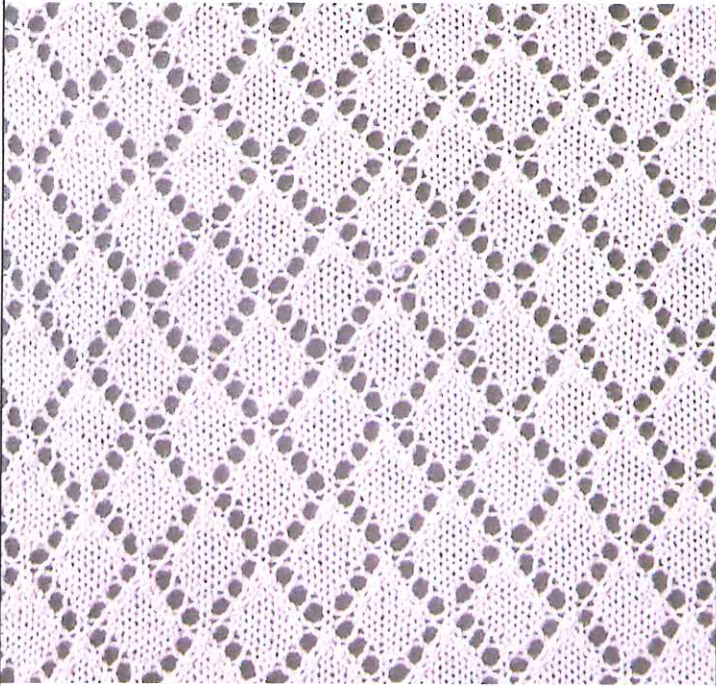
NO. 14-(43)



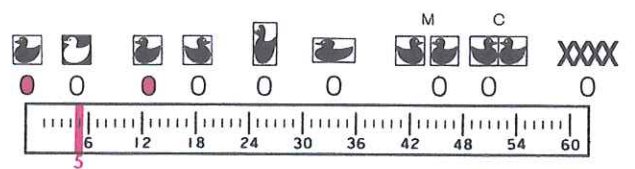
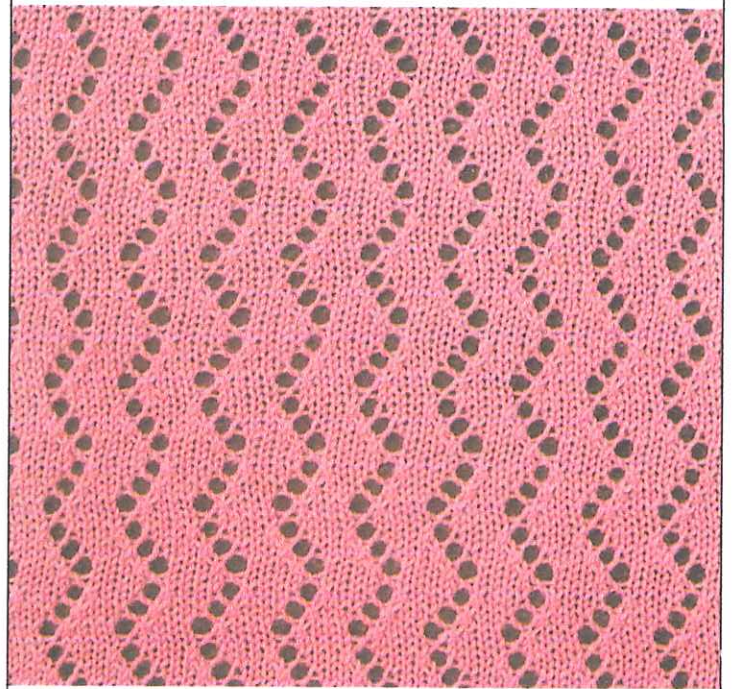


# PLAIN LACE

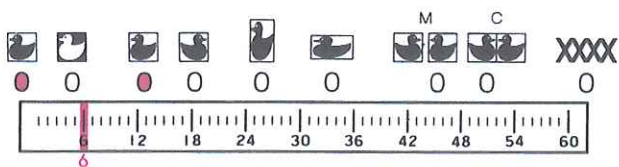
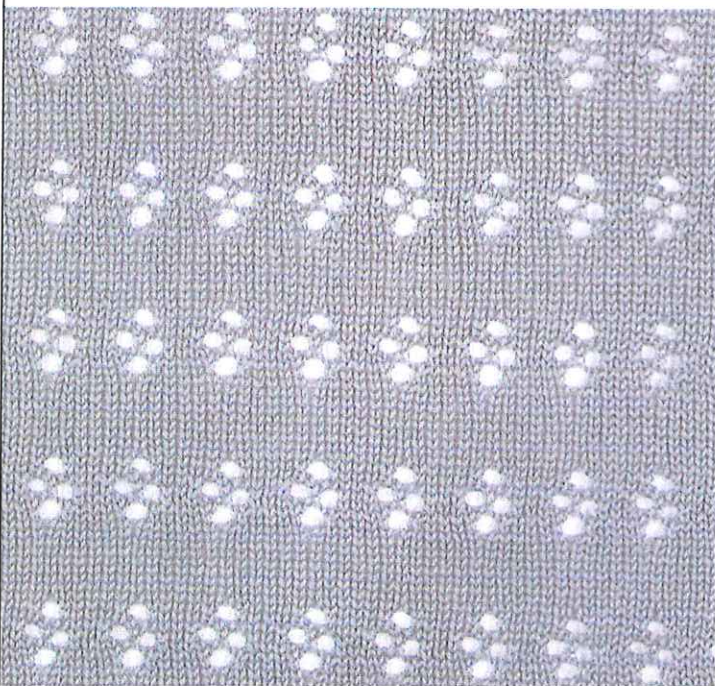
NO. 1-L-(1)



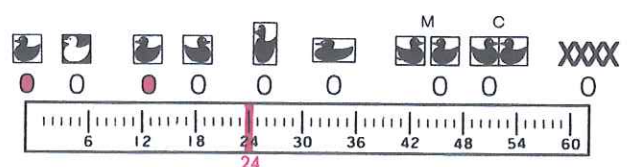
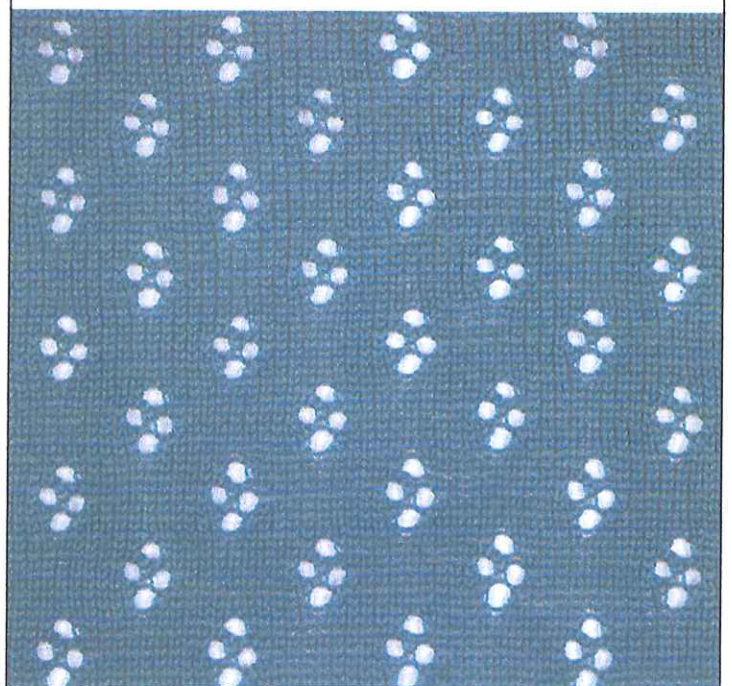
NO. 1-L-(1)



NO. 1-L-(2)

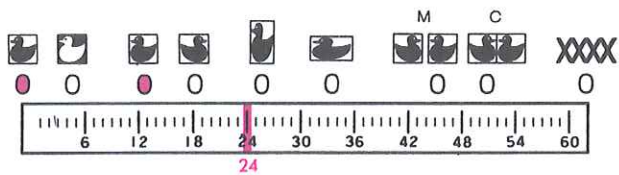
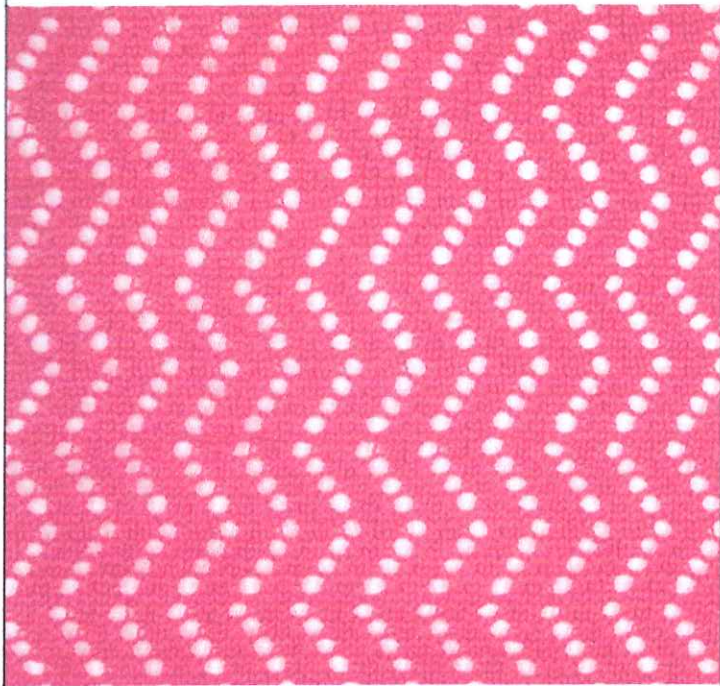


NO. 1-L-(2)

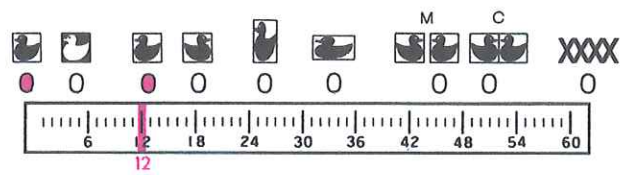
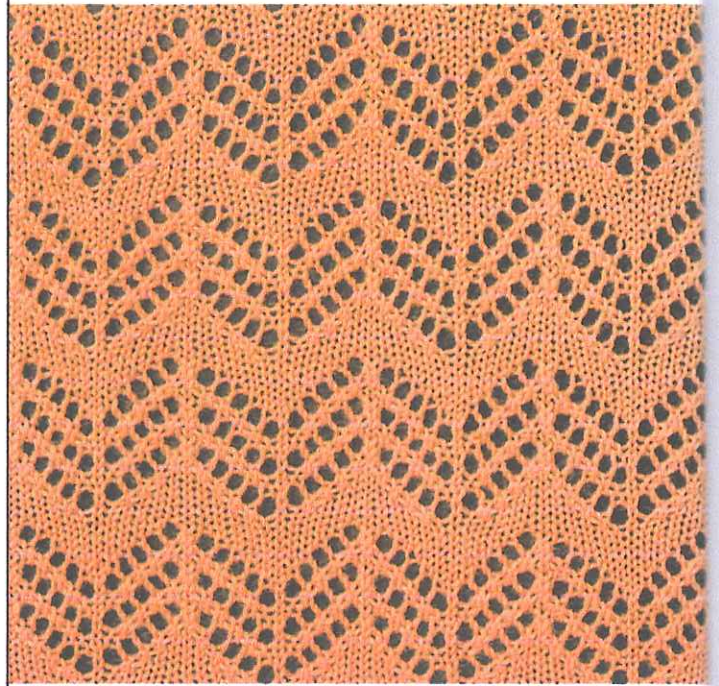




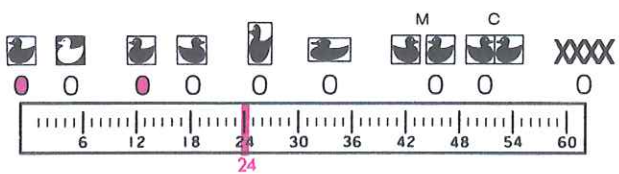
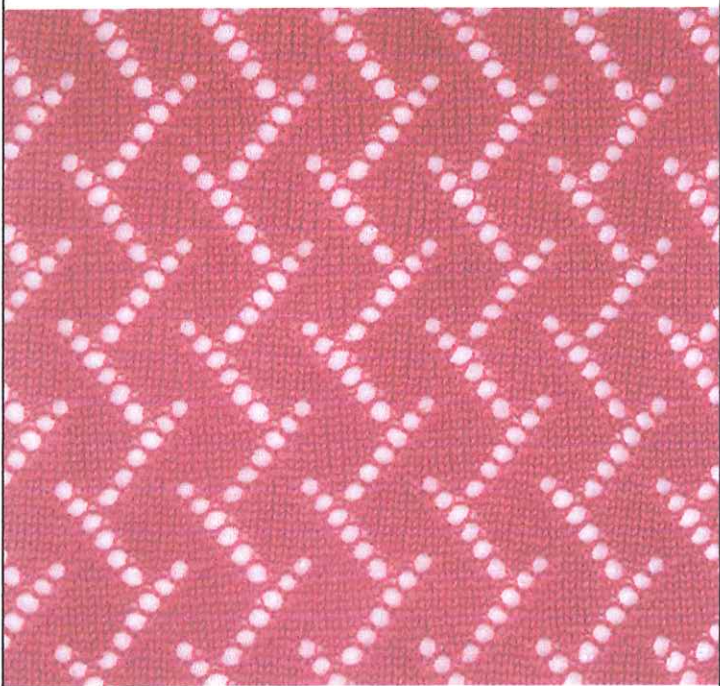
NO. 1-L-(3)



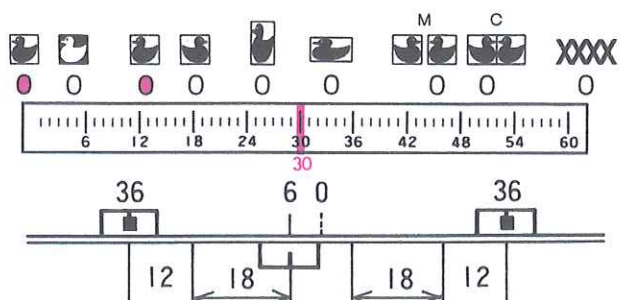
NO. 1-L-(5)



NO. 1-L-(4)

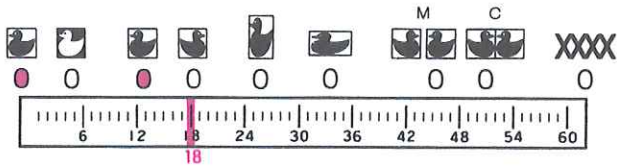
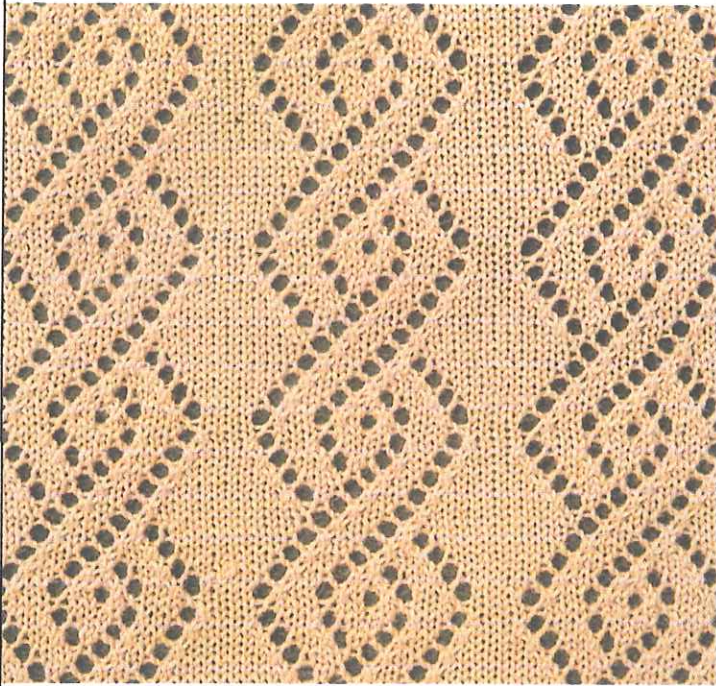


NO. 1-L-(5)

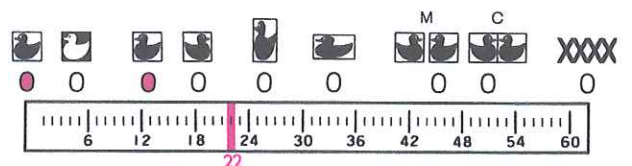
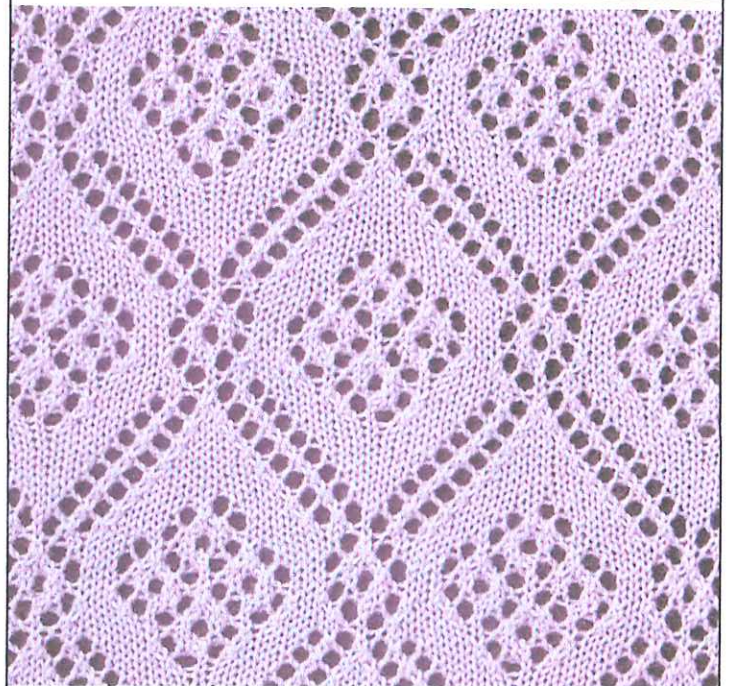




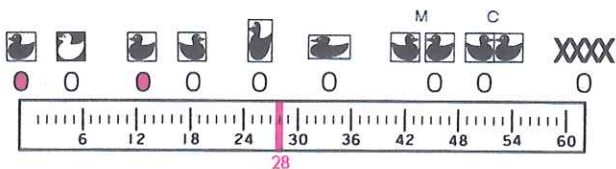
NO.1-L-(6)



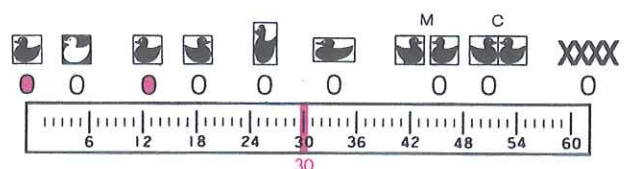
NO.2-L-(7)



NO.2-L-(8)

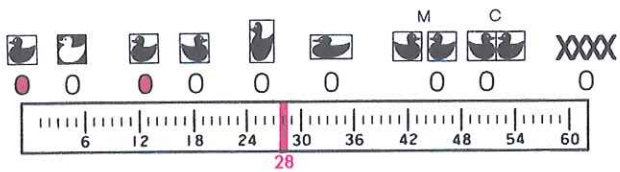
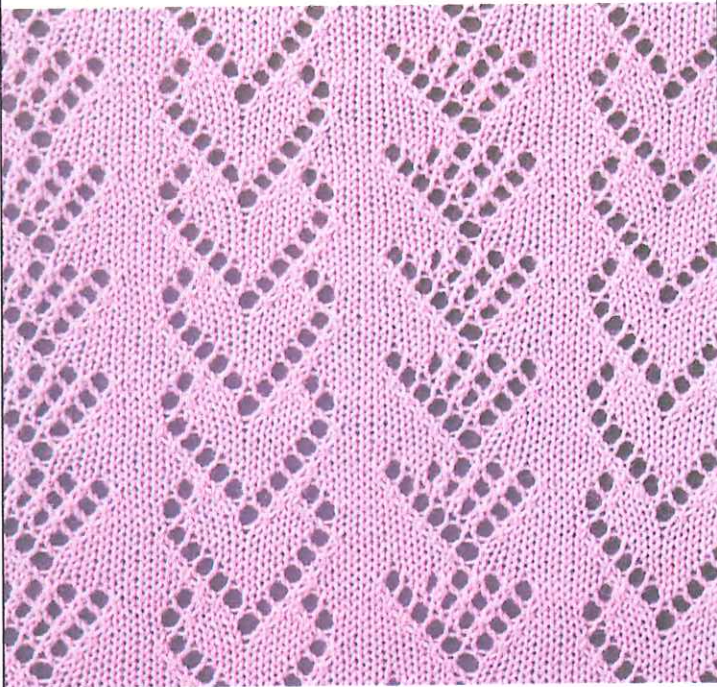


NO.2-L-(9)

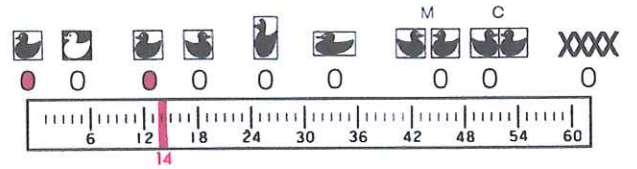
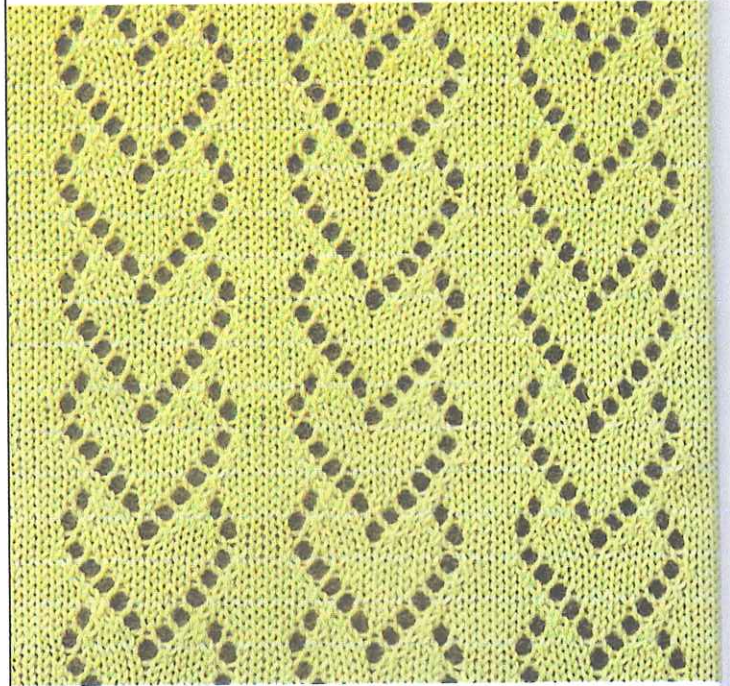




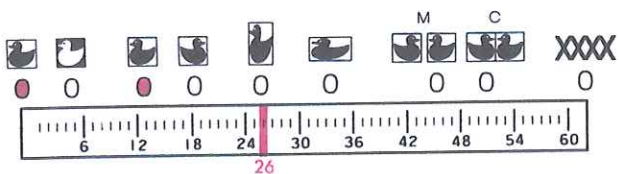
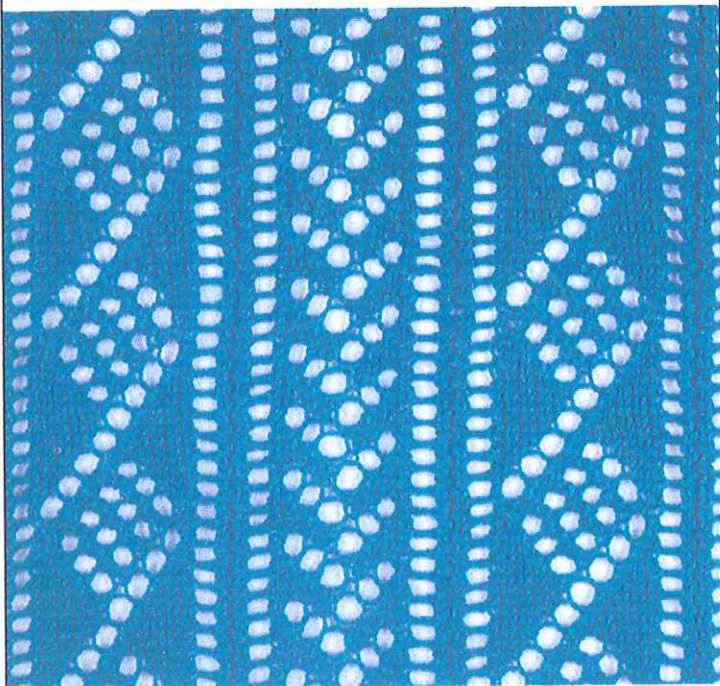
NO. 2-L-(10)



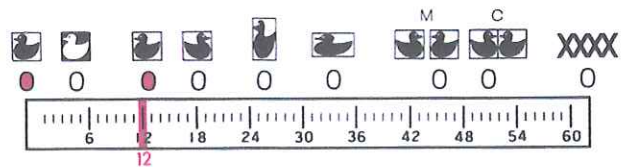
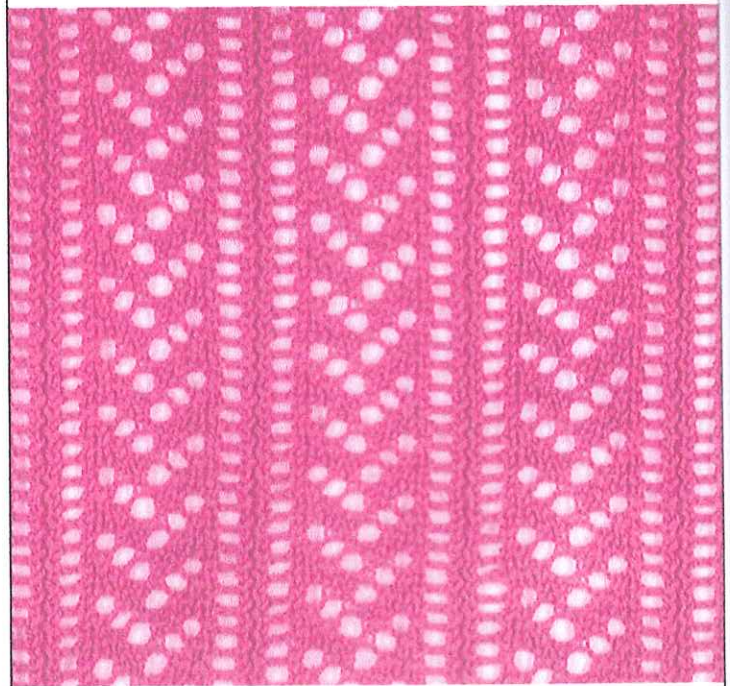
NO. 2-L-(10)



NO. 3-L-(12)



NO. 3-L-(12)



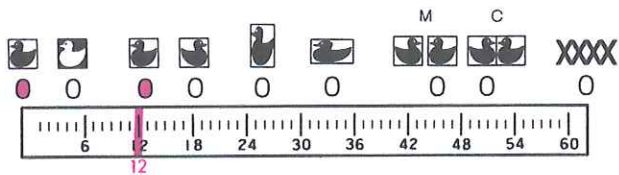
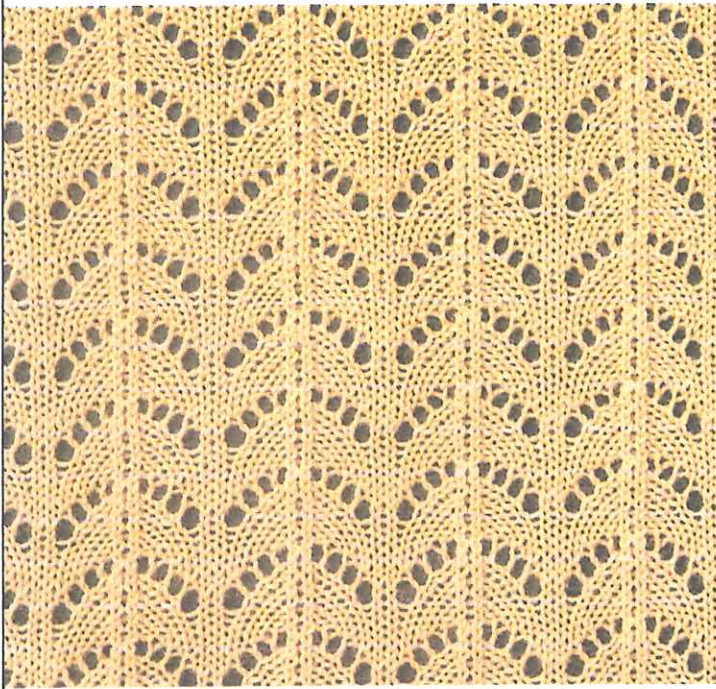




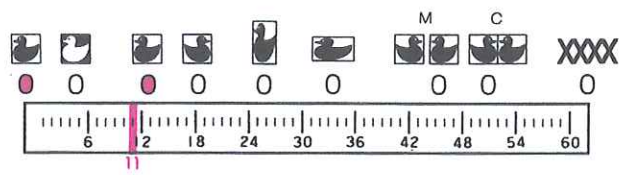
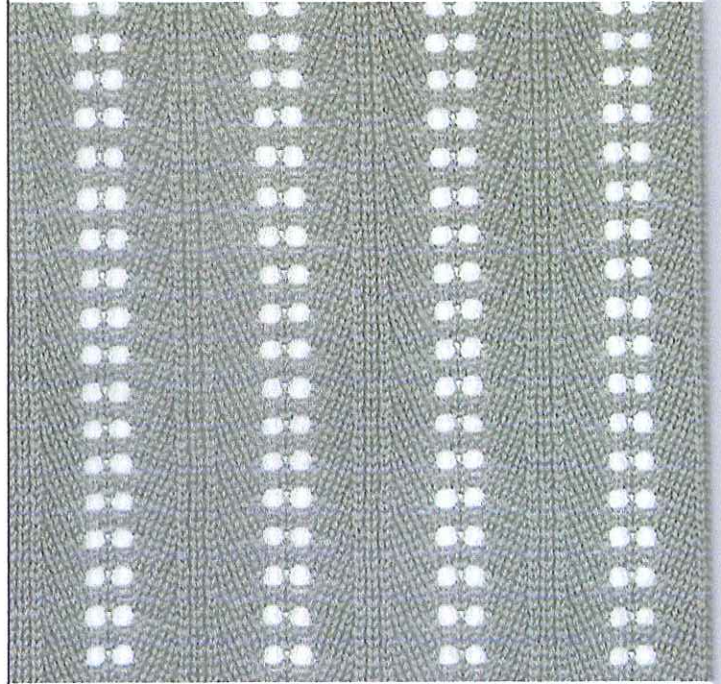


# FASHION LACE

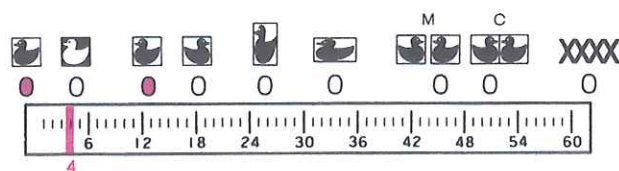
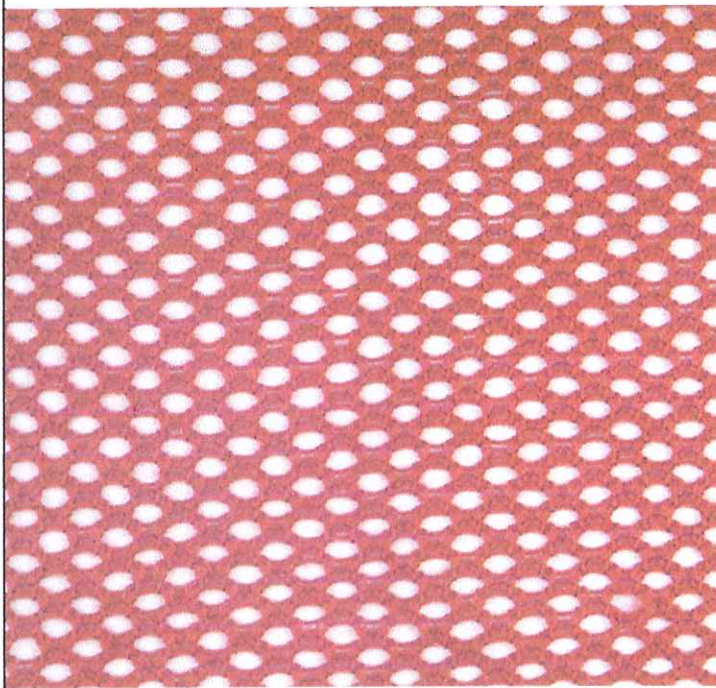
NO.4-L-(15)



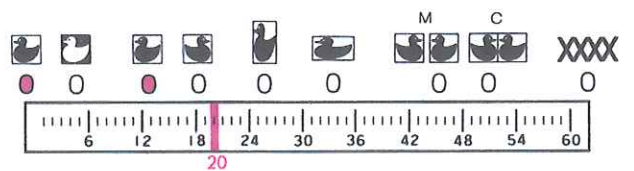
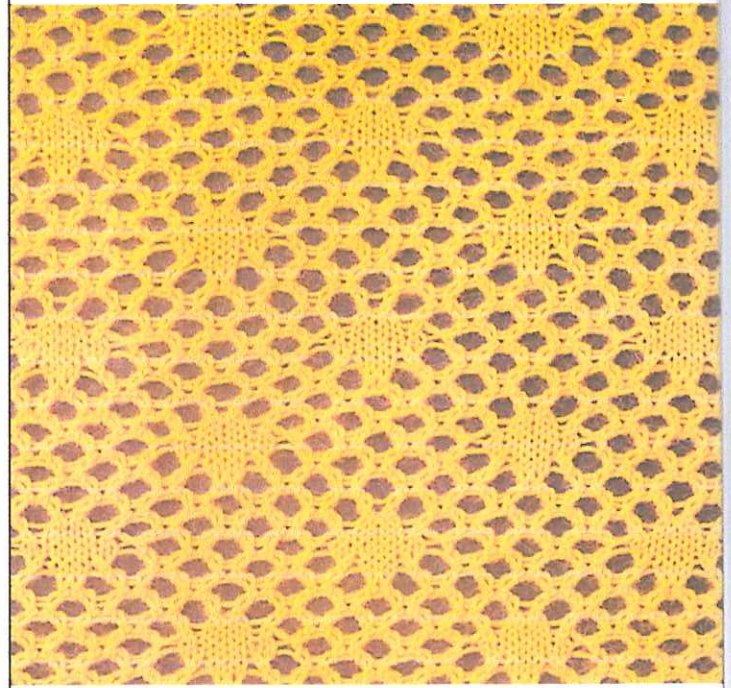
NO.4-L-(16)



NO.5-L-(18)



NO.5-L-(18)













## PATTERN AND STITCH TYPE POSSIBILITIES

STITCH TYPE PATTERN NO.	FAIR ISLE (KNIT-IN)	TUCK STITCH	SLIP STITCH	SINGLE MOTIF	WEAVING	PUNCH LACE	PLATING
1-(1)	○	○	○	○	○	○	○
(2)	○		○	○	○	○	
(3)	○	○	○	○	○	○	
(4)	○	○	○	○	○	○	○
(5)	○	○	○	○	○	○	○
(6)	○	○	○			○	○
(7)	○						
2-(8)				○			
(9)	○			○			
3-(10)				○			
(11)				○			
4-(12)	○			○			
(13)	○			○			
5-(14)	○						
(15)	○					○	
6-(16)	○	(○)		○		○	(○)
(17)	○			○		○	
(18)				○			
7-(19)	○			○			
(20)				○			
(21)	○			○			
(22)	○			○			
(23)	○			○		○	
8-(24)	○			○		○	
(25)	○			○			
(26)	○			○			
9-(27)	○			○			
(28)	○			○			
(29)	○			○			
10-(30)	○			○		○	
(31)	○		○		○	○	
(32)	○		○		○	○	
(33)	○		○		○	○	
11-(34)	○	○		○		○	○
(35)	○			○		○	
12-(36)	○	○			○	○	
(37)	○		○	○		○	
(38)	○	○		○		○	○
(39)	○		○			○	
13-(40)	○	○				○	○
(41)	○	○		○		○	○
14-(42)	○	○			○	○	
(43)	○	○				○	○
(44)	○		○	○		○	
15-(45)	○			○	○		
(46)	○			○		○	
(47)	○		○		○	○	
(48)	○				○	○	

※ Set Pattern Width at 6 for the patterns marked with (○).