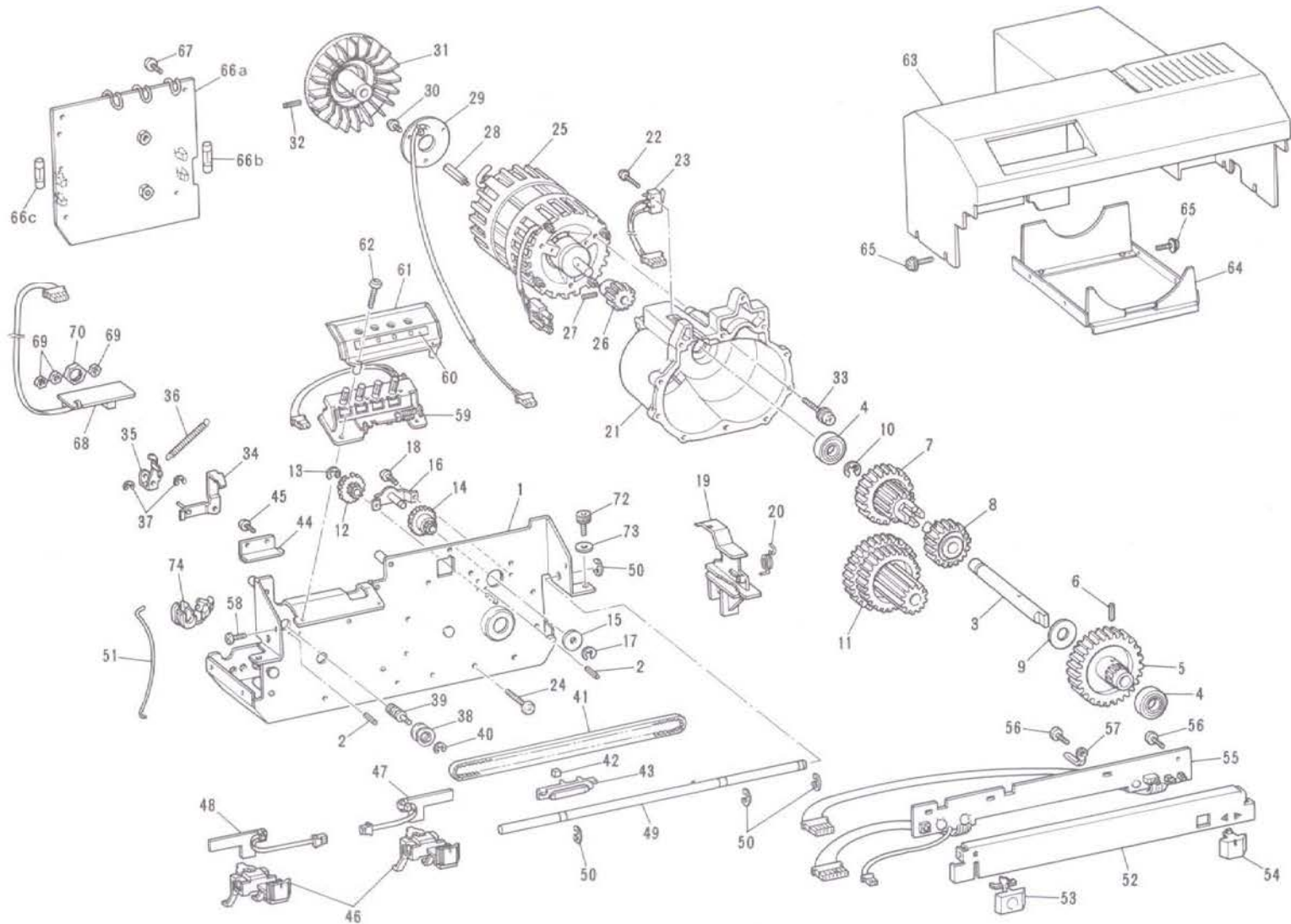


PARTS CATALOGUE FOR KE-100 KNITTING MACHINE

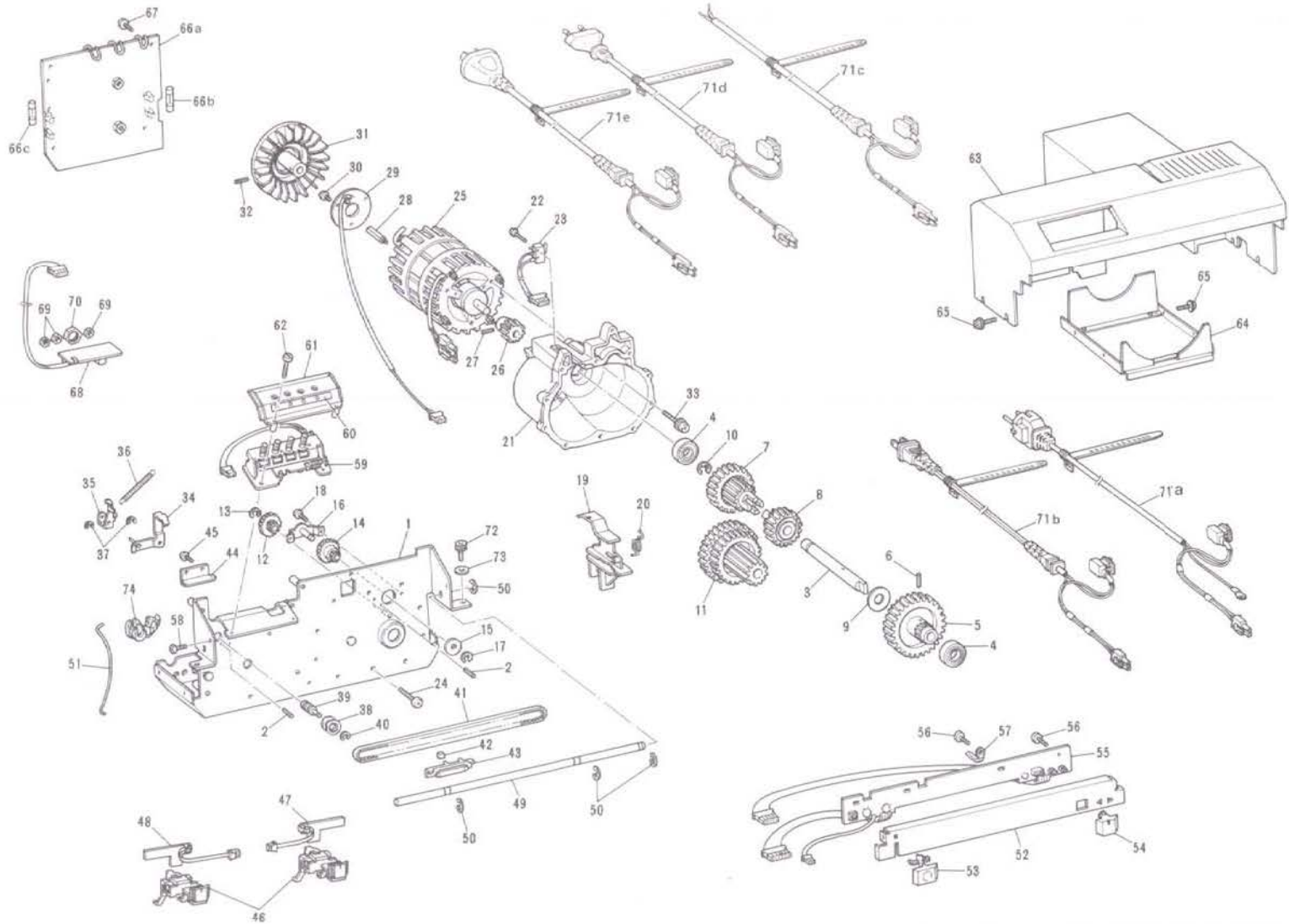


PARTS FOR MOTOR HEAD

Fig: A

PARTS FOR MOTOR HEAD

Ref. No.	Parts No.	Description	Revised	Q'ty	Ref. No.	Parts No.	Description	Revised	Q'ty
A-01	414671001	Head frame with shaft for L		1	A-43	414714000	Sensor magnet holder		1
A-01	415149001	Head frame with shaft for S		1	A-44	414715001	Sensor belt presser		1
A-02	047201042	Spring pin AW2		2	A-45	062300506	Screw 3X5		2
A-03	414678001	Driving shaft		1	A-46	414716001	Operation range knob		2
A-04	076001800	Ball bearing 6001Z		2	A-47	414922001	Right range sensor P.C.B.		1
A-05	415556001	M2Z34MO. 5Z40 gear		1	A-48	414925001	Left range sensor P.C.B.		1
A-06	047402042	Spring pin AW4		1	A-49	414717001	Sensor guide bar		1
A-07	415554001	M1. 5Z34X18 gear		1	A-50	048060346	Snap ring E6		4
A-08	414685001	M1. 5Z24 gear		1	A-51	414718001	Sensor belt tension spring		1
A-09	415123001	Washer 12		1	A-52	414721001	Control panel		1
A-10	048090346	Snap ring E9		1	A-53	414722001	Start/Stop switch key		1
A-11	415555000	M1. 5Z46X40 gear		1	A-54	414723001	Operation mode selector knob		1
A-12	414687000	MO. 5Z52X20 gear		1	A-55	414906001	Control switch P.C.B. assembly		1
A-13	048030346	Snap ring E3		1	A-56	060300804	+ - Screw 3X8		4
A-14	414688000	Pulley for operation range sensor		1	A-57	415118001	Code clip		4
A-15	124628001	Washer		1	A-58	060300804	+ - Screw 3X8		2
A-16	414689001	Bracket for pulley		1	A-59	414724001	Built-in row counter		1
A-17	048030346	Snap ring E3		1	A-60	414738001	Display window		1
A-18	162300506	Screw 3X5		2	A-61	414739001	Row counter cover		1
A-19	414692001	Spring for speed change knob		1	A-62	062301606	Screw 3X16		2
A-20	414693001	Speed change knob spring		1	A-63	414740001	Motor head upper cover L		1
A-21	414694000	Gear box		1	A-63	415119001	Motor head upper cover L (UL, CSA)		1
A-22	415005001	Tapping screw 2X14		2	A-63	414741001	Motor head upper cover S		1
A-23	414934001	Safety switch for speed change knob		1	A-64	414743001	Motor head lower cover		1
A-24	037421617	Tapping screw 2X14		10	A-65	411710002	+ - Screw with washer 3X8		10
A-25	231089001	Motor for 220V (Europe, EGYPT)		1	A-66a-c	415164001	Main P.C.B. assembly for 110V (TAIWAN)		1
A-25	231528001	Motor for 110V (TAIWAN)		1	A-66a-c	414999001	Main P.C.B. assembly for 117V (UL, CSA)		1
A-25	231091001	Motor for 120V (UL, CSA)		1	A-66a-c	415086001	Main P.C.B. assembly for 240V (UK)		1
A-25	231093001	Motor for 240V, 230V (UK, etc.)		1	A-66a-c	415089001	Main P.C.B. assembly for Europe (220V)		1
A-26	415553000	M1. 5Z14 gear		1	A-66a-c	415014001	Main P.C.B. assembly for EGYPT (220V)		1
A-27	048251642	Spring pin AW2.5		1	A-66a-c	415671001	Main P.C.B. assembly for 230V		1
A-28	414938001	Encoder PC board supporter		3	A-66b	410475001	Tubular fuse 2A (Europe, UK, EGYPT)		1
A-29	414914001	Encoder PC board assembly		1	A-66b	414997001	Tubular fuse 4A-TSC (UL, CSA)		1
A-30	062300606	Screw 3X6		3	A-66b	U16169000	Tubular fuse 4A (TAIWAN)		1
A-31	414704000	Motor fan		1	A-66c	414879001	Tubular fuse 0.2A (Europe, UK, EGYPT, TAIWAN)		1
A-32	047251642	Spring pin AW2.5		1	A-66c	414998001	Tubular fuse 0.2A-MT (UL, CSA)		1
A-33	052402505	Screw with tow washers 4X25		3	A-67	060300804	+ - Screw 3X8		4
A-34	414705001	Row counter tripper		1	A-68	414917001	Jack P.C. Board assembly		1
A-35	414708001	Row counter operation lever		1	A-69	414988001	Nut #1		3
A-36	414709001	Row counter functioning spring		1	A-70	414989001	Nut #2		1
A-37	048030346	Snap ring E3		2					1
A-38	U04335000	Sensor idle pulley		1					1
A-39	414712001	Shaft for sensor idle pulley		1					1
A-40	048030346	Snap ring E3		1					1
A-41	414713000	Sensor belt		1					1
A-42	128652001	Magnet for sensor		1					1



PARTS FOR MOTOR HEAD

Fig: A

PARTS FOR MOTOR HEAD

Ref. No.	Parts No.	Description	Revised	Q'ty	Ref. No.	Parts No.	Description	Revised	Q'ty
A-71a	415136001	AC Power cord for 220V (EGYPT)		1	A-71d	415015001	AC Power cord for 220V, 230V (Europe, EGYPT, etc.)		1
A-71b	414928001	AC Power cord for 115V (UL, TAIWAN)		1	A-71e	415425001	AC Power cord for 240V (AUSTRALIA, etc.)		1
A-71b	415003001	AC Power cord for 115V (CSA)		1	A-72	018500837	Socket head bolt 5X8		2
A-71c	415087001	AC Power cord for 240V (UK)		1	A-73	026050137	Washer 5		2

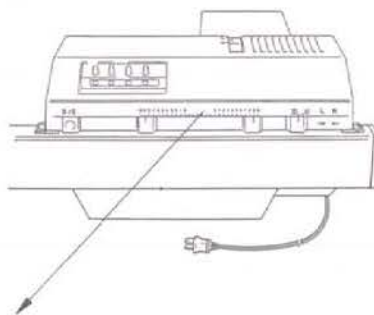
***Note**

Two types of Motor drive unit

There are 2 types of motor drive unit namely L (long) type and S (short) type.

L-type ... all round type

S-type ... It can not use with KH-260 for its short rail.



*How to distinguish between both types

(1) Operation range indicator



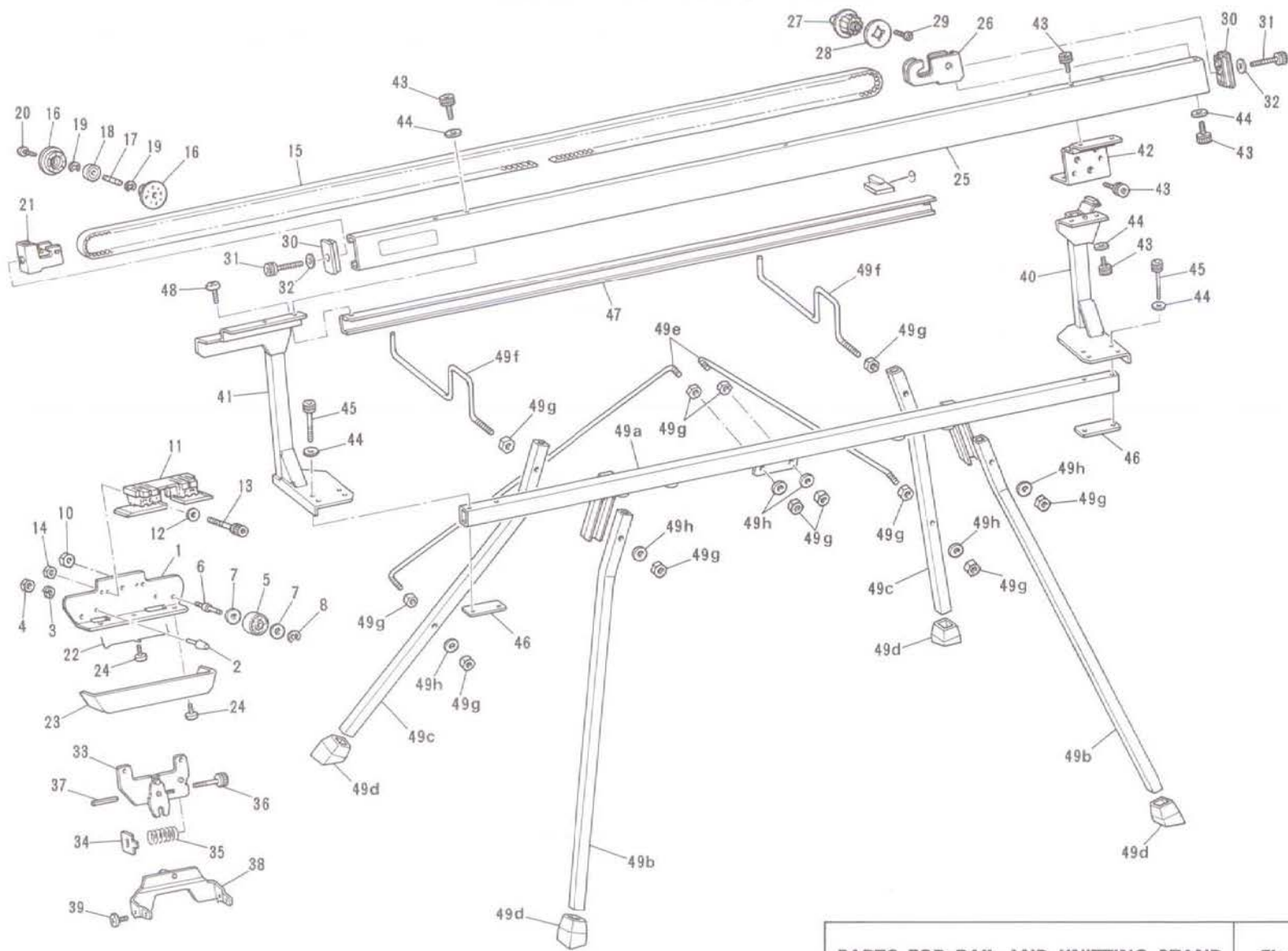
L-Type



S-Type

(2) Difference between L and S types

Ref. No.	Description	Parts code		Difference
		L	S	
A-01	Head frame with shaft	414671001	415149001	Strain relief/cord bush
A-63	Motor head upper cover			Operation range indicator
B-15	Driving belt	414757000	414872000	Length of the belt
B-25	Rail frame with name plate	415061001	415062001	Length
B-47	Belt cover	415007000	415008000	Length
B-49a	Knitting machine setting bar	487435001	487436001	Length Disk for Table clamp.

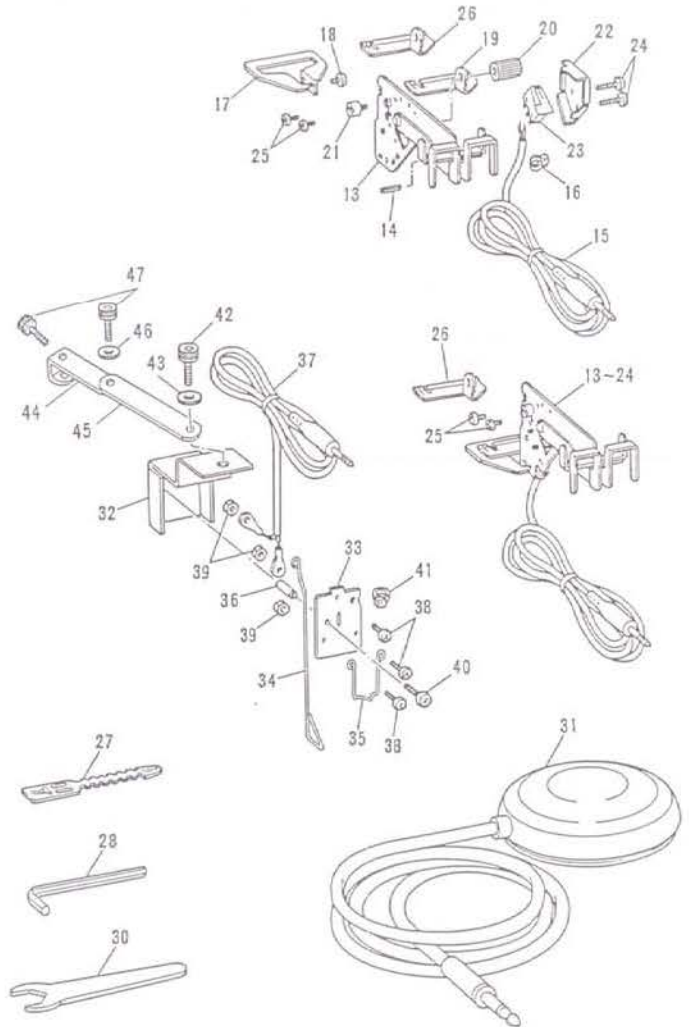
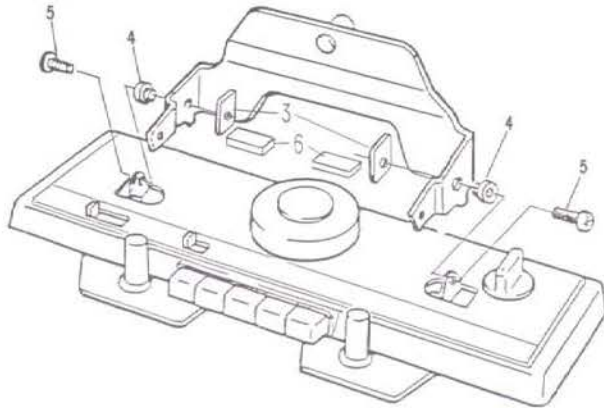
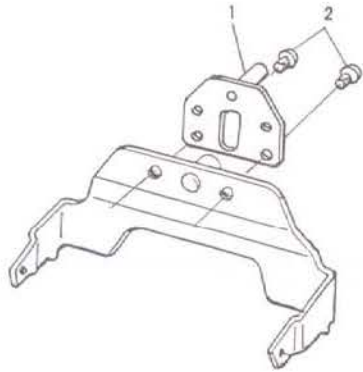


PARTS FOR RAIL AND KNITTING STAND

Fig: B

PARTS FOR RAIL AND KNITTING STAND

Ref. No.	Parts No.	Description	Revised	Q'ty	Ref. No.	Parts No.	Description	Revised	Q'ty
B-01-15	414747001	Shuttle base & belt L assembly		1	B-41	414779001	Bracket, L		1
B-01-15	415010001	Shuttle base & belt S assembly		1	B-42	414869001	Motor head reinforcement		1
B-01	414749001	Shuttle base		1	B-43	018500837	Socket head bolt 5X8		9
B-02	414750001	Pin for shuttle arm		2	B-44	026050137	Washer 5		13
B-05-08	414751001	Roller assembly		3	B-45	415006002	Socket head bolt 5X40		4
B-05	414752000	Roller		3	B-46	414783001	Fasten plate		2
B-06	414753001	Shaft for roller		3	B-47	415007000	Belt cover L		1
B-07	414754001	Washer		6	B-47	415008000	Belt cover S		1
B-08	048080345	Snap ring E8		3	B-48	415126001	Screw 5X8		1
B-09	226758000	Cord guide		1	B-49a-g	414942001	Knitting stand assembly S		1
B-10	021080305	Nut 8		3	B-49a-g	414941001	Knitting stand assembly L		1
B-11	414755000	Clamp for driving belt		1	B-49a	487436001	Knitting machine setting bar S		1
B-12	025050332	Washer 5		2	B-49a	487435001	Knitting machine setting bar L		1
B-13	018503035	Socket head bolt 5X30		2	B-49b	487225001	Front leg for stand		2
B-14	021500205	Nut 5		2	B-49c	487438001	Rear leg for stand		2
B-15	414757000	Driving belt L		1	B-49d	487234001	Rubber foot		4
B-15	414872000	Driving belt S		1	B-49e	487440001	Reinforcing bar for stand		2
B-16-20	414758001	Idle pulley assembly		1	B-49f	487468001	Carrying case holding bar		2
B-16	414759000	Idle pulley		1	B-49g	487229001	Nut 10		12
B-17	414760001	Idle pulley shaft		1					
B-18	070608800	Ball bearing 0608ZZ		1					
B-19	048060346	Snap ring E6		2					
B-20	037281415	Tapping screw 26X4		4					
B-21	414761001	Holder for idle pulley		1					
B-22	414762001	Shuttle spring		1					
B-23	414763001	Shuttle cover		1					
B-24	060300804	+ - Screw 3X8		3					
B-25	415061001	Rail frame with name plate L		1					
B-25	415062001	Rail frame with name plate S		1					
B-26	414870001	Holder for driving belt pulley		1					
B-27	414680000	Driving pulley		1					
B-27-29	414679001	Driving pulley assembly		1					
B-28	414681001	Pulley flange		1					
B-29	037280815	Screw 26X8		4					
B-30	414770001	End cover		2					
B-31	415151001	Socket head bolt 5X25		2					
B-32	027050001	Washer with stopper 5		2					
B-33	414961001	Cupler		1					
B-33-37	414960001	Cupler assembly		1					
B-34	414968001	Indicator for coupling torque		1					
B-35	414969001	Spring for coupling		1					
B-36	415006002	Socket head bolt 5X40		1					
B-37	047302050	Spring pin AW3		1					
B-38	414970001	Joint assembly		1					
B-39	060680506	+ - Screw 4.37-40X5		2					
B-40	414775001	Bracket, R		1					



PARTS FOR YARN SENSOR & EXTENSION SET

Fig: C

PARTS FOR YARN SENSOR & EXTENSION SET

Ref. No.	Parts No.	Description	Revised	Q'ty	Ref. No.	Parts No.	Description	Revised	Q'ty
C1-2	487448001	Extension set for KH-230/KR/230		Option	C-45	415169001	Tension rod stabilizer arm		1
C-01	415160001	Extension plate for KH-230/KR-230		1	C-46	026050137	Washer 5		1
C-02	060680506	+ - Screw 4.37-40X5		2	C-47	018005837	Socket head bolt 5X8		2
C1-6	487458001	Extension set for KH-120/710/830/835/836		Option					
C-03	415191001	Fasting plate		2					
C-04	415190001	Collar		2					
C-05	415192001	+ - Screw 3.57X16		2					
C-06	415193001	Rubber block		2					
C-13	415018001	Yarn sensor assembly		2					
C-13	414788001	Yarn sensor assembly for EGYPT		2					
C-13-25	415017001	Yarn sensor		2					
C-13-25	414787001	Yarn sensor for EGYPT		2					
C-14	047210650	Spring pin BW2		2					
C-15	414843001	Plug with code		2					
C-16	414844001	Binder T18S		2					
C-17	415023000	Yarn sensor guide		2					
C-18	408304001	Screw 3.18X4		2					
C-19	415024000	Yarn ball detector for thick yarn		2					
C-20	415025001	Nut		2					
C-21	414871001	Lock screw		2					
C-22	415066001	Switch cover		2					
C-23	414795001	Micro switch D2F-01F		2					
C-24	415076001	+ Screw 2X9		4					
C-25	062020304	Screw 2X5		4					
C-26	415026001	Yarn ball detector for fine yarn		1					
C-27	414845000	Code binder 106		1					
C-28	414940001	Hexagonal bar wrench		1					
C-30	415065001	Wrench 17		1					
C-31	415059001	Foot switch		Option					
C-32	415078001	Jam sensor base		1					
C-32-41	415077001	Jam sensor assembly		1					
C-33	415079000	Jam sensor supporter		1					
C-34	415080000	Jam sensor		1					
C-35	415081000	Jam sensor contacter		1					
C-36	415082001	Collar		1					
C-37	415083001	Jam sensor cord assembly		1					
C-38	060020506	+ - Screw 2X5		3					
C-39	021020206	Nut 2		3					
C-40	060301006	+ - Screw 3X10		1					
C-41	414844001	Cord binder T18S		1					
C-42	018005837	Socket head bolt 5X8		1					
C-43	026050137	Washer 5		1					
C-44-47	415167001	Tension rod stabilizer assembly		1					
C-44	415168001	Tension rod stabilizer		1					