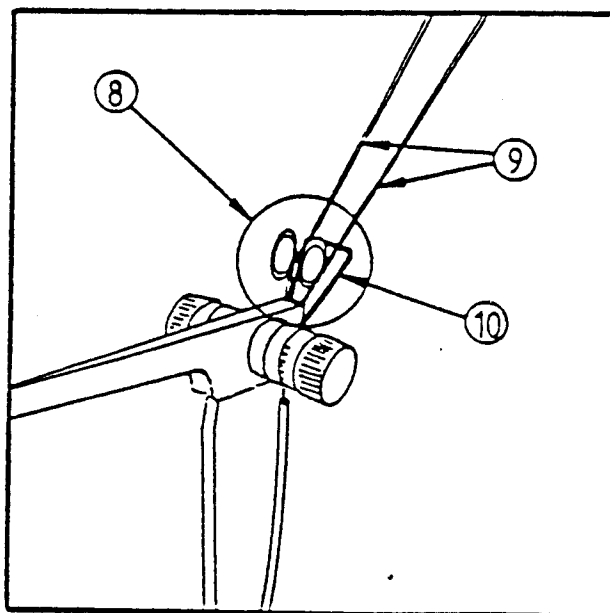
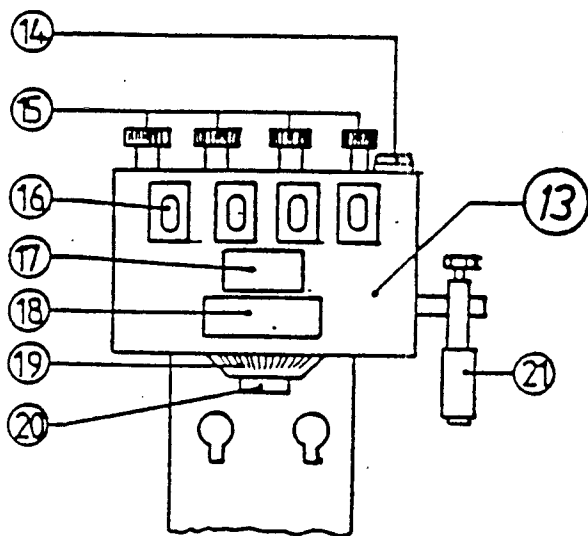
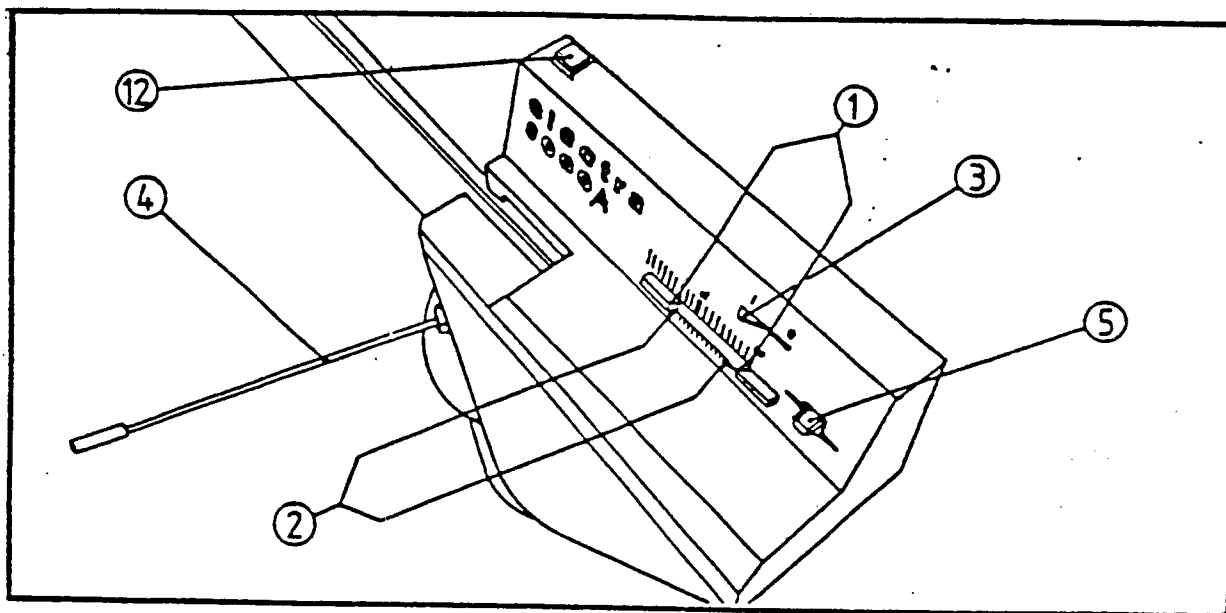


**\*\*ELECTRA 3000A  
\*\*OPERATING DIRECTIONS**



**OPERATING PARTS:** See page #2 for diagram of parts.

Remember not to loose the transport screw and washer from the motor. (Tape them to the back of the motor housing and they will be available when you need them. When ever the unit is transported that screw and washer must be inserted at Number Right 1 on the motor scale. Move the Direction Indicator (#5) down (pointing to the Right) before inserting the transport screw and washer. *Transporting the Electra without the transport screw and washer could result in the motor gear assembly becoming out of 'sync'.*

**REGULATOR FOR KNITTING WIDTH (#1 & #2):**

These two pointers regulate the distance the motor will travel before reversing direction. It is best to position these pointers on the motor housing approximately 5 to 10 needles outside the last working needle on both ends of the bed. For example, if your knitting bed width is Left 20 through Right 20 then you would set the knitting width indicators approximately Left 25-30 and Right 25-30. The top pointer on the right knitting width regulator (#1) controls the distance the locks travel to the right WITHOUT the Deco selector attached. The bottom pointer on the right regulator (#2) **MUST** be used when setting width regulation with the Deco selector is attached. The locks must travel far enough past the working needles on the right so the 'scoop' of the Deco will also clear the pushers.

**FLIP SWITCH (#3):**

This flip switch is like a light switch.  
(I = switch ON) (O = switch OFF).

The foot control does not function when the flip switch is on (I).

=====

(C) 1988; PASSAP KNITTING MACHINES, U.S.A.

\*\*ELECTRA 3000A

\*\*OPERATING DIRECTIONS

Page # 4

**FOOT PEDAL:**

If you use the foot pedal, the flip switch (#3) must always be at O!  
If possible use always the foot pedal!

The foot control **IS NOT A SPEED CONTROL**  
**-ONLY AN ON OR OFF SWITCH!**

**COLOR-LEVER (#4):**

The COLOR-lever must be set to the left if the color change has to be done by the program set on the pre-selection counter.

**DIRECTION INDICATOR (#5):**

Indicates which direction the locks will travel. When the pointer is up the locks will travel to the left. When the pointer is down the locks will travel to the right. If you want to manually change the direction the locks will travel, then you must move the pointer either up or down. If the direction indicator will not move, then slightly move the locks left or right before you move the direction indicator.

**PRE-SELECTION COUNTER (#13):**

Operating parts see page #2.

This counter can be used in 3 ways according to setting and placement of the RED plug at the back of the Electra 3000A:

- A)  
as stop counter (locks stop automatically at indication 0000)
- B)  
as stop counter and for color change according to pre-selection,  
i.e. a + b.

=====  
(C) 1988; PASSAP KNITTING MACHINES, U.S.A.

**\*\*ELECTRA 3000A  
\*\*OPERATING DIRECTIONS**

Page # 5

C)

as stop counter and for stopping the locks within the program according to pre-selection. For instance for increasing and decreasing stitches, i.e. for functions a + c.

The pre-set number is always counted backwards, the counter works as a negative counter.

**YARN CONTROL (#8):**

A)

The yarn control stops the motor (locks) immediately when the yarn is finished or broken by releasing the contact.

B)

The yarn control can also be released by an undesired contact between the tension arm (#9) and the contact strap (#10). In order to avoid this, unused tension arms should be put in the double front eyelet of the yarn tensioner. Or a business card can be placed between the unused tension arms and the contact strap.

C)

If the yarn control is not used, the respective black plug at (B) behind the Electra 3000A can also be taken off.

**RED KEY (#12):** (failure key)

A)

When the red key lights up, this means that a failure has occurred, the motor will then stop. You can continue working only if the failure has been eliminated, then press the red key which should turn off the red light.

**\*\*ELECTRA 3000A****\*\*OPERATING DIRECTIONS**

Page # 6

B)

Eliminate failure in the following order:

1. Find and eliminate failure.
2. Press red key.

C)

The red key lights up in the following situations:

Pre-selection counter shows 0000: A new number has to be set on the pre-selection counter, then press red key.

1 yarn thread is broken: Fasten thread, press red key.

End of yarn supply: Take new bobbin or ball and fasten thread, then press red key.

Yarn control (contact) has been released unwillingly, i.e. there is actually no failure: Only press red key.

At desired automatic stop of the locks as per program, for instance each 6th row: Carry out the planned work, then press red key.

motor is over-heated: immediately switch off the Electra 3000A, find out the reason for the over-heating and eliminate it.

The locks may be jammed.

Then, after about 10 to 20 minutes switch the Electra 3000A on again and press the red key.

Note: The red key stay lit until the motor has cooled off sufficiently approx. 10 to 20 minutes.

\*\*ELECTRA 3000A

\*\*OPERATING DIRECTIONS

Page # 7

PRE-SELECTION COUNTER (#13): See page #2 for diagram of parts.

UPPER PUSH-BUTTON (#14),

by pressing this push-button each of the 4 numbers on the upper display (#16) can be set individually.

TURNING KNOB (#15),

by turning this knob each of the 4 numbers in the upper display (#16) can be set individually, after first pressing (#14).

UPPER DISPLAY (#16),

indication of the row number, 9999-0000.

MIDDLE DISPLAY (#17),

indication of a white point or no indication.

LOWER DISPLAY (#18),

either indication of the pre-selected number (21-0) which is set with the pre-selection knob (#19).

PRE-SELECTION KNOB (#19),

by turning this pre-selection knob to the right, any desired number (program) from 21-0 can be set.

LOWER PUSH-BUTTON (#20),

by pressing this push-button, the white point will immediately appear at (#17), but only with numbers 21-1 showing at (#18). If (#18) shows 0, the white point cannot be displayed.

The white point also appears at (#17) by either turning the first turning knob (#15) on the right, or the pre-selection knob (#19).

The white point displayed at (#17) means the start or end of the program cycle, according to the number indicated at (#18).

A for automatic interruption  
C for color interrupt

\*\*ELECTRA 3000A  
\*\*OPERATING DIRECTIONS

COUNTER LEVER (#21).

with each passage of the locks, the counter lever deducts one number. This means the pre-selection counter must always be positioned in such a way that the locks move sufficiently beyond the pre-selection counter at left and right. Pay attention to the setting of the regulator for the knitting width (#1+2).

3 examples for the application of ELECTRA 3000A with pre-selection counter.

1st example:

Stopping the locks automatically after 120 rows to the right of the knitting. With yarn control.

Adjusting: A) Connect the plugs at the back of Electra 3000A as follows:

- white plug in (A)
- black plugs in (B)
- red plug in (C)

B) Move locks to the right of the pre-selection counter (#13).

C) Set the pre-selection counter to 120.

D) Turn the pre-selection knob (#19) until 0 appears at (#18).

**\*\*ELECTRA 3000A  
\*\*OPERATING DIRECTIONS**

Page # 9

2nd example:

Changing the color automatically every 6th row and stopping the locks after 120 rows to the right of the knitting. With yarn control.

Adjusting: A) Connect the plugs at the back of Electra 3000A as follows:

white plug in (A)  
black plugs in (B)  
red plug in (C)

- B) Move locks to the right of the pre-selection counter (#13).
- C) Move COLOR-lever (#4) to the left.
- D) Set the pre-selection counter to 120.
- E) Turn pre-selection knob (#19) until number 6 appears at (#18).
- F) Check whether the white point appears at (#17), if not, the lower push-button (#20) has to be pressed, so that the white point appears. The white point has to appear every 6th row.  
It shows the beginning or the end of the program cycle.



\*\*ELECTRA 3000A  
 \*\*OPERATING DIRECTIONS

Page # 10

3rd example:

Stopping the locks automatically every 6th row to the right of the knitting as well as automatically after a total of 120 rows. With yarn control.

Important: On stopping the locks after each 6th row, the red key lights up. Only after pressing the red key (switching off) is it possible to continue work.

Adjusting: A) Connect the the plugs at the back of Electra 3000A as follows:

white plug in (A)

black plugs in (B)

red plug in (A)

B) Move locks to the right of the pre-selection counter (#13).

C) Set pre-selection counter to 120.

D) Turn pre-selection knob (#19) until 6 appears at (#18).

E) Check whether the white point appears at (#17), if not, the lower push-button (#20) has to be pressed, so that the white point appears. The white point has to appear every 6th row. It shows the beginning or the end of the program cycle.

Sequence of working procedure for ELECTRA 3000A:

A)

Check at the back of Electra 3000A whether the plugs are connected according to the desired program! See, if necessary, pages 8-10, 3 examples of application.

## \*\*ELECTRA 3000A

## \*\*OPERATING DIRECTIONS

Page # 11

- B)  
Move regulator left and right (#1+2) for the knitting width.
- C)  
Thread yarn, according to operating instructions of knitting machine and 4-COLOR changer.
- D)  
Set the desired program on the pre-selection counter. If the locks are to the right of the pre-selection counter, and an even number (e.g. 20) has been pre-selected, the locks will stop at 0000, at right of knitting edge. When pre-selecting an uneven number (e.g. 21) the locks will stop at left of knitting edge.
- E)  
Set row-counter on locks front to 000. This serves to check the total number of knitted rows (up to max. 999) when knitting in several stages with the aid of the pre-selection counter.
- F)  
Check position of COLOR-lever (#4).
- G)  
Direction indicator (#5) must point in the desired starting direction for the locks. The direction indicator may be switched over by hand, provided the locks are not moved at the same time. If thereby a resistance is observed, the locks have to be moved slightly!
- H)  
Press red key. The red key must not be lighted up. If the red key is lighted up, it is impossible to start!
- J)  
Press foot pedal or switch on flip switch (#3).

=====

(C) 1988; PASSAP KNITTING MACHINES, U.S.A.

\*\*ELECTRA 3000A

\*\*OPERATING DIRECTIONS

Page # 12

Suggestions only valid for pre-selection counter (#13) with pre-selected programs where on indicator (#18) a number is indicated (21-1).

Not valid if 0 is indicated at (#18).

A) How to unravel stitches:

- Add the number of rows which have to be undone to the number of rows as indicated at (#16) on the pre-selection counter.

Note this number.

- Pull up by hand the counter lever (#21) as many times as necessary for the white point to appear at (#17).

- Now add to the number appearing at (#16) once or so many times the number indicated at (#18) until the result is bigger than the number noted down in the beginning. Press push-button (#14) and set counter to this number by turning the corresponding turning knob (#15). Press the lower push-button (#20) so that the white point appears at (#17).

- Pull up the counter lever (#21) by hand as many times as necessary for the first noted down number to appear at (#16).

Continue knitting.

B) What to do when for shaping reasons the pre-selection counter (#13) has to be reset (at the end of program at 0000), if the white point at (#17) does not appear:

- Set the row-counter on locks front to zero. Do not change anything on pre-selected counter!

- Continue knitting until the white point appears on the pre-selection counter at (#17).

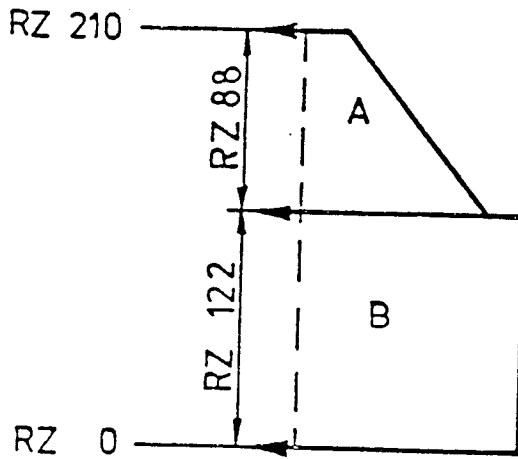
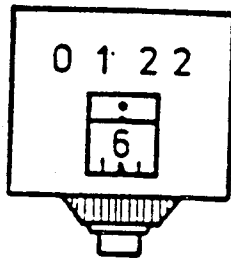
\*\*ELECTRA 3000A

\*\*OPERATING DIRECTIONS

- Deduct from the number of rows, to which you intended to set the pre-selection counter at (#16), the number that is shown on the row counter on locks front, and set the pre-selection counter at (#16) according to this result.

- Press the lower push-button (#20) so that the white point appears at (#17).

- Example with sketch.



\*\*ELECTRA 3000A  
\*\*OPERATING DIRECTIONS

Page # 14

Example:

Starting position on pre-selection counter

- With above starting position, the locks stop after 122 rows at 0000, if at the back of Electra 3000A the plugs are connected accordingly.
- Set the row counter to 000 on the locks front, for checking.
- Press the red key (lighted) on Electra 3000A. Continue knitting until after 4 rows the white point and the number 9996 appears on the pre-selection counter. On locks front, the number 4 appears on the row counter.
- Press upper push-button on the top of the pre-selection counter and set pre-selection counter to 0084 ( $88-4=84$ ). Press lower push-button underneath the pre-selection counter so that the white point appears.
- Continue knitting until 0000 appears on the pre-selection counter. The cam-boxes are stopped. On the row counter of the locks front the number 88 appears,  $122+88=210$  rows have been knitted in the same program cycle.