

**WALK ON
THE WILD SIDE**
Animal Prints Galore

knitking
magazine

VOLUME 27 • ISSUE 2

**SPOTLIGHT
ON SEPARATES**
Accent on
Two-Piece
Ensembles

**SENSATIONAL
SWEATERS**
Lace, Tuck,
Weaving
& More



184



185



Ben Brandello

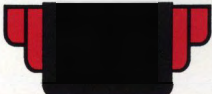


Table of Contents

July 1993

KNITTING MAGAZINE - VOLUME 27 NO. 2

0000	GENERAL INSTRUCTIONS	13
183	CABLED DELIGHT	15
184	PURR-FECTLY SUITED	16
185	WILD IN THE CITY	17
186	CLASSIC LINES	20
187	LOVELY IN LACE	21
188	FANTASTIC FAIRISLE	23
189	STEPPING OUT	24
190	BLUE MOOD	26
191	SIMPLY SUMMER	28
192	SLIP INTO CABLES	29
193	RUSTIC ELEGANCE	30
194	WILD AND WONDERFUL	31
195	WALK ON THE WILD SIDE	32
196	THE BULKY BLUES	34
197	G-I-URNED IT	35
198	SMART-N-SASSY	36
199	STRIPE IT RICH	38
200	WEAVE A SPELL	40
201	BLUE PLATED SPECIAL	41
202	TWO-FOR-ONE	42



Editorial

Dear Readers,

Summer is upon us, which means only one thing . . . frightening as it may sound . . . the holidays loom right around the corner! Now I know you're thinking that I must have lost my mind in the California sunshine, but we crafty types have to plan ahead!

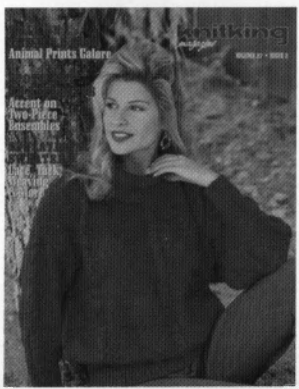
This issue of Knitking Magazine provides you with fresh knitting ideas for the upcoming months. Whether you are making gifts or knitting for yourself, the wide selection of styles and patterns fit in with the 1993 fashion trend of "anything goes." Women, men, and certainly children, are selecting styles that they enjoy wearing, that flatter the body, and are comfortable. We are no longer strictly concerned with what the latest advertising moguls say we must wear to be "in." Along with our liberated fashion sense comes a heightened awareness of a fragile earth combined with a hearty respect for nature. The Knitking Design Department has created several wonderful outfits and sweaters that embody the best of mother nature's "coat" designs!

From casual to dressy, we're walking on the wild side in an array of fairisle animal prints perfect for any occasion. Pattern 184 (page 16) is a striking example of nature at its best. If you'd like to turn heads with a subtle naturalistic print, check out the stunning fairisle suit of page 17. And for the a more casual camouflage, the tunic sweater of Page 32 is shaped to flatter your figure!

These are just a few of the super garments in this mid-year issue. So if you want to get the jump on holiday knitting, we've got lots to keep you busy. If you're like me and you're still making warm weather knits, our lovely lace patterns are perfect for any season! Whatever your creative mood—we've got you covered!

Happy Knitting,

Suzanne Str



183

Publisher: KNITKING CORPORATION, 1128 Crenshaw Blvd. Los Angeles, CA 90019. Telephone: (213) 938-2077. Published quarterly. Subscriptions: USA-\$24.00 annually; single copies \$7.95. \$29.00-all other countries. The entire contents of KNITKING MAGAZINE are copyrighted and must not be reproduced in any shape or form without the express permission, in writing, of the publisher. © COPYRIGHT 1993 KNITKING CORPORATION

186



187





189



190



191





193



GENERAL INSTRUCTIONS

THE SAMPLE SWATCH

It is imperative that you knit a sample swatch for every garment. Although you may be using the identical yarn and machine model as the pattern suggests, many variables such as dye lot difference, speed of knitting and just machine to machine differences can all cause a variance in the gauge achieved. Knit magazine publishes the tension and gauge for each garment shown. We strongly urge you to knit a swatch representing three tensions - the recommended tension, and .1 or .2 higher and lower. These different tensions can be knitted in one piece with waste yarn separating the sections. This will eliminate unnecessary rethreading while allowing you to obtain the gauge published in the magazine.

To make a sample swatch on standard gauge machines cast on 60 stitches with waste yarn. Knit approximately 6 rows. *Mark the tension number for your swatch by making holes. For example 4 eyelet holes for Tension 4, 6 eyelet holes for Tension 6. Knit 6 more rows.

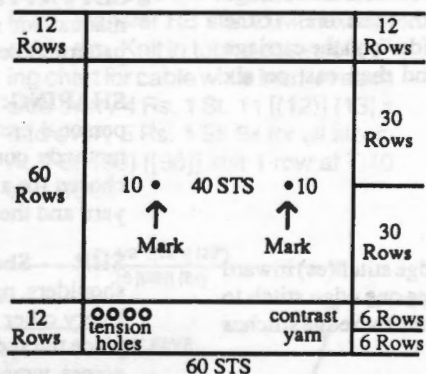
Change to garment yarn and reset row counter to 0. Knit 30 rows (in Pattern stitch). With contrast yarn, mark the 10th stitch FROM EACH SIDE by hand. Knit 30 Rows. Change to waste yarn and knit 6 rows. Change tension up or down for second section and repeat from *. Make third section with another tension. Remove on 12 Rows of waste yarn. Remove the sts. from the machine

by pushing the Carriage across without yarn.

Pull and stretch the swatch both lengthwise and diagonally from corner to corner. Gently block the swatch. Treat the swatch as you would the finished garment before measuring the gauge. For example, if you plan to wash this garment and dry it in the dryer, you should do so, measuring before and after to see the difference.

Measure between the stitches marked and the beginning and ending rows for the inches/cms. knitted. Divide the total number of stitches/rows by the inches measured to calculate sts. and rows per inch.

For Bulky knitters, make swatch with 30 Sts. and 30 Rows. If so desired, or for large pattern repeats, we suggest a wider and longer swatch to provide more accurate gauges.



HEMS

Two methods of knitting hems are described below. Variations on these instructions will allow you to knit plain hems, picot edge hems and more.

Method One

With waste yarn cast on the required number of stitches and knit about 10-12 rows ending with the carriage on the left. Knit 1 Row to the right with Ravel Cord. Change to garment yarn and knit 1 Row to the left at garment body tension. (i.e. Skirt at Tension 4, 1st row at T4). Turn tension down approximately 2 full tension numbers lower (tighter) and knit to mid point. (i.e. Row 14 of a 28-row hem). Change tension to 1 full point lower than garment body and knit remainder of hem rows. Pick up the stitches from the first row of garment yarn - shown between the stitches of Ravel Cord. Hem is now completed. Proceed with pattern as per chart and instruc-

tions. Remove waste yarn and Ravel Cord when you have completed section.

Method Two

Bring required number of needles to "B" (working) position. Attach cast-on comb. Beginning with the 2nd needle on the LEFT, bring every other needle to "D" or "E" position. Push in both Part buttons. Knit 1 Row to the left. Release the part buttons and drop the cast-on comb. (DO NOT REMOVE cast on comb from work). Knit required number of rows for hem. Attach weights to the back of work close to the cast-on comb (about 1/4" above the comb). Beginning with the 1st needle on the LEFT, bring every other needle to "D" position. Carefully LIFT the cast-on comb and hang loops onto the needles in "D" position. Turn the comb back away from you and make sure the needles are through the loops. Pull the needles out to "E" position and remove the cast-on comb.

BUTTONHOLES

The following methods of buttonholes are the general manner in which small and large buttonholes are created.

Small Buttonholes in Ribbing
Make small eyelet style buttonholes by following chart below.



Large Buttonholes in FNR
Vertical buttonholes are made by knitting each side separately (partial or short-row knitting). Knit the right side first, end with yarn on left. Without breaking yarn, knit left side. The strand of yarn inside the buttonhole can be picked up every other row when knitting the left side, but this is not necessary for a small buttonhole.

SHORT ROWS

Method One

With carriage on opposite side start placing appropriate number of ndls in HP. Knit across and wrap the inside needle. Again, place appropriate number of ndls in HP on opposite side from carriage, knit across and repeat wrapping. The wrapping will eliminate any holes in the knitting.

Method Two - Automatic Wrap

Example follows for shoulder short rows. This method can be used for other Short Rowing as well. For example if pattern says to Short Row at shoulder every other row 7 sts, 1 x and 6 sts. 1 x . . . With carriage on opposite side put 6 sts in HP, knit 1 row across and put one additional needle in HP. Opposite carriage place 6 ndls in HP. Knit 1 row across and bring one extra needle to HP. Repeat until shortrowing is completed.

GENERAL INSTRUCTIONS

AT THE SAME TIME - Two functions are to be performed at the same time, such as shaping the neck and shoulder. Be sure to read both instructions before proceeding.

BO - Bind Off. To take off more than 1 St. at a time. When two or more stitches are to be bound off (or cast on) the carriage and yarn must be on the same side as the bind off. If the instruction is, "At R 100 BO 6 Sts on each side.", on the carriage side BO six stitches, knit one row and then bind off six stitches on the other side. See DECR and FF DECR.

BOLT - Slip Stitch Bind Off with a Latch Tool. Knit one row to the left at a tension at least five numbers higher (looser) than the garment tension. Bring all needles to holding position ("E") and then, pick up the first stitch on a latch tool allowing it to slip behind the latch, then pick up the next stitch and pull it through the stitch already on the latch hook, thus creating a slip stitch. If you cannot set the tension at least five full tension numbers higher, knit a row loosely manually.

CO - Cast on stitches for knitting. (CHECK INSTRUCTION MANUALS TO MAKE SURE DIFFERENT METHODS ARE SHOWN) In our instructions, CO is used either for a finished edge at the beginning of the garment, or to add edge stitch(es). If two or more stitches are to be cast on the carriage and yarn must be on the same side as the cast on. If the instruction is, "At R 100 CO 6 Sts on each side.", on the carriage side cast on six stitches, knit one row and then cast on six stitches on the other side.

COR - Carriage on Right

COL - Carriage on Left

DECR - Use the transfer tool to move the edge stitch(es) inward to the next needle. Usually used to transfer one edge stitch to the next needle, but may be used to transfer the two edge stitches to the next two needles.

EON - Every other needle

EOR - Every other row

EOS - Every other stitch

FF DECR - Used to make an even edge for seaming and decorative seams for raglans. If one stitch is to be decreased, use a two-prong transfer tool to move the two edge stitches inward one needle. If two stitches are to be decreased, use a three-prong transfer tool to move the three edge stitches in two needles. If three stitches are to be decreased, use two two-prong transfer tools and move the edge stitches in four needles. See DECR, BO and SHAPING.

FF INCR - To increase one stitch move the two edge stitches outward one needle, then fill the empty needle by picking up a bar from the row below and hanging it on the empty needle.

FNR - Full Needle Rib

G.C. - Garter Carriage

HP - Holding position or "E" position.

INCR - Increase. Usually used for "full-fashion" shaping, see FF Incr., or in conjunction with short row shaping. A simple incr can be made by pulling additional needle on side of carriage out to "E" position and knit across.

MB - Main Bed

MC - Main Color

Ndls - Needles

NWP - Non-working position or position "A"

R(s) - Row(s)

RB - Ribber Bed

RC - Row Counter.

RC 0 - Set RC to zero.

SET PATTERN - Follow the step-by-step instructions in your manual for setting the pattern and carriage controls for the pattern to be knit, e.g., Fairisle, tuck, single motif, etc.

SHAPING: The method used for shaping is a matter of personal preference. In our definitions we have described the methods commonly in use at Knitking. Which method is chosen for a particular pattern depends upon the garment, the yarn and the personal preference of the designer.

SHR - Short Row or Partial Knitting. Used for shaping shoulders, necklines, darts, gores, etc. Set carriage on H(old). **Every other row SHR:** On the opposite side of the carriage, place the specified number of stitches in holding position, knit across, wrap the inner needle or use an "automatic wrap". After all specified stitches have been placed in HP change the carriage setting to N (knit) to return the needles to WP. **Every row SHR:** On the side being shaped, place one stitch in HP every row. It is recommended you refer to your manual or an instruction book for detailed instructions about how to short row.

St(s) - Stitch(es)

St. St. - Stockinette stitch.

T - Tension.

WP - Working Position or "B" position.

WY - Waste yarn.

YM - Yarn marker. To place a yarn marker, use a short piece of contrasting yarn and loop it over the needle specified or the end needle of the row specified.

SEAMING GARMENTS

Any number of popular methods are suggested. We encourage you to experiment with any and all. If a garment in Knitking Magazine requires special seaming information it will be provided in the individual pattern instruction. Otherwise, methods include: linking on the knitting machine, Knitking's Lectrolink, the electric linker, crochet slip stitch, tapestry needles with back stitch sewing by hand. Bar to bar weaving for seamless appearance and seaming on a sewing machine.



CABLED DELIGHT

YARN: Splendor - Cardinal
Use 2 strands throughout

SIZES:
6/8 (10/12) [14/16]

AMOUNT:
2 lbs. all sizes

KIT PRICE: \$31.00

TENSION:
Body: T 10/8 I
Rib: T 1/1 I

GAUGE:
Body: 3.6 Sts., 6 Rs. = 1"

Make on Compuknit/Bulky with Ribber.

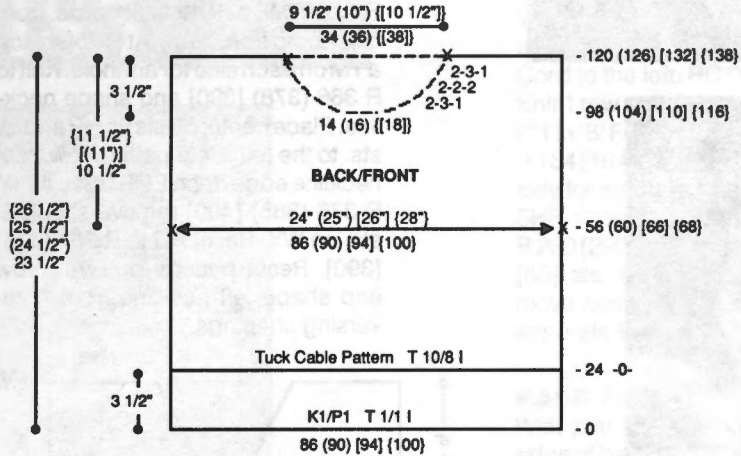
Note: Back and Front have 3 cables. Sleeves start with 1 cable up the center and as you increase another cable will start on each side.

BACK:

CO 86 (90) [94] [100] sts. for K1/P1 Rib. After selvedge RC 0. T 1/1 I. Knit to R 24. Transfer RB sts. to MB except cable sts. Knit in tuck pattern following chart for cables. At R 56 (60) [66] [68] place a YM on each side for armhole. At R 120 (126) [132] [138] mark center 34 (36) [[38]] sts. for neckline and center of neckline. Remove sts. on WY.

FRONT:

Knit front same as back to R 98 (104) [110] [116]. Shape neckline. Place center 14 (16) [[18]] sts. in HP and all sts. to the left. Note pattern row. *On neckline edge SHR EOR 3 Sts. 1x, 2 Sts. 2x and 3 Sts. 1x. At R 120 (126) [132] [138] remove shoulder sts. on

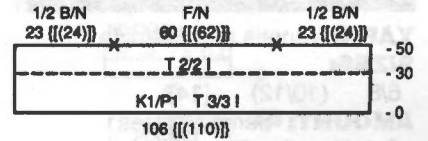


WY. Reset RC to R 98 (104) [110] [116]. Reset pattern to correct row and shape left neckline from *, reversing shaping. Remove shoulder and neckline sts. on separate WY.

SLEEVE:

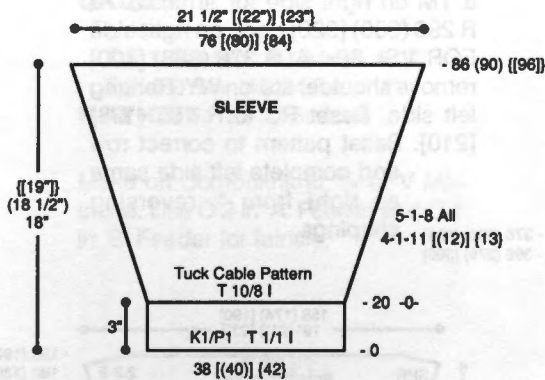
CO 38 [[40]] [42] sts. for K1/P1 Rib. After selvedge RC 0. T 1/1 I. Knit to R 20. Transfer RB sts. to MB except cable sts. Knit in tuck pattern following chart for cable while incr. on each side every 4 Rs. 1 St. 11 [[12]] [13] x and every 5 Rs. 1 St. 8x for all sizes. At R 86 (90) [[96]] knit 1 row at T 10 and BOLT.

NECKBAND (Not to Scale)



FINISHING:

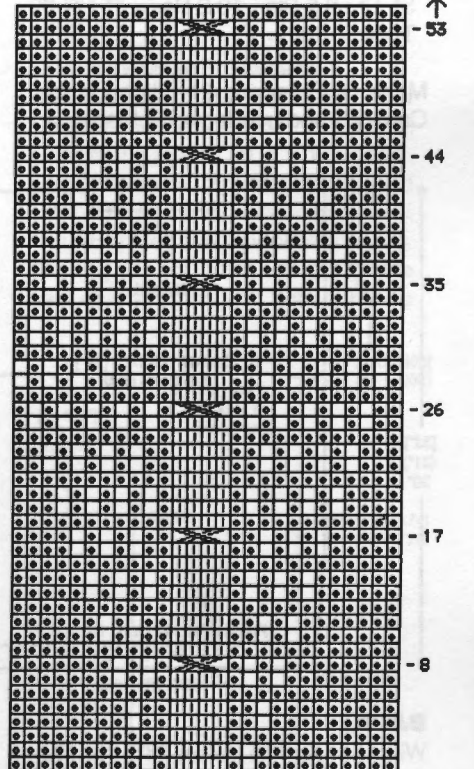
Close shoulder seams and attach neckband following chart. Attach sleeves and close all remaining seams.



NECKBAND:

CO 106 [[110]] sts. for K1/P1 Rib. After selvedge RC 0. T 3/3 I. Knit to R 30 and change to T 2/2 I. Knit to R 50. Knit 1 row at T 8/4 and transfer RB sts. to MB. Mark center 60 [[62]] sts. with YM for front neckline. Knit 1 row at T 10 and BOLT.

#183 Tuck Cable Pattern 27 Sts. x 54 Rows



Compuknit/Bulky; Built-in Pattern #96



PURR-FECTLY SUITED

YARN: Venetia and Pearlyte
SIZES:

6/8 (10/12) [14]

AMOUNT: Same all sizes

C 1: Venetia - Toast-1 cone

Cones average 1-1/2 lbs.

C 2: Pearlyte - Cream-1 cone

Cones average 1 lb.

KIT PRICE: \$63.00

TENSION:

Fairisle: T 5

St. St.: T 4.1

Tuck: T 4.1

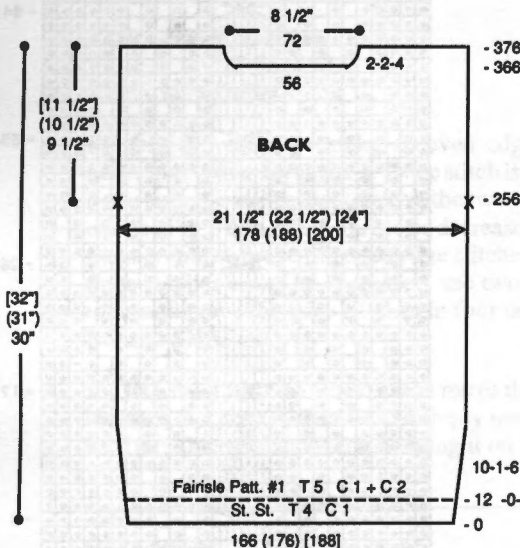
GAUGE:

Fairisle: 8.3 Sts., 12.5 Rs. = 1"

St. St.: 8.5 Sts., 13.3 Rs. = 1"

Tuck: 7 Sts. = 1"

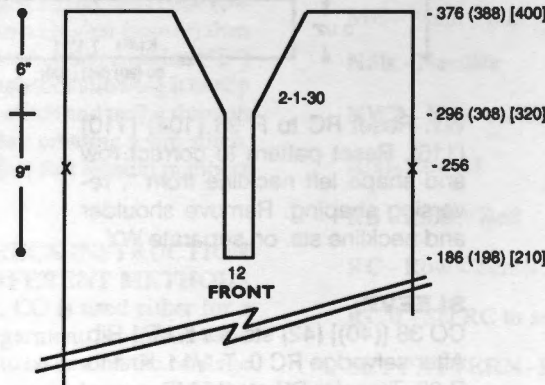
Make on Standard 24-Stitch Punch Card or Standard Electronic Machine.



BACK:

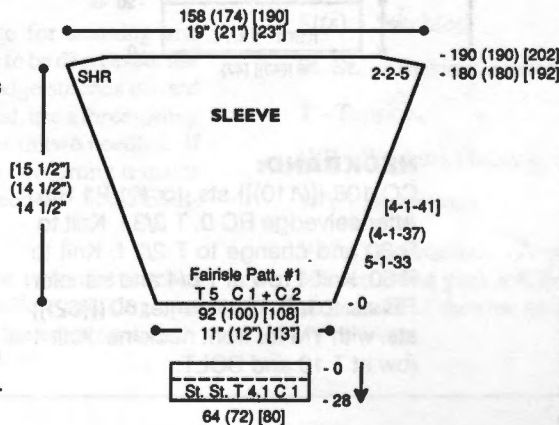
With C 1 CO 166 (176) [188] sts. RC 0. T 4. C 1. St. St. Knit to R 12. RC 0. T 5. Add C 2 in 'B' Feeder and knit in fairisle, pattern #1, while incr. on each

side every 10 Rs. 1 St. 6x. AT THE SAME TIME at R 12 pick up sts. from first row to form hem. At R 256 place a YM on each side for armhole. Knit to R 366 (378) [390] and shape neckline. Place center 56 sts. in HP and all sts. to the left. Note pattern row. *On neckline edge decr. EOR 2 Sts. 4x. At R 376 (388) [400] remove shoulder sts. on WY. Reset RC to R 366 (378) [390]. Reset pattern to correct row and shape left neckline from *, reversing shapings.



FRONT:

Knit front same as back to R 186 (198) [210]. BO center 12 sts. and remove all sts. to the left on WY. Note pattern row. *Knit to R 256 and place a YM on right side for armhole. At R 296 (308) [320] decr. on right side EOR 1 St. 30x. At R 376 (388) [400] remove shoulder sts. on WY. Rehang left side. Reset RC to R 186 (198) [210]. Reset pattern to correct row and complete left side same as right from *, reversing shapings.



SLEEVE:

With WY CO 92 (100) [108] sts. After several rows end with 1 row Ravel Cord to the right. RC 0. T 5. With C 1

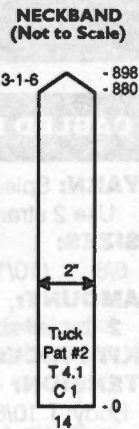
knit 1 row to select ndls. Add C 2 in 'B' Feeder and knit in fairisle while incr. on each side every 5 Rs. 1 St. 33x (every 4 Rs. 1 St. 37x) [every 4 Rs. 1 St. 41x]. At R 180 (180) [192] SHR sleeve cap on each side EOR 2 Sts. 5x. At R 190 (190) [202] knit 1 row at T 10 and BOLT.

SLEEVE CUFF:

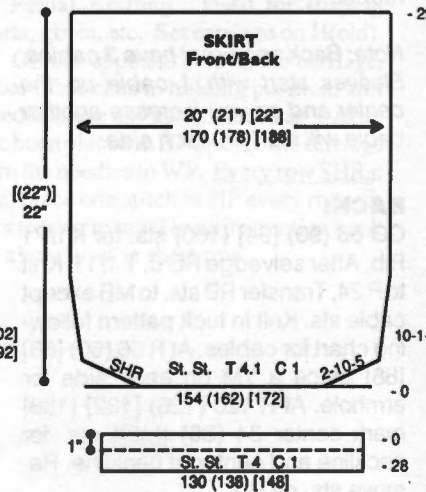
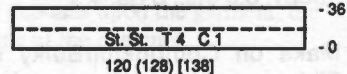
With purl side facing rehang lower edge of sleeve on 64 (72) [80] ndls. RC 0. T 4.1. C 1. St. St. Knit to R 28. Pick up first row to form double band. Knit 1 row at T 10 and BOLT.

NECKBAND: (Knit side is right side).

With WY CO 14 sts. After several rows end with 1 row Ravel Cord to the right. RC 0. T 4.1. C 1. Knit in tuck, pattern #2, to R 880. On each side decr. every 3 Rs. 1 St. 6x. At R 898 BO remaining sts.



WAISTBAND



SKIRT FRONT/BACK:

With WY CO 154 (162) [172] sts. After several rows end with 1 row Ravel Cord to the right. RC 0. T 4.1. C 1. Knit shaping lower edge by SHR shapping on each side EOR 10 Sts. 5x. Incr. on each side every 10 Rs. 1 St. 8x. At R 292 remove sts. on WY.

185



WILD IN THE CITY

YARN: Sorbet and Venetia

SIZES:

6/8 (10/12) [14]

AMOUNT:

C 1: Sorbet - Khaki
1 1/2 lbs. (1 1/2 lbs.) [2 lbs.]

C 2: Venetia - Black Tweed
1 1/2 lbs. (1 1/2 lbs.) [2 lbs.]

KIT PRICE:

\$ 87.00 (\$87.00) [\$115.00]

TENSION:

Fairisle: T 5.1 (5.1) [6]

Hems & Bands: T 4.2 or T 5

GAUGE:

Fairisle:

T 5.1: 9.3 Sts., 10.94 Rs. = 1"

T 6: 8.9 Sts., 10.94 Rs. = 1"

NOTIONS: 5 - 1" Buttons

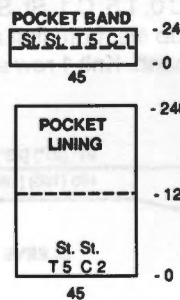
Make on Compuknit III, IV or V Machine. Use C 2 in 'A' Feeder and C 1 in 'B' Feeder for fairisle.

BACK:

With WY CO 186 (196) [196] sts. After several rows end with 1 row Ravel Cord to the left. RC 0. T 5.1 (5.1) [6]. Knit 1 row with C 2 to set pattern. Add C 1 in 'B' Feeder and knit in fairisle. At R 154 (164) [170] place a YM on each side for armhole. At R 270 (280) [290] SHR shoulders EOR 10 Sts. 5x. At R 280 (290) [300] mark center 56 (56) [60] sts. for neck opening and remove neckline and shoulder sts. on separate WY.

BACK HEM:

With purl side facing, rehang lower edge of back on 148 (156) [164] ndls. RC 0. T 4.2. C 1. St. St. Knit to R 24. Pick up sts. from first row to form double hem. Knit 1 row at T 10 and BOLT.



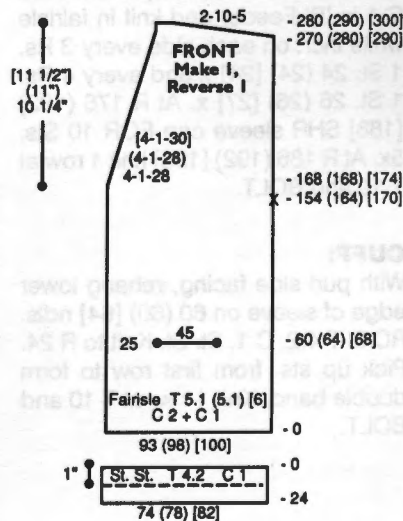
POCKET LINING: Make 2.

Must be made prior to Front.

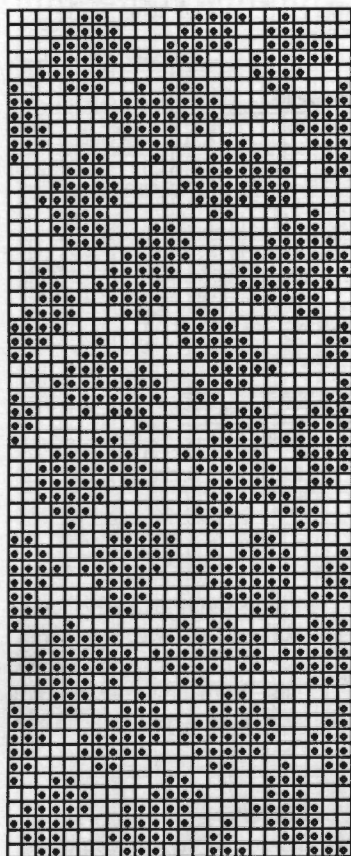
With C 2 'e' wrap CO 45 sts. RC 0. T 5. St. St. Knit to R 240 and remove sts. on WY.

FRONT: Make 1, Reverse 1.

With WY CO 93 (98) [100] sts. After several rows end with 1 row Ravel Cord to the left. RC 0. T 5.1 (5.1) [6]. Knit 1 row with C 2 to set pattern. Add C 1 in 'B' Feeder and knit in fairisle. At R 60 (64) [68] make pocket opening. Starting 25 sts. from left side, take next 45 sts. off on WY. With purl side

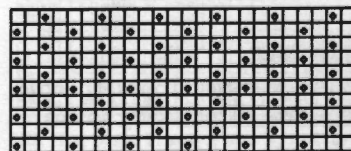


•184 Tunic Top
24 Sts. x 60 Rows

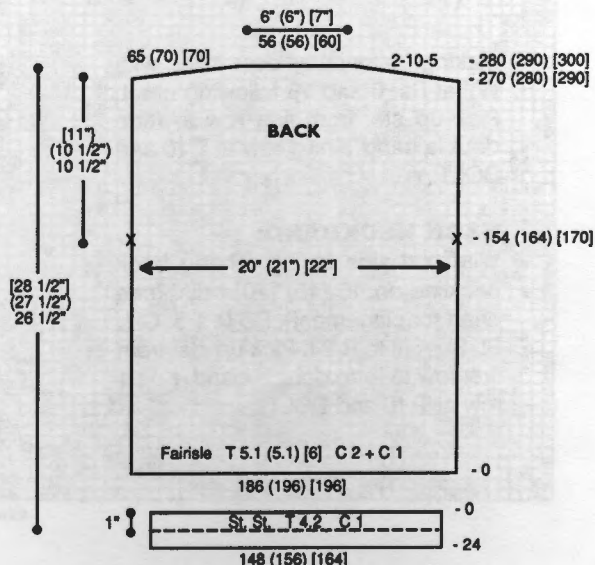


CK Mag Disk: Track 1; Pattern 901

•184 Tunic Top
24 Sts. x 10 Rows



CK Mag Disk: Track 1; Pattern 902



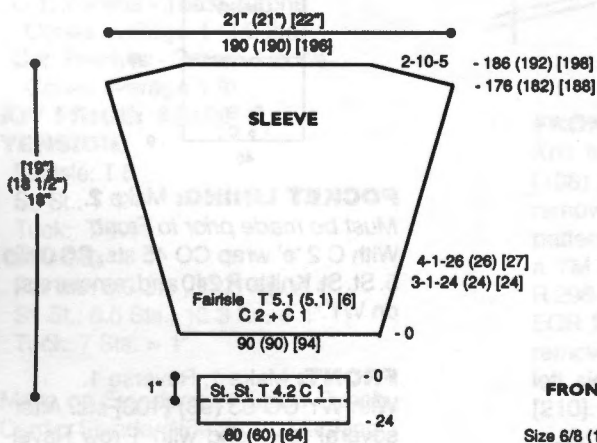
facing rehang open sts. of pocket lining on these ndls. Continue to R 154 (164) [170] and place a YM on right side for armhole. At R 168 (168) [174] shape neckline. On neckline edge decr. every 4 Rs. 1 St. 28x (every 4 Rs. 1 St. 28x) [every 4 Rs. 1 St. 30x]. At R 270 (280) [290] SHR shoulder EOR 10 Sts. 5x. At R 280 (290) [300] remove sts. on WY.

FRONT HEM:

With purl side facing, rehang lower edge of front on 74 (78) [82] ndls. RC 0. T 4.2. C 1. St. St. Knit to R 24. Pick up sts. from first row to form double hem. Knit 1 row at T 10 and BOLT.

POCKET BAND: Make 2.

Bring 45 ndls. to WP. With purl side facing rehang pocket opening on these ndls. RC 0. T 5. C 1. St. St. Knit to R 24. Pick up sts. from first row to form double band. Knit 1 row at T 10 and BOLT.

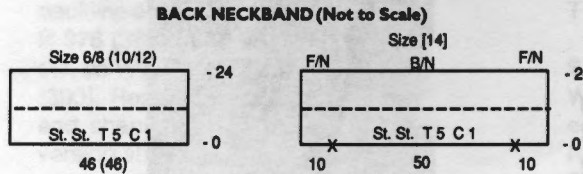
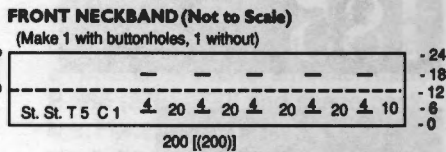


SLEEVE:

With WY CO 90 (90) [94] sts. After several rows end with 1 row Ravel Cord to the left. RC 0. T 5.1 (5.1) [6]. Knit 1 row with C 2 to set pattern. Add C 1 in 'B' Feeder and knit in fairisle while incr. on each side every 3 Rs. 1 St. 24 (24) [24] x and every 4 Rs. 1 St. 26 (26) [27] x. At R 176 (182) [188] SHR sleeve cap EOR 10 Sts. 5x. At R 186 (192) [198] knit 1 row at T 10 and BOLT.

CUFF:

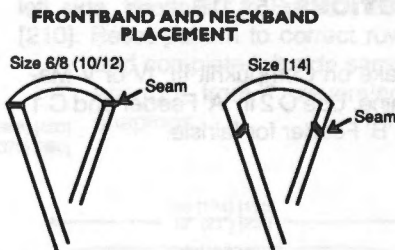
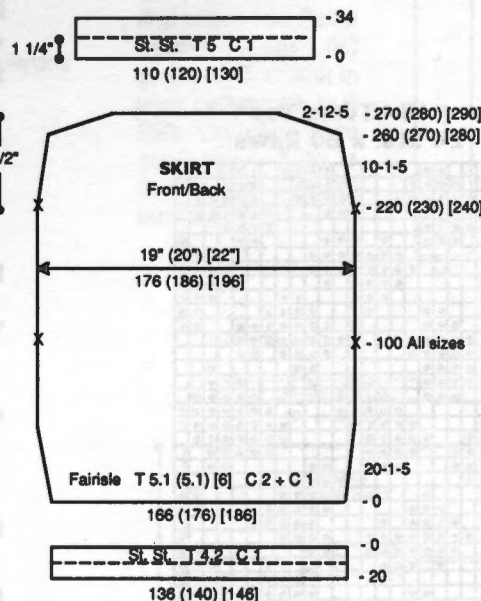
With purl side facing, rehang lower edge of sleeve on 60 (60) [64] ndls. RC 0. T 4.2. C 1. St. St. Knit to R 24. Pick up sts. from first row to form double band. Knit 1 row at T 10 and BOLT.



FRONT NECKBAND:

Make 1 with buttonholes, 1 without.

Join shoulder seams. With purl side facing rehang left front on 200 [(200)] ndls. (see chart for placement). RC 0. T 5. C 1. St. St. Knit to R 24



making buttonholes over 4 Sts. with WY at Rs. 6 and 18 following chart. Pick up sts. from first row to form double band. Knit 1 row at T 10 and BOLT.

BACK NECKBAND:

With purl side facing rehang back neckline on 46 (46) [70] ndls. (see chart for placement). RC 0. T 5. C 1. St. St. Knit to R 24. Pick up sts. from first row to form double band. Knit 1 row at T 10 and BOLT.

SKIRT FRONT/BACK:

With WY CO 166 (176) [186] sts. After several rows end with 1 row Ravel Cord to the left. RC 0. T 5.1 (5.1) [6]. Knit 1 row with C 2 to set pattern. Add C 1 in 'B' Feeder and knit in fairisle while incr. on each side every 20 Rs. 1 St. 5x. At R 100, all sizes, place a YM on each side for aid in seaming. At R 220 (230) [240] place a YM on each side and start decr. on each side every 10 Rs. 1 St. 5x. At R 260 (270) [280] SHR on each side EOR 12 Sts. 5x. At R 270 (280) [290] remove sts. on WY.

HEM:

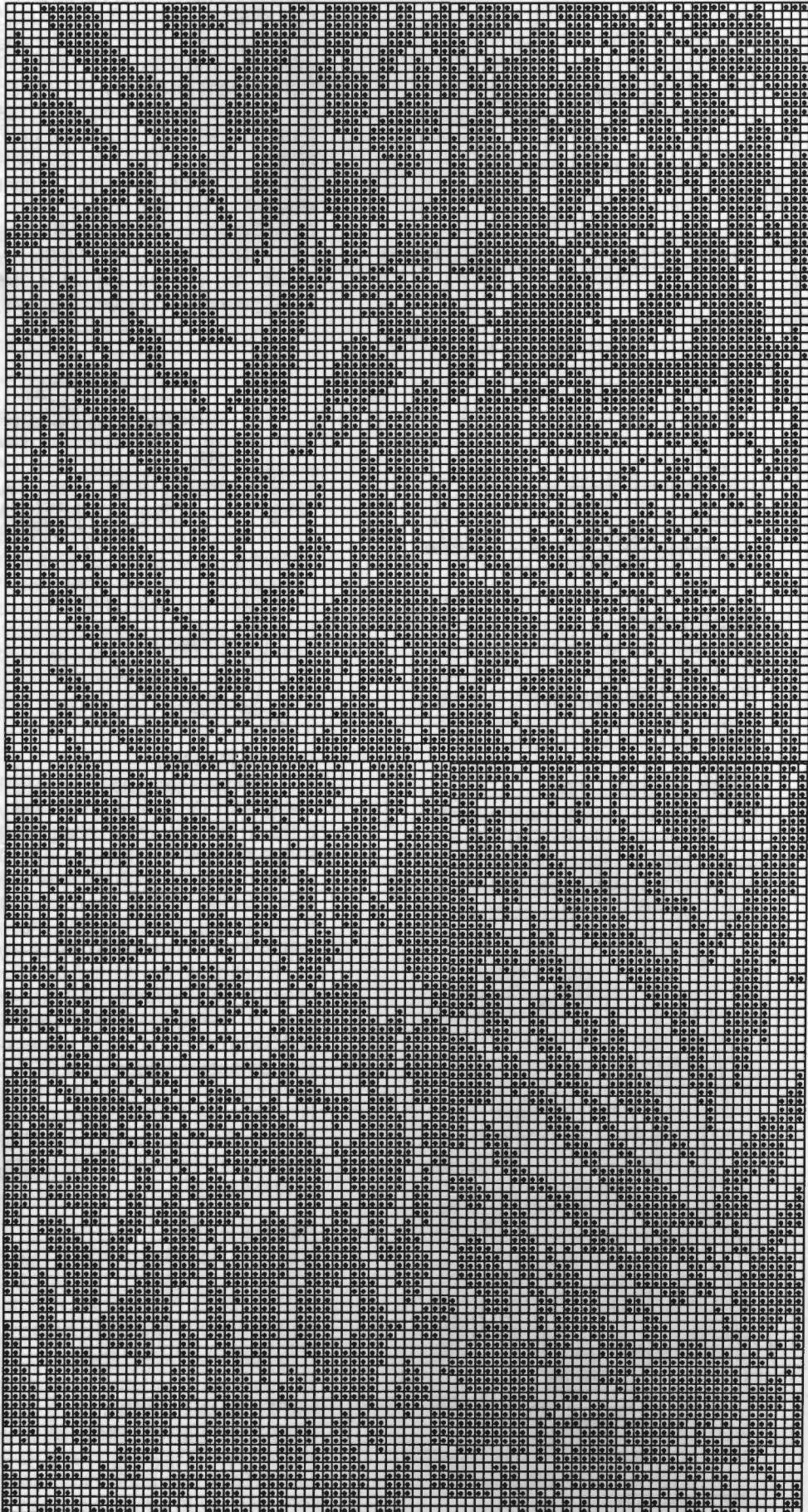
With purl side facing, rehang lower edge of skirt on 136 (140) [146] ndls. RC 0. T 4.2. C 1. St. St. Knit to R 20. Pick up sts. from first row to form double hem. Knit 1 row at T 10 and BOLT.

WAISTBAND:

With purl side facing, rehang upper edge of skirt on 110 (120) [130] ndls. RC 0. T 5. C 1. St. St. Knit to R 34. Pick up sts. from first row to form double band. Knit 1 row at T 10 and BOLT.

FINISHING:

Attach sleeves. Stitch pocket band in place. Close all remaining seams.



-Track 3



CLASSIC LINES

YARN: Venetia - Red

SIZES:

6/8 (10/12) [14]

AMOUNT:

2 (2) [2 1/2] lbs.

KIT PRICE:

\$56.00 (\$56.00) [\$70.00]

TENSION:

Body: T 5

Hems & Bands: T 4.2

GAUGE:

Body: 8.57 Sts., 12.98 Rs. = 1"

NOTIONS:

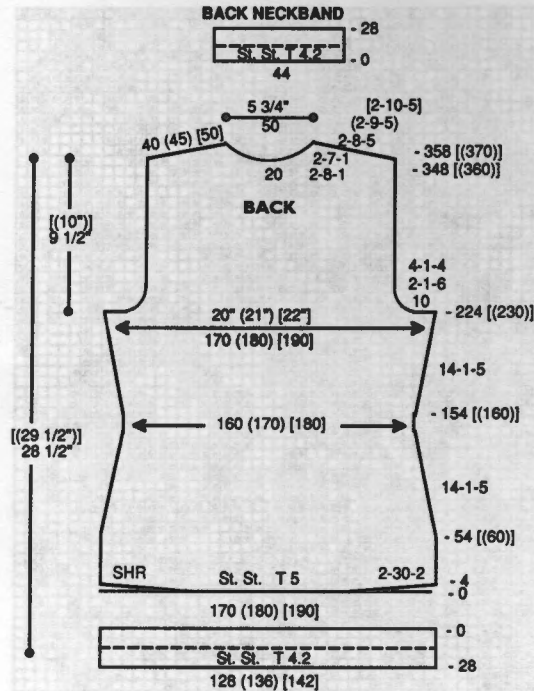
Elastic for skirt waistband.

2 - 1" Buttons for jacket

Make on any Standard Machine.

BACK:

With WY CO 170 (180) [190] sts. After several rows, end with 1 row Ravel Cord to the right. RC 0. T 5. St. St. On each side SHR EOR 30 Sts. 2x. Knit to R 54 [(60)] and decr. on each side every 14 Rs. 1 St. 5x. At R 154 [(160)] incr. on each side every 14 Rs. 1 St. 5x. At R 224 [(230)] shape armhole. On each side BO 10 sts., then decr. EOR 1 St. 6x and every 4 Rs. 1 St. 4x. At R 348 [(360)] shape neckline. Place center 20 sts. in HP and all sts. to the left. *On neckline edge SHR EOR 8 Sts. 1x and 7 Sts. 1x. AT THE SAME TIME SHR shoulder EOR 8 Sts. 5x (9 Sts. 5x) [10 Sts. 5x]. At R 358 [(370)] remove shoulder sts. on WY. Reset RC to R 348 [(360)] and shape left neckline and shoulder from *, reversing shapings. Remove shoulder and neckline sts. on separate WY.

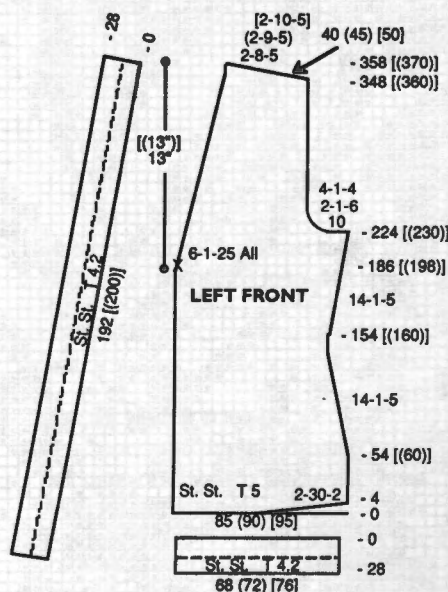


BACK HEM:

With purl side facing rehang lower edge of back on 128 (136) [142] ndls. RC 0. T 4.2. St. St. Knit to R 28. Pick up sts. from first row to form double hem. Knit 1 row at T 10 and BOLT.

BACK NECKBAND:

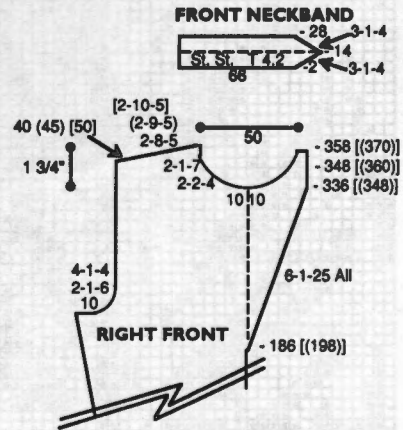
With purl side facing, rehang back neckline on 44 ndls. RC 0. T 4.2. St. St. Knit to R 28. Pick up sts. from first row to form double band. Knit 1 row at T 10 and BOLT.



LEFT FRONT:

With WY CO 85 (90) [95] sts. After several rows, end with 1 row Ravel

Cord to the right. RC 0. T 5. St. St. On right side SHR EOR 30 Sts. 2x. Knit to R 54 [(60)] and decr. on right side every 14 Rs. 1 St. 5x. At R 154 [(160)] incr. on right side every 14 Rs. 1 St. 5x. AT THE SAME TIME at R 186 [(198)] on left side shape neckline. FF decr. every 6 Rs. 1 St. 25x. At R 224 [(230)] shape armhole. On right side BO 10 sts. then decr. EOR 1 St. 6x and every 4 Rs. 1 St. 4x. At R 348 [(360)] SHR shoulder EOR 8 Sts. 5x (9 Sts. 5x) [10 Sts. 5x]. At R 358 [(370)] remove shoulder sts. on WY.



RIGHT FRONT:

Knit right front same as left front to R 186 [(198)]. On right side incr. every 6 Rs. 1 St. 25 x. At R 224 [(230)] shape armhole. On left side BO 10 sts. then decr. EOR 1 St. 6x and every 4 Rs. 1 St. 4x. AT THE SAME TIME at R 336 [(348)] shape neckline. Place center 20 sts. of neckline (see chart) in HP and all sts. to the left. On neckline edge decr. EOR 2 Sts. 4x and 1 St. 7x. At R 358 [(370)] reset RC to R 336 [(348)] and shape left neckline. On neckline edge decr. EOR 2 Sts. 4x and 1 St. 7x. At R 348 [(360)] SHR shoulder EOR 8 Sts. 5x (9 Sts. 5x) [10 Sts. 5x]. At R 358 [(370)] remove shoulder and neckline sts. on separate WY.

FRONT HEM:

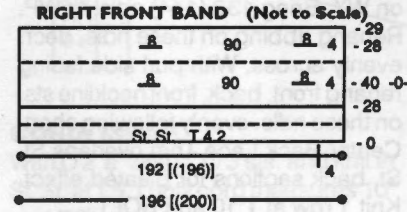
With purl side facing rehang lower edge of front on 68 (72) [76] ndls. RC 0. T 4.2. St. St. Knit to R 28. Pick up sts. from first row to form double hem. Knit 1 row at T 10 and BOLT.

LEFT FRONT BAND:

With purl side facing, rehang left front and hem on 192 [(200)] ndls. RC 0. T 4.2. St. St. Knit to R 28. Pick up sts. from first row to form double band. Knit 1 row at T 10 and BOLT.

FRONT NECKBAND:

With purl side facing, rehang front neckline on 66 ndls. RC 0. T 4.2. St. St. Knit to R 2. On right side incr. every 3 Rs. 1 St. 4x. After R 14 decr. every 3 Rs. 1 St. 4x. At R 28 pick up sts. from first row to form double band. Knit 1 row at T 10 and BOLT.

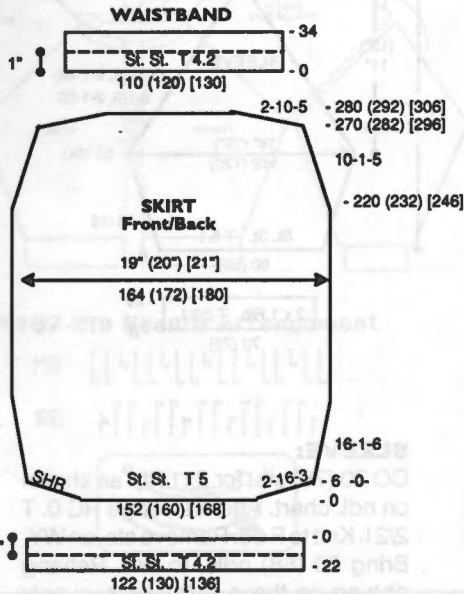


RIGHT FRONT BAND:

With purl side facing, rehang right front and hem on 192 [(196)] ndls. 'e' wrap CO 4 sts. to the right. RC 0. T 4.2. St. St. Knit to R 28. Pick up sts. from first row to form double band. Knit to R 40. RC 0. Make 2 buttonholes over 8 sts. with WY following chart. Knit to R 28 and make 2 buttonholes over 8 sts. with WY following chart. Knit 1 R and pick up sts. from R 40 to form double band. Knit 1 row at T 10 and BOLT.

SLEEVE CUFF:

With purl side facing rehang lower edge of sleeve on 58 (62) [66] ndls. RC 0. T 4.2. St. St. Knit to R 28. Pick up sts. from first row to form hem. Knit 1 row at T 10 and BOLT.



SKIRT FRONT/BACK:

With WY CO 152 (160) [168] sts. After several rows, end with 1 row Ravel Cord to the right. RC 0. T 5. St. St. On each side SHR EOR 16 Sts. 3x. Reset RC to 0. Knit while incr. on each side every 16 Rs. 1 St. 6x. At R 220 (232) [246] begin shaping. On each side decr. every 10 Rs. 1 St. 5x. At R 270 (282) [296] SHR on each side EOR 10 Sts. 5x. At R 280 (292) [306] remove sts. on WY.

SKIRT HEM:

With purl side facing rehang lower edge of skirt front/back on 122 (130) [136] ndls. RC 0. T 4.2. St. St. Knit to R 22. Pick up sts. from first row to form double hem. Knit 1 row at T 10 and BOLT.

SKIRT WAISTBAND:

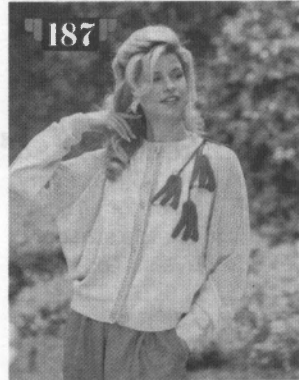
With purl side facing rehang upper edge of skirt front/back on 110 (120) [130] ndls. decr. evenly across. RC 0. T 4.2. St. St. Knit to R 34. Pick up sts. from first row to form double band. Knit 1 row at T 10 and BOLT.

FINISHING:

Close shoulder seams. Finish buttonholes with crochet hook. Close all remaining seams.

SLEEVE:

With WY CO 76 (80) [84] sts. After several rows, end with 1 row Ravel Cord to the right. RC 0. T 5. St. St. On each side SHR EOR 6 Sts. 3x. Reset RC to 0. Knit while incr. on each side every 3 Rs. 1 St. 12x and every 4 Rs. 1 St. 36x (every 3 Rs. 1 St. 12x and every 4 Rs. 1 St. 36x) [every 3 Rs. 1 St. 2x and every 4 Rs. 1 St. 46x]. At R 206 (210) [216] shape sleeve cap. On each side SHR EOR 5 Sts. 4 [(5)] x and 4 Sts. 17 [(17)] x. At R 248 (254) [260] knit 1 row at T 10 and BOLT.



LOVELY IN LACE

YARN: Sorbet

SIZES:

Small/Medium (Large)

AMOUNT:

C 1: Lilac - 1-1/2 lbs. all sizes

C 2: Plumberry - 2 oz. all sizes

KIT PRICE: \$40.00

TENSION:

St. St.: T 5.1

Lace: T 7

Rib: T 2/2 I

GAUGE:

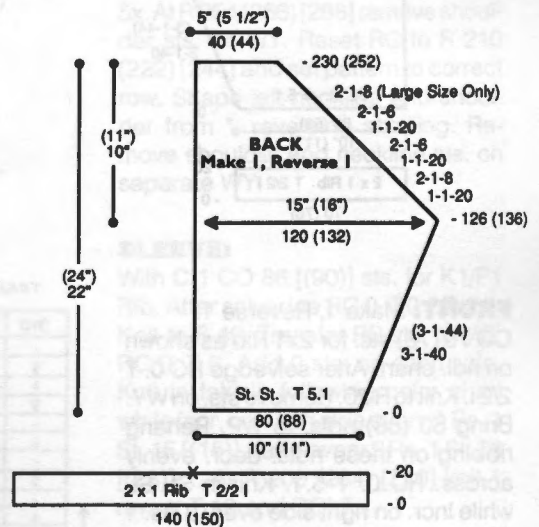
St. St.: 8 Sts., 10.5 Rs. = 1"

Lace: 6 Sts., 10 Rs. = 1"

Rib: 12 Rs. = 1"

NOTIONS: 9 - 1/4" Buttons

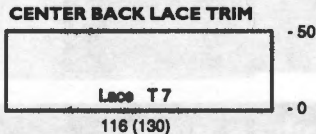
Make on Standard 24-Stitch Punch Card or Standard Electronic Machine with Ribber.



BACK: Make 1, Reverse 1.

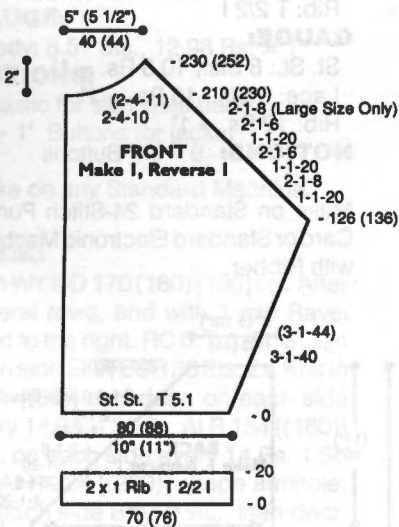
CO 140 (150) sts. for 2x1 Rib as shown on ndl. chart. After selvedge

RC 0. T 2/21. Knit to R 20. Mark center with YM and remove sts. on WY. Bring 80 (88) ndls. to WP. Starting at center and working to the right, rehang half of ribbing on these ndls. decr. evenly across. RC 0. T 5.1. Knit in St. St. while incr. on right side every 3 Rs. 1 St. 40 x (every 3 Rs. 1 St. 44 x). At R 126 (136) start decr. on right side every R 1 St. 20x, EOR 1 St. 8x, every R 1 St. 20x, EOR 1 St. 6x, every R 1 St. 20x, EOR 1 St. 6x for all sizes and (EOR 1 St. 8x) for large size only. At R 230 (252) remove sts. on WY.



CENTER BACK LACE TRIM:

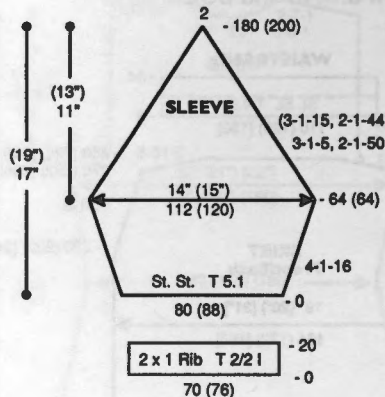
Bring 116 (130) ndls. to WP. With purl side facing rehang one center back piece on these ndls. RC 0. T 7. Knit in lace pattern to R 50. With purl side facing rehang remaining back piece on these same ndls. Knit 1 row at T 10 and BOLT. Fold lace insert at rib band to create pleated effect and whip stitch in place.



FRONT: Make 1, Reverse 1.

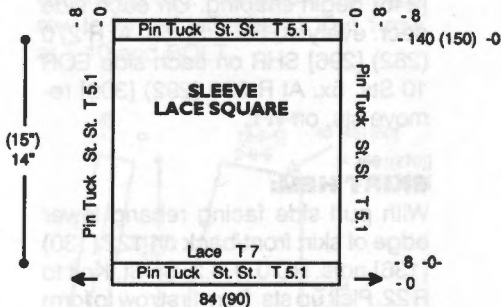
CO 70 (76) sts. for 2x1 Rib as shown on ndl. chart. After selvedge RC 0. T 2/21. Knit to R 20. Remove sts. on WY. Bring 80 (88) ndls. to WP. Rehang ribbing on these ndls. decr. evenly across. RC 0. T 5.1. Knit in St. St. while incr. on right side every 3 Rs. 1 St. 40 x (every 3 Rs. 1 St. 44 x). At R 126 (136) start decr. on right side every R 1 St. 20x, EOR 1 St. 8x, every R 1 St. 20x, EOR 1 St. 6x, every R 1 St. 20x, EOR 1 St. 6x for all sizes and (EOR 1 St. 8x) for large size only. AT

THE SAME TIME at R 210 (230) shape neckline. On neckline edge SHREOR 4 Sts. 10x (4 Sts. 11 x). At R 230 (252) remove remaining sts. on WY.



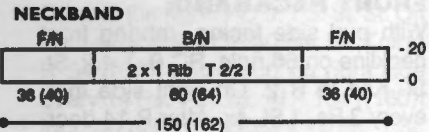
SLEEVE:

CO 70 (76) sts. for 2x1 Rib as shown on ndl. chart. After selvedge RC 0. T 2/21. Knit to R 20. Remove sts. on WY. Bring 80 (88) ndls. to WP. Rehang ribbing on these ndls. decr. evenly across. RC 0. T 5.1. Knit in St. St. while incr. on each side every 4 Rs. 1 St. 16x. At R 64 (64) start decr. on each side every 3 Rs. 1 St. 5x and EOR 1 St. 50x (every 3 Rs. 1 St. 15x and EOR 1 St. 44x). At R 180 (200) remove sts. on WY.



SLEEVE LACE SQUARE:

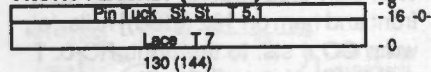
With WY CO 84 (90) sts. After several rows end with 1 row Ravel Cord to the right. RC 0. T 5.1. St. St. Knit to R 8 and pick up sts. from first row to form pin tuck. RC 0. T 7. Knit in lace pattern to R 140 (150). RC 0. T 5.1. St. St. Knit to R 8. Pick up sts. from first row of St. St. to form pin tuck. Knit 1 row at T 10 and BOLT. With purl side facing rehang side selvedge of square on 84 (90) ndls. RC 0. T 5.1. St. St. Knit to R 8 and pick up sts. from first row to form pin tuck. Knit 1 row at T 10 and BOLT. Finish remaining side selvedge the same.



NECKBAND:

CO 150 (162) sts. for 2x1 Rib as shown on ndl. chart. After selvedge RC 0. T 2/21. Knit to R 20. Remove sts. on WY. Bring 132 (144) ndls. to WP. Rehang ribbing on these ndls. decr. evenly across. With purl side facing rehang front, back, front neckline sts. on these ndls. evenly following chart. Center Back Lace Trim overlaps St. St. back sections for pleated effect. Knit 1 row at T 10 and BOLT.

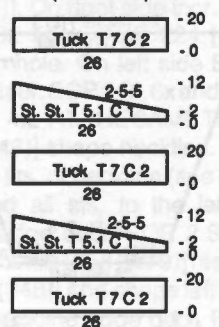
FRONT PLACKET (Make 2)



FRONT PLACKET: Make 2.

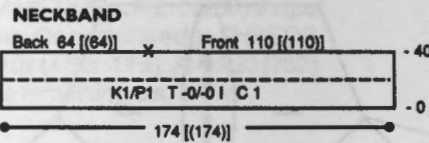
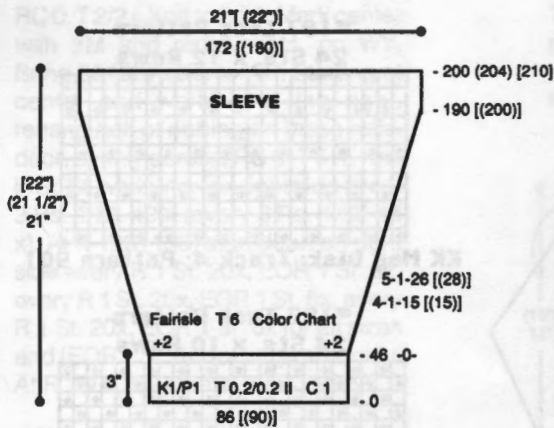
Bring 130 (144) ndls. to WP. With purl side facing rehang center selvedge (including top and bottom ribbing) on these ndls. RC 0. T 7. Knit in lace pattern to R 16. RC 0. T 5.1. St. St. Knit to R 8. Pick up first row of St. St. to form pin tuck. Knit 1 row at T 10 and BOLT.

FLOWER (Make 3)
(Not to Scale)

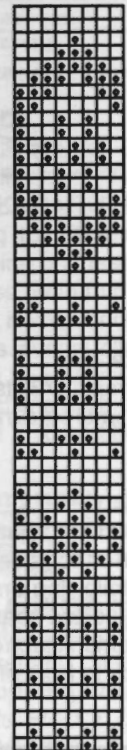


FLOWERS: Make 3.

With C2 'e' wrap CO 26 sts. RC 0. T 7. *Knit in tuck pattern for 20 Rs. and remove sts. on WY. With knit side facing rehang sts. on 26 ndls. RC 0. T 5.1. C 1. St. St. Knit 2 Rs. then SHREOR 5 Sts. 5x and remove sts. on WY. RC 0. T 7. C 2. With knit side facing rehang sts. on 26 ndls. and repeat from * 1 time. RC 0. T 7. C 2. With knit side facing rehang sts. on 26 ndls. Knit in tuck pattern for 20 Rs. knitting last row at T 10 and BOLT.



188 Fairisle Pattern
8 Sts. x 56 Rows

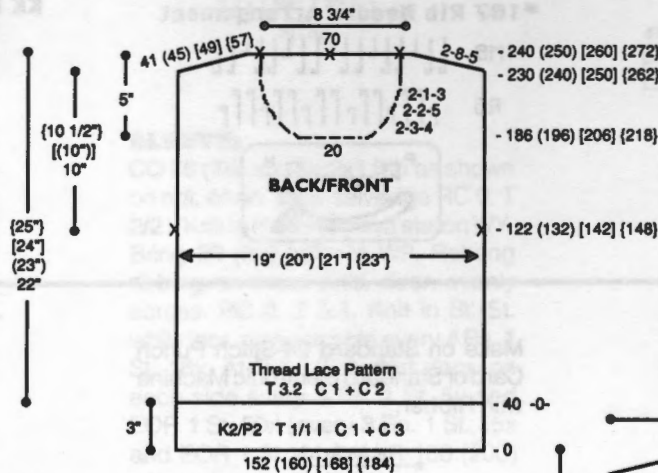
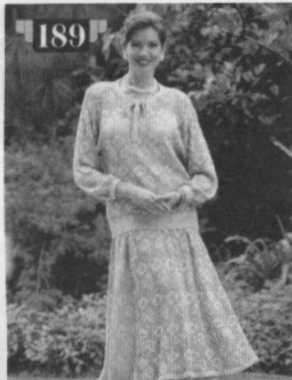


facing, rehang neckline on 174 [(174)] ndls. following chart. Knit 1 row at T 10 and BOLT.

FINISHING:

Close all remaining seams. Fold neckband to inside and whip stitch in place to form double band.

189



KK Mag Disk: Track 5;
Pattern 901

STEPPING OUT

YARN: Pearlyte and Sewing Thread

SIZES:

6/8 (10/12) [14] [16]

AMOUNT:

C 1: Pearlyte - Silver

3-1/2 [[(4)]] lbs.

C 2: Sewing Thread - Grey

5 spools (6000 yds.) All

C 3: Knit-in Elastic - Grey

1 spool - All

KIT PRICE:

\$79.00 [[(\$89.00)]]

TENSION:

Pattern: T 3.2

St. St.: T 3.1

Rib: T 1/1 I

GAUGE:

Pattern: 8 Sts., 10.87 Rs. = 1"

Tie: 14 Sts., 9.83 Rs. = 1"

NOTIONS:

Elastic for skirt waistband.

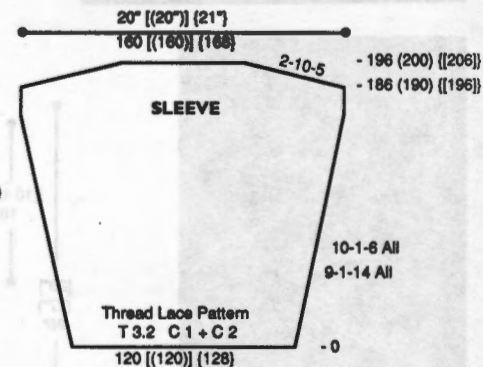
Make on Standard 24-Stitch Punch Card or Standard Electronic Machine with Ribber. Thread Lace is pattern #397 in Compuknit III, IV & V Pattern Book. Read instruction book on how to knit Thread Lace.

TOP BACK:

With C1 + C 3 CO 152 (160) [168] [184] sts. for K2/P2 Rib. After selvedge RC 0. T 1/1 I. Knit to R 40. Transfer RB sts. to MB. Cut C 3. RC 0. T 3.2. Add C 2. Knit in thread lace pattern. At R 122 (132) [142] [148] place a YM on each side for arm-hole. At R 230 (240) [250] [262] SHR shoulders EOR 8 Sts. 5x. At R 240 (250) [260] [272] knit 1 row over all sts. at T 10. Mark center 70 sts. for neckline and center of neckline with YM and BOLT.

TOP FRONT:

Knit front same as back to R 186 (196) [206] [218]. Shape neckline. Place center 20 sts. in HP and all sts. to the left. Note pattern row. *On neckline edge SHR EOR 3 Sts. 4x, 2 Sts. 5x and 1 St. 3x. At R 230 (240) [250] [262] SHR shoulder EOR 8 Sts. 5x. At R 240 (250) [260] [272] knit 1 row at T 10 and BOLT. Reset RC to R 186 (196) [206] [218]. Reset pattern to correct row. Complete left side from *, reversing shapings.



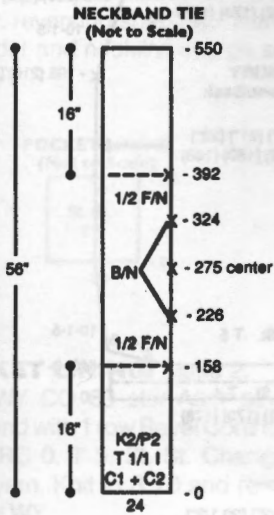
SLEEVE:

With WY CO 120 [(120)] [128] sts. After several rows end with 1 row Ravel Cord to the right. RC 0. T 3.2. C 1 + C 2. Knit in thread lace pattern while incr. on each side every 9 Rs. 1 St. 14x and every 10 Rs. 1 St. 6x for all sizes. At R 186 (190) [(196)] SHR sleeve cap EOR 10 Sts. 5x. At R 196 (200) [(206)] knit 1 row over all sts. at T 10 and BOLT.

SLEEVE CUFF:

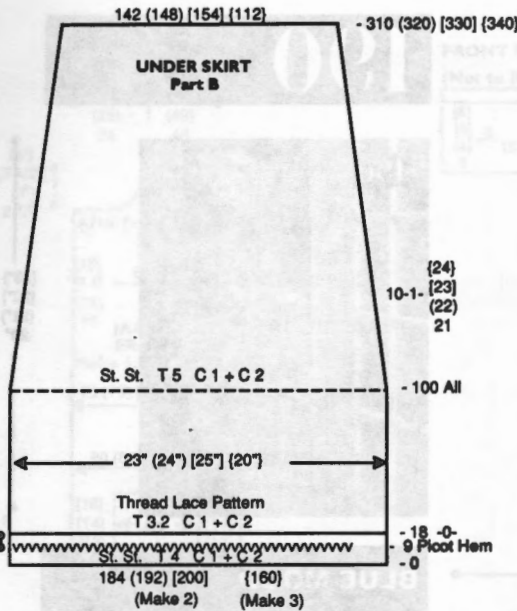
With puri side facing rehang lower edge of sleeve on 60 [(60)] [68] ndls. RC 0. T 3.1. St. St. C 1 + C 2. Knit to R 14. Transfer EOS to adjacent ndl.

leaving empty ndls. in WP. Knit to R 28. Pick up sts. from first row to form picot hem. Knit 1 row at T 10 and BOLT.



NECKBAND TIE:

With C 1 + C 2 CO 24 sts. for K2/P2 Rib. After selvedge RC 0. T 1/1 I. Knit to R 550 placing YM's on right side at Rs. 158, 226, 275, 324 and 392 to aid in neckline placement. Transfer RB sts. to MB and BO.

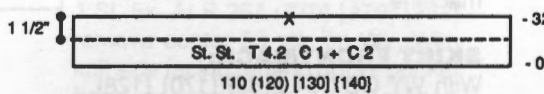


UNDER SKIRT:

Part B: Make 2 pieces for sizes 6/8 (10/12) [14] and 3 pieces for size [16].

With WY CO 184 (192) [200] {160} sts. After several rows end with 1 row Ravel Cord to the right. RC 0. T 4. St. St. C 1 + C 2. Knit to R 9. Transfer EOS to adjacent ndl. leaving empty ndls. in WP. Knit to R 18. Pick up sts. from first row to form picot hem. RC 0. T 3.2. Knit in thread lace pattern to R 100 for all sizes. Change to T 5. Knit in St. St. while decr. on each side every 10 Rs. 1 St. 21 (22) [23] [24] x. At R 310 (320) [330] [340] cut C 2 and knit 1 row in St. St.. Remove sts. on WY.

WAISTBAND



WAISTBAND:

Size 6/8 (10/12) [14]

Front: Bring 110 (120) [130] ndls. to WP. With purl side facing rehang Part A on these ndls. decr. evenly across (see drawing). Rehang 1 piece of Part B on same ndls. RC 0. C 1 + C 2. Knit 1 row manually. T 4.2. Knit to R 32. Pick up sts. from first row to form double band. Knit 1 row at T 10 and BOLT.

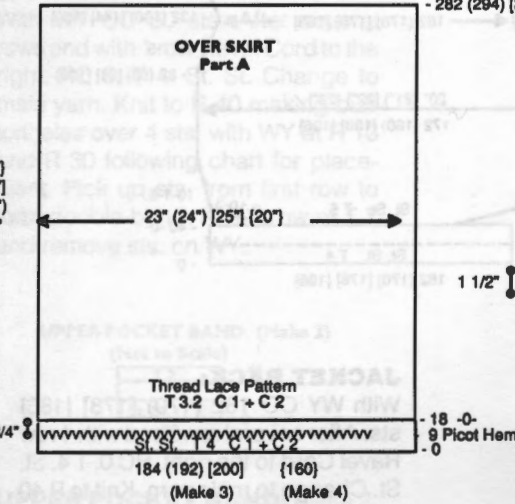
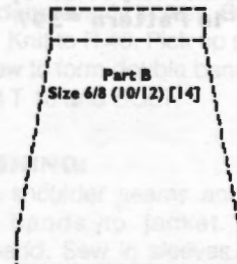
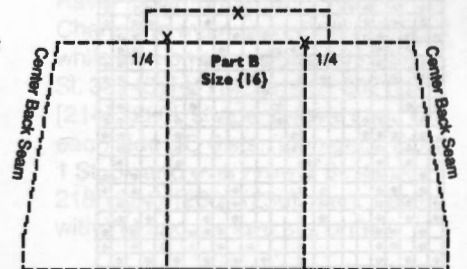
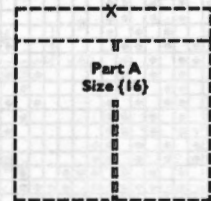
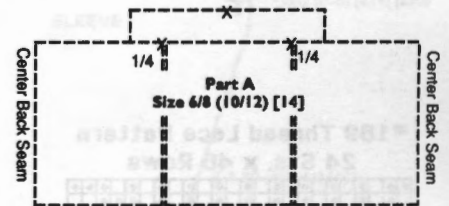
Back: Bring 110 (120) [130] ndls. to WP. With purl side facing rehang

remaining sts. on 2 pieces of Part A on these ndls. decr. evenly across. Rehang 1 piece of Part B on same ndls. RC 0. C 1 + C 2. Knit 1 row manually. T 4.2. Knit the same as Front.

Size [16]:

Front: Bring [140] ndls. to WP. With purl side facing rehang 2 pieces of Part A on these ndls. Rehang Part B on same ndls. (see drawing). RC 0. C 1 + C 2. Knit 1 row manually. T 4.2. Knit to R 32. Pick up sts. from first row to form double band. Knit 1 row at T 10 and BOLT.

Back: Bring [140] ndls. to WP. With purl side facing rehang 2 pieces of Part A on these ndls. Rehang remaining sts. on 2 pieces of Part B on same ndls. RC 0. C 1 + C 2. Knit 1 row manually. T 4.2. Knit the same as Front.



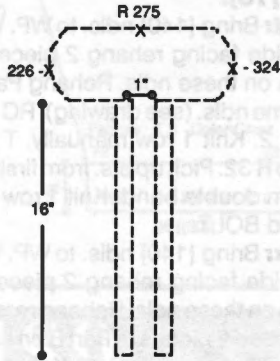
OVER SKIRT:

Part A: Make 3 pieces for sizes 6/8 (10/12) [14] and 4 pieces for size [16].

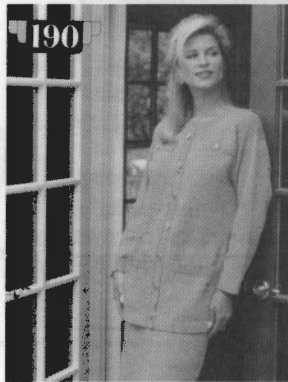
With WY CO 184 (192) [200] {160} sts. After several rows end with 1 row Ravel Cord to the right. RC 0. T 4. St. St. C 1 + C 2. Knit to R 9. Transfer EOS to adjacent ndl. leaving empty ndls. in WP. Knit to R 18. Pick up sts. from first row to form picot hem. RC 0. T 3.2. Knit in thread lace pattern. At R 282 (294) [304] [316] cut C 2 and knit 1 row in St. St.. Remove sts. on WY.

FINISHING:

Join one shoulder. Attach Neckband Tie following chart. Close remaining shoulder. Sew in sleeves. Close all remaining seams.



190



BLUE MOOD

YARN: Venetia

SIZES: 6/8 (10/12) [14] [16]

AMOUNT: C 1: Periwinkle - 2 lbs.

KIT PRICE: \$56.00

TENSION: St. St.: T 5
Bands & Hems: T 4
FNR: T 0/0 I

GAUGE: St. St.: 8.4 Sts., 12.25 Rs. = 1"

NOTIONS: 7 - 1" and 4 - 1/2" buttons for jacket and elastic for skirt waistband.

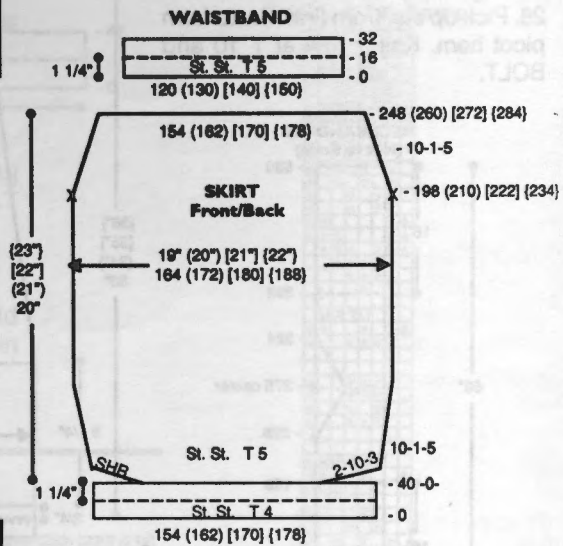
Make on any standard machine.

SKIRT FRONT/BACK:

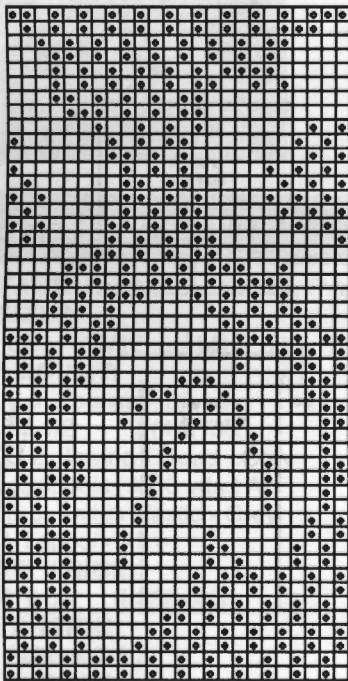
With WY CO 154 (162) [170] [178] sts. After several rows end with 1 row Ravel Cord to the right. RC 0. T 4. St. St. Change to main yarn. Knit to R 40 and pick up sts. from first row to form hem. RC 0. T 5. St. St. Shape lower edge by SHR shaping on each side EOR 10 Sts. 3x. Incr. on each side every 10 Rs. 1 St. 5x. At R 198 (210) [222] [234] begin shaping. On each side decr. every 10 Rs. 1 St. 5x. At R 248 (260) [272] [284] remove sts. on WY.

WAISTBAND: Make 2.

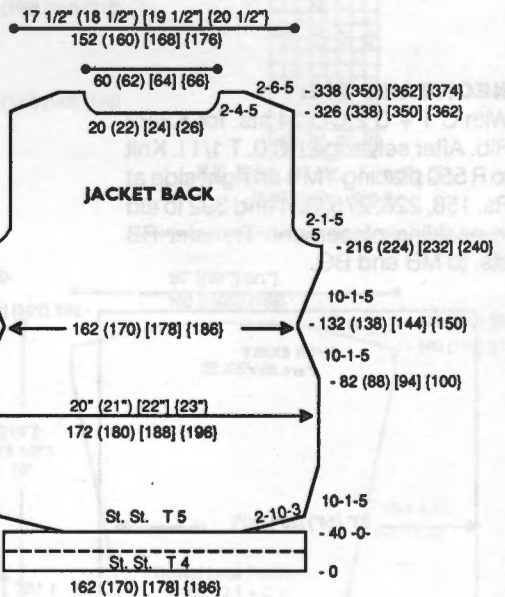
Bring 120 (130) [140] [150] ndls. to WP. With purl side facing, rehang upper edge of skirt front/back on these ndls. decr. evenly across. RC 0. T 5. St. St. Knit to R 32. Pick up sts. from first row to form doubled band and BO.



#189 Thread Lace Pattern
24 Sts. x 48 Rows



Compuknit III, IV or V;
Built-in Pattern #397



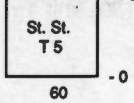
JACKET BACK:

With WY CO 162 (170) [178] [186] sts. After several rows end with 1 row Ravel Cord to the right. RC 0. T 4. St. St. Change to main yarn. Knit to R 40 and pick up sts. from first row to form hem. RC 0. T 5. St. St. Shape lower edge by SHR shaping on each side EOR 10 Sts. 3x. Shape jacket by incr. on each side every 10 Rs. 1 St. 5x. At R 82 (88) [94] [100] decr. on each side every 10 Rs. 1 St. 5x. At R 132 (138) [144] [150] incr. on each side every 10 Rs. 1 St. 5x. At R 216 (224) [232] [240] shape armhole. On each side BO 5 sts., then decr. EOR 1 St. 5x. At R 326 (338) [350] [362] shape neckline. Place center 20 (22) [24] [26] sts. in HP and all sts. to the left. *On neckline edge BO EOR 4 Sts. 5x

AT THE SAME TIME SHR shoulder EOR 6 Sts. 5x. At R 338 (350) [362] [374] remove shoulder sts. on WY. Reset RC to R 326 (338) [350] [362] and shape left neckline and shoulder from *, reversing shapings. Remove shoulder and neckline sts. on separate WY.

POCKET LINING

(Not to Scale)

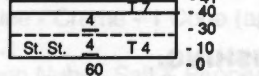


POCKET LINING: Make 2.

With WY CO 60 sts. After several rows end with 1 row Ravel Cord to the right. RC 0. T 5. St. St. Change to main yarn. Knit to R 70 and remove sts. on WY.

LOWER POCKET BAND

(Make 2)

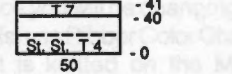


LOWER POCKET BAND: Make 2.

With WY CO 60 sts. After several rows end with 1 row Ravel Cord to the right. RC 0. T 4. St. St. Change to main yarn. Knit to R 40 making buttonholes over 4 sts. with WY at R 10 and R 30 following chart for placement. Pick up sts. from first row to form double band. Knit 1 row at T 7 and remove sts. on WY.

UPPER POCKET BAND

(Make 2)

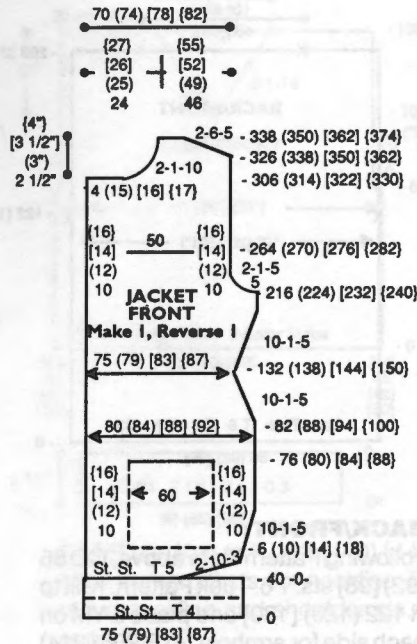


UPPER POCKET BAND: Make 2.

With WY CO 50 sts. After several rows end with 1 row Ravel Cord to the right. RC 0. T 4. St. St. Change to main yarn. Knit to R 40. Pick up sts. from first row to form double band. Knit 1 row at T 7 and remove sts. on WY.

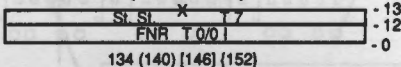
JACKET FRONT: Make 1,

Reverse 1. With WY CO 75 (79) [83] [87] sts. After several rows end with 1 row Ravel Cord to the right. RC 0. T 4. St. St. Change to main yarn. Knit to R 40 and pick up sts. from first row to form



hem. RC 0. T 5. St. St. Knit 1 row to the left then shape lower edge by SHR at the right EOR 10 Sts. 3x. Shape jacket by incr. on right side every 10 Rs. 1 St. 5x. AT THE SAME TIME at R 6 (10) [14] [18] rehang lower edge of pocket lining with knit side facing on center 60 sts. (see chart). At R 76 (80) [84] [88] remove center 60 sts. on WY and hang upper edge of pocket lining on these ndls. At R 82 (88) [94] [100] decr. on right side every 10 Rs. 1 St. 5x. At R 132 (138) [144] [150] incr. on right every 10 Rs. 1 St. 5x. At R 216 (224) [232] [240] shape armhole. On right side BO 5 sts., then decr. EOR 1 St. 5x. At R 264 (270) [276] [282] remove center 50 sts. on WY. With knit side facing rehang upper pocket band on these ndls., then rehang center 50 sts. on these same ndls. Knit to R 306 (314) [322] [330] shape neckline. On left side BO 14 (15) [16] [17] sts. then decr. on neckline edge EOR 1 St. 10x. At R 326 (338) [350] [362] SHR shoulder EOR 6 St. 5x. At R 338 (350) [362] [374] remove shoulder sts. on WY.

NECKBAND

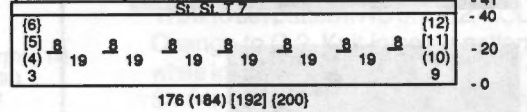


NECKBAND:

With main yarn CO 134 (140) [146] [152] sts. for FNR. After selvedge RC 0. T 0/0. Knit to R 12. Transfer RB sts. to MB. Knit 1 row at T 7 and remove sts. on WY.

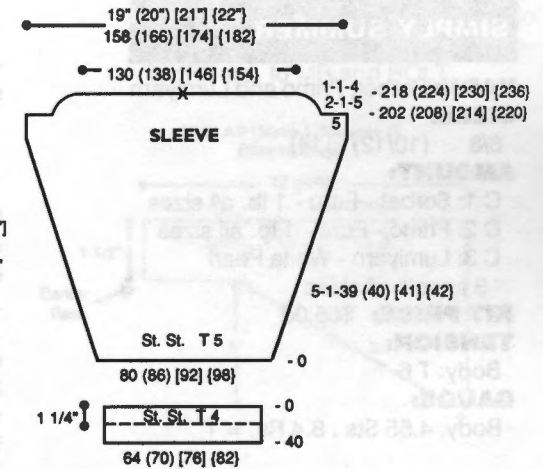
FRONT BAND (Make 1 with buttonholes, 1 w/o buttonholes)

(Not to Scale)



FRONT BAND: Make 1 with but-

tonholes, 1 without. With main yarn CO 176 (184) [192] [200] sts. for FNR. After selvedge RC 0. T 0/0. Knit to R 40 making buttonholes over 8 sts. with WY at R 20 following chart for placement. Transfer RB sts. to MB. Knit 1 row at T 7 and remove sts. on WY.



SLEEVE:

With WY CO 80 (86) [92] [98] sts. After several rows end with 1 row Ravel Cord to the right. RC 0. T 5. Change to main yarn. Knit in St. St. while incr. on each side every 5 Rs. 1 St. 39 (40) [41] [42] x. At R 202 (208) [214] [220] shape sleeve cap. On each side BO 5 sts., then decr. EOR 1 St. 5x and every row 1 St. 4x. At R 218 (224) [230] [236] mark center with YM and remove sts. on WY.

SLEEVE BAND:

With purl side facing rehang lower edge of sleeve on 64 (70) [76] [82] ndls. decr. evenly across. RC 0. T 4. St. St. Knit to R 40. Pick up sts. from first row to form double band. Knit 1 row at T 10 and BOLT.

FINISHING:

Close shoulder seams and attach front bands to jacket. Attach neckband. Sew in sleeves. Weave open sts. together for pocket and pocket bands. Close all remaining seams.

191



SIMPLY SUMMER

YARN: Sorbet, Primo and Lumiyarn

SIZES:

6/8 (10/12) [14]

AMOUNT:

C 1: Sorbet - Ecu - 1 lb. all sizes

C 2: Primo - Ecu - 1 lb. all sizes

C 3: Lumiyarn - White Pearl

3 spools all sizes

KIT PRICE: \$65.00

TENSION:

Body: T 6

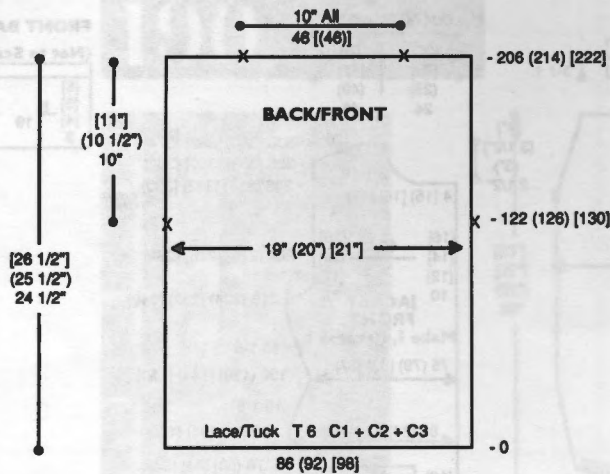
GAUGE:

Body: 4.55 Sts., 8.4 Rs. = 1"

Make on CompuKnit/Bulky or Punch Card Bulky.

Pattern Note:

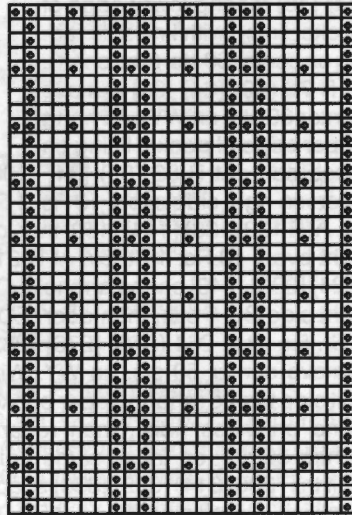
1. Select KC. With K-Carriage knit 1 row without yarn to select ndls. (Ndl. Arrangement Chart 1).
2. Following Ndl. Arrangement Chart 2 push ndls. to NWP.
3. With C 1, C 2 & C 3 together 'e' wrap CO over the ndls. left in WP.
4. Pattern R 1. COR. Knit 1 row to the left.
5. Depress both tuck buttons and knit in tuck pattern.



BACK/FRONT:

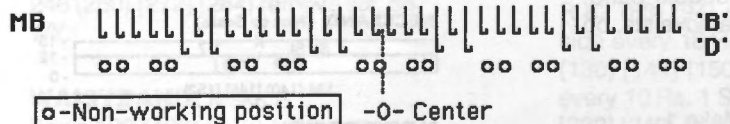
Following Pattern Note above, CO 86 (92) [98] sts. T 6. Tuck Pattern. Knit to R 122 (126) [130] and place a YM on each side for armhole. At R 206 (214) [222] mark center 46 [(46)] sts. for neckline. Knit 1 row at T 10 and BOLT.

**#191 Tuck/Lace Pattern
24 Sts. x 36 Rows**

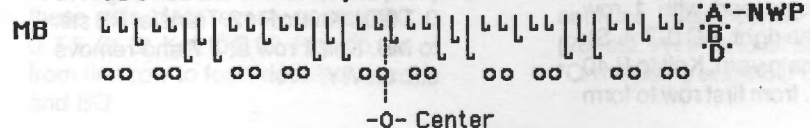


KK Mag Disk: Track 6; Pattern #901

#191 Needle Set-Up for Pattern Note-Step 1

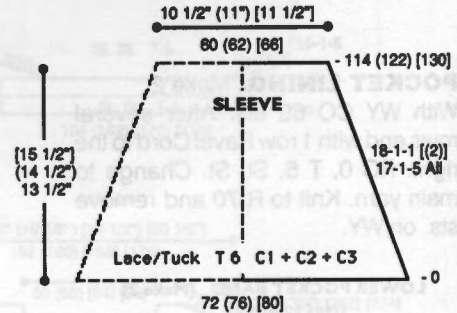


#191 Needle Set-Up for Pattern Note-Step 2



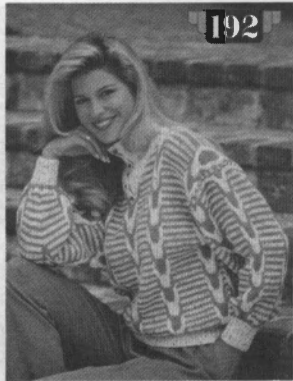
SLEEVE:

Join shoulder seams first. Bring 72 (76) [80] ndls. to WP. Follow steps 1 and 2 of Pattern Note. With purl side facing rehang armhole opening on these ndls. Pattern R 1. COR. Knit 1 row to the left. Depress both tuck buttons and knit in tuck pattern while decr. on each side every 17 Rs. 1 St. 5x and every 18 Rs. 1 St. 1 [(2)] x. At R 114 (122) [130] knit 1 row at T 10 and BOLT.



FINISHING:

Close all remaining seams. Finish Back/Front, Sleeves and Neckline edges with Single Crochet Shells.



SLIP INTO CABLES

YARN: Alpine and Rayon Nubs

SIZES:

Small (Medium) [Large]

AMOUNT:

C 1: Twisted

Alpine - Creme - 1 Cone (approx. 14 oz.)

Rayon Nubs - Salt & Pepper 4 oz.

C 2: Alpine - Taupe 1 Cone

C 3: Knit-in Elastic - Creme

1 Spool

KIT PRICE: \$58.00

TENSION:

Body: T 7.2

Rib: T 1/1 I

GAUGE:

Body: 4.8 Sts., 6.77 Rs. = 1:

NOTIONS: 6 - 1/4" Buttons.

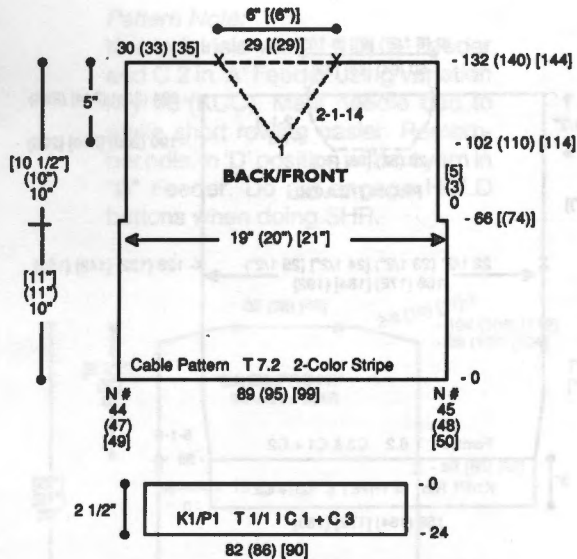
Make on Compuknit/Bulky with Ribber.

Note: Use variation key #6 (negative). Since you will be changing color every 2Rs. use Ribber Color Changer. Garment is knitted on the MB but raise ribber and use the RCC.

Pattern Note: Cable is made every 10Rs. When your machine BEEPS as you begin the row, STOP and make the cable.

BACK:

With WY CO 89 (95) [99] sts. following chart. After several rows end with 1 row Ravel Cord to the right. With C 1 knit 1 row to the left. Select KC and depress 2 PART buttons. Knit 1 row to set pattern. RC 0. T 7.2. COL. Change to C 2. Knit in cable pattern changing color EOR. At R 66 [(74)] shape armhole. On each side BO 0



(3) [5] sts. Knit to R 132 (140) [144]. Mark center 29 sts. for neckline. Remove neckline and shoulder sts. on separate WY.

FRONT:

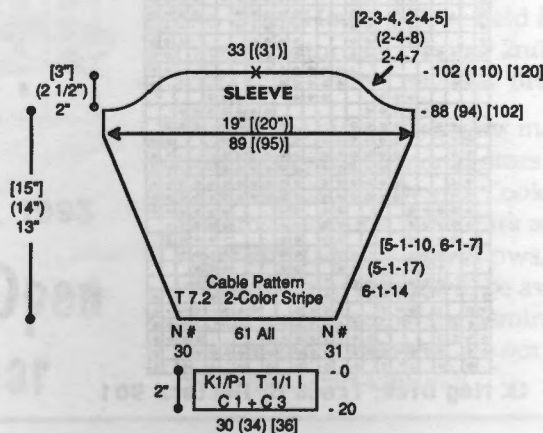
Knit front same as back to R 102 (110) [114]. Shape neckline. Place all sts. to the left of -0- and 1 st. to the right of -0- in HP. Note Pattern Row. *On neckline edge decr. EOR 1 St. 14x. At R 132 (140) [144] remove shoulder sts. on WY. Reset RC to R 102 (110) [114]. Reset pattern to row noted above. Bring ndls. to the left of -0- to WP and shape left side from *, reversing shapings. Remove center st. on WY.

WAISTBAND: Make 2.

With purl side facing rehang lower edge of back/front on 84 (86) [90] ndls. decr. evenly across. With C 1 and C 3 knit 1 row at T 7.2. Transfer EOS to RB for K1/P1 Rib. RC 0. T 1/1 I. Knit to R 24, knitting last row at T 10/5. Transfer RB sts. to MB and BOLT.

SLEEVE:

With WY CO 61 sts. for all sizes following chart. After several rows end

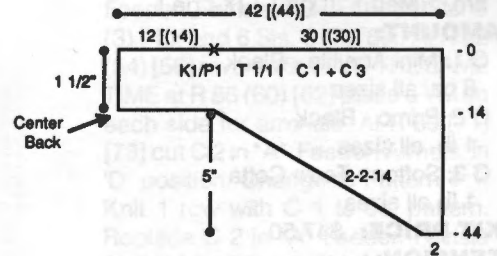


with 1 row Ravel Cord to the right. With C 1 knit 1 row to the left. Select KC and depress 2 PART buttons. Knit 1 row to set pattern. RC 0. T 7.2. COL. Change to C 2. Knit in cable pattern while incr. on each side every 6 Rs. 1 St. 14x (every 5 Rs. 1 St. 17x) [every 5 Rs. 1 St. 10x and every 6 Rs. 1 St. 7x]. At R 88 (94) [102] shape sleeve cap. On each side SHREOR 4 Sts. 7x (4 Sts. 8x) [3 Sts. 4x and 4 Sts. 5x]. At R 102 (110) [120] knit 1 row over all sts. at T 10 and BOLT.

SLEEVE CUFF:

With purl side facing rehang lower edge of sleeve on 30 (34) [36] ndls. decr. evenly across. With C 1 and C 3 knit 1 row at T 7.2. Transfer EOS to RB for K1/P1 Rib. RC 0. T 1/1 I. Knit to R 20, knitting last row at T 10/5. Transfer RB sts. to MB and BOLT.

COLLAR (Make 1, Reverse 1) (Not to Scale)



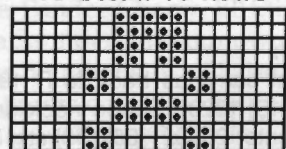
COLLAR: Make 1, Reverse 1.

With C 1 and C 3 CO 42 [(44)] sts. for circular knitting. After selvedge RC 0. T 1/1 I. Cut C 3. Arrange ndls. for K1/P1 Rib. Knit to R 14 and start shaping. On left side SHREOR 2 Sts. 14 x. Transfer RB sts. to MB. Knit 1 row at T 3 and remove sts. on WY.

FINISHING:

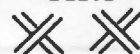
Join shoulder seams. Join 2 pieces of collar at center back. Attach collar to neckline. Beginning at the base or top of right front collar, make buttonholes as follows: 1 single crochet, * chain 1 (buttonhole) 3 single crochet. Repeat from * making 6 buttonholes spaced evenly along edge. Attach sleeves. Close all remaining seams.

* 192 Cable Pattern 19 Sts. x 10 Rows



KK Mag Disk: Track 7; Pattern 901

Cable





RUSTIC ELEGANCE

YARN:

Mini Acrylite, Primo and Softon

SIZES:

Sm. (Med.) [Lge.] [X-Lge.]

AMOUNT:

C 1: Mini Acrylite - Black
8 oz. all sizes

C 2: Primo - Black
1 lb. all sizes

C 3: Softon - Terra Cotta
1 lb all sizes

KIT PRICE: \$47.50

TENSION:

Body: T 6.2

Rib: T 1.1/1.1

GAUGE:

Body: 7.5 Sts., 9.75 Rs. = 1"

Rib: 12.5 Rs. = 1"

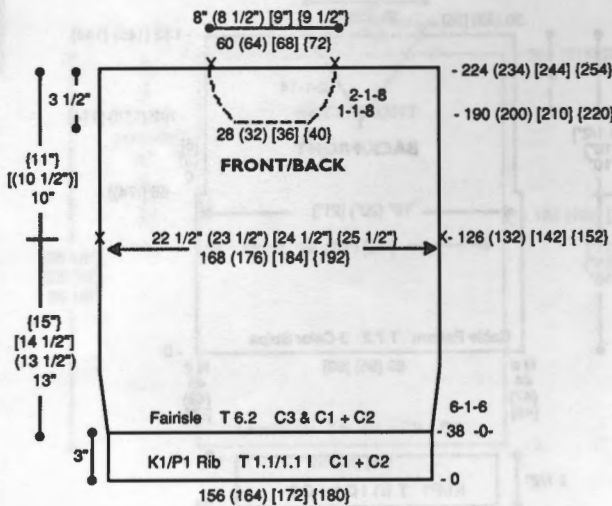
Make on Standard 24-Stitch Punch Card or Standard Electronic Machine with Ribber.

BACK:

With C 1 and C 2 CO 156 (164) [172] [180] sts. for K1/P1 Rib. After selvedge RC 0. T 1.1/1.1 I. Knit to R 38. Transfer RB sts. to MB. RC 0. T 6.2. With C 3 in 'A' Feeder and C 1 + C 2 in 'B' Feeder knit in fairisle while incr. on each side every 6 Rs. 1 St. 6x. At R 126 (132) [142] [152] place a YM on each side for armhole. At R 224 (234) [244] [254] mark center 60 (64) [68] [72] sts. for neckline and remove sts. on WY.

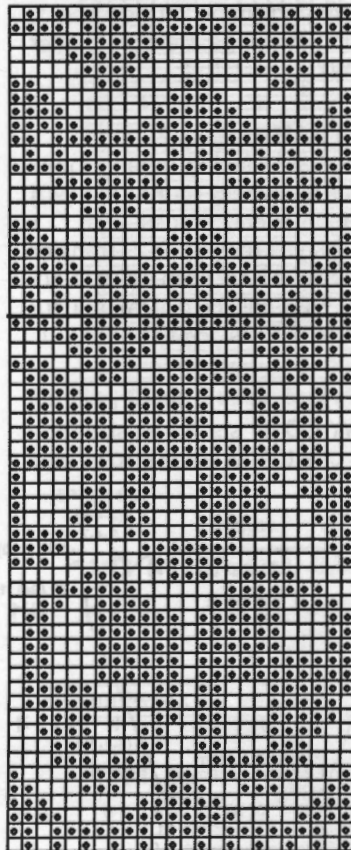
FRONT:

Knit front same as back to R 190 (200) [210] [220]. Shape neckline. Place center 28 (32) [36] [40] sts. in HP and all sts. to the left. Note pattern



row. *On neck edge SHR every row 1 St. 8x and EOR 1 St. 8x. At R 224 (234) [244] [254] remove shoulder sts. on WY. Reset RC to R 190 (200) [210] [220]. Reset pattern to correct row and shape left neckline from *, reversing shaping. Remove shoulder and neckline sts. on separate WY.

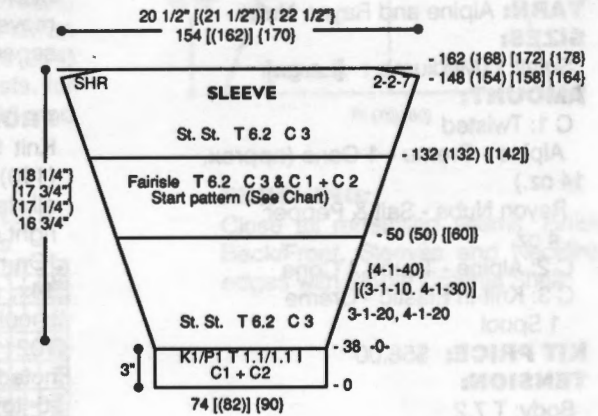
*193 Fairisle Pattern 24 Sts. x 60 Rows



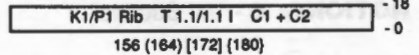
◀K Mag Disk: Track 8; Pattern 901

SLEEVE:

With C 1 and C 2 CO 74 [(82)] [90] sts. for K1/P1 Rib. After selvedge RC 0. T 1.1/1.1 I. Knit to R 38. Transfer RB sts. to MB. RC 0. T 6.2. C 3. Knit in St. St. while incr. on each side every 3 Rs. 1 St. 20x and every 4 Rs. 1 St. 20x [(every 3 Rs. 1 St. 10x and every 4 Rs. 1 St. 30x)] {every 4 Rs. 1 St. 40x}. AT THE SAME TIME at R 49 (49) [[59]] set sleeve pattern to correct row (see chart). Select KC and knit 1 row to set pattern. Add C 1 + C 2 in 'B' Feeder. Knit in fairisle following chart to R 132 (132) [[142]]. Change to C 3. Knit in St. St. to R 148 (154) [158] [164]. On each side SHR sleeve cap EOR 2 Sts. 7x. At R 162 (168) [172] [178] knit 1 row at T 10 and BOLT.



NECKBAND



NECKBAND:

With C 1 and C 2 CO 156 (164) [172] [180] sts. for K1/P1 Rib. After selvedge RC 0. T 1.1/1.1 I. Knit to R 18. Transfer RB sts. to MB and remove sts. on WY.

FINISHING:

Join one shoulder seam. Attach neckband to neckline with a crochet hook. Join remaining shoulder seam. Attach sleeves. Close all remaining seams.



WILD AND WONDERFUL

YARN: Panache, Softon and Lumiyarn

SIZES: 6 (8) [10]

AMOUNT:

C 1:

Panache - Black 1 str. 8 oz.
Softon - Black 1 str. 8 oz.

C 2:

Panache - Khaki 2 str. 6 oz.
Lumiyarn - Gold 1 str. 1 cone

C 3:

Knit-in Elastic - Black 1 spool

KIT PRICE: \$34.00

TENSION:

Fairisle: T 4

St. St.: T 4

GAUGE:

Fairisle: 5 Sts., 5 Rs. = 1"

St. St. 5 Sts., 6 Rs. = 1"

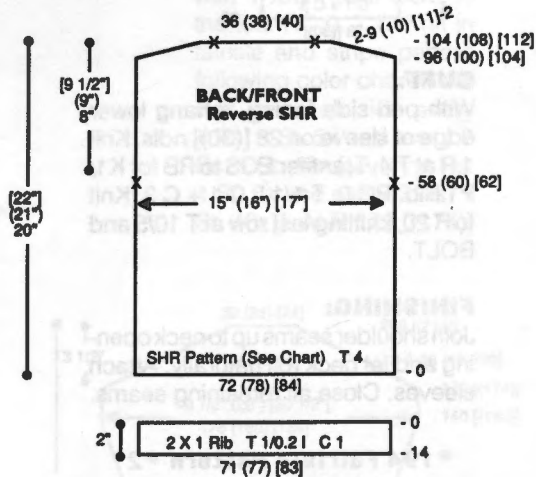
Make on Compuknit/Bulky with Ribber.

Note: Pattern #2 is built-in pattern #60 in Compuknit/Bulky Pattern Book. Buttons are not included in kit.

Pattern Note:

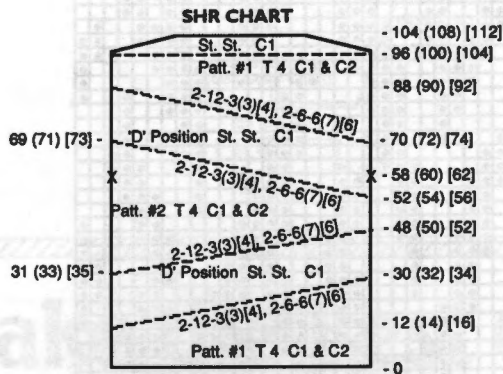
Knit in fairisle with C 1 in 'B' Feeder and C 2 in 'A' Feeder using variation key #6 (KCC). Mark needle bed to make short rowing easier. Remember ndls. in 'D' position will knit yarn in "B" Feeder. Do not engage HOLD buttons when doing SHR.

1. Bring ndls. that are being SHR to 'D' position.
2. Knit 1 row in fairisle.
3. Bring ndls. that are being SHR in 'D' position. Bring C 2 up and lay it on top between the 1st St. and the 2nd ndl. Carefully pull up the slack as you knit.
4. Repeat steps 1 thru 3 until you finish SHR.



BACK/FRONT: Reverse SHR.

With WY CO 72 (78) [84] sts. After several rows, end with 1 row Ravel Cord to the left. RCO. T 4. Pattern # 1. C 1 in "A" Feeder. Select KC and knit 1 row to set pattern. Remove C1 and put in "B" Feeder. Add C 2 in "A" Feeder and knit in fairisle. At R 12 (14) [16] begin fairisle SHR EOR 12 Sts. 3 (3) [4]x and 6 Sts. 6 (7) [6]x. At R 30 (32) [34] cut C 2 in "A" Feeder. All ndls. in 'D' position. Change to Pattern # 2.. Knit 1 row with C 1 to set pattern. COL. Replace C 2 in "A" Feeder. Fairisle SHR EOR 12 Sts. 3 (3) [4]x and 6 Sts. 6 (7) [6]x. At R 52 (54) [56] reverse SHR. AT THE SAME TIME at R 58 (60) [62] place a YM on each side for armhole. At R 69 (71) [73] cut C 2 in "A" Feeder. All ndls. in 'D' position. Change to Pattern # 1. Knit 1 row with C 1 to set pattern. Replace C 2 in "A" Feeder. Fairisle SHR EOR 12 Sts. 3 (3) [4]x and 6 Sts. 6 (7) [6]x. At R 96 (100) [104] release KC. C 1 in 'A' Feeder. St. St. SHR shoulders EOR 9 (10) [11] Sts. 2x. After SHR is completed with COR push left shoulder sts. to WP and knit 1 row to left. Release 'H' button and knit 1 row over all sts. at T 10. Mark center 36 (38) [40] sts. for neckline and BOLT.



19	20	21	22	23	24	25
26	27	28	29	30	1	2
3	4	5	6	7	8	9

Mark your calendar! This year, KNITKING's famous Seminar and Open House will be held from Tuesday, September 28th through Saturday, October 2nd, and will be located, as always, at KNITKING 1128 Crenshaw Blvd., Los Angeles, CA 90019.

Come meet our experts plus many acknowledged guest authorities. This year's Demonstrators include: Sandee Cherry, Jill Stern, Ricki Mundstock, Dennis Cook, Gloria Saunders and our own Dorothy Akiyama, Jung Park and Eliza Boughous. You'll also enjoy our daily Fashion Shows, and if you're one of the lucky entrants, daily prizes will be awarded as well as a GRAND PRIZE at the close of the Seminar. As always, KNITKING Dealers and employees are not eligible, but if you're not in these categories, start knitting!

Sept 28, 1993 thru Oct. 2, 1993

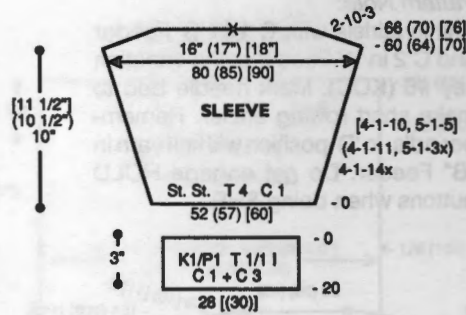
Knitking Annual Open House & Seminar

WAISTBAND:

With purl side facing, rehang lower edge of back/front on 71 (77) [83] ndls. Knit 1 R at T 4. Transfer ndls. to RB for 2 x 1 Rib. RC 0. T 1/0.2 I. C 1. Knit to R 14, knitting last row at T 8/4 and BOLT.

SLEEVE:

With WY CO 52 (57) [60] sts. After several rows end with 1 row Ravel Cord to the left. RC 0. T 4. C 1. Knit in St. St. while incr. on each side every 4 Rs. 1 St. 14x (every 4 Rs. 1 St. 11x and every 5 Rs. 1 St. 3x) [every 4 Rs. 1 St. 10x and every 5 Rs. 1 St. 5x]. At R 60 (64) [70] SHR sleeve cap EOR 10 Sts. 3x. Knit 1 row over all sts. and remove on WY.



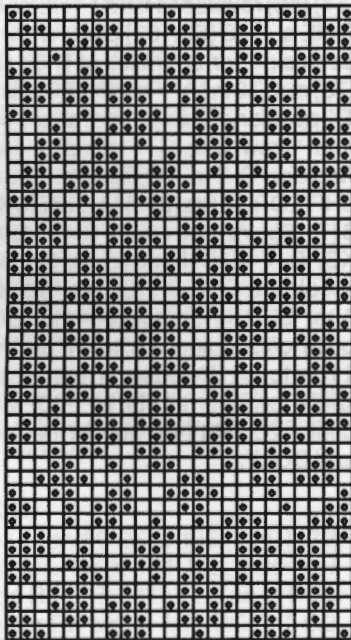
CUFF:

With purl side facing, rehang lower edge of sleeve on 28 [(30)] ndls. Knit 1 R at T 4. Transfer EOS to RB for K1/P1 Rib. RC 0. T 1/1 I. C 1 + C 3. Knit to R 20, knitting last row at T 10/5 and BOLT.

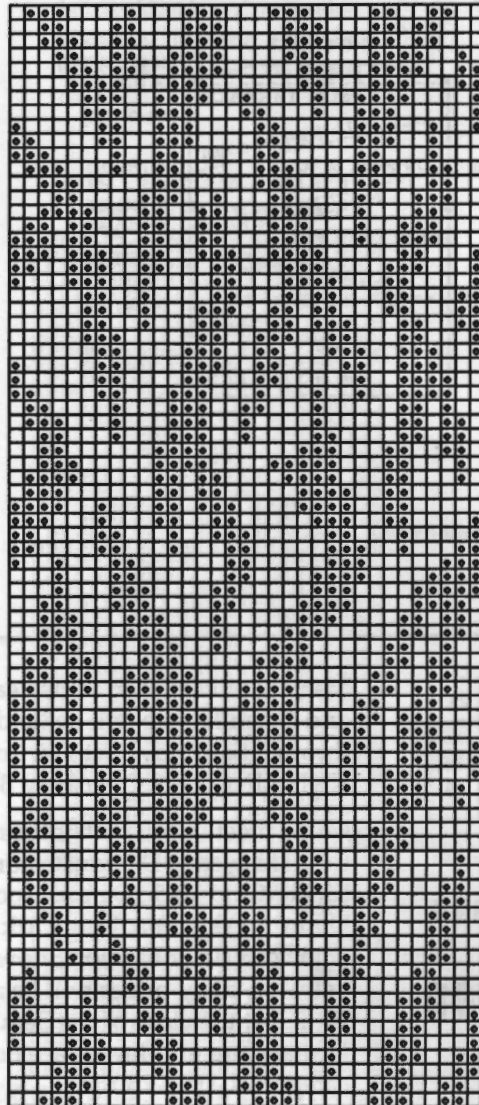
FINISHING:

Join shoulder seams up to neck opening and let neck roll naturally. Attach sleeves. Close all remaining seams.

#194 Fairisle Pattern #1
24 Sts. x 45 Rows



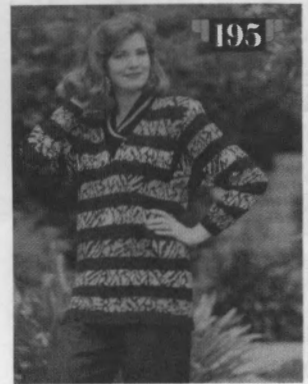
#194 Fairisle Pattern #2
33 Sts. x 78 Rows



KK Mag Disk: Track 9; Pattern 901

Compuknit/Bulky; Built-in Pattern #60

195



WALK ON THE WILD SIDE

YARN: Sorbet and Lumiyarn
SIZES:

6/8 (10/12) [14]

AMOUNT:

- C 1: Sorbet - Black 1-1/2 lbs. all sizes
- C 2: Sorbet - Khaki 4 oz. & Lumiyarn - Copper 1 spool
- C 3: Sorbet - Khaki 4 oz. & Lumiyarn - Gold 2 spools

KIT PRICE: \$72.00

TENSION:

- Body: T 6
- Hems: T 4 or T 5
- FNR: T 3.1/3 I

GAUGE:

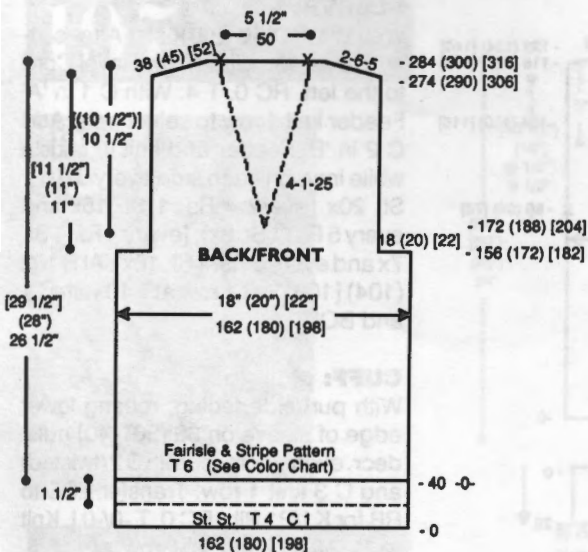
Body: 9 Sts., 10.71 Rs. = 1"

Make on Compuknit III, IV or V Machine with Ribber.

Note: Stitch Pattern is same as Garment #185 this issue.

BACK:

With WY CO 162 (180) [198] sts. After several rows end with 1 row Ravel Cord to the left. RC 0. T 4. St. St. C 1. Knit to R 40 and pick up sts. from first row to form double band. RC 0. T 6. Knit in fairisle and stripe pattern following color chart. At R 156 (172) [182] shape armhole. On each side BO 18 (20) [22] sts. Knit to R 274 (290) [306] and SHR shoulders EOR 6 Sts. 5x. At R 284 (300) [316] mark center 50 sts. with YM. Knit 1 row at T 10 and BOLT.



COLOR CHART

Size/# Rows	MC	CC	Repeat
6/8 10/12 14	C 1		↑
16 18 20	C 1	C 3	
20 20 20	C 1	C 3	
16 18 20	C 1		
20 20 20	C 1	C 2	

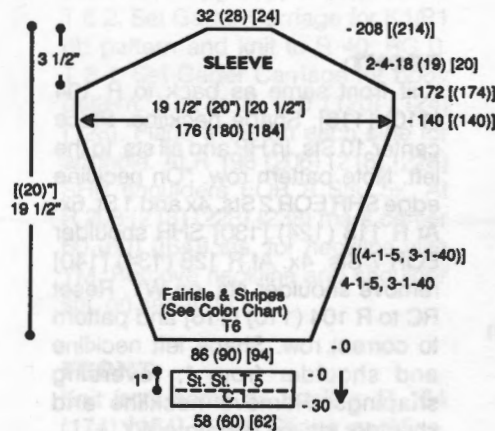
FRONT:

Knit front same as back to R 172 (188)[204] and shape neckline. Place all sts. to the left of -0- in HP. Note pattern row. *On neckline edge decr. every 4 Rs. 1 St. 25x. At R 274 (290) [306] SHR shoulder EOR 6 Sts. 5x. At R 284 (300) [316] knit 1 row at T 10

and BOLT. Reset RC to R 172 (188) [204]. Reset pattern to row noted above. Shape left side from *, reversing shapings.

SLEEVE:

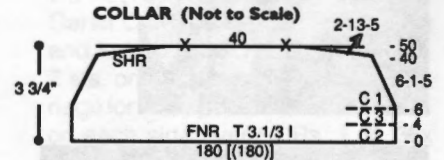
With WY CO 86 (90) [94] sts. After several rows end with 1 row Ravel Cord to the left. RC 0. T 6. Knit in fairisle and stripe pattern following color chart while incr. on each side every 4 Rs. 1 St. 5x and every 3 Rs. 1 St. 40x [(every 4 Rs. 1 St. 5x) and every 3 Rs. 1 St. 40x]. At R 172 [(174)]



shape sleeve cap. On each side decr. EOR 4 Sts. 18 (19) [20] x. At R 208 [(214)] knit 1 row over remaining sts. at T 10 and BOLT.

SLEEVE BAND:

With purl side facing rehang lower edge of sleeve on 58 (60) [62] ndls. decr. evenly across. RC 0. T 5. C 1. Knit in St. St. to R 30. Pick up sts. from first row to form double band and BO.



COLLAR:

With C 2 CO 180 sts. for FNR. After selvedge RC 0. T 3.1/3 I. Knit 4 Rs. Change to C 3 and knit 2 Rs. Change to C 1 and begin shaping. On each side decr. every 6 Rs. 1 St. 5x. At R 40 SHR EOR 13 Sts. 5x. At R 50 transfer RB sts. to MB and mark center 40 sts. with YM. Knit 1 row at T 10 and BOLT.

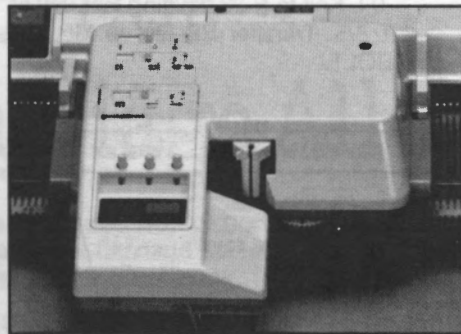
FINISHING:

Join shoulder seams. Match center marks on back neckline and collar and attach collar overlapping from right to left at base of V. Attach sleeves. Close all remaining seams.

Turtles Make the Best Companions

The Knitting Garter Carriage, or "turtle," as we prefer to call it, is the best companion for your knitting machine. With the press of a button, the Garter Carriage ribs on its own power! Leave the room and your ribbing will be finished when you return!

But ribbing is only the beginning of the story. The Garter Carriage automatically casts on, binds off and knits a multitude of fancy Garter Stitch patterns—beautiful, textured 3-dimensional designs impossible to knit any other way—Unbelievable!



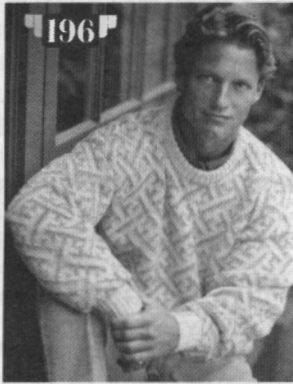
- Select desired pattern on knitting machine.
- Set number of rows; switch GC on and leave to do other things.
- It will turn off after completion or if yarn runs out or breaks.

OMNI GC fits all standard-gauge COMPUKNITS, and most standard Knitkng punch card knitters going all the way back to the KH-840.

Order yours now from your local Knitkng Dealer, or if there are none in your area, from:



1128 Crenshaw Boulevard • Los Angeles, CA 90019 • Phone: (213) 938-2077



THE BULKY BLUES

YARN: Primo and Softon

SIZES:

Small (Medium) [Large]

AMOUNT:

Primo: Lt. Blue - 1 lb. all sizes

Softon: Lt. Blue: 1 lb.

Primo: Dolphin: 8 oz.

C 1: Primo - Dolphin 1 strand

Primo - Lt. Blue 1 strand

C 2: Softon - Lt. Blue 1 strand

Primo - Lt. Blue 1 strand

C 3: Knit-in elastic - Silver

1 spool all sizes

KIT PRICE: \$49.00

TENSION:

Fairisle: T 4

Rib: T -0/-0 I

GAUGE:

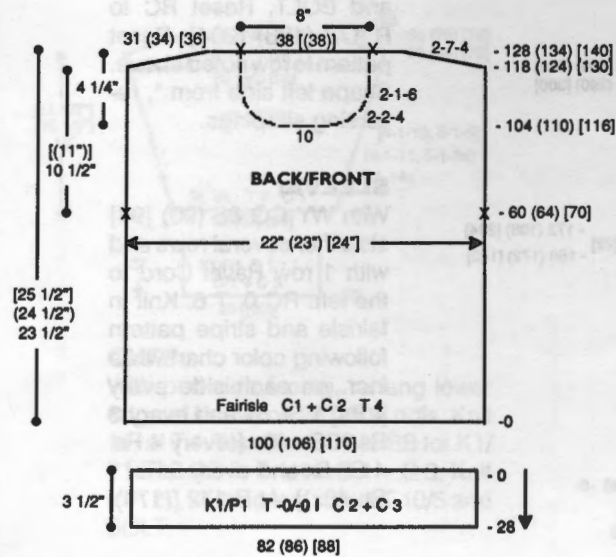
Fairisle: 4.58 Sts., 5.46 Rs. = 1"

Make on Compuknit/Bulky Machine with Ribber. Fairisle is built-in Pattern #54 in Compuknit/Bulky Pattern Book.

Note: Twist C 2 (1 strand Primo Lt. Blue and 1 strand Softon Lt. Blue) with Twister Winder for ribbing only (together 3 oz.).

BACK:

With WY CO 100 (106) [110] sts. After several rows end with 1 row Ravel Cord to the left. RC 0. T 4. With C 1 in 'A' Feeder knit 1 row to select ndls. Add C 2 in 'B' Feeder and knit in fairisle. At R 60 (64) [70] place a YM on each side for armhole. At R 118 (124) [130] SHR shoulders EOR 7 Sts. 4x. At R 128 (134) [140] mark center 38 [(38)] sts. for neckline and remove sts. on WY.

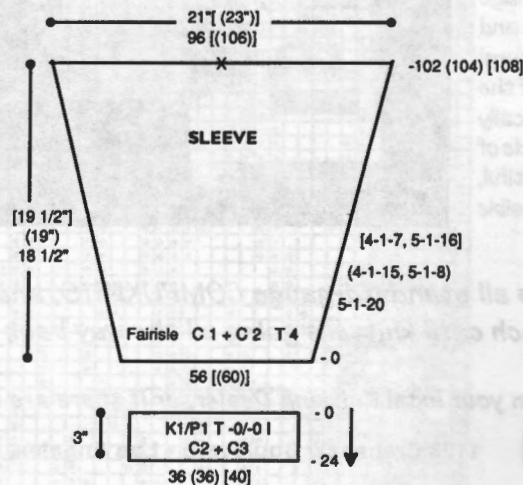


FRONT:

Knit front same as back to R 104 (110) [116]. Shape neckline. Place center 10 Sts. in HP and all sts. to the left. Note pattern row. *On neckline edge SHR EOR 2 Sts. 4x and 1 St. 6x. At R 118 (124) [130] SHR shoulder EOR 7 Sts. 4x. At R 128 (134) [140] remove shoulder sts. on WY. Reset RC to R 104 (110) [116] and pattern to correct row. Shape left neckline and shoulder from *, reversing shapings. Remove neckline and shoulder sts. on separate WY.

WAISTBAND:

With purl side facing, rehang lower edge of front/back on 82 (86) [88] ndls. decr. evenly across. With C 2 (twisted) and C 3 knit 1 row. Transfer EOS to RB for K1/P1 Rib. RC 0. T -0/-0 I. Knit to R 28, knitting last row at T 8/5. Transfer RB sts. to MB and BOLT.



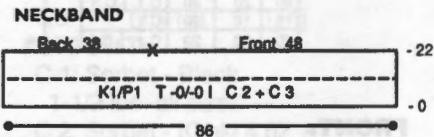
SLEEVE:

With WY CO 56 [(60)] sts. After several rows end with 1 row Ravel Cord to the left. RC 0. T 4. With C 1 in 'A' Feeder knit 1 row to select ndls. Add C 2 in 'B' Feeder and knit in fairisle while incr. on each side every 5 Rs. 1 St. 20x (every 4 Rs. 1 St. 15x and every 5 Rs. 1 St. 8x), [every 4 Rs. 1 St. 7x and every 5 Rs. 1 St. 16x]. At R 102 (104) [108] knit 1 row at T 10 with C 1 and BOLT.

CUFF:

With purl side facing, rehang lower edge of sleeve on 36 (36) [40] ndls. decr. evenly across. With C 2 (twisted) and C 3 knit 1 row. Transfer EOS to RB for K1/P1 Rib. RC 0. T -0/-0 I. Knit to R 24, knitting last row at T 8/5. Transfer RB sts. to MB and BOLT.

NECKBAND:



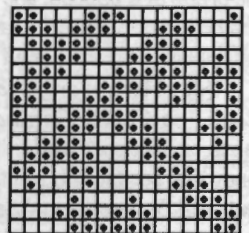
Close one shoulder. With purl side facing rehang neckline on 86 ndls. following chart. With C 2 (twisted) and C 3 knit 1 row. Transfer EOS to RB for K1/P1 Rib. T -0/-0 I. Knit to R 22, knitting last row at T 8/5. Transfer RB sts. to MB and BOLT.

FINISHING:

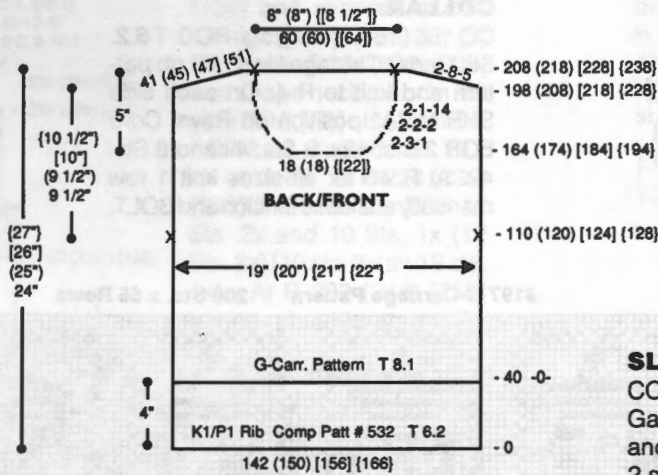
Close all remaining seams.

• 196 Fairisle Pattern

16 Sts. x 16 Rows



Compuknit/Bulky;
Built-in Pattern #54



the left. Note pattern row. *On neckline edge decr. EOR 3 Sts. 1x, 2 Sts. 2x and 1 St. 14x. At R 198 (208) [218] [228] SHR shoulder EOR 8 Sts. 5x. At R 208 (218) [228] [238] remove shoulder sts. on WY. Reset RC to R 164 (174) [184] [194]. Reset pattern to proper row and shape left side from * reversing shapings.

SLEEVE:

CO 66 (70) [[74]] sts. RC 0. T 6.2. Set Garter Carriage for K1/P1 rib pattern and knit to R 36. RC 0. T 8.1. Incr. 2 sts. on each side. Set Garter Carriage for body pattern. Knit while incr. on each side every 4 Rs. 1 St. 36x (every 4 Rs. 1 St. 34x and every 5 Rs. 1 St. 4x) [[every 4 Rs. 1 St. 40x]]. At R 150 (150) [[160]] remove sts. on WY.

G - I - URNED IT

YARN: Primo - Use 2 strands throughout.

SIZES:

6/8 (10/12) [14] [16]

AMOUNT:

C 1: Dolphin

2 lbs. (2 lbs.) [[2 1/2 lbs.]]

KIT PRICE:

\$38.00 (\$38.00) [[\$48.00]]

TENSION:

Body: T 8.1

Rib: T 6.2

GAUGE:

Body: 7.5 Sts., 10.38 Rs. = 1"

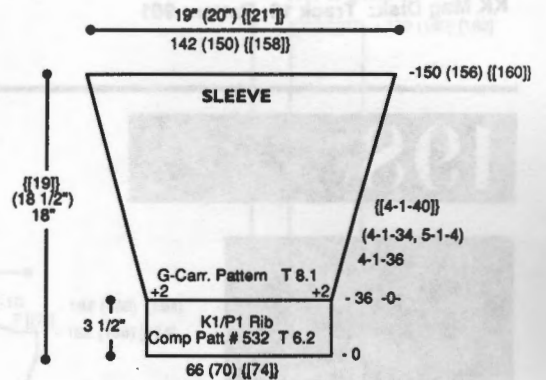
Make on Compuknit III, IV or V with Garter Carriage. Pattern for rib is #532 in Compuknit III, IV/V Pattern Book.

BACK:

CO 142 (150) [156] [166] sts. RC 0. T 6.2. Set Garter Carriage for K1/P1 rib pattern and knit to R 40. RC 0. T 8.1. Set Garter Carriage for body pattern. Knit to R 110 (120) [124] [128]. Place a YM on each side for armhole. At R 198 (208) [218] [228] SHR shoulders EOR 8 Sts. 5x. At R 208 (218) [228] [238] mark center 60 (60) [[64]] sts. for neckline with YM. Remove neckline and shoulder sts. on separate WY.

FRONT:

Knit front same as back to R 164 (174) [184] [194]. Shape neckline. Knit center 18 (18) [[22]] sts. to 'A' position on Ravel Cord and all sts. to



"Get Yer Program!! ... Garter Carriage All-Stars Here!"



The greatest collection of Garter Carriage patterns ever! We've taken the 15 favorite Garter Carriage patterns ever created for *KnitKng Magazine* and put them together in one great book.

LOOK NO FURTHER! When you're ready to set your "turtle" in motion, grab your **KnitKng Garter Carriage Collection** and go to town! All patterns can be knitted on the Compuknit III, IV or V with the Garter Carriage, and many were created for the Punch Card machines as well.

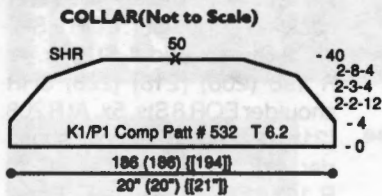
- Great Ideas and Interesting Techniques
 - Cables on the G. Carriage
 - Sideways Sleeves to match patterns
 - Use Variation Keys on electronic knitters & more!

Book Only: \$12.95

Book & Disk: \$19.00

(Specify KC/PPD or DesignaKnit Disk format and DesignaKnit Disk size when ordering Pattern Disk)

Order TODAY from your local, authorized KnitKng Dealer, or, if there is none in your area, from KnitKng



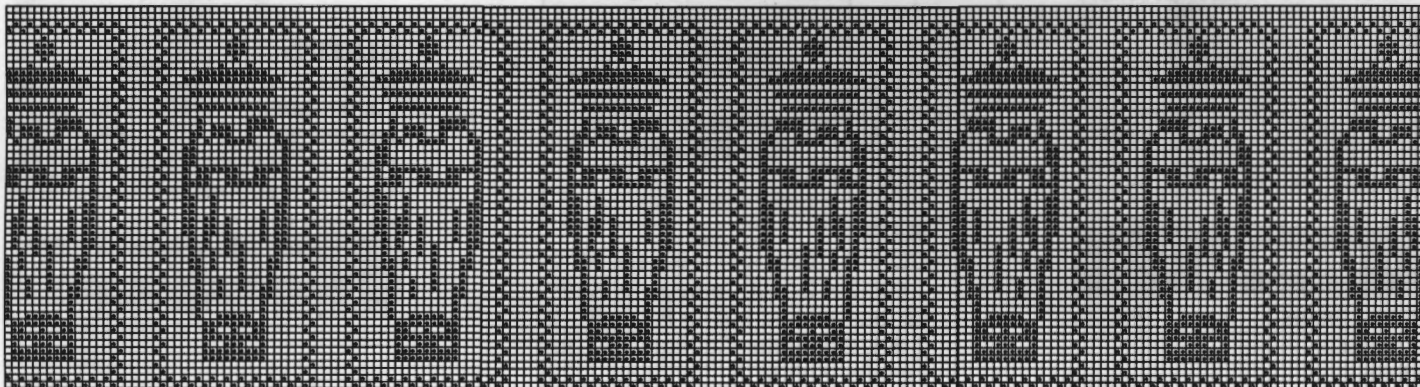
COLLAR:

CO 186 (186) [[194]] sts. RC 0. T 6.2. Set Garter Carriage for K1/P1 rib pattern and knit to R 4. On each side SHR to "A" position on Ravel Cord EOR 2 Sts. 12x, 3 Sts. 4x and 8 Sts. 4x. At R 40 for all sizes knit 1 row manually at a loose tension and BOLT.

FINISHING:

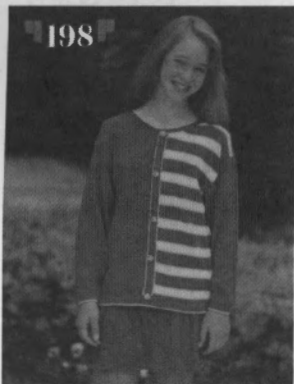
Close shoulder seams and attach collar to garment overlapping 1" in the front. Attach sleeves. Close all remaining seams.

#197 G-Carriage Pattern 200 Sts. x 55 Rows



KK Mag Disk: Track 10; Pattern 901

198



SMART - N - SASSY

YARN: Sorbet and Lumiyarn

SIZES: 6/8 (10/12) [14]

AMOUNT:

- C 1: Sorbet-Navy 1-1/2 lbs. all sizes
- C 2: Sorbet-White 4 oz. all sizes
- C 3: Lumiyarn - Gold (2 strands) 1 spool all sizes

TENSION:

- Body: T 5
- Hems: T 4.1

KIT PRICE: \$48.00

GAUGE:

Skirt: 8.2 Sts.; 11.9 Rs = 1"
Top: 8.2 Sts.; 11.35 Rs = 1"

NOTIONS:

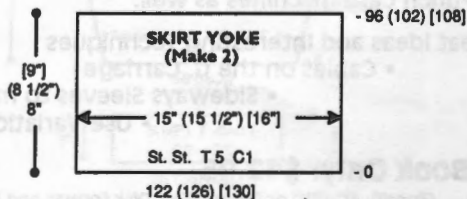
5 - 5/8" buttons and elastic for skirt waistband.

Make on Standard 24-Stitch Punch Card or Standard Electronic Machine.



SKIRT RUFFLE: Make 4.

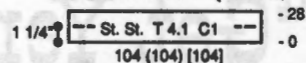
With WY CO 126 (130) [134] sts. After several rows end with 1 row Ravel Cord to the right. RC 0. T 4.1. C 1. St. St. Knit 12 Rs. Reset RC to 0. Change to T 5. Knit 12 Rs. Pick up sts. first row to form hem. Continue in St. St. to R 72 (78) [84] and remove sts. on WY.



SKIRT YOKE: Make 2

Bring 122 (126) [130] ndls. to WP. With purl side facing rehang 2 pieces of skirt ruffle on these ndls. as follows: *Rehang 2 single sts. on next 2 ndls., then next 4 sts. on next ndl. Repeat from * across. Bring all ndls. to 'E' position. C 1. Knit 1 R at T 8. RC 0. T 5. St. St. Knit to R 96 (102) [108]. Remove sts on WY.

WAISTBAND (Make 2)

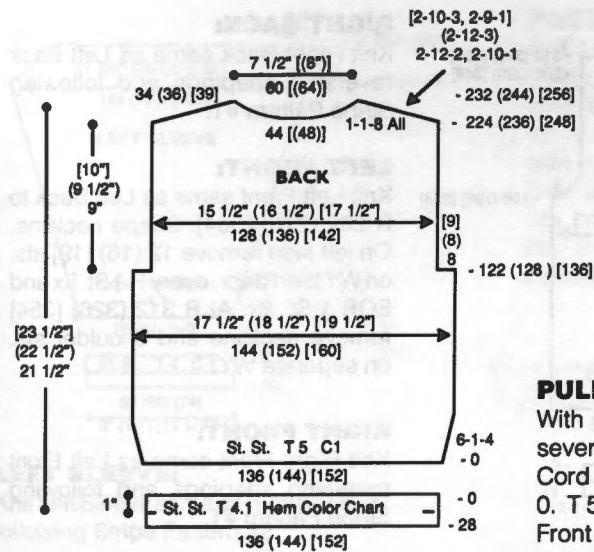


SKIRT WAISTBAND:

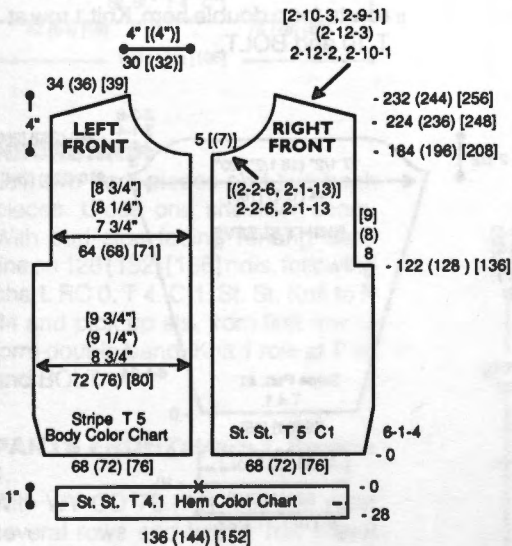
With purl side facing rehang upper edge of skirt yoke on 104 [(104)] ndls. decr. evenly across. RC 0. T 4.1. C 1. St. St. Knit to R 28. Pick up sts. from first row to form waistband. Knit 1 R at T 10 and BOLT.

PULLOVER BACK:

With WY CO 136 (144) [152] sts. After several rows, end with 1 row Ravel Cord to the right. RC 0. T 5. C 1. St. St. Incr. on each side every 6 Rs 1 St. 4 x. At R 122 (128) [136] shape armhole. On each side BO 8 (8) [9] sts. Knit to R 224 (236) [248] and shape neckline. Place center 44 [(48)] sts. in HP and all sts. to the left.



*On neckline edge decr. every R 1 St. 8 x for all sizes. AT THE SAME TIME SHR shoulders EOR 12 Sts. 2x and 10 Sts. 1x (12 Sts. 3x) [10 Sts. 3x and 9 Sts. 1x]. At R 232 (244) [256] remove shoulder sts on WY. Reset RC to 224 (236) [248] and shape left neckline and shoulder from *, reversing shapings. Remove neckline sts. on WY.



Body Color Chart

# Rs	Color
16	C1
2	C3
8	C2
2	C3
6	C1

Repeat ↑

Hem Color Chart

# Rs	Color
12	C1
5	C3
11	C1

↑

PULLOVER RIGHT FRONT: With WY CO 68 (72) [76] sts. After several rows end with 1 row Ravel Cord to the right. Change to C1. RC 0. T 5. St. St. On right side incr. every 6 Rs 1 St. 4 x. Knit to R 122 (128)

[136] and shape armhole. On right side BO 8 (8) [9] Sts. Knit to R 184 (196) [208] and shape neckline. On left side BO 5 [(7)] sts., then BO EOR 2 sts. 6 x and 1 St. 13 x for all sizes. At R 224 (236) [248] SHR shoulder EOR 12 Sts. 2x and 10 Sts. 1x (12 Sts. 3x) [10 sts. 3x and 9 sts. 1x]. At R 232 (244) [256] remove shoulder sts on WY.

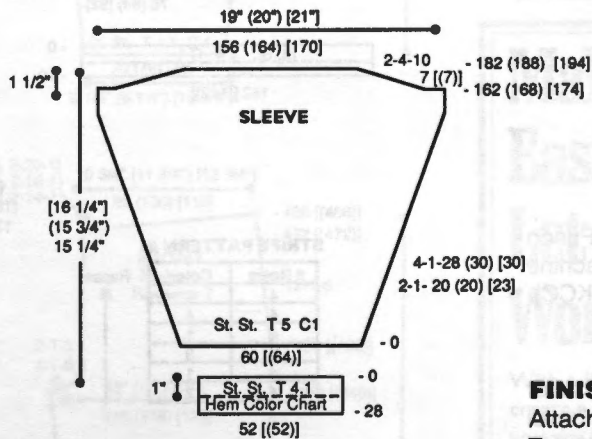
PULLOVER LEFT FRONT:

With WY CO 68 (72) [76] sts. After several rows end with 1 row Ravel Cord to the right. Change to C1. RC 0. T 5. Knit Left Front same as Right Front following Body Color Chart and reversing shapings.

PULLOVER HEM BAND:

Back Hem Band: With purl side facing rehang lower edge of back on 136 (144) [152] ndls. RC 0. T 4.1 C1. Knit in St. St. following Hem Color Chart. After R 28 knit 1 R at T 10 and BOLT.

Front Hem Band: With purl side facing rehang 2 pieces of front on 136 (144) [152] ndls. following chart. Knit same as Back Hem Band.



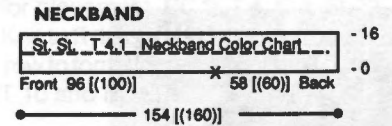
SLEEVE:

With WY CO 60 [(64)] sts. After several rows end with 1 row Ravel Cord to the right. RC 0. T 5. C 1. Knit in St. St. while incr. on each side EOR 1 St. 20 (20) [23] x and every 4 Rs. 1 St. 28 [(30)] x. At R 162 (168) [174] BO 7 [(7)] sts. on each side. SHR sleeve cap EOR 4 Sts. 10 x. At R 182 (188) [194] knit 1 R over all sts. at T 10 and BOLT.

SLEEVE BAND:

With purl side facing rehang lower edge of sleeve on 52 [(52)] [52] ndls.

decr. evenly across. RC 0. T 4.1 Knit in St. St. following Hem Color Chart. After R 28, knit 1 R at T 10 and BOLT.



Neckband Color Chart

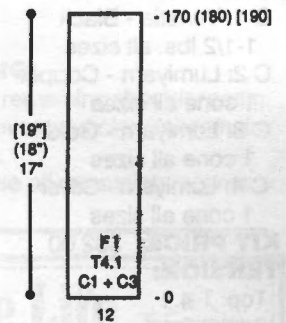
# Rs	Color
5	C1
5	C3
6	C1

↑

NECKBAND:

Close one shoulder first. With purl side facing rehang front/back neckline on 154 [(160)] ndls. following chart. RC 0. T 4.1. C 1. Knit in St. St. following Neckband Color Chart. After R 16, knit 1 R at T 10 and BOLT.

PLACKET
Not to Scale



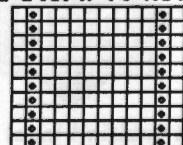
PLACKET: Make 1.

With C 1 'e' wrap CO 12 sts. T 4.1. Knit 1 row to select pattern. Add C 3 in "B" Feeder and knit in fairisle to R 170 (180) [190]. Remove sts. on WY.

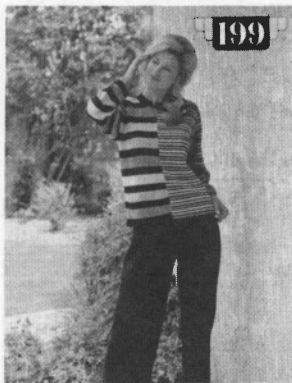
FINISHING:

Attach sleeves and close all seams. Turn pullover hem bands, neckband and sleeve bands to inside and whip stitch in place. Stitch placket into place centering on front body ending at neckband edge. Stitch buttons in place, spacing evenly on placket.

198 Fairisle Pattern
12 Sts. x 10 Rows



KK Mag Disk: Track 11;
Pattern 901



STRIPE IT RICH

YARN: Venetia and Lumiyarn

SIZES:

6/8 (10/12) [14]

AMOUNT:

- C 1: Venetia - Black
1-1/2 lbs. all sizes
- C 2: Lumiyarn - Copper
1 cone all sizes
- C 3: Lumiyarn - Gold
1 cone all sizes
- C 4: Lumiyarn - Silver
1 cone all sizes

KIT PRICE: \$62.00

TENSION:

- Top: T 4.1
- Pants: T 4.1

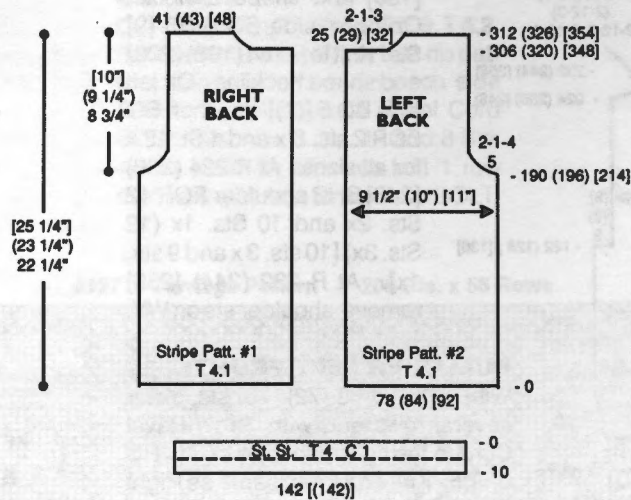
GAUGE:

- Top: 8.3 Sts., 14 Rs. = 1"
- Pants: 8.5 Sts., 13.3 Rs. = 1"

Make on Standard 24-Stitch Punch Card or Standard Electronic Machine with Main Bed Color Changer (KCC).

LEFT BACK:

With WY CO 78 (84) [92] sts. After several rows end with 1 row Ravel Cord to the right. RC 0. T 4.1. Knit in St. St. following Stripe Pattern #2 to R 190 (196) [214]. Shape armhole. On right side BO 5 Sts., then decr. EOR 1 St. 4x. At R 306 (320) [348] shape neckline. On left side remove 25 (29) [32] sts. on WY then SHREOR 1 St. 3x. At R 312 (326) [354] remove neckline and shoulder sts. on separate WY.



RIGHT BACK:

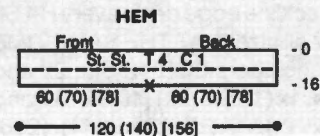
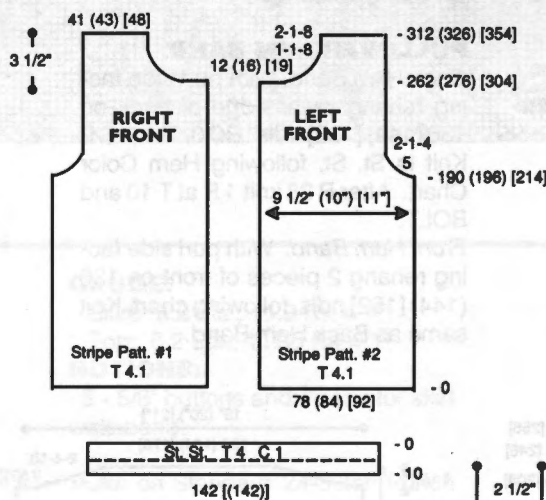
Knit Right Back same as Left Back reversing shapings and following Stripe Pattern #1.

LEFT FRONT:

Knit Left Front same as Left Back to R 262 (276) [304]. Shape neckline. On left side remove 12 (16) [19] sts. on WY then decr. every R 1 St. 8x and EOR 1 St. 8x. At R 312 (326) [354] remove neckline and shoulder sts. on separate WY.

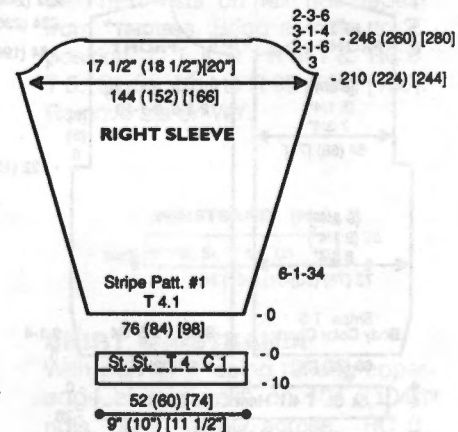
RIGHT FRONT:

Knit Right Front same as Left Front reversing shapings and following Stripe Pattern #1.



HEM:

With purl side facing rehang back/front pieces on 142 [(142)] ndls. decr. evenly across. RC 0. T 4.1. St. St. Knit to R 10 and pick up sts. from first row to form double hem. Knit 1 row at T 10 and BOLT.



RIGHT SLEEVE:

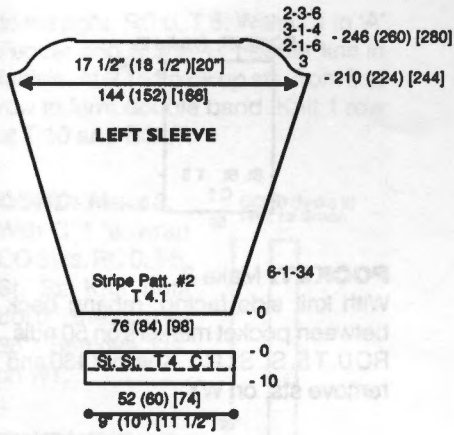
With WY CO 76 (84) [98] sts. After several rows end with 1 row Ravel Cord to the right. RC 0. T 4.1. Knit in St. St. following Stripe Pattern #1 while incr. on each side every 6 Rs. 1 St. 34x. At R 210 (224) [244] shape sleeve cap. On each side BO 3 Sts., then decr. EOR 1 St. 6x, every 3 Rs. 1 St. 4x and EOR 3 Sts. 6x. At R 246 (260) [280] knit 1 row at T 10 and BOLT.

STRIPE PATTERN #1

# Rows	Color	Repeat
4	1	↑
4	4	
4	1	
4	3	
4	1	
4	2	

STRIPE PATTERN #2

# Rows	Color	Repeat
20	1	↑
20	4	
20	1	
20	3	
20	1	
20	2	
16	1	

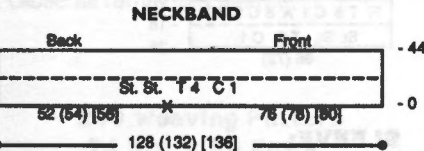


LEFT SLEEVE:

Knit Left Sleeve same as Right Sleeve following Stripe Pattern #2.

CUFF:

With purl side facing rehang lower edge of sleeve on 52 (60) [74] ndls. decr. evenly across. RC 0. T 4. C 1. St. St. Knit to R 10 and pick up sts. from first row to form double hem. Knit 1 row at T 10 and BOLT.



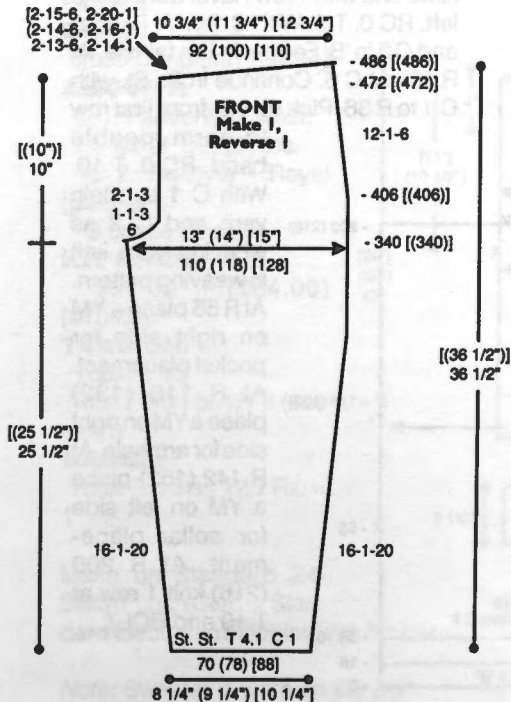
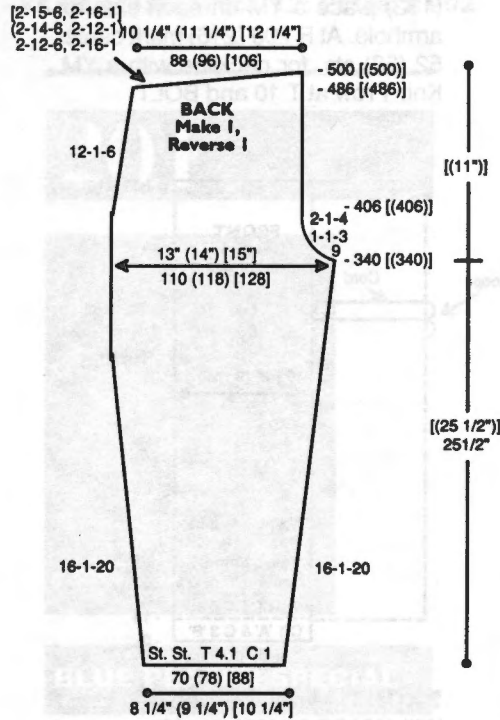
NECKBAND:

Join two front pieces and two back pieces. Close one shoulder seam. With purl side facing rehang neck line on 128 (132) [136] ndls. following chart. RC 0. T 4. C 1. St. St. Knit to R 44 and pick up sts. from first row to form double band. Knit 1 row at T 10 and BOLT.

PANTS FRONT: Make 1, Reverse 1.

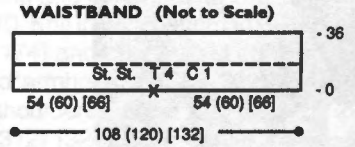
With WY CO 70 (78) [88] sts. After several rows end with 1 row Ravel Cord to the right. RC 0. T 4.1. C 1. Knit in St. St. while incr. on each side every 16 Rs. 1 St. 20x. At R 340 [(340)] on left side BO 6 sts., then decr. every R 1 St. 3x and EOR 1 St. 3x. At R 406 [(406)] decr. on the right side every 12 Rs. 1 St. 6x. At R 472 [(472)] SHR EOR 13 Sts. 6x and 14 Sts. 1x (14 Sts. 6x and 16 Sts. 1x) [15 Sts. 6x and 20 Sts. 1x]. At R 486 [(486)] remove sts. on WY.

PANTS BACK: Make 1, Reverse 1. Knit back same as front to R 340 [(340)]. On right side BO 9 sts., then decr. every R 1 St. 3x and EOR 1 St. 4x. At R 406 [(406)] decr. on the left side every 12 Rs. 1 St. 6x. At R 486 [(486)] SHR EOR 12 Sts. 6x and 16 Sts. 1x (14 Sts. 6x and 12 Sts. 1x) [15 Sts. 6x and 16 Sts. 1x]. At R 500 [(500)] remove sts. on WY.



HEM:

With purl side facing rehang lower edge of one front and one back on 120 (140) [156] ndls. following chart for placement. RC 0. T 4. C 1. St. St. Knit to R 16 and pick up sts. from first row to form double hem. Knit 1 row at T 10 and BOLT.



WAISTBAND:

Close center seams. With purl side facing rehang upper edge of front/back on 108 (120) [132] ndls. following chart. RC 0. T 4. C 1. St. St. Knit to R 36 and pick up sts. from first row to form double band. Knit 1 row at T 10 and BOLT.

FINISHING:

Top: Close remaining shoulder seam. Attach sleeves and close all remaining seams.
Pants: Close all remaining seams.

Make Life Easier ... Let a Knitleader Work for YOU!

With a KL 16 Knitleader, you can create a full-size chart of the garment you are knitting. And, as you knit, the chart rotates, telling you, on a row-by-row basis, exactly when and where to increase and decrease stitches for perfect garment shaping every time. Use it with any Knitting Standard or Bulky Gauge machines—it will even fit on the Power Drive Unit.

SAVE \$30
\$169.95

See your local Knitting Dealer or contact Knitting to order.



WEAVE A SPELL

YARN: Primo and Pebble

SIZES:

Small/Medium (Large/X-Large)

AMOUNT:

C 1: Primo - White - 1-1/4 lbs.

C 2: Pebble - Grey/Pink/White
1 lb.

C 3: Primo - Pink - 7 oz.

KIT PRICE: \$62.00

TENSION:

Weaving: T 10

Fairisle: T 5

St. St.: T 5

GAUGE:

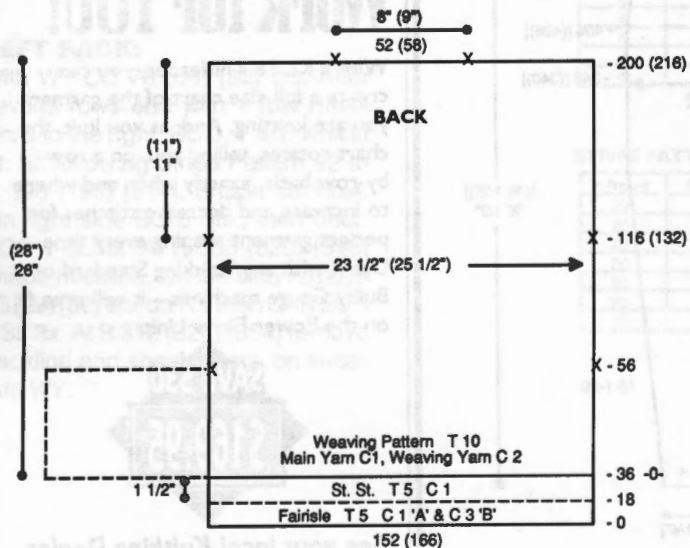
Weaving: 6.5 Sts., 7.7 Rs. = 1"

Fairisle: 8.3 Sts., 11 Rs. = 1"

NOTIONS:

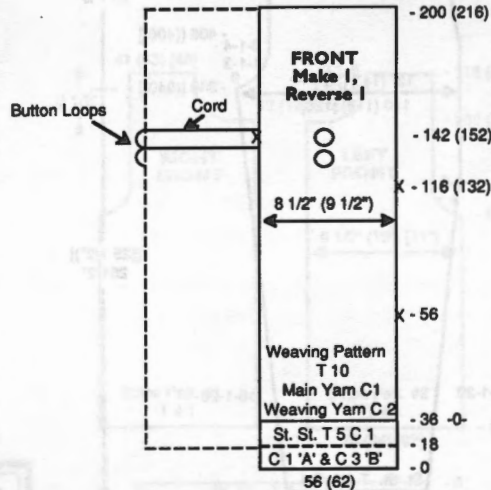
4 - 1-1/4" Buttons

Make on Standard 24-Stitch Punch Card or Standard Electronic Machine with Ribber.



BACK:

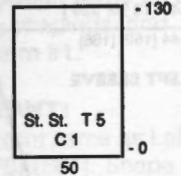
With WY CO 152 (166) sts. After several rows end with 1 row Ravel Cord to the left. RC 0. T 5. With C 1 in 'A' Feeder and C 3 in 'B' Feeder knit in fairisle. At R 18 cut C 3. Continue in St. St. with C 1 to R 36. Pick up sts. from first row to form double band. RC 0. T 10. With C 1 as main yarn and C 2 as weaving yarn knit in weaving pattern. At R 56 place a YM on each side for pocket placement. At R 116 (132) place a YM on each side for armhole. At R 200 (216) mark center 52 (58) sts. for neckline with a YM. Knit 1 row at T 10 and BOLT.



FRONT: Make 1, Reverse 1.

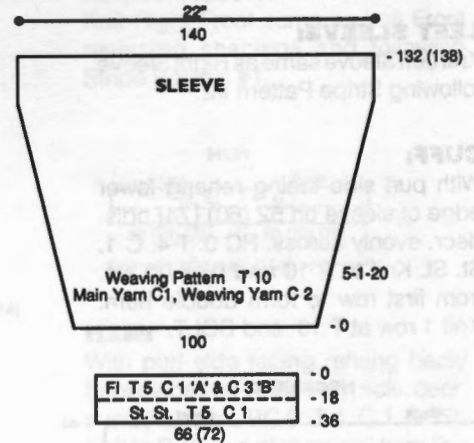
With WY CO 56 (62) sts. After several rows end with 1 row Ravel Cord to the left. RC 0. T 5. With C 1 in 'A' Feeder and C 3 in 'B' Feeder knit in fairisle. At R 18 cut C 3. Continue in St. St. with C 1 to R 36. Pick up sts. from first row to form double band. RC 0. T 10. With C 1 as main yarn and C 2 as weaving yarn knit in weaving pattern. At R 56 place a YM on right side for pocket placement. At R 116 (132) place a YM on right side for armhole. At R 142 (152) place a YM on left side for collar placement. At R 200 (216) knit 1 row at T 10 and BOLT.

POCKET (Make 2)



POCKET: Make 2.

With knit side facing, rehang back between pocket markers on 50 ndls. RC 0. T 5. St. St. C 1. Knit to R 130 and remove sts. on WY.



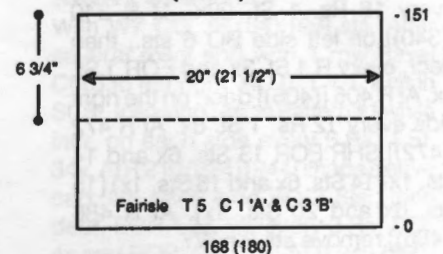
SLEEVE:

With WY CO 100 sts. After several rows end with 1 row Ravel Cord to the right. RC 0. T 10. With C 1 as main yarn and C 2 as weaving yarn knit in weaving pattern while incr. on each side every 5 Rs. 1 St. 20x. At R 132 (138) knit 1 row at T 10 and BOLT.

SLEEVE CUFF:

With knit side facing rehang lower edge of sleeve on 66 (72) ndls. decr. evenly across. RC 0. T 5. With C 1 in 'A' Feeder and C 3 in 'B' Feeder knit in fairisle. At R 18 cut C 3. Continue in St. St. with C 1 to R 36. Pick up sts. from first row to form double band. Knit 1 row at T 10 and BOLT.

COLLAR (Make 3)

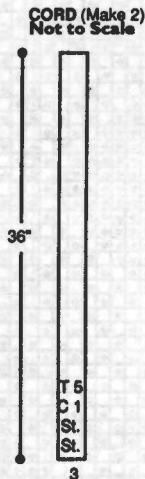


COLLAR: Make 3.

With WY CO 168 (180) sts. After several rows end with 1 row Ravel Cord

to the right. RC 0. T 5. With C 1 in 'A' Feeder and C 3 in 'B' Feeder knit in fairisle. At R 151 pick up sts. from first row to form double band. Knit 1 row at T 10 and BOLT.

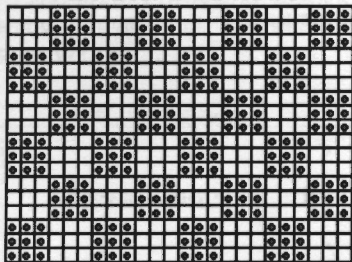
CORD: Make 2. With C 1 'e' wrap CO 3 sts. RC 0. T 5. St. St. Knit until cord measures 36". Remove sts. on WY.



FINISHING:

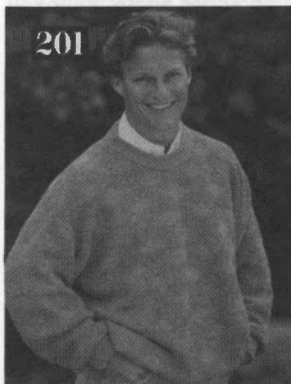
With purl side facing, attach pocket to front between pocket markers. Join collar pieces together. Attach collar matching seams with markers. Sew cords on to make 2 loops for buttons and to cover collar seams (see chart). Join shoulder seams. Attach sleeves. Close all remaining seams.

***200 Fairisle Pattern
24 Sts. x 18 Rows**

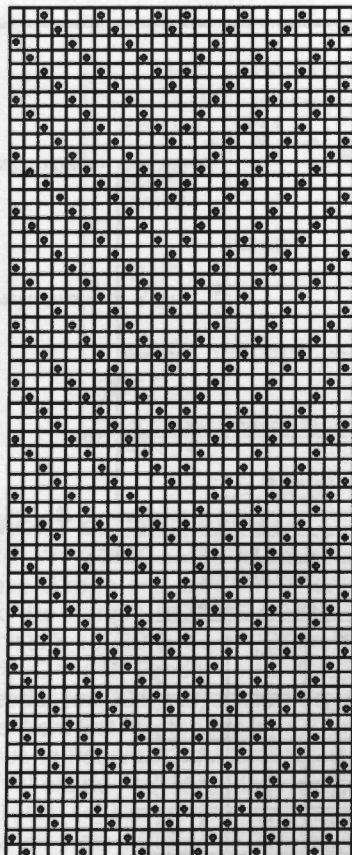


KK Mag Disk: Track 12; Pattern 902

201



***200 Weaving Pattern
24 Sts. x 60 Rows**



KK Mag Disk: Track 12; Pattern 901

BACK:

With C 1 CO 176 (182) [190] sts. for K1/P1 Rib. After selvedge RC 0. T 0/0 I. Knit to R 50. Transfer RB sts. to MB. Remove sts. on WY. Rehang waistband on 128 (134) [140] ndls. decr. evenly across. Select KC. C 1. Knit 1 row with K-Carriage at T 10 to set pattern. Depress 2 tuck buttons and add C 2 in plating finger. RC 0. T 10. Knit in tuck pattern to R 160 (168) [174] and place a YM on each side for armhole. At R 288 (302) [314] SHR shoulders EOR 8 Sts. 5x. At R 298 (312) [324] mark center 44 sts. for neckline and remove sts. on WY.

FRONT:

Knit front same as back to R 248 (262) [274]. Shape neckline. Place center 12 sts. in HP and all sts. to the left. Note pattern row. *On neckline edge SHR EOR 2 Sts. 4x and 1 St. 5x, then decr. every 5 Rs. 1 St. 3x. At R 288 (302) [314] SHR shoulder EOR 8 Sts. 5x. At R 298 (312) [324] remove shoulder sts. on WY. Reset RC to R 248 (262) [274]. Reset pattern to proper row and shape left side from *, reversing shapings.

BLUE PLATED SPECIAL

YARN: Panache and Pearlyte

SIZES:

Small (Medium) [Large]

AMOUNT:

C 1: Panache - Denim
1 1/2 (1 1/2) [2] lbs.

C 2: Pearlyte - Royal (plated)

2 cones all sizes

KIT PRICE:

\$64.00 (\$64.00)

[\$70.00]

TENSION:

Tuck: T 10

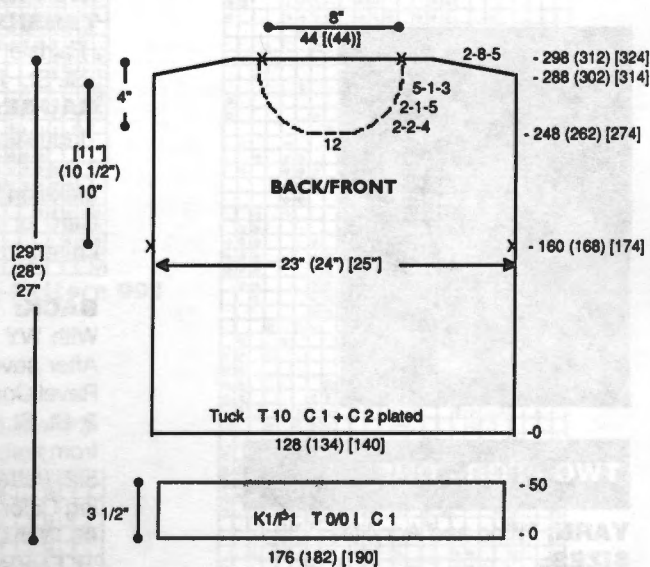
Rib: T 0/0 I or 1/1 II (see chart)

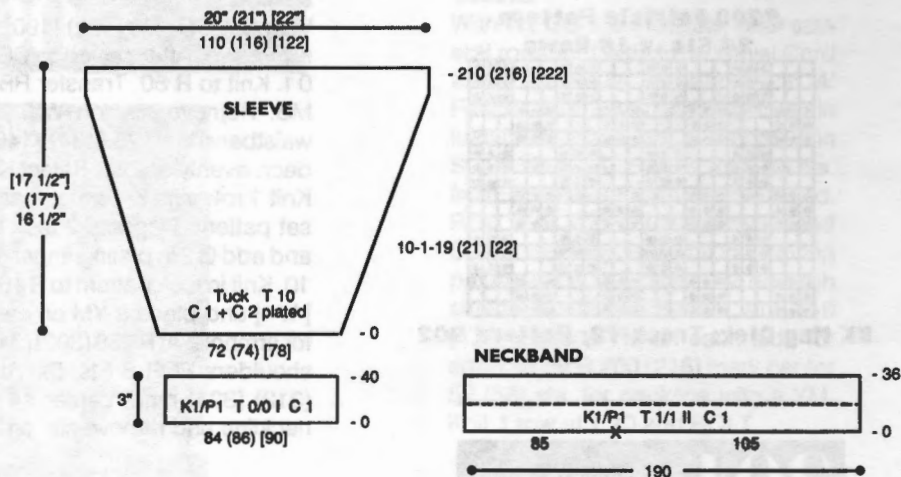
GAUGE:

Tuck: 5.5 Sts., 12.7 Rs. = 1"

Make on Standard 24-Stitch Punch Card or Standard Electronic Machine with Ribber.

Note: Sweater is worn on the purl side.





SLEEVE:

With C 1 CO 84 (86) [90] sts. for K1/P1 Rib. After selvedge RC 0. T 0/0 I. Knit to R 40. Transfer RB sts. to MB. Remove sts. on WY. Rehang cuff on 72 (74) [78] ndls. decr. evenly across. Select KC. C 1. Knit 1 row with K-Carriage at T 10 to set pattern. Depress 2 tuck buttons and add C 2 in plating finger. RC 0. T 10. Knit in tuck pattern while incr. on each side every 10 Rs. 1 St. 19 (21) [22] x. At R 210 (216) [222] knit 1 row over all sts. manually at a loose tension and BOLT.

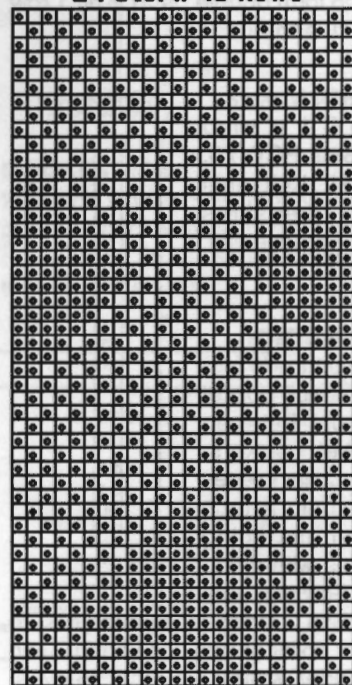
NECKBAND:

Close one shoulder seam. With knit side facing rehang neck opening on 190 ndls. following chart. Knit 1 row and transfer EOS to RB for K1/P1 Rib. RC 0. T 1/1 II. C 1. Knit to R 36, knitting last row at T 8/4 I. Transfer RB sts. to MB and BOLT.

FINISHING:

Close remaining shoulder. Fold neckband to inside and whip stitch in place. Attach sleeves. Close all remaining seams.

#201 Tuck Pattern 24 Sts. x 48 Rows



KK Mag Disk: Track 13; Pattern 901

202



TWO - FOR - ONE

YARN: Primo and Acrylite

SIZES:

8 (10) [12/14]

AMOUNT:

- C 1: Primo - White
- 8 oz. all sizes
- C 2: Primo - Black
- 2 oz. all sizes
- C 3: Primo - Royal

2 oz. all sizes
C 4: Acrylite - Fuschia
8 oz. all sizes

KIT PRICE: \$24.00

TENSION:

Fairisle: T 5.2

St. St.: T 5

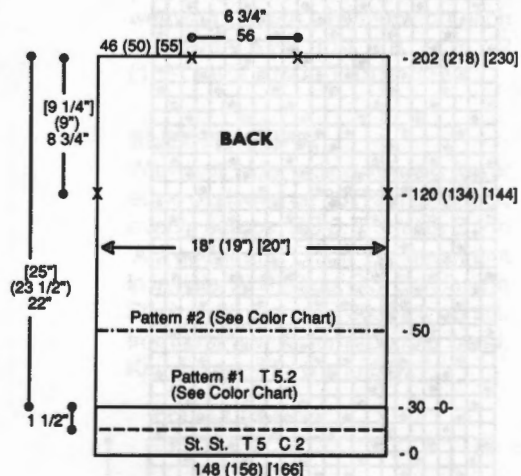
GAUGE:

Fairisle: 8.25 Sts., 9.25 Rs. = 1"

Make on Standard 24-Stitch Punch Card or Standard Electronic Machine.

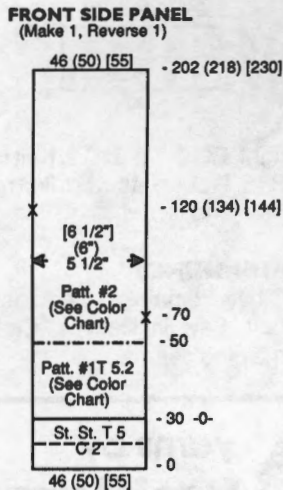
BACK:

With WY CO 148 (156) [166] sts. After several rows end with 1 row Ravel Cord to the right. RC 0. T 5. C 2. St. St. Knit to R 30. Pick up sts. from first row to form hem. RC 0. T 5.2. Pattern #1. Knit to R 50 following Color Chart. Change to Pattern #2. With C 4 in 'A' Feeder and C 1 in 'B' Feeder, knit in fairisle. At R 120 (134) [144] place a YM on each side for armhole. Knit to R 202 (218) [230] and mark center 56 sts. for neckline with YM. Remove neckline and shoulder sts. on separate WY.



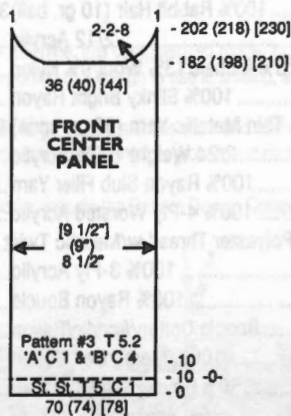
COLOR CHART

Patt.	# Rows	MC	CC
	End		
Fl #2	4	4	1
St. St.	4	4	-
Fl #1	10	4	3
Fl #1	5	2	3
Fl #1	6	2	1
Fl #1	5	4	1
St. St.	10	4	-
St. St.	10	3	-



FRONT SIDE PANEL:

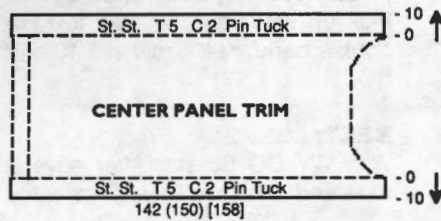
Make 1, Reverse 1.
With WY CO 46 (50) [55] sts. After several rows end with 1 row Ravel Cord to the right. RC 0. T 5. C 2. St. St. Knit to R 30. Pick up sts. from first row to form hem. RC 0. T 5.2. Pattern #1. Knit to R 50 following Color Chart. Change to Pattern #2. With C 4 in 'A' Feeder and C 1 in 'B' Feeder, knit in fairisle. At R 70 Place a YM on right side for belt. At R 120 (134) [144] place a YM on left side for armhole. Knit to R 202 (218) [230] and remove sts. on separate WY.



FRONT CENTER PANEL:

With WY CO 70 (74) [78] sts. After several rows end with 1 row Ravel Cord to the right. RC 0. T 5. C 1. St. St. Knit to R 10. RC 0. T 5.2. Pattern #3. With C 1 in 'A' Feeder and C 4 in 'B' Feeder, knit 10 Rs. in fairisle. Pick up sts. from first row to form hem. Continue in Pattern #3. At R 182 (198) [210] shape neckline. Place center 36 (40) [44] sts. in HP and all sts. to the left. Note pattern row. *On neckline edge SHR EOR 2 Sts. 8x. At R 202 (218) [230] remove 1 st. on WY.

Reset RC to R 182 (198) [210] and pattern to correct row. Shape left neckline from *, reversing shaping. Remove shoulder st. and neckline sts. on WY

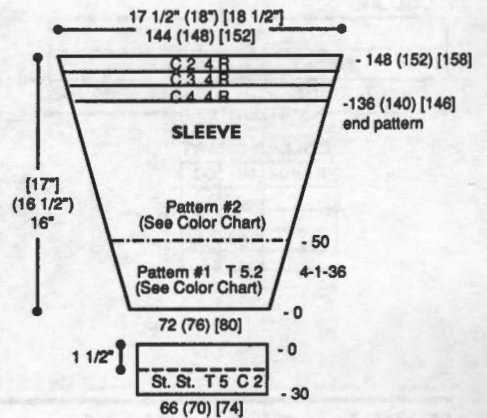


CENTER PANEL TRIM:

Make 2.
With purl side facing, rehang outside edge of center panel on 142 (150) [158] ndls. RC 0. T 5. C 2. Knit in St. St. to R 10. Pick up sts. from first row to form pin tuck. Knit 1 row at T 10 and BOLT.

SLEEVE:

With WY CO 72 (76) [80] sts. After several rows end with 1 row Ravel Cord to the right. RC 0. T 5.2. Pattern #1. Knit in fairisle following Color Chart while incr. on each side every 4 Rs. 1

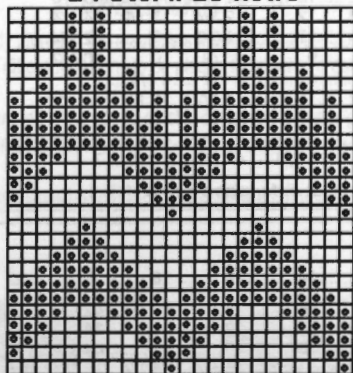


St. 36x. AT THE SAME TIME at R 50 change to Pattern #2. With C 4 in 'A' Feeder and C 1 in 'B' Feeder knit in fairisle. At R 136 (140) [146] change to C 4. Knit 4 Rs. in St. St. Change to C 3. Knit 4 Rs. in St. St. Change to C 2. Knit 4 Rs. in St. St. At R 148 (152) [158] remove sts. on WY.

SLEEVE CUFF:

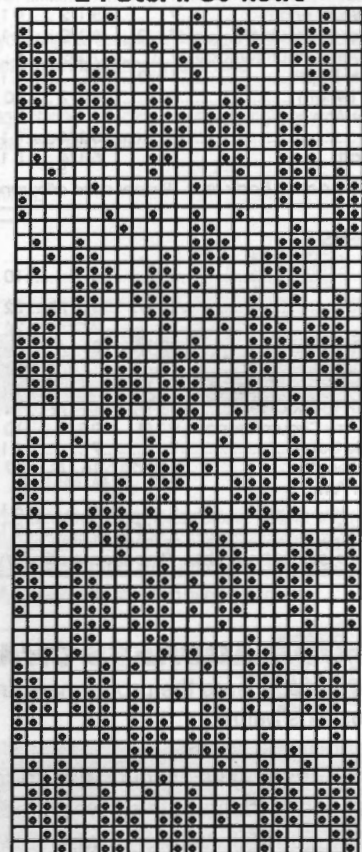
With purl side facing rehang lower edge of sleeve on 66 (70) [74] ndls. RC 0. T 5. C 2. Knit in St. St. to R 30. Pick up sts. from first row to form double cuff. Knit 1 row at T 10 and BOLT.

***202 Fairisle Pattern #1**
24 Sts. x 26 Rows



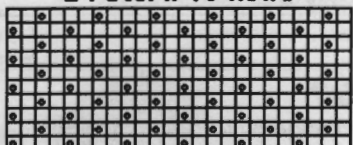
KK Mag Disk: Track 14; Pattern 901

***202 Fairisle Pattern #2**
24 Sts. x 60 Rows

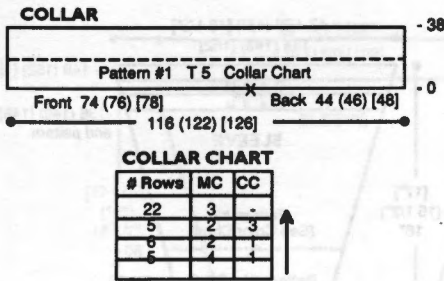


KK Mag Disk: Track 14; Pattern 902

***202 Fairisle Pattern #3**
24 Sts. x 10 Rows

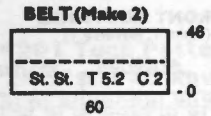


KK Mag Disk: Track 14; Pattern 903



COLLAR:
Close one shoulder and attach front panels. With purl side facing rehang neckline on 116 (122) [126] ndls. following chart. RC 0. T 5. Knit in pattern following Collar Chart to R 38. Pick up sts. from first row to form double band. Knit 1 row at T 10 and BOLT.

BELT: Make 2.
With WY CO 60 sts. After several rows end with 1 row Ravel Cord to the



right. RC 0. T 5.2. C 2. Knit in St. St. to R 46. Pick up sts. from first row to form hem and BO.

FINISHING:
Close remaining shoulder. Attach belt. Sew in sleeves. Close all remaining seams.

Knitkng Sizing Chart

MENS

Size	34	36	38	40	42	44
Chest	34	36	38	40	42	44
Waist	30	32	34	36	38	40
Hip	36	37	39	41	43	45
Neck	15 1/2	16	16 1/2	17	17 1/2	17 1/2
Back Waist Length	18	18 1/2	19	19 1/2	20	21
Shoulder to Shoulder	15 1/2	16	16 1/2	17	17 1/2	18
Upper Arm Circumference	9 5/8	10 3/8	11 1/8	11 7/8	12 5/8	13 3/8
Armhole Depth	8	8 1/2	9	9 1/2	10	10 1/2
Sleeve Length	19	19 1/2	19 1/2	20	20	20 1/2
Under Arm						
Wrist	6 1/2	7	7	7	7 1/2	8
Hip Depth	8 3/8	8 1/2	8 5/8	8 3/4	8 3/4	9

These are actual body sizes. Proper ease allowance is necessary as determined by the style.

CHILDREN

Size	12 mo	2 yr	4	6	8	10	12	14
Chest	19	21	23	25	27	28	30	32
Waist	19	20	21	22	23	24	25	26 1/2
Hip	20	22	24	26	28	30	32	34
Neck	9 1/4	10	10 3/4	11 1/2	12 1/8	12 5/8	13 1/8	13 5/8
Back Waist Length	7	8 1/2	9 1/2	10 1/2	12	12 3/4	13 1/2	14 1/4
Shoulder to Shoulder	7 1/2	8 1/2	9 1/2	10	11	11 1/2	12	12 1/4
Upper Arm Circumference	7	7 1/2	8	8 1/2	9	9 1/2	10	10 1/2
Armhole Depth	3 1/2	4	4 1/2	5 1/4	6	6 1/2	6 3/4	7
Sleeve Length	6	8 1/2	10	11 1/2	13	14 1/2	15 1/2	16 1/2
Under Arm								
Wrist	5	5 1/4	5 1/2	5 1/2	5 3/4	5 3/4	6	6
Hip Depth	5	5 1/4	5 1/2	5 1/2	5 3/4	6 1/4	6 3/4	7

These are actual body sizes. Proper ease allowance is necessary as determined by the style.

WOMENS

Size	6	8	10	12	14	16	18	20	22
Bust	30 1/2	31 1/2	32 1/2	34	36	38	40	42	44
Waist	22	23	24	25 1/2	27	29	31	34	36
Hip	32 1/2	33 1/2	34 1/2	36	38	40	42	44	46
Neck	13 1/8	13 3/8	13 5/8	14	14 3/8	14 3/4	15 1/4	15 3/4	16 1/4
Back Waist Length	15 1/2	15 3/4	16	16 1/4	16 1/2	16 3/4	17	17 1/4	17 1/2
Shoulder to Shoulder	13 1/2	13 1/2	14	14 1/2	15	15 1/2	16	16 1/2	17
Upper Arm Circumference	9 3/4	9 3/4	10 1/4	10 1/2	11	11 1/2	12	13	13 1/2
Armhole Depth	7	7	7 1/2	7 1/2	7 1/2	8	8	8 1/4	8 1/4
Sleeve Length	16 1/2	16 1/2	17 1/2	17 1/2	17 1/2	18	18	18 1/2	18 1/2
Under Arm									
Wrist	6	6	6 1/4	6 1/4	6 1/2	6 1/2	6 1/2	7	7
Hip Depth	7 3/4	8	8 1/4	8 1/2	8 3/4	9	9 1/4	9 1/2	9 3/4

These are actual body sizes. Proper ease allowance is necessary as determined by the style.

IS YOUR ADDRESS CHANGING?

If so, you can insure the proper handling of this change by following the three suggestions below:

- 1) When advising us of your **new** address, please also indicate your **old** address.
- 2) Please provide us with six weeks notice to affect this change.
- 3) PLEASE PRINT ALL INFORMATION LEGIBLY.



The finest quality KNITKING yarns are used to create the beautiful fashions found in KNITKING Magazine. Photographic representations may not accurately reflect the true color of the yarn due to lighting and printing processes. Please refer to your Knitkng Yarn Color Book for actual colors. Kit prices are located with the instructions for each garment. Each yarn comes in a wide selection of colors. The different types of yarns have been selected to allow for blending, mixing, and contrasting—both color and texture.

Yarn Color Book is available through KNITKING or an authorized Knitkng dealer. Content and approximate yardage of each yarn is shown below:

	Yds./Pound
Alpine	100% Wool..... 1600
Angora	100% Rabbit Hair (10 gr. ball) 33 yds/ball
Acrylite	2/12 Acrylic..... 2400
Caprinae	78% Mohair/13% Wool/9% Nylon..... 980
Glace Plus	100% Slinky Bright Rayon..... 1650
Lumiyarn	Thin Metallic Yarn (50 gr. cone) 1200/cone
Mini Acrylite	2/24 Weight 100% Acrylic..... 3600
Mini Pebble	100% Rayon Slub Filler Yarn..... 3350
Mirage	100% 4-Ply Worsted Acrylic..... 1000
Night Music	Polyester Thread w/Metallic Twist .. 115/ball
Panache	100% 3-Ply Acrylic..... 2400
Pearlyte	100% Rayon Boucle..... 2200
Pebble	Boucle Cotton/Acrylic/Rayon..... 700
Primo	100% Mercerized Cotton..... 2500
Rayon Nubs	100% Rayon Nub Filler Yarn..... 5500
Roma	80% Acrilan/20% Antron..... 2600
Rubane (50 gr ball)	100% Polyamid 1/8" ribbon .. 82/ball
Silkie	2-Ply Orton..... 2100
Softon	100% Soft Cotton..... 2000
Sorbet	54% Cotton/46% Rayon..... 2200
Splendor	3-Ply High Bulk Acrylic..... 2200
Starlite	Acrylic w/Metallic Thread..... 2400
Venetia	70% Wool/30% Rayon..... 2400
Woolana	100% 2/12 Merino Wool..... 3000
Knit-in Elastic	79% Nylon/21% Elastic 430/spool

Yarn Color Book: \$25.00 + Shipping and Handling

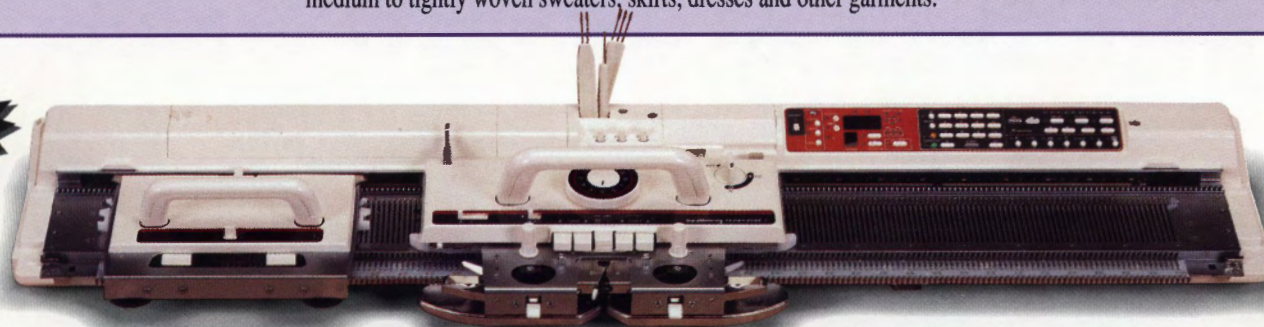
Order your Knitkng kits in the color of your choice from Knitkng color cards. Kit and yarn prices subject to change without notice.

When It Comes to Standard Bed Machines . . . We've Got the Right One For You

Standard Needle Machines

Built-in knitting patterns and stitches include Fair Isle, Tuck, Skip—even Single Motif Isolation, Weaving, Thread Lace and Plating. Capability of using Knitking's exclusive Garter Carriage accessory. Standard gauge machines can handle a wide selection of yarns ranging from fine to sport weight, to produce medium to tightly woven sweaters, skirts, dresses and other garments.

Now Only
\$1749.95

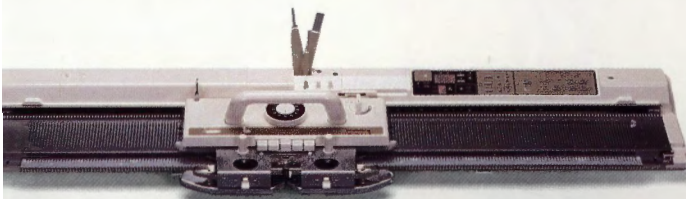


Compuknit V

Our most popular machine, this computerized model includes 615 patterns already stored in the machine's memory, plus the ability to create your original designs with the push of a few buttons. You can even "frame" any portion of a design to use in knitting, and can select from 1 to 9 different designs to be placed together to create a motif, repeating in the order of your choice.

Patterns can be as large as 200 stitches wide and 998 stitches long. Variation buttons allow you to quickly customize any design for reversing, rotating, reflecting, doubling length or width (or both), turning patterns upside down, changing foreground and background colors, plus automatic double jacquard. And, 3-color knitting is now even easier than ever before!

Inclusive accessories include the Pattern Design Computer, Disk Drive, Printer and DesignaKnit Complete Software System for Knitting Machines.

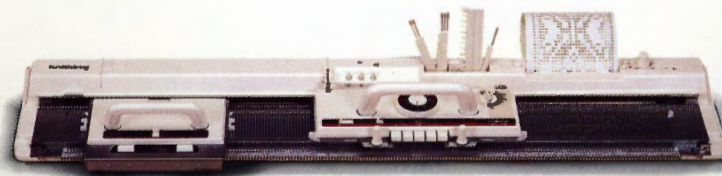


Compuknit/ST

Our most economical computerized knitter, the Compuknit/ST still offers many of the same desirable features of its big sister, the Compuknit V. Includes 50 built-in patterns, plus enough memory for the user to input her own designs—patterns ranging from 1 to 24 stitches wide and over 1000 rows long, up to a total of 26,000 stitches. Variation buttons allow any of the patterns to be reversed, turned upside down, doubled in length or have their yarn colors reversed. Intarsia and Lace Carriages are optional.

Inclusive accessories include the Pattern Design Computer, Disk Drive and Printer.

Save \$400
\$899.95



Auto KK 98

This versatile machine features punch card technology for automatic pattern knitting. Capable of repeating patterns of up to 24 stitches, with the variation of double length available at the flip of a switch. Includes Lace Carriage allowing you to create beautiful normal and fine lace garments. Intarsia Carriage optional. Most affordable standard needle machine.

Best Buy
\$699.95

194



195



196



197



198



199



200



201



202



Make Machine Knitting Even Easier ... Without Worrying About Shaping

Shaping your garments while knitting them can be a somewhat complicated and time-consuming task. Now, there is an easier way.

With the new Knitking 4/3-Thread King Lock 900D Serger, all you do is knit rectangular pieces in shapes approximating the different pieces of the garment you are making. Then, let the King Lock 900D cut and "overlock stitch" the pieces to the exact measurements for a perfect fit. Quickly. Easily. Using three threads or even four (for added durability).

And, with the special, built-in Differential Feed feature, the King Lock 900D assures a smooth, neat, unruffled edge for *any* fabric — ideal for your knitwear creations!

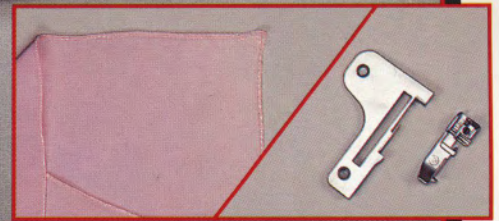
Low, Low SALES
\$799.95
Limited Time Only



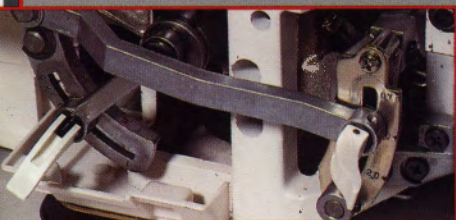
Flatlocked Seams allow mixing and matching of different fabric textures and colors using a decorative topstitch.



Create your own Lace fabric trim and use it to put a unique finishing edge on your knitted garments.



Narrow/Rolled Hem accessory is included and easily attaches for beautiful fine and narrow rolled hem edge finishing.

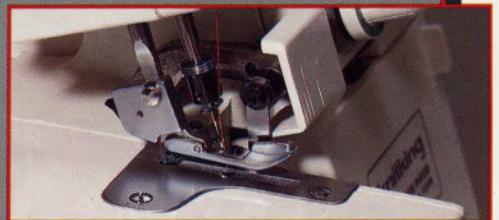


One-Touch sewing pitch adjustment and One-Touch Differential Feed adjustment are both conveniently located.

knitking

**KING LOCK 900D
DIFFERENTIAL FEED**

**10 Year
Limited
Warranty**



Two-Position Presser Foot allows presser foot height adjustment of up to 6 mm to accommodate thicker knitted fabrics.

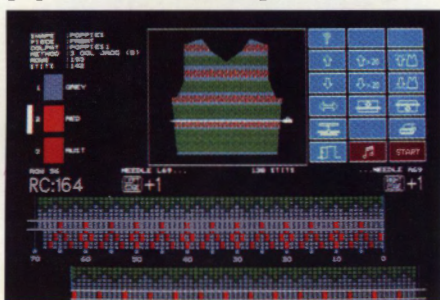
1128 Crenshaw Boulevard
Los Angeles, CA 90019

For the Knitking Dealer near you
Call Toll-Free: 1-800-962-6446

Become A Great Fashion Designer With A Little Help From A Square.

DesignaKnit 5...the most popular computer-aided knitwear design program in the USA.

With DesignaKnit 5, machine knitters at every skill level can create beautiful garments with no previous design experience. DesignaKnit takes you through the entire design process one step at a time. You can work with a vast array of built in shapes and sizes and then modify them to fit your exact needs. With the Professional Version, you can even create original shapes. By designing on the screen, you can develop your own stitch patterns from the most popular stitches and experiment with thousands of color combinations. You can even



**PRICES START
AS LOW AS \$259.95**

import original or scanned graphics right into your design. When ready, you can print out scaled drawings, stitch patterns, knitting instructions, punchcard templates and more. With the Knit-From-Screen feature, you're even able to view your progress as you knit and monitor color and shaping changes. DesignaKnit also comes with Knitking's unmatched customer support, including a technical assistance hot-line, a tutorial and detailed manual. So take your designs to a new level, and order the square called DesignaKnit today.



LIMITED TIME OFFER: CALL 800-962-6446 TODAY AND GET A FREE DEMO DISK

DesignaKnit works with virtually all electronic and punchcard machines...Knitking, Singer, Brother, Studio, Passap (Cable links optional).