



**The**  
*Knitwear*  
**Book**

**KNITMASTER**



Aneto 2ply: Bouclé

# The *Knitwear* Book

The superb range of designs included in *The Knitwear Book* have all been knitted in Knitmaster Bouclé and Aneto 2ply — two beautiful, lightly textured fashion yarns which are just perfect for lightweight Summer knitwear.

However, knit these same bright, fresh Summer designs in the darker, richer colours which are also available in these yarn ranges and you'll find they'll be equally perfect for your Autumn/Winter wardrobe, too.

The sizes range from 32" to 42" bust and have been carefully designed to be both stylish and extremely wearable for this whole size range.

Many of the designs are quick and easy to knit — so start knitting now and you'll soon have a whole new selection of beautiful fashion knits to add to your wardrobe.

---

# The Book

## CONTENTS

### EDITOR

Laraine McCarthy

### DESIGN

Sarah Pooley  
Deborah Townsend

### PATTERNS

Debbie Clarkson  
Pat Fell

### KNITTING

Lourdes Sanchez

### PHOTOGRAPHY

Liz McAulay

### Accessories

Debbie Moore  
for Pineapple  
Tel: 01-497 2799

### Next

Tel: 01-499 6518

### STYLIST

Jo Chapman  
for Artistic Licence

<b>1</b>	Summer Cardigan & Wrap Skirt	6
<b>2</b>	Stripey Scooped Neck Top	8
<b>3</b>	Square Necked Top	9
<b>4</b>	Blue Fish Sweater	10
<b>5</b>	Long-Line Cardigan	12
<b>6</b>	Blue Short Sleeve Cardigan	13
<b>7</b>	Blue Short Sleeve Sweater	16
<b>8</b>	Circular Yoke Sweater	17
<b>9</b>	Lace and Fair Isle Cardigan	19
<b>10</b>	'Seaside' Vest	26
<b>11</b>	'Seaside' Sweater	28
<b>12</b>	Bolero Jacket	32
<b>13</b>	Blue Suit	33
<b>14</b>	Top with Shell Edging	35
<b>15</b>	Sweater with Windmill Border	38
<b>16</b>	Dolman Sweater with Border	39
<b>17</b>	Dolman Sweater	42
	<b>Yarn Information</b>	23
	<b>Abbreviations</b>	25

Although every reasonable care has been taken to ensure that the instructions and designs in this pattern book are correct. Modern Knitting Ltd. cannot accept responsibility for any errors which may have occurred in spite of such precautions. All rights reserved. Reproduction in whole or part without written permission is strictly prohibited.

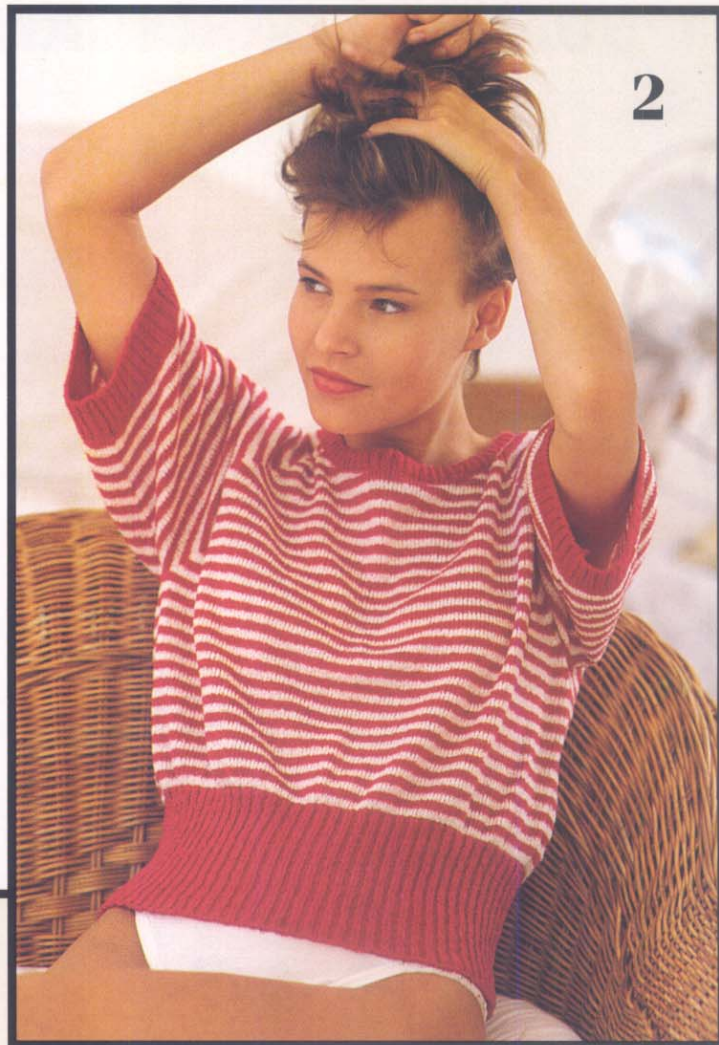
A Modern Knitting Publication © 1990  
Modern Knitting is a Registered Trademark  
Printed in the U.K. by E E Owens & Co Ltd.

### SUITABLE FOR PUNCHCARD AND ELECTRONIC MACHINES

The designs in The Knitwear Book are suitable for use with all Knitmaster Standard Gauge Punchcard and Electronic Machines — model nos. 321, 323, 324, 326, 328, 329, 360, 260, 600, 700, Zippy De Luxe, Zippy plus, 500, 550, 560 and 580.

Note for electronic owners — when using the punchcard charts to make an electronic design card, fill in a square where the punchcard chart shows a hole.





# 1 SUMMER CARDIGAN AND WRAP SKIRT



For Knitmaster Standard Gauge Machines with Ribbing Attachment.

## Sizes:

To fit 81-86 (91-96) (101-106) cms/32-34 (36-38) (40-42) inch bust.

## Materials:

Knitmaster Aneto 2ply  
Cardigan  
Col 1 (Winter Green) – 250 (300) (350) grms  
5 buttons

## Skirt

Col 1 (Winter Green) – 280 (330) (380) grms  
elastic: velcro.

## Tensions:

Double Rib – 26 sts and 44 rows to 10 cms. TD's at approx. 3 (MT) 2x1 Rib – 55 rows to 10 cms. TD's at approx. MT-2.

## Pattern Note:

Double Rib.  
Work decreases on neck edge of cardigan and front edges of skirt using a 3 prong transfer tool.

This elegant suit has been knitted in double rib, using Knitmaster Aneto 2ply which produces the perfect lightweight suit fabric. The softly pleated wrap over skirt with its prettily curved hemline is extremely flattering for all shapes and sizes while the boxy jacket can be used with any skirt shape you like to create a whole range of stylish suits.

## CARDIGAN BACK

Push 52 (59) (65) Ns at left and right of centre O to WP. 104 (118) (130) Ns altog. Push corresponding Ns on ribber to WP. Arrange Ns for double rib. Using col 1, cast on. RC 000. MT. Knit 5 rows. Inc 1 st at both ends of the next and ev foll 6th row 8 (6) (4) times in all, knit 6 rows. Inc 1 st at both ends of the next and ev foll 7th row 5 (7) (9) times in all. 130 (144) (156) sts. Knit 6 (8) (10) rows. RC 89 (93) (97). Carr at right.

## Shape Armholes

Cast off 4 sts at beg of the next 2 rows. Dec 1 st at both ends of the next and ev foll alt row 5 (7) (8) times in all, knit 3 rows. Dec 1 st at both ends of the next and ev foll 4th row 4 times in all, knit 5 (3) (3) rows. Dec 1 st at both ends of the next and foll 10th (8th) (6th) row. 100 (110) (120) sts. Knit 63 rows. RC 195 (199) (203). Carr at right.

## Shape back neck

Using a length of col 1, cast off centre 42 sts. Hold Ns at left.

## Knit Right Part as Follows:-

Knit 1 row. Cast off 2 sts at beg of the next row, knit 1 row. Dec 1 st at beg of the next row.

## Shape Shoulder

Cast off 8 (10) (12) sts at beg of the next row and dec 1 st at beg of the next row. Rept the last 2 rows once more. Cast off rem 8 (9) (10) sts. Take carr to left. Bring Ns back to WP. Knit left part as for right part.

## RIGHT FRONT

Push 6 Ns at left and 52 (59) (65) Ns at right of centre O to WP. 58 (65) (71) Ns altog. Push corresponding Ns on ribber to WP. Arrange Ns for double rib. Using col 1, cast on. RC 000. MT. Make a buttonhole over N 1 at left and right of centre O on Rows 5, 29, 53, 77 and 101. AT THE SAME TIME knit 5 rows. Inc 1 st at right edge on the next and ev foll 6th row 8 (6) (4) times in all, knit 6 rows. Inc 1 st at right edge on the next and ev foll 7th row 5 (7) (9) times in all. 71 (78) (84) sts. Knit 6 (8) (10) rows. RC 89 (93) (97). (Knit 1 row extra for Left Front). Carr at right.

## Shape Armhole

Cast off 4 sts at beg of the next row, knit 1 row. Dec 1 st at armhole edge on the next and ev foll alt row 5 (7) (8) times in all, knit 3 (3) (1) rows.

## 1st Size Only

Dec 1 st at armhole edge on the next and ev foll 4th row 3 times in all, knit 3 rows.

## 2nd Size Only

Dec 1 st at armhole edge on the next row, knit 3 rows.

## All Sizes

59 (66) (72) sts. RC 115.

## Shape Front Edge

Dec 1 st at left edge on the next and ev foll alt row 9 (11) (13) times in all, AT THE SAME TIME, knit 0 (0) (2) rows.

## 1st Size Only

Dec 1 st at armhole edge on the next row.

## 2nd & 3rd Sizes Only

Dec 1 st at armhole edge on the next and ev foll 4th row (3) (4) times in all.

## All Sizes

Knit 5 (3) (3) rows. Dec 1 st at armhole edge on the next and foll 10th (8th) (6th) row. 47 (50) (53) sts. Knit 1 row. Dec 1 st at front edge on the next and ev foll alt row 10 (6) (2) times in all, knit 2 rows.

Dec 1 st at front edge on the next and ev foll 3rd row 7 times in all, knit 3 rows.

Dec 1 st at front edge on the next and ev foll 4th row 6 (8) (10) times in all. 24 (29) (34) sts. Knit 2 rows. Carr at right.

## Shape Shoulder

Cast off 8 (10) (12) sts at beg of the next and foll alt row, knit 1 row. Cast off rem 8 (9) (10) sts.

## LEFT FRONT

Knit as for Right Front but reverse the shapings by noting alteration in number of rows worked and reading left for right and vice versa and omitting armholes.

## SLEEVES

Push 32 Ns at left and right of centre O to WP. 64 Ns altog. Push corresponding Ns on ribber to WP. Arrange Ns for double rib. Using col 1, cast on. RC 000. MT. Knit 4 rows. Inc 1 st at both ends of the next and ev foll 5th row 36 times in all. 136 sts. Knit 15 rows. RC 195. Carr at right.

## Shape Top

Cast off 8 sts at beg of the next 2 rows, 3 sts at beg of the next 2 rows and 2 sts at beg of the next 8 rows. Dec 1 st at both ends of the next and ev foll alt row 5 times in all, knit 1 row. Cast off 2 sts at beg of the next 12 rows, 3 sts at beg of the next 6 rows and 5 sts at beg of the next 4 rows. Cast off rem 26 sts.

## TO MAKE UP

Pin out to size and steam carefully. Join shoulder, side and sleeve seams. Set in sleeves. Finish buttonholes and sew on buttons to correspond. Give final light steam.

## SKIRT

### BACK

Push 47 (52) (57) Ns at left and right of centre O to WP. 94 (104) (114) Ns altog. Push corresponding Ns on ribber to WP. Arrange Ns for double rib. Using col 1, cast on. RC 000. MT. Knit 3 rows. Inc 1 st at both ends of the next and foll 4th row, knit 4 rows. Inc 1 st at both ends of the next and ev foll 5th row 7 times in all, knit 7 rows. Inc 1 st at both ends of the next and ev foll 8th row 4 times in all, knit 18 rows. Inc 1 st at both

ends of the next and ev foll 19th row 3 times in all. 126 (136) (146) sts. RC 132. Carr at left. Knit 63 rows. Dec 1 st at both ends of the next and ev foll 22nd (15th) (12th) row 6 (8) (10) times in all. 114 (120) (126) sts. Knit 2 (7) (4) rows. RC 308. Transfer sts to knitter. Cast off.

#### LEFT FRONT

Push 31 (34) (37) Ns at left and 47 (52) (57) Ns at right of centre O to WP. 78 (86) (94) Ns altog. Push corresponding Ns on ribber to WP. Arrange Ns for double rib. Using col 1, cast on. Mark between sts 31 and 32 (34 and 35) (37 and 38) at right of centre O with waste yarn. RC 000. MT. Knit 3 rows. Inc 1 st at right edge on the next and foll 4th row, knit 4 rows. Inc 1 st at right edge on the next and ev foll 5th row 7 times in all, knit 7 rows. Inc 1 st at right edge on the next and ev foll 8th row 4 times in all, knit 13 rows. Dec 1 st at left edge on the next row, knit 4 rows. Inc 1 st at right edge on the next row, knit 13 rows. Dec 1 st at left edge on the next row, knit 4 rows. Inc 1 st at right edge on the next row, knit 17 rows. Dec 1 st at left edge on the next row. Inc 1 st at right edge on the next row. 91 (99) (107) sts. RC 132. Carr at left. Knit 5 rows. Dec 1 st at left edge on the next and ev foll 7th row 5 times in all, knit 5 rows. Dec 1 st at left edge on the next and foll 6th row, knit 4 rows. Dec 1 st at left edge on the next and foll 5th row, knit 3 rows. Dec 1 st at left edge on the next row, knit 3 rows. 81 (89) (97) sts. Dec 1 st at right edge on the next and ev foll 22nd (15th) (12th) row 6 (8) (10) times in all, AT THE SAME TIME dec 1 st at left edge on the next and ev foll 4th row 9 times in all, knit 2 rows. Dec 1 st at left edge on the next and ev foll 3rd row 9 times in all, knit 1 row. Dec 1 st at left edge on the next and ev foll alt row 12 times in all, knit 1 row. Cast off 1 (1) (2) sts at beg of the next and ev foll alt row 3 times in all, knit 1 row. Cast off 1 (2) (2) sts at beg of the next and foll alt row, knit 1 row. Cast off 2 (2) (3) sts at beg of the next row, knit 1 row. Cast off 2 (3) (3) sts at beg of the next and ev foll alt row 4 times in all, knit 1 row. Cast off 3 (3) (4) sts at beg of the next row, knit 1 row. Cast off 4 sts at beg of the next row, knit 1 row. Cast off 4 (5) (6) sts at beg of the next row, knit 1 row. RC 308. Transfer sts to knitter. Cast off rem 16 sts.

#### RIGHT FRONT

Push 47 Ns at left and 70 (78) (86) Ns at right of centre O to WP. 117 (125) (133) Ns altog. Push corresponding Ns on ribber to WP. Arrange Ns for double rib. Using col 1, cast on. Mark between sts 31 and 32 (29 and 30) (27 and 28) at left of centre O then mark centre O and between sts 13 and 14; 23 and 24; 36 and 37; 46 and 47; 59 and 60 (13 and 14; 26 and 27; 39 and 40; 52 and 53; 65 and 66) (13 and 14; 29 and 30; 42 and 43; 58 and 59; 71 and 72) at right of centre O with waste yarn for pleats. RC 000. MT.

Knit 3 rows. Inc 1 st at left edge on the next and foll 4th row, knit 4 rows. \*Inc 1 st at left edge and dec 1 st at right edge on the next row, knit 4 rows. Inc 1 st at left edge on the next row, knit 4 rows\*. Rept from \*to\* twice more. Inc 1 st at left edge and dec 1 st at right edge on the next row, knit 5 rows. Dec 1 st at right edge on the next row, knit 1 row. Inc 1 st at left edge on the next row, knit 3 rows. Dec 1 st at right edge on the next row, knit 3 rows. Inc 1 st at left edge on the next row, knit 1 row. Dec 1 st at right edge on the next row, knit 5 rows. Inc 1 st at left edge and dec 1 st at right edge on the next row, knit 5 rows. Dec 1 st at right edge on the next row, knit 1 row. Inc 1 st at left edge on the next row, knit 3 rows. Dec 1 st at right edge on the next and ev foll 5th row 4 times in all, knit 1 row. Inc 1 st at left edge on the next row, knit 1 row. Dec 1 st at right edge on the next and ev foll 4th row 5 times in all. Inc 1 st at left edge on the next row. 112 (120) (128) sts. RC 132. Carr at left. Knit 2 rows. Dec 1 st at right edge on the next and ev foll 4th row 8 times in all, knit 2 rows. Dec 1 st at right edge on the next and ev foll 3rd row 10 times in all, knit 2 rows. 94 (102) (110) sts. Dec 1 st at left edge on the next and ev foll 22nd (15th) (12th) row 6 (8) (10) times in all, AT THE SAME TIME. Dec 1 st at right edge on the next and ev foll alt row 43 times in all, knit 1

row. Cast off 1 (1) (2) sts at beg of the next and ev foll alt row 3 times in all, knit 1 row. Cast off 1 (2) (2) sts at beg of the next row, knit 1 row. Cast off 2 sts at beg of the next and foll alt row, knit 1 row. Cast off 2 (2) (3) sts at beg of the next row, knit 1 row. Cast off 2 (3) (3) sts at beg of the next and ev foll alt row 4 times in all, knit 1 row. Cast off 3 (3) (4) sts at beg of the next row, knit 1 row. Cast off 4 sts at beg of the next row, knit 1 row. Cast off 4 (5) (6) sts at beg of the next row. RC 308. Transfer sts to knitter. Cast off rem 16 sts.

#### BACK WAISTBAND

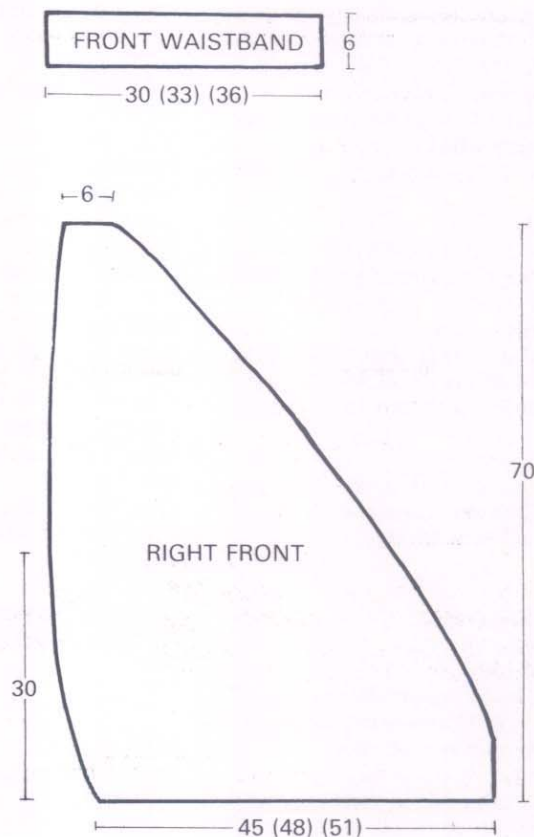
Arrange 94 (104) (116) Ns for 2x1 rib. Using col 1, cast on. RC 000. MT-2, knit 33 rows. Transfer sts to knitter. MT+2, knit 1 row. Cast off.

#### FRONT WAISTBAND (knit 2)

Arrange 78 (86) (94) sts for 2x1 rib. Using col 1, cast on. RC 000. MT-2, knit 33 rows. Transfer sts to knitter. MT+2, knit 1 row. Cast off.

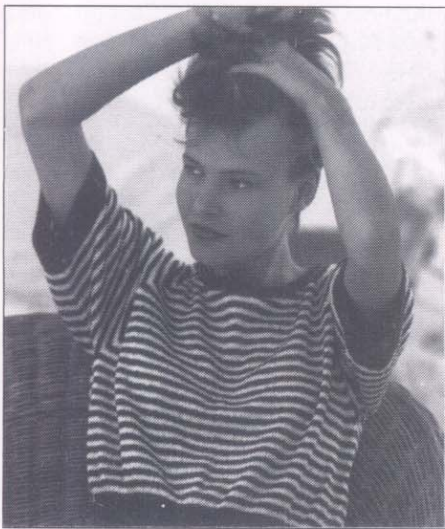
#### TO MAKE UP

Pin out to size and steam carefully. Fold pleats on right front. Sew waistbands into pos. Join side and waistband seams. Fold waistband in half to inside and catch down. Insert elastic and secure ends. Attach velcro to ends of waistbands and to corresponding parts of waistband to secure. Give final light steam.



Continued on page 24

## 2 STRIPEY SCOOPED NECK TOP



For Knitmaster Standard Gauge Machines with Ribbing Attachment.

### Sizes:

To fit 86-91 (96-101) cms/34-36 (38-40) inch bust.

### Materials:

Knitmaster Aneto 2 ply  
Col 1 (Hibiscus) – 175 (215) grms  
Col 2 (Cream) – 70 (95) grms

### Tensions:

Stocking Stripes – 30 sts and 53 rows to 10 cms. TD at approx. 3 (MT)  
2x1 Rib – 55 rows to 10 cms. TD's at approx. MT-2.

### Pattern Note:

Stockinet Stripes  
Back & Front – knit 4 rows col 2, 4 rows col 1. Repeat throughout.  
Sleeves – knit 4 rows col 1, 4 rows col 2. repeat throughout.

**We've knitted this pretty little top in stripes of red and cream, but you can knit it using any combination of stripes and colours you like. Navy and white or navy and cream will reflect the ever fashionable nautical look while two or three pastel colours with white will produce that delicious 'ice-cream' effect.**

### BACK

Push 78 (86) Ns at left and right of centre O to WP. 156 (172) Ns altog. Using waste yarn, cast on and knit several rows ending with carr at right. RC 000. MT. Continue in stockinet stripes, knit 96 (112) rows. Carr at right.

#### Shape Raglan Armholes

Cast off 6 sts at beg of the next 2 rows. Dec 1 st at both ends of the next and ev foll alt row 7 (3) times in all, knit 1 row\*\*.

#### 1st Size Only

\*Dec 1 st at both ends of the next and foll alt row, knit 2 rows\*. Repeat the last 5 rows from \*to\* 17 times more.

#### 2nd Size Only

\*Dec 1 st at both ends of the next and ev foll alt row 4 times in all, knit 2 rows\*. Rept the last 9 rows from \*to\* 11 times more.

#### Both Sizes.

58 sts. Dec 1 st at both ends of the next and ev foll 3rd row 8 times in all. RC 224 (250). Cast off rem 42 sts.

### FRONT

Knit as for Back to \*\*.

#### 1st Size Only

\*Dec 1 st at both ends of the next and foll alt row, knit 2 rows\*. Rept the last 5 rows from \*to\* 12 times more. Dec 1 st at both ends of the next row.

#### 2nd Size Only

\*Dec 1 st at both ends of the next and ev foll alt row 4 times in all, knit 2 rows\*. Rept the last 9 rows from \*to\* 8 times more. Dec 1 st at both ends of the next and foll alt row.

### Both Sizes

76 (78) sts. RC 178 (204).

#### Shape Neck

Using a length of col 1, cast off centre 12 sts. Hold Ns at left.

Knit Right Part as Follows:-

#### 1st Size Only

Knit 1 row. Cast off 4 sts at beg and dec 1 st at end of the next row, knit 1 row. Cast off 4 sts at beg of the next row. Dec 1 st at beg of the next row. Cast off 3 sts at beg of the next row. Dec 1 st at beg of the next row. Cast off 3 sts at beg of the next row, knit 1 row. \*Cast off 2 sts at beg and dec 1 st at end of the next row, knit 1 row\*. Rept the last 2 rows from \*to\* once more. Dec 1 st at beg of the next 4 rows, knit 2 rows. Dec 1 st at both ends of the next row, knit 1 row. Dec 1 st at end of the next row, knit 1 row. Dec 1 st at beg of the next row.

#### 2nd Size Only

Knit 1 row. \*Cast off 4 sts at beg and dec 1 st at end of the next row, knit 1 row\*. Rept the last 2 rows from \*to\* once more. \*\*Cast off 3 sts at beg of the next row. Dec 1 st at beg of the next row\*\*. Rept the last 2 rows from \*\*to\*\* once more. Cast off 2 sts at beg of the next row. Dec 1 st at beg of the next row. Cast off 2 sts at beg of the next row. Dec 1 st at beg of the next 2 rows, knit 1 row. \*Dec 1 st at both ends of the next row, knit 1 row. Dec 1 st at end of the next row, knit 1 row\*. Rept the last 4 rows from \*to\* once more. Dec 1 st at beg of the next row.

#### Both Sizes

Fasten off rem st. Take carr to left. Bring Ns back to WP. Knit left part as for right part.

### LEFT SLEEVE

Push 60 Ns at left and right of centre O to WP. 120 Ns altog. Push corresponding Ns on ribber to WP. Arrange Ns for 2x1 rib. Using col 1, cast on. RC 000. MT-2, knit 17 rows. Transfer sts to knitter. RC 000. MT. Continue in stock-

inet stripes. Knit 1 row. Inc 1 st at both ends of the next ev foll 9th (10th) row 9 times in all. 138 sts. Knit 2 rows. RC 76 (84). Carr at right.

#### Shape Top

Cast off 6 sts at beg of the next 2 rows.

#### 1st Size Only

Dec 1 st at both ends of the next and ev foll alt row 3 times in all, knit 1 row. \*Dec 1 st at both ends of the next and ev foll alt row 3 times in all, knit 2 rows\*. Rept the last 7 rows from \*to\* 13 times more.

#### 2nd Size Only

Dec 1 st at both ends of the next and ev foll 3rd row 3 times in all, knit 2 rows. \*Dec 1 st at both ends of the next and foll alt row, knit 2 rows\*. Rept the last 5 rows from \*to\* 20 times more.

#### Both Sizes

36 sts. RC 182 (200). Carr at right. Cast off 6 sts at beg and dec 1 st at end of the next row, knit 1 row. Cast off 6 sts at beg and dec 1 st at end of the next row, knit 1 row. Cast off 6 sts at beg of the next row. Dec 1 st at beg of the next row. Cast off 2 sts at beg of the next row. Dec 1 st at beg of the next 2 rows, knit 1 row. Dec 1 st at both ends of the next and foll alt row, knit 1 row. Dec 1 st at beg of the next 2 rows, knit 1 row. Dec 1 st at beg of the next 2 rows, knit 1 row. Dec 1 st at end of the next 2 rows. Fasten off rem st.

### RIGHT SLEEVE

Knit as for Left Sleeve but in reverse.

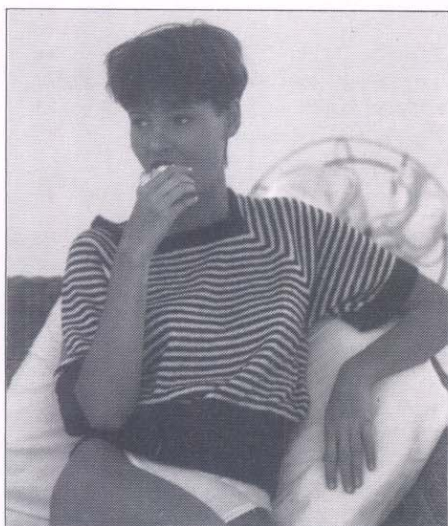
### WELT

Arrange 120 (135) Ns for 2x1 rib. Using col 1, cast on and knit circular rows in reverse. RC 000. MT-2, knit 77 rows. Transfer sts to knitter. With wrong side of Back facing, pick up sts from below waste yarn and place onto Ns gathering evenly. MT+4, knit 1 row. Cast off. Rept for Front.

Continued on page 23



# 3 SQUARE NECKED TOP



For Knitmaster Standard Gauge Machines with Ribbing Attachment.

### Sizes:

To fit 86-91 (96-101) cms/34-36 (38-40) inch bust.

### Materials:

Knitmaster Aneto 2 ply  
Col 1 (Hibiscus) – 175 (215) grms  
Col 2 (Cream) – 70 (95) grms

### Tensions:

Stockinet Stripes – 30 sts and 53 rows to 10 cms. TD at approx. 3 (MT)  
2x1 Rib – 55 rows to 10 cms. TD's at approx. MT-2  
Double Rib – 26 sts and 44 rows to 10 cms. TD's at approx. MT

### Pattern Note:

Stockinet Stripes  
Back & Front – Knit 4 rows col 2, 4 rows col 1. Rept throughout.  
Sleeves – knit 4 rows col 1, 4 rows col 2. Rept throughout.

Although we've knitted this pretty Summer top in stripes of red and cream, you can, of course, also knit it completely plain in any colour you like. Alternatively you might prefer to vary the width of the stripes. Perhaps broad stripes of 20 or more rows or maybe a combination of broad stripes and narrow stripes.

### BACK

Push 78 (86) Ns at left and right of centre O to WP. 156 (172) Ns altog. Using waste yarn, cast on and knit several rows ending with carr at right. RC 000. MT. Continue in stockinet stripes, knit 96 (112) rows. Carr at right.

#### Shape Raglan Armholes

Cast off 6 sts at beg of the next 2 rows. Dec 1 st at both ends of the next and ev foll alt row 2 (50) times in all, knit 1 (0) rows.

#### 1st Size Only

\*Dec 1 st at both ends of the next and ev foll alt row 8 times in all, knit 2 rows\*. Rept the last 17 rows from \*to\* 4 times more.

#### Both Sizes

60 sts\*\*.

\*Dec 1 st at both ends of the next and ev foll alt row 3 times in all, knit 2 rows\*. Rept the last 7 rows from \*to\* 4 times more. Dec 1 st at both ends of the next row, knit 1 row. RC 224 (250). Cast off rem 28 sts.

### FRONT

Knit as for Back to \*\*. RC 187 (213). Cast off.

### RIGHT SLEEVE

Push 60 Ns at left and right of centre O to WP. 120 Ns altog. Push corresponding Ns on ribber to WP. Arrange Ns for 2 x 1 rib. Using col 1, cast on. RC 000. MT-2, knit 17 rows. Transfer sts to knitter. RC 000. MT. Continue in stockinet stripes, knit 2 rows. Inc 1 st at both ends of

the next and ev foll 5th row 15 times in all. 150 sts. Knit 3 (11) rows. RC 76 (84). Carr at right.

#### Shape Top

Cast off 6 sts at beg of the next 2 rows.

#### 1st Size Only

Dec 1 st at both ends of the next row, knit 1 row.

#### 2nd Size Only

Dec 1 st at both ends of the next and ev foll alt row 4 times in all, knit 1 row.

#### Both Sizes

\*Dec 1 st at both ends of the next and ev foll alt row 14 (3) times in all, knit 2 rows\*. Rept the last 29 (7) rows from

\*to\* 2 (12) times more. 52 sts. RC 167 (185). Carr at left. Cast off 7 sts at beg

and dec 1 st at end of the next row, knit 1 row. Cast off 7 sts at beg and dec 1 st

at end of the next row, knit 1 row. Cast off 6 sts at beg and dec 1 st at end of the next row, knit 1 row. Cast off 6 sts at beg

of the next row. Dec 1 st at beg of the next row. Cast off 2 sts at beg of the next row. Dec 1 st at beg of the next 4

rows, knit 1 row. Dec 1 st at both ends of the next row, knit 1 row. Dec 1 st at end of the next row, knit 1 row. Dec 1 st at

both ends of the next row, knit 2 rows. Dec 1 st at beg of the next 3 rows, knit 1

row. Dec 1 st at beg of the next 2 rows, knit 1 row. Dec 1 st at end of the next

and foll alt row, knit 1 row. Dec 1 st at both ends of the next row, knit 2 rows.

Dec 1 st at beg of the next row, knit 1 row. RC 224 (250). Cast off rem st.

Dec 1 st at beg of the next row, knit 1 row. Fasten off rem st.

### LEFT SLEEVE

Knit as for Right Sleeve but in reverse.

### WELTS

Arrange 120 (135) Ns for 2x1 rib. Using col 1, cast on and knit circular rows in reverse. RC 000. MT-2, knit 77 rows. Transfer sts to knitter. With wrong side of Back facing, pick up sts from below waste yarn and place onto Ns gathering evenly. MT+4, knit 1 row. Cast off. Rept for Front.

### FRONT NECKBAND

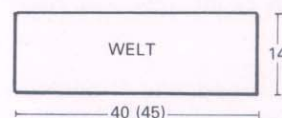
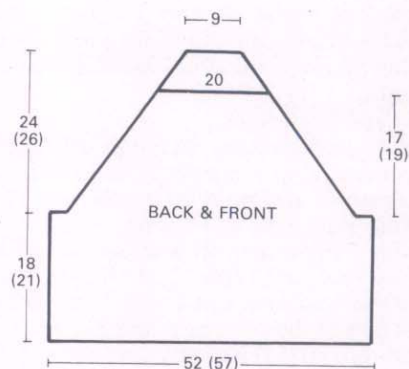
Arrange 42 Ns for double rib. Using col 1, cast on. RC 000. MT. Inc 1 st at both ends of the next and ev foll alt row 5 times in all. 52 sts. Transfer sts to knitter. Knit 1 row. Cast off with waste yarn.

### BACK AND SIDE NECKBAND

Arrange 114 Ns for double rib. Using col 1, cast on. RC 000. MT. Inc 1 st at both ends of the next and ev foll alt row 5 times in all. 124 sts. Transfer sts to knitter. Knit 1 row. Cast off with waste yarn.

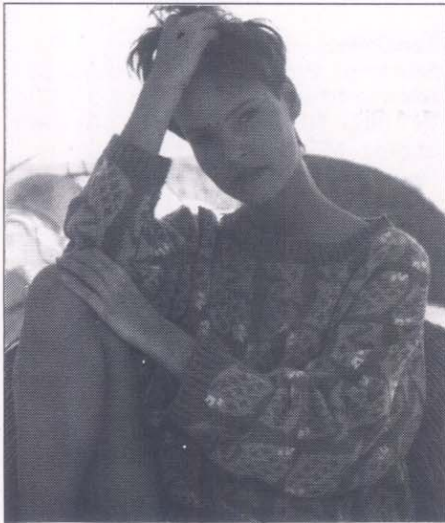
### TO MAKE UP

Pin out to size and steam carefully. Join raglan, side and sleeve seams. Back-stitch neckbands into pos and join seams. Give final light steam.



Continued on page 22

# 4 BLUE FISH SWEATER



For Knitmaster Standard Gauge Punchcard Machines with Ribbing Attachment.

**Sizes:**

To fit 91-96 (101-106) (112-117) cms/  
36-38 (40-42) (44-46) inch bust.

**Materials:**

Knitmaster Aneto 2 ply  
Col 1 (Saxe 2712) – 400 (430) (460) grms  
Col 2 (Aqua 2705) – 280 (310) (340) grms  
Col 3 (Cream 2700) – small amount.

**Tensions:**

Fair Isle (using 2 ends of col 1 and 2 ends of col 2) – 29 sts and 36 rows to 10 cms. TD at approx. 7 (MT)  
2x1 rib (using 2 ends of col 1) – 55 rows to 10 cms. TD's at approx. MT-4.

**Pattern Note:**

Fair Isle – see chart.  
2 ends of col 1 in feeder 1 and 2 ends of col 2 in feeder 2 throughout.

Although Knitmaster Aneto 2ply is a beautiful lightweight yarn, you can also use it double (knitting two ends together) to produce an extremely attractive, heavier weight fabric. We've used it double to knit this unusual Fair Isle sweater – a beautiful alternative to the ever popular sweatshirt, or simply an elegant sweater for any occasion.

**BACK**

Push 82 (89) (97) Ns at left and right of centre O to WP. 164 (178) (194) Ns altog. Push corresponding Ns on ribber to WP. Arrange Ns for 2x1 rib. Using 2 ends of col 1, cast on. RC 000. MT-4, knit 27 rows. Transfer sts to knitter. Insert card and lock on row 1. Take carr across twice without knitting. RC 000. MT. Release card. Set carr for Fair Isle. With 2 ends of col 1 in feeder 1 and 2 ends of col 2 in feeder 2, knit 112 (116) (118) rows. Mark both ends with waste yarn\*. Knit 92 rows. RC 204 (208) (210). Carr at right.

**Shape Back Neck**

Note row number showing on pattern panel. Using a length of col 1, cast off centre 46 sts. Hold Ns at left.

**Knit Right Part as Follows:-**

Knit 1 row. Cast off 4 sts at beg of the next row, knit 1 row. Cast off 3 sts at beg of the next row, knit 1 row. Cast off 2 sts at beg of the next row, knit 2 rows. Cast off rem 50 (57) (65) sts. Carr at right. Set card to row previously noted and lock. Take carr to left. Release card. Using a transfer tool bring Ns back to WP. Knit left part as for right part. Remove card.

**FRONT**

Knit as for Back to \*. Knit 72 rows. RC 184 (188) (190). Carr at right.

**Shape Neck**

Note row number showing on pattern panel. Using a length of col 1, cast off centre 40 sts. Hold Ns at left.

**Knit Right Part as Follows:-**

Knit 1 row. Cast off 3 sts at beg of the next and foll alt row, knit 1 row. Cast off 2'sts at beg of the next row, knit 1 row. Dec 1 st at neck edge on the next and ev foll alt row 4 times in all, knit 14 rows. Cast off rem 50 (57) (65) sts. Carr at right. Set card to row previously noted and lock. Take carr to left. Release card. Using a transfer tool bring Ns back to WP. Knit left part as for right part. Remove card.

**SLEEVES**

Push 41 Ns at left and right of centre O to WP. 82 Ns altog. Push corresponding Ns on ribber to WP. Arrange Ns for 2x1 rib. Using 2 ends of col 1, cast on. RC 000. MT-4, knit 17 rows. Transfer sts to knitter. Insert card and lock on row 1. Take carr across twice without knitting. RC 000. MT. Release card. Set carr for

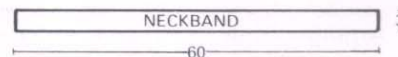
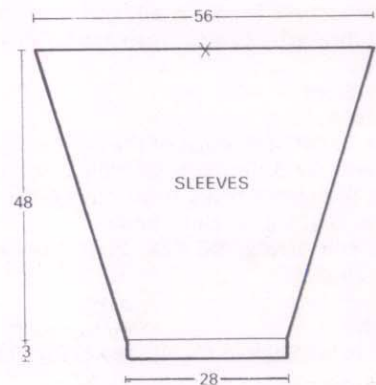
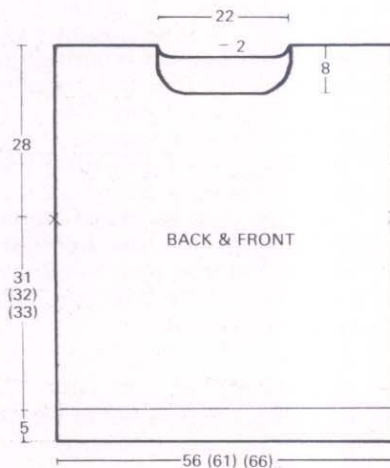
Fair Isle. With 2 ends of col 1 in feeder 1 and 2 ends of col 2 in feeder 2, knit 3 rows. Inc 1 st at both ends of the next and ev foll 4th row 40 times in all. 162 sts. Knit to Row 172. Mark centre with waste yarn. Cast off. Remove card.

**NECKBAND**

Arrange 176 Ns for 2x1 rib. Using 2 ends of col 1, cast on. RC 000. MT-4, knit 17 rows. Transfer sts to knitter. Knit 1 row MT. Cast off with waste yarn.

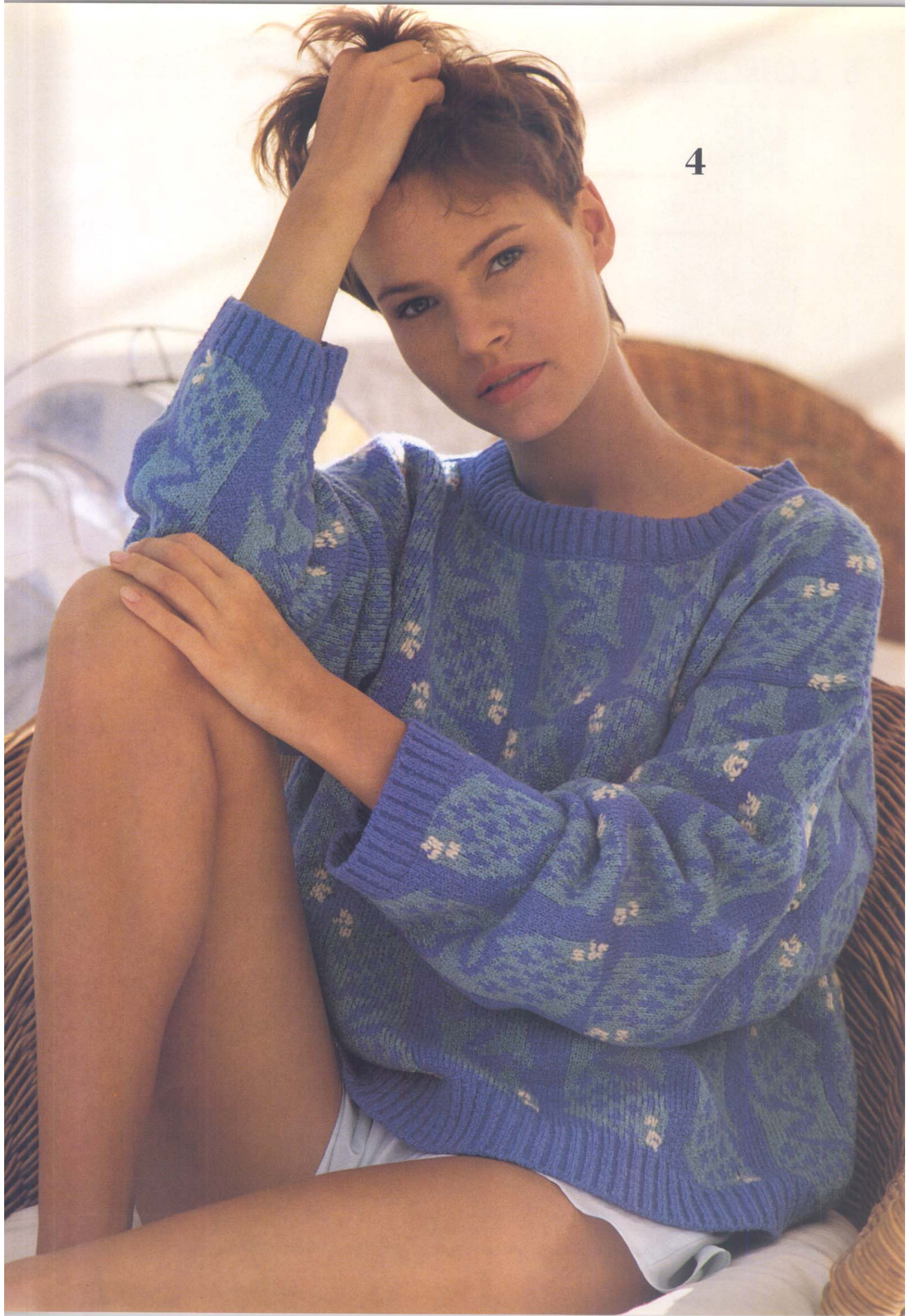
**TO MAKE UP**

Pin out to size and steam carefully. Join shoulder seams. Set in sleeves between marked points. Join side and sleeve seams. Backstitch neckband into pos and join centre back neck seam. Using 2 ends of col 3 swiss darn the eye and mouth of fish. Give final light steam.

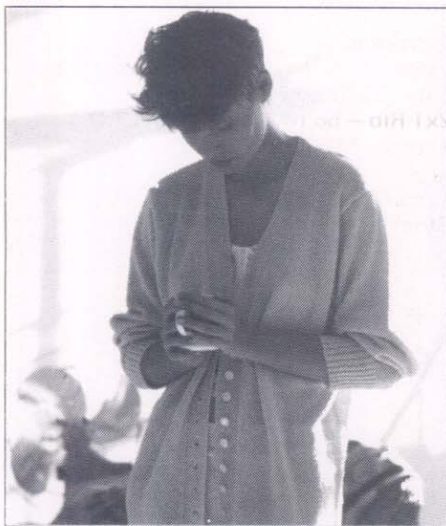


Continued on page 25

4



# 5 LONG-LINE CARDIGAN



Sometimes we forget that a classic plain design can be extremely fashionable as well as being wonderfully useful and wearable. This delightfully simple, long-line cardigan can be the basis of many a fashionable outfit – and it's easy to knit. So, why not knit it in lots of different colours and create a whole new range of fashion outfits.

## BACK

Push 81 (89) Ns at left and right of centre 0 to WP. 162 (178) Ns altog. Push corresponding Ns on ribber to WP. Arrange Ns for 2x1 rib. Using col 1, cast on. RC 000. MT-2, knit 23 rows. Transfer sts to knitter. RC 000. MT. Knit 222 rows. Carr at right.

## Shape Armholes

Cast off 2 sts at beg of the next 4 rows. Dec 1 st at both ends of the next and ev foll alt row 3 times in all, knit 1 row. Dec 1 st at both ends of the next and ev foll 3rd row 3 times in all, knit 2 rows. Dec 1 st at both ends of the next and ev foll 6th row 9 (11) times in all. 124 (136) sts. Knit to Row 372. Carr at right.

## Shape Back Neck

Using a length of col 1, cast off centre 42 sts. Hold Ns at left.

## Knit Right Part as Follows:-

Knit 1 row. Cast off 2 sts at beg of the next and foll alt row. RC 376. Carr at right.

## Shape Shoulder

Cast off 10 (12) sts at beg of the next row, dec 1 st at beg of the next row. Rept the last 2 rows once more. Cast off 10 (12) sts at beg of the next row, knit 1 row. Cast off rem 5 sts. Carr at left. Bring Ns back to WP. Knit left part as for right part, reading left for right.

## RIGHT FRONT

Push 81 (89) Ns at right of centre 0 to WP. Push corresponding Ns on ribber to WP. Arrange Ns for 2x1 rib. Using col 1, cast on. RC 000. MT-2, knit 23 rows.

For Knitmaster Standard Gauge Machines with Ribbing Attachment.

## Sizes:

To fit 86–91 (96–101) cms/34–36 (38–40) inch bust.

## Materials:

Knitmaster Aneto 2ply  
Col 1 (Saffron) – 290 (350) grms  
12 buttons.

## Tensions:

Stockinet – 30 sts and 53 rows to 10 cms. TD at approx. 3 (MT)  
2x1 Rib – 55 rows to 10 cms. TD's at approx. MT-2  
Double Rib – 38 rows to 10 cms. TD's at approx. MT

Transfer sts to knitter. RC 000. MT. Knit 222 rows. Carr at right.

## Shape Front Edge & Armhole

Dec 1 st at left edge on the next and ev foll 6th row 27 times in all, AT THE SAME TIME cast off 2 sts at beg of the next and foll alt row, knit 1 row. Dec 1 st at beg of the next and ev foll alt row 3 times in all, knit 1 row. Dec 1 st at armhole edge on the next and ev foll 3rd row 3 times in all, knit 2 rows. Dec 1 st at armhole edge on the next and ev foll 6th row 9 (11) times in all. Knit to Row 376.

## Shape Shoulder

Cast off 10 (12) sts at beg of the next and ev foll alt row 3 times in all, knit 1 row. Cast off rem 5 sts.

## LEFT FRONT

Knit as for Right Front but in reverse.

## SLEEVES

Push 39 Ns at left and right of centre 0 to WP. 78 Ns altog. Push corresponding Ns on ribber to WP. Arrange Ns for 2x1 rib. Using col 1, cast on. RC 000. MT-2, knit 45 rows. Transfer sts to knitter. RC 000. MT. Knit 1 row. Inc 1 st at both ends of the next and ev foll 4th row 45 times in all. 168 sts. Knit to Row 182.

## Shape Top

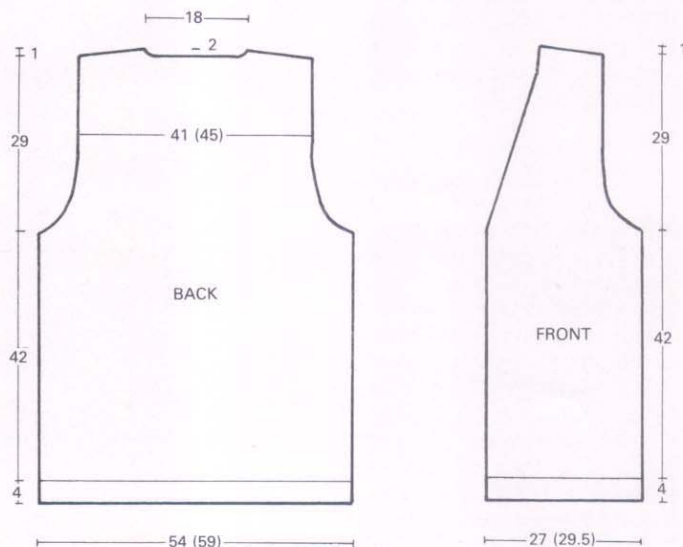
Cast off 3 sts at beg of the next 4 rows and 2 sts at beg of the next 8 rows. Dec 1 st at both ends of the next and foll alt row, knit 1 row. Dec 1 st at both ends of the next and ev foll 3rd row 15 times in all, knit 1 row. Dec 1 st at both ends of the next row, knit 1 row. Cast off 2 sts at beg of the next 8 rows, 3 sts at beg of the next 4 rows, 4 sts at beg of the next 4 rows and 5 sts at beg of the next 6 rows. RC 266. Cast off rem 30 sts.

## FRONT BAND

Arrange 12 Ns for double rib. Using col 1, cast on. RC 000. MT. Knit 8 rows. Make a buttonhole over centre 4 Ns. \*Knit 15 rows. Make a buttonhole over centre 4 Ns\*. Rept from \*to\* 10 more times. 12 buttonholes altog. Continue to knit until band measures 176 cms. Cast off.

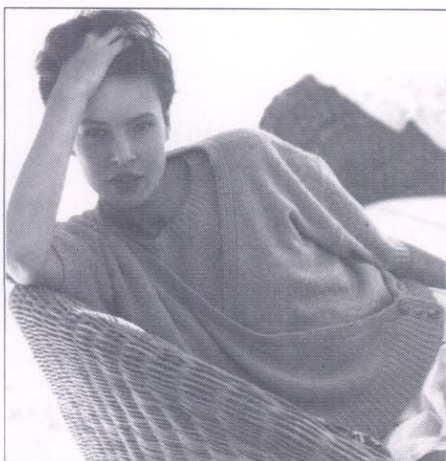
## TO MAKE UP

Pin out to size and steam carefully. Join shoulder seams. Set in sleeves. Join side and sleeve seams. Sew band into pos. Finish buttonholes and sew on buttons to correspond. Give final light steam.



Continued on page 25

# 6 BLUE SHORT SLEEVE CARDIGAN



For Knitmaster Standard Gauge Machines with Ribbing Attachment.

**Sizes:**  
To fit 81–86 (91–96) (101–106) cms/  
32–34 (36–38) (40–42) inch bust.

**Materials:**  
Knitmaster Boucle  
Col 1 (Ciel 1710) – 240 (270) (300)  
grms  
3 buttons; 3 press studs.

**Tensions:**  
Stockinet – 31 sts and 43 rows to 10  
cms. TD at approx. 5 (MT)  
2x1 Rib – 56 rows to 10 cms. TD's at  
approx. MT–4

**Pattern Note:**  
Stockinet.

The wrap over top is with us again this year and looks like becoming a fashion classic. This short sleeve, wrap over cardigan can be worn as part of a twinset, as we've shown it, or simply over a T shirt for a more casual look. Alternatively a short sleeve blouse will create a smarter outfit.

## BACK

Push 84 (92) (100) Ns at left and right of centre 0 to WP. 168 (184) (200) Ns altog. Push corresponding Ns on ribber to WP. Arrange Ns for 2x1 rib. Using col 1, cast on. RC 000. MT–4, knit 45 rows. Transfer sts to knitter. RC 000. MT. Knit 98 (102) (106) rows. Mark both ends with waste yarn. Knit 112 rows. RC 210 (214) (218).

## Shape Back Neck and Shoulder

Using a length of col 1, cast off centre 52 sts. Hold Ns at left.

## Knit Right Part as Follows:-

Cast off 10 (12) (14) sts at beg of the next row, 3 sts at beg of the next row, 10 (12) (14) sts at beg of the next row, 3 sts at beg of the next row, 10 (12) (14) sts at beg of the next row, 2 sts at beg of the next row, 10 (12) (14) sts at beg of the next row, knit 1 row. Cast off rem 10 sts. Take carr to left. Bring Ns back to WP. Knit left part as for right part.

## RIGHT FRONT

Push 84 (92) (100) Ns at left and right of centre 0 to WP. 168 (184) (200) Ns altog. Push corresponding Ns on ribber to WP. Arrange Ns for 2x1 rib. Using col 1, cast on. RC 000. MT–4, knit 6 rows. Counting from the left edge make a buttonhole over Ns 9, 10 and 11. Knit 17 rows. Make a buttonhole over same Ns as before. Knit 17 rows. Make a buttonhole over same Ns as before. Knit 5 rows. RC 45. Transfer sts to knitter. RC 000. MT. Knit 1 row. Cast off 13 sts at beg of the next row, knit 1 row. \*Dec 1 st at left edge on the next and ev foll alt row 4 (4) (3) times in all\*. Rept the last 7 (7) (5) rows from \*to\* 21 (25) (34) more times marking right edge on Row 98

(102) (106). Dec 1 st at left edge on the next and ev foll alt row 7 (3) (11) times in all, knit 1 row. Dec 1 st at left edge on the next and ev foll 3rd row 10 (6) (5) times in all. 50 (58) (66) sts. Knit to Row 210 (214) (218). Carr at right.

## Shape Shoulder

Cast off 10 (12) (14) sts at beg of the next and ev foll alt row 4 times in all, knit 1 row. Cast off rem 10 sts.

## LEFT FRONT

Knit as for Right Front but in reverse.

## SLEEVES

Push 75 Ns at left and right of centre 0 to WP. 150 Ns altog. Push corresponding Ns on ribber to WP. Arrange Ns for 2x1 rib. Using col 1, cast on. RC 000. MT–4, knit 17 rows. Transfer sts to knitter. RC 000. MT. Knit 2 rows. Inc 1 st

at both ends of the next and ev foll 11th row 5 times in all. 160 sts. Knit to Row 52.

## Shape Top

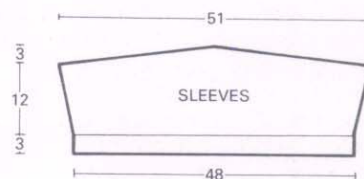
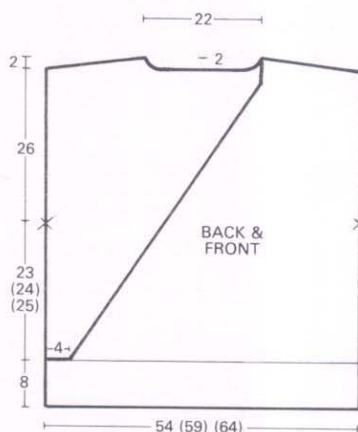
Cast off 10 sts at beg of the next 14 rows. Mark centre with waste yarn. Cast off rem 20 sts.

## FRONT AND BACK NECK BAND

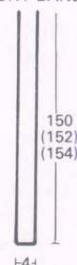
Arrange 14 Ns for 2x1 rib. Using col 1, cast on. RC 000. MT–4, knit until band measures approx. 150 (152) (154) cms. Cast off.

## TO MAKE UP

Pin out to size and steam carefully. Join shoulder seams. Set in sleeves between marked points. Join side and sleeve seams. Sew band into pos. Finish buttonholes and sew on buttons to correspond. Sew 3 press studs inside left front to secure. Give final light steam.

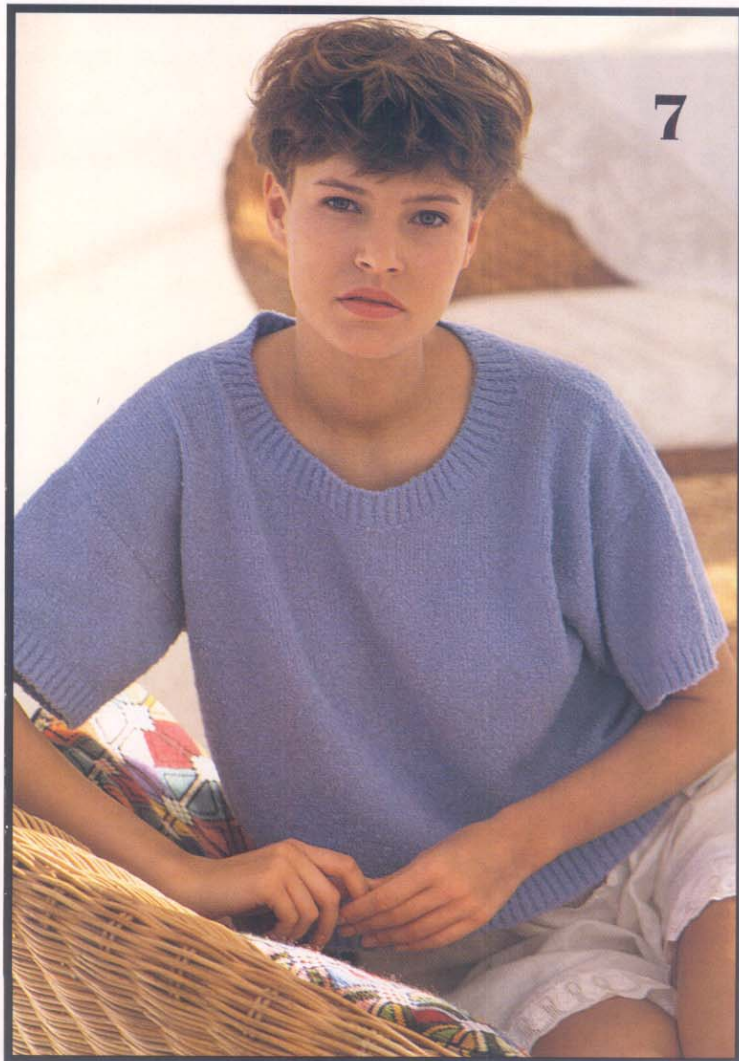


## FRONT BAND

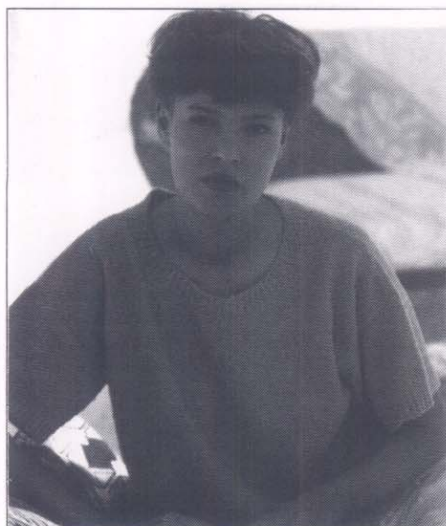


5





# 7 BLUE SHORT SLEEVE TOP



For Knitmaster Standard Gauge Machines with Ribbing Attachment.

**Sizes:**  
To fit 81–86 (91–96) (101–106) cms/  
32–34 (36–38) (40–42) inch bust.

**Materials:**  
Knitmaster Bouclé  
Col 1 (Ciel 1710) – 170 (200) (230)  
grms

**Tensions:**

Stockinet – 31 sts and 43 rows to 10 cms. TD at approx. 5 (MT)  
2x1 Rib – 56 rows to 10 cms. TD's at approx. MT–4

**Pattern Note:**

Stockinet

**This versatile top is quick and easy to knit and will look wonderful knitted in any of the lovely colours included in the Knitmaster Bouclé range. The pastel colours of Apricot, Coral and Lemon will look fresh and Summery while the rich jewel colours of Emperor, Seaspray, Geranium and Royal will make for a more dramatic effect.**

**BACK**

Push 78 (85) (93) Ns at left and right of centre 0 to WP. 156 (170) (186) Ns altog. Push corresponding Ns on ribber to WP. Arrange Ns for 2x1 rib. Using col 1, cast on. RC 000. MT–4, knit 33 rows. Transfer sts to knitter. RC 000. MT. Knit 94 (98) (102) rows. Mark both ends with waste yarn\*. Knit 102 rows. RC 196 (200) (204). Carr at right.

**Shape Back Neck & Shoulder**

Using a length of col 1, cast off centre 56 sts. Hold Ns at left.

**Knit Right Part as Follows:-**

Cast off 9 (11) (13) sts at beg of the next row, 3 sts at beg of the next row, 9 (11) (13) sts at beg of the next row, 2 sts at beg of the next row, 9 (11) (13) sts at beg of the next row, dec 1 st at beg of the next row. Cast off 9 (11) (13) sts at beg of the next row, knit 1 row. Cast off rem 8 (7) (7) sts. Take carr to left. Bring Ns back to WP. Knit left part as for right part.

**FRONT**

Knit as for Back to \*. Knit 58 rows. RC 152 (156) (160). Carr at right.

**Shape Neck**

Using a length of col 1, cast off centre 12 sts. Hold Ns at left.

**Knit Right Part as Follows:-**

Knit 1 row. Cast off 3 sts at beg of the next and ev foll alt row 3 times in all, knit 1 row. Cast off 2 sts at beg of the next and ev foll alt row 5 times in all, knit 1 row. Dec 1 st at neck edge on the

next and ev foll alt row 9 times in all. Knit to Row 196 (200) (204). Carr at right.

**Shape Shoulder**

Cast off 9 (11) (13) sts at beg of the next and ev foll alt row 4 times in all, knit 1 row. Cast off rem 8 (7) (7) sts. Take carr to left. Bring Ns back to WP. Reset RC to 152 (156) (160). Knit left part as for right part.

**SLEEVES**

Push 65 Ns at left and right of centre 0 to WP. 130 Ns altog. Push corresponding Ns on ribber to WP. Arrange Ns for 2x1 rib. Using col 1, cast on. RC 000. MT–4, knit 17 rows. Transfer sts to knitter. RC 000. MT. Knit 2 rows. Inc 1 st at both ends of the next and ev foll 5th

row 8 times in all. 146 sts. Knit to Row 43.

**Shape Top**

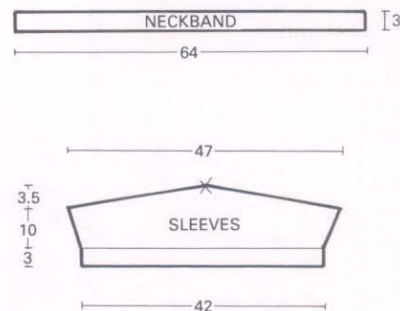
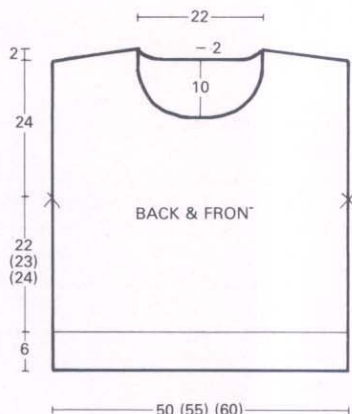
Cast off 8 sts at beg of the next 16 rows. Mark centre with waste yarn. Cast off rem 18 sts.

**NECKBAND**

Arrange 200 Ns for 2x1 rib. Using col 1, cast on. RC 000. MT–4, knit 17 rows. Transfer sts to knitter. Knit 1 row MT. Cast off with waste yarn.

**TO MAKE UP**

Pin out to size and steam carefully. Join shoulder seams. Set in sleeves between marked points. Join side and sleeve seams. Backstitch neckband into pos and join centre back neck seam. Give final light steam.





# 8 CIRCULAR YOKE SWEATER



**This striking circular yoke sweater has been knitted using tuck stitch for the main sections while the circular yoke features a pretty floral Fair Isle. Very small amounts of yarn have been used to knit the yoke so you might like to create colour combinations of your own which will use up some of your leftover yarns.**

## BACK

Push 75 (83) (91) Ns at left and right of centre 0 to WP. 150 (166) (182) Ns altog. Push corresponding Ns on ribber to WP. Arrange Ns for 1x1 rib. Using 2 ends of col 1, cast on. RC 000. MT-1, knit 17 rows. Transfer sts to knitter. Insert card A and lock on row 1. Take carr across twice without knitting. RC 000. MT. Release card. Set carr for tuck stitch, using 1 end of col 1. Knit 228 (248) (268) rows.

### Shape Raglan Armholes

Cast off 6 sts at beg of the next 2 rows\*.  
1st Size Only

Dec 1 st at both ends of the next and ev foll 4th row 15 times in all, knit 3 rows.  
2nd & 3rd Sizes Only

Dec 1 st at both ends of the next and ev foll alt row (9) (33) times in all, knit 1 row.

### All Sizes

Dec 1 st at both ends of the next and ev foll 3rd row 8 (22) (6) times in all. 92 sts. RC 312 (332) (352). Carr at right.

### Shape Back Neck

Note row number showing on pattern panel. Using a length of col 1, cast off centre 38 sts. Hold Ns at left.

### Knit Right Part as Follows:-

Knit 1 row. Cast off 3 sts at beg of the next row, dec 1 st at beg of the next row, cast off 3 sts at beg of the next row, knit 1 row. Cast off 3 sts at beg and dec 1 st at end of next row, knit 1 row. Cast off 3 sts at beg of the next row, dec 1 st at beg of next row. Cast off 2 sts at beg of the next row, knit 1 row. Cast off 2 sts

For Knitmaster Standard Gauge Punchcard Machines with Ribbing Attachment.

## Sizes:

To fit 81-86 (91-96) (101-106) cms/  
32-34 (36-38) (40-42) inch bust.

## Materials:

Knitmaster Aneto 2ply  
Col 1 (Red Pepper) - 200 (250) (300) grms  
Col 2 (Black) - 30 grms  
Col 3 (Winter Green) - small amount  
Small amount yellow and pale pink embroidery silk for swiss darning.

## Tensions:

Tuck Stitch - 31 sts and 95 rows to 10 cms. TD at approx. 3 (MT)  
Fair Isle - 34 sts and 52 rows to 10 cms. TD at approx. MT  
1x1 Rib (using 2 ends) - 54 rows to 10 cms. TD's at approx. MT-1

## Pattern Note:

Tuck Stitch - see chart A  
Fair Isle - see chart B.

at beg and dec 1 st at end of the next row, knit 1 row. Dec 1 st at beg of the next 3 rows, knit 1 row. Dec 1 st at both ends of the next row, knit 1 row. Dec 1 st at beg of the next row. RC 332 (352) (372). Fasten off rem st. Carr at right. Set card to row previously noted and lock. Take carr to left. Release card. Using a transfer tool bring Ns back to WP. Reset RC to Row 312 (332) (352). Knit left part as for right part. Remove card.

## FRONT

Knit as for Back to \*.

Dec 1 st at both ends of the next and ev foll 4th (alt) (alt) row 4 (7) (7) times in all, knit 1 row. 130 (140) (156) sts. RC 244 (264) (284). Carr at right.

### Shape Front Neck

Note row number showing on pattern panel. Using a length of col 1, cast off centre 12 sts. Hold Ns at left.

### Knit Right Part as Follows:-

#### 1st Size Only

Dec 1 st at raglan edge on the 3rd and ev foll 4th row 11 times in all, knit 3 rows, AT THE SAME TIME knit 1 row.

Cast off 5 sts at beg of the next row, knit 1 row. Cast off 4 sts at beg of the next row, knit 1 row. Cast off 3 sts at beg of the next and ev foll alt row 3 times in all, knit 1 row. Cast off 2 sts at beg of the next and ev foll alt row 3 times in all, knit 1 row.

Dec 1 st at neck edge on the next and ev foll alt row 15 times in all. Dec 1 st at beg of the next 2 rows, knit 1 row.

Dec 1 st at both ends of the next row, knit 1 row. Dec 1 st at beg of the next 3 rows, knit 2 rows. RC 300. Cast off rem 2 sts.

#### 2nd Size Only

Dec 1 st at beg of the next row. Cast off 5 sts at beg of the next row. Dec 1 st at beg of the next row. Cast off 4 sts at beg of the next row. Dec 1 st at raglan edge on the next and ev foll 3rd row 17 times in all, AT THE SAME TIME knit 1 row. Cast off 3 sts at beg of the next and ev foll alt row 3 times in all, knit 1 row. Cast

off 2 sts at beg of the next and ev foll alt row 3 times in all, knit 1 row. Dec 1 st at neck edge on the next and ev foll alt row 19 times in all, knit 2 rows. RC 320. Cast off rem 2 sts.

#### 3rd Size Only

Dec 1 st at raglan edge on the next and ev foll alt row 27 times in all, knit 3 rows, AT THE SAME TIME knit 1 row.

Cast off 5 sts at beg of the next row, knit 1 row. Cast off 4 sts at beg of the next row, knit 1 row. Cast off 3 sts at beg of the next and ev foll alt row 3 times in all, knit 1 row.

Cast off 2 sts at beg of the next and ev foll alt row 3 times in all, knit 1 row. Dec 1 st at neck edge on the next and ev foll alt row 19 times in all, knit 2 rows. RC 340. Cast off rem 2 sts.

#### All Sizes

Carr at right. Set card to row previously noted and lock. Take carr to left. Release card. Using a transfer tool bring Ns back to WP. Reset RC to 244 (264) (284). Knit left part as for right part. Remove card.

RIGHT SLEEVE  
Push 47 Ns at left and right of centre 0 to WP. 94 Ns altog. Push corresponding Ns on ribber to WP. Arrange Ns for 1x1 rib. Using 2 ends of col 1, cast on. RC 000. MT-1, knit 17 rows. Transfer sts to knitter. Insert card A and lock on row 1. Take carr across twice without knitting. RC 000. MT. Release card. Set carr for tuck stitch, using 1 end of col 1. Knit 1 row. Inc 1 st at both ends of the next and ev foll 10th row 21 times in all. 136 sts. Knit to Row 218. Carr at right.

## RIGHT SLEEVE

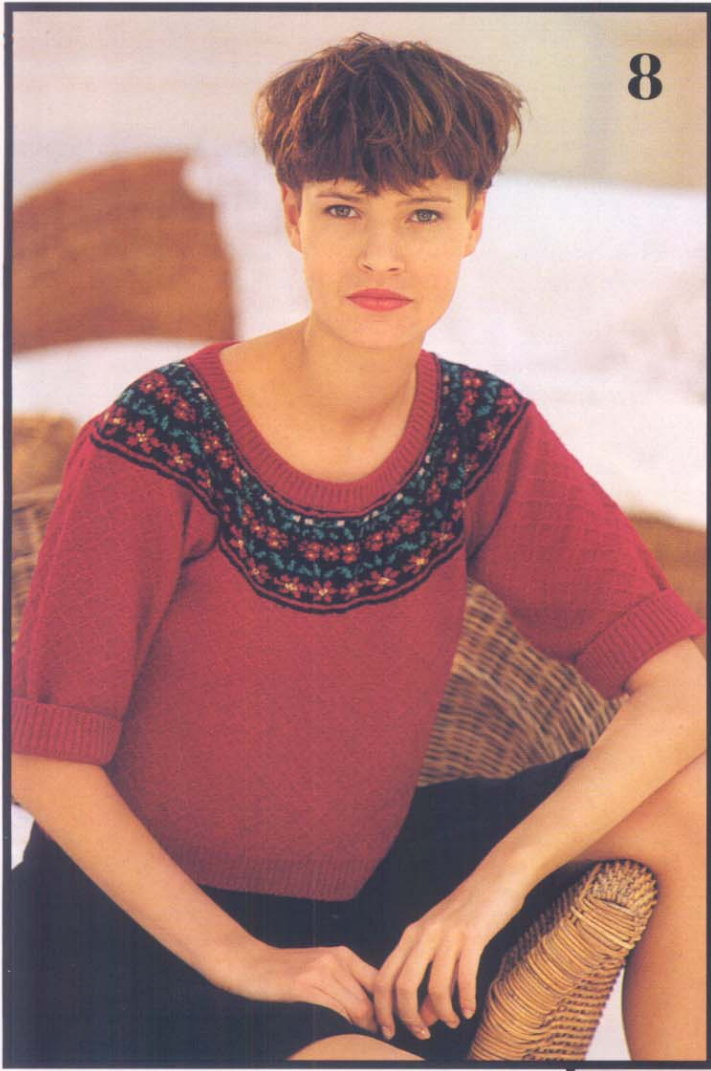
Shape Raglan Top  
Cast off 6 sts at beg of the next 2 rows.

Dec 1 st at both ends of the next and ev foll 4th row 12 times in all, knit 1 row. 100 sts. RC 266. Carr at right.

Note row number showing on pattern panel. Using a length of col 1, cast off 10 sts at left and 5st at right of centre 0. Hold Ns at left.

Knit Right Part as Follows:-

Continued on page 21



# 9 LACE AND FAIR ISLE CARDIGAN



This pretty lacy cardigan has a Fair Isle border which uses the same punchcard as our circular yoke sweater (pattern 8). If you want to knit both designs using the same colours as we have, you'll be able to make use of the same cone of black and the same cone of red for both designs.

## BACK

Push 84 (92) (100) Ns at left and right of centre 0 to WP. 168 (184) (200) Ns altog. Push corresponding Ns on ribber to WP. Arrange Ns for 2x1 rib. Using col 1, cast on. RC 000. MT-2, knit 33 rows. Transfer sts to knitter. Insert special card A and lock on row 1. Change to lace carriage. Set edge pins 2 sts in from each edge. Take carr across twice without knitting. RC 000. MT. Release card. Continue in Fashion Lace, knit 158 (164) (168) rows.

## Shape Armholes

Cast off 7 (8) (10) sts at beg of the next 2 rows. 154 (168) (180) sts. Knit 104 (110) (110) rows. RC 264 (276) (280). Carr at right.

## Shape Back Neck

Note row number showing on pattern panel. Using a length of col 1, cast off centre 54 sts. Using nylon cord, hold Ns at left.

## Knit Right Part as Follows:-

Knit 1 row. \*Cast off 3 sts at beg of the next row, knit 1 row. Cast off 2 sts at beg of the next and ev foll alt row 3 times in all, knit 1 row. Dec 1 st at neck edge on the next and ev foll alt row 6 times in all. RC 284 (296) (300). Carr at right.

## Shape Shoulder

Cast off 6 (7) (8) sts at beg of the next and ev foll alt row 5 times in all, knit 1 row. Cast of rem 5 (7) (8) sts\*. Carr at right. Set card to row previously noted and lock. Take carr across twice without knitting. Carr at right. Unravel nylon cord bringing Ns back to WP. Reset RC to Row 264 (276) (280). Release card.

For Knitmaster Standard Gauge Punchcard Machines with Lace Carriage and Ribbing Attachment

## Sizes:

To fit 81-86 (91-96) (101-106) cms/ 32-34 (36-38) (40-42) inch bust.

## Materials:

Knitmaster Aneto 2ply  
Col 1 (Black) - 310 (360) (410) grms  
Col 2 (Red Pepper) - small amount  
Col 3 (Winter Green) - small amount  
Small amount of embroidery silk in yellow and pale pink.  
6 buttons.

## Tensions:

Fashion Lace - 32 sts and 51 rows to 10 cms. TD at approx. 3 (MT)  
Fair Isle - 33 sts and 55 rows to 10 cms. TD at approx. MT  
2x1 Rib - 65 rows to 10 cms. TD's at approx. MT-2  
Double Rib - 26 sts and 44 rows to 10 cms. TD's at approx. MT-1

## Pattern Note:

Fashion Lace - see chart A.  
Fair Isle - see chart B from circular yoke sweater.

Continue in Fashion Lace. Knit as given for right part from \*to\* but read left for right.

## RIGHT FRONT LACE PANEL

Lock card on row 1. Push Ns 40 to 84 (92) (100) at right of centre 0 to WP. 45 (53) (61) Ns altog. Using main carriage and waste yarn, cast on and knit several rows ending with carr at left. MT. Using col 1, knit 1 row. Change to lace carriage. Set edge pins 2 sts in from each edge. Take carr across twice without knitting. RC 000. MT. Release card. Continue in Fashion Lace, knit 158 (164) (168) rows. (Knit 1 row extra for Left Front Only). Carr at right.

## Shape Armhole

Cast off 7 (8) (10) sts at beg of the next row. Knit 63 (69) (69) rows. Dec 1 st at left edge on the next and ev foll 26th row 3 times in all, knit 9 rows. RC 284 (296) (300). Carr at right.

## Shape Shoulder

Cast off 6 (7) (8) sts at beg of the next and ev foll alt row 5 times in all, knit 1 row. Cast off rem 5 (7) (8) sts.

## LEFT FRONT

Knit as for Right Front but note alteration in number of rows worked and read left for right. Remove card.

## FRONT FAIR ISLE PANELS (knit 2)

Insert special card B and lock on row 1. Push 73 (76) (78) Ns at left and right of centre 0 to WP. 146 (152) (156) sts. Using waste yarn cast on and knit several rows ending with carr at right. RC 000. MT. Using col 1, knit 7 rows. Release card. Set carr for Fair Isle. Col 1 in feeder 1, Col 2 in feeder 2, knit 10 rows. Col 1 in feeder 1 only, knit 2 rows. Col 1 in feeder 1, Col 3 in feeder 2, knit 6 rows. Col 1 in feeder 1 only, knit 2 rows. Col 1 in feeder 1, Col 2 in feeder 2, knit 10 rows. Col 1 in feeder 1 only, knit 2 rows. Col 1 in feeder 1, Col 3 in feeder 2, knit 5 rows. Col 1 in feeder 1 only, knit 1 row. Col 1 in feeder 1, Col 3 in feeder 2,

knit 3 rows. Set carr for stockinet. Knit 7 rows Col 1. Cast off.

## FRONT WELTS

Pin out front lace and front Fair Isle panels to size and steam carefully. Backstitch Fair Isle panels to lace panels. Arrange 77 (85) (90) Ns for 2x1 rib. Using col 1, cast on and knit circular rows in reverse. RC 000. MT-2, knit 33 rows. Transfer sts to knitter. With wrong side facing, pick up sts from below waste yarn on front lace panel and lower edge of front Fair Isle panel and place onto Ns. MT+4, knit 1 row. Cast off.

## SLEEVES

Push 42 Ns at left and right of centre 0 to WP. 84 Ns altog. Push corresponding Ns on ribber to WP. Arrange Ns for 2x1 rib. Using col 1, cast on. RC 000. MT-2, knit 33 rows. Transfer sts to knitter. Insert special card A and lock on row 1. Change to lace carriage. Set edge pins 2 Ns in from edge of knitting. Take carr across twice without knitting. RC 000. MT. Release card. Continue in Fashion Lace, knit 2 (1) (1) rows. Inc 1 st at both ends of the next and ev foll 5th row 38 (42) (42) times in all, AT THE SAME TIME when RC shows 200 (198) (195) mark both ends with waste yarn. 160 (168) (168) sts. Knit to Row 210.

## Shape Top

Cast off 9 (10) (10) sts at beg of the next 16 rows. Mark centre with waste yarn, cast off rem 16 (8) (8) sts.

## BACK AND SIDE NECKBAND

Arrange 142 Ns for double rib. Using col 1, cast on. RC 000. MT-1, inc 1 st at both ends of the next and ev foll alt row 6 times in all. 154 sts. Transfer sts to knitter. Knit 1 row MT. Cast off with waste yarn.

## LEFT FRONT NECKBAND

Arrange 34 Ns for double rib. Using col 1, cast on. RC 000. MT-1, inc 1 st at right edge on the next and ev foll 4th

row 3 times in all, knit 2 rows. Transfer sts to knitter. Knit 1 row MT. Cast off with waste yarn.

**RIGHT FRONT NECKBAND**

Arrange 34 Ns for double rib. Using col 1, cast on. RC 000. MT-1, inc 1 st at left edge on the next and foll 4th row, knit 1 row. Counting from the right edge make a buttonhole over Ns 6, 7, 8 & 9. Knit 2 rows. Inc 1 st at left edge on the next row, knit 2 rows. Transfer sts to knitter. Knit 1 row MT. Cast off with waste yarn.

**BUTTONHOLE BAND**

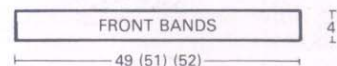
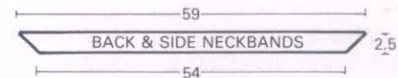
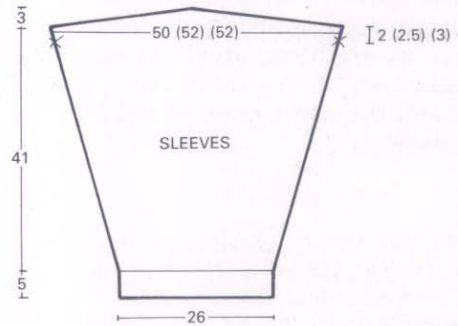
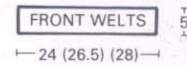
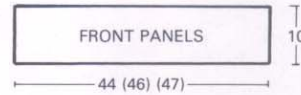
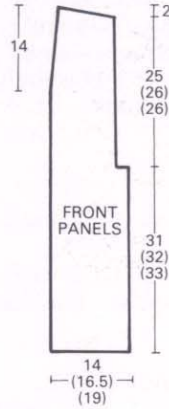
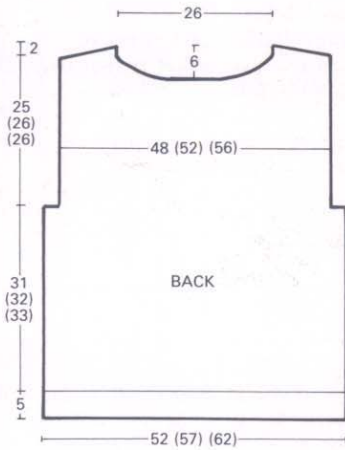
Arrange 128 (134) (136) Ns for double rib. Using col 1, cast on. RC 000. MT-1, knit 9 rows. Make 5 evenly spaced buttonholes over 4 Ns. Knit 9 rows. Transfer sts to knitter. Knit 1 row MT. Cast off with waste yarn.

**BUTTON BAND**

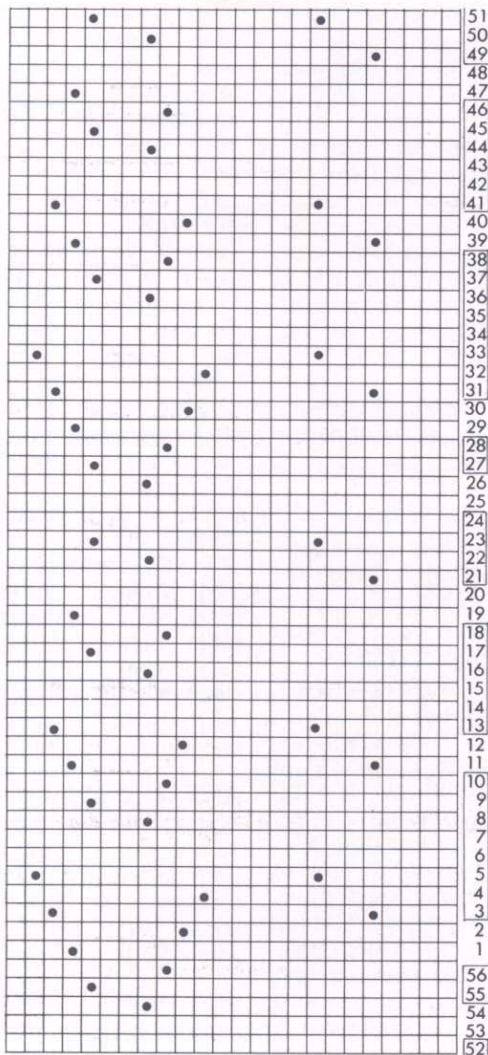
Knit as for Buttonhole Band but omit buttonholes.

**TO MAKE UP**

Pin out to size and steam carefully. Join shoulder seams. Set in sleeves sewing rows above markers to cast off sts at armhole. Join side and sleeve seams. Backstitch front bands into pos. Backstitch neckband into pos and join seams. Finish buttonholes and sew on buttons to correspond. Swiss darn centre of flowers with yellow embroidery silk and edges of buds with pink embroidery silk as shown in photograph. Give final light steam.



LACE CARD



## PATTERN 8

Continued from page 17

Dec 1 st at raglan edge on the 3rd and ev foll 4th row 14 times in all, AT THE SAME TIME knit 1 row. Cast off 3 sts at beg of the next and foll alt row, knit 1 row. Cast off 2 sts at beg of the next and foll alt row, knit 1 row. Dec 1 st at beg of the next and ev foll alt row 12 times in all, knit 1 row. Dec 1 st at left edge on the next and ev foll 3rd row 8 times in all, knit 1 row. RC 322. Fasten off rem st. Carr at right. Set card to row previously noted and lock. Take carr to left. Release card. Using a transfer tool bring Ns back to WP. Reset RC to 266. Dec 1 st at raglan edge on the 3rd and ev foll 4th row 6 times in all, AT THE SAME TIME knit 1 row. Cast off 5 sts at beg of the next and foll alt row, knit 1 row. Cast off 4 sts at beg of the next row, knit 1 row. Cast off 3 sts at the beg of the next and ev foll alt row 3 times in all, knit 1 row. Cast off 2 sts at beg of the next and ev foll alt row 4 times in all, knit 1 row. Dec 1 st at beg of the next and foll alt row. RC 290. Fasten off rem st. Remove card.

### LEFT SLEEVE

Knit as for Right Sleeve but in reverse.

### BACK YOKE

#### 1st Piece

Insert card B and lock on row 1. Push 78 Ns at left and right of centre 0 to WP. 156 Ns altog. \*Using waste yarn, cast on. Push Ns to HP. Using col 2, cast on by hand. Push Ns to UWP. RC 000. MT. Knit 2 rows. Using col 1, knit 2 rows. Using col 2, knit 2 rows. Release card. Set carr for Fair Isle. Col 2 in feeder 1, Col 1 in feeder 2, knit 10 rows. Col 2 in feeder 1, knit 1 row. Lock card. Set carr for stockinet. Using waste yarn, knit several rows and release from machine\*.

#### 2nd Piece

Push 68 Ns at left and right of centre 0 to WP. 136 Ns altog. \*With wrong side of first piece facing, pick up sts from below waste yarn and place onto Ns gathering evenly. RC 000. Release card. Set carr for Fair Isle. Col 1 in feeder 1 only, knit 1 row. Col 2 in feeder 1, Col 3 in feeder 2, knit 6 rows. Col 2 in feeder 1 only, knit 1 row. Lock card. Set carr for stockinet. Using waste yarn knit several rows and release from machine\*.

#### 3rd Piece

Push 55 Ns at left and right of centre 0 to WP. 110 Ns altog. \*With wrong side of second piece facing, pick up sts from below waste yarn and place onto Ns gathering evenly. RC 000. Release card. Set carr for Fair Isle. Col 1 in feeder 1 only, knit 1 row. Col 2 in feeder 1, Col 1 in feeder 2, knit 10 rows. Col 2 in feeder 1 only, knit 1 row. Lock card. Set carr for stockinet. Using waste yarn knit several rows and release from machine\*.

#### 4th Piece

Push 41 Ns at left and right of centre 0 to WP. 82 Ns altog. \*With wrong side of 3rd piece facing, pick up sts from below

waste yarn and place onto Ns gathering evenly. RC 000. Release card. Set carr for Fair Isle. Col 1 in feeder 1 only, knit 1 row. Col 2 in feeder 1, Col 3 in feeder 2, knit 5 rows. Col 2 in feeder 1 only, knit 1 row. Col 2 in feeder 1, Col 3 in feeder 2, knit 3 rows. Lock card on row 1. Set carr for stockinet. Using col 2, knit 2 rows. Using col 1, knit 2 rows. Using col 2, knit 2 rows. Cast off loosely\*.

### FRONT YOKE

#### 1st Piece

Push 96 Ns at left and right of centre 0 to WP. 192 Ns altog. Knit as for first piece of Back Yoke from \*to\*.

#### 2nd Piece

Push 82 Ns at left and right of centre 0 to WP. 164 Ns altog. Knit as for second piece of Back Yoke from \*to\*.

#### 3rd Piece

Push 68 Ns at left and right of centre 0 to WP. 136 Ns altog. Knit as for third

piece of Back Yoke from \*to\*.

#### 4th Piece

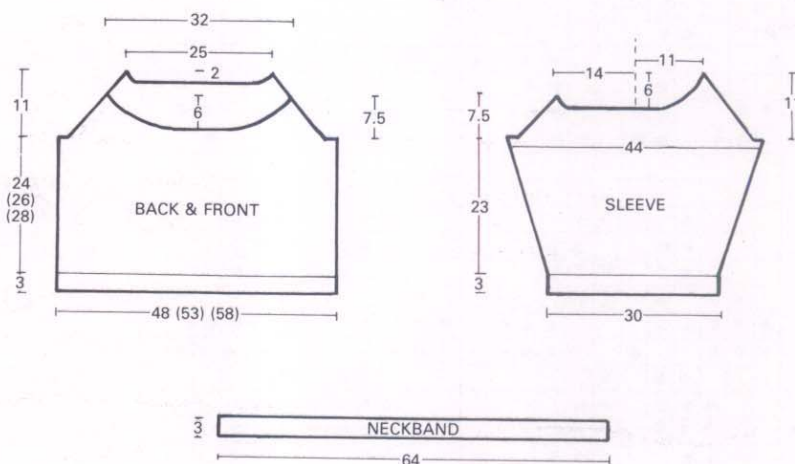
Push 55 Ns at left and right of centre 0 to WP. 110 Ns altog. Knit as for fourth piece of Back Yoke from \*to\*.

### NECKBAND

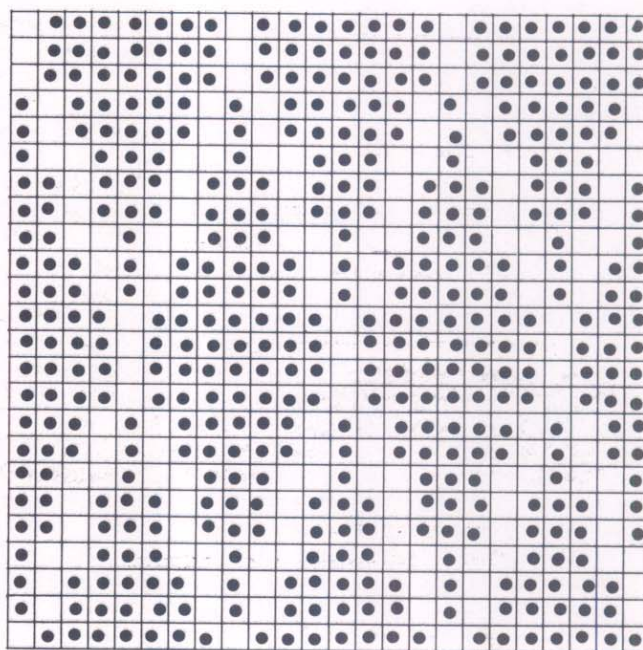
Arrange 200 Ns for 1x1 rib. Using 2 ends of col 1, cast on. RC 000. MT-1, knit 16 rows. Transfer sts to knitter. Knit 1 row MT. Cast off with waste yarn.

### TO MAKE UP

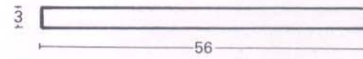
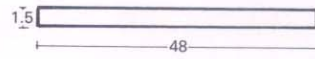
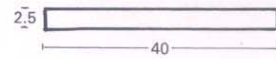
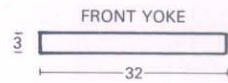
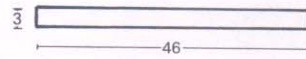
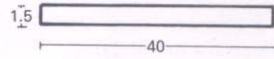
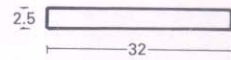
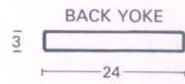
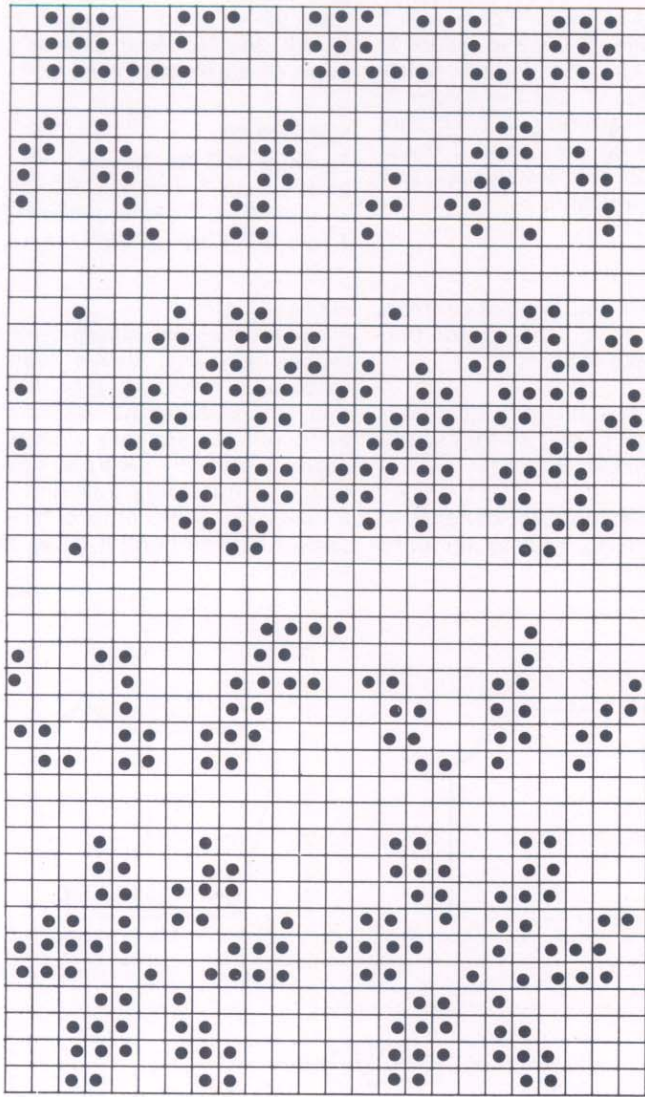
Pin out to size and steam carefully. Join raglan, side and sleeve seams. Backstitch back and front yoke into pos and join shoulder seams. Backstitch neckband into pos and join centre back neck seam. Embroider centre of flowers with yellow embroidery silk and edges of buds with pink embroidery silk as shown in photograph. Give final light steam.



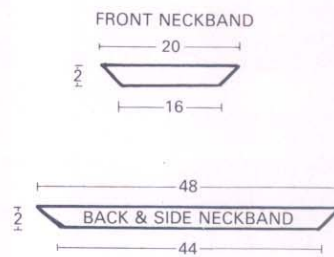
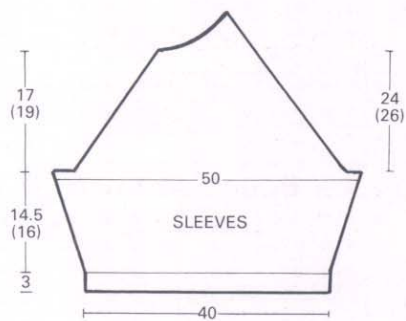
CARD A



CARD B



**PATTERN 3**  
Continued from page 9



## PATTERN 2

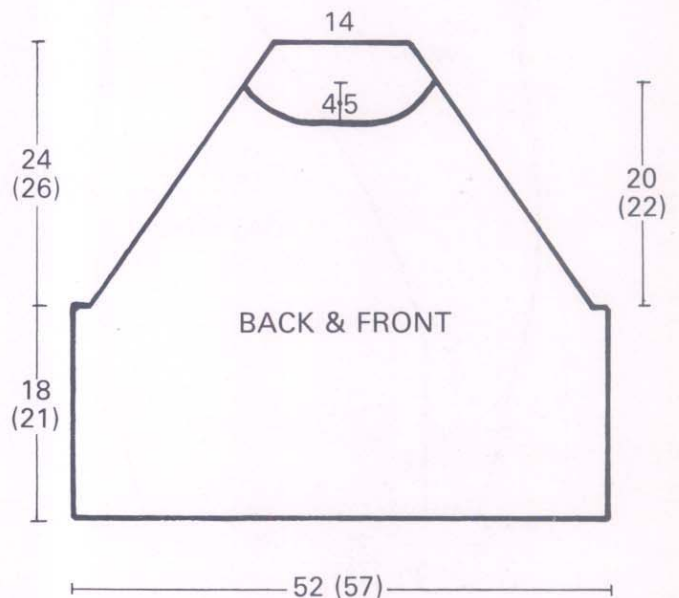
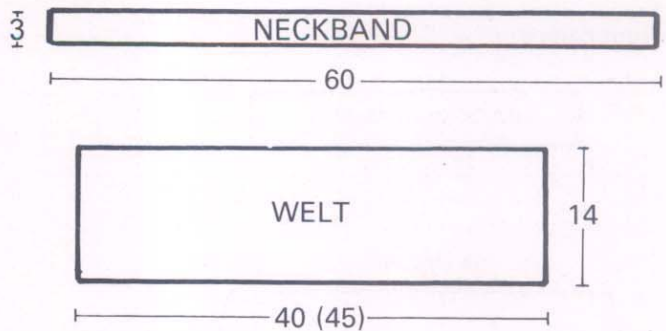
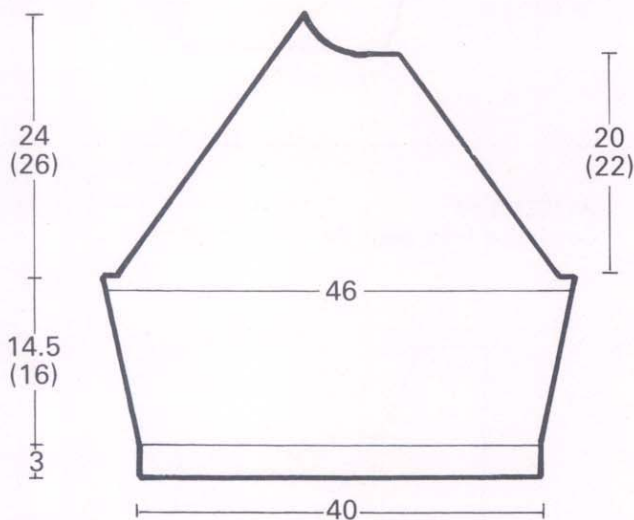
Continued from page 8

### NECKBAND

Arrange 180 Ns for 2x1 rib. Using col 1, cast on. RC 000. MT-2, knit 16 rows. Transfer sts to knitter. MT, knit 1 row. Cast off with waste yarn.

### TO MAKE UP

Pin out to size and steam carefully. Join raglan, side and sleeve seams. Back-stitch neckband into pos and join centre back neck seam, fold in half and catch down on the inside. Give final light steam.



## WHERE TO BUY KNITMASTER BOUCLÉ AND ANETO 2PLY YARN

All of the beautiful knitwear designs in this pattern booklet have been knitted in Knitmaster's fabulous fashion yarns — Bouclé and Aneto 2ply.

Both of these yarns are superb quality and lightly textured — just perfect for this year's fashion knitwear.

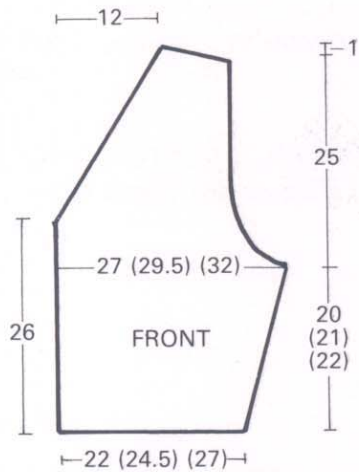
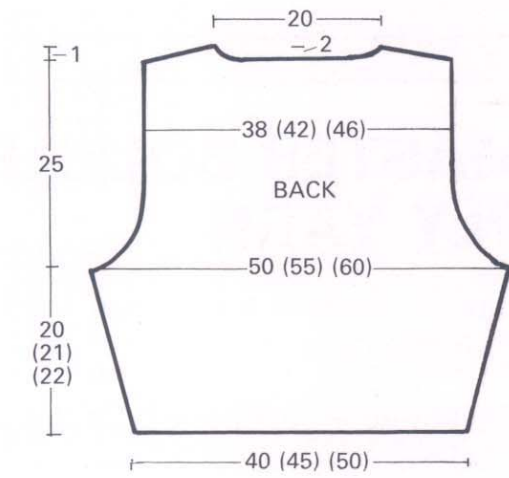
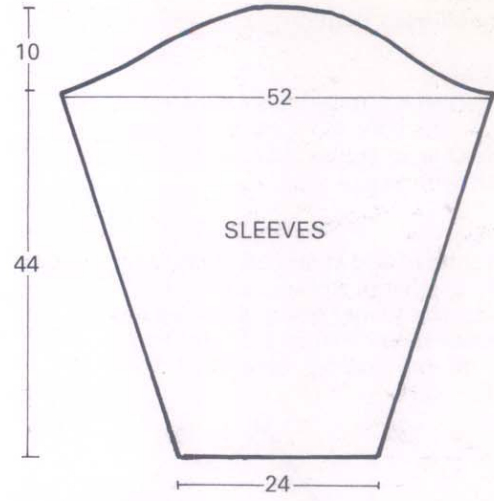
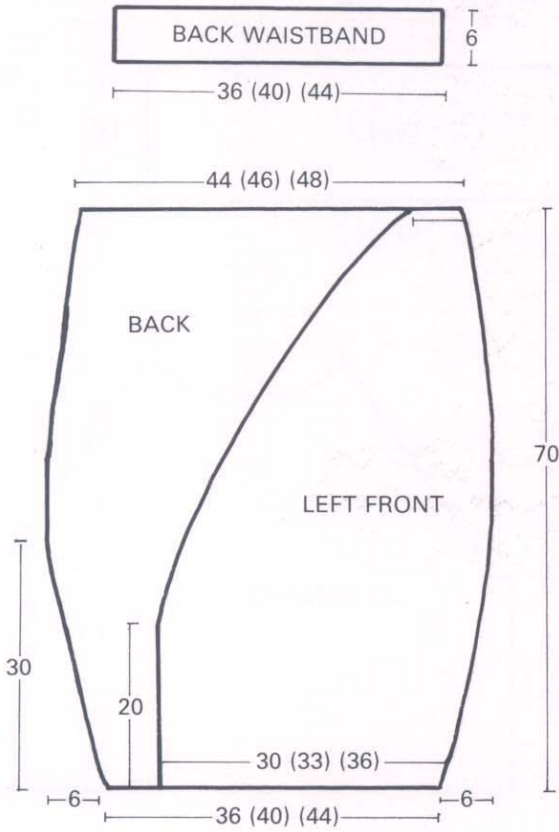
Knitmaster Bouclé and Aneto 2ply are available from your local Knitmaster Stockist. If he doesn't have the Knitmaster yarn you need in the colour you've chosen, ask him to order it for you, from Knitmaster.

If you have any difficulties obtaining either Knitmaster Bouclé or Aneto 2ply, send a large SAE for your FREE shade fringe and SPECIAL POST FREE order form to:—

**Knitmaster Ltd.**  
**39-45 Cowleaze Road,**  
**Kingston-upon-Thames,**  
**Surrey. KT2 6DT.**

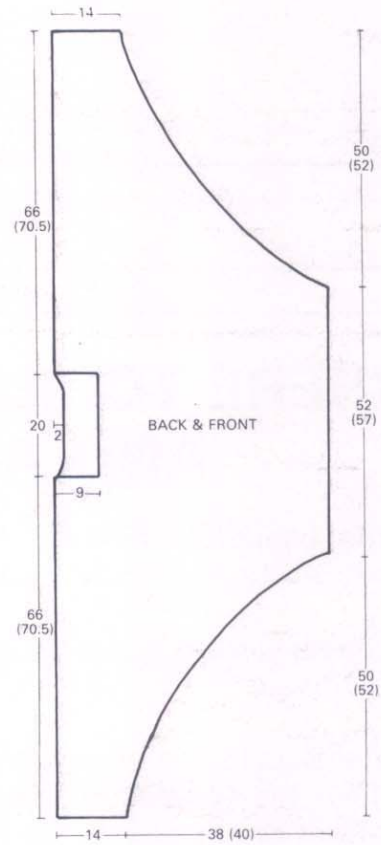
**PATTERN 1**

Continued from page 7



**PATTERN 17**

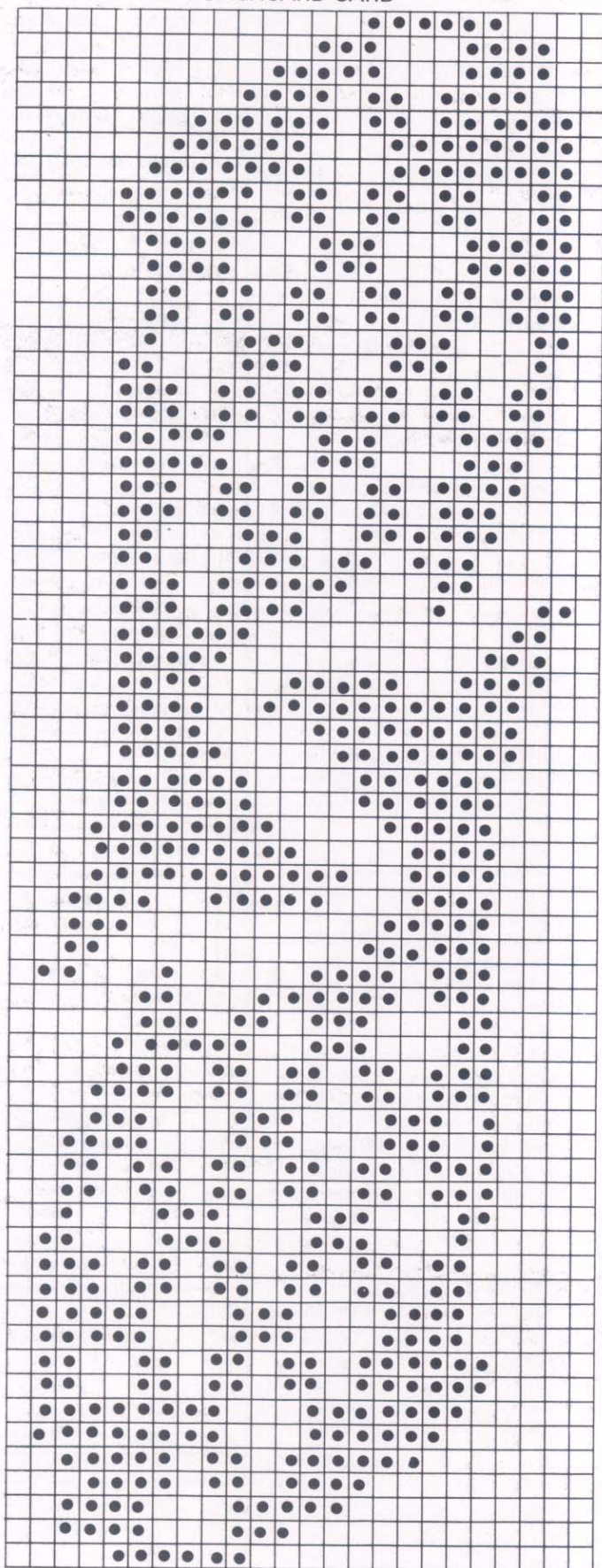
Continued from page 42



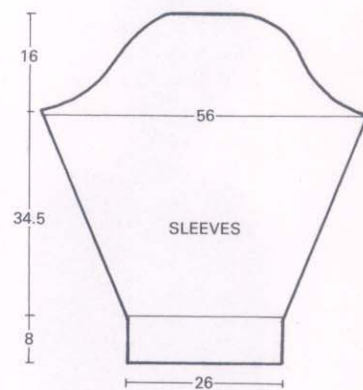


**PATTERN 4**  
Continued from page 10

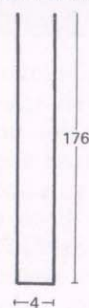
PUNCHCARD CARD



**PATTERN 5**  
Continued from page 12



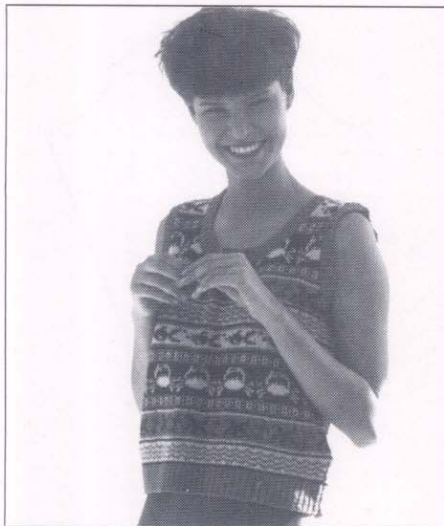
FRONT BAND



**ABBREVIATIONS**

- |        |   |                           |
|--------|---|---------------------------|
| Alt    | — | Alternate                 |
| Altog  | — | Altogether                |
| Approx | — | Approximately             |
| Beg    | — | Beginning                 |
| Carr   | — | Carriage                  |
| Cm(s)  | — | Centimetre(s)             |
| Dec    | — | Decrease                  |
| Ev     | — | Every                     |
| Foll   | — | Following                 |
| HP     | — | Holding Position          |
| Inc    | — | Increase                  |
| MT     | — | Main Tension              |
| N      | — | Needle                    |
| Ns     | — | Needles                   |
| NWP    | — | Non Working<br>Position   |
| Patt   | — | Pattern                   |
| Pos    | — | Position                  |
| Rept   | — | Repeat                    |
| Rem    | — | Remaining                 |
| RC     | — | Row Counter               |
| St     | — | Stitch                    |
| Sts    | — | Stitches                  |
| TD     | — | Tension Dial              |
| Tog    | — | Together                  |
| UWP    | — | Upper Working<br>Position |
| WP     | — | Working Position          |

# 10 'SEASIDE' VEST



Seaside motifs of waves, starfish, crabs and fish give this Fair Isle design a special holiday feel. Patterns for knitted vests are not easy to come by so consider using this design more than once by substituting our seaside Fair Isle for some of your own favourite Fair Isles. Also, consider using this Fair Isle design for childrens tops too.

## BACK

Push 79 (87) Ns at left and right of centre 0 to WP. 158 (174) Ns altog. Using waste yarn, cast on and knit several rows ending with carr at right. Insert card and lock on row 1. Take carr across twice without knitting. RC 000. MT. Release card. Set carr for Fair Isle. Continue in pattern given in note, knit 130 (138) rows. Carr at right.

## Shape Armholes

Cast off 5 (7) sts at beg of the next 2 rows, 3 sts at beg of the next 4 rows and 2 sts at beg of the next 6 (8) rows. Dec 1 st at both ends of the next and ev foll alt row 5 (9) times in all, knit 1 row. Dec 1 st at both ends of the next and foll 4th row, knit 5 rows\*. Dec 1 st at both ends of the next and foll 6th row. 106 sts. Knit 31 rows. RC 200 (218). Carr at right.

## Shape Back Neck

Note row number showing on pattern panel and pos in pattern. Using a length of appropriate col, cast off centre 42 sts. Hold Ns at left.

## Knit Right Part as Follows:-

Knit 1 row. Cast off 4 sts at beg of the next row, knit 1 row. Cast off 2 sts at beg of the next row, knit 1 row. Dec 1 st at beg of the next and ev foll alt row 3 times in all, knit 3 rows. Dec 1 st at beg of the next and foll 4th row. 21 sts. Knit 4 rows. Cast off. Carr at right. Set card to row previously noted and lock. Take carr to left. Bring Ns back to WP. Release card. Keeping pattern correct, knit left part as for right part. Remove card.

For Knitmaster Standard Gauge Punchcard Machines with Ribbing Attachment.

## Sizes:

To fit 81-86 (91-96) cms/32-34 (36-38) inch bust.

## Materials:

Knitmaster Aneto 2ply  
Col 1 (Saxe) - 50 (70) grms  
Col 2 (Flame) - 50 (70) grms  
Col 3 (Saffron) - 50 (70) grms

## Tensions:

Fair Isle - 32 sts and 46 rows to 10 cms. TD at approx. 3 (MT)  
2x1 Rib - 56 rows to 10 cms. TD's at approx. MT-2

## Pattern Note:

Fair Isle - see punchcard charts  
Join card 2 to top of card 1.  
\*Col 2 in feeder 1 only, knit 2 rows.  
Col 3 in feeder 1 only, knit 2 rows.  
Col 3 in feeder 1, Col 1 in feeder 2, knit 12 rows.  
Col 3 in feeder 1 only, knit 2 rows.

Col 2 in feeder 1 only, knit 2 rows.  
Col 3 in feeder 1 only, knit 2 rows.  
Col 1 in feeder 1 only, knit 2 rows.  
Col 1 in feeder 1, Col 2 in feeder 2, knit 14 rows.  
Col 1 in feeder 1 only, knit 2 rows.  
Col 3 in feeder 1 only, knit 2 rows.  
Col 2 in feeder 1 only, knit 2 rows.  
Col 1 in feeder 1 only, knit 2 rows.  
Col 3 in feeder 1, Col 2 in feeder 2, knit 4 rows.  
Col 1 in feeder 1 only, knit 2 rows.  
Col 2 in feeder 1 only, knit 2 rows.  
Col 2 in feeder 1, Col 3 in feeder 2, knit 21 rows.  
Col 2 in feeder 1 only, knit 2 rows.  
Col 1 in feeder 1 only, knit 2 rows.  
Col 3 in feeder 1, Col 2 in feeder 2, knit 4 rows.  
Col 1 in feeder 1 only, knit 2 rows.  
Col 2 in feeder 1 only, knit 2 rows.  
Col 1 in feeder 1 only, knit 2 rows.  
Col 3 in feeder 1 only, knit 2 rows.  
Col 3 in feeder 1, Col 2 in feeder 2, knit 10 rows.  
Col 3 in feeder 1 only, knit 2 rows.  
Col 1 in feeder 1 only, knit 2 rows\*.  
Rept from \*to\* throughout.

## FRONT

Knit as for Back to\*.

## Shape Neck

Note row number showing on pattern panel and pos in pattern. Using a length of appropriate col, cast off centre 10 sts. Hold Ns at left.

## Knit Right Part as Follows:-

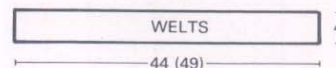
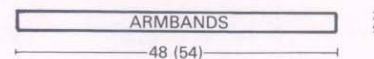
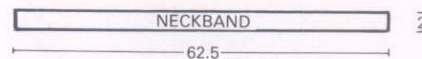
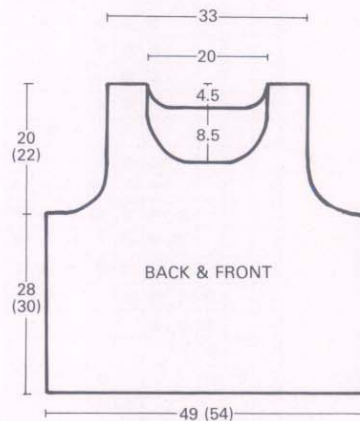
Dec 1 st at beg of the next row. Cast off 5 sts at beg of the next row, knit 1 row. Cast off 4 sts at beg of the next row, knit 1 row. Cast off 3 sts at beg of the next row. Dec 1 st at beg of the next row. Cast off 2 sts at beg of the next and ev foll alt row 3 times in all, knit 1 row. Dec 1 st at beg of the next and ev foll alt row 6 times in all, knit 3 rows. Dec 1 st at beg of the next and ev foll 4th row 3 times in all. 21 sts. Knit 24 rows. Cast off. Carr at right. Set card to row previously noted and lock. Take carr to left. Bring Ns back to WP. Release card. Keeping pattern correct, knit left part as for right part. Remove card.

## WELTS

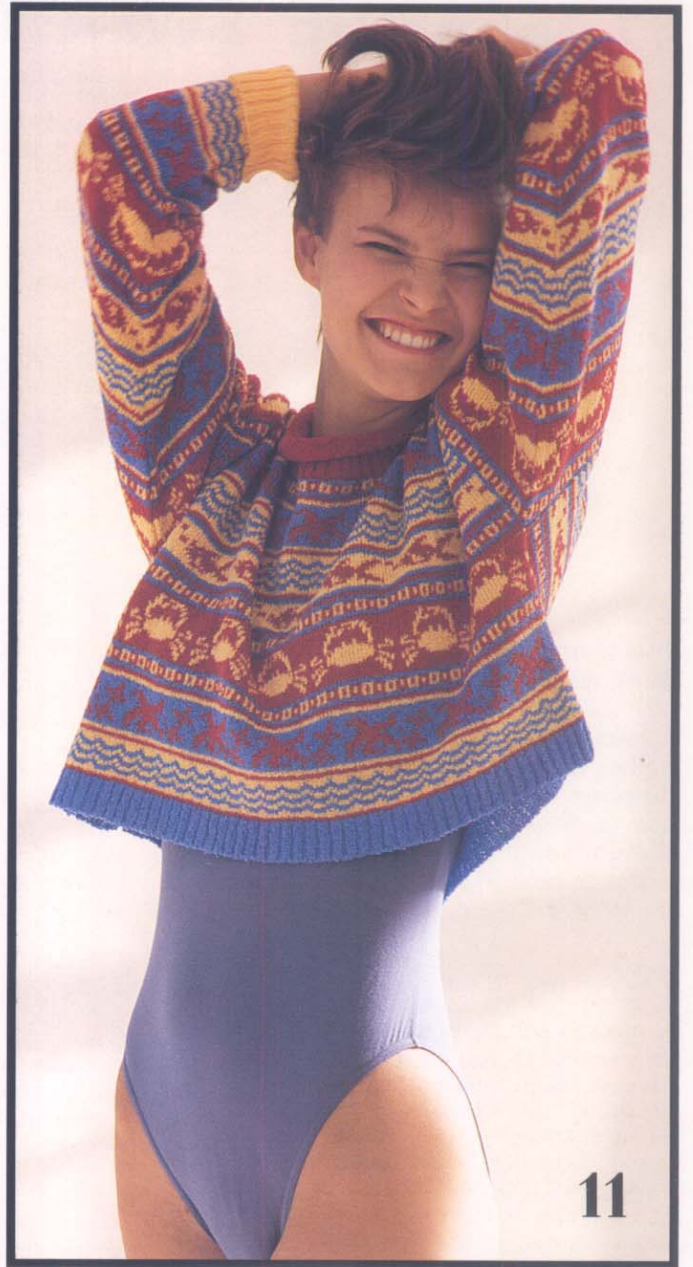
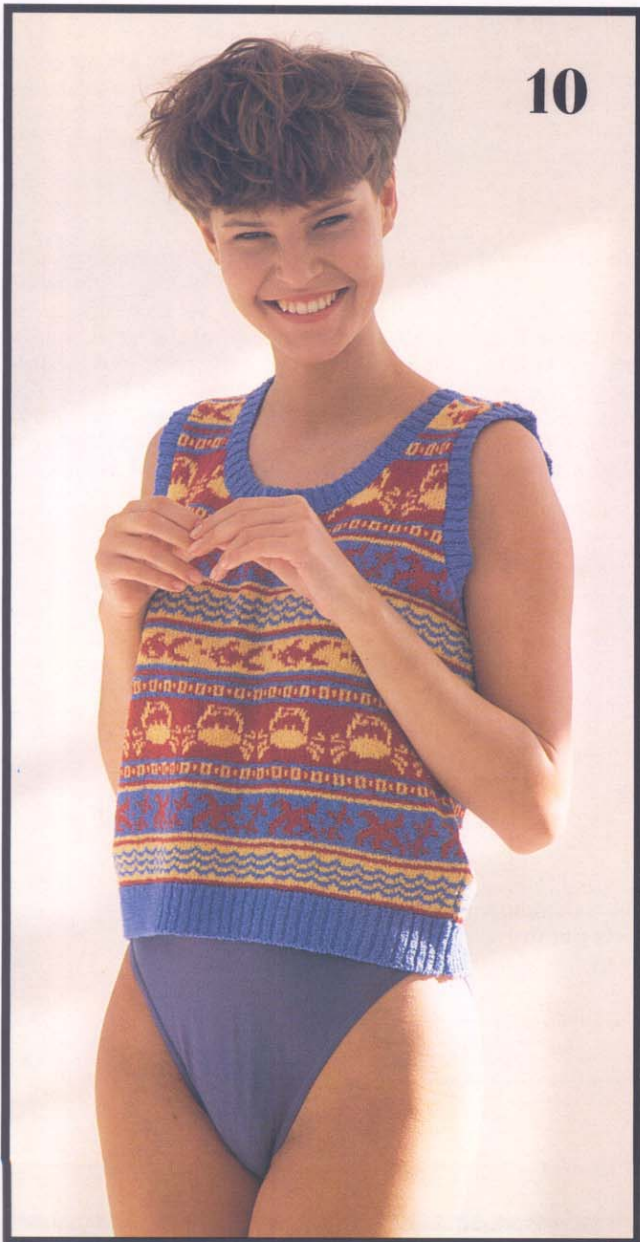
Arrange 142 (158) Ns for 2x1 rib. Using col 1, cast on and knit circular rows in reverse. RC 000. MT-2, knit 22 rows. Transfer sts to knitter. With wrong side of Back facing, pick up sts from below waste yarn and place onto Ns gathering evenly. Knit 1 row MT+1. Cast off. Rept for Front.

## NECKBAND

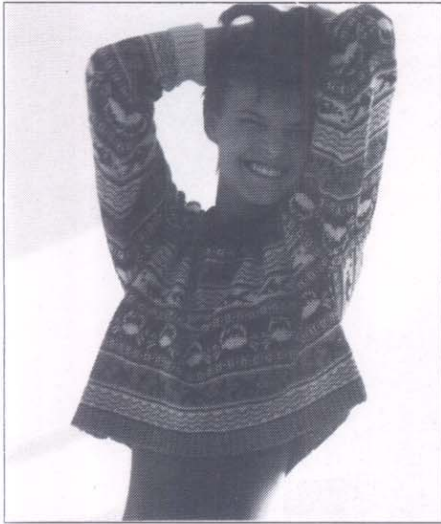
Arrange 200 Ns for 2x1 rib. Using col 1, cast on. RC 000. MT-2, knit 11 rows. Transfer sts to knitter. Knit 1 row MT. Cast off with waste yarn.



Continued on page 29



# 11 'SEASIDE' SWEATER



For Knitmaster Standard Gauge Punchcard Machines with Ribbing Attachment.

### Sizes:

To fit 86–91 (96–101) cms/34–36 (38–40) inch bust.

### Materials:

Knitmaster Aneto 2ply  
Col 1 (Saxe) – 90 (110) grms  
Col 2 (Flame) – 110 (135) grms  
Col 3 (Saffron) – 90 (110) grms

### Tensions:

Fair Isle – 32 sts and 46 rows to 10 cms. TD at approx. 3 (MT)  
2x1 Rib – 56 rows to 10 cms. TD's at approx. MT–2

### Pattern Note:

Fair Isle – see punchcard charts from 'Seaside' Vest Pattern.  
Join card 2 to top of card 1.  
Follow colour sequences from 'Seaside' Vest pattern.

**This short boxy sweater is ideal for Summer and Winter alike. Using our seaside Fair Isle design of waves, starfish, crabs and fish makes it perfect for an easy, slip on Summer cover up. However, if you use a more traditional Fair Isle design, you'll find this pattern will make a beautiful fashion sweater for Winter.**

### BACK

Push 90 (98) Ns at left and right of centre 0 to WP. 180 (196) Ns altog. Push corresponding Ns on ribber to WP. Arrange Ns for 2x1 rib. Using col 1, cast on. RC 000. MT–2, knit 17 rows. Transfer sts to knitter. Insert card and lock on row 1. Take carr across twice without knitting. RC 000. MT. Release card. Set carr for Fair Isle. Continue in pattern given in note. Knit 84 (102) rows. Carr at right.

### Shape Armholes

Cast off 6 sts at beg of the next 2 rows. 168 (184) sts\*. Knit 102 rows. RC 188 (206). Carr at right.

### Shape Back Neck

Note row number showing on pattern panel and pos in pattern. Using a length of appropriate col, cast off centre 44 sts. Hold Ns at left.

### Knit Right Part as Follows:-

Knit 1 row. Cast off 3 sts at beg of the next row, knit 1 row. Cast off 2 sts at beg of the next and ev foll alt row 3 times in all, knit 1 row. Dec 1 st at beg of the next row. Cast off rem 52 (60) sts. Carr at right. Set card to row previously noted and lock. Take carr to left. Bring Ns back to WP. Release card. Keeping pattern correct, knit left part as for right part. Remove card.

### FRONT

Knit as for Back to \*. Knit 74 rows. RC 160 (178). Carr at right.

### Shape Neck

Note row number showing on pattern

panel and pos in pattern. Using a length of appropriate col, cast off centre 44 sts. Hold Ns at left.

### Knit Right Part as Follows:-

Knit 1 row. Cast off 2 sts at beg of the next and ev foll alt row 3 times in all, knit 1 row. Dec 1 st at beg of the next and ev foll alt row 4 times in all, knit 24 rows. Cast off rem 52 (60) sts. Carr at right. Set card to row previously noted and lock. Take carr to left. Bring Ns back to WP. Release card. Keeping pattern correct, knit left part as for right part. Remove card.

### SLEEVES

Push 42 Ns at left and right of centre 0 to WP. 84 Ns altog. Push corresponding Ns on ribber to WP. Arrange Ns for 2x1 rib. Using col 3, cast on. RC 000. MT–2, knit 55 rows. Transfer sts to knitter. Insert card and lock on row 1. Take carr across twice without knitting. RC 000. MT. Release card. Set carr for Fair Isle. Continue in pattern given in note, knit 4

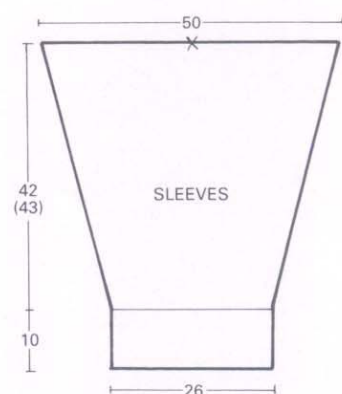
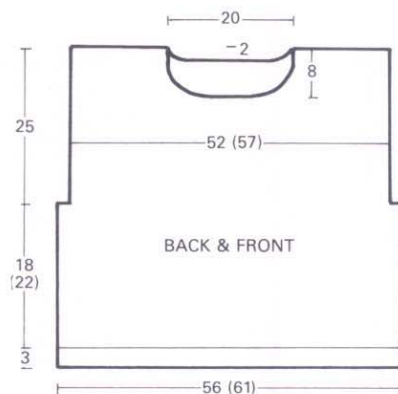
rows. Inc 1 st at both ends of the next and ev foll 5th row 38 times in all, marking both ends with waste yarn on Row 185 (189). 160 sts. Knit 4 (8) rows. RC 194 (198). Mark centre with waste yarn. Cast off. Remove card.

### NECKBAND

Arrange 174 Ns for 2x1 rib. Using col 2, cast on. RC 000. MT–2, knit 22 rows. Transfer sts to knitter. MT. Knit 32 rows. MT+7, knit 1 row. Cast off with a latch tool.

### TO MAKE UP

Pin out to size and steam carefully. Join shoulder seams. Set in sleeves sewing rows above marker to cast off sts at armholes. Join side and sleeve seams, reversing half of cuff seam. Fold cuff in half onto the outside. Sew cast on edge of neckband into pos and join centre back neck seam. Allow neckband to roll to right side. Give final light steam.

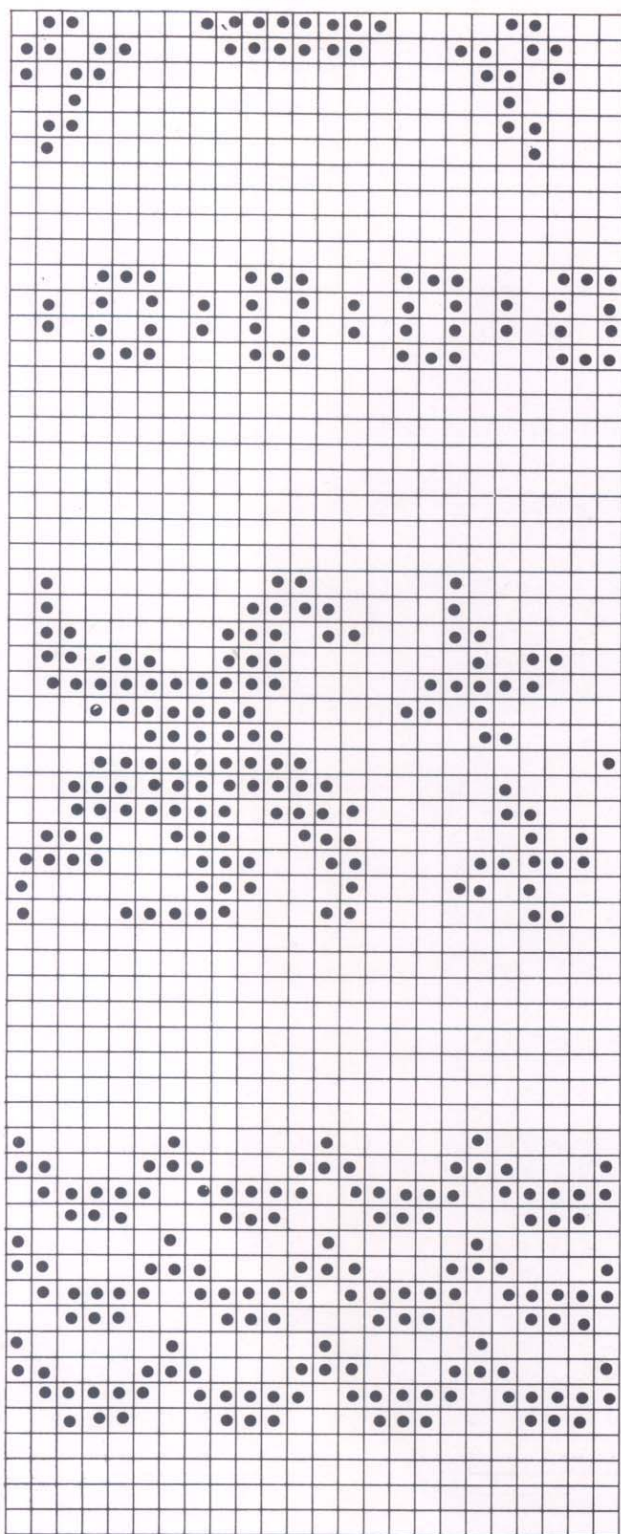


**PATTERN 10**  
Continued from page 26

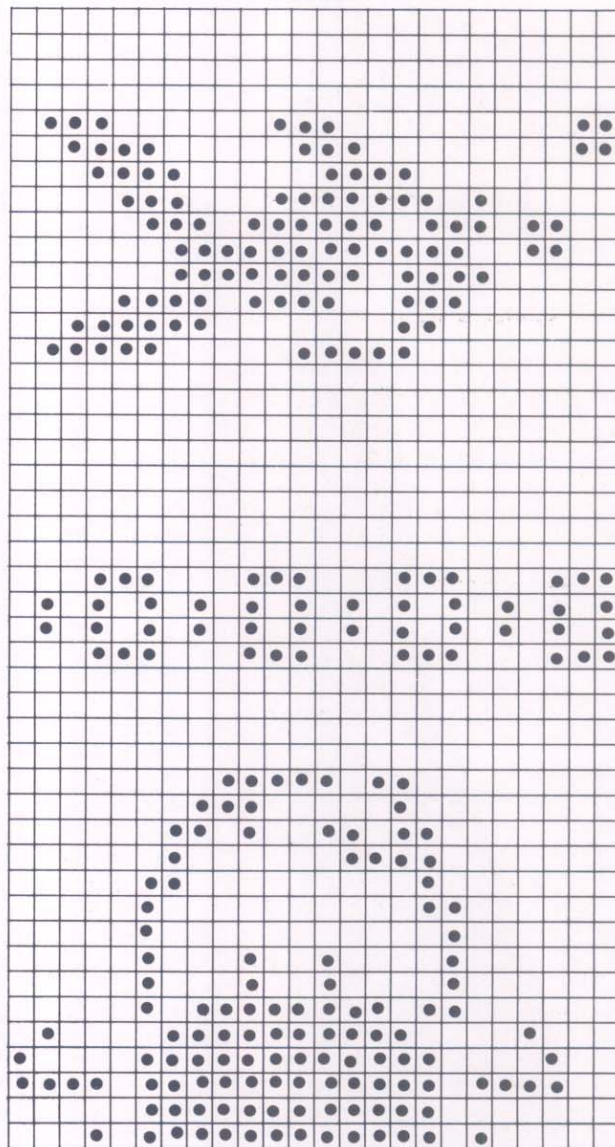
**ARMBANDS**  
Arrange 154 (174) Ns for 2x1 rib. Using col 1, cast on. RC 000. MT-2, knit 11 rows. Transfer sts to knitter. Knit 1 row MT. Cast off with waste yarn.

**TO MAKE UP**  
Pin out to size and steam carefully. Join shoulder seams. Backstitch neckband into pos and join centre back neck seam. Backstitch armbands into pos. Join side and armband seams. Give final light steam.

CARD 1



CARD 2





13



# 12 BOLERO JACKET



For Knitmaster Standard Gauge Punchcard Machines with Ribbing Attachment.

### Sizes:

To fit 81–86 (91–96) (101–106) cms/  
32–34 (36–38) (40–42) inch bust.

### Materials:

Knitmaster Boucle  
Col 1 (Geranium) – 265 (315) (365)  
grms  
Black cord

### Tensions:

Self Coloured Fair Isle – 31 sts and 40 rows to 10 cms. TD at approx. 5 (MT)  
Double Rib – 25 sts and 43 rows to 10 cms. TD's at approx. MT–3

### Pattern Note:

Self Coloured Fair Isle – see chart.  
Col 1 in feeder 1 and feeder 2.

**Cardigans and jackets with curved fronts have become extremely popular over the last few months. Here we have a classic version of this style which we've decorated simply by attaching black cord in swirling shapes. We bought black cord but you could use knitted cords if you prefer or simply leave it plain.**

### BACK

Push 68 (76) (84) Ns at left and right of centre 0 to WP. 136 (152) (168) Ns altog. Push corresponding Ns on ribber to WP for double rib. Using col 1, cast on. RC 000. MT–3, knit 17 rows. Transfer sts to knitter. Insert card and lock on row 1. Take carr across twice without knitting. RC 000. MT. Release card. Set carr for Fair Isle. Continue in pattern, knit 1 row. Inc 1 st at both ends of the next and ev foll 6th (7th) (7th) row 11 times in all. 158 (174) (190) sts. Knit 10 (8) (16) rows. RC 72 (80) (88). Carr at right.

### Shape Armholes

Cast off 5 sts at beg of the next 2 rows, 3 sts at beg of the next 2 rows and 2 sts at beg of the next 6 (8) (10) rows. Dec 1 st at both ends of the next and foll alt row, knit 2 rows. Dec 1 st at both ends of the next and foll 3rd row, knit 3 rows. Dec 1 st at both ends of the next and ev foll 4th row 3 times in all, knit 5 rows. Dec 1 st at both ends of the next and foll 6th row. 112 (124) (136) sts. Knit 61 (59) (57) rows. RC 176 (184) (192). Carr at right.

### Shape Back Neck

Note row number showing on pattern panel. Using a length of col 1, cast off centre 38 sts. Hold Ns at left.

### Knit Right Part as Follows:-

Knit 1 row. Cast off 2 sts at beg of the next and foll alt row.

### Shape Shoulder

Cast off 10 (12) (14) sts at beg of the next row, 2 sts at beg of the next row and 10 (12) (14) sts at beg of the next row, knit 1 row. Cast off rem 11 (13) (15)

row 8 times in all, knit 3 rows. Dec 1 st at left edge of the next and ev foll 4th row 6 times in all. 31 (37) (43) sts. Knit 1 row. Carr at right.  
Shape Shoulder  
Cast off 10 (12) (14) sts at beg of the next and foll alt row, knit 1 row. Cast off rem 11 (13) (15) sts.

### RIGHT FRONT

Push Ns 38 to 68 (38 to 76) (38 to 84) inclusive at right of centre 0 to WP. 31 (39) (47) Ns altog. Lock card on row 1. Using waste yarn cast on and knit several rows ending with carr at right. Push Ns to HP. Using col 1, cast on by hand. Push Ns to UWP. RC 000. MT. Release card. Set carr for Fair Isle. Continue in pattern, knit 1 row. Inc 1 st at right edge of the next and ev foll 6th (7th) (7th) row 7 (6) (6) times in all, AT THE SAME TIME cast on 7 sts at beg of the next row, knit 1 row. Cast on 5 sts at beg of the next row, knit 1 row. Cast on 4 sts at beg of the next row, knit 1 row. Cast on 3 sts at beg of the next row, knit 1 row. Cast on 2 sts at beg of the next and ev foll alt row 4 times in all, knit 1 row. Inc 1 st at beg of the next and ev foll alt row 8 times in all, knit 3 rows. Inc 1 st at beg of the next and foll 4th row. 75 (82) (90) sts. RC 40. Knit 3 rows. Inc 1 st at right edge of the next and ev foll 6th (7th) (7th) row 4 (5) (5) times in all. 79 (87) (95) sts. Knit 2 (0) (8) rows.

### Shape Front Edge

Dec 1 st at left edge of the next and foll 5th row, knit 2 rows. Carr at right.

### Shape Armhole

Dec 1 st at front edge of the 3rd and ev foll 5th row 9 times in all, AT THE SAME TIME cast off 5 sts at beg of the next row, knit 1 row. Cast off 3 sts at beg of the next row, knit 1 row. Cast off 2 sts at beg of the next and ev foll alt row 3 (4) (5) times in all, knit 1 row. Dec 1 st at beg of the next and foll alt row, knit 2 rows. Dec 1 st at right edge of the next and foll 3rd row, knit 3 rows. Dec 1 st at right edge of the next and ev foll 4th row 3 times in all, knit 5 rows. Dec 1 st at right edge of the next and foll 6th row. 45 (51) (57) sts. Knit 4 (2) (0) rows. Dec 1 st at left edge of the next and ev foll 5th

row 8 times in all, knit 3 rows. Dec 1 st at left edge of the next and ev foll 4th row 6 times in all. 31 (37) (43) sts. Knit 1 row. Carr at right.

### Shape Shoulder

Cast off 10 (12) (14) sts at beg of the next and foll alt row, knit 1 row. Cast off rem 11 (13) (15) sts.

### LEFT FRONT

Knit as for Right Front but in reverse. Remove card.

### SLEEVES

Push 44 Ns at left and right of centre 0 to WP. 88 Ns altog. Push corresponding Ns on ribber to WP for double rib. Using col 1, cast on. RC 000. MT–3, knit 9 rows. Transfer sts to knitter. Insert card and lock on row 1. Take carr across twice without knitting. RC 000. MT. Release card. Set carr for Fair Isle. Continue in pattern, knit 2 rows. Inc 1 st at both ends of the next and ev foll 4th row 33 times in all, knit 2 rows. Inc 1 st at both ends of the next and ev foll 3rd row 10 times in all. 174 sts. Knit 3 (7) (11) rows. RC 164 (168) (172). Carr at right.

### Shape Top

Cast off 8 sts at beg of the next 2 rows, 4 sts at beg of the next 2 rows, 3 sts at beg of the next 4 rows and 2 sts at beg of the next 8 rows. Dec 1 st at both ends of the next and ev foll alt row 5 times in all, knit 1 row. Cast off 2 sts at beg of the next 14 rows, 3 sts at beg of the next 4 rows, 4 sts at beg of the next 4 rows and 6 sts at beg of the next 4 rows. Cast off rem 32 sts. Remove card.

### BACK NECKBAND

Arrange 50 Ns for double rib. Using col 1, cast on. RC 000. MT–3, knit 17 rows. Transfer sts to knitter. MT, knit 1 row. Cast off with waste yarn.

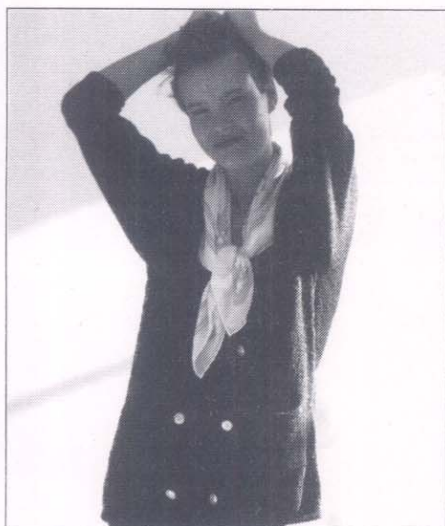
### FRONT BANDS

Arrange 160 (172) (183) Ns for double

Continued on page 36



# 13 BLUE SUIT



For Knitmaster Standard Gauge Punchcard Machines with Ribbing Attachment.

#### Sizes:

To fit 81–86 (91–96) (101–106) cms/  
32–34 (36–38) (40–42) inch bust.

#### Materials:

Knitmaster Bouclé  
Jacket  
Col 1 (Marine) – 350 (400) (450) grms  
6 buttons.  
Skirt  
Col 1 (Marine) – 120 (150) (180) grms  
20cm zip fastener.

#### Tensions:

Tuck Stitch – 24 sts and 76 rows to 10 cms. TD at approx. 5 (MT)  
Stockinet (knitted over 10 Ns) – 50 rows to 10 cms. TD at approx. MT.

#### Pattern Note:

Tuck Stitch – see chart from pattern 12.

**This beautiful suit will be a superb addition to any woman's wardrobe. We've knitted it in the beautifully textured Knitmaster Bouclé using a small tuck stitch pattern which creates a firm fabric ideally suited to jackets and skirts. The plain side of the fabric has been used as the right side so it looks like stocking stitch.**

#### JACKET BACK

Insert card and lock on row 1. Push 67 (73) (79) Ns at left and right of centre 0 to WP. 134 (146) (158) Ns altog. Using waste yarn cast on and knit several rows ending with carr at right. Push Ns to HP. Using col 1, cast on by hand. Push Ns to UWP. RC 000. MT. Knit 1 row. Release card. Set carr for tuck stitch. Knit to Row 340 (348) (356). Carr at right.

#### Shape Armholes

Cast off 3 sts at beg of the next 2 rows. Cast off 2 sts at beg of the next 2 rows. Dec 1 st at both ends of the next and ev foll alt row 6 (7) (8) times in all, knit 1 row. Dec 1 st at both ends of the next and ev foll 4th row 3 times in all, knit 4 rows. Dec 1 st at both ends of the next and ev foll 6th row 5 times in all, knit 5 rows. Dec 1 st at both ends of the next and ev foll 8th row 5 times in all. 86 (96) (106) sts. Knit to Row 536 (552) (560). Carr at right.

#### Shape Back Neck

Note row number showing on pattern panel. Using a length of col 1, cast off centre 24 sts. Hold Ns at left.

#### Knit Right Part as Follows:-

Knit 1 row. Cast off 2 sts at beg of the next row, knit 1 row. Dec 1 st at neck edge on the next and ev foll alt row 3 times in all. RC 544 (560) (568). Carr at right.

#### Shape Shoulder

Cast off 5 (6) (7) sts at beg of the next row, dec 1 st at beg of the next row.

Rept the last 2 rows once more. Cast off 5 (6) (7) sts at beg of the next and foll alt row, knit 1 row. Cast off rem 4 (5) (6) sts. Carr at right. Set card to row previously noted and lock. Take carr to left. Release card. Using a transfer tool, bring Ns back to WP. Reset RC to Row 536 (552) (560). Knit left part as for right part but read left for right.

#### RIGHT FRONT

Lock card on Row 1. Push 67 (73) (79) Ns at right and 8 Ns at left of centre 0 to WP. 75 (81) (87) Ns altog. Using waste yarn cast on and knit several rows ending with carr right. Push Ns to HP. Using col 1, cast on by hand. Push Ns to UWP. RC 000. MT. Knit 1 row. Carr at left. Release card. Set carr for tuck stitch. Cast on 2 sts at beg of the next row, knit 1 row. Inc 1 st at left edge on the next row, knit 1 row. Inc 1 st at left edge on the next and ev foll 3rd row 5 times in all. 83 (89) (95) sts. Knit to Row 46. Make buttonholes over Ns 9, 10 and 11 at left and right of centre 0. Knit to Row 152.

#### Pocket

Break yarn. Counting from the left edge, push first 36 Ns to HP, leave next 30 Ns in WP and push rem 17 (23) (29) Ns to HP. Knit 180 rows over Ns left in WP for pocket bag. Break yarn. Using a transfer tool bring Ns in HP back to WP. Reset RC to Row 152. Knit to Row 159. Make buttonholes over same Ns as before. Knit to Row 272. Make buttonholes over same Ns as before.

#### Shape Front Edge

Dec 1 st at left edge on the next and ev foll 8th row 35 times in all, AT THE SAME TIME when RC shows 340 (348) (356). Carr at right.

#### Shape Armhole

Cast off 3 sts at beg of the next row, knit 1 row. Cast off 2 sts at beg of the next row, knit 1 row. Dec 1 st at armhole edge on the next and ev foll alt row 6 (7) (8) times in all, knit 1 row. Dec 1 st at armhole edge on the next and ev foll

4th row 3 times in all, knit 4 rows. Dec 1 st at armhole edge on the next and ev foll 6th row 5 times in all, knit 5 rows. Dec 1 st at armhole edge on the next and ev foll 8th row 5 times in all. Knit to Row 544 (560) (568). Carr at right.  
Shape Shoulder  
Cast off 5 (6) (7) sts at beg of the next and ev foll alt row 4 times in all, knit 1 row. Cast off rem 4 (5) (6) sts.

#### LEFT FRONT

Knit as for Right Front but in reverse and omit buttonholes.

#### SLEEVES

Lock card on row 1. Push 29 Ns at left and right of centre 0 to WP. 58 Ns altog. Using waste yarn cast on and knit several rows ending with carr at right. Push Ns to HP. Using col 1, cast on by hand. Push Ns to UWP. RC 000. MT. Knit 1 row. Release card. Set carr for tuck stitch. Knit 1 row. Inc 1 st at both ends of the next and ev foll 7th row 38 (40) (40) times in all. 134 (138) (138) sts. Knit to Row 288 (296) (304).

#### Shape Top

Cast off 3 sts at beg of the next 4 rows and 2 sts at beg of the next 4 rows. Dec 1 st at both ends of the next and ev foll alt row 6 (9) (9) times in all, knit 1 row. Dec 1 st at both ends of the next and ev foll 6th row 11 (10) (10) times in all, knit 4 rows. Dec 1 st at both ends of the next and ev foll 5th row 4 times in all, knit 1 row. Dec 1 st at both ends of the next and foll alt row, knit 1 row. Cast off 2 sts at beg of the next 6 rows, 3 sts at beg of the next 2 rows, 4 sts at beg of the next 4 rows and 5 sts at beg of the next 4 rows. RC 410 (418) (426). Cast off rem 14 sts. Remove card.

#### CUFF EDGING (knit 2)

Using col 1, cast on by hand 10 sts. RC 000. MT. Knit 120 rows. Cast off.

Continued on page 37



# 14 TOP WITH SHELL EDGING



If you love knitting but hate sewing the pieces together afterwards, here's the ideal top for you to knit – the back and front are knitted in one piece. The scalloped lace border is an interesting and effective border design which you might like to try out and use for other designs of your own.

## BACK AND FRONT

Using waste yarn cast on 52 sts and knit 10 rows. Using nylon cord, knit 1 row. Using waste yarn, knit a few rows and release from machine. This piece of waste knitting will be used later when you need to cast on extra sts for the back neck. Push 69 (81) Ns at left and right of centre 0 to WP. 138 (162) Ns altog. Using waste yarn cast on and knit several rows ending with carr at right. RC 000. MT. Using col 1. Knit 10 rows. Continue in lace and tuck as shown on chart. Knit 44 rows. Continue in stockinet, knit 10 rows. Turn up a hem. RC 000. Knit 6 (10) rows. Inc 1 st at both ends of the next and ev foll 4th (7th) row 7 (4) times in all, knit 3 (6) rows. Inc 1 st at both ends of the next and ev foll 3rd (5th) row 9 (4) times in all, knit 1 (2) rows. Inc 1 st at both ends of the next and ev foll alt (3rd) row 9 (11) times in all. 188 (200) sts. Knit to Row 140 (154). Shape Front Neck

Using a length of col 1, cast off centre 20 sts. Hold Ns at left.

Knit Right Part as Follows:-

Knit 1 row. Cast off 4 sts at beg of the next row, knit 1 row. Cast off 3 sts at beg of the next and ev foll alt row 3 times in all, knit 1 row. Cast off 2 sts at beg of the next and ev foll alt row 4 times in all, knit 1 row. Dec 1 st at neck edge on the next and ev foll 3rd row 6 times in all. 57 (63) sts. Knit 21 rows. RC 194 (208). Carr at right. Mark both ends with waste yarn for shoulder position.

Shape Back Neck

Inc 1 st at neck edge on the next and ev foll 3rd row 7 times in all, knit 1 row. Inc

For Knitmaster Standard Gauge Punchcard Machines with Ribbing Attachment.

### Sizes:

To fit 86–91 (96–101) cms/34–36 (38–40) inch bust.

### Materials:

Knitmaster Boucle  
Col 1 (Plum) – 250 (300) grms

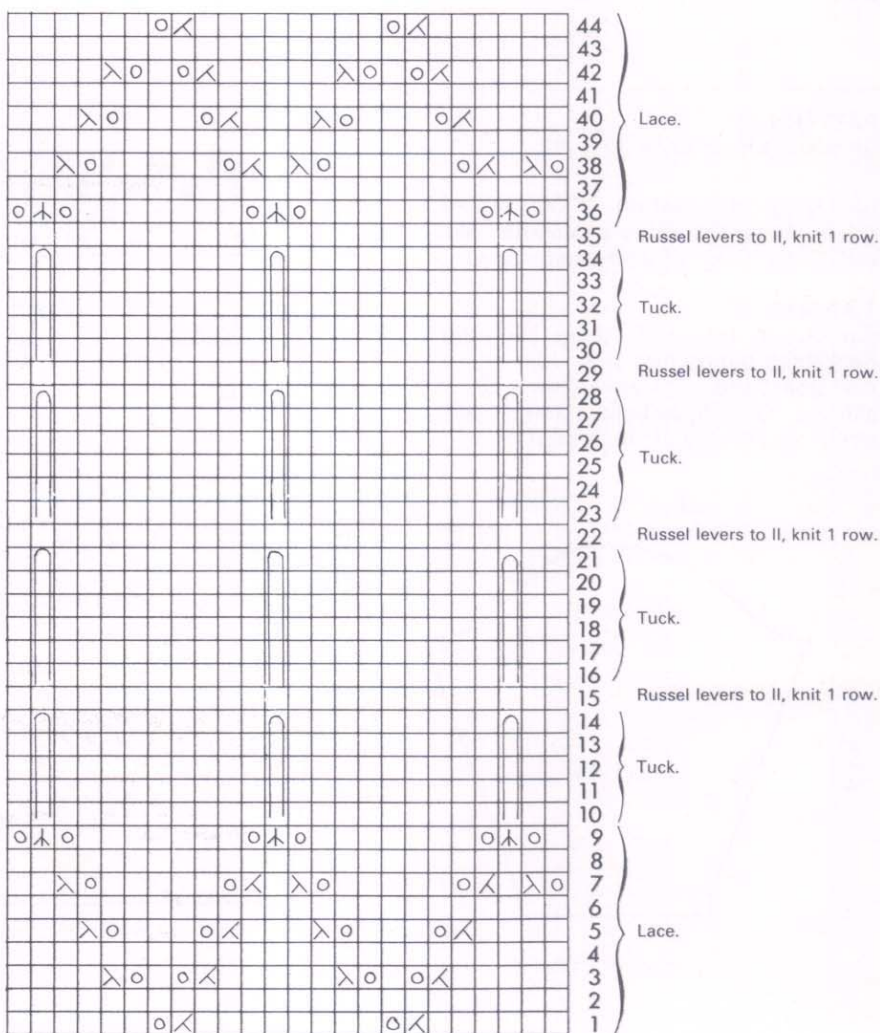
### Tensions:

Stockinet – 31 sts and 45 rows to 10 cms. TD at approx. 5 (MT)  
1x1 Rib – 56 rows to 10 cms. TD's at approx. MT–4

### Pattern Note:

Stockinet  
Shell Lace Edging – see chart.

- ↙ = st at left has been transferred onto this needle.
- ↘ ○ = st at right has been transferred onto this needle.
- ↗ ○ = sts either side have been transferred onto this needle.
- ⌋ = needle pushed to HP. Russel levers to I



1 st at neck edge on the next and ev foll alt row 4 times in all, knit 1 row. RC 222 (236). 68 (74) sts. Break yarn. Push Ns at right to HP. Take carr to left. Bring Ns at left back to WP. Reset RC to 140 (154). Knit left part as for right part. Push 26 Ns at left and right of centre 0 to WP. Pick up sts from below cord on waste knitting and place onto centre 52 Ns. Push centre 52 Ns to HP. Using a piece of col 1, cast on by hand. Push all Ns in HP to UWP. Reset RC to 222 (236) Knit 90 (94) rows. Dec 1 st at both ends of the next and ev foll alt (3rd) row 9 (11) times in all, knit 1 (2) rows. Dec 1 st at both ends of the next and ev foll 3rd (5th) row 9 (4) times in all, knit 3 (6) rows. Dec 1 st at both ends of the next and ev foll 4th (7th) row 7 (4) times in all. 138 (162) sts. Knit to Row 388 (416). Mark both ends with waste yarn. Knit 10 rows. Continue in lace and tuck as shown on chart, knit 44 rows. Continue in stockinet, knit 10 rows. Pick up row marked and place onto corresponding Ns. MT+4, knit 1 row. Cast off.

**ARMBANDS (knit 2)**

Push 81 (84) Ns at left and right of centre 0 to WP. 162 (168) Ns altog. Using col 1, cast on. RC 000. MT. Knit 10 rows. Continue in lace and tuck following chart, knit 44 rows. Continue in stockinet, knit 10 rows. Cast off.

**BACK NECKBAND**

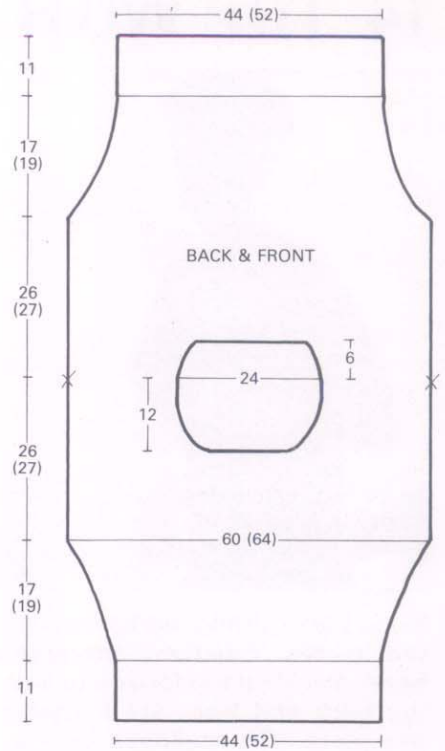
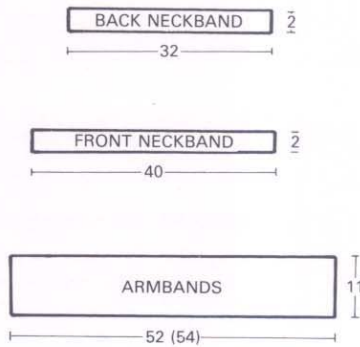
Arrange 101 Ns for 1x1 rib. Using col 1, cast on. RC 000. MT-4, knit 10 rows. Transfer sts to knitter. Knit 1 row MT. Cast off with waste yarn.

**FRONT NECKBAND**

Arrange 125 Ns for 1x1 rib. Using col 1, cast on. RC 000. MT-4, knit 10 rows. Transfer sts to knitter. Knit 1 row MT. Cast off with waste yarn.

**TO MAKE UP**

Pin out to size and steam carefully. Sew one edge of armbands into pos, fold in half and catch down on the inside. Join side seams. Backstitch neckbands into pos and join seams. Give final light steam.



**PATTERN 12**

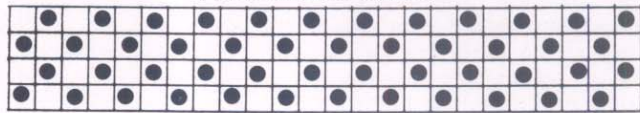
Continued from page 32

rib. Using col 1, cast on. RC 000. MT-3, knit 17 rows. Transfer sts to knitter. MT, knit 1 row. Cast off with waste yarn.

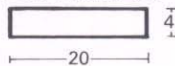
**TO MAKE UP**

Pin out to size and steam carefully. Backstitch bands into pos. Join shoulder, side, band and sleeve seams. Set in sleeves. Give final light steam. If desired, attach cord as illustrated.

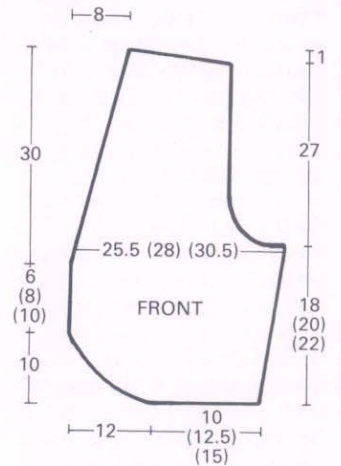
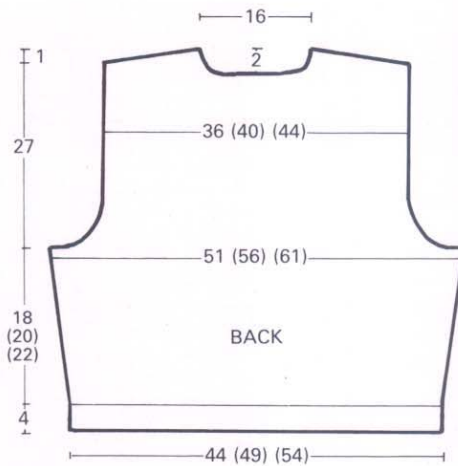
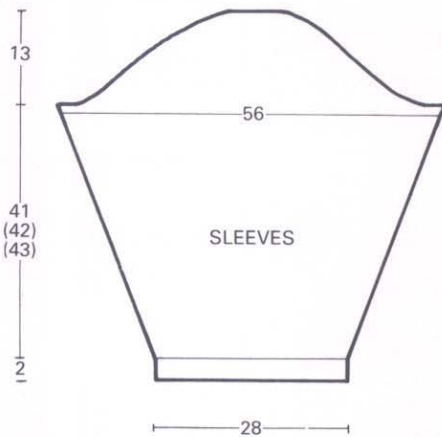
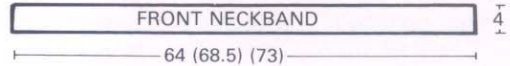
**PUNCHCARD CHART**



**BACK NECKBAND**



**FRONT NECKBAND**



**PATTERN 13**

Continued from page 33

**POCKET EDGING (knit 2)**

Using col 1, cast on by hand 10 sts. RC 000. MT. Knit 63 rows. Cast off.

**JACKET EDGING**

Using col 1, cast on by hand 10 sts. RC 000. MT. Knit 1580 (1650) (1720) rows. Cast off.

**TO MAKE UP**

Pin out to size and steam carefully. Join shoulder seams. Set in sleeves. Join side and sleeve seams. Join sides of pocket bags. Sew one edge of cuff edging, pocket edging and jacket edging into pos, allow to roll to the inside and catch down on the inside. Neaten edges. Finish buttonholes and sew on buttons to correspond. Give final light steam.

**BACK SKIRT**

Push 54 (60) (66) Ns at left and right of centre 0 to WP. 108 (120) (132) Ns altog. Push corresponding Ns on ribber to WP. Arrange Ns for double rib. Using col 1, cast on. Transfer sts to knitter. Insert card and lock on row 1. Take carr across twice without knitting. RC 000. MT. Release card. Set carr for tuck stitch. Knit 182 rows\*. Dec 1 st at both ends of the next and ev foll 30th row 3 times in all, knit 23 rows. RC 266. Note row number showing on pattern panel. Hold Ns at left.

**Knit Right Part as Follows:-**

Knit 6 rows. Dec 1 st at right edge on the next and foll 30th row, knit 17 rows. Dec 1 st at right edge on the next and ev foll 5th row 4 times in all, knit 2 rows. Dec 1 st at right edge on the next and foll 3rd row. 43 (49) (55) sts. RC 342. Knit 60 rows without shaping. Cast off. Carr at right. Set card to row previously noted and lock. Take carr to left. Release card. Using a transfer tool, bring Ns back to WP. Reset RC to Row 266. Knit left part as for right part but read left for right.

**FRONT SKIRT**

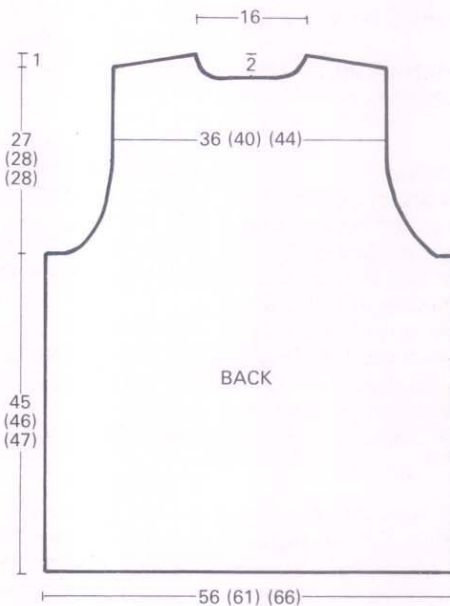
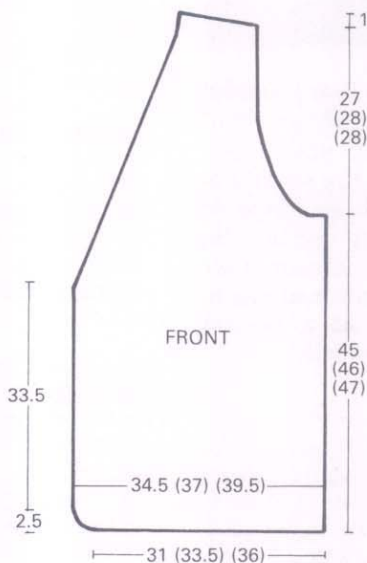
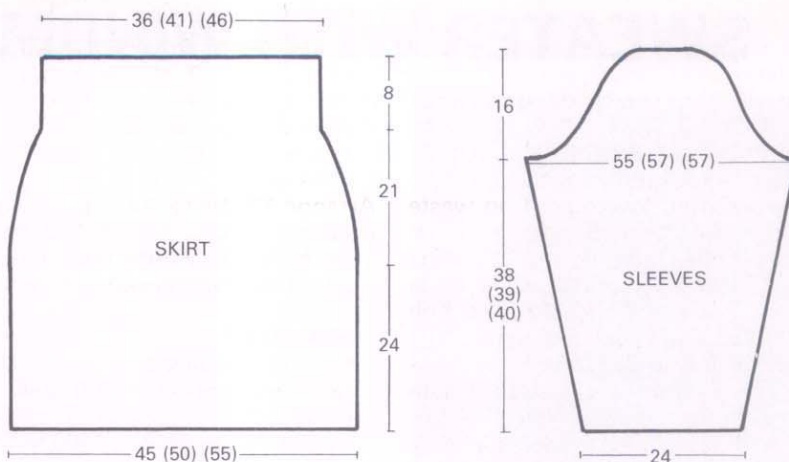
Knit as for Back to \*. Dec 1 st at both ends of the next and ev foll 30th row 5 times in all, knit 17 rows. Dec 1 st at both ends of the next and ev foll 5th row 4 times in all, knit 2 rows. Dec 1 st at both ends of the next and foll 3rd row. 86 (98) (110) sts. RC 342. Knit 60 rows without shaping. Cast off.

**WAIST EDGING**

Using col 1, cast on by hand 10 sts. RC 000. MT. Knit 360 (410) (460) rows. Cast off.

**TO MAKE UP**

Pin out to size and steam carefully. Join side seams. Sew one edge of waist edging into pos, allow to roll to the inside and catch down on the inside. Using col 1, work 2 rows of double crochet along back opening. Sew zip into pos. Give final light steam.



# 15 SWEATER WITH WINDMILL BORDER



This design has two very useful punchcard designs which you can use to knit some of your own Summer designs. Use the small all-over design with a whole range of pictorial or traditional border designs and consider our windmill for children's knitwear. Knit it in brighter colours, using it as a border design or as a single motif.

## BACK

Push 84 (92) (100) Ns at left and right of centre 0 to WP. 168 (184) (200) Ns altog. Push corresponding Ns on ribber to WP. Arrange Ns for 2x1 rib. Using col 1, cast on. RC 000. MT-4, knit 29 rows. Transfer sts to knitter. RC 000. MT. Continue in pattern given in pattern note, knit 98 (102) (106) rows. Mark both ends with waste yarn\*. Knit 94 (94) (98) rows. RC 192 (196) (204). Carr at right. Shape Back Neck

Note row number showing on pattern panel and pos in colour sequence. Using a length of col 1, cast off centre 50 sts. Hold Ns at left.

Knit Right Part as Follows:-

Knit 1 row. Cast off 4 sts at beg of the next row, knit 1 row. Cast off 3 sts at beg of the next row, knit 1 row. Cast off 2 sts at beg of the next row, knit 2 rows. Cast off rem 50 (58) (66) sts. Carr at right. Set card to row previously noted and lock. Take carr to left. Release card. Using a transfer tool bring Ns back to WP. Keeping pattern correct, knit left part as for right part. Remove card.

## FRONT

Knit as for Back to \*. Knit 70 (70) (74) rows. RC 168 (172) (180). Carr at right. Shape Neck

Note row number showing on pattern panel and pos in col sequence. Using a length of col 1, cast off centre 44 sts. Hold Ns at left.

Knit Right Part as Follows:-

Knit 1 row. Cast off 3 sts at beg of the

For Knitmaster Standard Gauge Punchcard Machines with Ribbing Attachment.

## Sizes:

To fit 81-86 (91-96) (101-106) cms/  
32-34 (36-38) (40-42) inch bust.

## Materials:

Knitmaster Boucle  
Col 1 (Aran 1701) - 210 (240) (270) grms  
Col 2 (Marine 1712) - 120 (150) (180) grms

## Tensions:

Fair Isle Patterns 1 and 2 - 31 sts and 39 rows to 10 cms. TD at approx. 5 (MT)

2x1 Rib - 56 rows to 10 cms. TD's at approx. MT-4

## Pattern Note:

Back & Front  
Insert card 1 and lock on row 1.  
Col 1 in feeder 1, knit 6 rows.  
Col 2 in feeder 1, knit 2 rows.  
Col 1 in feeder 1, knit 3 rows.  
Transfer ev 3rd st onto its adjacent N

at left, leave empty Ns in WP. Knit 3 rows.

Col 2 in feeder 1, knit 2 rows.

Col 1 in feeder 1, knit 2 rows.

Col 2 in feeder 1, knit 2 rows.

Release card. Set carr for Fair Isle.

Col 1 in feeder 1, Col 2 in feeder 2, knit 25 rows.

Remove card. Insert card 2 and lock on row 1. Set carr for stockinet.

Col 2 in feeder 1, knit 2 rows.

Col 1 in feeder 1, knit 2 rows.

Col 2 in feeder 1, knit 2 rows.

Col 1 in feeder 1, knit 3 rows.

Transfer ev 3rd st onto its adjacent N at left, leave empty Ns in WP. Knit 3 rows.

Col 2 in feeder 1, knit 2 rows.

Col 1 in feeder 1, knit 6 rows.

Release card. Set carr for Fair Isle.

\*Col 1 in feeder 1, Col 2 in feeder 2, knit 3 rows. Col 1 in feeder 1 only, knit 6 rows\*. Rept from \*to\* throughout.

## Sleeves

Insert card 2 and lock on row 1.

Col 1 in feeder 1 only, knit 6 rows.

Rept as given on back and front from \*to\* throughout.

next and foll alt row, knit 1 row. Cast off 2 sts at beg of the next row, knit 1 row. Dec 1 st at neck edge on the next and ev foll alt row 4 times in all, knit 18 rows. Cast off rem 50 (58) (66) sts. Carr at right. Set card to row previously noted and lock. Take carr to left. Release card. Using a transfer tool bring Ns back to WP. Keeping pattern correct, knit left part as for right part. Remove card.

## SLEEVES

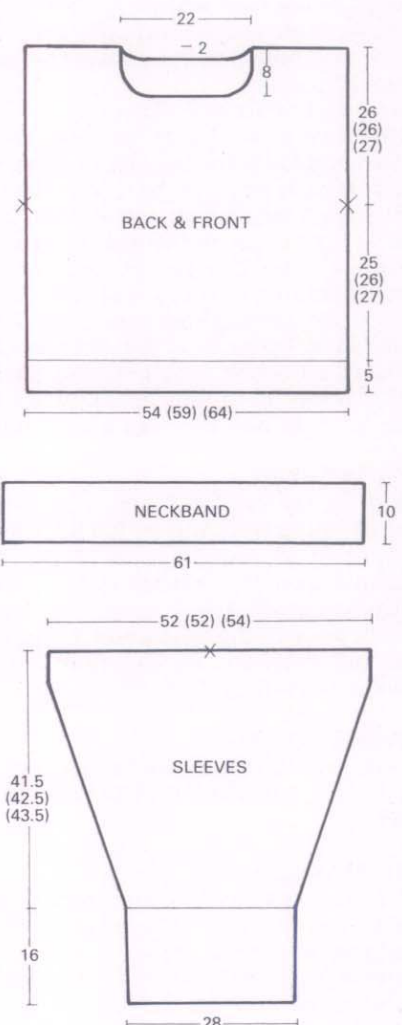
Push 43 Ns at left and right of centre 0 to WP. 86 Ns altog. Push corresponding Ns on ribber to WP. Arrange Ns for 2x1 rib. Using col 2, cast on. RC 000. MT-4, knit 89 rows. Transfer sts to knitter. RC 000. MT. Continue in pattern given in pattern note, knit 3 rows. Inc 1 st at both ends of the next and ev foll 4th row 38 (38) (41) times in all. 162 (162) (168) sts. Knit to Row 162 (166) (170). Mark centre with waste yarn. Cast off. Remove card.

## NECKBAND

Arrange 191 Ns for 2x1 rib. Using col 2, cast on. RC 000. MT-4, knit 56 rows. Transfer sts to knitter. Knit 1 row MT. Cast off with waste yarn.

## TO MAKE UP

Pin out to size and steam carefully. Join shoulder seams. Set in sleeves between marked points. Join side and sleeve seams reversing half of cuff seam. Fold cuff in half onto the outside. Backstitch neckband into pos and join centre back neck seam reversing half of seam. Fold in half onto the outside. Give final light steam.



Continued on page 43

# 16 DOLMAN SWEATER WITH BORDER



For Knitmaster Standard Gauge Punchcard Machines with Ribbing Attachment.

**Sizes:**

To fit 86–91 (96–101) cms/34–36 (38–40) inch bust.

**Materials:**

Knitmaster Boucle  
Col 1 (Amethyst) – 310 (360) grms  
Col 2 (Dune) – 110 (150) grms

**Tensions:**

Fair Isle 1 – 29 sts and 46 rows to 10

cms when slightly stretched sideways. TD at approx. 5 (MT)  
2x1 Rib – 64 rows to 10 cms. TD's at approx. MT–4

**Pattern Note:**

Fair Isle Patterns 1 and 2 – see charts. Pattern 1  
Col 1 in feeder 1 only, knit 6 rows.  
Col 1 in feeder 1, Col 2 in feeder 2, knit 5 rows.  
Pattern 2  
Col 1 in feeder 1, Col 2 in feeder 2.

**Dolman sweaters, which are traditionally knitted sideways on a knitting machine, are always beautifully comfortable and flattering to wear. However, because they are knitted sideways, you don't often see a long-line version. We've made our dolman sweater long and easy to wear by adding on an extra Fair Isle border to the hem line.**

**BACK**

Insert card 1 and lock on row 1. Push Ns 50 to 90 inclusive at left of centre 0 to WP. 41 Ns altog. Using waste yarn, cast on ending with carr at right. RC 000. MT. Release card. Set carr for Fair Isle. Continue in Pattern 1, knit 4 rows. Inc 1 st at right edge on the next and ev foll 6th row 8 (14) times in all, knit 4 rows. Inc 1 st at right edge on the next and ev foll 5th row 12 (6) times in all, knit 3 rows. Inc 1 st at right edge on the next and ev foll 4th row 5 times in all, knit 2 rows. Inc 1 st at right edge on the next and ev foll 3rd row 8 times in all, knit 1 row. Inc 1 st at right edge on the next and ev foll alt row 16 times in all, knit 1 row. Cast on 2 sts at beg of the next and ev foll alt row 8 times in all, knit 1 row. Cast on 3 sts at beg of the next and ev foll alt row 7 times in all, knit 1 row. Cast on 6 sts at beg of the next and foll alt row, knit 1 row. Cast on 11 sts at beg of the next row, knit 1 row. Cast on 30 sts at beg of the next row. 180 sts. Knit 78 (88) rows. RC 299 (315). Carr at left\*.

**Shape Back Neck**

Cast off 2 sts at beg of the next row, knit 1 row. Dec 1 st at beg of the next and ev foll alt row 3 times in all, knit 3 rows. Dec 1 st at beg of the next row. Knit 79 (81) rows. Inc 1 st at beg of the next and ev foll alt row 3 times in all, knit 1 row. Cast on 2 sts at beg of the next row. 180 sts. \*\*Knit 78 (88) rows. RC 478 (506). Carr at right.

Cast off 30 sts at beg of the next row, knit 1 row. Cast off 11 sts at beg of the

next row, knit 1 row. Cast off 6 sts at beg of the next and foll alt row, knit 1 row. Cast off 3 sts at beg of the next and ev foll alt row 7 times in all, knit 1 row. Cast off 2 sts at beg of the next and ev foll alt row 8 times in all, knit 1 row. Dec 1 st at right edge on the next and ev foll alt row 16 times in all, knit 1 row. Dec 1 st at right edge on the next and ev foll 3rd row 8 times in all, knit 2 rows. Dec 1 st at right edge on the next and ev foll 4th row 5 times in all, knit 3 rows. Dec 1 st at right edge on the next and ev foll 5th row 12 (6) times in all, knit 4 rows. Dec 1 st at right edge on the next and ev foll 6th row 8 (14) times in all. 41 sts. Knit 4 (3) rows. RC 699 (732). Cast off with waste yarn\*\*.

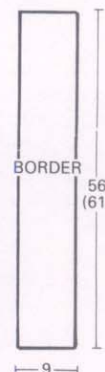
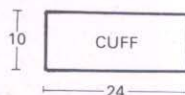
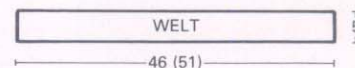
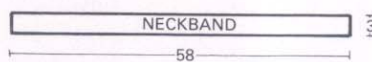
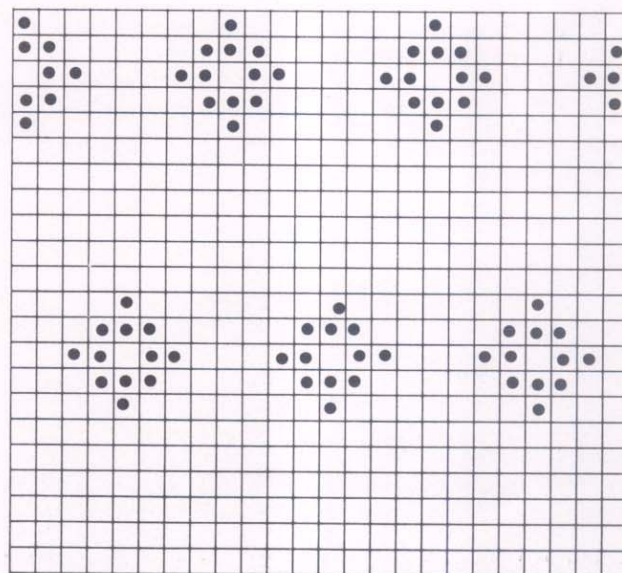
**FRONT**

Knit as for Back to \* but reverse the shapings by reading left for right and vice versa.

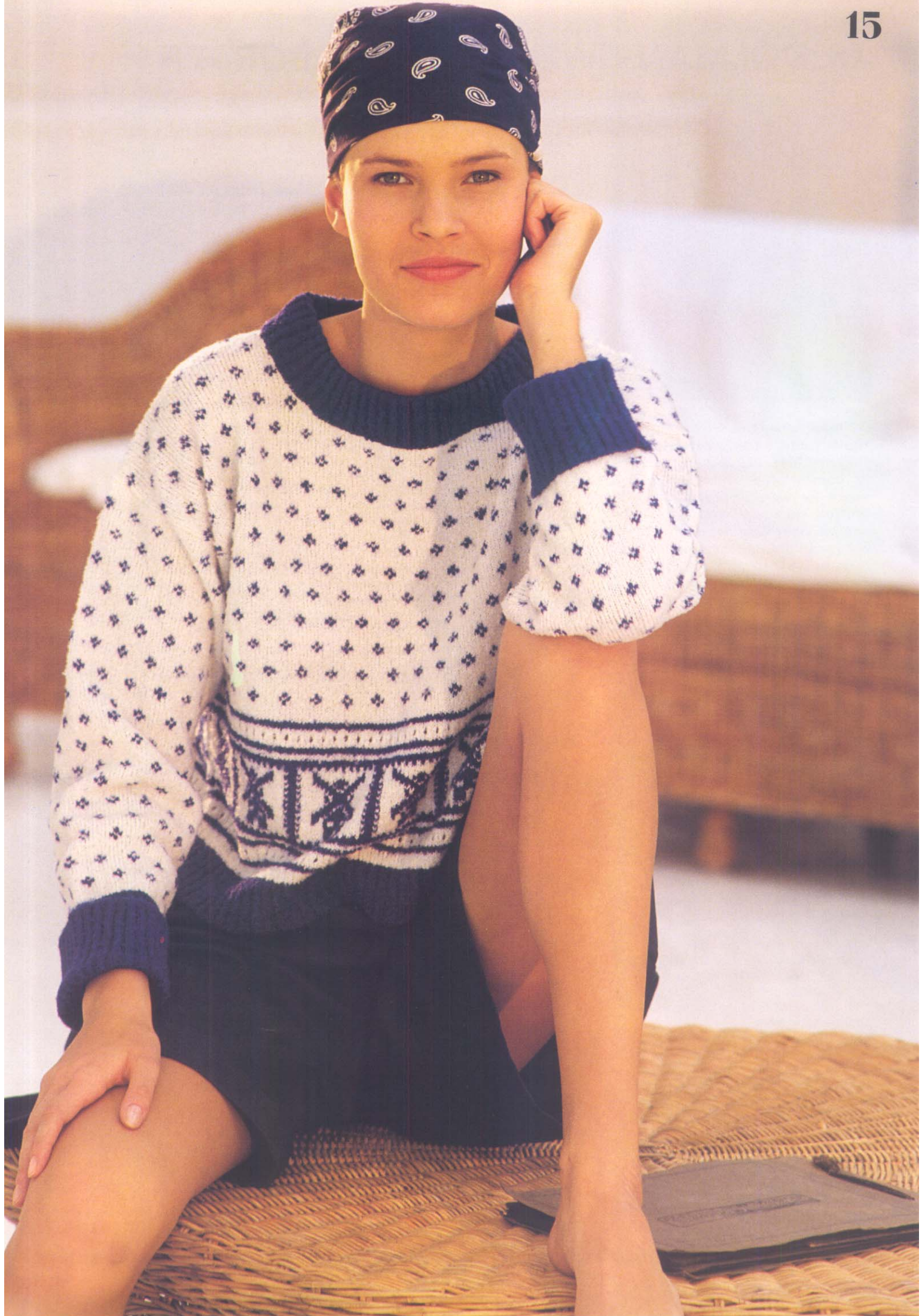
**Shape Neck**

Cast off 8 sts at beg of the next row, knit 1 row. Cast off 3 sts at beg of the next row, knit 1 row. Cast off 2 sts at beg of the next and ev foll alt row 3 times in all, knit 1 row. Dec 1 st at beg of the next and ev foll alt row 6 times in all, knit 2 rows. Dec 1 st at neck edge on the next and foll 3rd row, knit 4 rows. Dec 1 st at neck edge on the next row. Knit 37 (39) rows. Inc 1 st at neck edge on the next row, knit 4 rows. Inc 1 st at neck edge on the next and foll 3rd row, knit 2 rows. Inc 1 st at beg of the next and ev foll alt

CHART 1

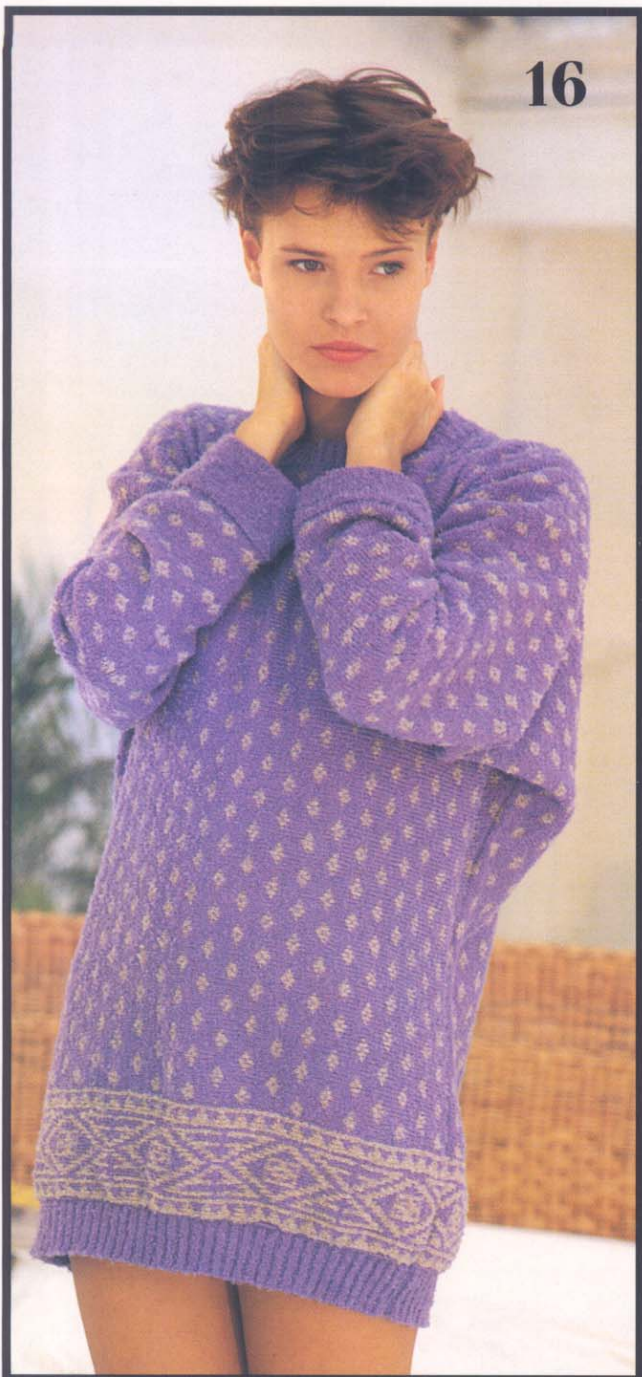


Continued on page 43

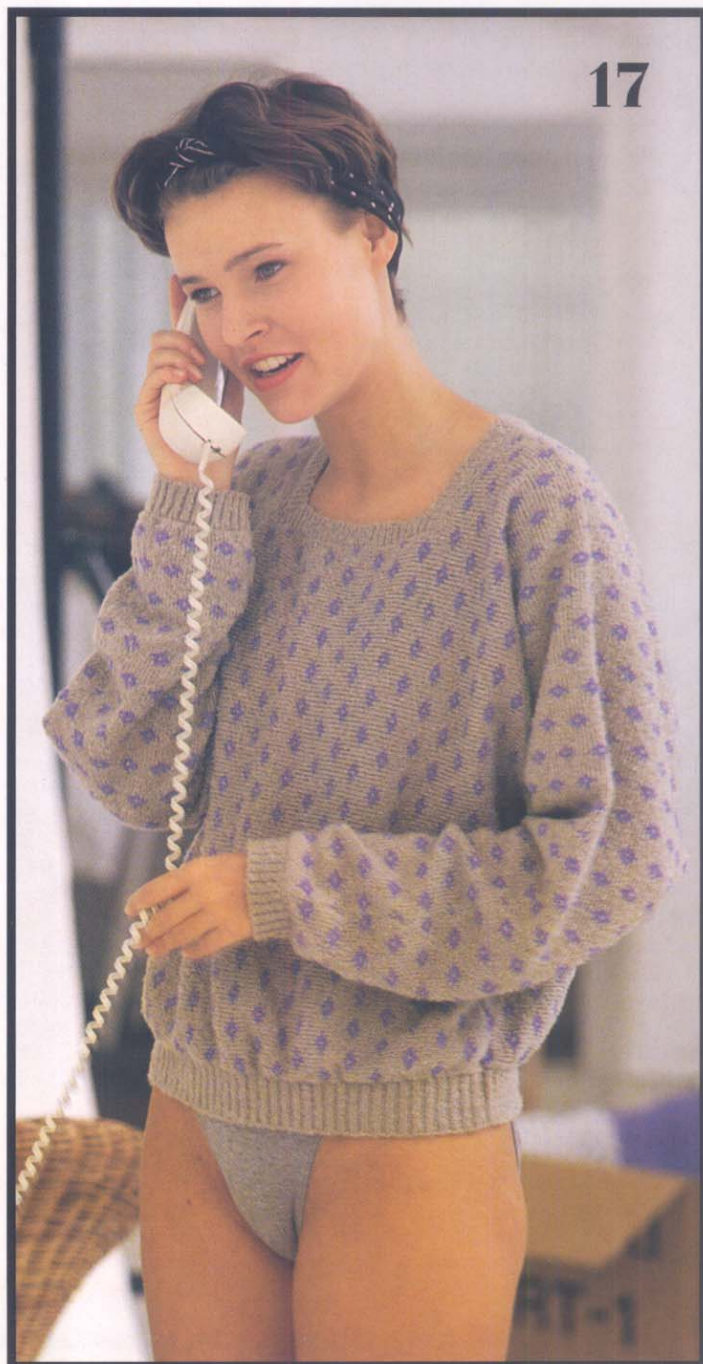




16



17



# 17 DOLMAN SWEATER



For Knitmaster Standard Gauge Punchcard Machines with Ribbing Attachment.

### Sizes:

To fit 86-91 (96-101) cms/34-36 (38-40) inch bust.

### Materials:

Knitmaster Boucle  
Col 1 (Dune) – 320 (370) grms  
Col 2 (Amethyst) – 110 (150) grms

### Tensions:

Fair Isle Pattern 1 – 29 sts and 46 rows to 10 cms when slightly stretch-

ed sideways. TD at approx. 5 (MT) 2x1 Rib – 64 rows to 10 cms. TD's at approx. MT-4  
1x1 Rib – 54 rows to 10 cms. TD's at approx. MT-4

### Pattern Note:

Fair Isle Pattern 1 – see chart 1 from Pattern 16.  
Col 1 in feeder 1 only, knit 6 rows.  
Col 1 in feeder 1, Col 2 in feeder 2, knit 5 rows.

**Soft neutral shades always look cool and fresh in Summer and chic and elegant in Winter. This classic dolman sweater can be the basis of many a fashion outfit for Winter or Summer – wear it with a long, flowing muslin skirt or crisp linen trousers on cooler Summer days or with smart, wool trousers in Winter.**

### BACK

Insert card 1 and lock on row 1. Push Ns 36 to 76 (39-79) inclusive at left of centre 0 to WP. 41 Ns altog. Using waste yarn, cast on ending with carr at right. RC 000. MT. Release card. Set carr for Fair Isle. Continue in Pattern 1, knit 5 rows. Inc 1 st at right edge on the next and ev foll 6th row 6 times in all, knit 4 rows. Inc 1 st at right edge on the next and ev foll 5th row 16 times in all, knit 3 rows. Inc 1 st at right on the next and ev foll 4th row 4 times in all, knit 2 rows. Inc 1 st at right edge on the next and ev foll 3rd row 7 times in all, knit 1 row. Inc 1 st at right edge on the next and ev foll alt row 22 (26) times in all, knit 1 row. Cast on 2 sts at beg of the next and ev foll alt row 9 (10) times in all, knit 1 row. Cast on 3 sts at beg of the next and foll alt row, knit 1 row. Cast on 4 sts at beg of the next and foll alt row, knit 1 row. Cast on 6 sts at beg of the next and ev foll alt row 4 times in all. 152 (158) sts. Knit 72 (84) rows. RC 303 (325). Carr at left\*.

### Shape Back Neck

Cast off 2 sts at beg of the next row, knit 1 row. Dec 1 st at beg of the next and foll alt row, knit 3 rows. Dec 1 st at beg of the next and foll 4th row, knit 67 rows. Inc 1 st at beg of the next and foll 4th row, knit 3 rows. Inc 1 st at beg of the next and foll alt row, knit 1 row. Cast on 2 sts at beg of the next row. 152 (158) sts. \*\*Knit 74 (86) rows. RC 470 (504). Carr at right.

Cast off 6 sts at beg of the next and ev foll alt row 4 times in all, knit 1 row. Cast

off 4 sts at beg of the next and foll alt row, knit 1 row. Cast off 3 sts at beg of the next and foll alt row, knit 1 row. Cast off 2 sts at beg of the next and ev foll alt row 9 (10) times in all, knit 1 row. Dec 1 st at right edge on the next and ev foll alt row 22 (26) times in all, knit 1 row. Dec 1 st at right edge on the next and ev foll 3rd row 7 times in all, knit 2 rows. Dec 1 st at right edge on the next and ev foll 4th row 4 times in all, knit 3 rows. Dec 1 st at right edge on the next and ev foll 5th row 16 times in all, knit 4 rows. Dec 1 st at right edge on the next and ev foll 6th row 6 times in all. 41 sts. Knit 3 rows. RC 699 (743). Cast off with waste yarn\*\*.

### FRONT

Knit as for Back to \* but reverse the shapings by reading left for right and vice versa.

### Shape Neck

Cast off 26 sts at beg of the next row. Knit 91 rows. Cast on 26 sts at beg of the next row. 152 (158) sts. Knit as for Back from \*\*to\*\* but reverse the shapings by reading left for right.

### BACK AND SIDE NECKBAND

Arrange 128 Ns for 1x1 rib. Using col 1, cast on. RC 000. MT-4. Inc 1 st at both ends of the next and ev foll alt row 6 times in all. 140 sts. Transfer sts to knitter. Knit 1 row MT. Cast off with waste yarn.

### FRONT NECKBAND

Arrange 46 Ns for 1x1 rib. Using col 1, cast on. RC 000. MT-4. Inc 1 st at both ends of the next and ev foll alt row 6 times in all. 58 sts. Transfer sts to knitter. Knit 1 row MT. Cast off with waste yarn.

### CUFFS

Join shoulder seams. Arrange 82 Ns for 2x1 rib. Using col 1, cast on and knit circular rows in reverse. RC 000. MT-4, knit 19 rows. Transfer sts to knitter.

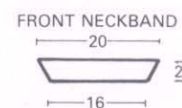
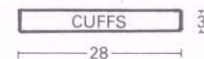
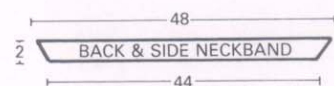
With wrong side facing, pick up sts from below waste yarn and place onto Ns. Knit 1 row MT. Cast off.

### WELTS

Arrange 134 (148) Ns for 2x1 rib. Using col 1, cast on and knit circular rows in reverse. RC 000. MT-4, knit 32 rows. Transfer sts to knitter. With wrong side of Back facing, pick up sts from lower edge and place onto Ns. Knit 1 row MT. Cast off. Rept for Front.

### TO MAKE UP

Pin out to size and steam carefully. Join side and sleeve seams. Backstitch neckbands into pos and join seams. Give final light steam.

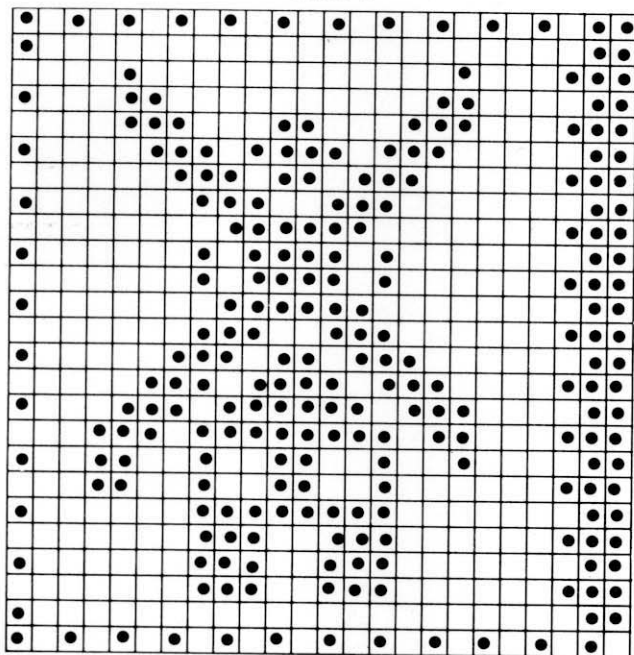


Continued on page 24

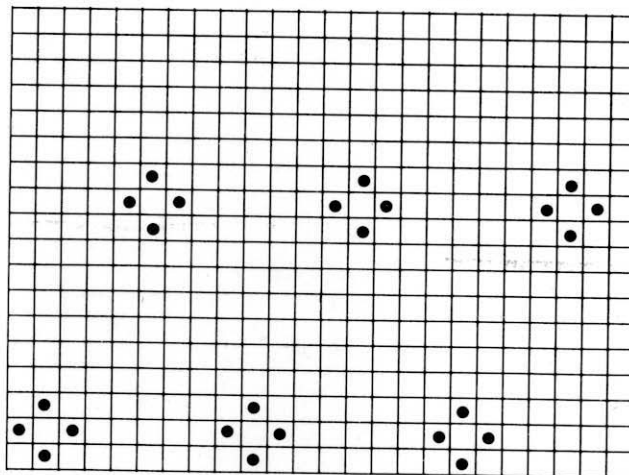
**PATTERN 15**

Continued from page 38

CARD 1



CARD 2 (Rept twice more)



**PATTERN 16**

Continued from page 39

row 6 times in all, knit 1 row. Cast on 2 sts at beg of the next and ev foll alt row 3 times in all, knit 1 row. Cast on 3 sts at beg of the next row, knit 1 row. Cast on 8 sts at beg of the next row. 180 sts. Knit as for Back from \*\*to\*\* but reverse the shapings by reading left for right. Remove card.

**BORDER (knit 2)**

Insert card 2 and lock on row 38 (27). Push 17 Ns at left and right of centre 0 to WP. 34 Ns altog. Using waste yarn, cast on by hand. Push Ns to HP. Using col 1, cast on by hand. Push Ns to UWP. RC 000. MT. Knit 2 rows. Release card. Set carr for Fair Isle. Continue in Pattern 2, knit 254 (276) rows. Continue in stockinet. Knit 2 rows col 1. Cast off.

**CUFFS**

Join shoulder seams. Push 75 Ns to WP. With right side facing, pick up sts from below waste yarn and place onto Ns gathering evenly. RC 000. MT. Using col 1, knit 43 rows. Cast off.

**WELTS**

Join borders to lower edge of back and front. Arrange 134 (148) Ns for 2x1 rib. Using col 1, cast on and knit circular rows in reverse. RC 000. MT-4, knit 32 rows. Transfer sts to knitter. With wrong side of back border facing, pick up sts from lower edge and place onto Ns. Knit 1 row MT. Cast off. Rept for front.

**NECKBAND**

Arrange 169 Ns for 2x1 rib. Using col 1,

cast on. RC 000. MT-4, knit 19 rows. Transfer sts to knitter. Knit 1 row MT. Cast off with waste yarn.

**TO MAKE UP**

Pin out to size and steam carefully. Join

side and sleeve seams reversing cuff seam. Fold cuff to the outside, allow edge to roll and catch down. Backstitch neckband into pos and join centre back neck seam. Give final light steam.

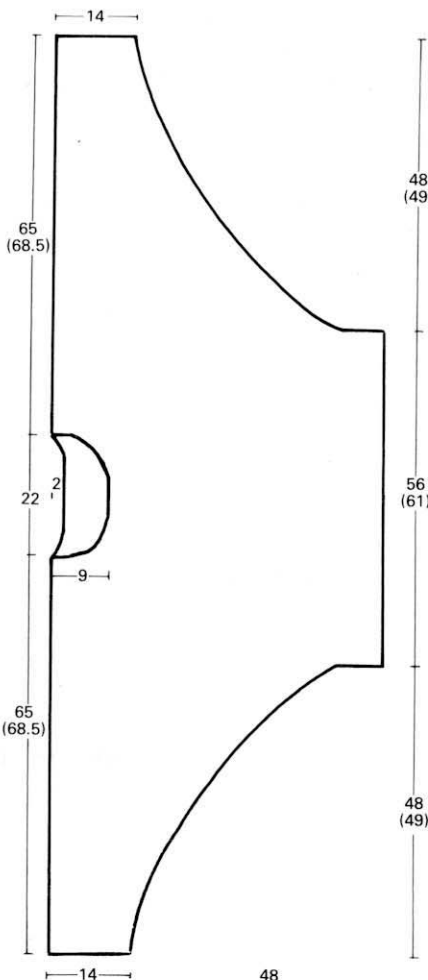


CHART 2

