

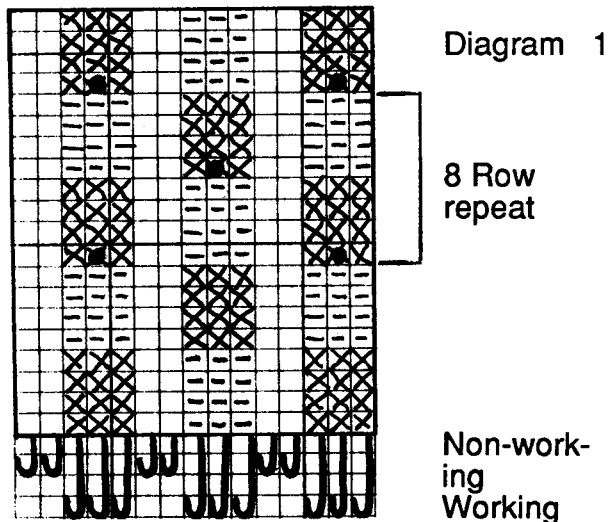
Tips & Techniques!

Tips & Techniques #9

ALL MACHINE GAUGES HAND MANIPULATED STITCHES

OPEN TUCK STITCH

1. With waste yarn, C/O the required number of NDLS.
2. Transfer every 4th & 5th NDL to adjacent NDLS as shown at bottom of chart (diagram #1) and put empty NDLS in non-working position (NWP). Begin and end with 2 working NDLS at each edge for seaming.



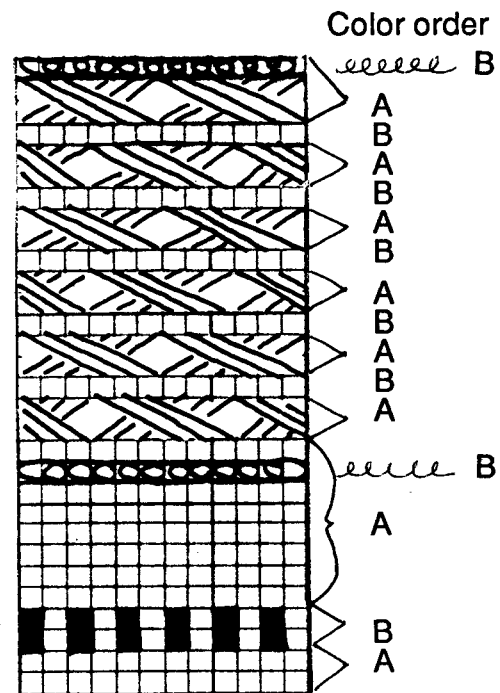
3. Knit 1 row. Set carriage to hold NDL in holding position (HP). Refer to the chart and push the NDLS marked with "X" to HP and knit 4 Rs.
4. Push the NDLS in HP back to upper working position (UWP) so they will be able to knit in the next row. Push the next groups of NDLS marked with "X" to HP and knit 4 Rs.
5. With a transfer tool, lift the 4 floats five Rs below and place them onto the NDLS marked

with "•".

6. Repeat steps 1-5. Stitch size should be as for stockinette; move the claw weights up regularly.

GIANT BASKET WEAVE CABLES

1. C/O and knit 7 Rs with color A.
2. Set carriage to hold NDLS in HP.
3. Push every other NDL to HP and knit 2 Rs with color B.
4. Set carriage to knit NDLS back from HP and knit 7 Rs with color A.
5. Push all NDLS to HP and wind color B (e-wrap) around two NDLS at a time. Knit 1 R with color A.
6. Push all the NDLS to HP, with STS behind the latches.
7. Unthread color A from the carriage and lay it across all the open NDL hooks. Push the NDLS back to UWP so that the latches close



and catch the yarn in the NDL hooks. Manually knit each NDL all the way back to NWP, one at a time.

8. Pull the fabric towards you to return the NDLS to working position (WP). Then, use a pair of 3 prong transfer tools to cross the cables as shown on the chart (Diagram #2).

9. Bring all NDLS to HP and knit 1 R color B.

10. Repeat steps 6-9 as desired. To end, repeat steps 5-1.

TWISTED LOOP STITCH

1. C/O and knit some rows with color A. Transfer every other ST to an adjacent NDL and place empty NDLS in NWP. Set carriage to knit NDLS back from HP.

2. Push the NDLS with 2 STS to HP so that the STS slip behind the latches. Lay a double strand of color B across the open hooks of the NDLS and then push them back to UWP so that the latches close and catch the yarn in the hooks. Then, manually knit each NDL (one at a time) back to NWP as shown in diagram 3a.

3. Bring these same NDLS to HP and knit 3 Rs with color A as shown in diagram 3b.

4. Pick up the loops from the row knitted with color B and place them onto the empty NDLS, twisting the loops as shown in diagram 3c and bringing the NDLS to WP.

5. Repeat steps 1-5 as desired.

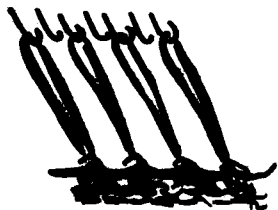


Diagram 3a

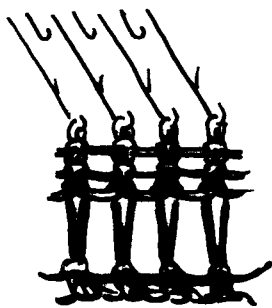


Diagram 3b

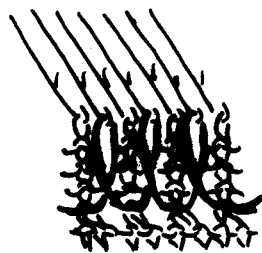


Diagram 3c

ZIG-ZAG EDGING

1. C/O the required number of NDLS, ending with carriage on right (COR). Set carriage to knit NDLS back from HP.

2. Skip the next 3 NDLS and bring the following 3 NDLS into HP. E-wrap the 3 edge NDLS as shown in diagram 4a.

3. Knit 10 Rs. Use a 3 prong tool to transfer the STS from the NDLS marked "•" to the NDLS marked "X".

4. Repeat steps 2-3 as desired.

5. To knit edging at both sides of fabric: e-wrap the right group of 3 NDLS, knit 1 R and then e-wrap 3 NDLS at left. Knit 9 Rs, make transfer and re-wrap right group of NDLS. Knit 1 R and repeat at left. See diagram 4b.

6. This edging can be applied to short row and sideways knitted garments as well as to straight edges.



Diagram 4a

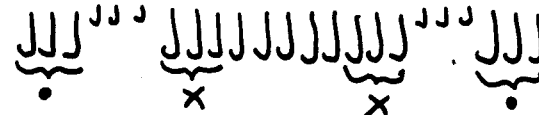


Diagram 4b

BASKET WEAVE EDGING

1. To knit the edging strip: C/O over a width of 8 NDLS as shown in diagram 5a. Each border repeat requires 20 Rs on the edging strip.

Knit enough rows (multiples of 20). B/O only the pair of STS at the left, not the ST marked "X".

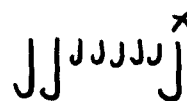
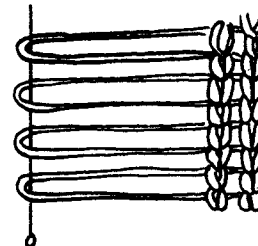


Diagram 5a

2. Unravel the ST marked "X", catching the loops on a blocking wire (or ribber comb wire) to hold them taut (as shown in diagram 5b) as you steam press the strip.

Diagram 5b



3. The long loops are woven on the machine as follows: With the wrong side of the strip facing you, pick up the first 5 loops (A,B,C,D,E) and hang them on NDLS 6,7,8,9,10 as shown in diagram 5c. Begin on the right of the machine, allowing enough NDLS for the entire border.

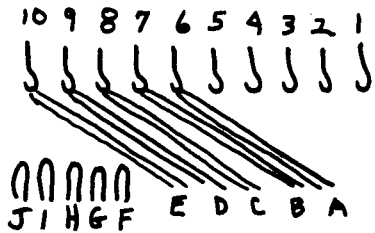


Diagram 5c

4. Insert a latch tool between the loops, weaving it over and under as shown in diagram 5d. Catch loop "F" in the hook and pull it through, hanging it on NDL 1.

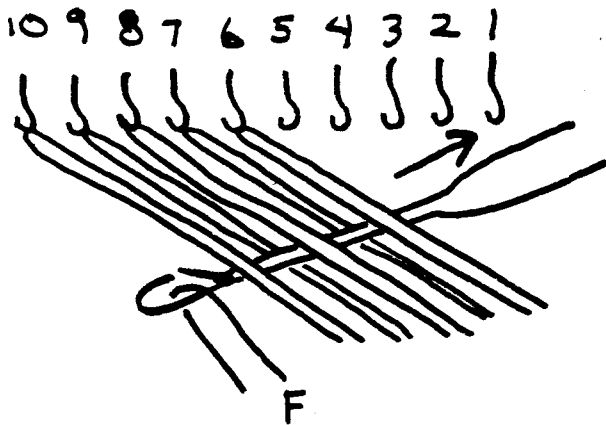


Diagram 5d

5. Weave loops G,H,I,J through (as shown in diagram 5e), alternating the over and under placement. Hang each loop on the NDL indicated in the diagram. This completes the first border pattern.

6. The next repeat is done exactly the same way except that you only need to allow 9 NDLS because the last NDL of the previous repeat is used as the first NDL in the next repeat (see diagram 5e). That is, the NDL holding loop "E" from the first repeat will ultimately hold loop "F" from the next repeat. (You can also vary this by allowing the last wo/first two to overlap.)

Place 2 loops on this needle.

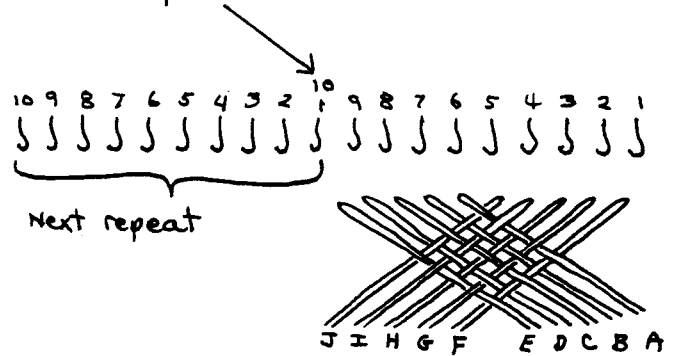





Diagram 5e

7. The depth of the border can be increased or decreased according to the number of empty NDLS included when knitting the edging strip. Accordingly, you will also want to adjust the number of loops that weave through each other.

TRIANGLE TRIM AND APPLIQUE

1. For Applique: C/O over 11 NDLS by ewrapping. Follow chart 6a and use full fashion decreases (two prong transfer tool) to reduce to 1 ST over the next 12 Rs.

-  Purl stitch
-  Full fashion transfer to the right
-  Full fashion transfer to the left

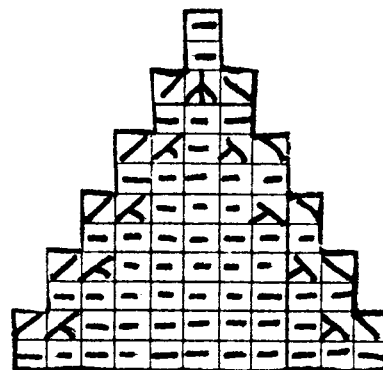


Diagram 6a

NOTE: Omit last 2 rows when making triangular trim.

2. Leave last ST on the NDL and ewrap across next 10 NDLS as shown in diagram 6b.

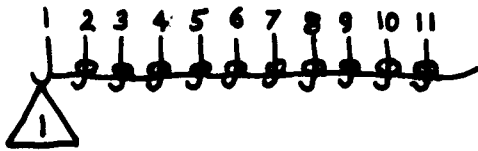


Diagram 6b

3. When second triangle is completed, pick up corner of first triangle and hang it on the same NDL before starting the third section. See diagram 6c for joining the triangles as they are knitted.

4. Steam/press the finished piece and then use the yarn ends to sew through the points marked "X" in diagram 6d to gather the center two triangles. Add crochet trim around the edges as desired or continue knitting enough pieces to assemble an afghan!

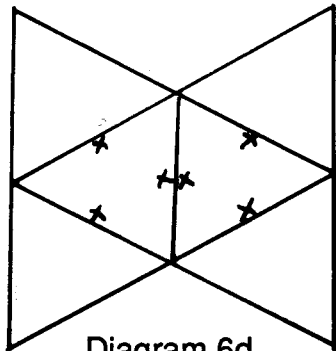


Diagram 6d

5. To make triangle trim: Begin as above, C/O over 11 NDLS and making full fashion decreases to shape the first triangle. However, do not knit Rs 11 & 12 after reducing from 3 STS to 1. Simply leave all 3 STS on the NDL and ewrap the next 10 STS to the right (as shown in diagram 6b). Repeat for each section. Do not pick up lower corners of completed triangles to join them.

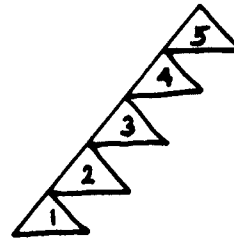


Diagram 6e.

6. The size of the triangles (for trim or applique) can be varied by casting on fewer or more (odd number) NDLS for each triangle.

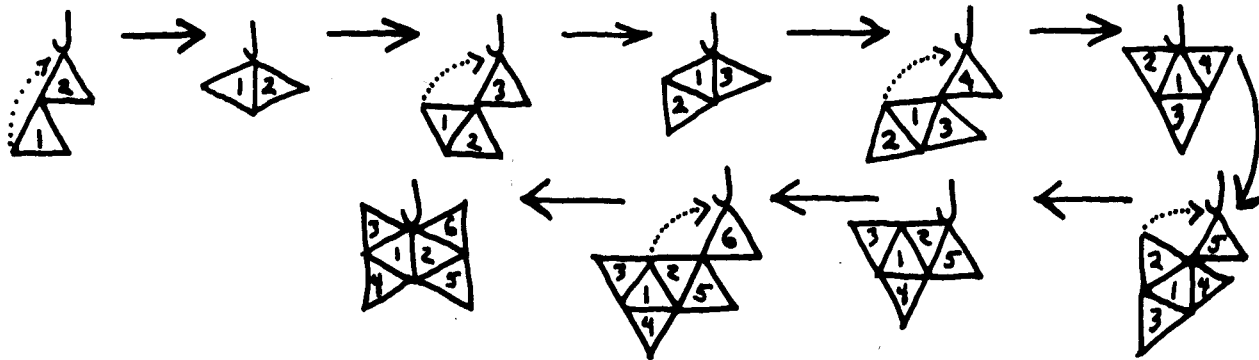
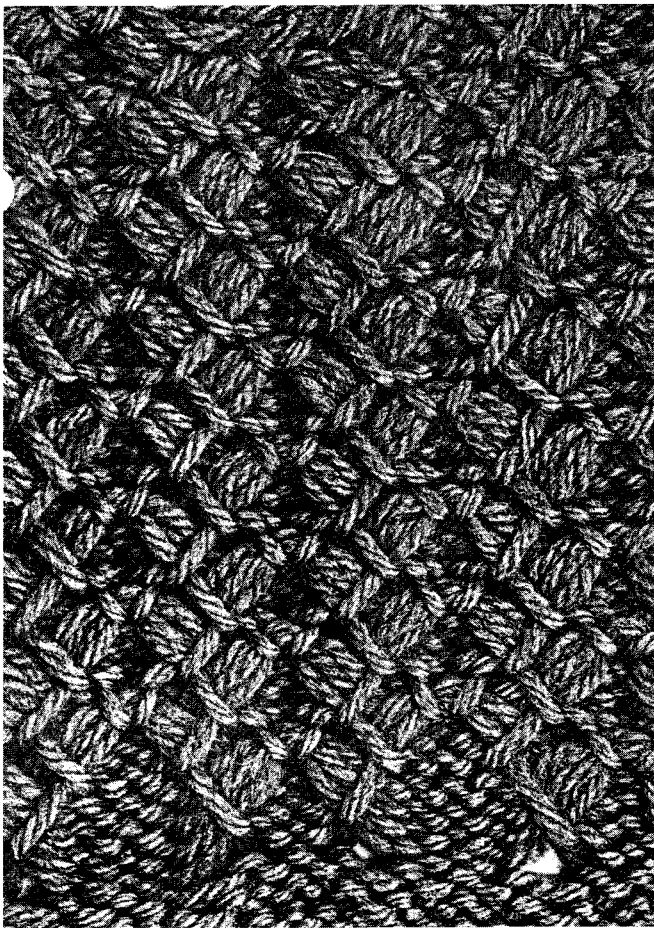
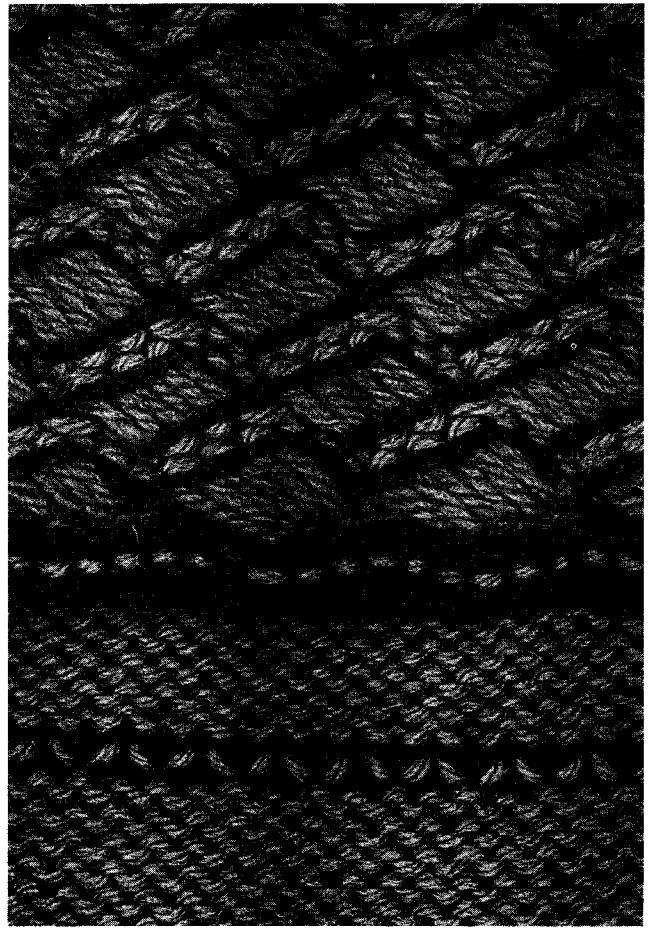


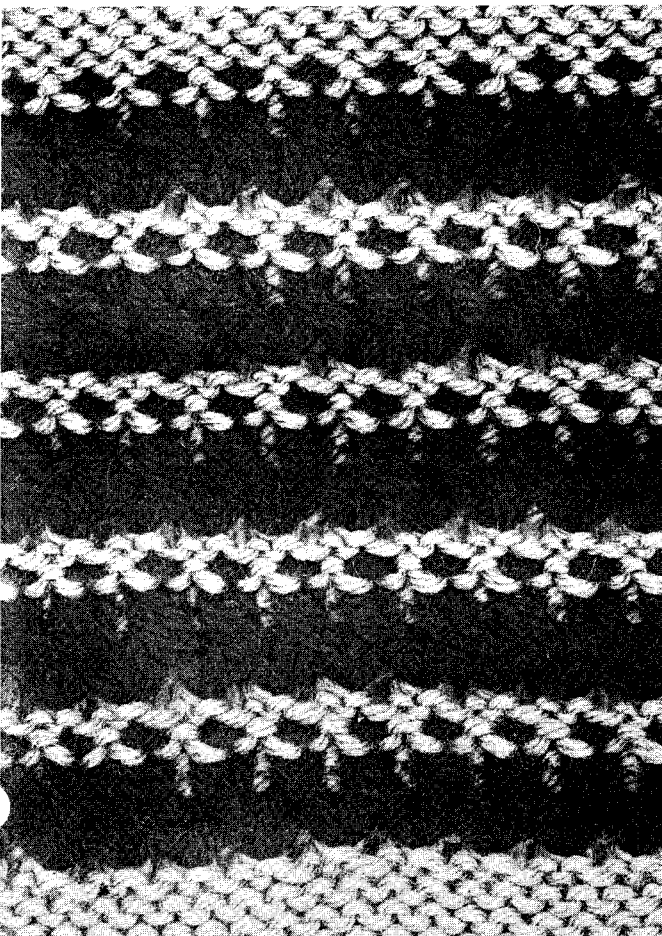
Diagram 6c



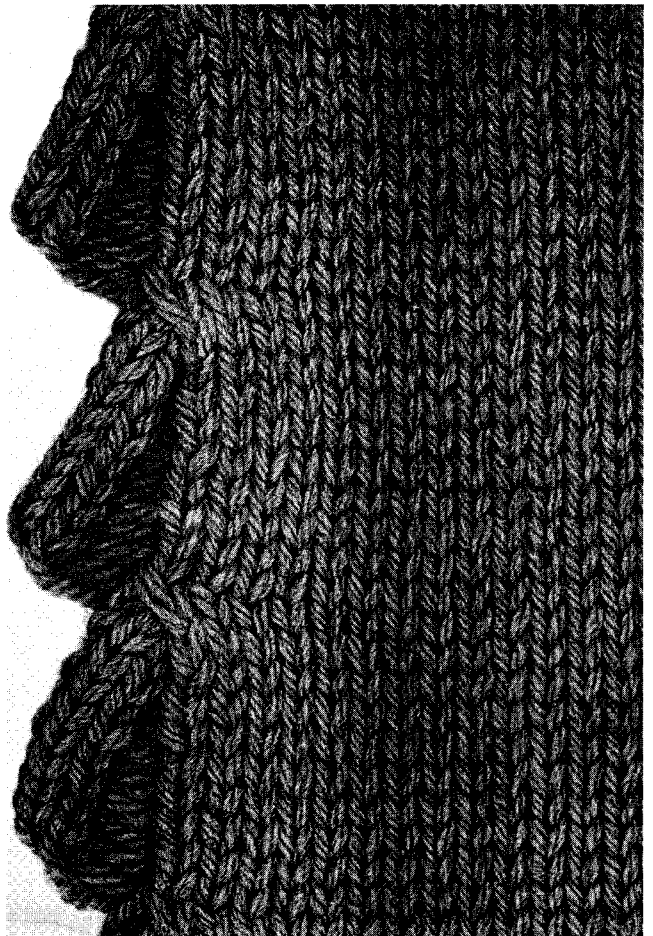
#1 Open Tuck Stitch



#2 Giant Basket Weave Cable



#3 Twisted Loop Stitch



#4 Zigzag Edging



#5 Basket Weave Edging



#6 Triangle Trim & Applique