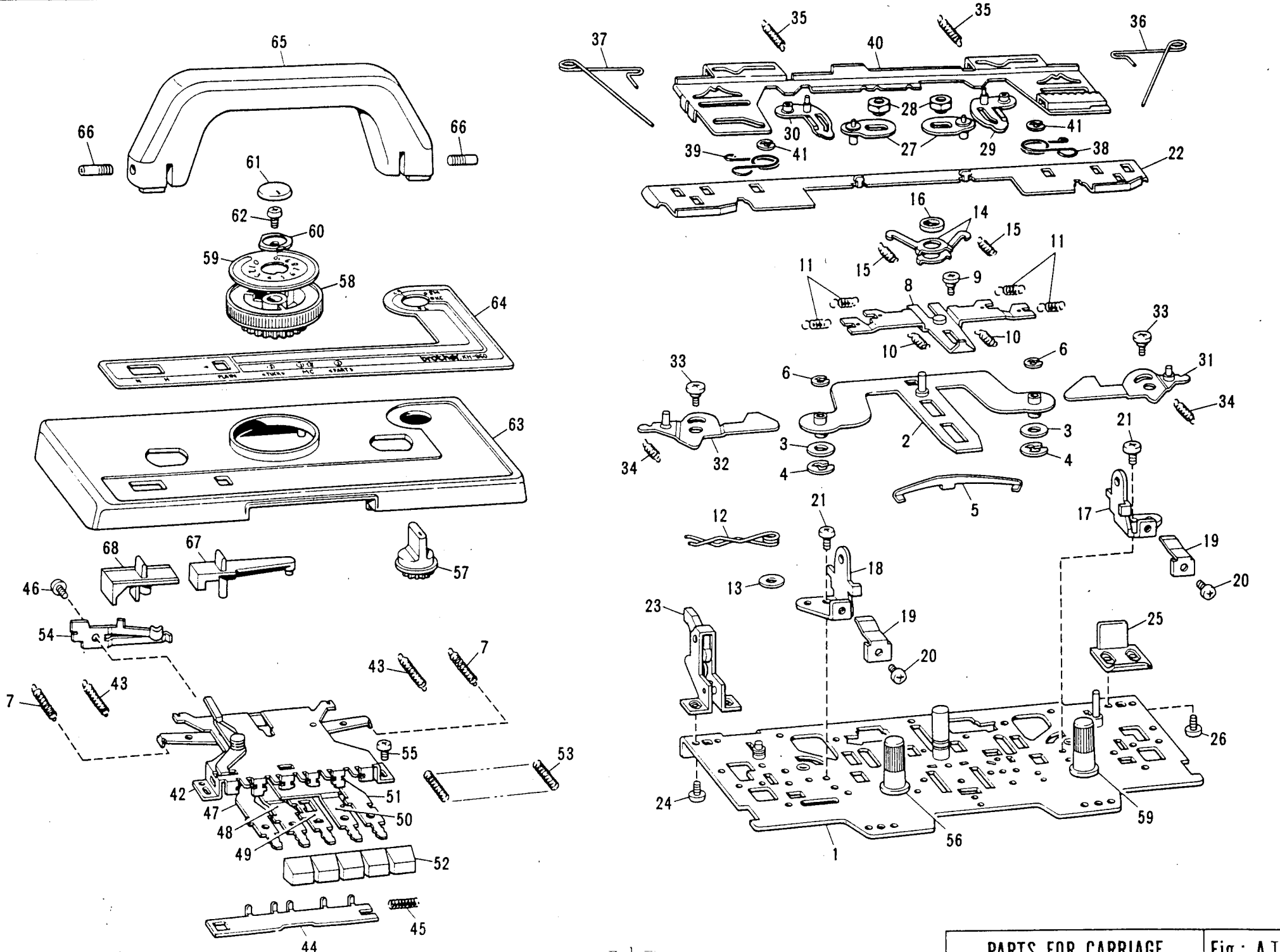


PARTS CATALOGUE FOR KH-860 KNITTING MACHINE

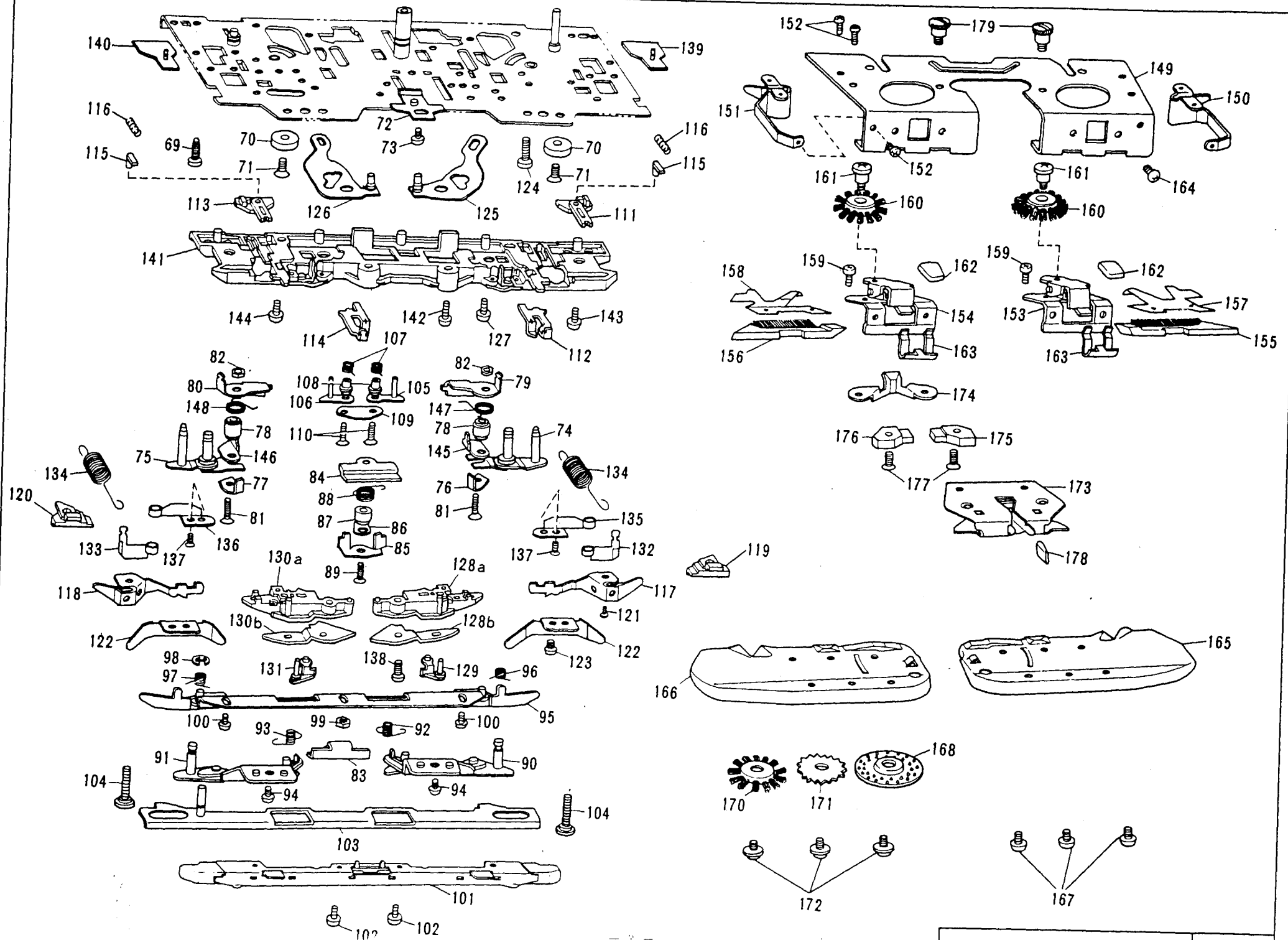
Parts marked "○" are new for KH-860 and not interchangeable with other models.



PARTS FOR CARRIAGE Fig. AT

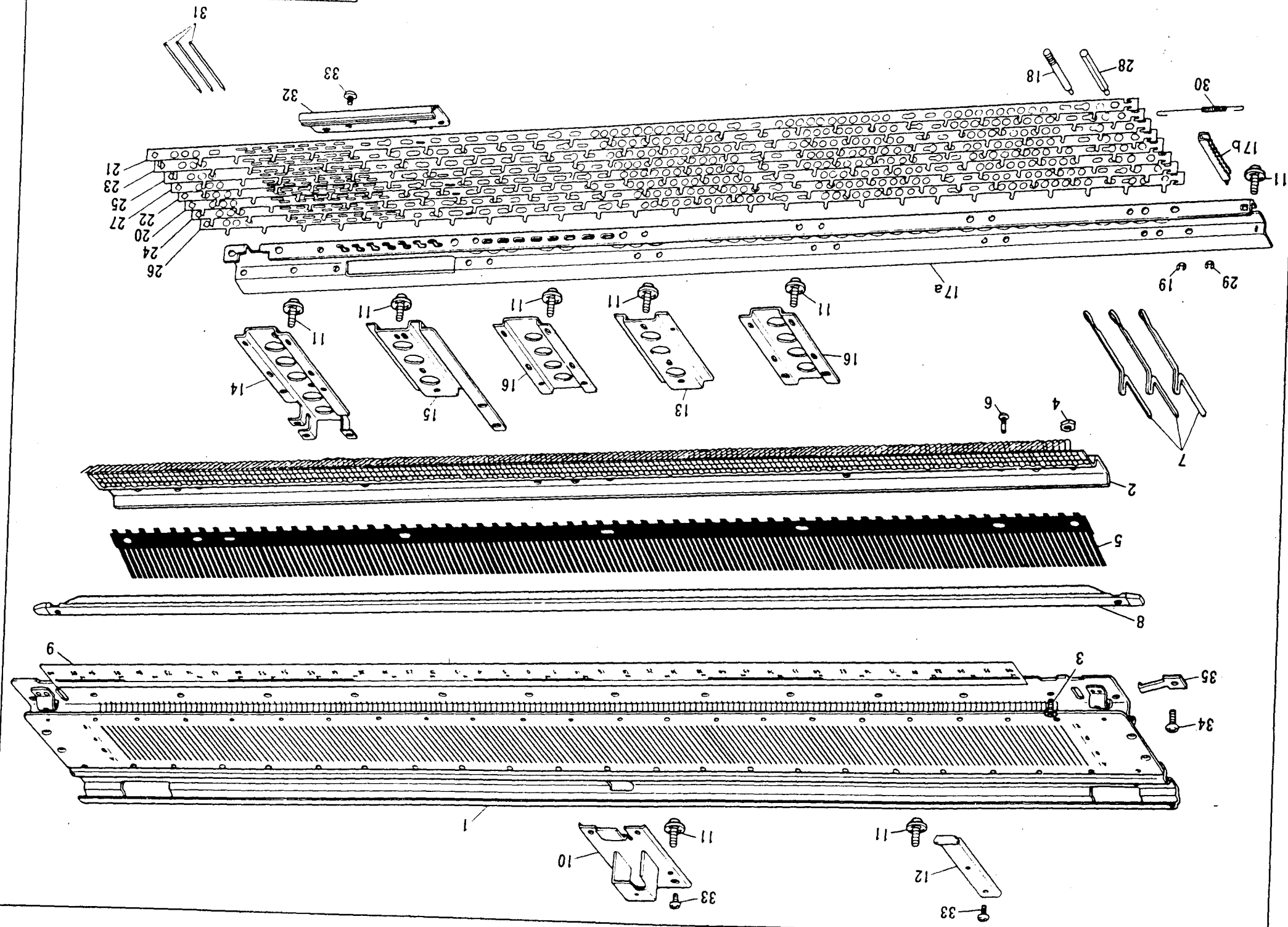
PARTS FOR CARRIAGE UPPER PART

Ref. No.	Parts No.	Description	Revised	Q'ty	Ref. No.	Parts No.	Description	Revised	Q'ty
○A11-68 & A1169-179	41108001	Carriage complete set KH-860 B		1	A I - 65	409605001	K Carriage handle		1
A I - 1	409501001	Carriage plate		1	66	409608001	Screw		2
2	409504001	Stitch cam guide plate		1	67	409609001	Plain lever knob		1
3	405483001	Washer		2	68	409610001	H.C.L. knob		1
4	048070346	Snap ring		2					
5	409506001	Stitch cam guide plate spring		1					
6	048030346	Snap ring		2					
7	407432001	Rasing cam change spring		2					
8	407692001	Change plate		1					
9	408491001	Change plate guide collar		1					
10	407318001	Change plate spring		2					
11	407319001	MC cam spring		4					
12	407333001	H.C.L. spring		1					
13	402447003	Washer		1					
14	407341001	Tuck cam operating plate		2					
15	407342001	Tuck cam spring		2					
16	407343001	Presser ring		1					
17	409520001	Handle setting base, right		1					
18	409521001	Handle setting base, left		1					
19	409522001	Handle lock spring		2					
20	060670403	+ - Screw 3.57×4		2					
21	060680503	+ - Screw 4.37×5		2					
22	409554001	Rear plate		1					
23	409967001	Row counter tripper assembly		1					
24	060660403	+ - Screw 3.18×4		2					
25	409972001	Rear plate guide		1					
26	060660403	+ - Screw 3.18×4		2					
27	409567001	S.M. cam lever		2					
28	409571001	Nut		2					
29	409572001	S.M. cam change crank, right		1					
30	409576001	S.M. cam change crank, left		1					
31	409578001	Cam change plate, right		1					
32	409581001	Cam change plate, left		1					
33	408506001	Stud screw 3.18		2					
34	410928001	Selection guide spring		2					
35	409585001	Needle selection change lever spring		2					
36	409498001	Valve cam E spring, right		1					
37	409499001	Valve cam E spring, left		1					
38	409543001	Connecting plate spring, right		1					
39	409544001	Connecting plate spring, left		1					
40	409565001	Upper slide plate		1					
41	048040346	Snap ring		2					
42-54	409590001	Cam button unit		1					
52	405302003	Push botton		5					
54	409595001	Stitch dial notch spring		1					
55	060670403	+ - Screw 3.57×4		2					
56	409596001	Thunb nut		2					
57	409597001	Change knob		1					
58	409599001	Stitch dial		1					
59	409974001	Stitch dial indicator plate		1					
60	406283001	Stitch dial presser		1					
61	409601001	Stitch dial cap		1					
62	060660603	+ - Screw 3.18×6		1					
63-64	411081001	K Carriage cover assembly KH-860 B		1					
○ 63	409603001	K Carriage cover		1					
○ 64	411082001	K Carriage cover decoration plate KH-860B		1					



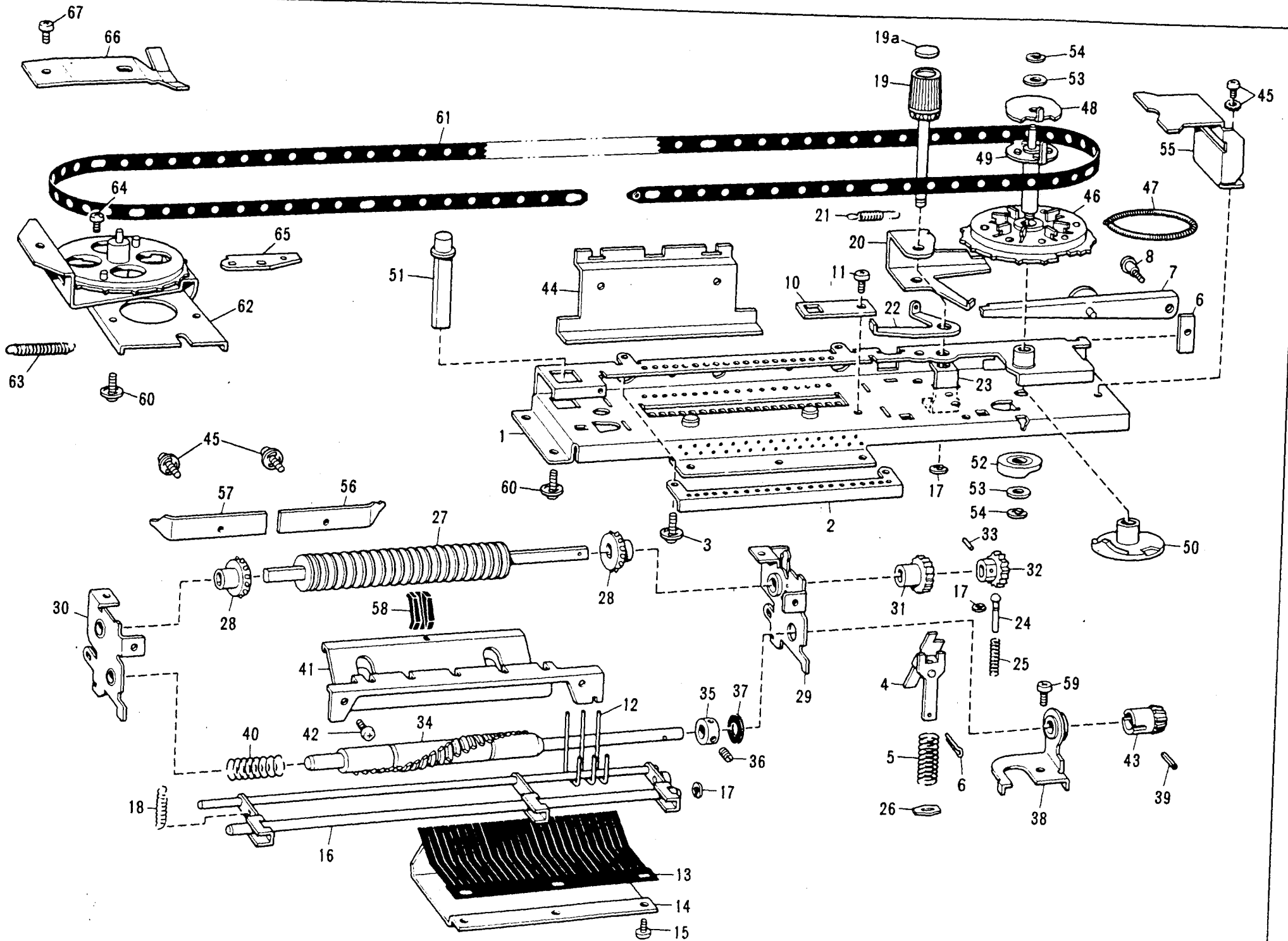
PARTS FOR CARRIAGE LOWER PART

Ref. No.	Parts No.	Description	Revised	Q'ty	Ref. No.	Parts No.	Description	Revised	Q'ty
A II- 69	037351615	Tapping screw		2	A II-125	409523001	Needle selection change plate, right		1
70	407285000	Carriage magnet 16		2	126	409526001	Needle selection change plate, left		1
71	408773001	Flat head screw 3.18×9		2	127	409528001	Stud screw		2
72	407289001	Stripe adjuster plate		1	128	409921001	Selection cam, right	(411491001	1
73	060679303	+ - Screw 3.57×3.5		1	129	409530001	Needle selection change cam, right	(411489001	1
○ 74	410094001	Stitch cam assembly, right		1	130	409922001	Selection cam, left	(411492001	1
○ 75	410097001	Stitch cam assembly, left		1	131	409535001	Needle selection change cam, left	(411490001	1
76	407296001	Sub stitch cam, right		1	132	410883001	Valve cam F, right		1
77	407297001	Sub stitch cam, left		1	133	410884001	Valve cam F, left		1
78	407298001	Sub stitch cam shaft		1	134	409570001	Valve cam F spring		2
79	407313001	MC cam, right		1	135	409537001	Guide cam G, right		1
80	407314001	MC cam, left		1	136	409538001	Guide cam G, left		1
81	407312001	Screw		2	137	410030001	Flat head screw 2.38×14		2
82	021660406	Nut		2	138	060661003	+ - Screw 3.18×10		2
83	408465001	Slide cam		1	139	409539001	Connecting plate, right		1
84	408466001	Slide cam guide		1	140	409541001	Connection plate, left		1
85	407356001	Guide cam C		1	141	409895001	Rear foot		1
86	407635001	Valve cam C		1	142	060660403	+ - Screw 3.18×4		2
87	408467001	Shaft for guide cam C		1	143	409494001	Screw 3.57		2
88	407636001	Valve cam C spring		1	144	060661213	Screw 3.18×12		2
89	408459001	Flat head screw C		1	○ 145	410488001	Valve cam D, right		1
90	408468001	Guide cam B, right		1	○ 146	410489001	Valve cam D, left		1
91	408471001	Guide cam B, left		1	○ 147	410490001	Valve cam D spring right		1
92	408473001	Valve cam B spring, right		1	○ 148	410491001	Valve cam D spring left		1
93	408474001	Valve cam B spring, left		1	○ 149-179	411008001	Sinker plate complete set		1
94	408305002	Screw		2	149-172	411009001	Sinker plate assembly without feeder		1
95-98	407455001	Guide cam A assembly		1	149	409979001	Sinker plate arm		1
95	407320001	Guide cam A		1	150	407427000	Weaving thread guide, right		1
96	407325001	Holding cam spring, right		1	151	407428000	Weaving thread guide, left		1
97	407326001	Holding cam spring, left		1	152	409162001	Tapping screw 3V-2.6		6
98	048030346	Snap ring		2	153	410026001	Weaving lever assembly, right		1
99	408524001	Nut		1	154	410027001	Weaving lever assembly, left		1
○ 100	408305002	Screw		2	155	410003001	Latch opening brush, right		1
101	409892001	Front foot		1	156	410004001	Latch opening brush, left		1
102	408305002	Screw		2	157	408607000	Latch presser plate, right		1
103	407327001	Front slide plate		1	158	408608000	Latch presser plate, left		1
104	408504001	Stud screw 3.18		2	159	037280616	Screw		4
105	407579001	Tuck cam, right		1	160	407437001	Weaving pattern brush		2
106	407586001	Tuck cam, left		1	161	408316001	Stud screw for weaving pattern brush		2
107	407338001	Tuck cam spring		1	162	409629001	Weaving lever knob		2
108	407339001	Shaft for tuck cam		2	163	407441001	Weaving lever spring		2
109	407340001	Tuck cam plate		1	164	408305001	Screw		4
110	407299001	Screw		2	165	409614001	Sinker plate, right		1
111	410922001	Selection cam for right end needle		1	166	409618001	Sinker plate, left		1
112	410924001	Selection guide for right end needle		1	167	060660303	+ - Screw 3.18×3		6
113	410923001	Selection cam for left end needle		1	○ 168	410988001	Rubber wheel		2
114	410925001	Selection guide for left end needle		1	170	407702001	Wheel brush		2
115	410926001	End needle selection switch cam		2	171	405184002	Plastic gear		2
116	410927001	End needle selection cam spring		2	172	409621001	+ - Screw 3.18		6
117	409897001	Separation cam, right		1	173-177	409980001	Double yarn feeder assembly		1
118	409898001	Separation cam, left		1	173	409981001	Yarn feeder body		1
119	410929000	Buffer right, for selected needle		1	174	409625000	Magnet holder plate		1
120	410930000	Buffer left, for selected needle		1	175	407454000	Magnet, right		1
121	060660403	+ - Screw 3.18×4		2	176	407578000	Magnet, left		1
122	409519001	Guide cam F		2	177	002631003	Fastening screw, 2.38×10		2
123	062660403	+ - Screw 3.18×4		2	178	407450002	Yarn feeder knob		1
124	062681203	+ - Screw 4.37×12		2	179	409626001	Thumb screw		2



PARTS FOR NEEDLE BED

Ref. No.	Parts No.	Description	Revised	Q'ty	Ref. No.	Parts No.	Description	Revised	Q'ty
○ B- 1	411102001	Needle bed assembly		1					
2	409641001	Needle bed comb assembly		1					
3	004630704	Screw		12					
4	405077001	Nut		12					
5	407112001	Needle retaining spring		1					
6	407687001	Screw		3					
7	407113001	Plain needle		200					
8	405078002	Needle presser bar assembly		1					
9	407114001	Needle position indicator		1					
10	407565001	Carrying case reinforcing plate A		1					
11	409197001	Screw with washer		27					
12	407116000	Carrying case reinforcing plate B		1					
13	407120000	Lower holder plate		1					
14	407121000	Stay, right		1					
15	408061000	Stay, center		1					
16	407123000	Stay, left		2					
○ 17-30	411088001	Needle selector plate holder assembly		1					
○ 17-19	411089001	Needle selector plate holder		1					
18	408159001	Shaft A		6					
19	048025346	Snap ring		6					
20	408088001	Needle selector plate, 1		1					
21	408089001	Needle selector plate, 2		1					
22	408090001	Needle selector plate, 3		1					
23	408091001	Needle selector plate, 4		1					
24	408092001	Needle selector plate, 5		1					
25	408093001	Needle selector plate, 6		1					
26	408094001	Needle selector plate, 7		1					
27	408095001	Needle selector plate, 8		1					
28	408172001	Shaft B		1					
29	048025346	Snap ring		1					
30	408086001	Needle selector plate spring		8					
31	408098001	N.S.P. operation lever		24					
32	408099001	Operation lever presser		1					
33	060660403	+ - Screw 3.18×4		5					
34	060660704	+ - Screw 3.18×7		2					
35	407457001	Extension rail lock spring		2					



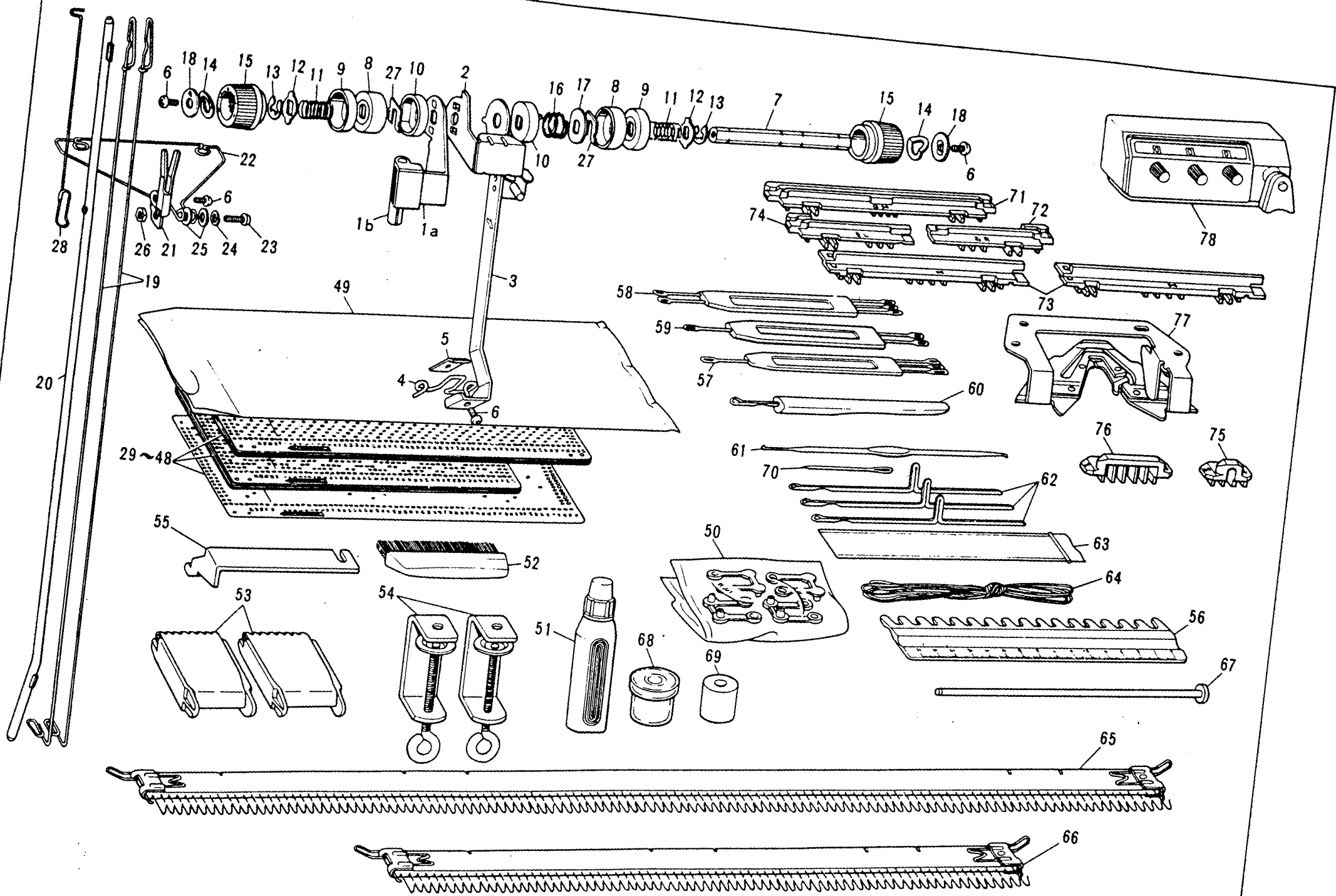
NEEDLE SELECTOR UNIT Fig. C

PARTS FOR NEEDLE SELECTOR UNIT

Ref. No.	Parts No.	Description	Revised	Q'ty	Ref. No.	Parts No.	Description	Revised	Q'ty
C-1-59	410007001	Needle selector unit		1	C-55	408084000	Timing belt guide plate, right		1
○ 1	409662002	Needle selector unit body		1	36	408309001	Spring plate R		1
2	409679000	Card reader adjusting plate		1	57	408308001	Spring plate L		1
3	409197001	Screw With washer		2	58	407467000	Card guide pin holder		1
4	409665001	Ratchet assembly		1	59	060660503	+ -Screw 3.18×5		1
5	407145001	Ratchet operation plate spring		1	60	409197001	Screw with washer		7
6	045100802	Split pin		1	61	408181001	Timing belt		1
7	408529001	Card feeding lever assembly		1	62-64	410012002	Pulley assembly		1
8	408534001	Stud screw		1	63	410016001	Belt tension control spring		1
9	407197000	Card feeding adjuster plate		1	64	410072001	Screw with washer		2
10	408068001	Card reader guide stopper		1	65	410071000	Pulley adjusting plate		1
11	060660403	+ -Screw 3.18×4		1	66	407597001	Brake spring		1
12	407152001	Card reader		24	67	060660403	+ -Screw 3.18×4		1
13	408315001	Card reader spring		1					
14	408213000	Card reader spring presser plate		1					
15	062669303	+ -Screw 3.18×3.5		3					
16	408069001	Card reader release plate assembly		1					
17	048020346	Snap ring		3					
18	407161001	Spring for card reader release plate		1					
19	407189007	Card feeding knob assembly		1					
19a	405330002	Slide dial decoration plate		1					
20	408535001	Intermittent feeding lever		1					
21	408536001	Intermittent feeding lever spring		1					
22	408537001	Change lever		1					
23	407193000	Card feeding knob stopper cam		1					
24	407179001	Card position guide pin		1					
25	407180001	Spring		1					
26	407464000	Ratchet spring stopper ring		1					
27-42	410008001	Card feeding unit		1					
27	407162001	Card roller		1					
28	407164001	Feeding gear		2					
29	409673001	Card roller holder right assembly		1					
30	408075001	Card roller holder, left		1					
31	407176000	Ratchet wheel		1					
32	407177000	Card position guide gear		1					
33	407473001	Pin		1					
34	408078002	Rotary cam		1					
35	407184001	Rotary cam adjuster collar		1					
36	013680516	Stopper screw		2					
37	409658001	Washer 8.1		1					
38	409659001	Bevel gear stopper plate		1					
39	407183001	Pin		1					
40	408165001	Rotary cam spring		1					
41	407187001	Card guide		1					
42	060660403	+ -Screw 3.18×4		2					
43	409191000	Bevel gear		1					
44	407188000	Card reader holder		1					
45	409197001	Screw with washer		4					
46	408173001	Clutch wheel assembly		1					
47	410017001	Clutch spring		1					
48	407205001	Clutch cam B		1					
49	407206001	Clutch cam A		1					
50	408082000	Card feeding cam		1					
51	408065006	Push botton		1					
52	408083000	Card reader release cam		1					
53	025350333	Washer		2					
54	048025346	Snap ring		2					

PARTS FOR CARRYING CASE

Ref. No.	Parts No.	Description	Revised	Q'ty	Ref. No.	Parts No.	Description	Revised	Q'ty
○ D- 1-20	411091001	Carrying case complete KH-860 B		1					
○ 1-11	411092001	Carrying case upper assembly KH-860 B		1					
2	408250001	Cushion tube		2					
3	407250006	Upper side plate, right		1					
4	407251006	Upper side plate, left		1					
5	407252001	Square nut, 3.18		2					
6	408307001	Screw		2					
7	408194001	Plastic rivet		8					
8	407741001	L carriage holder plate		1					
○ 9	411094001	BROTHER name plate KH-860		1					
10	408037001	Ribet		2					
11	409986001	Packing instruction sheet		1					
12-20	409942001	Carrying case lower assembly		1					
12a-h	409943001	Carrying case lower body		1					
13	407262006	Lower side plate, right		1					
14	407263006	Lower side plate, left		1					
15	407252001	Square nut, 3.18		2					
16	408194001	Plastic rivet		6					
17	404022001	Carrying case lock assembly		2					
18	404027001	Carrying case lock spring		2					
19	407115000	Fastening plate		2					
20	405658001	Fastening screw		4					
21	407261001	Table clamp setting plate		2					
22	060660604	+ -Screw 3.18×6		4					
23	407265000	Needle bed fastening plate		2					
24	407119001	Screw		4					
25	407523002	Direction indicator plate		1					
26-30	409993001	Panel assembly		1					
○ 31-32	411084001	Accessories box assembly		1					
33	060660504	+ -Screw 3.18×5		4					
34	407277006	Card lock lever knob		1					



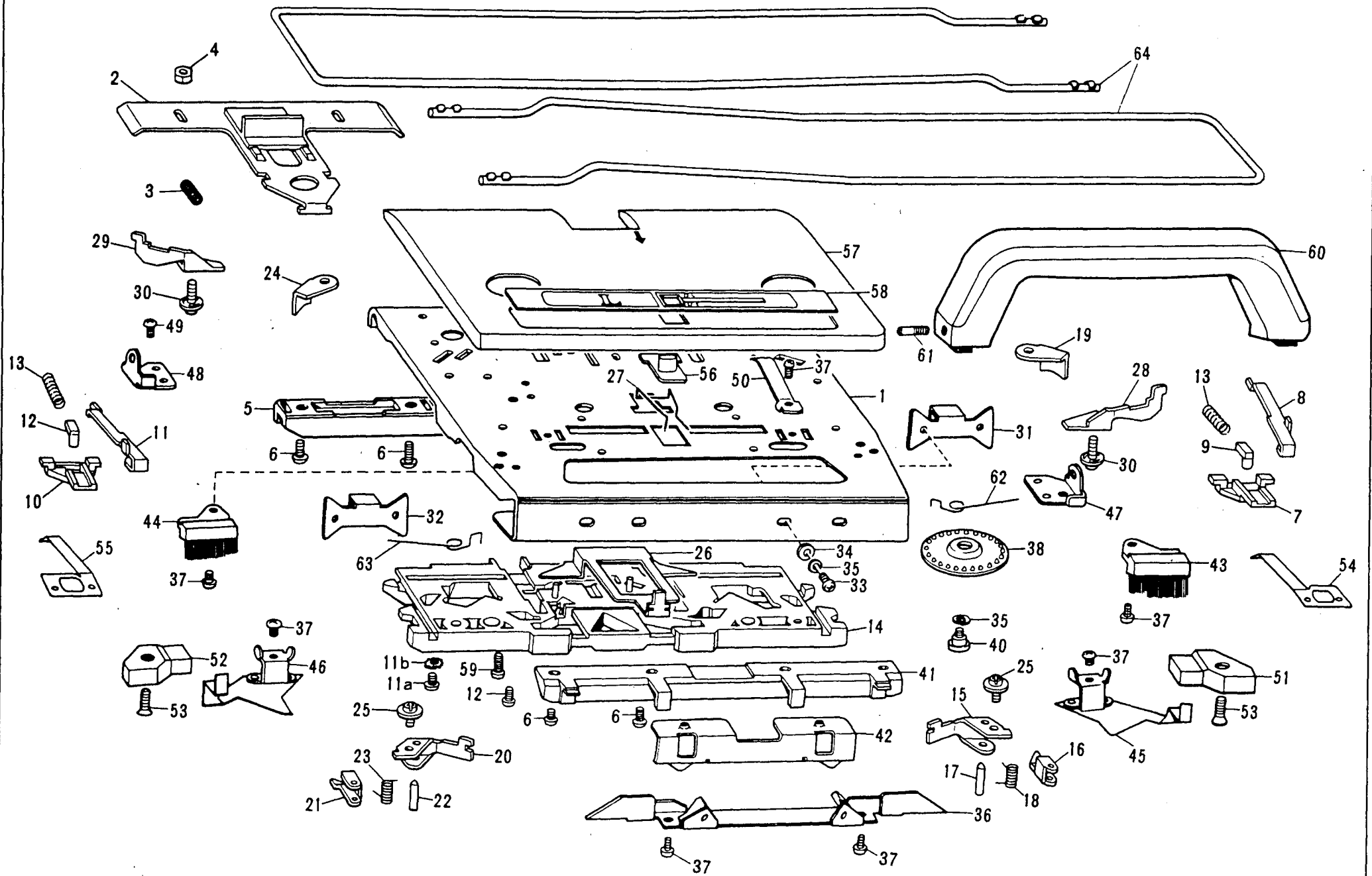
PARTS FOR ACCESSORIES

Ref. No.	Parts No.	Description	Revised	Q'ty	Ref. No.	Parts No.	Description	Revised	Q'ty
E- 1-28	410672001	Yarn tension unit assembly		1					
19	404755001	Take-up spring		2					
28	408614001	Sub take-up spring		1					
○ 29-49	411044001	Punch card set KH-860		1					
50	409170001	Plastic snap (4pcs. in one set)		1					
51	405135004	Special knitting machine oil		1					
52	403552002	Hand brush		1					
53	404883005	Claw weight		2					
54	409198001	Table clamp		2					
55	407481001	Carriage lock		1					
56	407482002	1/1 Needle pusher		1					
57	402575003	1×3 Transfer tool		1					
58	402631003	2×3 Transfer tool		1					
59	402576003	1×2 Transfer tool		1					
60	407458002	Latch tool		1					
61	402577001	Crochet		1					
62	407113001	Plain needle		3					
63	407483000	Spare needle case		1					
64	402389001	Cast-on thread		1					
65	404787005	Cast-on comb, long		1					
66	404884005	Cast-on comb, short		1					
67	407518001	Card holder pin		1					
68-69	487221001	Yarn wax with case		1					
70	402714001	Tapestry needle		1					
○ 71	410985001	Single motif cam		1					
○ 72	410975001	Motif knitting cam R		1					
○ 73	410976001	Motif knitting cam center		2					
○ 74	410977001	Motif knitting cam L		1					
○ 75	410978001	L-Point cam for 4 needles		6					
○ 76	410979001	L-Point cam for 8 needles		6					
○ 77	410971001	Plating yarn feeder assembly		1					
78	405134006	Row counter		1					

PARTS FOR L-CARRIAGE (FOR MODIFIED VERSION)

Ref. No.	Parts No.	Description	Revised	Q'ty	Ref. No.	Parts No.	Description	Revised	Q'ty
F-1-68	411097001	L carriage assembly KH-860		1	60	412148001	Valve cam C spring, left		1
1	410563001	L carriage plate		1	61	409528001	Screw		2
2	410564001	Release button plate assembly		1	62	410966001	R end needle selection change spring		1
3	410565001	Release button plate spring		1	63	410967001	L end needle selection change spring		1
4	408166001	Stud for release button plate		2	64	409744001	Lace selecting knob		1
5	060660706	-- Screw 3.18x7		4	65-66	411098001	L carriage cover assembly KH-860		1
6	060660806	+ - Screw 3.18x8		4	67	409748001	L carriage handle		1
7	410957001	R end needle selection cam for L		1	68	409751001	Screw		2
8	410958001	R end needle selection plate for L		1	69	410594001	Extension rail		2
9	410959001	R end needle selection change cam for L		1					
10	410960001	L end needle selection cam for L		1					
11	410961001	L end needle selection plate for L		1					
12	410962001	L end needle selection change cam for L		1					
13	410963001	End needle selection cam spring for L		2					
14	412138001	Main cam		1					
15	060660806	+ - Screw 3.18x8		2					
16	410578001	Separation cam R for L carriage		1					
17	408132001	Raising cam right for L carriage		1					
18	410579001	Shaft for separation cam		1					
19	408134001	Raising cam spring		1					
20	412145001	Valve cam C, right for L		1					
21	410581001	Separation cam L for L carriage		1					
22	408137001	Raising cam left for L carriage		1					
23	412146001	Valve cam C, left for L		1					
24	412898000	Presser plate		2					
25	406397001	Screw with washer 3.18x5		2					
26	408582001	Lace selecting cam		1					
27	408583001	Change lever spring		1					
28	410583001	Right end needle separation cam for L		1					
29	410584001	Left end needle separation cam for L		1					
30	410592001	+ - Screw 3.18x12		2					
31	410494001	Needle transfer plate R		1					
32	410495001	Needle transfer plate L		1					
33	413734001	Screw		4					
36	408573001	Cam plate		1					
37	060660406	+ - Screw 3.18x4		2					
38-39	411003001	Rubber wheel assembly		2					
40	405029001	Shud screw		2					
41	407490000	Front foot		1					
42	408579000	Front fool holder		1					
43	408580002	Small brush, right		1					
44	408581002	Small brush, left		1					
45	408561001	Spring plate, right		1					
46	408562001	Spring plate, left		1					
47	409740001	Handle setting base, right		1					
48	409739001	Handle setting base, left		1					
49	060670506	+ - Screw 3.57x5		2					
50	407522001	Handle lock spring		2					
51	407454000	Magnet, right		1					
52	407578000	Magnet, left		1					
53	061661006	Screw		2					
54	412141001	Valve cam B, right for L		1					
55	412142001	Valve cam B, left for L		1					
56	412143001	Rein forcing plate B, right for L cam		1					
57	412144001	Rein forcing plate B, left for L cam		1					
58	040210812	Tapping screw		2					
59	412147001	Valve cam C spring, right		1					

(KH-860 has been modified
from the serial number
L 4216299)



PARTS FOR CARRIAGE

Fig. 6

Ref. No.	Parts No.	Description	Revised	Q'ty	Ref. No.	Parts No.	Description	Revised	Q'ty
CG-1-63	411097001	L carriage assembly KH-860		1	G-59	060660403	+ -Screw 3.18×4		2
○ 1	410563001	L carriage plate		1	60	409748001	L carriage handle		1
○ 2	410954002	Release button plate assembly		1	61	409751001	Screw		2
○ 3	410565001	Release button plate spring		1	○ 62	410966001	R end needle selection change spring		1
○ 4	408166001	Stud for release button plate		2	○ 63	410967001	L end needle selection change spring		1
○ 5	410566000	Rear foot for L		1	○ 64	410594001	Extension rail		2
○ 6	060660703	+ -Screw 3.18×7		10					
○ 7	410957001	R end needle selection cam for L		1					
○ 8	410958001	R end needle selection plate for L		1					
○ 9	410959001	R end needle selection change cam for L		1					
○ 10	410960001	L end needle selection cam for L		1					
○ 11	410961001	L end needle selection plate for L		1					
○ 12	410962001	L end needle selection change cam for L		1					
○ 13	410963001	End needle selection cam spring for L		2					
○ 14	410573001	Main cam		1					
○ 15	410578001	Separation cam R for L carriage		1					
16	408132001	Raising cam right for L carriage		1					
○ 17	410579001	Shaft for separation cam		1					
18	408134001	Raising cam spring		1					
○ 19	410580001	Reinforcing plate BR for main cam		1					
○ 20	410581001	Separation cam L for L carriage		1					
21	408137001	Raising cam left for L carriage		1					
○ 22	410579001	Shaft for separation cam		1					
23	408134001	Raising cam spring		1					
○ 24	410582001	Reinforcing plate BL for main cam		1					
25	406397001	Screw with washer 3.18×5		2					
26	408582001	Lace selection cam		1					
27	408583001	Change lever spring		1					
○ 28	410583001	Right end needle separation cam for L		1					
○ 29	410584001	Left end needle separation cam for L		1					
○ 30	410592001	+ -Screw 3.18×12		2					
○ 31	410494001	Needle transfer plate R		1					
○ 32	410495001	Needle transfer plate L		1					
33	060660504	+ -Screw 3.18×5		4					
34	403069001	Washer		4					
35	028030243	Spring washer		6					
36	408573001	Cam plate		1					
37	060660403	+ -Screw 3.18×4		8					
○ 38	411003001	Rubber wheel for L		2					
40	405029001	Stud screw		2					
41	407490000	Front foot		1					
42	408579001	Front foot holder		1					
43	408580002	Small brush, right		1					
44	408581002	Small brush, left		1					
45	408561001	Spring plate, right		1					
46	408562001	Spring plate, left		1					
47	409740001	Handle setting base, right		1					
48	409739001	Handle setting base, left		1					
49	060670503	+ -Screw 3.57×5		2					
50	407522001	Handle lock spring		2					
51	407454000	Magnet, right		1					
52	407578000	Magnet, left		1					
53	004661003	Screw		2					
54	410986001	Right arresting plate for impact		1					
55	410987001	Left arresting plate for impact		1					
56	409744001	Lace selecting knob		1					
○ 57-58	411098001	L carriage cover assembly KH-860		1					

