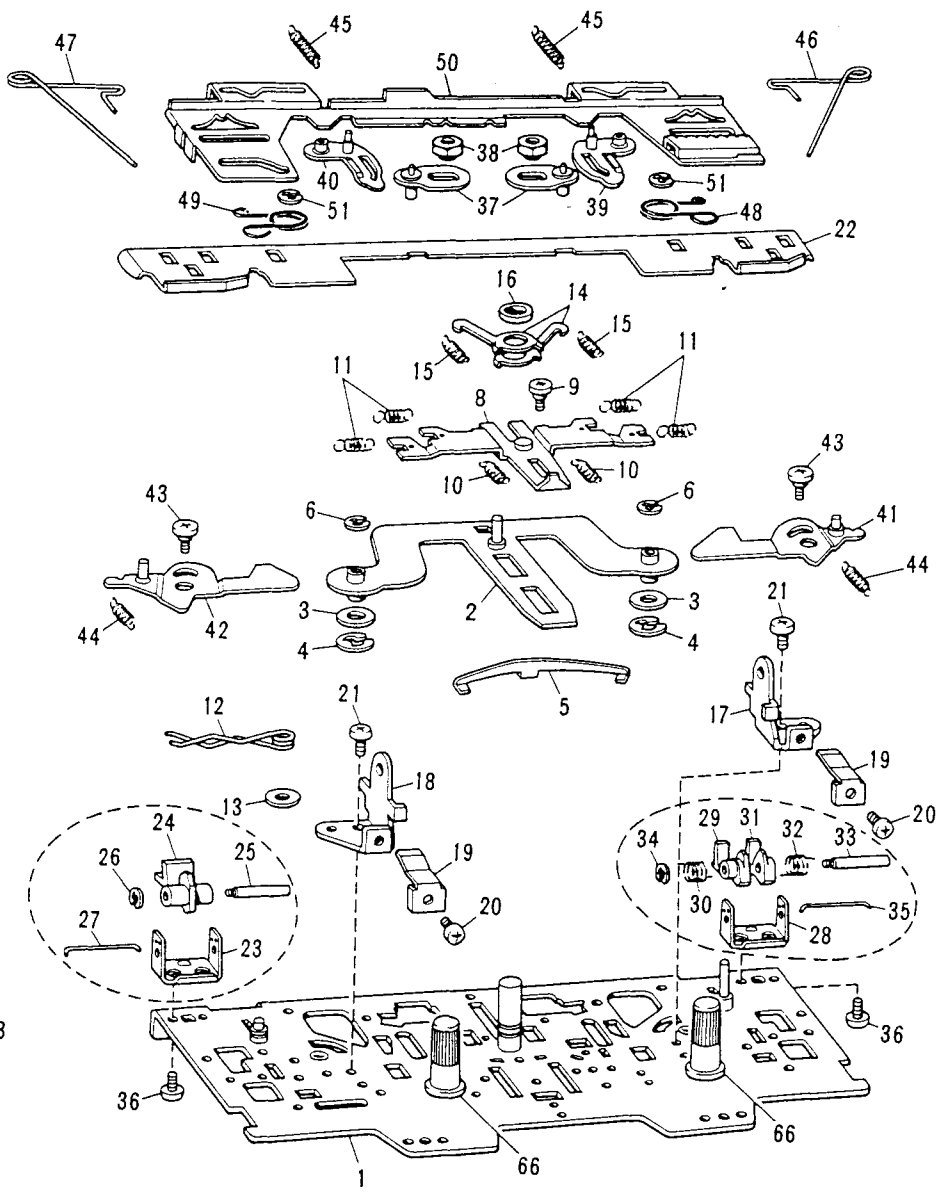
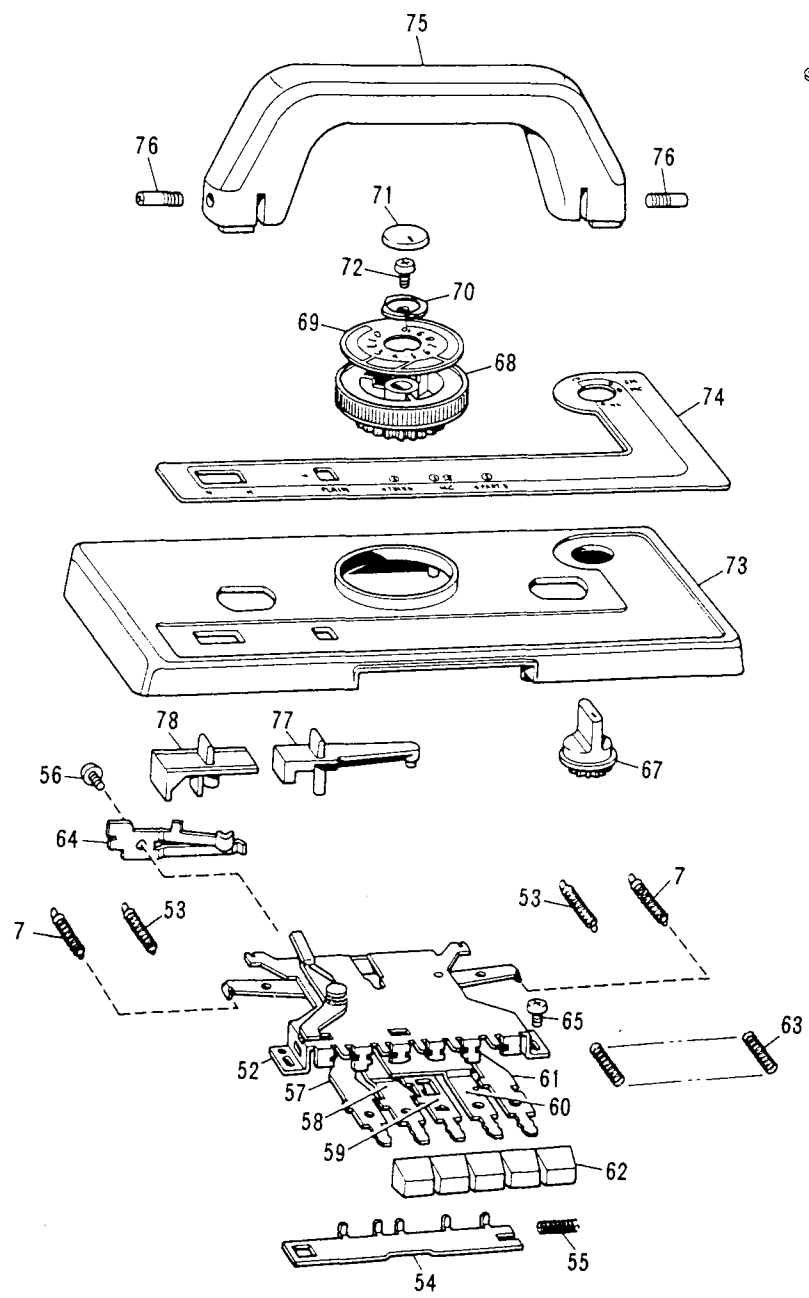


PARTS CATALOGUE FOR KH-881 KNITTING MACHINE

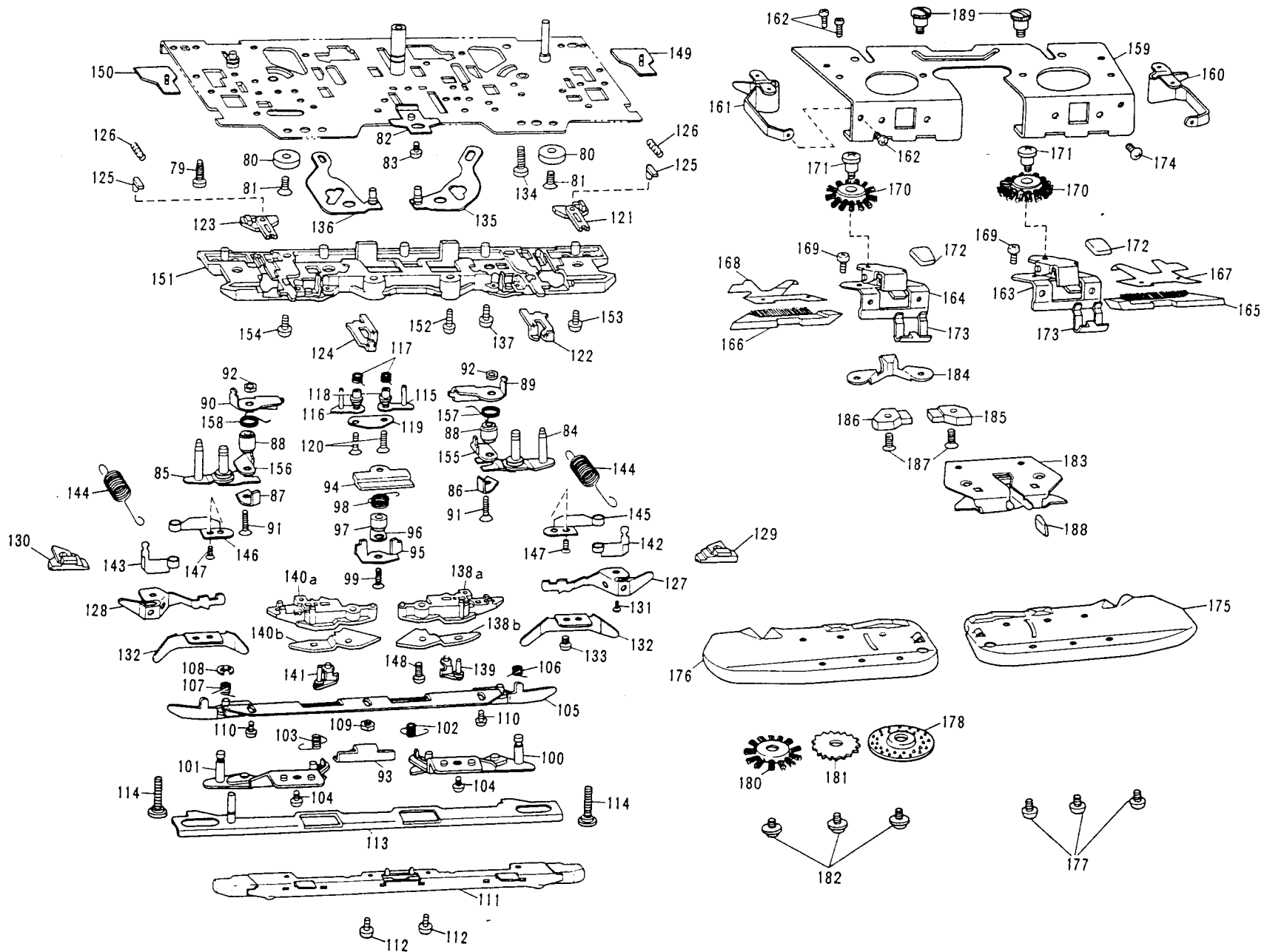
Parts marked "○" are new for KH-881 and not interchangeable with other models.



PARTS FOR CARRIAGE Fig: A I

PARTS FOR CARRIAGE UPPER PART

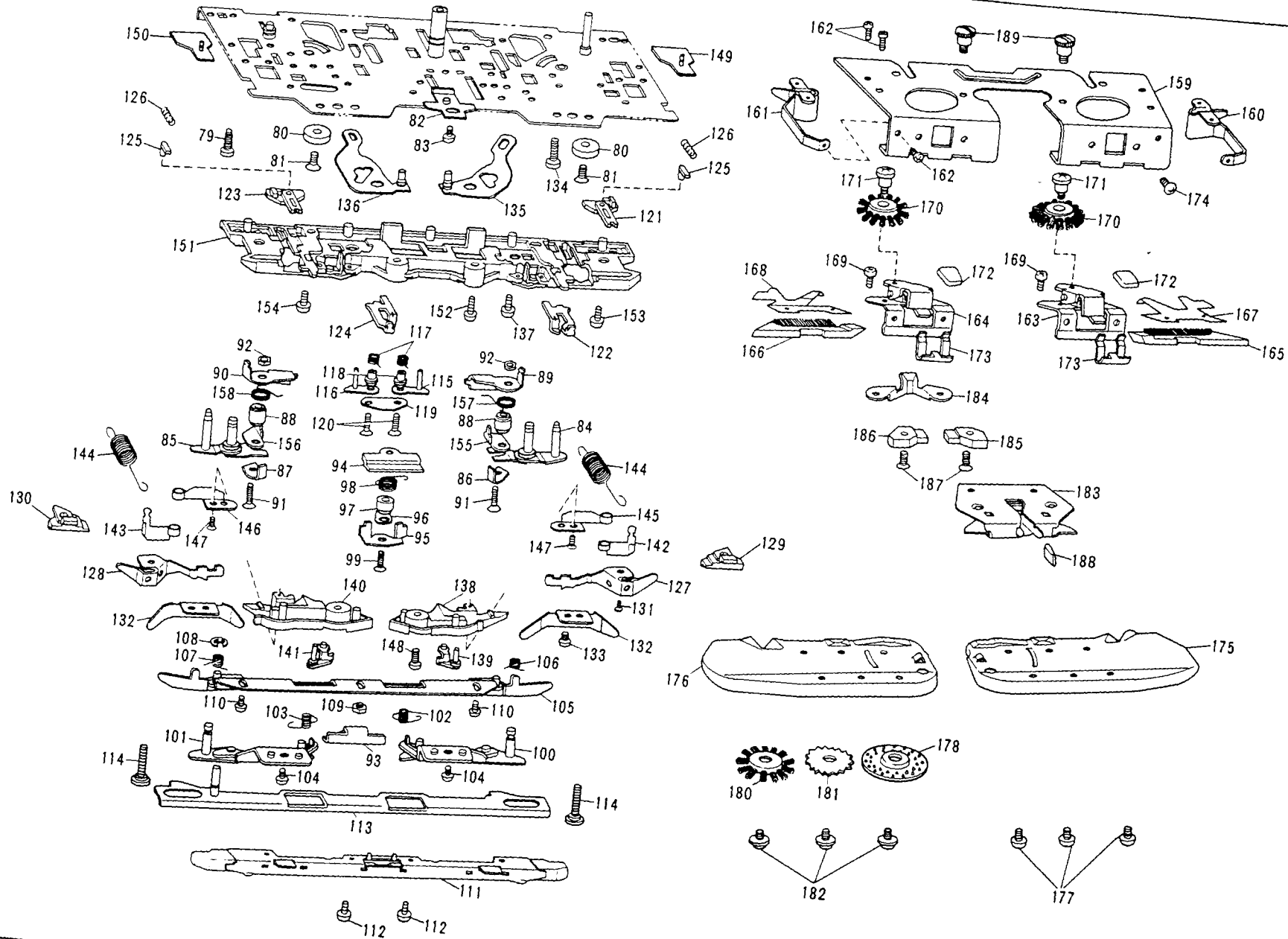
Ref. No.	Parts No.	Description	Revised	Q'ty	Ref. No.	Parts No.	Description	Revised	Q'ty
○ AI-1-78&AI-79-189	411035001	K carriage complete set KH-881 B		1	○ AI-69	409974003	Stitch dial indicator plate		1
AI-1	409501001	Carriage plate		1	70	406283001	Stitch dial presser		1
2	409504001	Stitch cam guide plate		1	71	409601001	Stitch dial cap		1
3	405483001	Washer		2	72	060660603	+ - screw 3.18 X 6		1
4	048070346	Snap ring		2	○ 73-74	411036001	K carriage cover assembly KH-881 B		1
5	409506001	Stitch cam guide plate spring		1	73	409603001	K carriage cover		1
6	048030346	Snap ring		2	○ 74	411037001	K carriage cover decoration plate KH-881 B		1
7	407432001	Rasing cam change spring		2	75	409605001	K carriage handle		1
8	407692001	Change plate		1	76	409608001	Screw		2
9	408491001	Change plate guide collar		1	○ 77	409609002	Plain lever knob		1
10	407318001	Change plate spring		2	○ 78	409610002	H.C.L. knob		1
11	407319001	MC cam spring		4					
12	407333001	H.C.L. spring		1					
13	402447003	Washer		1					
14	407341001	Tuck cam operating plate		2					
15	407342001	Tuck cam spring		2					
16	407343001	Presser ring		1					
17	409520001	Handle setting base, right		1					
18	409521001	Handle setting base, left		1					
19	409522001	Handle lock spring		2					
20	060670403	+ - screw 3.57 X 4		2					
21	060680503	+ - screw 4.37 X 5		2					
22	409554001	Rear plate		1					
○ 23-27	409564001	Row counter tripper assembly		1					
○ 28-35	409559001	Knit-leader tripper assembly		1					
36	060660403	+ - screw 3.18 X 4		4					
37	409567001	S.M. cam lever		2					
38	409571001	Nut		2					
39	409572001	S.M. cam change crank, right		1					
40	409576001	S.M. cam change crank, left		1					
41	409578001	Cam change plate, right		1					
42	409581001	Cam change plate, left		1					
43	408506001	Stud screw 3.18		2					
○ 44	410928001	Selection guide spring		2					
45	409585001	Needle selection change lever spring		2					
46	409498001	Valve cam E spring, right		1					
47	409499001	Valve cam E spring, left		1					
48	409543001	Connecting plate spring, right		1					
49	409544001	Connecting plate spring, left		1					
50	409565001	Upper slide plate		1					
51	048040346	Snap ring		2					
52-63	409590001	Cam button unit		1					
62	405302003	Push button		5					
64	409595001	Stitch dial notch spring		1					
65	060670403	+ - screw 3.57 X 4		2					
66	409596001	Thumb nut		2					
67	409597001	Change knob		1					
○ 68-69	409973003	Stitch dial assembly		1					
68	409599001	Stitch dial		1					



PARTS FOR CARRIAGE Fig: A II

PARTS FOR CARRIAGE LOWER PART

Ref. No.	Parts No.	Description	Revised	Q'ty	Ref. No.	Parts No.	Description	Revised	Q'ty
AII- 79	037351615	Tapping screw		2	127	409897001	Separation cam, right		1
80	407285000	Carriage magnet 16		2	128	409898001	Separation cam, left		1
81	408773001	Flat head screw 3.18 X 9		2	○ 129	410929000	Buffer right for selected needle		1
82	407289001	Stripe adjuster plate		1	○ 130	410930000	Buffer left for selected needle		1
83	060679303	+ - screw 3.57 X 3.5		1	131	060660403	+ - screw 3.18 X 4		2
○ 84	410094001	Stitch cam assembly, right		1	132	409519001	Guide cam F		2
○ 85	410097001	Stitch cam assembly, left		1	133	062660403	+ - screw 3.18 X 4		2
86	407296001	Sub stitch cam, right		1	134	062681203	+ - screw 4.37 X 2		2
87	407297001	Sub stitch cam, left		1	135	409523001	Needle selection change plate, right		1
88	407298001	Sub stitch cam shaft		2	136	409526001	Needle selection change plate, left		1
89	407313001	MC cam, right		1	137	409528001	Stud screw		2
90	407314001	MC cam, left		1	138	40921001	Selection cam, right	411491001	1
91	407312001	Screw		2	139	409530001	Needle selection change cam, right	411489001	1
92	021660406	Nut		2	140	40922001	Selection cam, left	411492001	1
93	408465001	Slide cam		1	141	409535001	Needle selection change cam, left	411490001	1
94	408466001	Slide cam guide		1	142	410883001	Valve cam F, right		1
95	407356001	Guide cam C		1	143	410884001	Valve cam F, left		1
96	407635001	Valve cam C		1	144	409570001	Valve cam F spring		2
97	408467001	Shaft for guide cam C		1	145	409537001	Guide cam G, right		1
98	407636001	Valve cam C spring		1	146	409538001	Guide cam G, left		1
99	408459001	Flat head screw C		1	147	410030001	Flat head screw 2.38 X 14		2
100	408468001	Guide cam B, right		1	148	060661003	+ - screw 3.18 X 10		2
101	408471001	Guide cam B, left		1	149	409539001	Connecting plate, right		1
102	408473001	Valve cam B spring, right		1	150	409541001	Connection plate, left		1
103	408474001	Valve cam B spring, left		1	151	409895001	Rear foot		1
104	408305002	Screw		2	152	060660403	+ - screw 3.18 X 4		2
105-108	407455001	Guide cam A assembly		1	153	409494001	Screw 3.57		2
105	407320001	Guide cam A		1	154	060661213	Screw 3.18 N 12		2
106	407325001	Holding cam spring, right		1	155	410488001	Valve cam D, right		1
107	407326001	Holding cam spring, left		1	156	410489001	Valve cam D, left		1
108	048030346	Snap ring		2	157	410490001	Valve cam D spring right		1
109	408524001	Nut		1	158	410491001	Valve cam D spring left		1
110	408305002	Screw		2	○ 159-189	411008001	Sinker plate complete set		1
111	409892001	Front foot		1	○ 159-182	411009001	Sinker plate assembly without feeder		1
112	408305002	Screw		2	159	409979001	Sinker plate arm		1
113	407327001	Front slide plate		1	160	407427000	Weaving thread guide, right		1
114	408504001	Stud screw 3.18		2	161	407428000	Weaving thread guide, left		1
115	407579001	Tuck cam, right		1	162	409162001	Tapping screw 3V-2.6		6
116	407586001	Tuck cam, left		1	163	410026001	Weaving lever assembly, right		1
117	407338001	Tuck cam spring		1	164	410027001	Weaving lever assembly, left		1
118	407339001	Shaft for tuck cam		2	165	410003001	Latch opening brush, right		1
119	407340001	Tuck cam plate		1	166	410004001	Latch opening brush, left		1
120	407299001	Screw		2	167	408607000	Latch presser plate, right		1
121	410922001	Selection cam for right end needle		1	168	408608000	Latch presser plate, left		1
122	410924001	Selection guide for right end needle		1	169	037280616	Screw		4
123	410923001	Selection cam for left end needle		1	170	407437001	Weaving pattern brush		2
124	410925001	Selection guide for left end needle		1	171	408316001	Stud screw for weaving pattern brush		2
125	410926001	End needle selection switch cam		2	172	409629001	Weaving lever knob		2
126	410927001	End needle selection cam spring		2	173	407441001	Weaving lever spring		2

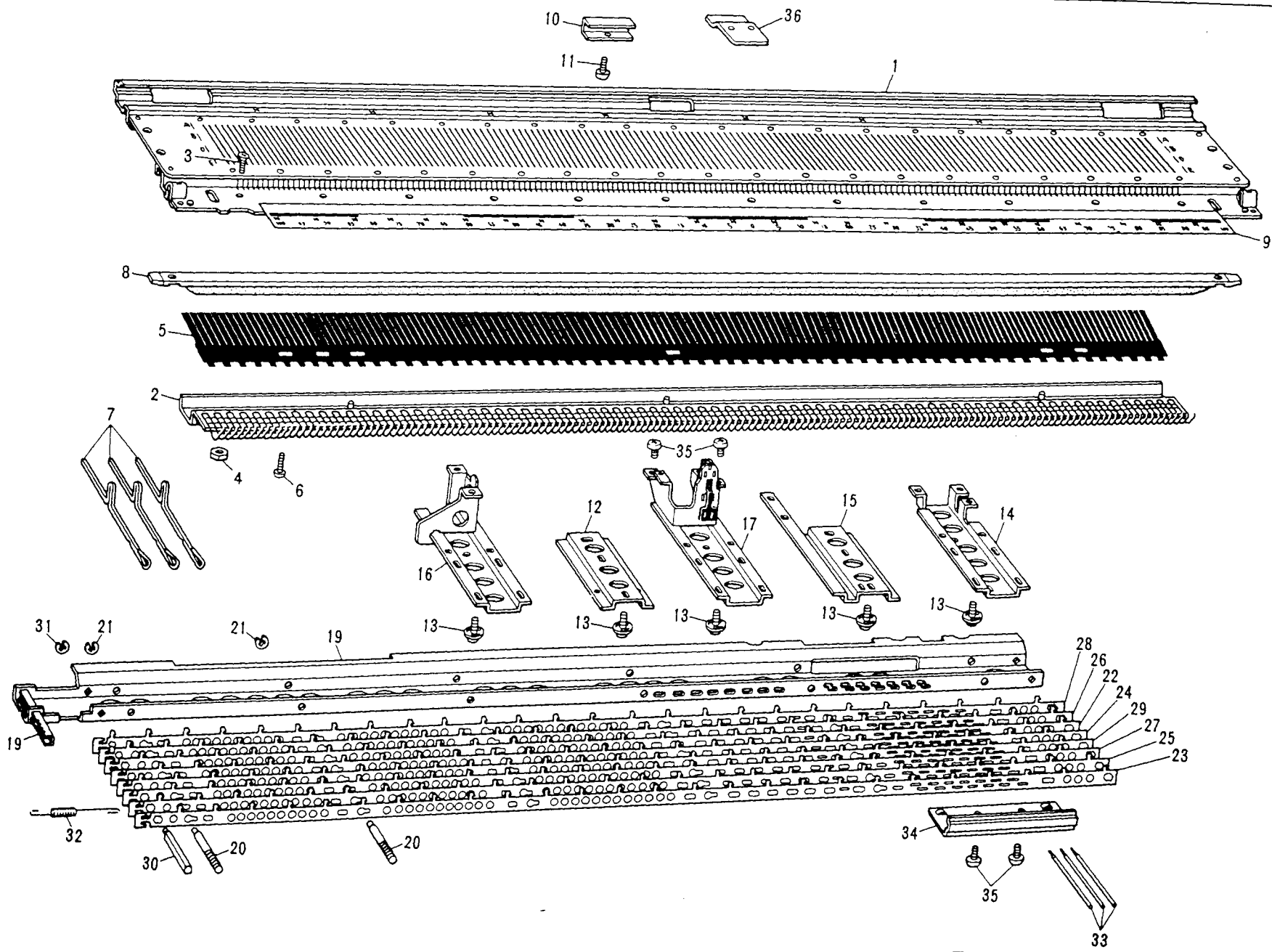


PARTS FOR CARRIAGE

Fig: A II

PARTS FOR CARRIAGE LOWER PART

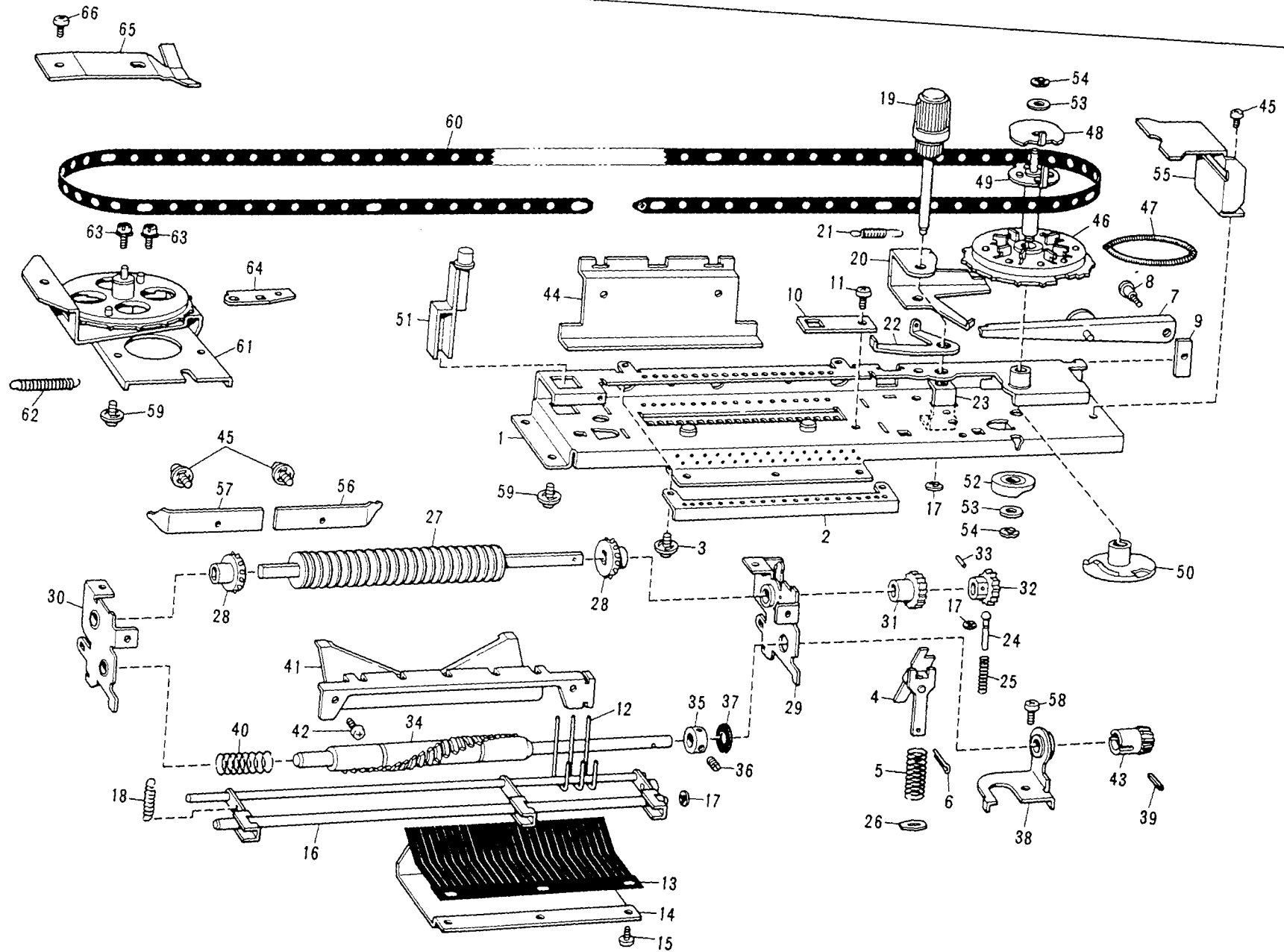
Ref. No.	Parts No.	Description	Revised	Q'ty	Ref. No.	Parts No.	Description	Revised	Q'ty
174	408305001	Screw		4					
○ 175	409614001	Sinker plate, right .		1					
○ 176	409618001	Sinker plate, left		1					
177	060660303	+ - screw 3.18 X 3		6					
○ 178	410988001	Rubber wheel		2					
180	407702001	Wheel brush		2					
181	405184002	Plastic gear		2					
182	409621001	+ - screw 3.18		6					
183-187	409980001	Double yarn feeder assembly		1					
183	409981001	Yarn feeder body		1					
184	409625000	Magnet holder plate		1					
185	407454000	Magnet, right		1					
186	407578000	Magnet, left		1					
187	002631003	Fastening screw, 2.38 X		2					
188	407450002	Yarn feeder knob		1					
189	409626001	Thumb screw		2					



PARTS FOR NEEDLE BED Fig: B

PARTS FOR NEEDLE BED

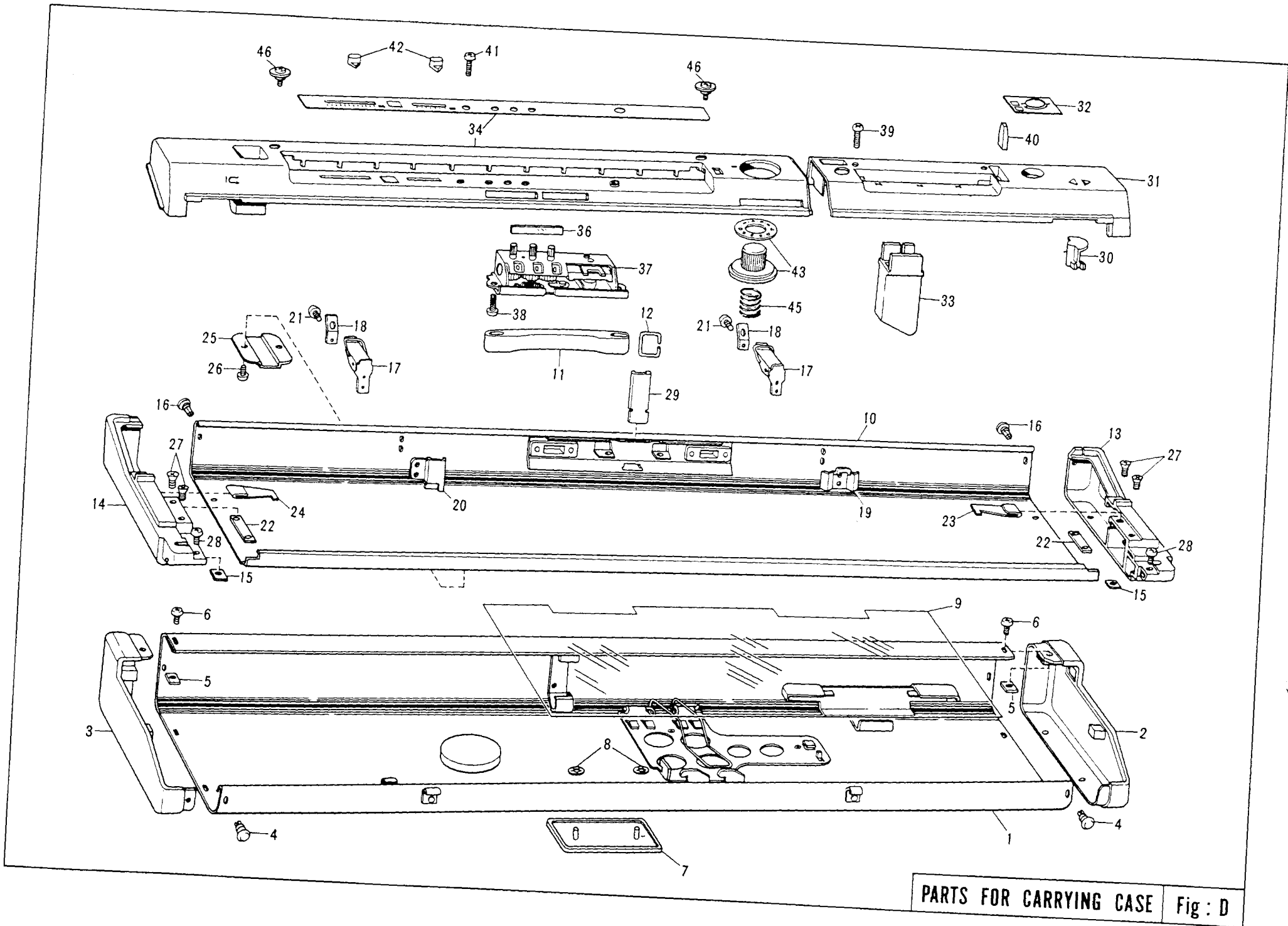
Ref. No.	Parts No.	Description	Revised	Q'ty				
○ B- 1	410899001	Needle bed assembly		1				
2	409641001	Needle bed come assembly		1				
3	004630704	Screw		12				
4	405077001	Nut		12				
5	407112001	Needle retaining spring		1				
6	407687001	Screw		3				
7	407113001	Plain needle		200				
○ 8	409643001	Needle presser bar assembly		1				
9	407114001	Needle position indicator		1				
○ 10	409656000	Timing belt cover		1				
11	060660303	+ - screw 3.18 X 4		1				
12	407120000	Lower holder plate		1				
13	409197001	Screw with washer		26				
14	407121000	Stay, right		1				
15	408061000	Stay, center		1				
○ 16	409648001	Stay, Left		1				
○ 17	409651001	Yarn tension rod stand		1				
○ 19-32	410668001	Needle selector plater holder assembly		1				
○ 19	410669001	Needle selector plate holder		1				
20	408159001	Shaft A		6				
21	048025346	Snap ring		6				
22	408088001	Needle selector plate, 1		1				
23	408089001	Needle selector plate, 2		1				
24	408090001	Needle selector plate, 3		1				
25	408091001	Needle selector plate, 4		1				
26	408092001	Needle selector plate, 5		1				
27	408093001	Needle selector plate, 6		1				
28	408094001	Needle selector plate, 7		1				
29	408095001	Needle selector plate, 8		1				
30	408172001	Shaft B		1				
31	048025346	Snap ring		1				
32	408086001	Needle selector plate spring		8				
33	408098001	N.S.P. operation lever		24				
34	408099001	Operation lever presser		1				
35	060660403	+ - screw 3.18 X 4		4				
○ 36	409657000	Reinforcing plate for knit-leder		1				



NEEDLE SELECTOR UNIT Fig: C

PARTS FOR NEEDLE SELECTOR UNIT

Ref. No.	Parts No.	Description	Revised	Q'ty	Ref. No.	Parts No.	Description	Revised	Q'ty
○ C- 1-58	411043001	Needle selector unit		1	48	407205001	Clutch cam B		1
1	409662001	Needle selector unit body		1	49	407206001	Clutch cam A		1
2	409679000	Card reader adjusting plate		1	50	408082000	Card feeding cam		1
3	409197001	Screw with washer		2	○ 51	409711001	Push button		1
4	409665001	Ratchet assembly		1	52	408083000	Card reader release cam		1
5	407145001	Ratchet operation plate spring		1	53	025350333	Washer		2
6	045100802	Split pin		1	54	048025346	Snap ring		2
7	408529001	Card feeding lever Assembly		1	55	408084000	Timing belt guide plate, right		1
8	408534001	Stud screw		1	56	408309001	Spring plate R		1
9	407197000	Card feeding adjuster plate		1	57	408308001	Spring plate L		1
10	408068001	Card reader guide stopper		1	58	060660503	+ - screw 3.18 X 5		1
11	060660403	+ - screw 3.18 X 4		1	59	409197001	Screw with washer		7
12	407152001	Card reader		24	60	408181001	Timing belt		1
13	408315001	Card reader spring		1	61-64	410012002	Pulley assembly		1
14	408213000	Card reader spring presser plate		1	62	410016001	Belt tension control spring		1
15	062669003	+ - screw 3.18 X 3.5		3	63	410072001	Screw with washer		2
16	408069001	Card reader release plate assembly		1	64	410071000	Pulley adjusting plate		1
17	048020346	Snap ring		3	65	407597001	Brake spring		1
18	407161001	Spring for card reader release plate		1	66	060660403	+ - screw 3.18 X 4		1
○ 19	410936002	Card feeding knob assembly		1					
20	408535001	Intermittent feeding lever		1					
21	408536001	Intermittent feeding lever spring		1					
22	408537001	Change lever		1					
23	407193000	Card feeding knob stopper cam		1					
24	407179001	Card position guide pin		1					
25	407180001	Spring		1					
26	407464000	Ratchet spring stopper ring		1					
○ 27-42	410938001	Card feeding unit		1					
27	407162001	Card roller		1					
28	407164001	Feeding gear		2					
29	409673001	Card roller holder right assembly		1					
30	408075001	Card roller holder, left		1					
31	407176000	Ratchet wheel		1					
32	407177000	Card position guide gear		1					
33	407473001	Pin		1					
34	408078002	Rotary cam		1					
35	407184001	Rotary cam adjuster collar		1					
36	013680516	Stopper screw		2					
37	409658001	Washer 8.1		1					
38	409659001	Bevel gear stopper plate		1					
39	407183001	Pin		1					
40	408165001	Rotary cam spring		1					
○ 41	410939001	Card guide		1					
42	060660403	+ - screw 3.18 X 4		2					
43	409191000	Bevel gear		1					
44	407188000	Card reader holder		1					
45	409197001	Screw with washer		2					
46	408173001	Clutch wheel assembly		1					
47	410017001	Clutch spring		1					



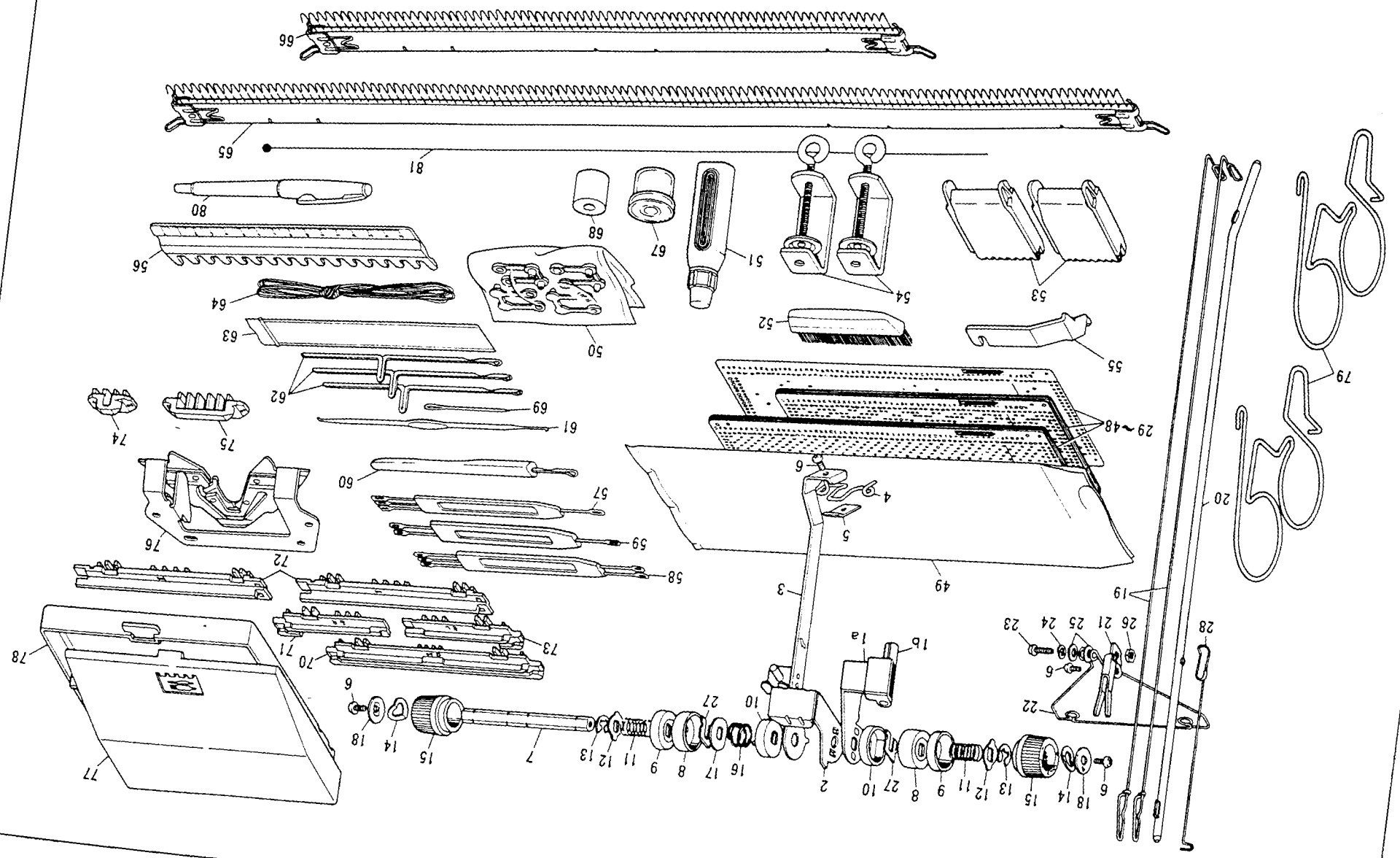
PARTS FOR CARRYING CASE Fig: D

PARTS FOR CARRYING CASE

Ref. No.	Parts No.	Description	Revised	Q'ty	Ref. No.	Parts No.	Description	Revised	Q'ty
○ D- 1-24	411054001	Carrying case complete set KH-881 B		1					
○ 1- 9	411055001	Carrying case upper assembly KH-881 B		1					
○ 2	409692001	Upper side plate right		1					
○ 3	409693001	Upper side plate left		1					
○ 4	408194001	Plastic rivet		8					
○ 5	407252001	Square nut, 3.18		2					
○ 6	408306001	Screw		2					
○ 7	411056001	Brother name plate KH-881		1					
○ 8	408784001	Pushing nut		2					
○ 9	410944001	Packing instruction sheet		1					
○ 10-24	410790001	Carrying case lower assembly		1					
○ 10-12	410791001	Carrying case lower body		1					
○ 13	409698001	Lower side plate right		1					
○ 14	409699001	Lower side plate left		1					
○ 15	409700001	Square nut 3.18		2					
○ 16	408194001	Plastic rivet		6					
○ 17	404022001	Carrying case lock assembly		2					
○ 18	404027001	Carrying case lock spring		2					
○ 19	410793000	Fastening plate R		1					
○ 20	409701000	Fastening plate L		1					
○ 21	405658001	Fastening screw		4					
○ 22	407265000	Needle bed fastening plate		2					
○ 23	409640001	Extension rail lock spring, right		1					
○ 24	409639001	Extension rail lock spring, left		1					
○ 25	407261001	Table clamp setting plate		2					
○ 26	060660604	+ - screw 3.18 X 6		4					
○ 27	407119001	Screw		4					
○ 28	060660704	+ - screw 3.18 X 7		2					
○ 29	409705000	Sheet guide setting plate		1					
○ 30	409712001	Direction indicator plate		1					
○ 31-32	411038001	Panel assembly		1					
○ 33	410949000	Accessory stand		1					
○ 34	411041001	Panel assembly for knit-leader KH-881		1					
○ 36	409721001	Glass for row counter		1					
○ 37	409722001	Row counter		1					
○ 38	037351015	Tapping screw		2					
○ 39	060661604	+ - screw 3.18 X 16		2					
○ 40	409716001	Card lock lever knob		1					
○ 41	060661804	+ - screw 3.18 X 18		1					
○ 42	409723003	Regulator knob		2					
○ 43	409726003	Sheet feeding dial assembly		1					
○ 45	409729001	Sheet feeding dial spring		1					
○ 46	409709001	+ - screw 3.18		2					

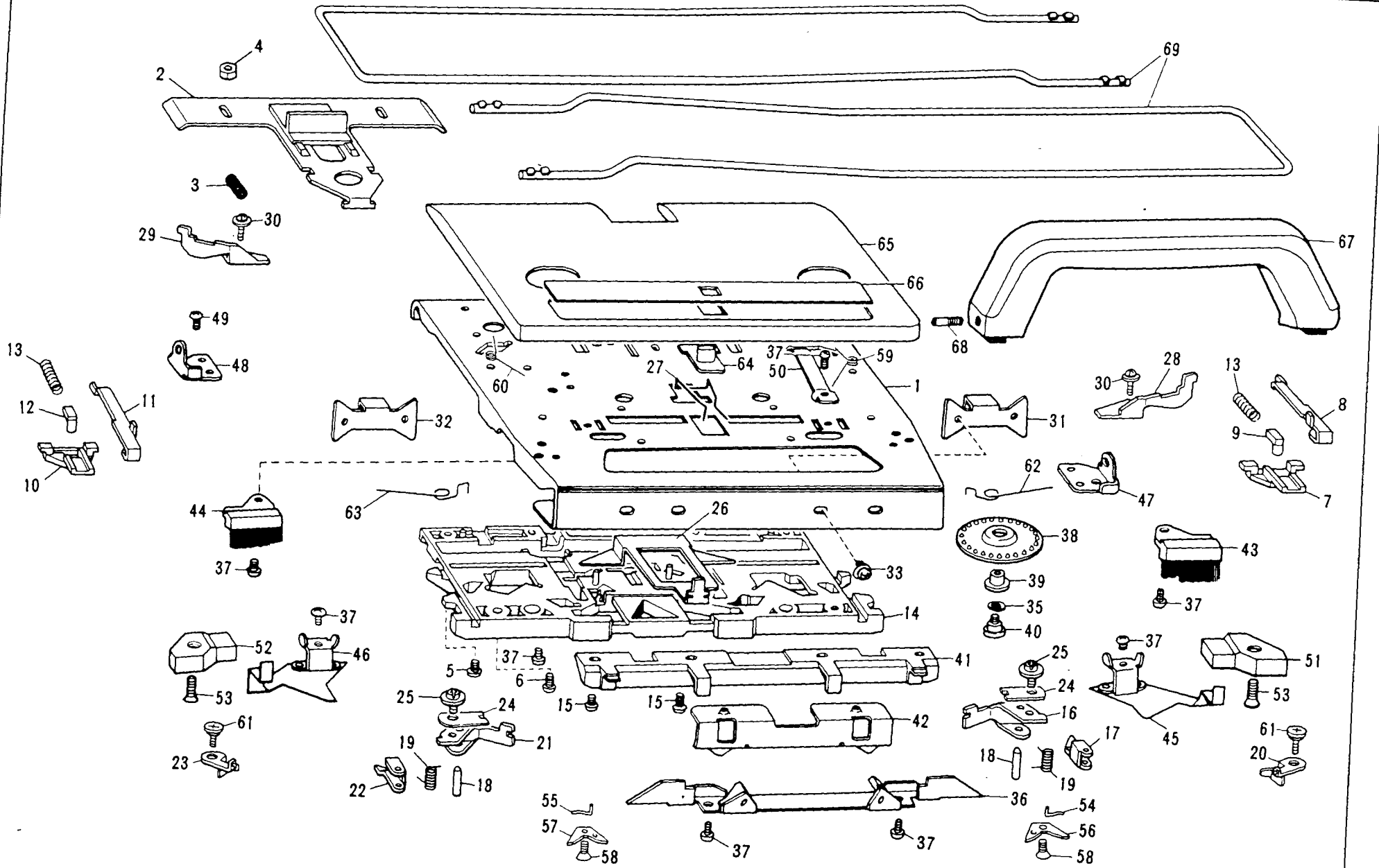
PARTS FOR ACCESSORIES

Fig: E



PARTS FOR ACCESSORIES

Ref. No.	Parts No.	Description	Revised	Q'ty	Ref. No.	Parts No.	Description	Revised	Q'ty
E- 1-28	410672001	Yarn tension unit assembly		1					
19	404755001	Take-up spring		2					
28	408614001	Sub take-up spring		1					
29-49	411044001	Punch card set KH-860/KH-881		1					
50	409170001	Plastic snap (4pcs. in one set)		1					
51	405135004	Special knitting machine oil		1					
52	403552002	Hand brush		1					
53	404883005	Claw weight		2					
54	409198001	Table clamp		2					
55	409756001	Carriage lock		1					
56	407482002	1/1 needle pusher		2					
57	402575003	1 X 3 transfer tool		1					
58	402631003	2 X 3 transfer tool		1					
59	402576003	1 X 2 transfer tool		1					
60	407458002	Latch tool		1					
61	402577001	Crochet		1					
62	407113001	Plain needle		3					
63	407483000	Spare needle case		1					
64	402389001	Cast-on thread		1					
65	404787005	Cast-on comb, long		1					
66	404884005	Cast-on comb, short		1					
67-68	487221001	Yarn wax with case		1					
69	402714001	Tapestry needle		1					
○ 70	410985001	Single motif cam		1					
○ 71	410975001	Motif knitting cam R		1					
○ 72	410976001	Motif knitting cam center		2					
○ 73	410977001	Motif knitting cam L		1					
○ 74	410978001	L-point cam for 4 needles		6					
○ 75	410979001	L-point cam for 8 needles		6					
○ 76	410971001	Plating yarn feeder assembly		1					
○ 77-78	409752001	Accessories box		1					
○ 79	410974001	Sheet guide		2					
80	406910001	Special felt pen (black)		1					
81	405683001	Binding wire		1					
					(Optional)				
					486392001 Special Felt pen set (3pcs)				

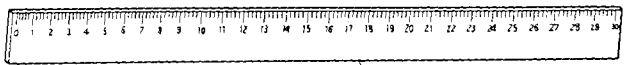
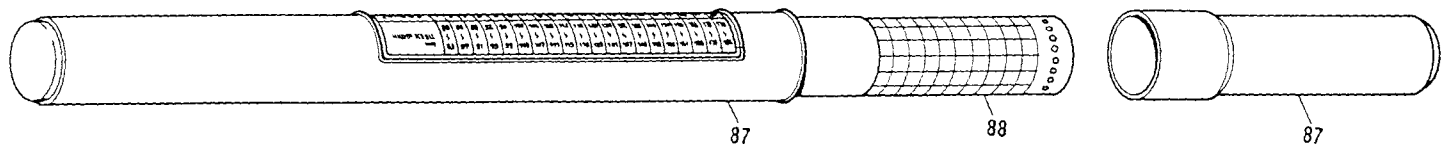
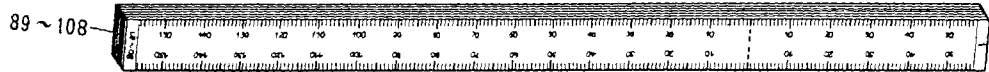
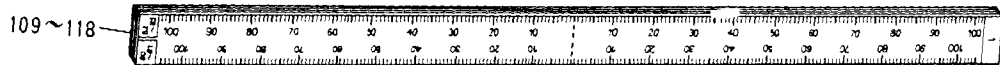
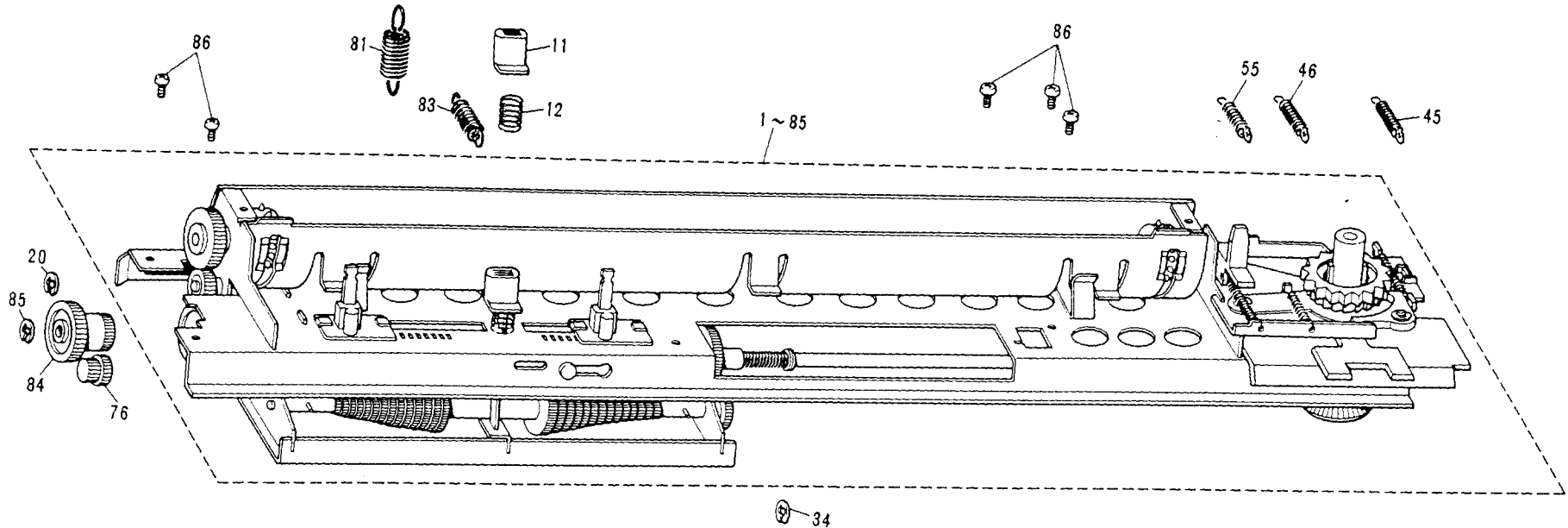


PARTS FOR CARRIAGE Fig: F

PARTS FOR L-CARRIAGE (FOR MODIFIED VERSION)

Ref. No.	Parts No.	Description	Revised	Q'ty	Ref. No.	Parts No.	Description	Revised	Q'ty
○F- 1-68	411047001	L carriage assembly KH-881		1	60	412148001	Valve cam C spring, left		1
1	410563001	L carriage plate		1	61	409528001	Screw		2
2	410564001	Release button plate assembly		1	62	410966001	R end needle selection change spring		1
3	410565001	Release button plate spring		1	63	410967001	L end needle selection change spring		1
4	408166001	Stud for release button plate		2	64	409744002	Lace selecting knob		1
5	060660706	+ -Screw 3.18×7		4	65-66	411048001	L carriage cover assembly KH-881		1
6	060660806	+ -Screw 3.18×8		4	67	409748001	L carriage handle		1
7	410957001	R end needle selection cam for L		1	68	409751001	Screw		2
8	410958001	R end needle selection plate for L		1	69	410594001	Extension rail		2
9	410959001	R end needle selection change cam for L		1					
10	410960001	L end needle selection cam for L		1					
11	410961001	L end needle selection plate for L		1					
12	410962001	L end needle selection change cam for L		1					
13	410963001	End needle selection cam spring for L		2					
14	412138001	Main cam		1					
15	060660806	+ -Screw 3.18×8		2					
16	410578001	Separation cam R for L carriage		1					
17	408132001	Raising cam right for L carriage		1					
18	410579001	Shaft for separation cam		1					
19	408134001	Raising cam spring		1					
20	412145001	Valve cam C, right for L		1					
21	410581001	Separation cam L for L carriage		1					
22	408137001	Raising cam left for L carriage		1					
23	412146001	Valve cam C, left for L		1					
24	412898000	Presser plate		2					
25	406397001	Screw with washer 3.18×5		2					
26	408582001	Lace selecting cam		1					
27	408583001	Change lever spring		1					
28	410583001	Right end needle separation cam for L		1					
29	410584001	Left end needle separation cam for L		1					
30	410592001	+ -Screw 3.18×12		2					
31	410494001	Needle transfer plate R		1					
32	410495001	Needle transfer plate L		1					
33	413734001	Screw		4					
36	408573001	Cam plate		1					
37	060660406	+ -Screw 3.18×4		2					
38-39	411003001	Rubber wheel assembly		2					
40	405029001	Shud screw		2					
41	407490000	Front foot		1					
42	408579000	Front fool holder		1					
43	408580002	Small brush, right		1					
44	408581002	Small brush, left		1					
45	408561001	Spring plate, right		1					
46	408562001	Spring plate, left		1					
47	409740001	Handle setting base, right		1					
48	409739001	Handle setting base, left		1					
49	060670506	+ -Screw 3.57×5		2					
50	407522001	Handle lock spring		2					
51	407454000	Magnet, right		1					
52	407578000	Magnet, left		1					
53	061661006	Screw		2					
54	412141001	Valve cam B, right for L		1					
55	412142001	Valve cam B, left for L		1					
56	412143001	Rein forcing plate B, right for L cam		1					
57	412144001	Rein forcing plate B, left for L cam		1					
58	040210812	Tapping screw		2					
59	412147001	Valve cam C spring, right		1					

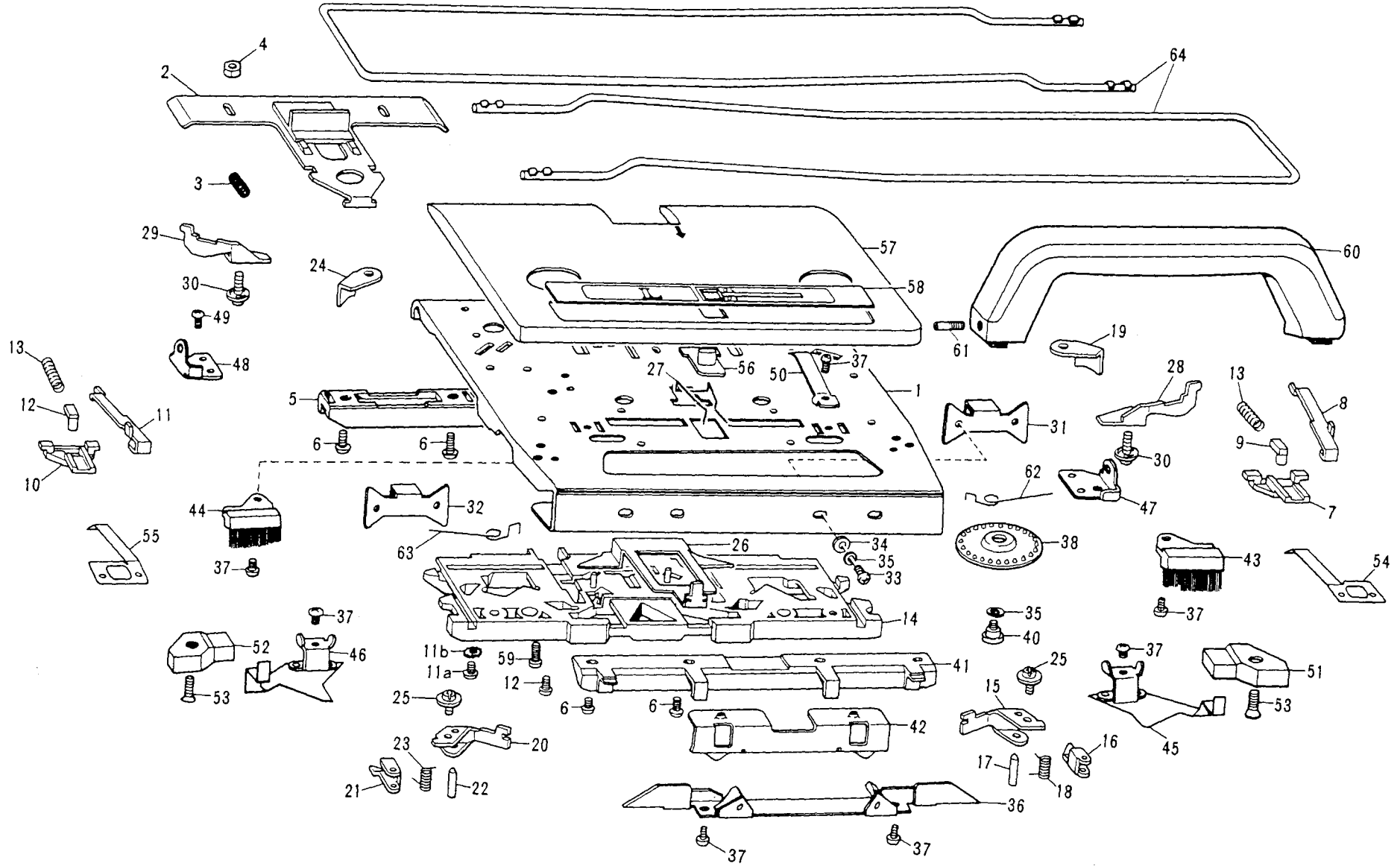
(KH-881 has been modified
from the serial number
K 4209990)



PARTS FOR KNIT LEADER Fig: G

PARTS FOR KNIT LEADER

Ref. No.	Parts No.	Description	Revised	Q'ty	Ref. No.	Parts No.	Description	Revised	Q'ty
○ G- 1-85	409760002	Knit-leader assembly		1	(Optional)				
○ 11	409724003	Clutch knob		1	487071001		Sheet set (small)	487081001	
○ 12	409725001	Clutch lever spring		1			(5 pcs in one set)		
○ 20	048030346	Snap ring		1					
○ 34	048040346	Snap ring		1					
○ 45	409811001	Ratchet spring		1					
○ 46	409812001	Ratchet arm spring		1					
○ 55	409819001	Sheet button lever spring		1					
○ 76	406120000	Z:16 & Z:20 gear		1					
○ 81	406129001	Upper gear arm spring		1					
○ 83	409839001	Gear arm spring		1					
○ 84	409835000	Z:24.40 gear		1					
○ 85	048030346	Snap ring		1					
○ 86	060660403	+ - screw 3.18 X 4		5					
○ 87-119	411050001	Scale & Sheet set		1					
○ 87	411051001	Sheet case (small)		1					
○ 89-118	409850001	Scale No. 1-20 assembly		1					
○ 89	409851001	Scale No. 1		1					
○ 90	409852001	Scale No. 2		1					
○ 91	409853001	Scale No. 3		1					
○ 92	409854001	Scale No. 4		1					
○ 93	409855001	Scale No. 5		1					
○ 94	409856001	Scale No. 6		1					
○ 95	409857001	Scale No. 7		1					
○ 96	409858001	Scale No. 8		1					
○ 97	409859001	Scale No. 9		1					
○ 98	409860001	Scale No. 10		1					
○ 99	409861001	Scale No. 11		1					
○ 100	409862001	Scale No. 12		1					
○ 101	409863001	Scale No. 13		1					
○ 102	409864001	Scale No. 14		1					
○ 103	409865001	Scale No. 15		1					
○ 104	409866001	Scale No. 16		1					
○ 105	409867001	Scale No. 17		1					
○ 106	409868001	Scale No. 18		1					
○ 107	409869001	Scale No. 19		1					
○ 108	409870001	Scale No. 20		1					
○ 109	409871001	Scale No. 1-2		1					
○ 110	409872001	Scale No. 3-4		1					
○ 111	409873001	Scale No. 5-6		1					
○ 112	409874001	Scale No. 7-8		1					
○ 113	409875001	Scale No. 9-10		1					
○ 114	409876001	Scale No. 11-12		1					
○ 115	409877001	Scale No. 13-14		1					
○ 116	409878001	Scale No. 15-16		1					
○ 117	409879001	Scale No. 17-18		1					
○ 118	409880001	Scale No. 19-20		1					
○ 119	405879001	Ruler		1					



PARTS FOR L-CARRIAGE Fig: H

PARTS FOR L-CARRIAGE (For Old Version)

Ref. No.	Parts No.	Description	Revised	Q'ty	Ref. No.	Parts No.	Description	Revised	Q'ty
○ H- 1-63	411047001	L carriage assembly KH-881		1	50	407522001	Handle lock spring		2
○ 1	410563001	L carriage plate		1	51	407454000	Magnet, right		1
○ 2	410954001	Release button plate assembly		1	52	407578000	Magnet, left		1
○ 3	410565001	Release button plate spring		1	53	004661003	Screw		2
○ 4	408166001	Stud for release button plate		2	○ 54	410986001	Right arresting plate for impact		1
○ 5	410566000	Rear foot for L		1	○ 55	410987001	Left arresting plate for impact		1
○ 6	060660703	+ - screw 3.18 X 7		10	○ 56	409744002	Lace selecting knob		1
○ 7	410957001	R end needle selection cam for L		1	○ 57-58	411048001	L carriage cover assembly KH-881		1
○ 8	410958001	R end needle selection plate for L		1	59	060660403	+ - screw 3.18 X 4		2
○ 9	410959001	R end needle selection change cam for L		1	60	409748001	L carriage handle		1
○ 10	410960001	L end needle selection cam for L		1	61	409751001	Screw		2
○ 11	410961001	L end needle selection plate for L		1	○ 62	410966001	R end needle selection change spring		1
○ 12	410962001	L end needle selection change cam for L		1	○ 63	410967001	L end needle selection change spring		1
○ 13	410963001	End needle selection cam spring for L		2	○ 64	410594001	Extension rail		1
○ 14	410573001	Main cam		1					
○ 15	410578001	Separation cam R for L carriage		1					
○ 16	408132001	Raising cam right for L carriage		1					
○ 17	410579001	Shaft for separation cam		1					
○ 18	408134001	Raising cam spring		1					
○ 19	410580001	Reinforcing plate BR for main cam		1					
○ 20	410581001	Separation cam L for L carriage		1					
○ 21	408137001	Raising cam left for L carriage		1					
○ 22	410579001	Shaft for separation cam		1					
○ 23	408134001	Raising cam spring		1					
○ 24	410582001	Reinforcing plate BL for main cam		1					
○ 25	406397001	Screw with washer 3.18 X 5		2					
○ 26	408582001	Lace selecting cam		1					
○ 27	408583001	Change lever spring		1					
○ 28	410583001	Right end needle separation cam for L		1					
○ 29	410584001	Left end needle separation cam for L		1					
○ 30	410592001	+ - screw 3.18 X 12		2					
○ 31	410494001	Needle transfer plate R		1					
○ 32	410495001	Needle transfer plate L		1					
○ 33	060660504	+ - screw 3.18 X 5		4					
○ 34	403069001	Washer		4					
○ 35	028030243	Spring washer		6					
○ 36	408573001	Cam plate		1					
○ 37	060660403	+ - screw 3.18 X 4		8					
○ 38	411003001	Rubber wheel for L		2					
○ 40	405029001	Stud screw		2					
○ 41	407490000	Front foot		1					
○ 42	408579001	Front foot holder		1					
○ 43	408580002	Small brush, right		1					
○ 44	408581002	Small brush, left		1					
○ 45	408561001	Spring plate, right		1					
○ 46	408562001	Spring plate, left		1					
○ 47	409740001	Handle setting base, right		1					
○ 48	409739001	Handle setting base, left		1					
○ 49	060670503	+ - screw 3.57 X 5		2					

BROTHER INDUSTRIES, LTD. Printed in Japan
K5055050
The parts No. is subject to change without notice.