

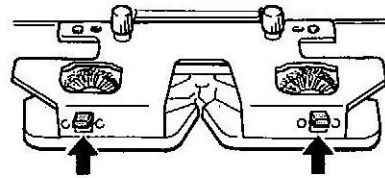
*Weaving Arm for  
Mod. 150*

**Instruction Book**

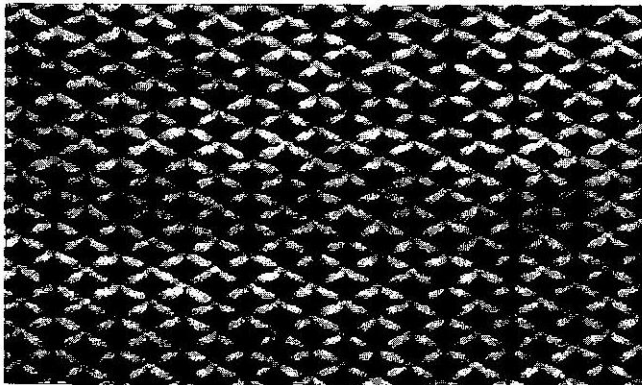
— Weaving —

On the purl side of a fabric of Stockinet, thick yarn, fancy yarn, or ribbon yarn is woven through the stitches giving a weaving effect.

- \* Set the Stitch Dial one number higher than one for Stockinet.
- \* Thread the ground yarn which will knit Stockinet through Auto-Tension, and hook it into Yarn Clip. Then, put the weaving yarn on the floor, front of the machine, without threading.
- \* In case of starting weaving pattern immediately after waste knitting, knit two rows and more in Stockinet and leave the Carriage on the right side of the Needle Bed.



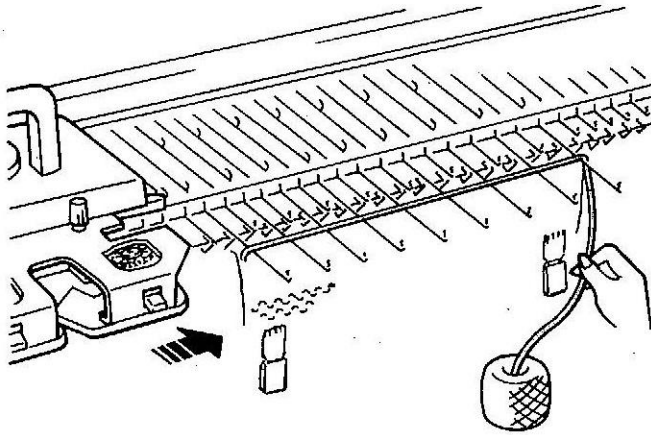
- \* Lift up the right and left Weaving Knobs lightly to set the Weaving Brushes in operation.



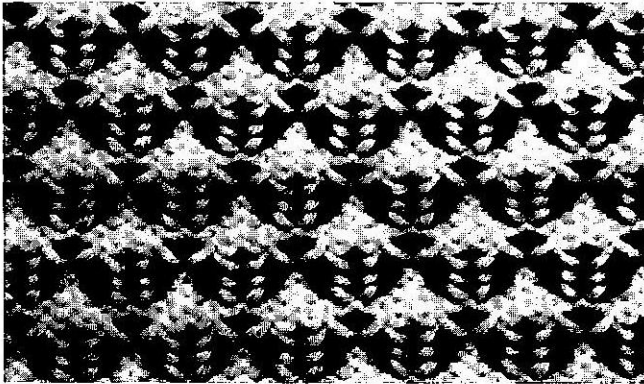
Knit the Weaving Pattern according to the Pattern Chart (1)

---





4. Following the second line of the Pattern Chart, push the needles to D position in the same manner in step 1.
5. Lay the weaving yarn from left to right over selected needles, and knit one row.
6. Repeat steps 1—5.



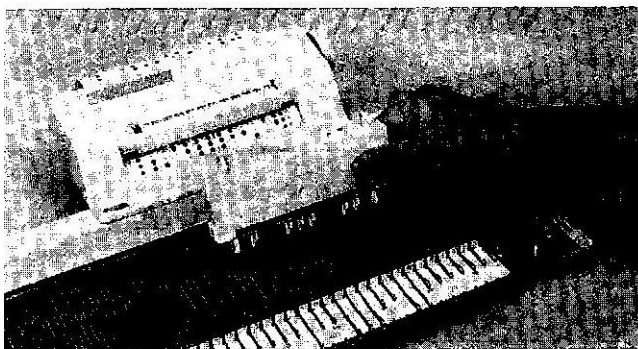
Knit the Weaving Pattern according to the Pattern Chart  
(2)

---



(NOTE)

- \* Set the Weaving Knobs to Stockinet except when you knit the weaving pattern. Otherwise, the operation of Carriage will get heavy and knitting yarn tends to get entangled in Weaving Brushes easily.
- \* Keep Needle Bed clean using Cleaning Brush, and remove entalged fluffs of yarn from Weaving Brushes and Shafts sometimes in case you knit the weaving pattern with mohair or hairy fancy yarn. Otherwise, imperfect weaving effect might occur because of insufficient work of Weaving Brushes.
- \* When the Russel Levers are set at — for partial knitting, push up the needles to C position instead of D position.



**Introduction of optional Pattern Selector Model PS-150**

- \* Pattern Selector PS-150 is designed to help the needle selection for the Chunky Knitter by using Needle Selector in combination with Punch Card System.
- \* Easy to pick up the pattern on the Punch Card without fail. Try and use this PS-150 for various fashionable patterns in chunky knitting.