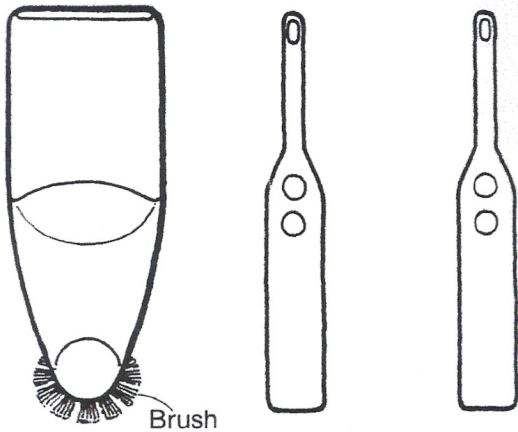


How to use Weaving Attachment

Weaving is a fabric created by passing the yarn (weaving yarn) between the Stockinet Stitches on purl side. Combination of different types of yarn gives you interesting textured effect.

Weaving Attachment

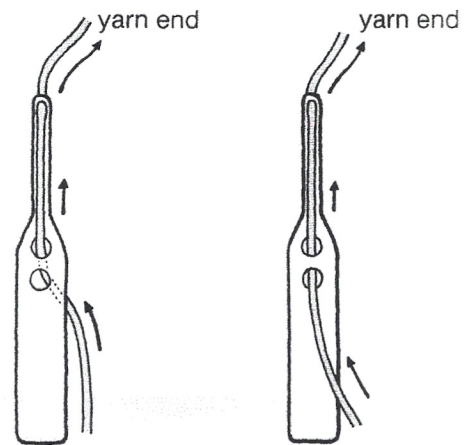
Shuttle (2 pcs.)



How to thread a Shuttle

(with very thick yarn)

(with thick yarn)

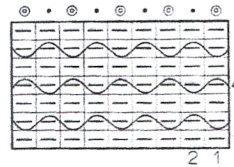


How to knit weaving patterns with Weaving Attachment

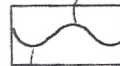
Pattern A

- ① Thread waste yarn through the Tension and the Carriage and weaving yarn through the Shuttle.
- ② Cast on the required number of stitches and knit several rows with the Carriage.
- ③ Exchange waste yarn for main yarn and knit 2 rows in Stockinet using the Carriage.
N.B. When using thicker weaving yarn, set the Stitch Dial to the higher number than for Stockinet.
- ④ Push the needles marked with ● on the pattern chart to D position using 1 × 1 side of Needle Pusher.
- ⑤ Lay the weaving yarn over the needles in D position as shown.
- ⑥ Set the Weaving Attachment on the Needle Bed at the Carriage side as shown below.

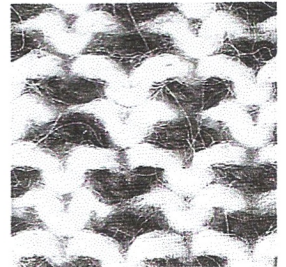
Pattern A



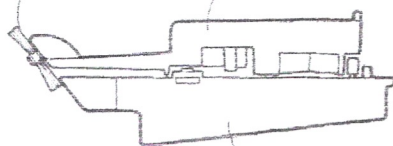
Pass the weaving yarn over the needle.



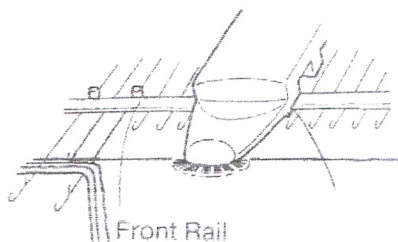
Pass the weaving yarn under the needle.



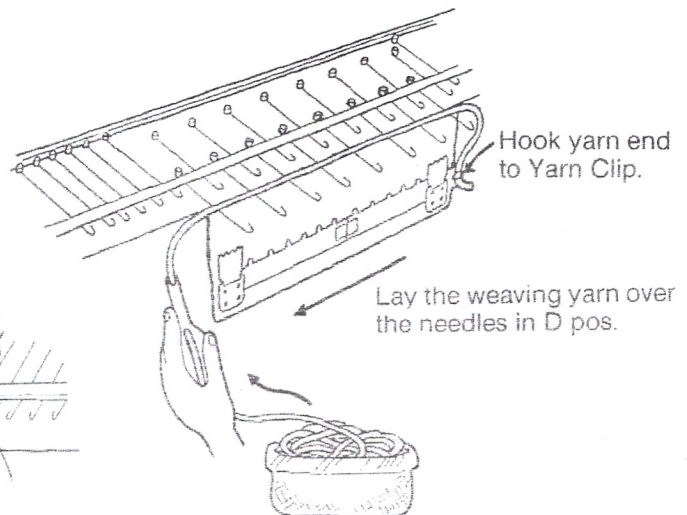
Brush Weaving Attachment



Needle Bed

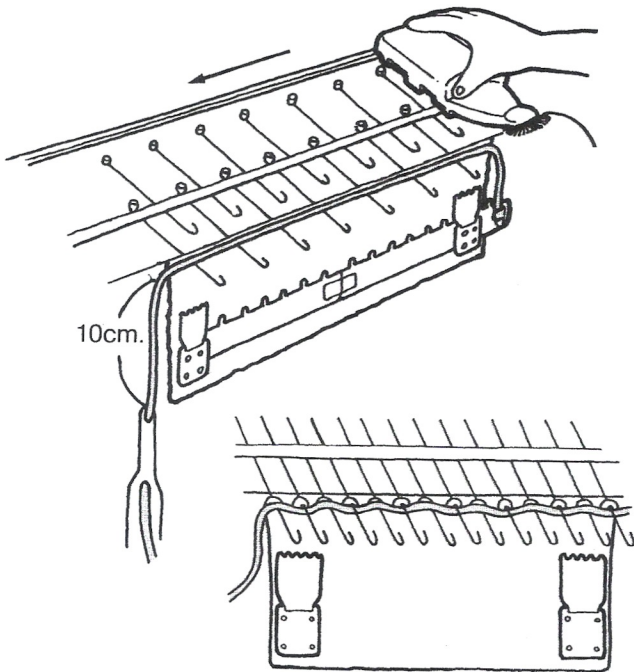


Front Rail



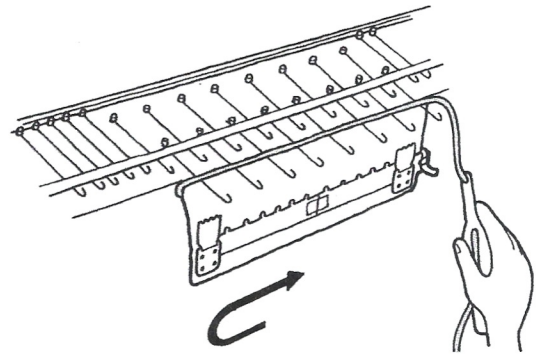
Hook yarn end to Yarn Clip.

Lay the weaving yarn over the needles in D pos.



The needles are aligned in C position and the weaving yarn is passed over and under the needles.

Needle Pusher.

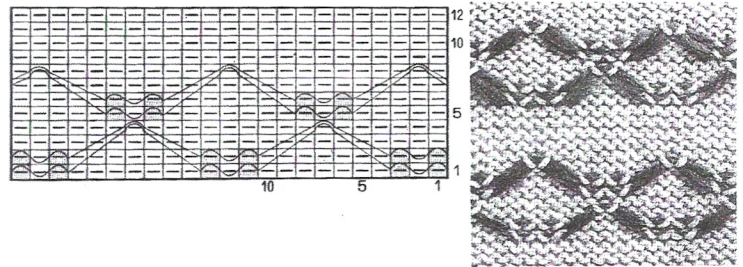


- ⑩ Lay the weaving yarn over the needles in D position.
- ⑪ Move the Attachment across the needles in the same manner as done for steps ⑥ and ⑦.
- ⑫ Repeat steps ③ ~ ⑪.

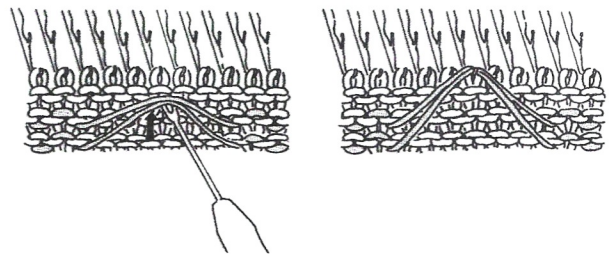
Pattern B

- ① Thread waste yarn through the Tension and the Carriage and weaving yarn through the Shuttle.
- ② Cast on the required number of stitches and knit several rows with the Carriage.
- ③ Exchange waste yarn for main yarn and knit 1 row in Stockinet using the Carriage.
- ④ Push the needles marked with ■ on the pattern chart to D position and lay the weaving yarn over the needles in D position.
N.B. Push the end working needle on the Carriage side to D position to knit the end stitch perfectly.
- ⑤ Set the Weaving Attachment on the Needle Bed at the Carriage side and move it across the needles.
- ⑥ Knit 1 row in Stockinet and repeat steps ④ and ⑤.

Pattern B



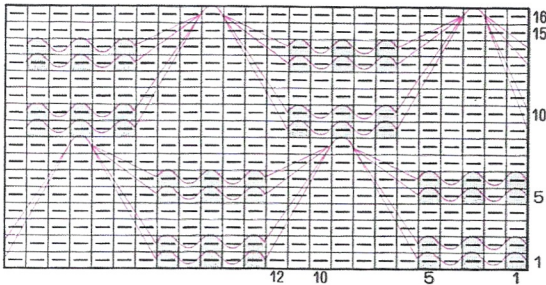
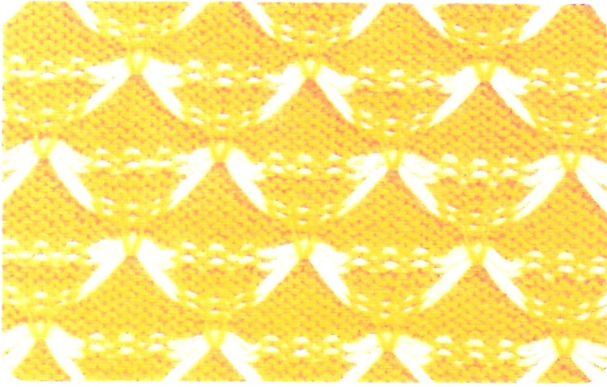
- ⑦ Knit 2 rows in Stockinet and hook 2 floats on the centre needle as shown below.



Hook floats on the centre needle

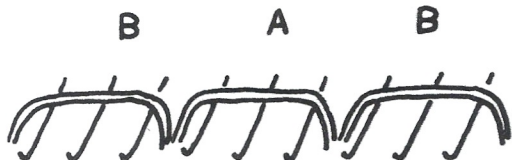
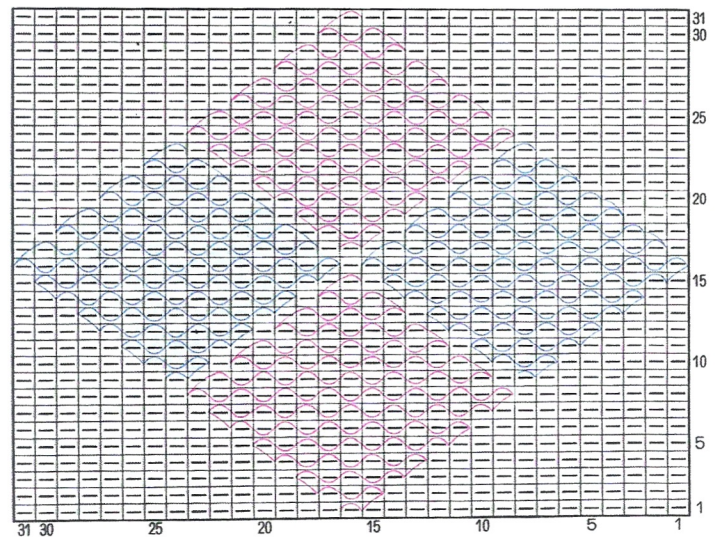
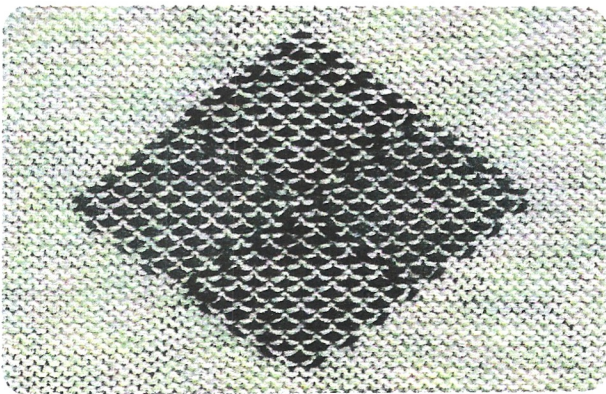
- ⑧ Knit 1 row in Stockinet.
- ⑨ Repeat steps ④ ~ ⑧ following the pattern chart.
- ⑩ Knit 4 rows in Stockinet.
- ⑪ Repeat steps ③ ~ ⑩.

Pattern 1



- ① Knit 1 row in Stockinet.
- ② Push the needles marked with ■ on the pattern chart to D position and lay the weaving yarn over the needles in D position.
- ③ Move the Weaving Attachment across the needles.
- ④ Repeat steps ① ~ ③.
- ⑤ Knit 3 rows in Stockinet.
- ⑥ Repeat steps ② ~ ④.
- ⑦ Knit 2 rows in Stockinet and hook 4 floats on the centre needle as shown on the pattern chart.
- ⑧ Repeat steps ① ~ ⑦ following the pattern chart.

Pattern 2

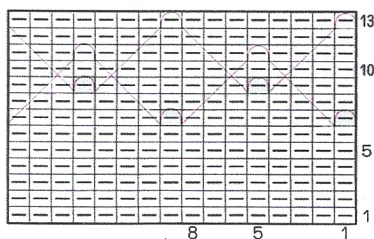
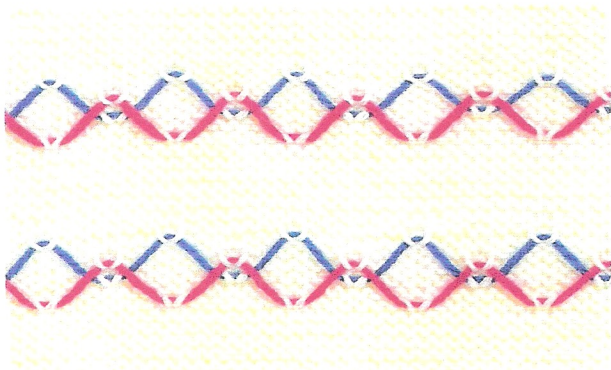


Weaving yarn
 A = Black
 B = Green

- ① Knit 1 row in Stockinet.
 - ② Push the needle to D position following the pattern chart and lay the weaving yarn over the needle in D position.
 - ③ Move the Weaving Attachment across the needles.
 - ④ Repeat steps ① ~ ③ following the pattern chart.
- * For the rows 9-23, use 3 weaving yarns and lay the yarns as shown.

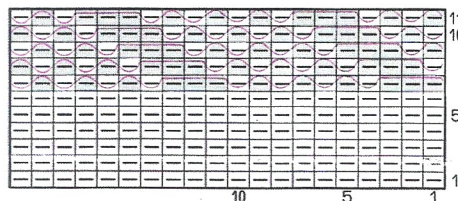
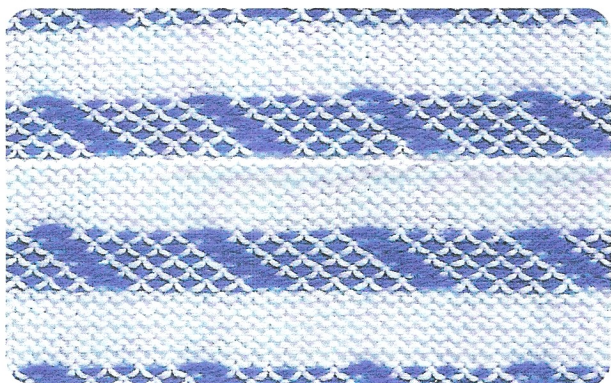
Pattern 3

Weaving yarn
A = Red
B = Blue



- ① Knit 7 rows in Stockinet.
- ② Push the needles marked with ■ on the pattern chart to D position and lay the weaving yarn A over the needles in D position.
- ③ Move the Weaving Attachment across the needles.
- ④ Knit 2 rows in Stockinet.
- ⑤ Push the needles marked with ■ on the pattern chart to D position and lay the weaving yarn B over the needles in D position.
Move the Weaving Attachment across the needles.
- ⑥ Knit 2 rows in Stockinet.
- ⑦ Hook the float of weaving yarn A on the centre needle as shown on the pattern chart.
- ⑧ Knit 2 rows in Stockinet and hook the float of weaving yarn B on the centre needle.
- ⑨ Repeat steps ① ~ ⑧.

Pattern 4



- ① Knit 7 rows in Stockinet.
- ② Push the needles marked with ■ on the pattern chart to D position and lay the weaving yarn over the needles in D position.
- ③ Move the Weaving Attachment across the needles.
- ④ Knit 1 row in Stockinet.
- ⑤ Repeat steps ② ~ ④ another 4 times following the pattern chart.
- ⑥ Repeat steps ① ~ ⑤.

Pattern 5



- ① Knit 1 row in Stockinet.
- ② Push the needles marked with ■ on the pattern chart to D position and lay the weaving yarn over the needles in D position.
- ③ Move the Weaving Attachment across the needles.
- ④ Repeat steps ① ~ ③ another 2 times.
- ⑤ Knit 4 rows in Stockinet and hook 3 floats on the centre needle as shown on the pattern chart. Work Lace Knitting with a Transfer Tool following the pattern chart.
- ⑥ Knit 5 rows working Lace Knitting.
- ⑦ Repeat steps ① ~ ⑥.