

Pattern Selector

MOD. PS-150

INSTRUCTION BOOK

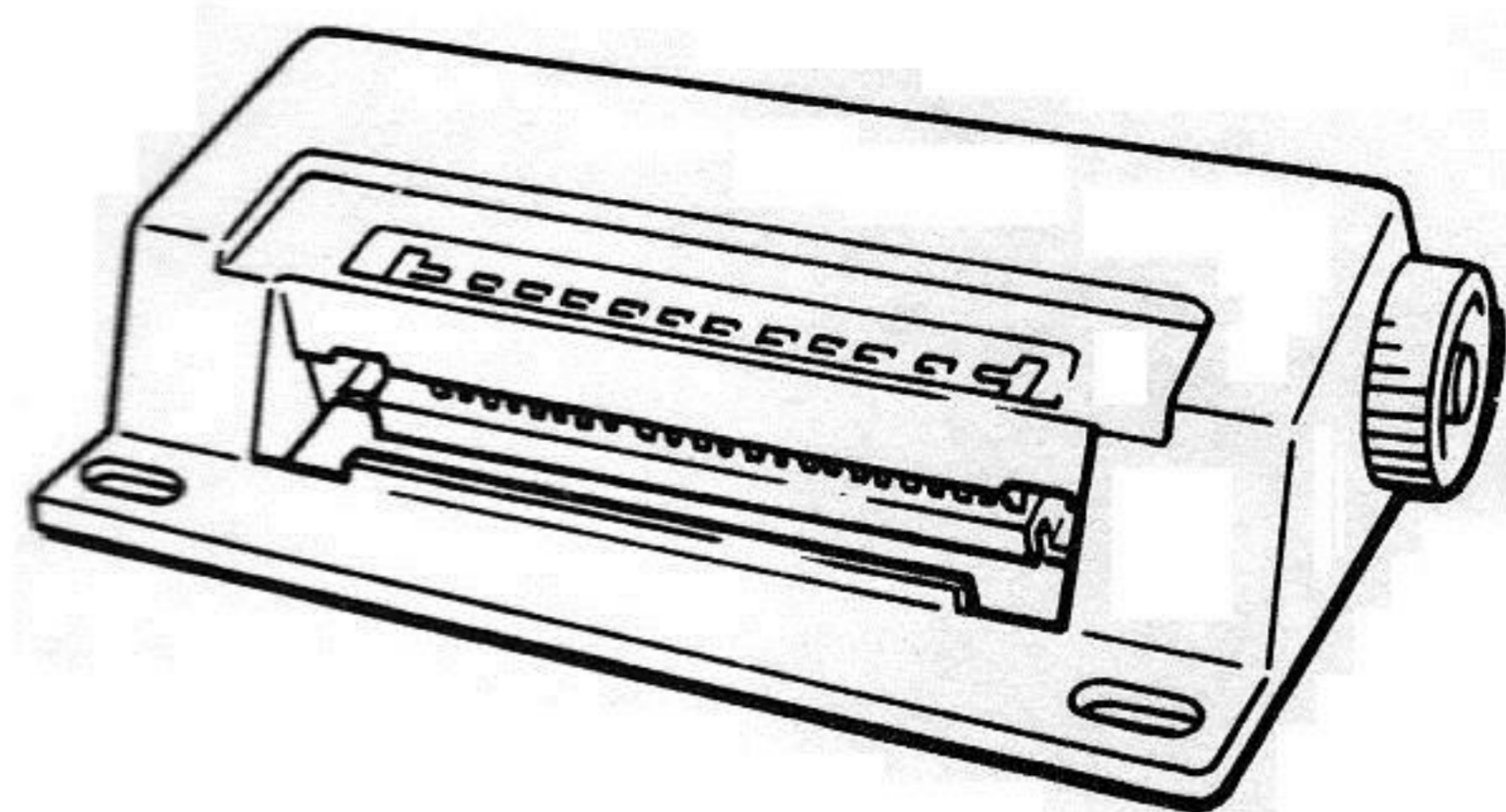


Congratulations on your purchase of this Pattern Selector.

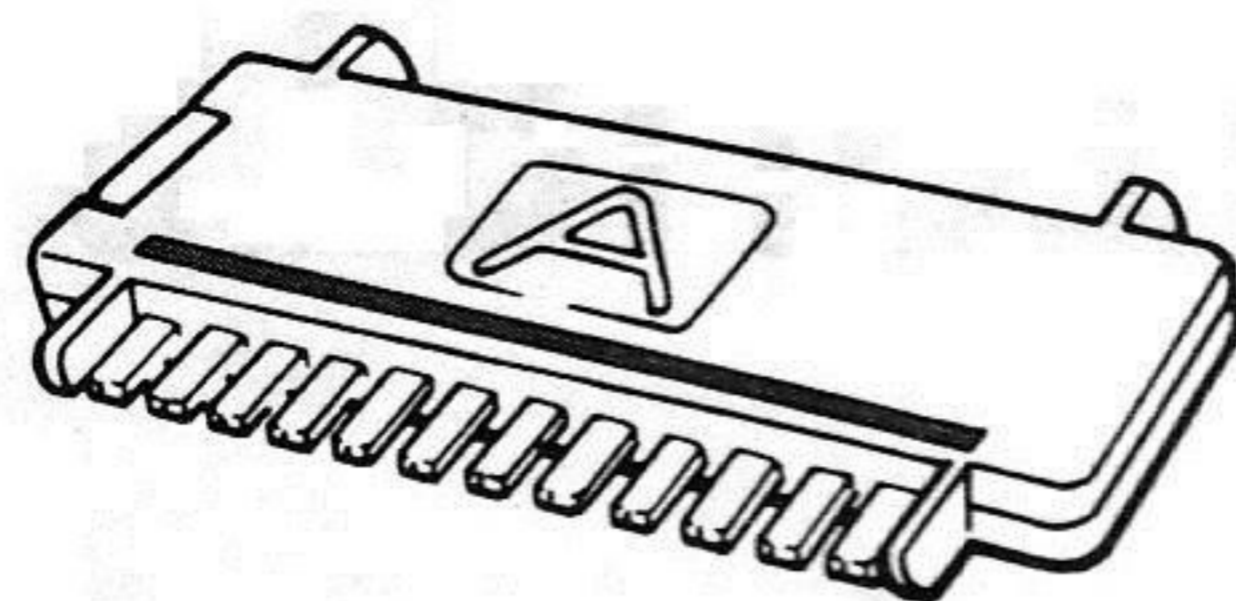
This Pattern Selector helps you select needles for knitting various fashionable pattern stitches on the Model 150 chunky knitting machine.

There are extra punch card sets and non-perforated card set for optional purchase, which will increase your collection of patterns.

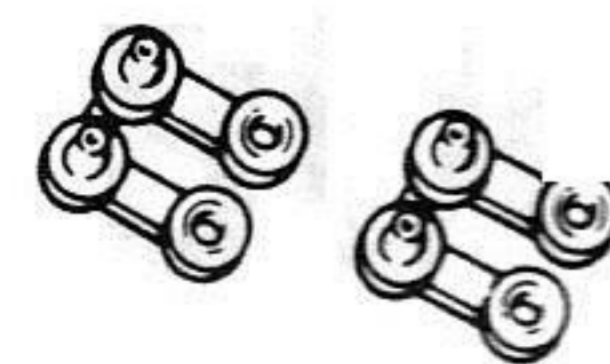
NAMES OF EACH COMPONENT AND ACCESSORY



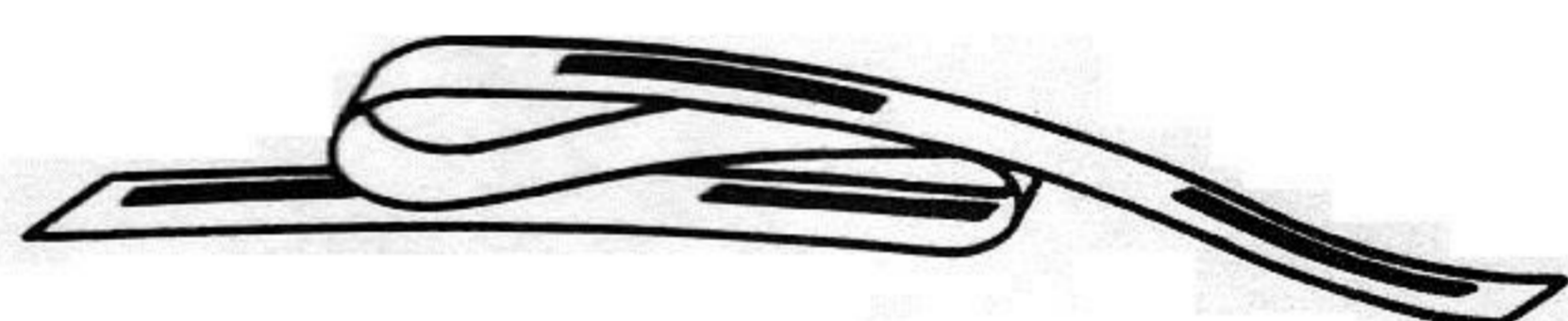
Pattern Selector



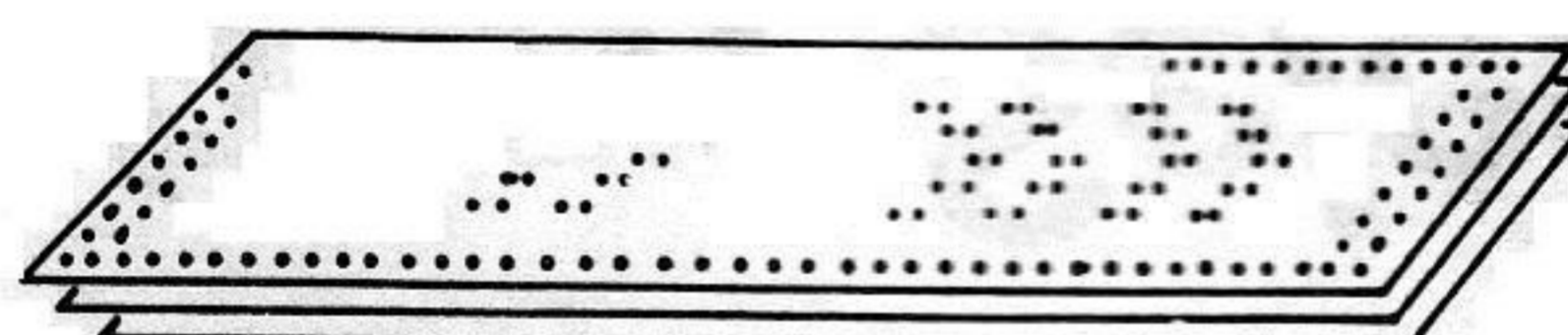
Needle Selector



Card Snap



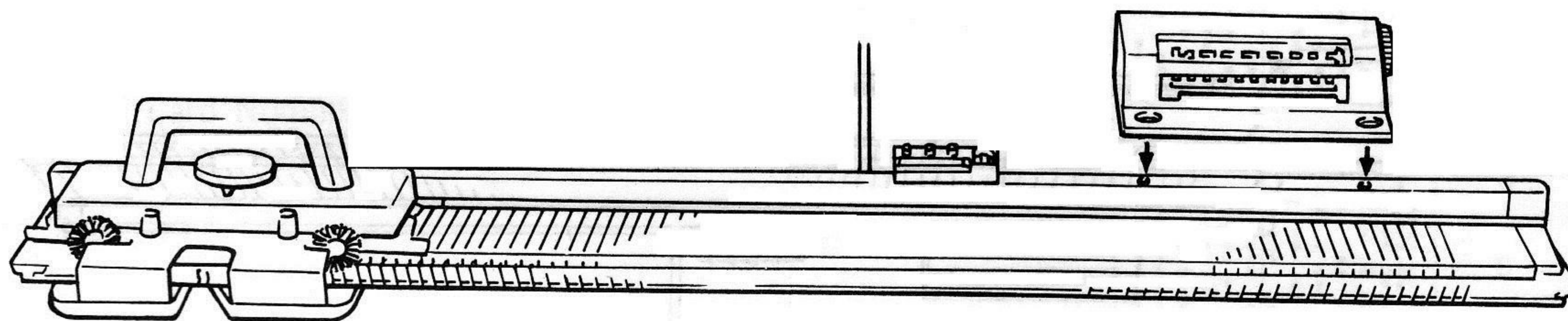
Needle Number Tape



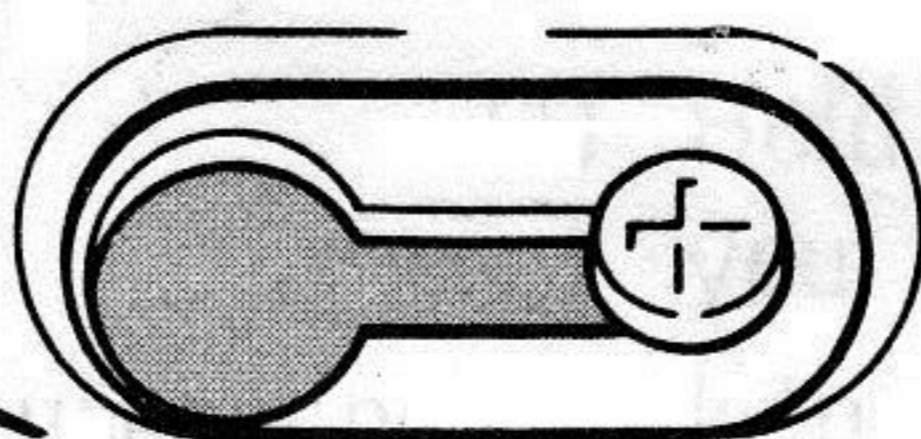
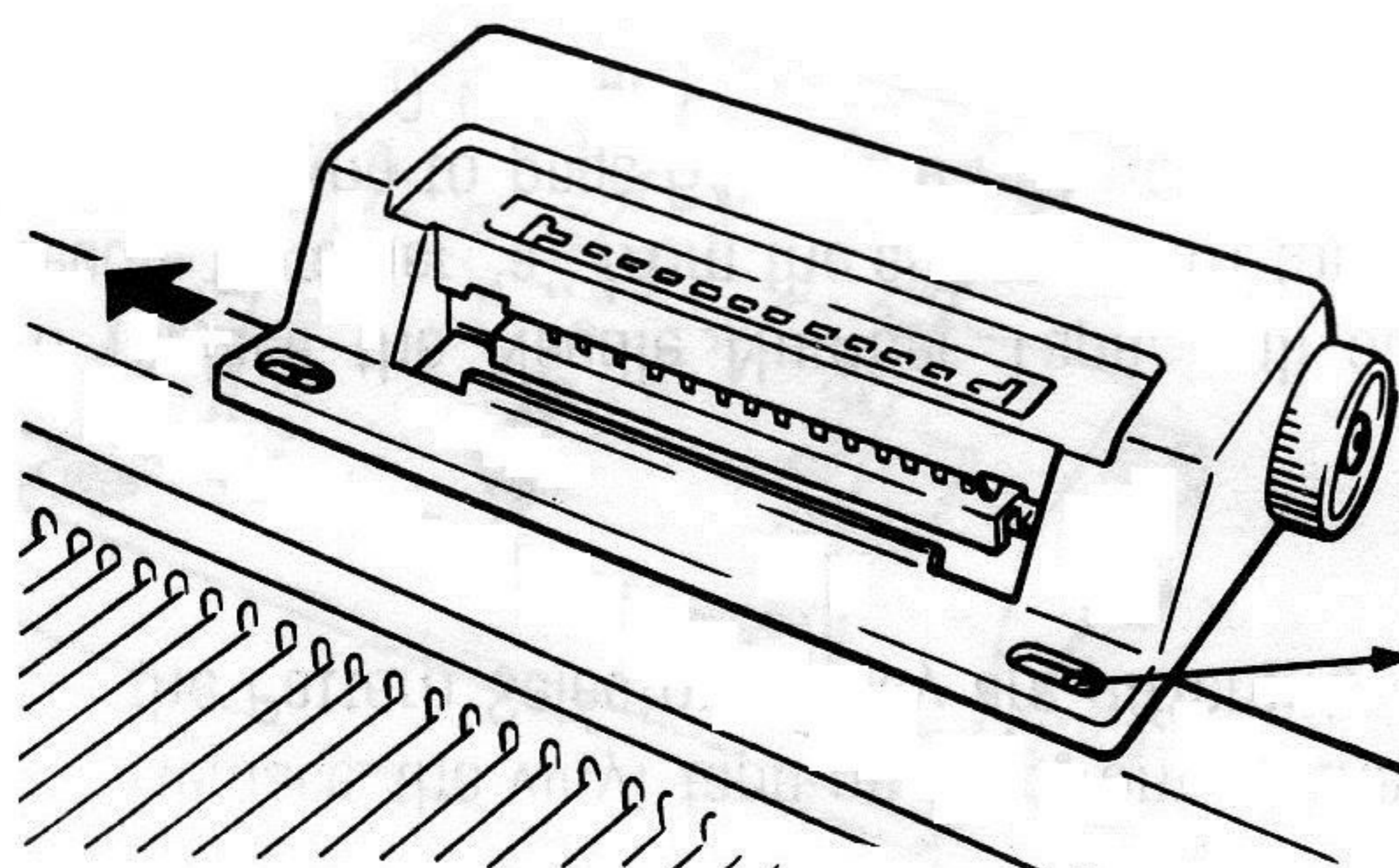
Punch Card (3 sheets)

ATTACHING THE PATTERN SELECTOR

(1) Attach the Pattern Selector at the right side of the needle bed case.



Fit the securing slots of the Pattern Selector to the screw heads at the right side of the needle bed case, and then slide the Selector to the left till it is secured firmly.



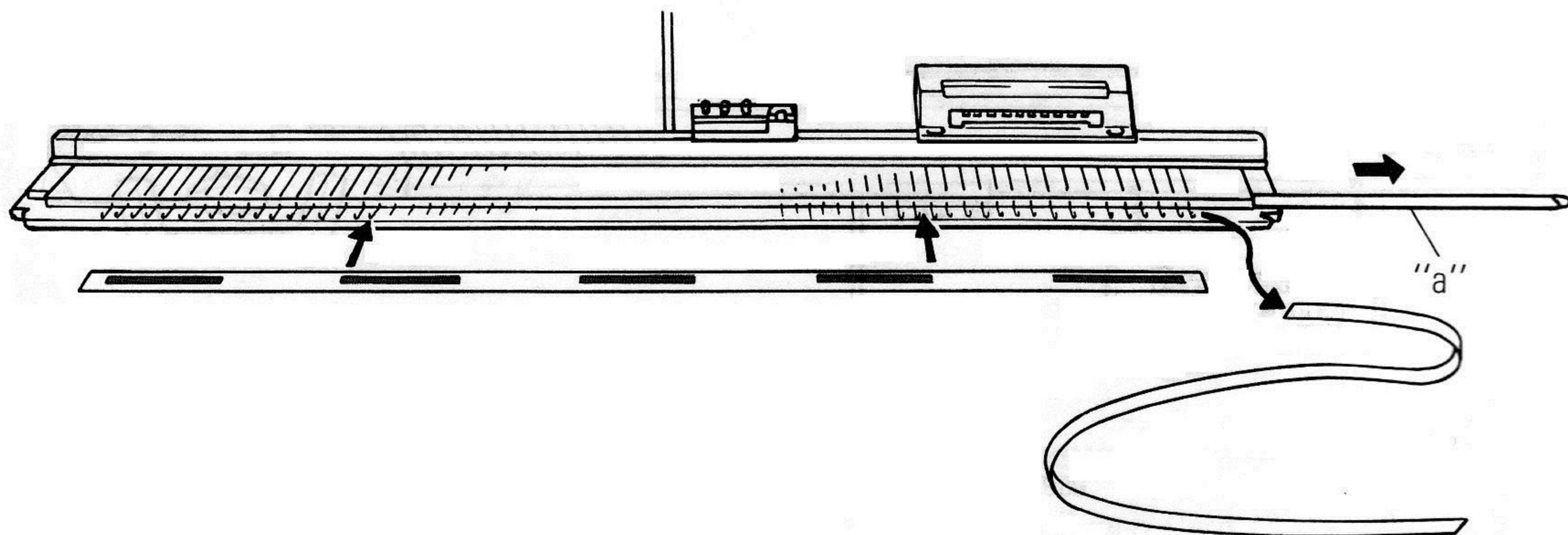
Slide the Pattern Selector till the screw head contacts the right end of the slot.

(2) Needle Number Tape

* Replace the vinyl tape on the front of the needle bed with the Needle Number Tape accompanying with the Pattern Selector if they are different.

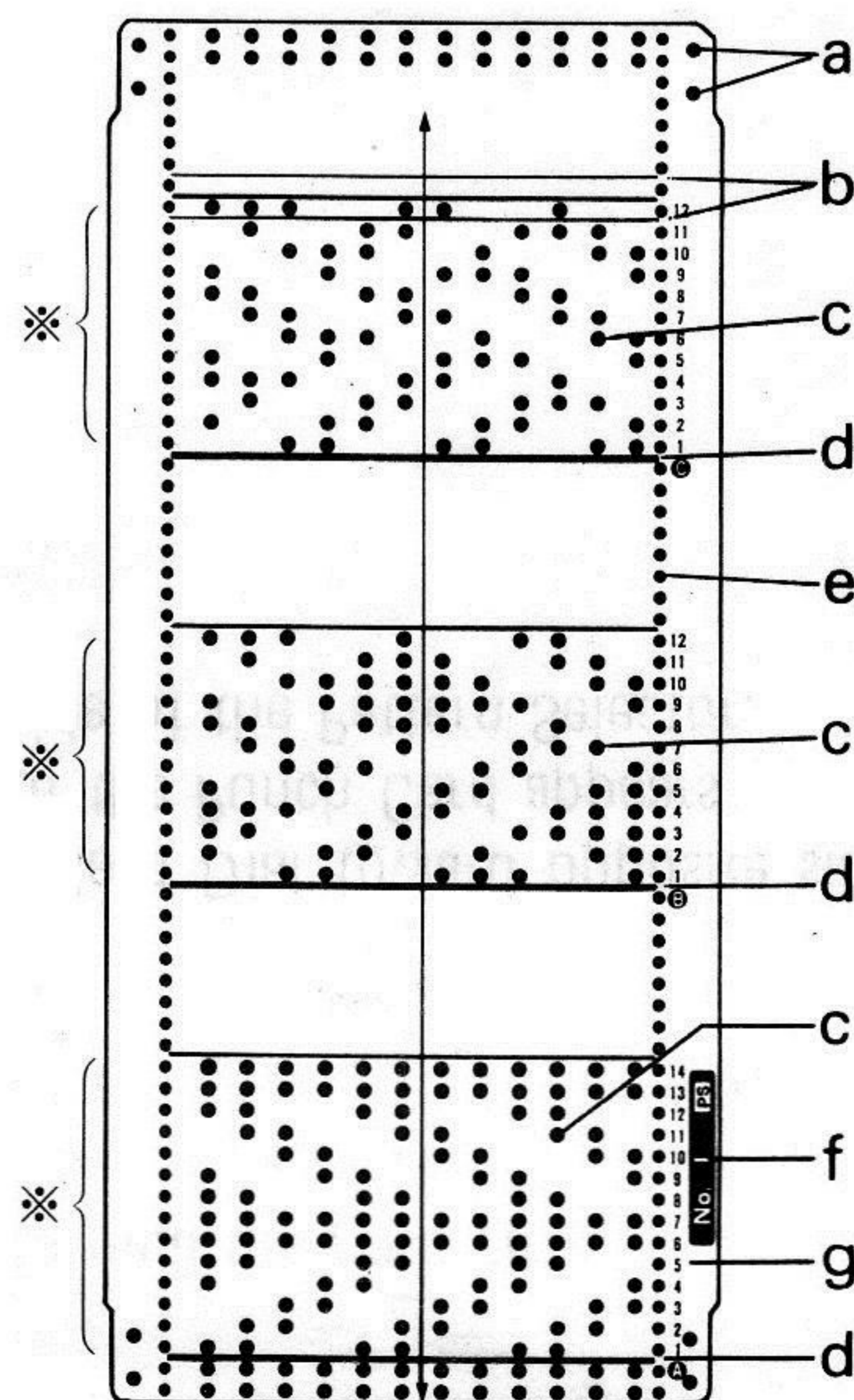
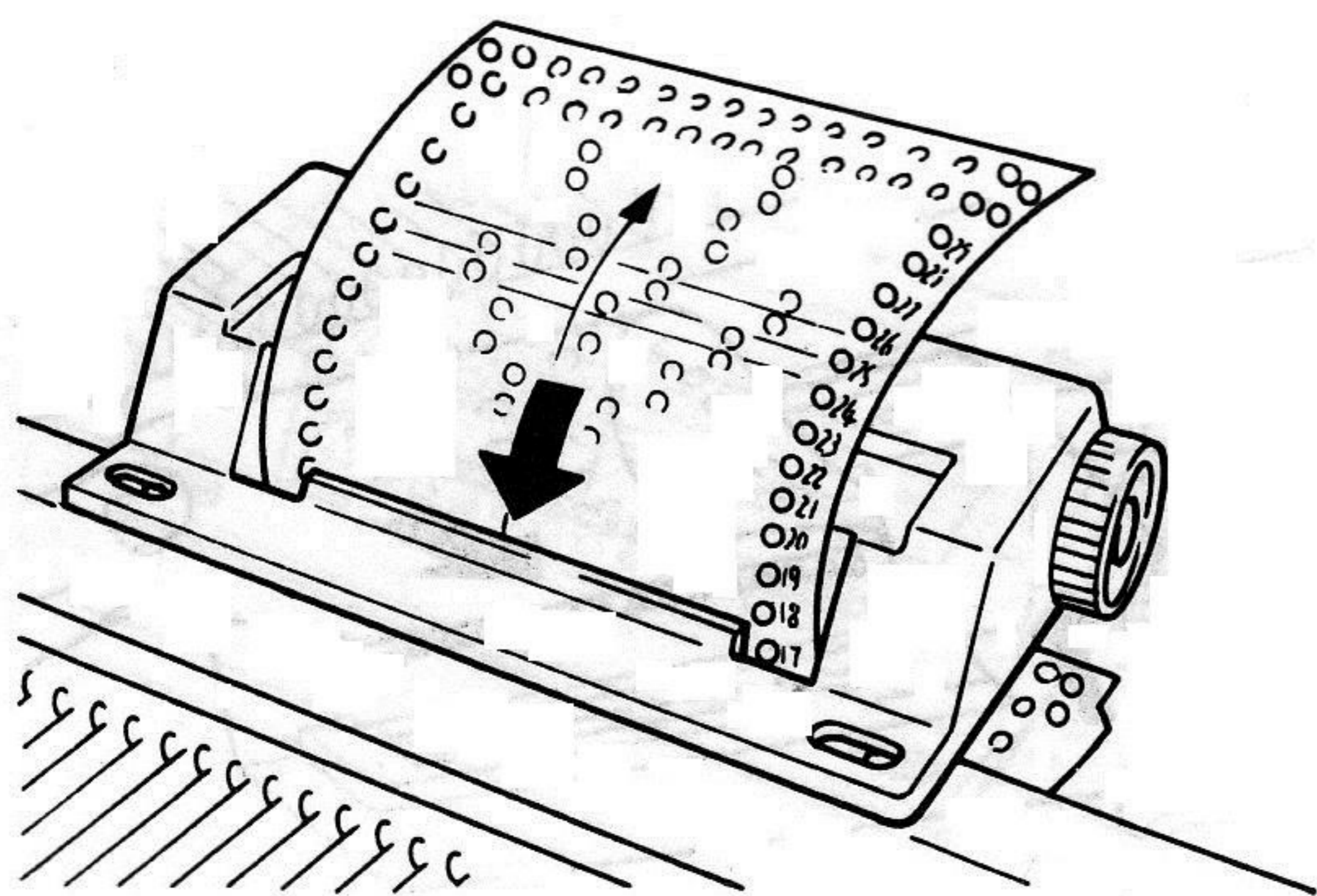
To replace the Needle Number Tape, pull out the Needle Retainer "a" from the either end of the needle bed (referring to page 64 of the Instruction book for the Model 150 knitter.)

Place the new Needle Number Tape under the needles, and push back the Needle Retainer into correct position.

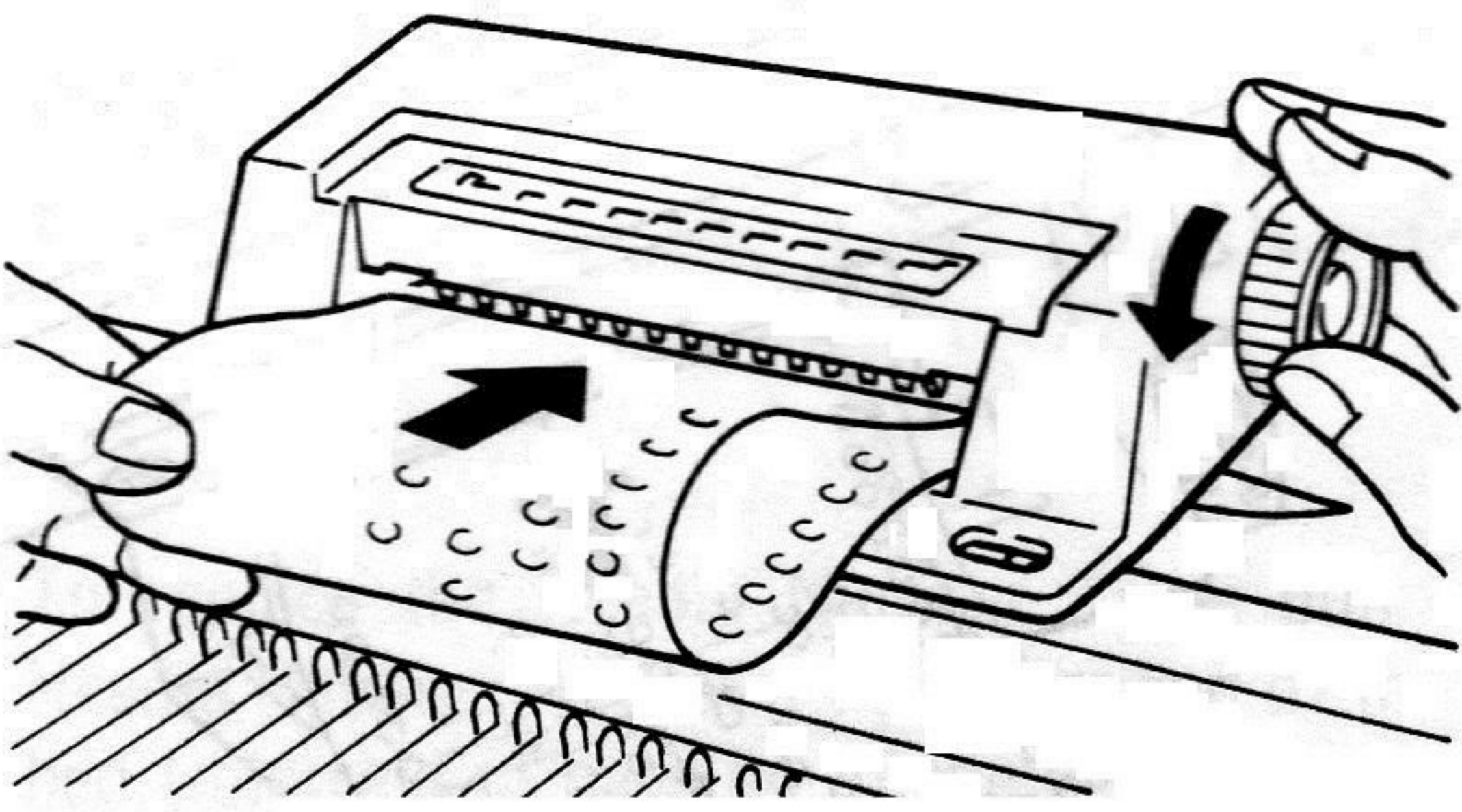


SETTING A PUNCH CARD

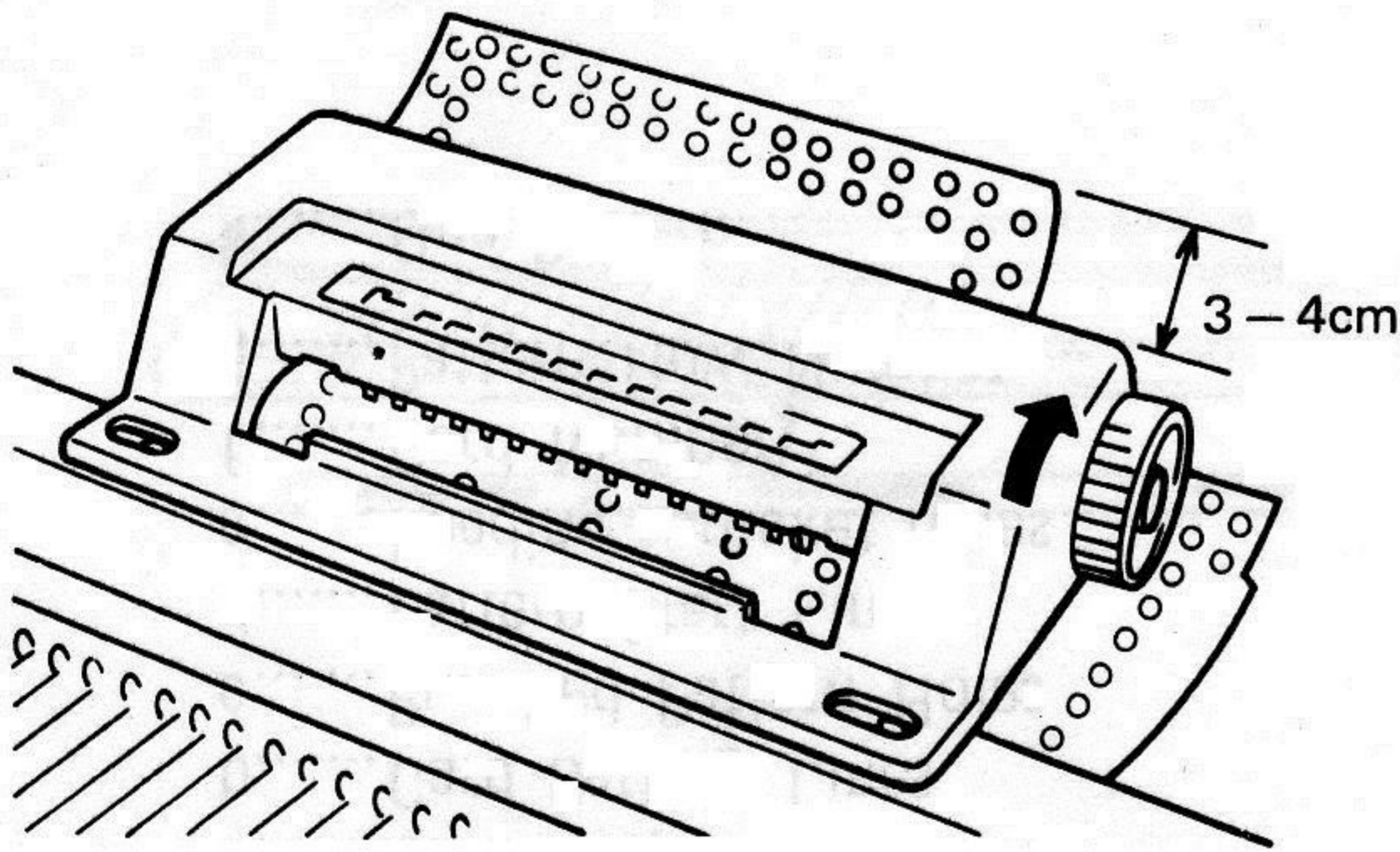
- a..... Card Snap Holes
- b..... Card Setting Lines
- c..... Punched Pattern Holes
- d..... Pattern Start Line
- e..... Feeding sprocket holes
- f..... Card Number
- g..... Pattern Row Number
- ※..... One Pattern



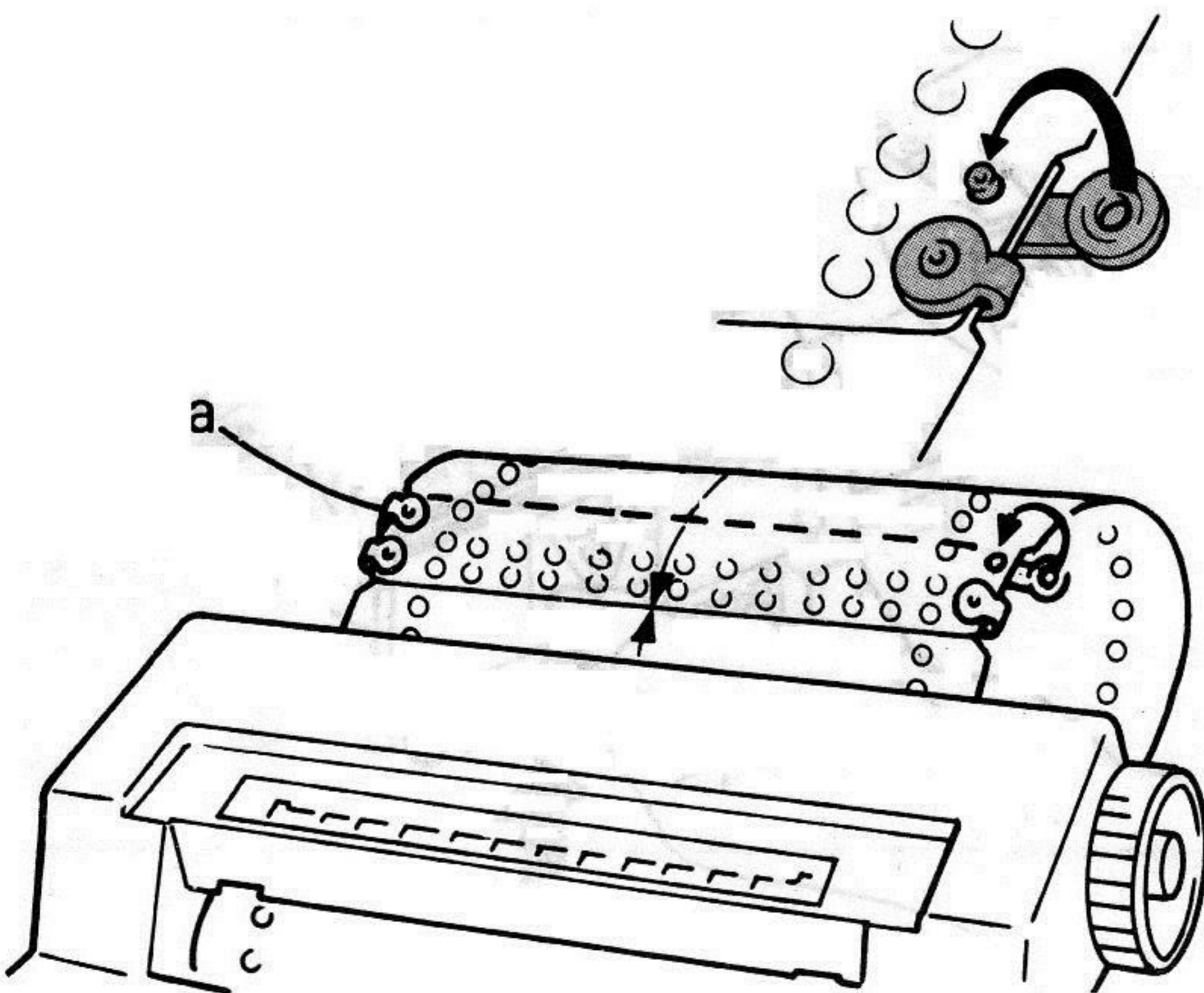
(1) Hold a Punch Card with its printed side facing you and insert the bottom end of the Punch Card into the front slot of the Pattern Selector as shown.



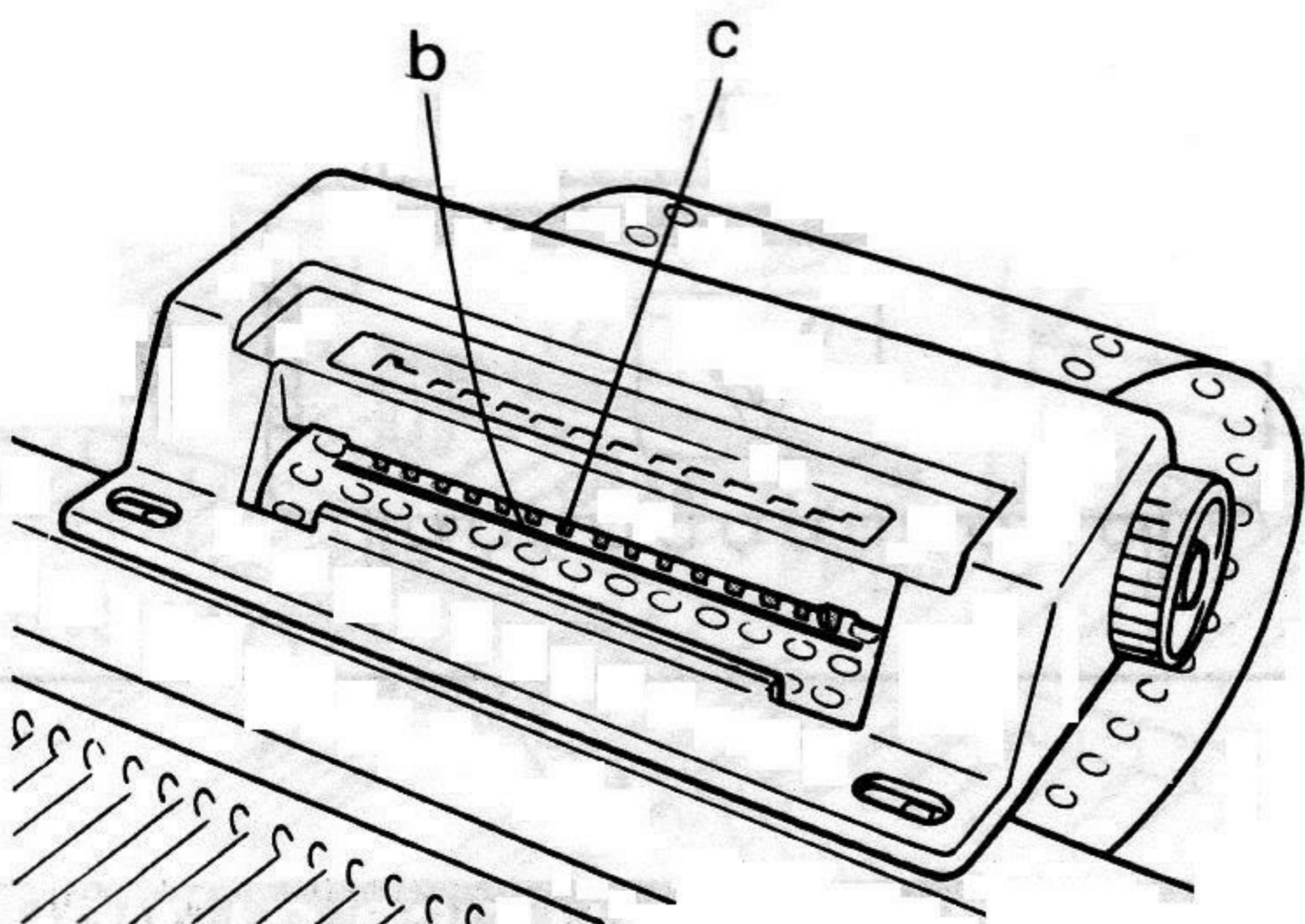
- (2) When the Card is inserted halfway, insert the top end of the Punch Card into the upper slot and turn the Card Dial toward you till the Card fits into the Selector properly without slack.



- (3) Turn the Card Dial toward opposite side till the top end of the Punch Card appears by 3-4cm. at the rear side of the Pattern Selector.

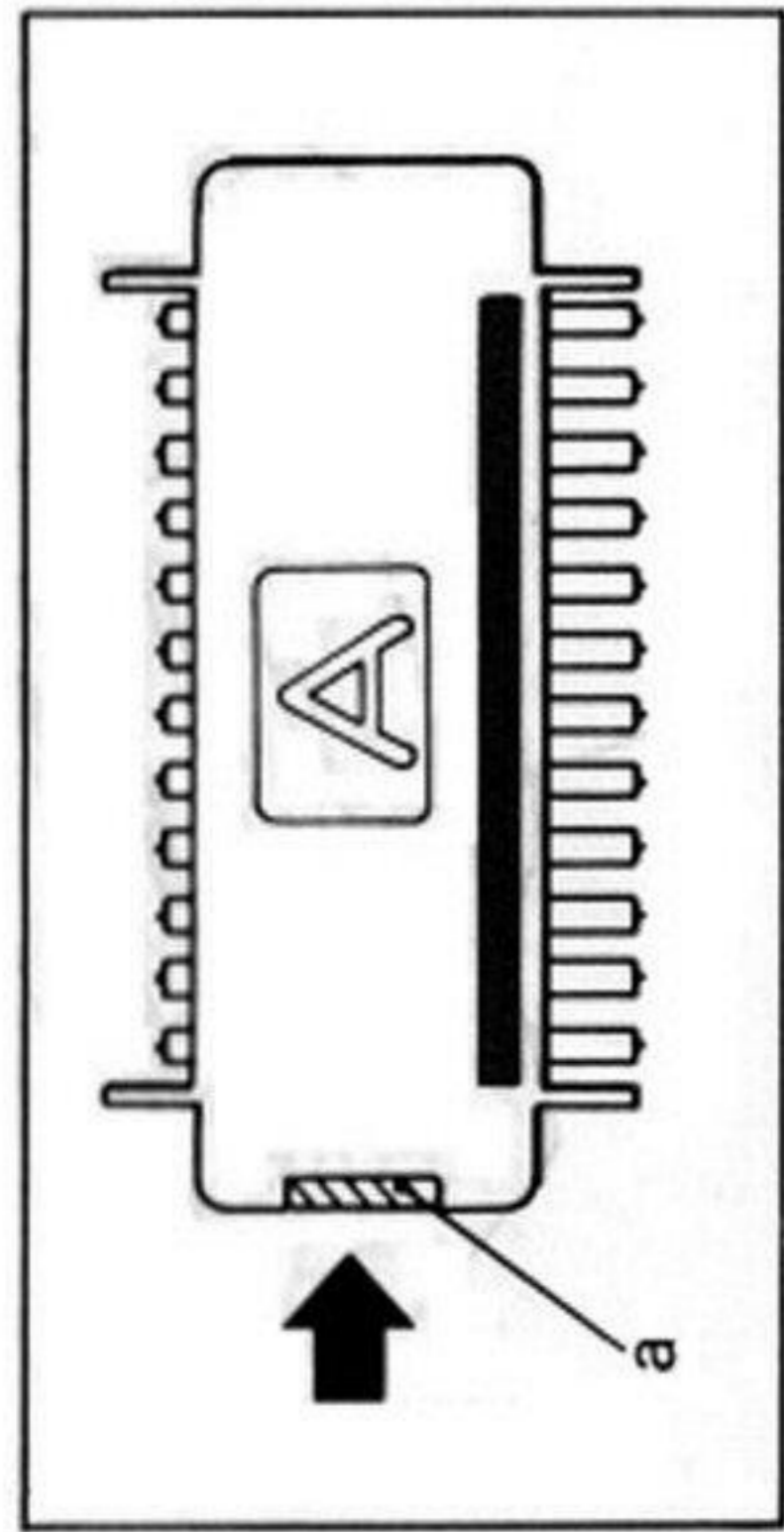


- (4) Lap the bottom end of the punchcard over the top end and snap them together with "a"

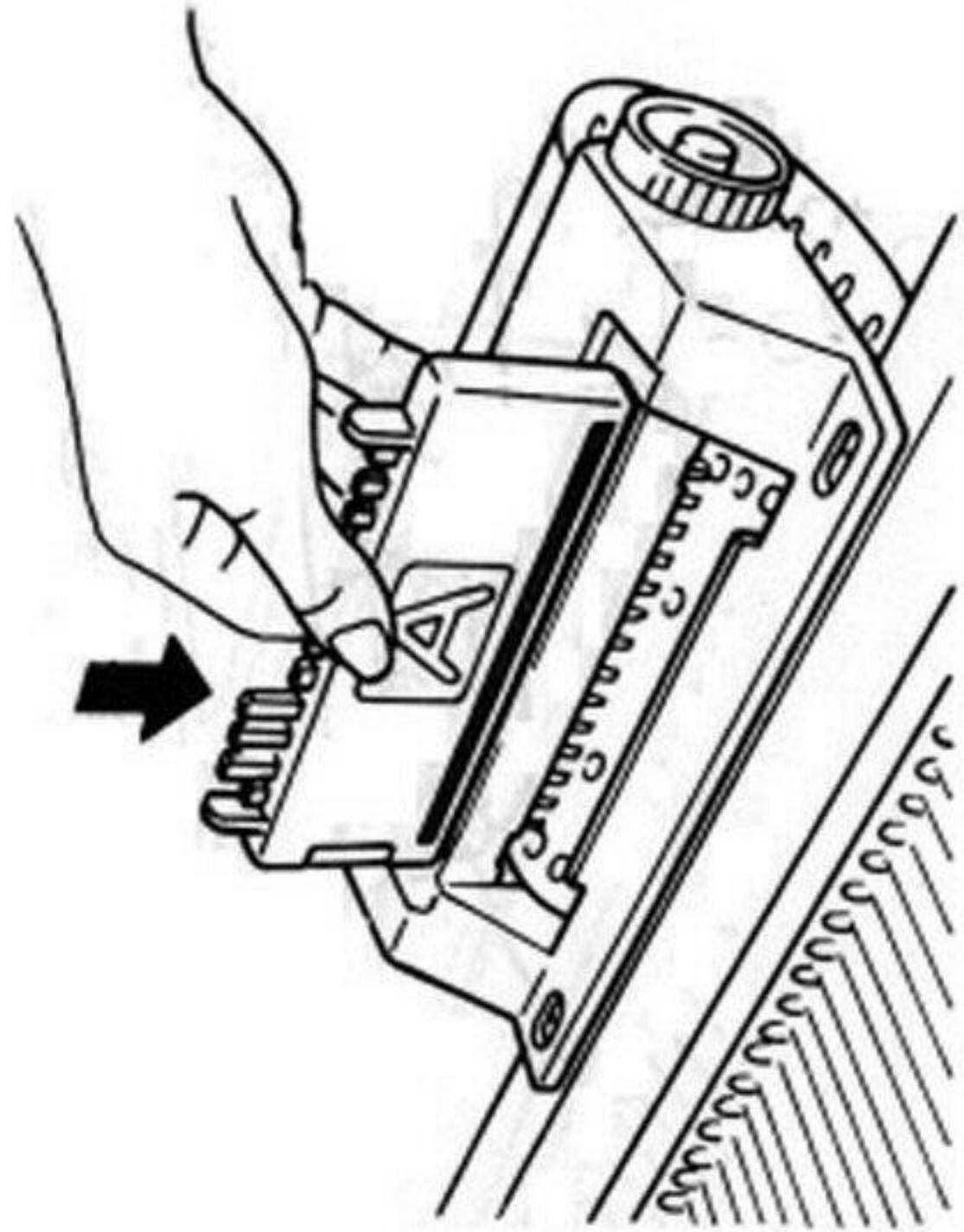


- (5) Set the Pattern Start Line "b" on the Card to the position immediately front of the Touch Levers "c" by turning the Card Dial.

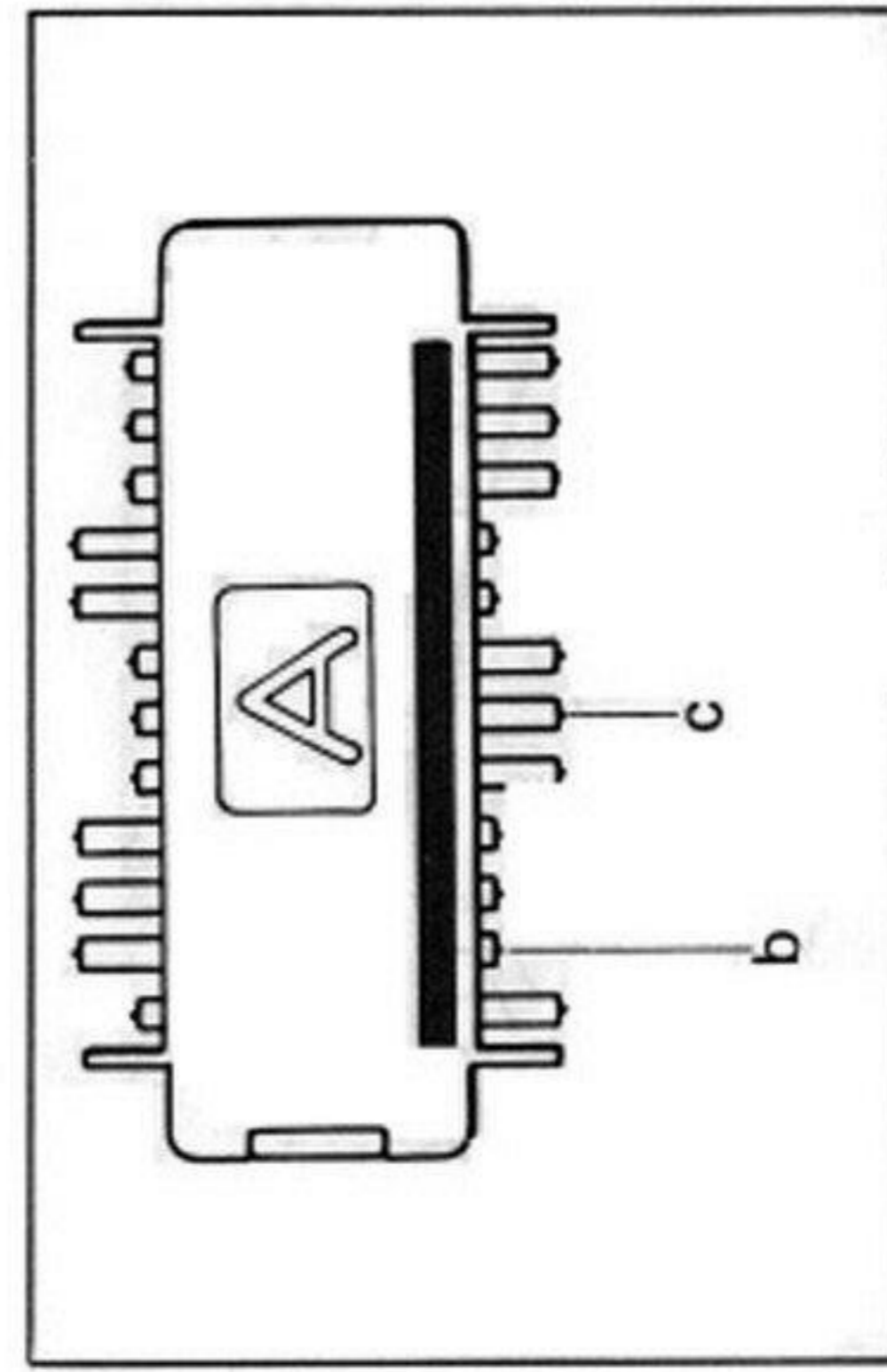
HOW TO USE THE NEEDLE SELECTOR



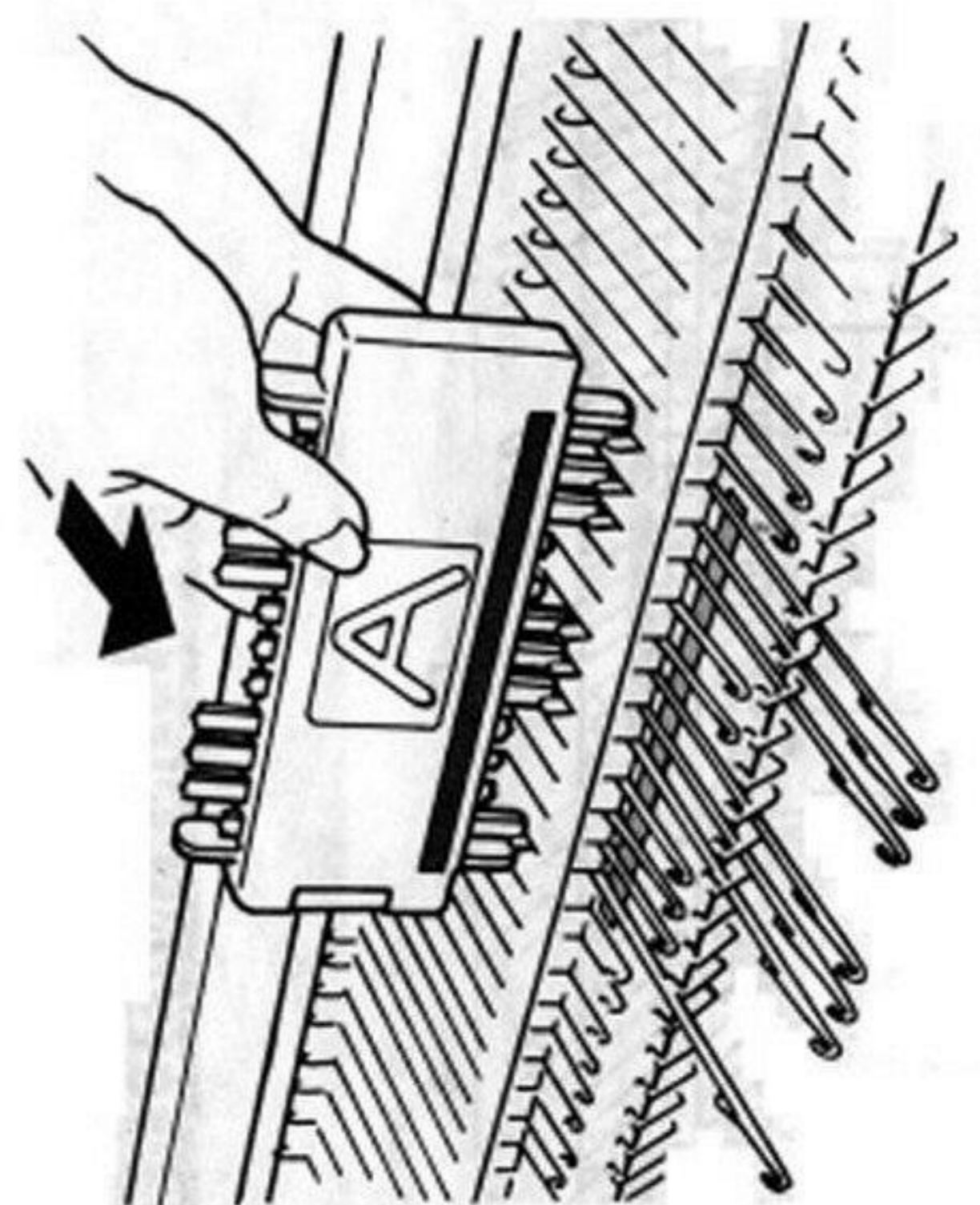
- (1) If the fingers of the Needle Selector are not in alignment, correct them by pushing the Reset Button "a".



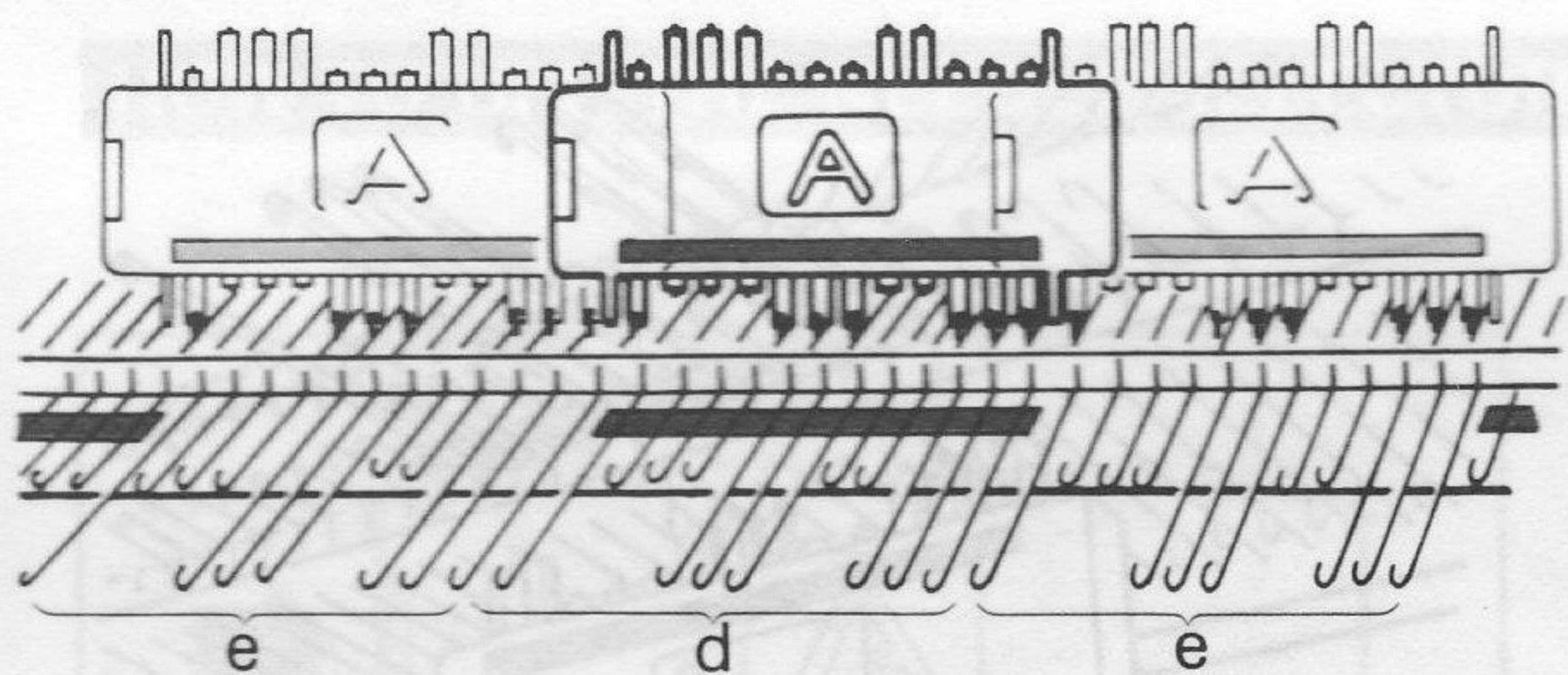
- (2) With the side A of the Needle Selector facing you, thrust the fingers of the Selector into the pattern slot as shown.



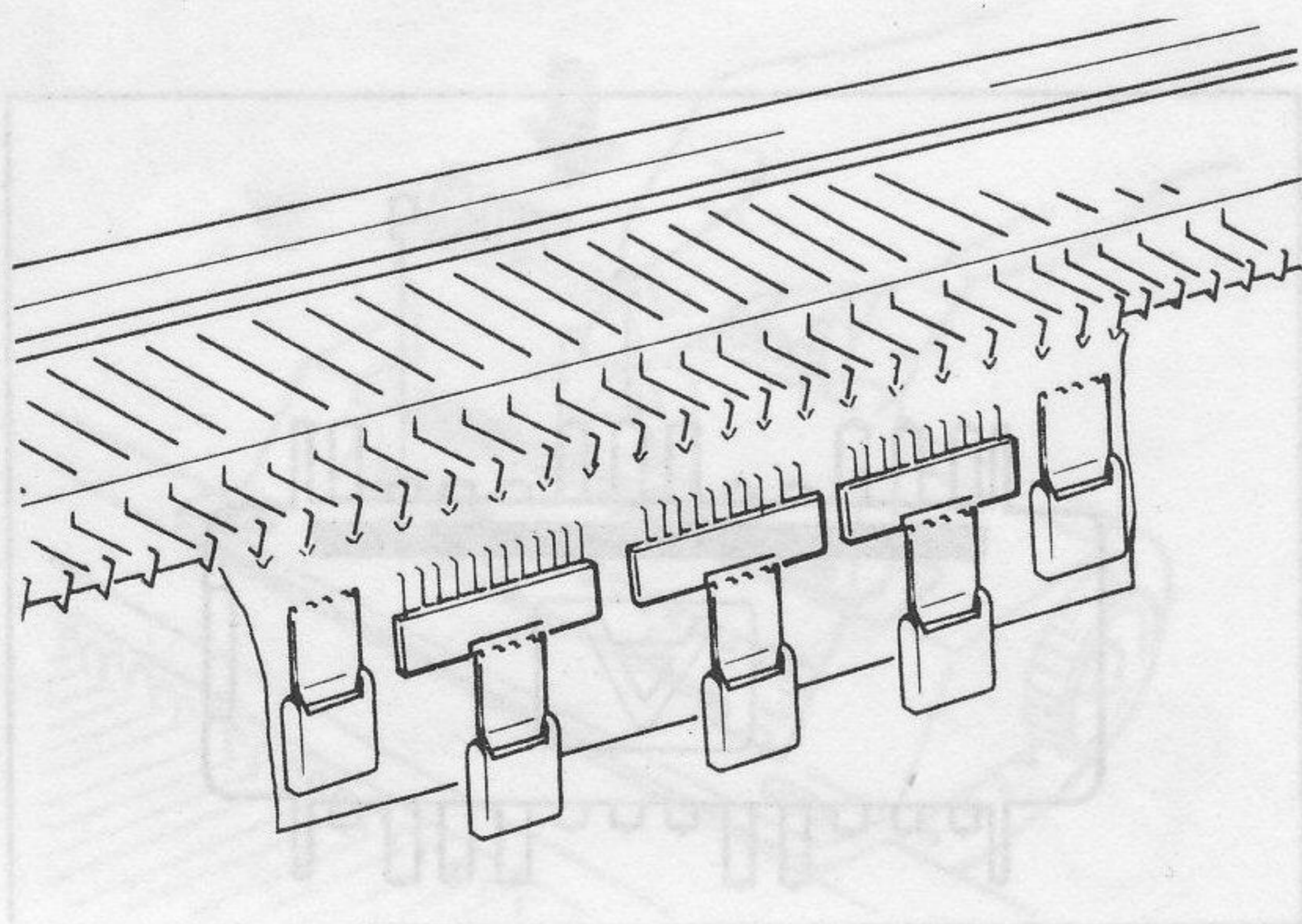
Then pull out the Needle Selector, the fingers represent the punched holes "c" and non-punched area "b" of the Punch Card.



- (3) For selecting the needles in B position, place the Needle Selector behind the butts of the Needles, and push them toward D position.



PATTERN KNITTING



- * One unit of needle selection must correspond to the red zone "d" and white zone "e" of the Needle Number Tape which groups 12 needles for each alternating red and white zones.

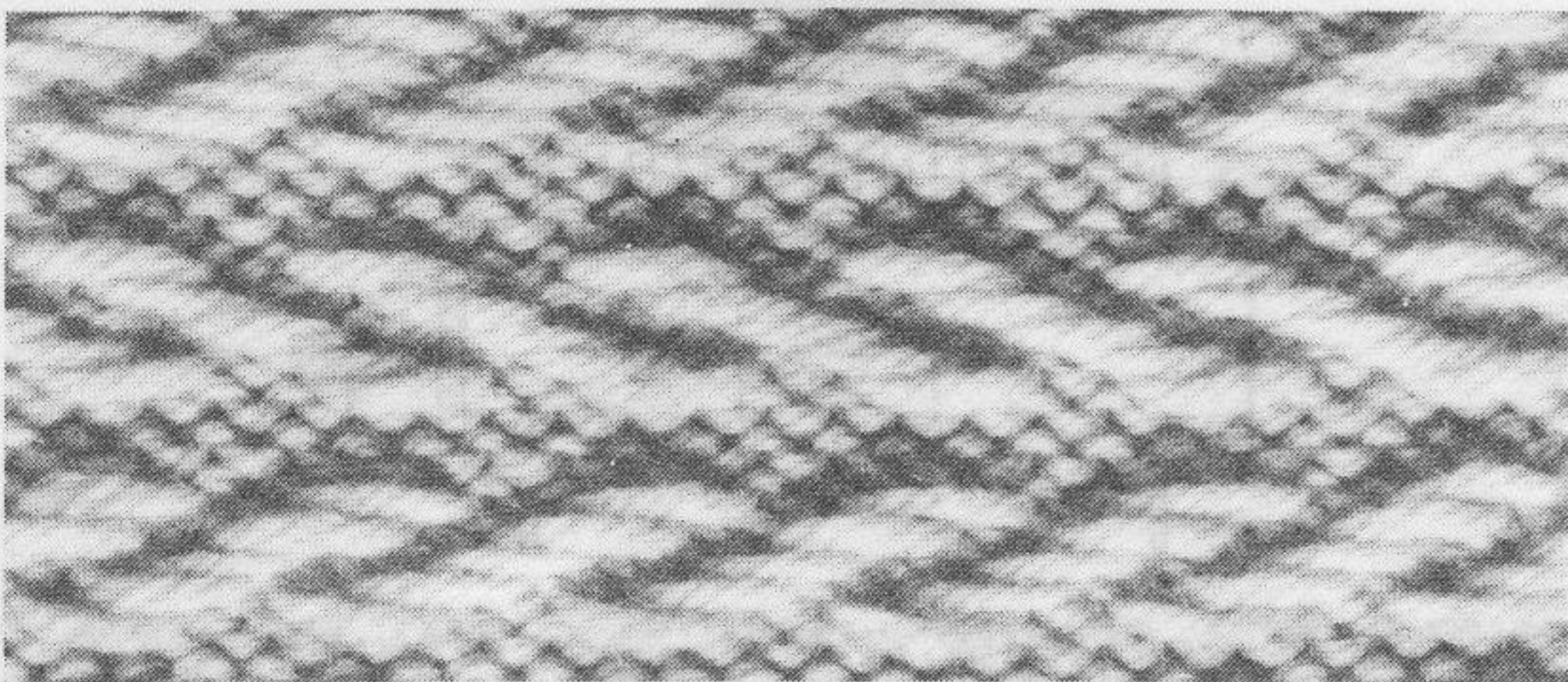
Select the needles for each 12-needle selection unit grouped by alternating red and white marks on the Needle Number Tape on the front of the needle bed.

- * Before starting to knit in pattern stitches, knit 7–8 rows of stockinet or waste knitting ending at the right end of the needle bed.
- * It is recommended to hang the Claw Weight on the fabric if the stitches tend to become loose on the needles.

SLIP STITCH

Referring to the Instruction Book, set the Carriage for Slip Stitch.

Card No.1— (A)



Card No.1— (B)



Card No.1— (C)

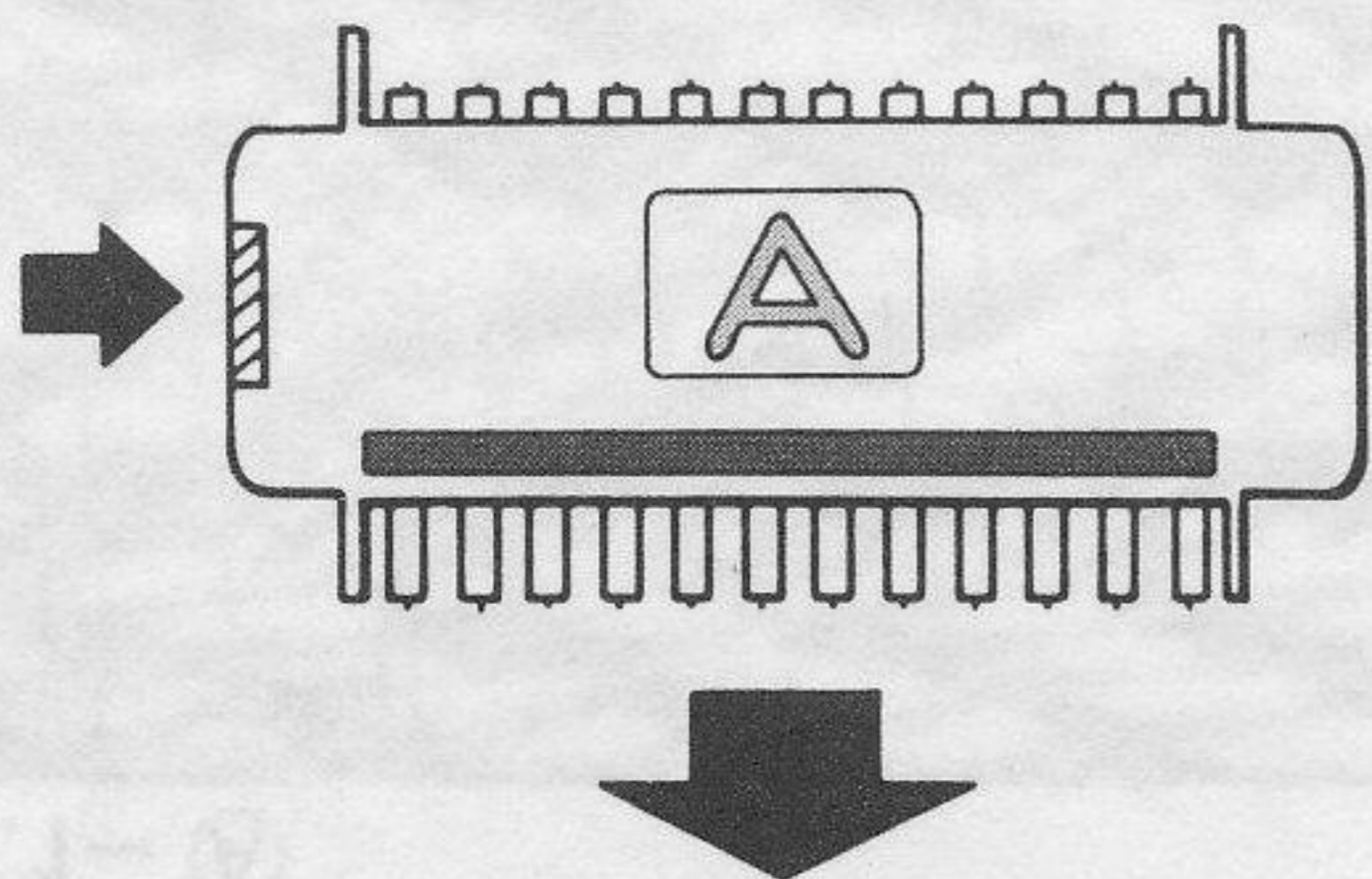
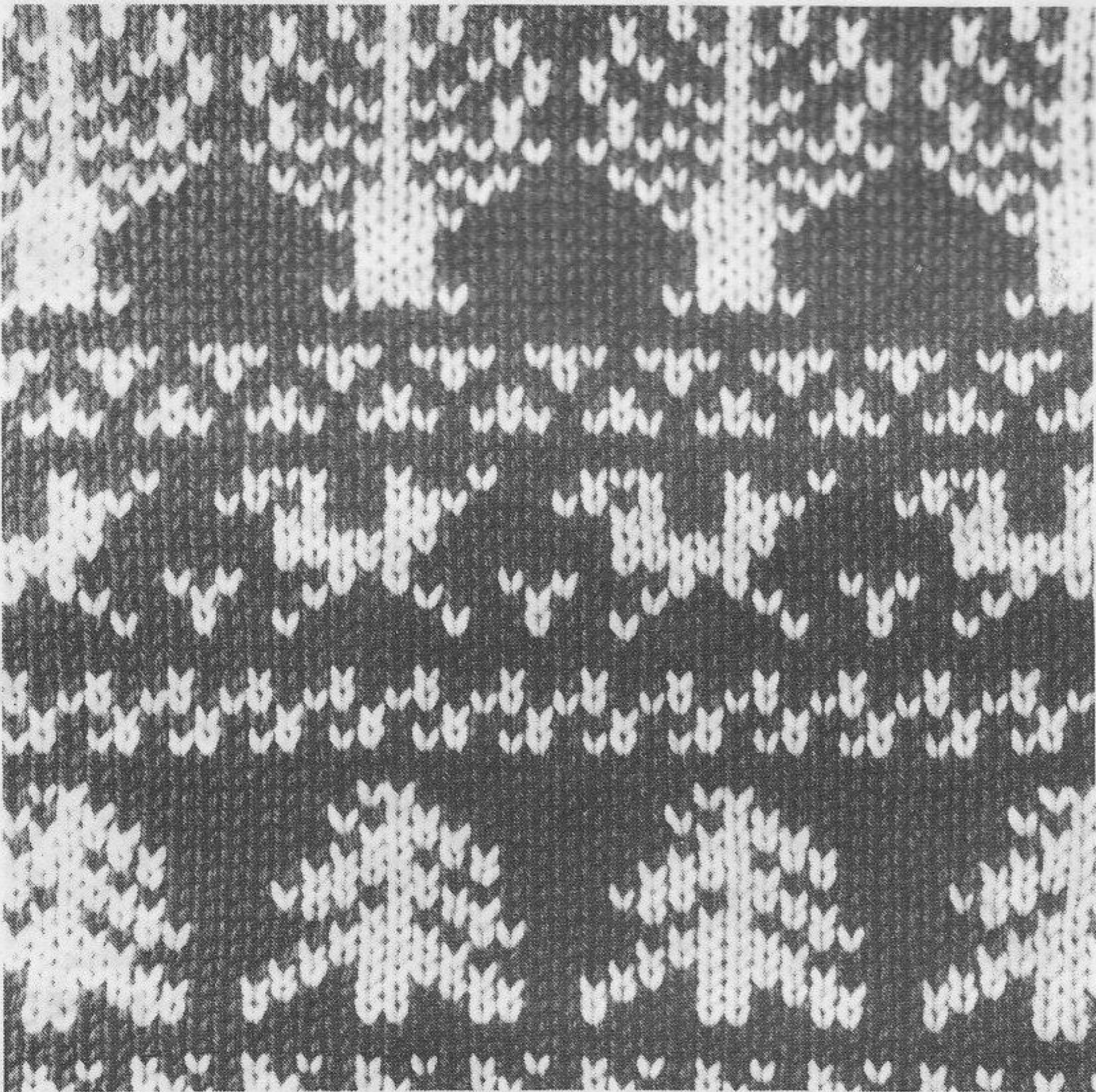


- (1) Set the Punch Card No.1, and set it to knit pattern (A) , (B) or (C) .
 - (2) Pick up the first pattern row by thrusting the Needle Selector into the pattern Selector.
 - (3) Push the selected needles into D position using the Needle Selector with its A side facing you.
 - (4) Move the Carriage to knit one row.
 - (5) Turn the Card Dial in the arrow direction to feed the Punch Card to the next row.
- * Repeat the steps (2) – (5).
 - * For knitting in stockinet partially, reset the Cam Lever for Stockinet.
 - * When the last row of the pattern has been knitted, feed back the Card to the first row of the pattern by turning the Card Dial.

If incorrectly selected...

Using a Transfer Tool, replace the stitch back into the hook of the needle, and align needle in B position.

Card No.2



KNIT-IN (FAIR ISLE) PATTERN

Each row of Knit-in (fair isle) pattern is formed with two rows of knitting – one is with contrast yarn "A" and the other row is with ground yarn "B".

Referring to the Instruction Book, set the Carriage for Knit-in Pattern.

Set the Punch Card No.2 into the Pattern Selector.

Place the yarn A through the right Tension Spring and yarn B through the left Tension Spring.

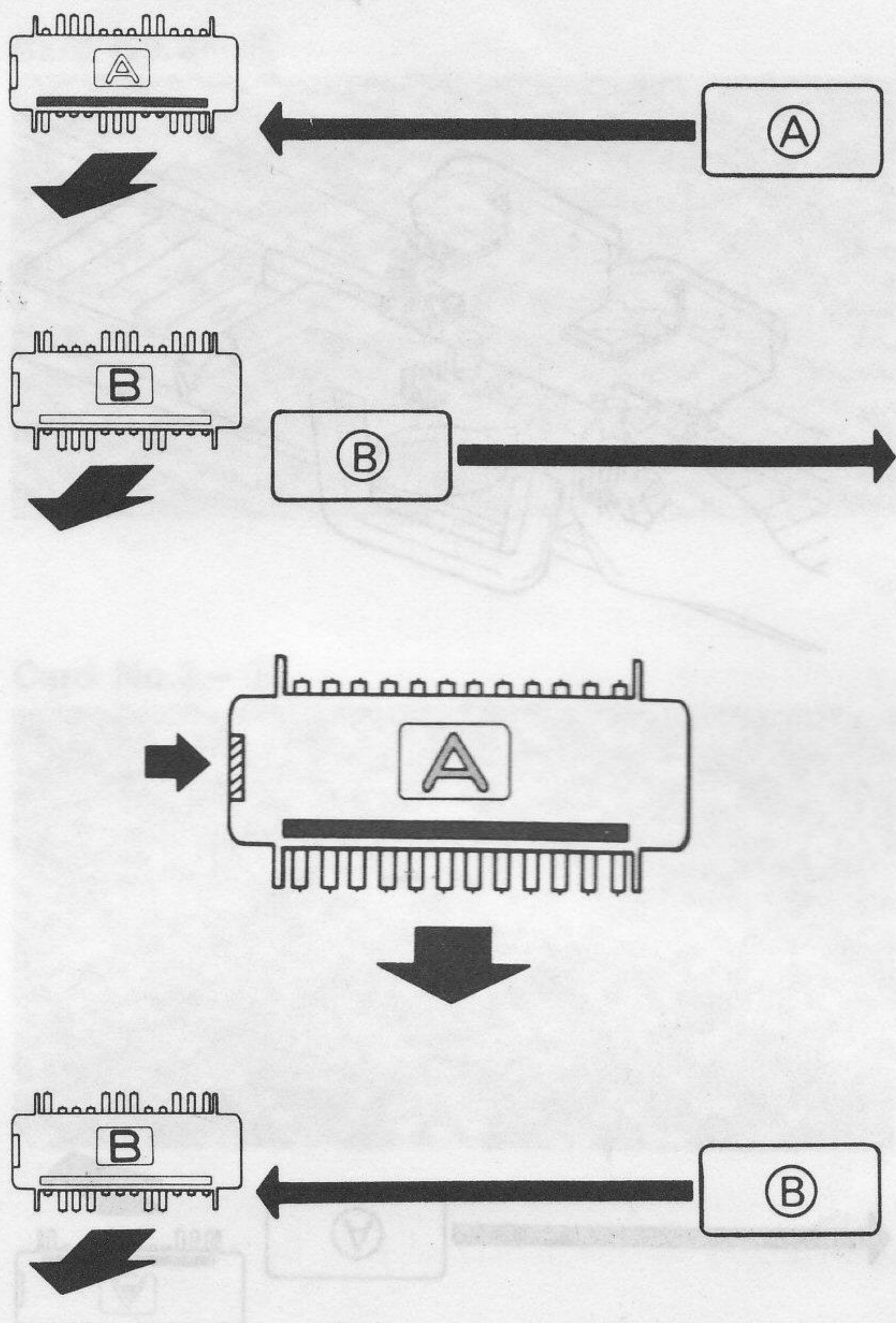
Knit 1 row with yarn A from the left to right.

FIRST ROW

- (1) Pick up the pattern from the Pattern Selector with A side of Needle Selector facing you.

Important

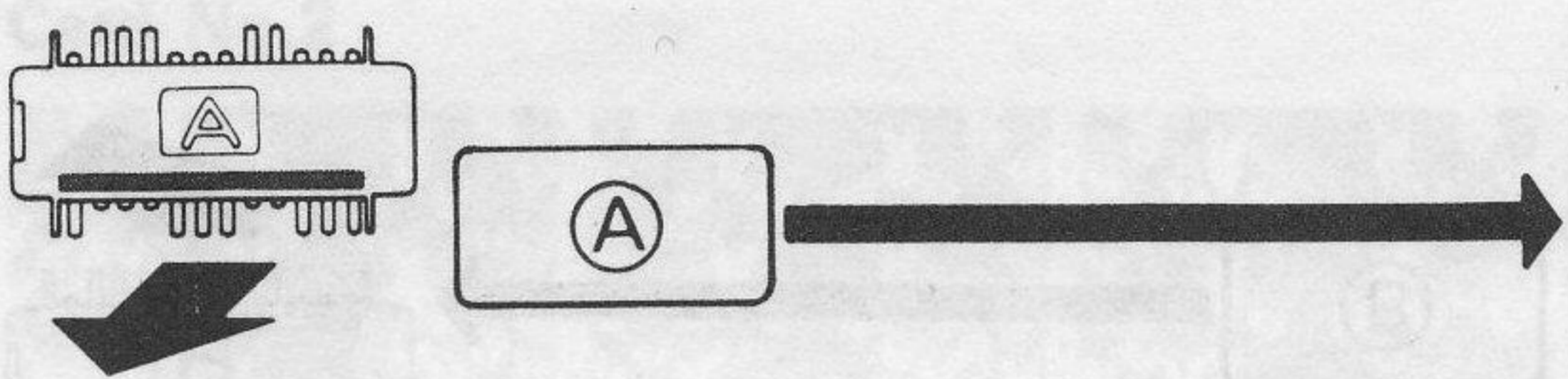
Whenever picking up pattern from the Pattern Selector, side A of the Needle Selector must face you.



- (2) Select the needles with the A side of Needle selector facing you.
- (3) With yarn A, knit 1 row.
Rest the yarn at the right yarn rest.
- (4) Select the needles with the side B of the Needle Selector facing you (reversed needle selection.)
- (5) With yarn B, knit from the left to the right.

SECOND ROW

- (5) Advance the Punch Card to the second row, reset the Needle Selector and pick up the pattern with the side A facing you.
- (6) Select the needles with the side B of the Needle Selector (reversed selection).
- (7) Knit back to the left.
Rest the yarn at the left yarn rest.



(8) Select the needles with the side A facing you.

(9) With yarn A, knit to the right.

* Repeat above steps for the rest of the Punch Card.

When knitting with the yarn A, select the needles using the side A of the Needle Selector and use the side B (reversed needle selection) when knitting with the yarn B.

TUCK STITCH

Referring to the instruction Book, set the Carriage for Tuck Stitch pattern.

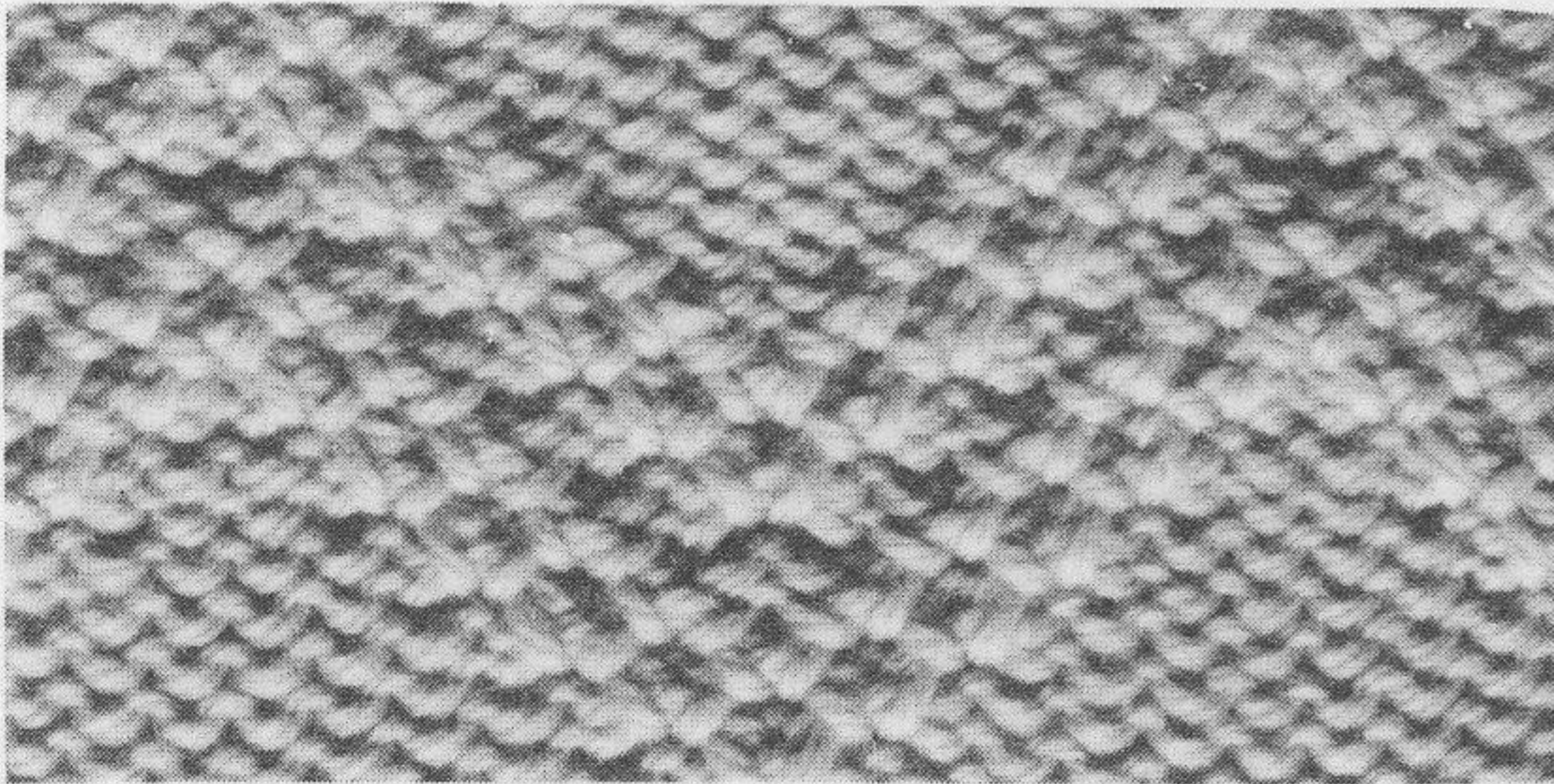
* Attach the Tuck Brushes.

(1) Set the Punch Card No.3 and set it to knit Pattern (A) or (B).

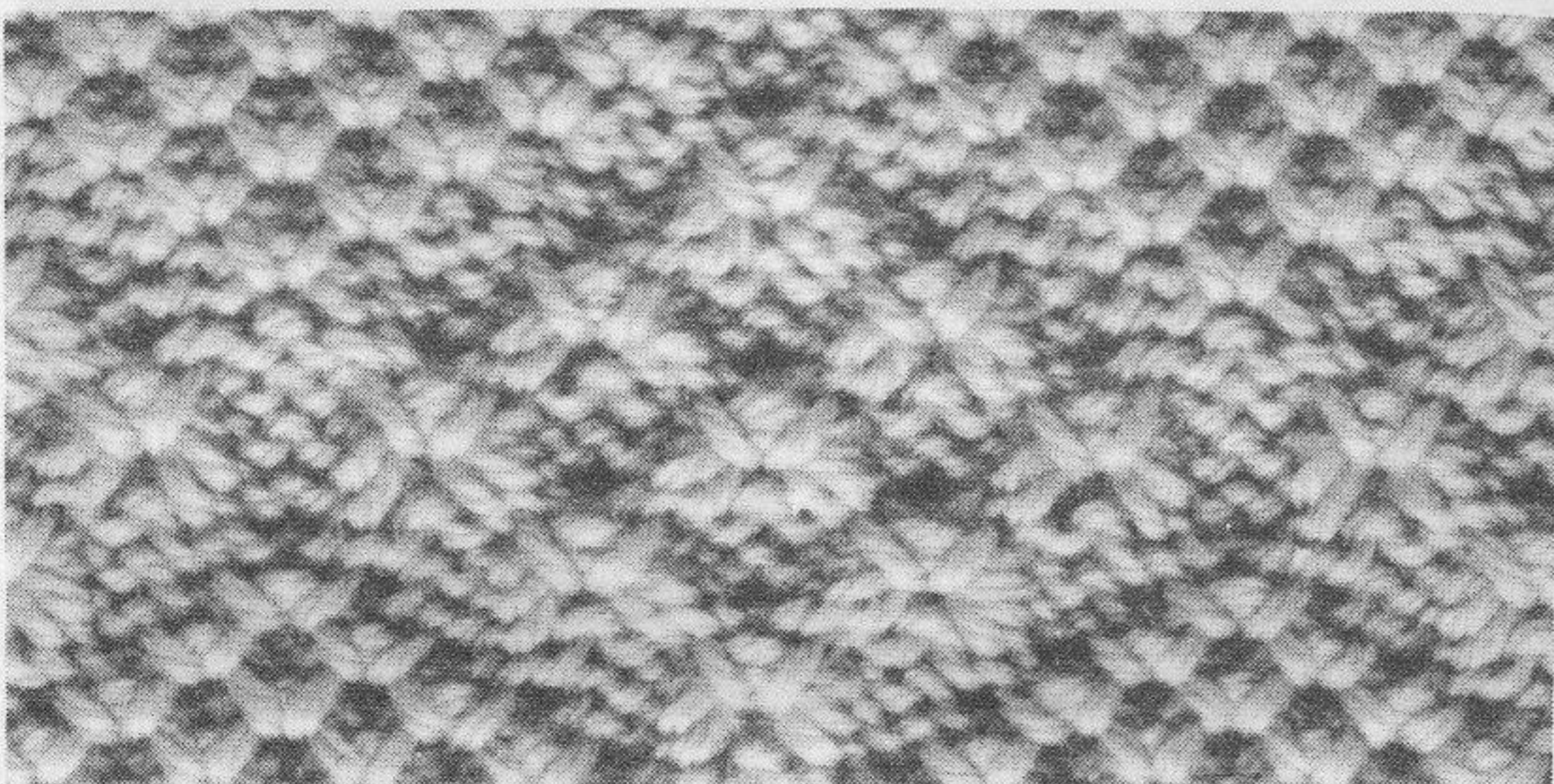
(2) Pick up the first pattern row by thrusting the Needle Selector into the Pattern Selector with the side A facing you.

(3) Select the needles and push them into D position using the Needle Selector with A side facing you.

Card No.3— (A)



Card No.3— (B)



- (4) Pattern (A)Knit two rows for each pattern row.
Pattern (B)Knit one row for each pattern row.
- (5) Push the needles in D position back into C position.
- (6) Pattern (A)Feed the Punch Card by two rows.
Pattern (B)Feed the Punch Card by one row.

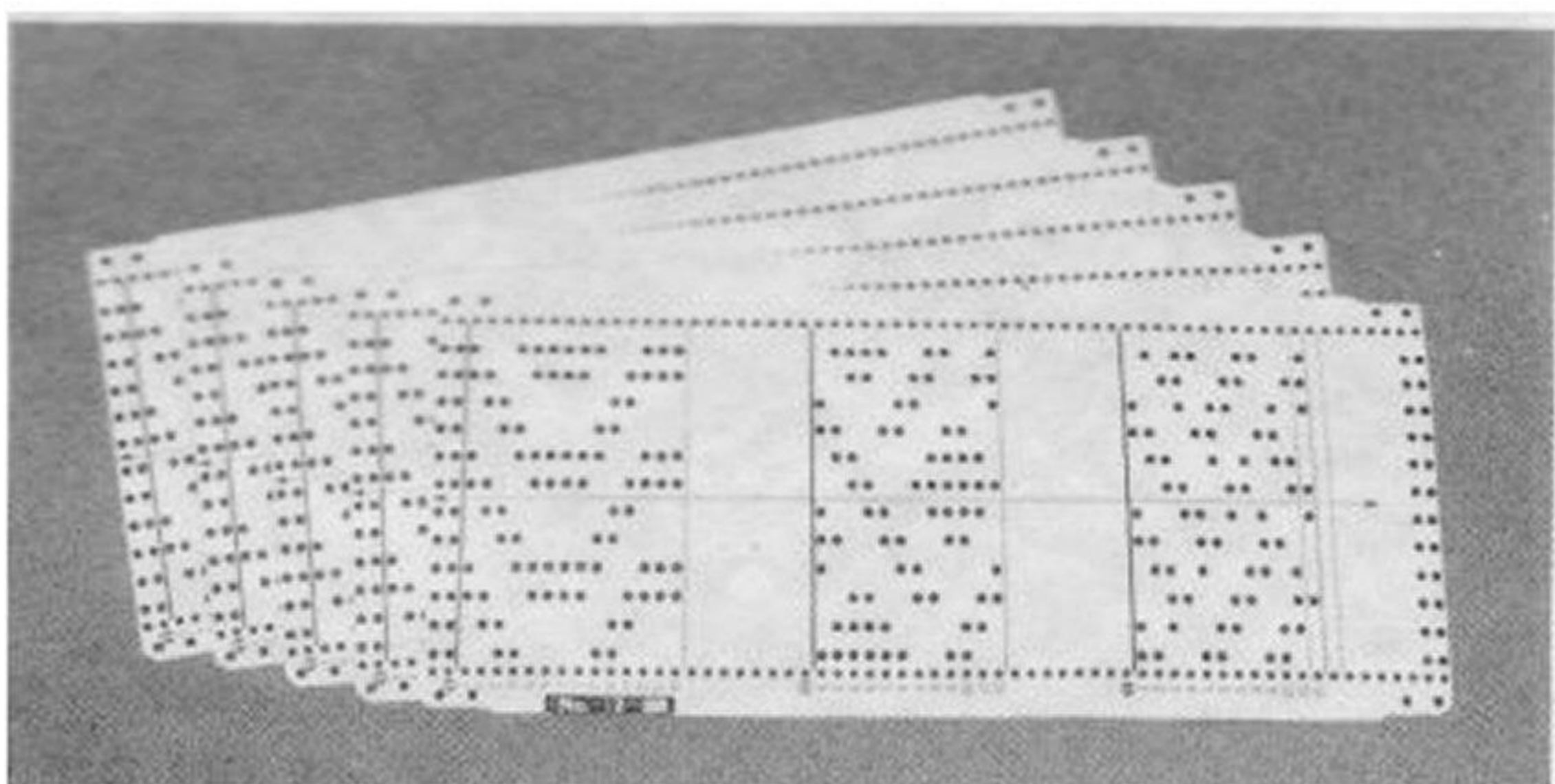
* Repeat steps (2) – (6).

Note: Before selecting the needles for second pattern row, the needles are aligned in C position and B position, so push the Needle Selector from B position to D position, and the needles remaining in C position will knit stockinet stitch and align back into B position in the next row of knitting.

If incorrectly selected...

Push the needles in D position back to C position, and select again from B position using the Needle Selector.

For widening the pattern range for the Pattern Selector.



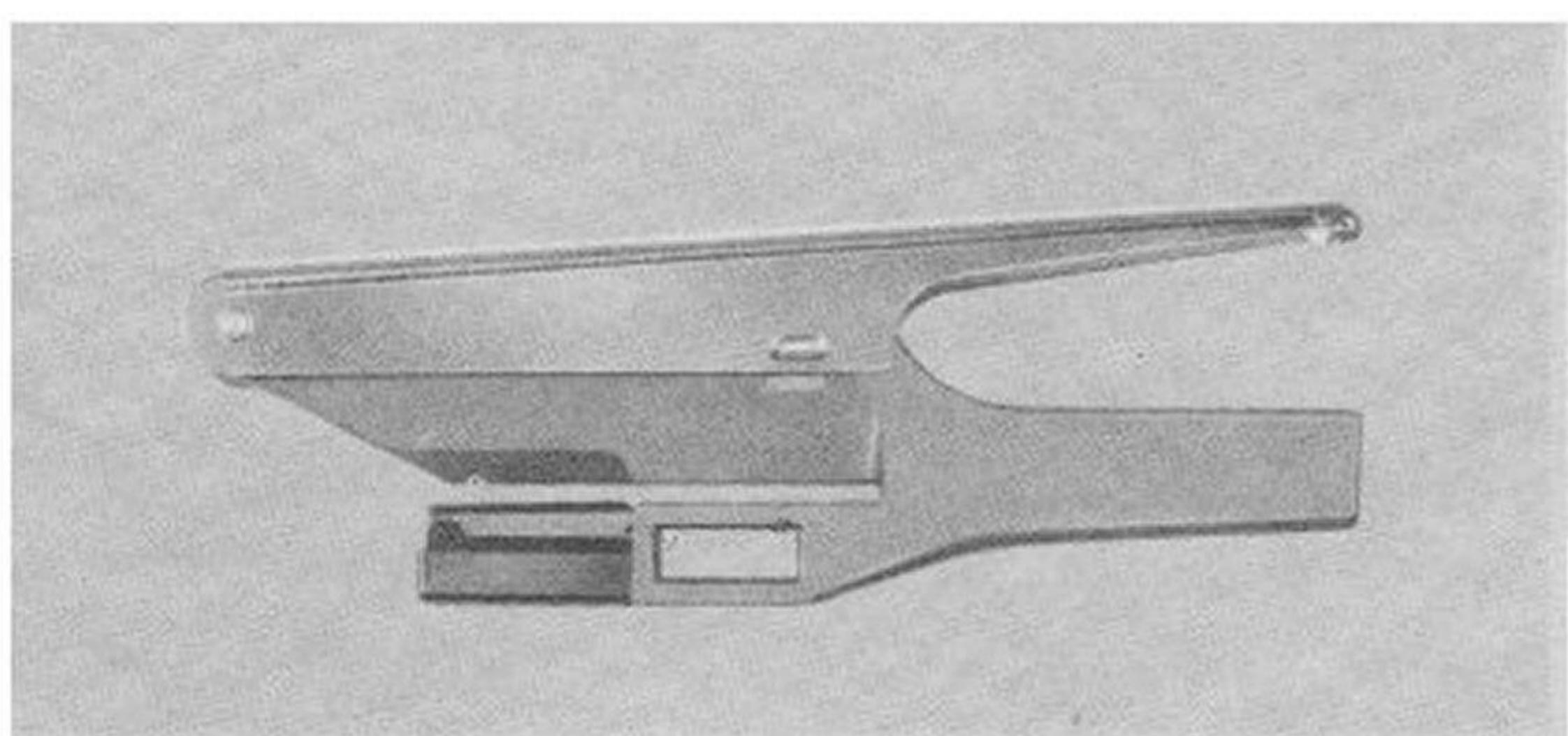
Extra Pre-Punch Card set

(for use on Model 150 only.)

Chunky N.P. Card

(for use on Model 150 only.)

Punch your own pattern using the Handy Punch.



Handy Punch

Indispensable device to punch the N.P. Card.