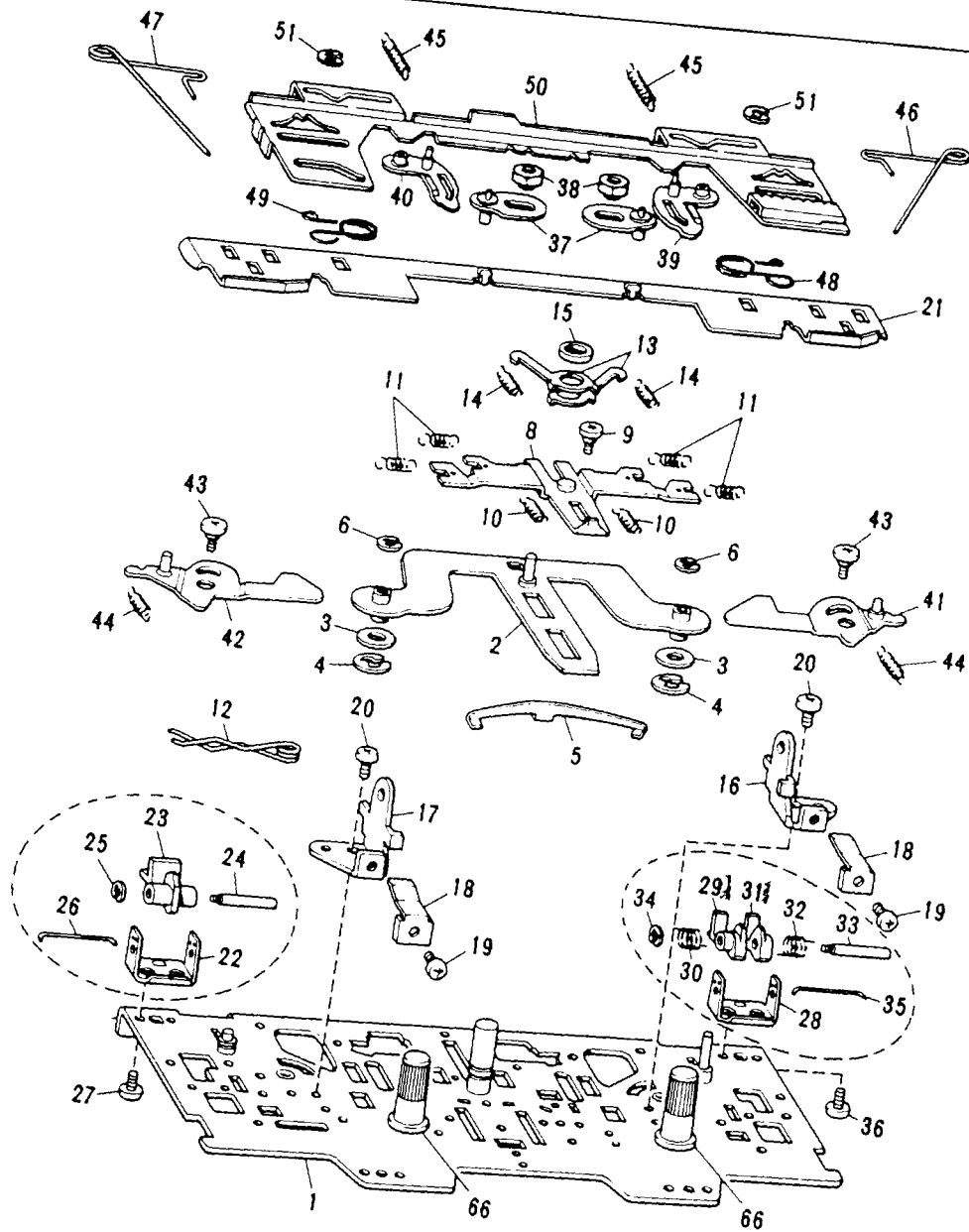
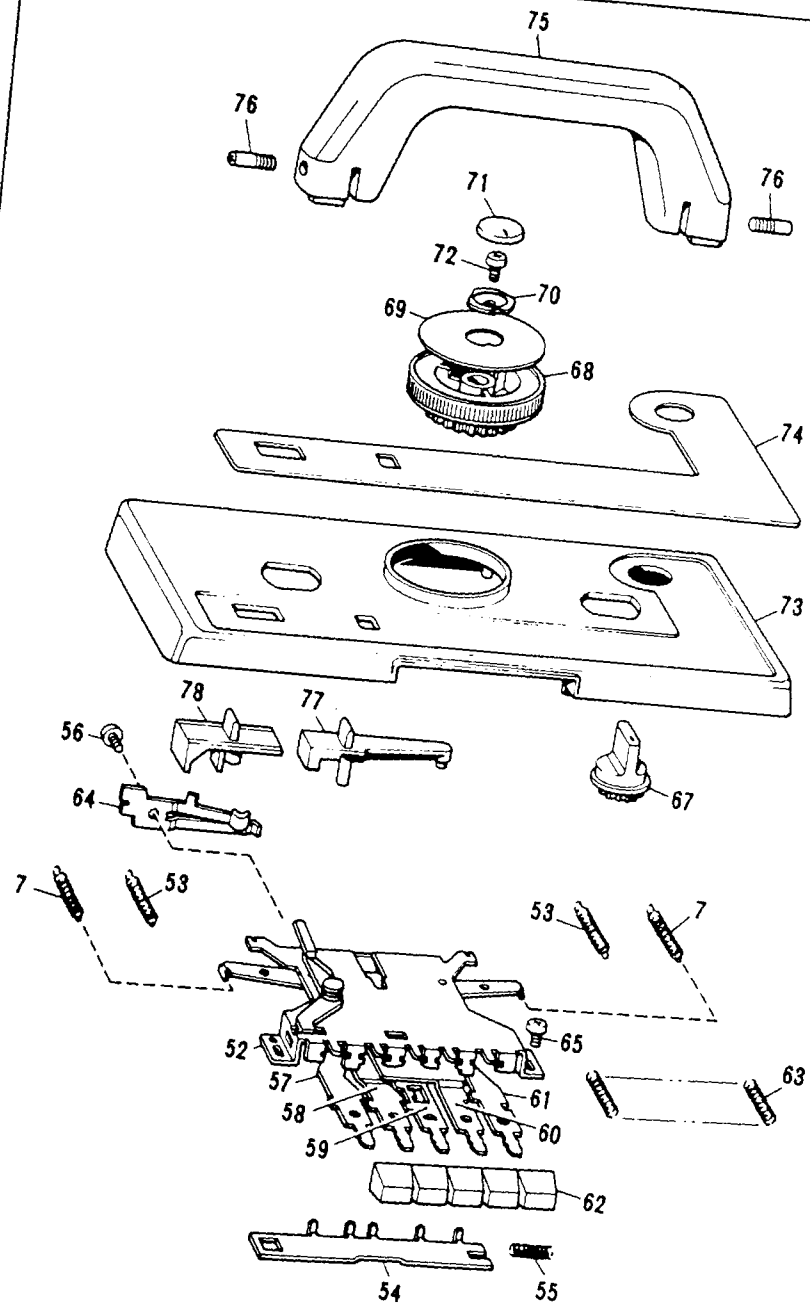


# *PARTS CATALOGUE FOR KH-891 KNITTING MACHINE*

*Parts marked “○” are new for KH-891 and not interchangeable with other models.*

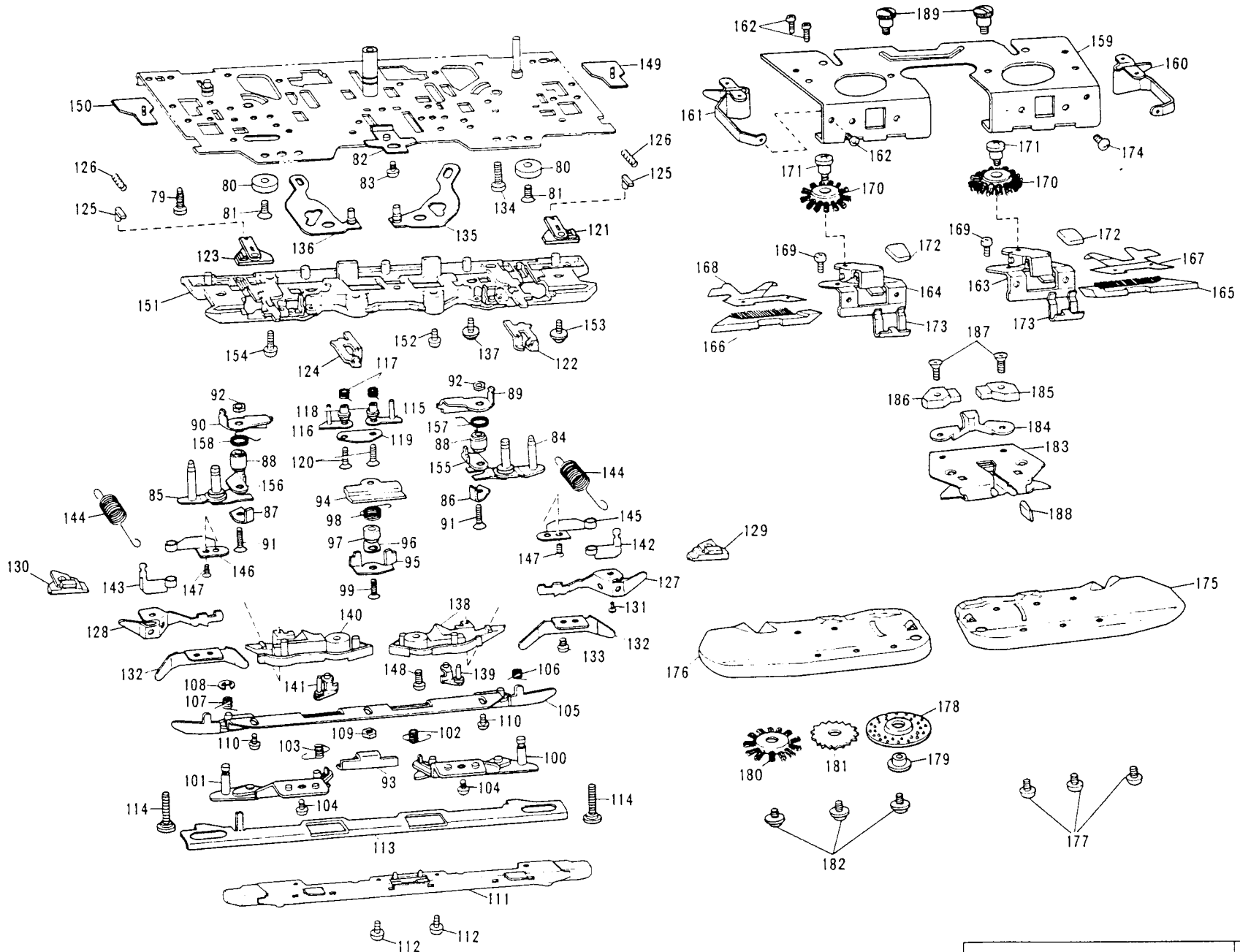


PARTS FOR CARRIAGE

Fig: A I

## PARTS FOR CARRIAGE UPPER PART

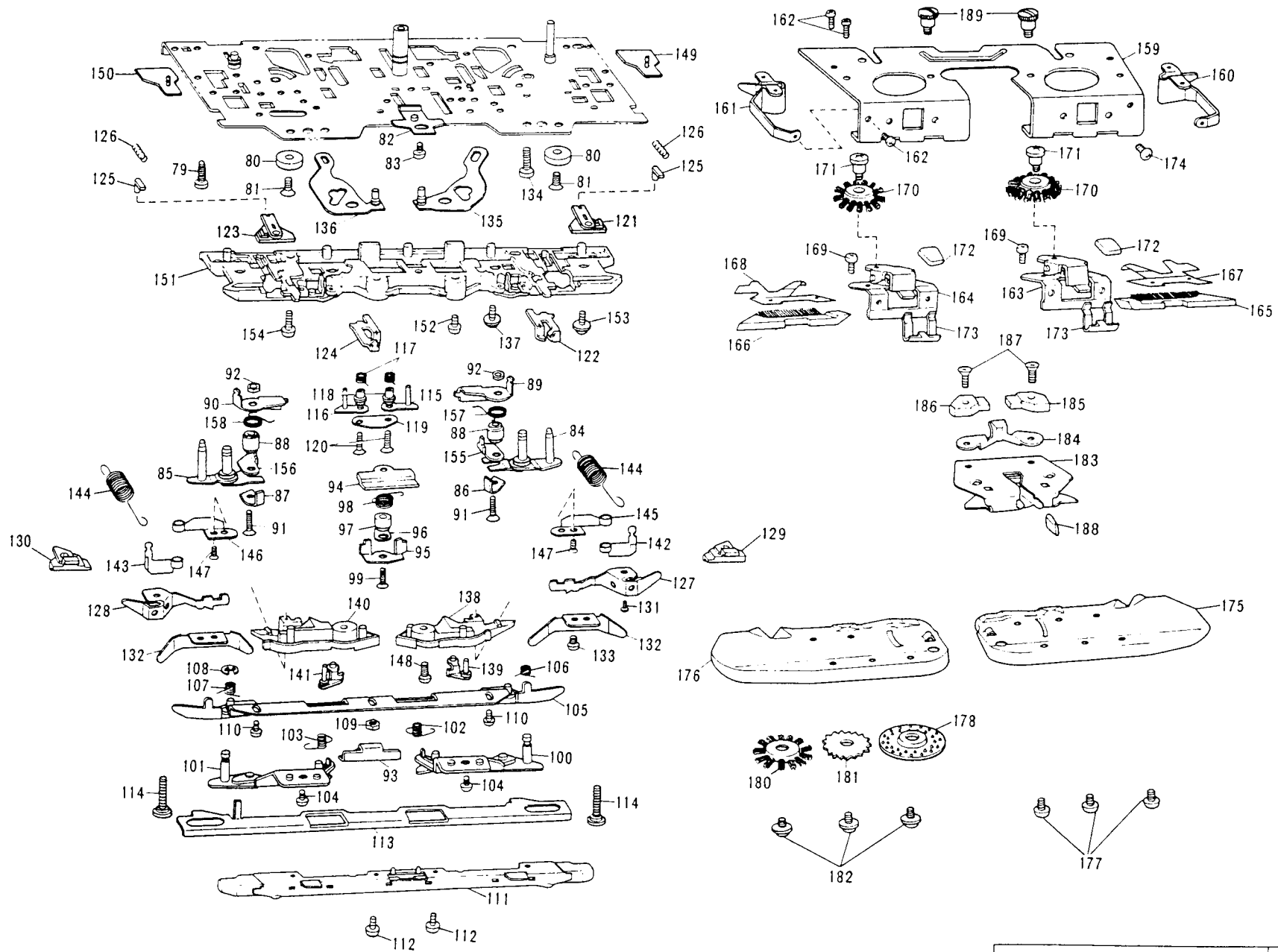
| Ref. No.  | Parts No. | Description                          | Revised | Q'ty | Ref. No. | Parts No. | Description                      | Revised | Q'ty |
|-----------|-----------|--------------------------------------|---------|------|----------|-----------|----------------------------------|---------|------|
| AI- 1-189 | 413091001 | K carriage complete set KH-891       |         | 1    | ○ 71     | 409601003 | Stitch dial cap                  |         | 1    |
| 1         | 409501001 | Carriage plate                       |         | 1    | 72       | 060660606 | + - screw 3.18 × 6               |         | 1    |
| 2         | 409504001 | Stitch cam guide plate               |         | 1    | ○ 73-74  | 413092001 | K carriage cover assembly KH-891 |         | 1    |
| 3         | 405483001 | Washer                               |         | 2    | ○ 75     | 409605005 | K carriage handle                |         | 1    |
| 4         | 048070346 | Snap ring                            |         | 2    | 76       | 409608001 | Screw                            |         | 2    |
| 5         | 409506001 | Stitch cam guide plate spring        |         | 1    | ○ 77     | 409609004 | Plain lever knob                 |         | 1    |
| 6         | 048030346 | Snap ring                            |         | 2    | ○ 78     | 409610004 | H.C.L. knob                      |         | 1    |
| 7         | 407432001 | Rasing cam change spring             |         | 2    |          |           |                                  |         |      |
| 8         | 407692001 | Change plate                         |         | 1    |          |           |                                  |         |      |
| 9         | 408491001 | Change plate guide collar            |         | 1    |          |           |                                  |         |      |
| 10        | 407318001 | Change plate spring                  |         | 2    |          |           |                                  |         |      |
| 11        | 407319001 | MC cam spring                        |         | 4    |          |           |                                  |         |      |
| 12        | 407333001 | H.C.L. spring                        |         | 1    |          |           |                                  |         |      |
| 13        | 407341001 | Tuck cam operating plate             |         | 2    |          |           |                                  |         |      |
| 14        | 407342001 | Tuck cam spring                      |         | 2    |          |           |                                  |         |      |
| 15        | 407343001 | Presser ring                         |         | 1    |          |           |                                  |         |      |
| 16        | 409520001 | Handle setting base, right           |         | 1    |          |           |                                  |         |      |
| 17        | 409521001 | Handle setting base, left            |         | 1    |          |           |                                  |         |      |
| 18        | 409522001 | Handle lock spring                   |         | 2    |          |           |                                  |         |      |
| 19        | 060670406 | + - screw 3.57 × 4                   |         | 2    |          |           |                                  |         |      |
| 20        | 060680506 | + - screw 4.37 × 5                   |         | 2    |          |           |                                  |         |      |
| 21        | 409554001 | Rear plate                           |         | 1    |          |           |                                  |         |      |
| 22-26     | 409564001 | Row counter tripper assembly         |         | 1    |          |           |                                  |         |      |
| ○ 28-35   | 409559002 | Knit-leader tripper assembly         |         | 1    |          |           |                                  |         |      |
| 36        | 060660406 | + - screw 3.18 × 4                   |         | 4    |          |           |                                  |         |      |
| 37        | 409567001 | S.M. cam lever                       |         | 2    |          |           |                                  |         |      |
| 38        | 409571001 | Nut                                  |         | 2    |          |           |                                  |         |      |
| 39        | 409572001 | S.M. cam change crank, right         |         | 1    |          |           |                                  |         |      |
| 40        | 409576001 | S.M. cam change crank, left          |         | 1    |          |           |                                  |         |      |
| 41        | 409578001 | Cam change plate, right              |         | 1    |          |           |                                  |         |      |
| 42        | 409581001 | Cam change plate, left               |         | 1    |          |           |                                  |         |      |
| 43        | 408506001 | Stud screw 3.18                      |         | 2    |          |           |                                  |         |      |
| 44        | 410928001 | Selection guide spring               |         | 2    |          |           |                                  |         |      |
| 45        | 409585001 | Needle selection change lever spring |         | 2    |          |           |                                  |         |      |
| 46        | 409498001 | Valve cam E spring, right            |         | 1    |          |           |                                  |         |      |
| 47        | 409499001 | Valve cam E spring, left             |         | 1    |          |           |                                  |         |      |
| 48        | 409543001 | Connecting plate spring, right       |         | 1    |          |           |                                  |         |      |
| 49        | 409544001 | Connecting plate spring, left        |         | 1    |          |           |                                  |         |      |
| 50        | 409565001 | Upper slide plate                    |         | 1    |          |           |                                  |         |      |
| 51        | 048040346 | Snap ring                            |         | 2    |          |           |                                  |         |      |
| ○ 52-64   | 409590002 | Cam button unit                      |         | 1    |          |           |                                  |         |      |
| 65        | 060670406 | + - screw 3.57 × 4                   |         | 2    |          |           |                                  |         |      |
| ○ 66      | 409596002 | Thumb nut                            |         | 2    |          |           |                                  |         |      |
| ○ 67      | 409597004 | Change knob                          |         | 1    |          |           |                                  |         |      |
| ○ 68-69   | 413105001 | Stitch dial assembly                 |         | 1    |          |           |                                  |         |      |
| ○ 68      | 409599002 | Stitch dial                          |         | 1    |          |           |                                  |         |      |
| ○ 69      | 413106001 | Stitch dial indicator plate          |         | 1    |          |           |                                  |         |      |
| ○ 70      | 406283001 | Stitch dial presser                  |         | 1    |          |           |                                  |         |      |



PARTS FOR CARRIAGE Fig: A II

# PARTS FOR CARRIAGE LOWER PART

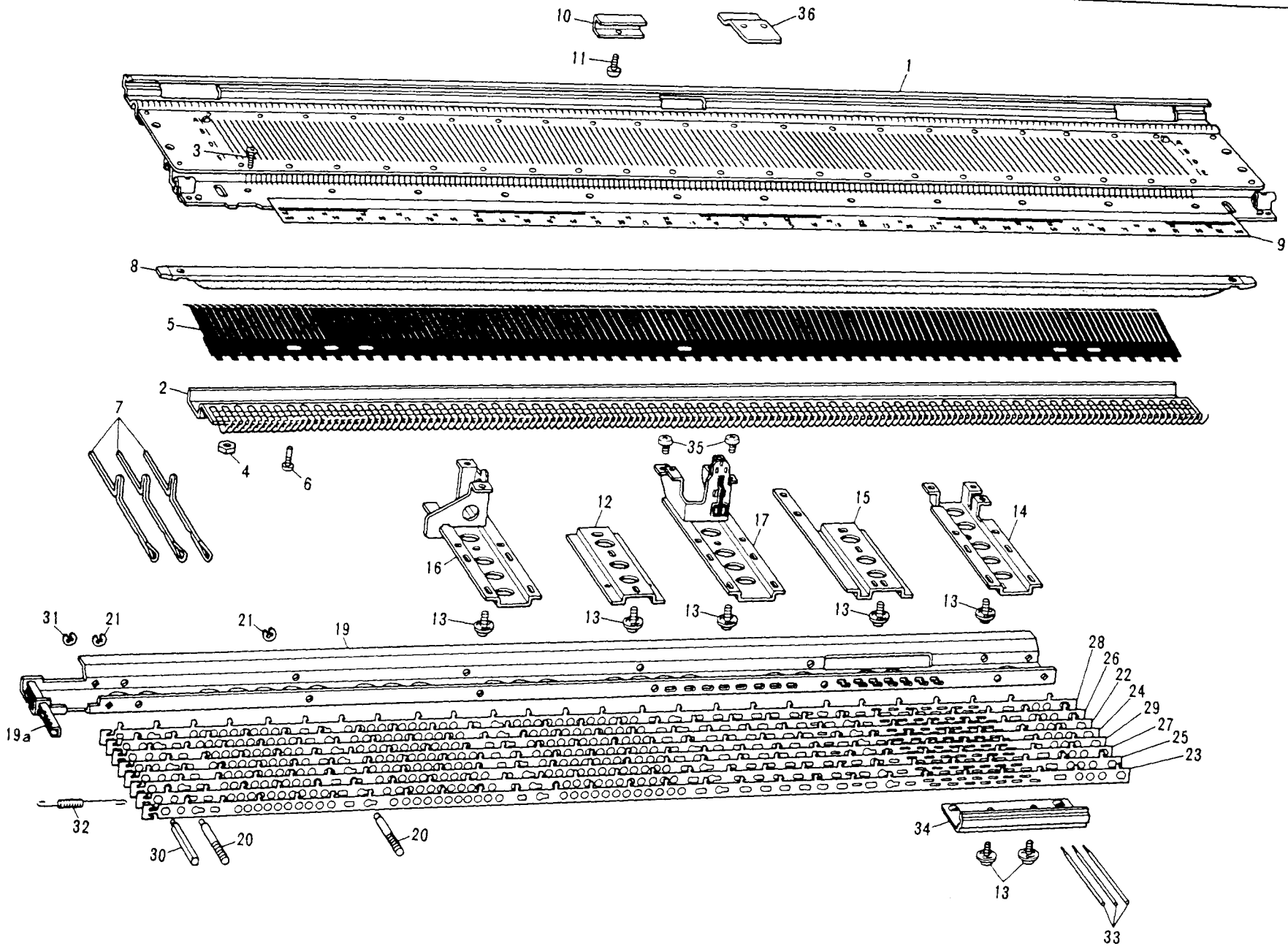
| Ref. No. | Parts No. | Description                          | Revised | Q'ty | Ref. No. | Parts No. | Description                          | Revised | Q'ty |
|----------|-----------|--------------------------------------|---------|------|----------|-----------|--------------------------------------|---------|------|
| All- 79  | 037351615 | Tapping screw                        |         | 2    | ○ 126    | 412215001 | End needle selection cam spring      |         | 2    |
| 80       | 407285000 | Carriage magnet 16                   |         | 2    | 127      | 409897001 | Separation cam, right                |         | 1    |
| 81       | 408773006 | Flat head screw 3.18 x 9             |         | 2    | 128      | 409898001 | Separation cam, left                 |         | 1    |
| 82       | 407289001 | Stripe adjuster plate                |         | 1    | 129      | 410929000 | Buffer right for selected needle     |         | 1    |
| 83       | 412050006 | + - screw 3.57 x 3.5                 |         | 1    | 130      | 410930000 | Buffer left for selected needle      |         | 1    |
| 84       | 410094001 | Stitch cam assembly, right           |         | 1    | 131      | 060660406 | + - screw 3.18 x 4                   |         | 2    |
| 85       | 410097001 | Stitch cam assembly, left            |         | 1    | 132      | 409519001 | Guide cam F                          |         | 2    |
| 86       | 407296001 | Sub stitch cam, right                |         | 1    | 133      | 062660406 | + - screw 3.18 x 4                   |         | 2    |
| 87       | 407297001 | Sub stitch cam, left                 |         | 1    | 134      | 062681206 | + - screw 4.37 x 12                  |         | 2    |
| 88       | 407298001 | Sub stitch cam shaft                 |         | 2    | 135      | 409523001 | Needle selection change plate, right |         | 1    |
| 89       | 407313001 | MC cam, right                        |         | 1    | 136      | 409526001 | Needle selection change plate, left  |         | 1    |
| 90       | 407314001 | MC cam, left                         |         | 1    | 137      | 409528001 | Stud screw                           |         | 2    |
| 91       | 407312001 | Screw                                |         | 2    | 138      | 409529000 | Selection cam, right                 |         | 1    |
| 92       | 021660306 | Nut                                  |         | 2    | 139      | 409530001 | Needle selection change cam, right   |         | 1    |
| 93       | 408465001 | Slide cam                            |         | 1    | 140      | 409534000 | Selection cam, left                  |         | 1    |
| 94       | 408466001 | Slide cam guide                      |         | 1    | 141      | 409535001 | Needle selection change cam, left    |         | 1    |
| 95       | 407356001 | Guide cam C                          |         | 1    | 142      | 410883001 | Valve cam F, right                   |         | 1    |
| 96       | 407635001 | Valve cam C                          |         | 1    | 143      | 410884001 | Valve cam F, left                    |         | 1    |
| 97       | 408467001 | Shaft for guide cam C                |         | 1    | 144      | 409570001 | Valve cam F spring                   |         | 2    |
| 98       | 407636001 | Valve cam C spring                   |         | 1    | 145      | 409537001 | Guide cam G, right                   |         | 1    |
| 99       | 408459001 | Flat head screw C                    |         | 1    | 146      | 409538001 | Guide cam G, left                    |         | 1    |
| 100      | 408468001 | Guide cam B, right                   |         | 1    | 147      | 410030001 | Flat head screw 2.38 x 14            |         | 2    |
| 101      | 408471001 | Guide cam B, left                    |         | 1    | 148      | 060661006 | + - screw 3.18 x 10                  |         | 2    |
| 102      | 408473001 | Valve cam B spring, right            |         | 1    | 149      | 409539001 | Connecting plate, right              |         | 1    |
| 103      | 408474001 | Valve cam B spring, left             |         | 1    | 150      | 409541001 | Connection plate, left               |         | 1    |
| 104      | 408305002 | Screw                                |         | 2    | 151      | 412219001 | Rear foot                            |         | 1    |
| 105-108  | 407455001 | Guide cam A assembly                 |         | 1    | 152      | 060660406 | + - screw 3.18 x 4                   |         | 2    |
| 105      | 407320001 | Guide cam A                          |         | 1    | 153      | 409494001 | Screw 3.57                           |         | 2    |
| 106      | 407325001 | Holding cam spring, right            |         | 1    | 154      | 060661216 | Screw 3.18 x 12                      |         | 2    |
| 107      | 407326001 | Holding cam spring, left             |         | 1    | 155      | 410488001 | Valve cam D, right                   |         | 1    |
| 108      | 048030346 | Snap ring                            |         | 2    | 156      | 410489001 | Valve cam D, left                    |         | 1    |
| 109      | 408524001 | Nut                                  |         | 1    | 157      | 410490001 | Valve cam D spring right             |         | 1    |
| 110      | 408305002 | Screw                                |         | 2    | 158      | 410491001 | Valve cam D spring left              |         | 1    |
| 111      | 409892001 | Front foot                           |         | 1    | 159-189  | 411008002 | Sinker plate complete set            |         | 1    |
| 112      | 408305002 | Screw                                |         | 2    | 159-182  | 411009002 | Sinker plate assembly without feeder |         | 1    |
| 113      | 407328000 | Front slide plate                    |         | 1    | ○ 159    | 412158001 | Sinker plate arm                     |         | 1    |
| 114      | 408504001 | Stud screw 3.18                      |         | 2    | 160      | 407427000 | Weaving thread guide, right          |         | 1    |
| 115      | 407579001 | Tuck cam, right                      |         | 1    | 161      | 407428000 | Weaving thread guide, left           |         | 1    |
| 116      | 407586001 | Tuck cam, left                       |         | 1    | 162      | 409162001 | Tapping screw 3V-2.6                 |         | 6    |
| 117      | 407338001 | Tuck cam spring                      |         | 1    | 163      | 410026001 | Weaving lever assembly, right        |         | 1    |
| 118      | 407339001 | Shaft for tuck cam                   |         | 2    | 164      | 410027001 | Weaving lever assembly, left         |         | 1    |
| 119      | 407340001 | Tuck cam plate                       |         | 1    | 165      | 410003001 | Latch opening brush, right           |         | 1    |
| 120      | 407299001 | Screw                                |         | 2    | 166      | 410004001 | Latch opening brush, left            |         | 1    |
| ○ 121    | 410922002 | Selection cam for right end needle   |         | 1    | 167      | 408607000 | Latch presser plate, right           |         | 1    |
| ○ 122    | 410924001 | Selection guide for right end needle |         | 1    | 168      | 408608000 | Latch presser plate, left            |         | 1    |
| ○ 123    | 410923002 | Selection cam for left end needle    |         | 1    | 169      | 037280616 | Screw                                |         | 4    |
| 124      | 410925001 | Selection guide for left end needle  |         | 1    | 170      | 407437001 | Weaving pattern brush                |         | 2    |
| 125      | 410926001 | End needle selection switch cam      |         | 2    | 171      | 408316001 | Stud screw for weaving pattern brush |         | 2    |



**PARTS FOR CARRIAGE**      **Fig: A II**

## PARTS FOR CARRIAGE LOWER PART

| Ref. No. | Parts No. | Description                 | Revised | Q'ty | Ref. No. | Parts No. | Description | Revised | Q'ty |
|----------|-----------|-----------------------------|---------|------|----------|-----------|-------------|---------|------|
| ○ 172    | 409629002 | Weaving lever knob          |         | 2    |          |           |             |         |      |
| 173      | 407441001 | Weaving lever spring        |         | 2    |          |           |             |         |      |
| 174      | 408305001 | Screw                       |         | 4    |          |           |             |         |      |
| 175      | 409614001 | Sinker plate, right         |         | 1    |          |           |             |         |      |
| 176      | 409618001 | Sinker plate, left          |         | 1    |          |           |             |         |      |
| 177      | 412048006 | + - screw 3.18 × 3          |         | 6    |          |           |             |         |      |
| 178      | 410988001 | Rubber wheel assembly       |         | 2    |          |           |             |         |      |
| 180      | 407702001 | Wheel brush                 |         | 2    |          |           |             |         |      |
| 181      | 405184002 | Plastic gear                |         | 2    |          |           |             |         |      |
| 182      | 409621001 | + - screw 3.18              |         | 6    |          |           |             |         |      |
| 183-187  | 409980001 | Double yarn feeder assembly |         | 1    |          |           |             |         |      |
| 183      | 409981001 | Yarn feeder body            |         | 1    |          |           |             |         |      |
| 184      | 409625000 | Magnet holder plate         |         | 1    |          |           |             |         |      |
| 185      | 407454000 | Magnet, right               |         | 1    |          |           |             |         |      |
| 186      | 407578000 | Magnet, left                |         | 1    |          |           |             |         |      |
| 187      | 413247001 | Fastening screw, 2.38 × 10  |         | 2    |          |           |             |         |      |
| 188      | 407450003 | Yarn feeder knob            |         | 1    |          |           |             |         |      |
| 189      | 409626001 | Thumb screw                 |         | 2    |          |           |             |         |      |



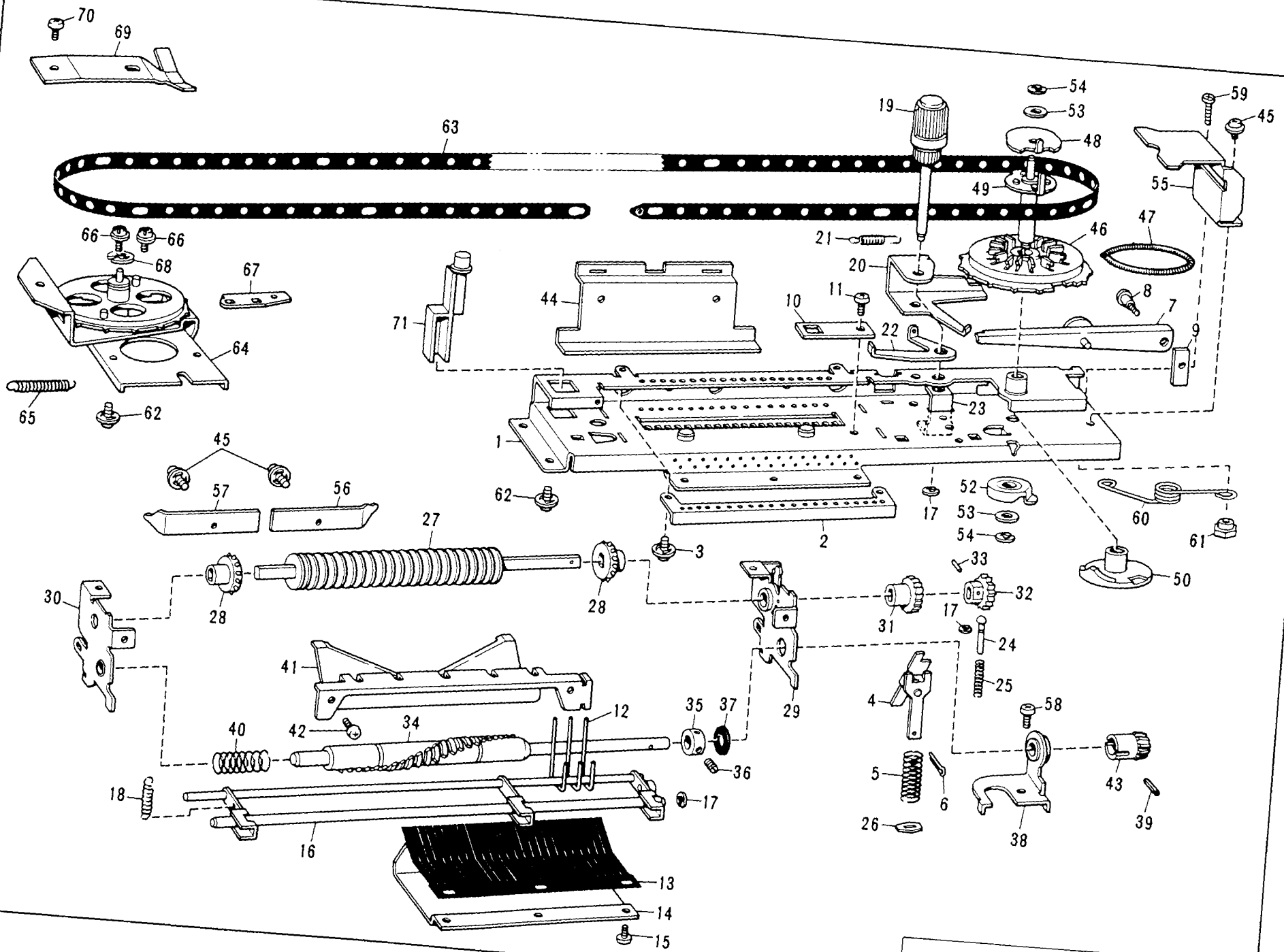
PARTS FOR NEEDLE BED

Fig: B



## PARTS FOR NEEDLE BED

| Ref. No. | Parts No. | Description                           | Revised | Q'ty | Ref. No. | Parts No. | Description | Revised | Q'ty |
|----------|-----------|---------------------------------------|---------|------|----------|-----------|-------------|---------|------|
| ○ B- 1   | 412161001 | Needle bed assembly                   |         | 1    |          |           |             |         |      |
| 2        | 409641001 | Needle bed comb assembly              |         | 1    |          |           |             |         |      |
| 3        | 412109004 | Screw                                 |         | 12   |          |           |             |         |      |
| 4        | 405077001 | Nut                                   |         | 12   |          |           |             |         |      |
| 5        | 407112001 | Needle retaining spring               |         | 1    |          |           |             |         |      |
| 6        | 407687001 | Screw                                 |         | 3    |          |           |             |         |      |
| 7        | 407113001 | Plain needle                          |         | 200  |          |           |             |         |      |
| ○ 8      | 409643002 | Needle presser bar assembly           |         | 1    |          |           |             |         |      |
| 9        | 407114001 | Needle position indicator             |         | 1    |          |           |             |         |      |
| 10       | 409656000 | Timing belt cover                     |         | 1    |          |           |             |         |      |
| 11       | 412048006 | + - screw 3.18 x 4                    |         | 1    |          |           |             |         |      |
| 12       | 407120000 | Lower holder plate                    |         | 1    |          |           |             |         |      |
| 13       | 409197001 | Screw with washer                     |         | 26   |          |           |             |         |      |
| 14       | 407121000 | Stay, right                           |         | 1    |          |           |             |         |      |
| 15       | 408061000 | Stay, center                          |         | 1    |          |           |             |         |      |
| 16       | 409648001 | Stay, Left                            |         | 1    |          |           |             |         |      |
| 17       | 409651001 | Yarn tension rod stand                |         | 1    |          |           |             |         |      |
| 19-32    | 410668001 | Needle selector plate holder assembly |         | 1    |          |           |             |         |      |
| 19       | 410670000 | Needle selector plate holder          |         | 1    |          |           |             |         |      |
| 20       | 408159001 | Shaft A                               |         | 6    |          |           |             |         |      |
| 21       | 048025346 | Snap ring                             |         | 6    |          |           |             |         |      |
| 22       | 408088001 | Needle selector plate, 1              |         | 1    |          |           |             |         |      |
| 23       | 408089001 | Needle selector plate, 2              |         | 1    |          |           |             |         |      |
| 24       | 408090001 | Needle selector plate, 3              |         | 1    |          |           |             |         |      |
| 25       | 408091001 | Needle selector plate, 4              |         | 1    |          |           |             |         |      |
| 26       | 408092001 | Needle selector plate, 5              |         | 1    |          |           |             |         |      |
| 27       | 408093001 | Needle selector plate, 6              |         | 1    |          |           |             |         |      |
| 28       | 408094001 | Needle selector plate, 7              |         | 1    |          |           |             |         |      |
| 29       | 408095001 | Needle selector plate, 8              |         | 1    |          |           |             |         |      |
| 30       | 408172001 | Shaft B                               |         | 1    |          |           |             |         |      |
| 31       | 048025346 | Snap ring                             |         | 1    |          |           |             |         |      |
| 32       | 408086001 | Needle selector plate spring          |         | 8    |          |           |             |         |      |
| 33       | 408098001 | N.S.P. operation lever                |         | 24   |          |           |             |         |      |
| 34       | 408099001 | Operation lever presser               |         | 1    |          |           |             |         |      |
| 35       | 060660406 | + - screw 3.18 x 4                    |         | 2    |          |           |             |         |      |
| 36       | 409657000 | Reinforcing plate for knit leader     |         | 1    |          |           |             |         |      |

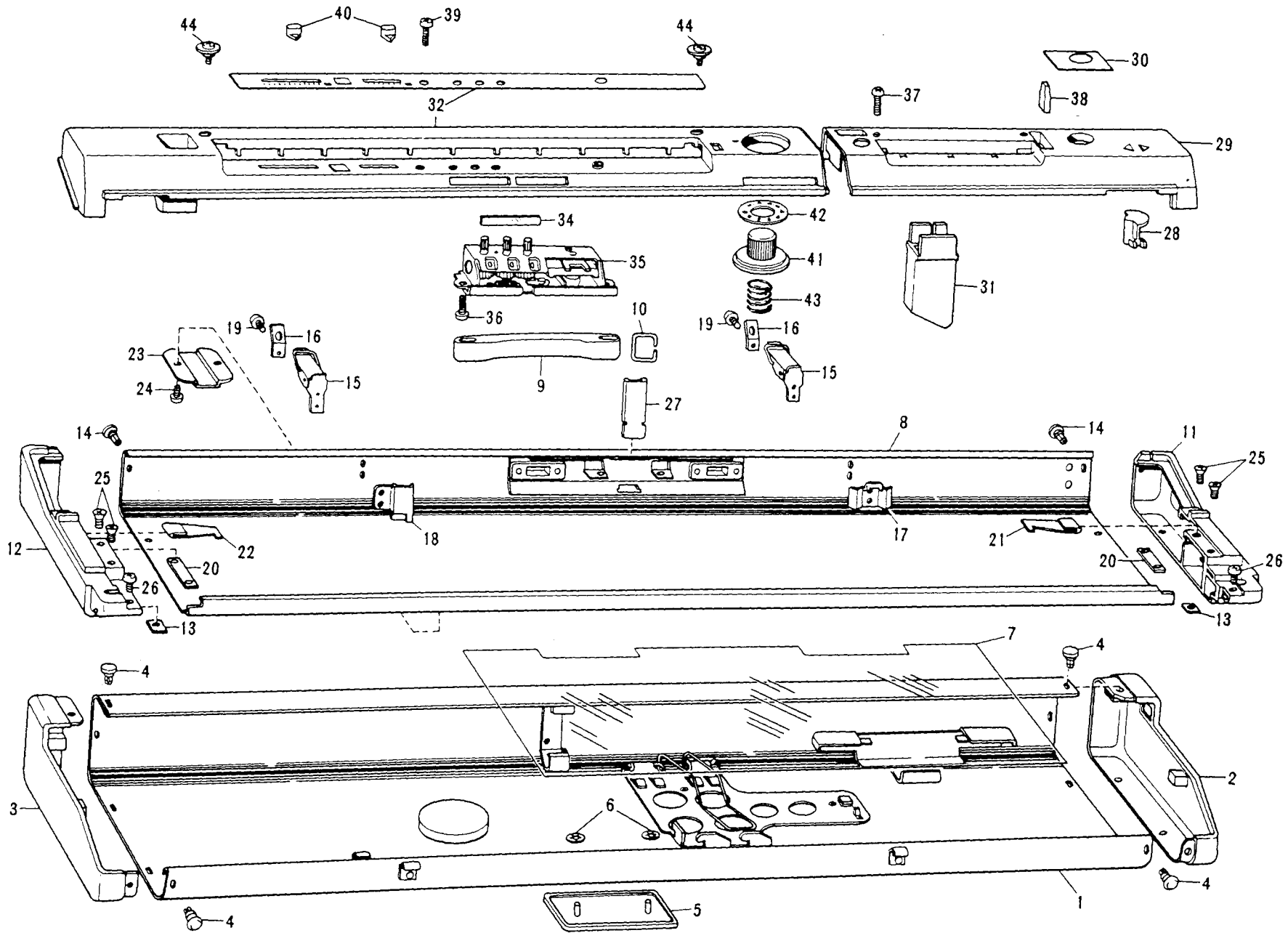


NEEDLE SELECTOR UNIT

Fig: C

## PARTS FOR NEEDLE SELECTOR UNIT

| Ref. No.  | Parts No. | Description                          | Revised | Q'ty | Ref. No. | Parts No. | Description                    | Revised | Q'ty |
|-----------|-----------|--------------------------------------|---------|------|----------|-----------|--------------------------------|---------|------|
| ○ C- 1-61 | 413094001 | Needle selector unit                 |         | 1    | 47       | 410017001 | Clutch spring                  |         | 1    |
| 1         | 409662002 | Needle selector unit body            |         | 1    | 48       | 407205001 | Clutch cam B                   |         | 1    |
| 2         | 409679000 | Card reader adjusting plate          |         | 1    | 49       | 407206001 | Clutch cam A                   |         | 1    |
| 3         | 409197001 | Screw with washer                    |         | 2    | 50       | 408082000 | Card feeding cam               |         | 1    |
| 4         | 409665001 | Ratchet assembly                     |         | 1    | 52       | 412871000 | Card reader release cam        |         | 1    |
| 5         | 407145001 | Ratchet operation plate spring       |         | 1    | 53       | 025350333 | Washer                         |         | 2    |
| 6         | 045100802 | Split pin                            |         | 1    | 54       | 048025346 | Snap ring                      |         | 2    |
| 7         | 408529001 | Card feeding lever assembly          |         | 1    | 55       | 408084000 | Timing belt guide plate, right |         | 1    |
| 8         | 408534001 | Stud screw                           |         | 1    | 56       | 408309001 | Spring plate R                 |         | 1    |
| 9         | 407197000 | Card feeding adjuster plate          |         | 1    | 57       | 408308001 | Spring plate L                 |         | 1    |
| 10        | 408068001 | Card reader guide stopper            |         | 1    | 58       | 060660406 | + - screw 3.18 x 4             |         | 1    |
| 11        | 060660406 | + - screw 3.18 x 4                   |         | 1    | 59       | 060660806 | + - screw 3.18 x 8             |         | 1    |
| 12        | 407152001 | Card reader                          |         | 24   | 60       | 412870001 | Card reader release cam spring |         | 1    |
| 13        | 408315001 | Card reader spring                   |         | 1    | 61       | 408760001 | Nut                            |         | 1    |
| 14        | 408213000 | Card reader spring presser plate     |         | 1    | 62       | 409197001 | Screw with washer              |         | 5    |
| 15        | 060660406 | + - screw 3.18 x 4                   |         | 3    | 63       | 408181001 | Timing belt                    |         | 1    |
| 16        | 408069001 | Card reader release plate assembly   |         | 1    | 64-68    | 410012002 | Pulley assembly                |         | 1    |
| 17        | 048020346 | Snap ring                            |         | 3    | 69       | 407597001 | Brake spring                   |         | 1    |
| 18        | 407161001 | Spring for card reader release plate |         | 1    | 70       | 060660406 | + - screw 3.18 x 4             |         | 1    |
| ○ 19      | 410936004 | Card feeding knob assembly           |         | 1    | 71       | 409711002 | Push button                    |         | 1    |
| 20        | 408535000 | Intermittent feeding lever           |         | 1    |          |           |                                |         |      |
| 21        | 408536001 | Intermittent feeding lever spring    |         | 1    |          |           |                                |         |      |
| 22        | 408537000 | Change lever                         |         | 1    |          |           |                                |         |      |
| 23        | 407193000 | Card feeding knob stopper cam        |         | 1    |          |           |                                |         |      |
| 24        | 407179001 | Card position guide pin              |         | 1    |          |           |                                |         |      |
| 25        | 407180001 | Spring                               |         | 1    |          |           |                                |         |      |
| 26        | 407464000 | Ratchet spring stopper ring          |         | 1    |          |           |                                |         |      |
| 27-42     | 410938001 | Card feeding unit                    |         | 1    |          |           |                                |         |      |
| 27        | 407162001 | Card roller                          |         | 1    |          |           |                                |         |      |
| 28        | 407164001 | Feeding gear                         |         | 2    |          |           |                                |         |      |
| 29        | 409673001 | Card roller holder right assembly    |         | 1    |          |           |                                |         |      |
| 30        | 408075001 | Card roller holder, left             |         | 1    |          |           |                                |         |      |
| 31        | 407176000 | Ratchet wheel                        |         | 1    |          |           |                                |         |      |
| 32        | 407177000 | Card position guide gear             |         | 1    |          |           |                                |         |      |
| 33        | 407473001 | Pin                                  |         | 1    |          |           |                                |         |      |
| 34        | 408078002 | Rotary cam                           |         | 1    |          |           |                                |         |      |
| 35        | 407184001 | Rotary cam adjuster collar           |         | 1    |          |           |                                |         |      |
| 36        | 013680516 | Stopper screw                        |         | 2    |          |           |                                |         |      |
| 37        | 409658001 | Washer 8.1                           |         | 1    |          |           |                                |         |      |
| 38        | 409659001 | Bevel gear stopper plate             |         | 1    |          |           |                                |         |      |
| 39        | 407183001 | Pin                                  |         | 1    |          |           |                                |         |      |
| 40        | 408165001 | Rotary cam spring                    |         | 1    |          |           |                                |         |      |
| 41        | 410939001 | Card guide                           |         | 1    |          |           |                                |         |      |
| 42        | 060660406 | + - screw 3.18 x 4                   |         | 2    |          |           |                                |         |      |
| 43        | 409191000 | Bevel gear                           |         | 1    |          |           |                                |         |      |
| 44        | 407188000 | Card reader holder                   |         | 1    |          |           |                                |         |      |
| 45        | 409197001 | Screw with washer                    |         | 2    |          |           |                                |         |      |
| ○ 46      | 412166001 | Clutch wheel assembly                |         | 1    |          |           |                                |         |      |

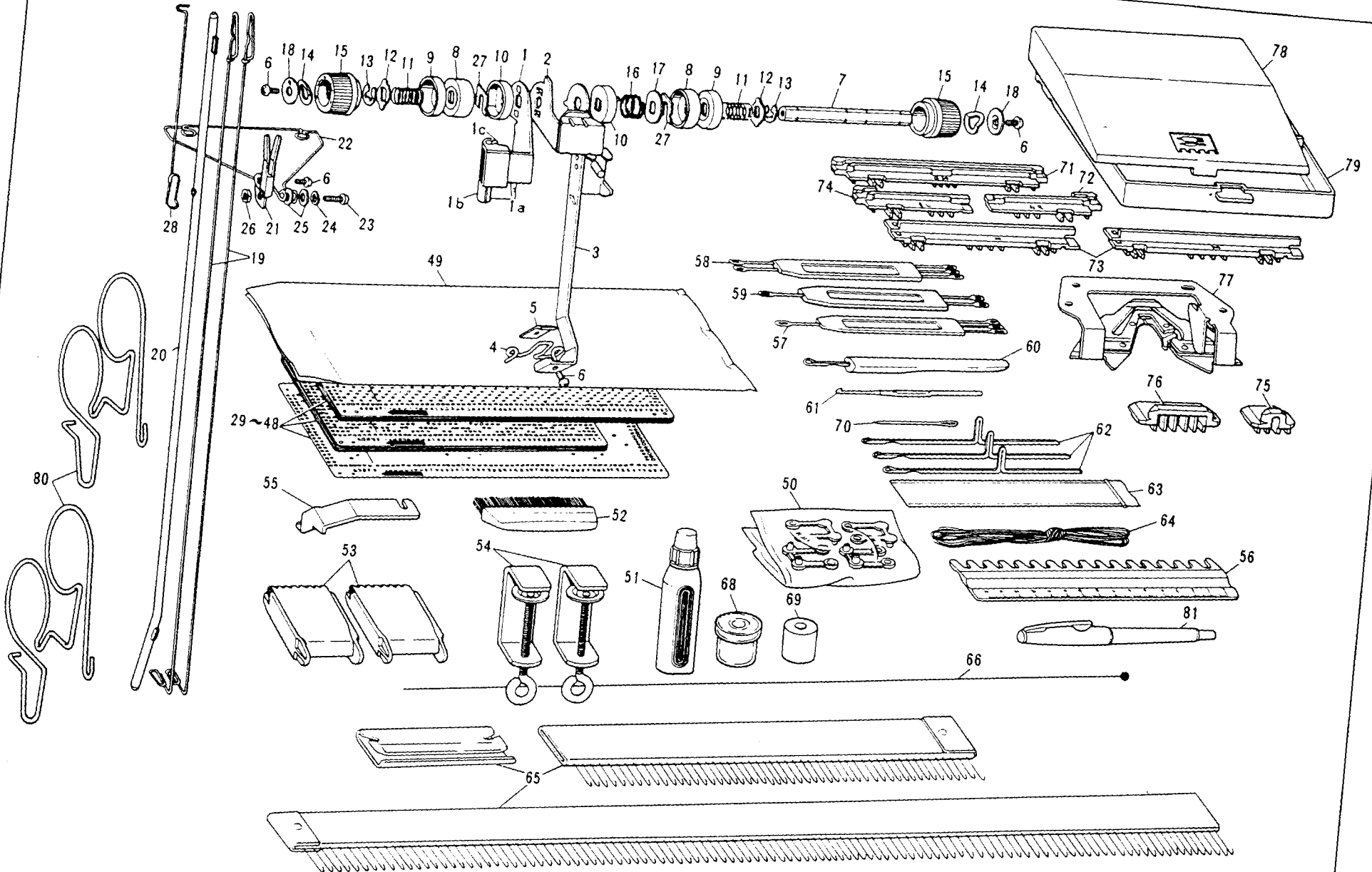


PARTS FOR CARRYING CASE

Fig: D

## PARTS FOR CARRYING CASE

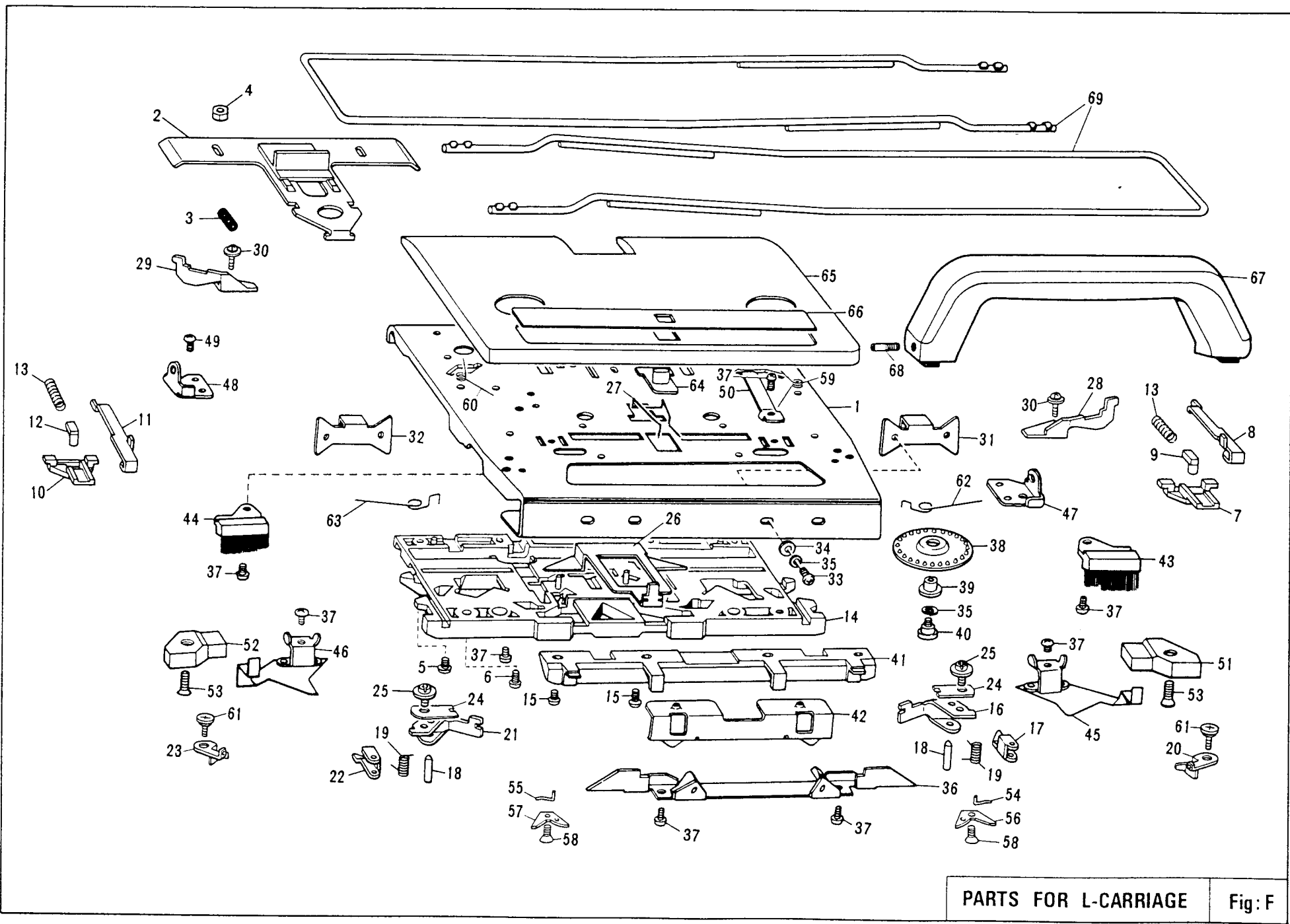
| Ref. No.  | Parts No. | Description                            | Revised | Q'ty | Ref. No. | Parts No. | Description | Revised | Q'ty |
|-----------|-----------|--|---------|------|----------|-----------|-------------|---------|------|
| ○ D- 1-22 | 413095001 | Carrying case complete set KH-891 BM   |         | 1    |          |           |             |         |      |
| ○ 1- 7    | 413096001 | Carrying case upper assembly KH-891 BM |         | 1    |          |           |             |         |      |
| ○ 2       | 409692002 | Upper side plate right                 |         | 1    |          |           |             |         |      |
| ○ 3       | 409693002 | Upper side plate left                  |         | 1    |          |           |             |         |      |
| ○ 4       | 408194002 | Plastic rivet                          |         | 10   |          |           |             |         |      |
| 5         | 413097001 | Brother name plate KH-891              |         | 1    |          |           |             |         |      |
| 6         | 408784001 | Pushing nut                            |         | 2    |          |           |             |         |      |
| 7         | 412172001 | Packing instruction sheet              |         | 1    |          |           |             |         |      |
| ○ 8-22    | 412173001 | Carrying case lower assembly           |         | 1    |          |           |             |         |      |
| ○ 8-10    | 412174001 | Carrying case lower body               |         | 1    |          |           |             |         |      |
| ○ 11      | 409698002 | Lower side plate right                 |         | 1    |          |           |             |         |      |
| ○ 12      | 409699002 | Lower side plate left                  |         | 1    |          |           |             |         |      |
| 13        | 409700001 | Square nut 3.18                        |         | 2    |          |           |             |         |      |
| 14        | 408194002 | Plastic rivet                          |         | 6    |          |           |             |         |      |
| ○ 15      | 404022002 | Carrying case lock assembly            |         | 2    |          |           |             |         |      |
| 16        | 404027001 | Carrying case lock spring              |         | 2    |          |           |             |         |      |
| 17        | 410793000 | Fastening plate R                      |         | 1    |          |           |             |         |      |
| 18        | 409701000 | Fastening plate L                      |         | 1    |          |           |             |         |      |
| 19        | 405658001 | Fastening screw                        |         | 4    |          |           |             |         |      |
| 20        | 407265000 | Needle bed fastening plate             |         | 2    |          |           |             |         |      |
| 21        | 409640001 | Extension rail lock spring, right      |         | 1    |          |           |             |         |      |
| 22        | 409639001 | Extension rail lock spring, left       |         | 1    |          |           |             |         |      |
| 23        | 407261001 | Table clamp setting plate              |         | 2    |          |           |             |         |      |
| 24        | 060660704 | + - screw 3.18 × 7                     |         | 4    |          |           |             |         |      |
| 25        | 407119001 | Screw                                  |         | 4    |          |           |             |         |      |
| ○ 26      | 060660704 | + - screw 3.18 × 7                     |         | 2    |          |           |             |         |      |
| 27        | 409705000 | Sheet guide setting plate              |         | 1    |          |           |             |         |      |
| ○ 28      | 409712002 | Direction indicator plate              |         | 1    |          |           |             |         |      |
| ○ 29-31   | 411038002 | Panel assembly                         |         | 1    |          |           |             |         |      |
| ○ 31      | 410949000 | Accessory stand                        |         | 1    |          |           |             |         |      |
| ○ 32-36   | 413098001 | Panel assembly for knit-leader KH-891  |         | 1    |          |           |             |         |      |
| ○ 34      | 409721002 | Glass for row counter                  |         | 1    |          |           |             |         |      |
| ○ 35      | 409722002 | Row counter                            |         | 1    |          |           |             |         |      |
| 36        | 037351016 | Tapping screw                          |         | 2    |          |           |             |         |      |
| 37        | 060661604 | + - screw 3.18 × 16                    |         | 2    |          |           |             |         |      |
| ○ 38      | 409716002 | Card lock lever knob                   |         | 1    |          |           |             |         |      |
| 39        | 060662004 | + - screw 3.18 × 20                    |         | 1    |          |           |             |         |      |
| ○ 40      | 409723004 | Regulator knob                         |         | 2    |          |           |             |         |      |
| ○ 41-42   | 409726004 | Sheet feeding dial assembly            |         | 1    |          |           |             |         |      |
| 43        | 409729001 | Sheet feeding dial spring              |         | 1    |          |           |             |         |      |
| 44        | 409709001 | + - screw 3.18                         |         | 2    |          |           |             |         |      |



PARTS FOR ACCESSORIES

Fig: E



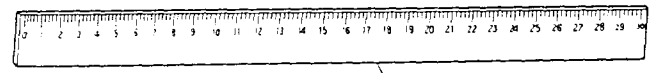
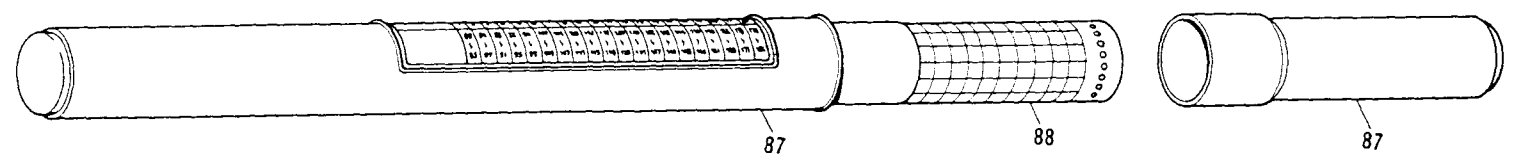
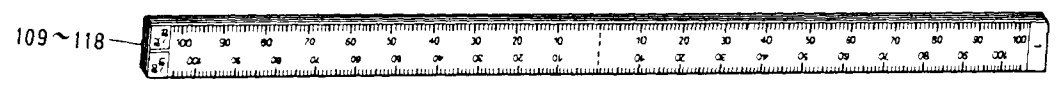
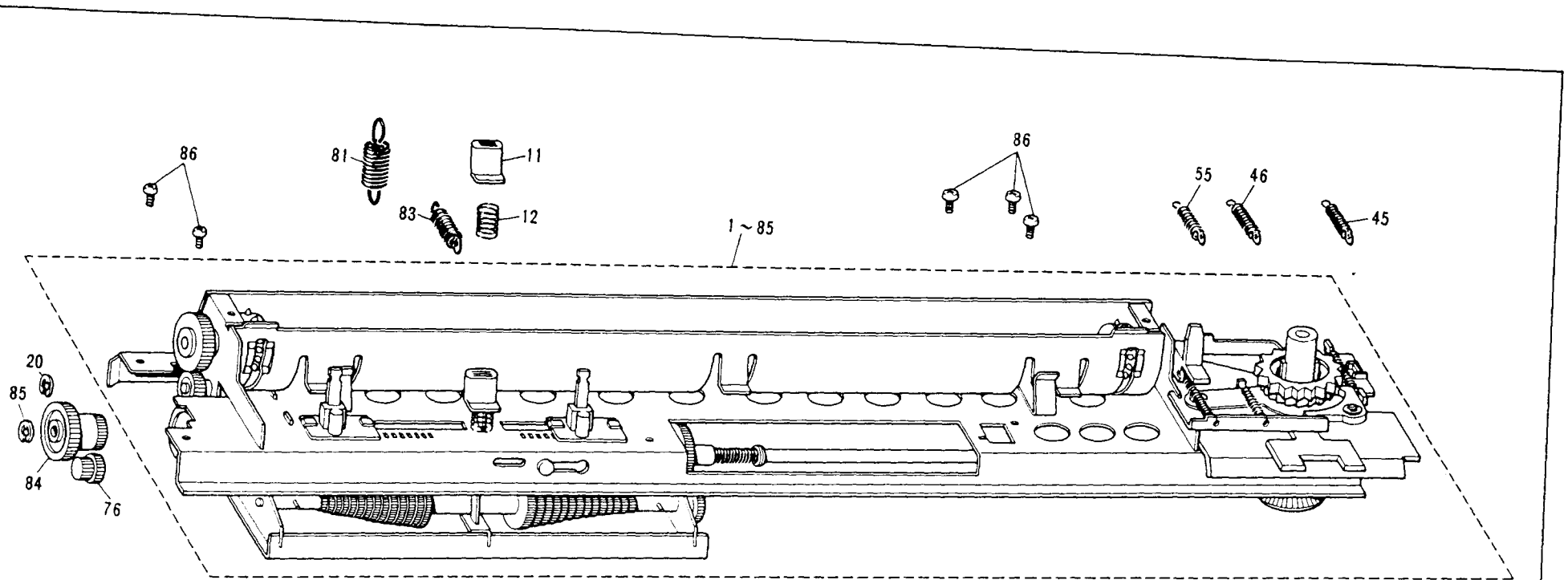


PARTS FOR L-CARRIAGE Fig: F



# PARTS FOR L-CARRIAGE

| Ref. No. | Parts No. | Description                             | Revised | Q'ty | Ref. No. | Parts No. | Description                          | Revised | Q'ty |
|----------|-----------|---|---------|------|----------|-----------|--------------------------------------|---------|------|
| ○ F-1-68 | 413101001 | L carriage assembly KH-891              |         | 1    | 49       | 060670506 | + - screw 3.57 × 5                   |         | 2    |
| 1        | 410563001 | L carriage plate                        |         | 1    | 50       | 407522001 | Handle lock spring                   |         | 2    |
| ○ 2      | 410954005 | Release button plate assembly           |         | 1    | 51       | 407454000 | Magnet, right                        |         | 1    |
| 3        | 410565001 | Release button plate spring             |         | 1    | 52       | 407578000 | Magnet, left                         |         | 1    |
| 4        | 408166001 | Stud for release button plate           |         | 2    | 53       | 061661006 | Screw                                |         | 2    |
| 5        | 060660706 | + - screw 3.18 × 7                      |         | 4    | 54       | 412141001 | Valve cam B, right for L             |         | 1    |
| 6        | 060660806 | + - screw 3.18 × 8                      |         | 4    | 55       | 412142001 | Valve cam B, left for L              |         | 1    |
| 7        | 410957002 | R end needle selection cam for L        |         | 1    | 56       | 412143001 | Reinforcing plate B, right for L cam |         | 1    |
| 8        | 410958001 | R end needle selection plate for L      |         | 1    | 57       | 412144001 | Reinforcing plate B, left for L cam  |         | 1    |
| 9        | 410959001 | R end needle selection change cam for L |         | 1    | 58       | 040210812 | Tapping screw                        |         | 2    |
| 10       | 410960002 | L end needle selection cam for L        |         | 1    | 59       | 412147001 | Valve cam C spring, right            |         | 1    |
| 11       | 410961001 | L end needle selection plate for L      |         | 1    | 60       | 412148001 | Valve cam C spring, left             |         | 1    |
| 12       | 410962001 | L end needle selection change cam for L |         | 1    | 61       | 409528001 | Screw                                |         | 2    |
| 13       | 410963001 | End needle selection cam spring for L   |         | 2    | 62       | 410966001 | R end needle selection change spring |         | 1    |
| 14       | 412138001 | Main cam                                |         | 1    | 63       | 410967001 | L end needle selection change spring |         | 1    |
| 15       | 060660806 | + - screw 3.18 × 8                      |         | 2    | ○ 64     | 409744004 | Lace selecting knob                  |         | 1    |
| 16       | 410578001 | Separation cam R for L carriage         |         | 1    | ○ 65-66  | 413102001 | L carriage cover assembly-KH-891     |         | 1    |
| 17       | 408132001 | Raising cam right for L carriage        |         | 1    | 67       | 409748005 | L carriage handle                    |         | 1    |
| 18       | 410579001 | Shaft for separation cam                |         | 1    | 68       | 409751001 | Screw                                |         | 2    |
| 19       | 408134001 | Raising cam spring                      |         | 1    | 69       | 412205001 | Extension rail                       |         | 2    |
| 20       | 412145001 | Valve cam C, right for L                |         | 1    |          |           |                                      |         |      |
| 21       | 410581001 | Separation cam L for L carriage         |         | 1    |          |           |                                      |         |      |
| 22       | 408137001 | Raising cam left for L carriage         |         | 1    |          |           |                                      |         |      |
| 23       | 412146001 | Valve cam C, left for L                 |         | 1    |          |           |                                      |         |      |
| 24       | 412898000 | Presser plate                           |         | 2    |          |           |                                      |         |      |
| 25       | 406397001 | Screw with washer 3.18 × 5              |         | 2    |          |           |                                      |         |      |
| 26       | 408582001 | Lace selecting cam                      |         | 1    |          |           |                                      |         |      |
| 27       | 408583001 | Change lever spring                     |         | 1    |          |           |                                      |         |      |
| 28       | 410583001 | Right end needle separation cam for L   |         | 1    |          |           |                                      |         |      |
| 29       | 410584001 | Left end needle separation cam for L    |         | 1    |          |           |                                      |         |      |
| 30       | 410592001 | + - screw 3.18 × 12                     |         | 2    |          |           |                                      |         |      |
| 31       | 410494001 | Needle transfer plate R                 |         | 1    |          |           |                                      |         |      |
| 32       | 410495001 | Needle transfer plate L                 |         | 1    |          |           |                                      |         |      |
| 33       | 060660504 | + - screw 3.18 × 5                      |         | 4    |          |           |                                      |         |      |
| 34       | 403069001 | Washer                                  |         | 4    |          |           |                                      |         |      |
| 35       | 028030243 | Spring washer                           |         | 4    |          |           |                                      |         |      |
| 36       | 408573001 | Cam plate                               |         | 1    |          |           |                                      |         |      |
| 37       | 060660406 | + - screw 3.18 × 4                      |         | 8    |          |           |                                      |         |      |
| 38-39    | 411003001 | Rubber wheel assembly                   |         | 2    |          |           |                                      |         |      |
| 40       | 405029001 | Stud screw                              |         | 2    |          |           |                                      |         |      |
| 41       | 407490000 | Front foot                              |         | 1    |          |           |                                      |         |      |
| 42       | 408579000 | Front foot holder                       |         | 1    |          |           |                                      |         |      |
| 43       | 408580003 | Small brush, right                      |         | 1    |          |           |                                      |         |      |
| 44       | 408581003 | Small brush, left                       |         | 1    |          |           |                                      |         |      |
| 45       | 408561001 | Spring plate, right                     |         | 1    |          |           |                                      |         |      |
| 46       | 408562001 | Spring plate, left                      |         | 1    |          |           |                                      |         |      |
| 47       | 409740001 | Handle setting base, right              |         | 1    |          |           |                                      |         |      |
| 48       | 409739001 | Handle setting base, left               |         | 1    |          |           |                                      |         |      |



PARTS FOR KNIT LEADER Fig: G

# PARTS FOR KNIT LEADER

| Ref. No. | Parts No. | Description               | Revised | Q'ty | Ref. No.                             | Parts No. | Description | Revised   | Q'ty |
|----------|-----------|---------------------------|---------|------|--------------------------------------|-----------|-------------|-----------|------|
| G- 1-85  | 409760003 | Knit-leader assembly      |         | 1    | (Optional)                           |           |             |           |      |
| ○ 11     | 409724004 | Clutch knob               |         | 1    | Sheet set (small) (5 pcs in one set) |           |             | 487081001 |      |
| 12       | 409725001 | Clutch lever spring       |         | 1    |                                      |           |             |           |      |
| 20       | 048030346 | Snap ring                 |         | 1    |                                      |           |             |           |      |
| 34       | 048040346 | Snap ring                 |         | 1    |                                      |           |             |           |      |
| 45       | 409811001 | Ratchet spring            |         | 1    |                                      |           |             |           |      |
| 46       | 409812001 | Ratchet arm spring        |         | 1    |                                      |           |             |           |      |
| 55       | 409819001 | Sheet button lever spring |         | 1    |                                      |           |             |           |      |
| 76       | 406120000 | Z: 16 & Z:20 gear         |         | 1    |                                      |           |             |           |      |
| 81       | 406129001 | Upper gear arm spring     |         | 1    |                                      |           |             |           |      |
| 83       | 409839001 | Gear arm spring           |         | 1    |                                      |           |             |           |      |
| 84       | 409835000 | Z:24.40 gear              |         | 1    |                                      |           |             |           |      |
| 85       | 048030346 | Snap ring                 |         | 1    |                                      |           |             |           |      |
| 86       | 060660406 | + - screw 3.18 x 4        |         | 5    |                                      |           |             |           |      |
| ○ 87-118 | 411050003 | Scale & Sheet set         |         | 1    |                                      |           |             |           |      |
| ○ 87     | 411051003 | Sheet case (small)        |         | 1    |                                      |           |             |           |      |
| 89-118   | 409850002 | Scale No. 1-20 assembly   |         | 1    |                                      |           |             |           |      |
| 89       | 409851002 | Scale No. 1               |         | 1    |                                      |           |             |           |      |
| 90       | 409852002 | Scale No. 2               |         | 1    |                                      |           |             |           |      |
| 91       | 409853002 | Scale No. 3               |         | 1    |                                      |           |             |           |      |
| 92       | 409854002 | Scale No. 4               |         | 1    |                                      |           |             |           |      |
| 93       | 409855002 | Scale No. 5               |         | 1    |                                      |           |             |           |      |
| 94       | 409856002 | Scale No. 6               |         | 1    |                                      |           |             |           |      |
| 95       | 409857002 | Scale No. 7               |         | 1    |                                      |           |             |           |      |
| 96       | 409858002 | Scale No. 8               |         | 1    |                                      |           |             |           |      |
| 97       | 409859002 | Scale No. 9               |         | 1    |                                      |           |             |           |      |
| 98       | 409860002 | Scale No. 10              |         | 1    |                                      |           |             |           |      |
| 99       | 409861002 | Scale No. 11              |         | 1    |                                      |           |             |           |      |
| 100      | 409862002 | Scale No. 12              |         | 1    |                                      |           |             |           |      |
| 101      | 409863002 | Scale No. 13              |         | 1    |                                      |           |             |           |      |
| 102      | 409864002 | Scale No. 14              |         | 1    |                                      |           |             |           |      |
| 103      | 409865002 | Scale No. 15              |         | 1    |                                      |           |             |           |      |
| 104      | 409866002 | Scale No. 16              |         | 1    |                                      |           |             |           |      |
| 105      | 409867002 | Scale No. 17              |         | 1    |                                      |           |             |           |      |
| 106      | 409868002 | Scale No. 18              |         | 1    |                                      |           |             |           |      |
| 107      | 409869002 | Scale No. 19              |         | 1    |                                      |           |             |           |      |
| 108      | 409870002 | Scale No. 20              |         | 1    |                                      |           |             |           |      |
| 109      | 409871002 | Scale No. 1-2             |         | 1    |                                      |           |             |           |      |
| 110      | 409872002 | Scale No. 3-4             |         | 1    |                                      |           |             |           |      |
| 111      | 409873002 | Scale No. 5-6             |         | 1    |                                      |           |             |           |      |
| 112      | 409874002 | Scale No. 7-8             |         | 1    |                                      |           |             |           |      |
| 113      | 409875002 | Scale No. 9-10            |         | 1    |                                      |           |             |           |      |
| 114      | 409876002 | Scale No. 11-12           |         | 1    |                                      |           |             |           |      |
| 115      | 409877002 | Scale No. 13-14           |         | 1    |                                      |           |             |           |      |
| 116      | 409878002 | Scale No. 15-16           |         | 1    |                                      |           |             |           |      |
| 117      | 409879002 | Scale No. 17-18           |         | 1    |                                      |           |             |           |      |
| 118      | 409880002 | Scale No. 19-20           |         | 1    |                                      |           |             |           |      |
| 119      | 405879001 | Ruler                     |         | 1    |                                      |           |             |           |      |

**BROTHER INDUSTRIES, LTD.** Printed in Japan K4105039-a  
The part No. is subject to change without notice.