



brother®

HOME STUDY COURSE

*With Brother-Knit
Pattern Series
and
Beginners Patterns*

INTRODUCTION

Dear BROTHER-Knitter:

Welcome to the advanced world of automatic hand knitting!

We know that you have before you hundreds of hours of creative knitting pleasure. You, your friends and your family will benefit tremendously from the beautiful knitted garments you will produce. Remember, your knitting machine is your slave and you are its master. Learning to knit this new, modern way is simple, but like anything else, it requires a little patience and some practice.

We recommend that you take one step at a time and do not proceed to the next lesson until you are satisfied that you have mastered the previous instructions.

Your BROTHER knitter is versatile and can do many varieties of knitting. Learn this by degrees, by carefully following the lessons provided and by referring to your instruction book. Also, when you start to knit finished knitted garments, choose good materials so that your results will always be elegant.

Another valuable tip is to remember that proper blocking and finishing of your knitted garments make a tremendous difference in the end result. Do it carefully and you will enjoy most professional results.

Remember that your automatic knitter is merely a multiple knitting needle that is producing handwork with the speed of a hundred hands. We know that you have a great deal of pleasure ahead of you and that you will enjoy the sheer luxury and practicality of hand knitwear.

Sincerely,



Susan Foster
Customer Relations

LESSON 1

Set up the knitter according to the illustration and instructions in your manual. Familiarize yourself with the most obvious parts of your machine.

1. The needle bed contains 200 needles; the red numerals at the edge clearly show the number of needles in use. The letters at each end indicate the positions of the needles.
2. The carriage with the sinker plate completes the main mechanism on your knitter.
3. The automatic yarn tension unit - this controls the feeding of the yarn.
4. Accessory Box: For contents and their use see manual.
5. Two cast-on combs - The small one for 100 stitches or less. The large for more than 100, up to the full width of the knitter, 200.
6. Plastic tool kit - contains transfer and cabling tools, also the 4 needle pushers.
7. Row counter - when tripper on carriage is extended, will compute the rows you knit.

Our first project will be a swatch with the plain stockinette stitch. For practice, use only fingering yarn.

To prepare the yarn for knitting, rewind all yarn into a ball. Place the ball into a smooth receptacle just below the tension unit. Do not use pull skeins, as they do not feed evenly.

1. Thread the yarn into the center position of the tension unit, then into the center keyhole slots of carriage yarn guide. See illustration in manual.
2. Place carriage on left side of knitter.
3. Hold small cast-on-comb centered to the pegs of the needle bed, fasten by holding comb at each end with the hooks facing you. Place prongs of cast-on-comb between the pegs, then turn securing pins out.

In the plastic kit you will find several needle pushers; take out the one with a straight edge; using this edge, place it in back of the needle butts, gently push toward you 60 needles, 30 on each side of "O" to position B.

By getting accustomed to working in the middle of the needle bed, you can tell at a glance how many stitches you are working with, after making increases and decreases, without stopping to count.

Set the tension dial to 5. The cam levers, one on each side of the carriage should always be in position I for plain knitting, unless otherwise specified. All 5 buttons in front of the carriage even, if any are pressed in, release by pushing center of button.

You are ready to knit; check to see that the yarn extends about 8" below carriage feeder and gently push carriage across the 60 needles, a little past the cast-on-comb. Notice each needle holds a loop, after the first row, lower the cast-on-comb by carefully turning the pins at each end. See illustration. The hooks of the comb must remain suspended in the stitches; now push carriage across until you hear a "click"; the second row has been knitted. Continue this push-pull movement of the carriage and knit 30 rows.

If the yarn continues to feed into the unit without any unexpected pull, you will encounter no problems. However, as a beginner, at times, by pushing your carriage too far past the "click" or uneven rolling of the yarn, the end stitches can tighten, causing the carriage to jam as you try to knit the next row. To correct this, do the following:

1. Remove the sinker plate from the carriage by loosening the white-thumb screws.
2. Lift up the carriage off the needles.
3. Even the stitches by pulling back the needles and loosening the yarn; if 2 or 3 stitches have unknitted, re-knit manually.
4. Replace the sinker plate to the carriage, re-thread yarn into the carriage and pull back the slack yarn through top tension unit, then proceed with your practicing.

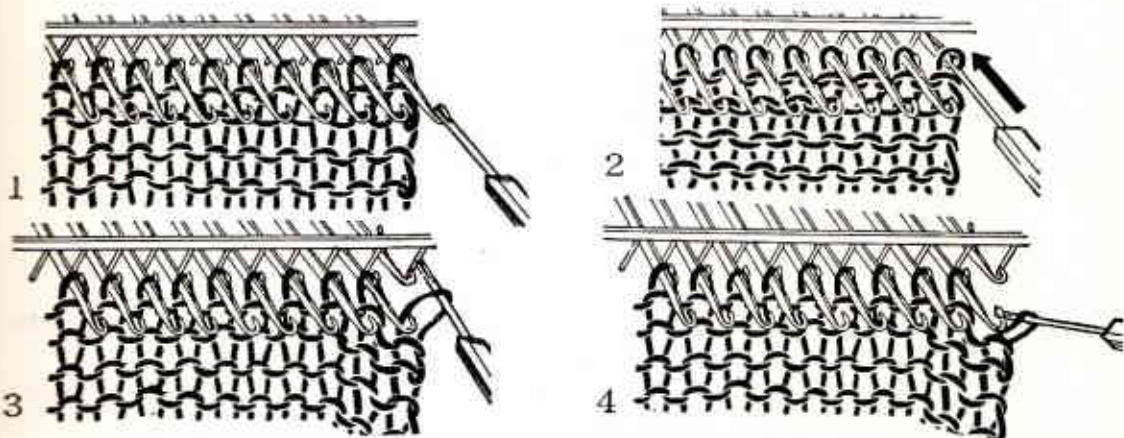
A simple variation when knitting the plain stockinette stitch is to change the tension. Turning your tension dial setting to 5, knit 10 rows, then to 9, knit 10 rows. Repeat this several times. Needless to say, practice is essential to acquire speed and skill in the use of handling the knitter and the tools. If this piece of knitting is satisfactory, proceed to the next lesson.

SHAPING: By increasing and decreasing stitches, a knitted garment is formed.

TO INCREASE: Push up 1 needle at the beginning of each row to position B; the knitter automatically picks up this needle and forms a stitch after you have pushed the carriage across. Repeat for 6 rows.

TO DECREASE: Use the 1 eyed transfer tool, place the eye of the tool lightly into the hook of first needle, pull needle forward until stitch slips past the latch, then push needle back, latch closes and stitch slides off to the tool. Now put the eye of the tool into the next needle and flip tool up, the stitch will slide on the next needle and you have 2 stitches together or a decrease of 1 stitch.

For practice, decrease 1 stitch each end every other row 6 times or until you can handle the tool easily.



LESSON 2

OPEN EDGE CAST ON: for the Quick Rib

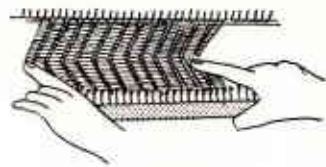
Hand knitters are accustomed to starting most garments with ribbing, the "quick rib" is the ideal solution.

Practice this hem a few times, be sure you set tension to a tight knit for the ribbing and loosen the tension after the hem is completed.

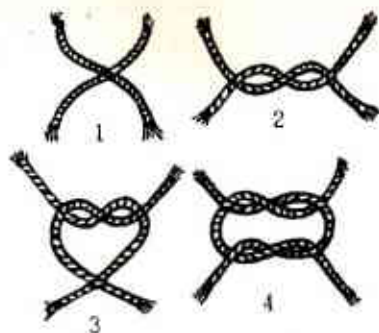
To keep the cast on stitches from slipping off the hooks of the comb as you fold it, grasp comb at each end, place thumbs underneath comb and place index finger of each hand at the side edges of the knitting at the point where you fold knitting in half. Hold comb steady with the left hand and level with the needles, one at a time, push all the alternate empty needles now in position A to position E thru the large loops on the cast-on-comb. Now remove comb from the loops, tip it backward and lift up, all the stitches will slide off.

Remember to release yarn from left side spring of cast-on-comb. This method can be used whenever ribbing is required.

Knitting a stripe with a contrasting color is the easiest of all designs, yet very effective. Remove the color you were using from the



carriage feeder, place this yarn under the left side of knitter bed. Thread contrasting color into the right side of the upper tension unit, then into the carriage guide, allowing about 6" to hang below carriage feed. Hold this end as you pull carriage to the right, as soon as it starts to knit, release the yarn and continue to knit a specified number of rows to form a pattern. Knit 4 rows of CC, now remove this yarn from the carriage feeder, swing it over to the left side of knitter and replace MC, knit 4 rows. Repeat this pattern, then substitute your own combination of rows and colors until you have mastered the threading and unthreading.



NOTE: This is the method recommended for joining yarn, whether it is another color or the same color that you have used up.

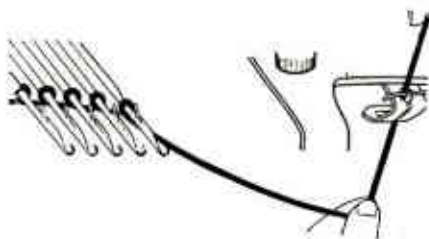
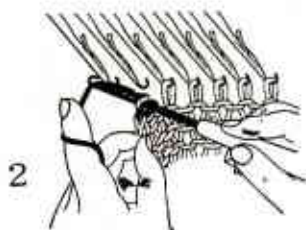
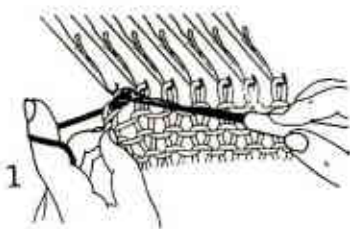
If the yarn ends in the middle of the row, make a square knot and trim ends close to the knot before continuing to knit.

LESSON 3

TO CAST ON WITH FINISHED EDGE:

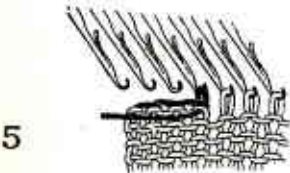
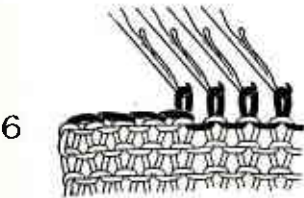
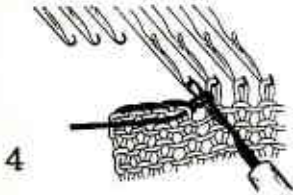
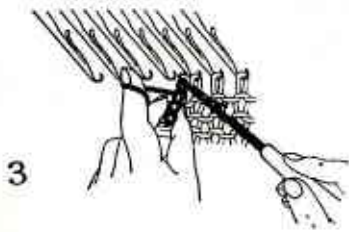
1. Place carriage at right side of knitter.
2. Hang cast-on-comb to the pegs of needle bed.
3. Push to position E as many needles as you need stitches.
4. Thread yarn into tension unit, pull down enough yarn for you to handle so spring above is lax.
5. Fasten the beginning of the yarn at the left side of knitter with a slip knot.
6. Loop yarn around each needle, from left to right counter clockwise, loops must be on stems of needles like the letter.
7. To control these loops as you wind, hold your thumb under the last one before making another. If loops are too tight, it will be difficult to knit the second row.
8. When all the needles have been cast on, thread yarn into the feeder on the carriage.
9. Be sure all slack yarn is eliminated by pulling up & back through tension unit.
10. Gently push carriage to the left. The carriage has knitted the first row.
11. Lower the comb and leave it suspended in the stitches until about 10 rows have been knitted.

This type of cast on will not ravel.



MULTIPLE INCREASE: To increase more than one stitch as for a cap or kimono sleeve:

1. On the side where the yarn ends, put to position E as many needles as you need stitches.
2. Loop yarn around the stems of needles, if on the left side, loop clockwise, if on the right, counter clockwise, actually both toward center.



BINDING OFF is a multiple decrease using the latch tool.

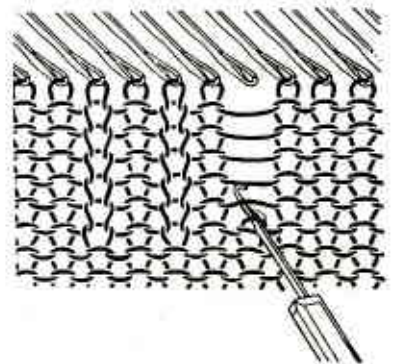
1. Start on the side where the yarn ends.
2. Hold the latch tool upright so latch remains open.
3. Insert the hook of the tool into the under side of stitch and remove it from its needle, also remove the next one in this manner,
4. Let these 2 stitches slide past the latch on the tool.
5. Place yarn in front of the latch and pull yarn thru the 2 stitches; you again have 1 stitch on the hook of the tool.
6. Remove 1 more stitch and repeat until the required stitches have been bound off.

NOTE: The stitch you pull thru should be fairly loose so as not to contract the knit as all edges should have give or stretch.

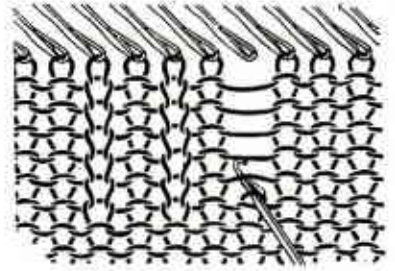
RIBBING WITH LATCH TOOL

The knitter automatically knits the stockinette stitch. To get a rib of 1 K. 1 P. or 2 K. 1 P., every other or every third stitch has to be reversed with the latch tool. For practice knit the required border of 30 rows, then reverse this stitch one at a time. To drop this stitch manually pull this needle back to pos. A., this closes the latch and permits the stitch to slide off. Ravel this stitch down to about a row above the point where you are to start the rib. Now insert the head of the latch tool into the last stitch, allow this stitches to slide past the latch.

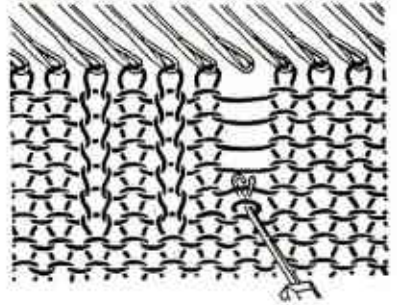
The following diagrams show how the latch tool is used. Note that the tool must be held in exactly the same position as your needles. The stitch must be in back of the latch and the strand of yarn must be in front of the latch.



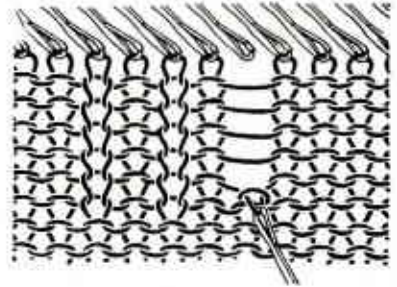
Pull the knitting down with your left hand as you manipulate the latch tool. This opens the cross strands making them easier to catch.



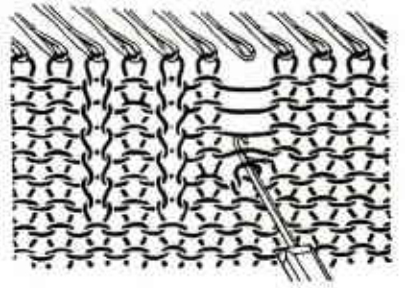
Now catch the first strand of yarn so that it lies in position on top of the latch.



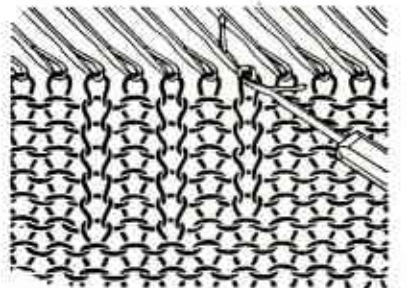
Pull strand of yarn through the stitch and



immediately push latch tool under the next strand of yarn, thus opening the latch and at the same time putting both stitch and yarn in position for next stitch.



Continue this till you are back to the top of your work. Push tool so that stitch is in back of the latch. Then hook latch tool around empty needle, and using tool as a lever, slide stitch onto needle. You have now ribbed one stitch.



You acquire speed with practice.

LESSON 4

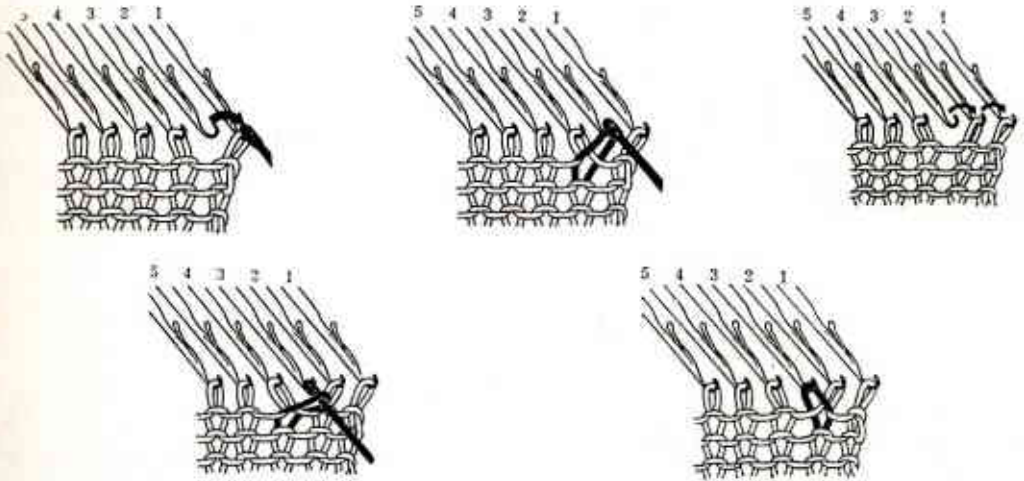
SHAPING

Full fashioned decrease; This method of decreasing is most popular for the raglan sleeve shaping. However, it is also used at any edge where consecutive decreases are to be made, at neck lines, regulation armholes, and side seams of skirts. Use your 3 eyed transfer tool, move the 3 edge stitches in by placing the 3rd stitch to the 4th needle.

Full fashioned increase with the 3 eyed transfer tool; Move the 3 edge stitches out leaving 1 empty needle. This if left empty will form a hole. Therefore, to fill in this needle, use 1 eye transfer tool and pick up the stitch on the row below and the stitch next to the empty one needle.

Increasing several stitches across a row is the same principle as explained above except that you move the stitches out in groups of three leaving 1 empty needle between each group, then fill in the empty needles.

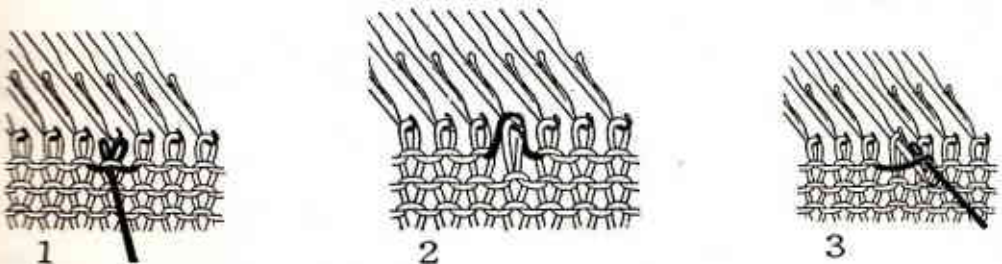
Decreasing a number of stitches across the row using the 3 eyed transfer tool, shift the stitches towards center so that several needles hold 2 stitches at 3 or 6 stitch intervals. (See illustration)

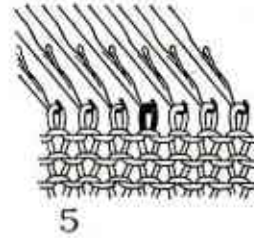
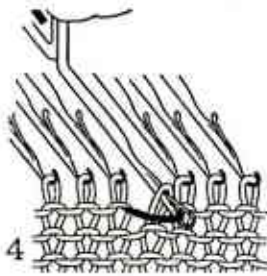


LESSON 5

CORRECTIONS

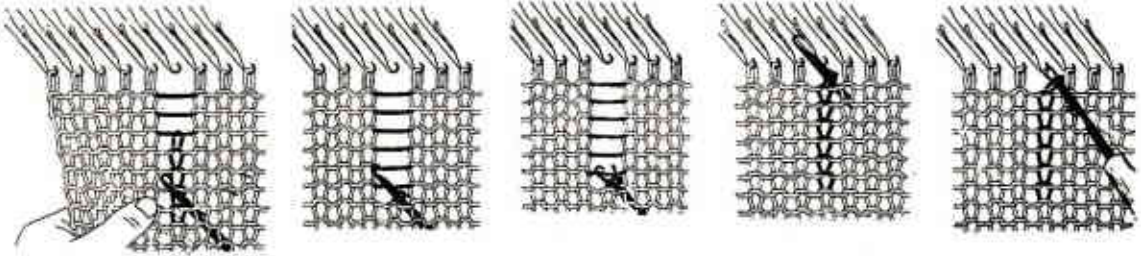
Your knitter is so mechanically perfected that a dropped stitch rarely occurs, however, due to lack of experience, carelessness in threading or an oversight in recognizing an adjustment, a stitch or stitches may drop. If the stitch is only one or two rows below the top, use the 1 eyed tool, insert into the stitch below the unknitted yarn, place both on the empty needle, push this needle forward until the stitch is past





the latch, the unknitted yarn in front of open latch. By hand, pull back this needle until the yarn pulls thru the stitch and is reknitted.

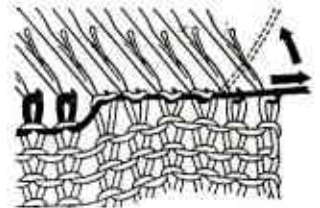
If the dropped stitch is several rows below, take your latch tool and work from the back. Pull the knitting down as you manipulate the latch tool.



RAVELLING

To correct an error where an entire row or rows have to be ripped, do the following:

1. Insert the cast-on-comb into the knitting; this holds the knitting down preventing any accidents.
2. Gently pull yarn sideways across the row, notice the yarn is now taut and drawn out of the stitches.
3. Hold this yarn and with a short quick upward movement unknit each stitch.
4. Do not pull needles forward during this process as stitches can go in back of the latches and if these needles are pushed back it will result in dropped stitches.
5. After ripping the necessary rows, the slack yarn must be pulled back through the tension unit to prevent loop at the edge.



LESSON 6

GAUGE AND TENSIONS

The tension dial settings control the size of the stitch. When knitting by hand the size of the needles and the holding of the yarn results in a tight or loose knit. This can vary for many reasons, the weight of the yarn, type of garment or personal preference. We give you a list of the tensions recommended for the most popular yarns available in your neighborhood yarn shops or department stores.

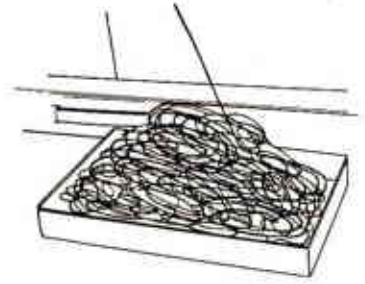
YARNS AND TENSIONS

Sport, fingering and baby yarns require no special handling except the recommended tension adjustment

for the correct gauge.

To use mohair, angora or any worsted weight yarns successfully the following suggestions are both necessary and helpful:

1. Prepare the worsted yarn by piling it spaghetti fashion into a basket or bowl. Do not touch this pile as it easily tangles.
2. If you prefer to ball it, wind firmly and place into a receptacle which has room enough for the ball to roll freely.
3. Use alternate needles.
4. Tension setting of 7-10 according to the gauge for the specific garment.
5. Knit a few rows, then to prevent the edges from bunching and possibly jamming the carriage or dropping stitches, insert the cast-on-comb into the knitting. Pull the knitting down every 5 or 6 rows and check edge stitches to see that they have knitted.



The appearance of the knitting when using worsted is very misleading due to the use of alternate needles. The true gauge is not obtained until the knitting is removed from the machine and pulled lengthwise. The knitting contracts about one third of its width after removal from the machine. Therefore, never judge size by sight, always follow specific count, as looks are very deceiving.

GAUGE

The stitch gauge is the number of stitches and rows per inch on a piece of knitting and determines the size of the garment.

You can enlarge a sweater one or even two sizes by knitting it at a looser tension. This, of course, is only to be used if you do not have enough needles for the size you need; example: size 54 using fingering yarn and 7 st. to 1" gauge for 206 st.

Since you only have 200 needles, by loosening your tension 1 or 2 points, this enlarges the stitches giving you a 5 st. gauge, resulting in a larger garment.

Always make a test swatch to get the recommended gauge. Keep a record and sample swatch for future reference.

A good firm knit is recommended for dresses, suits and coats. They will then hold their shape without a lining. Although, when the dressmaker touch is added to the finishing, it enhances both the appearance, durability and value.

Do not attempt to design your own garments until you have completed several garments following basic patterns.

HOW TO TAKE MEASUREMENTS

1. Chest or Bust Measure over fullest part
2. Waist Measure natural waistline
3. Hip Measure fullest part of hip (7 inch below natural waistline)
4. Shoulder Measure the width across back from arm to arm
5. Length of sweater Measure neckbone to bottom
6. Length of armhole Measure from arm pit to center of shoulder
7. Length of sleeve Measure from arm-pit to desired length
8. Wrist Measure width of wrist

Note: The measurements given in the charts are actual measurements. When you make the pattern, allow sufficient ease to insure a comfortable and correct fit. The allowance will vary according to the style of garment and type of yarn.

STANDARD BODY MEASUREMENTS

For Children:

SIZE	2	3	4	6	8	10	12	14
Chest	21"	22"	23"	24"	26"	28"	30"	32"
Shoulder (arm to arm)	9	9½	9¾	10¼	10¾	11¼	12	12¾
Length of sweater	12½	13	14	15	16	17	18	19
Length of armhole	4	4½	4¾	5¼	6	6½	6¾	7
Length of sleeve (underarm)	9	10	10½	12½	13¼	14½	15½	16½

Note: Children's measurements.....allow for child's growth

For misses and women:

SIZE	12	14	16	18	20	40	42
Bust	32"	34"	36"	38"	40"	42"	44"
Waist	25	26	28	30	32	34	36
Hip	35	37	39	40	42	44	46
Width across back between armholes	13	13¼	13½	14	14½	15	15½
Length from neck bone to bottom	19½	20	20½	21	22	22½	23
Length of underarm seam	11¼	12	12¼	12½	13	13¼	13½
Length of armhole	7	7¼	7½	7¾	8	8¼	8½
Length of sleeve (underarm)	17	17½	18	18¼	18½	19	19
Width of sleeve (upperarm)	12½	13	13½	14	14½	15	15½
Width of wrist	6	6½	6½	7	7	7	7

For men:

SIZE	34	36	38	40	42	44	46
Chest	34"	36"	38"	40"	42"	44"	46"
Width across back between armholes	14	15	15½	16	16½	17	17½
Length from neck bone to bottom	23	23½	24	24½	25	25½	25½
Length of underarm seam	14¼	14½	14¾	15	15¼	15½	15½
Length of armhole	8	8¼	8½	8¾	9	9¼	9½
Length of sleeve (underarm)	19	19¼	19½	20	20¼	20½	21
Width of sleeve	15	15½	16	16½	17	17	17½
Width of wrist	6½	7	7	7	7½	7½	8

LESSON 7

SHORT ROW DESIGNING

This method of shaping has endless possibilities and can be used for the following:

1. Turning the heel of a sock.

2. Circular skirts and yokes.
3. Darts for bust fullness.
4. Modern diagonal multi-color patterning.
5. Pockets and buttonholes.
6. Neck shaping.

These are just a few ideas and suggestions. When you acquire the technique, it will be a challenge to your designing skill. As an example, for a circular skirt or yoke, do the following: (See illustration)

1. Cast on 60 sts. and K. 10 rows. The left side is the waist line, the right side is the hem edge.
2. End with carriage at the right, set both H.C. to Pos. 3.
3. Set 4 needles at the left to pos. E.
4. Knit to the left, all, but the 4 needles have knitted.
5. Place yarn around last needle in H.P. to prevent hole. (see illustration)
6. Knit 1 row to the right.
7. Set 4 more needles at left to Pos. E.
8. Knit 1 row to the left, again place yarn around last needle and knit to the right.

Repeat this procedure until 10 needles remain in Pos. B. This completes half of the gore. To knit the other half, the needles which are now in Pos. E. are pulled back to Pos. C. (stitch just rides on the closed latch. Therefore, do not pull back too far).

Start at the left and pull back to Pos. C. 3 needles for the first group, then continue pulling back 4 needles at a time until all needles are back in Pos. B. (Diagram A)

When knitting short rows, UNLESS OTHERWISE specified yarn must always go around or over the closest needle put in H.P. before you knit the next row, or you will have a hole at every short row division. (Diagram B)

Diagram A

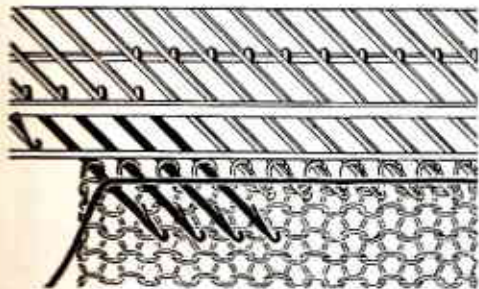
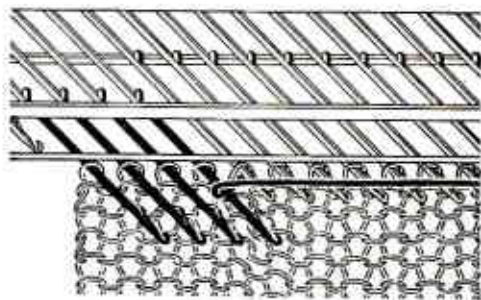


Diagram B



LESSON 8

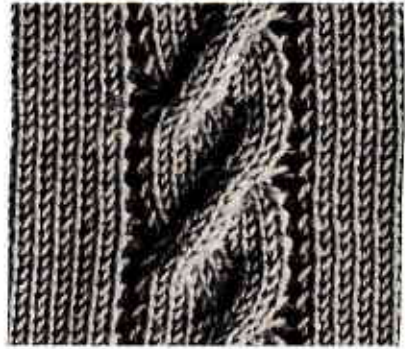
Miscellaneous Pattern Stitches

CABLES

The method for making a basic cable is explained and illustrated in your instruction manual. When making cables, have your tension 1 or 2 points looser than for plain knitting. You will also find that after you have crossed all your cables across the row, if you push the entire row of needles to pos. E, it will be easier to knit this row. This position eases the tension on the crossed stitches. Cables can be used on any basic garment. This pattern is worked in multiples of 11 sts.

Row 1-6 knit even. Use the 2-3 eyed transfer tools. Place them on needles 1-6. Remove these sts. to transfer tools. Place sts. 3, 2, 1 to empty needles 6, 5, 4. Cross sts. 6, 5, 4 over to needles 3, 2, 1.

Row 7-12-Knit even. Repeat the above procedure except that you now transfer sts. 6, 5, 4 to needles 9, 8, 7 then 9, 8, 7 to needles 6, 5, 4. When the entire length of the cable has been completed "purl" 1 st. at each side to accentuate the design.



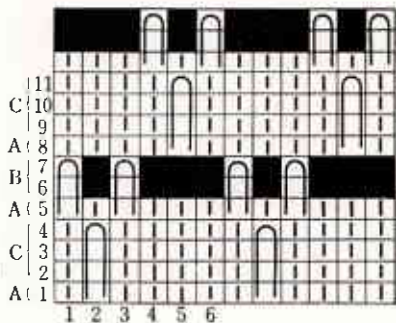
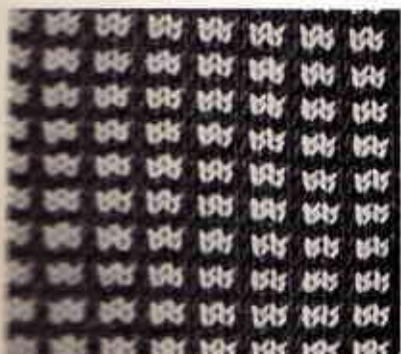
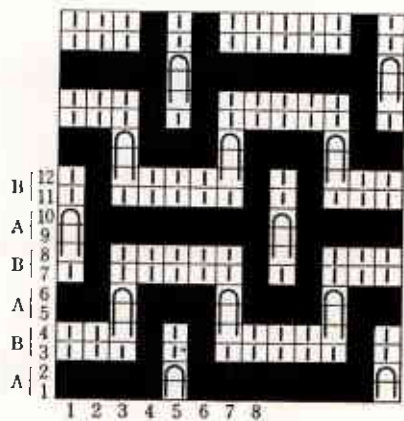
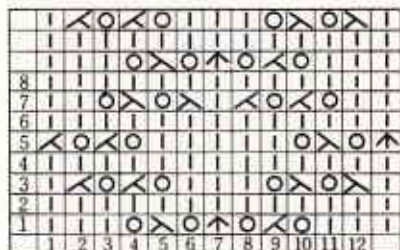
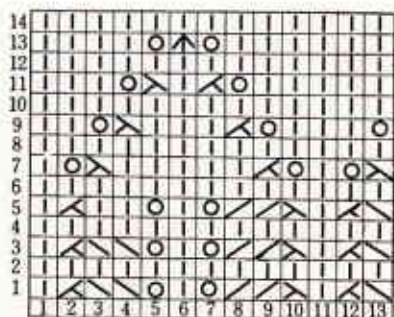
DOUBLE CABLE

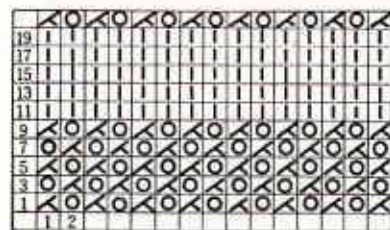
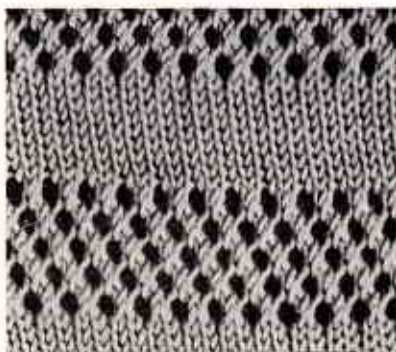
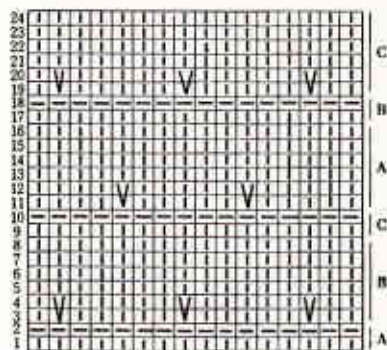
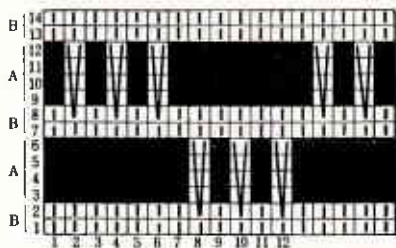
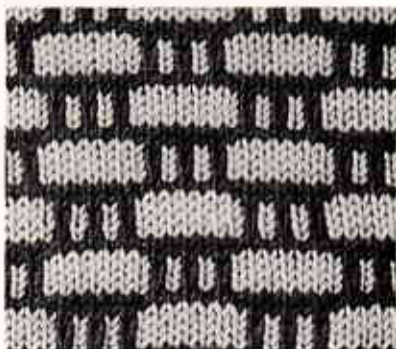
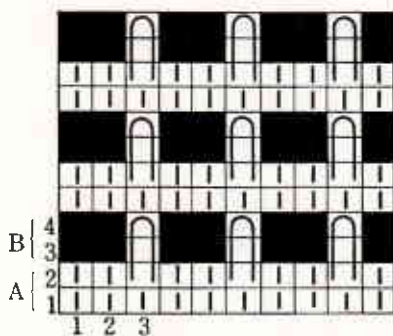
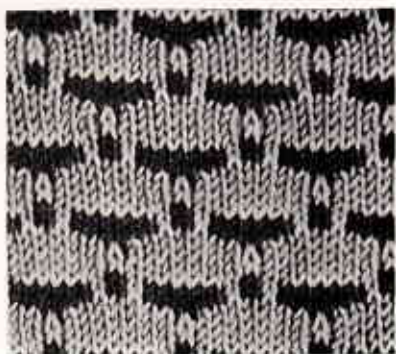
Pattern worked in multiples of 15 sts. Two 6 st. cables, the right cable transferred to the left, the left cable twisted to the right. 1 K. st. in between and 1 P. on each side.

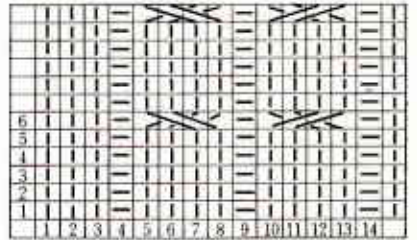
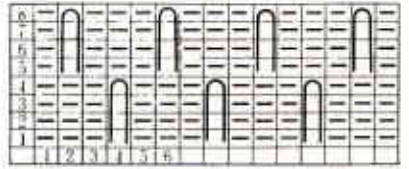
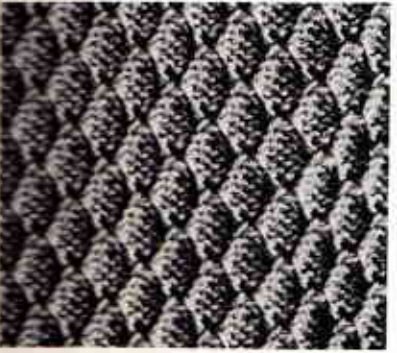
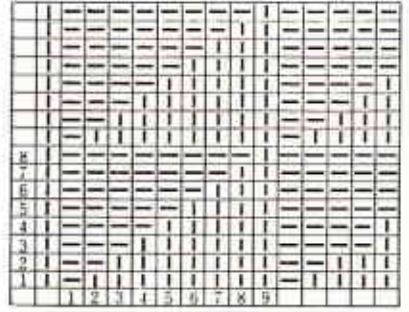
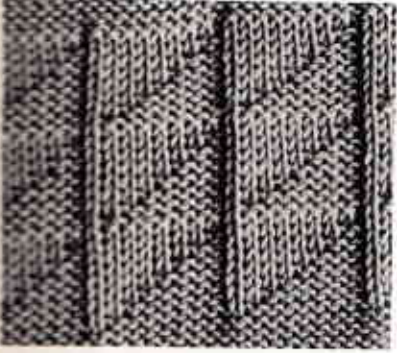
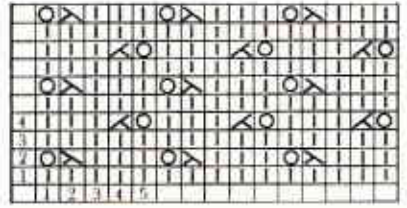
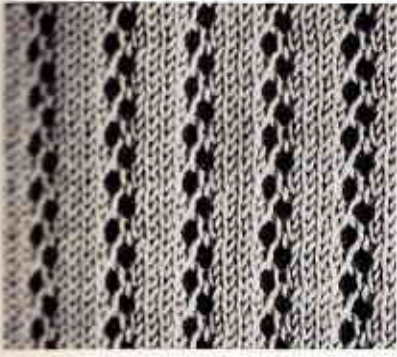
PATTERN STITCH SYMBOLS

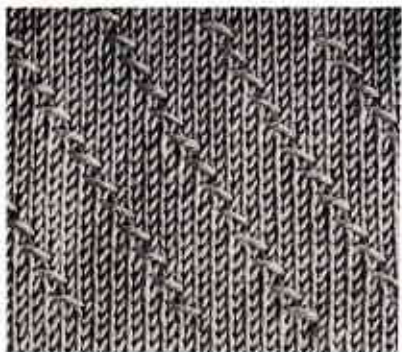
Symbol	Nomenclature	Definition
	Knit stitch	Face loop of plain stitch (right or knit side)
—	Purl stitch	Back loop of plain stitch (wrong or purl side)
λ	Right above, Two stitches together	Knit together two stitches, right loop over left loop
∧	Left above, Two stitches together	Knit together two stitches, left loop over right loop
⋈	Center above, Three stitches together	Knit together three stitches. Center loop over right and left loops
⤴	Right above, Three stitches together	Knit together three stitches, right loop over center and left loops
⤵	Left above, Three stitches together	Knit together three stitches, left loop over center and right loops
/	Lean stitch to the right	Transfer to the right by increase or decrease
\	Lean stitch to the left	Transfer to the left by increase or decrease
⤴	Increased stitch to the right	Draw up the purl side of the loop and place to right empty needle
⤵	Increased stitch to the left	Draw up the purl side of the loop and place to left empty needle
×	Right overcrossing	Cross the stitches with the right stitch over the left as a cable
×	Left overcrossing	Cross the stitches with the left stitch over the right
V	<u>DRAW STITCH:</u>	KNIT 2 rows at looser tension with c.c. Pull back designated needles manually from pos. B to pos. A using M.C. Knit the required rows at the normal tension. Repeat as graph indicates.
∩		Set both cams to pos. I & the designated needles to pos. E for the specified number of rows.
⋈	Twist draw up stitch	Work stitch as above for required number rows but twist bottom loop
ℚ	Twisted stitch	Stich formed by twisting the loop (use loose tension with latch tool)
⊙	Rolled stitch	Wind the yarn around the needle (casting on)
○	Empty stitch	Hole formed by transferring stitch to right or left, return empty needle to pos. B.

Note: The word, over, under, right or left in the column of definition, shall be expressed by viewing the knitted garment from the face, or knit side.

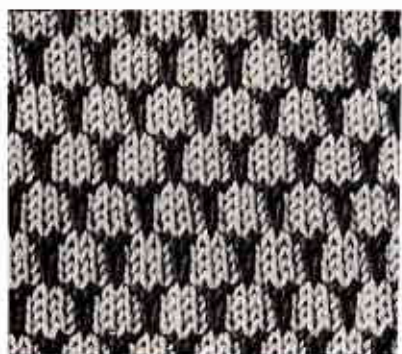








10																			
9																			
8																			
7																			
6																			
5																			
4																			
3																			
2																			
1																			
	1	2	3	4	5	6	7												

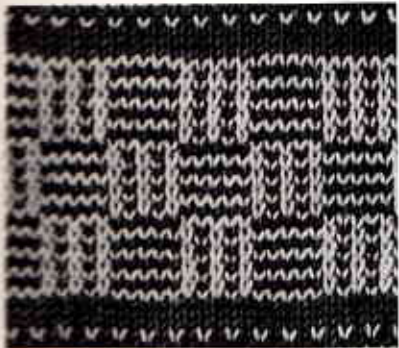


B10																			
B9																			
B8																			
B7																			
B6																			
B5																			
B4																			
B3																			
color B2																			
color B1																			
	1	2	3	4															

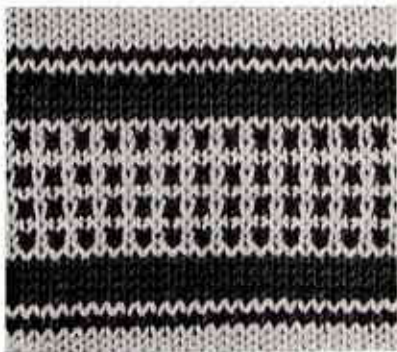
FAIRISLE

USE IN BOTH PART BUTTON & SET NEEDLES TO POS "D" FOR EACH COLOR ACROSS ROW.

Base Color	BLACK
1	W WHITE
2	W BLACK
3	W WHITE
4	W BLACK
5	W WHITE
6	W BLACK
7	W WHITE
8	W BLACK
9	W WHITE
10	W BLACK
11	W WHITE
12	W BLACK
13	W WHITE
14	W BLACK
15	W WHITE
16	W BLACK
17	W WHITE
18	W BLACK
19	W WHITE
20	W BLACK
21	W WHITE
22	W BLACK
23	W WHITE
24	W BLACK
25	W WHITE
26	W BLACK
27	W WHITE
28	W BLACK
29	W WHITE
30	W BLACK
31	W WHITE
32	W BLACK
33	W WHITE
34	W BLACK
35	W WHITE
36	W BLACK
37	W WHITE
38	W BLACK
39	W WHITE
40	W BLACK
41	W WHITE
42	W BLACK
43	W WHITE
44	W BLACK
45	W WHITE
46	W BLACK
47	W WHITE
48	W BLACK
49	W WHITE
50	W BLACK
51	W WHITE
52	W BLACK
53	W WHITE
54	W BLACK
55	W WHITE
56	W BLACK
57	W WHITE
58	W BLACK
59	W WHITE
60	W BLACK
61	W WHITE
62	W BLACK
63	W WHITE
64	W BLACK
65	W WHITE
66	W BLACK
67	W WHITE
68	W BLACK
69	W WHITE
70	W BLACK
71	W WHITE
72	W BLACK
73	W WHITE
74	W BLACK
75	W WHITE
76	W BLACK
77	W WHITE
78	W BLACK
79	W WHITE
80	W BLACK
81	W WHITE
82	W BLACK
83	W WHITE
84	W BLACK
85	W WHITE
86	W BLACK
87	W WHITE
88	W BLACK
89	W WHITE
90	W BLACK
91	W WHITE
92	W BLACK
93	W WHITE
94	W BLACK
95	W WHITE
96	W BLACK
97	W WHITE
98	W BLACK
99	W WHITE
100	W BLACK
Base Color	BLACK



Base Color	GREY
1	W BLACK
2	W WHITE
3	W BLACK
4	W WHITE
5	W BLACK
6	W WHITE
7	W BLACK
8	W WHITE
9	W BLACK
10	W WHITE
11	W BLACK
12	W WHITE
13	W BLACK
14	W WHITE
15	W BLACK
16	W WHITE
17	W BLACK
18	W WHITE
19	W BLACK
20	W WHITE
21	W BLACK
22	W WHITE
23	W BLACK
24	W WHITE
25	W BLACK
26	W WHITE
27	W BLACK
28	W WHITE
29	W BLACK
30	W WHITE
31	W BLACK
32	W WHITE
33	W BLACK
34	W WHITE
35	W BLACK
36	W WHITE
37	W BLACK
38	W WHITE
39	W BLACK
40	W WHITE
41	W BLACK
42	W WHITE
43	W BLACK
44	W WHITE
45	W BLACK
46	W WHITE
47	W BLACK
48	W WHITE
49	W BLACK
50	W WHITE
51	W BLACK
52	W WHITE
53	W BLACK
54	W WHITE
55	W BLACK
56	W WHITE
57	W BLACK
58	W WHITE
59	W BLACK
60	W WHITE
61	W BLACK
62	W WHITE
63	W BLACK
64	W WHITE
65	W BLACK
66	W WHITE
67	W BLACK
68	W WHITE
69	W BLACK
70	W WHITE
71	W BLACK
72	W WHITE
73	W BLACK
74	W WHITE
75	W BLACK
76	W WHITE
77	W BLACK
78	W WHITE
79	W BLACK
80	W WHITE
81	W BLACK
82	W WHITE
83	W BLACK
84	W WHITE
85	W BLACK
86	W WHITE
87	W BLACK
88	W WHITE
89	W BLACK
90	W WHITE
91	W BLACK
92	W WHITE
93	W BLACK
94	W WHITE
95	W BLACK
96	W WHITE
97	W BLACK
98	W WHITE
99	W BLACK
100	W WHITE
Base Color	GREY



Base Color	GREY
1	W BLACK
2	W WHITE
3	W BLACK
4	W WHITE
5	W BLACK
6	W WHITE
7	W BLACK
8	W WHITE
9	W BLACK
10	W WHITE
11	W BLACK
12	W WHITE
13	W BLACK
14	W WHITE
15	W BLACK
16	W WHITE
17	W BLACK
18	W WHITE
19	W BLACK
20	W WHITE
21	W BLACK
22	W WHITE
23	W BLACK
24	W WHITE
25	W BLACK
26	W WHITE
27	W BLACK
28	W WHITE
29	W BLACK
30	W WHITE
31	W BLACK
32	W WHITE
33	W BLACK
34	W WHITE
35	W BLACK
36	W WHITE
37	W BLACK
38	W WHITE
39	W BLACK
40	W WHITE
41	W BLACK
42	W WHITE
43	W BLACK
44	W WHITE
45	W BLACK
46	W WHITE
47	W BLACK
48	W WHITE
49	W BLACK
50	W WHITE
51	W BLACK
52	W WHITE
53	W BLACK
54	W WHITE
55	W BLACK
56	W WHITE
57	W BLACK
58	W WHITE
59	W BLACK
60	W WHITE
61	W BLACK
62	W WHITE
63	W BLACK
64	W WHITE
65	W BLACK
66	W WHITE
67	W BLACK
68	W WHITE
69	W BLACK
70	W WHITE
71	W BLACK
72	W WHITE
73	W BLACK
74	W WHITE
75	W BLACK
76	W WHITE
77	W BLACK
78	W WHITE
79	W BLACK
80	W WHITE
81	W BLACK
82	W WHITE
83	W BLACK
84	W WHITE
85	W BLACK
86	W WHITE
87	W BLACK
88	W WHITE
89	W BLACK
90	W WHITE
91	W BLACK
92	W WHITE
93	W BLACK
94	W WHITE
95	W BLACK
96	W WHITE
97	W BLACK
98	W WHITE
99	W BLACK
100	W WHITE
Base Color	GREY

FINISHING

HOW TO WEAVE

Method 1

Thread tapestry needle.

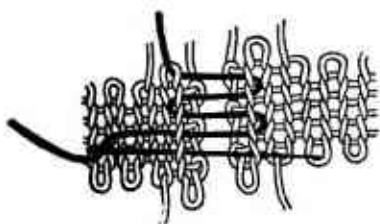
With wrong sides together, insert left forefinger between the two pieces.

Take inside stitch of first row toward the outside (from wrong side to right side), pull tapestry needle through.

Taking next stitch on the same side toward the inside (from right side to wrong side), bring tapestry needle through stitch.

Take stitches to correspond on the other side in the same manner.

Repeat this process all the way through.



Do not pull yarn too tight or too loose.

This method is used to seam sides of garments.

Method 2

Thread tapestry needle.

With wrong sides together, insert left forefinger between the two pieces.

Pick up one cross-bar between 1st and 2nd row from right side of work.

Bring tapestry needle over to the other side, pick up one cross-

bar to correspond in the same manner. Repeat this process all the way through.

Pull yarn tight enough until the seamed yarn does not show in between.

This method is used to seam two pieces of different colors or of pattern stitches, etc.

Method 3

This is used to put together two different directions of knittings as shown in Fig.

Put all stitches of one piece on to a knitting needle. With wrong sides together, hold the stitches on knitting needle against the side seam of the other piece, insert left forefinger between the two pieces.

Thread tapestry needle.

Bring tapestry needle over to the side with no knitting needle, 1) pick up one cross-bar between 1st and 2nd row, pull tapestry needle through.

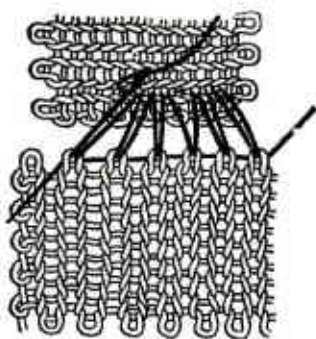
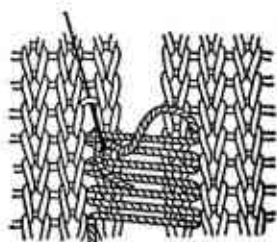
Bring tapestry needle over to the other side, and 2) pick up 1st stitch on knitting needle from outside to inside (as if to knit), remove from knitting needle, take next stitch from inside to outside (as if to purl), leave it on knitting needle.

Repeat 1) and 2) once more.

Bring tapestry needle over to the other side, 3) pick up 2 cross-bars at a time, then take 1st and 2nd stitches on knitting needle in the same manner.

Repeat this whole process, 1) to 3), until you get to end.

Pull yarn tight enough.



You should take stitches on knitting needle to correspond to cross-bars, because there will be more cross-bars than stitches.

Method 4

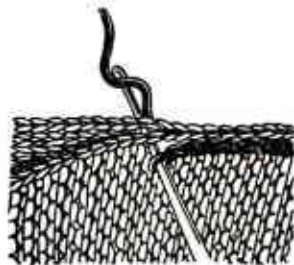
With right sides together, put crochet hook into both pieces.

Bringing yarn behind work, catch yarn inside the hook, pull it through.

Do not pull yarn too tight or too loose.

Put crochet hook into next stitch about one stitch apart, work in the same manner, as if to chain.

This method is useful in sewing sleeves in place, top and skirt of garments together, etc.



The assembling methods just explained are the conventional ways hand knitters are accustomed to finishing knitted garments. However, keeping pace with the speed of your knitter many garments can be put together quickly with your sewing machine. Raise the pressure on the presser foot bar. Use 2 rows of small machine stitching close to the edge. This results in a strong neat seam.

CARE OF YOUR KNITTER

The most important factor in the care of your knitter is cleanliness. Use the little hand brush to keep it free of lint and fuzz as this has a tendency to collect in the under-part of the carriage and in the back-track where the carriage slides back and forth. This loose matter can also seep through the spaces of the needle bed. An occasional use of a vacuum is the only way to remove this.

Never soak the machine with oil, as the excess oil coagulates and gums up the parts if the machine is not constantly in use. A light coating of oil applied with a cloth is enough of a lubrication. The combination of lint and too much oil can cause the carriage to move with difficulty. To remove a gummy surface, kerosene is the best cleanser.

If the carriage becomes difficult to push, never force it, look for the cause. If it jams in the same spot, then the needle is wedged in its slot by a bend in the metal strip. Use the end of the 1 x 1 needle pusher, insert into the opening and carefully bend tool from side to side until needle moves freely in its slot.

The art of knitting is both practical and pleasurable. You will enjoy creating garments and useful articles for your family and friends. Remember.....knitted articles are the epitome of luxury, and if properly cared for, they last forever. We know that you have many pleasant hours of knitting ahead.....and assure you that the craft of machine knitting is one which will be profitable to you for many years to come.

brother -Knit Pattern Series

This is the first of your Home Study Series, and has been planned to progressively and pleasurably teach you to master your BROTHER-KNITTER. You will find that as you proceed with the various lessons you will be learning a few more steps each time. We know that upon completion of this course, you will be ready to knit the most intricate and detailed garments. You will also start to enjoy the creative possibilities of your BROTHER KNITTER.

ABBREVIATIONS:

K-Knit

O of S-out of service (not knitting)

H.P.-Holding Position-at E on needle bed.

H.C.-Hold cam-pos. 3. on carriage.

LESSON #1 GLAMOUR STOLES

MATERIAL: 8 oz. Fingering yarn

GAUGE: 8 st.-1" 10 rows-1"

ABBREVIATIONS: K-Knit

O of S- out of service (needles not knitting Pos A on the needle bed)

PATTERN STITCH: Set to knitting position Pos B 100 needles, 50 on each side of "O". Starting from center, put out of service the follow-

ing needles, #1 and 2 O of S. 12, 13, 14, 15, O of S, 25, 26, 27, 28 O of S. 38, 39, 40, 41 O of S. You will have groups of 9 needles knitting and 4 not knitting giving the effect of the "drop" stitch when hand knitting. Cast on with a finished edge.

Row 1-550 knit even. Bind off loosely.

THE BUTTERFLY STOLE

MATERIAL: 8 oz. of any Fingering yarn.

PATTERN STITCH: Set to Pos B 144 needles; starting on the right side of "O" arrange needles as follows:- 1 & 2 K, 3 & 4 O of S, 5 K, 6 & 7 O of S, 8 & 9 K, 10 & 11 O of S, 12 K, 13 & 14 O of S, 15 & 16 K, 17 & 18 O of S, 19 K, 20 & 21 O of S, 22 & 23 K, 24 & 25 O of S, 26 K, 27 & 28 O of S, 29 & 30 K, 31 & 32 O of S, 33 K, 34 & 35 O of S, 36 & 37 K, 38 & 39 O of S, 40 K, etc.; continue this arrangement until you have 10 pattern groups and 4 K at edge. Arrange left side to correspond.

Cast on with finished edge

Row 1-4 Knit even

Row 5-8 Set all single needles to Pos "D" every 4 rows and HC to pos 3. This adjustment will keep the single needles up to form your pattern stitch. Knit 4 rows. Switch HC to pos 1 and Knit 4 rows, even. Notice that when cams are in pos 1 all needles are even.

Knit for 346 rows. The last 4 rows knit even. Bind off loosely, allowing for the 20 of S needles between patterns.

BLOCKING: A simple method for blocking stoles is to wet them thoroughly and squeeze dry by rolling in a towel. If curtain stretcher is available, several stoles may be dried at the same time. The pins give it attractive scalloped edge. If you do not have a stretcher pin edges to a pad.

FRINGE: Take a cardboard 10" wide, wind all leftover yarn around it and cut in half. Take 4 strands to a cluster, loop through narrow ends of stole with crochet hook.



LESSON #2 SPORTSMAN TIE

MATERIALS: Nylon Fingering yarn $1\frac{1}{2}$ oz. Gray- $\frac{1}{4}$ of Pink.

NOTE: Check gauge by making test swatch using recommended tension. If gauge is not identical to the one recommended, adjust tension accordingly.

GAUGE: 11 rows 1"-10 sts.-1"

Cast on 38 st.-19 needles on either side of "0".

Row 1-70 knit even. Gray.

71- 72 Knit even Pink	119-120 Knit even Pink
73- 82 // // Gray	121-130 // // Gray
83- 84 // // Pink	131-132 // // Pink
85- 94 // // Gray	133-142 // // Gray
95- 96 // // Pink	143-144 // // Pink
97-106 // // Gray	145-154 // // Gray
107-108 // // Pink	166-156 // // Pink
109-118 // // Gray	

157-213 From now on continue to use Gray. Decrease 1 st. each end of every 8th row. (22) st remain.

213-363 Gray-Knit even for neckband (150) rows.

364-406 Now increase 1 st. each side every 6th row, have 28 sts.

406-556 Knit even. Bind off.

BLOCKING: Pin tie to pad or ironing board. Steampress lightly before sewing. Stretch lengthwise about 50".

FINISHING: First pin, then overcast or weave the edges together, starting from each end towards the neckband. Leave a 3" opening in the center of the neckband. Turn inside out. Close up 3" opening in neckband. Place seam in center. Neckband may be lined to keep tie from stretching.



LESSON #3 BABY SAQUE

MATERIALS: 4 oz. Pompadour or Fingering yarn

SIZE: Infant 6 mo. to 1 year old.

STITCH: Stockinette and picot edge

GAUGE: 7 st=1

BACK:

Cast on 78 st - 39 needles on each side of "0".

ROW 1-10 Knit even. On 10th row make picot edge.

ROW 11-21 Knit even. Make hem (refer to instruction book).

SLEEVE SHAPING:

ROW 21-71 Knit even. Now cast on 35 st. on each side for sleeves.

NECK SHAPING:

ROW 72-115 Knit even. Bind off 20 st in center 10 on each side of "0" for back of neck and complete one front as follows.

FRONT:

ROW 116-126 Knit even. Now cast on 12 st. for front.

ROW 127-170 Knit even. Bind off 35 st. from side edge for sleeve shaping.

ROW 171-213 Knit even. Baste guide line with needle and thread as marker for reverse hem.

ROW 214-224 Transfer stitches for picot edge.

ROW 225-235 Make hem by picking up stitches along basted guide line. Bind off. Knit other side to correspond.

PICOT EDGE BORDER:

Hold garment with purl side towards you. Use 1 eye transfer tool and pick up stitches along edge, when all the stitches are on the needles, push needles up to Pos. E. sts in back of, open latches and knit across. Knit 9 rows more and transfer stitches for picot edge, this is done with the 1 eyed tool by transferring every other stitch to the adjacent needle, remember to bring back to knitting position all emptied needles and knit another 10 rows, bind off. Fold in half on picot edge and hem by hand.

FOR CENTER FRONT: Pick up 60 st. Proceed as directed above.

FOR NECKBAND: Tighten tension. Pick up 62 sts.

SLEEVE BAND: Tighten tension. Pick up 50 sts.

BLOCKING: Pin to blocking pad or ironing board carefully matching seams. Steam lightly before sewing. Make pom-poms by winding yarn around a 1" wide cardboard 40 times. Using double stand of yarn, tie loop together, then cut and trim to shape. Tiny rosebuds may be hand embroidered on border for a very dainty finish.

ASSEMBLING & FINISHING:

Weave or sew under-arms and side seams. Also fold front, neck and sleeve borders in half and hem by hand. Make chain using your crochet hook and 3 strands of yarn. Pull thru neck hem and tie. Ribbon may also be used for this purpose.



LESSON #4 BROTHER SWEATER

MATERIAL: Fingering yarn. 3 oz. NAVY: 1 oz. WHITE.

SIZE: 4-6 years

GAUGE: 8 st=1" 10 rows=1"

PATTERN STITCH: Snowflake. (*) Adjust row counter so it does not register on pattern row; press in both "Part" buttons in front of the carriage; now take your metal needle selector, set to pos. "D" every 6th needle. Remove MC from carriage feeder, then thread the CC yarn into carriage feeder, check to see that the yarn is feeding freely, knit across 1 row. You will notice that only the raised needles knitted. Remove CC from carriage feeder, leave "Part" buttons depressed, and push carriage to other side. Rethread MC, now release "Part" buttons, adjust row counter so it registers, and knit 5 rows. Repeat all details from (*) except that the second pattern row should start at the 3rd needle to alternate design. Repeat pattern throughout garment.

BACK: Cast on 90 sts, divide evenly on each side of "O". Set needles for "quick rib" hem, using main color.

Row 1-40 Quick rib hem, reset tension to given gauge.

41-44 Knit even no count-Snowflake pattern

45-46 Knit in C. C. 57-61 Knit even

47-50 Knit even no count-Snowflake pattern

51-52 C. C. 62-112 Knit even and repeat pattern.

53-56 Knit even

SHAPE ARMHOLE:

113-114 Bind off 4 st at the beg of next 2 rows.

115-120 Dec 1 st at the beg of next 6 rows.

121-190 Knit even

SHAPE SHOULDERS:

191-199 Bind off 6 st at the beg of next 8 rows-4 times each side.

Bind off remaining sts loosely.

FRONT: Knit to correspond to back up to armhole shaping.

V-NECK SHAPING:

Row 115-Divide work in half by tran st 1 on each side of "O" to needle 2. Now that your work is divided, you must knit on only one side at a time. Push to pos "D" all needles on the right side of knitter. This is HP. Also set both cams on the sides of your carriage to pos. 3.

Continue to shape the armhole to correspond to back, at the same time dec 1 st at neck edge every 4th row 16 times. knit even until armhole matches back. Bind off.

NECKBAND: Hold purl side of garment towards you, pick up stitches along neck edges, the back and each side of neck separately. Rib to correspond to bottom border.

Rows 1- 6 Navy

7- 8 White

9-24 Navy, fold in half and hem.

ARMHOLE BAND: Sew shoulder seams, now pick up stitches along edge and knit to correspond to neckband.

BLOCKING AND FINISHING: Steam-press entire garment, press ribbing lightly. Sew side seams, fold neck and armhole bands in half and hem.



LESSON #5 SISTER SWEATER

MATERIAL: 4 oz. Fingering weight yarn. $\frac{1}{4}$ oz. Trim color.

SIZE: 4-6 years

GAUGE: 8 sts.-1" 10 rows-1"

ABBREVIATION GUIDE: see back cover.

PATTERN STITCH:

Pattern Stitch, (1) Remove M.C. from carriage feeder; (2) Re-thread with C.C.; (3) put both H.C. to pos. 3; (4) push pattern keys 1 and 3; (5) set needles; (6) knit 2 rows; (7) now remove C.C. yarn from carriage feeder; (8) replace with M.C.; (9) put H.C. back to pos. 1; (10) knit 2 rows. Now release keys 1 and 3, then set keys 2 and 4 for alternating design and repeat all previous instructions.

FRONT: Cast on 86 sts. divide evenly on each side of "O".

Row 1-30 Knit even. Make hem (refer to your instruction book).

31-120 Knit even.

UNDERARM SHAPING: 121-130 Inc 1 st at the beg of next 10 rows.

CAP SLEEVE:

131-132 Cast on 20 sts at the beg of next 2 rows.

133-160 knit even

161-170 knit pattern sts as directed in P. "PATTERN STITCH".

171-176 Knit even. End with carriage at the left.

NECK SHAPING: Bind off 12 sts in the center of your knitting. You will knit on one side at a time. Place both H.C. to pos. 3 and push up the group of needles on the right side until the left shoulder is completed.

177-187 Dec 1 st at neck edge 10 times.

188-205 Knit even-have carriage end at neck edge; inc 15 sts.

206-245 Knit even-this forms the upper half of the back with a placket for neck opening.

Now re-set row counter to R. 176-also set HC to Pos. 3.

Knit other half to correspond, reversing all shaping; when both sides are uniform knit even to R. 266.

SLEEVE:

267-268 Bind off 20 st at the beg of next two rows.

269-278 Dec 1 st at the beg of next 10 rows.

279-393 Knit even, bind off, fold back and make hem to correspond to front.

NECKBAND: Hold garment with purl side facing you, using your single eyed trans. tool pick up stitches along neck edge, approx. 60-65 sts.

Row 1- 2 knit MC.

3-10 Pattern st-CC

11-25 knit even with M.C. fold in and hem by hand

SLEEVEBAND: Knit to correspond to neckband.

FINISHING: Steam block, sew underarm seams; carefully weave seams of hem to avoid thickness, crochet edge of placket, make 4 loops for buttonholes and sew 4 buttons on to correspond to loops.



brother. -Knit Beginners Patterns

brother. - KNIT PATTERN SERIES

No. 1

THE CLASSIC CARDIGAN



THE CLASSIC CARDIGAN

Sizes 12 14 16 18 20

WORSTED

1 oz. pull skeins 20 22 23 24 25
 2 oz. skeins 10 11 12 12 13
 4 oz. skeins 5 6 6 7 7

GAUGE: 5 sts = 1 inch 6 rows = 1 inch
 use alternate needles.

SPORT YARN

1 oz. pull skeins 9 10 11 12 13
 2 oz. balls 5 5 6 6 7

GAUGE: 6 sts = 1 inch 10 rows = 1 inch

FINGERING YARN

1 oz. pull skeins 10 11 11 12 12

GAUGE: 7 sts = 1 inch 11 rows = 1 inch

8 buttons

1½ yds 1 inch grosgrain ribbon

The classic cardigan is a must in every female's wardrobe. We have given you the instructions using the three most popular weights of yarn. Be sure to follow the correct group of figures. The following instructions give you the basic shaping of the standard garment. You can vary it by introducing the pattern stitches given in your instruction manual; another suggestion to give it that "custom made" look is to substitute a picot edge or the tailored hem instead of the regulation ribbed border.

ABBREVIATIONS:-

K-knit, P-purl, Sts-stitches, Dec-decrease, Trans-transfer, F.F.-Full fashioned, Sl-Slip

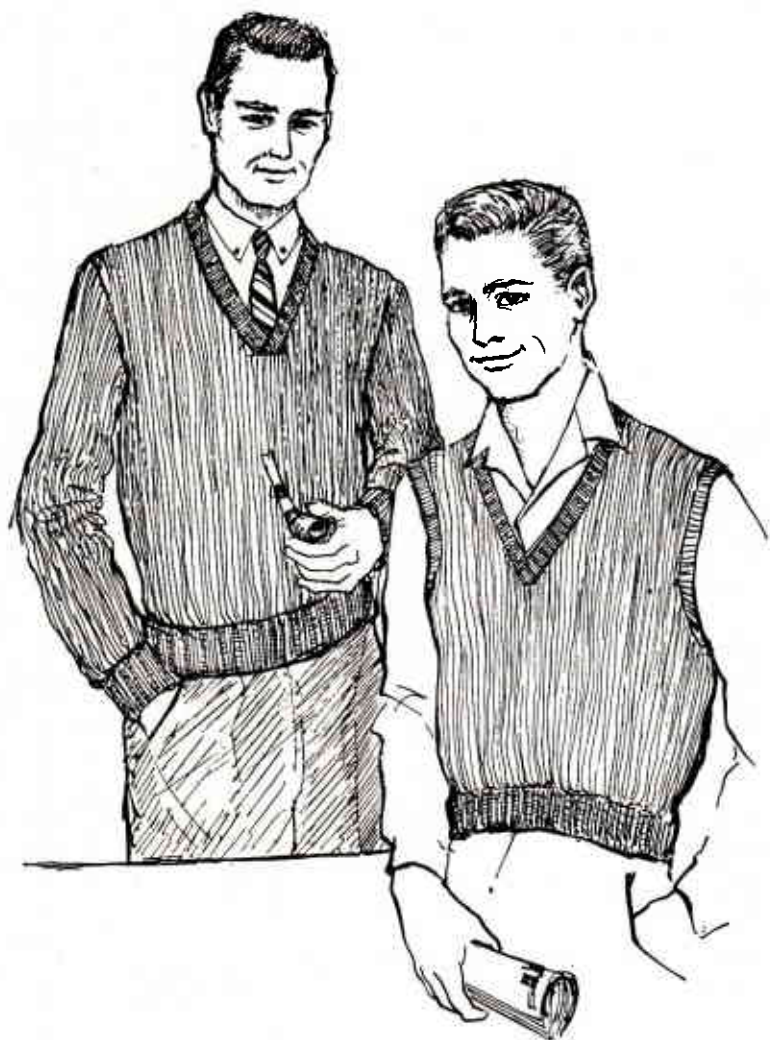
NOTE-Knit ribbing tighter than the given gauge.

	WORSTED					SPORT					FINGERING					
	12	14	16	18	20	12	14	16	18	20	12	14	16	18	20	
BACK: cast on.....sts.	88	92	98	104	108	106	112	118	124	130	124	130	136	144	150	
K2, P1, rib for 2 inches. Work even until piece measures.....inches.	15	15	15½	15½	15½	15	15	15½	15½	15½	15	15	15½	15½	15½	
Loosen tension to given gauge.																
SHAPE FULL FASHIONED ARMHOLES:																
At the beg of next 2 rows bind off.....sts.	3	3	4	4	4	4	4	4	4	4	4	4	4	4	4	
Use F.F. method of dec then dec 1 st at each arm edge every 4th row.....times.	7	7	8	9	9	8	9	9	10	11	10	11	11	13	14	
Work even onsts.	66	70	72	76	80	80	84	90	94	98	94	98	104	108	112	
until armholes measure.....inches.	7	7¼	7½	7¾	8	7	7¼	7½	7¾	8	7	7¼	7½	7¾	8	
SHAPE SHOULDERS: At the beg of the next 4 rows bind offsts.																
At the beg of the next 2 rows bind offsts.	7	8	8	9	9	9	9	10	11	11	10	10	11	12	12	
Trans to stitchholder remaining.....sts.	7	7	7	7	8	9	10	10	10	11	11	12	12	12	13	
	24	24	26	26	28	26	28	30	30	32	32	34	36	36	38	
LEFT FRONT: cast on.....sts.																
K2, P1 rib for 2 inches. Then work even in stockinette st until piece measures inches.	50	52	54	56	58	58	60	64	68	70	66	70	74	78	82	
	15	15	15½	15½	15½	15	15	15½	15½	15½	15	15	15½	15½	15½	
SHAPE FULL-FASHIONED ARMHOLE:																
At arm edge bind off.....sts, continue to dec 1 st at same edge every 4th rowtimes.	3	3	4	4	4	4	4	4	4	4	4	4	4	4	4	
Work even on.....sts.	7	7	8	9	9	8	9	9	10	11	10	11	11	13	14	
until armhole measures.....inches.	39	41	41	42	44	45	46	50	53	54	51	54	58	60	63	
	5¾	6	6¼	6½	6¾	5¾	6	6¼	6½	6¾	5¾	6	6¼	6½	6¾	
SHAPE NECK: Starting at arm edge, worksts.																
sl onto a holder last (or bind off)sts.	29	31	31	33	34	35	36	38	40	41	39	40	42	44	45	
At neck edge dec 1 st 8 times. Work even onsts.	10	10	10	9	10	10	10	12	13	13	12	14	16	16	18	
until armhole measures.....inches.	21	23	23	25	26	27	28	30	32	33	31	32	34	36	37	
	7	7¼	7½	7¾	8	7	7¼	7½	7¾	8	7	7¼	7½	7¾	8	
SHAPE SHOULDER: At arm edge bind off.....sts.																
twice and.....sts.	7	8	8	9	9	9	9	10	11	11	10	10	11	12	12	
once.	7	7	7	7	8	9	10	10	10	11	11	12	12	12	13	

Sizes	WORSTED					SPORT					FINGERING				
	12	14	16	18	20	12	14	16	18	20	12	14	16	18	20
RIGHT FRONT: Work to correspond to left front, reversing all shaping. Form first buttonhole when piece measures 1 inch. BUTTONHOLE: Starting at front edge, K3, trans st 4 & 5 to opposite sides. On next row cast on 2 sts over those trans on previous row. Make 7 more buttonholes, evenly spaced—the last one to be made on second row below neckband.															
SLEEVES: cast onsts.	40	40	42	42	46	50	52	54	56	58	52	56	60	64	68
K2, P1 rib for 2 inches. Knit 1 row then, inc at even intervals to.....sts. inc 1 st each end every 1 inch 11 times. Work even on.....sts.	42	44	46	48	52	54	56	60	62	66	66	70	74	78	82
until piece measures.....inches, SHAPE FULL-FASHIONED CAP: At the beg of the next 2 rows bind offsts. Dec 1 st each end every other row...times. At the beg of the next 4 rows bind offsts. At the beg of the next 2 rows bind offsts.	64	66	68	70	74	76	78	82	84	88	88	92	96	100	104
SHOULDER TAB: Work even for 1 inch on remainingsts. On next row dec 1 st each end and repeat this dec every 1½ inches twice. Work even on.....sts. until tab measures.....inches. Bind off.	18	18	18½	18½	18½	18	18	18½	18½	18½	18	18	18½	18½	18½
NOTE- If shoulder tab is not desired-knit 2 more rows to shoulders of front & back before starting binding off. FINISHING: Sew back and front shoulders to sleeve tab. Sew in sleeves. Sew underarm and sleeve seams. NECKBAND: with purl side facing you, pick up.....sts. around neck edge, including sts from holders. K2, P1 rib for 1 inch, forming last buttonhole on right front on second row in same manner as before. With right side facing you, work 1 row S C on each front edge. Block. Shrinking ribbon first, face both fronts. Finish buttonholes. Sew on buttons.	3	3	4	4	4	4	4	4	4	4	4	4	4	4	4
	15	16	17	17	18	17	19	19	21	23	21	23	24	26	28
	3	3	3	3	3	4	3	4	4	4	4	4	4	4	4
	3	3	2	3	4	3	4	4	3	3	4	4	5	5	5
	10	10	10	10	10	12	12	12	12	12	14	14	14	14	14
	4	4	4	4	4	6	6	6	6	6	8	8	8	8	8
	4¼	4½	4¾	5	5¼	4¼	4½	4¾	5	5¼	4¼	4½	4¾	5	5¼
	88	90	94	96	98	106	108	112	116	116	120	120	124	124	128

brother. - KNIT PATTERN SERIES

No. 2



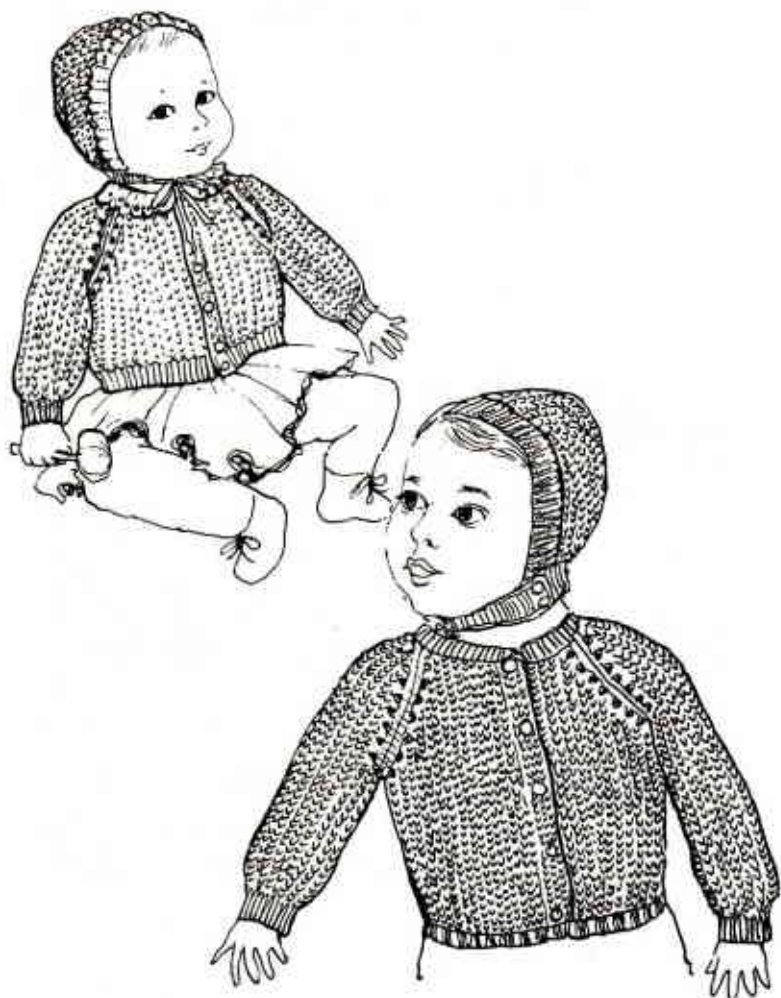
MEN'S CLASSIC V-NECK PULLOVER

FINGERING YARN

SIZES	38	40	42	44	46	48
SKEINS: STYLE A-SLEEVELESS	9	10	11	12	13	14
STYLE B-WITH SLEEVES	12	13	15	16	18	19
GAUGE: 8 Sts = 1 inch; 10 rows = 1 inch.						
BACK: Cast on.....	160	168	176	184	192	200
Work in desired ribbing of k 2, p 2, or k 1, p 1, for	3½	3½	3½	4	4	4
Work in stockinette st until length is	13	13	13½	13½	14	14¼
Style A... INCHES	14½	14½	15	15	15½	15¾
Style B... INCHES	10	10	10	12	12	12
ARMHOLE SHAPING: All styles. Bind off at beginning of next 2 rows. Bind off	4	5	5	5	5	6
at beginning of next 4 ROWS FOR STYLE A and next 2 ROWS FOR STYLE B.						
STYLE B ONLY: Bind off	—	—	—	—	2	2
at beginning of next 2 rows. Dec 1 st at both ends of every other row until there remain	108	112	116	120	124	128
Style A... STITCHES	120	124	128	132	136	140
Style B... STITCHES	10	10½	10½	11	11	11¼
Style A... INCHES	8½	9	9	9½	9½	9¾
Style B... INCHES	8	8	9	9	9	10
SHOULDER SHAPING: STYLE A: Bind off at beginning of next	8	6	6	6	6	6
ROWS	—	10	8	8	10	8
then at beginning of next 2 rows bind off	10	10	11	11	11	11
STYLE B: Bind off	6	8	6	6	6	8
at beginning of next	8	—	8	8	10	—
then at beginning of next 2 rows bind off	44	44	46	50	50	52
ON ALL STYLES: Bind off remaining.....						
FRONT: Work exactly as Back until armhole shaping has been completed. If necessary work even until length from first row of armhole shaping is	3	3¼	3½	3½	3¾	3¾
Style A... INCHES	1½	1¾	2	2	2¼	2½
Style B... INCHES						
V-NECK SHAPING: NEXT ROW: Divide work in half - Knit one side at a time	54	56	58	60	62	64
Style A... STITCHES	60	62	64	66	68	70
Style B... STITCHES						
(center of Front). Place remaining sts on a stitch holder, decrease 1 st at NECK EDGE every 3rd row until there remain	32	34	35	35	37	38
Style A... STITCHES	38	40	41	41	43	44
Style B... STITCHES						
If necessary, work even until length is same as Back to shoulder shaping, ending at side edge.						
SHOULDER SHAPING: Bind off.....	8	8	9	9	9	10
Style A... STITCHES	10	10	11	11	11	11
Style B... STITCHES						
at beginning of next row and every other row 3 times. Bind off at same edge remaining sts.						
Knit Right Front to correspond, reversing shapings.						
SLEEVES:	72	76	76	80	84	88
Work in ribbing as for Back for.....	3	3	3	3	3½	4
INCREASING 8 STS evenly spaced on last row of ribbing - Inc. 1 st at each end every 8th row until there are	120	124	128	132	136	140
Work even until length is.....	19	19½	20	20	20½	21
TOP SHAPING: Bind off	10	10	10	12	12	12
at beginning of next 2 rows, then	4	5	5	5	5	6
at beginning of next 2 rows, then	—	—	—	—	2	2
at beginning of next 2 rows. Dec 1 st at each end every other row until piece measures from first row of top shaping	5½	6	6	6½	6½	6¾
INCHES						
Bind off 3 sts at beginning of next 6 rows. Bind off remaining sts.						
NECKBAND: Pick up stitches along left and right side of "V" neck separately. Left edge-82-82-82-82-86-86 sts. The right edge to correspond to the left-Knit 12 rows K 2 P1-dec. 1 st at "V" shaping of center front every other row to form diagonal edge for a smooth fit of neck border. Back of neck; pick up 43-43-47-51-51-55 sts.						
Armband Style A						
Pick up: 94-102-104-110-112 sts. along armhole edges working on the front and back separately. Knit 15 rows of K 2 P 1 or any ribbing desired. Bind off. Sew together at shoulder seam. If this ribbing is knit with hand needles, no shoulder seam is necessary, just double the figures given above.						
Finishing: Sew shoulder and side seams, then sew in sleeves. Steam block to size. This is a basic slipover, as to size and shaping. To vary it, you can introduce, cables, Fair Isle, or any pattern stitch desired.						

brother. - KNIT PATTERN SERIES

No. 3



DESIGNED BY LILI KIRK

INFANTS OUTFIT

MATERIAL: candour or pompadour 3 oz (4-4) oz., 5 tiny pearl buttons, ½ yard grosgrain, ribbon, a few strands embroidery cotton.

SIZES: 6 (12-18) mos.

GAUGE: 8 st=1" 12 rows=1"

ABBREVIATION: K-knit P-purl YO-yarn over

NOTE: Ribbing should always be knitted tighter than given gauge.

BACK: Cast on 82 (86-90) sts evenly on each side of "O".

Row 1-20 Rib K2 P1

Row 21-70 (21-75) (21-80) knit even

SHAPE RAGLAN ARMHOLE

Row 71-72 (76-77) (81-82) Bind off 4 st the beg. of next 2 rows.

73-122 (78-131) (83-140) Dec 1 st each end every other row. Make full fashioned dec. by using three prong transfer tool and moving the 3rd st. to the 4th needle and sts. 2 & 1 on following needles.

Now to form 1 YO next to the 3rd needle trans. the 4th st. also to needle 3 which now holds 3 st., always push up emptied needles before knitting. Slip remaining sts on holder, to be picked up later for neckband.

LEFT FRONT Cast on 46 (49-52) sts evenly on each side of "O".

Row 1-20 Rib K2 P1 on 10th row start first buttonhole and make the following ones 20 rows apart.

Row 21 Transfer the 7th st to the 8th needle and leave it out of service all the way up center front for buttonhole border.

Row 21-70 (21-75) (21-80) Knit even

RAGLAN ARMHOLE

Row 71 (76) (81) Bind off 4 st at the beg. of row.

Row 72-122 (77-131) (82-140) Dec 1 st at armhole edge to correspond to back. Slip remaining sts on holder to be picked up later for neckband.

RIGHT FRONT-Knit to correspond to left front, reverse shaping and buttonholes if its for boy or girl.

SLEEVE Cast on 46 (48-50) sts

Row 1-20 Rib K2 P1

Row 21-52 (21-52) (21-52) Inc 1 st each side every 6th row.

Row 53-84 (53-90) (53-96) Knit even.

SHAPE RAGLAN

Row 85-86 (91-92) (97-98) Bind off 4 st at the beg. of next 2 rows and shape to correspond to back and front armholes. Trans remaining sts to stitch holders. Knit second sleeve to correspond.

FINISHING Sew side, underarm, and sleeve seams. Style 1-Neckband. Replace sts now on st holders and rib to correspond to bottom and cuff. Style 2-Picot edge collar. Work front same as style 1 up to row 115 (118-121) Bind off 8 st starting at center front edge and continue to dec 1 st every other row until 6 sts remain.

COLLAR Pick up 70 (72-74) sts along neck edge. To shape this collar which is double, loosen tension slightly every 4th row and also inc. 1 st at each end 4X-16 rows in all. Transfer stitches for picot edge Now tighten tension every 4th row for the underside of collar and reverse shaping by dec. every 4th row. Fold under on picot edge and sew to neck edge. Trim with embroidered rose buds.

BOYS CAP

NECKBAND Cast on 116 (122-128) evenly on each side of "O".

Row 1-15 Rib K2 P1 for neckband.

Row 16-Bind off 38 st from each end and work on 78 (84-90) st.

Row 17-56 Knit even

57 Bind off 26 (28-30) st at the beg of next 2 rows

Turn row counter back to O and knit 30 (33-36) rows/Bind off.

Finishing sew bound off edges of sides to center piece

CAP CUFF Pick up 96 (100-104) st on edge of cap and replace on needles, knit 15 rows and rib to correspond to sweater edge.

BONNET Cast on 70 (76-80) evenly on each side of "O".

Row 1-16 Knit and Inc 1 st each side every 4th row Transfer sts for picot edge

17-32 Dec every 4th row make hem-Row 33 Dec 6 st evenly across row.

33-36 Knit even

Ribbon Beading Trans sts for YO use 1x3 transfer tool (for ribbon insert)

Row 37-80 Knit even

Divide work in thirds, bind off 1/3 of the sts from each side. Knit centerback

Row 81-117 Dec 1 st each side every 6th row. Bind off remaining sts.

Weave side edges to center back.

NECKBAND pick up sts along back of cap. Knit 20 rows make hem, insert ribbon for ties.

Finishing-Embroider rosebuds on facing of bonnet and edge of collar.

brother. - KNIT PATTERN SERIES

No. 4



OFF TO SCHOOL

A cardigan and slipover of worsted for the boy or girl of the school set.

MATERIALS: Knitting worsted 14 (16-16-18) oz.
SIZE: 6(8-10-12)
STITCH: Stockinette
GAUGE: 5 st=1" 7 rows=1" on alternate needles.
Note: Knit ribbing tighter than given gauge.

CARDIGAN WITH ROUND NECK

BACK: Cast on 62 (66-70-76) sts.

Row 1-14 Rib (K2 P1); on last row after ribbing is completed loosen tens. for correct gauge.

Row 15-16 Inc. 1 st each side on next 2 rows. Knit even on 66 (70-74-80) sts until back measure 9 (10-10-11-12)" or the desired length.

ARMHOLE SHAPING: Bind off 3 (3-3-4) sts. at the beg. of next 2 rows. Now dec. 1 st. each side every other row 3 (4-5-6) times. Knit even on remaining 54 (56-58-60) sts. until armhole measures 5¼ (5-3¼-6¼-6½)" from bound off stitches.

SHOULDER SHAPING: Bind off 6 sts at beg of next 2 (4-4-6) rows, on sizes 6-8-10 only bind off 5 sts at the beg of next 4 (2-2) rows. Trans. remaining 22 (22-24-24) sts to st holder, to be used later for neck rib.

Note: Knit the front without the buttonholes first. For a boy knit right front first. The following directions are for a girl.

LEFT FRONT: Cast on 44 (46-50-52) sts. Rib to correspond to back, leaving 13 sts at front edge in stockinette st. This forms a double buttonhole border. Knit to correspond to back, up to armhole shaping.

ARMHOLE SHAPING: Bind off 3 (3-4-4) sts at side edge. Dec. 1 st. at same edge every other row 3 (4-5-6) times. Knit even until armhole measures 3¾ (4¼-4½-4¾)" above bound-off stitches.

NECK SHAPING: Starting at front edge trans. 16 sts. to holder, these to be picked up later for neck band. Knit 2 rows, then bind off 2 sts at neck edge every other row 3 (3-4-4) times. Knit even on the remaining 16 (17-17-18) sts until armhole corresponds to back.

SHOULDER SHAPING: Bind off 6 sts at armhole edge every other row 1 (2-2-3) times. On sizes 6-8-10 only bind off 5 sts at the same edge 2 (1-1). Place markers for 4 buttons at front edge with the first one ¾" above lower edge, the others 2 (2-2½-2½)" apart, 5th button on neckband.

RIGHT FRONT: Knit to correspond to left front, reversing all shaping, except that you trans sts opposite markers as follows; starting from front edge trans sts 3 and 4 and sts 10 and 11 for double buttonholes. Next row cast on the empty needles, and repeat making buttonholes as specified.

SLEEVES: Cast on 38 (38-40-40) sts. K2 P1 rib for 2½"; when ribbing is completed loosen tens. Knit even and inc. 1 st. each side every 7th row 8 (9-9-11) times or until you have 54 (56-58-62) sts. Knit until sleeve measures 12 (13-14-15)" or the desired length.

CAP SHAPING: Bind off 3 (3-3-4) sts. at the beg. of next 2 rows. Dec. 1 st. each side every other row 7(8-9-10) times, bind off 3 sts at the beg of next 4 rows for all sizes. Bind off remaining 22 sts.

Sew shoulder seams.

NECKBAND: Pick up 99 (99-103-103) sts around neck including sts on holders; make corresponding rib for 10 rows, remember to make the last button hole at the correct edge.

FINISHING: Sew sleeves in place, then underarm and side seams. Fold in facing and hem on purl side; be sure to match buttonholes and work around them.

RAGLAN SLEEVE SLIPOVER

Follow the instructions for the back of cardigan up to Armhole Shaping. Bind off 3 sts for all sizes, then dec 1 st each side every other row use FF dec until 20 (22-24-26) sts remain, trans to stitch holder to be picked up later for neckband or turtle neck finish. Knit front to correspond.

SLEEVE: Follow instructions for sleeve of cardigan up to bind off; bind off 3 sts at the beg of next 2 rows, then dec 1 st each end every other row until 12 (12-13-13) sts remain; trans. to st holder. Knit other sleeve to correspond.

NECK RIBBING: Carefully sew sleeves to front and back, leaving the 4th edge open; to replace the stitches on holders to the knitter the garment has to be opened. If turtleneck is to be ribbed by hand, then sew all 4 seams, underarm and side seams together.

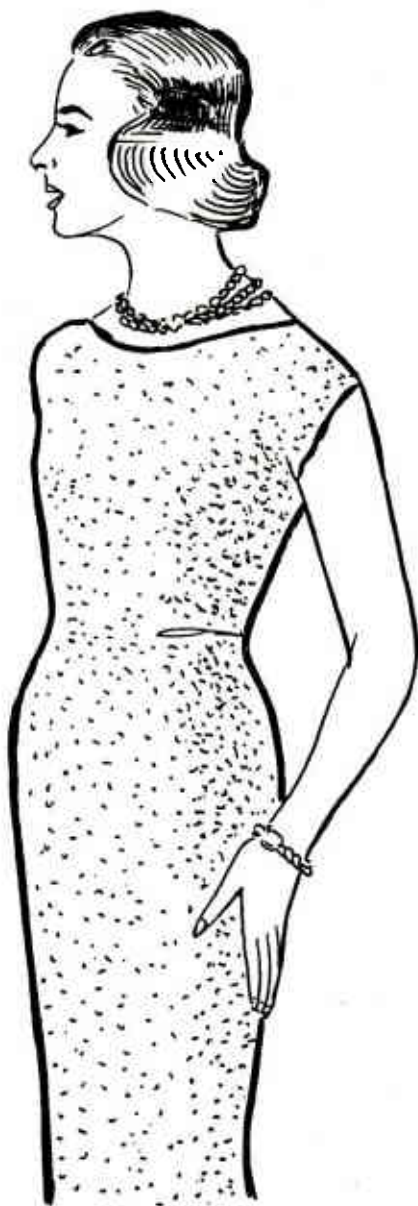
HOOD

Worsted:- 2 oz. Sizes: Medium and large.

Cast on 50 (54) sts. Knit hem two points tighter than given gauge. Row 1-30 hem. Now loosen tension, set H.C. to pos. III and use the method used for shaping the heel of a sock. When the cap is completed, trans. every third st as for Y.O. These are used to insert chain or ribbon for tying. Knit another 20 rows and bind off. Trim to suit.

brother. - KNIT PATTERN SERIES

No. 5



THE HERODIA DRESS

- MATERIALS:** Spinnerin's Herodia (1 oz sk. s) 16 (17-18) sk. or any dress yarn giving the same gauge.
- SIZES:** 12 (14-16)
- GAUGE:** 7 st-1" 11 rows
- STITCH:** Stockinette
- BACK:** Cast on 154 (160-166) sts. evenly on each side of "O".
If not certain of length do not make hem at this time.
- ROW:** 1-24 Knit even, make hem.
- NOTE:** Skirt is planned for 26½" length. Make any necessary length adjustment before first dec. row.
- Row 25-132 Knit even for 12" on last row dec. 1 st. each side (First dec. now)
- 133-217 Knit even for 17 rows repeat 4 times more on each 17th row.
Work on 144 (150-156) sts.
- 217- Dec. 1 st. each side (6th dec. row)
- 218-229 Knit even on 142 (148-154) sts.
- 230- Make 4 dec. across this row. dec. on 25th st. from each end and also 1 st. and last st. on this row, Work on 138 (144-150) sts.
- 231-286 Repeat this 4 st. dec. every 8th row 7 X. Continue knitting even on 110 (116-122) sts. until piece measures 26½" on the desired length.

BLOUSE

- Place markers across row for waistline. Do not bind off, continue with bodice. Set row counter back to "O".
- ROW:** 1-77 Inc. 4 st. across row, and inc. 1 st. on 25th needle from each end, also 1 st. and last st. on this row.
Make 6 more increase rows in this manner, work on 138 (144-150) sts.
the inc. will be directly above the previous one forming a dart. Knit even until piece measures 8 (8-8½)" from waistline marker.
- SLEEVE:** Place marker at each end for start of cap sleeve.
inc. 1 st. at each end, then every 17th row. 5 times, at the same time when sleeve measures 4½ inches.
- SHAPE NECK:** Knit across and bind off 25 (27-29) center stitches. Trans. one side to sts. holder, continue to inc. at arm edge and neck edge, bind off 3 st. every other row 12 (13-14) times.
- SHAPE SHOULDER:** Work even until sleeve measures 7 (7½-7¾) inches. Divide remaining st. in 1/3rds and bind off. beg at arm edge. Replace other shoulder to knitter and knit to correspond to first reversing all shaping.
- FRONT:** Knit the same as back of dress.
- FINISHING:** First steam block lightly. Sew shoulder and side seams, leave 10" opening at left side for zipper. Work 2 rows of S. C. around neck and sleeve edges and 1 row around side zipper opening. Make casing for elastic inside waistline.

brother. - KNIT PATTERN SERIES

No. 6



ANGORA MAGIC

THE ULTIMATE IN LUXURY...THE MINK OF YARNS...CUDDLY SOFT AND RICHLY FEMINE, IS THE MAGIC OF ANGORA. YOU WILL LOVE HOW EASILY AND SMOOTHLY BROTHER-KNIT HANDLES YOUR ANGORA AND WE KNOW THAT YOU WILL GET EVERLASTING USE OUT OF THESE ANGORA-MAGIC ACCESSORIES. THE MORE YOU USE AND WASH ANGORA, THE MORE BEAUTIFUL IT BECOMES. IN THIS MANNER, YOU WILL ENJOY LUXURY IN THE MOST ECONOMICAL FASHION.

MATERIAL: 100% angora, 24 balls (mink) 2 balls darker brown trim. GAUGE: 5 st=1"

STRIP 1

Cast on 6 sts for all strips.

Row 1-40 Inc 1 st each side every 5th row.

41-100 Inc 1 st each side every 10 rows. (32 st)

101-250 Knit even.

CENTER

Row 251-310 Dec 1 st each side every 10 row.

311-350 Dec 1 st each side every 5th rows.

Bind off. Block to 65".

STRIP 2

Row 1-40 Inc 1 st each side every 5th row.

41-100 Inc 1 st each side every 10th row.

101-225 Knit even

CENTER

Row 226-285 Dec 1 st each side every 10th row.

286-325 Dec 1 st each side every 5th row.

Bind off. Block to 55".

STRIP 3

Row 1-40 Inc 1 st each side every 5th row.

41-100 Inc 1 st each side every 10th row.

101-200 Knit even.

CENTER

Row 201-260 Dec 1 st each side every 10th row.

261-300 Dec 1st each side every 5th row.

Bind off. Block to 49".

STRIP 4

Tuxedo collar and pocket strip. Cast on 6 st.

Row 1-24 Inc 1 st each side every 6th row. (14 st)

25-400 Knit even.

401-425 Dec 1 st each side every 6th row.

Bind off.

BLOCKING & FINISHING: Angora, because of its unusually soft texture, has very little body, therefore curls, more than other yarns. The best way to block it is to dip into lukewarm water, roll in towel and squeeze dry. Then pin three graduated strips to blocking board, pad, or heavy cardboard, in crescent shaped pattern. When pieces are completely dry, mark center of each piece, put a row of basting on the inner curve of each strip, gather slightly, to fit outer curve of each shorter piece. Match center marks, as you pin pieces together and ease in any extra fullness with your basting thread. To give the shaded effect of mink, use a darker color varn to join pieces together, using a single crochet stitch. For an additional ridge fold each strip in half and single crochet on the edge of the fold. The tuxedo collar is pinned to the neck edge with the purl side to the knit side of stole. Start pinning from center back. The ends of the tuxedo form the small spiral shaped pockets as shown in illustration. The edges are crocheted together with a picot edge trim, of 5 single crochet sts and 5 chain sts, fasten chain st back into 5th st. Apply this trim around stole, collar and pocket edges. Angora does not attain its usual fluffiness until it is handled and used. Shake and brush thoroughly for it to get its full luxurious beauty.

Defrosters



"DEFROSTERS"

SMALL MITTENS #1

Material: ½ oz. super-fingering yarn.

Size: Toddler

Gauge: 7 sts. = 1" 9 rows = 1"

Note: Knit ribbing at a tighter tension than given gauge.

Abbreviations: O of S-out of service; P.K. -partial knit on KH 43.

H.P. -hold position: on KH 211, 218, 311 & 511-F.F. -full fashioned inc or dec.

Cast on 44 sts. Divide evenly on each side of "O". For "Quick Rib" cuff-1 knit-1 "O.S".
Row 1-24 Knit even. Make hem for cuff.

Row 25-30 Knit even.

Shape thumb: Set cams to H.P. Set row counter to "O". Knit 9 stitches on left side of work for thumb. Balance of stitches remain on needle until thumb is completed. Knit 9 rows even then, shape tip. Use "short row" method. To decrease, push up one needle at a time from each side starting at the left outside needle. Raise it, then knit across. Decrease until 3 stitches remain in center; then reverse by pulling back into knit position one needle at a time until all 9 stitches knit and tip is completed, Knit 9 rows to correspond to first half of thumb. This method for shaping applies to all following mittens.

Row 31-45 Knit even.

Shape Top: Set cams to H.P. Divide work in half (22 sts.) Work one side at a time with transfer tool. Dec. 1 st. beg. of each row until 10 sts. remain. Bind off. Work other side to correspond.

Finishing: Join seams, sew thumb seams first, using wool needle; carefully pick up only ½ sts along side edge to prevent ridge on the inside.

For Small Mit: Make chain of single crochet, insert through eyelet above cuff. Make pom poms and attach to ends.

SCHOOL CHILD'S MITTEN: #2

Material: 1 oz. Sport or Fingering Yarn

Size: Medium

Gauge: 8 sts. = 1 inch-12 rows = 1 inch

Cast on 60 sts. 30 sts. on each side of "O".

Row 1-40 "Quick Rib"-1 knit-1 "O.S." Make hem.

Row 41-55 Knit even.

Shape Thumb: Cams to P.K. or H.P. -row counter to "O". 10 sts. to H.P. knit 15 rows. See method on small mitten.

Shape Tip: "Short row" method, knit another 15 rows to correspond to first half. Set cams to K row counter back to 56.

56-102 Knit even. Cams to "P.K." or H.P. Divide work in half.

Shape Top: 103-112 *Dec. 1 st. beg. of each row until 10 sts. remain. Bind off. Work other side to correspond.

Trim Pattern Suggestions: After thumb has been formed at row 60, knit attractive Fair Isle pattern using 2x2 needle selector or push button pattern. Knit 2 rows of trim color, 2 rows of main color - push up alternating needles and repeat. You will get a checkerboard design. Continue for 14 rows.
Same as first mitten.

LARGE WORSTED MITTEN: #3

Material: Worsted-2 oz. skein

Size: Large

Stitch: Stockinette & Cable

Gauge: 5 sts. = 1" - 7 rows = 1"

Cast on 36 sts. Divide evenly on each side of "O" using alternate needle.

Row 1-24 Knit 2 Purl 1 with latch tool. Place cable on needles 9-10-11-12. Purl 1 st. on each side of cable with latch tool.

Row 25-32 Knit even. Twist cable every 8th row.

Row 33-36 Knit even. Set row counter to "O".

Shape Thumb: Put 8 sts. into "P.K." See method "Small mitten" Knit 15 rows.

Shape Tip: "Short row" method. Knit 15 rows to correspond to first half. Thumb completed. Set row counter back to 37. knit all 36 st. across.

Row 37-62 Knit and twist cable every 8th row, now set cams to HP. Divide work in half.

Shape Top:

Row 63-70 *Dec. 1 st. each side every other row until 10 sts, remain. Bind off.

PRE-SCHOOL BOY'S CAP: #4

Material: 1 oz. Skein Worsted

Size: 6-10 year

Stitch: Stockinette-on alternate needles.

Gauge: 5 sts= 1 inch - 7 rows= 1 inch

Cast on 84 sts. 42 sts. on each side of "O".

Row 1-25 Rib-Knit 2, purl 1.

26-45 Knit even-then divide work in 4 equal parts-21 sts, to each quarter. Set cams to H.P. Dec. 1 st, beg. of each row until 1 st. Bind off. Knit 3 other gores to correspond.

Block & Finish: Sew gore seams first, then center back seam.

Trim: Pom Pom on top is optional.

*Wherever decreases are made, use 3 eyed transfer tool (center prong being inactive). Make full fashioned decrease by transferring second stitch to third needle.

TEEN BOY'S SKATING CAP: #5

Material: 1 oz. Skein Worsted

Size: College Boy (20-21 head size)

Stitch: Stockinette and Cable

Gauge: 5 sts= 1 inch-7 rows= 1 inch

Cast on 88 sts, divide evenly on each side of "O".

Row 1-32 Knit even, make hem.

Row 32 Divide work into quarters of 22 sts. each by placing markers. Start Cables on this row in the center of each quarter, twist cables every 8th row. Continue until row 56.

Row 57 Set cams to H.P. Work each gore separately. Start at left to shape gores. Work on 22 sts. at a time. Dec. 1 st. at each end every 3rd row, also continue cable until all stitches are finished off. Repeat for 3 other gores. Weave or sew gores first, then the back seam.

HOODED SCARF: #6

Material: 4 oz Worsted. 1 ball angora trim. 2 small pearl buttons.

Size: Pre-teen

Cast on 45 sts. Divide on each side of "O"

Row 1-135 Knit even.

136-145 Rib-Knit 2 Purl 1

146-185 Knit even.

186-221 Dec. 1 st. every 4th row on left side of work. Center of Hood. Knit other side to correspond reversing all shaping

Block: When blocking, stretch lengthwise.

Finishing: Sew back seam from ribbing to top of hood at center back. Then crochet along front edge if angora facing is not used.

Angora Facing: Angora facing on hood is knitted separately.

Cast on 60 sts, using every other needle.

Row 1-15 Knit even. Dec. 1 st. deg. of every-4th row. Bind off. Sew to edge of hood.

Neck Closing: Sew two small pearl buttons and crochet two loops for buttonholes under the chin.

Fringe: Cut 12 inch strands-4 strands to a cluster, fold in half, pull through every other stitch and loop at the ends of scarf about 3 sts apart.

brother. - KNIT PATTERN SERIES

No. 8

Minute-Made Gifts !



MINUTE MADE GIFTS

Knitted in minutes, worn for years, these "quickies" can be made in less time than you can shop for them. They will be appreciated and enjoyed by their recipients.
For general knitting instructions consult the manual given with your machine.

GLOVES

MATERIALS: 1 oz.-Fingering Weight Yarn **SIZES:** Medium-Fits 5-6-7. **GAUGE:** 7 st=1"-12 rows=1"

NOTE: Knit all ribbing at a tighter tension than given gauge.

ABBR.: K-knit, P-purl, St-stitch, O of S. -out of service, x-times, Inc-increase, Dec-decrease, Y.O-yarn over, FF-full fashioned dec, H.P-hold position.

CUFF: Cast on 60 sts-divide evenly on each side of "O". Row 1-10 knit even, transfer sts for picot edge. Row 11-21 knit even make hem. For a man's glove these 20 rows should be ribbed K2-P2

ROW: 21-45 knit even to base of thumb.

Set cams to HP-Knit 11 sts at left of knitter to form thumb. Knit 24 rows for length. Shape tip-use short row method as for heel of sock, dec. 1 st at the beg. of each row until 1 remains then reverse until the 11 st are knitting again. Repeat 24 rows even. Set HP cams back to knit, continue knitting on all 60 sts. Knit 17 rows even.

SHAPING FINGERS-PINKY

Leave 13 center sts on knitter. Transfer remaining sts on each side to 2 separate st. holders or sock knitting needles. Inc 1 st each side of 13 sts. Knit 24 rows for length of fingers. Tear off yarn leaving enough yarn to thread needle and run thru 15 sts, pull together and weave side seam later.

THIRD FINGER

With purl side facing you replace to the knitter 7 sts. from 1 holder, pick up 1 st at left from previous finger and 8 sts. from other holder and inc 1 st. at right side. K37 rows, finish as previously instructed.

MIDDLE FINGER

Replace 8 sts. from each needle inc. 1 st. in between from 3rd finger and 1 st. at right side. K39 rows finish as other fingers.

INDEX FINGER

Pick up 7sts. from one side, 8 sts. from the other; pick up 1 st. from middle finger and inc 1 st. at rightend. K36 rows.

Knit left glove to correspond but remember to reverse shaping. This is a medium size glove. If you need it larger or smaller inc. or dec. accordingly.

WORSTED HAT-2 VERSIONS ILLUSTRATED

This style hat may be worn by teenagers and their mothers as well. For the youngsters knit it in their school colors.

Cast on 90 sts.-use on alternate needles. Knit two rows of each color, 35 rows altogether. Now K2 P1 but do not pick up each strand as for regular rib. Start at the bottom, pick up and pull thru two white strands, slip latch tool under next two strands and again pick up only trim color. When completed only white sts. predominate. Bind off and sew band together.

FRINGE

Cut 50 strands each of two colors. 24" long if pony tail hat is desired, 12" long for adults. Work along the top edge, double a strand of yarn and pull thru with crochet hook and draw thru loop. Alternate with as many colors as are being used in hat. Take double strand of yarn and wind around fringes tightly after trying cap on so cap is the desired depth. Trim ends of pony tail even. For adults, after tying securely, trim fringe very closely to resemble a frizzy button. Turn brim up to suit wearer.

T. V. SLIPPERS

MATERIALS: 4 Ply knitting worsted **SIZE:** Small, Medium, Large **GAUGE:** 5 st-1" 7 rows-1"

Cast on 26 (30-36) sts.

Row 1-35 (40-46) Knit even.

36-50 (41-60) (47-70) Dec 1 st each side every other row until 10 sts (10-12 sts) remain.

51-85 (61-90) (71-95) Knit even. Bind off.

FINISHING

To shape heel fold cast on edge in half and crochet or sew together with blanket stitch in contrasting color. Fold over toe at end of decreases and crochet or sew together. Trim instep with pom poms or embroidery

MEN'S WORSTED DICKEY

Cast on 70 sts; divide evenly on each side of "O".

Row 1-60 Knit even.

61-66 Bind off 5 sts at the beg. of next 6 rows, remaining sts form turtle neck.

TURTLE NECK

Row 67-77 Rib K1P1. Bind off loosely. Knit second piece to correspond.

If crew neck is desired do not rib these stitches, just knit 10 rows, bind off, fold in and sew as a facing or hem.

FINISHING

Sew front and back piece together on left shoulder only. On right shoulder sew in zipper or buttons and crochet buttonhole loops.

MEN'S WORSTED SKI HELMET

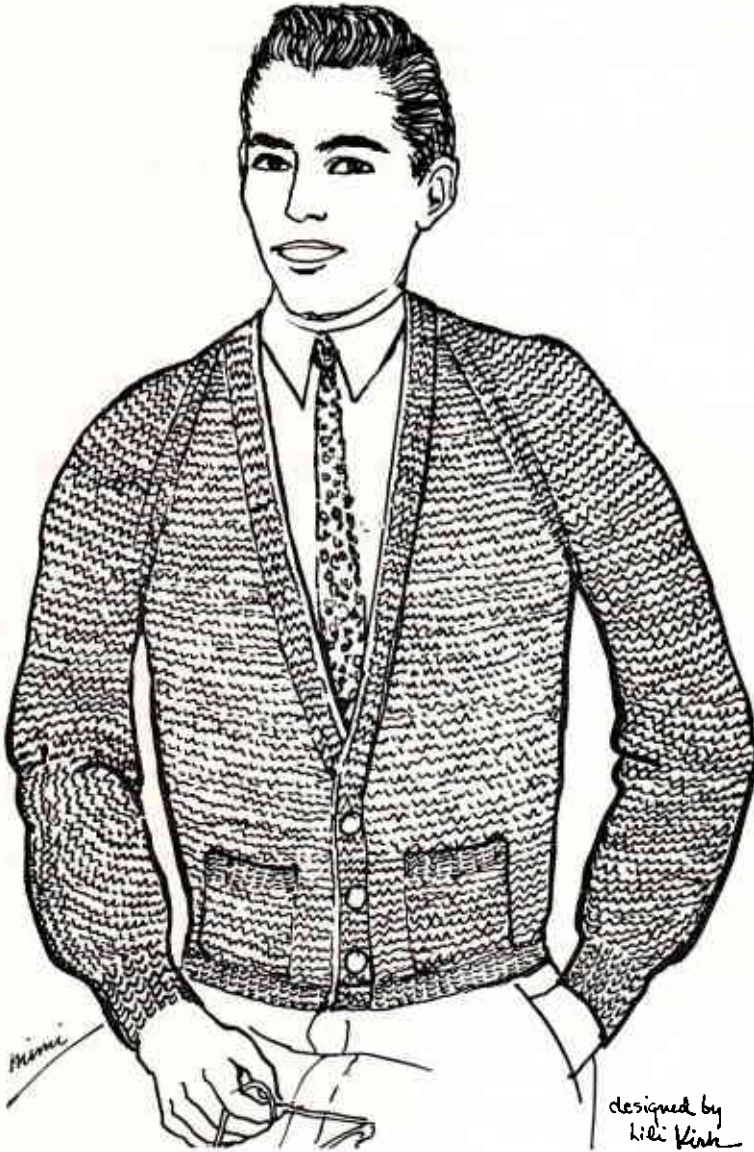
Cast on 90 st.

Rib 1-40 Rib K1 P1. Bind off loosely. Sew band together. Cross pieces.

Cast on 9 sts. Knit 2 strips about 8 inches long and slip stitch to head band one piece from front to back, the other from one side to the other.

brother. - KNIT PATTERN SERIES

No. 9



PERRY'S CASUAL CARDIGAN

CUSTOM MADE FOR THE MAN WHO LOVES TO RELAX. THIS "PERRY'S" CASUAL CARDIGAN SWEATER SEEMS TO INVITE RELAXATION. SUITABLE FOR EASY LIVING GOLFING OR PUTTERING AROUND THE HOUSE. MEN OF ALL AGES WILL LOOK TO THIS AS A GARMENT TO "LIVE IN".

FOR GENERAL KNITTING INSTRUCTIONS CONSULT THE INSTRUCTION BOOK ISSUED WITH YOUR KNITTER. IT IS NECESSARY TO CHECK GAUGE BY MAKING A SAMPLE SWATCH BEFORE STARTING THE GARMENT.

MATERIALS; fingering yarn 15 (15-17-18) oz, 3 pearl buttons, 1 yard gross grain ribbon for button borders facing

SIZES; 40 (42-44-46)

GAUGE: 8 st=1" 11 rows=1"

STITCH: Stockinette Note: Ribbing should always be tighter than given gauge.

The new look in full fashioned shoulder shaping. The decrease is made by transferring the 7th st to the 8th needle and shifting the other 7 sts over to full in the empty needle.

BACK

Cast on 160 sts (166-172-188), divide evenly on each side of "O".

Row 1-20 Knit even. Make hem.

21-176 (21-181) (21-186) (21-191) Knit even.

RAGLAN SHAPING

Row 177-178 (182-183) (187-188) (192-193) Bind off 4 sts (4-5-5) st beg. of next 2 rows.

179 (184) (189) (194) dec 1 st each side every other row until 42. st (46-52-59) st. remain. Bind off loosely for neck edge.

POCKET LINING

Before starting front, prepare 2 pocket linings. Cast on 32-(34-36-38) sts. Knit even for 36 rows. (41-46-52) rows, slip on stitch holder.

BUTTONHOLE BORDER

Consists of 7 sts. For an effective trim reverse all but the edge st to a purl and make your front edge shaping on the 8 st. Start first buttonhole on 25th row. Make 3 or 4 buttonholes 25 rows apart on left front.

RIGHT FRONT

Cast on 88 (91-94-97) sts, divide evenly on each side of "O".

Row 1-20 Knit even. Make hem.

21-56 (21-61) (21-66) (21-66) Knit even.

POCKET SHAPING

Knit in PK 32 (33-34-35) sts. Slip next 32 (34-36-38) st on holder these sts to be picked up later for band.

Now place pocket lining which was prepared into place on the knitter.

Row 57-80 (61-85) (67-90) Knit even.

81-96(86-101) (91-106) (96-111) Dec 1 every 8th row 2x at front edge.

97-176(102-181) (107-186) (112-191) Continue front edge dec every 10th row all the way up front.

RAGLAN SHAPING

Row 177 (182) (187) (192) Bind off 4 sts (5-5) at arm edge.

178 (183) (188) (193) Dec 1 st at arm edge every other row until 7(7-8-8) st remain continue to knit this piece until this border reaches center back of neck-approximately 30-35 rows.

LEFT FRONT-Work to correspond to right front only reversing the shaping of pockets.

SLEEVES -Cast on 68 sts (72-74-76 sts.)

Row 1-35 knit 1 Purl for cuff.

36 Inc 6 st evenly across row.

Row 37-187 (37-189) (37-189) Inc 1 st each side every 6th row. Work on 124 (130-132-134) sts until sleeve measures 19" or the desired length.

SHAPE RAGLAN CAP-Bind off 4 sts (5-5-5 sts) and Dec on each side every row to correspond to front and back armholes until 10 (12-12-14) sts remain.

POCKET BAND-Return to knitter the sts now on holders and knit 20 rows of 1 K 1 p border. Fold back and hem.

FINISHING-Steam pieces, sew seams. Set in sleeves. Sew pocket lining to sweater. Sew border to back of neck. To re-enforce front border knit a separate piece the length of the 2 fronts, and back of neck 8 sts wide, with buttonholes matching the ones made on sweater front. To attach to sweater use 1 row of S. C. in a trim color and slip stitch other edge to sweater.

CLASSIC SOCK

Sizes: Small - Medium - Large
 1 oz. -sock yarn 2 oz. 2 oz.

Cast on 47 (59-64) sts. Knit 24 (24-30) rows for cuff, this may be 1-K 1-P or quick rib. Knit even for 60 (70-80) rows-Instep-set row counter back to "O". Set H.C. to Pos. 3. Put the 12-(15-16) needles on each side of sock to pos. E. Now tear yarn and knit only the 23 (29-32) sts. in center, if end sts should drop as knitting grows, either hold down the knitting manually or insert small comb into the knitting to keep it taut. Knit even for 70 (80-90) rows. -Toe shaping: dec 1 st each side of every other row F.F. method, until 6(8-10) sts remain. They may be bound off or transferred to stitch holder and later sewn or woven to sole.

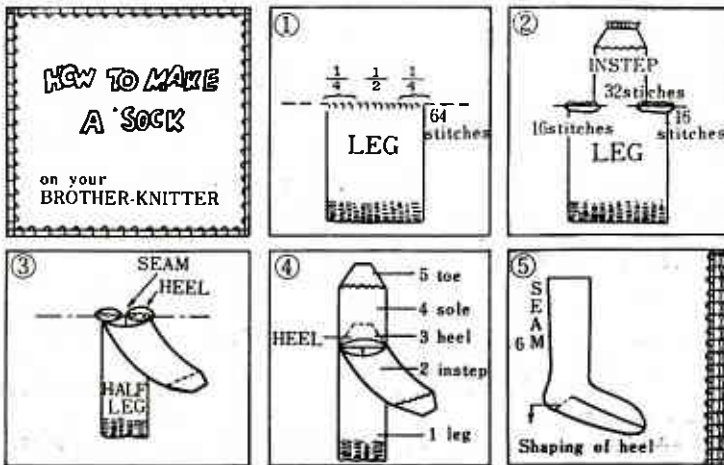
Heel shaping: Now remove the sts from the right side of the knitter, replace these sts to the left of sts on the knitter, so that the "purl" side is facing you and the edges meet in the center. These sts form the heel. Knit 10 rows even for all sizes, then set H.C. to pos 3. You will now push up to pos "E" 1 needle at a time, starting with the first needle nearest the carriage. Knit 1 row to the right, push up the outside needle, knit 1 row to the left, push up second needle, etc., until the work is divided into thirds 6 (8-10) sts on each side are in H.P. This is the center of the heel. You have been decreasing one st at a time. Now, reverse this process to increase by pulling back 1 needle at a time to pos "C" carefully, so that the st does not slip off the closed latch start with the center needle last put into pos "E", until all needles are knitting again. This is "short row" knitting.

Sole: Knit 60 (70-80) even.

Toe Shaping: Dec 1 st each side until it corresponds to toe of instep.

Finishing: Carefully weave side seams, toe and back seam. Pick up only 1 st from each side to form a nice flat seam.

This is a basic sock, you can introduce cables or any popular pattern stitch for an attractive trim.



COMMON KNITTER TERMS & ABBREVIATIONS

K - Knit	P - Purl	T - For tuck sts
Sts - Stitches	Inc - Increase	Dec- Decrease
Beg- Beginning	Tog- Together	Trans-Transfer
YO- Yarn over	Part- Partial knit for Fair Isle designs	
HC-Hold Cams in position I	MC- Main color	CC- Contrasting color
HP- Hold position (needles in position "D" do not knit but hold yarn on stitches.)		
FF- Full fashioned (use the 3 eyed transfer tool and decrease 1 stitch by shifting the 3rd stitch to 4th needle from the side edge.)		
O of S- Out of service, needles not knitting (position A)		

HINTS FOR PATTERN KEY STITCHES

The pattern keys which control the choice of needles in conjunction with "Hold Cams" at **I** for most of the basic textured patterns.

1. If not otherwise specified, Hold Cams are in pos. **I**
2. Start with carriage at the left side of knitter.
3. After pressing down pattern keys be sure to set needles by gently swinging handle to the left.
4. Always release set keys before resetting for alternate pattern.
5. Do not knit more than 2 rows when using every other needle in H P as thickness of collected yarn on needles jams carriage.
6. Textured patterns should be steamed lightly. Do not let iron rest on garment when blocking.
7. Do not unthread automatic yarn feeder unit when using 2 or more colors. Just remove the yarn being used from carriage guide, then thread C C into carriage feeder and place M C under right or left side of knitter to keep from tangling with yarn in use.

BROTHER-KNIT EXCLUSIVE PATTERN SERIES

The patterns listed below may be ordered individually at \$0.20 each. Check the ones you need. Enclose check or money order.

- 156 The Glamour Blouse
- 157 Playmates-children's Sweater Set
- 158 Man's Classic-slipover-with or without sleeves
- 159 Twin-Set Classic-Ladies fingering yarn
- 160 Minute Made Gifts-gloves, slippers, caps, dickey
- 161 The Worsted Bulky-raglan sleeved shorty
- 162 The Bermuda Dress-Two piece (fine dress yarn)
- 164 Defrosters-Cap, scarfs worsted
- 165 Off to School-Boys & Girls Sweaters, worsted
- 166 Cable Convertible-Men's Sweater, using worsted
- 167 On Ship or Shore-Two piece dress-for women
- 168 Little Charmer-Girl's Dress & Cardigan fingering yarn
- 169 The Popcorn Set-Boy's & Girl's Cardigan fingering yarn
- 170 Italian Cable-Ladies-fingering yarn
- 171 Cape Stole-Collar-Cap-Angora
- 172 Perry's Casual Cardigan-Men's sweater
- 173 Tiny Tot's Sweater & Hat Sets-Baby yarn
- 174 Winter Frolics-Ski Hood, Scarf worsted
- 175 Striped Jacket-Women's worsted
- 411 Knicker Sport Shirt-sport yarn
- 412 Worsted Empire Jacket
- 413 Empire Sleeveless Slipon-worsted
- 414 Men's Round Neck Slipover-Sport
- 415 Women's Blouse & Sheath Skirt-Dress yarn
- 416 Women's V-Neck Cardigan-Dress yarn
- 417 Afghans (4) Patterns-Worsted
- 418 Sheath Dress-Cap Sleeves-Classic Dress yarn
- 419 Boy's Crew Neck Worsted Slipover
- 420 Schoolgirl Cardigan-Fingering yarn
- 421 Toddler Outdoor Set-Sport yarn
- 422 The Skater-Fingering yarn
- 423 Twin Sweater (large size) Man, woman, fingering & sport yarn
- 425 Awning Striped Cardigan, Worsted for men & women
- 426 Men's Socks
- 427 Ladies Raglan Sleeve Coat-worsted
- 428 Worsted Slacks & Hooded Jacket for 2-4 year olds.

MAIL TO:

BROTHER INTERNATIONAL CORP.
680 FIFTH AVE
NEW YORK 19, NEW YORK
ATT: MISS LILI KIRK

CUSTOMER'S NAME _____
ADDRESS _____
CITY _____ ZONE _____ STATE _____
DATE _____
AMOUNT ENCLOSED \$ _____

