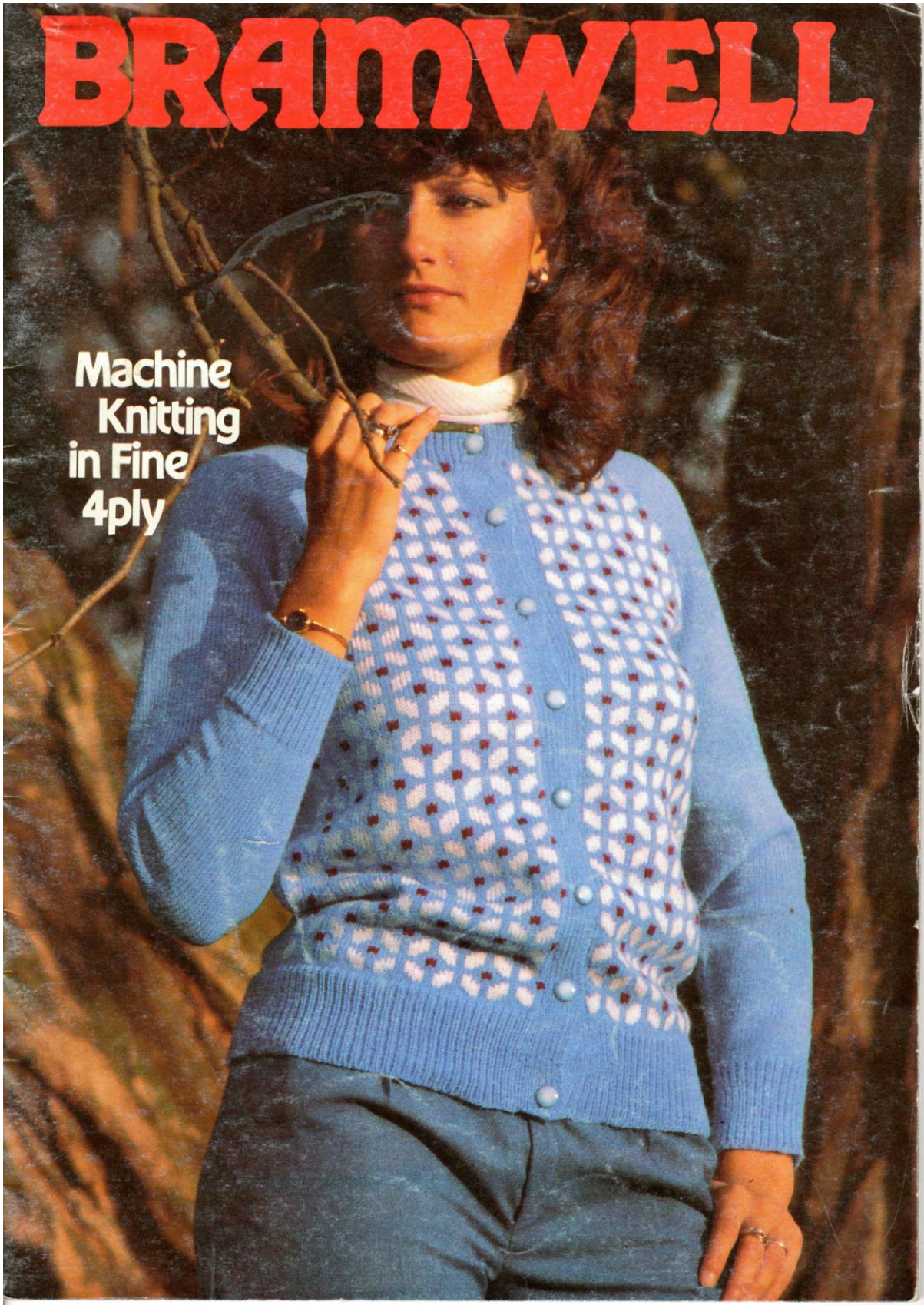
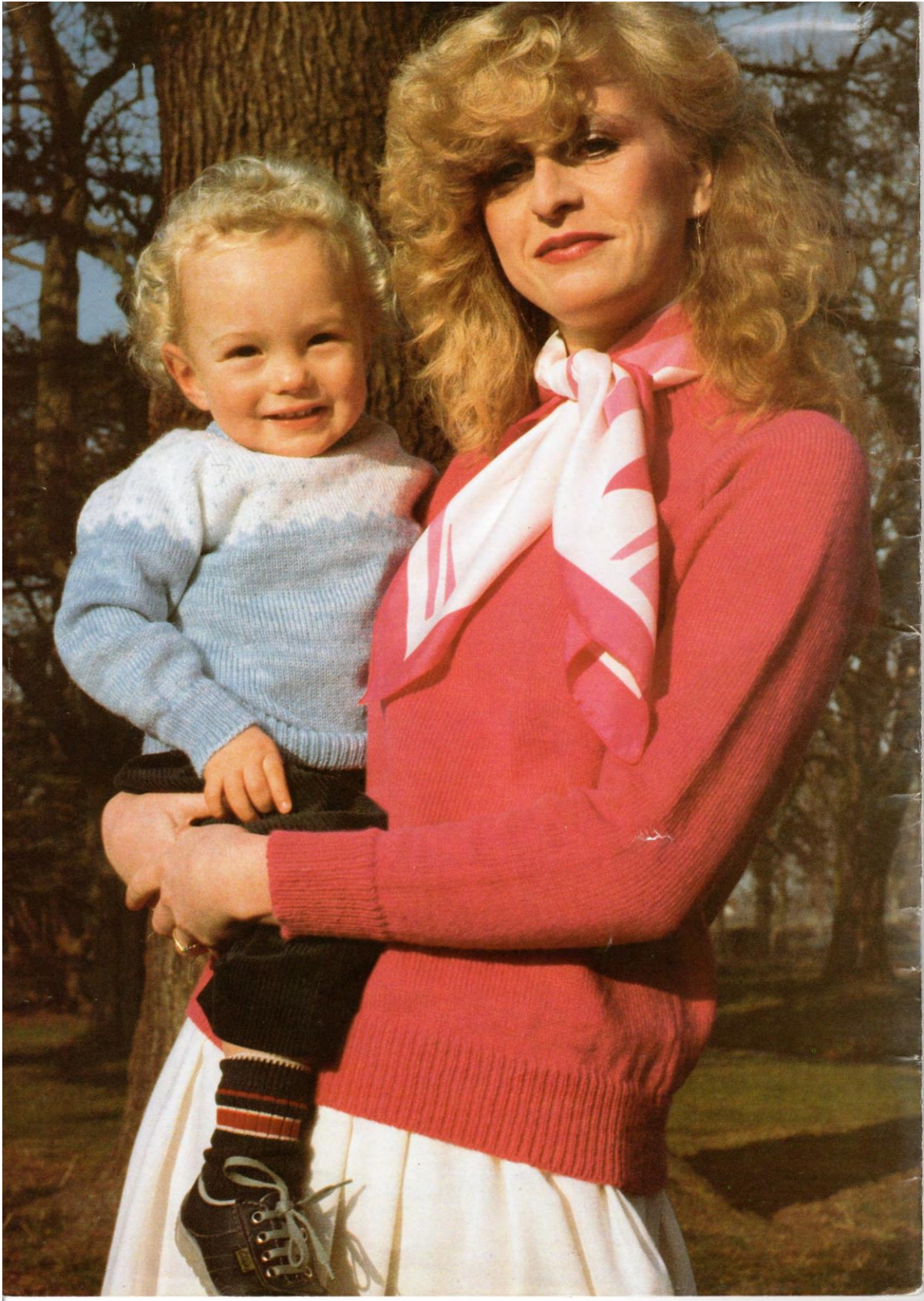


# BRAMWELL

Machine  
Knitting  
in Fine  
4ply













## CONTENTS

### INSET SLEEVES:-

SIZES:- ins. 22 – 44  
          cms. 56 – 112

Round & V neck sweaters.  
Round & V neck cardigans.  
Sleeveless slipovers.

### RAGLAN SLEEVES:-

SIZES:- ins. 16 – 44  
          cms. 41 – 112

Round & V neck sweaters.  
Round & V neck cardigans.

### IDEAS FOR VARIATIONS:-

The cards used were by kind permission of  
Knitmaster Ltd. and Jones & Brother Ltd.

### MATERIALS:-

All the garments, even the mans size 44ins.  
can be knitted from one cone of  
BRAMWELL'S fine 4ply. This yarn comes in  
50 shades, and knits to a soft even texture.  
To give you some idea how far it knits:-  
we knitted the ladies, size 34in high neck  
cardigan and round neck short sleeve  
sweater, from one cone, and still had some  
left.

Toys used in this book were kindly loaned by  
F.W. Woolworth & Co.

Whilst every care is taken to ensure the  
accuracy of the patterns in this book. The  
publisher accepts no responsibility  
whatsoever for any damage, loss or the like  
arising from their use.

Copyright © Juval Designs 1984  
Exclusive for F.W. BRAMWELL & CO LTD.

4663/Nov 90/5m    KNP PRINTED IN THE UNITED KINGDOM

## ABBREVIATIONS

Alt	Alternate
Approx	Approximate
Beg	Beginning
C.on	Cast on
C/off	Cast off
Cms.	Centimetres
Col.	Colour
Cont.	Continue
Dec.	Decrease
Ev.	Every
Foll.	Following
HP.	Holding Position
In/s	Inch/es
Inc.	Increase
K.	Knit
Mac.	Machine
M/bed	Main bed
MT	Main Tension
Ns	Needle/s
NWP.	Non working position
Oppos.	Opposite
Patt.	Pattern
Rs.	Row/s
Rel	Release
Rem.	Remainder
Rep.	Repeat
Rev.	Reversing
Sts.	Stitch/es
S/s	Stocking Stitch
Trans.	Transfer
WY.	Waste Yarn
WP.	Working position

NOTE:- Rib tension 3/3  
Tension 3 on both beds.  
MT – 4 Main tension  
minus 4.

If you have any difficulty in obtaining  
Bramwell's fine 4ply write to:-  
F.W. Bramwell & Co Ltd.  
Unit 5, Metcalf Drive,  
Altham Lane,  
Altham,  
Accrington BB5 5TU,  
England.

## **INTRODUCTION**

The classic shapes included in this book, look good and will give years of service when knitted in plain colours, but for those of you who like something 'just a little different' we have knitted several variations, all using the basic pattern shapes.

On the pages photographed in colour you will see the classic garment and a variation, sometimes we have knitted a striped garment plus a variation, all the variations are included in the back of this book.

Most of all we have tried to give you some ideas for using this classic book, not only for your classic garments and the childrens school sweaters, but for all those other little numbers that you and the rest of the family all wear.

We hope by using this pattern book and knitting up some of our ideas we have stimulated you into knitting more varied garments.

## **PATTERN NOTES**

The patterns in this book are written in chart form, and include all the shapes you need to make a complete set of classic knitwear.

Choose inset or raglan sleeves, and whether you want a sweater or cardigan, in round or V neck etc. all the styles are in this book, for you to knit for the whole family.

When you choose to knit a fairisle front onto a plain back, you will find that some fairisle patterns seem to knit up longer, as a general rule, you will find that if you knit the front 10 rows shorter under the armhole, the garment will be the same length.

As there are so many sizes on each page you will find it helpful to mark the size you are knitting, with a penciled circle (so that it can be erased) making the figures you need to follow more prominent.

## **WELTS WITHOUT A RIBBING ATTACHMENT**

Although the instructions throughout the book are given for the welts knitted on the ribbing attachment, you can knit a mock (or continental) rib using the single bed machine.

As an average, knit two thirds of the number of rows given for the rib, (ie k 12rs, becomes k 8rs.) as when a double rib is off the machine it lengthens more than a double bed rib.

Always knit the welt at least three tensions tighter than the rest of the garment, and knit a loose folding line.

If you prefer to knit a 2 x 1 rib or even a 3 x 1 rib the choice is yours, the patterns are basic shapes for you to knit a classic garment of your own design.

## **TENSION**

The patterns in this book were all knitted on a standard Japanese machine, using BRAMWELL'S fine 4 ply coned yarn.

The tension for all these patterns is:- 28sts. x 42rs. = 10cms. (4ins.) We found that we achieved the correct number of stitches and rows with the tension dial at number 6 on the Knitmaster machine and number 5 on the Brother machine.

As all machines vary, it is important that you knit a test swatch and obtain the correct number



of stitches and rows. If your swatch is too large lower the tension dial, if it is too small, raise the tension dial.

Cast on with main colour. 70 needles, knit a few rows.

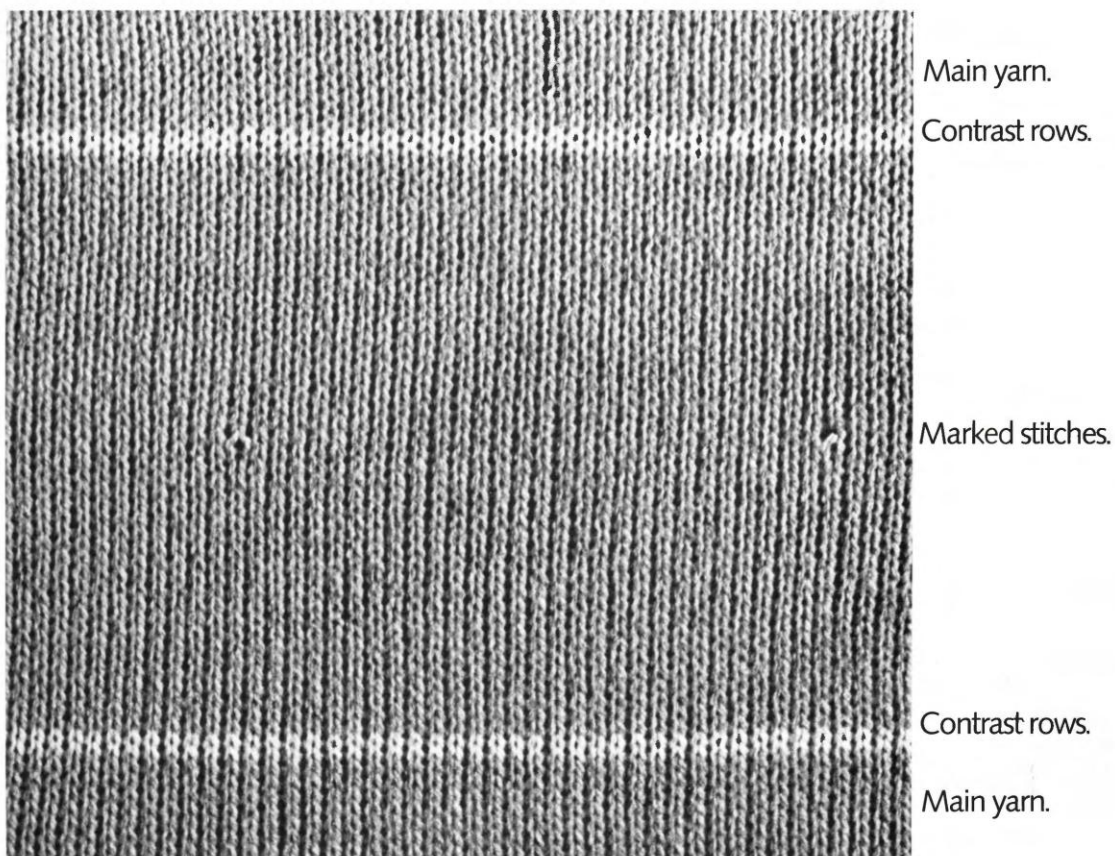
Change to a contrast yarn, knit 2 rows.

Using main colour, knit 21 rows.

Mark the 15th. needle each side of centre 0 with contrast yarn. Knit 21 rows. Change to contrast yarn knit a few rows and release work from machine.

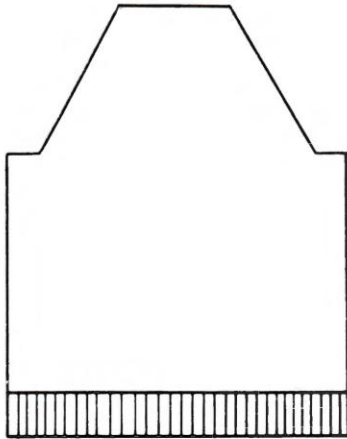
Leave the swatch overnight (if possible) or for at least 4 hours before pressing. The swatch should measure 10cms. between the two marked stitches and 10cms. between the rows of contrast yarn.

TENSION:- 28sts. x 42rs = 10cms.



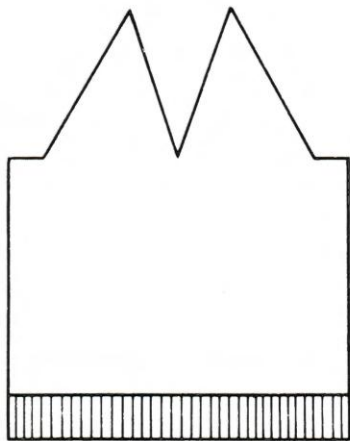
## SIZE CHART

<b>TO FIT:- CHEST</b>	<b>ins.</b>	16	18	20	22	24	26	28	30	32	34	36	38	40	42	44	
	<b>cms.</b>	41	46	51	56	61	66	71	76	81	86	91	97	102	107	112	
<b>SLEEVE LENGTH</b>	<b>ins.</b>	6	7	8	9	11	13	15	17½	18	18½	18½	18¾	19½	19½	19½	
	<b>cms.</b>	15	18	20	23	28	33	38	44	46	47	47	48	50	50	50	
<b>RAGLAN LENGTH</b>	<b>ins.</b>	8	9	11	13	15½	18	20	22½	25	25¼	26½	27½	28½	29	29	
	<b>cms.</b>	20	23	28	33	39	46	51	57	63	64	67	70	72	74	74	
<b>INSET LENGTH</b>	<b>ins.</b>					12½	14½	17½	20	22½	24½	25	25½	26½	28½	28¾	29
	<b>cms.</b>					32	37	44	51	57	62	63	65	67	72	73	74



## RAGLAN BACK

<b>SIZES:-</b>	<b>ins.</b>	16	18	20	22	24	26	28	30	32	34	36	38	40	42	44
	<b>cms.</b>	41	46	51	56	61	66	71	76	81	86	91	97	102	107	112
Cast on in 1 x 1 rib		71	77	83	89	93	101	107	115	121	129	135	143	149	157	163 sts.
R/C 000, MT - 4 Knit		12	12	12	14	16	18	20	26	30	30	30	30	36	36	36 rs.
Trans sts to M/bed R/C 000, MT, Knit		34	44	54	70	86	102	120	134	144	146	148	154	158	162	162 rs.
<b>SHAPE RAGLAN</b> R/C 000, Cast off beg next 2rs. Dec 1 st both ends next & ev foll 4th. rs 3 times, K 1r. Dec 1 st both ends next & ev foll alt rs. Until		2	2	2	4	4	4	4	4	5	6	6	6	6	6	7 sts.
Cast off rem sts. R/C reads		19	21	25	25	27	27	29	29	29	35	35	35	37	41	45 sts. rem
		54	58	60	62	64	72	76	84	88	88	94	102	106	110	110 rs.



## RAGLAN V NECK FRONT

<b>SIZES:-</b>	<b>ins</b>	16	18	20	22	24	26	28	30	32	34	36	38	40	42	44
	<b>cms.</b>	41	46	51	56	61	66	71	76	81	86	91	97	102	107	112
Cast on in 1 x 1 rib		71	77	83	89	93	101	107	115	121	129	135	143	149	157	163 sts.
R/C 000, MT – 4 Knit		12	12	12	14	16	18	20	26	30	30	30	30	36	36	36 rs.
Trans sts to M/bed R/C 000, MT Knit		34	44	54	70	86	102	120	134	144	146	148	154	158	162	162 rs.

### DIVIDE WORK

Place all ns left of cent 0 into HP, or knit back onto nylon cord.  
With piece of WY take off cent st.

### SHAPE RAGLAN & NECK

R/C 000, Cast off  
beg next r. Knit 1r.

	2	2	2	4	4	4	4	4	5	6	6	6	6	6	7	sts.
--	---	---	---	---	---	---	---	---	---	---	---	---	---	---	---	------

### AT SAME TIME

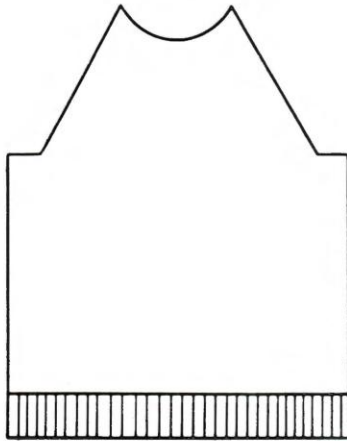
Dec 1 st at raglan beg next & ev foll alt  
rs. Dec 1 st at neck edge next & ev foll  
3rd r.

	12	13	15	15	16	16	17	17	17	20	20	20	21	23	25	times.
--	----	----	----	----	----	----	----	----	----	----	----	----	----	----	----	--------

Cont shaping at raglan edge until all sts  
have been dec. R/C reads

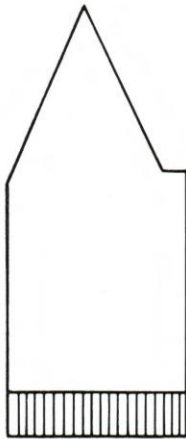
	44	48	50	52	54	62	66	74	78	78	84	92	96	100	100	rs.
--	----	----	----	----	----	----	----	----	----	----	----	----	----	-----	-----	-----

Rep for 2nd side rev shapings.



## RAGLAN ROUND NECK FRONT

SIZES:-	ins.		16	18	20	22	24	26	28	30	32	34	36	38	40	42	44
	cms.		41	46	51	56	61	66	71	76	81	86	91	97	102	107	112
Cast on in 1 x 1 rib			71	77	83	89	93	101	107	115	121	129	135	143	149	157	163 sts.
R/C 000, MT – 4 Knit			12	12	12	14	16	18	20	26	30	30	30	30	36	36	36 rs.
Trans sts to M/bed R/C 000, MT Knit			34	44	54	70	86	102	120	134	144	146	148	154	158	162	162 rs.
<b>SHAPE RAGLAN</b> R/C 000, Cast off beg next 2rs. Dec 1st both ends next & ev foll alt rs. Until			2	2	2	4	4	4	4	4	5	6	6	6	6	6	7 sts.
			39	41	47	49	51	51	53	53	59	69	69	69	79	81	85 sts. rem
<b>SHAPE NECK</b> Divide work Cast off centre Place all sts left of cent 0 into HP or knit back on nylon cord. Keeping raglan shaping correct Dec 1 st at neck edge on next Cont shaping at RAGLAN until all sts are dec. R/C reads			9	11	11	11	13	13	15	15	15	17	17	17	19	19	19 sts.
			8	8	10	10	10	10	10	10	10	12	12	12	12	14	16 rs.
			44	48	50	52	54	62	66	74	78	78	84	92	96	100	100 rs.
Knit 2nd side rev all shaping																	



## RAGLAN V NECK CARDIGAN FRONT

<b>SIZES:-</b>	<b>ins.</b>	16	18	20	22	24	26	28	30	32	34	36	38	40	42	44
	<b>cms.</b>	41	46	51	56	61	66	71	76	81	86	91	97	102	107	112
Cast on in 1 x 1 rib		35	38	41	44	46	50	53	57	59	63	67	71	74	78	81 sts.
R/C 000, MT – 4 Knit		12	12	12	14	16	18	20	26	30	30	30	30	36	36	36 rs.
Trans sts to M/bed R/C 000, MT, Knit		34	44	54	70	86	102	120	134	144	146	148	154	158	162	162 rs.

### SHAPE RAGLAN & NECK

R/C 000, Cast off  
beg next r, k 1r.

2	2	2	4	4	4	4	4	5	6	6	6	6	6	6	7 sts.
---	---	---	---	---	---	---	---	---	---	---	---	---	---	---	--------

### AT SAME TIME

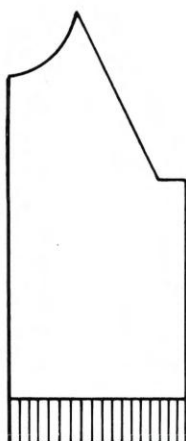
Dec 1 st at raglan edge beg next & ev  
foll alt rs. Dec 1 st at neck edge next &  
ev foll 3rd rs

12	13	15	15	16	16	17	17	17	20	20	20	21	23	25 times
----	----	----	----	----	----	----	----	----	----	----	----	----	----	----------

Cont shaping at raglan edge until all sts  
have been dec. R/C reads

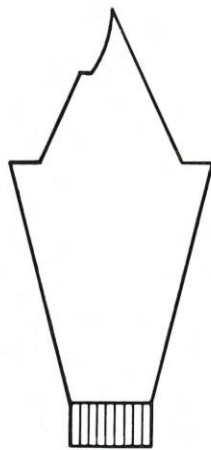
44	48	50	52	54	62	66	74	78	78	84	92	96	100	100 rs.
----	----	----	----	----	----	----	----	----	----	----	----	----	-----	---------

Rep for 2nd side rev all shapings.



## RAGLAN ROUND NECK CARDIGAN FRONT

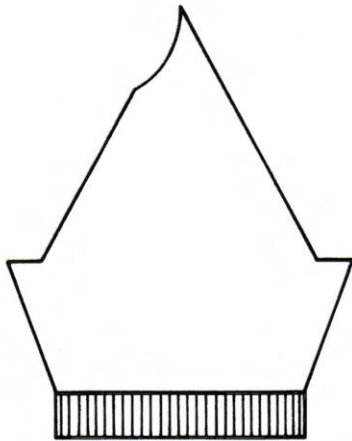
<b>SIZES:-</b>	<b>ins.</b>	16	18	20	22	24	26	28	30	32	34	36	38	40	42	44
<b>cms.</b>		41	46	51	56	61	66	71	76	81	86	91	97	102	107	112
Cast on in 1 x 1 rib		35	38	41	44	46	50	53	57	59	63	67	71	74	78	81sts.
R/C 000, MT – 4 Knit		12	12	12	14	16	18	20	26	30	30	30	30	36	36	36rs.
Trans sts to M/bed R/C 000, MT knit		34	44	54	70	86	102	120	134	144	146	148	154	158	162	162rs.
<b>SHAPE RAGLAN</b> R/C 000, Cast off beg next r. knit 1r. Dec 1 st at raglan edge next & ev foll alt rs. until		2	2	2	4	4	4	4	4	5	6	6	6	6	6	7sts.
		19	19	23	24	27	25	26	26	28	33	34	34	39	40	42sts. rem
<b>SHAPE NECK</b> At neck edge cast off Keeping raglan shaping correct. Dec 1 st at neck next		4	4	5	5	8	6	7	7	6	7	8	8	9	9	9sts.
		8	8	10	10	10	10	10	10	10	12	12	12	12	14	16rs.
Cont shaping at raglan edge until all sts have been dec. RC reads		44	48	50	52	54	62	66	74	78	78	84	92	96	100	100rs.
Knit 2nd side rev all shapings																



## RAGLAN SLEEVES

<b>SIZES:-</b>	<b>ins.</b>	16	18	20	22	24	26	28	30	32	34	36	38	40	42	44
	<b>cms.</b>	41	46	51	56	61	66	71	76	81	86	91	97	102	107	112
Cast on in 1 x 1 rib		43	45	47	49	53	55	57	59	61	63	65	67	69	71	73sts.
R/C 000, MT – 4 Knit		12	12	12	14	16	18	20	26	30	30	30	30	36	36	36rs.
Trans sts to M/bed R/C 000, MT k 2rs. Inc 1 st both ends next & ev foll 6th rs until		57	63	69	73	79	83	91	97	105	107	117	125	127	129	131 sts.
Knit straight until R/C reads		50	62	72	80	116	134	142	154	158	164	168	174	178	180	182rs.
<b>SHAPE RAGLAN</b> R/C 000, Cast off beg next r. k 2rs. Dec 1st both ends next & ev foll alt rs. until		2	2	2	4	4	4	4	4	5	6	6	6	6	6	7 sts.
		11	13	17	15	19	15	19	17	19	19	23	23	21	19	19sts. rem
<b>SHAPE TOP</b> Cast off beg next r. k 1r. Carr at right. Dec 1 st both ends next & ev foll alt rs until all sts have been dec R/C reads		1	3	7	5	9	5	9	7	9	9	13	13	11	9	9sts.
		54	58	60	62	64	72	76	84	88	88	94	102	106	110	110rs.

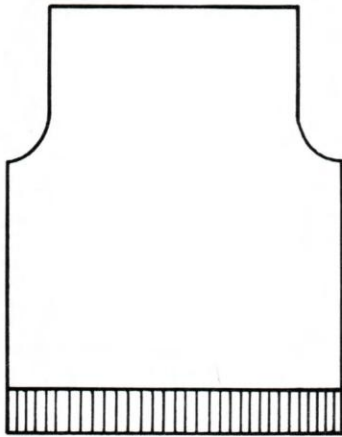
Rep for 2nd. sleeve rev the top shaping.



## RAGLAN SHORT SLEEVES

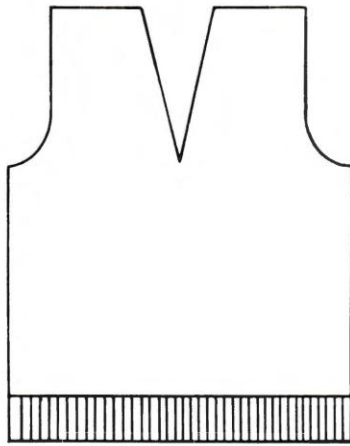
<b>SIZES:-</b>	<b>ins.</b>	16	18	20	22	24	26	28	30	32	34	36	38	40	42	44
	<b>cms.</b>	41	46	51	56	61	66	71	76	81	86	91	97	101	107	112
Cast on in 1 x 1 rib		45	49	53	55	61	65	69	75	79	83	85	91	97	99	103
R/C 000, MT – 4 Knit		8	8	8	8	8	8	10	10	10	10	10	12	12	12	12
Trans sts to M/bed R/C 000, MT Knit 2rs. Inc 1 st. both ends next & ev foll alt rs until		57	63	69	73	79	83	91	97	105	107	117	125	127	129	131 sts.
Knit straight until R/C reads		18	22	26	28	30	32	38	42	48	50	56	62	62	62	62 rs.
<b>SHAPE RAGLAN</b> R/C 000, cast off beg. next 2rs. Dec 1 st both ends next & ev foll alt rs until		2	2	2	4	4	4	4	4	5	6	6	6	6	6	7 sts.
		11	13	17	15	19	15	19	17	19	19	23	23	21	19	19 sts. rem
<b>SHAPE TOP</b> Cast off beg next r. K 1r. Carr at right. Dec 1 st both ends next & ev foll alt rs until all sts have been dec. R/C reads		1	3	7	5	9	5	9	7	9	9	13	13	11	9	9 sts.
		54	58	60	62	64	72	76	84	88	88	94	102	106	110	110 rs.
Rep for 2nd sleeve rev the top shaping.																





## BACK

<b>SIZES:-</b>	<b>ins.</b>	22	24	26	28	30	32	34	36	38	40	42	44
	<b>cms.</b>	56	61	66	71	76	81	86	91	97	102	107	112
Cast on in 1 x 1 rib		89	93	101	107	115	121	129	135	143	149	157	163 sts.
R/C 000, MT – 4 knit		14	16	18	20	26	30	30	30	30	36	36	36 rs.
Trans sts to M/bed R/C 000, MT knit		70	86	102	120	134	144	146	148	154	158	162	162 rs.
<b>SHAPE ARMHOLES</b> R/C 000, Cast off beg next 2rs. Dec 1 st. both ends next & foll alt rs		3	3	4	5	5	6	7	7	8	9	10	11 sts.
		5	5	6	6	6	6	7	8	9	10	12	12 times
Knit		34	42	46	50	54	58	60	62	64	64	62	66 rs.
<b>SHAPE SHOULDER</b> Cast off beg next 6rs. Cast off beg next 2rs. Cast off rem sts.		5	5	6	6	6	7	7	7	8	8	8	9 sts.
		6	7	6	7	9	7	9	10	9	9	11	8 sts.



## V NECK FRONT

### SIZES:-

	ins.	22	24	26	28	30	32	34	36	38	40	42	44
	cms.	56	61	66	71	76	81	86	91	97	102	107	112
Cast on in 1 x 1 rib		89	93	101	107	115	121	129	135	143	149	157	163 sts.
R/C 000, MT – 4 Knit		14	16	18	20	26	30	30	30	30	36	36	36 rs.
Trans sts to M/bed R/C 000, MT Knit		58	74	90	108	122	132	134	136	142	146	150	150 rs.

### DIVIDE WORK

With WY take off cent st.  
Place all ns left of cent 0  
into HP or knit back on nylon cord.  
Dec 1 st at cent on next &  
ev foll 4th r 3 times. K 3rs.  
R/C reads

70	86	102	120	134	144	146	148	154	158	162	162 rs.
----	----	-----	-----	-----	-----	-----	-----	-----	-----	-----	---------

### SHAPE ARMHOLE

R/C 000, Cast off  
beg next r. Dec 1 st at neck  
edge beg next & ev foll 4th rs.

3	3	4	5	5	6	7	7	8	9	10	11 sts.
---	---	---	---	---	---	---	---	---	---	----	---------

### AT SAME TIME

Dec 1 st at armhole edge next  
& ev foll alt rs  
Cont shaping at neck edge  
until

5	5	6	6	6	6	7	8	9	10	12	12 times
21	22	24	25	27	28	30	31	33	33	35	35 sts. rem

Knit until R/C reads

46	54	60	64	68	72	76	80	84	86	88	92 rs.
----	----	----	----	----	----	----	----	----	----	----	--------

### SHAPE SHOULDER

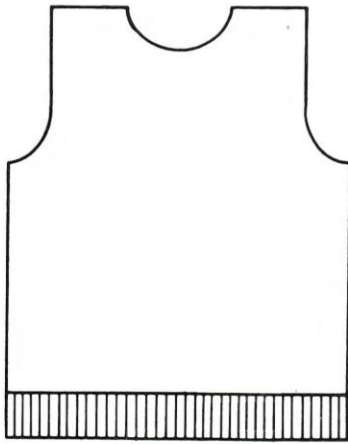
Cast off  
beg next & foll alt rs 3 times  
Cast off

5	5	6	6	6	7	7	7	8	8	8	9 sts.
6	7	6	7	9	7	9	10	9	9	11	8 sts.

Set R/C to read

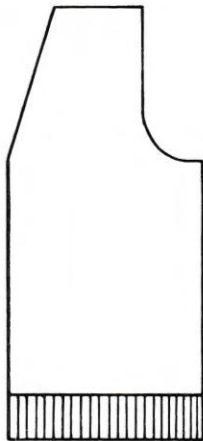
58	74	90	108	122	132	134	136	142	146	150	150 rs.
----	----	----	-----	-----	-----	-----	-----	-----	-----	-----	---------

Rep for left side rev all shapings.



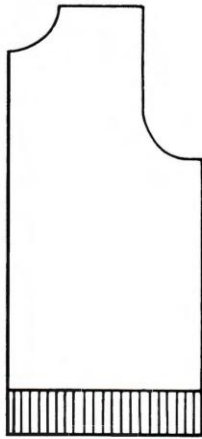
## ROUND NECK FRONT

<b>SIZES:-</b>	<b>ins.</b>	22	24	26	28	30	32	34	36	38	40	42	44
	<b>cms.</b>	56	61	66	71	76	81	86	91	97	102	107	112
Cast on in 1 x 1 rib		89	93	101	107	115	121	129	135	143	149	157	163sts.
R/C 000, MT – 4 knit		14	16	18	20	26	30	30	30	30	36	36	36 rs.
Trans sts to M/bed R/C 000, MT knit		70	86	102	120	134	144	146	148	154	158	162	162 rs.
<b>SHAPE ARMHOLES</b>													
R/C 000, Cast off beg next 2rs.		3	3	4	5	5	6	7	7	8	9	10	11sts.
Dec 1 st both ends next & ev foll alt rs		5	5	6	6	6	6	7	8	9	10	12	12 times
Knit		22	30	34	36	40	44	46	46	48	48	48	50 rs.
<b>DIVIDE WORK</b>													
Take off on WY cent Place all ns left of cent 0 into HP or knit back on nylon cord. Work on Right Side Only. Dec 1 st at neck edge on next 4 rs. k 1 r. Dec 1 st at neck edge next & ev foll rs until		15	17	17	17	19	21	21	21	21	21	23	23sts.
Knit until R/C reads		21	22	24	25	27	28	30	31	33	33	35	35 sts. rei
		46	54	60	64	68	72	76	80	84	86	88	92 rs.
<b>SHAPE SHOULDER</b>													
Cast off beg next & foll alt rs. 3 times		5	5	6	6	6	7	7	7	8	8	8	9 sts.
Cast off beg next r.		6	7	6	7	9	7	9	10	9	9	11	8 sts.
Set R/C to read		34	42	48	50	54	58	62	64	68	70	74	76rs.
Rep for left side rev all shapings.													



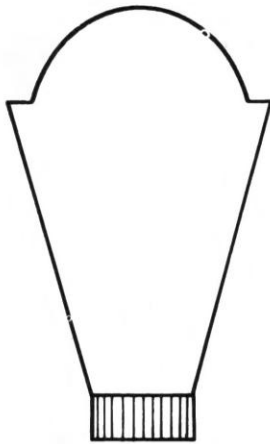
## V NECK CARDIGAN FRONT

<b>SIZES:-</b>	<b>ins.</b>	22	24	26	28	30	32	34	36	38	40	42	44
	<b>cms.</b>	56	61	66	71	76	81	86	91	97	102	107	112
Cast on in 1 x 1 rib		43	47	51	55	59	61	65	69	73	75	79	83 sts.
R/C 000, MT – 4 knit		14	16	18	20	26	30	30	30	30	36	36	36 rs.
Trans sts to M/bed R/C 000, MT knit		58	74	90	108	122	132	134	136	142	146	150	150 rs.
Dec 1 st at neck edge next & ev foll 4th rs 3 times in all Knit 3rs. R/C reads		70	86	102	120	134	144	146	148	154	158	162	162 rs.
<b>SHAPE ARMHOLE &amp; NECK</b>													
R/C 000 Dec 1 st at neck edge beg next & ev foll 4th rs													
<b>AT SAME TIME</b>													
Cast off beg next r.		3	3	4	5	5	6	7	7	8	9	10	11sts.
Keeping neck shaping correct Dec 1 st at armhole edge next & ev foll alt rs		5	5	6	6	6	6	7	8	9	10	12	12 times
Cont shaping at neck edge until		23	24	26	27	29	30	32	33	35	35	37	37 sts. rem
Knit until R/C reads		46	54	60	64	68	72	78	80	84	86	88	92 rs.
<b>SHAPE SHOULDER</b>													
Cast off beg next & foll alt rs 3 times		5	5	6	6	6	7	7	7	8	8	8	9 sts.
Cast off		8	9	8	9	11	9	11	12	11	11	13	10 sts.
Rep for 2nd front rev all shapings.													



## ROUND NECK CARDIGAN FRONT

<b>SIZES:-</b>	<b>ins.</b>	22	24	26	28	30	32	34	36	38	40	42	44
	<b>cms.</b>	56	61	66	71	76	81	86	91	97	102	107	112
Cast on in 1 x 1 rib		43	47	51	55	59	61	65	69	73	75	79	83 sts.
R/C 000, MT – 4 Knit		14	16	18	20	26	30	30	30	30	36	36	36 rs.
Trans sts to M/bed R/C 000, MT Knit		70	86	102	120	134	144	148	150	154	158	162	162 rs.
<b>SHAPE ARMHOLES</b>													
R/C 000, Cast off beg next r. k 1r.		3	3	4	5	5	6	7	7	8	9	10	11 sts.
Dec 1 st at armhole edge next & ev foll alt rs		5	5	6	6	6	6	7	8	9	10	12	12 times
Knit		18	24	26	30	32	36	36	38	38	36	34	36 rs.
Cast off at neck edge		5	6	7	7	8	9	9	10	10	10	10	11 sts.
Dec 1 st at neck edge on next & ev foll alt rs 4 times in all K 1r. Dec 1 st at neck edge next & ev foll alt rs until		21	22	24	25	27	28	30	31	33	33	35	35 sts. rem.
Knit until R/C reads		46	54	60	64	68	72	76	80	84	86	88	92 rs.
<b>SHAPE SHOULDER</b>													
Cast off beg next & foll alt rs 3 times in all		5	5	6	6	6	7	7	7	8	8	8	9 sts.
Cast off beg next r. Rep for 2nd front rev all shapings.		6	7	6	7	9	7	9	10	9	9	11	8 sts.



## LONG SLEEVE

### SIZES:-

ins.  
cms.

22 24 26 28 30 32 34 36 38 40 42 44  
56 61 66 71 76 81 86 91 97 102 107 112

Cast on in 1 x 1 rib

49 53 55 57 59 61 63 65 67 69 71 73 sts.

R/C 000, MT – 4 knit

14 16 18 20 26 30 30 30 30 36 36 36 rs.

Trans sts to M/bed  
R/C 000, MT Inc 1 st  
both ends next & ev  
foll 6th. rs until

59 67 73 77 83 89 93 97 103 109 113 117 sts.

Knit straight until R/C reads

80 100 120 140 152 158 168 168 172 176 176 176 rs.

### SHAPE ARMHOLE

R/C 000, Cast off

3 3 3 4 4 5 5 5 5 7 8 9 sts.

beg next 2rs.

Dec 1 st both ends next & ev

foll alt rs 4 times.

Dec 1 st both ends next & foll 4th r.

2 2 2 2 2 2 2 2 2 2 2 3 times

Knit 3rs.

Dec 1 st both ends next & ev

foll alt rs.

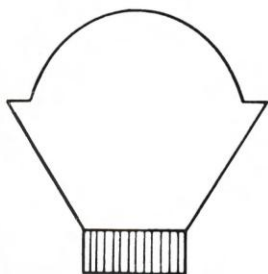
3 6 9 10 12 13 15 16 18 19 20 21 times

Dec 1 st both ends next 10rs.

R/C reads

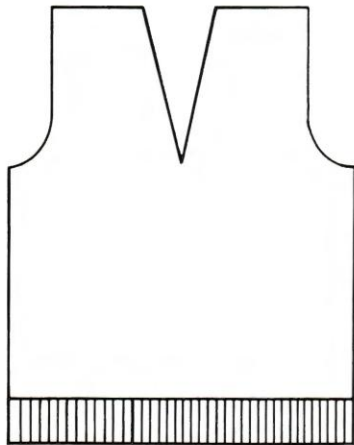
34 40 46 48 52 54 58 60 64 66 68 70 rs.

Cast off rem sts.



## SHORT SLEEVE

<b>SIZES:-</b>	<b>ins.</b>	<b>cms.</b>	22	24	26	28	30	32	34	36	38	40	42	44
			56	61	66	71	76	81	86	91	97	102	107	112
Cast on in 1 x 1 rib			55	61	67	69	75	79	83	85	91	97	99	103 sts.
R/C 000, MT – 4 Knit			8	8	8	10	10	10	10	10	12	12	12	12 rs.
Trans sts. to M/bed R/C 000, MT Inc 1 st both ends next & ev foll			2	3	3	4	4	4	4	4	4	4	4	4 th rs.
Until			63	69	75	79	85	91	95	99	105	111	115	119 sts.
Knit straight until R/C reads			10	14	14	20	20	26	26	30	30	30	36	36 rs.
<b>SHAPE ARMHOLE</b> R/C 000, Cast off beg next 2rs. Dec 1 st both ends next & ev foll alt rs 4 times Dec 1 st both ends next & ev foll 4th r Knit 3 rs Dec 1 st both ends next & ev foll alt rs.			3	3	3	4	4	5	5	5	5	7	8	9 sts.
			2	2	2	2	2	2	2	2	2	2	2	3 times
			3	6	9	10	12	13	15	16	18	19	20	21 times
Dec 1 st both ends next 10 rs. R/C reads			34	40	46	48	52	54	58	60	64	66	68	70 rs.
Cast off rem sts.														



## SLIPOVER FRONT

<b>SIZES:-</b>	<b>ins.</b>	22	24	26	28	30	32	34	36	38	40	42	44
	<b>cms.</b>	56	61	66	71	76	81	86	91	97	102	107	112
Cast on in 1 x 1 rib		89	93	101	107	115	121	129	135	143	149	157	163 sts.
R/C 000, MT – 4 Knit		14	16	18	20	26	30	30	30	30	36	36	36 rs.
Trans sts. to M/bed R/C 000, MT Knit		58	74	90	108	122	132	134	136	142	146	150	150 rs.

### DIVIDE WORK

With WY take off cent st.  
Place all ns left of cent 0  
into HP or knit back on  
nylon cord.  
Dec 1 st at neck edge on next &  
ev foll 4th. r 3 times. K 3rs.  
R/C reads

70	86	102	120	134	144	146	148	154	158	162	162 rs.
----	----	-----	-----	-----	-----	-----	-----	-----	-----	-----	---------

### SHAPE ARMHOLE

R/C 000, Cast off  
beg next r. Dec 1 st at neck  
edge beg next & ev foll 4th. rs.

3	3	3	5	5	5	7	7	9	9	11	11 sts.
---	---	---	---	---	---	---	---	---	---	----	---------

### AT SAME TIME

Cast off 4 sts. beg next r. K 1r.  
Cast off 3 sts. beg next r. K 1r.  
Cast off 2 sts. beg next & foll  
alt 3 rs.  
Dec 1 st at armhole edge next

2	2	6	6	6	6	6	6	6	6	6	3 rs.
---	---	---	---	---	---	---	---	---	---	---	-------

Cont shaping at neck edge  
until

12	12	12	12	14	16	18	20	22	24	28	28 sts. rem
----	----	----	----	----	----	----	----	----	----	----	-------------

Knit straight until R/C reads

46	54	60	64	68	72	76	80	84	86	88	92 rs.
----	----	----	----	----	----	----	----	----	----	----	--------

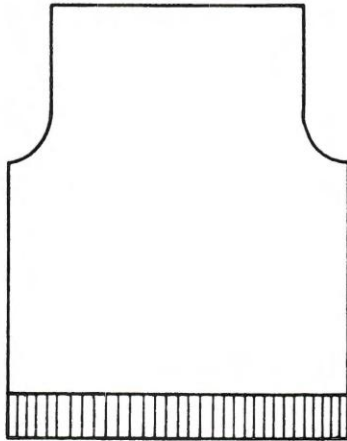
### SHAPE SHOULDER

Cast off  
beg next & foll alt r. K 1r.  
Cast off  
beg next & foll alt r.  
Rep for 2nd side rev all shapings.

3	3	3	3	3	4	4	5	5	6	7	7 sts.
---	---	---	---	---	---	---	---	---	---	---	--------

3	3	3	3	4	4	5	5	6	6	7	7 sts.
---	---	---	---	---	---	---	---	---	---	---	--------





## SLIPOVER BACK

### SIZES:-

ins.  
cms.

22 24 26 28 30 32 34 36 38 40 42 44  
56 61 66 71 76 81 86 91 97 102 107 112

Cast on in 1 x 1 rib 89 93 101 107 115 121 129 135 143 149 157 163 sts.

R/C 000, MT – 4 Knit 14 16 18 20 26 30 30 30 30 36 36 36 rs.

Trans sts to M/bed  
R/C 000, MT Knit 70 86 102 120 134 144 146 148 154 158 162 162 rs.

### SHAPE ARMHOLES

R/C reads 000

Cast off beg next 2rs.

Cast off 4 sts. beg next 2rs.

Cast off 3 sts. beg next 2rs.

Cast off 2 sts. beg next 6rs.

Dec 1 st both ends next

3 3 3 5 5 5 7 7 9 9 11 11 sts.

1 1 6 6 6 6 6 6 6 6 6 6 rs.

Sts. rem

Knit until R/C reads

55 59 57 59 67 73 77 83 87 93 97 103 sts. rem  
46 54 60 64 68 72 76 80 84 86 88 92 rs.

### SHAPE SHOULDER

Cast off

beg next 4rs.

Cast off

beg next 4rs.

Cast off rem sts.

3 3 3 3 3 4 4 5 5 6 7 7 sts.

3 3 3 3 4 4 5 5 6 6 7 7 sts.

### KNIT ARMBANDS

Sew shoulder seams, pick up  
sts around armhole.

MT, K 1r.

Trans sts to 1 x 1 rib,

weight, R/C 000, T2/2 Knit

T10/10, K 1r.

Trans sts to M/bed

Cast off.

7 7 9 9 13 13 13 13 13 15 15 15 rs.

## ROUND NECKBANDS

- We have used two ways of finishing off the neckbands.
- Pick up the stitches on the right side of the garment.  
Take the band off on waste yarn.  
Back stitch the open loops to the front of the garment.  
Remove waste yarn.
  - Pick up the stitches on the wrong side of the garment.  
Cast off the neckband.  
Slip stitch cast off edge to inside of garment.

### KNITTING BANDS

SIZES:-	ins.	16	18	20	22	24	26	28	30	32	34	36	38	40	42	44
	cms.	41	46	52	56	61	66	71	76	81	86	91	97	102	107	112

MT, K 1r.

Trans sts 1 x 1 rib weight, R/C 000, MT - 3 knit 6 6 6 8 8 8 10 10 12 12 12 14 14 14 14 rs.

MT, - 4 knit 4rs.

MT, - 3 knit 6 6 6 8 8 8 10 10 12 12 12 14 14 14 14 rs.

Trans sts to W/bed, cast off. If using Method 1. MT k 3rs, change to waste yarn, knit few rs. rel work from mac.

Decide which method you are going to use.  
Join raglan seams leaving left back open.  
Join right shoulder seam of inset garments.

### RAGLAN

Pick up stitches from across back, top of sleeve and cast off stitches, down front shaping, across front, up front shaping, cast off stitches and top of sleeve.

### INSET

Pick up stitches across back, down front shaping, across centre front, and up front shaping.

## V NECK BANDS

We have used the easy method, which is to knit the bands separately and then sew into position, if you wish to pick up the stitches or are using a single bed machine:-

### INSET

Join right shoulder seam. The band is knitted in two pieces.  
1st. side, pick up stitches from across back, down front shaping, 2nd side, pick up stitches from front shaping.

### KNITTING BANDS

SIZES:-	ins.	16	18	20	22	24	26	28	30	32	34	36	38	40	42	44
	cms.	41	46	51	56	61	66	71	76	81	86	91	97	102	107	112

MT, K 1r.

Trans sts to 1 x 1 rib weight, R/C 000, T2/2 Dec 1 st at V cent on next & ev foll 9 9 9 9 11 11 13 13 15 15 15 15 15 15 15 15 15' rs.

T10/10 k 1r.

Trans sts to W/bed, cast off loosely. If using Method 1 (as for round necks) MT k 3rs.

Change to waste yarn, knit few rs. rel work from machine.

### RAGLAN

Join raglan seams leaving left back open. The band is knitted in two pieces, 1st. side. Pick up stitches from across back, top of sleeve shaping and cast off stitches, down front shaping. 2nd side, pick up stitches up front shaping, cast off stitches and top sleeve shaping.

## POLO NECKS

Pick up stitches on right side of garment as for round necks.

### KNITTING NECK

SIZES:-	ins.	16	18	20	22	24	26	28	30	32	34	36	38	40	42	44
	cms.	41	46	51	56	61	66	71	76	81	86	91	97	102	107	112

MT, k 1r.

Trans sts to 1 x 1 rib weight, R/C 000, T 5/5 knit 2 rs. T4/4 knit 4 4 4 4 6 6 8 8 10 10 10 10 10 10 10 10 rs.

T3/3 knit 4 4 4 4 6 6 8 8 10 10 10 10 12 12 12 rs.

T2/2 knit 4 4 4 4 4 4 6 6 6 6 6 6 6 10 10 10 rs.

T1/1 knit 4 4 4 4 4 4 6 6 10 10 10 10 10 10 10 rs.

T2/2 knit 4 4 4 4 4 4 6 6 6 6 6 6 6 10 10 10 rs.

T3/3 knit 4 4 4 4 6 6 8 8 10 10 10 10 12 12 12 rs.

T4/4 knit 4 4 4 4 6 6 8 8 10 10 10 10 10 10 10 rs.

T5/5 knit 3rs.

T10/10 knit 1r. R/C reads 34 34 34 34 42 42 56 56 68 68 68 68 80 80 80 rs.

Cast off loosely.

## CARDIGAN BANDS

Cardigan bands are much easier to knit separately, on both single and double bed machines.

### V NECK BANDS

Are knitted in two pieces, one to fit up front to back of sleeve, and the other to fit up one front and across back, the join should be at back shoulder.

### ALL FRONT BANDS

SIZES:-	ins.	16	18	20	22	24	26	28	30	32	34	36	38	40	42	44
	cms.	41	46	51	56	61	66	71	76	81	86	91	97	102	107	112
Sts. required single bed		14	14	14	14	16	16	16	16	18	18	18	18	20	20	20
Sts. required double bed		11	11	11	11	13	13	13	15	15	15	15	15	17	17	17

Knit to the required length, knitting the bands on one tension tighter than welts, and slightly shorter than the actual garment, so they can be slightly stretched, Knit 2nd. band working buttonholes where required.

## ROUND NECK BANDS

Are knitted in two pieces, both to fit up to centre front. After knitting bands, sew into place, pick up stitches from top of band, and the stitches from the neck (as for the round neckbands). working a buttonhole on one side.

## BUTTONHOLES

### BUTTONHOLES ON RIBBED BANDS

**Simple Buttonhole over 1 needle:-** Transfer the centre stitch from the main bed to the ribber bed, leave empty needle in working position, knit to next buttonhole.

**Simple Buttonhole over 2 needles:-** Transfer the stitch left of centre 0 on the main bed to the ribber bed, and transfer the stitch right of centre 0 on the ribber bed to the main bed. Leave the empty needles in working position, knit to next buttonhole.

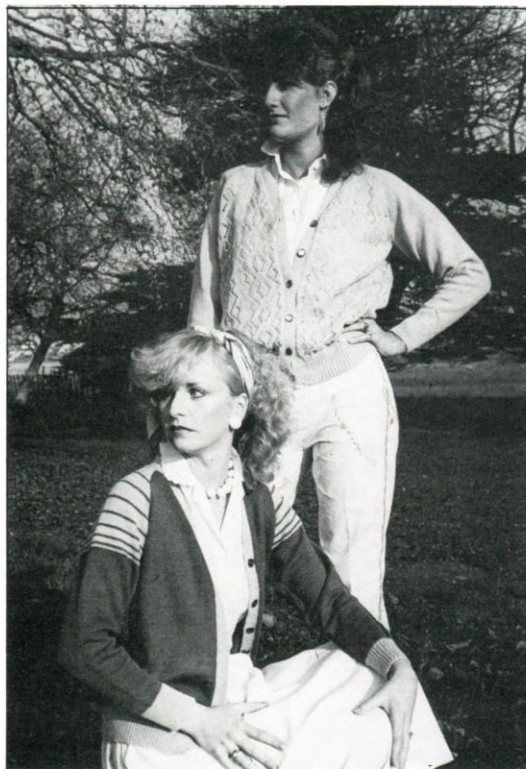
### BUTTONHOLES ON DOUBLE BANDS

**Small Buttonhole over 1 needle:-** Transfer the 4th. stitch each side of centre 0 onto adjacent needles. Leave empty needles in working position, knit to next buttonhole.

**Medium Buttonhole over 2 needles:-** Transfer the 4th. & 5th. stitches each side of centre 0 onto adjacent needles. Push the 5th needle back into none working position, leaving the 4th needle in working position. Knit 1 row. Bring the 5th needle back to working position, and pick up the loop below the 4th needle, knit to next buttonhole.

**Large Buttonhole over 3 or more needles:-** Using a length of main yarn, cast off the 4th, 5th, 6th, & 7th, needles each side of centre 0. Bring the empty needles as far forward as possible (D or E position), cast on by hand. Lay nylon cord over needles knit to next buttonhole.

## VARIATIONS



### LACE CARDIGAN

This was knitted using a Brother card No.436, from pre-punched card set No. 10. If you are a Knitmaster owner use one of the cards from their lace sets, Nos. 62,63,64,65. Use the basic pattern, working lace design on the back and fronts only.

### STRIPED CARDIGAN

Materials:- Col 1, Col 2,  
Using the basic pattern. Knit all ribs in Col 2.  
10rs. before armhole shaping on sleeves. WORK STRIPES  
Col 2, K 2rs. Col 1, K 2rs.  
Col 2, K 4rs. Col 1, K 2rs.  
Col 2, K 6rs. Col 1, K 2rs.  
Col 2, K 8rs. Col 1, K 2rs.  
Col 2, K 10rs. Col 1, K 2rs.  
Col 2, K 12rs. Col 1, K 2rs.  
Col 2, K 14rs. Col 1, K 2rs.  
Col 2, K to end. Rep on 2nd sleeve.

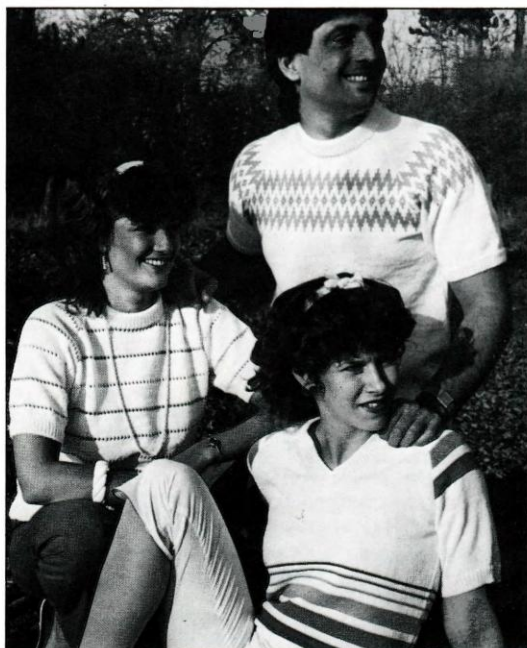
### LACE V NECK SWEATER

Pictured on Page 31

This was knitted using a Brother lace card No. 440 from pre-punched set No. 10. If you are a knitmaster owner use one of the cards from their sets Nos. 62,63,64,65.

A point to remember here, is not to use a card that is very lacy as it will alter the tension, and your garment will not fit. Use the basic pattern, working from the lace card as soon as the ribs have been knitted.

## VARIATIONS



### SUMMER TOP TRIO

#### STRIPED V NECK

Materials:- Col 1, Col 2, Col 3, Col 4.

After knitting rib

Col 1, K 24rs. Col 2, K 12rs.

Col 1, K 6rs. Col 3, K 12rs.

Col 1, K 6rs. Col 4, K 12rs.

Col 1, K 6rs. Col 4, K 2rs.

Col 1, K 6rs. Col 3, K 2rs.

Col 1, K 6rs. Col 2, K 2rs.

Cont in Col 1 only, to end.

Knit back and front the same.

SLEEVES.

After the start of SHAPE RAGLAN, work 14rs. then work stripes.

Col 2, K 12rs. Col 1, K 6rs.

Col 3, K 12rs. Col 1, K 6rs.

Col 4, K 12rs. Cont in Col 1 only, to end.

#### LACY STRIPED ROUND NECK

Materials:- Col 1, Col 2, Col 3, Col 4, Col 5, Col 6.

After knitting ribs.\*\*

Col 1, K 20rs.

Col 2, K 1r.

Trans ev other stitch onto adjacent needles. Leaving empty needles in WP.

Col 2, K 1r.\*\*

Rep from \*\* to \*\* using Cols in sequence.

Work Lacy Stripes on all pieces.

#### FAIRISLE BORDER ROUND NECK

Materials:- Col 1, Col 2,

This was knitted using a Knitmaster card No.247 from set No.53.

Using basic pattern. After working, SHAPE RAGLAN, work 10rs. then rel card and work in fairisle. One complete card revolution per border. Cont in Col 1, only, to end.

Rep border on all pieces.



### LADIES FAIRISLE SLIPOVER

Materials:- Col 1, Col 2,  
Col 3, Col 4,  
Col 5.

This was knitted using a Brother card, no. 235 from set 11.

Using the basic pattern, Lock the card to knit row 1. Rel card and start fairisle after knitting ribs. Keep col 1, in feeder 1.

Col 2, K 12rs. col 3, K 8rs.

Col 4, K 12rs. col 5, K 14rs.

Rep throughout. Knit back & front in fairisle, or just front.

### LADIES V NECK.

Pictured on Page 3

Materials:- Col 1, Col 2,  
Col 3.

Using the basic pattern,

Cast on in col 2. K 2rs.

Col 3, K 2rs. col 1, K 2rs.

Col 2, K 24rs.

Cont in col 1.

Neckband.

Cast on in col 2, K 10rs.

Col 3, K 2rs, col 1, K 2rs.

Col 2, K 2rs.

Work stripes on all ribs.

### MANS V NECK

Pictured on Page 3

Materials:- Col 1, Col 2,

Using the basic pattern,  
50 rows before armhole shapings  
WORK STRIPES

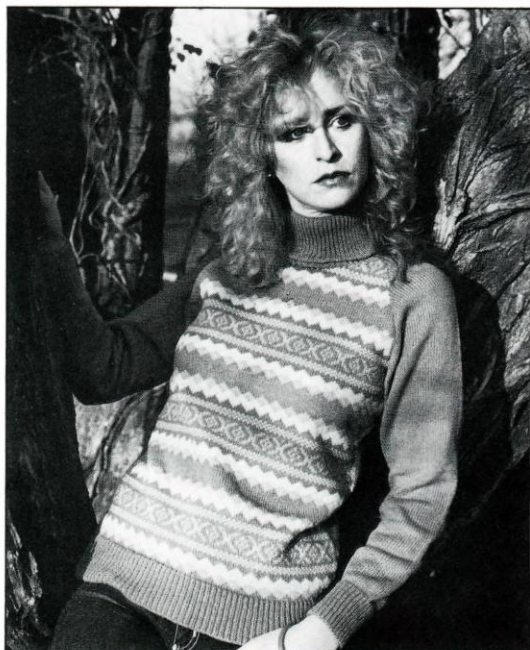
Col 2, K 4rs. Col 1, K 6rs.

Col 2, K 30rs. Col 1, K 6rs.

Col 2, 4rs. cont in col 1 only.

Rep stripes on all pieces.

## VARIATIONS



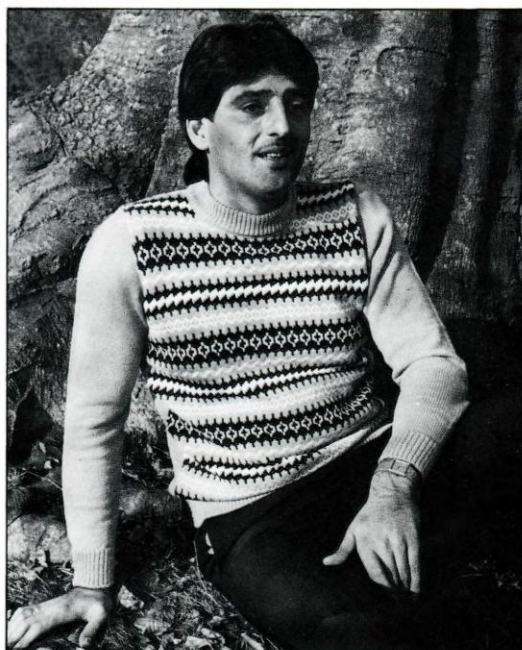
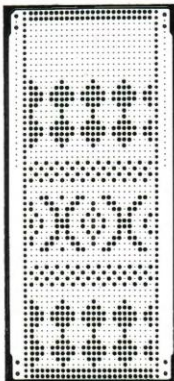
### LADIES FAIRISLE POLO NECK

Materials:- Col 1, col 2,  
col 3, col 4.

This was knitted using the card pictured below.  
Using the basic pattern, Lock the card to knit row 1. Rel card and start knitting fairisle after knitting ribs.

Col 1, feeder 1, col 2, feeder 2, K 3rs.  
Col 3, feeder 1, col 2, feeder 2, K 3rs.  
Col 3, feeder 1, col 4, feeder 2, K 3rs.  
Col 1, feeder 1, col 4, feeder 2, K 3rs.  
Col 1, feeder 1, col 3, feeder 2, K 8rs.  
Col 1, feeder 1, col 2, feeder 2, K 10rs.  
Col 1, feeder 1, col 3, feeder 2, K 8rs.  
Col 1, feeder 1, col 4, feeder 2, K 3rs.  
Col 3, feeder 1, col 4, feeder 2, K 3rs.  
Col 3, feeder 1, col 2, feeder 2, K 3rs.  
Col 1, feeder 1, col 2, feeder 2, K 3rs.  
Col 1, feeder 1, K10rs.

Rep pattern and colours throughout.  
Knit back and front in fairisle or just front.



### MANS FAIRISLE ROUND NECK

Materials:- Col 1, col 2,  
col 3.

This was knitted using a Brother card No. 1, from Punchcard Pattern book Vol 4.

Using the basic pattern, Lock the card to knit row 1.  
Rel card after knitting the ribs.

Col 2, feeder 1, col 1, feeder 2, K 6rs.  
Col 3, feeder 1, col 1, feeder 2, K 6rs.  
Col 3, feeder 1, col 2, feeder 2, K 12rs.  
Col 3, feeder 1, col 1, feeder 2, K 6rs.  
Col 2, feeder 1, col 1, feeder 2, K 10rs.  
Col 3, feeder 1, col 1, feeder 2, K 6rs.  
Col 3, feeder 1, col 2, feeder 2, K 8rs.  
Col 3, feeder 1, col 1, feeder 2, K 8rs.

Rep colour sequence throughout. Knitting fairisle on front and back or just on the front.

### LADIES FAIRISLE ROUND NECK CARDIGAN

Pictured on front cover.

Materials:- Col 1, col 2,  
col 3.

This was knitted using a Knitmaster card No. 78 from Punchcard Pattern Library No.1.

Using the basic pattern, Lock card to knit row 1. Rel card after knitting the ribs.

Keeping col 1, in feeder 1.

Col 2, K 6rs.

Col 3, K 2rs.

Col 2, K 6rs.

Rep throughout.

Knit fairisle on both fronts.

## CHILDRENS VARIATIONS



### POLO NECK CRAB DESIGN

Materials:- Col 1, col 2,  
col 3, col 4,

This was knitted using a Brother pre-punched card, No. 212, from set 7.

Using the basic pattern, Lock the card to K row 1. After knitting the rib, K 2rs. before rel card.

Col 1, and col 2, K 12rs.

Col 1, and col 3, K 28rs.

Col 1, and col 4, K 10rs.

Cont in col 1 only, lock card. (Brother r 41, Knitmaster r 39.)

After knitting armhole shaping K 2rs. rel card.

Col 1, and col 4, K 10rs.

Cont in col 1, only.

Rep for all pieces.



### V NECK CARDIGAN WITH BORDER

Materials:- Col 1, col 2,  
col 3,

This was knitted using a section of a Brother punchcard No. 1, from Punchcard pattern book Vol 4.

Lock card on (Knitmaster r 5, Brother r 7.)

After knitting rib, K 4rs. before rel card.

Col 2, in feeder 1, and

Col 1, in feeder 2, K 6rs.

Col 2, feeder 1, col 3, feeder 2

K 12rs. col 2, feeder 1, col 1,

in feeder 2, K 6rs.

Cont in col 1 only.

Rep on all pieces.

### ROUND NECK SPOT DESIGN. (raglan)

Pictured inside front cover.

Materials:- Col 1, col 2,

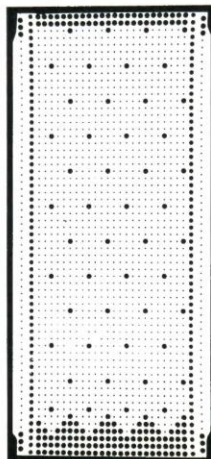
This was knitted using the punchcard design on the right.

Using the basic pattern, lock the card to knit row 1. After

knitting cast off rs. for armholes, K 4rs. before rel card.

Col 2, in feeder 1, and col 1, in feeder 2, cont in patt to end.

Knit neck in Col 1. to contrast.

















A Juval Design Publication