

PASSAP®
ELECTRONIC 6000

Sonderzubehör Accessoire spécial

Color C 600
der automatische Vierfarbenwechsler

Color C 600
Changeur automatique à 4 couleurs

Color C 600
Automatic 4 colour changer

Color C 600
Cambiador automatico de 4 colores

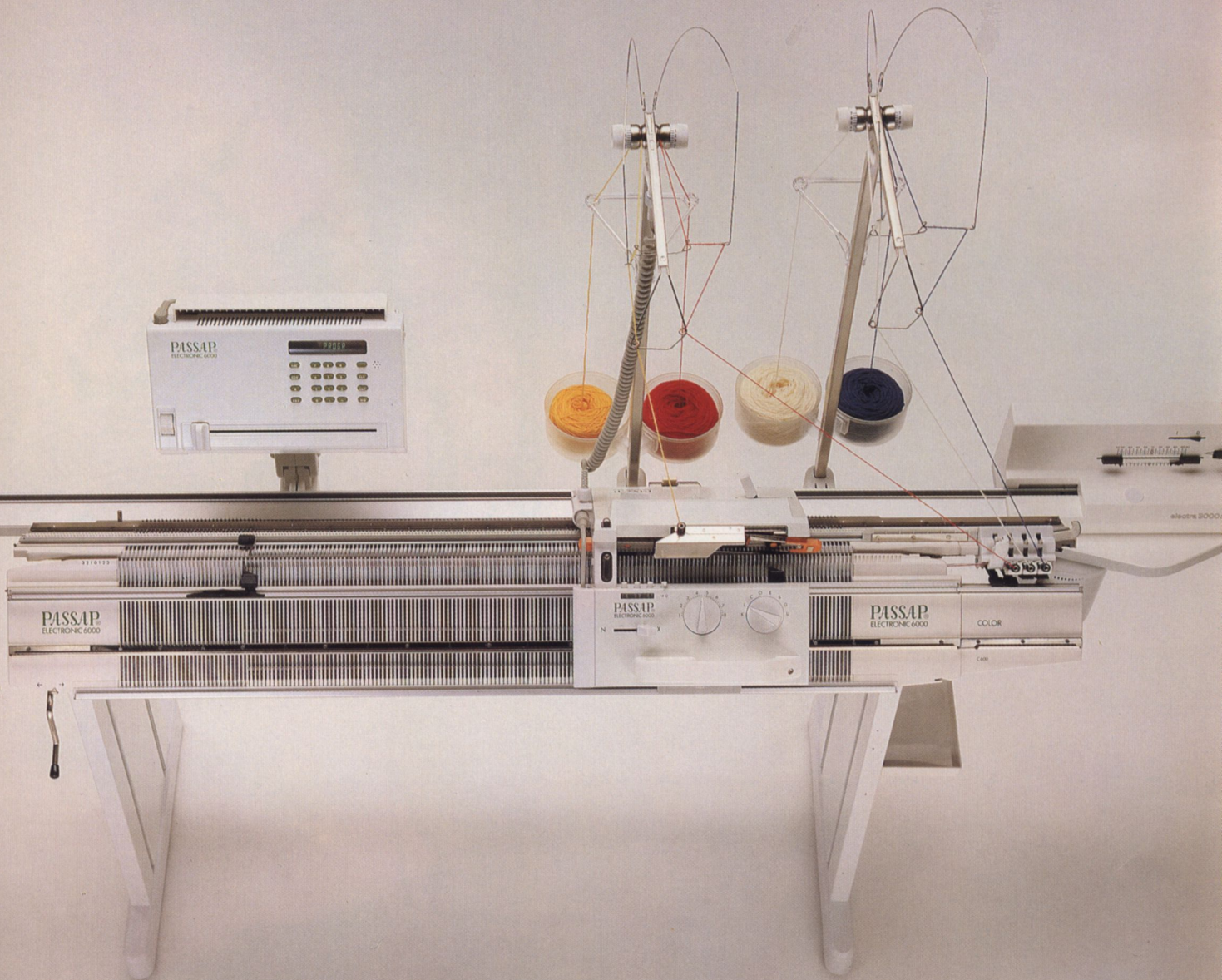
Optional Accesorio especial

Electra E 3000 A / E 3002 A
der elektrische Motorantrieb

Electra E 3000 A / E 3002 A
Entrainement moteur

Electra E 3000 A / E 3002 A
Motor drive

Electra E 3000 A / E 3002 A
Accionamiento motriz



Tisch T 600
Table T 600
Stand T 600
Mesa T 600

Tisch T 601 mit Rollen
Table T 601 à rouleaux
Stand T 601 with casters
Mesa T 601 con chasis



6011

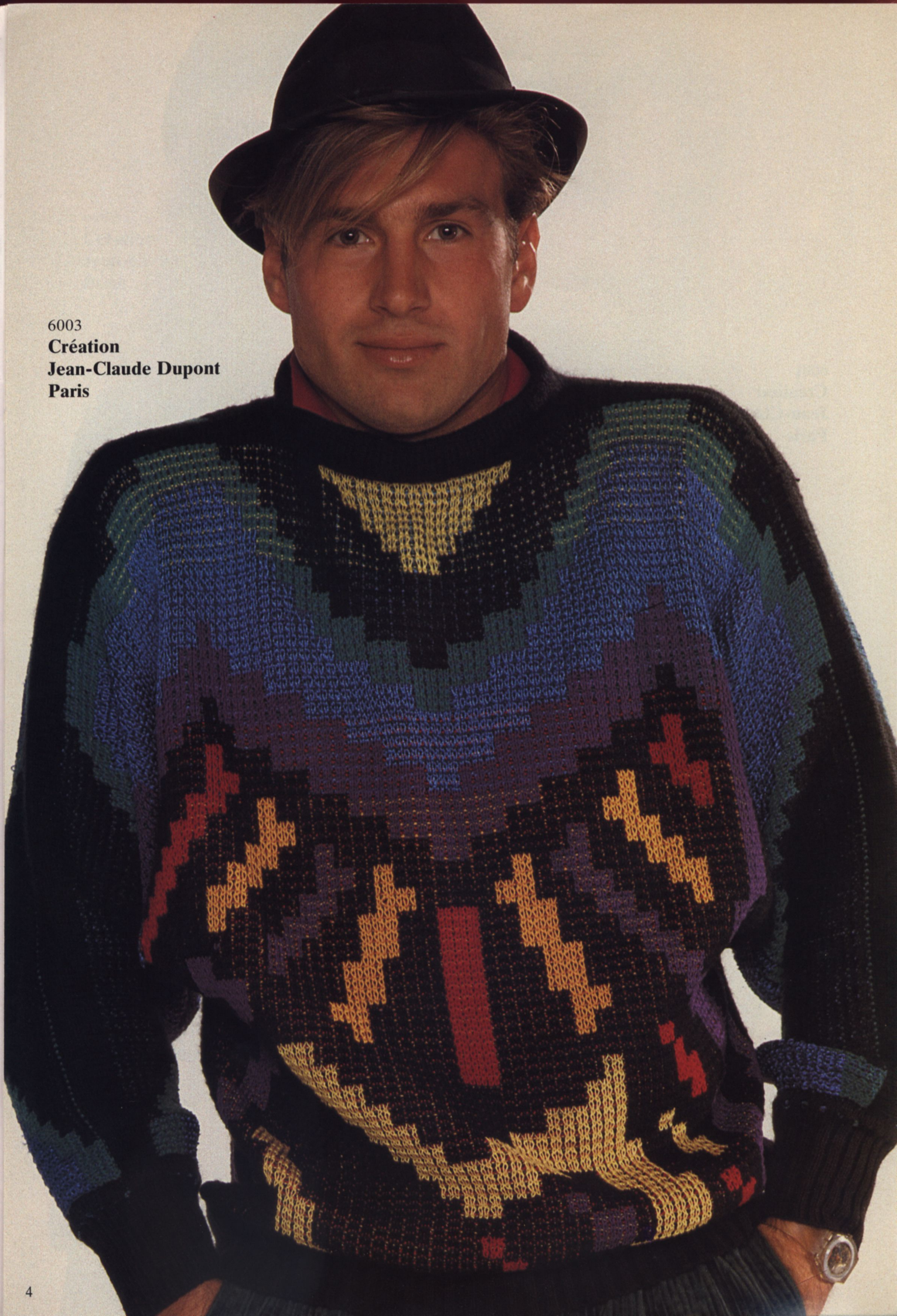
6002
Création
Jean-Claude Dupont
Paris



6001
Création
Jean-Claude Dupont
Paris



6003
Création
Jean-Claude Dupont
Paris





6004

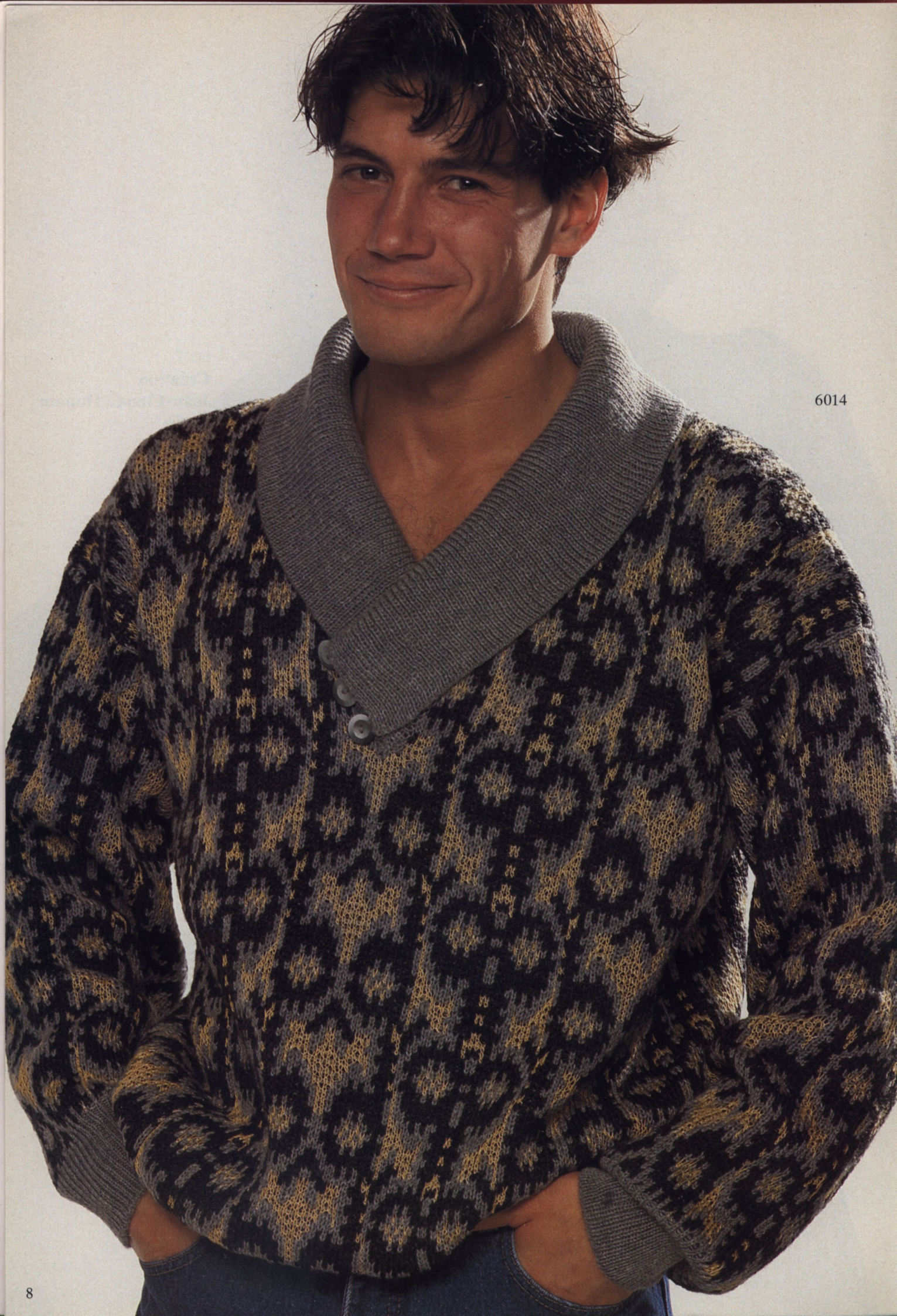


6017
6022



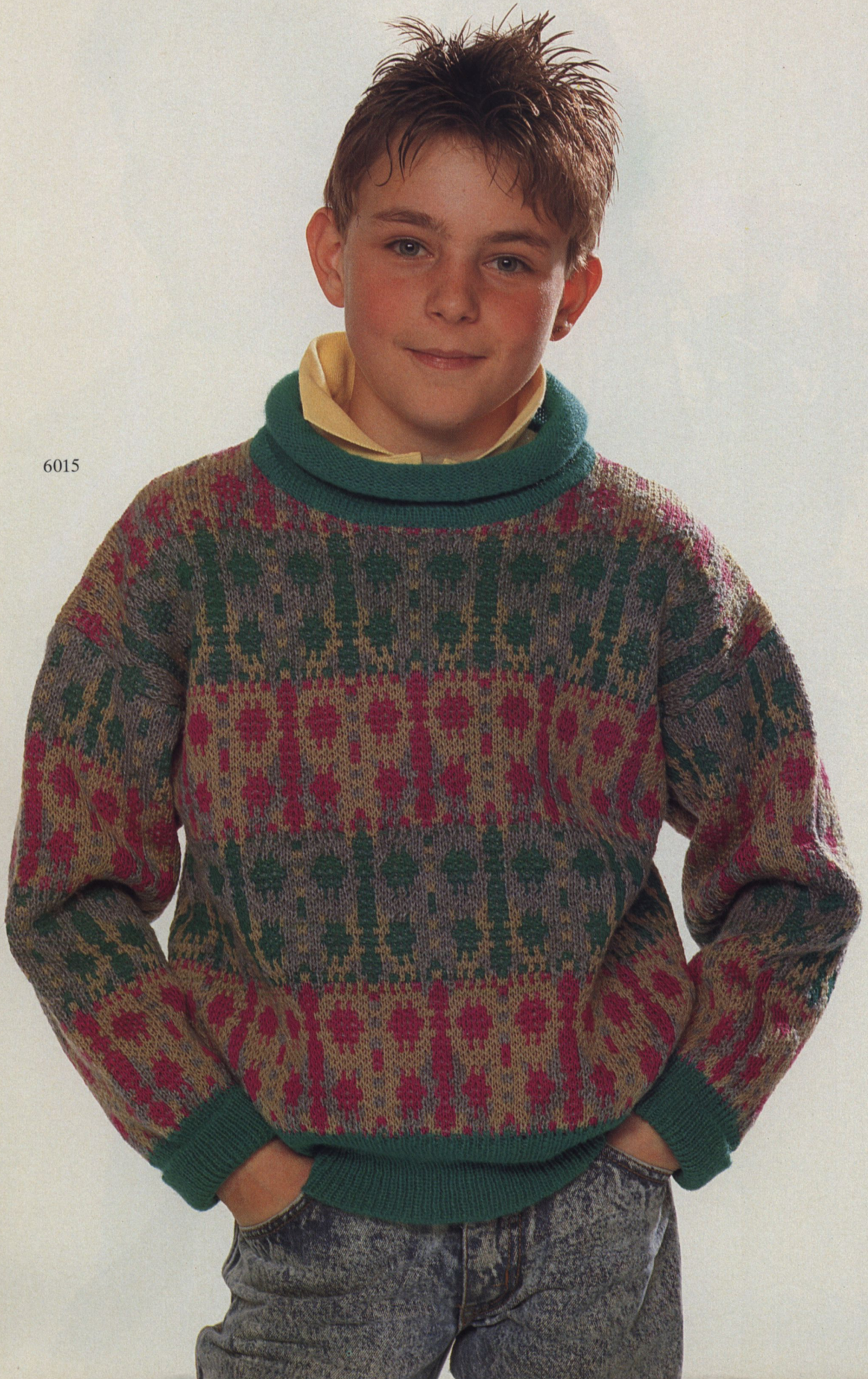
6007
Création
Jean-Claude Dupont
Paris





6014

6015

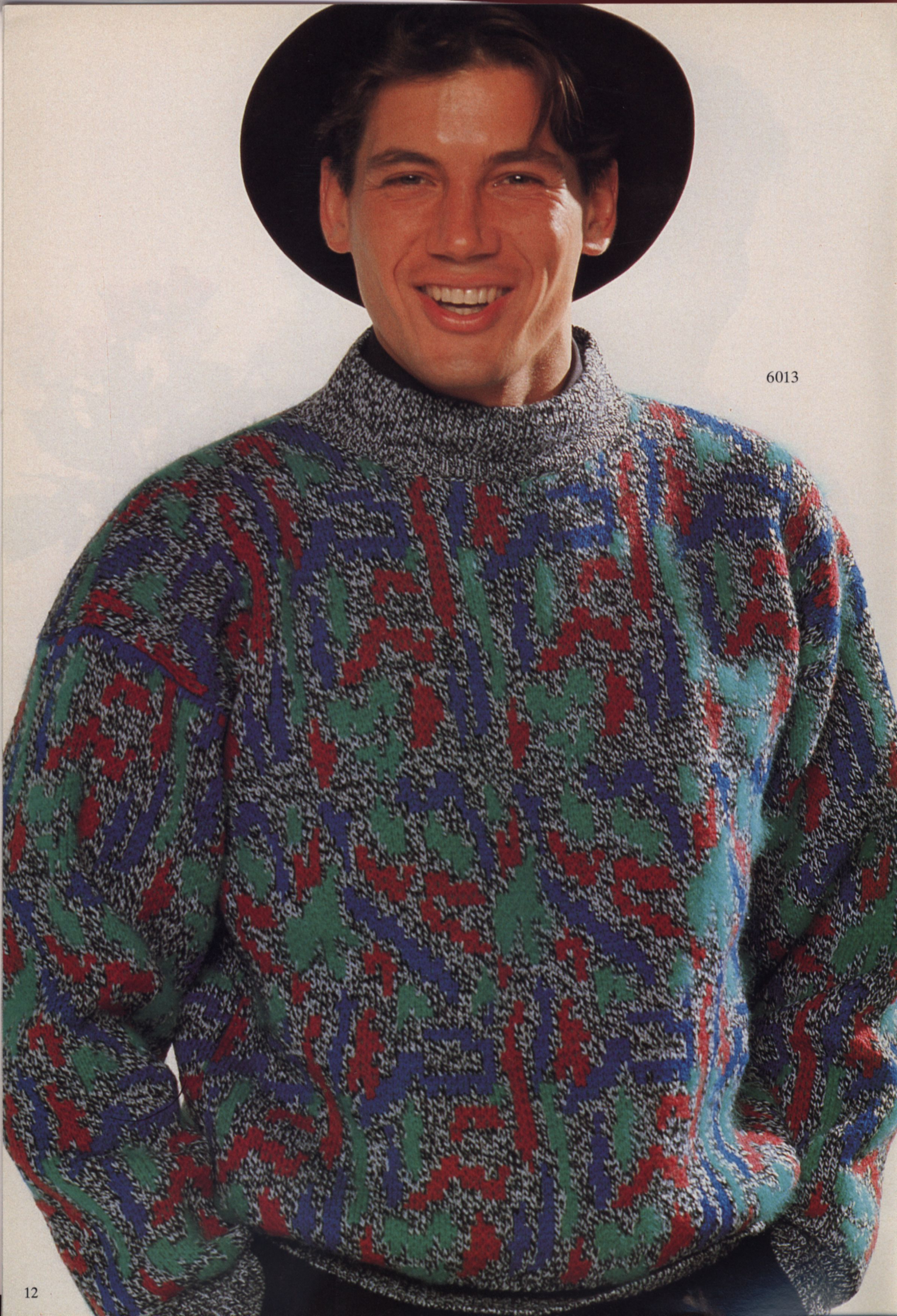




6010



6009



6013

6016





6005



6018



6019

6021

6006



6008

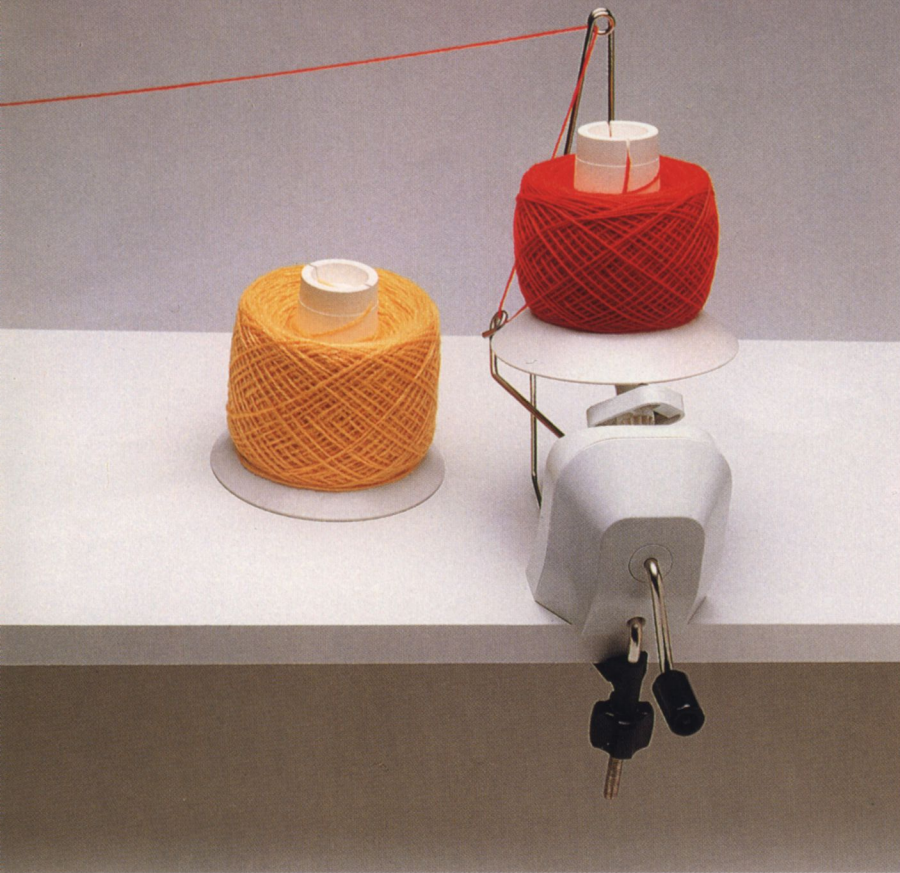




6020



6012



Sonderzubehör
Accessoire spécial

Optional ex
Accesorio e

PASSAP[®]
ELECTRONIC 6000

Die modernste Hobby-Strickmaschine der Welt.

PASSAP[®]
ELECTRONIC 6000

PASSAP[®]
ELECTRONIC 6000

The world's most advanced home knitting machine.

PASSAP[®]
ELECTRONIC 6000



33.333.83/5.88

© 1987 by MADAG Maschinen-
und Apparatebau

Dietikon AG, CH-8953 Dietikon

All rights of reproduction reserved
Printing and Layout in Switzerland

Druck: Zollikofer AG, St.Gallen

Fotolithos: Zollikofer AG, St.Gallen

Pictures: R. Moser, Zürich

Accessoires: Globus Zürich



6006

MADAG
8953 Dietikon
Schweiz

ELECTRONIC 6000

Description Book

C O N T E N T S

6001	Lady's 4-colour Fairisle sweater	4
6002	Lady's 4-colour Fairisle jacket	6
6003	Man's sweater in 4-colour Fairisle	10
6004	Child's sweater in 4-colour Fairisle	9
6005	Mini dress	12
6006	Lady's sweater in 3-colour Fairisle	13
6007	Lady's jacket in 3-colour Fairisle	14
6008	Lady's 3-colour intarsia sweater	16
6009	Man's sweater with pin tucks	27
6010	Lady's sweater in Fairisle	17
6011	Cocktail dress	22
6012	Sweater dress	18
6013	Man's sweater	8
6014	Man's sweater in 3-colour Fairisle	23
6015	Child's sweater	24
6016	Lady's sweater	25
6017	Lady's 3/4 length jacket	26
6018	Lady's sweater in 4-colour Fairisle	28
6019	Lady's Fairisle jacket in 3 colours	30
6020	Intarsia sweater in 3 colours	31
6021	Lady's 3-colour Fairisle sweater	32
6022	Skirt with frills (matching jacket 6017)	29

HELPFUL HINTS AND TIPS

The pattern block

If you knit with FORM-program, the pattern block serves as a guide as to whether the garment is particularly long or short, with much or little ease. These proportions also apply to the sizes for which there is a FORM-program but no pattern block.

If you knit without FORM-program, go by the indications given in the pattern block, observing the following :

For a symmetrical part usually only one half is drawn, the broken vertical (or occasionally horizontal) line represents the centre line.

The number of stitches always refers to the full width, and always indicates only the stitches knitted on the front bed.

Abbreviations

- ▲ = knit with short rows (graduations). See Instruction Book page 107 on increasing, page 110 on decreasing.
- = every
- X = times
- = tubular
- C = half tubular, C open at right, C open at left
- R = rows
- RC = Row Counter. You will find 'RC' in place of 'R' (rows) in the case of stitch patterns where fewer rows show up in the knitting than have actually been knitted.
(Example : 3 and 4-colour Fairisle)

Examples for increasing and decreasing

- +3×2·8.R = increase 2 stitches 3 times in every 8th row (i.e. always at an interval of 8 rows)
- 19×3·7.R = decrease 3 stitches 19 times in every 7th row (i.e. at an interval of 7 rows)
- 17×1·2./3.R = decrease 1 stitch 17 times in every 2nd or 3rd row respectively (i.e. the interval between the decreases is alternately once two and once three rows)
- ▲-4×8·2.R = decrease with short rows (graduations) 8 stitches 4 times in every 2nd row, i.e. always push the respective pushers right down, so that the corresponding needles are not working any more.

How to use the electronic and the mechanical Row Counter

The ELECTRONIC 6000 is fitted with an electronic as well as a mechanical Row Counter.

Starting from the cast-on the electronic Row Counter counts automatically and continuously all the knitted rows. If you turn it back by pressing key COR (Instruction Book page 188), this means that the computer will go back in the stitch pattern and the FORM-program by the same number of rows that you have gone back.

As far as the mechanical Row Counter is concerned, you may set it at the desired row number at any time and quite independently of the electronic system. If you knit without FORM-program, we would advise that you always re-set the mechanical Row Counter at 000 at the beginning of a new section. This enables you to check it against the indications in the pattern block, and tells you immediately when you have come to the end of a particular section.

If you knit with a FORM-program

The places where you have to enter the measurements of your test square are marked as follows :

- A enter the measurement in mm of 40 rows of your test square
- B enter the measurement in mm of 40 stitches of your test square
- C enter the measurement in mm of 40 rows of the border

Note : It is possible for 'C' to appear twice in a program in which case the same measurement must be entered twice.

The flashing figures may have a different meaning for each program. The meaning is explained separately for the particular program.

How to program

The cast-on and the stitch patterns A,B,C etc. as well as the corresponding knitting techniques are indicated in the descriptions in the sequence most suitable for programming. But always read through the whole description first to get a clear picture of the sequence in which the respective patterns are knitted.

How to alter the program

When you have knitted a part (e.g. back or front) it is normally not necessary to fully re-program the next part. In the majority of cases you may simply overwrite the parts of the program you wish to alter (see Instruction Book page 182.)

If you want a new stitch pattern, overwrite the previous pattern number and knitting technique number. Important : Continue to the question ALL ST.PATT and answer it.

Never press the key for "fast forward" before answering the question ALL ST.PATT!

Proceed in the same way if you wish to alter the FORM-program, i.e. simply write the numbers of the new program over the old numbers. Note : Proceed very carefully as after altering the program you cannot run through it again automatically to check it.

6001 ELECTRONIC 6000

Lady's 4-colour Fairisle sweater

(Design Jean-Claude Dupont, Paris)

Size : To fit 88-92 cm bust
Material : 110 g of each brown and green wool, 90 g of each lilac and yellow cotton thread, 110 g red. 190 g wool/polyamid black. 120 g viscose shiny yarn blue.
Stitch size : Pattern A = 5. Pattern B = 6 3/4. Neckband = 7. Band = 3 1/2
Test square : Pattern A : 100 sts on front bed = 40 cm, RC 100 = 18 cm
 Pattern B : 100 sts on front bed = 38,5 cm, RC 100 = 11,5 cm
Cast-on for band : 2
Neckband : 6
Pattern A : KNIT TECH 117
Pattern B : Self-drawn pattern sheet entered for 4-colour Fairisle :
 Pattern sheet 1.ADD, pattern sheet 2 ADD, pattern sheet 3 ENLARGE ↑ R x 2, ↔ STS x 4. KNIT TECH 207.

Colour sequence :

RC 0 - 112	2 R black, 2 R blue, 2 R red, 2 R yellow
RC 113 - 144	2 R black, 2 R blue, 2 R lilac, 2 R yellow
RC 145 - 320	2 R black, 2 R blue, 2 R lilac, 2 R brown
RC 321 - 352	2 R black, 2 R red, 2 R lilac, 2 R yellow
RC 353 - 448	2 R black, 2 R red, 2 R green, 2 R yellow
RC 449 - 480	2 R black, 2 R red, 2 R green, 2 R blue
RC 481 - 512	2 R black, 2 R lilac, 2 R green, 2 R blue
RC 513 - 640	2 R black, 2 R lilac, 2 R brown, 2 R blue

Fig. I : Back

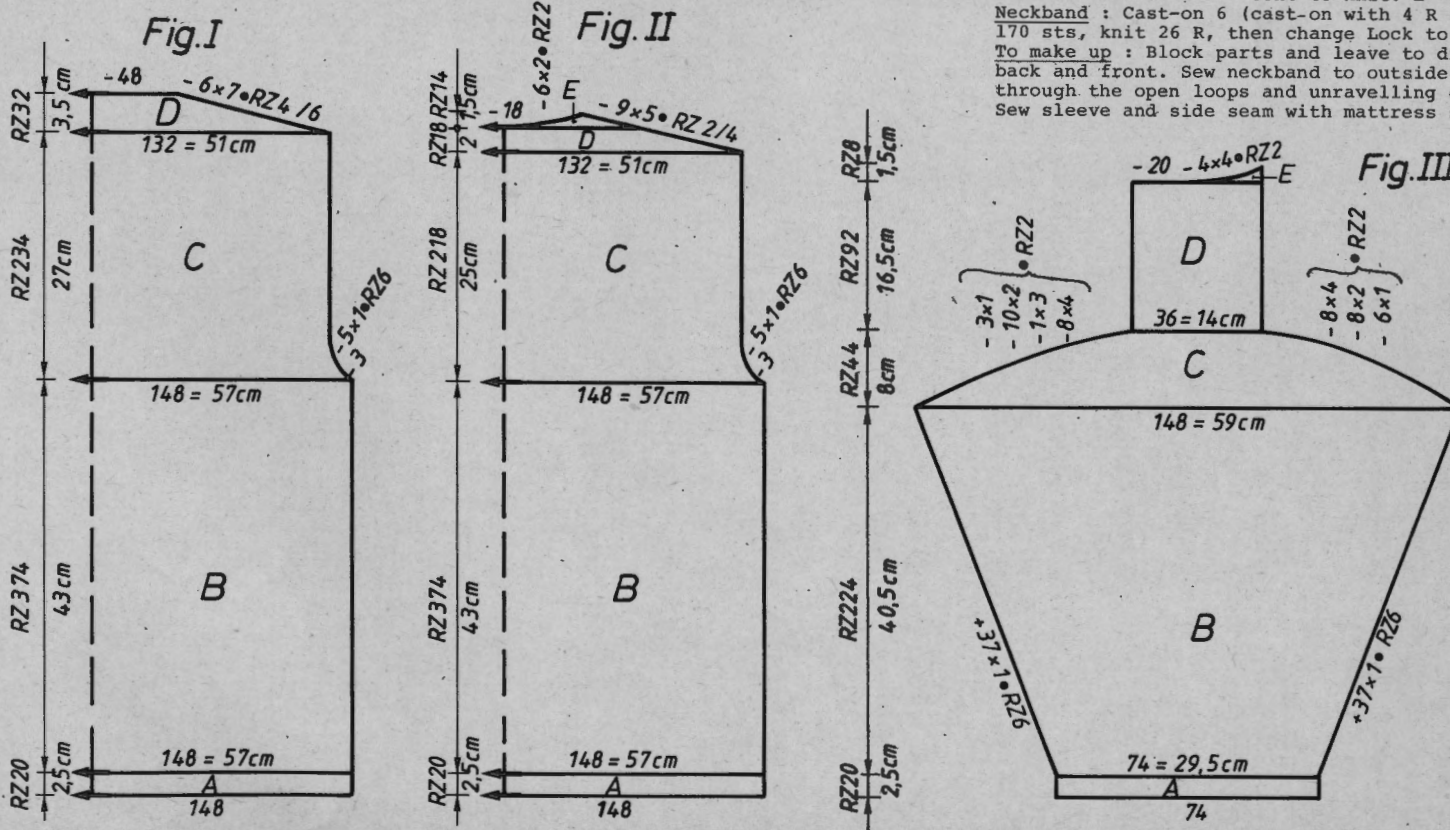
A = cast-on 2 (tubular cast-on for K/K), cont to knit patt A (KNIT TECH 117).
 B = knit patt B acc to col sequence. C = shape armhole at each end, cont in col sequence. D = shape shoulder at each end, cont in col sequence. Cast off.

Fig. II : Front

A, B, C and D = knit as for Fig. I. E = divide work. Place sts of left half onto deckercombs. (If you knit without FORM-program, make a note of the exact RC position, and the nds on which the left half is. See instruction book page 117.) Cont to knit right half in col sequence, shaping neck at left, shaping shoulder at right. Place left half back onto nds of machine and knit with reversed shapings.

Fig. III : Sleeve, knit two with reversed shapings

A = knit as for Fig. I. B = knit patt A, inc at each end. C = shape sleeve head at each end. D = cont to knit. E = shape neck at left.
Neckband : Cast-on 6 (cast-on with 4 R for st.st.) in black wool with 2 strands 170 sts, knit 26 R, then change Lock to N, knit a few R contrast yarn, release.
To make up : Block parts and leave to dry under a damp cloth. Sew sleeve to back and front. Sew neckband to outside neck edge, st by st, backstitching through the open loops and unravelling contrast yarn, hem down on inside. Sew sleeve and side seam with mattress stitch.



400 m wool per 100 g
 125 yds per 1 oz
 500 m cotton thread per 100 g
 157 yds per 1 oz
 900 m wool/polyamid black per 100 g
 282 yds per 1 oz
 322 m Viscose shiny yarn per 100 g
 101 yds per 1 oz
 10 cm = approx 4"

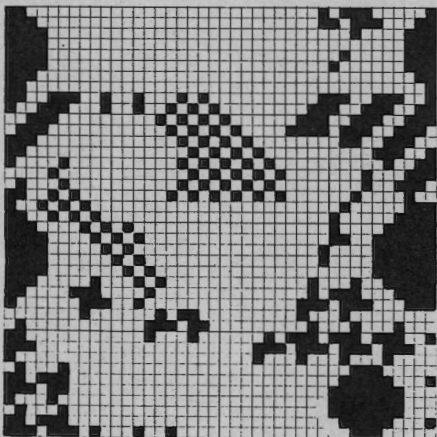
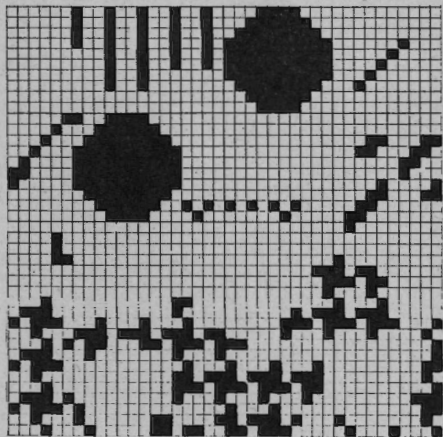


FIG. I

	34/36	38/40	42/44
1	46	46	46
2	154	154	154
3	.	.	.
4	.	.	.
5	138	148	158
6	84	92	100
7	.	.	.
8	195	195	195
9	.	.	.
10	7	7	7
11	8	8	8
12	38	38	38
13	138	148	158
14	84	92	100
15	.	.	.
16	43	43	43
17	77	77	77
18	.	.	.
19	105	105	105
20	152	152	152
21	3	3	3
22	175	175	175
23	8	8	8
24	7	7	7
25	92	92	92
26	191	191	191
27	159	163	167
28	11	11	11
29	0	0	0

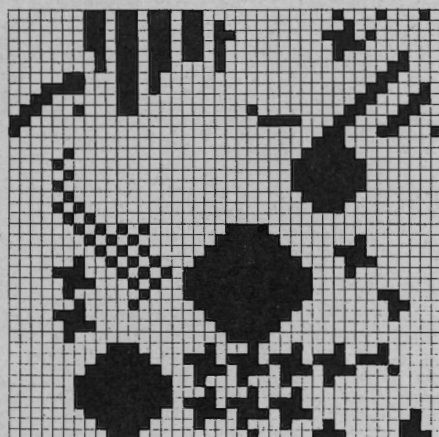


FIG. II

	34/36	38/40	42/44
1	46	46	46
2	154	154	154
3	.	.	.
4	.	.	.
5	138	148	158
6	84	92	100
7	.	.	.
8	195	195	195
9	.	.	.
10	7	7	7
11	8	8	8
12	38	38	38
13	138	148	158
14	84	92	100
15	.	.	.
16	43	43	43
17	77	77	77
18	.	.	.
19	233	233	233
20	152	152	152
21	3	3	3
22	175	175	175
23	8	8	8
24	7	7	7
25	84	84	84
26	191	191	191
27	162	166	170
28	11	11	11
29	68	68	68
30	184	184	184
31	129	130	131
32	190	190	190
33	133	133	133
34	0	0	0

FIG. III

	34/36	38/40	42/44
1	72	72	72
2	160	160	160
3	.	.	.
4	.	.	.A
5	72	74	76
6	3	3	3
7	3	3	3
8	195	195	195
9	.	.	.
10	7	7	.C
11	3	3	3
12	38	38	38
13	146	148	150
14	3	3	3
15	3	3	3
16	41	40	41
17	58	59	60
18	.	.	.
19	78	78	78
20	155	155	155
21	191	191	191
22	141	141	141
23	3	3	3
24	145	153	161
25	191	191	191
26	153	153	153
27	1	1	1
28	7	7	7
29	36	39	42
30	184	184	184
31	141	141	141
32	188	188	188
33	137	137	137
34	73	73	74
35	174	182	190
36	191	191	128
37	137	137	191
38	1	1	137
39	191	191	1
40	153	153	191
41	1	1	153
42	7	7	1
43	40	43	7
44	0	0	46
45	.	.	0

total length

6002 ELECTRONIC 6000

Lady's 4-colour Fairisle jacket

(Design Jean-Claude Dupont, Paris)

Size : To fit 88 - 92 cm bust
Material : 110 g wool of each : brown and green. 80 g each cotton thread : lilac and yellow. 130 g red. 100 g wool/polyamid black. 360 g viscose shiny yarn blue.
Stitch size : Pattern A = 6 3/4. Hem, collar and binding = 5.
Test square : 100 sts on front bed = 36 sts. RC 100 = 11 cm
Cast-on for hem and collar : 8, cont to knit.
Cast-on for binding : 6, cont to knit.
Pattern A : Enter self-drawn pattern sheet for 4-colour Fairisle (see stitch pattern drawing for garment 6001) :
 Pattern sheet 1 ADD Pattern sheet 2 ADD Pattern sheet 3. 207 (Fairisle 4 colours)

KNIT TECH :

Col sequence :

RC 0 - 56	2 R black, 2 R blue, 2 R red, 2 R yellow
RC 57 - 72	2 R black, 2 R blue, 2 R lilac, 2 R yellow
RC 73 - 160	2 R black, 2 R blue, 2 R lilac, 2 R brown
RC 161 - 176	2 R black, 2 R red, 2 R lilac, 2 R yellow
RC 177 - 224	2 R black, 2 R red, 2 R green, 2 R yellow
RC 225 - 240	2 R black, 2 R red, 2 R green, 2 R blue
RC 241 - 256	2 R black, 2 R lilac, 2 R green, 2 R blue
RC 257 - 320	2 R black, 2 R lilac, 2 R brown, 2 R blue

Fig. I : Back

A = cast-on 8 (closed cast-on for tubular) knit to the end of hem. B = knit patt A. C = shape armhole at each end, cont in patt A. D = shape shoulder at each end. Cast off.

Fig. II : Front, knit two pieces with reversed shapings

Knit A and B as given for Fig. I. C = shape neck at left. D = shape armhole at right, shape neck at left. E = shape neck at left, shape shoulder at right.

Fig. III : Sleeve, knit two

A = knit as for Fig. I. B = knit pattern A, inc at each end. C = cont to knit, shaping sleeve head at each end.

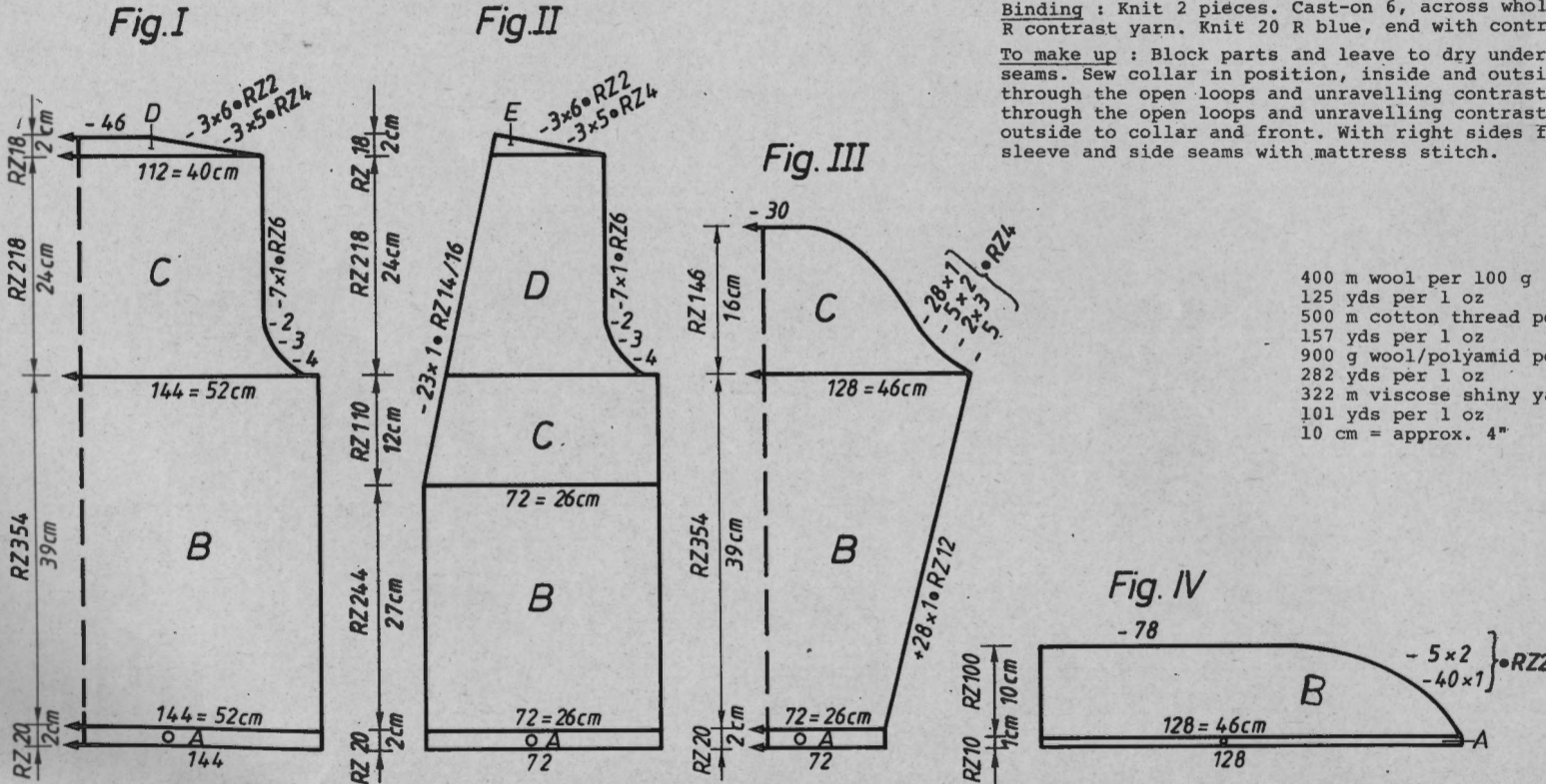
Fig. IV : Collar, knit two pieces with reversed shapings

Cast-on 8 with contrast yarn, knit a few R. Cont to knit with shiny yarn, blue. After RC 9, knit 1 R with lock back and front N. B = lock back CX, front LX, dec at right. Cast off.

Binding : Knit 2 pieces. Cast-on 6, across whole width of nd-bed, knit a few R contrast yarn. Knit 20 R blue, end with contrast yarn, release.

To make up : Block parts and leave to dry under a damp cloth. Sew shoulder seams. Sew collar in position, inside and outside, st by st, backstitching through the open loops and unravelling contrast yarn. St by st, backstitching outside to collar and front. With right sides facing, set in sleeves. Sew sleeve and side seams with mattress stitch.

400 m wool per 100 g
 125 yds per 1 oz
 500 m cotton thread per 100 g
 157 yds per 1 oz
 900 g wool/polyamid per 100 g (black)
 282 yds per 1 oz
 322 m viscose shiny yarn per 100 g (blue)
 101 yds per 1 oz
 10 cm = approx. 4"



ERRATUM zu Sonderheft ELECTRONIC 6000

Bitte für Modell 6002, Fig. II und Modell 6007, Fig. IA die folgenden FORM Programme verwenden und nicht die im Arbeitsheft abgedruckten.

ERRATUM cahier de descriptions ELECTRONIC 6000

Pour les modèles 6002, Fig. II et 6007, Fig. IA, veuillez utiliser les programmes FORME ci-dessous au lieu de ceux imprimés dans le cahier de descriptions.

6002 : FIG.II

	34/36	38/40	42/44
1	44	44	44
2	400	400	400
3	.	.	.A
4	.	.	.B
5	67	72	78
6	84	92	100
7	.	.	*1
8	195	195	195
9	.	.	.C
10	7	7	7
11	4	4	4
12	38	38	38
13	67	72	78
14	84	92	100
15	.	.	*1
16	20	20	20
17	67	67	67
18	.	.	*2
19	238	238	238
20	7	7	7
21	79	79	79
22	160	160	160
23	3	3	3
24	152	152	152
25	3	3	3
26	191	191	191
27	130	130	130
28	17	17	17
29	7	7	7
30	72	72	72
31	191	191	191
32	150	154	159
33	2	2	2
34	68	68	68
35	191	191	191
36	143	144	145
37	127	127	127
38	167	167	167
39	0	0	0

6007 : FIG.IA

	34/36	38/40	42/44
1	48	48	48
2	188	188	188
3	.	.	.A
4	.	.	.B
5	46	48	52
6	3	3	3
7	3	3	3
8	38	38	38
9	46	48	52
10	3	3	3
11	3	3	3
12	70	70	70
13	82	82	82
14	.	.	.C
15	229	229	229
16	7	7	7
17	35	35	35
18	191	191	191
19	129	129	130
20	1	1	1
21	69	69	69
22	185	185	185
23	128	129	131
24	191	191	191
25	129	129	129
26	1	1	1
27	0	0	0

6002

FIG. I			FIG. II			FIG. III		
34/36	38/40	42/44	34/36	38/40	42/44	34/36	38/40	42/44
1	44	44	44	44	44	44	44	44
2	144	144	144	400	400	400	144	144
3
4
5	134	144	156	67	72	78	70	72
6	84	92	100	84	92	100	3	3
7	3	3
8	195	195	195	195	195	195	195	195
9
10	7	7	7	7	7	7	7	7
11	4	4	4	4	4	4	4	4
12	38	38	38	38	38	38	38	38
13	134	144	156	67	72	78	124	128
14	84	92	100	84	92	100	3	3
15	3	3
16	39	39	39	20	20	20	39	39
17	67	67	67	67	67	67	58	59
18
19	111	111	111	238	238	238	105	105
20	160	160	160	7	7	7	168	168
21	3	3	3	79	79	79	2	2
22	152	152	152	160	160	160	180	180
23	3	3	3	3	3	3	191	191
24	144	144	144	152	152	152	131	131
25	3	3	3	3	3	3	3	3
26	191	191	191	191	191	191	191	191
27	128	128	128	130	130	130	149	149
28	14	14	14	17	17	17	49	49
29	7	7	7	7	7	7	0	0
30	72	72	72	72	72	72	72	72
31	190	190	190	191	191	191	191	191
32	135	136	141	150	154	159	191	191
33	187	187	187	2	2	2	49	49
34	136	139	139	68	68	68	0	0
35	0	0	0	191	191	191	191	191
				143	144	145		
				127	127	127		
				167	167	167		
				0	0	0		

*1 = cm bust
*2 = cm total length

FIG. IV

	34/44
1	44
2	144
3	.A
4	.B
5	128
6	3
7	3
8	194
9	.C
10	6
11	66
12	7
13	43
14	69
15	191
16	161
17	33
18	189
19	131
20	0

6013

FIG. I			FIG. II		
44/46	48/50	52/54	44/46	48/50	52/54
1	40	40	40	40	40
2	154	154	154	154	154
3
4
5	142	154	164	142	154
6	90	98	106	90	98
7
8	195	195	195	195	195
9
10	7	7	7	7	7
11	34	34	34	34	34
12	38	38	38	38	38
13	142	154	164	142	154
14	90	98	106	90	98
15
16	61	61	61	53	53
17	69	69	69	69	69
18
19	0	0	0	226	226
20	.	.	.	7	7
21	.	.	.	33	33
22	.	.	.	73	74
23	.	.	.	176	184
24	.	.	.	2	128
25	.	.	.	191	2
26	.	.	.	131	191
27	.	.	.	1	131
28	.	.	.	183	1
29	.	.	.	1	183
30	.	.	.	183	1
31	.	.	.	5	183
32	.	.	.	0	5
33	.	.	.	0	0

FIG. III

	44/46	48/50	52/54
1	40	40	40
2	154	154	154
3	.	.	.A
4	.	.	.B
5	86	88	90
6	3	3	3
7	3	3	3
8	195	195	195
9	.	.	.C
10	7	7	7
11	24	24	24
12	38	38	38
13	142	146	148
14	3	3	3
15	3	3	3
16	48	50	51
17	62	64	66
18	.	.	.cm
19	0	0	length

6013 ELECTRONIC 6000

Man's sweater

Size : To fit 98 cm chest
Material : 540 g wool/polyamid grey/black. 210 g angora/wool green.
 140 g wool each : blue and red.
Stitch size : Pattern A = front 6 1/2, back 6. Neckband = 5. Bands = 4
Test square : Pattern A : 100 sts on front bed = 38,5 cm. RC 100 = 10 cm
Cast-on for band : 1, cont to knit
Cast-on for neckband : 2, cont to knit
Pattern A : Self-drawn pattern sheets. 1A ADD 1B ADD 1C
Knit tech : 231 (Fairisle in 4 colours)
Col sequence : 2 R grey/black, 2 R green, 2 R blue, 2 R red

Fig. I : Back
 A = cast-on 1 (tubular cast-on for 1:1 rib), cont to knit to end of band. B = knit pattern A, cast off.
Fig. II : Front
 A + B = as for Fig. I. C = divide work. Place left half onto deckercombs. (If you are knitting without FORM-program, make a note of the exact number on the Row Counter, and the needles on which the left half hangs. Instruction Book page 117.) Cont to knit right half : shape neck at left. Cast off. Place left half back onto nds of machine and knit with reversed shapings.

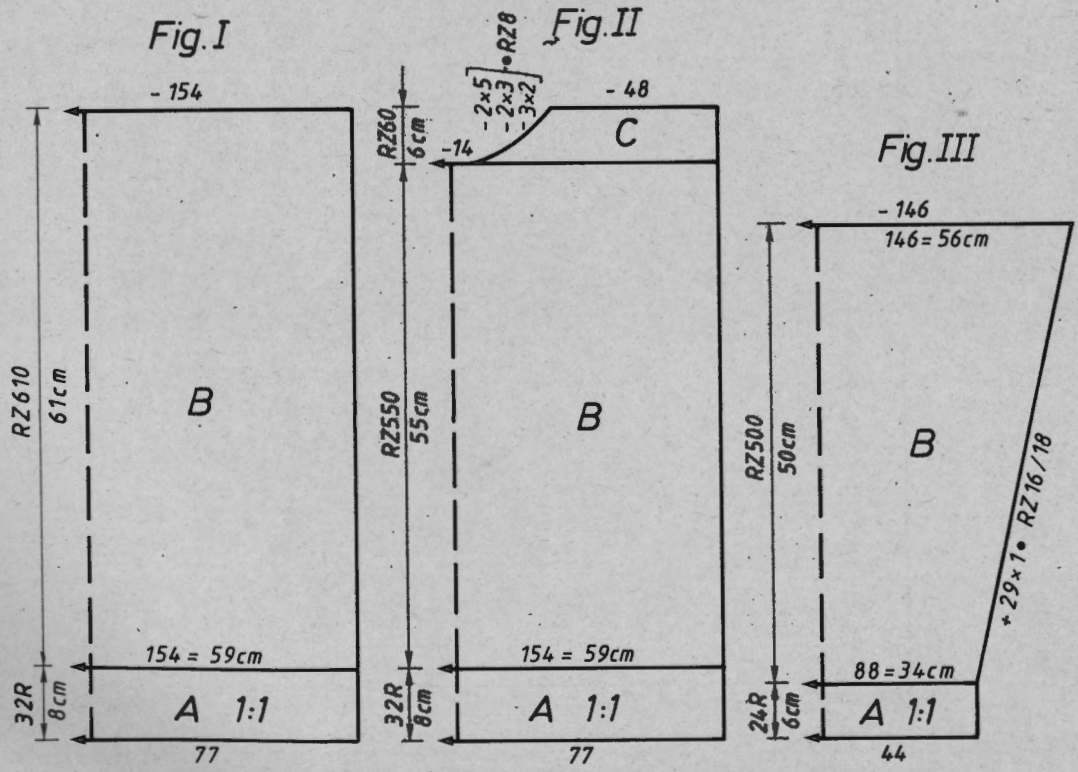
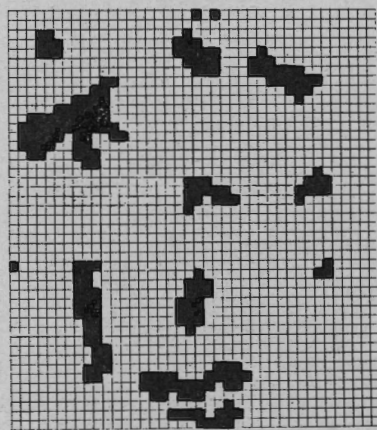


Fig. III : Sleeve, knit two
 A = as for Fig. I. B = knit in pattern A, inc at each end. Cast off.
Neckband : Cast-on 2 (tubular cast-on for Knit/Knit) with 110 sts, knit 14 R. Then with lock back and front CX, knit RC 12. End with a few R contrast yarn, release.
To make up : Block parts and leave to dry under a damp cloth. Sew shoulder seams. With right sides facing, set in sleeves. Sew neckband to outside neck edge, st by st, backstitching through the open loops and unravelling contrast yarn, hem down on inside. Sew sleeve and side seams with mattress stitch.

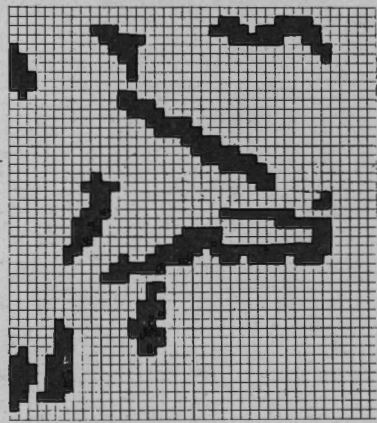
Pattern sheet 1A



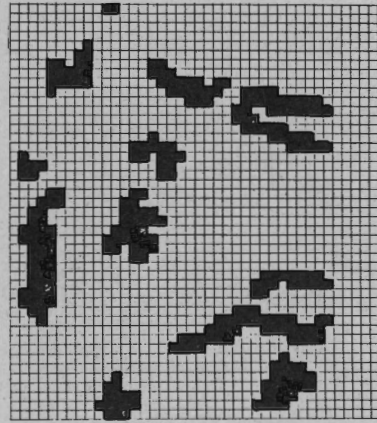
328 m per 100 g wool/polyamid
 102 yds per 1 oz
 480 m per 100 g angora/wool
 150 yds per 1 oz
 450 m per 100 g wool
 141 yds per 1 oz
 10 cm = approx. 4"

FORM-program see page 7

Pattern sheet 1B



Pattern sheet 1C



6004 ELECTRONIC 6000

Child's sweater in 4-colour Fairisle

Size : To fit 116 cm height
Material : 130 g acryl/mohair green, 110 g acryl/mohair black, 40 g acryl/mohair red. 10 g viscose shiny yarn yellow.
Stitch size : Pattern A + B = front 5 1/2, back 5. Band = 3 1/2
Test square : Pattern A : 100 sts on front bed = 37 cm, RC 100 = 8,5 cm
 Pattern B + C : 100 sts on front bed = 37 cm, RC 100 = 12 cm

Cast-on and band : 1, cont to knit.

Pattern A : Self-drawn pattern sheets entered for 4-col Fairisle. Pattern sheet 1A ADD, Pattern sheet 1B ADD, Pattern sheet 1C ENLARGE=YES, ↑ R x 2, ↔ STS x 2. POSITION = YES, PATT. APT R = 24, ↑ REP. R = NO, ↔ REP. ST = NO. KNIT TECH 207 (Fairisle in 4 colours)
Pattern B : KNIT TECH 180 (Fairisle in 2 colours)
Pattern C : 1197 ADD 1180, DIST STS = 2, ADD 1191, DIST STS = 2, ADD 1191, DIST STS = 2, ADD 1204, DIST STS = 2, POSITION = YES, ↑ REP. R = NO, ↔ REP. ST = NO
 KNIT TECH 180

Col sequence

pattern A : 2 R green, 2 R black, 2 R red, 2 R yellow, repeat

Col sequence

pattern B + C : 2 R green, 2 R black, repeat

Fig. I : Back

A = cast-on 1 (tubular cast-on for 1:1 rib) cont to knit to end of band. B = knit in pattern B, cast off.

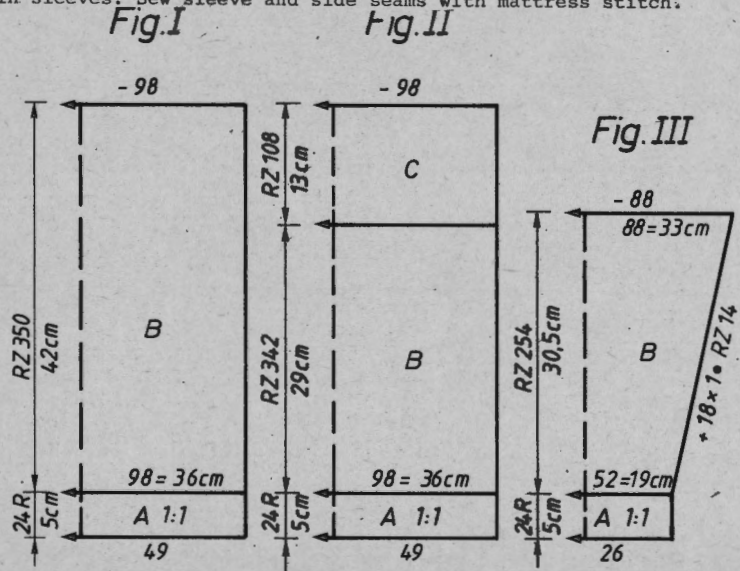
Fig. II : Front

A = cast-on 1, cont to knit. B = knit in pattern A. C = knit in pattern C, cast off.

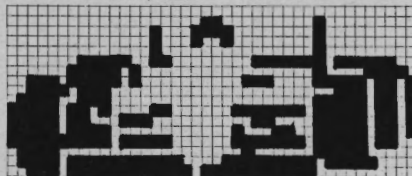
Sleeve : Knit two alike

A = Knit as for Fig. I. B = knit in pattern B, inc at each end. Cast off.

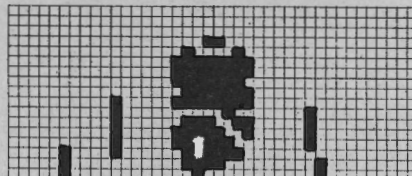
To make up : Block parts and leave to dry under a damp cloth. Close shoulders along approx. 10 cm, hem neck edge to inside. With right sides facing, set in sleeves. Sew sleeve and side seams with mattress stitch.



Pattern sheet 1A



Pattern sheet 1B



Pattern sheet 1C

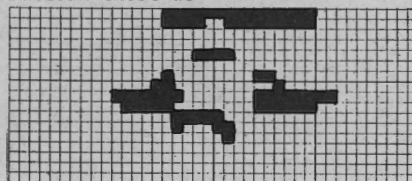


FIG. I

	92	116	140	152
1	48	48	48	48
2	148	148	148	148
3	.	.	.	A (pattern B)
4	.	.	.	B (pattern B)
5	94	98	108	118
6	56	60	68	76
7cm chest
8	195	195	195	195
9C
10	7	7	7	7
11	15	15	15	15
12	38	38	38	38
13	94	98	108	118
14	56	60	68	76
15cm chest
16	38	42	47	51
17	43	47	52	56
18cm total
19	0	0	0	0 length

FIG. II

	92	116	140	152
1	34	34	34	34
2	148	148	148	148
3	.	.	.	A (pattern A)
4	.	.	.	B (pattern A)
5	94	98	108	118
6	56	60	68	76
7cm chest
8	195	195	195	195
9C
10	7	7	7	7
11	24	24	24	24
12	38	38	38	38
13	94	98	108	118
14	56	60	68	76
15cm chest
16	24	28	33	37
17	43	47	52	56
18cm total
19	98	98	98	98 length
20	70	70	70	70
21	65	65	65	65
22	131	131	131	131
23
24	7	7	7	A (pattern C)
25	70	70	70	70
26	0	0	0	0

FIG. III

	92	116	140	152
1	48	48	48	48
2	148	148	148	148
3	.	.	.	A (pattern B)
4	.	.	.	B (pattern B)
5	48	52	54	56
6	3	3	3	3
7	3	3	3	3
8	195	195	195	195
9C
10	7	7	7	7
11	15	15	15	15
12	38	38	38	38
13	86	88	92	94
14	3	3	3	3
15	3	3	3	3
16	20	31	39	42
17	30	41	49	53
18cm sleeve
19	0	0	0	0 length

475 m acryl/mohair per 100 g
 149 yds per 1 oz
 700 m viscose shiny yarn yellow per 100 g
 220 yds per 1 oz
 10 cm = approx 4"

REFER :

7 = Knit in pattern C.

6003 ELECTRONIC 6000

Man's sweater in 4-colour Fairisle
(Design Jean-Claude Dupont, Paris)

Size : To fit 98 cm chest
Material : 210 g wool/polyamid black. 90 g cotton thread yellow, 170 g cotton thread lilac, 170 g cotton thread green, 130 g cotton thread red, 110 g cotton thread orange. 240 g viscose shiny yarn.

Stitch size : Pattern A = front 5 1/4, back 4 1/2
Pattern B = front 4 1/4, back 4. Band = 4 1/2

Test square : Pattern A, B + D = 100 sts on the front bed = 47,5 cm
RC 100 = 9,5 cm

Cast-on for bands : 4, cont. to knit.

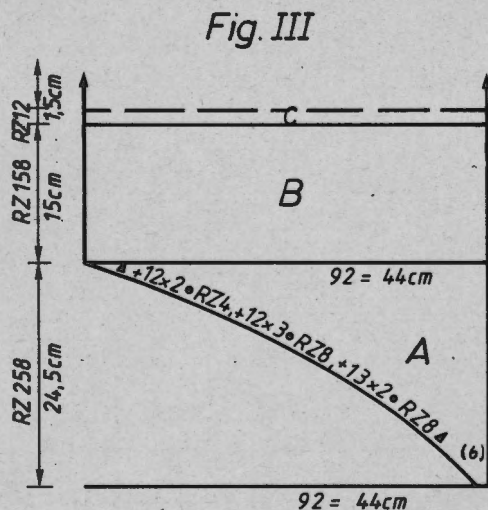
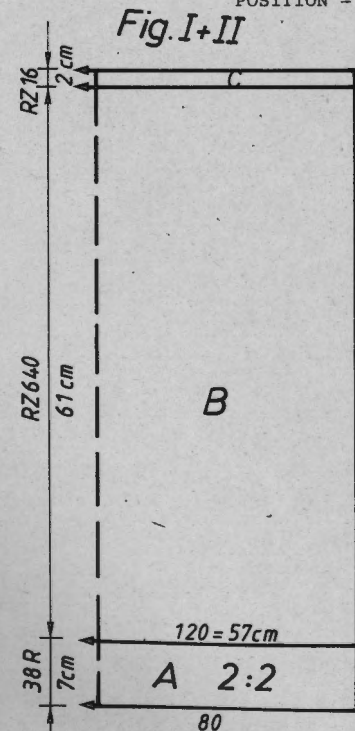
Cast-on for neckband : 2

Pattern A : Self-drawn pattern sheets entered for 4-colour Fairisle
1A ADD 1B ADD 1C, ENLARGE POSITION = YES, ↑R x 2, ↔ STS x 3, KNIT TECH 211

Pattern B : Self-drawn pattern sheets entered for 4-colour Fairisle
2A ADD 2B ADD 2C, ENLARGE POSITION = YES, ↑R x 2, ↔ STS x 3, KNIT TECH 211

Pattern C : KNIT TECH 117 (Long stitch) plain black

Pattern D : Self-drawn pattern sheets entered for 4-colour Fairisle
2A ADD 2B ADD 2C, ALTER = YES, ↖↗ ENLARGE POSITION = YES, ↑R x 2, ↔ STS x 3, KNIT TECH 211



Colour sequence for Fig. I + II : RC 0 - 240 black, yellow, lilac, red
RC241 - 416 black, orange, lilac, red
RC417 - 464 black, blue, lilac, red
RC465 - 560 black, blue, lilac, green
RC561 - 640 black, blue, yellow, green

Colour sequence for Fig. III : 2 R black, 2 R blue, 2 R lilac, 2 R green

Fig. I + II : Back and front

A = cast-on 4 with black, 2 strands (tubular cast-on for 2:2 rib) cont to knit to end of band. B = knit in pattern A. C = black, knit in pattern C.

Fig. III : Sleeve, knit two alike

A = cast-on 2 across a width of 92 nds (cast-on for K/K), knit in pattern B, at the same time inc with short rows, Lock back BX, at right front and back 6 pushers in Working Position, all other pushers in Rest Position, pushing them to Working Position acc to block diagram, i.e. at front, when the lock is at left, and at the back when the lock is at right. B = knit straight in pattern B. C = knit twice in pattern C, black. B + A = knit in pattern D in reverse order and shapings.

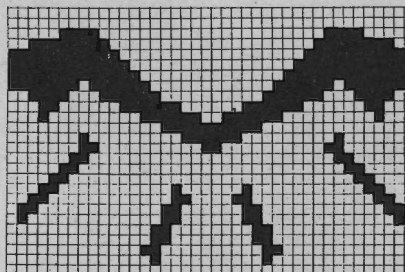
Neckband : Cast-on 2 (tubular cast-on for K/K) with black, 2 strands, with 116 sts, knit 20 R. Then knit RC 10 with lock back and front CX. End with a few R contrast yarn, release.

Sleeve band : Knit 2 pieces

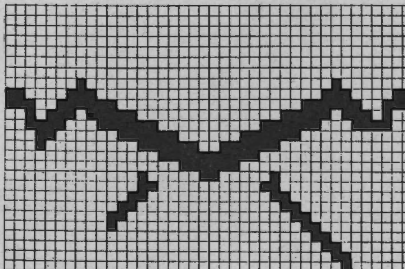
Cast-on 4 (tubular cast-on for 2:2 rib) black, 2 strands, over 64 nds, knit 36 R. Then RC 8 with lock back and front CX. End with a few R contrast yarn, release.

To make up : Block parts and leave to dry under a damp cloth. Sew shoulder seams. St by st, backstitching through the open loops and unravelling contrast yarn, sew sleeve band to sleeve edge, inside and outside. Sew sleeves with right sides facing to back and front. Sew neckband to neck edge, st by st, backstitching through the open loops and unravelling contrast yarn, inside and outside. Sew sleeve and side seams.

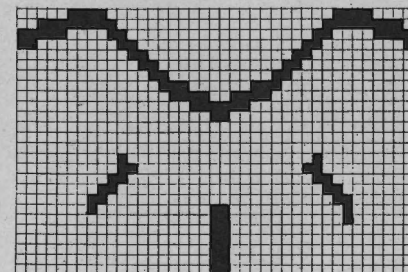
Pattern sheet 2A



Pattern sheet 2B

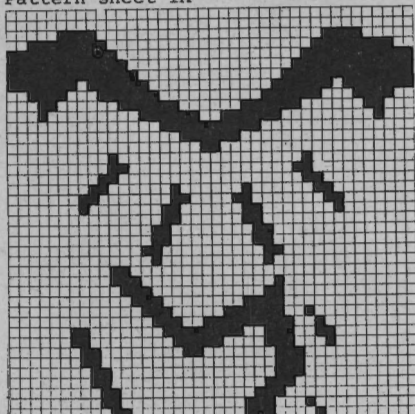


Pattern sheet 2C

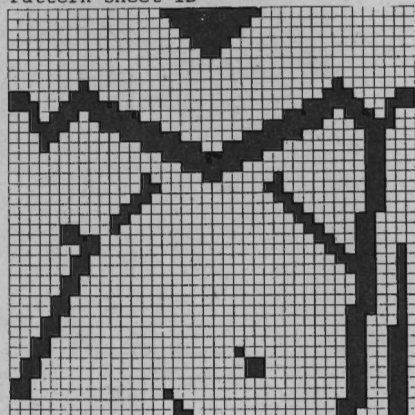


900 m per 100 g wool/polyamid
282 yds per 1 oz
500 m per 100 g cotton thread
157 yds per 1 oz
332 m per 100 g viscose shiny yarn
104 yds per 1 oz
10 cm = approx 4"

Pattern sheet 1A



Pattern sheet 1B



Pattern sheet 1C

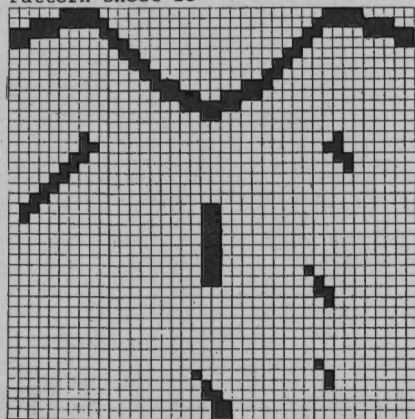


FIG. I+II

	44/46	48/50	52/54
1	38	38	38
2	190	190	190
3	.	.	. ^A
4	.	.	. ^B
5	112	120	128
6	90	98	106
7	.	.	.cm chest
8	195	195	195
9	.	.	. ^C
10	7	7	7
11	31	31	31
12	38	38	38
13	112	120	128
14	90	98	106
15	.	.	.cm chest
16	61	61	61
17	70	70	70
18	.	.	.cm total
19	99	99	99
20	71	71	71
21	1	1	1
22	1	1	1
23	0	0	0
24	.	.	.
25	.	.	.
26	.	.	.
27	.	.	.
28	.	.	.
29	.	.	.
30	.	.	.
31	.	.	.
32	.	.	.
33	.	.	.
34	.	.	.
35	.	.	.
36	.	.	.

FIG. III

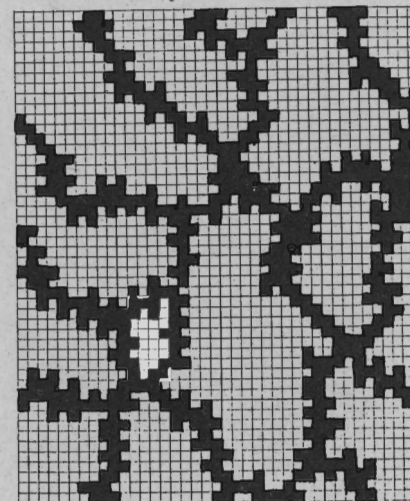
	44/46	48/50	52/54
1	38	38	38
2	446	446	446
3	.	.	. ^A
4	.	.	. ^B
5	90	92	94
6	62	64	66
7	.	.	.cm sleeve
8	110	110	110
9	67	67	67
10	67	67	67
11	184	184	184
12	205	207	209
13	1	1	1
14	63	63	63
15	147	147	148
16	47	47	47
17	63	63	63
18	155	157	158
19	43	43	43
20	63	63	63
21	145	145	145
22	17	17	17
23	110	110	110
24	71	71	71
25	65	65	65
26	72	72	72
27	71	71	71
28	66	66	66
29	5	5	5
30	7	7	7
31	72	72	72
32	191	191	191
33	145	145	145
34	17	17	17
35	191	191	191
36	155	157	158
37	43	43	43
38	100	100	100
39	191	191	191
40	147	147	148
41	47	47	47
42	1	1	1
43	0	0	0

REFER :

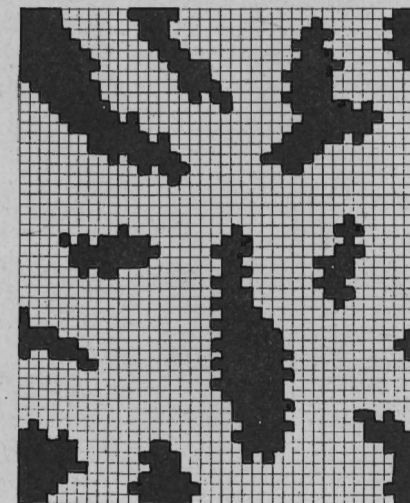
- 7 = cont to knit in pattern C
- 8 = cont to knit in pattern D
- 9 = dec and inc with short rows
(Instruction Book p 107 and 110)

6007

Pattern sheet 1A



Pattern sheet 1B



6005 ELECTRONIC 6000

Mini dress

Size : to fit 88 - 92 cm bust
Material : 150 g angora/wool beige. 130 g cotton thread pink, 90 g cotton thread offwhite
Stitch size : Pattern A = front 5 1/4, back 4 3/4. Bands and neckband = 4 1/2
Test square : 100 sts on front bed = 46 cm. RC 100 = 12 cm
Cast-on for all bands : 8, cont to knit.
Pattern A : 1247 ADD 1248 [+3 entered for 3-colour Fairisle.
KNIT TECH : 198 (3-col Fairisle)
Col sequence : 2 R rosa, 2 R beige, 2 R offwhite, repeat.

Fig. I : Back

A = cast-on 8 (closed cast-on for tubular) cont to knit to end of band. B = knit pattern A. C = shape armhole at each end. Cast off.

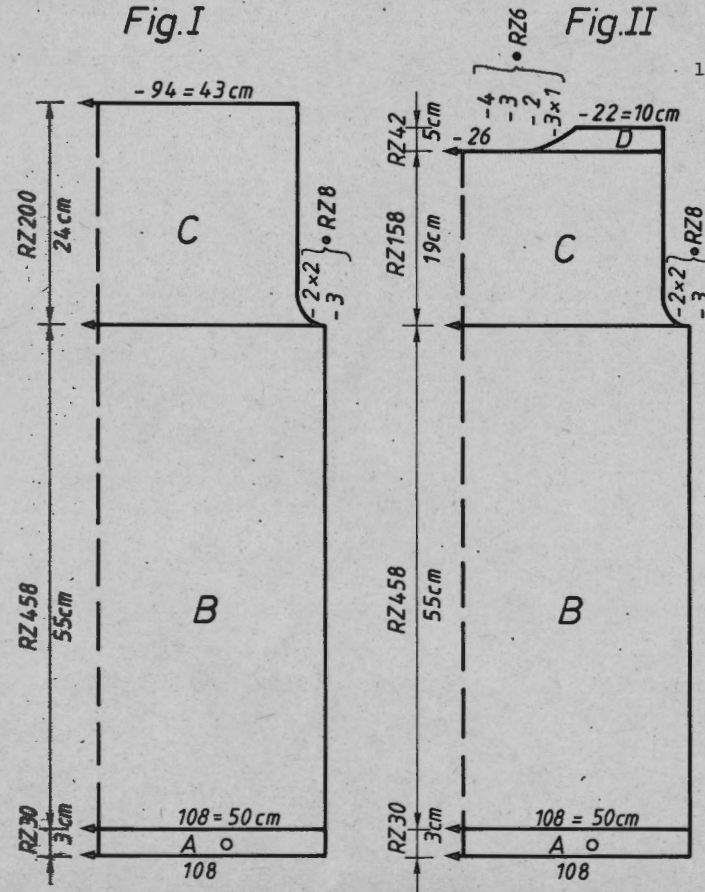


Fig. II

480 m per 100 g angora/wool
 150 yds per 1 oz
 1000 m per 100 g cotton thread
 314 yds per 1 oz
 10 cm = approx 4"

Fig. II : Front

A, B and C = knit as for Fig. I. D = divide work. Place left half onto decker-combs. (If you knit without FORM-program, make a note of the exact position of the Row Counter, and the needles on which the left half hangs. See instruction book page 117.) Cont to knit right half : shape neck at left. Cast off. Place left half back onto nds of machine and knit with reversed shapings.

Fig. III : Sleeve, knit two alike

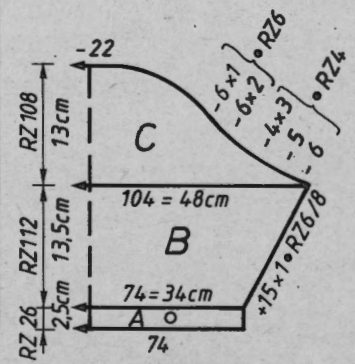
A = knit as for Fig. I. B = knit pattern A, inc at each end. C = cont to knit, shape sleeve head at each end. Cast off.

Neckband : Cast-on 8 (closed cast-on for tubular) with 146 sts, knit RC 17. Then with lock back and front N, knit 1 R. With lock back CX, front LX cont to knit tubular RC 12. End with a few R contrast yarn, release.

To make up : Block parts and leave to dry under a damp cloth. Sew shoulder seams. With right sides facing sew sleeves to back and front. Sew neckband to outside neck edge, st by st, backstitching through the open loops and unravelling contrast yarn, hem down on inside. Sew sleeve and side seams with mattress stitch.

	FIG. I			FIG. II			FIG. III		
	34/36	38/40	42/44	34/36	38/40	42/44	34/36	38/40	42/44
1	48	48	48	48	48	48	48	48	48
2	184	184	184	184	184	184	184	184	184
3
4
5	100	108	118	100	108	118	72	74	76
6	82	90	98	82	90	98	3	3	3
7	3	3	3
8	195	195	195	195	195	195	195	195	195
9
10	7	7	7	7	7	7	7	7	7
11	7	7	7	7	7	7	3	3	3
12	38	38	38	38	38	38	38	38	38
13	100	108	118	100	108	118	102	104	106
14	82	90	98	82	90	98	3	3	3
15	3	3	3
16	55	55	55	55	55	55	12	13	14
17	82	82	82	82	82	82	28	29	30
18
19	102	102	102	230	230	230	108	108	108
20	152	152	152	152	152	152	176	176	176
21	4	4	4	4	4	4	3	3	3
22	167	167	167	167	167	167	168	168	168
23	1	1	1	1	1	1	3	3	3
24	7	7	7	7	7	7	183	183	183
25	81	81	81	81	81	81	11	11	11
26	0	0	0	75	75	75	191	191	191
27	.	.	.	184	184	184	133	133	133
28	.	.	.	133	134	134	11	11	11
29	.	.	.	3	3	3	191	191	191
30	.	.	.	160	160	160	133	133	133
31	.	.	.	3	3	3	1	1	1
32	.	.	.	152	152	152	0	0	0
33	.	.	.	3	3	3	.	.	.
34	.	.	.	144	144	144	.	.	.
35	.	.	.	3	3	3	.	.	.
36	.	.	.	159	159	159	.	.	.
37	.	.	.	2	2	2	.	.	.
38	.	.	.	0	0	0	.	.	.

Fig. III



*1 = cm bust
 *2 = cm total length

6006 ELECTRONIC 6000

Lady's sweater in 3-col Fairisle

Size : To fit 88 - 92 cm bust
Material : 150 g angora/wool beige. 190 g viscose shiny yarn salmon. 90 g cotton thread offwhite.
Stitch size : Pattern A, B, C and D = front 5 1/4, back 4 3/4.
 Hem = 4 1/2. Neck and armhole bands = 4 3/4
Test square : Pattern A, B, C und D : 100 sts on front bed = 47 cm
 RC 100 = 11,5 cm

Cast-on hem, neck and armhole band : 8, cont to Knit
Pattern A : 1156 ADD self-drawn pattern sheet, PATT. AFT R = 6,
 ↑ REP.R = NO, ↔ REP.ST = YES
Pattern B : 1401 E → m ADD 1402 E → m IN PATT.AT R 24,
 ↑ REP.R = NO, ↔ REP.ST = YES
Pattern C : 1305 ADD 1305 E → 3 ENLARGE POSITION = YES, ↑ R x 2, ↔ STS x 2,
 ↑ REP.R = NO, ↔ REP.ST = NO
Pattern D : 1402 E → m ADD 1402 E → m IN PATT.AT R 42, ↑ REP.R = NO
 ↔ REP.ST = YES
KNIT TECH : 199 (Fairisle in 3 colours)
Col sequence : 2 R offwhite, 2 R beige, 2 R salmon, repeat

Fig. I : Back

A = beige, cast-on 8 (closed cast-on for tubular), cont to knit to end of hem.
 B = knit pattern A. C = knit pattern B. D = knit pattern C. E = knit pattern D. Cast off.

Fig. II : Front

A, B, C, D and E = as for Fig. I. F = divide work. Place left half onto deker-combs. (If you knit without FORM-program make a note of the exact position of the Row Counter, and the needles on which the left half hangs. See instruction book page 117.) Cont to knit right half : shape neck at left. Cast off. Place left half back onto nds of machine and knit with reversed shapings.
Neckband : Beige, cast-on 8 (closed cast-on for tubular) with 112 sts, knit RC 9, then 1 R lock back and front N. Change lock to back CX, front LX, knit RC 8. End with a few R contrast yarn, release.
Armhole band : Knit two pieces. Beige, cast-on 8 (closed cast-on for tubular) with 138 sts, knit RC 17. Then 1 R lock band and front N. Change lock to back CX, front LX, knit RC 8. End with a few R contrast yarn, release.
To make up : Block parts and leave to dry under a damp cloth. Sew shoulder seams. Sew neckband to outside neck edge, st by st, backstitching through the open loops and unravelling contrast yarn, then hem to inside. In the same way sew armhole band in position. Sew side seams with mattress stitch.

480 m per 100 g angora/wool
 150 yds per 1 oz
 332 m per 100 g viscose shiny yarn
 104 yds per 1 oz
 1000 m per 100 g cotton thread
 314 yds per 1 oz
 10 cm = approx 4"

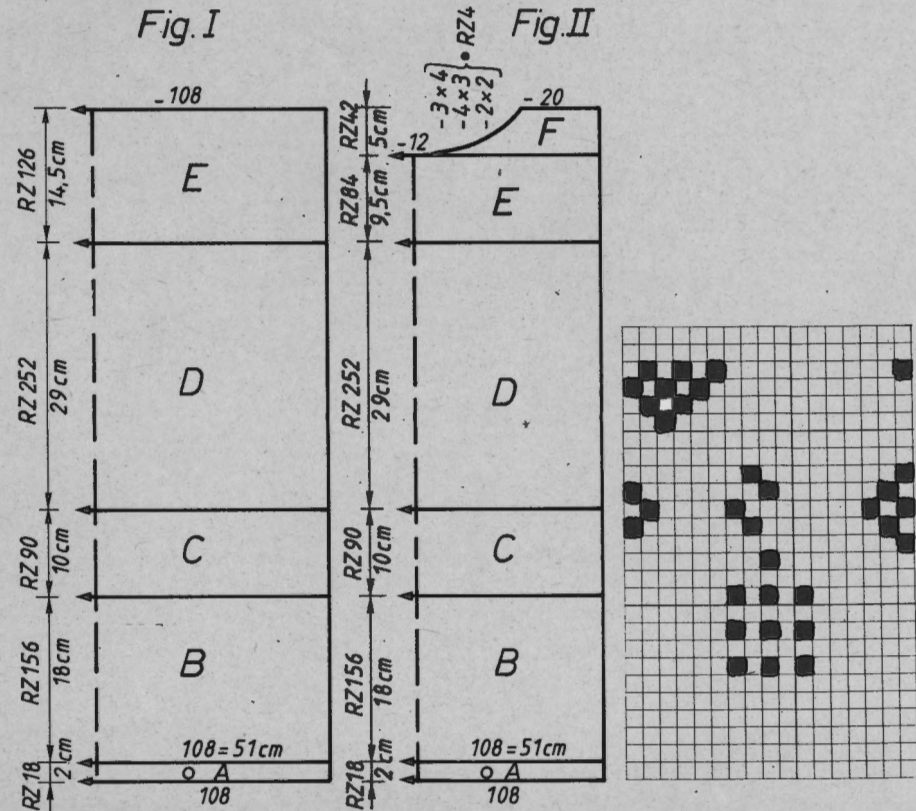


FIG. I

	34/36	38/40	42/44
1	46	46	46
2	188	188	188
3	.	.	.
4	.	.	.
5	100	108	118
6	82	90	98
7	.	.	.
8	195	195	195
9	.	.	.
10	7	7	7
11	3	3	3
12	38	38	38
13	100	108	118
14	82	90	98
15	.	.	.
16	72	72	72
17	74	74	74
18	.	.	.
19	0	0	0

FIG. II

	34/36	38/40	42/44
1	46	46	46
2	188	188	188
3	.	.	.A
4	.	.	.B
5	100	108	118
6	82	90	98
7	.	.	.cm bust
8	195	195	195
9	.	.	.C
10	7	7	7
11	3	3	3
12	38	38	38
13	100	108	118
14	82	90	98
15	.	.	.cm bust
16	65	65	65
17	74	74	74 total
18	.	.	.cm length
19	226	226	226
20	7	7	7
21	23	23	23
22	72	72	73
23	168	176	184
24	3	3	128
25	190	190	3
26	133	133	190
27	191	191	133
28	133	133	191
29	1	1	133
30	164	164	1
31	0	0	164
32	0	0	0

6007 ELECTRONIC 6000

Lady's jacket in 3-col Fairisle
(Design Jean-Claude Dupont, Paris)

Size : To fit 88 - 92 cm bust
Material : 460 g mohair/wool tweedy blue. 190 g polyamid/transparent. 410 g viscose/shiny yarn green. 3 buttons.
Stitch size : Pattern A = 4 3/4. Collar and bindings = 5 1/2.
Test square : Pattern A : 100 sts on the front bed = 47 cm, RC 100 = 12cm
Cast-on jacket + bindings : 2 (Tubular cast-on for K/K)
Pattern A : Self-drawn pattern sheets entered for 3-col Fairisle.
Pattern A : 1A ADD 1B
KNIT TECH : 199 (Fairisle in 3 colours)
Col sequence : 2 R tweedy blue, 2 R transparent, 2 R green, repeat.

Fig. Ia : Back centre panel

A = cast-on 2 (tubular cast-on for K/K), knit pattern A. B = divide work. Place left half onto deckercombs. (If you knit without FORM-program, make a note of the exact Row Counter number, and the needles on which the left half hangs. See instruction book page 117.) Cont to knit right half : shape neck at left, shape shoulder at right. Place sts of left half back onto nds of machine and knit with reversed shapings.

Fig. Ib : Back side panel, knit 2 panels with reversed shapings

A = knit as for Fig. Ia. B = inc 1 st at left, cont to knit in pattern A. C = shape armhole at right, cont to knit in pattern A. D = shape shoulder at right.

Fig. II : Front, knit 2 pieces with reversed shapings

A = knit as for Fig. Ia. B = knit off the 28 sts for the pockets with contrast yarn, then cont in pattern A. C = shape neck at left, cont in pattern A. D = dec at right, shape neck at left, cont in pattern A. Cast off.

Fig. III : Sleeve, knit 2 with reversed shapings

A = Cast-on 2 (tubular cast-on for Knit/Knit), cont to knit in pattern A, inc at each end. B = shape sleeve head at each end, cont in pattern A. C = shape sleeve head at right, dec for yoke at left, cont in pattern A. D = shape sleeve head at right, cast off at left, cont in pattern A. E = shape neck.

Charts for self-drawn pattern sheets see page 11

Fig. Ia

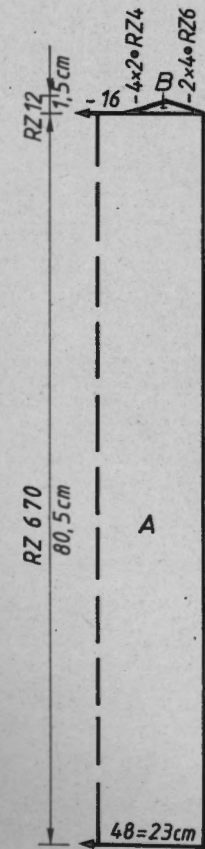


Fig. Ib

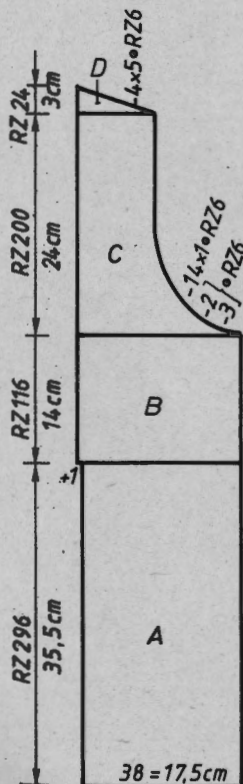


Fig. II

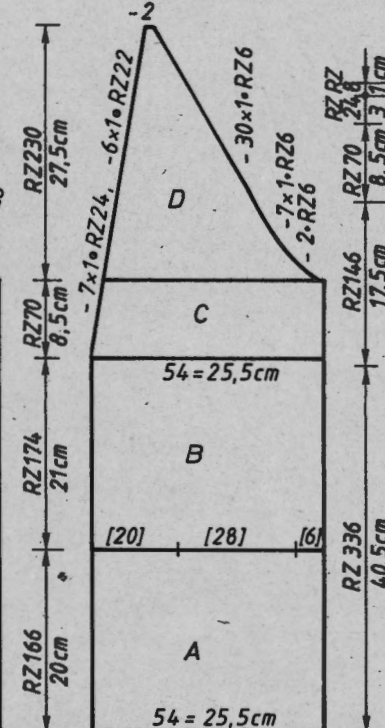
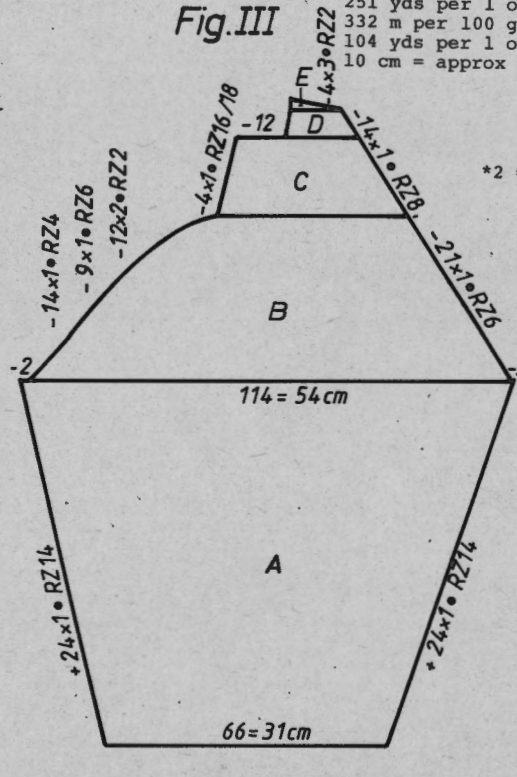


Fig. III



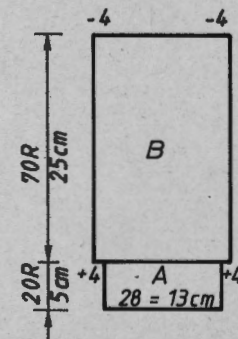
400 m per 100 g mohair/wool
 125 yds per 1 oz
 800 m per 100 g polyamid/transparent
 251 yds per 1 oz
 332 m per 100 g viscose/shiny yarn
 104 yds per 1 oz
 10 cm = approx 4"

FIG. III

	34/36	38/40	42/44
1	48	48	48
2	188	188	188
3	.	.	A
4	.	.	B
5	64	66	68
6	3	3	3
7	3	3	3
8	38	38	38
9	112	114	116
10	3	3	3
11	3	3	3
12	40	41	42
13	58	59	60
14	.	.	*2
15	79	79	79
16	191	191	191
17	137	137	137
18	23	23	23
19	191	191	191
20	130	130	130
21	20	20	20
22	191	191	191
23	145	145	145
24	5	5	5
25	167	167	167
26	20	28	39
27	184	184	184
28	133	133	133
29	7	7	7
30	9	9	9
31	70	70	70
32	144	144	144
33	191	191	191
34	156	156	156
35	105	113	124
36	188	188	188
37	131	133	135
38	0	0	0

*2 = cm sleeve length

Fig. VI



ERRATUM zu Sonderheft ELECTRONIC 6000

Bitte für Modell 6002, Fig. II und Modell 6007, Fig. IA die folgenden FORM Programme verwenden und nicht die im Arbeitsheft abgedruckten.

ERRATUM cahier de descriptions ELECTRONIC 6000

Pour les modèles 6002, Fig. II et 6007, Fig. IA, veuillez utiliser les programmes FORME ci-dessous au lieu de ceux imprimés dans le cahier de descriptions.

6002 : FIG.II

	34/36	38/40	42/44
1	44	44	44
2	400	400	400
3	.	.	.A
4	.	.	.B
5	67	72	78
6	84	92	100
7	.	.	*1
8	195	195	195
9	.	.	.C
10	7	7	7
11	4	4	4
12	38	38	38
13	67	72	78
14	84	92	100
15	.	.	*1
16	20	20	20
17	67	67	67
18	.	.	*2
19	238	238	238
20	7	7	7
21	79	79	79
22	160	160	160
23	3	3	3
24	152	152	152
25	3	3	3
26	191	191	191
27	130	130	130
28	17	17	17
29	7	7	7
30	72	72	72
31	191	191	191
32	150	154	159
33	2	2	2
34	68	68	68
35	191	191	191
36	143	144	145
37	127	127	127
38	167	167	167
39	0	0	0

6007 : FIG.IA

	34/36	38/40	42/44
1	48	48	48
2	188	188	188
3	.	.	.A
4	.	.	.B
5	46	48	52
6	3	3	3
7	3	3	3
8	38	38	38
9	46	48	52
10	3	3	3
11	3	3	3
12	70	70	70
13	82	82	82
14	.	.	.C
15	229	229	229
16	7	7	7
17	35	35	35
18	191	191	191
19	129	129	130
20	1	1	1
21	69	69	69
22	185	185	185
23	128	129	131
24	191	191	191
25	129	129	129
26	1	1	1
27	0	0	0

6007

Fig. IV : Collar, knit 2 pieces

A = cast-on 2 with contrast yarn across a width of 150 nds (tubular cast-on for Knit/Knit), knit a few R. Cont in green, inc with short rows, i.e. on back bed lock BX, bring 24 pushers to Working Position at right, cont knitting adding extra pushers. B = blue, knit across all nds (back bed all pusher in Working Position, lock BX). C = green, dec with short rows. End with a few R contrast yarn across all nds, release.

Fig. VI : Pocket, knit two

A = cast-on 2 with contrast yarn (tubular cast-on for Knit/Knit), knit a few R contrast yarn. Cont to knit in blue for pocket band. B = transfer sts for st.st. (lock back GX) leaving lock at front on LX, inc at each end, cont straight. At the end cast off 4 sts at each end, then knit a few R contrast yarn, release.

Binding for sleeve : Knit 2 pieces. With 36 sts, cast-on 2 with contrast yarn (tubular cast-on for Knit/Knit), knit a few R. Knit 20 R in blue. End with a few R contrast yarn, release.

Binding for back centre panel : Knit two pieces. With 134 sts, cast-on 2 with contrast yarn, knit a few R. Cont in blue, inc 1 st at right every alt R 4 times in all, dec 1 st at left every alt R 4 times in all. Knit rows 11-20 with reversed shapings, i.e. dec at right, inc at left. End with a few R contrast yarn, release.

Binding back hem : With 64 sts with contrast yarn, cast-on 2, knit a few R. Cont in blue, dec 1 st at each end every alt R 4 times in all. Knit R 11-20 with reversed shapings, i.e. inc at each end. End with a few R contrast yarn.

Binding back slit : Knit 2 pieces. With 58 sts, cast-on 2 with contrast yarn, knit a few R. Cont in blue, inc 1 st at left every alt R 4 times in all. Knit R 11-20 with reversed shapings, i.e. dec at left. End with a few R contrast yarn, release.

Binding front/side hem : Knit 2 pieces. With 70 sts, cast-on 2 with contrast yarn, knit a few R. Cont in blue, inc 1 st at left every alt R 4 times in all. Knit R 11-20 with reversed shapings., i.e. dec at left. End with a few R contrast yarn, release.

To make up : Block all parts and leave to dry under a damp cloth. Sew all bindings to their respective edges, first on the outside, st by st, back-stitching through the open loops and unravelling contrast yarn, hem down on inside, closing the corners. Sew back side panels to back centre panel. Sew shoulder seams. With right sides facing, set in sleeves. Sew sleeve and side seams with mattress stitch. Sew collar and front bindings in position as given above. Unravel contrast yarn on pockets, graft pocket band to jacket. On the inside close pocket sides and join the upper edge to pocket slit in jacket. Make loop on front part and sew on button to match. Where the back slits end sew on a button.

Fig. IV

150 = 92cm

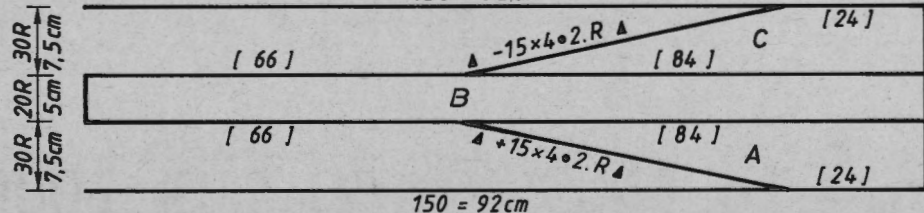


FIG. IA

	34/36	38/40	42/44
1	48	48	48
2	188	188	188
3	.	.	.
4	.	.	.
5	46	48	52
6	3	3	3
7	3	3	3
8	38	38	38
9	46	48	52
10	3	3	3
11	3	3	3
12	70	70	70
13	82	82	82
14	.	.	.
15	229	229	229
16	7	7	7
17	35	35	35
18	191	191	191
19	129	129	130
20	1	1	1
21	69	69	69
22	185	185	185
23	128	129	131
24	191	191	191
25	129	129	129
26	1	1	1
27	0	0	0

FIG. IB

	34/36	38/40	42/44
1	48	48	48
2	444	444	444
3	.	.	.
4	.	.	.
5	32	38	44
6	82	90	98
7	.	.	.
8	55	55	55
9	96	96	96
10	32	38	44
11	82	90	98
12	.	.	.
13	36	36	36
14	82	82	82
15	.	.	.
16	110	110	110
17	7	7	7
18	51	51	51
19	152	152	152
20	3	3	3
21	144	144	144
22	3	2	3
23	191	191	191
24	135	135	135
25	35	35	35
26	7	7	7
27	45	45	45
	191	191	191
	135	141	147
	5	5	5
	0	0	0

FIG. II

	34/36	38/40	42/44
1	48	48	48
2	444	444	444
3	.	.	.
4	.	.	.
5	46	54	62
6	82	90	98
7	.	.	.
8	55	55	55
9	160	160	160
10	46	54	62
11	82	90	98
12	.	.	.
13	20	20	20
14	82	82	82
15	.	.	.
16	234	234	234
17	7	7	7
18	113	113	113
19	144	144	144
20	3	3	3
21	191	191	191
22	128	128	128
23	14	14	14
24	191	191	191
25	147	151	155
26	77	86	94
27	68	68	68
	191	191	191
	130	134	138
	127	127	127
	135	144	154
	0	0	0

FIG. IV

34/44

1	48
2	444
3	A
4	B
5	150
6	82
7	cm jacket length
8	109
9	67
10	67
11	184
12	247
13	127
14	68
15	181
16	8
17	56
18	187
19	71
20	69
21	3
22	101
23	184
24	187
25	191
26	181
27	8
28	0

FIG. VI

34/44

1	48
2	188
3	.
4	B
5	28
6	3
7	3
8	195
9	C
10	7
11	15
12	101
13	32
14	7
15	28
16	160
17	1
18	0

REFER

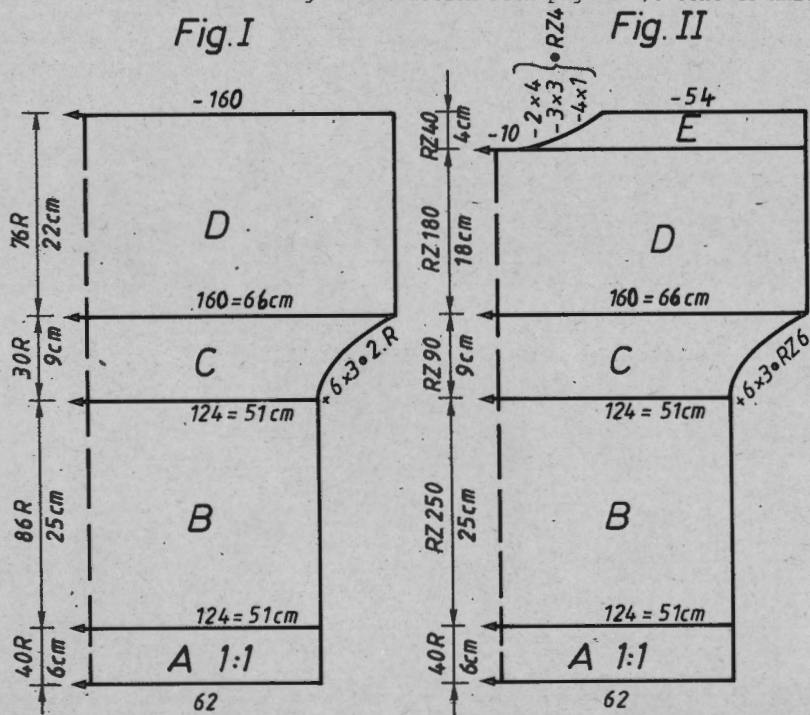
- 7 = at left edge (for mirror imaged part at right edge) inc 1 stitch
- 8 = prepare pocket, see Fig. IIB
- 9 = dec and inc again with short rows (Instruction Book pages 107 and 110)
- 10 = colour sequence
- 11 = dec with short rows, end with a few R contrast yarn, release.

6008 ELECTRONIC 6000

Lady's 3-col intarsia sweater

Size : To fit 88 - 92 cm bust
Material : 110 g acrylic/mohair yellow. 30 g angora/wool beige. 40 g silk gold
Stitch size : Pattern A and B = 6 1/2. Bands = 3 1/2
Test square : Pattern A : 100 sts = 41 cm, 100 R = 29 cm
 Pattern B : 100 sts = 41 cm, RC100 = 10 cm
Cast-on welt : 1, cont to knit (tubular cast-on for 1:1 rib)
Cast-on neckband : 6, cont to knit
Pattern A : KNIT TECH 100
Pattern B : 1405 ADD 1406, 3. COL = YES, ENLARGE = YES, ↔ STS x 5, KNIT TECH 246 (intarsia knitting in 3 colours)
Col sequence for pattern B : 2 R yellow, 2 R gold, 2 R beige, repeat. Observe the rule on threading up, instruction book page 169.

Fig. I : Back
 A = yellow, cast-on 1 (tubular cast-on for 1:1 rib), cont to knit to end of welt. B = knit pattern A. C = cont to knit in pattern, inc at each end. D = cont to knit in pattern. Cast off.
Fig. II : Front
 A = knit as for Fig. I. B = knit in pattern B in col sequence (possibly winding yarn round the first non-knitting needle, see instruction book page 110). C = cont to knit in pattern, inc at each end. D = cont in pattern. E = divide work. Place left half onto deckercombs. (If you knit without FORM-program, make a note of the exact number on the Row Counter, and the needles on which the left half hangs. Instruction Book page 117). Cont to knit right



half : shape neck at left, cast off. Place left half back onto nds of machine and knit with reversed shapings. 16
Neckband : With 116 sts, yellow, cast-on 6 (cast-on with 4 R st.st.), knit 20 R. End with a few R contrast yarn, release.
To make up : Pin parts out to size and leave to dry under a damp cloth. Sew shoulder seams. Sew armhole edges 2 cms to inside. Sew neckband to outside neck edge st by st, backstitching through the open loops and unravelling contrast yarn, sew in position on inside. Sew side seams with mattress stitch.

Note : If your sweater is more than 160 sts wide at the widest point, you will have to multiply the pattern in width by 6. (The pattern width multiplied by the desired amount must result in the maximum knitting width.)

620 m per 100 g acrylic/mohair
 194 yds per 1 oz
 480 m per 100 g angora/wool
 150 yds per 1 oz
 288 m per 100 g silk
 90 yds per 1 oz
 10 cm = approx 4"

	FIG. I			FIG. II		
	34/36	38/40	42/44	34/36	38/40	42/44
1	116	116	116	40	40	40
2	164	164	164	164	164	164
3	A
4	B
5	114	124	134	114	124	134
6	82	90	98	82	90	98
7	cm bust
8	195	195	195	195	195	195
9	C
10	7	7	7	7	7	7
11	5	5	5	24	24	24
12	38	38	38	38	38	38
13	114	124	134	114	124	134
14	82	90	98	82	90	98
15	cm bust
16	25	25	25	25	25	25
17	62	62	62	62	62	62
18	cm length
19	100	100	100	229	229	229
20	62	62	62	63	63	63
21	139	139	139	139	139	139
22	7	7	7	11	11	11
23	31	31	31	7	7	7
24	0	0	0	103	103	103
				25	71	71
				26	160	168
				27	188	188
				28	129	129
				29	190	190
				30	130	130
				31	167	167
				32	1	1
				33	0	0

6010 ELECTRONIC 6000

Lady's sweater in Fairisle

Size : To fit 94 - 98 cm bust
Material : Mohair/wool : 400 g offwhite
 Cotton thread : 30 g black, 30 g green
Stitch size : Fairisle = front 4 1/2, back 4. Border and neckband = 4
Test square : 100 sts on front bed = 45 cm. RC 100 = 11,5 cm

Cast-on for border, neckband : 4 (tubular cast-on for 2:2 rib), cont to knit
Pattern A : Pattern sheet 1, KNIT TECH 188
Pattern B : Pattern sheet 2, KNIT TECH 188
Pattern C : Pattern sheet 1, KNIT TECH 188
Pattern D : Pattern sheet 1, ENLARGE : ↑ R x 2, ↔ STS x 2, KNIT TECH 188
Pattern E : Pattern sheet 2, ENLARGE : ↑ R x 3, ↔ STS x 3, KNIT TECH 188
Pattern F : Pattern sheet 1, ENLARGE : ↑ R x 2, ↔ STS x 2, KNIT TECH 188
Pattern G : Pattern sheet 1, KNIT TECH 188
Pattern H : Pattern sheet 2, ENLARGE : ↑ R x 2, ↔ STS x 2, KNIT TECH 188

(It is also possible to enter only the patterns A,B,D,E. However, when you then want to change from pattern B to pattern A, you have to press the key for 'fast forward' twice, go to display CAST-ON, press the ABC-key and at display ST. PATT A press ENT. Use the same method for changing from pattern E to pattern D, etc.)

For col sequence, refer to the respective sections.

Mohair/wool = 620 m per 100 g
 194 yds per 1 oz
 Cotton thread = 1000 m per 100 g
 314 yds per 1 oz

Fig. I : Back

A = cast-on 4, cont to knit to end of border. Knit last row with lock front and back N. B = RC 20 pattern A, 2 R white, 2 R black
 RC 88 pattern B, 2 R green, 2 R white
 RC 20 pattern C, 2 R white, 2 R black
 RC 40 pattern D, 2 R white, 2 R green
 RC 264 pattern E, 2 R black, 2 R white
 RC 40 pattern F, 2 R white, 2 R green

Section C begins at the end of pattern F. Knit pattern G, 2 R white, 2 R black, dec at each end.

Fig. II : Front

A = as for Fig. I. B = pattern and col sequence as given for Fig. I, but knitting only as far as RC 256 of pattern E. C = divide work. Place left half onto deckercombs. Make a note of the number on the electronic Row Counter in case you are knitting without FORM-program. Finish pattern E, then knit pattern F, dec at left. D = knit pattern G, dec at right. Knit left half with

Fig. III : Knit two sleeves reversed shapings.
 A = cast-on 4, cont to knit to end of border.

B = RC 20 pattern A, 2 R green, 2 R white
 RC 88 pattern B, 2 R black, 2 R white
 RC 40 pattern D, 2 R black, 2 R white
 RC 176 pattern H, 2 R green, 2 R white
 RC 40 knit pattern A twice, 2 R black, 2 R white, inc each end.

Section C begins after RC 12 of the last pattern A, dec at each end, cast off.

Neckband :

For back : Cast-on 4 over 56 nds, knit 80 R. With lock front and back CX knit RC 12. End with a few R contrast yarn, release.

For front : Cast-on 4 over 65 nds, then knit as for back.

To make up : Block parts and leave to dry under a damp cloth. Sew shoulder seams. Join neckband with mattress stitch and sew to outside neck edge, st by st, backstitching through the open loops and unravelling contrast yarn, hem down on inside. With right sides facing set in sleeves. Sew sleeve and side seams with mattress stitch. Fold neckband in half to inside, and slip stitch in position.

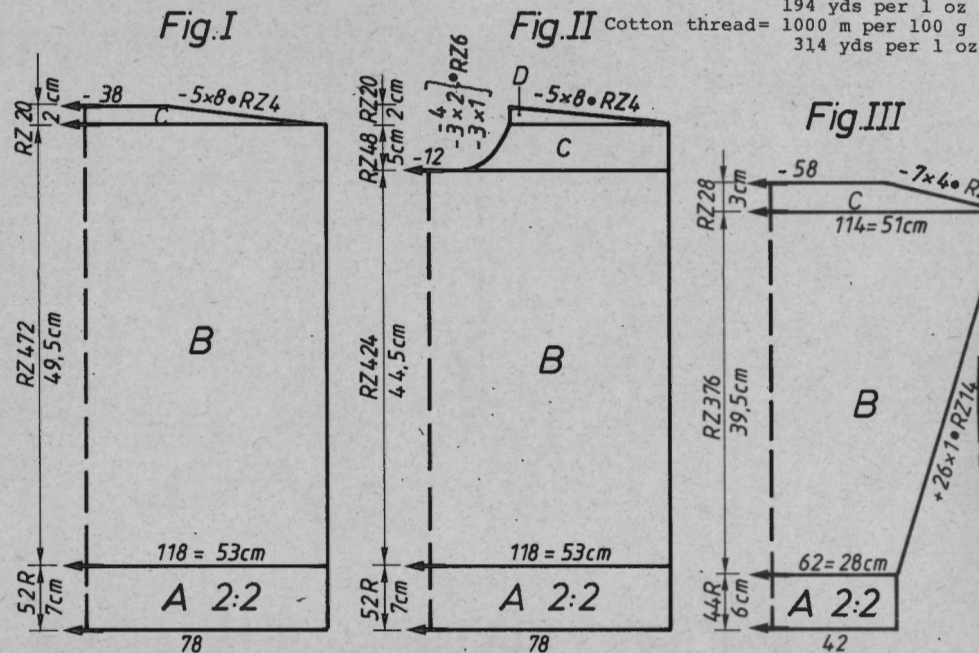


FIG I			FIG II			FIG III		
34-36	38-40	42-44	34-36	38-40	42-44	34-36	38-40	42-44
52	52	52	52	52	52	52	52	52
120	120	120	120	120	120	120	120	120
.
.
164	176	190	164	176	190	90	94	97
88	96	105	88	96	105	3	3	3
.	3	3	3
195	195	195	195	195	195	195	195	195
7	7	7	7	7	7	.	.	.
21	21	21	21	21	21	7	7	7
38	38	38	38	38	38	21	21	21
164	176	190	164	176	190	38	38	38
82	90	98	82	90	98	164	174	180
.	3	3	3
39	39	39	39	39	39	3	3	3
57	57	57	57	57	57	37	37	35
.	55	56	57
101	101	101	229	229	229	100	100	100
7	7	7	7	7	7	4	4	4
28	28	28	28	28	28	191	191	191
191	191	191	191	191	191	163	165	167
172	177	183	172	177	183	4	4	4
1	1	1	1	1	1	0	0	0
0	0	0	73	73	73	.	.	.
.	.	.	184	184	184	.	.	.
.	.	.	130	131	132	.	.	.
.	.	.	178	178	178	.	.	.
.	.	.	180	180	180	.	.	.
.	.	.	182	182	182	.	.	.
.	.	.	167	167	167	.	.	.
.	.	.	1	1	1	.	.	.
.	.	.	7	7	7	.	.	.
.	.	.	128	1	2	.	.	.
.	.	.	0	0	0	.	.	.

6012 ELECTRONIC 6000

620 m per per 100 g acrylic/mohair
 194 yds per 1 oz
 500 m per 100 g cotton thread
 157 yds per 1 oz
 332 m per 100 g shiny yarn
 104 yds per 1 oz
 10 cm = approx 4"

Sweater dress (Design Jean-Claude Dupont, Paris)

Size : To fit 88 - 92 cm bust
Material : 360 g acrylic/mohair rostr, 240 g acrylic/mohair black.
 80 g cotton thread yellow. 110 g cotton thread green,
 70 g cotton thread orange. 40 g shiny yarn gold, 90 g
 shiny yarn pale green.
Stitch size : Pattern A = front 6 1/2, back 6. Collar = 5. Bands = 4
Test square : Pattern A : 100 sts on front bed = 39 cm, RC 100 = 11 cm
Cast-on and band : 4, cont to knit
Cast-on and neckband : 2, cont to knit

Pattern A : Self-drawn pattern sheets (see instruction book page 74-77
 on how to enter several pattern sheets.)
 Begin with pattern sheets 1 - 3
 At RC 248 enter pattern sheets 4 - 6
 At RC 496 enter pattern sheets 7 - 9
 At RC 744 enter pattern sheets 10-12
 (Note : answer question 3.COL with NO, as here the colours
 are not being superimposed.)

KNIT TECH : 23l (Fairisle in 4 colours)
Col sequence : RC 1 - 352 2 R rust, 2 R yellow, 2 R green, 2 R black,
 repeat.
 RC 353 - 536 2 R rust, 2 R orange, 2 R green, 2 R black,
 repeat
 RC 537 - 704 2 R rust, 2 R pale green, 2 R green, 2 R
 black, repeat
 RC 705 - end 2 R rust, 2 R pale green, 2 R gold, 2 R
 black, repeat.

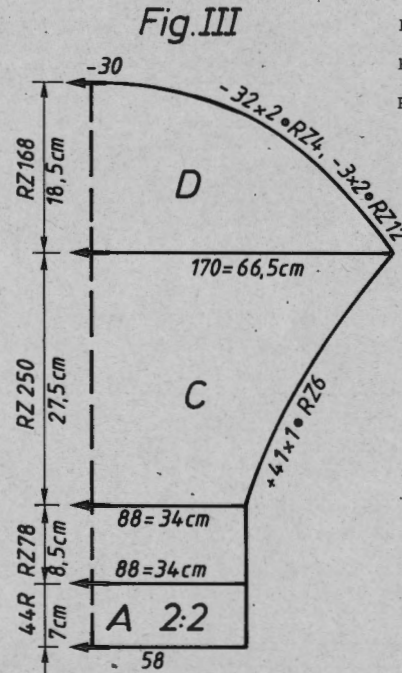
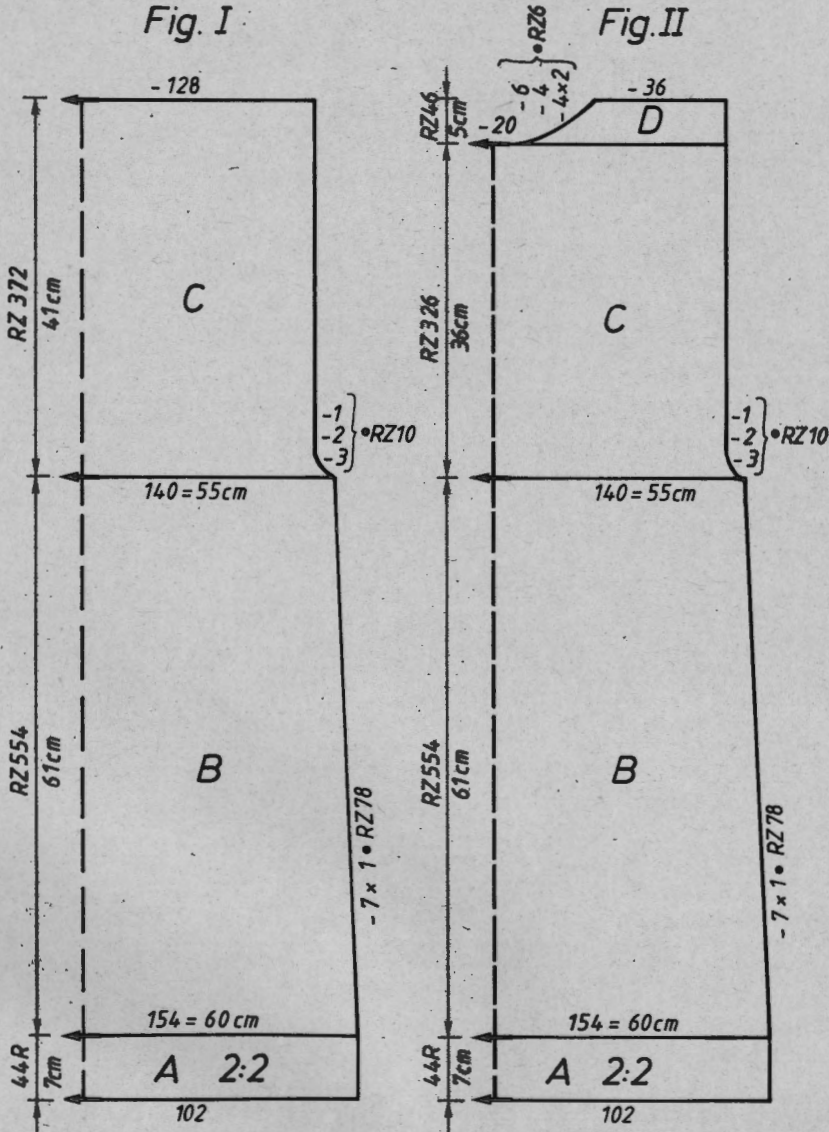


Diagram for entering the pattern sheets

7B	8B	9B	10B	11B	12B
7A	8A	9A	10A	11A	12A
1B	2B	3B	4B	5B	6B
1A	2A	3A	4A	5A	6A

Fig. I : Back

A = rust, cast-on 4 (tubular cast-on for 2:2 rib), cont to knit to end of band.
 B = knit pattern A in col sequence. C = continue to knit and shape the armhole at each end. Cast off.

Fig. II : Front

A,B,C = knit as for Fig. I. D = divide work. Place left half onto deckercombs. (If you knit without FORM-program, make a note of the exact number on the Row Counter, and the needles on which the left half hangs. Instruction Book page 117.) Cont to knit right half: shape neck at left. Cast off. Place left half back onto nds of machine and knit with reversed shapings.

Fig. III : Sleeve, knit two alike

A = knit as for Fig. I. B = knit pattern A in col sequence. C = cont to knit, inc at each end. D = dec at each end. Cast off.

Neckband : Rust, cast-on 2 (tubular cast-on for Knit/Knit) with 90 sts, knit 30 R. Then with lock back and front CX, knit RC 14. End with a few R contrast yarn, release.

To make up : Block parts and leave to dry under a damp cloth. Sew shoulder seams. With right sides facing, set in sleeves. Sew neckband to outside neck edge, st by st, backstitching through the open loops and unravelling contrast yarn, hem down on inside. Sew sleeve and side seams with mattress stitch.

FIG. III

	34/36	38/40	42/44
1	44	44	44
2	156	156	156
3	.	.	.A
4	.	.	.B
5	84	88	90
6	3	3	3
7	3	3	3
8	195	195	195
9	.	.	.C
10	7	7	7
11	26	26	26
12	98	98	98
13	7	7	7
14	29	29	29
15	38	38	38
16	168	170	172
17	3	3	3
18	3	3	3
19	26	26	26
20	58	59	60
21	.	.	.cm total
22	101	101	101 length
23	183	183	183
24	11	11	11
25	191	191	191
26	185	185	185
27	57	57	57
28	0	0	0

FIG. I

	34/36	38/40	42/44
1	44	44	44
2	156	156	156
3	.	.	.
4	.	.	.
5	144	154	164
6	82	90	98
7	.	.	.
8	195	195	195
9	.	.	.
10	7	7	7
11	26	26	26
12	38	38	38
13	130	140	150
14	82	90	98
15	.	.	.
16	61	61	61
17	109	109	109
18	.	.	.
19	104	104	104
20	152	152	152
21	5	5	5
22	144	144	144
23	5	5	5
24	136	136	136
25	7	7	7
26	127	127	127
27	170	170	170
28	0	0	0

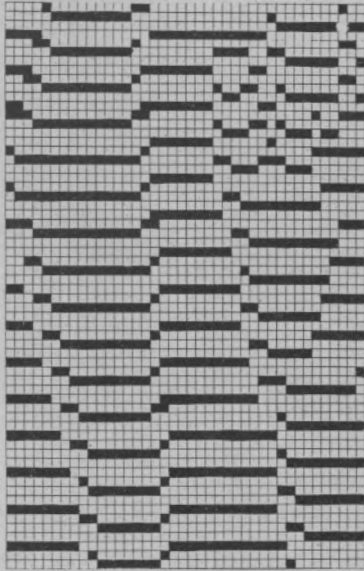
FIG. II

	34/36	38/40	42/44
1	44	44	44
2	156	156	156
3	.	.	.A
4	.	.	.B
5	144	154	164
6	82	90	98
7	.	.	.cm bust
8	195	195	195
9	.	.	.C
10	7	7	7
11	26	26	26
12	38	38	38
13	130	140	150
14	82	90	98
15	.	.	.cm bust
16	61	61	61
17	109	109	109
18	.	.	.cm total
19	232	232	232 length
20	152	152	152
21	5	5	5
22	144	144	144
23	5	5	5
24	136	136	136
25	7	7	7
26	127	127	127
27	170	170	170
28	74	74	74
29	184	184	184
30	130	131	132
31	3	3	3
32	176	176	176
33	3	3	3
34	160	160	160
35	3	3	3
36	191	191	191
37	129	129	129
38	5	5	5
39	0	0	0

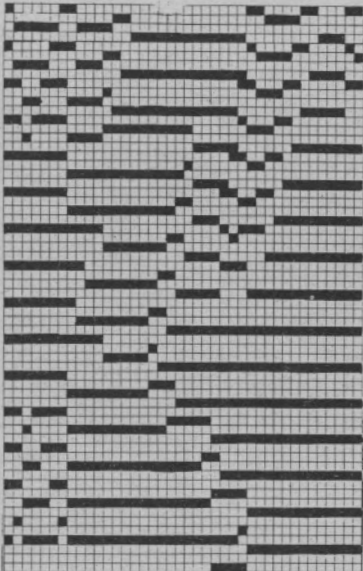
6012

20

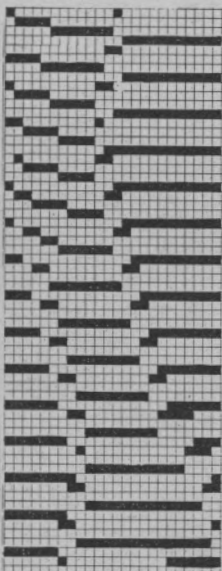
Pattern sheet 1B



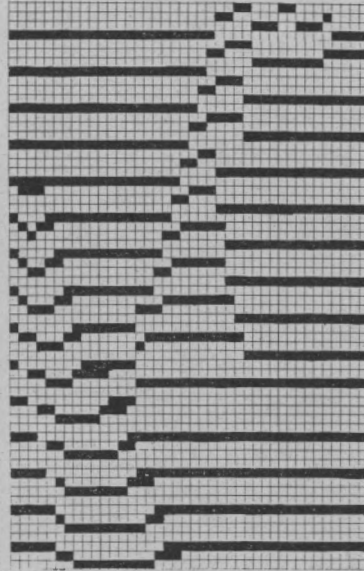
Pattern sheet 2B



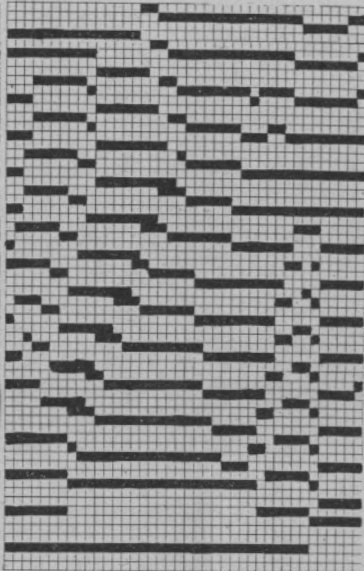
Pattern sheet 3B



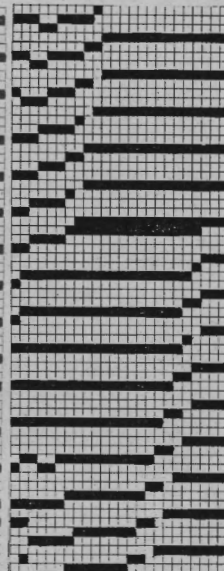
Pattern sheet 4B



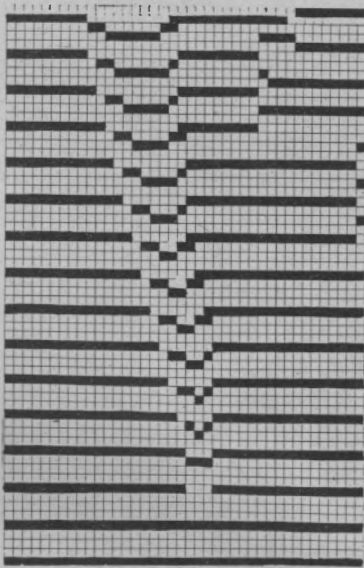
Pattern sheet 5B



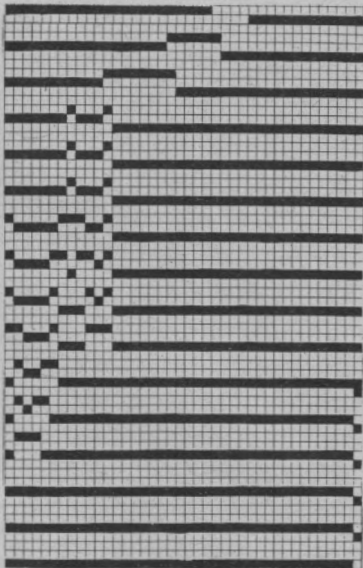
Pattern sheet 6B



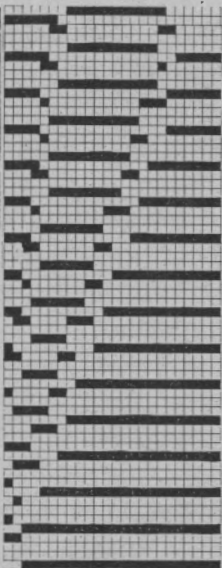
Pattern sheet 1A



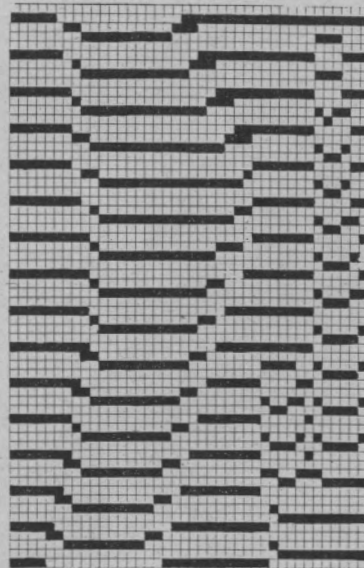
Pattern sheet 2A



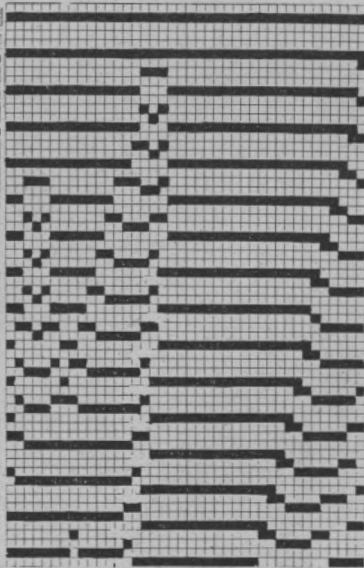
Pattern sheet 3A



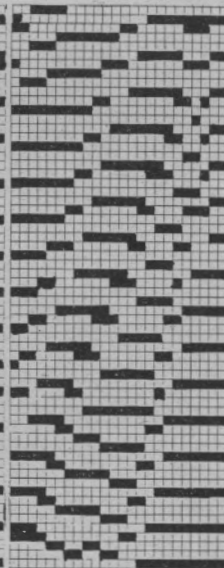
Pattern sheet 4A



Pattern sheet 5A

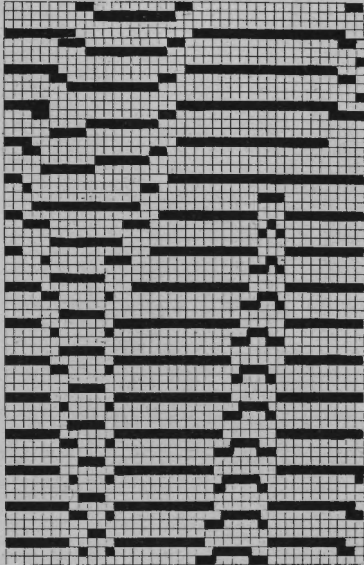


Pattern sheet 6A

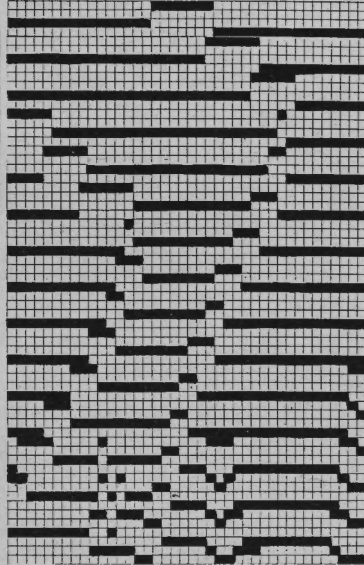


6012

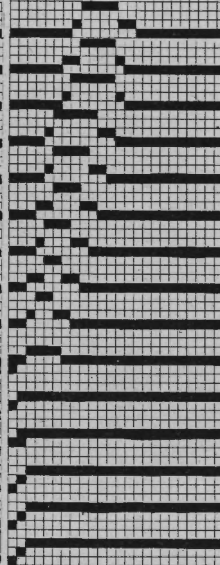
Pattern sheet 7B



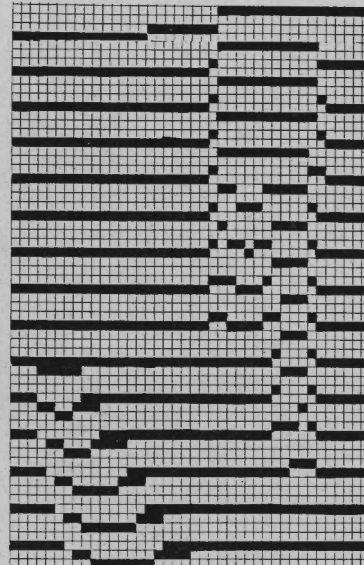
Pattern sheet 8B



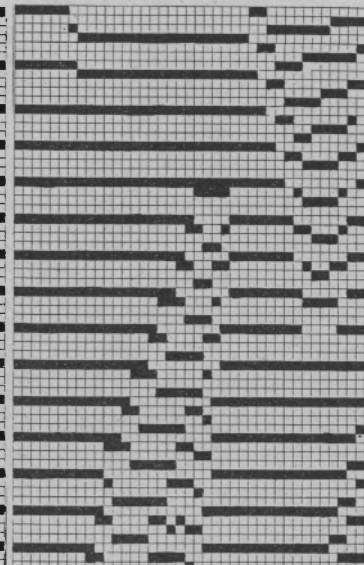
Pattern sheet 9B



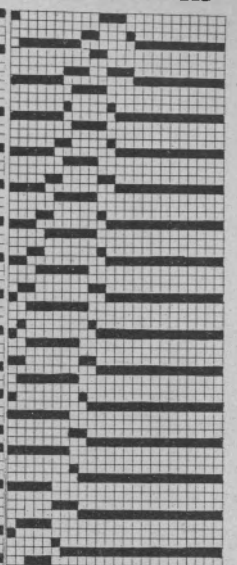
Pattern sheet 10B



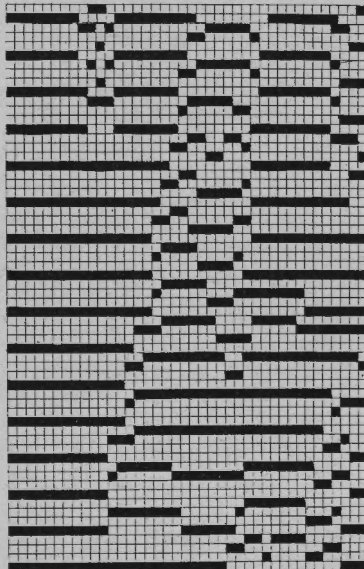
Pattern sheet 11B



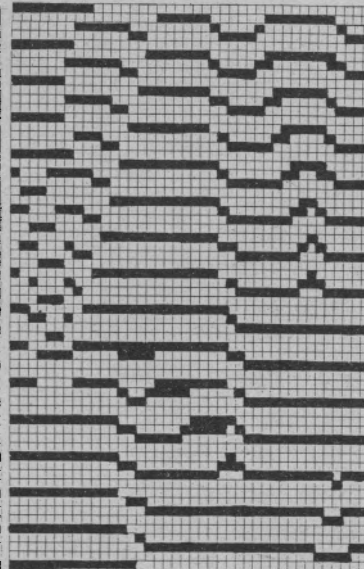
Pattern sheet 12B



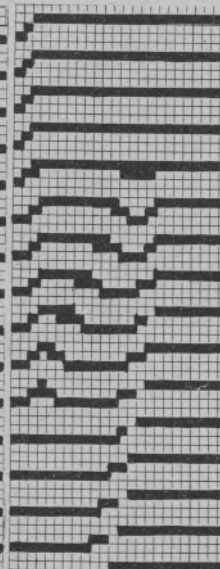
Pattern sheet 7A



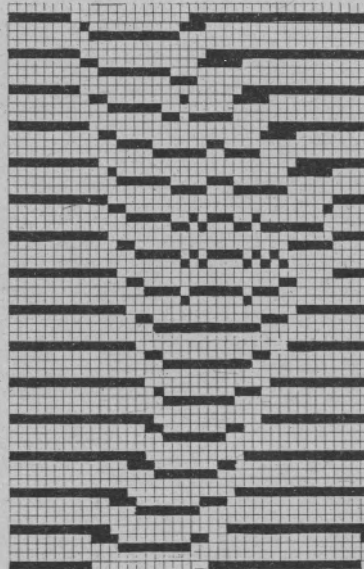
Pattern sheet 8A



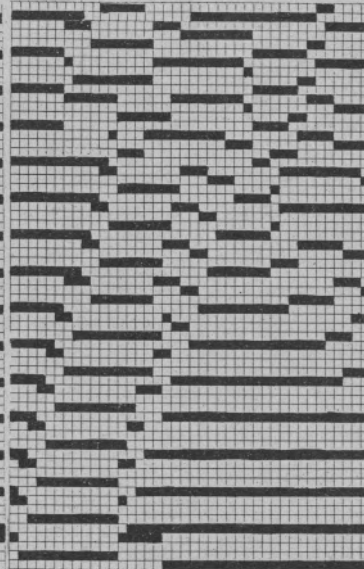
Pattern sheet 9A



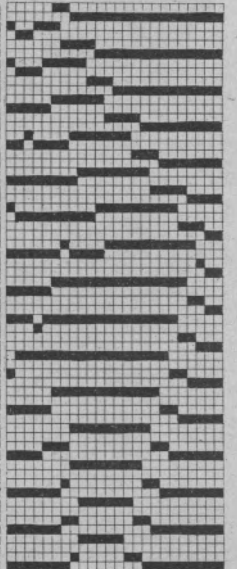
Pattern sheet 10A



Pattern sheet 11A



Pattern sheet 12A



6011 ELECTRONIC 6000

Cocktail dress

Size : To fit 92 cm bust, 98 cm hip
Material : Mohair/wool : 290 g pink, 120 g black
 Shiny yarn : 270 g black. 110 cm stiff net fabric.
Stitch size : Fairisle = front 6 1/2, back 5. Stocking stitch = 6
Test square : Fairisle : 100 sts on front bed = 42 cm, 100 R = 8,5 cm
Cast-on : For back and front : 2 (tubular cast-on for K/K)
 For sleeve : 6 (cast-on with 4 R.st.st.)
Pattern A : Fairisle with self-drawn pattern sheet
 ENLARGE : ↑ R x 2, ↔ STS x 2, OUTLINE = NO
 TO R./L. for back 24 (to the right)
 for front - 24 (to the left)
 REP.R = NO, REP.ST = NO
 KNIT TECH 193
Colour sequence : Back and front : 2 R black shiny yarn, 6 R mohair/wool pink

Fig. I : Back

A = cast-on 2 with black shiny yarn, then cont to knit pattern A, straight.
 Note : After RC 640 in pattern A, move to the programming part by pressing the key for 'fast forward', run through it giving the same answers you have already given when you programmed it, except at display TO R./L. Write '-16' over this. Important : Only after answering the question ALL ST.PATT with ENT, can you go to the display START CAST ON with the key for 'fast forward'. Now answer with NO, and the computer will jump to the place where you can cont to knit. B = cont to knit pattern A, shaping armhole at each end. Cast off.

Fig. II : Front

Note : Change the program for the front part as follows : ALTER = YES; mirror image [→], then overwrite the display TO R./L. with '- 24'. After RC 640, overwrite the display TO R./L. by pressing 16. Otherwise, knit as given for back.

Fig. III : Sleeve, knit two, mohair/wool black

A = cast-on 6, cont to knit in stocking stitch, inc at each end. B = cont in stocking stitch, dec at each end. Cast off.

Sleeve border : Knit two pieces

Cast-on 6 with 66 nds, knit 16 R. Cast off.

To make up : Block parts and leave to dry under a damp cloth. With right sides facing, join about 2 cm at each end for the shoulder seam. Hem neck edge to inside, tapering at each end (fold a bit more fabric to inside at the front). Sew side seams. Cut stiff net fabric to size and line the sleeves with it. Make some pleats along the top of the sleeves, sew sleeve seam, then with right sides facing set in sleeves. Gather lower end of sleeves and sew sleeve border to outside sleeve edge (wrong side out), fold to inside, catch down.

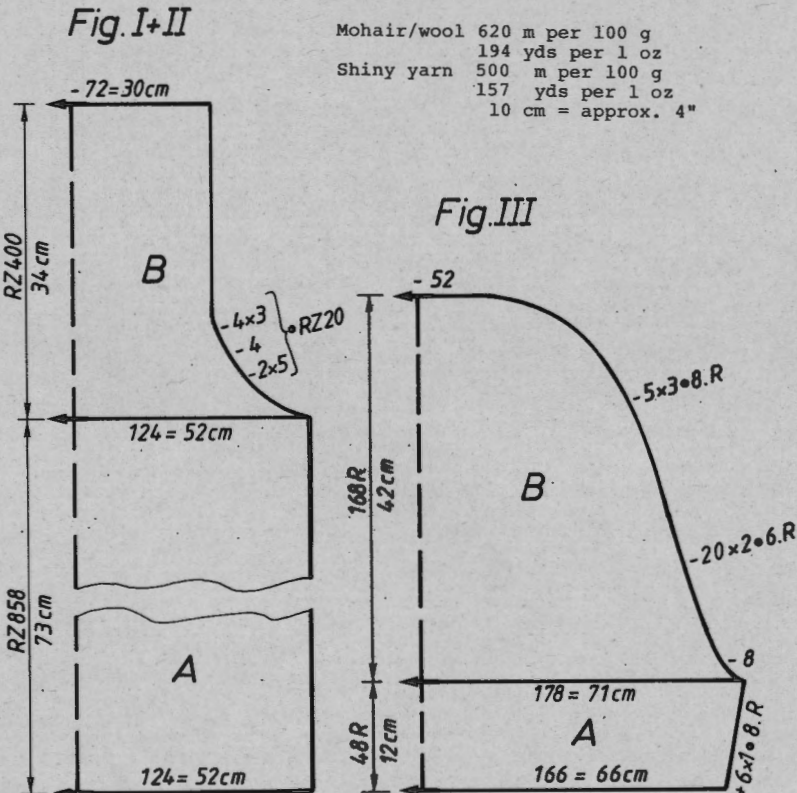


	FIG. I+II			FIG. III		
	34/36	38/40	24/44	34/36	38/40	42/44
1	34	34	34	100	100	100
2	168	168	168	160	160	160
3	A
4	B
5	114	124	134	158	166	176
6	90	98	106	3	3	3
7	.	.	.	3	3	3
8	38	38	38	38	38	38
9	114	124	134	170	178	188
10	90	98	106	3	3	3
11	.	.	.	3	3	3
12	73	73	73	12	12	12
13	105	107	108	24	26	27
14	cm total length
15	106	106	107	105	105	105
16	191	191	191	184	184	184
17	131	131	131	129	129	129
18	13	13	13	3	3	3
19	167	167	167	191	191	191
20	3	3	3	161	161	161
21	191	191	191	53	53	53
22	133	133	133	191	191	191
23	33	33	33	136	136	136
24	7	7	7	10	14	16
25	111	123	127	0	0	0
26	0	0	130			
27			0			

6014 ELECTRONIC 6000

Man's sweater in 3-col Fairisle

Size : To fit 98 cm chest
Material : 410 g wool/grilon pale grey, 320 g wool/grilon dark grey, 130 g cotton thread beige. 3 buttons.
Stitch size : Pattern A = front 6 1/2, back 6. Collar = 5. Bands = 4.
Test square : Pattern A = 100 sts on front bed = 38 cm. RC 100 = 10,5 cm
Cast-on for band and collar : 1, cont to knit
Pattern A : Self-drawn pattern sheets entered for 3-col Fairisle :
 1A ADD 1B
KNIT TECH : 195 (Fairisle in 3 colours)
Col sequence : 2 R beige, 2 R dark grey, 2 R pale grey, repeat.

Fig. I : Back
 A = cast-on 1 (tubular cast-on for 1:1 rib), cont to knit to end of band. B = knit pattern A. Cast off.
Fig. II : Front
 A, B = as for Fig. I. C = divide work. Place left half onto deckercombs. (If you knit without FORM-program, make a note of the number on the Row Counter, and the needles on which the left half hangs. Instruction Book 117.) Cont to knit right half : shape neck at left. Cast off. Place left half back onto nds of machine and knit with reversed shapings.

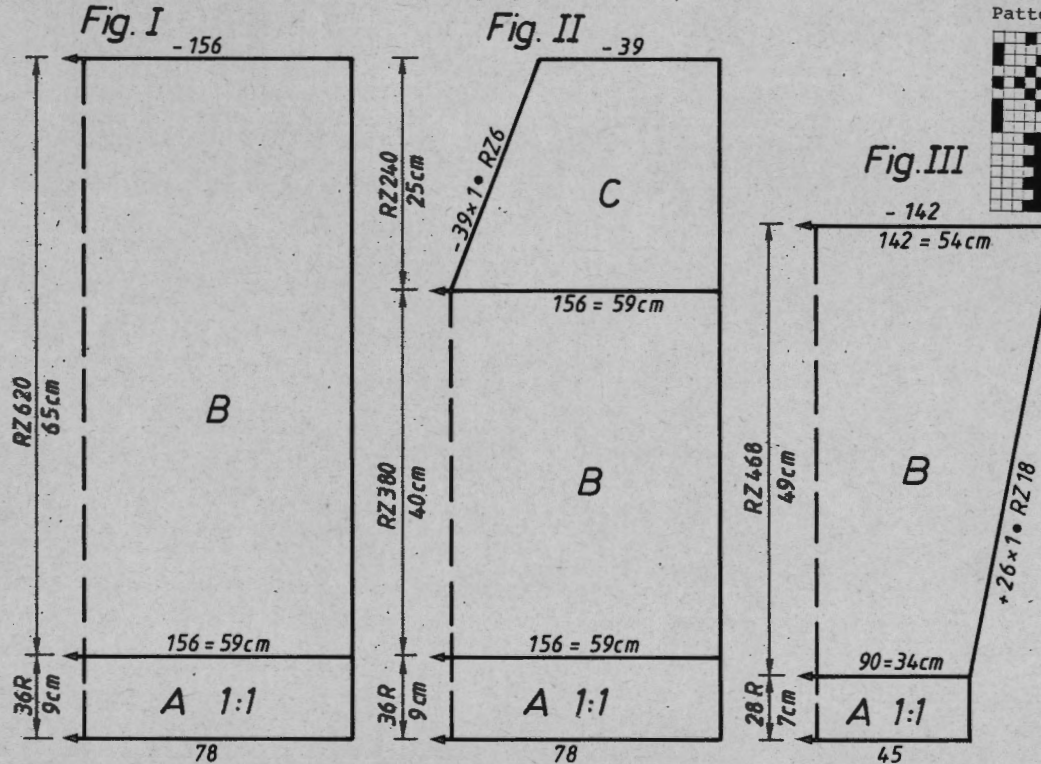
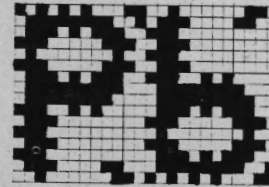


Fig. III : Sleeve, knit two alike
 A = knit as for Fig. I. B = knit pattern A, inc at each end. Cast off.
Collar : Knit two pieces
Cast-on 1 (tubular cast-on for 1:1 rib) with 168 sts, knit 48 R. Then, with lock back and front CX, knit RC 10. End with a few R contrast yarn, release.
To make up : Block parts and leave to dry under a damp cloth. Sew shoulder seams. With right sides facing, set in sleeves. Sew collar to outside neck edge, st by st, backstitching through the open loops and unravelling contrast yarn, hem down on inside. Sew sleeve and side seams with mattress stitch. Make 3 loops and sew on buttons to match.

Pattern sheet 1A



Pattern sheet 1B

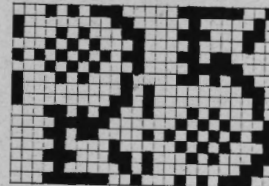


Fig. III

	FIG. I			FIG. II		
	44/46	48/50	52/54	44/46	48/50	52/54
1	42	42	42	42	42	42
2	152	152	152	152	152	152
3
4
5	144	156	166	144	156	166
6	90	98	106	90	98	106
7
8	195	195	195	195	195	195
9
10	7	7	7	7	7	7
11	37	37	37	37	37	37
12	38	38	38	38	38	38
13	144	156	166	144	156	166
14	90	98	106	90	98	106
15
16	65	65	65	38	38	38
17	74	74	74	74	74	74
18
19	0	0	0	226	226	226
				7	7	7
				123	123	123
				67	67	67
				191	191	191
				159	160	160
				113	113	113
				0	0	0

	FIG. III		
	44/46	48/50	52/54
1	42	42	42
2	152	152	152
3	.	.	.
4	.	.	.
5	88	90	92
6	3	3	3
7	3	3	3
8	195	195	195
9	.	.	.
10	7	7	7
11	28	28	28
12	38	38	38
13	140	142	144
14	3	3	3
15	3	3	3
16	47	49	50
17	62	64	64
18	.	.	.
19	0	0	0

*1 = cm chest
 *2 = cm total length

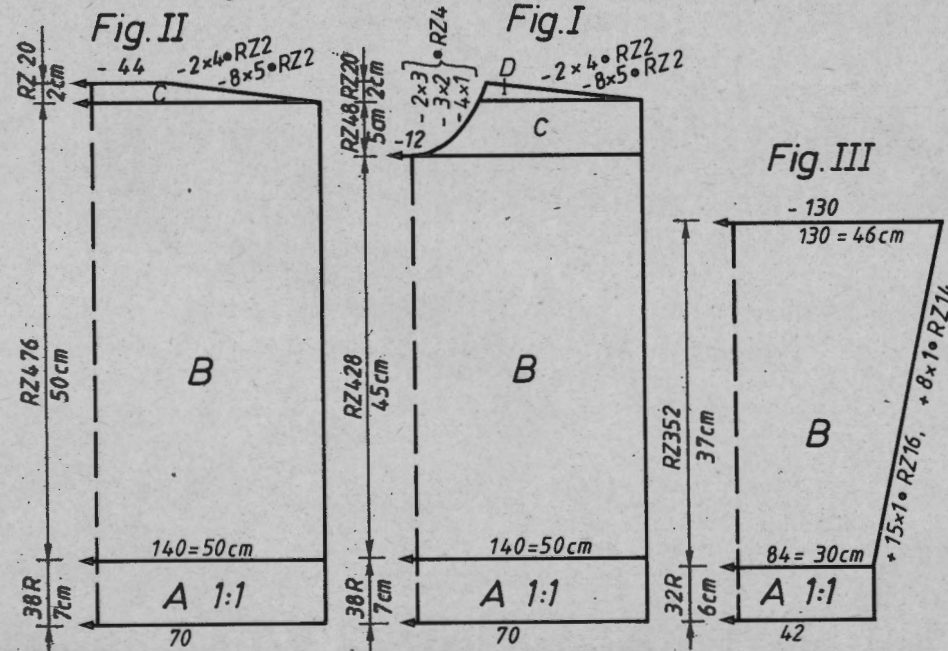
420 m per 100 g wool/grilon
 132 yds per 1 oz
 1000 m per 100 g cotton thread
 314 yds per 1 oz
 10 cm = approx 4"

6015 ELECTRONIC 6000

Child's sweater

Size : To fit 152 cm height
Material : 170 g wool/grilon grey, 170 g wool/grilon beige. 60 g acrylic/mohair green. 30 g each cotton thread : pink and green.
Stitch size : Pattern A = 5 1/2. Bands = 4. Collar = 6 1/2.
Test square : Pattern A : 100 sts on front bed = 35,5 cm. RC 100 = 10,5cm
Cast-on and band: 1, cont to knit
Collar : 6, cont to knit
Pattern A : Self-drawn pattern sheets entered for 3-col Fairisle.
 LA = [E→E] ADD LB = [E→E]
KNIT TECH : 195 (Fairisle in 3 colours)
Col sequence : 2 R pink (green), 2 R beige, 2 R grey, using green instead of pink and vice versa every RC 96.

Fig. I : Back
 A = acrylic/mohair green, cast-on 1 (tubular cast-on for 1:1 rib), cont to knit to end of band. B = knit pattern A. C = shape shoulders at each end. Cast off.
Fig. II : Front
 A, B = knit as for Fig. I. C = divide work. Place left half onto deckercombs. (If you knit without FORM-program, make a note of the number on the Row Counter, and the needles on which the left half hangs. Instruction Book page 117.) Cont to knit right half : shape neck at left. D = shape shoulder at right. Place left half back onto nds of machine and knit with reversed shapings.
Fig. III : Sleeve, knit two alike
 A = knit as for Fig. I. B = knit pattern A, inc at each end. Cast off.



Collar : Acrylic/mohair green, cast-on 6 (cast-on with 4 R for st.st.) with 110 sts, knit 50 R. Leave nds on back bed in Working Position. Then, with lock back and front N, knit 1 R. Change lock to back N, front GX, knit 4 R. With lock back GX, front N, knit 4 R. Cast off sts on back bed. Knit a few R contrast yarn on front bed with lock N, then release.

To make up : Block parts and leave to dry under a damp cloth. Sew shoulder seams. Sew rollneck collar to outside neck edge, st by st, backstitching through the open loops and unravelling contrast yarn. Hem the cast-off edge to inside. With right sides facing, set in sleeves. Sew side and sleeve seams with mattress stitch.

FIG. I

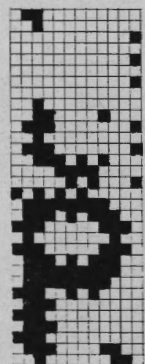
	104	128	140	152
1	42	42	42	42
2	142	142	142	142
3
4
5	116	124	130	140
6	58	64	68	76
7
8	195	195	195	195
9
10	7	7	7	7
11	28	28	28	28
12	38	38	38	38
13	116	124	130	140
14	58	64	68	76
15
16	39	43	46	50
17	48	52	55	59
18
19	99	99	99	99
20	191	191	191	191
21	160	163	165	169
22	3	3	3	3
23	0	0	0	0

FIG. II

	104	128	140	152
1	42	42	42	42
2	142	142	142	142
3
4
5	116	124	130	140
6	58	64	68	76
7
8	195	195	195	195
9
10	7	7	7	7
11	28	28	28	28
12	38	38	38	38
13	116	124	130	140
14	58	64	68	76
15
16	39	43	46	50
17	48	52	55	59
18
19	99	99	99	99
20	191	191	191	191
21	160	163	165	169
22	3	3	3	3
23	0	0	0	0

FIG. III

	104	128	140	152
1	42	42	42	42
2	142	142	142	142
3
4
5	76	78	82	84
6	3	3	3	3
7	3	3	3	3
8	195	195	195	195
9
10	7	7	7	7
11	23	23	23	23
12	38	38	38	38
13	122	124	128	130
14	3	3	3	3
15	3	3	3	3
16	23	31	35	37
17	37	45	49	53
18
19	0	0	0	0



*1 = cm chest
 *2 = cm total length
 475 m per 100 g acrylic/mohair
 149 yds per 1 oz
 1000 m per 100 g cotton/thread
 314 yds per 1 oz
 420 m per 100 g wool/grilon
 132 yds per 1 oz
 10 cm = approx 4"

6016 ELECTRONIC 6000

Lady's sweater

Size : To fit 88 - 92 cm bust
Material : 300 g angora/wool green. 250 g wool blue
Stitch size : Pattern A = front 5 1/2, back 4 3/4. Neckband = 4 1/2. Bands = 4
Test square : Pattern A : 100 sts on front bed = 51 cm. RC 100 = 13,5 cm
Cast-on for bands and neckband : 1, cont to knit
Pattern A : Self-drawn pattern sheet. ENLARGE POSITION = YES, REP.ST = 6
KNIT TECH : 187.1 (Fairisle in 2 colours)
Col sequence : 2 R blue, 2 R green

Fig. I + II : Back and front
 A = cast-on 1 (tubular cast-on for 1:1 rib), cont to knit to end of band. B = knit pattern A. Cast off.

480 m length per 100 g angora/wool
 150 yds per 1 oz
 450 m length per 100 g wool
 141 yds per 1 oz
 10 cm = approx 4"

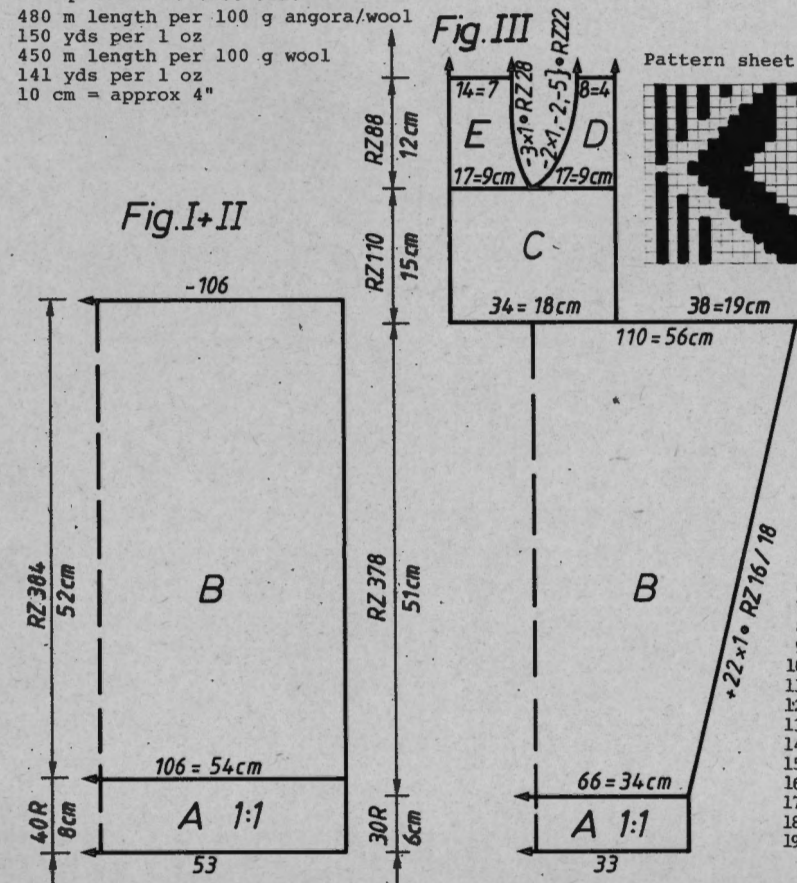


Fig. III : Sleeve and yoke, knit one piece
Placing pattern A : ENLARGE POSITION = YES, REP.ST = NO
 A = as for Fig. I + II. B = knit pattern A, inc at each end. C = cast off at each end, cont to knit. D = divide work. Place left half onto deckercomb. (If you knit without FORM-program, make a note of the number on the Row Counter, and the needles on which the left half hangs. Instruction Book page 117.) Cont to knit right half : shape neck at left. Then repeat D with reversed shapings and place sts onto deckercomb. E = place left half back onto nds of machine, shape neck at right. Then repeat E with reversed shapings. Place sts of right half back onto nds of machine and knit C,B,A with reversed shapings and in reverse order, transferring the sts for 1:1 rib in section A. Lock back and front N knit a few R contrast yarn, release.
Neckband : Cast-on 1 (tubular cast-on for 1:1 rib) with 114 sts, knit 16 R. Then, with lock back and front CX, knit RC 12. End with a few R contrast yarn, release.
To make up : Block parts and leave to dry under a damp cloth. Unravel contrast yarn at sleeve edge and cast off loose sts, st by st. With right sides facing sew yoke/sleeve part to back and front parts. Sew neckband to outside neck edge, st by st, backstitching through the open loops and unravelling contrast yarn, hem down on inside. Sew sleeve and side seams with mattress stitch.

FIG. IIIA	34-36	38-40	42-44	34/36	38/40	42/44	FIG. III B
1	54	54	54	54	54	54	REFER
2	204	204	204	204	204	204	8 = place left half of remaining sts onto deckercombs, pushing pushers right down. Cont to knit acc to FORM displays, at the same time making sure that you always knit over the last nd at left on which the released sts were.
3	
4	A
5	64	66	68	34	34	34	B
6	3	3	3	3	3	3	
7	3	3	3	3	3	3	
8	195	195	195	66	66	66	
9	.	.	.	C	7	7	
10	7	7	7	81	81	81	
11	17	17	17	69	69	69	5 = regarding Fig. IIIa : do not cast off, but place remaining sts onto deckercombs. Place the sts of left half back on the same nds as they were before. Push corresponding pushers to WP. Go back into programming part, and enter FORM program of Fig. IIIb. Cont to knit (Note : at R 0 the computer also displays the nds for the part already knitted, push these pushers right down, but always move the lock right over these nds.)
12	38	38	38	159	159	159	
13	108	110	112	37	37	37	
14	3	3	3	95	95	95	
15	3	3	3	67	67	67	
16	48	48	48	37	37	37	
17	58	59	60	38	38	38	
18	.	.	.	*2	34	34	
19	98	98	98	3	3	3	
20	184	184	184	3	3	3	
21	158	159	160	13	15	17	
22	55	55	55	20	22	24	*3
23	160	160	160	.	.	.	
24	34	34	34	98	98	98	
25	3	3	3	56	56	56	
26	3	3	3	158	159	160	
27	13	15	17	38	38	38	
28	20	22	24	64	66	68	9 = place sts from deckercombs back onto the nds on which they were before.
29	.	.	.	*3	3	3	
30	72	72	72	3	3	3	
31	167	167	167	48	48	48	
32	26	26	26	58	59	60	
33	175	175	175	.	.	.	*2
34	4	4	4	98	98	98	
35	47	47	47	65	65	65	
36	4	4	4	68	68	68	
37	39	39	39	131	131	131	C
38	26	26	26	.	.	.	
39	66	66	66	7	7	7	
40	7	7	7	16	16	16	
41	81	81	81	0	0	0	
42	0	0	0	.	.	.	

6017 ELECTRONIC 6000

Lady's 3/4 length jacket

Size : To fit 94 - 98 cm hip
Material : 90 g cotton thread blue. 430 g medium wool blue. 340 g shiny yarn green. 6 buttons.
Stitch size : Three-col Fairisle = front 5 3/4, back 5 1/4. Binding and hem = 5 1/2. Sleeve border = 4.
Test square : 100 sts on the front bed = 51,5 cm. RC 100 = 12 cm
Cast-on : For back and front : 8 (closed cast-on for tubular), cont to knit.
 For binding : 2 (tubular cast-on for K/K), cont to knit
 For sleeve border : 1 (tubular cast-on for 1:1 rib) cont to knit.
Pattern A : KNIT TECH 199
Pattern B : Self-drawn pattern sheets 1A ADD 1B, POSITION = YES, TO R./L. = -6, REP.R = NO, REP.ST = NO. KNIT TECH 199
Col sequence for pattern A and B : 2 R cotton thread blue, 2 R shiny yarn green, 2 R wool blue.

Fig. I : Back

A = cast-on 8 with wool, blue, cont to knit tubular to end of hem. B = knit pattern A in col sequence. C = cont pattern A, dec at each end. Cast off.

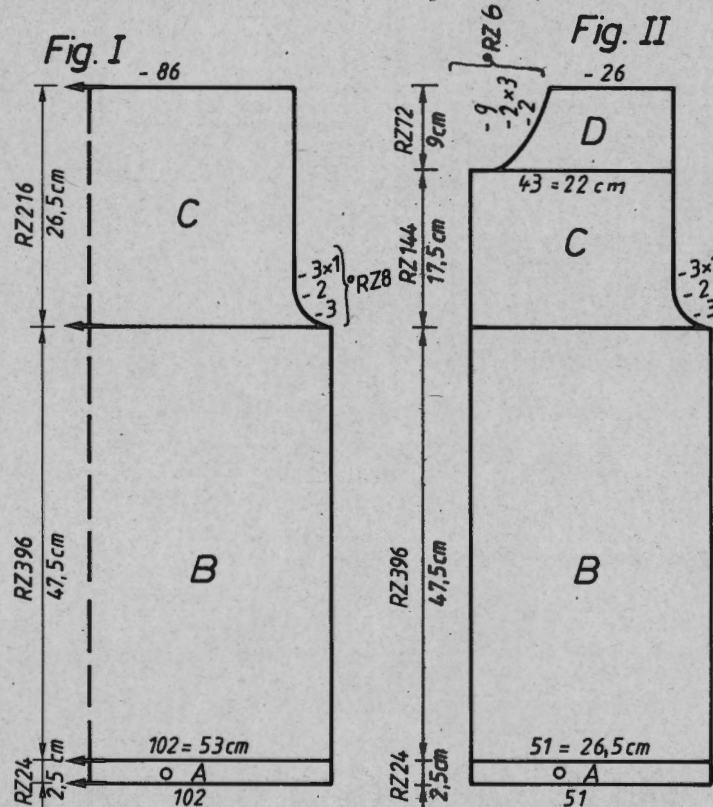
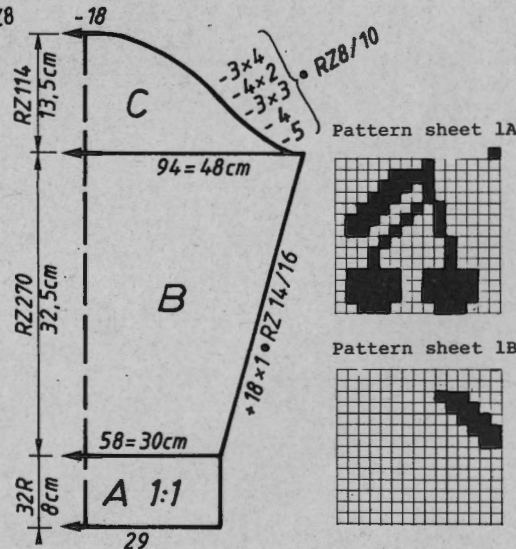


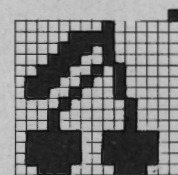
Fig. II

Cotton thread 1000 m per 100 g
 Medium wool 250 m per 100 g
 Shiny yarn 216 m per 100 g
 67 yds per 1 oz
 10 cm = approx 4"

Fig. III



Pattern sheet 1A



Pattern sheet 1B

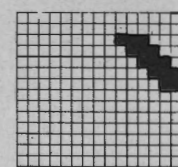


Fig. II :

Left front : A = cast-on 8 with wool, blue, cont to knit to end of hem. B = knit pattern A in col sequence. C = change to pattern B and cont to knit, shaping armhole at right. D = cont pattern B, shaping neck at left. Cast off.
Right front : knit with reversed shapings, completely in pattern A in col sequence.

Fig. III : Sleeve, knit two

A = cast-on 1 with wool, blue, cont to end of hem. B = knit pattern A in col sequence, inc at each end. C = cont in pattern A, dec at each end. Cast off.

Binding : Knit three pieces

Begin two pieces with 146 sts and one piece with 108 sts. Cast-on 2, blue wool, cont to knit, dec as follows : for the shorter piece dec at each end, for the longer pieces only at one end, i.e. 1 st every alternate R, knitting a total of 10 R. Then knit 4 R with lock front N, back GX. 4 R with lock front GX, back N. End with a few R contrast yarn with lock back and front N, release. In one of the longer pieces work 5 buttonholes in R 6, i.e. from the right over sts 7-9, 35-37, 63-65, 91-93, 119-121.

To make up : Block parts and leave to dry under a damp cloth. Sew shoulder seams. Join the binding at the slanted edges, mitring points, and leaving an opening on one side for the 6th buttonhole. Sew binding to neck and front edges, st by st, backstitching through the open loops and unravelling contrast yarn, first to outside, then to inside. With right sides facing, set in sleeves. Sew side and sleeve seams with mattress stitch. Sew on buttons.

FIG. III

34/36 38/40 42/44

1	48	48	48
2	206	206	206
3	.	.	.A
4	.	.	.B
5	56	58	60
6	3	3	3
7	3	3	3
8	195	195	195
9	.	.	.C
10	7	7	7
11	28	28	28
12	38	38	38
13	92	94	96
14	3	3	3
15	3	3	3
16	33	33	33
17	58	59	60
18	.	.	.cm sleeve length
19	109	109	109
20	168	168	176
21	4	4	4
22	160	160	168
23	4	4	4
24	191	191	191
25	130	130	130
26	8	8	8
27	191	191	191
28	129	129	129
29	8	13	13
30	191	191	191
31	133	133	133
32	8	8	8
33	0	0	0

6009 ELECTRONIC 6000

Man's sweater with pin tucks

Size : To fit 106 cm chest
Material : 680 g medium yarn offwhite
Stitch size : Borders and neckband = 3 1/2. Pattern = 4 1/2
Test square : 100 sts on front bed = 55 cm. 100 R = 14,5 cm
Cast-on
Pattern A : Cast-on 2 (tubular cast-on for K/K), cont to knit 1124, KNIT TECH 138

524 m per 100 g
 164 yds per 1 oz
 10 cm = approx. 4"

Fig. I : Back

A = cast-on 2, cont to knit to end of border. B = knit pattern A. C = dec at each end, cont to knit pattern A. Cast off.

Fig. II : Front

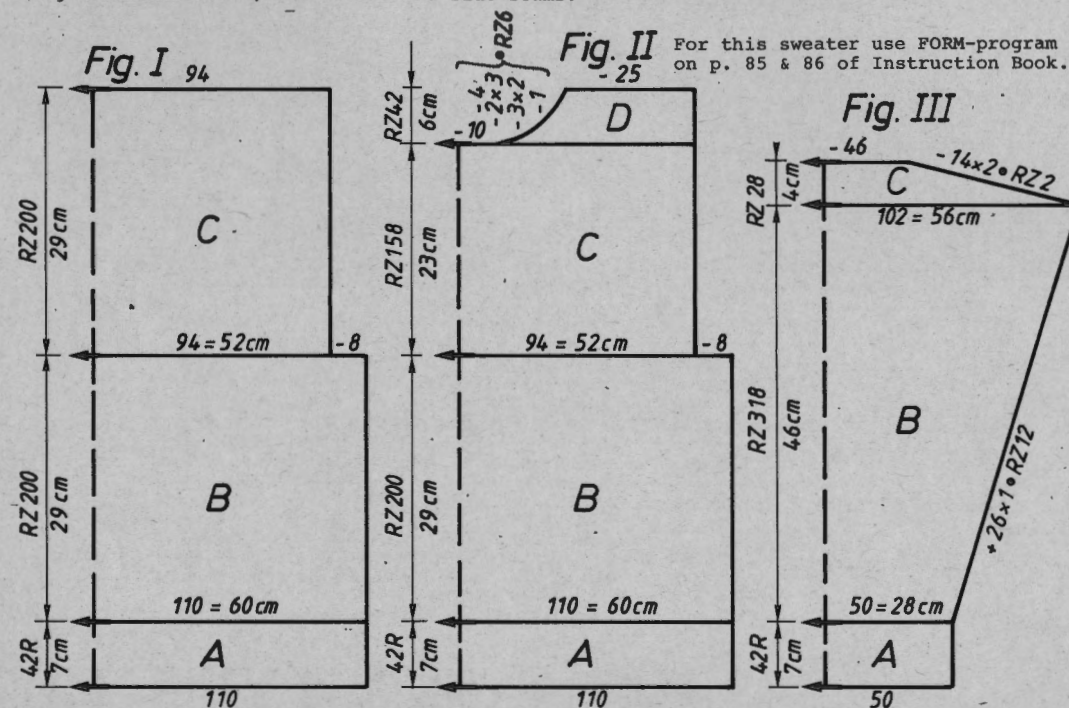
A = cast-on 2, cont to knit to end of border. B = knit pattern A. C = dec at each end, cont to knit pattern A. D = divide work. Place left half onto deckercombs. (If you knit without FORM-program, make a note of the exact number on the Row Counter, and the needles on which the left half hangs. Instruction Book page 117.) Cont to knit right half in pattern A, shape neck at left. Cast off. Knit the left half with reversed shapings.

Fig. III : Sleeve, knit two

A = cast-on 2, cont to knit to end of border. B = knit pattern A, inc at each end. C = cont in pattern A, dec at each end. Cast off.

Neckband : Cast-on 2 over a width of 120 nds, knit 36 R. End with a few R contrast yarn, release.

To make up : Block parts and leave to dry under a damp cloth. Sew shoulder seams. Sew neckband to outside neck edge, st by st, backstitching through the open loops and unravelling contrast yarn, hem down on inside. With right sides facing set in sleeves. Using mattress stitch, sew sleeve and side seams.



6017

FIG. I

	34/36	38/40	42/44
1	48	48	48
2	206	206	206
3	.	.	.
4	.	.	.
5	96	102	110
6	90	98	106
7	.	.	.
8	195	195	195
9	.	.	.
10	7	7	7
11	7	7	7
12	38	38	38
13	96	102	110
14	90	98	106
15	.	.	.
16	47	47	47
17	76	77	77
18	.	.	.
19	104	104	104
20	152	152	160
21	4	4	4
22	144	144	152
23	4	4	4
24	159	159	159
25	5	5	5
26	7	7	7
27	81	85	85
28	0	0	0

FIG. II

	34/36	38/40	42/44
1	48	48	48
2	462	462	462
3	.	.	.
4	.	.	.
5	48	51	56
6	90	98	106
7	.	.	.
8	195	195	195
9	.	.	.
10	7	7	7
11	7	7	7
12	38	38	38
13	48	51	56
14	90	98	106
15	.	.	.
16	47	47	47
17	76	77	77
18	.	.	.
19	232	232	232
20	152	152	160
21	4	4	4
22	144	144	152
23	4	4	4
24	159	159	159
25	5	5	5
26	7	7	7
27	81	85	85
28	71	71	71
29	184	184	184
30	129	130	132
31	3	3	3
32	179	179	179
33	147	147	147
34	7	7	7
35	17	21	21
36	0	0	0

6018 ELECTRONIC 6000

Lady's sweater in 4-col Fairisle

Size : To fit 88 - 92 cm bust
Material : Angora/wool : 210 g salmon, 130 g pale beige, 130 g bordeaux. 80 g cotton thread offwhite.
Stitch size : Pattern A + B = front and back 4 3/4. Neckband = 5. Bands = 4
Test square : Pattern A + B = 100 sts on front bed = 50 cm. RC 100 = 10 cm
Cast-on band : 1, cont to knit
Cast-on for neckband : 8, cont to knit
Pattern A : Self-drawn pattern sheets entered for 4-col Fairisle : 1A ADD 1B ADD 1C.
 For Fig. I+II : ENLARGE ↑ R x 2, ↔ STS x 2, POSITION = YES, ↑ REP. R = NO, ↔ REP. ST = NO
 For Fig. III : (do not enlarge) PATT.AFT R = 116, ↑ REP. R = NO, ↔ REP. ST = NO
Pattern B : KNIT TECH 211 (Fairisle in 4 colours)
Col sequence for patterns A+B : 2 R offwhite, 2 R salmon, 2 R pale beige, 2 R bordeaux, repeat

Fig. I : Back

A = cast-on 1 (tubular cast-on for 1:1 rib), cont to knit to end of band. B = knit pattern A. Cast off.

Fig. II : Front

A+B = as for Fig. I. C = divide work. Place left half onto deckercombs. (If you knit without FORM-program, make a note of the number on the Row Counter, and the needles on which the left half hangs. Instruction Book page 117.) Cont to knit right half : shape neck at left. Cast off. Place left half back onto nds of machine and knit with reversed shapings.

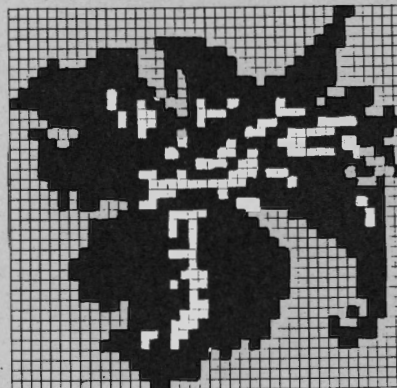
Fig. III : Sleeve, knit two

A = as for Fig. I. B = knit once in pattern A (not enlarged) and once in pattern B, inc at each end. Cast off.

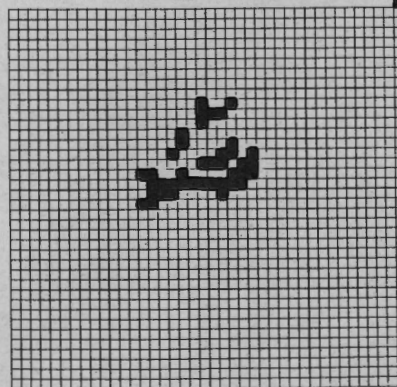
Neckband : Cast-on 8 (closed cast-on for tubular) with salmon, 120 sts, knit RC 25, then with lock back and front N knit 1 R. Change lock to back CX, front LX and knit RC 8. End with a few R contrast yarn, release.

To make up : Block parts and leave to dry under a damp cloth. Sew shoulder seams. With right sides facing, set in sleeves. Sew neckband to outside neck edge, st by st, backstitching through the open loops and unravelling contrast yarn. Hem down on inside. Sew sleeve and side seams with mattress stitch.

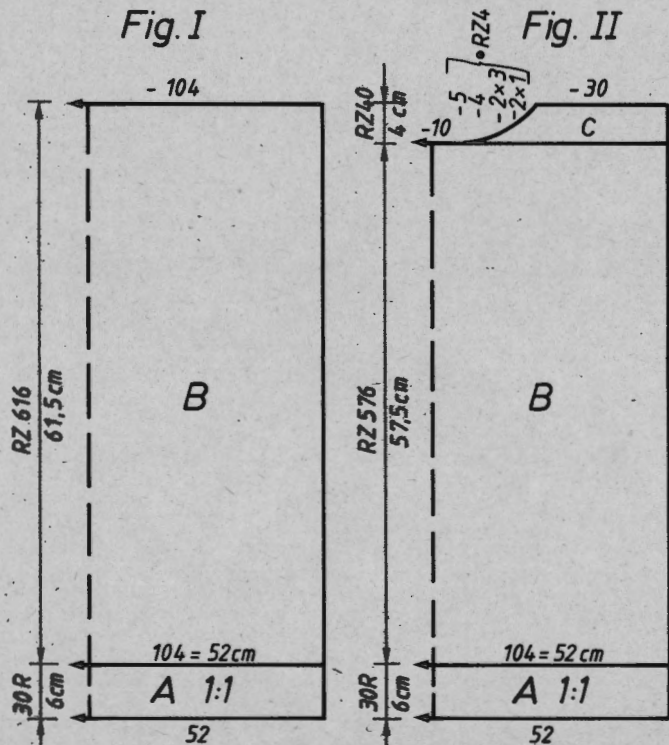
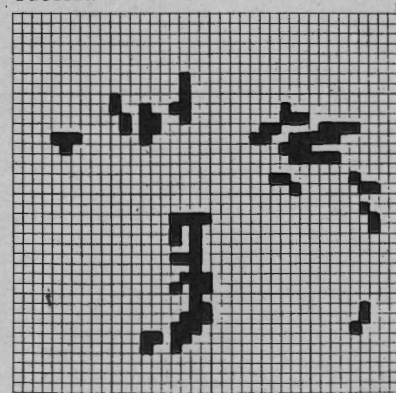
Pattern sheet 1A



Pattern sheet 1B

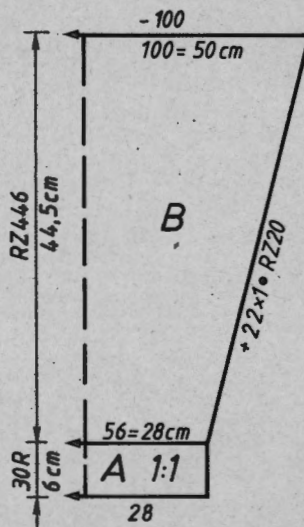


Pattern sheet 1C



500 m per 100 g angora/wool
 157 yds per 1 oz
 1000 m per 100 g cotton thread
 314 yds per 1 oz
 10 cm = approx 4"

Fig. III



6022 ELECTRONIC 6000

Skirt with frills (matching jacket 6017)

900 m per 100 g
282 yds per 1 oz
10 cm = approx 4"

Size : To fit 92 cm hip
Material : 230 g fairly fine acrylic, blue
Stitch size : Half Fisherman's rib = 6. Stocking stitch = 6 1/2
Test square : St.st. 100 sts = 37,5 cm. 100 R = 25 cm
Cast-on : 2 (tubular cast on for K/K)
Pattern A : KNIT TECH 105 (Half Fisherman's rib). Yarn : single strand
Pattern B : KNIT TECH 100 (st.st.). Yarn : double strand

Fig. VII + VIII : Skirt panel, knit two

A = cast-on 2. Following the cast-on, begin pattern A, cont to knit. B = transfer all sts to front bed and knit pattern B with two strands of yarn. At the end of section B, place all sts onto deckercombs.

Repeat section A once more. At the end of section A, transfer all sts to front bed, and place the sts on the deckercombs onto the same nds on the front bed, then knit pattern B for section C with two strands of yarn. At the end of section C, place all sts onto deckercombs.

Repeat section A once more. At the end of section A, transfer all sts to front bed, and place the sts on the deckercombs onto the same nds on the front bed. For section D, knit pattern B with two strands of yarn. E = transfer every 3rd st to adjacent nd. Push empty nds and pushers out of Working Position, and cont to knit pattern B. End with a few R contrast yarn, release.

(Hint : Instead of programming pattern B, you can also set the lock at front to N, back GX and knit.)

To make up : Block parts and lightly press the stocking stitch part. Sew side seam with mattress stitch. Fold section E in half to inside and sew in position, unravelling contrast yarn.

Fig.VII+VIII

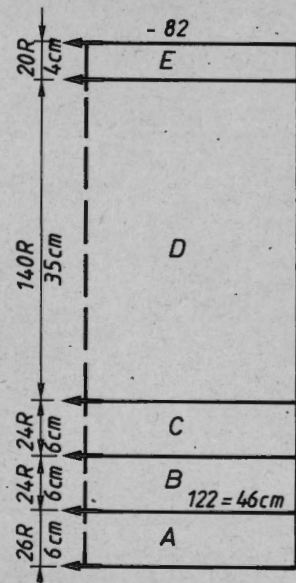


	FIG.VII ; VIII	
	36/38	40/42
1	100	100
2	150	150
3	.	.A
4	.	.B
5	122	134
6	92	100
7	.	.cm hip
8	102	102
9	71	71
10	65	65
11	6	6
12	71	71
13	66	66
14	5	5
15	38	38
16	122	134
17	92	100
18	.	.cm hip
19	29	29
20	55	55
21	.	.cm skirt length
22	99	99
23	71	71
24	4	4
25	3	3
26	0	0

REFER
7 = end of section A
8 = end of section B.
When you have knitted to flashing figure 8 the first time, remove sts from the machine and jump back to the cast-on. Knit section A once more, then place the sts of the first section A onto nds and knit to flashing figure 8. Repeat this procedure for the 3rd frill, and without taking any notice of flashing figure 8 cont to knit.
10 = begin of section E.

6018

FIG.I

	34/36	38/40	42/44
1	40	40	40
2	200	200	200
3	.	.	.
4	.	.	.
5	96	104	112
6	82	90	98
7	.	.	.
8	195	195	195
9	.	.	.
10	7	7	7
11	24	24	24
12	38	38	38
13	96	104	112
14	82	90	98
15	.	.	.
16	62	62	62
17	68	68	68
18	.	.	.
19	0	0	0

FIG.II

	34/36	38/40	42/44
1	40	40	40
2	200	200	200
3	.	.	.A
4	.	.	.B
5	96	104	112
6	82	90	98
7	.	.	.cm bust
8	195	195	195
9	.	.	.C
10	7	7	7
11	24	24	24
12	38	38	38
13	96	104	112
14	82	90	98
15	.	.	.cm bust
16	56	56	56
17	68	68	68 total
18	.	.	.cm length
19	226	226	226
20	7	7	7
21	23	23	23
22	70	70	70
23	188	188	188
24	131	131	133
25	162	162	162
26	164	180	180
27	148	148	148
28	6	6	6
29	0	0	0

FIG.III

	34/36	38/40	42/44
1	40	40	40
2	200	200	200
3	.	.	.A
4	.	.	.B
5	54	56	58
6	3	3	3
7	3	3	3
8	195	195	195
9	.	.	.C
10	7	7	7
11	24	24	24
12	38	38	38
13	98	100	102
14	3	3	3
15	3	3	3
16	45	45	45
17	58	59	60
18	.	.	.cm sleeve length
19	0	0	0

6019 ELECTRONIC 6000

Lady's Fairisle jacket in 3 colours

- Size :** 88 - 92 cm bust
Material : Angora/wool : 120 g black, 110 g salmon. Cotton thread : 90 g beige. 3 buttons.
Stitch size : Pattern A,B,C and D = front 6, back 5 1/2. Neckband = 5. Borders = 4.
Test square : Pattern A,B,C and D : 100 sts on front bed = 55 cm RC 100 = 14 cm
Cast-on borders : 1 (tubular cast-on for 1:1 rib), cont to knit
Cast-on neckband : 2 (tubular cast-on for K/K), cont to knit
Pattern A : KNIT TECH 199
Pattern B (=M) : Self-drawn pattern sheets, entered for 3-col Fairisle, 1A ADD 1B, POSITION : PATT. AFT R 48, TO R / L 2, ↑ REP. R = NO, ↔ REP. ST = NO
Pattern C (=E) : Self-drawn pattern sheets, entered for 3-col Fairisle, 2A ADD 2B, POSITION : TO R / L -5, ↑ REP. R = NO ↔ REP. ST = NO
Pattern D (=S) : Self-drawn pattern sheets, entered for 3-col Fairisle, 3A ADD 3B, ENLARGE : ↑ R x 2, ↔ STS x 2, POSITION : PATT. AFT R 72, TO R / L 6, ↑ REP. R = NO, ↔ REP. ST = NO
KNIT TECH : 199 (3-col Fairisle)
Col sequence : 2 R beige, 2 R black, 2 R salmon, repeat.

Fig. I : Back
 A = cast-on 1, black, cont to knit to end of border. B = knit pattern A. Cast off.

Fig. II :
Right front : A = as for Fig. I. B = begin pattern B. C = cont to knit pattern B, shape neck at right. After RC 198 from end of border, change to pattern C. Cast

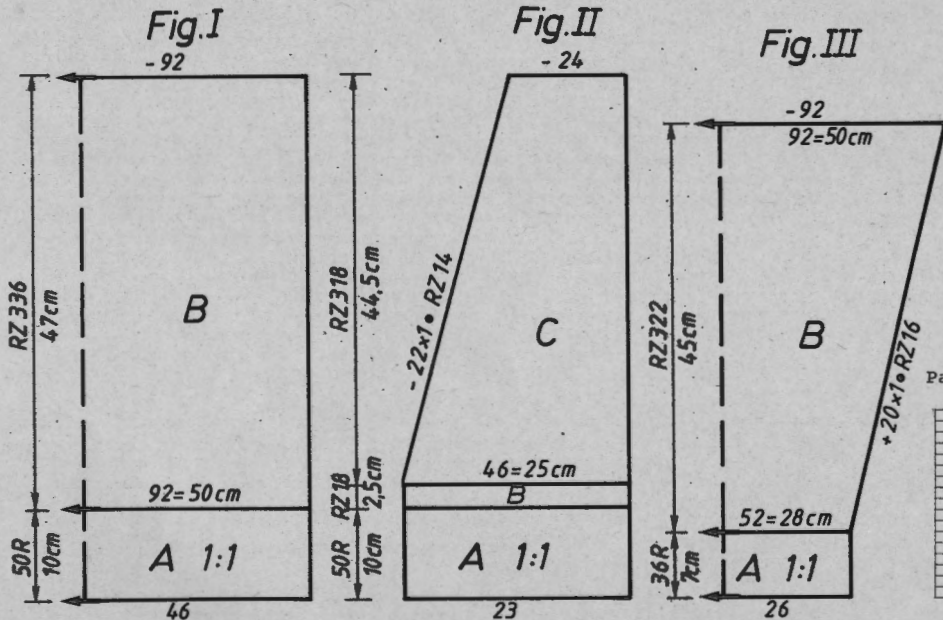
off. **Left front :** A = as for right front. B = begin pattern D. C = cont to knit pattern D, shape neck at left. Cast off.

Fig. III : Sleeve, knit 20

A = cast-on 1, black, cont to knit to end of border. B = knit pattern A, inc at each end. Cast off.

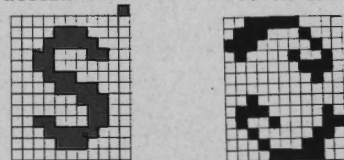
Neckband : Knit two pieces

Cast-on 2, black, with 128 sts, knit 16 R, working buttonholes in one band, i.e. work 3 buttonholes in R 10, over sts 6-9, 15-18, 24-27 counting from the right. With lock back and front CX, knit RC 6. End with a few R contrast yarn, release.
To make up : Block parts and leave to dry under a damp cloth. Sew shoulder seams. With right sides facing, set in sleeves. Join neckband, sew to outside neck edge, st by st, backstitching through the open loops and unravelling contrast yarn, hem down on inside. Neaten buttonholes. Sew sleeve and side seams with mattress stitch. Sew on buttons.

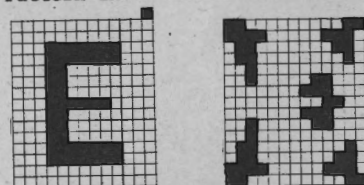


Angora/wool 500 m per 100 g
 157 yds per 1 oz
 Cotton thread 1000 m per 100 g
 314 yds per 1 oz
 10 cm = approx 4"

Pattern sheet 3A Pattern sheet 3B



Pattern sheet 2A Pattern sheet 2B



Pattern sheet 1A Pattern sheet 1B

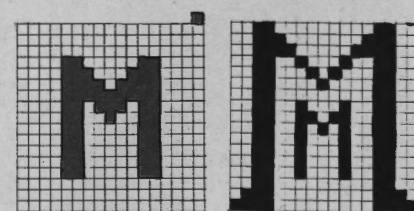


	FIG.I			FIG.II		
	34/36	38/40	42/44	34/36	38/40	42/44
1	56	56	56	56	56	56
2	220	220	220	476	476	476
3
4
5	84	92	98	42	46	50
6	82	90	98	82	90	98
7
8	195	195	195	195	195	195
9
10	7	7	7	7	7	7
11	30	30	30	30	30	30
12	38	38	38	38	38	38
13	84	92	98	42	46	50
14	82	90	98	82	90	98
15
16	47	47	47	3	3	3
17	57	57	57	57	57	57
18
19	0	0	0	227	227	227

FIG.III

	FIG.III		
	34/36	38/40	42/44
1	56	56	56
2	220	220	220
3	.	.	.
4	.	.	.
5	50	52	54
6	3	3	3
7	3	3	3
8	195	195	195
9	.	.	.
10	7	7	7
11	19	19	19
12	38	38	38
13	90	92	94
14	3	3	3
15	3	3	3
16	45	45	45
17	58	59	60
18	.	.	.
19	0	0	0

*1 = cm bust
 *2 = cm total length
 Note : This garment may only be lengthened.

6020 ELECTRONIC 6000

Intarsia sweater in 3 colours

Size : To fit 88-92 cm bust
Material : 150 g cotton/linen white. 80 g silk gold. 60 g acrylic/mohair yellow.
Stitch size : Pattern A = 6 1/2. Neck and armhole bands = 5. Border = 4
Test square : Pattern A : 100 sts on front bed = 40 cm, RC 100 = 9 cm
Cast-on : 6 (cast-on with 4 R stocking stitch)
Cast-on border : 1 (tubular cast-on for 1:1 rib) cont to knit
Cast-on neck and armhole bands : 8 (closed cast-on for tubular), cont to knit
Pattern A : Self-drawn pattern sheet ADD 1408 entered for 3-col Fairisle. ENLARGE : ♦ STS x 8 246 (intarsia in 3 colours)
Knit tech : 2 R white = col 1, 2 R yellow = col 2, 2 R gold = col 3, repeat (observe rule on threading up the yarn : always wind yarn round the adjacent non-working needle during knitting. See instruction book, page 169)
Col sequence :

Fig. I + II : Back and front, knitted sideways in one piece
 A = cast-on 6, cont to knit in pattern A, after RC 96 always knit 2 R white, 2 R yellow, 2 R gold with lock at front N, press key COR, L.ND .. appears, press ENT, R.ND.. appears, press ENT, Row Counter appears, press - (minus) 6 and ENT. The computer goes back to the beginning of pattern A (1 patt repeat = 102 R). B = knit off sts at right by hand with contrast yarn (for armhole).
 Cont acc to pattern repeat, repeating section A. Cast off.
Border : Knit two pieces
 Cast-on 1, white, over 110 nds, knit 32 R. End with a few R contrast yarn, release.

Armhole band : Knit two pieces

Cast-on 8, white, with 100 sts on front bed, knit 23 R. With lock back and front N knit 1 R. With lock back CX, front LX knit 6 R. End with a few R contrast yarn, release.

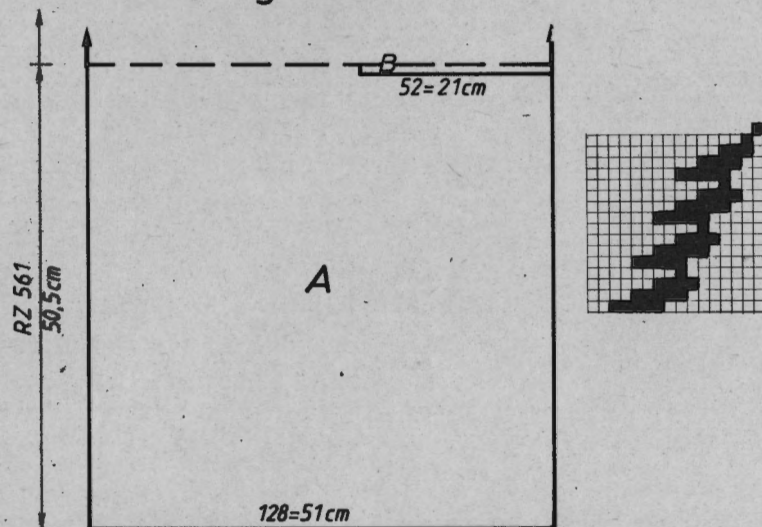
Neckband : Knit one piece as for armhole band but with 112 sts.

To make up : Block parts and leave to dry under a damp cloth. Close shoulder seams along approx 14 cm. Sew neckband to neck edge, armhole band to armhole edge, st by st, backstitching through the open loops and unravelling contrast yarn, hem down on inside. Sew borders to back and front parts, st by st, backstitching through the open loops and unravelling contrast yarn. Sew side seam with mattress stitch.

Note : If the FORM-program shows more than 128 sts for the cast-on, you must not multiply the pattern in width with 8 but with 9 or possibly with 10. (The pattern width multiplied with desired number for enlarging must at the very least result in the knitting width.)

Cotton/linen 314 m per 100 g
 98 yds per 1 oz
 Silk 288 m per 100 g
 90 yds per 1 oz
 Acrylic/mohair 620 m per 100 g
 194 yds per 1 oz
 10 cm = approx 4"

Fig. I+II



REFER

7 = knit as given for section B.

FIG.I+II

	34/36	38/40	42/44
1	36	36	36
2	160	160	160
3	.	.	A
4	.	.	B
5	128	128	128
6	51	51	51
7	.	.	cm total length
8	55	55	55
9	96	96	96
10	128	128	128
11	51	51	51
12	.	.	cm total length
13	46	51	55
14	41	45	49
15	.	.	cm 1/2 bust
16	38	38	38
17	128	128	128
18	51	51	51
19	.	.	cm total length
20	46	51	55
21	41	45	49
22	.	.	cm 1/2 bust
23	0	0	0

6021 ELECTRONIC 6000

Lady's 3-col Fairisle sweater

Size : To fit 98 cm bust
Material : 200 g cotton yarn black. 130 g mohair/wool yellow.
 330 g shiny yarn apricot.
Stitch size : 3-col Fairisle = front 4 1/2, back 4. Borders and neckband = 3
Cast-on : 1 (tubular cast-on for 1:1 rib) cont to knit
Pattern A : Pattern 1284, ALTER = YES, $E \rightarrow m$ ADD
 Pattern 1284, ALTER = YES $E \rightarrow 3$ $E \rightarrow m$
 ENLARGE $\uparrow R \times 2$, $\leftrightarrow STS \times 2$
 KNIT TECH 199
Col sequence : 2 R black, 2 R apricot, 2 R yellow

Fig. I : Back

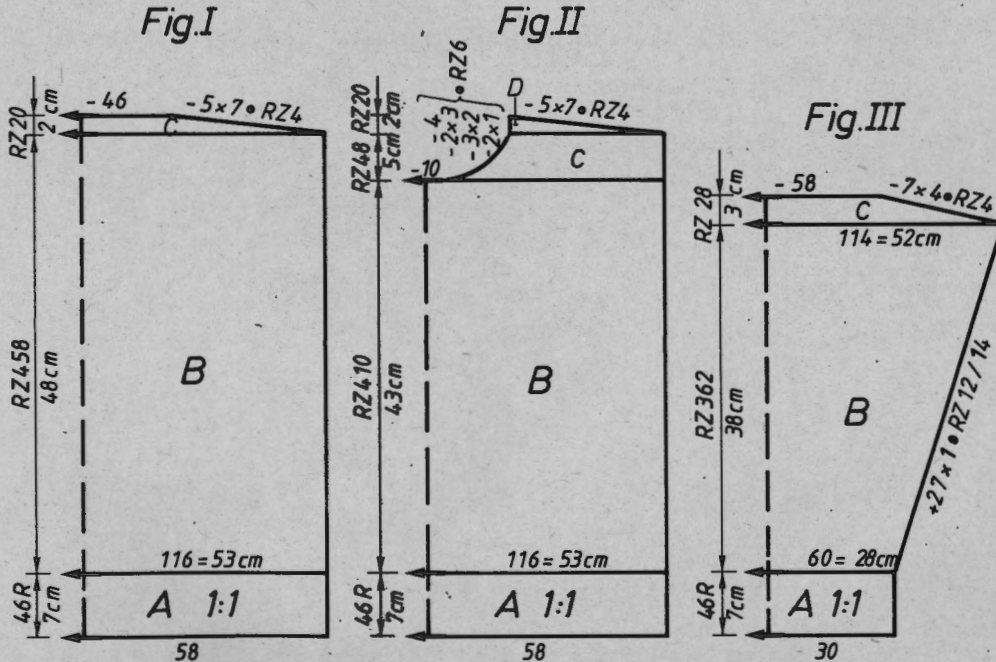
A = cast-on 1 with cotton, black, cont to knit to end of border. B = knit pattern A in col sequence. C = cont to knit pattern A, dec at each end. Cast off.

Fig. II : Front

A + B = as for Fig. I. C = divide work, place left half onto deckercombs. (If you knit without FORM-program, make a note of the exact number on the Row Counter, and the needles on which the left half hangs. See instruction book page 117.) Cont to knit right half : shape neck at left. D = cont to knit pattern A, shape shoulder at right. Knit left half with reversed shapings.

Fig. III : Sleeve, knit two

A = cast-on 1 with cotton, black, cont to knit to end of border. B = knit pattern A in col sequence, inc at each end. C = dec at each end. Cast off.
Neckband : Cast-on 1 with cotton, black, with 80 nds, knit 36 R. End with a few R contrast yarn, release.



To make up : Block parts and leave to dry under a damp cloth. Sew shoulder seams. Sew neckband to outside neck edge, st by st, backstitching through the open loops and unravelling contrast yarn, fold in half to inside, catch down. With right sides facing, set in sleeves. Sew side and sleeve seams.

32

Cotton yarn 500 m per 100 g
 157 yds per 1 oz
 Mohair/wool 620 m per 100 g
 194 yds per 1 oz
 Shiny yarn 250 m per 100 g
 78 yds per 1 oz

FIG I			FIG II			FIG III		
34-36	38-40	42-44	34-36	38-40	42-44	34-36	38-40	42-44
52	52	52	52	52	52	52	52	52
120	120	120	120	120	120	120	120	120
.
.
164	176	190	164	176	190	90	94	97
88	96	105	88	96	105	3	3	3
.	3	3	3
195	195	195	195	195	195	195	195	195
.
7	7	7	7	7	7	7	7	7
21	21	21	21	21	21	21	21	21
38	38	38	38	38	38	38	38	38
164	176	190	164	176	190	164	174	180
82	90	98	82	90	98	3	3	3
.	3	3	3
39	39	39	39	39	39	37	37	35
57	57	57	57	57	57	55	56	57
.
101	101	101	229	229	229	100	100	100
7	7	7	7	7	7	4	4	4
28	28	28	28	28	28	191	191	191
191	191	191	191	191	191	163	165	167
172	177	183	172	177	183	4	4	4
1	1	1	1	1	1	0	0	0
0	0	0	73	73	73	.	.	.
.	.	.	184	184	184	.	.	.
.	.	.	130	131	132	.	.	.
.	.	.	178	178	178	.	.	.
.	.	.	180	180	180	.	.	.
.	.	.	182	182	182	.	.	.
.	.	.	167	167	167	.	.	.
.	.	.	1	1	1	.	.	.
.	.	.	7	7	7	.	.	.
.	.	.	128	1	2	.	.	.
.	.	.	0	0	0	.	.	.