

PASSAP®
Club Patterns

D E S I G N N o . 2 7
C e l i a
in Bramwell Rania and Silky



PASSAP CLUB PATTERN 27

C E L I A

| | | | | | | | | | | |
|-------------------------|-----|------|------|------|------|------|-----|------|------|------|
| Sizes | ins | 32 | 34 | 36 | 38 | 40 | 42 | 44 | 46 | 48 |
| | cms | 81 | 86 | 91 | 96 | 101 | 106 | 111 | 116 | 121 |
| Finished (not inc band) | | | | | | | | | | |
| Bust | ins | 40 | 42 | 44 | 46 | 48 | 50 | 52 | 54 | 56 |
| | cms | 98 | 104 | 109 | 114 | 120 | 126 | 131 | 136 | 142 |
| Length | ins | 27 | 27 | 27½ | 28½ | 29 | 29 | 30½ | 30½ | 30½ |
| | cms | 68 | 68 | 69 | 71.5 | 72.5 | 76 | 76 | 76 | 76 |
| Total | ins | 22 | 22 | 22½ | 23 | 23 | 23 | 24 | 24 | 24 |
| Sleeve | cms | 55.5 | 55.5 | 56.5 | 58 | 58 | 58 | 60.5 | 60.5 | 60.5 |

Classic style jacquard jacket made with the same colours of Rania and Silky to give a textured effect.

Yarn Required - 1 cone of Silky and 2 cones of Rania in the same colour.

N.B. Two ends of Silky should be threaded together in Col 1 and two ends Rania in Col. 2. Before beginning, it will be necessary to wind off some Silky to provide the second end.

Pattern Details:

Tension: 22 sts and 84 rows = 10cm (4ins) ss approx. 3½/3½ throughout.

All pieces are begun with waste knitting. After approx 10 rows, follow instructions given for garment piece, ignoring waste knitting. This will give a very neat cast on edge.

When a number of Ns is given, this refers to FB Ns e.g. 120 Ns means 60 on left and 60 on right of centre.

E6000: Diagram for Band shows pattern only. When making the card, it will be necessary to colour the single square over the last stitch on the right in the extra control row at the top as well as colour the vertical lines outside the drawing area in the normal way. Cast on 2, Stitch Patt A (striped jacquard) - 1100, Knit Tech 183 Stitch Patt B (band) - Card, Knit Tech 183. The Lock Row Counter and the Console Row Counter will not always agree. In every case, where a Row Counter number is given, this refers to the Lock Row Counter.

DUO 80: Punch card for Band using the diagram. Place pattern on card so that there are 9 sts on left of centre and 10 sts on right. Pattern must be repeated upwards to top of card ending with a complete repeat. Rows of holes at top for joining card so pattern repeats continuously are not shown but must be added. Tubular cast on used for all pieces - Handle down, Orange Strippers, Locks N/N

K 1 row. Locks CX/CX. K 2 rows. Locks N/N. K 1 row. Striped Jacquard: Handle down. Orange Strippers. B.Bed - Ns in work. F. Bed - Ns in work. 1 pusher up 1 pusher down. Locks N/BX left arrow key. K 2 rows Col 1, 2 rows Col 2. Band: Handle down. Orange Strippers. B. Bed - Ns in work. F. Bed - Ns in work. Pushers in WP. Locks N/BX left arrow key. Deco on 4. K 2 rows Col 1, 2 rows Col 2.

BACK

Bring up 108 (114, 120, 126, 132, 138, 144, 150, 156) FB Ns and same no. on BB. * With WY, make cast on and K approx 10 rows on N/N. ss 3/3. Rep cast on with Col 2. Set machine for striped jacquard. RC000. ss 3½/3½. * K to RC 368 (368, 368, 388, 388, 388, 412, 412, 412).

Shape armholes: (At beg of next 2 rows cast off 2 (2, 2, 2, 3, 3, 3, 4) sts and K 2 rows) 1 (1, 2, 2, 2, 2, 3, 3, 3) times. (Dec. 1 st at each end of work and K 8 rows) 4 times. (Dec. 1 st at each end of work and K 8 rows) 9 times. Cont. to RC 580 (580, 592, 612, 620, 620, 652, 652, 652). Cast off.

FRONTS

Make 2 with reversed shapings. Bring up 54 (57, 60, 63, 66, 69, 72, 75, 78) FB Ns and same no. on BB. Work as * to * of Back. K to RC 352 (352, 364, 360, 368, 368, 376, 376, 376).

Shape neckline: (Cast off 1 st at right and K 12 rows) 19 (19, 19, 21, 21, 21, 23, 23, 23) times. Cast off. RC 580 (580, 592, 612, 620, 620, 652, 652, 652).

AT SAME TIME, shape armhole: At RC 369 (369, 369, 389, 389, 389, 413, 413, 413), (cast off 2 (2, 2, 2, 3, 3, 3, 3, 4) sts and K 4 rows) 1 (1, 2, 2, 2, 2, 3, 3, 3) times. (Dec. 1 st at left and K 8 rows) 9 times. Cont. to RC 580 (580, 592, 612, 620, 620, 652, 652, 652) without further shaping. Cast off.

Make second side with reverse shap-

SLEEVES Make 2

Bring up 60 (60, 62, 62, 64, 64, 66, 66, 68) FB Ns and same no. of Ns on BB. Work as * to * on Back. K 8 (8, 24, 8, 24, 24, 24, 24, 24) rows. (Inc 1 st at each end of work and K 16 (16, 12, 16, 12, 12, 12, 12, 12) rows) 19 (19, 21, 21, 25, 25, 27, 27, 27) times. Cont. to RC 328 (328, 328, 344, 344, 344, 360, 360, 360). Shape sleevehead as armholes on Back. RC 404 (404, 408, 424, 424, 424, 444, 444, 444). Cast off.

BANDS Make 2.

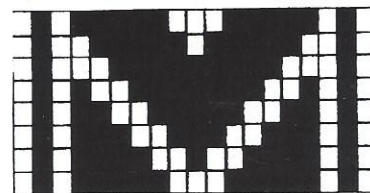
Bring up 9 sts on left of centre and 10 on right. Work as * to * on Back but setting machine for Band pattern. K in Band pattern to RC 680 (680, 680, 680, 700, 700, 700, 700, 700). Set Locks to N/N. K several rows with WY and strip work from machine.

CUFFS Make 2

Work as Bands but to RC 240 (240, 240, 240, 260, 260, 260, 260, 260).

TO MAKE UP

Block out and steam all pieces. Remove all waste knitting. Place cuffs on bottom of sleeves so that long edge of cuff lies on cast on edge of sleeve. Cast on edge of cuff should be to side of sleeve. Pattern on cuffs should be pointing in opposite directions on each sleeve. Backstitch cuffs to sleeves following a single stitch on cuff for an invisible join. Unravel excess knitting and catch open stitches together to prevent further unravelling. Join shoulder seams. Place Bands along front opening and stitch as far as centre back as for cuffs. Unravel excess knitting and graft open stitches from each band to make join at centre back. Matching centre of sleevehead to shoulder seam, stitch sleeves into armholes. Join underarm seams from bottom to cuffs. Steam seams.



Design by Irene Krieger
CELIA
Classic Style Jacquard Jacket.

Whilst every care is taken to ensure the accuracy of this pattern, the publisher accepts no responsibility whatsoever for any damage, loss or the like arising from use.

©The design, printed matter and photography of this leaflet are and remain the copyright of F.W. Bramwell & Co. Ltd. and may not be reproduced in whole or in part without the consent of the copyright holder.

Printed and published in the U.K.

F.W. Bramwell and Co. Ltd., Unit 5, Metcalf Drive,
Atherton Lane, Altham, Accrington, BB5 5TJ. Tel. (0292) 770811