

Brother Punch Cards

Series 'R'

The Patterns are from the KK93  
(Brother KH893) Manual  
Patterns can be printed full  
size. Be sure to select full  
size when printing. Some of the  
patterns are in 2 pieces. Just  
cut out both and place on blank  
card.

# LIST OF PATTERN VARIATION

MEMO

MEMO

Each punch card can be used for the pattern(s) marked ○ in the following column.  
 Punch cards No. 17R-20R (inc) are special cards for Lace Pattern and Fine Lace Pattern.

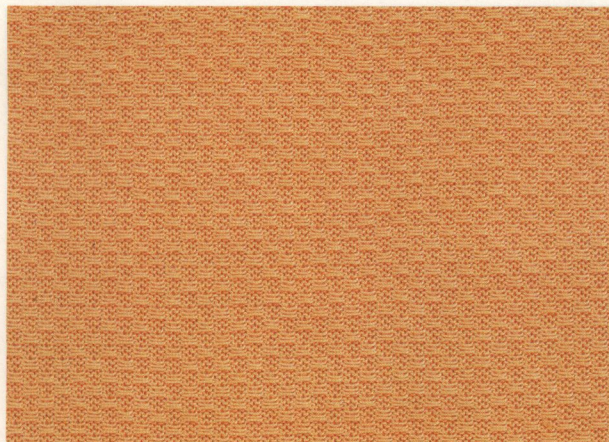
PATTERN	RECOMMENDED PUNCH CARD NO.																			
	1	2	3	4	5	6	7	8	9	10	11	12	13	14	15	16	17	18	19	20
Tuck Stitch Pattern	●	●	●				●	●												
Color Tuck Stitch Pattern	●	●	●				●	●												
Skip Stitch Pattern	●	●	●		●		●	●			●									
Color Skip Stitch Pattern	●	●	●		●		●	●			●									
Fairisle Pattern	●	●	●	●	●	●	●	●	●	●	●	●	●							
Weaving Pattern	●	●	●		●		●	●			●	●								
Thread Lace Pattern	●					●					●			●	●	●				
Plating Tuck Stitch Pattern	●		●					●												
Lace Pattern																	●	●	●	●
Fine Lace Pattern																	●		●	●



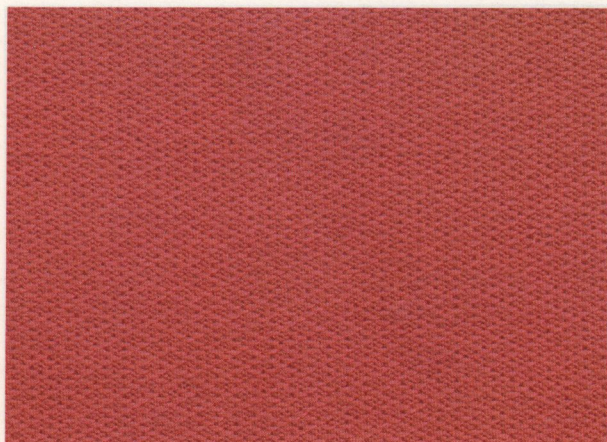
# ORIGINAL PATTERNS

## SKIP STITCH PATTERN

Refer to P.34.



Card No. 2R



Card No. 3R



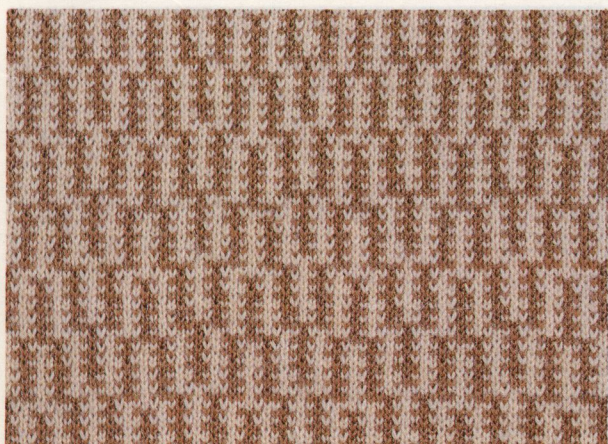
Card No. 5R



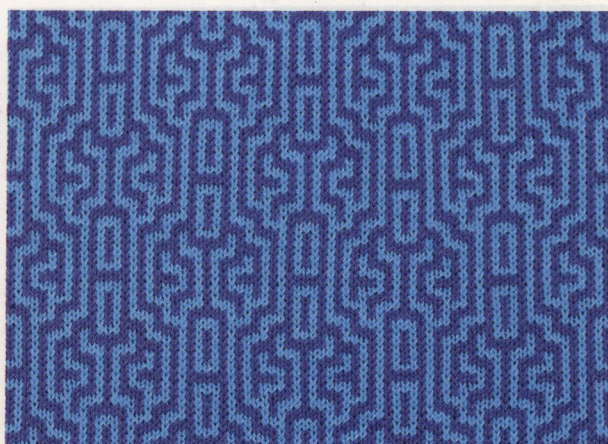
Card No. 11R

## MULTI-COLOUR SKIP STITCH PATTERN

Refer to P.35.



Card No. 5R

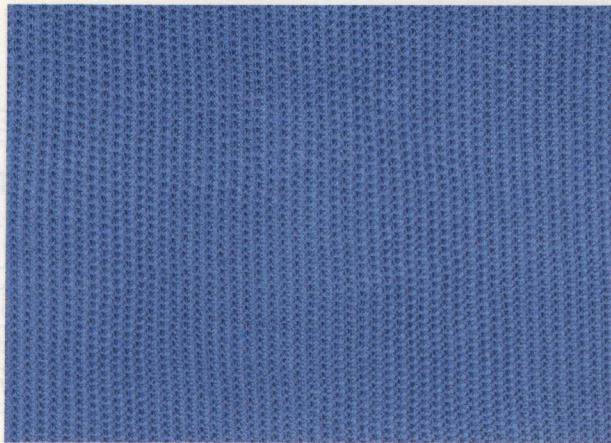


Card No. 7R

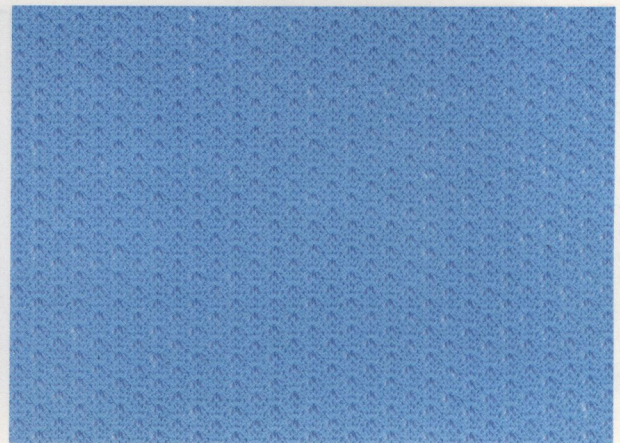


**TUCK STITCH PATTERN**

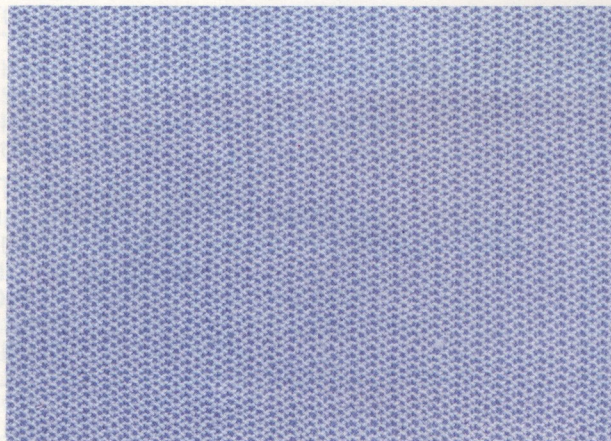
Refer to P.36.



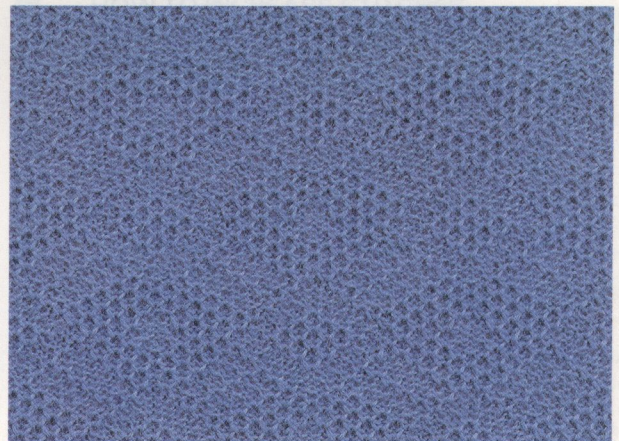
Card No. 1R



Card No. 2R



Card No. 3R



Card No. 7R

**MULTI-COLOUR TUCK STITCH PATTERN**

Refer to P.37.



Card No. 2R

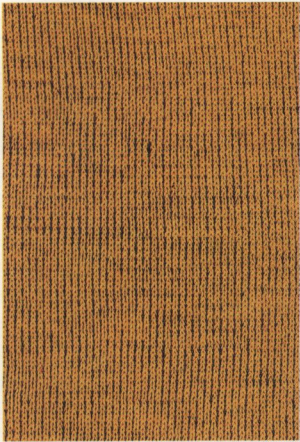


Card No. 3R



**PLATED STITCH PATTERN**

Refer to P.59.61.



FRONT No. 1R

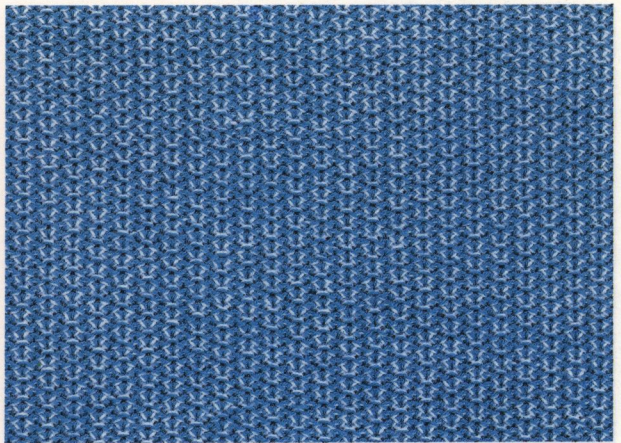
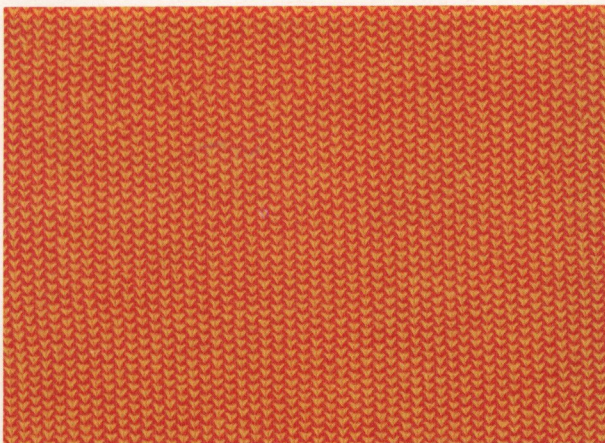
BACK Card No. 2R

FRONT No. 11R

BACK Card No. 12R

**PLATED TUCK STITCH PATTERN**

Refer to P.62.



Card No. 1R  
BACK

Card No. 3R  
BACK



Card No. 8R  
BACK

Card No. 16R

Card No. 12R

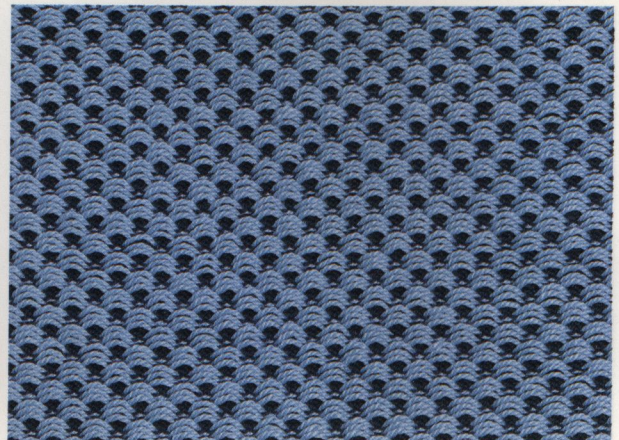


**WEAVING PATTERN**

Refer to P.38.



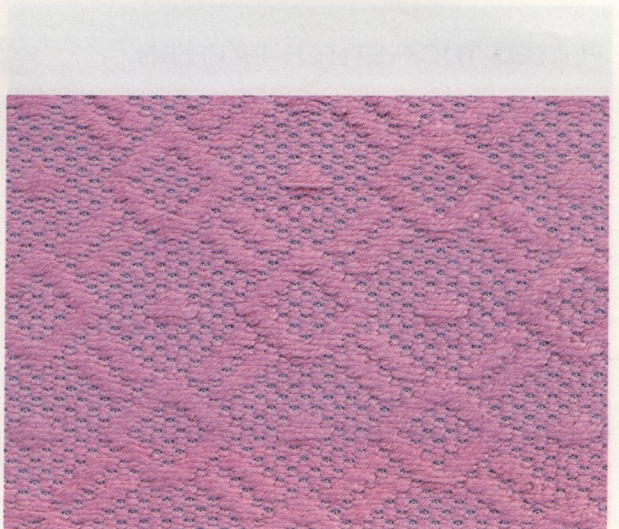
Card No. 1R



Card No. 2R



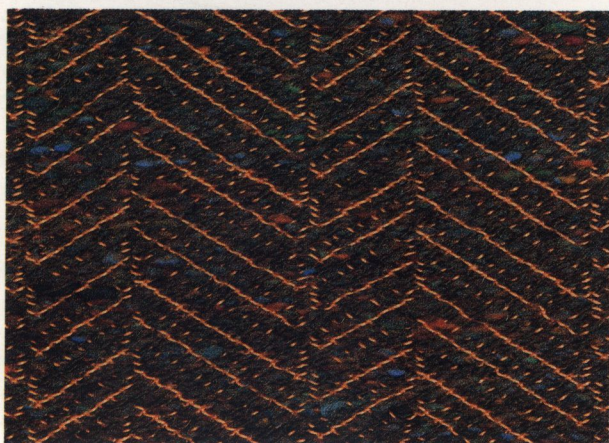
Card No. 5R



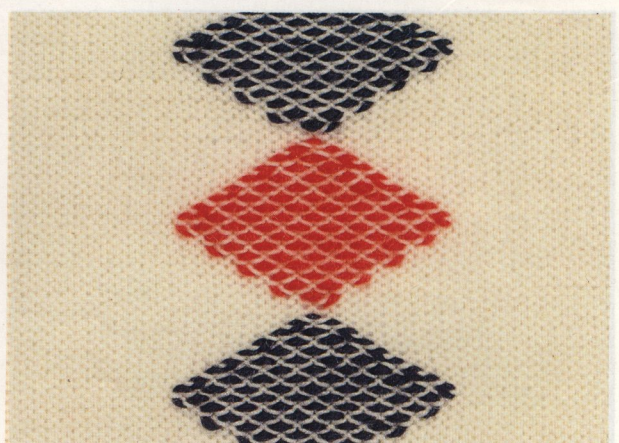
Card No. 7R

**WOVEN MOTIF PATTERN**

Refer to P.40.



Card No. 12R

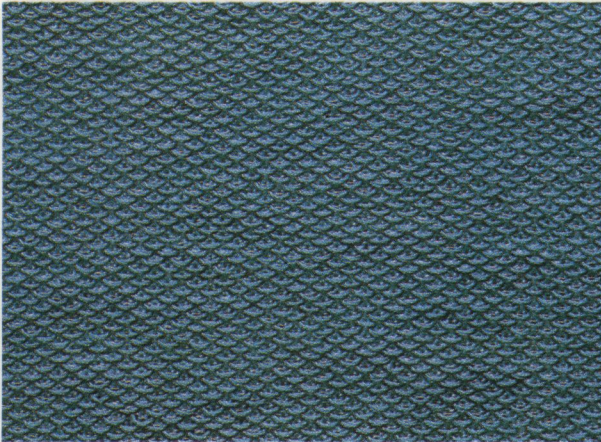


Card No. 1R



**THREAD LACE PATTERN**

Refer to P.48.



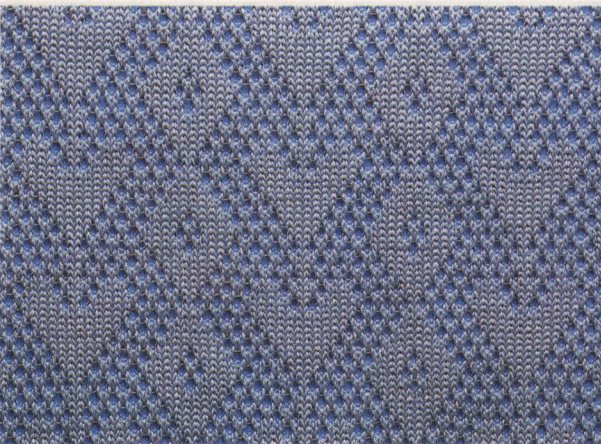
Card No. 1R



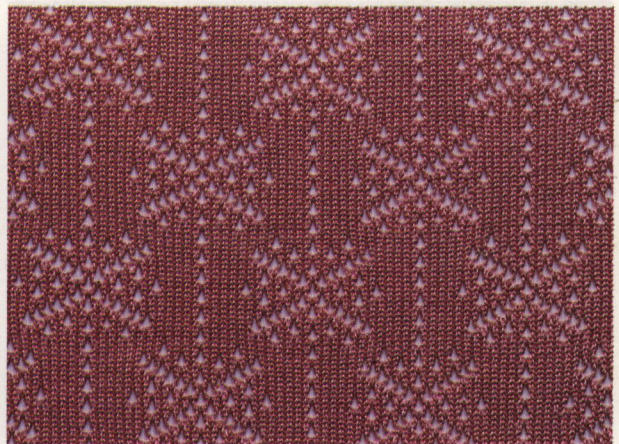
Card No. 11R

**FAIRISLE MOTIF PATTERN**

Refer to P.48.



Card No. 14R



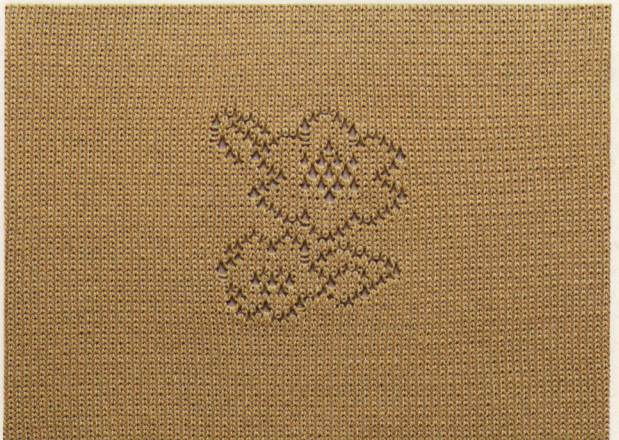
Card No. 15R

**THREAD LACE MOTIF PATTERN**

Refer to P.50.



Card No. 16R

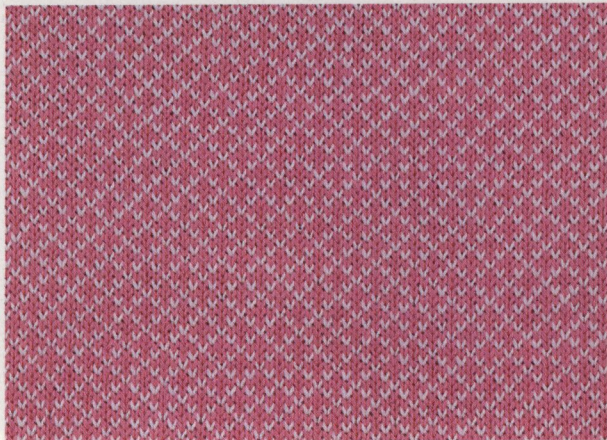


Card No. 16R



FAIRISLE PATTERN

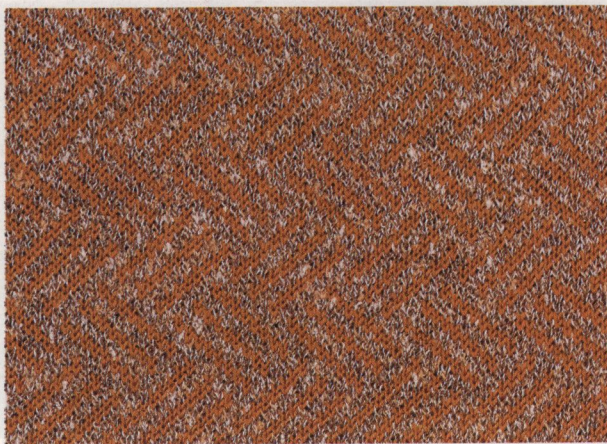
Refer to P.41.



Card No. 3R



Card No. 4R



Card No. 5R



Card No. 6R



Card No. 8R

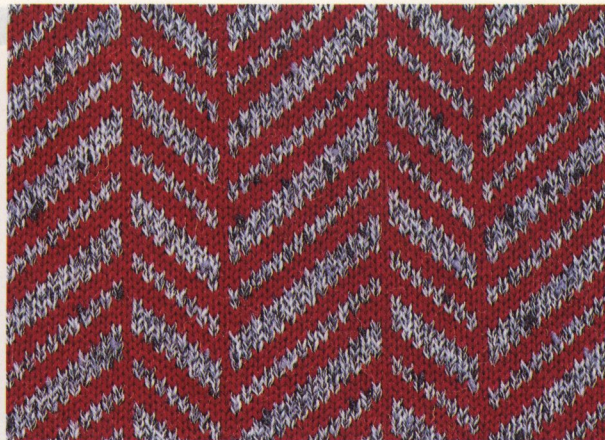


Card No. 9R





Card No. 10R



Card No. 12R

**FAIRISLE MOTIF PATTERN**

Refer to P.43.



Card No. 13R



Card No. 13R

**DOUBLE LENGTH PATTERN**

Refer to P.47.



Card No. 9R

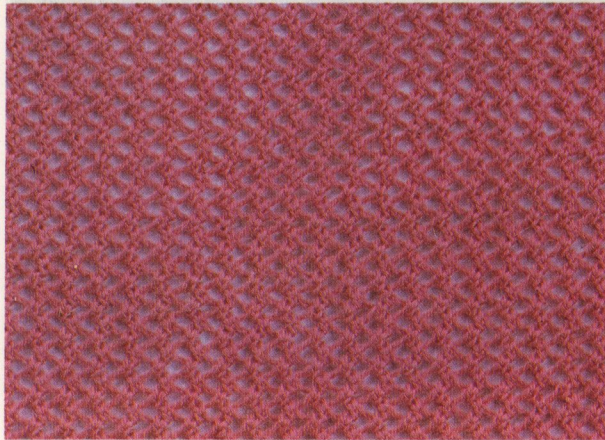


Card No. 9R  
 <Part of the pattern is knitted double length.>

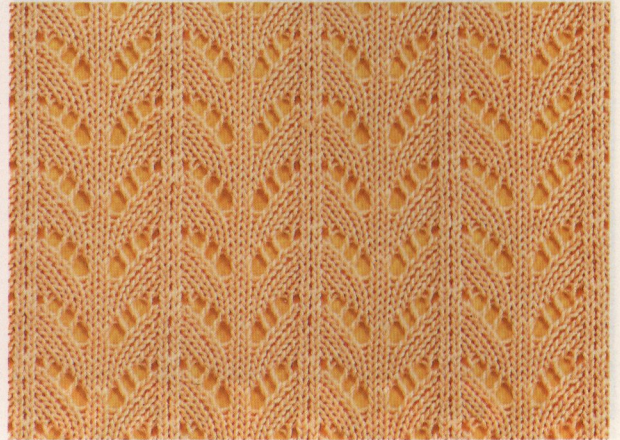


**LACE PATTERN**

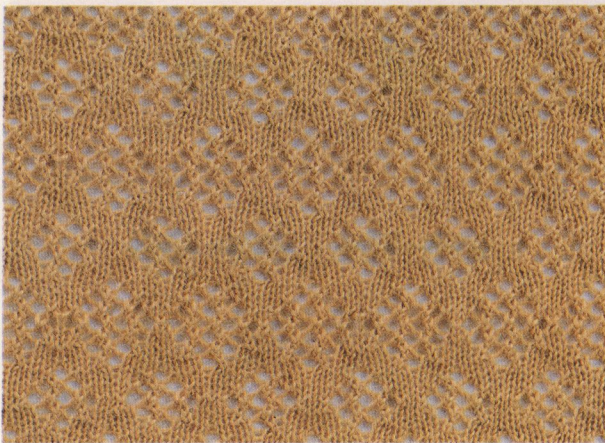
Refer to P.53.



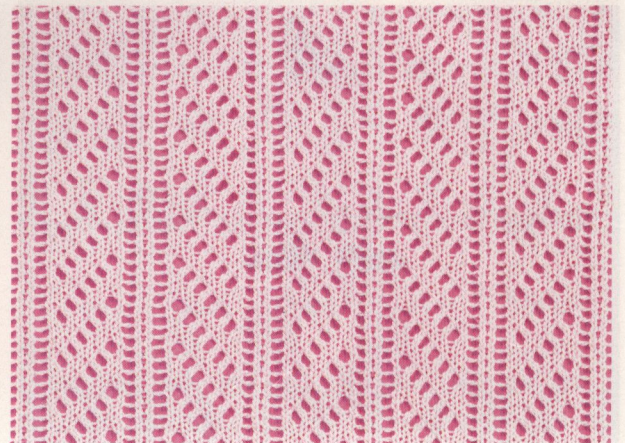
Card No. 17R



Card No. 18R



Card No. 19R



Card No. 20R

**ISOLATED LACE PATTERNS**

Refer to P.57.



Card No. 20R  
<Using L-Point Cam (4-needle)>



Card No. 20R  
<Using L-Point Cam (8-needle)>

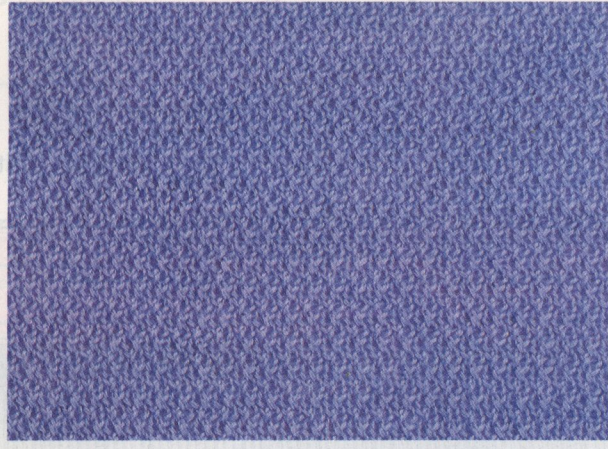


Push Button

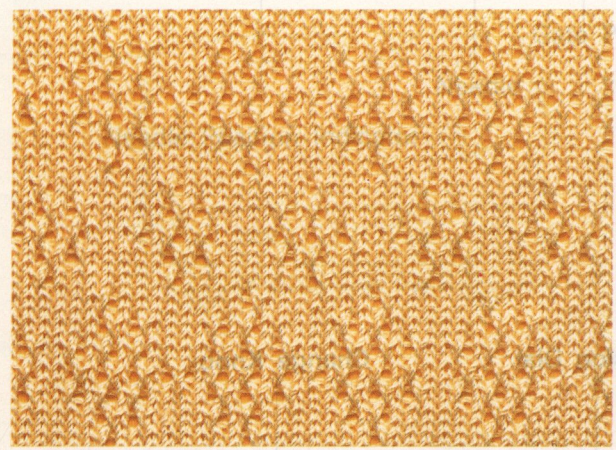
Card Lock Lever

**FINE-LACE PATTERN**

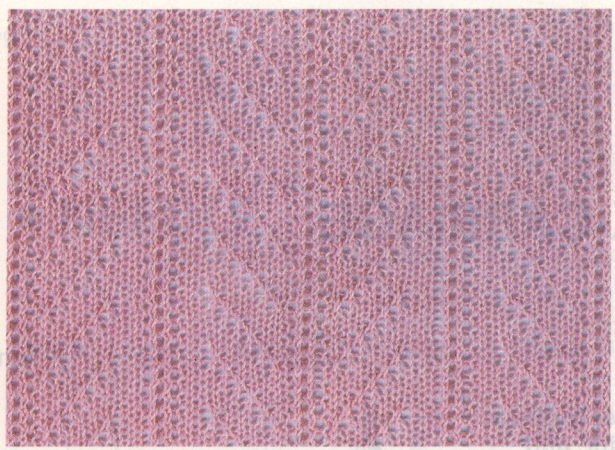
Refer to P.53.



Card No. 17R



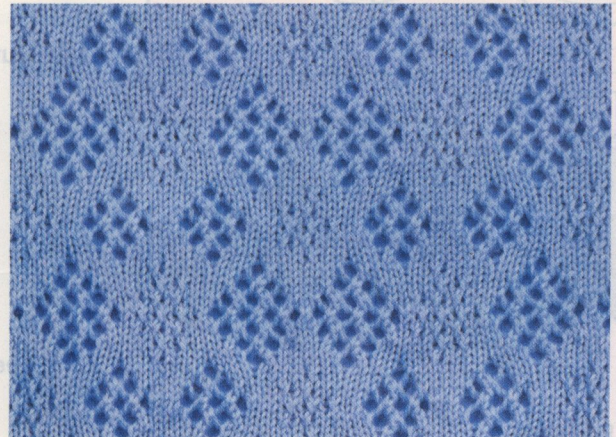
Card No. 19R



Card No. 20R

**LACE AND FINE-LACE PATTERN MIXED**

Refer to P.56.

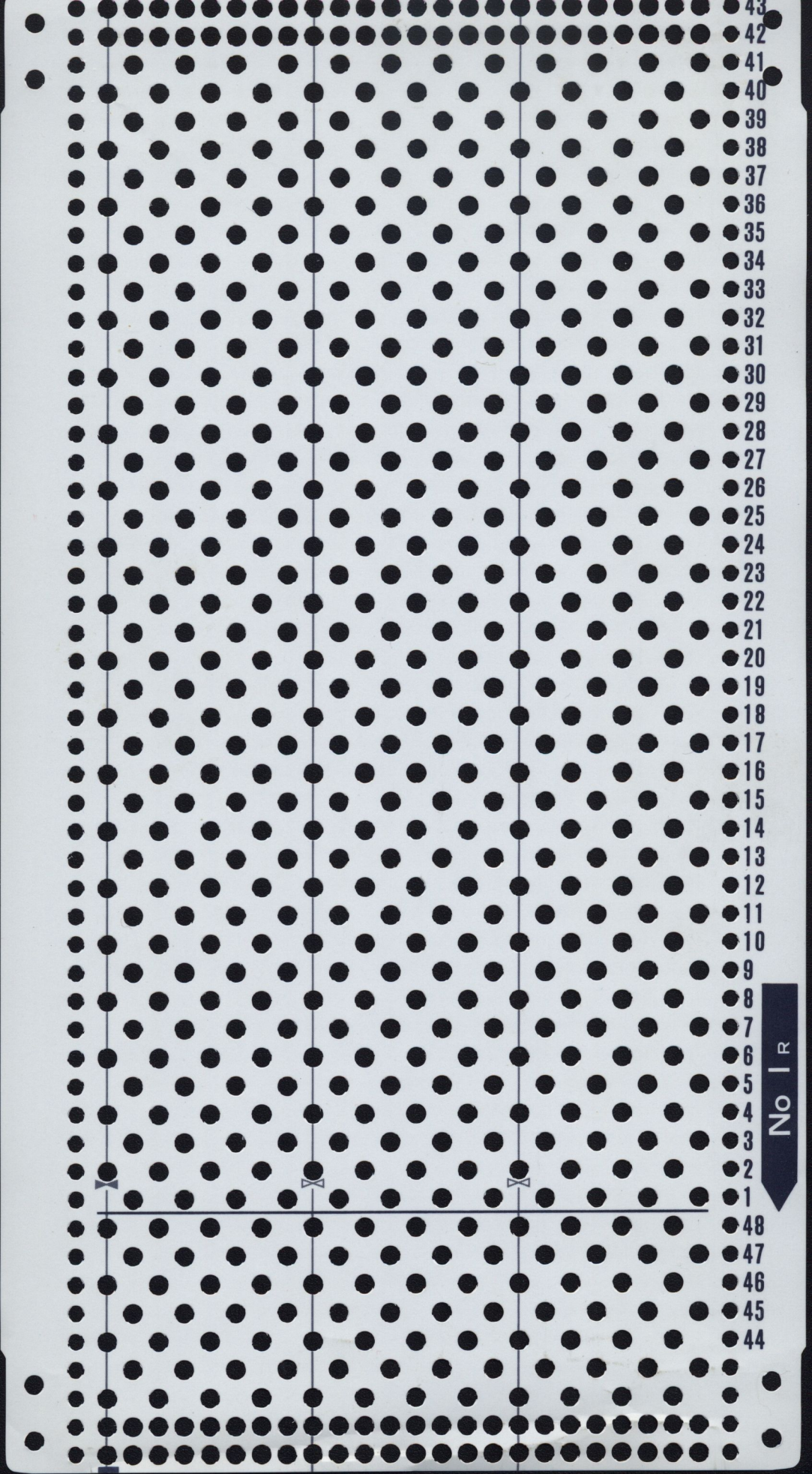


Card No. 19R  
→ N (Normal Lace)  
→ F (Fine Lace)



Card No. 19R  
→ F (Fine Lace)  
→ N (Normal Lace)

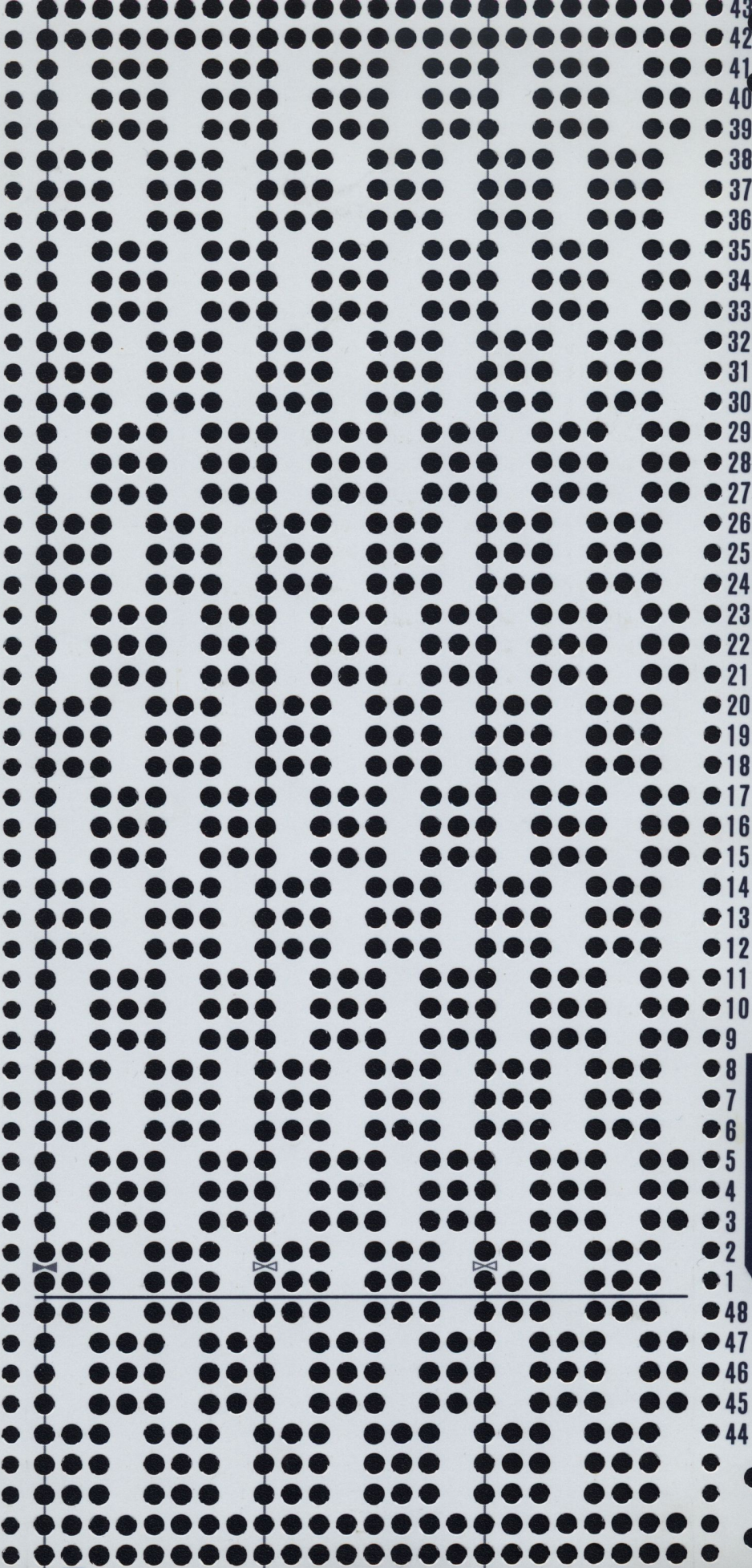




No I R

- 43
- 42
- 41
- 40
- 39
- 38
- 37
- 36
- 35
- 34
- 33
- 32
- 31
- 30
- 29
- 28
- 27
- 26
- 25
- 24
- 23
- 22
- 21
- 20
- 19
- 18
- 17
- 16
- 15
- 14
- 13
- 12
- 11
- 10
- 9
- 8
- 7
- 6
- 5
- 4
- 3
- 2
- 1
- 48
- 47
- 46
- 45
- 44





No 2<sub>R</sub>

43  
42  
41  
40  
39  
38  
37  
36  
35  
34  
33  
32  
31  
30  
29  
28  
27  
26  
25  
24  
23  
22  
21  
20  
19  
18  
17  
16  
15  
14  
13  
12  
11  
10  
9  
8  
7  
6  
5  
4  
3  
2  
1  
48  
47  
46  
45  
44



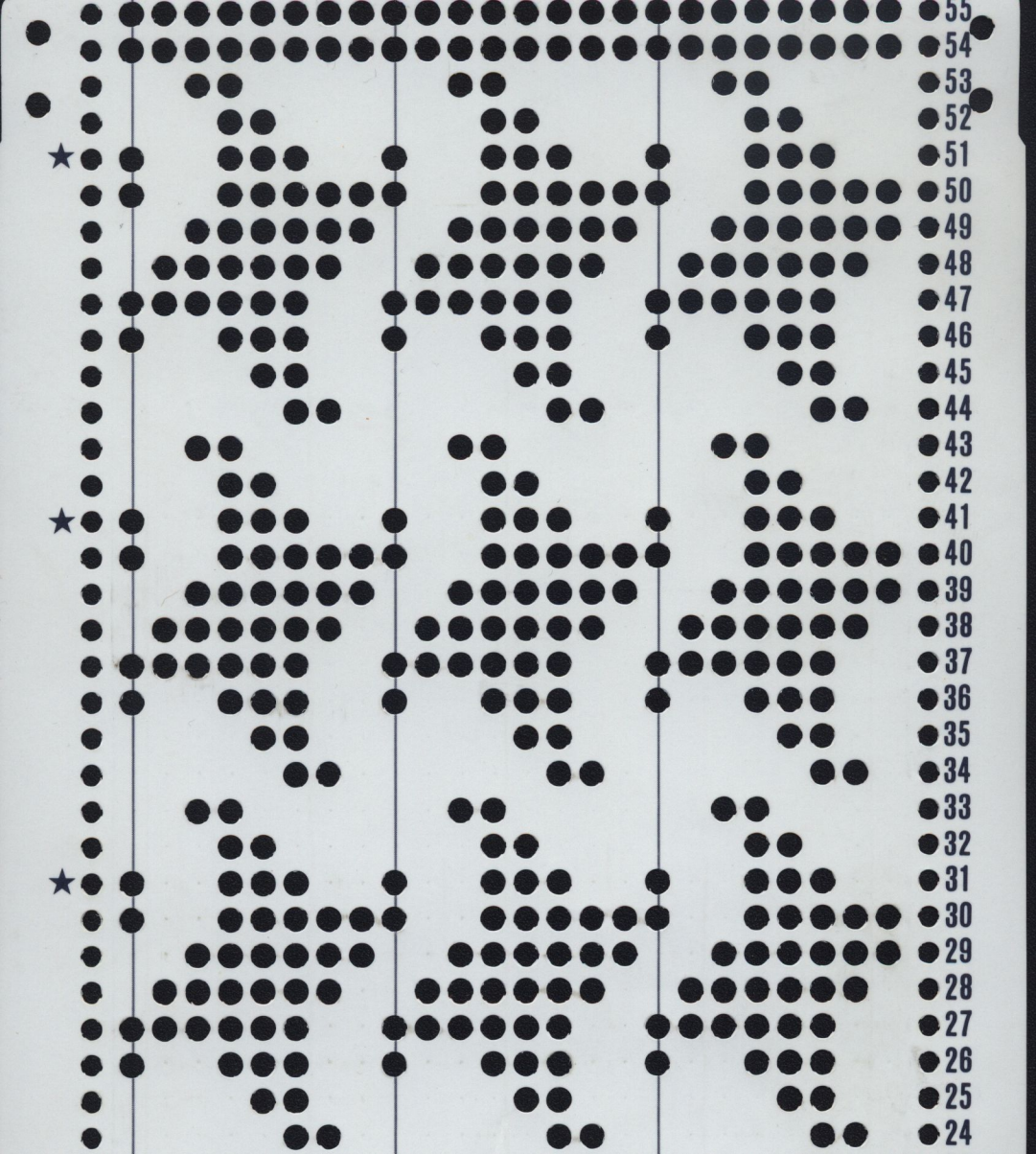
43  
42  
41  
40  
39  
38  
37  
36  
35  
34  
33  
32  
31  
30  
29  
28  
27  
26  
25  
24  
23  
22  
21  
20  
19  
18  
17  
16  
15  
14  
13  
12  
11  
10  
9  
8  
7  
6  
5  
4  
3  
2  
1

No 3R



48  
47  
46  
45  
44





- 55
- 54
- 53
- 52
- 51
- 50
- 49
- 48
- 47
- 46
- 45
- 44
- 43
- 42
- 41
- 40
- 39
- 38
- 37
- 36
- 35
- 34
- 33
- 32
- 31
- 30
- 29
- 28
- 27
- 26
- 25
- 24

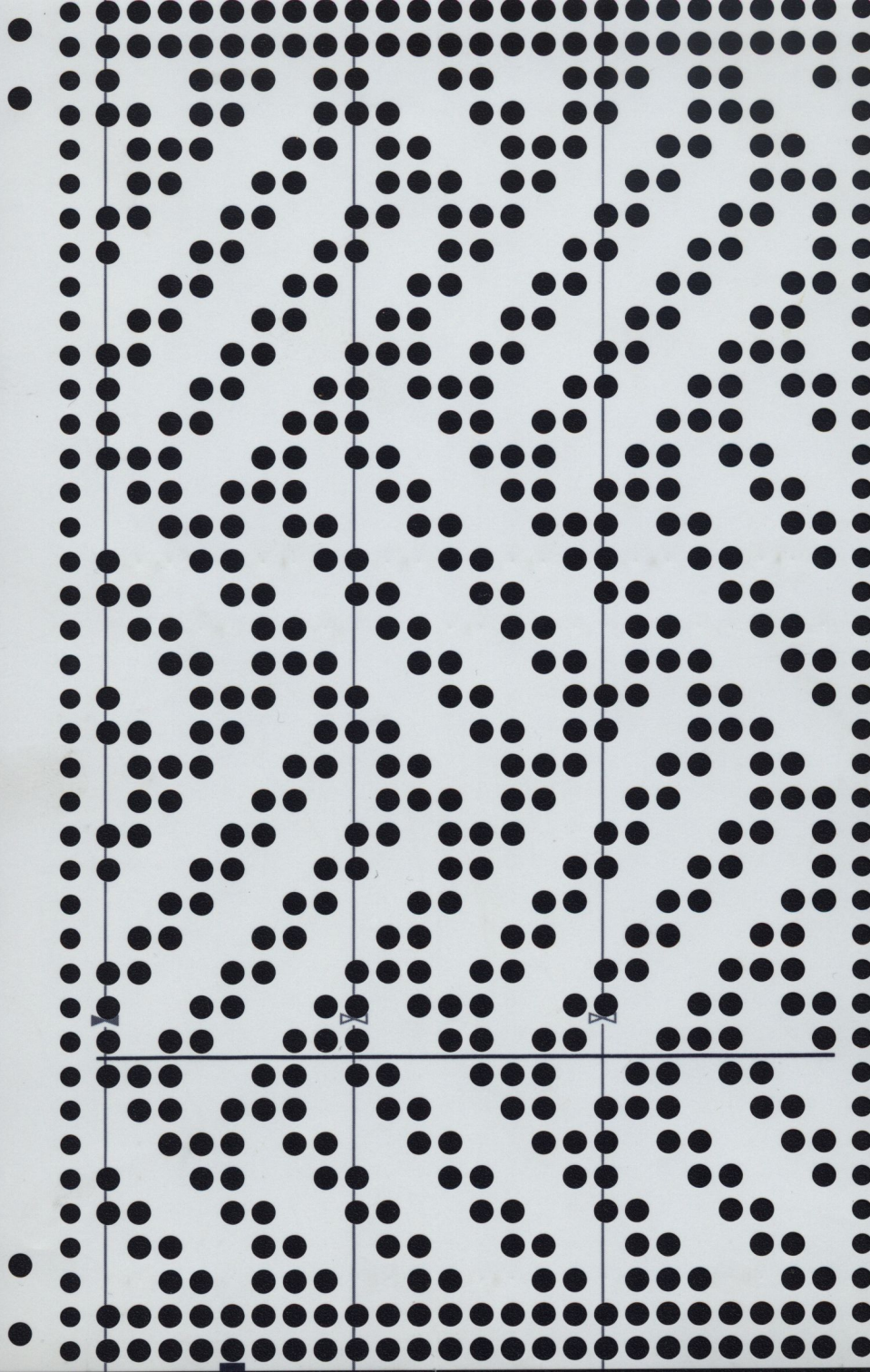




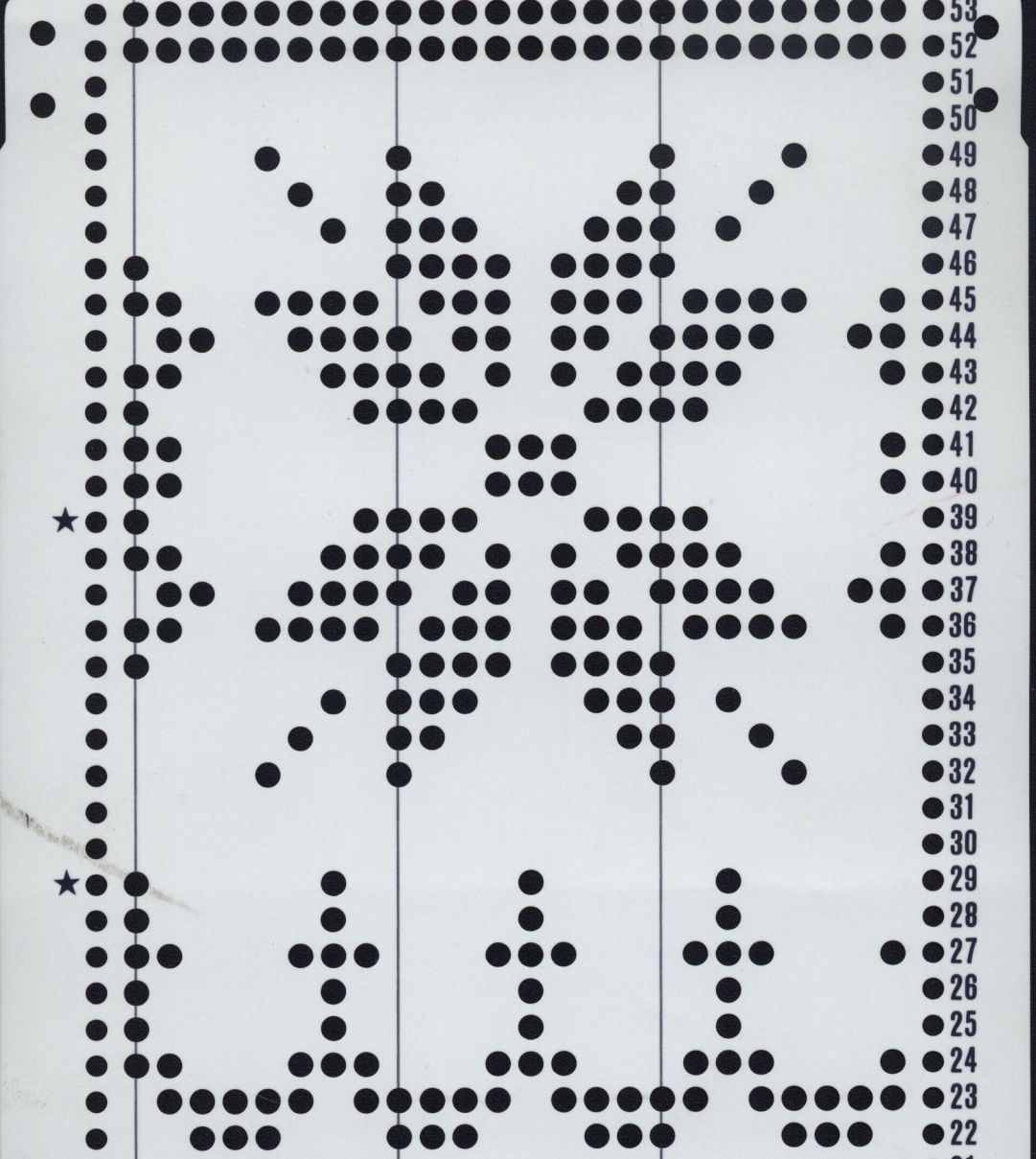


No 5<sub>R</sub>

- 31
- 30
- 29
- 28
- 27
- 26
- 25
- 24
- 23
- 22
- 21
- 20
- 19
- 18
- 17
- 16
- 15
- 14
- 13
- 12
- 11
- 10
- 9
- 8
- 7
- 6
- 5
- 4
- 3
- 2
- 1
- 36
- 35
- 34
- 33
- 32



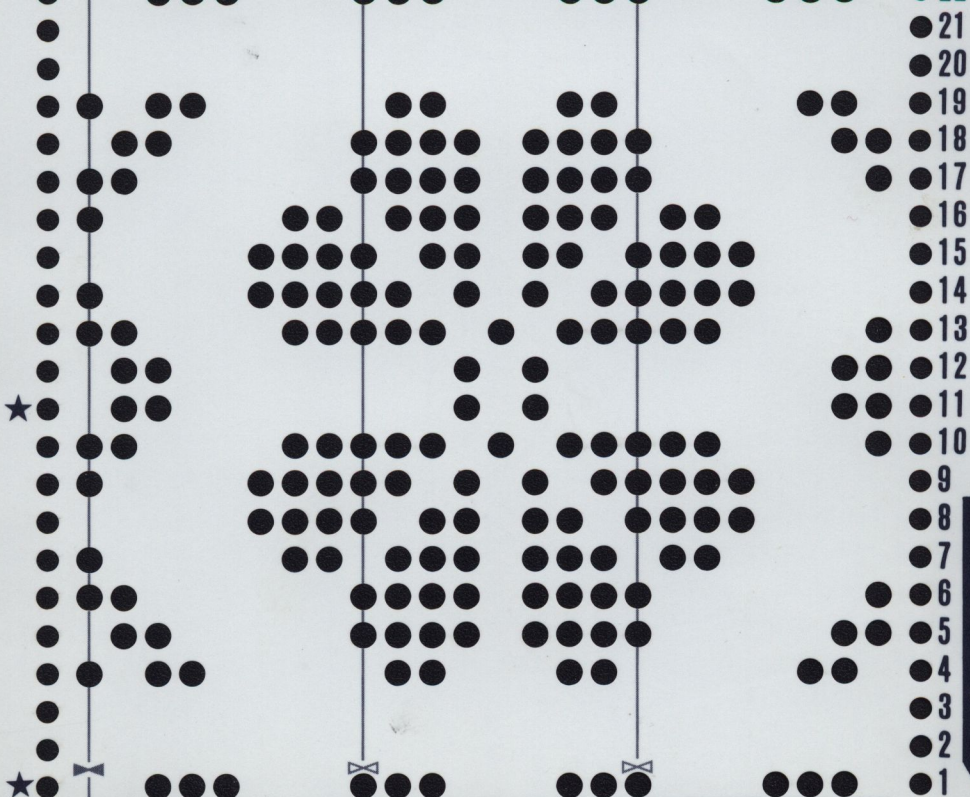




53  
52  
51  
50  
49  
48  
47  
46  
45  
44  
43  
42  
41  
40  
39  
38  
37  
36  
35  
34  
33  
32  
31  
30  
29  
28  
27  
26  
25  
24  
23  
22

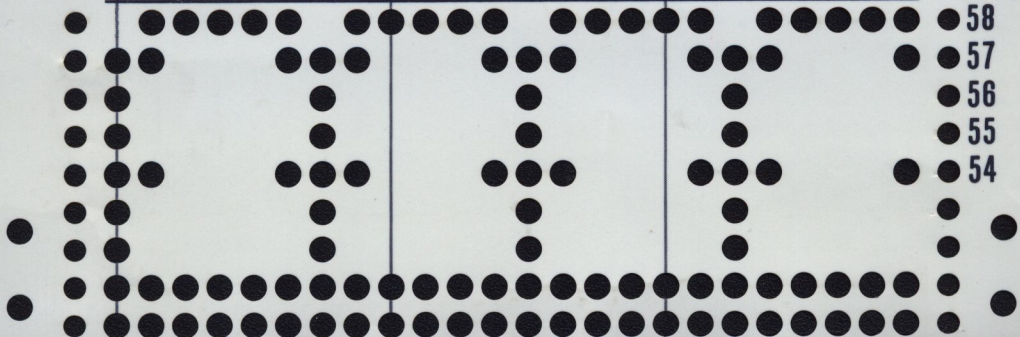
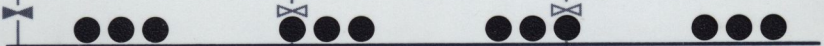






No 6R

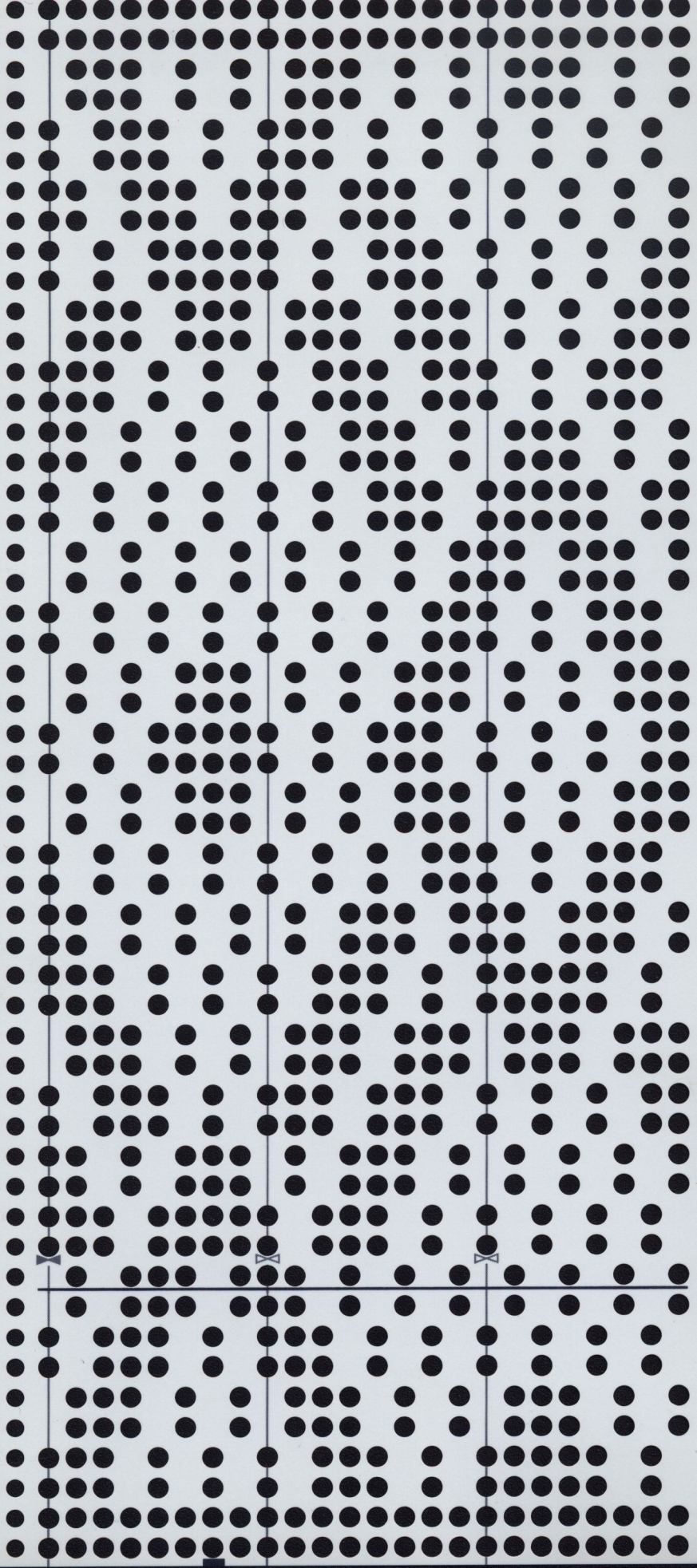
- 21
- 20
- 19
- 18
- 17
- 16
- 15
- 14
- 13
- 12
- 11
- 10
- 9
- 8
- 7
- 6
- 5
- 4
- 3
- 2
- 1
- 58
- 57
- 56
- 55
- 54





43  
42  
41  
40  
39  
38  
37  
36  
35  
34  
33  
32  
31  
30  
29  
28  
27  
26  
25  
24  
23  
22  
21  
20  
19  
18  
17  
16  
15  
14  
13  
12  
11  
10  
9  
8  
7  
6  
5  
4  
3  
2  
1  
48  
47  
46  
45  
44

No 7 R

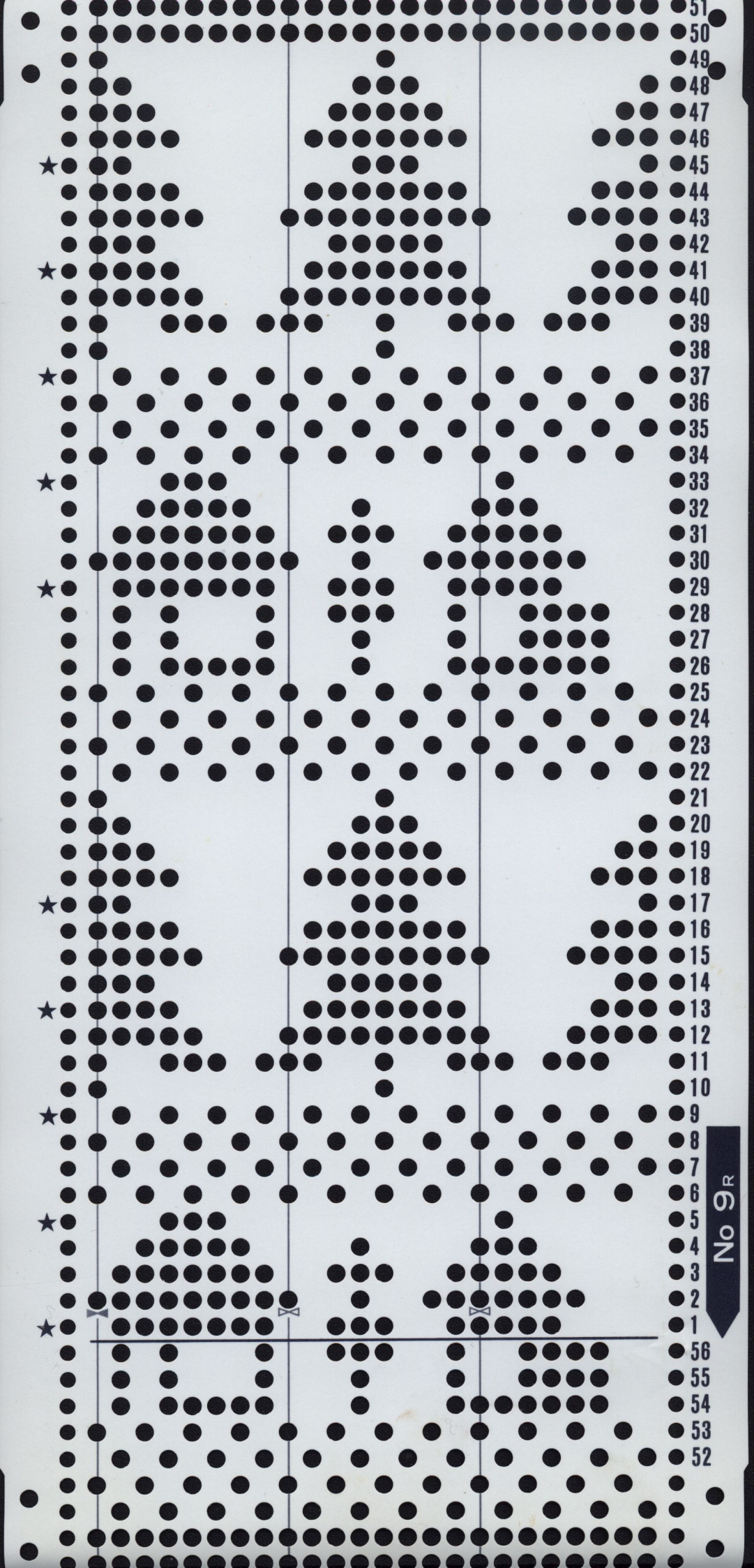




- 43
- 42
- 41
- 40
- 39
- 38
- 37
- 36
- 35
- 34
- 33
- 32
- 31
- 30
- 29
- 28
- 27
- 26
- 25
- 24
- 23
- 22
- 21
- 20
- 19
- 18
- 17
- 16
- 15
- 14
- 13
- 12
- 11
- 10
- 9
- 8
- 7
- 6
- 5
- 4
- 3
- 2
- 1
- 48
- 47
- 46
- 45
- 44







No 9R

- 51
- 50
- 49
- 48
- 47
- 46
- 45
- 44
- 43
- 42
- 41
- 40
- 39
- 38
- 37
- 36
- 35
- 34
- 33
- 32
- 31
- 30
- 29
- 28
- 27
- 26
- 25
- 24
- 23
- 22
- 21
- 20
- 19
- 18
- 17
- 16
- 15
- 14
- 13
- 12
- 11
- 10
- 9
- 8
- 7
- 6
- 5
- 4
- 3
- 2
- 1
- 56
- 55
- 54
- 53
- 52



No 10R

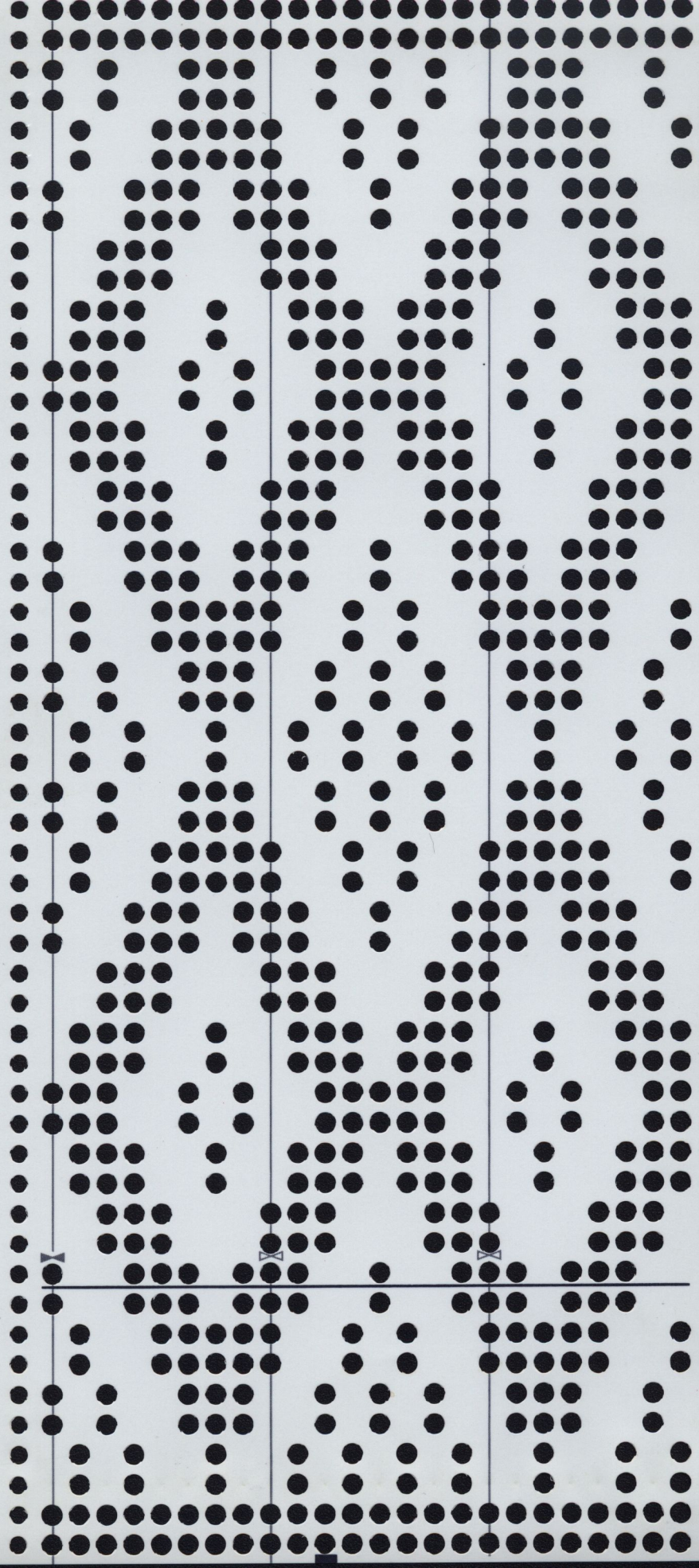
31  
30  
29  
28  
27  
26  
25  
24  
23  
22  
21  
20  
19  
18  
17  
16  
15  
14  
13  
12  
11  
10  
9  
8  
7  
6  
5  
4  
3  
2  
1  
36  
35  
34  
33  
32





43  
42  
41  
40  
39  
38  
37  
36  
35  
34  
33  
32  
31  
30  
29  
28  
27  
26  
25  
24  
23  
22  
21  
20  
19  
18  
17  
16  
15  
14  
13  
12  
11  
10  
9  
8  
7  
6  
5  
4  
3  
2  
1  
48  
47  
46  
45  
44

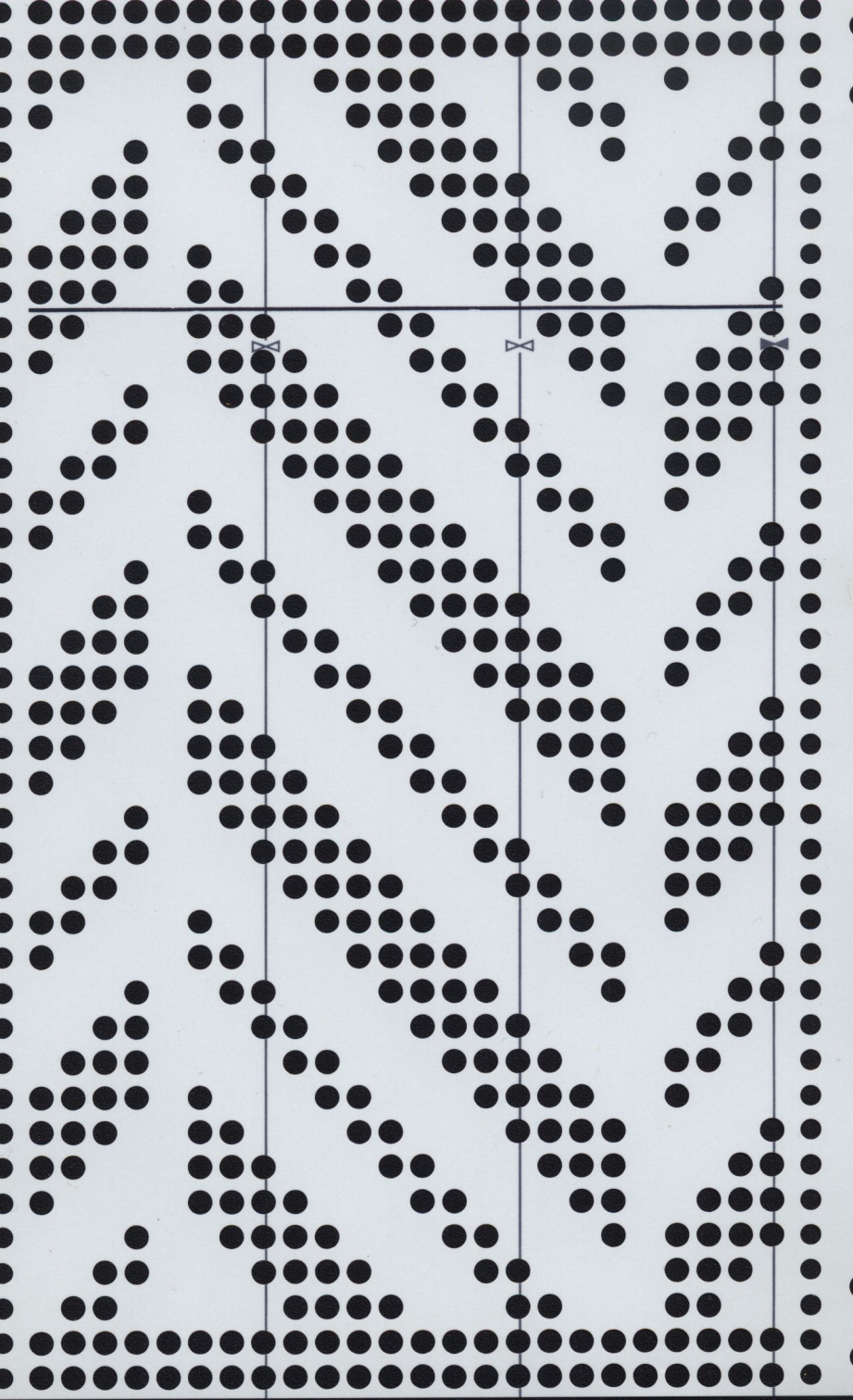
No | R



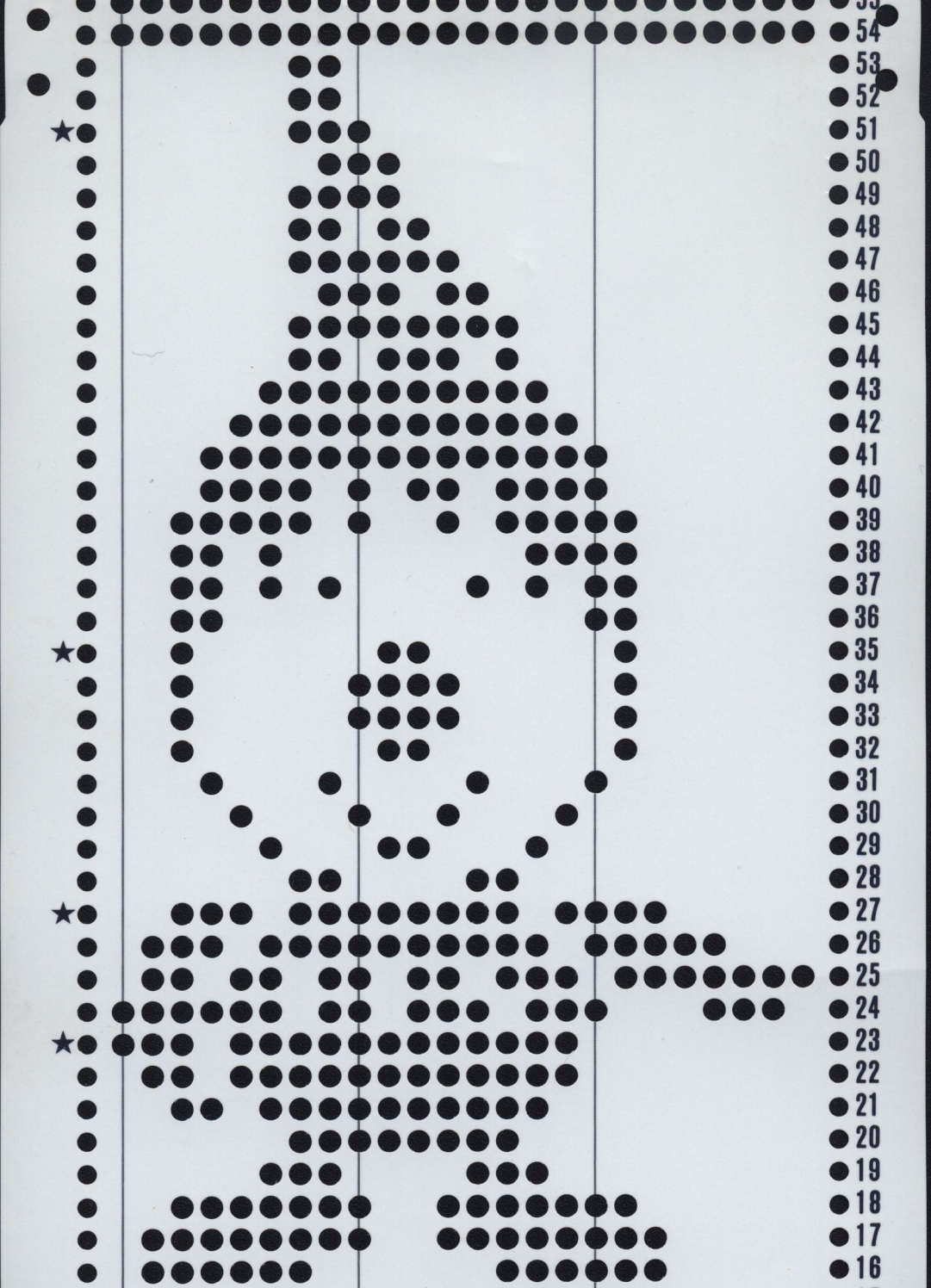


No 12<sub>R</sub>

- 32
- 33
- 34
- 35
- 36
- 1
- 2
- 3
- 4
- 5
- 6
- 7
- 8
- 9
- 10
- 11
- 12
- 13
- 14
- 15
- 16
- 17
- 18
- 19
- 20
- 21
- 22
- 23
- 24
- 25
- 26
- 27
- 28
- 29
- 30
- 31



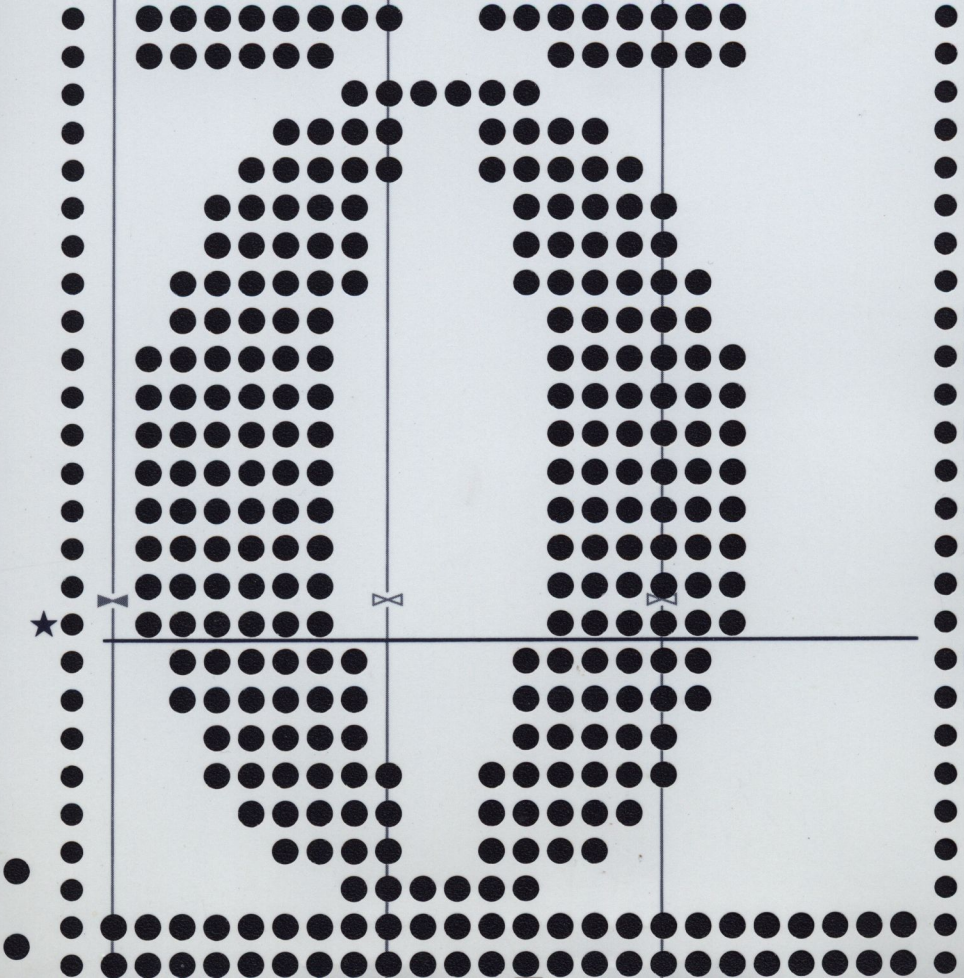




54  
53  
52  
51  
50  
49  
48  
47  
46  
45  
44  
43  
42  
41  
40  
39  
38  
37  
36  
35  
34  
33  
32  
31  
30  
29  
28  
27  
26  
25  
24  
23  
22  
21  
20  
19  
18  
17  
16



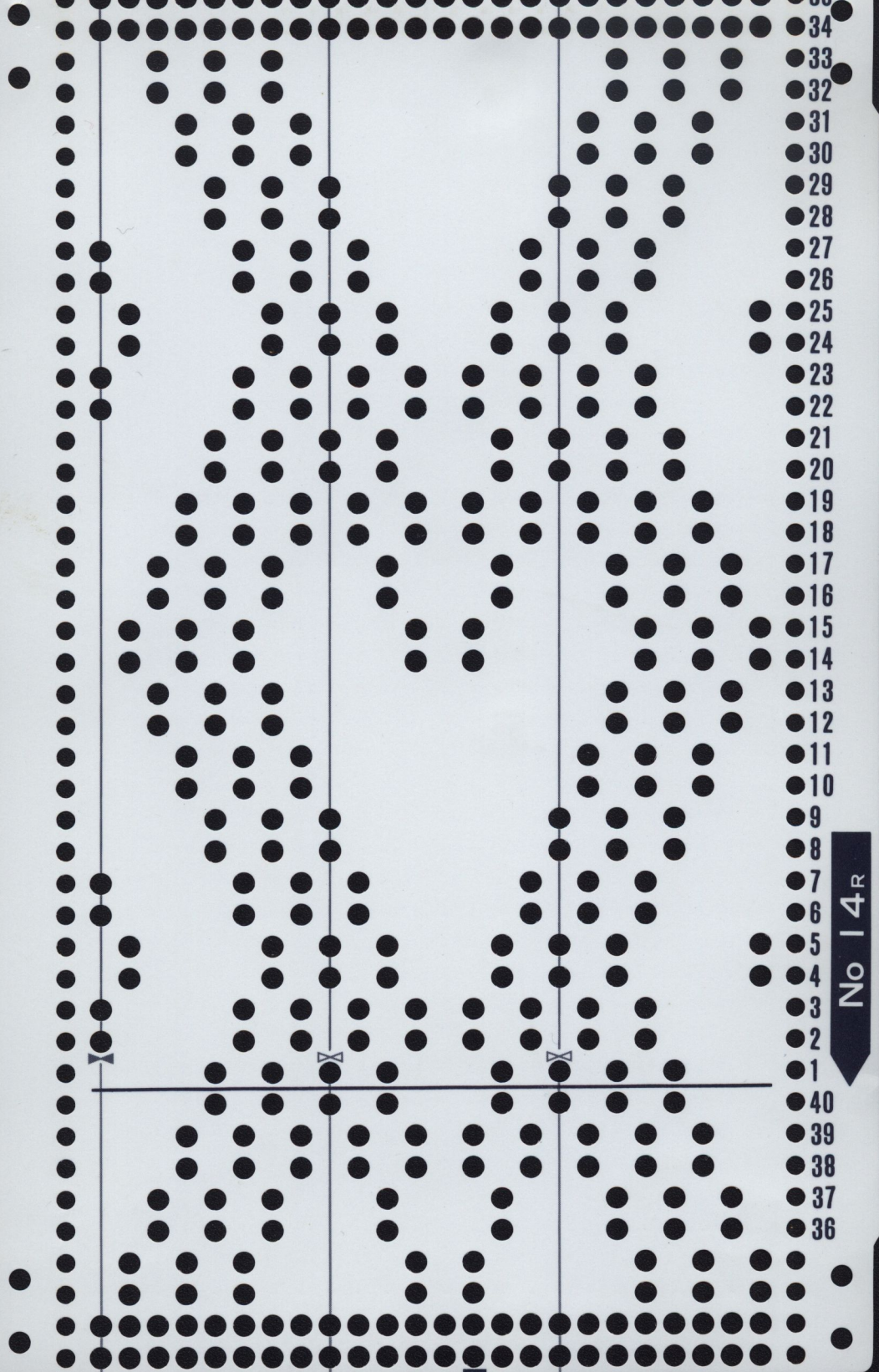




No 13R

- 17
- 16
- 15
- 14
- 13
- 12
- 11
- 10
- 9
- 8
- 7
- 6
- 5
- 4
- 3
- 2
- 1
- 60
- 59
- 58
- 57
- 56

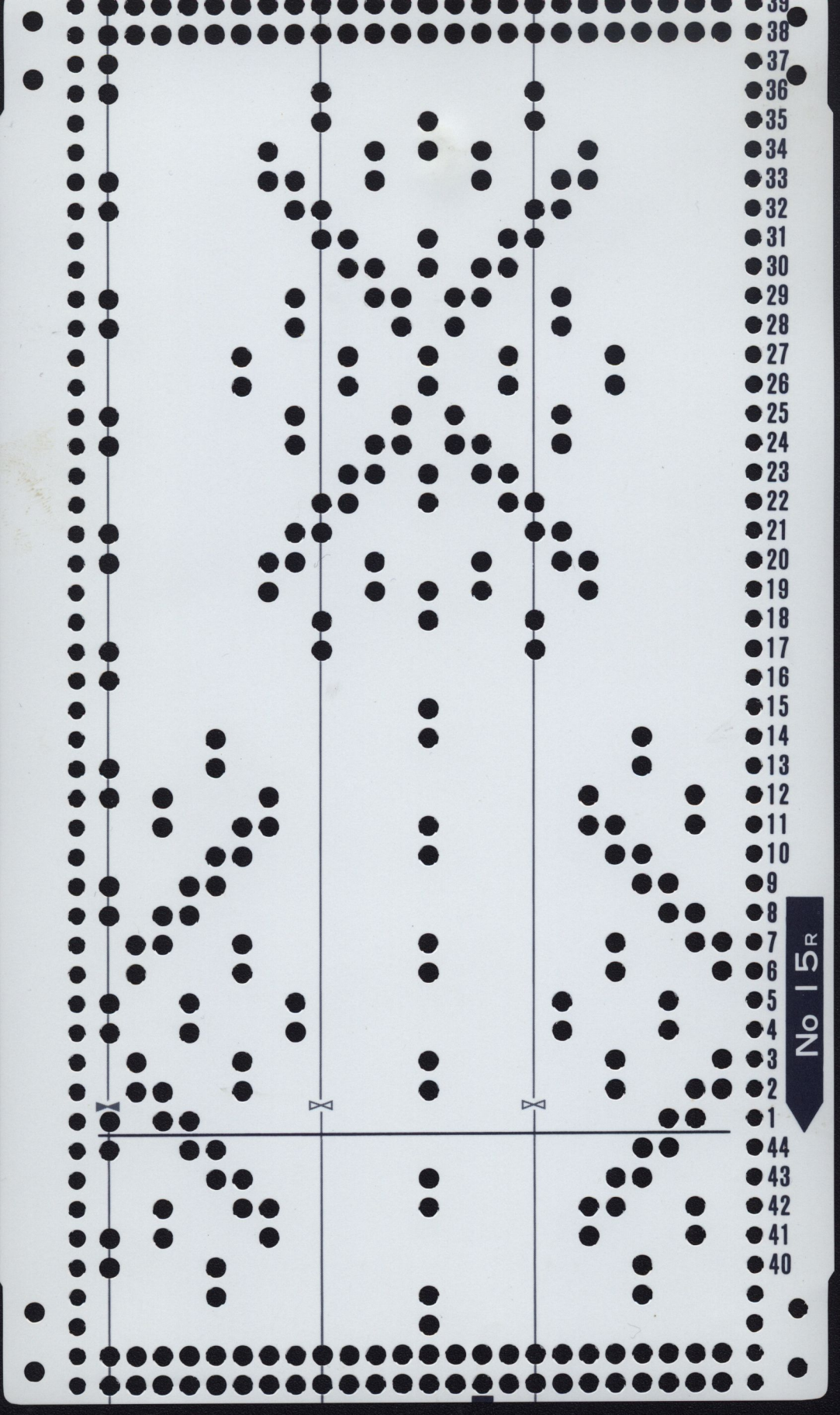




No 14R

- 35
- 34
- 33
- 32
- 31
- 30
- 29
- 28
- 27
- 26
- 25
- 24
- 23
- 22
- 21
- 20
- 19
- 18
- 17
- 16
- 15
- 14
- 13
- 12
- 11
- 10
- 9
- 8
- 7
- 6
- 5
- 4
- 3
- 2
- 1
- 40
- 39
- 38
- 37
- 36



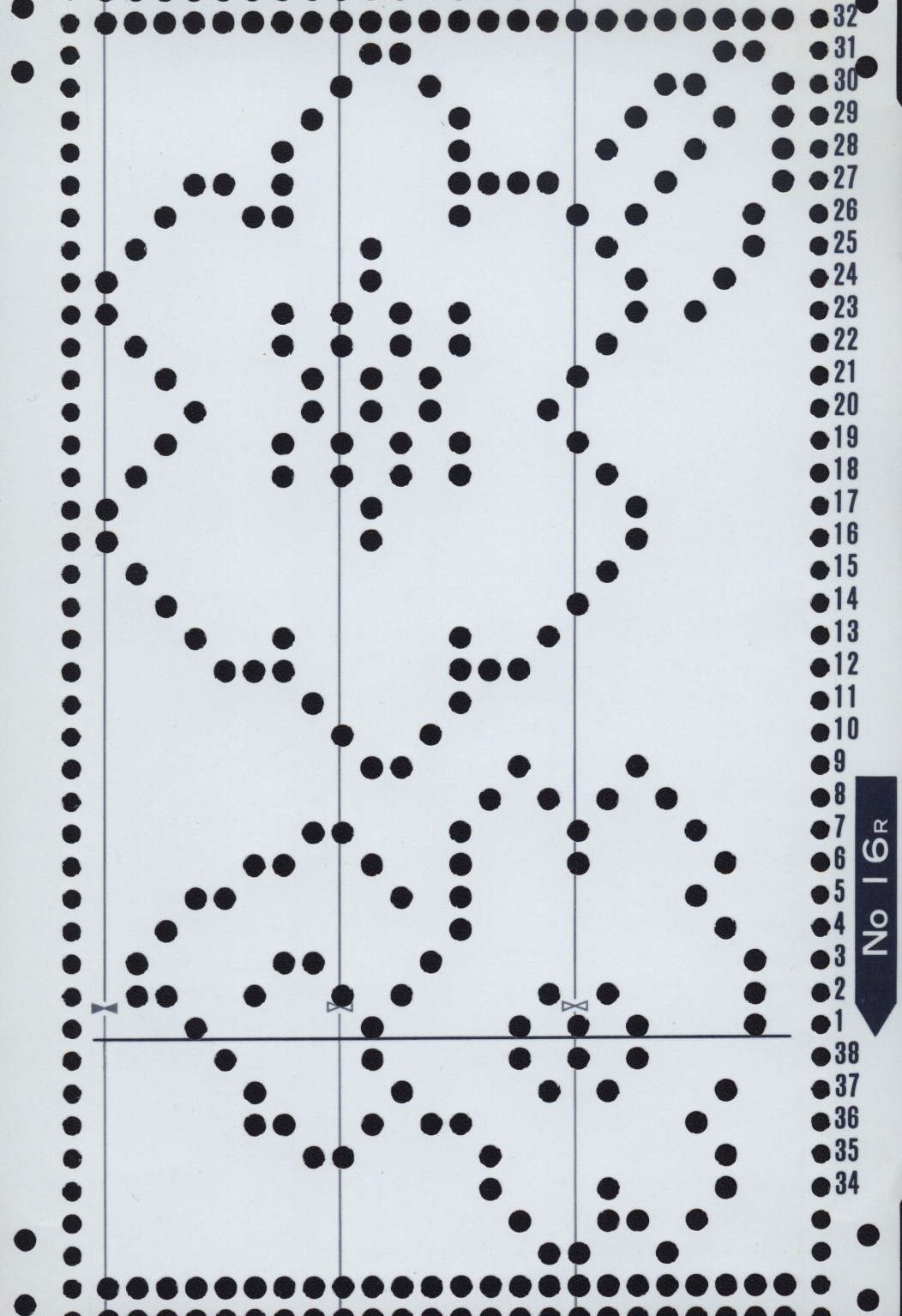


39  
38  
37  
36  
35  
34  
33  
32  
31  
30  
29  
28  
27  
26  
25  
24  
23  
22  
21  
20  
19  
18  
17  
16  
15  
14  
13  
12  
11  
10  
9  
8  
7  
6  
5  
4  
3  
2  
1  
44  
43  
42  
41  
40

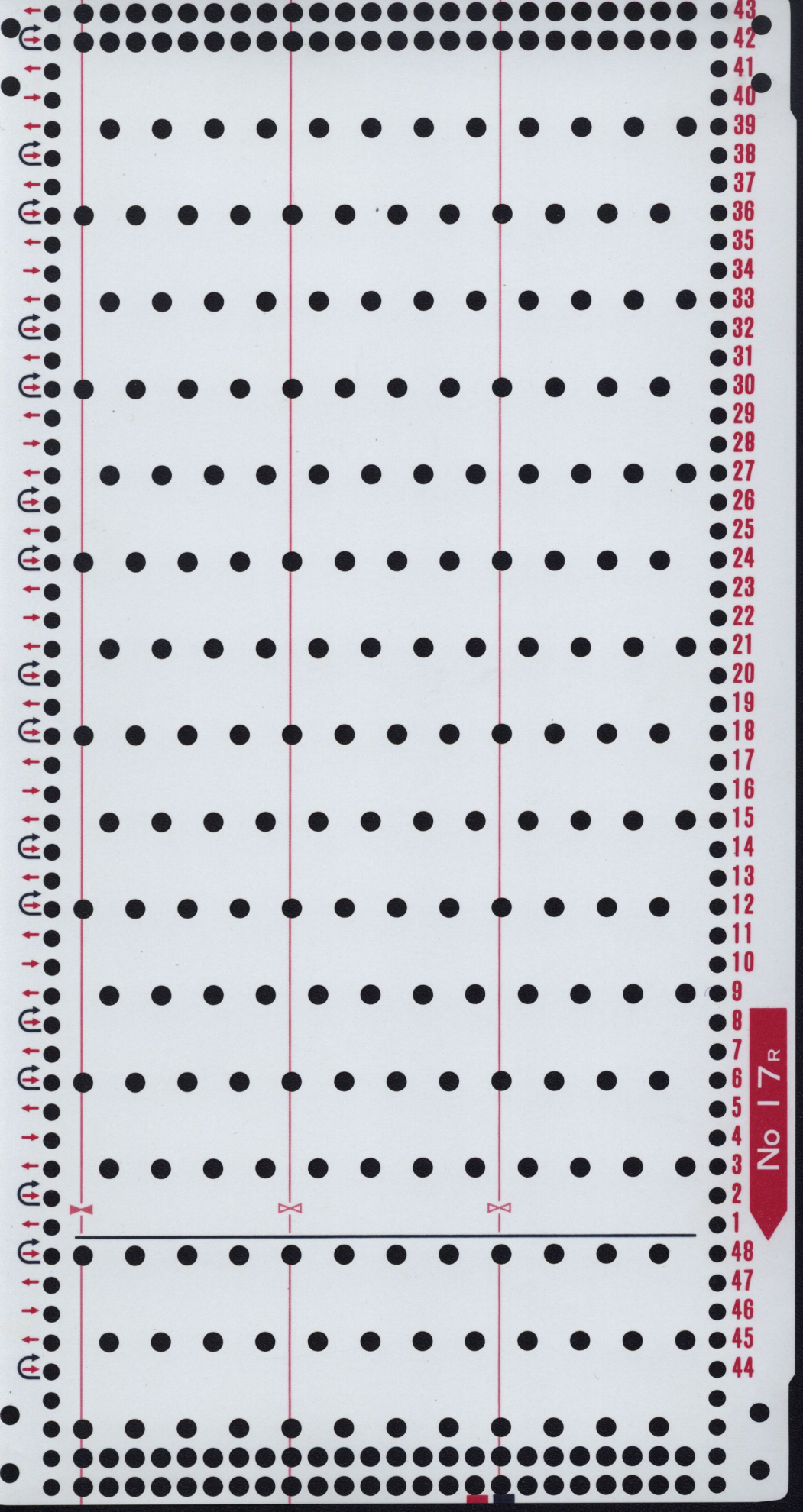
No 15R



- 35
- 32
- 31
- 30
- 29
- 28
- 27
- 26
- 25
- 24
- 23
- 22
- 21
- 20
- 19
- 18
- 17
- 16
- 15
- 14
- 13
- 12
- 11
- 10
- 9
- 8
- 7
- 6
- 5
- 4
- 3
- 2
- 1
- 38
- 37
- 36
- 35
- 34

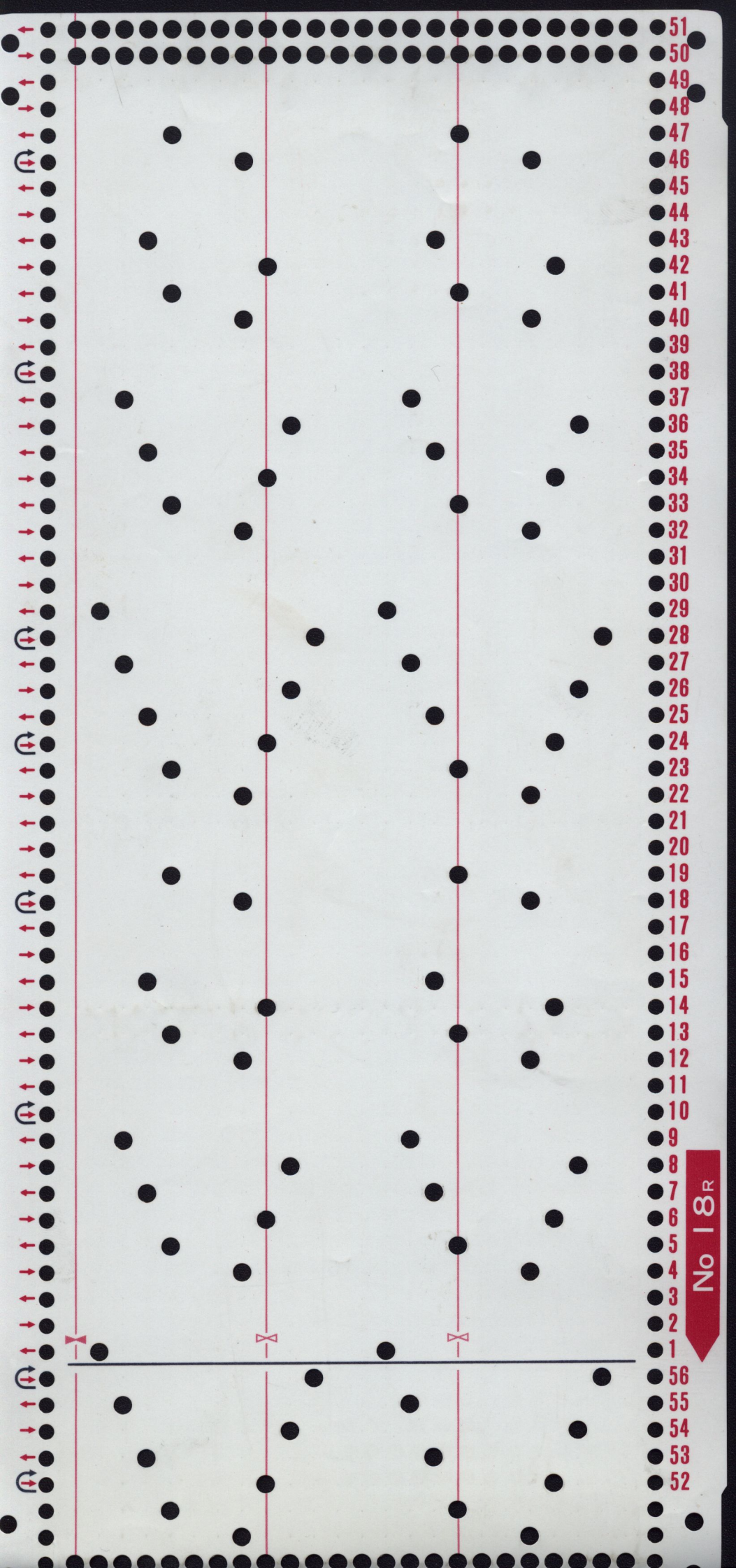






No 17 R

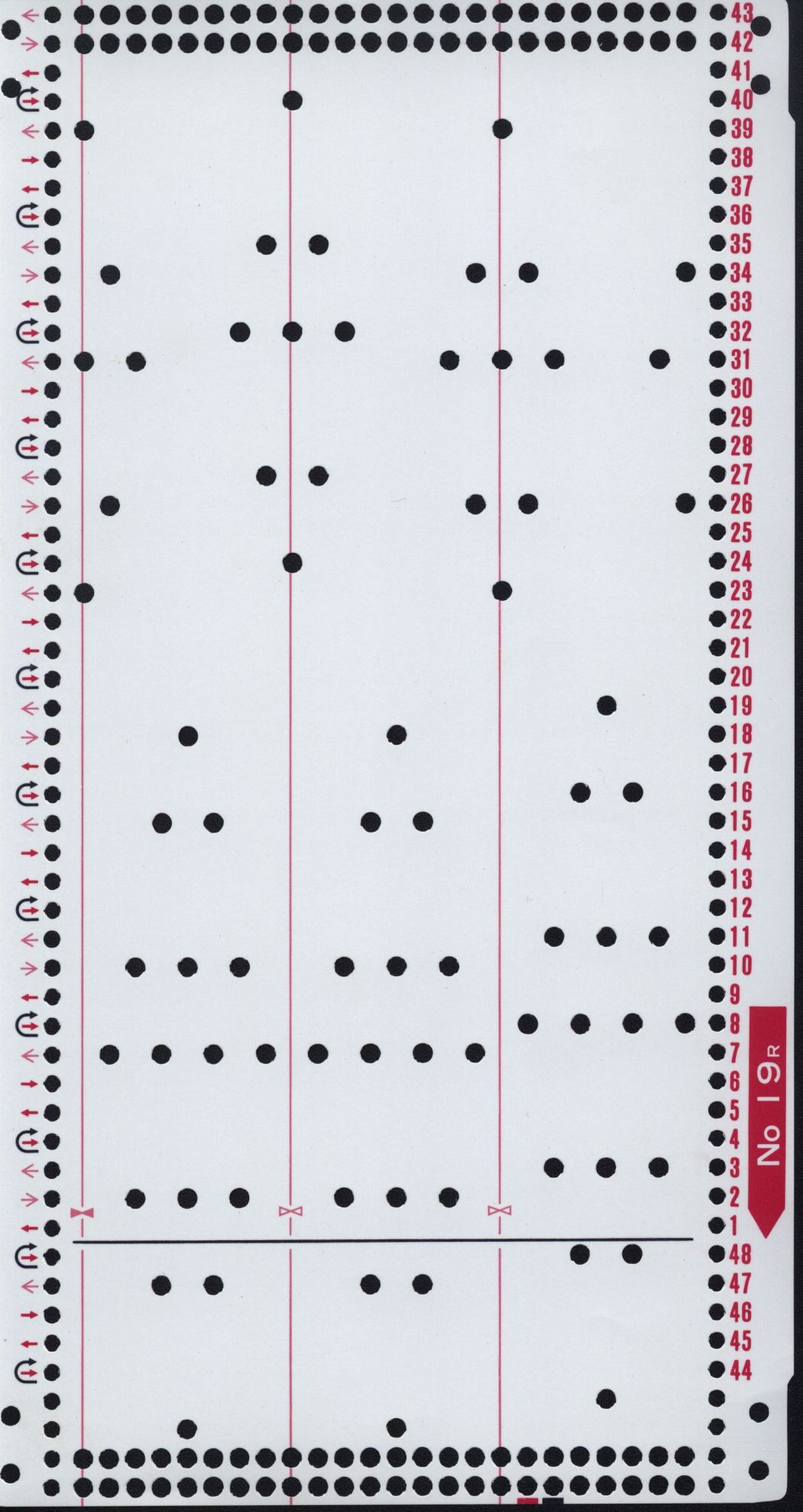




51  
50  
49  
48  
47  
46  
45  
44  
43  
42  
41  
40  
39  
38  
37  
36  
35  
34  
33  
32  
31  
30  
29  
28  
27  
26  
25  
24  
23  
22  
21  
20  
19  
18  
17  
16  
15  
14  
13  
12  
11  
10  
9  
8  
7  
6  
5  
4  
3  
2  
1  
56  
55  
54  
53  
52

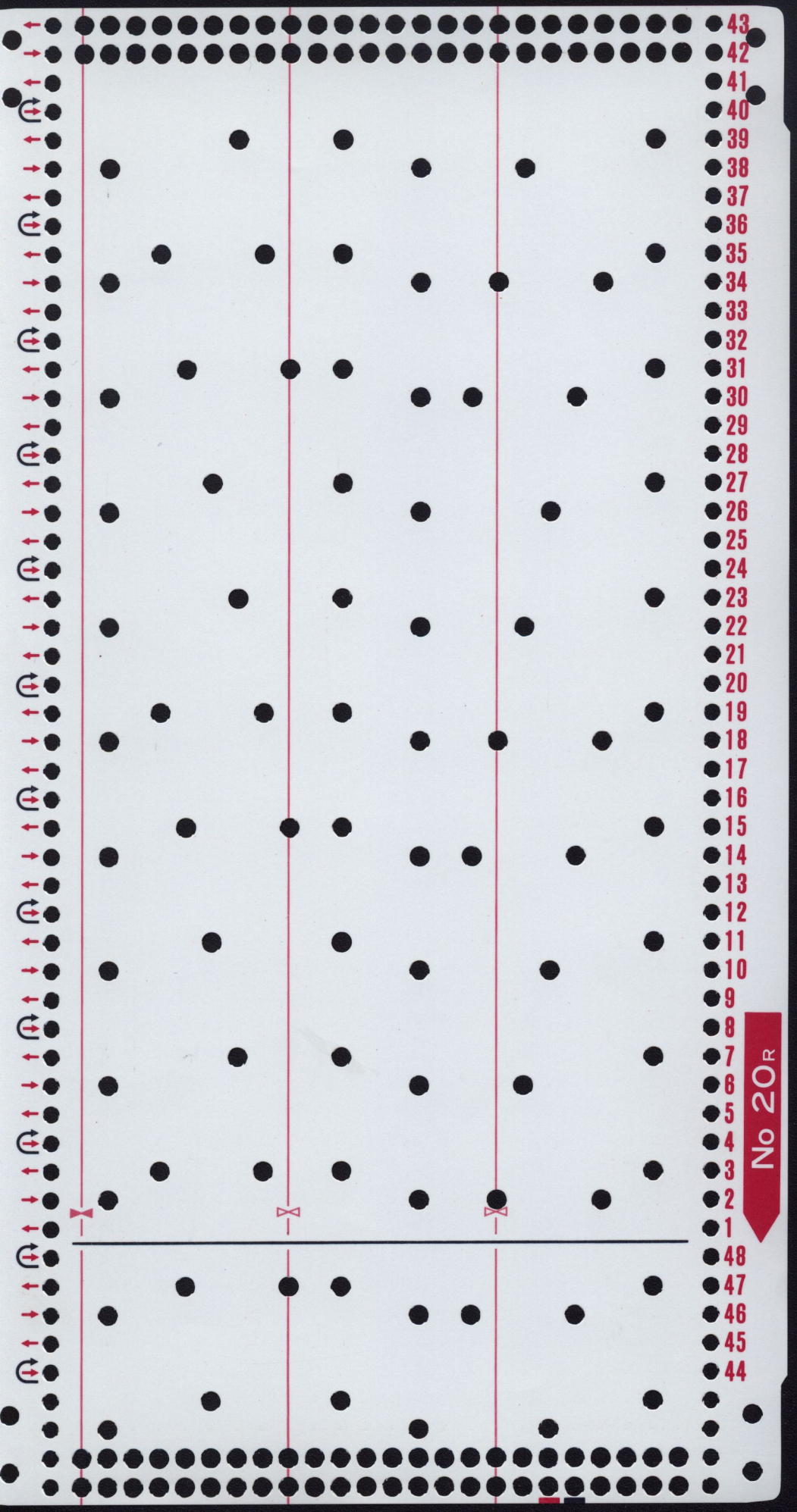
No 18R





No 19R





No 20R

- 43
- 42
- 41
- 40
- 39
- 38
- 37
- 36
- 35
- 34
- 33
- 32
- 31
- 30
- 29
- 28
- 27
- 26
- 25
- 24
- 23
- 22
- 21
- 20
- 19
- 18
- 17
- 16
- 15
- 14
- 13
- 12
- 11
- 10
- 9
- 8
- 7
- 6
- 5
- 4
- 3
- 2
- 1
- 48
- 47
- 46
- 45
- 44