

Brother Punch Cards

Series 'M'

The Patterns are from the Brother KH890-891 Manual Patterns can be printed full size. Be sure to select full size when printing. Some of the patterns are in 2 pieces. Just cut out both and place on blank card.

LIST OF PATTERN VARIATION

Each punch card can be used for the pattern(s) marked ○ in the following column.
 Punch cards No. 16M through 20M are special cards for Lace pattern and Fine-lace pattern.

Pattern	Recommended Punch Card No.																			
	1M	2M	3M	4M	5M	6M	7M	8M	9M	10M	11M	12M	13M	14M	15M	16M	17M	18M	19M	20M
Tuck stitch pattern	●	●	●				●	●												
Two color Tuck stitch pattern	●	●	●				●													
Skip stitch pattern	●	●	●		●		●	●			●									
Two color Skip stitch pattern		●	●		●		●				●									
Fair-isle pattern	●	●	●	●	●	●	●	●	●	●	●	●	●	●	●					
Weaving pattern	●	●	●		●		●	●			●	●								
Plating Tuck stitch pattern	●		●					●												
Lace pattern																●	●	●	●	●
Fine-lace pattern																●	●		●	●

LESSON 2

5. BASIC OPERATION PRACTICE II (PATTERN KNITTING)

TUCK STITCH PATTERNS (1M, 2M, 3M, 7M, 8M)



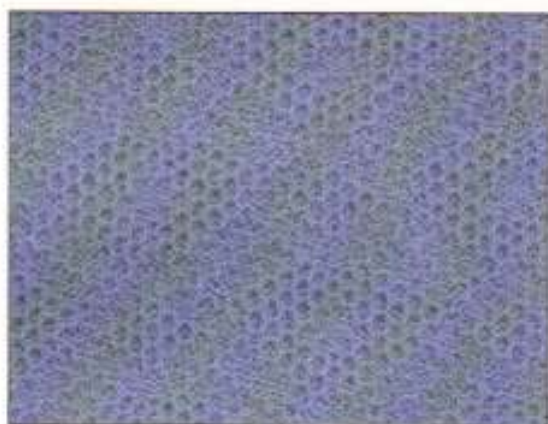
Card No. 1M



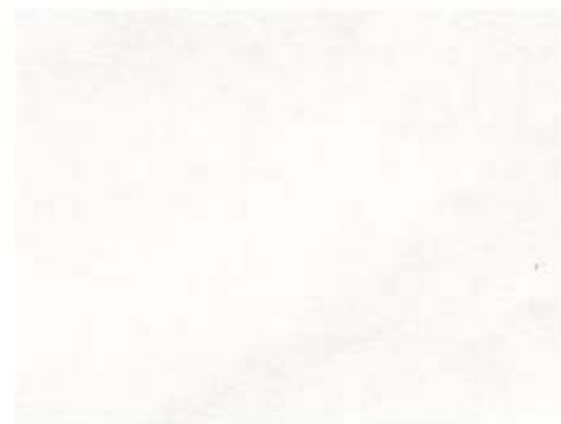
Card No. 2M



Card No. 3M



Card No. 7M



TWO COLOR TUCK STITCH PATTERNS (1M, 2M, 3M, 7M)

* Change the yarn in the Yarn feeder "A" every two rows.



Card No. 2M



Card No. 3M



SKIP STITCH PATTERNS (1M, 2M, 3M, 5M, 7M, 8M, 11M)



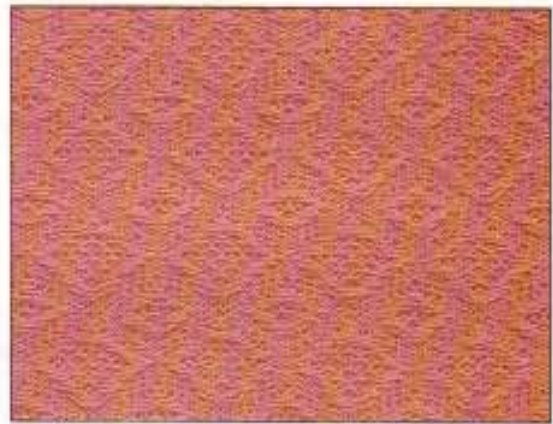
Card No. 2M



Card No. 3M



Card No. 5M



Card No. 11M

TWO COLOR SKIP STITCH PATTERNS (2M, 3M, 5M, 7M, 11M)

* Change the yarn in the Yarn feeder "A" every two rows.

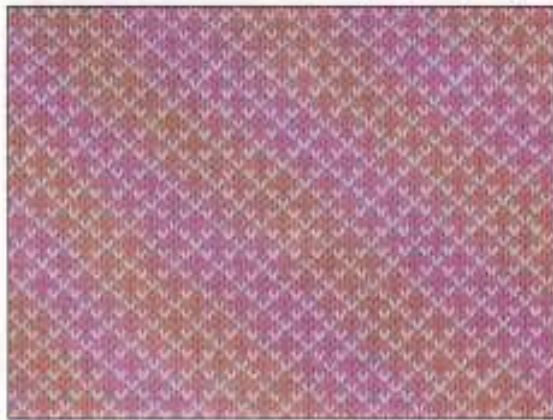


Card No. 5M



Card No. 7M

FAIR-ISLE PATTERNS (1M, 2M, 3M, 4M, 5M, 6M, 7M, 8M, 9M, 10M, 11M, 12M, 13M, 14M, 15M)



Card No. 3M



Card No. 4M



Card No. 5M



Card No. 6M



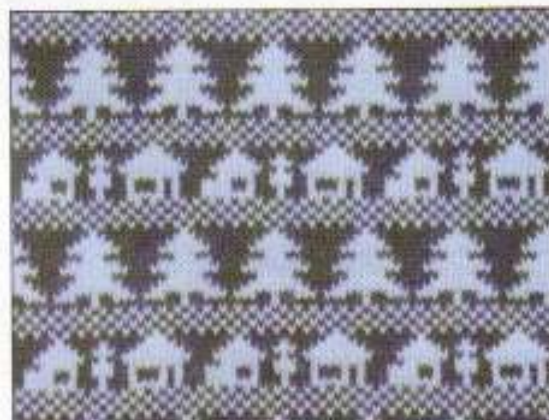
Card No. 10M



Card No. 12M



Card No. 13M



Card No. 14M



Card No. 14M



Card No. 14M

FAIR-ISLE MOTIF



Card No. 15M

WEAVING PATTERNS
(1M, 2M, 3M, 5M, 7M, 8M, 11M, 12M)



Card No. 1M



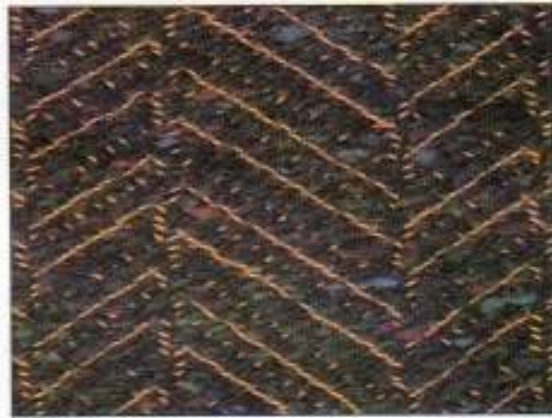
Card No. 2M



Card No. 5M

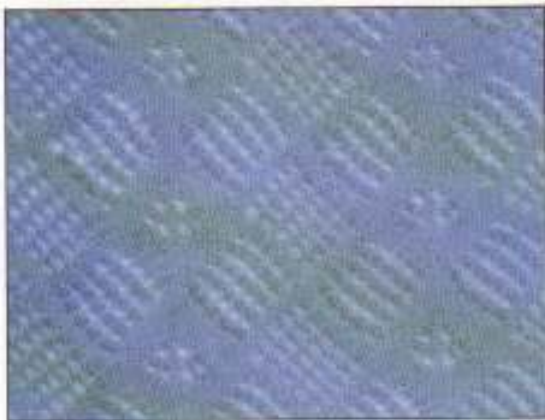


Card No. 7M



Card No. 12M

LACE PATTERNS (16M, 17M, 18M, 19M, 20M)



Card No. 16M



Card No. 17M

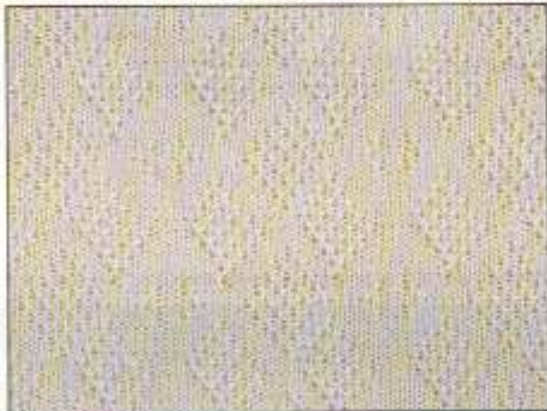


Card No. 18M

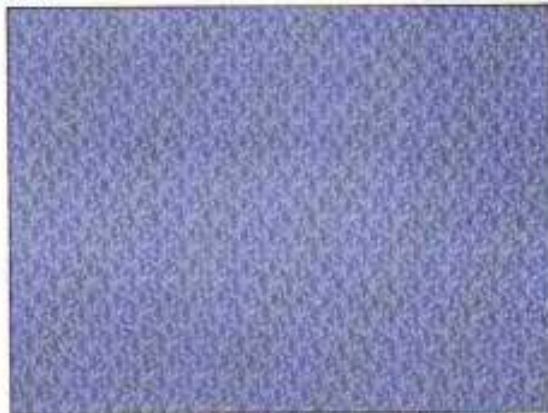


Card No. 20M

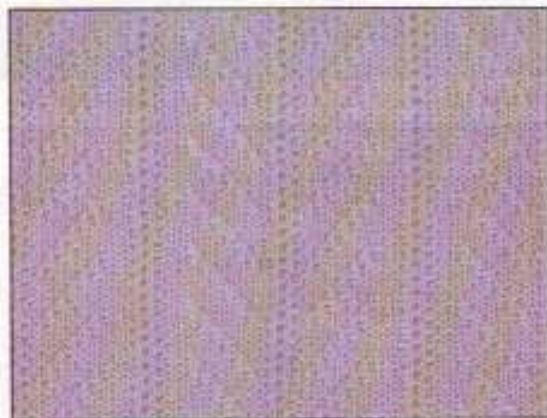
FINE-LACE PATTERNS (16M, 17M, 18M, 19M, 20M)



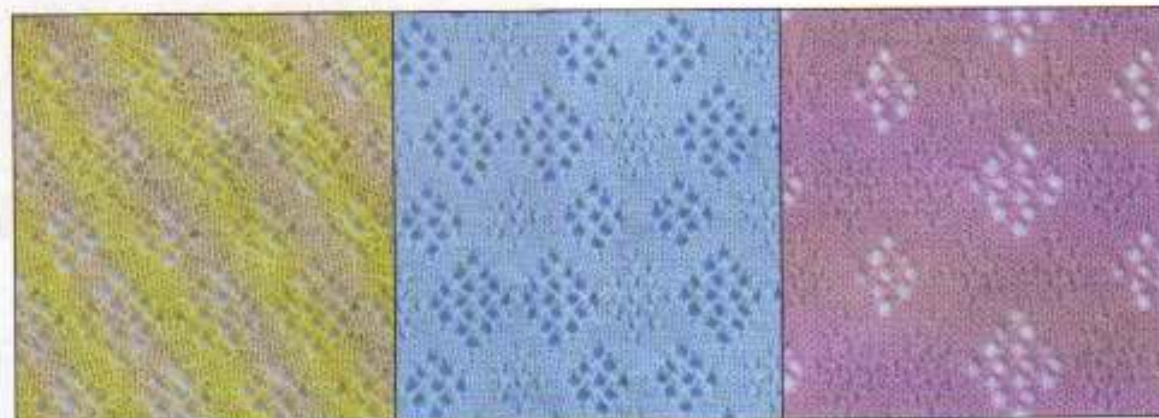
Card No. 16M



Card No. 17M



Card No. 20M



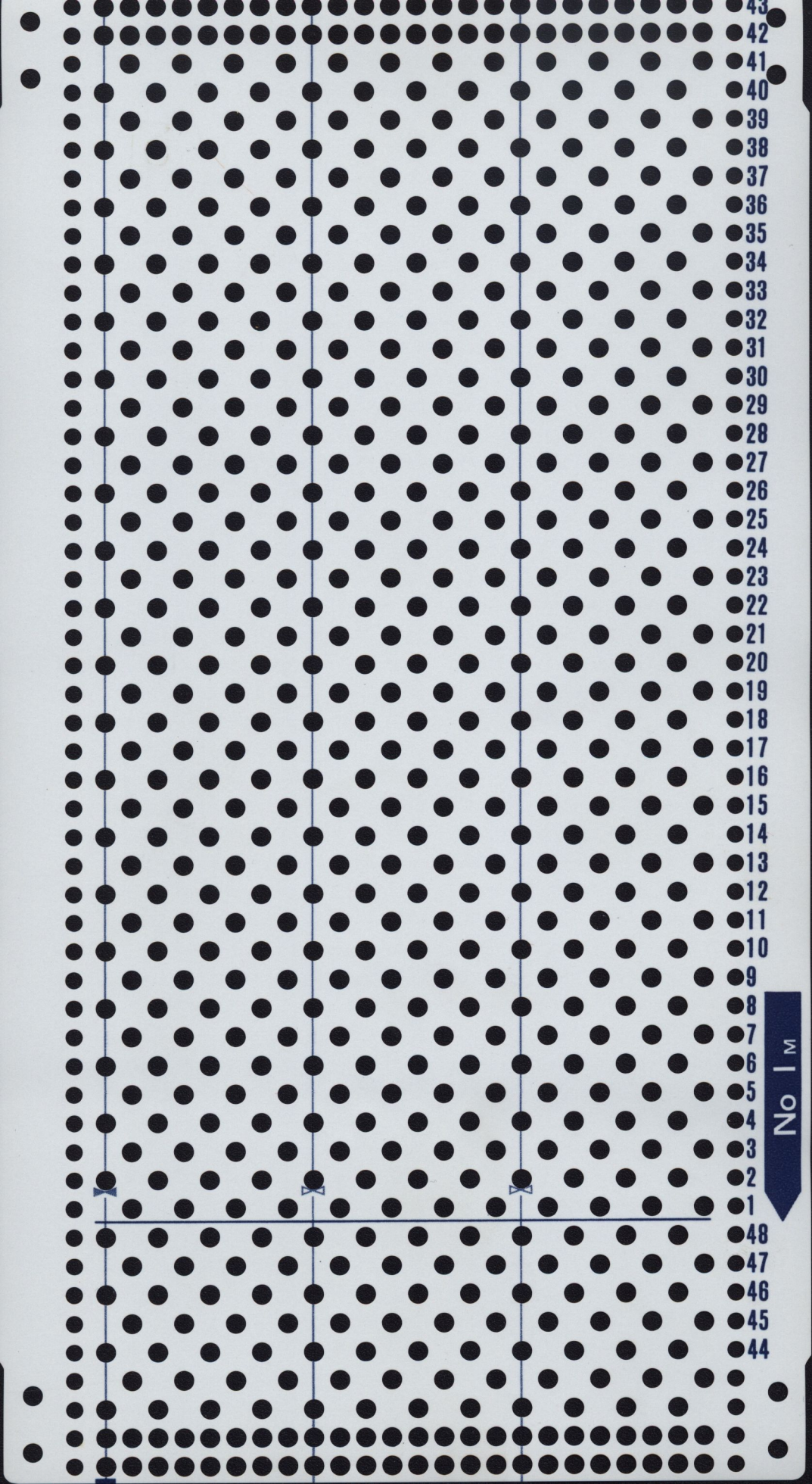
Card No. 19M

(↔ = N ↔ = F)

(↔ = N ↔ = F)

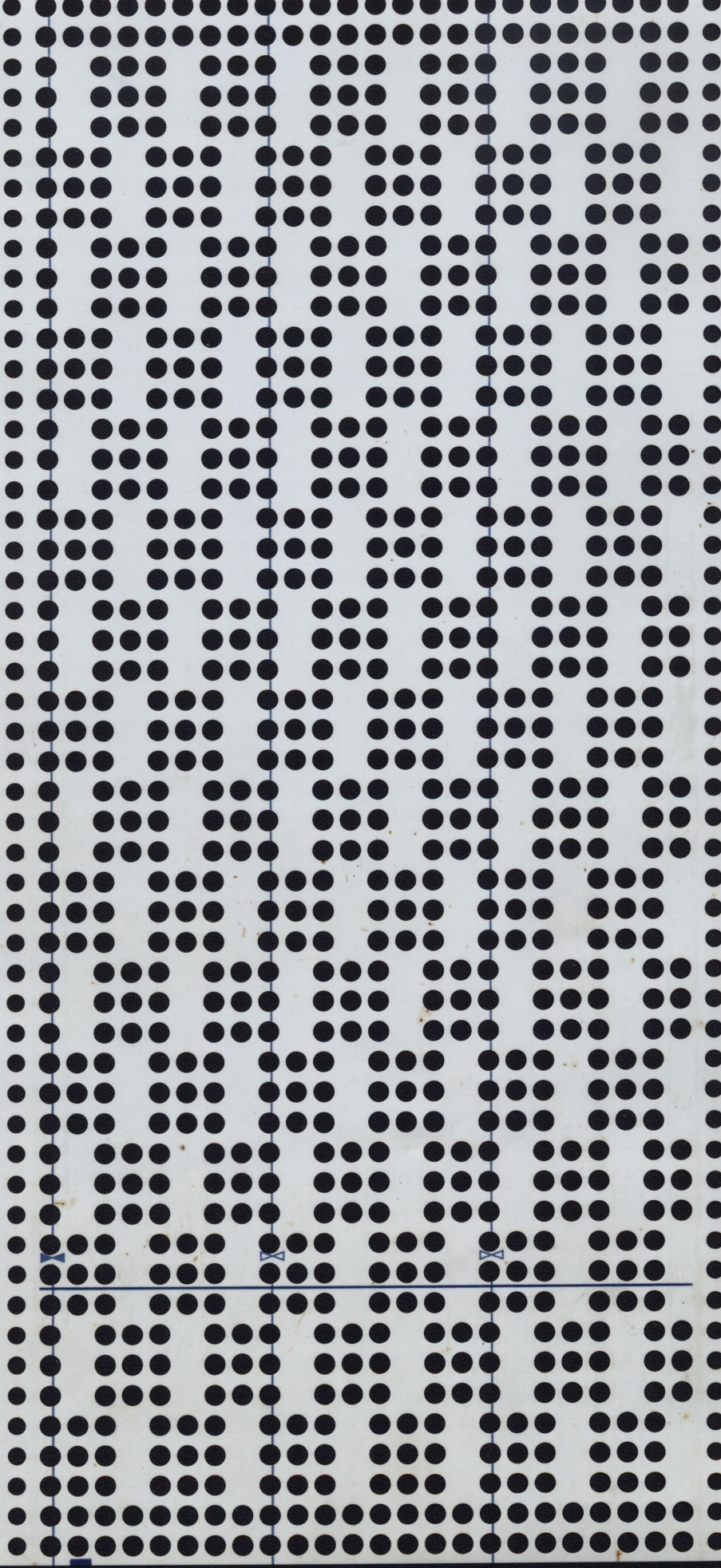
No 1 M

43
42
41
40
39
38
37
36
35
34
33
32
31
30
29
28
27
26
25
24
23
22
21
20
19
18
17
16
15
14
13
12
11
10
9
8
7
6
5
4
3
2
1
48
47
46
45
44



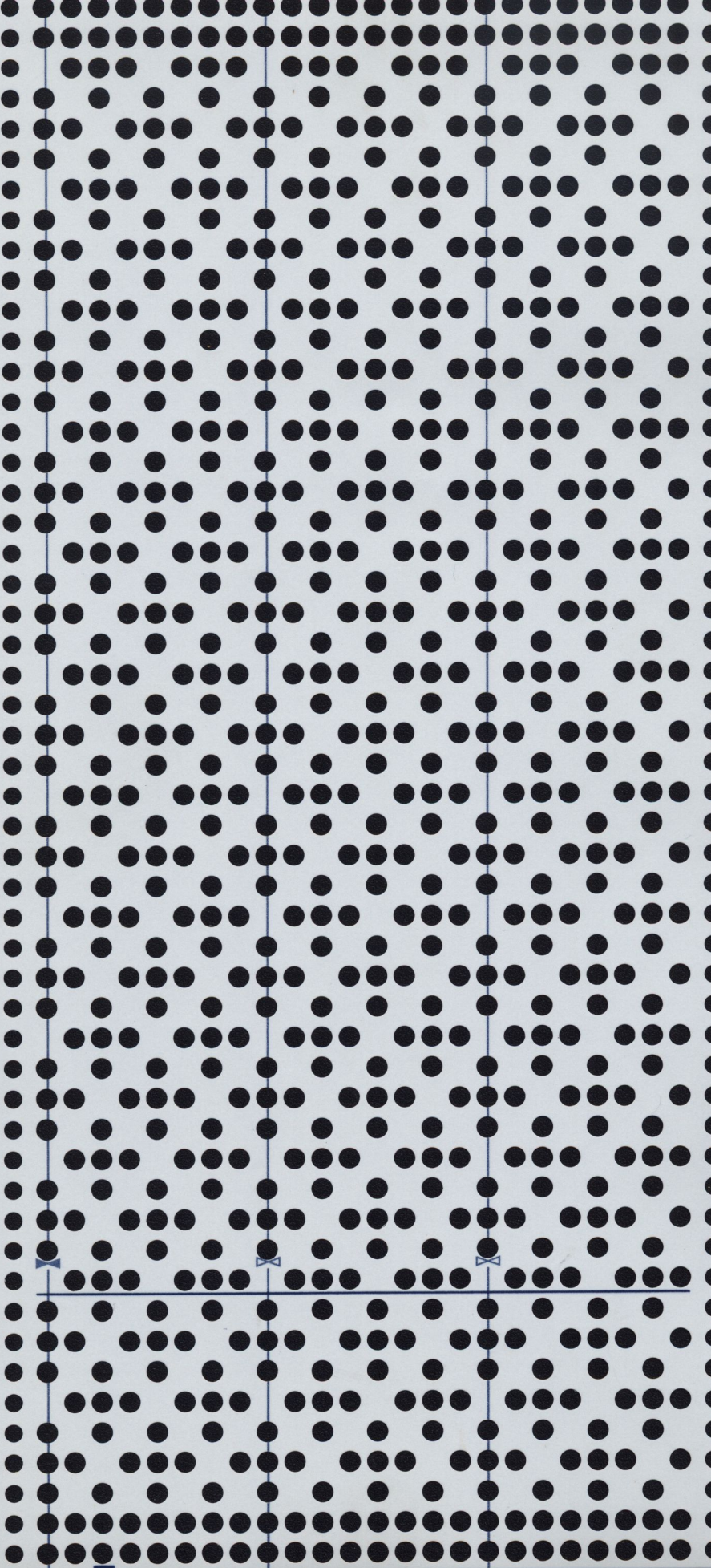
43
42
41
40
39
38
37
36
35
34
33
32
31
30
29
28
27
26
25
24
23
22
21
20
19
18
17
16
15
14
13
12
11
10
9
8
7
6
5
4
3
2
1
48
47
46
45
44

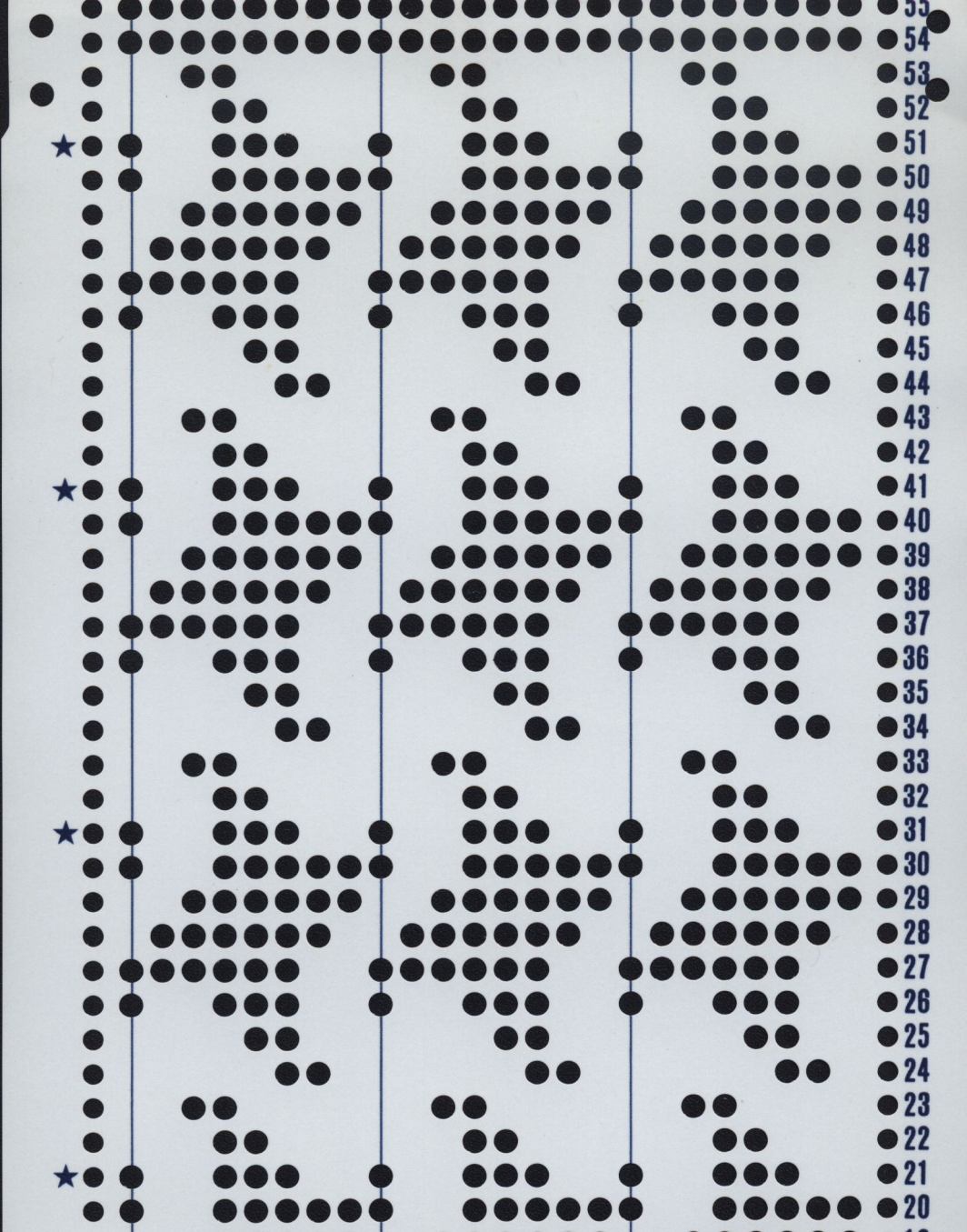
No 2^M



No 3^M

43
42
41
40
39
38
37
36
35
34
33
32
31
30
29
28
27
26
25
24
23
22
21
20
19
18
17
16
15
14
13
12
11
10
9
8
7
6
5
4
3
2
1
48
47
46
45
44

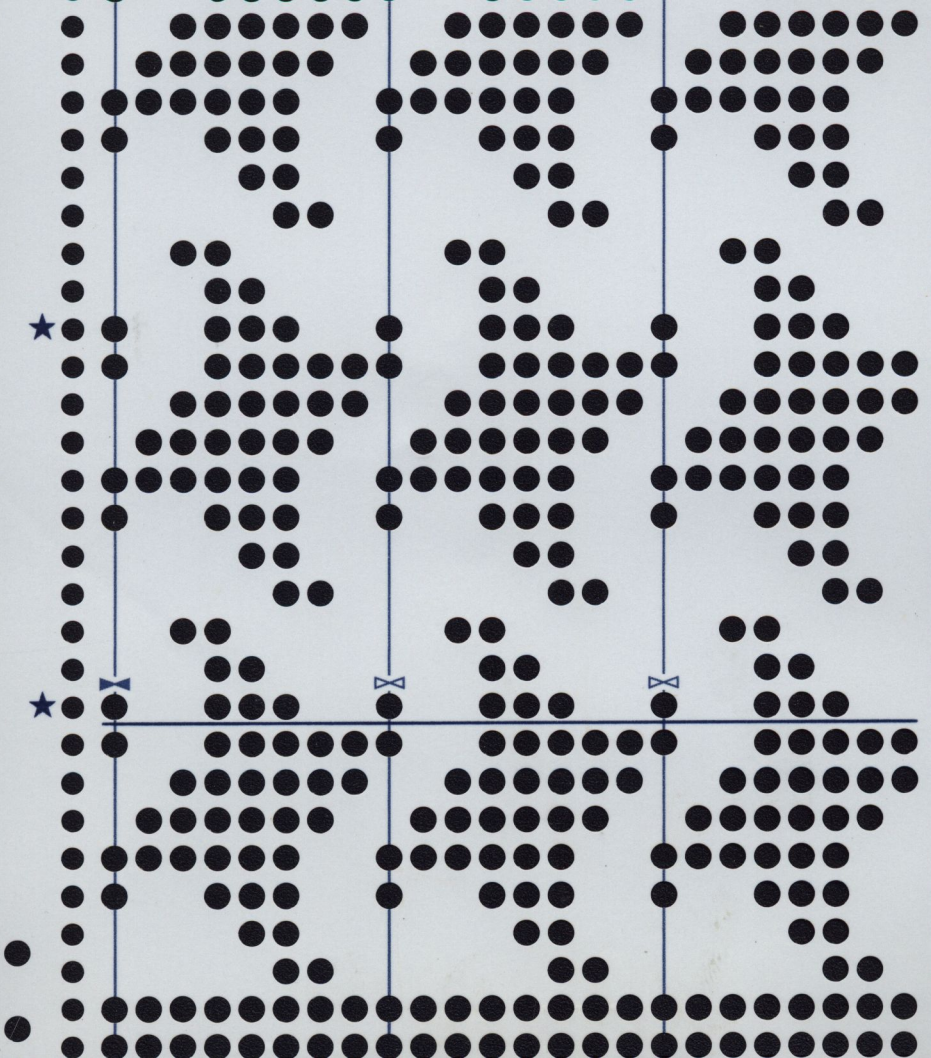




55
54
53
52
51
50
49
48
47
46
45
44
43
42
41
40
39
38
37
36
35
34
33
32
31
30
29
28
27
26
25
24
23
22
21
20

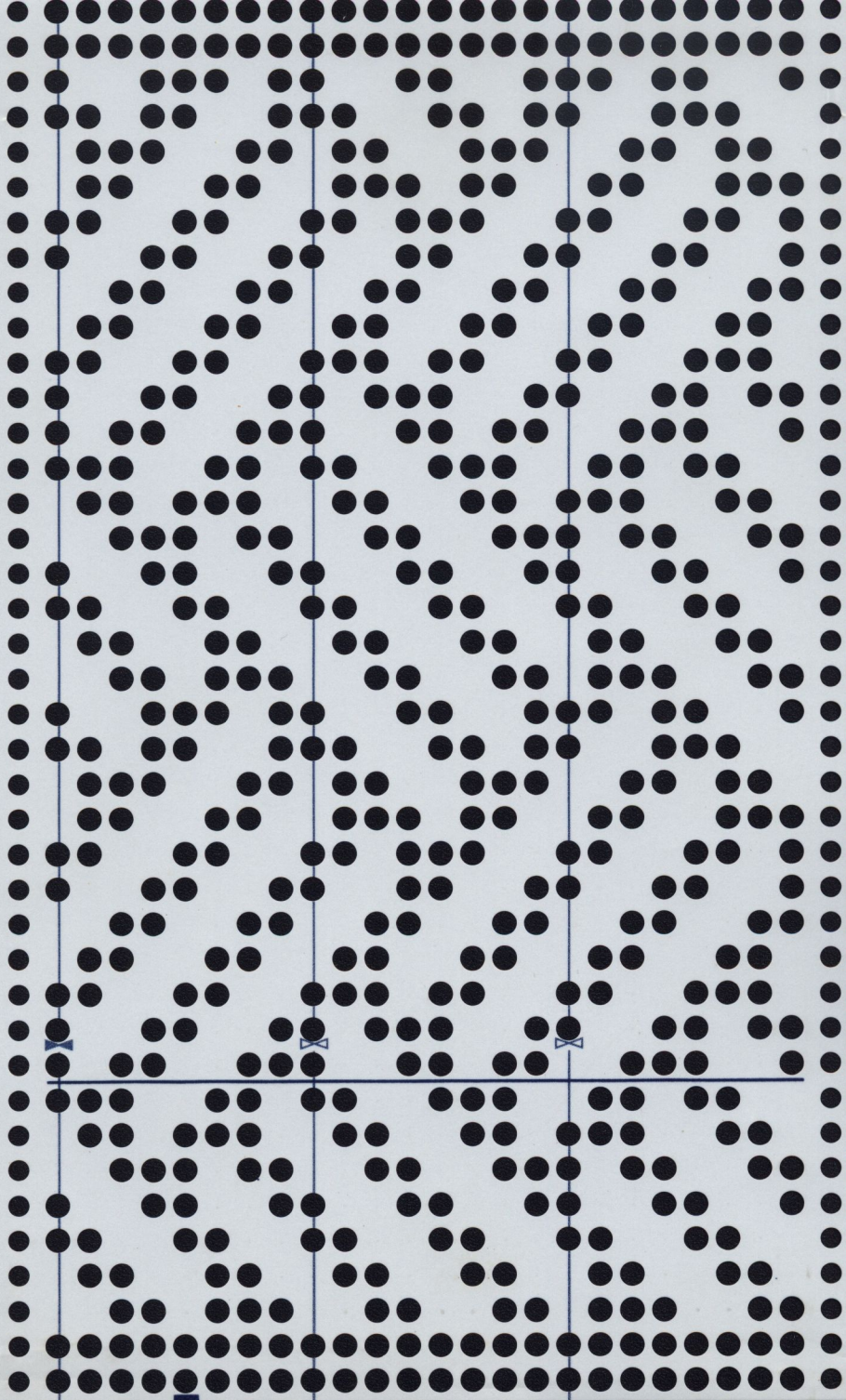


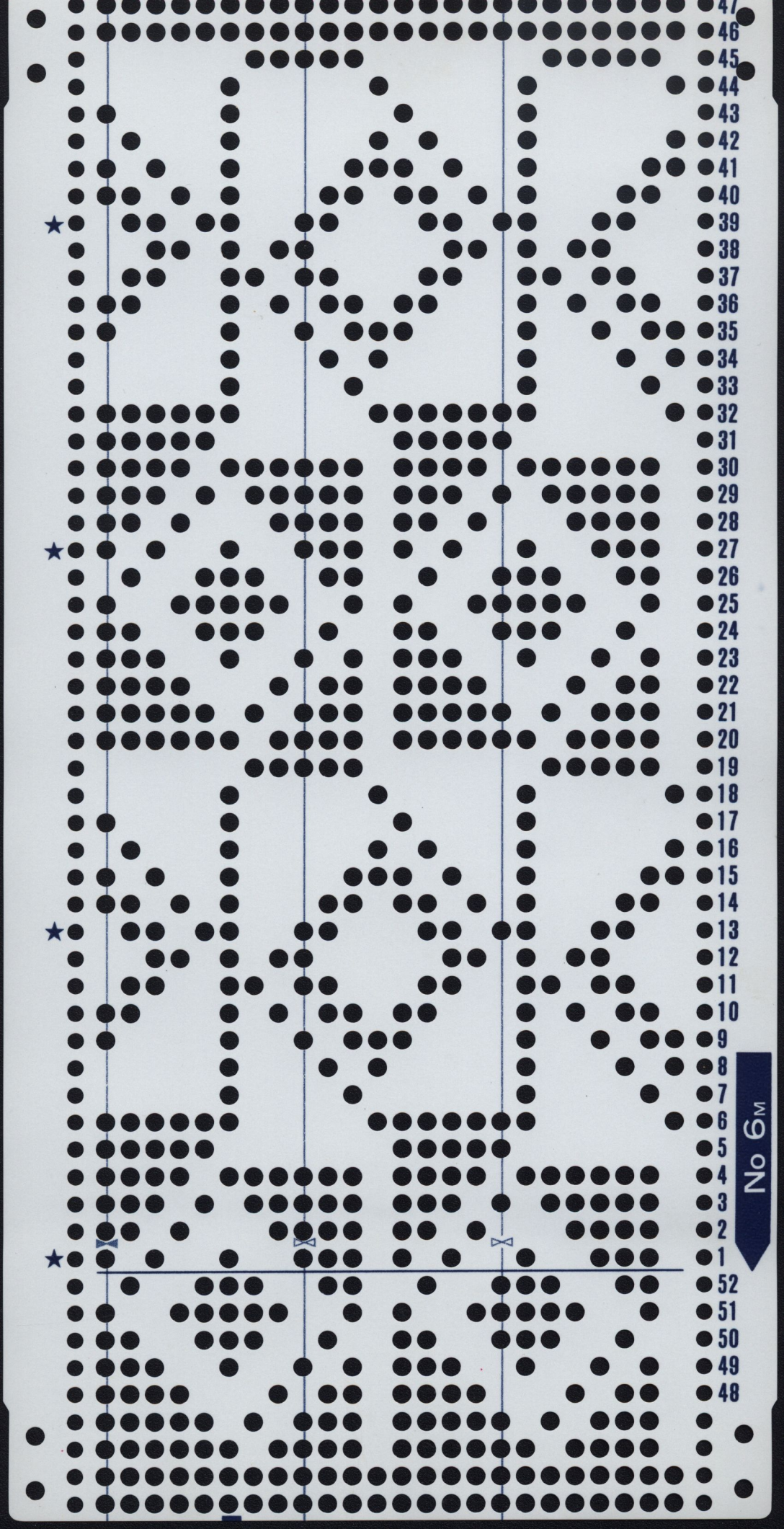
- 19
- 18
- 17
- 16
- 15
- 14
- 13
- 12
- 11
- 10
- 9
- 8
- 7
- 6
- 5
- 4
- 3
- 2
- 1
- 60
- 59
- 58
- 57
- 56



No 5^M

30
29
28
27
26
25
24
23
22
21
20
19
18
17
16
15
14
13
12
11
10
9
8
7
6
5
4
3
2
1
36
35
34
33
32



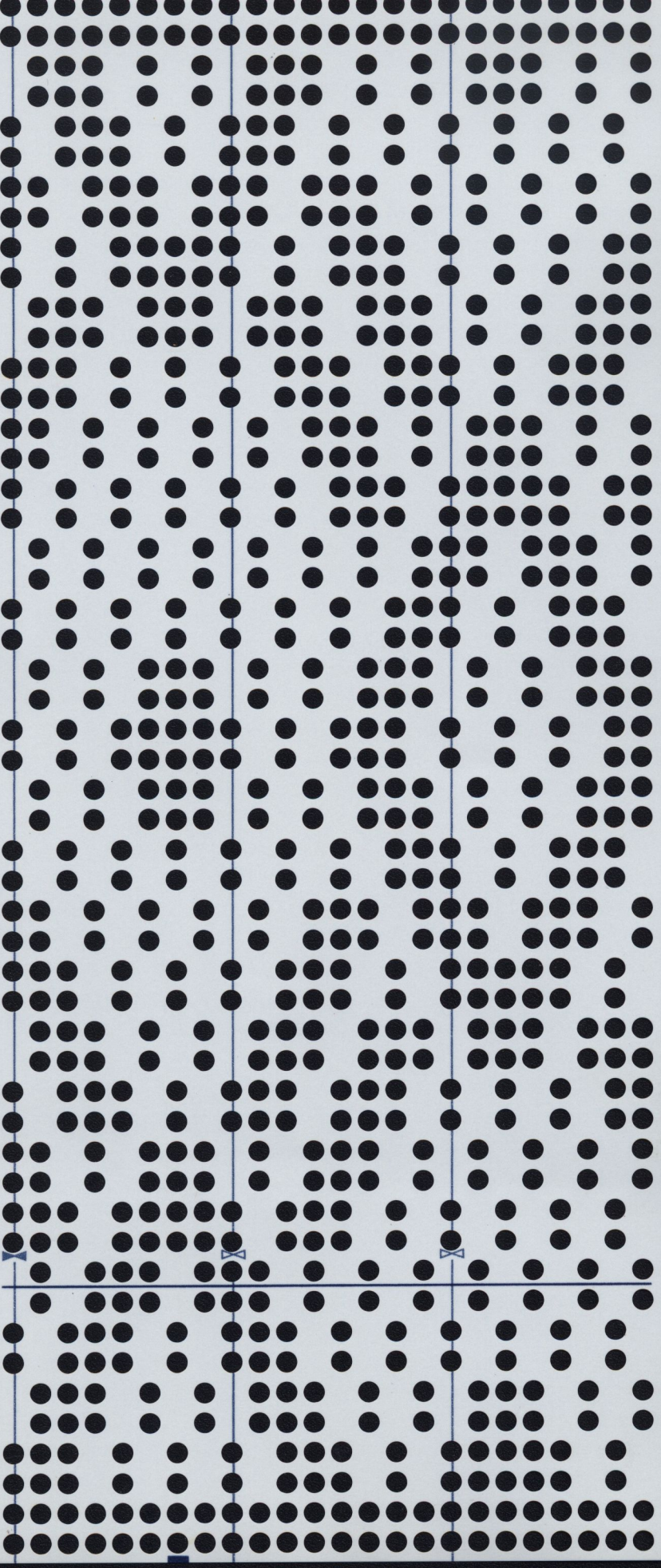


No 6^M

- 47
- 46
- 45
- 44
- 43
- 42
- 41
- 40
- 39
- 38
- 37
- 36
- 35
- 34
- 33
- 32
- 31
- 30
- 29
- 28
- 27
- 26
- 25
- 24
- 23
- 22
- 21
- 20
- 19
- 18
- 17
- 16
- 15
- 14
- 13
- 12
- 11
- 10
- 9
- 8
- 7
- 6
- 5
- 4
- 3
- 2
- 1
- 52
- 51
- 50
- 49
- 48

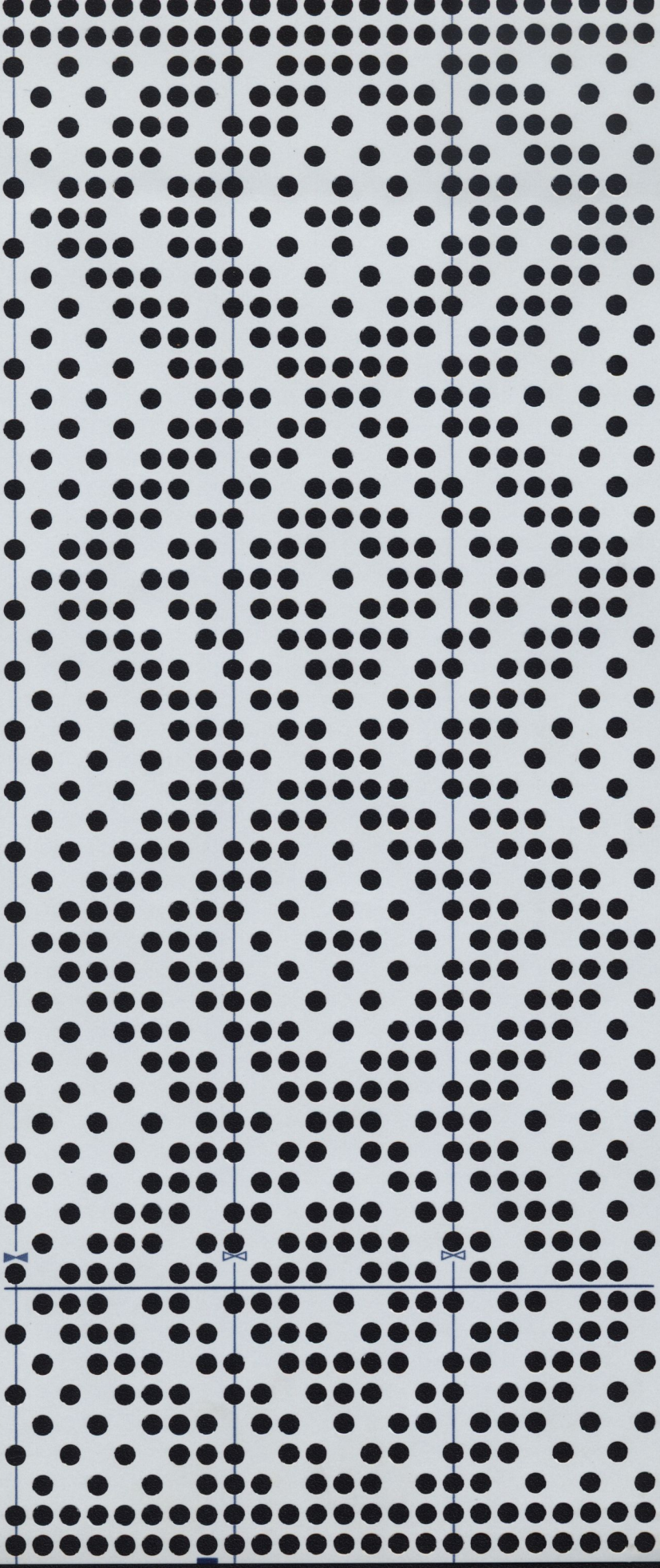


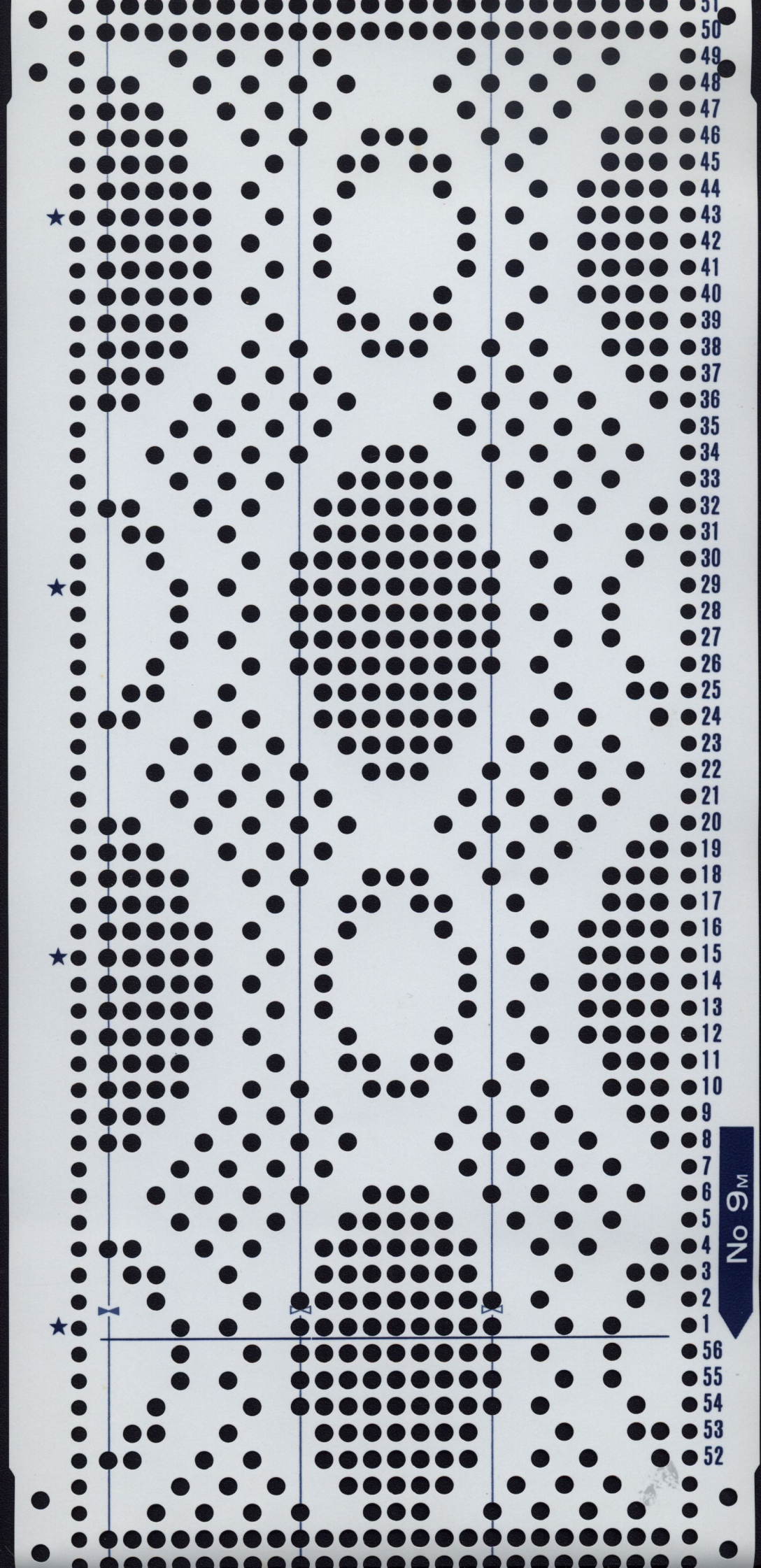
43
42
41
40
39
38
37
36
35
34
33
32
31
30
29
28
27
26
25
24
23
22
21
20
19
18
17
16
15
14
13
12
11
10
9
8
7
6
5
4
3
2
1
48
47
46
45
44



No 8^M

43
42
41
40
39
38
37
36
35
34
33
32
31
30
29
28
27
26
25
24
23
22
21
20
19
18
17
16
15
14
13
12
11
10
9
8
7
6
5
4
3
2
1
48
47
46
45
44



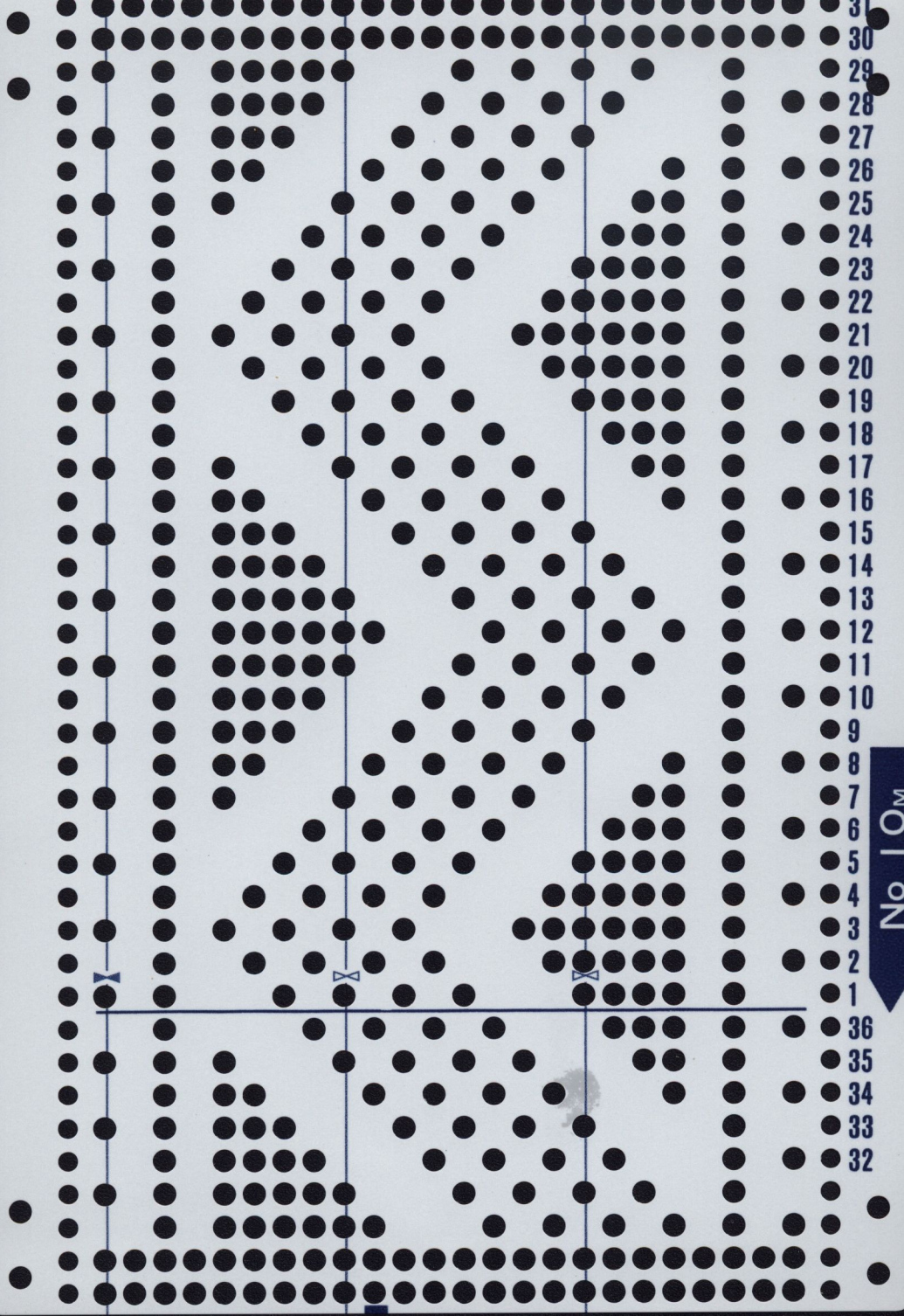


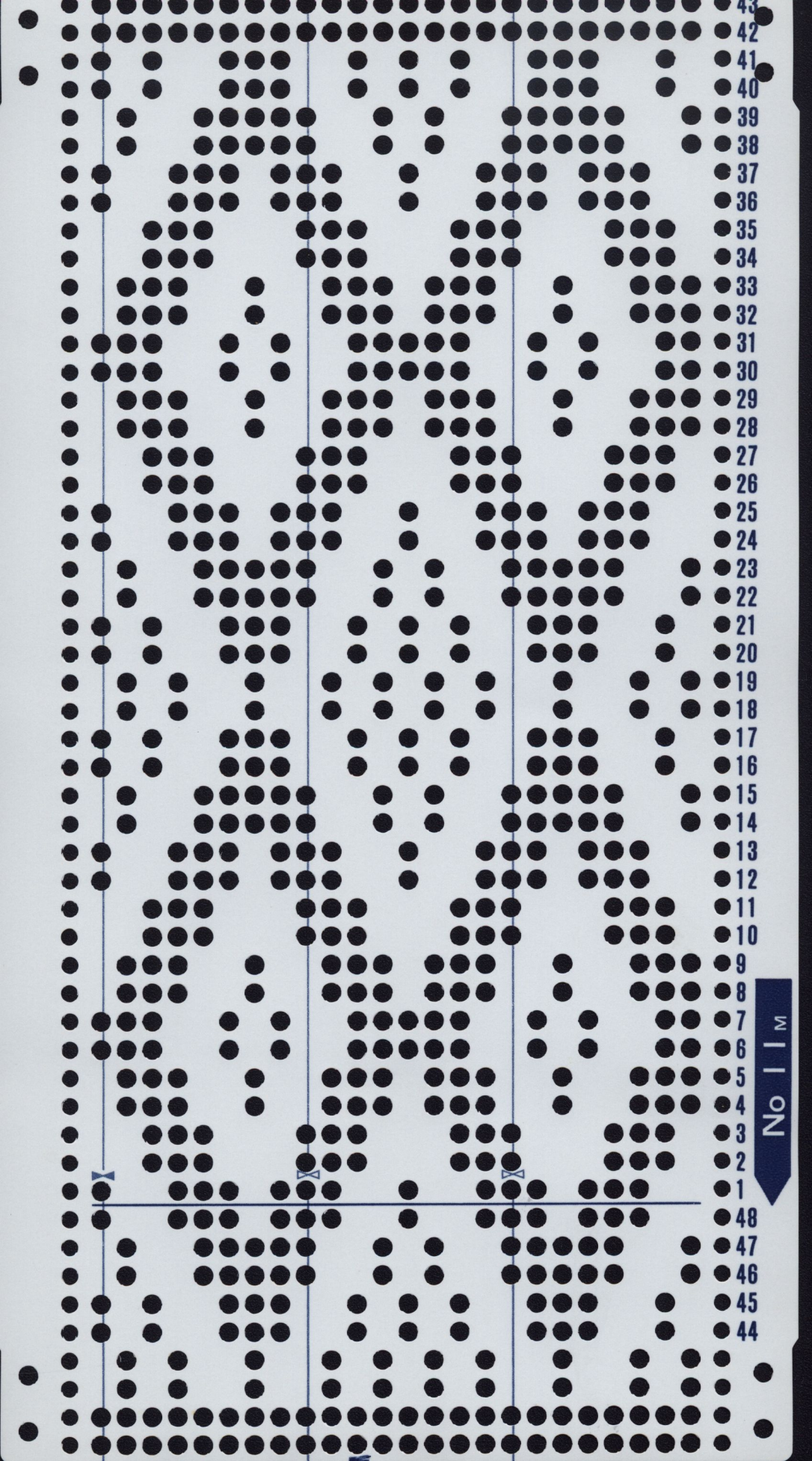
No 9M

50
49
48
47
46
45
44
43
42
41
40
39
38
37
36
35
34
33
32
31
30
29
28
27
26
25
24
23
22
21
20
19
18
17
16
15
14
13
12
11
10
9
8
7
6
5
4
3
2
1
56
55
54
53
52



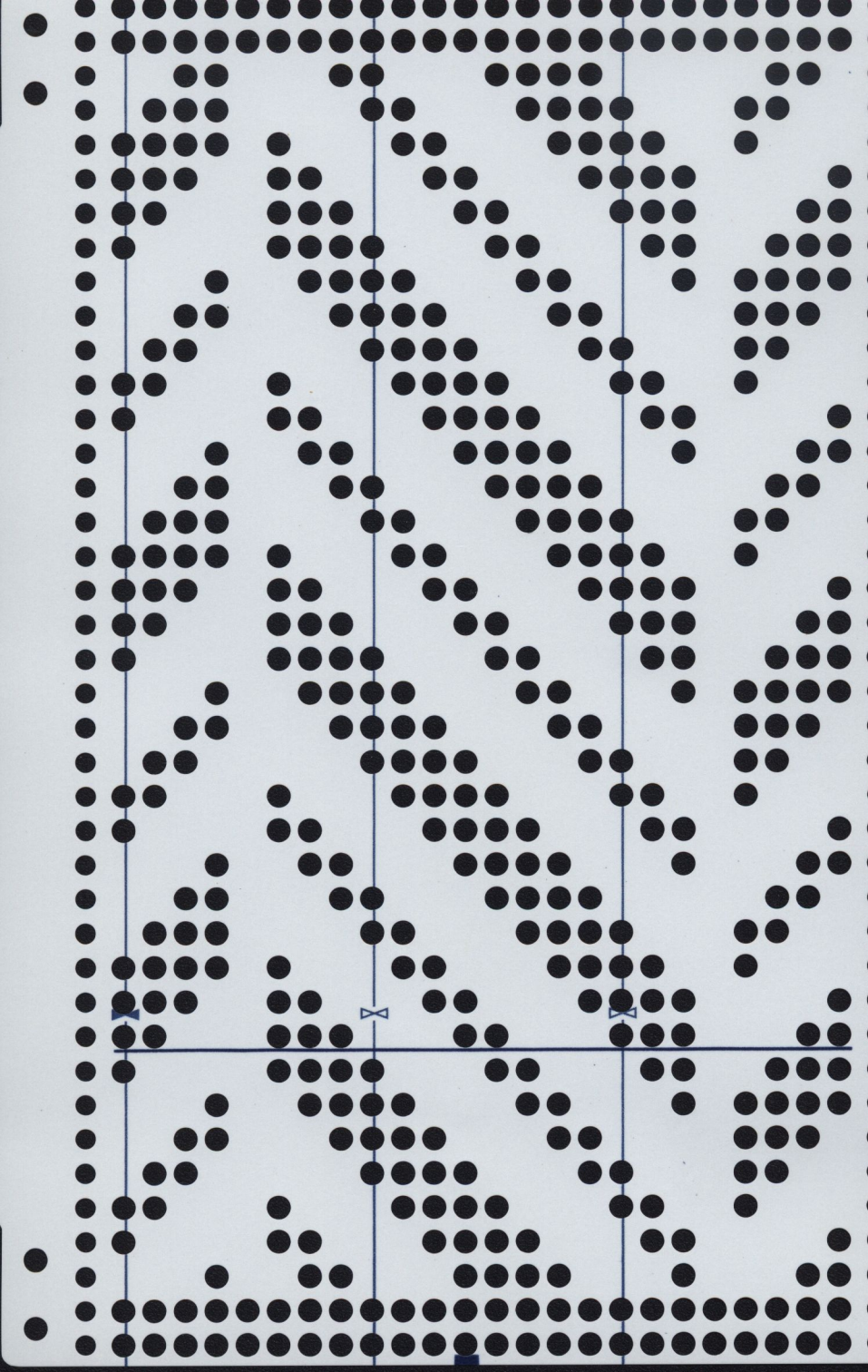
30
29
28
27
26
25
24
23
22
21
20
19
18
17
16
15
14
13
12
11
10
9
8
7
6
5
4
3
2
1
36
35
34
33
32

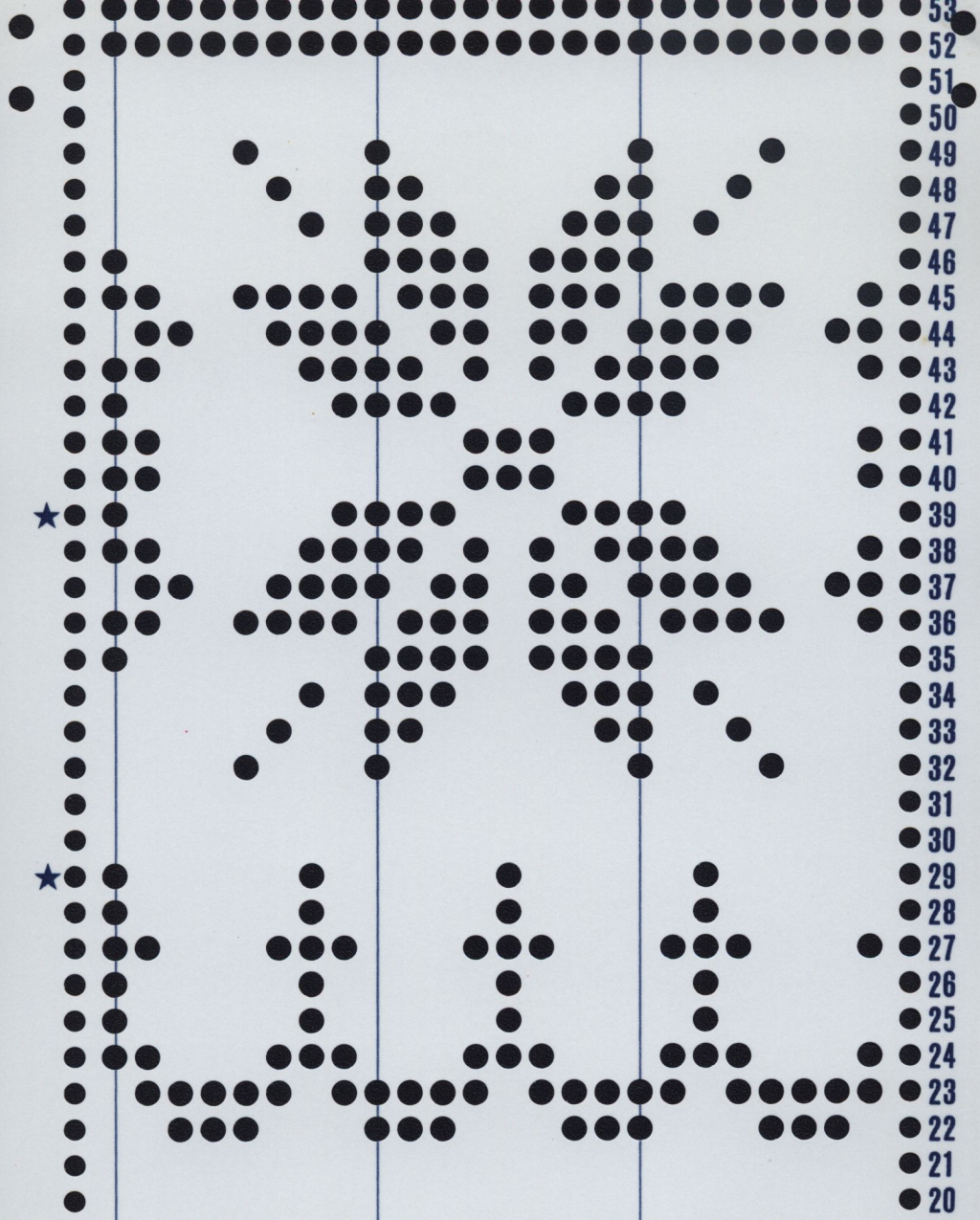




No. 1 M

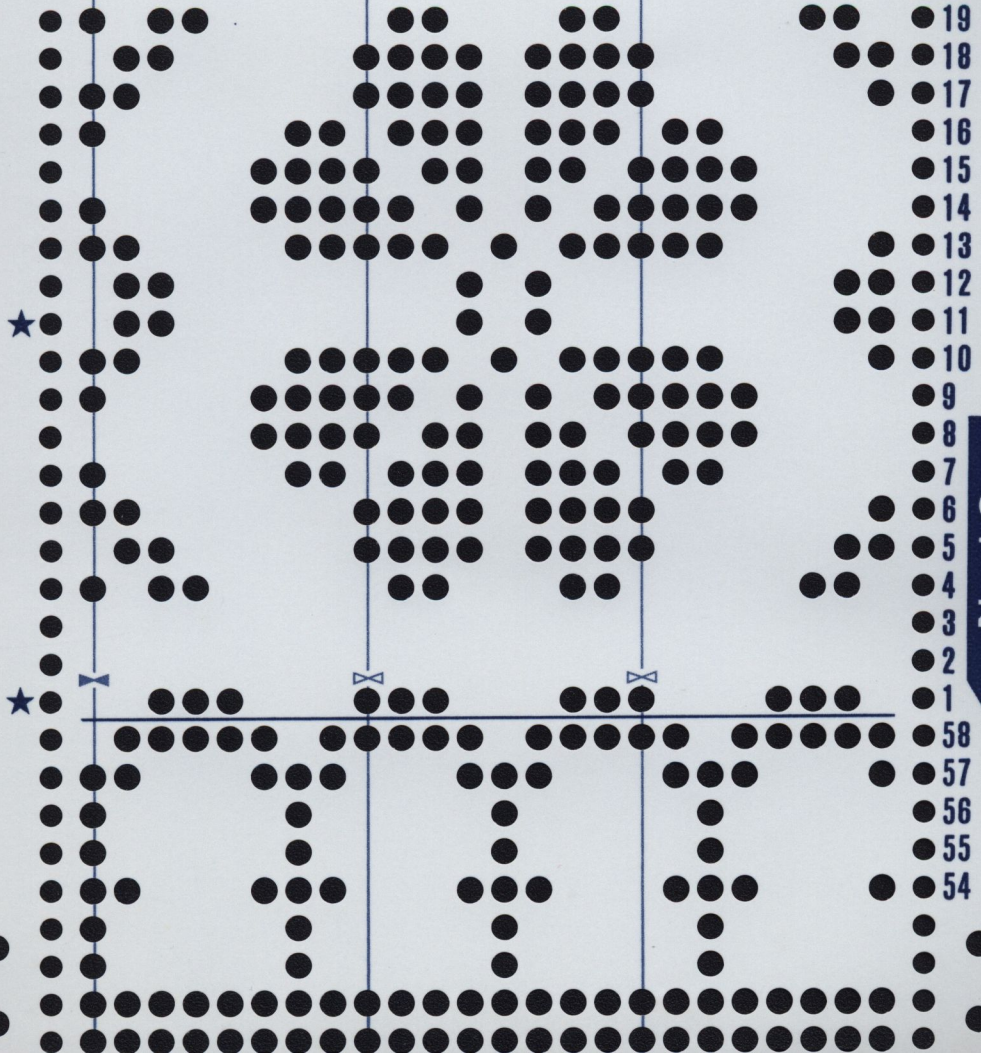
- 31
- 30
- 29
- 28
- 27
- 26
- 25
- 24
- 23
- 22
- 21
- 20
- 19
- 18
- 17
- 16
- 15
- 14
- 13
- 12
- 11
- 10
- 9
- 8
- 7
- 6
- 5
- 4
- 3
- 2
- 1
- 36
- 35
- 34
- 33
- 32



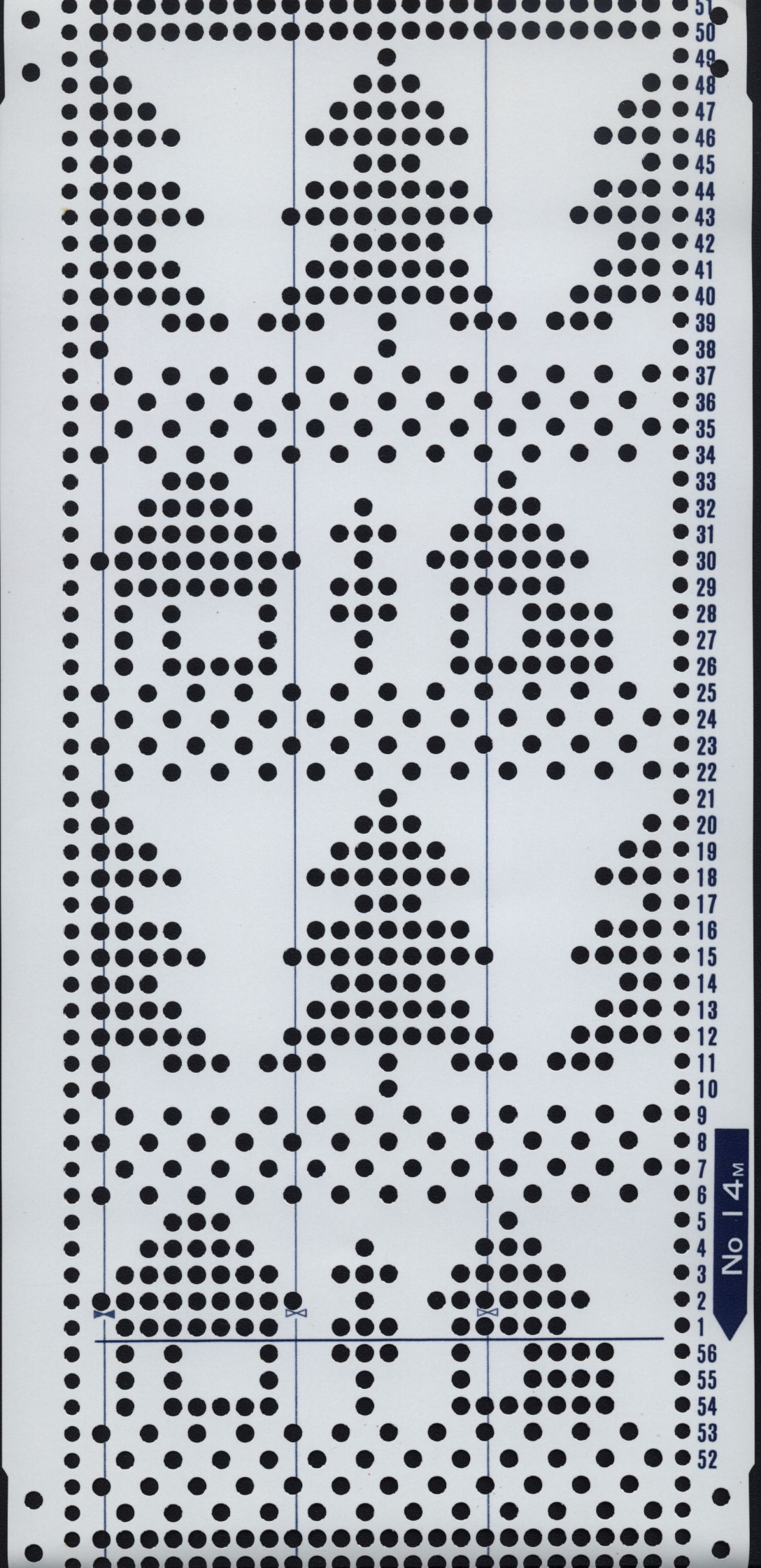


53
52
51
50
49
48
47
46
45
44
43
42
41
40
39
38
37
36
35
34
33
32
31
30
29
28
27
26
25
24
23
22
21
20





- 19
- 18
- 17
- 16
- 15
- 14
- 13
- 12
- 11
- 10
- 9
- 8
- 7
- 6
- 5
- 4
- 3
- 2
- 1
- 58
- 57
- 56
- 55
- 54

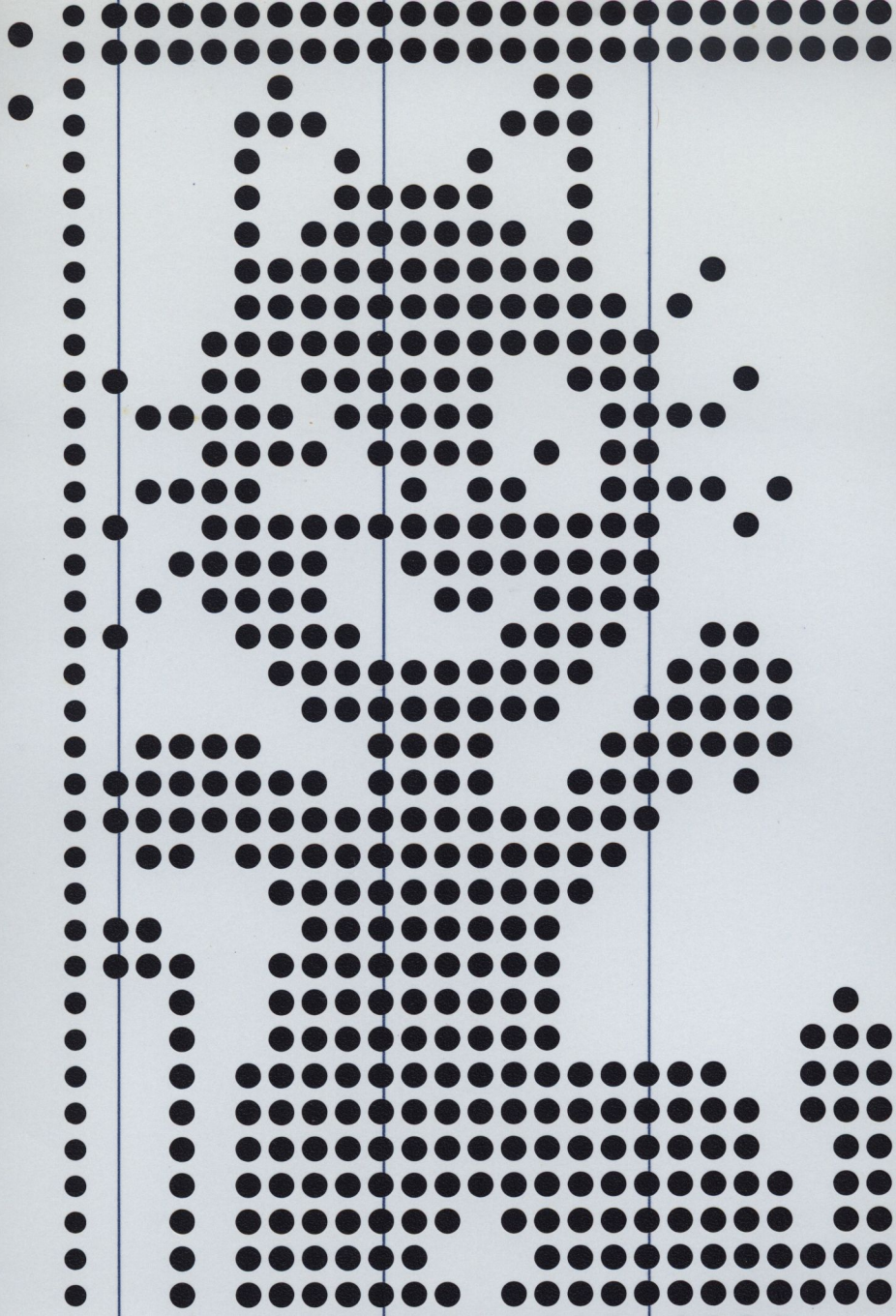


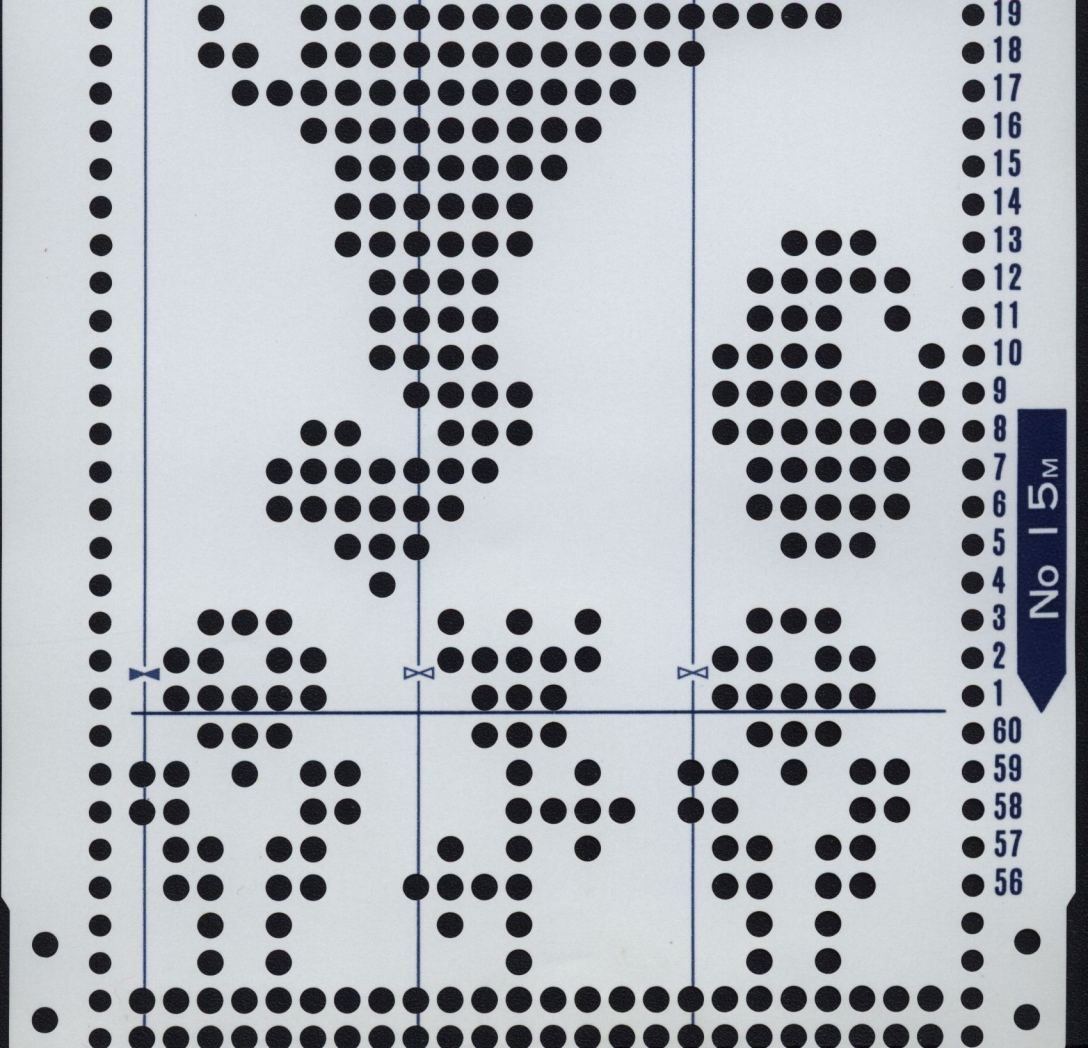
51
50
49
48
47
46
45
44
43
42
41
40
39
38
37
36
35
34
33
32
31
30
29
28
27
26
25
24
23
22
21
20
19
18
17
16
15
14
13
12
11
10
9
8
7
6
5
4
3
2
1
56
55
54
53
52

No 14^M



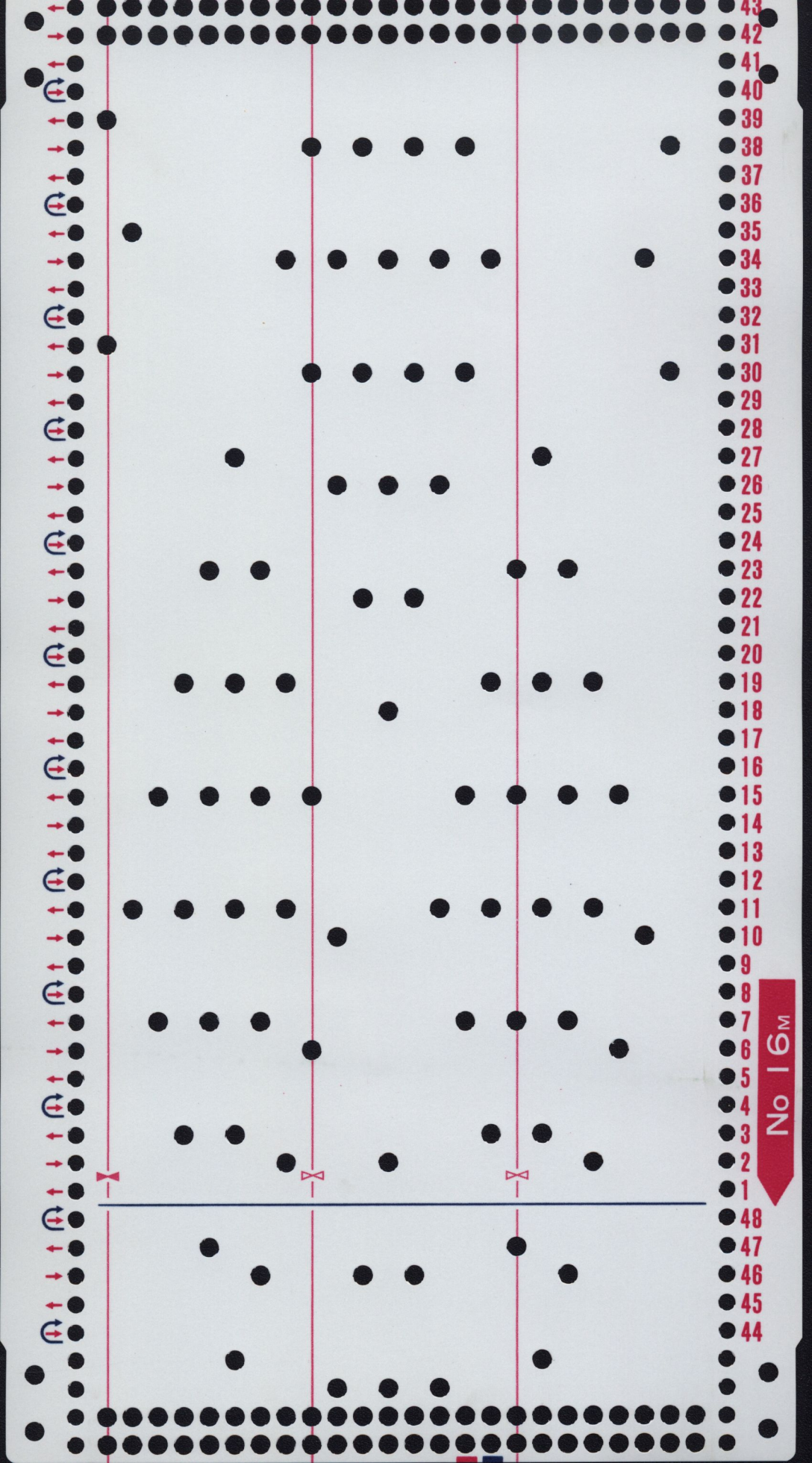
55
54
53
52
51
50
49
48
47
46
45
44
43
42
41
40
39
38
37
36
35
34
33
32
31
30
29
28
27
26
25
24
23
22
21
20





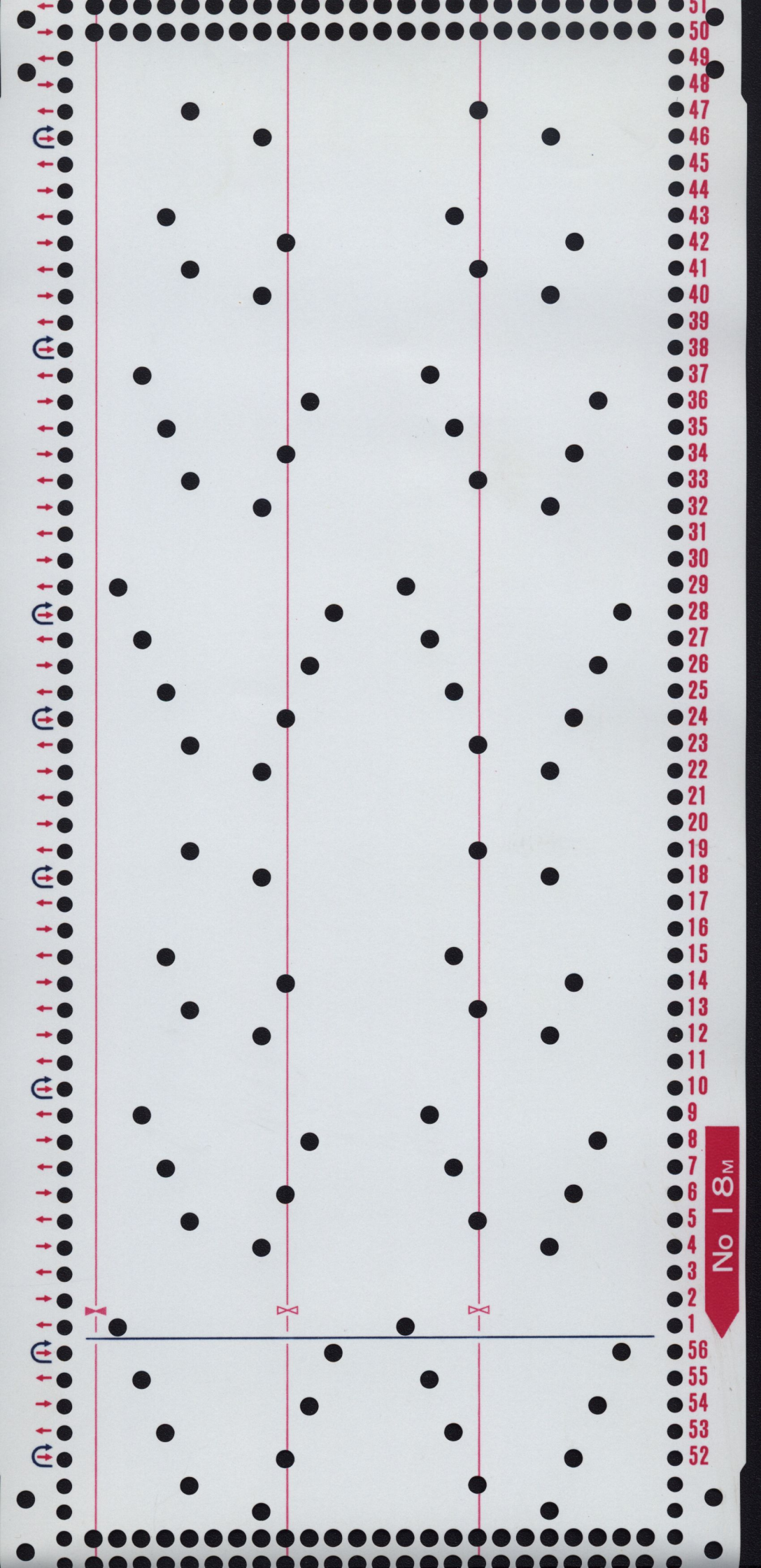
No 15M

- 19
- 18
- 17
- 16
- 15
- 14
- 13
- 12
- 11
- 10
- 9
- 8
- 7
- 6
- 5
- 4
- 3
- 2
- 1
- 60
- 59
- 58
- 57
- 56



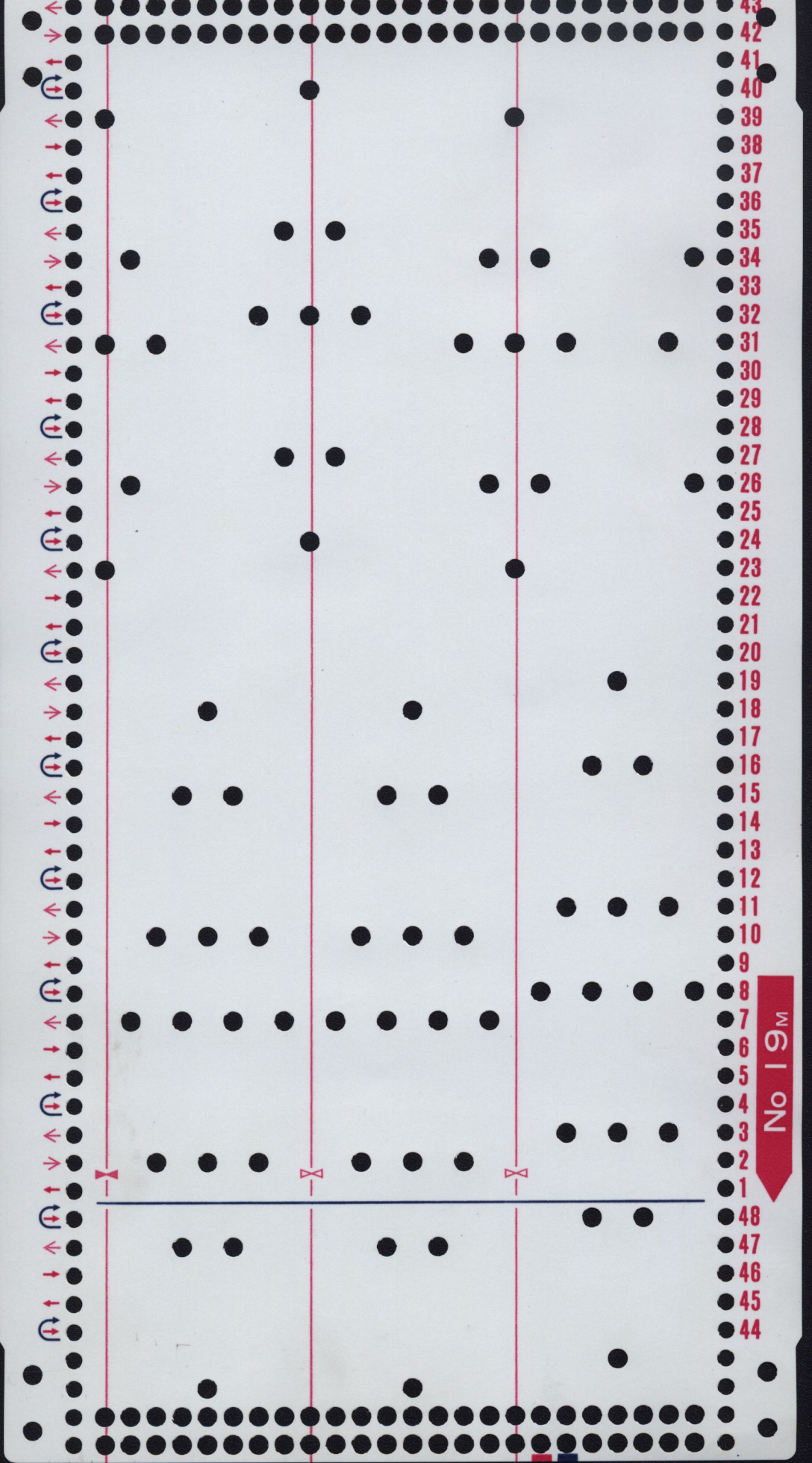
No 16M

43
42
41
40
39
38
37
36
35
34
33
32
31
30
29
28
27
26
25
24
23
22
21
20
19
18
17
16
15
14
13
12
11
10
9
8
7
6
5
4
3
2
1
48
47
46
45
44



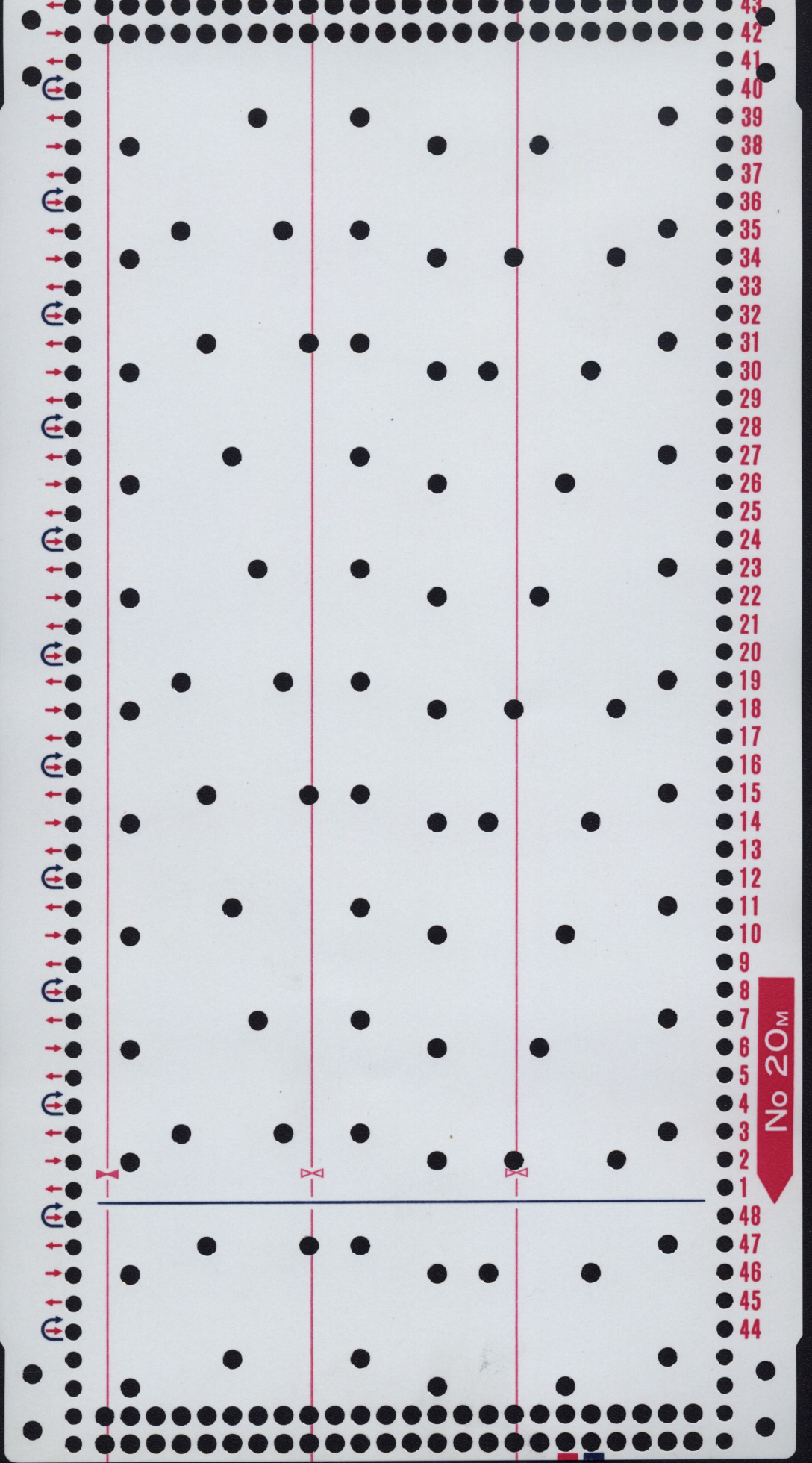
No 18^M

- 50
- 49
- 48
- 47
- 46
- 45
- 44
- 43
- 42
- 41
- 40
- 39
- 38
- 37
- 36
- 35
- 34
- 33
- 32
- 31
- 30
- 29
- 28
- 27
- 26
- 25
- 24
- 23
- 22
- 21
- 20
- 19
- 18
- 17
- 16
- 15
- 14
- 13
- 12
- 11
- 10
- 9
- 8
- 7
- 6
- 5
- 4
- 3
- 2
- 1
- 56
- 55
- 54
- 53
- 52



No 19M

- 43
- 42
- 41
- 40
- 39
- 38
- 37
- 36
- 35
- 34
- 33
- 32
- 31
- 30
- 29
- 28
- 27
- 26
- 25
- 24
- 23
- 22
- 21
- 20
- 19
- 18
- 17
- 16
- 15
- 14
- 13
- 12
- 11
- 10
- 9
- 8
- 7
- 6
- 5
- 4
- 3
- 2
- 1
- 48
- 47
- 46
- 45
- 44



No 20M

- 43
- 42
- 41
- 40
- 39
- 38
- 37
- 36
- 35
- 34
- 33
- 32
- 31
- 30
- 29
- 28
- 27
- 26
- 25
- 24
- 23
- 22
- 21
- 20
- 19
- 18
- 17
- 16
- 15
- 14
- 13
- 12
- 11
- 10
- 9
- 8
- 7
- 6
- 5
- 4
- 3
- 2
- 1
- 48
- 47
- 46
- 45
- 44