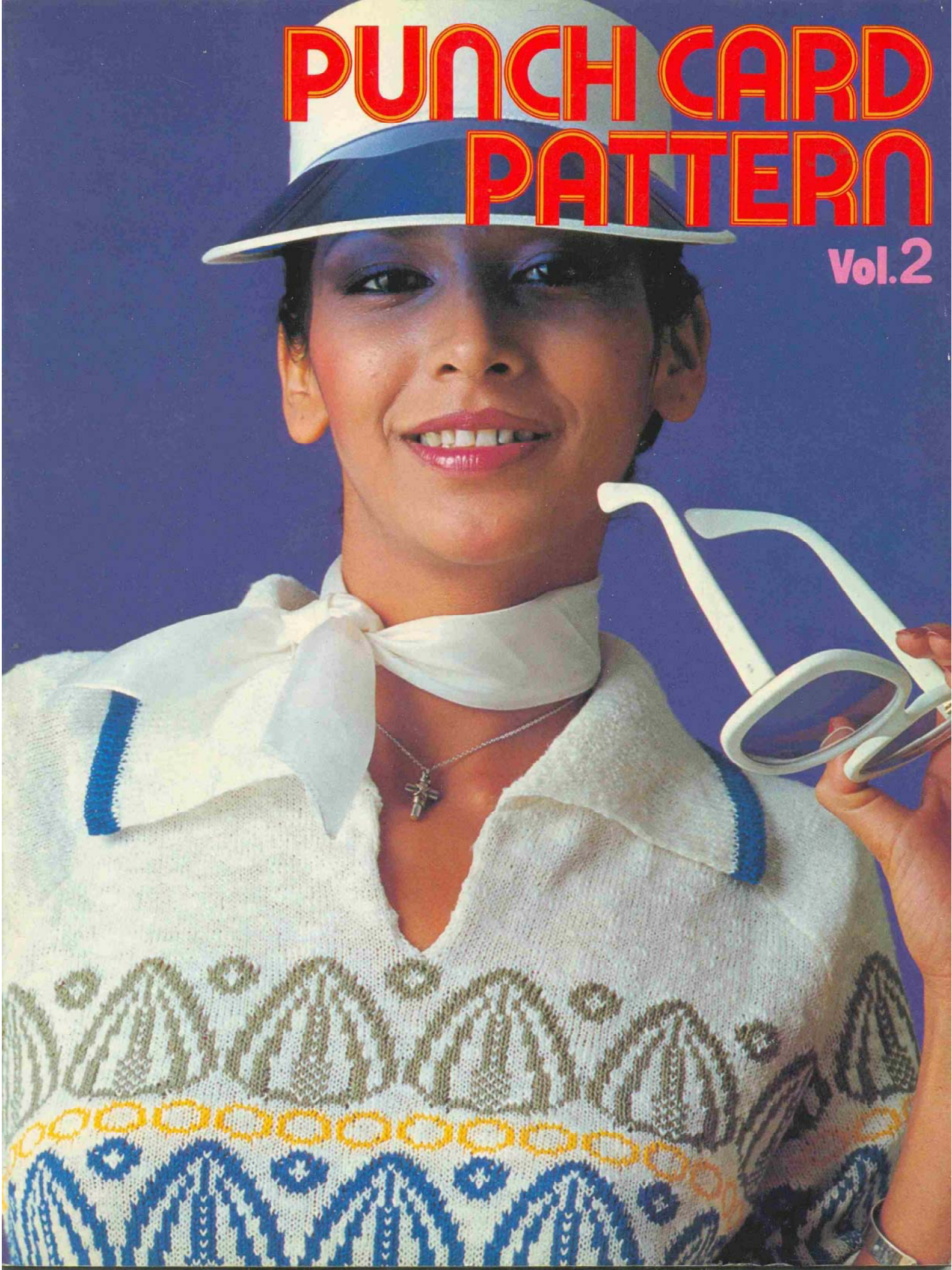
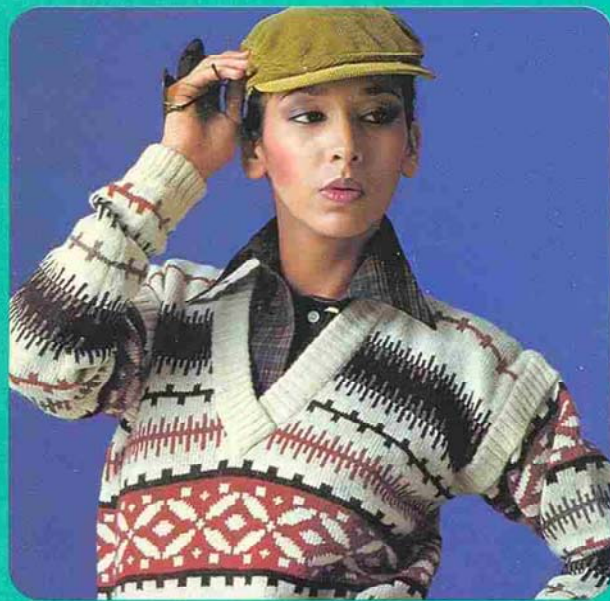


PUNCH CARD PATTERN

Vol.2





brother®
486431001 Printed in Japan



PUNCH CARD PATTERN Vol.2

This volume contains Fine lace, Multi-colour fair-isle, Multi-colour skip stitch and Multi-colour tuck stitch patterns.

The multi-colour fair-isle patterns are particularly prepared for use with the colour changer for the knitter. To knit these patterns without a colour changer the perforations should be made in reverse order, i.e. make perforations for the contrast colour yarn only, not for the main colour yarn.

The fine-lace and the multi-colour fair-isle patterns (double length patterns) are particularly prepared for use with the knitter KH830.

MOTIFS DE CARTES PERFOREES Vol.2

Ce volume présente des motifs de dentelle, et les motifs jacquard, motifs à mailles sautées et motifs à mailles renversées de plusieurs couleurs.

Les motifs jacquard multicolores sont préparés particulièrement avec l'appareil changeur de couleur. Ces motifs peuvent être faits sans utiliser l'appareil "quatre couleurs" en faisant les perforations dans l'ordre inverse, c'est-à-dire en perforant pour les fils de couleur contraste seulement et non pour les fils de couleur principale.

Les motifs dentelle fine et jacquard multicolore (à double longueur) sont préparés particulièrement pour la machine KH830.

●INDEX●

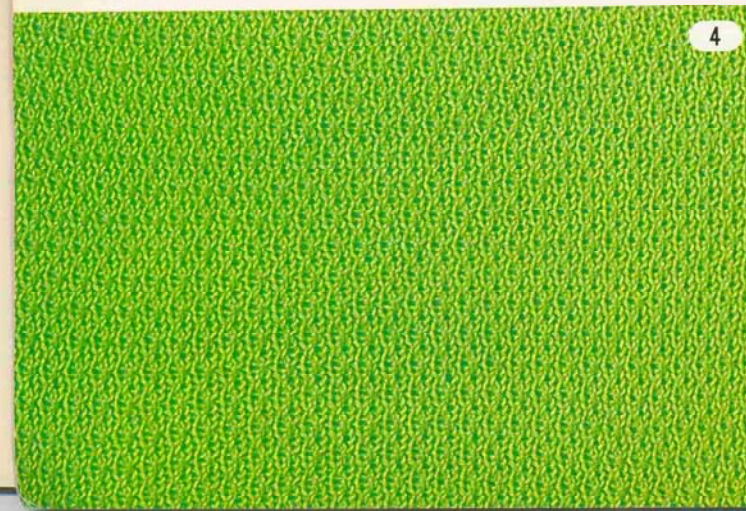
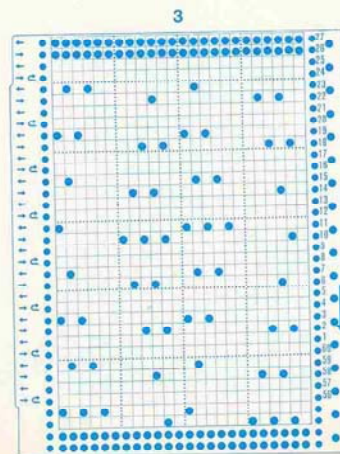
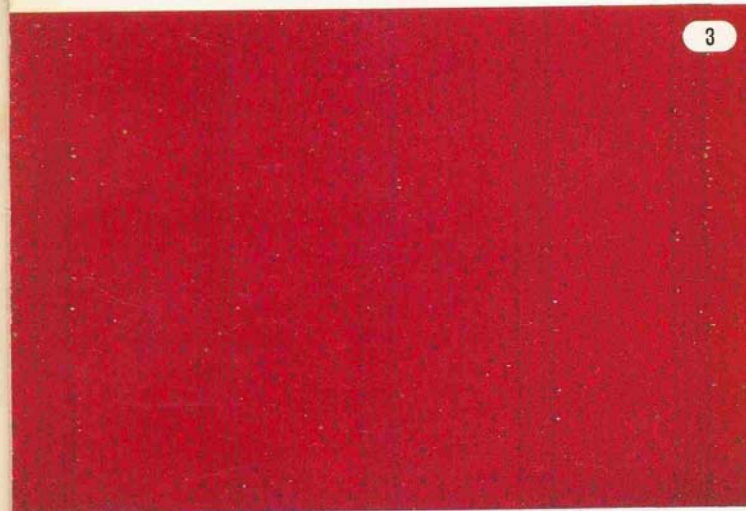
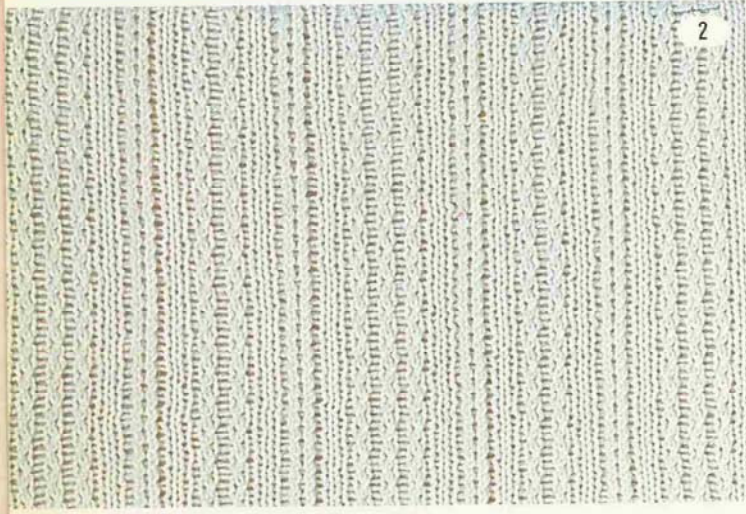
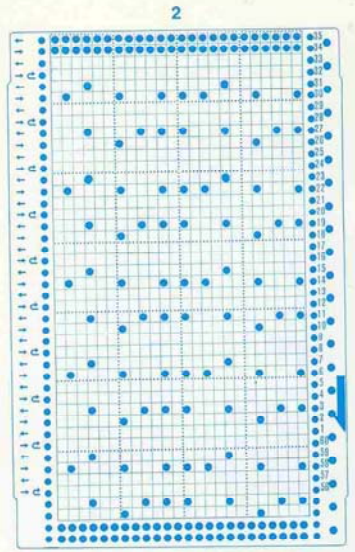
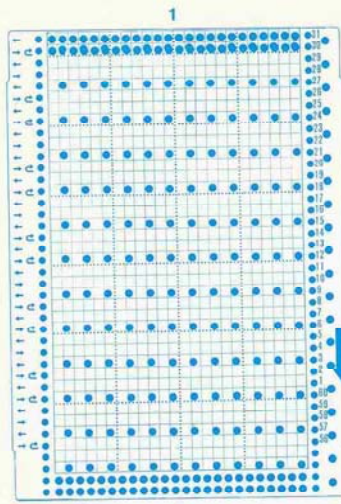
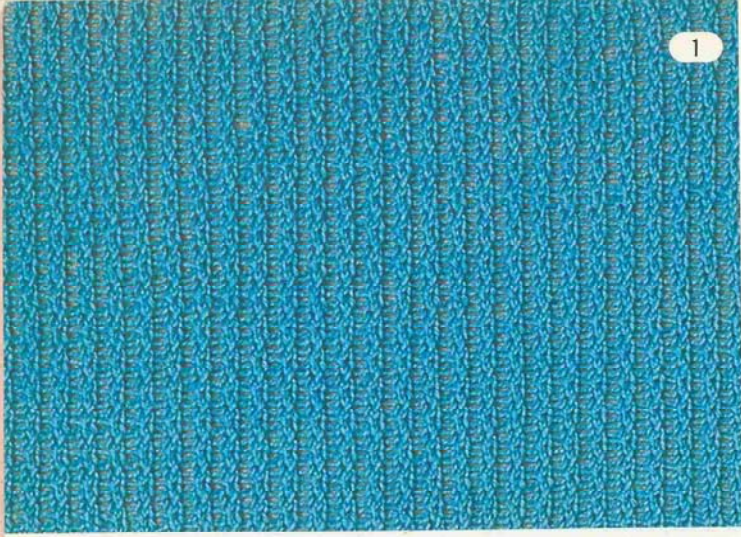
<i>FINE-LACE PATTERNS</i> <i>MOTIFS DE DENTELLE FINE</i>	5
<i>LACE PATTERNS</i> <i>MOTIFS DE DENTELLE</i>	20
<i>MULTI-COLOUR FAIR-ISLE PATTERNS</i> <i>MOTIFS JACQUARD MULTICOLORE</i>	22
<i>MULTI-COLOUR FAIR-ISLE PATTERNS (DOUBLE LENGTH PATTERNS)</i> <i>MOTIFS JACQUARD MULTICOLORE (MOTIFS SUR DEUX LONGUEURS)</i>	37
<i>MULTI-COLOUR SKIP STITCH PATTERNS</i> <i>MOTIFS A MALLES SAUTEES</i>	39
<i>MULTI-COLOUR TUCK STITCH PATTERNS</i> <i>MOTIFS A MALLES RENVERSEES</i>	40



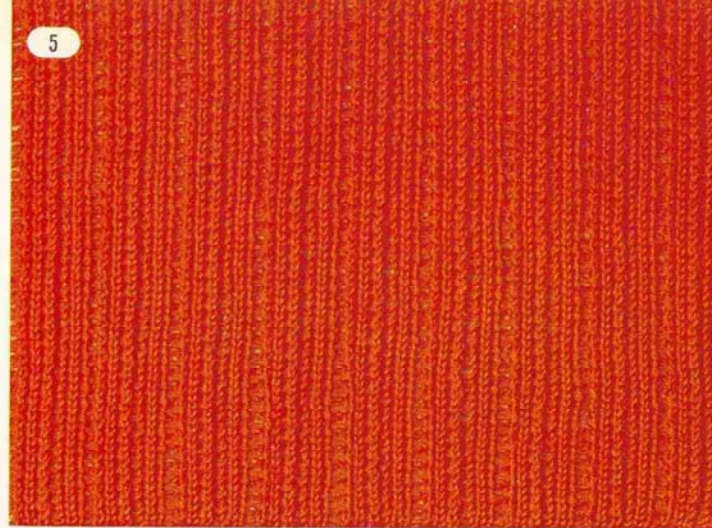
FINE LACE PATTERNS



◎タックレース模様◎
design by KEIKO KANETA



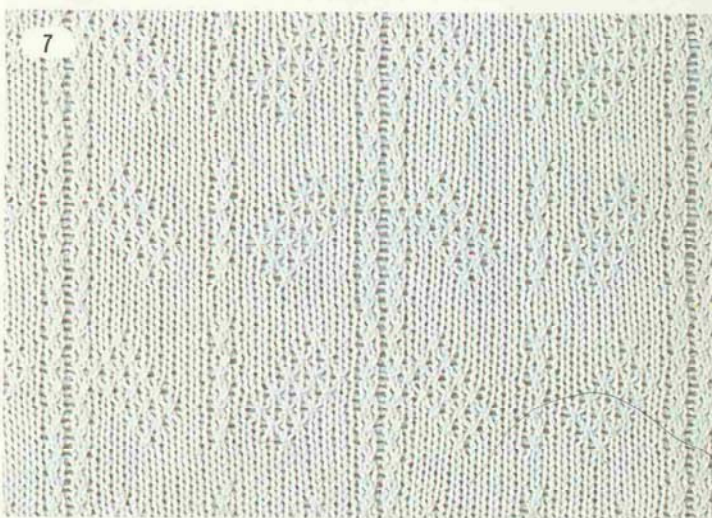
5



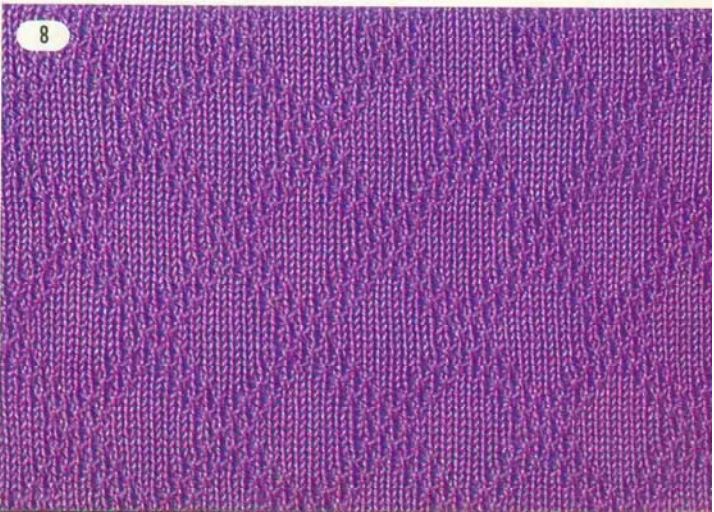
6



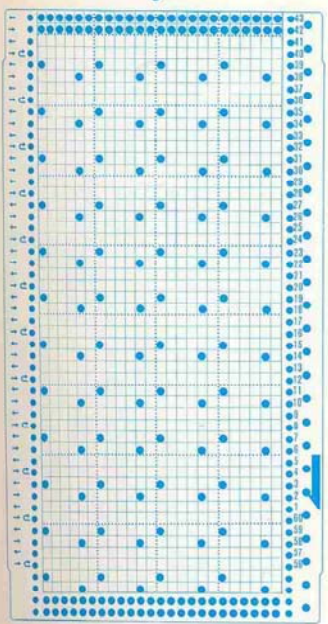
7



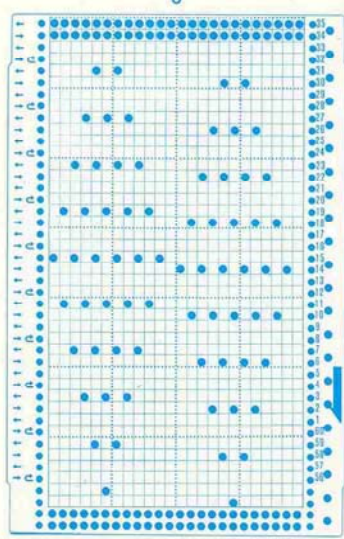
8



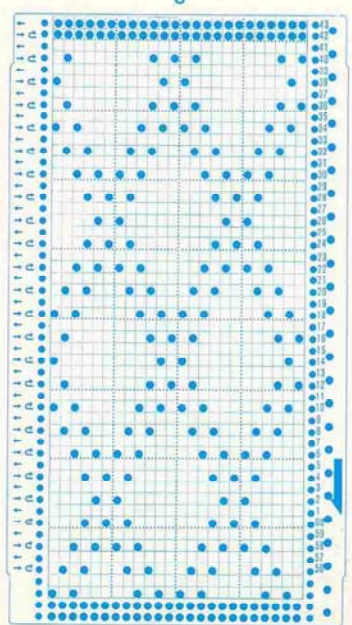
5



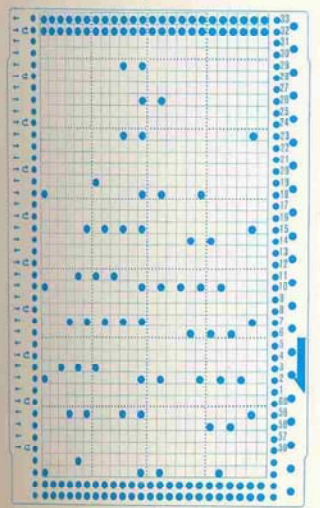
6

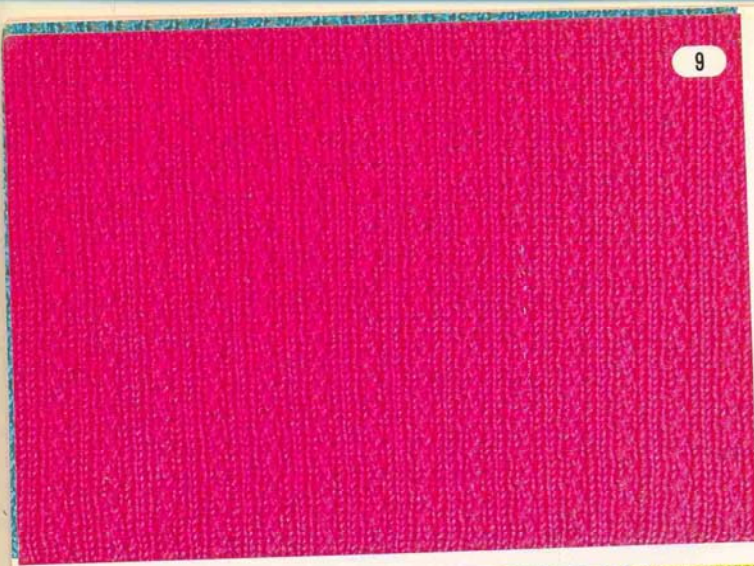


8

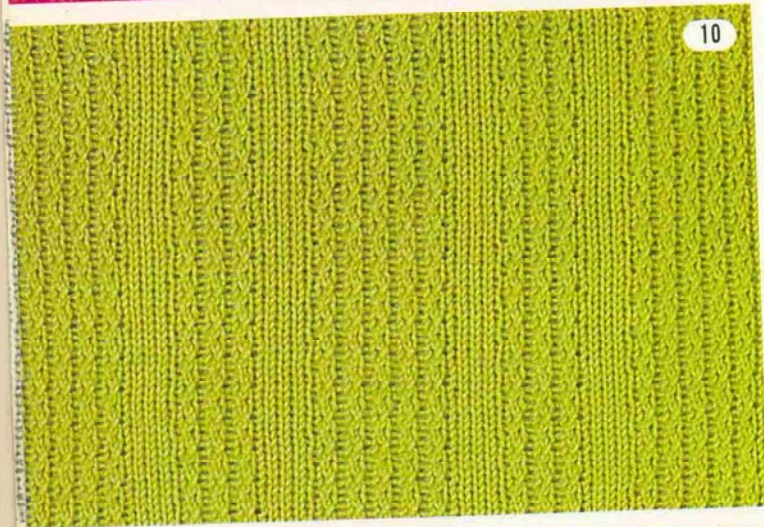


7

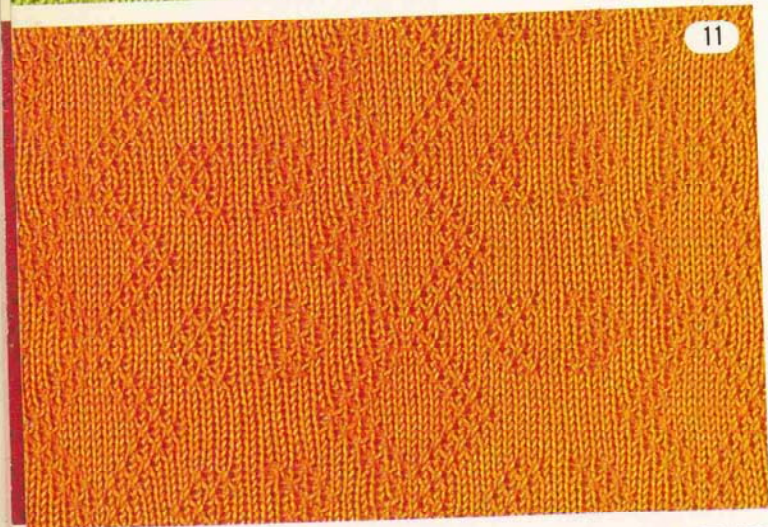




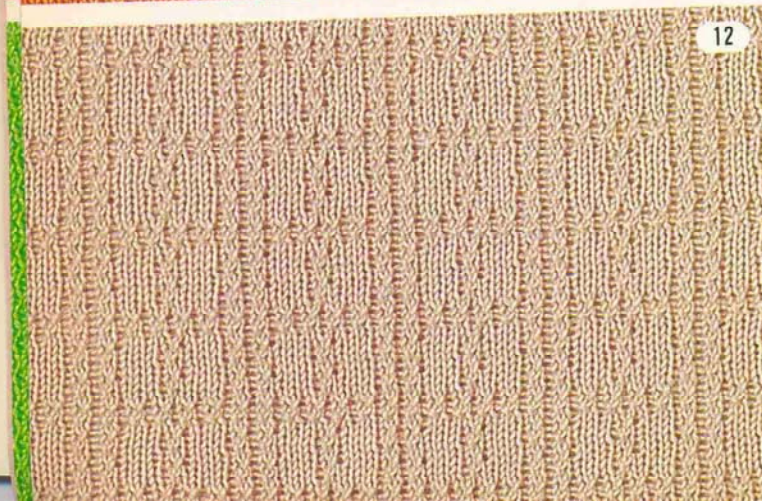
9



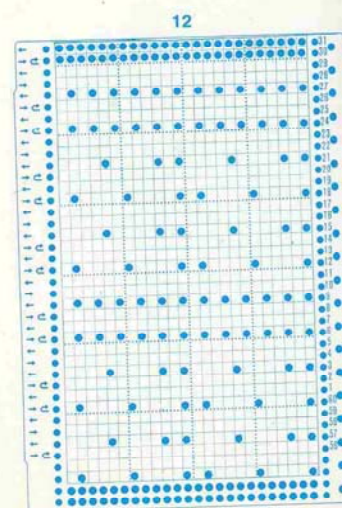
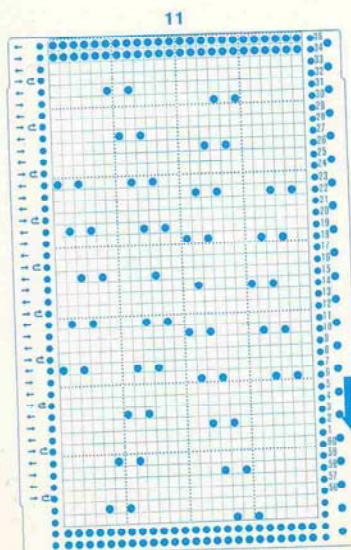
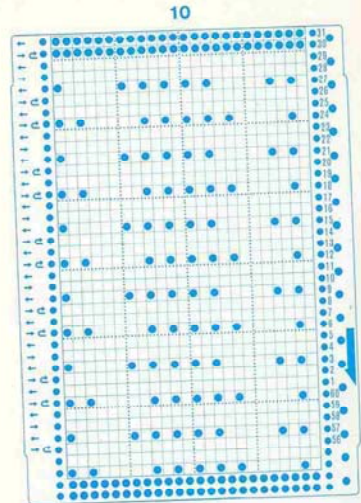
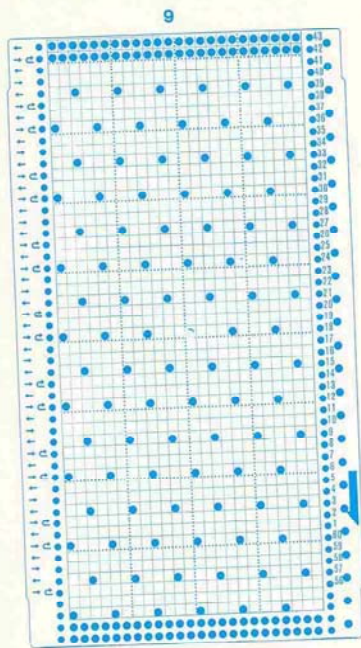
10



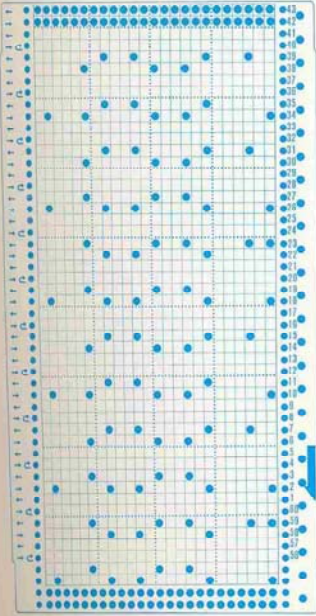
11



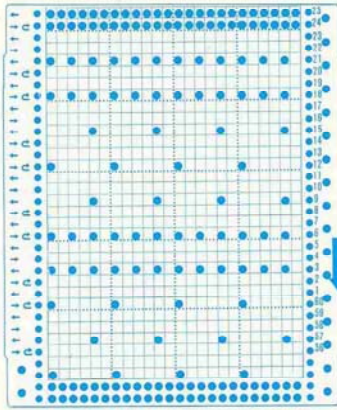
12



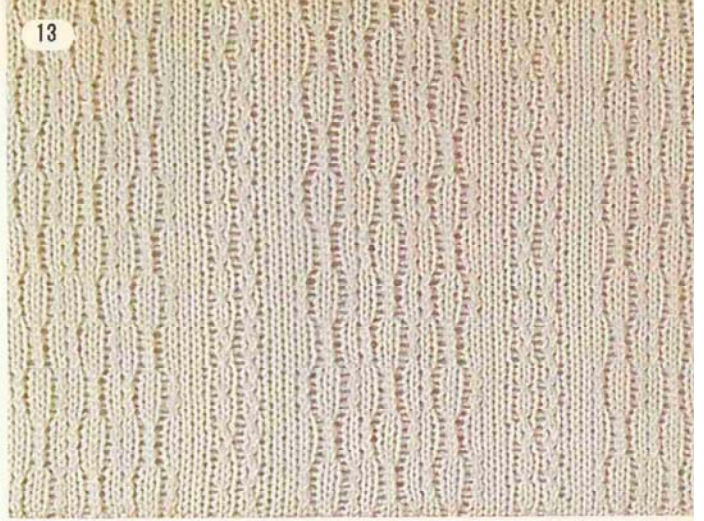
13



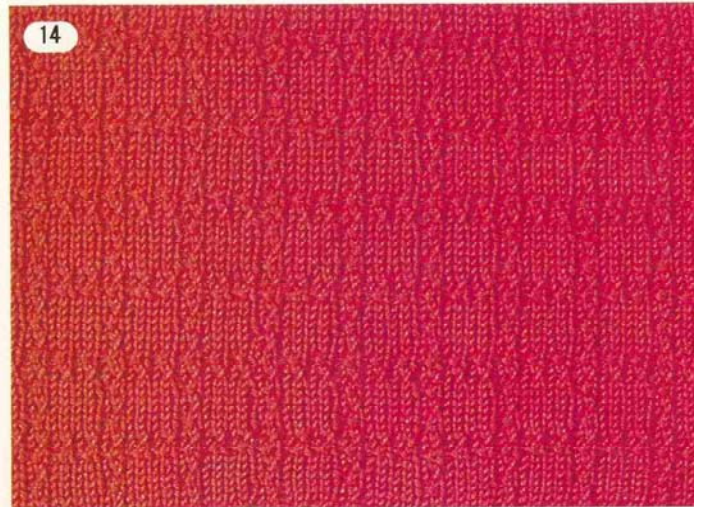
14



13

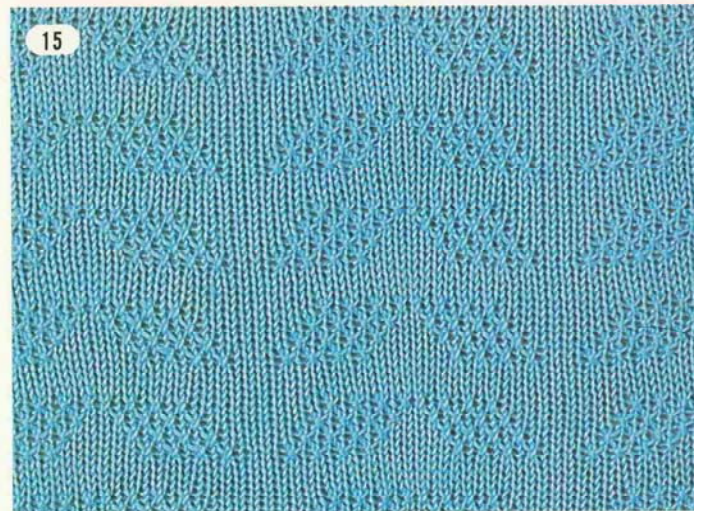


14

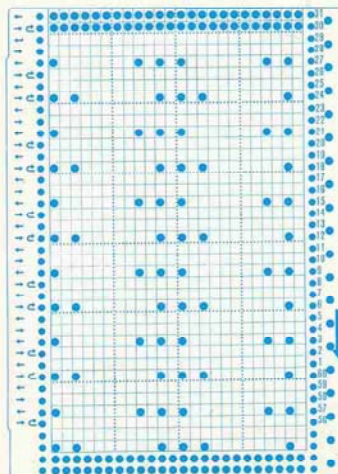


15

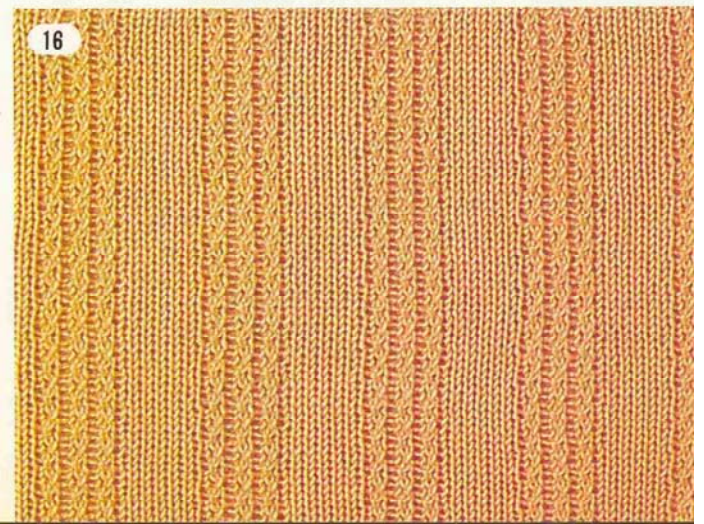
15



16

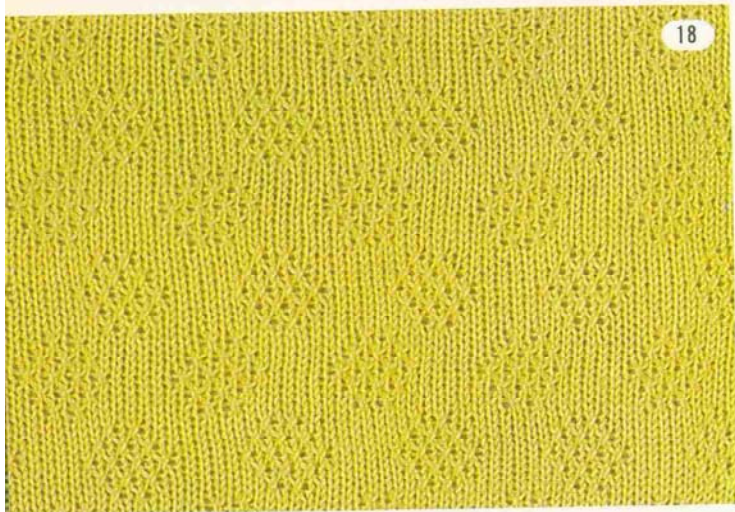


16

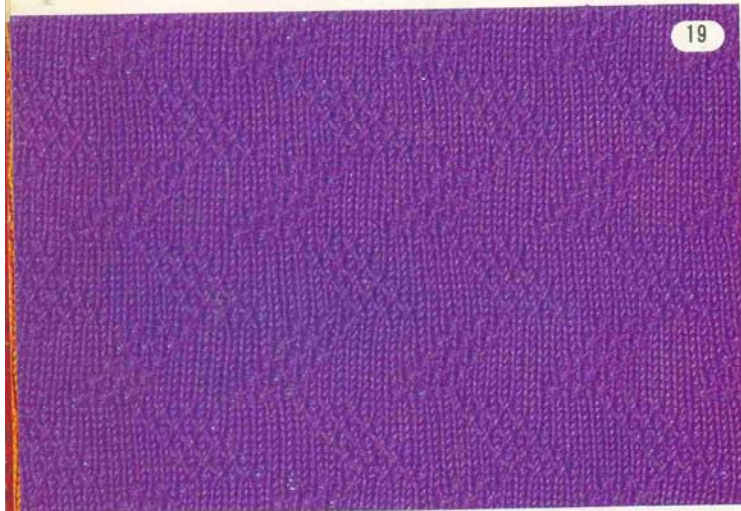




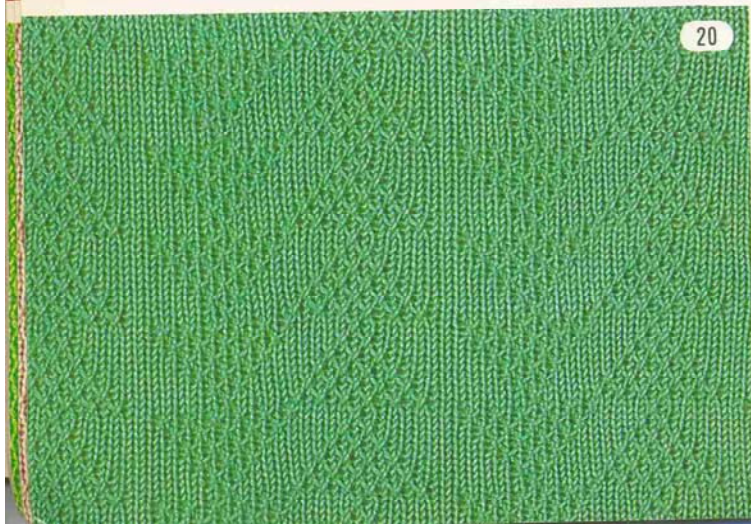
17



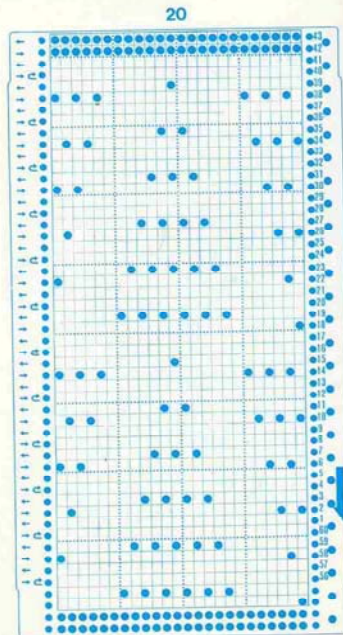
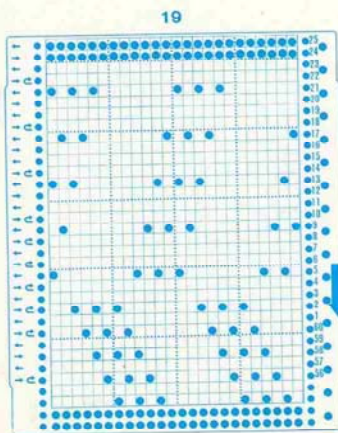
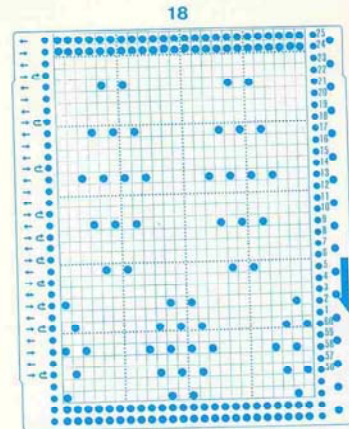
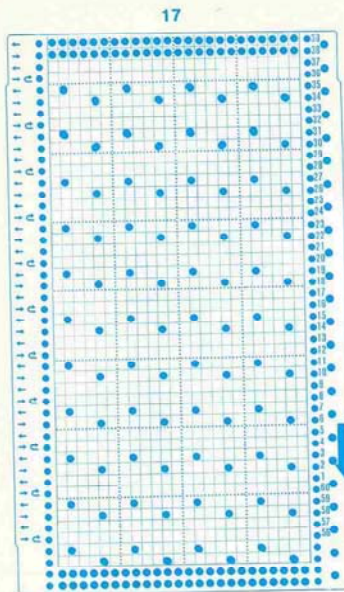
18



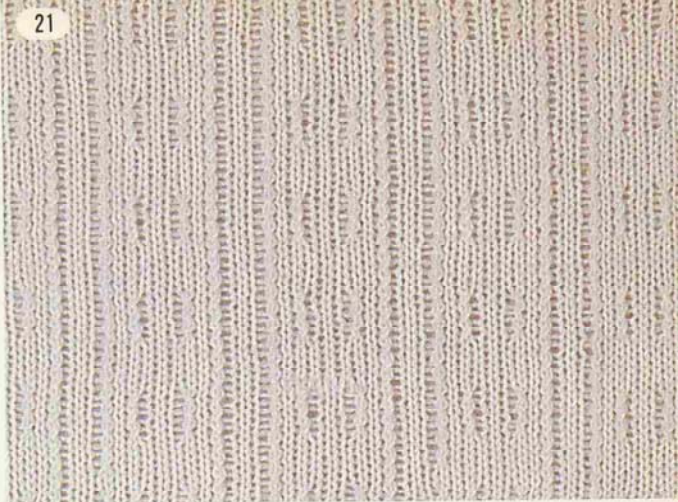
19



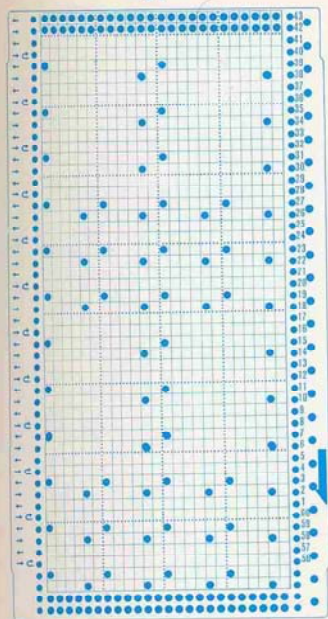
20



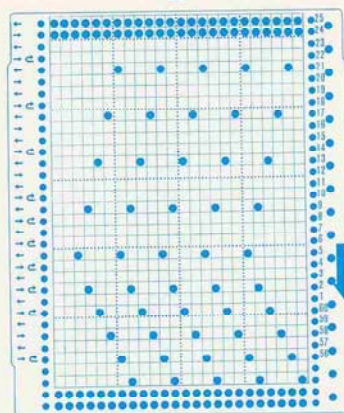
21



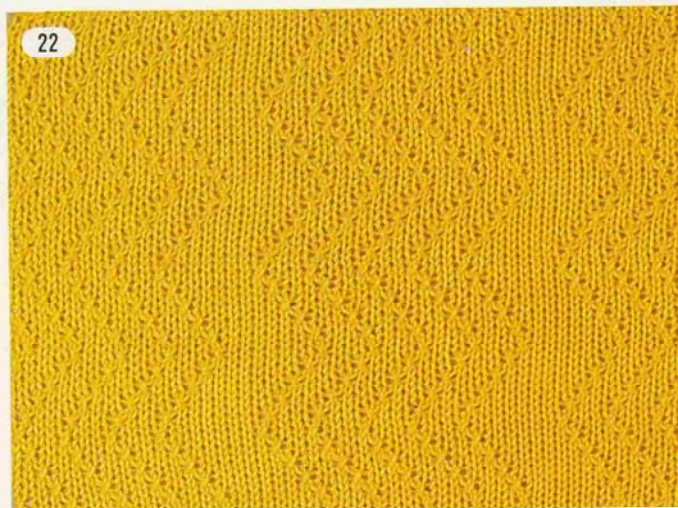
21



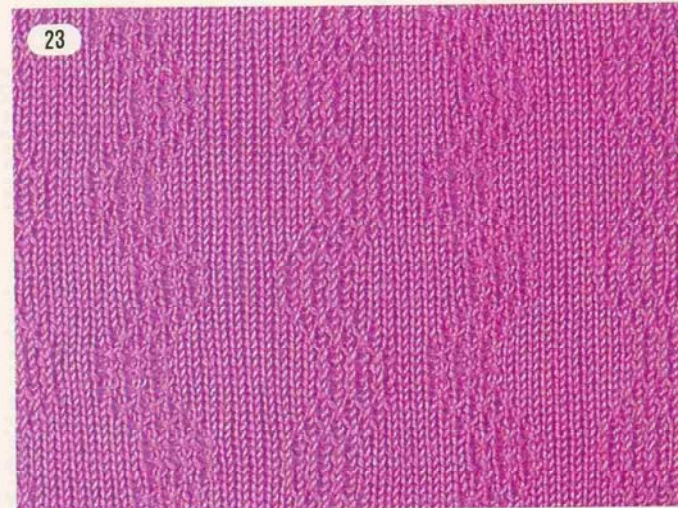
22



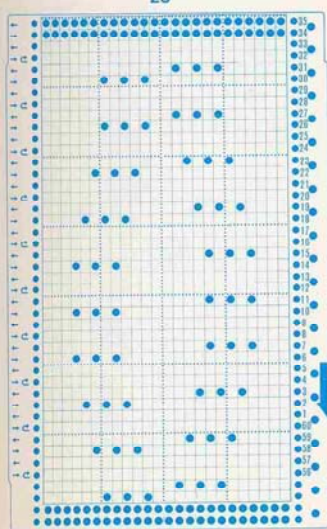
22



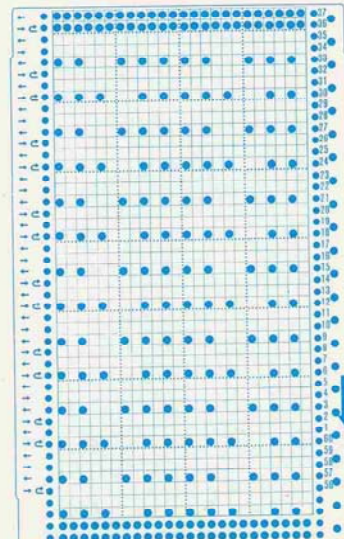
23



23

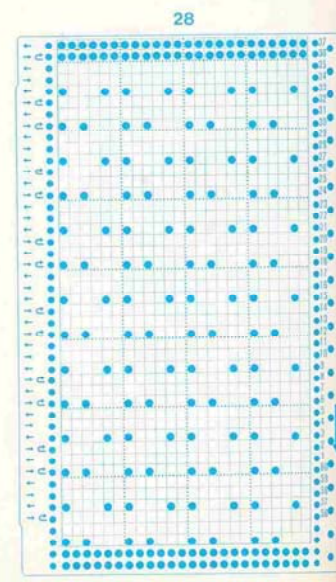
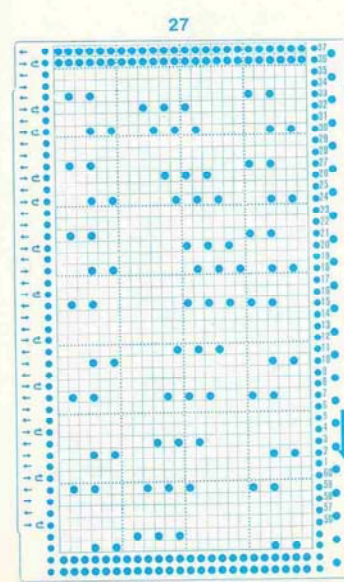
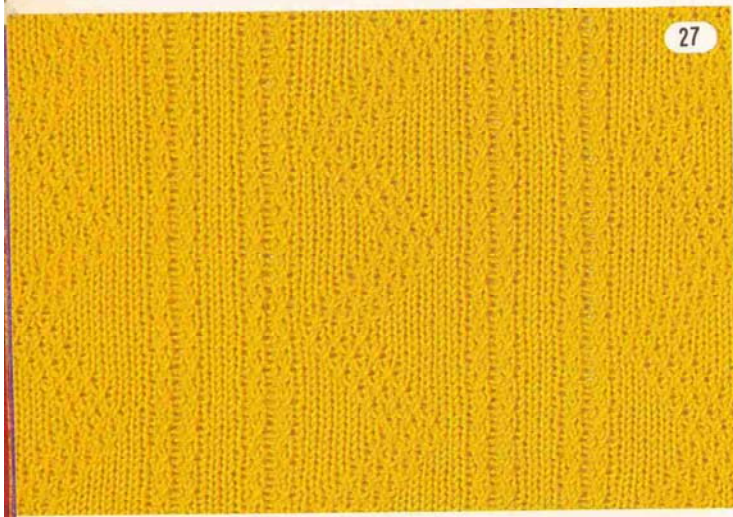
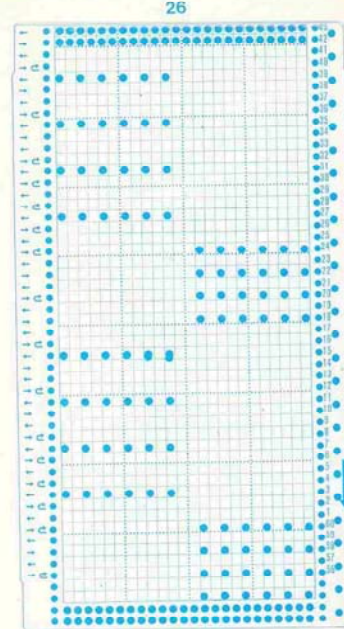
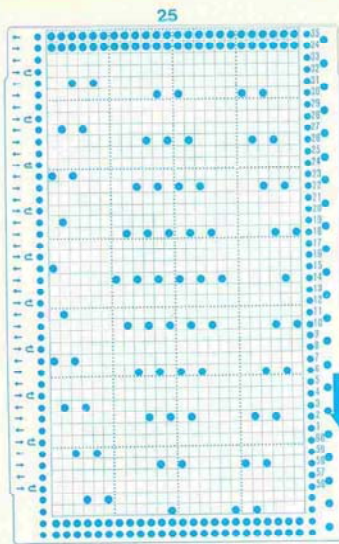
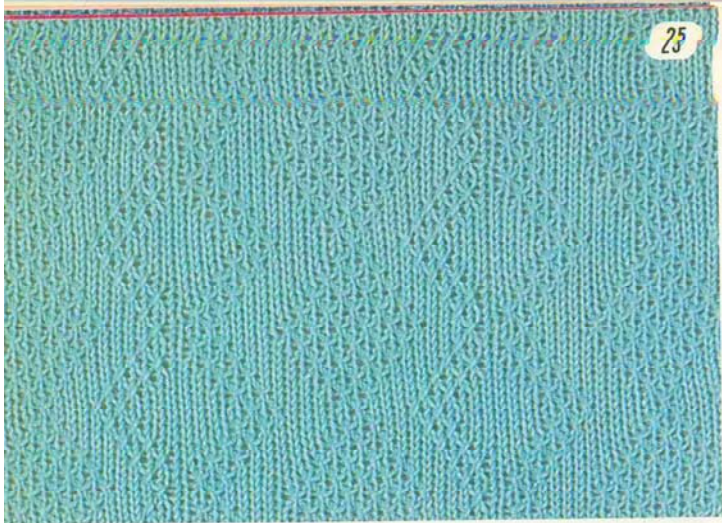


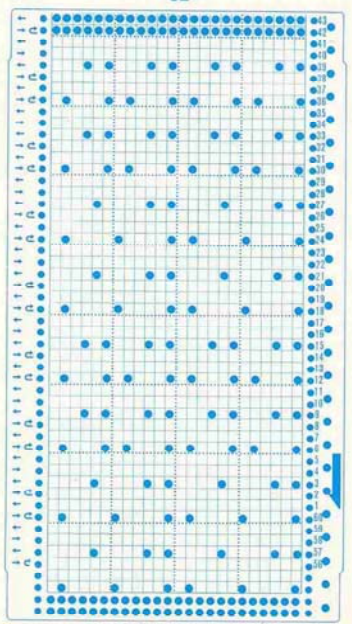
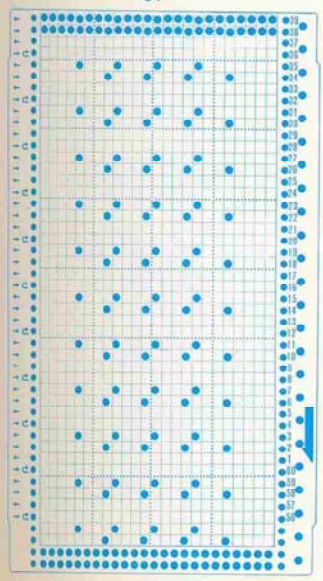
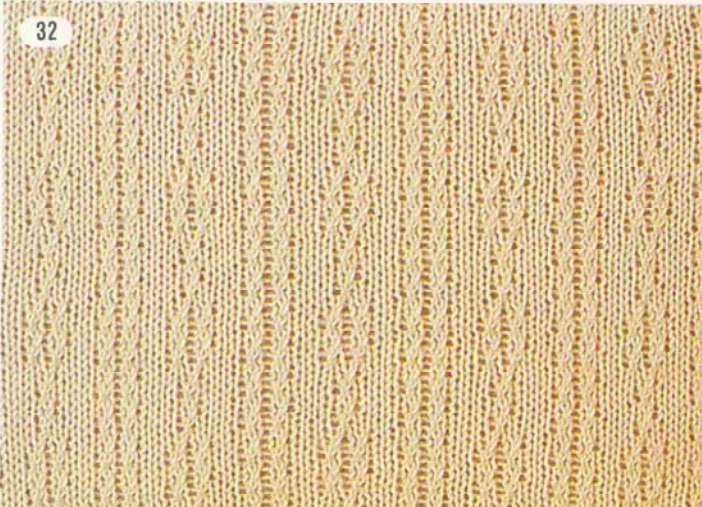
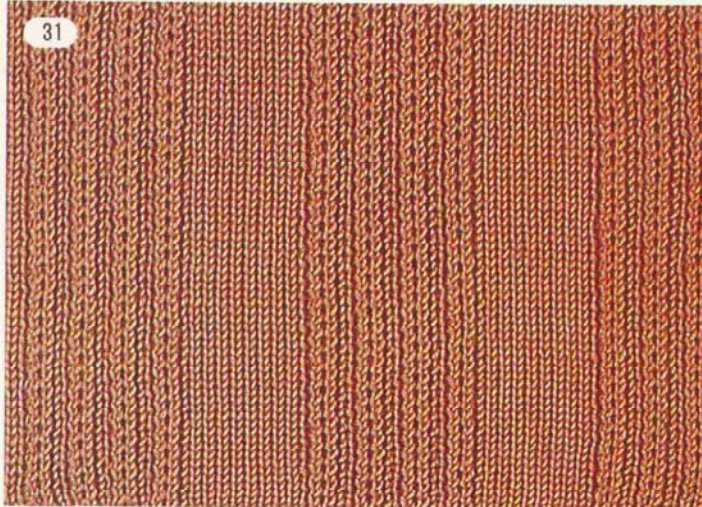
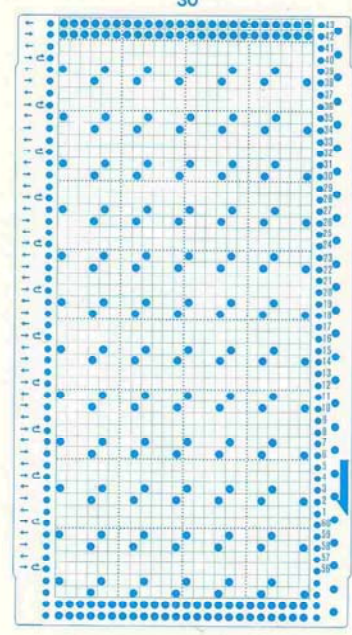
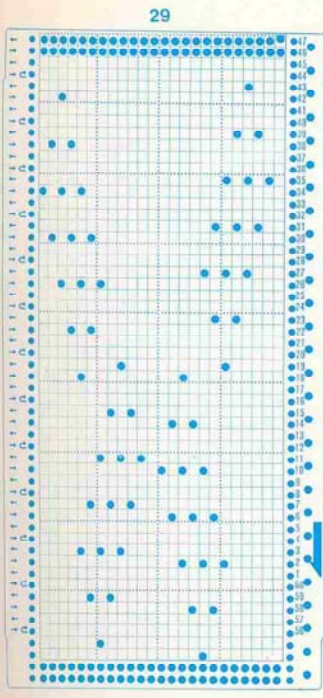
24

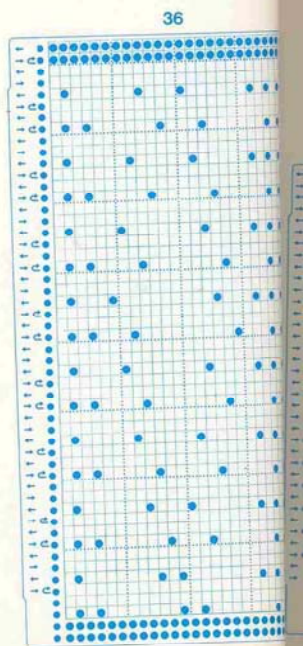
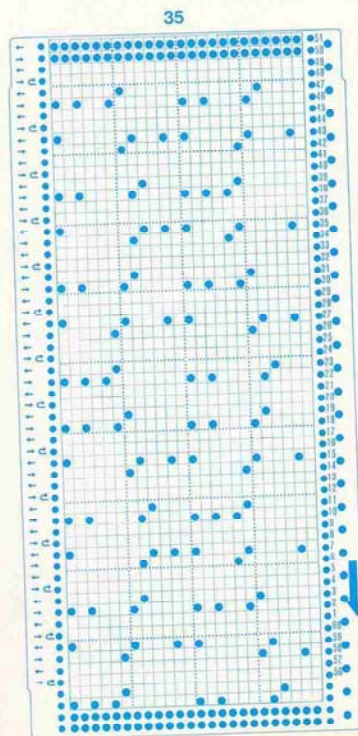
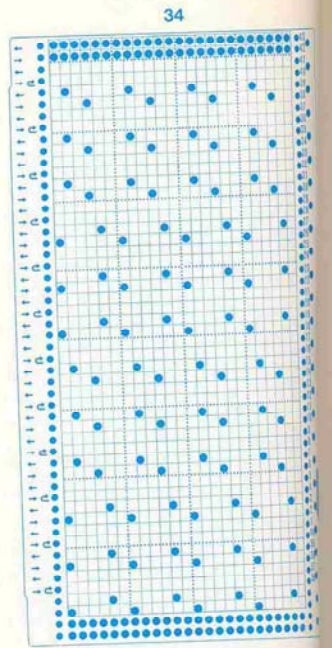
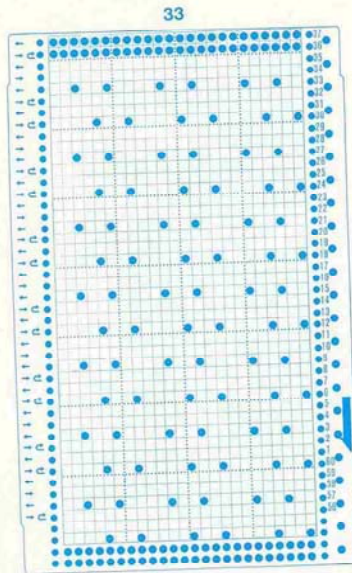
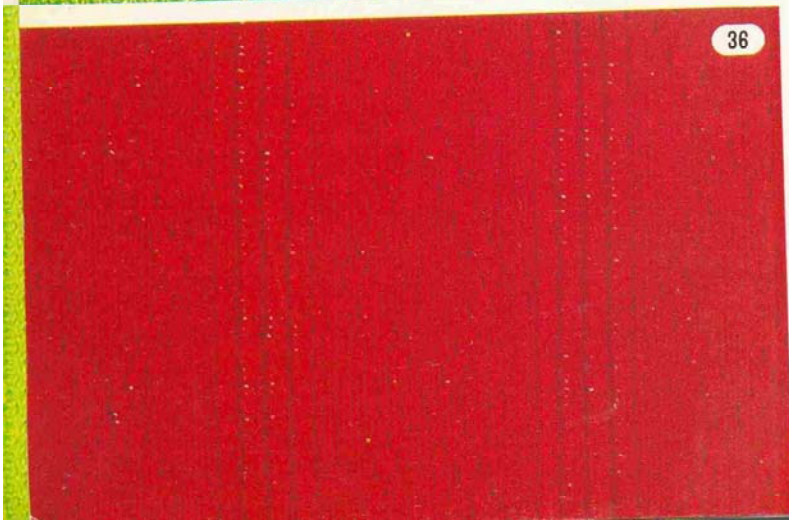
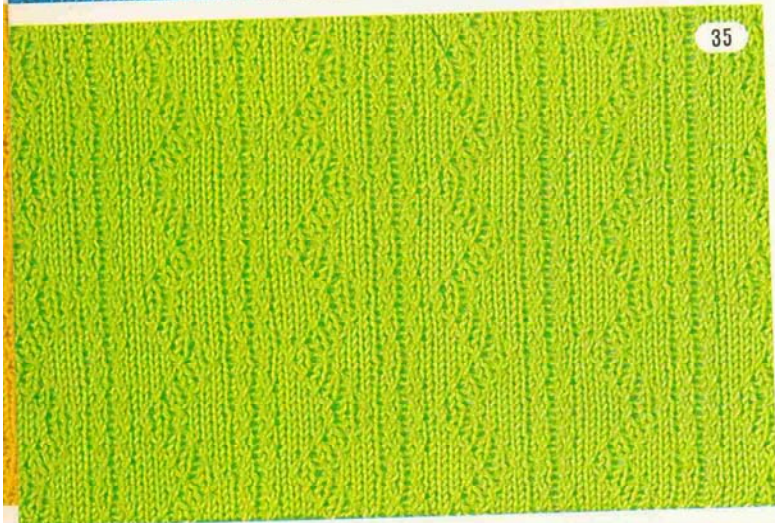
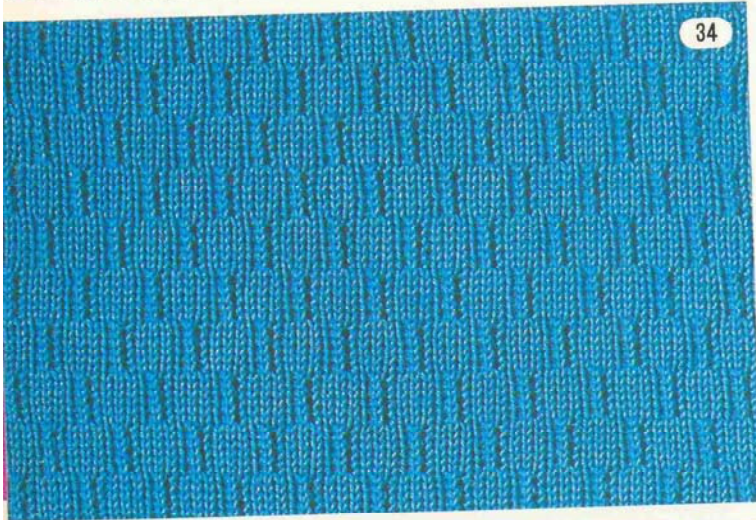
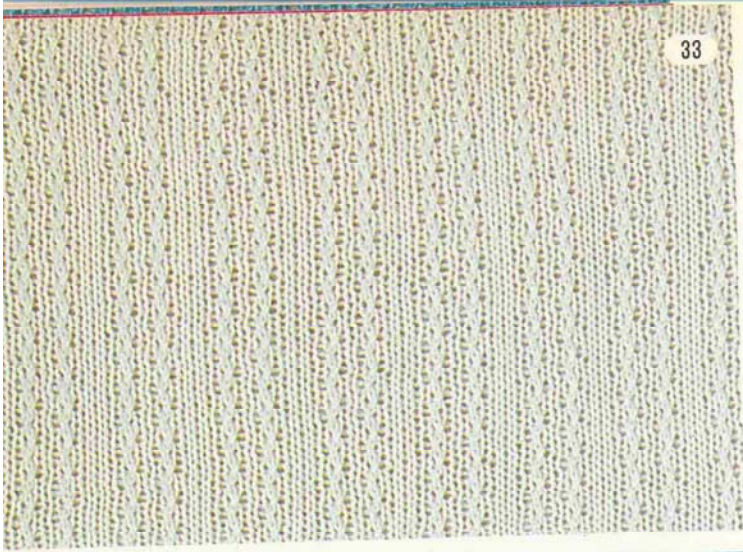


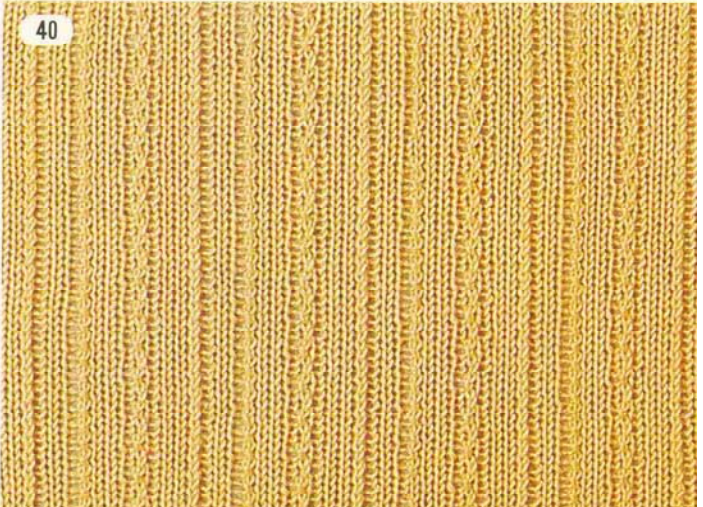
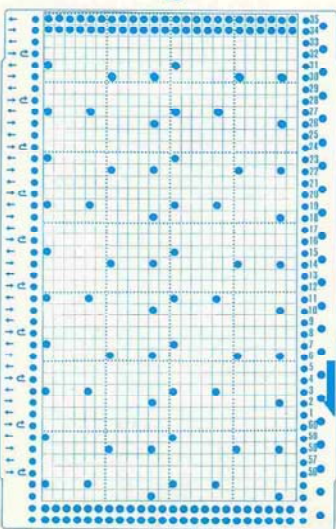
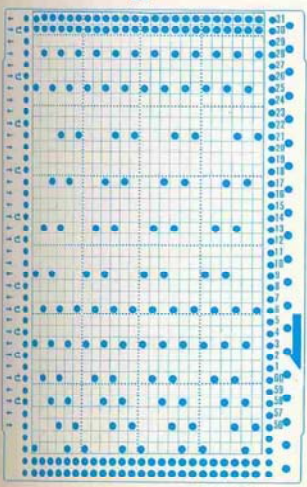
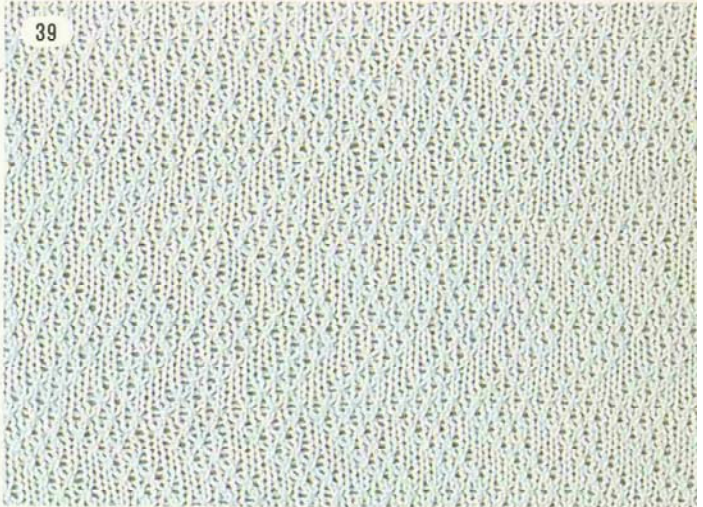
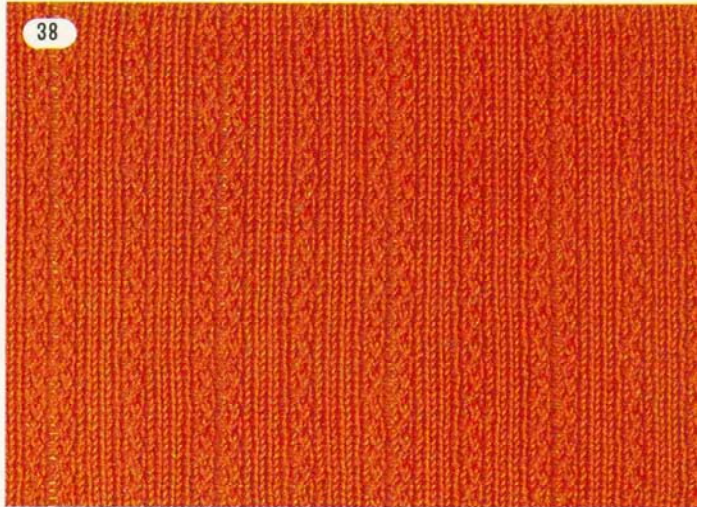
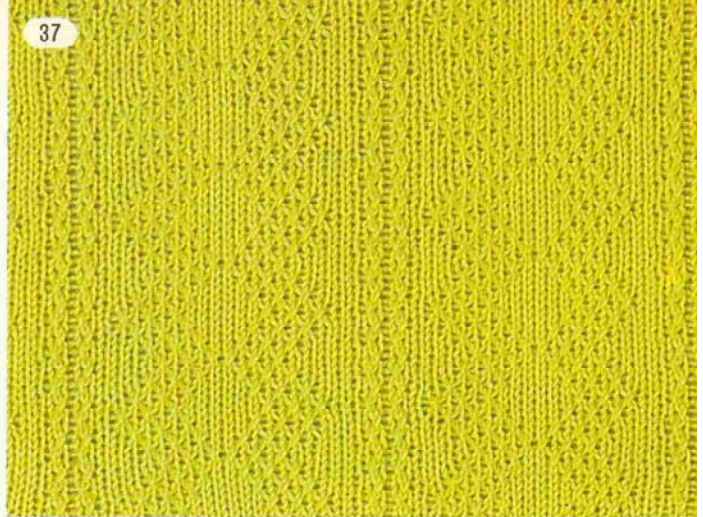
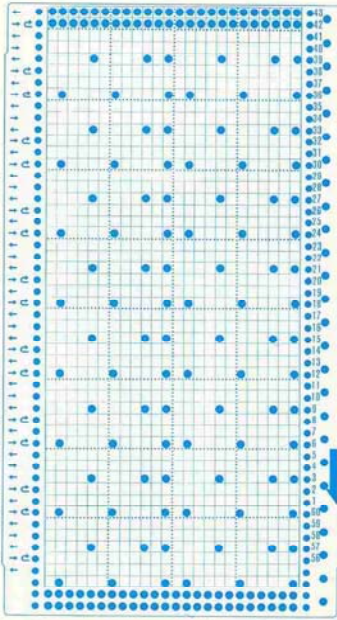
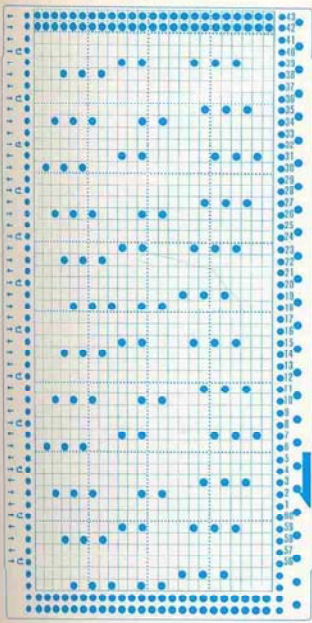
24

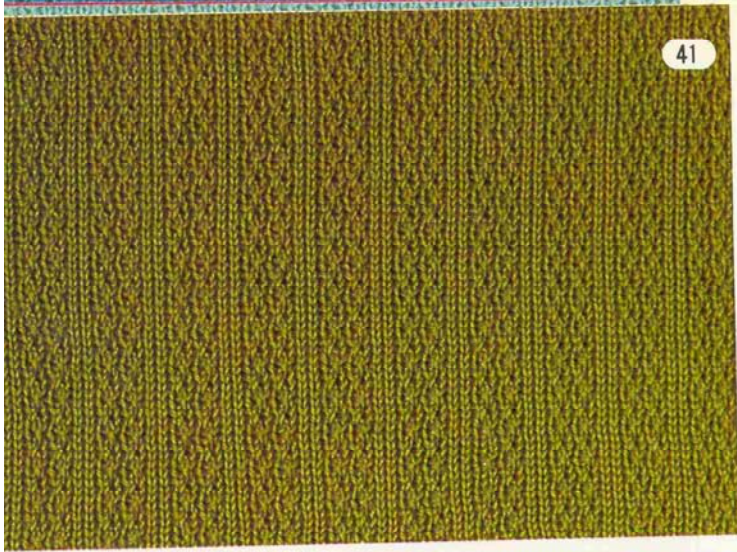




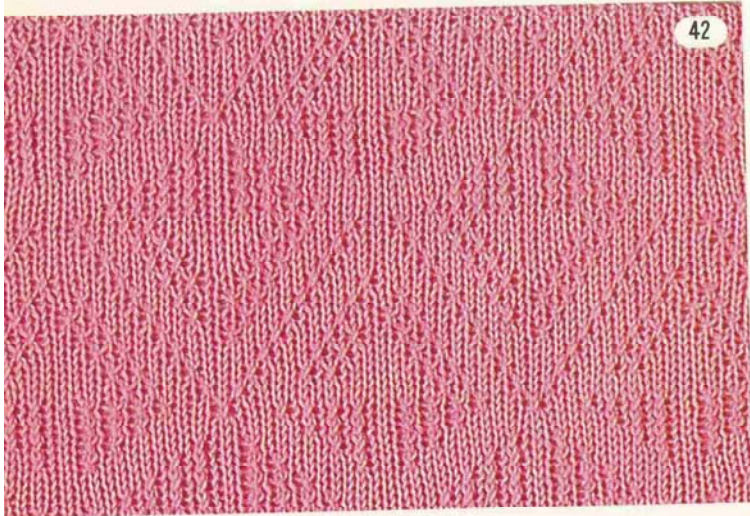




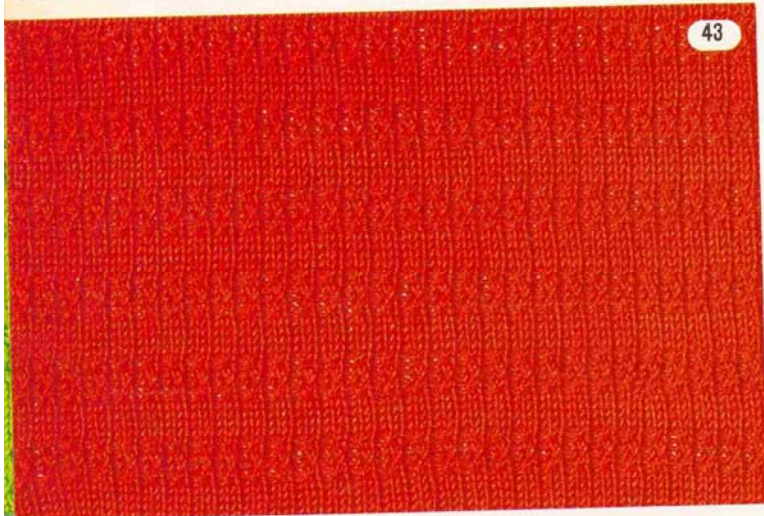




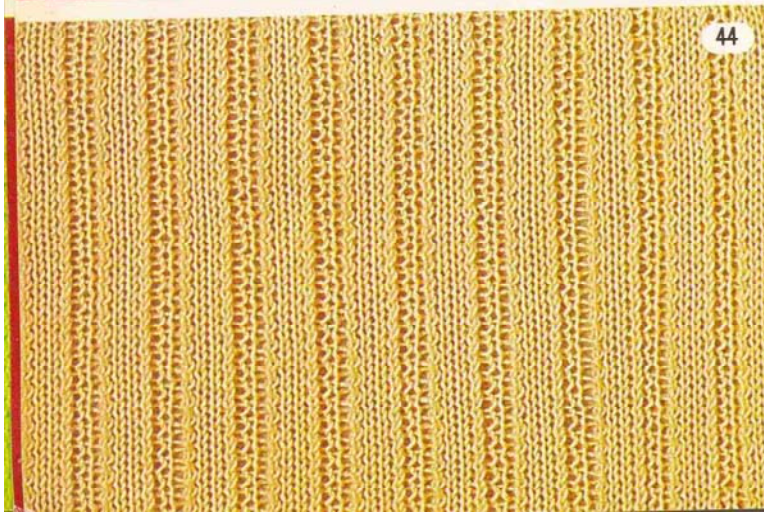
41



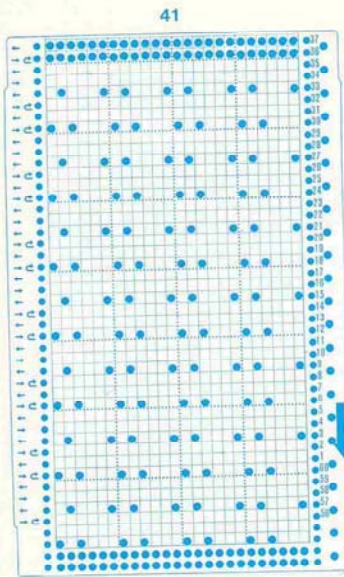
42



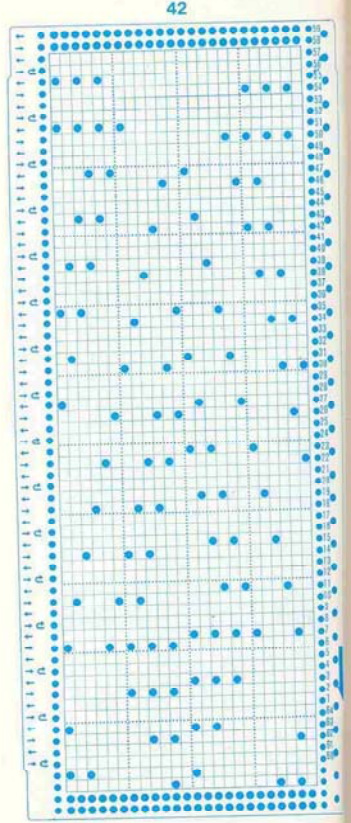
43



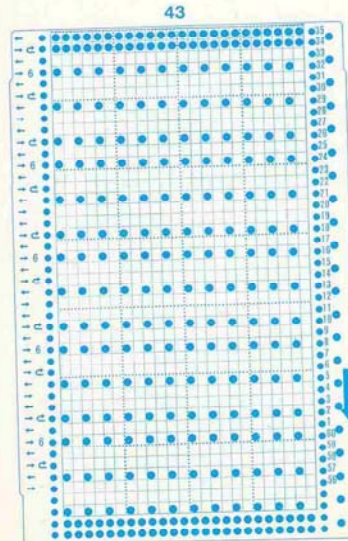
44



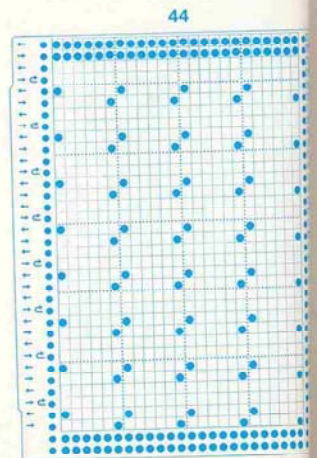
41



42



43

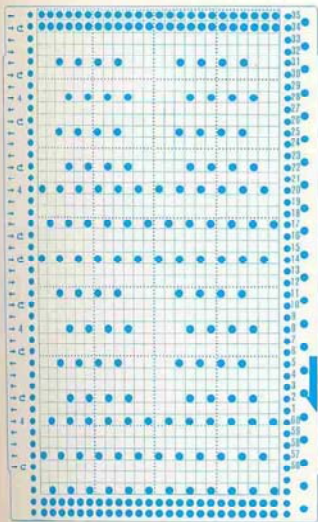


44

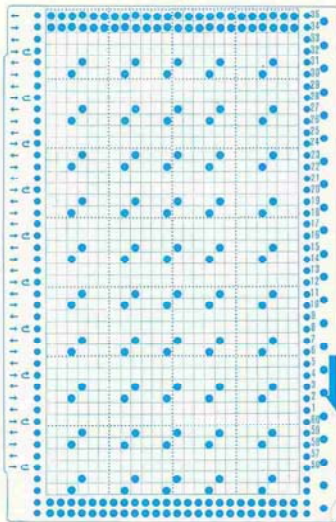
45



45



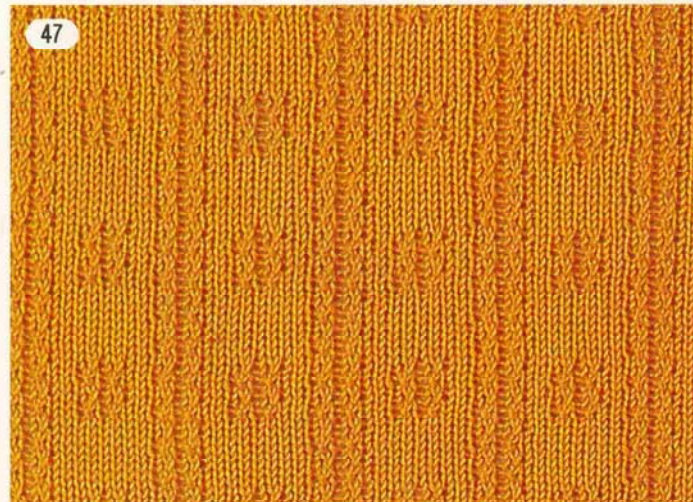
46



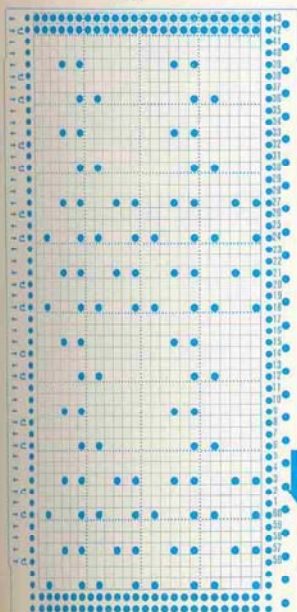
46



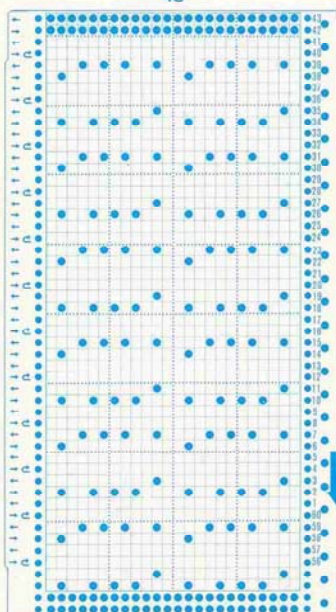
47



47



48



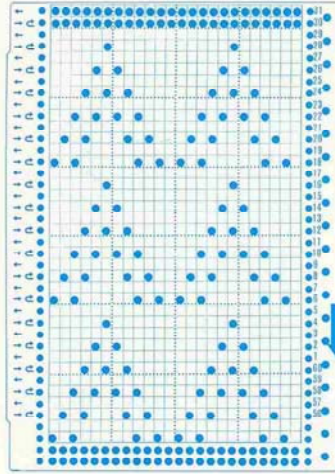
48



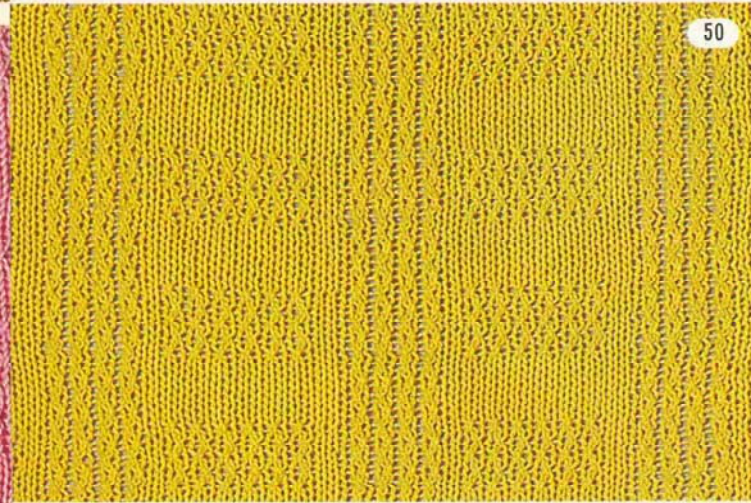
49



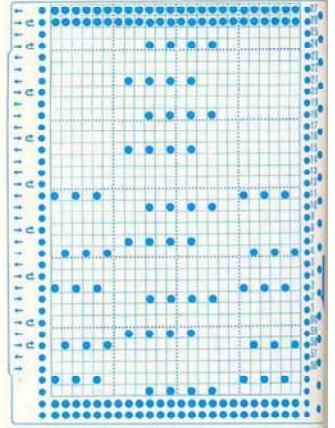
49



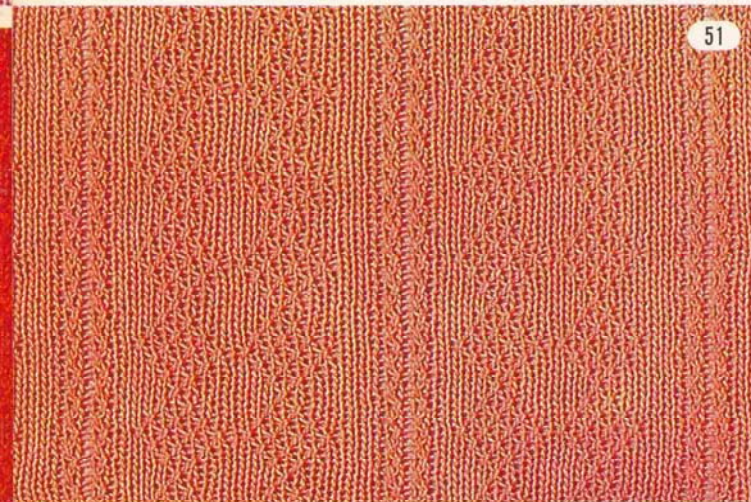
50



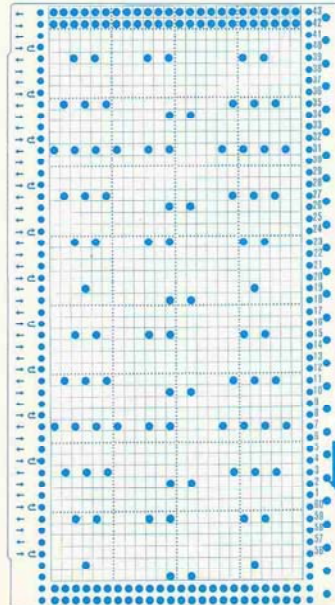
50



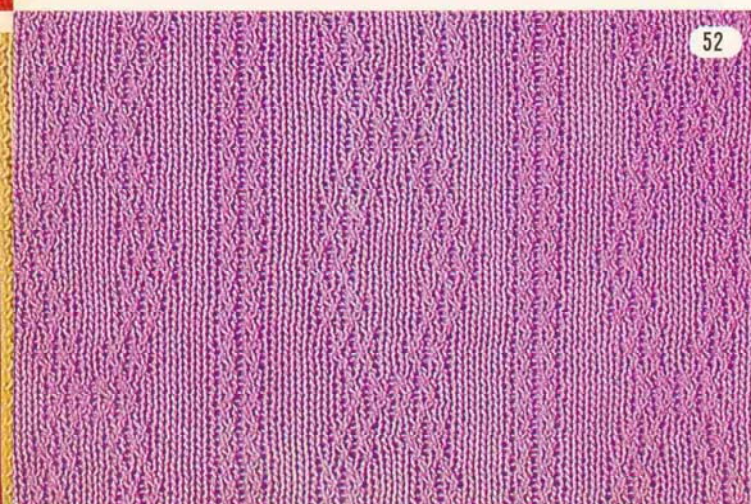
51



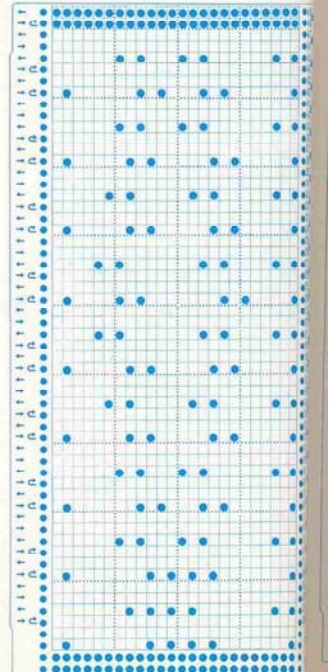
51



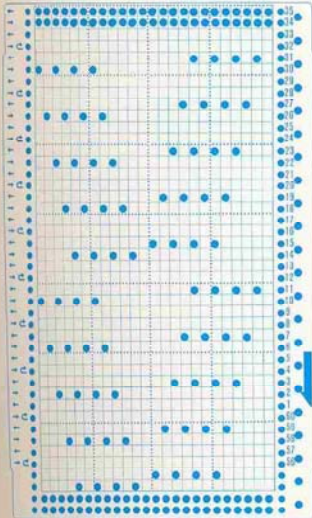
52



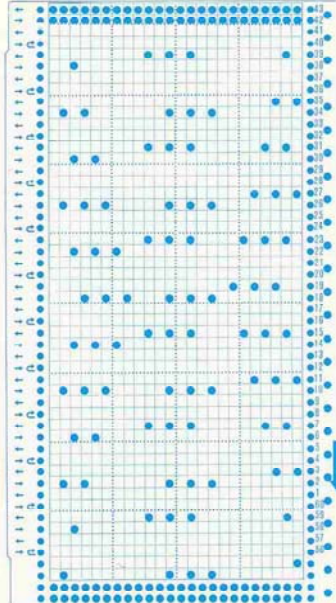
52



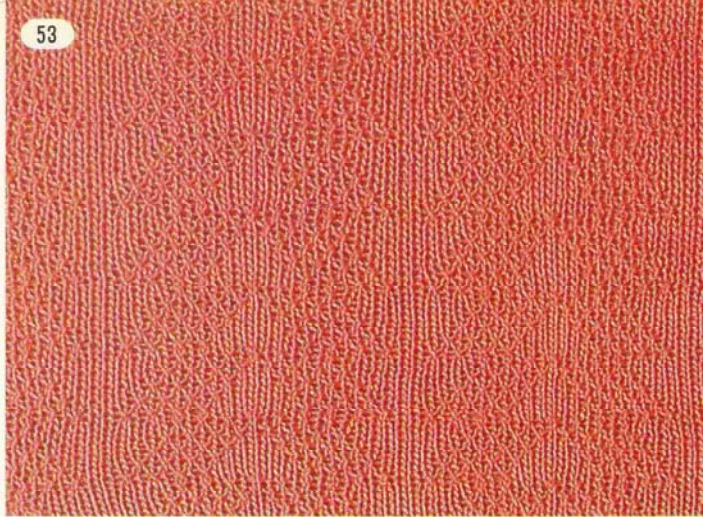
53



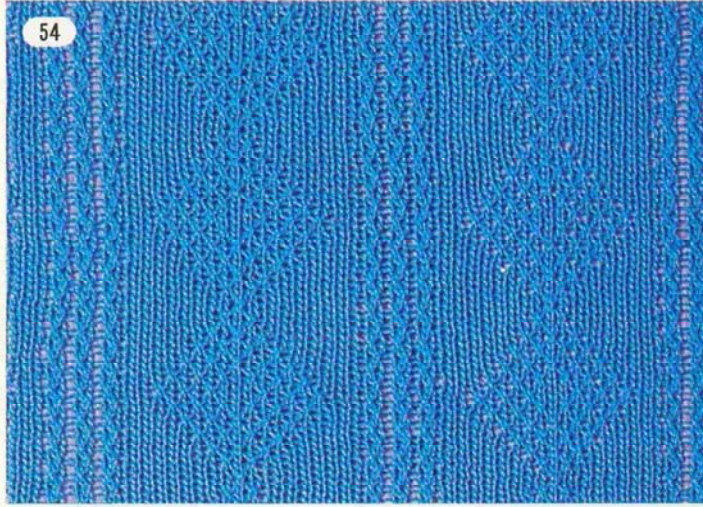
54



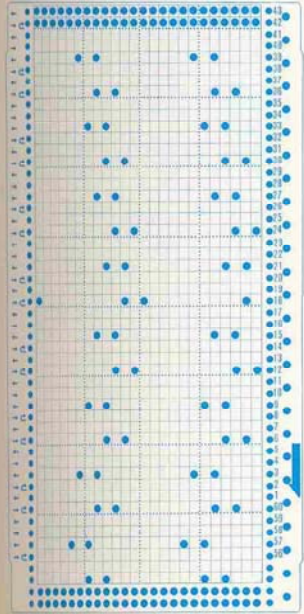
53



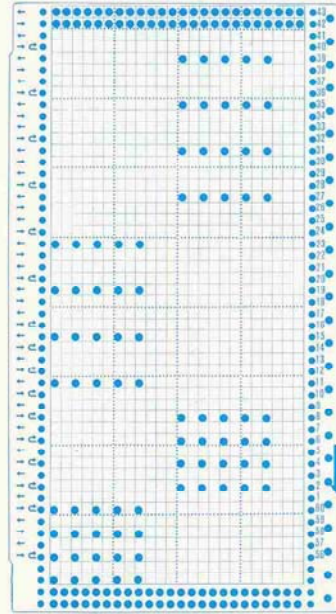
54



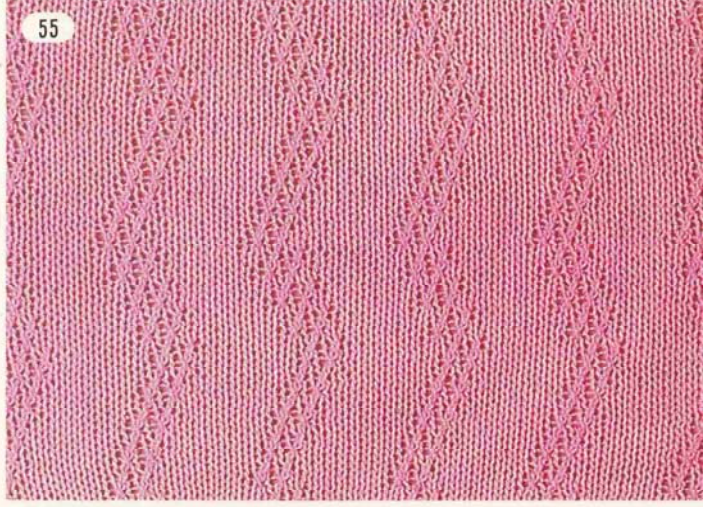
55



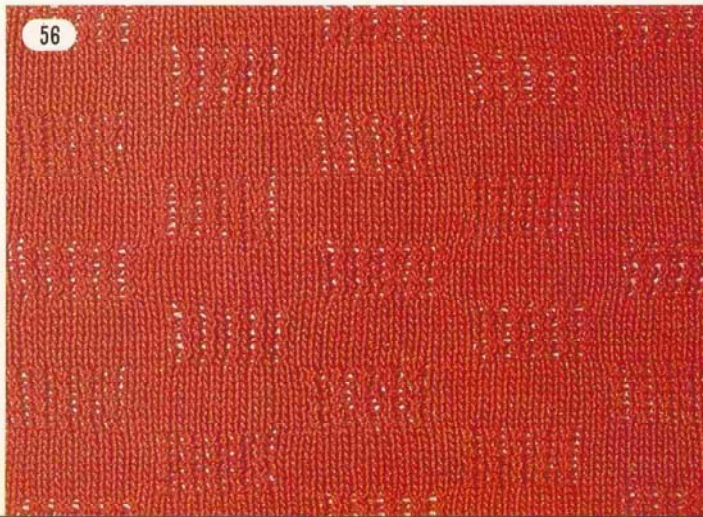
56



55



56

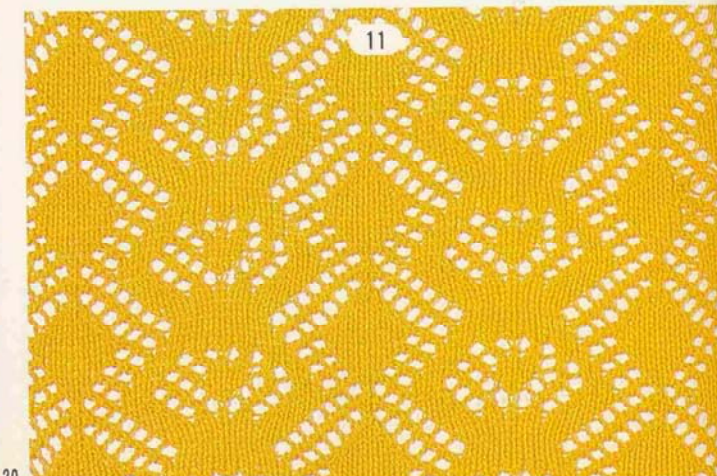
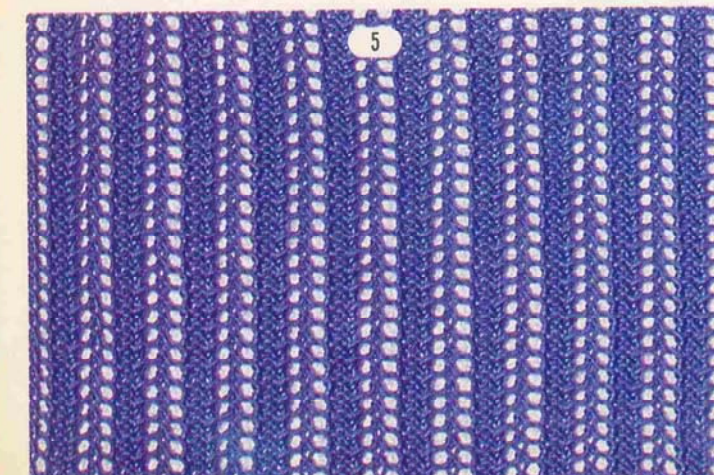
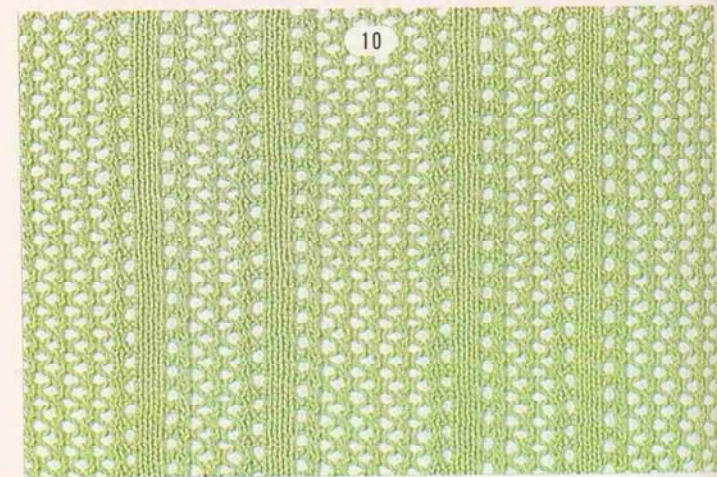
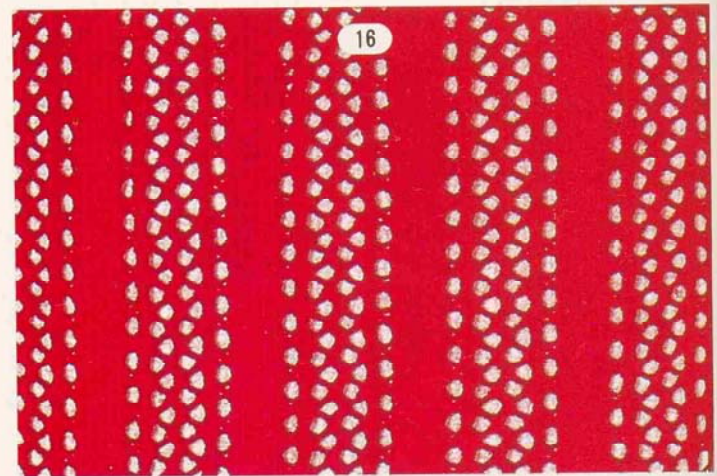
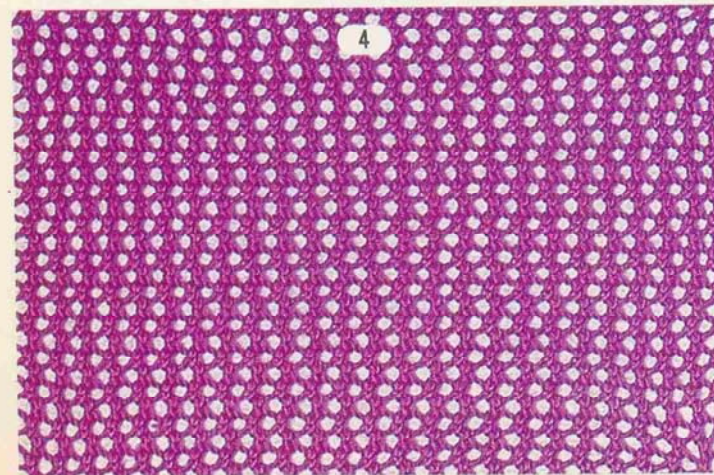
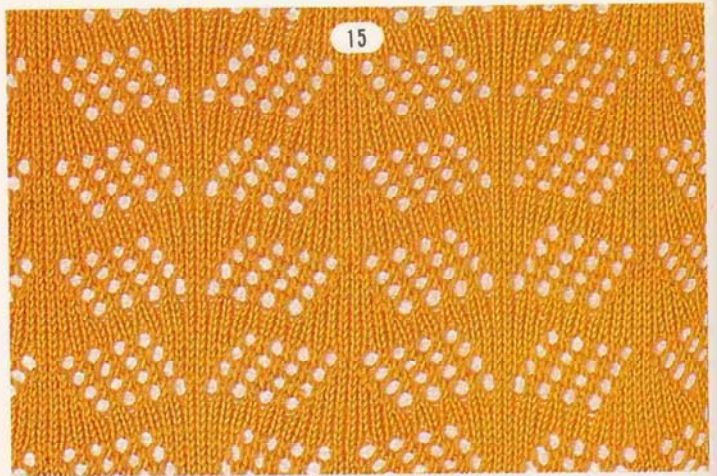
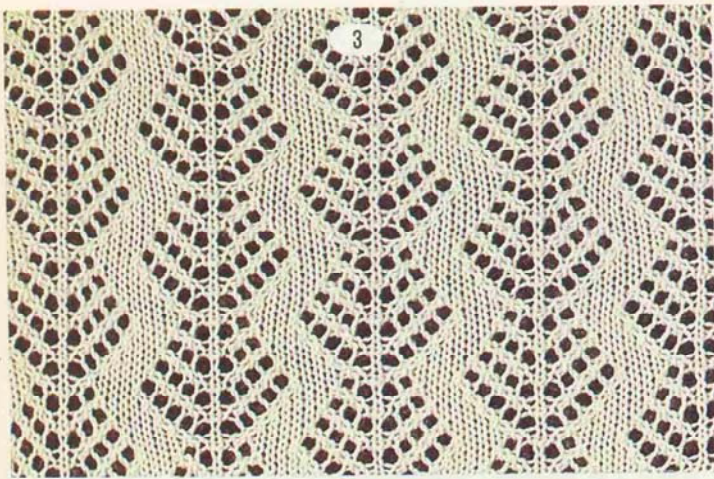


LACE PATTERNS

When knitting the patterns on pages 20 and 21, please use the same punch card numbers as for fine lace patterns as shown on pages 6-19.

MOTIFS DE DENTELLE

Pour tricoter les motifs des pages 20 et 21, veuillez utiliser les mêmes numéros de cartes perforées que pour les motifs de dentelle fine comme indiqué aux pages 6-19.

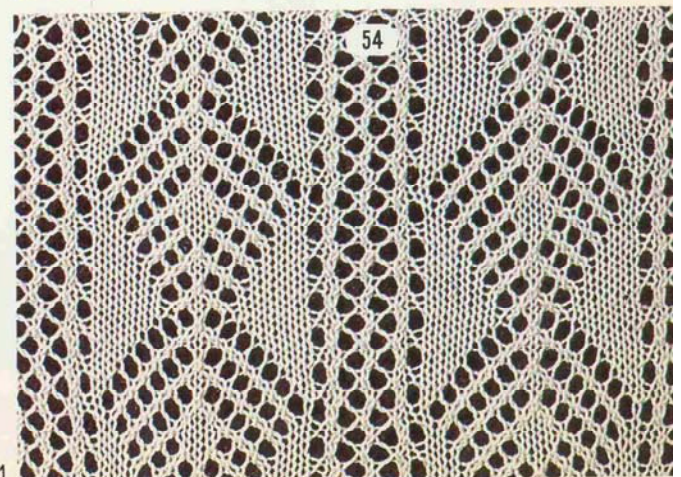
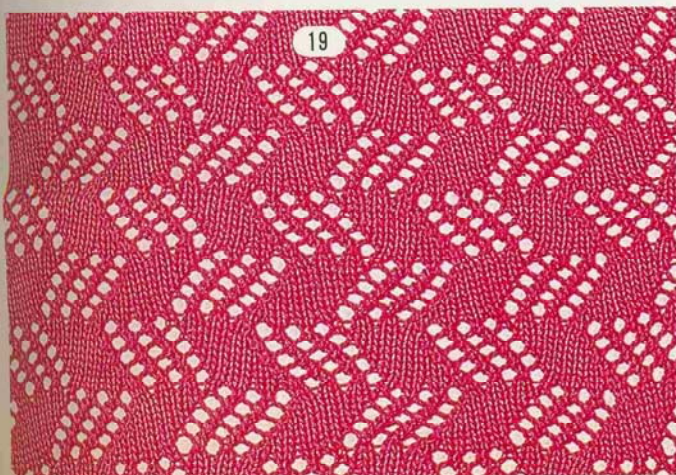
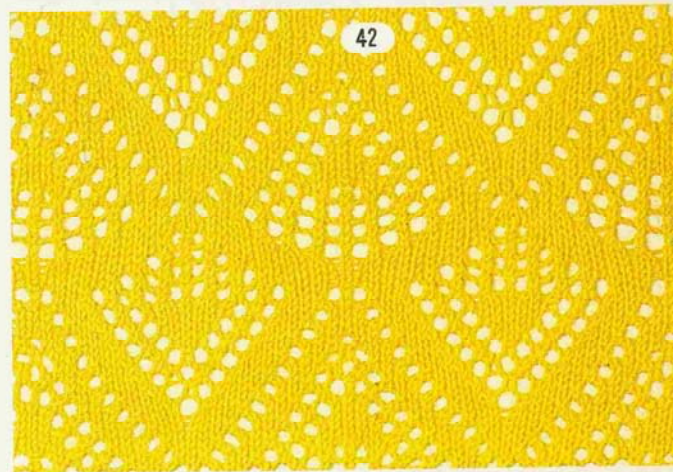
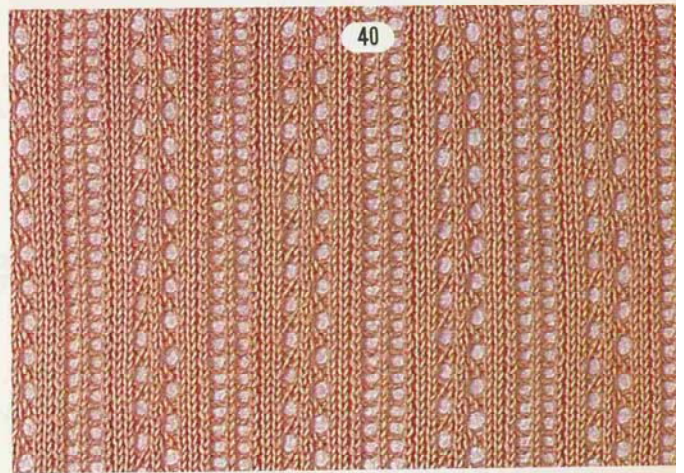
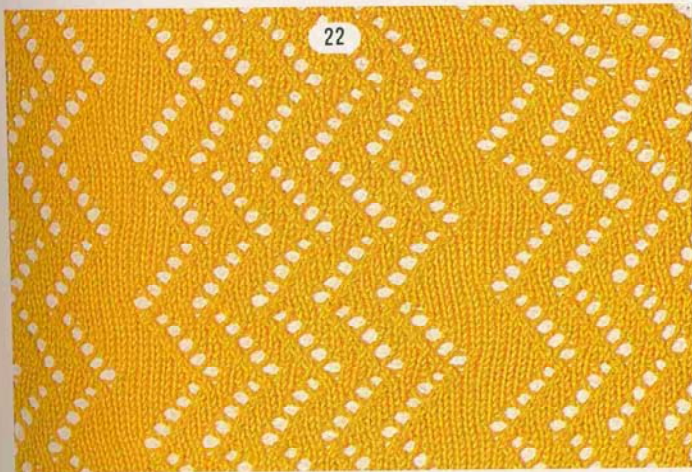
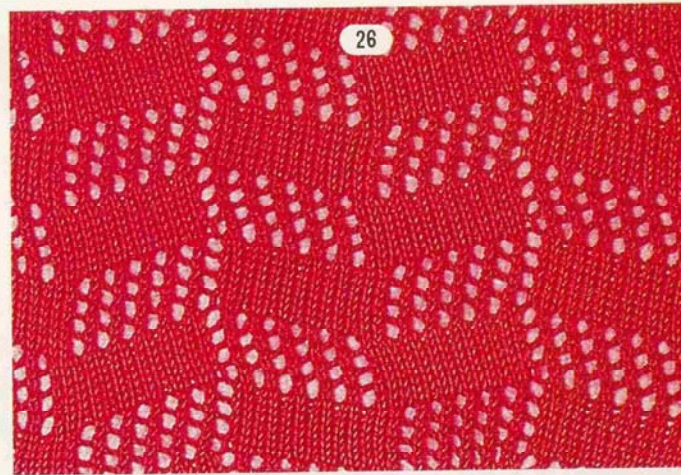
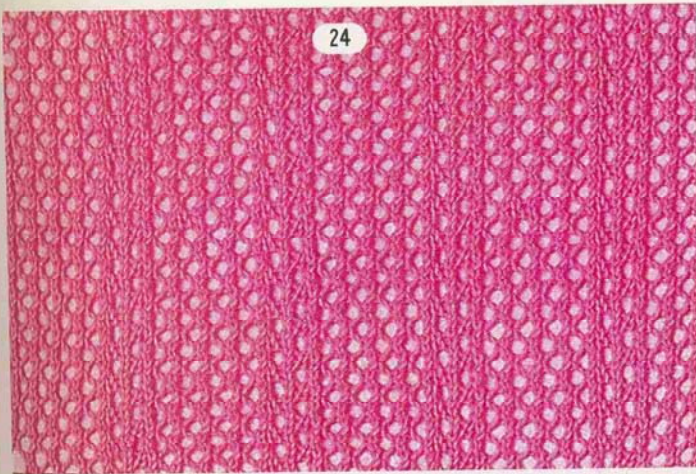


LOCHMUSTER

Stricket man die Muster der Seiten 20 + 21, dann benutzt man dieselben Lochkarten wie für die Feinlochmuster, wie auf Seiten 6-19 gezeigt.

DIBUJOS DE ENCAJE

Al formar los dibujos en las páginas 20 y 21, servise emplear los naipes punzados con el mismo número que los dibujos de encaje fino indicados en las páginas 6-19.



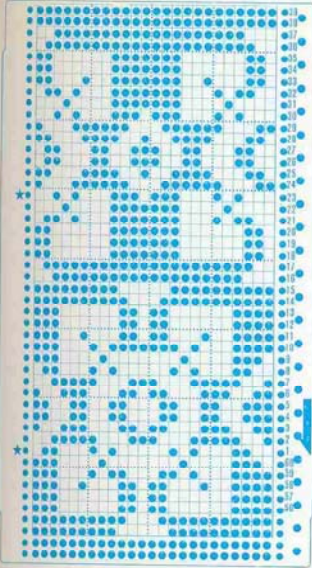


FAIR ISLE PATTERNS

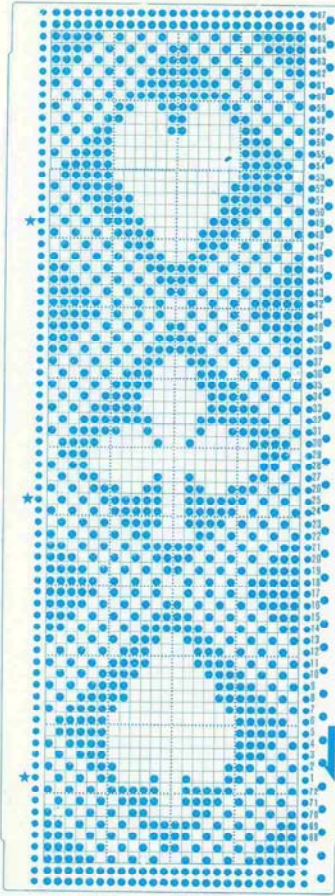
◎多色同時編込み模様◎

design by MITSURU KUNII

57



58



57



58



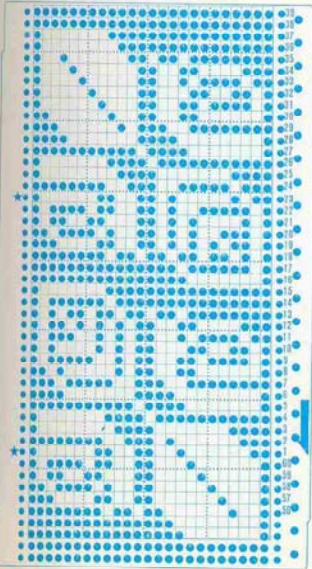
59



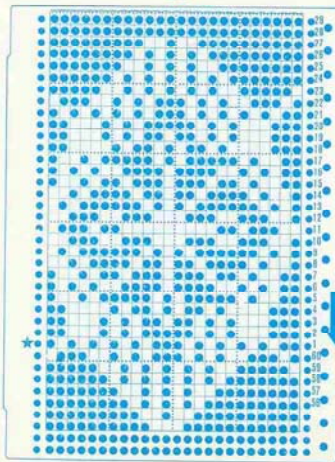
60



59



60





61



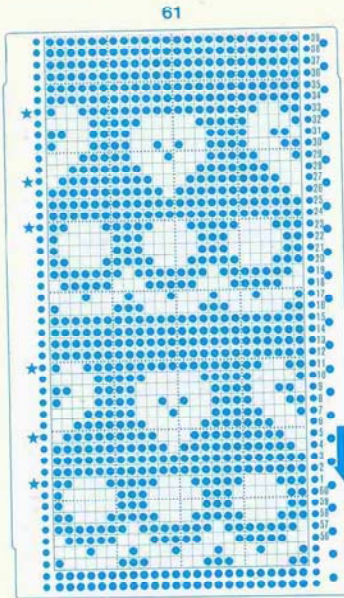
62



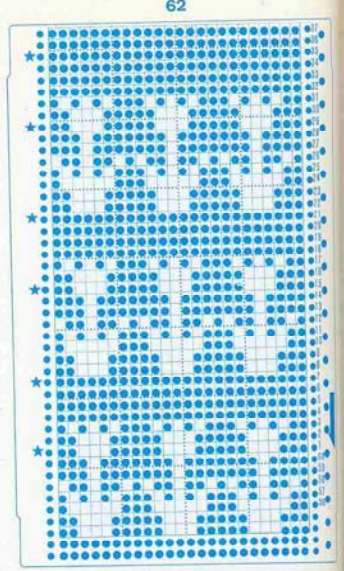
63



64



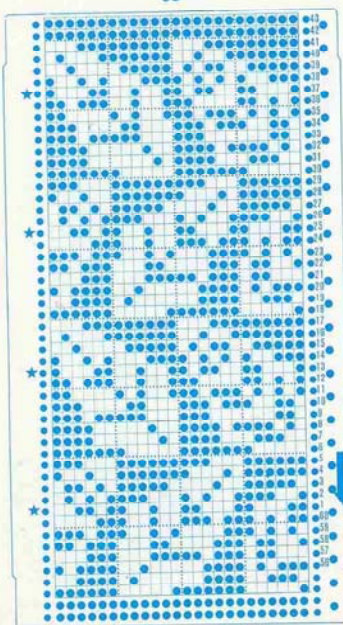
61



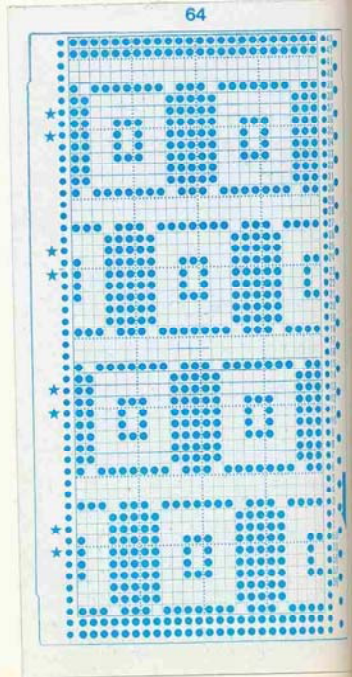
62



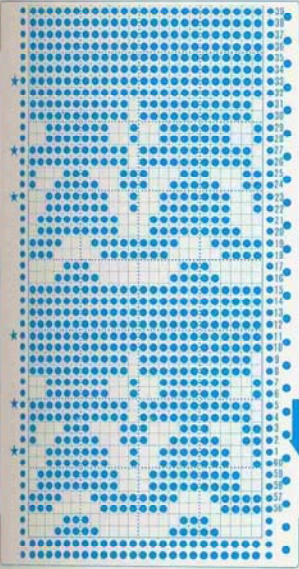
63



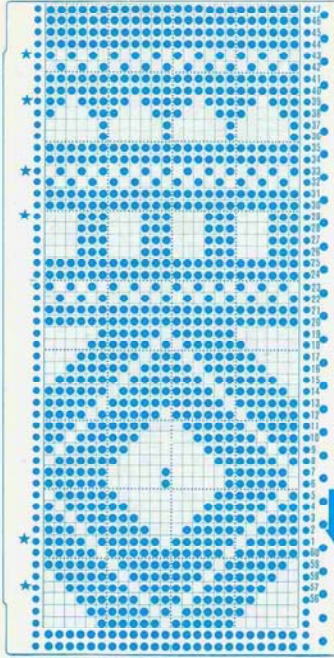
64



65



66



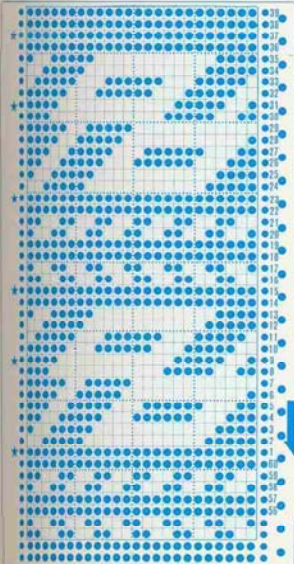
65



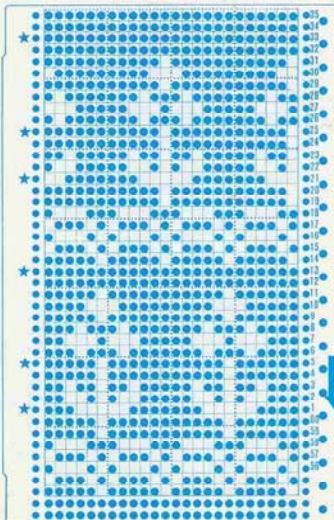
66



67



68

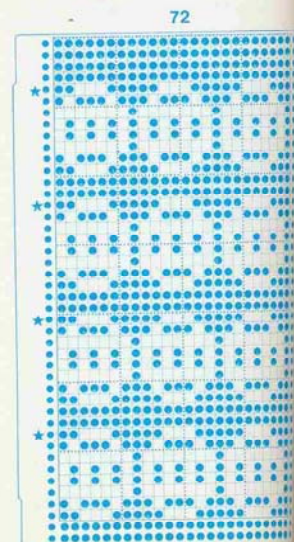
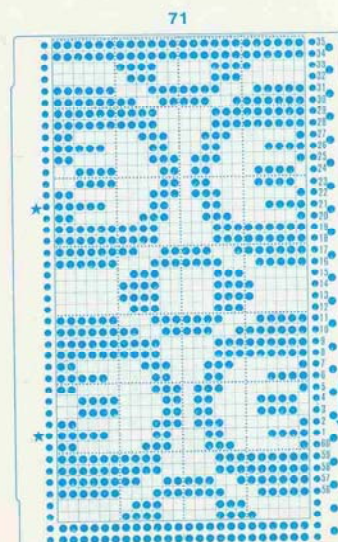
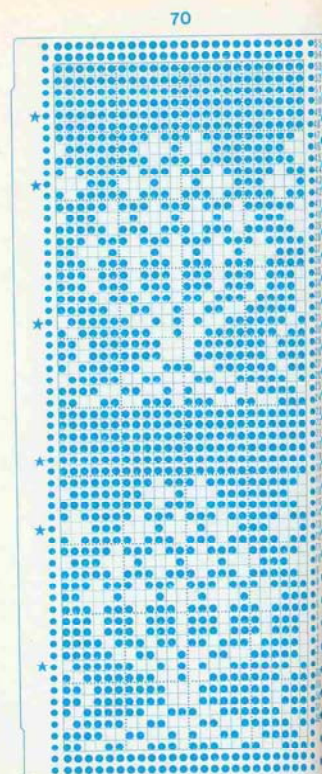
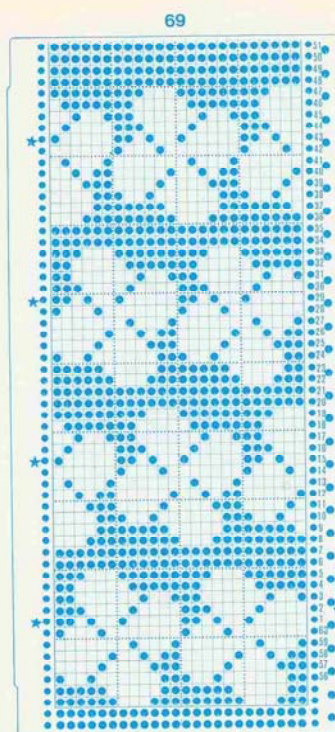
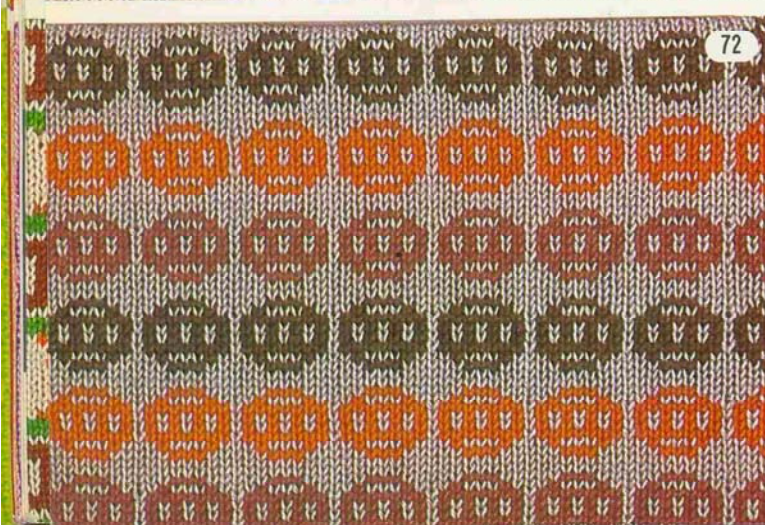


67

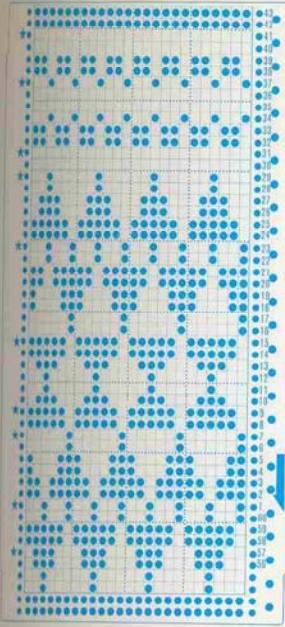


68

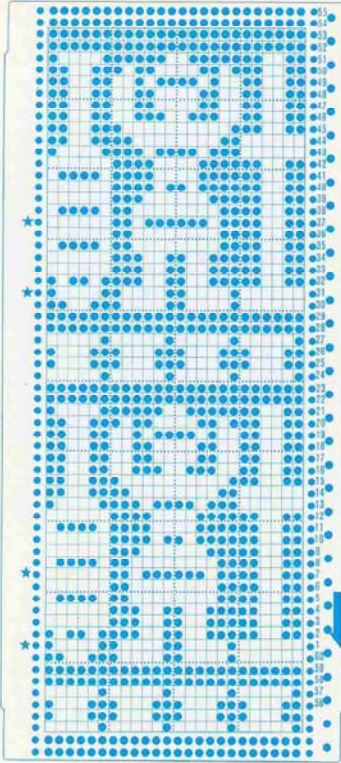




73



74



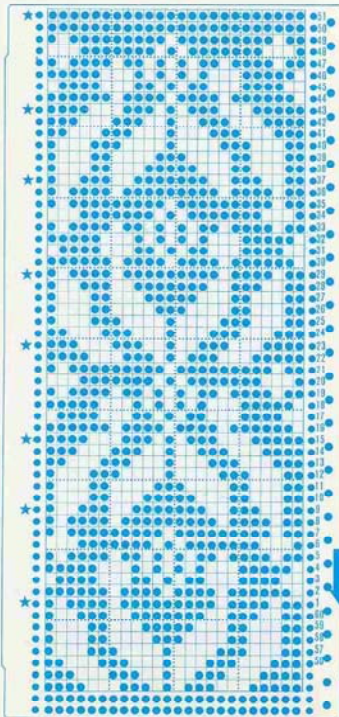
73



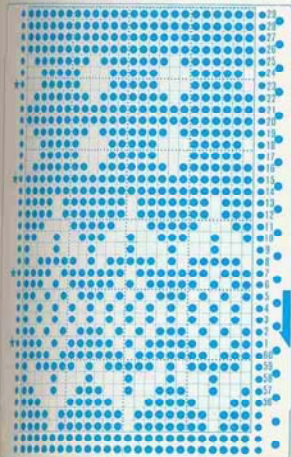
74



76



75

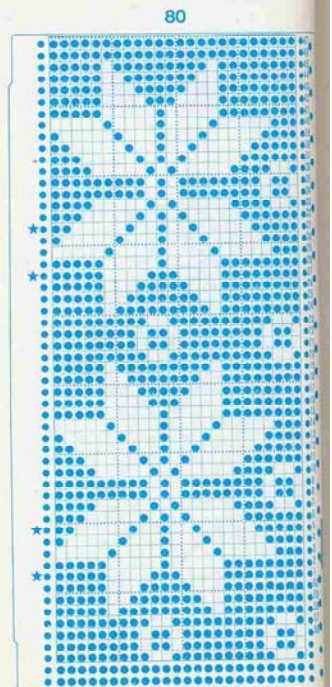
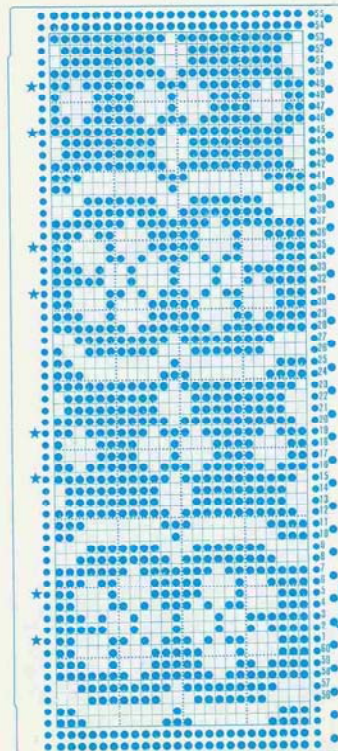
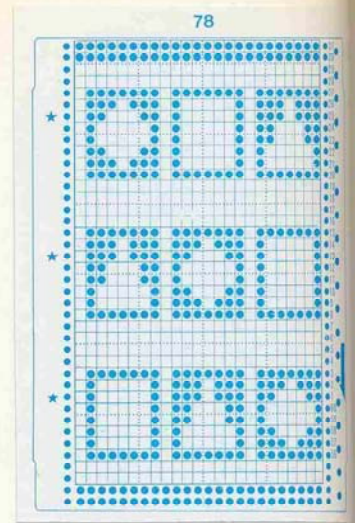
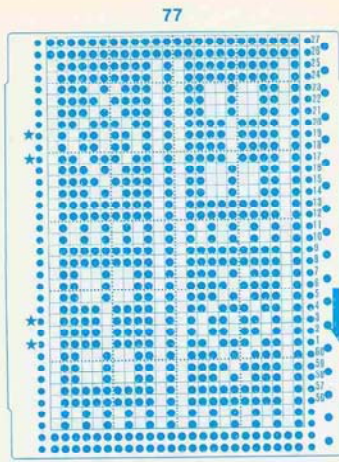


75

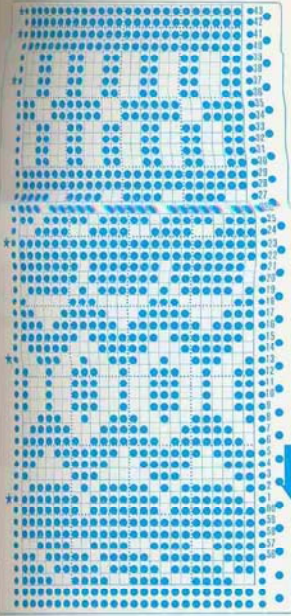


76

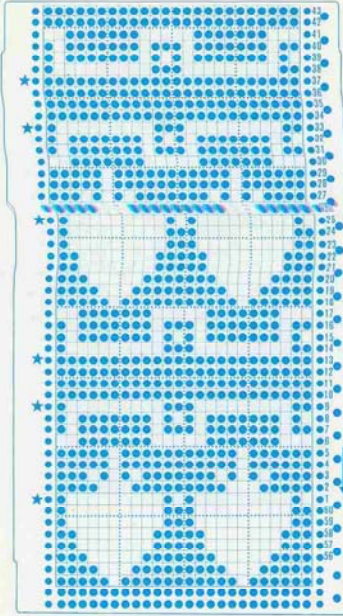




81



82



81



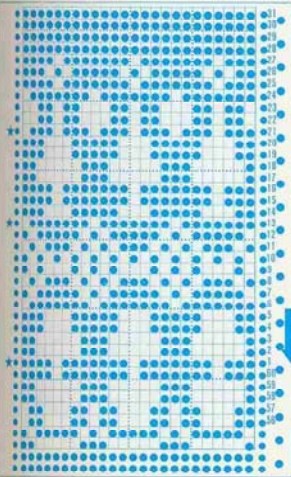
82



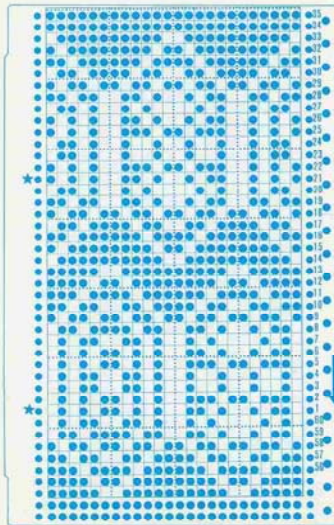
83



83

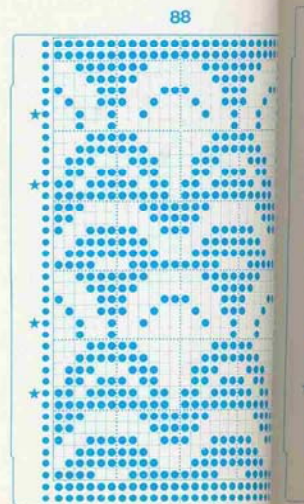
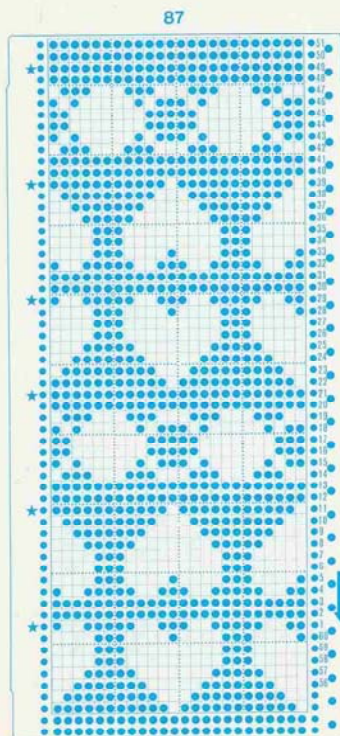
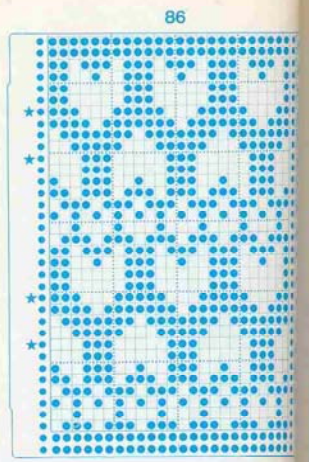
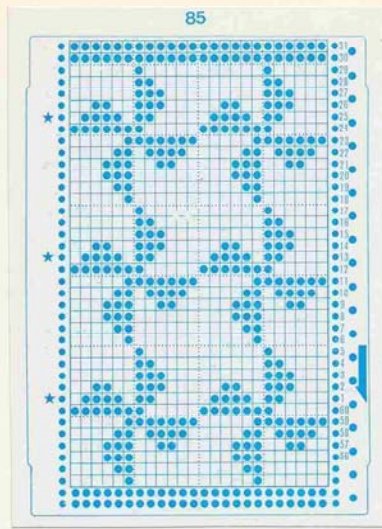


84

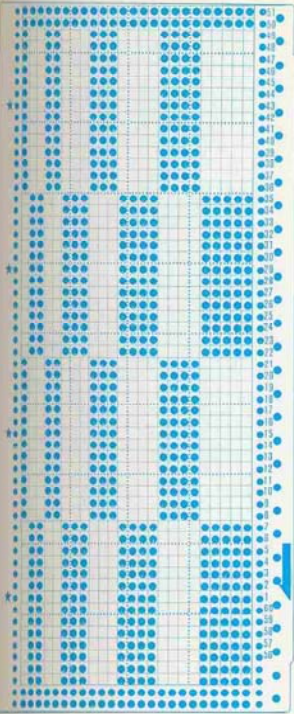


84

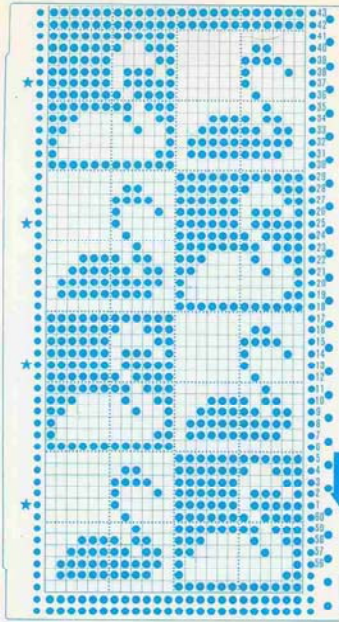




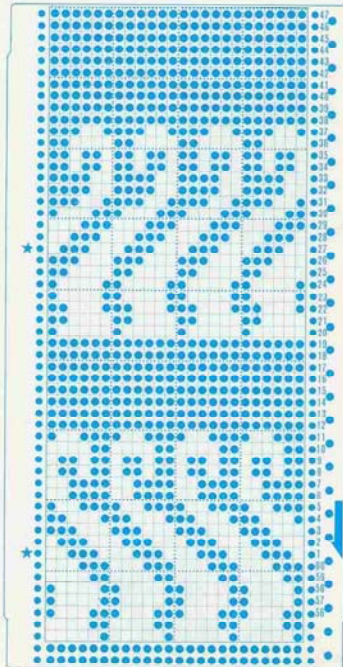
89



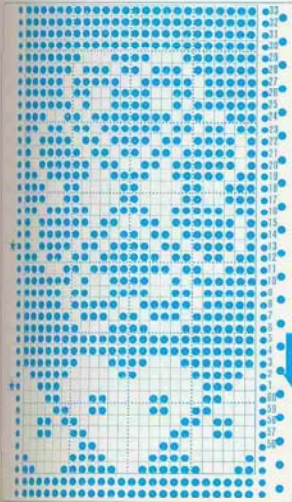
90

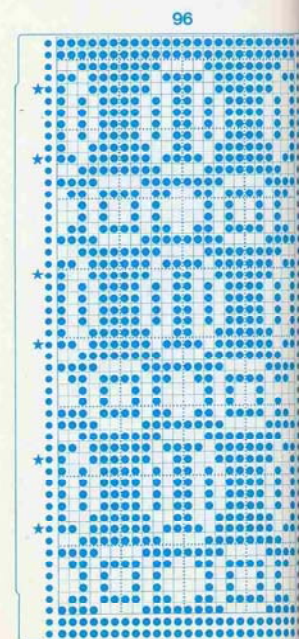
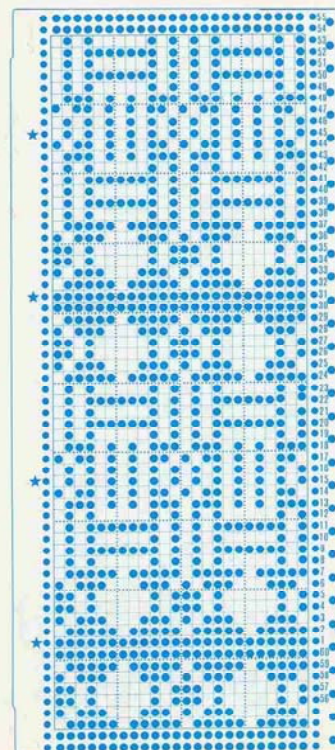
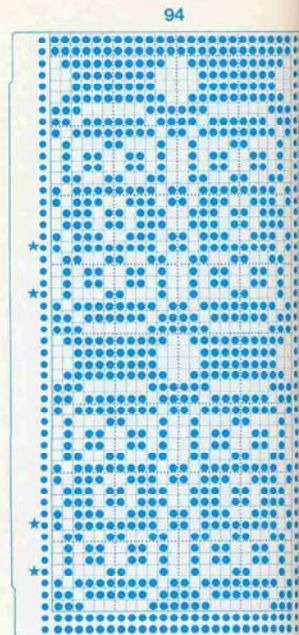
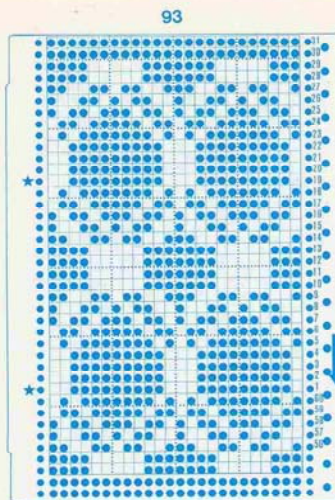


92

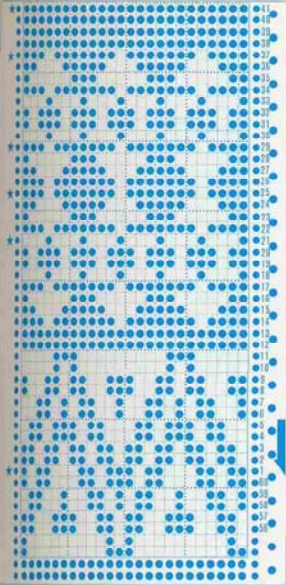


91

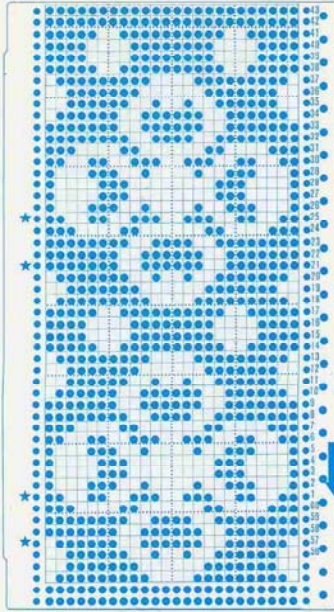




97



98



97



98



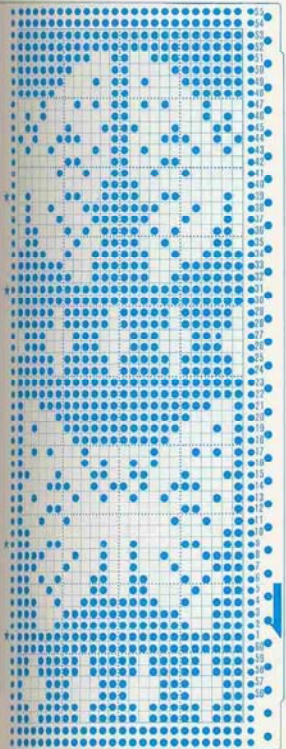
99



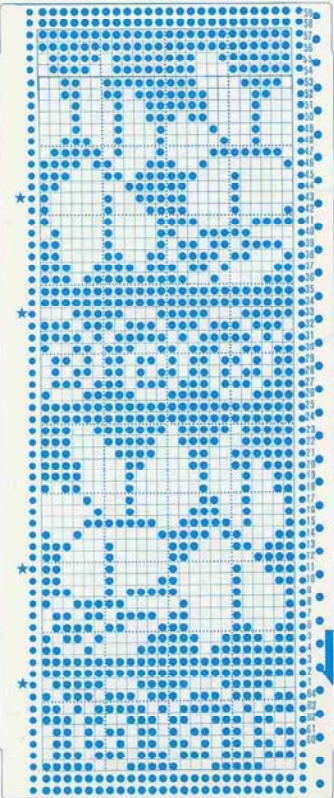
100



99



100





101



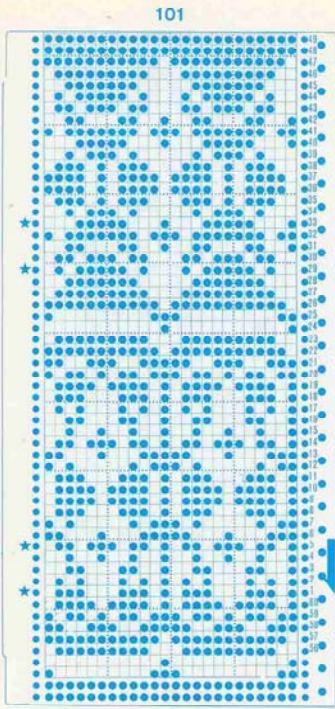
102



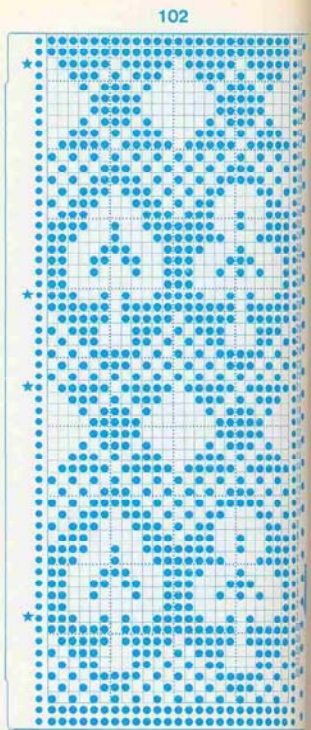
103



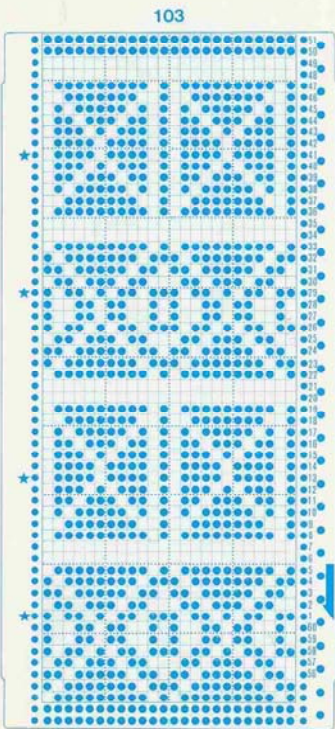
104



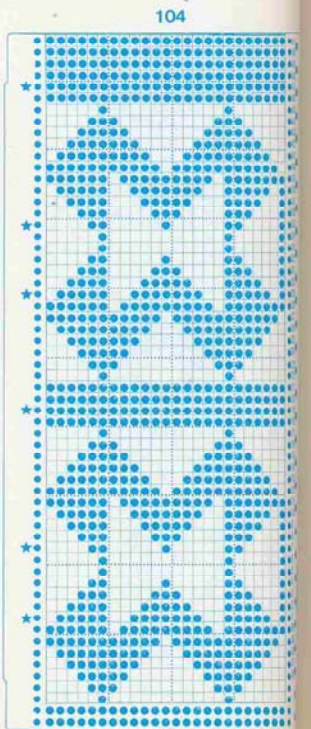
101



102

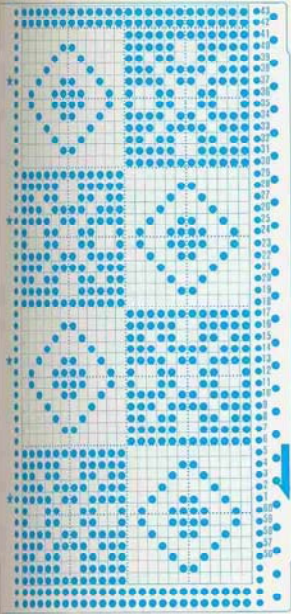


103

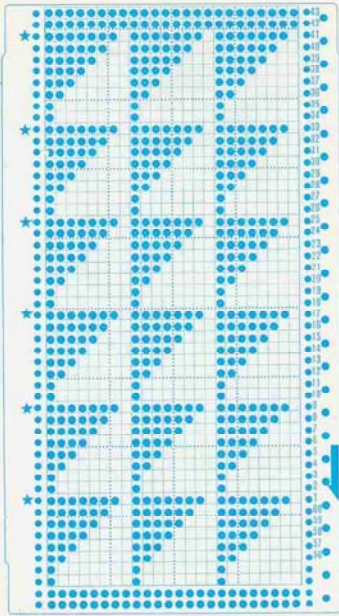


104

105



106



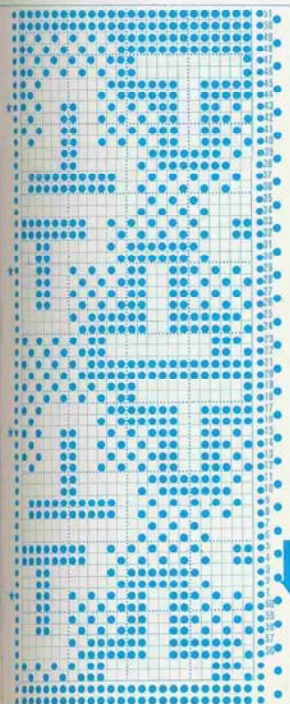
105



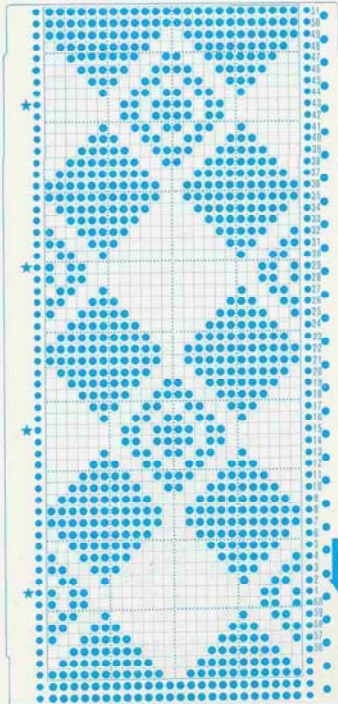
106



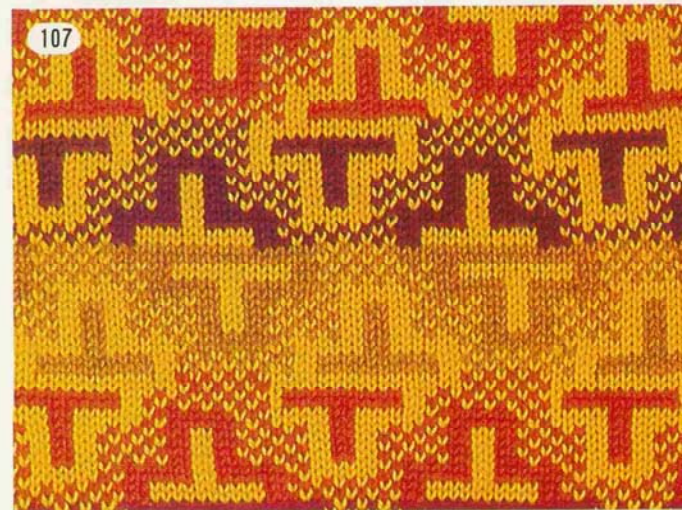
107



108

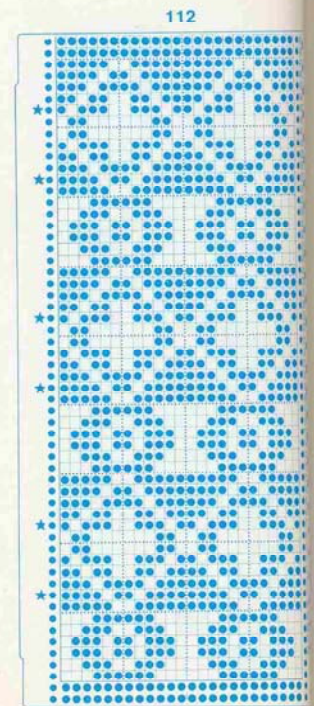
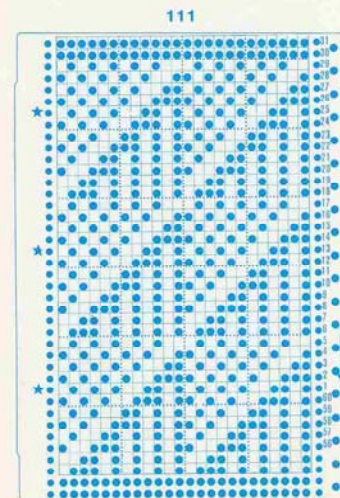
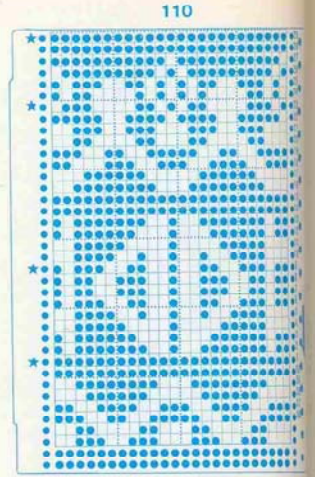
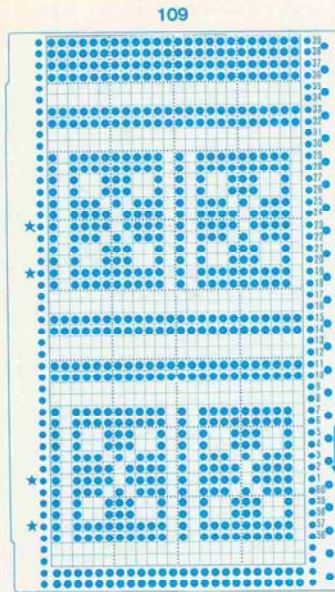


107



108





DOUBLE LENGTH PATTERNS

These patterns can be produced by using the punch cards for fair-isle patterns and setting the card lock lever at "V" position. Please use the punch card with the same number as the fair-isle patterns.

MOTIFS SUR DEUX LONGUEURS

Ces motifs peuvent être obtenus en utilisant les cartes perforées pour les motifs jacquard et en plaçant le levier de verrouillage du peigne à la position "V". Prenez la carte perforée ayant le même numéro que pour les motifs jacquard.



93



65



72



63



106



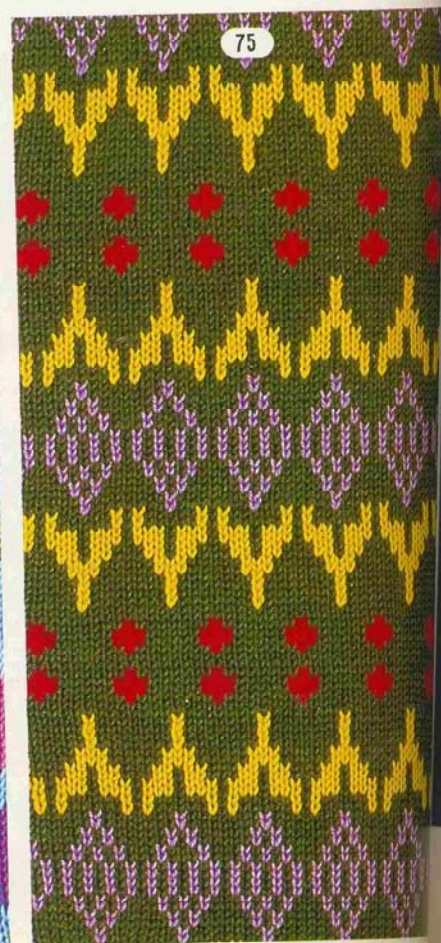
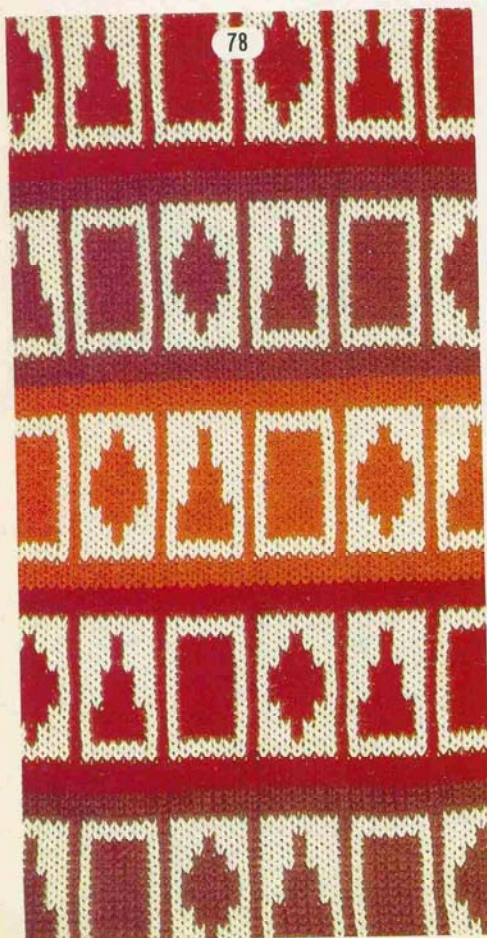
105

DOPPELTER HÖHE

Diese Muster können gestrickt werden bei Verwendung der Lochkarten für die Norwegemuster bei Einstellung des Druckknopfs auf Stellung "∇". Benutzen Sie bitte die Lochkarten derselben Nummern der Norwegemuster.

DIBUJOS DEL LARGO DOBLE

Estos dibujos pueden formarse mediante utilización de los naipes punzados para los dibujos de entretejidos sincronizados (fair-isle), al mismo tiempo colocando la palanca inmovilizadora de ficha perforada en la posición "∇". Sirvase Ud. emplear el naipé punzado con el mismo número que los dibujos de entretejido sincronizado (fair-isle).





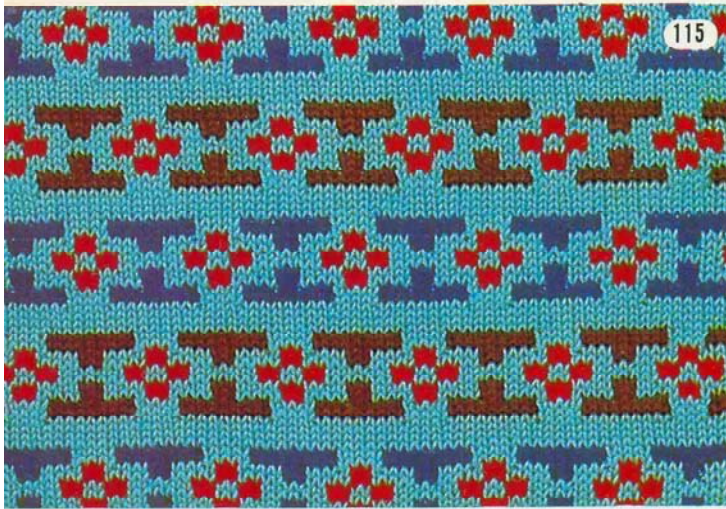
◎多色すべり目模様◎
design by KEIKO KANETA



113



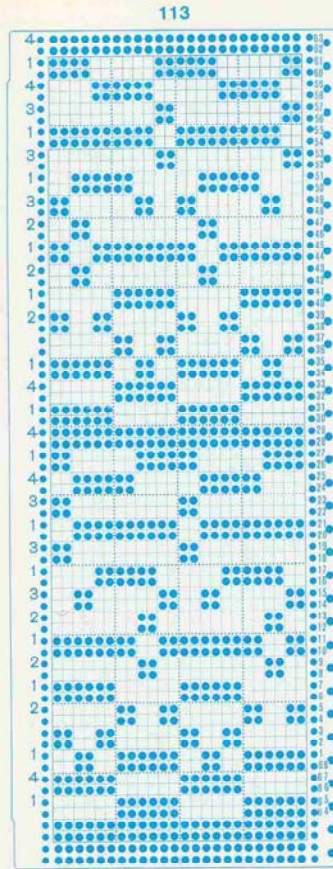
114



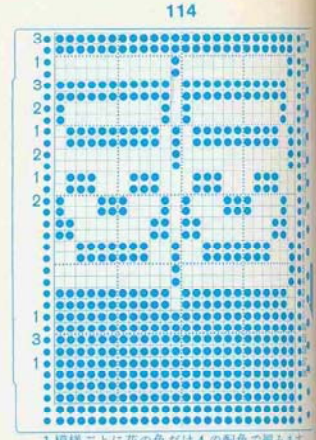
115



116

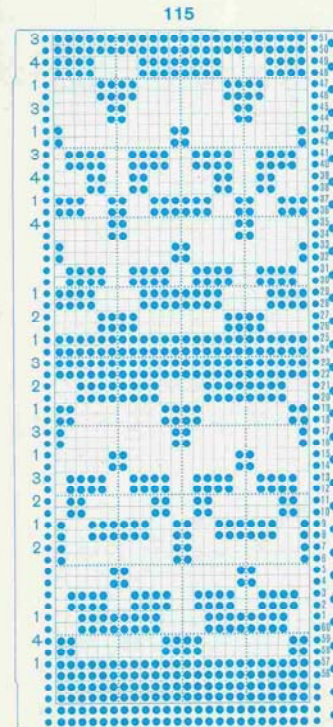
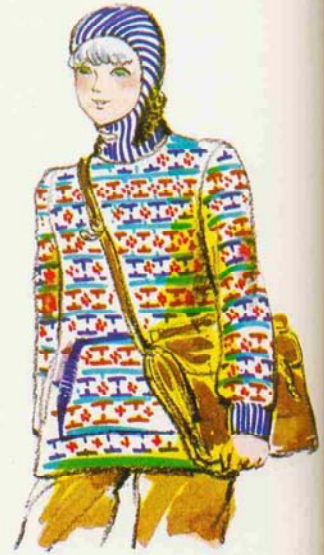


113

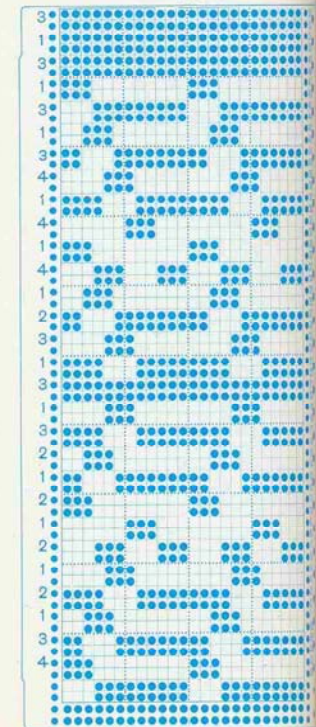


114

1 模様ごとに花の色だけ4の配色で編みよ
(カットの都合上カードを1枚様で省略)

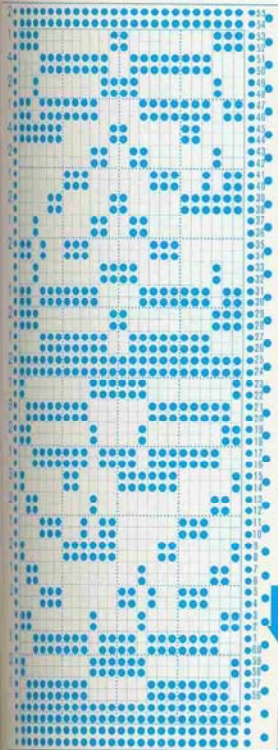


115

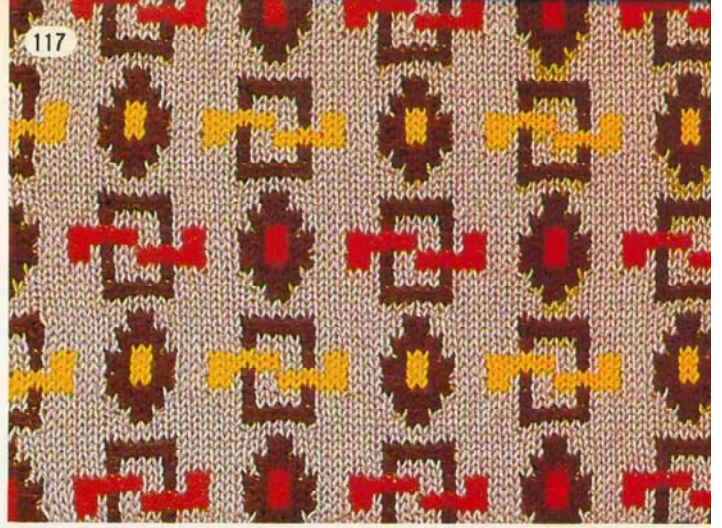
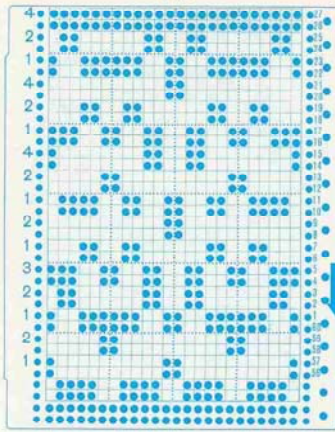


116

117



118



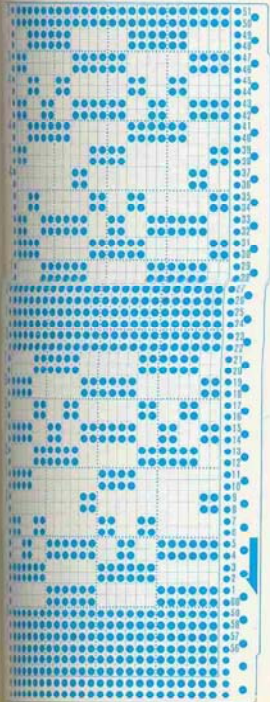
118



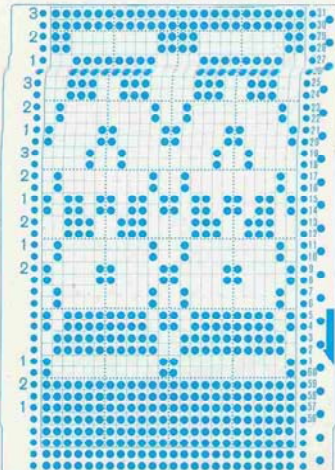
119



119



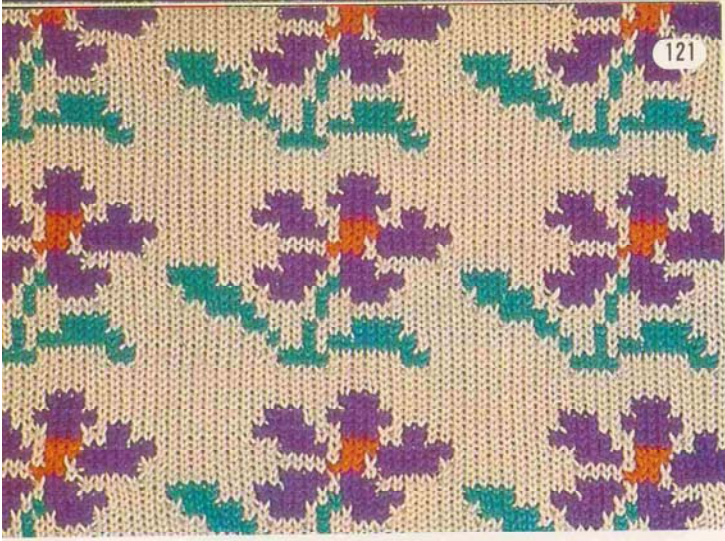
120



2 模様目は 3 の糸を 4 に替えて編みます。



120



121



122

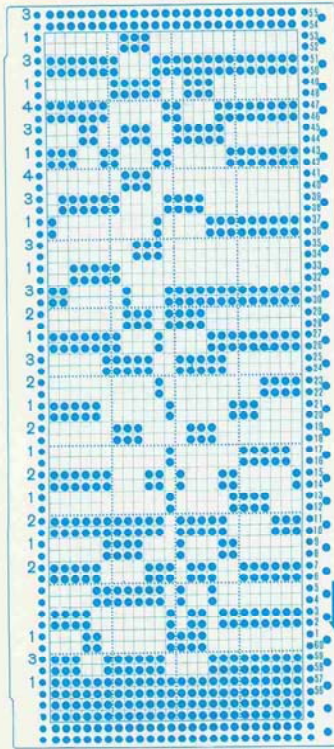


123

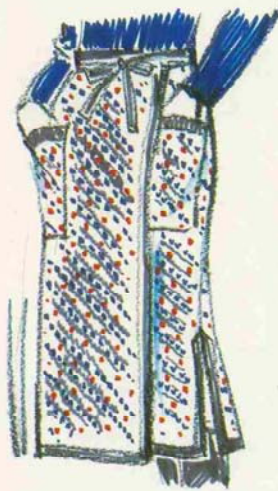
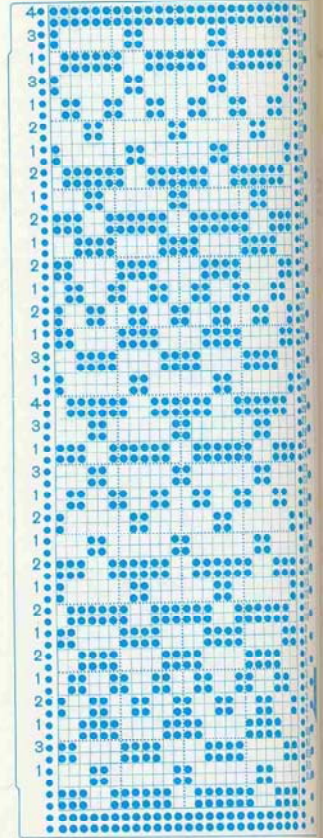


124

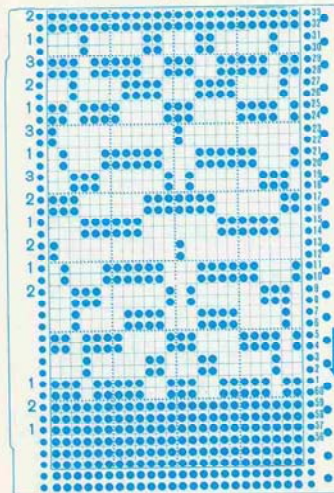
121



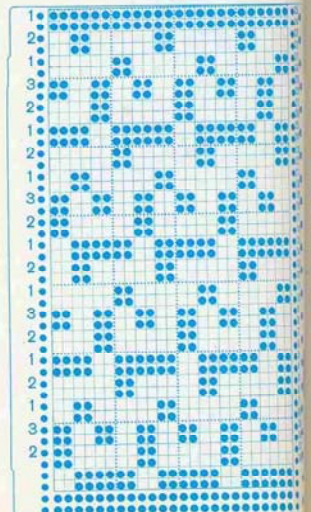
122



123

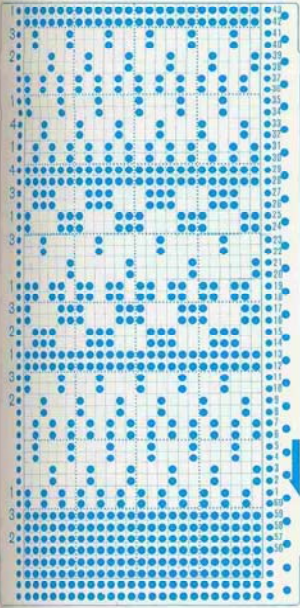


124

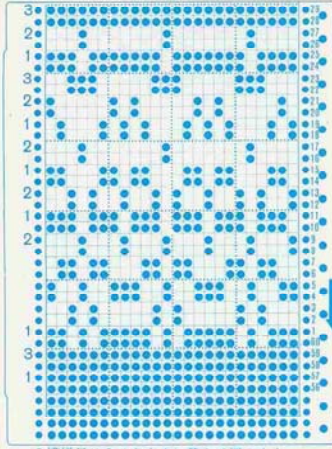


2 模様日は 3 の糸を 4 に替えて編みます。

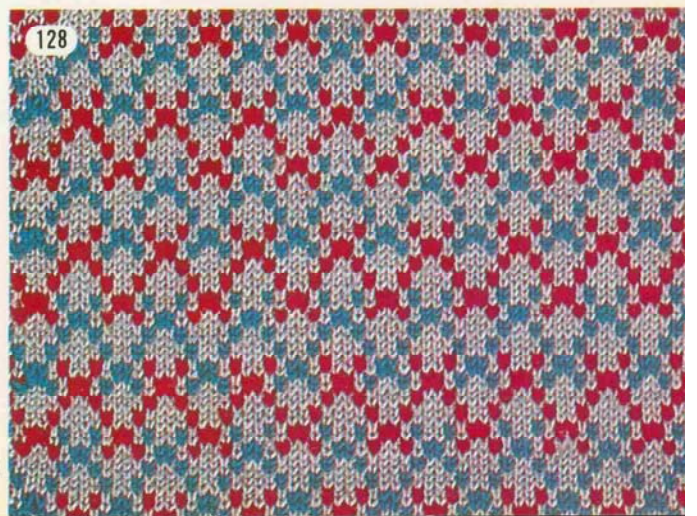
125



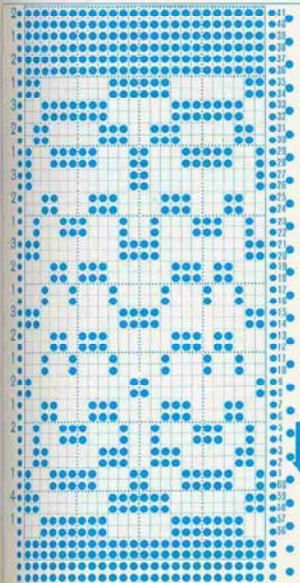
126



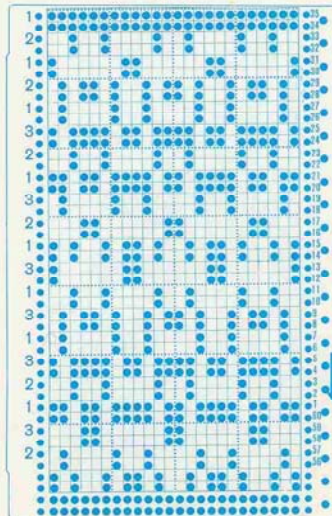
2 模様目は3の色を4に替えて編みます。
(カットの都合上カードを1模様で省略)



127



128





129



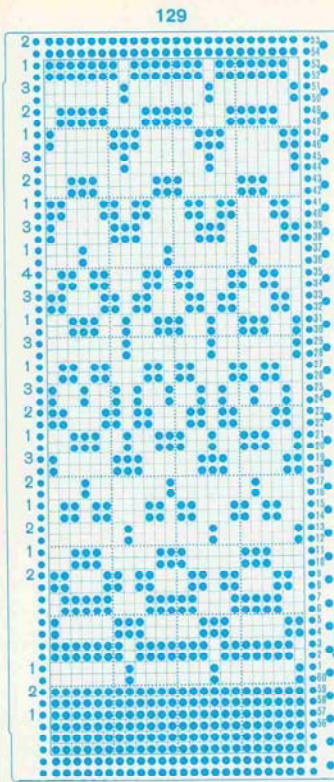
130



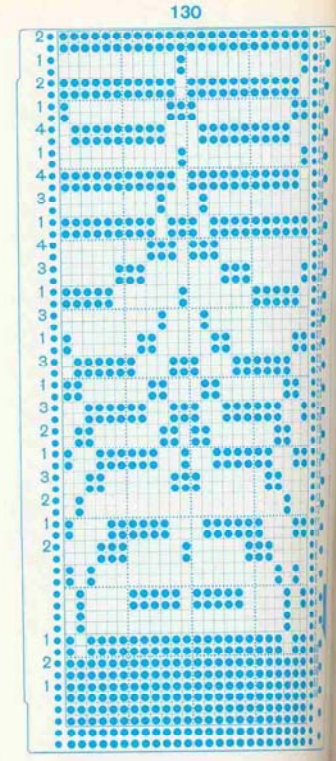
131



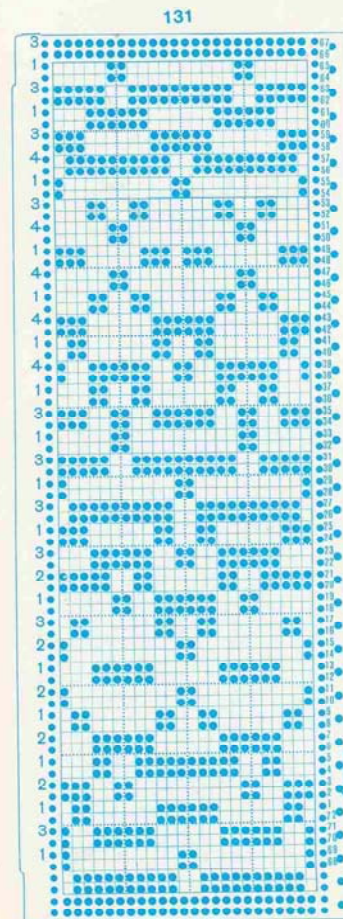
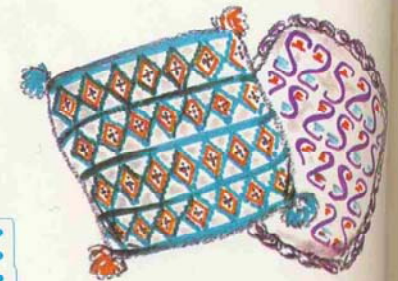
132



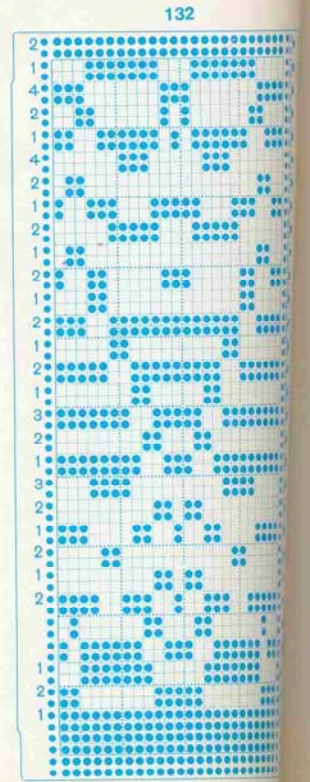
129



130

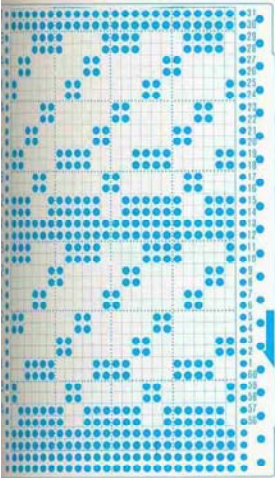


131

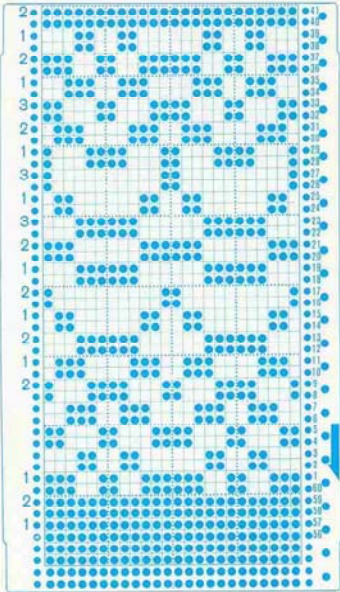


132

133



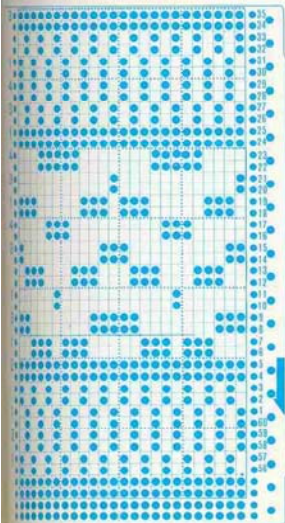
134



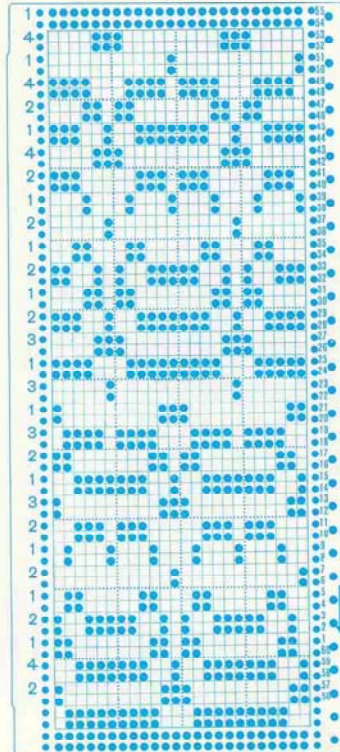
2 模様目は 2 の糸を 4 に替えて編みます。



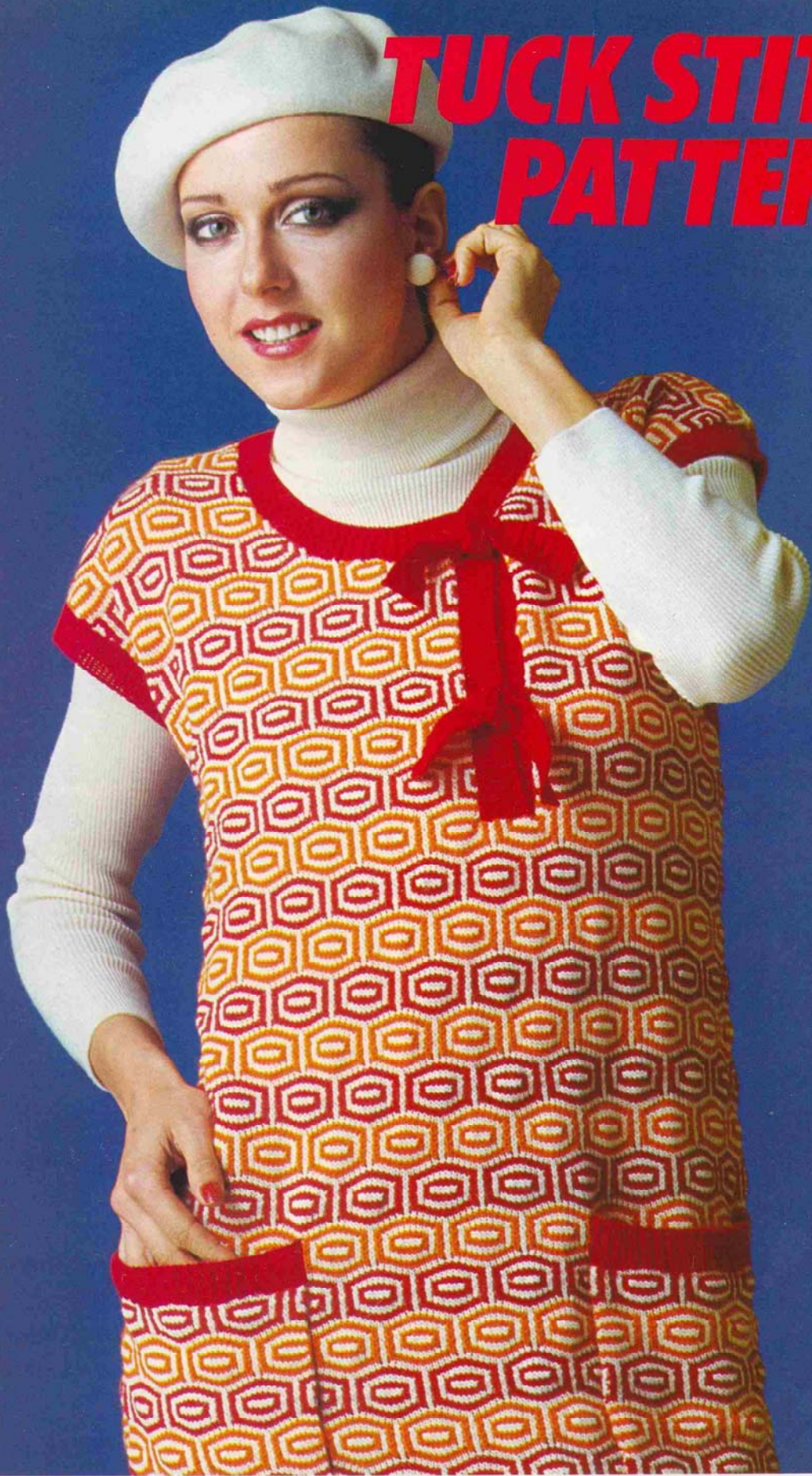
135



136

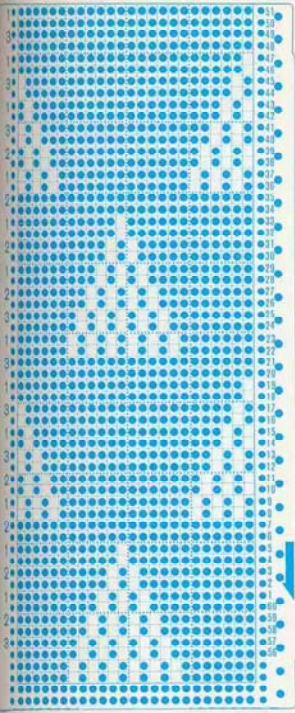


TUCK STITCH PATTERNS

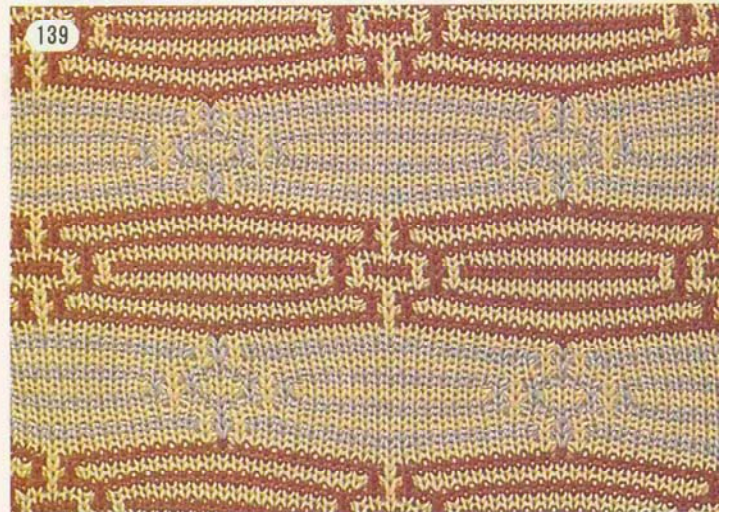
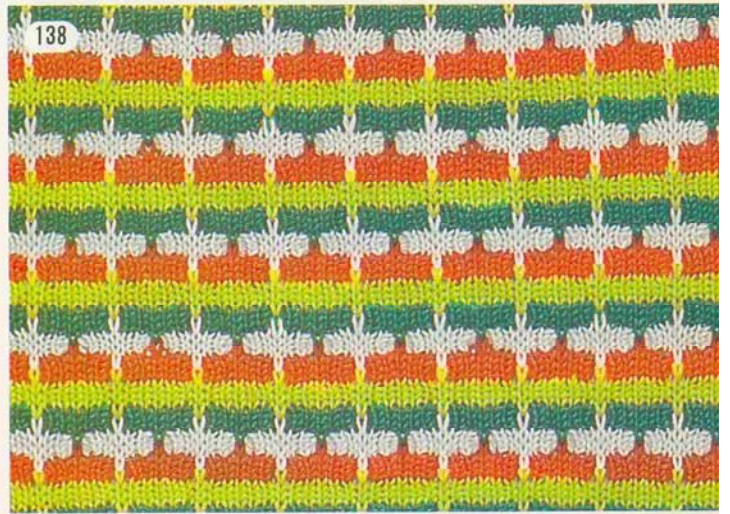
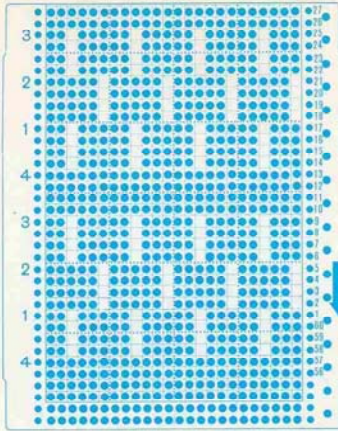


●多色タック模様●
design by KEIKO KANETA

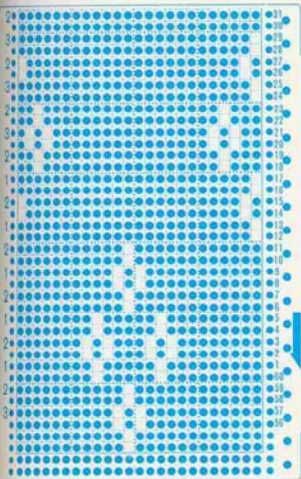
137



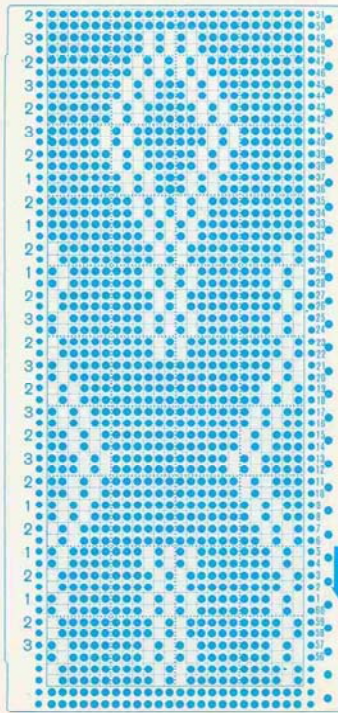
138

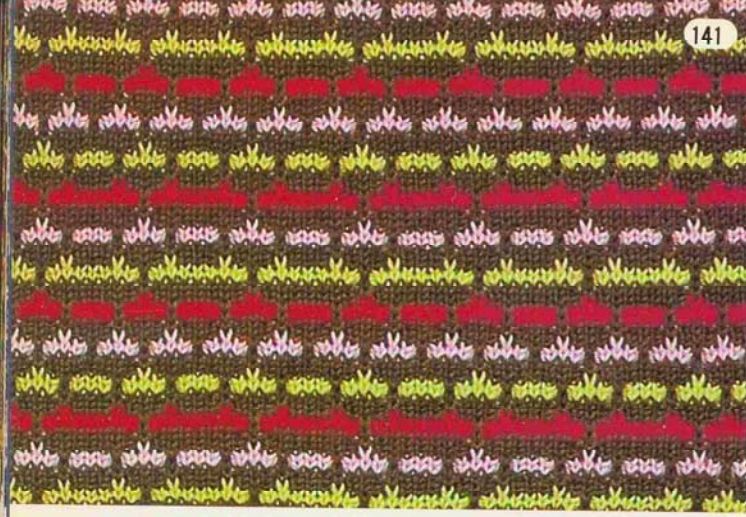


139



140





141



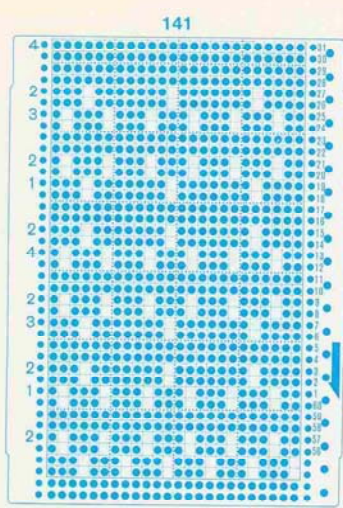
142



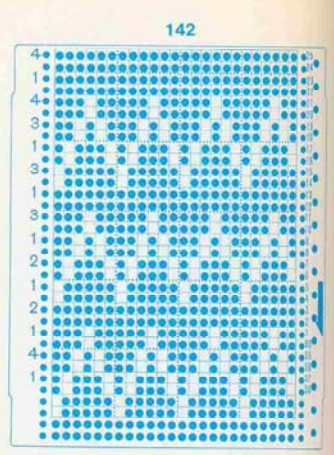
143



144



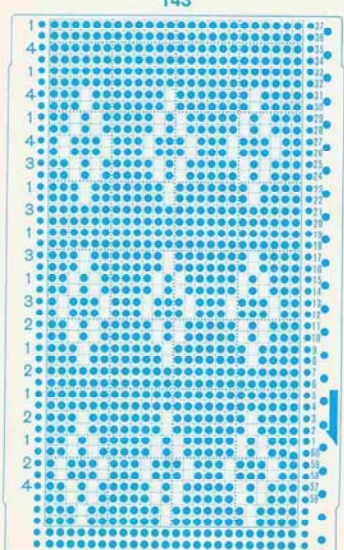
141



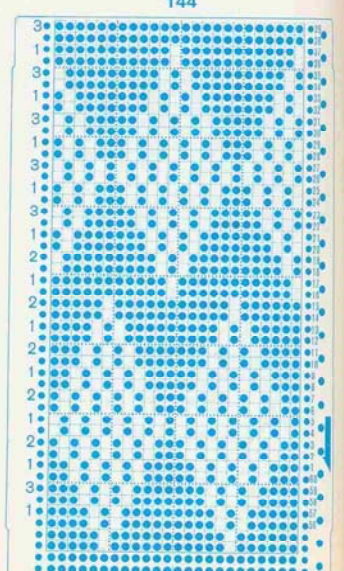
142



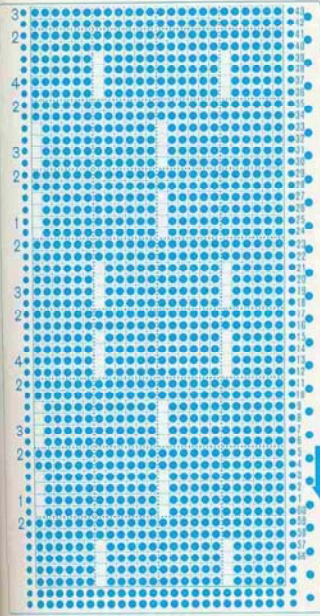
143



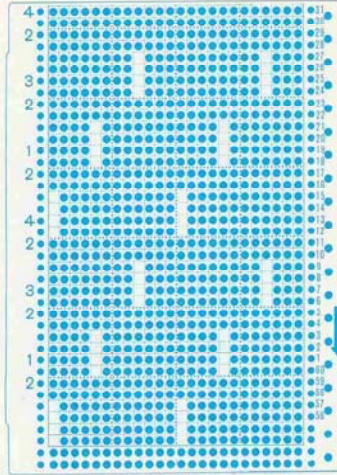
144



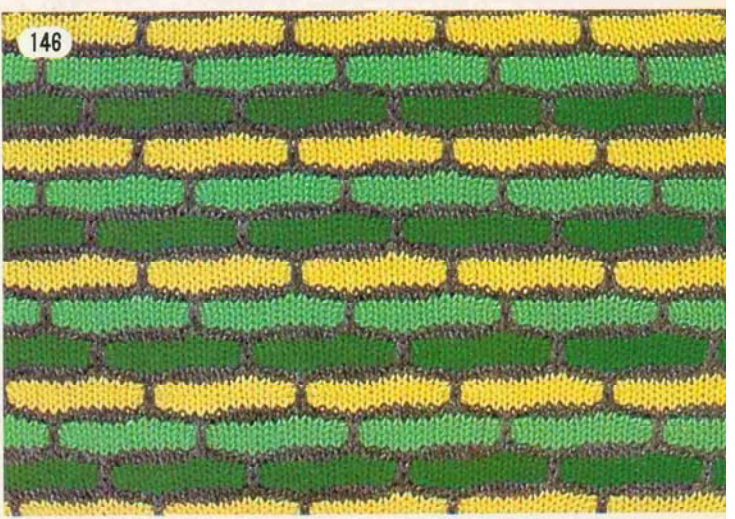
145



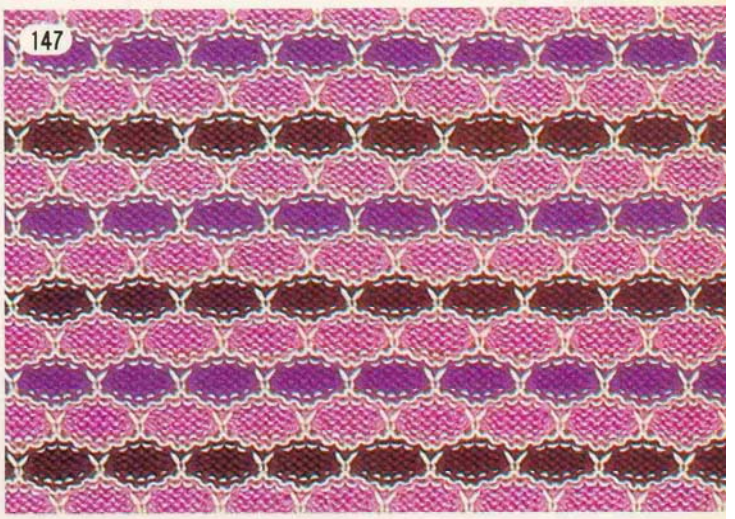
146



146



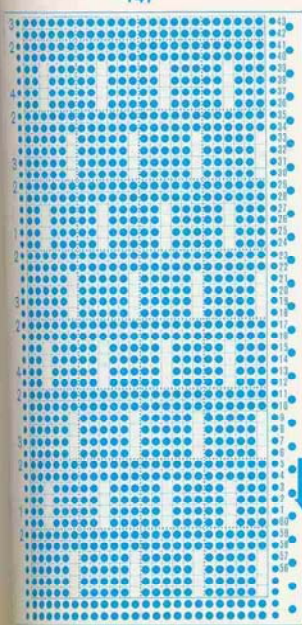
147



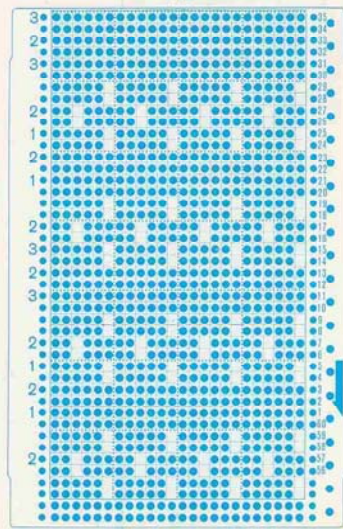
148



147



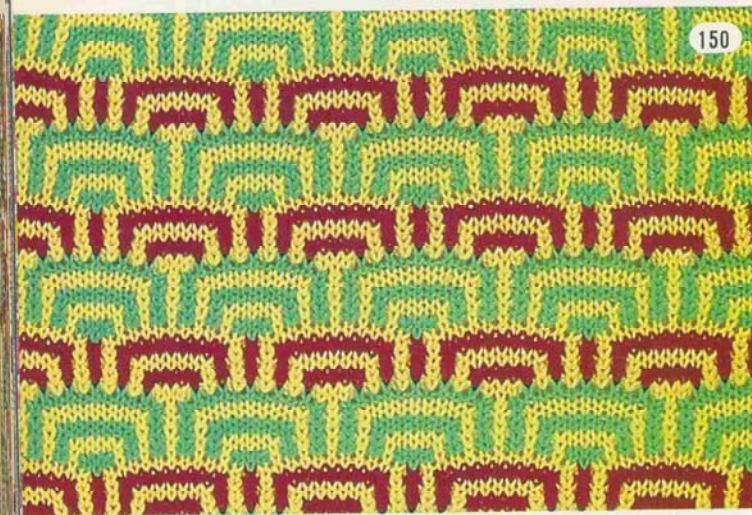
148



149



150



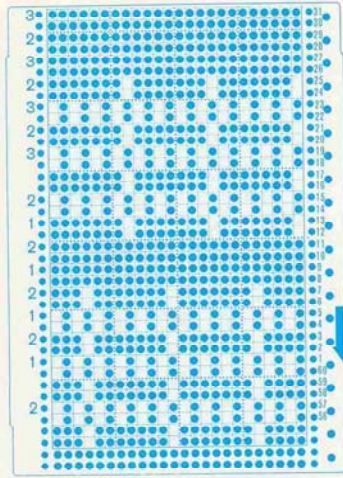
151



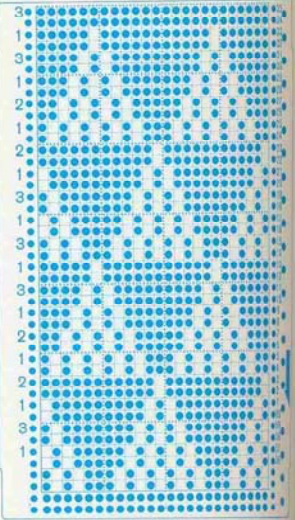
152



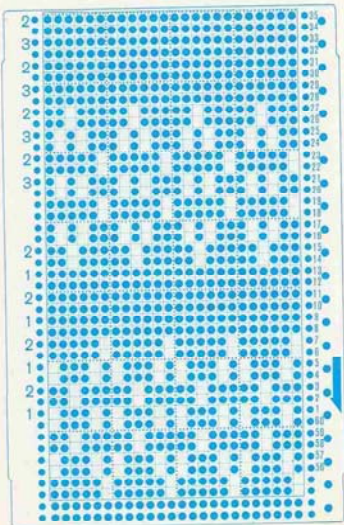
149



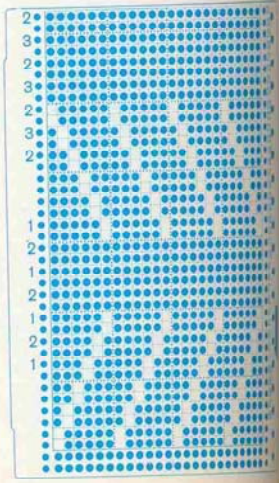
150



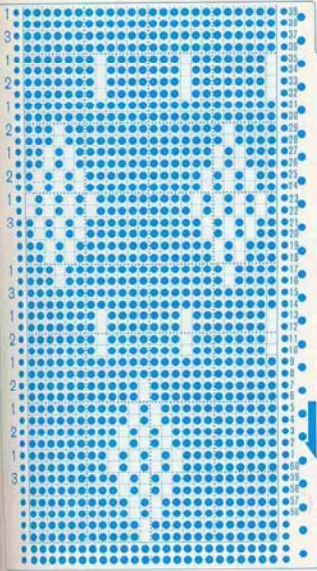
151



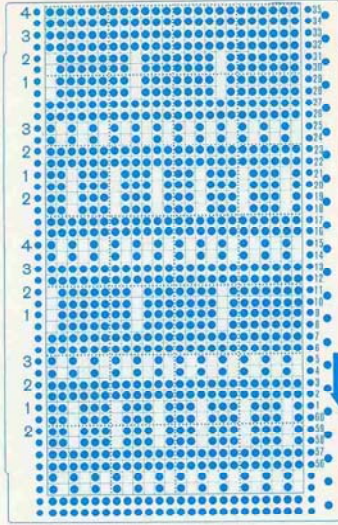
152



153



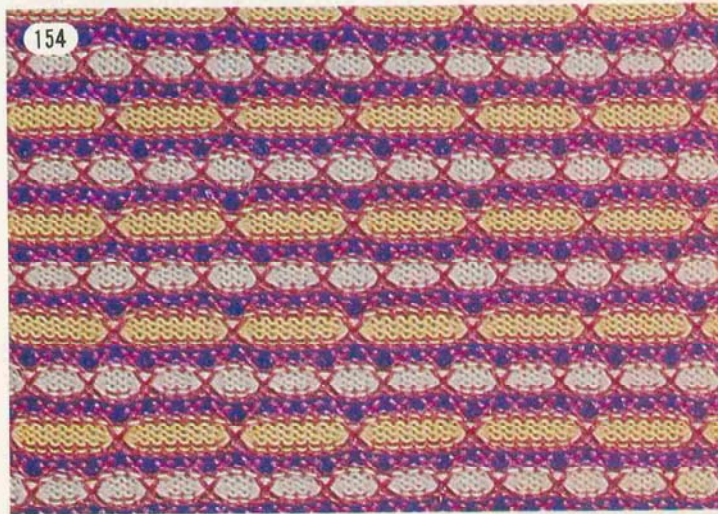
154



153



154



155



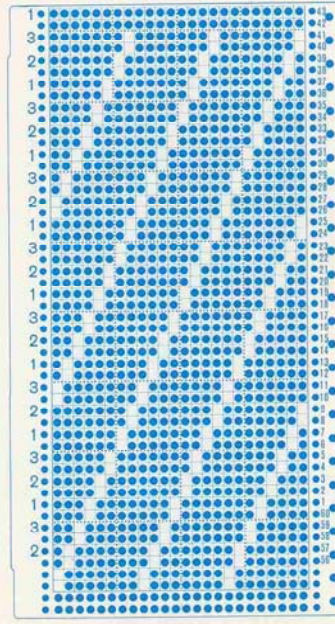
156



155



156





157



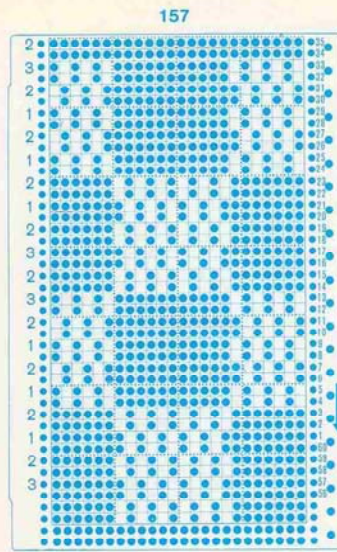
158



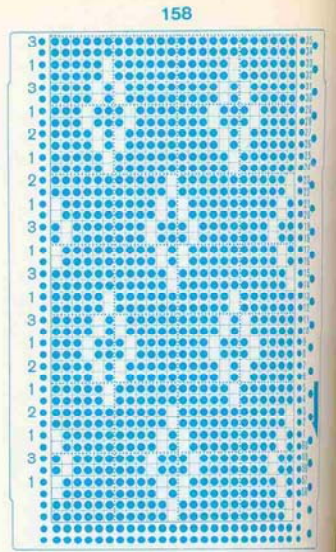
159



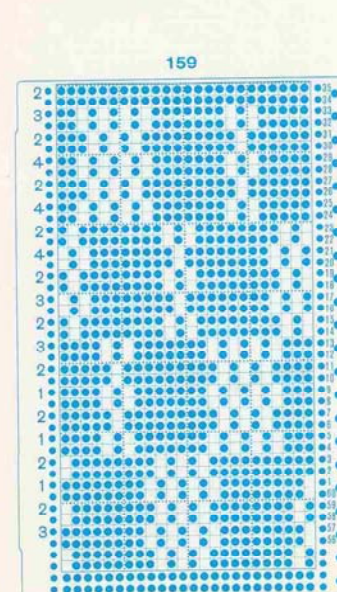
160



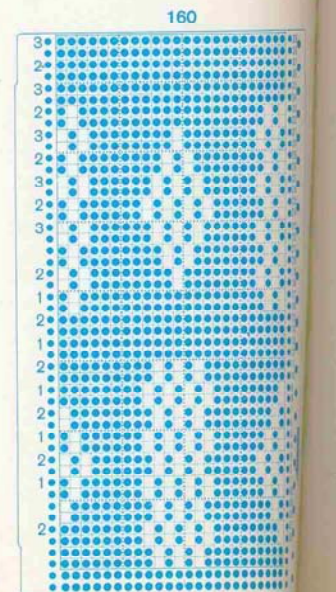
157



158



159



160