

# knitking *magazine*

Volume 28, Issue 4

## Look For Our New Selection of Yarns

Available through Kit Korner!  
See for yourself

## Winter Is Here

Stay warm with great sweaters  
and outer wear

## Great Additions to Your Wardrobe

Sweaters, Suits, an easy to knit  
Poncho and much more



306

307



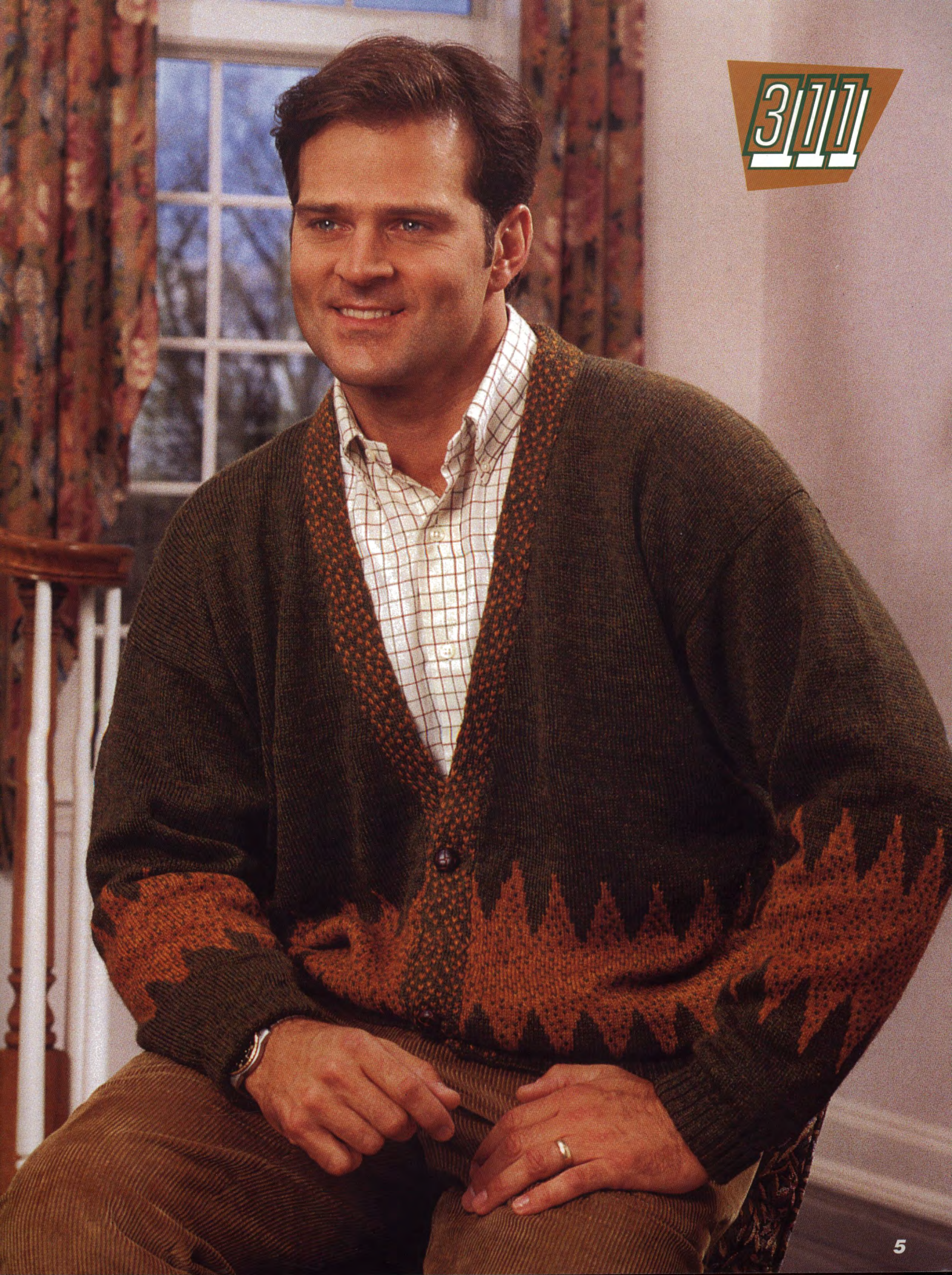
3|0|8|



310

309





312



3131



3/14





3115

3116



317

318



Knitkng Magazine — Volume 28, Number 4

•••General Instructions .....	12
305 Classic With A Twist .....	14
306 The Perfect Run .....	15
307 The Perfect Run .....	16
308 Touch Of Color .....	17
309 Cool Cotton .....	19
310 Simple Comfort .....	20
311 Fairisle Concept .....	21
312 Creme De La Creme .....	23
313 A Classic With Flair .....	24
314 Pewter Elegance .....	26
315 Uncommon Luxury .....	28
316 Embellished With Design .....	29
317 Textured Look .....	30
318 Completely At Ease .....	32
319 Teen Scene .....	35
320 Pocket Full Of Fun .....	36
321 Great Beginnings .....	37
322 Great Beginnings .....	39
323 Plenty Of Texture .....	40
324 On The Bright Side .....	42
325 Wrap It Up .....	44
326 Special Detail .....	45
327 A New Slant .....	47
328 At Your Service .....	48
Knitkng News .....	49
Kit Korner .....	50

Dear Readers,

As the year comes to a close, so comes the end of my time as Editor of Knitkng Magazine. From a personal standpoint I feel a certain sense of sadness no longer working side by side with our talented staff of designers and talking with our loyal subscribers. Fortunately, any ambivalence I feel is more than offset by the absolute excitement and confidence I feel in announcing Jill Stern (no relation!) as the new Editor of Knitkng Magazine. In addition to her contagious enthusiasm, Jill brings to Knitkng Magazine an extraordinary range of talents from technical knowledge to teaching and publishing skills to fashion design. Many of you already know Jill as a prolific author in our industry, a frequent speaker/ demonstrator at machine knitting workshops and seminars, and the founder of Knitech. From my first meeting with Jill many years ago to our co-editorship of this issue, I never cease to be amazed and delighted by her creativity, her energy and her knowledge of what kinds of information knitters need and want!

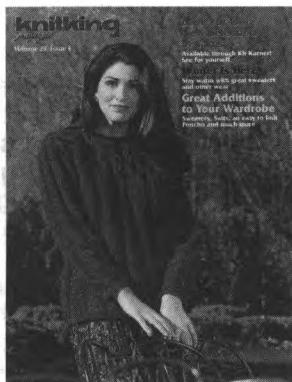
In the months of transition, we have spent much time meeting with the outstanding staff of Knitkng Magazine designers. Jill brings many new and creative ideas to the drawing board and we have been hard at work formulating new and exciting garment designs, informative new features to help you improve your knitting skills, and a new easy-to-read and follow format for pattern knitting that will unfold fully in the next issue. Not only will you have beautiful, fashionable garments and crafts to knit, but you'll have written lessons from industry leaders to help you master your machine and all its accessories.

But that's only part of the news. We've already added exciting new yarns, (Patterns 305, 315 and 318) and plans are underway now for more additions to the textures, colors and fibers available through Knitkng and our dealers.

I have had a wonderful time as Editor of Knitkng Magazine and I look forward to what the future holds in each new issue.

Happy Knitting,

*Suzanne Stern*

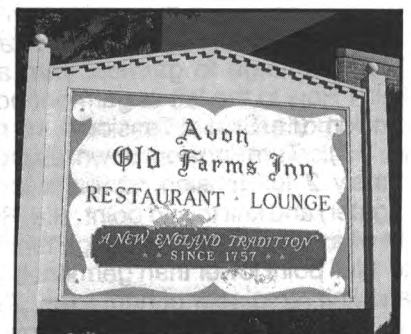


# 305

Publisher: KNITKING CORPORATION, 141 Hopmeadow St.,  
Simsbury, CT 06089. Telephone (203) 651-2929. Published quarterly.  
Subscriptions: USA-\$24.00 annually; single copies \$7.95. \$29.00-all other  
countries. The entire contents of KNITKING MAGAZINE are copyrighted and  
must not be reproduced in any shape or form without the  
express permission, in writing, of the publisher.  
© COPYRIGHT 1994 KNITKING CORPORATION

## On Location

We chose the gracious and historic Avon Old Farms Inn located in Avon, Connecticut to premier our first issue of The Knitkng Magazine in Knitkng's new home in Connecticut. The land was settled in 1678 by John North after serving in the British Colonial Army in King Phillip's War. His son, Nathaniel, built his home, which is part of the Inn, in 1757. We felt this warm elegant atmosphere of the Inn would be a welcome scene for our fabulous Knitkng knitted fashions.



# GENERAL INSTRUCTIONS

## THE SAMPLE SWATCH

It is imperative that you knit a sample swatch for every garment. Although you may be using the identical yarn and machine model as the pattern suggest, many variable such as dye lot difference, speed of knitting and just machine to machine differences can all cause a variance in the gauge achieved. Knitting Magazine publishes the tension and gauge for each garment shown. We strongly urge you to knit a swatch representing three tensions - the recommended tension, and .1 or .2 higher and lower. These different tensions can be knitted in one piece with waste yarn separating the sections. This will eliminate unnecessary rethreading while allowing you to obtain the gauge published in the magazine.

To make a sample swatch on standard gauge machines cast on 60 stitches with waste yarn. Knit approximately 6 rows. \*Mark the tension number for your swatch by making holes. For example 4 eyelet holes for Tension 4, 6 eyelet holes for Tension 6. Knit 6 more rows.

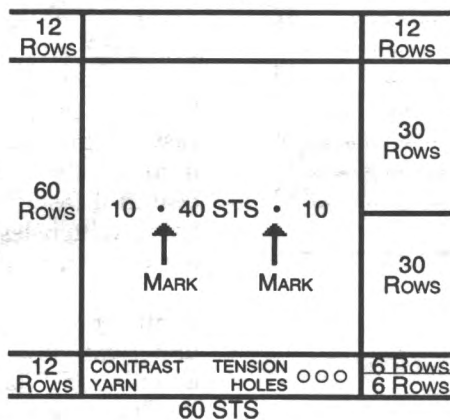
Change to garment yarn and reset row counter to 0. Knit 30 rows (in Pattern stitch). With contrast yarn, mark the 10th stitch FROM EACH SIDE by hand. Knit 30 Rows. Change to waste yarn and knit 6 rows. Change tension up or down for second section and repeat from \*. Make third section with another tension. Remove on 12 Rows

of waste yarn. Remove the sts. from the machine by pushing the Carriage across without yarn.

Pull and stretch the swatch both lengthwise and diagonally from corner to corner. Gently block the swatch. Treat the swatch as you would the finished garment before measuring the gauge. For example, if you plan to wash this garment and dry it in the dryer, you should do so, measuring before and after to see the difference.

Measure between the stitches marked and the beginning and ending rows for the inches/cms. knitted. Divide the total number of stitches/rows by the inches measured to calculate sts. and rows per inch.

For Bulky knitters, make swatch with 30 Sts. and 30 Rows. If so desired, or for large pattern repeats, we suggest a wider and longer swatch to provide more accurate gauges.



## HEMS

Two methods of knitting hems are described below. Variations on these instructions will allow you to knit plain hems, picot edge hems and more.

### Method One

With waste yarn cast on the required number of stitches and knit about 10-12 rows ending with the carriage on the left. Knit 1 Row to the right with Ravel Cord. Change to garment yarn and knit 1 Row to the left at garment body tension. (i.e. Skirt at Tension 4, 1st row at T 4). Turn tension down approximately 2 full tension numbers lower (tighter) and knit to mid point. (i.e. Row 14 of a 28-row hem). Change tension to 1 full point lower than garment body and knit remainder of hem rows. Pick up the stitches from the first row of garment yarn - shown between the stitches of Ravel Cord. Hem is now completed. Proceed with pattern as per chart and instructions. Remove

waste yarn and Ravel Cord when you have completed section.

### Method Two

Bring required number of needles to "B" (working) position. Attach cast-on comb. Beginning with the 2nd needle on the LEFT, bring every other needle to "D" or "E" position. Push in both Part buttons. Knit 1 Row to the left. Release the part buttons and drop the cast-on comb. (DO NOT REMOVE cast on comb from work). Knit required number of rows for hem. Attach weights to the back of work close to the cast-on comb (about 1/4" above the comb). Beginning with the 1st needle on the LEFT, bring every other needle to "D" position. Carefully LIFT the cast-on comb and hang loops onto the needles in "D" position. Turn the comb back away from you and make sure the needles are through the loops. Pull the needles out to "E" position and remove the cast-on comb.

## BUTTONHOLES

The following methods of buttonholes are the general manner in which small and large buttonholes are created.

### Small Buttonholes in Ribbing

Make small eyelet style buttonholes by following chart below.

BUTTONHOLE TRANSFER  
CENTER ST. OF EACH BED TO  
NEXT ST. OF OTHER BED



### Large Buttonholes in FNR

Vertical buttonholes are made by knitting each side separately (partial or short-row knitting). Knit the right side first, end with yarn on left. Without breaking yarn, knit left side. The strand of yarn inside the buttonhole can be picked up every other row when knitting the left side, but this is not necessary for a small buttonhole.

## SHORT ROWS

### Method One

With carriage on opposite side start placing appropriate number of ndls in HP. Knit across and wrap the inside needle. Again, place appropriate number of ndls in HP on opposite side from carriage, knit across and repeat wrapping. The wrapping will eliminate any holes in the knitting. Release HOLD button and continue knitting.

### Method Two - Automatic Wrap

Example follows for shoulder short rows. This method can be used for other Short Rowing as well. For example if pattern says to Short Row at shoulder every other row 7 sts, 1 x and 6 sts. 1 x ... With carriage on opposite side put 6 sts in HP, knit 1 row across and put one additional needle in HP. Opposite carriage place 6 ndls in HP. Knit 1 row across and bring one extra needle to HP. Repeat until shortrowing is completed.

# GENERAL INSTRUCTIONS

**AT THE SAME TIME** - Two functions are to be performed at the same time, such as shaping the neck and shoulder. Be sure to read both instructions before proceeding.

**BO** - Bind Off. To take off more than 1 St. at a time. When two or more stitches are to be bound off (or cast on) the carriage and yarn must be on the same side as the bind off. If the instruction is, "At R 100 BO 6 Sts on each side.", on the carriage side BO six stitches, knit one row and then bind off six stitches on the other side. See DECR and FF DECR.

**BOLT** - Slip Stitch Bind Off with a Latch Tool. Knit one row to the left at a tension at least five numbers higher (looser) than the garment tension. Bring all needles to holding position ("E") and then, pick up the first stitch on a latch tool allowing it to slip behind the latch, then pick up the next stitch and pull it through the stitch already on the latch hook, thus creating a slip stitch. If you cannot set the tension at least five full tension numbers higher, knit a row loosely manually.

**CO** - Cast on stitches for knitting. **(CHECK INSTRUCTION MANUALS TO MAKE SURE DIFFERENT METHODS ARE SHOWN)** In our instructions, CO is used either for a finished edge at the beginning of the garment, or to add edge stitch(es). If two or more stitches are to be cast on the carriage and yarn must be on the same side as the cast on. If the instruction is, "At R 100 CO 6 Sts on each side.", on the carriage side cast on six stitches, knit one row and then cast on six stitches on the other side.

**DEC** - Decrease. Use the transfer tool to move the edge stitch(es) inward to the next needle. Usually used to transfer one edge stitch to the next needle, but may be used to transfer the two edge stitches to the next two needles.

**EON** - Every other needle

**EOR** - Every other row

**EOS** - Every other stitch

**ES** - Each Side

**FF DEC** - Used to make an even edge for seaming and decorative seams for raglans. If one stitch is to be decreased, use a two-prong transfer tool to move the two edge stitches inward one needle. If two stitches are to be decreased, use a three-prong transfer tool to move the three edge stitches in two needles. If three stitches are to be decreased, use two two-prong transfer tools and move the edge stitches in four needles. See DECR, BO and SHAPING.

**FF INC** - To increase one stitch move the two edge stitches outward one needle, then fill the empty needle by picking up a bar from the row below and hanging it on the empty needle.

**FNR** - Full Needle Rib

**GC** - Garter Carriage

**HP** - Holding position or "E" position.

**INC** - Increase. Usually used for "full-fashion" shaping, see FF Incr., or in conjunction with short row shaping. A simple incr can be made by pulling additional needle on side of carriage out to "E" position and knit across.

**LS** - Left Side

**MB** - Main Bed

**MY** - Main Yarn

**NDL(S)** - Needles

**NWP** - Non-working position or position "A"

**RB** - Ribber Bed

**RC** - Row Counter.

**RS** - Right Side

**RW(S)** - Rows(s)

**SET PATTERN** - Follow the step-by-step instructions in your manual for setting the pattern and carriage controls for the pattern to be knit, e.g., Fairisle, tuck, single motif, etc.

**SHAPING** - The method used for shaping is a matter of personal preference. In our definitions we have described the methods commonly in use at Knitking. Which method is chosen for a particular pattern depends upon the garment, the yarn and the personal preference of the designer.

**SHR** - Short Row or Partial Knitting. Used for shaping shoulders, necklines, darts, gores, etc. Set carriage on H (hold). Every other row SHRs: On the opposite side of the carriage, place the specified number of stitches in holding position, knit across, wrap the inner needle or use an "automatic wrap". After all specified stitches have been placed in HP change the carriage setting to N (knit) to return the needles to WP. Every row SHRs: On the side being shaped, place one stitch in HP every row. It is recommended you refer to your manual or an instruction book for detailed instructions about how to short row.

**ST(S)** - Stitch(es)

**St. St.** - Stockinette stitch.

**T** - Tension.

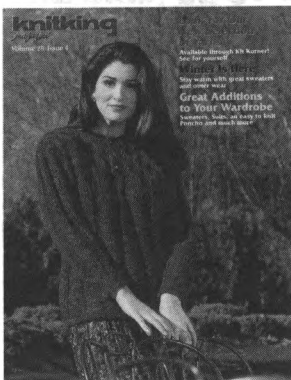
**WP** - Working Position or "B" position.

**WY** - Waste yarn.

**YM** - Yarn marker. To place a yarn marker, use a short piece of contrasting yarn and loop it over the needle specified or the end needle of the row specified.

## SEAMING GARMENTS

Any number of popular methods are suggested. We encourage you to experiment with any and all. If a garment in Knitking Magazine requires special seaming information it will be provided in the individual pattern instruction. Otherwise, methods include: linking on the knitting machine, an electric linker, crochet slip stitch, tapestry needles with back stitch sewing by hand. Bar to bar weaving for seamless appearance and seaming on a sewing machine or serger.



## CLASSIC WITH A TWIST

**YARN:** Hartford - Amethyst (Use 2 strands throughout)

**SIZES:**

6/8 (10/12) [14]

**AMOUNT:**

2 (2) [2 1/2] lbs.

**TENSION:**

Body: T 5/5 I  
Circular: T 1/1 I  
Bands: T 4

**GAUGE:**

Body: 4.37 STS, 6 RWS = 1"

**KIT:** See Kit Korner

**NOTIONS:** 3 - 1" Buttons

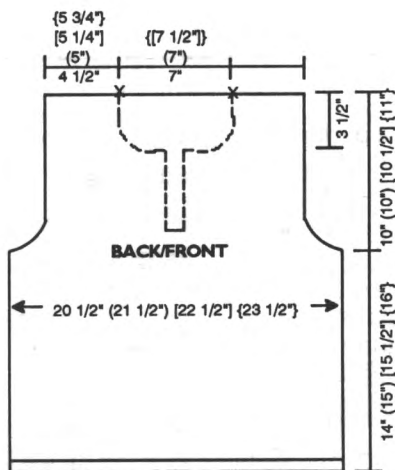
**TECHNIQUE:** FNR Cable

Make on any Bulky Machine with Ribber.

**Note:** Garment is worn on the purl side.

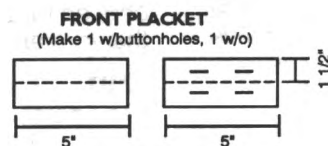
**BACK:**

CO 90 (94) [98] [102] STS for circular knitting. After selvedge RC 0. T 1/1 I. Knit to RC 12 and arrange NDLS for pattern following NDL chart. T 5/5 I. Knit to RC 74 (80) [82] [86] and shape armhole. On ES DEC 1 ST EOR 10x. At RC 94 (100) [106] [112] start cable pattern following cable chart. At RC 144 (150) [156] [162] transfer RB STS to MB. Mark center 30 (30) [[32]] STS for neck and remove all STS on WY.



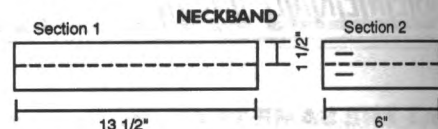
**FRONT:**

Knit front same as back to RC 94 (100) [106] [112] and BO center 4 STS for front opening. Place all STS on LS in HP. \*Knit in cable pattern following chart. At RC 122 (128) [134] [140] BO 3 STS on neck edge then DEC 1 ST EOR 10 (10) [[11]] x. At RC 144 (150) [156] [162] transfer RB STS to MB and remove shoulder STS on WY. Reset RC to 94 (100) [106] [112] and shape LS from \*, reversing shaping.



**FRONT PLACKET:** Make 1 with buttonholes, 1 w/o buttonholes.

With knit side facing rehang RS of front opening on 21 NDLS. RC 0. T 4. St. St. Knit to RC 5 and make 2 buttonholes as follows: Skip 5 STS and BO next 3 STS, skip next 5 STS and BO next 3 STS. Bring buttonhole STS to HP and knit 1 RW. With 1 prong transfer tool twist yarn on buttonhole NDLS to form STS. Knit to RC 17 and make 2 more buttonholes. Knit to RC 22 and pick up STS from first RW to form double band. Knit 1 RW at T 10 and BOLT.



**NECKBAND:**

**Section 1:** Close left shoulder. With knit side facing rehang left front neck and back neck on 54 (54) [[57]] NDLS. RC 0. T 4. St. St. Knit to RC 22 and pick up STS from first RW to form double band. Knit 1 RW at T 10 and BOLT.

**Section 2:** Close right shoulder. With knit side facing rehang right front neck on 24 (24) [[25]] NDLS. RC 0. T 4. St. St. Knit to RC 5 and make a buttonhole as follows: Skip 3 STS on LS and BO next 3 STS. Bring buttonhole STS to HP and knit 1 RW. With 1 prong transfer tool twist yarn on buttonhole NDLS to form STS. Knit to RC 17 and make another buttonhole. Knit to RC 22 and pick up STS from first RW to form double band. Knit 1 RW at T 10 and BOLT.



**SLEEVE:**

CO 43 (43) [45] [48] STS for circular knitting. After selvedge RC 0. T 1/1 I. Knit to RC 12 and arrange NDLS for pattern following NDL chart. T 5/5 I. Knit in cable pattern to RW 13 on cable chart. AT THE SAME TIME INC on ES 1 ST every 7 RWS 4 (10) [8] [6] x and 1 ST every 8 RWS 8 (3) [5] [7] x. At RC 92 (94) [96] [98] shape sleeve cap. On ES

**#305 Nd1 Chart**

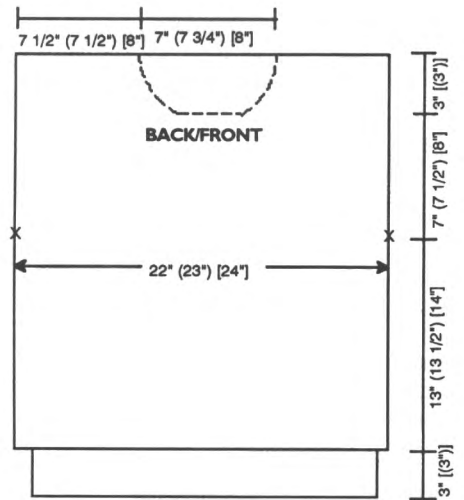
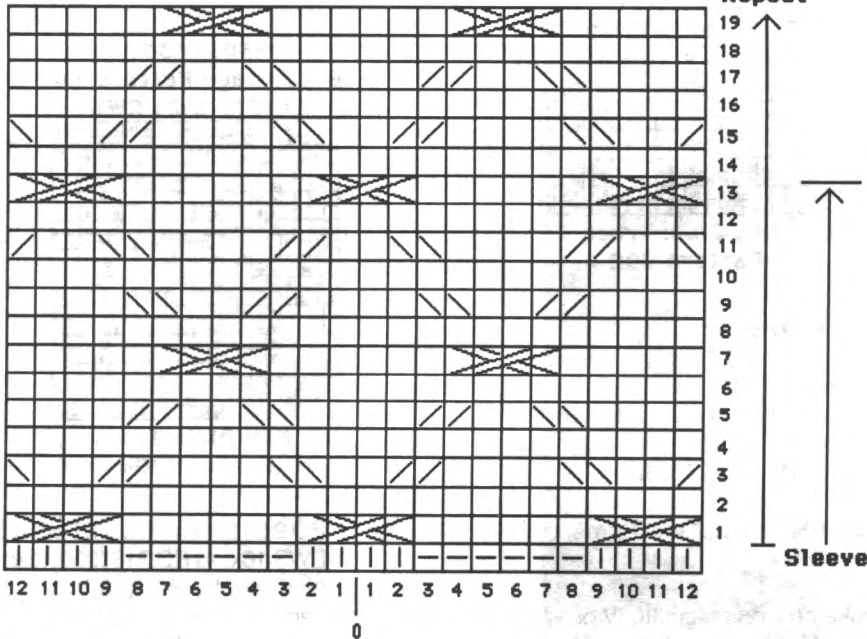


BO 3 STS then DEC 1 ST EOR 14 (14) {[15]} x and 2 STS EOR 5 {[5]} x. At RC 130 (132) [136] {138} transfer RB STS to MB. Knit 1 RW at T 10 and BOLT.

**FINISHING:**

Attach sleeves and close all remaining seams. Whip stitch buttonholes together.

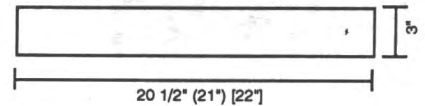
**#305 Cable Chart (Made on RB)**



**FRONT:**

Knit front same as back to RC 230 (242) [254] and shape neck. Note pattern RW. Knit center 14 (16) [18] STS to 'A' position on Ravel Cord and all STS on LS. \*On neck edge SHR 5 STS EOR 1 [(1)] x, 3 STS EOR 1 [(1)] x, 2 STS EOR 3 [(4)] x and DEC 1 ST EOR 8 [(8)] x. At RC 262 (274) [286] remove shoulder STS on WY. Reset RC to 230 (242) [254]. Reset pattern to correct RW and shape LS from \*, reversing shap- ing. Remove neck STS on WY.

**NECKBAND**



**NECKBAND:**

Close one shoulder. With purl side facing rehang neck on 127 (132)[137] NDLS. Knit 1 RW with K-Carriage. RC 0. T 7. Set G-Carriage for pattern #1. Knit to RC 12 and change to T 6.2. Knit to RC 24 and change to T 6.0. Knit to RC 36 and change to T 10+. Knit 1 RW and BOLT. Close remaining shoulder.

**SLEEVE:**

CO 102 (108) [114] STS. Knit 5 RWS of WY and 1 RW with Ravel Cord. RC 0. T 7. Set G-Carriage for pattern #2. Knit while INC on ES 1 ST every 4 RWS 13 (14) [13] x and 1 ST every 6 RWS 18 (18) [20] x. At RC 172 (176) [182] remove STS on garter bar or WY. With knit side facing rehang arm- hole on 164 (172) [180] NDLS.

**GAUGE:**

8.21 STS, 11.43 RWS = 1"

**KIT:** See Kit Korner

**TECHNIQUE:** Garter Carriage

Make on Compuknit III, IV or V/ Vcx Machine with Garter Carriage.

**Pattern Note:** Before knitting Pattern #2 change left end ND1 position to Yellow 12 to line up rib at shoulder. See Knitting News for SHR instructions with G-Carriage.

**BACK:**

With G-Carriage CO 182 (188) [196] STS. RC 0. T 7. Set G-Carriage for pattern #1. Knit to RC 35. RC 0. Set G-Carriage for pattern #2. Knit to RC 148 (154) [160] and place a YM on ES for armhole. At RC 262 (274) [286] mark center 58 (64) [66] STS for neck and remove STS on WY.



**THE PERFECT RUN**

**YARN:** Canton

**SIZES:**

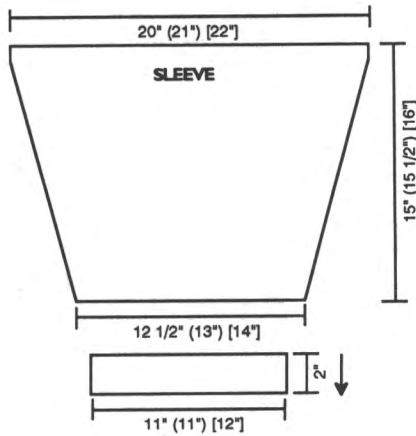
Small (Medium) [Large]

**AMOUNT: Same all sizes**

Blue Mist - 2 Cones (approx 2 lbs)

**TENSION:**

Body: T 7



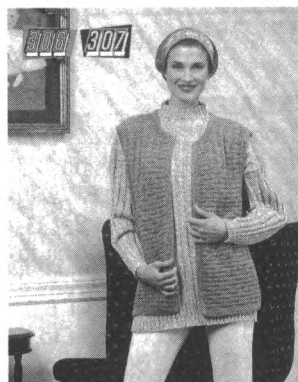
Push STS behind latches. With purl side facing rehang upper edge of sleeve on these NDLS. Manually pull STS through and BO.

**CUFF:**

With purl side facing rehang lower edge of sleeve on 92 (92) [97] NDLS. Knit 1 RW with K-Carriage. RC 0. T 7. Set G-Carriage for pattern #1 and knit to RC 22. Knit 1 RW at T 10+ and BOLT.

**FINISHING:**

Close all remaining seams.



**THE PERFECT RUN**

**YARN:** Hartford & Canton

**SIZES:**

Small (Medium) [Large]

**AMOUNT: Same all sizes**

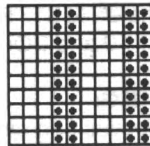
C1:Hartford - Blue Mist

1 Cone (approx 1 lb)

C2: Canton - Blue Mist

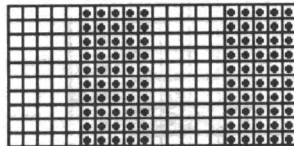
(Left from Pullover)

**#306/#307  
G-Carriage Pattern #1  
10 STS x 48 RWS**



**KK Mag Disk: Track 1;  
Pattern 901**

**#306/#307  
G-Carriage Pattern #2  
20 STS x 10 RWS**



**KK Mag Disk: Track 1;  
Pattern 902**

**TENSION:**

G-Carriage: T 7

Fairisle: T 6.2

St. St. T 6.1

**GAUGE:**

8.16 STS, 13.79 RWS = 1"

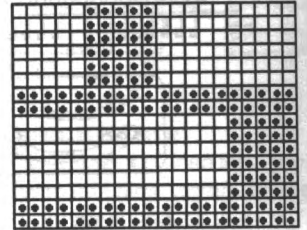
**KIT:** See Kit Korner

**TECHNIQUE:** Garter Carriage and Fairisle

Make on Compuknit III, IV or V/  
Vcx Machine with Garter Carriage.

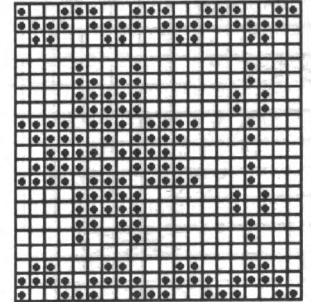
**NOTE:** Vest will need to be steamed to flatten out to measurements.

**#306/#307  
G-Carriage Pattern #3  
20 STS x 16 RWS**



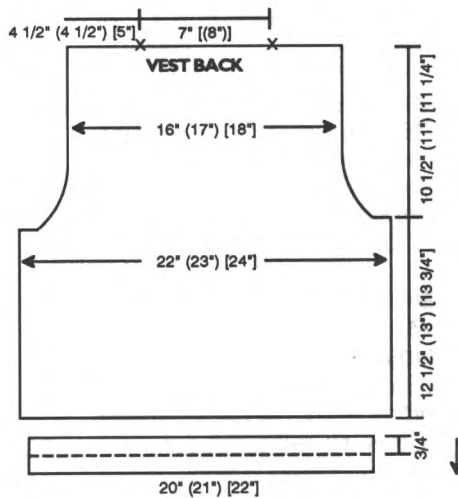
**KK Mag Disk: Track 1;  
Pattern 903**

**#306/#307  
G-Carriage Pattern #4  
20 STS x 21 RWS**



**KK Mag Disk: Track 1;  
Pattern 904**

BO 9 STS then DEC 1 ST every 3 RWS 16x. At RC 318 (330) [344] mark center 58 [(66)] STS for neck and remove STS on WY. With purl side facing rehang lower edge of back on 146 (152) [160] NDLS. RC 0. T 6.1. Knit in St. St. to RC 16 and BO.



**BACK:**

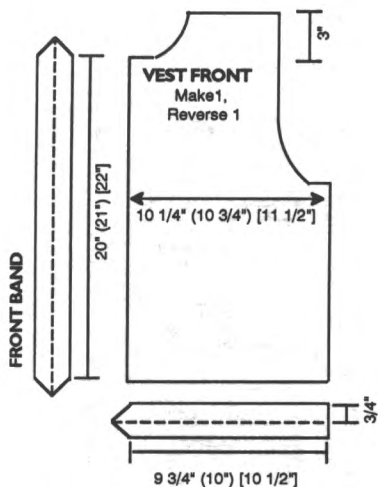
With C1 CO 180 (188) [196] STS. RC 0. T 7. Set G-Carriage for pattern #3. Knit to RC 174 (178) [190] and shape armhole. On ES

**"LACE MAKER" CARTRIDGE**

There's nothing more beautiful than the delicate appeal of Lace. And, with this new cartridge, you can use it (with your KC Pattern Design Computer) to create Lace and Fine Lace Patterns. The KC will automatically convert the "transfer symbols" you entered into a "data pattern" for easy communication into your Compuknit V or ST knitting machine.

Until April 14, 1995, this exciting, new accessory is **SALE priced at only \$113.95.**

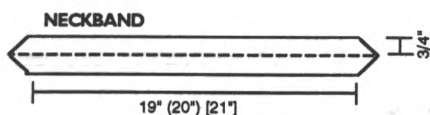




**FRONT:** Make 1, Reverse 1. With C1 CO 84 (88) [92] STS. RC 0. T 7. Set G-Carriage for pattern #3. Knit to RC 174 (178) [190] and shape armhole. On RS BO 9 STS then DEC 1 ST every 3 RWS 16x. At RC 276 (288) [302] shape neck. On LS BO 8 [(8)] STS, then SHR 5 STS EOR 1 [(1)] x, 4 STS EOR 1 [(2)] x and 1 ST every 3 RWS 6 [(6)] x. At RC 318 (330) [344] remove neck and shoulder STS on WY. With purl side facing rehang lower edge of front on 68 (70) [72] NDLS. RC 0. T 6.1. Knit in St. St. while INC on LS 1 ST EOR 3x. At RC 8 DEC on LS 1 ST EOR 3x. At RC 16 BO.

#### NECKBAND:

Close shoulder seams. With purl side facing rehang neck on 138 (144) [152] NDLS. RC 0. T 6.1. C1. Knit in St. St. while INC on ES 1 ST EOR 3x. At RC 8 DEC on ES 1 ST EOR 3x. At RC 16 BO.

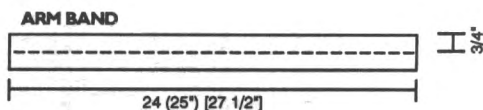


#### FRONT BAND:

With purl side facing rehang front edge on 144 (150) [158] NDLS. RC 0. T 6.1. C1. Knit in St. St. while INC on ES 1 ST EOR 3x. At RC 8 DEC on ES 1 ST EOR 3x. At RC 16 BO.

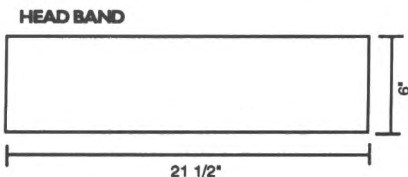
#### ARM BAND:

With purl side facing rehang armhole on 172 (182) [198] NDLS. RC 0. T 6.1. C1. Knit in St. St. to RC 16 and BO.



#### HEAD BAND:

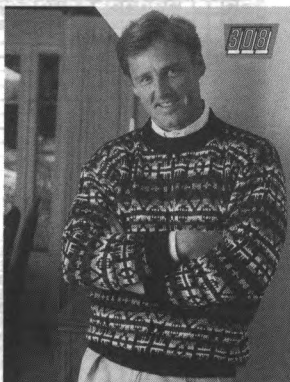
With C1 'e' wrap CO 150 STS. RC 0. T 7.1. St. St. Knit to RC 20 and change to T 6.2. Add C2 in 'B' Feeder and knit in fairisle pattern #4 to RC 41. Cut C2 and change to T 7.1. Knit in St. St. to RC 60 and BO.



#### FINISHING:

**Vest:** Close all remaining seams and whip stitch bands to inside to form hems.

**Head Band:** Close center seam on headband and pull through to knit side. Close end seam.



#### TOUCH OF COLOR

**YARN:** Venetia

#### SIZES:

Small (Medium) [Large]

#### AMOUNT: Same all sizes

C1: Black - 1 1/2 lbs.

C2: Choc. Brown - 8 oz.

C3: Coffee - 6 oz.

C4: Sand Frost - 2 oz.

C5: White - 2 oz.

C 6: Eggplant - 4 oz.

#### TENSION:

Fairisle: T 5.2

Rib: T 0/0 I

#### GAUGE:

Fairisle: 8.25 STS 13.28 RWS = 1"

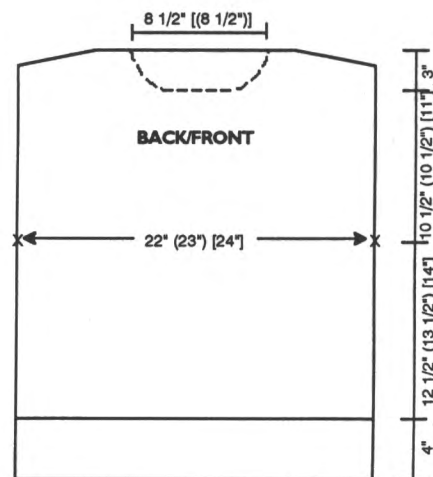
#### TECHNIQUE: Fairisle

Make on Compuknit III, IV or V Machine with Ribber.

#### BACK:

With C1 CO 182 (190) [198] STS in 1 x 1 rib. After selvedge RC 0. T 0/0 I. C1. Knit to RC 50 and

transfer RB STS to MB. RC 0. T 5.2. Knit in fairisle following Color Chart. At RC 168 (182) [190] place a YM on ES for armhole. At RC 308 (322) [336] SHR shoulders 6 STS EOR 5x. At RC 318 (332) [346] mark center 70 [(70)] STS for neck and remove all STS on WY.

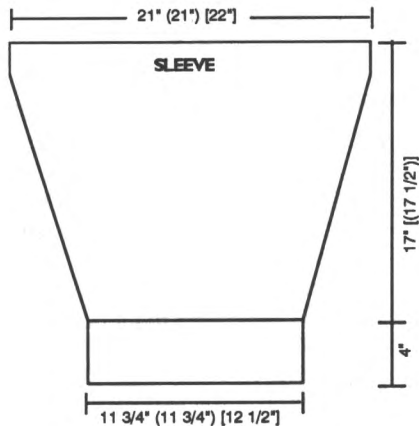


#### FRONT:

Knit front same as back to RC 278 (288) [302] and shape neck. Place center 20 STS in HP and all STS on LS. Note pattern RW. \*On neck edge SHR 3 STS EOR 3x and 2 STS EOR 8x. At RC 308 (322) [336] SHR shoulder 6 STS EOR 5x. At RC 318 (332) [346] remove shoulder STS on WY. Reset to RC 278 (288) [302]. Reset pattern to correct RW and shape LS from \*, reversing shapings.

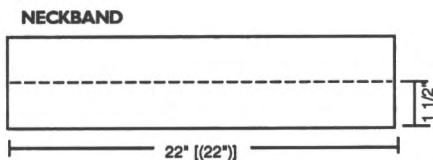
**SLEEVE:**

With C1 CO 92 (92) [96] STS in 1 x 1 rib. After selvedge RC 0. T 0/0 I. C1. Knit to RC 50 and transfer RB STS to MB. RC 0. T 5.2. INC 3 STS on ES. Knit in fairisle following Color Chart while INC on ES 1 ST every 5 RWS 8x and 1 ST every 6 RWS 30x (1 ST every 6 RWS 38x) [1 ST every 5 RWS 10x and 1 ST every 6 RWS 30x]. At RC 226 [(232)] knit 1 RW at T 10 and BOLT.



**NECKBAND:**

Close one shoulder. With purl side facing rehang neck on 180 [(180)] NDLS. Knit 1 RW with C1 and transfer EOS to RB for 1 x 1 rib. RC 0. T 0/0 I. C1. Knit to RC 40 and pick up STS from first RW to form double band. Knit 1 RW at T 10 and BOLT.



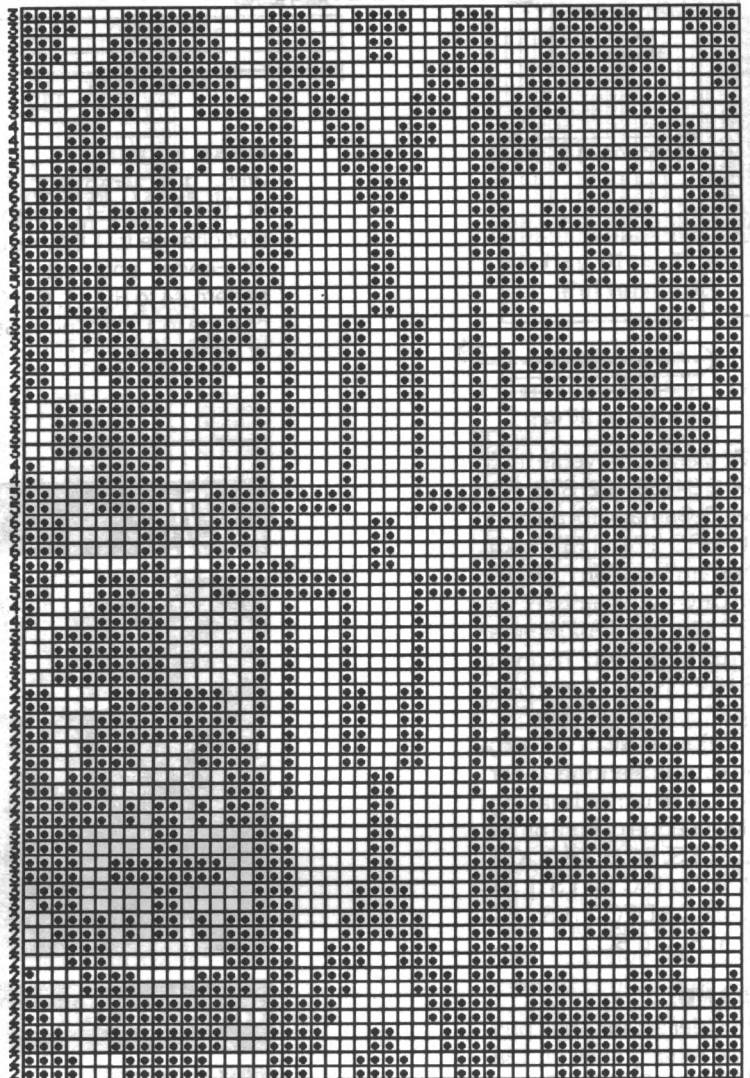
**FINISHING:**

Close remaining shoulder and attach sleeves. Close all remaining seams.

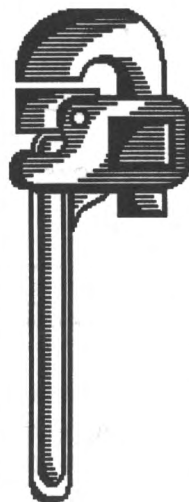
**COLOR CHART**

MC	CC	# Rows
1	3	8
1	4	2
1	5	2
1	6	6
1	5	2
1	4	2
1	3	2
1	2	4
1	3	4
1	4	2
1	5	2
1	6	4
1	5	2
1	4	2
1	3	4
1	2	10
1	3	6
1	2	12

**#308 Fairisle Pattern  
50 STS x 76 RWS**



KK Mag Disk: Track 2; Pattern 901



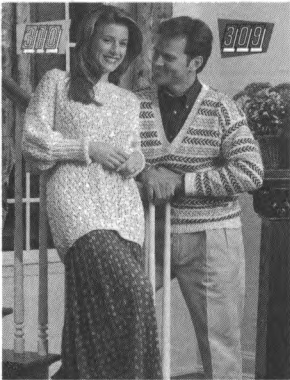
**The Right Tool  
for the Job...Let a  
Knitleader Work for You.**

With a KL 16 Knitleader, you can create a full-size chart of the garment you are knitting. And, as you knit, the chart rotates, telling you, on a row-by-row basis, exactly when and where to increase and decrease stitches for perfect garment shaping every time. Use it with any Knitting Standard or Bulky Gauge machines — it will even fit on the Power Drive Unit.

See your local Knitting Dealer or contact Knitting to order



**309**

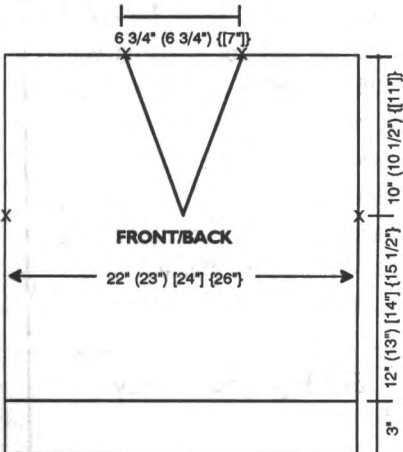


**COOL COTTON**

**YARN:** Primo  
**SIZES:** Sm. (Med.) [Lge] [X-Lge]  
**AMOUNT: Same all sizes**  
 C1: Ecrú - 1 1/2 lbs.  
 C2: Jungle - 8 oz.  
 C3: Inca - 8 oz.  
**TENSION:**  
 Fairisle: T 5.1  
 Rib: T 0.1/0.1 I or 0.2/0.2 I  
**GAUGE:**  
 Body: 7.3 STS, 10.8 RWS = 1"  
**TECHNIQUE:** Fairisle

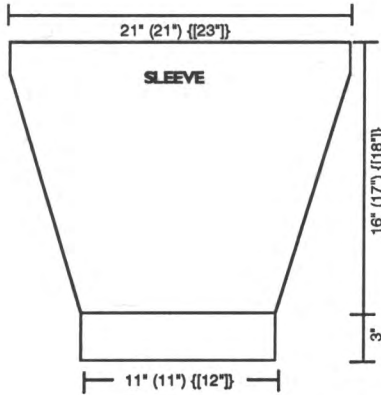
Make on Compuknit III, IV or V/  
 Vcx Machine with Ribber.

**BACK:**  
 With C1 CO 164 (172) [180] {194}  
 STS in 2 x 1 rib. After selvedge  
 RC 0. T 0.1/0.1 I. Knit to RC 50  
 {[50]} and transfer RB STS to  
 MB. RC 0. T 5.1. Knit in fairisle  
 following Color Chart. At RC 130  
 (140) [150] {166} place a YM on  
 ES for armhole. At RC 238 (254)  
 [270] {286} mark center 50 (50)  
 {[52]} STS for neck and remove  
 STS on WY.



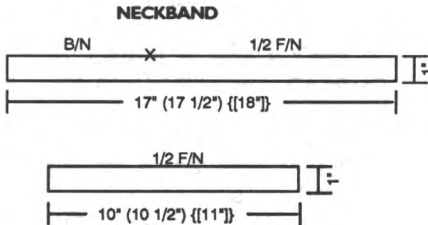
**FRONT:**

Knit front same as back to RC  
 130 (140) [150] {166} and place  
 a YM on ES for armhole. AT THE  
 SAME TIME shape neck. Place  
 all STS to the left of 0- in HP.  
 Note pattern row. \*On neck edge  
 DEC 1 ST every 4 RWS 23 {[20]}  
 x and 1 ST every 6 RWS 2 (5)  
 {[6]} x. At RC 238 (254) [270]  
 {286} remove STS on WY. Reset  
 to RC 130 (140) [150] {166}.  
 Reset pattern to RW noted above  
 and shape LS from \*, reversing  
 shaping.



**SLEEVE:**

With C1 CO 80 (80) {[88]} STS in  
 2 x 1 rib. After selvedge RC 0. T  
 0.1/0.1 I. Knit to RC 50 {[50]}  
 and transfer RB STS to MB. RC  
 0. T 5.1. Knit in fairisle following  
 Color Chart while INC on ES 1 ST  
 every 4 RWS 21 (18) {[25]} x and  
 1 ST every 6 RWS 16 (19) {[15]}  
 x. At RC 156 (168) {[180]} change  
 to C1 and knit in St. St. to RC 162  
 (174) {[186]} knitting last RW at T  
 10 and BOLT.



**NECKBAND:**

**Section 1:** With C1 CO 168  
 (176) {[184]} STS in 2 x 1 rib.  
 After selvedge RC 0. T 0.2/0.2 I.  
 Knit to RC 18. Transfer RB STS to  
 MB and remove STS on WY.  
**Section 2:** With C1 CO 106  
 (110) {[114]} STS in 2 x 1 rib and  
 knit same as section 1.

**FINISHING:**

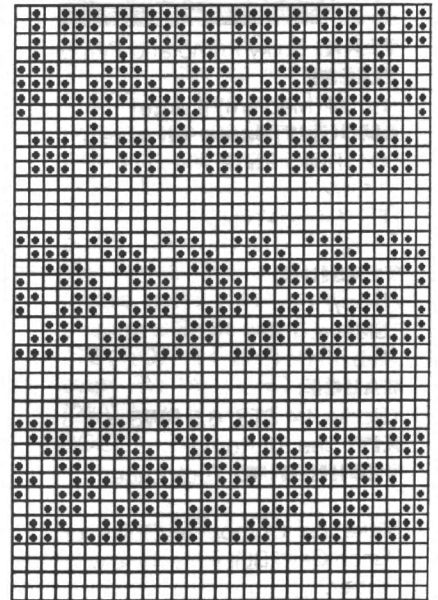
Close shoulder seams and at-  
 tach neckband to neck overlap-  
 ping from left to right at base of  
 V. Attach sleeves and close all  
 remaining seams.

**COLOR CHART**

# Rows	MC	CC
12	1	3
4	1	-
9	1	2
4	1	-
9	1	2
4	1	-

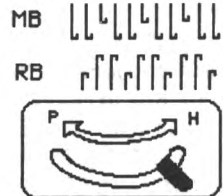


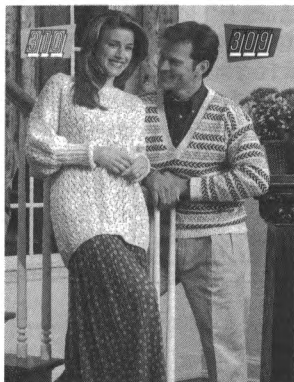
**#309 Fairisle Pattern**  
**30 STS x 42 RWS**



KK Mag Disk: Track 3; Pattern 90

**Rib Nd1. Arrangement**





## SIMPLE COMFORT

**YARN:** Bulky Primo and Primo

**SIZES:**

Small (Medium) [Large]

**AMOUNT: Same all sizes**

C1: Bulky Primo - Ivory

1 1/2 lbs.

C2: Primo - Ivory

1/2 lb.

**TENSION:**

Body: T 5

Sleeve: T 4

Rib: T 1/1 l

**GAUGE:**

Body: 4.4 STS, 6.5 RWS = 1"

**KIT:** See Kit Korner

**TECHNIQUE:** Tuck Lace

Make on Compuknit/Bulky or Punch Card Bulky Machine with Ribber.

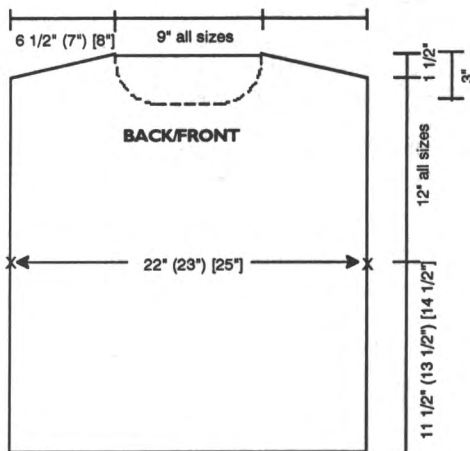
**Note:** Use 1 strand Bulky Primo and 1 strand Primo together throughout.

### BACK:

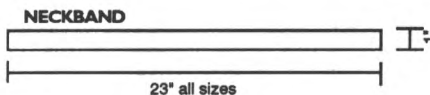
With WY CO 96 (102) [110] STS. Knit 9 RWS of WY and 1 RW with Ravel Cord. RC 0. T 5. C1 and C2. Transfer NDLS to OWP following Ndl. Arrangement Chart. Tuck Pattern. Knit to RC 74 (88) [94] and place a YM on ES for armhole. At RC 152 (166) [172] SHR shoulders 5 STS EOR 5x. At RC 162 (176) [182] mark center 40 STS for neck. Remove all STS on WY.

### FRONT:

Knit front same as back to RC 142 (156) [182]. Shape neck. Place center 20 STS in HP and all STS on LS. Note pattern row. \*On neck edge SHR 2 STS EOR 2x and 1 ST EOR 6x. AT THE



SAME TIME at RC 152 (166) [172] SHR shoulder 5 STS EOR 5x. At RC 162 (176) [182] remove shoulder STS on WY. Reset RC to 142 (156) [182] and shape LS from \*, reversing shapings. Remove neck STS on WY.



### NECKBAND:

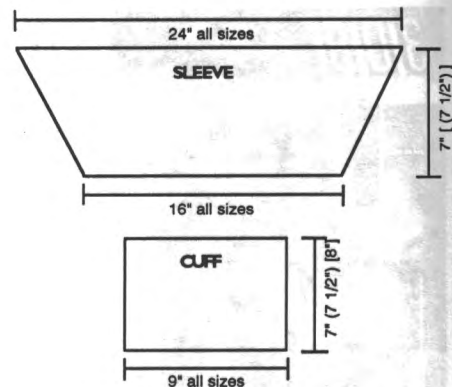
Close one shoulder. With purl side facing rehang neck on 96 NDLS. C1 and C2. Knit 1 RW and transfer STS to RB for 2x2 rib. RC 0. T 1/1 l. Knit to RC 8. Knit 1 RW at T 5/8. Transfer RB STS to MB and BOLT. Close remaining shoulder seam.

### SLEEVE:

With purl side facing rehang armhole on 106 NDLS. all sizes. C1 and C2. Knit 1 RW at T 5. Transfer NDLS to OWP following Ndl. Arrangement Chart. RC 0. T 4. Knit in tuck pattern while DEC 1 ST every 3 RWS 17 [(18)] x. At RC 52 [(56)] remove STS on WY.

### CUFF:

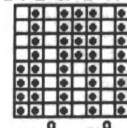
With purl side facing rehang lower edge of sleeve on 42 NDLS all sizes. C1 and C2. Knit 1 RW at T 5. Transfer NDLS to OWP following Ndl. Arrangement Chart. RC 0. T 2.2. St. St. Knit to RC 42 (46) [50]. Knit 1 RW at T 10 and BO making a Ch 1 where NDL is in OWP



### FINISHING:

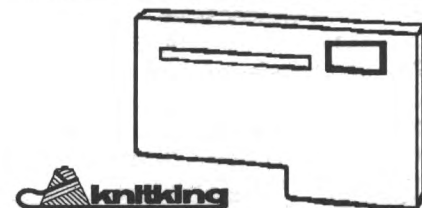
With C1 and C2 single crochet 1 RW around lower edge of back making sure to pick up all open STS. Without turning garment single crochet 1 RW back across the RW. Repeat from front. Close all remaining seams.

### #310 Tuck Pattern 8 STS x 8 RWS



Compuknit/Bulky  
Built-in Pattern #125

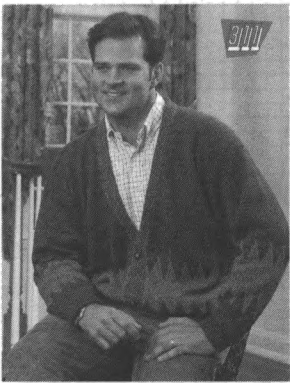
### #310 Tuck Ndl. Arrangement



## STORE PATTERNS WITHOUT A DISK

If you use the Control Panel on your Compuknit V to design your own original patterns, you can now save them directly to this new "Pattern Saver" Cartridge—and, unlike patterns loaded from the KC, those loaded from this Cartridge do not interfere with others created on the Compuknit V.

Until April 14, 1995 this handy storage device is **SALE priced at only \$87.95.**



**FAIRISLE CONCEPT**

**YARN:** Hartford

**SIZES:**

Small (Medium) [Large]

**AMOUNT: Same all sizes**

C1: Moss - 1 Cone

C2: Goldenrod - 3 oz.

**TENSION:**

Body: T 7

Placket: T 5.1

Rib: T 2.2/2.2 l

**GAUGE:**

Body: 7.75 STS, 9.5 RWS = 1"

Placket: 9 RWS = 1"

Rib: 12 RWS = 1"

**NOTIONS:** 3 - 1" Buttons

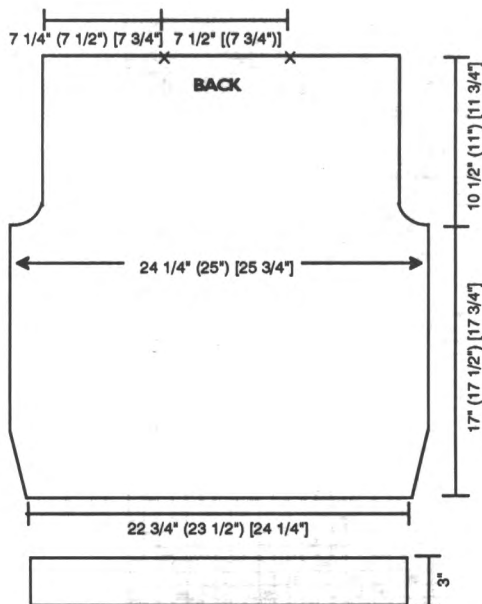
**TECHNIQUE:** Fairisle

Make on Standard 24-Stitch Punch Card or Standard Electronic Machine with Ribber.

**Note:** When knitting fairisle pattern #1, put C2 in 'A' Feeder and C1 in 'B' Feeder.

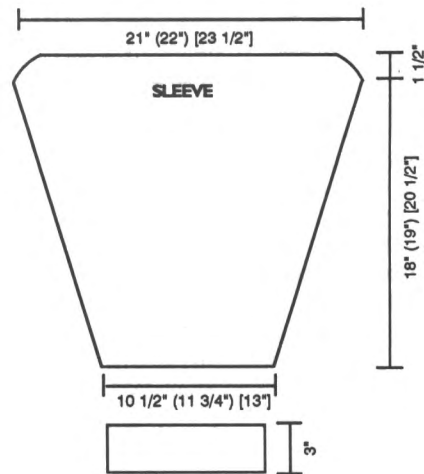
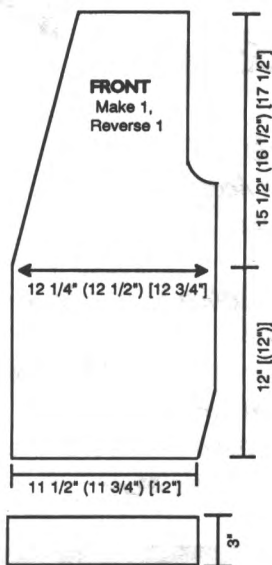
**BACK:**

With C1 CO 150 (160) [170] STS for 2x1 rib. After selvedge RC 0. T 2.2/2.2 l. Knit to RC 36 and remove STS on WY. With purl side facing rehang rib on 176 (182) [188] NDLS DEC evenly. RC 0. T 7. C1. Knit in St. St. while INC on ES 1 ST every 8 RWS 6x. AT THE SAME TIME at RC 30 start fairisle pattern #1. At RC 100 change to St. St. with C1. At RC 162 (166) [170] shape armhole. On ES BO 4 STS, then DEC 1 ST every RW 2x and 1 ST EOR 2x. At RC 262 (270) [280] mark center 58 [(60)] STS for neck and remove STS on WY.



**FRONT:** Make 1, Reverse 1.

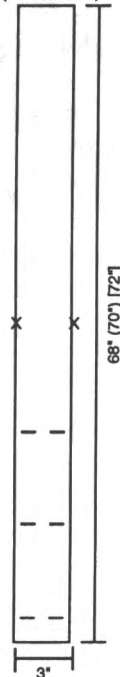
With C1 CO 78 (84) [90] STS for 2x1 rib. After selvedge RC 0. T 2.2/2.2 l. Knit to RC 36 and remove STS on WY. With purl side facing rehang rib on 90 (92) [95] NDLS DEC evenly. RC 0. T 7. C1. Knit in St. St. while INC on RS 1 ST every 8 RWS 6x. AT THE SAME TIME at RC 30 start fairisle pattern #1. At RC 100 change to St. St. with C1. At RC 114 shape neck. On LS DEC 1 ST every 4 RWS 31 x. AT THE SAME TIME at RC 162 (166) [170] shape armhole. On RS BO 4 STS, then DEC 1 ST every RW 2x and 1 ST EOR 2x. At RC 262 (270) [280] remove STS on WY.



**SLEEVE:**

With C1 CO 68 (76) [84] STS for 2x1 rib. After selvedge RC 0. T 2.2/2.2 l. Knit to RC 36 and remove STS on WY. With purl side facing rehang rib on 82 (92) [102] NDLS DEC evenly. RC 0. T 7. C1. Knit in St. St. while INC on ES 1 ST every 4 RWS 40x. AT THE SAME TIME at RC 30 start fairisle pattern #1. At RC 100 change to St. St. with C1. At RC 172 (180) [194] SHR on ES 1 ST every RW 14x. At RC 186 (194) [208] knit 1 RW at T 10 and BOLT.

**FRONT BAND**  
(Not to Scale)



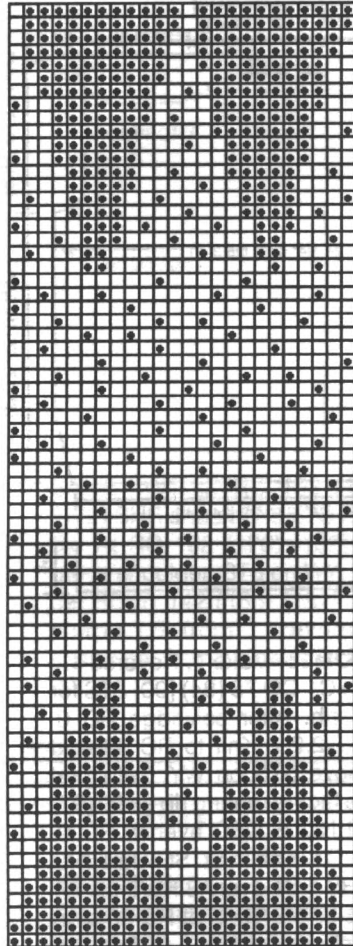
**FRONT BAND:**

With WY CO 28 STS. Knit 6 RWS of WY and 1 RW with Ravel Cord. RC 0. T 5.1. C1 & C2. Knit in fairisle pattern #2. At RC 28 make 2 buttonholes as follows: Skip 4 STS, remove next 6 STS on WY, skip next 8 STS and remove next 6 STS on WY. At RC 76 and RC 126 make buttonholes in the same manner. At RC 306 (315) [324] place a YM on each side to mark center of band. At RC 612 (630) [648] remove STS on WY.

**FINISHING:**

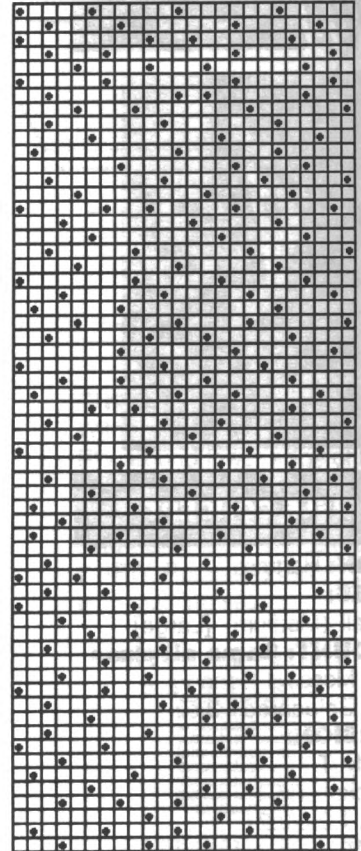
Close shoulder seams and attach sleeves. With knit sides together attach front band to front making sure buttonholes are on left front. Turn band to inside and whip stitch in place. Finish buttonholes and weave open stitches on band. Close all remaining seams.

#311 Fairisle Pattern #1  
24 STS x 70 RWS



KK Mag Disk: Track 4; Pattern 901

#311 Fairisle Pattern #2  
24 STS x 60 RWS



KK Mag Disk: Track 4; Pattern 902

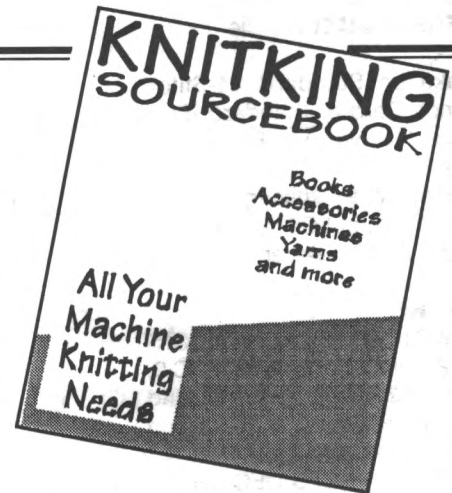
#311 Rib Ndl. Arrangement



*For All Your Machine Knitting Needs  
Go straight to the source . . .*

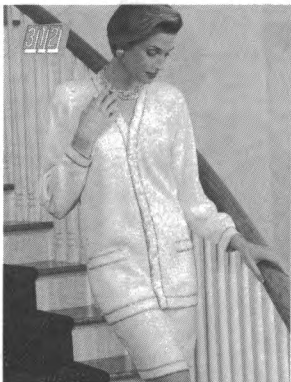
**THE ALL NEW  
KnitKING SourceBook**

- ★ *Over 60 Pages*
- ★ *Thousands of products*
- ★ *Machines, Machine Accessories*
- ★ *Hundreds of Books*
- ★ *Videos*
- ★ *Huge Yarn Selection*
- ★ *Design Aids*
- ★ *Punch Cards, Disks & Patterns*
- ★ *Garment Labels*
- ★ *Furniture*
- ★ *Lots, Lots More*



Order Your *KNITKING SourceBook* NOW from your Local Dealer or  
Call 1-800-962-6446 for the Name of a KnitKING Dealer Near you!

# 3/2



## CREME DE LA CREME

**YARN:** Venetia and Lumiyarn

**SIZES:**

6/8 (10/12) [14]

**AMOUNT:**

C1: Venetia White  
2 (2) [2 1/2] lbs.  
C2: Lumiyarn Gold  
2 [(3)] spools

**TENSION:**

Body: T 3.2  
Trim: T 3.1

**GAUGE:**

Body: 8.7 STS, 13 RWS = 1"

**KIT:** See Kit Korner

**NOTIONS:** 5 - 1 1/2" buttons for cardigan and elastic for waistband.

**TECHNIQUE:** St. St.

**NOTE:** Use 2 strands of C2 throughout.

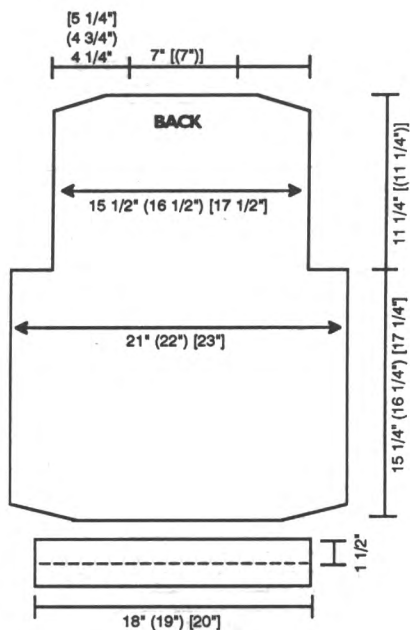
Make on any Standard Machine.

**BACK:**

With WY CO 182 (192) [200] STS. Knit 5 RWS of WY and 1 RW Ravel Cord. RC 0. T 3.2. St. St. C1. SHR on ES 20 STS EOR 2x. Reset RC to 0. Knit to RC 198 (212) [224] and shape armhole. On ES BO 24 STS. At RC 334 (348) [360] SHR shoulders 6 STS EOR 5x. At RC 344 (358) [370] mark center 60 [(60)] STS for neck and remove all STS on WY.

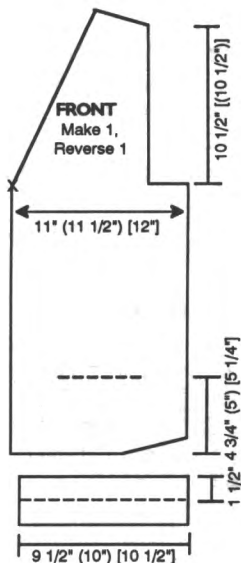
**BACK HEM:**

With purl side facing rehang lower edge of back on 158 (166) [176] NDLS. RC 0. T3.1. St. St. Stripe Chart 1. Knit to RC 46 and pick up STS from first RW to form double hem. Knit 1 RW at T 10 and BOLT.



**STRIPE CHART 1**

MC	# RWS
1	18
2	8
1	16
2	4



**FRONT:** Make 1, Reverse 1.

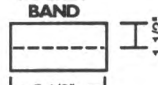
With WY CO 91 (96) [100] STS. Knit 5 RWS of WY and 1 RW Ravel Cord. RC 0. T 3.2. St. St. C1. SHR on RS 20 STS EOR 2x. Reset RC to 0. At RC 62 (66) [70] make pocket opening. Skip 23 (25) [27] STS at LS and remove next 50 STS on WY. At RC 198 (212) [224] shape armhole. On RS BO 24 STS. AT THE SAME TIME on LS shape neck. FF DEC 1 ST every 4 RWS 30x. At RC 334

(348) [360] SHR shoulder 6 STS EOR 5x. At RC 344 (358) [370] remove shoulder STS on WY.

**FRONT HEM:**

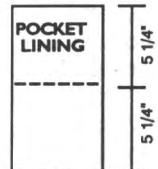
With purl side facing rehang lower edge of front on 84 (88) [92] NDLS. RC 0. T3.1. St. St. Stripe Chart 1. Knit to RC 46 and pick up STS from first RW to form double hem. Knit 1 RW at T 10 and BOLT.

**POCKET BAND**



**STRIPE CHART 2**

MC	# RWS
1	16
2	8
1	14
2	4

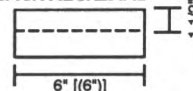


**POCKET:** (See Knitng News for Pocket Technique).

**Lining:** With purl side facing pick up 47 STS on upper side of WY. RC 0. T 3.1 St. St. Knit to RC 140. Change to T8 and knit 1 RW and BO.

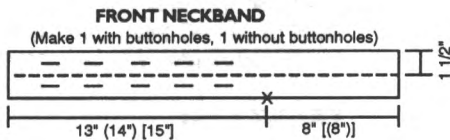
**Band:** With purl side facing pick up 47 STS on lower side of WY. RC 0. T 3.1. St. St. Stripe Chart 2. Knit to RC 42 and pick up STS from first RW to form double band. Knit 1 RW at T 10 and BOLT.

**BACK NECKBAND**



**BACK NECKBAND:**

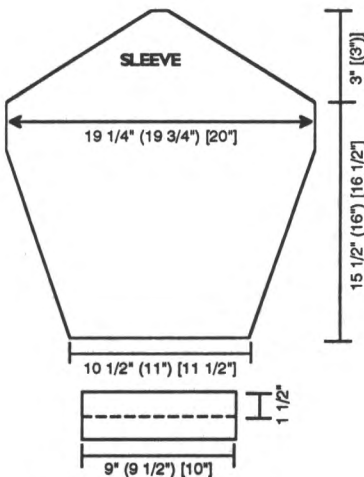
Close shoulder seams. With purl side facing rehang back neck on 50 [(50)] NDLS. RC 0. T3.1 St. St. Stripe Chart 1. Knit to RC 46 and pick up STS from first RW to form double band. Knit 1 RW at T 10 and BOLT.



**FRONT NECKBAND:**

Make 1 w/buttonholes, 1 w/o buttonholes.

With purl side facing rehang right front edge up to marker on 114 (122) [130] NDLS and from marker up to back neck on 70 [(70)] NDLS. RC 0. T 3.1. St. St. Stripe Chart 1. Knit to RC 46 making buttonholes at RC 11 and RC 35 as follows: Starting at LS skip 16 [(20)] STS, remove next 6 STS on WY. \*Skip next 17 (18) [20] STS, remove next 6 STS on WY. Repeat from \* 3 times. Pick up STS from first RW to form double band. Knit 1 RW at T 10 and BOLT.



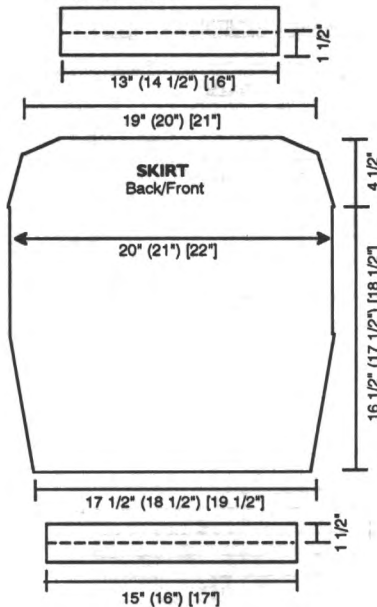
**SLEEVE:**

With WY CO 92 (96) [100] STS. Knit 5 RWS of WY and 1 RW Ravel Cord. RC 0. T 3.2. Knit in St. St. while INC on ES 1 ST every 4 RWS 38x. At RC 200 (208) [214] SHR on ES 4 STS EOR 20 [(20)] x. At RC 240 (248) [254] knit 1 RW at T 10 and BOLT.

**CUFF:**

With purl side facing rehang lower edge of sleeve on 78 (82) [86] NDLS. RC 0. T 3.1. St. St. Stripe Chart 2. Knit to RC 42 and pick up STS from first RW to form double band. Knit 1 RW at T 10 and BOLT.

**WAISTBAND**



**SKIRT BACK/FRONT:**

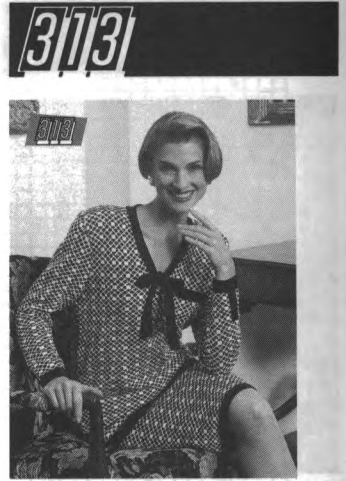
With WY CO 154 (162) [172] STS. Knit 5 RWS of WY and 1 RW Ravel Cord. RC 0. T 3.2. St. St. C1. INC on ES 1 ST every 10 RWS 10x. At RC 214 (226) [240] DEC on ES 1 ST every 10 RWS 5x. At RC 264 (276) [290] SHR on ES 10 STS EOR 5x. At RC 274 (286) [300] remove all STS on WY. With purl side facing rehang lower edge of skirt back/front on 132 (140) [148] NDLS. RC 0. T 3.1. St. St. Stripe Chart 2. Knit to RC 42 and pick up STS from first RW to form double hem. Knit 1 RW at T 10 and BOLT.

**WAISTBAND:**

With purl side facing rehang upper edge of skirt back/front on 114 (126) [138] NDLS. RC 0. T 3.2. St. St. C1. Knit to RC 44 and pick up STS from first RW to form double band. Knit 1 RW at T 10 and BOLT.

**FINISHING:**

Attach sleeves. Fold pocket lining in half and whip stitch to bottom of pocket band. Close all remaining seams. Finish buttonholes.



**A CLASSIC WITH FLAIR**

**YARN:** Venetia and Sorbet  
**SIZES:**

6/8 (10/12) [14]

**AMOUNT:** Same all sizes

C1: Venetia Navy 2 lbs.

C2: Sorbet White 1 lb.

**TENSION:**

Fairisle: T 5.1

St. St.: T 4

**GAUGE:**

Fairisle: 9 STS, 12 RWS = 1"

St. St.: 9 STS, 14 RWS = 1"

**NOTIONS:** Elastic for skirt waistbands.

**TECHNIQUE:** Fairisle

Make on Standard 24-Stitch Punch Card or Standard Electronic Machine with Ribber. Pattern is built-in #518 in Compuknit III, IV, V/Vcx machines.

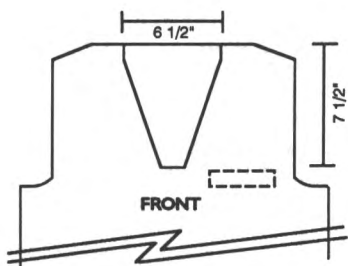
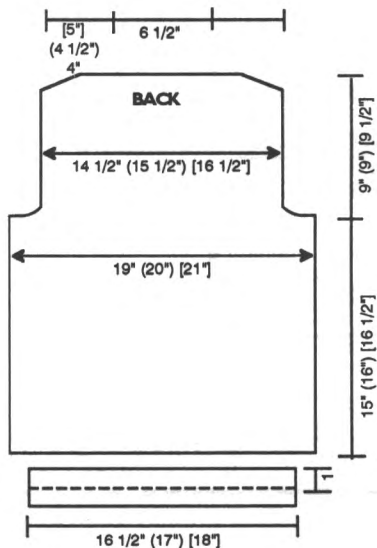
**BACK:**

With WY CO 172 (180) [190] STS. Knit 6 RWS of WY and 1 RW Ravel Cord. RC 0. T 5.1. Fairisle. C1 and C2. Knit to RC 182 (194) [200] and shape armhole. On ES BO 8 STS then DEC 1 ST EOR 12x. At RC 278 (290) [302] SHR shoulders 6 STS EOR 5x. At RC 288 (300) [312] mark center 58 STS for neck and remove all STS on WY.

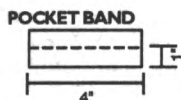
**FRONT:**

Knit front same as back to RC 182 (194) [200]. Skip 20 STS to the right of -0- and remove the next 40 STS on WY for pocket band. AT THE SAME TIME shape armhole same as back. At RC





198 (210) [222] shape neck. Remove center 12 STS and all STS on LS on WY. Note pattern RW. \*On neck edge FF DEC 1 ST every 3 RS 6x and 1 ST every 4 RS 17x. At RC 278 (290) [302] SHR shoulder 6 STS EOR 5x. At RC 288 (300) [312] remove STS on WY. Reset to RC 198 (210) [222]. Rehang STS from LS starting at NDL # 13 to the left of -0. Reset pattern to correct RW and shape LS from \*, reversing shapings.



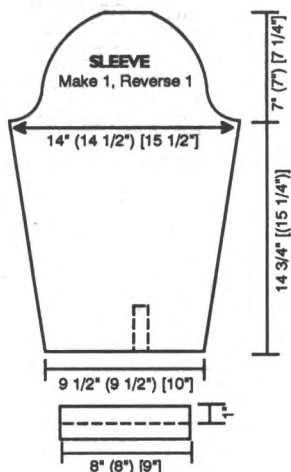
**POCKET BAND:**

With WY CO 36 STS. Knit 5 RWS of WY and 1 RW Ravel Cord. RC 0. T 4.1. St. St. C1. Knit to RC 36 and pick up STS from first RW to form double band. Knit 1 RW at T 10 and remove STS on WY.

**WAISTBAND:**

With purl side facing rehang lower edge of back/front on 148 (154) [162] NDLS. RC 0. T 4.2. St. St. C1. Knit to RC 40 and pick

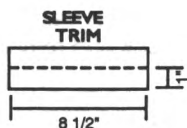
up STS from first RW to form double band. Knit 1 RW at T 10 and BOLT.



**SLEEVE:** Make 1, Reverse 1. With WY CO 84 (84) [90] STS. Knit 6 RWS of WY and 1 RW Ravel Cord. Mark 4th ST to the left of -0- for sleeve trim. RC 0. T 5.1. C1 and C2. Knit in fairisle while INC on ES 1 ST every 8 RWS 4x and 1 ST every 9 RWS 16x (1 ST every 7 RWS 2x and 1 ST every 8 RWS 21x) [1 ST every 7 RWS 25x]. AT THE SAME TIME at RC 40 mark 4th ST to the left of -0- for sleeve trim. At RC 176 (182) [184] shape sleeve cap. On ES BO 8 STS, then DEC 1 ST EOR 5x, 1 ST every 4 RWS 10 (10) [11]x, 1 STEOR 5x and SHR 2 STS EOR 11x. At RC 258 (264) [270] knit 1 RW at T 9 and BOLT.

**CUFF:**

With purl side facing rehang lower edge of sleeve on 72 (72) [80] NDLS. RC 0. T 4.2. St. St. C1. Knit to RC 40 and pick up STS from first RW to form double band. Knit 1 RW at T 10 and BOLT.

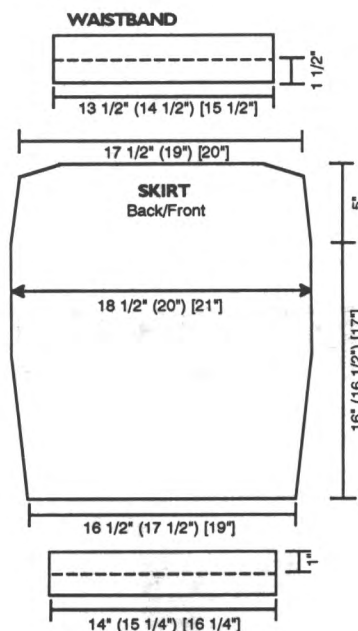


**SLEEVE TRIM:**

With WY CO 76 STS. Knit 5 RWS of WY and 1 RW Ravel Cord. RC 0. T 4.2. St. St. C1. Knit to RC 36 and pick up STS from first RW to form double band. Knit 1 RW at T 10 and remove STS on WY.

**NECK TIE:**

With C1 CO 16 STS on MB and 15 STS on RB for FNR following NDL chart. RC 0. T 0.1/0.11. C1. Knit to RC 550 and transfer RB STS to MB. Knit 1 row at T 8 and BOLT.



**SKIRT Back/Front:**

With WY CO 148 (160) [170] STS. Knit 6 RWS of WY and 1 RW Ravel Cord. RC 0. T 5.1. C1 and C2. Knit in fairisle while INC on ES 1 ST every 11 (12) [13] RWS 10x. At RC 110 (120) [130] mark ES for aid in seaming. At RC 192 (198) [204] DEC 1 ST every 10 RWS 5x. At RC 242 (248) [254] SHR on ES 10 STS EOR 5x. At RC 252 (258) [264] remove STS on WY. With purl side facing rehang lower edge of skirt back/front on 126 (138) [146] NDLS. RC 0. T 4.2. St. St. C1. Knit to RC 30 and pick up STS from first RW to form double hem. Knit 1 RW at T 10 and BOLT.

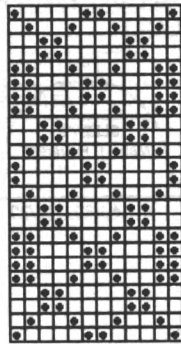
**WAISTBAND:**

With purl side facing rehang upper edge of skirt back/front on 120 (130) [140] NDLS. RC 0. T 4.2. St. St. C1. Knit to RC 44 and pick up STS from first RW to form double band. Knit 1 RW at T 10 and BOLT.

**FINISHING:**

Close shoulder seams. Attach necktie evenly around neck leaving excess to tie bow. Attach pocket band on left front. Attach sleeve trim from marker down to bottom of cuff and attach sleeves. Close all remaining seams.

**#313 Fairisle Pattern  
12 STS x 24 RWS**



Compuknit III, IV, V/Vcx  
Built-in Pattern #518

**#313 NdI Chart**



**PEWTER ELEGANCE**

**YARN:** Venetia and Roma

**SIZES:**

6/8 (10/12) [14]

**AMOUNT:**

C1: Venetia Charcoal  
1-1/2 (1-1/2) [2] lbs.

C2: Roma Eggplant  
5 oz. all sizes

C3: Venetia Taupe Tweed  
1/2 lb. all sizes

**TENSION:**

Fairisle: T 5.1 (5.1) [5.2]

St. St.: T 4.2 (4.2) [5]

Skirt: T 4.2

**GAUGE:**

Fairisle: 8.82 (8.82) [8.7] STS,

12 [(12)] RWS = 1"

Skirt: 9 STS, 13.96 RWS = 1"

**NOTIONS:** 4 - 1" Buttons for

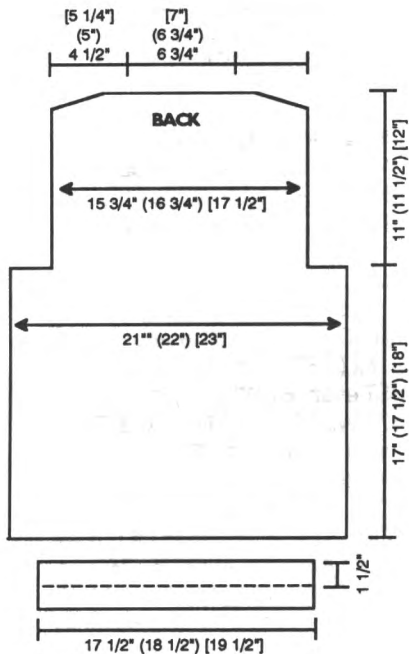
cardigan and elastic for waist-

band.

**TECHNIQUE:** Fairisle

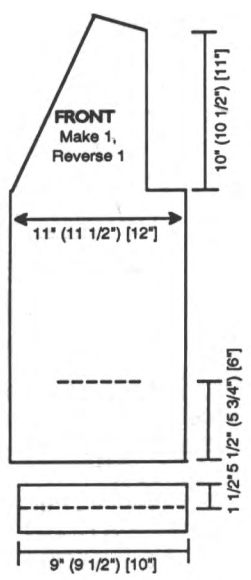
Make on Compuknit III, IV or V/  
Vcx Machine. Pattern is built-in

#63.



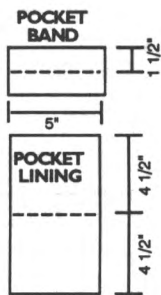
**BACK:**  
With WY CO 186 (194) [200] STS. Knit 6 RWS of WY and 1 RW Ravel Cord. RC 0. T 5.1 (5.1) [5.2]. Knit in fairisle following Color Chart. At RC 206 (212) [218] shape armhole. On ES BO 24 STS. At RC 326 (338) [350] SHR shoulders 6 STS EOR 5x. At RC 336 (348) [360] mark center 60 STS for neck and remove all STS on WY.

**BACK HEM:**  
With purl side facing rehang lower edge of back on 156 (162) [168] NDLS. RC 0. T4.2 (4.2) [5]. St. St. C1. Knit to RC 40 and pick up STS from first RW to form double hem. Knit 1 RW at T 10 and BOLT.



**FRONT:** Make 1, Reverse 1. With WY CO 96 (100) [103] STS. Knit 6 RWS of WY and 1 RW Ravel Cord. RC 0. T 5.1 (5.1) [5.2]. Knit in fairisle following Color Chart. At RC 66 (70) [74] make pocket opening. Skip 24 (25) [26] STS at LS and remove next 50 STS on WY. At RC 206 (212) [218] shape armhole. On RS BO 24 STS. AT THE SAME TIME shape neck. On LS DEC 1 ST every 3 RWS 12 (6) [0] x and 1 ST every 4 RWS 21 (27) [33] x. At RC 326 (338) [350] SHR shoulder 6 STS EOR 5x. At RC 336 (348) [360] remove STS on WY.

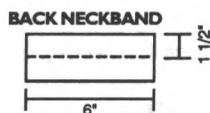
**FRONT HEM:**  
With purl side facing rehang lower edge of front on 78 (84) [90] NDLS. RC 0. T4.2 (4.2) [5]. St. St. C1. Knit to RC 40 and pick up STS from first RW to form double hem. Knit 1 RW at T 10 and BOLT.



**POCKET:** (See Knitting News for Pocket Technique).

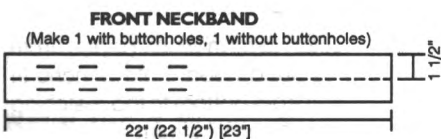
**Lining:** With purl side facing pick up 46 STS on upper side of WY. RC 0. T 4.2. St. St. Knit to RC 108. Change to T 8 and knit 1 RW and BO.

**Band:** With purl side facing pick up 50 STS on lower side of WY. RC 0. T 4.2. St. St. C1. Knit to RC 40 and pick up STS from first RW to form double band. Knit 1 RW at T 10 and BOLT.



**BACK NECKBAND:**

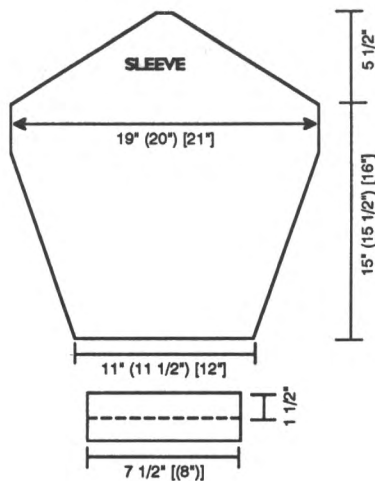
Close shoulder seams. With purl side facing rehang back neck on 50 NDLS. RC 0. T 4.2 (4.2) [5]. St. St. C1. Knit to RC 40 and pick up STS from first RW to form double band. Knit 1 RW at T 10 and BOLT.



**FRONT NECKBAND:**

Make 1 w/buttonholes, 1 w/o buttonholes.

With purl side facing rehang right front edge on 192 (196) [200] NDLS. RC 0. T 4.2 (4.2) [5]. St. St. C1. Knit to RC 40 making buttonholes at RC 10 and RC 30 as follows: Starting at LS \*skip 22 STS, remove next 6 STS on WY. Repeat from \* 3 times. Pick up STS from first RW to form double band. Knit 1 RW at T 10 and BOLT.

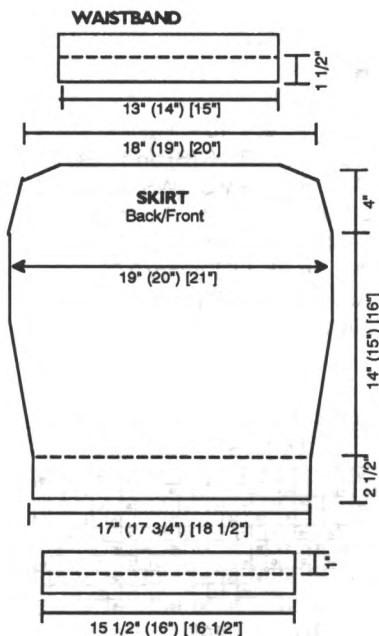


**SLEEVE:**

With WY CO 96 (100) [104] STS. Knit 6 RWS of WY and 1 RW Ravel Cord. RC 0. T 5.1 (5.1) [5.2]. Knit in fairisle following Color Chart while INC on ES 1 ST every 5 RWS 36 [(38)] x. At RC 210 (214) [218] SHR on ES 4 STS EOR 20 (21) [22] x. At RC 250 (256) [262] knit 1 RW at T 9 and BOLT.

**CUFF:**

With purl side facing rehang lower edge of sleeve on 63 (65) [70] NDLS. RC 0. T 4.2 (4.2) [5]. St. St. C1. Knit to RC 40 and pick up STS from first RW to form double cuff. Knit 1 RW at T 10 and BOLT.



**SKIRT BACK/FRONT:**

With WY CO 152 (160) [168] STS. Knit 6 RWS of WY and 1 RW Ravel Cord. RC 0. T 5.1. Knit in fairisle to RC 32 following Skirt Chart. Change to C1. T 4.2. Knit in St. St. while INC on ES 1 ST every 12 RWS 10x. At RC 200 mark ES for aid in seaming. At RC 226 (240) [254] DEC on ES 1 ST every 10 RWS 5x. At RC 276 (290) [304] SHR on ES 10 STS EOR 5x. At RC 286 (300) [314] remove all STS on WY. With purl side facing rehang lower edge of skirt back/front on 138 (140) [144] NDLS. RC 0. T 4.1. St. St. C1. Knit to RC 30 and pick up STS from first RW to form double hem. Knit 1 RW at T 10 and BOLT.

**WAISTBAND:**

With purl side facing rehang upper edge of skirt back/front on 116 (126) [136] NDLS. RC 0. T 4.1. St. St. C1. Knit to RC 44 and pick up STS from first RW to form double band. Knit 1 RW at T 10 and BOLT.

**FINISHING:**

Attach sleeves. With purl side facing fold pocket lining in half and whip stitch to bottom of pocket band. Close all remaining seams. Finish buttonholes with a crochet hook.

**SKIRT CHART**

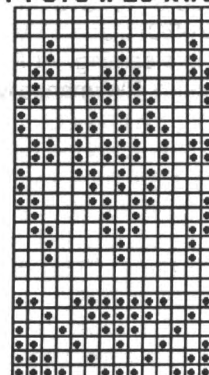
MC	CC	# RWS
1	2	6
1	-	2
1	3	16
1	-	2
1	2	6

**COLOR CHART**

MC	CC	# RWS
3	2	6
3	-	2
3	1	16
3	-	2
1	2	6
THEN		
1	-	2
1	3	16
1	-	2
1	2	6

Repeat to end  
Repeat 8x Body  
7x Sleeve

**\*314 Fairisle Pattern  
14 STS x 26 RWS**



Compuknit III, IV or V/Vcx  
Built-in Pattern #63

# 315



## UNCOMMON LUXURY

**YARN:** Chenille and Venetia

**SIZES:**

Medium (Large)

**AMOUNT:**

C1: Chenille - Rust

2 (2 1/2) lbs.

C2: Venetia - Black

1 1/2 lbs. all sizes

**TENSION:**

Body: T 10+

**GAUGE:**

Body: 7.27 STS, 7.34 RWS = 1"

KIT: See Kit Korner

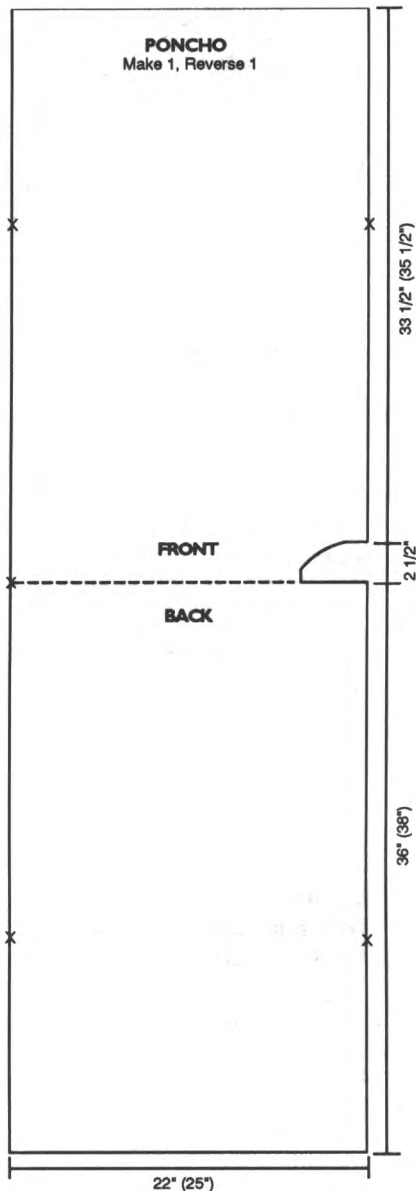
**NOTIONS:** 1 - 1" button

**TECHNIQUE:** Fairisle

Make on Standard 24-Stitch Punch Card or Standard Electronic Machine.

**BACK/FRONT:** Make 1, Reverse 1.

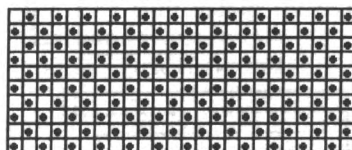
With C1 'e' wrap CO 160 (182) STS. RC 0. T 10+. Fairisle. C1 & C2. Knit to RC 100 and place a YM on ES for aid in steaming. At RC 260 (280) place a YM on ES for shoulder and shape neck. On RS BO 28 (30) STS. Knit to RC 268 (288). On neck edge INC 2 STS EOR 10x. At RC 288 (308) add 8 (10) STS on RS. At RC 420 (460) place a YM on ES for aid in steaming. At RC 520 (560) knit 1 RW manually and BOLT.



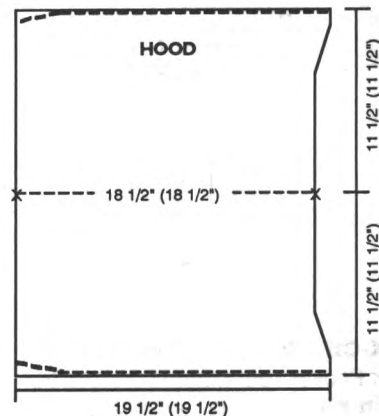
### HOOD:

With C1 'e' wrap CO 142 (142) STS. RC 0. T 10+. Fairisle. C1 & C2. Knit to RC 6 (6) and DEC on RS 1 ST every 3 RWS 8x. At RC 84 (84) place a YM on ES for center back. At RC 138 (138) INC on RS 1 ST every 3 RWS 8x. At RC 168 (168) knit 1 RW manually and BOLT.

### \*315 Fairisle Pattern 24 STS x 10 RWS



KK Mag Disk: Track 5; Pattern 901



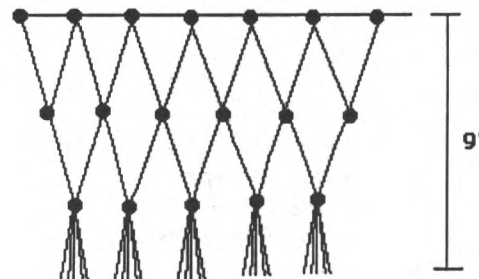
### FRINGE:

1. Cut 4 pieces of C1 23" long.
2. Cut 8 pieces of C2 23" long.
3. Put 12 pieces of yarn together and fold in half to form fringe. Latch fringe through bottom of garment.
4. Repeat steps 1 through 3 every 2 1/2" around bottom edge.
5. Use 4 strands of C1 and 8 strands of C2 and tie to make lattice fringe following chart.

### FINISHING:

Close center back seam on poncho. Fold hood in half and close seam following broken line on chart. Attach hood to neck. Single crochet around all edges with 2 strands of C2 making a chain loop buttonhole at the top of right front. Single crochet around front edge of hood, then backwards crochet as follows: \*5 single crochet, chain 3, slip stitch in same stitch to form picot. Repeat from \* around hood. Fold poncho in half from bottom to top matching markers and steam.

### \*315 Fringe





## EMBELLISHED WITH DESIGN

**YARN:** Woolana and Alpine

**SIZES:**

Small (Medium) [Large]

**AMOUNT: Same all sizes**

C1: Woolana - Fisherman

2 Cones

C2: Alpine - Grape 2 oz.

C3: Alpine - Taupe 2 oz.

C4: Alpine - Rust 2 oz.

**TENSION:**

Body: T 8.1

Rib: T 4/4 I

**GAUGE:**

Body: 7.5 STS, 10 RWS = 1"

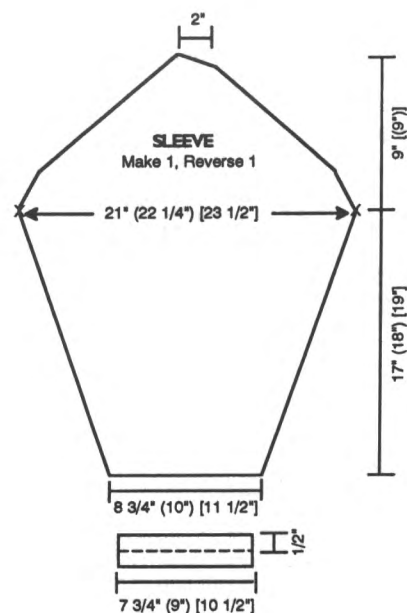
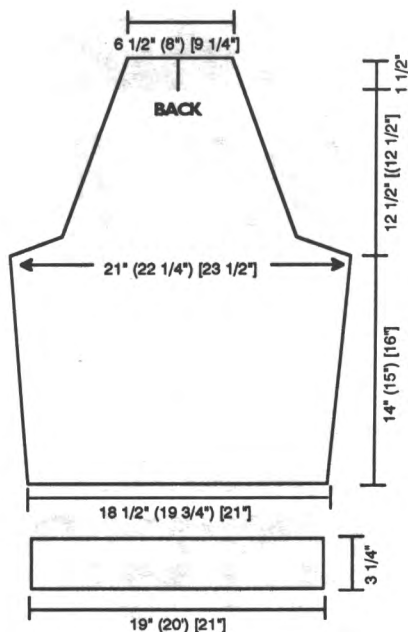
Rib: 11 RWS = 1"

**NOTIONS:** 3 - 1/4" buttons

**TECHNIQUE:** Single Motif Fairisle

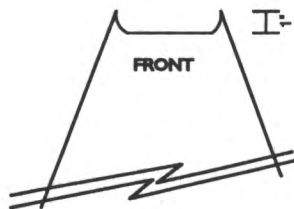
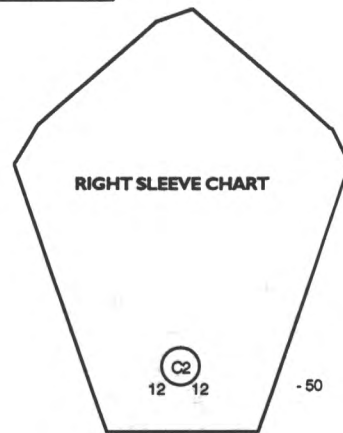
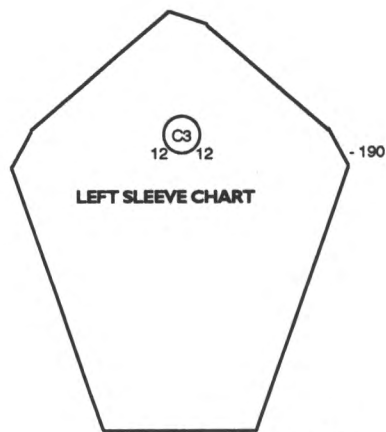
Make on Standard 24-Stitch Punch Card or Standard Electronic Machine with Ribber.

**Note:** Use 2 strands of C1 throughout.



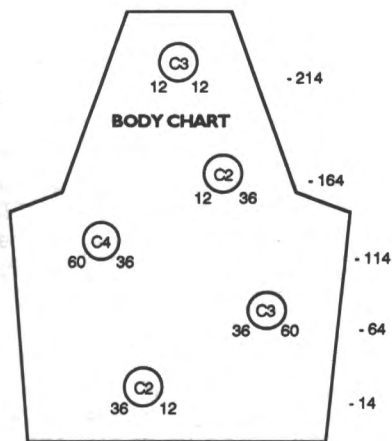
**BACK:**

With C1 CO 140 (146) [152] STS for 2x1 rib. After selvedge RC 0. T 4/4 I. Knit to RC 36 and remove STS on WY. With purl side facing rehang rib on 138 (148) [158] NDLS. RC 0. T 8.1. C1. Knit in single motif following Body Chart while INC on ES 1 ST every 10 RWS 10 [(10)] x. At RC 140 (150) [160] start raglan shaping. On ES DEC 1 ST every RW 20 [(20)] x and 1 ST every 3 RWS 34 [(34)] x. AT THE SAME TIME at RC 256 (266) [276] place all STS on LS of -0- in HP for back neck opening. \*Knit in St. St. to RC 270 (280) [290] and remove STS on WY. Reset RC to 256 (266) [276] and place all NDLS on LS of -0- in WP. Knit same as RS from \*, reversing shaping.



**FRONT:**

Knit front same as back to RC 254 (264) [274] and shape neck. Place center 30 (40) [50] STS and all STS on LS in HP. \*On neck edge SHR 1 ST every RW 10x. At RC 264 (274) [284] reset RC to 254 (264) [274] and shape LS from \*, reversing shaping. At RC 264 (274) [284] knit 1 RW at T 10 over neck STS and BOLT.



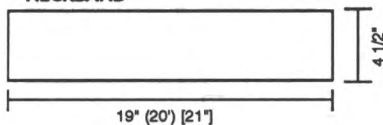
**SLEEVE:** Make 1, Reverse 1. With WY CO 66 (76) [86] STS. Knit 5 RWS of WY and 1 RW with Ravel Cord. RC 0. T 8.1. C1. Knit in single motif following Sleeve Chart while INC on ES 1 ST every 4 RWS 22 [(22)] x and 1 ST every 3 RWS 24 [(24)] x. At RC 170 (180) [190] place a YM on ES and shape sleeve cap. On ES DEC 1 ST EOR 19 (14) [10] x and 1 ST every RW 50 (60) [69] x. At

RC 260 (270) [280] SHR on RS 3 STS EOR 6x and remove STS on WY.

**CUFF:**

With purl side facing rehang lower edge of sleeve on 50 (60) [70] NDLS. RC 0. T 7.1. C1. St. St. Knit to RC 12 and pick up STS from first RW to form double band. Knit 1 RW at T 10 and BOLT.

**NECKBAND**



**NECKBAND:**

With C1 CO 140 (146) [152] STS for 2x1 rib. After selvedge RC 0. T 4/4.1. Knit to RC 52 and remove STS on WY.

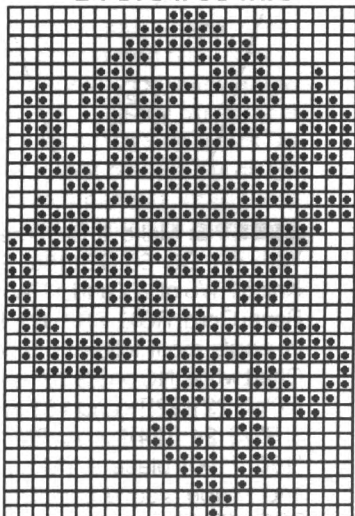
**FINISHING:**

Close raglan seams and attach neckband with a crochet hook. With knit side facing Single Crochet 1 RW around back neck opening making 3 Ch 4 loops for buttonholes. Close all remaining seams. With 2 strands of C2 whip stitch evenly over raglan DEC to make trim.

**#316 Rib Nd1. Arrangement**



**#316 Fairisle Pattern  
24 STS x 36 RWS**



KK Mag Disk: Track 6; Pattern 901



**TEXTURED LOOK**

**YARN:** Sorbet - Safari

**SIZES:**

6/8 (10/12) [14]

**AMOUNT:**

2 1/2 (2 1/2) [3] lbs.

**TENSION:**

G-Carriage: T 5.2

St. St.: T 5.1

**GAUGE:**

G-C: 8.4 STS, 11 RWS = 1"

**KIT:** See Kit Korner

**NOTIONS:** Elastic for skirt waistband.

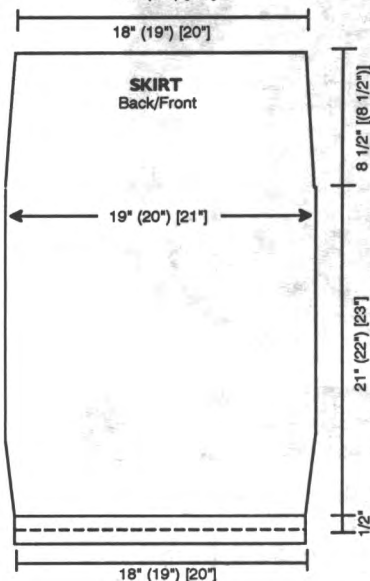
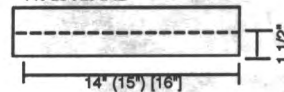
**TECHNIQUE:** G-Carriage

Make on Compuknit II, III, IV or V/Vcx Machine with Garter Carriage. Pattern #1 is built-in pattern #530, pattern #2 is built-in pattern #424, pattern #3 is built-in pattern #534 and pattern #4 is built-in pattern #430 in Compuknit III, IV or V/Vcx Machine.

**SKIRT BACK/FRONT:**

With WY CO 154 (162) [170] STS. Knit 5 RWS of WY and 1 RW with Ravel Cord. RC 0. T 5.1. St. St. Knit to RC 20 and pick up STS from first RW to form double hem. Reset RC to 0. T 5.2. Set G-Carriage for Pattern #1 and knit while INC on ES 1 ST every 20 RWS 3x. AT THE SAME TIME at RC 40 set G-Carriage for Pattern #2. At RC 230 (240) [252] DEC on ES 1 ST every 6 RWS 4x. At RC 254 (264) [276] set G-Carriage for Pattern #3 and knit to RC 324 (334) [346]. Remove STS on WY.

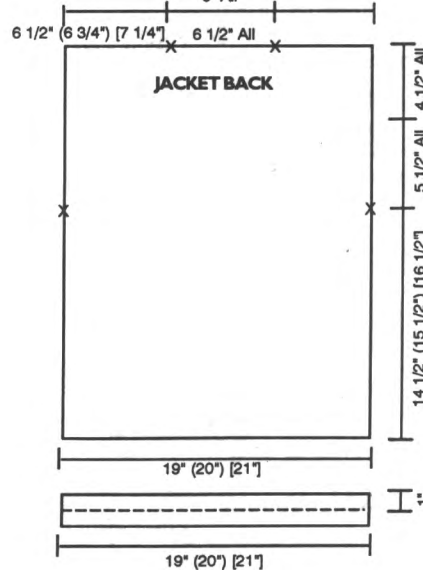
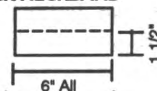
**WAISTBAND**



**WAISTBAND:**

With purl side facing rehang upper edge of skirt back/front on 116 (126) [136] NDLS. RC 0. T 5.1. St. St. Knit to RC 40 and pick up STS from first RW to form double band. Knit 1 RW at T 10 and BOLT.

**BACK NECKBAND**



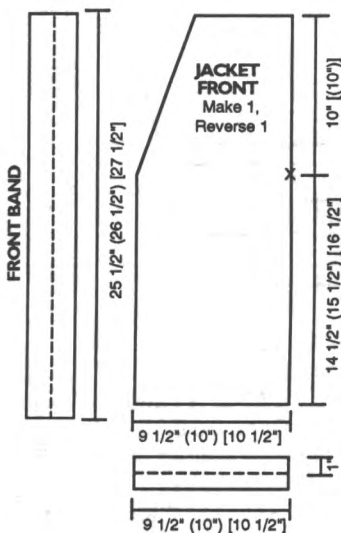
**JACKET BACK:**

With WY CO 160 (168) [176] STS. Knit 5 RWS of WY and 1 RW with Ravel Cord. RC 0. T 5.2. Set

G-Carriage for Pattern #1 and knit to RC 40. Set G-Carriage for Pattern #2. At RC 160(170)[182] place a YM on ES for armhole. At RC 220 (230) [242] set G-Carriage for Pattern #3. At RC 250 (260) [272] change to T 5.1. At RC 270 (280) [292] mark center 60 STS for neck and remove all STS on WY. With purl side facing rehang neck on 56 NDLS. RC 0. T 5.1. St. St. Knit to RC 38 and pick up STS from first RW to form double band. Knit 1 RW at T 10 and BOLT.

**BACK HEM:**

With purl side facing rehang lower edge of back on 134 (138) [142] NDLS. RC 0. T 5.1. St. St. Knit to RC 28 and pick up STS from first RW to form double band. Knit 1 RW at T 10 and BOLT.



**JACKET FRONT:** Make 1, Reverse 1.

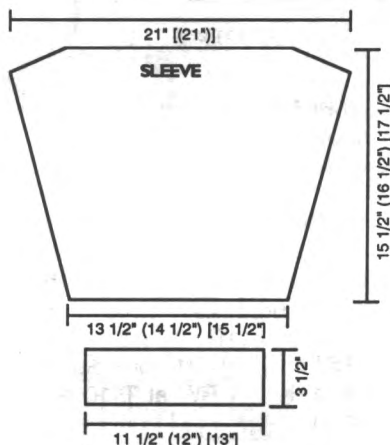
With WY CO 80 (84) [88] STS. Knit 5 RWS of WY and 1 RW with Ravel Cord. RC 0. T 5.2. Set G-Carriage for Pattern #1 and knit to RC 40. Set G-Carriage for Pattern #2. At RC 160(170)[182] place a YM on RS for armhole. AT THE SAME TIME on LS shape neck. DEC 1 ST every 3 RS 20 [(20)] x and 1 ST every 4 RWS 10 [(10)] x. AT THE SAME TIME at RC 220 (230) [242] set G-Carriage for Pattern #3. At RC 250 (260) [272] change to T 5.1. At RC 270 (280) [292] remove shoulder STS on WY.

**FRONT HEM:**

With purl side facing rehang lower edge of front on 67 (69) [71] NDLS. RC 0. T 5.1. St. St. Knit to RC 28 and pick up STS from first RW to form double band. Knit 1 RW at T 10 and BOLT.

**FRONT BAND:**

Close shoulder seams. With purl side facing rehang front from lower edge up to back neck on 184 (192) [200] NDLS. RC 0. T 5.1. St. St. Knit to RC 38 and pick up STS from first RW to form double band. Knit 1 RW at T 10 and BOLT.



**SLEEVE:**

Bring 180 [(180)] NDLS to WP. With purl side facing rehang armhole on these NDLS. T 5.2. Knit 1 RW with K-Carriage. RC 0. Set G-Carriage for Pattern #4. On ES manually knit to 'A' position on Ravel Cord 6 STS EOR 5x. At RC 10 start DEC on ES 1 ST every 5 RWS 24x and 1 ST every 4 RWS 10x (1 ST every 6 RWS 20x and 1 ST every 5 RWS 10x) [1 ST every 7 RWS 24x and 1 ST every 6 RWS 2x]. At RC 170 (180) [190] remove STS on WY.

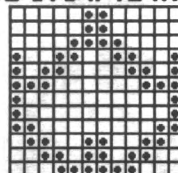
**CUFF:**

With purl side facing rehang lower edge of sleeve on 96 (100) [104] NDLS. Knit 1 RW with K-Carriage. RC 0. T 5.2. Set G-Carriage for Pattern #3 and knit to RC 46 knitting last RW at T 10 and BOLT.

**FINISHING:**

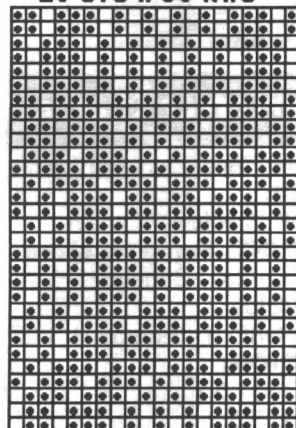
Close all remaining seams.

**#317 G-Carriage Pattern #1**  
12 STS x 12 RWS



Compuknit III, IV or V/Vcx  
Built-in Pattern #530

**#317 G-Carriage Pattern #2**  
20 STS x 30 RWS



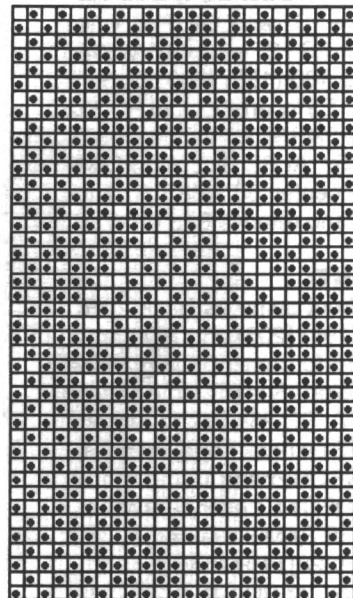
Compuknit III, IV or V/Vcx  
Built-in Pattern #424

**#317 G-Carriage Pattern #3**  
4 STS x 1 RW



Compuknit III, IV or V/Vcx  
Built-in Pattern #534

**#317 G-Carriage Pattern #4**  
24 STS x 42 RWS



Compuknit III, IV or V/Vcx  
Built-in Pattern #430



**COMPLETELY AT EASE**

**YARN:** Canton and Hartford

**SIZES:**

Small (Medium) [Large]

**AMOUNT: Same all sizes**

C1: Canton - Sagebrush

1 1/2 lbs.

C2: Hartford - Sagebrush 1 lb.

**TENSION:**

Fairisle: T 5.2

St. St.: T 5

**GAUGE:**

Fairisle: 8.25 STS, 12.5 RWS = 1"

**NOTIONS:** 3 - 3/4" Buttons

**TECHNIQUE:** Fairisle

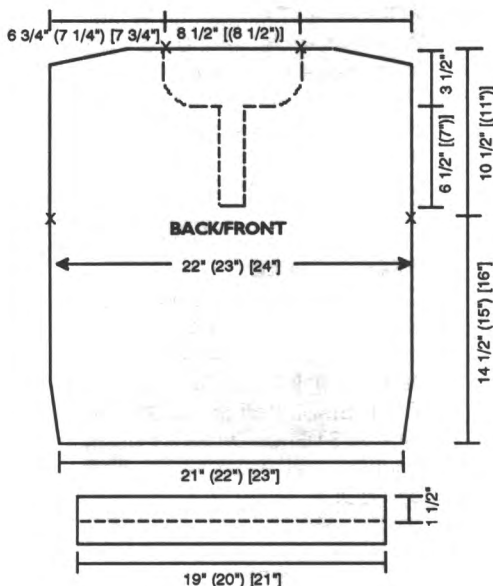
Make on Compuknit III, IV or V/  
Vcx Machine.

**BACK:**

With WY CO 174 (182) [190] STS. Knit 6 RWS of WY and 1 RW with Ravel Cord. RC 0. T 5.2. Fairisle. C1 and C2. Knit while INC on ES 1 ST every 16 RWS 4x. At RC 180 (188) [200] place a YM on ES for armhole. At RC 302 (316) [328] SHR shoulders 8 STS EOR 5x. At RC 312 (326) [338] mark center 68 [(68)] STS for neck and remove STS on WY.

**FRONT:**

Knit front same as back to RC 186 (194) [206] and BO center 12 STS for front opening. Place all STS on LS in HP. Note pattern RW. \*At RC 268 (282) [294] BO 10 STS on neck edge, then SHR 2 STSEOR 2x and 1 ST EOR 10x, then DEC 1 ST every 3 RWS 4x. AT THE SAME TIME at RC 302 (316) [328] SHR shoulder 8 STS EOR 5x. At RC 312 (326) [338] remove shoulder and neck STS on WY. Reset RC to 186 (194)

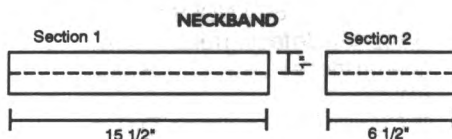


[206]. Reset pattern to RW noted above and shape LS from \*, reversing shapings.

**WAISTBAND:**

With purl side facing rehang lower edge of back/front on 154 (162) [168] NDLS. RC 0. T 5. St. St. C1. Knit to RC 42 and pick up STS from first RW to form double band. Knit 1 RW at T 10 and BOLT.

**NECKBAND:**



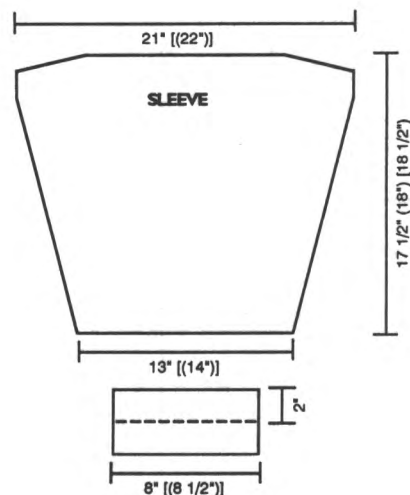
**Section 1:** Close one shoulder. With purl side facing rehang back neck and half of front neck on 108 [(108)] NDLS. RC 0. T 5. St. St. C1. Knit to RC 28 and pick up STS from first RW to form double band. Knit 1 RW at T 10 and BOLT.

**Section 2:** Close remaining shoulder. With purl side facing rehang remaining half of front neck on 48 [(48)] NDLS and knit same as section 1.

**FRONT PLACKET**  
(Make 1 w/buttonholes, 1 w/o)



**FRONT PLACKET:** Make 1 w/ buttonholes, 1 w/o buttonholes. With purl side facing rehang LS of front opening on 58 [(58)] NDLS. RC 0. T 5. St. St. C1. Knit to RC 7 and make 3 buttonholes as follows: skip 4 STS and BO next 4 STS, \*skip 16 STS and BO next 4 STS. Repeat from \*, once. Bring buttonhole STS to HP and knit 1 RW. With 1 prong transfer tool twist yarn on buttonhole NDLS to form STS. Knit to RC 21 and make 3 more buttonholes. At RC 28 pick up STS from first RW to form double band. Knit 1 RW at T 10 and BOLT.



**SLEEVE:**

With WY CO 108 [(116)] STS. Knit 6 RWS of WY and 1 RW with Ravel Cord. RC 0. T 5.2. Fairisle. C1 and C2. Knit while INC on ES 1 ST every 6 RWS 23 (21) [9] x and 1 ST every 7 RWS 10 (12) [24] x. At RC 208 (216) [222] SHR on ES 12 STS EOR 5x. At RC 218 (226) [232] knit 1 RW at T 10 and BOLT.

**CUFF:**

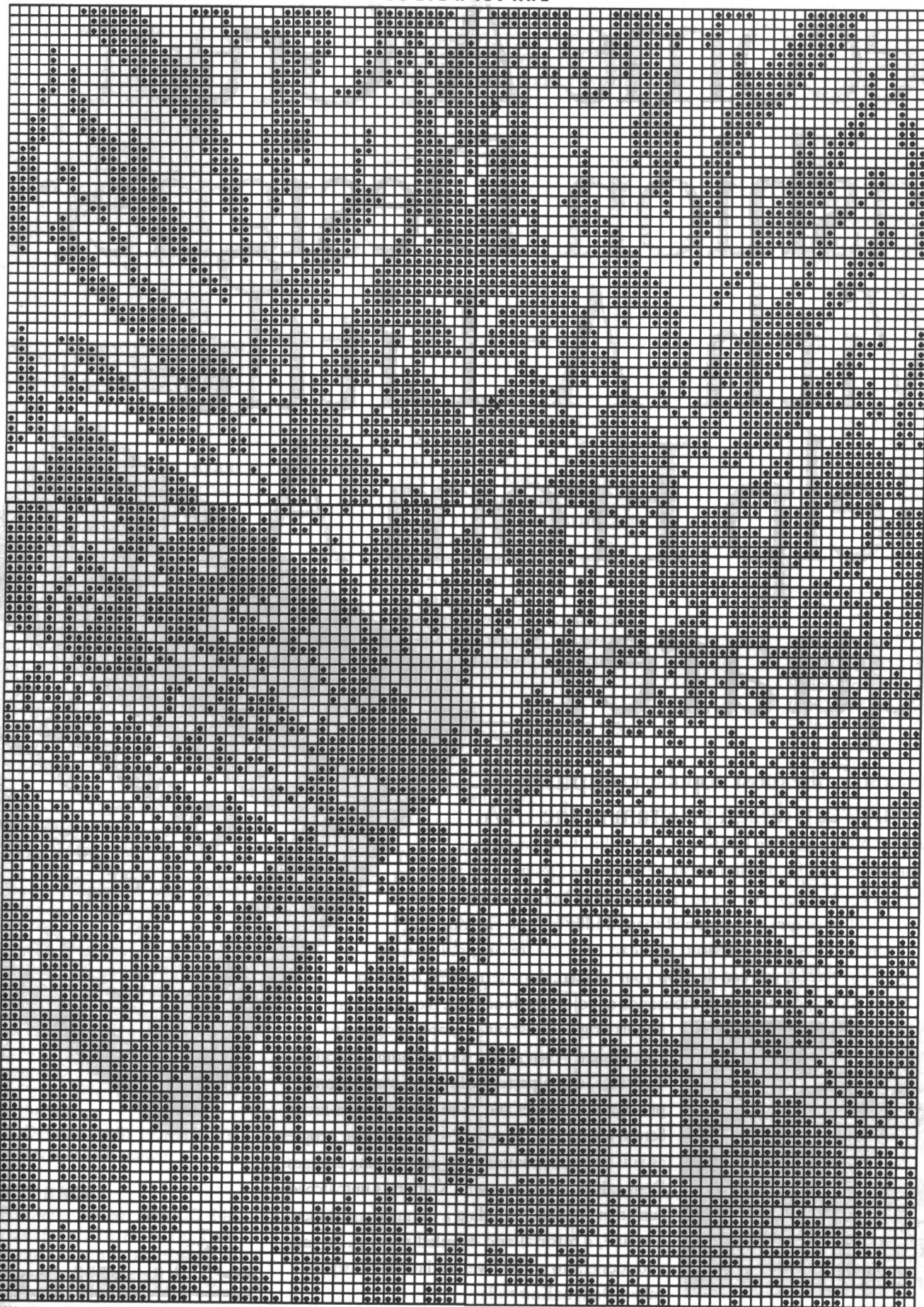
With purl side facing rehang lower edge of sleeve on 60 (60) [64] NDLS. RC 0. T 5. St. St. C1. Knit to RC 50 and pick up STS from first RW to form double band. Knit 1 RW at T 10 and BOLT.

**FINISHING:**

Attach sleeves and close all remaining seams. Finish buttonholes with a NDL or crochet hook.



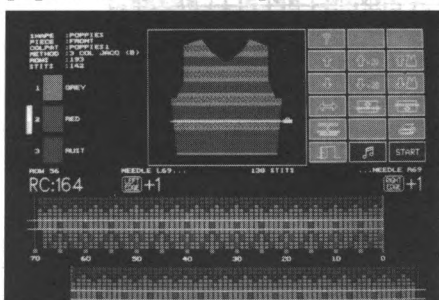
#318 Fairisle Pattern  
90 STS x 130 RWS



# Become A Great Fashion Designer With A Little Help From A Square.

DesignaKnit 5...the most popular computer-aided knitwear design program in the USA.

With DesignaKnit 5, machine knitters at every skill level can create beautiful garments with no previous design experience. DesignaKnit takes you through the entire design process one step at a time. You can work with a vast array of built in shapes and sizes and then modify them to fit your exact needs. With the Professional Version, you can even create original shapes. By designing on the screen, you can develop your own stitch patterns from the most popular stitches and experiment with thousands of color combinations. You can even



**PRICES START  
AS LOW AS \$259.95**

import original or scanned graphics right into your design. When ready, you can print out scaled drawings, stitch patterns, knitting instructions, punchcard templates and more. With the Knit-From-Screen feature, you're even able to view your progress as you knit and monitor color and shaping changes. DesignaKnit also comes with Knitking's unmatched customer support, including a technical assistance hot-line, a tutorial and detailed manual. So take your designs to a new level, and order the square called DesignaKnit today.



**LIMITED TIME OFFER: CALL 800-962-6446 TODAY AND GET A FREE DEMO DISK**  
*DesignaKnit works with virtually all electronic and punchcard machines...Knitking, Singer, Brother, Studio, Passap (Cable links optional).*



**TEEN SCENE**

**YARN:** Sorbet and Rayon Nubs  
**SIZES:**

Jr. 8 (10) [12]  
**AMOUNT: Same all sizes**  
 C1: Sorbet - Safari 1 1/2 lbs.  
 C2: Sorbet - Bone China  
 1 cone  
 C3: Rayon Nubs: - Green/Blue  
 10 oz.

**TENSION:**  
 Tuck: T 9  
 Rib: T 4/3.2 I  
 Trim: T 3.1/3 I

**GAUGE:**  
 Tuck: 8.22 STS, 16.7 RWS = 1"  
 Rib: 11.4 STS, 12.4 RWS = 1"

**NOTIONS:** 4 - 1" Buttons and elastic for skirt waistband.

**TECHNIQUE:** Tuck and FNR

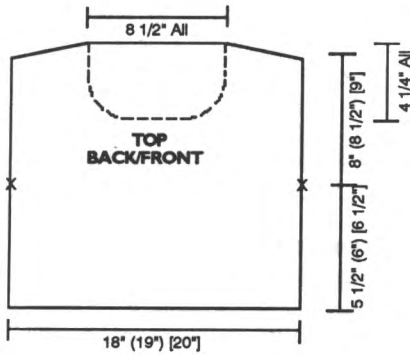
Make on Standard 24-Stitch Punch Card or Standard Electronic Machine with Ribber.

**Note:** Garment is worn on the knit side.

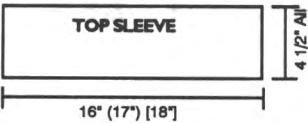
- Pattern Note:**
1. Select KC and knit 1 RW without yarn to select ndls.
  2. Following Ndl. Set-Up Chart for Pattern push ndls. to OWP.
  3. With C1 and C2 together 'e' wrap CO over ndls. left in WP.
  4. Pattern RW 1. COR. Knit 1 RW to the left.
  5. Depress both tuck buttons and knit in tuck pattern.

**TOP BACK:**  
 Following pattern note CO 148 (156) [164] STS. RC 0. T 9. Tuck Pattern. Knit to RC 94 (100) [108]

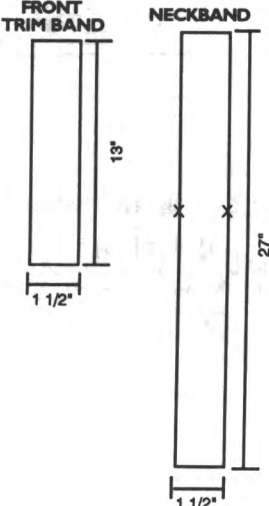
and place a YM on ES for armhole. At RC 224 (240) [258] SHR shoulders 8 STS EOR 5 [(5)] x. At RC 234 (250) [268] mark center 70 STS for neck and remove STS on WY.



**TOP FRONT:**  
 Knit front same as back to RC 164 (180) [198]. Shape neck. Place center 30 STS in HP and all STS on LS. Note pattern row. \*On neck edge SHR 3 STS EOR 2x and 2 STS EOR 7x. At RC 224 (240) [258] SHR shoulder 8 STS EOR 5x. At RC 234 (250) [268] remove shoulder STS on WY. Reset RC to 164 (180) [198]. Reset pattern to correct RW and shape LS from \*, reversing shapings. Remove neck STS on WY.

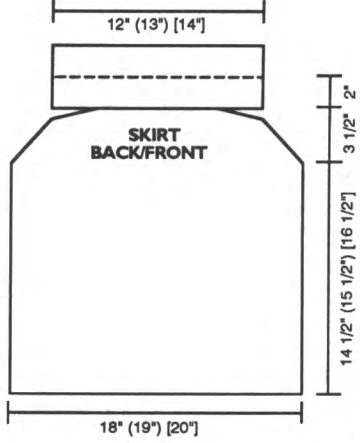


**TOP SLEEVE:**  
 Following pattern note CO 132 (140) [148] STS. RC 0. T 9. Tuck Pattern. Knit to RC 76. Knit 1 RW manually and BOLT.



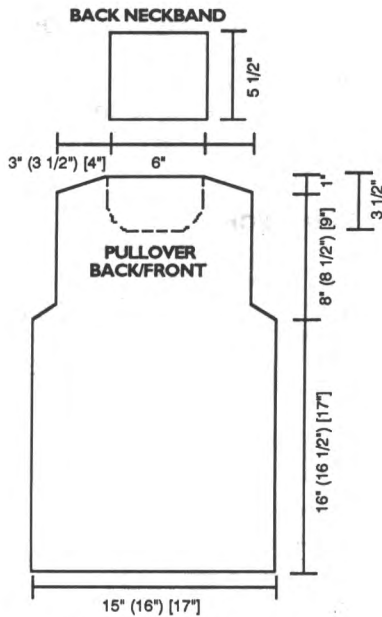
**TOP FRONT TRIM BAND:**  
 With C1 CO 16/15 STS for FNR. After selvedge RC 0. T 3.1/3 I. Arrange edge NDLS following Chart. Knit to RC 140 and remove STS on WY.

**TOP NECKBAND:**  
 With C1 CO 16/15 STS for FNR. After selvedge RC 0. T 3.1/3 I. Arrange edge NDLS following Chart. Knit to RC 180 and place a YM on ES for front neck. At RC 282 remove STS on WY.



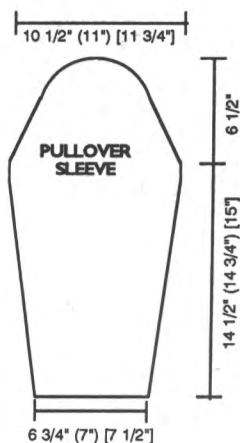
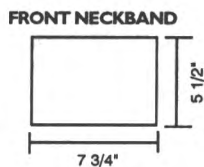
**SKIRT BACK/FRONT:**  
 Following pattern note CO 148 (156) [164] STS. RC 0. T 9. Tuck Pattern. Knit to RC 240 (258) [274] and start shaping. On ES DEC 1 ST every 10 RWS 5 [(5)] x. At RC 290 (308) [324] SHR on ES 10 STS EOR 5 [(5)] x. At RC 300 (318) [334] start waistband. Leave NDLS in OWP. RC 0. T 9. St. St. Knit to RC 40 and pick up STS from first RW to form double band. Knit 1 RW manually and BOLT.

**PULLOVER BACK:**  
 With C2 CO 170 (182) [194] STS for 2x2 rib. After selvedge RC 0. T 2/2 I. Knit to RC 8 and change to T 4/3.2 I. Knit to RC 200 (206) [212] and shape armhole. On ES FF DEC 2 STS every 4 RWS 4 [(4)] x. At RC 300 (312) [324] SHR shoulders 6 STS EOR 5 [(5)] x. At RC 310 (322) [334] remove 32 (38) [44] STS on ES for shoulders. RC 0. Continue in 2x2 rib to RC 70. Knit 1 RW at T 5/5. Transfer RB STS to MB and BOLT.



**PULLOVER FRONT:**

Knit front same as back to RC 270 (282) [294]. Shape neck. Remove center 38 STS on WY and place all STS on LS in HP. \*On neck edge SHR 3 STS EOR 3 [(3)] x and 1 ST EOR 7 [(7)] x. At RC 300 (312) [324] SHR shoulder 6 STS EOR 5 [(5)] x. At RC 310 (322) [334] transfer RB STS to MB and remove STS on WY. Reset RC to 270 (282) [294] and shape LS from \*, reversing shapings. Remove neck STS on WY. With purl side facing rehang neck on 90 [(90)] NDLS. RC 0. T 4/3.2 l. Knit to RC 70. Knit 1 RW at T 5/5. Transfer RB STS to MB and BOLT.



**PULLOVER SLEEVE:**

With C2 CO 77 (80) [85] STS for 2x2 rib. After selvedge RC 0. T 2/2 l. Knit to RC 8 and change to T 4/3.2 l. Knit to RC 20 and start shaping. On ES INC 1 ST every 7 RWS 22 (23) [24] x. At RC 180 (184) [188] shape sleeve cap. On ES DEC 1 ST EOR 5 [(5)] x and 1 ST every 4 RWS 15 [(15)] x then SHR 4 STS EOR 4 [(4)] x. At RC 260 (264) [268] knit 1 RW at T 5/5. Transfer RB STS to MB and BOLT.

**FINISHING:**

**Top:** Close shoulder seams and attach sleeves. Sew front trim band to front. Close neckband seam and sew to neck. Close all remaining seams. With C1 and C3 single crochet 2 RWS around bottom of sleeve and back/front.

**Skirt:** Close all remaining seams. With C1 and C3 single crochet 2 RWS around bottom of skirt.

**Pullover:** Close shoulder and turtle neck seams. Attach sleeves and close all remaining seams.

**\*319 Tuck Pattern  
6 STS x 4 RWS**

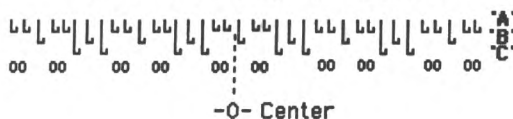


**KK Mag Disk: Track 8;  
Pattern 901**

**\*319 FNR Trim Chart**



**\*319 NdI Set-Up for Pattern**



**POCKET FULL OF FUN**

**YARN:** Splendor

**SIZES:**

4 (6) [8]

**AMOUNT:**

C1: Navy - 10 (10) [12] oz.

C2: Kelly - 2 oz. all

C3: Goldenrod - 2 oz. all

C4: Red - 2 oz. all

**TENSION:**

St. St.: T 6

Fairisle: T 6.1

**GAUGE:**

St. St.: 7.8 STS, 11.4 RWS = 1"

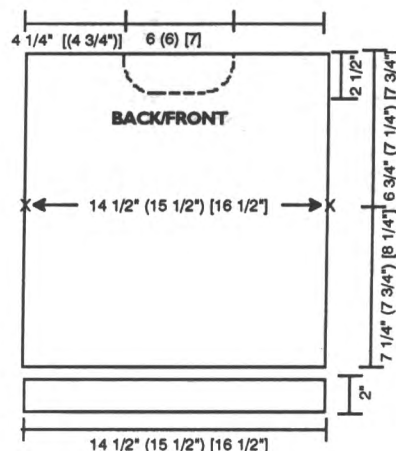
Fairisle: 7.6 STS, 11 RWS = 1"

**TECHNIQUE:** Fairisle

Make on Standard 24-Stitch Punch Card or Standard Electronic Machine with Ribber.

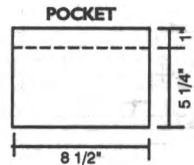
**BACK:**

With WY CO 114 (122) [130] STS. Knit 6 RWS of WY and 1 RW with Ravel Cord. RC 0. T 6. St. St. C1. Knit to RC 84 (90) [96] and place a YM on ES for armhole. At RC 160 (172) [182] mark center 48 (48) [56] STS for neck and remove all STS on WY.



**FRONT:**

Knit front same as back to RC 130 (142) [152] and shape neck. Place center 14 (14) [16] STS in HP and all STS on LS. \*On neck edge SHR 4 STS EOR 0 (0) [1] x, 3 STS EOR 2 (2) [1] x, 2 STS EOR 2 (2) [3] x and 1 ST EOR 5 (5) x then DEC 1 ST every 4 RWS 2 [(2)] x. At RC 160 (172) [182] remove shoulder STS on WY. Reset RC to 130 (142) [152] and shape LS from \*, reversing shap-ing. Remove neck STS on WY.



**COLOR CHART**

MC	CC	# ROWS
1	4	8
1	3	8
1	2	8

Repeat ↑

**POCKET:**

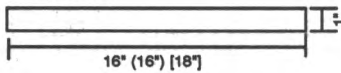
With WY CO 65 STS starting at NDL #36 to the left of -0- and NDL #29 to the right of -0-. Knit 5 RWS of WY and 1 RW with Ravel Cord. RC 0. T 6.1. With C1 knit 2 RWS. Add C2 and knit in fairisle following Color Chart to RC 58. Change to C3 and knit 1 RW. Transfer STS to RB for 1x1 rib. RC 0. T 0.1/0.1 I. Knit to RC 12 knitting last RW at T 8/5. Transfer RB STS to MB and BOLT.

**WAISTBAND:**

**Back:** With purl side facing rehang lower edge of back on 114 (122) [130] NDLS. C2. Knit 1 RW and transfer STS to RB for 1x1 rib. RC 0. T 0/0 I. Knit to RC 28 knitting last RW at T 8/5. Transfer RB STS to MB and BOLT.

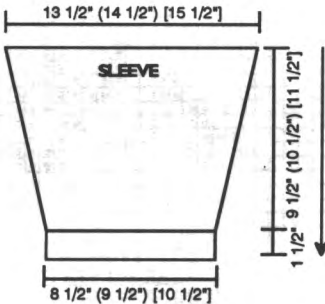
**Front:** With purl side facing rehang lower edge of pocket on center 65 NDLS. With purl side facing rehang lower edge of front on 114 (122) [130] NDLS. Knit same as back waistband.

**NECKBAND**



**NECKBAND:**

Close one shoulder. With purl side facing rehang neck on 111 (111) [127] NDLS. C4. Knit 1 RW and transfer STS to RB for 1x1 rib. RC 0. T 0.1/0.1 I. Knit to RC 14 knitting last RW at T 8/5. Transfer RB STS to MB and BOLT. Close remaining shoulder.



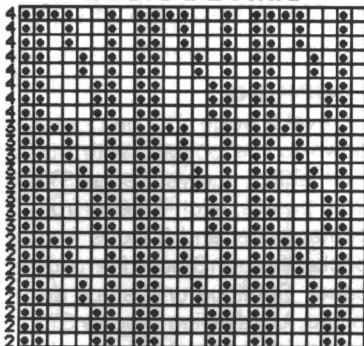
**SLEEVE:**

With purl side facing rehang arm-hole on 106 (114) [122] NDLS. RC 0. T 6. C1. Knit in St. St. while DEC on ES 1 ST every 6 RWS 9 (15) [20] x and 1 ST every 4 RWS 11 (5) x. At RC 102 (114) [124] change to C3 and knit 1 RW. Transfer STS to RB for 1x1 rib. RC 0. T 0/0 I. Knit to RC 20 knitting last RW at T 8/5. Transfer RB STS to MB and BOLT.

**FINISHING:**

Whip stitch pocket to front. Close all remaining seams.

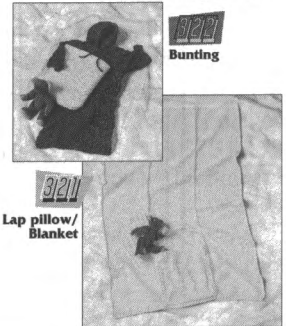
**#320 Fairisle Pattern  
24 STS x 24 RWS**



KK Mag Disk: Track 9; Pattern 901



**Great Ideas For Baby Gifts**



**GREAT BEGINNINGS**

**YARN:** Softon - Goldenrod  
**SIZE:**

27" x 40 1/2"

**AMOUNT:**

1 Cone

**TENSION:**

St. St.: T 8

G-Carr.: T 8

**GAUGE:**

St. St.: 6.6 STS, 10 RWS = 1"

G-Carr.: 6.6 STS, 10 RWS = 1"

**TECHNIQUE:** G-Carriage

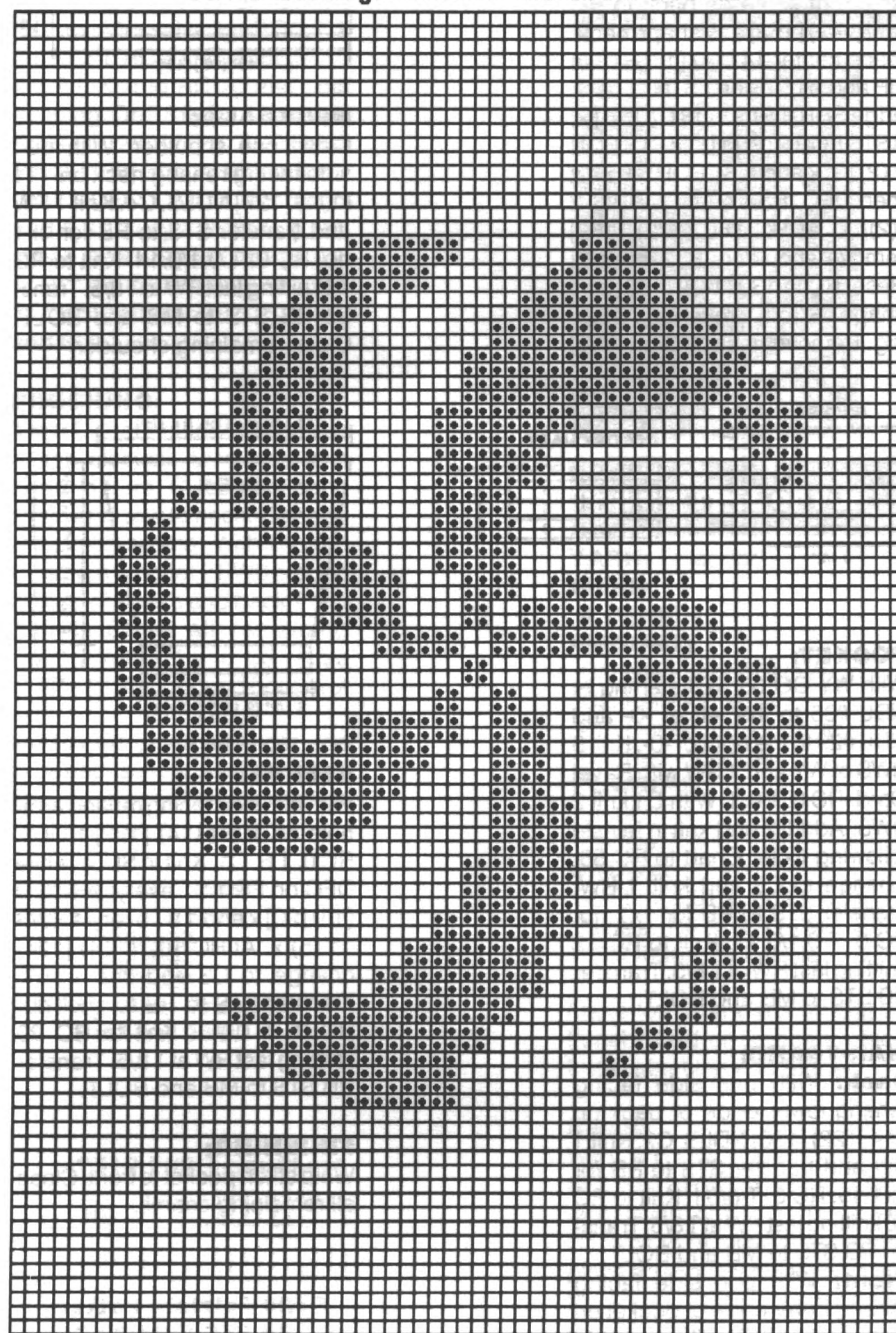
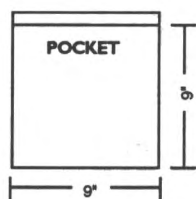
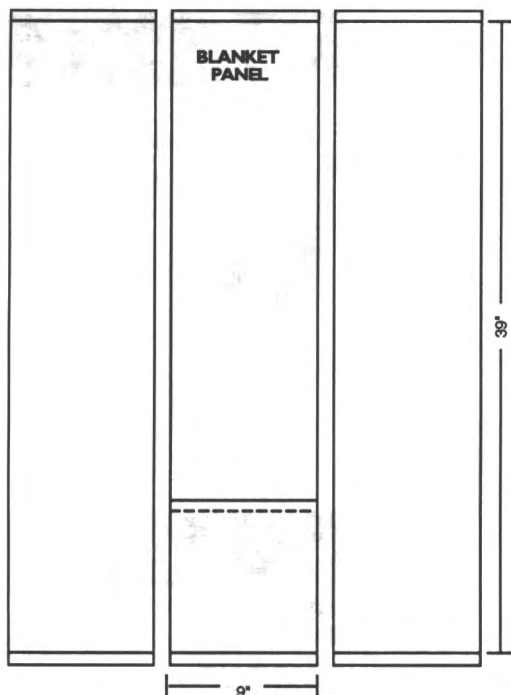
Make on Compuknit III, IV or V/ Vcx Machine with Garter Carriage.

**Note:** Do NOT block until panels have been joined. We made a G-Carriage pocket but you can do any of the following as long as you get the same gauge. Fairisle with small floats, Cables, Intarsia, Lace or St. St. with duplicate st. pattern on it.

**PANEL:** (Make 3)

CO 62 STS. Set G-Carriage for rib pattern #534. RC 0. T 8. Knit to RC 7. RC 0. T 8. Place NDL #30 on ES to OWP to form loop. With K-Carriage knit in St. St. to RC 390. Bring all NDLS to WP. RC 0. T 8. Set G-Carriage for rib pattern #534. Knit to RC 8 knitting last row at T 10. Remove first 2 STS on safety pin. BOLT next 58 STS and remove last 2 STS on safety pin.

#321 6-Carriage Pattern - 62 STS x 94 RWS



KK Mag Disk: Track 10; Pattern 901

**POCKET:**

With knit side of center panel facing, fold ribbing down and pick up center 58 STS from first RW of St. St. Knit 1 RW with K-Carriage. RC 0. T 8. Pick up 2 STS on ES. Set G-Carriage for pattern and knit to RC 94. Set G-Carriage for rib pattern #534. Knit to RC 8 knitting last row at T 10. Remove first 2 STS on safety pin. BOLT next 58 STS and remove last 2 STS on safety pin. The knit side of the pocket will be against the purl side of the panel.

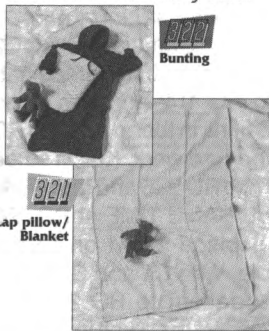
**FINISHING:**

Unravel 2 edge STS on pocket down to the bottom. With purl side facing, unravel 2 edge STS from panels, latch 3 loops from center panel and 3 loops from pocket through 3 loops from side panel. Continue until strips are joined. Unravelling 2 edge STS on outside edge of side panels, latch 2 loops through 2 loops to finish edge.

**PILLOW:**

With knit side facing, fold blanket in thirds from outside to middle over center strip. Fold strip from bottom up to top twice and tuck into pocket to form pillow.

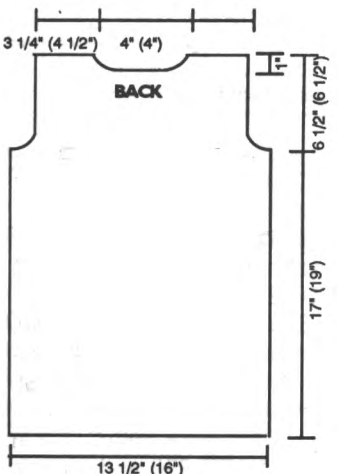
**Great Ideas For Baby Gifts**



**GREAT BEGINNINGS**

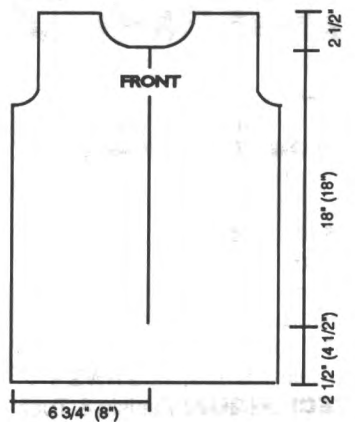
**YARN:** Bulky Primo - Royal  
**SIZES:**  
 3 (6) Months  
**AMOUNT: Same all sizes**  
 1 Cone  
**TENSION:**  
 Body: T 9  
 Rib: T 4.2 or T 6  
**GAUGE:**  
 Body: 6.7 STS, 9.5 RWS = 1"  
**NOTIONS:** 1 - 17" Zipper  
**TECHNIQUE:** Garter Carriage

Make on CompuKnit III, IV or V/  
 Vcx Machine with Garter Carriage.

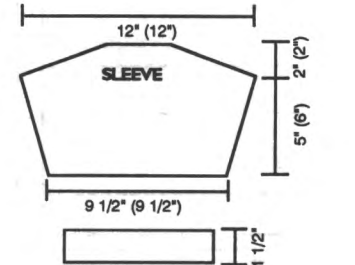


**BACK:**  
 With WY CO 90 (108) STS. Knit 6 RWS of WY and 1 RW of Ravel Cord. With K-Carriage knit 1 RW to the right with MY. RC 0. T 9.

Set G-Carriage for pattern and knit to RC 152 (172) and shape armhole. Reset RC to 0. BO 5 STS at the beginning of next 2 RWS then DEC 1 ST EOR 5x. At RC 48 (48) shape neck. With WY manually knit to 'A' position all STS to the left of -0-. Note pattern row. \*On neck edge manually knit to 'A' position 6 STS EOR 1x, 2 STS EOR 3x and 1 ST EOR 1x. At RC 58 (58) remove shoulder sts. on WY. Reset RC to 48 (48). Reset pattern to RW noted above and shape left side from \*, reversing shaping. Remove neck STS on WY.

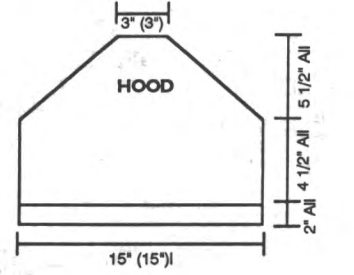


**FRONT:**  
 Knit front same as back to RC 22 (42). Remove all STS to the left of -0- on WY. DEC 1 ST on LS. Note pattern row. \*Continue to RC 152 (172) and shape armhole. Reset RC to 0. BO 5 STS on RS then DEC 1 ST EOR 5x. At RC 32 (32) shape neck. On neck edge BO 5 STS then DEC 1 ST every RW 2x and 1 ST EOR 5x. At RC 58 (58) remove shoulder sts. on WY. Reset RC to 22 (42) and pattern to row noted above. DEC 1 ST on RS. Knit LS from \*, reversing shapings.

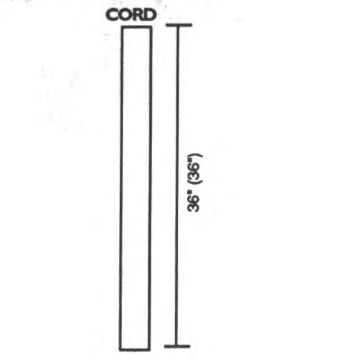


**SLEEVE:**  
 With WY CO 64 (64) STS. Knit 6 RWS of WY and 1 RW of Ravel Cord. With K-Carriage knit 1 RW to the right with MY. RC 0. T 9. Set G-Carriage for pattern. INC on ES 1 ST every 4 RWS 5x and 1 ST every 5 RWS 4x. At RC 46 (54) shape sleeve cap. On ES manually knit to 'A' position on WY 3 STS 6x and 4 STS 4x. At RC 66 (74) remove STS on WY.

**CUFF:**  
 With purl side facing rehang lower edge of sleeve on 44 (44) NDLS. Knit 1 RW to the right at T 9 with K-Carriage. Set G-Carriage for rib pattern #534. RC 0. T 4.2. Knit to RC 16 knitting last RW at T 10 and BOLT.



**HOOD:**  
 CO 100 (100) STS. Set G-Carriage for rib pattern #534. RC 0. T 6. Knit to RC 20 (20). RC 0. T 9. Set G-Carriage for pattern and knit to RC 40 (40). On ES manually knit to 'A' position on WY 8 STS 3x and 9 STS 1x. At RC 48 (48) remove 'A' position STS on WY. Continue on center 34 STS DEC 1 ST every 6 RS 7x. At RC 46 (46) BO remaining STS.

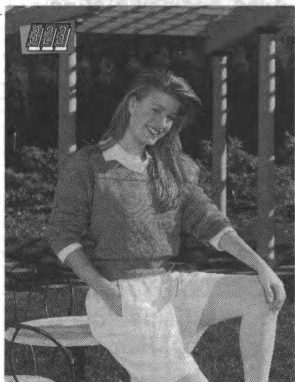


**CORD:**  
 'e' wrap CO 3 STS. RC 0. T 9.1. St. St. Knit to RC 300 knitting last RW at T 10+ and BOLT.

**FINISHING:**

Join shoulder seams and attach sleeves. With knit side facing rehang neck on 74 (74) NDLS. With purl side facing rehang lower edge of hood and sides up to ribbing on these same NDLS and BO. Fold ribbing in half to inside to form casing and whip stitch in place. Pull cord through casing. SC along zipper opening and sew in zipper. Close all remaining seams.

**3/2/3**



**PLENTY OF TEXTURE**

**YARN:** Softon

**SIZES:**

Small (Medium) [Large]

**AMOUNT: Same all sizes**

C1: Turquoise - 1 1/4 lbs.

C2: Sunset - 1/2 lb.

**TENSION:**

Body: T 7.1

Hems: T 6

**GAUGE:**

St. St./Fl: 7.6 STS, 10 RWS = 1"

Tuck: 7.6 STS, 12.3 RWS = 1"

**TECHNIQUE:** Fairisle & Tuck

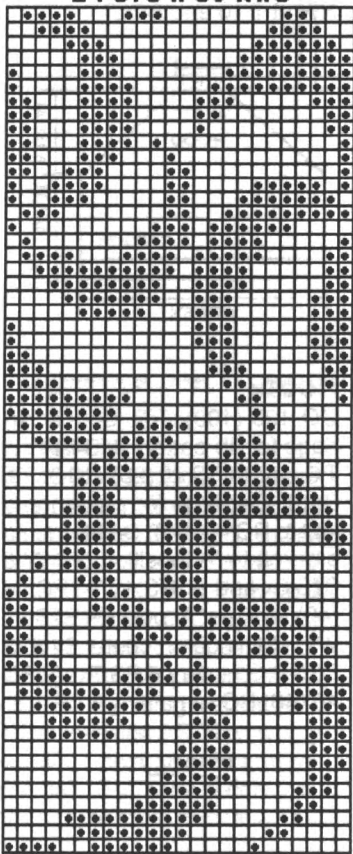
Make on Standard 24-Stitch Punch Card or Standard Electronic Machine.

**Note:** Garment is worn with purl side of fairisle and tuck showing. Use a Garter Bar to turn work. Follow Color Chart for color and pattern changes.

**BACK:**

With WY CO 168 (176) [184] STS. Knit 6 RWS of WY and 1 RW Ravel Cord. RC 0. T 7.1. St. St. Knit in stripe pattern to RC 22 and turn work. With C1 and C2 knit in fairisle pattern to RC 72 and turn work. Knit in stripe pattern to RC 102 and turn work. With C1 knit in tuck pattern to RC 176 and turn work. Knit in stripe pattern to RC 236 and turn work. AT THE SAME TIME at RC 190 [(186)] place a YM on ES for armhole. With C1 and C2 knit in fairisle pattern to RC 286 and turn work. With C1 knit in St. St. to RC 296. Mark center 70 [(70)] STS for neck and remove STS on WY.

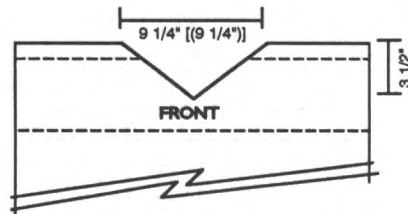
**#322 6-Carriage Pattern  
24 STS x 60 RWS**



KK Mag Disk: Track 11; Pattern 901

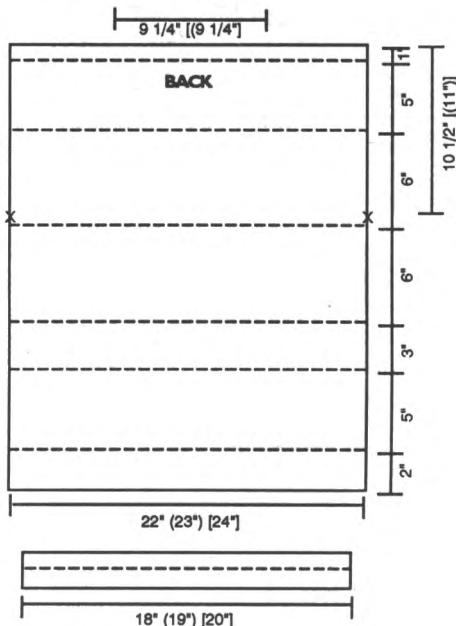
**COLOR CHART**

MC	CC	# RWS	PATTERN
1	-	10	St. St.
1	2	50	Fairisle
1	-	12	Stripe
2	-	6	Stripe
1	-	24	Stripe
2	-	6	Stripe
1	-	12	Stripe
1	-	74	Tuck
1	-	12	Stripe
2	-	6	Stripe
1	-	12	Stripe
1	2	50	Fairisle
1	-	16	Stripe
2	-	6	Stripe



**FRONT:**

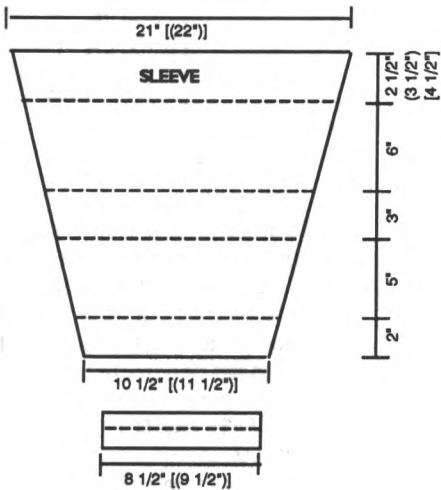
Knit front same as back to RC 250 [(250)]. Shape neck. Place all STS to the left of -0- in HP. Note pattern RW. \*On neck edge DEC 1 St. every RW 25x and 1 St. EOR 10x. AT THE SAME TIME at RC 286 turn work. With C1 knit in St. St. to RC 296 and remove shoulder STS on WY. Reset to RC 250 [(250)]. Reset pattern to RW noted above and shape left side from \*, reversing shaping.





**HEM:**

With purl side of St. St. facing rehang lower edge of back/front on 138 (146) [154] NDLS. RC 0. T 6. St. St. C1. Knit to RC 24 and pick up STS from first RW to form double hem. Knit 1 RW at T 10 and BOLT.



**SLEEVE:**

With WY CO 80 [(88)] STS. Knit 6 RWS of WY and 1 RW Ravel Cord. RC 0. T 7.1. Knit pattern same as back/front following chart while INC on ES 1 ST every 4 RWS 20x and 1 ST every 5 RWS 20x. At RC 198 (208) [218] knit 1 RW at T 10 and BOLT.

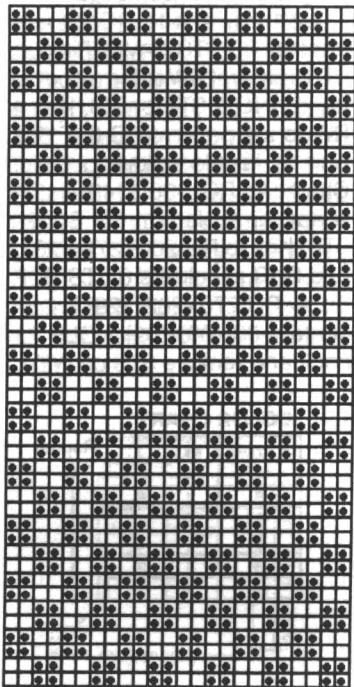
**CUFF:**

With purl side of St. St. facing rehang lower edge of sleeve on 64 [(72)] NDLS. RC 0. T 6. St. St. C1. Knit to RC 24 and pick up STS from first RW to form double hem. Knit 1 RW at T 10 and BOLT.

**FINISHING:**

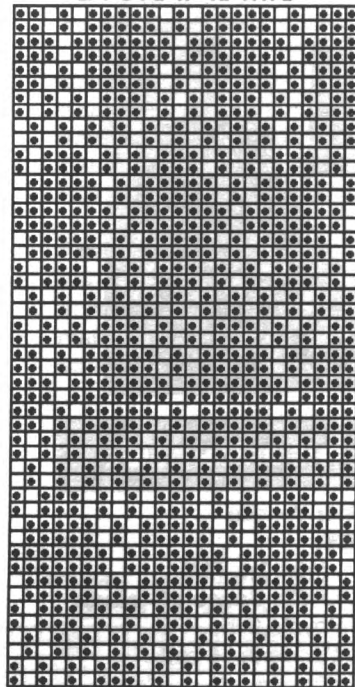
Close shoulder seams and attach sleeves. Close all remaining seams. Let neck roll naturally.

**\*323 Fairisle Pattern  
24 STS x 48 RWS**



KK Mag Disk: Track 12; Pattern 901

**\*323 Tuck Pattern  
24 STS x 48 RWS**



KK Mag Disk: Track 12; Pattern 902

# Floppy Disk Drive

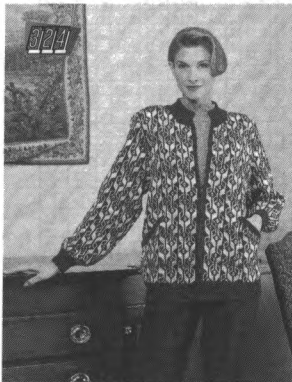
Direct Connection to CompuKnit Vax



The Floppy Disk Drive makes pattern work unbelievably easy. There are many programmed disks available from a variety of designers. In fact, several of the unique creations found on the pages of this magazine are available on disk. (CompuKnit V, CompuKnit/Bulky or CompuKnit/ST owners will also need the KC/PPD optional accessory to transfer patterns).

Invest in a Floppy Disk Drive today . . . and start your own Design Collection tomorrow! Regularly Priced \$399.95 - Sale Price until April 14, 1995 - \$379.95

# 3/2/4



## ON THE BRIGHT SIDE

**YARN:** Venetia

**SIZES:**

6/8 (10/12) [14]

**AMOUNT: Same all sizes**

C1: Royal - 3 lbs.

C2: Mandarin - 6 oz.

C3: Corn - 4 oz.

C4: Light Blue - 4 oz.

C5: Salmon - 4 oz.

C6: Lilac - 4 oz.

C7: Iced Stream - 4 oz.

**TENSION:**

Fairisle: T 5.2

St. St. T 3.2

Rib: T 1.2/1.2 I

**GAUGE:**

Fl: 8.84 STS, 11.75 RWS = 1"

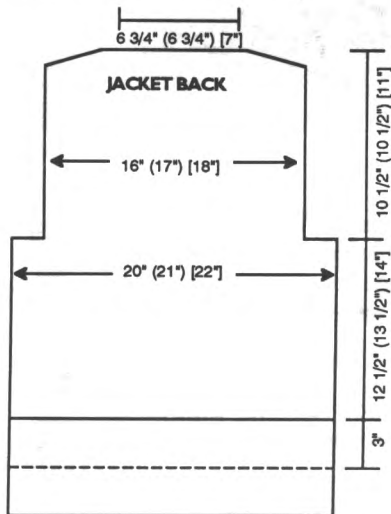
St. St. 9.28 STS, 14 RWS = 1"

**NOTIONS:**

1 - 22" (23") [24"] zipper and elastic for pants waistband.

**TECHNIQUE:** Fairisle

Make on Standard 24-Stitch Punch Card or Standard Electronic Machine with Ribber.

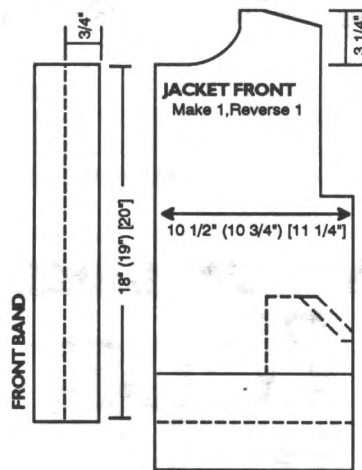


## JACKET BACK:

With C1 CO 174 (182) [190] STS in 2 x 2 rib. After selvedge RC 0. T 1.2/1.2 I. Knit to RC 70 and transfer RB STS to MB. Pick up STS from first RW to form double band. INC 3 STS on ES. Knit 1 RW to set pattern. RC 0. T 5.2. Knit in fairisle following Color Chart. At RC 136 (148) [154] shape armhole. On ES BO 20 STS. Knit to RC 260 (272) [284] and SHR shoulders 6 STS EOR 5x. At RC 270 (282) [294] mark center 60 (60) [62] NDLS for neck and remove STS on WY.

## COLOR CHART

# Rows	MC	CC	Repeat
10	1	7	↑ Repeat
8	1	6	
6	1	5	
6	1	4	
8	1	3	
10	1	2	

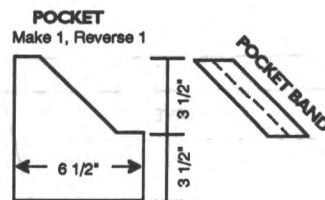


## JACKET FRONT: Make 1, Reverse 1.

With C1 CO 92 (96) [100] STS in 2 x 2 rib. After selvedge RC 0. T 1.2/1.2 I. Knit to RC 70 and transfer RB STS to MB. Pick up STS from first RW to form double band. Knit 1 RW to set pattern. RC 0. T 5.2. Knit in fairisle following Color Chart. At RC 136 (148) [154] shape armhole. On RS BO 22 STS. Knit to RC 232 (244) [256] and shape neck. On LS BO 16 (16) [17] STS then DEC on neckedge 1 ST every RW 5x and 1 ST EOR 9x. At RC 260 (272) [284] SHR shoulder 6 STS EOR 5x. At RC 270 (282) [294] remove shoulder STS on WY.

## FRONT BAND:

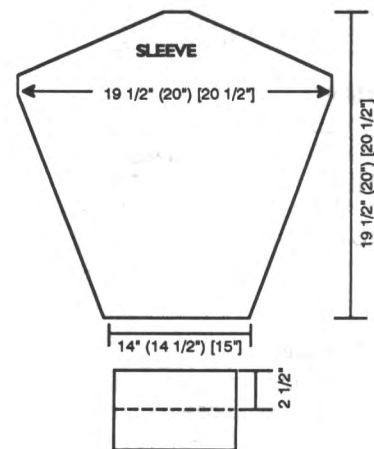
With purl side facing rehang front edge on 160 (168) [176] NDLS. RC 0. T 5. St. St. C1. Knit to RC 16 and pick up STS from first RW to form double band. Knit 1 RW at T 10 and BOLT.



**POCKET:** Make 1, Reverse 1. With C1 'e' wrap CO 56 (56) [56] STS starting at NDL # 46 (48) [50] to the right of -0- to match pocket pattern to garment. Knit 1 RW to set pattern. RC 0. T 5.2. Knit in fairisle following Color Chart. At RC 46 BO 10 STS on RS, then DEC 2 STS EOR 20x. At RC 86 BO remaining STS.

## POCKET BAND:

With purl side facing rehang front edge of pocket on 56 NDLS. RC 0. T 4.1. St. St. C1. Knit to RC 28 and pick up STS from first RW to form double band. Knit 1 RW at T 10 and BOLT.

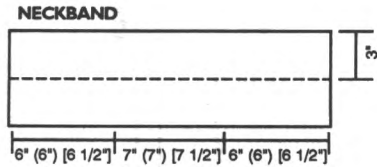


## SLEEVE:

With WY CO 122 (126) [130] STS. Knit 6 RWS of WY and 1 RW Ravel Cord. Knit 1 RW to set pattern. RC 0. T 5.2. Knit in fairisle following Color Chart while INC on ES 1 ST every 6 RWS 9 (5) x and 1 ST every 7 RWS 16 (20) [25] x. At RC 190 (194) [200] DEC on ES 4 STS EOR 20 ((21)) x. At RC 230 (236) [242] knit 1 RW at T 10 and BOLT.

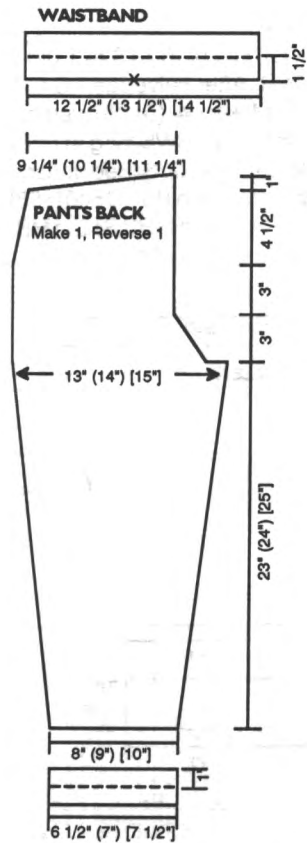
**CUFF:**

With C1 CO 80 (80) [84] STS in 2 x 2 rib. After selvedge RC 0. T 1.2/1.2 I. Knit to RC 60 and pick up STS from first RW to form double band. With purl side facing rehang lower edge of sleeve on these NDLS DEC evenly across. Knit 1 RW at T 10 and BOLT.



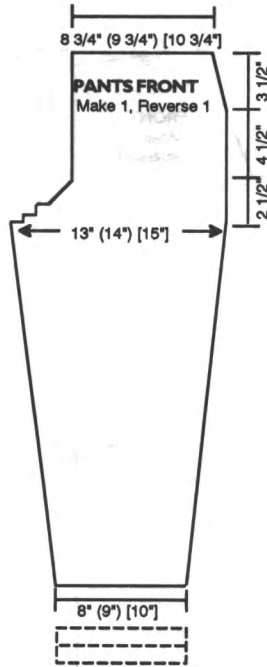
**NECKBAND:**

Close shoulder seams. With C1 CO 170 (170) [174] STS in 2 x 2 rib. After selvedge RC 0. T 1.2/1.2 I. Knit to RC 70 and pick up STS from first RW to form double band. With purl side facing rehang neck on these NDLS. Knit 1 RW at T 10 and BOLT.



**PANTS BACK: Make 1, Reverse 1.**

With WY CO 76 (84) [92] STS. Knit 5 RWS of WY and 1 RW with Ravel Cord. RC 0. T 3.2. C1. Knit in St. St. while INC on ES 1 ST every 14 RWS 15 (16) [17] x and 1 ST every 16 RWS 7 [(7)] x. At RC 322 (336) [350] BO 8 STS on RS then DEC 1 ST every 4 RS 10 [(10)] x. At RC 406 (420) [434] on LS DEC 1 ST every 4 RWS 16 [(16)] x. At RC 470 (484) [498] SHR 5 STS EOR 10 [(10)] x. At RC 480 (494) [508] remove STS on WY.



**PANTS FRONT: Make 1, Reverse 1.**

Knit front same as back to RC 322 (336) [350]. On LS BO 8 STS EOR 1 [(1)] x, 6 STS EOR 1 [(1)] x and 5 STS EOR 1 [(1)] x, then DEC 1 ST every 4 RWS 8 [(8)] x. At RC 422 (436) [450] on RS DEC 1 ST every 4 RWS 12 [(12)] x. At RC 470 (484) [498] remove STS on WY.

**HEM: Make 4.**

With purl side facing rehang lower edge of 1 front/back on 60 (64) [68] NDLS. RC 0. T 3.2. St. St. C1. Knit to RC 30 and pick up STS from first RW to form double hem. Knit 1 RW at T 10 and BOLT.

**WAISTBAND:**

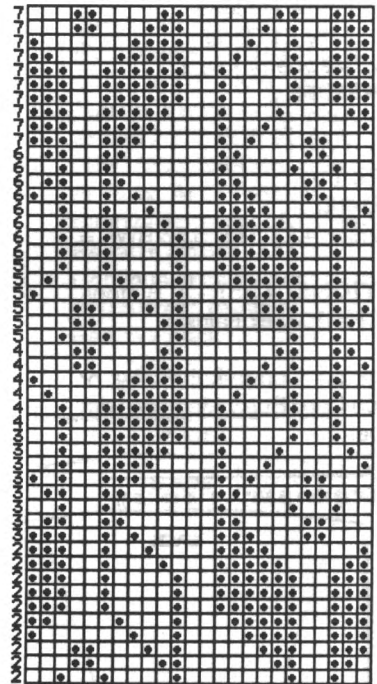
Join center seams. With purl side facing rehang upper edge of front/back on 114 (124) [134]

NDLS. RC 0. T 3.2. St. St. C1. Knit to RC 46 and pick up STS from first RW to form double band. Knit 1 RW at T 10 and BOLT.

**FINISHING:**

Attach sleeves. Sew pockets on front starting at top of rib and matching pattern. Sew zipper in front. Close all remaining seams.

**#324 Fairisle Pattern 24 STS x 48 RWS**



**KK Mag Disk: Track 13; Pattern 901**

3/2/5

3/2/5

Stay Warm This Winter



**WRAP IT UP**

**YARN:** Mirage

**SIZES:**

6/8 (10/12) [14-18]

**AMOUNT: Same all sizes**

C1: Jungle - 1 Cone

C2: Navy - 1 Cone

C3: Raspberry - 8 oz.

**TENSION:**

Fairisle: T 5

Rib: T 0/0 I

FNR: T1/1 I

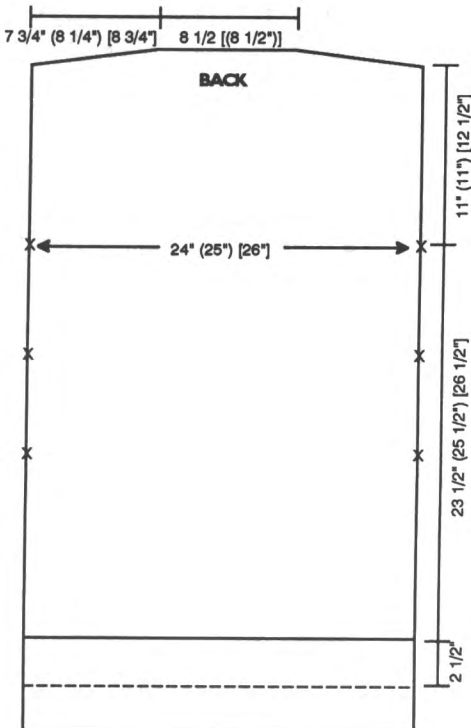
**GAUGE:**

Fairisle: 4.23 STS, 5.56 RWS = 1"

**NOTIONS:** 4 [(5)] - 1" Buttons

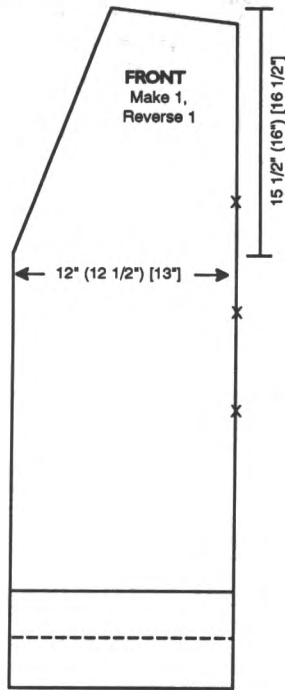
**TECHNIQUE:** Fairisle

Make on Compuknit/Bulky or Punch Card Bulky Machine with Ribber.



**BACK:**

With WY CO 102 (106) [110] STS. Knit 5 RWS of WY and 1 RW with Ravel Cord. RC 0. T 3.1. St. St. C1. Knit to RC 14 [(14)]. RC 0. T 5. Fairisle. C1 and C2. Knit to RC 14 [(14)] and pick up STS from first RW to form double hem. Continue to RC 74 [(86)] and place a YM on ES for pocket. At RC 120 [(132)] place a YM on ES for pocket. At RC 146 (158) [162] place a YM on ES for armhole. At RC 208 (220) [232] SHR shoulders 8 STS EOR 4x. At RC 216 (228) [240] mark center 36 [(36)] STS for neck and remove all STS on WY.



**FRONT:** Make 1, Reverse 1.

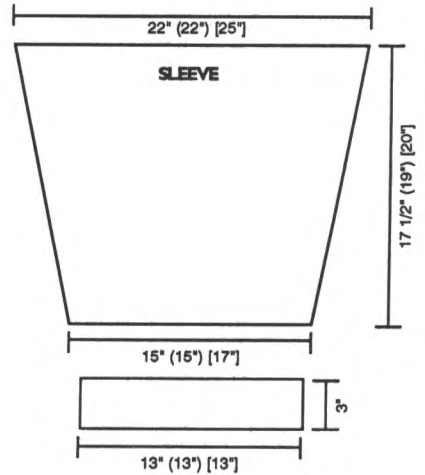
With WY CO 51 (53) [55] STS starting at NDL #4 to the left of -0-. Knit 5 RWS of WY and 1 RW with Ravel Cord. RC 0. T 3.1. St. St. C1. Knit to RC 14 [(14)]. RC 0. T 5. Fairisle. C1 and C2. Knit to RC 14 [(14)] and pick up STS from first RW to form double hem. Continue to RC 74 [(86)] and place a YM on RS for pocket. At RC 120 [(132)] place a YM on RS for pocket. At RC 126 (136) [148] shape neck. On LS DEC 1 ST every 4 RWS 14 [(14)] x and 1 ST every 6 RWS 4 [(4)] x. AT THE SAME TIME at RC 146 (158) [162] place a YM on RS for armhole. At RC 208 (220) [232] SHR shoulder 8 STS EOR 4x. At RC 216 (228) [240] remove shoulder STS on WY.

**BAND**  
(Not to Scale)



**BAND:**

With C2 CO 9/10 STS at T 0/0 II for FNR. After selvedge RC 0. T 1/1 I. Make 4 (5) [5] vertical buttonholes 5 RWS long at RWS 5, 22, 39, 56 and 73 (See general instructions). Knit to RC 540 (558) [580] and transfer RB STS to MB. Remove STS on WY.

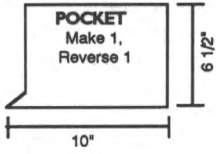


**SLEEVE:**

With WY CO 66 (66) [72] STS. Knit 6 RWS of WY and 1 RW with Ravel Cord. RC 0. T 5. C1 and C2. Knit in fairisle while INC on ES 1 ST every 7 RWS 14 (15) [16] x. At RC 98 (106) [112] knit 1 RW at T 10 and BOLT.

**CUFF:**

With purl side facing rehang lower edge of sleeve on 40 [(40)] NDLS. Knit 1 RW with C2 at T 5 and transfer STS to RB for 1x1 rib. RC 0. T 0/0 I. Knit to RC 16 and change to C3. Knit to RC 20 knitting last RW at T 5/4. Transfer RB STS to MB and BOLT.



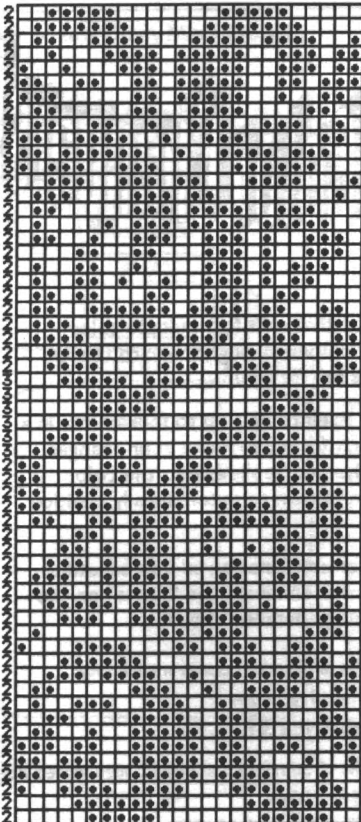
**POCKET:** Make 1, Reverse 1.

With purl side facing rehang back between markers on 54 NDLS. RC 0. T 5. C2. Knit in St. St. while DEC on LS 1 ST EOR 4x. At RC 44 knit 1 RW at T 10 and BO.

**FINISHING:**

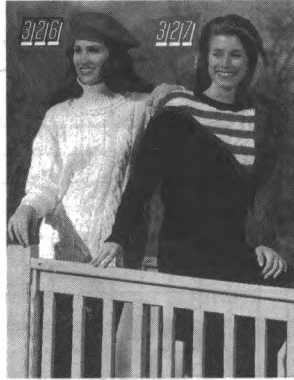
Whip stitch end of pocket to side seam and sides to front between markers. Close shoulder seams and attach sleeves. Attach band and close all remaining seams.

**#325 Fairisle Pattern**  
24 STS x 58 RWS



**KK Mag Disk: Track 9; Pattern 901**

**3/2/6**



**SPECIAL DETAIL**

**YARN:** Alpine - White

**SIZES:**

Small (Medium) [Large]

**AMOUNT:** Same all sizes

2 1/2 lbs.

**TENSION:**

Body: T 10+

Rib: T 5/5 I

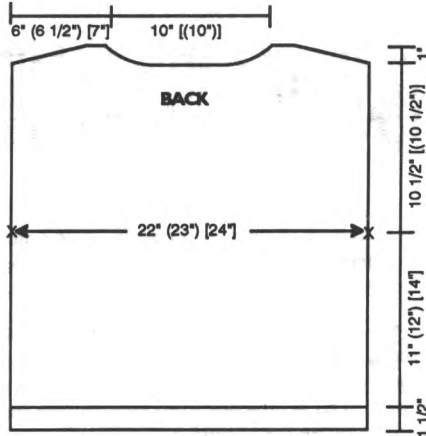
**GAUGE:**

Body: 7 STS, 8.23 RWS = 1"

**KIT:** See Kit Korner

**TECHNIQUE:** Fern Lace

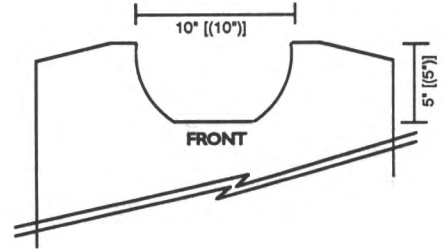
Make on any Standard Machine with Ribber.



**BACK:**

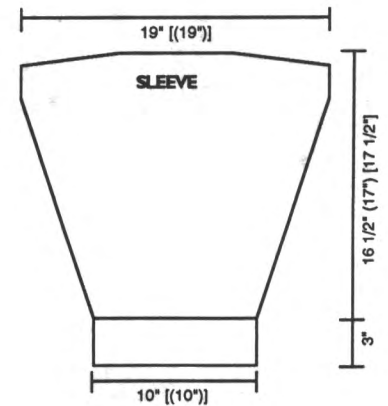
CO 154 (162) [170] STS for 2x2 rib at T 0/0 I. After selvedge RC 0. T 5/5 I. Knit to RC 16 and arrange NDLS following body chart. RC 0. T 10+. Knit in pattern following cable chart. At RC 92 (100) [116] place a YM on ES for armhole. At RC 178 (186)

[202] shape neck. Place center 20 STS and all STS on LS in HP. \*On neck edge SHR 8 STS EOR 3x. AT THE SAME TIME SHR shoulder 6 STS EOR 4x. At RC 186 (194) [210] remove shoulder STS on WY. Reset RC to RW 178 (186) [202] and shape LS from \*, reversing shapings. Remove neck STS on WY.



**FRONT:**

Knit front same as back to RC 144 (152) [168] and shape neck. Place center 20 STS and all STS on LS in HP. Note pattern RW. \*On neck edge SHR 3 STS EOR 2x and 2 STS EOR 9x. At RC 178 (186) [202] SHR shoulder 6 STS EOR 4x. At RC 186 (194) [210] remove shoulder STS on WY. Reset RC to RW 144 (152) [168]. Continue in cable pattern shaping LS from \*, reversing shapings. Remove neck STS on WY.

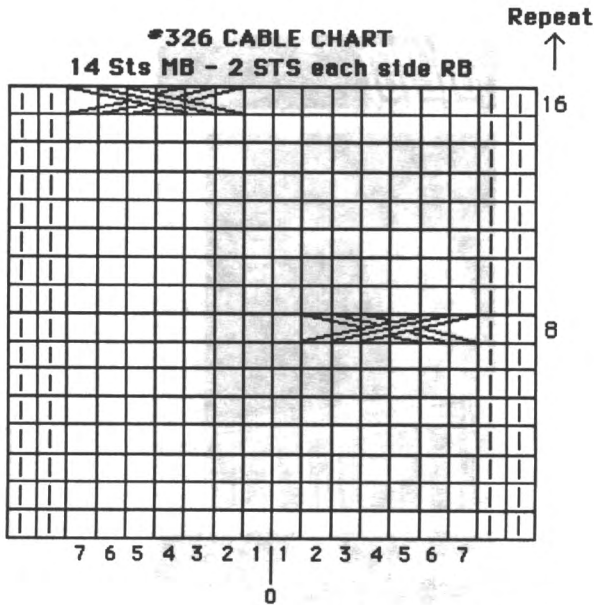


**SLEEVE:**

CO 70 [(70)] STS for 2x2 rib at T 0/0 I. After selvedge RC 0. T 5/5 I. Knit to RC 30 and arrange NDLS following sleeve chart. RC 0. T 10+. Knit in pattern following cable chart while INC on ES 1 ST every 3 RWS 20 [(14)] x and 1 ST every 4 RWS 12 [(18)] x. At RC 110 (114) [118] on ES SHR 10 STS EOR 5x. At RC 120 (124) [128] knit 1 RW manually and BOLT.

**FERN LACE YOKE:**

1. From left 'e' wrap CO 124 [(124)] STS. Knit 2 RWS at T 10. Reset RC to 0.
2. Carriage in 'H'. Place all STS in HP except first group of 4 on RS. Knit 4 RWS.
3. Push next 4 STS on LS back to WP and knit 5 RWS. COL, bring 4 STS on RS to HP and knit 1 RW.
- \*4. RC 0. Push next 4 STS on LS to WP. Knit 9 RWS and bring 4 STS on RS to HP. Knit 1 RW.
5. Repeat from \* to last 4 STS on LS. Knit 4 RWS over these STS.
6. Carriage to N. T 7. Knit 4 RWS.
7. Repeat steps 2 to 5 reversing shapings and working from left to right.
8. Knit 2 RWS at T 10. Knit 1 RW manually and BOLT.



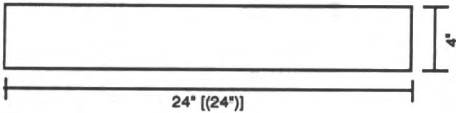
**NECKBAND:**

CO 168 [(168)] STS for 2x2 rib at T 0/0 1. After selvedge RC 0. T 5/5 1. Knit to RC 46 and transfer RB STS to MB. Knit 1 RW manually and BOLT.

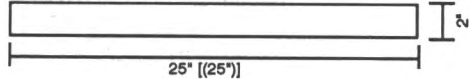
**FINISHING:**

Close shoulder seams. Attach fern lace yoke and neckband together. Starting at center of back neck, attach yoke and band. Attach sleeves and close all remaining seams.

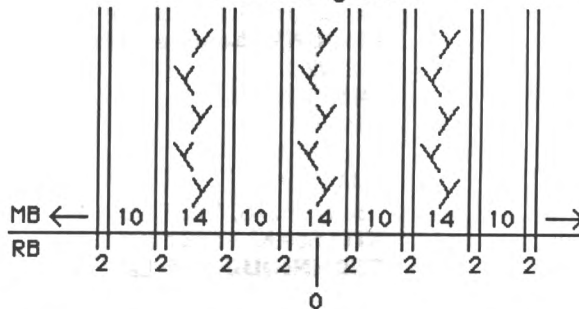
**NECKBAND**



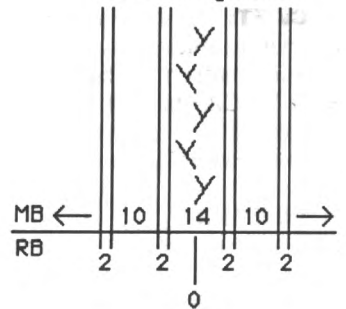
**FERN LACE YOKE**



**#326 BODY CHART**  
Nd1 Arrangement

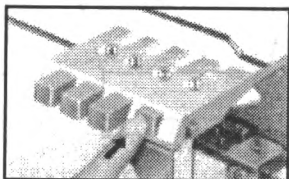


**#326 SLEEVE CHART**  
Nd1 Arrangement

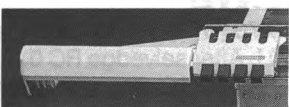


# Forget to change colors? Try our Automatic Color Changers!

Have you ever forgotten to change yarn colors while knitting a garment that calls for multiple color changes? Or, gotten frustrated having to stop and re-thread your new colors through the yarn tension process? If the answer is "Yes," then our Automatic 4-Color Changers are for you!



Add the **Knitter 4-Color Changer (KCC)\*** to your knitting bed by itself to knit up to four colors in a design without having to stop and re-thread on every change. You won't forget to make your changes either, as every time your knitting carriage returns to the left side of the bed, it slides into the color changer, prompting you to simply push the appropriate yarn's selection button to automatically position it in the knitting carriage for easy knitting of the new color.



Add the **Ribber 4-Color Changer (RCC)\*** to your knitter and ribber combination to knit beautiful, multi-color Jacquard designs with up to four colors in one row. It will also eliminate the "floats" on the back of fair isle knitting. And, yes, it uses the same push-button technology detailed above.

*KCC fits all Standard Gauge models only*

*Reg. Price \$145.00—*

**SALE Price \$137.95**

*RCC fits all Standard and Bulky Gauge models Reg.*

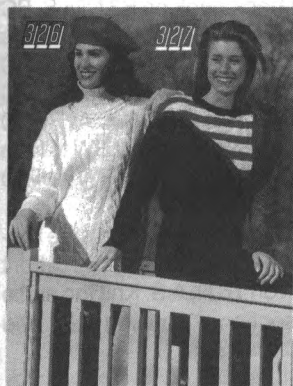
*Price \$157.00—*

**SALE Price \$149.95**

Sale till April 14, 1995



Order from your local Knitking Dealer or, if there is no Dealer in your area, contact Knitking at: 1-800-962-6446



## A NEW SLANT

**YARN:** Alpine

**SIZES:**

6/8 (10/12) [14]

**AMOUNT: Same all sizes**

C1: Black - 1 lb.

C2: Turquoise - 8 oz.

C3: Fuschia - 2 oz.

C4: White - 2 oz.

**TENSION:**

St. St.: T 2.2

Rib: T -0/-0 ||

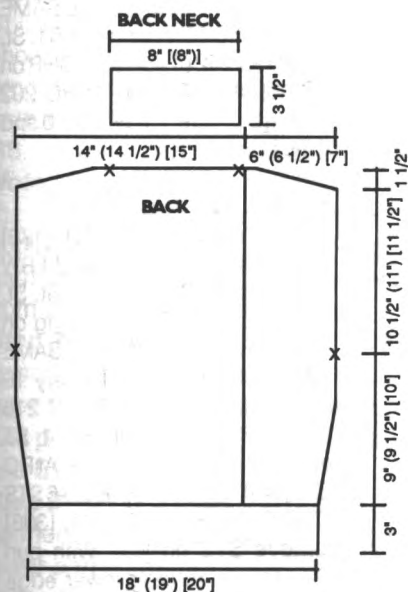
**GAUGE:**

St. St.: 5 STS, 7.27 RWS = 1"

**TECHNIQUE:** Short Row

Make on any Bulky Machine with Ribber.

**Stripe Pattern:** \*Knit 10 RWS with C3 and 10 RWS with C4. Repeat from \* to end.

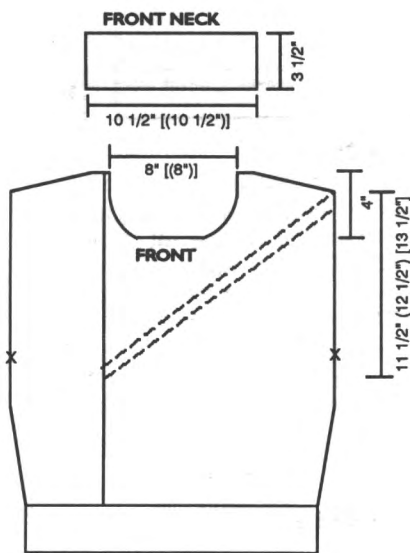


### BACK:

With C1 CO 90 (94) [100] STS for 1x1 rib. After selvedge RC 0. T-0/-0 II. Knit to RC 24 and transfer RB STS to MB. Remove 25 (27) [30] STS on RS on WY. RC 0. T 2.2. C1. INC 1 ST on RS for seam. \*Knit in St. St. while INC on LS 1 ST every 10 RWS 5x. At RC 64 (70) [74] place a YM on LS for armhole. At RC 142 (150) [158] SHR shoulder 5 STS EOR 5x. At RC 152 (160) [168] mark 30 (32) [35] STS on LS for shoulder and next 40 [(40)] STS for neck. Remove all STS on WY. With purl side facing rehang 25 (27) [30] STS on RS. RC 0. T 2.2. C2. INC 1 ST on LS for seam. Knit from \*, reversing shapings to RC 152 (160) [168] and remove shoulder STS on WY.

### BACK NECKBAND:

With purl side facing rehang back neck on 40 [(40)] NDLS. RC 0. T 2.1. C1. St. St. INC 1 ST on ES. Knit to RC 26 knitting last RW at T 10 and BOLT.

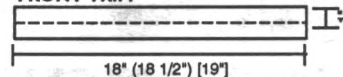


### FRONT:

Knit front same as back to RC 24. Transfer RB STS to MB. Remove 25 (27) [30] STS on LS on WY. RC 0. T 2.2. C1. INC 1 ST on LS for seam. Knit in St. St. while INC on RS 1 ST every 10 RWS 5x. At RC 60 start SHR. On LS \*bring 1 NDL to HP every RW 1x and 1 NDL to HP EOR 2x. Repeat from \* until all NDLS are in HP. Put all NDLS in WP. RC 0. T 2.1. C2. St. St. Knit to RC 18 and pick up STS

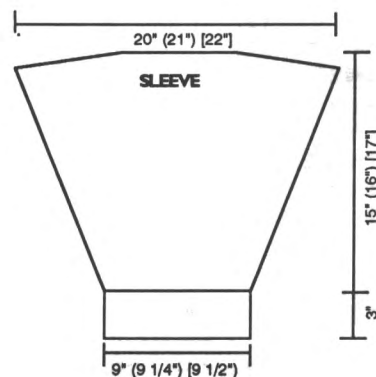
from first RW to form front trim. Bring all NDLS to HP. Reset RC to 60 and reverse SHR in Stripe Pattern. On LS \*\*push 1 NDL to WP every RW 1x and 1 NDL to WP EOR 2x. Repeat from \*\* until all NDLS are in WP. AT THE SAME TIME at RC 64 (70) [74] place a YM on RS for armhole. At RC 124 (132) [140] shape neck. BO center 16 STS and put all STS on LS in HP. \*\*\*On neck edge DEC 2 STS EOR 2x and 1 ST EOR 8x. AT RC 142 (150) [158] SHR shoulder 5 STS EOR 5x. At RC 152 (160) [168] remove shoulder STS on WY. Reset RC to 124 (132) [140] and shape LS from \*\*\*, reversing shapings. With purl side facing rehang 25 (27) [30] STS on LS. RC 0. T 2.2. C2. INC 1 ST on RS for seam. Knit in St. St. while INC on LS 1 ST every 10 RWS 5x. At RC 64 (70) [74] place a YM on LS for armhole. At RC 142 (150) [158] SHR shoulder 5 STS EOR 5x. At RC 152 (160) [168] remove shoulder STS on WY.

### FRONT TRIM



### FRONT NECKBAND:

With purl side facing rehang front neck on 52 [(52)] NDLS. RC 0. T 2.1. C1. St. St. Knit to RC 26 knitting last RW at T 10 and BOLT.



### LEFT SLEEVE:

With C2 CO 44 (46) [48] STS for 1x1 rib. After selvedge RC 0. T-0/-0 II. Knit to RC 24 and transfer RB STS to MB. INC 2 STS on ES. RC 0. T 2.2. Knit in St. St. while INC on ES 1 ST every 4 RWS 14 (15) [16] x and 1 ST every 5 RWS 10 [(10)] x. At RC

106 (110) [118] SHR on ES 10 STS EOR 3x. At RC 112 (116) [124] knit 1 RW at T 10 and BOLT.

**RIGHT SLEEVE:**

Knit same as Left Sleeve using C1.

**FINISHING:**

Close back and front seams. Close shoulder and neckband seams. Let neckband roll naturally. Attach sleeves and close all remaining seams.



**AT YOUR SERVICE**

**YARN:** Venetia

**SIZES:**

6/8 (10/12) [14]

**AMOUNT: Same all sizes**

C1: Black Tweed 1-1/2 lbs.

C2: Black 2 oz.

C3: Red 1 oz.

C4: White 3 oz.

**TENSION:**

Body: T 4.1

Rib: T 0/0 l

**GAUGE:**

Body: 9 STS., 13.4 RWS = 1"

Rib: 12 RWS = 1"

**NOTIONS:** Elastic for skirt waistband.

**TECHNIQUE:** Fairisle

Make on Standard 24-Stitch Punch Card or Standard Electronic Machine with Ribber.

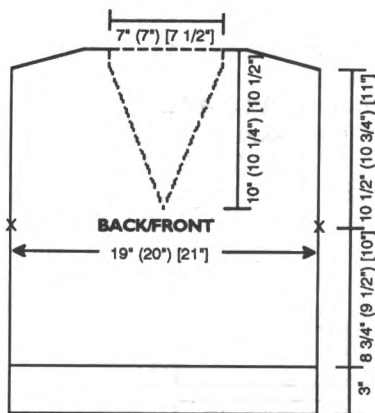
**BACK:**

With C1 CO 172 (180) [188] STS in 1 x 1 rib. After selvedge RC 0. T 0/0 l. Knit to RC 40 and transfer RB STS to MB. RC 0. T 4.2. Knit in stripe and fairisle following color chart to RC 82. Change to St. St. C1. At RC 118 (128) [136]

place a YM on ES for armhole. At RC 258 (272) [284] SHR shoulders 5 STS EOR 5x. At RC 268 (282) [294] mark center 62 (62) [68] STS for neck and remove all STS on WY.

**COLOR CHART**

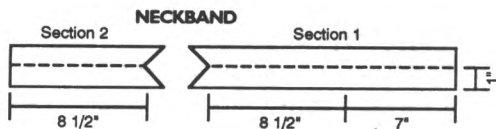
MC	CC	# RWS	PATT #
1	2	10	3
1	-	4	-
2	1	36	2
1	-	4	-
1	2	10	1
1	-	4	-
4	-	4	-
3	-	4	-
2	-	4	-
1	-	2	-



**FRONT:**

Knit front same as back to RC 134 (144) [154] and shape neck. Place all STS to the left of -0- in HP. \*On neck edge DEC 1 ST every 4 RWS 31 (31) [34] x. At RC 258 (272) [284] SHR shoulder 5 STS EOR 5x. At RC 268 (282) [294] remove shoulder STS on WY. Reset to RC 134 (144) [154] and shape left side from \*, reversing shapings.

**NECKBAND:**

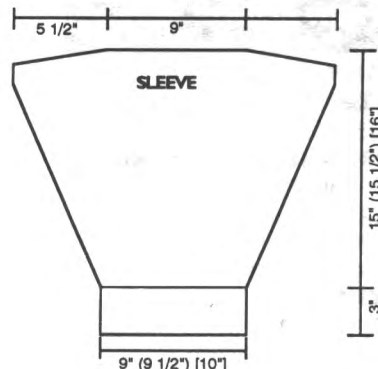


**NECKBAND CHART**

MC	CC	# RWS	PATT #
1	-	1	-
3	-	2	-
1	2	10	1
4	-	2	-
1	-	15	-

**Section 1:** Close one shoulder. With purl side facing rehang half of front neck on 76 NDLS. and back neck on 62 NDLS. RC 0. T 4.2. Knit in stripe and fairisle following neckband chart. At RC 2 DEC on LS 1 ST EOR 6x. At RC 15 INC 1 ST EOR 6 x. At RC 30 pick up STS from first RW to form double band. Knit 1 RW at T 10 and BOLT.

**Section 2:** With purl side facing rehang remaining half of front neck on 76 NDLS. Knit the same as section 1 making INC and DEC on RS.



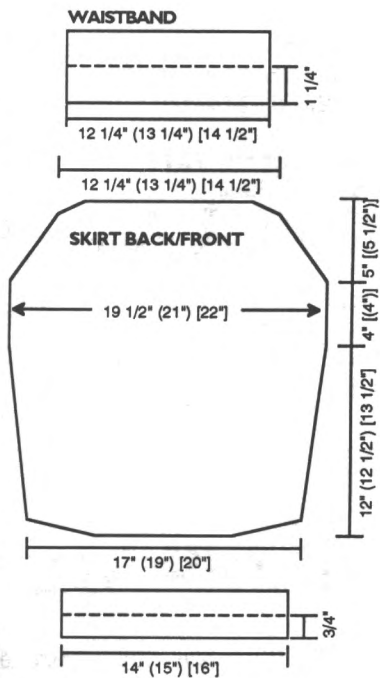
**SLEEVE:**

With C1 CO 82 (86) [90] STS. in 1 x 1 rib. After selvedge RC 0. T 0/0 l. Knit to RC 36 and transfer RB STS to MB. RC 0. T 4.2. Knit in stripe and fairisle following color chart while INC on ES 1 ST every 4 RWS 48x, 1 ST every 3 RWS (14) [16] x and 1 ST every 4 RWS (37) [38] x. AT THE SAME TIME at RC 82 change to C1. St. St. At RC 192 (198) [204] SHR on ES 10 STS EOR 5x. At RC 202 (208) [214] knit 1 RW at T 10 and BOLT.

**SKIRT BACK/FRONT:**

With WY CO 156 (170) [178] STS. Knit 6 RWS of WY and 1 RW Ravel Cord. RC 0. T 4.2. St. St. C1. Knit while SHR shaping on ES 12 ST EOR 3x. AT THE SAME TIME INC on ES 1 ST every 16 (17) [18] RWS 10x. At RC 216 (224) [234] DEC on ES 1 ST every 14 (15) [16] RWS 4x. At RC 272 (284) [298] SHR on ES 6 STS EOR 5x. At RC 282 (294) [308] remove STS on WY. With purl side facing rehang lower edge





of skirt back/front on 124 (134) [144] NDLS. RC 0. T 4.1. St. St. C1. Knit to RC 22 and pick up STS from first RW to form double hem. Knit 1 RW at T 10 and BOLT.

**WAISTBAND:**

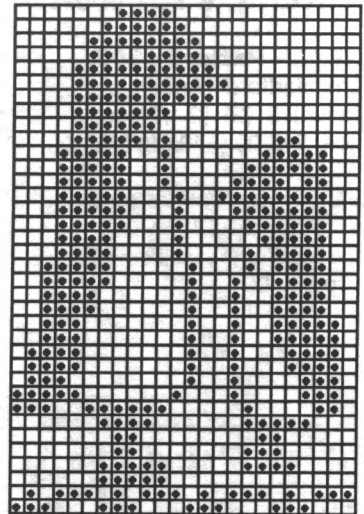
With purl side facing rehang upper edge of skirt back/front on 110 (120) [130] NDLS. RC 0. T 4.1. St. St. C1. Knit to RC 36 and pick up STS from first RW to form double band. Knit 1 RW at T 10 and BOLT.

**FINISHING:**

**Pullover:** Close remaining shoulder and attach sleeves. Close all remaining seams.

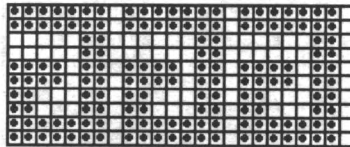
**Skirt:** Close all remaining seams.

#328 Fairisle Pattern #2  
 24 STS x 36 RWS



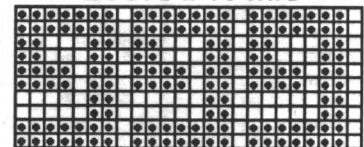
KK Mag Disk: Track 15; Pattern 902

#328 Fairisle Pattern #3  
 24 STS x 10 RWS



KK Mag Disk: Track 15; Pattern 903

#328 Fairisle Pattern #1  
 24 STS x 10 RWS



KK Mag Disk: Track 15; Pattern 901

*knit*ing news

**STEP-BY-STEP  
 KNIT IN POCKETS**

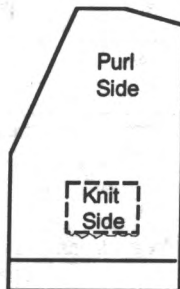
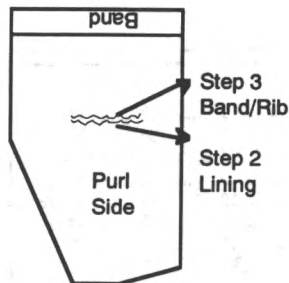
**Step 1:** If knitting in pattern, mark the pattern row. Turn off Row Counter.

Knit 1 R or WY over the pocket stitches as shown on chart. Reset pattern back to proper row if knitting in pattern. Depress both part buttons and return carriage to RS. Release part buttons and turn RC on.

**Note:** For the purpose of this instruction the *Lower Part* of the front is from the ribbing/band/hem on the lower edge of the garment to the pocket. The *Upper Part* is from the pocket to the shoulder.

**Step 2:** (Lining) With the purl side of the *upper part* facing, pick up the stitches on *upper part* of the WY for the pocket lining. Knit pocket lining per pattern instructions and BO.

**Step 3:** (Band) With the purl side of the garment facing, rehang the stitches on *lower part* on appropriate number of ndls per pattern. Knit the number of RWS specified in pattern and pick up STS from first RW to form double band. Knit 1 R at T 10 and BOLT.



**SHORTROWING  
 ON THE GARTER CARRIAGE**

Shortrowing on the G-Carriage is a bit different since there is no hold position. Instead of placing the needles in 'E' position, they are knit with either waste yarn or ravel cord and then pushed back to 'A' position. When shortrowing, knit 1 stitch less than the number shown back to 'A' position. This will form the "wrap". For example, the instructions are to short row 6 sts 2 x. When the G-Carriage is on the opposite side of the stitches to be shortrowed, \*hand knit (with waste yarn or ravel cord) and push back 5 stitches. Knit 1 Row. Hand knit and push back to 'A' position the sixth stitch. Knit 1 Row.\* Repeat between \* until all the stitches have been shortrowed. Carefully pull the waste yarn or ravel cord to set the garment stitches back on the needles, paying close attention to the wrapped stitches. Knit 1 Row to close off the wrapped stitches.

## Knitking's Kit Korner

### KIT #1 - Pattern #305

Yarn: Hartford - Amethyst  
Amount: 2 (2) [2 1/2] lbs.  
Price: \$43.00 (\$43.00) [\$54.00]

### KIT #2 - Pattern #306

Yarn: Canton - Blue Mist  
Amount: Same all sizes - 2 lbs.  
Price \$37.00

### KIT #3 - Pattern #307

Yarn: Hartford & Canton - Blue Mist  
Amount: Same all sizes - 1 lb. & 1 oz.  
Price: \$23.00

### KIT #4 - Pattern #310

Yarn: Bulky Primo & Primo - Ivory  
Amount: Same all sizes - 1 1/2 lbs.  
& 1 lb.  
Price: \$53.00

### KIT #5 - Pattern #312

Yarn: Venetia - White 2 (2) [2 1/2] lbs.  
Lumiarn - Gold 2 (3) [3] spools  
Price: \$77.00 (\$77.00) [\$100.00]

### KIT #6 - Pattern #315

Yarn: Chenille - Rust 2 (2 1/2) lbs.  
Venetia - Black 1 1/2 (1 1/2) lbs.  
Price: \$127.00 (\$147.00)

### KIT #7 - Pattern #317

Yarn: Sorbet - Safari  
Amount: 2 1/2 (2 1/2) [3] lbs.  
Price: \$ 74.00(\$ 74.00) [\$ 88.00]

### KIT #8 - Pattern #321

Yarn: Alpine - White  
Amount: Same all sizes - 3 cones  
Price: \$84.00

## Knitking Sizing Chart

### WOMENS

Size	6	8	10	12	14	16	18	20	22
Bust	30 1/2	31 1/2	32 1/2	34	36	38	40	42	44
Waist	22	23	24	25 1/2	27	29	31	34	36
Hip	32 1/2	33 1/2	34 1/2	36	38	40	42	44	46
Neck	13 1/8	13 3/8	13 5/8	14	14 3/8	14 3/4	15 1/4	15 3/4	16 1/4
Back Waist Length	15 1/2	15 3/4	16	16 1/4	16 1/2	16 3/4	17	17 1/4	17 1/2
Shoulder to Shoulder	13 1/2	13 1/2	14	14 1/2	15	15 1/2	16	16 1/2	17
Upper Arm Circumference	9 3/4	9 3/4	10 1/4	10 1/2	11	11 1/2	12	13	13 1/2
Armhole Depth	7	7	7 1/2	7 1/2	7 1/2	8	8	8 1/4	8 1/4
Sleeve Length	16 1/2	16 1/2	17 1/2	17 1/2	17 1/2	18	18	18 1/2	18 1/2
Under Arm									
Wrist	6	6	6 1/4	6 1/4	6 1/2	6 1/2	6 1/2	7	7
Hip Depth	7 3/4	8	8 1/4	8 1/2	8 3/4	9	9 1/4	9 1/2	9 3/4

These are actual body sizes. Proper ease allowance is necessary as determined by the style.

### MENS

Size	34	36	38	40	42	44
Chest	34	36	38	40	42	44
Waist	30	32	34	36	38	40
Hip	35	37	39	41	43	45
Neck	15 1/2	16	16 1/2	17	17 1/2	17 1/2
Back Waist Length	18	18 1/2	19	19 1/2	20	21
Shoulder to Shoulder	15 1/2	16	16 1/2	17	17 1/2	18
Upper Arm Circumference	9 5/8	10 3/8	11 1/8	11 7/8	12 5/8	13 3/8
Armhole Depth	8	8 1/2	9	9 1/2	10	10 1/2
Sleeve Length	19	19 1/2	19 1/2	20	20	20 1/2
Under Arm						
Wrist	6 1/2	7	7	7	7 1/2	8
Hip Depth	8 3/8	8 1/2	8 5/8	8 3/4	8 3/4	9

These are actual body sizes. Proper ease allowance is necessary as determined by the style.

### CHILDREN

Size	12 mo	2 yr	4	6	8	10	12	14
Chest	19	21	23	25	27	28	30	32
Waist	19	20	21	22	23	24	25	26 1/2
Hip	20	22	24	26	28	30	32	34
Neck	9 1/4	10	10 3/4	11 1/2	12 1/8	12 5/8	13 1/8	13 5/8
Back Waist Length	7	8 1/2	9 1/2	10 1/2	12	12 3/4	13 1/2	14 1/4
Shoulder to Shoulder	7 1/2	8 1/2	9 1/2	10	11	11 1/2	12	12 1/4
Upper Arm Circumference	7	7 1/2	8	8 1/2	9	9 1/2	10	10 1/2
Armhole Depth	3 1/2	4	4 1/2	5 1/4	6	6 1/2	6 3/4	7
Sleeve Length	6	8 1/2	10	11 1/2	13	14 1/2	15 1/2	16 1/2
Under Arm								
Wrist	5	5 1/4	5 1/2	5 1/2	5 3/4	5 3/4	6	6
Hip Depth	5	5 1/4	5 1/2	5 1/2	5 3/4	6 1/4	6 3/4	7

These are actual body sizes. Proper ease allowance is necessary as determined by the style.

## IS YOUR ADDRESS CHANGING?

If so, you can insure the proper handling of this change by following the three suggestions below:

- 1) When advising us of your new address, please also indicate your old address.
- 2) Please provide us with six weeks notice to affect this change.
- 3) PLEASE PRINT ALL INFORMATION LEGIBLY.



The finest quality KNITKING yarns are used to create the beautiful fashions found in KNITKING Magazine. Photographic representations may not accurately reflect the true color of the yarn due to lighting and printing processes. Please refer to your Knitking Yarn Color Book for actual colors. Each yarn comes in a wide selection of colors. The different types of yarns have been selected to allow for blending, mixing, and contrasting—both color and texture.

Yarn Color Book is available through KNITKING or an authorized Knitking dealer. Content and approximate yardage of each yarn is shown below.

	Yds./Pound
Alpine	100% Wool ..... 1600
Angora	100% Rabbit Hair (10 gr. ball) .. 33 yds/ball
Acrylite	2/12 Acrylic ..... 2400
Caprinae	78% Mohair/13% Wool/9% Nylon ..... 980
Glace Plus	100% Slinky Bright Rayon ..... 1650
Lumiarn	Thin Metallic Yarn (50 gr. cone) .. 1200/cone
Mini Pebble	100% Rayon Slub Filler Yarn ..... 3350
Mirage	100% 4-Ply Worsted Acrylic ..... 1000
Night Music	Polyester Thread w/Metallic Twist ..... 115/ball
Panache	100% 3-Ply Acrylic ..... 2400
Pearlyte	100% Rayon Boucle ..... 2200
Pebble	Boucle Cotton/Acrylic/Rayon ..... 700
Primo	100% Mercerized Cotton ..... 2500
Rayon Nubs	100% Rayon Nub Filler Yarn ..... 5500
Roma	80% Acrilan/20% Antron ..... 2600
Rubane	(50 gr ball) 100% Polyamid 1/8" ribbon ..... 82/ball
Softon	100% Soft Cotton ..... 2000
Sorbet	54% Cotton/46% Rayon ..... 2200
Splendor	3-Ply High Bulk Acrylic ..... 2200
Starlite	Acrylic w/Metallic Thread ..... 2400
Venetia	70% Wool/30% Rayon ..... 2400
Woolana	100% 2/12 Merino Wool ..... 3000
Knit-in Elastic	79% Nylon/21% Elastic ... 430/spool

Yarn Color Book: \$25.00 + Shipping and Handling

3|7|9|





# Great Ideas For Baby Gifts



**Bunting**



**Lap pillow/  
Blanket**

3|2|3|



3|2|4



3|2|5|

# Stay Warm This Winter





3|2|6|

3|2|7|

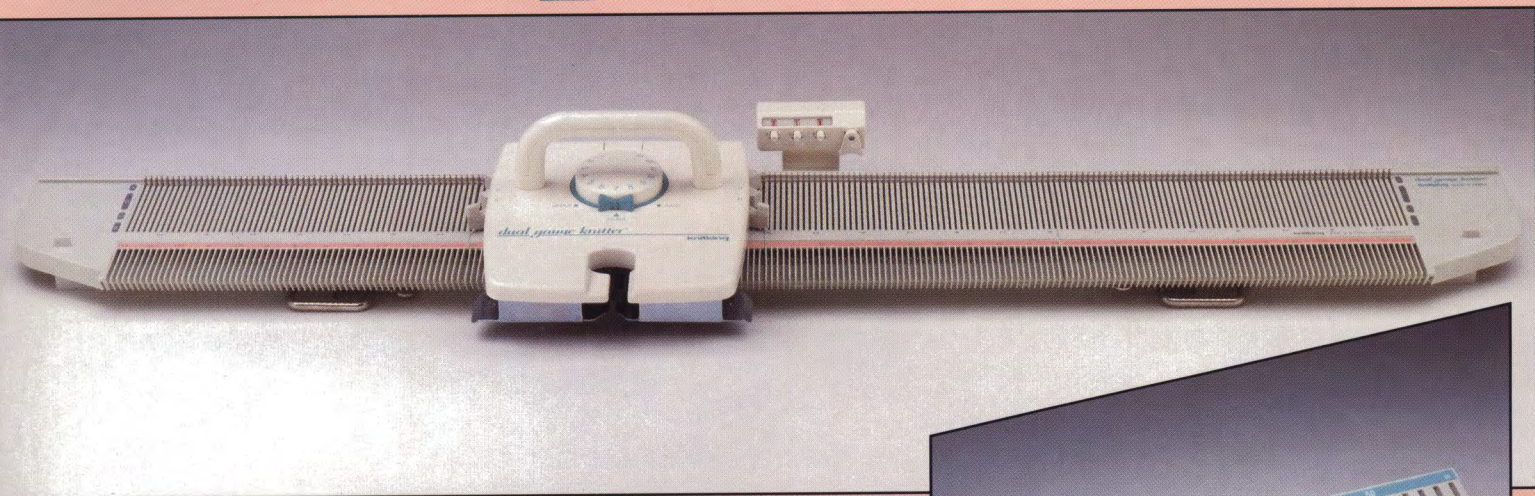


3|2|8|



# Dual Gauge Knitter

# Two Knitting Machines for the Price of One



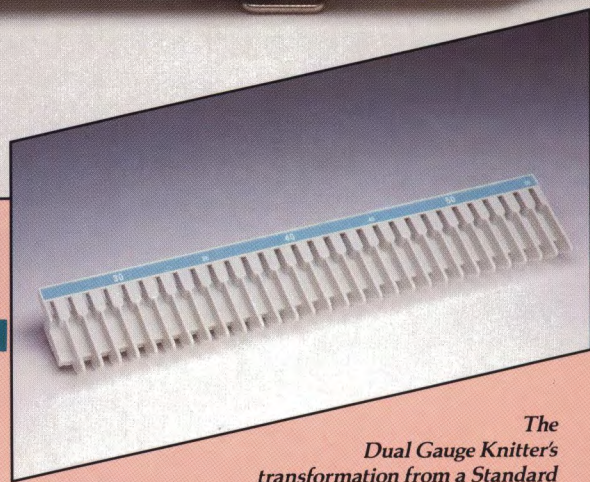
*Think of it...one knitting machine that takes the place of two!*

As its name implies, this unique knitter offers you the choice between using it as a **Standard Bed knitting machine (4.5 mm gauge with 220 needles)** or as a **Bulky knitting machine (9.0 mm gauge with 110 needles)**. These two industry-standard gauges are necessary to knit the full range of available yarns... Because of its gauge convertability, **The Dual Gauge Knitter** is the **one** machine that will handle them all!

Pattern capabilities include Stockinette, Skip, Tuck, Holding, Lace, Cabling... **and built-in Intarsia and Plating!!** Fully portable at only 13 lbs., the **Dual Gauge Knitter** also comes complete with Row Counter, Table Clamps, Tools and **Instructional VHS Videotape and Manual.**

The experienced machine knitter will appreciate the wonderful possibilities of Intarsia knitting and Plating on **both** Standard and Bulky beds at a surprisingly **low cost**. The hand knitter or beginning knitter will appreciate the ability to **quickly** knit the **full range of yarns** on one **easy-to-use** machine—the economical **Dual Gauge Knitter!**

The unique features of the **Dual Gauge Knitter** make it **two** truly remarkable knitting machines... **in one!**

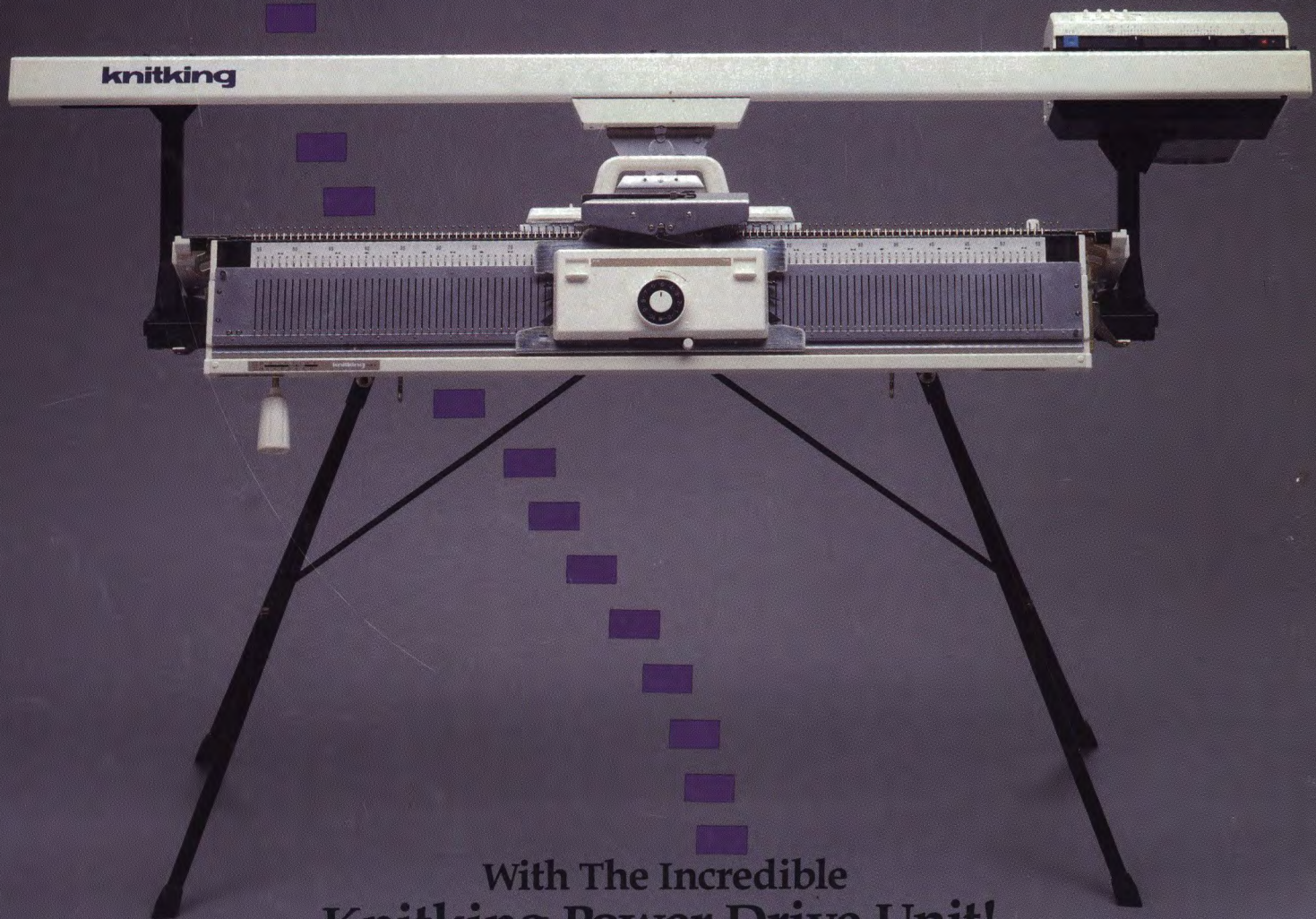


*The Dual Gauge Knitter's transformation from a Standard Bed machine to a Bulky machine (or vice-versa), is easily accomplished by removing one set of lightweight, color-coded needle plates... and simply replacing them with the other set!*

## knitking

Where Savings And Value  
Are Always In Fashion

# Now You Can Knit Your Garments in the Wink of an Eye and the Tap of a Foot!



## With The Incredible Knitking Power Drive Unit!

It attaches to the carriage of your Knitking knitting machine and, with the push of a button or tap of the foot pedal, automatically moves the carriage back and forth across the knitting bed!

**knitking**

Where Savings And Value  
Are Always In Fashion