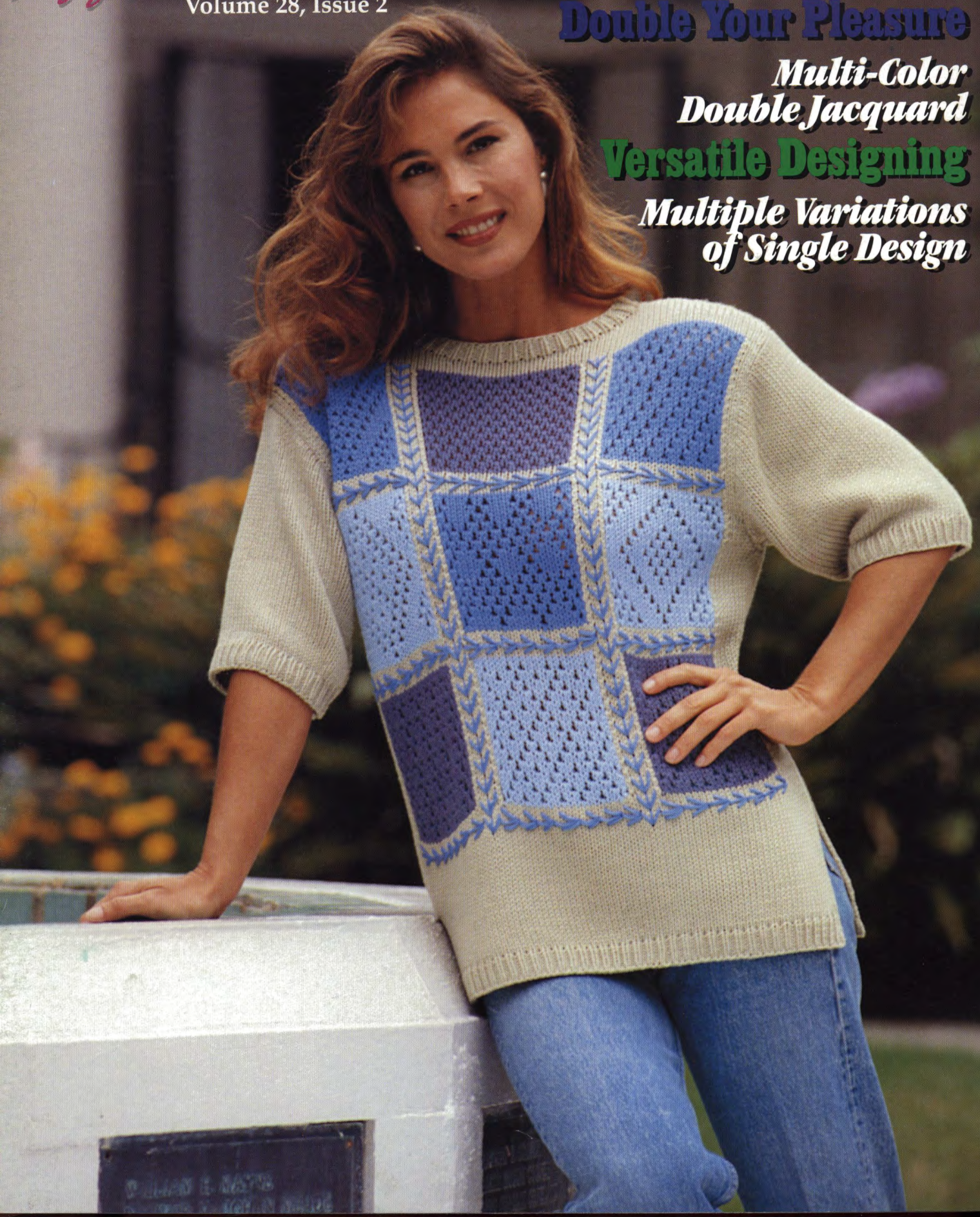


knitking
magazine
Volume 28, Issue 2

Timely Thread Lace
Today's Fashion Look
Double Your Pleasure

Multi-Color
Double Jacquard
Versatile Designing

Multiple Variations
of Single Design



264



265



Table of Contents

Knitking Magazine — Volume 28, Number 2

••• General Instructions	13
263 A Square Deal	15
264 Fashion Flash	17
265 Patterned Perfection	18
266 Today's Look	20
267 Fun in the Sun	21
268 Natural Simplicity	23
269 Man About Town	24
270 Something Extra	25
271 Beyond Basics	27
272 Man's Viewpoint	28
273 Peachy Keen	30
274 A Family Affair	31
275 A Family Affair	31
276 A Family Affair	32
277 A New Twist	36
278 Two Piece or Not Two Piece	38
279 Timeless Beauty	40
280 Critic's Choice	41
281 Easy Going	43
282 Color of Summer	44
283 Forever Young	45



263

Publisher: KNITKING CORPORATION, 1128 Crenshaw Blvd.
 Los Angeles, CA 90019. Telephone: (213) 938-2077. Published quarterly.
 Subscriptions: USA-\$24.00 annually; single copies \$7.95. \$29.00-all other
 countries. The entire contents of KNITKING MAGAZINE are copyrighted and
 must not be reproduced in any shape or form without the
 express permission, in writing, of the publisher.
 © COPYRIGHT 1994 KNITKING CORPORATION

Photography by : LARRY BARTHOLOMEW
 Photographed at Ebell Theater Gardens, Los Angeles, California

Editorial

With spring in the air and summer not far behind our design moods reflect the light and airy seasons upon us. Lacy looks and light colors are perfect for this season's fashions.

The ambiance of the historical landmark Ebell Theater Gardens in Los Angeles lent a perfect background to set off our garments in the wonderful natural world around us. From casual to formal summer attire, and fun family coordinated designs, we've created a selection of garments in a wide range of yarns and techniques that will provide you with many interesting knitting projects.

This issue is loaded with creative ideas designed to help you use your knitting machine to its full potential. We've given you ideas with motif knitting, block knitting, patterning variations and more.

Notice all the exciting looks you can achieve using one large electronic pattern in a wide variety of techniques (Patterns 274, 275 and 276). We've used a similar technique variation in Patterns 269 and 270 to create a bold, summer fairisle pullover for men and a graceful Garter Carriage ensemble for women.

And what would summer be this year without lace of all types? We've got you covered with fine lace (Pattern 281), thread lace (Patterns 273 and 282), and a lovely lace tank top pullover in Pattern 267. Combine the fun technique of block knitting with thread lace and assemble the garment as you go for a fabulous pullover like our stunning cover garment (Pattern 263).

If warm weather knits are not your thing, we've got double jacquards, sweaters and suits that can easily go well into cold weather that always arrives sooner than we care to acknowledge! So knit early for the holidays ahead.

Delight family and friends with your knitted creations. Now stop reading and start knitting!

Happy Knitting

Suzanne Ste...

266



267



268



269



270



271



272



273



GENERAL INSTRUCTIONS

THE SAMPLE SWATCH

It is imperative that you knit a sample swatch for every garment. Although you may be using the identical yarn and machine model as the pattern suggests, many variables such as dye lot difference, speed of knitting and just machine to machine differences can all cause a variance in the gauge achieved. Knitting Magazine publishes the tension and gauge for each garment shown. We strongly urge you to knit a swatch representing three tensions - the recommended tension, and .1 or .2 higher and lower. These different tensions can be knitted in one piece with waste yarn separating the sections. This will eliminate unnecessary rethreading while allowing you to obtain the gauge published in the magazine.

To make a sample swatch on standard gauge machines cast on 60 stitches with waste yarn. Knit approximately 6 rows. *Mark the tension number for your swatch by making holes. For example 4 eyelet holes for Tension 4, 6 eyelet holes for Tension 6. Knit 6 more rows.

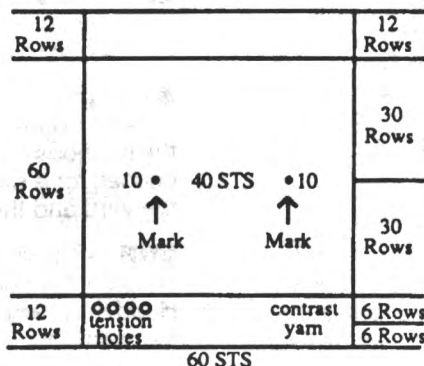
Change to garment yarn and reset row counter to 0. Knit 30 rows (in Pattern stitch). With contrast yarn, mark the 10th stitch FROM EACH SIDE by hand. Knit 30 Rows. Change to waste yarn and knit 6 rows. Change tension up or down for second section and repeat from *. Make third section with another tension. Remove on 12 Rows of

waste yarn. Remove the sts. from the machine by pushing the Carriage across without yarn.

Pull and stretch the swatch both lengthwise and diagonally from corner to corner. Gently block the swatch. Treat the swatch as you would the finished garment before measuring the gauge. For example, if you plan to wash this garment and dry it in the dryer, you should do so, measuring before and after to see the difference.

Measure between the stitches marked and the beginning and ending rows for the inches/cms. knitted. Divide the total number of stitches/rows by the inches measured to calculate sts. and rows per inch.

For Bulky knitters, make swatch with 30 Sts. and 30 Rows. If so desired, or for large pattern repeats, we suggest a wider and longer swatch to provide more accurate gauges.



BUTTONHOLES

The following methods of buttonholes are the general manner in which small and large buttonholes are created.

Small Buttonholes in Ribbing

Make small eyelet style buttonholes by following chart below.



Large Buttonholes in FNR

Vertical buttonholes are made by knitting each side separately (partial or short-row knitting). Knit the right side first, end with yarn on left. Without breaking yarn, knit left side. The strand of yarn inside the buttonhole can be picked up every other row when knitting the left side, but this is not necessary for a small buttonhole.

SHORT ROWS

Method One

With carriage on opposite side start placing appropriate number of ndls in HP. Knit across and wrap the inside needle. Again, place appropriate number of ndls in HP on opposite side from carriage, knit across and repeat wrapping. The wrapping will eliminate any holes in the knitting. Release HOLD button and continue knitting.

Method Two - Automatic Wrap

Example follows for shoulder short rows. This method can be used for other Short Rowing as well. For example if pattern says to Short Row at shoulder every other row 7 sts, 1 x and 6 sts. 1 x . . . With carriage on opposite side put 6 sts in HP, knit 1 row across and put one additional needle in HP. Opposite carriage place 6 ndls in HP. Knit 1 row across and bring one extra needle to HP. Repeat until shortrowing is completed.

HEMS

Two methods of knitting hems are described below. Variations on these instructions will allow you to knit plain hems, picot edge hems and more.

Method One

With waste yarn cast on the required number of stitches and knit about 10-12 rows ending with the carriage on the left. Knit 1 Row to the right with Ravel Cord. Change to garment yarn and knit 1 Row to the left at garment body tension. (i.e. Skirt at Tension 4, 1st row at T 4). Turn tension down approximately 2 full tension numbers lower (tighter) and knit to mid point. (i.e. Row 14 of a 28-row hem). Change tension to 1 full point lower than garment body and knit remainder of hem rows. Pick up the stitches from the first row of garment yarn - shown between the stitches of Ravel Cord. Hem is now completed. Proceed with pattern as per chart and instructions. Remove waste yarn and

Ravel Cord when you have completed section.

Method Two

Bring required number of needles to "B" (working) position. Attach cast-on comb. Beginning with the 2nd needle on the LEFT, bring every other needle to "D" or "E" position. Push in both Part buttons. Knit 1 Row to the left. Release the part buttons and drop the cast-on comb. (DO NOT REMOVE cast on comb from work). Knit required number of rows for hem. Attach weights to the back of work close to the cast-on comb (about 1/4" above the comb). Beginning with the 1st needle on the LEFT, bring every other needle to "D" position. Carefully LIFT the cast-on comb and hang loops onto the needles in "D" position. Turn the comb back away from you and make sure the needles are through the loops. Pull the needles out to "E" position and remove the cast-on comb.

GENERAL INSTRUCTIONS

AT THE SAME TIME - Two functions are to be performed at the same time, such as shaping the neck and shoulder. Be sure to read both instructions before proceeding.

BO - Bind Off. To take off more than 1 St. at a time. When two or more stitches are to be bound off (or cast on) the carriage and yarn must be on the same side as the bind off. If the instruction is, "At R 100 BO 6 Sts on each side.", on the carriage side BO six stitches, knit one row and then bind off six stitches on the other side. See DECR and FF DECR.

BOLT - Slip Stitch **Bind Off** with a **Latch Tool**. Knit one row to the left at a tension at least five numbers higher (looser) than the garment tension. Bring all needles to holding position ("E") and then, pick up the first stitch on a latch tool allowing it to slip behind the latch, then pick up the next stitch and pull it through the stitch already on the latch hook, thus creating a slip stitch. If you cannot set the tension at least five full tension numbers higher, knit a row loosely manually.

C - Color

CO - Cast on stitches for knitting. **(CHECK INSTRUCTION MANUALS TO MAKE SURE DIFFERENT METHODS ARE SHOWN)** In our instructions, CO is used either for a finished edge at the beginning of the garment, or to add edge stitch(es). If two or more stitches are to be cast on the carriage and yarn must be on the same side as the cast on. If the instruction is, "At R 100 CO 6 Sts on each side.", on the carriage side cast on six stitches, knit one row and then cast on six stitches on the other side.

COL - Carriage on left

COR - Carriage on right

DECR - Use the transfer tool to move the edge stitch(es) inward to the next needle. Usually used to transfer one edge stitch to the next needle, but may be used to transfer the two edge stitches to the next two needles.

EON - Every other needle

EOR - Every other row

EOS - Every other stitch

FF DECR - Used to make an even edge for seaming and decorative seams for raglans. If one stitch is to be decreased, use a two-prong transfer tool to move the two edge stitches inward one needle. If two stitches are to be decreased, use a three-prong transfer tool to move the three edge stitches in two needles. If three stitches are to be decreased, use two two-prong transfer tools and move the edge stitches in four needles. See DECR, BO and SHAPING.

FF INCR - To increase one stitch move the two edge stitches outward one needle, then fill the empty needle by picking up a bar from the row below and hanging it on the empty needle.

FNR - Full Needle Rib

G.C. - Garter Carriage

HP - Holding position or "E" position.

INCR - Increase. Usually used for "full-fashion" shaping, see FF Incr., or in conjunction with short row shaping. A simple incr can be made by pulling additional needle on side of carriage out to "E" position and knit across.

MB - Main Bed

MC - Main Color

Ndls - Needles

NWP - Non-working position or position "A"

R(s) - Row(s)

RB - Ribber Bed

RC - Row Counter.

RC 0 - Set RC to zero.

SET PATTERN - Follow the step-by-step instructions in your manual for setting the pattern and carriage controls for the pattern to be knit, e.g., Fairisle, tuck, single motif, etc.

SHAPING: The method used for shaping is a matter of personal preference. In our definitions we have described the methods commonly in use at Knitking. Which method is chosen for a particular pattern depends upon the garment, the yarn and the personal preference of the designer.

SHR - Short Row or Partial Knitting. Used for shaping shoulders, necklines, darts, gores, etc. Set carriage on H(old). **Every other row SHRs:** On the opposite side of the carriage, place the specified number of stitches in holding position, knit across, wrap the inner needle or use an "automatic wrap". After all specified stitches have been placed in HP change the carriage setting to N (knit) to return the needles to WP. **Every row SHRs:** On the side being shaped, place one stitch in HP every row. It is recommended you refer to your manual or an instruction book for detailed instructions about how to short row.

St(s) - Stitch(es)

St. St. - Stockinette stitch.

T - Tension.

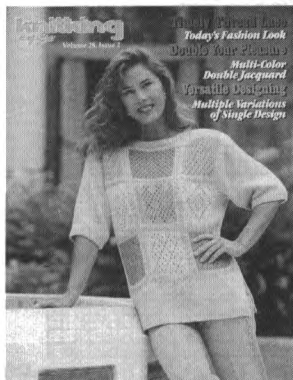
WP - Working Position or "B" position.

WY - Waste yarn.

YM - Yarn marker. To place a yarn marker, use a short piece of contrasting yarn and loop it over the needle specified or the end needle of the row specified.

SEAMING GARMENTS

Any number of popular methods are suggested. We encourage you to experiment with any and all. If a garment in *Knitking Magazine* requires special seaming information it will be provided in the individual pattern instruction. Otherwise, methods include: linking on the knitting machine, Knitking's Lectrolink, the electric linker, crochet slip stitch, tapestry needles with back stitch sewing by hand. Bar to bar weaving for seamless appearance and seaming on a sewing machine.



A SQUARE DEAL

YARN: Panache

SIZES:

Small (Medium) [Large]

AMOUNT:

C 1: Khaki - 1 lb. all sizes

C 2: Denim - 2 oz. all sizes

C 3: Lt. Blue - 2 oz. all sizes

C 4: Wedgewood - 2 oz. all sizes

KIT: Color of your Choice

\$25.00

TENSION:

Body: T 4

GAUGE:

Body: 4.44 Sts., 6.66 Rs. = 1"

TECHNIQUE: Thread Lace

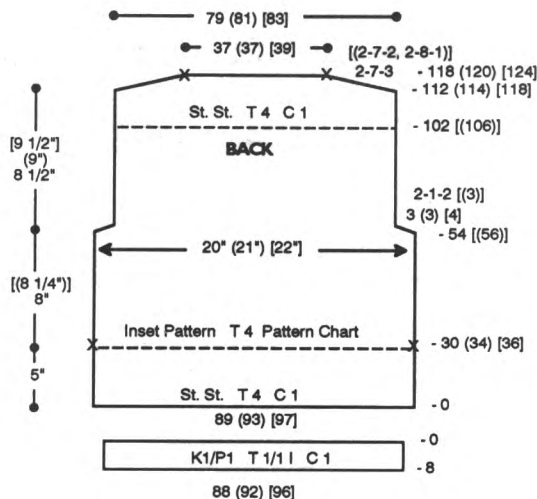
NOTIONS: 1 Spool of thread to match each square of yarn for thread lace pattern

Make on CompuKnit/Bulky or Punch Card Bulky Machine.

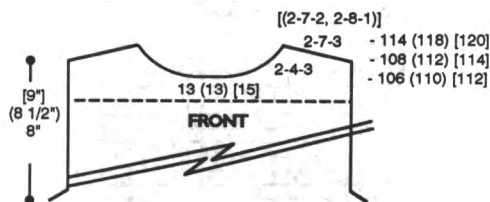
Note: Use 2 strands of panache throughout.

BACK:

With WY CO 89 (93) [97] sts. After several rows end with 1 row Ravel Cord to the right. RC 0. T 4. C 1. St. St. Knit to R 30 (34) [36] and mark sts. on WY. With purl side facing rehang center 21 sts. starting at ndl. #10 on the left. RC 0. T 4. C 3. *COL. Knit 1 R to set Pattern #1. Knit in thread lace to R 30. Cut thread and release KC. Knit 1 row and cut C 3. Change to C 1 and knit 4 [(6)] Rs. in St. St. Repeat from * for each square following pattern chart for appropriate color and pattern. At R 102 [(106)] remove sts. on WY. Rehang 'left' 21 sts. on same center ndls. Knit in the same manner as center strip. Repeat for 'right' 21 sts. Block panels for ease in picking



pick up sts. to connect strips. RC 0. T 4. C 1. St. St. Pick up 4 [(5)] sts. to the left of center panel. COR. **Hang the end st. (loop) of the left thread lace panel on the end st. Knit 1 row. Hang the end st. of the right thread lace panel on the end st. Knit 1 row. Repeat from ** to R 102 [(106)] and remove sts. on WY. Pick up 4 [(5)] sts. to the right of center panel. COR. Repeat from ** to R 102 [(106)] and remove sts. on WY. Pick up left side 9 (10) [12] sts. Knit in St. St. hanging thread lace panel on opposite side of carriage. At R 54 [(56)] shape armhole. On left side BO 3 (3) [4] sts. then decr. EOR 1 St. 2 [(3)] x. At 102 [(106)] remove sts. on WY. Complete right side in the same manner reversing shaping. With purl side facing rehang all panels on 79 (81) [83] ndls. RC 102 [(106)]. C 1. St. St. Knit to R 112 (114) [118] and SHR shoulders EOR 7 Sts. 3x [(EOR 7 Sts. 2x and 8 Sts. 1x)]. At R 118 (120) [124] mark center 37 (37) [39] sts. for neckline. Remove neckline and shoulder sts. on separate WY.



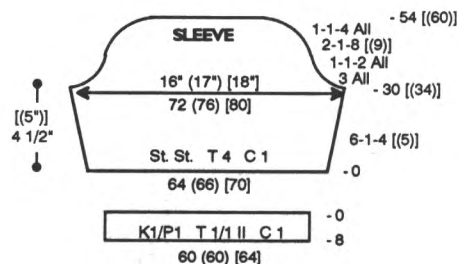
FRONT:

Knit front same as back to R 106 (110) [112] and shape neckline. Place center 13 (13) [15] sts. in HP and all sts. to the left. *On neckline edge decr. EOR 4 Sts. 3x. AT THE SAME

TIME at R 108 (112) [114] SHR shoulder EOR 7 Sts. 3x [(EOR 7 Sts. 2x and 8 Sts. 1x)]. At R 114 (118) [120] remove shoulder sts. on WY. Reset RC to R 106 (110) [112] and shape left side from *, reversing shapings. Remove neckline sts. on WY.

WAISTBAND:

With purl side facing rehang lower edge of back/front on 88 (92) [96] ndls. decr. evenly across. C 1. Knit 1 row at T 4 and transfer sts. to RB for K1/P1 rib. RC 0. T 1/1 I. Knit to R 8, knitting last row at T 10/5. Transfer RB sts. to MB and BOLT.



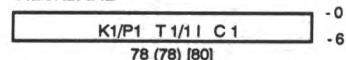
SLEEVE:

With WY CO 64 (66) [70] sts. After several rows end with 1 row Ravel Cord to the right. RC 0. T 4. C 1. Knit in St. St. while incr. on each side every 6 Rs. 1 St. 4 [(5)] x. At R 30 [(34)] shape sleeve cap. On each side BO 3 [(3)] sts. then decr. every R 1 St. 2x all sizes, EOR 1 St. 8 [(9)] x and every R 1 St. 4x all sizes. At R 54 [(60)] knit 1 row at T 10 and BOLT.

CUFF:

With purl side facing rehang lower edge of sleeve on 60 (60) [64] ndls. decr. evenly across. C 1. Knit 1 row at T 4 and transfer sts. to RB for K1/P1 rib. RC 0. T 1/1 II. Knit to R 8, knitting last row at T 9/5. Transfer RB sts. to MB and BOLT.

NECKBAND

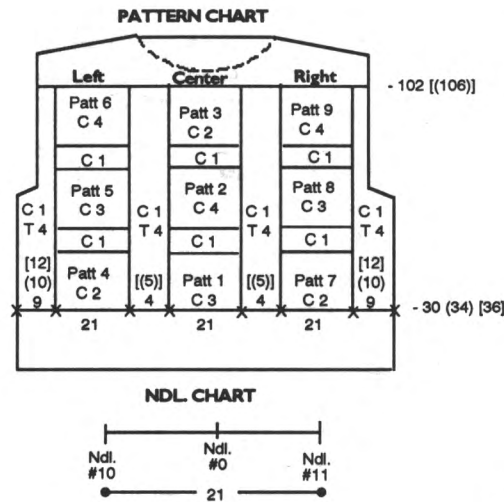


NECKBAND:

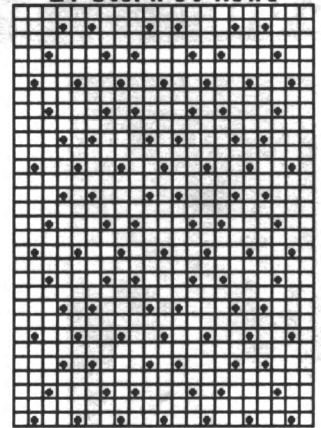
Close one shoulder. With purl side facing rehang neckline on 78 (78) [80] ndls. C 1. Knit 1 row at T 4 and transfer sts. to RB for K1/P1 rib. RC 0. T 1/1 I. Knit to R 6, knitting last row at T 10/5. Transfer RB sts. to MB and BOLT.

FINISHING:

Close remaining shoulder. Attach sleeves. Close side seams starting at marker. Close all remaining seams. With C 1 Slip Stitch down open sides. With 1 strand of C 4 embroider down each side of center panel beginning at the top in Fern Stitch. Then embroider across.

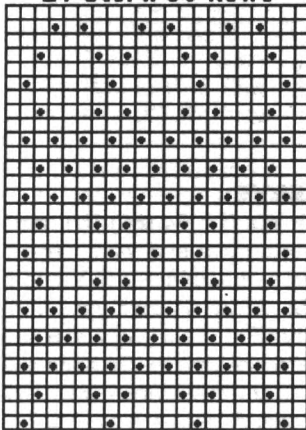


#263 Thread Lace Pattern #1
 21 Sts. x 30 Rows



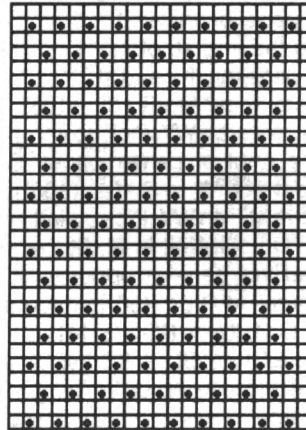
KK Mag Disk: Track 1; Pattern 901

#263 Thread Lace Pattern #2
 21 Sts. x 30 Rows



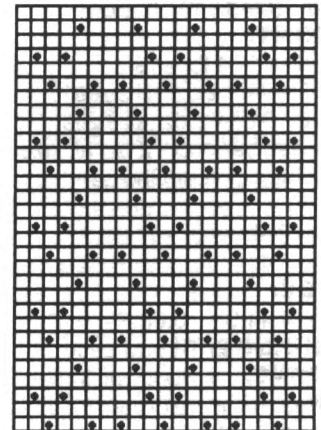
KK Mag Disk: Track 1; Pattern 902

#263 Thread Lace Pattern #3
 21 Sts. x 30 Rows



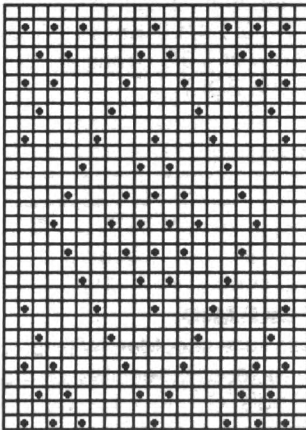
KK Mag Disk: Track 1; Pattern 903

#263 Thread Lace Pattern #4
 21 Sts. x 30 Rows



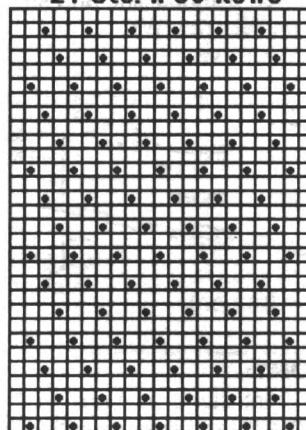
KK Mag Disk: Track 1; Pattern 904

#263 Thread Lace Pattern #5
 21 Sts. x 30 Rows



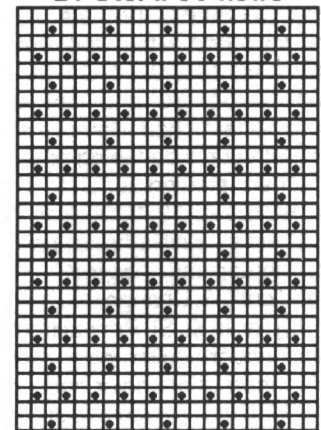
KK Mag Disk: Track 1; Pattern 905

#263 Thread Lace Pattern #6
 21 Sts. x 30 Rows



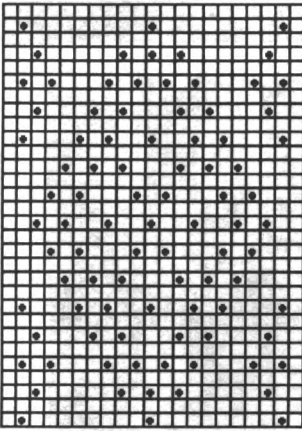
KK Mag Disk: Track 1; Pattern 906

#263 Thread Lace Pattern #7
 21 Sts. x 30 Rows



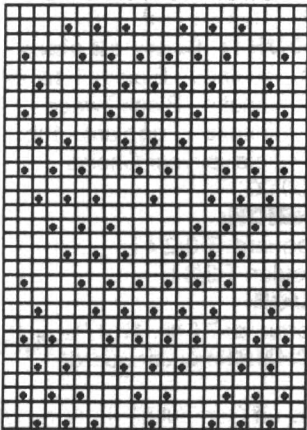
KK Mag Disk: Track 1; Pattern 907

#263 Thread Lace Pattern #8
21 Sts. x 30 Rows



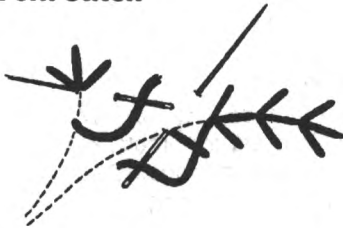
KK Mag Disk: Track 1; Pattern 908

#263 Thread Lace Pattern #9
21 Sts. x 30 Rows



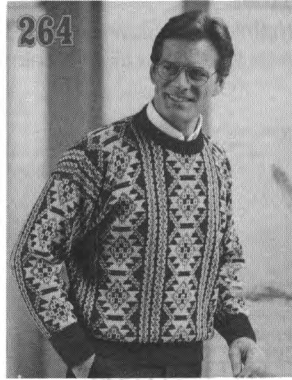
KK Mag Disk: Track 1; Pattern 909

Fern Stitch



Begin with 3 straight stitches of equal length that meet at the same point in the center at the color joining. Work sets of 3 stitches as shown in drawing. Pattern 263 uses fern stitch in straight line instead of curved as shown in above drawing.

264



FASHION FLASH

YARN: Woolana and Venetia

SIZES:

Small (Medium) [Large]

AMOUNT:

C 1: Woolana - Cardinal
1 lb. [(1 1/4)] lbs.

C 2: Venetia - Taupe Tweed
8 oz. all sizes

C 3: Venetia - Black Tweed
8 oz. all sizes

KIT: Color of your Choice

\$60.00 [(\$66.00)]

TENSION:

Body: T 4/4.1 I

Rib: T 2/2 I

GAUGE:

Body: 7.1 Sts., 18 Rs. = 1"

TECHNIQUE: Double Jacquard

Make on CompuKnit III, IV or V Machine with Ribber and Ribber Color Changer. Pattern is built-in #856 in CompuKnit V/Vcx.

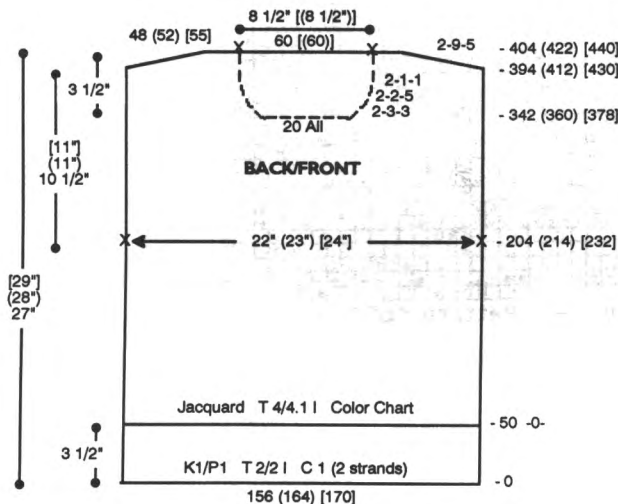
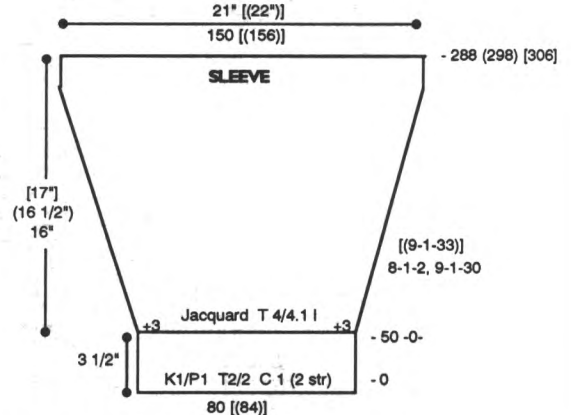
Note: Use 2 strands of Woolana for Rib and 1 strand of each color for Jacquard.

BACK:

With 2 strands of C 1 CO 156 (164) [170] sts. for K1/P1 Rib. After selvedge RC 0. T 2/2 I. Knit to R 50 and arrange ndls. for FNR. RC 0. T 4/4.1 I. COR. With 1 strand of C 1, knit 1R from right to left to set pattern. Knit in jacquard pattern following chart. At R 204 (214) [232] place a YM on each side for armhole. At R 394 (412) [430] SHR shoulders EOR 9 Sts. 5x. At R 404 (422) [440] mark center 60 [(60)] sts. for neckline and remove neckline and shoulder sts. on separate WY.

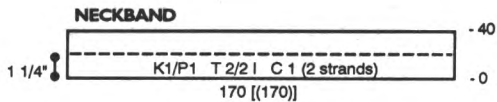
FRONT:

Knit front same as back to R 342 (360)[378] and shape neckline. Place center 20 sts. in HP and all sts. to the left. Note pattern row. *On neckline edge SHR EOR 3 Sts. 3x, 2 Sts. 5x and 1 St. 1x. At R 394 (412) [430] SHR shoulder EOR 9 Sts. 5x. At R 404 (422) [440] remove shoulder sts. on WY. Reset RC to R 342 (360) [378] and pattern to correct row. Shape left side from *, reversing shapings.



SLEEVE:

With 2 strands of C 1 CO 80 [(84)] sts. for K1/P1 Rib. After selvedge RC 0. T 2/2 I. Knit to R 50 and arrange ndls. for FNR. RC 0. T 4/4.1 I. COR. With 1 strand of C 1, knit 1 R from right to left to set pattern. Incr. 3 Sts. on each side. Knit in jacquard pattern while incr. on each side every 8 Rs. 1 St. 2x and every 9 Rs. 1 St. 30x [(every 9 Rs. 1 St. 33x)]. At R 288 (298) [306] transfer RB sts. to MB. Knit 1 row at T 10 and BOLT.



NECKBAND:

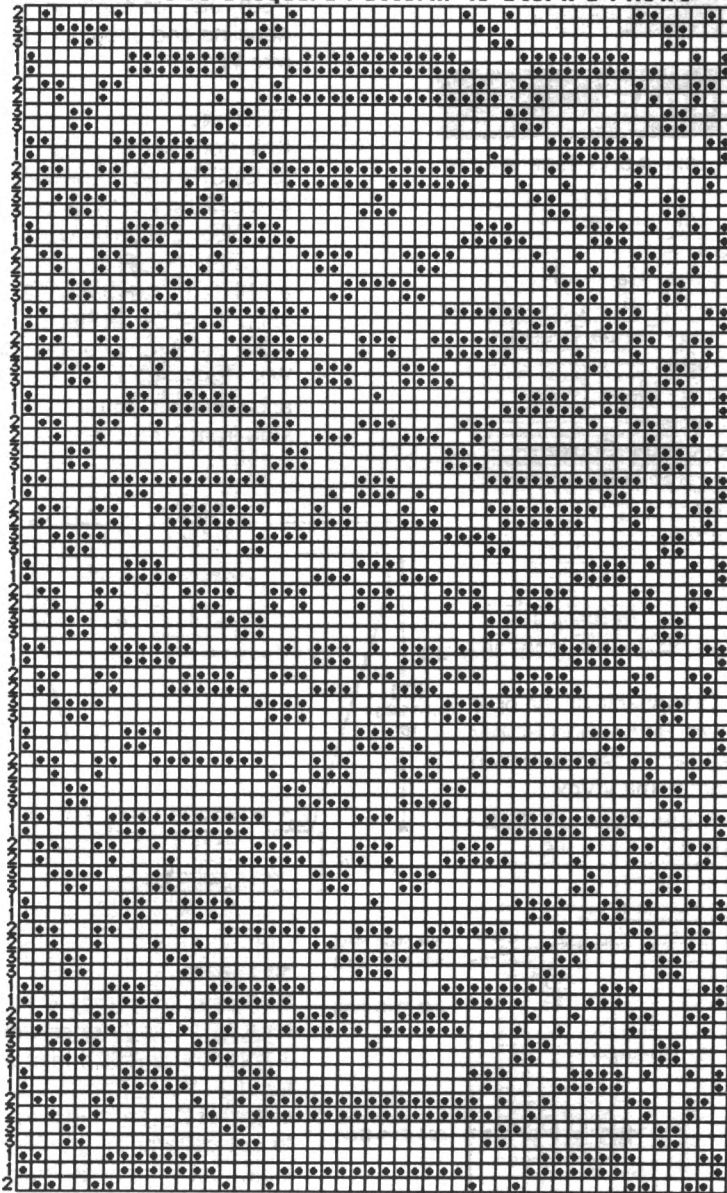
Close one shoulder. With 2 strands of C 1 CO 170 [(170)] sts. for K1/P1 Rib. After selvedge RC 0. T 2/2 I. Knit to R 40 and transfer RB sts. to MB. With

purl side facing rehang neckline on these ndls. Knit 1 row at T 10 and BOLT.

FINISHING:

Close remaining shoulder seam. Attach sleeves and close all remaining seams.

***264/*265 Jacquard Pattern: 49 Sts. x 84 Rows**



Compuknit V Built-in Pattern #856

265



PATTERNED PERFECTION

YARN: Woolana and Venetia

SIZES: 6/8 (10/12) [14] {16}

AMOUNT: Same all sizes

C 1: Woolana - Black - 1-1/2 lbs.

C 2: Venetia - Black Tweed - 1 lb.

C 3: Venetia - Eggplant - 1 lb.

KIT: Color of your Choice

\$100.00

TENSION:

Jacquard: T 3.2/4 I

Circular: T 3/3 I

GAUGE:

Jacquard: 7 Sts., 17.9 Rs. = 1"

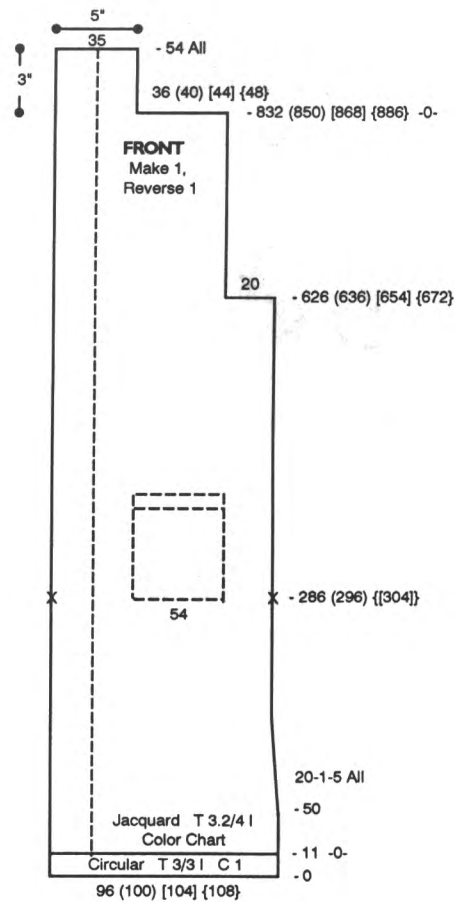
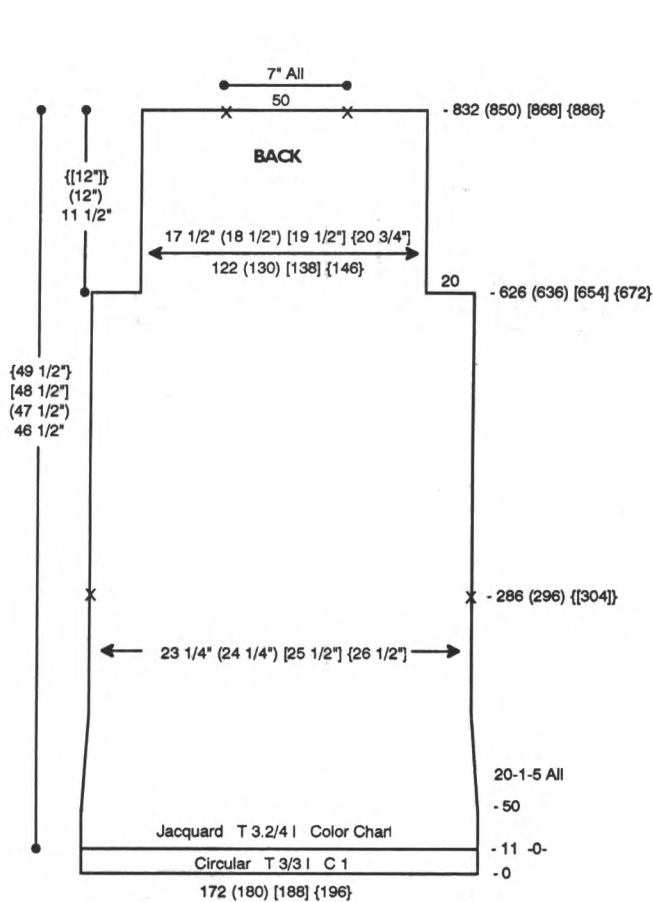
TECHNIQUE: Jacquard

Make on Compuknit III, IV or V/Vcx Machine with Ribber and Ribber Color Changer. Pattern is built-in #856 in Compuknit V/Vcx.

Note: Use 2 strands of Woolana for circular knitting and 1 strand of each color for Jacquard.

BACK:

With 2 strands of C 1 CO 172 (180) [188] [196] sts. for circular knitting at T 0/0 I. After selvedge RC 0. T 3/3 I. Knit to R 11 and change to FNR. With 1 strand of C 1, knit 1 row to set pattern. RC 0. T 3.2/4 I. Knit in jacquard pattern following chart. At R 50 start decr. on each side every 20 Rs. 1 St. 5x. At R 286 (296) {[304]} place a YM on each side for aid in seaming. At R 626 (636) [654] {672} shape armhole. On each side BO 20 sts. Knit to R 832 (850) [868] {886} and mark center 50 sts. for neckline. Transfer RB sts. to MB and knit 1 row at T 10 and BOLT.

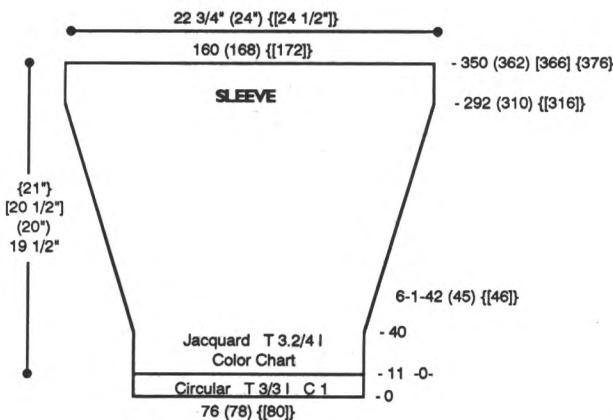


FRONT: Make 1, Reverse 1.

With 2 strands of C 1 CO 96 (100) [104] {108} sts. for circular knitting at T 0/0 I. After selvedge RC 0. T 3/3 I. Knit to R 11 and change to FNR. With 1 strand of C 1, knit 1 row to set pattern. RC 0. T 3.2/4 I. Knit in jacquard pattern following chart. At R 50 start decr. on right side every 20 Rs. 1 St. 5x. At R 286 (296) {[304]} place a YM on each side for pocket. Mark 36th ndl. in from left side for pocket placement and note pattern row. At R 626 (636) [654] {672} shape armhole. On right side BO 20 sts. Knit to R 832 (850) [868] {886} and BO 36 (40) [44] {48} sts. on right side. RC 0. Knit to R 54 and transfer RB sts. to MB. Knit 1 row at T 10 and BOLT.

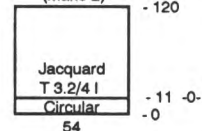
SLEEVE:

With 2 strands of C 1 CO 76 (78) {[80]} sts. for circular knitting at T 0/0 I. After selvedge RC 0. T 3/3 I. Knit to R 11 and change to FNR. With 1



strand of C 1, knit 1 row to set pattern. RC 0. T 3.2/4 I. Knit in jacquard pattern following chart to R 40. Start incr. on each side every 6 Rs. 1 St. 42 (45) {[46]} x. At R 350 (362) [366] {376} transfer RB sts. to MB. Knit 1 row at T 10 and BOLT.

POCKET
(Make 2)

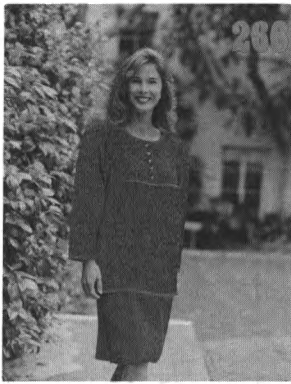


POCKET:

With 2 strands of C 1 CO 54 {[54]} sts. for circular knitting at T 0/0 I. After selvedge RC 0. T 3/3 I. Knit to R 11 and change to FNR. Advance pattern to row noted above. Use variation key # 6 (upside down). With 1 strand of C 1, knit 1 row to set pattern. RC 0. T 3.2/4 I. Knit in jacquard pattern following chart to R 120 and transfer RB sts. to MB. Knit 1 row at T 10 and BOLT.

FINISHING:

Sew pockets in place. Join neckband. Fold neckband and front edge to inside and whip stitch in place. Close shoulder seams and attach sleeves. Close all remaining seams.



TODAY'S LOOK

YARN: Venetia and Woolana
SIZES: 6/8 (10/12) [14]

AMOUNT: Same all sizes

C 1: Venetia - Black Tweed - 1-1/2 lbs.

C 2: Woolana - Royal (Mari) - 1 lb.

KIT: Color of your Choice
 \$75.00

TENSION:

Fairisle: T 6

St. St.: T 3

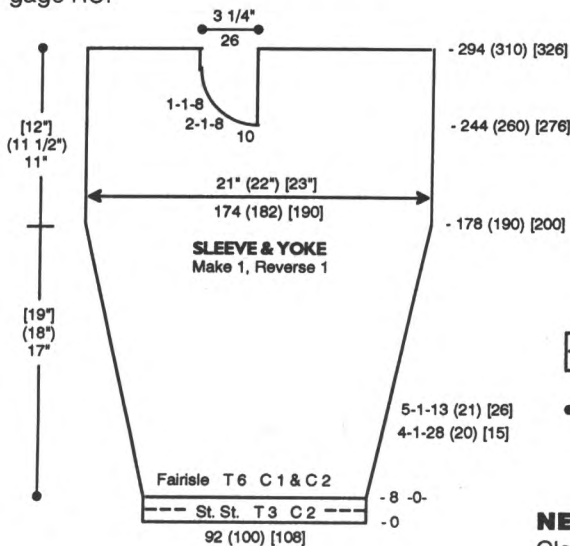
GAUGE:

Fairisle: 8.25 Sts., 10.5 Rs. = 1"

TECHNIQUE: Fairisle and Pin Tuck.

Make on Standard 24-Stitch Punch Card or Standard Electronic Machine.

Note: When knitting pin tuck disengage RC.

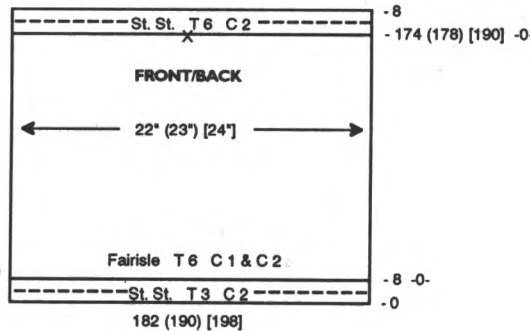


SLEEVE & YOKE: Make 1, Reverse 1.
 With WY CO 92 (100) [108] sts. After

several rows end with 1 row Ravel Cord to the right. RC 0. T 3. St. St. C 2. Knit to R 8 and pick up sts. from first row to form double band. RC 0. T 6. Knit 1 row with C 1 to set pattern. Add C 2 in 'B' Feeder and knit in fairisle while incr. on each side every 4 Rs. 1 St. 28 (20) [15] x and every 5 Rs. 1 St. 13 (21) [26] x. At R 244 (260) [276] place all sts. to the left of -0- in HP. Knit to R 294 (310) [326] and remove sts. on WY. Reset RC to R 244 (260) [276] and place ndls. to the left of -0- in WP. On right side BO 10 sts., then decr. EOR 1 St. 8x and every R 1 St. 8x. At R 294 (310) [326] remove remaining sts. on WY.

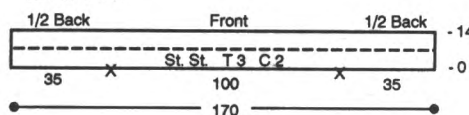
FRONT/BACK:

With WY CO 182 (190) [198] sts. After several rows end with 1 row Ravel Cord to the right. RC 0. T 3. St. St. C 2. Knit to R 8



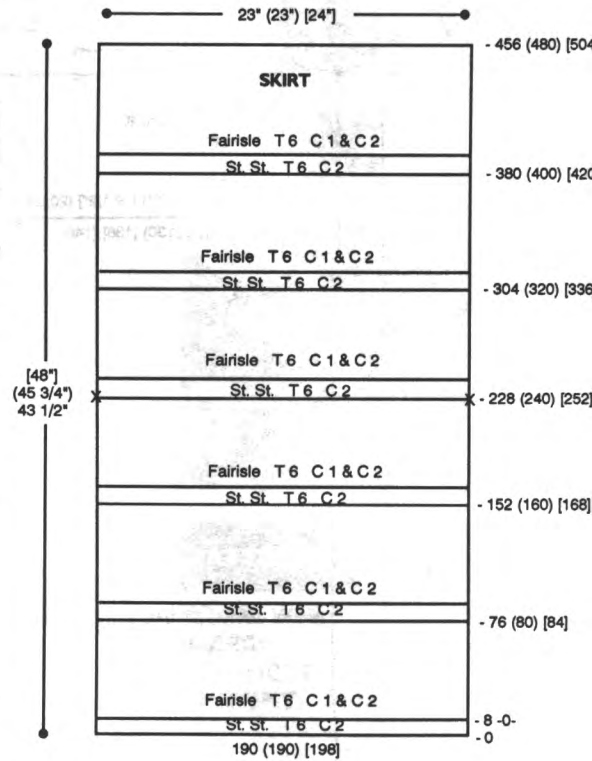
and pick up sts. from first row to form double band. RC 0. T 6. Knit 1 row with C 1 to set pattern. Add C 2 in 'B' Feeder and knit in fairisle. At R 174 (178) [190] mark center with a YM. RC 0. T 6. C 2. St. St. Knit to R 8 and pick up sts. from first row to form pin tuck. Knit 1 row and remove sts. on WY.

NECK TRIM:



NECK TRIM:

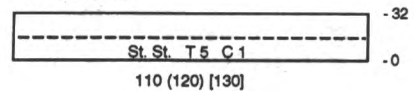
Close front yoke opening. With purl side facing rehang neckline on 170 ndls. following chart. RC 0. T 3. St. St. C 2. Knit to R 14 and pick up sts. from first row to form double band. Knit 1 row at T 10 and BOLT.



SKIRT:

With WY CO 190 (190) [198] sts. After several rows end with 1 row Ravel Cord to the right. T 6. St. St. C 2. Disengage RC. Knit 8 Rs. and pick up sts. from first row to form pin tuck. RC 0. T 6. Knit 1 row with C 1 to set pattern. Add C 2 in 'B' Feeder and knit in fairisle making pin tucks at Rs. 76 (80) [84] and 152 (160) [168]. At R 228 (240) [252] place a YM on each side for waistband and make pin tucks at Rs. 228 (240) [252], 304 (320) [336] and 380 (400) [420]. At R 456 (480) [504] remove sts. on WY.

WAISTBAND



WAISTBAND:

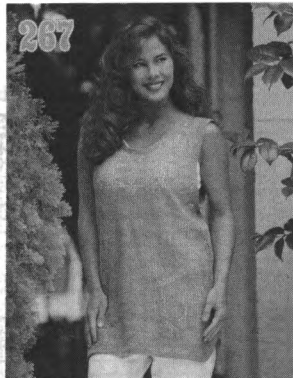
With purl side facing rehang one half of skirt on 110 (120) [130] ndls. decr. evenly across. RC 0. T 5. C 1. St. St. Knit to R 32 and pick up sts. from first row to form double band. With purl side facing rehang remaining half of skirt on 110 (120) [130] ndls. and knit back waistband same as front.

FINISHING:

Top: Close back yoke seam. With knit side facing rehang bottom of front/back yoke on 182 (190) [198] ndls. With purl side facing rehang upper edge of front/back on these same ndls. Knit 1 row at T 10 and BOLT. Close all remaining seams.

Skirt: Close side seam and SC 1 row around bottom of skirt with C 1.

267



FUN IN THE SUN

YARN: Panache - Denim

SIZES: 6/8 (10/12) [14] {16}

AMOUNT: 1 lb. all sizes

KIT: Color of your Choice \$16.25

TENSION:

Lace: T 7
St. St.: T 5.1

GAUGE:

Lace: 6.2 Sts., 10 Rs. = 1"

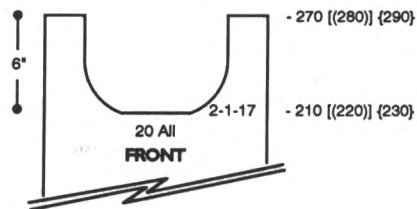
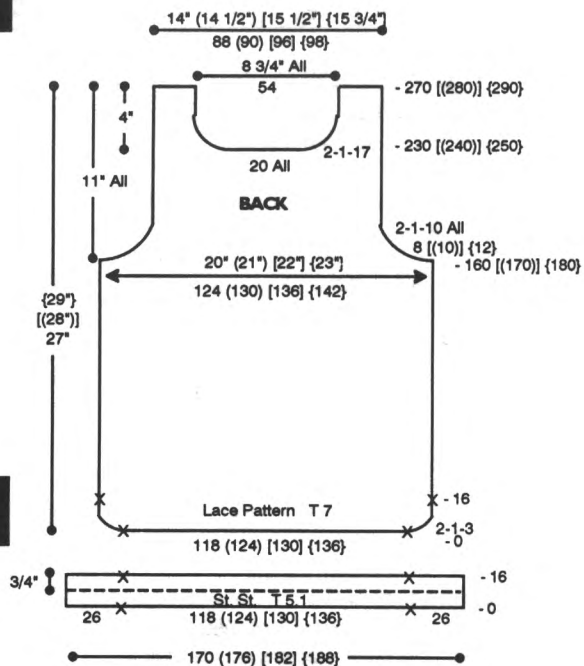
TECHNIQUE: Lace

Make on Compuknit II/III/IV or V/Cx Machine.

Note: End sts. must be in WP to decr. in Lace Pattern.

BACK:

With WY CO 118 (124) [130] {136} sts. After several rows end with 1 row Ravel Cord to the left. Knit 1 row with main yarn to set pattern. RC 0. T 7. Place a YM on each side for aid in attaching hem. Knit in lace pattern while incr. on each side EOR 1 St. 3x. At R 16 place a YM on each side for aid in attaching hem. At R 160 [(170)] {180} shape armhole. On each side BO 8 [(10)] {12} sts., then decr. EOR 1 St. 10x for all sizes. At R 230 [(240)] {250} shape neckline. Knit center 20 sts. and all sts. to the left to 'A' position on WY. *On neckline edge decr. EOR 1 St. 17x. At R 270 [(280)] {290} remove shoulder sts. on WY. Reset RC to R 230 [(240)] {250} and shape left side from *, reversing shaping. Remove neckline sts. on WY.



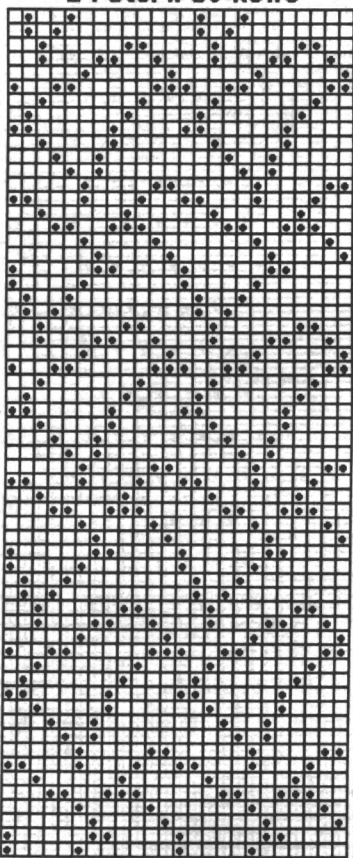
FRONT:

Knit front same as back to R 210 [(220)] {230} and shape neckline. Knit center 20 sts. and all sts. to the left to 'A' position on WY. *On neckline edge decr. EOR 1 St. 17x. At R 270 [(280)] {290} remove shoulder sts. on WY. Reset RC to R 210 [(220)] {230} and shape left side from *, reversing shaping. Remove neckline sts. on WY.

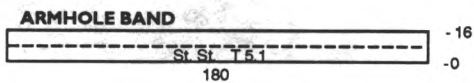
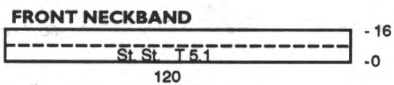
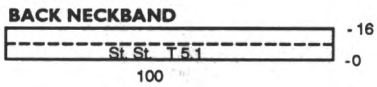
HEM:

With WY CO 170 (176) [182] {188} sts. After several rows end with 1 row Ravel Cord to the right. RC 0. T 5.1. St. St. Knit to R 16 and pick up sts. from first row to form double hem. Mark 26 sts. on each side with YM. Knit 1 row at T 7 and remove on WY. With knit side facing rehang lower edge of back/front up to marker at R 16 on 170 (176) [182] {188} ndls. matching markers. With purl side facing rehang hem on these same ndls. Knit 1 row at T 10 and BOLT.

***266 Fairisle Pattern
24 Sts. x 60 Rows**



KK Mag Disk: Track 2;
Pattern 901



BACK NECKBAND:

With purl side facing rehang back neckline on 100 ndls. RC 0. T 5.1. St. St. Knit to R 16 and pick up sts. from first row to form double band. Knit 1 row at T 10 and BOLT.

FRONT NECKBAND:

With purl side facing rehang front neckline on 120 ndls. RC 0. T 5.1. St. St. Knit to R 16 and pick up sts. from first row to form double band. Knit 1 row at T 10 and BOLT.

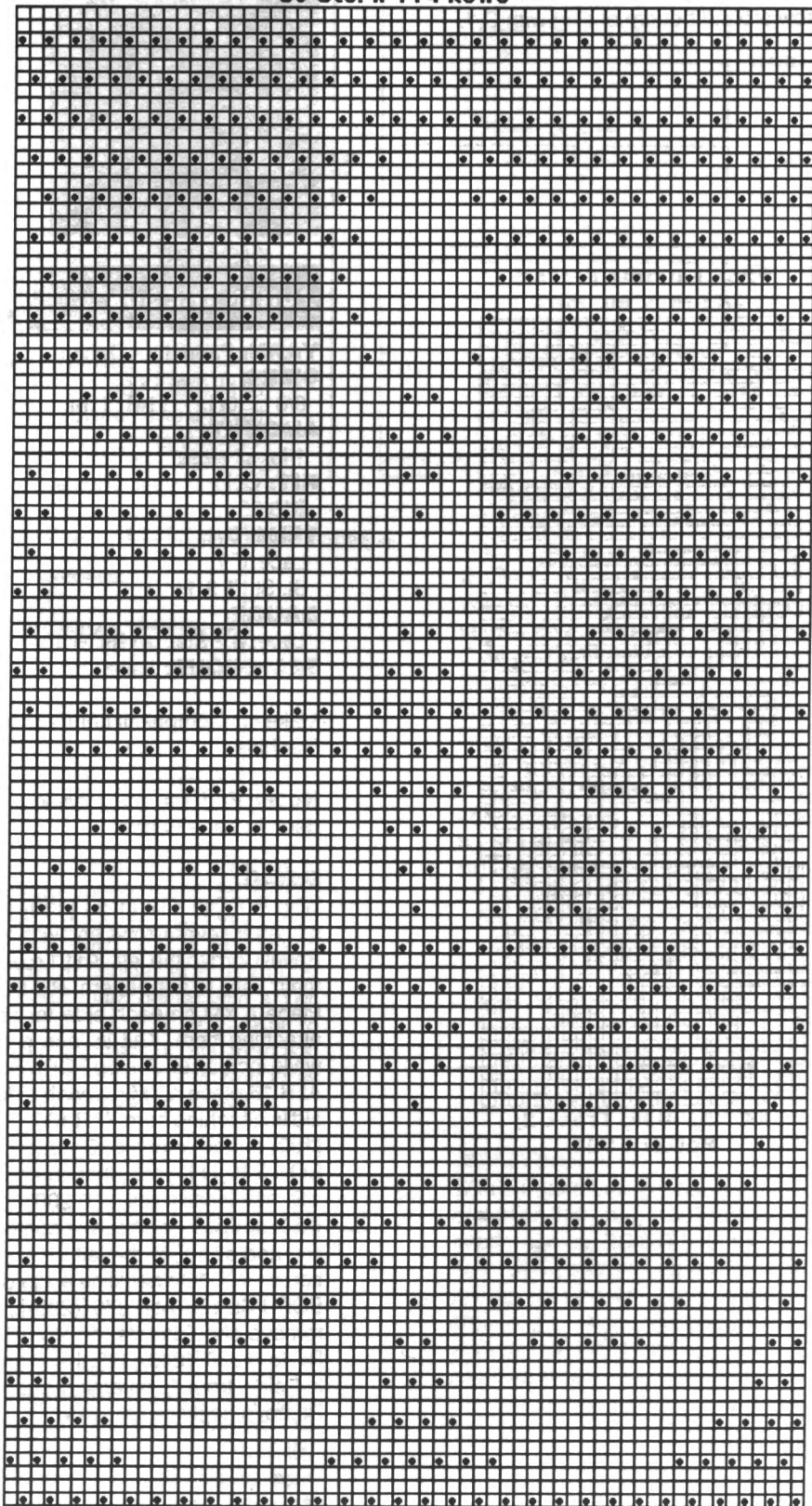
ARMHOLE BAND:

Close shoulder seams first. With purl side facing rehang armhole on 180 ndls. RC 0. T 5.1. St. St. Knit to R 16 and pick up sts. from first row to form double band. Knit 1 row at T 10 and BOLT.

FINISHING:

Close all remaining seams. Turn lower side hem to inside (miter) and stitch in place for a neat finish.

**#267 Lace Pattern
60 Sts. x 114 Rows**



KK Mag Disk: Track 3; Pattern 901



NATURAL SIMPLICITY

YARN: Softon and Sorbet

SIZES:

Small (Medium) [Large]

AMOUNT: Same all sizes

C 1: Softon - Winter White - 1 lb.

C 2: Sorbet - Ecru - 1 lb.

KIT: Color of your Choice

\$49.00

TENSION: Body: T 4/3 I

GAUGE:

Body: 4.77 Sts., 7.23 Rs. = 1"

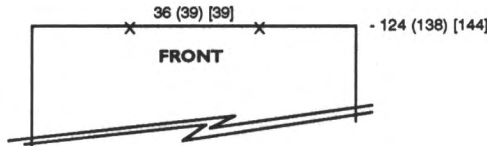
TECHNIQUE: Rib/Tuck with OWN (out of work needles).

Make on Compuknit/Bulky or Punch Card Bulky Machine.

Note: Transfer OWN first (each side of the ndl. in 'B'), then transfer ndls. to RB. Disengage end ndl. selector or select KC II. Use ribber wire-loop type weight hangers to prevent dropping sts.

BACK:

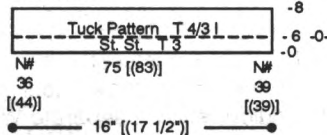
With C 1 and C 2 weaving CO 96 (99) [107] sts. following chart for Ndl. #. RC 0. T 3. St. St. Knit to R 5 and knit 1 row to set pattern. Transfer appropriate ndls. following chart. RC 0. T 4/3 I. Tuck Pattern. Knit to R 66 (72) [78] and place a YM on each side for armhole. At R 132 (144) [150] bring all ndls. to WP. Transfer RB sts. to MB and mark center 36 [(39)] sts. for neckline. Knit 1 row at T 10 BOLT.



FRONT:

Knit front same as back to R 124 (138) [144] and bring all ndls. to WP. Transfer RB sts. to MB and mark center 36 [(39)] sts. for neckline. Knit 1 row at T 10 BOLT.

SLEEVE

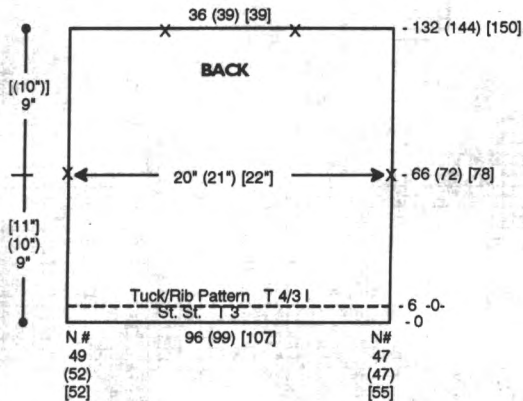


SLEEVE:

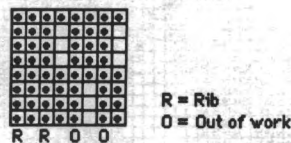
With C 1 and C 2 weaving CO 75 [(83)] sts. following chart for Ndl. #. RC 0. T 3. St. St. Knit to R 5 and knit 1 row to set pattern. Transfer appropriate ndls. following chart. RC 0. T 4/3 I. Tuck Pattern. Knit to R 8. Bring all ndls. to WP and transfer RB sts. to MB. Knit 1 row at T 10 and BOLT.

FINISHING:

Close shoulders and ease armhole into sleeve. Close side seams. The lower edge will naturally roll under and create a scallop.

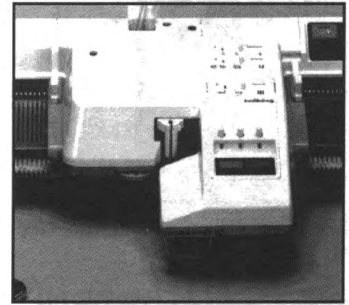


**#268 Tuck/Rib Pattern
8 Sts. x 8 Rows**



**KK Mag Disk: Track 4;
Pattern 901**

GC Deals.



The Knitkng Garter Carriage, or turtle, as we prefer to call it, is the best companion for your knitting machine. With the press of a button, the Garter Carriage ribs on its own power! Leave the room and your ribbing will be finished when you return!

But ribbing is only the beginning of the story: The Garter Carriage automatically casts on, binds off and knits a multitude of fancy Garter Stitch patterns beautiful, textured 3-dimensional designs impossible to knit any other way. Unbelievable!

—Select desired pattern on knitting machine.

—Set number of rows; switch GC on and leave to do other things.

—It will turn off after completion or if yarn runs out or breaks.

OMNI GC fits all standard-gauge COMPUKNITS, and most standard Knitkng punch card knitters going all the way back to the KH-890.

20% OFF till July 31, 1994

Reg. \$555.95

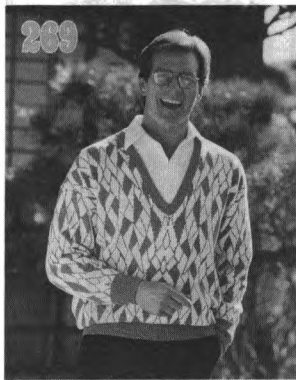
20% OFF SALE: \$444.75

Order yours now from your local Knitkng Dealer, or if there are none in your area, from:



1-800-962-6446

269



MAN ABOUT TOWN

YARN: Venetia

SIZES:

Small (Medium) [Large]

AMOUNT: Same all sizes

C 1: Periwinkle - 1 lb.

C 2: White - 1 lb.

KIT: Color of your Choice

\$60.00

TENSION:

Body: T 5.1

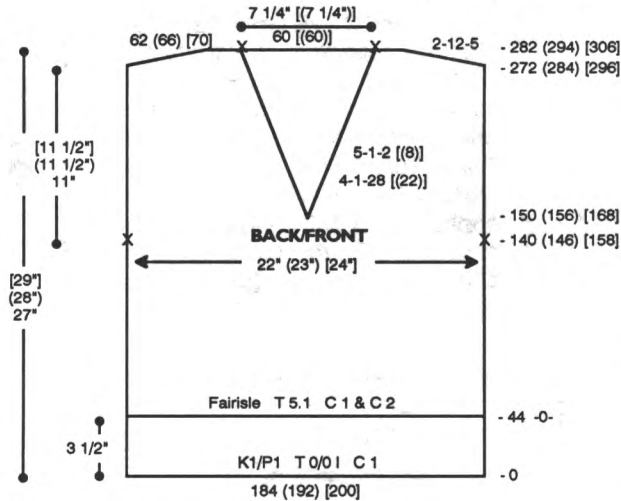
Rib: T 0/0 I

GAUGE:

Body: 8.4 Sts., 12 Rs. = 1"

TECHNIQUE: Fairisle

Make on Compuknit III, IV or VVcx Machine with Ribber. Use variation key for double length.



BACK:

With C 1 CO 184 (192) [200] sts. for K1/P1 Rib. After selvedge RC 0. T 0/0 I. Knit to R 44 and transfer RB sts. to MB. Knit 1 row to set pattern. RC 0. T 5.1. Select variation key for double length. Add C 2 in 'B' Feeder and knit in fairisle. At R 140 (146) [158] place a YM on each side for armhole. At R 272 (284) [296] SHR shoulders EOR 12 Sts. 5x. At R 282 (294) [306] mark center 60 [(60)] sts. for neckline and remove neckline and shoulder sts. on separate WY.

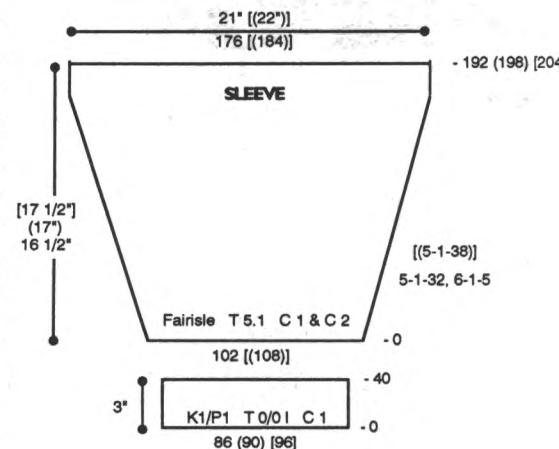
FRONT:

Knit front same as back to R 150 (156) [168] and shape neckline. Place all sts. to the left of -0- in HP. Note pattern row. *On neckline edge decr. every 4 Rs. 1 St. 28 [(22)] x and

every 5 Rs. 1 St. 2 [(8)] x. At R 272 (284) [296] SHR shoulder EOR 12 Sts. 5x. At R 282 (294) [306] remove shoulder sts. on WY. Reset RC to R 150 (156) [168] and pattern to correct row and shape left side from *, reversing shapings.

SLEEVE:

With WY CO 102 [(108)] sts. After several rows end with 1 row Ravel Cord to the left. Knit 1 row with C 1 to set pattern. RC 0. T 5.1. Select variation key #4. Add C 2 in 'B' feeder and knit in fairisle while incr. on each side every 5 Rs. 1 St. 32x and every 6 Rs. 1 St. 5x [(every 5 Rs. 1 St. 38x)]. At R 192 (198) [204] knit 1 row at T 10 and BOLT.



#269 Fairisle Pattern 200 Sts. x 55 Rows

1	2	3	4	5	6	7	8	9	10	11	12	13	14	15	16	17	18	19	20	21	22	23	24	25	26	27	28	29	30	31	32	33	34	35	36	37	38	39	40	41	42	43	44	45	46	47	48	49	50	51	52	53	54	55	56	57	58	59	60	61	62	63	64	65	66	67	68	69	70	71	72	73	74	75	76	77	78	79	80	81	82	83	84	85	86	87	88	89	90	91	92	93	94	95	96	97	98	99	100	101	102	103	104	105	106	107	108	109	110	111	112	113	114	115	116	117	118	119	120	121	122	123	124	125	126	127	128	129	130	131	132	133	134	135	136	137	138	139	140	141	142	143	144	145	146	147	148	149	150	151	152	153	154	155	156	157	158	159	160	161	162	163	164	165	166	167	168	169	170	171	172	173	174	175	176	177	178	179	180	181	182	183	184	185	186	187	188	189	190	191	192	193	194	195	196	197	198	199	200
---	---	---	---	---	---	---	---	---	----	----	----	----	----	----	----	----	----	----	----	----	----	----	----	----	----	----	----	----	----	----	----	----	----	----	----	----	----	----	----	----	----	----	----	----	----	----	----	----	----	----	----	----	----	----	----	----	----	----	----	----	----	----	----	----	----	----	----	----	----	----	----	----	----	----	----	----	----	----	----	----	----	----	----	----	----	----	----	----	----	----	----	----	----	----	----	----	----	----	-----	-----	-----	-----	-----	-----	-----	-----	-----	-----	-----	-----	-----	-----	-----	-----	-----	-----	-----	-----	-----	-----	-----	-----	-----	-----	-----	-----	-----	-----	-----	-----	-----	-----	-----	-----	-----	-----	-----	-----	-----	-----	-----	-----	-----	-----	-----	-----	-----	-----	-----	-----	-----	-----	-----	-----	-----	-----	-----	-----	-----	-----	-----	-----	-----	-----	-----	-----	-----	-----	-----	-----	-----	-----	-----	-----	-----	-----	-----	-----	-----	-----	-----	-----	-----	-----	-----	-----	-----	-----	-----	-----	-----	-----	-----	-----	-----	-----	-----	-----	-----

KK Mag Disk: Track 5; Pattern 901

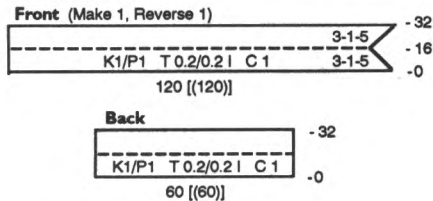
270



CUFF:

With C 1 CO 86 (90) [96] sts. for K1/P1 Rib. After selvedge RC 0. T 0/0 I. Knit to R 40 and transfer RB sts. to MB. With purl side facing rehang lower edge of sleeve on these ndls. decr. evenly across. Knit 1 row at T 10 and BOLT.

NECKBAND



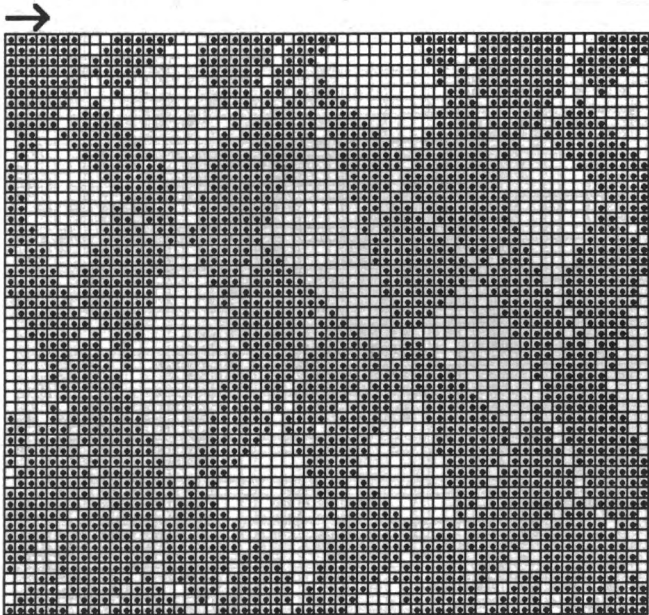
NECKBAND:

Back: With purl side facing rehang back neckline on 60 [(60)] ndls. Knit 1 row and transfer EOS to RB for K1/P1 Rib. RC 0. T 0.2/0.2 I. Knit to R 32 knitting last row at T 8/4. Transfer RB sts. to MB and BOLT.

Front: (Make 1, Reverse 1) With purl side facing rehang left side of front neckline on 120 [(120)] ndls. Knit 1 row and transfer EOS to RB for K1/P1 Rib. RC 0. T 0.2/0.2 I. Knit while decr. on right side every 3 Rs. 1 St. 5x. At R 16 incr. on right side every 3 Rs. 1 St. 5x. At R 32 knit 1 row at T 8/4. Transfer RB sts. to MB and BOLT.

FINISHING:

Close shoulder and neckband seams. Turn neckband to inside and whip st. in place. Attach sleeves and close all remaining seams.



SOMETHING EXTRA

YARN: Bulky Primo

SIZES: 6/8 (10/12) [14/16] [18]

AMOUNT: 3 cones [(3 cones)] [4 cones]

KIT: Ecru only \$60.00 [(\$60.00)] [\$87.50]

TENSION: Body: T 9.2 Rib: T 8.1

GAUGE: Body: 7.15 Sts., 8.26 Rs. = 1"

NOTIONS: Elastic for skirt waistband.

TECHNIQUE: Garter Carriage

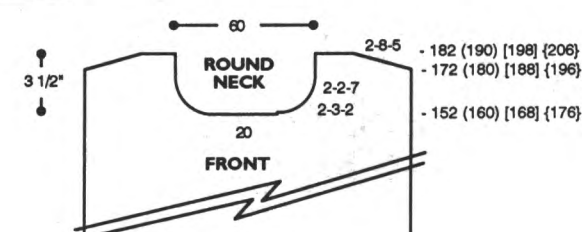
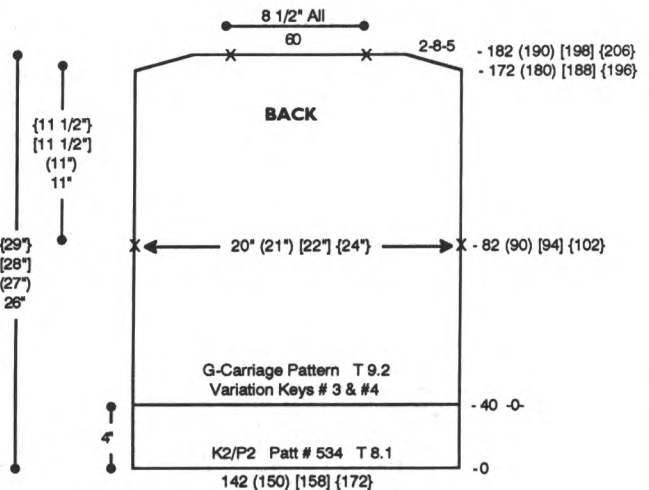
Make on Compuknit III, IV or V/Vcx Machine with Garter Carriage.

Bonus: Instructions for both Round Neck and V-Neck are included.

Note: Ribbing is built-in pattern #534 (2 x 2). Use variation key for double width **and** double length for body.

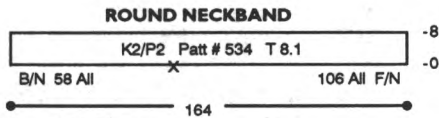
BACK:

CO 142 (150) [158] [172] sts. RC 0. T 8.1. Set G-Carriage for rib pattern and knit to R 40. RC 0. T 9.2. Set G-Carriage for body pattern and select variation keys for double width and double length. Knit to R 82 (90) [94] [102] and place a YM on each side for armhole. At R 172 (180) [188] [196] BO shoulders EOR 8 Sts. 5x. At R 182 (190) [198] [206] mark center 60 sts. for neckline and BO remaining sts.



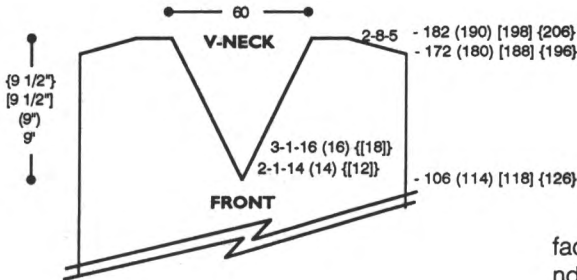
ROUND NECK FRONT:

Knit front same as back to R 152 (160) [168] [176] and shape neckline. Knit center 20 sts. manually to 'A' position on Ravel Cord and all sts. to the left. Note pattern row. *On neckline edge decr. EOR 3 Sts. 2x and 2 Sts. 7x. At R 172 (180) [188] [196] BO shoulder EOR 8 Sts. 5x. At R 182 (190) [198] [206] BO remaining shoulder sts.. Reset RC to R 152 (160) [168] [176]. Reset pattern to correct row and shape left side from *, reversing shapings.

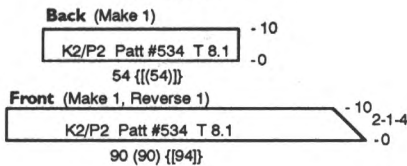


ROUND NECKBAND:

Close one shoulder. With purl side facing rehang neckline on 164 ndls. following chart. Knit 1 row with K-Carriage. RC 0. T 8.1. Set G-Carriage for rib pattern and knit to R 8 and BO.



V-NECKBAND

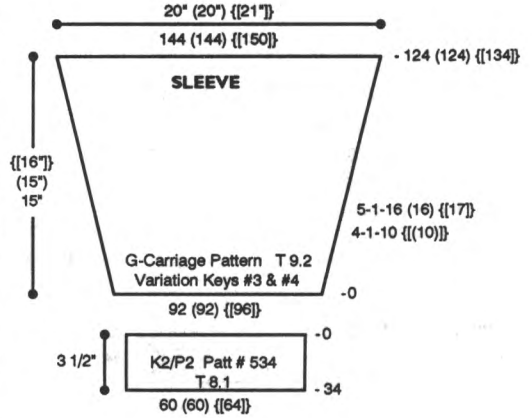


V-NECK FRONT:

Knit front same as back to R 106 (114) [118] [126] and shape neckline. Knit all sts. to the left of -0 manually to 'A' position on Ravel Cord. Note pattern row. *On neckline edge decr. EOR 1 St. 14 (14) {[12]} x and every 3 Rs. 1 St. 16 (16) {[18]} x. At R 172 (180) [188] [196] BO shoulder EOR 8 Sts. 5x. At R 182 (190) [198] [206] BO remaining shoulder sts. Reset RC to R 106 (114) [118] [126]. Reset pattern to correct row and shape left side from *, reversing shapings.

NECKBAND:

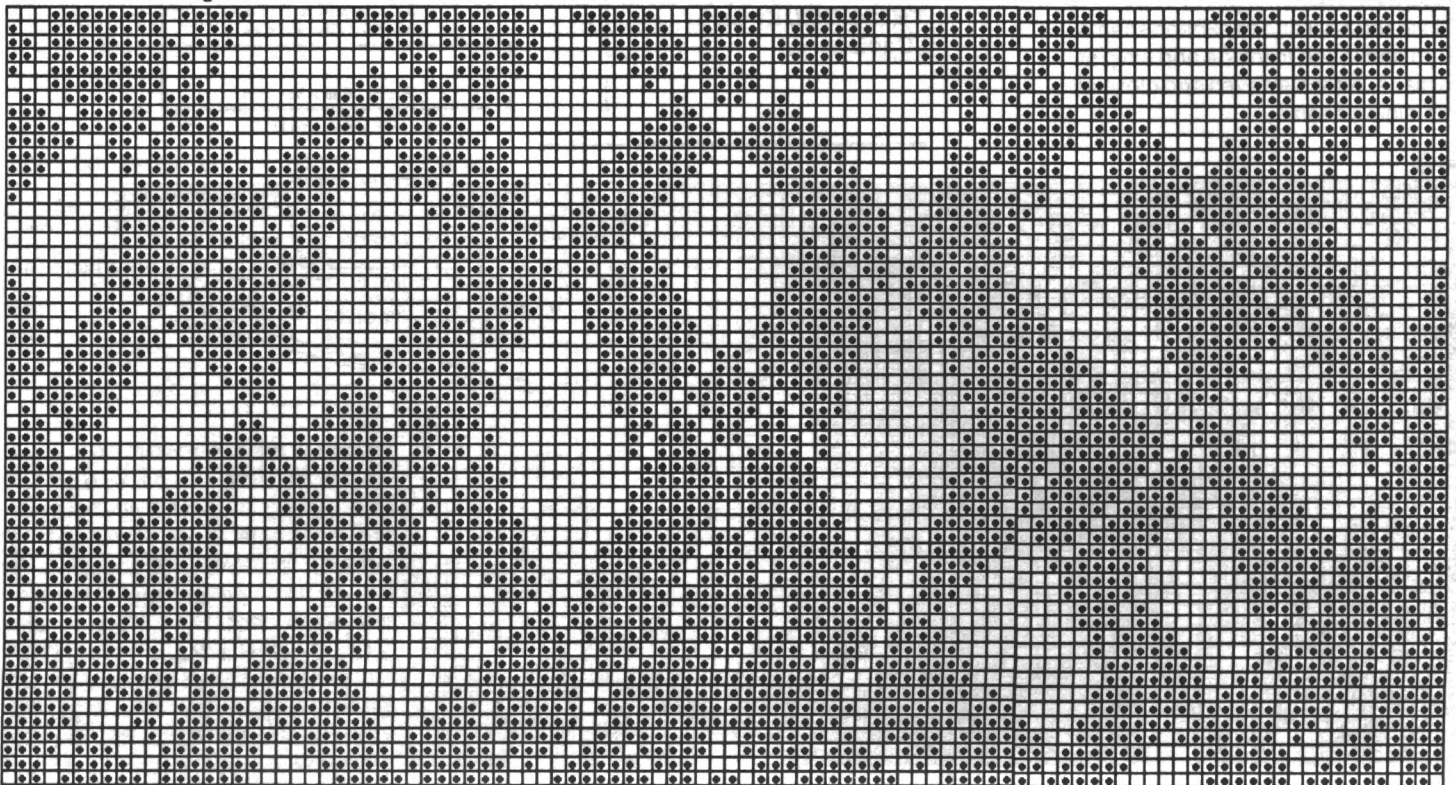
Back: CO 54 {[54]} sts. RC 0. T 8.1. Set G-Carriage for rib pattern. Knit to R 10. With purl side facing rehang back neckline on these ndls. Knit 1 row manually at a loose tension and BOLT.
Front: Make 1, Reverse 1. CO 90 (90) {[94]} sts. RC 0. T 8.1. Set G-Carriage for rib pattern. Knit to R 2 and decr. on right side EOR 1 St. 4x. At R 10 rehang left front on these ndls. with purl side facing. Knit 1 row manually at a loose tension and BOLT.



SLEEVE:

With WY CO 92 (92) {[96]} sts. After several rows end with 1 row Ravel Cord to the left. Change to main yarn and knit 1 R to the right with K-Carriage. RC 0. T 9.2. Set G-Carriage for body pattern and select variation keys for double width and double length. Knit in pattern while incr. on each side every 4 Rs. 1 St. 10 {[10]} x and every 5 Rs. 1 St. 16 (16) {[17]} x. At R 124 (124) {[134]} BO.

#270 G-Carriage Pattern: 100 Sts. x 55 Rows



KK Mag Disk: Track 6; Pattern 901
 Use variation keys for double wide and double high

271



BEYOND BASICS

YARN: Softon - Cottage Rose
SIZES: Sm. (Med.) [Lge.] {X-Lge.}

AMOUNT: Same all sizes
 2 lbs.

KIT: Color of your Choice
 \$40.00

TENSION:

Slip St.: T 9

St. St.: T 6

Rib: T 1.1/1.1 |

GAUGE:

Slip St.: 7.5 Sts., 15.5 Rs. = 1"

NOTIONS:

3 - 3/8" buttons

TECHNIQUE:

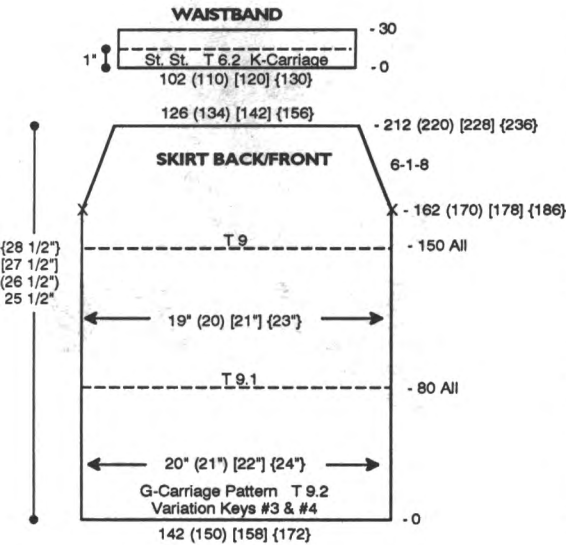
 Slip Stitch

Make on Standard 24-Stitch Punch Card or Standard Electronic Machine with Ribber.

Pattern Note: Knit very slowly and use heavy weights. Garment is worn on the purl side.

CUFF:

With purl side facing rehang lower edge of sleeve on 60 (60) {[64]} ndls. Knit 1 row with K-Carriage. RC 0. T 8.1. Set G-Carriage for rib pattern and knit to R 34, knitting last row manually at a loose tension and BOLT.



SKIRT BACK/FRONT:

CO 142 (150) [158] {172} sts. RC 0. T 9.2. Set G-Carriage for body pattern and select variation keys for double width and double length. Knit to R 80 and change to T 9.1. Knit to R 150 and change to T 9. Knit to R 162 (170) [178] {186} and decr. on each side every 6 Rs. 1 St. 8x. At R 212 (220) [228] {236} remove sts. on WY.

WAISTBAND:

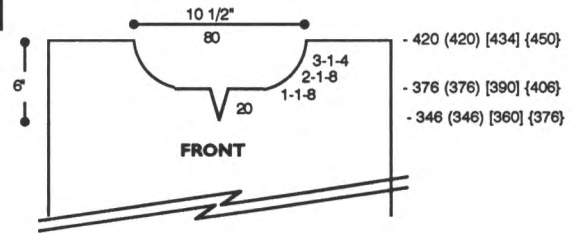
With purl side facing rehang upper edge of skirt on 102 (110) [120] {130} ndls. RC 0. T 6.2. St. St. With K-Carriage knit to R 30, knitting last row at T 7.2. Pick up sts. from first row to form double band. Knit 1 row manually at a loose tension and BOLT.

FINISHING:

Close shoulder seams. Attach sleeves and close all remaining seams. Single Crochet 1 row around bottom of skirt.

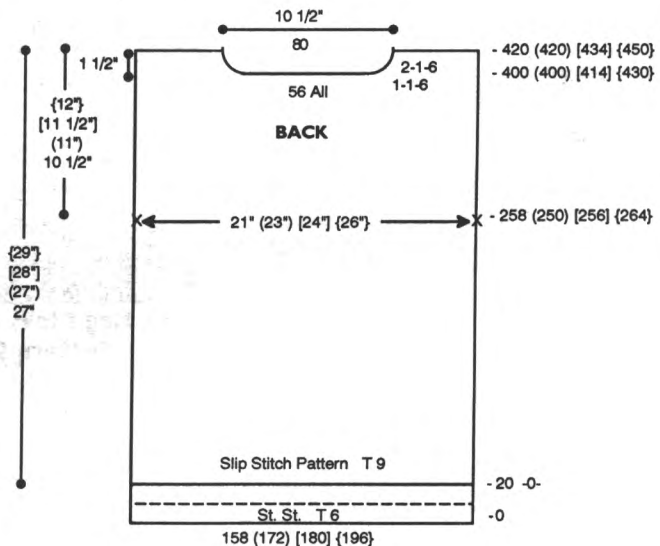
BACK:

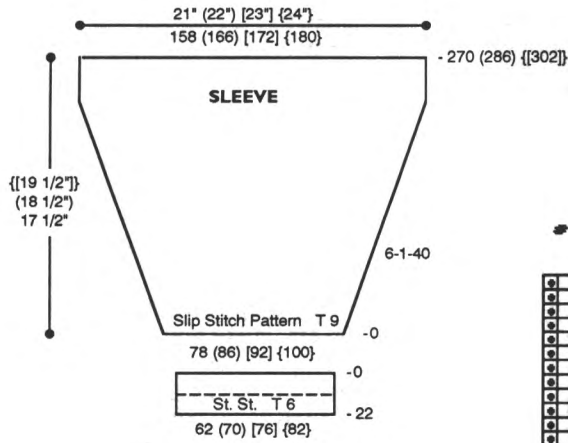
With WY CO 158 (172) [180] {196} sts. After several rows end with 1 row Ravel Cord to the right. RC 0. T 6. St. St. Knit to R 20 and pick up sts. from first row to form double hem. Slip Stitch Pattern. Knit 1 row to set pattern. RC 0. T 9. Knit to R 258 (250) [256] {264} and place a YM on each side for armhole. At R 400 (400) [414] {430} shape neckline. Place center 56 sts. in HP and all sts. to the left. Note pattern row. *On neckline edge decr. every R 1 St. 6x and EOR 1 St. 6x. At R 420 (420) [434] {450} remove shoulder sts. on WY. Reset RC to R 400 (400) [414] {430}. Reset pattern to correct row and shape left side from *, reversing shap- ing.



FRONT:

Knit front same as back to R 346 (346) [360] {376} and shape neckline. Place all sts. to the left of -0- in HP. Note pattern row. Knit to R 376 (376) [390] {406} and BO 20 sts. on neckline edge, then decr. every R 1 St. 8x, EOR 1 St. 8x and every 3 Rs. 1 St. 4x. At R 420 (420) [434] {450} remove shoulder sts. on WY. Reset RC to R 346 (346) [360] {376}. Reset pattern to correct row and shape left side from *, reversing shap- ing.



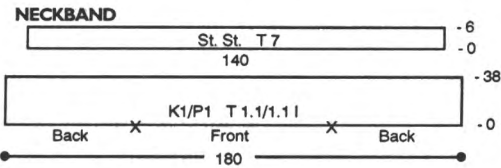


SLEEVE:

With WY CO 78 (86) [92] {100} sts. After several rows end with 1 row Ravel Cord to the left. Knit 1 row with main yarn to set pattern. RC 0. T 9. Knit in slip stitch pattern while incr. on each side every 6 Rs. 1 St. 40 x. At R 270 (286) [[302]] knit 1 row at T 10 and BOLT.

CUFF:

With knit side facing rehang lower edge of sleeve on 62 (70) [76] [82] ndls. decr. evenly across. RC 0. T 6. St. St. Knit to R 22 and pick up sts. from first row to form double band. Knit 1 row at T 10 and BOLT.



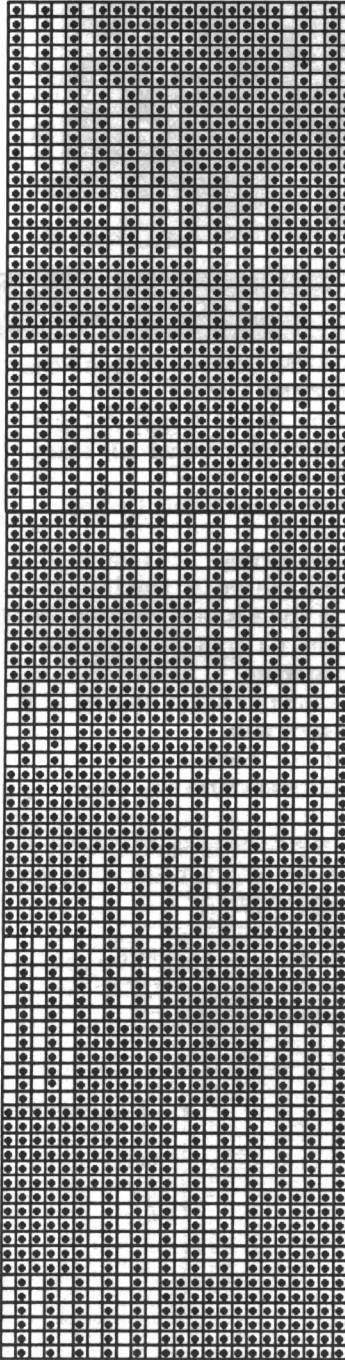
NECKBAND:

With WY CO 180 sts. After several rows end with 1 row Ravel Cord to the left. Knit 1 row with main yarn and transfer EOS to RB for K1/P1 rib. RC 0. T 1.1/1.1. Knit to R 38. Transfer RB sts. to MB and remove on WY. With purl side facing rehang upper edge of ribbing on 140 ndls. RC 0. T 7. St. St. Knit to R 6 and remove sts. on WY.

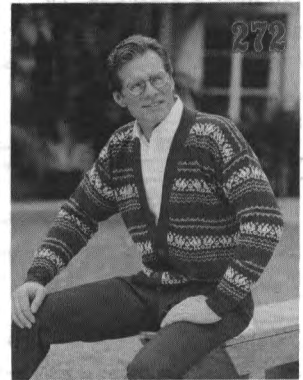
FINISHING:

Close shoulder seams and attach neckband. SC around front opening 2 times making 3 Ch 5 buttonhole loops on right side. Attach sleeves and close all remaining seams.

*271 Slip Stitch Pattern 24 Sts. x 96 Rows



KK Mag Disk: Track 7;
Pattern 901



MAN'S VIEWPOINT

YARN: Venetia and Woolana
SIZES:

Small (Medium) [Large]

AMOUNT: Same all sizes

- C 1: Venetia - Navy - 1 lb.
- C 2: Woolana - Denim - 5 oz.
- C 3: Woolana - Peony - 2 oz.
- C 4: Woolana - Silver Grey - 4 oz.
- C 5: Woolana - Cardinal - 4 oz.

KIT: Color of your Choice
\$60.00

NOTIONS: 5 - 7/8" buttons

TENSION:

Fairisle: T 5.1

Rib: T 0/0 I

GAUGE:

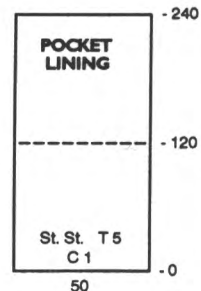
Fairisle: 8.18 Sts., 12.4 Rs. = 1"

TECHNIQUE: Fairisle

Make on CompuKnit III, IV or V/Vex Machine with Ribber.

BACK:

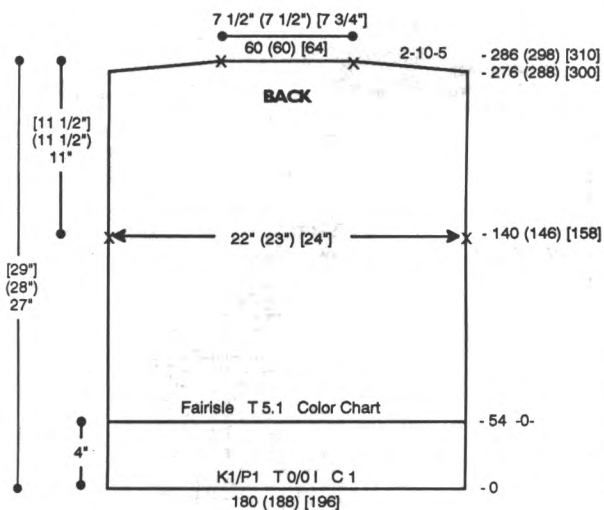
With C 1 CO 180 (188) [196] sts. for K1/P1 rib. After selvedge RC 0. T 0/0 I. Knit to R 54 and transfer RB sts. to MB. RC 0. T 5.1. Knit in fairisle following color chart. At R 140 (146) [158] place a YM on each side for armhole. At R 276 (288) [300] SHR shoulders EOR 10 Sts. 5x. At R 286 (298) [310] mark center 60 (60) [64] sts. for neckline. Remove neckline and shoulder sts. on separate WY.



POCKET LINING:

Make prior to Front.

With C 1 'e' wrap CO 50 sts. RC 0. T 5. St. St. Knit to R 240 and remove sts. on WY.



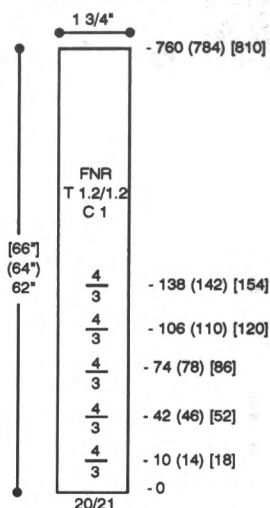
SLEEVE:

With C 1 CO 86 (86) [94] sts. for K1/P1 rib. After selvedge RC 0. T 0/0 I. Knit to R 40 and transfer RB sts. to MB. RC 0. T 5.1. Incr. 3 sts. on each side. Knit in fairisle following color chart while incr. on each side every 4 Rs. 1 St. 10 (30) x and every 5 Rs. 1 St. 34 (18) [44] x. At R 210 (218) [224] knit 1 row at T 10 and BOLT.

FRONT BAND:

With C 1 CO 20/21 sts. for FNR. After selvedge RC 0. T 1.2/1.2 I. Knit to R 760 (784) [810] making buttonholes over 7 sts. at R 10 (14) [18], 42 (46) [52], 74 (78) [86], 106 (110) [120] and 138 (142) [154] following chart. Remove sts. on WY.

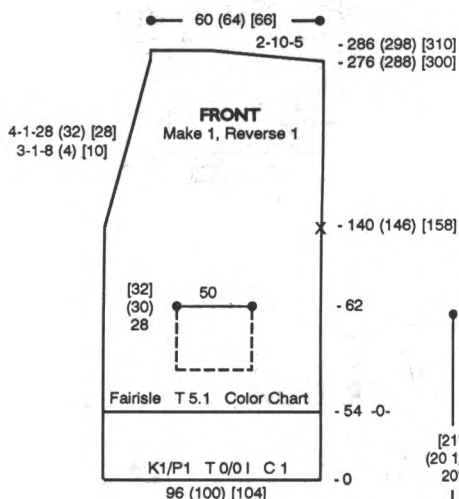
FRONT BAND



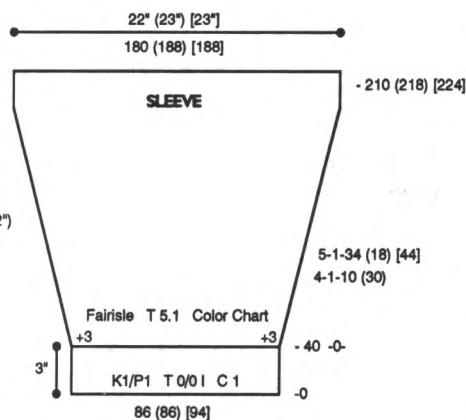
COLOR CHART

# Rows	MC	CC
2	▲	-
16	-	5
4	-	-
4	-	2
2	-	-
2	-	5
2	-	-
4	-	2
2	-	-
4	-	5
4	-	-
18	-	4
4	-	-
4	-	2
2	-	-
2	-	3
2	-	-
4	1	2

Repeat ↑

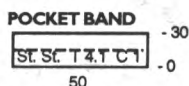


FRONT: Make 1, Reverse 1. With C 1 CO 96 (100) [104] sts. for K1/P1 rib. After selvedge RC 0. T 0/0 I. Knit to R 54 and transfer RB sts. to MB. RC 0. T 5.1. Knit in fairisle following color chart. At R 62 make pocket opening. Starting 28 (30) [32] sts. in from left side, manually knit the next 50 sts. off on WY. With purl side facing rehang open sts. of pocket lining on these ndls. At R 140 (146) [158] place a YM on right side for armhole and shape neckline. On left side decr. every 3 Rs. 1 St. 8 (4) [10] x and every 4 Rs. 1 St. 28 (32) [28] x. At R 276 (288) [300] SHR shoulder EOR 20 Sts. 5x. At R 286 (298) [310] remove shoulder sts. on WY.



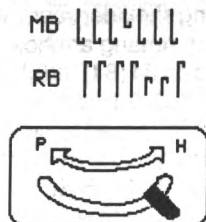
FINISHING:

Close shoulder seams and attach front band. Attach sleeves. Close all remaining seams. Finish buttonholes with a crochet hook or sewing needle.

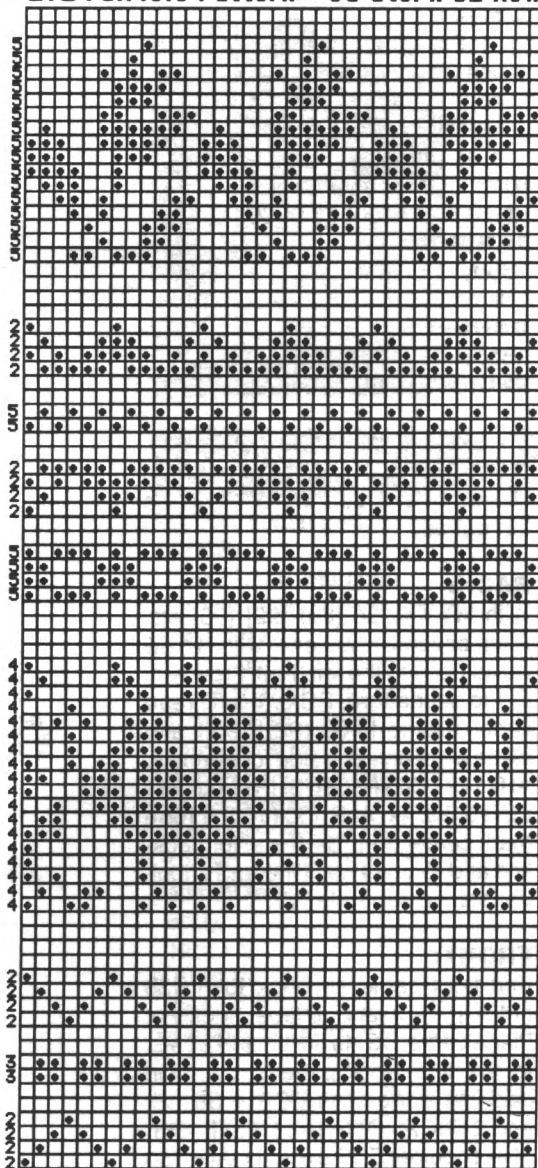


POCKET BAND: Bring 50 ndls. to WP. With purl side facing, rehang pocket opening on these ndls. RC 0. T 4.1. C 1. St. St. Knit to R 30 and pick up sts. from first row to form double band. Knit 1 row at T 10 and BOLT.

#272 Front Band Needle Arrangement



#272 Fairisle Pattern - 36 Sts. x 82 Rows



Compuknit V/Vcx Built-in Pattern #823



PEACHY KEEN

YARN: Panache and Primo

SIZES:

6/8 (10/12) [14] [16]

AMOUNT:

C 1: Panache - Peach
(Use 2 strands throughout)

1 (1) [[1 1/2]] lbs.

C 2: Primo - Peach

1 lb. all sizes

KIT: Color of your Choice

\$36.00 (\$36.00) {[\$44.00]}

TENSION:

Body: T 6

Hems: T 5

GAUGE:

Body: 4 Sts., 5.61 Rs. = 1"

TECHNIQUE: Thread Lace

Make on Compuknit Bulky Machine.

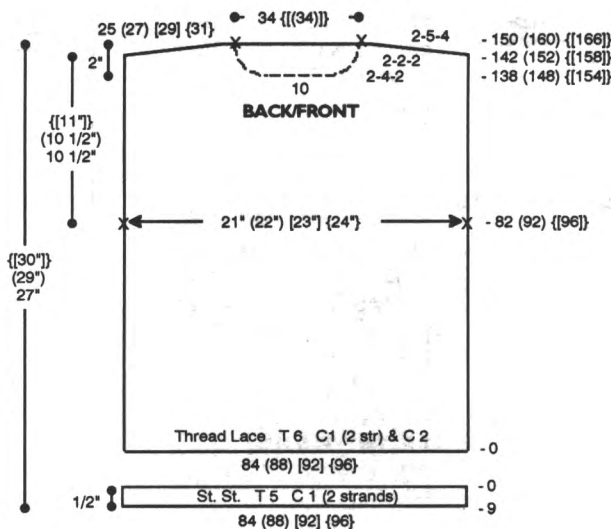
Note: Use 2 strands of Panache throughout.

BACK:

With WY CO 84 (88) [92] [96] sts. After several rows end with 1 row Ravel Cord to the left. Knit 1 row with C 1 to set pattern. RC 0. T 6. Thread Lace. Knit to R 82 (92) [[96]] and place a YM on each side for armhole. At R 142 (152) [[158]] SHR shoulders EOR 5 Sts. 4x. At R 150 (160) [[166]] mark center 34 [[(34)]] sts. for neckline and remove neckline and shoulder sts. on separate WY.

FRONT:

Knit front same as back to R 138 (148) [[154]] and shape neckline. Place center 10 sts. in HP and all sts. to the left. Note pattern row. *On neckline edge SHR EOR 4 Sts. 2x and 2 Sts. 2x. At R 142 (152) [[158]] SHR shoulder EOR 5 Sts. 4x. At R 150

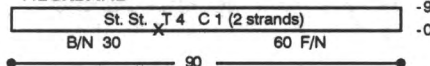


(160) [[166]] remove shoulder sts. on WY. Reset RC to R 138 (148) [[154]] and pattern to correct row. Shape left side from * reversing shapings.

HEM:

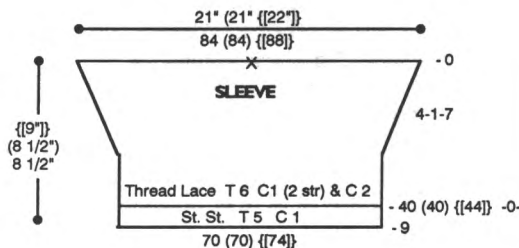
With purl side facing rehang lower edge of back/front on 84 (88) [92] [96] ndls. RC 0. T 5. C 1. St. St. Knit to R 9, knitting last row at T 6 and BOLT.

NECKBAND



NECKBAND:

Close one shoulder seam. With purl side facing rehang neckline on 90 ndls. following chart. RC 0. T 5. C 1. St. St. Knit to R 9 knitting last row at T 6 and BOLT.



SLEEVE:

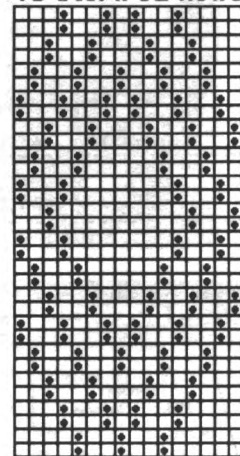
Close remaining shoulder seam. With purl side facing rehang armhole between markers on 84 (84) [[88]] ndls. Knit 1 row with C 1 to set pattern. RC 0. T 6. Knit in Thread Lace while decr. every 4 Rs. 1 St. 7x. At R 40 (40) [[44]] reset RC to R 0. T 5. St. St. C 1. Knit to R 9, knitting last row at T 6 and BOLT.

FINISHING:

Close all remaining seams. Let lower sleeve and neckband naturally roll to knit side.

#273 Thread Lace Pattern

16 Sts. x 32 Rows



Compuknit Bulky
Built-in Pattern #214

Make Life Easier ...
Let a Knitleader Work for YOU!



With a KL 16 Knitleader, you can create a full-size chart of the garment you are knitting. And, as you knit, the chart rotates, telling you, on a row-by-row basis, exactly when and where to increase and decrease stitches for perfect garment shaping every time. Use it with any Knitking Standard or Bulky Gauge machines—it will even fit on the Power Drive Unit.

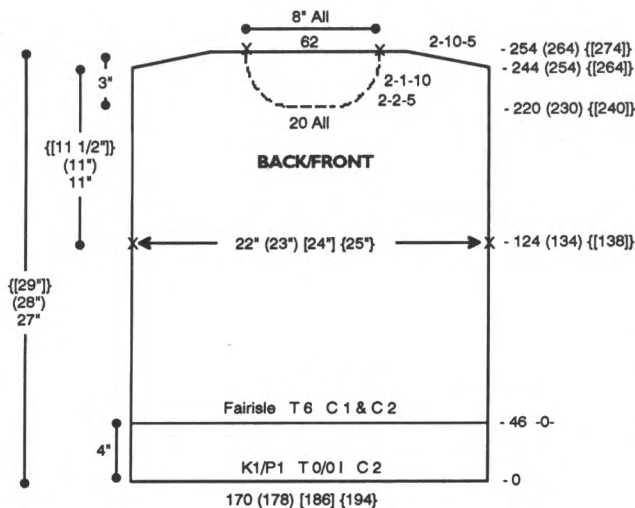
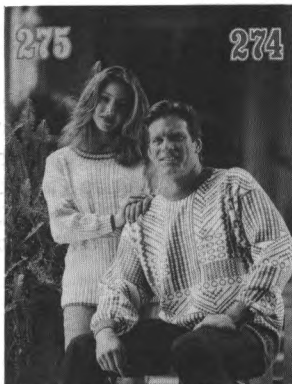
20% OFF till July 31, 1994

Regularly priced at \$199.95, until July 31, 1994, KL-16 is **20% OFF SALE** priced at **\$159.95**



See your local Knitking Dealer or contact Knitking to order.

274



A FAMILY AFFAIR

YARN: Panache and Acrylite

SIZES:

Sm. (Med.) [Lge.] {X-Lge.}

AMOUNT: Same all sizes

C 1: Panache - White - 1 lb.

C 2: Acrylite - Grey - 1 lb.

KIT: Color of your Choice

\$28.00

TENSION:

Fairisle: T 6

Rib: T 0/0 I

GAUGE:

Fairisle: 7.74 Sts. 10.96 Rs = 1"

TECHNIQUE: Fairisle

Make on Compuknit III, IV or V/Vcx Machine with Ribber.

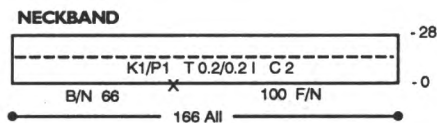
BACK:

With C 2 CO 170 (178) [186] {194} sts. for K1/P1 rib. After selvedge RC 0. T 0/0 I. Knit to R 46 and transfer RB sts. to MB. RC 0. T 6. With C 1 in 'A' Feeder and C 2 in 'B' Feeder knit in fairisle. At R 124 (134) {[138]} place a YM on each side for armhole. At R 244 (254) {[264]} SHR shoulders EOR 10 Sts. 5x. At R 254 (264) {[274]} mark center 62 sts. for neckline and remove neckline and shoulder sts. on separate WY.

FRONT:

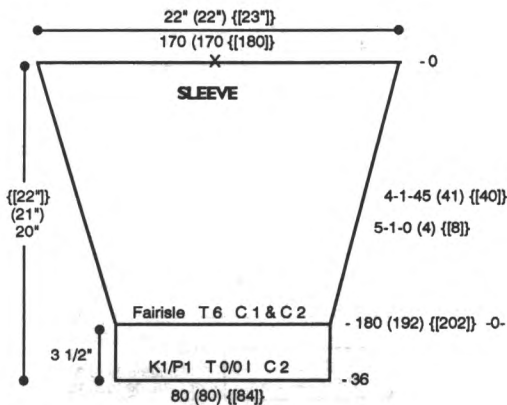
Knit front same as back to R 220 (230) {[240]} and shape neckline. Place center 20 sts. in HP and all sts. to the left. Note pattern row. *On neckline edge SHR EOR 2 Sts. 5x

and 1 St. 10x. AT THE SAME TIME at R 244 (254) {[264]} SHR shoulder EOR 10 Sts. 5x. At R 254 (264) {[274]} remove shoulder sts. on WY. Reset RC to R 220 (230) {[240]} and shape left side from *, reversing shapings. Remove neckline sts. on WY.



NECKBAND:

Close one shoulder. With purl side facing rehang neckline on 166 ndls. following chart. Knit 1 row with C 2 and transfer EOS to RB for K1/P1 rib. T 0.2/0.2 I. Knit to R 28, knitting last row at T 8/4. Transfer RB sts. to MB and BOLT.



SLEEVE:

Close remaining shoulder. With purl side facing rehang armhole between markers on 170 (170) {[180]} ndls. RC 0. T 6. Knit 1 row to set pattern. Add C 2 in 'B' Feeder and knit in fairisle while decr. on each side every 4 Rs. 1 St. 45 (41) {[40]} x and every 5 Rs. 1 St. 0 (4) {[8]} x. At R 180 (192) {[202]} reset RC to 0. Knit 1 row with C 2 and transfer EOS to RB for K1/P1 rib. T 0/0 I. Knit to R 36, knitting last row at T 8/4. Transfer RB sts. to MB and BOLT.

FINISHING:

Close all remaining seams. Fold neckband to inside and whip stitch in place.

275



A FAMILY AFFAIR

YARN: Softon and Panache

SIZES:

Girls: Small (Medium)

Ladies: [6/8] {10/12} *14/16*

AMOUNT:

C 1: Softon - Lt. Blue

1 {[1(1/2)]} *2* lbs.

C 2: Softon - Royal

1 oz. all sizes

C 3: Panache - Berry

1 oz. all sizes

KIT: Color of your Choice

\$24.50 {[((\$35.75)]} *\$46.50*

TENSION:

Body: T 7.2

Rib: T 6.1

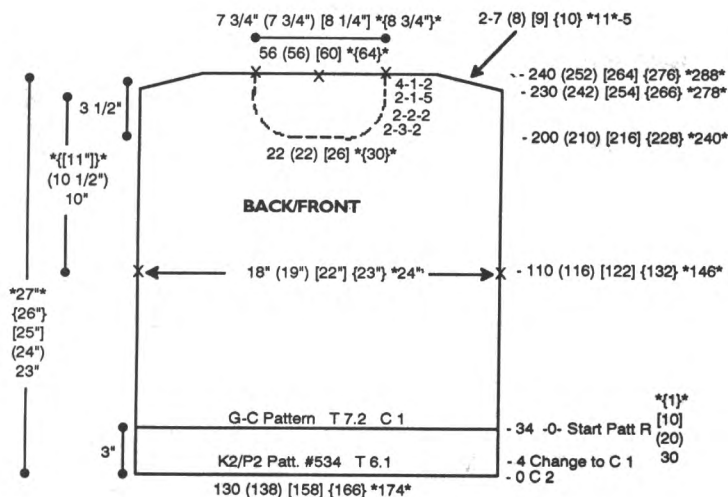
GAUGE:

Body: 7.2 Sts., 12 Rs. = 1"

TECHNIQUE: Garter Carriage.

Make on Compuknit III, IV or V/Vcx Machine with Garter Carriage.

Note: Pattern for ribbing is #534 in CompuKnit Pattern Book. Use Variation Upside Down for sleeve.



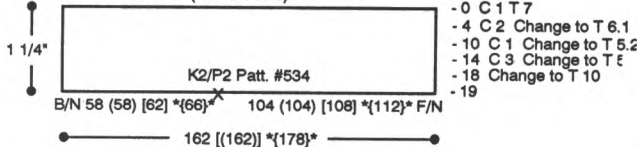
BACK:

With C 2 CO 130 (138) [158] {166} *174* sts. RC 0. T 6.1. Set Garter Carriage for rib pattern and knit to R 4 and change to C 1. Knit to R 34. RC 0. T 7.2. Set Garter Carriage for body pattern. Advance pattern to R 30 (20) [10] *{1}* . Knit to R 110 (116) [122] {132} *146* and place a YM on each side for armhole. At R 230 (242) [254] {266} *278* SHR shoulders EOR 7 (8) [9] {10} *11* Sts. 5x. At R 240 (252) [264] {276} *288* mark center 56 (56) [60] *{64}* sts. for neckline and remove neckline and shoulder sts. on WY.

FRONT:

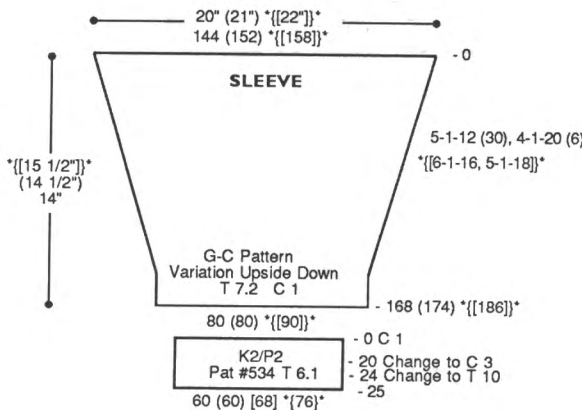
Knit front same as back to R 200 (210) [216] {228} *240*. Shape neckline. Knit center 22 (22) [26] *{30}* sts. manually to 'A' position on Ravel Cord and all sts. to the left. Note pattern row. *On neckline edge decr. EOR 3 Sts. 2x, 2 Sts. 2x, 1 St. 5x and every 4 Rs. 1 St. 2x. At R 230 (242) [254] {266} *278* SHR shoulder EOR 7 (8) [9] {10} *11* Sts. 5x. At R 240 (252) [264] {276} *288* remove shoulder sts. on WY. Reset RC to R 200 (210) [216] {228} *240*. Return sts. to the left of center neckline sts. to WP. Reset pattern to correct row and shape left side from *, reversing shapings. Return neckline sts. to WP and remove on WY.

NECKBAND (Not to Scale)



NECKBAND:

Close one shoulder. With purl side facing rehang neckline on 162 [(162)] *{178}* ndls. following chart. C 1. Knit 1 row with K-Carriage at T 7. Set Garter Carriage for rib pattern and knit to R 4. Change to C 2 and T 6.1 and knit to R 10. Change to C 1 and T 5.2 and knit to R 14. Change to C 3 and T 5 and knit to R 18. Change to T 10 and knit 1 row and BOLT. Close remaining shoulder seam.



SLEEVE:

With purl side facing rehang armhole between markers on 144 (152) *{158}* ndls. C 1. Knit 1 row with K-Carriage at T 7.2. Set Garter Carriage for body pattern. Select variation key

#6 and knit while decr. every 5 Rs. 1 St. 12 (30) x and 4 Rs. 1 St. 20 (6) x *{every 6 Rs. 1 St. 16x and every 5 Rs. 1 St. 18x}* . At R 168 (174) *{186}* remove sts. on WY.

CUFF:

With purl side facing rehang lower edge of sleeve on 60 (60) [68] *{76}* ndls. C 1. Knit 1 row with K-Carriage at T 6.1. Set Garter Carriage for rib pattern and knit to R 20. Change to C 3 and knit to R 24. Change to T 10 and knit 1 row and BOLT.

FINISHING:

Close all remaining seams.

276



A FAMILY AFFAIR

YARN: Panache

SIZES:

6/8 (10/12) [14] {16/18}

AMOUNT:

C 1: Berry - 1 (1) [{1 1/2}] lbs.

C 2: White - 1/2 lb. all sizes

KIT: Color of your Choice

\$24.00 (\$24.00) [{\$32.00}]

TENSION:

Body: T 5.2

Rib: T 0.1/0.1 I

GAUGE:

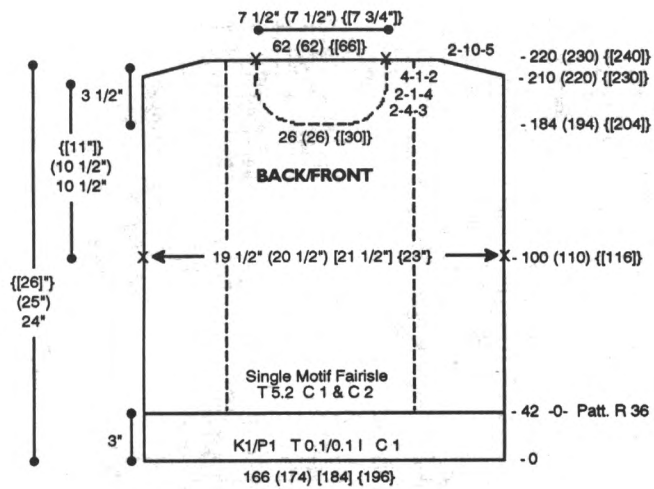
Body: 8.5 Sts., 10.45 Rs. = 1"

TECHNIQUE: Single Motif Fairisle.

Make on CompuKnit III, IV or V/Vcx Machine with Ribber.

Pattern Note:

Use Selector II and 'e' wrap ndl. next to carriage with a long piece of Main Yarn to prevent a hole next to motif. If you want a longer top start back and front on pattern R 1.



BACK:

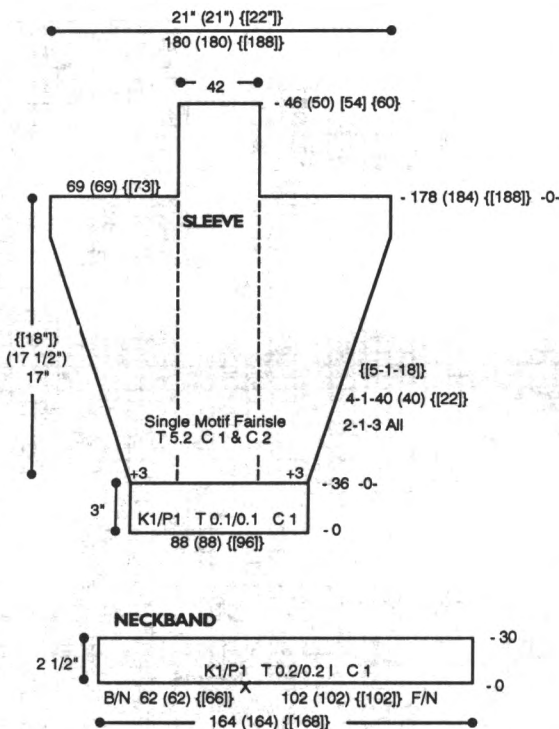
With C 1 CO 166 (174) [184] [196] sts. for K1/P1 rib. After selvedge RC 0. T 0.1/0.1 l. Knit to R 42 and transfer RB sts. to MB. RC 0. T 5.2. Advance pattern to R 36. Selector II. Knit 1 row with C 1 to set pattern. Add C 2 in 'B' Feeder. Knit to R 100 (110) {[116]} and place a YM on each side for armhole. At R 210 (220) {[230]} SHR shoulders EOR 10 Sts. 5x. At R 220 (230) {[240]} mark center 62 (62) {[66]} sts. for neckline and remove neckline and shoulder sts. on separate WY.

FRONT:

Knit front same as back to R 184 (194) {[204]}. Shape neckline. Place center 26 (26) {[30]} sts. in HP and all sts. to the left. Note pattern row. *On neckline edge SHR EOR 4 Sts. 3x and 1 St. 4x, then decr. every 4 Rs. 1 St. 2x. At R 210 (220) {[230]} SHR shoulder EOR 10 Sts. 5x. At R 220 (230) {[240]} remove shoulder sts. on WY. Reset RC to R 184 (194) {[204]} and pattern to correct row. Shape left side from *, reversing shapings.

SLEEVE:

With C 1 CO 88 (88) {[96]} sts. for K1/P1 rib. After selvedge RC 0. T 0.1/0.1 l. Knit to R 36 and transfer RB sts. to MB. RC 0. T 5.2. Incr. 3 sts. on each side. Selector II. Knit 1 row with C 1 to set pattern. Add C 2 in 'B' Feeder. Knit in pattern while incr. on each side EOR 1 St. 3x for all sizes and every 4 Rs. 1 St. 40 (40) {[22]} x {[every 5 Rs. 1 St. 18x]}. At R 178 (184) {[188]} leave center 42 sts. and remove all sts. to the left and right on WY. RC 0. T 5.2. Continue in pattern to R 46 (50) [54] [60] and remove sts. on WY.

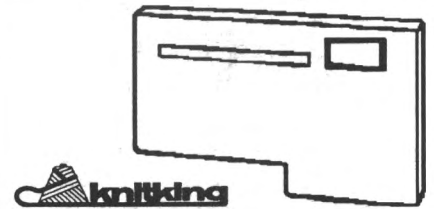


NECKBAND:

Close one shoulder. CO 164 (164) {[168]} sts. for K1/P1 rib. After selvedge RC 0. T 0.2/0.2 l. Knit to R 30 and transfer RB sts. to MB. With purl side facing rehang neckline on these ndls. Knit 1 row at T 10 and BOLT.

FINISHING:

Close remaining shoulder seam. Attach sleeves and stitch shoulder overlap in place. Close all remaining seams.



STORE PATTERNS WITHOUT A DISK

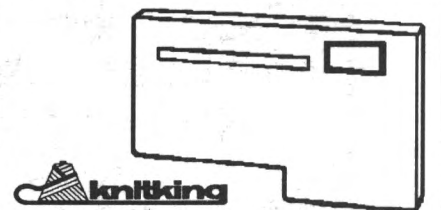
If you use the Control Panel on your Compuknit V to design your own original patterns, you can now save them directly to this new "Pattern Saver" Cartridge—and, unlike patterns loaded from the KC, those loaded from this Cartridge do not interfere with others created on the Compuknit V.

Regularly priced at \$89.95, until July 31, 1994 this handy storage device is **20% OFF SALE** priced at only **\$71.95**.

20% OFF till July 31, 1994



Contact your local Dealer or Knitking to order

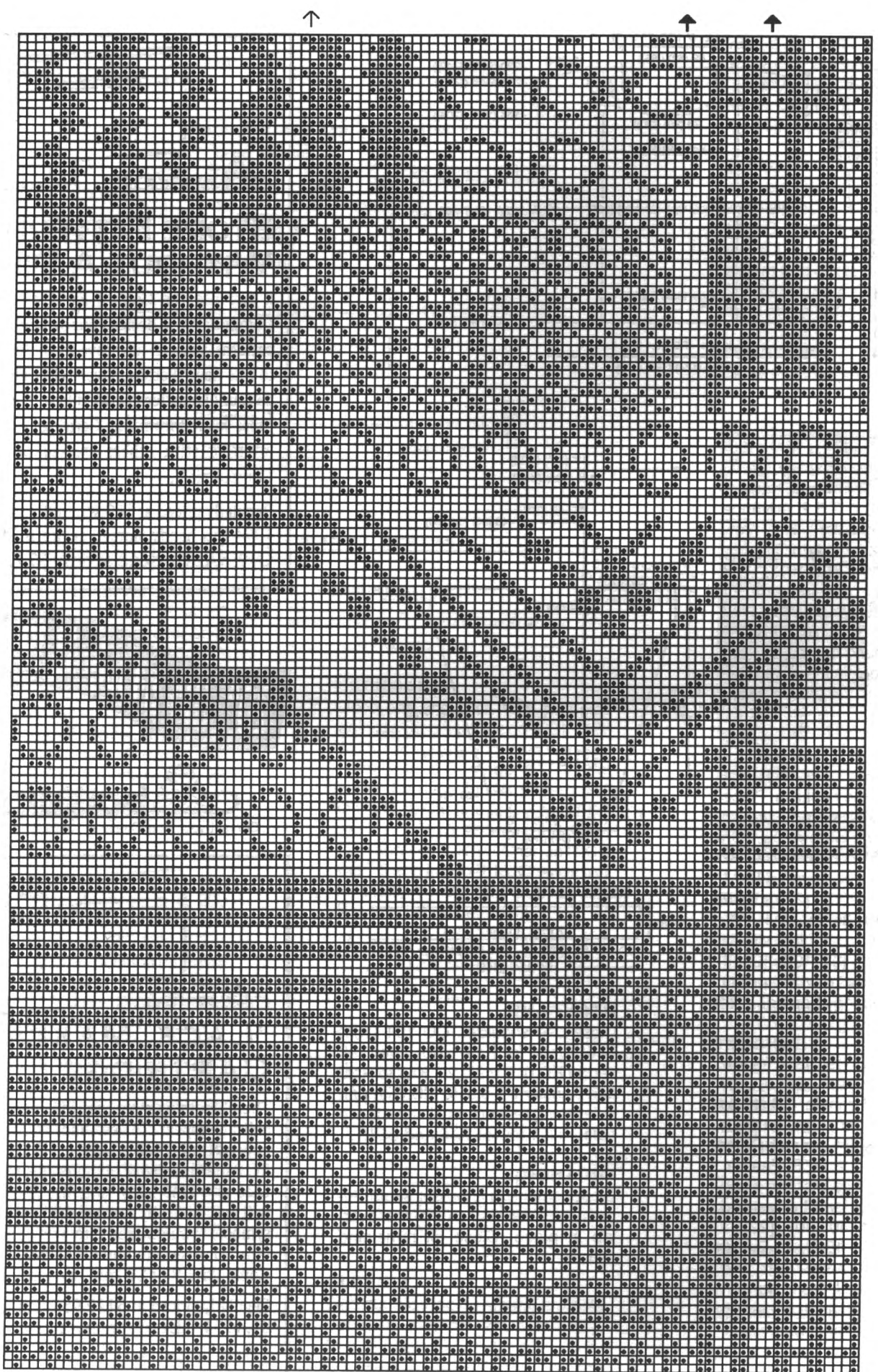


"LACE MAKER" CARTRIDGE

There's nothing more beautiful than the delicate appeal of Lace. And, with this new cartridge, you can use it (with your KC Pattern Design Computer) to create Lace and Fine Lace Patterns. The KC will automatically convert the "transfer symbols" you entered into a "data pattern" for easy communication into your Compuknit V or ST knitting machine.

Regularly priced at \$129.95, until July 31, 1994, this exciting, new accessory is

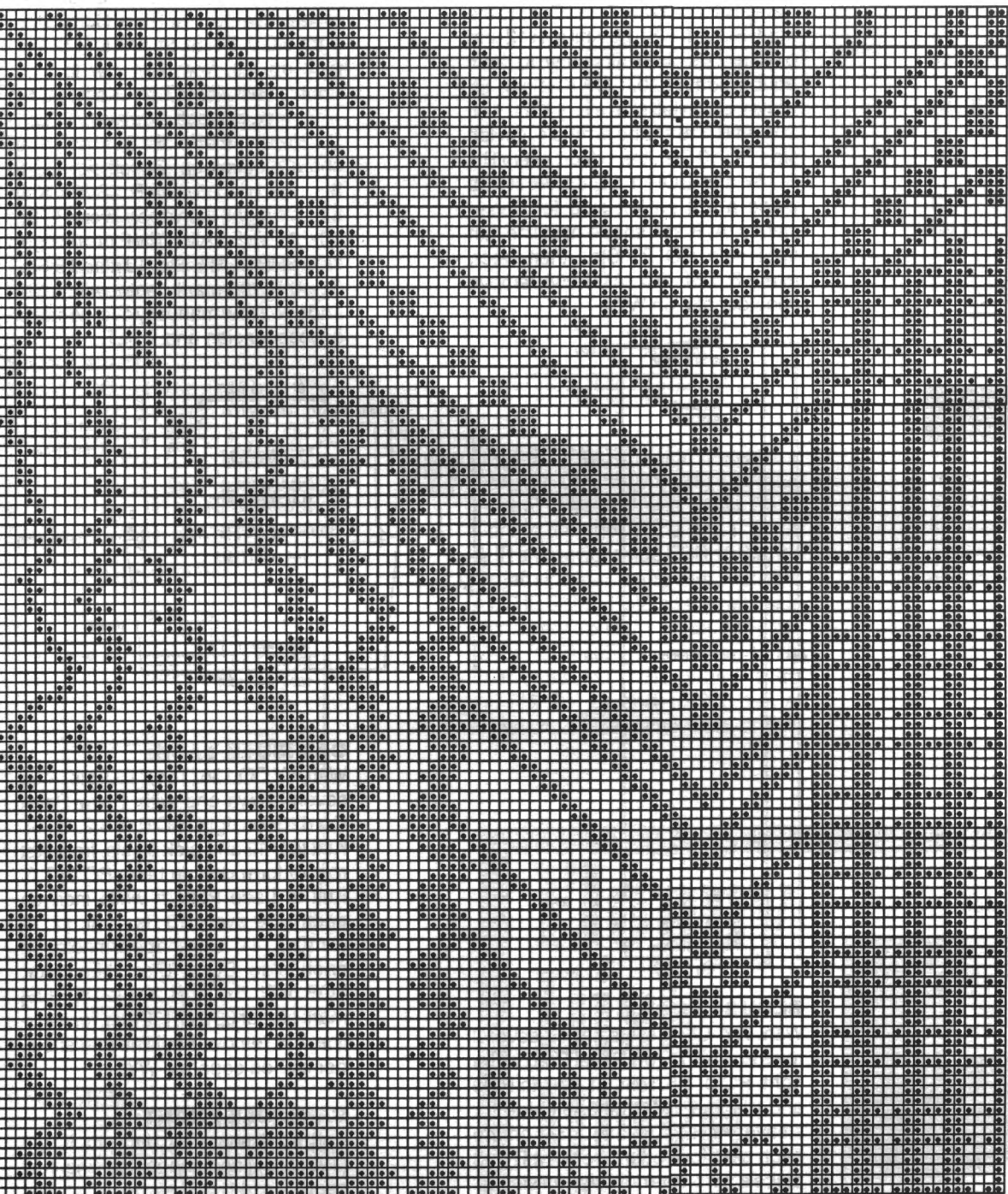
20% OFF SALE priced at **\$103.95**.



Left edge of womens fairisle motif ↑

↑ This marks edge of sleeve motif for womens fairisle #276

#274, #275 and #276 Stitch Pattern Design
 Pattern explanation follows drawing



#274 Fairisle
 #275 G-Carriage
 200 Sts. x 280 Rows

#276 Fairisle Motif
 80 Sts. x 280 Rows

Pattern Note:
 Pattern shown in magazine
 in one-half of entire design.
 Full design of 200 Sts. is
 mirrored image of stitches
 shown here. KK Magazine
 Disk reflects full pattern--
 no need to use variation
 keys for mirror image on
 CIII/IV.

KK Magazine Disk
 Instructions for Patterns
 274/275/276

PATTERNS 274/275:

- Track 8 - Section 1 - #901
200 Sts. x 68 Rows
- Track 9 - Section 2 - #901
200 Sts. x 68 Rows
- Track 10 - Section 3 - #901
200 Sts. x 68 Rows
- Track 11 - Section 4 - #901
200 Sts. x 68 Rows
- Track 12 - Section 5 - #901
200 Sts. x 8 Rows

PATTERN 276:

- Track 12 - Section 1 - #902
Body
80 Sts. x 144 Rows
- Track 13 - Section 2 - #901
Body
80 Sts. x 136 Rows
- Track 14 - Sleeve - #901
38 Sts. x 250 Rows

277



A NEW TWIST

YARN: Sorbet - Bone China

SIZES:

6/8 (10/12) [14]

AMOUNT:

2 1/2 lbs. same all sizes

KIT: Color of your Choice

\$68.00

TENSION:

St. St.: T 5.1

Hems: T 4 or T 4.2

Lace: T 6

GAUGE:

St. St.: 8 Sts., 10.5 Rs. = 1:

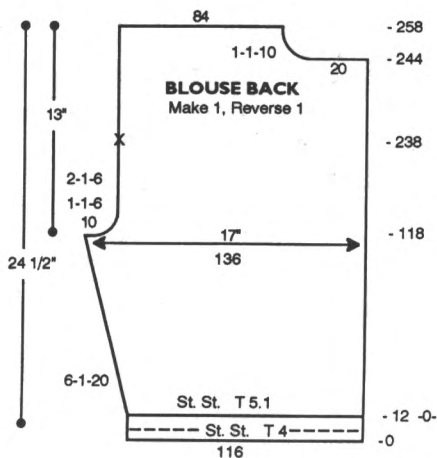
Lace: 7.5 Sts., 11.3 Rs. = 1"

NOTIONS:

3 - 5/8" buttons for camisole and elastic for skirt waistband.

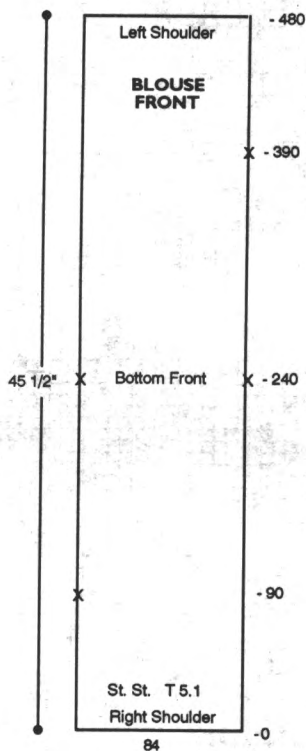
TECHNIQUE: St. St. and Lace

Make on Standard 24-Stitch Punch Card or Standard Electronic Machine.



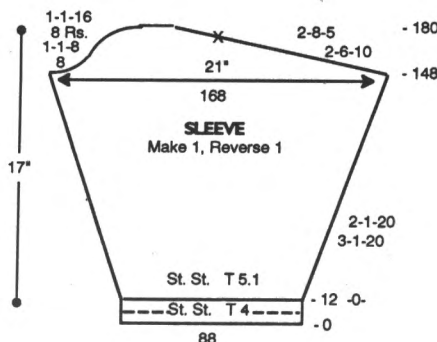
BLOUSE BACK: Make 1, Reverse 1.

With WY CO 116 sts. After several rows end with 1 row Ravel Cord to the right. RC 0. T 4. St. St. Knit to R 12 and pick up sts. from first row to form double hem. RC 0. T 5.1. Knit in St. St. while incr. on left side every 6 Rs. 1 St. 20x. At R 118 shape armhole. On left side BO 10 Sts., then decr. every R 1 St. 6x and EOR 1 St. 6x. At R 238 place a YM on left side for center sleeve. At R 244 shape neckline. On right side BO 20 Sts., then decr. every R 1 St. 10x. At R 258 remove shoulder sts. on WY.



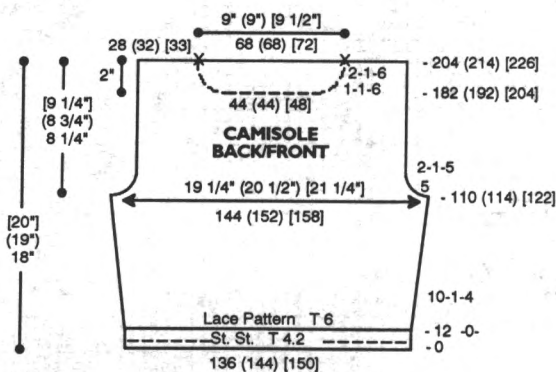
BLOUSE FRONT:

With WY CO 84 sts. After several rows end with 1 row Ravel Cord to the right. RC 0. T 5.1. St. St. Knit to R 90 and place a YM on the left side for sleeve. At R 240 place a YM on the each side for bottom front. At R 390 place a YM on the right side for sleeve. At R 480 remove left shoulder sts. on WY.



BLOUSE SLEEVE: Make 1, Reverse 1.

With WY CO 88 sts. After several rows end with 1 row Ravel Cord to the right. RC 0. T 4. St. St. Knit to R 12 and pick up sts. from first row to form double hem. RC 0. T 5.1. Knit in St. St. while incr. on each side every 3 Rs. 1 St. 20x and EOR 1 St. 20x. At R 148 shape sleeve cap. On left side BO 8 Sts., then decr. every R 1 St. 8x. Knit 8 Rs. straight, then decr. every R 1 St. 16x. AT THE SAME TIME on the right side SHR EOR 6 Sts. 10x and 8 Sts. 5x. At R 180 mark center with a YM and knit 1 row manually over all sts. at a loose tension and BOLT.

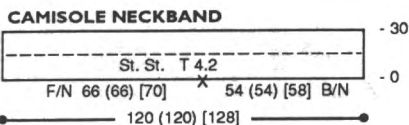


CAMISOLE BACK:

With WY CO 136 (144) [150] sts. After several rows end with 1 row Ravel Cord to the right. RC 0. T 4.2. St. St. Knit to R 12 and pick up sts. from first row to form double hem. RC 0. T 6. Knit in Lace Pattern while incr. on each side every 10 Rs. 1 St. 4x. At R 110 (114) [122] shape armhole. On each side BO 5 Sts., then decr. EOR 1 St. 5x. At R 204 (214) [226] mark center 68 (68) [72] sts. for neckline and remove neckline and shoulder sts. on separate WY.

CAMISOLE FRONT:

Knit front same as back to R 182 (192) [204] and shape neckline. Knit center 44 (44) [48] sts. to 'A' position manually on Ravel Cord and all sts. to the left. Note pattern row. *On neckline edge decr. every R 1 St. 6x and EOR 1 St. 6x. At R 204 (214) [226] remove shoulder sts. on WY. Reset RC to R 182 (192) [204] and shape left side from *, reversing shaping. Remove neckline sts. on WY.

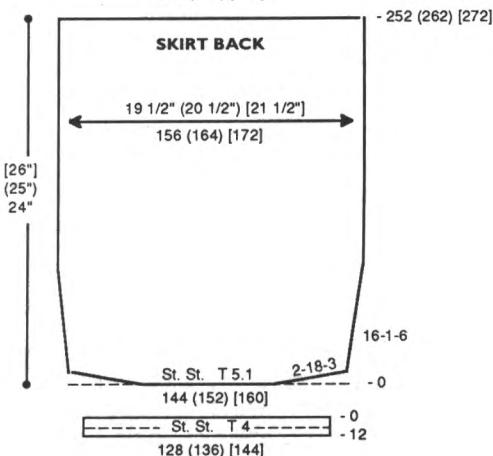
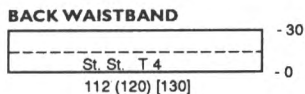


CAMISOLE NECKBAND:

Close right shoulder. With purl side facing rehang neckline on 120 (120) [128] ndls. following chart. RC 0. T 4.2. St. St. Knit to R 30 and pick up sts. from first row to form double band. Knit 1 row at T 10 and BOLT. Close left shoulder leaving 10 sts. on front and back at the neckline edge open.

SKIRT BACK:

With WY CO 144 (152) [160] sts. After several rows end with 1 row Ravel Cord to the right. RC 0. T 5.1. St. St. Knit while SHR shaping on each side EOR 18 Sts. 3x. Incr. on each side every 16 Rs. 1 St. 6x. At R 252 (262) [272] remove sts. on WY.

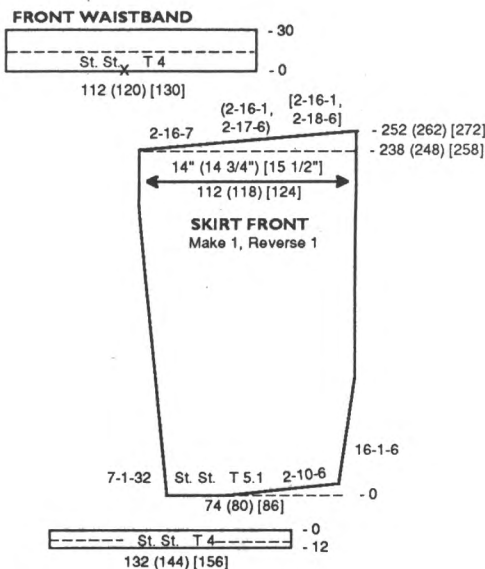


BACK HEM:

With purl side facing rehang lower edge of skirt back on 128 (136) [144] ndls. decr. evenly across. RC 0. T 4. St. St. Knit to R 12 and pick up sts. from first row to form double hem. Knit 1 row at T 10 and BOLT.

BACK WAISTBAND:

With purl side facing rehang upper edge of skirt back on 112 (120) [130] ndls. decr. evenly across. RC 0. T 4. St. St. Knit to R 30 and pick up sts. from first row to form double band. Knit 1 row at T 10 and BOLT.



SKIRT FRONT: Make 1, Reverse 1.

With WY CO 74 (80) [86] sts. After several rows end with 1 row Ravel Cord to the right. RC 0. T 5.1. St. St. SHR shape right side EOR 10 Sts. 6x. On left side incr. every 7 Rs. 1 St. 32x. AT THE SAME TIME on the right side incr. every 16 Rs. 1 St. 6x. At R 238 (248) [258] SHR by bringing to HP EOR 16 Sts. 7x (17 Sts. 6x and 16 Sts. 1x) [18 Sts. 6x and 16 Sts. 1x]. At R 252 (262) [272] remove sts. on WY.

SKIRT FRONT HEM:

Close center seam. With purl side facing rehang lower edge of skirt fronts on 132 (144) [156] ndls. decr. evenly across. RC 0. T 4. St. St. Knit same as back hem.

SKIRT FRONT WAISTBAND:

With purl side facing rehang upper edge of skirt fronts on 112 (120) [130] ndls. decr. evenly across. RC 0. T 4. St. St. Knit the same as back waistband.



SKIRT FRONT TRIM:

With knit side facing, rehang front seam from top of hem to bottom of waistband on 144 ndls. RC 0. T 4. St. St. Knit to R 10 and pick up sts. from first row to form pin tuck. Knit 1 row at T 10 and BOLT. Fold pin tuck to left side and press.

Floppy Disk Drive

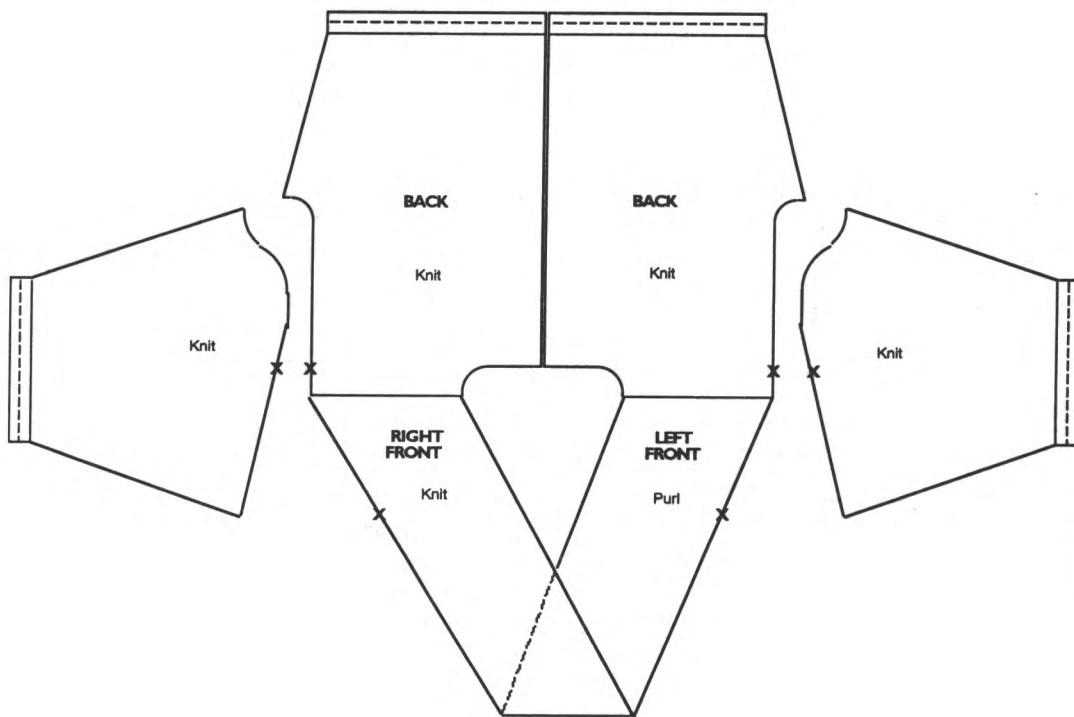
Direct Connection to CompuKnit V[®]

knitking

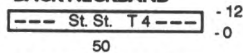
The Floppy Disk Drive makes pattern work unbelievably easy. There are many programmed disks available from a variety of designers. In fact, several of the unique creations found on the pages of this magazine are available on disk. (CompuKnit V, CompuKnit/Bulky or CompuKnit/ST owners will also need the KC/PPD optional accessory to transfer patterns).

Invest in a Floppy Disk Drive today . . . and start your own Design Collection tomorrow! **20% OFF till July 31, 1994 — ONLY \$319.95**

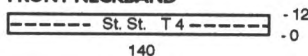
AS SHOWN ON PHOTO



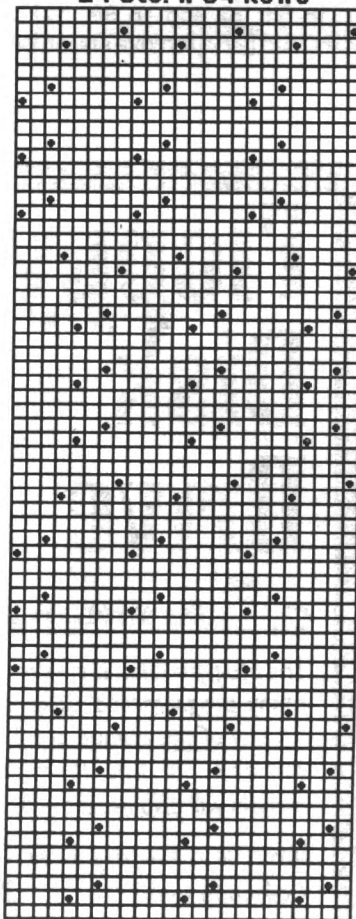
BACK NECKBAND



FRONT NECKBAND



**#277 Lace Pattern
24 Sts. x 64 Rows**



KK Mag Disk: Track 15;
Pattern 901

278



**TWO PIECE OR
NOT TWO PIECE**

FINISHING:

Blouse: Close back center seam. With purl side facing rehang left back shoulder. With knit side facing rehang left front shoulder sts. Knit 1 row at T 10 and BOLT. With knit side facing rehang right back shoulder. With knit side facing rehang right front shoulder sts. Knit 1 row at T 10 and BOLT (see drawing).

Blouse neckbands: With purl side facing rehang back neckline on 50 ndls. RC 0. T 4.2. Knit to R 12 and pick up sts. from first row to form double band. Knit 1 row at T 10 and BOLT. With knit side facing rehang left front neckline on 140 ndls. and knit same as back neckline. With purl side facing rehang right front neckline on 140 ndls. and knit same as left front neckline. Attach sleeves and close all remaining seams.

Camisole: Single Crochet around neckband and shoulder sts. 2 times making 3 Ch 6 loops for buttonholes on front side of opening. Sew buttons on back side of opening. Close all remaining seams.

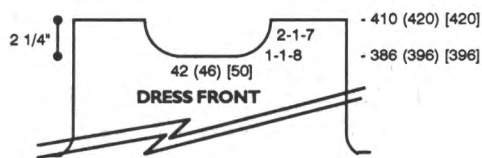
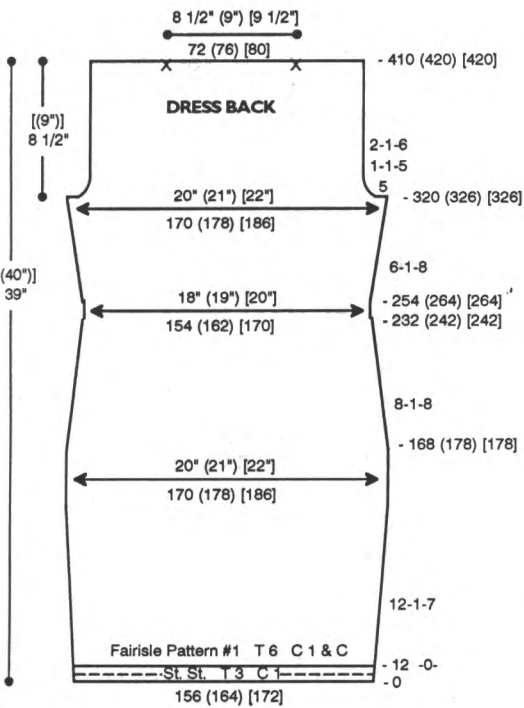
Skirt: Close all remaining seams.

DRESS BACK:

With WY CO 156 (164) [172] sts. After several rows end with 1 row Ravel Cord to the left. RC 0. T 3. C 1. St. St. Knit to R 12 and pick up sts. from first row to form double hem. Fairisle Pattern #1. Knit 1 row to set pattern with C 1. RC 0. T 6. Add C 2 in 'B' Feeder. Knit in fairisle while incr. on each side every 12 Rs. 1 St. 7x. At R 168 (178) [178] decr. on each side every 8 Rs. 1 St. 8x. At R 254 (264) [264] incr. on each side every 6 Rs. 1 St. 8x. At R 320 (326) [326] shape armhole. On each side BO 5 sts., then decr. every R 1 St. 5x and EOR 1 St. 6x. At R 410 (420) [420] mark center 72 (76) [80] sts. for neckline and remove neckline and shoulder sts. on separate WY.

DRESS FRONT:

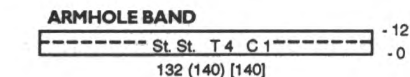
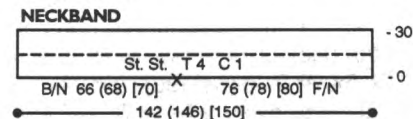
Knit front same as back to R 386 (396) [396]. Shape neckline. Place center 42 (46) [50] sts in HP and all sts. to the left. Note pattern row. *On neckline edge decr. every R 1 St. 8x



and EOR 1 St. 7x. At R 410 (420) [420] remove shoulder sts. on WY. Reset RC to R 386 (396) [396]. Reset pattern to correct row and shape left side from *, reversing shaping.

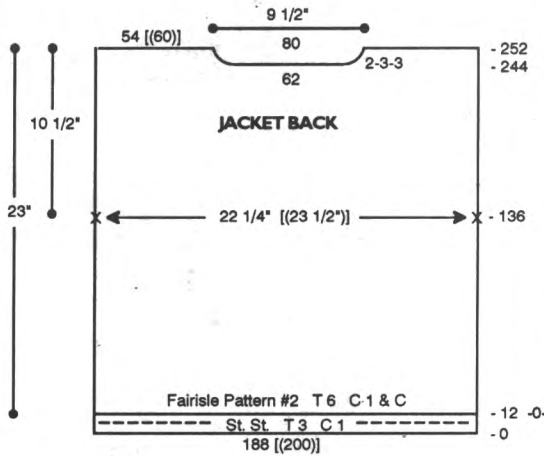
NECKBAND:

Close one shoulder. With purl side facing rehang neckline on 142 (146) [150] ndls. following chart. RC 0. T 4. C 1. St. St. Knit to R 30 and pick up sts. from first row to form double band. Knit 1 row at T 10 and BOLT.



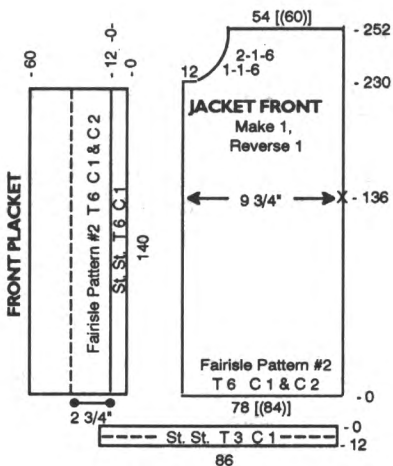
ARMHOLE BAND:

Close remaining shoulder. With purl side facing rehang armhole on 132 (140) [140] ndls. RC 0. T 4. C 1. St. St. Knit to R 12 and pick up sts. from first row to form double band. Knit 1 row at T 10 and BOLT.



JACKET BACK:

With WY CO 188 [(200)] sts. After several rows end with 1 row Ravel Cord to the right. RC 0. T 3. C 1. St. St. Knit to R 12 and pick up sts. from first row to form double hem. Knit 1 row to the left. Fairisle Pattern #2. Knit 1 row to set pattern with C 1. RC 0. T 6. Add C 2 in 'B' Feeder. Knit to R 136 and place a YM on each side for armhole. At R 244 shape neckline. Place center 62 sts. in HP and all sts. to the left. *On neckline edge SHR EOR 3 Sts. 3x. At R 252 remove shoulder sts. on WY. Reset RC to R 244 and shape left side from * reversing shaping. Remove neckline sts. on WY.



JACKET FRONT: (Make 1, Reverse 1)

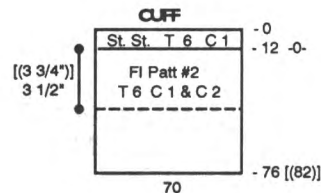
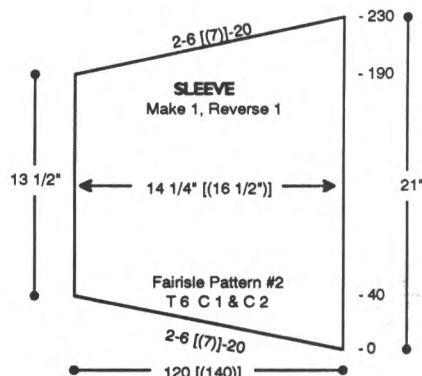
With WY CO 78 [(84)] sts. After several rows end with 1 row Ravel Cord to the left. Fairisle Pattern #2. Knit 1 row to set pattern with C 1. RC 0. T 6. Add C 2 in 'B' Feeder. Knit to R 136 and place a YM on right side for armhole. At R 230 shape neckline. On neckline edge BO 12 sts. then decr. every R 1 St. 6x and EOR 1 St. 6x. At R 252 remove shoulder sts. on WY.

FRONT PLACKET:

With purl side facing rehang front edge on 140 ndls. RC 0. T 6. C 1. St. St. Knit to R 12 and pick up sts. from first row to form pin tuck. RC 0. T 6. Fairisle Pattern #2. Knit 1 row to set pattern with C 1. Add C 2 in 'B' Feeder. Knit to R 60 and pick up sts. from first row to form double band. Knit 1 row at T 10 and BOLT.

FRONT HEM:

With purl side facing rehang lower edge of front on 86 ndls. RC 0. T 3. C 1. St. St. Knit to R 12 and pick up sts. from first row to form double hem. Knit 1 row at T 10 and BOLT.

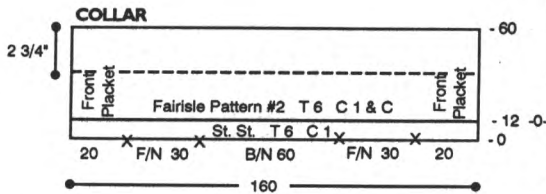


SLEEVE:

With WY CO 120 [(140)] sts. After several rows end with 1 row Ravel Cord to the left. Fairisle Pattern #2. Knit 1 row to set pattern with C 1. RC 0. T 6. Add C 2 in 'B' Feeder. Place all sts. in HP. SHR shape EOR by pushing to WP 6 [(7)] Sts. 20 x. At R 190 SHR shape EOR by bringing 6 [(7)] Sts. to HP 20x. At R 230 remove sts. on WY.

CUFF:

With purl side facing rehang lower edge of sleeve on 70 ndls. RC 0. T 6. C 1. St. St. Knit to R 12 and pick up sts. from first row to form pin tuck. RC 0. T 6. Fairisle Pattern #2. Knit 1 row to set pattern with C 1. Add C 2 in 'B' Feeder. Knit to R 76 [(82)] and pick up sts. from first row to form double band. Knit 1 row at T 10 and BOLT.



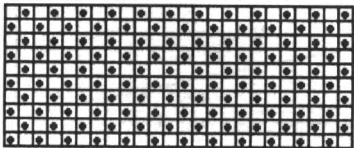
COLLAR:

Close shoulder seams. With purl side facing rehang neckline on 160 ndls. following chart. RC 0. T 6. C 1. St. St. Knit to R 12 and pick up sts. from first row to form pin tuck. RC 0. T 6. Fairisle Pattern #2. Knit 1 row to set pattern with C 1. Add C 2 in 'B' Feeder. Knit to R 60 and pick up sts. from first row to form double band. Knit 1 row at T 10 and BOLT.

FINISHING:

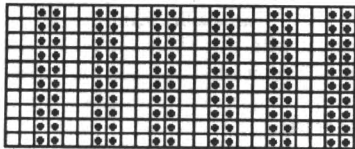
Attach sleeves to jacket and close all remaining seams.

#278 Fairisle Pattern #1
24 Sts. x 10 Rows



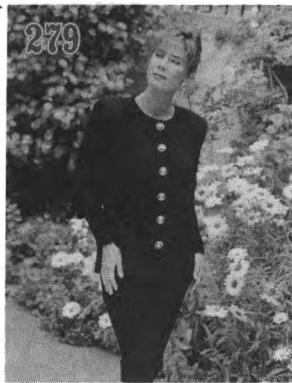
KK Mag Disk: Track 16;
Pattern 901

#278 Fairisle Pattern #2
24 Sts. x 10 Rows



KK Mag Disk: Track 16;
Pattern 902

279



TIMELESS BEAUTY

YARN: Venetia - Navy

SIZES:
6/8 (10/12) [14]

AMOUNT:
3 (3) [4] lb.

KIT: Color of your Choice
\$75.00 (\$75.00) [\$112.00]

TENSION:
Body: T 3/2.2 I

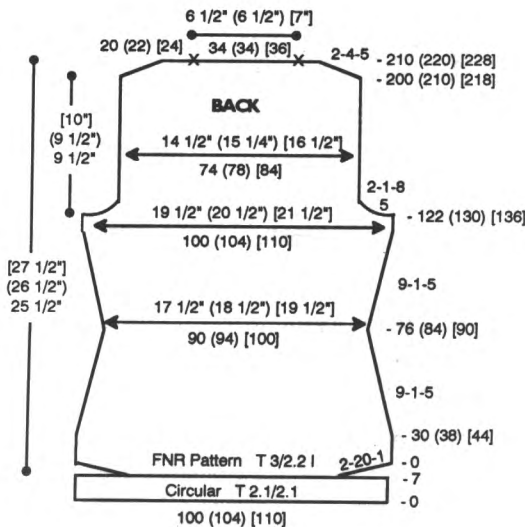
GAUGE:
Body: 5.13 Sts., 8.26 Rs. = 1"

NOTIONS:
8 - 1" Buttons and 1-1/2" elastic for waistband.

TECHNIQUE: FNR

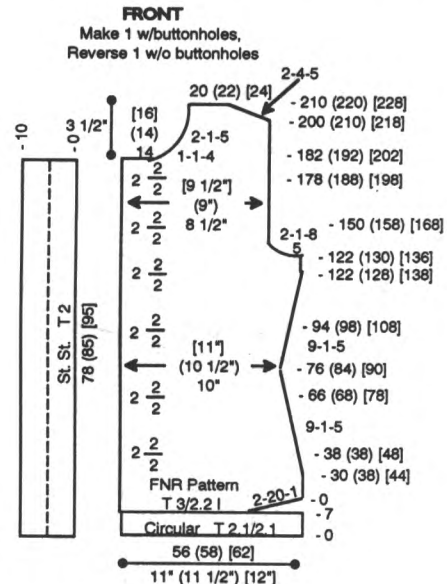
Make on any Bulky Machine with Ribber.

Note: Thread 2 strands of Venetia through separate yarn guide and into the same take up spring.



JACKET BACK:

CO 100 (104) [110] sts. for circular knitting. After selvedge RC 0. T 2.1/2.1 I. Knit to R 7 and arrange ndls. for pattern following chart. SHR on each side EOR 20 Sts. 1x. RC 0. T 3/2.2 I. Knit to R 30 (38) [44] and start decr. on each side every 9 Rs. 1 St. 5x. At R 76 (84) [90] start incr. on each side every 9 Rs. 1 St. 5x. At R 122 (130) [136] shape armhole. On each side BO 5 sts., then decr. EOR 1 St. 8x. At R 200 (210) [218] SHR shoulders EOR 4 Sts. 5x. At R 210 (220) [228] mark center 34 (34) [36] sts. for neckline and remove neckline and shoulder sts. on separate WY.



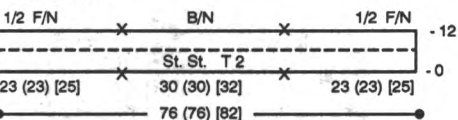
JACKET FRONT: Make 1 w/buttonholes, Reverse 1 w/o.

CO 56 (58) [62] sts. for circular knitting. After selvedge RC 0. T 2.1/2.1 I. Knit to R 7 and arrange ndls. for pattern following chart. SHR on right side EOR 20 Sts. 1x. RC 0. T 3/2.2 I. Knit to R 30 (38) [44] and start decr. on right side every 9 Rs. 1 St. 5x. At R 76 (84) [90] start incr. on right side every 9 Rs. 1 St. 5x. At R 122 (130) [136] shape armhole. On right side BO 5 sts., then decr. EOR 1 St. 8x. At the same time at Rs. 38 (38) [48], 66 (68) [78], 94 (98) [108], 122 (128) [138], 150 (158) [168] and 178 (188) [198] make buttonholes over 4 sts. with WY following chart. At R 182 (192) [202] shape neckline. On left side BO 14 (14) [16] sts., then decr. every R 1 St. 4x and EOR 1 St. 5x. At R 200 (210) [218] SHR shoulder EOR 4 Sts. 5x. At R 210 (220) [228] remove shoulder sts. on WY.

FRONT BAND:

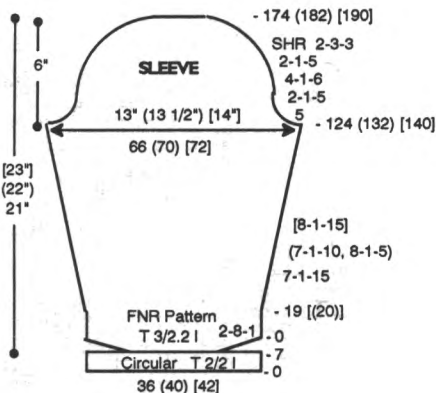
With purl side facing rehang front edge on 78 (85) [95] ndls. RC 0. T 2. St. St. Knit to R 10 and pick up sts. from first row to form double band. Knit 1 row at T 8 and BOLT.

NECKBAND



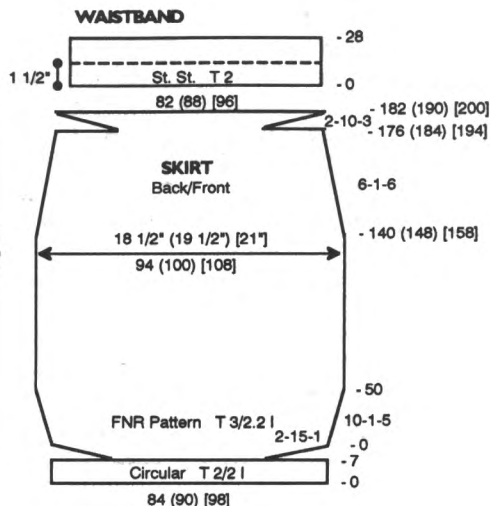
NECKBAND:

Close shoulder seams. With purl side facing rehang neckline and frontband on 76 (76) [82] ndls. following chart. RC 0. T 2. St. St. Knit to R 12 and pick up sts. from first row to form double band. Knit 1 row at T 8 and BOLT.



SLEEVE:

CO 36 (40) [42] sts. for circular knitting. After selvedge RC 0. T 2. 1/2. 1 I. Knit to R 7 and arrange ndls. for pattern following chart. SHR on each side EOR 8 Sts. 1x. RC 0. T 3/2.2 I. Knit to R 19 [(20)] and start incr. on each side every 7 Rs. 1 St. 15x (every 7 Rs. 1 St. 10x and every 8 Rs. 1 St. 5x) [every 8 Rs. 1 St. 15x]. At R 124 (132) [140] shape sleeve cap. On each side BO 5 sts., then decr. EOR 1 St. 5x, every 4 Rs. 1 St. 6x and EOR 1 St. 5x, then SHR EOR 3 Sts. 3x. At R 174 (182) [190] knit 1 row at T 8 and BOLT.



SKIRT BACK/FRONT:

CO 84 (90) [98] sts. for circular knitting. After selvedge RC 0. T 2/2 I. Knit to R 7 and arrange ndls. for pattern following chart. SHR on each side EOR 15 Sts. 1x. RC 0. T 3/2.2 I. Incr. on each side every 10 Rs. 1 St. 5x. At R 140 (148) [158] decr. on each side every 6 Rs. 1 St. 6x. At R 176 (184) [194] SHR on each side EOR 10 Sts. 3x. At R 182 (190) [200] transfer RB sts. to MB. RC 0. T 2. St. St. Knit to R 28 and pick up sts. from first row to form double band. Knit 1 row at T 8 and BOLT.

FINISHING:

Attach sleeves and close all remaining seams. Steam front. With purl side facing carefully remove WY from buttonholes and whip st. around to finish.

*279 Needle Set-Up



280



CRITIC'S CHOICE

YARN: Splendor and Softon

SIZES:

Small (Medium) [Large]

AMOUNT: Same all sizes

C 1: Splendor - Navy 1 lb.

C 2: Softon - Violet 1 lb.

C 3: Softon - Jade 2 oz.

C 4: Softon - Purple 2 oz.

C 5: Softon - Turquoise 2 oz.

C 6: Softon - Royal 2 oz.

KIT: Color of your Choice

\$48.00

TENSION:

Fairisle: T 7

St. St.: T 7

GAUGE:

Fairisle: 8 Sts., 10 Rs. = 1"

TECHNIQUE:

 Fairisle

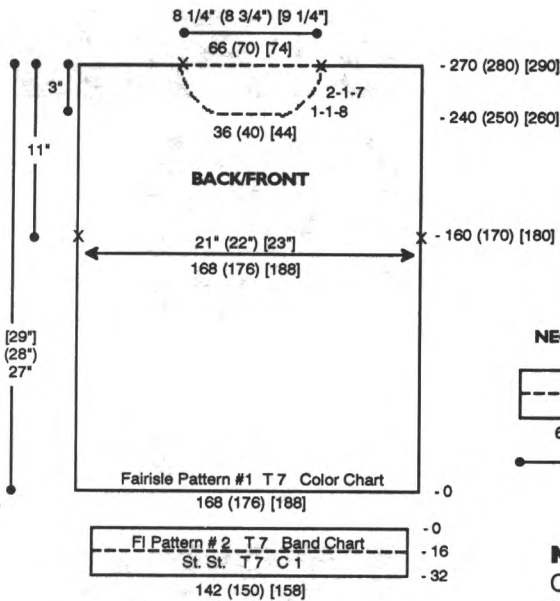
Make on Standard 24-Stitch Punch Card or Standard Electronic Machine.

BACK:

With WY CO 168 (176) [188] sts. After several rows end with 1 row Ravel Cord to the left. Fairisle Pattern #1. Knit 1 row with C 1 to set pattern. RC 0. T 7. Knit in fairisle following Color Chart. At R 160 (170) [180] place a YM on each side for armhole. At R 270 (280) [290] mark center 66 (70) [74] sts. for neckline and remove neckline and shoulder sts. on separate WY.

FRONT:

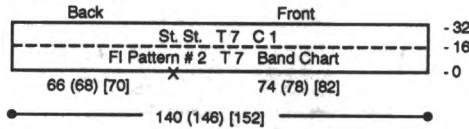
Knit front same as back to R 240 (250) [260] and shape neckline. Place center 36 (40) [44] sts. in HP and all sts. to the left. Note pattern row. *On neckline edge decr. every R 1 St. 8x



CUFF:

With purl side facing rehang lower edge of sleeve on 56 (60) [64] ndls. Fairisle Pattern #2. Knit 1 row with C 1 to set pattern. RC 0. T 7. Knit in fairisle following Band Chart to R 16. St. St. T 7. C 1. Knit to R 32 and pick up sts. from first row to form double cuff. Knit 1 row at T 10 and BOLT.

NECKBAND



NECKBAND:

Close one shoulder. With purl side facing rehang neckline on 140 (146) [152] ndls. following chart. Fairisle Pattern #2. Knit 1 row with C 1 to set pattern. RC 0. T 7. Knit in fairisle following Band Chart to R 16. St. St. T 7. C 1. Knit to R 32 and pick up sts. from first row to form double band. Knit 1 row at T 10 and BOLT.

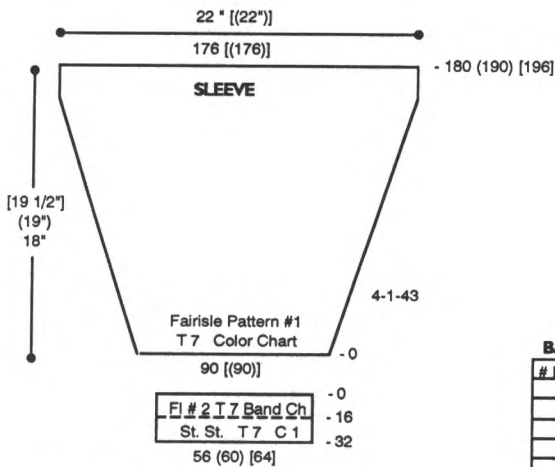
FINISHING:

Close remaining shoulder seam. Attach sleeves and close all remaining seams.

and EOR 1 St. 7x. At R 270 (280) [290] remove shoulder sts. on WY. Reset RC to R 240 (250) [260]. Reset pattern to correct row and shape left side from *, reversing shapng.

HEM:

With purl side facing rehang lower edge of back/front on 142 (150) [158] ndls. Fairisle Pattern #2. Knit 1 row with C 1 to set pattern. RC 0. T 7. Knit in fairisle following Band Chart to R 16. St. St. T 7. C 1. Knit to R 32 and pick up sts. from first row to form double hem. Knit 1 row at T 10 and BOLT.



SLEEVE:

With WY CO 90 ([90]) sts. After several rows end with 1 row Ravel Cord to the left. Fairisle Pattern #1. Knit 1 row with C 1 to set pattern. RC 0. T 7. Knit in fairisle following Color Chart while incr. on each side every 4 Rs. 1 St. 43x. At R 180 (190) [196] remove sts. on WY.

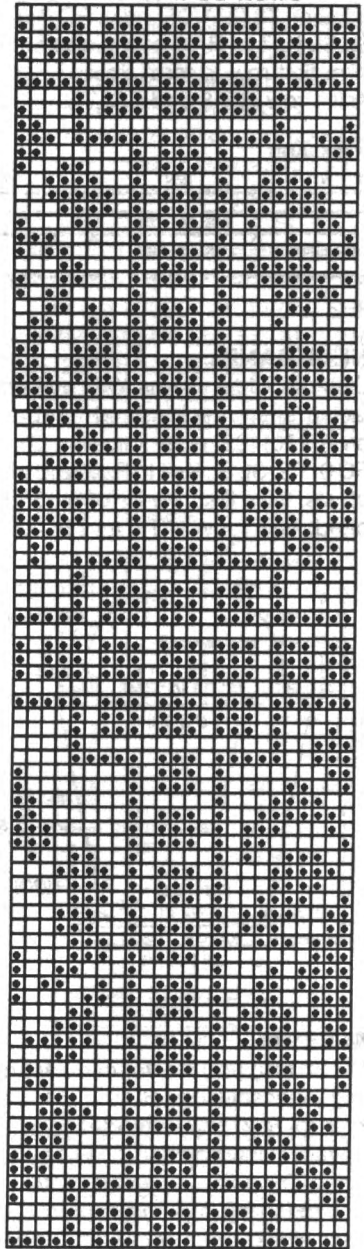
BAND CHART

# Rows	MC	CC
3	1	3
1	1	-
3	1	6
1	1	-
3	1	5
1	1	-
3	1	4
1	1	-

COLOR CHART

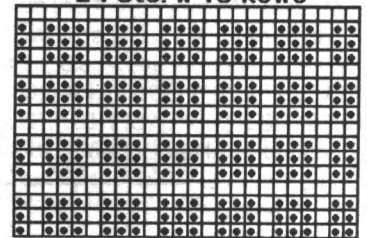
# Rows	MC	CC	Repeat
1	1	-	
3	1	6	
1	1	-	
39	1	2	
1	1	-	
3	1	5	
1	1	-	
39	1	2	
1	1	-	
3	1	4	
1	1	-	
39	1	2	
1	1	-	
3	1	3	
1	1	-	
39	1	2	

#280 Fairisle Pattern #1
24 Sts. x 88 Rows

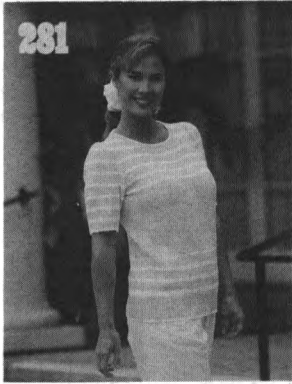


KK Mag Disk: Track 17; Pattern 901

#280 Fairisle Pattern #2
24 Sts. x 16 Rows



KK Mag Disk: Track 17; Pattern 902



EASY GOING

YARN: Sorbet

SIZES:

6/8 (10/12) [14] {16}

AMOUNT: Same all sizes

C 1: Turquoise - 1-1/2 lb.

C 2: White - 4 oz.

KIT: Color of your Choice

\$45.00

TENSION:

Body: T 7.1

St. St.: T 5

Rib: T 2/2 l

GAUGE:

Body: 8 Sts., 11 Rs. = 1"

TECHNIQUE: Fine Lace

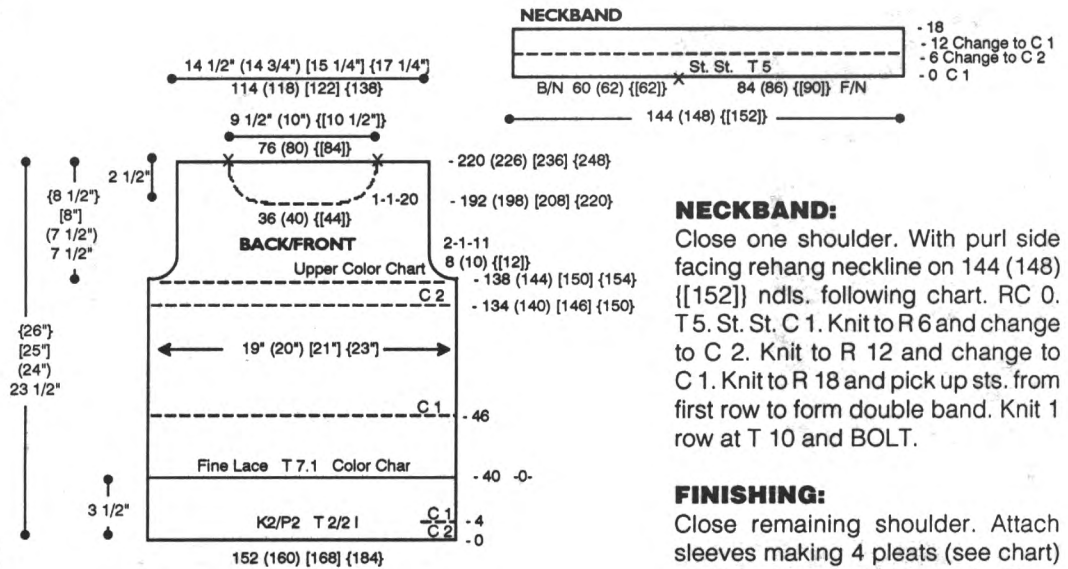
Make on Standard 24-Stitch Punch Card or Standard Electronic Machine with Ribber.

BACK:

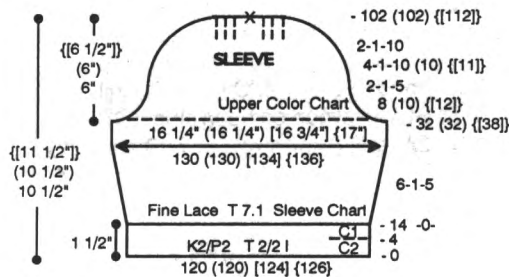
With C 2 CO 152 (160) [168] {184} sts. for K2/P2 Rib. After selvedge RC 0. T 2/2 l. Knit to R 4 and change to C 1. Knit to R 40 and transfer RB sts. to MB. RC 0. T 7.1. Knit in lace pattern following Color Chart to R 46. Change to C 1 and knit to R 134 (140) [146] {150}. Change to C 2 and knit to R 138 (144) [150] {154}. Change to C 1 and follow Upper Color Chart. Shape armhole. On each side BO 8 (10) [12] sts., then dec. EOR 1 St. 11x. At R 220 (226) [236] {248} mark center 76 (80) [84] sts. for neckline and remove neckline and shoulder sts. on separate WY.

FRONT:

Knit front same as back to R 192 (198) [208] {220}. Shape neckline. Knit center 36 (40) [44] sts. to 'A' position on Ravel Cord and all sts. to



the left. Note pattern row. *On neckline edge decr. every R 1 St. 20x. At R 220 (226) [236] {248} remove shoulder sts. on WY. Reset RC to R 192 (198) [208] {220}. Reset pattern to correct row and shape left side from *, reversing shaping.



SLEEVE CHART

# Rows	Color
4 (4) [4]	2
10 (10) [12]	1
4 (4) [4]	2
10 (10) [12]	1
4 (4) [4]	2

SLEEVE:

With C 2 CO 120 (120) [124] {126} sts. for K2/P2 Rib. After selvedge RC 0. T 2/2 l. Knit to R 4 and change to C 1. Knit to R 14 and transfer RB sts. to MB. RC 0. T 7.1 Knit in lace pattern following Sleeve Chart while incr. on each side every 6 Rs. 1 St. 5x. At R 32 (32) [38] change to C 1 and follow Upper Color Chart. Shape sleeve cap. On each side BO 8 (10) [12] sts., then dec. EOR 1 St. 5x, every 4 Rs. 1 St. 10 (10) [11] x and EOR 1 St. 10x. At R 102 (102) [112] mark center with a YM. Knit 1 row at T 10 and BOLT.

COLOR CHART

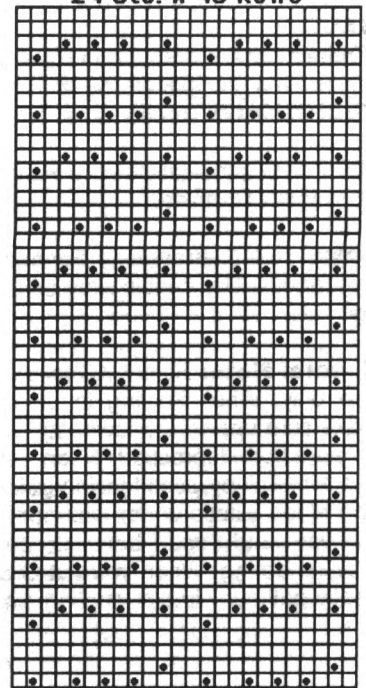
# Rows	Color
2	2
10	1
4	2
10	1
4	2
10	1
6	2

UPPER COLOR CHART

# Rows	Color
4	2
10	1

Repeat

*281 Fine Lace Pattern 24 Sts. x 48 Rows



KK Mag Disk: Track 18;
Pattern 901



COLOR OF SUMMER

YARN: Panache and Lumiyarn
SIZES:

Sm. (Med.) [Lge.] [X-Lge.]

AMOUNT:

- C 1: Panache - Pink
1 (1) [[1 1/2]] lbs.
- C 2: Lumiyarn - White Pearl
1 spool all sizes
- C 3: Knit-in Elastic - Pink
1 spool all sizes

KIT: Color of your Choice
 \$24.25 (\$24.25) [[32.25]]

TENSION:

Thread Lace: T 4.2
 St. St.: T 4.0

GAUGE:

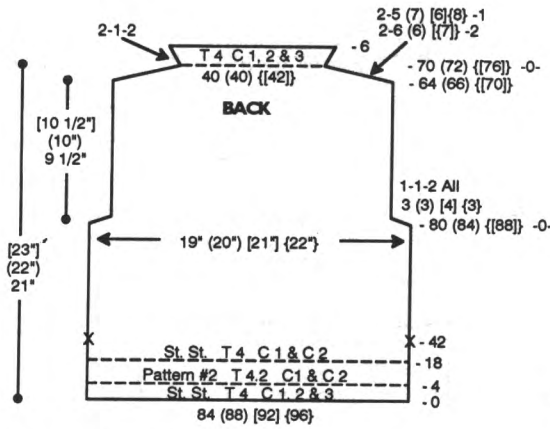
Thread Lace: 4.4 Sts., 7.11 Rs. = 1"
 St. St.: 4.4 Sts., 6.66 Rs. = 1"

TECHNIQUE: Thread Lace

Make on Compuknit/Bulky or Punch Card Bulky Machine.

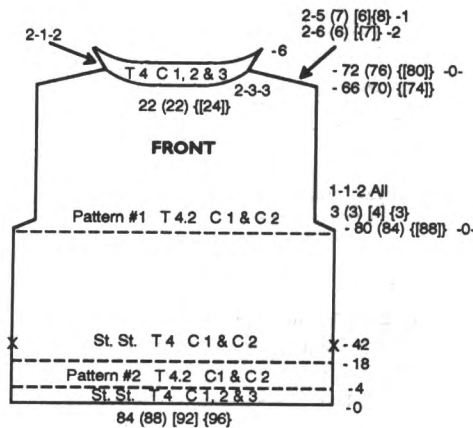
Note: Use 2 strands of Panache throughout. Garment is worn on the knit side.

Special Note: Select KC for pattern only. When knitting in St. St. make sure upper and lower 'L' buttons are both depressed. When knitting with C 3 by-pass tension guide and place elastic under wax opposite yarn and thread both into one take up spring. When you cut C 3, gently pull out without tangling with C 1.



BACK:

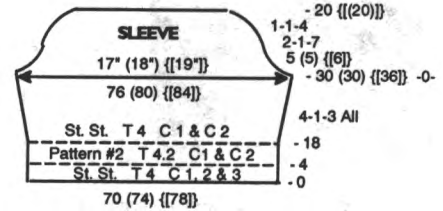
With C 1 and C 3 weaving CO 84 (88) [92] [96] sts. RC 0. T 4. St. St. Add C 2 and knit to R 4. Cut C 3 and knit 1 R to the left. Change to T 4.2 and knit 1 row to the right to set pattern #2. At R 17 release KC and depress L buttons again. Change to T 4. St. St. At R 42 place a YM on each side for seaming. Knit to R 80 (84) [[88]] and shape armhole. RC 0. On each side BO 3 (3) [4] [3] sts. then decr. every R 1 St. 2x. At R 64 (66) [[70]] SHR shoulders EOR 6 (6) [[7]] Sts. 2x and 5 (7) [6] [8] Sts. 1x. At R 70 (72) [[76]] remove shoulder sts. on WY and start neckband. RC 0. T 4. C 1, 2 & 3. Knit in St. St. while incr. on each side EOR 1 St. 2x. At R 6 knit 1 row at T 10 and BOLT.



FRONT:

Knit front same as back to R 79 (83) [[87]]. Knit 1 R to set pattern #1. RC 0. T 4.2. Shape armhole. On each side BO 3 (3) [4] [3] sts. then decr. every R 1 St. 2x. At R 66 (70) [[74]] shape neckline. Place center 22 (22) [[24]] sts. in HP and all sts. to the left. Note pattern row. *On neckline edge

SHR EOR 3 Sts. 3x. At the same time SHR shoulder EOR 6 (6) [[7]] Sts. 2x and 5 (7) [6] [8] Sts. 1x. At R 72 (76) [[80]] remove shoulder sts. on WY. Reset RC to R 66 (70) [[74]] and shape left side from *, reversing shapings. Place neckline sts. in WP. RC 0. T 4. C 1, 2 & 3. Knit in St. St. while incr. on each side EOR 1 St. 2x. At R 6 knit 1 row at T 10 and BOLT.



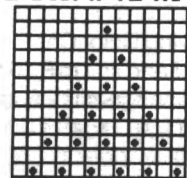
SLEEVE:

With C 1 and C 3 weaving CO 70 (74) [[78]] sts. RC 0. T 4. St. St. Add C 2 and knit to R 4. Cut C 3 and knit 1 R to the left. Change to T 4.2 and knit 1 row to the right to set pattern #2. At R 17 release KC and depress L buttons again. Change to T 4. Knit in St. St. while incr. on each side every 4 Rs. 1 St. 3x for all sizes. At R 30 (30) [[36]] shape sleeve cap. On each side BO 5 (5) [[6]] sts. then decr. EOR 1 St. 7x and every R 1 St. 4x. At R 20 [[(20)]] BO remaining sts.

FINISHING:

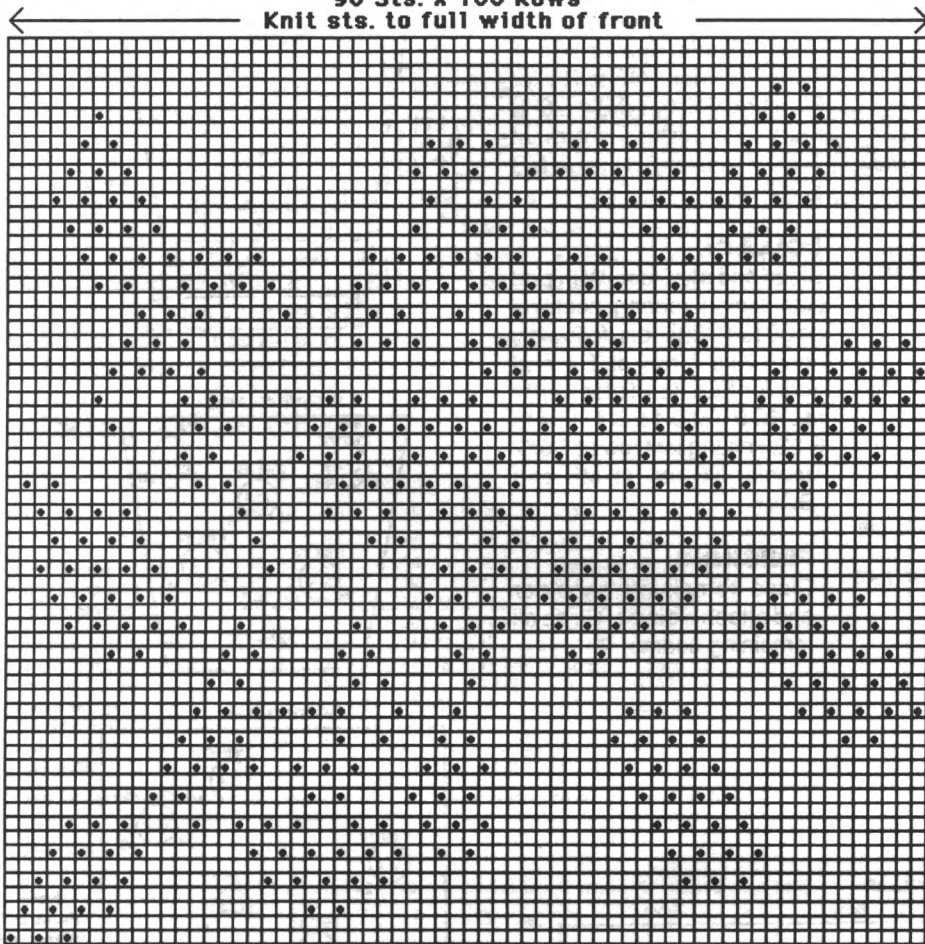
Close shoulder and neckband seams. Let neckband roll naturally. Attach sleeves. Close side seam starting at marker. Close all remaining seams. With 2 strands of C 1 SC around bottom and sides on back and front.

***282 Thread Lace Pattern #2
 12 Sts. x 12 Rows**



**KK Mag Disk: Track 19;
 Pattern 902**

***282 Thread Lace Pattern #1**
90 Sts. x 100 Rows
 Knit sts. to full width of front



↑
 Knit
 sts.
 to
 R 100

KK Mag Disk: Track 19; Pattern 901

283



FOREVER YOUNG

YARN: Mirage

SIZES:

Small (Medium) [Large]

AMOUNT: Same all sizes

C 1: Raspberry - 1 1/2 lbs.

C 2: Camel - 1/2 lb.

C 3: Wedgewood - 2 oz.

C 4: Jungle - 2 oz.

KIT: Color of your Choice
 \$28.50

TENSION:

Body: T 4

Rib: T 0/0.1 I

GAUGE:

Body: 4.5 Sts., 6.5 Rs. = 1"

Rib: 7 Rs. = 1"

TECHNIQUE: Fairisle and Single Motif.

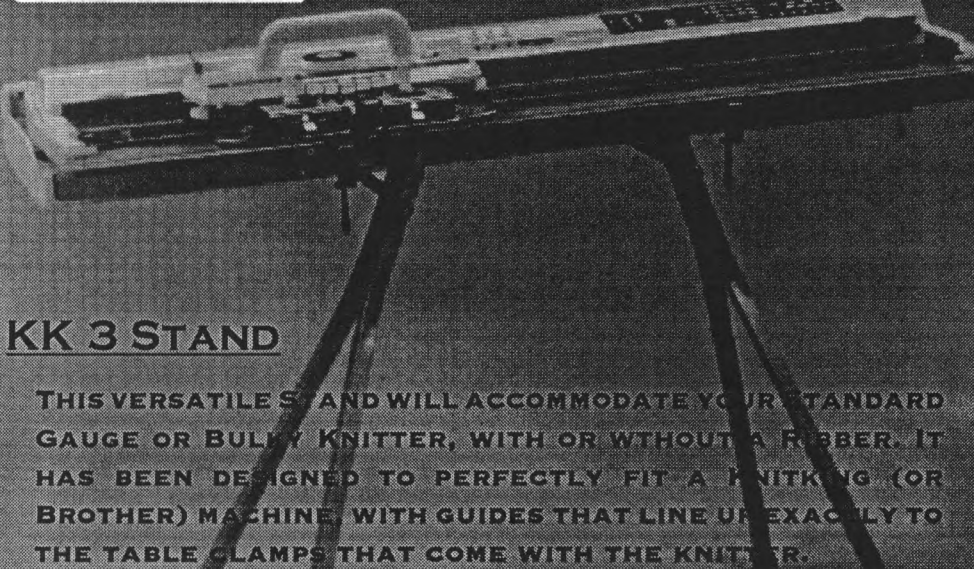
Make on Compuknit/Bulky or Punch Card Bulky with Ribber.

Pattern Note: Knit 2 Rs. of St. St. between single motif patterns on back and front and knit 4 Rs. of St. St. between single motif patterns on sleeves.

BACK:

With WY CO 96 (96) [106] sts. After several rows end with 1 row Ravel Cord to the left. RC 0. T 4. St. St. C 1. Knit to R 11 (17) [23] and knit 1 row to set pattern #1. With C 2 in 'A' feeder and C 1 in 'B' Feeder knit in fairisle to R 48 (54) [60]. Cut C 2 and put C 1 in 'A' Feeder. St. St. Knit to R 56 (62) [68] and start single motif pattern following Body Chart. At R 98 (100) [104] place a YM on each side for armhole. At R 156 (162) [168] mark center 32 (34) [36] sts. for neckline and remove neckline and shoulder sts. on separate WY.

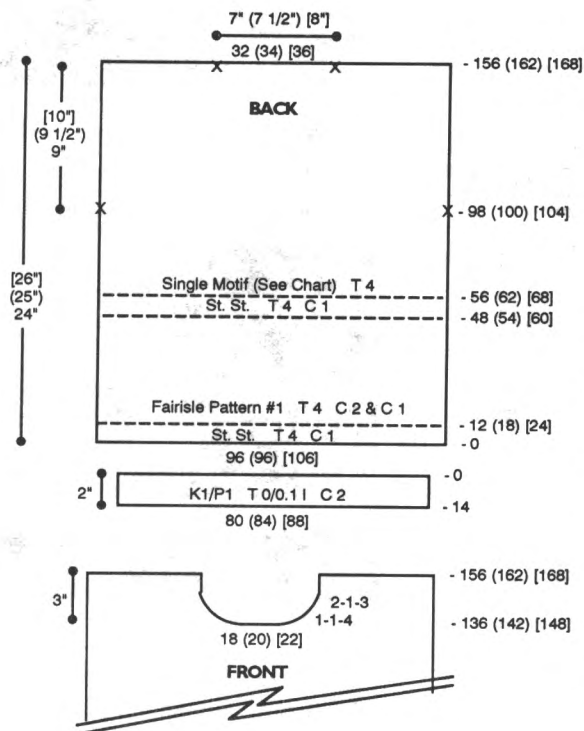
knitting



KK 3 STAND

THIS VERSATILE STAND WILL ACCOMMODATE YOUR STANDARD GAUGE OR BULKY KNITTER, WITH OR WITHOUT A RIBBER. IT HAS BEEN DESIGNED TO PERFECTLY FIT A KNITTING (OR BROTHER) MACHINE, WITH GUIDES THAT LINE UP EXACTLY TO THE TABLE CLAMPS THAT COME WITH THE KNITTER.

REGULARLY PRICED AT \$79.95, UNTIL JULY 31, 1994, THE SPECIAL 20% OFF SALE PRICE IS ONLY \$63.95



CUFF:
With purl side facing rehang lower edge of sleeve on 36 (38) [40] ndls. Knit 1 row at T 4 and transfer EOS to RB for K1/P1 rib. RC 0. T 0/0.1 I. C 1. Knit to R 14, knitting last row at T 8/6. Transfer RB sts. to MB and BOLT.

COLLAR:
Close one shoulder. With purl side facing rehang neckline on 80 (84) [88] ndls. following chart. Knit 1 row at T 4 and transfer EOS to RB for K1/P1 rib. RC 0. T 0/0.1 I. C 1. Knit to R 22, knitting last row at T 8/6. Transfer RB sts. to MB and BOLT.

FINISHING:
Close remaining shoulder and attach sleeves. Close all remaining seams.

FRONT:

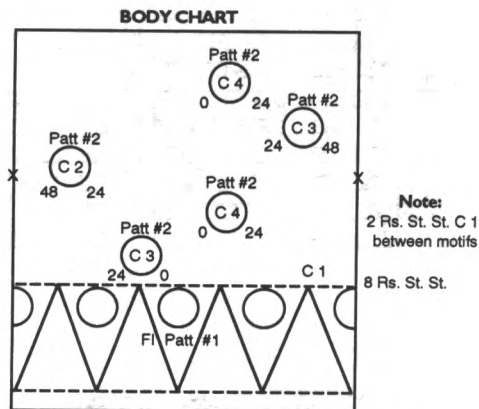
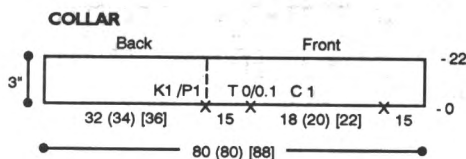
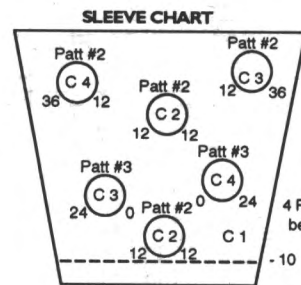
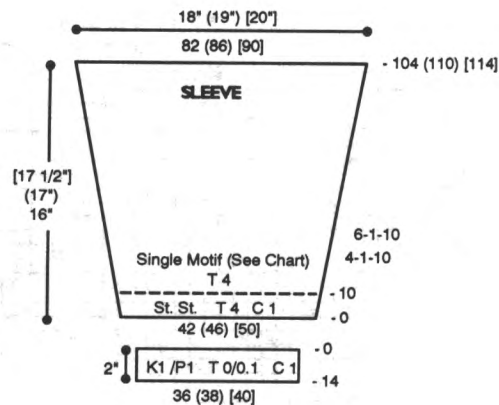
Knit front same as back to R 136 (142) [148] and shape neckline. Place center 18 (20) [22] sts. in HP and all sts. to the left. *On neckline edge decr. every R 1 St. 4x and EOR 1 St. 3x. At R 156 (162) [168] remove shoulder sts. on WY. Reset RC to R 136 (142) [148] and shape left side from *, reversing shapings.

WAISTBAND:

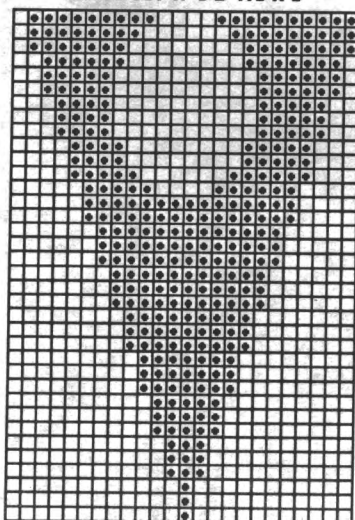
With purl side facing rehang lower edge of back/front on 80 (84) [88] ndls. Knit 1 row at T 4 and transfer EOS to RB for K1/P1 rib. RC 0. T 0/0.1 I. C 2. Knit to R 14, knitting last row at T 8/6. Transfer RB sts. to MB and BOLT.

SLEEVE:

With WY CO 42 (46) [50] sts. After several rows end with 1 row Ravel Cord to the right. RC 0. T 4. St. St. C 1. Knit in St. St. while incr. on each side every 4 Rs. 1 St. 10x and every 6 Rs. 1 St. 10x. AT THE SAMETIME at R 10 start single motif pattern following Sleeve Chart. At R 104 (110) [114] remove sts. on WY.

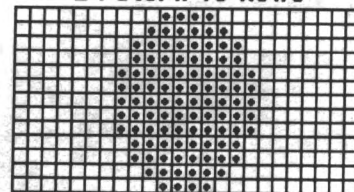


***283 Single Motif Pattern #1
24 Sts. x 36 Rows**



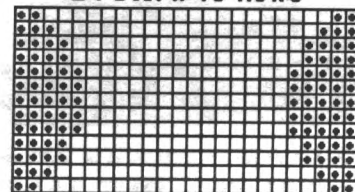
**KK Mag Disk: Track 20;
Pattern 901**

***283 Single Motif Pattern #2
24 Sts. x 13 Rows**



**KK Mag Disk: Track 20;
Pattern 902**

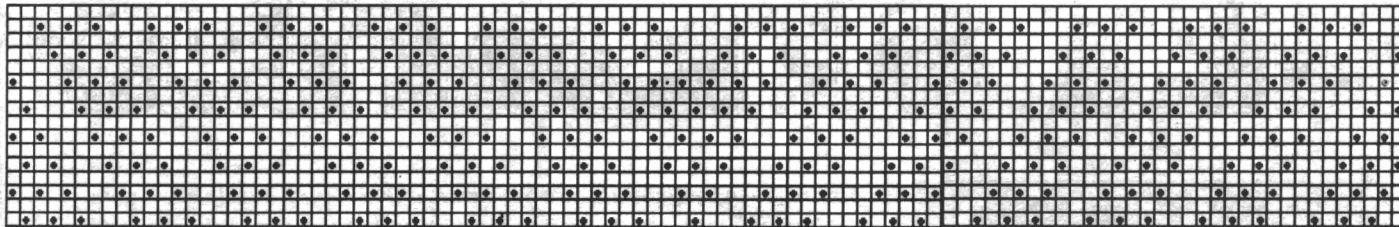
***283 Single Motif Pattern #3
24 Sts. x 13 Rows**



**KK Mag Disk: Track 20;
Pattern 903**

Correction — Stitch Pattern #243 — Volume 28, Issue 1 — Page 14

#243 Thread Lace Pattern #1 — 100 Stitches x 16 Rows



Stitch 67, Rows 1 - 16 were inadvertently left out of printout. Note correction. Knitking Magazine Pattern Disk is correct.

Knitkng Sizing Chart

MENS

Size	34	36	38	40	42	44
Chest	34	36	38	40	42	44
Waist	30	32	34	36	38	40
Hip	35	37	39	41	43	45
Neck	15 1/2	16	16 1/2	17	17 1/2	17 1/2
Back Waist Length	18	18 1/2	19	19 1/2	20	21
Shoulder to Shoulder	15 1/2	16	16 1/2	17	17 1/2	18
Upper Arm Circumference	9 5/8	10 3/8	11 1/8	11 7/8	12 5/8	13 3/8
Armhole Depth	8	8 1/2	9	9 1/2	10	10 1/2
Sleeve Length	19	19 1/2	19 1/2	20	20	20 1/2
Under Arm						
Wrist	6 1/2	7	7	7	7 1/2	8
Hip Depth	8 3/8	8 1/2	8 5/8	8 3/4	8 3/4	9

These are actual body sizes. Proper ease allowance is necessary as determined by the style.

CHILDREN

Size	12 mo	2 yr	4	6	8	10	12	14
Chest	19	21	23	25	27	28	30	32
Waist	19	20	21	22	23	24	25	26 1/2
Hip	20	22	24	26	28	30	32	34
Neck	9 1/4	10	10 3/4	11 1/2	12 1/8	12 5/8	13 1/8	13 5/8
Back Waist Length	7	8 1/2	9 1/2	10 1/2	12	12 3/4	13 1/2	14 1/4
Shoulder to Shoulder	7 1/2	8 1/2	9 1/2	10	11	11 1/2	12	12 1/4
Upper Arm Circumference	7	7 1/2	8	8 1/2	9	9 1/2	10	10 1/2
Armhole Depth	3 1/2	4	4 1/2	5 1/4	6	6 1/2	6 3/4	7
Sleeve Length	6	8 1/2	10	11 1/2	13	14 1/2	15 1/2	16 1/2
Under Arm								
Wrist	5	5 1/4	5 1/2	5 1/2	5 3/4	5 3/4	6	6
Hip Depth	5	5 1/4	5 1/2	5 1/2	5 3/4	6 1/4	6 3/4	7

These are actual body sizes. Proper ease allowance is necessary as determined by the style.

WOMENS

Size	6	8	10	12	14	16	18	20	22
Bust	30 1/2	31 1/2	32 1/2	34	36	38	40	42	44
Waist	22	23	24	25 1/2	27	29	31	34	36
Hip	32 1/2	33 1/2	34 1/2	36	38	40	42	44	46
Neck	13 1/8	13 3/8	13 5/8	14	14 3/8	14 3/4	15 1/4	15 3/4	16 1/4
Back Waist Length	15 1/2	15 3/4	16	16 1/4	16 1/2	16 3/4	17	17 1/4	17 1/2
Shoulder to Shoulder	13 1/2	13 1/2	14	14 1/2	15	15 1/2	16	16 1/2	17
Upper Arm Circumference	9 3/4	9 3/4	10 1/4	10 1/2	11	11 1/2	12	13	13 1/2
Armhole Depth	7	7	7 1/2	7 1/2	7 1/2	8	8	8 1/4	8 1/4
Sleeve Length	16 1/2	16 1/2	17 1/2	17 1/2	17 1/2	18	18	18 1/2	18 1/2
Under Arm									
Wrist	6	6	6 1/4	6 1/4	6 1/2	6 1/2	6 1/2	7	7
Hip Depth	7 3/4	8	8 1/4	8 1/2	8 3/4	9	9 1/4	9 1/2	9 3/4

These are actual body sizes. Proper ease allowance is necessary as determined by the style.

IS YOUR ADDRESS CHANGING?

If so, you can insure the proper handling of this change by following the three suggestions below:

- 1) When advising us of your new address, please also indicate your old address.
- 2) Please provide us with six weeks notice to affect this change.
- 3) PLEASE PRINT ALL INFORMATION LEGIBLY.



The finest quality KNITKING yarns are used to create the beautiful fashions found in KNITKING Magazine. Photographic representations may not accurately reflect the true color of the yarn due to lighting and printing processes. Please refer to your Knitking Yarn Color Book for actual colors. Kit prices are located with the instructions for each garment. Each yarn comes in a wide selection of colors. The different types of yarns have been selected to allow for blending, mixing, and contrasting—both color and texture.

Yarn Color Book is available through KNITKING or an authorized Knitking dealer. Content and approximate yardage of each yarn is shown below.

	Yds./Pound
Alpine	100% Wool 1600
Angora	100% Rabbit Hair (10 gr. ball) .. 33 yds/ball
Acrylite	2/12 Acrylic 2400
Caprinae	78% Mohair/13% Wool/9% Nylon 980
Glace Plus	100% Slinky Bright Rayon 1650
Lumiyarn	Thin Metallic Yarn (50 gr. cone) .. 1200/cone
Mini Pebble	100% Rayon Slub Filler Yarn 3350
Mirage	100% 4-Ply Worsted Acrylic 1000
Night Music	Polyester Thread w/Metallic Twist 115/ball
Panache	100% 3-Ply Acrylic 2400
Pearlyte	100% Rayon Boucle 2200
Pebble	Boucle Cotton/Acrylic/Rayon 700
Primo	100% Mercerized Cotton 2500
Rayon Nubs	100% Rayon Nub Filler Yarn 5500
Roma	80% Acrilan/20% Antron 2600
Rubane	(50 gr ball) 100% Polyamid 1/8" ribbon 82/ball
Softon	100% Soft Cotton 2000
Sorbet	54% Cotton/46% Rayon 2200
Splendor	3-Ply High Bulk Acrylic 2200
Starlite	Acrylic w/Metallic Thread 2400
Venetia	70% Wool/30% Rayon 2400
Woolana	100% 2/12 Merino Wool 3000
Knit-in Elastic	79% Nylon/21% Elastic ... 430/spool

Yarn Color Book: \$25.00 + Shipping and Handling

Order your Knitking kits in the color of your choice from Knitking color cards. Kit and yarn prices subject to change without notice.

GET STEAMED



The new, top-of-the-line VaporSimac MX 170 will surely earn your "es-steam" with the powerful blasts that it produces. With a micro-pump located in the stand, the MX 170's Dual Control switch even allows you to choose between a "blast" or continuous steam output. Either way, the curl in your knitted projects will relax—so, too will you, due to the light weight effortlessness of this marvel! With a non-stick, non-stain black aluminum sole plate, the MX 170 need not be limited to knitwear; all of your fabric blocking and steaming needs can be met with professional results.

Reg. \$239.95

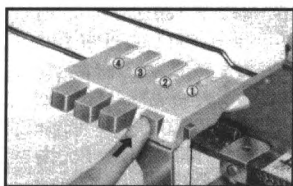
20% OFF fill July 31, 1994

**Now Only
\$191.95**



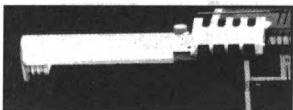
Call your local Knitking Dealer, or contact Knitking at 1-800-962-6446

Forget to change Colors? Try our Automatic Color Changers!



Have you ever forgotten to change yarn colors while knitting a garment that calls for multiple color changes? Or, gotten frustrated having to stop and re-thread your new colors through the yarn tension process? If the answer is "Yes," then our Automatic 4-Color Changers are for you!

Add the **Knitter 4-Color Changer (KCC)*** to your knitting bed by itself to knit up to four colors in a design without having to stop and re-thread on every change. You won't forget to make your changes either, as every time your knitting carriage returns to the left side of the bed, it slides into the color changer, prompting you to simply push the appropriate yarn's selection button to automatically position it in the knitting carriage for easy knitting of the new color.



Add the **Ribber 4-Color Changer (RCC)*** to your knitter and ribber combination to knit beautiful, multi-color Jacquard designs with up to four colors in one row. It will also eliminate the "floats" on the back of fair isle knitting. And, yes, it uses the same push-button technology detailed above.

20% OFF fill July 31, 1994

KCC fits all Standard Gauge models only

Reg. Price \$144.95—

20% OFF SALE Price \$115.95

RCC fits all Standard and Bulky Gauge models Reg.

Price \$154.95—

20% OFF SALE Price \$123.95



Order from your local Knitking Dealer or, if there is no Dealer in your area, contact Knitking at: 1-800-962-6446

Now You Can Knit Your Garments in the Wink of an Eye and the Tap of a Foot!



With The Incredible Knitking Power Drive Unit!

It attaches to the carriage of your Knitking knitting machine and, with the push of a button or tap of the foot pedal, automatically moves the carriage back and forth across the knitting bed!

knitking

Where Savings And Value
Are Always In Fashion

1128 Crenshaw Blvd., Los Angeles, CA 90019 213-938-2077

275

274



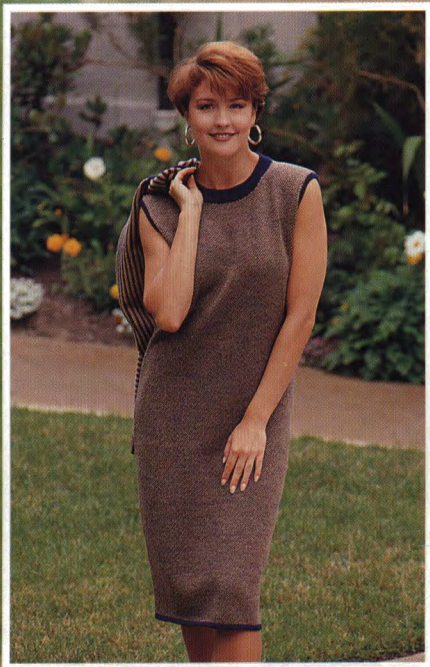
276



277



278



279



280



281



282



283



Make Machine Knitting Even Easier ... Without Worrying About Shaping

Shaping your garments while knitting them can be a somewhat complicated and time-consuming task. Now, there is an easier way.

With the new Knitking 4/3-Thread King Lock 900D Serger, all you do is knit rectangular pieces in shapes approximating the different pieces of the garment you are making. Then, let the King Lock 900D cut and "overlock stitch" the pieces to the exact measurements for a perfect fit. Quickly. Easily. Using three threads or even four (for added durability).

And, with the special, built-in Differential Feed feature, the King Lock 900D assures a smooth, neat, unruffled edge for *any* fabric — ideal for your knitwear creations!



Low, Low SALES

\$799.95

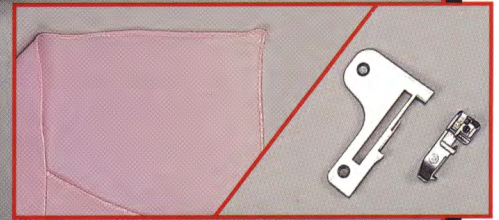
LIMITED TIME ONLY



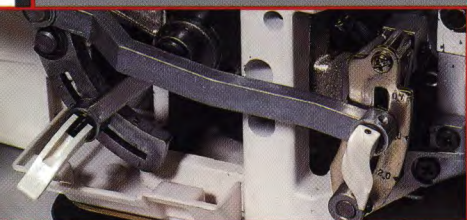
Flatlocked Seams allow mixing and matching of different fabric textures and colors using a decorative topstitch.



Create your own Lace fabric trim and use it to put a unique finishing edge on your knitted garments.



Narrow/Rolled Hem accessory is included and easily attaches for beautiful fine and narrow rolled hem edge finishing.



One-Touch sewing pitch adjustment and One-Touch Differential Feed adjustment are both conveniently located.

knitking

**KING LOCK 900D
DIFFERENTIAL FEED**



Two-Position Presser Foot allows presser foot height adjustment of up to 6 mm to accommodate thicker knitted fabrics.

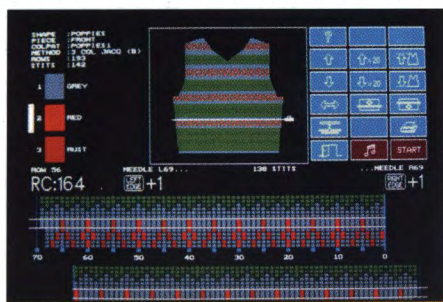
1128 Crenshaw Boulevard
Los Angeles, CA 90019

For the Knitking Dealer near you
Call Toll-Free: 1-800-962-6446

Become A Great Fashion Designer With A Little Help From A Square.

DesignaKnit 5...the most popular computer-aided knitwear design program in the USA.

With DesignaKnit 5, machine knitters at every skill level can create beautiful garments with no previous design experience. DesignaKnit takes you through the entire design process one step at a time. You can work with a vast array of built in shapes and sizes and then modify them to fit your exact needs. With the Professional Version, you can even create original shapes. By designing on the screen, you can develop your own stitch patterns from the most popular stitches and experiment with thousands of color combinations. You can even



**PRICES START
AS LOW AS \$259.95**

import original or scanned graphics right into your design. When ready, you can print out scaled drawings, stitch patterns, knitting instructions, punchcard templates and more. With the Knit-From-Screen feature, you're even able to view your progress as you knit and monitor color and shaping changes. DesignaKnit also comes with Knitking's unmatched customer support, including a technical assistance hot-line, a tutorial and detailed manual. So take your designs to a new level, and order the square called DesignaKnit today.



LIMITED TIME OFFER: CALL 800-962-6446 TODAY AND GET A FREE DEMO DISK

DesignaKnit works with virtually all electronic and punchcard machines...Knitking, Singer, Brother, Studio, Passap (Cable links optional).