

# Sensational Knitted Pants

In a Variety of Styles

# Day to Evening Knitware

A Perfect Fit  
for Your Lifestyle

# Wonderful Winter Warmth

Great Textures  
and Designs

# knitking

*magazine*

Volume 27, Issue 4

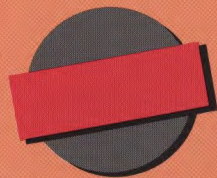


224



225

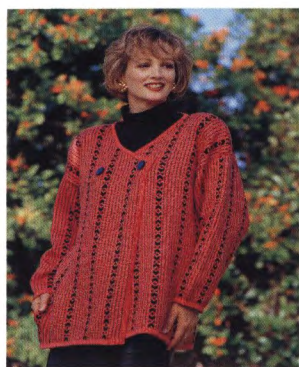




## TABLE OF CONTENTS

### Knitking Magazine – Volume 27 No. 4

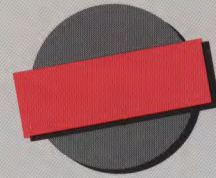
•••	General Instructions .....	13
223	Bright Start .....	15
224	Profoundly Masculine .....	16
225	Lightweight Luxury .....	18
226	Design of the Times .....	19
227	Perfectly Classic .....	21
228	Black Magic .....	23
229	G-O All Out .....	25
230	Twist 'N Skip .....	26
231	Tee Off .....	28
232	Double Take – Mens .....	30
233	Double Take – Womens .....	31
234	Down to Earth .....	32
235	A Fringe Benefit .....	34
236	Check It Out .....	36
237	Tres Chic .....	38
238	Less Is More .....	40
239	Stardust .....	41
240	All Wrapped Up .....	42
241	Winter Warmth .....	45
242	Pastel Puzzler .....	46



Publisher: KNITKING CORPORATION, 1128 Crenshaw Blvd.,  
Los Angeles, CA 90019. Telephone: (213) 938-2077. Published quarterly.  
Subscriptions: USA-\$24.00 annually; single copies \$7.95. \$29.00-all other  
countries. The entire contents of KNITKING MAGAZINE are copyrighted and  
must not be reproduced in any shape or form without the  
express permission, in writing, of the publisher.

© COPYRIGHT 1994 KNITKING CORPORATION

Photography by: LARRY BARTHOLOMEW



## EDITORIAL

Dear Readers,

Hard to believe, but we've put another year behind us! The holidays are fading fast to a dim memory and fortunately the holiday cookies and candies are out of sight!

Festive holiday clothing gives way to winter comfort and warmth. We've put together some exciting colors and textures in this issue like the beautiful multi-color combinations (Patterns 224 and 233), textured creations for the cold winter months (Patterns 241) and just plain feel-good techniques (Patterns 239 and 236). The yarn for each garment can be ordered in a kit packaged to match the color photos, or in the color of your choice.

To make life even easier, we've put all of our original stitch designs from this issue and each of our last 20 issues on disk—both Floppy Disk format and DesignaKnit format. The DesignaKnit format works with our DesignaKnit software, on your IBM compatible computer, and is great for punch card or electronic machines.

We receive many requests for information on how DesignaKnit works and how it can be used with Knitking Magazine. It can be used in any number of ways. First, DesignaKnit can assist you in taking the guess work out of knitting for color selection and garment shapes. DesignaKnit allows you to pre-test color combinations before purchasing yarn. There are thousands of colors represented in DesignaKnit and if you prefer, the computer will even select compatible color combinations for you and display them on your computer screen.

In addition to color pattern designs, DesignaKnit makes it easy to create a perfect fitting garment shape, utilize knit-from-screen instructions, load color designs into the knitting machine and much more. If you haven't worked with DesignaKnit, take advantage of our limited-time offer of a free demonstration disk. You'll see in minutes how versatile, yet easy to use DesignaKnit can be.

When it comes to computer-aided software for machine knitting enthusiasts Knitking has the first and last word — DesignaKnit!

Don't take my word for it—check it out for yourself! You'll be glad you did.

Happy Knitting

*Suzanne Str*

226



227



228



229





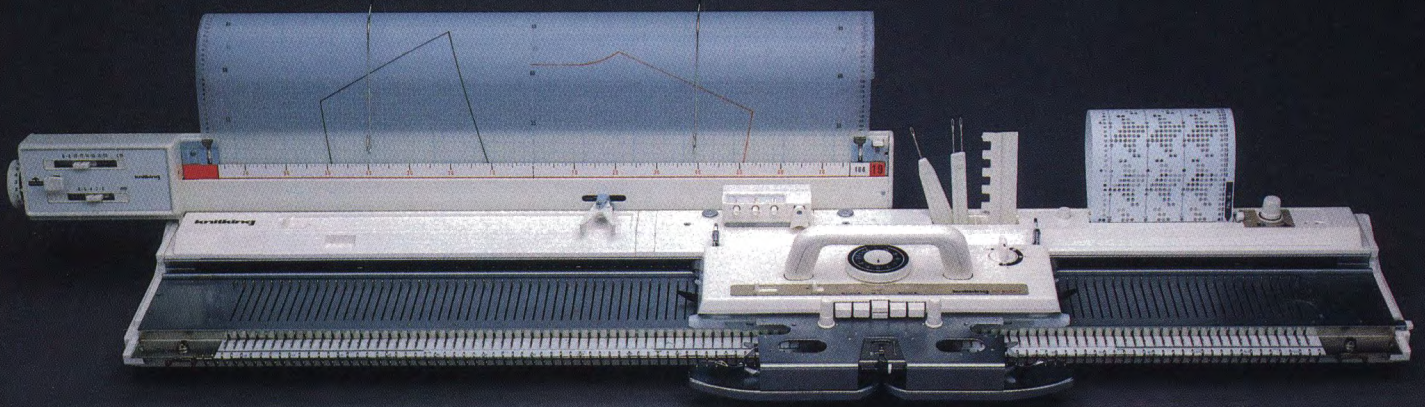
230



231



# Punch Card Programmed Bulky



The **Knitking PC Bulky** is easily the most versatile of all Bulky knitting machines. It offers **Knitking's** exclusive **Automatic 24 Stitch Repeat Punch Card Pattern Selection** and **Single Motif Isolation** capabilities. It knits a range of yarns from sport weight to jumbo, including Angora, Mohair, Boucle, Ribbon, Cotton, Acrylic, etc.; with 114 stainless steel needles you can knit up to 38" wide, at 3 stitches per inch. The Tension Control Dial has 30 tension positions for knitting different weights of yarn.

The **PC Bulky** comes complete with **Twin Overhead Yarn Feeders**, **15 Pre-Punched Cards** (you can also make your own pattern stitch cards), **Row Counter**, complete **Tool Kit**, **Stitch Measure Scales for Knitleader**, **Carrying Case**, a detailed, well illustrated, easy-to-understand **Instruction Manual** and a one year warranty on parts and service.

The **Knitleader** is a charting accessory that fits on the back of the knitter. You draw, or trace a garment, full-size, on the furnished Mylar sheet. The chart rotates as you knit, and shows you, on a row-by-row basis, exactly where to increase and decrease stitches.

## knitking

Where Savings And Value  
Are Always In Fashion

1128 Crenshaw Blvd., Los Angeles, CA 90019 213-938-2077

**Announcing the finest selection of quality yarns—  
with simply the best prices and support  
available anywhere...**



**The First Name in Machine Knitting**



**Unsurpassed Selection and Quality**

With over 25 different yarns and over 250 different colors in the Knitking line, you have a variety to choose from for any and all needs. The yarns include a wide selection of natural fibers and blends, along with acrylics and acrylic blends in varying weights. There are fine filler yarns for blending, elastic for knitting in and a wide array of colors and textures in all types.



**Unsurpassed Support**



No yarn company in the world can match Knitking's support for its customers. For 25 years, Knitking has published the internationally-acclaimed **Knitking Magazine**. Each quarterly full-color issue contains at least 20 original fashions *made exclusively with Knitking Yarns*, complete with clear instructions for machine knitting.

**And At Prices Well Below The Competition**

**Order the exciting Knitking Yarn Book today for only \$25.00 from your local Knitking Dealer, or if you do not have one in your area, from:**



1128 Crenshaw Blvd., Los Angeles, CA 90019 • Phone (213) 938-2077

# GENERAL INSTRUCTIONS

## THE SAMPLE SWATCH

It is imperative that you knit a sample swatch for every garment. Although you may be using the identical yarn and machine model as the pattern suggests, many variables such as dye lot difference, speed of knitting and just machine to machine differences can all cause a variance in the gauge achieved. Knit Magazine publishes the tension and gauge for each garment shown. We strongly urge you to knit a swatch representing three tensions - the recommended tension, and .1 or .2 higher and lower. These different tensions can be knitted in one piece with waste yarn separating the sections. This will eliminate unnecessary rethreading while allowing you to obtain the gauge published in the magazine.

To make a sample swatch on standard gauge machines cast on 60 stitches with waste yarn. Knit approximately 6 rows. \*Mark the tension number for your swatch by making holes. For example 4 eyelet holes for Tension 4, 6 eyelet holes for Tension 6. Knit 6 more rows.

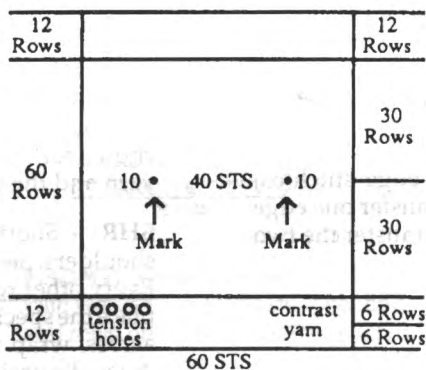
Change to garment yarn and reset row counter to 0. Knit 30 rows (in Pattern stitch). With contrast yarn, mark the 10th stitch FROM EACH SIDE by hand. Knit 30 Rows. Change to waste yarn and knit 6 rows. Change tension up or down for second section and repeat from \*. Make third section with another tension. Remove on 12

Rows of waste yarn. Remove the sts. from the machine by pushing the Carriage across without yarn.

Pull and stretch the swatch both lengthwise and diagonally from corner to corner. Gently block the swatch. Treat the swatch as you would the finished garment before measuring the gauge. For example, if you plan to wash this garment and dry it in the dryer, you should do so, measuring before and after to see the difference.

Measure between the stitches marked and the beginning and ending rows for the inches/ cms. knitted. Divide the total number of stitches/ rows by the inches measured to calculate sts. and rows per inch.

For Bulky knitters, make swatch with 30 Sts. and 30 Rows. If so desired, or for large pattern repeats, we suggest a wider and longer swatch to provide more accurate gauges.



## HEMS

Two methods of knitting hems are described below. Variations on these instructions will allow you to knit plain hems, picot edge hems and more.

### Method One

With waste yarn cast on the required number of stitches and knit about 10-12 rows ending with the carriage on the left. Knit 1 Row to the right with Ravel Cord. Change to garment yarn and knit 1 Row to the left at garment body tension. (i.e. Skirt at Tension 4, 1st row at T 4). Turn tension down approximately 2 full tension numbers lower (tighter) and knit to mid point. (i.e. Row 14 of a 28-row hem). Change tension to 1 full point lower than garment body and knit remainder of hem rows. Pick up the stitches from the first row of garment yarn - shown between the stitches of Ravel Cord. Hem is now completed. Proceed with pattern as per chart and instructions.

Remove waste yarn and Ravel Cord when you have completed section.

### Method Two

Bring required number of needles to "B" (working) position. Attach cast-on comb. Beginning with the 2nd needle on the LEFT, bring every other needle to "D" or "E" position. Push in both Part buttons. Knit 1 Row to the left. Release the part buttons and drop the cast-on comb. (DO NOT REMOVE cast on comb from work). Knit required number of rows for hem. Attach weights to the back of work close to the cast-on comb (about 1/4" above the comb). Beginning with the 1st needle on the LEFT, bring every other needle to "D" position. Carefully LIFT the cast-on comb and hang loops onto the needles in "D" position. Turn the comb back away from you and make sure the needles are through the loops. Pull the needles out to "E" position and remove the cast-on comb.

## BUTTONHOLES

The following methods of buttonholes are the general manner in which small and large buttonholes are created.

**Small Buttonholes in Ribbing**  
Make small eyelet style buttonholes by following chart below.



**Large Buttonholes in FNR**  
Vertical buttonholes are made by knitting each side separately (partial or short-row knitting). Knit the right side first, end with yarn on left. Without breaking yarn, knit left side. The strand of yarn inside the buttonhole can be picked up every other row when knitting the left side, but this is not necessary for a small buttonhole.

## SHORT ROWS

### Method One

With carriage on opposite side start placing appropriate number of ndls in HP. Knit across and wrap the inside needle. Again, place appropriate number of ndls in HP on opposite side from carriage, knit across and repeat wrapping. The wrapping will eliminate any holes in the knitting. Release HOLD button and continue knitting.

### Method Two - Automatic Wrap

Example follows for shoulder short rows. This method can be used for other Short Rowing as well. For example if pattern says to Short Row at shoulder every other row 7 sts, 1 x and 6 sts. 1 x . . . With carriage on opposite side put 6 sts in HP, knit 1 row across and put one additional needle in HP. Opposite carriage place 6 ndls in HP. Knit 1 row across and bring one extra needle to HP. Repeat until shortrowing is completed.

# GENERAL INSTRUCTIONS

**AT THE SAME TIME** - Two functions are to be performed at the same time, such as shaping the neck and shoulder. Be sure to read both instructions before proceeding.

**BO** - Bind Off. To take off more than 1 St. at a time. When two or more stitches are to be bound off (or cast on) the carriage and yarn must be on the same side as the bind off. If the instruction is, "At R 100 BO 6 Sts on each side.", on the carriage side BO six stitches, knit one row and then bind off six stitches on the other side. See DECR and FF DECR.

**BOLT** - Slip Stitch Bind Off with a Latch Tool. Knit one row to the left at a tension at least five numbers higher (looser) than the garment tension. Bring all needles to holding position ("E") and then, pick up the first stitch on a latch tool allowing it to slip behind the latch, then pick up the next stitch and pull it through the stitch already on the latch hook, thus creating a slip stitch. If you cannot set the tension at least five full tension numbers higher, knit a row loosely manually.

**CO** - Cast on stitches for knitting. (**CHECK INSTRUCTION MANUALS TO MAKE SURE DIFFERENT METHODS ARE SHOWN**) In our instructions, CO is used either for a finished edge at the beginning of the garment, or to add edge stitch(es). If two or more stitches are to be cast on the carriage and yarn must be on the same side as the cast on. If the instruction is, "At R 100 CO 6 Sts on each side.", on the carriage side cast on six stitches, knit one row and then cast on six stitches on the other side.

**DEC**R - Use the transfer tool to move the edge stitch(es) inward to the next needle. Usually used to transfer one edge stitch to the next needle, but may be used to transfer the two edge stitches to the next two needles.

**EON** - Every other needle

**EOR** - Every other row

**EOS** - Every other stitch

**FF DECR** - Used to make an even edge for seaming and decorative seams for raglans. If one stitch is to be decreased, use a two-prong transfer tool to move the two edge stitches inward one needle. If two stitches are to be decreased, use a three-prong transfer tool to move the three edge stitches in two needles. If three stitches are to be decreased, use two two-prong transfer tools and move the edge stitches in four needles. See DECR, BO and SHAPING.

**FF INCR** - To increase one stitch move the two edge stitches outward one needle, then fill the empty needle by picking up a bar from the row below and hanging it on the empty needle.

**FNR** - Full Needle Rib

**G.C.** - Garter Carriage

**HP** - Holding position or "E" position.

**INCR** - Increase. Usually used for "full-fashion" shaping, see FF Incr., or in conjunction with short row shaping. A simple incr can be made by pulling additional needle on side of carriage out to "E" position and knit across.

**MB** - Main Bed

**MC** - Main Color

**Ndls** - Needles

**NWP** - Non-working position or position "A"

**R(s)** - Row(s)

**RB** - Ribber Bed

**RC** - Row Counter.

**RC 0** - Set RC to zero.

**SET PATTERN** - Follow the step-by-step instructions in your manual for setting the pattern and carriage controls for the pattern to be knit, e.g., Fairisle, tuck, single motif, etc.

**SHAPING:** The method used for shaping is a matter of personal preference. In our definitions we have described the methods commonly in use at Knitking. Which method is chosen for a particular pattern depends upon the garment, the yarn and the personal preference of the designer.

**SHR** - Short Row or Partial Knitting. Used for shaping shoulders, necklines, darts, gores, etc. Set carriage on H(old). **Every other row SHRs:** On the opposite side of the carriage, place the specified number of stitches in holding position, knit across, wrap the inner needle or use an "automatic wrap". After all specified stitches have been placed in HP change the carriage setting to N (knit) to return the needles to WP. **Every row SHRs:** On the side being shaped, place one stitch in HP every row. It is recommended you refer to your manual or an instruction book for detailed instructions about how to short row.

**St(s)** - Stitch(es)

**St. St.** - Stockinette stitch.

**T** - Tension.

**WP** - Working Position or "B" position.

**WY** - Waste yarn.

**YM** - Yarn marker. To place a yarn marker, use a short piece of contrasting yarn and loop it over the needle specified or the end needle of the row specified.

---

## SEAMING GARMENTS

Any number of popular methods are suggested. We encourage you to experiment with any and all. If a garment in Knitking Magazine requires special seaming information it will be provided in the individual pattern instruction. Otherwise, methods include: linking on the knitting machine, Knitking's Lectrolink, the electric linker, crochet slip stitch, tapestry needles with back stitch sewing by hand. Bar to bar weaving for seamless appearance and seaming on a sewing machine.



## BRIGHT START

**YARN:** Softon and Primo  
**SIZES:**

Sm./Med. (Lge./X-Lge.)

**AMOUNT:**

C 1: Softon - Sunset 1 lb. all

C 2: Primo - Black 1 lb. all

**KIT:** Color of your Choice

\$40.00 all sizes

**TENSION:**

Fairisle: T 7

St..St.: T 6.1

**GAUGE:**

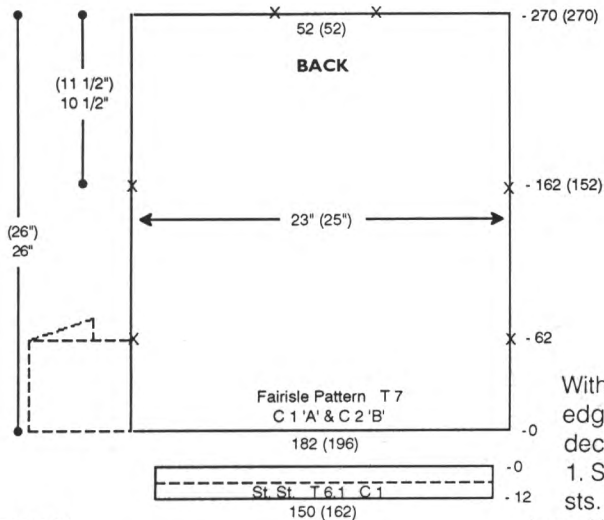
Fairisle: 7.8 Sts., 10.45 Rs. = 1"

**NOTIONS:**

2 - 1-1/4" Black Buttons.

**TECHNIQUE:** Fairisle

Make on Standard 24-Stitch Punch Card or Standard Electronic Machine.



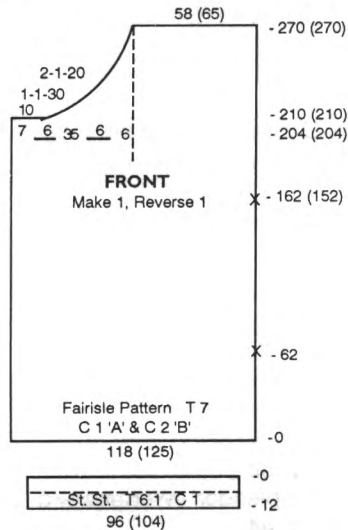
**BACK:**

With WY CO 182 (196) sts. After several rows end with 1 row Ravel Cord to the right. RC 0. T 7. With C 1 in 'A' Feeder and C 2 in 'B' Feeder, knit in fairisle. At R 62 place a YM on each

side for pocket marker. Knit to R 162 (152) and place a YM on each side for armhole. At R 270 (270) mark center 52 (52) sts. for neckline and remove shoulder and neckline sts. on separate WY.

**BACK HEM:**

With purl side facing, rehang lower edge of back on 150 (162) ndls. decr. evenly across. RC 0. T 6.1 C 1. St. St. Knit to R 12 and pick up sts. from first row to form double hem. Knit 1 row at T 10 and BOLT.



**FRONT:** Make 1, Reverse 1.

With WY CO 118 (125) sts. After several rows end with 1 row Ravel Cord to the right. RC 0. T 7. With C 1 in 'A' Feeder and C 2 in 'B' Feeder, knit in fairisle. At R 62 place a YM on right side for pocket marker. Knit to R 162 (152) and place a YM on right side for armhole. At R 204 (204) make buttonholes over 6 sts. with WY following chart for placement. Knit to R 210 (210) and shape neckline. On left side BO 10 sts., then decr. every R 1 St. 30x and EOR 1 St. 20x. At R 270 (270) remove shoulder sts. on WY.

**FRONT HEM:**

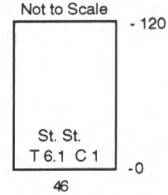
With purl side facing, rehang lower edge of front on 96 (104) ndls. decr. evenly across. RC 0. T 6.1 C 1. St. St. Knit to R 12 and pick up sts. from first row to form double hem. Knit 1 row at T 10 and BOLT.

**BUTTONHOLE FACING:**

Bring 8 ndls. to WP. With purl side facing rehang lower half of buttonhole on these ndls. RC 0. T 6.1. C 1.

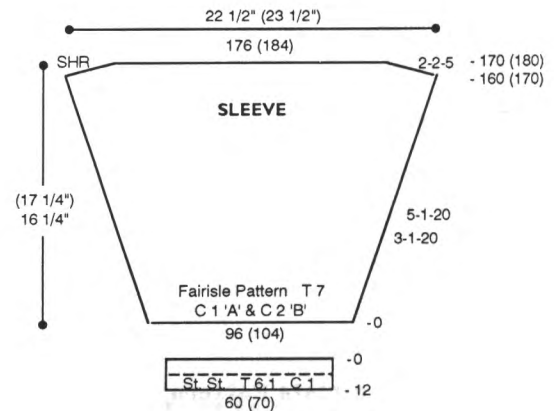
Knit to R 6, knitting last row at T 10 and BOLT. Bring 8 ndls. to WP. With purl side facing rehang upper half of buttonhole on these ndls. RC 0. T 6.1 C 1. Knit upper half of buttonhole the same as lower half. Knit second buttonhole facing the same way.

**POCKET (Make 2)**



**POCKET:**

With purl side facing, rehang back from bottom up to pocket marker on 46 ndls. RC 0. T 6.1. C 1. Knit to R 120 and remove sts. on WY.



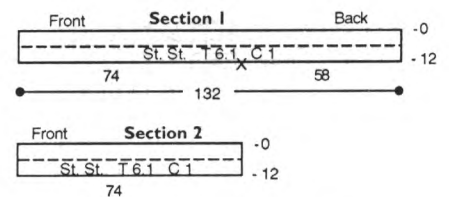
**SLEEVE:**

With WY CO 96 (104) sts. After several rows end with 1 row Ravel Cord to the right. RC 0. T 7. With C 1 in 'A' Feeder and C 2 in 'B' Feeder, knit in fairisle while incr. on each side every 3 Rs. 1 St. 20x and every 5 Rs. 1 St. 20x. At R 160 (170) SHR sleeve cap EOR 2 Sts. 5x. At R 170 (180) knit 1 row at T 10 and BOLT.

**SLEEVE CUFF:**

With purl side facing, rehang lower edge of sleeve on 60 (70) ndls. decr. evenly across. RC 0. T 6.1 C 1. St. St. Knit to R 12 and pick up sts. from first row to form double band. Knit 1 row at T 10 and BOLT.

**NECK TRIM**



**NECK TRIM:** Knit in 2 sections. Join shoulder seams first.

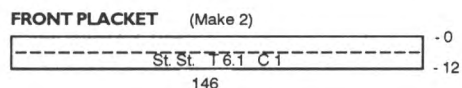
**Section 1:**

With purl side facing, rehang one front neckline and back neckline on

132 ndls. following chart. RC 0. T 6.1 C 1. St. St. Knit to R 12 and pick up sts. from first row to form double band. Knit 1 row at T 10 and BOLT.

**Section 2:**

With purl side facing, rehang remaining front neckline on 74 ndls. RC 0. T 6.1 C 1. St. St. Knit to R 12 and pick up sts. from first row to form double band. Knit 1 row at T 10 and BOLT.



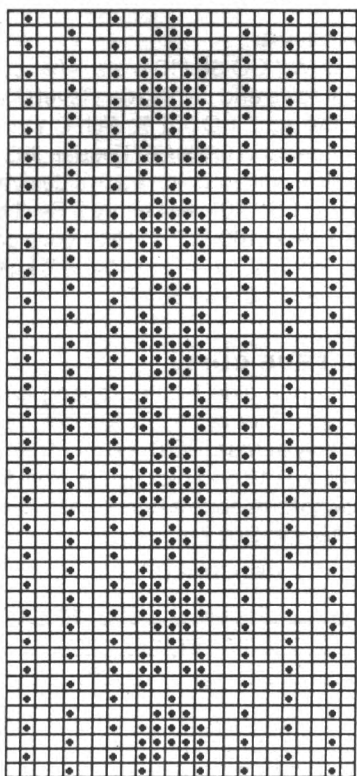
**FRONT PLACKET: Make 2.**

With purl side facing, rehang front on 146 ndls. RC 0. T 6.1 C 1. St. St. Knit to R 12 and pick up sts. from first row to form double band. Knit 1 row at T 10 and BOLT.

**FINISHING:**

With knit side facing, attach pocket to front from bottom up to pocket marker. Attach sleeves. Close all remaining seams. Fold buttonhole facing to inside and stitch in place.

**\*223 Fairisle Pattern  
24 Sts. x 54 Rows**



KK Mag Disk: Track 1; Pat. 901

**22-4**



**PROFOUNDLY MASCULINE**

**YARN:** Silkie and Splendor

**SIZES:**

Small (Medium) [Large]

**AMOUNT:**

C 1: Silkie - Grey

4 (4) [6] oz.

C 2: Silkie - Burgundy

6 oz. all

C 3: Splendor - Black

4 oz. all

C 4: Splendor - Wedgewood

8 oz. all

**KIT:** Color of your Choice

\$22.00 (\$22.00) [\$24.00]

**TENSION:**

Body: T 6

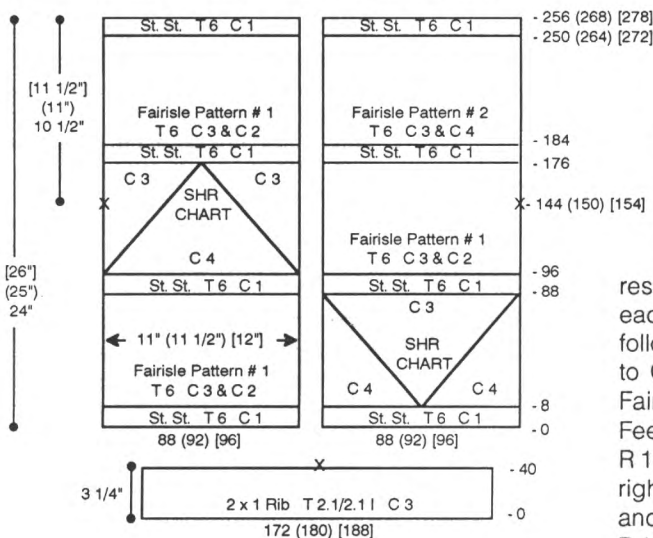
Rib: T 2.1/2.1 I

**GAUGE:**

Body: 8 Sts., 10.7 Rs. = 1"

Rib: 12 Rs. = 1"

Right Side **BACK** Left Side



**SHR CHART**

[2-1-38, 2-3-2, 2-4-1]  
[2-1-38, 2-2-2, 2-4-1]  
2-1-38, 2-2-3

**TECHNIQUE:** Fairisle, St. St., Short Row and Tuck.

Make on Standard 24-Stitch Punch Card or Standard Electronic Machine with Ribber.

**WAISTBAND:** Make 2.

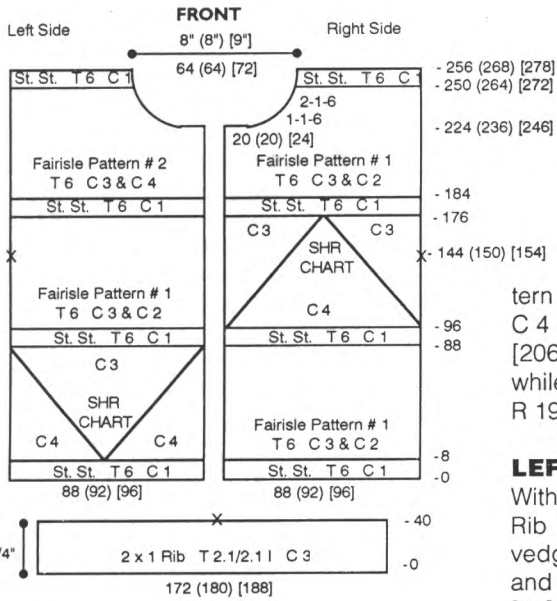
With C 3 CO 172 (180) [188] sts. for 2 x 1 Rib following ndl. chart. After selvedge RC 0. T 2.1/2.1 I. Knit to R 40 and mark center with a YM. Remove sts. on WY.

**BACK:**

**Right Side:** Bring 88 (92) [96] ndls. to WP. Rehang left half of waistband on these ndls. decr. evenly across. RC 0. T 6. C 1. St. St. Knit to R 8. Fairisle Pattern #1. With C 3 in 'A' Feeder and C 2 in 'B' Feeder knit to R 88. Change to C 1 and knit in St. St. to R 96. With C 4 SHR on each side by bringing ndls. to HP following SHR chart. AT R 176 bring all ndls. to HP and reset RC to R 96. With C 3 SHR on right side by pushing ndls. to WP following SHR chart. At R 176 bring all ndls. to HP and reset RC to R 96. With C 3 SHR on left side by pushing ndls. to WP following SHR chart. AT THE SAME TIME at R 144 (150) [154] place a YM on left side for armhole. At R 176 push all ndls. to WP and change to C 1. Knit in St. St. to R 184. Fairisle Pattern #1. With C 3 in 'A' Feeder and C 2 in 'B' Feeder knit to R 250 (264) [272]. Change to C 1 and knit in St. St. to R 256 (268) [278]. Remove sts. on WY.

**Left Side:** Bring 88 (92) [96] ndls. to WP. Rehang right half of waistband on these ndls. decr. evenly across. RC 0. T 6. C 1. St. St. Knit to R 8. Bring left 44 (46) [48] ndls. to HP. With C 4 SHR on right side by bringing ndls. to HP following SHR chart. At R 88 push left 44 (46) [48] ndls. to WP and reset RC to R 8. With C 4 SHR on left side by bringing ndls. to HP following SHR chart. At R 88 bring all ndls. to HP and reset RC to R 8. With C 3 SHR on each side by pushing ndls. to WP following SHR chart. At R 88 change to C 1 and knit in St. St. to R 96. Fairisle Pattern #1. With C 3 in 'A' Feeder and C 4 in 'B' Feeder knit to R 144 (150) [154] and place a YM on right side for armhole. Knit to R 176 and change to C 1. Knit in St. St. to R 184. Fairisle Pattern #2. With C 3 in 'A' Feeder and C 4 in 'B' Feeder knit to R 250 (264) [272]. Change to C 1 and knit in St. St. to R 256 (268) [278]. Remove sts. on WY.

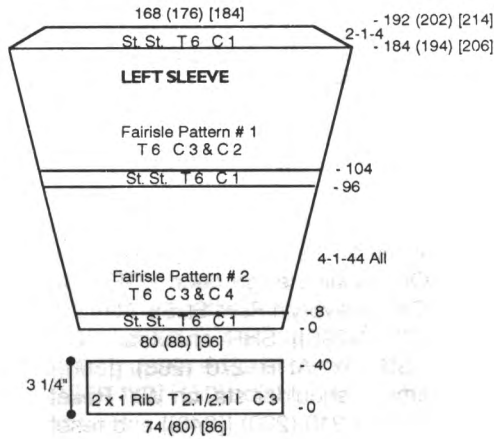




these ndls. decr. evenly across. RC 0. T 6. C 1. Knit in St. St. while incr. on each side every 4 Rs. 1 St. 44x for all sizes. AT THE SAME TIME at R 8 change to Pattern #1. With C 3 in 'A' Feeder and C 2 in 'B' Feeder knit to R 96. Change to C 1 and knit in St. St. to R 104. Change to Pattern # 2. With C 3 in 'A' Feeder and C 4 in 'B' Feeder knit to R 184 (194) [206]. Change to C 1 and knit in St. St. while SHR shaping EOR 1 St. 4x. At R 192 (202) [214] BO.

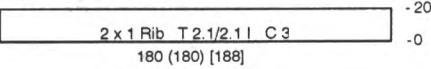
**LEFT SLEEVE:**

With C 3 CO 74 (80) [86] sts. for 2 x 1 Rib following ndl. chart. After selvedge RC 0. T 2.1/2.1 l. Knit to R 40 and remove sts. on WY. Bring 80 (88) [96] ndls. to WP. Rehang ribbing on



these ndls. decr. evenly across. RC 0. T 6. C 1. Knit in St. St. while incr. on each side every 4 Rs. 1 St. 44x for all sizes. AT THE SAME TIME at R 8 change to Pattern #2. With C 3 in 'A' Feeder and C 4 in 'B' Feeder knit to R 96. Change to C 1 and knit in St. St. to R 104. Change to Pattern # 1. With C 3 in 'A' Feeder and C 2 in 'B' Feeder knit to R 184 (194) [206]. Change to C 1 and knit in St. St. while SHR shaping EOR 1 St. 4x. At R 192 (202) [214] BO.

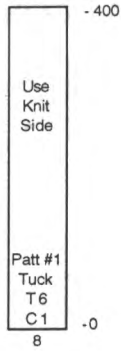
**COLLAR:**



**COLLAR:**

Close center back and front seams. Join one shoulder. With C 3 CO 180 (180) [188] sts. for 2 x 1 Rib following ndl. chart. After selvedge RC 0. T 2.1/2.1 l. Knit to R 20 and transfer RB sts. to MB. With purl side facing rehang neckline on these ndls. Knit 1 row at T 10 and BOLT.

**FRONT & BACK CENTER TRIM**  
(Not to Scale)



**FRONT/BACK CENTER TRIM:**

With C 1 'e' wrap CO 8 sts. RC 0. T 6. C 1. Knit in Tuck using Fairisle Pattern #1 to R 400. Remove sts. on WY.

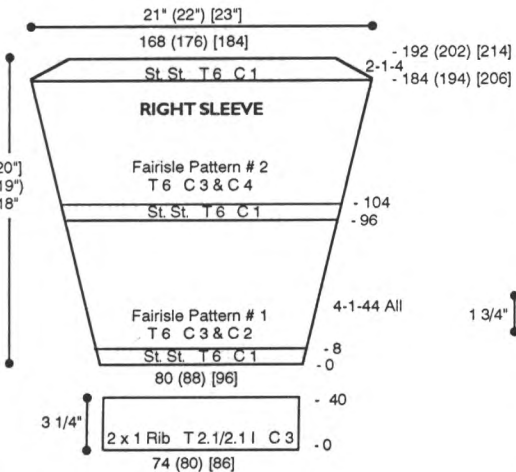
**FINISHING:**

Close remaining shoulder. Attach sleeves and close all remaining seams. Sew trim down center of front and back with knit side showing to cover seam.

**FRONT:**

**Left Side:** Knit front left side same as back left side to R 224 (236) [246] marking armhole on left side at R 144 (150) [154]. Shape neckline. On neckline edge BO 20 (20) [24] sts. then decr. every R 1 St. 6x and EOR 1 St. 6x. At R 250 (264) [272] change to C 1. Knit in St. St. to R 256 (268) [278] and remove shoulder sts. on WY.

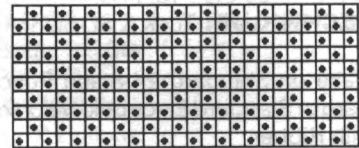
**Right Side:** Knit front right side same as back right side to R 224 (236) [246] marking armhole on right side at R 144 (150) [154]. Shape neckline. On neckline edge BO 20 (20) [24] sts. then decr. every R 1 St. 6x and EOR 1 St. 6x. At R 250 (264) [272] change to C 1. Knit in St. St. to R 256 (268) [278] and remove shoulder sts. on WY.



**RIGHT SLEEVE:**

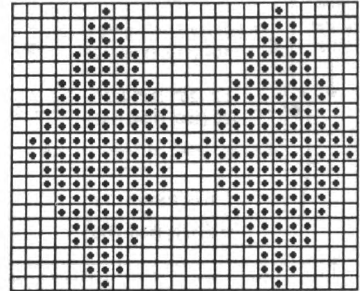
With C 3 CO 74 (80) [86] sts. for 2 x 1 Rib following ndl. chart. After selvedge RC 0. T 2.1/2.1 l. Knit to R 40 and remove sts. on WY. Bring 80 (88) [96] ndls. to WP. Rehang ribbing on

**#224 Fairisle Pattern #1**  
24 Sts. x 10 Rows



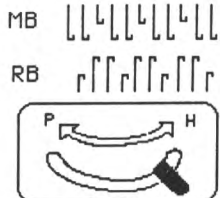
KK Mag Disk: Track 2; Pat 901

**#224 Fairisle Pattern #2**  
24 Sts. x 20 Rows



KK Mag Disk: Track 2; Pat 902

**Rib Needle Arrangement**





## LIGHTWEIGHT LUXURY

**YARN:** Sorbet - Periwinkle

**SIZES:**

6/8 (10/12) [14] {16}

**AMOUNT:**

2 1/2 (2-1/2) [{3}] lbs.

**KIT:** Color of your Choice

\$68.00 (\$68.00) {[\$84.00]}

**TENSION:**

Tuck: T 5

St. St.: T 4.1

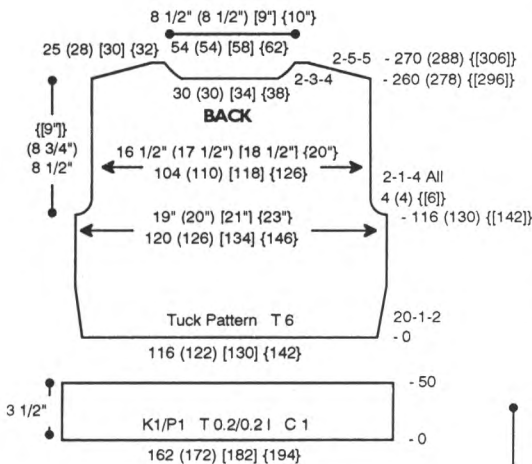
**GAUGE:**

Tuck: 6.3 Sts., 17 Rs. = 1"

St. St. 9.33 Sts., 13.4 Rs. = 1"

**TECHNIQUE:** Tuck & St. St.

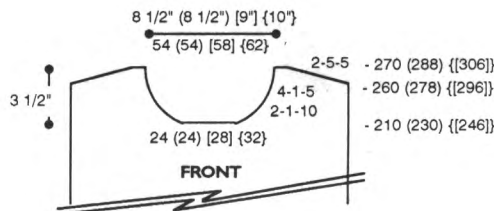
Make on Standard 24-Stitch Punch Card or Standard Electronic Machine with Ribber.



### BACK:

With C1 CO 162 (172) [182] {194} for K1/P1 Rib. After selvedge RC 0. T 0.2/0.2 I. Knit to R 50 and remove sts. on WY. Bring 116 (122) [130] {142} ndls. to WP and rehang ribbing on these ndls. decr. evenly across. RC 0. T 6. Knit in tuck pattern while

incr. on each side every 20 Rs. 1 St. 2x. At R 116 (130) {[142]} shape armhole. On each side BO 4 (4) {[6]} sts. then decr. EOR 1 St. 4x. At R 260 (278) {[296]} shape neckline. Place center 30 (30) [34] {38} in HP and all sts. to the left. Note pattern row. \*On neckline edge SHR EOR 3 Sts. 4x. AT THE SAME TIME SHR shoulder EOR 5 Sts. 5x. At R 270 (288) {[306]} remove shoulder sts. on WY. Reset RC to R 260 (278) {[296]} and reset pattern to row noted above. Shape left neckline and shoulder from \*, reversing shapings. Remove neckline and shoulder sts. on separate WY.

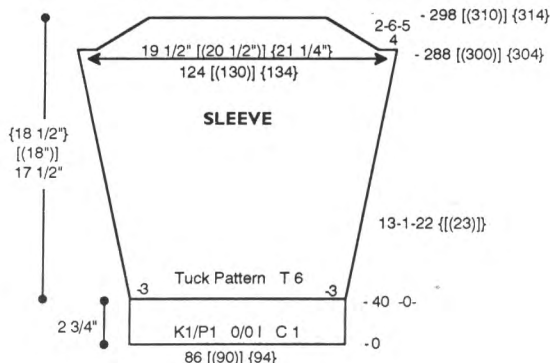


### FRONT:

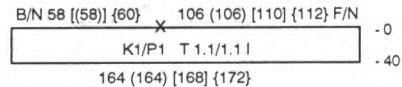
Knit front same as back to R 210 (230) {[246]}. Shape neckline. Place center 24 (24) [28] {32} sts. in HP and all sts. to the left. Note pattern row. \*On neckline edge decr. EOR 1 St. 10x and every 4 Rs. 1 St. 5x. At R 260 (278) {[296]} SHR shoulder EOR 5 Sts. 5x. At R 270 (288) {[306]} remove shoulder sts. on WY. Reset RC to R 210 (230) {[246]} and reset pattern to row noted above. Shape left neckline and shoulder from \*, reversing shapings. Remove neckline and shoulder sts. on separate WY.

### SLEEVE:

With C 1 CO 86 {[90]} {94} sts. for K1/P1 Rib. After selvedge RC 0. T 0/0 I. Knit to R 40 and transfer RB sts. to MB. Decr. 3 sts. on each side. RC 0. T 6. Knit in tuck pattern while incr. on each side every 13 Rs. 1 St. 22 {[23]} x. At R 288 {[300]} {304} shape sleeve cap. On each side BO 4 sts. then SHR EOR 6 Sts. 5x. At R 298 {[310]} {314} knit 1 row at T 10 and BOLT.

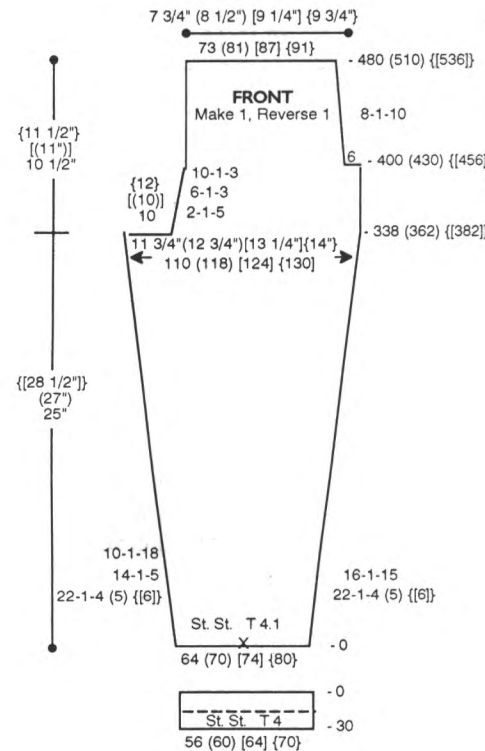


### NECKBAND



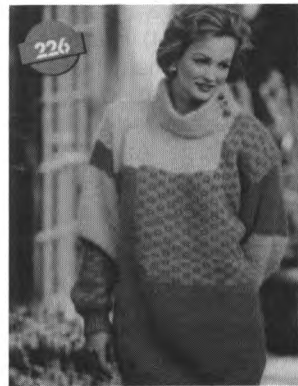
### NECKBAND:

Close one shoulder. With purl side facing rehang neckline on 164 (164) [168] {172} ndls. following chart. Knit 1 row and transfer EOS to RB for K1/P1 Rib. RC 0. T 1.1/1.1 I. Knit to R 40 knitting last row at T 8/4. Transfer RB sts. to MB and BOLT.



### PANTS FRONT: Make 1, Reverse 1.

With WY CO 64 (70) [74] {80} sts. After several rows end with 1 row Ravel Cord to the right. RC 0. T 4.1. Mark center with a YM. Knit in St. St. while shaping both sides. On the left side incr. every 22 Rs. 1 St. 4 (5) {[6]} x, every 14 Rs. 1 St. 5x and every 10 Rs. 1 St. 18x. At R 338 (362) {[382]} BO 10 {[10]} {12} sts. and then decr. EOR 1 St. 5x, every 6 Rs. 1 St. 3x and every 10 Rs. 1 St. 3x. AT THE SAME TIME on the right side incr. every 22 Rs. 1 St. 4 (5) {[6]} x and every 16 Rs. 1 St. 15x. At R 400 (430) {[456]} on the right side BO 6 sts. and place a YM for pocket and decr. every 8 Rs. 1 St. 10x. At R 480 (510) {[536]} remove sts. on WY.



## DESIGN OF THE TIMES

**YARN:** Caprinae

**SIZES:**

Sm./Med. (Lge/X-Lge)

**AMOUNT:**

C 1: Royal - 1 cone all sizes (approx. 14 oz.)

C 2: Lt. Blue - 4 oz. all sizes

C 3: Camel - 6 oz. all sizes

**KIT:** Color of your Choice \$40.00 all sizes

**TENSION:**

Body: T 9

Rib: T 0/0 I

**GAUGE:**

Body: 3.5 Sts., 5.5 Rs. = 1"

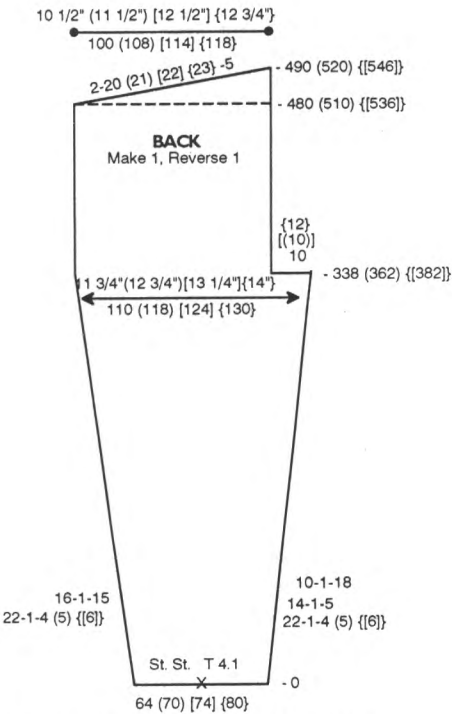
Rib: 7 Rs. = 1"

**NOTIONS:**

3 - 1" Buttons

**TECHNIQUE:** Fairisle and St. St.

Make on Compuknit/Bulky or Punch Card Bulky with Ribber.

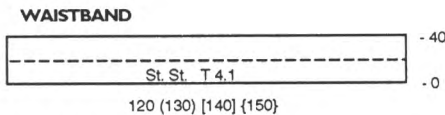
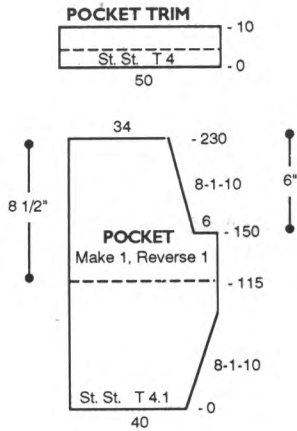


**PANTS BACK:** Make 1, Reverse 1. With WY CO 64 (70) [74] {80} sts. After several rows end with 1 row Ravel Cord to the right. RC 0. T 4.1. Mark center with a YM. Knit in St. St. while shaping both sides. On the left side incr. every 22 Rs. 1 St. 4 (5) {[6]} x and every 16 Rs. 1 St. 15x. AT THE SAME TIME on the right side incr. every 22 Rs. 1 St. 4 (5) {[6]} x, every 14 Rs. 1 St. 5x and every 10 Rs. 1 St. 18x. At R 338 (362) {[382]} BO 10 [(10)] {12} sts. At R 480 (510) {[536]} SHR EOR 20 (21) [22] {23} Sts. 5x. At R 490 (520) {[546]} remove sts on WY.

**PANTS HEM:** Make 4. With purl side facing rehang lower edge of pants front/back on 56 (60) [64] {70} ndls. RC 0. T 4. St. St. Knit to R 30 and pick up sts. from first row to form double hem. Knit 1 row at T 10 and BOLT.

**POCKET TRIM:** Make 2. With purl side facing rehang front pocket opening on 50 ndls. RC 0. T 4. St. St. Knit to R 10 and pick up sts. from first row to form double band. Knit 1 row at T 10 and BOLT.

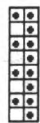
**POCKET:** Make 1, Reverse 1. With WY CO 40 sts. After several rows end with 1 row Ravel Cord to the right. RC 0. T 4.1. Knit in St. St. while incr. on right side every 8 Rs. 1 St. 10x. At R 150 BO 6 sts. on the right side then decr. every 8 Rs. 1 St. 10x. At R 230 remove sts. on WY.



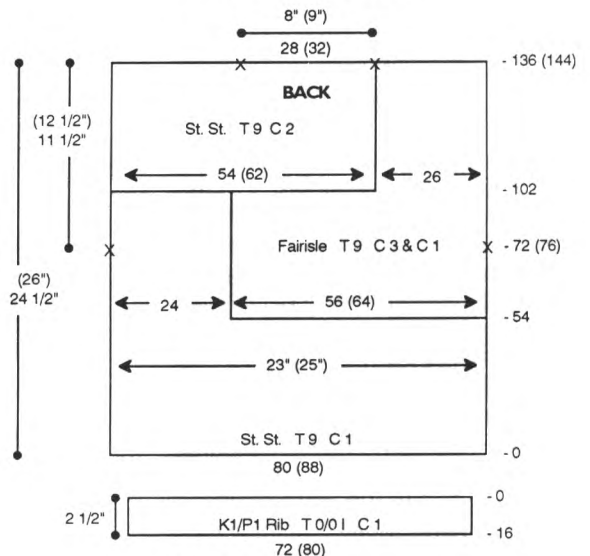
**WAISTBAND:** With purl side facing rehang upper edge of fronts on 120 (130) [140] {150} ndls. decr. evenly across. Leave 10 ndls. at the outside edge empty and rehang upper edge of pocket with knit side facing. Rehang bottom of pocket from outside edge in (incl. 10 empty ndls.) RC 0. T 4.1. St. St. Knit to R 40 and pick up sts. from first row to form double band. Knit 1 row at T 10 and BOLT. With purl side facing rehang upper edge of backs on 120 (130) [140] {150} ndls. and knit same as front.

**FINISHING:** Close remaining shoulder. Attach sleeves. Close pocket seams. Close all remaining seams.

### #225 Tuck Pattern 2 Sts. x 8 Rows



### KK Mag Disk: Track 3; Pat 901

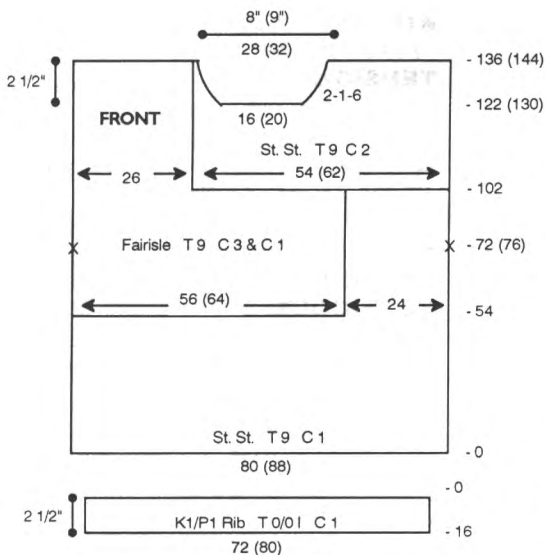


**BACK:** With WY CO 80 (88) sts. After several rows end with 1 row Ravel Cord to the

right. RC 0. T 9. C 1. St. St. Knit to R 54 and remove all sts. except 24 at the left on WY. Knit to R 72 (76) and place a YM on the left side for armhole. Continue to R 102 and remove sts. on WY. Bring 56 (64) ndls. to WP. With purl side facing rehang first section on these ndls. Reset RC to R 54. With C 3 in 'A' Feeder and C 1 in 'B' Feeder knit in fairisle. At R 72 (76) place a YM on the right side for armhole. At R 102 remove all sts. except 26 sts. at the right on WY. Knit to R 136 (144) and remove sts. on WY. Bring 54 (62) ndls. to WP. With purl side facing rehang 24 sts. from first section at the left and 30 (38) sts. from second section on these ndls. Reset RC to R 102. C 2. Knit in St. St. to R 136 (144) and mark 28 (32) sts. at the right for neckline. Remove neckline and shoulder sts. on WY.

**FRONT:**

With WY CO 80 (88) sts. After several rows end with 1 row Ravel Cord to the right. RC 0. T 9. C 1. St. St. Knit to R 54 and remove all sts. except 24 at

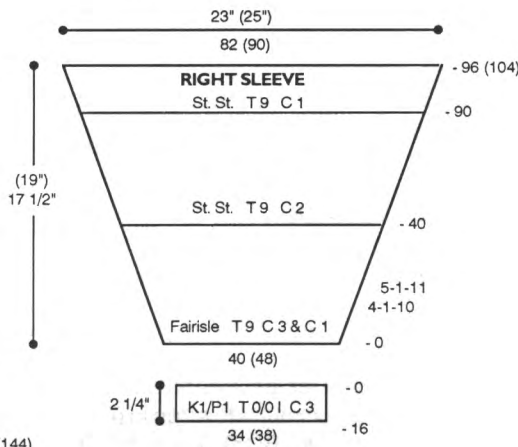


the right on WY. Knit to R 72 (76) and place a YM on the right side for armhole. Continue to R 102 and remove sts. on WY. Bring 56 (64) ndls. to WP. With purl side facing rehang first section on these ndls. Reset RC to R 54. With C 3 in 'A' Feeder and C 1 in 'B' Feeder knit in fairisle. At R 72 (76) place a YM on the left side for armhole. At R 102 remove all sts. except 26 sts. at the left on WY. Knit to R 136 (144) and remove sts. on WY. Bring 54 (62) ndls. to WP. With purl side facing rehang 24 sts. from first section at the right and 30 (38) sts. from second section on these ndls. Reset RC to R 102. C 2. Knit in St. St. to

R 122(130) and shape neckline. Place 22 (26) sts. at the left in HP. \*On neckline edge decr. EOR 1 St. 6x. At R 136 (144) remove shoulder sts. on WY. Reset RC to R 122 (130) and shape left neckline from \*, reversing shaping.

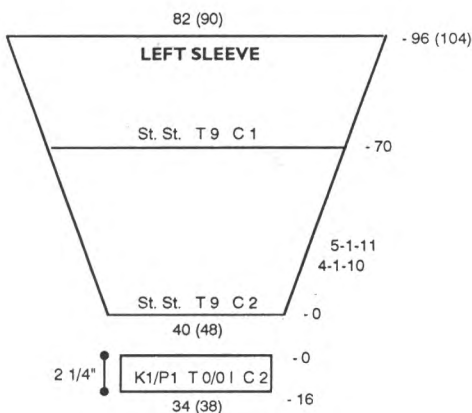
**WAISTBAND:**

With purl side facing rehang lower edge of back/front on 72 (80) ndls. decr. evenly across. Knit 1 row at T9. Transfer EOS to RB for K1/P1 Rib. RC 0. T 0/O 1. Knit to R 16 knitting last row at T 9/6 and BOLT.



**RIGHT SLEEVE:**

With WY CO 40 (48) sts. After several rows end with 1 row Ravel Cord to the left. RC 0. T 9. C 3 in 'A' Feeder and C 1 in 'B' Feeder. Knit in fairisle while incr. on each side every 4 Rs. 1 St. 10x and every 5 Rs. 1 St. 11x. AT THE SAME TIME at R 40 change to C 2. St. At R 90 change to C 1. At R 96 (104) knit 1 row manually at a loose tension and BOLT.



**LEFT SLEEVE:**

With WY CO 40 (48) sts. After several rows end with 1 row Ravel Cord to the right. RC 0. T 9. C 2. Knit in St. St.

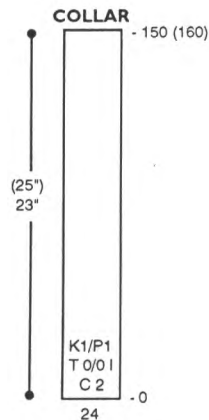
while incr. on each side every 4 Rs. 1 St. 10x and every 5 Rs. 1 St. 11x. At R 70 change to C 1. At R 96 (104) knit 1 row manually at a loose tension and BOLT.

**RIGHT CUFF:**

With purl side facing rehang lower edge of right sleeve on 34 (38) ndls. decr. evenly across. Knit 1 row at T9 with C 3. Transfer EOS to RB for K1/P1 Rib. RC 0. T 0/O 1. Knit to R 16 knitting last row at T 9/6 and BOLT.

**LEFT CUFF:**

Knit same as right cuff using C 2.



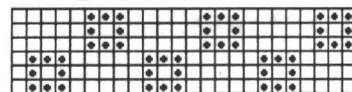
**COLLAR:**

With C 2 CO 24 sts. for K1/P1 Rib. After selvedge RC 0. T 0/O 1. Knit to R 150 (160) knitting last row at T 9/6 and BOLT.

**FINISHING:**

Close both shoulder seams. Starting 4" before left shoulder sew collar around neckline overlapping at left side. Sew buttons on. Attach sleeves and close all remaining seams.

**\*226 Fairisle Pattern  
24 Sts. x 6 Rows**



KK Mag Disk: Track 4; Pat. 901



## PERFECTLY CLASSIC

**YARN:** Woolana

**SIZES:** 6/8 (10/12) [14] [16]

**AMOUNT:**

C 1: Dark Grey  
2 1/2 [(2 1/2)] {3} lbs  
C 2: Silver Grey  
1/2 [(1/2)] {3/4} lbs.

**KIT:** Color of your Choice  
\$90.00 [(90.00)] {112.00}

**TENSION:**

Body: T 2/2 I  
Bands: T 0/0 I

**GAUGE:**

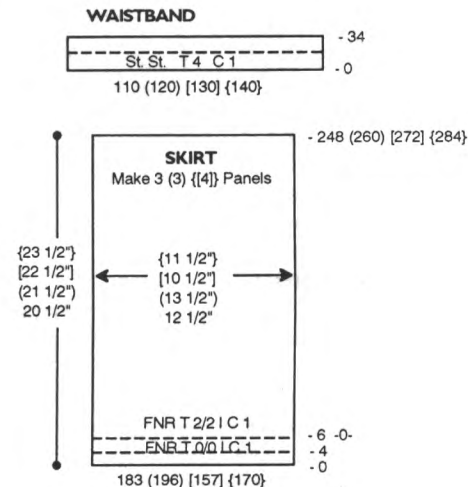
FNR: 7.95 Sts., 11.55 Rs. = 1"  
Stripe: 7.95 Sts., 15.75 Rs. = 1"  
Skirt: 14.4 Sts., 11.9 Rs. = 1"

**NOTIONS:**

Elastic for skirt waistband.

**TECHNIQUE:** FNR and Double Jacquard

Make on Compuknit II, III, IV or V Machine with Ribber and RCC.

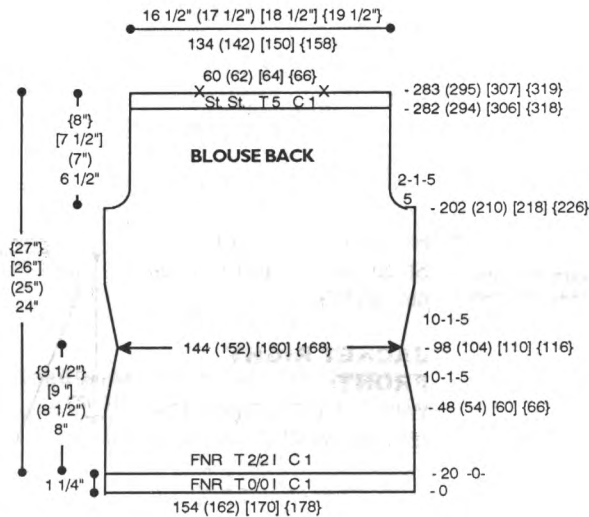


**SKIRT:** Make 3 panels for sizes 6/8 and (10/12). Make 4 panels for sizes [14] and [16].

With C 1 CO 183 (196) [157] {170} sts. for FNR. Knit 4 Rs. of selvedge and 2 Rs. of FNR. Beginning at left with 6 ndls. in WP and ending on right with 4 ndls. in WP on RB arrange ndls. following chart. RC 0. T 2/2 I. Knit to R 248 (260) [272] {284}. Transfer RB sts. to MB and BO. With crochet hook single crochet 1 row around the top closing the pleats on top edge.

**WAISTBAND:** Make 2.

Join skirt panels together. Bring 110 (120) [130] {140} ndls. to WP. With purl side facing rehang 1/2 of upper edge of skirt on these ndls. RC 0. T 4. C 1. St. St. Knit to R 34. Pick up sts. from first row to form double band and BO.

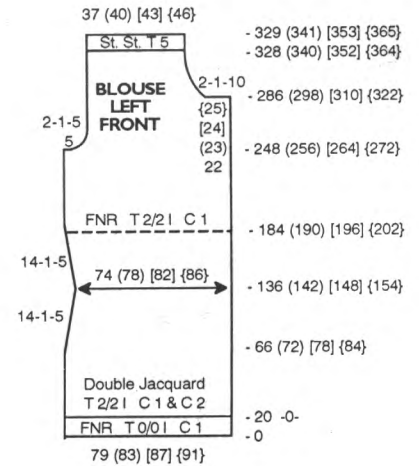


**BLOUSE BACK:**

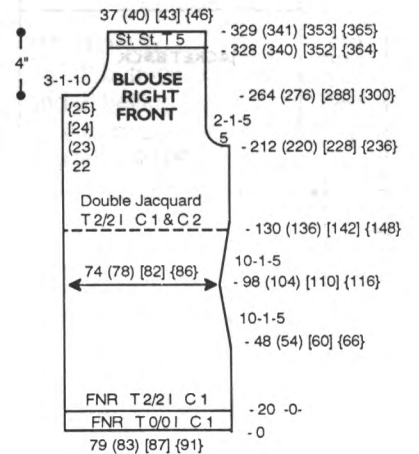
With C 1 CO 154 (162) [170] {178} sts. for FNR. After selvedge RC 0. T 0/0 I. Knit to R 20. Change to T 2/2 I. RC 0. Knit to R 48 (54) [60] [66] and start shaping. On each side decr. every 10 Rs. 1 St. 5x. At R 98 (104) [110] {116} incr. every 10 Rs. 1 St. 5x. At R 202 (210) [218] {226} shape armhole. On each side BO 5 sts. then decr. EOR 1 St. 5x. At R 282 (294) [306] {318} transfer RB sts. to MB. Knit 1 row in St. St. at T 5. Mark center 60 (62) [64] [66] sts. for neckline and remove neckline and shoulder sts. on separate WY.

**BLOUSE LEFT FRONT:**

With C 1 CO 79 (83) [87] {91} sts. for FNR. After selvedge RC 0. T 0/0 I. Knit to R 20. RC 0. T 2/2 I. C 1 and C 2. FNR double jacquard pattern. Knit to R 66 (72) [78] [84] and start shap-



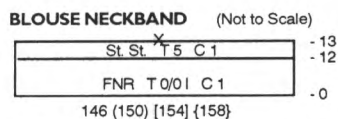
ing. On left side decr. every 14 Rs. 1 St. 5x. At R 136 (142) [148] {154} incr. every 14 Rs. 1 St. 5x. AT THE SAME TIME at R 184 (190) [196] {202} change to FNR with C 1. At R 248 (256) [264] {272} shape armhole. On left side BO 5 sts. then decr. EOR 1 St 5x. At R 286 (298) [310] {322} shape neckline. On right side BO 22 (23) [24] {25} sts. then decr. EOR 1 St. 10x. At R 328 (340) [352] {364} transfer RB sts. to MB. Knit 1 row in St. St. at T 5 and remove sts. on WY.



**BLOUSE RIGHT FRONT:**

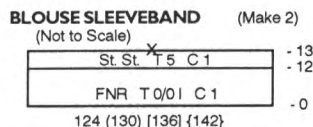
With C 1 CO 79 (83) [87] {91} sts. for FNR. After selvedge RC 0. T 0/0 I. Knit to R 20. Change to T 2/2 I. RC 0. Knit to R 48 (54) [60] [66] and start shaping. On right side decr. every 10 Rs. 1 St. 5x. At R 98 (104) [110] {116} incr. every 10 Rs. 1 St. 5x. AT THE SAME TIME at R 130 (136) [142] {148} start FNR double jacquard pattern with C 1 and C 2. At R 212 (220) [228] {236} shape armhole. On right side BO 5 sts. then decr. EOR 1 St 5x. At R 264 (276) [288] {300} shape neckline. On left side BO 22

(23) [24] [25] sts. then decr. every 3 Rs. 1 St. 10x. At R 328 (340) [352] [364] transfer RB sts. to MB. Knit 1 row in St. St. at T 5 and remove sts. on WY.



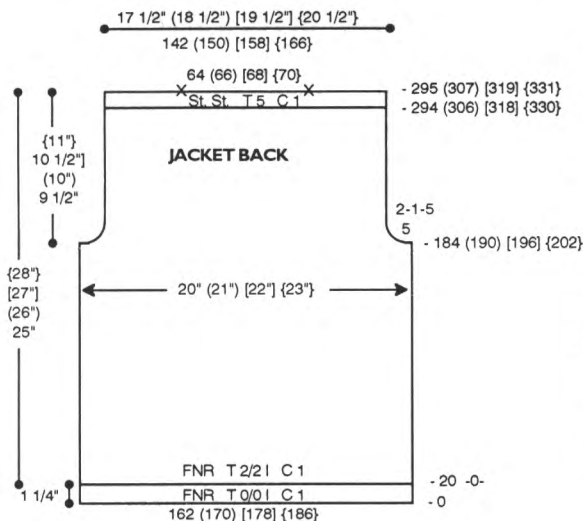
### BOLOUSE NECKBAND:

With C 1 CO 146 (150) [154] [158] sts. for FNR. After selvedge RC 0. T 0/0 I. Knit to R 12 and transfer RB sts. to MB. Knit 1 row in St. St. at T 5 and remove sts. on WY.



### BOLOUSE SLEEVEBAND:

With C 1 CO 124 (130) [136] [142] sts. for FNR. After selvedge RC 0. T 0/0 I. Knit to R 12 and transfer RB sts. to MB. Knit 1 row in St. St. at T 5 and remove sts. on WY.

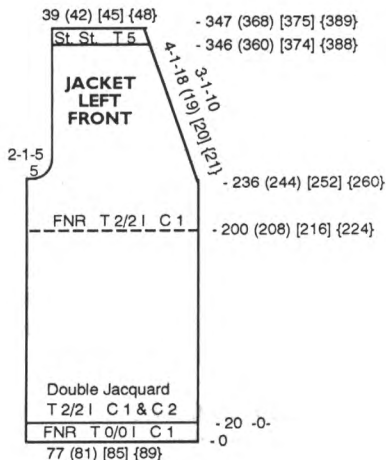


### JACKET BACK:

With C 1 CO 162 (170) [178] [186] sts. for FNR. After selvedge RC 0. T 0/0 I. Knit to R 20. Change to T 2/2 I. RC 0. At R 184 (190) [196] [202] shape armhole. On each side BO 5 sts. then decr. EOR 1 St. 5x. At R 294 (306) [318] [330] transfer RB sts. to MB. Knit 1 row in St. St. at T 5. Mark center 64 (66) [68] [70] sts. for neckline and remove neckline and shoulder sts. on separate WY.

### JACKET LEFT FRONT:

With C 1 CO 77 (81) [85] [89] sts. for FNR. After selvedge RC 0. T 0/0 I.

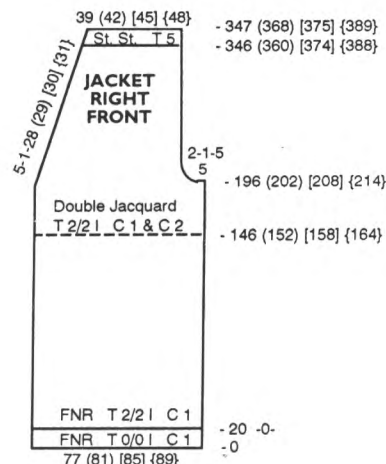


Knit to R 20. RC 0. T 2/2 I. C 1 and C 2. FNR double jacquard pattern. Knit to R 200 (208) [216] [224] change to FNR with C 1. At R 236 (244) [252] [260] shape armhole. On left side BO 5 sts. then decr. EOR 1 St. 5x. AT THE SAME TIME shape neckline. On right side decr. every 4 Rs. 1 St. 18 (19) [20] [21] x and every 3 Rs. 1 St.

10x for all sizes. At R 346 (360) [374] [388] transfer RB sts. to MB. Knit 1 row in St. St. at T 5 and remove sts. on WY.

### JACKET RIGHT FRONT:

With C 1 CO 77 (81) [85] [89] sts. for FNR. After selvedge RC 0. T 0/0 I. Knit to R 20. Change to T 2/2 I. RC 0. Knit to R 146 (152) [158] [164] and start FNR double jacquard pattern with C 1 and C 2. At R 196 (202) [208] [214] shape armhole. On right side BO 5 sts. then decr. EOR 1 St. 5x. AT THE SAME TIME shape neckline. On left side



decr. every 5 Rs. 1 St. 28 (29) [30] [31] x. At R 346 (360) [374] [388] transfer RB sts. to MB. Knit 1 row in St. St. at T 5 and remove sts. on WY.

### JACKET FRONT BANDS:

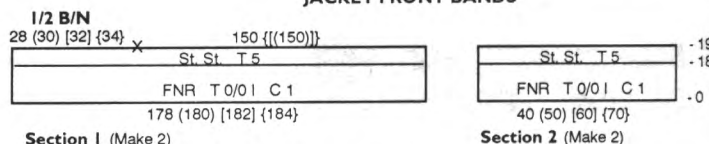
**Section 1:** Make 2.

With C 1 CO 178 (180) [182] [184] sts. for FNR. After selvedge RC 0. T 0/0 I. Knit to R 18 and transfer RB sts. to MB. Knit 1 row in St. St. at T 5. Mark 1/2 of back neckline with a YM following chart and remove sts. on WY.

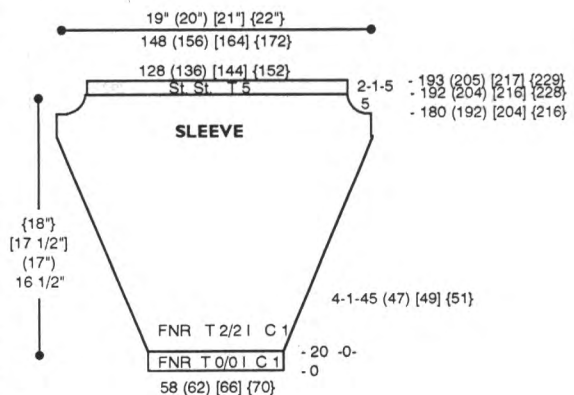
**Section 2:** Make 2.

With C 1 CO 40 (50) [60] [70] sts. for

### JACKET FRONT BANDS



FNR. After selvedge RC 0. T 0/0 I. Knit to R 18 and transfer RB sts. to MB. Knit 1 row in St. St. at T 5 and remove sts. on WY.



### SLEEVE:

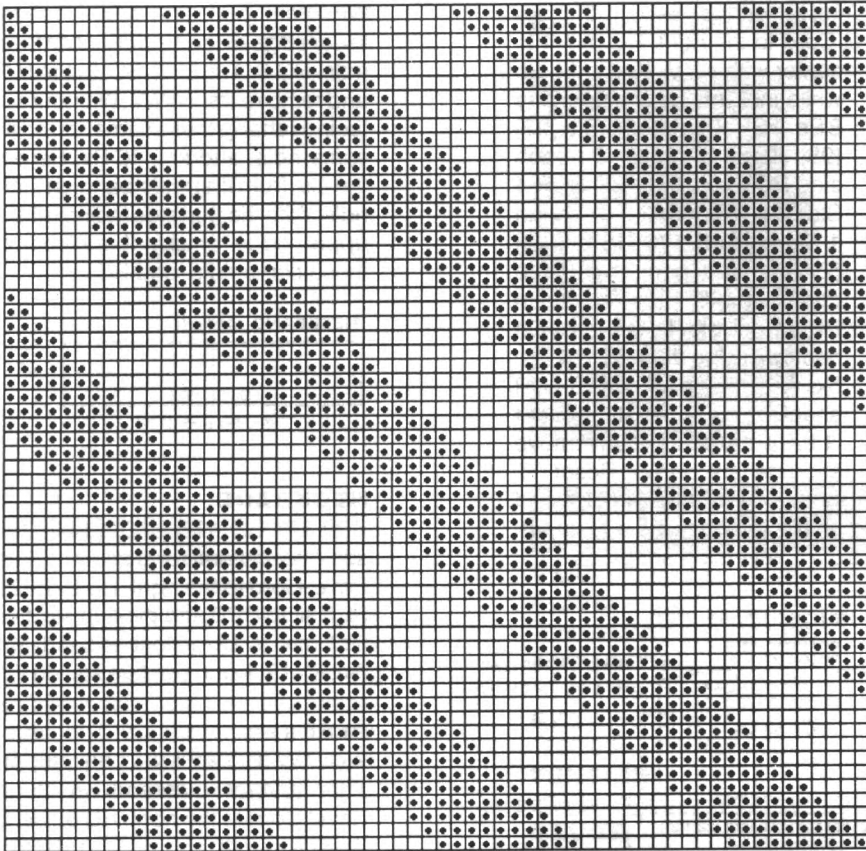
With C 1 CO 58 (62) [66] [70] sts. for FNR. After selvedge RC 0. T 0/0 I. Knit to R 20. RC 0. T 2/2 I. On each side incr. every 4 Rs. 1 St. 45 (47) [49] [51] x. At R 180 (192) [204] [216] shape sleeve cap. On each side BO 5 sts. then decr. EOR 1 St. 5x. At R 192 (204) [216] [228] transfer RB sts. to MB. Knit 1 row in St. St. at T 5 and remove sts. on WY.

### FINISHING:

*Blouse:* Join shoulder seams, close center front seam and attach neckband and sleevebands.

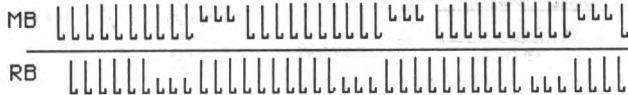
*Jacket:* Join shoulder seams. Join 4 front band sections together and attach to jacket. Attach sleeves and close all remaining seams.

#227 Jacquard Pattern  
60 Sts. x 60 Rows

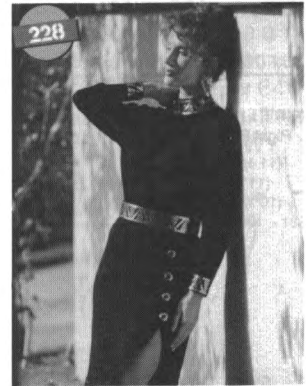


KK Mag Disk: Track 5; Pattern 901

#227 Needle Arrangement for Skirt



228



BLACK MAGIC

**YARN:** Venetia - Black

**SIZES:**

6/8 (10/12) [14] {16}

**AMOUNT:**

1 1/2 lbs. all sizes

**KIT:** Color of your Choice

\$42.00 all sizes

Applique (Gold): \$17.50

**TENSION:**

St. St.: T 4.2

Bands: T 3

**GAUGE:**

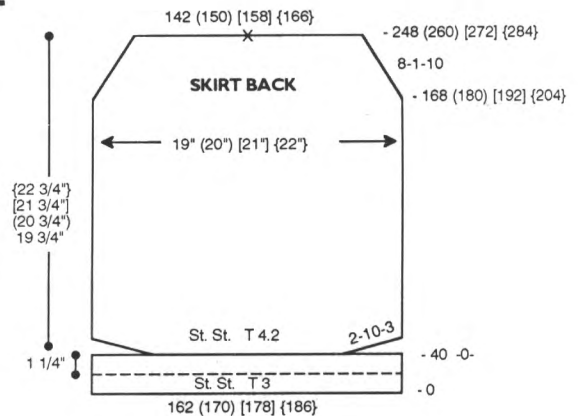
St. St.: 8.3 Sts., 12.5 Rs. = 1"

**NOTIONS:**

4 - 1" buttons, elastic for waistband and 2" belting stabilizer for belt. Metallic applique for trim.

**TECHNIQUE:** St. St.

Make on any Standard Machine.



**SKIRT BACK:**

With WY CO 162 (170) [178] {186} sts. After several rows end with 1 row Ravel Cord to the right. RC 0. T 3. St. St. Knit to R 40 and pick up sts. from first row to form double hem. RC 0. T 4.2. Knit while SHR shaping lower



The Right Tool for the Job...  
Let a Knitleader Work for You

With a KL 16 Knitleader, you can create a full-size chart of the garment you are knitting. And, as you knit, the chart rotates, telling you, on a row-by-row basis, exactly when and where to increase and decrease stitches for perfect garment shaping every time. Use it with any Knitting Standard or Bulky Gauge machines—

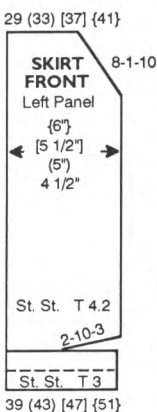
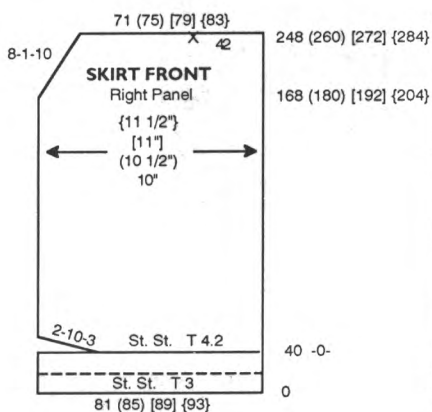
SAVE \$30

\$169.95

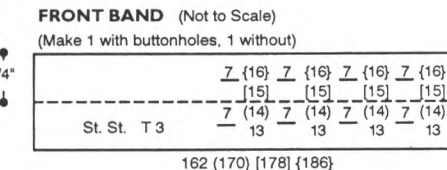
See your local Knitting Dealer or contact Knitking to order



edge on each side EOR 10 Sts. 3x. At R 168 (180) [192] [204] decr. on each side every 8 Rs. 1 St. 10x. At R 248 (260) [272] [284] mark center with a YM and remove sts. on WY.

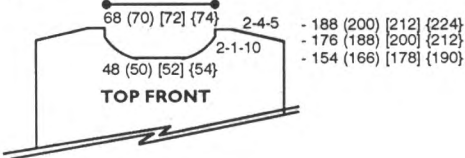
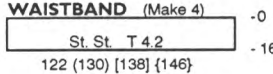
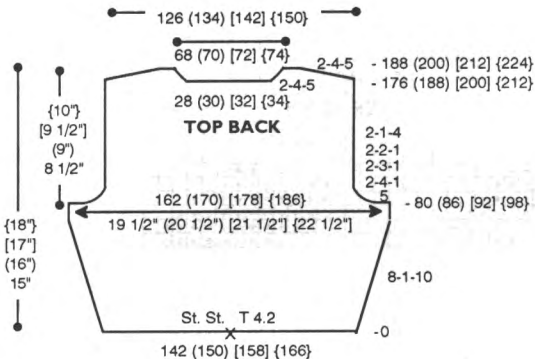


**SKIRT FRONT:** Make 2 panels.  
**Right Panel:** With WY CO 81 (85) [89] [93] sts. After several rows end with 1 row Ravel Cord to the right. RC 0. T 3. St. St. Knit to R 40 and pick up sts. from first row to form double hem. RC 0. T 4.2. Knit while SHR shaping lower edge on left side EOR 10 Sts. 3x. At R 168 (180) [192] [204] decr. on left side every 8 Rs. 1 St. 10x. At R 248 (260) [272] [284] mark 42 sts. at the right with a YM and remove sts. on WY.  
**Left Panel:** With WY CO 39 (43) [47] [51] sts. Knit the same as Right Panel reversing shapings.



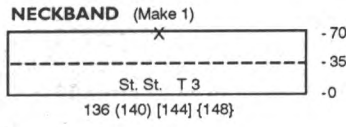
**FRONT BAND:** Make 1 with buttonholes, 1 without.  
 With WY CO 162 (170) [178] [186] sts. After several rows end with 1 row Ravel Cord to the right. RC 0. T 3. St. St. Knit to R 38 making buttonholes over 7 sts. with WY at Rs. 9 and 28 following chart. Pick up sts. from first row to form double band. Knit 1 row at T 5 and remove sts. on WY. With knit side facing rehang inside edge of skirt front right panel on 162 (170) [178] [186] ndls. With purl side facing rehang front band (with buttonholes) on these same ndls. Knit 1 row at T 10 and BOLT. Finish front left panel and band the same way.

**TOP BACK:**  
 With WY CO 142 (150) [158] [166] sts. After several rows end with 1 row Ravel Cord to the right. RC 0. T 4.2. Mark center with a YM. Knit in St. St. while incr. on each side every 8 Rs. 1 St. 10x. At R 80 (86) [92] [98] shape armhole. On each side BO 5 sts. then BO EOR 4 Sts. 1x, 3 Sts. 1x, 2 Sts. 1x and 1 St. 4x. At R 176 (188) [200] [212] shape neckline. Place center 28 (30) [32] [34] sts. in HP and all sts. to the left. \*On neckline edge decr. EOR 4 Sts. 5x. AT THE SAME TIME SHR shoulder EOR 4 Sts. 5x. At R 188 (200) [212] [224] remove shoulder sts. on WY. Reset RC to R 176 (188) [200] [212] and shape left neckline and shoulder from \*, reversing shapings.



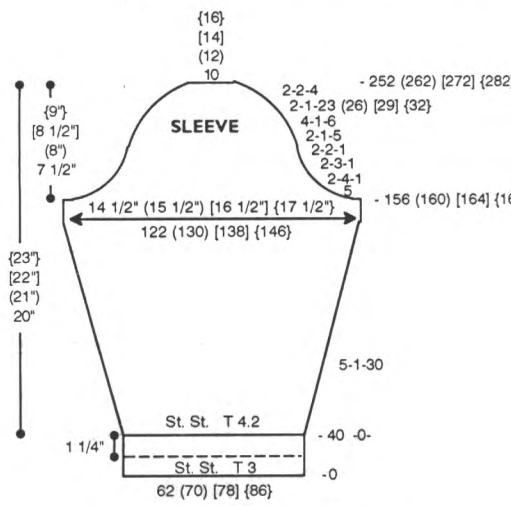
**TOP FRONT:**  
 Knit front same as back to R 154 (166) [178] [190] and shape neckline. Place center 48 (50) [52] [54] sts. to HP and all sts. to the left. \*On neckline edge decr. EOR 1 St. 10x. At R 176 (188) [200] [212] SHR shoulder EOR 4 Sts. 5x. At R 188 (200) [212] [224] remove shoulder sts. on WY. Reset RC to R 154 (166) [178] [190] and shape left neckline and shoulder from \*, reversing shapings.

**WAISTBAND:** Make 4.  
 Bring 122 (130) [138] [146] ndls. to WP. With purl side facing rehang lower edge of top back/front on these ndls. RC 0. T 4.2. St. St. Knit to R 16 and remove sts. on WY. With knit side facing rehang these same sts. on the same ndls. and knit 16 Rs. Rehang the sts. from first waistband on these ndls. With the purl side facing rehang upper edge of skirt back/front on these same ndls. and BO.



**NECKBAND:**  
 With WY CO 136 (140) [144] [148] sts. After several rows end with 1 row Ravel Cord to the right. RC 0. T 3. St. St. Knit to R 70 and pick up sts. from first row to form double band. Knit 1 row at T 5 and remove sts. on WY.

**SLEEVE:**  
 With WY CO 62 (70) [78] [86] sts. After several rows end with 1 row Ravel Cord to the right. RC 0. T 3. St. St. Knit to R 40 and pick up sts. from first row to form double band. RC 0.



T 4.2. Knit in St. St. while incr. on each side every 5 Rs. 1 St. 30x. At R 156 (160) [164] [168] shape sleeve cap. On each side BO 5 sts. then BO EOR 4 Sts. 1x, 3 Sts. 1x, 2 Sts. 1x, 1 St. 5x. Continue decr. every 4 Rs. 1 St. 6x, EOR 1 St. 23 (26) [29] [32] x and 2 Sts. 4x. At R 252 (262) [272] [282] BO remaining sts.



**BELT****BELT:**

'e' wrap CO 36 sts. RC 0. T 4.2. St. St. Knit until piece measures 5" more than your waist measurement and remove on WY. Iron 2" wide black fusible interfacing down middle of belt. Iron fusible adhesive to belting stabilizer and fuse the two pieces together. Close center seam and apply metallic applique following instructions on sheet. Attach velcro for closing.

**FINISHING:**

Iron metallic applique on dress pieces before finishing. Close shoulder seams and attach neckband. Attach sleeve and close all remaining seams.

**229****G—O ALL OUT**

**YARN:** Splendor - Purple  
**SIZES:**

Small/Med. (Lge./X-Lge.)

**AMOUNT:**

1-1/4 lbs. (1-1/2) lbs.

**KIT:** Color of your Choice

\$20.00 (\$24.00)

**TENSION:**

Body & Sleeve: T 7

**GAUGE:**

Body: 8.1 Sts., 12.0 Rs. = 1"

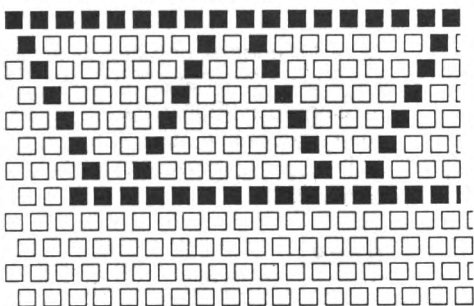
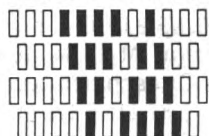
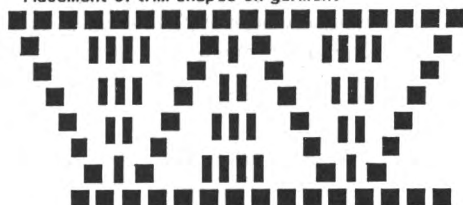
Sleeve: 7.2 Sts., 11.4 Rs. = 1"

**TECHNIQUE:** Garter Carriage

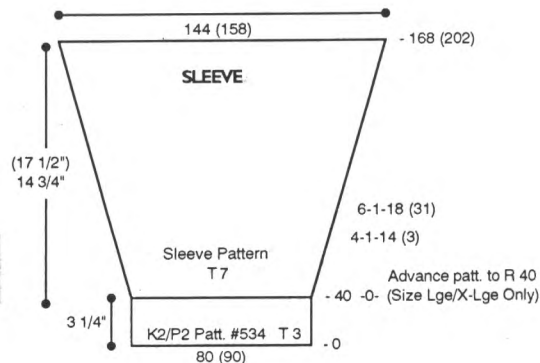
Make on Compuknit III/IV or V Machine with Garter Carriage.

**Note:**

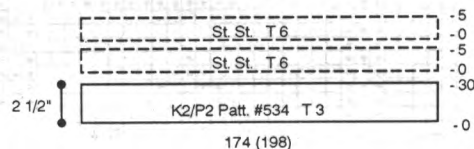
Body is built-in pattern #480 using variation keys #3 (double width) and #4 (double length). Knit sleeve using sleeve pattern and variation keys #3 and #4.

**Trim Pattern for Gold Squares****Trim Pattern for Gold Rectangles****Placement of trim shapes on garment****BACK/FRONT:**

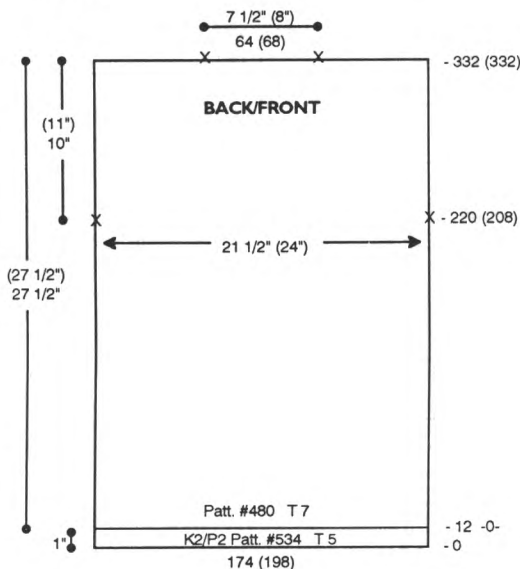
CO 174 (198) sts. RC 0. T 5. Set Garter Carriage for K2/P2 rib pattern and knit to R 12. RC 0. T 7. Set Garter Carriage for body pattern. Knit to R 220 (208) and place a YM on each side for armhole. Continue to R 332 (332) and mark center 64 (68) sts. for neckline. Remove neckline and shoulder sts. on separate WY.

**SLEEVE:**

CO 80 (90) sts. RC 0. T 3. Set Garter Carriage for K2/P2 rib pattern and knit to R 40. RC 0. T 7. Set Garter Carriage for sleeve pattern. For Lge/X-Lge size only advance pattern to R 40. Shape sleeve by incr. every 4 Rs. 1 St. 14 (3) x and every 6 Rs. 1 St. 18 (31) x. At R 168 (202) remove sts. on WY.

**NECKBAND****CUT & SEW NECKBAND:**

1. Close one shoulder.
2. Make a template of neckline. We made ours 7 1/2" (8") wide and 4" deep for the front and 1" deep for the back.
3. Trace neckline template on front/back using tailor's chalk or washable marker. Stitch along line with sewing machine and trim to 3/8" of marked line. If using a serger cut out neck 1" from line and serge along line.
4. Leave a long end for attaching neckband to neckline. With WY CO 174 (198) sts. After several rows knit 1 row Ravel Cord to the right. RC 0. T 6. Knit 5 rows and remove sts. on WY.
5. CO 174 (198) sts. RC 0. T 3. Set Garter Carriage for K2/P2 rib pattern and knit to R 30.



6. Rehang piece made in step 4 on these same ndls. RC 0. T 6. Knit 5 rows and remove sts. on WY.

7. With knit side facing rehang neckline on 174 (198) ndls. picking up just below the stitching line.

8. Pull ndls. to E position and push neckline behind latches. Rehang piece removed on WY in step 6 keeping sts. in latches.

9. Close latches and gently push ndls. back through neckline.

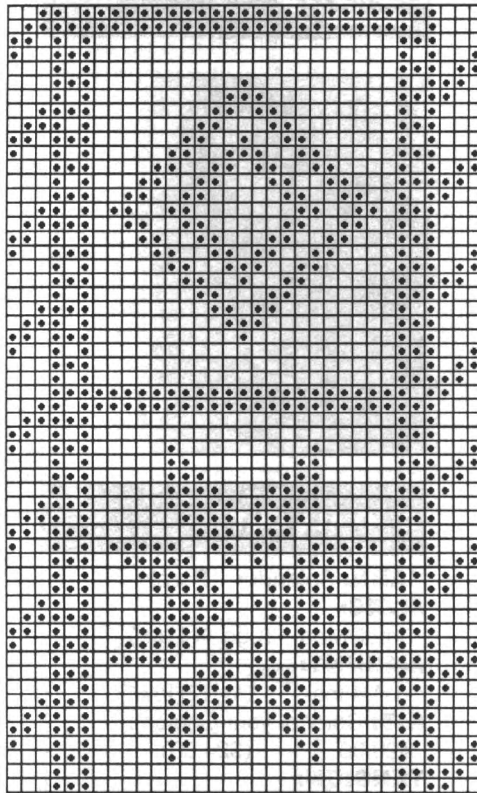
10. Pick up CO edge sts. from scrap and hang on same ndls. to encase neckline edge.

11. Pull ndls. to E position and BO.

**FINISHING:**

Close remaining shoulder and seam neckband. Attach sleeves and close all remaining seams.

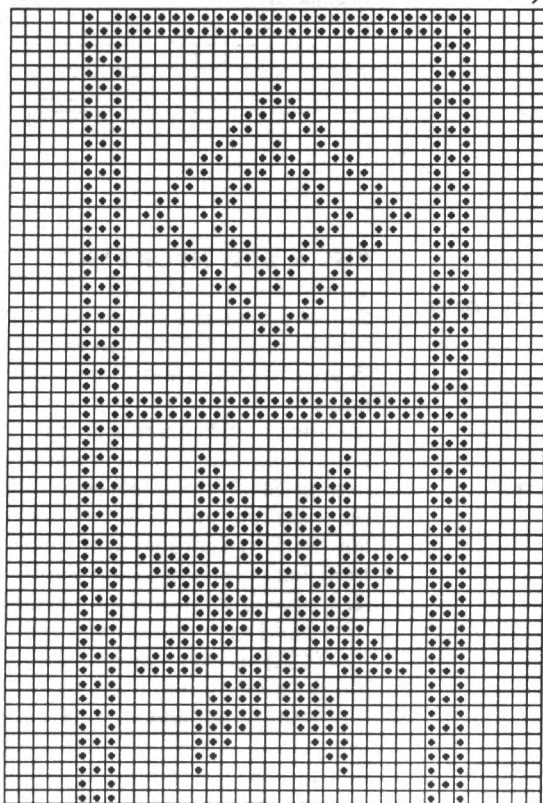
**#229 Garter Carriage Pattern-Body**  
33 Sts. x 56 Rows



Compuknit III/IV/V; Built-in Pattern #480  
Use variation keys for double length and double width

**#229 Garter Carriage Sleeve Pattern**  
79 Sts x 56 Rows

← Knit sts. to full width of sleeve →



← R 40 Start Sleeve  
Size Lge/X-Lge

KK Mag Disk: Track 6; Pattern 901  
Use double length & double width variation



**TWIST 'N SKIP**

**YARN:** Alpine

**SIZES:**

Small (Medium) [Large]

**AMOUNT:**

C 1: Alpine - Fuschia

1 (1 1/4) [1 1/2] lbs.

C 2: Knit-in Elastic - Red

1 spool all sizes

**KIT:** Color of your Choice  
\$28.00 (\$35.00) [\$42.00]

**TENSION:**

Body: T 6/5 I [(T 6.1/5.2 I)]

**GAUGE:**

Body: 5 [(4.78)] Sts., 6.66 [(6.66)]

Rs. = 1"

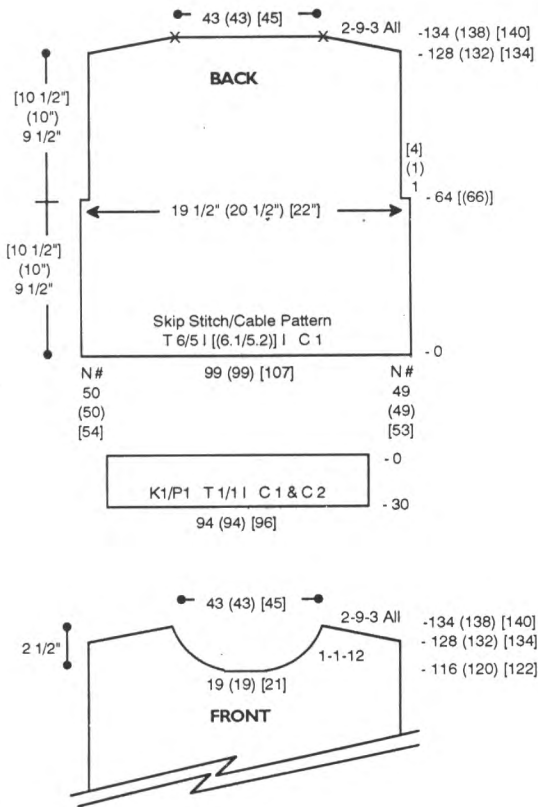
**TECHNIQUE:** Skip/Slip Stitch with Ribber

Make on Compuknit/Bulky or Punch Card Bulky with Ribber.

*Note:* Disengage end needle selector or use KC II. Pattern is built-in # 5 in Compuknit/Bulky Pattern Book. After the 'beep' (pattern R 8) knit 1 R to the right (pattern R 1) and make cable on RB.

**BACK:**

With WY CO 99 (99) [107] sts. following chart for ndl. #. After several rows end with 1 row Ravel Cord to the left. RC 0. T 6/5 I [(6.1/5.2 I)]. C 1. Knit in skip/cable pattern. At R 64 [(66)] shape armhole. On each side decr. 1 (1) St. [BO 4 Sts.]. Knit to R 128 (132) [134] and SHR shoulders EOR 9 Sts. 3x for all sizes. At R 134 (138) [140] mark center 43 (43) [45] sts. for neckline and remove sts. on WY.



**FRONT:**

Knit front same as back to R 116 (120)[122] and shape neckline. Place center 19 (19) [21] sts. in HP and all sts. to the left. Note pattern row. \*On neckline edge decr. every R 1 St. 12x. At R 128 (132) [134] SHR shoulder EOR 9 Sts. 3x for all sizes. At R 134 (138) [140] remove shoulder sts. on WY. Reset RC to 116 (120) [122]. Reset pattern to correct row and shape left side from \*, reversing shapings.

**WAISTBAND:**

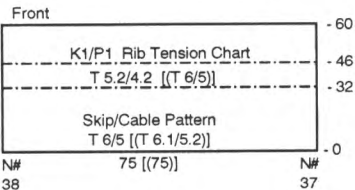
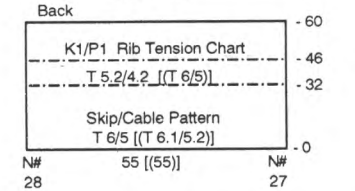
With purl side facing rehang lower edge of back/front on 94 (94) [96] ndls. decr. evenly across. C 1 and C 2. Knit 1 R at T 4. Transfer EOS to RB for K1/P1 Rib. RC 0. T 1/1 I. Knit to R 30 knitting last row at T 8/4. Transfer RB sts. to MB and BOLT.

**COLLAR:**

**Back:**  
With WY CO 55 [(55)] sts. following chart for ndl. #. After several rows end with 1 row Ravel Cord to the left. RC 0. T 6/5 I [(6.1/5.2 I)]. C 1. Knit in skip/cable pattern. At R 32 change to T 5.2/4.2 I [(6/5 I)]. Knit to R 46. Transfer sts. for K1/P1 Rib. Knit to

R 60 following Rib Tension Chart. Transfer RB sts. to MB. Knit 1 row at T 5 and remove sts. on WY.  
**Front:**  
With WY CO 75 [(75)] sts. following chart for ndl. #. Knit same as collar back.

**COLLAR**



**RIB TENSION CHART**

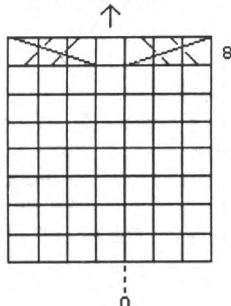
# Rows	Tension
6	1.1/1.1
4	1.2/1.2
4	2/2

**#230 Skip St. Pattern 2 Sts. x 8 Rows**

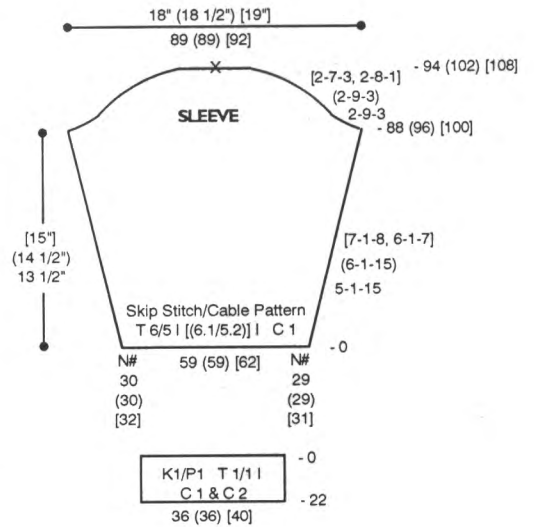
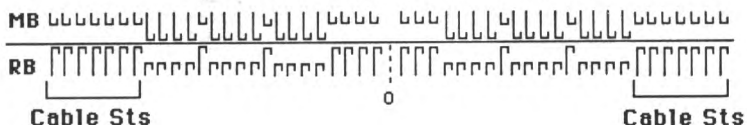


**Compuknit/Bulky Built-in Pattern #5**

**Cable Chart (Made on RB)**



**Skip/Cable Needle Arrangement**



**SLEEVE:**

With WY CO 59 (59) [62] sts. following chart for ndl. #. After several rows end with 1 row Ravel Cord to the left. RC 0. T 6/5 I [(6.1/5.2 I)]. C 1. Knit in skip/cable pattern while incr. on each side every 5 Rs. 1 St. 15x (every 6 Rs. 1 St. 15x) [every 7 Rs. 1 St. 8x and every 6 Rs. 1 St. 7x]. Wait until there are at least 2 sts. on MB when incr. There are only 3 cables up sleeve. The side patterns will be 4 Sts. on MB and 1 St. on RB. At R 88 (96) [100] shape sleeve cap. BO around gate pegs so sleeve will remain in place. Transfer RB sts. to MB before BO. On each side BO EOR 9 Sts. 3x (9 Sts. 3x) [7 Sts. 3x and 8 Sts. 1x]. At R 94 (102)[108] BO remaining sts.

**CUFF:**

With purl side facing rehang lower edge of sleeve on 36 (36) [40] ndls. decr. evenly across. C 1 and C 2. Knit 1 R at T 4. Transfer EOS to RB for K1/P1 Rib. RC 0. T 1/1 I. Knit to R 22 knitting last row at T 8/4. Transfer RB sts. to MB and BOLT.

**FINISHING:**

Attach back/front collar decr. evenly across. Close shoulder seams and side seams of collar. With knit side facing slip stitch lower edge. Attach sleeve. Close all remaining seams.



## TEE OFF

**YARN:** Venetia

**SIZES:**

Top: 6/8 (10/12) [14]  
Shorts: 6/8 (10/12) [14] {16}

**AMOUNT:**

C 1: Fisherman - 1 lb. all sizes  
C 2: Emerald  
1 [(1)] {1 1/2} lbs.

**KIT:** Color of your Choice

\$59.00 [(\$59.00)] {\$74.00}

**TENSION:**

Body: T 4.2  
Hems & Bands: T 4 or T 4.1

**GAUGE:**

Body: 9 Sts., 13.3 Rs. = 1"

**NOTIONS:**

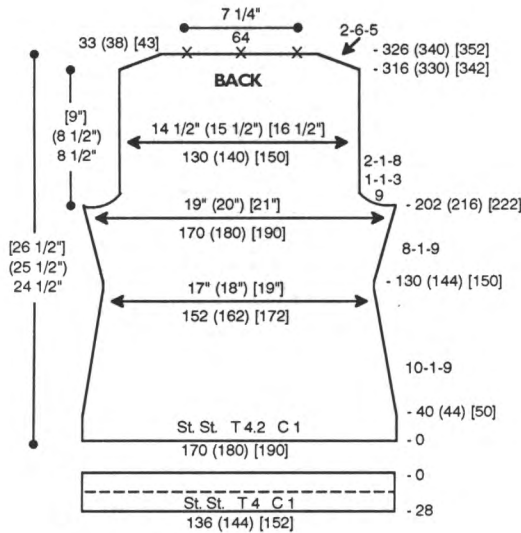
3 - 3/4" buttons and elastic for waistband.

**TECHNIQUE:** St. St. and Single Motif Fairisle.

Make on Standard 24-Stitch Punch Card or Standard Electronic Machine with Ribber.

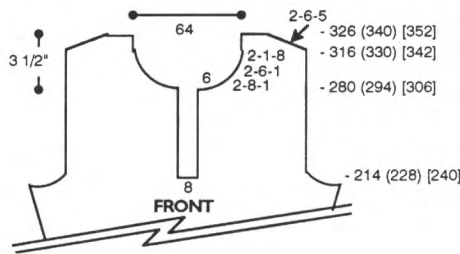
**TOP BACK:**

With WY CO 170 (180) [190] sts. After several rows end with 1 row Ravel Cord to the right. RC 0. T 4.2. C 1. St. St. Knit to R 40 (44) [50] and decr. on each side every 10 Rs. 1 St. 9x. At R 130 (144) [150] incr. every 8 Rs. 1 St. 9x. At R 202 (216) [222] shape armhole. On each side BO 9 sts., then decr. every row 1 St. 3x and EOR 1 St. 8x. Knit to R 316 (330) [342] and SHR shoulders EOR 6 Sts. 5x. At R 326 (340) [352] knit 1 row over all sts. at T 10. Mark center 64 sts. for neckline and center of neckline with YM and BOLT.



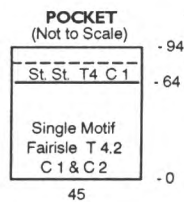
**TOP FRONT:**

Knit front same as back to R 214 (228) [240]. Shape neckline. BO center 8 sts. and remove all sts. to the left on WY. \*Knit to R 280 (294) [306]. On neckline edge BO 6 sts. then SHR EOR 8 sts. 1x, 6 Sts. 1x and 1 St. 8x. At R 316 (330) [342] SHR shoulder EOR 6 Sts. 5x. At R 326 (340) [352] knit 1 over shoulder sts. at T 10 and BOLT. Reset RC to R 214 (228) [240] and complete left side from \*, reversing shapings.



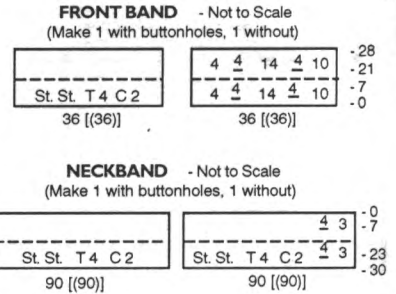
**TOP POCKET:**

With C 1 'e' wrap CO 45 sts. RC 0. T 4.2. Work in single motif with C 1 in 'A' Feeder and C 2 in 'B' Feeder. At R 64 change to T 4. C 1. St. St. Knit to R 94 and pick up sts. from R 65 to form double band. Knit 1 row at T 10 and BOLT.



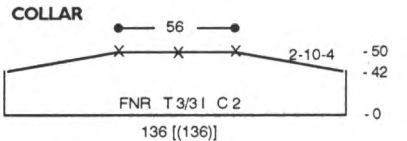
**FRONT BAND:** Make 1 with buttonholes, 1 without.

With purl side facing rehang front opening on 36 [(36)] ndls. RC 0. T 4. C 2. St. St. Knit to R 28 making buttonholes over 4 sts. with WY at Rs. 7 and 21 following chart for placement. Pick up sts. from first row to form double band. Knit 1 row at T 10 and BOLT.



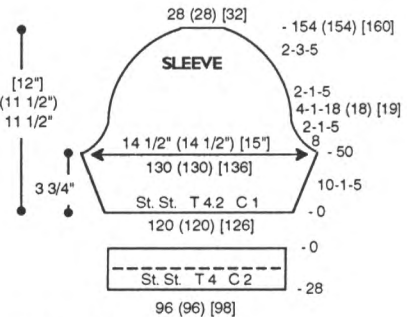
**NECKBAND:** Make 1 with buttonholes, 1 without.

With purl side facing rehang right half of neckline on 90 [(90)] ndls. RC 0. T 4. C 2. St. St. Knit to R 30 making buttonholes over 4 sts. with WY at R 7 and R 23 following chart. Pick up sts. from first row to form double band. Knit 1 row at T 10 and BOLT.



**COLLAR:** (Removable)

With C 2 CO 136 [(136)] sts. for FNR. After selvedge RC 0. T 3/3 I. Knit to R 42 and SHR on each side EOR 10 Sts. 4x. At R 50 transfer RB sts. to MB and mark center 56 sts. and center with a YM. Knit 1 row at T 10 and BOLT.



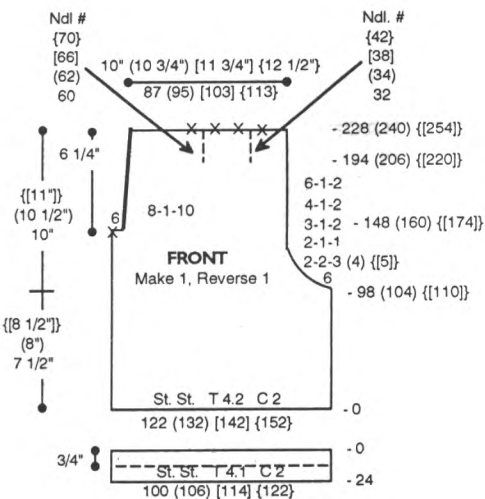
**SLEEVE:**

With WY CO 120 (120) [126] sts. After several rows end with 1 row Ravel Cord to the right. RC 0. T 4.2. C 1. Knit in St. St. while incr. on each side every 10 Rs. 1 St. 5x. At R 50 shape

sleeve cap. On each side BO 8 Sts. then decr. EOR 1 St. 5x, every 4 Rs. 1 St. 18 (18) [19] x and EOR 1 St. 5x, then SHR EOR 3 Sts. 5x. At R 154 (154) [160] knit 1 row at T 10 and BOLT.

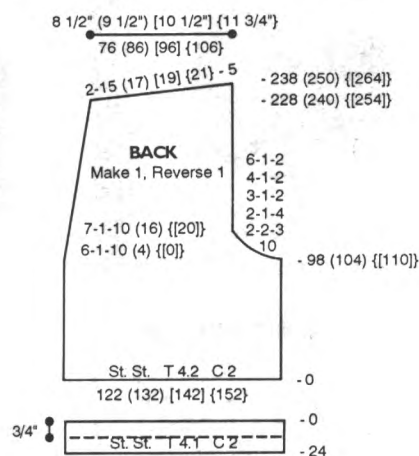
**CUFF:**

With purl side facing rehang lower edge of sleeve on 96 (96) [98] ndls. RC 0. T 4. C 2. St. St. Knit to R 28. Pick up sts. from first row to form double band. Knit 1 row at T 10 and BOLT.



**SHORTS FRONT:** Make 1, Reverse 1.

With WY CO 122 (132) [142] {152} sts. After several rows end with 1 row Ravel Cord to the right. RC 0. T 4.2. C 2. St. St. Knit to R 98 (104) {[110]} and start shaping. On right side BO 6 Sts. then FF decr. EOR 2 Sts. 3 (4) {[5]} x, 1 St. 1x, every 3 Rs. 1 St. 2x, every 4 Rs. 1 St. 2x and every 6 Rs. 1 St. 2x. At R 148 (160) {[174]} place a YM on left side for pocket and BO 6 Sts., then FF decr. every 8 Rs. 1 St. 10x. AT THE SAME TIME on the right side at R 194 (206) {[220]} place ndl. #'s 60 (62) [66] {70} and ndl. #'s 32 (34) [38] {42} to OWP for pleats. Con-



tinue in St. St. to R 228 (240) {[254]} and mark sts. for pleats following Front Waistband Pleat Chart. Remove sts. on WY.

**SHORTS BACK:** Make 1, Reverse 1.

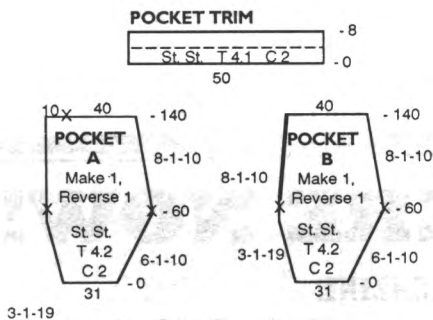
Knit back same as front to R 98 (104) {[110]}. On left side FF decr. every 6 Rs. 1 St. 10 (4) {[0]} x and every 7 Rs. 1 St. 10 (16) {[20]} x. AT THE SAME TIME on the right side BO 10 Sts. then FF decr. EOR 2 Sts. 3x and 1 St. 4x, every 3 Rs. 1 St. 2x, every 4 Rs. 1 St. 2x and every 6 Rs. 1 St. 2x. At R 228 (240) {[254]} SHR EOR 15 (17) [19] {21} Sts. 5x. At R 238 (250) {[264]} remove sts. on WY.

**HEM:** Make 4.

With purl side facing rehang lower edge of front/back on 100 (106) [114] {122} ndls. RC 0. T 4.1. C 2. St. St. Knit to R 24 and pick up sts. from first row to form double hem. Knit 1 row at T 10 and BOLT.

**POCKET A:** Make 1, Reverse 1.

With C 2 'e' wrap CO 31 sts. RC 0. T 4.2. St. St. On left side incr. every 3 Rs. 1 St. 19x. AT THE SAME TIME on the right side incr. every 6 Rs. 1 St. 10x. At R 60 place a YM on each side. On right side decr. every 8 Rs. 1 St. 10x. At R 140 place a YM 10 sts. in from left side and remove sts. on WY.



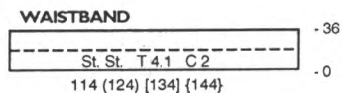
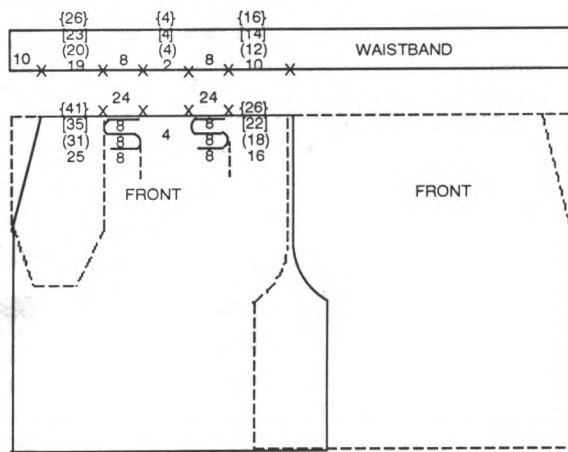
**POCKET B:** Make 1, Reverse 1.

With C 2 'e' wrap CO 31 sts. RC 0. T 4.2. St. St. On left side incr. every 3 Rs. 1 St. 19x. At R 60 mark edge with a YM then decr. every 8 Rs. 1 St. 10x. AT THE SAME TIME on the right side incr. every 6 Rs. 1 St. 10x. At R 60 mark edge with a YM then decr. every 8 Rs. 1 St. 10x. At R 140 remove sts. on WY.

**POCKET TRIM:**

With knit side facing rehang edge of Pocket B on 50 {[50]} ndls. RC 0. T 4.1. C 2. St. St. Knit to R 8 and pick up sts. from first row to form double hem. Knit 1 row at T 10 and BOLT.

**FRONT WAISTBAND PLEAT CHART**



**WAISTBAND:**

**Front:** Bring 114 (124) [134] [144] ndls. to WP. With purl side facing rehang 1 front from center to left following Front Waistband Pleat Chart and ending 10 sts. from left. With knit side facing rehang Pocket B on 29 (30) [33] [36] ndls. at left decr. evenly. Starting 10 ndls. in from left rehang Pocket A with purl side facing on 19 (20) [23] [26] ndls. Rehang remaining front the same way reversing pleats and pockets. Knit 1 row slowly from right to left. RC 0. T 4.1. C 2. St. St. Knit to R 36 and pick up sts. from first row to form double band. Knit 1 row at T 10 and BOLT.

**Back:** Bring 114 (124) [134] [144] ndls. to WP. With purl side facing rehang 2 pieces of back on these ndls. decr. evenly across. Knit same as front.

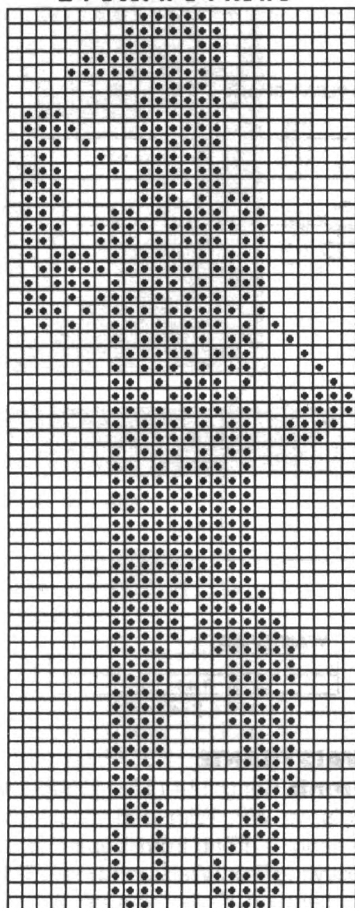
**FINISHING:**

**Top:** Close remaining shoulder. Starting 1/2" in from edge whip stitch collar to neckline matching markers. Sew pocket on front left side. Attach sleeves and close all remaining seams.

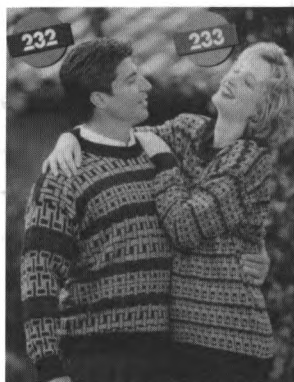
**Shorts:** Close pocket seams. Close front and side seams. Close all remaining seams.

# 232

**\*231 Fairisle Pattern**  
24 Sts. x 64 Rows



KK Mag Disk: Track 7; Pat. 901



## DOUBLE TAKE

**YARN:** Venetia, Panache Splendor and Acrylite

**SIZES:**

Small (Medium) [Large]

**AMOUNT:**

C 1: Venetia - Black

1 lb. all sizes

C 2: Panache - Grey

3 (4) [4] oz.

C 3: Splendor - Jade

3 (4) [4] oz.

C 4: Acrylite - Burgundy

3 (4) [4] oz.

**KIT:** Color of your Choice

\$36.00 [(\$40.00)]

**TENSION:**

Fairisle: T 6

Rib: T 0/0 I

**GAUGE:**

Fairisle: 8 Sts., 12 Rs. = 1"

**TECHNIQUE:** Fairisle

Make on Standard 24-Stitch Punch Card or Standard Electronic Machine with Ribber.

**Note:**

Pattern is #129 in Punch Card Pattern Book Vol. 5.

**Pattern Note:**

Use variation key #4 on electronic machines or elongate on punch card machine following Color & Technique Charts.

**BACK:**

With C 1 CO 184 (192) [200] sts. for K1/P1 Rib. After selvedge RC 0. T 0/0 I. Knit to R 50 and transfer RB sts. to MB. RC 0. T 6. Knit in fairisle following Color Chart. At R 140 (152) [158] place a YM on each side for armhole. At R 266 (278) [290] SHR shoulders EOR 12 Sts. 5x. At R 276 (288) [300] mark center 60 [(60)] sts. for neckline and remove shoulder and neckline sts. on separate WY.

**FRONT:**

Knit front same as back to R 228 (240) [252]. Shape neckline. BO center 20 sts. Place all sts. to the left in HP. Note pattern row. \*On neckline edge decr. EOR 3 sts. 2x, 2 Sts. 5x and 1 St. 4x. At R 266 (278) [290] SHR shoulder EOR 12 Sts. 5x. At R 276

# IT'S HERE NOW!!

KNITTING MAGAZINE

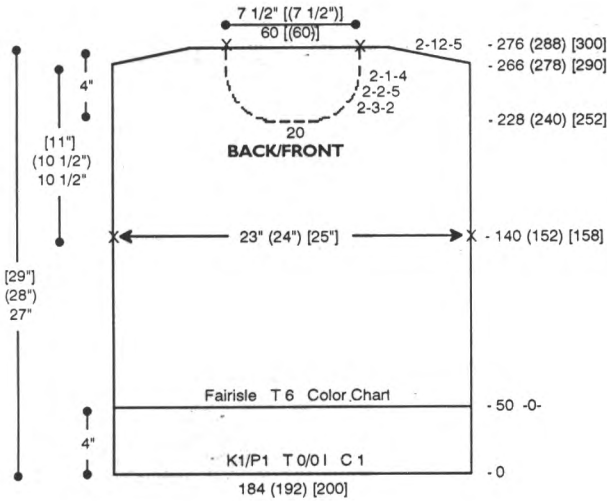
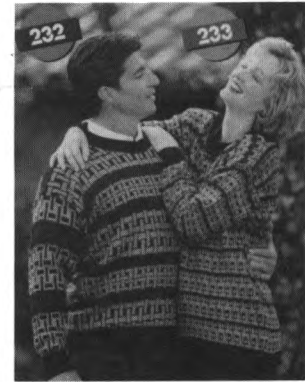
BOUND VOLUME 27

- HARD BOARD COVER
- COMPLETE INSTRUCTIONS
- WILL HOLD ANOTHER COMPLETE VOLUME



**PRICE: \$26.95**  
+ Ship/Hndl: \$4.00



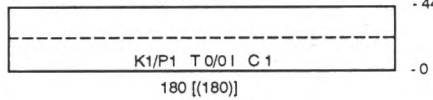


**BODY COLOR & TECHNIQUE CHART**

# Rows	MC	CC	Repeat
14	1	4	↑
14	1	3	
14	1	2	
14	1	4	
28	1	3	
28	1	2	

E = Elongated

**NECKBAND** (Not to Scale)



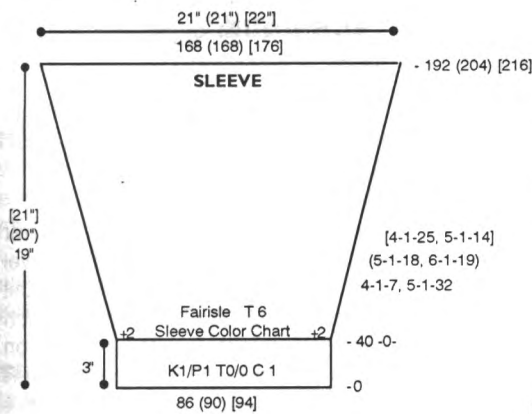
**FINISHING:**

Close remaining shoulder seam. Fold neckband to inside and whip stitch in place. Attach sleeves and close all remaining seams.

(288) [300] remove shoulder sts. on WY. Reset RC to R 228 (240) [252]. Reset pattern to row noted above and shape left side from \*, reversing shapings.

**SLEEVE:**

With C 1 CO 86 (90) [94] sts. for K1/P1 Rib. After selvedge RC 0. T 0/0 I. Knit to R 40 and transfer RB sts. to MB. RC 0. T 6. Incr. 2 sts. on each side. Knit in fairisle while incr. on each side every 4 Rs. 1 St. 7x and

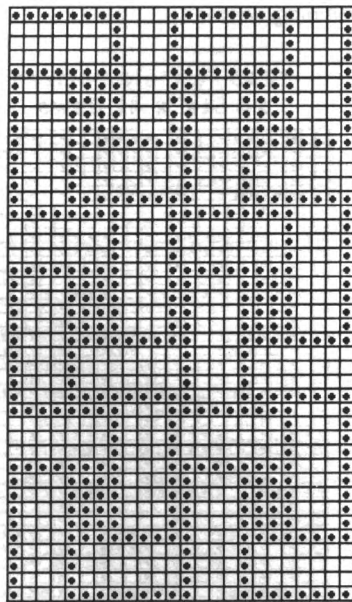


**SLEEVE COLOR & TECHNIQUE CHART**

# Rows	MC	CC	Repeat
28	1	4	↑
28	1	3	
28	1	2	

E = Elongated

**\*232 Fairisle Pattern  
24 Sts. x 42 Rows**



KK Mag Disk: Track 8; Pat. 901

every 5 Rs. 1 St. 32x (every 5 Rs. 1 St. 18x and every 6 Rs. 1 St. 19x) [every 4 Rs. 1 St. 25x and every 5 Rs. 1 St. 14x]. At R 192 (204) [216] knit 1 row at T 10 and BOLT.

**NECKBAND:**

Join one shoulder seam. With C 1 CO 180 [(180)] sts. for K1/P1 Rib. After selvedge RC 0. T 0/0 I. Knit to R 44. With purl side facing rehang neckline on these same ndls. Knit 1 row at T 10 and BOLT.

**DOUBLE TAKE**

**YARN:** Venetia, Panache, Splendor and Acrylite

**SIZES:**

6/8 (10/12) [14]

**AMOUNT:**

- C 1: Venetia - Black 1/2 lb. all sizes
- C 2: Panache - Grey 8 (8) [12] oz.
- C 3: Splendor - Teal 4 oz. all sizes
- C 4: Acrylite - Burgundy 4 oz. all sizes

**KIT:** Color of your Choice \$31.00 (\$31.00) [\$35.00]

**TENSION:**

Fairisle: T 6  
Rib: T 0/0 I

**GAUGE:**

Fairisle: 8.6 Sts., 10.8 Rs. = 1"

**TECHNIQUE:** Fairisle

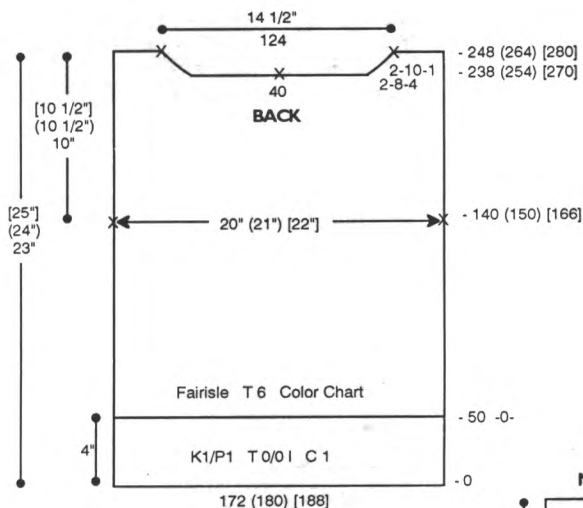
Make on Standard 24-Stitch Punch Card or Standard Electronic Machine with Ribber.

**Pattern Note:**

Use variation Key #4 on electronic machines or elongate on punch card machine.

**BACK:**

With C 1 CO 172 (180) [188] sts. for K1/P1 Rib. After selvedge RC 0. T 0/0 I. Knit to R 50 and transfer RB sts. to MB. RC 0. T 6. Knit in fairisle following Color Chart. At R 140 (150) [166] place a YM on each side for armhole. Knit to R 238 (254) [270] and shape neckline. Place center 40 sts. in HP and all sts. to the left. Note pattern row. \*On neckline edge SHR EOR 8 Sts. 4x and 10 Sts. 1x. At R 248 (264)

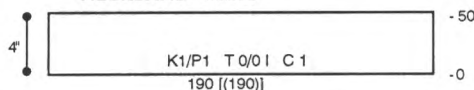


MB. RC 0. T 6. Incr. 2 sts. on each side. Knit in fairisle following Color Chart while incr. on each side every 4 Rs. 1 St. 43 (43) [45] x. At R 172 (178) [184] knit 1 row at T 10 and BOLT.

**BODY COLOR CHART**

# Rs.	MC	CC	Repeat
4	1	4	↑
4	1	3	
8	1	2	
4	1	3	
8	1	2	
4	1	3	
8	1	2	
4	1	3	

**NECKBAND** Make 2



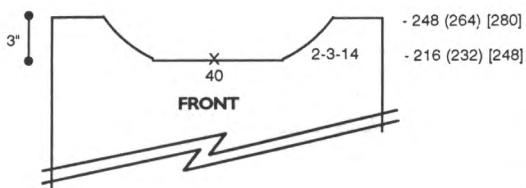
[280] remove shoulder sts. on WY. Reset RC to R 238 (254) [270]. Reset pattern to row noted above and shape left side from \*, reversing shaping. Mark neckline and center of neckline with YM. Knit 1 row over neckline sts. with C 1 and remove sts. on WY.

**NECKBAND:** Make 2.

With C 1 CO 190 [(190)] sts. for K1/P1 Rib. After selvedge RC 0. T 0/0 I. Knit to R 50 and transfer RB sts. to MB. With purl side facing rehang back/front neckline on these ndls. Knit 1 row at T 10 and BOLT.

**FINISHING:**

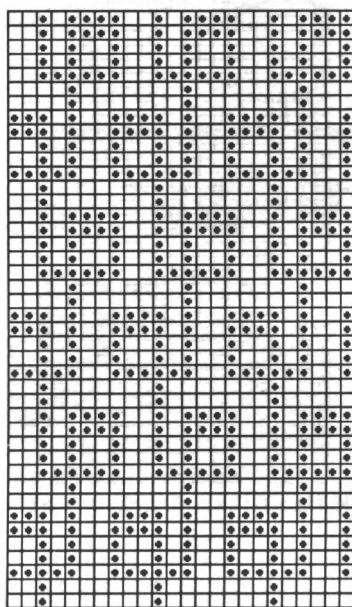
Close shoulder seams and attach sleeves. Fold back neckband so half turns to the knit side and attach edge to front neckline. Fold front neckband in half overlapping the back and whip stitch to back neckline. Close all remaining seams.



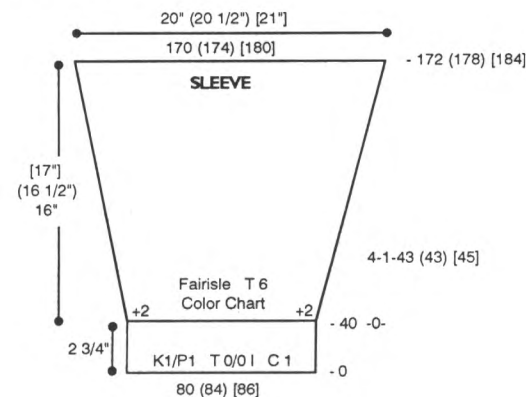
**FRONT:**

Knit front same as back to R 216 (232) [248] and shape neckline. BO center 40 sts. Place all sts. to the left in HP. Note pattern row.\*On neckline edge decr. EOR 3 Sts. 14x. At R 248 (264) [280] remove shoulder sts. on WY. Reset RC to R 216 (232) [248]. Reset pattern to row noted above and shape left side from \*, reversing shapings.

**\*233 Fairisle Pattern 24 Sts. x 42 Rows**



KK Mag Disk: Track 9; Pat 901



**SLEEVE:**

With C 1 CO 80 (84) [86] sts. for K1/P1 Rib. After selvedge RC 0. T 0/0 I. Knit to R 40 and transfer RB sts. to

**23-1**



**DOWN TO EARTH**

**YARN:** Venetia & Lumiyarn

**SIZES:**

6/8 (10/12) [14]

**AMOUNT:**

C 1: Venetia - Chocolate 1-3/4 lbs. all sizes

C 2: Venetia - Black 4 oz. all sizes

C 3: Venetia - Paprika 4 oz. all sizes

C 4: Lumiyarn - Copper 1 spool all sizes

**KIT:** Color of your Choice \$65.00 all sizes

**TENSION:**

St. St.: T 5

Fairisle & Lace: T 6

Hems: T 4

**GAUGE:**

St. St.: 8.5 Sts., 13 Rs. = 1"

Fairisle: 8 Sts., 13 Rs. = 1"

**NOTIONS:**

Elastic for waistband.

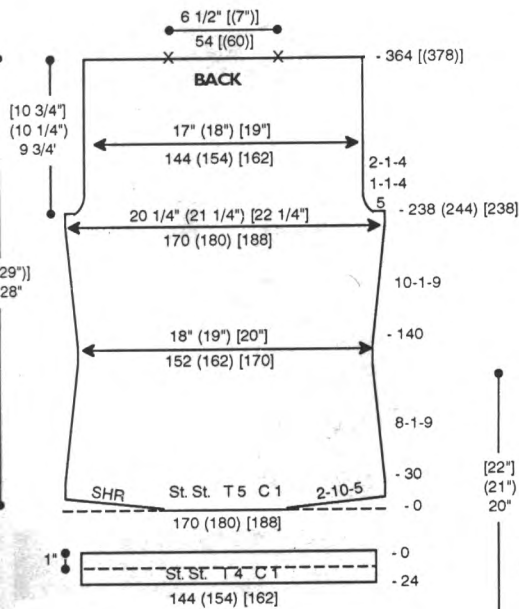
**TECHNIQUE:** St. St., Fairisle and Lace.

Make on Standard 24-Stitch Punch Card or Standard Electronic Machine.

**BACK:**

With WY CO 170 (180) [188] sts. After several rows end with 1 row Ravel Cord to the right. RC 0. T 5. C 1. Knit in St. St. while SHR shaping on each side EOR 10 Sts. 5x. At R 30 decr. on each side every 8 Rs. 1 St. 9x. At R 140 incr. on each side every 10 Rs. 1 St. 9x. At R 238 (244) [238] shape armhole. On each side BO 5 Sts., then decr. every R 1 St. 4x and EOR 1 St. 4x. At R 364 [(378)] mark center 54 [(60)] sts. for neckline and remove neckline and shoulder sts. on separate WY.

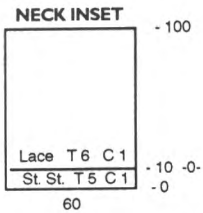




12x. On each side BO 3 Sts. then BO 4 Sts. Knit 1 row over remaining sts. at T 10 and BOLT.

**CUFF:**

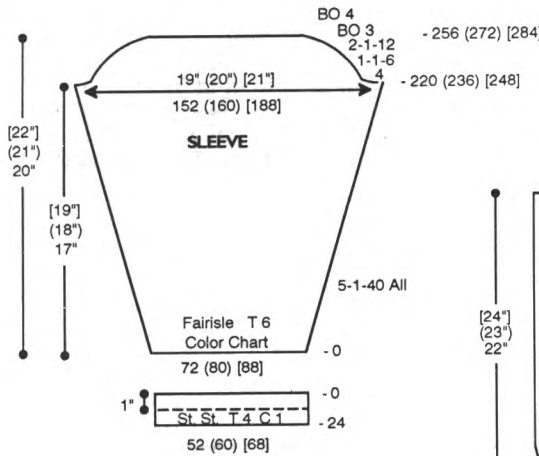
With purl side facing rehang lower edge of sleeve on 52 (60) [68] ndls. decr. evenly across. RC 0. T 4. C 1. St. St. Knit to R 24 and pick up sts. from first row to form double hem. Knit 1 row at T 10 and BOLT.



R 10 and pick up sts. from first row to form double hem. RC 0. T 6. Knit in lace pattern to R 100 and BO.

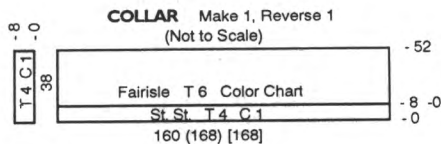
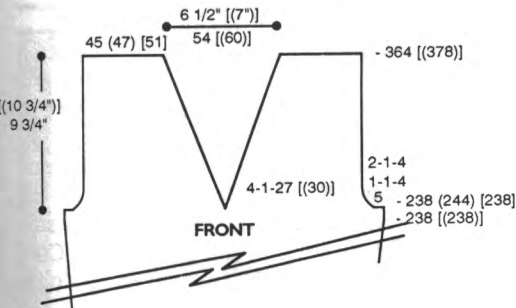
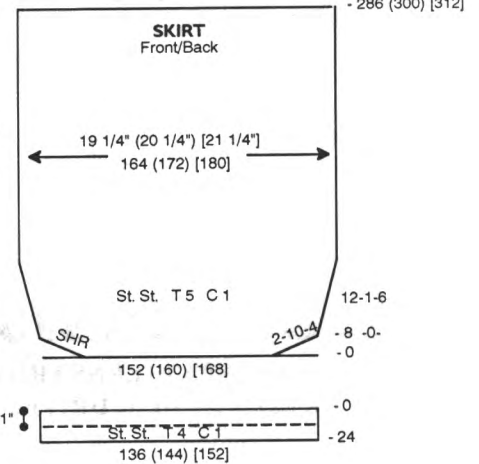
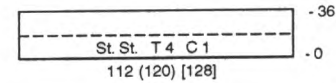
**FRONT:**

Knit front same as back to R 238 [(238)] and shape neckline. Place all sts. to the left of -0- in HP. \*On neckline edge decr. every 4 Rs. 1 St. 27 [(30)] x. AT THE SAME TIME at R 238 (244) [238] shape armhole. On right side BO 5 Sts., then decr. every R 1 St. 4x and EOR 1 St. 4x. At R 364 [(378)] remove shoulder sts. on WY. Reset RC to R 238 [(238)] and shape left side from \*, reversing shapings.



**COLOR CHART**

# Rows	MC	CC	Repeat
4	1	2	↑
4	1	4	
4	1	3	



**COLLAR:** (Make 1, Reverse 1.

With WY CO 160 (168) [168] sts. After several rows end with 1 row Ravel Cord to the right. RC 0. T 4. C 1. St. St. Knit to R 8 and pick up sts. from first row to form pin tuck. RC 0. T 6. Knit in fairisle following Color Chart to R 52 and BO. Bring 38 ndls. to WP. With purl side facing rehang left end on these ndls. RC 0. T 4. C 1. St. St. Knit to R 8 and pick up sts. from first row to form pin tuck. Knit 1 row at T 10 and BOLT.

**SKIRT FRONT/BACK:**

With WY CO 152 (160) [168] sts. After several rows end with 1 row Ravel Cord to the right. RC 0. T 5. C 1. Knit in St. St. while SHR shapping on each side EOR 10 Sts. 4x. RC 0. On each side incr. every 12 Rs. 1 St. 6x. At R 286 (300) [312] remove sts. on WY.

**HEM:**

With purl side facing rehang lower edge of skirt front/back on 136 (144) [152] ndls. RC 0. T 4. C 1. St. St. Knit to R 24 and pick up sts. from first row to form double hem. Knit 1 row at T 10 and BOLT.

**WAISTBAND:**

With purl side facing rehang upper edge of skirt front/back on 112 (120) [128] ndls. RC 0. T 4. C 1. St. St. Knit to R 36 and pick up sts. from first row to form double band. Knit 1 row at T 10 and BOLT.

**HEM:**

With purl side facing rehang lower edge of back/front on 144 (154) [162] ndls. decr. evenly across. RC 0. T 4. C 1. St. St. Knit to R 24 and pick up sts. from first row to form double hem. Knit 1 row at T 10 and BOLT.

**SLEEVE:**

With WY CO 72 (80) [88] sts. After several rows end with 1 row Ravel Cord to the left. Knit 1 row to set pattern. RC 0. T 6. Knit in fairisle following Color Chart while incr. on each side every 5 Rs. 1 St. 40x for all sizes. At R 220 (236) [248] shape sleeve cap. On each side BO 4 Sts., then decr. every R 1 St. 6x, EOR 1 St.

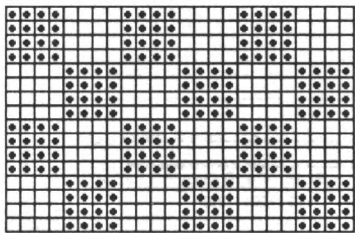
**NECK INSET:**

With WY CO 60 sts. After several rows end with 1 row Ravel Cord to the right. RC 0. T 5. C 1. St. St. Knit to

**FINISHING:**

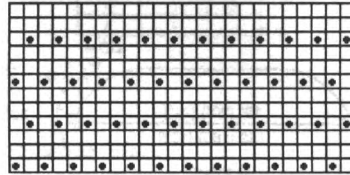
Close shoulder seams. Close center back seam of collar and attach collar to neckline. Starting 2" down from shoulder attach neck inset in neckline "V" with hem at top. Attach sleeves and close all remaining seams.

**#234 Fairisle Pattern**  
24 Sts. x 16 Rows



KK Mag Disk: Track 10; Pat. 901

**#234 Lace Pattern**  
24 Sts. x 12 Rows



KK Mag Disk: Track 10; Pat 902

# knitking news

## LOADING STORED PATTERNS FROM A DISK INTO THE COMPUKNIT Vcx VIA THE FLOPPY DISK DRIVE:

- Step 1: Connect the Floppy Disk Drive to the knitting machine with the power off. Turn the machine and the Floppy Disk Drive on.
- Step 2: With the ready light on, enter "551" and push the STEP key.
- Step 3: Enter the track number which contains the pattern you want.
- Step 4: Press the STEP key. (The Pattern No. lamp is now lit. The number of the last pattern stored on the disk will show in the window.)
- Step 5: Enter the pattern number that you want to load.
- Step 6: Press the STEP key. (The machine will now assign the next available pattern number in its memory.)  
The new Pattern number is flashing. You will, in the future use this Pattern number when you program the machine to knit. Make a note of it is it differs from original notation. (i.e. Knitking Magazine assigns a track number and pattern number for garments in our magazine. Your Compuknit V/Vcx will assign a new pattern number based on availability.)
- Step 7: Press the STEP key.  
(All indicators in the display and all lamps go out. The access lamp of the Floppy Disk Drive is lit. The computer in the knitting machine begins to load the data.)
- Step 8: When loading is completed, the buzzer sounds "Pi" and the READY lamp is lit.

Unlike the Compuknit III and IV, the patterns you load from a stored disk merely become an additional pattern to others you have created or transferred into the machine. When loading a pattern, the Compuknit V/Vcx loads one pattern at a time and does not wipe out everything that is currently in the machine. It loads a pattern at a time, not a track at a time.

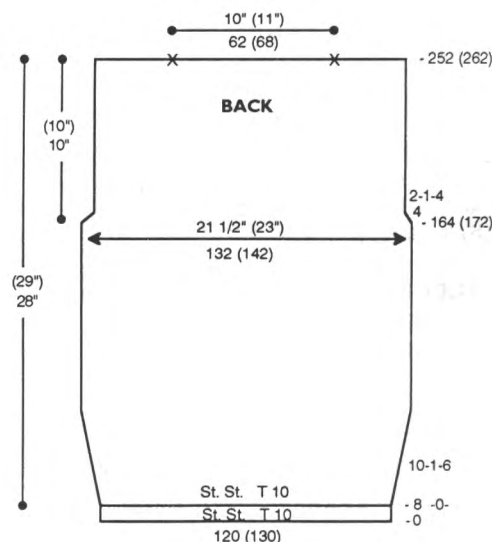


### A FRINGE BENEFIT

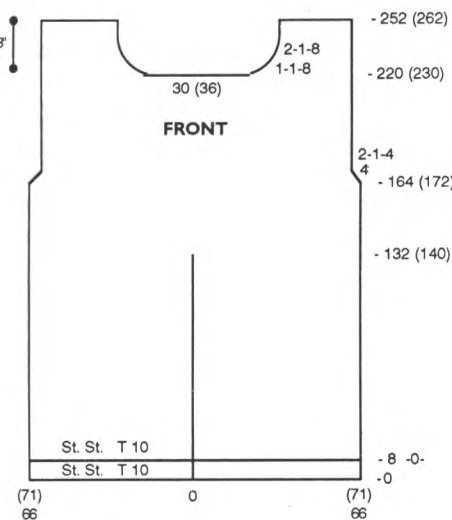
- YARN:** Alpine - Jungle
- SIZES:** Sm./Med. (Lge./X-Lge)
- AMOUNT:** 2 lbs. all sizes
- KIT:** Color of your Choice \$55.00
- TENSION:** Body: T 10  
Rib: T 6/6 I
- GAUGE:** Body: 6.15 Sts., 9 Rs. = 1"  
Rib: 10 Rs. = 1"
- NOTIONS:** 3 1-1/4" buttons for decoration.
- TECHNIQUE:** St. St.

Make on any Standard Machine with Ribber.

**BACK:**  
With WY CO 120 (130) sts. After several rows end with 1 row Ravel Cord to the right. RC 0. T 10. St. St. Knit to



R 8. RC 0. T 10. Knit in St. St. while incr. on each side every 10 Rs. 1 St. 6x. At R 164 (172) shape armhole. On each side BO 4 sts. then decr. EOR 1 St. 4x. At R 252 (262) mark center 62 (68) sts. for neckline. Remove neckline and shoulder sts. on separate WY.

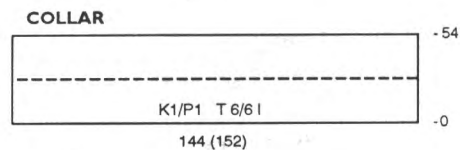
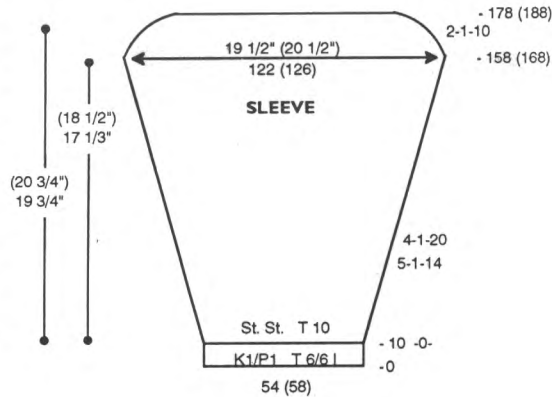


**FRONT:**  
With WY CO 66 (71) sts. to the left of '0'. After several rows end with 1 row Ravel Cord to the right. RC 0. T 10. St. St. Knit to R 8. Pick up sts. from first row to form hem. RC 0. T 10. St. St. Knit to R 132 (140) and remove these

sts. on WY or Garter Bar. With WY CO 66 (71) sts. to the right of '0'. Knit the same as left side to R 132 (140). Rehang left side on ndls. to the left of '0'. Continue in St. St. to R 164 (172) and shape armhole. On each side BO 4 sts. then decr. EOR 1 St. 4x. At R 220 (230) shape neckline. BO center 30 (36) sts. Place all sts. to the left in HP. \*On neckline edge decr. every R 1 St. 8x and EOR 1 St. 8x. At R 252 (262) remove shoulder sts. on WY. Reset RC to R 220 (230) and shape left side from \*, reversing shaping.

**SLEEVE:**  
CO 54 (58) sts. for K1/P1 Rib. After selvedge RC 0. T 6/6 l. Knit to R 10 and transfer RB sts. to MB. RC 0. T 10. Knit in St. St. while incr. on each side every 5 Rs. 1 St. 14x and every 4 Rs. 1 St. 20x. At R 158 (168) shape sleeve cap. On each side decr. EOR 1 St. 10x. At R 178 (188) knit 1 row manually at a loose tension and BOLT.

**COLLAR:**  
CO 144 (152) sts. for K1/P1 Rib. After selvedge RC 0. T 6/6 l. Knit to R 54 and remove sts. on WY.



**FINISHING:**  
Close one shoulder and attach collar with a crochet hook. Close remaining shoulder. Fold collar to inside and whip stitch in place. Attach sleeves, and close all remaining seams.  
*Front Opening:* With purl side facing SC1 R along front edge. \*SC in SC, wrapping yarn around a 1 1/2" wide ruler. Repeat from \* around front edge.



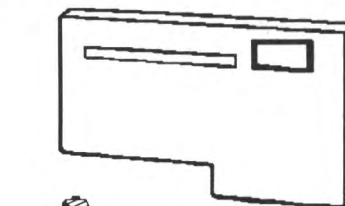
# Floppy Disk Drive



Direct Connection to Compuknit Vcx

The Floppy Disk Drive makes pattern work unbelievably easy. There are many programmed disks available from a variety of designers. In fact, several of the unique creations found on the pages of this magazine are available on disk. (Compuknit V, Compuknit/Bulky or Compuknit/ST owners will also need the KC/PPD optional accessory to transfer patterns).

Invest in a Floppy Disk Drive today . . . and start your own Design Collection tomorrow! — **ONLY \$369.95**



## knitting "LACE MAKER" CARTRIDGE

There's nothing more beautiful than the delicate appeal of Lace. And, with this new cartridge, you can use it (with your KC Pattern Design Computer) to create Lace and Fine Lace Patterns. The KC will automatically convert the "transfer symbols" you entered into a "data pattern" for easy communication into your Compuknit Vcx, Compuknit O or Compuknit ST knitting machine.

Regularly priced at \$129.95, this exciting, new accessory is **SALE priced at \$119.95.**



## CHECK IT OUT

**YARN:** Venetia

**SIZES:**

Jacket: 6/8 (10/12) [14]

Pants: 6/8 (10/12) [14] {16}

**AMOUNT:**

**Jacket:**

C 1: Black -1 lb. all  
C 2: Coffee - 1 lb. all

**Pants:** C 1: Black

1 [(1 1/2)] {1 3/4} lbs.

**KIT:** Color of your Choice

Jacket: \$ 60.00 all

Pants:

\$28.00 [(\$42.00)] {\$49.00}

**TENSION:**

Fairisle: T 5

Pants: T 4.2

**GAUGE:**

Fairisle: 9.5 Sts., 11.5 Rs. = 1"

Pants: 9 Sts., 12.6 Rs. = 1"

**NOTIONS:**

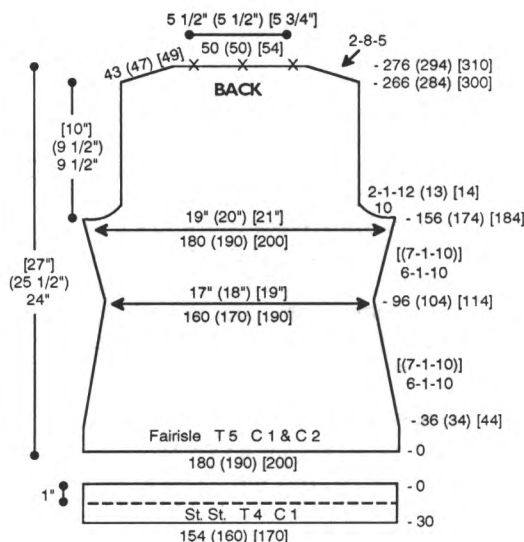
2 - 1 1/4" buttons, 4 - 3/4" buttons and elastic for waistband.

**TECHNIQUE:** Fairisle and St. St.

Make on Standard 24-Stitch Punch Card or Standard Electronic Machine.

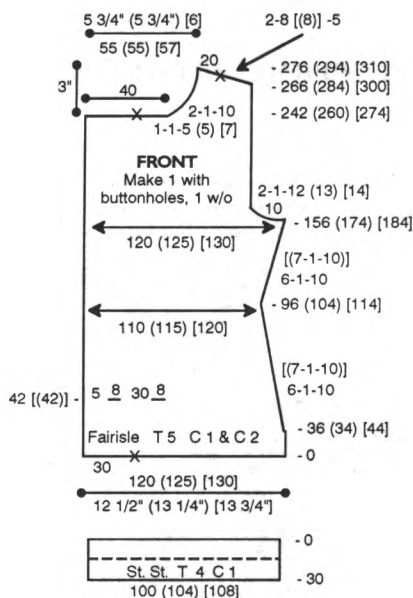
### JACKET BACK:

With WY CO 180 (190) [200] sts. After several rows end with 1 row Ravel Cord to the left. RC 0. T 5. C 1 and C 2. Fairisle. Knit to R 36 (34) [44] and shape by decr. on each side every 6 Rs. 1 St. 10x [(every 7 Rs. 1 St. 10x)]. At R 96 (104) [114] incr. on each side every 6 Rs. 1 St. 10x [(every 7 Rs. 1 St. 10x)]. At R 156 (174) [184] shape armhole. On each side BO 10 sts. then decr. EOR 1 St. 12 (13) [14] x. At R 266 (284) [300] SHR shoulders EOR 8 Sts. 5x. At R 276 (294) [310] mark center 50 (50) [54] sts. for neckline and center of neckline with a YM. Remove shoulder and neckline sts. on separate WY.



### BACK HEM:

With purl side facing rehang lower edge of back on 154 (160) [170] ndls. RC 0. T 4. C 1. St. St. Knit to R 30 and pick up sts. from first row to form double hem. Knit 1 row at T 10 and BOLT.



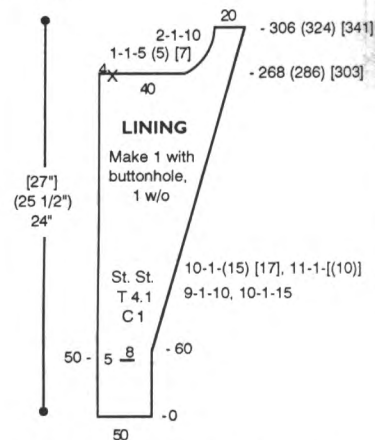
### JACKET FRONT:

Make 1 with buttonholes, 1 without. With WY CO 120 (125) [130] sts. After several rows end with 1 row Ravel Cord to the left. RC 0. T 5. C 1 and C 2. Fairisle. Knit to R 36 (34) [44] and shape by decr. on right side every 6 Rs. 1 St. 10x [(every 7 Rs. 1 St. 10x)]. AT THE SAME TIME at R 42 [(42)] make buttonholes with WY over 8 sts. following chart. At R 96 (104) [114] incr. on right side every 6 Rs. 1 St. 10x [(every 7 Rs. 1 St. 10x)]. At R 156 (174) [184] shape armhole. On right

side BO 10 sts. then decr. EOR 1 St. 12 (13) [14] x. At R 242 (260) [274] mark left 30 sts. with a YM for collar and shape neckline. On left side BO 40 sts. then decr. every R 1 St. 5 (5) [7] x and EOR 1 St. 10 x for all sizes. At R 266 (284) [300] SHR shoulder EOR 8 [(8)] Sts. 5x. At R 276 (294) [310] mark 20 sts. at the left for lining and remove shoulder sts. on WY.

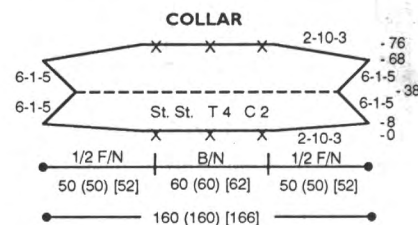
### FRONT HEM:

With purl side facing rehang lower edge of front on 100 (104) [108] ndls. RC 0. T 4. C 1. St. St. Knit to R 30 and pick up sts. from first row to form double hem. Knit 1 row at T 10 and BOLT.



### JACKET LINING:

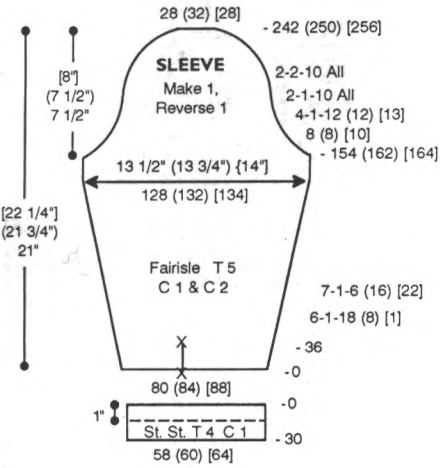
Make 1 with buttonhole, 1 without. With WY CO 50 sts. After several rows end with 1 row Ravel Cord to the right. RC 0. T 4.1. C 1. St. St. Knit to R 50 and make a buttonhole over 8 sts. with WY following chart. At R 60 incr. on right side every 9 Rs. 1 St. 10x and every 10 Rs. 1 St. 15x [(15) [17] x] and every 11 Rs. 1 St. [(10x) x]. At R 268 (286) [303] mark 4 sts. at the left for attaching to garment and shape neckline. On left side BO 40 sts. then decr. every R 1 St. 5 (5) [7] x and EOR 1 St. 10 x for all sizes. At R 306 (324) [342] remove shoulder sts. on WY.



### COLLAR:

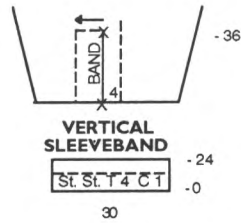
With WY CO 160 (160) [166] sts. After several rows end with 1 row Ravel Cord to the right. Mark center 60 (60) [62] sts. for back neckline and center

of neckline with a YM. RC 0. T 4. C 2. St. St. On each side SHR EOR 10 St.s 3x. At R 8 decr. on each side every 6 Rs. 1 St. 5x. At R 38 incr. on each side every 6 Rs. 1 St. 5x. At R 68 SHR on each side EOR 10 Sts. 3x. At R 76 mark center 60 (60) [62] sts. for back neckline and center of neckline with a YM. Pick up sts. from first row to form double collar and knit 1 R at T 5. Knit 1 row at T 10 and BOLT.



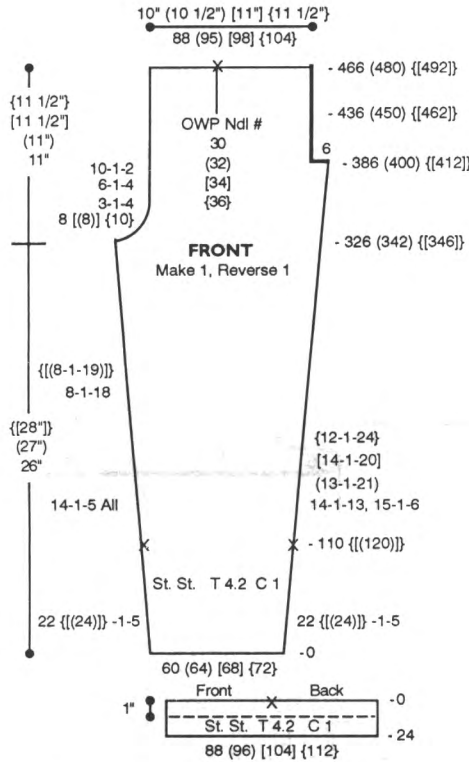
**SLEEVE:** Make 1, Reverse 1. With WY CO 80 (84) [88] sts. After several rows end with 1 row Ravel Cord to the left. RC 0. T 5. Place a YM on ndl. # 4 to the left of -0- for vertical sleeveband. With C 1 and C 2 knit in fairisle while incr. on each side every 6 Rs. 1 St. 18 (8) [1] x and every 7 Rs. 1 St. 6 (16) [22] x. AT THE SAMETIME at R 36 place a YM on ndl. # 4 to the left of -0- for vertical sleeveband. At R 154 (162) [164] shape sleeve cap. On each side BO 8 (8) [10] sts. then decr. every 4 Rs. 1 St. 12 (12) [13] x, EOR 1 St. 10x and 2 Sts. 10x for all sizes. At R 242 (250) [256] knit 1 row at T 10 and BOLT.

**CUFF:** With purl side facing rehang lower edge of sleeve on 58 (60) [64] ndls. RC 0. T 4. C 1. St. St. Knit to R 30 and pick up sts. from first row to form double band. Knit 1 row at T 10 and BOLT.



**VERTICAL SLEEVEBAND:**

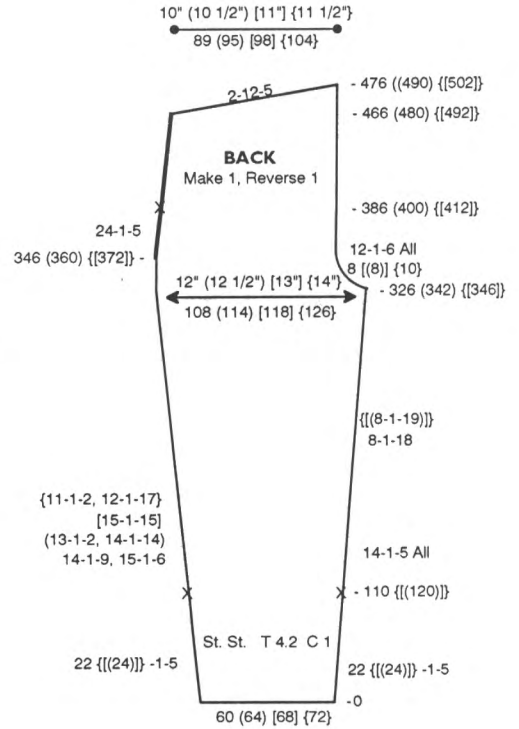
With WY CO 30 sts. After several rows end with 1 row Ravel Cord to the right. RC 0. T 4. C 1. St. St. Knit to R 24 and pick up first row to form double band. Knit 1 row at T 10 and BOLT.



**PANTS FRONT:** Make 1, Reverse 1.

With WY CO 60 (64) [68] [72] sts. After several rows end with 1 row Ravel Cord to the right. RC 0. T 4.2. C 1. Knit in St. St. while shaping both sides. On the left side incr. every 22 {{{(24)}}} Rs. 1 St. 5x. At R 110 {{{(120)}}} mark left side with YM for aid in seaming. Continue incr. every 14 Rs. 1 St. 5x and every 8 Rs. 1 St. 18x {{{(every 8 Rs. 1 St. 19x)}}}. At R 326 (342) {{{[346]}}} BO 8 {{{(8)}}} [10] sts. and then decr. every 3 Rs. 1 St. 4x, every 6 Rs. 1 St. 4x and every 10 Rs. 1 St. 2x. AT THE SAME TIME on the right side incr. every 22 {{{(24)}}} Rs. 1 St. 5x. At R 110 {{{(120)}}} mark right side with YM for aid in seaming. Continue incr. every 14 Rs. 1 St. 13x and every 15 Rs. 1 St. 6 x, (every 13 Rs.

1 St. 21x), [every 14 Rs. 1 St. 20x], [every 12 Rs. 1 St. 24x]. At R 386 (400) {{{[412]}}} BO 6 Sts. At R 436 (450) {{{[462]}}} put ndl. # 30 (32) [34] [36] in NWP. Continue to R 466 (480) {{{[492]}}} and remove sts. on WY.

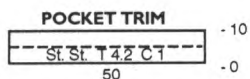


**PANTS BACK:** Make 1, Reverse 1.

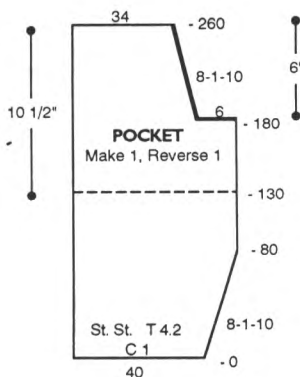
With WY CO 60 (64) [68] [72] sts. After several rows end with 1 row Ravel Cord to the right. RC 0. T 4.2. C 1. Knit in St. St. while shaping both sides. On the left side incr. every 22 {{{(24)}}} Rs. 1 St. 5x. At R 110 {{{(120)}}} mark left side with YM for aid in seaming. Continue incr. every 14 Rs. 1 St. 9x and every 15 Rs. 1 St. 6x, (every 13 Rs. 1 St. 2x and every 14 Rs. 1 St. 14x), [every 15 Rs. 1 St. 15x], [every 11 Rs. 1 St. 2x and every 12 Rs. 1 St. 17x]. At R 346 (360) {{{[372]}}} decr. every 24 Rs. 1 St. 5x. At R 386 (400) {{{[412]}}} place a YM on left side for aid in seaming. AT THE SAME TIME on the right side incr. every 22 {{{(24)}}} Rs. 1 St. 5x. At R 110 {{{(120)}}} mark right side with YM for aid in seaming. Continue incr. every 14 Rs. 1 St. 5x for all sizes, every 8 Rs. 1 St. 18x {{{(every 8 Rs. 1 St. 19x)}}}. At R 326 (342) {{{[346]}}} BO 8 {{{(8)}}} [10] Sts., then decr. every 12 Rs. 1 St. 6x. At R 466 (480) {{{[492]}}} SHR EOR 12 Sts. 5x. At R 476 (490) {{{[502]}}} remove sts. on WY.

**PANTS HEM:** Make 2.

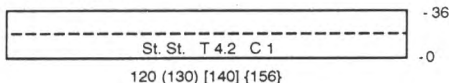
With purl side facing rehang lower edge of 1 front and 1 back on 88 (96) [104] {112} ndls. RC 0. T 4.2. C 1. St. St. Knit to R 24 and pick up sts. from first row to form double hem. Knit 1 row at T 10 and BOLT.

**POCKET TRIM:** Make 2.

With purl side facing rehang front pocket opening on 50 ndls. RC 0. T 4.2. C 1. St. St. Knit to R 10 and pick up sts. from first row to form double band. Knit 1 row at T 10 and BOLT.

**POCKET:** Make 1, Reverse 1.

With WY CO 40 sts. After several rows end with 1 row Ravel Cord to the right. RC 0. T 4.2. C 1. Knit in St. St. while incr. on right side every 8 Rs. 1 St. 10x. At R 180 BO 6 sts. on the right side then decr. every 8 Rs. 1 St. 10x. At R 260 remove sts. on WY.

**WAISTBAND****WAISTBAND:**

**Front:** Bring 120 (130) [140] {156} ndls. to WP. With purl side facing rehang upper edge of front on these ndls. starting at the right of -0- and following Pleat Chart. Leave 10 ndls. at the right empty. With knit side facing rehang upper edge of pocket on these same ndls. from right to left. Rehang bottom of pocket from right to left (incl. 10 empty ndls.) Rehang left front and pocket in the same

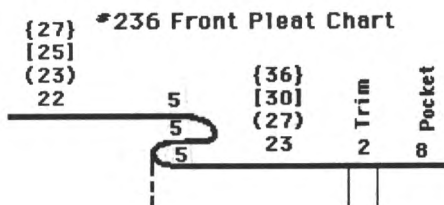
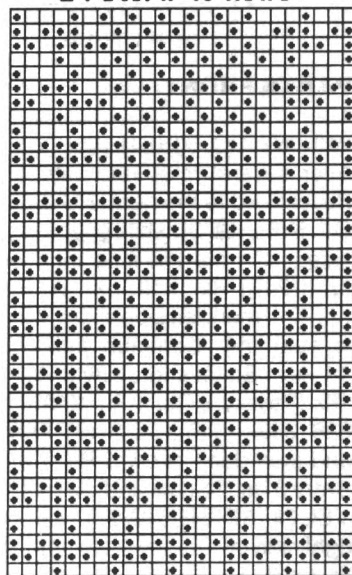
manner from the left of -0-. RC 0. T 4.2. St. St. Knit to R 36 and pick up sts. from first row to form double band. Knit 1 row at T 10 and BOLT.

**Back:** Bring 120 (130) [140] {156} ndls. to WP. With purl side facing rehang 2 pieces of back on these ndls. decr. evenly across. Knit same as Front.

**FINISHING:**

**Jacket:** Close collar seams. Attach front and lining together inserting collar between the two pieces at the top starting at marker on front. Close shoulder seams and attach collar to back neckline. Starting at bottom of sleeve attach vertical sleevebands and sew in sleeves. Close all remaining seams.

**Pants:** Close pocket seams. Close all remaining seams.

**#236/237 Fairisle Pattern**  
24 Sts. x 40 Rows

KK Mag Disk: Track 11; Pattern 901

# 237

**TRES CHIC**

**YARN:** Venetia

**SIZES:**

6/8 (10/12) [14] {16}

**AMOUNT:**

C 1: Black

1 (1) {[1 1/2]} lbs.

C 2: Fisherman

4 oz. all sizes

**KIT:** Color of your Choice

\$36.00 (\$36.00) {[50.00]}

**TENSION:**

Fairisle: T 5.1

St. St.: T 3.2

Rib: T 3/3 II

**GAUGE:**

Fairisle: 9.37 Sts., 10 Rs. = 1"

St. St.: 9.23 Sts., 13.23 Rs. = 1"

**NOTIONS:**

6 - 1" buttons

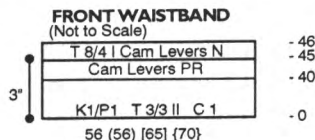
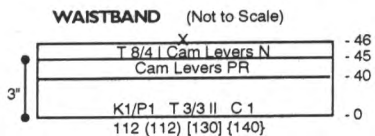
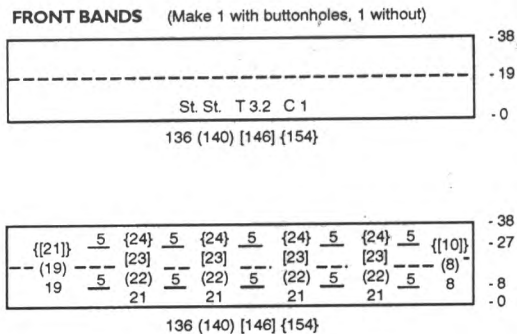
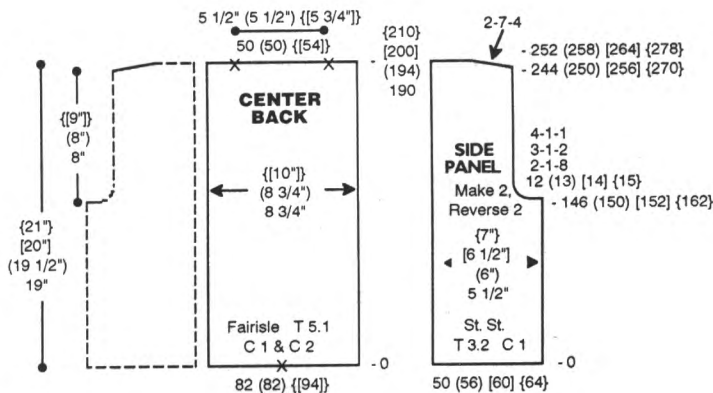
**TECHNIQUE:** Fairisle and St. St. Make on Standard 24-Stitch Punch Card or Standard Electronic Machine with Ribber.

**CENTER BACK:**

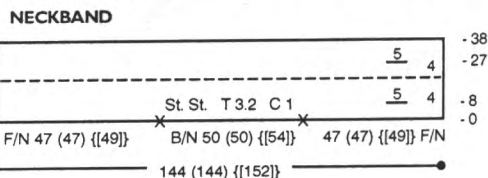
With WY CO 82 (82) {[94]} sts. After several rows end with 1 row Ravel Cord to the left. RC 0. T 5.1. C 1 and C 2. Mark center with a YM. Knit in fairisle to R 190 (194) [200] [210] and mark center 50 (50) {[54]} sts. for neckline. Remove sts. on WY.

**SIDE PANELS:** Make 2, Reverse 2.

With WY CO 50 (56) [60] {64} sts. After several rows end with 1 row Ravel Cord to the right. RC 0. T 3.2. C 1. St. St. Knit to R 146 (150) [152] [162] and shape armhole. On right side BO 12 (13) [14] {15} sts. then decr. EOR 1 St. 8x, every 3 Rs. 1 St. 2x and every 4 Rs. 1 St. 1x. At R 244 (250) [256] {270} SHR shoulder EOR 7 Sts. 4x. At R 252 (258) [264] {278} remove shoulder sts. on WY.



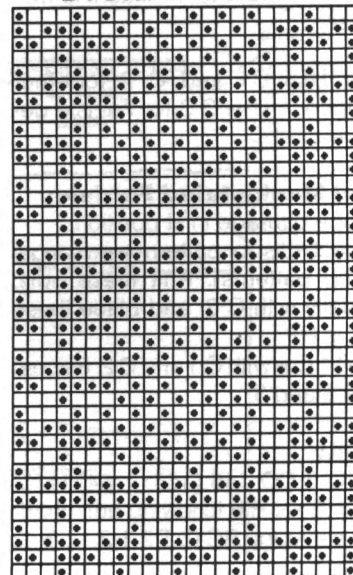
edge on 136 (140) [146] [154] ndls. RC 0. T 3.2. C 1. Knit in St. St. making buttonholes over 5 Sts. with WY at Rs. 8 and 27 following chart. At R 38 pick up sts. from first row to form double band. Knit 1 row at T 10 and BOLT.



**NECKBAND:**  
Close shoulder seams. With purl side facing rehang neckline and front bands on 144 (144) [152] ndls. following chart. RC 0. T 3.2. C 1. Knit in St. St. making buttonholes over 5 Sts. with WY at Rs. 8 and 27 following chart. At R 38 pick up sts. from first row to form double band. Knit 1 row at T 10 and BOLT.

**FINISHING:**  
Attach sleeves. Close all remaining seams.

**\*236/237 Fairisle Pattern  
24 Sts. x 40 Rows**



KK Mag Disk: Track 11; Pattern 901

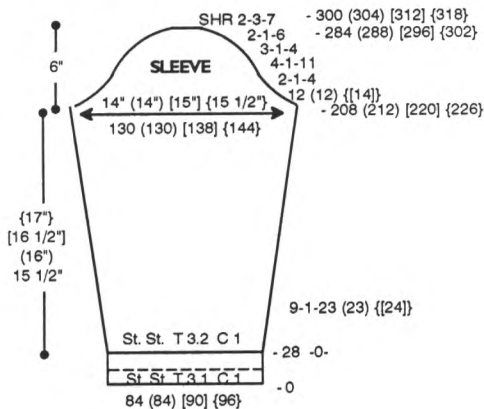
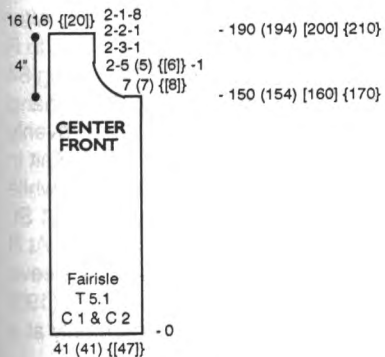
**BACK WAISTBAND:**

With C 1 CO 112 (112) [130] [140] sts. for K1/P1 Rib. After selvedge RC 0. T 3/3 II. Knit to R 40 and bring Cam Levers to PR position on KR carriage. Knit to R 45. Return Cam Levers to N position and change to T 8/4 I. Knit 1 row and mark center with a YM. Transfer RB sts. to MB and remove sts. on WY. With purl side facing rehang lower edge of center back and side panels on these ndls. matching markers and decr. evenly across. Knit 1 row at T 10 and BOLT.

riage. Knit to R 45. Return Cam Levers to N position and change to T 8/4 I. Knit 1 row and transfer RB sts. to MB. Remove sts. on WY. With purl side facing rehang lower edge of center front and side panel on these ndls. decr. evenly across. Knit 1 row at T 10 and BOLT.

**SLEEVE:**

With WY CO 84 (84) [90] [96] sts. After several rows end with 1 row Ravel Cord to the right. RC 0. T 3.1. C

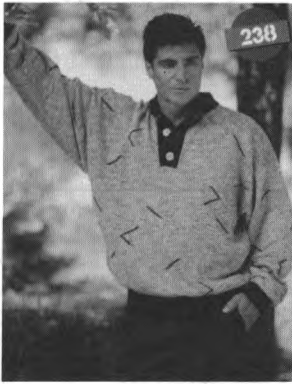


**CENTER FRONT: Make 1,**

Reverse 1.  
With WY CO 41 (41) [47] sts. After several rows end with 1 row Ravel Cord to the left. RC 0. T 5.1. C 1 and C 2. Knit in fairisle to R 150 (154) [160] [170] and shape neckline. On neckline edge BO 7 (7) [8] sts. then decr. EOR 5 (5) [6] sts. 1x, 3 Sts. 1x, 2 Sts. 1x and 1 St. 8x. At R 190 (194) [200] [210] remove shoulder sts. on WY.

1. St. St. Knit to R 28 and pick up sts. from first row to form double band. RC 0. T 3.2. Knit in St. St. while incr. on each side every 9 Rs. 1 St. 23 (23) [24] x. At R 208 (212) [220] [226] shape sleeve cap. On each side BO 12 (12) [14] sts. then decr. EOR 1 St. 4x, every 4 Rs. 1 St. 11x, every 3 Rs. 1 St. 4x, EOR 1 St. 6x. At R 284 (288) [296] [302] SHR on each side EOR 3 Sts. 7x. At R 300 (304) [312] [318] knit 1 row at T 10 and BOLT.

**FRONT BAND:** Make 1 with buttonholes, 1 without.  
With purl side facing rehang front



## LESS IS MORE

**YARN:** Silkie and Rayon Nubs  
**SIZES:**

Sm. (Med.) [Lge.] {X-Lge.}

**AMOUNT:**

- C 1: Silkie - Taupe  
1 1/4 lb. all sizes
- C 2: Rayon Nubs - Salt/Pepper  
8 oz all sizes
- C 3: Silkie - Black  
4 oz. all sizes

**KIT:** Color of your Choice  
 \$40.00 all sizes

**TENSION:**

- Body: T 9
- Rib: T 2.1/2.1 I

**GAUGE:**

- Body: 7 Sts., 10 Rs. = 1"
- Rib: 13 Rs. = 1"

**NOTIONS:**

- 3 - 3/4" Buttons

**TECHNIQUE:** St. St. and Hand Manipulated Fairisle

Make on any Standard Machine with Ribber.

*Note:* Use C1 and C 2 together throughout. Use C 3 for Fairisle design and Ribs.

**Hand Manipulated Fairisle:**

1. Place carriage in H position.
2. Select ndls. for pattern (see manual knitting patterns). Knit these ndls. manually with C 3, and place these ndls. in HP.
3. Knit 1 row with C 1 and C 2. Repeat steps 2 and 3.

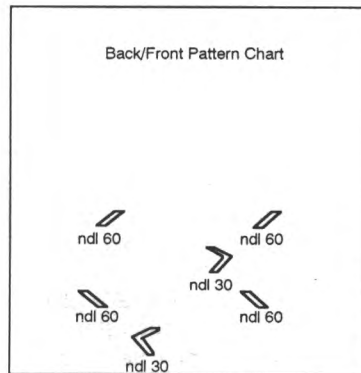
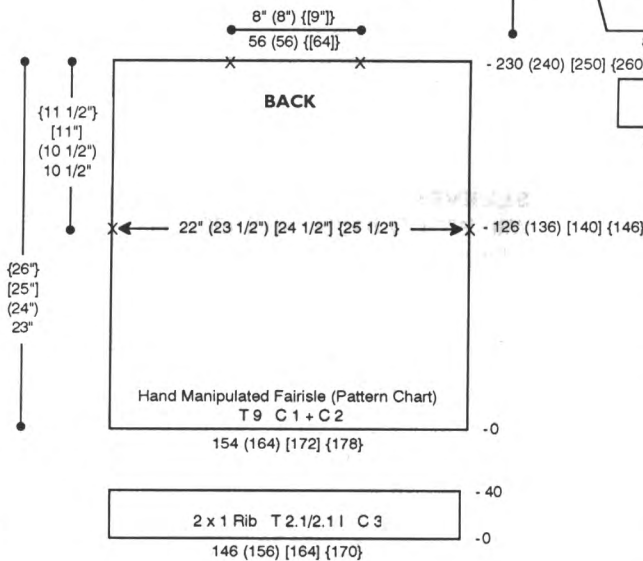
**BACK:**

With C 3 CO 146 (156) [164] {170} sts. for 2 x 1 Rib following ndl. chart. After selvedge RC 0, T 2.1/2.1 I. Knit

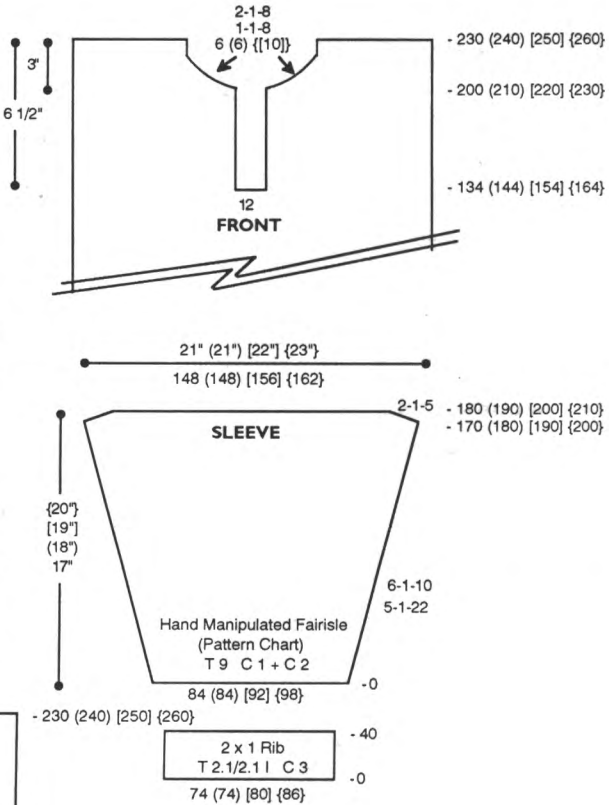
to R 40 and remove sts. on WY. Bring 154 (164) [172] {178} ndls. to WP. Rehang ribbing on these ndls. decr. evenly across. RC 0, T 9, C 1 + C 2. Knit in fairisle following Pattern Chart. At R 126 (136) [140] {146} place a YM on each side for armhole. Knit to R 230 (240) [250] {260} and mark center 56 (56) {[64]} sts. for neckline. Remove shoulder and neckline sts. on separate WY.

**FRONT:**

Knit front same as back to R 134 (144) [154] {164} and shape neckline. BO center 12 sts. Place all sts. to the left in HP. Note pattern row. \*Knit to R 200 (210) [220] {230}.

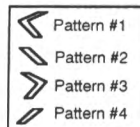
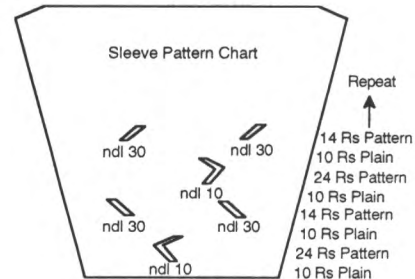


On neckline edge BO 6 (6) {[10]} sts. then decr. every R 1 St. 8x and EOR 1 St. 8x. At R 230 (240) [250] {260} remove shoulder sts. on WY. Reset RC to R 134 (144) [154] {164}. Complete left side from \* continuing in pattern from row noted above.



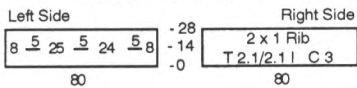
**SLEEVE:**

With C 3 CO 74 (74) [80] {86} sts. for 2 x 1 Rib following ndl. chart. After selvedge RC 0, T 2.1/2.1 I. Knit to R 40 and remove sts. on WY. Bring 84 (84) [92] [98] ndls. to WP. Rehang ribbing on these ndls. decr. evenly across. RC 0, T 9, C 1 + C 2. Knit in fairisle following Pattern Chart while incr. on each side every 5 Rs. 1 St. 22x and every 6 Rs. 1 St. 10x. At R 170 (180) [190] {200} SHR sleeve cap EOR 1 St. 5x. At R 180 (190) [200] {210} knit 1 row manually at a loose tension and BOLT.

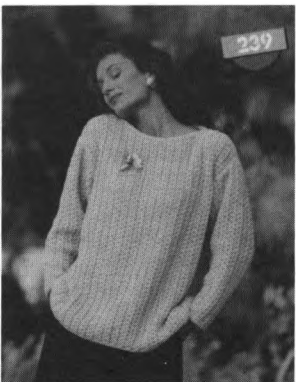
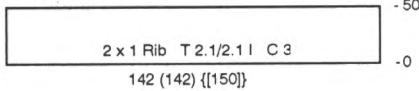




**FRONT PLACKETS**



**COLLAR**



**FRONT PLACKETS:**

**Left Side:**

With C 3 CO 80 sts. for 2 x 1 Rib. following ndl. chart. After selvedge RC 0. T 2.1/2.1 I. Knit to R 28 making buttonholes over 5 sts. with WY following chart. Remove sts. on WY.

**Right Side:**

Knit right side same as left side without buttonholes.

**COLLAR:**

With C 3 CO 142 (142) {[150]} sts. for 2 x 1 Rib. following ndl. chart. After selvedge RC 0. T 2.1/2.1 I. Knit to R 50 and remove sts. on WY.

**FINISHING:**

Close shoulder seams. Attach front plackets and collar. Fold collar to inside and whip stitch in place. Attach sleeves and close all remaining seams.

**STARDUST**

**YARN:** Starlite - Use 2 strands throughout

**SIZES:**

Small (Medium) [Large]

**AMOUNT:**

- C 1: Starlite - Pink Silver 1 1/2 lbs. all sizes
- C 2: Knit-in Elastic - Pink 1 spool all sizes

**KIT:** Color of your Choice \$30.00

**TENSION:**

Body: T 4/2 I

**GAUGE:**

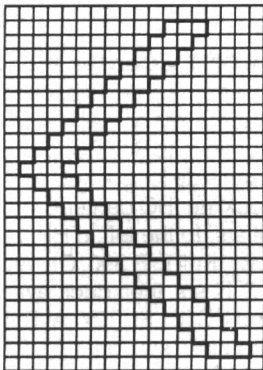
Body: 4.76 Sts., 8.42 Rs. = 1"

**TECHNIQUE:** Tuck/Rib and St. St.

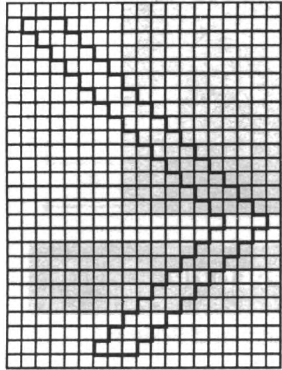
Make on Compuknit/Bulky or Punch Card Bulky with Ribber.

*Note:* Let lower edge and neckband roll naturally to the inside to form bands.

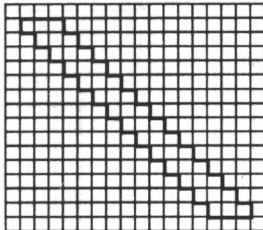
#238 Manual Knitting Pattern #1



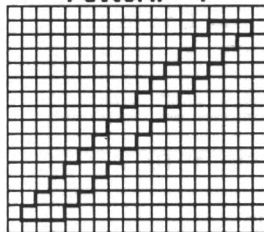
#238 Manual Knitting Pattern #3



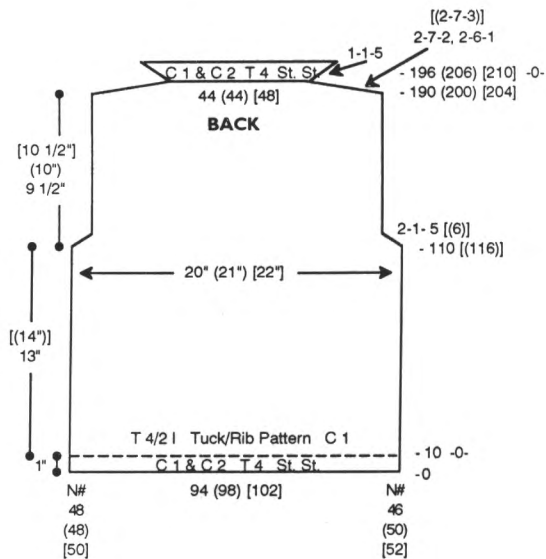
#238 Manual Knitting Pattern #2



#238 Manual Knitting Pattern #4

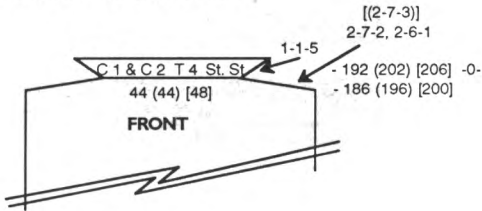


**Rib Needle Arrangement**



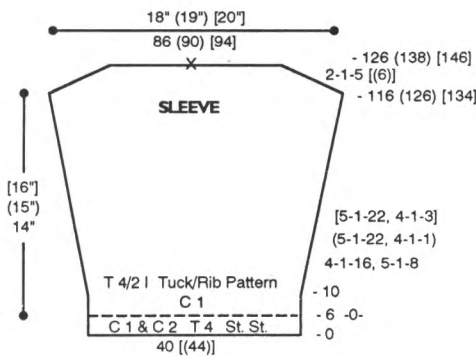
**BACK:**

With C 1 and C 2 weaving CO 94 (98) [102] sts. following chart for ndl. #. Knit to R 9. COL. Select KC and knit 1 row to set pattern. Transfer appropriate sts. to RB and cut C 2. RC 0. T 4/2 I. Tuck Pattern. Knit to R 110 [(116)] and shape armhole. On each side decr. EOR 1 St. 5 [(6)] x. At R 190 (200) [204] shape shoulders. On each side BO EOR 7 Sts. 2x and 6 Sts. 1 x [(EOR 7 Sts. 3x)]. At R 196 (206) [210] start neckband. RC 0. T 4. C 1 and C 2. Knit in St. St. while incr. on each side every R 1 St. 5x. Knit 1 row at T 10 and BOLT.



**FRONT:**

Knit front same as back to R 186 (196) [200] and shape shoulders. On each side BO EOR 7 Sts. 2x and 6 Sts. 1 x [(EOR 7 Sts. 3x)]. At R 192 (202) [206] start neckband. RC 0. T 4. C 1 and C 2. Knit in St. St. while incr. on each side every R 1 St. 5x. Knit 1 row at T 10 and BOLT.



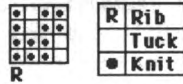
**SLEEVE:**

With C 1 and C 2 weaving CO 40 [(44)] sts. Knit to R 5. COL. Select KC and knit 1 row to set pattern. Transfer appropriate sts. to RB and cut C 2. RC 0. T 4/2 I. Tuck Pattern. Knit to R 10 and begin incr. on each side every 4 Rs. 1 St. 16x and every 5 Rs. 1 St. 8x (every 5 Rs. 1 St. 22x and every 4 Rs. 1 St. 1x) [every 5 Rs. 1 St. 22x and every 4 Rs. 1 St. 3x]. At R 116 (126) [134] shape sleeve cap. On each side decr. EOR 1 St. 5 [(6)] x. At R 126 (138) [146] mark center with YM and remove sts. on WY.

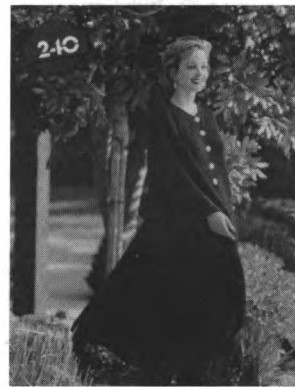
**FINISHING:**

Close shoulder and neckline seams. Attach sleeves and close all remaining seams.

**\*239 Tuck/Rib Pattern  
4 Sts. x 4 Rows**



**KK Mag Disk: Track 12; Pat. 901**



**ALL WRAPPED UP**

**YARN:** Venetia and Silkie  
**SIZES:**

One Size Fits All

**AMOUNT:**

C 1: Venetia - Eggplant 2 lbs.

C 2: Silkie - Red 1-1/2 lbs.

**KIT:** Color of your Choice

\$75.00 all sizes

**TENSION:**

Fairisle: T 7.2

**GAUGE:**

Fairisle: 8.8 Sts., 10 Rs. = 1"

**NOTIONS:**

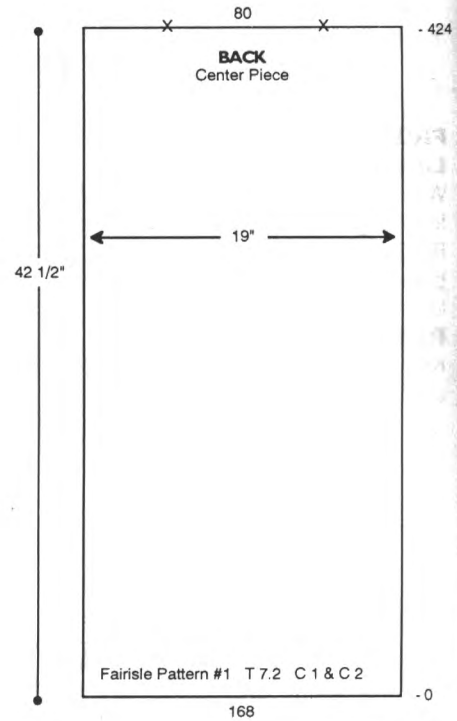
5 - 1" Buttons

**TECHNIQUE:** Fairisle and St. St.

Make on Standard 24-Stitch Punch Card or Standard Electronic Machine.

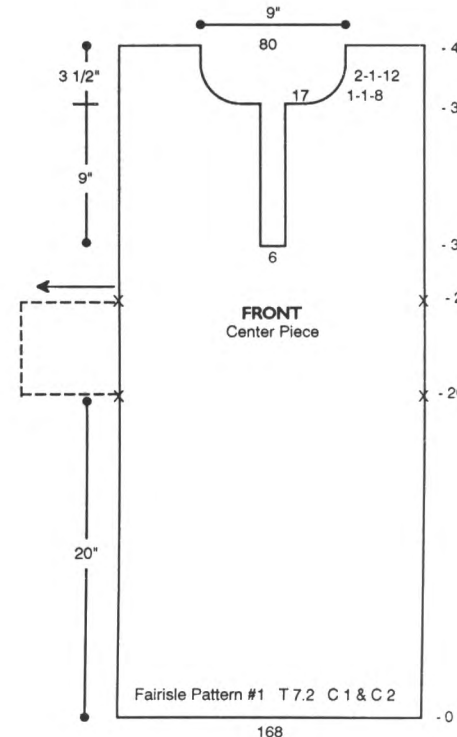
**BACK - Center Piece:**

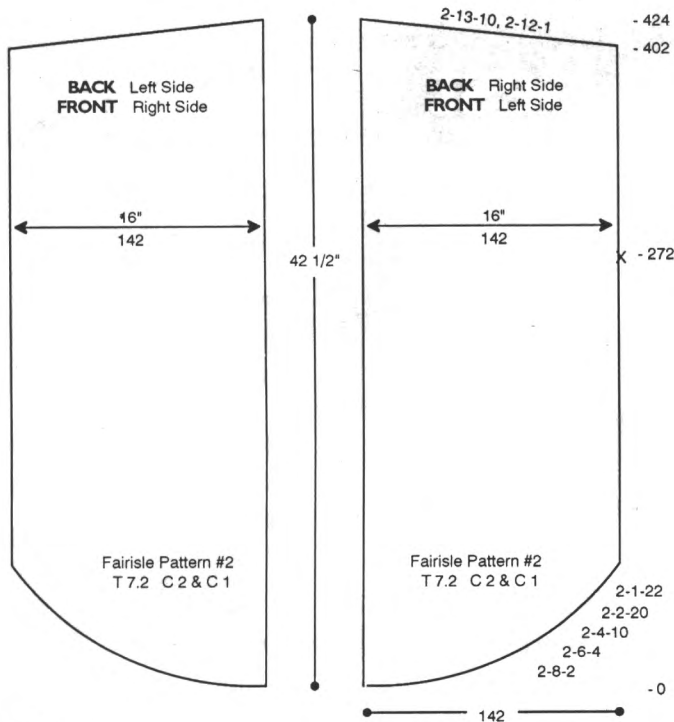
With WY CO 168 sts. After several rows end with 1 row Ravel Cord to the left. RC 0. T 7.2. With C 1 in 'A' Feeder and C 2 in 'B' Feeder knit in fairisle pattern #1 to R 424. Mark center 80 sts. for neckline and remove neckline and shoulder sts. on separate WY.



**FRONT - Center Piece:**

Knit front same as back to R 200 and place a YM on each side for pocket. Continue to R 260 and place a YM on each side for pocket. At R 300 shape neckline. BO center 6 sts. and place all sts. to the left in HP. Note pattern row. \*Knit to R 390. On neckline edge BO 17 sts. then decr. every R 1 St. 8x and EOR 1 St. 12x. At R 424 remove shoulder sts. on WY. Reset RC to R 300. Reset pattern to row noted above and shape left side from \*, reversing shaping.





**CORD:**

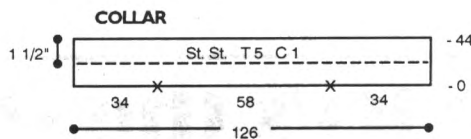
'e' wrap CO 10 sts. RC 0. T 4. C 1. St. St. Knit until cord measures approximately 300" and remove sts. on WY.

**FINISHING:**

Attach side panels to center panels, attaching pocket on the front. Finish buttonholes with 1 R SC. Attach cord all around cape with sewing needle.

**BACK - Left Side  
FRONT - Right Side:**

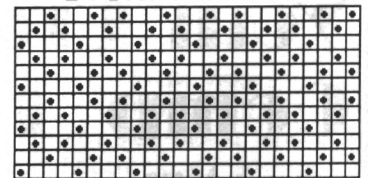
With WY CO 142 sts. After several rows end with 1 row Ravel Cord to the left. RC 0. T 7.2. With C 2 in 'A' Feeder and C 1 in 'B' Feeder knit in fairisle pattern #2 while SHR shaping on the left side EOR 8 Sts. 2x, 6 Sts. 4x, 4 Sts. 10x, 2 Sts. 20x and 1 St. 22x. At R 272 place a YM on left side for aid in seaming. At R 402 SHR shape top EOR 13 Sts. 10x and 12 Sts. 1. At R 424 remove sts. on WY.



**COLLAR:**

With purl side facing rehang neckline on 126 ndls. RC 0. T 5. C 1. St. St. Knit to R 44 and pick up sts. from first row to form double band. Knit 1 row at T 10 and BOLT.

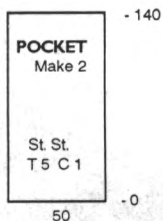
**#240 Fairisle Pattern #1  
24 Sts. x 12 Rows**



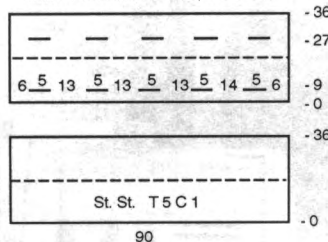
KK Mag Disk: Track 13; Pat. 901

**BACK - Right Side  
FRONT - Left Side:**

Knit the same as Back Left Side/Front Right Side reversing shapings.



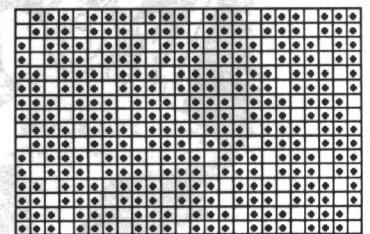
**FRONT PLACKET (Not to Scale)  
Make 1 with buttonholes, 1 without**



**FRONT PLACKET:** Make 1 with buttonholes, 1 without.

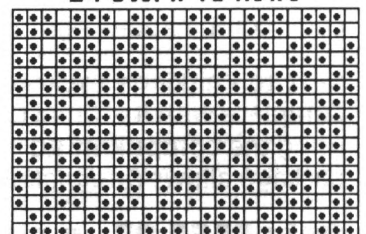
With purl side facing rehang right side of front opening and collar edge on 90 ndls. RC 0. T 5. C 1. St. St. Knit to R 36 making buttonholes over 5 sts. with WY at R 9 and R 27 following chart. Pick up sts. from first row to form double band. Knit 1 row at T 10 and BOLT.

**#240 Fairisle Pattern #2-Right Side  
24 Sts. x 16 Rows**



KK Mag Disk: Track 13; Pat. 902

**#240 Fairisle Pattern #2-Left Side  
24 Sts. x 16 Rows**



KK Mag Disk: Track 13; Pat. 903

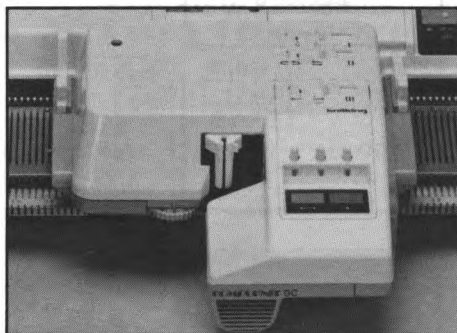
**POCKET:** Make 2.

With purl side facing rehang front center piece between pocket markers on 50 ndls. RC 0. T 5. C 1. St. St. Knit to R 140 and remove sts. on WY.

# Turtles Make the Best Companions

The Knitkting Garter Carriage, or "turtle," as we prefer to call it, is the best companion for your knitting machine. With the press of a button, the Garter Carriage ribs on its own power! Leave the room and your ribbing will be finished when you return!

But ribbing is only the beginning of the story: The Garter Carriage automatically casts on, binds off and knits a multitude of fancy Garter Stitch patterns—beautiful, textured 3-dimensional designs impossible to knit any other way—Unbelievable!



- Select desired pattern on knitting machine.
- Set number of rows; switch GC on and leave to do other things.
- It will turn off after completion or if yarn runs out or breaks.

**OMNI GC fits all standard-gauge COMPUKNITS, and most standard Knitkting punch card knitters going all the way back to the KH-890.**

Order yours now from your local Knitkting Dealer, or if there are none in your area, from:



**knitkting**

1128 Crenshaw Boulevard • Los Angeles, CA 90019 • Phone: (213) 938-2077

**Still Only \$499.95**

# Your Creativity's the Star with the Comp KC

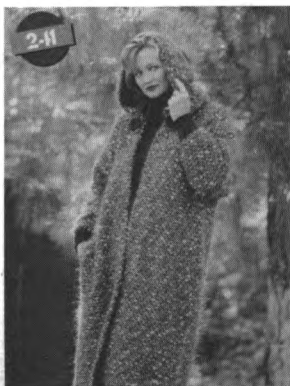


By turning your color television set into a theater of knitwear designs, the **Compuknit KC Pattern Design Computer** allows you to make your own creativity the star, while at the same time make fine-tuning adjustments in your beautiful designs with the push of a button. Then, you can experiment with different yarn color combinations *right on your T.V. screen* and in seconds start knitting your new pattern automatically!

Next to Knitkting's exclusive Garter Carriage, the **Compuknit KC** is easily the most popular of accessories. Complete with its "Omni Cartridge," the **Compuknit KC** works with all of Knitkting's Compuknit knitters. And, using the **Compuknit KC** in conjunction with Knitkting's exciting *DesignaKnit* computer-aided software design package allows *DesignaKnit* creations to be transferred into the Compuknit/Bulky and Compuknit V.

**Only \$569.95—a savings of \$100.00! Order yours today.**





## WINTER WARMTH

**YARN:** Sorbet, Primo, Softon, Caprinae, Night Music and Pebble

**SIZES:**

6/8 (10/12) [14] [16]

**AMOUNT:**

- C 1: Sorbet - Black  
1 1/2 (1 1/2) {[2]} lbs.
- C 2: Primo - Black  
1 lb. all sizes
- C 3: Softon - Black  
1 lb. all sizes
- C 4: Caprinae - Black/Grey  
1 [(1)] {1 1/4} lbs.
- C 5: Night Music - Blk/Silver  
5 (5) {[6]} balls
- C 6: Pebble - Dk Grey/Pink/Wh  
2 lbs. all sizes

**KIT:** Color of your Choice  
\$175. (\$175.) [\$205.] {\$210.}

**TENSION:**

Weaving: T 10+  
St. St.: T 5.1 or 5.2

**GAUGE:**

Weaving: 3.4 Sts., 4.8 Rs. = 1"

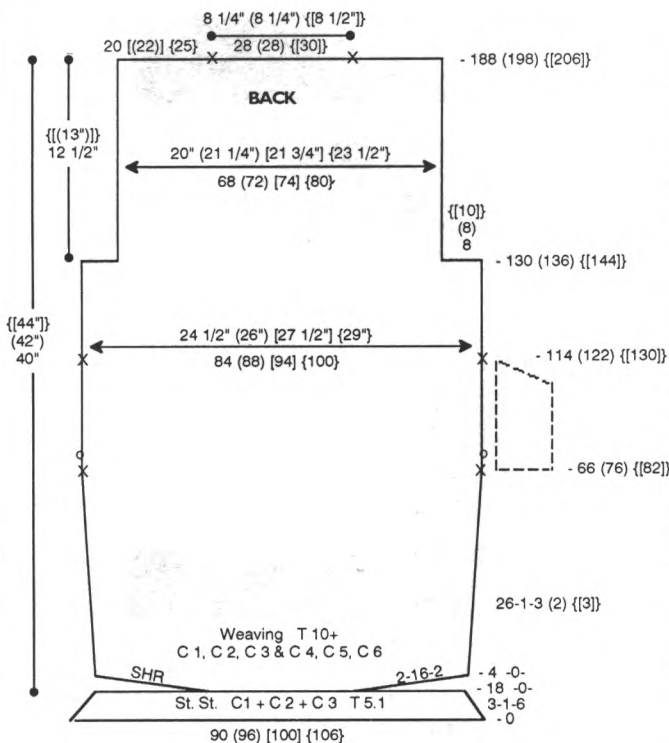
**NOTIONS:**

3 buttons to attach hood and 2 buttons for decoration.

**TECHNIQUE:** Weaving and St. St.

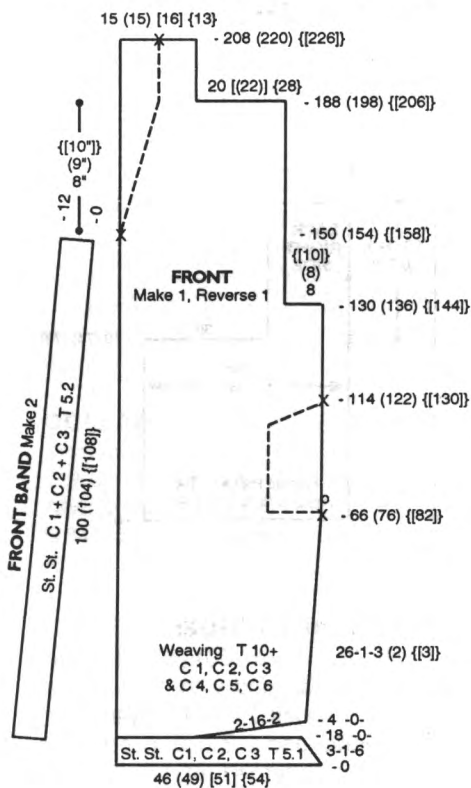
Make on Compuknit/Bulky with Ribber. Weaving is built-in pattern #264.

**Note:** Coat is worn on the purl side and will stretch 2" in length when you wear it. If yarn gets caught on ndl. while knitting pull ndl. out to E position before weaving. C 1, C 2 and C 3 are used together as main yarn, C 4, C 5 and C 6 are used together as weaving yarn.



**BACK:**

With C 1, C 2 & C 3 'e' wrap CO 90 (96) [100] {106} sts. RC 0. T 5.1. Knit in St. St. to R 18 while decr. on each side every 3 Rs. 1 St. 6x. RC 0. T 10+. With C 1 + C 2 + C 3 and C 4 + C 5 + C 6 knit in weaving pattern while SHR shaping on each side EOR 16 Sts. 2x. RC 0. Begin incr. on each side every 26 Rs. 1 St. 3 (2) {[3]} x. At R 66 (76)



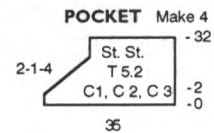
{[82]} place a YM on each side for pocket. Knit to R 114 (122) {[130]} and place a YM on each side for pocket. At R 130 (136) {[144]} shape armhole. On each side BO 8 (8) {[10]} sts. At R 188 (198) {[206]} mark center 28 (28) {[30]} sts. for neckline. Remove neckline and shoulder sts. on separate WY.

**FRONT:** Make 1, Reverse 1.

With C 1, C 2 & C 3 'e' wrap CO 46 (49) [51] {54} sts. RC 0. T 5.1. Knit in St. St. to R 18 while decr. on right side every 3 Rs. 1 St. 6x. RC 0. T 10+. With C 1 + C 2 + C 3 and C 4 + C 5 + C 6 knit in weaving pattern while SHR shaping on right side EOR 16 Sts. 2x. RC 0. Begin incr. on right side every 26 Rs. 1 St. 3 (2) {[3]} x. At R 66 (76) {[82]} place a YM on right side for pocket. Knit to R 114 (122) {[130]} and place a YM on right side for pocket. At R 130 (136) {[144]} shape armhole. On right side BO 8 (8) {[10]} sts. At R 150 (154) {[158]} place a YM on left side for front band placement. At R 188 (198) {[206]} remove 20 {[22]} [28] sts. on the right for shoulder. Continue to R 208 (220) {[226]} and place a YM in the center to mark collar fold line. Remove sts. on WY.

**FRONT BAND:** Make 2.

Bring 100 (104) {[108]} ndls. to WP. With knit side facing rehang front from bottom up to marker on these ndls. RC 0. T 5.2. C 1, C 2 & C 3. St. St. Knit to R 12 knitting last row at T 10 and BOLT.



**POCKET:** Make 1, Reverse 1.

Bring 35 ndls. to WP. With knit side facing rehang back between pocket markers on these ndls. RC 0. T 5.2. C 1, C 2 & C 3. St. St. Knit to R 2 and start decr. on left side EOR 1 St. 4x. At R 32 knit 1 row at T 10 and BOLT. Turn under and attach to front between markers.

**SLEEVE:**

Close shoulder seams. With knit side facing rehang front and back between markers on 84 {[88]} ndls. RC 0. T 10+. With C 1 + C 2 + C 3 and C 4 + C 5 + C 6 knit in weaving pattern. At R 10 shape sleeve by

# 2-12



## PASTEL PUZZLER

**YARN:** Mirage

**SIZES:**

8 (10) [12]

**AMOUNT:**

C 1: Jade - 8 oz. all

C 2: Lilac - 8 oz. all

C 3: Yellow - 12 oz. all

C 4: Wedgewood - 4 oz. all

**KIT:** Color of your Choice

\$25.00 all

**TENSION:**

Fairisle: T 4

Rib: T 0/0 I

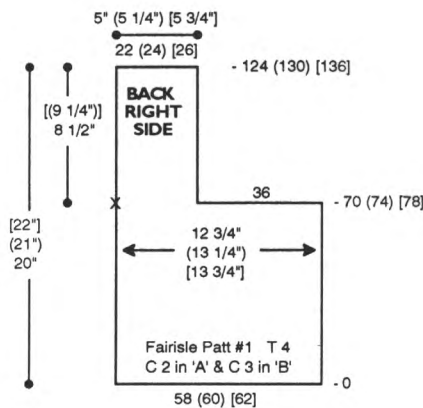
**GAUGE:**

Fairisle: 4.5 Sts., 6.2 Rs. = 1"

Rib: 7 Rs. = 1"

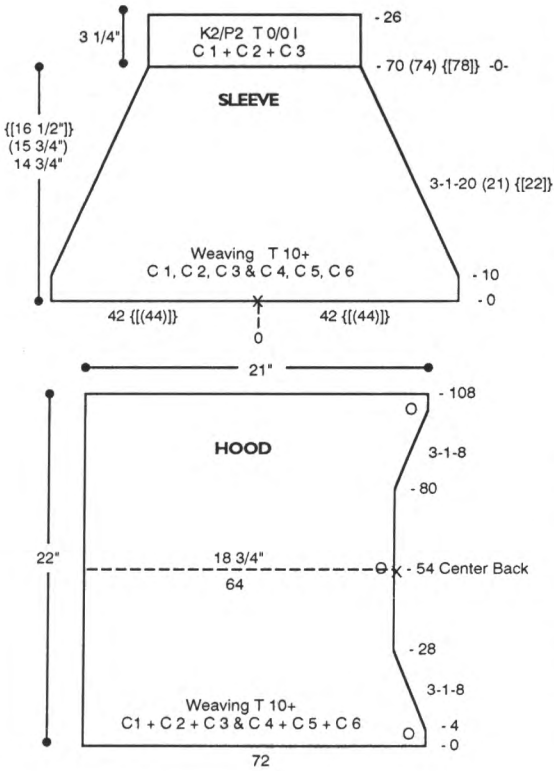
**TECHNIQUE:** Fairisle

Make on Compuknit/Bulky or Punch Card Bulky with Ribber.



### BACK RIGHT SIDE:

With WY CO 58 (60) [62] sts. After several rows end with 1 row Ravel Cord to the left. RC 0. T 4. With C 2 in 'A' Feeder and C 3 in 'B' Feeder knit in fairisle pattern #1. At R 70 (74) [78] remove 36 sts. at the right on WY.



decr. every 3 Rs. 1 St. 20 (21) [22] x. At R 70 (74) [78] transfer sts. to RB for K2/P2 rib. RC 0. T 0/0 I. C 1, C 2 & C 3. Knit to R 26 knitting last row at T 9/6. Transfer RB sts. to MB and BOLT.

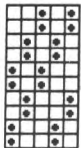
### HOOD:

With C 1, C 2 & C 3 'e' wrap CO 72 sts. RC 0. T 10+. With C 4, C 5 & C 6 knit in weaving pattern. At R 4 decr. on right side every 3 Rs. 1 St. 8x. At R 54 place a YM on right side for center. At R 80 incr. every 3 Rs. 1 St. 8x. At R 108 knit 1 row manually at a loose tension and BOLT.

### FINISHING:

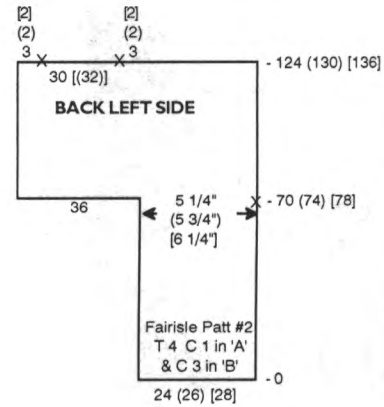
Join neckband. Fold in half to inside following chart and whip st. in place. Turn bottom hem under and whip stitch in place. Close side seam and pocket from 'o' marker down. Close all remaining seams. With C 1, C 4 & C 5 SC across top and down to CO edge of hood. Attach 3 buttons to hood following chart. To attach hood to coat push buttons through weaving sts.

### \*241 Weaving Pattern 5 Sts. x 10 Rows



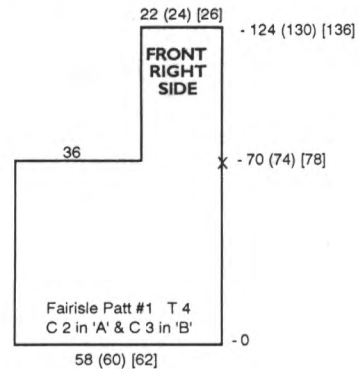
Compuknit/Bulky  
Built-in Pattern #264

Place a YM on left side for armhole. Continue in pattern to R 124 (130) [136] and remove sts. on WY.



### BACK LEFT SIDE:

With WY CO 24 (26) [28] sts. After several rows end with 1 row Ravel Cord to the left. RC 0. T 4. With C 1 in 'A' Feeder and C 3 in 'B' Feeder knit in fairisle pattern #2. At R 70 (74) [78] rehang 36 sts. from Back Right Side. Place a YM on right side for armhole. Continue in pattern to R 124 (130) [136] and mark 30 [(32)] sts. for neckline following chart. Remove sts. on WY.

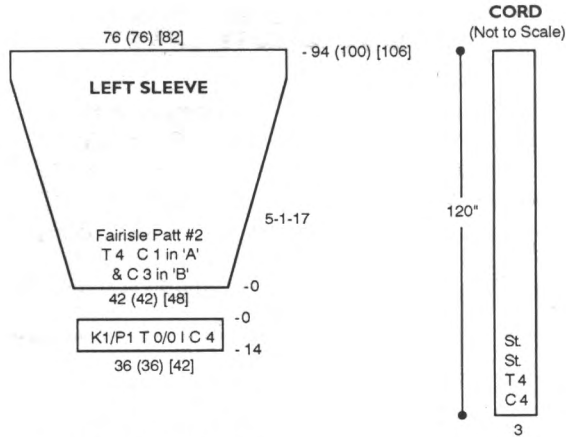
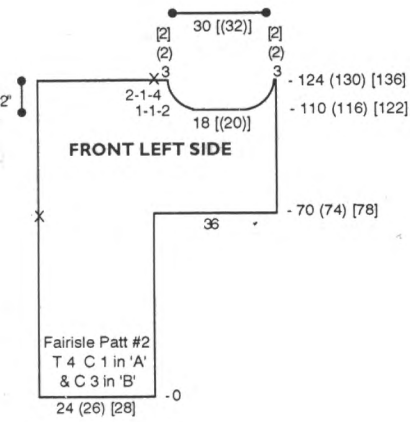


### FRONT RIGHT SIDE:

With WY CO 58 (60) [62] sts. After several rows end with 1 row Ravel Cord to the left. RC 0. T 4. C 2 in 'A' Feeder and C 3 in 'B' Feeder. Pattern #1. Knit the same as Back Right Side reversing shaping.

### FRONT LEFT SIDE:

With WY CO 24 (26) [28] sts. After several rows end with 1 row Ravel Cord to the left. RC 0. T 4. With C 1 in 'A' Feeder and C 3 in 'B' Feeder knit in fairisle pattern #2. At R 70 (74) [78] rehang 36 sts. from Front Right Side. Place a YM on left side for armhole. Continue in pattern to R 110 (116) [122]. Shape neckline. Place 51 (54) [56] sts. at the left in HP. \*On neckline



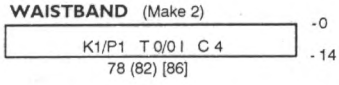
**CORD:**  
With C 4 'e' wrap CO 3 sts. RC 0. T 4. Knit approx. 120" and remove sts. on WY.

**FINISHING:**  
Close remaining shoulder seam. Seam front and back pieces. Attach sleeves and close all remaining seams. With a crochet hook or tapestry needle pull cord around seams on front and back pieces.

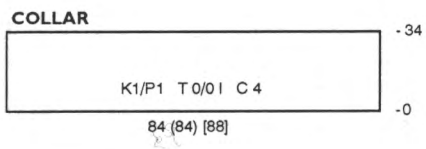
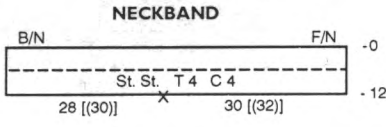
edge decr. every R 1 St. 2x and EOR 1 St. 4x. At R 124 (130) [136] remove 3 [(2)] sts. on WY. Reset RC to R 110 (116) [122] and place 9 [(8)] sts. on neckline edge to WP and shape from \*, reversing shaping. Mark 3 sts. on left side with YM. Remove shoulder and neckline sts. on WY.

**LEFT SLEEVE:**  
With WY CO 42 (42) [48] sts. After several rows end with 1 row Ravel Cord to the left. RC 0. T 4. C 1 in 'A' Feeder and C 3 in 'B' Feeder. Pattern #2. Knit the same as right sleeve.

**CUFF:**  
With purl side facing rehang lower edge of sleeve on 36 (36) [42] ndls. decr. evenly across. Knit 1 row at T 4 with C 4. Transfer EOS to RB for K1/P1 Rib. RC 0. T 0/0 I. Knit to R 14 knitting last row at T 8/6. Transfer RB sts. to MB and BOLT.

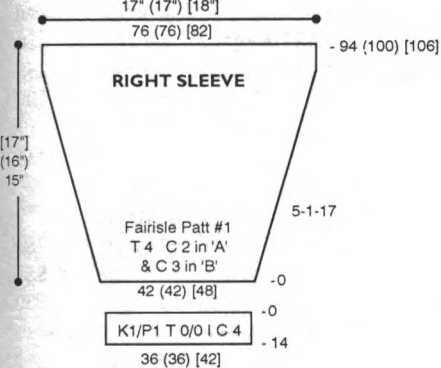


**WAISTBAND:**  
With purl side facing rehang lower edge of both sections of front/back on 78 (82) [86] ndls. Knit 1 row at T 4 and transfer EOS to RB for K1/P1 Rib. RC 0. T 0/0 I. C 4. Knit to R 14 knitting last row at T 8/6. Transfer RB sts. to MB and BOLT.



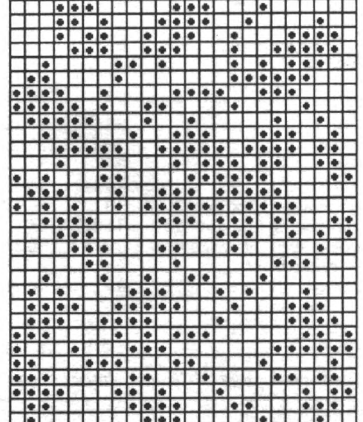
**NECKBAND:**  
Close one shoulder. With purl side facing rehang back neckline on 28 [(30)] ndls. and front neckline on 30 [(32)] ndls. RC 0. T 4. C 4. St. St. Knit to R 12 and pick up sts. from first row to form double band and BO.

**COLLAR:**  
Close remaining shoulder. With C 4 CO 84 (84) [88] sts. for K1/P1 Rib. After selvedge RC 0. T 0/0 I. Knit to R 34 knitting last row at T 8/6. Transfer RB sts. to MB and BOLT. Starting at center of front neckline attach collar to the inside of neckband with a crochet hook.



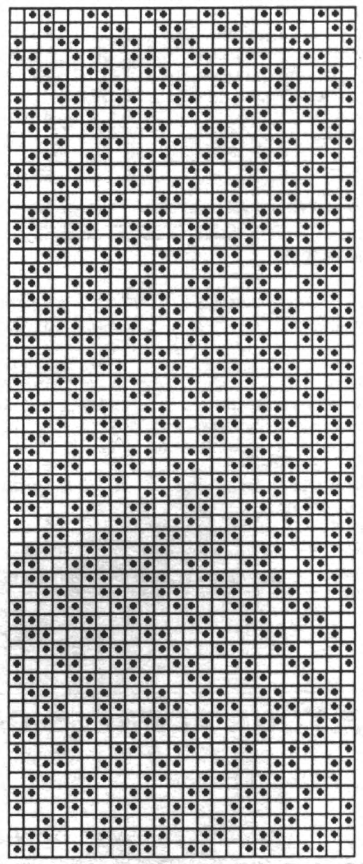
**RIGHT SLEEVE:**  
With WY CO 42 (42) [48] sts. After several rows end with 1 row Ravel Cord to the left. RC 0. T 4. With C 2 in 'A' Feeder and C 3 in 'B' Feeder knit in fairisle pattern #1 while incr. on each side every 5 Rs. 1 St. 17x. At R 94 (100) [106] knit 1 row at T 10 and BOLT.

**#242 Fairisle Pattern #1**  
24 Sts. x 30 Rows



KK Mag Disk: Track 14; Pat. 901

**#242 Fairisle Pattern #2**  
24 Sts. x 60 Rows

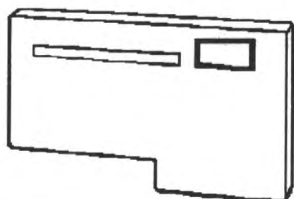


KK Mag Disk: Track 14; Pat. 902

# Store Patterns Without A Disk Drive:



Contact your local Dealer or KnitKING to order



If you use the Control Panel on your Compuknit V to design your own original patterns, you can now save them directly to this new "Pattern Saver" Cartridge. This little marvel effectively expands your Comp. V's memory, as its capacity and the Comp. V's are the same. This is especially evident when loading your patterns from the Cartridge into your Comp. V—unlike patterns loaded from the KC, those loaded from this Cartridge do not interfere with others created on the Compuknit V.

Regularly priced at \$89.95, this handy storage device is **SALE** priced at only \$69.95.

## KnitKING Sizing Chart

MENS						
Size	34	36	38	40	42	44
Chest	34	36	38	40	42	44
Waist	30	32	34	36	38	40
Hip	35	37	39	41	43	45
Neck	15 1/2	16	16 1/2	17	17 1/2	17 1/2
Back Waist Length	18	18 1/2	19	19 1/2	20	21
Shoulder to Shoulder	15 1/2	16	16 1/2	17	17 1/2	18
Upper Arm Circumference	9 5/8	10 3/8	11 1/8	11 7/8	12 5/8	13 3/8
Armhole Depth	8	8 1/2	9	9 1/2	10	10 1/2
Sleeve Length	19	19 1/2	19 1/2	20	20	20 1/2
Under Arm						
Wrist	6 1/2	7	7	7	7 1/2	8
Hip Depth	8 3/8	8 1/2	8 5/8	8 3/4	8 3/4	9

*These are actual body sizes. Proper ease allowance is necessary as determined by the style.*

CHILDREN						
Size	12 mo	2 yr	4	6	8	10
Chest	19	21	23	25	27	28
Waist	19	20	21	22	23	24
Hip	20	22	24	26	28	30
Neck	9 1/4	10	10 3/4	11 1/2	12 1/8	12 5/8
Back Waist Length	7	8 1/2	9 1/2	10 1/2	12	12 3/4
Shoulder to Shoulder	7 1/2	8 1/2	9 1/2	10	11	11 1/2
Upper Arm Circumference	7	7 1/2	8	8 1/2	9	9 1/2
Armhole Depth	3 1/2	4	4 1/2	5 1/4	6	6 1/2
Sleeve Length	6	8 1/2	10	11 1/2	13	14 1/2
Under Arm						
Wrist	5	5 1/4	5 1/2	5 1/2	5 3/4	6
Hip Depth	5	5 1/4	5 1/2	5 1/2	5 3/4	6 1/4

*These are actual body sizes. Proper ease allowance is necessary as determined by the style.*

WOMENS						
Size	6	8	10	12	14	16
Bust	30 1/2	31 1/2	32 1/2	34	36	38
Waist	22	23	24	25 1/2	27	29
Hip	32 1/2	33 1/2	34 1/2	36	38	40
Neck	13 1/8	13 3/8	13 5/8	14	14 3/8	14 3/4
Back Waist Length	15 1/2	15 3/4	16	16 1/4	16 1/2	16 3/4
Shoulder to Shoulder	13 1/2	13 1/2	14	14 1/2	15	15 1/2
Upper Arm Circumference	9 3/4	9 3/4	10 1/4	10 1/2	11	11 1/2
Armhole Depth	7	7	7 1/2	7 1/2	8	8
Sleeve Length	16 1/2	16 1/2	17 1/2	17 1/2	17 1/2	18
Under Arm						
Wrist	6	6	6 1/4	6 1/4	6 1/2	6 1/2
Hip Depth	7 3/4	8	8 1/4	8 1/2	8 3/4	9

*These are actual body sizes. Proper ease allowance is necessary as determined by the style.*



The finest quality KNITKING yarns are used to create the beautiful fashions found in KNITKING Magazine. Photographic representations may not accurately reflect the true color of the yarn due to lighting and printing processes. Please refer to your KnitKING Yarn Color Book for actual colors. Kit prices are located with the instructions for each garment. Each yarn comes in a wide selection of colors. The different types of yarns have been selected to allow for blending, mixing, and contrasting—both color and texture.

Yarn Color Book is available through KNITKING or an authorized KnitKING dealer. Content and approximate yardage of each yarn is shown below:

	Yds./Pound
Alpine	100% Wool ..... 1600
Angora	100% Rabbit Hair (10 gr. ball) 33 yds/ball
Acrylite	2/12 Acrylic ..... 2400
Caprinae	78% Mohair/13% Wool/9% Nylon ..... 980
Glace Plus	100% Slinky Bright Rayon ..... 1650
LumiYarn	Thin Metallic Yarn (50 gr. cone) 1200/cone
Mini Acrylite	2/24 Weight 100% Acrylic ..... 3600
Mini Pebble	100% Rayon Slub Filler Yarn ..... 3350
Mirage	100% 4-Ply Worsted Acrylic ..... 1000
Night Music	Polyester Thread w/Metallic Twist . 115/ball
Panache	100% 3-Ply Acrylic ..... 2400
Pearlyte	100% Rayon Boucle ..... 2200
Pebble	Boucle Cotton/Acrylic/Rayon ..... 700
Primo	100% Mercerized Cotton ..... 2500
Rayon Nubs	100% Rayon Nub Filler Yarn ..... 5500
Roma	80% Acrilan/20% Antron ..... 2600
Rubane(50 gr ball)	100% Polyamid 1/8" ribbon... 82/ball
Silkie	2-Ply Orlon ..... 2100
Softon	100% Soft Cotton ..... 2000
Sorbet	54% Cotton/46% Rayon ..... 2200
Splendor	3-Ply High Bulk Acrylic ..... 2200
Starlite	Acrylic w/Metallic Thread ..... 2400
Venetia	70% Wool/30% Rayon ..... 2400
Woolana	100% 2/12 Merino Wool ..... 3000
Knit-in Elastic	79% Nylon/21% Elastic 430/spool

**Yarn Color Book: \$25.00 + Shipping and Handling**

Order your KnitKING kits in the color of your choice from KnitKING color cards. Kit and yarn prices subject to change without notice.

## IS YOUR ADDRESS CHANGING?

If so, you can insure the proper handling of this change by following the three suggestions below:

- 1) When advising us of your **new** address, please also indicate your **old** address.
- 2) Please provide us with six weeks notice to affect this change.
- 3) PLEASE PRINT ALL INFORMATION LEGIBLY.



232

233



23-4



235



236



237



238

239



2-10





2-41



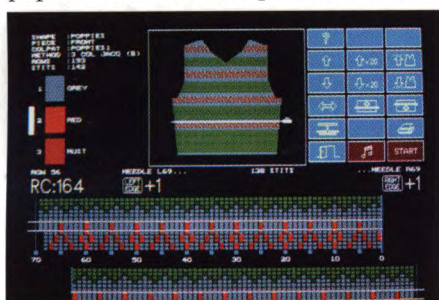
2-12



# Become A Great Fashion Designer With A Little Help From A Square.

DesignaKnit 5...the most popular computer-aided knitwear design program in the USA.

With DesignaKnit 5, machine knitters at every skill level can create beautiful garments with no previous design experience. DesignaKnit takes you through the entire design process one step at a time. You can work with a vast array of built in shapes and sizes and then modify them to fit your exact needs. With the Professional Version, you can even create original shapes. By designing on the screen, you can develop your own stitch patterns from the most popular stitches and experiment with thousands of color combinations. You can even



**PRICES START  
AS LOW AS \$259.95**

import original or scanned graphics right into your design. When ready, you can print out scaled drawings, stitch patterns, knitting instructions, punchcard templates and more. With the Knit-From-Screen feature, you're even able to view your progress as you knit and monitor color and shaping changes. DesignaKnit also comes with Knitking's unmatched customer support, including a technical assistance hot-line, a tutorial and detailed manual. So take your designs to a new level, and order the square called DesignaKnit today.



**LIMITED TIME OFFER: CALL 800-962-6446 TODAY AND GET A FREE DEMO DISK**  
*DesignaKnit works with virtually all electronic and punchcard machines...Knitking, Singer, Brother, Studio, Passap (Cable links optional).*

# Make Machine Knitting Even Easier ... Without Worrying About Shaping

Shaping your garments while knitting them can be a somewhat complicated and time-consuming task. Now, there is an easier way.

With the new Knitking 4/3-Thread King Lock 900D Serger, all you do is knit rectangular pieces in shapes approximating the different pieces of the garment you are making. Then, let the King Lock 900D cut and "overlock stitch" the pieces to the exact measurements for a perfect fit. Quickly. Easily. Using three threads or even four (for added durability).

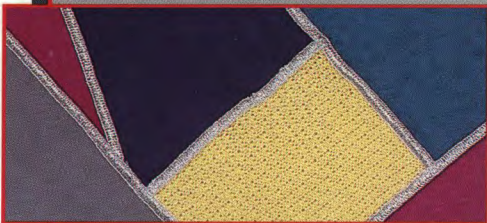
And, with the special, built-in Differential Feed feature, the King Lock 900D assures a smooth, neat, unruffled edge for *any* fabric — ideal for your knitwear creations!



Low, Low SALES

**\$399.95**

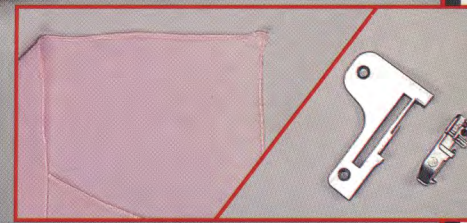
Limited Time Only



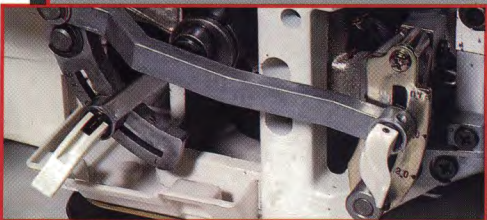
Flatlocked Seams allow mixing and matching of different fabric textures and colors using a decorative topstitch.



Create your own Lace fabric trim and use it to put a unique finishing edge on your knitted garments.



Narrow/Rolled Hem accessory is included and easily attaches for beautiful fine and narrow rolled hem edge finishing.



One-Touch sewing pitch adjustment and One-Touch Differential Feed adjustment are both conveniently located.

**knitking**

**KING LOCK 900D  
DIFFERENTIAL FEED**



Two-Position Presser Foot allows presser foot height adjustment of up to 6 mm to accommodate thicker knitted fabrics.



1128 Crenshaw Boulevard  
Los Angeles, CA 90019

For the Knitking Dealer near you  
Call Toll-Free: 1-800-962-6446