



knitking

magazine



Holiday Inspired Creations

SUPER SELECTIONS
FOR WINTER HOLIDAYS

Bulky Brigade

PULLOVERS, CARDIGANS
AND ENSEMBLES

Knit Classic Styles

ENHANCE WITH
FANCY EMBELLISHMENTS

Designing Men

TUCK, FAIRISLE AND
GARTER CARRIAGE
CHOICES

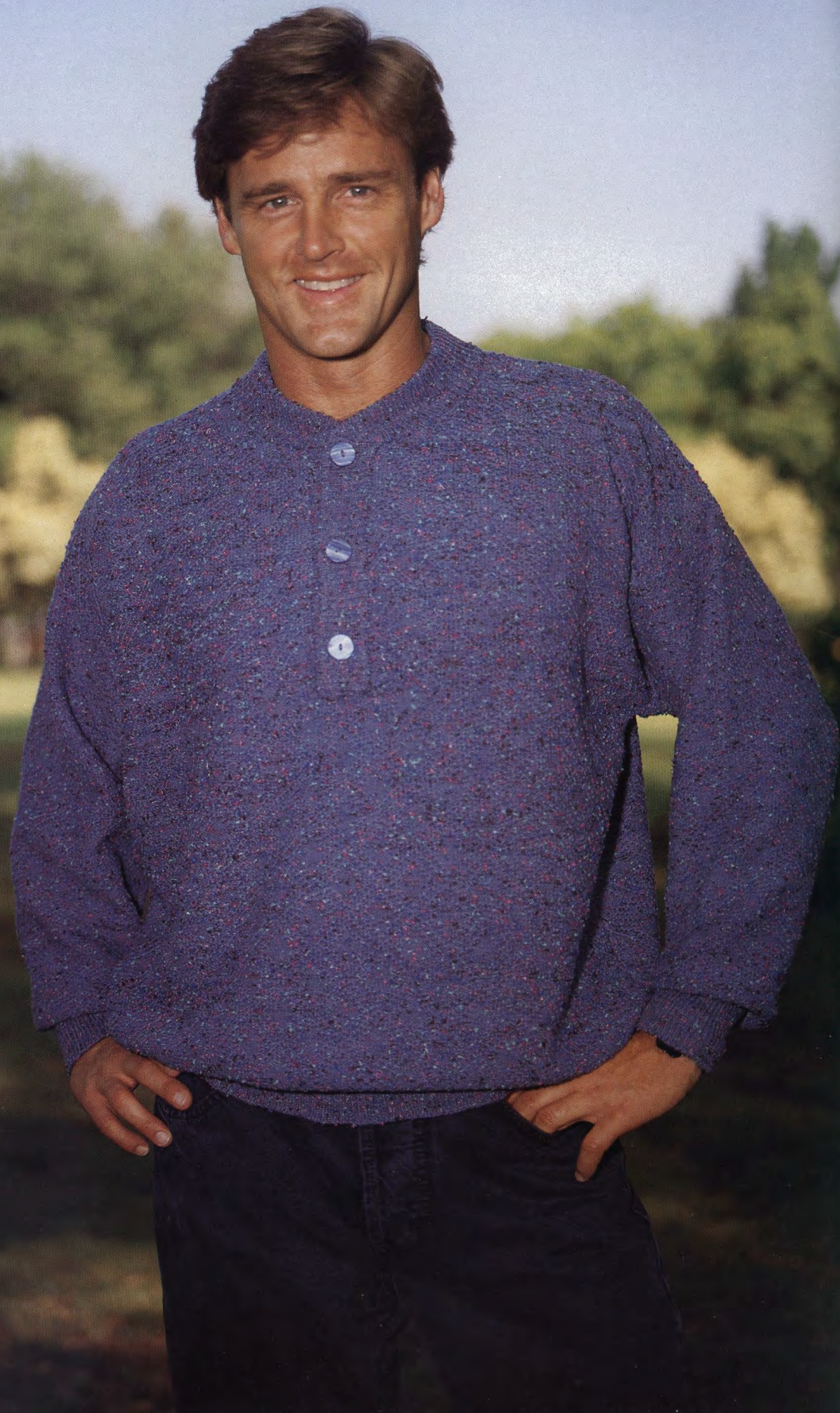


VOLUME 26 ISSUE 3

124

SUBTLE SHADING

Knit this classy Pullover for your favorite man. Our Woolana and Rayon Nubs are combined while knitting in a Tuck Stitch for an interesting texture. The shaped Collar and button placket are 1 x 1 Ribbing. Knit it on any standard Punch Card or Electronic machine with Ribber.



125

A STRIKING DESIGN

Although this Jacket is knitted in a Fairisle Design, there will be no floats as you pick them up while you knit to form a great Pull-up Pattern Stitch. The purl side will be the right side. A deep 1 x 1 Rib is used to form the waistband. Sleeve and front bands are also ribbed. Knit it with Mirage on the Compuknit or Punch Card Bulky machine with Ribbing Attachment.





TABLE OF CONTENTS

KNITTING MAGAZINE - VOLUME 26 NO. 3

0000	GENERAL INSTRUCTIONS	13
122	HOLIDAY JACKET & TOP	15
123	HOLIDAY PANTS	16
124	MENS TUCK PULLOVER	18
125	BULKY PULL-UP STITCH FAIRISLE JACKET	19
126	DRESS AND JACKET ENSEMBLE	20
127	TWO-PIECE SUIT	22
128	WOMENS FAUX JUMPER DRESS	24
129	MENS MULTI-COLOR FAIRISLE with SHAWL COLLAR	25
130	BULKY FAIRISLE JACKET	26
131	TWO-PIECE DRESS	27
132	MENS GARTER CARRIAGE PULLOVER	30
133	MENS FAIRISLE PULLOVER	31
134	LACE BORDERED SWEATER with HOLIDAY TRIM	32
135	BULKY EYELET CARDIGAN	33
136	BULKY PULLOVER with KNITTED or SEQUINED SLEEVES	34
137	WOMENS TWO-PIECE DRESS	35
138	GIRLS FAIRISLE and LACE DRESS	36
139	BULKY CARDIGAN JACKET	38
0000	KNITTING NEWS and TIPS	39
140	BULKY PULLOVER with FERN LACE YOKE	40
141	V-NECK LACE PULLOVER	42



EDITORIAL

Dear Readers,

Having just returned from the Second British American Machine Knitting Seminar in Atlanta, Georgia, my excitement and enthusiasm are running at top speed. Meeting and talking with machine knitters who came from near and far to teach, to learn and to share was a joy. I'm always delighted to hear from our readers and being able to share thoughts in person was an extra special treat!

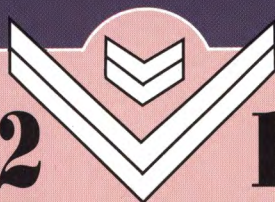
Parts of our display area were accented with many of the garments featured in recent issues of Knitting Magazine (and a few future" sneak previews" as well). Knitting Magazine readers were so excited to be able to see many of their favorite patterns "come to life" and to be able to touch the textured fabrics, investigate the yarns, and checkout all our hems and seams!

We received lots of special "oohs and aahs" over many of the garments featured in this issue. A special favorite of the seminar attendees was the lovely 3-piece garment featured on the cover. The shimmering flow of the rayon yarn makes the pants, top and cardigan a perfectgo-anywhere holiday ensemble. Want a holiday happening without traditional reds and greens? Check out our lace bordered pullover with all the trimmings on page 32. Another hit was the stunning dress and jacket ensemble featured on page 20. Its a lightweight wool, flattering fit and the perfect weight for almost any weather. And while you're perusing through this great new issue, pay special attention to our houndstooth happenings—the great bulky coat on page 26 or the tailored slim suit on page 22.

There's plenty of styles, textures and colors to choose from so get a jump on the holiday knitting frenzy! Remember, we'll make any of our kits in any color of the recommended yarns—so try Pattern #141 in any one of our twenty-three beautiful shades of Primo. We make it easy for you to . . .

Have Fun Knitting,

Suzanne Str



122 SEASONS BEST 123



A three-piece Holiday Ensemble with great personality will delight you. The Cardigan and Pullover (122) are Stockinette stitch with manually knit-in bright tassels scattered throughout for special accents. The purl side is the right side. The bands are striped. Knit them both on a standard gauge machine with ribber with Glace Plus and colorful Metallics. The easy fit pants (123) are in Stockinette stitch and worn on the knit side.

Publisher: KNITTING CORPORATION, 1128 Crenshaw Blvd. Los Angeles, CA 90019. Telephone: (213) 938-2077. Published quarterly. Subscriptions: USA-\$24.00 annually; single copies \$7.95. \$29.00-all other countries. The entire contents of KNITTING MAGAZINE are copyrighted and must not be reproduced in any shape or form without the express permission, in writing, of the publisher.
© COPYRIGHT 1992 KNITTING CORPORATION

Photography by : NILS VIDSTRAND STUDIOS

126

SIMPLY ELEGANT

You can wear this fantastic two-piece Dress and Jacket ensemble to the office or to a special dinner party. The long bodice sleeveless Dress with flattering neckline is in Stockinette stitch and is attached to the ribbed pleated Skirt. The long lovely Jacket is full needle rib with a jewel button closure. Knit it with Woolana on any standard gauge machine with Ribbing Attachment.



127

TAILORED TO PERFECTION

Everyone enjoys wearing a well-tailored Suit and this one can be worn through all seasons. The Jacket is in a tiny Houndstooth Fairisle Design with Stockinette stitch bands and bright buttons. The straight well fitting Skirt is in Stockinette. Knit it with Venetia and Pearlyte on standard Punch Card or Electronic machine.



128

**A
NEW
LOOK**

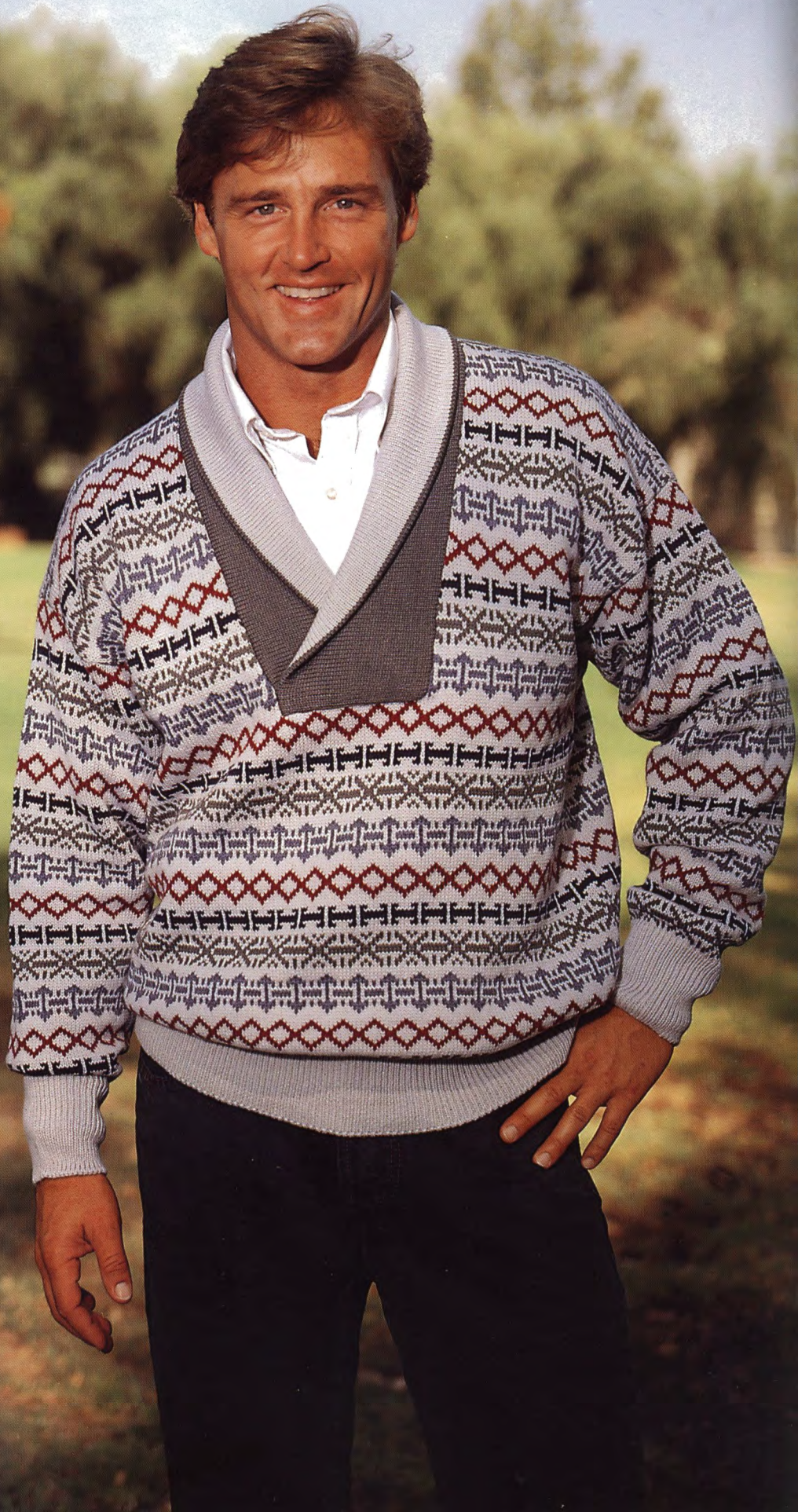
Very new and very special is this lovely Dress that resembles a Jumper with a separate top but is actually a complete dress. It's in Stockinette stitch with the attractive deep sleeves and 'V' neck insert knitted in stripes. Knit it on any Standard gauge or Electronic machine with Venetia.



129

FIRST PLACE

A welcome addition to your Man's wardrobe is this warm Pullover that combines colors in various Fairisle Designs. He will appreciate the Stockinette stitch shawl Collar that is faced with a second color to form the contrast fold-over at neckline. The bands are 1 x 1 ribbing. Knit it with Woolana on standard gauge Punch Card or Electronic machine with Ribber.





130

BULKY BEAUTY

A quick and very easy to knit fingertip Coat is sure to keep you warm during the cold months of winter. Four yarns, Caprinae, Pebble, Pearlyte, and Acrylite knitted together in a large houndstooth pattern, create the perfect blend. Knit this luscious coat on any Punch Card or Compuknit/Bulky machine.

131

DRESS MAGIC

Knit the top of this two-piece Dress in sections, reversing the colors in the Fairisle Design for an interesting and different effect. Rib bands in a third color are used for accents and match the Stockinette stitch Skirt with ribbing at hemline. Knit it on a standard Punch Card or Electronic machine with Ribber using Venetia.



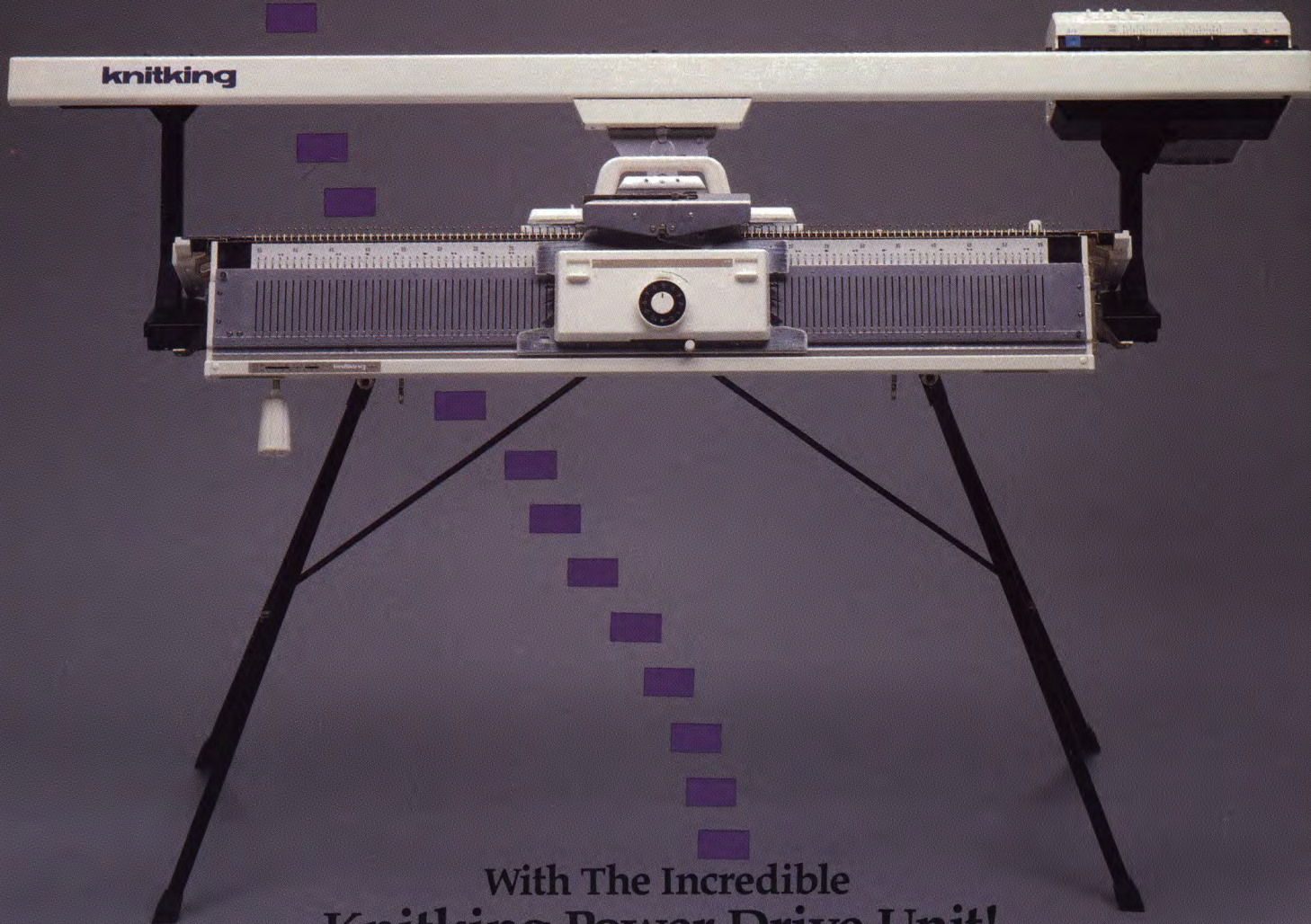


132

MOST IMPRESSIVE

The Garter Carriage makes easy and fun knitting for this Man's great Crew Neck Pullover. Use the variation keys to expand the Pattern appearance. Double the length, the width and mirror image and the results are spectacular. Use the Garter Carriage for the 2 x 2 Rib bands with Color Stripes. Knit it on the Compuknit III or IV with our Alpine yarn.

Now You Can Knit Your Garments in the Wink of an Eye and the Tap of a Foot!



With The Incredible Knitking Power Drive Unit!

It attaches to the carriage of your Knitking knitting machine and, with the push of a button or tap of the foot pedal, automatically moves the carriage back and forth across the knitting bed!

Buy It For
As Little As
\$30/Mo.

knitking

Where Savings And Value
Are Always In Fashion

1128 Crenshaw Blvd., Los Angeles, CA 90019 213-938-2077



GENERAL INSTRUCTIONS

THE SAMPLE SWATCH

It is imperative that you knit a sample swatch for every garment. Although you may be using the identical yarn and machine model as the pattern suggests, many variables such as dye lot difference, speed of knitting and just machine to machine differences can all cause a variance in the gauge achieved. Knit Magazine publishes the tension and gauge for each garment shown. We strongly urge you to knit a swatch representing three tensions - the recommended tension, and .1 or .2 higher and lower. These different tensions can be knitted in one piece with waste yarn separating the sections. This will eliminate unnecessary rethreading while allowing you to obtain the gauge published in the magazine.

To make a sample swatch on standard gauge machines cast on 60 stitches with waste yarn. Knit approximately 6 rows. *Mark the tension number for your swatch by making holes. For example 4 eyelet holes for Tension 4, 6 eyelet holes for Tension 6. Knit 6 more rows.

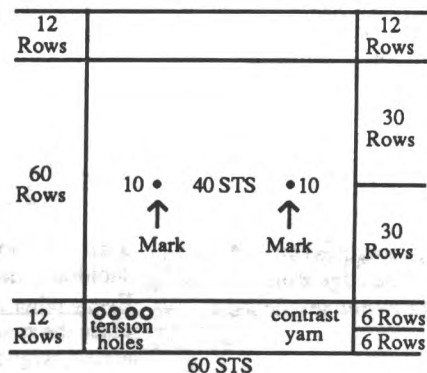
Change to garment yarn and reset row counter to 0. Knit 30 rows (in Pattern stitch). With contrast yarn, mark the 10th stitch FROM EACH SIDE by hand. Knit 30 Rows. Change to waste yarn and knit 6 rows. Change tension up or down for second section and repeat from *. Make third section with another tension. Remove on 12 Rows of waste yarn. Remove the sts. from the machine

by pushing the Carriage across without yarn.

Pull and stretch the swatch both lengthwise and diagonally from corner to corner. Gently block the swatch. Treat the swatch as you would the finished garment before measuring the gauge. For example, if you plan to wash this garment and dry it in the dryer, you should do so, measuring before and after to see the difference.

Measure between the stitches marked and the beginning and ending rows for the inches/cms. knitted. Divide the total number of stitches/rows by the inches measured to calculate sts. and rows per inch.

For Bulky knitters, make swatch with 30 Sts. and 30 Rows. If so desired, or for large pattern repeats, we suggest a wider and longer swatch to provide more accurate gauges.



HEMS

Two methods of knitting hems are described below. Variations on these instructions will allow you to knit plain hems, picot edge hems and more.

Method One

With waste yarn cast on the required number of stitches and knit about 10-12 rows ending with the carriage on the left. Knit 1 Row to the right with Ravel Cord. Change to garment yarn and knit 1 Row to the left at garment body tension. (i.e. Skirt at Tension 4, 1st row at T 4). Turn tension down approximately 2 full tension numbers lower (tighter) and knit to mid point. (i.e. Row 14 of a 28-row hem). Change tension to 1 full point lower than garment body and knit remainder of hem rows. Pick up the stitches from the first row of garment yarn - shown between the stitches of Ravel Cord. Hem is now completed. Proceed with pattern as per chart and instruc-

tions. Remove waste yarn and Ravel Cord when you have completed section.

Method Two

Bring required number of needles to "B" (working) position. Attach cast-on comb. Beginning with the 2nd needle on the LEFT, bring every other needle to "D" or "E" position. Push in both Part buttons. Knit 1 Row to the left. Release the part buttons and drop the cast-on comb. (DO NOT REMOVE cast on comb from work). Knit required number of rows for hem. Attach weights to the back of work close to the cast-on comb (about 1/4" above the comb). Beginning with the 1st needle on the LEFT, bring every other needle to "D" position. Carefully LIFT the cast-on comb and hang loops onto the needles in "D" position. Turn the comb back away from you and make sure the needles are through the loops. Pull the needles out to "E" position and remove the cast-on comb.

BUTTONHOLES

The following methods of buttonholes are the general manner in which small and large buttonholes are created.

Small Buttonholes in Ribbing
Make small eyelet style buttonholes by following chart below.

Buttonhole Transfer
Center St. of Each Bed to Next St. of Other Bed



Large Buttonholes in FNR
Vertical buttonholes are made by knitting each side separately (partial or short-row knitting). Knit the right side first, end with yarn on left. Without breaking yarn, knit left side. The strand of yarn inside the buttonhole can be picked up every other row when knitting the left side, but this is not necessary for a small buttonhole.

SHORT ROWS

Method One

With carriage on opposite side start placing appropriate number of ndls in HP. Knit across and wrap the inside needle. Again, place appropriate number of ndls in HP on opposite side from carriage, knit across and repeat wrapping. The wrapping will eliminate any holes in the knitting.

Method Two - Automatic Wrap

Example follows for shoulder short rows. This method can be used for other Short Rowing as well. For example if pattern says to Short Row at shoulder every other row 7 sts, 1 x and 6 sts. 1 x . . . With carriage on opposite side put 6 sts in HP, knit 1 row across and put one additional needle in HP. Opposite carriage place 6 ndls in HP. Knit 1 row across and bring one extra needle to HP. Repeat until shortrowing is completed.



GENERAL INSTRUCTIONS

AT THE SAME TIME - Two functions are to be performed at the same time, such as shaping the neck and shoulder. Be sure to read both instructions before proceeding.

BO - Bind Off. To take off more than 1 St. at a time. When two or more stitches are to be bound off (or cast on) the carriage and yarn must be on the same side as the bind off. If the instruction is, "At R 100 BO 6 Sts on each side.", on the carriage side BO six stitches, knit one row and then bind off six stitches on the other side. See DECR and FF DECR.

BOLT - Slip Stitch Bind Off with a Latch Tool. Knit one row to the left at a tension at least five numbers higher (looser) than the garment tension. Bring all needles to holding position ("E") and then, pick up the first stitch on a latch tool allowing it to slip behind the latch, then pick up the next stitch and pull it through the stitch already on the latch hook, thus creating a slip stitch. If you cannot set the tension at least five full tension numbers higher, knit a row loosely manually.

CO - Cast on stitches for knitting. (CHECK INSTRUCTION MANUALS TO MAKE SURE DIFFERENT METHODS ARE SHOWN) In our instructions, CO is used either for a finished edge at the beginning of the garment, or to add edge stitch(es). If two or more stitches are to be cast on the carriage and yarn must be on the same side as the cast on. If the instruction is, "At R 100 CO 6 Sts on each side.", on the carriage side cast on six stitches, knit one row and then cast on six stitches on the other side.

COR - Carriage on Right

COL - Carriage on Left

DECR - Use the transfer tool to move the edge stitch(es) inward to the next needle. Usually used to transfer one edge stitch to the next needle, but may be used to transfer the two edge stitches to the next two needles.

EON - Every other needle

EOR - Every other row

EOS - Every other stitch

FF DECR - Used to make an even edge for seaming and decorative seams for raglans. If one stitch is to be decreased, use a two-prong transfer tool to move the two edge stitches inward one needle. If two stitches are to be decreased, use a three-prong transfer tool to move the three edge stitches in two needles. If three stitches are to be decreased, use two two-prong transfer tools and move the edge stitches in four needles. See DECR, BO and SHAPING.

FF INCR - To increase one stitch move the two edge stitches outward one needle, then fill the empty needle by picking up a bar from the row below and hanging it on the empty needle.

FNR - Full Needle Rib

G.C. - Garter Carriage

HP - Holding position or "E" position.

INCR - Increase. Usually used for "full-fashion" shaping, see FF Incr., or in conjunction with short row shaping. A simple incr can be made by pulling additional needle on side of carriage out to "E" position and knit across.

MB - Main Bed

MC - Main Color

Ndls - Needles

NWP - Non-working position or position "A"

R(s) - Row(s)

RB - Ribber Bed

RC - Row Counter.

RC 0 - Set RC to zero.

SET PATTERN - Follow the step-by-step instructions in your manual for setting the pattern and carriage controls for the pattern to be knit, e.g., Fairisle, tuck, single motif, etc.

SHAPING: The method used for shaping is a matter of personal preference. In our definitions we have described the methods commonly in use at Knitking. Which method is chosen for a particular pattern depends upon the garment, the yarn and the personal preference of the designer.

SHR - Short Row or Partial Knitting. Used for shaping shoulders, necklines, darts, gores, etc. Set carriage on H(old).

Every other row SHR: On the opposite side of the carriage, place the specified number of stitches in holding position, knit across, wrap the inner needle or use an "automatic wrap". After all specified stitches have been placed in HP change the carriage setting to N (knit) to return the needles to WP. **Every row SHR:** On the side being shaped, place one stitch in HP every row. It is recommended you refer to your manual or an instruction book for detailed instructions about how to short row.

St(s) - Stitch(es)

St. St. - Stockinette stitch.

T - Tension.

WP - Working Position or "B" position.

WY - Waste yarn.

YM - Yarn marker. To place a yarn marker, use a short piece of contrasting yarn and loop it over the needle specified or the end needle of the row specified.

SEAMING GARMENTS

Any number of popular methods are suggested. We encourage you to experiment with any and all. If a garment in Knitking Magazine requires special seaming information it will be provided in the individual pattern instruction. Otherwise, methods include: linking on the knitting machine, Knitking's Lectrolink, the electric linker, crochet slip stitch, tapestry needles with back stitch sewing by hand. Bar to bar weaving for seamless appearance and seaming on a sewing machine.



HOLIDAY JACKET & TOP

YARN: Glace Plus, Venetia, Lumiyarn and Metallic

SIZES: 6/8 (10/12) [14/16]

AMOUNT: Same all sizes

- Col. 1: Glace Plus - White
- 2 cones all sizes (approx. 3 lb.)
- Col. 2: Venetia - Red - 3 oz.
- Col. 3: Lumiyarn - Gold-1 spool
- Col. 4: Venetia - Emerald - 2 oz.
- Col. 5: Metallic - Green - 1 ball
- Col. 6: Metallic - Red - 1 ball

KIT PRICE: \$105.00

TENSION:

- Body: T 5.2
- Bands: T 5.1
- FNR: T 2/2 I

GAUGE: Body: 8.57 Sts., 10.8 Rs. = 1"

Make on any standard gauge machine with ribber.

Note: Worn on the purl side. When blocking garments, do not place direct heat on metallic yarn.

Pattern Note:

Cut 11", 10", 9" pieces of each color of Lumiyarn and Metallic for fringes.

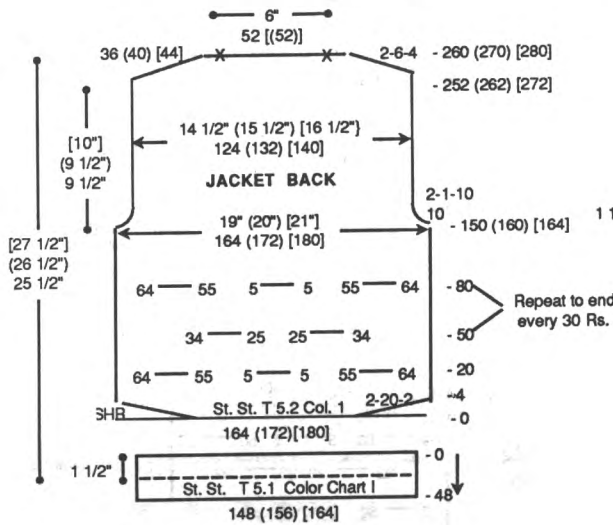
1. Bring 10 sts. to 'C' position. Take 2 strands of 11" long yarn (any color). With right hand hold last 2 1/2" of yarn. Knit 1 row manually from right to left with remaining yarn.
2. Leave 1 st. on each side and bring center 8 sts. to 'C' position. Take 2 strands of 10" yarn (any color). Hold end of yarn the same as step 1. Knit 1 row manually from right to left with remaining yarn.
3. Leave 1 more st. on each side and bring center 6 sts. to 'C' position. Take 2 strands of 9" yarn (any color). Hold end of yarn the same as step 1. Knit 1 row manually from right to left with remaining yarn.
4. Trim all fringes to the same

length.

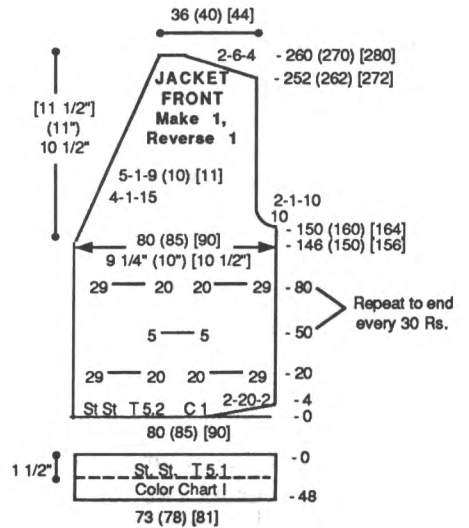
5. Repeat steps 1 thru 4 for each fringe following chart for placement.

JACKET BACK:

With WY CO 164 (172) [180] sts. After several rows end with 1 row Ravel Cord to the right. RC 0. T 5.2. Col. 1. St. St. SHR shape lower edge on each side EOR 20 Sts. 2x. Knit in fringe pattern following chart for placement. At R 150 (160) [164] shape armhole. On each side BO 10 sts. then decr. EOR 1 St. 10x. At R 252 (262) [272] SHR shoulders EOR 6 Sts. 4x. At R 260 (270) [280] mark center 52 sts. with YM for neckline. Remove shoulder and neckline sts. on separate WY.

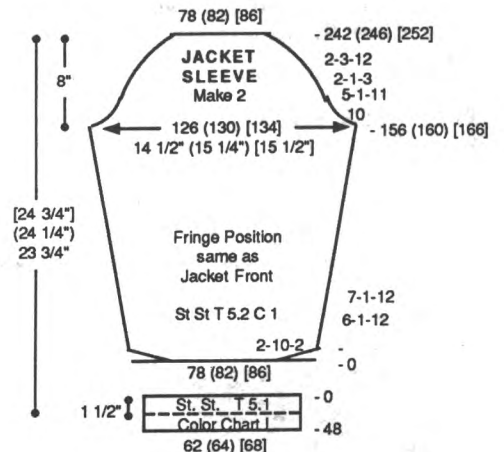


neckline. On left side decr. every 4 Rs. 1 St. 15x for all sizes and every 5 rows 1 St. 9 (10) [11] x. AT THE SAME TIME at R 150 (160) [164] shape armhole. On right side BO 10 sts. then decr. EOR 1 St. 10x. At R 252 (262) [272] SHR shoulder EOR 6 Sts. 4x. At R 260 (270) [280] remove shoulder sts. on WY.



FRONT HEM:

With knit side facing rehang lower edge of jacket front on 73 (78) [81] ndls. decr. evenly across. RC 0. T 5.1. Knit in St. St. following Color Chart I to R 48. Pick up first row to form double hem. Knit 1 row at T 10 and BOLT.



BACK HEM:

With knit side facing rehang lower edge of jacket back on 148 (156) [164] ndls. decr. evenly across. RC 0. T 5.1. Knit in St. St. following Color Chart I to R 48. Pick up first row to form double hem. Knit 1 row at T 10 and BOLT.

JACKET FRONT: Make 1, Reverse 1.

With WY CO 80 (85) [90] sts. After several rows end with 1 row Ravel Cord to the right. RC 0. T 5.2. Col. 1. St. St. SHR shape lower edge on right side EOR 20 Sts. 2x. Knit in fringe pattern following chart for placement. At R 146 (150) [156] shape

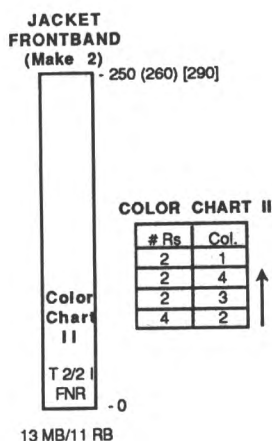
SLEEVE: Make 2.

With WY CO 78 (82) [86] sts. After several rows end with 1 row Ravel Cord to the right. RC 0. T 5.2. Col. 1. St. St. SHR shape lower edge on each side EOR 10 Sts. 2x. Knit in fringe pattern following chart for placement (continued next page)

(continued from previous page)
while shaping sleeve by incr. every 6 Rs. 1 St. 12 x and every 7 Rs. 1 St. 12x. At R 156 (160) [166] shape sleeve cap. On each side BO 10 sts. then decr. every 5 Rs. 1 St. 11x and EOR 1 St. 3x, then SHR EOR 3 Sts. 12x. At R 242 (246) [252] knit 1 row over all sts. at T 10 and BOLT.

SLEEVE CUFF: Make 2.

With knit side facing rehang lower edge of jacket sleeve on 62 (64) [68] ndls. decr. evenly across. RC 0. T 5.1. Knit in St. St. following Color Chart I to R 48. Pick up first row to form double hem. Knit 1 row at T 10 and BOLT.



FRONT BAND: Make 2.

With Col. 2 CO 13/11 sts. for FNR. After selvedge T 2/2 I. Knit to R 250 (260) [270] following Color Chart II. Remove sts. on WY.

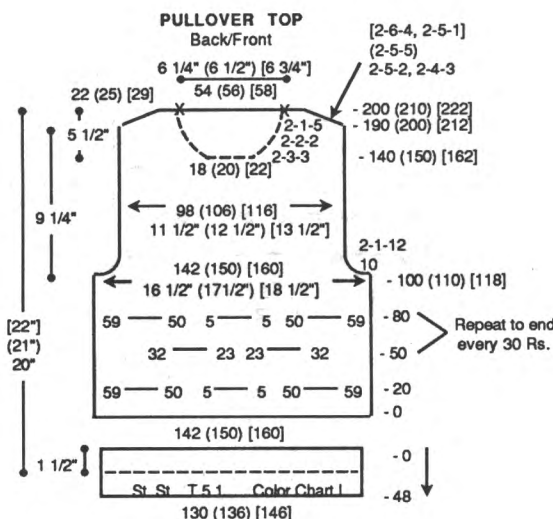
PULLOVER BACK: Make 2.

With WY CO 142 (150) [160] sts. After several rows end with 1 row Ravel Cord to the right. RC 0. T 5.2. Col. 1. St. St. Knit in fringe

pattern following chart for placement. At R 100 (110) [118] shape armhole. On each side BO 10 sts. then decr. EOR 1 St. 12x. At R 190 (200) [212] SHR shoulders EOR 5 Sts. 2x and 4 Sts. 3x (5 Sts. 5x) [6 Sts. 4x and 5 Sts. 1x]. At R 200 (210) [222] mark center 54 (56) [58] sts. with YM for neckline. Remove shoulder and neckline sts. on separate WY.

PULLOVER FRONT: Make 2.

Knit top front same as top back to R 140 (150) [162]. Shape neckline. Place center 18 (20) [22] sts. in HP and all to the left in HP. *On neckline edge SHR EOR 3 Sts. 3x, 2 Sts. 2x and 1 St. 5x. At R 190 (200) [212] SHR shoulder EOR 5 Sts. 2x and 4 Sts. 3x (5 Sts. 5x) [6 Sts. 4x and 5 Sts. 1x]. At R 200 (210) [222] remove shoulder sts. on WY.



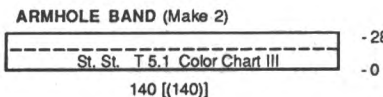
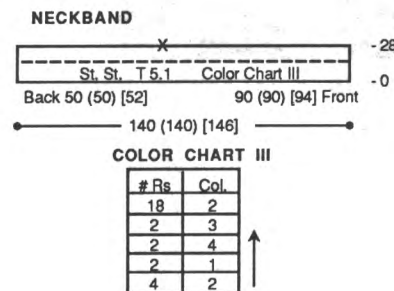
WAISTBAND: Make 2.

With knit side facing rehang lower edge of top back/front on 130 (136) [146] ndls. decr. evenly across. RC 0. T 5.1. Knit in St. St. following Color Chart I

to R 48. Pick up first row to form double hem. Knit 1 row at T 10 and BOLT.

NECKBAND: Make 2.

Join one shoulder. With knit side facing rehang neckline on 140 (140) [146] ndls. following chart. RC 0. T 5.1. Knit in St. St. following Color Chart III to R 28. Pick up first row to form double band. Knit 1 row at T 10 and BOLT.

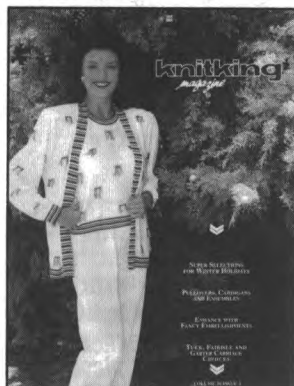


ARMHOLE BAND: Make 2.

Join remaining shoulder. With knit side facing rehang armhole on 140 ([140]) sts. RC 0. T 5.1. Knit in St. St. following Color Chart III to R 28. Pick up first row to form double band. Knit 1 row at T 10 and BOLT.

FINISHING:

Join shoulder seams on jacket. Attach front band, beginning at lower edge up to center back on each side. Seam at center back. Sew in sleeve. Close all remaining seams.



HOLIDAY PANTS

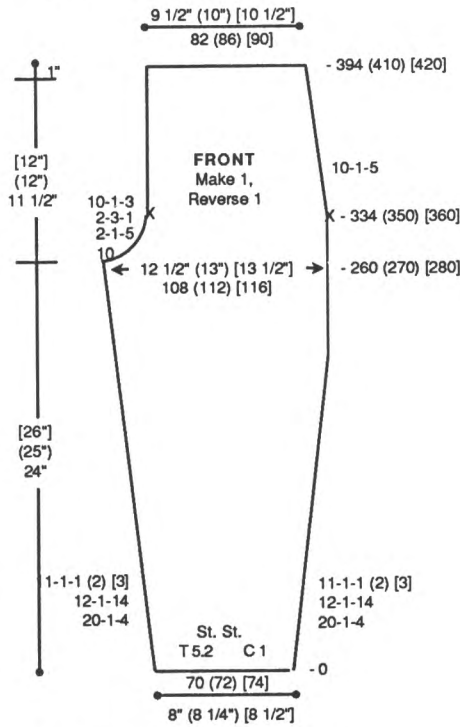
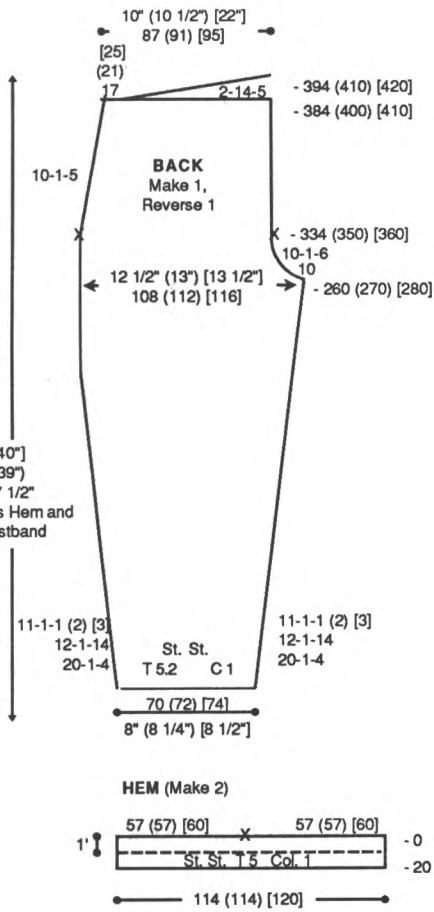
YARN: Glace Plus - White
SIZES: 6/8 (10/12) [14]
AMOUNT: 1 cone (approx. 1-1/2 lb. all sizes)
KIT PRICE: \$39.00
TENSION: St. St.: T 5.2
Hem: T 5
Waistband: T 5.1
GAUGE: St. St.: 8.6 Sts., 10.8 Rs. = 1"
NOTIONS: Elastic for waistband.

Make on any standard gauge machine. Worn on the knit side.

BACK: Make 1, Reverse 1.
With WY CO 70 (72) [74] sts. After several rows, end with 1 row Ravel Cord to the right. RC 0. T 5.2. Col. 1. Knit in St. St. while shaping left side by incr. every 20 Rs. 1 St. 4x, every 12 Rs. 1 St. 14x and every 11 Rs. 1 St. 1 (2) [3] x. AT THE SAME TIME on the right side incr. every 20 Rs. 1 St. 4x, every 12 Rs. 1 St. 14x and every 11 Rs. 1 St. 1 (2) [3] x. At R 260 (270) [280] on the right side BO 10 sts. then

every 10 Rs. 1 St. 5x. At R 384 (400) [410], place left 17 (21) [25] sts. in HP, SHR EOR 14 Sts. 5x. At R 394 (410) [420] remove sts. on WY.

3 Sts. 1x and every 10 Rs. 1 St. 3x. At R 334 (350) [360] place a YM on each side and decr. on the right side every 10 Rs. 1 St. 5x. At R 394 (410) [420] remove sts. on WY.

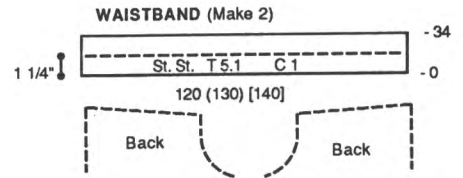


HEM: Make 2.

With purl side facing rehang lower edge of one front and one back on 114 (114) [120] ndls. as shown on chart. RC 0. T 5. Col. 1. Knit in St. St. to R 20. Pick up sts. from first row to form double hem. Knit 1 row at T 10 and BOLT.

WAISTBAND:

Close center seams. With purl side facing rehang front/back on 120 (130) [140] ndls. RC 0. T 5.1. Col. 1. Knit in St. St. to R 34. Pick up first row to form double band. Knit 1 row at T 10 and BOLT.



FRONT: Make 1, Reverse 1.

Knit front same as back to R 260 (270) [280]. On the left side BO 10 sts. then decr. EOR 1 Sts. 5x,

FINISHING:

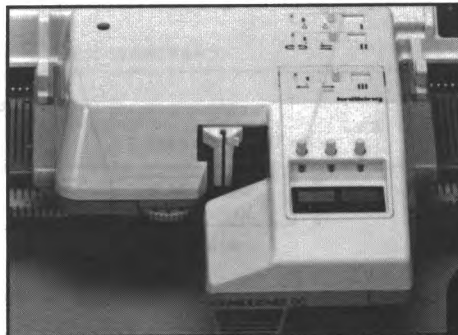
Close all remaining seams.

decr. every 10 Rs. 1 St. 6x. At R 334 (350) [360] place a YM on each side and decr. on the left side

Garter Carriage Knits Ribbing Automatically . . . and More!

The Knitting Garter Carriage makes knitting Ribbing a breeze. With the press of a button, the Garter Carriage moves across your knitting machine on its own power! You can leave the room and your ribbing will be finished when you return!

But ribbing is only the beginning of the story: The Garter Carriage automatically casts on, binds off and knits a multitude of fancy Garter Stitch patterns—beautiful, textured 3-dimensional designs impossible to knit any other way.



- Select desired pattern on knitting machine.
- Set number of rows; switch GC on and leave to do other things.
- It will turn off after completion or if yarn runs out or breaks.

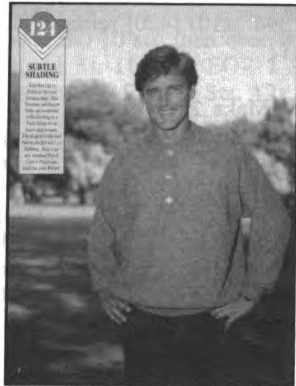
**Buy It For
As Little As
\$15/Mo.**

Available for all standard COMPUKNITS, including the brand new COMPUKNIT V, and most standard Knitting punch card knitters going all the way back to the KH-840.



Order yours now from your local Knitting Dealer, or if there are none in your area, from:

1128 Crenshaw Boulevard • Los Angeles, CA 90019 • Phone: (213) 938-2077



MENS TUCK PULLOVER

YARN:

Woolana and Rayon Nubs

SIZES:

Small (Medium) [Large]

AMOUNT:

Col. 1: Woolana - Denim

1 1/2 lbs. all sizes

Col. 2: Rayon Nubs - Green/Blue

1 Spool all sizes (12 oz. cone)

KIT PRICE: \$67.00

TENSION:

Tuck: T 7

Rib: T 1/1 I

GAUGE:

Tuck: 7.4 Sts., 16 Rs. = 1"

NOTIONS:

3 - 3/4" Buttons

Make on Compuknit III/IV Machine with Ribber. Pattern is #234 in Compuknit III/IV Pattern Book.

NOTE: Put Col. 1 and Col. 2 in separate antenna and then put both together into "A" Feeder.

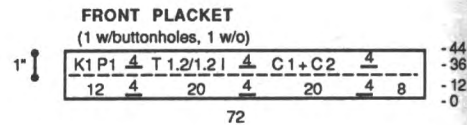
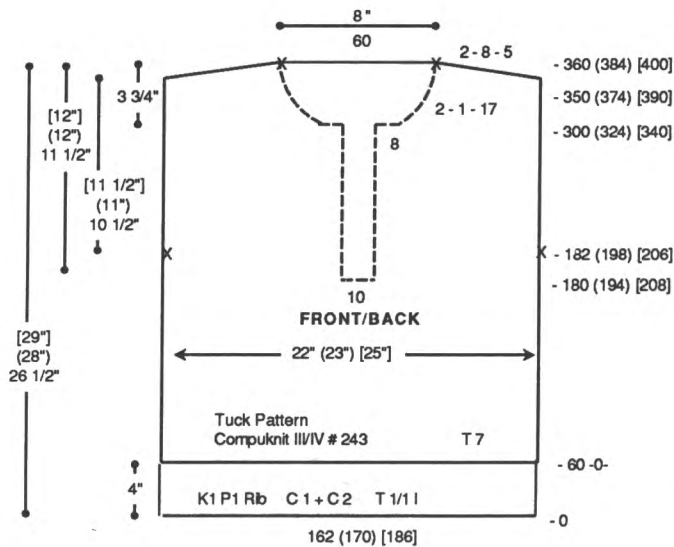
BACK:

With Col. 1 and Col. 2 CO 162 (170) [186] sts. for K1/P1 Rib. After selvedge RC 0. T 1/1 I. Knit to R 60. Transfer Rib sts. to MB. RC 0. T 7. Tuck Pattern. Knit to R 182 (198) [206] and place a YM on each side for armhole. At R 350 (374) [390] SHR shoulders EOR 8 Sts. 5x. At R 360 (384) [400] mark center 60 sts. with YM for neckline. Knit 1 row at T 10 and BOLT.

FRONT:

Knit Front same as Back to R 180 (194) [208]. BO center 10 sts. Place all sts. to the left in HP. Note pattern row. *Knit to R 300 (324) [340]. On neckline edge BO 8 sts. then decr. EOR 1 St. 17x. At R 350 (374) [390] SHR shoulder EOR 8 Sts. 5x. At R 360 (384) [400] knit 1 row over

shoulder sts. at T 10 and BOLT. Reset RC to R 180 (194) [208]. Reset pattern to correct row. Complete left side from *, reversing shapings.

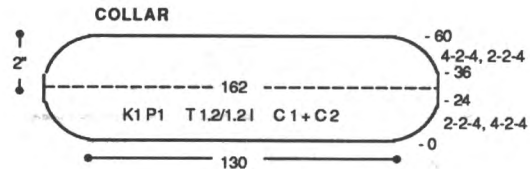


FRONT PLACKET: Make 2, the right one with buttonholes.

With knit side facing, rehang right side of front on 72 ndls. Knit 1 row. Transfer EOS to RB for K1/P1 Rib. RC 0. T 1.2/1.2 I. Knit to R 44 making buttonholes at R 12 and R 30 over 4 sts. with WY as shown on chart. Transfer RB sts. to MB. Pick up sts. from first row to form band. Knit 1 at T 10 and BOLT.

COLLAR:

With Col. 1 and Col. 2 CO 130 sts. for K1/P1 Rib. After selvedge RC 0. T 1.2/1.2 I. On each side incr. EOR 2 Sts. 4x and



Make on Compuknit III/IV Machine with Ribber. Pattern is #234 in Compuknit III/IV Pattern Book.

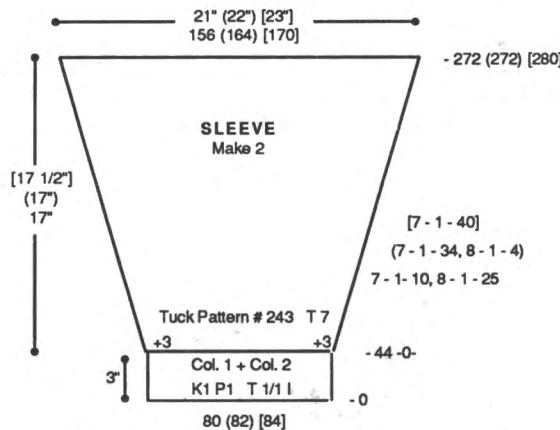
NOTE: Put Col. 1 and Col. 2 in separate antenna and then put both together into "A" Feeder.

BACK:

With Col. 1 and Col. 2 CO 162 (170) [186] sts. for K1/P1 Rib. After selvedge RC 0. T 1/1 I. Knit to R 60. Transfer Rib sts. to MB. RC 0. T 7. Tuck Pattern. Knit to R 182 (198) [206] and place a YM on each side for armhole. At R 350 (374) [390] SHR shoulders EOR 8 Sts. 5x. At R 360 (384) [400] mark center 60 sts. with YM for neckline. Knit 1 row at T 10 and BOLT.

FRONT:

Knit Front same as Back to R 180 (194) [208]. BO center 10 sts. Place all sts. to the left in HP. Note pattern row. *Knit to R 300 (324) [340]. On neckline edge BO 8 sts. then decr. EOR 1 St. 17x. At R 350 (374) [390] SHR shoulder EOR 8 Sts. 5x. At R 360 (384) [400] knit 1 row over



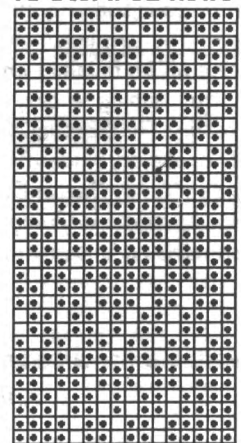
SLEEVE:

Make 2 the same.

With Col. 1 and Col. 2 CO 80 (82) [84] sts. for K1/P1 Rib. After selvedge T 1/1 I. RC 0. Knit to R 44. Transfer RB sts. to MB. Reset RC to 0. T 7. Incr. 3 sts. on each side. Knit in tuck pattern while incr. on each side every 7 Rs. 1 St. 10x and every 8 Rs. 1 St. 25x (every 7 Rs. 1 St. 34x and every 8 Rs. 1 St. 4x) [every 7 Rs. 1 St. 40x]. At R 272 (272) [280] knit 1 row at T 10, mark center with WY and BOLT.

every 4 Rs. 2 Sts. 4x. At R 36 start decr. on each side every 4 Rs. 2 Sts. 4x and EOR 2 Sts. 4x. After R 60 transfer RB sts. to MB. Knit 1 row at T 10 and BOLT.

#124 Tuck Pattern 16 Sts. x 32 Rows



KK Mag Disk:
Track 1; Pattern 901

FINISHING:

Close all seams. Attach collar.



BULKY PULL-UP STITCH FAIRISLE JACKET

YARN: Mirage

SIZES:
Sm/Med (Large/X Large)

AMOUNT:

Col. 1: Black - 1 1/4 lbs.

Col. 2: Raspberry - 1 lb.

KIT PRICE: \$28.50

TENSION:

Fairisle: T 5

Rib: T 0.1/0.1 I

GAUGE:

Fairisle: 4 Sts., 6 Rs. = 1"

Rib: 7 Rs. = 1"

NOTIONS:

3 - 1-1/4" Buttons

Make on Compuknit/Bulky or Punch Card Bulky with Ribber.

Note: Jacket is worn on the purl side.

Pattern Note: *Knit 6 Rs. in fairisle. Using one-eye transfer tool, pick up the floats and hang them on center ndl. of each block. Repeat from * to end.

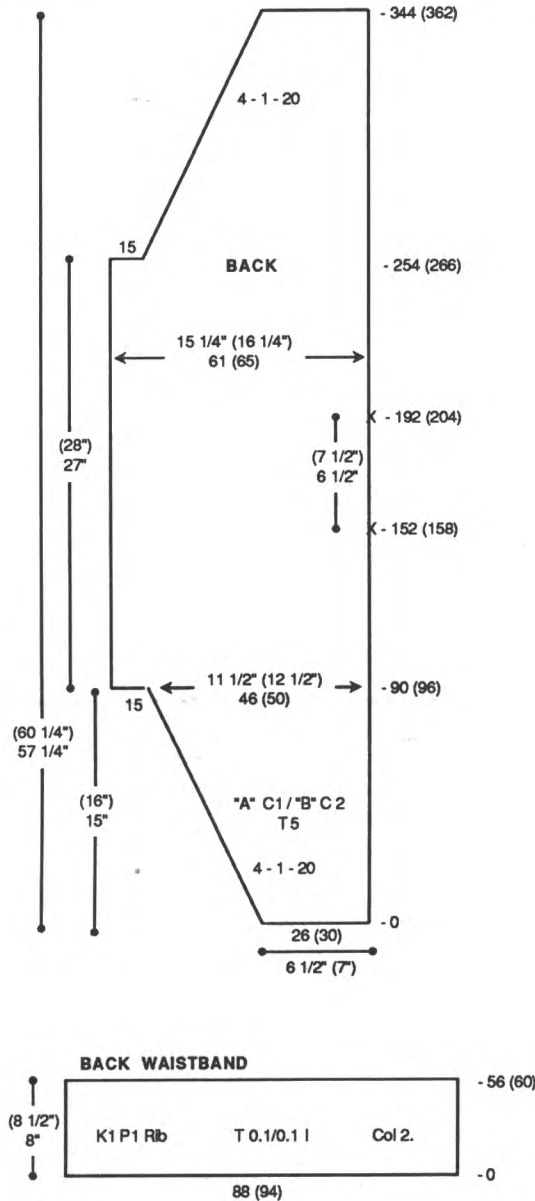
BACK:

With WY CO 26 (30) sts. After several rows, end with 1 row Ravel Cord to the right. RC 0. T 5. Col. 1 in "A" Feeder and Col. 2 in "B" Feeder. Knit in Fairisle while incr. on the left side every 4 Rs. 1 St. 20 x. At R 90 (96) CO 15 sts. at the left. Knit to R 152 (158) and place a YM on the right side for neck opening. At R 192 (204) place a YM on the right side for neck opening. At R 254 (266) BO 15 sts. on the left side, then decr. every 4 Rs. 1 St. 20 x. At R 344 (362) remove sts. on WY.

BACK WAISTBAND:

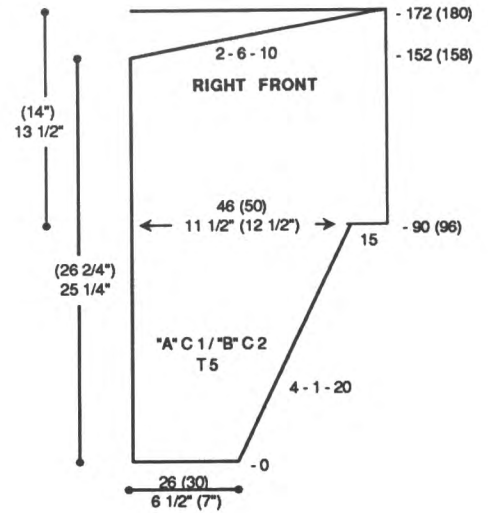
Bring 88 (94) ndls. to WP. With knit side facing rehang lower edge of back on these ndls. Knit 1 row

at T 6. Transfer EOS to RB for K1/P1 Rib. T 0.1/0.1 I. RC 0. Col. 2. Knit to R 56 (60). Transfer RB sts. to MB, knit 1 R at T 6 and BOLT.



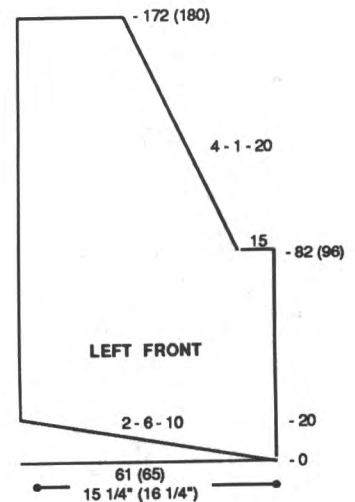
RIGHT FRONT:

With WY CO 26 (30) sts. After several rows, end with 1 row Ravel Cord to the right. RC 0. T 5. Col. 1 in "A" Feeder and Col. 2 in "B" Feeder. Knit in Fairisle while incr. on the right side every 4 Rs. 1 St. 20 x. At R 90 (96) CO 15 sts. at the right. Knit to R 152 (158) and SHR neckline EOR 6 Sts. 10x. At R 172 (180) remove sts. on WY.



LEFT FRONT:

With WY CO 61 (65) sts. After several rows, end with 1 row Ravel Cord to the right. RC 0. T 5. Col. 1 in "A" Feeder and Col. 2 in "B" Feeder. Knit in Fairisle. SHR neckline edge EOR 6 Sts. 10x. At R 82 (96) BO 15 sts. on the right side, then decr. every 4 Rs. 1 St. 20x. At R 172 (180) remove sts. on WY.



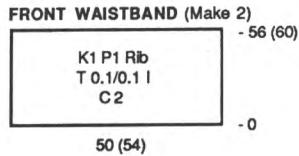
FRONT WAISTBAND:

Make 2.

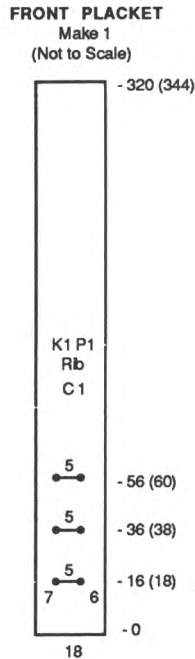
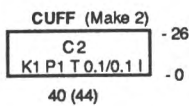
Bring 50 (54) ndls. to WP. With knit side facing rehang lower edge of front on these ndls. Knit 1 row at T 6. Transfer EOS to RB for K1/P1 Rib. T 0.1/0.1 I. RC 0. Col. 2. Knit to R 56 (60). Transfer RB sts. to MB, knit 1 R at T 6 and BOLT.

(continued next page)

(continued from previous page)



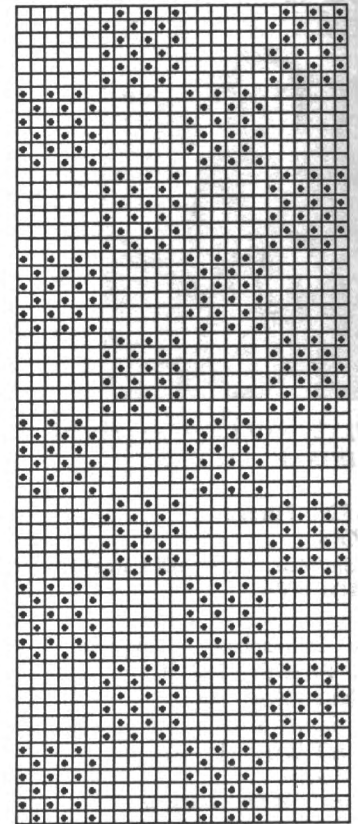
SLEEVE CUFF: Make 2.
Bring 40 (44) ndls. to WP. With knit side facing rehang lower edge of sleeve (front & back) on these ndls. Knit 1 row at T 6. Transfer EOS to RB for K1/P1 Rib. T 0.1/0.1 I. RC 0. Col. 2. Knit to R 26. Transfer RB sts. to MB, knit 1 R at T 6 and BOLT.



FRONT PLACKET:
With Col. 1 CO 18 sts. for K1/P1 Rib. After selvedge RC 0. T 0.1/0.1 I. Knit to R 320 (344) making buttonholes over 5 sts. with WY (see chart) at Rs. 16 (18), 36 (38) and 56(60). Remove sts. on WY.

FINISHING:
Close all seams. Attach front placket and finish buttonholes with crochet hook.

#125 Fairlie Pull-up Pattern
24 Sts. x 60 Rows



KK Mag Disk: Track 2; Pattern 901

126



DRESS AND JACKET ENSEMBLE

YARN: Woolana and Cotton Sewing Thread
SIZES:

6/8 (10/12) [14/16]

AMOUNT: Same All Sizes

Col. 1: Woolana - Navy
3 cones (approx. 3 lb.)
Col. 2: Sewing Thread - Navy
3000 yds.

KIT PRICE: \$102.00

TENSION:
FNR: T 1.1/1 I
St. St. Hem: T 4

GAUGE:
Top: 8.33 Sts., 11.67 Rs. = 1"
Skirt: 10 Sts., 12.8 Rs. = 1"
Jacket: 8 Sts., 12.8 Rs. = 1"

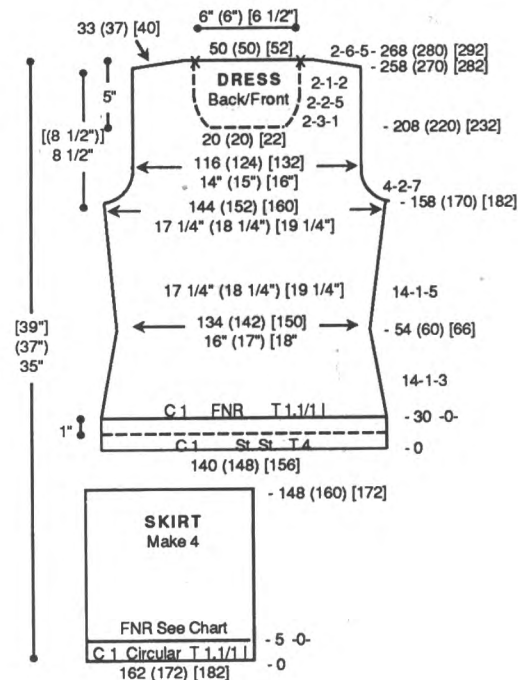
NOTIONS:
1 - 1" Button for Jacket.

Make on any Standard Machine with Ribber. Recommended for Intermediate and Advanced Knitters.

Notes:
1. Feed Col. 1 and Col. 2 through separate antenna then put together in Feeder "A".
2. Make skirt panels first.
3. Full Fashion Decrease: Use 6-prong of transfer tool(s) and decrease appropriate number of stitches (i.e. 1 or 2 as instructions mandate) on MB/RB sts., doubling all fashion stitches.

DRESS SKIRT: Make 4.
With Col. 1 CO 162 (172) [182] sts. for FNR. After selvedge T 1.1/1 I. Knit 5 Rs. in circular knitting. RC 0. Arrange ndls. for FNR pleats following chart. Knit to R 148 (160) [172] and remove sts. on WY.

DRESS BACK:
With purl side facing, rehang 2 skirt panels on 140 (148) [156] ndls. closing pleats and doubling sts. if necessary. RC 0. T 4. Col. 1. St. St. Knit to R 30. Pick up sts. from first row to form double hem. RC 0. T 1.1/1 I. Arrange ndls. for FNR. Decr. on each side every 14 Rs. 1 St. 3x.



At R 54 (60) [66] start incr. on each side every 14 Rs. 1 St. 5x. At R 158 (170) [182] shape armhole. On each side FF decr. every 4 Rs. 2 Sts. 7x. At R 258 (270) [282] SHR shoulders EOR 6 Sts. 5x. At R 268 (280) [292] knit 1 R at T 8/4. Mark center 50 (50) [52] sts. for neckline. Transfer RB sts. to MB and BOLT.

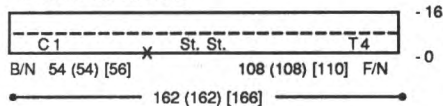
DRESS FRONT:

Knit front same as back to R 208 (220) [232]. Shape neckline. BO center 20 (20) [22] sts. Place all sts. to the left in HP. *On neckline edge SHR EOR 3 Sts. 1x, 2 Sts. 5x and 1 St. 2x. At R 258 (270) [282] SHR shoulder EOR 6 Sts. 5x. At R 268 (280) [292] knit 1 R at T 8/4. Transfer RB sts. to MB and BOLT. Reset RC to R 208 (220) [232] and shape neckline and shoulder from *, reversing shapings.

NECKBAND:

Join one shoulder. With purl side facing rehang neckline on 162 (162) [166] ndls. as shown on chart. RC 0. T 4. Col. 1. Knit in St. St. to R 16. Pick up sts. from first row to form doubled band. Knit 1 row at T 10 and BOLT.

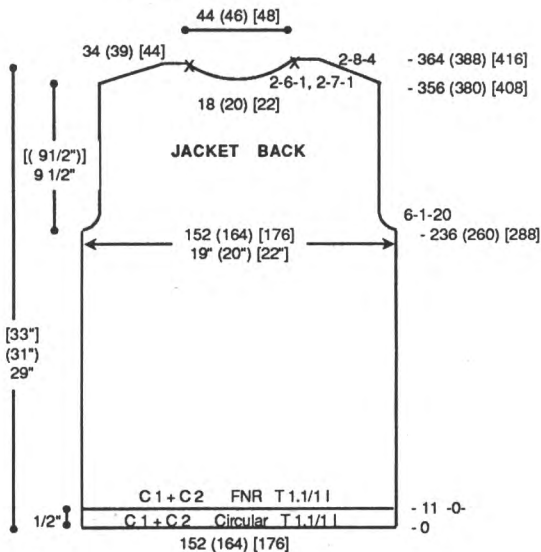
DRESS NECKBAND



JACKET BACK:

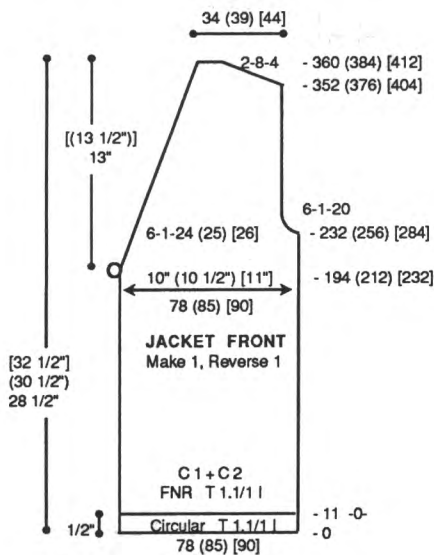
With Col. 1 and Col. 2 CO 152 (164) [176] sts. for FNR. After selvedge T 1.1/1 I. Knit 11 Rs. in circular knitting. RC 0. FNR. T 1.1/1 I. Knit to R 236 (260) [288] and shape armhole. On each side FF decr. every 6 Rs. 1 St. 20x. At R 356 (380) [408] shape neckline. BO center 18 (20) [22] sts. *On neckline edge decr. EOR 6 Sts. 1x and 7 Sts. 1x. AT THE SAME TIME SHR shoulders EOR 8 Sts. 4x. At R 364 (388) [416] knit 1 R at T 8/4. Transfer RB sts. to MB and BOLT. Reset RC to R 356 (380)

[408] and shape neckline and shoulder from *, reversing shapings.



JACKET FRONT:

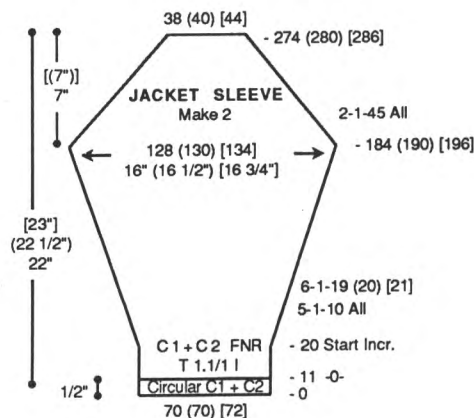
Make 1, Reverse 1. With Col. 1 and Col. 2 CO 78 (85) [90] sts. for FNR. After selvedge T 1.1/1 I. Knit 11 Rs. in circular knitting. RC 0. FNR. T 1.1/1 I. Knit to R 194 (212) [232] and shape neckline. On left side FF decr. every 6 Rs. 1 St. 24 (25) [26] x. AT THE SAME TIME at R 232 (256) [284] shape



armhole. On right side FF decr. every 6 Rs. 1 St. 20x. At R 352 (376) [404] SHR shoulder EOR 8 Sts. 4x. At R 360 (384) [412] knit 1 R at T 8/4. Transfer RB sts. to MB and BOLT.

SLEEVE: Make 2.

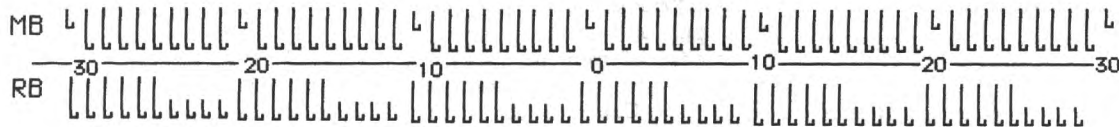
With Col. 1 and Col. 2 CO 70 (70) [72] sts. for FNR. After selvedge T 1.1/1 I. Knit 11 Rs. in circular knitting. RC 0. FNR. T 1.1/1 I. Knit to R 20. On each side incr. every 5 Rs. 1 St. 10x for all sizes and every 6 Rs. 1 St. 19 (20) [21] x. At R 184 (190) [196] shape sleeve cap. On each side FF decr. EOR 1 St. 45x for all sizes. At R 274 (280) [286] knit 1 R at T 8/4. Transfer RB sts. to MB and BOLT.



FINISHING:

Join remaining shoulder seam. Join skirt panels. With 2 strands Col. 1, single crochet 1 time around neck opening, then single crochet in backwards motion, without turning fabric. Make a buttonhole loop on right jacket front at the base of the neckline shaping by chaining 10 sts. Close all remaining seams.

Needle Arrangement Woolana Pleated Skirt





TWO-PIECE SUIT

YARN: Venetia and Pearlyte
SIZES:

6/8 (10/12) [14]

AMOUNT: Same All Sizes

Col. 1: Venetia - Black - 1 lb.

Col. 2: Pearlyte-Charcoal - 1 lb.

KIT PRICE: \$50.00

TENSION:

Fairisle & St. St.: T 5.1

Hems: T 5

GAUGE:

Fairisle: 9.1 Sts., 11.3 Rs. = 1"

St. St.: 8.9 Sts., 14.5 Rs. = 1"

NOTIONS:

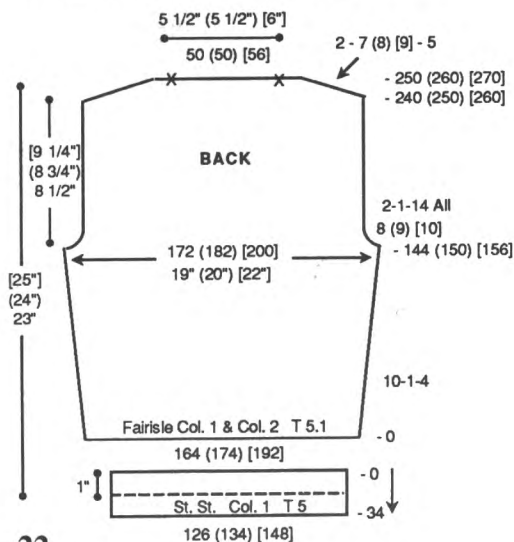
6 - 1" buttons.

Elastic for skirt waistband.

Make on Standard 24-Stitch Punch Card or Standard Electronic Machine.

BACK:

With WY CO 164 (174) [192] sts. After several rows end with 1 row Ravel Cord to the right. RC 0. T 5.1. With Col. 1 in 'A' Feeder and Col. 2 in 'B' Feeder knit in fairisle while incr. on each side every 10 Rs. 1 St. 4x. At R 144 (150) [156] shape armhole. On



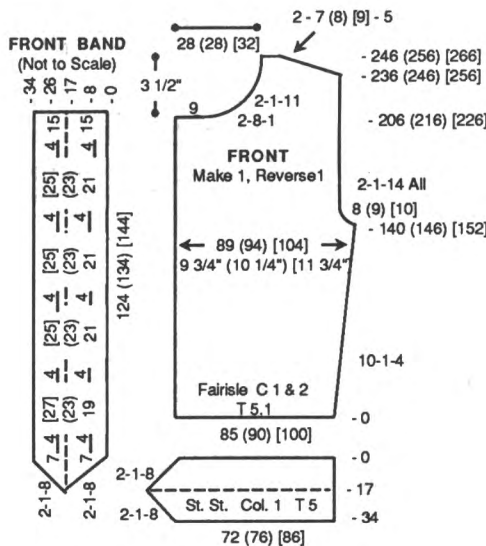
each side BO 8 (9) [10] sts. then decr. EOR 1 St. 14x. At R 240 (250) [260] SHR shoulder EOR 7 (8) [9] Sts. 5x. At R 250 (260) [270] mark center 50 (50) [56] sts. for neckline. Remove neckline and shoulder sts. on separate WY.

BACK WAISTBAND:

With purl side facing rehang lower edge of back on 126 (134) [148] ndls. decr. evenly across. RC 0. T 5. Col. 1. St. St. Knit to R 34. Pick up sts. from first row to form hem. Knit 1 row at T 10 and BOLT.

FRONT: Make 1, Reverse 1.

With WY CO 85 (90) [100] sts. After several rows end with 1 row Ravel Cord to the right. RC 0. T 5.1. With Col. 1 in 'A' Feeder and Col. 2 in 'B' Feeder knit in fairisle while incr. on right side every 10 Rs. 1 St. 4x. At R 140 (146) [152] shape armhole. On right side BO 8 (9) [10] sts. then decr. EOR 1 St. 14x. At R 206 (216) [226] shape neckline. On left side BO 9 sts. then BO EOR



8 Sts. 1x, and decr. EOR 1 St. 11x. At R 236 (246) [256] shape shoulder same as back. At R 246 (256) [266] remove sts. on WY.

FRONT WAISTBAND:

Make 1, Reverse 1. With purl side facing rehang lower edge of front on 72 (76) [86] ndls. decr. evenly across. RC 0. T 5. Col. 1. St. St. Start miter band shaping on left side. Incr. EOR 1 St. 8x. At R 17 start miter decr. on left side EOR 1 St. 8x. At R 34 pick up sts. from first row to form hem. Knit 1 row at T 10 and BOLT.

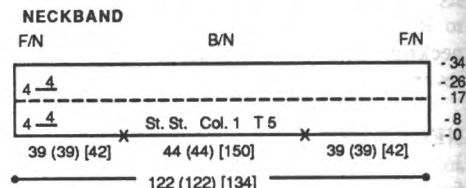
FRONT BAND:

Make 1 with buttonholes, 1 without.

With purl side facing rehang right front on 124 (134) [144] ndls. beginning at mitered corner and matching lower band. RC 0. T 5. Col. 1. St. St. Start miter band shaping. Incr. EOR 1 St. 8x. Make buttonholes at Rs. 8 and 26 over 4 sts. with WY following chart. At R 17 start miter decr. EOR 1 St. 8x. At R 34 pick up sts. from first row to form hem. Knit 1 row at T 10 and BOLT.

NECKBAND:

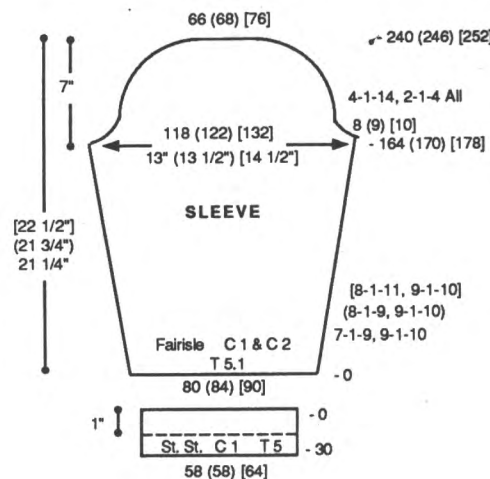
Join shoulder seams. With purl side facing rehang front/back/front neckline on 122 (122) [134] ndls. following chart. RC 0. T 5.



Col. 1. St. St. Knit to R 34 making a buttonhole on the left side at Rs. 8 and 26 over 4 sts. with WY following chart. Pick up sts. from first row to form hem. Knit 1 R at T 10 and BOLT.

SLEEVE:

Make 2 the same. With WY CO 80 (84) [90] sts. After several rows, end with 1 row Ravel Cord to the right. RC 0. T 5.1. With Col. 1 in 'A' Feeder and Col. 2 in 'B' Feeder knit in fairisle while incr. on each side every 7 Rs. 1 St. 9x and every 9 Rs. 1 St. 10x (every 8 Rs. 1 St. 9x and every 9 Rs. 1 St. 10x) [every 8 Rs. 1 St. 11x and every 9 Rs. 1 St. 10x]. At R 164 (170) [178] shape sleeve cap. On each side BO 8 (9) [10] sts. then BO every 4 Rs. 1 St. 14x and EOR 1 St. 4x. At R 240 (246) [252] BO remaining sts.



SLEEVE BAND:

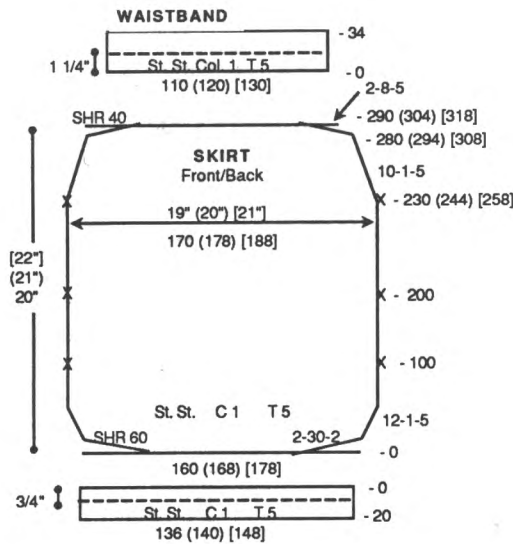
With purl side facing rehang lower edge of sleeve on 58 (58) [64] ndls. RC 0. T 5. Col. 1. St. St. Knit to R 30. Pick up sts. from first row to form hem. Knit 1 R at T 10 and BOLT.

SKIRT FRONT/BACK:

Make 2 the same. With WY CO 160 (168) [178] sts. After several rows, end with 1 row Ravel Cord to the right. RC 0. T 5. Col. 1. On each side SHR EOR 30 Sts. 2 x. Knit in St. St. incr. on each side every 12 Rs. 1 St. 5x. At R 100 and R 200 place a YM on each side for aid in seaming. At R 230 (244) [258] place a YM on each side and begin shaping. On each side decr. every 10 Rs. 1 St. 5x. At R 280 (294) [308] SHR on each side EOR 8 Sts. 5x. At R 290 (304) [318] remove sts. on WY.

SKIRT HEM:

With purl side facing rehang lower edge of skirt on 136 (140) [148] ndls. RC 0. T 5. Col. 1.



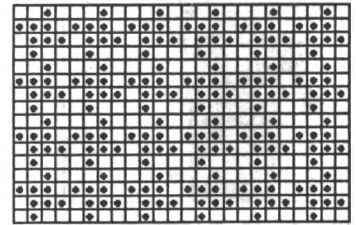
St. St. Knit to R 20. Pick up sts. from first row to form hem. Knit 1 R at T 10 and BOLT.

WAISTBAND:

With purl side facing rehang upper edge of skirt on 110 (120) [130] ndls. decr. evenly across.

RC 0. T 5. Col. 1. Knit in St. St. to R 34. Pick up sts. from first row to form doubled band. Knit 1 row at T 10 and BOLT.

**#127 Fairisle
24 Sts. x 16 Rows**



KK Mag Disk: Track 5; Pat. 901

FINISHING:

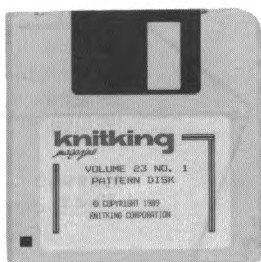
Close all remaining seams. Finish buttonholes by whip stitching around open sts. Remove WY from buttonholes.

Patterns, Patterns Everywhere!

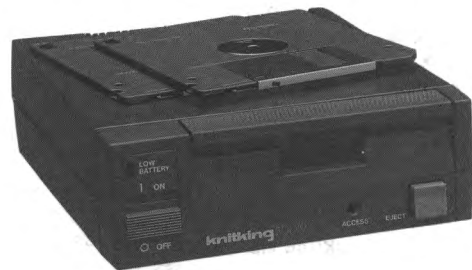
FDD 19

PATTERN DISKS for COMPUKNIT/BULKY, COMP. III, IV or the new COMP. V (see back cover)

FLOPPY DISK DRIVE for COMP/BULKY, COMP/ST, COMPUKNIT III, IV or the newest, COMPUKNIT V



For Use With:



A Pre-Programmed Floppy Disk with all of the Pattern Stitches (except Intarsia) for the garments in this issue. Just insert the Disk into your Floppy Disk Drive, enter the Pattern Stitch of your choice and... Away You Go!!!

The Floppy Disk Drive makes pattern work unbelievably easy. There are many programmed disks available from a variety of designers. In fact, as the ad to the left explains, several of the unique creations found on the pages of this magazine are available on disk.

Also available for back issues starting with 22 #1

Invest in a Floppy Disk Drive today... and start your own Design Collection tomorrow! — **ONLY \$369.95**

The price is **ONLY \$9.95** plus \$.75 for shipping.



WOMENS FAUX JUMPER DRESS

YARN: Venetia

SIZES:

6/8 (10/12) [14/16]

AMOUNT:

Col. 1: Black - 1 cone
(ave. 1- 1/2 lbs.)

Col. 2: Black Tweed - 1/2 lb.

KIT PRICE: \$58.00

TENSION:

St. St.: T 5.1

FNR: T 2/2 I

Circular: 1/1 I

GAUGE:

St. St. 9 Sts., 12.46 Rs. = 1"

FNR: 7.43 Sts., 13 Rs. = 1"

Make on any Standard Machine with Ribber.

BACK:

With WY CO 160 (170) [188] sts. After several rows, end with 1 row Ravel Cord to the right. RC 0. T 5. St. St. Col. 1. Shape lower edge by SHR shaping on each side EOR 30 Sts. 2x. Then incr. on each side every 20 Rs. 1 St. 5x. At R 318 [(330)] shape armhole. On each side BO 18 (20) [24] sts., then decr. every row 1 St. 10x, EOR 1 St. 10x and every 3 Rs. 1 St. 8x. At R 486 [(506)] remove shoulder and neckline sts. on separate WY. With purl side facing, rehang lower edge of back on 134 (140) [168] ndls. decr. evenly across. RC 0. T 5. St. St. Col. 1. Knit to R 24. Pick up sts. from first row to form doubled hem. Knit 1 row at T 10 and BOLT.

FRONT:

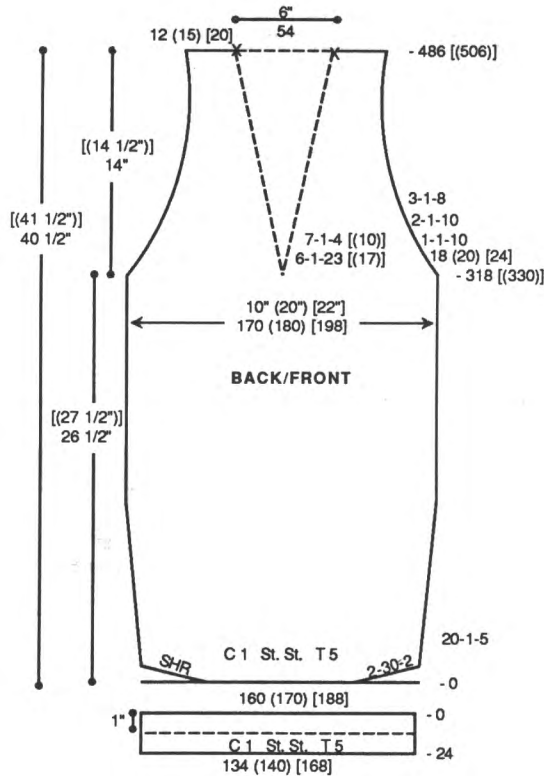
Knit front same as back to R 318 [(330)]. Shape armhole. *On right side BO 18 (20) [24] sts., then decr. every row 1 St. 10x, EOR 1 St. 10x and every 3 Rs. 1 St. 8x. AT THE SAME TIME shape neckline. Place all sts. to the left of -0- in HP. *On

neckline edge decr. every 6 Rs. 1 St. 23 [(17)] x and every 7 Rs. 1 St. 4 [(10)] x. At R 486 [(506)] remove shoulder sts. on WY. Reset RC to R 318 [(330)] and shape left side from *, reversing shapings. With purl side facing, rehang lower edge of front on 134 (140) [168] ndls. decr. evenly across. RC 0. T 5. St. St. Col. 1. Knit to R 24. Pick up sts. from first row to form doubled hem. Knit 1 row at T 10 and BOLT.

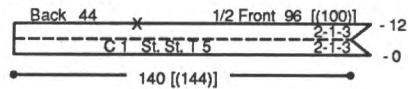
NECKBAND: Make in two pieces. Close one shoulder first.

Back & 1/2 Front:

With Col. 1 CO 140 [(144)] sts. RC 0. T 5. St. St. On right side decr. EOR 1 St. 3x and then incr. EOR 1 St. 3x. At R 12 rehang back neck opening and half of front neck on these ndls. following chart. Knit 1 row manually at loose tension and BOLT.

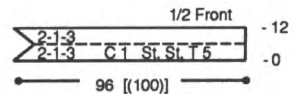


NECKBAND



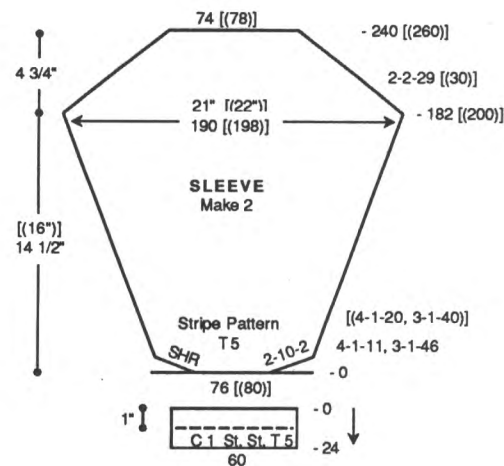
1/2 Front:

Knit same as Back & 1/2 Front except CO 96 [(100)] sts. and shape on the left side.



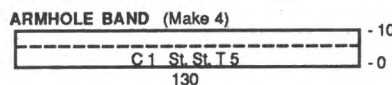
SLEEVE: Make 2.

With WY CO 76 [(80)] sts. After several rows, end with 1 row Ravel Cord to the right. RC 0. T 5. St. St. Stripe Pattern. Shape lower edge by SHR shaping on



ARMHOLE BAND: Make 4.

With purl side facing, rehang half of armhole edge on 130 ndls. RC 0. T 5. St. St. Col. 1. Knit to R 10. Pick up sts. from first row to form doubled hem. Knit 1 row at T 10 and BOLT.



STRIPE PATTERN

Sleeve Size 6/8

# Rs	Col
Repeat	
20	2
20	1

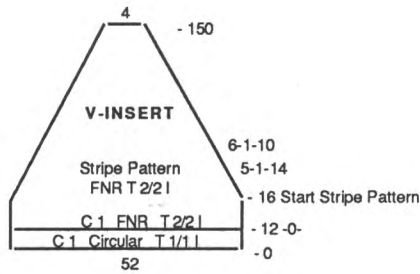
STRIPE PATTERN

V-Insert

Sleeve Size 10 to 16

# Rs	Col
Repeat	
20	1
20	2

each side EOR 10 Sts. 2x. Then incr. on each side every 4 Rs. 1 St. 11x and every 3 Rs. 1 St. 46x [(every 4 Rs. 1 St. 20x and every 3 Rs. 1 St. 40x)]. At R 182 (200) shape sleeve cap. On each side decr. EOR 2 Sts. 29 [(30)] x. At R 240 [(260)] knit 1 row at T 10 and BOLT.



V-INSERT:

With Col. 1 CO 52 sts. for FNR. After selvedge, T 1/1 I. Knit 12 Rs. in circular knitting. RC 0.

FNR. T 2/2 I. Knit to R 16. Knit in stripe pattern following chart while decr. on each side every 5 Rs. 1 St. 14x and every 6 Rs. 1 St. 10x. At R 150 transfer RB sts. to MB. Knit 1 row at T 10 and BOLT.

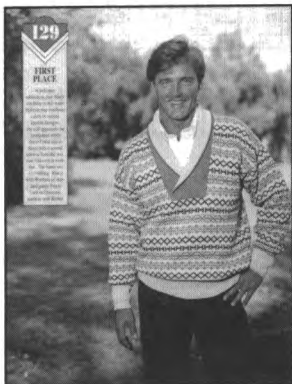
FINISHING:

Close all remaining seams. Beginning at the base of the V, with Col. 2 stripe showing, whip stitch V-Insert in place on front neckline.

SLEEVE CUFF:

With purl side facing, rehang lower edge of sleeve on 60 ndls. decr. evenly across. Col. 1. RC 0. T 5. St. St. Knit to R 24. Pick up sts. from first row to form doubled band. Knit 1 row at T 10 and BOLT.

129



MENS MULTI-COLOR FAIRISLE with SHAWL COLLAR

YARN: Woolana (2 strands each color throughout)

SIZES: Small (Medium) [Large]

AMOUNT: Same all sizes
Col. 1: Silver Grey - 1 lb.
Col. 2: Dark Grey - 7 oz.
Col. 3: Navy - 5 oz.
Col. 4: Cardinal - 5 oz.
Col. 5: Denim - 4 oz.

KIT PRICE: \$69.50

TENSION:

Fairisle: T 10
Rib: T 1/1 I

GAUGE:

Fairisle: 7.73 Sts., 9.41 Rs. = 1"

Make on Standard 24-Stitch Punch Card or Standard Electronic Machine with Ribber.

BACK:

With Col. 1 CO 178 (186) [194] sts. for K1/P1 Rib. After selvedge RC 0. T 1/1 I. Knit to R 56. Transfer RB sts. to MB. Reset RC to 0. T 10. Knit in fairisle following color chart. At R 112 (116) [128] mark each side with

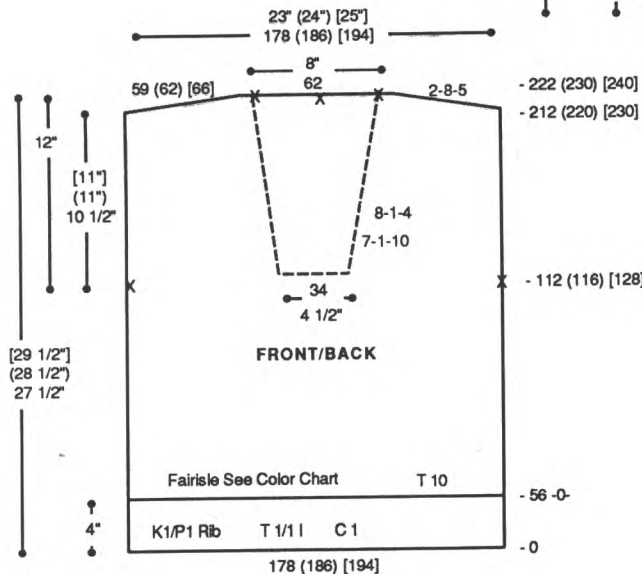
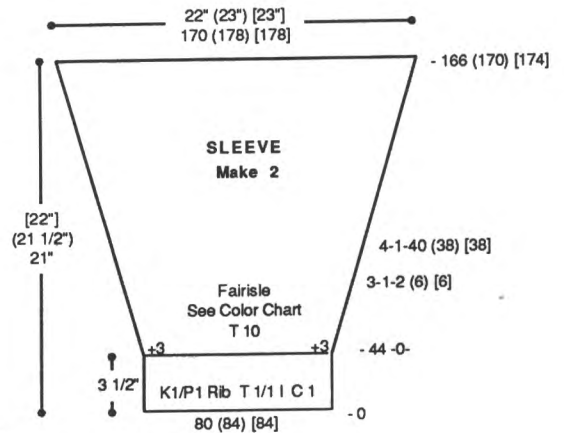
YM for armhole. At R 212 (220) [230] SHR shoulders EOR 8 Sts. 5x. At R 222 (230) [240] mark center 62 sts. with YM for neckline. Mark center of neckline for Collar. Knit 1 row manually at a loose tension and BOLT.

FRONT:

Knit Front same as Back to R 112 (116) [128]. Mark each side with YM for armhole and shape neckline. Note pattern row. BO center 34 sts. Place all sts. to the left in HP. *On neckline edge decr. every 7 Rs. 1 St. 10x and every 8 Rs. 1 St. 4x. At R 212 (220) [230] SHR shoulder EOR 8 St.s. 5x. At R 222 (230) [240] knit 1 row manually at a loose tension and BOLT. Reset RC to 112 (116) [128]. Reset pattern to correct row. Shape left side from *, reversing shapings. Knit 1 row manually at a loose tension over neckline sts. and BOLT.

SLEEVE: Make 2.

With Col. 1 CO 80 (84) [84] sts. for K1/P1 Rib. After selvedge RC 0. T 1/1 I. Knit to R 44. Transfer RB sts. to MB. Reset RC to 0. T 10. Incr. 3 sts. on each side. Knit in fairisle following color chart while incr. on each side every 3 Rs. 1 St. 2 (6) [6]x and every 4 Rs. 1 St. 40 (38) [38]x. At R 166 (170) [174] knit 1 row manually at a loose tension and BOLT.



COLLAR: Make 1, Reverse 1. With Col. 1 'e' wrap CO 124 [(126)] sts. RC 0. T 8. St. St. Starting 24 [(26)] sts. from the left SHR shape on the right side EOR 20 Sts. 5x. At R 75 change to Col. 2. Knit to R 140 and reverse SHR EOR 20 Sts. 5x. At R 150 rehang first row, knit 1 row manually at a loose tension and BOLT.

(continued next page)

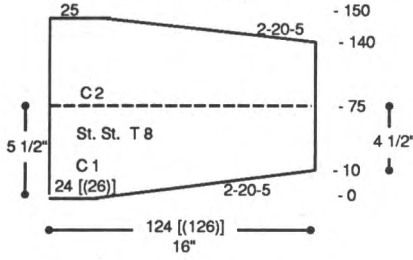
(continued from previous page)

COLOR CHART

# Rs	Main Color	Contrast Color
2R	↑	
12R		C 5
2R		
10R		C 4
2R		
6R		C 3
2R		
10R	C 1	C 2

COLLAR

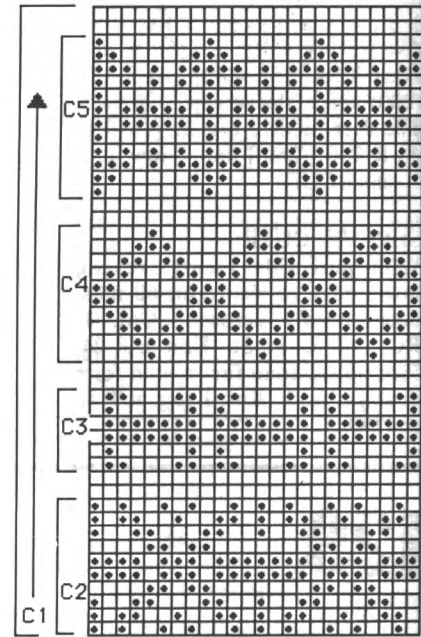
(Make 1, Reverse 1)



FINISHING:

Close all seams. Join center seam of collar (Col. 1 is inside, Col. 2 is outside). With knit side facing rehang garment. With Col. 1 side of collar facing, rehang collar to neckline. Knit 1 row manually at loose tension and BOLT. Overlap lower edge of collar and sew in place.

#129 Fairisle Pattern
24 Sts. x 46 Rows



M/C C/C KK Mag Disk:
Track 4; Pattern 901

130



BULKY FAIRISLE JACKET

YARN: Caprinae, Acrylite,
Pebble and Pearlyte

SIZES:
6/8 (10/12)

AMOUNT:

- Col. 1: Acrylite - Vanilla
6 oz. (6 oz.)
- Col. 2: Pearlyte - Silver
1 lb. (1 cone) all sizes
- Col. 3: Caprinae - Silver
1 lb. (1 lb.)
- Col. 4: Grey/Ecru Pebble
1 lb. (1 1/2) lbs.

KIT PRICE:

\$90.00 (\$105.00)

TENSION:

Fairisle: T 10
St. St.: T 2

GAUGE:

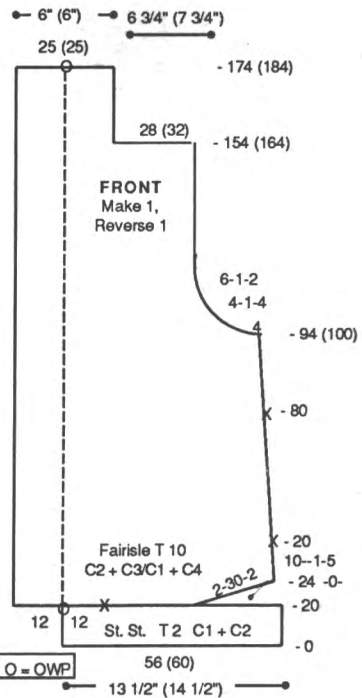
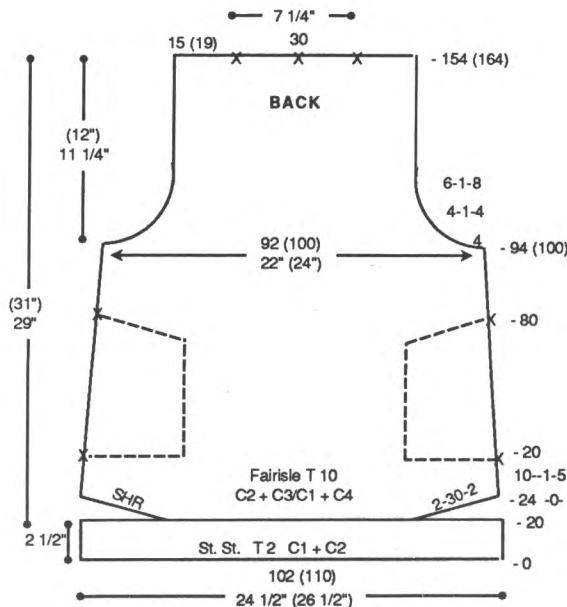
Fairisle: 4.16 Sts., 5.3 Rs. = 1"

Make on Compuknit/Bulky or
Punch Card Bulky Knitter.

BACK:

With WY CO 102 (110) sts. After several rows end with 1 row Ravel Cord to the right. RC 0. T 2. Col. 1 and Col. 2. St. St. Knit to R 20. Change to T 10. Col. 2 and Col. 3 in "A" Feeder, Col. 1 and Col. 4 in "B" Feeder. Knit in fairisle while SHR shaping on each side EOR 30 Sts. 2x. RC 0. Knit in fairisle while decr. on each side every 10 Rs. 1 St. 5x. AT THE SAME TIME at Rs. 20 and 80 place a YM on each side for pocket lining. At R 94 (100) shape armhole. On each side BO 4 Sts., then decr. every 4 Rs. 1 St. 4x and every 6 Rs. 1 St. 8x. At

R 154 (164) mark center 30 sts. for neckline and center of neckline and BO.



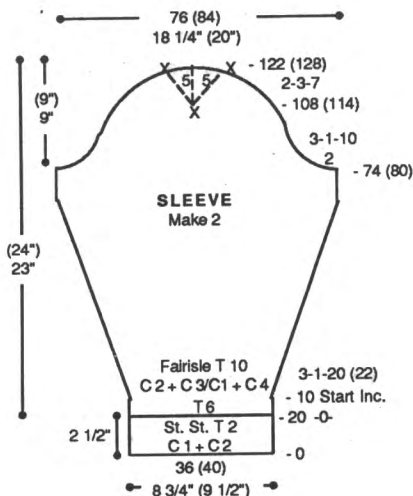
FRONT: Make 1, Reverse 1.

With WY CO 56 (60) sts. After several rows end with 1 row Ravel Cord to the right. RC 0. T 2. Col. 1 and Col. 2. St. St. Knit to R 20. Mark left 13th st. with a YM and CO 12 sts. to the left. Place 13th stitch in OWP. Change to T 10. Col. 2 and Col. 3 in "A" Feeder, Col. 1 and

Col. 4 in "B" Feeder. Knit in fairisle while SHR shaping right side EOR 30 Sts. 2x. RC 0. Knit in fairisle while decr. on right side every 10 Rs. 1 St. 5x. AT THE SAME TIME at Rs. 20 and 80 place a YM on right side for pocket lining. At R 94 (100) shape armhole. On right side BO 4 Sts., then decr. every 4 Rs. 1 St. 4x and every 6 Rs. 1 St. 2x. At R 154 (164) BO 28 (32) sts. at the right for shoulder. Knit to R 174 (184) and BO.

SLEEVE: Make 2.

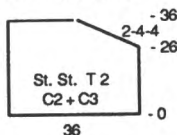
With WY CO 36 (40) sts. After several rows end with 1 row Ravel Cord to the right. RC 0. T 2. Col. 1 and Col. 2. St. St. Knit to R 20. Change to T 6. Col. 2 and Col. 3 in "A" Feeder, Col. 1 and Col. 4 in "B" Feeder. Knit in fairisle to R 10. Change to T 10. Shape sleeve by incr. on each side every 3 Rs. 1 St. 20 (22) x. At R 74 (80) shape sleeve cap. On each side BO 2 sts., then decr. every 3 Rs. 1 St. 10x. At R 108 (114) mark center st. with a YM and SHR EOR 3 Sts. 7x. At R 122 (128) mark 5 sts. on each side of center and BO.



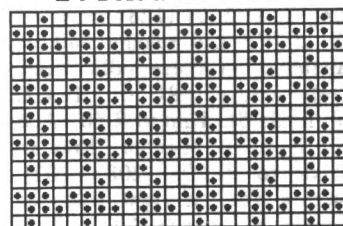
POCKET LINING: Make 1, Reverse 1.

With purl side facing, rehang back between pocket markers on 36 ndls. T 10. With Col. 2 and Col. 3 knit to R 26. On right side SHR EOR 4 Sts. 4x. Knit to R 36 and BO.

POCKET LINING Make 1, Reverse 1



#130 Fairisle Pattern 24 Sts. x 16 Rows



KK Mag Disk: Track 5; Pat. 901

FINISHING:

Make 2 pleats on front shoulder. Join front and back shoulder seams. Join top of fronts together and stitch to neckline to form facing. With knit side facing, pick up st. that is in NWP and latch tool 1 st. EOR around front/back/front neckline edge. Fold facing along fronts and neckline to inside and whip stitch in place. Fold bottom hems to inside and whip stitch in place. Manually make a dart at the top of sleeve following markers. Sew sleeves in place. Close all remaining seams.

131



TWO-PIECE DRESS

YARN: Venetia

SIZES:

14/16 (18/20) [22]

AMOUNT: Same All Sizes

Col. 1: Chocolate Brown
12 oz.

Col. 2: Emerald - 12 oz.

Col. 3: Sand Frost - 1 lb.

KIT PRICE: \$70.00

TENSION:

Body: T 4.2

Rib: T 2/2 I

GAUGE:

Body: 8.5 Sts., 13 Rs. = 1"

Rib: 14 Rs. = 1"

NOTIONS:

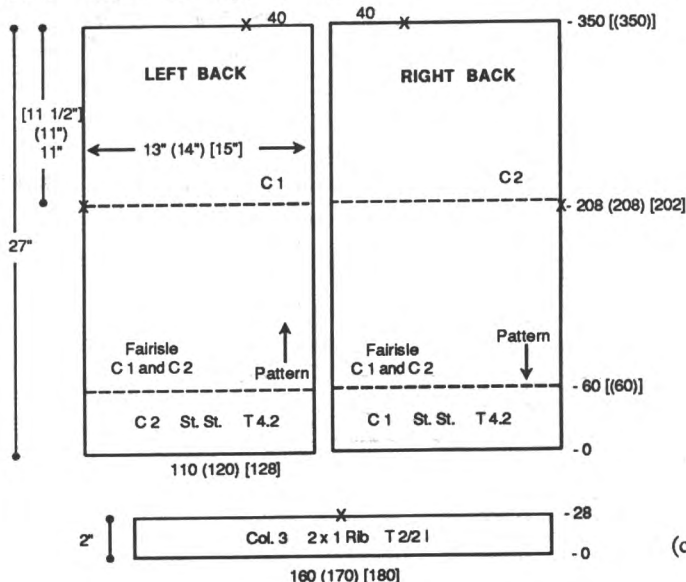
Elastic for skirt waistband.

Make on Standard 24-Stitch Punch Card or Standard Electronic Machine with Ribber.

Pattern Note: Pattern is knit upside down on right back and front.

LEFT BACK:

With Col. 3 CO 160 (170) [180] sts. for 2x1 Rib as shown on ndl. chart. After selvedge RC 0.



T 2/2 I. Knit to R 28 and mark center with YM. Remove sts. on WY. Bring 110 (120) [128] ndls. on MB to WP and rehang half of waistband on these ndls. decr. evenly across. RC 0. T 4.2. Col. 2. St. St. Knit to R 60. Change to Col. 1 in "A" Feeder and Col. 2 in "B" Feeder. Knit in fairisle to R 208 (208) [202]. Place a YM on left side for armhole. Change to Col. 1. Knit in to R 350 [(350)] and mark 40 sts. at the right for neckline. Remove sts. on WY.

(continued next page)

(continued from previous page)

RIGHT BACK:

Bring 110 (120) [128] ndls. on MB to WP and rehang half of waistband on these ndls. decr. evenly across. RC 0. T 4.2. Col. 1. St. St. Knit to R 60. Add Col. 2 in "B" Feeder. Knit in fairisle to R 208 (208) [202]. Place a YM on right side for armhole. Change to Col. 2. Knit in to R 350 [(350)] and mark 40 sts. at the left for neckline. Remove sts. on WY.

RIGHT FRONT:

With Col. 3 CO 160 (170) [180] sts. for 2x1 Rib as shown on ndl. chart. After selvedge RC 0. T 2/2 I. Knit to R 28 and mark center with YM. Remove sts. on WY. Bring 110 (120) [128] ndls. on MB to WP and rehang half of waistband on these ndls. decr. evenly across. RC 0. T 4.2. Col. 1. St. St. Knit to R 60. Add Col. 2 in "B" Feeder. Knit in fairisle to R 208 (208) [202]. Place a YM on left side for armhole. Change to Col. 2. Knit in to R 318 [(318)] and shape neckline. On right side BO 20 sts., then decr. every R 1 St. 8x and EOR 1 St. 12x. At R 350 [(350)] remove sts. on WY.

LEFT FRONT:

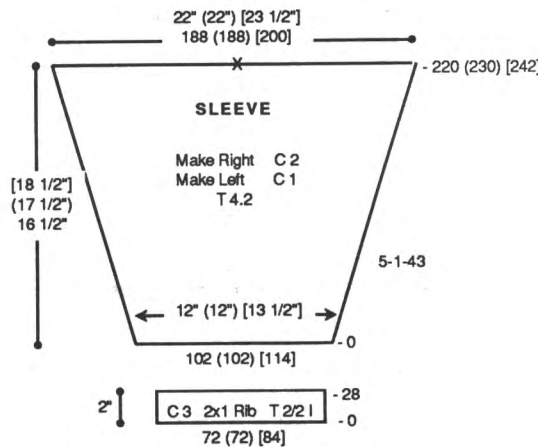
Bring 110 (120) [128] ndls. on MB to WP and rehang half of waistband on these ndls. decr. evenly across. RC 0. T 4.2. Col. 2. St. St. Knit to R 60. Change to Col. 1 in "A" Feeder and Col. 2 in "B" Feeder. Knit in fairisle to R 208 (208) [202]. Place a YM on right side for armhole. Change to Col. 1. Knit to R 318 [(318)] and shape neckline. On left side BO 20 sts., then decr. every R 1 St. 8x and EOR 1 St. 12x. At R 350 [(350)] remove sts. on WY.

RIGHT SLEEVE:

With Col. 3 CO 72 (72) [84] sts. for 2x1 Rib as shown on ndl. chart. After selvedge RC 0. T 2/2 I. Knit to R 28 and remove sts. on WY. Bring 102 (102) [114] ndls. on MB to WP and rehang ribbing decr. evenly across. RC 0. T 4.2. Col. 2. Knit in St. St. while incr. on each side every 5 Rs. 1 St. 43x. At R 220 (230) [242] mark center and remove sts. on WY.

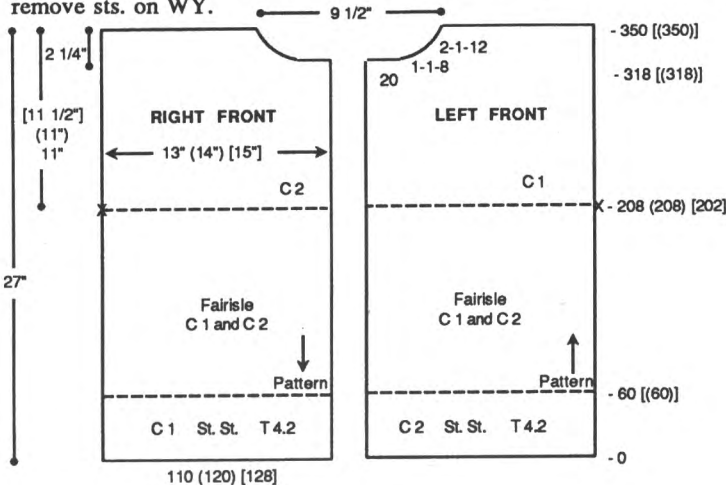
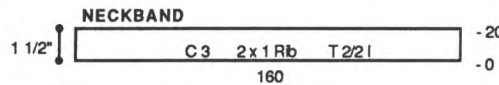
LEFT SLEEVE:

With Col. 3 CO 72 (72) [84] sts. for 2x1 Rib as shown on ndl. chart. After selvedge RC 0. T 2/2 I. Knit to R 28 and remove sts. on WY. Bring 102 (102) [114] ndls. on MB to WP and rehang ribbing decr. evenly across. RC 0. T 4.2. Col. 1. Knit same as right sleeve.



NECKBAND:

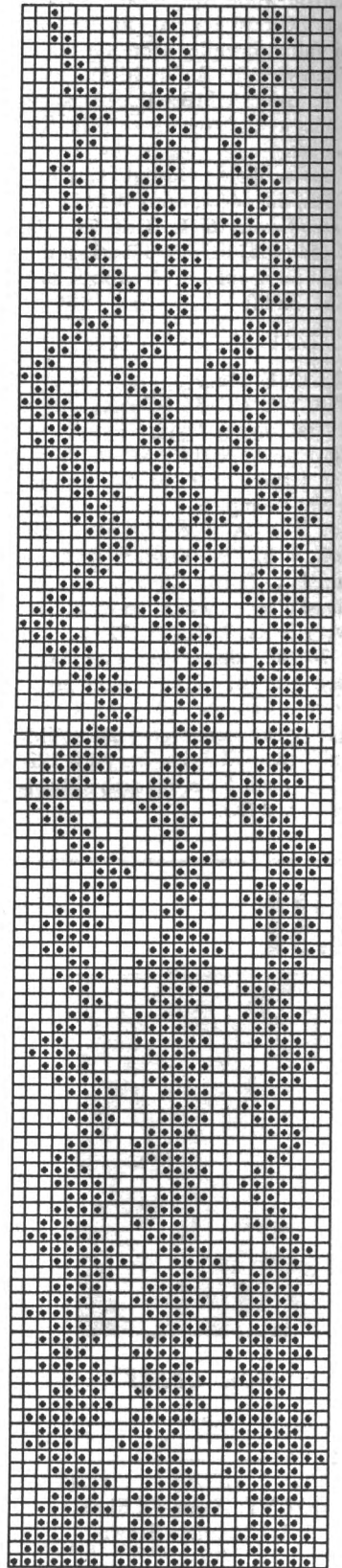
With Col. 3 CO 160 sts. for 2x1 Rib as shown on ndl. chart. After selvedge RC 0. T 2/2 I. Knit to R 20 and remove sts. on WY.



FRONT PLACKET (Not to Scale)



***131 Fairisle Pattern 24 Sts. x 120 Rows**



KK Mag Disk: Track 6; Pat. 901

FRONT PLACKET:

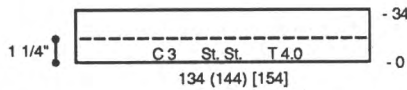
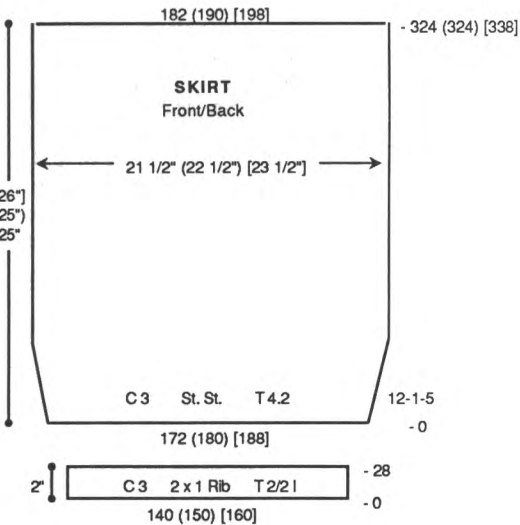
With Col. 3 CO 18 sts. for 2x1 Rib as shown on ndl. chart. After selvedge RC 0. T 2/2 I. Knit to R 270 and remove sts. on WY.

SKIRT FRONT/BACK:

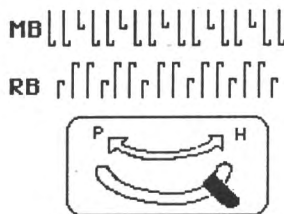
With Col. 3 CO 140 (150) [160] sts. for 2x1 Rib as shown on ndl. chart. After selvedge RC 0. T 2/2 I. Knit to R 28 and remove sts. on WY. Bring 172 (180) [188] ndls. on MB to WP and rehang ribbing decr. evenly across. RC 0. T 4.2. Col. 3. Knit in St. St. while incr. on each side every 12 Rs. 1 St. 5x. At R 324 (324) [338] remove sts. on WY.

WAISTBAND:

With purl side facing rehang upper edge of skirt front/back on 134 (144) [154] ndls. decr. evenly across. RC 0. T 4.0. St. St. Knit to R 34. Pick up sts. from first row to form doubled band. Knit 1 row at T 10 and BOLT.

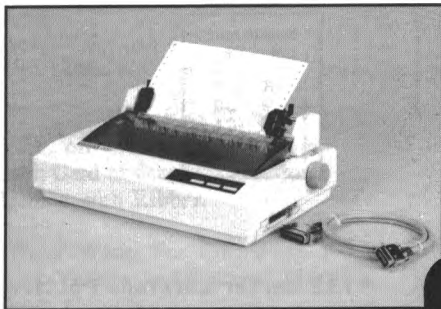


*** 131 Rib Needle Arrangement**



FINISHING:

Join center front and back seams. Close all remaining seams. Attach neckband with a crochet hook. Attach front placket with sewing needle on the top of the front center seam.



ONE PICTURE IS WORTH A 1000 WORDS!!

With the KNITKING-compatible dot-matrix printer, you can quickly print out a hard copy of the original patterns you have created using the Pattern Design Computer for your Compuknit III, IV or V, Compuknit/Bulky, or Compuknit/ST. You can even use it with the DESIGNAKNIT program for a variety of print-outs!

- FEATURES INCLUDE:
- Yarn color change indicator
 - Form Feed feature
 - Extra large pattern print-out accommodation
 - Includes our "Kwik-Konnect" interface cable
 - Uses plain paper or tractor-fed paper

Buy It For As Little As \$15/Mo.



Order one today from your local KNITKING dealer or, if there is no dealer in your area, from:

1128 Crenshaw Blvd., Los Angeles, CA 90019 • Phone: 213-938-2077

Use your Knitking Credit Card to buy any of the products advertised in these pages for the approximate monthly payments shown (on approved credit). The Annual Percentage Rate ("A.P.R.") on Knitking credit card purchases is 18.9%.

Please note, however, that actual monthly payments may vary based on current balance with Knitking Credit.





MENS GARTER CARRIAGE PULLOVER

YARN: Alpine and Woolana

SIZES:

Sm. (Med.) [Lge.] [X-Lge.]

AMOUNT:

Col. 1: Alpine-Beige (1 Strand)

2 lb. All Sizes

Col. 2: Woolana-Cardinal

(2 Strands) — 1 oz. All Sizes

KIT PRICE: \$56.00

TENSION:

Body: T 10

Rib: T 6

GAUGE:

Body: 6.39 Sts., 8.32 Rs. = 1"

Make on Standard Electronic Machine with Garter Carriage.

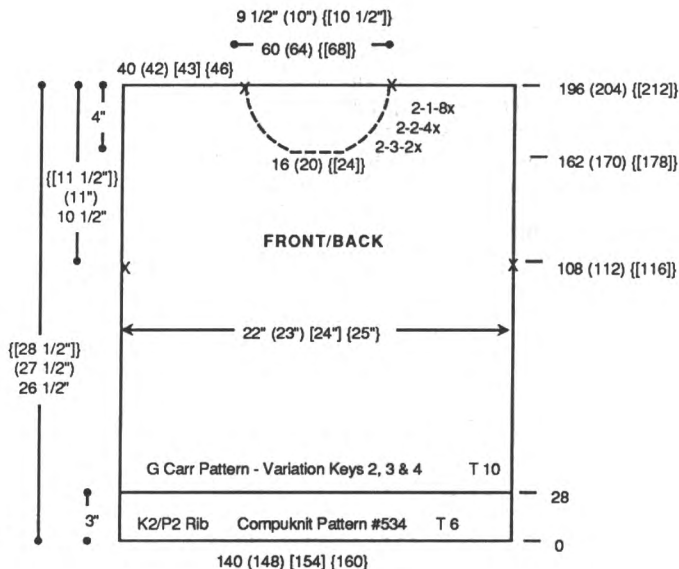
Note: Pattern for ribbing is #534 in the Compuknit III/IV Pattern Book. Pattern for body and sleeves is #33, page 16, Punch Card Pattern Book Vol. 5. Use variation keys #2 (mirror image), #3 (double width) and #4 (double length).

BACK:

With Col. 1 CO 140 (148) [154] [160] sts. at T 8. RC 0. T 6. Set Garter Carriage for rib pattern and knit to R 28 following color chart. RC 0. T 10. Col. 1. Set Garter Carriage for body pattern (mirror image, double width, double length). Knit to R 108 (112) [[116]] and mark each side with YM for armhole. Continue in pattern to R 196 (204) [[212]]. Mark center 60 (64) [[68]] sts. for neckline with YM and remove neckline and shoulder sts. on separate WY.

FRONT:

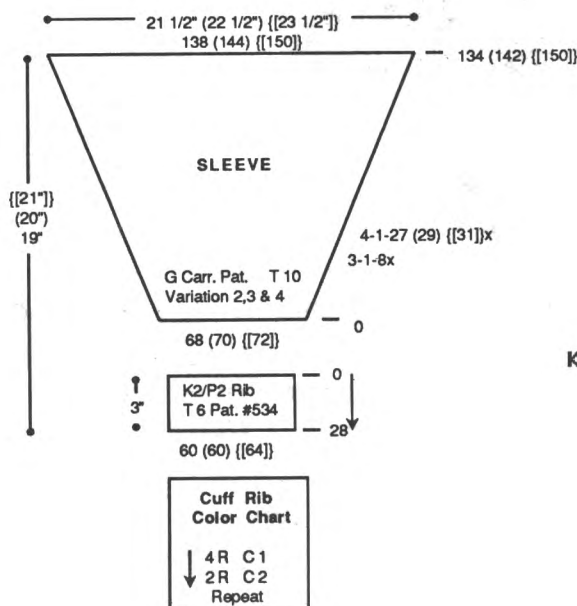
Knit same as back to R 162 (170) [[178]]. Shape neckline. Knit center 16 (20) [[24]] sts. and all sts. to the left manually to "A" (out of work) position on Ravel Cord. Note pattern row. *On



neckline edge decr. EOR 3 Sts. 2x, 2 Sts. 4x and 1 St. 8x. At R 196 (204) [[212]] remove shoulder sts. on WY. Reset RC to R 162 (170) [[178]]. Return sts. to the left of center neckline sts. to WP. Reset pattern to correct row. Shape left neckline same as right from *. Remove shoulder and neckline sts. on separate WY.

SLEEVE:

Make 2 the same. With WY CO 68 (70) [[72]] sts. After several rows, end with 1 row Ravel Cord to the right. RC 0. T 10. Col. 1. Set Garter Carriage for body pattern (mirror image, double width, double length).



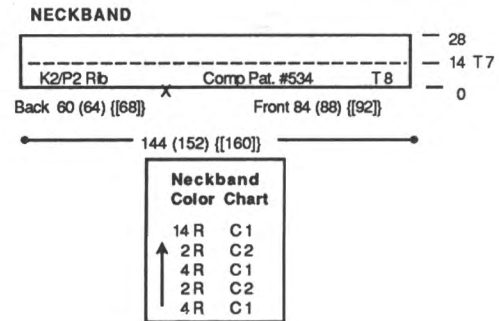
Shape sleeve by incr. on each side every 3 Rs. 1 St. 8x and every 4 Rs. 1 St. 27 (29) [[31]] x. At R 134 (142) [[150]] BO around gate pegs.

SLEEVE CUFF:

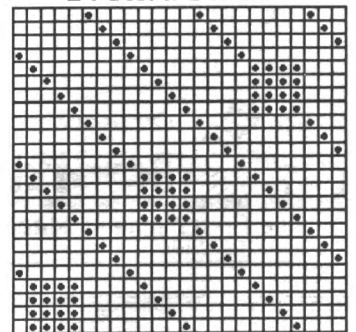
With purl side facing rehang lower edge of sleeve on 60 (60) [[64]] ndls. decr. evenly across. RC 0. T 6. Set Garter Carriage for rib pattern. Following color chart knit to R 28 and BO around gate pegs.

NECKBAND:

Close one shoulder first. With purl side facing rehang back/front neckline on 144 (152) [[160]] ndls. following chart. RC 0. T 8. Set Garter Carriage for rib pattern. Following color chart knit to R 14, change to T 7 and knit to R 28 and BO around gate pegs.



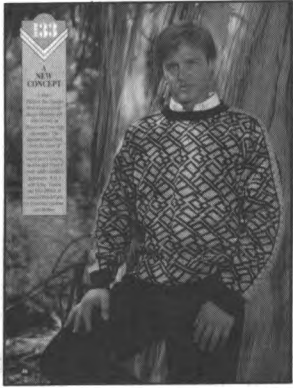
#132 Garter Carriage Pattern 24 Sts. x 24 Rows



KK Mag Disk: Track 7; Pattern 901

FINISHING:

Close all remaining seams. Fold neckband to inside and whip stitch in place.



MENS FAIRISLE PULLOVER

YARN: Silkie, Venetia, Softon and Mini-Pebble

SIZES: Small (Med.) [Lge.] [X-Lge.]

AMOUNT: Same All Sizes

Col. 1: Silkie - Black - 1 lb.

Col. 2: (1 strand each)

Venetia - Taupe Tweed - 12 oz.

MiniPebble - Black/White

1 cone (approx. 12 oz.)

Col. 3: Softon - Turquoise - 2 oz.

Col. 4: Softon - Goldenrod - 2 oz.

KIT PRICE: \$48.00

TENSION:

Body: T 7

Rib: T 2/2 II

GAUGE:

Body: 8 Sts., 11.4 Rs. = 1"

Rib: 12 Rs. = 1"

Make on Standard 24-Stitch Punch Card or Standard Electronic Machine with Ribber.

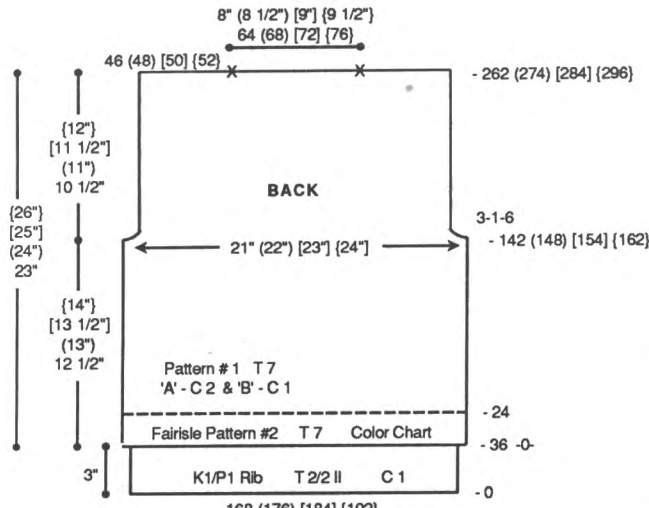
Pattern Note: For Col. 2 use 1 strand Venetia and 1 strand Mini Pebble together.

BACK:

With Col. 1 CO 168 (176) [184] [192] sts. for K1/P1 Rib. After selvedge T 2/2 II. RC 0. Knit to R 36. Transfer RB sts. to MB. RC 0. T 7. Pattern #2. Knit in fairisle following color chart to R 24. Change to Pattern #1. With Col. 2 in 'A' Feeder and Col. 1 in 'B' Feeder knit in fairisle. At R 142 (148) [154] [162] shape armhole. On each side decr. every 3 Rs. 1 St. 6x. At R 262 (274) [284] [296] mark center 64 (68) [72] [76] sts. for neckline. Knit 1 row at T 10 and BOLT.

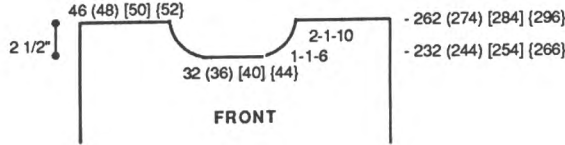
FRONT:

Knit front same as back to R 232 (244) [254] [266]. Begin neckline shaping. Place center



PATTERN #2 COLOR CHART

# Rows	MC	CC
6	2	4
6	2	3
6	2	4
6	2	3

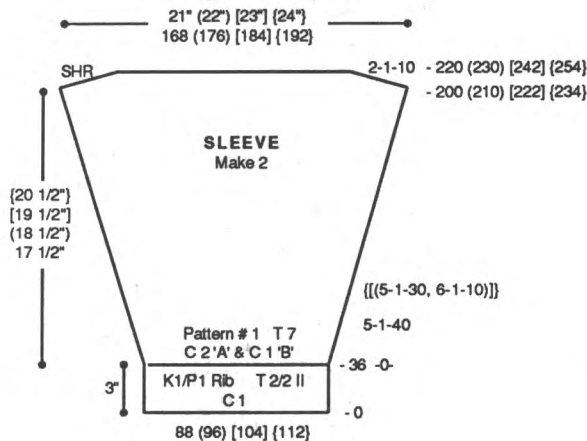


32 (36) [40] [44] sts. in HP and all sts. to the left. *Note pattern row.* *On neckline edge SHR every row 1 St. 6x and EOR 1 St. 10x. At R 262 (274) [284] [296] knit 1 row at T 10 and BOLT. Reset RC to R 232 (244) [254] [266]. Reset pattern to row noted above and shape left neckline from *, reversing shaping.

SLEEVE:

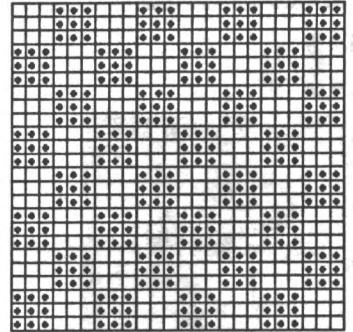
Make 2 the same.

With Col. 1 CO 88 (96) [104] [112] sts. for K1/P1 Rib. After selvedge T 2/2 II. RC 0. Knit to R 36. Transfer RB sts. to MB. RC 0. T 7. Pattern #1. Knit in fairisle while incr. on each side every 5 Rs. 1 St. 40x [(every 5 Rs. 1 St. 30x and every 6 Rs. 1 St. 10x)]. At R 200 (210) [222]



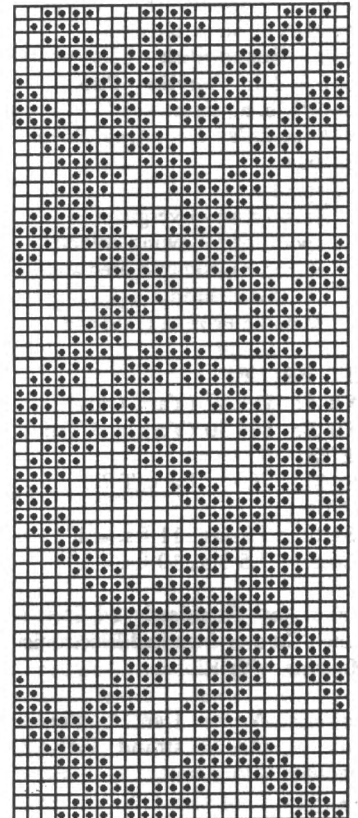
{234} SHR sleeve cap EOR 1 St. 10x. At R 220 (230) [242] [254] knit 1 row at T 10 and BOLT.

#133 Fairisle Pattern #2 24 Sts. x 24 Rows



KK Mag Disk: Track 8; Pat. 902

#133 Fairisle Pattern #1 24 St. x 60 Rows



KK Mag Disk: Track 8; Pat. 901

(continued next page)

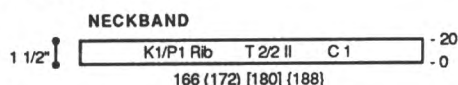
(continued from previous page)

SLEEVE TRIM (Make 2)			- 24
Fairisle Pattern #2	T 7	Color Chart	0
170 (180)	[190]	[200]	

following color chart to R 24. Change to Col. 1. Knit 1 R at T 10 and BOLT.

NECKBAND:

With Col. 1 CO 166 (172) [180] {188} sts. for K1/P1 Rib. After selvedge T 2/2 II. RC 0. Knit to R 20. Transfer RB sts. to MB and remove sts. on WY.



SLEEVE TRIM: Make 2.

With Col. 1 'e' wrap CO 170 (180) [190] {200} sts. Knit 1 R. Change to Col. 2. RC 0. T 7. Pattern #2. Knit in fairisle

FINISHING:

Close all seams. Attach collar to neckline with a crochet hook. Attach sleeve trim from neck to cuff with whip stitch.

134



LACE BORDERED SWEATER with HOLIDAY TRIM

YARN: Roma and Mini Acrylite
SIZES:

Small (Medium) [Large]
AMOUNT: Same all sizes
Col. 1: Roma - Pink - 1 lb.
Col. 2: Mini-Acrylite - Pink
1/2 lb. all sizes

Kit B includes DecoKing Rayon Knit trim:

- 2 spools: Rayon Knit - Evergreen
- 1 spool of following colors: Rayon Knit-Purple, Red and Goldenrod
- Metallic Frizette-Gold and Silver

KIT PRICE:

Kit A: \$31.50 (Yarn Only)
Kit B: \$66.50 (Yarn and Trim)

TENSION:

St. St.: T 7.0 Lace: T 7.0

GAUGE:

St. St. : 7.5 Sts., 11 Rs. = 1"
Lace: 7.5 Sts., 10 Rs. = 1"

Make on Standard 24-Stitch Punch Card or Standard Electronic Machine with Ribber.

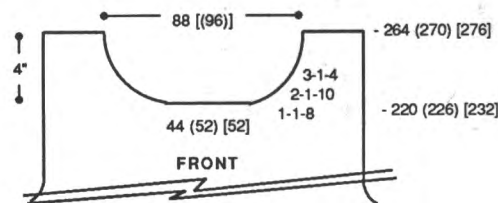
Pattern Note: Use 1 strand Col. 1 and 1 strand Col. 2 together throughout.

BACK:

With WY CO 142 (150) [156] sts. After several rows, end with 1 row Ravel Cord to the right. RC 0.

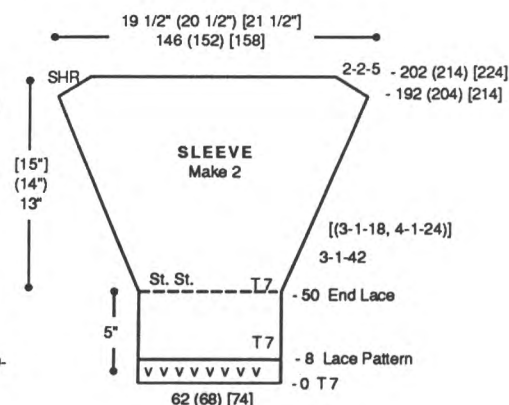
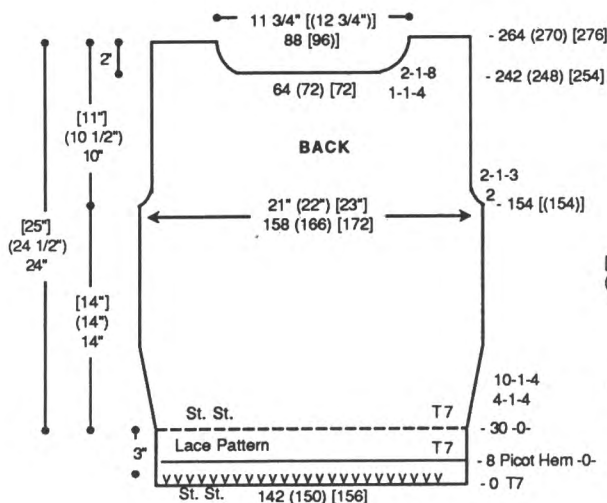
32

T 7. St. St. Knit to R 4. Transfer EOS to adjacent ndl. leaving empty ndls. in WP. Knit to R 8. Pick up sts. from first row to form picot hem. RC 0. T 7. Knit in lace pattern to R 30. RC 0. T 7. Knit in St. St. while incr. on each side every 4 Rs. 1 St. 4x and every 10 Rs. 1 St. 4x. At R 154 [(154)] shape armhole. On each side BO 2 sts., then decr. EOR 1 St. 3x. At R 242 (248) [254] shape neckline. Place center 64 (72) [72] sts. in HP and all sts. to the left. *On neckline edge SHR every R 1 St. 4x and EOR 1 St. 8x. At R 264 (270) [276] remove shoulder sts. on WY. Reset RC to 242 (248) [254] and shape left neckline from *, reversing shapings. Remove neckline sts. on WY.



SLEEVE:

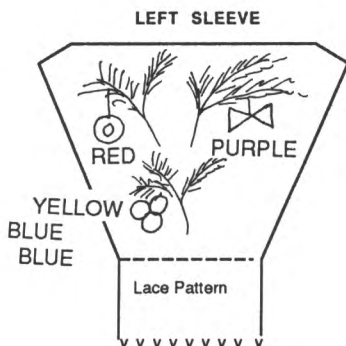
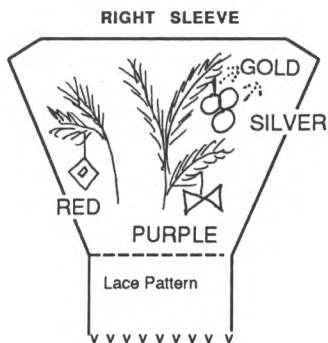
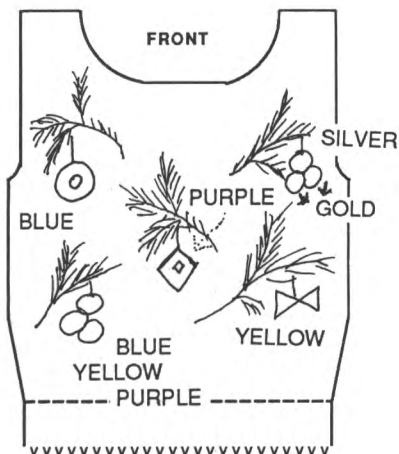
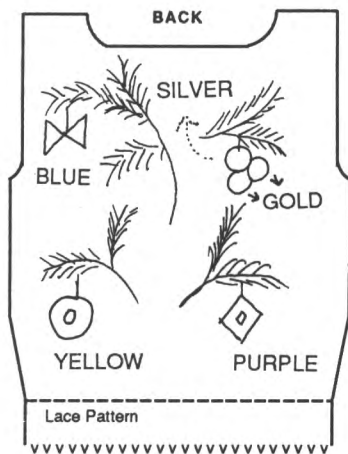
Make 2 the same. With WY CO 62 (68) [74] sts. After several rows, end with 1 row Ravel Cord to the right. RC 0. T 7. St. St. Knit to R 4. Transfer EOS to adjacent ndl., leaving empty ndls. in WP. Knit to R 8. Pick up sts. from first row to form picot hem. RC 0. T 7. Knit in lace pattern to R 50. Knit in St. St. while incr. on each side every 3 Rs. 1 St. 42x [(every 3 Rs. 1 St. 18x and every 4 Rs. 1 St. 24x)]. At R 192 (204) [214] SHR sleeve cap EOR 2 Sts. 5x. At R 202 (214) [224] knit 1 row over all sts. and BO.



FRONT:

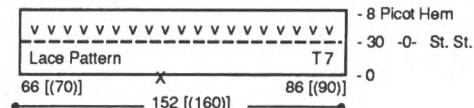
Knit front same as back to R 220 (226) [232]. Shape neckline. Place center 44 (52) [52] sts. in HP and all sts. to the left. *On neckline edge SHR every row 1 St. 8x, EOR 1 St. 10x and every 3 Rs. 1 St. 4x. At R 264 (270) [276] remove shoulder sts. on WY. Reset RC to 220 (226) [232] and shape left neckline from *, reversing shapings. Remove neckline sts. on WY.

NOTE: If you are embellishing garment with the DecoKing machine, do so before joining one shoulder seam and attaching collar. Use small feed finger, Rayon Knit and Metallic Frizette DecoKing trim and DecoKing design on pullover pieces following outline sketches.

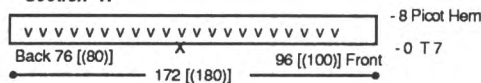


Section B:
With purl side facing rehang these sts. evenly on 152 [(160)] ndls. following chart. RC 0. T 7. Knit in lace pattern to R 30. Knit in St. St. to R 4. Transfer EOS to adjacent ndls. leaving empty ndls. in WP. Knit to R 8. Pick up sts. from first row of St. St. to form picot hem. Knit 1 R at T 10 and BOLT.

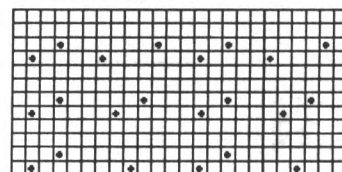
COLLAR Section B



Section A



***134 Lace Pattern 24 Sts. x 12 Rows**



KK Mag Disk: Track 9; Pat. 901

FINISHING:

Close remaining shoulder and collar seam. Close all remaining seams.

COLLAR:

Join one shoulder.

Section A:

With purl side facing rehang neckline on 172 [(180)] ndls. following chart. RC 0. T 7. Transfer EOS to adjacent ndls. leaving empty ndls. in WP. Knit to R 8. Pick up sts. from first row of St. St. to form picot hem. Remove sts. on WY.

135



BULKY EYELET CARDIGAN

YARN: Rubane - Taupe

SIZES: Sm./Med. (Lge/X-Lge)

AMOUNT: 10 Balls

KIT PRICE: \$63.00

TENSION:

Body: T 10

GAUGE:

Body: 4.25 Sts., 5 Rs. = 1"

NOTIONS:

5 - 3/4" or 1" Gold Buttons.

Make on any Bulky Machine.

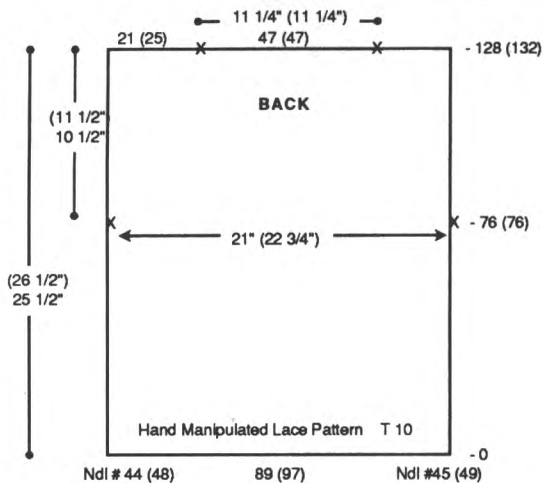
Pattern Note: *With all ndls. in WP knit 4 Rs. in St. St. Manually drop sts. marked OWP on chart and unravel. Using one-eye transfer tool, pick up floats created by OWP ndls. and place them on ndl. to the right. Put all ndls. to WP and knit 4 Rs. in St. St. Manually drop sts. marked OWP on chart and unravel. Using one-eye transfer tool, pick up floats created by OWP ndls. and place them on ndl. to the left (see chart). Repeat from * to end.

***135 Manual Lace Pull Ups**



Legend for the chart: OWP - Sts. to be manually dropped every 4 Rs; WP

Legend for the chart: OWP - Sts. to be manually dropped every 4 Rs; WP



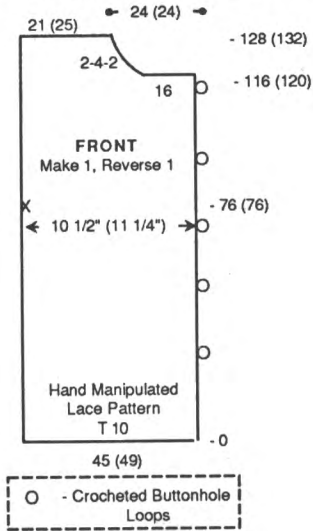
BACK:

With Col.1 latch tool CO 89 (97) sts. following chart. RC 0. T 10. Arrange ndls. for hand manipulated lace pattern following Chart. Knit to R 76 (76) and place a YM on each side for armhole. At R 128 (132) mark center 47 (47) sts. for neckline. Knit 1 row manually at a loose tension and BOLT.

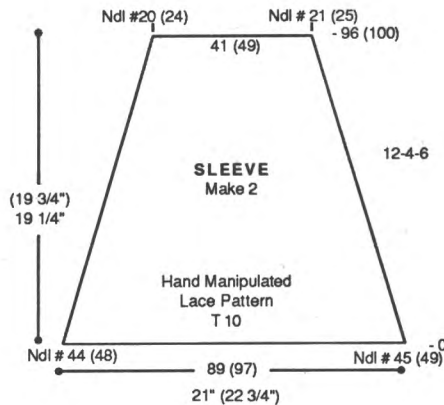
(continued next page)

(continued from previous page)

FRONT: Make 1, Reverse 1. With Col. 1 latch tool CO 45 (49) sts. following chart. RC 0. T 10. Arrange ndls. for pattern following Chart. Knit to R 76



(76) and place a YM on the left side for armhole. At R 116 (120) shape neckline. On right side BO 16 sts. then BO EOR 4 Sts. 2x. At R 128 (132) knit 1 row manually at a loose tension and BOLT.



SLEEVE:

Make 2 the same. Join shoulder seams. With purl side facing rehang armhole between markers on 89 (97) ndls. RC 0. T 10. Knit in pattern while decr. every 12 Rs. 4 Sts. 6x. At R 96 (100) knit 1 row manually at a loose tension and BOLT.

FINISHING:

Sew underarm and side seams. Crochet 2 Rs. single crochet on the bottom of sleeves, around the neckline, down the front opening, making 5 buttonhole loops (6 chain sts. for each) 3 1/2" apart on right front when doing the second row of single crochet and around the bottom of sweater.

136



BULKY PULLOVER with KNITTED or SEQUINED ORGANZA SLEEVES

YARN: Venetia and Glace
SIZES:

Small (Medium) [Large]
AMOUNT: Same all Sizes
Col. 1: Venetia - White (2 strands plated) - 1 lb.
Col. 2: Glace-White 1 cone (approx. 12 ozs.)
Col. 3: Knit-in Elastic - White 1 spool all sizes

KIT PRICE:
Kit A: (Yarn Only): \$50.00
Kit B: (Yarn, Sequins & Ribbon): \$70.00

TENSION:

Body: T 4
Rib: T 1/1 I

GAUGE:

Body: 5 Sts., 6.66 Rs. = 1"

NOTIONS:

1/2 yd. silk organza, 20 yds.

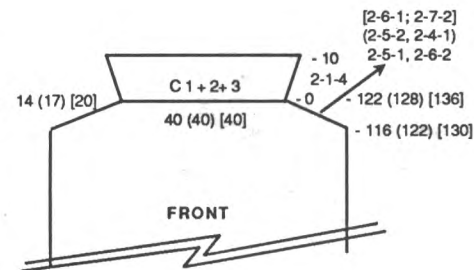
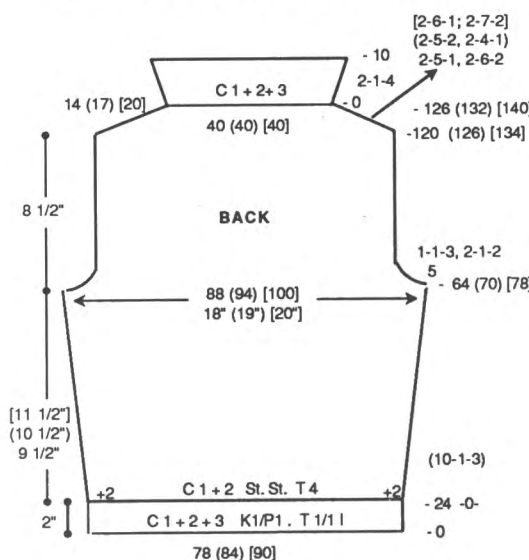
sequins and ribbon. (Sequins and ribbon included in Kit B.)

Make on Compuknit/Bulky or Punch Card Bulky with Ribber. Embellished on the DecoKing Custom Embellishment Machine.

Note: This sweater can be made with either knitted sleeves, or you can sew organza sleeves with DecoKing trim. Instructions for either are included.

BACK:

With Col. 1, 2 and 3 CO 78 (84) [90] sts. for K1/P1 Rib. After selvedge RC 0. T 1/1 I. Knit to R 24. Transfer RB sts. to MB. RC 0. T 4. Col. 1 (2 strands in plating finger) and Col. 2.

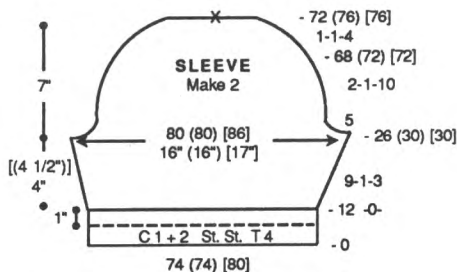


FRONT:

Knit front same as back to R 116 (122) [130]. SHR shoulders same as back. At R 122 (128) [136] remove shoulder sts. on WY. Complete neckline same as back.

KNIT SLEEVE: (Optional)

Make 2.
With WY CO 74 (74) [80] sts.
After several rows, end with 1 row
Ravel Cord to the right. Change to
Col. 1 (2 strands in plating
finger) and Col. 2. RC 0. T 4.
Knit to R 12. Pick up sts. from
first row to form hem. RC 0. T 4.
Knit in St. St. while incr. on each
side every 9 Rs. 1 St. 3x. At
R 26 (30) [30] shape sleeve cap.
On each side BO 5 sts., then decr.
EOR 1 St. 10x for all sizes. At
R 68 (72) [72] decr. every row
1 St. 4x. At R 72 (76) [76] knit 1
R at T 10 mark center with a YM
and BOLT.



ORGANZA SLEEVE: Make 2.
Using the commercial pattern of
your choice, or an original
pattern, draw sleeve pattern on
organza with disappearing ink.
Mark 3/4" seam allowance and
overlock edges.

DecoKing Trim: Take Gold
Sequins and using Sequin Placer
Feed Folder for DecoKing stitch
sequins along one edge of 1/2
Rayon Ribbon. Use 1/2" Flat
Feed Folder for DecoKing with
needle set to one side (away from
sequins). Free form in swirls
filling in space on sleeve. Do not
DecoKing on edges. Gather cap to
4" and ease into sleeve
opening. Pin in place and sew
with machine.

FINISHING:

Join shoulder seams. Turn neck
facing to inside and whip stitch in
place. Close all remaining seams.

137



WOMENS TWO-PIECE DRESS

YARN: Softon, Starlite and
Alpine

SIZES:
6/8 (10/12) [14]
AMOUNT: Same all sizes
Col. 1: Softon - Winter White
1-1/4 lbs.
Col. 2: Starlite - White/Gold
1 cone (approx. 1 lb.)
Col. 3: Alpine - Black - 5 oz.
Col. 4: Alpine - Emerald - 3 oz.
Col. 5: Alpine - Burgundy - 7 oz.

KIT PRICE: \$72.00

TENSION:

Body: T 3.1
Hems and Neckline: T 2
Rib: T 0/0 I

GAUGE:

Body: 4.7 Sts., 6.7 Rs. = 1"
Rib: 8 Rs. = 1"

NOTIONS:

6 - 3/8" Buttons and 1-1/4"
elastic for skirt waistband.

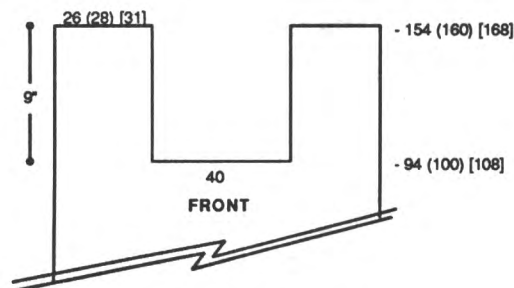
Make on Compuknit/Bulky or
Punch Card Bulky with Ribber.

Note: Use Col. 1 and Col. 2
together throughout. Plate Col. 1
when doing St. St.

BACK:

With WY CO 92 (96) [102] sts.
After several rows end with 1 row
Ravel Cord to the right. RC 0.
T. 2. Col. 5. St. St. Knit to R 8.
Pick up sts. from first row to form
double band. Reset RC to 0.
T 3.1. Knit in fairisle following
color chart to R 59. Change to
Col. 1 in plating finger and
Col. 2. St. St. At R 90 (94) [98]
place a YM on each side for
armhole. At R 154 (160) [168]
mark center 40 sts. for neckline
with a YM. Knit 1 row at T 10 and
BOLT.

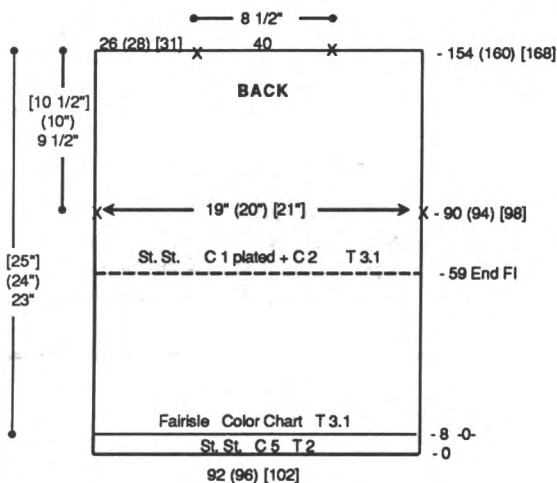
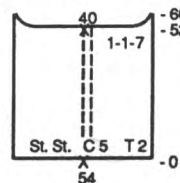
(100) [108]. Bring ndls. at the
left to WP. Knit to R 154 (160)
[168], knitting last row at T 10
and BOLT.



FRONT INSERT:

With purl side facing rehang
lower edge of neckline on 54
ndls. incr. evenly across. RC 0.
T 2. Col. 5. St. St. Knit to R 52
and shape neckline. BO center 40
sts. Place all sts. to the left in HP.
*On neckline edge decr. every R 1
St. 7x. End at R 60. Reset RC to
R 52 and shape neckline from *.

FRONT INSERT



COLOR CHART BODY & SLEEVE

FI	11	"A"	"B"
FI	12	1+2	5
STST	4	1+2	4
FI	30	1+2	3
STST	2	1+2	2
Technique	Rows	Color	

FRONT:

Knit front same as back to R 94
(100) [108]. Shape neckline.
BO center 40 sts. Place all sts.
to the left in HP. Knit to R 154
(160) [168], knitting last row at
T 10 and BOLT. Reset RC to 94

FRONT PLACKET:

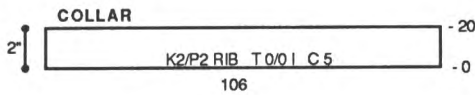
With knit side facing, fold front
insert piece in half with shaping
on left side. Bring 34 ndls. to
WP. Rehang center sts., picking
up half of stitch, on these ndls.
RC 0. T2. Col. 5. St. St. Knit to
R 8. Pick up first row to form
band. Knit 1 R at T 10 and BOLT.

(continued next page)

(continued from previous page)

COLLAR:

With WY CO 106 sts. After several rows end with 1 row Ravel Cord to the right. Change to Col. 5 and knit 1 row. RC 0. T 0/0 I. Transfer sts. to RB for K2/P2 Rib. Knit to R 20 knitting last row at T 5/5. Transfer RB sts. to MB and BOLT.



SLEEVE:

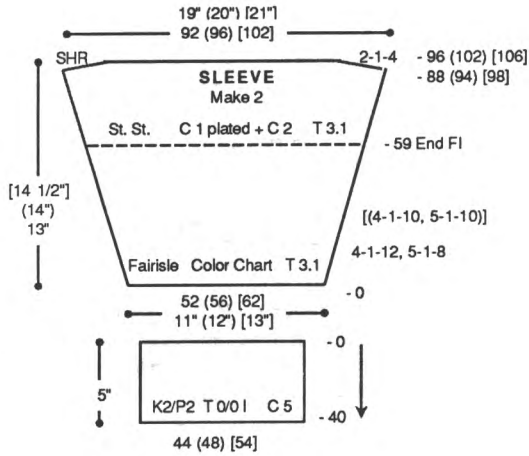
Make 2 the same. With WY CO 52 (56) [62] sts. After several rows end with 1 row Ravel Cord to the right. RC 0. T 3.1 Knit in fairisle following color chart while incr. on each side every 4 Rs. 1 St. 12x and every 5 Rs. 1 St. 8x [(every 4 Rs. 1 St. 10x and every 5 Rs. 1 St. 10x)]. AT THE SAME TIME at R 59 change to Col. 1 in plating finger and Col. 2. St. St. At R 88 (94) [98] SHR sleeve cap on each side EOR 1 St. 4x. At R 96 (102) [106] knit 1 row at T 10 and BOLT.

SLEEVE CUFF:

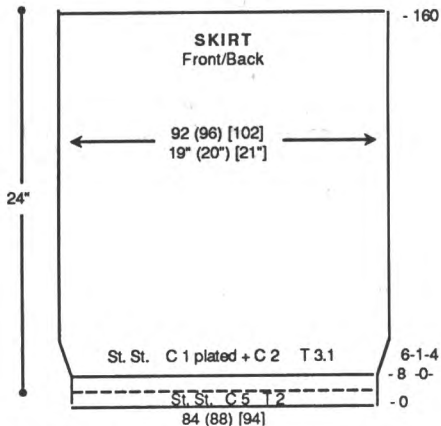
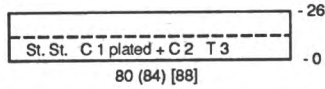
With purl side facing rehang lower edge of sleeve on 44 (48) [54]ndls. With Col. 5 knit 1 row. Transfer sts. to RB for K2/P2 Rib. RC 0. T 0/0 I. Knit to R 40 knitting last row at T 5/5. Transfer RB sts. to MB and BOLT.

SKIRT FRONT/BACK:

Make 2 the same. With WY CO 84 (88) [94] sts. After several rows end with 1 row Ravel Cord to the right. RC 0. T. 2. Col. 5. St. St. Knit to R 8.



Pick up sts. from first row to form double band. Reset RC to 0. T 3.1. Col. 1 in plating finger and Col. 2. Knit in St. St. while incr. on each side every 6 Rs. 1 St. 4x. At R 160 remove sts. on WY.

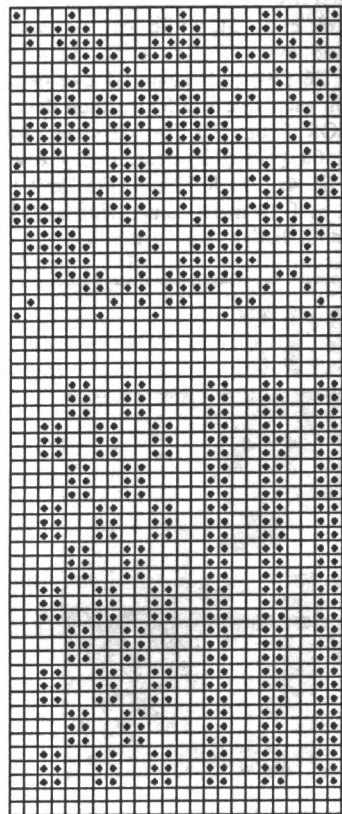


WAISTBAND:

With purl side facing, rehang upper edge of skirt front/back on 80 (84) [88] ndls. decr. evenly across. RC 0. T 3. Col. 1 in

plating finger and Col. 2. St. St. Knit to R 26. Pick up sts. from first row to form doubled band. Knit 1 row at T 10 and BOLT.

#137 Fairisle 24 Sts. x 59 Rows



KK Mag Disk: Track 10; Pat. 901

FINISHING:

Join shoulders. Close seams on front insert. Attach collar to neckline with a crochet hook. Sew buttons on front placket. Sew in sleeves. Close all remaining seams.

138



GIRLS FAIRISLE and LACE DRESS

36

YARN: Panache

SIZES: 4/5 (6/6X) [7/8]

AMOUNT: Same all sizes

Col. 1: Navy - 8 oz.

Col. 2: White - 1 cone

(approx. 1 lb.)

KIT PRICE: \$25.00

TENSION:

Fairisle: T 5

Lace: T 6

Hems: T 4

GAUGE:

Fairisle: 7.5 Sts., 11.5 Rs. = 1"

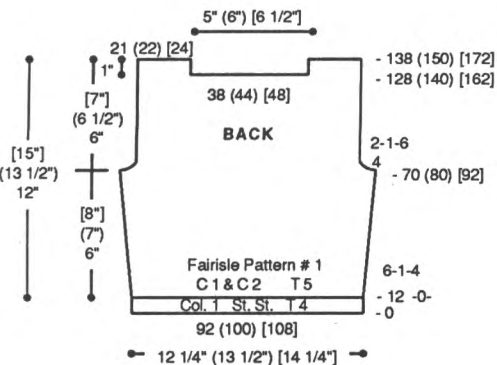
Lace: 7.5 Sts., 10.5 Rs. = 1"

Make on Standard 24-Stitch Punch Card or Standard Electronic Machine.

TOP BACK:

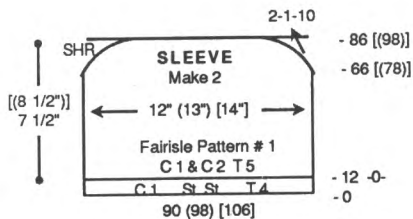
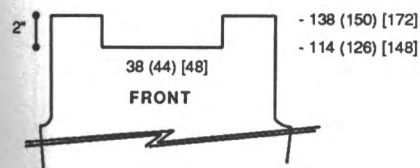
With WY CO 92 (100) [108] sts. After several rows, end with 1 row Ravel Cord to the right. RC 0. T 4. Col. 1. St. St. Knit to R 12. Pick up sts. from first row to form hem. Col. 1. Pattern #1. Knit 1 row to set ndls. Add Col. 2 in "B" Feeder. RC 0. T 5. Knit in fairisle while incr. on each side every 6 Rs. 1 St. 4x. At R 70 (80) [92] shape armhole. On each side BO 4 Sts. on each side, then decr. EOR 1 St. 6x. At R 128 (140) [162] shape neckline. BO center 38 (44) [48] sts. Place all sts. to the left in HP. Note pattern row. *Knit in pattern to R 138 (150) [172] and remove sts. on WY.

Reset RC to R 128 (140) [162] and pattern to correct row and shape neckline from *, reversing shaping.



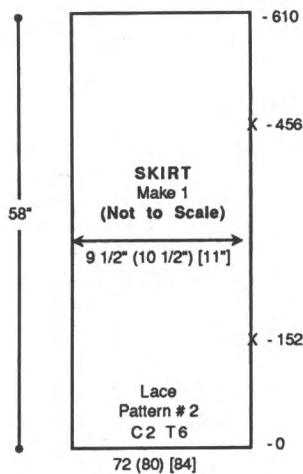
TOP FRONT:

Knit front same as back to R 114 (126) [148]. Shape neckline. BO center 38 (44) [48] sts. Place all sts. to the left in HP. *Note pattern row.* *Knit in pattern to R 138 (150) [172] and remove sts. on WY. Reset RC to R 114 (126) [148] and pattern to correct row and shape neckline from *, reversing shaping.



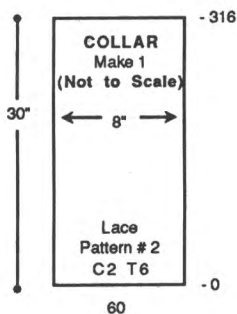
SKIRT:

With WY CO 72 (80) [84] sts. After several rows, end with 1 row Ravel Cord to the right. RC 0. T 6. Col. 2. Pattern # 2. Knit in Lace Pattern to R 152 and place a YM on the right side for side seam. At R 456 place a YM on the right side for side seam. At R 610 remove sts. on WY.



COLLAR:

With WY CO 60 sts. for all sizes. After several rows, end with 1 row Ravel Cord to the right. RC 0. T 6. Col. 2. Pattern # 2. Knit in Lace Pattern to R 316 and remove sts. on WY.

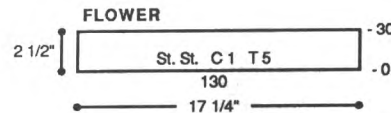


SLEEVE:

Make 2 the same. With WY CO 90 (98) [106] sts. After several rows, end with 1 row Ravel Cord to the right. RC 0. T 4. Col. 1. St. St. Knit to R 12. Pick up sts. from first row to form hem. Col. 1. Pattern #1. Knit 1 row to set ndls. Add Col. 2 in "B" Feeder. RC 0. T 5. Knit in fairisle to R 66 [(78)]. SHR sleeve cap on each side EOR 1 St. 10x. At R 86 [(98)] knit 1 row manually at a very loose tension and BOLT.

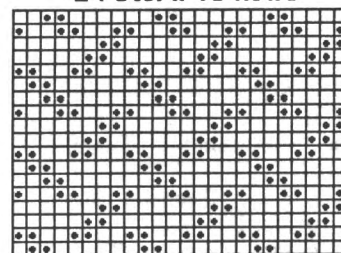
FLOWER:

With Col. 1 CO 130 sts. on EON. Bring all ndls. to WP. RC 0. T 5. St. St. Knit to R 30, knitting last row at T 10 and BOLT. Pull yarn through CO row to shire.



#138 Fairisle Pattern #1

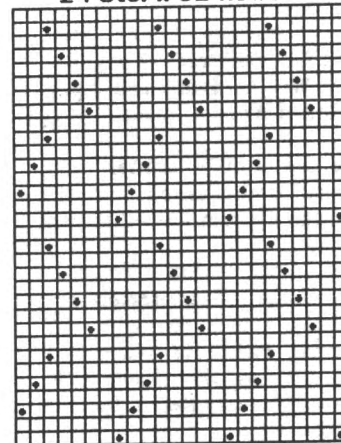
24 Sts. x 18 Rows



KK Mag Disk: Track 11; Pat. 901

#138 Lace Pattern #2

24 Sts. x 32 Rows



KK Mag Disk: Track 11; Pat. 902

FINISHING:

Close shoulder seams. With Col. 2 SC 2 Rs. around neckline. Close side seams of bodice. *Skirt:* Close center back seam. Gather and match marking with side seams of bodice. Attach skirt under the hem of top. With Col. 2 SC 1 R around bottom of skirt. Close all remaining seams. Attach collar to the center of front neck and attach flower.



BULKY CARDIGAN JACKET

YARN: Alpine

SIZES:

Small (Medium) [Large]

AMOUNT:

Col. 1: Black - 2 cones all sizes (approx. 1-3/4 lb.)

Col. 2: Knit-In Elastic - Black
1 spool all sizes

KIT PRICE:

Kit A: (Yarn Only) \$48.50

Kit B: (Yarn, Trim and Beads): \$75.00

TENSION:

St. St.: T 5

GAUGE:

St. St.: 4.3 Sts., 5.83 Rs. = 1"

NOTIONS:

5 - 1" Buttons, 1 pkg. Med. Round Wooden Beads, 2 pkg. Sm. Square Wooden Beads and 2 pkg. Sm. Round Wooden Beads.

Make on Bulky knitter with Ribber. Embellished on the DecoKing Custom Embellishment Machine.

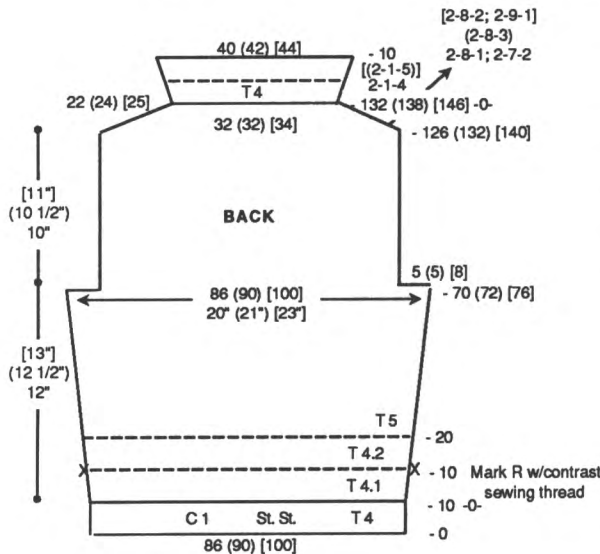
Buttonhole Instructions:

Manually knit 3 sts. with WY following chart for placement. Place sts. in HP. Knit 1 R. Release H button. Repeat for each buttonhole.

BACK:

With WY CO 86 (90) [100] sts. After several rows, end with 1 row Ravel Cord to the right. RC 0. T 4. St. St. Knit to R 10. RC 0. T 4.1. Knit to R 10 and change to T 4.2. Knit 1 R with contrast sewing thread in plating finger to mark row to aid in seaming later. At R 20 change to T 5. Knit to R 70 (72) [76] and shape armhole. On each side BO 5 (5) [8] sts. At R 126 (132) [140] SHR shoulder EOR 8 Sts. 1x and 7 Sts. 2x (8 sts. 3x) [8 Sts. 2x and 9 Sts. 1x]. Remove shoulder sts. on WY. RC 0. T 4. Working on

center 32 (32) [34] sts., knit in St. St. while incr. on each side EOR 1 St. 4x [(1 St. 5x)]. At R 10 remove sts. on WY.

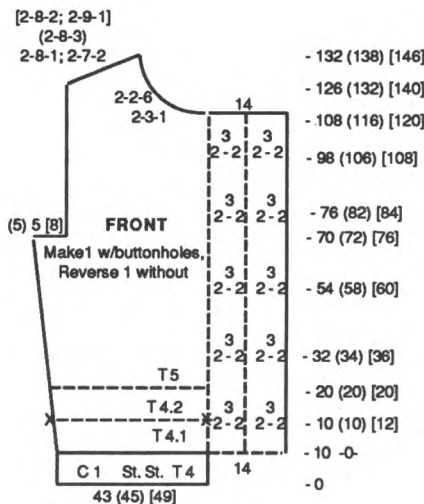


FRONT:

Make 1 with buttonholes, Reverse 1 without buttonholes.

Helpful Hint: After CO 14 sts., thread a 2 eye ndl. with a strand of contrast yarn, and stitch a line up the front as you work for easier finishing.

With WY CO 43 (45) [49] sts. After several rows, end with 1 row Ravel Cord to the right. RC 0. T 4. Knit to R 10. Place all sts. to HP. With WY CO 14 sts. to the right. After several rows end with 1 row Ravel Cord to the right. Put all ndls. to WP. RC 0. T 4.1. Knit to R 10 and change to T 4.2. Following the instructions above make buttonholes at Rs. 10 (10) [12], 32 (34) [36], 54 (58) [60], 76 (82) [84] and 98 (106) [108]. AT THE SAME TIME at R 10 [(10)] thread contrast sewing thread in plating finger to mark row to aid in seaming later. At R 20 [(20)] change to T 5. Knit

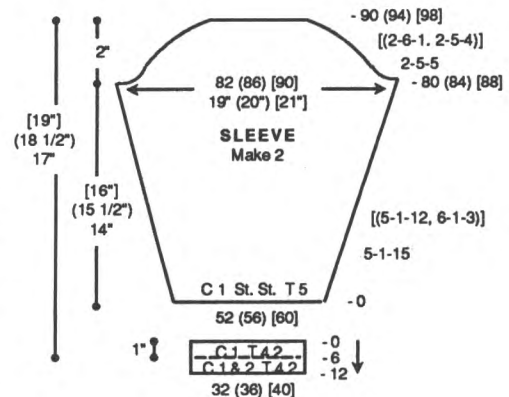


to R 70 (72) [76] and shape armhole. On left side BO 5 (5) [8] sts. At R 108 (116) [120] shape neckline. On neckline edge remove 14 sts. on WY, then decr. EOR 3 Sts. 1x and 2 Sts. 6x for all sizes. At R 126 (132) [140] SHR shoulder EOR 8 Sts. 1x and 7 Sts. 2x (8 sts. 3x) [8 Sts. 2x and 9 Sts. 1x]. Remove shoulder sts. on WY. Knit the facing on 20 (22) [24] sts. on neckline. Add 1 st. to the right. Knit in St. St. while incr. on left side EOR 1 St. 5x. At R 10 remove sts. on WY.

SLEEVE:

Make 2 the same.

With WY CO 52 (56) [60] sts. After several rows, end with 1 row Ravel Cord to the right. RC 0. T 5. Knit in St. St. while incr. on each side every 5 Rs. 1 St. 15x [(every 5 Rs. 1 St. 12x and every 6 Rs. 1 St. 3x)]. At R 80 (84) [88] shape sleeve cap. On each side SHR EOR 5 Sts. 5x [(6 Sts. 1x and 5 Sts. 4x)]. At R 90 (94) [98] knit 1 row over all sts. at T 10 and BOLT. With purl side facing, rehang lower edge of sleeve on 32 (36) [40] ndls. RC 0. T 4.2. Col. 1. Knit to R 6. Add Col. 2 and knit to R 12. Pick up sts. from first row to form doubled hem. Knit 1 row manually at loose tension and BOLT.



FINISHING:

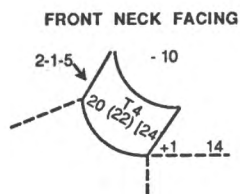
DecoKing Trim:

Pattern was selected from print in fabric used for skirt. Choose any design for sweater trim.

1. Use medium finger for Alpine yarn.

2. Trace pattern from skirt fabric or any design you choose on to jacket. Use yarns and DecoKing to outline and fill designs.
3. Split yarn and use 2 fine strands to thread wooden beads (color of your choice).
4. Remove feed finger. Lay the string of beads in pattern desired. Use zig zag motion over yarn and

in between each bead using the monofilament thread only.



Garment Finishing: Split yarn and use 2 fine strands to seam up lower hem and stitch along the marked line of facing. After hemming is complete, remove sewing thread. Weave open sts. Turn neck facing to inside and whip stitch in place. Join shoulder seams. Slip stitch sleeve to body. Close all remaining seams.

knitkng news and technical tips

Knitkng News is proud to join forces with Knitkng Technical Tips to bring you a combined article packed with information about our *two* new and exciting additions to the Knitkng family of products.

The first new addition is the most advanced electronic knitting machine—the **Compuknit V**. This newest model knitting machine comes with all the outstanding features of its predecessors and many exciting innovations to make knitting easier, more fun and more versatile. Along with the wide selection of pattern stitches, the Compuknit V has 615 built in patterns (60 more than the Compuknit III or IV). With the use of the variation buttons, the built-in patterns become thousands!

You can frame portions of the built-in patterns to use in all-over knitting, motifs and in conjunction with variation keys. You can select from 1 to 9 different patterns and place them together. Use the many variation keys, such as the all-new rotation (90 degrees) key, or "reflection" key to achieve a special new look.

You can even create patterns with 3 colors in a row and *let the Compuknit V automatically separate the colors for double jacquard or multi-color skip knitting* with color change instructions visible in the window display on the machine's control panel. The machine does the thinking—you have the fun knitting!

... And if it's fun you want — *check out our second new addition* — **the new DesignaKnit-Version 5!** Over 50 new enhancements have been added to the breakthrough computer design program that Knitkng introduced almost a year ago, allowing knitters of all skill levels the means to easily creating custom-fitting, custom-designed garments.

DesignaKnit Version 4 allowed you to create custom-fit garments in inches or centimeters, select different garment types, sleeve and neck treatments and shaping refinements. You could easily and quickly create and modify stitch pattern designs on grids matched to your tensions, using up to 50 colors in one garment, selected from a color palette with thousands of choices. You can even use clip art or scanned graphics in your designs. Then, you combined the shape and pattern stitch to see the finished product! You could print drawings and instructions of all sorts using a wide choice of printers; or interface directly into your Knitkng or Brother knitting machine.

The new DesignaKnit Version 5 contains all the features of Version 4, **plus** many enhancements! Some of these include the new "knit from the screen" feature which will alert the knitter to required color changes and shaping instructions. A built-in alphabet with size-modification, a vast range of standard sizes, color patterns shown as knitted fabric texture, random color changes for experimentation with different color combinations and wonderful size grading features for both standard to original shapes, plus loads of other enhancements are included. And version 5 now has an optional cable that works with most Studio and Singer electronic knitting machines.

A pair of fives is the winning hand — the Compuknit V and DesignaKnit 5 — Treat yourself to the dynamic duo — You're worth it!

For further details on these exciting new products, see our ads on page 41 and on the back cover.



BULKY PULLOVER with FERN LACE YOKE

YARN: Alpine

SIZES:
6/8 (10/12) [14]

AMOUNT: Same all sizes
Col. 1: Grape - 2 cones (approx. 1-3/4 lb.)
Col. 2: Black - 1 oz.
Col. 3: Goldenrod - 3 oz.
Col. 4: White - 2 oz.
Col. 5: Fuschia - 2 oz.

KIT PRICE: \$62.00 (includes Ribbon Trim)

TENSION:
Tuck: T 3.2
Rib: T -0/-0 I
Fern Lace: T 2

GAUGE:
Tuck: 4 Sts., 10.5 Rs. = 1"
Rib: 9 Rs. = 1"
Fern Lace: 8.5 Rs. = 1"

Fern Lace Pattern:

- Knit 2 Rs. at T 2. RC to 0.
- Carriage in 'H', all ndls. in HP except first group of 4 sts. on right side.
- Knit 4 Rs. (RC at 4)
- Push second group of 4 sts. back to WP and knit 5 Rs. Carriage on left side, bring first group of 4 sts. to HP and knit 1 R to the right. (RC at 10)
- Reset RC to 0. Push another 4 sts. back to WP. Knit 9 Rs. Pull second set of 4 sts. to HP and knit 1 R. RC at 10. Reset RC to 0.
- Repeat from * to last 4 sts. on left. Knit 4 Rs. over these sts.
- Carriage to N. T 1. Knit 4 Rs. St. St. over all sts. (RC at 14)
- Carriage in H. T 2. Repeat from #2 to #6 reversing shapings and working from left to right. (RC at 24. Reset to 0.)
- Remove sts. on WY.

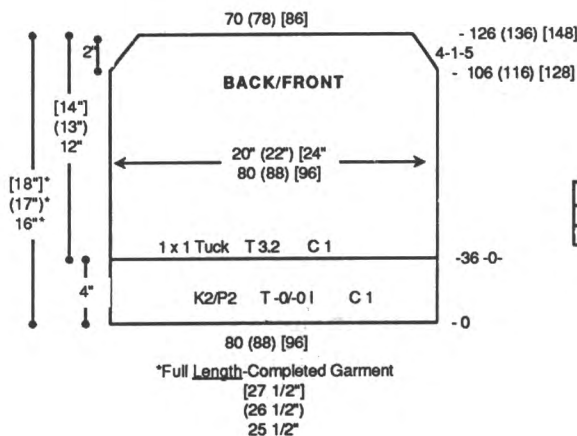
NOTIONS:

1/4" Ribbon: 5 yds. White,
5 yds. Purple, 7 yds. Fuschia

Make on Compuknit/Bulky or Punch Card Bulky with Ribber.

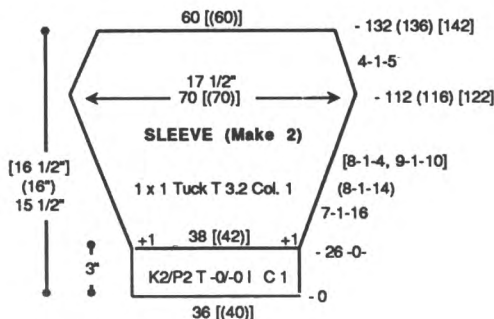
BACK/FRONT:

Make 2 the same.
With Col. 1 CO 80 (88) [96] sts. for K2/P2 Rib. After selvedge RC 0. T -0/-0 I. Knit to R 36. Transfer RB sts. to MB. T 3.2. RC 0. Knit in Tuck Pattern to R 106 (116) [128]. Decr. on each side every 4 Rs. 1 St. 5x. At R 126 (136) [148] remove sts. on WY.



SLEEVE:

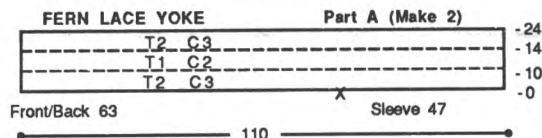
Make 2 the same.
With Col. 1 CO 36 [(40)] sts. for K2/P2 Rib. After selvedge RC 0. T -0/-0 I. Knit to R 26. Transfer RB sts. to MB. Incr. 1 St. on each side. RC 0. T 3.2. Knit in Tuck Pattern while incr. on each side every 7 Rs. 1 St. 16x (every 8 Rs. 1 St. 14x) [every 8 Rs. 1 St. 4x and every 9 Rs. 1 St. 10x]. At R 112 (116) [122] begin decr. on each side every 4 Rs. 1 St. 5x. At R 132 (136) [142] remove sts. on WY.



FERN LACE YOKE:

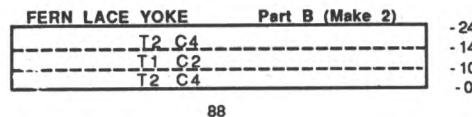
Part A:

With knit side facing rehang upper edge of front/back and one sleeve on 110 ndls. (see chart) decr. evenly across. Following color chart knit in Fern Lace Pattern to R 24. Change to T 1. With Col. 1 knit 4 Rs. and remove sts. on WY.



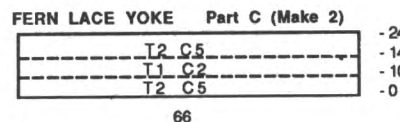
Part B:

With purl side facing rehang upper edge of Part A on 88 ndls. decr. evenly across. Following color chart knit in Fern Lace Pattern to R 24. Change to T 1. With Col. 1 knit 4 Rs. and remove sts. on WY.



Part C:

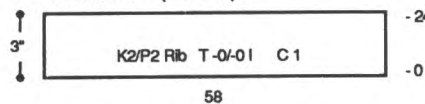
With purl side facing rehang upper edge of Part B on 66 ndls. decr. evenly across. Following color chart knit in Fern Lace Pattern to R 24. Change to T 1. With Col. 1 knit 2 Rs. and remove sts. on WY.



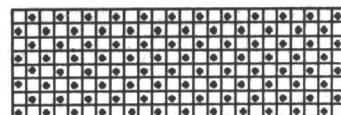
NECKBAND: Make 2.

With purl side facing rehang upper edge of Part C on 58 ndls. decr. evenly across. Knit 1 R. Transfer sts. to RB for K2/P2 Rib. RC 0. T -0/-0 I. Col. 1. Knit to R 24, knitting last R at T 8/4. Transfer RB sts. to MB and BOLT.

NECKBAND (Make 2)



*140 Tuck Pattern 24 Sts. x 8 Rows



KK Mag Disk: Track 12; Pat. 901

FINISHING:

Close all seams. Thread ribbon through opening of each Fern Lace.

NEW
VERSION 5.0

STUDIO OWNERS
READ THIS

DesignaKnit

IS NOW EVEN BETTER!

OVER 50 NEW ENHANCEMENTS

**KNIT FROM SCREEN CAPABILITY • FABRIC TEXTURE VIEWING • RANDOM COLOR CHANGE VIEWING
• SCALABLE ALPHABET • STANDARD SIZING AND SIZE GRADING OPTIONS • MUCH, MUCH MORE!**

NOW COMPATIBLE WITH STUDIO AND SINGER KNITTING MACHINES TOO!

THE ULTIMATE KNITWEAR DESIGN PACKAGE IS HERE

What Can You Do with DESIGNAKNIT?

- Design your own automatically-sized garments by choosing the basic shape, sleeve and neckline from the extensive built-in offerings, then easily alter garment features on the computer screen.
- Create and modify stitch patterns for fairisle, intarsia, tuck, skip, weaving, lace and jacquard—and make your color decisions from thousands of choices.
- Import computerized graphic files—original or scanned—for your design.
- Superimpose your stitch pattern anywhere on your garment shape—you can see the finished product on your screen or print it out.
- Print scaled drawings, instructions, stitch patterns, punch card and mylar templates, and much more.
- *Professional Version:* Includes above + ability to create your own shapes, and override stitch shaping or color layout stitch by stitch.
- *Optional interface allows transferring patterns into your Compuknit V (KH 965), Compuknit IV (KH940) or Comp/Bulky (KH270). An interface is even available for your Studio or Singer SK 840, 890, 560 or 580!*

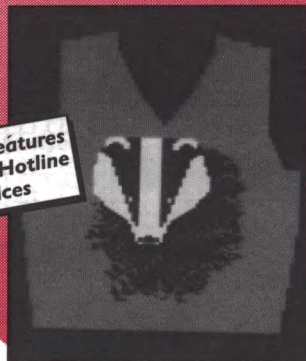
What Do You Get With DESIGNAKNIT?

- PC-computer compatibility (with EGA or VGA screen) • 3.5 or 5.25 disk.
- Nationwide support through Knitking's *DesignaKnit Technical Assistance Hotline* to compliment the built-in Tutorial program and Instruction Manual.

▲ Unmatched Design Features
▲ Technical Assistance Hotline
▲ Low Introductory Prices



Packages Start As Low As: \$259.95



Contact your local Dealer to order, or to request a Demo Disk (\$10.00). If there is no Dealer near you, contact:

 **knitking**

Call: (800) 962-6446, ext. 1

Dealer Inquiries Welcome



V-NECK LACE PULLOVER

YARN: Primo

SIZES:

6/8 (10/12) [14/16] {18}

AMOUNT:

Col. 1: Wine

1 lb. (1 lb.) {[1 1/2]} lbs.

KIT PRICE:

\$19.50 (\$19.50) {[29.00]}

TENSION:

Lace: T 6

FNR: T 3/3 I

GAUGE:

Lace: 6.36 Sts., 10.96 Rs. = 1"

Make on Compuknit III/IV with Ribber.

Note: Edge of Neckline needs 2 sts. in St. St. for seaming to Neckband.

BACK:

CO 146 (152) [160] {178} sts. for FNR. After Selvedge RC 0. T 3/3 I. *Knit 1 R. Move racking handle 1 step to the right. Repeat

2 more times. Knit 1 R. Move racking handle 1 step to the left. Repeat 2 more times. Repeat from * 1 more time. Transfer RB sts. to MB. RC 0. T 6. Lace Pattern. Knit to R 170 (180) {[190]} and place a YM on each side to mark armhole. At R 290 (300) {[316]} mark center 50 sts. with YM for neckline. Knit 1 row at T 10 and BOLT.

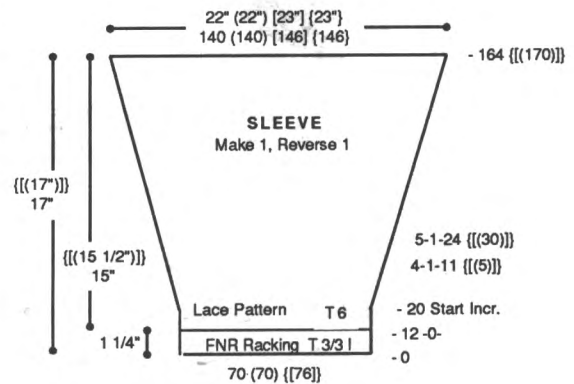
FRONT:

Knit front same as back to R 164 (174) {[190]}. Shape neckline. Knit all sts. to the left of -0 manually to "A" (out of work) position on Ravel Cord. *Note pattern row.* *On neckline edge decr. every 4 Rs. 1 St. 10x and every 5 Rs. 1 St. 15x. AT THE SAME TIME at R 170 (180) {[190]} place a YM on each side to mark armhole. At R 290 (300) 316 knit 1 row at T 10 and BOLT. Reset RC to 164 (174) {[190]}. Reset pattern to proper row and shape neckline from *, reversing shaping.

more times. Repeat from * 1 more time. Transfer RB sts. to MB. RC 0. T 6. Lace Pattern. Knit to R 20 and shape sleeve by incr. every 4 Rs. 1 St. 11 {[5]} x and every 5 Rs. 1 St. 24 {[30]}x. At R 164 {[170]} knit 1 row at T 10 and BOLT.

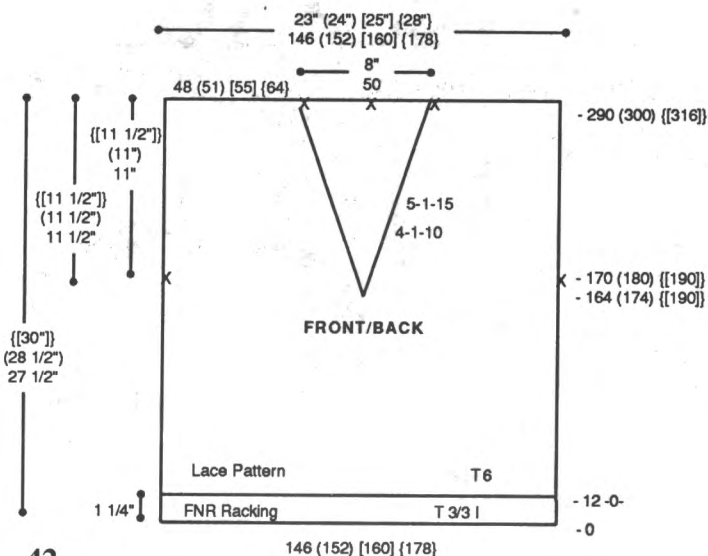
SLEEVE:

Make 1, Reverse Pattern on 1. CO 70 (70) {[76]} sts. for FNR. After Selvedge RC 0. T 3/3 I. *Knit 1 R. Move racking handle 1 step to the right. Repeat 2 more times. Knit 1 R. Move racking handle 1 step to the left. Repeat 2

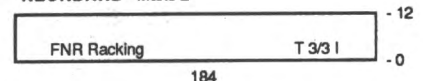


NECKBAND: Make 2.

CO 184 sts. for FNR. After Selvedge RC 0. T 3/3 I. *Knit 1 R. Move racking handle 1 step to the right. Repeat 2 more times. Knit 1 R. Move racking handle 1 step to the left. Repeat 2 more times. Repeat from * 1 more time. Knit 1 row at T 10 and BOLT.



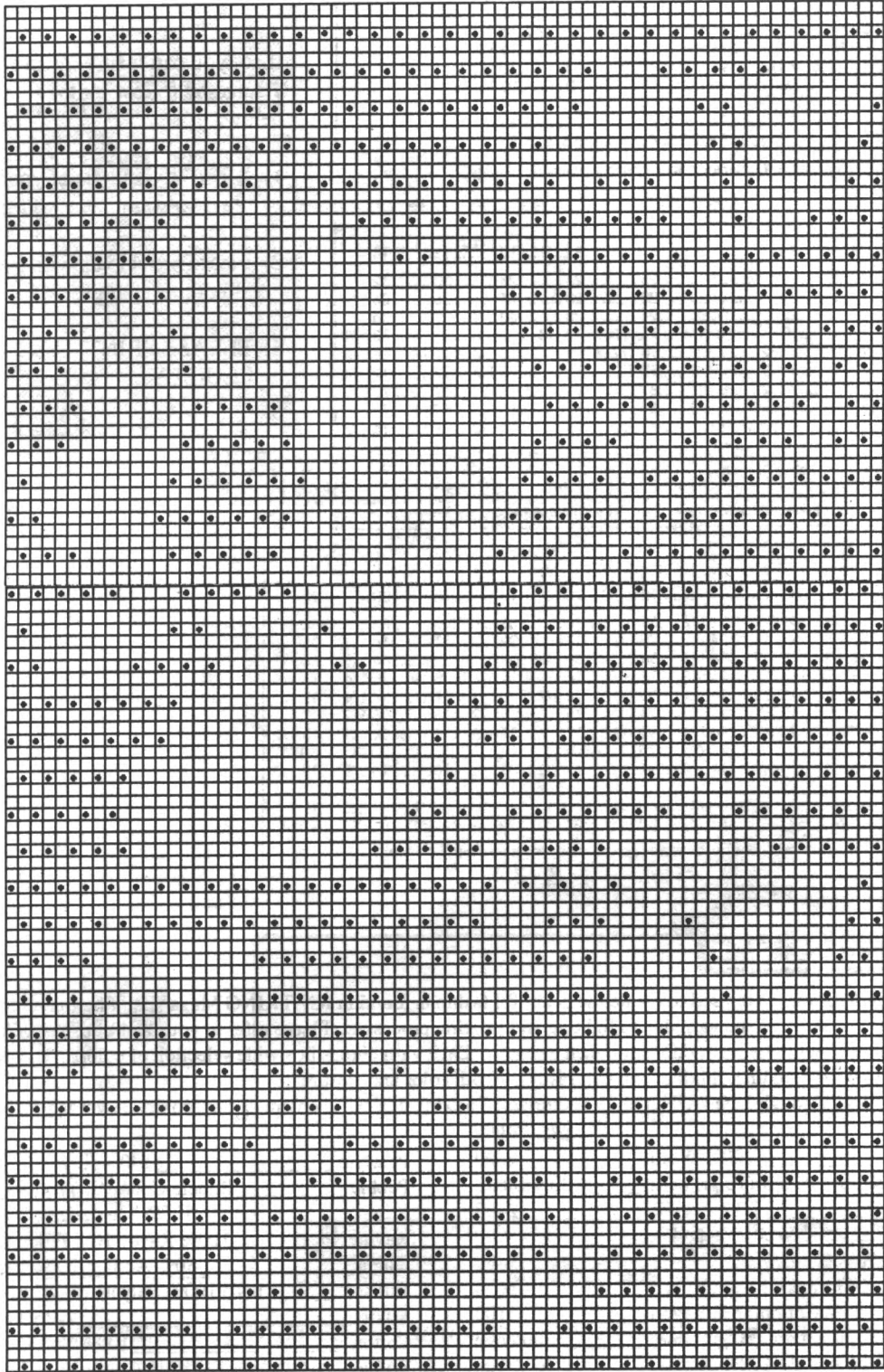
NECKBAND Make 2



FINISHING:

Close all seams. Attach neckband starting at center back and sew to form a V at base of V.

#141 Lace Pattern
70 Sts. x 111 Rows



KK Magazine Disk: Track 13; Pattern 901

Knitkng Sizing Chart

MENS						
Size	34	36	38	40	42	44
Chest	34	36	38	40	42	44
Waist	30	32	34	36	38	40
Hip	35	37	39	41	43	45
Neck	15 1/2	16	16 1/2	17	17 1/2	17 1/2
Back Waist Length	18	18 1/2	19	19 1/2	20	21
Shoulder to Shoulder	15 1/2	16	16 1/2	17	17 1/2	18
Upper Arm Circumference	9 5/8	10 3/8	11 1/8	11 7/8	12 5/8	13 3/8
Armhole Depth	8	8 1/2	9	9 1/2	10	10 1/2
Sleeve Length	19	19 1/2	19 1/2	20	20	20 1/2
Under Arm						
Wrist	6 1/2	7	7	7	7 1/2	8
Hip Depth	8 3/8	8 1/2	8 5/8	8 3/4	8 3/4	9

These are actual body sizes. Proper ease allowance is necessary as determined by the style.

CHILDREN						
Size	12 mo	2 yr	4	6	8	10
Chest	19	21	23	25	27	28
Waist	19	20	21	22	23	24
Hip	20	22	24	26	28	30
Neck	9 1/4	10	10 3/4	11 1/2	12 1/8	12 5/8
Back Waist Length	7	8 1/2	9 1/2	10 1/2	12	12 3/4
Shoulder to Shoulder	7 1/2	8 1/2	9 1/2	10	11	11 1/2
Upper Arm Circumference	7	7 1/2	8	8 1/2	9	9 1/2
Armhole Depth	3 1/2	4	4 1/2	5 1/4	6	6 1/2
Sleeve Length	6	8 1/2	10	11 1/2	13	14 1/2
Under Arm						
Wrist	5	5 1/4	5 1/2	5 1/2	5 3/4	6
Hip Depth	5	5 1/4	5 1/2	5 1/2	5 3/4	6 1/4

These are actual body sizes. Proper ease allowance is necessary as determined by the style.

WOMENS						
Size	6	8	10	12	14	16
Bust	30 1/2	31 1/2	32 1/2	34	36	38
Waist	22	23	24	25 1/2	27	29
Hip	32 1/2	33 1/2	34 1/2	36	38	40
Neck	13 1/8	13 3/8	13 5/8	14	14 3/8	14 3/4
Back Waist Length	15 1/2	15 3/4	16	16 1/4	16 1/2	16 3/4
Shoulder to Shoulder	13 1/2	13 1/2	14	14 1/2	15	15 1/2
Upper Arm Circumference	9 3/4	9 3/4	10 1/4	10 1/2	11	11 1/2
Armhole Depth	7	7	7 1/2	7 1/2	8	8
Sleeve Length	16 1/2	16 1/2	17 1/2	17 1/2	18	18
Under Arm						
Wrist	6	6	6 1/4	6 1/4	6 1/2	6 1/2
Hip Depth	7 3/4	8	8 1/4	8 1/2	8 3/4	9

These are actual body sizes. Proper ease allowance is necessary as determined by the style.

IS YOUR ADDRESS CHANGING?

If so, you can insure the proper handling of this change by following the three suggestions below:

- 1) When advising us of your new address, please also indicate your old address.
- 2) Please provide us with six weeks notice to affect this change.
- 3) PLEASE PRINT ALL INFORMATION LEGIBLY.



The finest quality KNITKING yarns are used to create the beautiful fashions found in KNITKING Magazine. Photographic representations may not accurately reflect the true color of the yarn due to lighting and printing processes. Please refer to your Knitkng Yarn Color Book for actual colors. Kit prices are located with the instructions for each garment. Each yarn comes in a wide selection of colors. The different types of yarns have been selected to allow for blending, mixing, and contrasting—both color and texture.


Yarn Color Book is available through KNITKING or an authorized Knitkng dealer. Content and approximate yardage of each yarn is included in

	<u>Yds./Pound</u>	<u>Yds./Pound</u>
Alpine	100% Wool	1600
Angora	100% Rabbit Hair (10 gr. ball)	33 yds/ball
Acrylite	2/12 Acrylic	2400
Caprinae	78% Mohair/13% Wool/9% Nylon	980
Glace	100% Slinky Bright Rayon	2400
Glace Plus	100% Slinky Bright Rayon	1650
Ice Cream	54% Cotton/46% Rayon	2100
Lumiarn	Thin Metallic Yarn (50 gr. cone)	1200/cone
Mini Acrylite	2/24 Weight 100% Acrylic	3600
Mini Pebble	100% Rayon Slub Filler Yarn	3350
Mirage	100% 4-Ply Worsted Acrylic	1000
Night Music	Polyester Thread w/Metallic Twist	115/ball
Panache	100% 3-ply Acrylic	2400
Pearlyte	100% Rayon Boucle	2200
Pebble	Boucle Cotton/Acrylic/Rayon	700
Primo	100% Mercerized Cotton	2500
Rayon Nubs	100% Rayon Nub Filler Yarn	5500
Roma	80% Acrilan/20% Antron	2600
Rubane	(50 gr ball) 100% Polyamid 1/8" ribbon	82/ball
Silkie	2-Ply Orlon	2100
Softon	100% Soft Cotton	2000
Sorbet	54% Cotton/46% Rayon	2200
Starlite	Acrylic w/Metallic Thread	2400
Venetia	70% Wool/30% Rayon	2400
Woolana	100% 2/12 Merino Wool	3000
Knit-in Elastic	79% Nylon/21% Elastic	430/spool

Yarn Color Book: \$25.00 + Shipping and Handling

Order your Knitkng kits in the color of your choice from Knitkng color cards. Kit and yarn prices subject to change without notice.

**Announcing the finest selection of quality yarns—
with simply the best prices and support
available anywhere...**

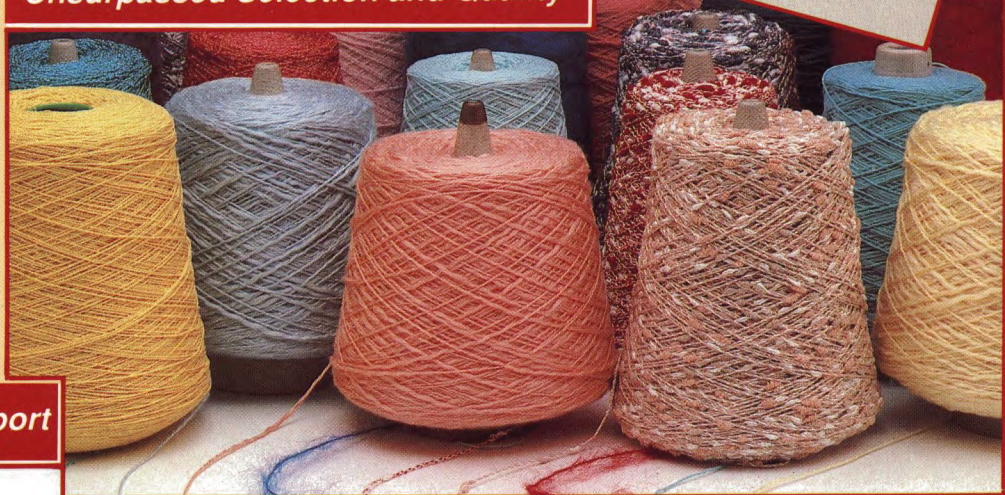
 **yarns by
knitking**
The First Name in Machine Knitting



**Exciting New Knitking Yarn Book-Only \$25.00
The perfect way to select your yarns and colors**

Unsurpassed Selection and Quality

With over 25 different yarns and over 250 different colors in the Knitking line, you have a variety to choose from for any and all needs. The yarns include a wide selection of natural fibers and blends, along with acrylics and acrylic blends in varying weights. There are fine filler yarns for blending, elastic for knitting in and a wide array of colors and textures in all types.



Unsurpassed Support



No yarn company in the world can match Knitking's support for its customers. For 25 years, Knitking has published the internationally-acclaimed **Knitking Magazine**. Each quarterly full-color issue contains at least 20 original fashions **made exclusively with Knitking Yarns**, complete with clear instructions for machine knitting.

And At Prices Well Below The Competition

Order the exciting Knitking Yarn Book today for only \$25.00 from your local Knitking Dealer, or if you do not have one in your area, from:



1128 Crenshaw Blvd., Los Angeles, CA 90019 • Phone (213) 938-2077

133

A NEW CONCEPT

A Man's Pullover that changes from a basic Fairisle design when you add color accents on sleeves and lower edge of sweater. The separate trim is sewn down the center of finished sleeve from top of sleeve band to neckline and forms a mock saddle shoulder appearance. Knit it with Silkie, Venetia and Mini Pebble on standard Punch Card or Electronic machine with Ribber.



ENCHANTING

Don't try to resist this delightfully feminine Pullover. It's easy to knit in Stockinette with Lace borders, Collar and picot trim edges. You can leave the sweater plain, or enhance the garment using the DecoKing Embellishment machine. Scatter original holiday pine and ornament designs on the front, back and sleeves. Knit it on a Standard gauge Punch Card or Electronic machine with Lacemaker using Roma and Mini Acrylite.



135

HOLIDAY DRAMA

A stunning Lace Cardigan is the perfect eye-catching cover-up to wear over a simple sheath. Knit it on a Bulky machine using hand transfers to form the all-over lace eyelets. You will be surprised to find it an easy and quick technique and be more than delighted with the results. Crochet around all edges adding buttonholes and pretty buttons. Knit it with our Rubane and feel elegant.





136

A DESIGNER TOUCH

Do knit this lovely Pullover with its choice of Sleeves. Make it in Stockinette stitch with ribbed waistband then trim the Organza Sleeves with Ribbon and Sequins applied with the DecoKing machine for a three dimensional effect.

If you prefer, you can knit the sleeves and create a trim yourself.

Knit it on a Bulky gauge machine with Ribber. The Yarns are Venetia and Glace.

137

SEASONAL CHANGE

A smart and practical two-piece Dress in a holiday mood. The Skirt is Stockinette stitch with a contrasting hemline. The pretty Top is Stockinette stitch with attractive Fairisle border designs at lower edge then repeated on the sleeves. The sleeve bands and Collar are ribbed. Knit it on the Punch Card or Compuknit/Bulky machine with Ribber. The Yarns are Starlite, Softon and Alpine.



138

SUGAR AND SPICE

Everything is nice and your little girl will adore wearing this pretty Dress. The Lace Skirt is full, is knitted sideways and attached to a Fairisle body. A Lace Scarf, draped over the shoulders is held in place with a knitted Rose. Knit it with Panache on a standard gauge Punch Card or Electronic machine with Lace Carriage.



139

EXCITING DETAILS

The perfect Jacket
to enhance with your
own creative ideas.

Easy to knit in
Stockinette stitch using
black Alpine yarn, trim
it on the DecoKing
Embellishment
machine to match any
fabric design with
contrasting yarns. You
can add wooden beads
for additional trim
highlights as shown in
Picture. Knit it on any
Bulky gauge knitter.





140

GREAT TEXTURE

Knit the body and sleeves of this colorful Pullover in a 1 x 1 Tuck stitch Pattern with a Fern Lace Yoke in bright colors. Weave Ribbon through the holes in the Fern Lace for more color accents. The bands are 2 x 2 Ribbing. Knit it with Alpine on the Punch Card or Compuknit Bulky machine with Ribber.

141

FABULOUS LACE

Flowers and Leaf Motifs are designed into the lace background of this lovely Pullover. You will enjoy the knitting and will proudly wear it to show off your handiwork. The bands are a unique Racking Pattern and resemble a hand crochet finish.

Knit it on the Compuknit III or IV with Ribbing Attachment. The Yarn is Primo.



Turn Something Ordinary ...into Something Beautiful with the DecoKing II® from Knitking

Enter a whole new world of creativity and simplicity with the revolutionary new DecoKing II by Knitking.

With Garments...

Start with a basic garment and turn it into an incredible, one-of-a-kind expensive-looking fashion statement. Create your own appliques or embellish plain fabric with decorative trims in lace, fabric, ribbon, yarn metallic threads and more! Let your imagination run wild!



Enhance a design in the fabric, follow any pattern or create a new design.



Beyond Garments...

Fashion embroidery, decorative quilting and hand crafts are all a snap with the DecoKing II. In fact, consider a home business of embellishing sweaters, designing wallcoverings, or making decorative sweatshirts, T-shirts, jackets with logos, denims and much more!

Create innovative textures and designs in minutes..

Buy It For
As Little As
\$15/Mo.



The Patented Process...

The DecoKing II allows the fabric to be moved by hand in any direction. A lock stitch prevents the yarn or trim from coming off the fabric, giving you 100% coverage on top. This differs from other embroidery machines which puncture yarn through to the back of the fabric.

It's incredibly easy to use. You'll be comfortable in a matter of minutes.

Garments designed using the DecoKing II and Knitking Knitting Machines are featured in the internationally-acclaimed Knitking Magazine.



DecoKing II® Contact Knitking today for the dealer nearest you.
Call Toll Free: 1-800-962-6446

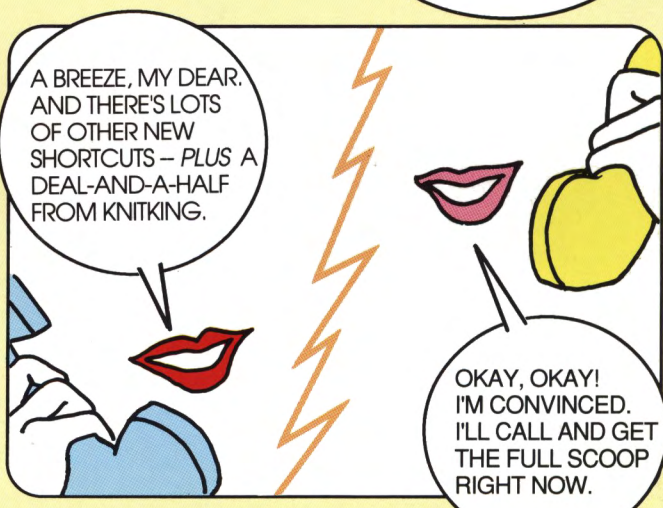
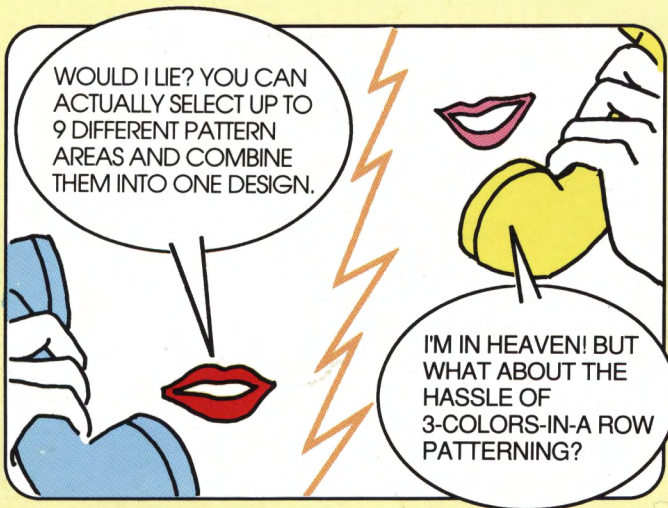
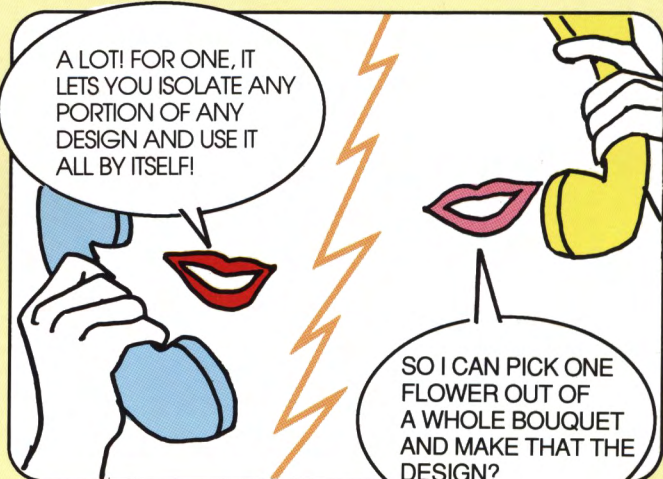
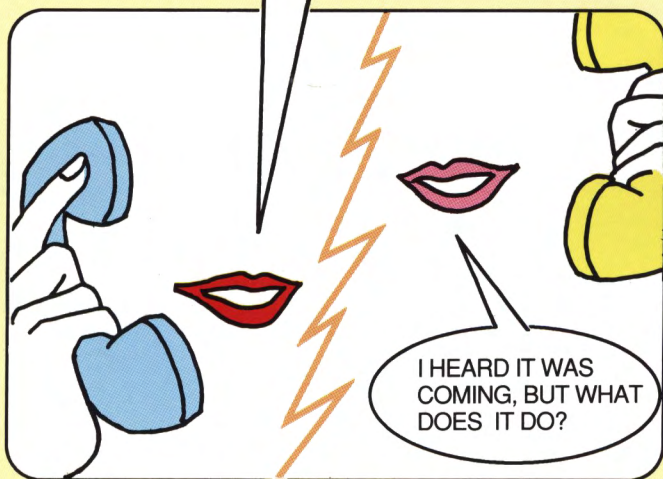
The new DecoKing II is affordable and easy to use.

knitking

1128 Crenshaw Blvd., Los Angeles, CA 90019

Dealer Inquiries Welcome

HAVE YOU HEARD ABOUT THE NEW COMPUKNIT 5?



INCREDIBLE SAVINGS OFFER ON THE COMPUKNIT 5 -- LIMITED TIME ONLY!

\$700 OFF by trading in any CompuKnit IV or KH 940

\$500 OFF by trading in any other brand, model or age knitting machine.

PLUS INTRODUCTORY DISCOUNT:

Whether you trade in or not, the CompuKnit V will be specially priced at \$1,729.95 from a list price of \$1,875.00 during the introductory period. (Offer applies to this promotion only).

YOU GET ALL THIS WITH COMPUKNIT V:

- 615 built-in patterns (60 more than the CompuKnit III or IV).
- Pattern framing, allowing you to isolate and use any part of a design.
- Pattern relocation, allowing you to select up to nine different pattern areas and combine them into a design in any way you choose.
- Pattern rotation, pattern reflection and other variation buttons for thousands of creative designs.
- New, easier, three-colors-in-a-row patterning with automatic color separating and color change instructions.
- Supports accessories that work with the CompuKnit IV.
- Ability to transfer disk and DesignaKnit patterns via pattern design cartridge.
- Newest and most advanced knitting machine with all the latest innovative features.

CALL NOW 1-800-962-6446

for the name of your nearest CompuKnit V dealer or for more information.

knitking
The First Name In Machine Knitting



THE NEW COMPUKNIT V