



**brother**  
**Fashion Knits**

*BK101*



# brother

Fashion Knits







*BK104*

*BK105*







This magazine aims at introducing to overseas users of Brother knitting machine some pieces of fashionable knitwears extracted from our Japanese magazine "Hello! Knit".

\* With regard to pattern Nos. BK101 to BK105, instructions are given so that you can produce those knitwears with the aid of a Knit-leader and without the aid of a Knit-leader. The figures in drawing show the measurement of the finished garment in centimeter. The figures in parenthesis show the number of stitches and the number of rows.

\* Pattern Nos. BK106 to BK115 are explained so that you can produce them using a Knit-leader and Home Knitting Pattern introduced at page 13. With a Knit-leader, you can enjoy producing those garments easily by simply tracing a pattern of your measurement onto a sheet, without bothering about kinds of yarn, thickness of yarn, stitch pattern, gauge, etc. Also, detailed explanation given in Home Knitting Pattern will be useful when you make those garments.

We hope that this magazine will be of help to you when you enjoy knitting with Brother knitting machine.

## Table of contents

	Page
BK101 Woman's Jacket .....	6
BK102 Woman's Off-the shoulder .....	7
BK103 Woman's Cardigan .....	8
BK104 Woman's Pullover .....	9
BK105 Woman's Pullover .....	10
<b>BK106 Woman's Two-piece</b> (Application of Brother Home-Knitting pattern No. 101 and 303) ..	11
<b>BK107 Woman's Two-piece</b> (Application of Brother Home-Knitting Pattern No. 302 and 303) ..	12
<b>BK108 Man's Pullover (Long sleeve)</b> (Application of Brother Home-Knitting pattern No. 202) .....	14
<b>BK109 Man's Pullover (Short sleeve)</b> (Application of Brother Home-Knitting pattern No. 202) .....	15
<b>BK110 Man's Cardigan</b> (Application of Brother Home-Knitting pattern No. 103) .....	16
<b>BK111, BK112, BK113 Woman's Pullover</b> (Application of Brother Home-Knitting pattern No. 201) .....	17~18
<b>BK114 Man's Jacket</b> (Application of Brother Home-Knitting pattern No. 103) .....	19
<b>BK115 Child's One-piece</b> (Application of Brother Home-Knitting pattern No. 104) .....	20

### REMARKS:

The materials, sizes, and tension dial (T.D.) number given for each patterns are for making the garments shown in the picture. Materials and T.D. number may be changed according to your preference and thickness of the yarn.

### SYMBOLS USED

Symbols	Explanation	Symbols	Explanation
	Actual size of knitting		Reference marks
	Symmetrical line (L & R)		Center line
	Folding line		Gather
	Ribbing		Indication line
	Direction of knitting		Button hole
	Chain stitch		Single crochet
	Work on purl side	$2 \sim 1 > 5$	Increase 1 st. every 2 Rs. 5 times by partial knitting
$2 \sim 1 - 5$	Decreasing 1 st. every 2 Rs. 5 times	$2 \sim 1 + 5$	Increasing 1 st. every 2 Rs. 5 times



# BK101 Woman's Jacket

## Materials; Midium yarn

Off-white	320 g
Black	320 g
Blue	160 g
Black	75 g
Brown	75 g

## Tension & Gauge

Bodies, sleeves & Border	T.D. 7
40 sts.	12.5 cm
60 rs.	14.5 cm

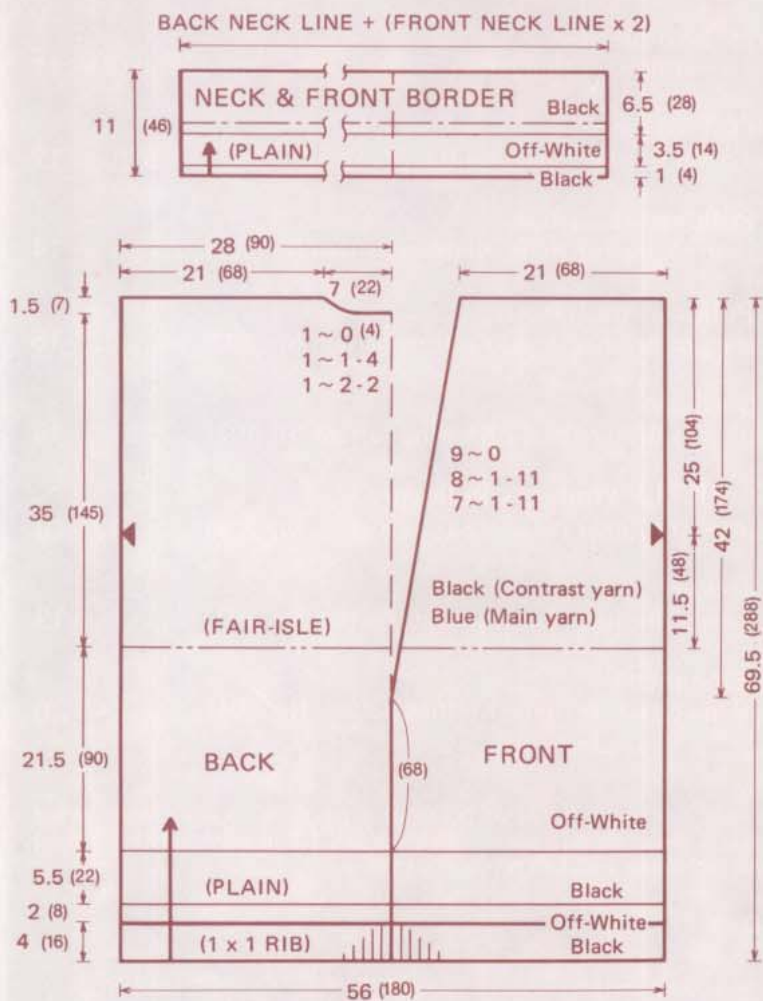
## Size of Finished Garment

Full length at back	68 cm
Width of a garment	56 cm

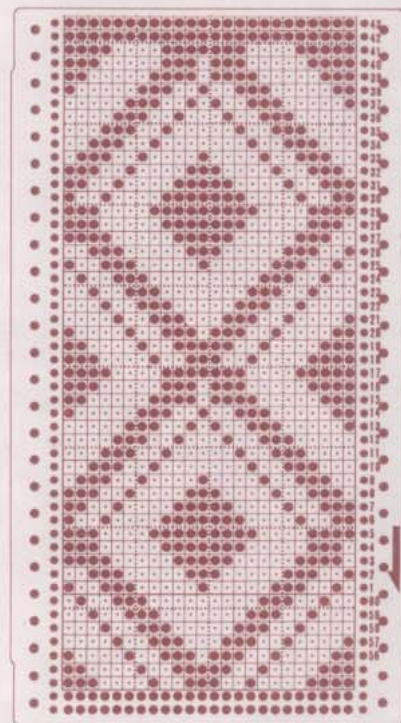
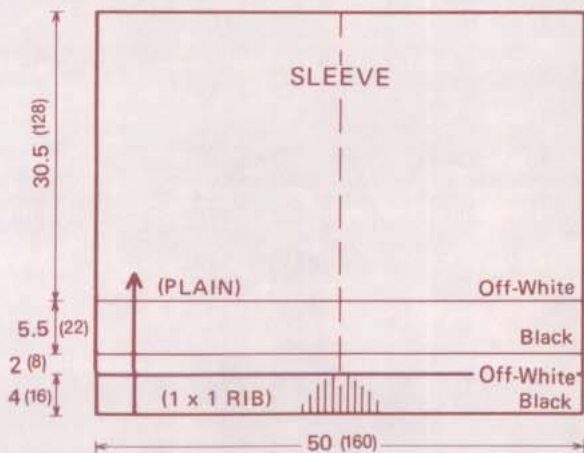
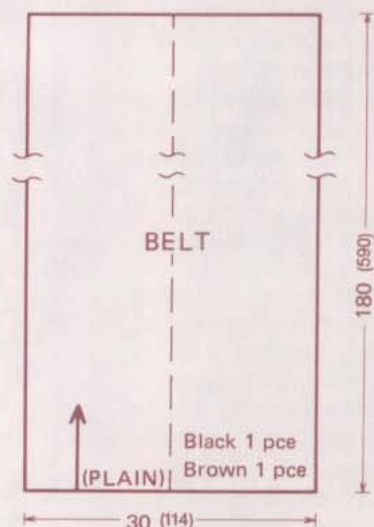


## (Notes)

Knit one pce. each of belt in brown color and black color respectively.



Belts  
 T.D. 5  
 40 sts. 10.5 cm  
 60 rs. 18.4 cm



# BK102 Woman's Off-the-shoulder

**Materials; Very fine yarn**  
 Salmon-pink . . . . . 200 g  
 Elastic band of 0.5cm wide (1m)

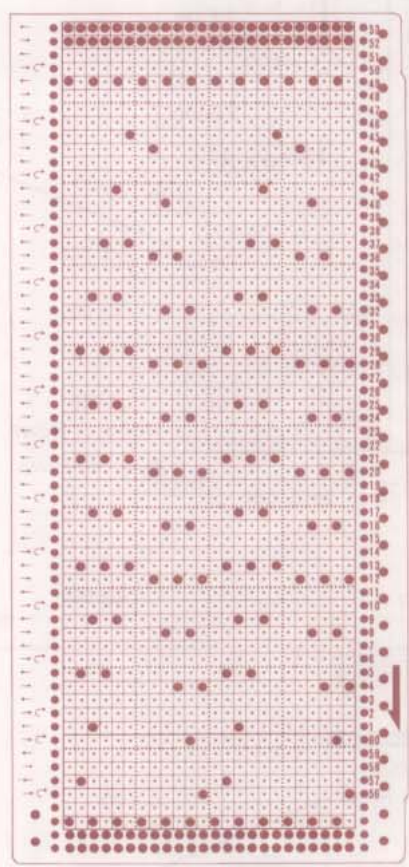
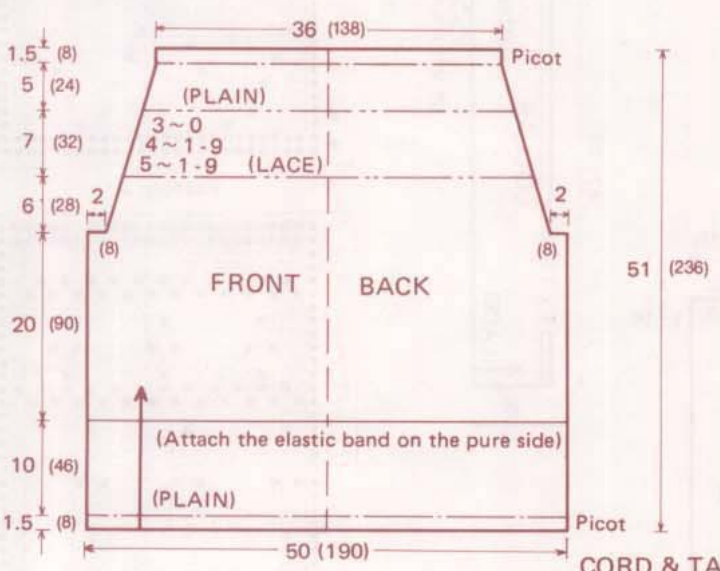
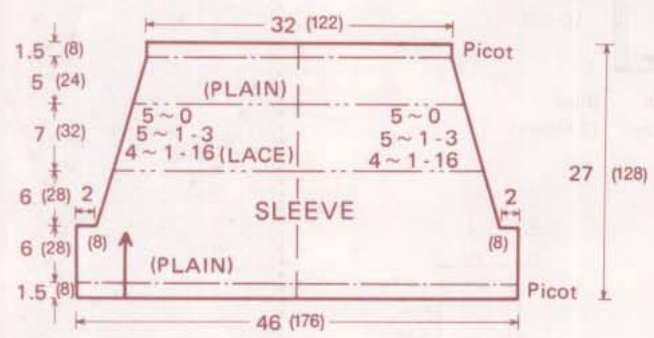
**Tension & Gauge**  
 T.D. 4  
 40 sts. . . . . 10.5 cm  
 60 rs. . . . . 13.0 cm

**Size of Finished Garment**  
 Full length at back . . . . 48 cm  
 Bust . . . . . 100 cm



**(Notes)**

Pass the elastic band through the folding part of the cuffs. As for the folding part of the neck line, pass the cord and then attach the tassels at the both ends of the cord.



**CORD & TASSEL**





# BK103 Woman's Cardigan

## Materials; Finer yarn

Pink ..... 240 g  
 Blue ..... 40 g  
 White ..... 40 g  
 9 buttons, 1 cm in diameter

## Tension & Gauge

T.D. 8.2  
 40 sts. .... 15.4 cm  
 60 rs. .... 18.7 cm

## Size of Finished Garment

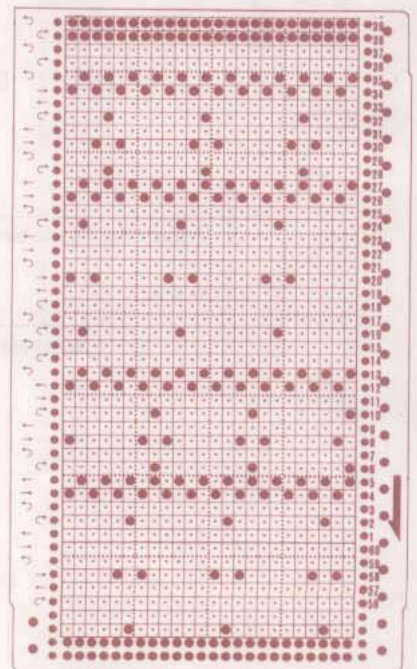
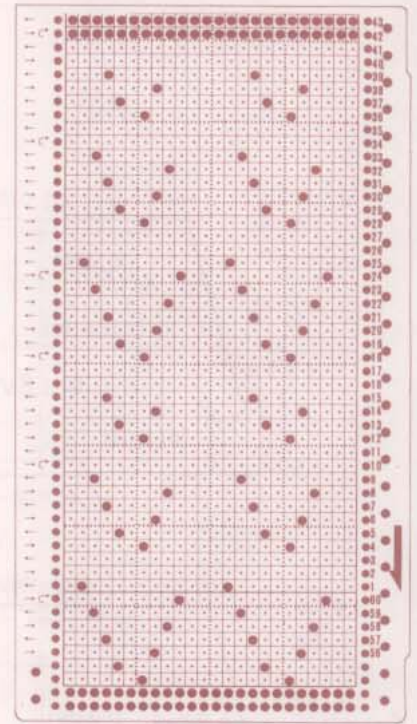
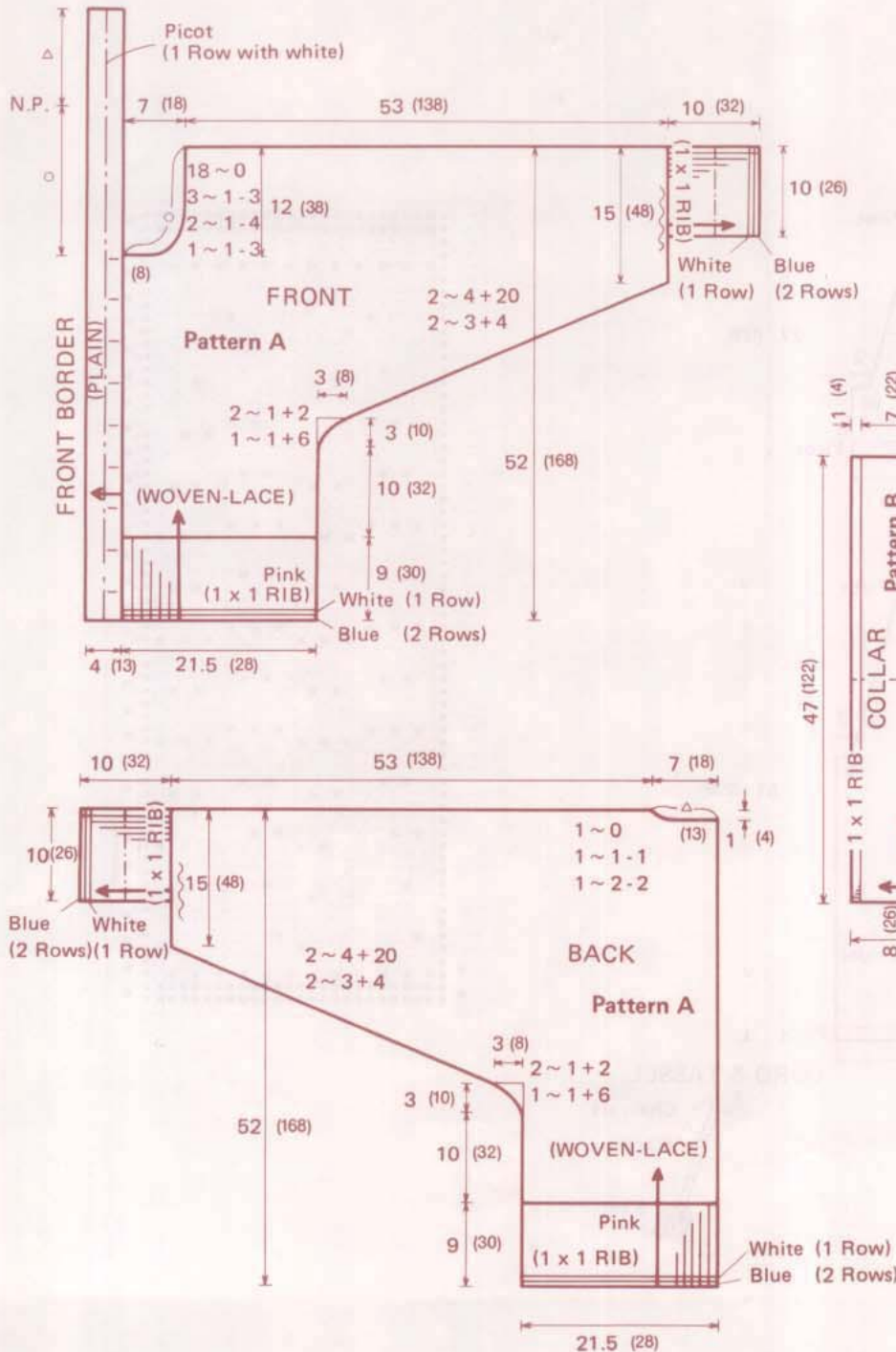
Full length at back .... 51 cm  
 Width of a garment .... 43 cm



### (Notes)

Knit front and back bodies in pink color, using the white yarn and blue yarn by turns for the weaving.

Knitting the collar, adjusting the Tension Dial (T.D.) number.





# BK104 Woman's Pullover

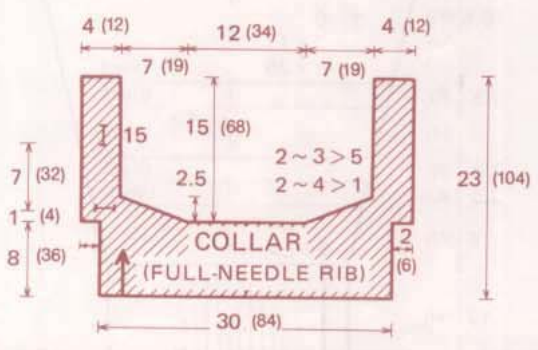
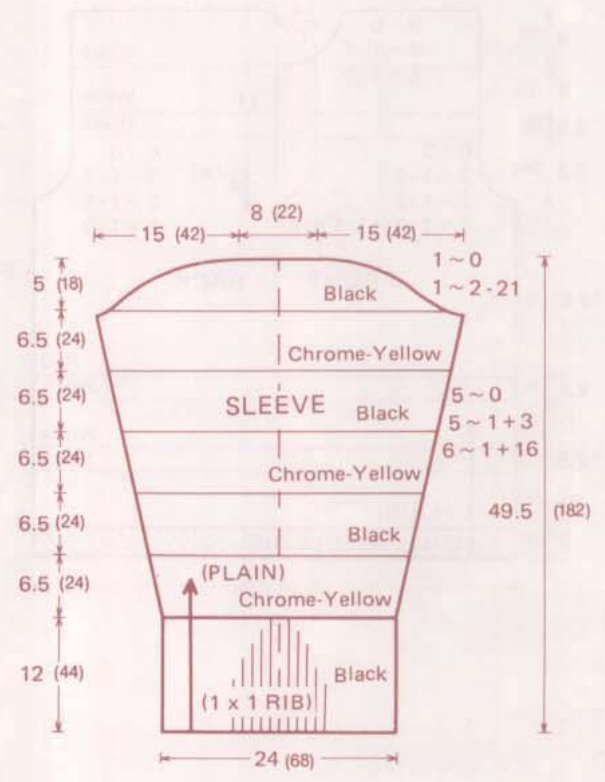
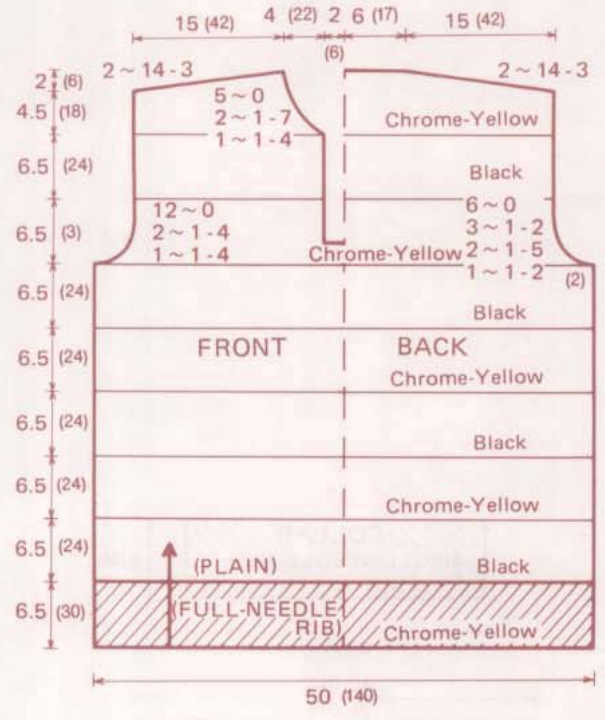
**Materials; Thicker yarn**  
 Chrome yellow . . . . . 250 g  
 Black . . . . . 225 g  
 White . . . . . 50 g  
 2 buttons, 2 cm in diameter

**Tension & Gauge**  
 Plain  
 T.D. 6  
 40 sts. . . . . 14.3 cm  
 60 rs. . . . . 16.4 cm  
 Full-needle rib  
 T.D. 6  
 40 sts. . . . . 14.3 cm  
 60 rs. . . . . 13.4 cm

**Size of Finished Garment**  
 Full length at back . . . 56.5 cm  
 Bust . . . . . 100 cm



**(Notes)**  
 2 ~ 4 > 1 means decrease of 4 stitches every 2 rows 1 time by partial knitting.





# BK105 Woman's Pullover

## Materials: Thicker yarn

Red	260 g
Black	150 g
White	100 g

## Tension & Gauge

T.D.	6
40 sts.	14.3 cm
60 rs.	13.4 cm

## Size of Finished Garment

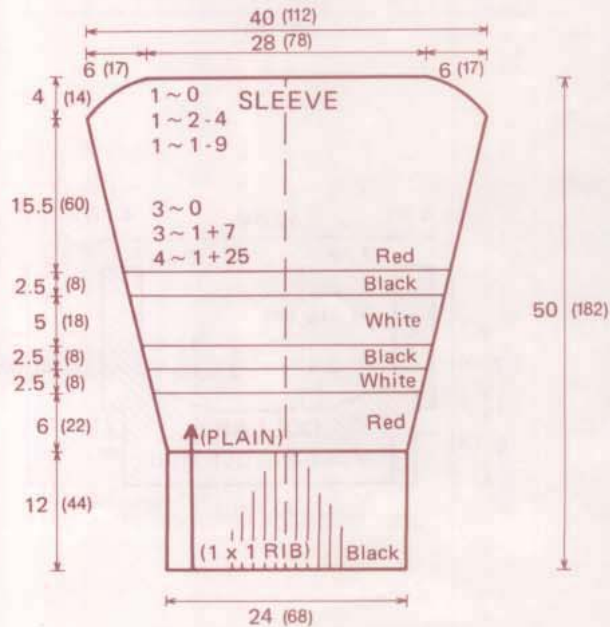
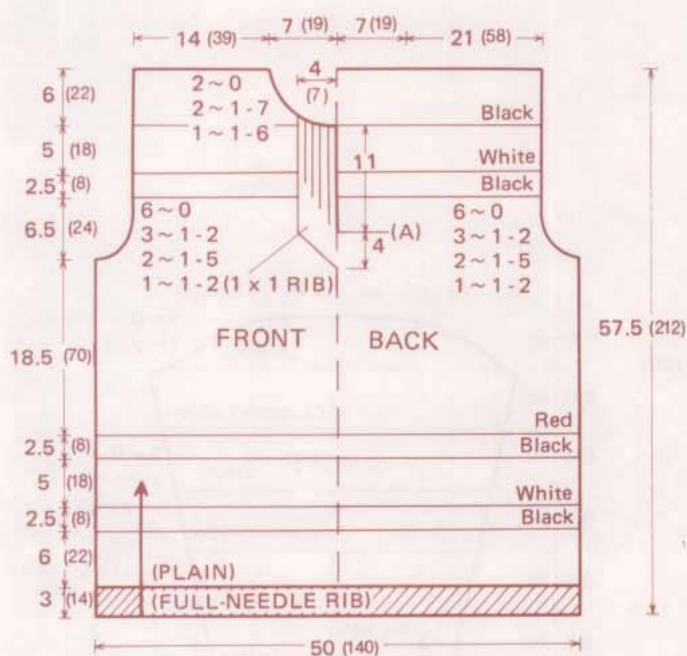
Full length at back	57.5 cm
Bust	100 cm



### (Notes)

For front, knit by point (A) indicated on the drawing, and then knit the right side and the left side separately.

For front border, make 1 x 1 Rib.





# BK106 Woman's Two-piece

(Application of Brother Home-Knitting pattern No. 101 and 303)

**Materials; Very fine yarn**

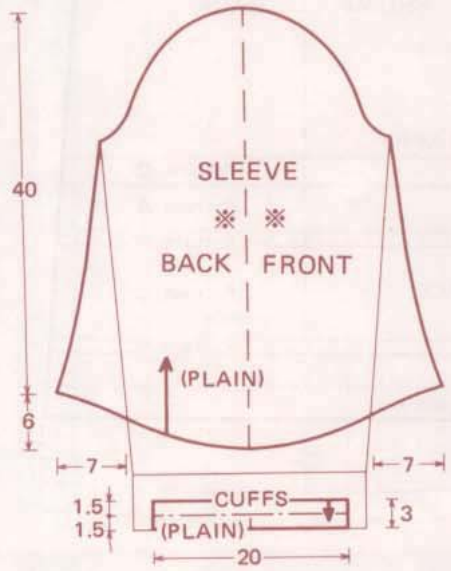
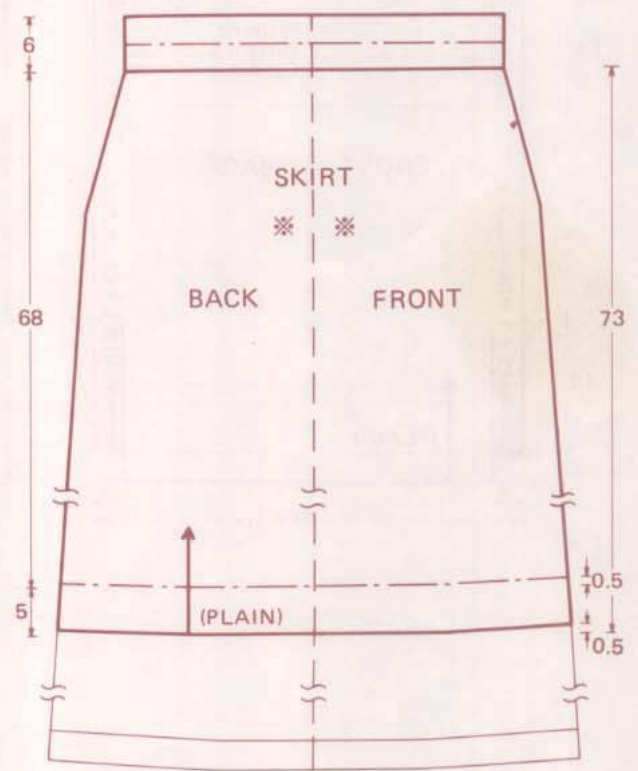
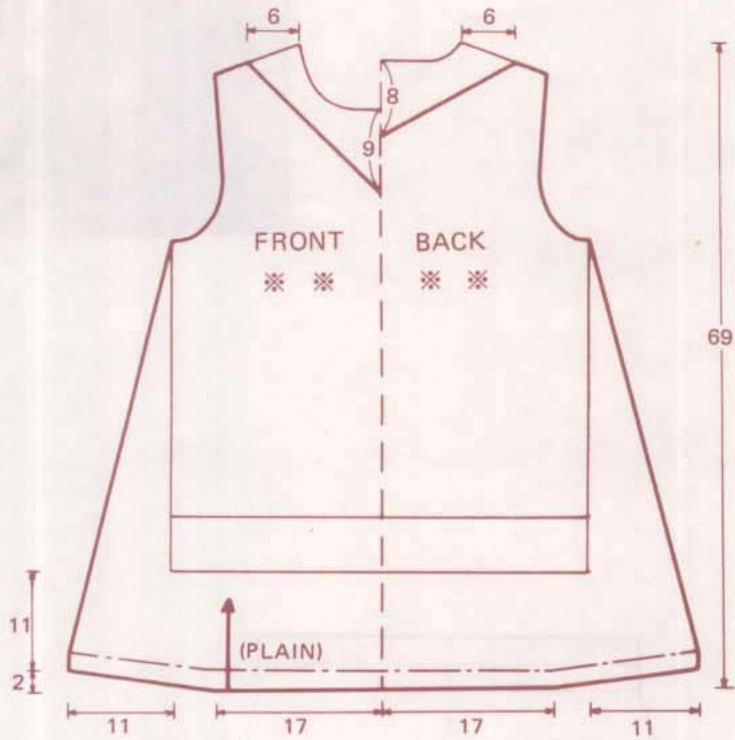
Top . . . . . White 1 . . . . . 150 g  
                   White 2 . . . . . 100 g  
 Skirt . . . . . White 1 . . . . . 330 g  
                   White 2 . . . . . 80 g  
 Fastener 1 pce. (20 cm)

**Tension & Gauge**

Top  
 T.D. 6.2  
 40 sts. . . . . 11.8 cm  
 60 rs. . . . . 13.8 cm

**Skirt**

T.D. 5.2  
 40 sts. . . . . 11.2 cm  
 60 rs. . . . . 17.7 cm



Patterns are drawn on the basis of size "S", but you can also make size "M" and size "L" in the same way as size "S".



# BK107 Woman's Two-piece

(Application of Brother Home-Knitting pattern No. 101 and 303)

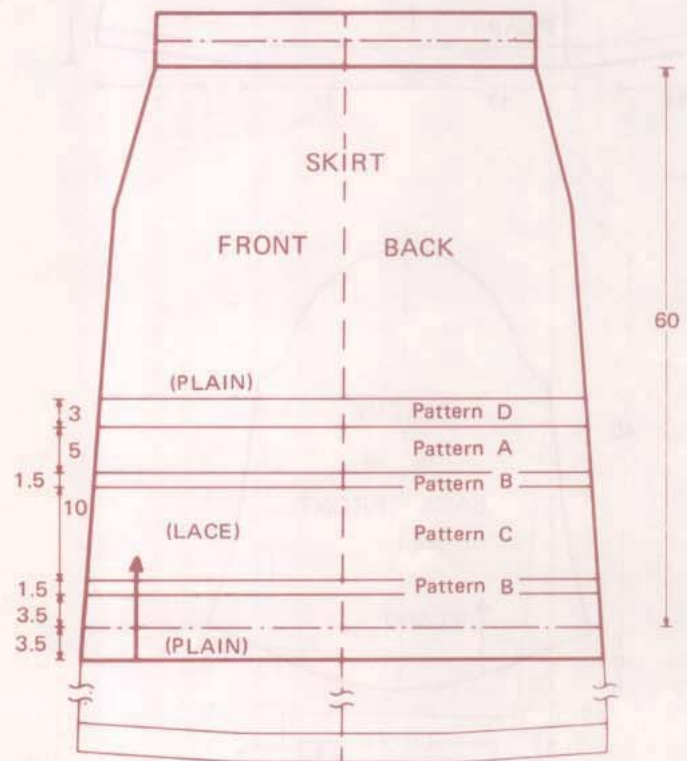
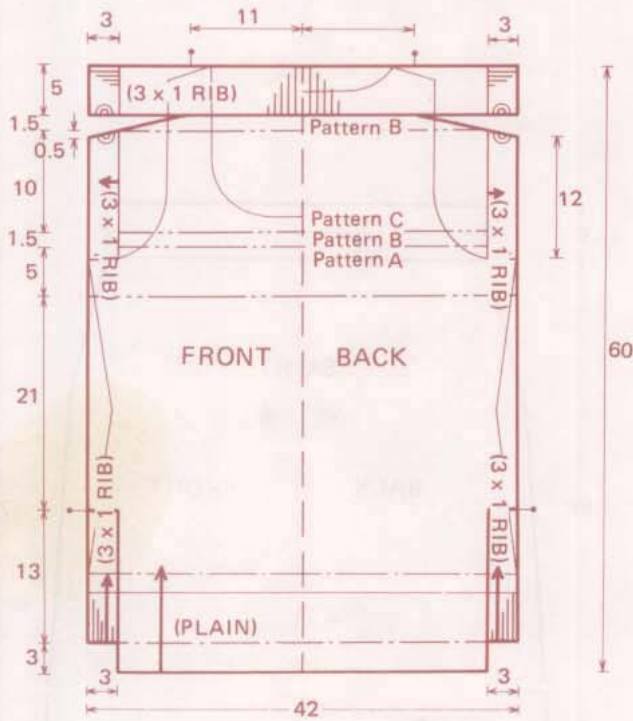
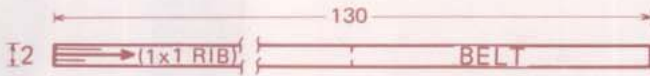
**Materials; finer yarn**

Green ..... 500 g  
 Elastic band of 3 cm wide (65 cm)  
 Lining ..... 130 cm

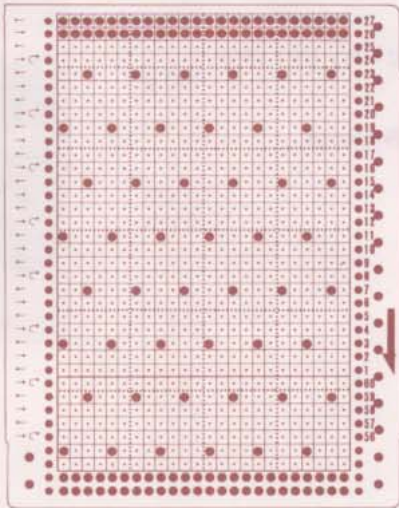
**Tension & Gauge**

T.D. 3.1  
 40 sts. .... 11.4 cm  
 60 rs. .... 13.4 cm

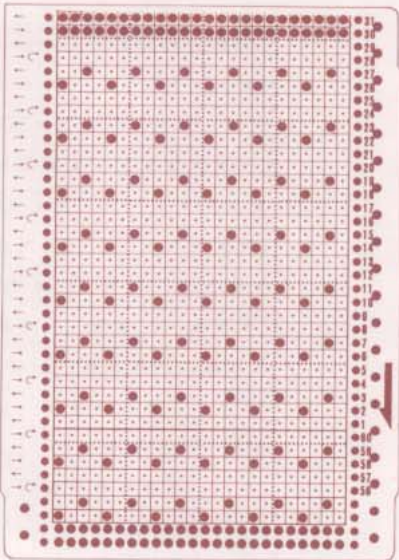
Patterns are drawn on the basis of size "S", but you can also make size "M" and size "L" in the same way as size "S".



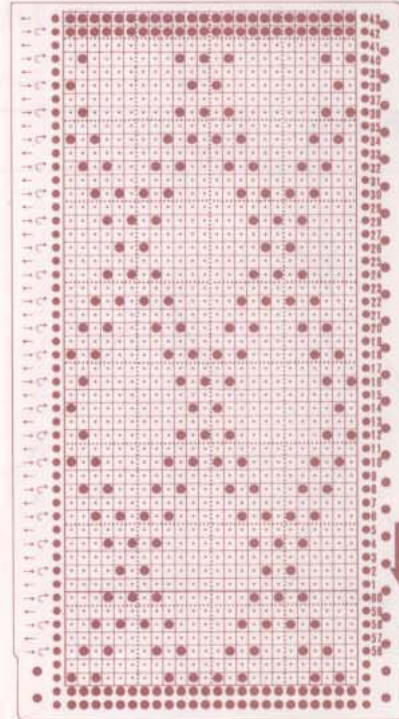




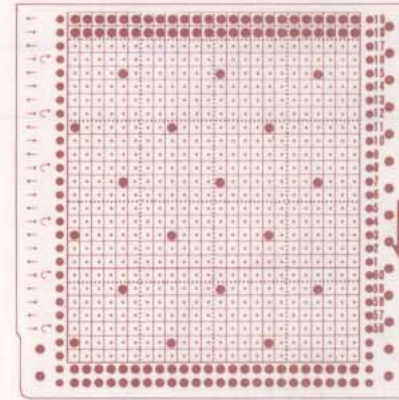
Pattern A



Pattern B



Pattern C



Pattern D



**HOME KNITTING PATTERN**

The Home Knitting Patterns, with contents ranging from simple pullovers and skirts to gorgeous dresses and evening sets, are now being published. Each pattern comes in three sizes and contains instructions for knitting.



**KNIT-LEADER KL-116**

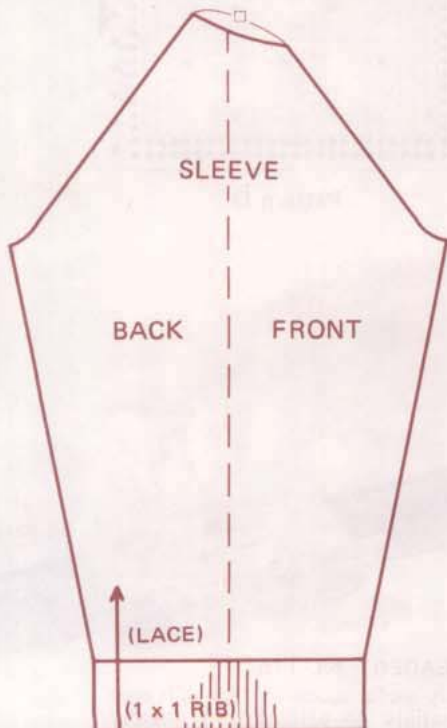
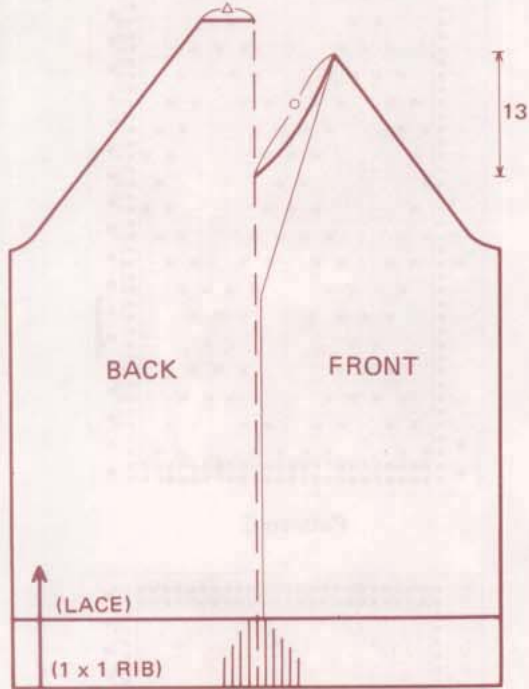
An extremely useful accessory that adds even greater versatility to patterning by simply translating shapes traced onto the graph sheet into knitting instructions.



# BK108 Man's Pullover

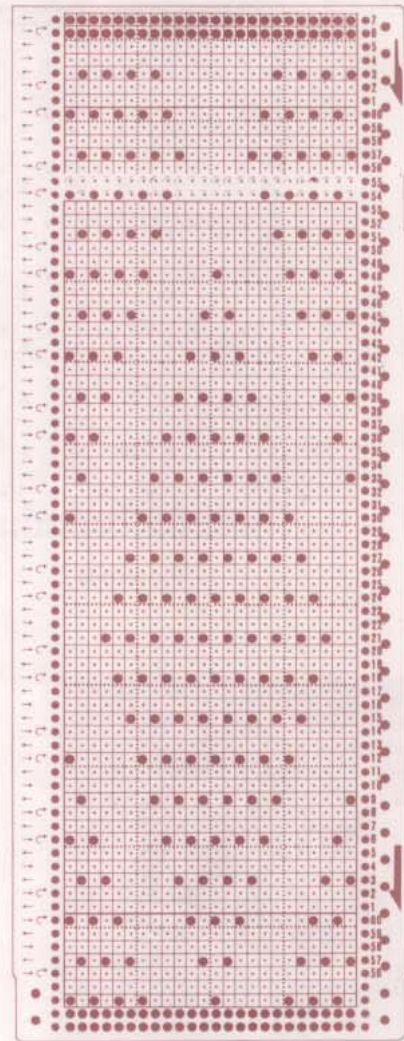
(Long sleeve)

(Application of Brother Home-Knitting pattern No. 202)



Materials; Very fine yarn  
Blue . . . . . 360 g

Tension & Gauge  
T.D. 8  
40 sts. . . . . 17.3 cm  
60 rs. . . . . 17.6 cm





# BK109 Man's Pullover

(Short sleeve)

(Application of Brother Home-Knitting pattern No. 202)

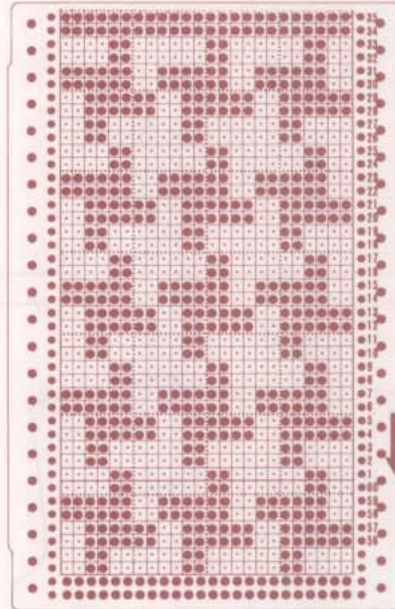
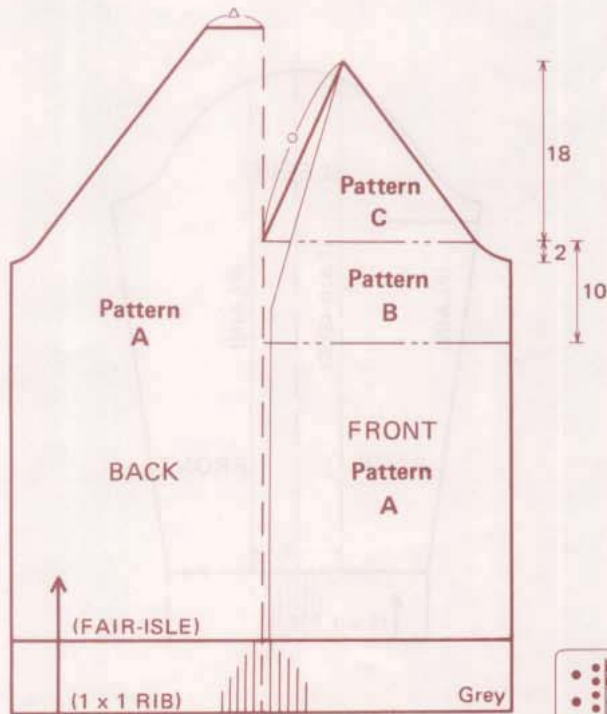
**Materials; Finer yarn**

Grey ..... 230 g  
Charcoal grey ..... 130 g

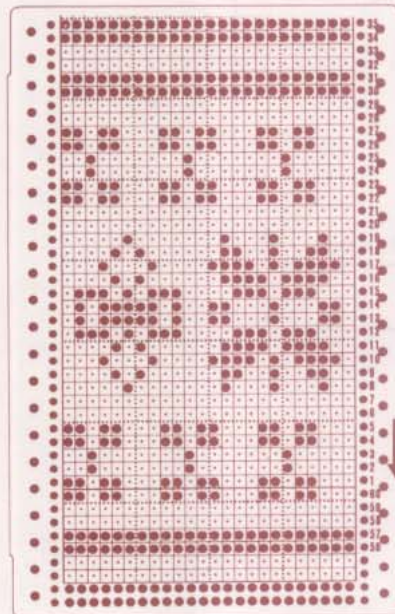
**Tension & Gauge**

Plain  
T.D. 8  
40 sts. .... 14.8 cm  
60 rs. .... 17.6 cm

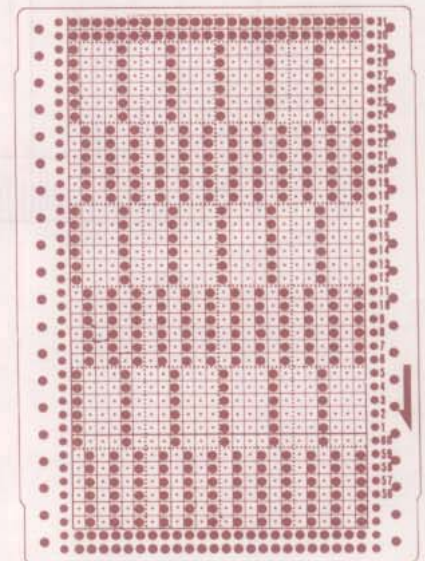
Fair-isle  
40 sts. .... 14.3 cm  
60 rs. .... 18.8 cm



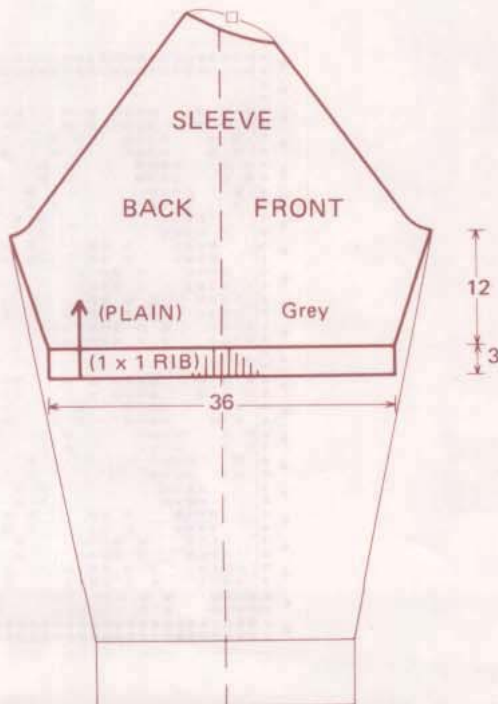
Pattern A



Pattern B



Pattern C





# BK110 Man's Cardigan

(Application of Brother Home-Knitting pattern No. 103)

**Materials; Midium yarn**

White ..... 380 g  
 Purple ..... 20 g  
 Blue ..... 20 g  
 5 buttons, 2 cm in diameter

**Tension & Gauge**

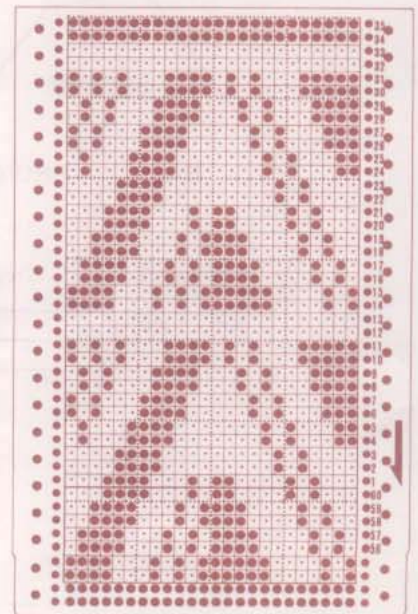
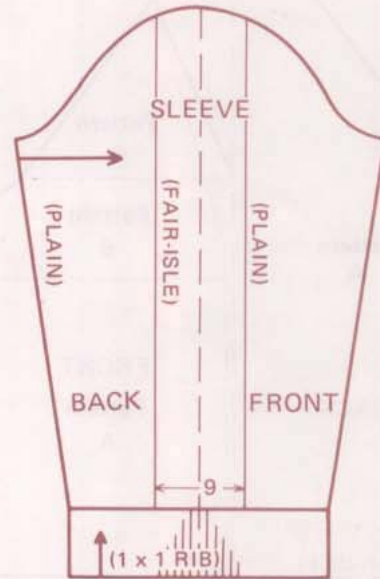
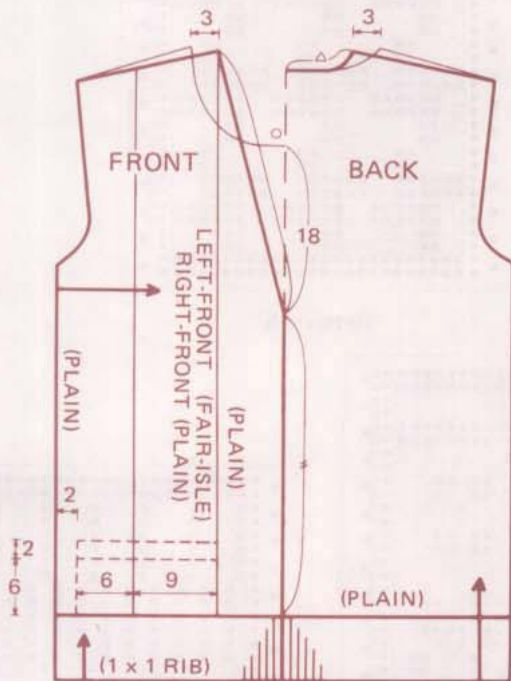
Plain  
 T.D. 5.2  
 40 sts. .... 12.5 cm  
 60 rs. .... 13.6 cm

Fair-isle  
 T.D. 7  
 40 sts. .... 12.5 cm  
 60 rs. .... 16.6 cm



**(Notes)**

As for the color of sleeves, reverse the color arrangement on the sleeve right side left.





# BK111 Woman's Pullover

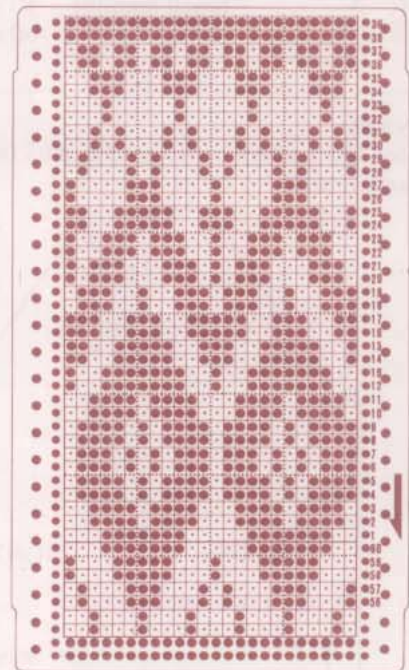
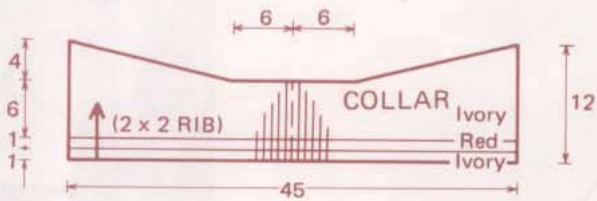
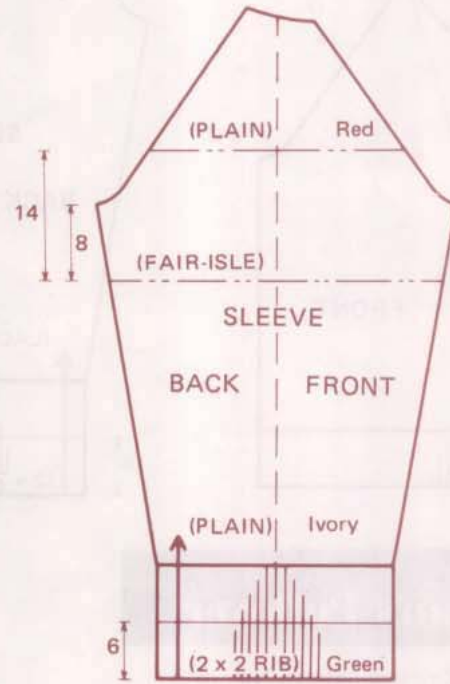
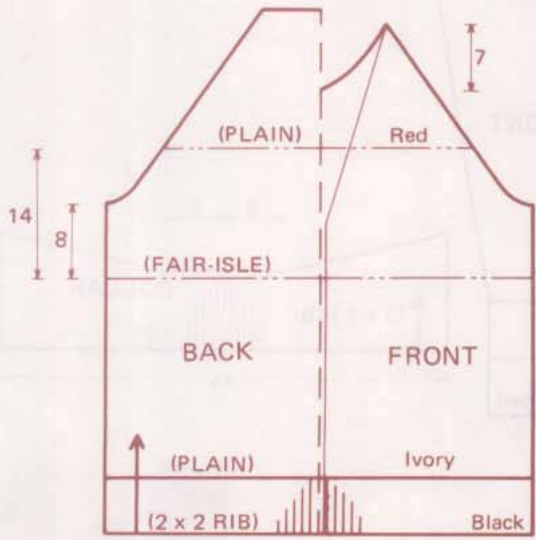
(Application of Brother Home-Knitting pattern No. 201)

**Materials; Thicker yarn**

Ivory	300 g
Black	130 g
Red	100 g
Green	70 g

**Tension & Gauge**

T.D. 9	
40 sts.	15.0 cm
60 rs.	16.6 cm





# BK112 Woman's Pullover

(Application of Brother Home-Knitting pattern No. 201)

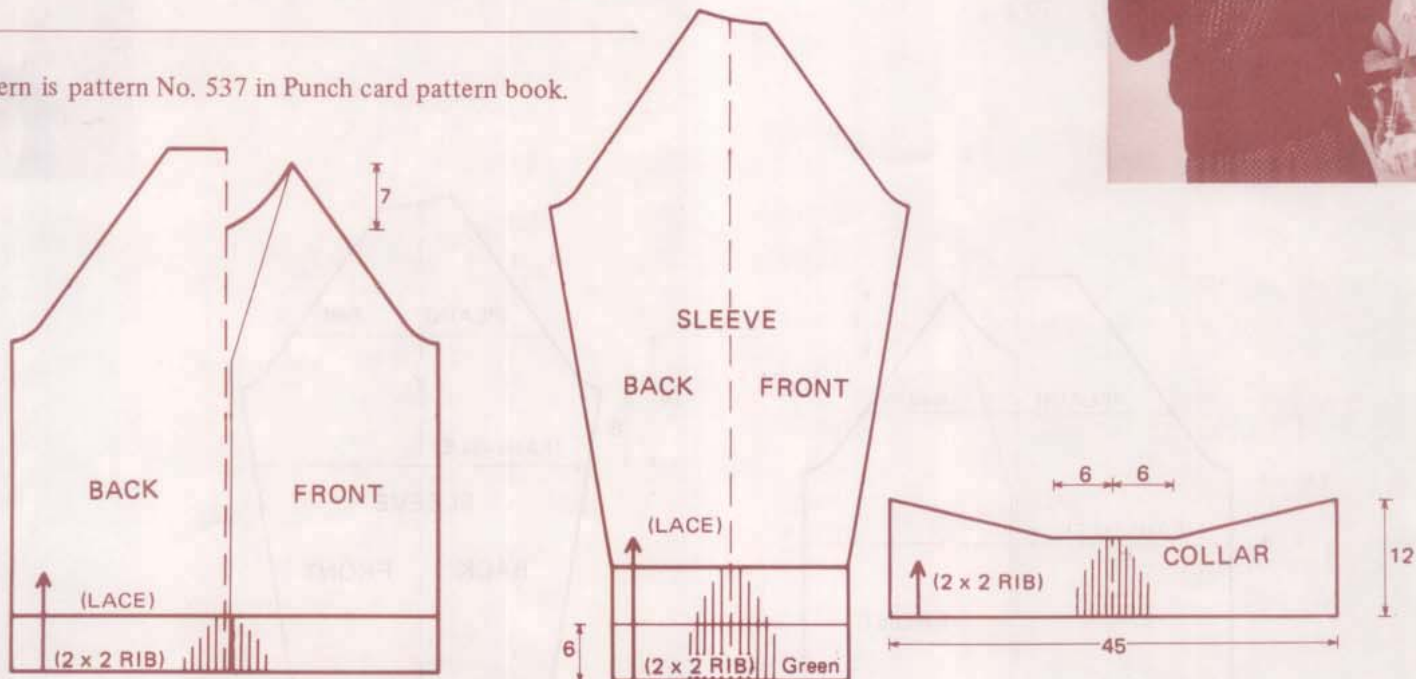
**Materials; Thicker yarn**  
Black (mohair) . . . . . 250g

**Tension & Gauge**  
T.D. 10  
40 sts. . . . . 21.6 cm  
60 rs. . . . . 17.6 cm



(Notes)

Lace pattern is pattern No. 537 in Punch card pattern book.



# BK113 Woman's Pullover

(Application of Brother Home-Knitting pattern No. 201)

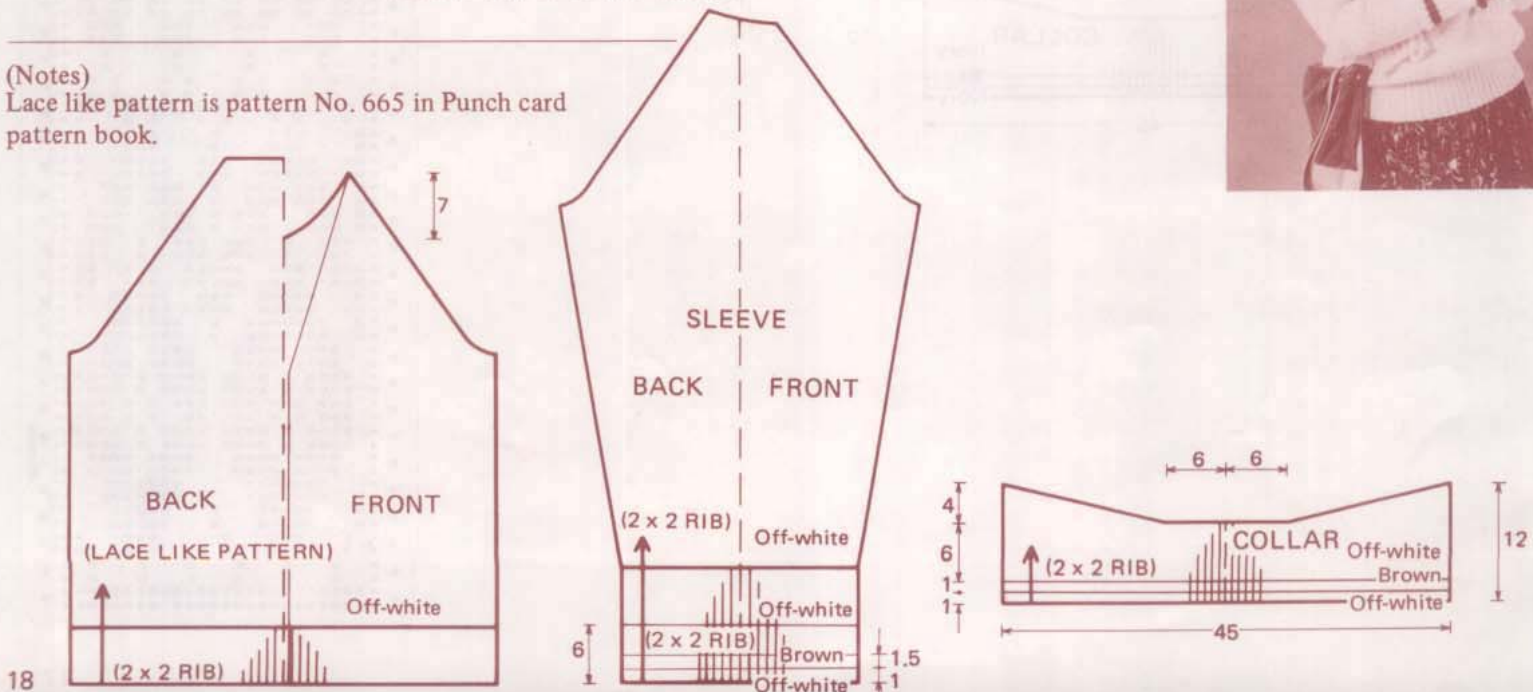
**Materials; Thick yarn**  
Off-white . . . . . 860g  
Brown . . . . . Small amount

**Tension & Gauge**  
T.D. 10  
40 sts. . . . . 19.0 cm  
60 rs. . . . . 18.6 cm



(Notes)

Lace like pattern is pattern No. 665 in Punch card pattern book.



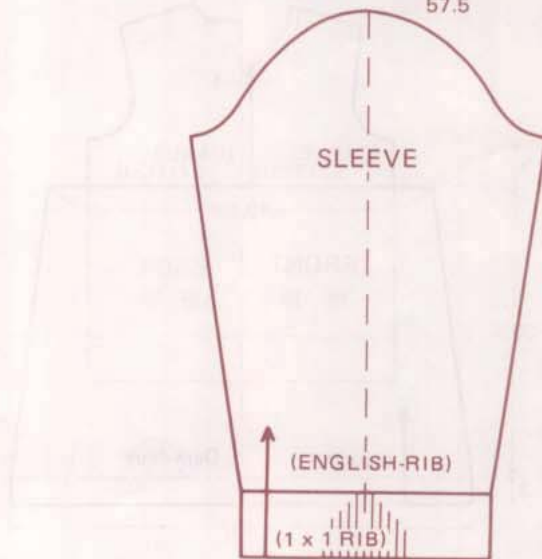
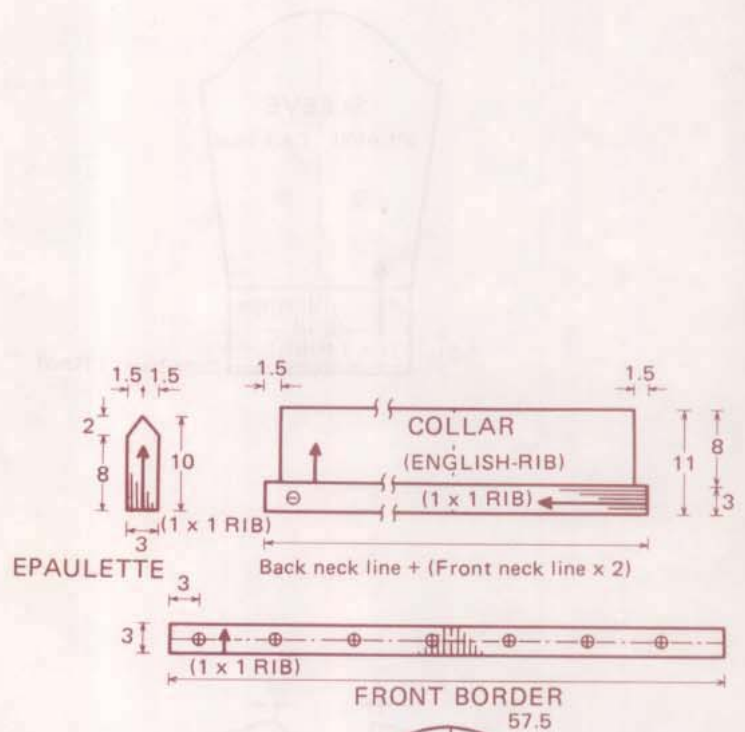
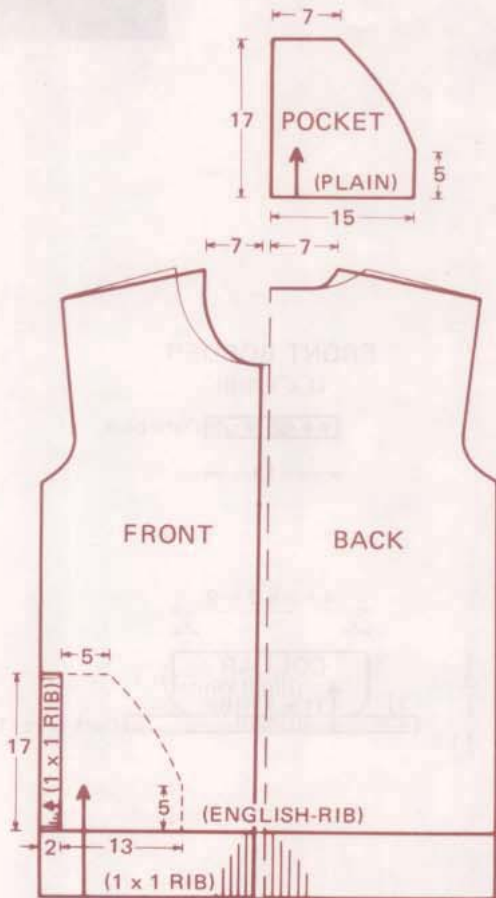


# BK114 Man's Jacket

(Application of Brother Home-Knitting pattern No. 103)

**Materials; Midium yarn**  
 Green (mixed yarn) . . . 650 g  
 10 buttons, 2 cm in diameter

**Tension & Gauge**  
 T.D. 5  
 40 sts. . . . . 10.5 cm  
 60 rs. . . . . 13.6 cm





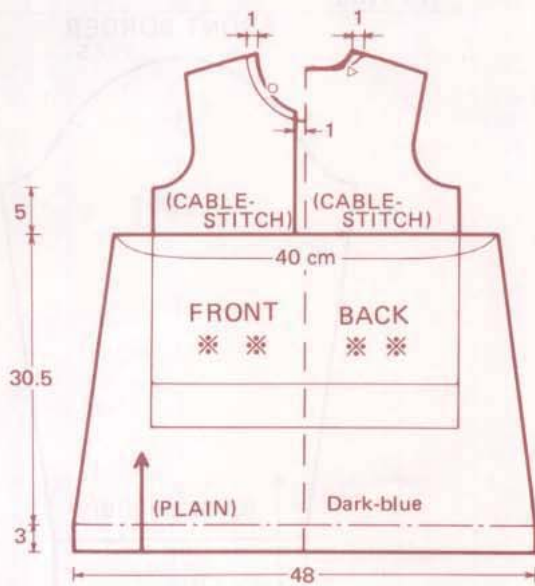
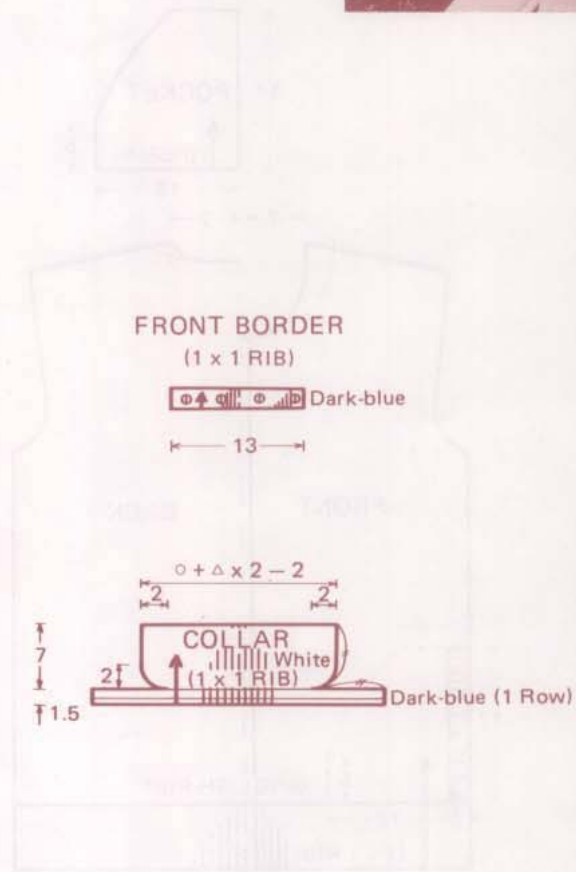
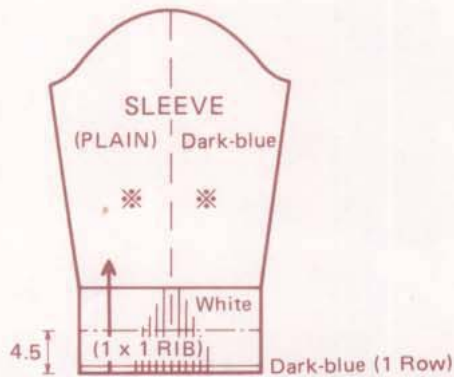
# BK115 Child's One-piece

(Application of Brother Home-Knitting pattern No. 104)

**Materials; Midium yarn**  
 Dark-blue (mixed yarn) . . .260 g  
 Off-white . . . . . 20 g  
 4 buttons, 1.5 cm in diameter

**Tension & Gauge**  
 Plain  
 T.D. 6.2  
 40 sts. . . . . 13.8 cm  
 60 rs. . . . . 15.4 cm

Cable stitch  
 T.D. 6.2  
 40 sts. . . . . 11.8 cm  
 60 rs. . . . . 13.6 cm





*BK108*

*BK109*



**brother**  
Fashion Knits



*BK110*



*BK111*







*BK112*



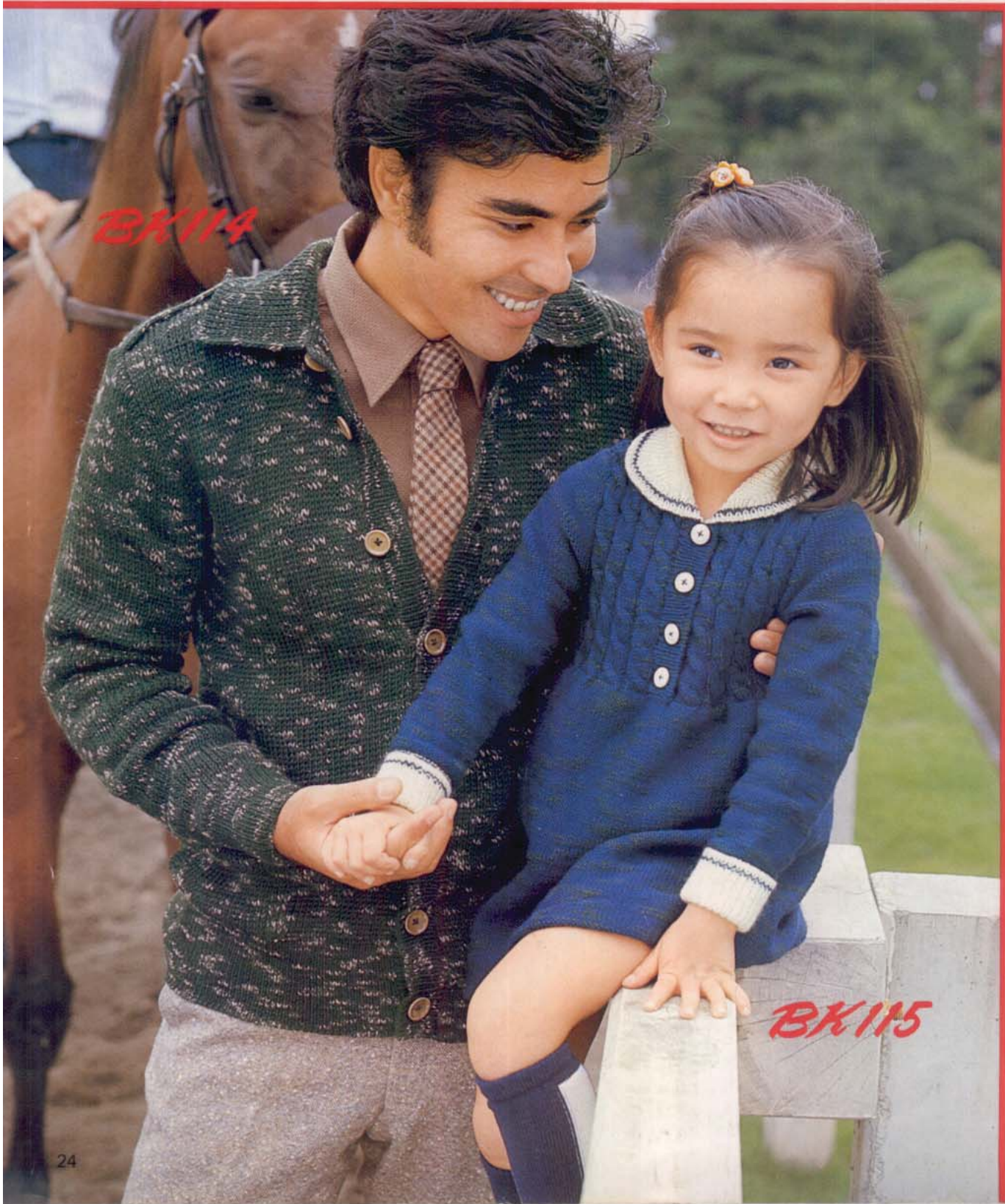
*BK113*

**brother**  
Fashion Knits



# brother

Fashion Knits



*BK114*

*BK115*