

Muster

PASSAP



Patterns

Dessins

Disegni



Desenhos

Malleja

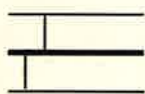


120 attractive stitch patterns for PASSAP-Duomatic

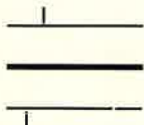
We wish you many happy hours of successful knitting consulting this collection of lovely stitch patterns. However, we do not doubt that you yourself will add quite a few new creations to our choice.

To make things easy for you we are giving below the explanation of various signs and definitions and furthermore, on page 40, a few useful hints. And now — happy landings!
With PASSAP ambition is unlimited and PASSAP-knitting means pleasure!

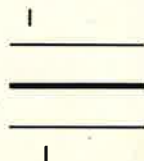
Explanation: Starting position always lock at right, i. e. after having formed the zig-zag and completed the tubular rows always knit one more row without pattern. Nd = needle, col. = colour, L = left, R = right. Cast on with racking = first arrange needles and pushers for pattern, then, before forming the zig-zag rack back bed 1 needle towards the left (one full circuit of handle) and afterwards rack back bed towards the right back into starting position again. \longleftarrow = press left arrowed key, \longrightarrow = press right arrowed key, \longleftrightarrow = press both arrowed keys, O = press centre key, RC = row counter. Front = side of knitting facing front bed, back = side of knitting facing back bed.



Needles in
working position



Pushers in
working position



Pushers in
rest position

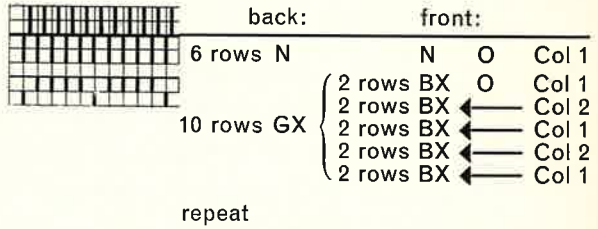
•
Needle or pusher
in neutral position



Pattern 1

Yarn: fine

Set stitch size at front 1 number higher than at back
handle down, black strippers



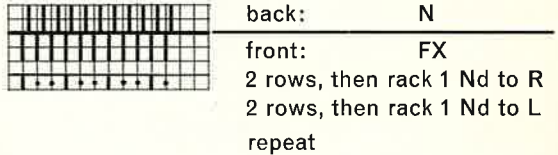
◀ front



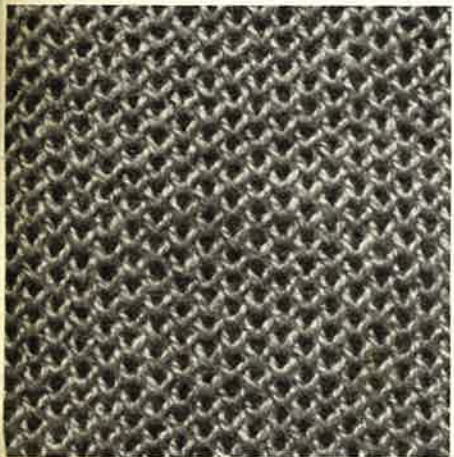
Pattern 2

Yarn: fine

handle down



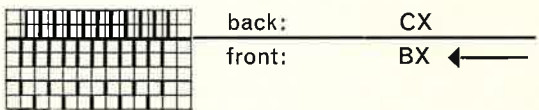
◀ back



Pattern 3 - "Overnit"

Yarn: fine

handle down



◀ back

Pattern 4

Yarn: fine
handle down



back: N
front: EX
2 rows, then rack 1 Nd to R
2 rows, then rack 1 Nd to L
repeat

back ▶



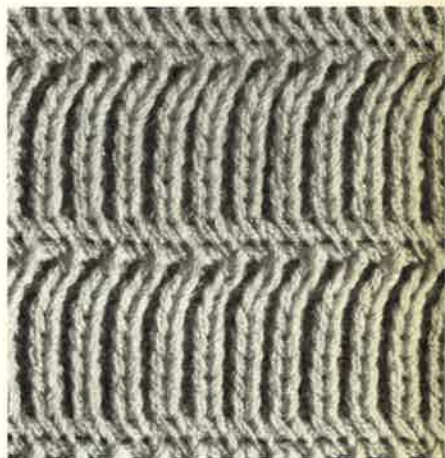
Pattern 5

Yarn: fine
handle down



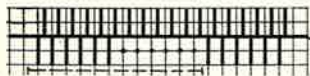
back: EX
front: N
2 rows, then rack 1 Nd to R, twice
2 rows, then rack 1 Nd to L, twice
repeat

back ▶



Pattern 6

Yarn: fine
handle down, rack back bed completely towards the right before casting on, black strippers

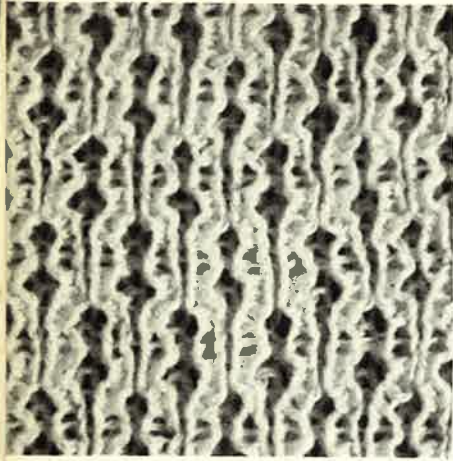


back: N
front: N

2 rows, then rack 1 Nd to L, 6 times
2 rows, then rack 1 Nd to R, 6 times
repeat

front ▶





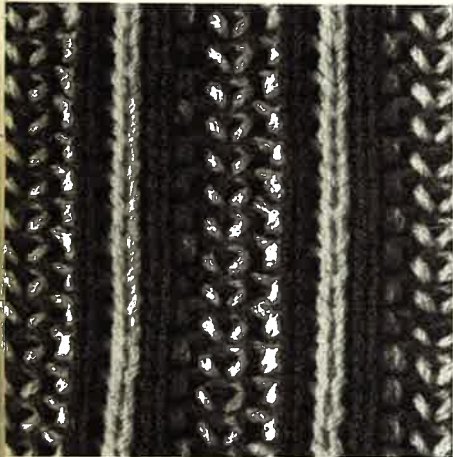
Pattern 7

Yarn: fine
handle down



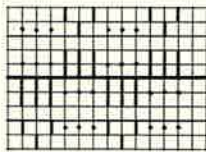
back: N
front: 4 rows AX ←
2 rows N ←
repeat

← back



Pattern 8

Yarn: fine - medium
handle up, black strippers



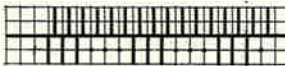
back: AX ←
front: AX ←
2 rows Col 1
2 rows Col 2
repeat

← either side can be used



Pattern 9

Yarn: fine
handle down



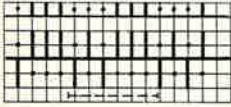
back: N
front: EX

2 rows, then rack 1 Nd to R, twice
2 rows, then rack 1 Nd to L, twice
repeat

← back

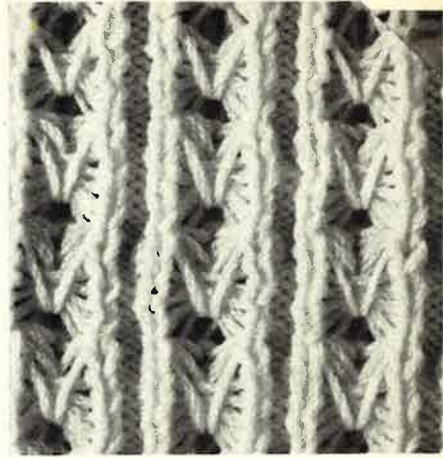
Pattern 10

Yarn: fine
handle up, black strippers



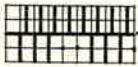
	back:	front:
4 rows	N	AX
6 rows	AX	N
repeat		

front ▶



Pattern 11

Yarn: fine - medium
handle down, black strippers



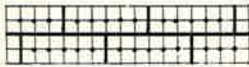
	back:	front:
stitch size: 3		3
6 rows	N	N Col 1
stitch size: 4½		3
6 rows	N	GX Col 2
repeat		

front ▶



Pattern 12

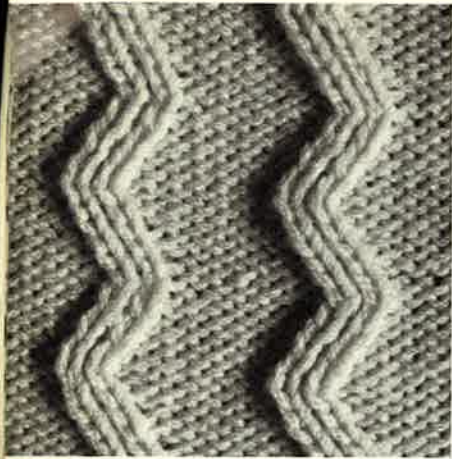
Yarn: fine
handle up



	back:	front:
4 rows	AX	N
2 rows	N	N
4 rows	N	AX
2 rows	N	N
repeat		

either side can be used ▶





Pattern 13

Yarn: fine
handle down, black strippers

	back:	N
	front:	N

2 rows, then rack 1 Nd to L, 3 times
2 rows, then rack 1 Nd to R, 3 times
repeat

◀ front



Pattern 14

Yarn: fine
handle down

	back:	N
	front:	EX

2 rows, then rack 1 Nd to R
2 rows, then rack 1 Nd to L
repeat

◀ back



Pattern 15

Yarn: fine
handle down, set stitch size at back 3 numbers
higher than at front, black strippers

	back:	front:
5 rows	N	GX
2 rows	N	N

repeat

◀ back

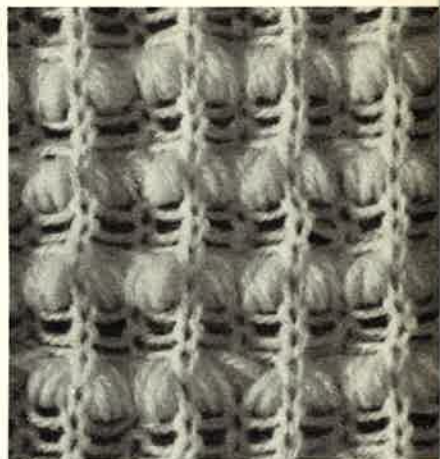
Pattern 16

Yarn: fine
handle up



	back:	front:
4 rows	N	N
6 rows	AX	AX
	repeat	

either side can be used ▶



Pattern 17

Yarn: fine
Pattern with released stitches, handle down, cast on only on back bed, black strippers



	back:	front:
6 rows	N	BX with yarn
2 rows	GX	N ← without yarn
	repeat	

front ▶



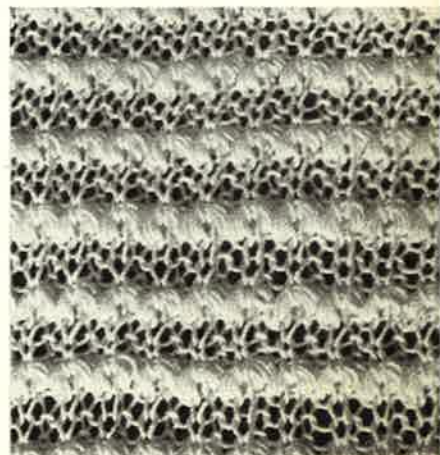
Pattern 18

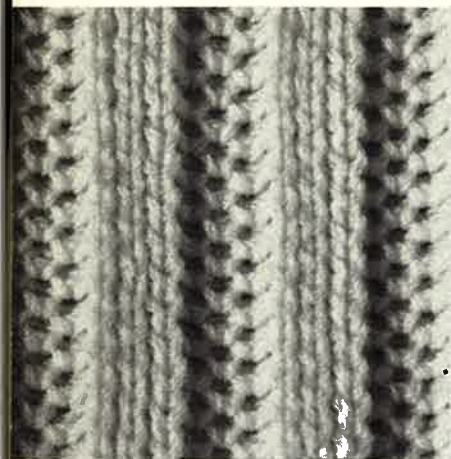
Yarn: fine (cotton)
handle up



	back:	front:
4 rows	N	N
6 rows	AX	AX
	repeat	

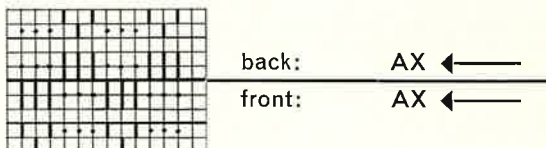
either side can be used ▶



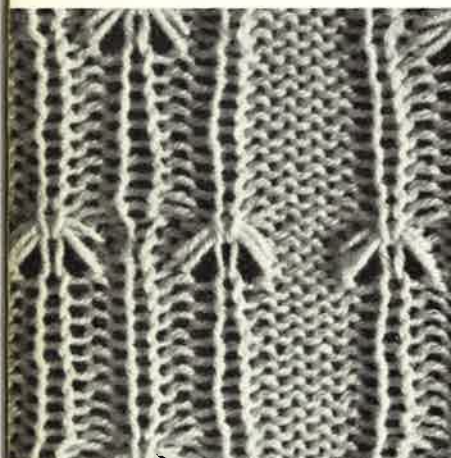


Pattern 19

Yarn: medium
fully automatic, handle up, black strippers

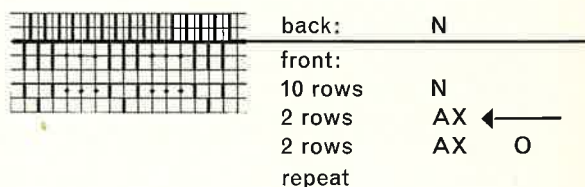


◀ either side can be used



Pattern 20

Yarn: fine
handle down, black strippers

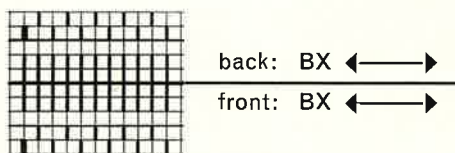


◀ front



Pattern 21 - "Interlock"

Yarn: fine
handle up. Attention! Position of pushers according to diagram. When finished stretch knitting.



◀ either side can be used

Pattern 22

Yarn: fine

handle down, black strippers



back: N
 front: BX
 2 rows ←
 4 rows O
 repeat

front ▶



Pattern 23

Yarn: fine

handle down



back: N
 front: EX
 4 rows, then rack 1 Nd to R
 4 rows, then rack 1 Nd to L
 repeat

back ▶



Pattern 24

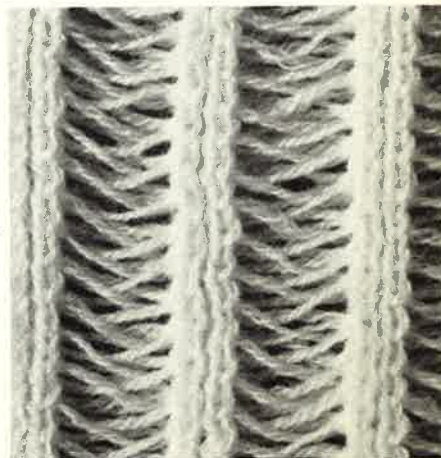
Yarn: fine

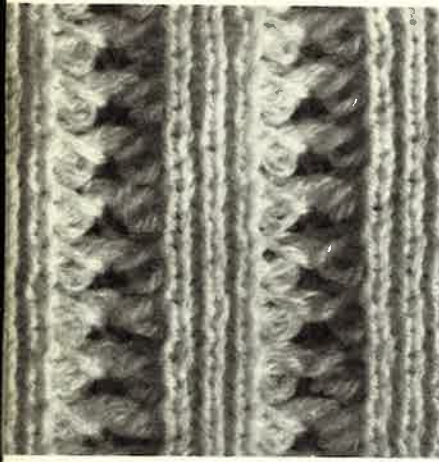
handle down



back: EX
 front: EX
 2 rows, then rack 1 Nd to L
 2 rows, then rack 1 Nd to R
 repeat

back ▶





Pattern 25

Yarn: medium
handle up, black strippers



back: AX ←
front: 6 rows AX
2 rows N

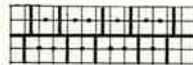
repeat

◀ back



Pattern 26

Yarn: medium
handle up



back: EX

front: EX

4 rows, then rack 1 Nd to R

4 rows, then rack 1 Nd to L

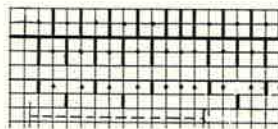
repeat

◀ front



Pattern 27

Yarn: medium
handle up



back: N

front:

2 rows AX ←

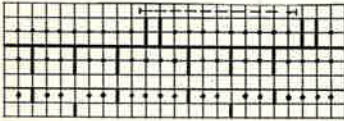
2 rows AX O

repeat

◀ back

Pattern 28

Yarn: medium
handle up, black strippers



back: N

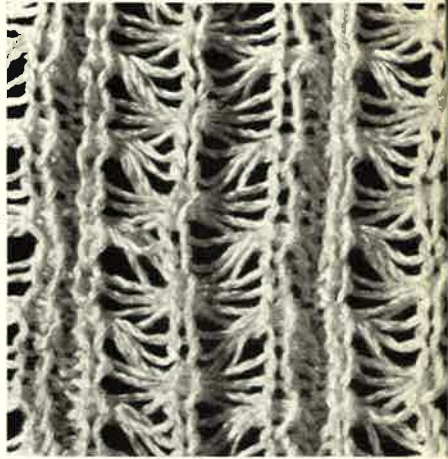
front:

2 rows AX ←

2 rows AX O

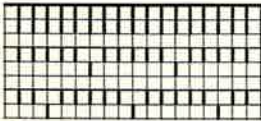
repeat

front ▶



Pattern 29

Yarn: medium



back: GX

front:

a 1st Series:

pushers in position a

2 rows AX

2 rows N

2nd Series:

pushers in position b

2 rows AX

2 rows N

repeat

back ▶



Pattern 30

Yarn:
handle down



back: N

front: 4 rows N

2 rows AX ←

2 rows AX O

repeat

back ▶



Pattern 34

Yarn: medium
handle down

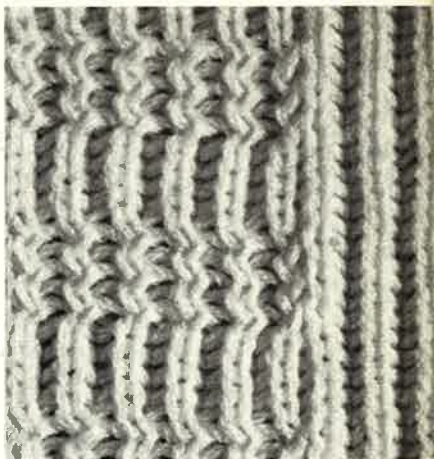


back: EX

front: EX

3 times {
8 rows,
then rack 1 Nd to L
2 rows,
then rack 1 Nd to R
2 rows
repeat

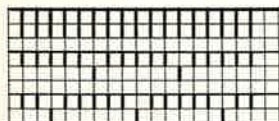
back ▶



Pattern 35

Yarn: medium, black strippers

back: GX



a

b

front:

1st Series: pushers in position a

once { 4 rows AX Col 1
2 rows N Col 1

2nd Series: pushers in position b

once { 4 rows AX Col 2
2 rows N Col 2

3rd Series: pushers in position a

once { 4 rows AX Col 3
2 rows N Col 3

repeat, but alternating order of pusher positions: b, a, b
either side can be used ▶



Pattern 36

Yarn: fine - medium

handle down, rack back bed completely towards the right before casting on, set stitch size at back 3 numbers higher than at front, black strippers

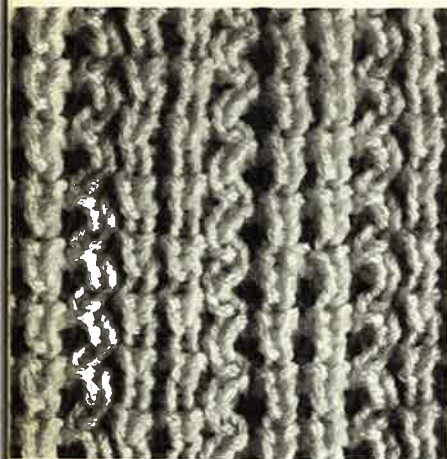


back: front:

2 rows N N
4 rows N, GX
then rack 4 Nd to L
2 rows N N
4 rows N, GX
then rack 4 Nd to R
repeat

back ▶





Pattern 37

Yarn: medium
handle up



back: N
front:

 AX ←
4 rows AX O
2 rows
repeat

◀ back



Pattern 38

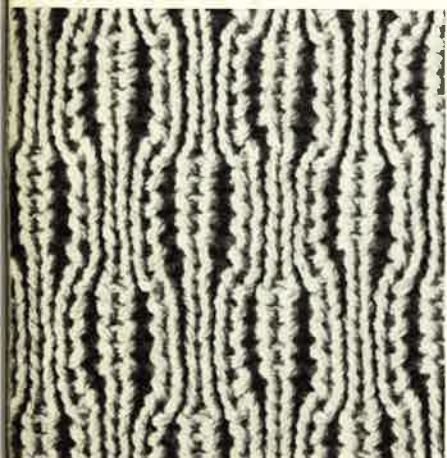
Yarn: fine - medium
handle down



back: EX
front: EX

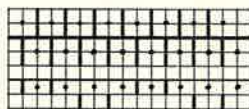
cast on, then lock at right,
7 times {
 rack 1 Nd to L
 1 row
 rack 1 Nd to R
 1 row
 1 row
 repeat

◀ either side can be used



Pattern 39

Yarn: fine - medium
handle up

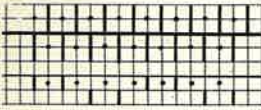


back: N
front: FX
8 rows O
2 rows ←
repeat

◀ back

Pattern 40

Yarn: medium
handle up



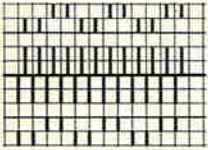
back: N
 front:
 2 rows AX ←
 2 rows AX O
 repeat

back ▶



Pattern 41

Yarn: fine
handle down



back: front:

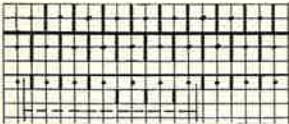
once { 2 rows AX AX ← Col 1
 2 rows N N O Col 2
 4 times { 2 rows AX AX O Col 1
 2 rows N N O Col 2
 repeat

either side can be used ▶



Pattern 42

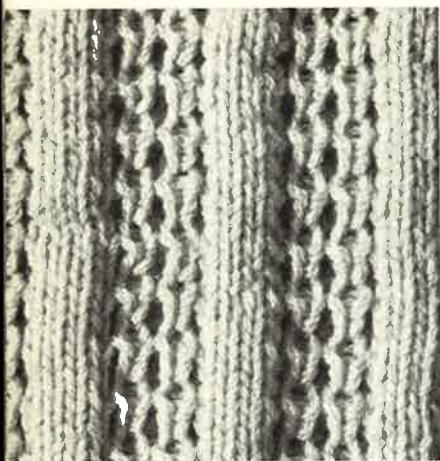
Yarn: medium
handle up



back: N
 front:
 2 rows AX ←
 4 rows AX O
 repeat

back ▶





Pattern 43

Yarn: medium
fully automatic, handle down, black strippers



back: N
front: AX ←

◀ back



Pattern 44

Yarn: medium
handle down



back: N
front:
2 rows AX ←
2 rows AX O
repeat

◀ back



Pattern 45

Yarn: medium
handle up



back: N
front:
4 rows AX ←
4 rows AX O
repeat

◀ back

Pattern 46

Yarn: medium
handle down



back: N

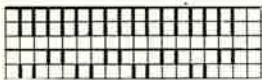
front: AX ←
2 rows, then rack 1 Nd to R
2 rows, then rack 1 Nd to L
repeat

back ▶



Pattern 47

Yarn: medium



back: GX

front:
4 rows N O Col 1
2 rows AX ← Col 2
repeat

front ▶



Pattern 48

Yarn: medium
handle up



back: N

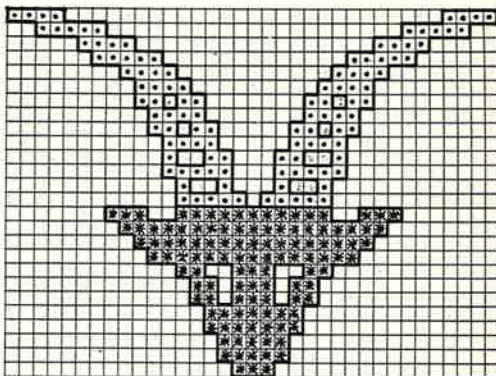
front:
4 rows AX ←
4 rows AX O
repeat

back ▶



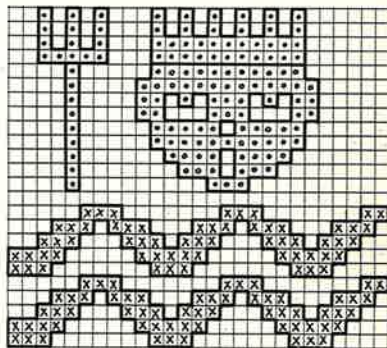
**Fairisle is the
most amusing
art of knitting**

Capricorn — Dec. 23 to Jan. 20



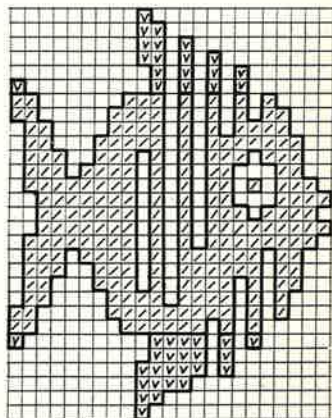
Pattern 52

Aquarius — Jan. 21 to Feb. 19



Pattern 53

Pisces — Feb. 20 to March 20

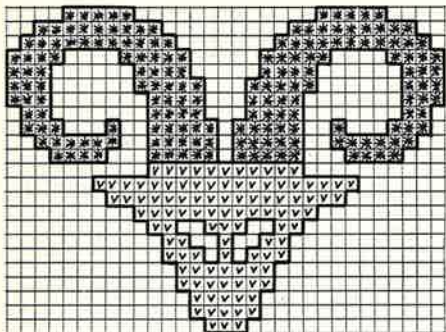


Pattern 54

Here and on the following pages you will find 20 fairisle designs—amongst which the 12 signs of the zodiac. However, you may just as well create your own and proper fairisle design proceeding as follows: on a piece of square paper draw what ever design you like providing 1 square in width each for 1 stitch and 1 square in height each for 2 rows (i.e. 2 rows with trimming colour and 2 rows with basic colour = RC 4).

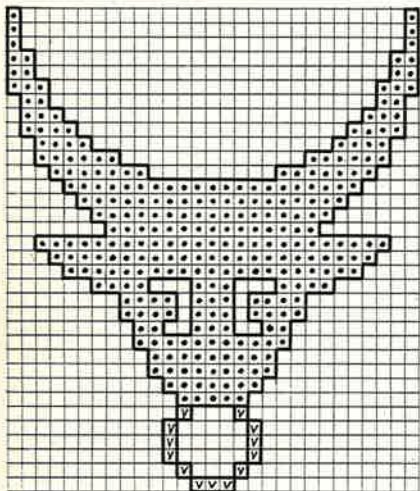
For basic principle on fairisle knitting see page 20.

**Fairisle is the
most personal
art of knitting**



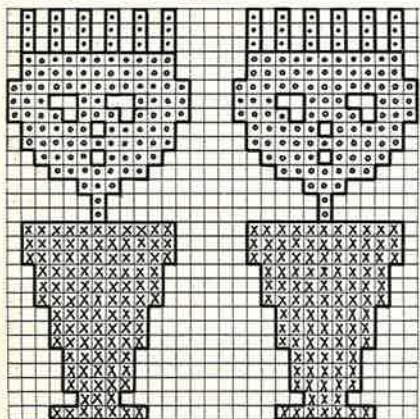
Aries
March 21 to
April 20

Pattern 55



Taurus
April 21 to
May 21

Pattern 56



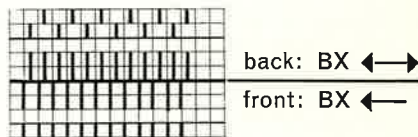
Gemini
May 22 to
June 21

Pattern 57

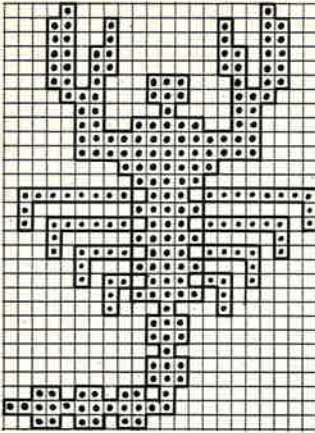
And here's how to knit fairisle:
Prepare lock, needles and pushers as shown in diagram for basic principle on fairisle knitting. Place feeding eyelet with first trimming colour in its socket at lock and the other feeding eyelets in the eyelet support, each of them fed with its proper colour. Each time before starting a new row of squares (= series) place into rest position the pushers for the design of the next trimming colour, then knit according to basic principle. Pushers change automatically.

Basic principle on fairisle knitting :

Yarn: fine. Handle down



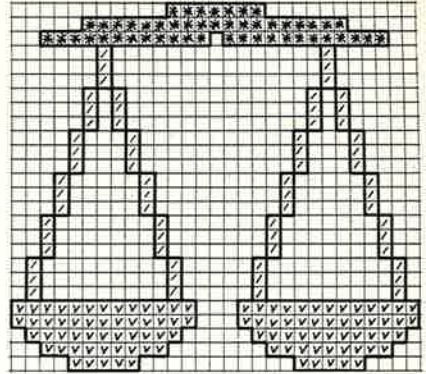
- 1st series: place pushers in rest position for "square row"
2 rows trimming colour
2 rows basic colour — RC 4
- 2nd series: place pushers in rest position for "square row"
2 rows trimming colour
2 rows basic colour — RC 8
- 3rd series: and so on



Cancer

June 22 to
July 23

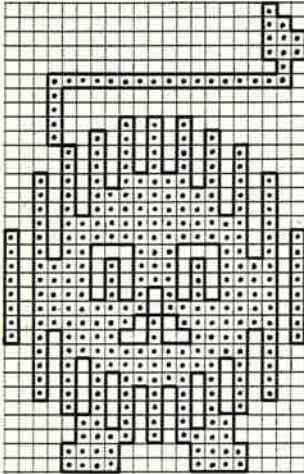
Pattern 58



Libra

Sept. 24 to
Oct. 23

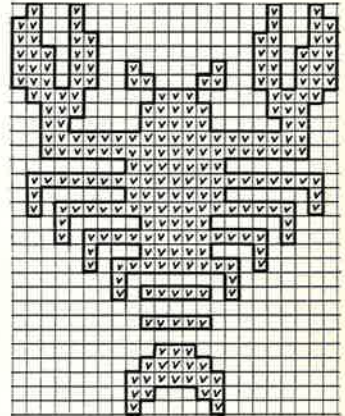
Pattern 61



Leo

July 24 to
August 23

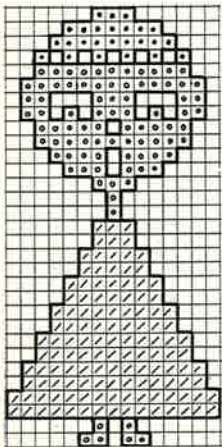
Pattern 59



Scorpio

Oct. 24 to
Nov. 22

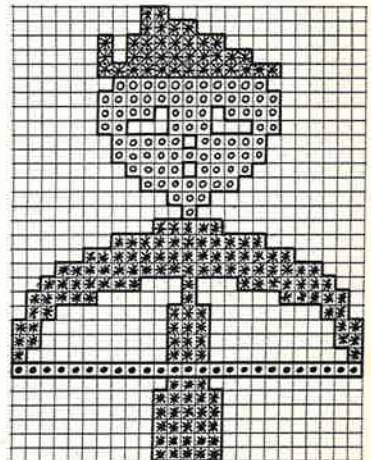
Pattern 62



Virgo

August 24 to
September 23

Pattern 60

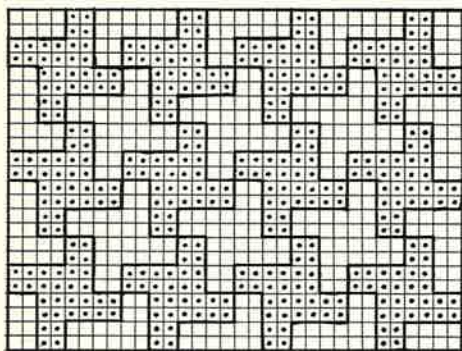


Sagittarius

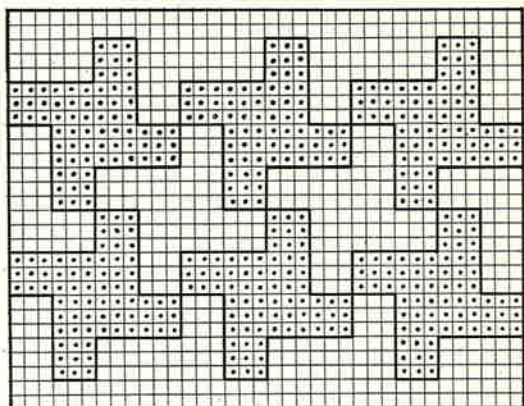
Nov. 23 to
Dec. 22

Pattern 63

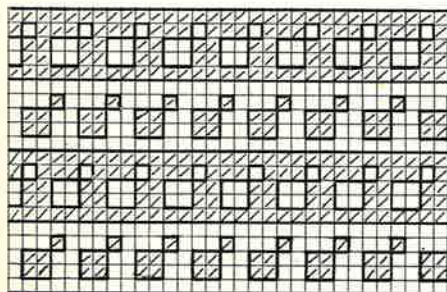
For basic principle on fairisle knitting see pages 19/20.



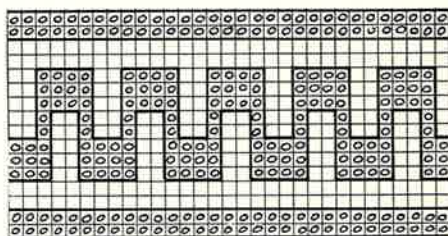
Pattern 64



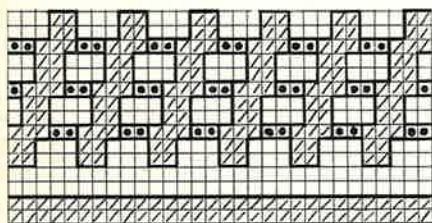
Pattern 68



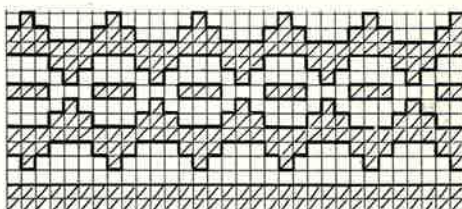
Pattern 65



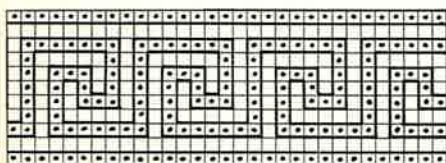
Pattern 69



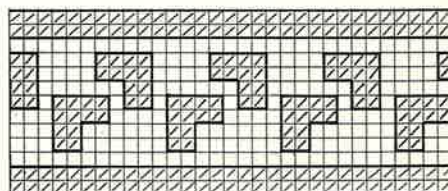
Pattern 66



Pattern 70



Pattern 67



Pattern 71

Pattern 72

Yarn: medium
handle down



back: FX

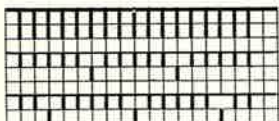
front: N

front ▶



Pattern 73

Yarn: medium



back: GX

front:

1st Series:

pushers in position a

4 rows AX Col 1

2 rows N Col 2

2nd Series:

pushers in position b

4 rows AX Col 1

2 rows N Col 2

repeat

either side can be used ▶



Pattern 74

Yarn: medium
handle down, black strippers



back: N

front:

3 rows N

1 row AX, then rack 1 Nd to L

3 rows N

1 row AX, then rack 1 Nd to R

repeat

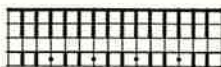
back ▶





Pattern 75

Yarn: medium



back: GX

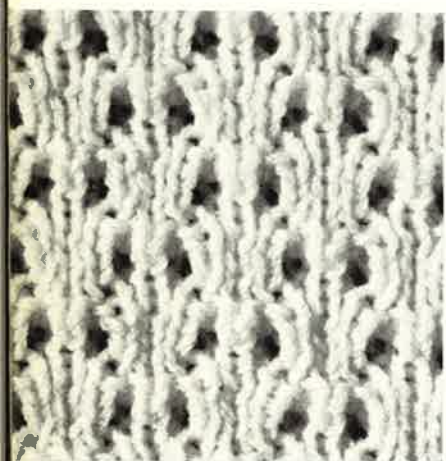
front:

2 rows N Col 1

2 rows AX Col 2

repeat

◀ front



Pattern 76

Yarn: medium

handle down



back: N

front:

2 rows N

2 rows AX ←

2 rows AX O

repeat

◀ back



Pattern 77

Yarn: medium

handle down, black shippers



back: N

front:

twice { 3 rows AX
1 row N, then rack 1 Nd to R

twice { 3 rows AX
1 row N, then rack 1 Nd to L

repeat

◀ back

Pattern 78 a

Yarn: fine - medium
handle down, black strippers



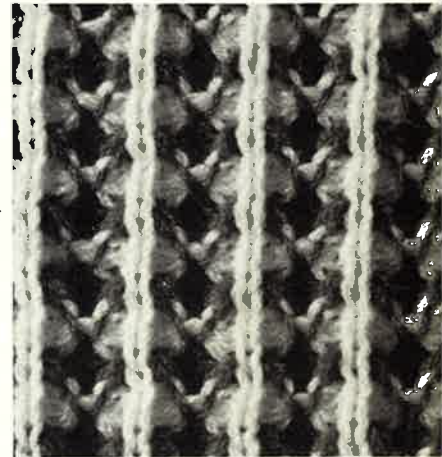
	back:	front:	
	4 rows N	AX	Col 1
	4 rows AX	N	Col 2
	repeat		

either side can be used ▶



Pattern 78 b

either side can be used ▶



Pattern 79

Yarn: medium
handle down, black strippers

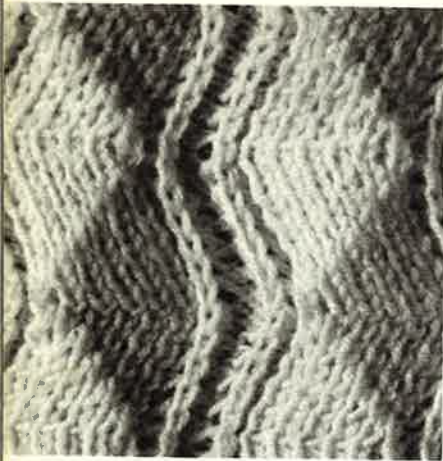


	back:	EX
	front:	EX

2 rows without racking
2 rows, then rack 1 Nd to R, twice
2 rows without racking
2 rows, then rack 1 Nd to L, twice
repeat

front ▶





Pattern 80

Yarn: fine

handle down, rack back bed completely towards the right before casting on, black strippers



back: N

front: FX

2 rows, then rack 1 Nd to L, 6 times
2 rows, then rack 1 Nd to R, 6 times
repeat

◀ either side can be used



Pattern 81

Yarn: fine

handle down



back: N

front: EX

2 rows, then rack 2 Nd to R
2 rows, then rack 2 Nd to L
repeat

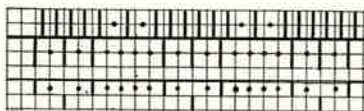
◀ back



Pattern 82

Yarn: medium

handle down



back: N

front: AX

2 rows, then rack 1 Nd to L
2 rows, then rack 1 Nd to R
repeat

◀ either side can be used

Pattern 83

Yarn: fine
handle down, black strippers



back: EX

front: EX

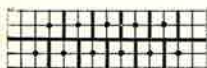
2 rows, then rack 1 Nd to R
2 rows, then rack 1 Nd to L
repeat

either side can be used ▶



Pattern 84

Yarn: medium
handle up



back: N

front:

2 rows AX Col 2

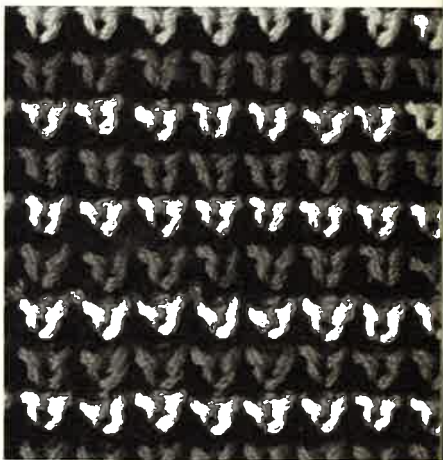
2 rows N Col 1

2 rows AX Col 3

2 rows N Col 1

repeat

either side can be used ▶



Pattern 85

Yarn: fine - medium
handle down



back: N

front:

2 rows AX ← Col 1

2 rows AX O Col 1

2 rows AX ← Col 2

2 rows AX O Col 2

repeat

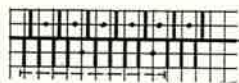
either side can be used ▶





Pattern 86

Yarn: medium
handle down



back: EX

front: EX

6 rows, then rack 1 Nd to R
6 rows, then rack 1 Nd to L
repeat

◀ back



Pattern 87

Yarn: fine - medium
handle down, rack back bed completely towards the left before casting on.



back: N

front: N

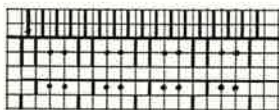
2 rows, then rack 1 Nd to R, 6 times
2 rows, then rack 1 Nd to L, 6 times
repeat

◀ front



Pattern 88

Yarn: medium
handle down



back: N

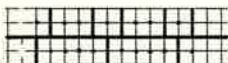
front: AX ←

2 rows, then rack 1 Nd to L
2 rows, then rack 1 Nd to R
repeat

◀ either side can be used

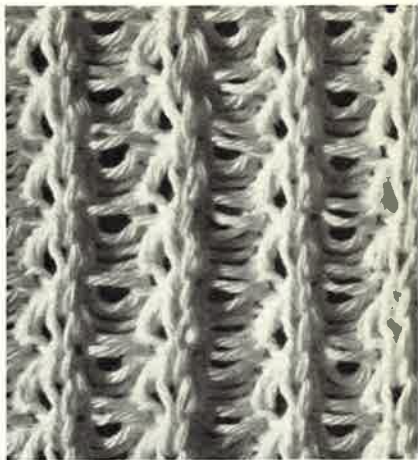
Pattern 89

Yarn: medium
handle up



back: N
front: 4 rows AX
2 rows N
repeat

either side can be used ▶



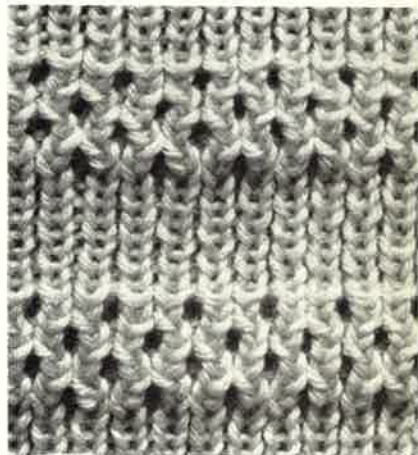
Pattern 90

Yarn: medium
handle down



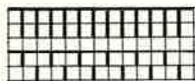
back: N
front: 8 rows AX
8 rows N
repeat

back ▶



Pattern 91

Yarn: fine - medium



back: GX
front: AX
2 rows Col 1
2 rows Col 2
repeat

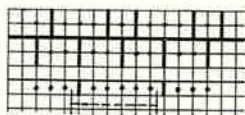
back ▶





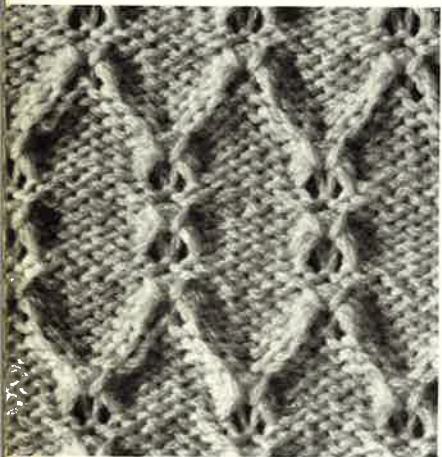
Pattern 92

Yarn: medium
handle up



back:	N
<hr/>	
front:	
4 rows	AX
2 rows	N
repeat	

◀ either side can be used



Pattern 93

Yarn: medium



back: GX

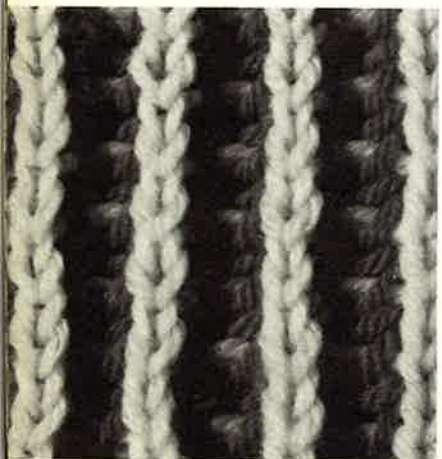
front:

1st Series:
pushers in position a
3 times { 4 rows AX
2 rows N

2nd Series:
pushers in position b
3 times { 4 rows AX
2 rows N

repeat

◀ back



Pattern 94

Yarn: thick
handle up, black strippers



back: front:

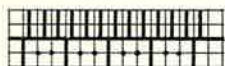
2 rows N	AX	Col 1
2 rows AX	N	Col 2
repeat		

◀ either side can be used

Pattern 95

Yarn: fine

handle down, set stitch size at back appr. 2 numbers higher than at front, black strippers



back: N

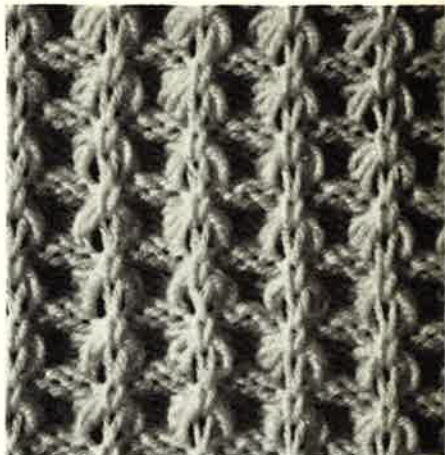
front:

6 rows AX

2 rows N

repeat

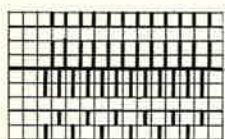
either side can be used ▶



Pattern 96

Yarn: fine - medium

handle down



back N

front:

2 rows N ← Col 1

4 rows AX O Col 2

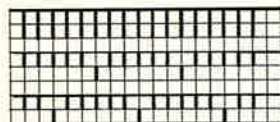
repeat

either side can be used ▶



Pattern 97

Yarn: medium



back: GX

front: AX

1st Series:

pushers in position a

4 rows Col 1

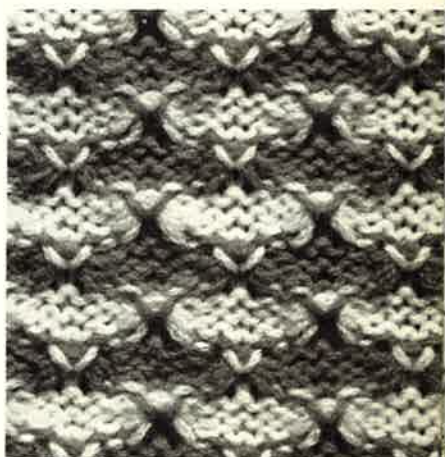
2nd Series:

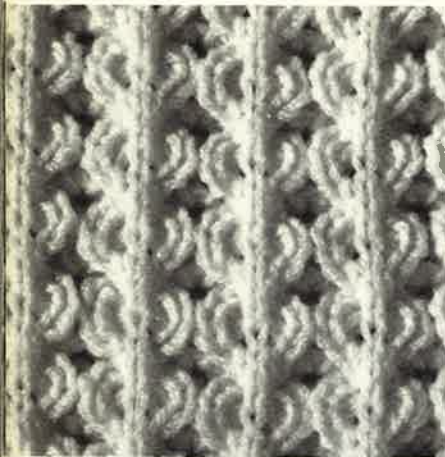
pushers in position b

4 rows Col 2

repeat

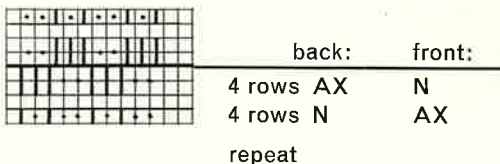
either side can be used ▶





Pattern 98

Yarn: medium
handle down, black strippers

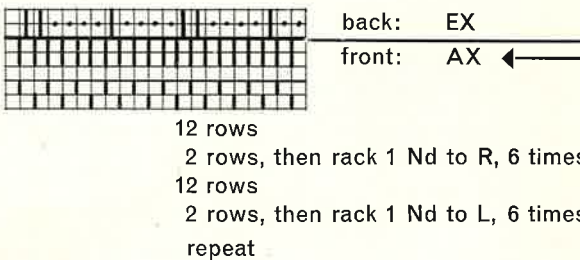


◀ either side can be used



Pattern 99

Yarn: medium
handle down, rack back bed completely towards the left before casting on, black strippers

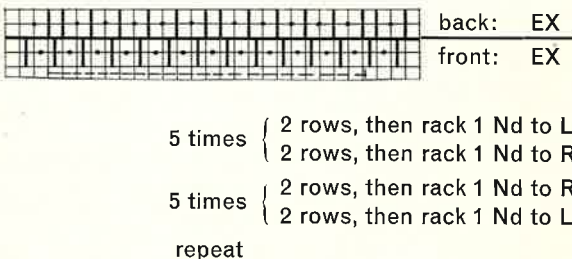


◀ back



Pattern 100

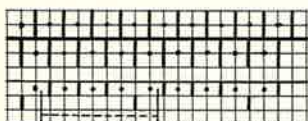
Yarn: medium
handle down



◀ back

Pattern 101

Yarn: medium
handle up



back: N
front:
2 rows AX ←
2 rows AX O
repeat

back ►



Pattern 102

Yarn: medium
handle up



back: N
front:
2 rows AX ← Col 1
2 rows AX O Col 1
2 rows AX ← Col 2
2 rows AX O Col 2
repeat

either side can be used ►



Pattern 103

Yarn: fine - medium
handle down



back: N
front: EX

2 rows, then rack 1 Nd to R
2 rows, then rack 1 Nd to L
repeat

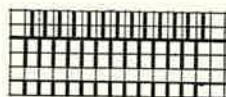
back ►





Pattern 104

Yarn: fine - medium
handle down



back: N
front: AX ←
2 rows Col 1
2 rows Col 2
repeat

◀ either side can be used



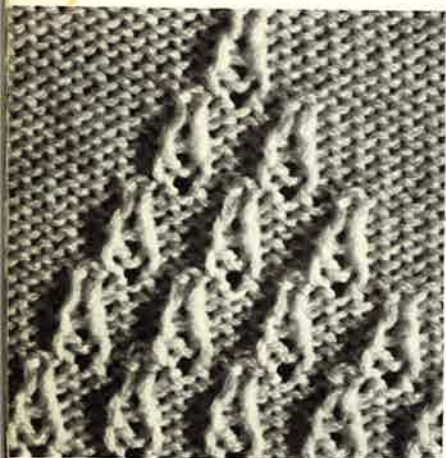
Pattern 105

Yarn: medium
handle up, black strippers



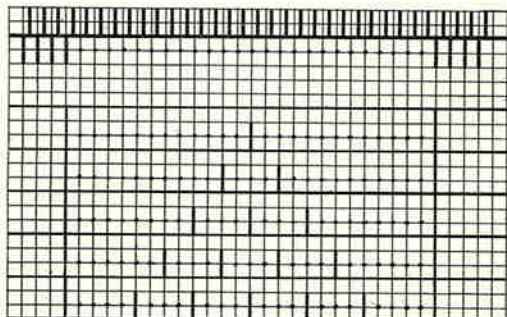
back: N
front: 6 rows AX
2 rows N
repeat

◀ front



Pattern 106

Yarn: medium - thick
handle down



back: N
front: CX

5th Series

4th Series

3rd Series

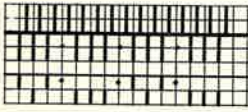
2nd Series

1st Series

1st Series: 6 rows, then transfer sts to back bed and
arrange Nd for 2nd Series
2nd Series: 6 rows, etc.

Pattern 107

Yarn: medium
handle down



back: N
 front: N ←
 2 rows N
 4 rows AX O
 repeat

back ▶



Pattern 108

Yarn: medium
handle down, rack back bed completely towards the right before casting on, black strippers



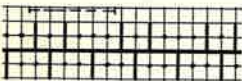
back: N
 front: AX ←

4 rows, then rack 1 Nd to L, 6 times
 4 rows, then rack 1 Nd to R, 6 times
 repeat



Pattern 109

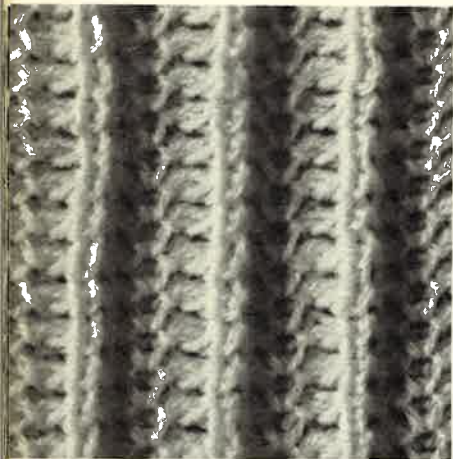
Yarn: medium
handle up



back: EX
 front: 4 rows N
 4 rows AX
 repeat

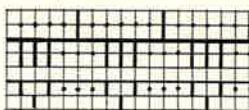
back ▶





Pattern 110

Yarn: fine
fully automatic, handle up, black strippers



back: N

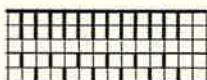
front: AX ←

◀ back



Pattern 111

Yarn: medium



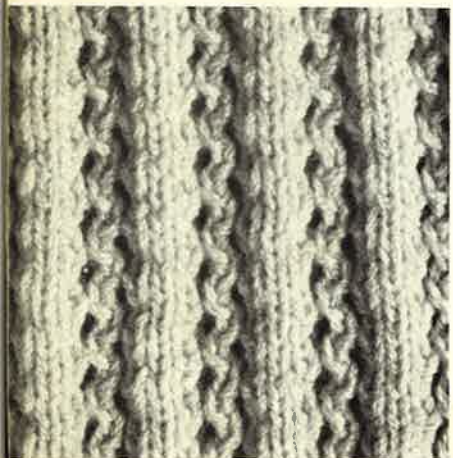
back: GX

front:

2 rows N O Col 1
2 rows AX ← Col 2

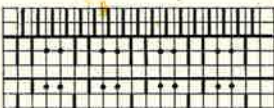
repeat

◀ back



Pattern 112

Yarn: medium
fully automatic, handle down, black strippers



back: N

front: AX ←

◀ back

Pattern 113a

Yarn: fine - medium with Candle-wick cotton
handle up, black strippers



	back:	front:
4 rows	AX	N
4 rows	N	AX

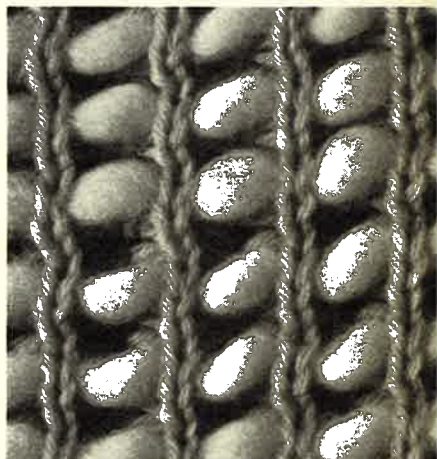
then place cadlewick
between the two beds

either side can be used ▶



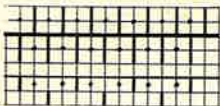
Pattern 113b

either side can be used ▶



Pattern 114

Yarn: medium
handle up

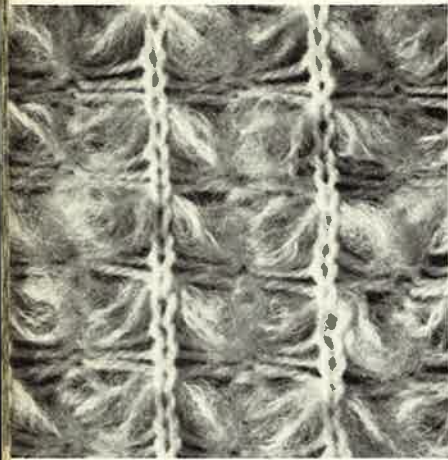


back:	N
front:	
2 rows	AX ←
2 rows	AX O

repeat

back ▶





Pattern 115

Yarn: fine and mohair wool
handle up



back: N

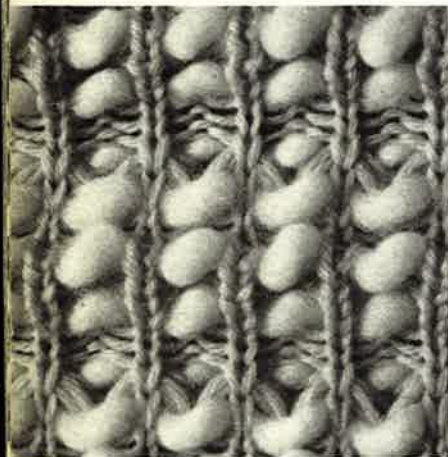
front

2 rows AX Col 1 -
mohair

4 rows N Col 2 -
fine

repeat

◀ back



Pattern 116

Yarn: fine - medium with candlewick cotton,
handle up, black strippers

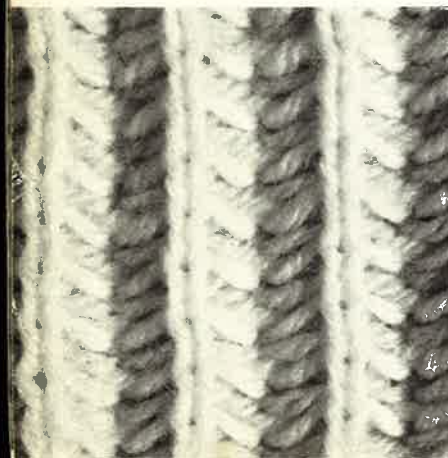


back:

front:

6 rows AX N
place candlewick between the 2 beds
4 rows N N
place candlewick between the 2 beds
6 rows N AX
place candlewick between the 2 beds
4 rows N N
place candlewick between the 2 beds
repeat

◀ either side
can be used



Pattern 117

Yarn: thick
handle up



back:

front:

2 rows AX N
2 rows N AX
repeat

◀ either side can be used

Pattern 118

Yarn: thick
handle down, black strippers



back: EX
front: EX

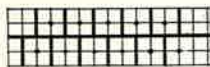
2 rows, then rack 1 Nd to R, 3 times
2 rows, then rack 1 Nd to L, 3 times
repeat

front ▶



Pattern 119

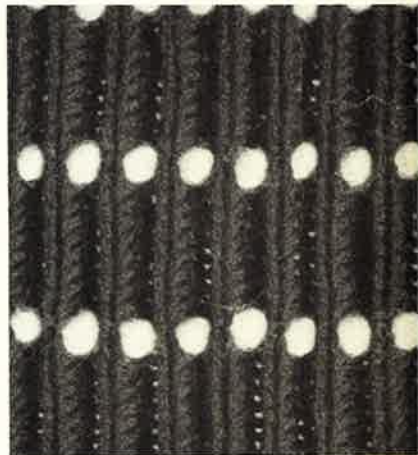
Yarn: fine - medium and candlewick cotton,
handle up, black strippers



back: N
front: N

10 rows
place candlewick between
the 2 beds
repeat

either side can be used ▶



Pattern 120

Yarn: thick
handle down



back: N
front: EX

2 rows, then rack 1 Nd to L
2 rows, then rack 1 Nd to R
repeat

back ▶

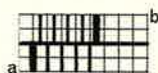


Take a useful hint

To achieve a nice edge of your knitting . . .

1. The «needle rule» for normal knitting: In order to achieve a nice and even edge arrange the needles always as follows:

- a) front left = first needle
- b) back right = last needle



Even for racking patterns you have to stick to that rule.



basic position



racking over 3 needles

2. Needle position for AX-patterns: When the lock is set to AX only loops are formed, no matter which way the lock is moved. There is a possibility that the edge stitches might drop. In order to achieve a correct edge you have to watch that the edge needles do knit proper stitches.

a) With double-bed knitting:

Front AX — without pattern change (O):

Place into working position the pusher of the left edge needle.



back:	N
front:	AX
	N

Front AX — with pattern change (arrow)

Contrary to the «needle rule»

- back left = first needle
- back right = last needle



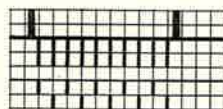
back:	N
front:	AX ←

Front and back AX: There is little use for patterns of this type. Watch the edge stitches carefully.

b) With single-bed knitting:

AX — without pattern change: Place the pushers of both edge needles into working position.

AX — with pattern change: Similar to double-bed knitting; on the second bed, however, place only the edge needles in working position. Lock at N.



back:	N
front:	AX ←

A few words concerning the strippers. Unless mentioned otherwise: red strippers for fine yarn (2 ply, 3 ply), blue strippers for 4 ply and over, black strippers for tubular and half tubular knitting, for single bed knitting and for all patterns when 2 or more needles are working side by side on the same bed.



Diseños

ΣΧΕΔΙΑ

Wzory

Mønster

Mønster

Patroonen

PASSAP-EXPORT Zürich 27 Bederstr. 1 Postf. 350 Tel. (051) 23 95 77 / 23 69 90