



PASSAP®

28

INTERNATIONAL



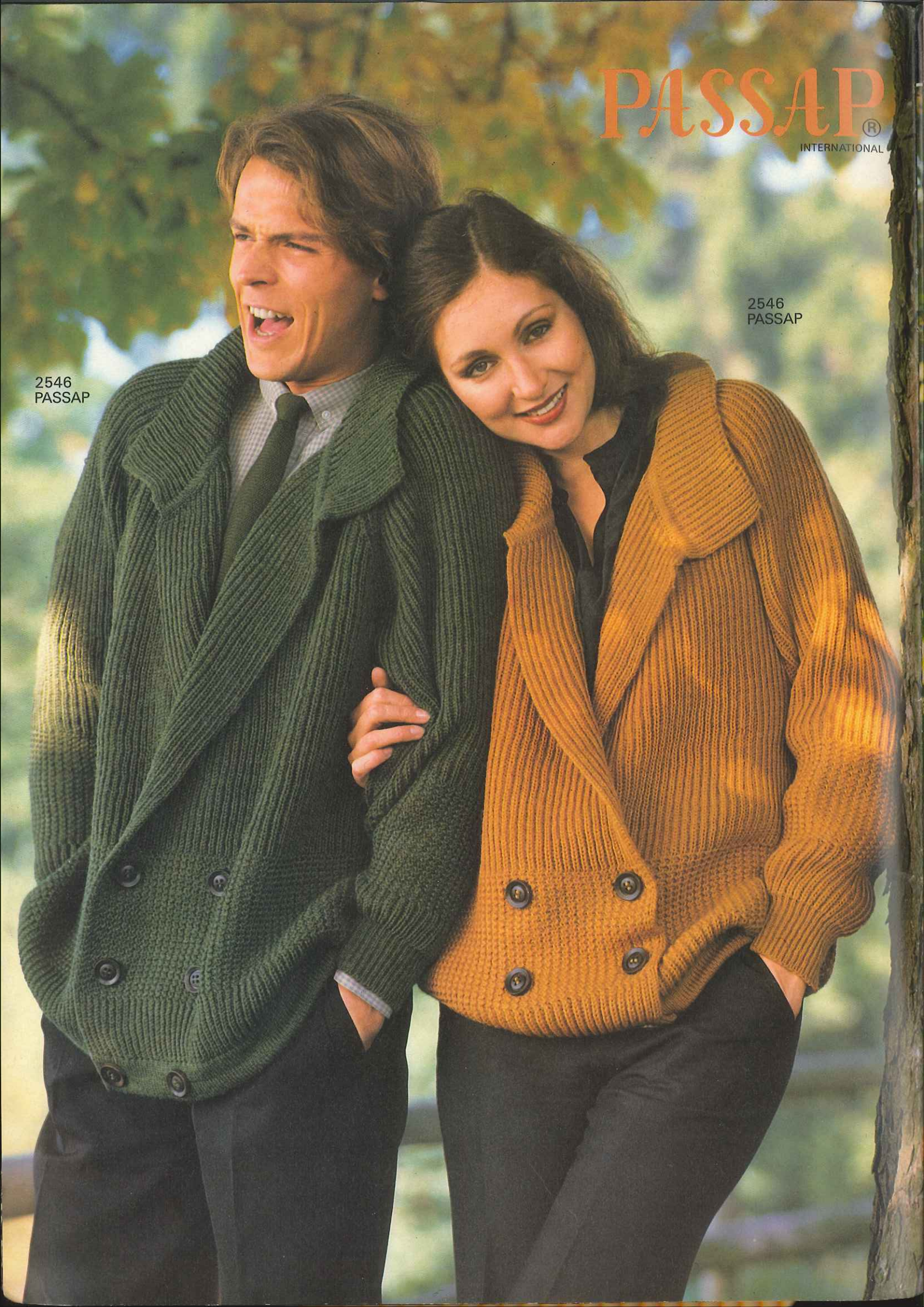
2577
PASSAP

PASSAP[®]
INTERNATIONAL

PASSAP[®]
INTERNATIONAL

2546
PASSAP

2546
PASSAP



2589
PASSAP

2570!
PASSAP



2567
PASSAP

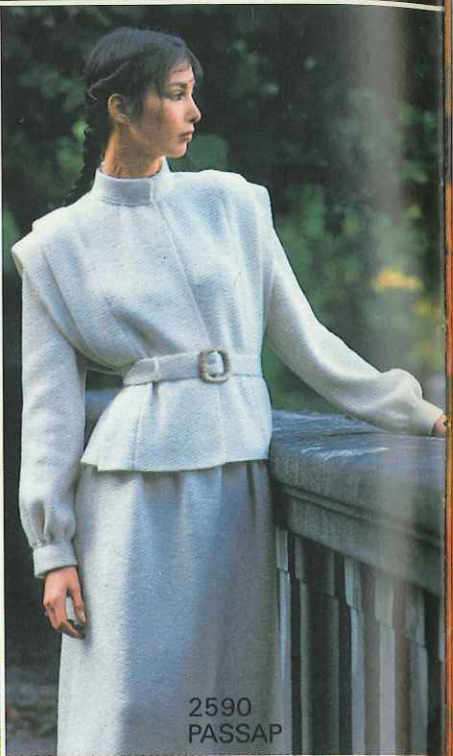


2593
PASSAP
2588!
PASSAP





2568
PASSAP



2590
PASSAP



2562
PASSAP



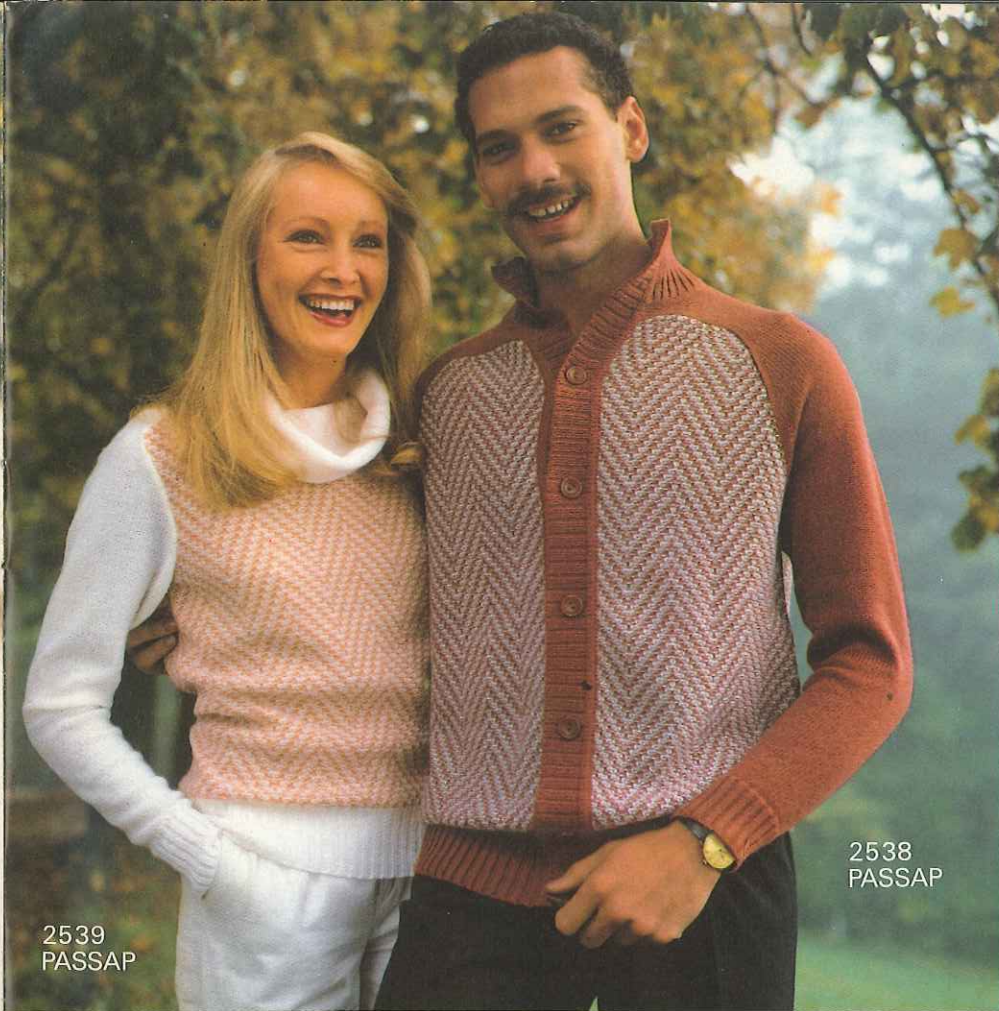
2552
PASSAP

2553
PASSAP

PASSAP®
INTERNATIONAL

2536
PASSAP



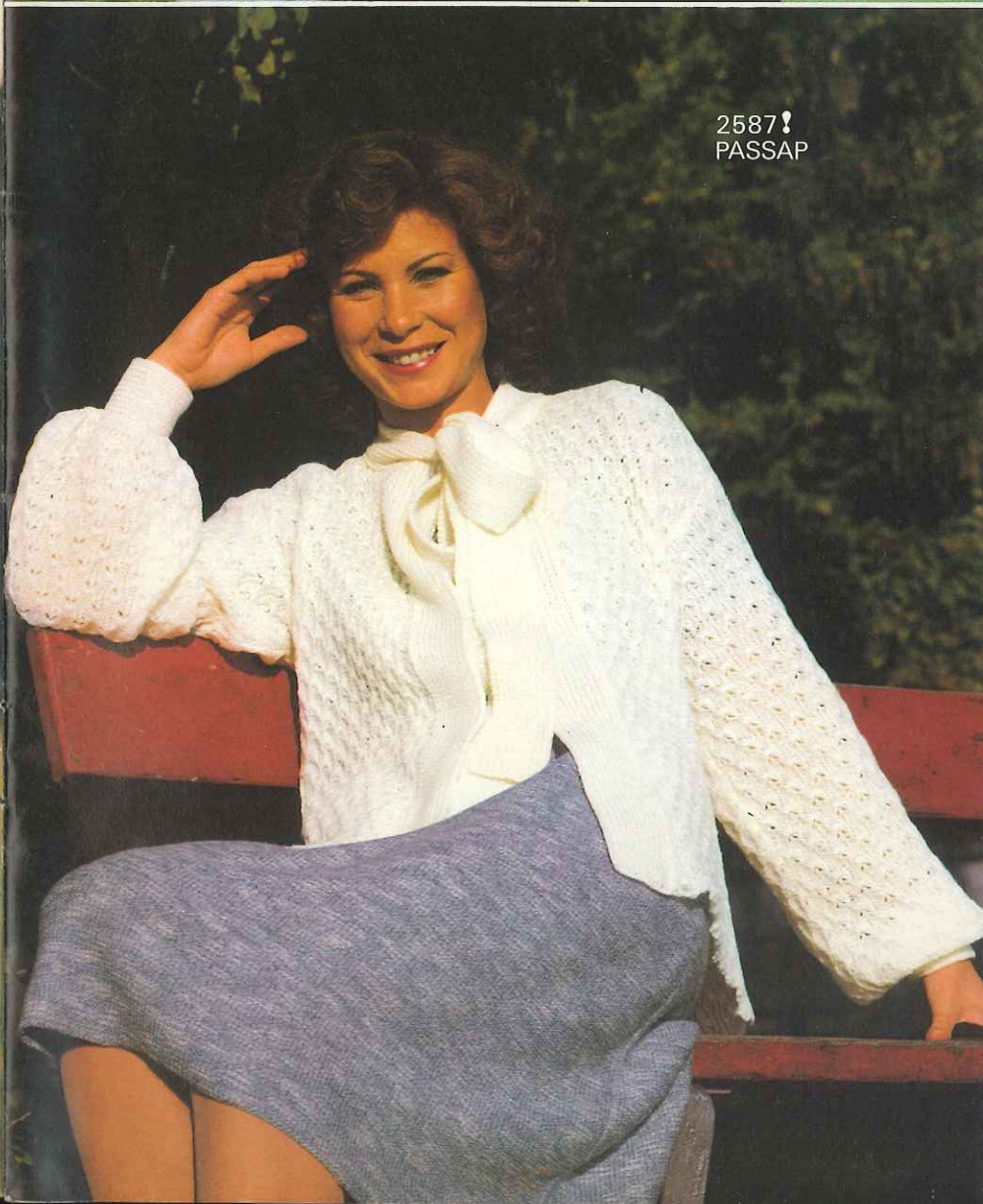


2539
PASSAP

2538
PASSAP

PASSAP[®]

INTERNATIONAL

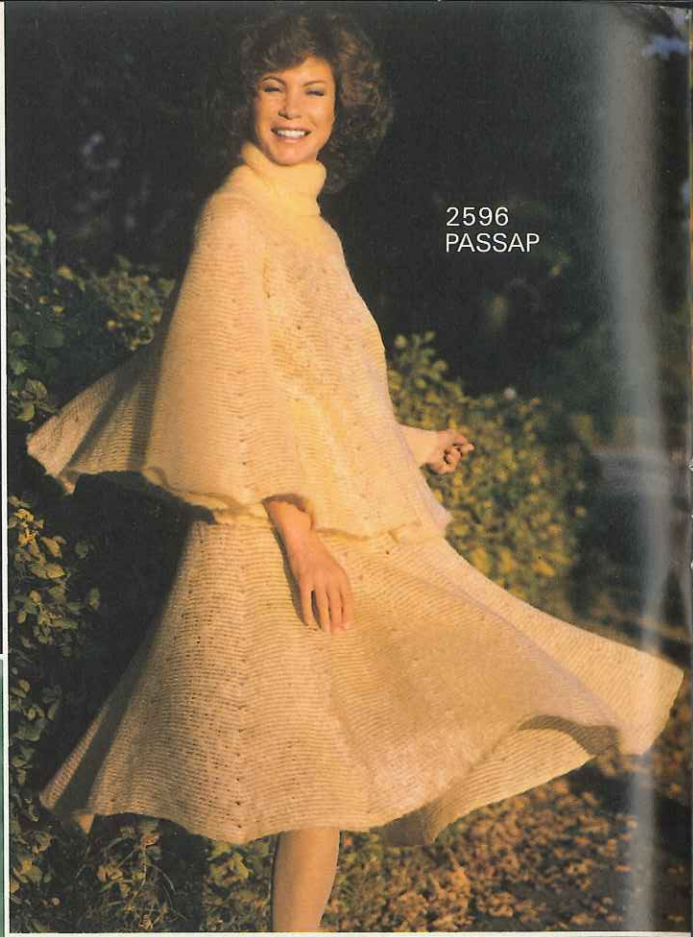


2587!
PASSAP



2583
PASSAP

2571
PASSAP



2596
PASSAP



2569
PASSAP

2569
PASSAP

PASSAP®
INTERNATIONAL



2541!
PASSAP

2537!
PASSAP

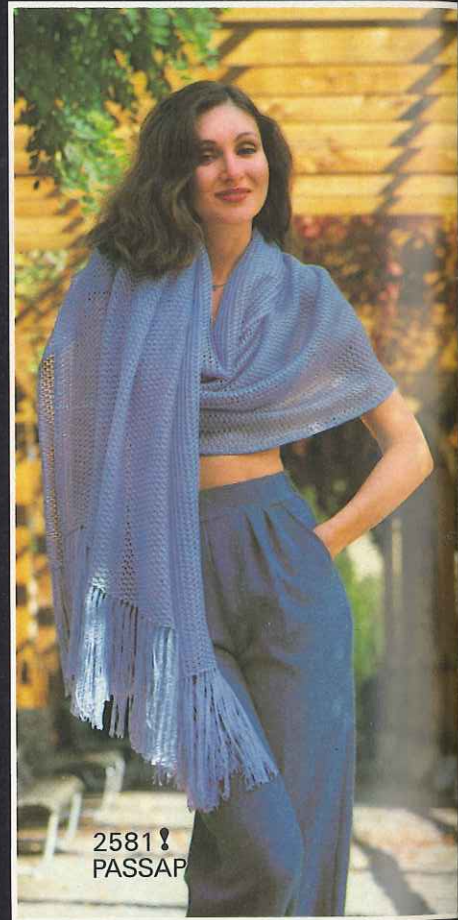
2594!
PASSAP

2574
PASSAP

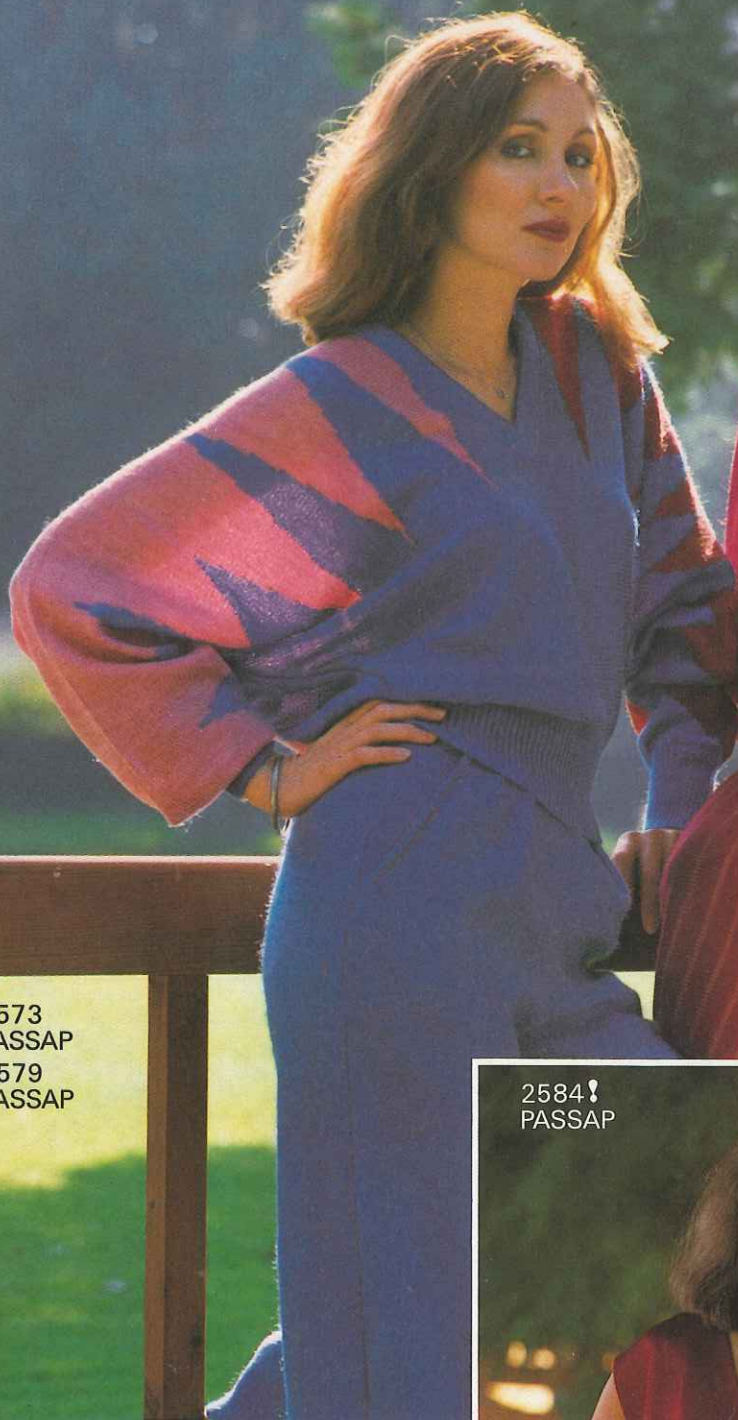


2579
PASSAP

2560
PASSAP



2581
PASSAP



2573
PASSAP
2579
PASSAP



2557
PASSAP



2584
PASSAP

2591
PASSAP

PASSAP[®]
INTERNATIONAL



2555
PASSAP

2556
PASSAP

2554
PASSAP



2542! PASSAP
2540! PASSAP

PASSAP[®]
INTERNATIONAL

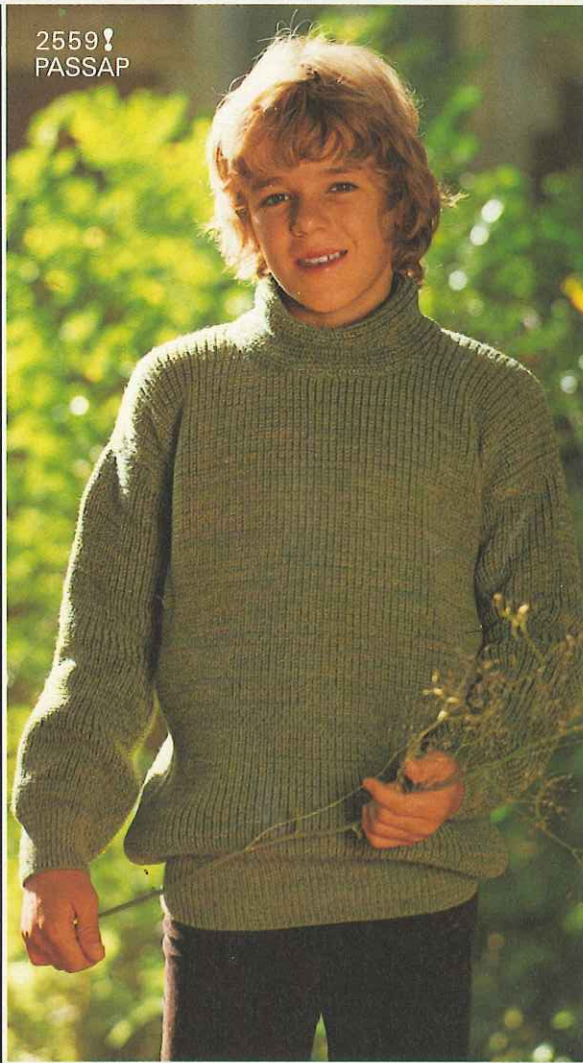


2580! PASSAP

2578
PASSAP.



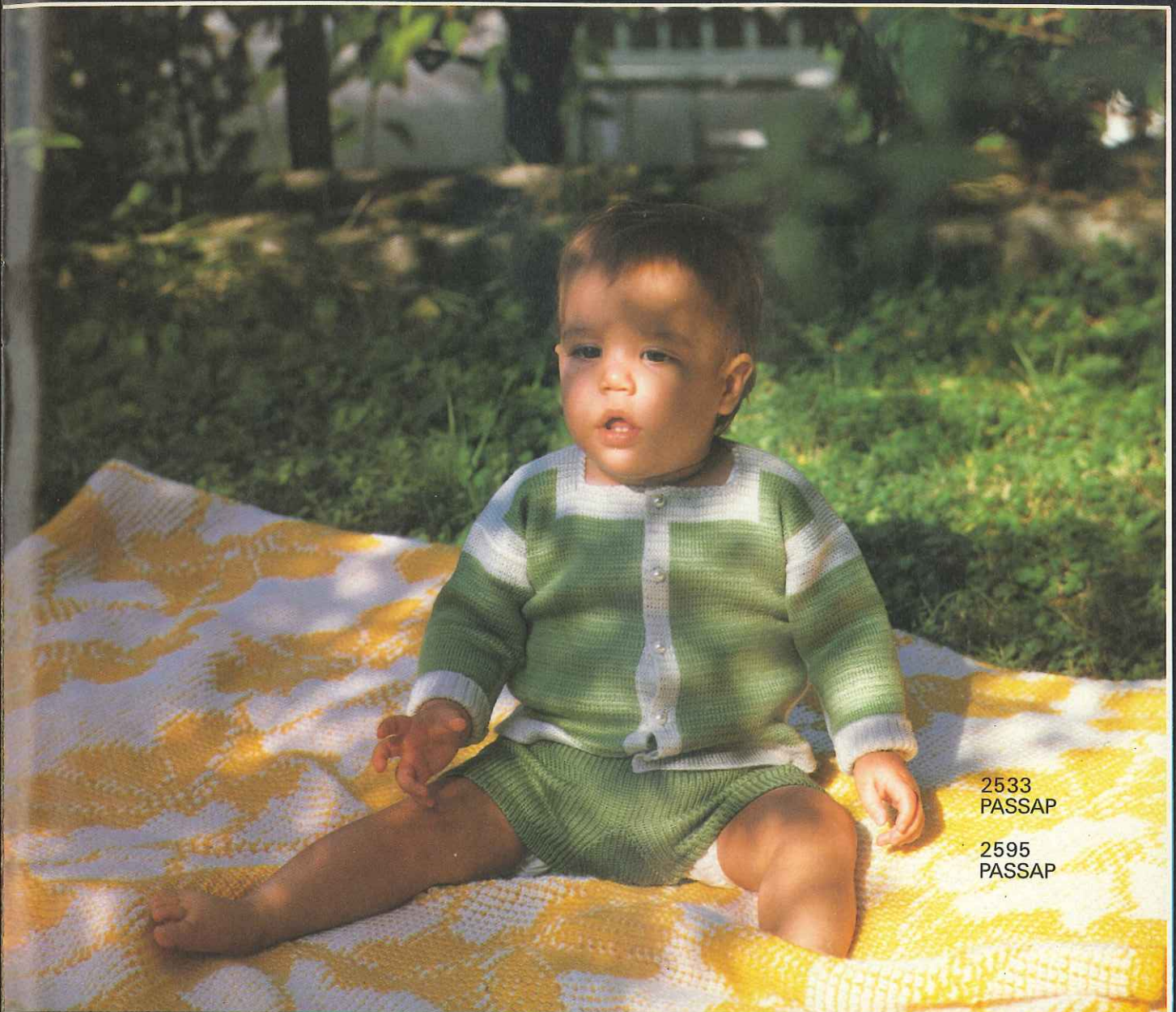
2559
PASSAP



2566
PASSAP

2585
PASSAP

PASSAP[®]
INTERNATIONAL



2533
PASSAP

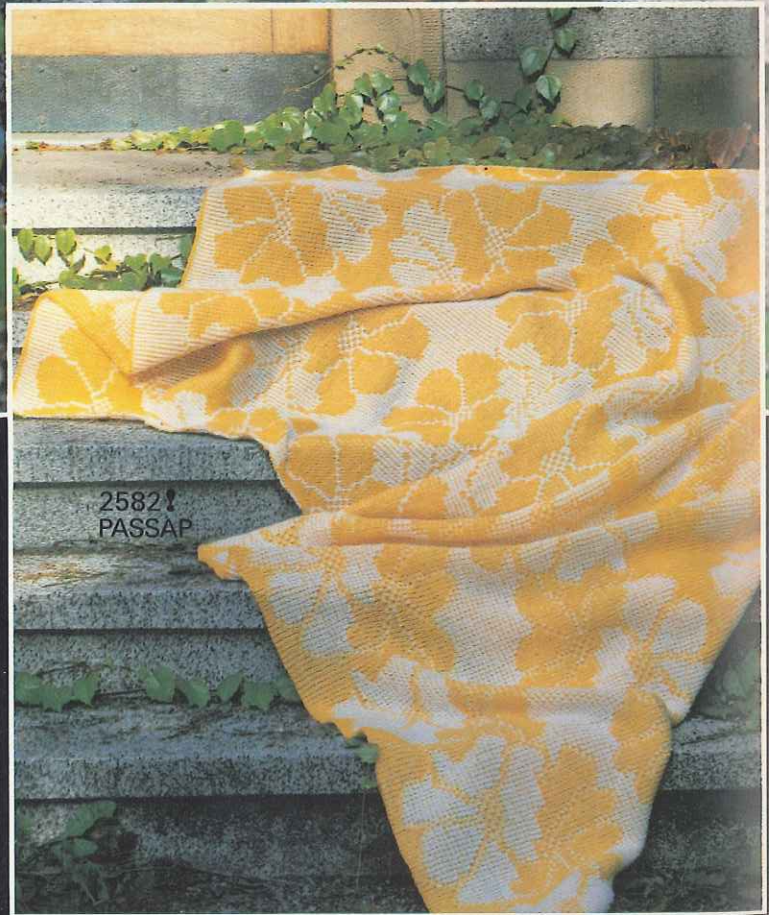
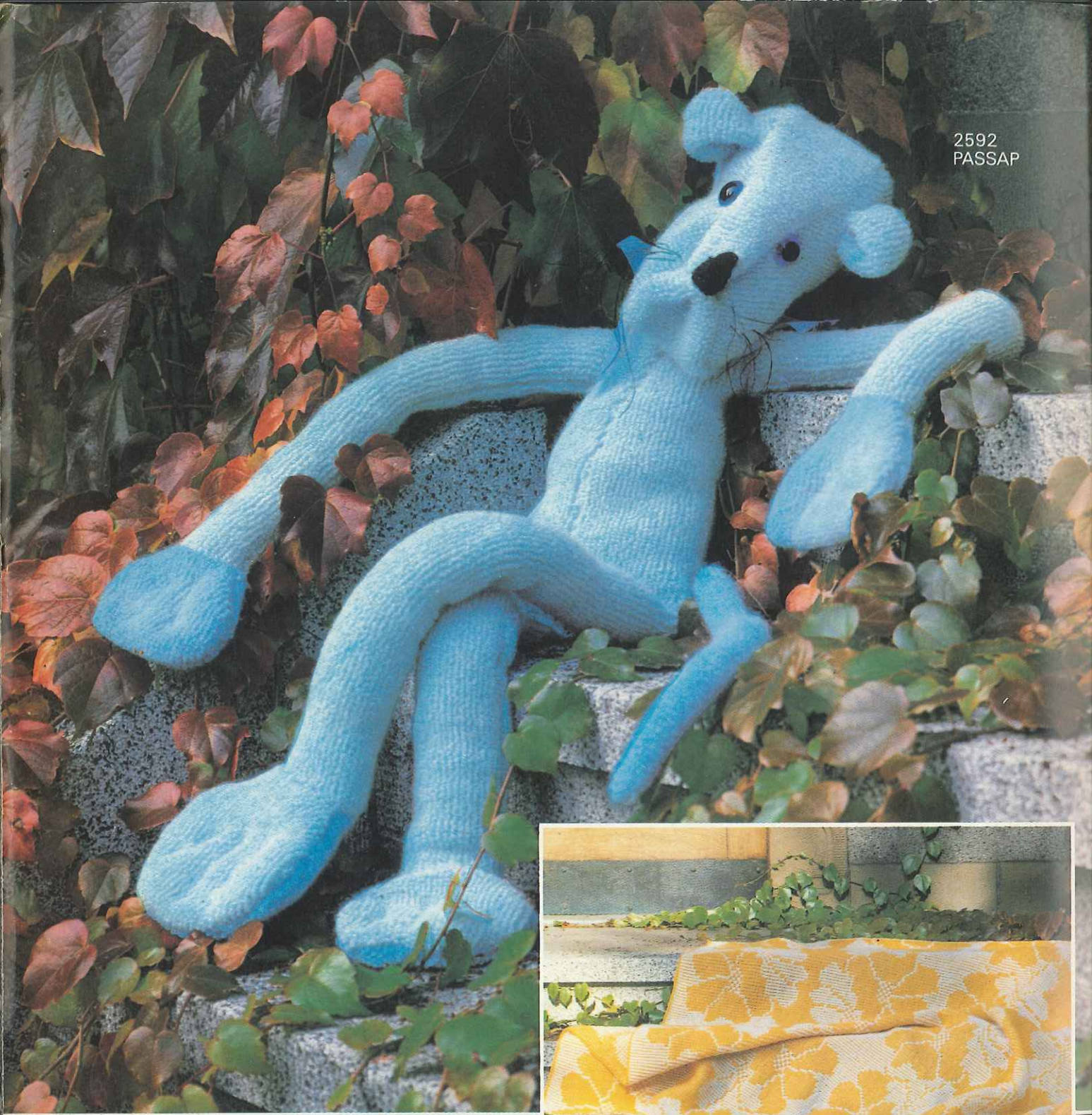
2595
PASSAP



2535
PASSAP

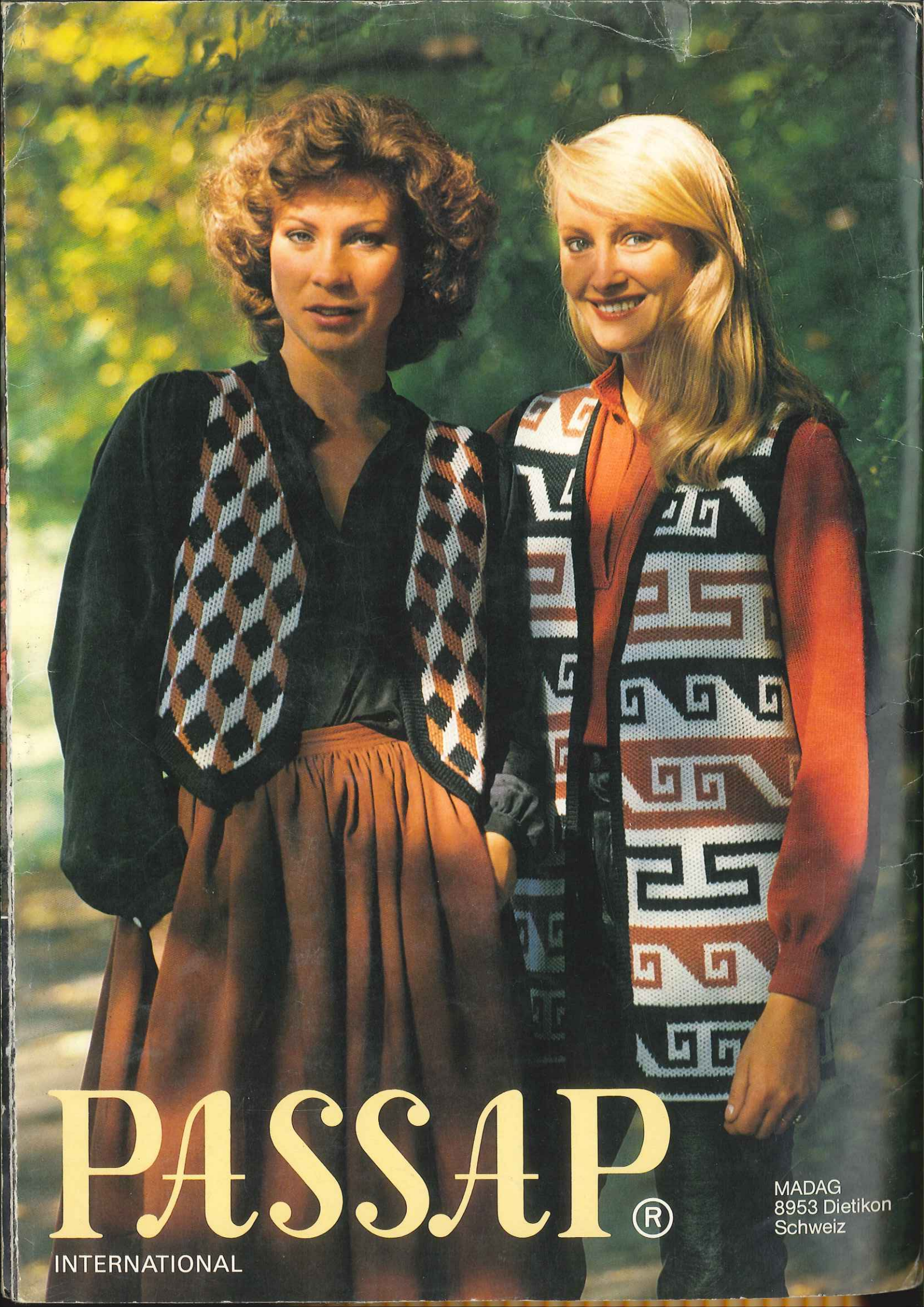
2534
PASSAP

2592
PASSAP



2582
PASSAP

PASSAP[®]
INTERNATIONAL



PASSAP®

INTERNATIONAL

MADAG
8953 Dietikon
Schweiz

PASSAP[®] DUOMATIC 80

PASSAP[®]
DUOMATIC

Description Book for Model Book No. 28

PASSAP[®] deco

New punchcards for the PASSAP deco

New punchcards are now available for over a hundred patterns that can all be knitted fully automatically with the PASSAP deco.

Ask your dealer to show you the new selection. We are quite sure you will find the pattern you are looking for. There are special patterns for children, exclusive patterns for ladies' wear, as well as discreet, unobtrusive ones for men's sweaters. You will also find a large number of new lace patterns which, together with the lace lock U 70, can now be knitted automatically with a punchcard.

As a novelty, we can now offer special cards for single motifs knitted with several colours in one row.

Models that have been knitted with the PASSAP DECO can of course also be worked without the PASSAP DECO on the DUOMATIC or DUOMATIC 80. You will find corresponding diagrams for most of the fairisle patterns, enabling you to either arrange the pushers by hand or punch a card for the PASSAP JAC. Where, due to lack of space, it has not been possible to fit in a diagram, similar cards from the wide range of JAC cards can be used.

Please remember :

If you knit on a DUOMATIC, always set the stitch size $1/2$ a number lower than the one indicated in the description.

The index is on the back page.



Here you will find our particularly easy and quick-to-knit models.

Before starting your work please study carefully the explanations on pages 2 and 3

Patterns: The drawings refer to half width, the indications of stitch numbers refer to whole width of each part.

Figure I	▪ back	Figure IX	▪ pants
Figure II	▪ front	Figure X	▪ gusset
Figure III	▪ sleeve	Figure XI	▪ scarf
Figure IV	▪ collar	Figure XII	▪ cap, bonnet
Figure V	▪ border, cuff	Figure XIII	▪ mittens
Figure VI	▪ pocket	Figure XIV	▪ socks, stockings
Figure VII	▪ skirt, front	Figure XV	▪ straps
Figure VIII	▪ skirt, back	Figure XVI	▪ bra, halter, bodice, top

If the centre line of the half width is dotted and shows arrows, the other half is worked simultaneously with reversed shapings, i. e. decreasing or increasing is made on the left as well as on the right side.

If the centre line is drawn in one firm line, the other half is worked separately with reversed shapings, i. e. first knit one part according to diagram (increasing or decreasing at right), then the second part the opposite way (decreasing or increasing at left).

Abbreviations:

Col.	▪ colour of wool.	○	▪ tubular (or) = half tubular
st, sts	▪ stitch, stitches	●	▪ every (in every row)
St.S	▪ stitch size	×	▪ times
Nd, nds	▪ needle, needles	+	▪ increase
R	▪ row	-	▪ decrease, cast off
T	▪ 2 rows	▲	▪ graduations (short rows)
		■	▪ for open work row hang st to the next nd, leave empty nd in W.P.

Stitches are only given by a number (without accompanying letter "st"). The stitch number always refers to the total of stitches, i. e. to all needles which are in Working Position on back and front bed.

Exception: For tubular or half tubular the necessary stitches are only given for one bed. The same number of needles must therefore be put into Working Position on the other bed. In these cases the sign for tubular \bigcirc respectively (or) for half tubular is set before the relevant stitch number.

Examples for increasing and decreasing:

First increase or decrease always occurs in the first row of a section.

- $+ 3 \times 2 \cdot 8 \cdot R$ means: increase 2 stitches 3 times in every 8th row (1 stitch at back, 1 stitch at front).
- $- 19 \times 3 \cdot 7 \cdot R$ means: decrease 3 stitches 19 times in every 7th row (back 2 stitches, front 1 stitch or vice versa).
- $- 17 \times 1 \cdot 2 / 3 \cdot R$ means: decrease 1 stitch 17 times, alternately once after 2 rows and once after 3 rows.
- $\blacktriangle - 4 \times 8 \cdot 2 \cdot R$ means: work graduations, i. e. short rows (on DUO with pushers and lock BX). Step by step put 8 nds (and their respective pushers) into Rest Position 4 times after every 2nd row (for double bed 4 nds each back and front). Once all graduations are finished, continue knitting normally, i. e. all nds in Working Position (pushers in Neutral Position).

Graduations can be knitted two ways, either from outer edge towards centre (gradual decreasing with the minus-sign "-" after the black triangle) or from the centre towards outer edge (gradual increasing with the plus-sign "+" after the black triangle.)

Number of stitches and centimetres :

- $136 = 20 \text{ cm}$ means: a total of 136 sts (for K/K 68 stitches each on back and front) make a width of 20 cm.
- $\bigcirc 146 = 43 \text{ cm}$ means: cast on 146 sts each on back and front bed for tubular which makes a width of 43 cm.

Stitch size: These indications are only recommended by us. They must always be tested by you, by making your own test square for your own wool.

Test square: We strongly recommend that you make always a test square with your own material before starting to work, in order to calculate for your material the necessary numbers of stitches and rows along the PASSAP - chart. The chapter "The test square and its calculation" in your instruction book informs you how to proceed for these calculations. This is very important, especially when adjusting a model to another size.

2537 PASSAP-DUOMATIC 80

Dress with dolman sleeves

- Size : 84 - 96 cm bust
 Material : 600 g man-made fibre yarn
 Stitch size : AX-pattern 3 3/4 , bands 2 3/4 , stocking stitch 5
 Test square : 50 sts = 33 cm (every alternate nd), 100 R = 16 cm
 Pattern : AX-pattern with every alternate nd with punchcard 17
 PASSAP deco or acc.to diagram, sleeve bands 1:1 rib, neckband stocking stitch.

Fig. I : A = at extreme left of machine bring nds into W.P. acc.to diagram (left of centre evenly numbered, right of centre unevenly numbered nds). Begin with contrast yarn. Then with lock AX, punchcard 17 or acc.to diagram, knit straight at left, inc.at right. B = straight. 2nd half : repeat A + B in reverse order.
 Fig. II : A = cast on as for Fig. I. Knit straight at left, inc.at right. B = straight. C = cast off 6 sts at left. Then shape neck at left, knit straight at right. Cast off loosely 24 sts at left at the end. 2nd half : cast on again 24 sts at left (old test square). Knit A + B + C in reverse order.
 Fig. VII + VIII : Knit three parts alike
 Arrange nds in 1:1 division, nds on front bed acc.to diagram, tubular cast on, then transfer sts from back to sts on front bed, lock AX, knit straight in pattern. A few rows with contrast yarn, release.
 Bands : knit two parts alike
 On each bed 30 nds in W.P. in 1:1 division, tubular cast on. Knit 50 rows. Transfer sts to front for st.st. Knit 2 rows st.st. A few rows with contrast yarn, release.

Material : 330 m length per 100 g
 103 yds per 1 oz
 10 cm = approx. 4"

Neckband : Begin with contrast yarn. Cast on 9 sts for st.st. Knit 66 rows st.st. straight. For first corner bring all pushers into W.P., lock BX, knit 4 rows, at the same time bring 1 pusher into R.P. on every row at each end, knit 4 rows, at the same time, beg,from inside bring 4 times 1 pusher into W.P. at each end. Knit 166 rows. Knit 2nd corner as given for first corner. Then knit 66 rows st.st. A few rows with contrast yarn, release.
 Belt : Tubular with 5 nds in W.P. on each bed. Knit belt to required length. A To make up : Block and press parts. Join shoulder from arrow to dot with mattress stitch. Backstitch bands to sleeves, unravelling contrast yarn, catch down on inside. Join sleeve seams. Backstitch neckband to neck opening, catch down on inside. Join skirt seams. Then join skirt to bodice, st by st backstitching into the open loops, acc. to the broken line on the diagram. Join lower edge of bodice to skirt. Close ends of belt and insert at waist.

Fig. I

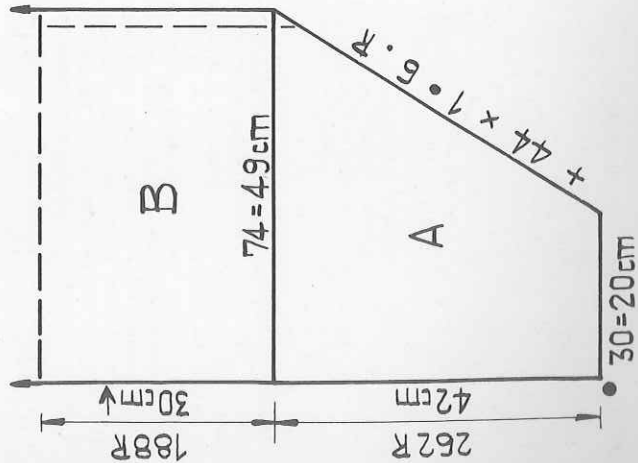


Fig. II

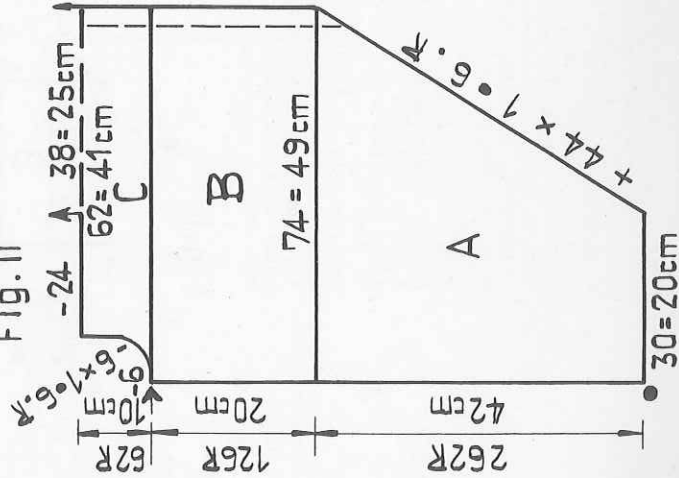
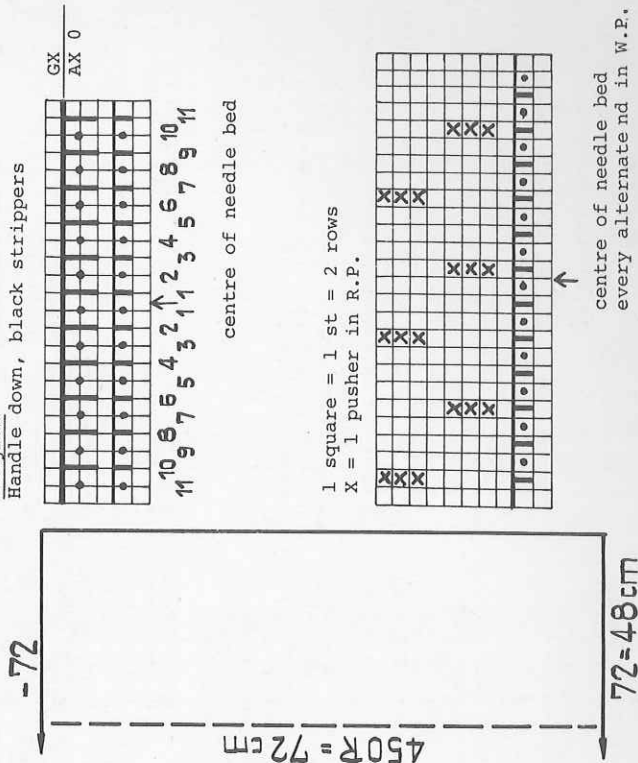


Fig. VII + VIII



Casual dress

Size : 88 (92) cm bust
 Material : 340 (370) g tweed-effect wool/acrylic and linen.
 6 small buttons. 1 leather belt.
 Stitch size : Stocking stitch = 7, 3:1 rib = back 6 1/4, front 3 1/2, 1:1 rib = 4 1/2, tub.=7
 Test square : Stocking stitch = 100 sts = 38 cm, 100 R = 32 cm
 3:1 rib = 100 sts (slightly stretched) = 30 cm, 100 R = 26,5 cm
 1:1 rib = 100 sts = 30 cm, 100 R = 25 cm
 Pattern : Skirt st.st., bodice 3:1 rib acc.to diagram, shoulders and sleeves 1:1 rib.

Fig. I

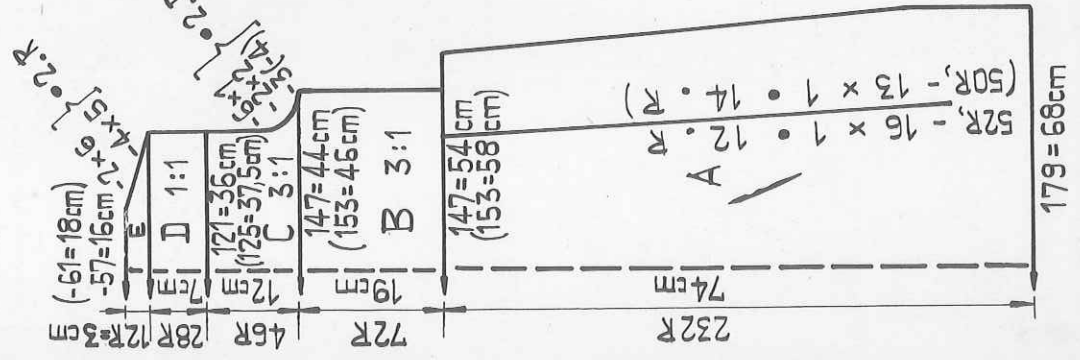


Fig. II

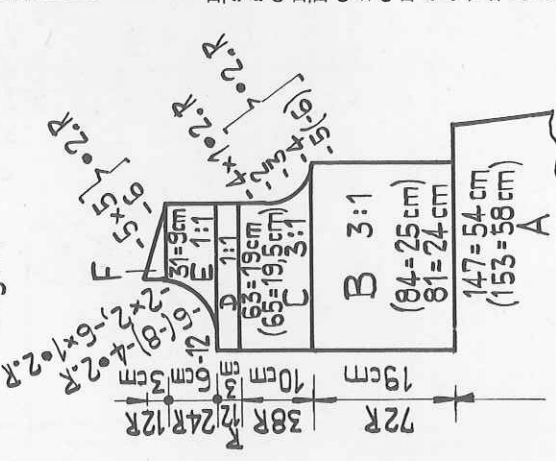


Fig. III

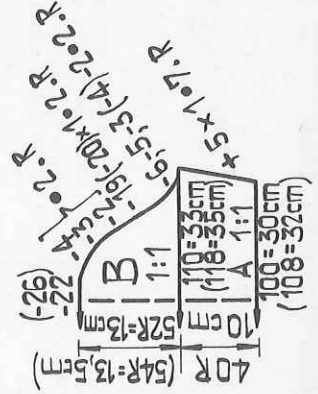


Diagram Handle up, blue strippers

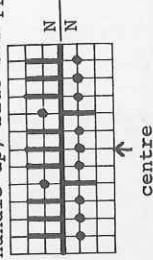


Fig. I : Begin with contrast yarn. Dec.at both ends with 24-deckercomb.B = transfer sts for 3:1 rib acc.to diagram. Knit straight. C = shape armhole at both ends, cont. straight. D = transfer sts for 1:1 rib. Knit straight. E = shape shoulder at both ends. Cast off.

Fig. II : A = as for Fig. I. B = divide work : place 66 (69) sts at left on deckercombs or knitting needle. First front part : B' transfer sts for 3:1 acc.to diagram. Knit straight. On the 25th row work first buttonhole as follows : miss 4 sts at left edge, knit the following 3 sts by hand using contrast yarn. After every 23 rows work another 2 buttonholes. C = shape armhole at right, knit straight at left. Work a buttonhole on the 23rd row. D = transfer sts for 1:1 rib. Work a buttonhole on the 8th row. E = straight at right, shape neck at left. F = shape shoulder at right, straight at left. Second front part : at left return sts to nds of machine and at right of them cast on 15 new sts for the underlap (slip sts of an old test square onto the nds of the machine). Knit with reversed shapings, but omit buttonholes.

Fig. III : sleeves in 1:1 rib
 A = tubular cast on. Inc. at both ends. B = shape sleeve head at both ends. Cast off.
 Neckband : tubular, stocking stitch
 With 164 (168) nds on each bed and lock N/N, St.S 1 1/2, knit 1 row. Then with lock CX/Ci: knit RC 11 tubular.After RC 6 work buttonhole : at right back and front miss 4 sts, knit the following 3 sts by hand using contrast yarn. A few rows with contrast yarn, release. To make up : Block and press parts lightly. Join shoulder seams. Sew neckband to outside of neck opening, st by st, backstitching into the open loops, then to inside, unravelling contrast yarn. Unravel contrast yarn on buttonholes and finish off the loose sts from back and front with buttonhole stitch. Join side and sleeve seams. Set in sleeves. Sew on buttons. Unravel contrast yarn on hem and cast off sts by hand. If necessary make a hem.

Material : 340 m length per 100 g
 106 yds per 1 oz
 10 cms = approx. 4"

2557 PASSAP-
DUOMATIC 80

Kimono dress with silk stripes

Size : 84 - 96 cm bust
 Material : 265 g fairly fine mohair and 185 g rayon. 1 fine elastic.
 Stitch size : 6 3/4
 Test square : 100 sts = 41,5 cm, 100 R (RC 200) = 30 cm

2536 PASSAP-DUOMATIC 80

2540 PASSAP-DUOMATIC 80

Pinafore dress

Size : 3 years, height 98 cm

Material : 200 g fairly fine wool :
110 g navy blue and 90 g yellow

Stitch size : Fairisle = 4, St.stitch = 5

Test square : 100 sts = 15,5 cm
RC 200 = 20,5 cm

Pattern : Fairisle acc. to diagram or with punchcard 22 PASSAP deco.

Fig. VII : A = with 232 nds tubular cast on in navy blue, then fairisle pattern acc. to diagram or with punchcard 22, dec. at both ends. B = divide work, cast off 76 sts at centre, slip 60 sts at left onto dekercombs, make note of row number of punchcard or pusher position. Knit straight at right, dec. at left. Then, at left, return the 60 sts to nds of machine and knit with reversed shapings. Make sure the pattern continues correctly.

Fig. VIII : A = with 244 nds cast on as for

Fig. VII. Knit in fairisle, dec. at both ends. B = shape armhole at both ends, cont. straight. Cast off.

Straps : knit twice

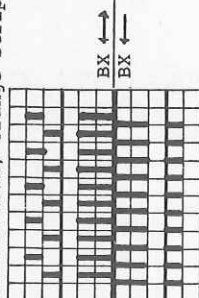
With 10 nds on each bed knit RC 368, straight, in fairisle. Cast off.

Material : 500 m length per 100 g
157 yds per 1 oz
10 cms = approx. 4"

Neckband : navy blue, stocking stitch
Begin with contrast yarn. With 130 sts knit 10 rows. A few rows with contrast yarn, release.
To make up : Block and press parts. Join side seams. Join neckband, and sew first to outside of neck opening, st by st, backstitching into the open loops, catch down, st by st, to inside, unravelling contrast yarn. Sew on straps at back in crossed fashion.

Fairisle diagram

Handle down, orange strippers



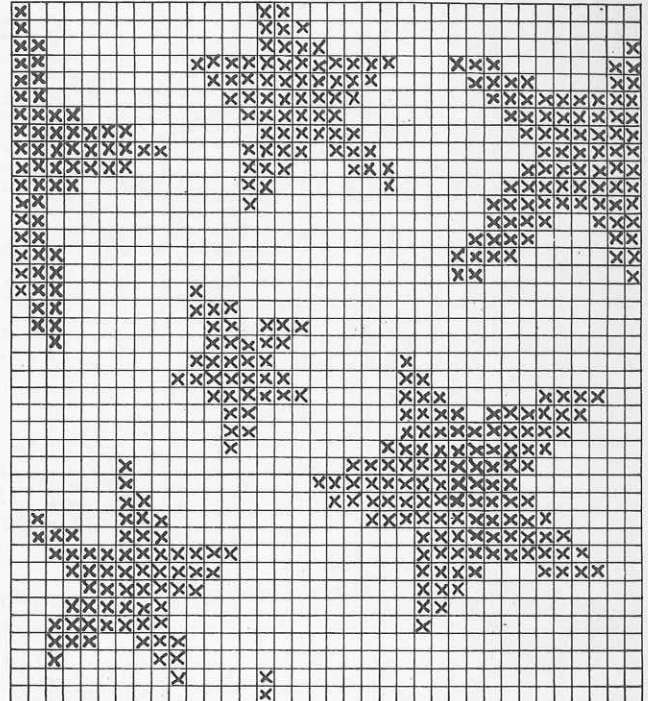
Fairisle pattern

empty square = navy blue

X = yellow

1 square = 1 st = 2 R = RC 4

RZ = RC



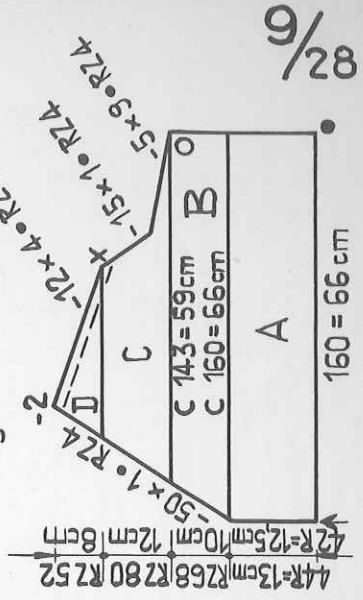
Pattern : Stocking stitch, bodice half tubular, stripes : 6 rows (RC 12) mohair, 2 rows (RC 4) rayon.

Fig. I + II : knit twice. For back and front part begin at shoulder seam, using contrast yarn.

A = cast on 160 sts on front bed for st.st. Knit 2 rows mohair. Then, 42 rows alternately 2 rows rayon, 6 rows mohair. Cast on 160 sts on back bed. With lock at front GX, back N, knit 4 rows mohair. Then, colour sequence as for front, knit 42 rows. B = knit half tubular, col. sequence 4 rows rayon, 12 rows mohair, open at right. Knit straight at right, at left back and front dec. with double decker tool. C = dec. at right for lower sleeve seam, at left cont. dec. with double decker. D = dec. at right for waist seam, at left dec. with double decker. Skirt : begin at a side seam using contrast yarn. Cast on 178 sts. Knit in colour sequence (2 rows rayon, 6 rows mohair) 400 rows. A few rows with contrast yarn, release. Silk cord : tubular with 3 sts on each bed. Knit a cord with St.S 5 to required length. To make up : Pin out parts to size and press lightly. Graft together skirt, unravelling contrast yarn and 1 row knitted in mohair. Graft together bodice parts from arrow to dot, unravelling contrast yarn and 1 row knitted in mohair. Join sleeve seams from circle to cross. From inside, join skirt to bodice acc. to broken line on diagram. Slip st. lower edge of bodice to skirt. Insert silk cord and tie as shown in picture. If required, make hem on skirt. Make sleeve hem, approx. 1,5 cm wide, and insert fine elastic.

Material : Mohair 500 m length per 100 g
157 yds per 1 oz
Rayon 300 m length per 100 g
94 yds per 1 oz

Fig. I + II



82/6

Fig. VII

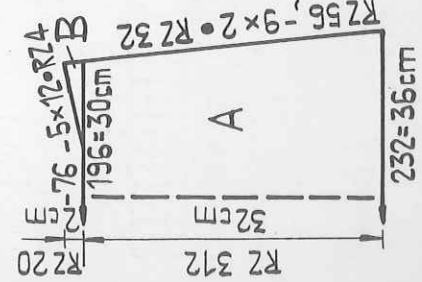
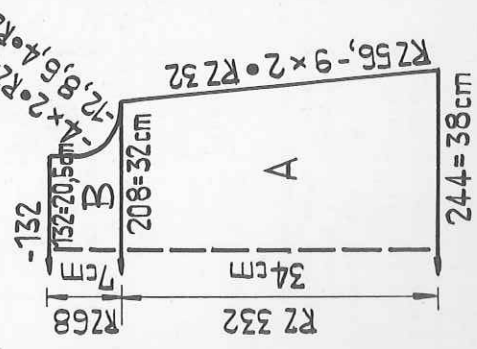


Fig. VIII



2546 PASSAP-DUOMATIC 80

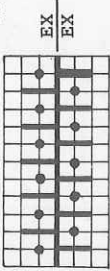
Double-breasted man's (lady's) jacket

Size : 105 (96) cm chest/bust
 Material : 820 (730) g sports wool. 6 buttons
 Stitch size : Fisherman's rib 5/2, stocking stitch 5/2 and 6 3/4, 1:1 rib 3/2.

Test square : Fisherman's rib 100 sts = 40 cm, 100 R = 18,5 cm
 " " with racking 100 sts = 40 cm, 100 R = 15 cm
 Pattern : Hem st.st. tubular, jacket fisherman's rib 1:1 and fisherman's rib with racking acc.to diagram, bands 1:1 rib.

Racking pattern

Handle up, blue strippers



Material : 275 m length per 100 g
 83 yds per 1 oz
 10 cm = approx. 4"

Rack 1/2 nds to the right, knit 2 R
 Rack 1/2 nds to the left, knit 2 R, repeat

Fig. I

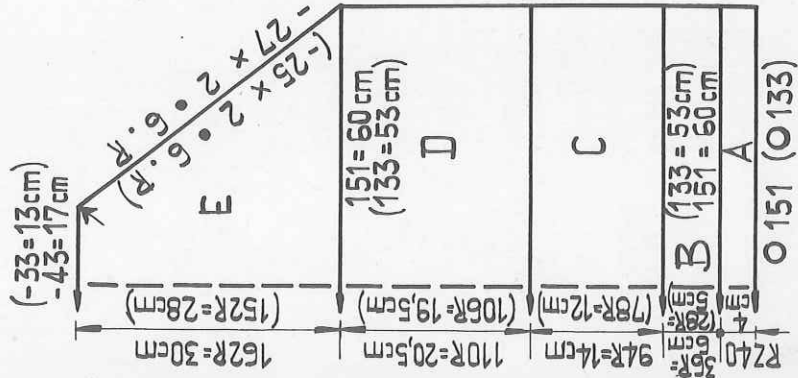


Fig. II

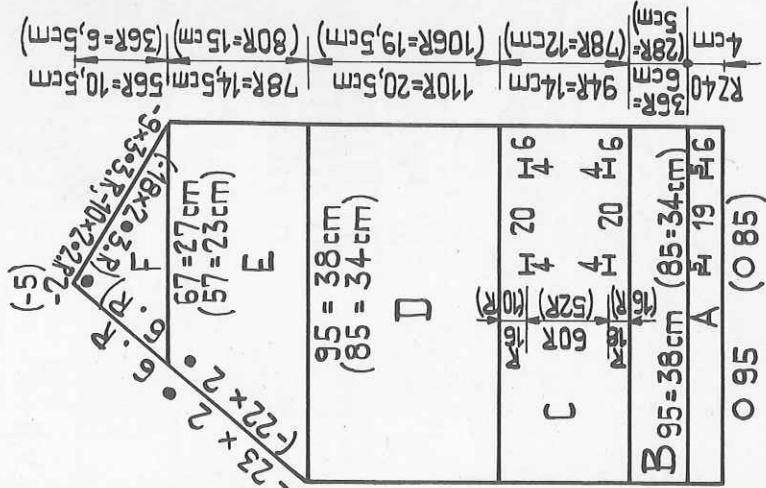


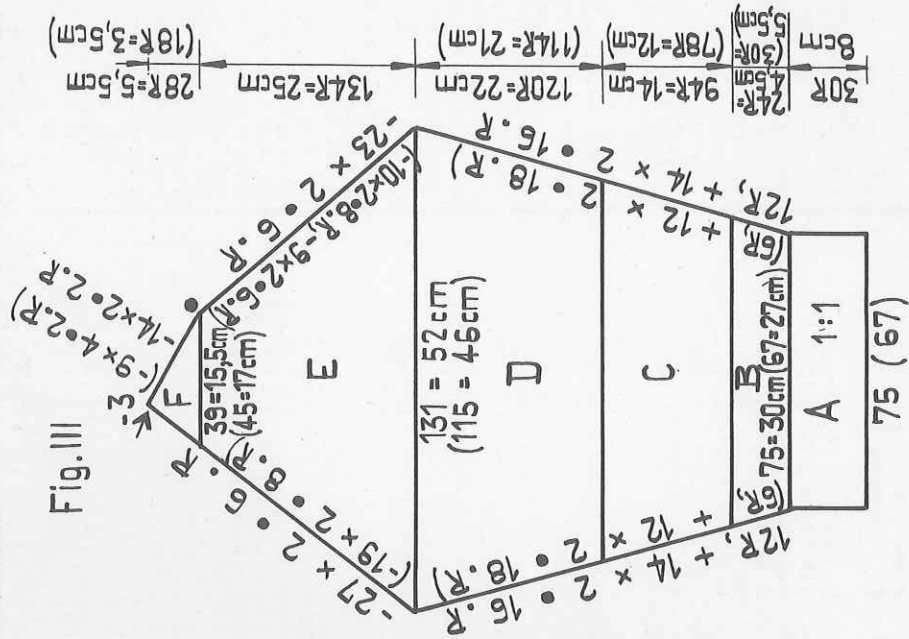
Fig. I :

A = hem : with 151 (133) nds on each bed, knit 1 row N/N with St.S 2. Then knit RC 40 tubular with lock CX/CX, St.S. 5/2. B = transfer sts for 1:1 rib, i.e. always transfer 1 st from back to front, and 1 st from front to back bed, knit 1 row N/N. Now, with lock EX/EX knit straight in fisherman's rib. C = Racking pattern acc.to diagram. D = as for B. E = shape raglan at both ends : always move 3 sts 1 nd in at back and front. Cast off.

Fig. II : left front part

A = with 95 (85) nds on each bed as for Fig. I. For the man's jacket, in the 20th row work 2 buttonholes acc.to diagram : miss 6 sts at right back and front. Then knit 5 sts back and front with contrast yarn by hand. Miss 20 sts, knit 5 sts each by hand. B = transfer sts as for Fig. I. Knit straight in fisherman's rib. C = fisherman's rib with racking. In the 18th row work two buttonholes as follows : at right miss 6 sts, knit 4 sts with contrast yarn, miss 20 sts, knit 4 sts with contrast yarn. Knit 60 rows, then work 3 pairs of buttonholes. D = fisherman's rib. E = straight at right, shape raglan at left : as given for Fig. I. F = shape neck at right edge, shape raglan at left. Right front part : knit with reversed shapings, but omitting buttonholes.

Fig. III



RZ = RC

2541 PASSAP-DUOMATIC 80

Short-sleeved sweater

Material : 600 m length per 100 g
188 yds per 1 oz
10 cms = approx. 4"

Size : 84 - 96 cm bust
Material : 310 g fairly fine mohair/acrylic
Stitch size : AX-pattern = 6, 1:1 rib = 3
Test square : 100 sts = 43 cm, 100 R = 20 cm
Pattern : AX-pattern with punchcard 19 PASSAP deco or acc.to diagram, bands 1:1 rib

Fig. I :
A = tubular cast on for 1:1 rib. Knit straight. B = transfer sts to front for AX-pattern. Lock AX. Tuck stitch acc. to diagram or with punchcard PASSAP deco, knit straight. Cast off.

Fig. II :
A = tubular cast on for 1:1 rib. Knit straight. B = transfer sts to front for AX-pattern. Knit straight. C = place left half on deckercombs, make note of pattern row. For right half : knit straight at right, shape neck at left. Cast off. For left half : return sts onto nds of machine. Knit with reversed shapings, taking care that the pattern continues correctly.

Fig. III : Knit two parts alike
A = tubular cast on for 1:1 rib. Knit straight. B = transfer sts to front for AX-pattern. Knit straight in pattern. A few rows with contrast yarn, release.

Fig. I

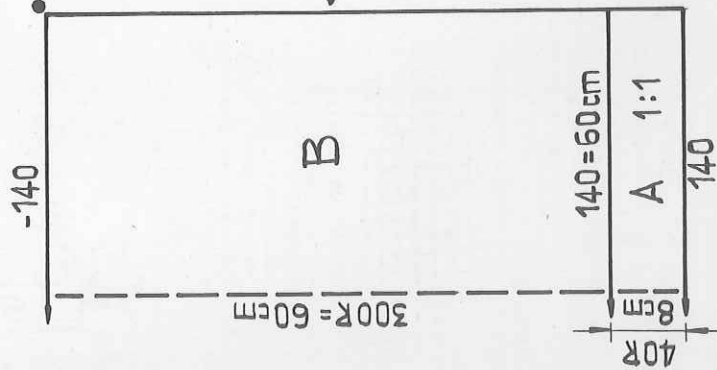


Fig. II

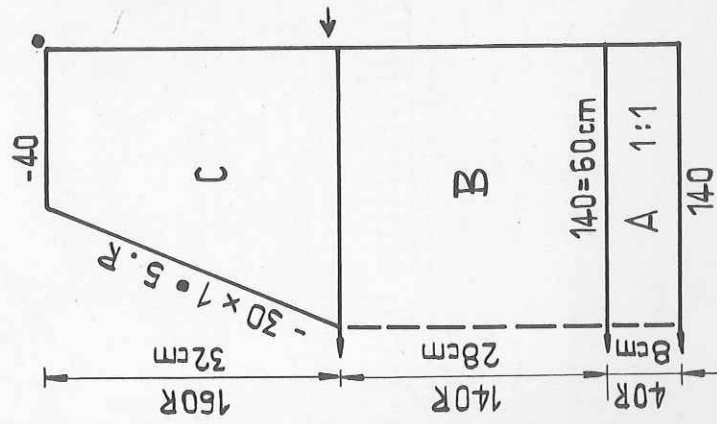
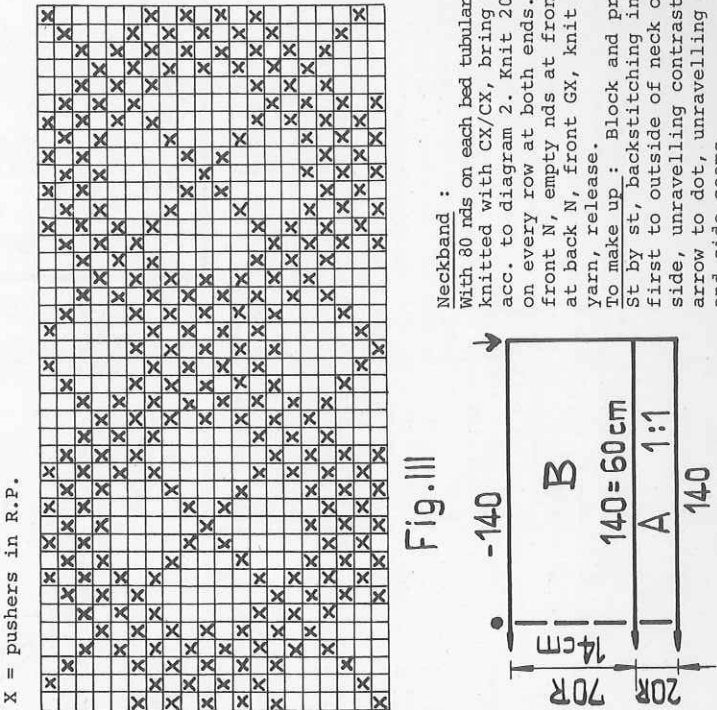


Fig. III



Lady : work right front part with buttonholes acc.to indications in brackets.

Fig. III : first sleeve

A = with 75 (67) sts tubular cast on in 1:1 rib. Knit 30 rows in 1:1 rib. B = fisherman's rib, inc. at both ends : back and front move the edges 1 working needle out, place a purlstitch loop on the empty needle. C = fisherman's rib with racking. Cont. incr. at both ends. D = fisherman's rib. E = shape raglan at both ends. F = shape neck at right, shape raglan at left. Cast off.

Second sleeve : A to D as for first sleeve. E + F with reversed shapings.

Collar :
With 150 nds tubular cast on in 1:1 rib, cont. in fisherman's rib. Knit 52 rows. Then bring all empty nds back and front into W.P., place the purlstitch loop of the st opposite onto the empty nd. Knit RC 8 st.st. tubular with lock CX/CX and St.S 6 3/4. A few rows with contrast yarn, release.

To make up : Do not press. Set in sleeves between back and front parts matching arrows and dots. Join sleeve and side seams. Sew collar first to outside, then to inside, st by st, backstitching into the open loops, at the same time easing in neck opening, unravel contrast yarn. Finish button holes with backstitch. Sew on buttons to match.

1 square = 1 st = 2 R
X = pushers in R.P.

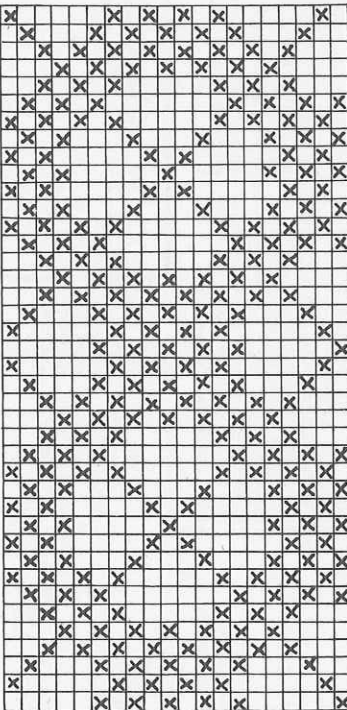


Diagram 1

Handle down, black strippers

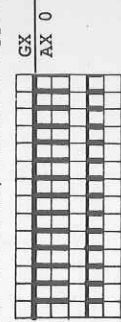
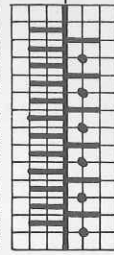


Diagram 2

Handle down, orange strippers



Neckband :

With 80 nds on each bed tubular cast on for 1:1 rib. After the rows knitted with CX/CX, bring up the empty nds on the back bed acc. to diagram 2. Knit 20 rows, at the same time inc. 1 st on every row at both ends. Then, with lock at back GX, front N, empty nds at front in W.P., knit 4 rows. With lock at back N, front GX, knit 4 rows. A few rows with contrast yarn, release.

To make up : Block and press parts. Join shoulder seams. St by st, backstitching into the open loops, sew neckband first to outside of neck opening, then catch down on inside, unravelling contrast yarn. Backstitch sleeve from arrow to dot, unravelling contrast yarn. Join sleeve and side seams.

11/28

2552 PASSAP-DUOMATIC 80

Striped raglan sweater

Size : chest approx. 110 cm
 Material : 380 g sports wool : 340 g tweed-effect and 40 g red
 Stitch size : Stocking stitch = 8, bands = 4 3/4, contrasting bands = 6
 Test square : 50 sts = 33 cm, 50 R = 20 cm
 Pattern : Stocking stitch knitted with every alternate nd, raglan with graduations.

Diagram 1
 Handle up, blue strippers

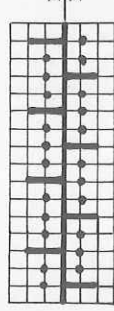


Diagram 2
 Handle up, blue strippers

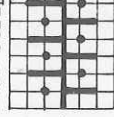


Diagram 3
 Handle down, blue strippers

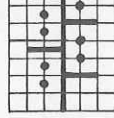


Fig. I :
 A = with 90 nds tubular cast on acc.to diagram 1. Knit straight. B = transfer sts to front for stocking stitch with every alternate nd. Knit straight. C = raglan shaping with graduations : for every working nd bring 1 pusher into W.P., make graduations acc.to diagram. Then cast off 10 sts at centre. Place 40 sts at left onto dekercombs or knitting needle. At right work contrasting band with red : at back, bring 39 nds into W.P. acc.to diagram 2, and place the purlstitch loop of the nd opposite onto each of these nds. Knit 20 rows

Fig. I

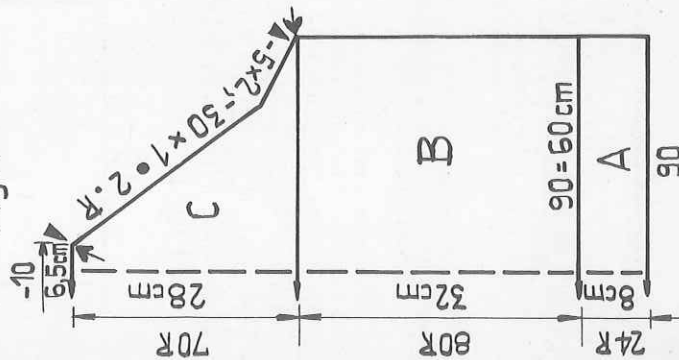


Fig. II

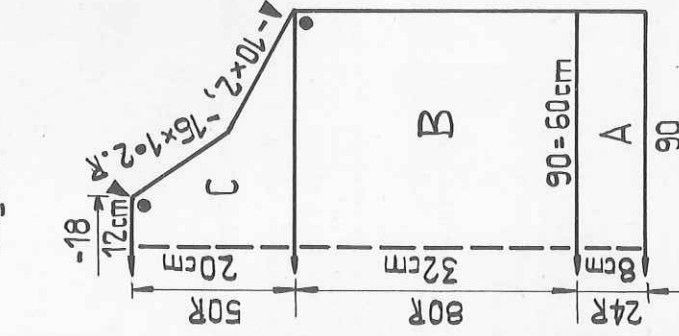
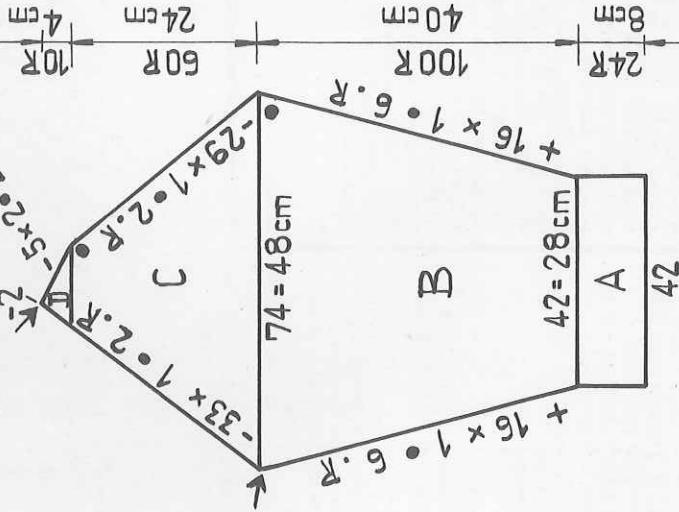


Fig. III



Material : 275 m length per 100 g
 83 yards per 1 oz
 10 cm = approx. 4"

with St.S 6 in 1:1 division. A few rows with contrast yarn, release. Then, at left, return the 40 sts to the nds of the machine, and work the contrasting band as given for right side.

Fig. II :

A + B as for Fig. I. C = shape raglan with graduations acc.to diagram. Cast off 18 sts at centre. Knit contrasting band at both ends as given for Fig. I.

Fig. III :

A = tubular cast on acc.to diagram 1. Knit straight. B = transfer sts to front for stocking stitch with every alternate nd, inc. at both ends. C = shape raglan at both ends by always moving 3 sts in. D = shape neck at right, shape raglan at left. Second sleeve : A + B as for first sleeve, knit C + D with reversed shapings.
 Neckband : red

With 115 nds tubular cast on acc.to diagram 3. Knit 12 rows. Transfer all sts to front. Knit 1 row with lock N, St.S 8. A few rows with contrast yarn, release. To make up : Block and press parts. Sew back and front parts to raglan edges of sleeves, st by st, backstitching into the open loops, and matching arrows and dots, in the same way sew to neck opening, unravelling contrast yarn. Join side and sleeve seams.

12/28

2594 PASSAP -

DUOMATIC 80

Material : 600 m length per 100 g
 188 yds per 1 oz
 10 cm = approx. 4"

Skirt

Size : 88 to 104 cm hips
 Material : 270 g fairly fine mohair/acrylic
 Stocking stitch tubular 5/2,
 "long stitch" front and back 4.
 Test square : 100 sts = 33 cm, 100 R (RC 200) = 26 cm
 Pattern : Stocking stitch, tubular, wrong side worn as right side, bands "long stitch"

Fig. VII + VIII :

A = begin with contrast yarn, 170 nds in W.P. on each bed, stocking stitch, tubular, knit straight. B = reduce number of sts, i.e. transfer every alternate st onto the next nd, then knit straight, tubular, with St.S 4 3/4, 12 rows. Starting at the centre, transfer the 5th st onto the 6th nd at right and left respectively, then knit RC 12. Then, RC 2 with St.S 3 3/4, another RC 24 with St.S 4 3/4. A few rows with contrast yarn, release.

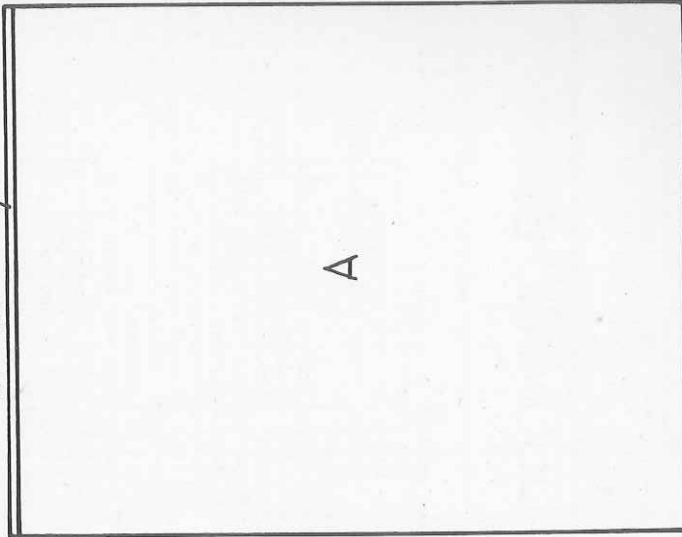
Belt :

At front 4, at back 5 nds in W.P., lock at front N, back CX. Knit band to desired length, cast off.
 To make up : Block and press skirt. Pull section B lengthwise, then hem it to the inside. Insert band. Make skirt hem to required length.

2594

Fig. VII + VIII

O - 85 B



RZ 554 = 72 cm

A

O 170 = 56 cm

Collar : Begin and end with contrast yarn.
St.st. tubular, with 76 nds on each bed knit RC 340.

To make up : Block and press parts. Join shoulder seams, taking care that the longer edge is sewn to the back part, at the same time set in sleeves. St by st, backstitching into the open loops, sew collar to outside of neck opening, catch down on inside, unravelling contrast yarn. Join sleeve and side seams.

Material : 600 m length per 100 g
188 yds per 1 oz
10 cms = approx. 4"

13/28

2539 PASSAP-DUOMATIC 80

Polo neck sweater with AX-pattern

- Size : 84 - 88 cm bust
- Material : 300 g fairly fine mohair/acrylic : 90 g salmon and 210 g white
- Stitch size : AX-pattern = 5 3/4, st.st. = 5 3/4, 2:2 rib = 4
- Test square : AX-pattern : 100 sts = 43 cm
100 R (RC 200) = 39 cm
Stocking stitch : 100 sts = 35 cm
100 R = 25 cm
- Pattern : Bands 2:2 rib, front and back part AX-pattern acc.to diagram for model 2538 or punchcard 50 PASSAP deco, sleeves and collar stocking stitch.

Fig. I : A = tubular cast on for 2:2 rib. Knit straight, B = transfer sts to front for tuck stitch. With lock AX, knit 2 rows salmon and 2 rows white in pattern, straight. C = at both ends shape armhole, knit straight. D = at both ends shape shoulder. Cast off.

Fig. I

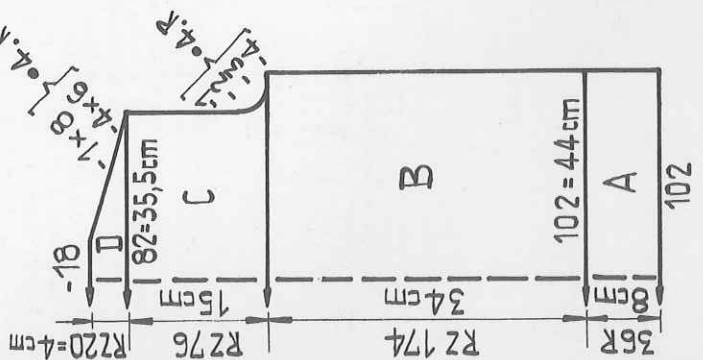
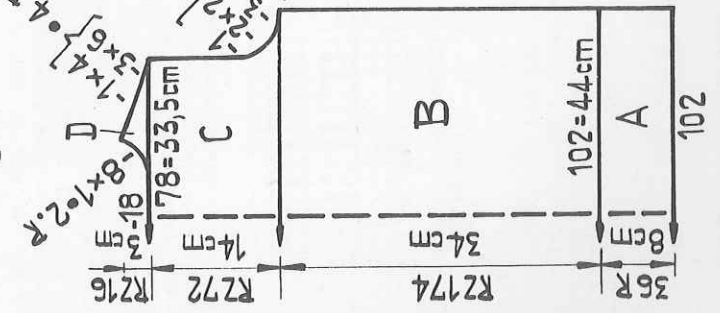


Fig. II



RZ=RC

Fig. III

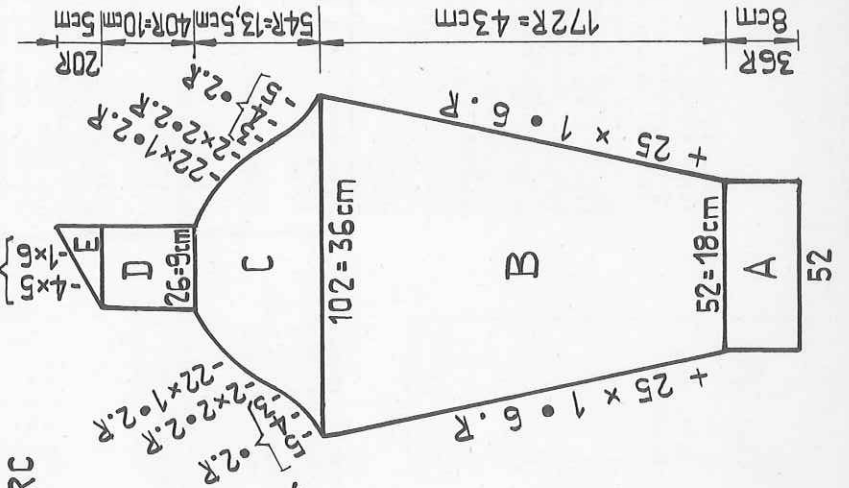


Fig. II : Section A + B as for Fig. I. C = at both ends shape armhole, knit straight, D = divide work, cast off 18 sts at centre, place left half on deckercombs. Note pusher position or punchcard row. For right half, shape shoulder at right, shape neck at left. Left part : return sts to nds of machine. Knit with reversed shapings, making sure the pattern continues correctly.

Fig. III : knit two parts with reversed shapings. A = tubular cast on for 2:2 rib. Knit straight. Transfer sts to front for st.st. B = knit st.st., white, incr. at both ends. C = shape sleeve head at both ends. D = shoulder saddle, st.st. straight. E = straight at right, dec. at left. 2nd sleeve : knit with reversed shapings.

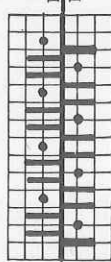
2555 PASSAP - DUOMATIC 80

Child's waist coat

Size : approx. 8 years, height 128 cm
Material : 150 g fine orlon : 110 g red and 40 g yellow. 5 buttons.
Stitch size : AX-pattern = 6, 2:2 rib = 5
Test square : 100 sts = 52 cm, 100 R = 17,5 cm
Pattern : All bands in 2:2 rib, red, yarn taken twofold. Waist coat AX-pattern acc.to diagram, 1 red and 1 yellow thread knitted together.

2:2 rib-band

Handle down, orange strippers



AX-pattern

Handle down, black strippers

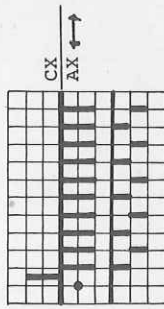
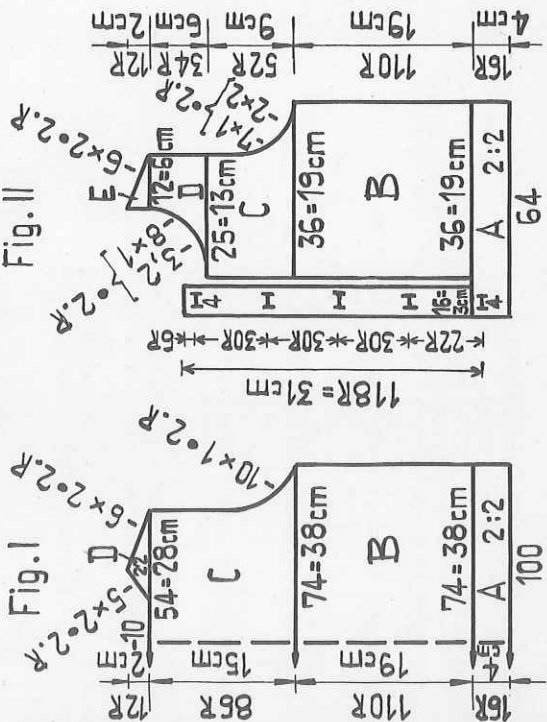


Fig. I :

A = 2:2 rib band, red. Tubular cast on acc.to instructions, knit 16 rows. B = always transfer the 2 sts from the back bed to the empty nds at front. Knit straight in AX-pattern. C = shape armhole at both ends. Knit straight. D = divide work, cast off 10 sts at centre, place 22 sts onto dekercombs at left. For right half, shape shoulder at right, shape neck at left. For left half, return sts to nds of machine and knit with reversed shapings.

Fig. II : right front half with buttonhole band
 A = red, tubular cast on in 2:2 rib over 64 nds. Knit 14 rows. First buttonhole at right miss 50 sts, knit 4 sts by hand with contrast yarn, miss 10 sts at left. Knit 2 rows. B = place 16 sts at left (8 from each bed) onto dekercomb.



14/28

Material : 600 m length per 100 g
 188 yards per 1 oz
 10 cm = approx. 4"

Transfer remaining sts to front as for Fig. I. Knit straight in pattern. C = shape armhole at right, knit straight at left. D = straight at right, shape neck at left. E = shape shoulder at right, knit straight at left. For buttonhole band, return the 16 sts in 2:2 rib on dekercomb to nds of machine. Knit with red. After 22 rows work the second buttonhole *miss 2 sts at right, knit 4 sts by hand with contrast yarn, miss 10 sts at left*. Repeat twice from * to *, always after 30 rows. At the end, knit 6 rows and cast off. Left front part : knit with buttonband and reversed shapings.

Neck and armhole bands : red, yarn taken two-fold, knit three times with 108 nds tubular cast on acc.to diagram in 2:2 rib. Knit 8 rows. A few rows with contrast yarn, release.

To make up : Pin out to size and press very lightly. Join shoulders. St by st, backstitching into the open loops, attach neck and armhole bands, unravelling contrast yarn. Join side seams, forming neat point on bands. Sew on buttonband and buttonholeband with mattress stitch. Neaten buttonholes with backstitch, unravel contrast yarn. Sew on buttons to match.

2535 PASSAP - DUOMATIC 80

Baby's pants

Size : 1 to 3 months
Material : 40 g fairly fine mohair. 2 buttons.
Stitch size : 5 3/4, 1:1 rib = 3 3/4, K/K = 2 3/4
Test square : 100 sts = 31 cm, 100 R (RC 200) = 27,5 cm
Pattern : Stocking stitch tubular, bands 1:1 rib, straps K/K.

Fig. VII + VIII : pants, begin at waist.

A = first waist band : tubular cast on in 1:1 rib with 140 nds (70 nds on each bed). Knit 12 rows. In order to knit the second band without taking the first band off the machine proceed as follows : acc.to diagram 1 transfer all sts marked a from the front bed to the nds on back bed which are also marked a, leaving every alternate nd empty at the back. Then, acc.to diagram 2, bring all nds back and front marked b and the corresponding pushers into W.P. Now knit for tubular cast on 1 row with lock at back and front BX without arrow keys. Press the left arrow key at the back, at the front press both arrow keys, knit 2 rows. Release arrow keys, bring all pushers into W.P., knit 1 row. (= 4 rows = cast-on). With BX and pushers back and front, knit 12 rows. Transfer b-sts for st.st. tubular from back to empty nds at front, at back transfer the second sts from the a-nds to the adjacent empty b-nds. B = st.st. tubular. Knit straight. C = legs : st.st. tubular using BX and pushers : bring 35 pushers into R.P. at back, at front 35 pushers into W.P., press both arrow keys back and front. Knit RC 32, at the same time decr. 1 st every RC 4 at left back and front using double deker. D = hem : st.st. tubular. A few rows with contrast yarn, release. 2nd leg : C = with lock CX/CX dec.at right, knit straight at left. D = as for first leg, but reverse shapings.

Straps : K/K, knit twice
 With 14 nds in K/K, St.S 2 3/4, knit 114 rows. Then, at centre, work buttonhole over 3 sts. Dec. at both ends for mitre.
To make up : Press lightly. Unravel contrast yarn on legs and sew hem st by st. Join waist band at both ends with mattress stitch. Sew on straps to the front part, at back button up.

2553 PASSAP-DUOMATIC 80

Child's sweater with kangaroo pocket

Size : approx. 9 years, height 134 cm
Material : 220 g sports wool : 120 g tweed-effect, 100 g red.
Stitch size : Stocking stitch = 8, bands = 4 3/4, polo neck = 4 1/2, contrasting bands and pocket = 6
Test square : 50 sts = 33 cm, 50 R = 20 cm
Pattern : Stocking stitch with every alternate needle, raglan with graduations.

Diagram 1
 Handle up, blue strippers

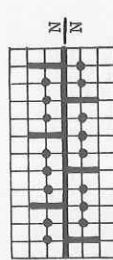


Diagram 3
 Handle down, blue strippers

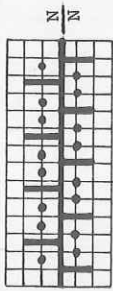


Diagram 2
 Handle up, blue strippers

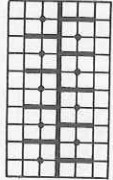


Diagram 4
 Handle down, blue strippers

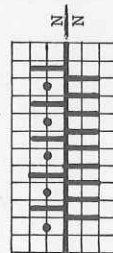


Fig. I :
 A = red, with 60 nds tubular cast on acc. to diagram 1. Knit straight. B = transfer sts to front for st.st. with every alternate nd, knit straight with tweed-effect wool. C = shape raglan with graduations : for every working nd place 1 pusher in W.P., make graduations acc. to diagram. After 50 rows cast off 10 sts at centre, place sts at left onto deckercombs. At right, for first

Fig. I

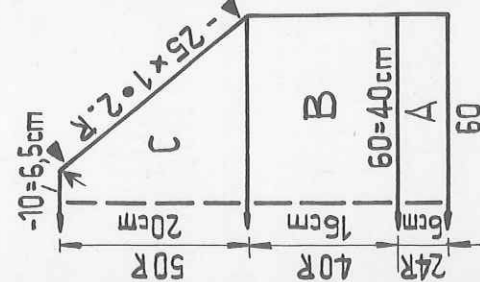


Fig. II

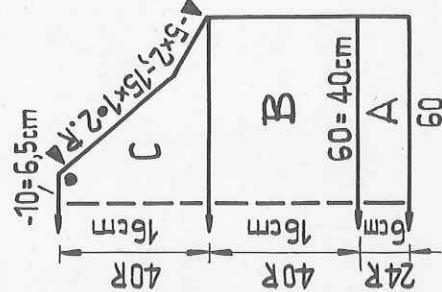
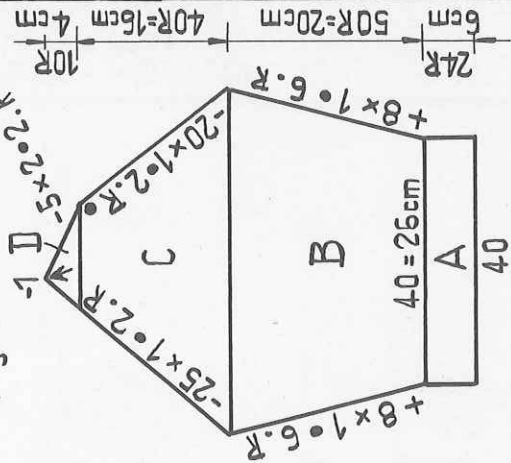


Fig. III



contrasting band in 1:1 rib, bring 24 nds into W.P. at back acc. to diagram 2 and place on every one of these nds a purlistitch loop of the stitch opposite. With red, St.S 6, knit 10 rows. A few rows with contrast yarn, release. Then, return sts to the nds of machine at left. Knit second contrasting band as for right side.

Fig. II :

A + B as for Fig. I. C = raglan with graduations acc. to diagram. After 40 rows, cast off 10 sts at centre. Work contrasting band at both ends as given for Fig. I.

Fig. III : first sleeve

A = With red, tubular cast on acc. to diagram 1. Knit straight. B = transfer sts to front for st.st. Knit with tweed-effect wool, inc. at both ends. C = shape raglan at both ends by always moving 3 sts in. D = shape neck at right, shape raglan at left. Second sleeve : A + B as for 1st sleeve, C + D with reversed shapings.

Polo neck : red. With 115 nds tubular cast on acc. to diagram 3. Knit 50 rows. Transfer sts for st.st. Knit 1 row. A few rows with contrast yarn, release. Pocket : red. Begin with contrast yarn. Acc. to diagram 4, bring 23 nds at back, 44 nds at front, into W.P. Knit 54 rows with St.S 6. A few rows with contrast yarn, release.

To make up : Block and press parts. Graft pocket to waist band on front part. Sew on upper edge st by st, backstitching into the open loops, and unravelling contrast yarn. Sew back and front parts, st by st, backstitching into open loops, and matching arrows and dots, to raglan edges of the sleeves. Join polo neck and sew to neck opening in the same way, unravelling contrast yarn. Join sleeve and side seams.

Material : 275 m length per 100 g
 83 yards per 1 oz
 10 cm = approx. 4"

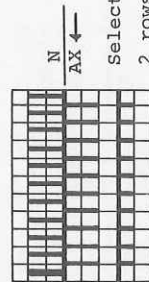
2582 !

Cover
 reversible

Size : approx. 275 x 147 cm
Material : 1800 g mohair/acrylic : 900 g yellow and 900 g white
Stitch size : 5 1/4
Pattern : AX-pattern acc. to diagram with punchcard 3 PASSAP deco

Diagram

Handle down, orange strippers



Material : 400 m length per 100 g
 125 yds per 1 oz
 10 cm = approx. 4"

Selector dial on 4

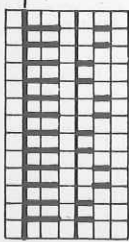
2 rows yellow, 2 rows white, repeat

With 179 nds in W. P. at back, and 178 nds at front, cast on with racking, St.S 5 1/4. Knit 1440 rows in pattern (4 double series), cast off loosely on both beds. We recommend working with two no.3 punchcards which have been fixed to each other in such a way that one arrow points upwards and the other one downwards.

If no two cards are available, then the punchcards have to be introduced alternately the right way up, then with arrow pointing downwards.

2562 PASSAP-DUOMATIC 80

Diagram
Handle down, black strippers



Material : 290 m length per 100 g
91 yds per 1 oz
10 cm = approx. 4"

Sleeveless coat

Size : 86 - 96 cm chest
Material : 1150 g shetland wool : 260 g white, 260 g lilac, 260 g rust and 370 g green.
Stitch size : Pattern and stocking stitch 7/2, 1:1 rib = 6
Test square : 100 sts = 36,5 cm, 100 R = 14 cm
Pattern : AX-pattern acc. to diagram, bands : stocking stitch.

Fig. I :

A = with 178 nds tubular cast on in 1:1 rib, green, knit 10 rows. Transfer sts for st.st. B = acc. to diagram and colour sequence chart, knit straight. A few rows with contrast yarn, release and press contrast yarn. C = bring 138 nds into W.P. Unravel contrast yarn from section B, and return sts to nds of machine as follows: place 9 sts on 9nds, then always place 2 sts onto every third nd until only 9 sts remain. Cont. knitting in pattern and colour sequence, straight. Cast off.

Fig. II :

A = with 91 nds tubular cast on in 1:1 rib. Knit 10 rows. B = transfer sts for st.st. Knit straight, in pattern and colour sequence. A few rows with contrast yarn, release, press contrast yarn. C = bring 68 nds into W.P. Unravel contrast yarn from section B, and return sts to nds of machine as follows : miss 3 sts, then always place 2 sts onto every third nd. Cont knitting straight, in pattern and colour sequence. D = cast off 11 sts at left, then shape neck at left, knit straight at right. Cast off.

Neckband : green

With 21 sts knit 360 rows straight st.st. Then, with lock BX and with pushers, for first corner, knit 10 rows, at the same time always putting 1 pusher into R.P. on every row. Then knit 10 rows, at the same time (starting from the inside) bringing 10 times 1 pusher into W.P. Knit 146 rows. Second corner : knit as for first corner. Knit 360 rows. Cast off.

Armhole band : knit two parts alike, green

Begin with contrast yarn, with 21 nds knit 180 rows st.st., a few rows with contrast yarn, release.

Band for draw-string belt :

With 10 nds knit 500 rows straight. Cast off.

Belt :

Stocking stitch, tubular, with 10 sts on each bed, knit belt measuring approx. 2 m. To make up : Block and press parts. Join shoulder and side seams from arrow to dot. Hem section A to inside. Sew sleeve and neck bands with back stitch to neck opening and front edge (see picture), and catch down on inside. Graft together sleeves and neck band, unravelling contrast yarn. Where the waist is, sew band for draw-string into position on the inside, and insert belt.

Colour sequence chart

2 R rust	2 R lilac
2 R white	2 R green
2 R lilac	2 R rust
2 R green	2 R white
8 R rust	8 R lilac
2 R white	2 R green
2 R lilac	2 R rust
2 R green	2 R white
2 R rust	2 R lilac
8 R white	8 R green
repeat	

Fig. I

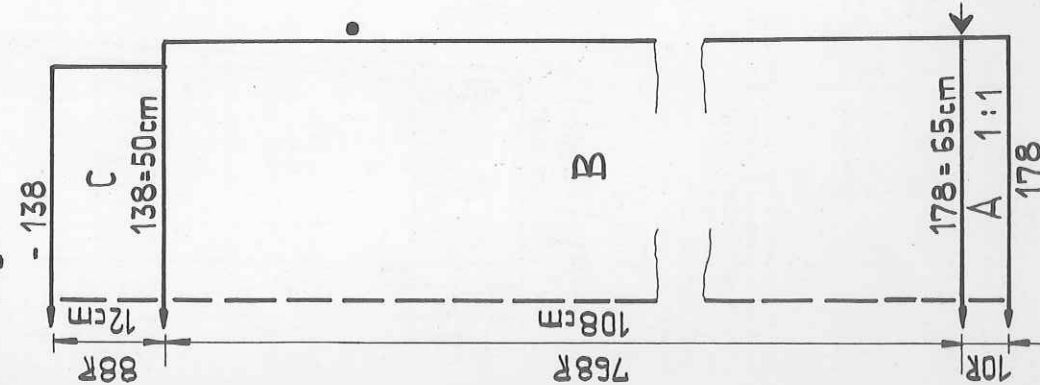
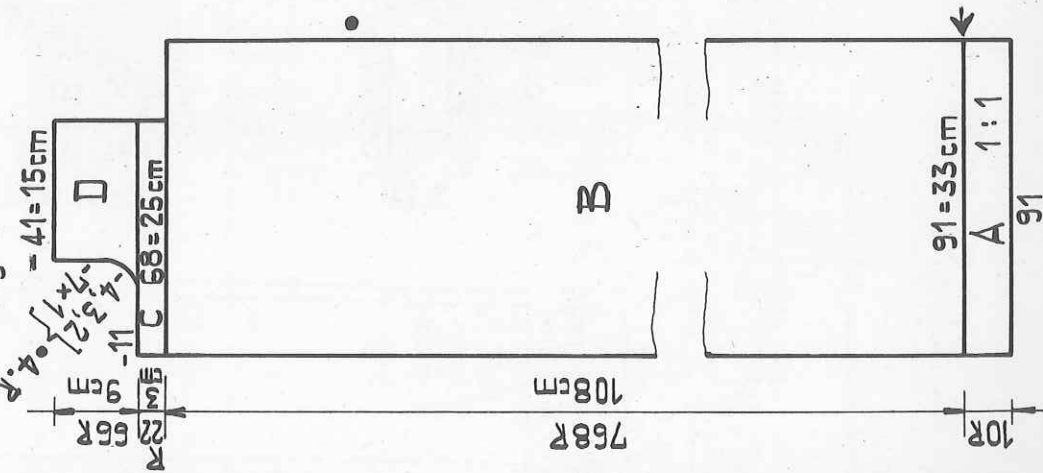


Fig. II



2560 PASSAP-DUOMATIC 80

18/28

Fire-side two-piece
(for experienced dressmaker)

- Size : 88 (96) cm bust
 Material : 770 (810) g fairly fine mohair/acrylic, 30 g rayon.
 Stiffening for belt, 1 zip fastener 22 cm long.
 Stitch size : 6
 Test square : 100 sts = 37 cm. 100 R = 27 cm
 Pattern : Stocking stitch and stocking stitch half tubular.

Skirt

Fig. VII :
 A = begin with contrast yarn. Cast on 100 (116) sts on each bed. Knit half tubular, open at right, dec. at back and front using quintuple decker, at left, closed side, knit straight. B = divide work, i.e. first cast on 10 sts at left on front bed (or use sts of an old test square) which will be folded under when putting in zip. At left knit straight, at right dec. acc. to diagram. Repeat on back bed. Cast off.

Fig. VII

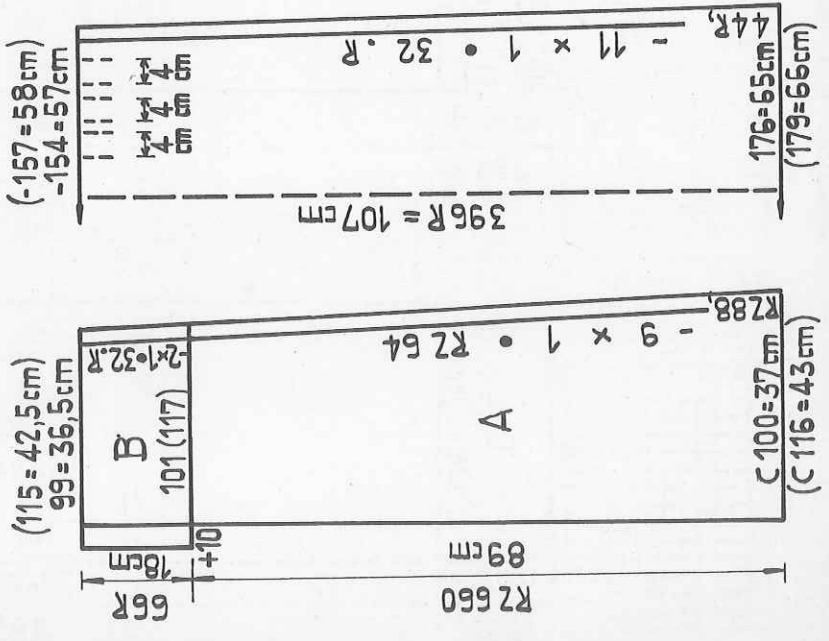


Fig. VIII

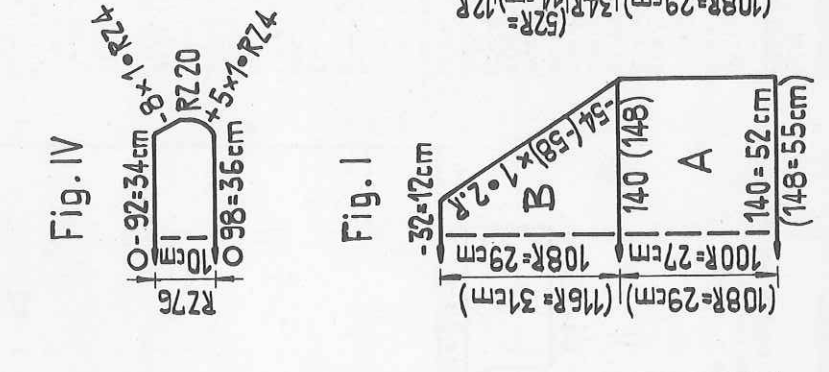


Fig. I

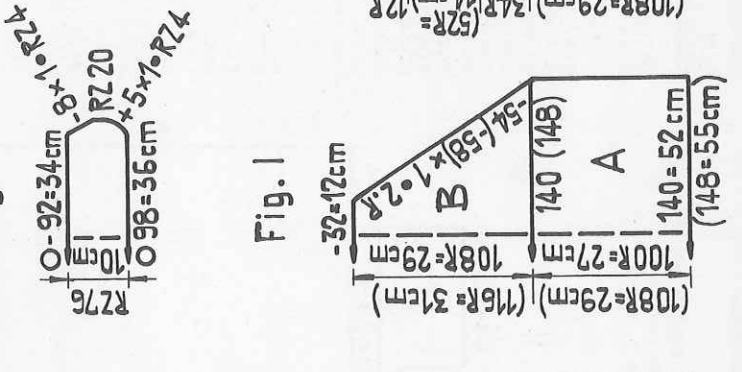


Fig. IV

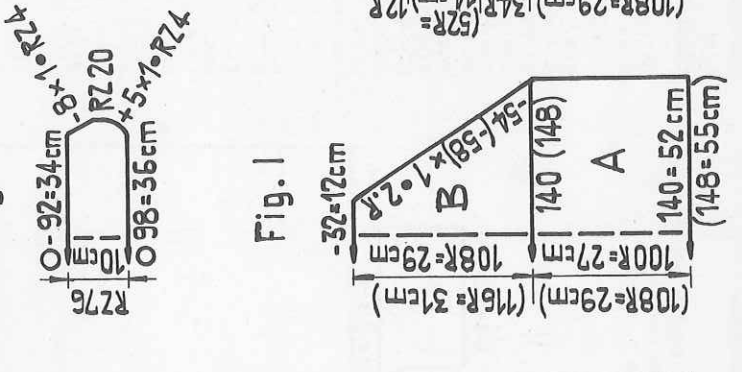


Fig. V

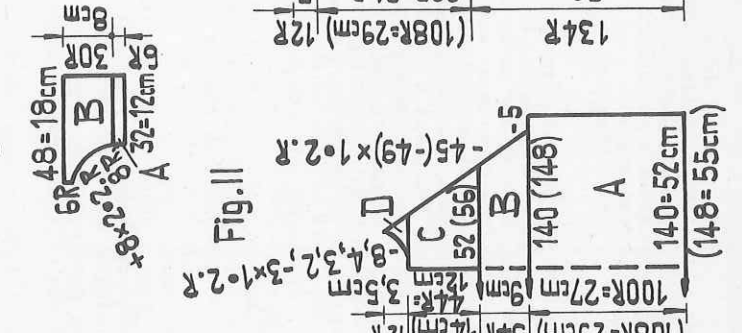


Fig. III

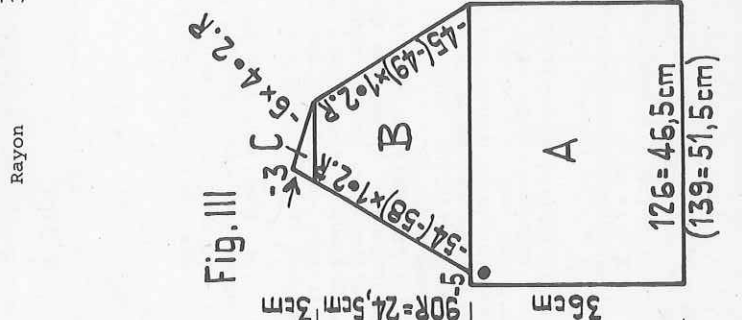


Fig. VI

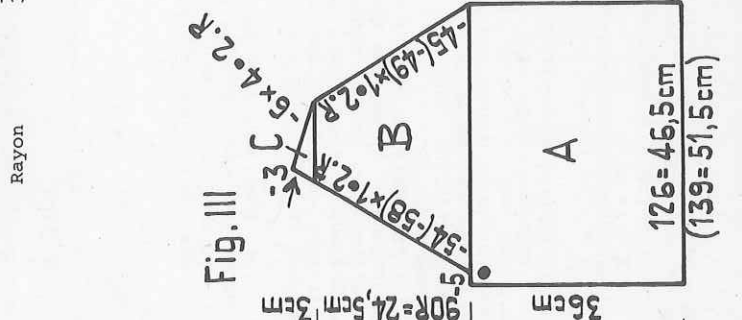


Fig. VIII :
 Begin with contrast yarn. Dec. at both ends using quintuple decker. Cast off.
 Fig. VI : Pockets. Stocking stitch, tubular. Begin with contrast yarn.
 A = at right, inc. 1 st back and front every RC 4, i.e. move edge stitches 1 nd out and place the purlstitch loop of the next stitch on the empty needle.
 At left back and front, dec. 1 st every RC 4. B = knit straight at right, cont. dec. at left. C = dec. every RC 2 at both ends, transfer all sts to front and cast off together.
 Belt : begin with contrast yarn.
 For waist size 66 cm cast on 160 sts, for waist size 74 cm cast on 176 sts.
 Knit 8 rows mohair, 6 rows rayon, 38 rows mohair. A few rows with contrast yarn, release.

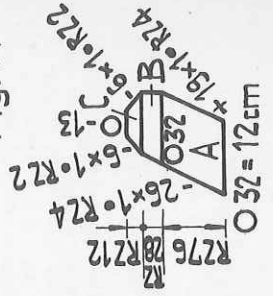
To make up : Block and press parts. Join side seams, leaving an opening measuring 12 cm, 8 cm below waist at both ends, for pockets. Sew pockets, st by st, backstitching into the open loops, to open edges, at the same time unravelling contrast yarn. On front part, make knife pleats as shown in diagram. Gather top of back part and fold the 10 sts in. Sew the belt first to the outside of waist, st by st, backstitching into the open loops, place a piece of stiffener in position, then fold belt to inside and catch down st by st, unravelling contrast yarn. Neaten the belt edges, then set in zip. Make hem to required length. Press seams and hem.

Material : Mohair/acrylic 600 m length per 100 g
 188 yds per 1 oz
 300 m length per 100 g
 94 yds per 1 oz
 10 cm = approx. 4"

Rayon

RZ=RC

Fig. I



2574 PASSAP-DUOMATIC 80

Material : 480 m length per 100 g
150 yds per 1 oz
10 cm = approx. 4"

Blouse

Size : 84 (96) cm bust
Material : 275 (320) g fairly fine mohair/acrylic
Stitch size : 6 and 5
Test square : 100 sts = 36 cm, 100 R = 27,5 cm
Pattern : Stocking stitch

Fig. I : A = st.st., straight. B = shape armhole at both ends, then cont. straight. C = shape shoulder at both ends. Cast off.
Fig. II : A = straight. Then, starting from the outside, make bust darts with BX and pushers. B = shape armhole at both ends, C = divide work for neck, with BX and pushers. 1st part : at right knit straight, at left dec. D = at right knit straight, at left shape neck. E = at right shape shoulder, at left knit straight. 2nd part : C, D + E = knit with reversed shapings.
Fig. III : A = begin with contrast yarn, knit straight. B = shape sleeve head at both ends. Cast off.
Cuffs : Place lower edges of sleeves onto 47 (50) nds on the machine, at the same time unraveling contrast yarn. Knit 60 rows with St.S 5. A few rows with contrast yarn, release.

2560

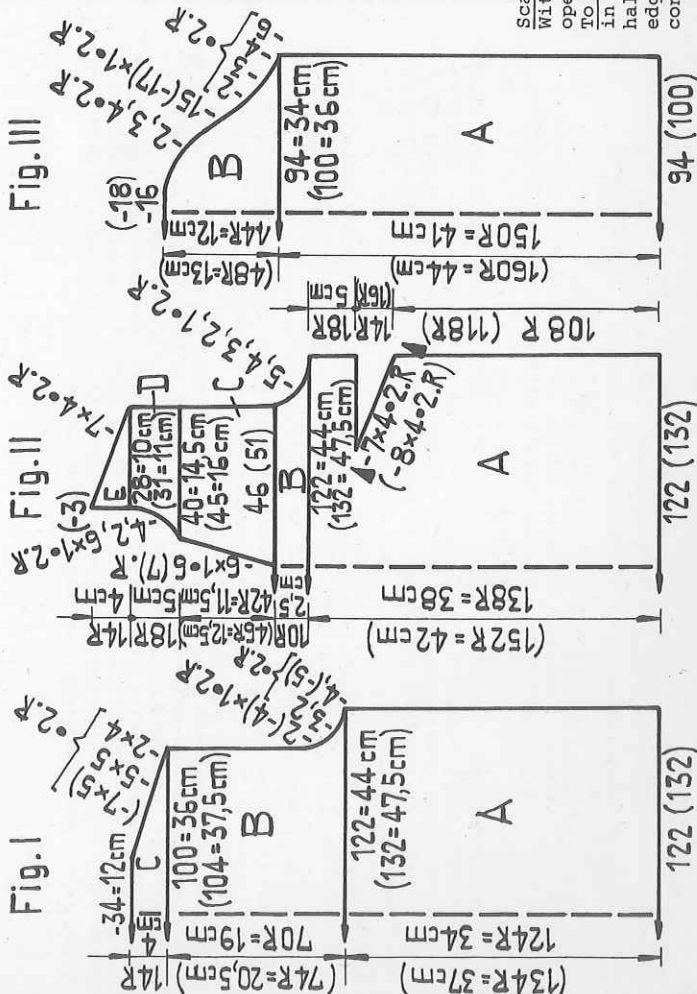
Blouse

Fig. I : begin with contrast yarn
A = knit straight. B = shape raglan at both ends, using quintuple decker, cast off
Fig. II :
A = as for Fig. I. B = at both ends, first cast off 5 sts, then shape raglan using quintuple decker. C = divide work with BX and pushers : First part : cont. dec. at right, knit straight at left. D = shape raglan at right, shape neck at left. Second part : knit with reversed shapings.
Fig. III : first sleeve
A = begin with contrast yarn. Knit straight. B = at left, first cast off 5 sts, then shape raglan at both ends, using quintuple decker. C = cast off for neck at right, cont. dec. with quintuple decker at left. Second sleeve : knit with reversed shapings.

Cuffs : Press sleeves and unravel contrast yarn. Then, place the first row onto the nds of the machine as follows : bring 45 (46) nds into W.P., then, place 1 st on the first two and the last two nds (for the larger size : on the first and last needle only), onto the remaining nds always place 3 sts, whereby the third st must be drawn through the first two sts, thus forming 1 st. Knit 10 rows mohair, 4 rows rayon, 22 rows mohair. A few rows with contrast yarn, release.
Fig. IV : Collar. Stocking stitch, tubular.
With 98 nds on each bed and St.S 1V2, knit 1 row with lock on M/N, then change to St.S 6 and lock CX/CX. Inc. at both ends as follows : at back and front move 1 st 1 nd out and place the purlstitch loop of the adjacent nd onto the empty nd. Knit RC 20 straight, Then, dec. at both ends acc. to diagram. A few rows with contrast yarn, release.
Collar trimming : rayon
Begin with contrast yarn. With 148 nds knit 12 rows. A few rows with contrast yarn, release.

Fig. V : Lapel, begin with contrast yarn.
A = 6 rows rayon. B = mohair : knit straight at right, inc. at left. End with contrast yarn. Knit second lapel with reversed shapings.
Contrasting bands on raglan : Rayon : 10 sts knit twice 100 and twice 110 rows.
To make up : Block and press parts. With mattress stitch, sew the shorter contrast band to the front part, the longer one to the sleeves from dot to arrow. Then set in sleeves between back and front part with the contrast band to the back. St by st, backstitching into the open loops, and using rayon, sew the lapels to the edge of the slit, unravelling contrast yarn. Then fold lapels to inside and slip stitch to neck edge. Sew collar first to outside, then to inside, of neck opening, st by st, backstitching into the open loops, in the same way sew collar trimming to collar edge, see picture, unravelling contrast yarn. Join side and sleeve seams. St by st, sew cuffs to inside. Unravel contrast yarn at lower edge of blouse and cast off the loose sts by hand.

Scarf : Stocking stitch, tubular (St.S 6)
With 47 sts on each bed knit RC 400 tubular. Then, knit RC 228 half tubular, open at right. Then knit RC 520 tubular. A few rows with contrast yarn, release.
To make up : Block and press parts. Join shoulder, side and sleeve seams. Set in sleeves. St by st sew cuffs to the inside. Sew neck opening to one edge of half tubular part of scarf, with right sides facing, then catch down the other edge on the inside. Close end edges of scarf with graft stitch, unravelling contrast yarn. Press.



2566 PASSAP - DUOMATIC 80

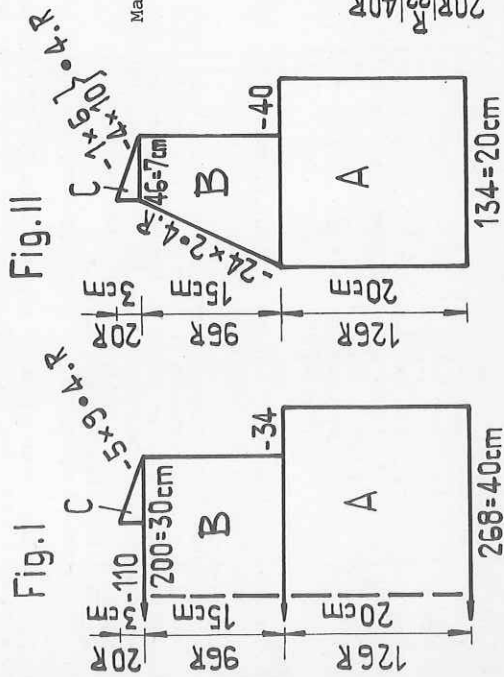
Child's pleated skirt with waist coat

Size: approx. 12 years, height 152 cm
Material: 720 g fine wool, taken two-fold, 1 elastic.
Stitch size: Long stitch = 3/2 front and back. Pleats = 3/2 at back, 4/2 at front
Test square: Long stitch: 100 sts = 15 cm, 100 R = 16 cm
 Pleats: 100 sts (front) = 34 cm, 62 R = 1 pleat = 4 cm
Pattern: Waist coat: long stitch, pleats with U 70 acc. to diagram.

Fig. I:
 A = tubular cast on, then with long stitch, knit straight. B = cast off 34 sts at both ends. Knit straight. C = cast off 110 sts at centre. Place left side onto deckercombs. For right side, knit straight at left, shape shoulder at right. Left side: return sts to nds of machine. Knit section C with reversed shapings.

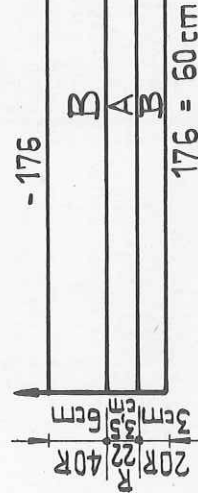
Fig. II:
 A = as for Fig. I. B = cast off 40 sts at right, cont. straight, dec. at left. C = shape shoulder at right, knit straight at left. 2nd part: knit with reversed shapings.

Fig. VII + VIII:
 Begin with contrast yarn. Knit sections A + B 25 times, beginning and ending with 20 rows for B. A few rows with contrast yarn, release.
 Waist band: stocking stitch, tubular.
 With 12 nds at back and front, lock CX/CX, a few rows with contrast yarn. Then knit a waistband to required length (waist size + 10 cm approx.). End with contrast yarn, release. Insert waist elastic. Graft together.
 To make up: Waist coat: Block and press parts. Join shoulder and side seams.
 Pleated skirt: First, press the knitting flat, then lay it into pleats and press again hard. Graft together beginning and end, unravelling contrast yarn. Using green tool, chain stitch waist band to waist edge.



Material: 1000 m length per 100 g
 314 yds per 1 oz
 10 cm = approx. 4"

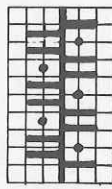
Fig. VII + VIII



2554 PASSAP - DUOMATIC 80

2:2 rib bands
 Handle down, orange strippers

Material: 600 m length per 100 g
 188 yds per 1 oz
 10 cm = approx. 4"



Child's pinafore dress

Size: approx. 8 years, height 128 cm
Material: 250 g fine orlon: 140 g red and 110 g yellow
Stitch size: Stocking stitch with yarn taken two-fold = 7/2, 2:2 rib = 5
Test square: 100 sts = 45 cm, 100 R = 32 cm
Pattern: Skirt: knitted with one red and one yellow thread in st.st.
 Bodice and straps: knitted with two-fold yarn, red, acc. to diagram.

Fig. I + II



Fig. VII + VIII

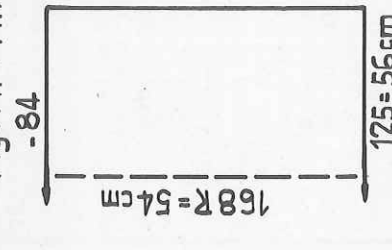


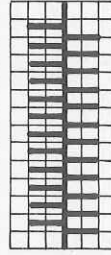
Fig. VII + VIII: knit twice
 With 125 nds in 1:1 rib tubular cast on. Then, transfer all sts for st.st. Knit straight.
 After 168 rows reduce sts as follows: miss 2 sts, transfer every third stitch onto fourth stitch. Knit 2 rows. A few rows with contrast yarn, release.

Fig. I + II: red, with two-fold yarn. Knit twice. With 112 nds tubular cast on acc. to diagram. Knit 40 rows. Then, transfer sts for st.st. as follows: always transfer the 2 sts at back to the empty nds at front. Knit 2 rows. A few rows with contrast yarn, release.

Straps: red, knit twice
 Cast on acc. to diagram over 8 nds. Knit 120 rows. Cast off.
 To make up: Press contrast yarn only. Graft together skirt and bodice parts, unravelling contrast yarn and 1 row knitted in orlon. Join side seams. Make hem. Sew on straps.

Diagram for pleats

Handle down, black strippers



Back: Front:
 A = 2l R N CX
 1 R N N

Transfer sts
 B = 20 R GX N St.-S 4/2
 1 R GX N St.-S 3
 19 R GX N St.-S 4/2

2567 PASSAP-DUOMATIC 80

Striped sweater

- Size : 88 to 96 cm bust
- Material : 500 g mohair : 300 g rust and 200 g yellow, 100 g rayon green.
- Stitch size : Fisherman's rib = 6, st.st. = 5
- Test square : 100 sts = 35 cm, 100 R = 16,5 cm
- Pattern : Sweater fisherman's rib acc. to diagram. Bands stocking stitch tubular acc. to instructions.

Fig. I :
 A = rust : acc. to diagram, bring 155 nds into W.P. (78 at back, 77 at front). Knit 1 row N/N with St.S. 2, then set lock to CX/CX, knit st.st. tubular until row 32. B = knit straight, in pattern acc. to diagram. C = shape raglan at both ends as follows : always, at back and front, move 3 sts 1 working nd in. Cast off.

Fig. II :
 A = as for Fig. I. B = knit straight in pattern. C = divide work for neck : at left, over 77 sts

Fig. I

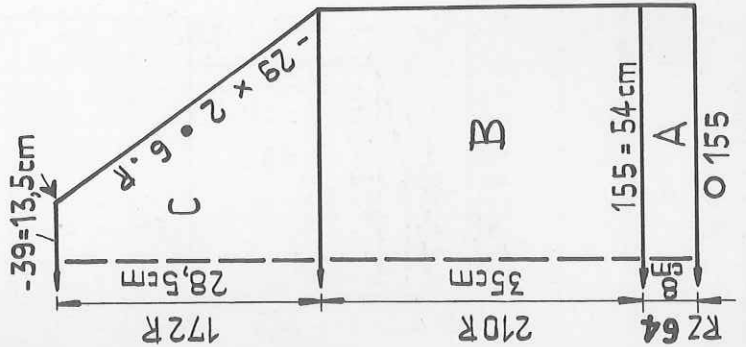


Fig. II

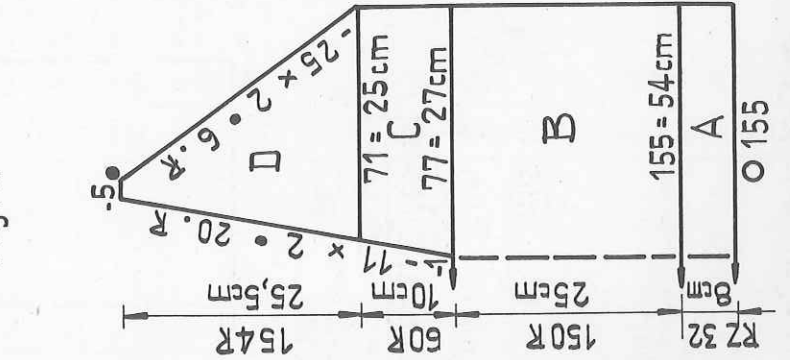
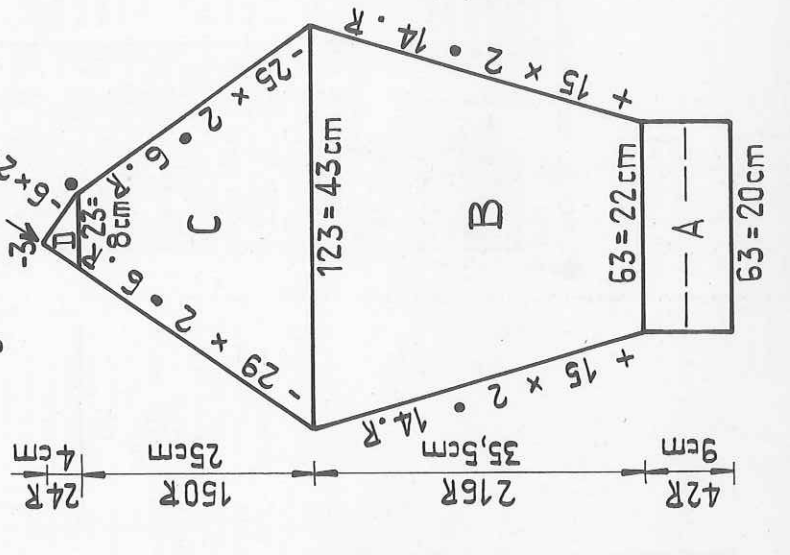


Fig. III



knit 1 row by hand using contrast yarn (to secure loops). Transfer all sts to front and remove from machine with dekercombs. Dec. 1 st at centre. 1st part : in pattern, knit straight at right, dec. at left with single-decker for neck opening. D = shape raglan at right, shape neck at left. 2nd part : at left, return sts to nds of machine, unravel contrast yarn and arrange sts in 1:1 division. Knit sections C + D with reversed shapings.

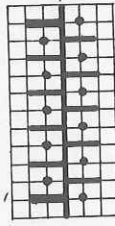
Fig. III : first sleeve, beg. with contrast yarn.
 A = with 63 nds and St.S 5, st.st., knit 21 rows, 1 row St.S 6, 20 rows St.S 5. Then, transfer sts for 1:1 rib. B = knit in pattern acc. to diagram, beg. with rust. Inc. at both ends as follows : back and front, move 1 st 1 working nd out and place a purlstitch loop or a loop on the empty nd. C = shape raglan at both ends. D = dec. at right acc. to diagram, shape raglan at left. Second sleeve : A, B and C as for first sleeve. Knit D with reversed shapings.

Neckband : rust. Stocking stitch tubular. Begin with contrast yarn. Cast on 148 sts on each bed. Knit straight at right, at left, dec. 20 times every RC 2 as follows : at left edge, bring 1 additional nd into W.P. (so that the decreases don't pull), knit RC 2, release the additional st. Then, at back and front, move 2 sts 2 nds in. Bring 2 nds in R.P., leave 1 nd in W.P. Knit RC 2, release additional st, etc. until RC 40. Then inc. as follows : back and front, move the edge st 2 nds out, move the next st 1 nd out and place purlstitch loop on empty nds. Knit RC 2. Repeat 19 times more. A few rows with contrast yarn, release.
 To make up : Press bands and contrast yarn only. Sew sleeves, matching arrows and dots, between back and front part. St by st, backstitching into the open loops, sew neckband first to outside, then to inside, unravelling contrast yarn. Join sleeve and side seams. St by st sew sleeve bands to inside, unravelling contrast yarn.

Material : Mohair = 400 m length per 100 g
 125 yds per 1 oz
 Rayon = 300 m length per 100 g
 94 yds per 1 oz
 10 cm = approx. 4"

RZ=RC

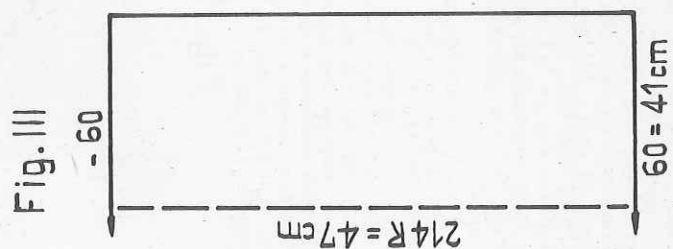
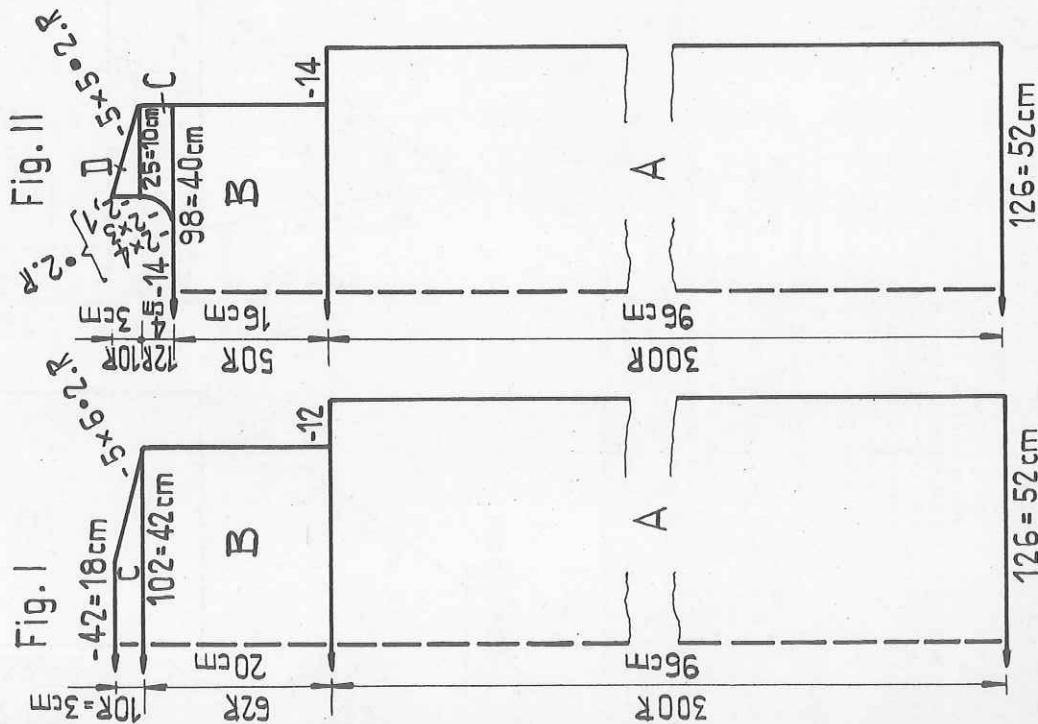
Pattern
 Handle up, blue strippers



Back :		Front :	
2 R	N	N	N
20 R	EX	EX	rust
2 R	N	N	N
6 R	CX	CX	green
2 R	N	N	N
20 R	EX	EX	yellow
2 R	N	N	N
6 R	CX	CX	green
repeat			

2568 PASSAP-DUOMATIC 80

Material : 290 m length per 100 g
 91 yds per 1 oz
 10 cm = approx. 4"



22/28

Dress to go with model 2562

Size : 88 to 102 bust
Material : 740 g shetland wool : 200 g white and 540 g red
Stitching stitch : 7 1/2, AX-pattern = 7 1/2
Test square : 100 sts = 41 cm, 100 R = 32 cm
AX-pattern : 50 sts = 34 cm, 50 R = 11 cm
Pattern : Stocking stitch, sleeves and collar AX-pattern acc. to diagram.

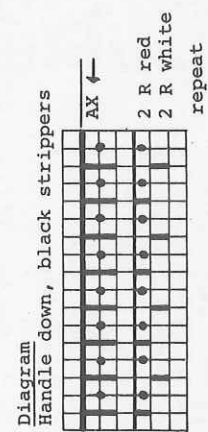
Fig. I :
 Begin with contrast yarn. A = knit straight, st.st. B = cast off 12 sts at both ends, cont. straight. C = shape shoulder at both ends. Cast off.

Fig. II :
 A = as for Fig. I. B = cast off 14 sts at both ends, cont. straight. C = divide work, cast off 14 sts at centre. Place left part onto dekercombs. For right part : knit straight at right, shape neck at left. D = straight at left, shape shoulder at right. 2nd shoulder : return sts to nds of machine, knit sections C + D with reversed shapings.

Fig. III : knit two parts alike
 Begin and end with contrast yarn. Arrange nds for AX-pattern acc. to diagram, 2 rows red and 2 rows white, repeat, knit straight. Release. Press the contrast yarn. Return the sts to the nds of the machine, i.e. onto every alternate nd 2 sts, total of 40 sts. Knit 30 rows straight, st.st. with St.S 7 1/2. A few rows with contrast yarn, release.

Collar :
 Begin with contrast yarn, 70 nds in W.P., AX-pattern acc. to diagram, knit 170 rows straight. A few rows with contrast yarn, release.

Belt :
 Stocking stitch, tubular, over 5 nds. Knit a length of approx. 4 m. To make up : Block and press parts. (Press sleeves and collar lightly). Join shoulders and collar. Sew collar first to outside, then to inside of neck opening, st by st, backstitching into the open loops and unravelling the contrast yarn. In the same way sew sleeves to armhole edge. Join sleeve and side seams. Turn cuffs to inside and catch down. Make hem to required length. Join belt.



2570 PASSAP-DUOMATIC 80

Man's sweater with AX-pattern

Size : 96 to 100 cm chest

Material : 530 g fairly fine mohair/acrylic : 360 g rust, 170 g off-white, 3 buttons.

Stitch size : AX-pattern front and back = 5

Test square : K/K front and back = 3

Pattern : 100 sts = 30 cm, 100 R = 19 cm

Diagram 1, 4 rows rust, 2 rows off-white, repeat, knit straight, cast off loosely.

Diagram 2, 2 rows rust, 2 rows off-white, repeat, knit straight, cast off loosely.

Diagram 3, 2 rows rust, 2 rows off-white, repeat, knit straight, cast off loosely.

Diagram 4, 2 rows rust, 2 rows off-white, repeat, knit straight, cast off loosely.

Diagram 5, 2 rows rust, 2 rows off-white, repeat, knit straight, cast off loosely.

Diagram 6, 2 rows rust, 2 rows off-white, repeat, knit straight, cast off loosely.

Diagram 7, 2 rows rust, 2 rows off-white, repeat, knit straight, cast off loosely.

Diagram 8, 2 rows rust, 2 rows off-white, repeat, knit straight, cast off loosely.

Diagram 9, 2 rows rust, 2 rows off-white, repeat, knit straight, cast off loosely.

Diagram 10, 2 rows rust, 2 rows off-white, repeat, knit straight, cast off loosely.

Diagram 11, 2 rows rust, 2 rows off-white, repeat, knit straight, cast off loosely.

Diagram 12, 2 rows rust, 2 rows off-white, repeat, knit straight, cast off loosely.

Diagram 13, 2 rows rust, 2 rows off-white, repeat, knit straight, cast off loosely.

Diagram 14, 2 rows rust, 2 rows off-white, repeat, knit straight, cast off loosely.

Diagram 15, 2 rows rust, 2 rows off-white, repeat, knit straight, cast off loosely.

Diagram 16, 2 rows rust, 2 rows off-white, repeat, knit straight, cast off loosely.

Diagram 17, 2 rows rust, 2 rows off-white, repeat, knit straight, cast off loosely.

Diagram 18, 2 rows rust, 2 rows off-white, repeat, knit straight, cast off loosely.

Diagram 19, 2 rows rust, 2 rows off-white, repeat, knit straight, cast off loosely.

Diagram 20, 2 rows rust, 2 rows off-white, repeat, knit straight, cast off loosely.

Diagram 21, 2 rows rust, 2 rows off-white, repeat, knit straight, cast off loosely.

Diagram 22, 2 rows rust, 2 rows off-white, repeat, knit straight, cast off loosely.

Diagram 23, 2 rows rust, 2 rows off-white, repeat, knit straight, cast off loosely.

Diagram 24, 2 rows rust, 2 rows off-white, repeat, knit straight, cast off loosely.

Diagram 25, 2 rows rust, 2 rows off-white, repeat, knit straight, cast off loosely.

Diagram 26, 2 rows rust, 2 rows off-white, repeat, knit straight, cast off loosely.

Diagram 27, 2 rows rust, 2 rows off-white, repeat, knit straight, cast off loosely.

Diagram 28, 2 rows rust, 2 rows off-white, repeat, knit straight, cast off loosely.

Diagram 29, 2 rows rust, 2 rows off-white, repeat, knit straight, cast off loosely.

Diagram 30, 2 rows rust, 2 rows off-white, repeat, knit straight, cast off loosely.

Diagram 31, 2 rows rust, 2 rows off-white, repeat, knit straight, cast off loosely.

Diagram 32, 2 rows rust, 2 rows off-white, repeat, knit straight, cast off loosely.

Diagram 33, 2 rows rust, 2 rows off-white, repeat, knit straight, cast off loosely.

Diagram 34, 2 rows rust, 2 rows off-white, repeat, knit straight, cast off loosely.

Diagram 35, 2 rows rust, 2 rows off-white, repeat, knit straight, cast off loosely.

Diagram 36, 2 rows rust, 2 rows off-white, repeat, knit straight, cast off loosely.

Diagram 37, 2 rows rust, 2 rows off-white, repeat, knit straight, cast off loosely.

Diagram 38, 2 rows rust, 2 rows off-white, repeat, knit straight, cast off loosely.

Diagram 39, 2 rows rust, 2 rows off-white, repeat, knit straight, cast off loosely.

Diagram 40, 2 rows rust, 2 rows off-white, repeat, knit straight, cast off loosely.

Diagram 41, 2 rows rust, 2 rows off-white, repeat, knit straight, cast off loosely.

Diagram 42, 2 rows rust, 2 rows off-white, repeat, knit straight, cast off loosely.

Diagram 43, 2 rows rust, 2 rows off-white, repeat, knit straight, cast off loosely.

Diagram 44, 2 rows rust, 2 rows off-white, repeat, knit straight, cast off loosely.

Diagram 45, 2 rows rust, 2 rows off-white, repeat, knit straight, cast off loosely.

Diagram 46, 2 rows rust, 2 rows off-white, repeat, knit straight, cast off loosely.

Diagram 47, 2 rows rust, 2 rows off-white, repeat, knit straight, cast off loosely.

Diagram 48, 2 rows rust, 2 rows off-white, repeat, knit straight, cast off loosely.

Diagram 49, 2 rows rust, 2 rows off-white, repeat, knit straight, cast off loosely.

Diagram 50, 2 rows rust, 2 rows off-white, repeat, knit straight, cast off loosely.

Diagram 51, 2 rows rust, 2 rows off-white, repeat, knit straight, cast off loosely.

Diagram 52, 2 rows rust, 2 rows off-white, repeat, knit straight, cast off loosely.

Diagram 53, 2 rows rust, 2 rows off-white, repeat, knit straight, cast off loosely.

Diagram 54, 2 rows rust, 2 rows off-white, repeat, knit straight, cast off loosely.

Diagram 55, 2 rows rust, 2 rows off-white, repeat, knit straight, cast off loosely.

Diagram 56, 2 rows rust, 2 rows off-white, repeat, knit straight, cast off loosely.

Diagram 57, 2 rows rust, 2 rows off-white, repeat, knit straight, cast off loosely.

Diagram 58, 2 rows rust, 2 rows off-white, repeat, knit straight, cast off loosely.

Diagram 59, 2 rows rust, 2 rows off-white, repeat, knit straight, cast off loosely.

Diagram 60, 2 rows rust, 2 rows off-white, repeat, knit straight, cast off loosely.

Collar :

With 140 nds tubular cast on for 2:2 rib, rust, St.S back 4, front 3. After the rows knitted with lock CX/CX, bring empty nds in W.P. on back bed acc. to diagram 2, knit 120 rows straight, transfer sts to front, knit 4 rows st.st. with St.S 7. A few rows with contrast yarn, release.

Loops :

Over 5 nds, knit 3 tubular strips each measuring approx. 8 cm.

To make up : Press all bands and the collar lightly. Join shoulders with back stitch. St by st, backstitching into the open loops and unravelling the contrast yarn, sew collar to neck opening. Sew on loops as shown on picture, join collar edges with mattress stitch. Sew on buttons to match loops. Sew on sleeves with backstitch, from arrow to dot, then catch down on inside, unravelling contrast yarn. Join sleeve and side seams.

Material : 600 m length per 100 g
188 yds per 1 oz
10 cm = approx. 4"

Fig. I

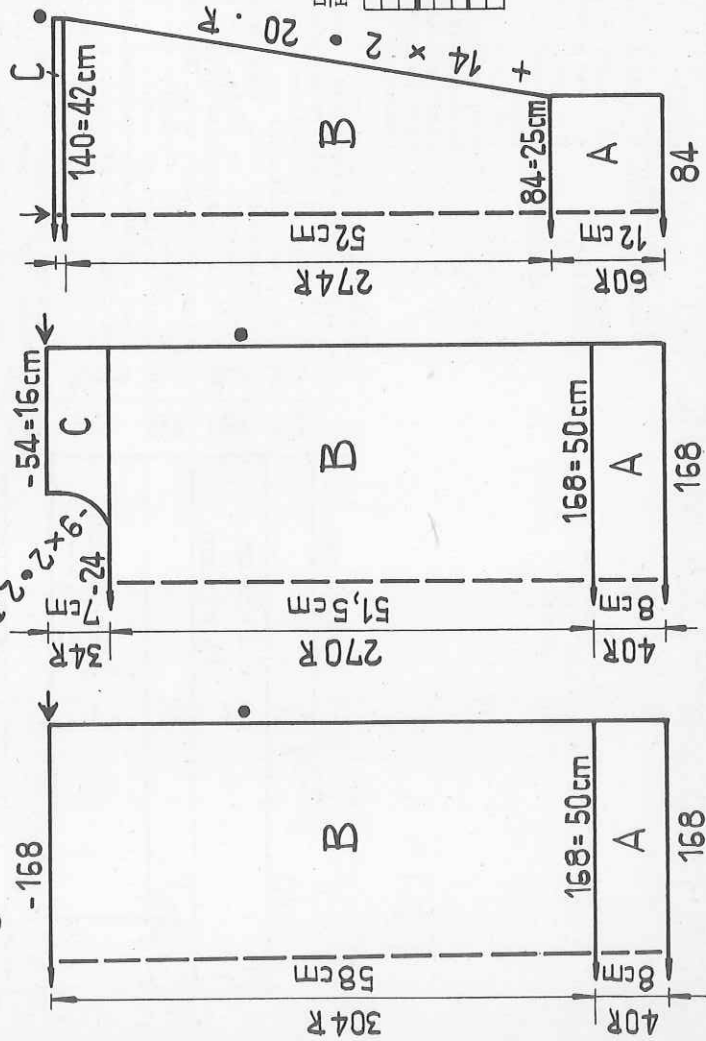


Fig. II

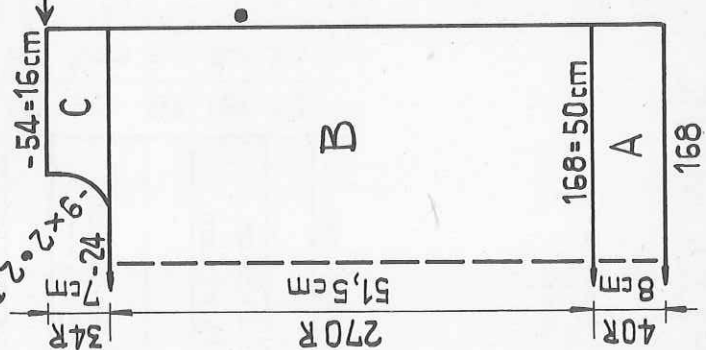


Fig. III

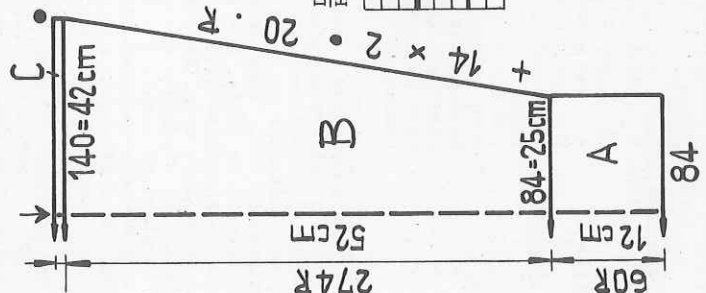


Diagram 1

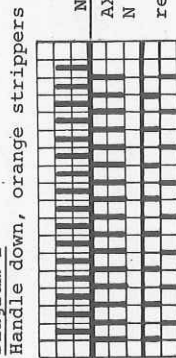
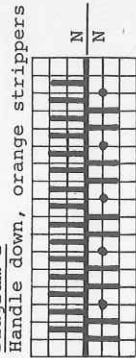


Diagram 2

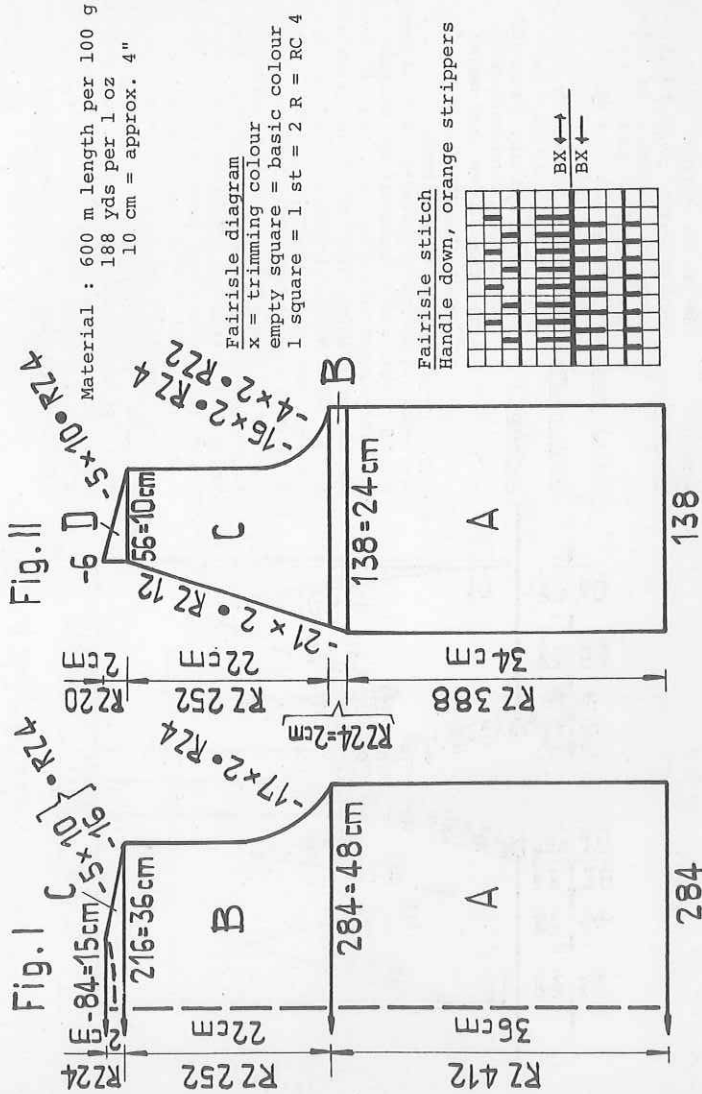


2571 PASSAP-DUOMATIC 80

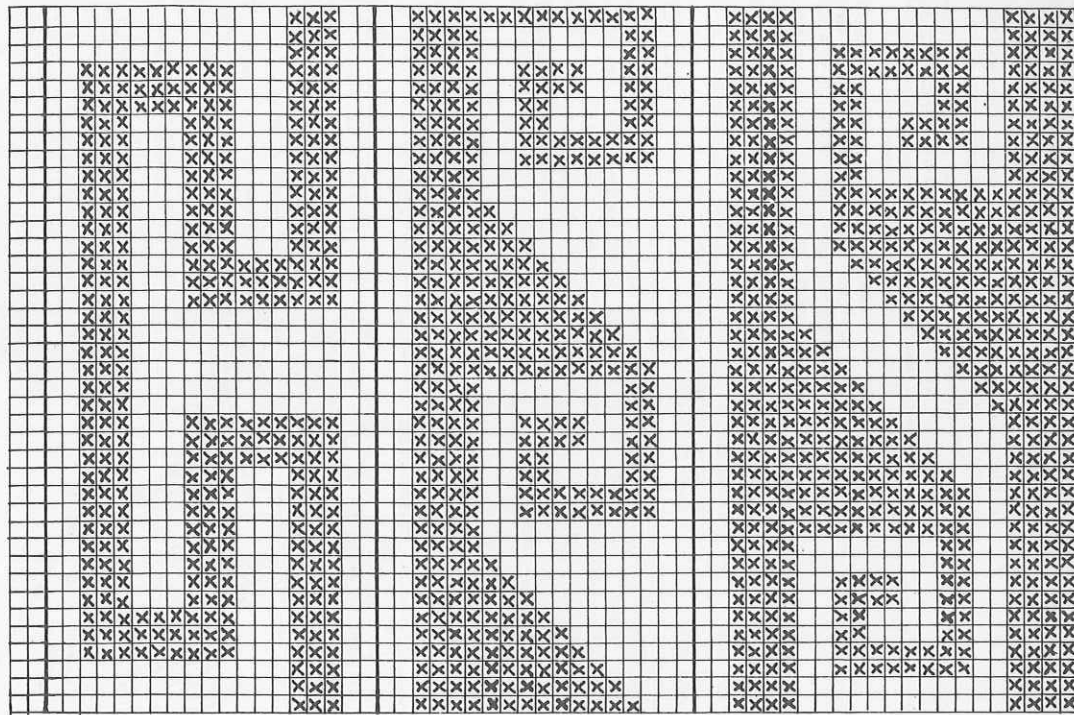
Long line waist coat

Size: 88 to 96 cm bust
Material: 600 g fairly fine mohair/acrylic : 300 g white, 180 g black and 120 g rust
Stitch size: Fairisle = 4/2, Stocking stitch = 5/4 and 7
Test square: 100 sts = 17,5 cm, RC 200 = 17,5 cm
Pattern: Fairisle acc. to diagram or with punchcard 9 PASSAP deco (If you use the deco card, start the pattern at RC 156) Repeat the fairisle pattern acc. to the diagram, with rust/white always following black/white.

Fig. I: tubular cast on with 142 nds on each bed. Then knit straight in fairisle pattern. B = shape armhole at both ends, then cont. straight. C = shape shoulder at both ends. Cast off.
Fig. II: first front part
 A = white, tubular cast on, then knit straight in pattern. B = knit straight at right, shape neck at left. C = shape armhole at right, shape neck at left. D = shape shoulder at right, knit straight at left. Second front part: knit with reversed shapings.
Neckband: Stocking stitch, half tubular
 Begin with contrast yarn. Cast on 179 sts on each bed. Knit RC 16 with St.S 5/4, RC 2 with St.S 7, RC 16 with St.S 5/4. A few rows with contrast yarn, release.



Armhole band: Stocking stitch, tubular, knit twice
 Begin with contrast yarn. Cast on 68 sts on each bed. Knit RC 16 with St.S 5/4, decreasing 1 st every RC 4 at left back and front. Knit RC 2 with St.S 7. Then, RC 16 with St.S 5/4, increasing every RC 4 as follows: on back and front bed move 1 st 1 nd out and place the purlstitch loop on the empty nd. A few rows with contrast yarn, release.
To make up: Block and press parts. Join shoulder and side seams. St by st, backstitching into the open loops, sew neck and armhole bands first to outside (follow the broken line for back neck as shown in diagram), then to inside, unravelling contrast yarn.



RZ=RC

2573 PASSAP - DUOMATIC 80

Intarsia-top in three colours
(for experienced knitters)

- Size : 80 to 96 cm bust
 Material : 280 g fairly fine mohair/
 acrylic : 130 g blue, 75 g
 red and 75 g pink
 Stitch size : Stocking stitch = 6,
 1:1 rib = 3
 Test square : 100 sts = 36 cm
 100 R (RC 200) = 27,5 cm
 Pattern : Stocking stitch, intarsia
 acc.to instructions and
 diagram. Sleeve and waist
 bands 1:1 rib.

Fig. I + II : sleeves and back
 A = begin with contrast yarn. Knit a few rows with
 42 sts, then start intarsia as follows : take 42
 pushers out of blocking rail. Thread the right feeding
 eyelet with blue, the left feeding eyelet with red
 yarn. Lock on BX, press left arrow key. Bring 8
 pushers into W.P. at right, at left 34 pushers into
 R.P. With blue knit 1 row, bring two more pushers into
 R.P. at right, knit 1 row blue, wind the blue thread
 round the next needle at right and at the same time
 bring the pusher of this needle into W.P. Now knit
 1 row red (= RC 4 = 2 rows). Repeat 17 time more.
 At the same time increase at left edge acc. to
 diagram, always taking 1 pusher out of the blocking
 rail for each new stitch. Turn row counter back to
 zero. Now, 1 row blue, at right 5 extra pushers into
 W.P., 1 row blue, wind the blue thread round the next
 needle and bring the pusher of this needle into W.P.

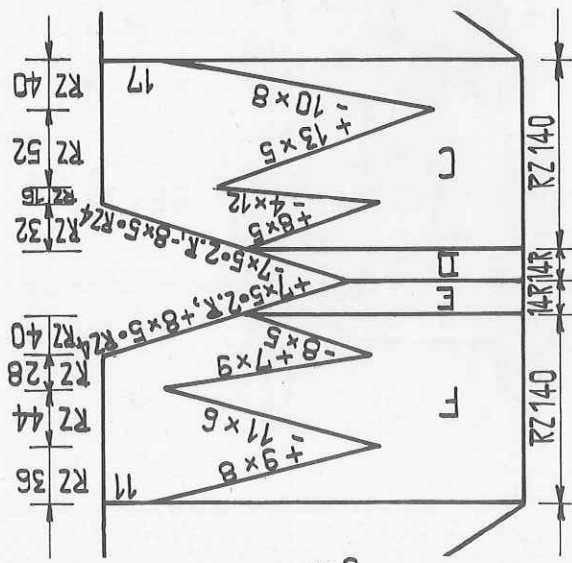


Fig. II

1 row red, return the same pusher into W.P., 1 row
 red. Repeat six more times. Turn row counter back to
 zero. The working method always remains the same,
 subject to the number of stitches and RCs indicated
 on the diagram. A + B = first sleeve. C = first
 back part. F = second back part. G + H = second
 sleeve. F, G + H = at right work now with pink
 instead of red. On second sleeve, at left, dec.
 acc. to diagram, always returning the pushers of the
 decreased stitches to the blocking rail. End with a
 few rows contrast yarn, release.

Fig. II + III : sleeves and front part
 Working method using blue and pink as given for
 Fig. I + II. A + B = inc. at left. C = knit
 straight, then shape neck at right acc. to diagram.
 D = blue, shape neck. E = blue, inc. again for neck.
 From F to end work with red and blue. Continue inc.
 at right for neck. G + H = second sleeve, dec. at
 left acc. to diagram. End with contrast yarn,
 release.

Sleeve bands : blue, knit twice
 Over 78 nds tubular cast on in 1:1 rib. Knit 40 rows.
 Transfer sts for st.st., knit 1 row. A few rows with
 contrast yarn, release.

Waist band : blue, knit twice
 Over 110 nds and 50 rows, knit as for sleeve bands.
 Neckband : blue, st.st., tubular
 Begin with contrast yarn. Cast on 96 sts on each bed
 knit RC 20 with lock CX/CX, at left back and front
 9 times decreasing 1 st every RC 2 using single
 decker. Then knit RC 20, at left back and front
 9 times increasing again as follows every RC 2 :
 back and front move 1 st 1 nd out and place the
 purlstitch loop of this st on the empty nd. A few
 rows with contrast yarn, release.

RZ 548 = 274 R = 75 cm

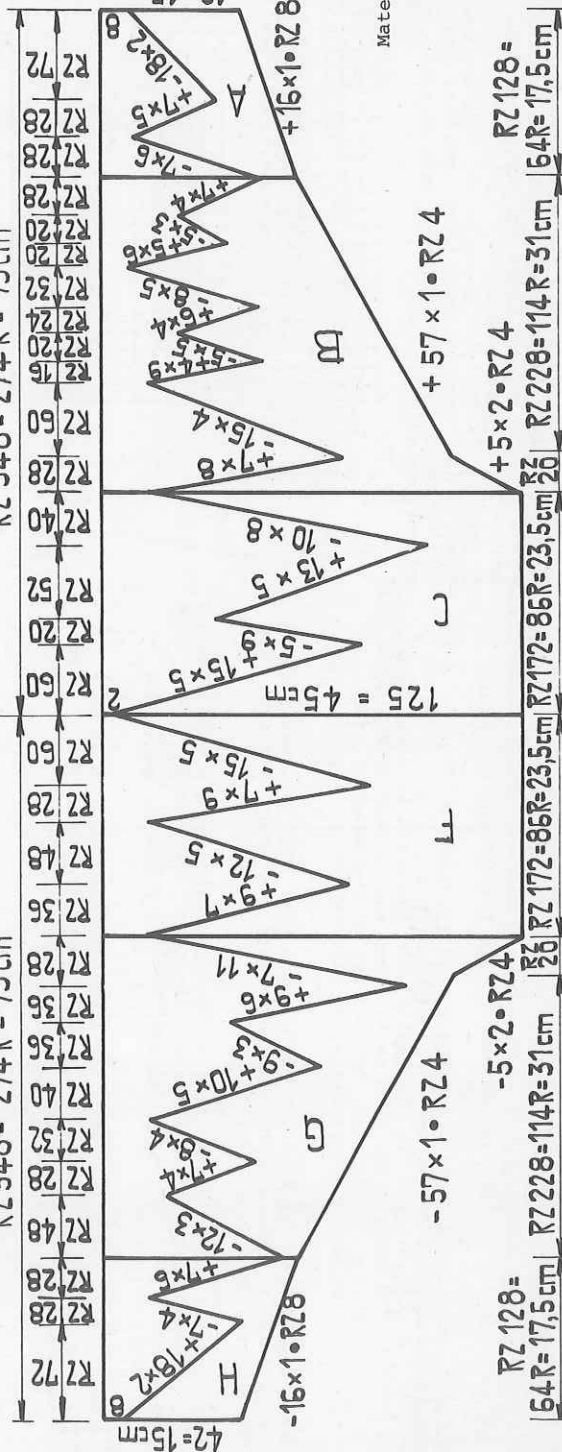


Fig. I + III

To make up : Block and press
 parts. Join back and front part
 along straight edge using mattress
 stitch. Sew on sleeve and waist bands,
 st by st, backstitching into the
 open loops and unravelling contrast
 yarn. St by st, backstitching into
 the open loops and unravelling
 contrast yarn, sew neckband first
 to outside then to inside of neck
 opening. Join side and sleeve
 seams.

Material : 480 m length per 100 g
 150 yds per 1 oz
 10 cm = approx. 4"

RZ = RC

RZ 128 =

+ 5 x 2 • RZ 4

+ 57 x 1 • RZ 4

+ 16 x 1 • RZ 8

+ 5 x 2 • RZ 4

+ 57 x 1 • RZ 4

+ 16 x 1 • RZ 8

+ 5 x 2 • RZ 4

+ 57 x 1 • RZ 4

+ 16 x 1 • RZ 8

+ 5 x 2 • RZ 4

+ 57 x 1 • RZ 4

+ 16 x 1 • RZ 8

+ 5 x 2 • RZ 4

+ 57 x 1 • RZ 4

+ 16 x 1 • RZ 8

+ 5 x 2 • RZ 4

+ 57 x 1 • RZ 4

+ 16 x 1 • RZ 8

+ 5 x 2 • RZ 4

+ 57 x 1 • RZ 4

+ 16 x 1 • RZ 8

+ 5 x 2 • RZ 4

+ 57 x 1 • RZ 4

+ 16 x 1 • RZ 8

+ 5 x 2 • RZ 4

+ 57 x 1 • RZ 4

+ 16 x 1 • RZ 8

+ 5 x 2 • RZ 4

+ 57 x 1 • RZ 4

+ 16 x 1 • RZ 8

+ 5 x 2 • RZ 4

+ 57 x 1 • RZ 4

+ 16 x 1 • RZ 8

+ 5 x 2 • RZ 4

+ 57 x 1 • RZ 4

+ 16 x 1 • RZ 8

+ 5 x 2 • RZ 4

+ 57 x 1 • RZ 4

+ 16 x 1 • RZ 8

+ 5 x 2 • RZ 4

+ 57 x 1 • RZ 4

+ 16 x 1 • RZ 8

+ 5 x 2 • RZ 4

+ 57 x 1 • RZ 4

+ 16 x 1 • RZ 8

+ 5 x 2 • RZ 4

+ 57 x 1 • RZ 4

+ 16 x 1 • RZ 8

+ 5 x 2 • RZ 4

+ 57 x 1 • RZ 4

+ 16 x 1 • RZ 8

+ 5 x 2 • RZ 4

+ 57 x 1 • RZ 4

+ 16 x 1 • RZ 8

+ 5 x 2 • RZ 4

+ 57 x 1 • RZ 4

+ 16 x 1 • RZ 8

+ 5 x 2 • RZ 4

+ 57 x 1 • RZ 4

+ 16 x 1 • RZ 8

+ 5 x 2 • RZ 4

+ 57 x 1 • RZ 4

+ 16 x 1 • RZ 8

+ 5 x 2 • RZ 4

+ 57 x 1 • RZ 4

+ 16 x 1 • RZ 8

+ 5 x 2 • RZ 4

+ 57 x 1 • RZ 4

+ 16 x 1 • RZ 8

+ 5 x 2 • RZ 4

+ 57 x 1 • RZ 4

+ 16 x 1 • RZ 8

+ 5 x 2 • RZ 4

+ 57 x 1 • RZ 4

+ 16 x 1 • RZ 8

+ 5 x 2 • RZ 4

+ 57 x 1 • RZ 4

+ 16 x 1 • RZ 8

+ 5 x 2 • RZ 4

+ 57 x 1 • RZ 4

+ 16 x 1 • RZ 8

+ 5 x 2 • RZ 4

+ 57 x 1 • RZ 4

+ 16 x 1 • RZ 8

+ 5 x 2 • RZ 4

+ 57 x 1 • RZ 4

+ 16 x 1 • RZ 8

+ 5 x 2 • RZ 4

+ 57 x 1 • RZ 4

+ 16 x 1 • RZ 8

+ 5 x 2 • RZ 4

+ 57 x 1 • RZ 4

+ 16 x 1 • RZ 8

+ 5 x 2 • RZ 4

+ 57 x 1 • RZ 4

+ 16 x 1 • RZ 8

+ 5 x 2 • RZ 4

+ 57 x 1 • RZ 4

+ 16 x 1 • RZ 8

+ 5 x 2 • RZ 4

+ 57 x 1 • RZ 4

+ 16 x 1 • RZ 8

+ 5 x 2 • RZ 4

+ 57 x 1 • RZ 4

+ 16 x 1 • RZ 8

+ 5 x 2 • RZ 4

+ 57 x 1 • RZ 4

+ 16 x 1 • RZ 8

+ 5 x 2 • RZ 4

+ 57 x 1 • RZ 4

+ 16 x 1 • RZ 8

+ 5 x 2 • RZ 4

+ 57 x 1 • RZ 4

+ 16 x 1 • RZ 8

+ 5 x 2 • RZ 4

+ 57 x 1 • RZ 4

+ 16 x 1 • RZ 8

+ 5 x 2 • RZ 4

+ 57 x 1 • RZ 4

+ 16 x 1 • RZ 8

+ 5 x 2 • RZ 4

+ 57 x 1 • RZ 4

+ 16 x 1 • RZ 8

+ 5 x 2 • RZ 4

+ 57 x 1 • RZ 4

+ 16 x 1 • RZ 8

+ 5 x 2 • RZ 4

+ 57 x 1 • RZ 4

+ 16 x 1 • RZ 8

+ 5 x 2 • RZ 4

+ 57 x 1 • RZ 4

+ 16 x 1 • RZ 8

+ 5 x 2 • RZ 4

+ 57 x 1 • RZ 4

+ 16 x 1 • RZ 8

+ 5 x 2 • RZ 4

+ 57 x 1 • RZ 4

+ 16 x 1 • RZ 8

+ 5 x 2 • RZ 4

+ 57 x 1 • RZ 4

+ 16 x 1 • RZ 8

+ 5 x 2 • RZ 4

+ 57 x 1 • RZ 4

+ 16 x 1 • RZ 8

+ 5 x 2 • RZ 4

+ 57 x 1 • RZ 4

+ 16 x 1 • RZ 8

+ 5 x 2 • RZ 4

+ 57 x 1 • RZ 4

+ 16 x 1 • RZ 8

+ 5 x 2 • RZ 4

+ 57 x 1 • RZ 4

+ 16 x 1 • RZ 8

+ 5 x 2 • RZ 4

+ 57 x 1 • RZ 4

+ 16 x 1 • RZ 8

+ 5 x 2 • RZ 4

+ 57 x 1 • RZ 4

+ 16 x 1 • RZ 8

+ 5 x 2 • RZ 4

+ 57 x 1 • RZ 4

+ 16 x 1 • RZ 8

+ 5 x 2 • RZ 4

+ 57 x 1 • RZ 4

+ 16 x 1 • RZ 8

+ 5 x 2 • RZ 4

+ 57 x 1 • RZ 4

+ 16 x 1 • RZ 8

+ 5 x 2 • RZ 4

+ 57 x 1 • RZ 4

+ 16 x 1 • RZ 8

+ 5 x 2 • RZ 4

+ 57 x 1 • RZ 4

+ 16 x 1 • RZ 8

+ 5 x 2 • RZ 4

+ 57 x 1 • RZ 4

+ 16 x 1 • RZ 8

+ 5 x 2 • RZ 4

+ 57 x 1 • RZ 4

+ 16 x 1 • RZ 8

+ 5 x 2 • RZ 4

+ 57 x 1 • RZ 4

+ 16 x 1 • RZ 8

+ 5 x 2 • RZ 4

+ 57 x 1 • RZ 4

+ 16 x 1 • RZ 8

+ 5 x 2 • RZ 4

+ 57 x 1 • RZ 4

+ 16 x 1 • RZ 8

+ 5 x 2 • RZ 4

+ 57 x 1 • RZ 4

+ 16 x 1 • RZ 8

+ 5 x 2 • RZ 4

+ 57 x 1 • RZ 4

2578 PASSAP-DUOMATIC 80

Material : 480 m length per 100 g
150 yds per 1 oz
10 cm = approx. 4"

Child's dress

Size :

approx. 6 (5) years old
Height 116 (110) cm

Material :

340 g synthetic yarn, 7 small buttons
Ribs and st.st. = 5. Transfer pattern
back 5, front 3/2. Frill back 3, front 3/2.

Stitch size :

St.st. : 100 sts = 29 cm, 100 R = 24 cm
Ribs : 100 sts = 31,5 cm, 100 R = 23 cm

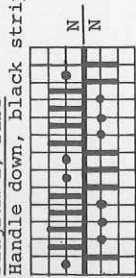
Test square :

Skirt and sleeves : ribs acc. to diagram 1
Skirt and sleeves : ribs acc. to diagram 1

Pattern :

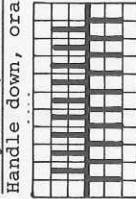
Yoke : st.st. Lower part of sleeves :
lace pattern with U 70 transfer lock acc.
to diagram 2. Frills : acc. to diagram 3
(Model for 5-year old : sleeveless)

Diagram 1, ribs



Handle down, black strippers

Diagram 3, frills



Handle down, orange strippers

Fig. I

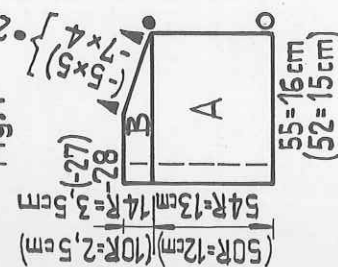


Fig. II

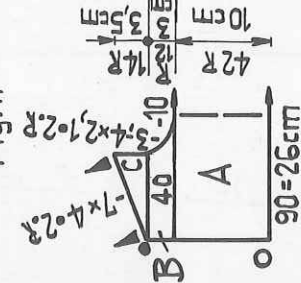


Fig. III

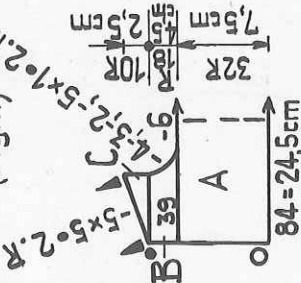


Diagram 2, lace pattern (for 6-year old only)

Handle down, black strippers

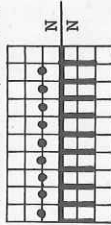
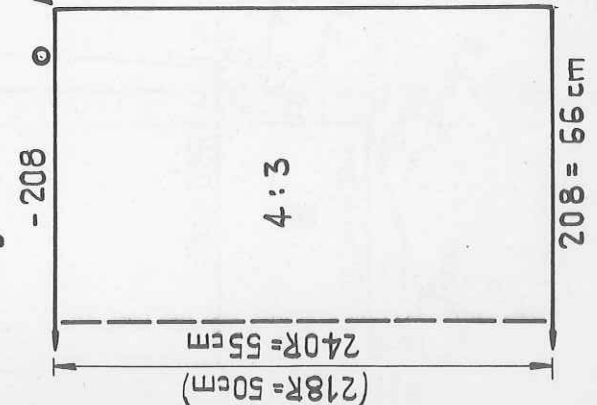


Fig. VII + VIII



Punchcard 68 PASSAP deco
If you are using PASSAP
deco, check on page 18 of
the instruction book
how to knit lace patterns.

Fig. III

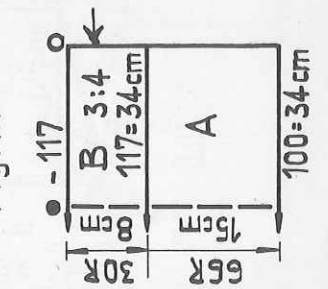


Fig. I : 1st back part

A = begin with contrast yarn. Knit straight, st.st. B =
shape shoulder at right, knit straight at left. 2nd
back part : knit with reversed shapings.

Fig. II :

A = begin with contrast yarn. Knit straight. B = divide
work with BX and pushers. Cast off 10 (6) sts at centre
for neck opening. 1st shoulder : shape neck at right,
knit straight at left. C = shape shoulder from the left
with graduations. A few rows with contrast yarn, release.
2nd shoulder : knit with reversed shapings.

Fig. III : Knit two sleeves alike

A = tubular cast on over 100 nds in 1:1 rib. Then trans-
fer sts for st.st., knit 8 rows. Then, in pattern acc.
to diagram 2, knit 56 rows. 2 rows st.st. B = ribs acc.
to diagram 1 : miss 4 sts at back, transfer 2 sts to
front, and onto the third needle place the purlstitch
loop of the stitch opposite. Knit 30 rows, then trans-
fer sts for st.st., knit 1 row. A few rows with contrast
yarn, release.

Fig. VII + VIII : skirt, knit two parts alike

Begin with contrast yarn. Acc. to diagram 1, cast on
208 sts. Knit straight, a few rows with contrast yarn,
release.

Frill : Acc. to diagram 3, cast on 10 sts at back, 9

sts at front, knit 520 (500) rows. Then transfer all
sts marked with X to the front, cast off all sts at
front. At back, release 4 sts at both ends and unravel
them right down to cast on.

To make up :

Block and press parts. With a lukewarm
iron press the frill apart both sides of the centre
strip. Graft together the shoulders on the yoke, un-
ravelling contrast yarn. At back, to make hem of slit-
opening, fold 10 sts to inside on both sides and catch
down, along one edge make 1 row of single crochet (or
one row of double crochet) at the same time working
7 loops, sew on 7 buttons to match on the opposite
edge. Join skirt seams, gather the top part of skirt from
0 to 0 and sew on yoke, st by st, backstitching into
the open loops. Only for 6-year old : sew sleeves to
yoke, matching dots and circles, st by st, back-
stitching into the open loops, and unravelling con-
trast yarn. Join the sleeves up to the arrow, and
set them in the armholes from arrow to circle.
Backstitch frill to yoke between the sts marked X
on diagram 3. Unravel contrast yarn at lower end of
skirt, and crochet off the stitches by hand.

2577 PASSAP-DUOMATIC 80

Multi-coloured striped tweed dress

Size : 88 to 96 cm bust
Material : 88 to 96 cm bust
 710 g fine industrial wool : 130 g plum,
 130 g pink, 130 g lilac, 100 g light blue,
 100 g white, 60 g orange, 60 g grey-green.
 1 leather belt.

Stitch size : 4 1/2
Test square : 100 sts = 38 cm, 100 R = 11 cm
Pattern : The whole dress is knitted in AX-pattern
 and 4 colours, mixed as follows :
 Colour 1 : 1 thread white 1 light blue
 Colour 2 : 1 thread plum 1 grey-green
 Colour 3 : 1 thread plum 1 orange
 Colour 4 : 1 thread lilac 1 pink

Material : 1000 m length per 100 g
 314 yds per 1 oz
 10 cm = approx. 4"

Fig. I

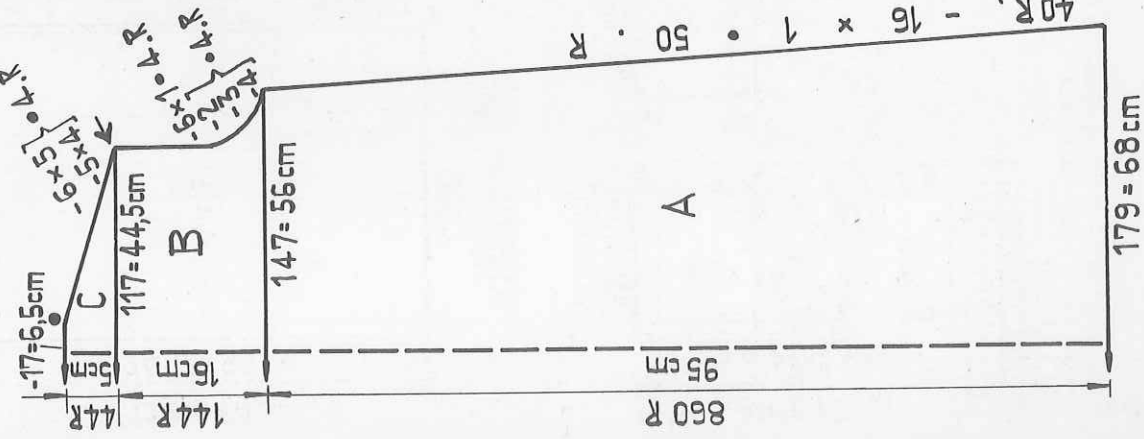


Fig. II

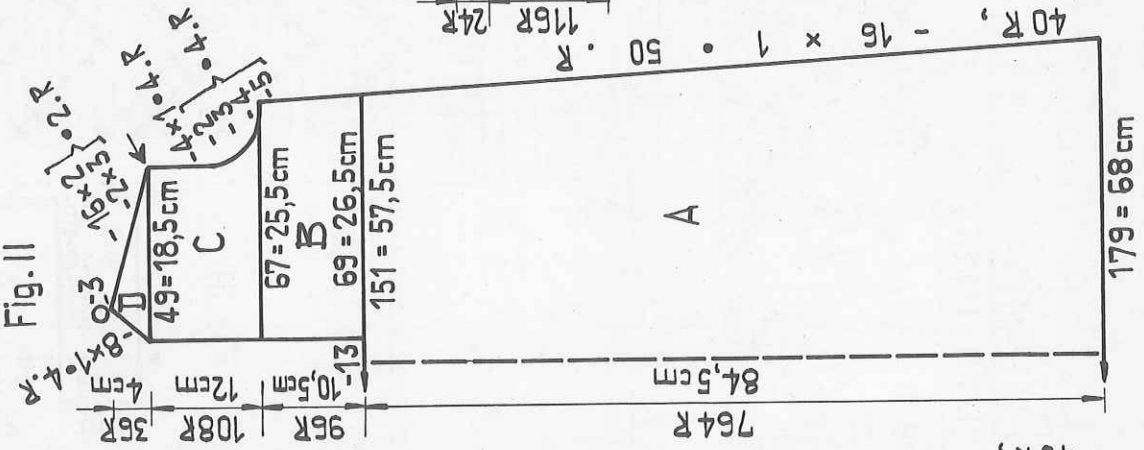
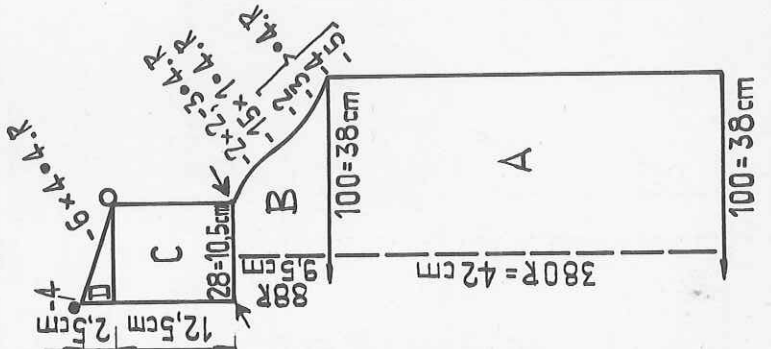
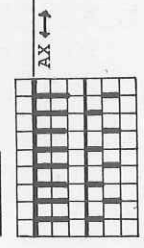


Fig. III



Diagram



Colour sequence : 8 x $\begin{cases} 2 \text{ R col 1} \\ 2 \text{ R col 4} \end{cases}$
 8 R col 1
 8 x $\begin{cases} 2 \text{ R col 2} \\ 2 \text{ R col 4} \end{cases}$
 8 R col 2
 12 R col 4
 9 x $\begin{cases} 2 \text{ R col 3} \\ 2 \text{ R col 4} \end{cases}$
 = 1 series = 128 R
 repeat

Fig. I :
 A = cast on 179 sts, knit in pattern, dec. at both ends. B = shape armhole at both ends, then cont. straight. C = shape shoulder at both ends. Cast off.

Fig. II :
 A = as for Fig. I. B = divide work, cast off 13 sts at centre. In order to protect the loops, knit off by hand 69 sts at left, using contrast yarn, and place them on deckercombs. 1st part : cont. dec. at right edge, knit straight for neck opening at left. C = shape armhole at right, shape neck at left. 2nd part : at left, return sts to nds of machine, and unravel contrast yarn. Knit sections B,C and D with reversed shapings.

Fig. III : first sleeve
 A = cast on 100 sts, knit straight. B = shape sleeve head at both ends. C = saddle shoulder, knit straight. D = neck opening : dec. at right, knit straight at left. Second sleeve : A to C as for first sleeve, D with reversed shapings.
 Cuffs : with only colours 1 + 4, knit twice
 With 45 sts knit 126 rows in pattern, then with lock on N a few rows with contrast yarn, release.
 Lapel : with colours 1 + 4, knit twice
 Begin with contrast yarn. With 84 sts knit 64 rows. A few rows with contrast yarn, release.
 Collar : with colours 1 + 4
 Begin with contrast yarn. With 94 sts knit 164 rows. A few rows with contrast yarn, release.

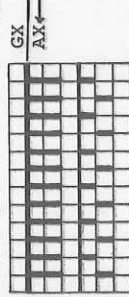
2585 PASSAP-DUOMATIC 80

Child's blouse

Size : approx. 12 years old, height 152 cm
Material : 140 g very fine wool, 150 cms of ribbon and a length of elastic measuring approx. 40 cm
Stitch size : 4/4
Test square : 100 sts = 40 cm, 100 R = 11 cm
Pattern : AX-pattern acc. to diagram.

Diagram

Handle down, black strippers



Material : 1000 m length per 100 g
 314 yds per 1 oz
 10 cm = approx. 4"

Fig. I : Tubular cast on in 1:1 rib. Knit 4 rows. B = for pattern, transfer sts to front and knit straight acc. to diagram. C = shape armhole at both ends, knit straight. D = shape shoulder at both ends. Cast off.

Fig. II : Knit sections A + B as given for Fig. I. C = shape armhole at both ends. D = divide work, cast off 16 sts at centre. Place left side onto dekercomb. For right side : knit straight at right, shape neck at left. E = shape shoulder at right, knit straight at left. 2nd shoulder : return sts to nds of machine, and knit sections D + E with reversed shapings.

Fig. III : Knit two parts alike
 A = begin with contrast yarn. Then knit 4 rows st.st, straight. B = knit in pattern acc. to diagram, straight. C = shape sleeve head at both ends.

Fig. I

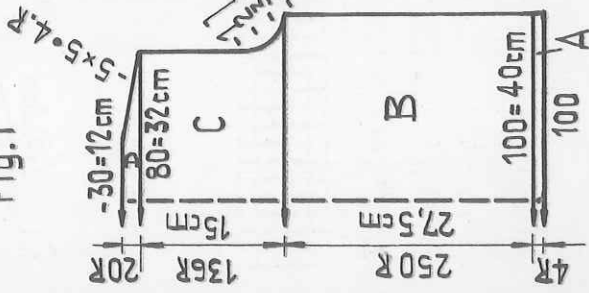


Fig. II

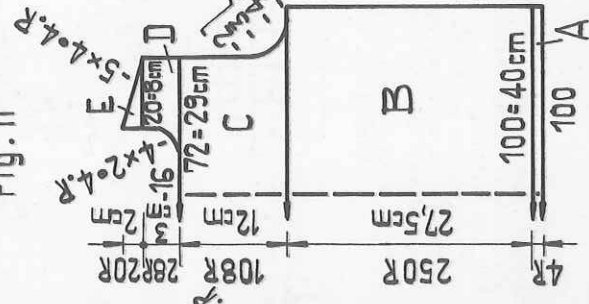
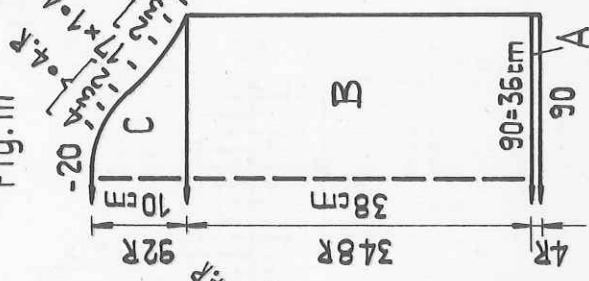


Fig. III



32/28

Collar : knit two parts alike
 With 179 nds in 1:1 division in W.P. tubular cast on, then transfer sts to front, knit 40 rows in pattern acc. to diagram. Knit 8 rows st.st. straight. A few rows with contrast yarn, release.
To make up : Block and press parts. Join shoulder, sleeve and side seams. Set in sleeves. At wrist-end of sleeve, fold 4 stocking collar rows to the outside and sew into position, then, insert elastic. For the collar, place the stocking stitch parts one on top of the other, in such a way that the ribbon can then be pulled through, unravel contrast yarn and catch down loose sts. Join the collar in a ring and attach it to the neck opening. Insert ribbon.

2584 PASSAP-DUOMATIC 80

Synthetic silk blouse with rose motif

Size : up to 104 cm bust
Material : 330 g synthetic silk
Stitch size : 6
Test square : 100 sts = 30 cm, 100 R = 30 cm
Pattern : Stocking stitch

Fig. I

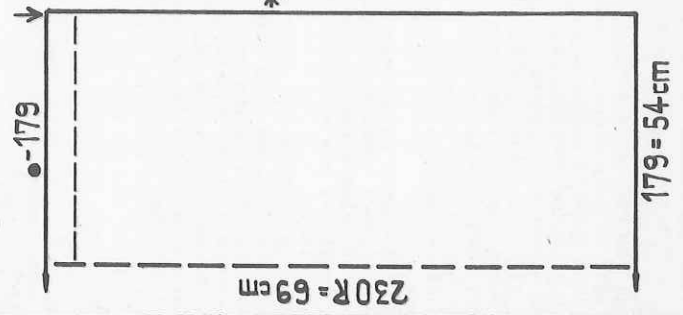
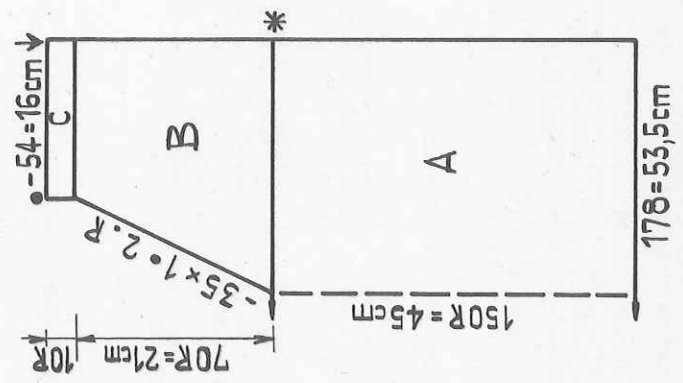


Fig. II



2588 PASSAP-DUOMATIC 80

Polo neck sweater in three colours

- Size : up to 98 cm bust
- Material : 370 g medium mohair/acrylic : 270 g rust, 100 g beige, 100 g white
- Stitch size : AX-pattern = 6/2, 1:1 rib = 4, collar front 7, back 5/2
- Test square : 50 sts (ev. alternate Nd) = 37 cm, 100 R = 18 cm
- Pattern : Bands 1:1 rib, AX-pattern acc. to diagram 1; collar, ribs acc. to diagram 2.

Diagram 1

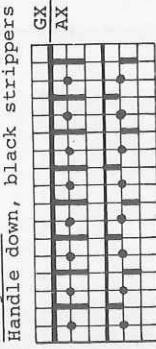
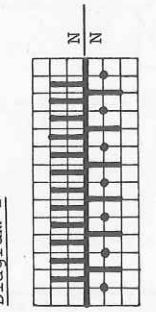


Diagram 2



- Colour sequence
- 2 R rust
 - 2 R beige
 - 2 R white
 - repeat

- Material : 400 m length per 100 g
125 yds per 1 oz
10 cm = approx. 4"

Fig. I

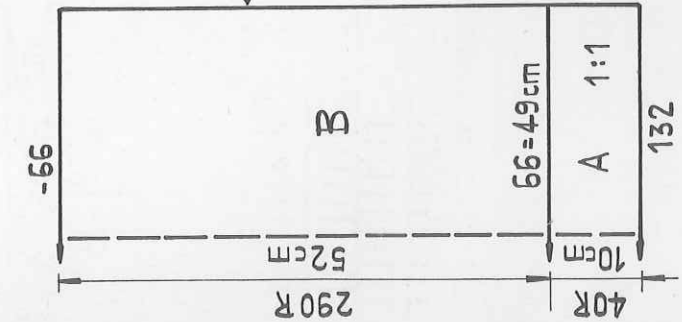


Fig. II

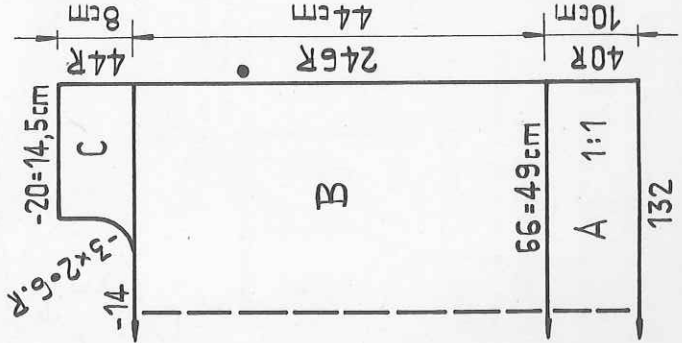


Fig. III

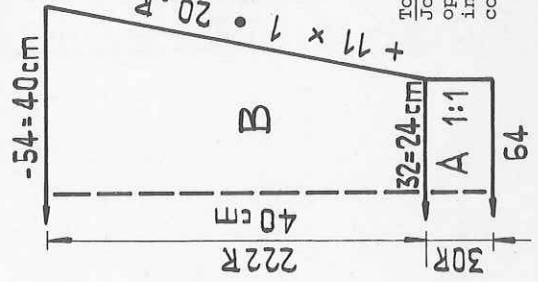


Fig. I :

Begin with contrast yarn, then knit straight, stocking stitch. A few rows with contrast yarn, release.

Fig. II :

A = begin with contrast yarn, then knit straight, stocking stitch. B = divide work, place left side on dekercomb. For right side : knit straight at right, dec. at left with quintuple deker. C = knit straight, stocking stitch. A few rows with contrast yarn, release. 2nd side : knit with reversed shapings.

String:

Stocking stitch, tubular. With 2 sts at front and 1 st at back, knit a strip measuring approx. 130 cm, and two smaller ones measuring approx. 50 cm each.

Rose :

Begin with contrast yarn, at front 10, at back 9 nds in W.P., St.S front 4/2, back 3, lock 4 rows at front N, at back GX, then 4 rows at front and back N, repeat until RC 128, then a few rows with contrast yarn, release.

To make up : Block and press parts hard. Hem the upper edge of Fig. I along broken line, unravelling contrast yarn. Hem the upper edge of Fig. II at the beginning of section C, unravelling contrast yarn. Using mattress stitch, join front and back part from dot to arrow. Join side seams from asterisk to lower edge. Fold 2 cm of blouse to inside and sew into position, unravelling contrast yarn. Pull the longer string through the upper hem of the back, and the two shorter ones through the upper hems of the front part, fasten one end with a few stitches. To make the rose, sew up the 10 sts which were knitted on the front bed and 2 sts at the edge of the back bed, at the same time unravelling contrast yarn. Unravel the loose sts. Press, then roll up the strip as shown in the photo, and fix it to neck opening with a few sts.

- Material : 300 m length per 100 g
94 yds per 1 oz
10 cm = approx. 4"

Fig. I :

A = begin with rust, put 66 nds front and back in W.P. in 1:1 division, then knit straight in 1:1 rib. B = transfer sts from back bed to front acc. to diagram 1, arrange pushers acc. to diagram 1, knit straight in colour sequence and pattern. Cast off.

Fig. II :

A = Knit section A + B as for Fig. 1 until row 246. C = cast off 14 sts at centre, divide work, place sts of left side on dekercomb. For right side, knit straight at right, shape neck at left, cast off. 2nd shoulder : return sts to nds of machine, knit with reversed shapings.

Fig. III :

A = begin with rust, put 32 nds front and back in W.P. in 1:1 division, tubular cast on. Knit straight in 1:1 rib. B = transfer sts from back bed to front acc. to diagram 1, arrange pushers acc. to diagram 1, knit in colour sequence and pattern, inc. at both ends, a few rows with contrast yarn, release. Collar : rust, begin and end with contrast yarn. Put 120 nds in W.P. on back bed, at front, put nds in W.P. acc. to diagram 2, knit 100 rows straight, release.

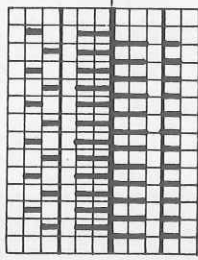
To make up : Press only welt, wrist bands, collar and contrast yarn on sleeves. Join shoulders. Sew on sleeves from dot to arrow st by st, backstitching into open loops, and unravelling contrast yarn. Sew collar st by st, backstitching into open loops, first to outside of neck, then to inside, unravelling contrast yarn. Join sleeve and side seams.

2583 PASSAP - DUOMATIC 80

Short waist coat

Size : up to 92 cm bust
Material : 210 g fairly fine mohair/acrylic : 40 g rust, 40 g white, 130 g black
Stitch size : 4 1/2 front and back for fairisle, 5 1/2 for stocking stitch
Test square : 3-coloured fairisle : 100 sts = 19 cm, RC 200 = 16,5 cm
 Fairisle stitch : 100 sts = 20,5 cm, RC 200 = 19,5 cm
Pattern : Front part : 3-coloured fairisle, with punchcard no 92
 PASSAP deco. Back : fairisle stitch, plain black.
 Bands : stocking stitch, half tubular.

Fairisle
 Handle down, orange strippers



Material : 600 m length per 100 g
 188 yds per 1 oz
 10 cm = approx. 4"

Fig. I : black

A = tubular cast on with black, then knit straight in fairisle stitch. B = dec, at both ends, knit straight. C = shape shoulders, cast off.
Fig. II : knit two parts with reversed shapings
 A = with 3 nds each on front and back bed tubular cast on with black, then 3-coloured fairisle acc. to instruction book DRCO, inc. at both ends. B = knit straight at left, inc. at right. C = at right, 42 nds and pushers in W.P., then

Fig. I

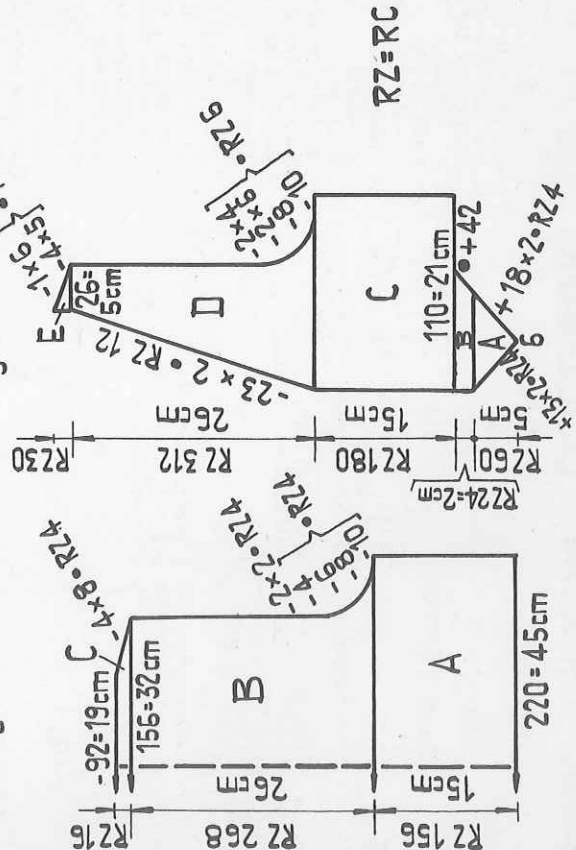
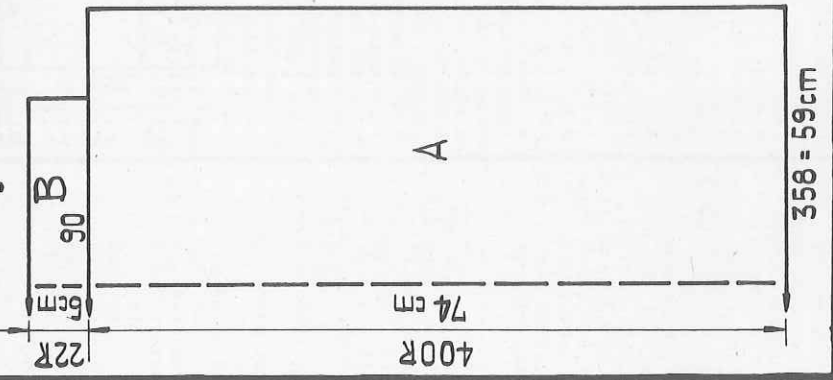


Fig. II

2590

Fig. VII + VIII



To make up : Block and press parts. Join the three back parts. Then join back and front part along the shoulders and press shoulder seams. Now pin pleats into position, and sew down with quilting stitch along the lines marked -x-x-x on diagram (----- fold of pleats). Press pleats. Join side and sleeve seams, set in sleeves. Graft together ends of cuffs, unravelling contrast yarn. Gather wrist end of sleeves and backstitch cuffs to outside, then catch down on inside. Sew collar in the same way to neck opening, closing narrow ends with right sides together. Fasten collar with two hooks and two loops (buttonhole stitch). Put in shoulder pads, and sew in seam band from one shoulder pad to the other, at the same time easing in neck opening.

Skirt

Fig. VII + VIII : knit two parts alike

A = tubular cast on, "long stitch", knit straight.
 B = waist band : transfer all sts to front bed and knit 1 row with St.S 5 1/2. Then reduce sts to half, i.e. always transfer 1 st to adjacent nd, empty nds out of W.P., knit 1 row with St.S 4 1/2. Now, with St.S 3 1/2 knit 20 rows. A few rows with contrast yarn, release.
 To make up : Block and press parts. Join side seams. Graft waist band to inside, unravelling contrast yarn. Insert elasticated band.

knit straight. D = shape armhole at right, shape neck at left. E = straight at left, shape shoulder at right.

Bands : 1st part : all nds in W.P., half tubular, begin with contrast yarn, knit RC 20 st. Knit RC 2 with St.S 7 1/2, then knit RC 18, a few rows with contrast yarn, release. 2nd part : 120 nds in W.P., begin with contrast yarn, knit stocking stitch, straight, 10 rows, then with St.S 7 1/2 knit 1 row, then another 9 rows, a few rows with contrast yarn, release.

Armhole band : knit twice

140 nds in W.P., begin with contrast yarn. Knit st.st., straight, 10 rows, then 1 row with St.S 7 1/2, then another 9 rows, a few rows with contrast yarn, release.

To make up : Block and press parts. Join shoulders. Sew armhole bands to

armhole, st by st, backstitching into the open loops, and unravelling contrast yarn, catch down on inside. Join side seams. Sew band 1st part from dot to dot round neck, st by st, backstitching into open loops, and unravelling contrast yarn. Then, sew band 2nd part from dot to dot to back, st by st, backstitching into open loops, and unravelling contrast yarn. Catch down on inside.

2591 PASSAP-DUOMATIC

Silk top

Size : 88 (90) cm bust
 Material : 320 g synthetic silk,
 1 button
 Stitch size : stocking stitch = 5 3/4,
 1:1 rib = 4/4,
 frills = front 4/4,
 back 3/4.
 Test square : 100 sts = 32cm
 100 R = 28cm
 Pattern : Bands 1:1 rib, st.st.,
 purlside to outside.

Material : 300 m length per 100 g
 94 yds per 1 oz
 10 cm = approx. 4"

Fig. I

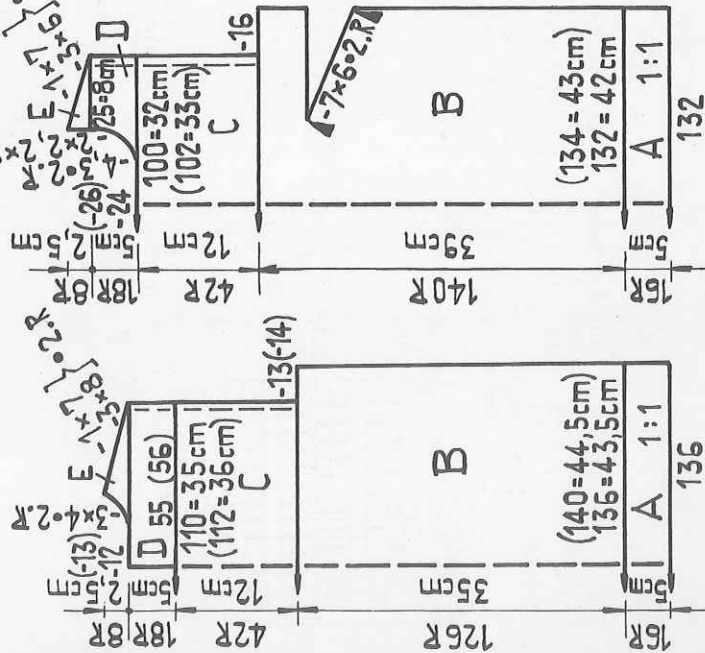


Fig. II



Fig. I :

A = tubular cast on, knit straight in 1:1 rib. B = transfer sts to front for st.st., then knit straight. C = cast off 13 (14) sts at both ends, then, at right and left on knitting add 5 nds on the back bed, lock at front N, at back CX, St.S. back 3/4, knit straight. D = divide work, place left side on dekercombs. For right side, knit straight at right and left. E = at left, cast off 12 (13) sts, then shape neck at left, shape shoulder at right. 2nd part : return sts to nds of machine, and knit section D + E with reversed shapings.

Fig. II :

A = tubular cast on, then knit straight in 1:1 rib. B = transfer sts to front for st.st., knit straight st.st. until row 108. Then make bust darts on both sides. Lock on BX and with pushers, make graduations from outside. Then, cont. straight, st.st. C = cast off 16 sts at both ends, then, at the right and left on the knitting add 5 nds each on the back bed, lock at front N, back CX, St.S. back 3/4, knit straight. D = divide work, cast off 24 (26) sts at centre. Then, place left side on dekercombs. For right side, knit straight at right, shape neck at left. E = shape shoulder at right, knit straight at left. 2nd shoulder : return sts to nds of machine, and knit with reversed shapings.

Frills : knit two parts
 Begin with contrast yarn, put 36 nds at front, and 35 nds at back into W.P., with lock at front N, back CX, knit 4 rows, then 6 rows with lock front and back N, repeat until row 320. On the back bed, starting from the left edge, release 25 sts. Knit a few rows with contrast yarn, release. Unravel loose sts completely.
 2nd part : as for first part, but knit only 270 rows.

To make up : Block and press parts. Join shoulder and side seams. Sew frills one on top of the other, taking care that the larger one is at the bottom and the smaller one on top. Attach frills to neck opening, at the back, backstitching them to the slit-opening, unravelling contrast yarn. Sew on button and crochet a loop to match.

2595 PASSAP-DUOMATIC 80

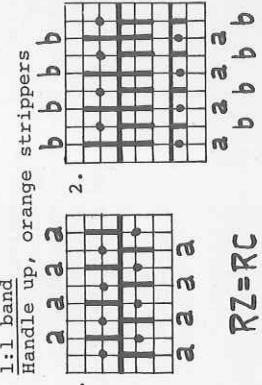
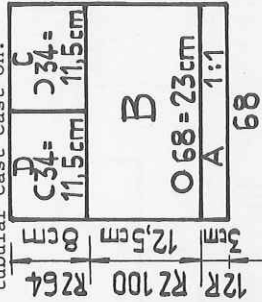
Material : 600 m length per 100 g
 188 yds per 1 oz
 10 cm = approx. 4"

Baby's short trousers

Size : approx. 9 months
 Material : 50 g fine synthetic mohair, knitted double, 1 length elastic.
 Stitch size : St.st. = 5 3/4, 1:1 rib = 3/4
 Test square : 100 sts = 34 cm, 100 R = 25 cm
 Pattern : Waist band 1:1 rib, trousers
 Stocking stitch tubular and st.st.
 half tubular.

A = waist bands: with 68 nds (34 on each bed) tubular cast on in 1:1 rib. Knit 12 rows. Second band, without taking the first one off the machine: acc. to diagram 1, transfer all sts marked a from back bed to nds on front bed, in such a way that every alternate nd at front remains empty. Then, acc. to diagram 2, put all nds marked b at back and front, as well as their pushers at front, in W. P. Now, cast on as follows : with lock at back N, front BX, knit 1 row. Then, with lock at back CX, front BX with both arrow keys, knit 2 rows. Then, with lock at back N, front BX without arrow keys (pushers remaining in W.P.), knit 1 row = 4 rows. With same lock position knit 12 rows = bands. Then, transfer the b-nds from front to empty nds at back; at front, remove the second st from the a-nds and transfer to the empty adjacent nds. Lock CX/CX. B = st.st., tubular. C = divide work, at left back and front place 34 sts on dekercombs or a length of yarn; at right, knit half tubular, open at left. A few rows with contrast yarn, release. At left, return sts to nds of machine, and knit half tubular, open at right. A few rows with contrast yarn, release. Gusset : stocking stitch. Begin with 3 sts. Knit 22 rows, at the same time inc. 1 st at both ends on every alternate row. Then knit 22 rows, at the same time dec. 1 st every row at both ends.

To make up : Press parts. Join waist band at both ends. Set in gusset. On each leg, fold 5 rows to inside and catch down st by st, unravelling contrast yarn. Insert elastic in tubular cast cast on.



RZ=RC

2596 PASSAP - DUOMATIC 80

Mohair two-piece

Size : 90, 98 cm hips
 Material : 480 g, 560 g fine mohair. 1 length elastic.
 Stitch size : 6/4
 Test square : 90 sts = 73 cm, 100 R = 29 cm
 Pattern : Stocking stitch with graduations (BX and pushers), knitted with every alternate nd, wrong side used as right side.

Skirt
Fig. VII + VIII : knitted in one piece with contrast yarn. Across the whole needle bed cast on 90 sts (i.e. every alternate nd). Then, knit 4 rows stocking stitch. A = graduations from the right. B = graduations from the left. C = 8 rows stocking stitch = 1 series (1 repeat). Knit 18 or 20 series (each series adds 4 cm to the hip size). End with 4 rows stocking stitch, a few rows contrast yarn. Release. Waist band : Stocking stitch, tubular, begin with contrast yarn. With 8 nds on each bed (i.e. every alternate nd) knit a tubular band to desired length. (Waist size + approx. 10 cm/4"). A few rows with contrast yarn, release. To make up : Block and press skirt. Graft together beginning and end, unravelling contrast yarn. Insert elastic into waist band, join with graft stitch, and, using green tool, crochet to waist edge of skirt.

Fig. I + II + III

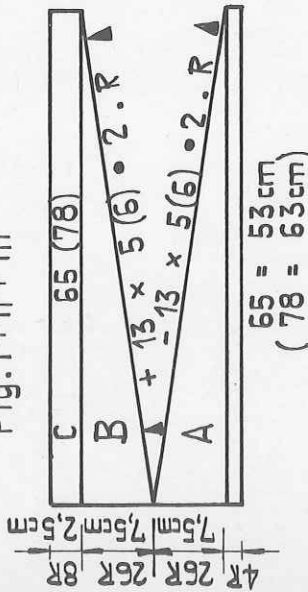
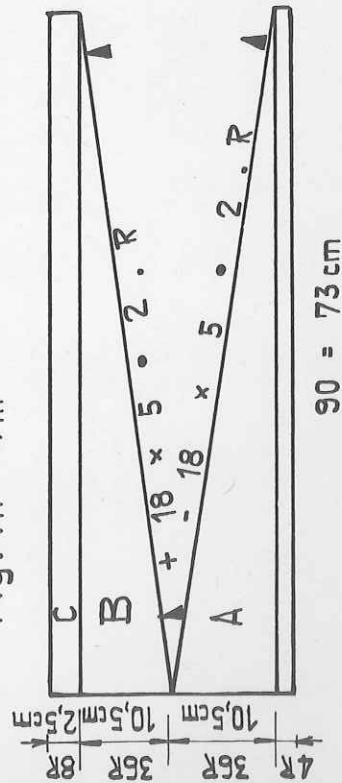


Fig. VII + VIII



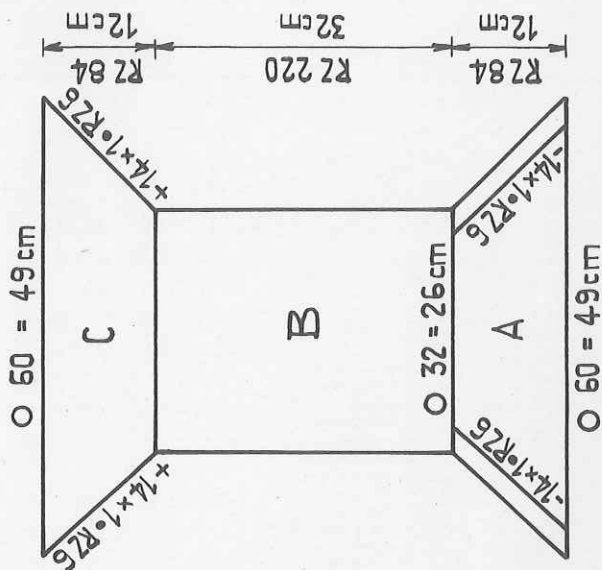
TOP

Fig. I, II + III : in one piece, begin at side edge. Begin with contrast yarn. With every alternate nd cast on 65 (78) sts, knit 4 rows mohair. A = make graduations starting from the right. B = graduations from the left. C = stocking stitch = 1 series. For back, knit 8 series. In section C, after 4 rows, knit a few rows with contrast yarn at right for armhole over 35 (45) sts (with BX and pushers). Then knit 4 rows mohair. For first sleeve, knit 6 series, then make armhole as before. For front part and 2nd sleeve, knit as for back and first sleeve. A few rows with contrast yarn, release. **Fig. IV** : polo neck

Stocking stitch, tubular, knitted with every alternate nd. Begin with contrast yarn. A = tubular, cast on 60 sts on each bed. Then dec. at both ends back and front, i.e. always move 3 sts 1 working nd in. B = stocking stitch, tubular. C = inc. at both ends back and front, i.e. always move 1 st 1 working nd out and place the purlstitch loop of this nd on the empty nd. A few rows with contrast yarn, release.

To make up : Block and press parts. At the sides, join the back and front parts with graft stitch, then graft together sleeves, unravelling contrast yarn. St by st, backstitching into the open loops, sew polo neck first to outside, then to inside, unravelling contrast yarn.

Fig. IV



Material : 500 m length per 100 g
 157 yds per 1 oz
 10 cm = approx. 4"

RZ = RC

40/28

C O N T E N T S

Model No.	Article	Page
	<u>Front cover</u>	
2567	Striped sweater	21
	<u>Back cover</u>	
2571	Long line waist coat	25
2583	Short waist coat	35
2533	Baby's coat	4
2534	Baby's coat	4
2535	Baby's pants	14
2536	Casual dress	8
! 2537	Dress with dolman sleeves	5
2538	Man's jacket with raglan sleeves	6
2539	Polo neck sweater with AX-pattern	13
! 2540	Pinafore dress	9
! 2541	Short-sleeved sweater	11
! 2542	Child's sweater to go with model 2540	7
2546	Double-breasted man's (lady's) jacket	10
2552	Striped raglan sweater	12
2553	Child's sweater with kangaroo pocket	16
! 2554	Child's pinafore dress	20
2555	Child's waist coat	14
! 2556	Polo neck jumper	7
2557	Kimono dress with silk stripes	8
! 2559	Child's jumper in pearl rib	15
2560	Fireside two-piece	18
2562	Sleeveless coat	17
! 2566	Child's pleated skirt with waist coat	20
2567	Striped sweater	21
! 2568	Dress to go with model 2562	22
2569	Top with neck frill	23
! 2570	Man's sweater with AX-pattern	24
2571	Long line waist coat	25
2573	Intarsia top in three colours	26
2574	Blouse	19
2577	Multi-coloured striped tweed dress	28
2578	Child's dress	27
2579	Lady's trousers pleated at the waist	30
! 2580	Bib	38
! 2581	Stole	31
! 2582	Cover	16
2583	Short waist coat	35
! 2584	Synthetic silk blouse with rose motif	32
2585	Child's blouse	32
! 2587	Loose cardigan	29
! 2588	Polo neck sweater in three colours	33
2589	Blouse	31
2590	Two-piece suit with wide shoulders	34
2591	Silk top	36
2592	Panther	37
2593	Waist coat to go with model 2588	38
! 2594	Skirt	12
2595	Baby's short trousers	36
2596	Mohair two-piece	39

PASSAP

28

2533 2554 2555
2556 2592 2595

2534 2535 2538
2539 2541 2560
2570 2571 2575
2583 2594

2536

2537 2578 2581

2540

2542

2546

2552 2553

2557

2559 2563 2565
2566 2577 2585
2589

2557 2560 2567
2584 2591

2562, 2568

2567 2582 2588
2593

2569

2573 2574 2579

2587 2590

2596

