

34



PASSAP®

INTERNATIONAL

PASSAP

34

33 308 13

2803 2804 2805

2806 2807 2811

2808

2809 2831

2810

2813 2814

2738 2739 2816
2817 2818

2819 2843

2820

2822 2823

2806 2822 2823
2841 2842

2825 2838 2840

2827

2830 2835

2833 2834

2812 2826 2836
2837 2841 2842
2844 2845

erung mit Lochkarten
cartes perforées
patterning
rforadas



2831

2809 !



2807



2808





2816
2817
2818

2738
2739





2838



2825 !

2840



2813

2814



2836

2837



forma

2803

forma

2804

2805



2826

2827



**Modèle
Caroline
de Hugo
Paris**

2810



2843

2819





2830
2835

U 80
2841

2845 !

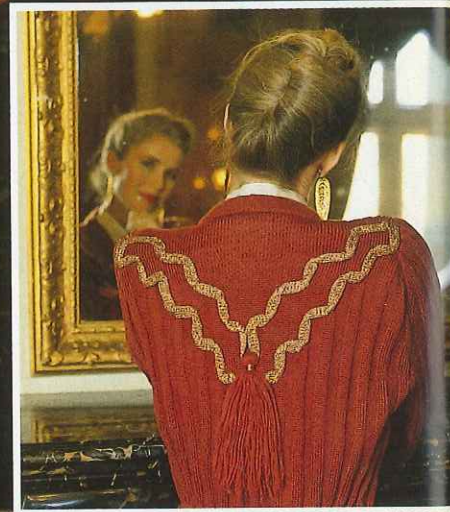
2842 !

2844 !

2811



2812



modèles

Mo les tricotés



2822



2823



2806

Sonderzubehör
Accessoire spécial
Optional extra
Accesorio especial

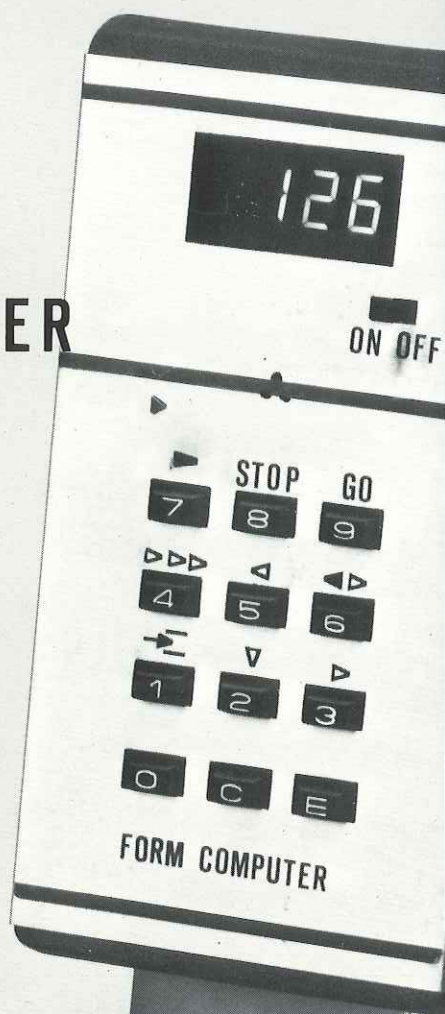
PASSAP® FORM COMPUTER

der elektronische
Formgeber

l'ordinateur de
tricotage

the electronic
shaping device

el modelador
electrónico



New

PASSAP®
FORM COMPUTER
der elektronische Formgeber

Nouveau

PASSAP®
FORM COMPUTER
l'ordinateur de tricotage

New

PASSAP®
FORM COMPUTER
the electronic shaping device

Nuevo

PASSAP®
FORM COMPUTER
el modelador electrónico

33 308 13/1.82

© 1982 by MADAG Maschinen-
und Apparatebau
Dietikon AG, CH-8953 Dietikon
All rights of reproduction reserved
Printing and Layout in Switzerland
Zollikofer AG, 9001 St.Gallen

Pictures: Urs Fäsch, E.T. Werlen
Zürich



2820

MADAG
8953 Dietikon
Schweiz

duomatic 80

duomatic S

Description Book for Model Book No. 34

FORM COMPUTER, the electronic shaping device

will be available from your stockist in the course of the next few months, and we would therefore like to give you a short preview :

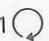


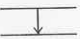
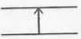
The FORM COMPUTER - your key to the perfect shape and fit, and all without effort, for you no longer need to calculate stitches and rows, nor trace a diagram.

No problem, either, if your figure does not fit the standard sizes, simply enter your own measurements in the programme, and the FORM COMPUTER will adapt the diagram accordingly.

Do you prefer another stitch pattern to the one illustrated, or another yarn to the one used in the model book? Again, no problem, enter the measurements of the new test square, and leave the rest to the FORM COMPUTER.

And while you knit you no longer need to count the rows before the next increase or decrease, the FORM COMPUTER tells you continuously what to do : how many stitches to cast on, how many rows to knit, when and how many stitches to increase or decrease. Nothing to go wrong now - start enjoying shaping with the FORM COMPUTER.

Please note the new abbreviations for the pattern descriptions

2 R	Knit 2 rows
4 R	Knit 4 rows
1 	Racking handle one full turn to the right
2 	Racking handle two full turns to the right
1 	Racking handle one full turn to the left
	Transfer stitches from back to front
	Transfer stitches from front to back

Patterns: The drawings refer to half width, the indications of stitch numbers refer to whole width of each part.

If the centre line of the half width is dotted and shows arrows, the other half is worked simultaneously with reversed shapings, i. e. decreasing or increasing is made on the left as well as on the right side.

If the centre line is drawn in one firm line, the other half is worked separately with reversed shapings, i. e. first knit one part according to diagram (increasing or decreasing at right), then the second part the opposite way (decreasing or increasing at left).

Abbreviations:

○	= tubular (or) = half tubular	+	= increase
●	= every (in every row)	-	= decrease, cast off
X	= times	▲	= graduations (short rows)

Stitches are only given by a number (without accompanying letter "st"). The stitch number always refers to the total of stitches, i. e. to all needles which are in Working Position on back and front bed.

Exception: For tubular or half tubular the necessary stitches are only given for one bed. The same number of needles must therefore be put into Working Position on the other bed. In these cases the sign for tubular ○ respectively (or) for half tubular is set before the relevant stitch number.

Examples for increasing and decreasing:

First increase or decrease always occurs in the first row of a section.

+ 3 × 2 · 8 · R	means: increase 2 stitches 3 times in every 8th row (1 stitch at back, 1 stitch at front).
- 19 × 3 · 7 · R	means: decrease 3 stitches 19 times in every 7th row (back 2 stitches, front 1 stitch or vice versa).
- 17 × 1 · 2./3 · R	means: decrease 1 stitch 17 times, alternately once after 2 rows and once after 3 rows.
▲ - 4 × 8 · 2 · R	means: work graduations, i. e. short rows (on DUO with pushers and lock BX). Step by step put 8 nds (and their respective pushers) into Rest Position 4 times after every 2nd row (for double bed 4 nds each back and front). Once all graduations are finished, continue knitting normally, i. e. all nds in Working Position (pushers in Neutral Position).

Graduations can be knitted two ways, either from outer edge towards centre (gradual decreasing with the minus-sign "-" after the black triangle) or from the centre towards outer edge (gradual increasing with the plus-sign "+" after the black triangle.)

Number of stitches and centimetres :

136 = 20 cm means: a total of 136 sts (for K/K 68 stitches each on back and front) make a width of 20 cm.

○ 146 = 43 cm means: cast on 146 sts each on back and front bed for tubular which makes a width of 43 cm.

Stitch size: These indications are only recommended by us. They must always be tested by you, by making your own test square for your own wool.

2803 DUOMATIC 80/S

Man's sweater

- Size : to fit chest up to 104 cm
 Material : 390 g soft wool : 150 g offwhite and 240 g grey
 Fairisle pattern : back 4/2, front 5/2.
 Stitch size : 2:2 rib band : 4.
 Test square : 50 sts = 22 cm, RC 100 = 22 cm (to be measured when the front bed stitches have been undone).
 Pattern : Double-bed release pattern. Deco punchcard to be punched as per patt.chart, page 7. The stitches of the front bed are dropped and undone at the end, therefore only the stitches of the back bed are indicated in the diagram.

Fig. I :
 A = grey, tubular cast on in 2:2 rib with 156 sts over a width of 118 nds. Knit 34 rows. B = transfer all sts to back bed, on front bed push the same number of nds into Working Position. Pusher division and lock setting/see diagram. Knit in pattern using deco punchcard, beginning with grey. C = dec. at each end (the stitches indicated in the diagram have to be decreased on the back bed, whereas on the front bed the same number of sts have to be released). When the fairisle motif as per pattern chart has been knitted, continue with the same lock setting with two colours but without the deco. Cast off the remaining 28 sts on back bed, release the sts on front bed.

Fig. II :
 A, B & C = as for Fig. I, but knit only RC 12 for section C. D = divide work. For left half, release the sts of front bed, put sts of back bed onto deker-comb. Make note of punchcard row (shown in card reader). Right half : cont. to knit in pattern, at the same time shape neck at left, cont. to shape raglan to right. Left half : return sts onto nds of back bed and cont. in pattern

Fig. I

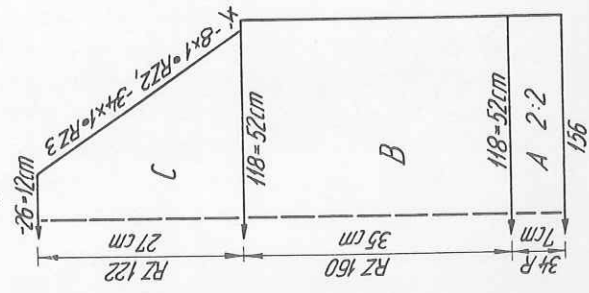
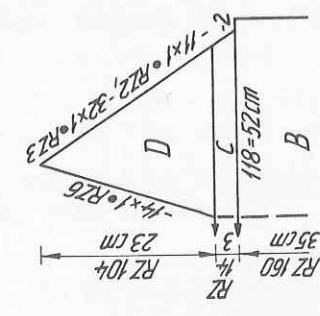


Fig. II



RZ = RC

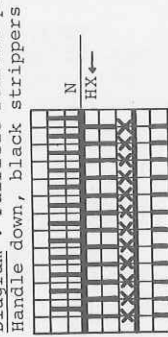
Material : 400 m length per 100 g
 125 yds per 1 oz
 10 cm = 4"

(keeping pattern correct), knitting section D with reversed shapings.
 Fig. III : knit two sleeves with reversed shapings.
 A = as for Fig. I, but with 80 sts over a width of 60 nds. B = knit in pattern as given for Fig. I and II, but knit the first RC 16 without using the deco but with the same lock setting and in colour sequence. Inc. at each end.
 C and D = shape raglan at each end.

Neckband :

Grey, tubular cast on in 2:2 rib with 206 sts over a width of 154 nds. Knit with St.S 4, at the same time at each end inc. 3 sts every alternate row 5 times = 12 rows. Now bring the empty needles lying inbetween on front and back bed in Working Position. St.S 6, first knit 6 rows on front bed with lock N/GX, then 6 rows at back with lock GX/N. Always end with contrast yarn, and release.
 To make up : Completely unravel the released stitches on all parts. Block and press parts. Join raglan and sleeve seams. Sew neckband, starting at the point, first to outside then to inside of neck opening, st by st, backstitching through the open loops and unravelling contrast yarn. Join point with mattress stitch. Close side seams.

Diagram : Fairisle release pattern



For man's sweater
 2 R grey
 2 R offwhite

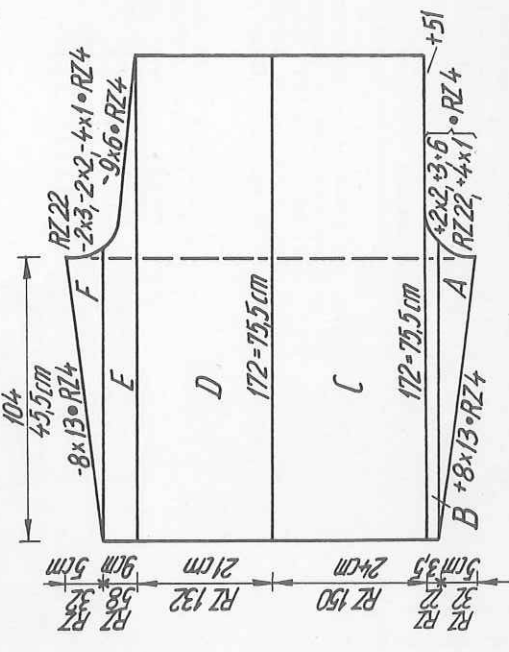
Lady's sweater
 2 R offwhite
 2 R grey

x = released at the end

2805 DUOMATIC 80

Fig. IX a+b

Material : 400 m length per 100 g
 125 yds per 1 oz
 10 cm = approx. 4"



Material : 400 m length per 100 g
 125 yds per 1 oz
 10 cm = approx. 4"

2840

Knickerbocker outfit

Size : bust 88 - 94 cm, hips 90 cm approx.

Material : 1300 g sports wool:550g cream, 750 g rust

St.st. = 7/2. 2:2 rib = 5/4

St.st. : 100 sts = 40 cm, 100 R = 30 cm

Pattern : on front and back intarsia yoke.

Along sleeves zig-zag pattern in single-bed

fairisle acc. to diagram. Trousers plain.

Sweater

Fig. I :

A = cream, tubular cast on in 2:2 rib with 122 sts over a width of 122 nds, St.S 5/4, knit 24 rows. B = transfer all sts to front for st.st., knit 110 rows, straight. C = knit intarsia as follows : with lock BX and pushers for the 61 sts of the right half in Working Position, cont. to knit, at the same time beginning from the left bring 2 pushers in Rest position every alternate row, until no sts knit. Repeat this with the sts of the left half reversing the shaping (the pushers of the right half are either in R.P. or in the blocking rail). Then, fill in the centre with rust, ie. begin with all pushers in R.P. except for the 4 centre ones, knit 1 row, place yarn at left across the adjacent nd and at right push up 2 more pushers next to

Fig. I

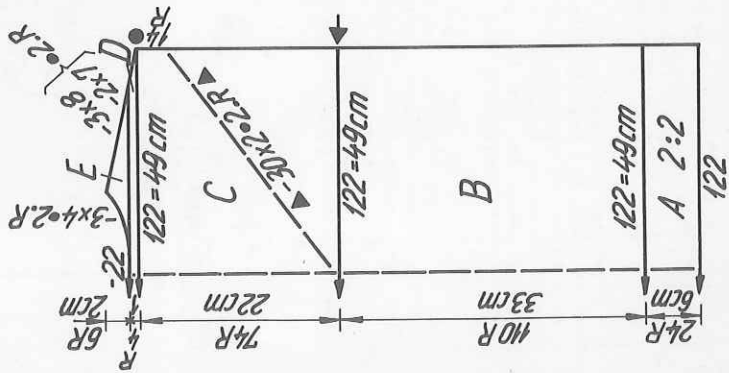
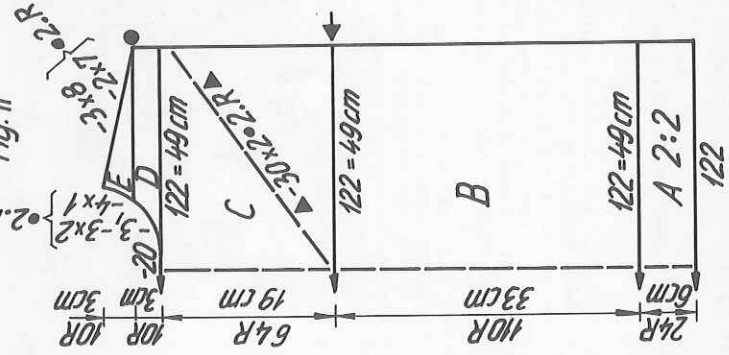


Fig. II



the 4 pushers already in W.P., knit 1 row (lock at right) place yarn across adjacent nd and this time add 2 more pushers at left. Cont. like this, until all sts have been knitted off in rust, knit 14 more rows. D = shape shoulder at each end. E = cast off centre 22 sts. Divide work. Place left half onto dekercomb. Right half : shape neck at left, cont. to dec. at right. Left half : return sts to nds of machine and knit section E with reversed shapings.

Fig. III :

A, B & C = as for Fig. I, but for C knit only 4 rows in rust at the end (i.e. NOT 14 rows as for Fig. I). D = cast off centre 20 sts. Divide work. Place left half onto dekercomb. For right half : shape neck at left, straight at right. E = shape shoulder at right, cont. to dec. at left. Left half : return sts to nds of machine and knit sections D & E with reversed shapings.

Fig. III : knit twice. Begin and end with contrast yarn.
A = cream, single-bed cast on with 92 sts, i.e. on the needle scale from 52 at left to 40 at right counting from the centre. Knit 2 rows. B = with graduations beginning from the right, add pushers every alternate row acc. to indications in diagram until all 92 pushers are in W.P. again. C & D = knit 32 rows plain, then knit zig-zag pattern in fairisle (if knitted with the punched card, move card reader 5 positions to the right), alternately knit 2 rows cream, 2 rows rust. Then, knit 32 rows plain again. E = with graduations, starting from the left, bring pushers in R.P. every alternate row. F = knit 2 rows across all 92 sts, end with contrast yarn. (For second sleeve, move card reader 5 positions to the left when knitting the zig-zag pattern).

Neckband

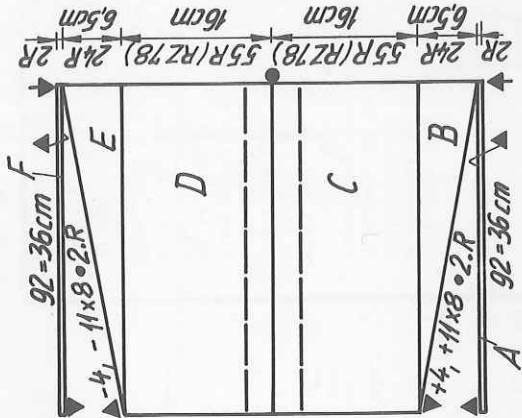
Rust, tubular cast on with 140 sts, in 2:2 rib, over 140 nds. St.S 5/4, knit 10 rows. Transfer all sts to front and knit 2 rows st.st. with St.S 7/2.

End with a few rows contrast yarn, release.

Cuffs : knit twice

As for neckband but with 86 sts over a width of 64 nds knit 30 rows in 2:2 rib.

Fig. III



Material : 230 m length per 100 g
72 yds per 1 oz
10 cm = approx. 4"

RZ = RC

2840 DUOMATIC 80/S

To make up : Block and press parts. Attach sleeves to front and back part with mattress stitch, matching arrows and dots as given in diagram. Join side and sleeve seams. Sew neckband and cuffs to main parts, st by st, and unravel contrast.

Trousers

Fig. IXa : Back part, knit two parts with reversed shapings. A = single-bed cast on with 72 sts. Knit st.st. 146 rows, at the same time inc. at right. B = dec. at right, cont. straight at left. C = dec. at each end every 5th row. D = knit 16 rows straight. End with contrast yarn, release.

Fig. IXb : front part, knit two parts with reversed shapings. A = single-bed cast on with 62 sts. Knit st.st. 146 rows, at the same time inc. at right. B = dec. at right, knit straight at left. C = dec. at left, knit straight at right. D = straight at each end, 16 rows. End with contrast yarn, release.

Leg border : knit twice. Begin and end with contrast yarn.

Single-bed cast on with 72 sts, knit st.st. 16 rows.

Fig. IXa

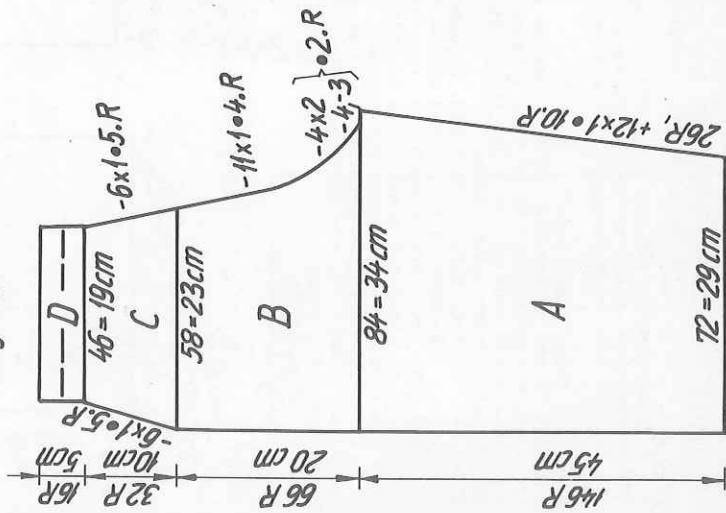
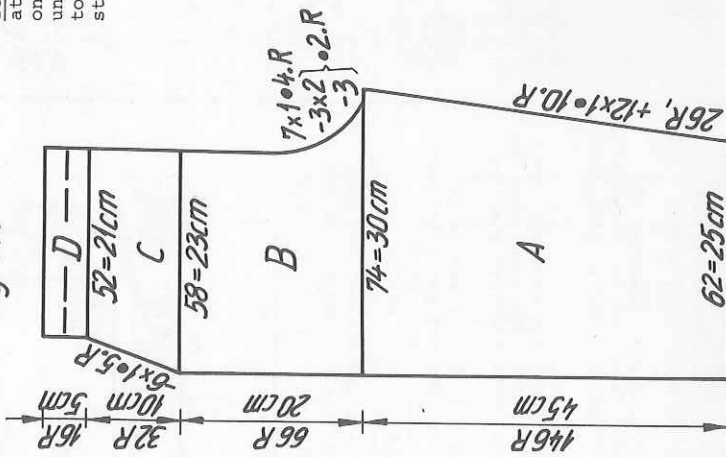
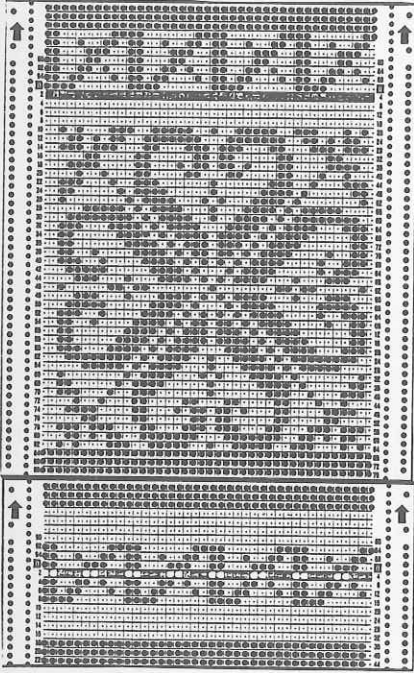


Fig. IXb



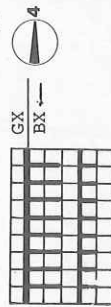
2803

Chart for DECO punchcard for nos. 2803 and 2804.

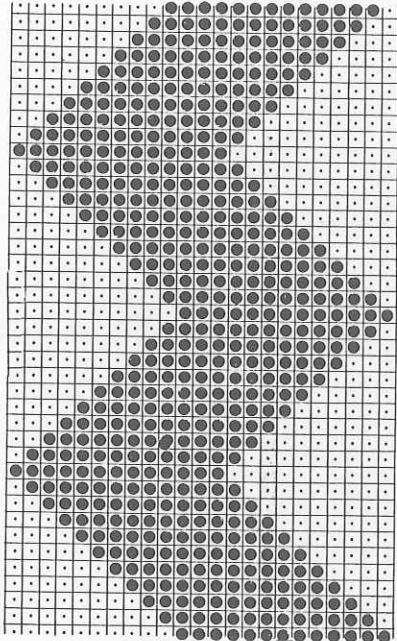


To make up : Block and press parts well. Join leg seams, leaving a slit at lower edge (10 cm long) along outside seam. Attach leg borders, first on the outside, then on the inside, st by st, gathering leg part, and unravelling contrast yarn. Attach button and crochet a loop to correspond to fasten slit. Join seat seam. Fold section D in half to inside, st by st, hem into position, insert waist elastic.

Diagram : Fairisle pattern
Handle down, black strippers



Pattern chart : Zig-zag motif



2738 DUOMATIC 80/S

Lady's summer dress

Size : to fit a 84 to 92 cm bust
 Material : 440 g mercerised cotton
 Stitch size : Pattern back 5/2, front 2 1/4, stocking stitch 5 1/2
 Test square : 100 sts = 40 cm, 100 R = 28 cm
 Pattern : Lace pattern with deco card 87 and transfer lock U70 / U80



Fig. I : begin at extreme left hand side of machine. A = tub. cast on for 1:1 rib. Knit 2 rows with St.S 4 1/2. Transfer all sts to back bed for lace pattern. For the intended skirt length of 260 rows, begin with pattern row 28. Knit in pattern, dec. at each end. B = eyelet holes for waist tie : pattern card on 0. Selector dial on zero. *Lock at back N, front GX, knit 2 rows. Change lock to BX at front, knit 2 rows. Transfer*. Repeat from * to * once. Knit 2 rows lock back N, front GX = you have now knitted 10 rows altogether. C = selector dial on 2. Knit straight in pattern. D = band, stocking stitch. 8 rows St.S 5/2, 1 row St.S 4, 7 rows St.S 5. End with a few rows contr. yarn, release.

Fig. II : A, B, C as for Fig. I. D = make graduations at each end as follows : lock at back BX, 105 pushers in W.P. Then, at left back bring 2 pushers into R.P., at front 2 pushers into blocking rail, knit 1 row. At right back 2 pushers into R.P., at front 2 pushers into blocking rail, knit 1 row, etc. D = band as for Fig. I.
 Straps : Stocking stitch, tubular. Cast on 9 sts on each bed, knit 2 straps measuring approx. 42 cms. End with a few rows contrast yarn, release. On both sides, unravel the ninth stitch all the way to the cast-on edge, turn strap inside out, and crochet the unravelled stitches to the top again thereby forming a pleasing edge.

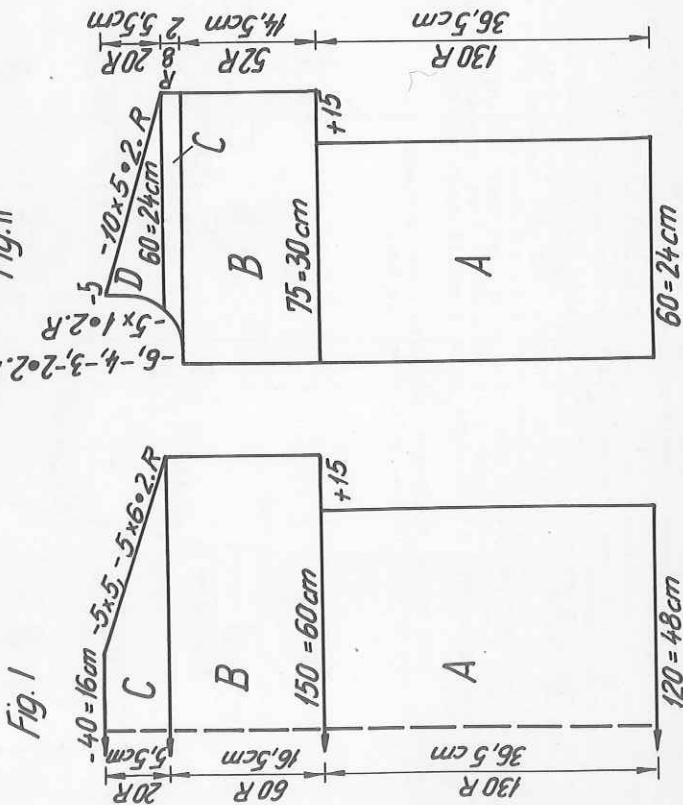
2739 DUOMATIC 80/S

Lady's jacket

Material : 300 m length per 100 g
 94 yds per 1 oz
 10 cm = approx. 4"

Size : to fit a 84 to 92 cm bust
 Material : 250 g mercerised cotton
 Stitch size : Pattern back 5/2, front 2 1/4, st.st. 5/2
 Test square : 100 sts = 40 cm, 100 R = 28 cm
 Pattern : Lace pattern with deco card 87 and transfer lock U80/U70. Bands st.st., tubular, puriside worn outside.

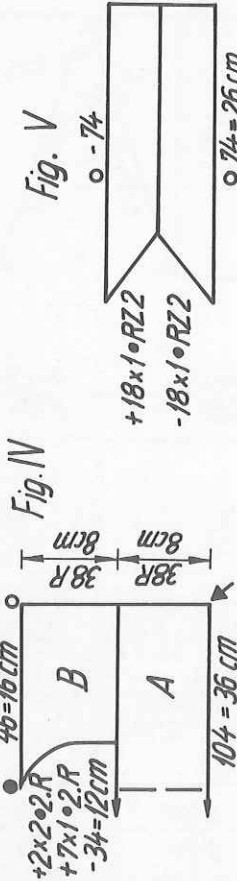
Fig. I : A = tubular cast-on for 1:1 rib. Knit 2 rows with St.S 4 1/2. Transfer all sts to back bed. Cont. to knit in pattern, straight. B = cast on 15 extra sts at each end, knit straight, in pattern. C = shape shoulder at each end. Cast off.
 Fig. II : first front part
 A = with 60 sts as for Fig. I. B = cast on 15 additional sts at right, knit straight. C = knit straight at right, shape neck at left. D = shape shoulder at right, shape neck at left. 2nd front part : knit with reversed shapings. Band, centre front : knit twice
 Bring 106 nds into W.P. on each bed. Lock N/N, St.S 1, knit 1 row. Lock CX/CX, St.S 5/2, knit to RC 20. End with a few rows contrast yarn, release. Neckband : With 100 sts on each bed, knit as for centre front band. To make up : Block and press parts lightly on the stocking stitch side. Join shoulder and side seams. Sew neckband and centre front bands in position, with the puriside to the outside, st by st backstitching through the open loops and unravelling contrast yarn, first on the outside then on the inside. Press seams and bands.



2808 DUOMATIC 80/S

Lady's linen dress

Size : to fit bust 88 to 96 cms
 Material : 900 g linen yarn
 Pattern : back 5/4, front 4 1/2. St.st. = 5/4
 Pattern : 100 sts = 45 cm, 100 R = 21 cm
 St.st. : 100 sts = 35 cm, 100 R = 21 cm
 Pattern : Tuck stitch acc. to diagram. Yoke, collar and armhole bands st.st. tubular, wrong side outside.



Material : 360 m length per 100 g
 113 yds per 1 oz
 10 cm = approx. 4"

Fig. I

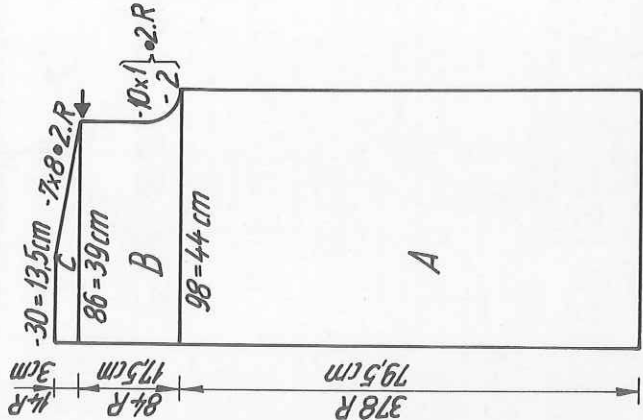


Fig. II

2738

Waist tie : Tubular, with 3 nds on back bed and 2 nds on front bed, St.S 4 1/2. Knit a length of about 550 cms. Cut into 3 length, neaten edges. To make up : Block and press parts lightly on the stocking stitch side. Join side seams. Sew bands in position, st by st, unravelling contrast yarn. Attach straps according to desired length. Insert waist tie through eyelet holes.

Material : 300 m length per 100 g
 94 yds per 1 oz
 10 cm = approx. 4"

RZ36 RZ36
 4 cm 4 cm

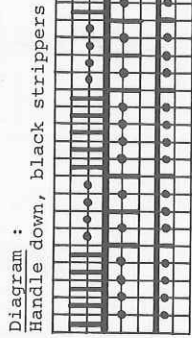


Diagram :

Fig. I : back, knitted in two halves
 First halves : A = with 98 nds in 1:1 division tubular cast on. Transfer sts acc. to diagram. Knit straight in pattern. B = shape armhole at right, knit straight at left. D = shape shoulder at right, straight at left. Cast off. Second half : knit with reversed shapings.

Fig. II : first front part
 A = with 112 nds in 1:1 division tubular cast on. Then, transfer 21 sts of front bed to back for st.st. Arrange remaining 91 sts for pattern acc. to diagram. Knit straight in pattern. B = shape armhole at left, knit straight at left. C = straight at right, shape shoulder at left. 2nd front part : knit with reversed shapings.

Fig. IV : Yoke, st.st.
 Begin with contrast yarn. A = knit straight. B = divide work, cast off 34 sts at centre. 1st part : knit 18 rows straight, then inc. at left, knit 2 more rows straight. End with a few rows contrast yarn, release. 2nd part : knit with reversed shapings.

Fig. V : armhole bands, tubular.
 A = contrast yarn, 74 nds in W.P. on each bed, knit a few rows. Change to main yarn, knit 2 rows. Now at left back and front, always dec. 1 st every RC 2. B = knit RC 2 with St.S 6 1/4, then change to St.S 5 1/4 and start inc. at left as follows : at back and front move 1 st 1 nd and place purll stitch loop of this st onto empty nd. End with contrast yarn, release.

To make up : Block and press parts. Join centre back seam and side seams. At centre front unravel the 11th stitch right down to cast on edge, then crochet it to the top again on the wrong side using the green tool and always picking up two threads at once (doing this, will result in a neat edge). With purllstitch side to the outside, attach yoke, gathering back part, st by st with backstitch, matching arrows and unravelling contrast yarn. Attach in same way to front parts, matching dots and circles. Fold st.st. bands to inside along front parts, catch down. Starting from the hem, close front parts with invisible sts to about 10 cms from waist. Fasten the remainder with plastic press studs, trim with buttons (optional). Attach collar with purllstitch side outside, st by st with backstitch, first on the outside, then on the inside, unravel contrast yarn. Attach armhole bands in the same way.

2806 DUOMATIC 80/S

Brocade evening jacket

Material :
475 m length per 100 g
149 yds per 1 oz
10 cm = approx. 4"

Size : to fit bust up to 94 cms
Material : 610 g medium acrylic/mohair : 165 g rust, 165 g deer brown, 280 g black, 175 g gold thread
Stitch size : front 4, back 5 1/4
Test square : 100 sts = 20 cm, RC 200 = 17 cm
Pattern : 4-coloured fairisle-pin tuck pattern with deco card 95.
Jacket bound with black, st.st. bands.

Fig. I : A = black, tubular cast on in K/K with 252 sts over a width of 126 nds. After casting on, knit RC 10 with lock back CX, front N, St.S 4. B = knit in pattern acc. to diagram and punchcard 95, dec. at each end. C = inc. at each end. D = shape armhole at each end, cont. straight. E = shape shoulder at each end, cast off remaining 44 sts.
Fig. II : knit two parts with reversed shapings
A = as for Fig. I, but with 126 sts over a width of 63 nds. B = as for Fig. I, but dec. on right side only. C = as for Fig. I, but inc. at right. D = shape armhole at right. E = shape neck at left, knit straight at left. shoulder at right, knit straight at left.
Fig. III : knit twice
A = as for Fig. I and II, but with 112 sts over a width of 56 nds. B = knit in pattern, inc. at each end. C = shape sleeve head at each end, cast off remaining 32 sts.
Neckband : knit twice. Begin and end with contrast yarn.
Black, single-bed cast on over the full width of front bed. Knit 16 rows St.S5.

Fig. I

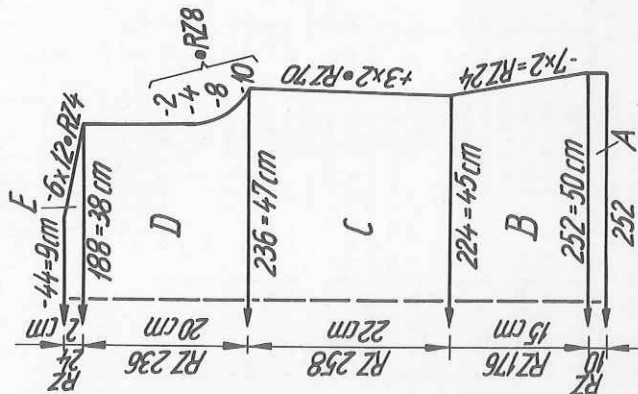


Fig. II

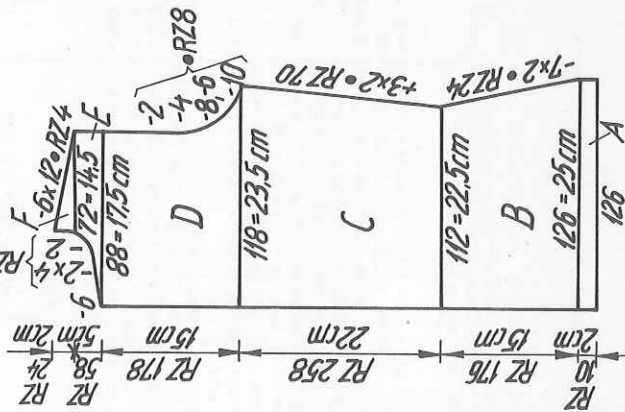
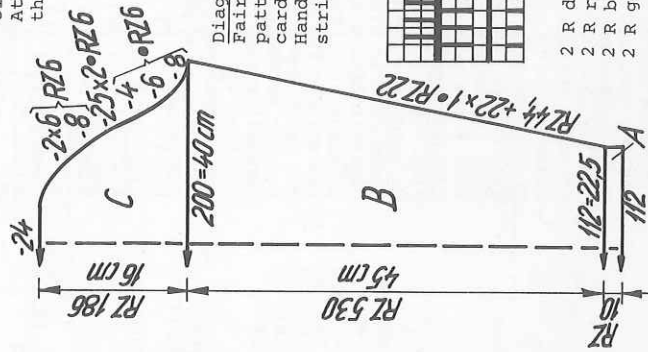


Fig. III



To make up : Block and press parts. Join shoulder seams. Set in sleeves, join sleeves seams by grafting together loose stitches. Attach wrist band to the outside, st by st, backstitching through the open loops and unravelling contrast yarn. Join side seams, leaving a 10 cm slit open at each side. Attach neckband to outside of neck opening, st by st, backstitching through the open loops and unravelling contrast yarn. Twist the four cords into a plait (braid) for the belt.

Fig. IXa : front trouser part. Knit 2 parts with reversed shapings.

A = dark rust, single bed cast on with 76 sts. Knit st.st., inc. at each end. B = dec. at left, knit straight at right. C = dec. at right, straight at left. D = dec. at right, straight at left. E = transfer sts for 1:1 rib. St.S 3 1/2, knit 20 rows. End with contrast yarn, release.

Fig. IXb : back trouser part. Knit 2 parts with reversed shapings.
A = dark rust, single bed cast on with 90 sts. Knit st.st., inc. at each end. B = dec. at left, knit straight at right. C & D = dec. at each end for both sections. E = transfer sts for 1:1 rib, knit 20 rows with St.S 3 1/2. End with contrast yarn, release.

Ankle band : knit two
Dark rust, tubular cast on in 2:2 rib with 106 sts over a width of 80 nds. St.S 4, knit 90 rows. Transfer sts to front for st.st. St.S 6, knit 2 rows. End with a few rows contrast yarn, release.

To make up : Block and press parts. Join leg and seat seams. Fold section E in half to inside and catch down st by st with hem stitch. Unravel contrast yarn. Insert elastic band. Attach ankle bands to outside of lower leg edge, st by st, gathering legs and unravelling contrast yarn. Fold in half to inside and catch down cast on edge with hem stitch.

To make up : Pin out parts to size and leave to dry under a damp cloth. Join shoulder, side and sleeve seams. Set in sleeves. Attach neckband, st by st, with backstitch, first to the outside, then to the inside, unravelling contrast yarn.

RZ = RC

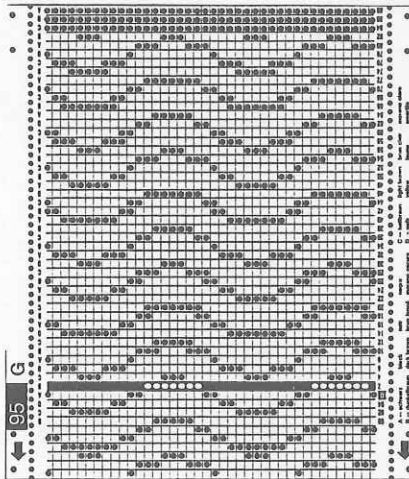
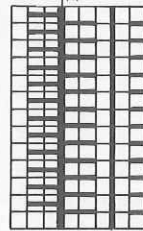


Diagram Fairisle-Pin tuck pattern with deco card 95. Handle down, black strippers



2 R deer brown
2 R rust
2 R black
2 R gold

repeat

2812 DUOMATIC 80/S

Lady's ribbed two piece by Mo les tricot

- Size :** to fit bust up to 96 cms
- Material :** 1040 g medium mohair/acrylic, rust. 160 g copper-col. lurex thread.
- Stitch size :** Back and front : 6. 2:2 rib : 4
- Test square :** 100 sts = 31 cm, 100 R = 28 cm (test square with 112 sts in 5:4 rib over a width of 100 nds)
- Pattern :** Skirt and jacket in ribs. Trimmings on front and back parts of jacket in tubular and then sewn on.

Fig. I :
 A = rust, tubular cast on in 1:1 rib with 160 sts. Immediately after casting on transfer sts for 5:4 rib acc. to diagram. Centre = 5 sts on back bed = 180 sts. Knit straight, after 12 rows rust knit 12 rows in lurex, then change to rust again. B = knit a row of eyelet holes as follows : transfer the sts marked X in the diagram (back bed) onto the adjacent nd, leaving nd in W.P., cont. to knit straight. C = transfer the centre group of 5 sts at back to front bed. Always after 16 rows transfer the group of 5 sts at back to the left and right of centre to the front bed 7 times in all. D = dec. 15 sts each end. Cont. to knit straight, continuing with transferring the groups of 5 stitches. End by casting off all sts.

Fig. II : knit two parts with reversed shapings
 A and B = as for Fig. I, but over a width of 90 nds. C = from now on transfer the groups of 5 sts from back to front as given for Fig. I, but starting from the left edge and only one group at a time. D = shape neck at left. E = dec. 15 sts at right, then cont. straight, at left cont. shaping neck. End by casting off the remaining sts.

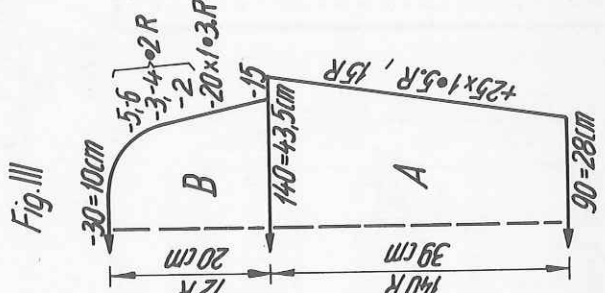
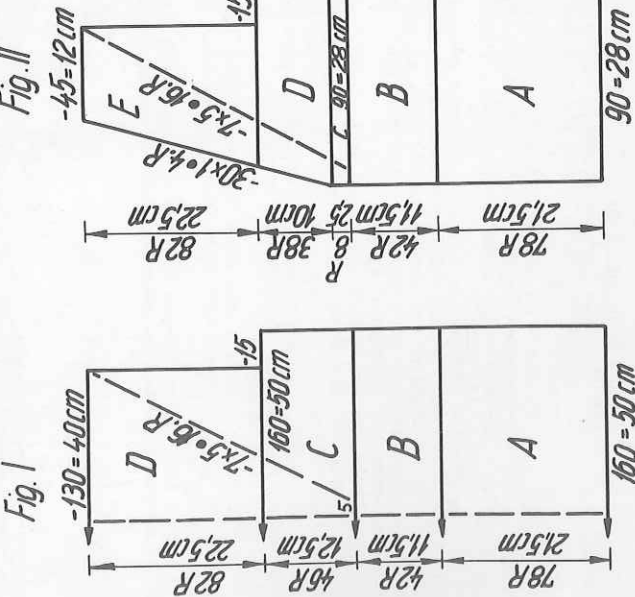


Fig. III : knit twice

A = as for Fig. I and II, but over a width of 90 nds. Knit in rib pattern, inc. at each end. B = shape sleeve head at each end. Transfer the stitches that have to be decreased first to front bed, because the number of sts indicated in the diagram stand for the width of the needle bed (as for stocking stitch).

Waist band : knit two
 Tubular cast on in 2:2 rib with 70 sts over a width of 52 nds. St.S 4, knit 60 rows. Transfer sts for st.st., knit 2 rows St.S 6. End with a few rows contrast yarn, release.

Front band :
 With 20 sts and St.S 6, st.st., knit a band measuring approx. 160 cm.

Belt : lurex

With 5 sts on each bed, tubular, St.S 8, knit a band approx. 180 cms long.

Trimming band : lurex

With 5 sts on each bed, St.S 5, knit a band of approx. 750 cms.

To make up : Block and press parts lightly. Join shoulder, side and sleeve seams. Set in sleeves. Attach wrist bands first to the outside, st by st, backstitching through the open loops and gathering width of sleeve. Unravel contrast yarn. Then fold in half to inside and catch down cast on edge with hem stitch. For hem on front and back part, fold the first 12 rows to inside and catch down. To make the hem stand out like a frill, iron on a bit of iron-on stiffener in the width of the hem. Attach front band so that the puristitch side is on the outside, st by st along jacket opening. Gather the width at the shoulder by making a tuck (fold), the finished shoulder width should measure approx. 38 sts. Sew on trimmings as seen in photo, wavy or following your own imagination. Insert belt into eyelet holes. Make tassels and attach to ends of belt.

Fig. VII & VIII : knit 3 parts

A = rust, tubular cast on in 1:1

rib with 179 sts, immediately after casting

on, transfer sts. acc. to diagram = 201 sts,

making sure that at right and left of the parts

to be knitted there is 1 rib each of purl sts.

Knit acc. to colour sequence as for Fig. I, then

the remaining rows with rust. Cast off.

Waist band :

Rust, tubular cast on in 2:2 rib with 180 sts

over a width of 135 nds. St.S 4, knit 40 rows.

Transfer sts to front for st.st. St.S 6, knit

2 rows. End with contrast yarn, release.

To make up : Block and press parts lightly.

Join side seams. Make hem as on jacket. Attach

waist band first to the outside, st by st, with

backstitch, then catch down cast-on edge on the

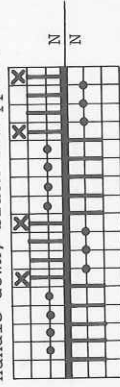
inside, unravel contrast yarn. Insert waist

elastic.

Material : 370 m length per 100 g
 116 yds per 1 oz
 10 cm = approx. 4"

Diagram : Ribs in 5:4

Handle down, black strippers



2814 DUOMATIC 80/1S

Teenage Two-Piece

- to fit 84 cm bust approx.
 Size : 890 g sports wool : 720 g ivory, 80 g navy, 50 g yellow, 40 g red
 Material :
 Stitch size : Stocking stitch = 6W4. 1:1 rib = 4V2. 6:3 rib = back 5V2, front 6.
 Test square : Stocking stitch : 100 sts = 43 cm, 100 R = 25 cm
 Ribs : 100 sts = 34 cm, 100 R = 24.5 cm
 Pattern : Skirt : Ribs with colour stripes acc. to instructions.
 Sweater : St.st., embroidered colour-dots on front and back parts. Bands on sweater, sleeves and neck : 1:1 rib.

Fig. VII + VIII

Fig. VII + VIII : Skirt, knit 3 pieces alike
 A = yellow, tubular cast on in 1:1 rib with 140 nds, then, acc. to diagram transfer sts for 6:3 rib. Transfer sts 1, 2 and 3 to front, st 4 to back, and place purllstitch loop of st 5 onto adjacent nd at front. Handle 1/2 turn to the right. Knit 2 rows yellow, then *16 rows ivory, 4 rows red, 16 rows ivory, 4 rows navy, 16 rows ivory, 4 rows navy, 16 rows ivory, 4 rows yellow*. Repeat from * to * once. Cont. in ivory. B = at back, transfer always the 1st stitch of the groups of three onto the 2nd needle. Handle up. St.S back 5, front 6. C = 1:1 rib, St.S 4V2. D = eyeletholes row : transfer

Fig. VII + VIII

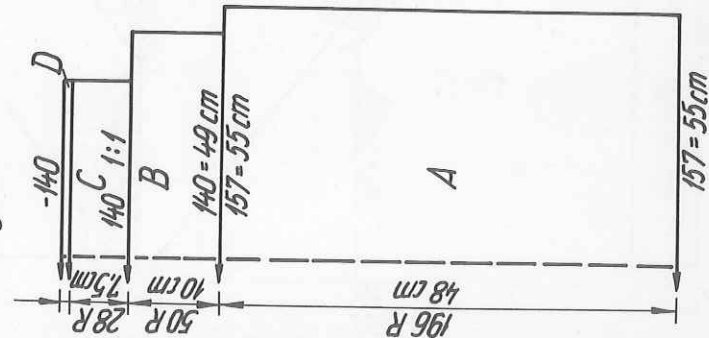


Fig. I

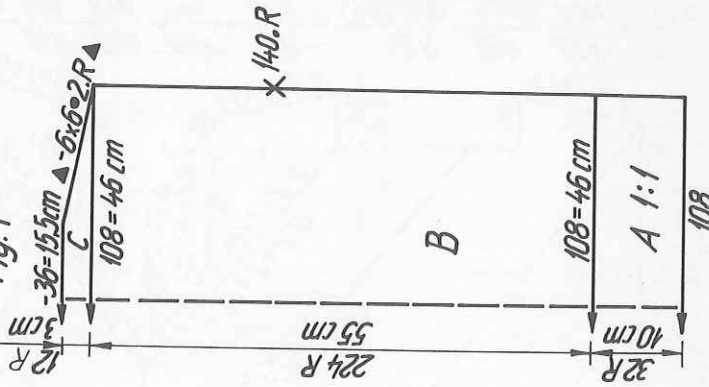


Fig. II

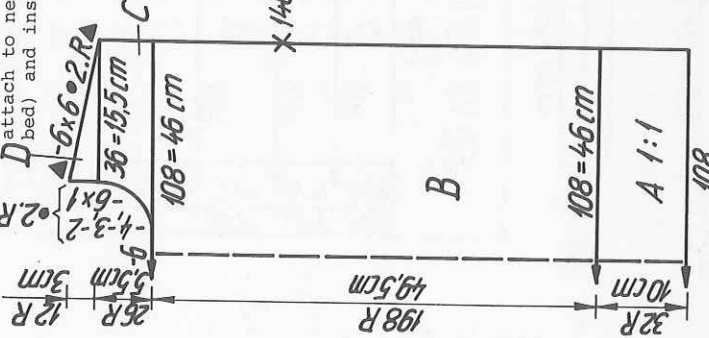
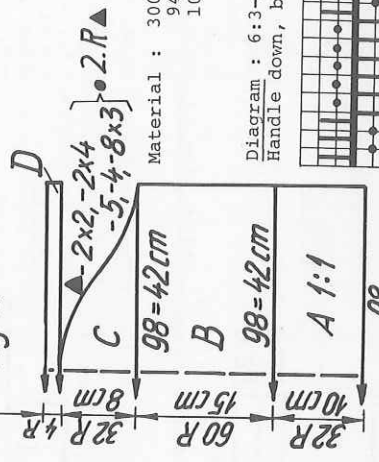


Fig. III



Material : 300 m. length per 100 g
 94 yds per 1 oz
 10 cm = approx. 4"

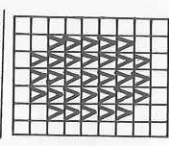
Diagram : 6:3-rib
 Handle down, black strippers

all sts of back bed to sts of front bed, leaving back nds in working position. Knit two rows. Cast off.

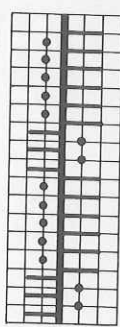
Fig. I :
 A = band : tubular cast on in 1:1 rib, navy, knit 2 rows. Ivory, knit 26 rows. Red, knit 4 rows. B = transfer sts for st.st., knit 224 rows, marking the armholes with a piece of contrast yarn on row 140. C = shape shoulders at each end with graduations (BX and pushers). End with a few rows contrast yarn, release.
 Fig. II :
 A and B = to row 198 as for Fig. I. 1st shoulder : C = at centre cast off 6 sts, divide work. At right, knit straight, shape neck at left. D = shoulder shaping with graduations (BX and pushers). End with a few rows contrast yarn, release. 2nd shoulder : knit with reversed shapings.
 Fig. III :

A = band, with 98 nds as for Fig. I. B = st.st., ivory, straight. C = shape sleeve head with BX and pushers. D = yellow, knit 4 rows across all nds. End with a few rows contrast yarn, release.
 Neckband : ivory
 With 101 nds, tub. cast on in 1:1 rib, knit 6 rows, work 1 eyelet holes row. Knit 2 rows, transfer sts for stocking stitch, knit 2 rows. End with a few rows contrast yarn, release.
 To make up : Embroider front and back part with coloured dots acc. to diagram (duplicate stitch, see photo). Block and press parts. Graft together open loops, join sleeves to side edges, unravel contrast yarn (see contrast yarn markings). Join side and sleeve seams. Join neckband in a ring, and attach to neck opening. Using yellow yarn, knit tubular cord (2 nds on each bed) and insert into eyelet holes. If desired, attach two pompoms.

Diagram
 Handle up, orange strippers



Embroidered
 Colour dots



Material : 475 m length per 100 g
 149 yds per 1 oz
 10 cm = approx. 4"



Fig. V b

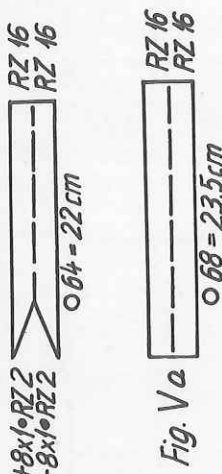


Fig. V a

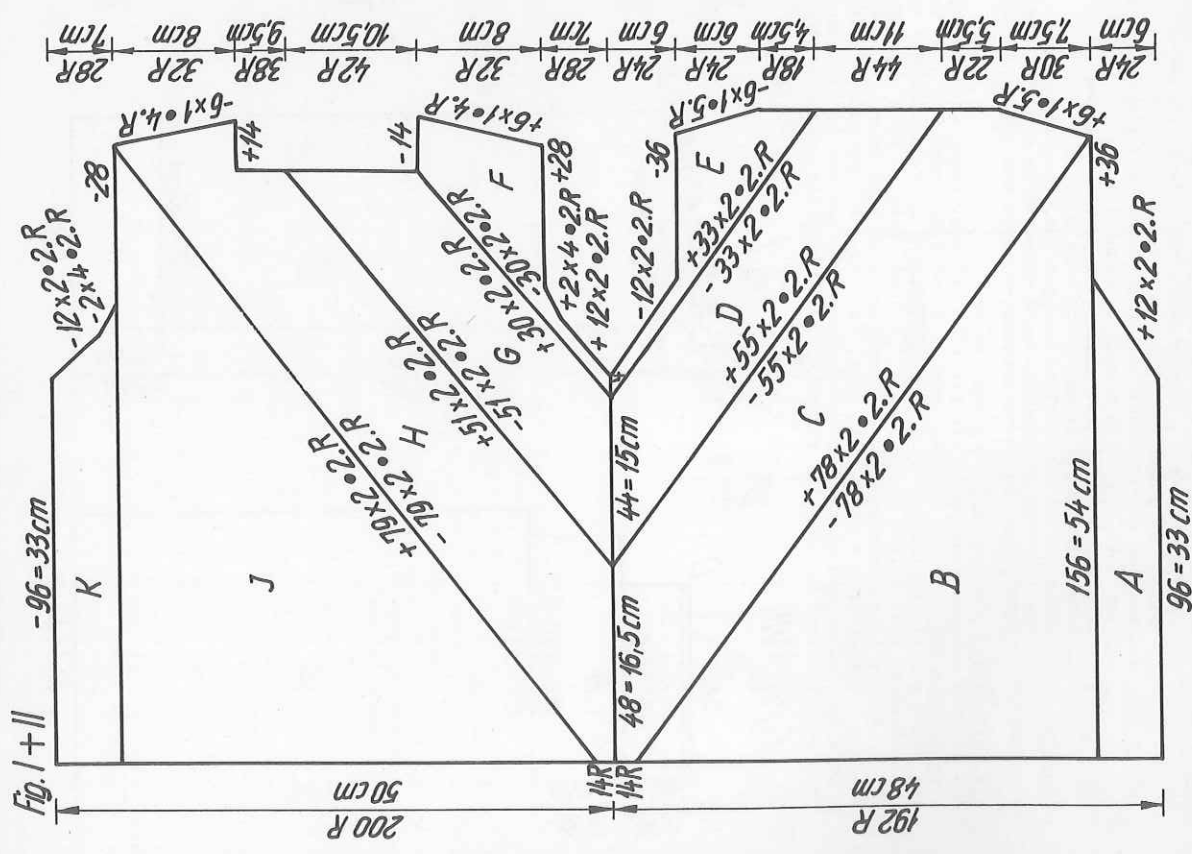
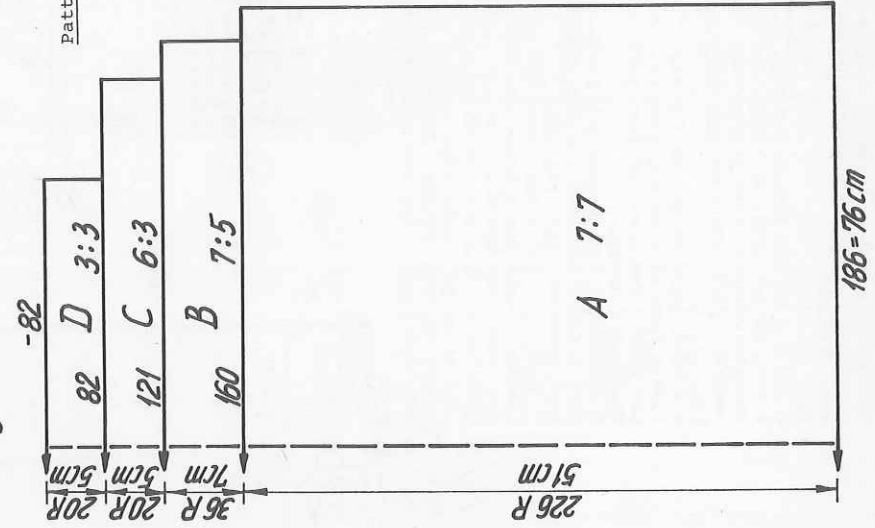


Fig. I + II

Fig. VII + VIII



Skirt with top in three colours

Size : 88 cm bust

Material :
 500 g fairly fine Mohair/
 Acrylic : 375 g colour
 petrol, 90 g rust, 35 g
 bordeaux.
 1 length narrow waist
 elastic.

Stitch size :
 Stocking stitch 5/2, ribs
 acc. to instructions,
 1:1 rib = 3/4

Test square :
 St.st. : 100 sts = 34,5 cm
 100 R = 25 cm
 Ribs : 100 R = 41 cm
 100 R = 22,5 cm

Pattern :
 Top with intarsia in st.st.
 Skirt colour stripes (ribs)
 acc. to instructions.

Diagram 1

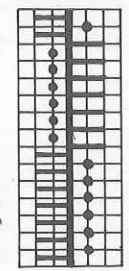


Diagram 2

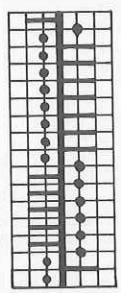
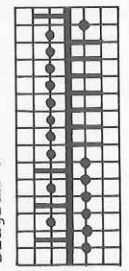


Diagram 3



RZ = RC

2807 DUOMATIC 80/S

2817 DUOMATIC 80

Bermuda pants matching sweater 2816
 Size : to fit hips up to 98 cms
 Material : 400 g medium cotton yarn, petrol blue
 Stitch size : 5
 Test square : 100 sts = 29,5 cm, 100 R = 20 cm
 Pattern : Pants st.st., half tubular.

Fig. IXa (back part) and IXb (front part).
 A = begin with contrast yarn, on front bed 102 sts, on back bed 88 sts, at right edge inc. 1 st every RC 24. B = on front bed for Fig. IXa and on back bed for Fig. IXb dec. the number of sts as indicated for the corresponding part in the diagram. C = on front bed (Fig. IXa) cont. to dec.; on back bed cont. straight, at the same time on each bed at left edge dec. 1 st every RC 10 using quintuple decker. D = for waistband, transfer every 3rd st onto left adjacent nd and push empty nd out of W.P. St.S 4/2, knit RC 48. End with a few rows contrast yarn, release. Second trouser part : Knit with reversed shapings, i.e. on front bed 88 sts (Fig. IXb) and on back bed 102 sts (Fig. IXa).
 To make up : Block and press parts. Join side and seat seams. Fold section D in half to inside and catch down st by st, unravelling contrast yarn. Insert elastic to fit waist size. Fold 5 cms to inside at edge of trouser legs and catch down st by st, unravelling contrast yarn. Then, fold to outside

Fig. IX a

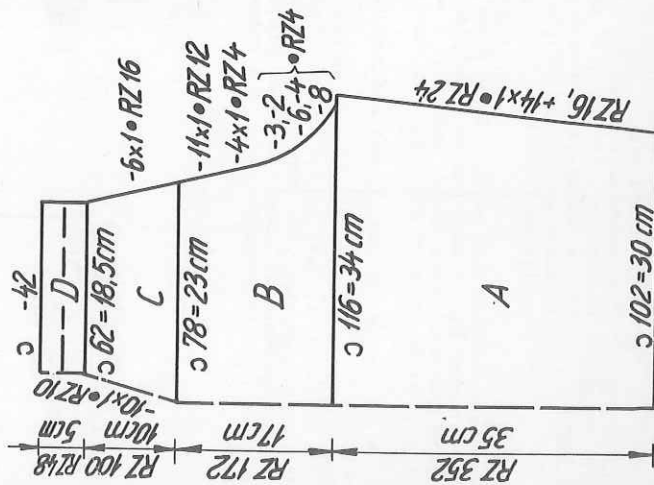


Fig. IX b

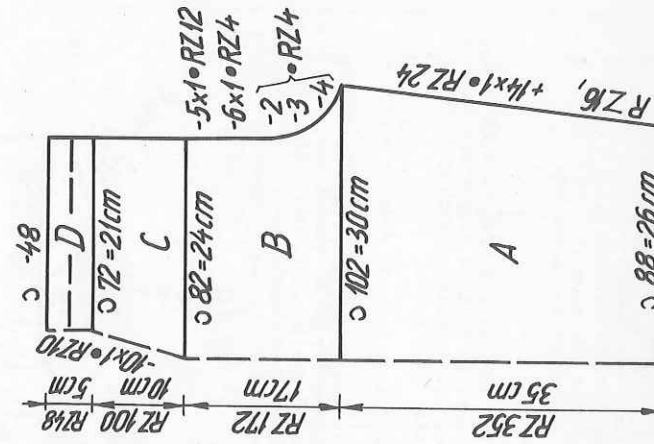


Fig. VII & VIII : Skirt, knit three parts

A = begin with contrast yarn, 7:7 ribs acc. to diagram 1, St.S 5/2. Knit 20 rows rust, 20 rows petrol, 20 rows bordeaux, 20 rows petrol, 20 rows rust, then petrol to the end. B = at back reduce every rib to 5 sts acc. to diagram 2, St.S back and front 5. C = reduce sts acc. to diagram 3 as follows : at back transfer the 2nd st on to the 1st st, the 4th st on to the 3rd st. St.S back 4, front 5. D = reduce front ribs to 3 sts as given for back stitches in section C. St.S as for C. End with contrast yarn, release.
 To make up : Block and press parts. Loosely crochet off the beginning and end in chain stitch using the green tool. Unravel contrast yarn. Join side seams. At waist thread the elastic through the knitting.

Fig. I & II : Begin at side seam

A = contrast yarn, cast on 96 sts. Cont. in petrol, inc. at right for armhole, then cast on 36 new sts; at left knit straight. B = all pushers in W.P.; lock BX. On the side opposite to where the lock is, put 2 pushers into R.P. every alternate row. C = rust. Beginning at the right, put 2 pushers in W.P. every alternate row, at the same time shape shoulder at right. After 52 rows, at right opposite to where the lock is, put 2 pushers into R.P. After every alt. row, at left cont. as before. D = bordeaux. Beginning with two pushers work as for C, at right knit 44 rows straight, then put pushers into R.P. as for C. E = rust. At left as for C, at right shape shoulder after 18 rows, then cast off 36 sts, shape armhole. F = rust. Increase again at right, then cast on 28 new sts, then inc. for shoulder shaping. At left, always on the side opposite to the lock, put 2 pushers into R.P. every alt. row. Finally, cast off 14 sts for neck opening. G = bordeaux. At right, pushers in W.P.; at left, in R.P. H = rust. At right as for G, at left knit 14 rows straight, then as for G. After 38 rows cast on 14 new sts at right. Shape shoulder. J = petrol. Beginning with 2 pushers on the side opposite to the lock, put 2 pushers into W.P. every alt. row. Then, cast off 28 sts for armhole. K = petrol. Lock N. Shape armhole at right. A few rows contrast yarn, release.

Band : petrol, 1:1 rib

With 131 nds tubular cast on, knit 40 rows. Transfer sts for st.st. Knit 2 rows, St.S 5/2. End with a few rows contrast yarn, release.

Fig. Va : Neckband, rust

Contrast yarn, tubular, with 68 sts on each bed, knit a few rows. Change to rust, St.S 5/2, knit RC 16. St.S 6/2, knit RC 2. St.S 5/2, knit RC 14. End with a few rows contrast yarn, release.

Fig. Vb : Armhole band, once in petrol, once in rust

Begin with contrast yarn. Tubular, straight at right, at left back and front dec. 1 st every RC 2. Then, RC 2 with St.S 6/2. At left, again inc. every RC 2 as follows : at back and front transfer 1 st out by 1 nd and place the puristitch loop of this stitch on to the empty nd. End with contrast yarn, release.

To make up : Press parts. Join side seam with mattress stitch, then join to 1:1 rib band, st by st, backstitching through the open loops and unravelling contrast yarn. Sew armhole and neck bands in position st by st, backstitching through the open loops and unravelling contrast yarn, first on the outside then on the inside.

Material : 340 m length per 100 g
 106 yds per 1 oz
 10 cm = approx. 4"

RZ = RC

2819 DUOMATIC 80/S

Lady's jacket and skirt

Size : bust 108 cm, hips 104 cm
Material : 1000 g fine mohair, beige.
 30 g rayon, beige.

Stitch size : back and front 4, 2:2 rib : 3/2
 Skirt : 3

Test square : Jacket (diagram 1) : 100 sts (counting sts on front bed only) = 36 cm, 100 R = 18 cm

Skirt (diagram 2) : 100 sts (counting sts on front bed only) = 34 cm, 100 R = 20 cm

Pattern : Jacket in racking pattern acc. to diagram 1. Bands 2:2 rib. Skirt in three horizontal panels, each knitted in a different needle arrangement. Tub. cast-on always in rayon.

Fig. I :

A = rayon, tubular cast on in 2:2 rib with 208 sts over a width of 156 nds. Then change to mohair, St.S 3/2, knit 20 rows. B = arrange nds acc. to diagram 1. Knit straight, in pattern. C = shape armhole at each end. D = shape shoulder at each end. Cast off remaining 68 sts.

Fig. II : knit two parts with reversed shapings. A = as for Fig. I, but with 104 sts over a width of 78 nds. B = arrange nds as for Fig. I and knit straight, in pattern. C = shape neck at left, knit straight at right. D = shape armhole at right, cont. to shape neck at left.

Fig. I

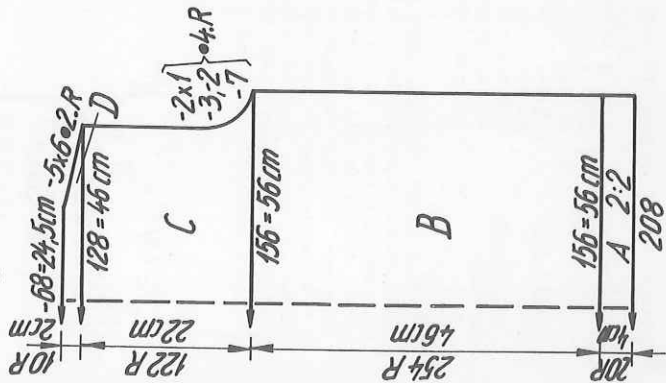
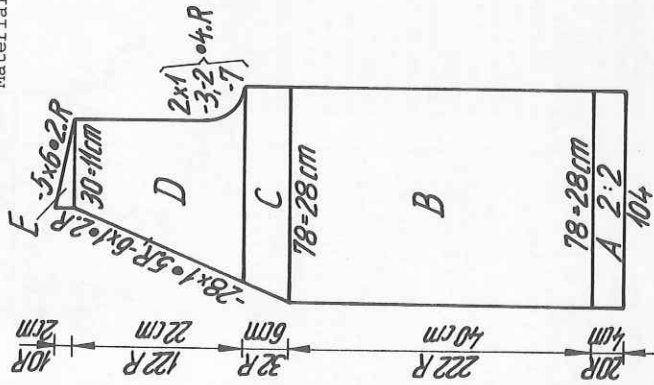


Fig. II



Material : 1000 m length per 100 g
 314 yards per 1 oz
 10 cm = approx. 4"

Fig. III

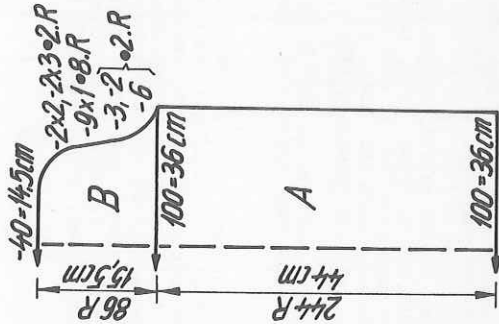
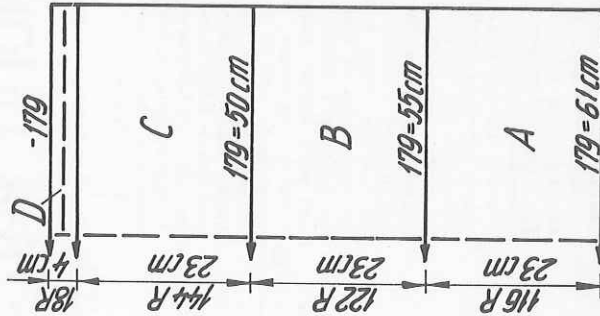


Fig. VII + VIII



E = shape shoulder at right, straight at left. 2nd front part : knit with reversed shapings.

Fig. III : knit twice

A = mohair, cast on with 100 sts on back bed, on front bed bring nds in W.P. acc. to diagram 1. Knit straight, in pattern. B = shape sleeve head at each end. Cast off remaining 40 sts.

Cuffs : knit twice

Rayon, tubular cast on in 2:2 rib with 72 sts over a width of 54 nds. Change to mohair, St.S 3/2, knit 20 rows. End with a few rows contrast yarn, release.

Neck/front band : knit twice

Rayon, tubular cast on in 2:2 rib with 14 sts on front bed and 12 sts on back bed over a width of 20 nds. Change to mohair, St.S 3/2, knit approx. 350 rows. End with contrast yarn, release.

To make up : Block and press parts lightly. Join shoulder, side and sleeve seams. Set in sleeves. Sew cuffs to outside of sleeve wrist, gathering main part, st by st, unravelling contrast yarn. Sew bands to front edges and neck opening of jacket, graft ends of bands at centre back.

Skirt

Fig. VII & VIII : knit twice

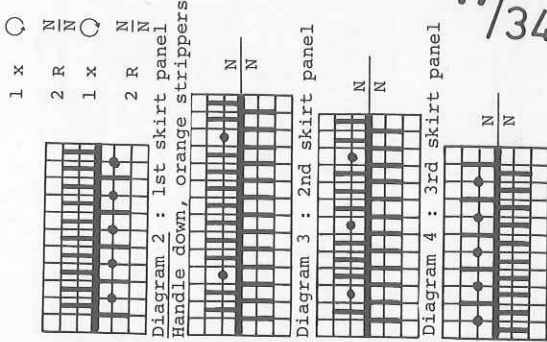
A = rayon, tubular cast on for K/K with 179 stitches on each bed.

After casting on, change to mohair, knit in pattern acc. to diagram 2, 116 rows. B = transfer sts as per diagram 3. Knit the first 2 rows in rayon, then change to mohair for the remaining rows. C = transfer sts acc. to diagram 4, knit 2 rows in rayon, change to mohair. D = transfer sts for 1:1 rib, St.S 2 1/2, knit 18 rows. End with contrast yarn, release.

To make up : Block and press parts lightly. Join side seams. Fold section D in half to inside, sew in position st by st, unravelling contrast yarn. Insert waist elastic.

Diagram 1 :

Jacket in racking pattern
 Handle down, orange strippers



2825 DUOMATIC 80/S

Lady's trousers and sweater outfit

- Size :** to fit bust up to 94 cms hips up to 96 cms
- Material :** 1800 g thickish wool : 1050 g dark brown, 450 g light beige, 300 g mid-brown.
- Stitch size :** St.st. = 7½. 2:2 rib = 5¼. Fringe = 5.
- Test square :** 100 sts = 42 cm, 100 R = 30 cm
- Pattern :** All in stocking stitch. Bands in 2:2 rib. Fringe acc. to diagram.

Fig. I :
 A = dark brown, tubular cast on in 2:2 rib over a width of 114 nds, with St.S 5¼, knit 20 rows. B = transfer all sts to front, knit 6 rows st.st. dark brown, then knit zig-zag motif in single-bed fair-isle acc. to chart on page 36, for 2838, light beige. C = shape armhole at each end. After 20 rows change colour and cont. to knit in mid-brown. D = shape shoulder at each end. Cast off remaining 36 sts.

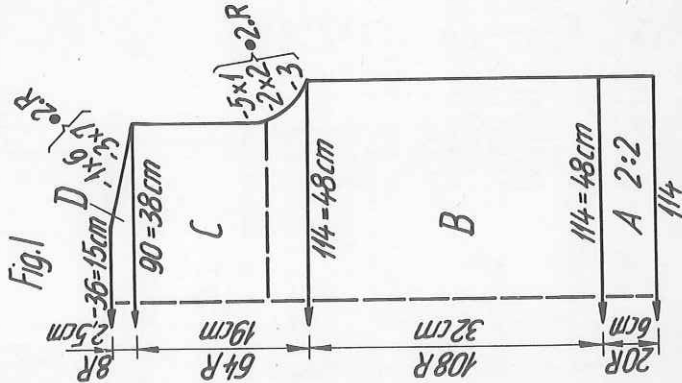


Fig. I

Fig. II

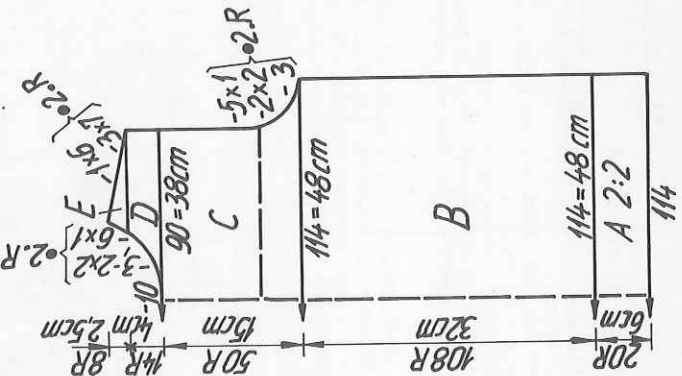


Fig. III

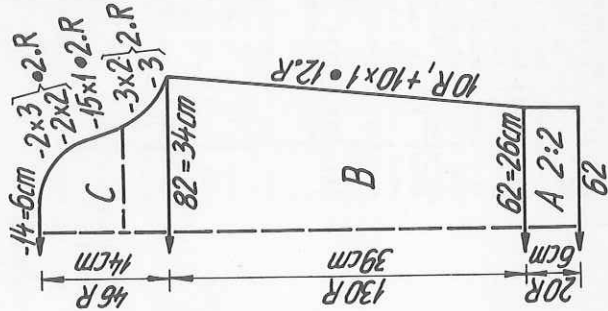


Fig. II :
 A, B & C = as for Fig. I, but for section C knit 50 rows. D = cast off centre 10 sts. Divide work. Place left half onto dekercombs. For right half : shape neck at left, straight at right. E = shape shoulder at right, shape neck at left. Left half : return sts to nds of machine and knit sections D & E with reversed shapings.

Fig. III : knit twice
 A = light beige, as for Fig. I, sts acc. to diagram. B = transfer all sts to front, cont. to knit in st.st., at the same time inc. at each end. C = shape sleeve head at each end. Cont. in mid-brown after 12 rows. Cast off remaining 14 sts.
 Fringe
 Dark brown, double-bed cast on with 8 sts acc. to diagram. Knit fringe band approx. 150 cms long. Cast off.

Neckband :
 Mid-brown, tubular cast on in 2:2 rib with 110 sts over a width of 110 nds. St.S 5¼, knit 12 rows. End with a few rows contrast yarn, release.
 To make up : Block and press parts well. Join shoulder, side and sleeve seams. Set in sleeves. Fold fringe band in half, and sew in position as shown in photograph. If desired, the loops of the fringe can be cut open. Attach neckband to outside

of neck opening, st by st, backstitching through the open loops, unravel contrast yarn.
 Fig. IXa : trousers, back part, knit 2 parts with reversed shapings. Begin with contrast yarn.
 A = dark brown, single-bed cast on with 72 sts. Knit 146 rows straight. B = inc. at right for leg width, straight at left. C = dec. at right, straight at left. D = dec. at each end. E = knit 16 rows straight for waistband. End with contrast yarn.

Fig. IXb : trousers, front part, knit 2 parts with reversed shapings.
 A & B = as for Fig. IXa, but following the figures given for this part. C = dec. at right, then cont. straight, at left knit straight. D = dec. at left, at right straight. E = knit 16 rows straight for waistband. End with contrast yarn.

Ankle band : Begin and end with contrast yarn. Knit twice. Dark brown, single-bed cast on with 64 sts. Knit 14 rows straight.
 To make up : Block and press parts well. Join side and seat seams. Leave 10 cm slit at lower edge of outside leg seams. Fold section E in half to form waistband, sew in position, st by st, backstitching through the open loops and unravelling contrast yarn. Insert waist elastic. Starting at the slit, sew ankle band first on the outside, then on the inside, to bottom of trouser leg, st by st, backstitching through the open loops and unravelling contrast yarn. Insert elastic. Attach button and loop to fasten slit.

2818 DUOMATIC 80/S

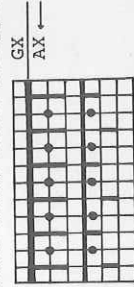
Material : 340 m length per 100 g
 106 yds per 1 oz
 10 cm = approx. 4"

Waist coat in AX-pattern, matching 2816

Size : to fit bust sizes up to 98 cms
Material : 260 g medium cotton yarn : 70 g rust, 70 g khaki, 120 g petrol blue.

Stitch size: AX-pattern : 5½, 1:1 rib = 4
Test square: AX-pattern : 50 sts = 28 cm, 100 R = 22 cm
Pattern : AX-pattern as given for 2816, but with every alt. needle in Working Position. Bands in 1:1 rib.

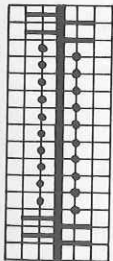
Diagram : AX-pattern
 Handle down, black strippers



For colour sequence, see no. 2816

2825

Diagram : Fringe
Handle down, orange strippers



2 R EX
1 Q EX
2 R EX
1 Q

Material : 230 m length per 100 g
72 yds per 1 oz
10 cm = approx. 4"

Fig. IX a

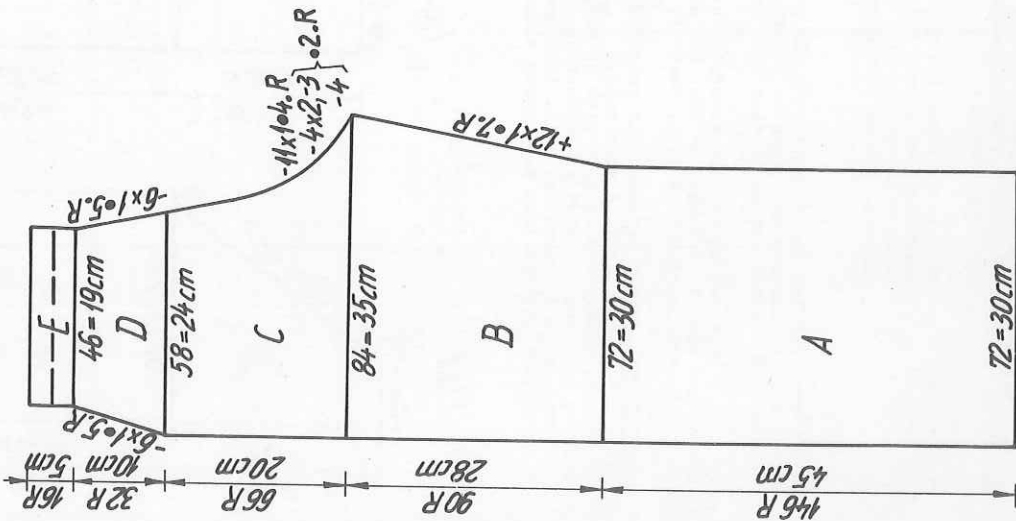


Fig. IX b

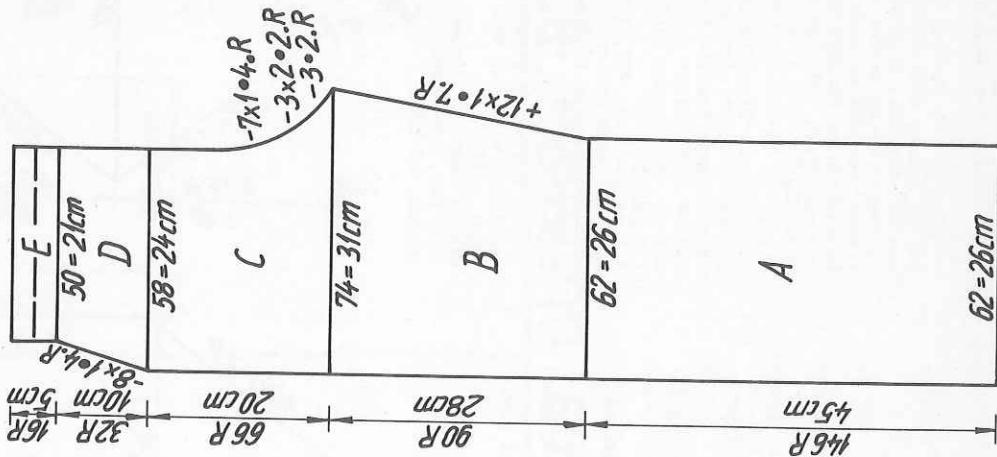


Fig. I :

A = petrol blue, tubular cast on in 1:1 rib with 178 sts, St.S 4, knit 12 rows. B = reduce number of sts to half by transferring every st of the back bed to a st on the front bed = 89 sts. Knit in pattern acc. to diagram and colour sequence, straight. C = dec. at each end, then cont. straight. D = shape shoulder at each end. Cast off remaining 31 sts.

Fig. II :

A = as for Fig. I, but with 92 sts. B = transfer as given for Fig. I = 46 sts. Knit 118 rows in pattern, straight. C = at left start neck shaping, at right knit straight. D = shape armhole at right, cont. neck shaping at left. E = shape shoulder at right, straight at left. 2nd front part : knit with reversed shapings.

Front band : knit two

Blue, tubular cast on in 1:1 rib with 179 sts, St.S 4, knit 8 rows. End with a few rows contrast yarn, release.

Armhole band : knit two

Blue, tubular cast on in 1:1 rib with 120 sts, St.S 4, knit 8 rows. End with a few rows contrast yarn, release.

To make up : Block and press parts. Join side and shoulder seams.

St by st, backstitching through the open loops, sew armhole band to outside of armhole, unravel contrast yarn. Attach the two front bands in the same manner.

Fig. I

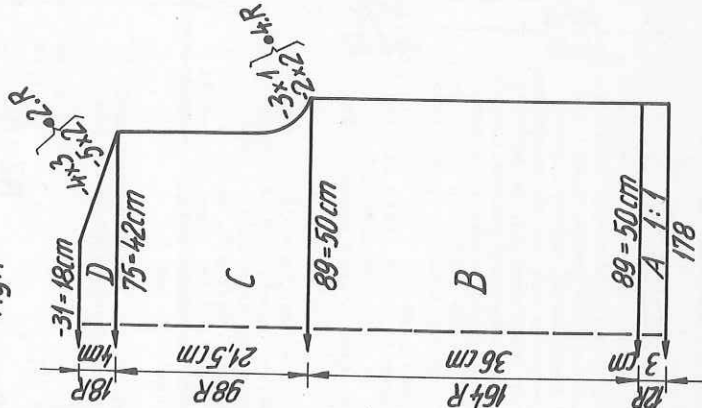
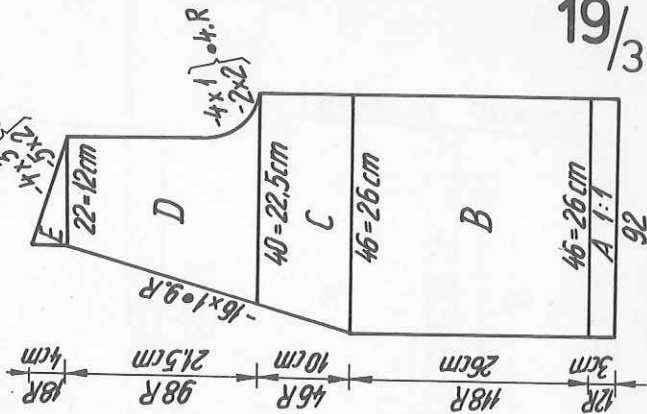


Fig. II



2822 DUOMATIC 80

Evening dress with top and jacket

Size : to fit bust 88-92 cms,

hips 94-96 cms

Material : 880 g medium acrylic with Lurex, black,

150 g gold thread.

Stitch size : 5/2

Test square : 100 sts = 33 cm, 100 R = 20 cm

Pattern : Everything in st.st. Top in gold.

Skirt half tubular with BX → and

pushers. Zip at centre back.

Jacket

Fig. I :

A = black, tubular cast on for 1:1 rib with 152 sts. Immediately after casting on, transfer sts for st.st. Knit straight. B = shape raglan at each end. Cast off rem. 40 sts.

Fig. II : knit two parts with reversed shapings

A = as for Fig. I, but with 76 sts. B = shape raglan

at right, knit straight at left. Cast off remaining

26 sts.

Fig. III : knit two sleeves with reversed shapings.

Stripes : 4 rows black, 4 rows gold.

A = black, single-bed cast on with 29 sts. After

casting on, cont. to knit in graduations (short rows),

i.e. beg. with 4 pushers at left, then bring

5 additional pushers into W.P. every alternate row.

Fig. I

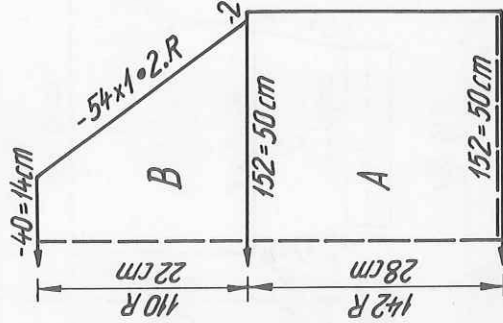
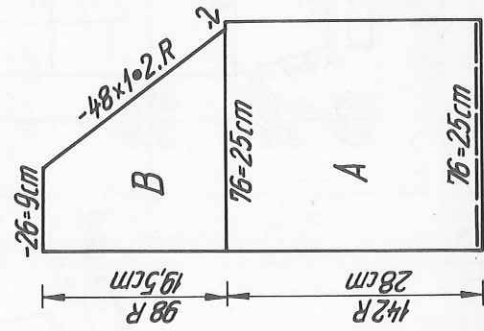


Fig. II



At the same time, inc. 1 st 5 times every alternate row at left = 34 sts. B = cont. with the stripes, at the same time inc. at each end. C = knit section B in reverse, i.e. dec. sts again. D = dec. 5 sts every alternate row at right, at the same time cont. to dec. at left.

Neckband : begin and end with contrast yarn.

Black, single bed cast on with 120 sts, St.S 5/2, knit 12 rows.

To make up : Block and press parts. Close all four

raglan seams, fold sleeve in half to inside and

sew in position. Join side seams. Fold approx. 10 sts

to inside along jacket front edges and sew in position.

Attach neckband to outside of neck opening, st by st

backstitching through the open loops and unravelling

contrast yarn. Fold in half to inside, attach in the

same way.

Skirt

Fig. VII : begin with contrast yarn.

A = half tubular cast on, open at right, with 115 sts

on each bed. Knit in black, at the same time dec.

sts at right front and back using triple decker. Cast

off.

Fig. VIII :

A = as for Fig. VII, but knit RC 880. B = divide work,

i.e. set lock at back to GX, at front to N. At left,

cast on an extra 10 sts. Cont. to knit st.st., knit

straight at left, dec. at right. Cast off. Release

the 10th stitch counting from the left, then crochet it

to the top again picking up 2 threads at a time. Repeat

section B with the sts on the back bed.

Waist band :

Black, tubular, closed cast on with 9 sts on each bed.

Knit tub., St.S 5/2, a band measuring approx. 70 cms =

approx. RC 700.

Fig. III

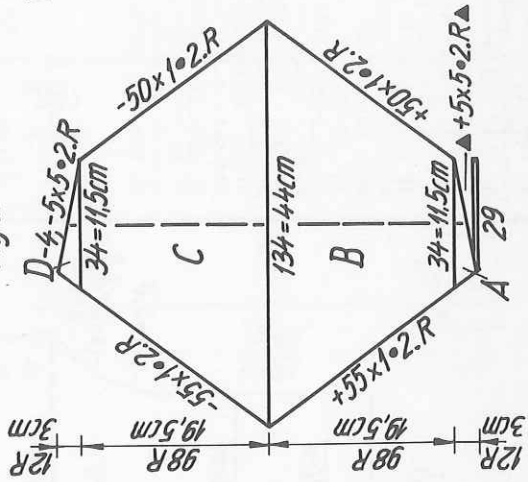
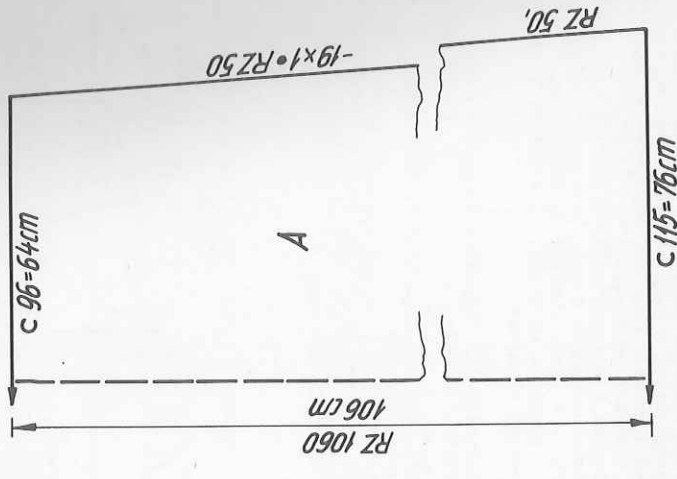


Fig. VIII



Fig. VII



2845 DUOMATIC 80/S

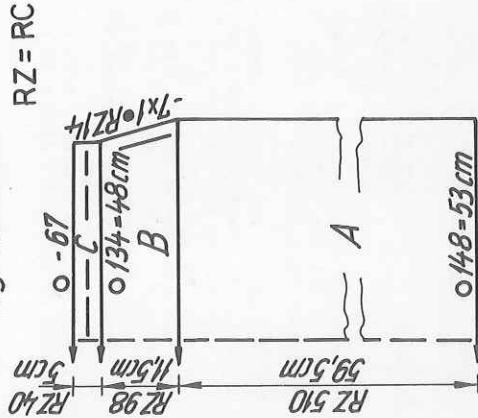
Skirt to match sweater 2841

Size : up to hips 104 cm
Material : 300 g medium mohair with synthetic yarn, petrol blue
Stitch size : 6
Test square : 100 sts = 36 cm
 100 R = 23,5 cm
Pattern : Tubular, stocking stitch.
Fig. VII and VIII : begin and end with contrast yarn.

A = cast on tubular with 148 sts on each bed. With lock CX knit RC 510. B = at each end, back and front, dec. 1 st every RC 14 seven times, using 16-decker tool. C = for waistband, reduce number of sts by half, i.e. transfer every other st to adjacent nd. With St.S 4 1/2, knit RC 40. End with contrast yarn, release.
To make up : Block and press parts. Fold section C in half to inside, and hem in position st by st, and unravelling contrast yarn. Insert waist elastic. At lower bottom, fold approx. 2 cms to inside for hem and hem in position st by st, unravelling contrast yarn.

Material : 400 m length per 100 g
 125 yds per 1 oz
 10 cm = approx. 4"

Fig. VII + VIII



RZ = RC

Fig. XVIa

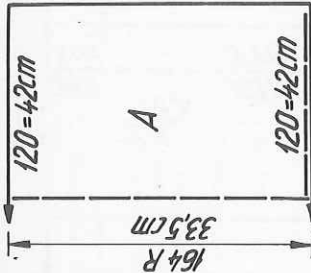
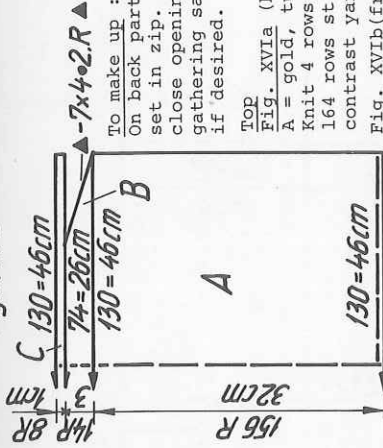


Fig. XVI b



To make up : Block and press parts. Join side seams. On back part, fold the 10 cast on sts to inside, then set in zip. Insert waist elastic into waist band, close opening. Crochet or sew waist band to skirt top gathering same. Attach two hooks and eyes. Make a hem if desired.

TOP

Fig. XVIa (back) :

A = gold, tubular cast on in 1:1 rib with 120 sts. Knit 4 rows. Transfer all sts to front and knit 164 rows st.st., straight. End with a few rows of contrast yarn, release.

Fig. XVIb(front) :

A = as for Fig. XVIa, but with 130 sts. Knit 156 rows. Then, with lock BX dec. sts at each end (short rows). Finally, with lock N, knit 8 rows across all 130 sts. End with a few rows contrast yarn, release.

Strap

Gold, with 3 sts on each bed, knit tubular strap about 80 cm long.

To make up : Block and press parts lightly. Join side seams. Fold the last 8 rows knitted in gold to inside and attach st by st, unravelling contrast yarn. Make two straps and attach as shown in photo.

Material : 420 m length per 100 g
 132 yds per 1 oz
 10 cm = approx. 4"

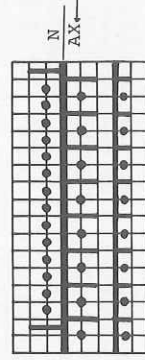
2809 DUOMATIC 80/S

Lacey dress

Size : 88 to 104 cm bust
Material : 310 g silky man-made fibre
Pattern : front 4 1/2, back 2 1/2. Cord : 4
Stitch size : 50 sts = 37 cm, 80 R = 18 cm
Test square : Tuck stitch using deco punchcard 17
Pattern : acc. to diagram, knitted in one piece

With 89 nds on front and 90 nds on back bed, tubular cast-on in 1:1 rib. Transfer all sts to front bed. For a neat edge, leave 1 nd in W.P. at each end on back bed. Knit 535 rows. For neck opening, miss 26 sts at each end, knit off the centre 37 stitches by hand (approx. 3 rows), knit 1 row across. For 2nd half : knit 543 rows. Then, at back bring every alt. nd into W.P. Knit 1 row. Transfer all loops to front on to empty nds. At back, all nds in W.P. Knit 1 row. Lower needle bed and cast off using green tool.
To make up : Pin out part to 65 cms in width and press. Join sides, leaving an 18 cm opening either side for armholes. At neck, crochet off the stitches with the green tool, remove contrast yarn. At waist level thread through a knitted cord (3 sts on back, 4 sts on front bed, lock back and front CX) or wear a belt with it as shown in photo.

Diagram



KING COLE PURE WOOL 4ply
800gms.

2820 DUOMATIC 80/S

Lady's ribbed skirt and sweater

Size : to fit bust 88-90 cms, hips 94-96 cms
Material : 750 gr lambs wool, offwhite (fairly fine yarn)
Stitch size : St.st. = 5 3/4, 1:1 = 3/2
Test square : St.st. : 100 sts = 34 cm, 100 R = 23 cm
 5:4 rib: 100 R = 26 cm

Pattern : Sweater : st.st., on front part stitches are transferred for 1:1 rib to make a triangle. Neck, triangle, wrists trimmed with ruffles in fisherman's rib. Skirt : 5:4 rib. A = tubular cast on in 1:1 rib with 140 sts. St.S 3/2, knit 24 rows. B = transfer all sts to front, cont. to knit in st.st. C = shape armhole at each end. D = shape shoulder at each end. Cast off remaining 48 sts.

Fig. II : A & B = as for Fig. I. C = shape armhole at each end, at the same time, beginning at centre, transfer sts for 1:1 rib : i.e. every 2th row counting from the centre to the left and right always transfer the second stitch to the back bed (lock at back N, St.S 3/2) until all sts are in 1:1 rib. D = cast off the centre 12 sts, divide work. Place left half onto dekercomb. Right half : shape neck at left, knit straight at right. E = shape shoulder at right, straight at left. Left half : return sts to nds of machine and knit sections D and E with reversed shapings.

Fig. III : knit twice
 A = cast on with racking, K/K, with 116 sts over a width of 58 nds. With lock EX/EX and St.S 5, knit 16 rows. Now transfer every alternate st of each

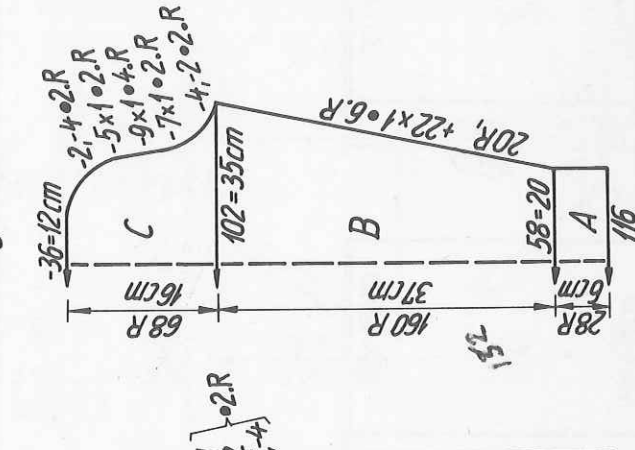
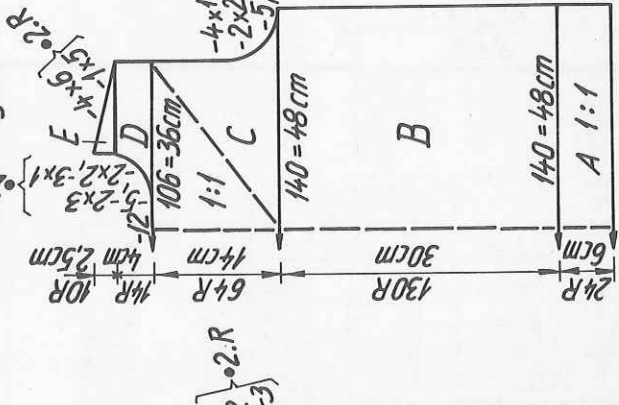
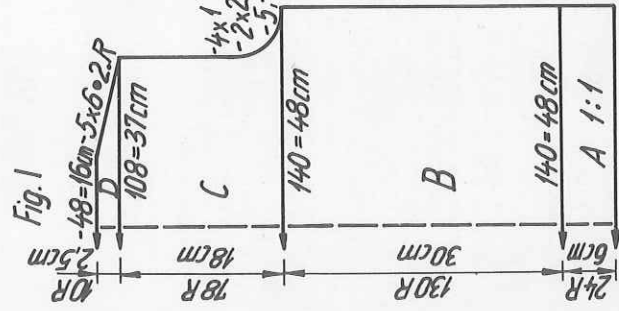
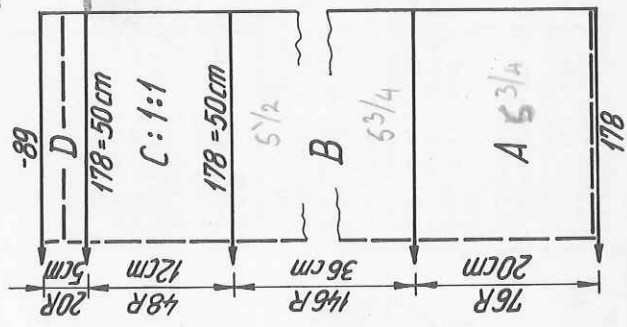


Fig. VII + VIII



Material : 380 m length per 100 g
 119 yds per 1 oz
 10 cm = approx. 4"

Diagram 1 : 5:4 rib
 Handle down, black strippers

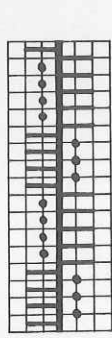
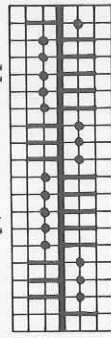


Diagram 2 : 5:3 rib
 Handle up, black strippers



22/34

bed to the nd on the bed opposite, so that the nds come to be in 1:1 division. With 58 sts, St.S 3/2, knit 12 rows. B = transfer all sts to front bed, cont. to knit in st.st., at the same time inc. at each end. C = shape sleeve head at each end. Cast off the remaining 36 sts.

Neck band : Cast on with racking, K/K, with 248 sts. With lock EX/EX, St.S 5, knit 16 rows. Transfer sts for 1:1 rib as given for sleeve band. St.S 3, knit 6 rows. St.S 3/2, knit 4 rows. End with a few rows contrast yarn, release. Ruffle along triangular part : Knit as given for neck band, but with 264 sts, and after transferring for 1:1 rib, knit only 2 rows with St.S 3. End with a few rows contrast yarn, release.

To make up : Block and press parts lightly. Join shoulder, side and sleeve seams. Sew neck band to outside of neck opening, st by st, backstitching through the open loops and unravelling contrast yarn. Attach ruffles in the same way along triangular part. Set in sleeves.

Fig. VII & VIII : knit twice
 A = tubular cast on in 1:1 rib with 178 sts. Immediately after casting on transfer sts for 5:4 rib acc. to diagram 1. St.S 6, knit 76 rows. B = on back bed, acc. to diagram 2, transfer sts and turn racking handle up, St.S 5 3/4, knit 80 rows. St.S 5/2, knit 66 rows. C = transfer all sts for 1:1 rib. St.S 3/2, knit 48 rows. D = transfer all sts to front, and dec. every alternate st by transferring it to the adjacent nd at left, bring empty nd into Rest Position. End with a few rows contrast yarn, release.

To make up : Block and press parts carefully. Join side seams. Fold section D in half to inside to form waist band, catch down st by st, through the open loops and unravelling contrast yarn. Insert waist elastic.

4 425

2830 DUOMATIC 80

Cashmere skirt and top

Top

Size : to fit bust up to 98 cms
Material : 300 g fine wool : 150 g ochre col. (taken double),
 75 g brick col. used together with 75 g bordeaux.
Stitch size : 50 sts = 18 cm, RC 100 = 13 cm
Test square : AX-pattern with pushers in 1:1 division. Alternately,
 knit 2 rows with 2 threads ochre col. and 2 rows with
 1 thread brick and 1 thread bordeaux (together).

Fig. I :

A = tubular cast on in 1:1 rib with 138 sts, immediately after casting on transfer all sts to front and knit in pattern acc. to diagram 2, straight.
 B = shape armhole at each end, cont. straight. C = shape shoulder at each end. Cast off remaining 42 sts.

Fig. II :

A & B = as for Fig. I, but knit RC 108 for section B. C = divide work. Cast off centre 10 sts. Place left half onto deckercombs, make note of pusher position. For right half : shape neck at left, straight at right, D = shape shoulder at right, straight at left. Left half : return sts to nds of machine and cont. in pattern, knit sections C and D with reversed shapings.

Fig. III : knit twice

A and B = as for Fig. I, but with 62 sts. Knit in pattern, inc. at each end. C = shape sleeve head at each end. Cast off remaining 24 sts.

Cross over collar :

Tubular cast on in 1:1 rib with 87 sts. Immediately after casting on, transfer sts to front and cont. in pattern, after RC 1000 transfer sts for 1:1 rib again, knit 4 rows. Cast off.

Fig. VI+VIII

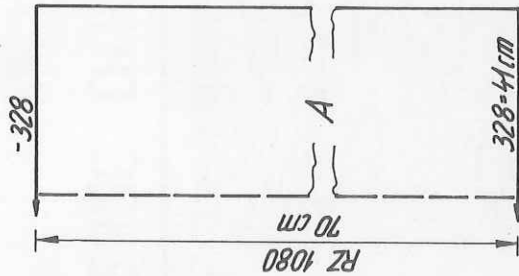


Fig. I

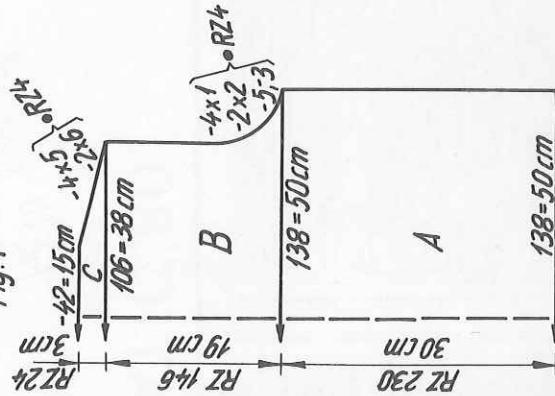


Fig. II

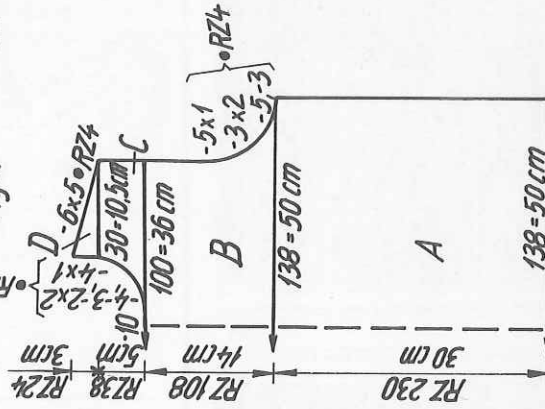


Fig. III



To make up : Block and press parts lightly. Join shoulder, side and sleeve seams. Set in sleeves. Sew cross over collar round back neck opening, across shoulder seams. On front part, fold approx. 1/2 cm to inside along neck opening and hem into position.

Skirt

Size : to fit hips up to 112 cms
Material : 580 g fine wool : 130 g ochre, 130 g petrol, 130 g brick and 190 g bordeaux. Use yarn twofold.
Stitch size : 4-colour fairisle : back 21/2, front 31/2
Test square : 100 sts = 12.5 cm, RC 200 = 13 cm
Pattern : Skirt with 3 panels, knit in 4-colour fairisle.
 Deco punchcard to be punched acc. to charts, page 24.

Fig. VII & VIII : 3 parts alike

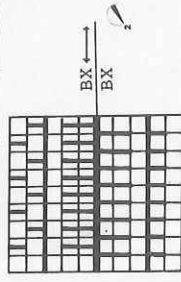
A = tubular cast on in K/K with 328 sts over a width of 164 nds. Immediately after casting on, begin with fairisle pattern acc. to diagram 1 and punch card. Knit straight. At the end, transfer sts of back bed to front and cast off the 164 sts.

Waist band : Begin and end with contrast yarn. Take yarn threefold (bordeaux). With 120 sts on each bed, tubular, lock CX/CX, St.S 41/2, knit RC 68.

To make up : Block and press parts. Join side seams. Attach waist band first on the outside, then on the inside, gathering skirt top, st by st, back-stitching through the open loops and unravelling contrast yarn. Insert waist elastic.

Diagram 1 : 4-colour fairisle

Handle down, orange strippers



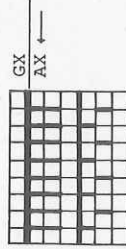
Material : 3200 m length per 100 g
 1005 yds per 1 oz
 10 cm = approx. 4"

Colour sequence :

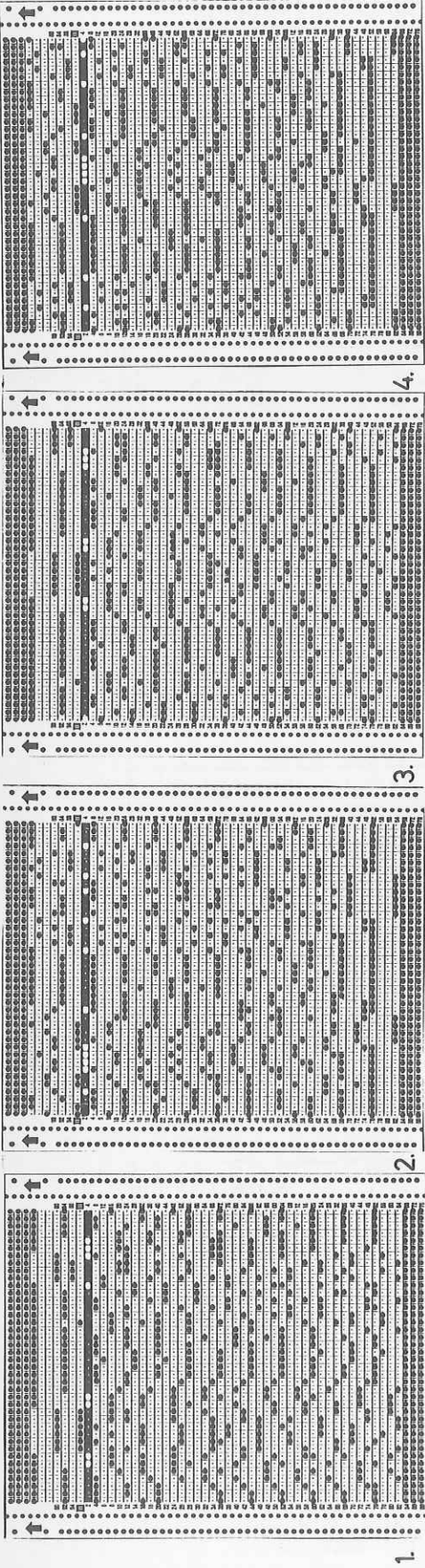
2 R bordeaux
 2 R brick
 2 R petrol
 2 R ochre

Diagram 2 :

AX-pattern for sweater top
 Handle down, black strippers



2 R ochre
 2 R ochre/bordeaux



2826 DUOMATIC 80

Material : 250 m length per 100 g
 80 yds per 1 oz
 10 cm = approx. 4"

RZ = RC

Coat with cape

Size :

Material :

Stitch size :

Test square :

Pattern :

to fit bust 88 to 96 cms
 1400 g mohair/acrylic : 720 g grey-brown,
 360 g rust, 160 g white, 160 g black.
 Pattern back 3, front 4 1/2. Binding band back 4 1/2,
 front 5 1/4. Tie 4 1/2.
 100 sts = 27 cm, RC 200 = 33,5 cm
 Tuck stitch acc. to diagram 1 and deco card punched
 acc. to card shown below. Binding acc. to diagram 2.
 Colour sequence acc. to instructions, basic col.
 remaining grey-brown throughout.

Fig. I.a

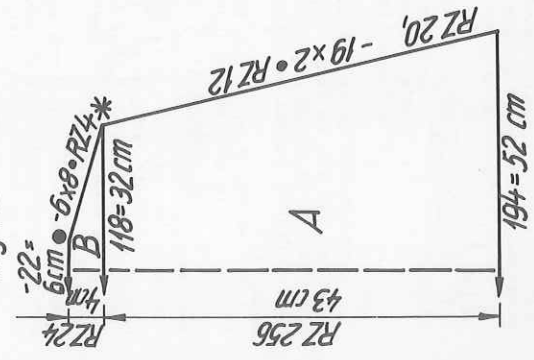


Fig. I.b

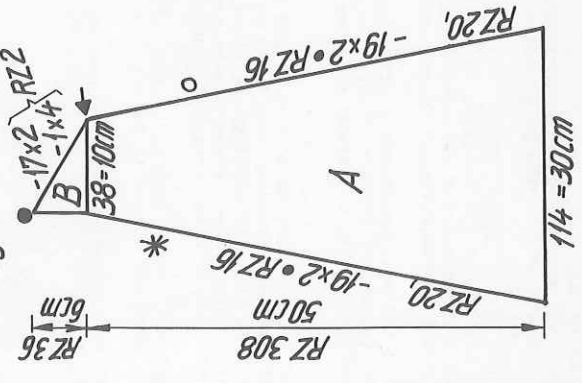


Fig. II.a

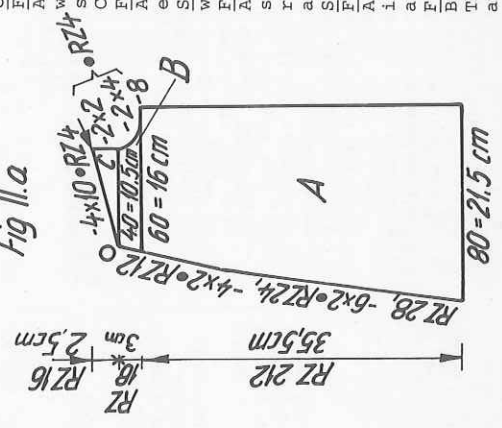


Fig. I.a :

A = cast on with racking, then trimming col. change : RC 40 white, RC 80 rust, RC 80 black, remainder in rust. At the same time dec. at each end. B = shape shoulder at each end. Cast off.

Fig. I.b :

A = cast on with racking, col. change as for Fig. Ia, dec. at each end. B = shape neck at right, knit straight at left. Second side panel : A = as for first side panel. B = knit with reversed shapings.

Fig. II.a :

A = cast on with racking, col. change as for Fig. Ia. At the same time dec. at left acc. to diagram; knit straight at right for centre front. B = shape neck at right, cont. dec. at left. C = shape shoulder at left, knit straight at right. Second front part : knit with reversed shapings.

Fig. IV :

A = cast on with racking, cont. to knit straight, white. B = in basic col., St.S 6, tub., st.st. knit 12 rows. End with a few rows contrast yarn, release.
 Fig. IV.a : Tie
 Basic col., 16 rnds at back, 15 rnds at front, tubular cast on. Then, change lock to N/CX, St.S 5. A = dec. at each end back and front using double-decker tool. B = knit straight. Cast off.

Binding : Knit a length of approx. 450 cms acc. to diagram 2.

Fig. I :

A = cast on with racking and basic col., sequence for trimming col. change : RC 80 rust, RC 80 white, RC 80 rust, RC 80 black, at the same time inc. at each end. B = RC 60 black, remainder in rust. Shape armhole at each end, then cont. straight. C = shape shoulder at each end. Cast off.

Fig. II : first front part

A = cast on with racking, col. change as for Fig. I, at the same time dec. at left, knit straight at right. B = col. change as for Fig. I, shape armhole at left. C = shape neck at right, knit straight at left. D = knit straight at right, shape shoulder at left. Second front part : knit with reversed shapings.

Fig. I

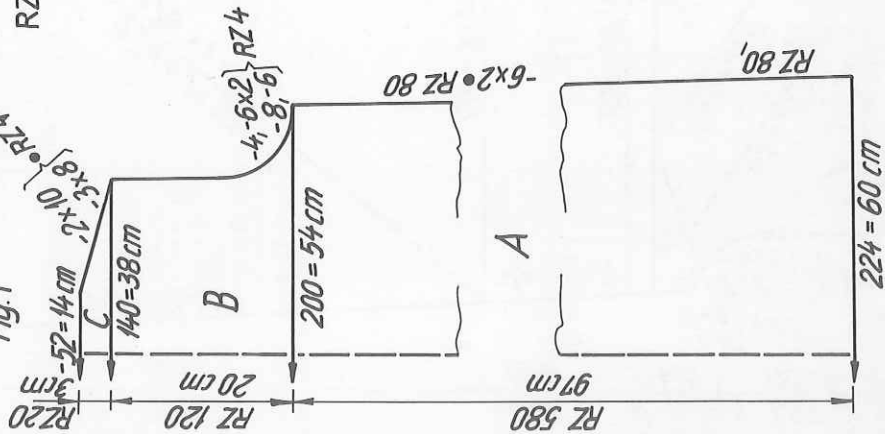


Fig. II

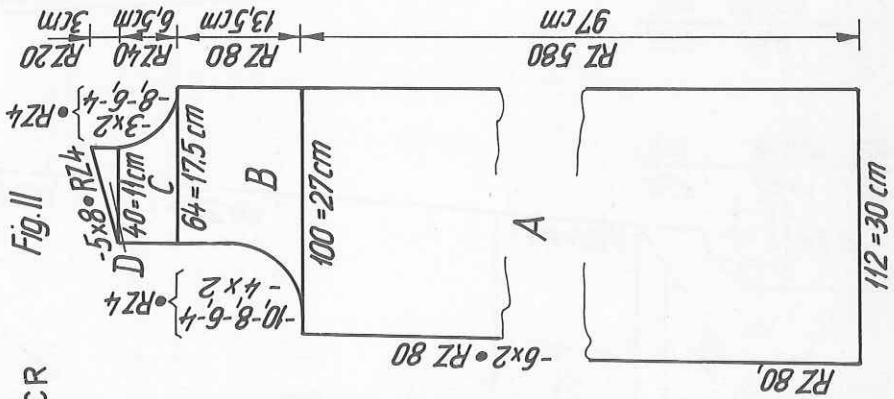


Fig. IV

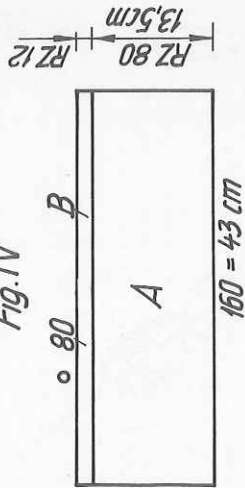


Fig. III

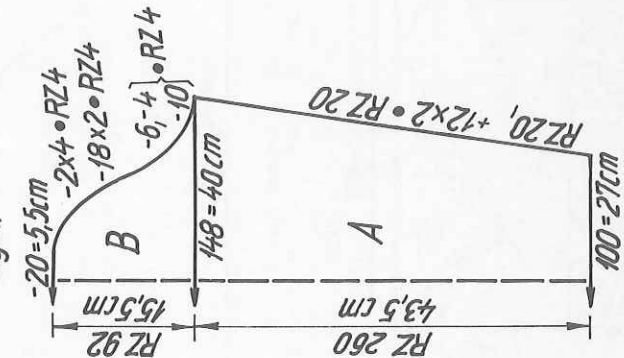


Fig. IVa

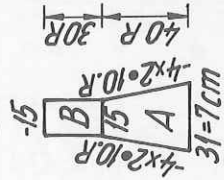


Diagram 2

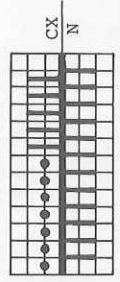
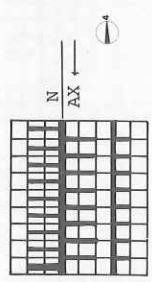


Fig. III :
 A = cast on as for Fig. I. Trimming col. change : RC 80 rust, RC 80 white, RC 80 rust, RC 20 black. At the same time inc. at each end. B = RC 60 black, remainder in rust. At the same time shape sleeve head at each end. Cast off.
 To make up : Join shoulder and side seams on coat. At centre front, back-stitch the binding to the outside with "long stitch" to the outside, then hem stocking stitch side to the inside. Join the cape parts matching dots, arrows and asterisks, then sew binding all around it as given for coat. Backstitch cape to coat neck opening. Attach collar first on the outside, then on the inside, to neck opening, st by st backstitching through the open loops, unravelling contrast yarn (keep in neckline). Sew tie in position on each front panel. Join sleeve seams, set in sleeves. Slightly press seams and binding.

Diagram 1



2 R trimming col.
 2 R basic col.

Material : 300 m length per 100 g
 94 yds per 1 oz
 10 cm = approx. 4"

Intarsia sweater dress

Diagram 1

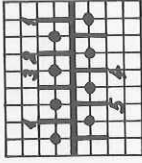
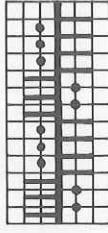
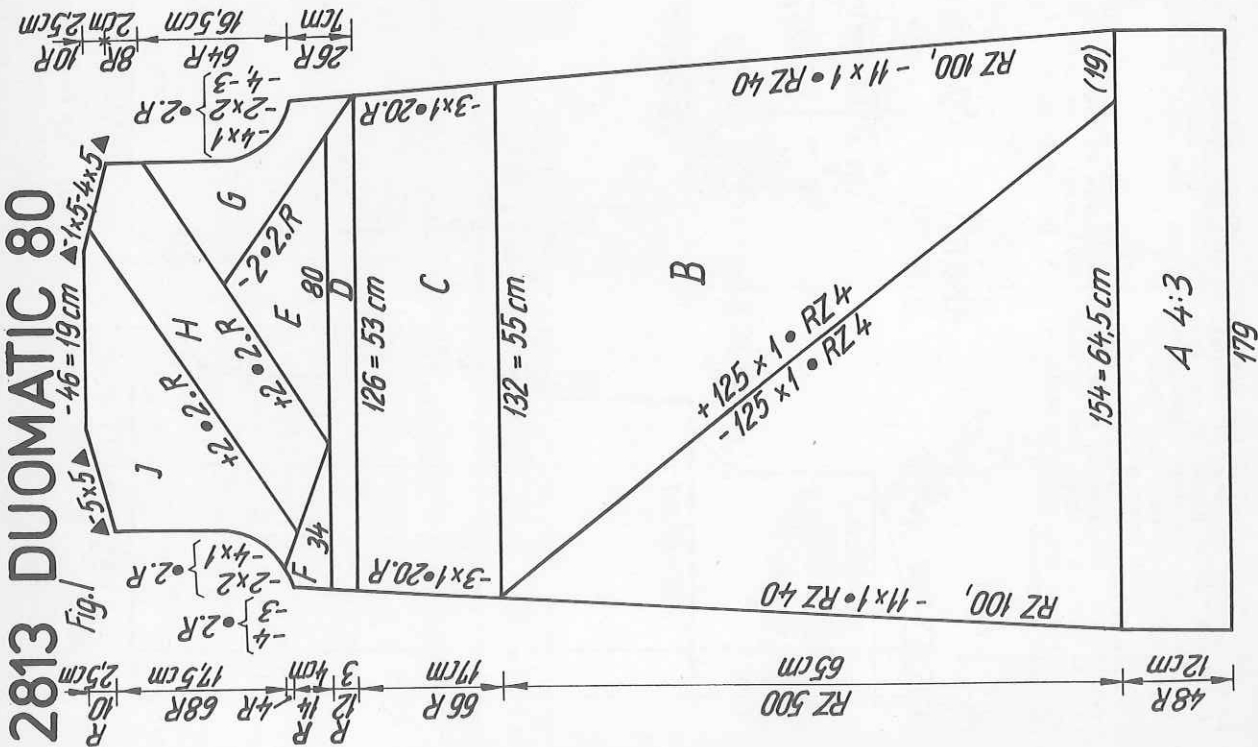
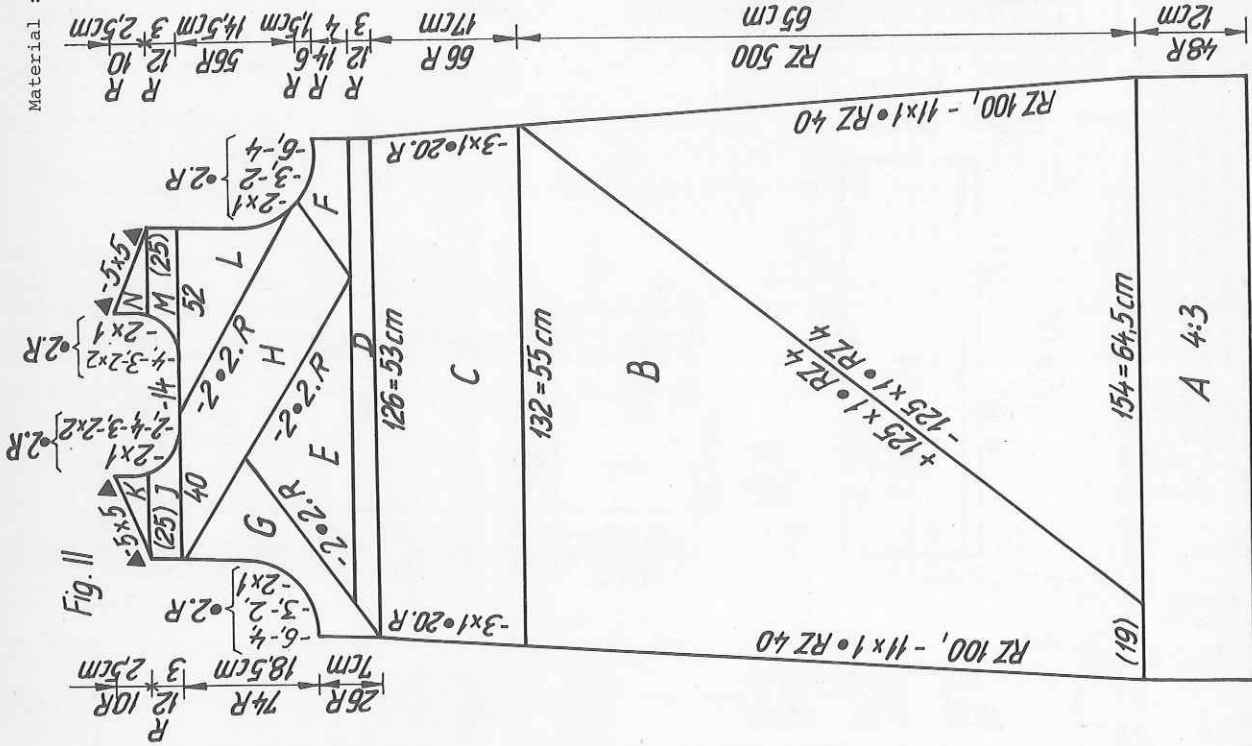
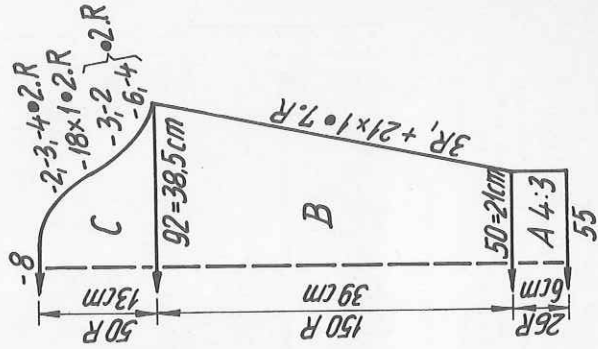


Diagram 2 : 4:3 rib



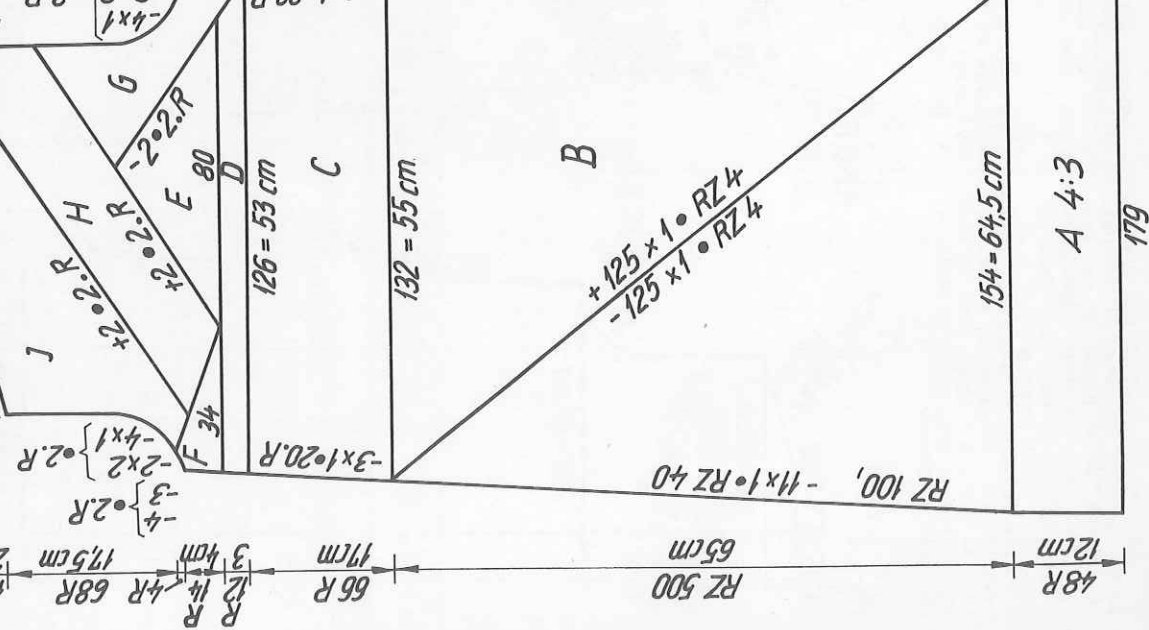
RZ = RC

Fig. III



2813 DUOMATIC 80

Fig. I



2837 DUOMATIC 80/1S

Material : 400 m length per 100 g
125 yds per 1 oz
10 cm = approx. 4"

Boy's sweater

height 104 cm

150 g medium mohair/acrylic : 110 g blue,
10 g red, 10 g yellow, 10 g green, 5 g brown,
5 g pink.

as given for 2836

Intarsia front following 2836, but using your
own imagination. Back and sleeves plain blue.

Stitch size and

test square :
Pattern :

Fig. I : blue
A = tubular cast on in 1:1 rib with 80 sts. Knit 20 rows. B = transfer all
sts to front, knit straight, st.st. C = transfer sts again for 1:1 rib. Knit
8 rows with St.S 3/2. Cast off.

Fig. II :

Knit as for Fig. I, but knitting section B with intarsia.
Fig. III : knit 2 parts alike
A = blue, tubular cast on in 1:1 rib with 54 sts. B = transfer
sts to front, cont. to knit in st.st., increasing at each end. End with
contrast yarn, release.

To make up : Block and press parts. Do not join shoulder seams, only lay on
top of each other matching dots as shown in diagram. Attach sleeves, st by
st, backstitching through the open loops and unravelling contrast yarn. Join
sleeve and side seams.

Fig. I+II

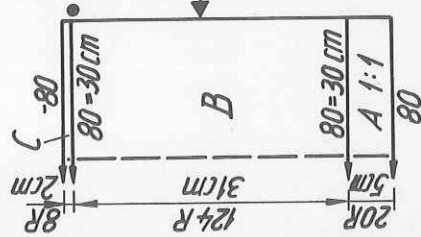
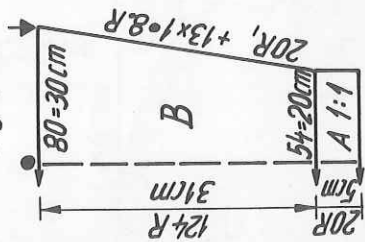


Fig. III



2813

Size : 94 cm bust

Material : 680 g sports wool : 220 g brown, 150 g yellow, 160 g brass colour, 40 g yellow

260 g rust, 60 g brass colour, 40 g yellow

Stitch size : St.st. 6/4. Ribs 5 3/4

Test square : 100 sts = 42 cm, 100 R = 26 cm

Pattern : Hem, sleeve and neck bands in 4:3 rib. Dress

in st.st., intarsia acc. to instructions.

Fig. I :

A = brown, cast-on for 4:3 rib : handle up, with 154 nd in 1:1 division,
tubular cast on. Then, transfer sts acc. to diagram 1 as follows : transfer
sts 1 and 2 from back to front, and place the purllitch loop of st 4 on to
nd 3 at back, and also transfer st 5 to back. Turn handle 1/2 turn to the
left. Knit 48 rows. B = transfer all sts to front for st.st. Simultaneous
colour change as per instructions. Note : the colour that is to knit at
right, must be put in the left feeding eyelet on the colour changer, and
the colour for the left, into the right feeding eyelet on the colour changer, and
brown at left, 19 sts rust at right. At the same time dec. using 20-decker
tool. C = rust, cont. to dec. D = rust, all pushers in W.P., knit 1 row.

At right, 2 pushers in R.P. Then, always put 2 pushers in W.P. every
alternate row, 12 rows in all. E = rust, only 80 pushers in W.P., then
always after every row 2 pushers into R.P. on the side opposite to
the lock. F = rust : at left, 34 pushers in W.P., knit 1 row. 2 pushers in
R.P., knit 2 rows, etc. 14 rows in all. Then cast off at left for armhole.
G = brass : begin with 2 pushers, and add 2 pushers at left every alt. row
until 26 rows, cont. in this way at left, shape armhole at right. After
54 rows, bring 2 pushers into R.P. at left every alt. row, 64 rows in all.
H = yellow, 35th and 36th pusher in W.P., knit 1 row. Then, always on the
side opposite to the lock, 2 pushers into W.P., 20 rows in all. Then, always
2 pushers into W.P. at right, and 2 pushers into R.P. at left, 60 rows in
all. Cont. in this way at left, at right knit 8 rows straight, then work
short rows over 20 sts for shoulder shaping. I = brass : bring the 17th
and 18th pusher into W.P. at left, knit 1 row, knit 14 rows as given
for section H. Then shape armhole at left, cont. straight. After 72 rows
shape shoulder at left with short rows. End with contrast yarn, release.

Fig. II :

A = as for Fig. I. B and C = simultaneous colour change, but rust at left,
brown at right. Dec. as for Fig. I. D = all pushers in W.P., at left put
2 pushers in R.P. every alt. row 6 times. E = as for Fig. I. F = rust. At
right 34 pushers in W.P., knit straight at right, put 2 pushers in R.P.
every alt. row at left, 14 rows in all, then shape armhole at right, cont.
to put pushers in R.P. at left. G = brass. Begin with 2 pushers at left.
Knit 1 row. Then, at right put 2 pushers in W.P. every alt. row. After
26 rows shape armhole at left, cont. straight. After 54 rows, at right put
2 pushers in R.P. every alt. row 18 times. H = yellow : at right, put
the 35th and 36th pusher in W.P. Knit 1 row. Then, always on the side
opposite to the lock, put 2 pushers in W.P., knit 1 row, etc. 20 rows in
all. Then, at left knit as before, at right (always on the side opp. the
lock) put 2 pushers in R.P., 76 rows in all. I = straight at left, shape
neck at right. K = at left shoulder shaping with short rows, straight at
right. L = brass: at right, begin with 2 pushers, knit 2 rows. Then, at
left always 2 pushers into W.P. every alt. row, 56 rows in all, at the
same time dec. 2 sts at left for armhole, then straight. M = straight at
right, shape neck at left. N = shape shoulder at right with short rows, straight at left.

Fig. III : knit two, brass

A = with 55 sts cast on for 4:3 rib band as given for Fig. I. B = st.st.,
inc. at each end. C = shape sleeve head at each end. Cast off.

Neckband : brown, begin and end with contrast yarn.

With 136 nds in 4:3 division, knit 48 rows.

To make up : Block and press parts. Join shoulders with graft stitch, unravel
contrast yarn. Join side and sleeve seams. Set in sleeves. Join neckband in
a ring and sew in position round neck, first on the outside, then on the
inside, unravel contrast yarn. Fold hem in half to inside, sew in position,
press lightly.

2835 DUOMATIC 80

2823

Material : 3200 m length per 100 g
1067 yds per 1 oz
10 cm = approx. 4"

Jacket to match 2830

Size : up to bust size 98 cms
Material : 300 g fine wool, petrol (taken two-fold)
Stitch size : back and front : 3 1/2
Test square : 100 sts = 16 cm, 100 R = 14 cm
Pattern : Long stitch; on front part : short rows (graduations).

Fig. I :

A = cast on 141 sts on each bed as follows : 1 row N/N and 3 rows CX/CX with St.S 2 1/2. Then, knit in pattern acc. to diagram 1, at the same time inc. at each end. B = shape armhole at each end. C = shape shoulder at each end. Cast off remaining 104 sts.

Fig. II : knit two parts with reversed shapings.

A = cast on as for Fig. I, but with 80 sts on each bed. After casting on start graduations, knit as per diagram 2. When turning on the end of a short row, always place yarn around adjacent nd. B = knit in pattern acc. to diagram 1, inc. at right, straight at left. C = inc. at right, dec. at left using triple decker. D = shape armhole at right, cont. dec. at left. E = shape shoulder at right, straight at left. Second front part : knit with reversed shapings, begin graduations in section A with lock at left. Fig. III : knit twice.

A = cast on as for Fig. I & II, but with 75 sts on each bed. After casting on knit in pattern acc. to diagram 1, at the same time inc. at each end. B = shape sleeve head at each end. Cast off remaining 42 sts.

To make up : Block and press parts lightly. Join shoulder, side and sleeve seams. Set in sleeves.

right, shape neck at left. M = black, 30 pushers in W.P., knit 3 rows, transfer 1 st to back at right, 1 pusher into R.P., knit 1 row, repeat 5 more times. N = knit as for M at right, shape shoulder at left. O = gold, transfer 30 sts to front, 30 pushers into W.P., knit 3 rows, transfer 1 st from back to front at left, add 1 pusher, knit 1 row, repeat 9 more times. At the same time dec. every alternate row, at right. R = shape neck at right, shape shoulder at left. Fig. V : neckband, gold.

Half tubular, open at right. Begin with contrast yarn. Knit RC 12, at the same time dec. 1 st at left back and front, every RC2, with single-decker. Then knit RC 12, at the same time inc. at back and front as follows : move 1 st 1 nd out ev. RC 2 and place the purlstitch loop of this st onto the empty nd. End with contrast yarn, release. Band for back and straps : Black, tubular, with 3 nds on back and front bed, St.S 4 1/2, knit tub. band approx. 150 cms long.

To make up : Block and press parts lightly. Join side seams. At front, attach neckband st by st, backstitching through the open loops, first on the outside, then on the inside, unravel contrast yarn. Using the green tool, crochet the tub. band (slip stitch) to back and side neck opening, gathering it slightly (see also photograph). Use remaining length of band for straps and attach at back.

Fig. I

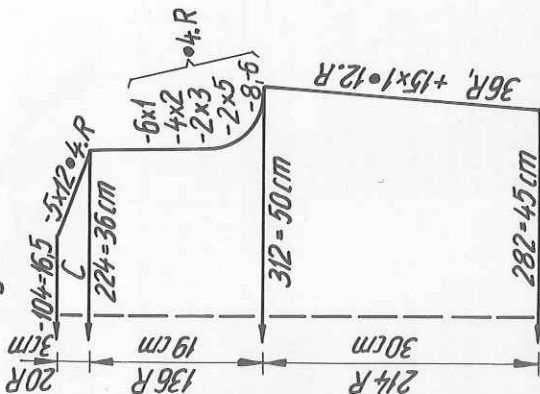


Fig. II

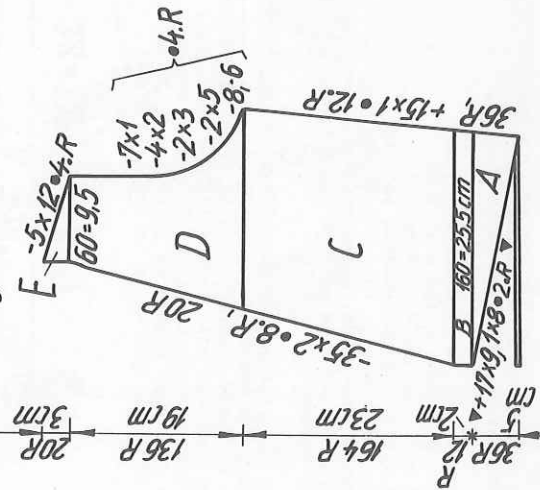


Fig. III

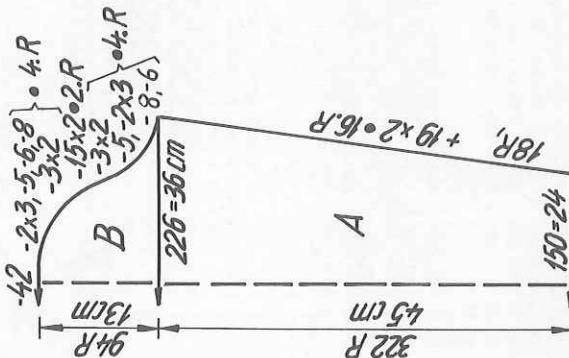


Diagram 1 : Long stitch
Handle down, orange strippers

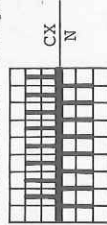
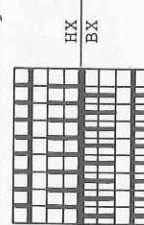


Diagram 2 : Long stitch for graduations
Handle down, orange strippers



2827 DUOMATIC 80

Lady's winter two-piece suit

Size : to fit bust 86 to 94 cms
hips 88 to 96 cms

Material : 1275 sports wool : 850 g grey-brown (basic col.)
225 g white and 200 g black. 1 length waist elastic,
2 hooks, 2 eyes.

Stitch size : Fairisle = 5/4, bands st.st. = 6, skirt = 6 3/4.

Test square : Fairisle : 100 sts = 20,5 cm, RC 100 = 13,5 cm
St.st. : 100 sts = 45 cm, 100 R = 29 cm

Pattern : Jacket: in fairisle with deco & card punched acc. to
chart below. Colour sequence acc. to instructions,
with basic col. always grey-brown. Skirt: in st.st.
with graduations, purlstitch side worn as right side.
Hem band : in "long stitch"

Jacket

Fig. I : A = tubular cast on in basic col. Start with deco punchcard on 34 in the left-hand window. Col. change for trimming col. : RC 24 black, RC 76 white, RC 20 black. B = tunnel for belt : knit 8 rows on front bed, st.st. with lock set to N/GX, then 8 rows on back bed with lock GX/N. C = Fairisle : Punchcard on 0, trimming col. as follows : RC 20 black, RC 52 white, RC 20 black, RC 56 white. D = dec. at each end, col. change as follows : RC 20 white, RC 44 black, RC 52 white, RC 20 black, then white to the end. E = shape shoulder at each end. Cast off.

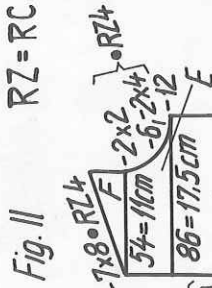
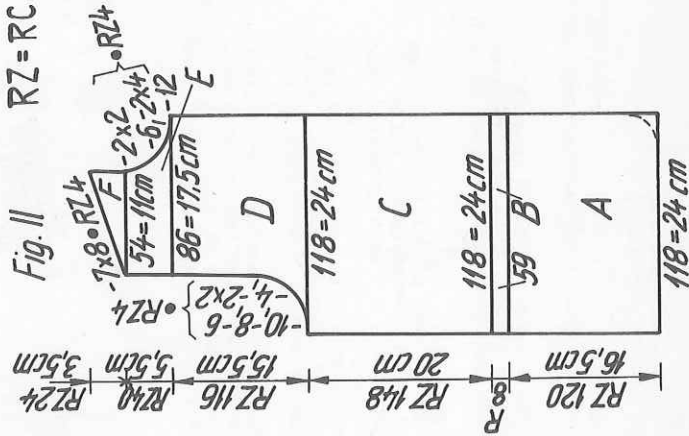
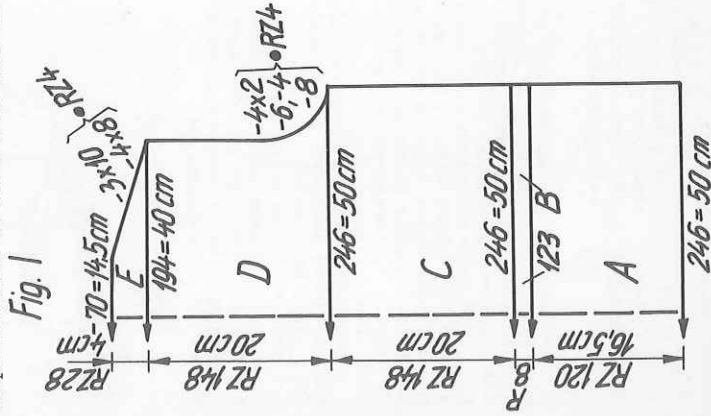


Fig. III

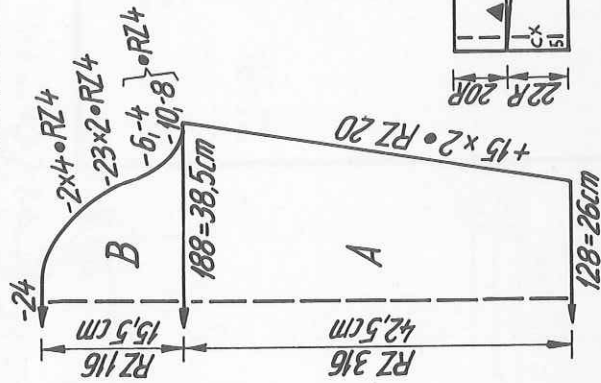


Fig. IV

Fig. II : first front part, trimming col. change acc. to Fig. I.
 A = tubular cast on, knit straight. B = tunnel for belt as for Fig. I. C = straight. D = straight at right, shape armhole at left, cont. straight. E = shape neck at right, straight at left. F = straight at right, shape shoulder at left. Second front part : work with reversed shapings.

Fig. III : knit 2 parts alike

A = black, closed cast on for tubular. St.S 6, knit 13 rows st.st., tubular (lock CX/CX). Then, for Fairisle, begin with punchcard at 20.

Col. change : RC 52 white, RC 20 black, RC 76 white, RC 44 black, RC 52 white, RC 20 black, RC 56 white. At the same time inc. at each end. B = shape sleeve head at each end. Col. change as follows : RC 20 white, RC 44 black, RC 52 white. Cast off.

Fig. IV : Collar.

A = tubular cast on in basic col., Fairisle in black, punchcard at the beginning on 84. B = black, st.st. tubular, St.S 6, knit 16 rows. End with a few rows contrast yarn, release.

Binding band : Black, St.S 6, beginning and ending with contrast yarn. Knit 2 lengths:once half tubular with all nds on each bed RC 24. Once single bed with 160 nds, 12 rows.

Diagram : "Long stitch"

Handle down, orange strippers

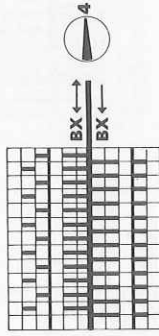
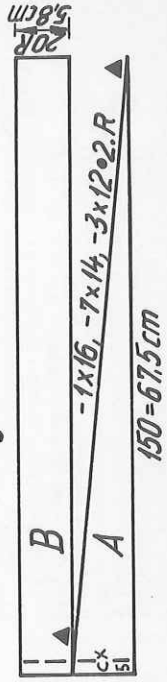


Fig. VII + VIII



Fig. VII + VIII

Fig. VII + VIII



2834 DUOMATIC 80/S

Material : 310 m length per 100 g
97 yds per 1 oz
10 cm = approx. 4"

Lady's casual draw-string top

Size : bust up to 100 cms
Material : 310 g linen yarn : 250 g white, 30 g red,
20 g yellow, 10 g black.
Stitch size : 5/2
Test square : 100 sts = 34,5 cm, 100 R = 21 cm
Pattern : All parts knitted in st.st., intarsia pattern
in the shape of a sailing boat. Cord.

Fig. I :

A = contrast yarn, single bed cast on with 156 sts. Knit 138 rows, white, straight, then 12 rows black, the remaining 108 rows white. B = shape shoulder at each end. Cast off remaining 76 sts.

Fig. II : Threading sequence for left feeding eyelet : yellow, black, red. Thread white into right feeding eyelet.

A = as for Fig. I, but knit only 90 rows in white, then work intarsia as follows : for the right 47 sts bring 47 pushers into W.P., lock BX without arrow key. Knit 2 rows in white. (Lock at right), at left push 1 of the 47 pushers into R.P., knit 2 rows. Repeat this until 28 pushers remain in W.P. = 40 rows. Do the same with the left 47 sts, bringing a pusher into R.P. at right when the lock is at left = 40 rows. Now push the centre 62 pushers

Fig. I

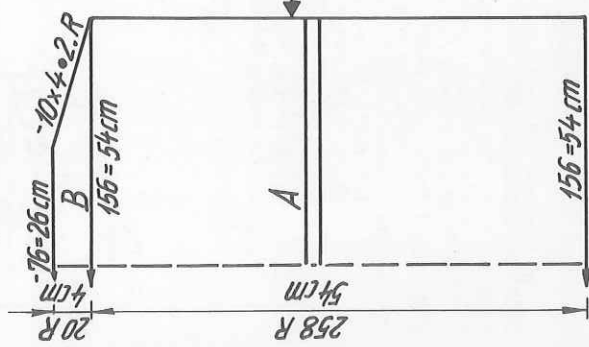
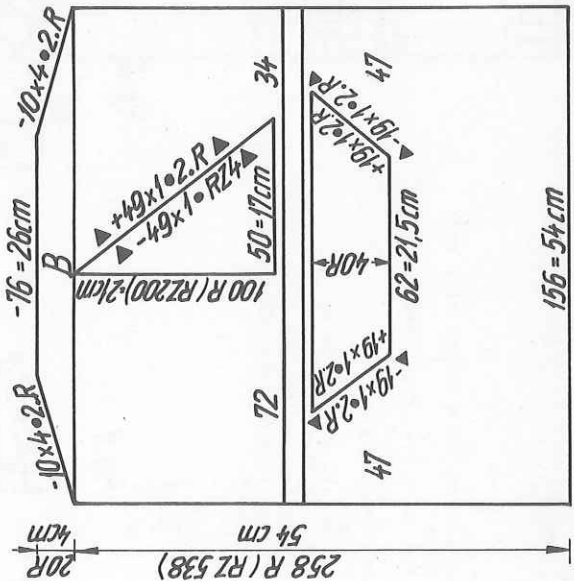


Fig. II



2827

To make up : Press parts lightly. Join shoulder and side seams, taking care to leave the tunnel for belt open on the inside. Backstitch collar first to the outside of neck opening, st by st, then fold to inside, backstitch through the open loops, unravelling contrast yarn. Join narrow ends of bands with mattress stitch, then attach to collar, centre front and lower edge of jacket, st by st with backstitch, shaping points as shown in diagram Fig. IV (cut off surplus material about 1 cm from seam), sew to inside, unravel contrast yarn. Join sleeve seams, set in sleeves. Knit a cord to serve as draw string belt : Tubular, with 3 nds on each bed, St.S 5, to required length. Pull through tunnel. Fasten jacket front with hooks and eyes.

Skirt

Fig. VII and VIII : gray-brown, begin at one side.

Cast on with 150 sts in contrast yarn, knit a few rows. A = push 5 nds in W.P. at left back for hem band, with lock CX, St.S 4 3/4. Front BX and pushers, starting graduations from the right acc. to diagram. B = knit 20 rows st.st. = 1 'panel'. 13 panels fit a waist size of 70 cms and 94 cm hips, 14 panels = waist 75 cms, hips 100 cms, etc. End with contrast yarn, release.

Waistband : Stocking stitch, tubular, with 6 nds on each bed, St.S 6 1/4, knit waistband to required length (measured waist size plus approx. 10 cms). End with contrast yarn, release.

To make up : Block and press skirt. Graft together beginning and end, unravelling contrast yarn. Insert waist elastic into waist band, graft together ends. Crochet or sew waistband to skirt waist.

into W.P., the remaining pushers in R.P. Cont. in yellow : knit 1 row (lock at left), lay yarn across left adjacent nd, knit 1 row (lock at right) lay yarn across the right adjacent nd and add a further pusher at left, knit 1 row (lock at left), lay yarn across left adjacent nd and add 1 pusher at right, etc. until 40 rows have been knitted = end of intarsia. With lock on N, knit 8 rows white, 12 rows black, 8 rows white across all 156 nds. Next intarsia : push the right 34 pushers into blocking rail, the left 72 pushers into R.P. and the remaining 50 pushers into W.P., in addition put in W.P. 1 nd on back bed between stitch 72 and 50 of the front bed, lock at back N. Using white, lock BX and left arrow key, knit alternately 2 rows white, 2 rows red, at the same time always pushing 1 pusher into blocking rail at right after the 1st row in red (lock at left). Continue in this manner until RC 200. With white, knit intarsia at right as follows : right 34 pushers in W.P., remaining pushers in R.P., lock BX without arrow key. * Knit 1 row (lock at left), lay yarn across left adjacent nd, knit 1 row (lock at right), push 1 pusher into W.P. at left*. Repeat from * to * until 100 rows have been knitted = end of intarsia. B = with lock on N, cont. to knit in white, at the same time shape shoulder at each end. Cast off remaining 76 sts.

To make up : Block and press parts. Join shoulder and side seams (as far as arrow). Along neck and armhole fold approx. 1/2 cm to inside and hem in position. At lower edge fold approx. 2 1/2 cm to inside and hem in position st by st, unravelling contrast yarn. Twist two cords approx. 1,5 m long and pull through hem.

31/34

RZ=RC

2831 PASSAP DUOMATIC 80/S

Material : 330 m length per 100 g
 103 yds per 1 oz
 10 cm = approx. 4"

Lady's three-piece suit

Size : to fit bust 90 cm, hips 95 cm
Material : 930 g medium synthetic yarn yellow, 30 g sewing silk red.
Waist elastic, 5 small buttons.
Stitch size : Jacket and skirt = front 4/2, back 5/2. Top = front 6, back 4 1/2. 1:1 rib = 2 1/2.
Test square: Jacket (counting sts on back bed only) :
 100 sts = 34 cm, 100 R = 24 cm
 Skirt : 100 sts = 15,5 cm (pleats), 100 R = 24 cm
 Top : 100 sts = 33 cm, 100 R = 27,5 cm
Pattern : Jacket : St.st. with CX-stripes acc. to diagram 1.
 Skirt : Acc. to diagram 2. Top : St.st. with CX-band, purlistitch side worn as right side.

Colour sequence chart
 16 R yellow, lock CX/N
 2 R red, lock GX/N
 16 R yellow, lock CX/N
 2 R red, lock GX/N
 16 R yellow, lock CX/N
 2 R red, lock GX/N
 2 R yellow, lock CX/N
 2 R red, lock GX/N
 2 R yellow, lock CX/N
 2 R red, lock GX/N
 repeat

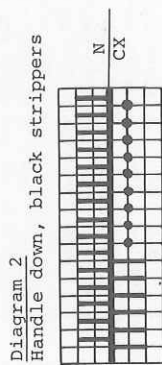
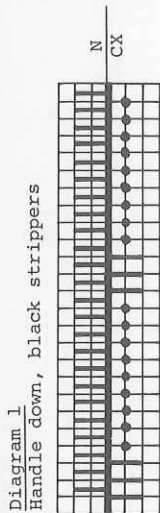


Fig. I

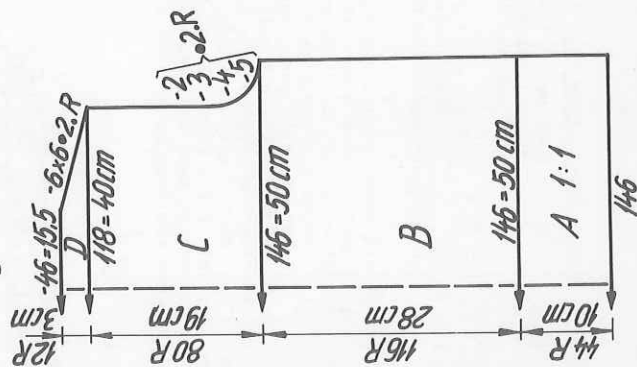


Fig. II

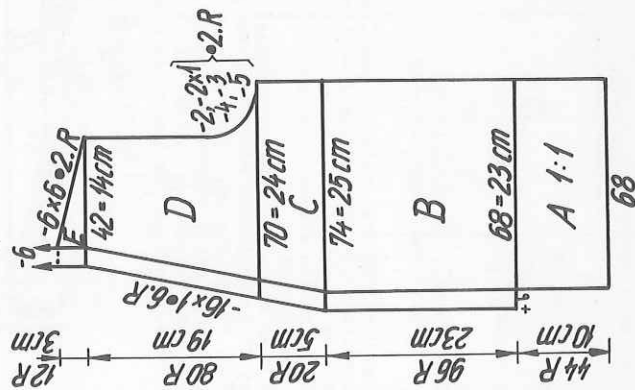


Fig. III

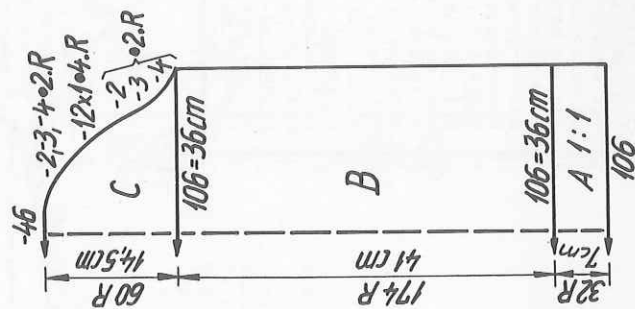


Fig. VII

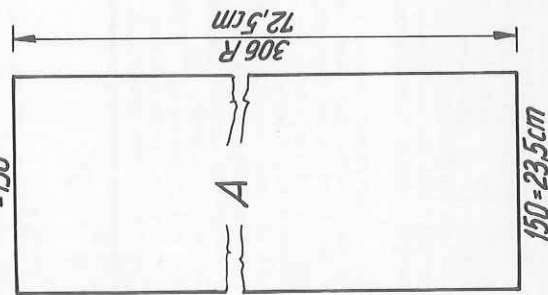
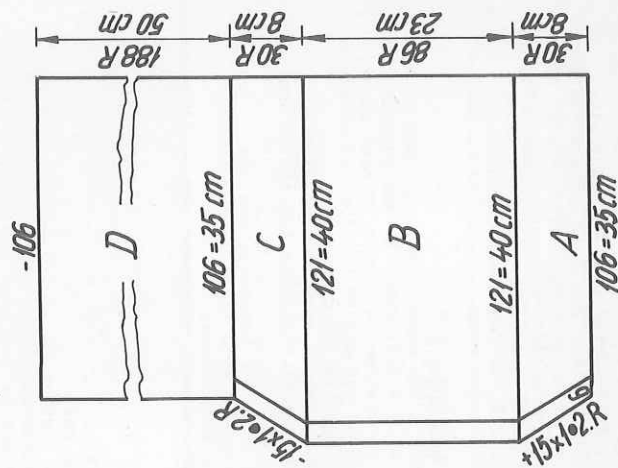


Fig. XVI



2844 DUOMATIC 80/S

Material : 400 m length per 100 g
125 yds per 1 oz
10 cm approx. 4"

Top to match jacket 2842

Size : bust 88 cms

Material : 125 g medium mohair/acrylic
petrol blue

Stitch size : St.st. : 6

Test square : at back : 3 for CX
100 sts = 36 cm, 100 R = 23,5 cm

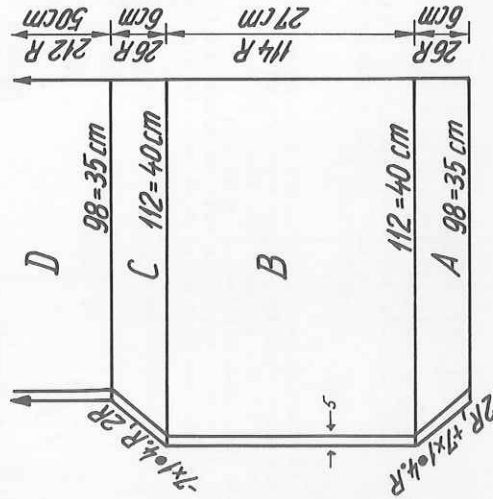
Pattern : Stocking stitch, knitted in one piece.
For upper edge : on back bed, add 5 sts
in CX, this will result in a neat edge.
The right or wrong side can be worn to
the outside.

Fig. XVI : begin and end with contrast yarn.

A = single-bed cast on with 98 sts, with 5 additional sts on back
bed at left edge, lock CX and St.S 3. Knit straight at right, inc.
at left. With every increase, also move the 5 sts on back bed. B =
knit straight at each end. C = dec. sts at left, knit straight at
right. D = knit 212 rows straight.

Straps : With 4 sts on back and 3 sts on front bed, knit 2 tub. straps
approx. 40 cms long, lock CX/CX, St.S 6/2.
To make up : Block and press. Graft side seam st by st, unravelling
contrast yarn. Attach straps.

Fig. XVI



2831

Fig. I : Jacket, back

A = tubular cast on in 1:1 rib with 146 nds, knit straight, St.S 2 1/2. B =
transfer sts to back bed, on front bed bring nds into W.P. acc. to diagram 1,
knit straight. C = shape armhole at each end, cont. straight. D = shape
shoulder at each end. Cast off.

Fig. II : Jacket front, two parts knitted with reversed shapings.

Prepare : Two bands in "long stitch", i.e. with 6 nds on each bed, lock
front CX, back N, knit 52 rows. End with a few rows contrast yarn, release.
Press well.

A = tubular cast on in 1:1 rib with 68 nds, knit straight. B = transfer sts
to back, adjacent on left hand side of machine place one of the bands onto
the nds of the machine. On front bed, bring nds into W.P. acc. to diagram 1.
Knit straight in pattern. C = shape neck at left, at back and front moving the
6 sts of the band in, knit straight at right. D = cont. to shape neck at left,
shape armhole at right, then straight. E = shape shoulder at right, knit 30
rows straight at left. End with a few rows contrast yarn, release.

Fig. III : sleeves, two alike

A = tubular cast on in 1:1 rib with 106 nds, knit straight. B = transfer sts
to back. At front, bring nds into W.P. acc. to diagram 1, cont. to knit in
pattern, straight. C = shape sleeve head at each end. Cast off.

Fig. VII : Skirt, three parts alike

A = tubular cast on in K/K over a width of 150 nds. B = transfer sts acc. to
diagram 2, knit straight. Cast off.

Waist band : Stocking stitch, tubular.

With 12 nds on each bed, lock CX/CX, a few rows with contrast yarn. Then,
knit waist band to required length (waist size plus approx. 10 cm). End with
contrast yarn, release. Press. Insert waist elastic, join ends with graft st.

Fig. XVI : Top

A = begin with contrast yarn, 106 nds, st.st., bringing 6 additional nds into
W.P. at left back, lock back CX, St.S 4 1/2, knit stocking stitch, at the same
time inc. at left, and also always move out the 6 sts on back bed. B = straight.
C = dec. at left, at the same time moving in the 6 additional sts on back bed.
D = straight. End with a few rows contrast yarn, release.

Strap : two

With 6 nds on front and 5 nds on back bed in W.P., lock CX/N, knit 136 rows.
Cast off.

To make up : Block and press parts well. Jacket : Join shoulder, sleeve and
side seams. Graft together neckband at centre back, then sew in position
along back neck opening (backstitch). Sew the two loose front bands to front
part edges also using backstitch. Attach buttons to left front band, crochet
loops on right front band to fasten the jacket. Set in sleeves. Skirt :
Press parts first, close seams, then make knife pleats as shown in photo,
press again hard. Starting from the waist sew along the folds - approx. 18 cm -
with invisible sts. Sew or crochet waist band to top of skirt. Top : Graft
together side seam, unravel contrast yarn. Attach straps.

2833 DUOMATIC 80/S

Lady's striped top (see cover)

Size : to fit bust up to 98 cms
 Material : 580 g linen yarn: 350 g red, 120 g white, 80 g yellow and 30 g black.
 Stitch size : St.st. 5/2
 Test square : 100 sts = 34,5 cm, 100 R = 21 cm
 Pattern : St.st. with colour stripes/sequence as given in chart below.

Fig. I :
 A = single-bed cast on with 162 sts, st.st. with stripes acc. to chart, at the same time dec. every 22nd row at each end 9 times, using 16-decker tool.
 B = dec. 13 sts at each end. Cont. to knit straight. C = shape shoulder at each end. Cast off remaining 48 sts.
 Fig. II :
 A = single-bed cast on with 81 sts, in addition push 4 nds in W.P. on left

Fig. I

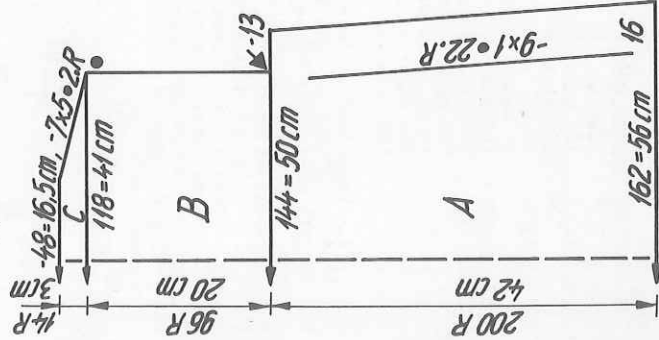


Fig. II

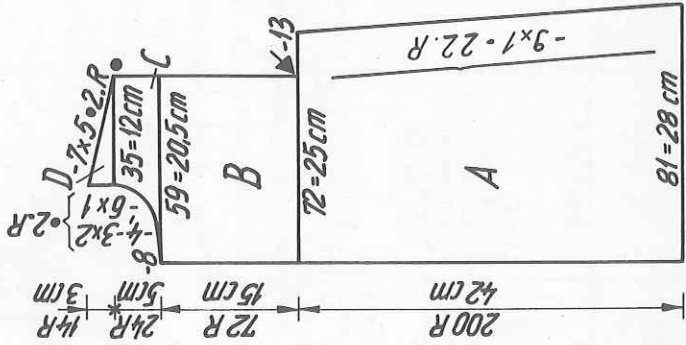
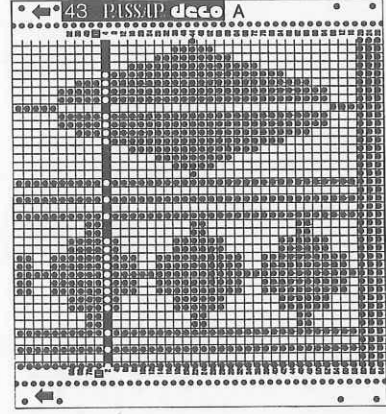
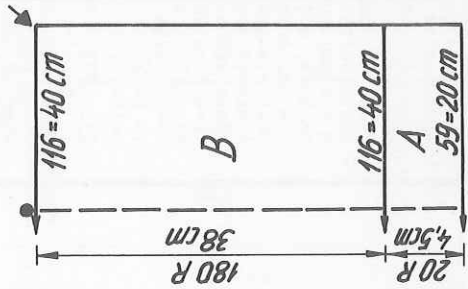


Fig. III



2841 DUOMATIC 80/S

edge of back bed and set lock to CX at back. St.S 3/2, knit as for Fig. I, but dec. only at right, knit straight at left. B = dec. at right for armhole, then cont. to knit straight. C = shape neck at left, knit straight at right. D = shape shoulder at right. Second front part : knit with reversed shapings.

Fig. III : knit twice

A = contrast yarn, single-bed cast on with 59 sts. Knit 20 rows white, then cast on an additional 59 sts adjacent to the first 59 sts. Knit 20 rows in white with pushers and lock BX = opening for drawstring. B = lock N, black, knit 4 rows across all 116 sts. Change to colour red and knit 176 rows. End with a few rows contrast yarn, release.

Collar : begin and end with contrast yarn.

Single-bed cast on with 114 sts, knit st.st. 20 rows in red, change to black and knit 4 rows, end with 20 rows red.

Welt : begin and end with contrast yarn.

With 115 sts on each bed, knit RC 4 half tubular, black, RC 40 white, RC 8 black, RC 40 white and RC 4 black.

To make up : Block and press parts well. Set in sleeves matching dots and arrows as shown in diagram, st by st and unravelling contrast yarn. Join short underarm seam to sleeves using mattress stitch. Join side and sleeve seams. On sleeves, fold section A to inside and sew in position st by st, unravelling contrast yarn. Stiffen welt with iron-on stiffening band, then attach to cast-on edge (gathering main parts), st by st and unravelling contrast yarn. Attach collar as given for welt, i.e. first sew to outside, then to inside, and unravelling contrast yarn. For sleeves, twist two 1 m long cords and insert. On front parts, attach a cord on each side measuring 50 cms.

Colour sequence :

2 R black
 20 R yellow
 2 R black
 20 R red
 2 R black
 20 R white

Material : 310 m length per 100 g
 97 yds per 1 oz
 10 cm = approx. 4"

2838 DUOMATIC 80/S

Sweater dress with zig-zag pattern

Size : to fit bust 88 to 92 cm, hips 94-96 cm
 Material : 820 g sports wool : 320 g cream, 120 g rust, 380 g mid-brown

Stitch size : St.st. = 7, 2:2 rib = 4/2
 Test square : 100 sts = 39,5 cm, 100 R = 28 cm
 Pattern : Dress knitted in st.st. with zig-zag pattern in single-bed fairisle. Punch deco card acc. to chart; alternatively, arrange pushers acc. to diagram, by hand. Bands 2:2 rib.

Fig. I

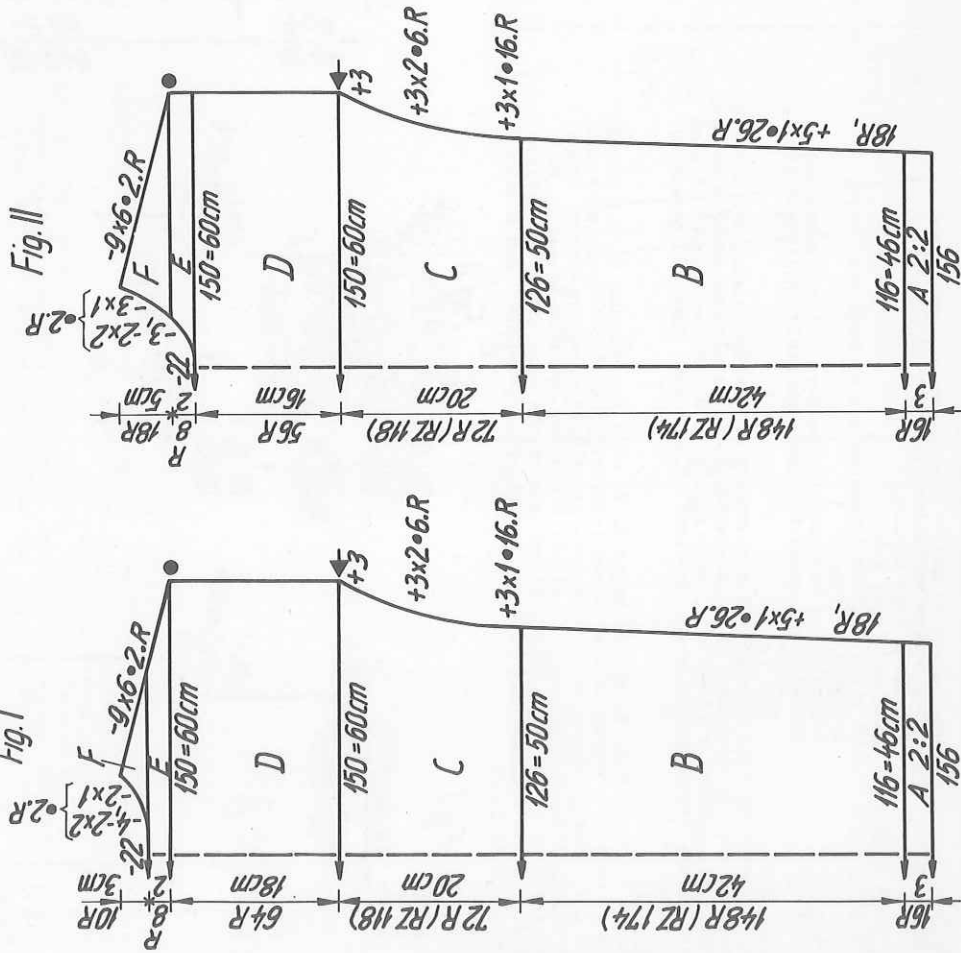


Fig. I :

A = rust, tubular cast on in 2:2 rib with 156 sts over a width of 116 nds. St.S 4/2, knit 16 rows. B = transfer all sts to front for st.st. = 116 sts. Knit 6 rows st.st., rust, then knit a triangle motif, single-bed fairisle acc. to diagram. Always knit 2 rows rust, 2 rows cream = RC 52 (26 actual rows). Cont. to knit in cream, st.st., at the same time inc. sts at each end. C = knit 26 rows and inc. sts., then work a triangle motif = RC 92 (46 actual rows), of which the first RC 46 knitted alternately 2 rows cream, 2 rows rust and the following RC 46 always 2 rows mid-brown, 2 rows rust. While knitting in fairisle, inc. at each end for kimono-shape. D = mid-brown, knit straight at each end. E = shape shoulder at each end. F = cast off centre 22 sts. Divide work. Place left half onto deckercomb. For right half : shape neck at left, shape shoulder at right. Left half : knit section F with reversed shapings.

Fig. II :

A, B, C & D = as for Fig. I, but knit only 56 rows for section D. E = cast off centre 22 sts. Divide work. Place left half onto deckercomb. Right half : shape neck at left, knit straight at right. F = shape shoulder at right, shape neck at left. Left half : knit sections E & F with reversed shapings.

Fig. III : knit two parts alike. Begin and end with contrast yarn. A = mid-brown, single-bed cast on with 90 sts. Knit 50 rows straight. B = with graduations beginning at left, dec. 10 sts every alternate row 8 times = 16 rows. C = graduations beginning from the right, inc. 10 sts every alt. row 8 times. D = knit 50 rows straight.

Neckband :

Tubular cast on in 2:2 rib with 136 sts over a width of 102 nds. St.S 4/2, knit 12 rows. End with contrast yarn, release.

Cuffs : knit twice

As for neckband, but with 52 sts over a width of 39 nds. Knit 50 rows.

To make up : Block and press parts well. Join shoulder seams. Using mattress stitch, sew sleeves to main parts matching dots and arrows. Join side and sleeve seams. Attach neckband to neck opening and cuffs to sleeves, st by st, backstitching through the open loops and unravelling contrast yarn.

Material : 230 m length per 100 g
 122 yds per 1 oz
 10 cm = approx. 4"

RZ = RC

Fig. III

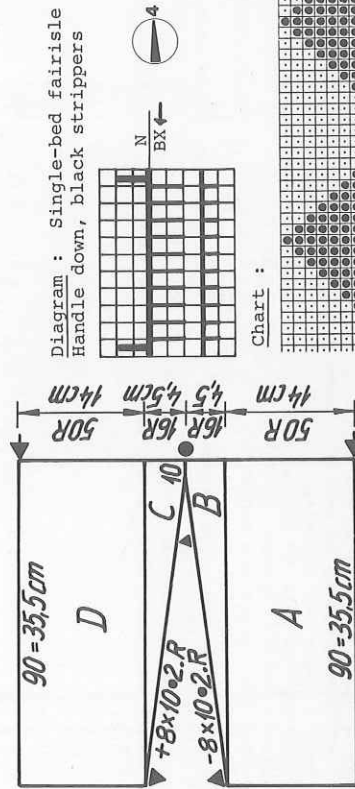
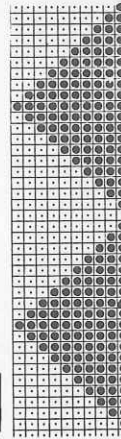


Diagram : Single-bed fairisle
 Handle down, black strippers

Chart :



2842 DUOMATIC 80/S

Material : 400 m length per 100 g
125 yds per 1 oz
10 cm = approx. 4"

Loose jacket in pin tuck pattern

Size :

to fit bust approx. 86 cms

Material :
575 g medium mohair : 220 g light blue, 220 g petrol blue, 135 g black, 100 g gold lurex.
Pattern back 6/4, front 4/4. St.st 5/2.

Stitch size :
Test square :
Pattern :
100 sts = 42 cm, RC 100 = 9.5 cm
Pin tuck pattern acc. to diagram, colour sequence :
8 R black, 8 R petrol blue, 8 R light blue, 8 R gold,
8 R light blue, 8 R petrol blue, repeat.

The indications in the diagram refer to the back bed.
On front bed, always inc. or dec. the corresponding stitches.

Fig. I

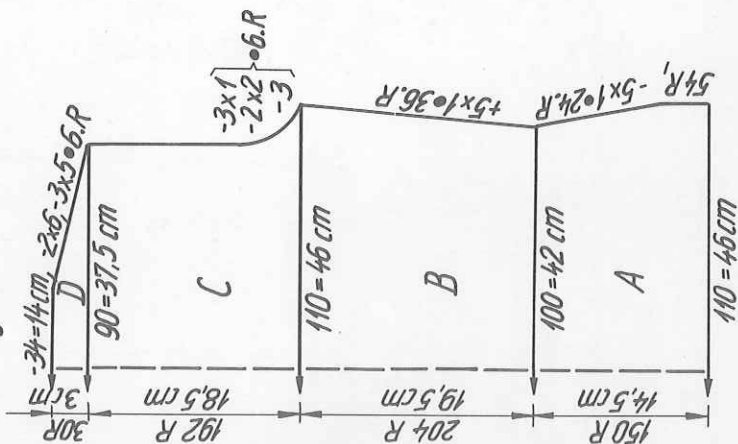


Fig. II

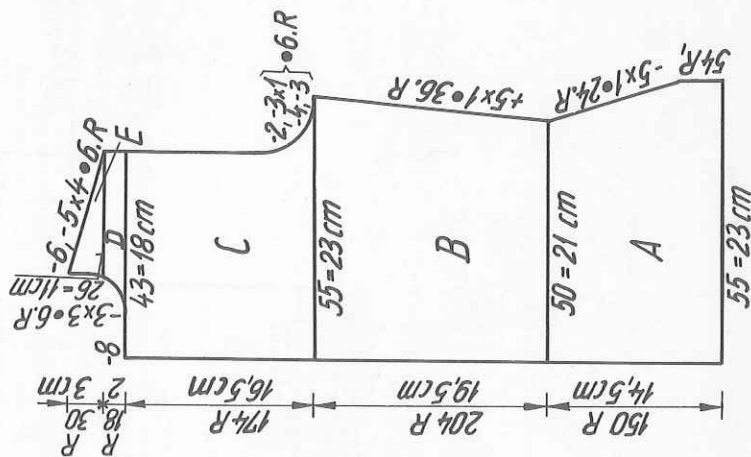


Fig. III

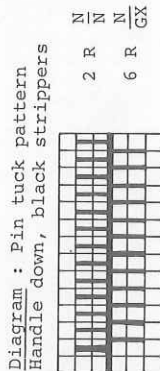
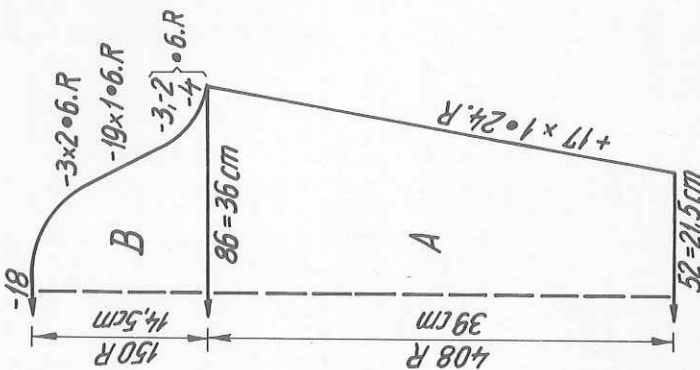


Fig. I :
A = black, back and front 110 nds in W.P., St.S 2 1/2, knit 1 row N/N, 4 rows back N, front GX, 1 row N/N. Then cont. in colour sequence acc. to diagram. Knit 54 rows straight, then dec. at each end. B = inc. at each end. C = shape armhole at each end, cont. straight. D = shape shoulder at each end. Cast off.
Fig. II : first front part
With 55 nds on each bed, as given for Fig. I. Then dec. at right, knit straight at left for centre front. B = inc. at right. C = shape armhole at right, cont. straight. D = shape neck at left, knit straight at right. E = straight at left, shape shoulder at right. Second front part : knit with reversed shapings.

Fig. III :
A = begin with 52 nds on each bed as for Fig. I. Knit in pattern acc. to diagram, inc. at each end. B = shape sleeve head at each end, cast off. Binding for jacket edges : st.st., half tubular, black, begin and end with contrast yarn. All nds in W.P. on each bed, knit a few rows half tub. in contrast yarn. Black, knit RC 10 with St.S 5 1/2, RC 2 with St.S 6 1/2, RC 10 with St.S 5 1/2.

To make up : Join shoulder seams. Press bands for binding edges, then sew to neck and front edges, st by st backstitching through the open loops and unravelling contrast yarn, first on the outside then on the inside. Join sleeve and side seams. Set in sleeves.

2836 DUOMATIC 80/IS

Material : 400 m length per 100 g
125 yds per 1 oz
10 cm = approx. 4"

Girl's dress

Size : to fit a 11 to 12-year old, height 146 to 152 cm
Material : 350 g medium Mohair/Acrylic : 120 g blue, 70 g red, 70 g yellow, 20 g green, 10 g brown, 10 g pink.
Stitch size : Stocking stitch = 6. 1:1 rib = 3/2
Test square : 100 sts = 37,5 cm, 100 R = 25 cm (st.st. without intarsia)
Pattern: Dress in st.st. with zig-zag intarsia, stripes and fairisle pattern. Bands in 1:1 rib.

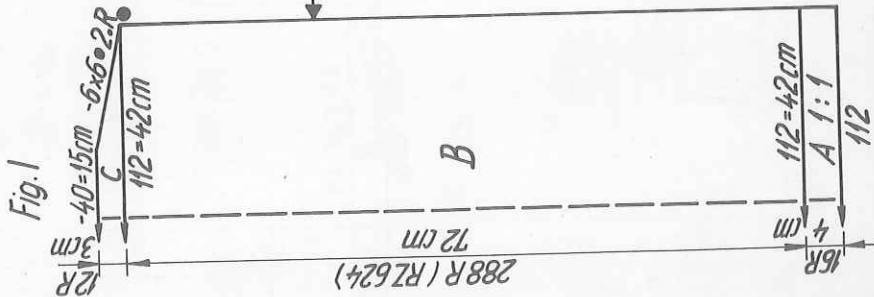


Fig. 1

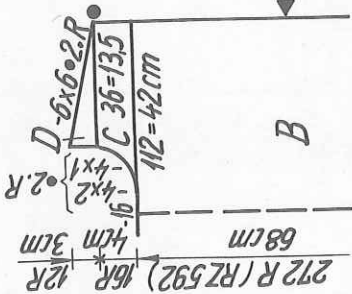
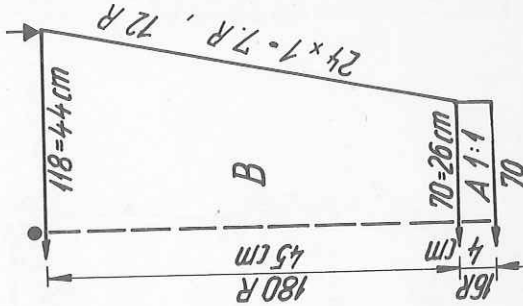


Fig. 2



RZ = RC

Fig. 1 :

A = blue, tubular cast on in 1:1 rib with 112 sts, St.S 3/2, knit 16 rows.
B = transfer all sts to front. Knit intarsia consisting of 4 points by following the separate instructions. Begin with lock BX and left arrow key, the 50 pushers at right in working position, the rest in rest position. Knit straight at each end. C = shape shoulder at each end, at the same time keep intarsia correct.

Fig. II : Intarsia as for back part, but with reversed shapings.

A & B = as for Fig. I, for section B knit 272 rows (RC 592). C = cast off centre 16 sts. Divide work. For left half, put pushers into blocking rail. For right half : Put pushers into working position, lock BX without arrow key, cont. in red. At the same time shape neck at left, straight at right. E = shape shoulder at right, straight at left. Left half : Lock N, blue yarn, knit sections C+D with reversed shapings.

Fig. III : two, but different colours

A = yellow, tubular cast on in 1:1 rib with 70 sts. Knit 16 rows. B = transfer sts to front, cont. to knit in blue, st.st., at the same time inc. at each end. End with contrast yarn. Knit the second sleeve in the same way, but using green for section B.

Neckband :

Blue, tubular cast on in 1:1 rib with 140 sts, St.S 3/2, knit 8 rows.

Transfer all sts to front for st.st., St.S 6, knit 2 rows. A few rows contrast yarn, release.

To make up : Block and press parts. Close the vertical opening at each intarsia point in section C. Join shoulder seams. Join sleeves acc. to the arrows and dots given in the diagram, st by st, backstitching through the open loops and unravelling contrast yarn. Join sleeve and side seams. St by st, using backstitch, attach neckband, unravel contrast yarn.

Intarsia : Description for back part. Knit second and fourth intarsia points in the same way. If desired, lay yarn across adjacent needle when doing the short rows (= no holes).

1st point : a) Lock BX and left arrow key, at right 50 pushers in working position, the remaining pushers in rest position. Alternately, knit 2 rows blue, 2 rows yellow, at the same time every RC 4 always add 6 pushers of the pushers in rest position to the pushers already in working position = RC 28.

b) Using the same pusher and lock positions, knit 2 rows blue, 2 rows green/2 rows blue, 2 rows brown = RC 8.

c) Return the 20 pushers at left to blocking rail, arrange remaining pushers in 1:1 division. (On back bed, with handle down, bring the needle between the 20th and 21st needle of the front bed also in working position). For the next RC 24 knit alternately 2 rows red, 2 rows green. Now transfer sts of back bed to front and put all pushers in rest position. Take out the 20 pushers which were put away in the blocking rail and leave them in working position. With lock BX without arrow key, fill in 12 rows in blue, always leaving the same needle in working position on back bed, finally transferring this stitch to the front again = RC 36.

d) Begin : On the left 22 pushers in rest position, lock again BX with left arrow key, back GX. Every RC 4 put two more pushers in rest position until RC 84, at the same time distributing the colours as follows : 2 rows blue, 2 rows brown/2 R blue, 2 rows pink/2 rows blue, 2 rows yellow/2 rows blue, 2 rows green/2 rows blue, 2 rows brown/2 rows blue, 2 rows pink. Knit the rest of the rows alternately blue/yellow.

2nd point : a) as given for first point a), but knitting alternately 2 rows blue, 2 rows red.

b) Using the same pusher and lock positions, knit 2 rows blue, 2 rows yellow/2 rows blue, 2 rows pink = RC 8.

c) Return the left 20 pushers to blocking rail, arrange remaining pushers in 5:5 division, add 1 needle on back bed, set lock on N. For the next RC 12 knit alternately 2 rows yellow, 2 rows green, then for the following RC 12 knit with reversed colour sequence (2 rows green, 2 rows yellow). Now transfer the back stitch to front bed and bring pushers into rest position. Take

WHITEISH

2843 DUOMATIC 80/S

Lady's sweater with frilly collar

Size : to fit 88 cm bust

Material : 230 g fine mohair, red.

Stitch size : AX = 5/2. CX-bands = 3/2. Fisherman's rib = 5/2

Test square : AX-pattern : 50 sts = 21 cm, RC 100 = 14,5 cm

Pattern : Sweater in AX-pattern with right side to the outside.

Fig. I : Bands knitted in st.st. tubular. Collar in fisherman's rib.

A = tubular, closed cast on with 108 sts on each bed, St.S 3/2, lock CX/CX,

knit RC 44. B = transfer all sts to front and knit straight in AX-pattern

acc. to diagram I. C = shape armhole at each end. D = shape shoulder at each

end. Cast off remaining 38 sts.

Fig. II :

A & B & C = as for Fig. I, but for section C knit RC 128. D = divide work.

Cast off centre 10 sts. Place left half onto dekercomb. For right half :

cont. to knit in pattern, shape neck at left, knit straight at right. E =

shape shoulder at right, knit straight at left. Left half : return sts to

nds of machine and cont. in pattern. Knit sections D & E with reversed

shapings.

Fig. III : knit twice

A = as for Fig. I and II, but with 72 sts on each bed. B = transfer all sts

to front and cont. in pattern, inc. at each end. C = knit straight at each

end. D = inc. at each end. E = shape sleeve head at each end. Cast off

remaining 48 sts.

Collar : knit twice

With rayon, cast on with racking for K/K with 240 sts. After casting on, with mohair,

knit RC 30 in fisherman's rib with lock back and front EX and St.S 5/2.

Then, transfer sts for 1:1 rib. Knit 8 rows with lock back and front N,

St.S 3/2. End with a few rows contrast yarn, release.

Neck tie :

With rayon, 4 sts on each bed, knit tubular, lock back and front CX, St.S 6,

a band about 150 cm long.

Fig. I

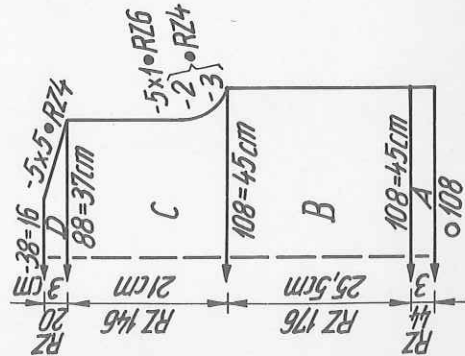


Fig. II

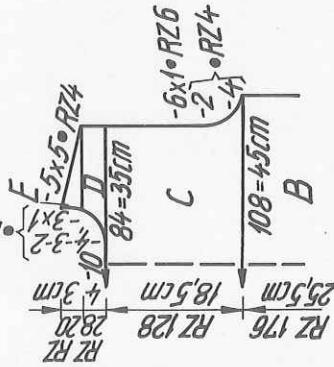
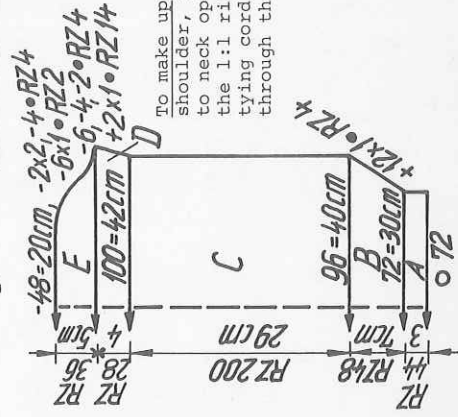


Fig. III



out the 20 pushers which were put into the blocking rail and put them into working position. With lock BX, no arrow key, fill in 12 rows in blue, at the same time leaving the same needle in working position on back bed, and finally transferring this stitch to front bed again.

d) Knit as for 1st point d), but with the following colour sequence : 2 rows blue, 2 rows pink/2 rows blue, 2 rows red/2 rows blue, 2 rows yellow/2 rows blue, 2 rows green/2 rows blue, 2 rows brown/2 rows blue, 2 rows pink. The rest of the rows alternately blue/red.

3rd point : a) and b) as for first point a & b).

c) As for 1st point c) but with the fairisle motif as given in the chart.

d) As for 1st point d).

4th point : a), b), c) and d) as for second point.

Fairisle chart

From deco punchcard 8a, use from 20 to 40 incl.

showing in right-hand window.

x = green

empty square = red (basic colour)

Fairisle chart

From deco punchcard 8a, use from 20 to 40 incl.

showing in right-hand window.

x = green

empty square = red (basic colour)

Fairisle chart

From deco punchcard 8a, use from 20 to 40 incl.

showing in right-hand window.

x = green

empty square = red (basic colour)

Fairisle chart

From deco punchcard 8a, use from 20 to 40 incl.

showing in right-hand window.

x = green

empty square = red (basic colour)

Fairisle chart

From deco punchcard 8a, use from 20 to 40 incl.

showing in right-hand window.

x = green

empty square = red (basic colour)

Fairisle chart

From deco punchcard 8a, use from 20 to 40 incl.

showing in right-hand window.

x = green

empty square = red (basic colour)

Fairisle chart

From deco punchcard 8a, use from 20 to 40 incl.

showing in right-hand window.

x = green

empty square = red (basic colour)

Fairisle chart

From deco punchcard 8a, use from 20 to 40 incl.

showing in right-hand window.

x = green

empty square = red (basic colour)

Fairisle chart

From deco punchcard 8a, use from 20 to 40 incl.

showing in right-hand window.

x = green

empty square = red (basic colour)

Fairisle chart

From deco punchcard 8a, use from 20 to 40 incl.

showing in right-hand window.

x = green

empty square = red (basic colour)

Fairisle chart

From deco punchcard 8a, use from 20 to 40 incl.

Material : 1000 m length per 100 g
314 yds per 1 oz
10 cm = approx. 4"

To make up : Pin parts out to size and leave to dry under a damp cloth. Join shoulder, side and sleeve seams. Set in sleeves. Attach the two collar parts to neck opening, lay the two parts on top of each other in such a way that the 1:1 rib rows lie one on top of the other and can be used to thread the tying cord through. Sew the collar in position st by st, backstitching through the open loops and unravelling contrast yarn. Insert cord.

Diagram :
Handle down, black strippers



40/34

C O N T E N T S

Model No.	Item	Page
	<u>Front cover</u>	
2833/34	Lady's striped top and lady's casual top	34/31
	<u>Back cover</u>	
2820	Lady's ribbed skirt and sweater	22
! 2738	Lady's summer dress	8/9
! 2739	Lady's jacket	8
forma 2803	Man's sweater	4/7
forma 2804	Lady's sweater	5
2805	Knickerbockers	4/5
2806	Brocade evening jacket	11
2807	Skirt with top in three colours	14/15
2808	Lady's linen dress	9
! 2809	Lacey dress	21
2810	Lady's sporty outfit	3
2811	Lady's trousers and top	10/11
2812	Lady's ribbed two piece	12
2813	Intarsia sweater dress	26/27
! 2814	Teenage Two-Piece	13
2816	AX-pattern short sleeve sweater	16
2817	Bermuda pants	15
2818	Waist coat in AX-pattern	18/19
! 2819	Lady's jacket and skirt	17
2820	Lady's ribbed skirt and sweater	22
! 2822	Evening dress with top and jacket	20/21
2823	Evening dress	28/29
! 2825	Lady's trousers and sweater outfit	18/19
2826	Coat with cape	24/25
2827	Lady's winter two-piece suit	30/31
2830	Cashmere skirt and top	23/24
2831	Lady's three-piece suit	32/33
! 2833	Lady's striped top	34
2834	Lady's casual draw-string top	31
2835	Lady's jacket matching skirt 2830	29
2836	Girl's dress	38/39
2837	Boy's sweater	27
2838	Sweater dress with zig-zag pattern	36
2840	Knickerbocker outfit	6/7
U 80 2841	Lady's sweater in transfer pattern	34/35
! 2842	Loose jacket in pin tuck pattern	37
2843	Lady's sweater with frilly collar	39
! 2844	Top to match jacket 2842	33
! 2845	Skirt to match sweater 2841	21

! Quick and easy to knit items.