



PASSAP[®]

DUOMATIC

Muster
Patterns
Dessins
Disegni
Desenhos
Malleja
Diseños
ΣΧΕΔΙΑ
Wzory
Mønster
Mønster
Patroonen



PASSAP Stitch Pattern Book No. 2 for PASSAP-DUOMATIC and PASSAP 12

For description of pattern on cover, see page 36

The more you get—the more you want!

A splendid reception was given to our first stitch pattern book and new friends are joining daily. We discovered with pleasure that the number of «gluttons» looking forward to another volume is still increasing. So we decided for a second collection hoping it will find your appreciation, too.

Experience having shown

that many DUOMATIC owners make fairisle knitting a hobby, an appropriate wider choice was ensured for this new collection. Those who still remain unsatisfied, may find an unlimited choice of cross-stitch diagrams in one of their granny's embroidery books. Lots of these designs may easily be copied for an attractive fairisle stitch pattern.

Yet not merely fairisle patterns

are suggested. There are other attractions as well waiting for you: transfer patterns, raised patterns, half tubular knitting, racking patterns, stripes on plain surface, stripes on purl surface, etc.—always with regard to the variety of fashionable yarns. Photos themselves will often show the material chosen for a specific pattern.

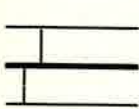
PASSAP 12

will also knit patterns described here under N, CX, EX or GX either with or without racking. For these patterns simply adjust your lock to N, C, E or G accordingly. Fairisle, however, is less well-suited for PASSAP 12 unless you decide to use heel-deckers available from every PASSAP-dealer.

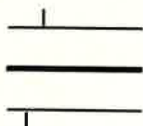
KNOW-HOW is everything in life, and this applies to knitting **PASSAP** as well. Below we may give some useful hints. Please read them carefully and try to remember them well. You will thus avoid making mistakes.

Here are the main points

For starting position for a pattern, always keep lock on the right, i. e. knit an additional row



Needles in working position



Pushers in working position



Pushers in rest position



Needle or pusher in neutral position

Fairisle knitting

1. Squares in diagrams

1 square = 1 stitch, i. e. in width 1 square equals 1 stitch. 1 square = 2 rows, i. e. in height 1 square equals 2 knitted rows.

For these 2 rows move the lock 4 times, twice for nds and pushers of the trimming col and twice for nds and pushers of the basic col. RC will show 4.

Hence: 1 square = 1 st and 2 rows = RC 4

Usually you need no more than 2 colours for 1 "square row". If exceptionally you want 3 colours instead, 1 square equals in height 2 knitted rows and RC 6. For every colour, pushers are arranged anew. The colour sequence is always as follows:

- 2 rows first trimming colour
- 2 rows second trimming colour
- 2 rows basic colour

When doing fairisle, use 1 nd less at right of back bed so that the colour change appears on the reverse of the garment.

When calculating a garment, we recommend to note the number of rows, the RC will indicate, when knitting.

without pattern after having formed the zig-zag and completed the tubular rows.

Unless otherwise mentioned, knit with "handle down".

Unelastic yarns (handspun wool, synthetic yarns, cotton, raffia, etc.) or certain patterns are easier to knit when paraffining the material beforehand. nd (s) = needle (s), col = colour, L = left, R = right, RC = row counter, M = centre stitch of pattern, S = series

2. How to knit fairisle

Prepare lock, needles and pushers according to diagram for basic principle of fairisle knitting. Place feeding eyelet with basic colour into socket at lock, remaining feeding eyelets into eyelet support, each fed with its proper colour. Before starting a new row of squares (= series), always put pushers required for design of following trimming colour into rest-position, then knit according to basic principle. Pushers will automatically change their position.

3. Basic principle for fairisle knitting



1st Series: for design of first "square row", put pushers on front bed in rest position

2 rows trimming colour

2 rows basic colour = RC 4

2nd Series: for design of following "square row", put pushers on front bed in rest position

2 rows trimming colour

2 rows basic colour = RC 8

3rd Series: etc.

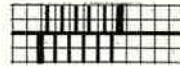
To achieve a nice edge of your knitting . . .

1. The "needle rule" for normal knitting: In order to achieve a nice and even edge arrange the needles always as follows:

- a) front left = first needle
- b) back right = last needle



Even for racking patterns you have to stick to that rule.



basic position



racking over 3 needles

2. Needle position for AX-patterns: When the lock is set to AX only loops are formed, no matter which way the lock is moved. There is a possibility that the edge stitches might drop. In order to achieve a correct edge you have to watch that the edge needles do knit proper stitches.

a) With double-bed knitting:

Front AX—without pattern change (O):

Place into working position the pusher of the left edge needle.



back:	N
front:	AX

Front AX—with pattern change (arrow)

Arrange pushers according to "needle rule".

Front and back AX: There is little use for patterns of this type. Watch the edge stitches carefully.

b) With single-bed knitting:

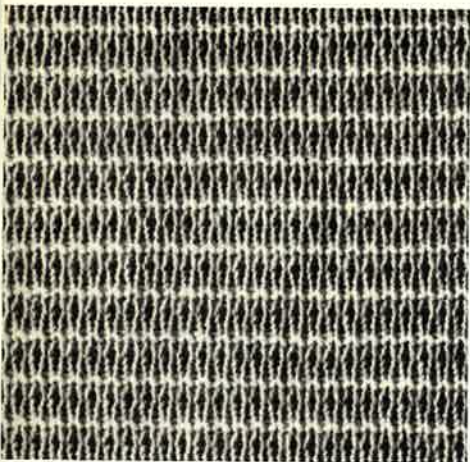
AX—without pattern change: Place the pushers of both edge needles into working position.

AX—with pattern change: Similar to double-bed knitting; on the second bed, however, place only the edge needles in working position. Lock at N.



back:	N
front:	AX ←

A few words concerning the strippers. Unless mentioned otherwise: red strippers for fine yarn (2 ply, 3 ply), blue strippers for 4 ply and over, black strippers for tubular and half tubular knitting, for single bed knitting and for all patterns when 3 or more needles are working side by side on the same bed.



Pattern 201



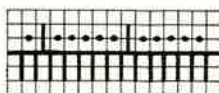
back:

front:

	back:	front:	
3 rows	GX	N	blue
1 row	N	N	blue
3 rows	N	GX	pink
1 row	N	N	pink



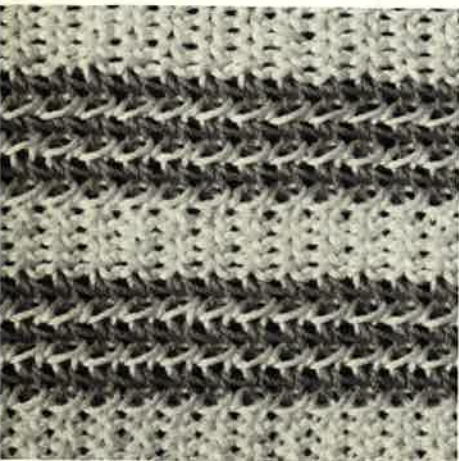
Pattern 202



back:

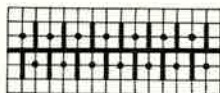
front:

2 rows	N	N, then rack 2 Nds to R
2 rows	AX	N
2 rows	N	N, then rack 2 Nds to L
2 rows	AX	N
repeat		



Pattern 203

handle up



back:

N

front:

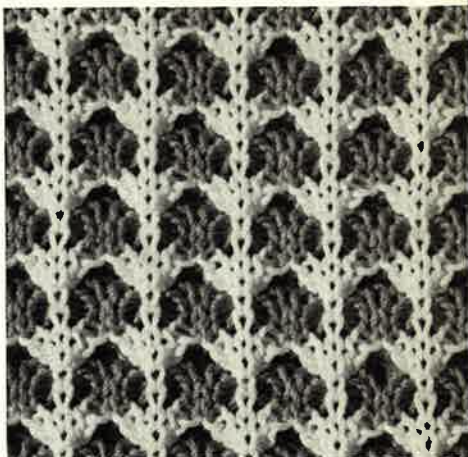
EX (E)

10 rows col 1, then rack 1 1/2 Nds to L
 2 rows col 2, then rack 1 Nd to R - twice
 2 rows col 1, then rack 1 Nd to L - twice
 2 rows col 2, then rack 1 1/2 Nds to R
 repeat

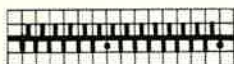
Pattern 204



back: front:
 4 rows AX N blue
 4 rows N AX white

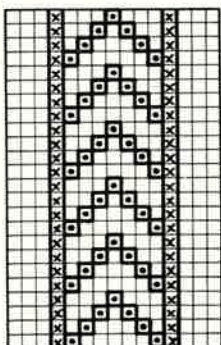


Pattern 205



back: N
 front: CX

Transferpattern



arrange stitches acc. to diagram

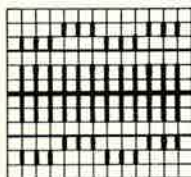
x = front Nds remain out of work

o = transfer front stitch on to adjacent Nd and leave empty Nd in working position Knit 2 rows. Repeat



Pattern 206

handle up



back: BX ←
 front: BX ←

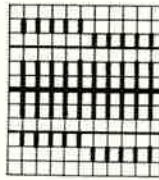
change col after every second row





Pattern 207

handle up



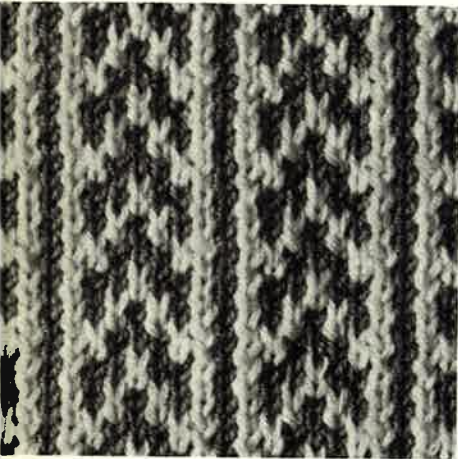
back:

front:

11 rows BX ← BX ←

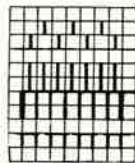
1 row BX → BX →

change col after every second row



Pattern 208

fairisle

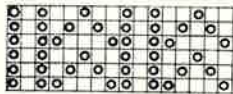


back:

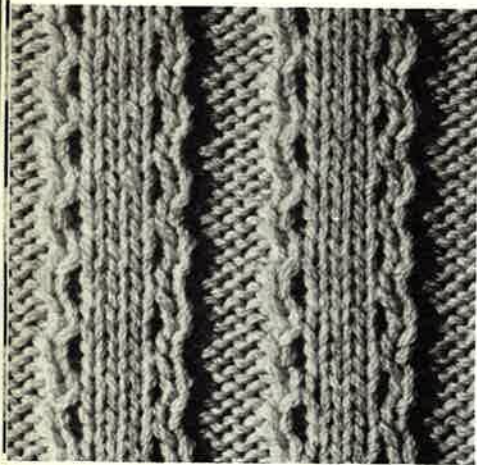
BX

front:

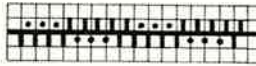
BX



o = trimming col
empty square = basic col



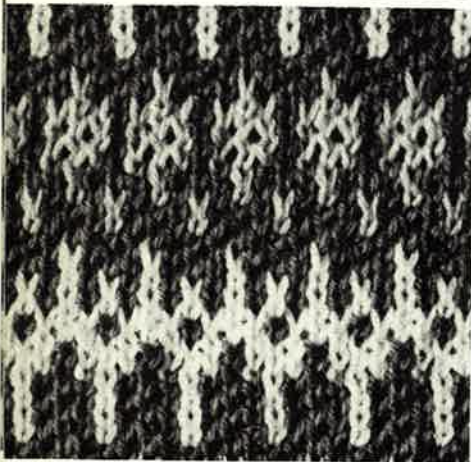
Pattern 211



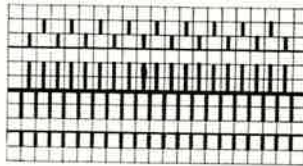
back: N

front: N

knit 2 rows, then rack 1 Nd to L
knit 2 rows, then rack 1 Nd to R

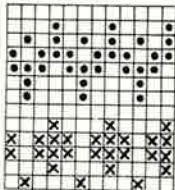


Pattern 212



back: BX ←→

front: BX ←

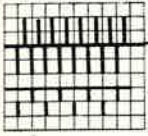


x = red

• = yellow

empty square = blue

Pattern 213

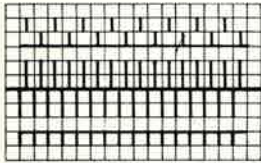


back: N
 front: AX ←
 2 rows, then rack 1 Nd to L - twice
 2 rows, then rack 1 Nd to R - twice

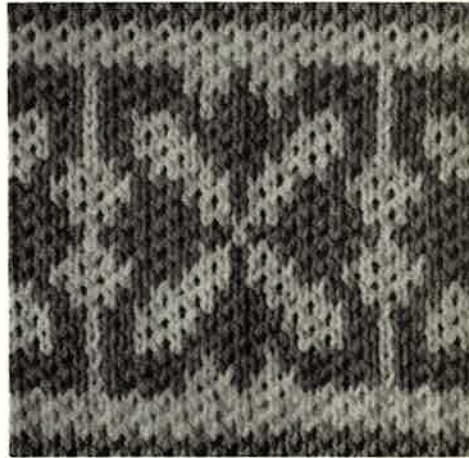


Pattern 214

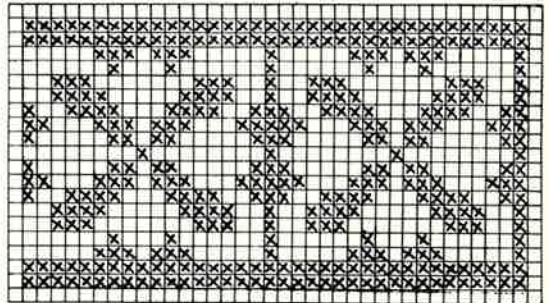
fairisle



back: BX ↔
 front: BX ←



x = white
 empty square = red



Pattern 215



back: N

front:

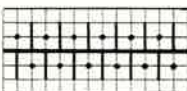
2 rows CX (C) white

6 rows GX (G) light blue

transfer stitch 1 to Nd 4 and
stitch 2 to Nd 3, leave empty
Nds in working position, rack
3 Nds to R,
repeat, however rack 3 Nds
to L.

Pattern 216

handle up



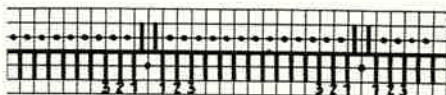
back: N

front: 4 rows EX (E)

2 rows N

repeat

Pattern 217

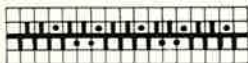


back: N

front: N

knit 6 rows, then transfer 1st stitch
to 3rd Nd, 2nd and 3rd stitch to 1st
and 2nd Nd,
repeat

Pattern 218



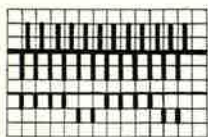
back: N

front: N

knit 2 rows, then rack 1 Nd to R
knit 2 rows, then rack 1 Nd to L



Pattern 219



back: N

front: BX ←

front: set stitch size 1 1/2
numbers higher

2 rows col 1 } 3 times

2 rows col 2 } 3 times

2 rows col 1 } 3 times

2 rows col 4 } 3 times



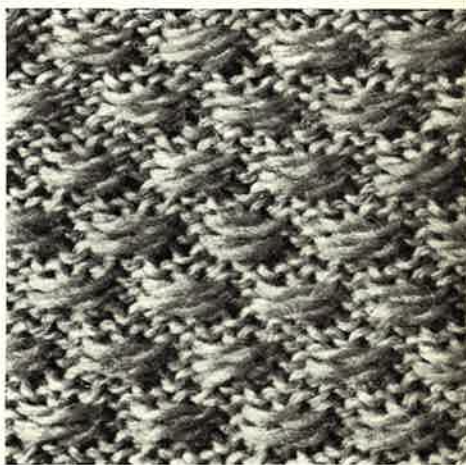
Pattern 220



back: GX

front: 2 rows BX ←

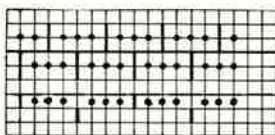
2 rows N O





Pattern 221

handle up



back: N

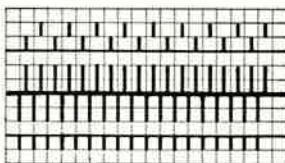
front: 2 rows AX ←

2 rows AX O



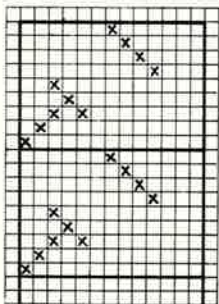
Pattern 222

fairisle



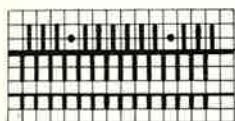
back: BX ←→

front: BX ←

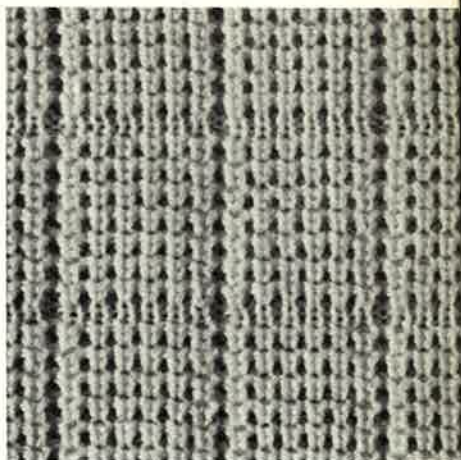


x = trimming col
empty square = basic col

Pattern 223

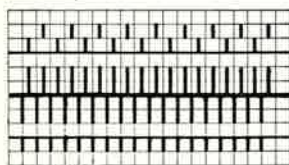


back: N
 front: 28 rows AX ←
 2 rows AX O

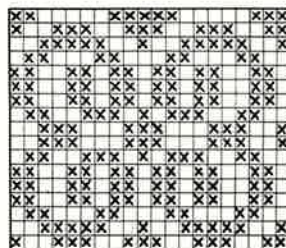


Pattern 224

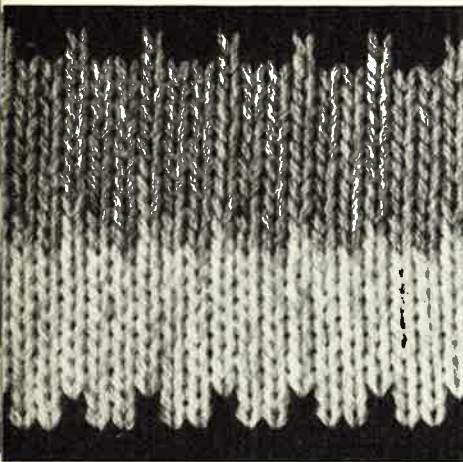
fairisle



back: BX ↔
 front: BX ←



x = trimming col
 empty square = basic col



Pattern 225



back: GX

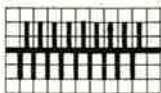
front:

- 8 rows N O col 1 (grey)
- 2 rows BX ← col 1 (grey)
- 2 rows BX ← col 2 (blue)
- 8 rows N O col 2 (blue)
- 2 rows BX ← col 2 (blue)
- 2 rows BX ← col 3 (white)
- 8 rows N O col 3 (white)
- 2 rows BX ← col 3 (white)
- 2 rows BX ← col 1 (grey)



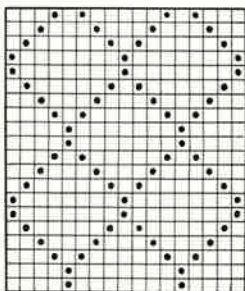
Pattern 226

Transfer pattern



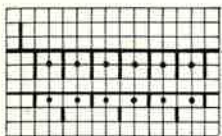
back: N

front: AX



● = on front bed transfer stitch to adjacent Nd, put empty Nd out of work. Knit 2 rows. Repeat, but additionally put into working position the Nd which **beforehand** was out of work.

Pattern 227



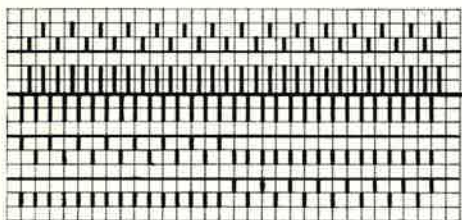
back: N

front: AX ←



Pattern 228

fairisle



back: BX ← →

front: BX ←

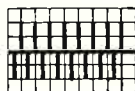
I 2 rows white } 15 times
2 rows light brown

II 2 rows light brown } 15 times
2 rows white



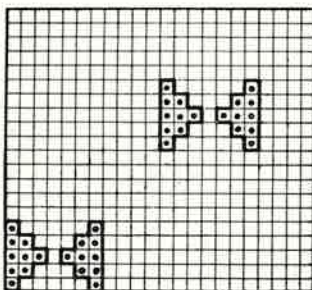
Pattern 229

raised pattern



back: N

front: CX (C)



black strippers, acc. to diagramm.

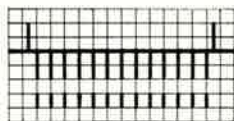
● = on front bed transfer stitch to adjacent Nd, put Nd out of work, knit 2 rows.

Or on front bed put Nd into working position, knit 2 rows.



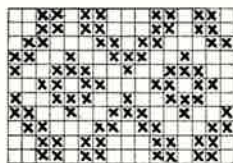
Pattern 230

fairisle on single bed



back: N

front: BX ←



knit fairisle acc. to diagram

x = red, empty square = yellow

Pattern 231



back: GX

front:

1st 2 rows BX O col 1

Series 2 rows BX ← col 2

2 rows BX O col 1

2 rows BX ← col 2

8 rows N O col 2

2nd 2 rows BX O col 2

Series 2 rows BX ← col 1

2 rows BX O col 2

2 rows BX ← col 1

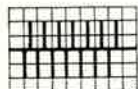
8 rows N O col 1

repeat



Pattern 232

Transfer pattern, black strippers



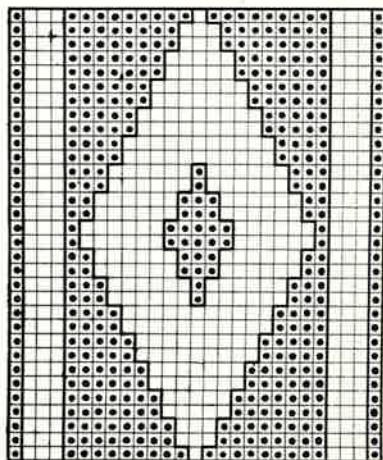
back: N

front: CX (C)



● = on front bed transfer stitch to adjacent Nd,
put Nd out of work, knit 2 rows.

Or put Nds of front bed into working position,
knit 2 rows.





Pattern 233



back: - GX

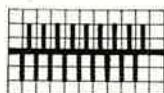
front:

2 rows N O col 1 (blue)
 2 rows BX ← col 1 (blue)
 2 rows BX ← col 2 (white)
 2 rows BX ← col 2 (white)
 2 rows BX ← col 1 (blue)
 6 rows N O col 2 (white)



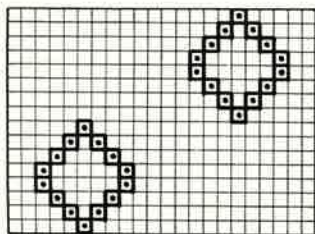
Pattern 234

raised pattern



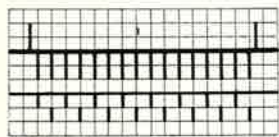
back: N

front: CX



● = on front bed transfer stitch to adjacent Nd, put empty Nd out of work knit 2 rows. Repeat, but additionally put into working position the Nd which **beforehand** was left out of work.

Pattern 235



back: N
 front: 2 rows AX ←
 2 rows N O

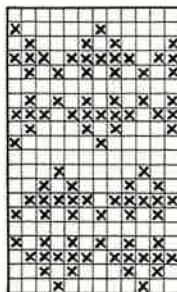


Pattern 236

fairisle, on single bed



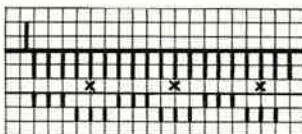
back: GX
 front: BX ←



x = red
 empty square = white



Pattern 237



back: N

front:

2 rows N
 1 row BX ←
 1 row N O
 1 row BX
 3 rows N
 hang threads on Nds x
 repeat reversing



Pattern 238

black strippers



back:

front:

4 rows N GX col 1 (blue)

then with double-decker needle transfer 1st and 2nd stitch to 3rd and 4th Nd, 5th and 6th stitch to 7th and 8th Nd etc. Empty Nds remain in working position.

2 rows N N col 2 (white)
 repeat reversing



Pattern 239



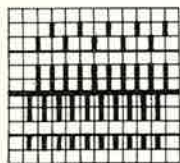
back: EX

front: EX

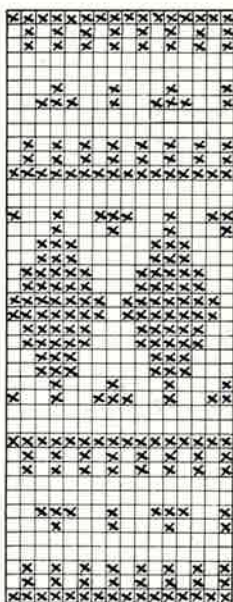
knit 2 rows, then rack 3 Nds to L
 knit 2 rows, then rack 3 Nds to R

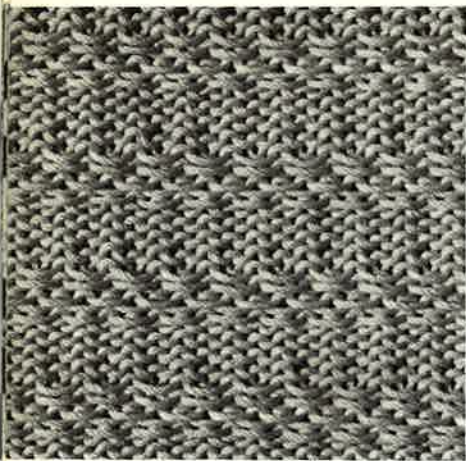
Pattern 240

fairisle



back: BX ← →
front: BX ← →





Pattern 241

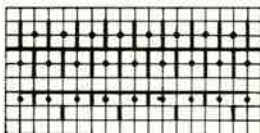


back: GX

front: 4 rows N O
6 rows BX ←



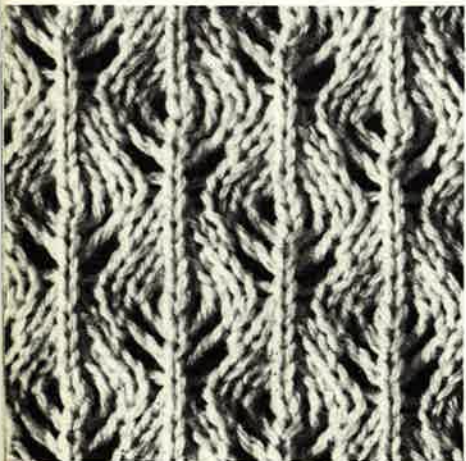
Pattern 242



back: N

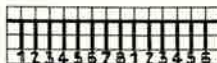
front:

2 rows AX ← white
2 rows AX O golden (Lurex)



Pattern 243

transfer pattern



back: GX

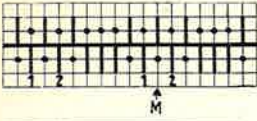
front: N

with triple-decker needle transfer 1st, 2nd, 3rd stitch by 1 Nd to R and 5th, 6th, 7th stitch by 1 Nd to L.

Leave empty Nds in working position, knit 2 rows. After 6 rows repeat reversing, viz.

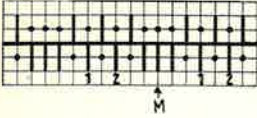
transfer 5th, 6th, 7th stitch by 1 Nd to R and 1st, 2nd, 3rd stitch by 1 Nd to L, knit 2 rows, after 6 rows repeat from very beginning.

Pattern 244



back: N I

front: N



back: N II

front: N

M = centre

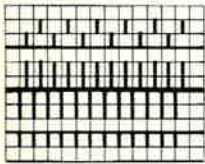
Needle division as per I: knit 2 rows, then cross 1 and 2
knit 2 rows, transfer all stitches to front bed
knit 2 rows

Needle division as per II: knit 2 rows, then cross 1 and 2
knit 2 rows, transfer all stitches to front bed
knit 8 rows. Repeat.



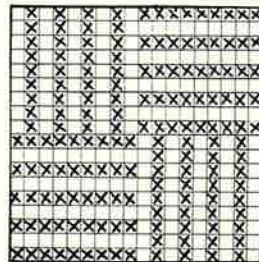
Pattern 245

fairisle



back: BX ← →

front: BX ← →



x = white
empty square = grey

Pattern 246



back: EX

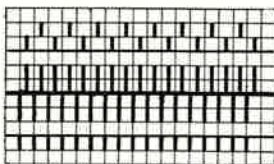
front: EX

4 rows, then rack 1 Nd to R
4 rows, then rack 1 Nd to L



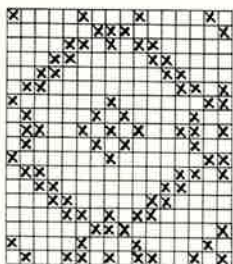
Pattern 247

fairisle



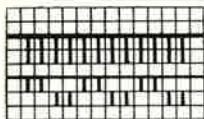
back: BX \longleftrightarrow

front: BX \longleftarrow



x = brown
empty square = yellow

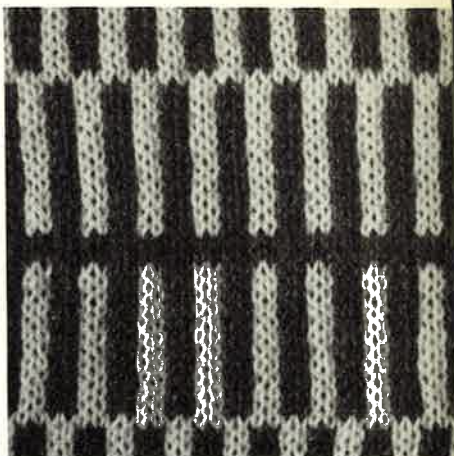
Pattern 248



back: GX

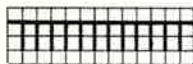
front: BX

2 rows white, 2 rows olive, 5 times.
 4 rows white.
 2 rows olive, 2 rows white, 5 times.
 6 rows olive.



Pattern 249

Transfer pattern, black strippers

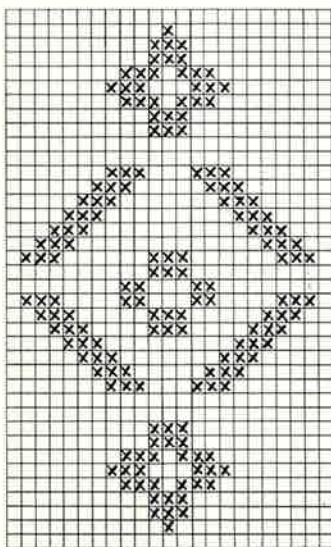


back: N

front: N



x = st on back bed
 Repeat pattern reversing





Pattern 250

carpet pattern

set stitch size 2 or 3 numbers lower on front bed

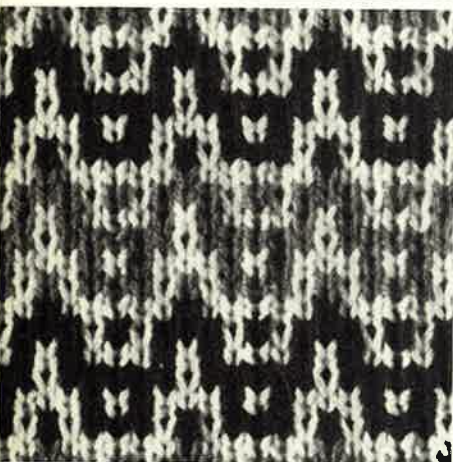


back: EX

front: CX

2 rows both locks

2 rows front lock only



Pattern 251



back: N

front: BX (N)

according to diagram

x = pushers in R. P.

1st Series:

according to pattern pushers in R. P., 2 rows white, pushers back to W. P.

2nd Series:

according to pattern pushers in R. P., 2 rows red, pushers back to W. P.

3rd and 5th Series: as first

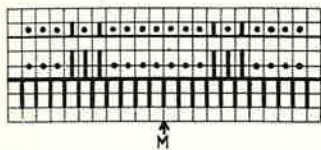
4th and 6th Series: as second

1st-6th Series: repeat with blue (instead of red)



Pattern 252

black strippers



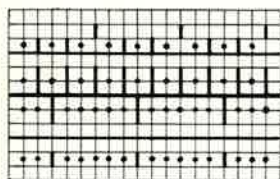
back: FX

front: N

knit 2 rows, then rack 1 nd to R
knit 2 rows, then rack 1 nd to L



Pattern 253



back: BX ← →

front: AX ← →

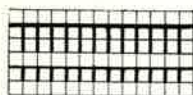
2 rows blue

2 rows white



Pattern 254

Work pattern according to diagram



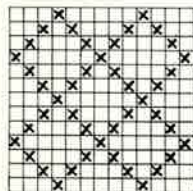
back: GX

front: BX

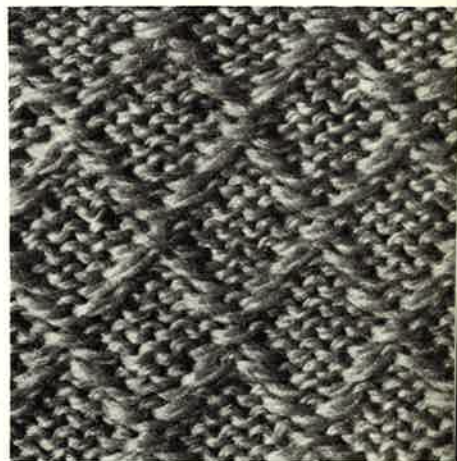
Arrange pushers according
to diagram

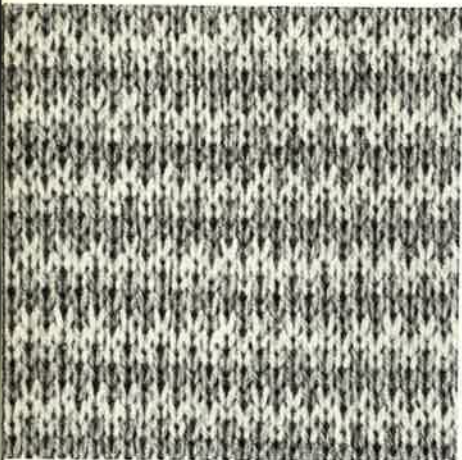
knit 2 rows

repeat



x = pushers in R.P.





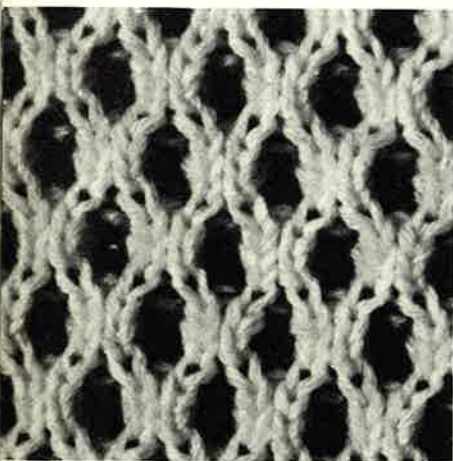
Pattern 255



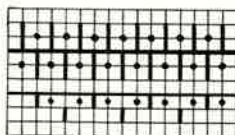
back: N

front: BX

change colour after every 4th row



Pattern 256



back: front:

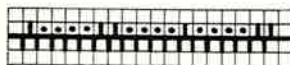
4 rows N AX O

2 rows GX N

white, yellow or blue



Pattern 257

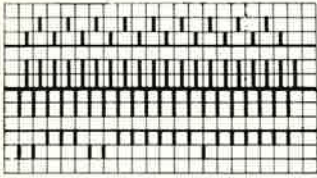


back: N

front: N

knit 1 row, then rack 1 nd to R
knit 1 row, then rack 1 nd to L

Pattern 258



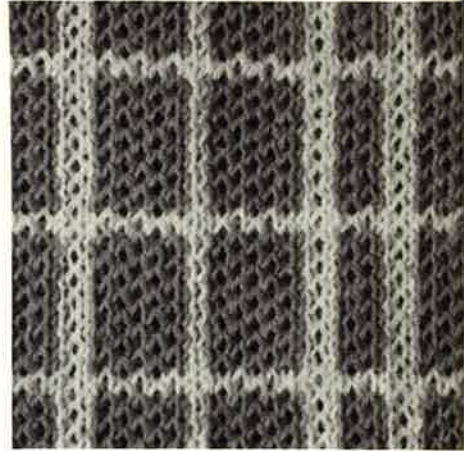
back: BX \longleftrightarrow

front: BX \longleftarrow

6 times: 2 rows white, 2 rows red,
4 rows white

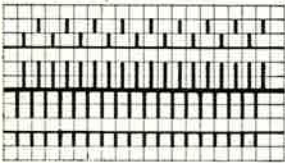
3 times: 2 rows white, 2 rows red,
4 rows white

6 times: 2 rows white, 2 rows red,
4 rows white



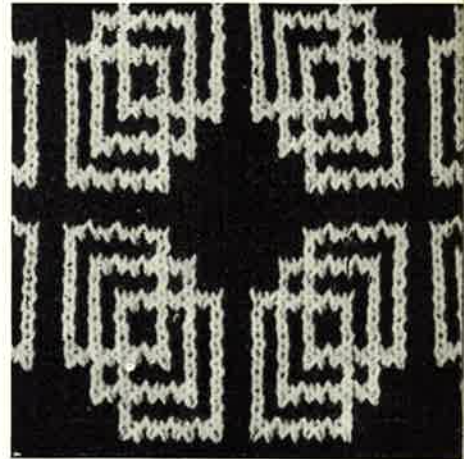
Pattern 259

fairisle, with pushers

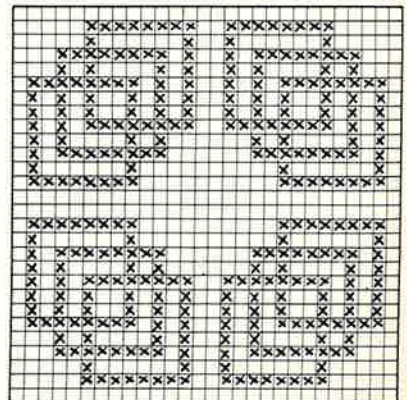


back: BX \longleftrightarrow

front: BX \longleftarrow

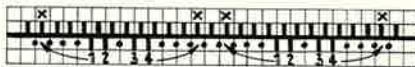


x = trimming colour
empty square = basic colour





Pattern 260



back: N

front: EX

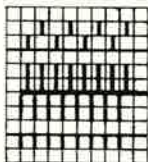
lock at left

knit 6 rows, put sts 1 and 4 to the back needle bed (X)



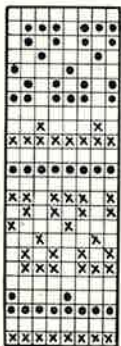
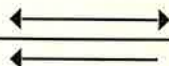
Pattern 261

fairisle according to diagram



back: BX

front: BX

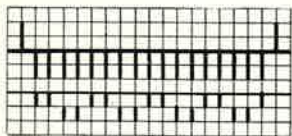


x = red

• = blue

empty square = white

Pattern 262

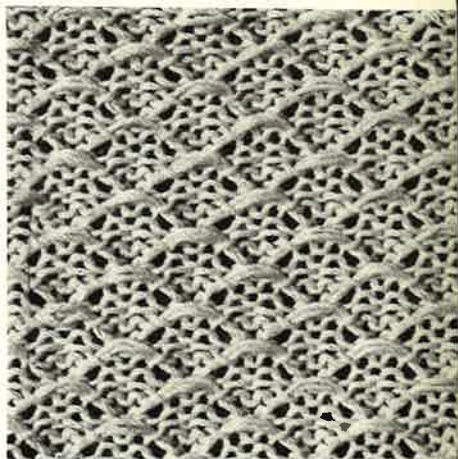


back: N

front:

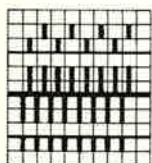
2 rows AX ←

2 rows N O



Pattern 263

fairisle



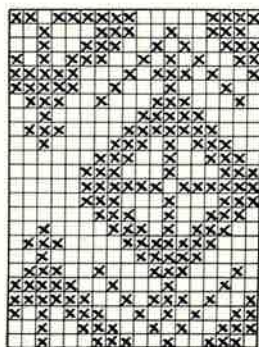
back: BX



front: BX

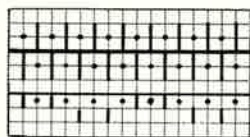


x = anthracite
empty square = white



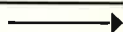


Pattern 264

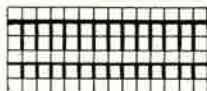


back: N

front: AX

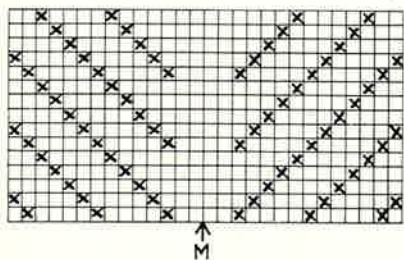


Pattern 265



back: GX

front: AX



work pattern according to diagram.
 x = pushes out of work, knit 2 rows
 M = centre

Pattern 266



back: N

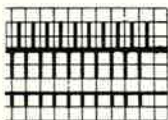
front: EX

2 rows, then rack 1 nd to L
2 rows, then rack 1 nd to R
repeat



Pattern 267

fairisle

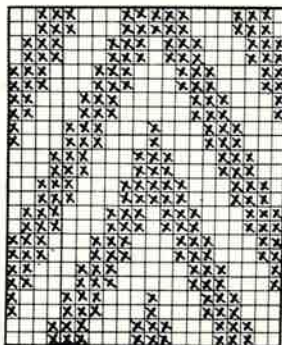


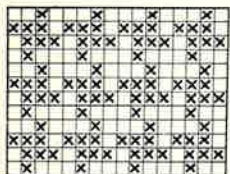
back: N

front: BX ←



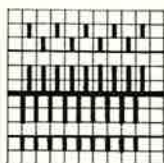
x = black
empty square = green





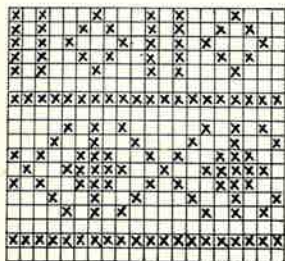
Pattern 268

Hen-Track pattern



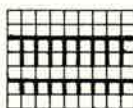
back: BX ←→

front: BX ←→



Pattern 269

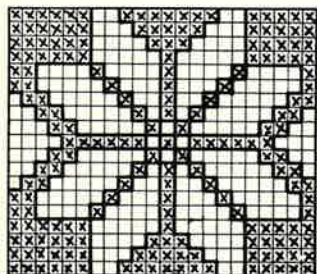
One-bed fairisle, according to diagram



back: GX ←→

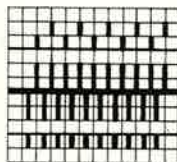
front: BX ←→

empty square = 2 rows blue
x = 2 rows white



Pattern 270

fairisle according to diagram



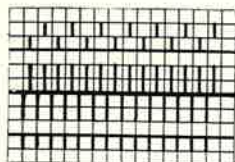
back: BX ←→

front: BX ←→

x = blue
empty square = white
repeat pattern reversing

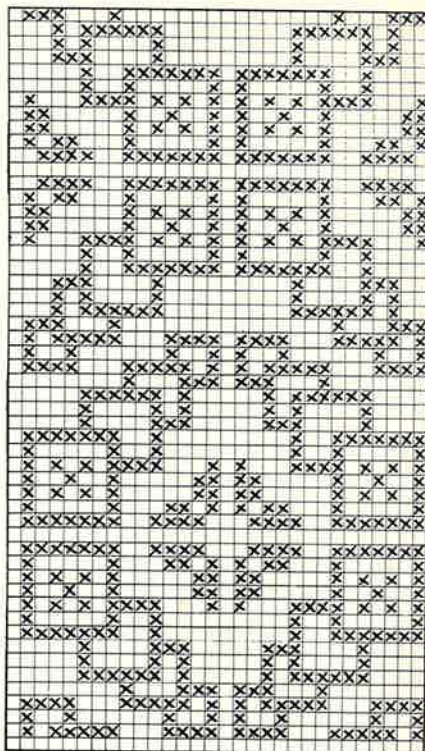
Pattern 271

work according to diagram



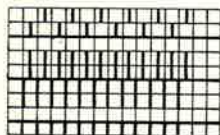
back: BX \longleftrightarrow
 front: BX \longleftarrow

x = yellow
 empty square = black



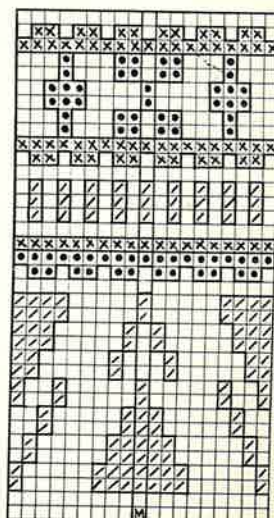
Pattern 272

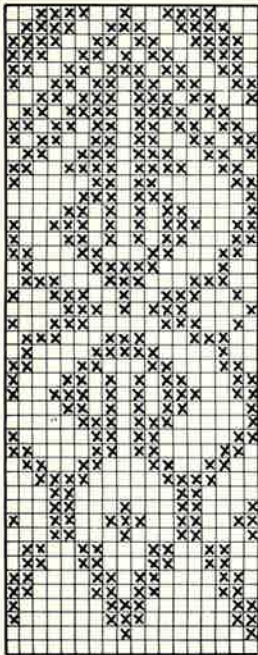
fairisle



back: BX \longleftrightarrow
 front: BX \longleftarrow

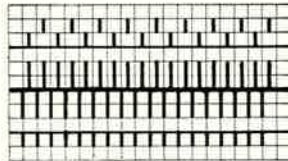
/ = cognac, ● = dark blue, x = light blue,
 empty square = white, M = centre



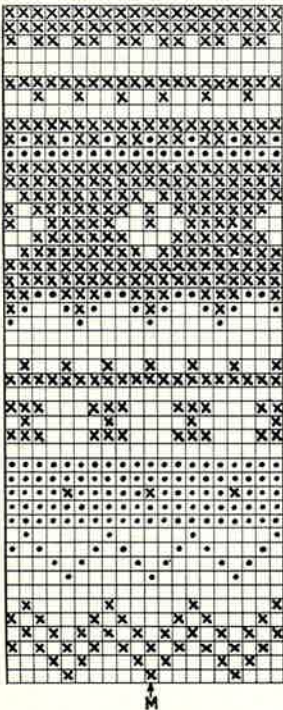


Pattern 273

cover page, fairisle
work according to diagram

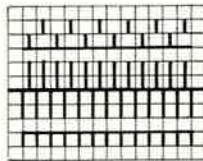


x = white
empty square = navy blue



Pattern 274

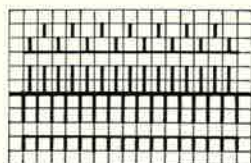
fairisle, work according to diagram



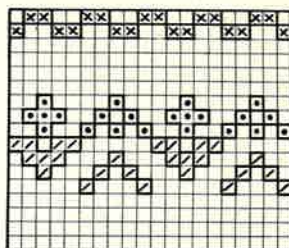
x = blue, • = white, empty square = brown
M = centre of fairisle pattern

Pattern 275

fairisle



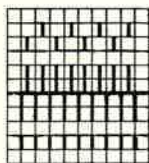
back: BX \longleftrightarrow
 front: BX \longleftarrow



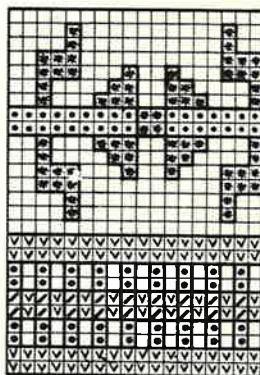
/ = white, • = red, x = black, empty square = blue

Pattern 276

fairisle



back: BX \longleftrightarrow
 front: BX \longleftarrow



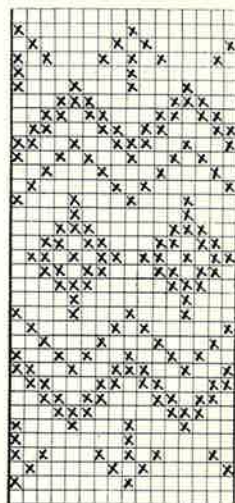
/ = dark blue, v = white, • = yellow, * = brown, empty square = light blue

Pattern 277

fairisle, knit according to diagram



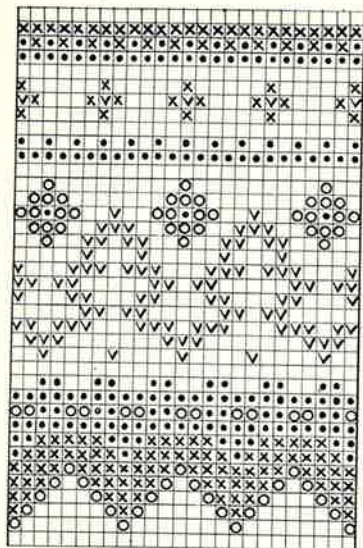
back: GX
 front: BX \longleftarrow



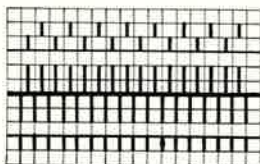
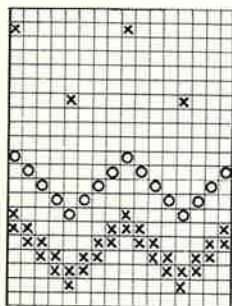
x = dark green, empty square = cognac

Pattern 278

fairisle



M



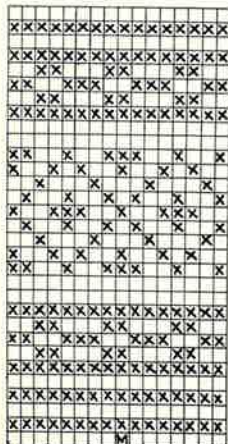
back: BX ← →

front: BX ←

x = dark green, • = red, v = cognac, O = yellow,
empty square = light green

Pattern 279

fairisle on single bed



M



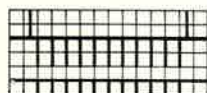
back: GX

front: BX ←

x = red, empty square = white

Pattern 280

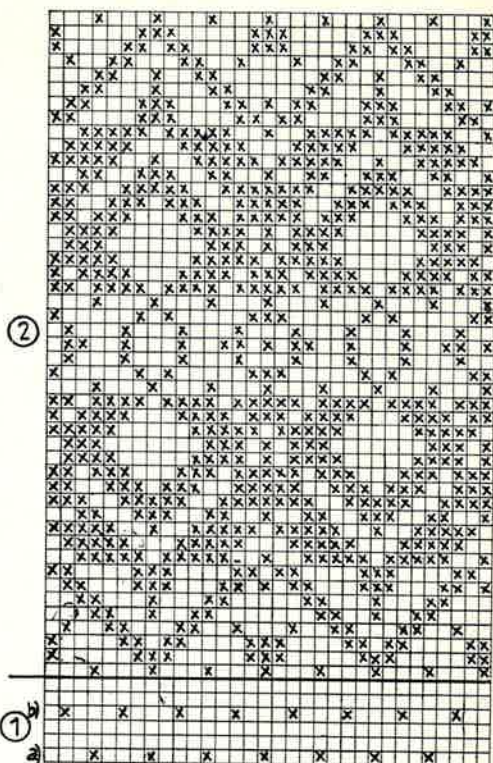
One-bed fairisle according to diagrams 1 and 2



back: N

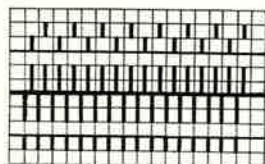
front: BX ←

x = white, empty square = cognac



Pattern 281

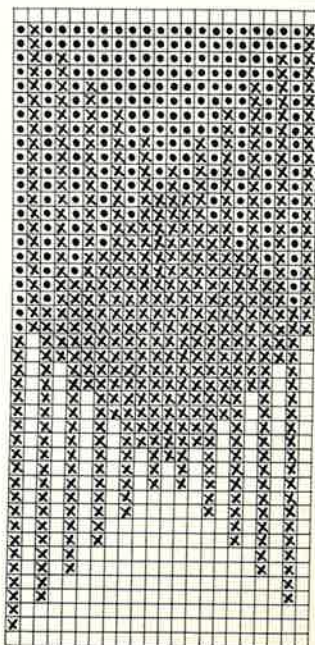
fairisle, work according to diagram



back: BX ← →

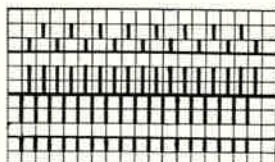
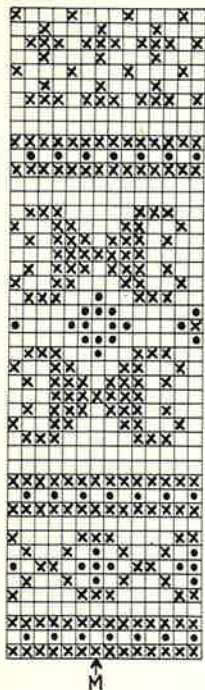
front: BX ←

x = green, • white, empty square = light brown



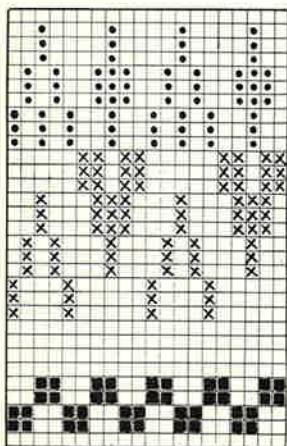
Pattern 282

fairisle, knit according to diagram



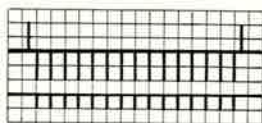
back: BX \longleftrightarrow
front: BX \longleftarrow

x = red, • = white, empty square = blue



Pattern 283

fairisle



back: N

front: BX

press arrowed keys
according to need

■ = black, x = white, • = green, empty square = red. 1 square = 1 st and 1 row, start fairisle with lock at left





PASSAP-EXPORT Dietikon /ZH (Switzerland)