



# PASSAP®

DUOMATIC

Muster  
Patterns  
Dessins  
Disegni  
Desenhos  
Malleja  
Diseños  
ΣΧΕΔΙΑ  
Wzory  
Mønster  
Mönster  
Patroonen



PASSAP -STEKENBOEK Nr. 2 VOOR DE  
PASSAP DUOMATIC EN DE PASSAP 12.

Hieronder vindt U een verklaring van de verschillende gebruikte tekens en afkortingen, alsmede enige nuttige aanwijzingen.

En nu... aan het werk!

Met de PASSAP kunt U Uw fantasie de vrije loop laten!

Verklaring van tekens en afkortingen:

Bij het begin van ieder patroon dient het slot rechts te staan. Brei dus na het opzetten en de sluittoeren nog 1 toer zonder patroon.

NLD	=	naald
KL	=	kleur
LI	=	links
RE	=	rechts
V	=	verzet
T	=	toer of toeren
TT	=	toerenteller
←----	=	druk de linker pijltoets in
----→	=	druk de rechter pijltoets in
←----→	=	druk de beide pijltoetsen in
O	=	druk op de middentoets

Enige nuttige wenken.

Bij AX EX patronen op het achterste naaldenbed links een naald meer in werking.

Voor BX patronen (Jacquard) steeds zwarte afstrijkers gebruiken.

Op de PASSAP 12 kunnen die patronen gebreid worden, die in het stekenboek beschreven staan onder N, CX, EX, en GX, zowel met als zonder verzet.

Op de DUOMATIC kunt U elk kruissteekpatroon gebruiken, wat op de PASSAP 12 niet mogelijk is.

### PATROON 201

Achter:	Voor:	
3T GX	N	Blauw
1T N	N	Blauw
3T N	GX	Rose
1T N	N	Rose

### PATROON 202

Achter:	Voor:	
2T N	N V 2 NLD naar RE	
2T AX	N	
2T N	N V 2 NLD naar LI	
2T AX	N	

Herhalen

### PATROON 203

Achter:	N
---------	---

---

Voor:	EX (E)
-------	--------

Slinger boven

10T KL 1, V  $1\frac{1}{2}$  NLD naar LI

2x 2T KL 2, V 1 NLD naar RE

2x 2T KL 1, V 1 NLD naar LI

2T KL 2, V  $1\frac{1}{2}$  NLD naar RE

Herhalen

### PATROON 204

Achter:	Voor:	
4T AX	N	Blauw
4T N	AX	Wit

### PATROON 205

Achter:	N
---------	---

---

Voor:	CX
-------	----

Steken volgens schema indelen.

X Voorste NLD buiten werking zetten.

\* Voorste steek op naaste steek hangen. Lege NLD in werkstand laten.

2T Breien.

### PATROON 206

Slinger boven

Achter: BX ←----

---

Voor: BX ←----

Om de 2 toeren de kleuren verwisselen.

### PATROON 207

Slinger boven

Achter: Voor:  
II T BX ←---- BX ←----  
I T BX -----> BX ----->

Om de 2 toeren kleuren verwisselen.

### PATROON 208

JACQUARD

Achter: BX ←---->

---

Voor: BX ←----

Volgens schema naald gidsen instellen.

O Inbrei kleur

▲ Hoofdkleur

### PATROON 209

Achter: EX (E)

---

Voor: N

4 T Breien. Dan de steek van het achterbed naar voor brengen.

NLD in werking laten

V 3 NLD naar rechts

herhalen, maar nu

V 3 NLD naar links.

### PATROON 210

JACQUARD

Achter: BX ←---->

---

Voor: BX ←----

Volgens schema naaidgidsen instellen.

X Inbrei kleur

▲ Hoofdkleur

#### PATROON 215

Achter: N

---

Voor: 2T CX (C) Wit  
6T GX (G) Blauw

Steek 1 op NLD 4 en  
Steek 2 op NLD 3 hangen.  
Lege NLD in werking laten.  
V 3 NLD naar RE herhalen,  
maar nu V 3 NLD naar LI.

#### PATROON 216

Achter: N

---

Voor: 4T EX (E)  
2T N

Herhalen

#### PATROON 217

Achter: N

---

Voor: N

6T Dan 1e st. op 3 NLD hangen, 2  
en 3e st. op 1e en 2e NLD hangen.

Herhalen

#### PATROON 218

Achter: N

---

Voor: N

2T, dan V 1 NLD naar RE  
2T, dan V 1 NLD naar LI

#### PATROON 219

Achter: N

---

Voor: BX  $\zeta$ ----

Voor steek Gr.  $1\frac{1}{2}$  Nr. groter.

3 x        2T KL 1  
            2T KL 2

3 x        2T KL 1  
            2T KL 3

3 x        2T KL 1  
            2T KL 4

PATROON 220

Achter:        GX

---

Voor:            2T BX ←----  
                  2T N        O

PATROON 221

Slinger boven

Achter:        N

---

Voor:            2T AX ←----  
                  2T AX        O

PATROON 222

Achter:        BX ←----→

---

Voor:            BX ←----

PATROON 223

Achter:        N

---

Voor:            28T AX ←----  
                  2T AX        O

PATROON 224

Achter:        BX ←----→

---

Voor:            BX ←----

PATROON 225

Achter:        GX

---

Voor:	8T	N	○	KL 1
	2T	BX	←----	KL 1
	2T	BX	←----	KL 2
	8T	N	○	KL 2
	2T	BX	←----	KL 2
	2T	BX	←----	KL 3
	8T	N	○	KL 3
	2T	BX	←----	KL 3
	2T	BX	←----	KL 1

PATROON 226  
RELIEF PATROON

Achter: N

---

Voor: CX

\* = Voorste steek op naaste steek hangen. Lege NLD buiten werking. 2T Breien. Herhalen. Doch elke keer de NLD die buiten werking was, in arbeid brengen.

PATROON 227

Achter: N

---

Voor: AX ←----

PATROON 228  
JACQUARD

Achter: BX ←--->

---

Voor: BX ←----

I 15 keer ( 2T Wit  
( 2T Bruin

II 15 keer ( 2T Bruin  
( 2T Wit

PATROON 229  
RELIEF PATROON

Achter: N

---

Voor: CX (C)

Zwarte afstrijkers  
\* Voorste steek op naaste steek brengen. NLD buiten werking. 2T Breien.



Nu voor NLD in arbeid . 2T Ereien.

PATROON 230

Achter: N

---

Voor: BX ←----

X = Rood      ▲ = Geel

PATROON 231

Achter: GX

---

Voor: 2T BX O KL 1  
2T BX ←---- KL 2  
2T BX O KL 1  
2T BX ←---- KL 2  
8T N O KL 2  
2T BX O KL 2  
2T BX ←---- KL 1  
2T BX O KL 2  
2T BX ←---- KL 1  
8T N O KL 1

Herhalen

PATROON 232  
RELIEF PATROON

Zwarte afstrijkers

Achter: N

---

Voor: CX (C)

PATROON 233

Achter: GX

---

Voor: 2T N O KL 1  
2T BX ←---- KL 1  
2T BX ←---- KL 2  
2T BX ←---- KL 2  
2T BX ←---- KL 1  
6T N O KL 2

PATROON 234

Achter: N

---

Voor: CX

Voor verwerking patroon, zie patroon 226.

### PATROON 235

Achter: N

---

Voor: 2T AX ←----  
2T N O

### PATROON 236

Achter: GX

---

Voor: BX ←----  
X Rood ▲ Wit

### PATROON 237

Achter: N

---

Voor: 2T N  
1T BX ←----  
1T N O  
1T BX  
3T N

Spandraden op de NLD X hangen.  
Patroon laten verspringen.

### PATROON 238

Zwarte afstrijkers

Achter: Voor:

---

4T N GX KL 1

Met de 2 ogige NLD die  
1 + 2 st. op 3 + 4 st. hangen  
5 + 6 st. op 7 + 8 st. hangen  
enz. Lege NLD in arbeid laten.

2T N N KL 2

Versprongen herhalen.

### PATROON 239

Achter: EX

---

Voor: EX

2T dan V 3 NLD naar LI  
2T dan V 3 NLD naar RE

#### PATROON 240

Achter: BX ←---→

---

Voor: BX ←----

#### PATROON 241

Achter: GX

---

Voor: 4T N O  
6T BX ←----

#### PATROON 242

Achter: N

---

Voor: 2T AX ←---- Wit  
2T AX O Lurex

#### PATROON 243

Overhang patroon naar schema ver-  
werken.

Achter: GX

---

Voor: N

Met de 3 ogige NLD de 1.2.3 st.  
naar rechts op de 5.6.7 st. hangen.  
Lege NLD in werkstand laten. 2 T  
Breien. Nu nog 6 T Breien en het  
patroon versprongen herhalen.

#### PATROON 244

Achter: N

---

Voor: N

Achter: N

---

Voor: N  
M is midden

No. I 2T Br. dan 1 en 2 kruisen.  
2T Br. alle st. naar het  
voorstede bed brengen.  
2T Br.

No. 2    2T Br. dan 1 en 2 kruisen.  
          2T Ex. alle st. op voorste  
          bed brengen.  
          8T Br. herhalen.

PATROON 245

Achter:            BX ←----→

---

Voor:             BX ←-----

X = Wit  
▲ = Grijs

PATROON 246

Achter:            EX

---

Voor:             EX

4T V 1 NLD naar RE  
4T V 1 NLD naar LI

PATROON 247

Achter:            BX ←----→

---

Voor:             BX ←-----

X = Bruin  
▲ = Geel

PATROON 248

Achter:            GX

---

Voor:             BX ←-----

5 Keer    2T Wit        2T Olijf  
          4T Wit  
5 Keer    2T Olijf        2T Wit  
          6T Olijf

PATROON 249

Overhang patroon

Achter:            N

---

Voor:             N

X = st. op achterste bed hangen.  
Patroon laten verspringen.

PATROON 250  
TAPIJTSTEEK

St. gr. voor 2 - 3 No. kleiner zetten.

Achter: EX

---

Voor: CX

2T Br. met beide sloten

2T Br. alleen voorste slot

PATROON 251

Achter: N

---

Voor: BX (N)

Werken volgens schema

X = NLD gids in ruststand

1 + 2 T Rood - Wit

3 + 5 T Als eerste T

4 + 6 T Als tweede T

1 + 6 T Met Blauw en Rood herha-  
len.

PATROON 252

Zwarte afstrijkers

Achter: FX

---

Voor: N

2T Br. dan V 1 NLD naar RE

2T Br. dan V 1 NLD naar LI

PATROON 253

Achter: BX <--->

---

Voor: AX <----

2T Blauw

2T Wit

PATROON 254

Achter: GX

---

Voor: BX

NLD gidsen naar patroon uitzetten.

2T Br.

Herhalen.

X = NLD gids in ruststand.

PATROON 255

Achter: N

---

Voor: BX ←----

Na 4T de kleur verwisselen.

PATROON 256

Achter: Voor:

---

4T N AX O  
2T GX N ←----

Wit, geel of blauw.

PATROON 257

Achter: N

---

Voor: N

1T Br. V 1 NLD naar RE

1T Br. V 1 NLD naar LI

PATROON 258

Achter: BX ←--->

---

Voor: BX ←----

6 Keer ( 2T Wit / 2T Rood  
( 4T Wit

3 Keer ( 2T Wit / 2T Rood  
( 4T Wit

6 Keer ( 2T Wit / 2T Rood  
( 4T Wit

PATROON 259

Achter: BX ←--->

---

Voor: BX ←----

X = Inbrei kleur

▲ = Hoofdkleur

PATROON 260

Achter: N

---

Voor: EX

Slot links.

6T Br. st. 1 en 4 op het achterste  
bed XX hangen.

PATROON 261

Achter: BX ←---→

---

Voor: BX ←-----

X = Rood  
. = Blauw  
▲ = Wit

PATROON 262

Achter: N

---

Voor: 2T AX ←-----  
2T N O

PATROON 263

Achter: BX ←---→

---

Voor: BX ←-----

PATROON 264

Achter: N

---

Voor: AX -----→

PATROON 265

Achter: GX

---

Voor: AX

X = NLD gids in rust 2T Br.  
M = Midden.

PATROON 266

Achter: N

---

Voor: EX

2T dan V 1 NLD naar LI  
2T dan V 1 NLD naar RE  
Herhalen

PATROON 267

Achter: N

---

Voor: BX ←-----

X = Zwart

▲ = Groen

PATROON 268

HANENPOOT

Achter: BX ←-----→

---

Voor: BX ←-----

PATROON 269

Noors op enkelbed.

Achter: GX

---

Voor: BX ←-----

▲ = 2T Blauw

X = 2T Wit

PATROON 270

Achter: BX ←-----→

---

Voor: BX ←-----

X = Blauw

▲ = Wit

Patroon steeds laten verspringen.

PATROON 271

Achter: BX ←-----→

---

Voor: BX ←-----

X = Geel      ▲ = Zwart

1 ▲ = 1 st. = 2T = 4 aanslagen op TT

PATROON 272

Achter: BX ←-----→

---

Voor: BX ←-----



I = Cognac = Blauw  
X = Lichtblauw ▲ = Wit  
M = Midden

#### PATROON 273

Achter: BX ←---→

---

Voor: BX ←----

#### PATROON 274

Achter: BX ←---→

---

Voor: BX ←----

X = Blauw . = Wit

▲ = Bruin

M = Midden

#### PATROON 275

Achter: BX ←---→

---

Voor: BX ←----

I = Wit . = Rood X = Zwart

▲ = Blauw

#### PATROON 276

Achter: BX ←---→

---

Voor: BX ←----

I = Donkerblauw V = Wit

. = Geel \* = Bruin

▲ = Lichtblauw

#### PATROON 277

Achter: GX

---

Voor: BX ←----

X = Donkergroen ▲ = Cognac

#### PATROON 278

Achter: BX ←---→

---

Voor: BX ←----

X = Donkergroen . = Rood  
V = Cognac O = Geel  
▲ = Lichtgroen

PATROON 279

Achter: GX

---

Voor: BX ←-----

X = Rood ▲ = Wit

PATROON 280

Noors op enkelbed volgens patroon  
1 en 2.

Achter: N

---

Voor: BX ←-----

X = Wit ▲ = Cognac

PATROON 281

Achter: BX ←---->

---

Voor: BX ←-----

X = Groen . = Rood  
▲ = Lichtbruin

PATROON 282

Achter: BX ←---->

---

Voor: BX ←-----

X = Rood . = Wit  
▲ = Lichtblauw

PATROON 283

Achter: N

---

Voor: BX

Inbrei patroon met slot links begin-  
nen.

NLD gidsen naar patroon instellen.

■ = Zwart X = Wit . = Groen

▲ = Rood 1 ▲ = 1 st. + 1 T.

# **PASSAP Stitch Pattern Book No. 2 for PASSAP-DUOMATIC and PASSAP 12**

For description of pattern on cover, see page 36

## **The more you get—the more you want!**

A splendid reception was given to our first stitch pattern book and new friends are joining daily. We discovered with pleasure that the number of «gluttons» looking forward to another volume is still increasing. So we decided for a second collection hoping it will find your appreciation, too.

## **Experience having shown**

that many DUOMATIC owners make fairisle knitting a hobby, an appropriate wider choice was ensured for this new collection. Those who still remain unsatisfied, may find an unlimited choice of cross-stitch diagrams in one of their granny's embroidery books. Lots of these designs may easily be copied for an attractive fairisle stitch pattern.

## **Yet not merely fairisle patterns**

are suggested. There are other attractions as well waiting for you: transfer patterns, raised patterns, half tubular knitting, racking patterns, stripes on plain surface, stripes on purl surface, etc.—always with regard to the variety of fashionable yarns. Photos themselves will often show the material chosen for a specific pattern.

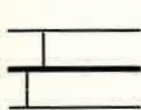
## **PASSAP 12**

will also knit patterns described here under N, CX, EX or GX either with or without racking. For these patterns simply adjust your lock to N, C, E or G accordingly. Fairisle, however, is less well-suited for PASSAP 12 unless you decide to use heel-deckers available from every PASSAP-dealer.

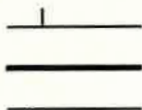
**KNOW-HOW is everything in life, and this applies to knitting PASSAP as well. Below we may give some useful hints. Please read them carefully and try to remember them well. You will thus avoid making mistakes.**

### Here are the main points

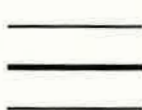
For starting position for a pattern, always keep lock on the right, i. e. knit an additional row



Needles in working position



Pushers in working position



Pushers in rest position



Needle or pusher in neutral position

## Fairisle knitting

### 1. Squares in diagrams

1 square = 1 stitch, i. e. in width 1 square equals 1 stitch. 1 square = 2 rows, i. e. in height 1 square equals 2 knitted rows.

For these 2 rows move the lock 4 times, twice for nds and pushers of the trimming col and twice for nds and pushers of the basic col. RC will show 4.

Hence: 1 square = 1 st and 2 rows = RC 4

Usually you need no more than 2 colours for 1 "square row". If exceptionally you want 3 colours instead, 1 square equals in height 2 knitted rows and RC 6. For every colour, pushers are arranged anew. The colour sequence is always as follows:

- 2 rows first trimming colour
- 2 rows second trimming colour
- 2 rows basic colour

When doing fairisle, use 1 nd less at right of back bed so that the colour change appears on the reverse of the garment.

When calculating a garment, we recommend to note the number of rows, the RC will indicate, when knitting.

without pattern after having formed the zig-zag and completed the tubular rows.

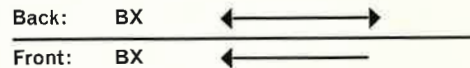
Unless otherwise mentioned, knit with "handle down".

Unelastic yarns (handspun wool, synthetic yarns, cotton, raffia, etc.) or certain patterns are easier to knit when paraffining the material beforehand. nd (s) = needle (s), col = colour, L = left, R = right, RC = row counter, M = centre stitch of pattern, S = series

### 2. How to knit fairisle

Prepare lock, needles and pushers according to diagram for basic principle of fairisle knitting. Place feeding eyelet with basic colour into socket at lock, remaining feeding eyelets into eyelet support, each fed with its proper colour. Before starting a new row of squares (= series), always put pushers required for design of following trimming colour into rest-position, then knit according to basic principle. Pushers will automatically change their position.

### 3. Basic principle for fairisle knitting



1st Series: for design of first "square row", put pushers on front bed in rest position

2 rows trimming colour

2 rows basic colour = RC 4

2nd Series: for design of following "square row", put pushers on front bed in rest position

2 rows trimming colour

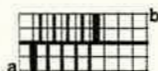
2 rows basic colour = RC 8

3rd Series: etc.

# To achieve a nice edge of your knitting . . .

**1. The "needle rule" for normal knitting:** In order to achieve a nice and even edge arrange the needles always as follows:

- a) front left = first needle
- b) back right = last needle



Even for racking patterns you have to stick to that rule.



basic position



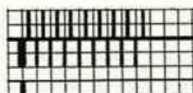
racking over 3 needles

**2. Needle position for AX-patterns:** When the lock is set to AX only loops are formed, no matter which way the lock is moved. There is a possibility that the edge stitches might drop. In order to achieve a correct edge you have to watch that the edge needles do knit proper stitches.

**a) With double-bed knitting:**

**Front AX—without pattern change (O):**

Place into working position the pusher of the left edge needle.



back:	N
front:	AX
	N

**Front AX—with pattern change (arrow)**

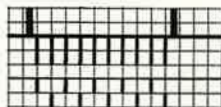
Arrange pushers according to "needle rule".

**Front and back AX:** There is little use for patterns of this type. Watch the edge stitches carefully.

**b) With single-bed knitting:**

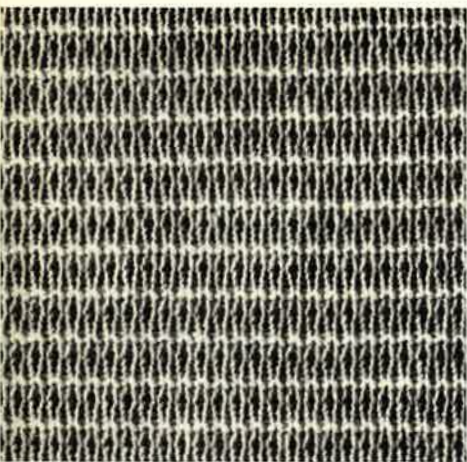
**AX—without pattern change:** Place the pushers of both edge needles into working position.

**AX—with pattern change:** Similar to double-bed knitting; on the second bed, however, place only the edge needles in working position. Lock at N.



back:	N
front:	AX ←

**A few words concerning the strippers.** Unless mentioned otherwise: red strippers for fine yarn (2 ply, 3 ply), blue strippers for 4 ply and over, black strippers for tubular and half tubular knitting, for single bed knitting and for all patterns when 3 or more needles are working side by side on the same bed.



## Pattern 201



back:

front:

3 rows	GX	N	blue
1 row	N	N	blue
3 rows	N	GX	pink
1 row	N	N	pink



## Pattern 202



back:

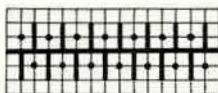
front:

2 rows	N	N, then rack 2 Nds to R
2 rows	AX	N
2 rows	N	N, then rack 2 Nds to L
2 rows	AX	N
repeat		



## Pattern 203

handle up



back:

N

front:

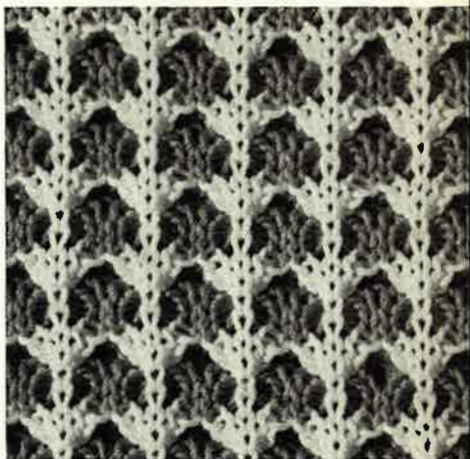
EX (E)

10 rows col 1, then rack 1 1/2 Nds to L  
 2 rows col 2, then rack 1 Nd to R - twice  
 2 rows col 1, then rack 1 Nd to L - twice  
 2 rows col 2, then rack 1 1/2 Nds to R  
 repeat

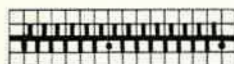
## Pattern 204



back: front:  
 4 rows AX N blue  
 4 rows N AX white



## Pattern 205



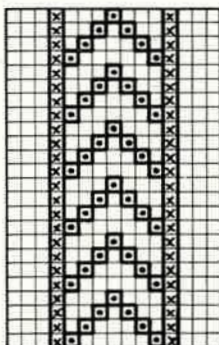
back: N  
 front: CX

Transferpattern

arrange stitches acc. to diagram

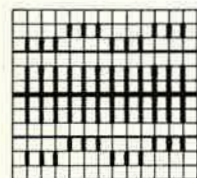
x = front Nds remain out of work

• = transfer front stitch on to adjacent Nd and leave empty Nd in working position Knit 2 rows. Repeat



## Pattern 206

handle up



back: BX ←  
 front: BX ←

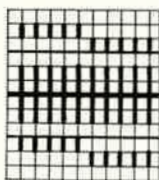
change col after every second row





## Pattern 207

handle up



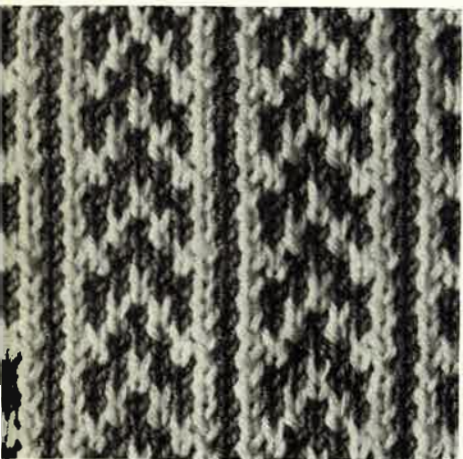
back:

front:

11 rows BX ← BX ←

1 row BX → BX →

change col after every second row



## Pattern 208

fairisle

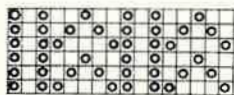


back:

BX

front:

BX

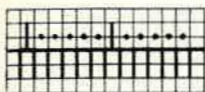


o = trimming col  
empty square = basic col



## Pattern 209

Black strippers

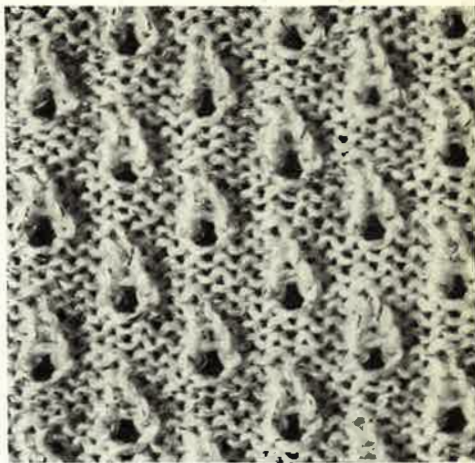


back: EX

front: N

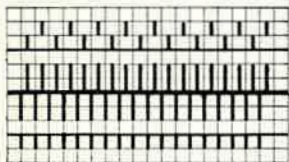
knit 4 rows, then transfer stitches from back bed to front bed

Leave empty Nds in working position, rack 3 Nds to R  
Repeat, however rack 3 Nds to L



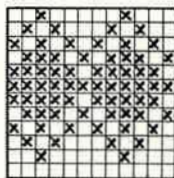
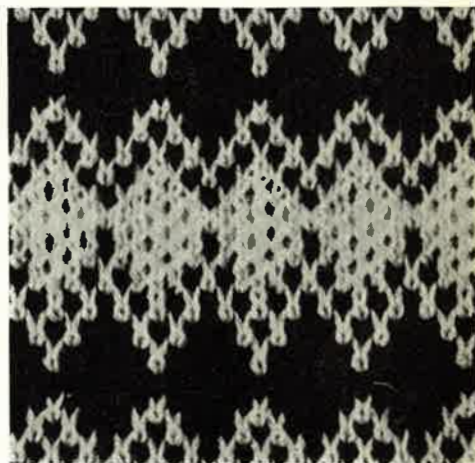
## Pattern 210

fairisle



back: BX ←→

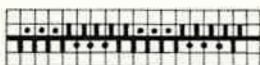
front: BX ←



x = trimming col  
empty square = basic col



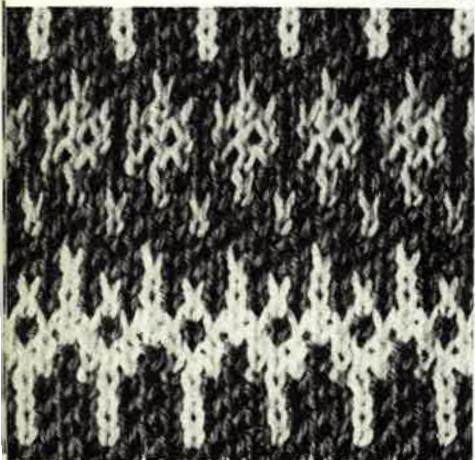
## Pattern 211



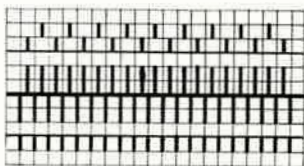
back: N

front: N

knit 2 rows, then rack 1 Nd to L  
knit 2 rows, then rack 1 Nd to R

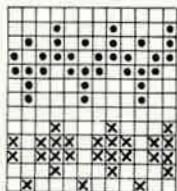


## Pattern 212



back: BX ←→

front: BX ←

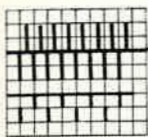


x = red

● = yellow

empty square = blue

## Pattern 213

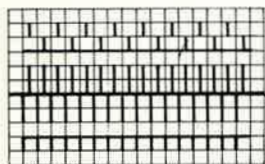


back: N  
 front: AX ←  
 2 rows, then rack 1 Nd to L – twice  
 2 rows, then rack 1 Nd to R – twice



## Pattern 214

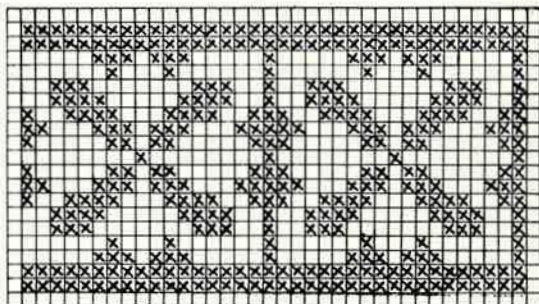
fairisle



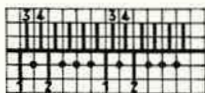
back: BX ↔  
 front: BX ←



x = white  
 empty square = red



## Pattern 215



back: N

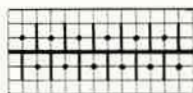
front:

2 rows CX (C) white  
6 rows GX (G) light blue

transfer stitch 1 to Nd 4 and  
stitch 2 to Nd 3, leave empty  
Nds in working position, rack  
3 Nds to R,  
repeat, however rack 3 Nds  
to L.

## Pattern 216

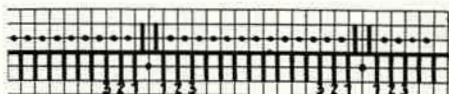
handle up



back: N

front: 4 rows EX (E)  
2 rows N  
repeat

## Pattern 217

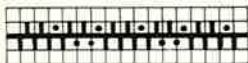


back: N

front: N

knit 6 rows, then transfer 1st stitch  
to 3rd Nd, 2nd and 3rd stitch to 1st  
and 2nd Nd,  
repeat

## Pattern 218



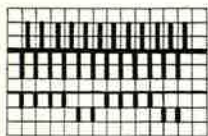
back: N

front: N

knit 2 rows, then rack 1 Nd to R  
knit 2 rows, then rack 1 Nd to L



## Pattern 219



back: N

front: BX ←

front: set stitch size 1 1/2  
numbers higher

2 rows col 1 } 3 times

2 rows col 2 } 3 times

2 rows col 1 } 3 times

2 rows col 3 } 3 times

2 rows col 1 } 3 times

2 rows col 4 } 3 times



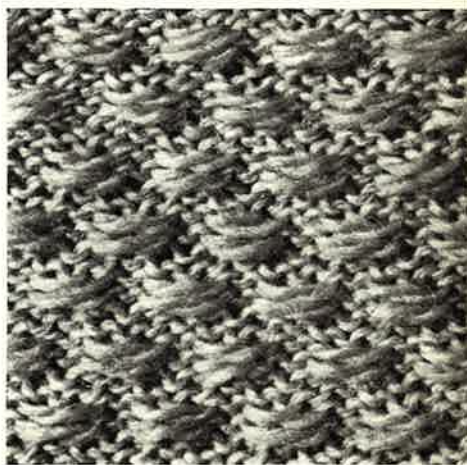
## Pattern 220



back: GX

front: 2 rows BX ←

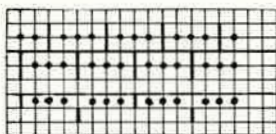
2 rows N O





## Pattern 221

handle up



back: N

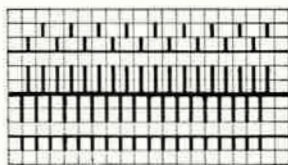
front: 2 rows AX ←

2 rows AX O



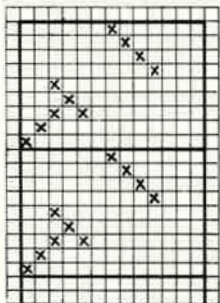
## Pattern 222

fairisle



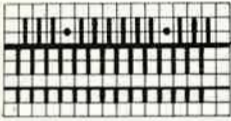
back: BX ↔

front: BX ←

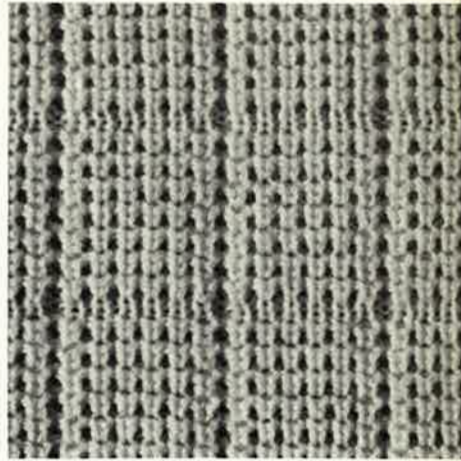


x = trimming col  
empty square = basic col

# Pattern 223

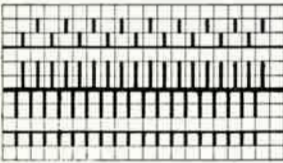


back: N  
 front: 28 rows AX ←  
 2 rows AX O

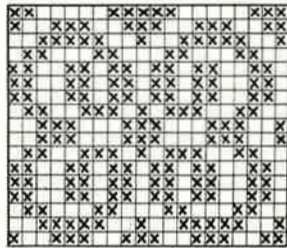
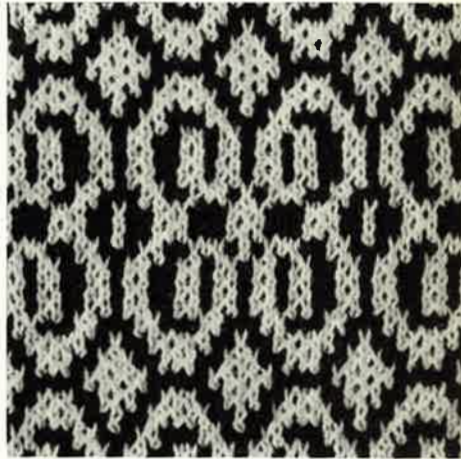


# Pattern 224

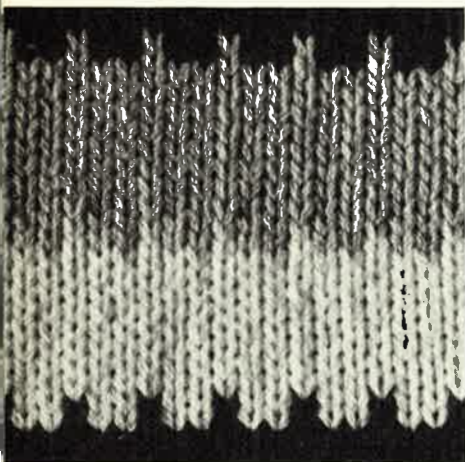
fairisle



back: BX ↔  
 front: BX ←



x = trimming col  
 empty square = basic col



## Pattern 225



back: GX

front:

- 8 rows N O col 1 (grey)
- 2 rows BX ← col 1 (grey)
- 2 rows BX ← col 2 (blue)
- 8 rows N O col 2 (blue)
- 2 rows BX ← col 2 (blue)
- 2 rows BX ← col 3 (white)
- 8 rows N O col 3 (white)
- 2 rows BX ← col 3 (white)
- 2 rows BX ← col 1 (grey)



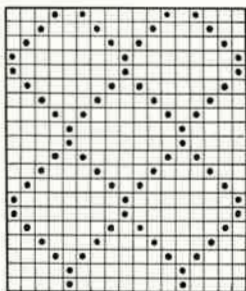
## Pattern 226

Transfer pattern



back: N

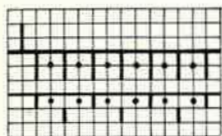
front: AX



● = on front bed transfer stitch to adjacent Nd, put empty Nd out of work. Knit 2 rows. Repeat, but additionally put into working position the Nd which **beforehand** was out of work.



## Pattern 227



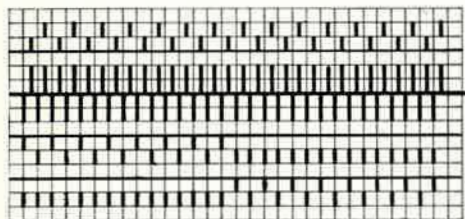
back: N

front: AX ←



## Pattern 228

fairisle



back: BX ← →

front: BX ←

I 2 rows white  
2 rows light brown } 15 times

II 2 rows light brown  
2 rows white } 15 times



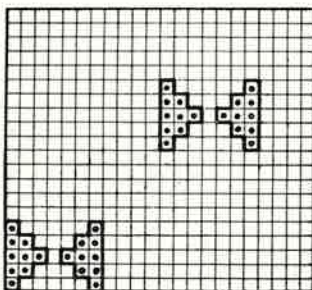
## Pattern 229

raised pattern



back: N

front: CX (C)



black strippers, acc. to diagramm.

● = on front bed transfer stitch to adjacent Nd, put Nd out of work, knit 2 rows.

Or on front bed put Nd into working position, knit 2 rows.



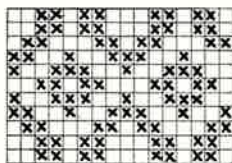
## Pattern 230

fairisle on single bed



back: N

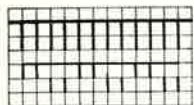
front: BX



knit fairisle acc. to diagram

x = red, empty square = yellow

## Pattern 231



back: GX

front:

1st 2 rows BX O col 1

Series 2 rows BX ← col 2

2 rows BX O col 1

2 rows BX ← col 2

8 rows N O col 2

2nd 2 rows BX O col 2

Series 2 rows BX ← col 1

2 rows BX O col 2

2 rows BX ← col 1

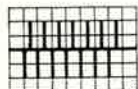
8 rows N O col 1

repeat



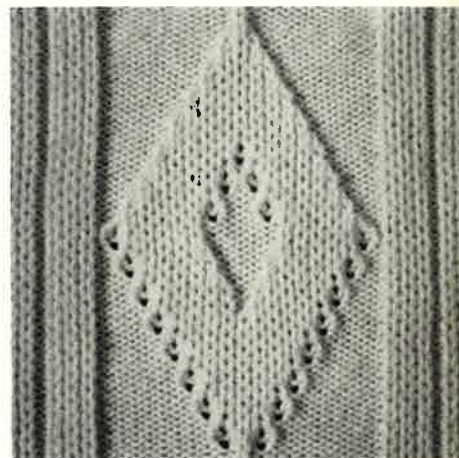
## Pattern 232

Transfer pattern, black strippers



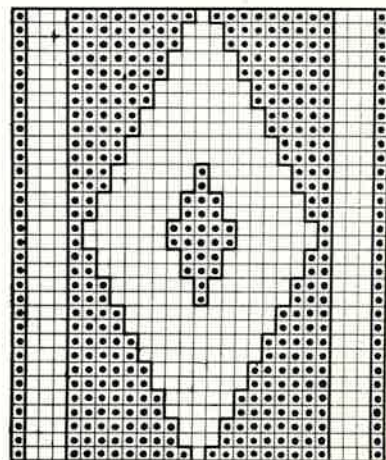
back: N

front: CX (C)



● = on front bed transfer stitch to adjacent Nd, put Nd out of work, knit 2 rows.

Or put Nds of front bed into working position, knit 2 rows.





## Pattern 233



back: - GX

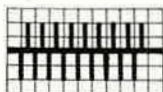
front:

2 rows N      O      col 1 (blue)  
 2 rows BX ←      col 1 (blue)  
 2 rows BX ←      col 2 (white)  
 2 rows BX ←      col 2 (white)  
 2 rows BX ←      col 1 (blue)  
 6 rows N      O      col 2 (white)



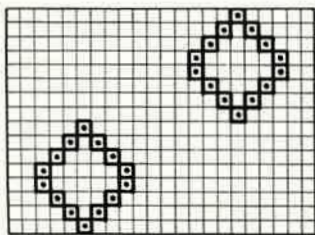
## Pattern 234

raised pattern



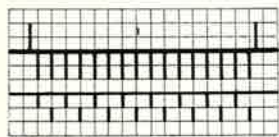
back: N

front: CX



● = on front bed transfer stitch to adjacent Nd, put empty Nd out of work knit 2 rows. Repeat, but additionally put into working position the Nd which **beforehand** was left out of work.

## Pattern 235



back: N  
 front: 2 rows AX ←  
 2 rows N O

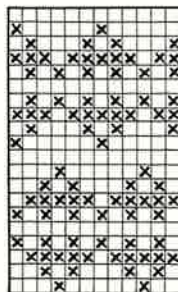


## Pattern 236

fairisle, on single bed



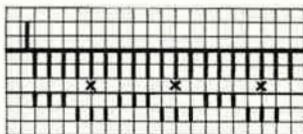
back: GX  
 front: BX ←



x = red  
 empty square = white



## Pattern 237



back: N

front:

2 rows N

1 row BX ←

1 row N O

1 row BX

3 rows N

hang threads on Nds x

repeat reversing



## Pattern 238

black strippers



back:

front:

4 rows N

GX col 1 (blue)

then with double-decker needle transfer 1st and 2nd stitch to 3rd and 4th Nd, 5th and 6th stitch to 7th and 8th Nd etc. Empty Nds remain in working position.

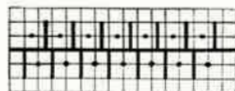
2 rows N

N col 2 (white)

repeat reversing



## Pattern 239



back:

EX

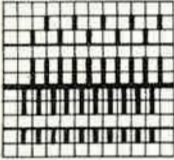
front:

EX

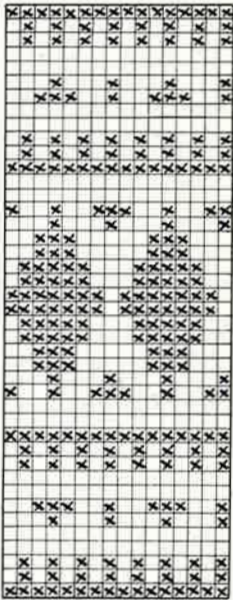
knit 2 rows, then rack 3 Nds to L  
knit 2 rows, then rack 3 Nds to R

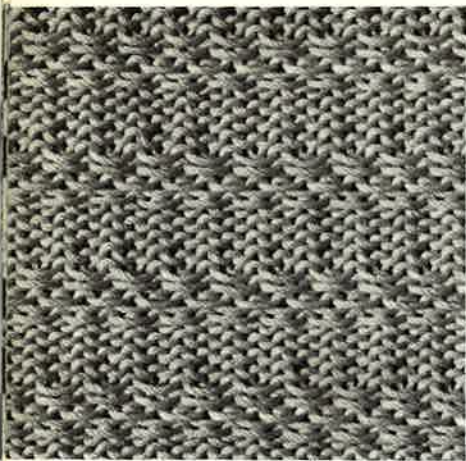
# Pattern 240

fairisle



back: BX ← →  
front: BX ← →





## Pattern 241

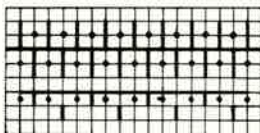


back: GX

front: 4 rows N O  
6 rows BX ←



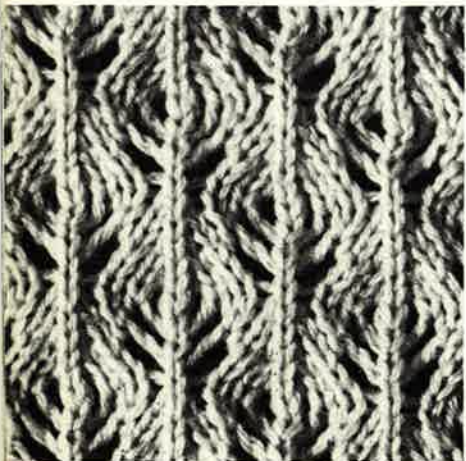
## Pattern 242



back: N

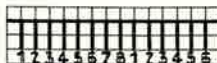
front:

2 rows AX ← white  
2 rows AX O golden (Lurex)



## Pattern 243

transfer pattern



back: GX

front: N

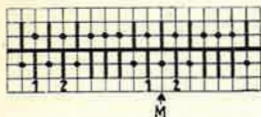
with triple-decker needle transfer 1st, 2nd, 3rd stitch by 1 Nd to R and 5th, 6th, 7th stitch by 1 Nd to L.

Leave empty Nds in working position, knit 2 rows. After 6 rows repeat reversing, viz.

transfer 5th, 6th, 7th stitch by 1 Nd to R and 1st, 2nd, 3rd stitch by 1 Nd to L, knit 2 rows, after 6 rows repeat from very beginning.

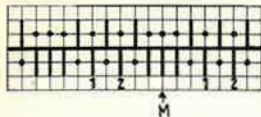


## Pattern 244



back: N I

front: N



back: N II

front: N

M = centre

Needle division as per I: knit 2 rows, then cross 1 and 2  
knit 2 rows, transfer all stitches to front bed

knit 2 rows

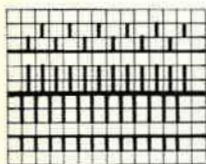
Needle division as per II: knit 2 rows, then cross 1 and 2  
knit 2 rows, transfer all stitches to front bed

knit 8 rows. Repeat.



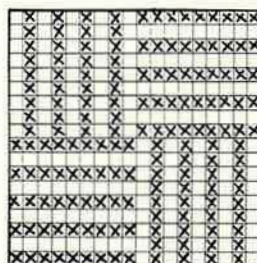
## Pattern 245

fairisle



back: BX ← →

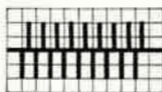
front: BX ← →



x = white

empty square = grey

## Pattern 246



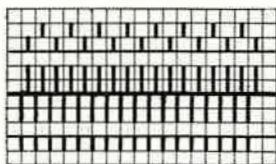
back: EX

front: EX

4 rows, then rack 1 Nd to R  
4 rows, then rack 1 Nd to L

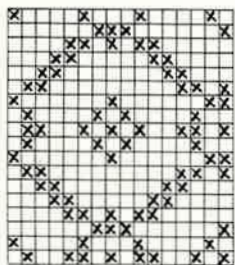
## Pattern 247

fairisle



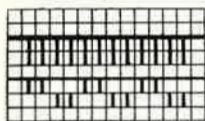
back: BX ← →

front: BX ←



x = brown  
empty square = yellow

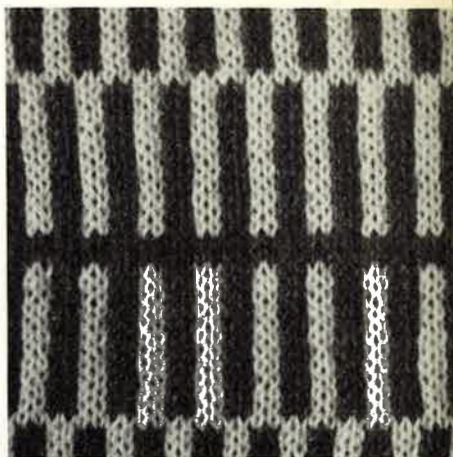
## Pattern 248



back: GX

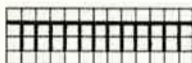
front: BX

2 rows white, 2 rows olive, 5 times.  
 4 rows white.  
 2 rows olive, 2 rows white, 5 times.  
 6 rows olive.



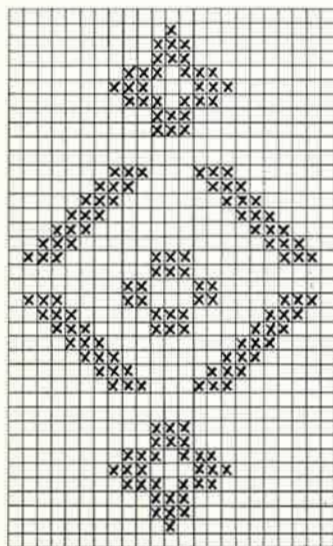
## Pattern 249

Transfer pattern, black strippers



back: N

front: N



x = st on back bed  
 Repeat pattern reversing



## Pattern 250

carpet pattern

set stitch size 2 or 3 numbers lower on front bed

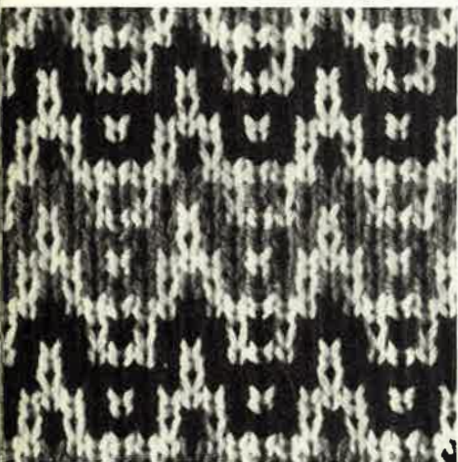


back: EX

front: CX

2 rows both locks

2 rows front lock only



## Pattern 251



back: N

front: BX (N)

according to diagram

x = pushers in R. P.

1st Series:

according to pattern pushers in R. P., 2 rows white, pushers back to W. P.

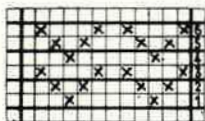
2nd Series:

according to pattern pushers in R. P., 2 rows red, pushers back to W. P.

3rd and 5th Series: as first

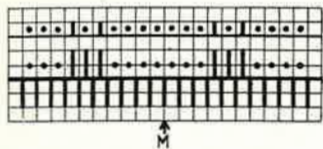
4th and 6th Series: as second

1st-6th Series: repeat with blue (instead of red)



## Pattern 252

black strippers



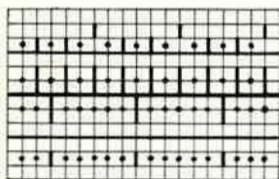
back: FX

front: N

knit 2 rows, then rack 1 nd to R  
knit 2 rows, then rack 1 nd to L



## Pattern 253



back: BX ←→

front: AX ←

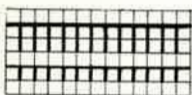
2 rows blue

2 rows white



## Pattern 254

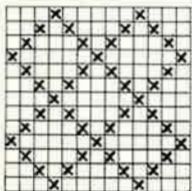
Work pattern according to diagram



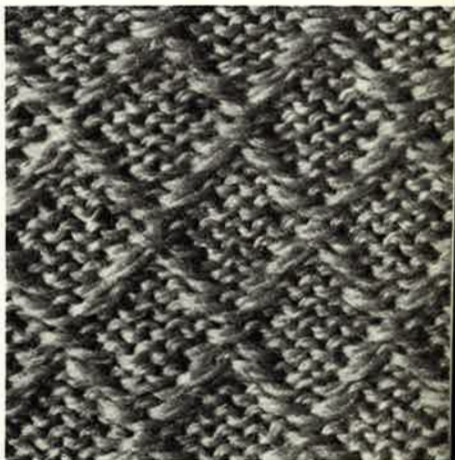
back: GX

front: BX

Arrange pushers according  
to diagram  
knit 2 rows  
repeat

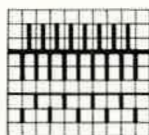


x = pushers in R. P.





## Pattern 255



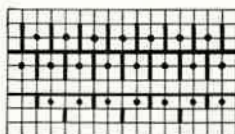
back: N

front: BX

change colour after every 4th row



## Pattern 256



back: front:

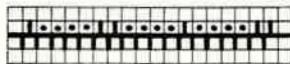
4 rows N AX O

2 rows GX N

white, yellow or blue



## Pattern 257

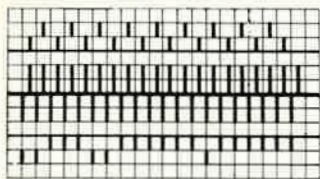


back: N

front: N

knit 1 row, then rack 1 nd to R  
knit 1 row, then rack 1 nd to L

## Pattern 258



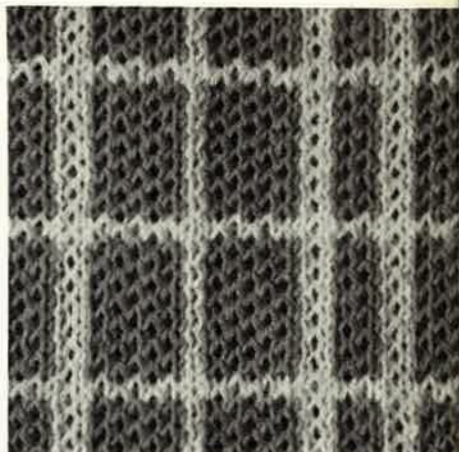
back: BX  $\longleftrightarrow$

front: BX  $\longleftarrow$

6 times: 2 rows white, 2 rows red,  
4 rows white

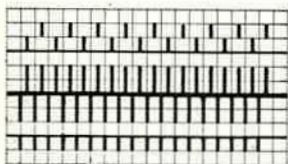
3 times: 2 rows white, 2 rows red,  
4 rows white

6 times: 2 rows white, 2 rows red,  
4 rows white



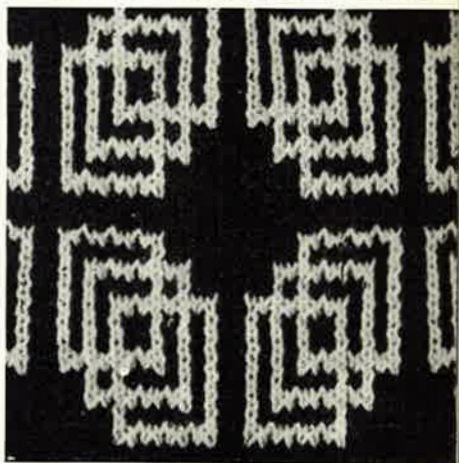
## Pattern 259

fairisle, with pushers

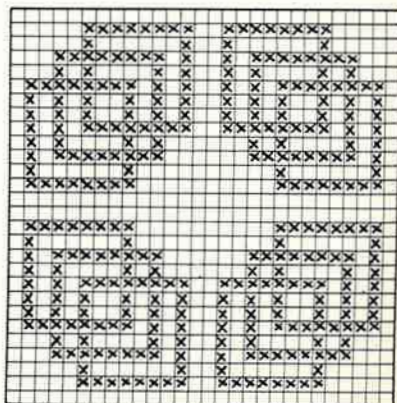


back: BX  $\longleftrightarrow$

front: BX  $\longleftarrow$

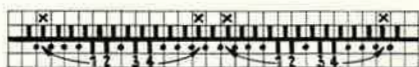


x = trimming colour  
empty square = basic colour





## Pattern 260



back: N  
front: EX

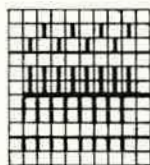
lock at left

knit 6 rows, put sts 1 and 4 to the back needle bed (X)



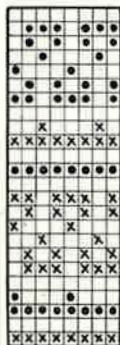
## Pattern 261

fairisle according to diagram



back: BX

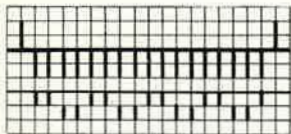
front: BX



x = red  
• = blue  
empty square = white



## Pattern 262

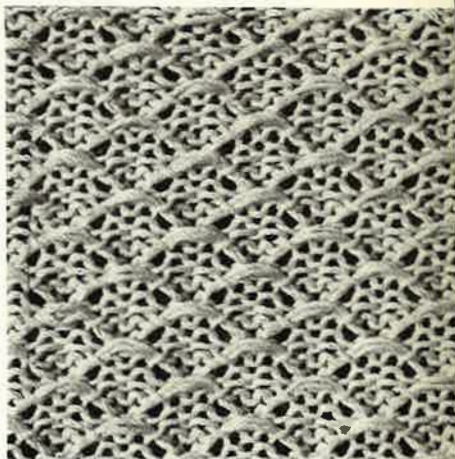


back: N

front:

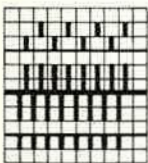
2 rows AX ←

2 rows N O



## Pattern 263

fairisle



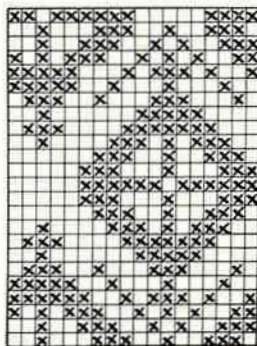
back: BX



front: BX

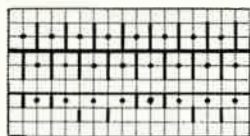


x = anthracite  
empty square = white



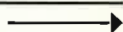


## Pattern 264



back: N

front: AX

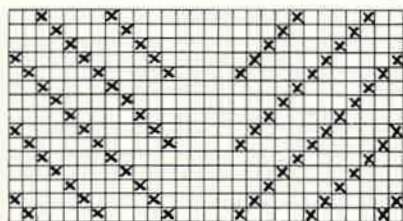


## Pattern 265



back: GX

front: AX



work pattern according to diagram.  
 x = pushers out of work, knit 2 rows  
 M = centre

## Pattern 266



back: N

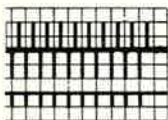
front: EX

2 rows, then rack 1 nd to L  
2 rows, then rack 1 nd to R  
repeat



## Pattern 267

fairisle

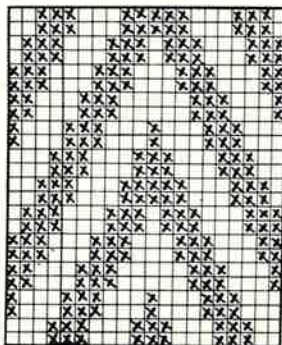


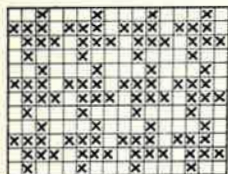
back: N

front: BX ←



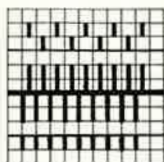
x = black  
empty square = green





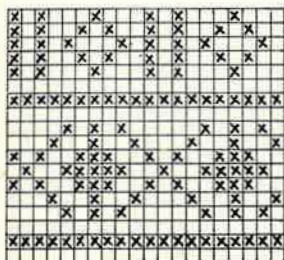
## Pattern 268

Hen-Track pattern



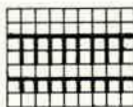
back: BX ←→

front: BX ←



## Pattern 269

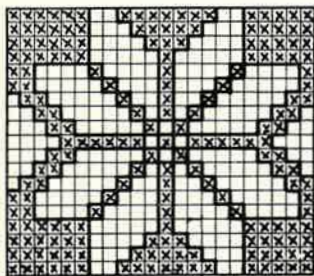
One-bed fairisle, according to diagram



back: GX

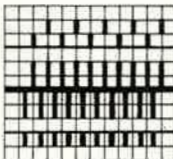
front: BX ←→

empty square = 2 rows blue  
x = 2 rows white



## Pattern 270

fairisle according to diagram



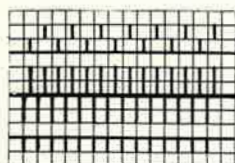
back: BX ←→

front: BX ←

x = blue  
empty square = white  
repeat pattern reversing

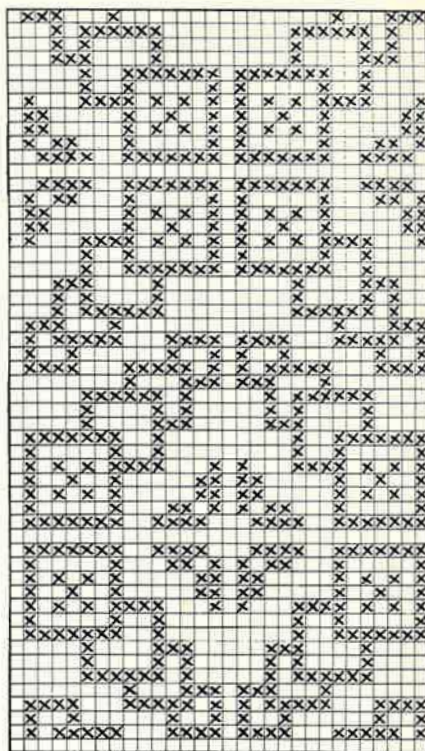
## Pattern 271

work according to diagram



back: BX ←→

front: BX ←→



x = yellow  
empty square = black

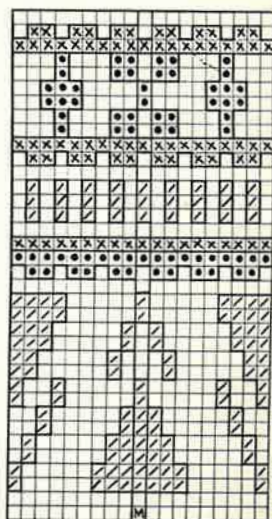
## Pattern 272

fairisle

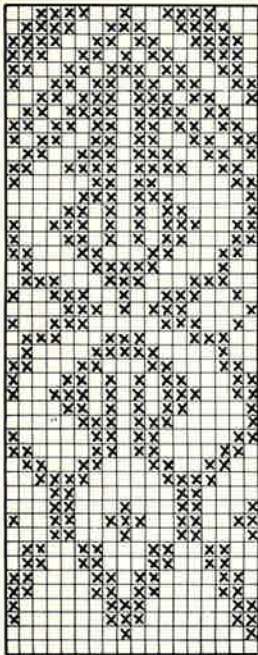


back: BX ←→

front: BX ←→

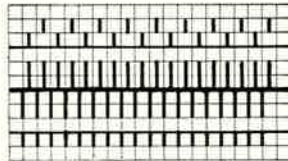


/ = cognac, • = dark blue, x = light blue,  
empty square = white, M = centre

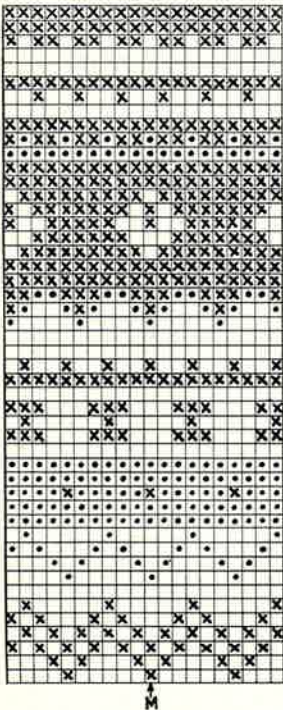


## Pattern 273

cover page, fairisle  
work according to diagram

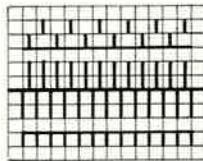


x = white  
empty square = navy blue



## Pattern 274

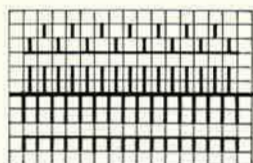
fairisle, work according to diagram



x = blue, ● = white, empty square = brown  
M = centre of fairisle pattern

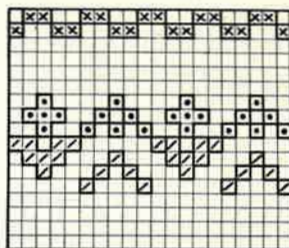
## Pattern 275

fairisle



back: BX ←→

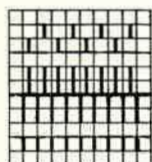
front: BX ←



/ = white, • = red, x = black, empty square = blue

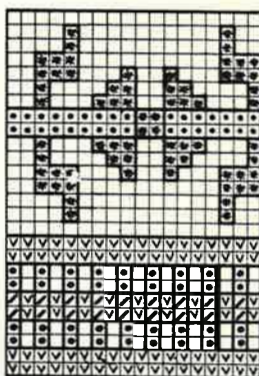
## Pattern 276

fairisle



back: BX ←→

front: BX ←



/ = dark blue, v = white, • = yellow, \* = brown, empty square = light blue

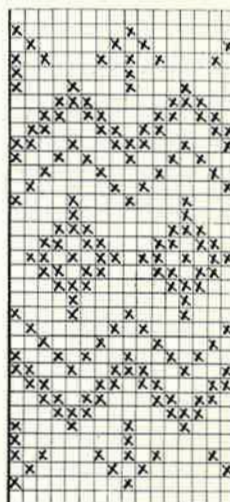
## Pattern 277

fairisle, knit according to diagram



back: GX

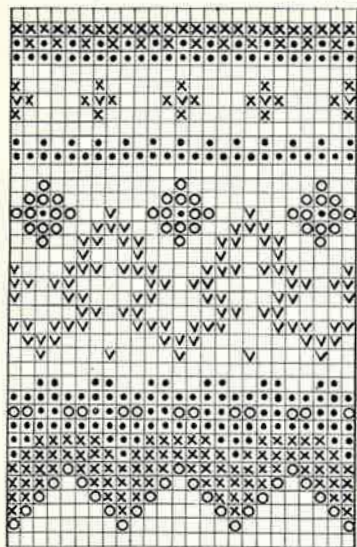
front: BX ←



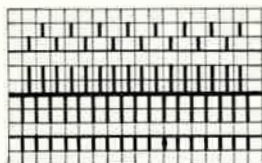
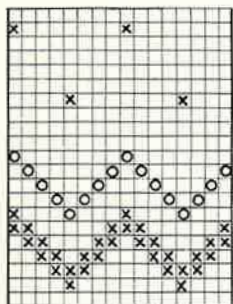
x = dark green, empty square = cognac

## Pattern 278

fairisle



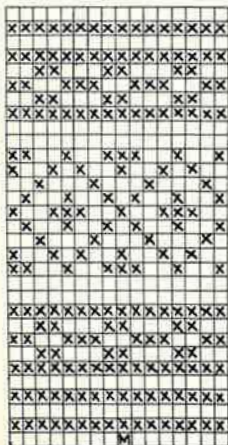
M



x = dark green, ● = red, v = cognac, O = yellow, empty square = light green

## Pattern 279

fairisle on single bed



M



x = red, empty square = white



## Pattern 280

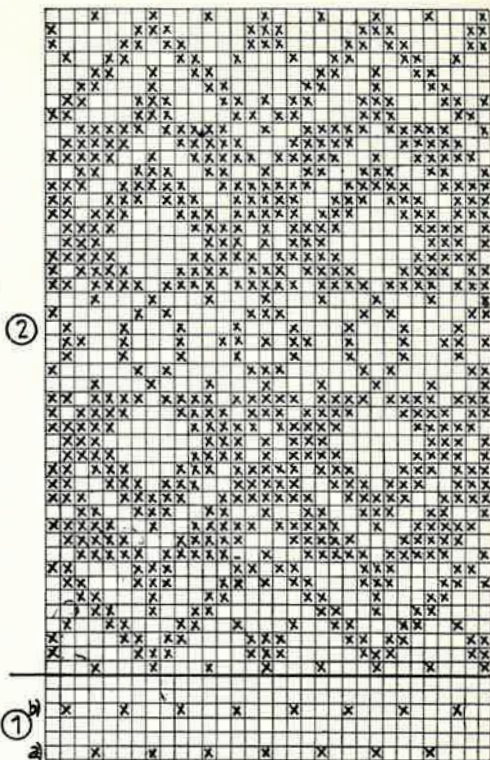
One-bed fairisle according to diagrams 1 and 2



back: N

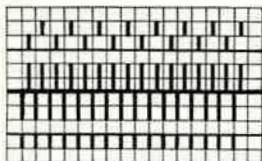
front: BX

x = white, empty square = cognac



## Pattern 281

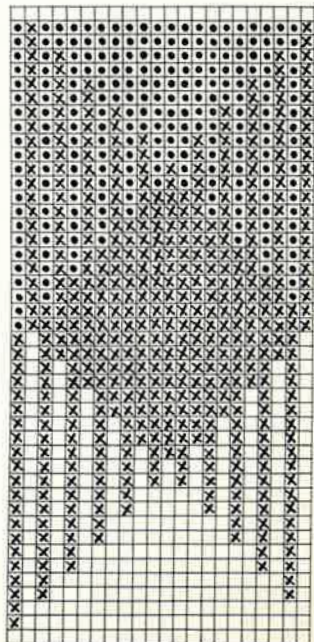
fairisle, work according to diagram

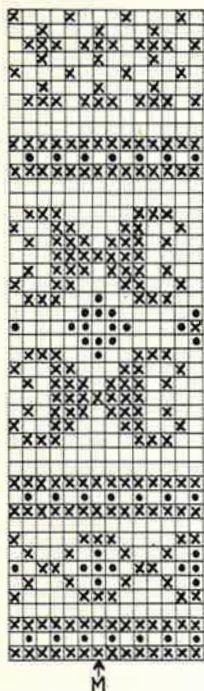


back: BX

front: BX

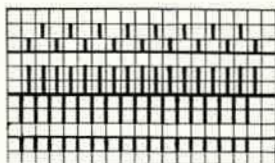
x = green, • white, empty square = light brown





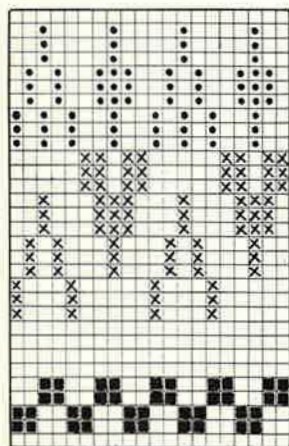
## Pattern 282

fairisle, knit according to diagram



back: BX ←→  
front: BX ←→

x = red, • = white, empty square = blue



## Pattern 283

fairisle



back: N  
front: BX

press arrowed keys  
according to need

■ = black, x = white, • = green, empty square = red. 1 square = 1 st and 1 row, start fairisle with lock at left





PASSAP-EXPORT D ilet kon /ZH (Sw izer land)