



KG88II/89II
Instruction Manual
For
G-Carriage

brother

THE POSSIBILITIES OF THE G-CARRIAGE

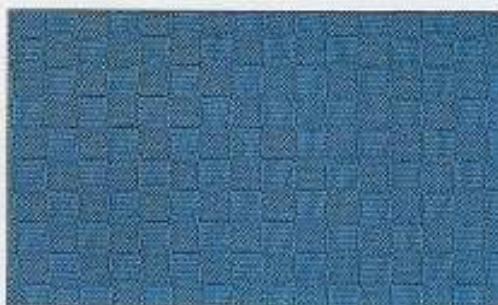
The G-Carriage is a knitting carriage which is capable of knitting plain and purl stitches in one row as well as automatic cast-on and cast-off.

1. Rib Knitting



1x1 Rib

2. G-Stitch pattern designs



3. Cast-on



4. Cast-off



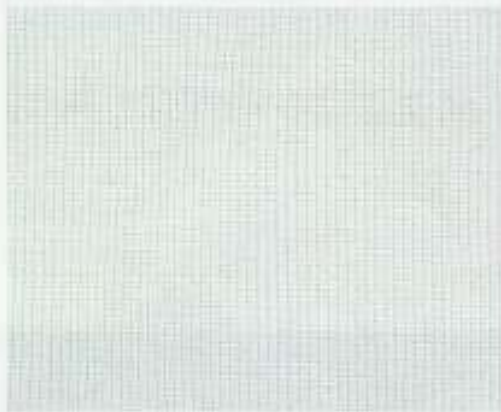
CONTENTS

THE POSSIBILITIES OF THE G-CARRIAGE	1
PATTERN VARIATIONS	2
PART NAMES	6
PART TO BE CHANGED (KH-836/860/881/910)	8
BEFORE STARTING TO KNIT	
SELECTOR	10
AUTOMATIC RETURN LEVER	11
CARRIAGE DIRECTION LEVER	11
ROW COUNTER	12
TENSION DIAL	12
NEEDLE POSITION	12
G-POINT CAMS	13
WHERE TO PLACE THE G-CARRIAGE BEFORE KNITTING	13
THE SENSOR UNIT	14
HOW TO USE THE G-CARRIAGE	
PREPARATION	15
CASTING-ON	18
RIB KNITTING	22
G-STITCH PATTERN DESIGNS	25
CASTING-OFF	28
BASIC TECHNIQUES	
INCREASING/DECREASING	32
HOW TO UNRAVEL AND PICK UP STITCHES	35
HOW TO SHAPE A NECK LINE	37
EXAMPLES OF WHEN YOU MUST USE THE K-CARRIAGE	40
CABLE KNITTING	40
HOW TO CHANGE YARNS DURING KNITTING	41
USEFUL HINTS	
IF THE G-CARRIAGE SHOULD STOP	42
HOW TO UNRAVEL SEVERAL ROWS	44
HOW TO MOVE THE G-CARRIAGE WITHOUT YARN	46
CHECKING THE G-NEEDLE	46
HOW TO CHANGE THE G-NEEDLE	47
CLEANING AND MAINTENANCE	48
HOW TO USE THE G-CARRIAGE (WITH THE KH-910)	
PREPARATION	50
CASTING-ON	53
RIB KNITTING AND G-STITCH PATTERN DESIGNS	54
CASTING-OFF	56
HOW TO SHAPE A NECK LINE	57
USEFUL HINTS	59
HOW TO UNRAVEL SEVERAL ROWS	59
WHEN YOU WANT TO TAKE OUT THE PATTERN CARD WHILST KNITTING	60
WHEN YOU WANT TO TURN OFF THE POWER SWITCH WHILST KNITTING	62
IF ELECTRIC POWER IS CUT OFF WHILST PATTERN KNITTING	63
VARIOUS PATTERNS	65
COMPARISON CHART	68

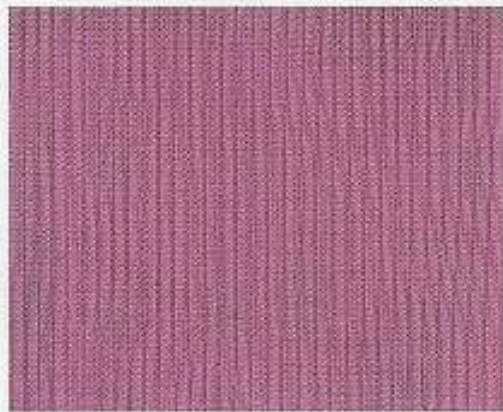
PATTERN VARIATIONS

RIB KNITTING

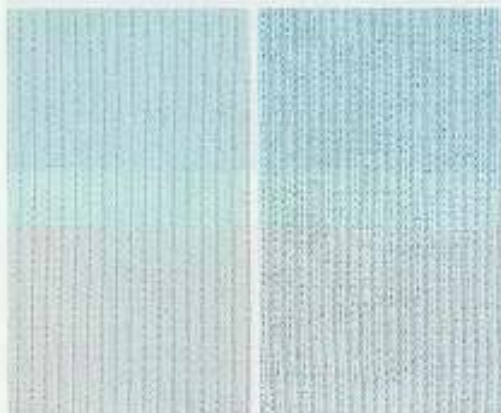
Card No. 1



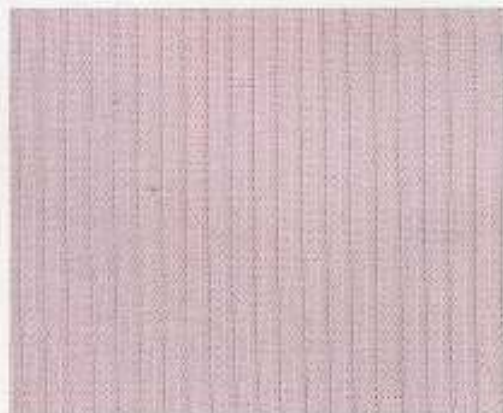
1x1 Rib



2x2 Rib



2x1 Rib



3x3 Rib



4x4 Rib



6x6 Rib

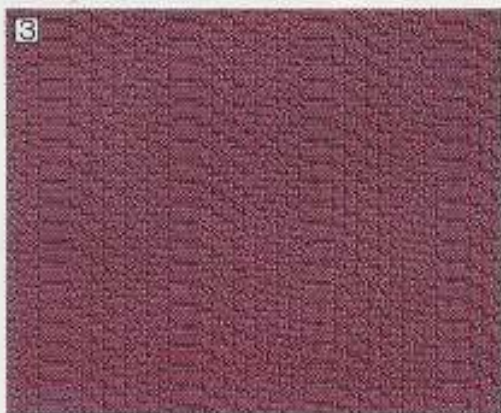
G-STITCH PATTERN DESIGNS



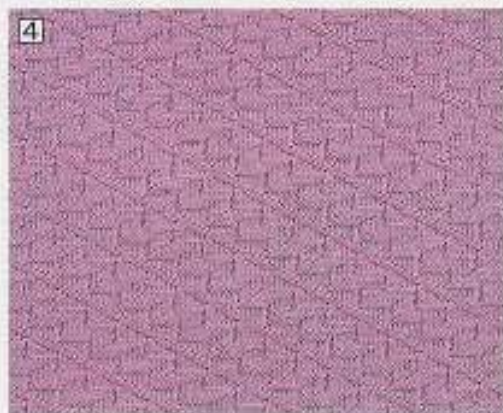
Card No. 2 (GARTER STITCH)



Card No. 3



Card No. 4

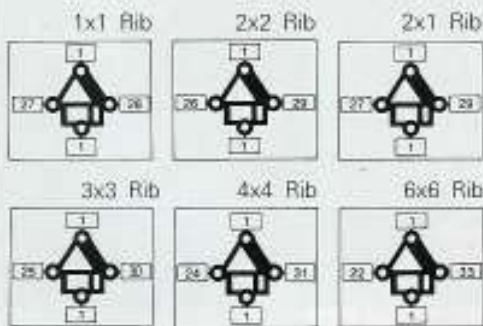


Card No. 5

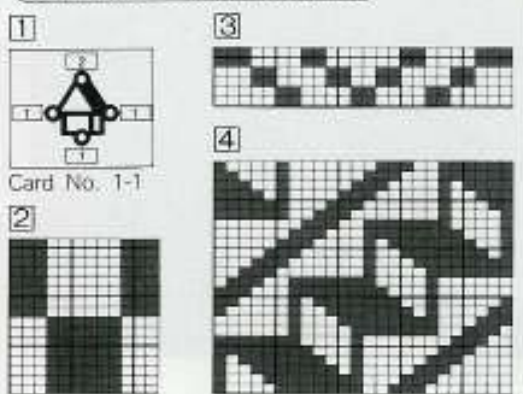
USING THE KG-88II WITH THE MODIFIED KH-910

RIB KNITTING

Use Pattern Card No. 3-12.

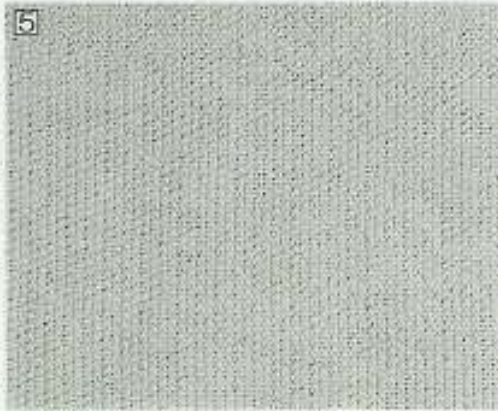


G-STITCH PATTERN DESIGNS



You can use some of the cards that come with your knitting machine for garter stitch patterns too!

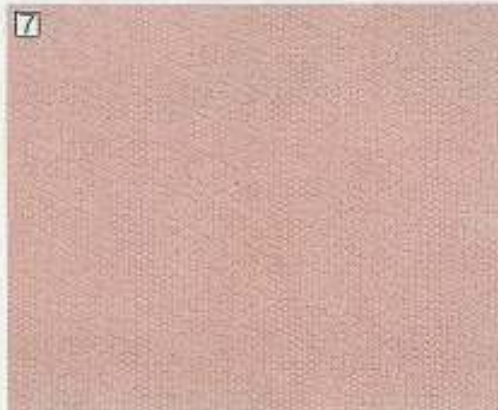
D ... KH836 M ... KH890/891
J ... KH860



CARD No. 1J 1M 1D



CARD No. 7J 7M 7D



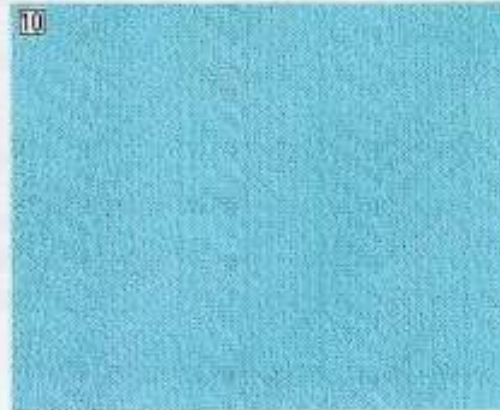
CARD No. 8J 8M



CARD No. 10M



CARD No. 11M



CARD No. 12M

USING THE KG-88II WITH THE MODIFIED KH-910

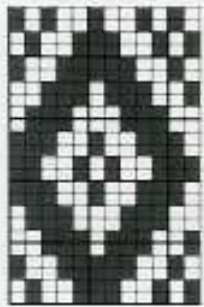
5



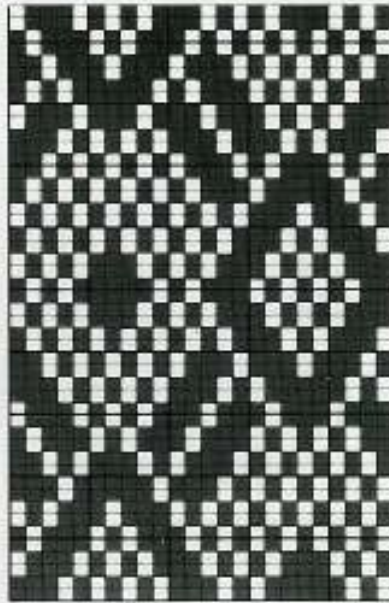
7



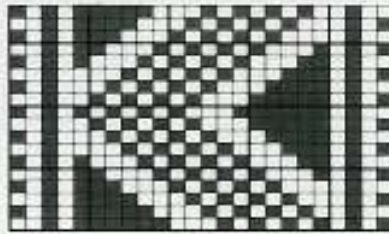
9



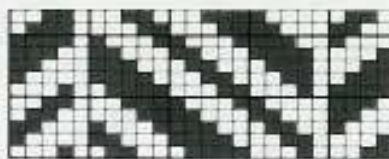
6



8

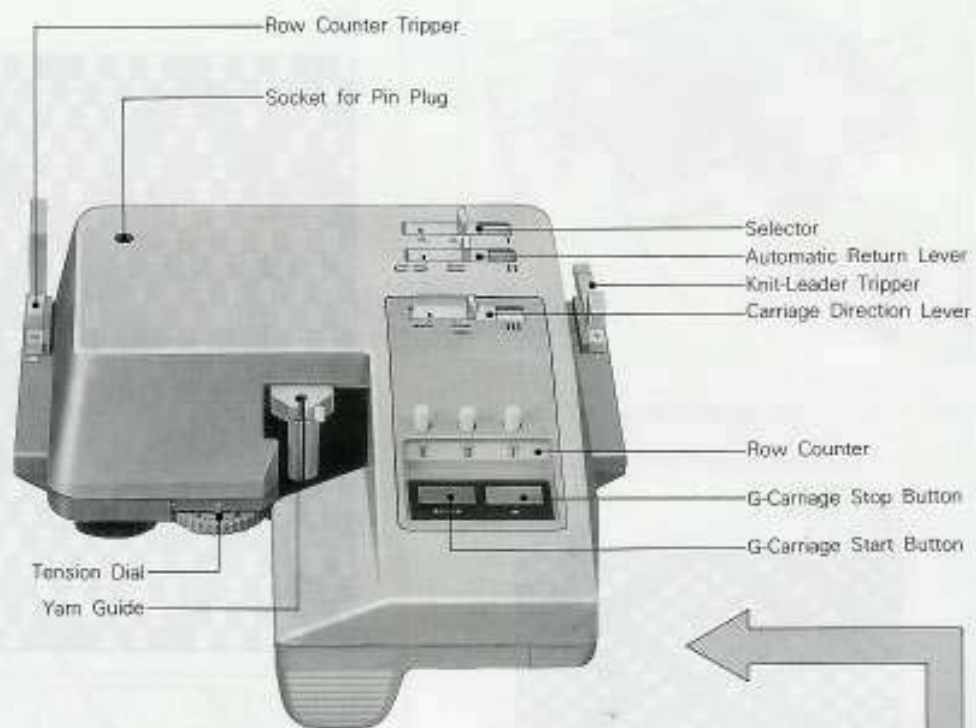


10

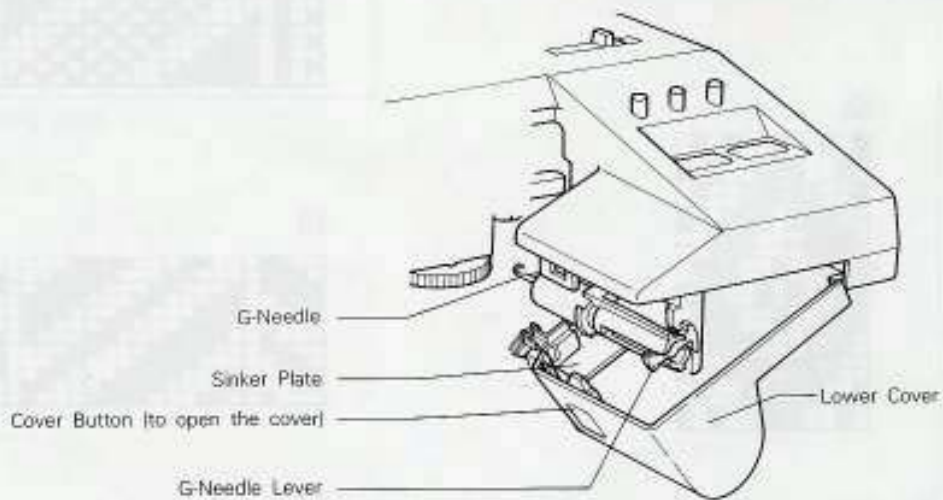


PART NAMES

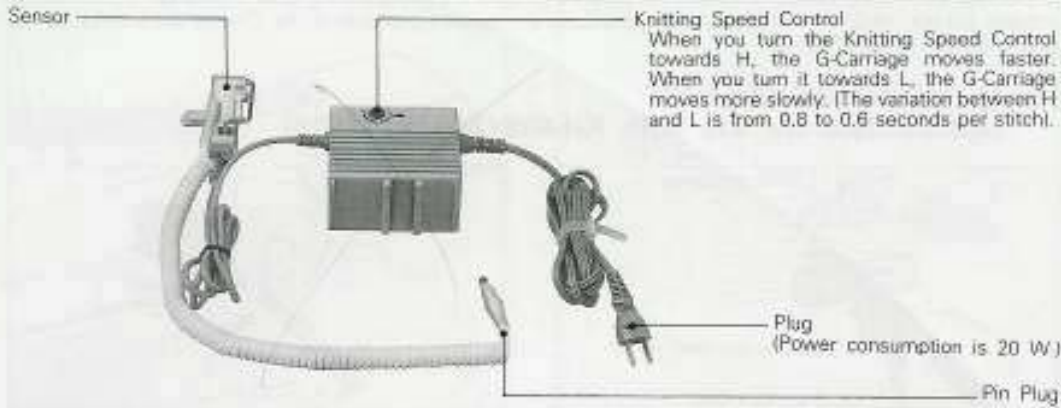
• G-CARRIAGE



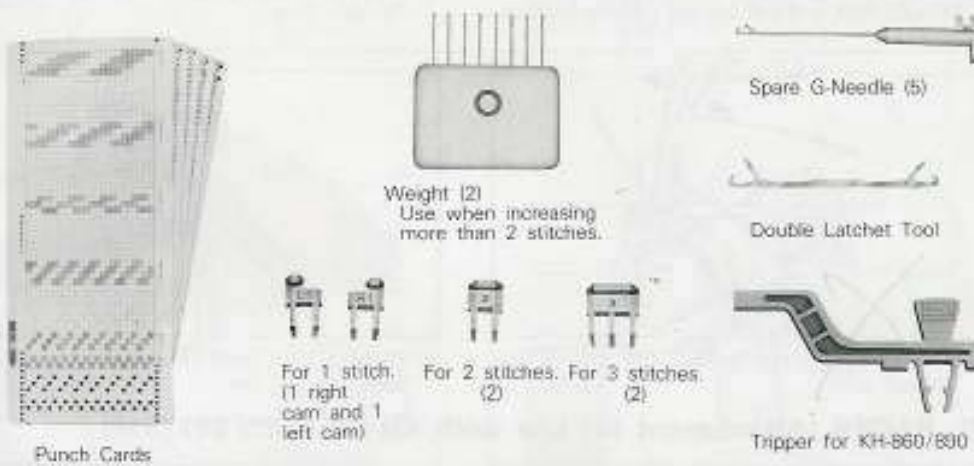
INSIDE THE COVER



● Adaptor

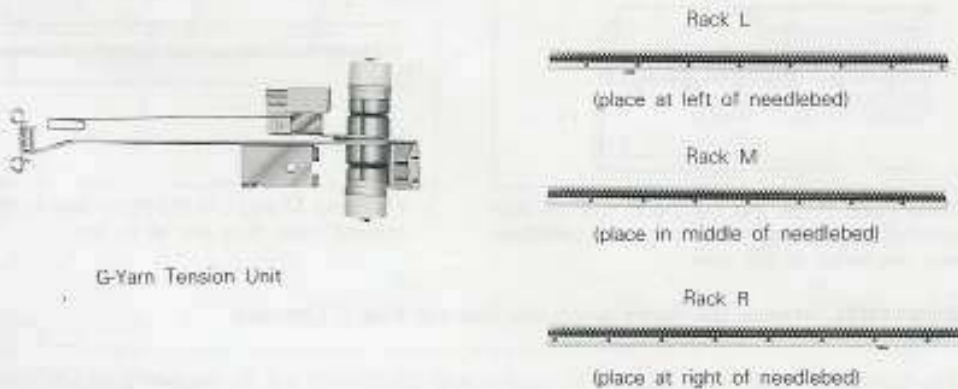


● Accessories



● PARTS FOR THE KG-88II

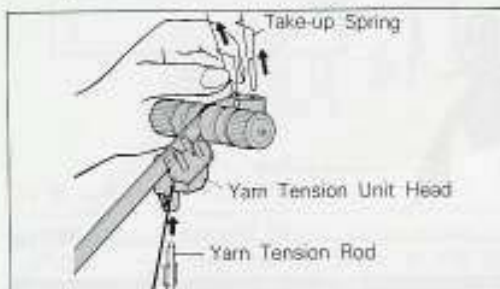
(using KH-836/860/881/910)



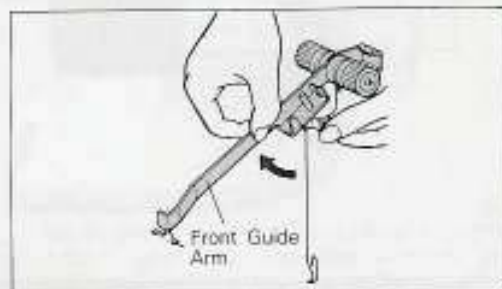
CHANGE THE FOLLOWING PARTS WHEN USING THE G-CARRIAGE ON KNITTING MACHINE MODELS KH-836/860/881/910

You can use the KG-88II G-Carriage on knitting machine models KH-836/860/881/910, and the KG-89II G-Carriage on knitting machine models KH-890/891. If you are using the KG-88II G-Carriage with machine models KH-836/860/881/910, you will need to fit the following attachments. (These are not necessary with models KH-890/891.)

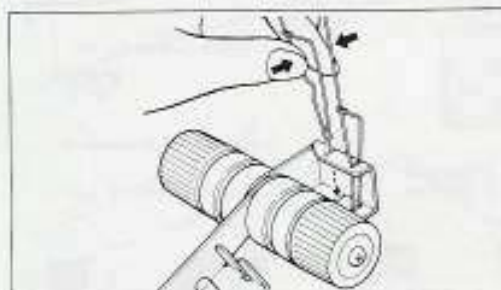
(1) G-YARN TENSION UNIT (Attachment for use with KH-836/860/881/910)



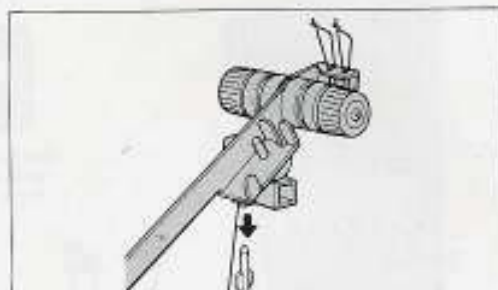
1. Take the Yarn Tension Unit Head off the Yarn Tension Rod, and pull out the Take-up Springs.



2. Raise the Front Guide Arm on the G-Yarn Tension Unit.

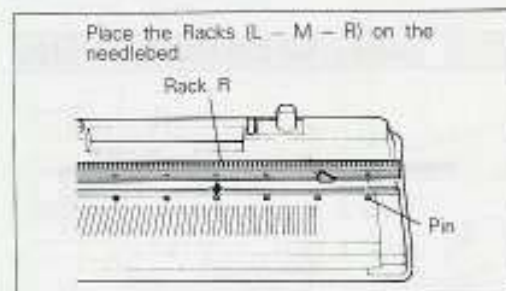


3. Insert the Take-up Springs into the G-Yarn Tension Unit.

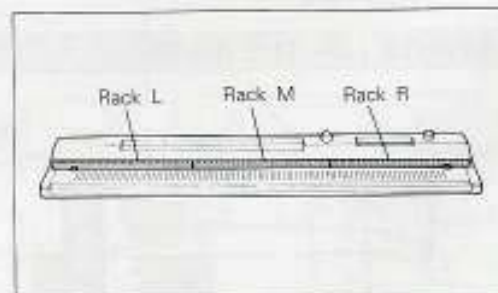


4. Fit the G-Yarn Tension Unit onto the top of the Yarn Tension Rod.

(2) RACKS (Attachment for use with KH-836/860/881/910)



1. Place Rack R on the righthand side of the needlebed, locating the pins in the needlebed into the holes in the rack.

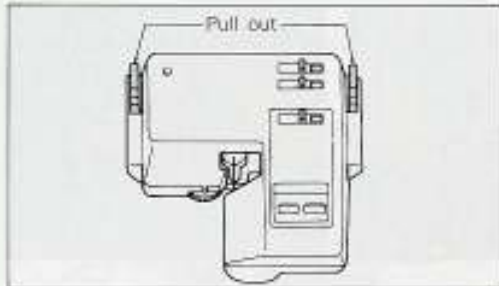


2. Fix Racks M and L in the same way as shown, making sure they are all in line.

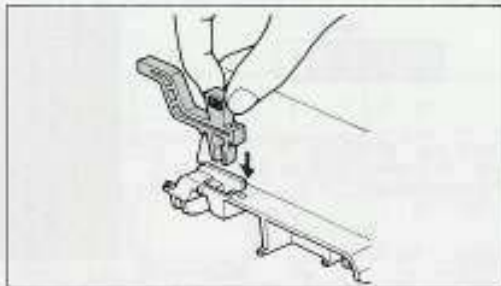
•**IMPORTANT!** Remove the Racks when you use the K or L Carriages.

You cannot use more than a total of 180 needles with the KG-88II e.g. 95 needles to the left, and 95 needles to the right of the centre of the needlebed.

(3) TRIPPERS (Attachment for using KH-836/860/890)



1. Remove both GREY Trippers.



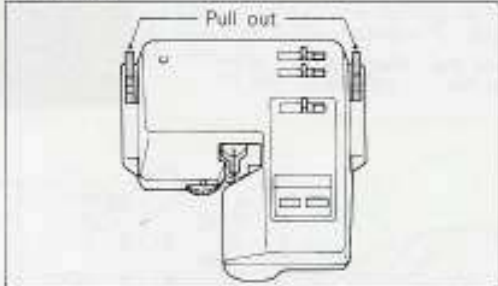
2. Insert the BROWN Tripper into the hole on the left. (The hole at the right is left empty).

PARTS TO BE CHANGED WHEN USING THE MODIFIED KH-910

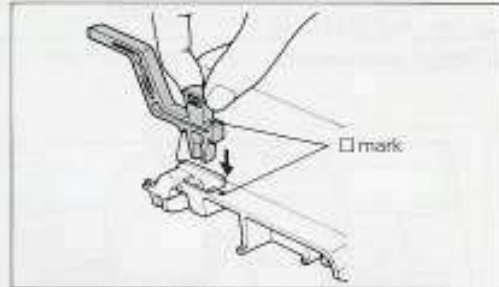
•Trippers and Magnets are necessary for using the G-Carriage with KH-910 (They are available separately).



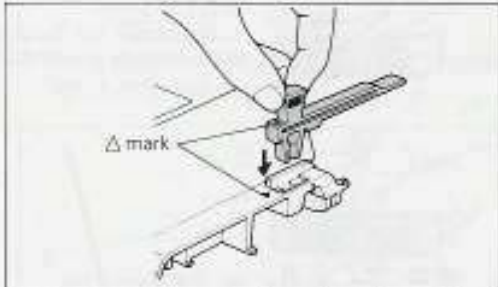
TRIPPERS



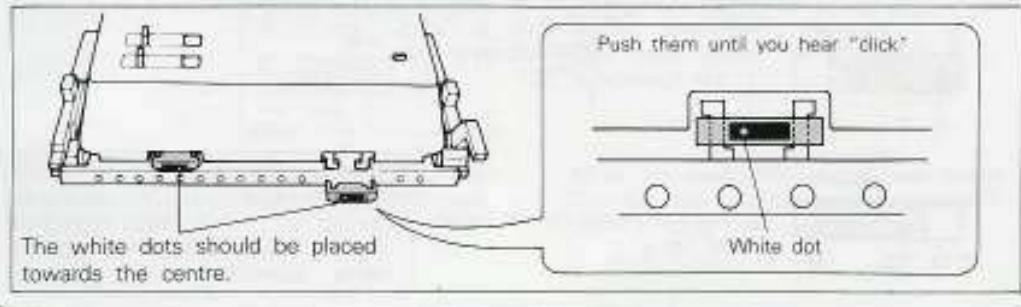
1. Remove both GREY Trippers.



2. Put the Knit-Leader Tripper into the lefthand hole. (Matching the □ marks.)

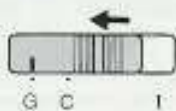


3. Put the Row Counter Tripper into the righthand hole. (Matching the △ marks.)

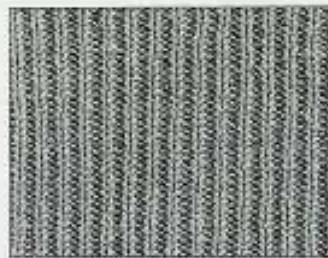


BEFORE STARTING TO KNIT

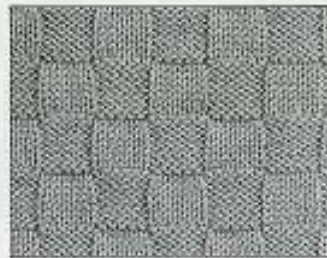
SELECTOR



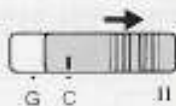
Place the Selector at "G" when you are knitting Ribs or G-Stitch Pattern Designs.



Ribs



G-Stitch Pattern Designs



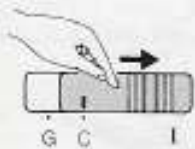
Place the Selector at "C" when you want to cast-on or cast off.



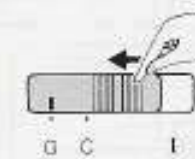
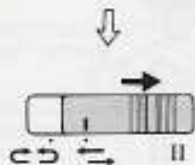
Cast-on



Cast-off

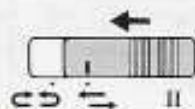


If you move the Selector to "C", the Automatic Return Lever is switched to "↔" automatically.



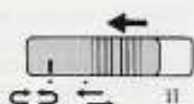
When you want to set the Selector to "G" and the Automatic Return Lever to "↔", you must switch them in the following order:

1. Set Selector at "G".
2. Set Automatic Return Lever to "↔".

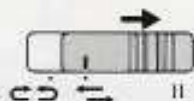


* If you switch the Automatic Return Lever to "↔" when the Selector is set at "C", the Selector is moved slightly to the left and it is not in the correct position.

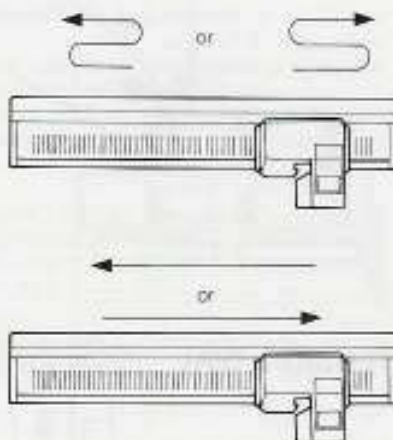
AUTOMATIC RETURN LEVER



With the Automatic Return Lever in this position, the G-Carriage will move back and forth across the needlebed automatically, until the Row Counter reads "000".



When you want to knit one row only, you must push the Stop Button at the end of that row.

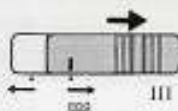


CARRIAGE DIRECTION LEVER

Use the Carriage Direction Lever to alter the direction of the G-Carriage before a row of knitting is begun. The G-Carriage must always be stationary when you change this lever.

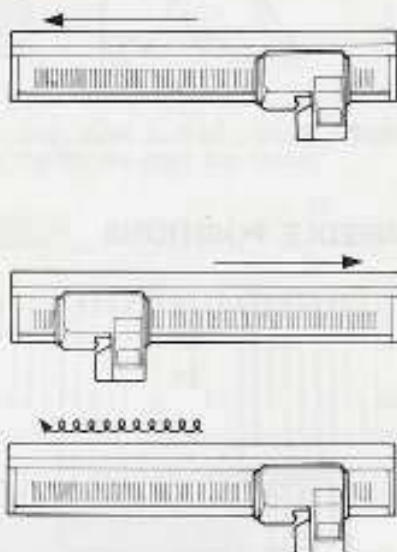


To operate the G-Carriage to the left.



① To operate the G-Carriage to the right.

② To cast on.



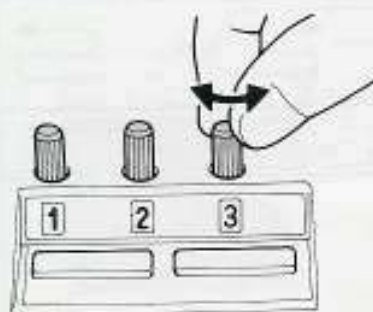
The G-Carriage can only cast on from right to left. So always start with the G-Carriage at the right when casting on.

* To set the Carriage Direction Lever, stop the G-Carriage when it has cleared at least 5 needles past the edge of the knitting.

* When the Automatic Return Lever is set at "CD", the Carriage Direction Lever works automatically and displays the direction in which the G-Carriage is moving.

* The Carriage Direction Lever works in conjunction with the Row Counter. The number displayed by the Row Counter decreases as the Carriage Direction Lever changes back and forth.

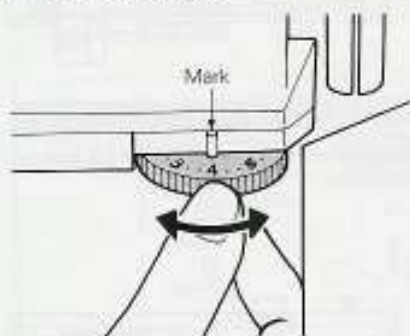
ROW COUNTER



* Set the Row Counter to the number of rows you want to knit. As the G-Carriage moves across the needlebed (knitting 1 row), the Row Counter automatically reduces its total by 1. When the Row Counter shows "000" the G-Carriage stops.

* Should you not wish to set the Row Counter for any particular number, then set it at a very high number so that the G-Carriage won't stop unexpectedly. You can then halt it yourself when you are ready.

TENSION DIAL

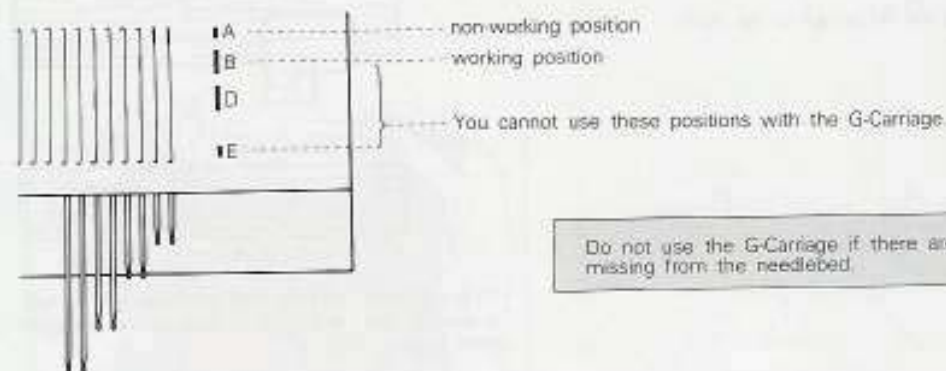


The Tension Dial is different to that of the K-Carriage, the chart below gives a rough guide to tension settings.

YARN	TENSION DIAL	
	CAST-ON RIB KNITTING	STITCH PATTERN
VERY FINE (2ply)	1~2	2~3
FINE (3ply)	2~4	3~6
MEDIUM (4ply)	3~5	5~8
* THICK (5ply)	6~8	7~10
* VERY THICK -	7~9	8~10

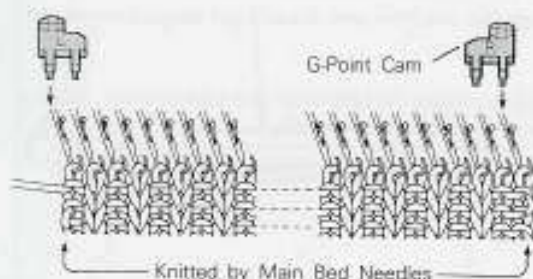
NOTE: Sometimes thick, fancy yarns, such as tweed and bouclé and yarn with no elasticity such as silk, cotton and linen are difficult to knit so take extra care when using these yarns.

NEEDLE POSITIONS



Do not use the G-Carriage if there are needles missing from the needlebed.

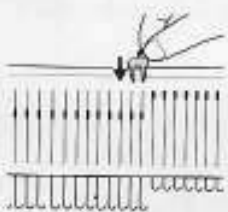
G-POINT CAMS



The G-Point Cams override the patterning and are placed at the edge of the knitting so that these stitches are always reversed by the G-Carriage. The result is an even edge that may be used as a finished edge or for seam allowance.

•HOW TO USE THE G-POINT CAMS

- (1) Hold the G-Point Cam as shown, with the prongs towards you and the flat side away from you. Push prongs into the needle tracks



- (2) Push the G-Point Cam to the back of the needlebed and push down firmly to fix in position.



If you are using the Racks, lift the back of the Cam slightly, and put it as far back in the needle tracks as it will go. The Cam will then sit on the Rack. Press it down firmly.

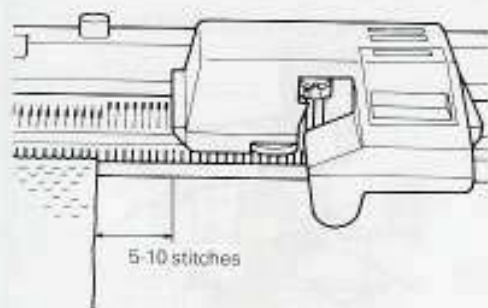
- You can use a 1 stitch, a 2 stitch or a 3 stitch G-Point Cam.

- G-Point Cams can be placed anywhere on the needlebed or even next to each other.

* As you increase or decrease stitches, remember to move the G-Point Cams too.

* Remember to remove the G-Point Cams when you're no longer using them.

WHERE TO PLACE THE G-CARRIAGE BEFORE KNITTING

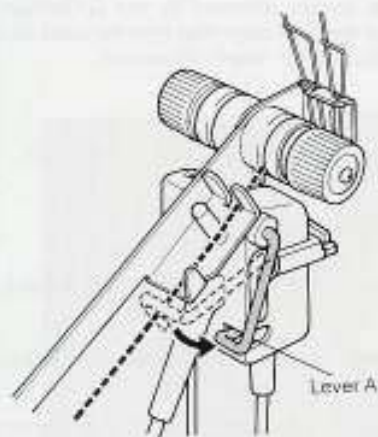


Always place the G-Carriage at least 5 stitches away from the edge of the knitting before you begin knitting.

- * Remove the G-Carriage from the needlebed when you aren't using it.

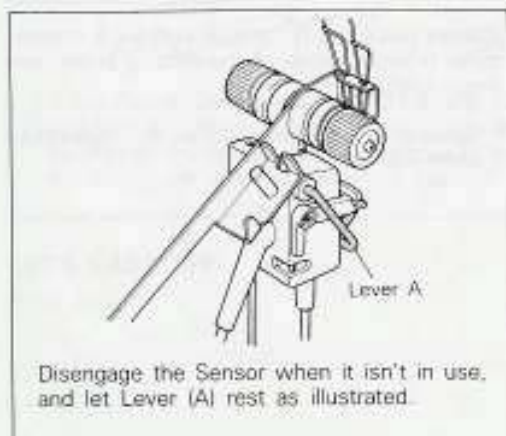
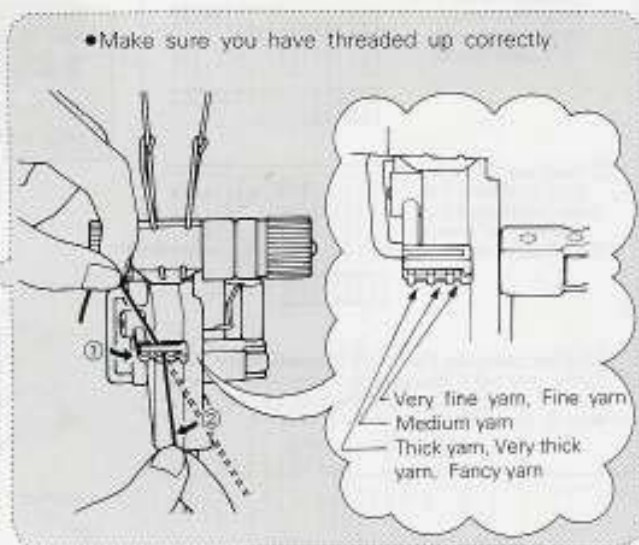
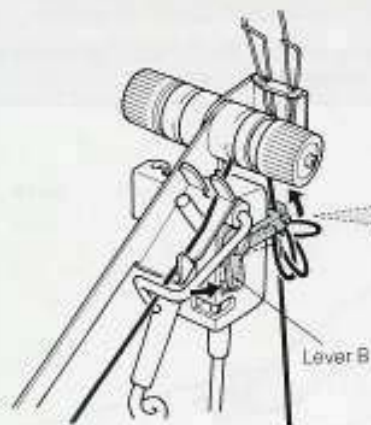
THE SENSOR UNIT

The Sensor checks that the yarn runs smoothly through the machine and doesn't get tangled or run out.



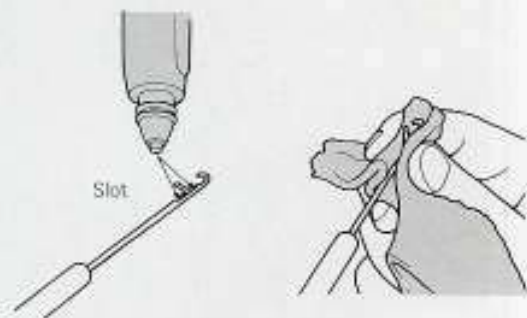
- The Sensor Lever (A) falls when the yarn runs out, and the G-Carriage stops automatically.

- Sensor Lever (B) is pushed up when the yarn has a knot or gets tangled up. The G-Carriage stops automatically.



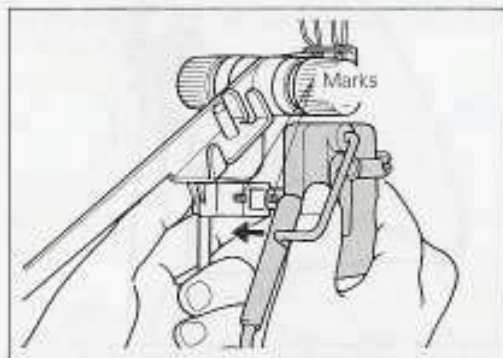
HOW TO USE THE G-CARRIAGE

PREPARATION

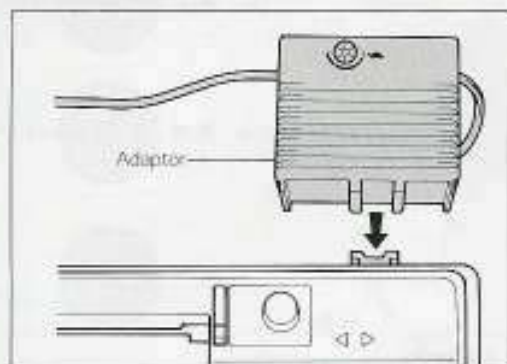


Lightly oil the slot in the stem of the G-Needle, and wipe off any excess.

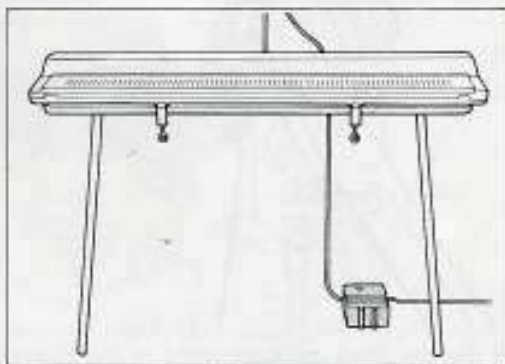
Remember to check the G-Needle before you begin to knit. (Refer to page 46.)



1. Fix the Sensor, which is attached to the Adaptor, onto the Yarn Tension Unit, placing the marks together.



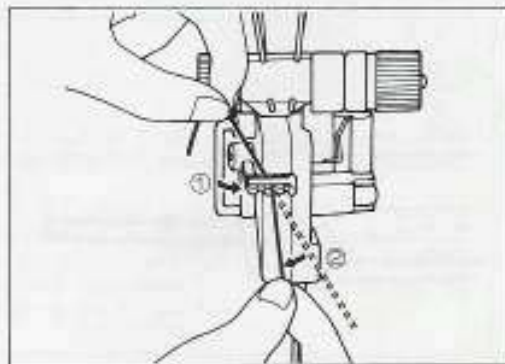
2 EITHER attach the Adaptor onto the back of the knitting machine (KH-890/891).



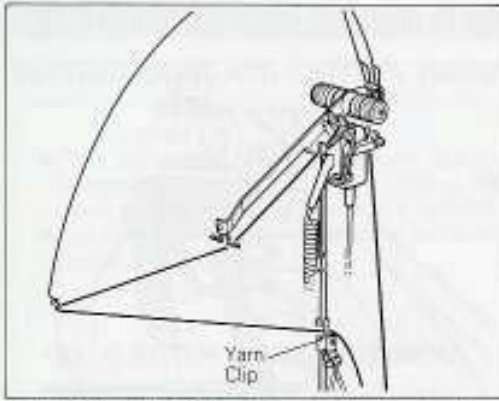
OR place the Adaptor at your feet (KH-836/881/860).



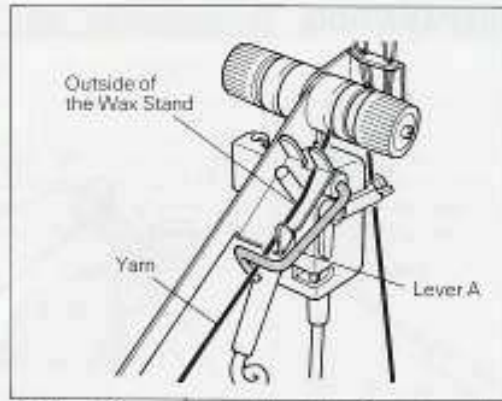
3. Fold down the Rear Yarn Guide.



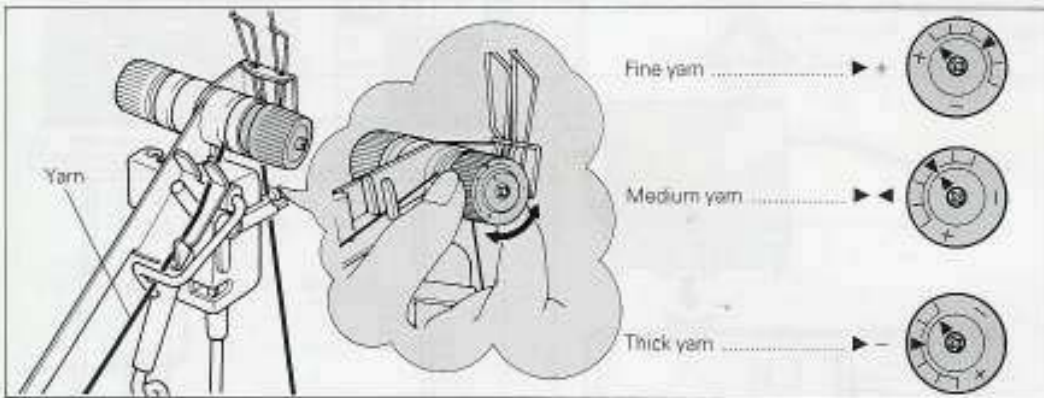
4. Thread the yarn through the Yarn Tension Unit. (1) Check that the yarn is in the correct channel for its weight. (See page 14.)



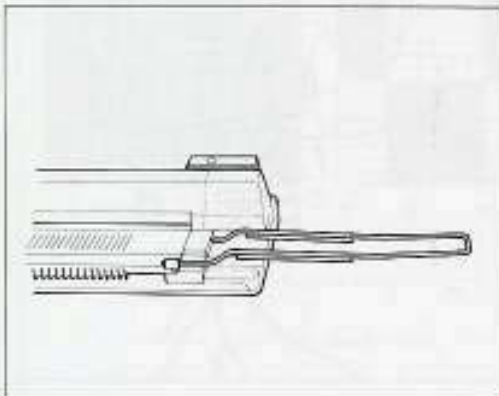
2. Thread the Yarn Tension Unit and place the yarn under the Yarn Clip.



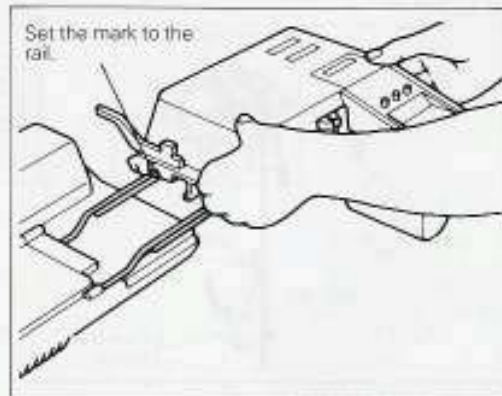
5. Place Sensor Lever (A) so that it rests on the yarn as shown.



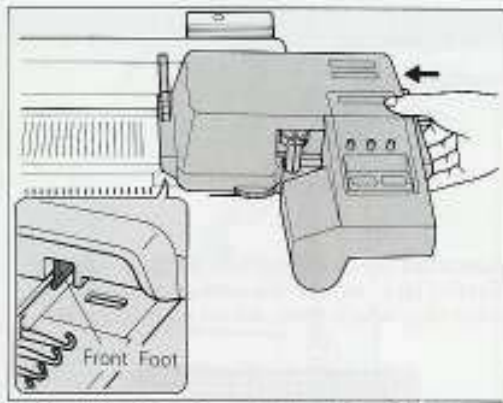
6. Set the arrow mark according to the thickness of the yarn.



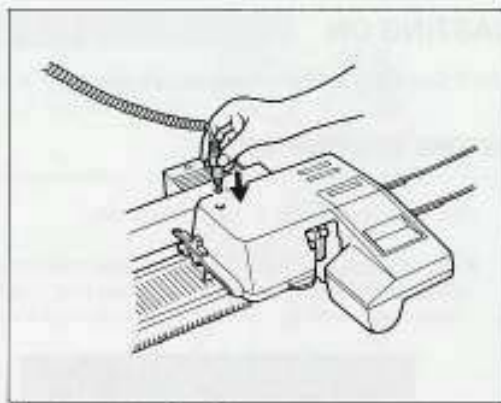
7. Fit the Extension Rails at both sides of the machine.



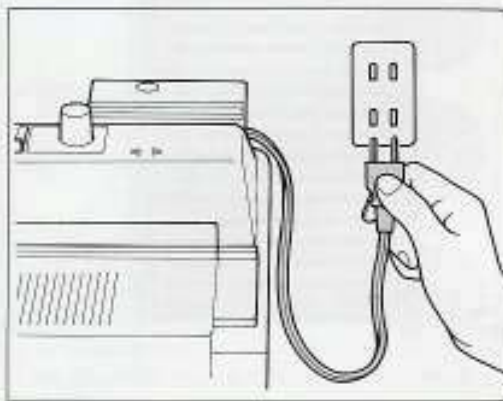
8. Holding the G-Carriage in both hands, place it on the righthand Extension Rail.



9. Push the G-Carriage to the left until it stops. Make sure that the front foot has engaged the needlebed.



10. Insert the Pin Plug.



11. Plug in.
When you put the machine away, always first take out the mains plug, then take out the pin plug.
*When you won't be using the G-Carriage for several hours, always unplug the mains plug.

CASTING ON

The G-Carriage casts on automatically using the 'e' wrap method.

BEFORE CASTING ON

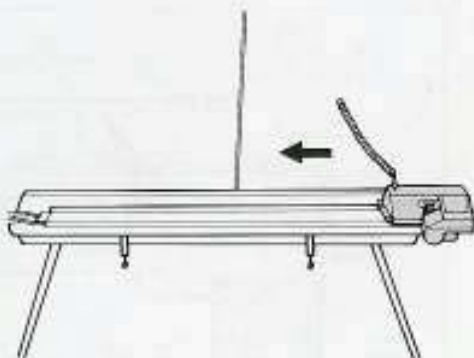
Use Punchcard No. 2 for casting on.

- The stitches which correspond to the holes in your punchcard will be knitted with the G-Needle. All other stitches will be knitted by main bed needles. Casting on is done on the main bed needles, so when you want to cast on, you must use a row on the card where there are no holes punched.

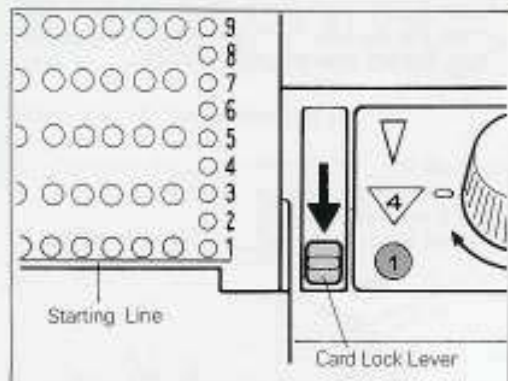


Casting-on by the main bed needles

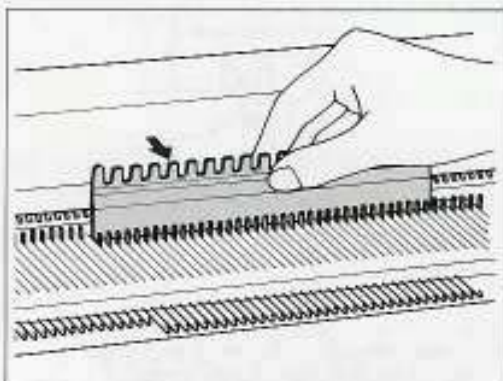
- Always start with the G-Carriage at the right as the G-Carriage can only cast on from right to left.



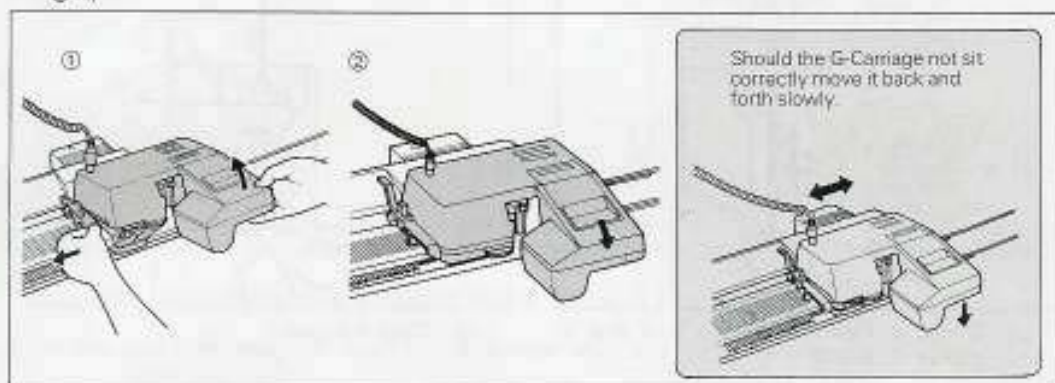
LET'S CAST ON



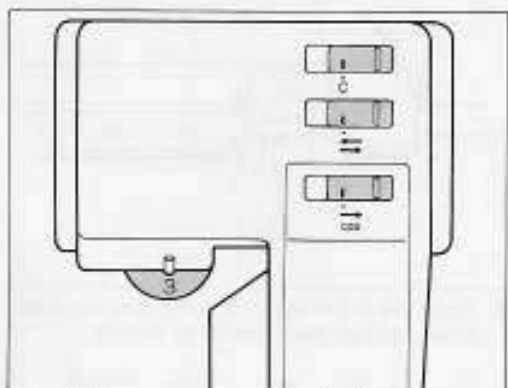
1. Insert punchcard No. 2 and lock on row 1. (Row 1 is at Starting Line and Card Lock Lever is at "●")



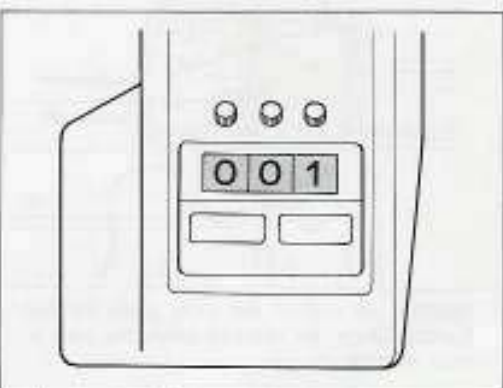
2. Using the flat side of the 1/1 Needle Pusher, bring needles to B position (working position).



3. Lift up the front part of the G-Carriage with your right hand and position it at least 5 stitches away from the edge of the knitting needles by pulling it with your left hand.

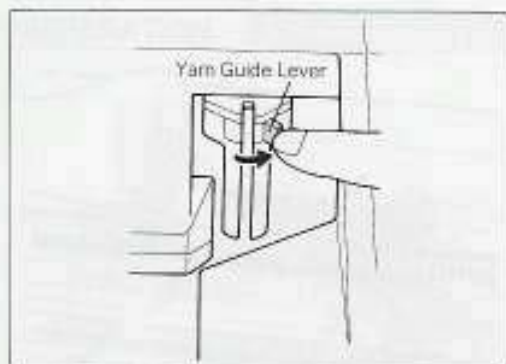


4. Set the Levers as shown in the illustration and the Tension Dial according to the yarn you are using. (Refer to page 12.)

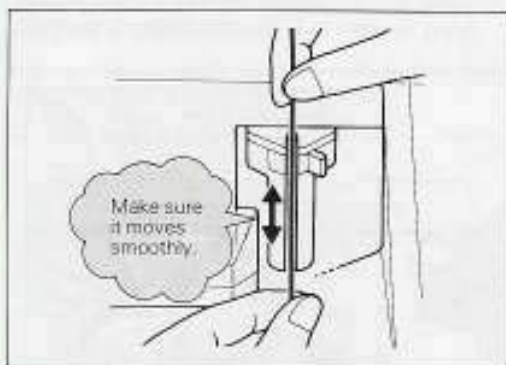


5. Set the Row Counter to 001.

HOW TO USE THE G-CARRIAGE (with model EP-310)

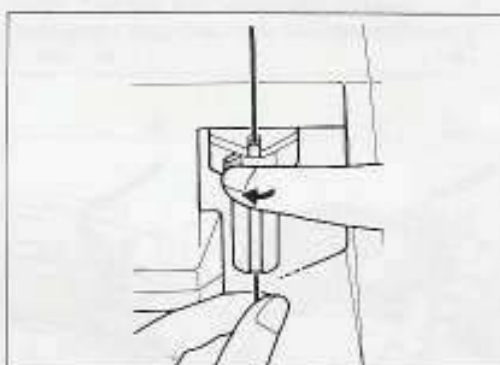


6. Thread the yarn into the Yarn Guide:
(1) Open the Yarn Guide Lever.

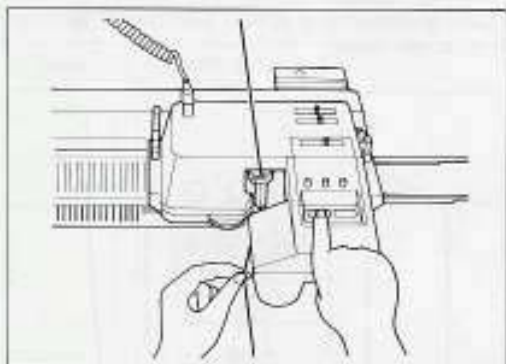


- (2) Thread the yarn and make sure that it moves smoothly.

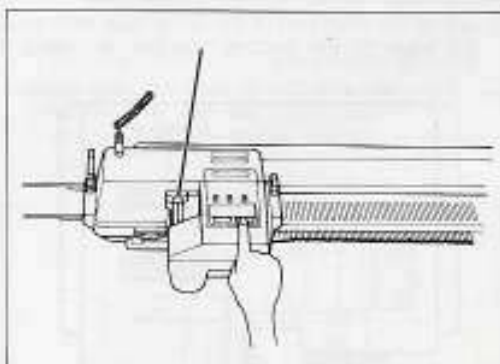
*Should it be difficult to thread the Yarn Guide because the Yarn Guide is on the right side move the Yarn Guide to the left by pushing the Start Button and the Stop Button.



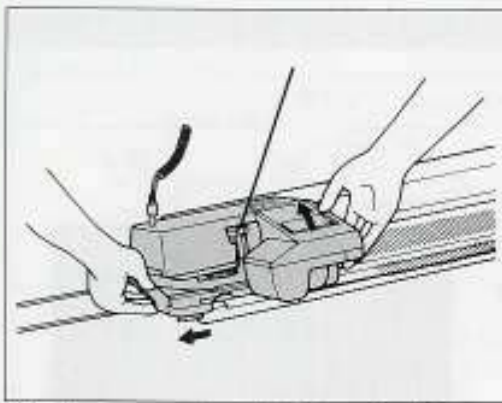
- (3) Close the Lever.



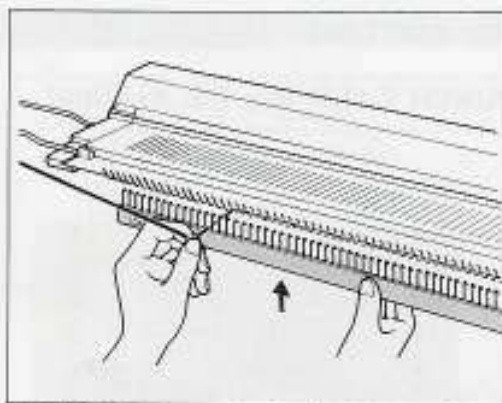
7. Holding the end of the yarn, push the Start Button (Once the needles catch the yarn you may release it).



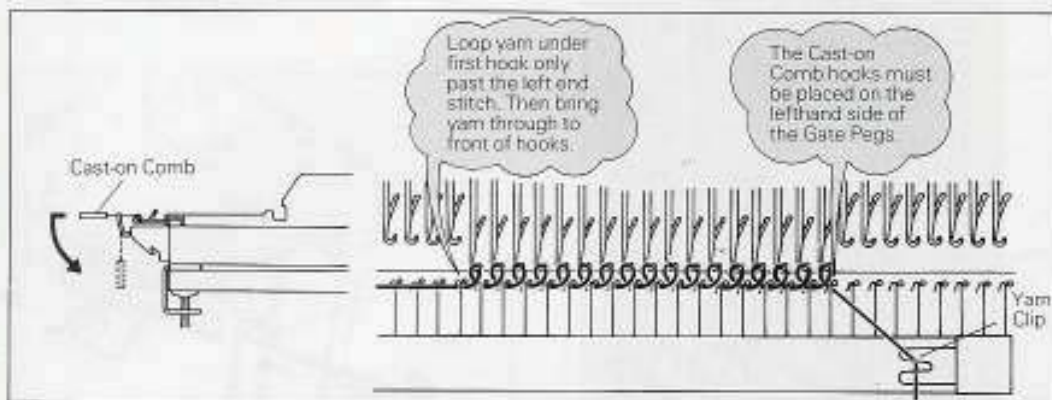
8. Once the G-Carriage has completed the automatic cast-on push the Stop Button.



9. So that you can hang the Cast-on Comb, move the G-Carriage to the left. To do this, lift the front part of the G-Carriage, and slide the G-Carriage to the left, away from the edge of the knitting.



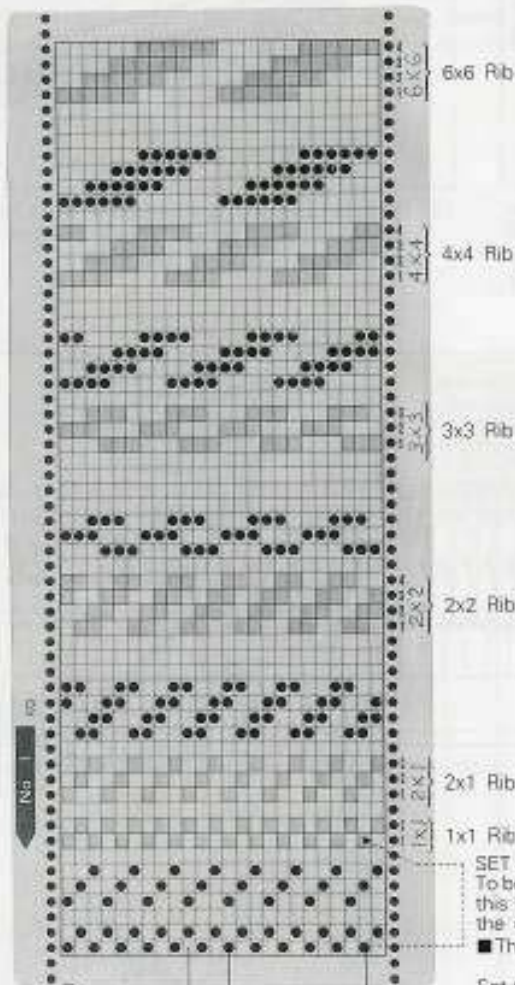
10. Hold the Cast-on Comb with the hooks facing towards the machine, and pull the yarn end through the Comb.



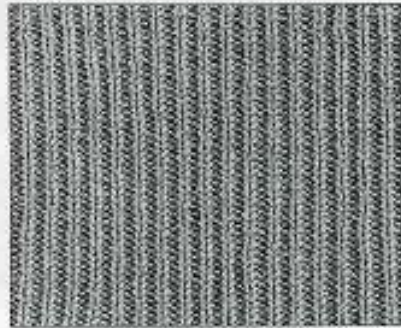
11. Now hang the Cast-on Comb as shown in the illustration, and hook the yarn end into the Yarn Clip.

RIB KNITTING

PUNCH CARD (for Rib Knitting)



Example



1x1 Rib

SET LINE
To begin at row 1 on the card, you should set the card at this line. (Note that it is 7 rows up from the bottom of the card.)

■ These marks correspond to the punched holes.

Set the card to whichever type of rib you want to knit.

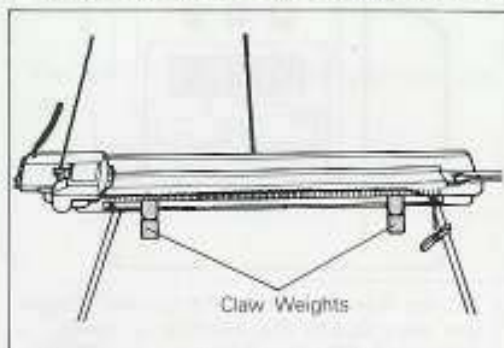
Perforation

Main bed
needle works
(no holes)

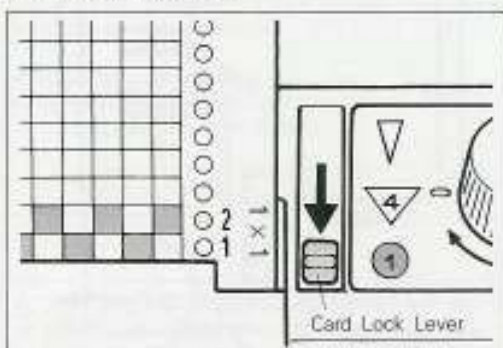
G-Needle works
(holes punched)

LET'S START KNITTING

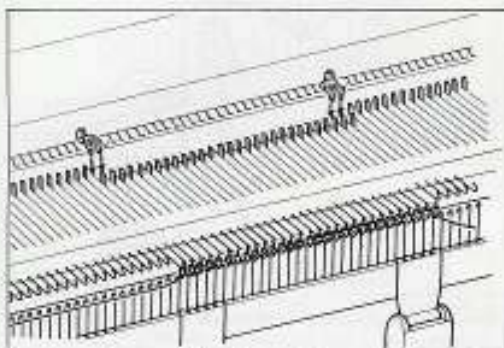
The G-Carriage is at the lefthand side of the machine in the illustrations.



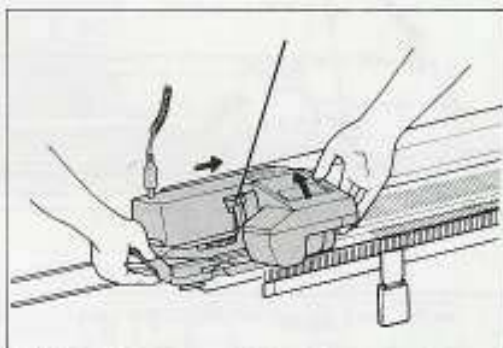
1. After casting on, hang the Claw Weights on the Cast-on Comb.
*Don't hang the Claw Weights directly on the knitting.



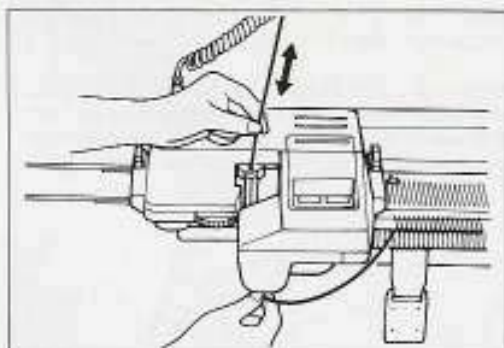
2. Insert punchcard No. 1 and lock on the 1st row of 1 x 1 rib. (Card Lock Lever to "1" mark.)



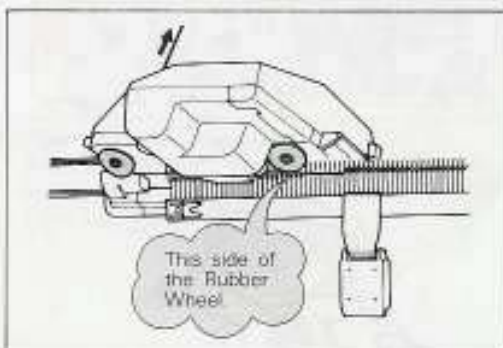
3. Place the 1 stitch G-Point Cams in the needle tracks of both end needles.



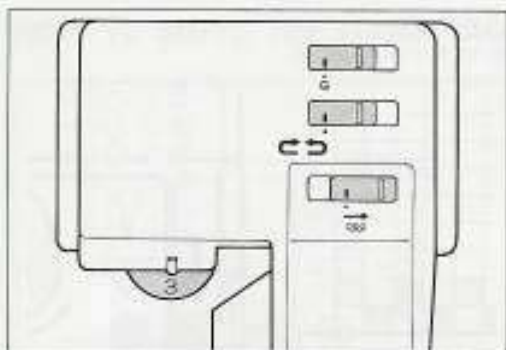
4. Lift the front part of the G-Carriage with your right hand, and slide the G-Carriage to the right with your left hand away from the edge of the knitting. Position it at least 5 stitches away from the edge of the knitting.



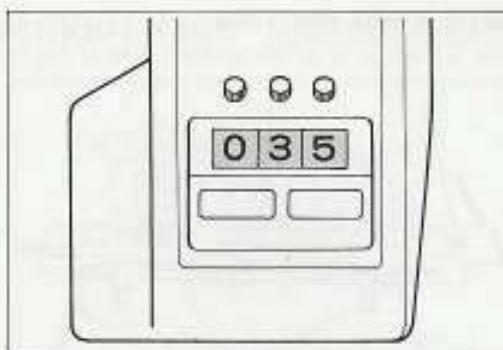
5. Check that the yarn is not caught in the hooks of the Cast-on Comb and that it moves smoothly in the Yarn Guide.



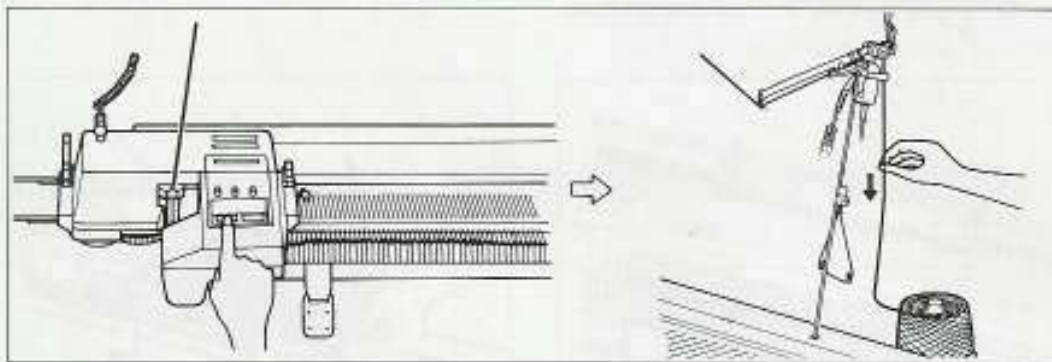
6. Check the yarn isn't caught around the Rubber Wheel.



7. Set the Levers as illustrated and the Tension Dial according to the yarn begin used. (Refer to page 12.)



8. Set the Row Counter to the number of rows you want to knit (for example 35 rows).
*Moving the Carriage Direction Lever will alter the Row Counter.



9. Push the Start Button. Now pull the yarn from below the Sensor until the first stitch has been knitted.

The G-Carriage will knit in rib for 35 rows and then stop automatically when the Row Counter shows 000.

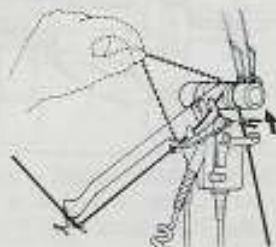


PLEASE NOTE:

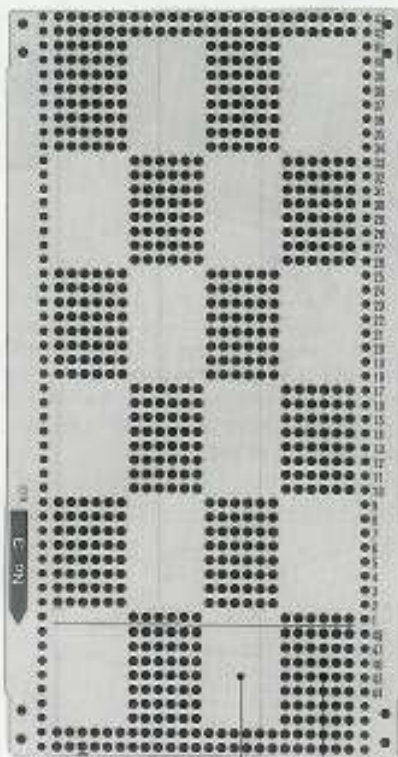
- WHENEVER YOU PUSH THE START BUTTON

In order to keep the tension even, you should pull the yarn from below the Sensor until the first stitch has been knitted.

- If there is a knot in the yarn, the Sensor will stop the G-Carriage. Pull out the knot and make sure the yarn will continue to run through the machine smoothly. Then push the Start Button.



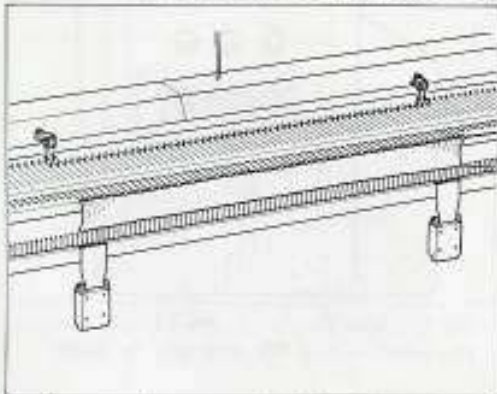
G-STITCH PATTERN DESIGNS



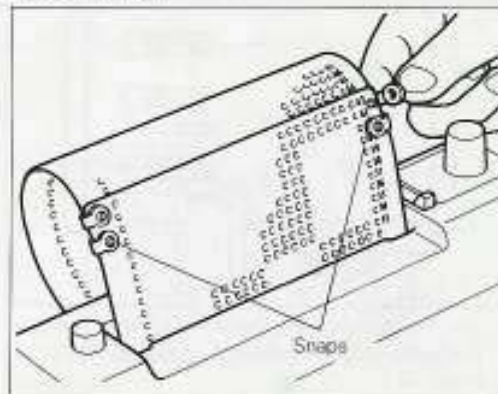
Needle-G works
Mainbed needle works

LET'S KNIT G-STITCH PATTERN DESIGNS

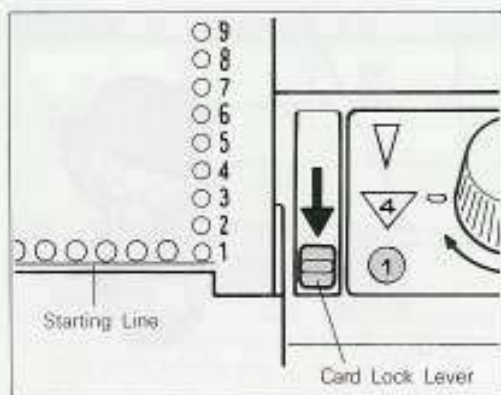
The illustration shows the G-Carriage at the right of the machine.



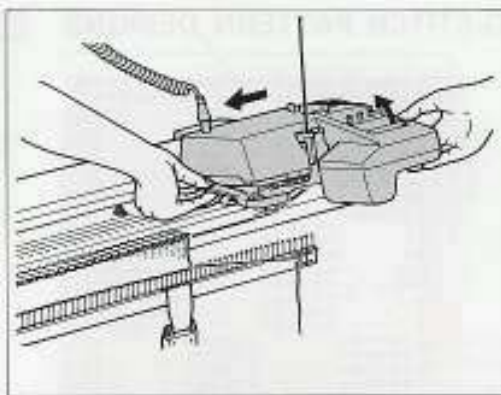
1. After casting on and knitting rib pattern (if required) hang the Claw Weights on the Cast-on Comb. Place the 1 stitch G-Point Cams in the needle tracks of both end needles.



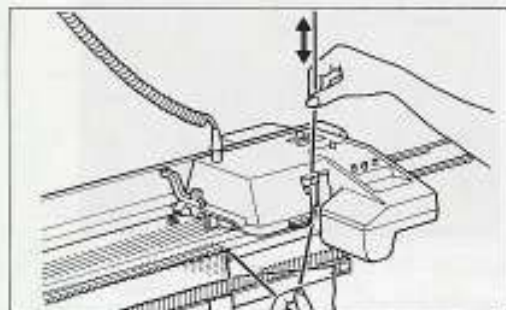
2. Insert a punchcard for a G-stitch pattern (example Card No. 3):
(1) Clip both ends of the card together using the card snaps.



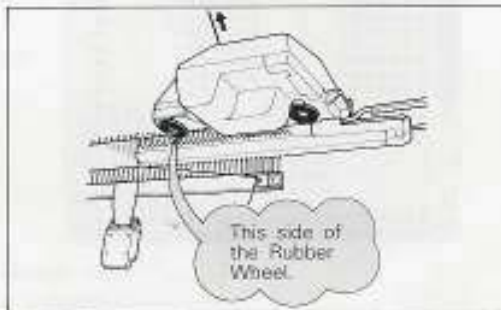
- (2) Set the card at the Starting Line and the Card Lock Lever at "1" mark.



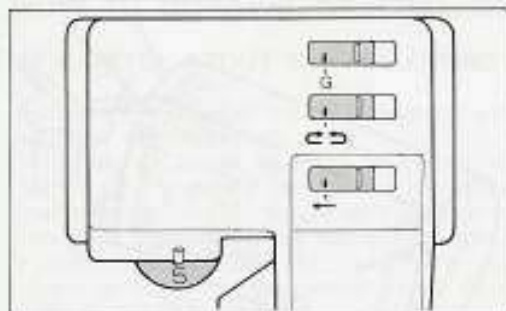
3. Lift the front part of the G-Carriage with your right hand, and slide the G-Carriage to the left with your left hand away from the edge of the knitting. Position it at least 5 stitches away from the edge of the knitting.



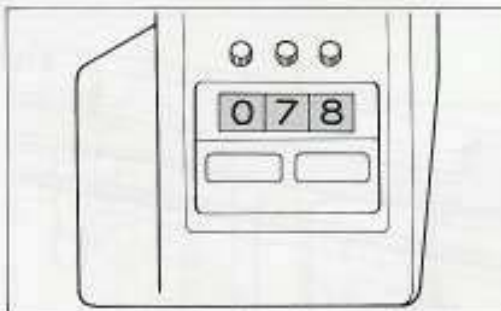
4. Check that the yarn is not caught in the hooks of the Cast-on Comb and that it moves smoothly in the Yarn Guide.



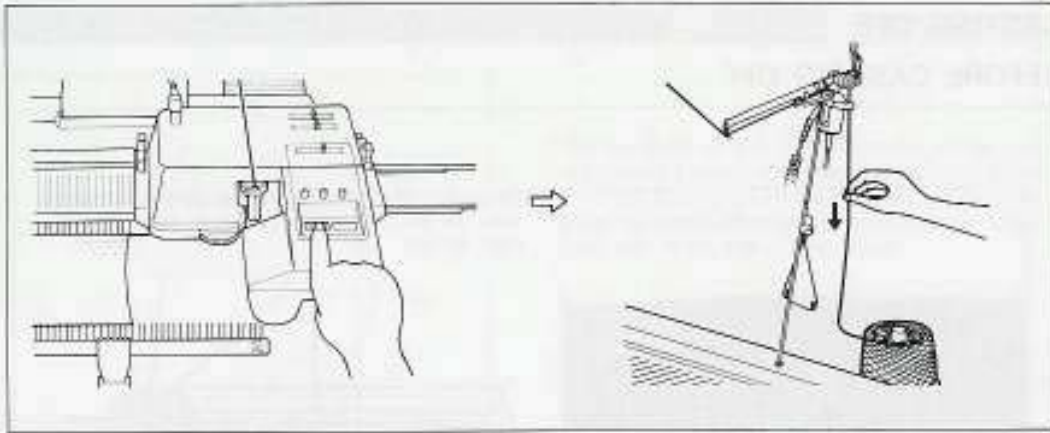
5. Check the yarn isn't caught around the Rubber Wheel.



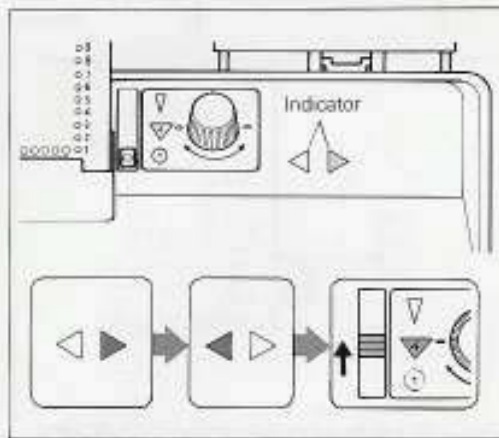
6. Set the Levers as illustrated and the Tension Dial according to the yarn being used. (Refer to page 12.)



7. Set the Row Counter to the number of rows you want to knit (for example 78 rows).



8. Push the Start Button. Now pull the yarn from below the Sensor until the first stitch has been knitted.



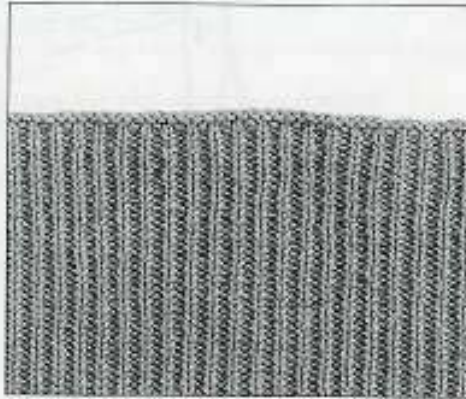
9. When the Indicator shows the same direction as the moving carriage, set the Card Lock Lever at the "▼" mark.



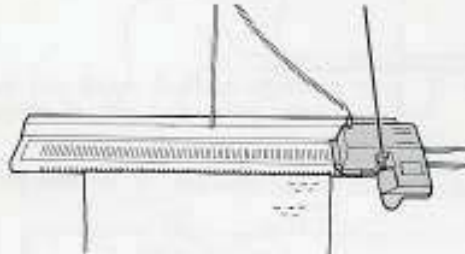
The G-Carriage will knit in pattern for 78 rows and then stop automatically when the Row Counter shows 000.

CASTING OFF

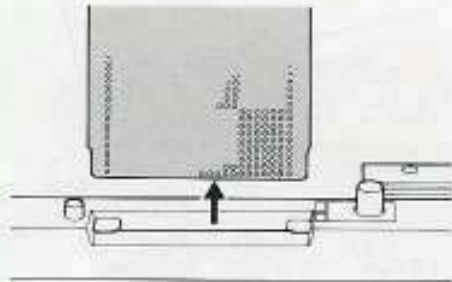
BEFORE CASTING OFF . . .



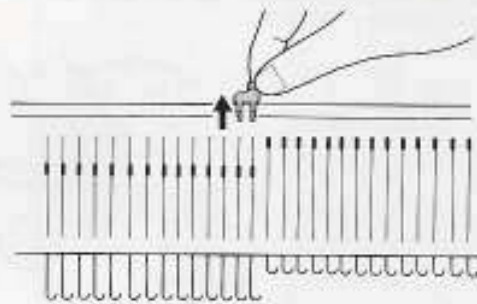
- Be sure to place the G-Carriage on the righthand side, as the G-Carriage can only cast off from right to left.

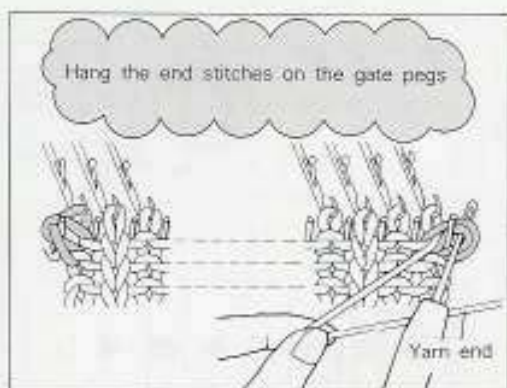


- Take out the Punch Card.

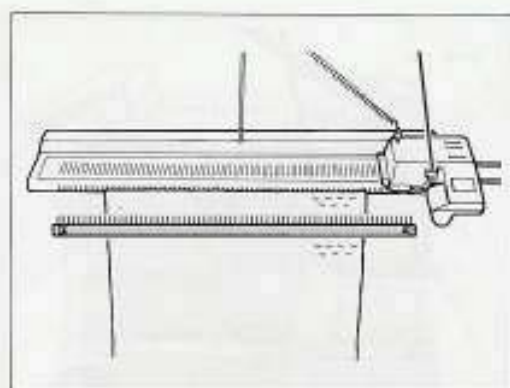


- Remove the G-Point Cams when casting off.

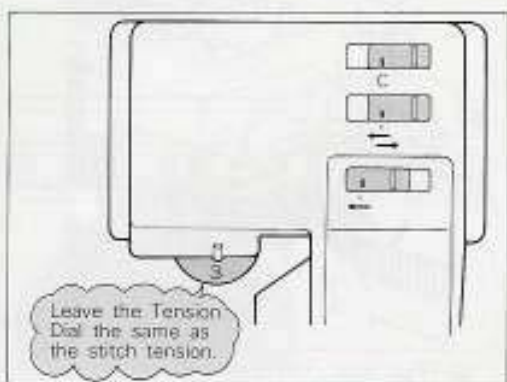




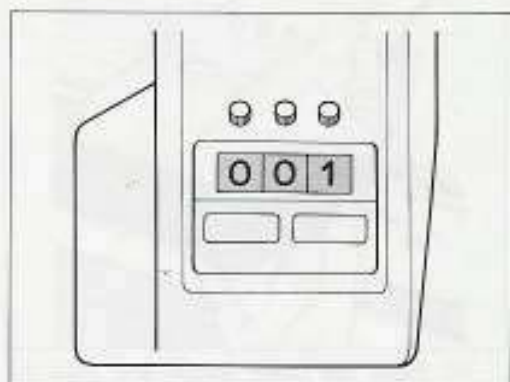
1. Pick up the stems of both end stitches and hang them onto the gate pegs as shown above.
(This is to prevent the knitting swatch from curling up whilst you are casting off.)



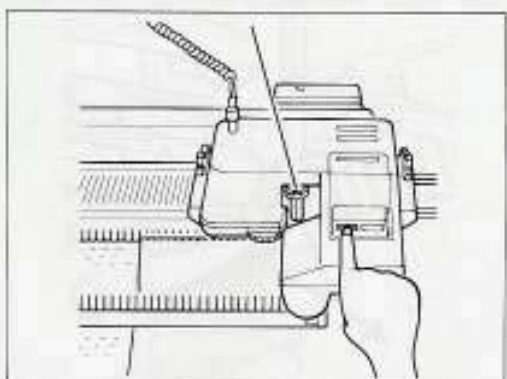
2. Remove the Claw Weights, and hang the Cast-on Comb about 5 cm down from the gate pegs.



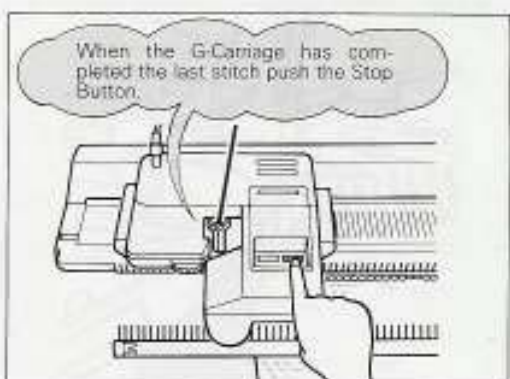
3. Set the Levers as shown above.



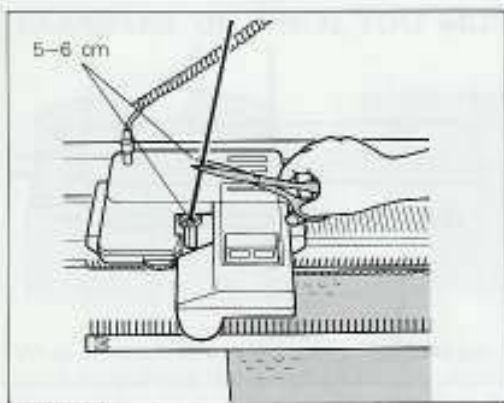
4. Set the Flow Counter to 001.



5. Ensure that the yarn is threaded through the Yarn Guide and push the Start Button.

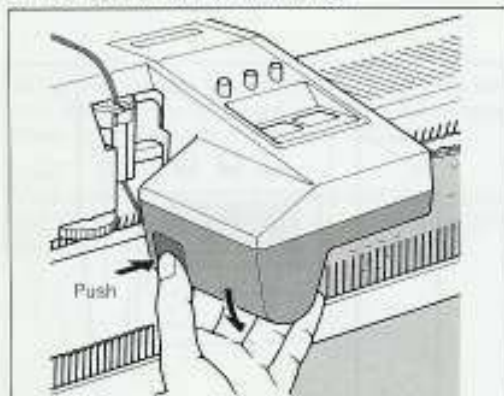


6. Push the Stop Button after the G-Carriage has completed the cast-off.

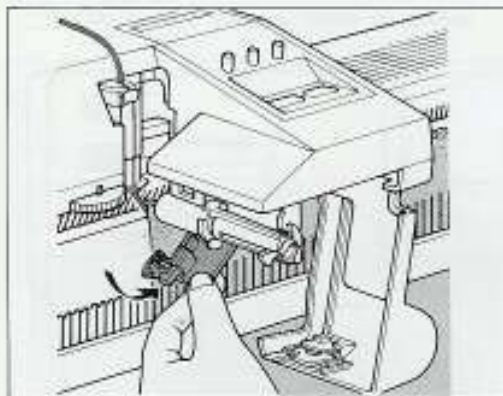


7. Cut the yarn.

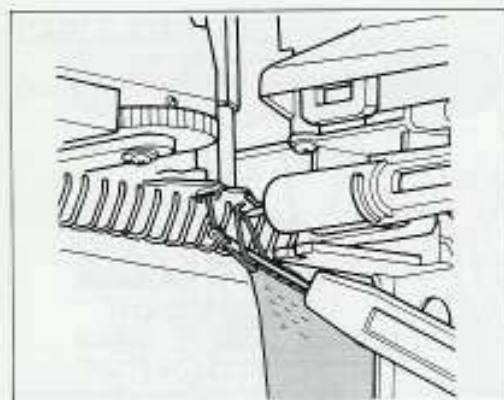
8. How to remove your knitting.



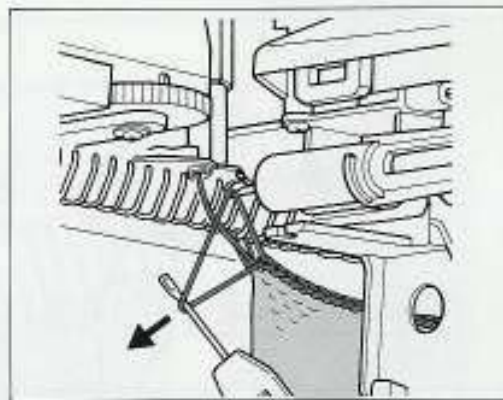
(1) Press the Cover Button and open the Lower Cover of the G-Carriage.

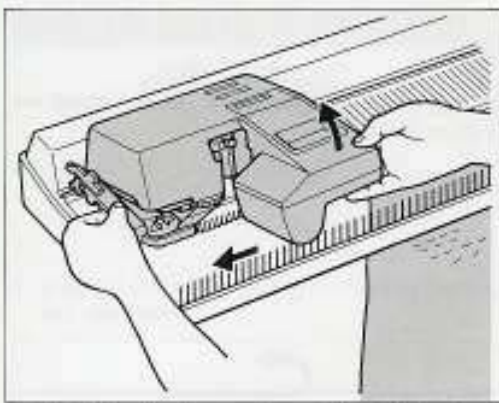


(2) Pull down the Sinker Plate.

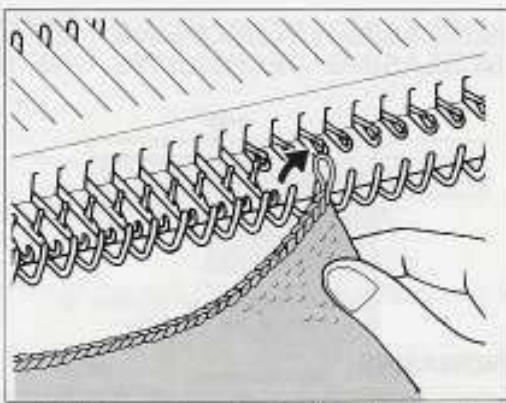


(3) Put your Transfer Tool into the stitch on the G-Needles and pull out a loop of yarn.



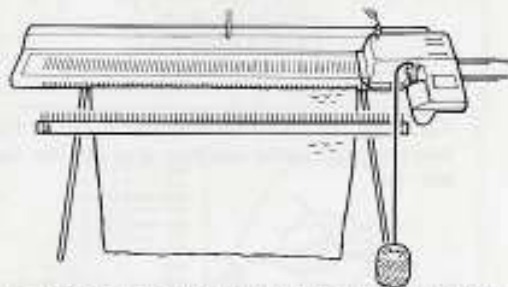


(4) Close the Lower Cover. Then lift the front part of the G-Carriage and slide it to the left.

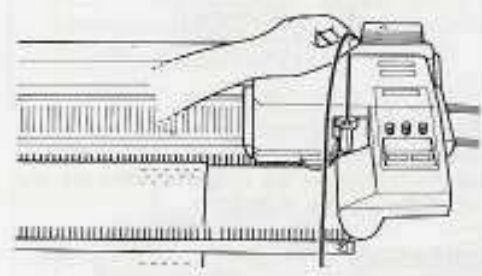


(5) Remove the Cast-on Comb and unhook both end stitches from the gate pegs.

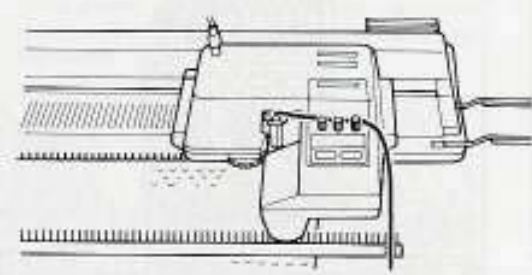
WHEN YOU WANT TO MAKE A LOOSE CAST-OFF



1. Take the yarn out of the Yarn Tension Unit and place it at your feet. Refer to page 14 to disengage the Sensor Lever A.



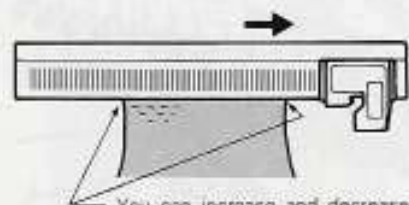
2. Push the Start Button at the same time pulling the yarn slightly from above with your other hand to keep an even tension.



3. After a few stitches have been cast off, place the yarn behind the knobs of the Row Counter as illustrated.

BASIC TECHNIQUES

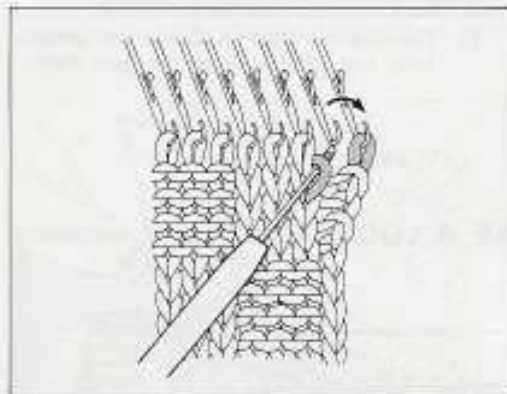
INCREASING / DECREASING INCREASING / DECREASING ONE STITCH



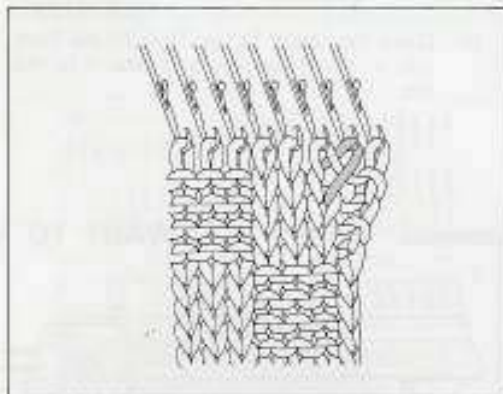
You can increase and decrease on both sides of the machine.

As you increase or decrease stitches move the G-Point Cams.

INCREASING

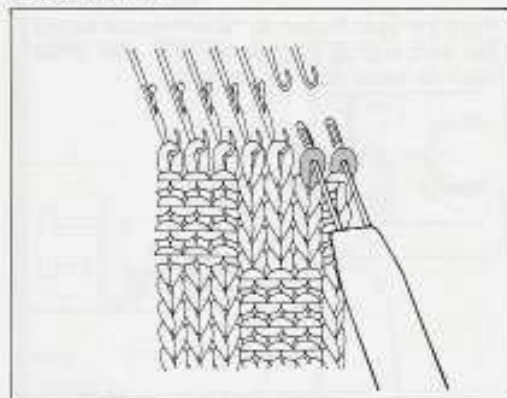


1. Transfer the end stitch to the adjacent empty needle. Then, using a single transfer tool, pick up the loop below the 2nd stitch from the end as shown in the illustration.

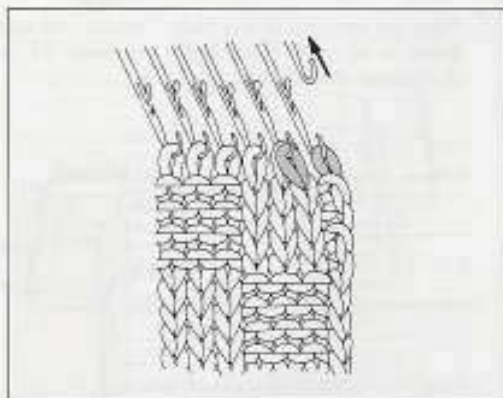


2. Place the Transfer Tool onto the hooks of the two adjacent inside needles, and transfer the stitches.

DECREASING



1. Pick up the end two stitches on the Transfer Tool.



2. Transfer the two stitches one needle inside of the knitting swatch and push back the empty needle to A position.

INCREASING/DECREASING MORE THAN TWO STITCHES

Before increasing or decreasing

1. While the G-Carriage is knitting the row on which you wish to increase or decrease, switch the Automatic Return Lever to "←".
2. When the G-Carriage has cleared the knitting by at least 5 needles, push the Stop Button.

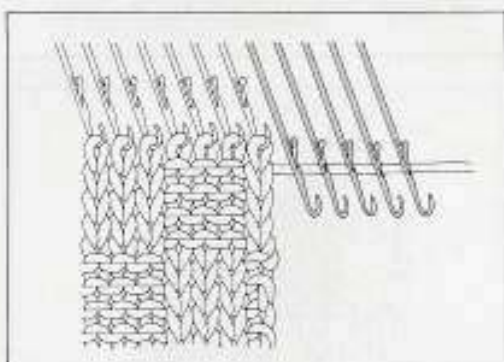


You can increase and decrease on G-Carriage side only.

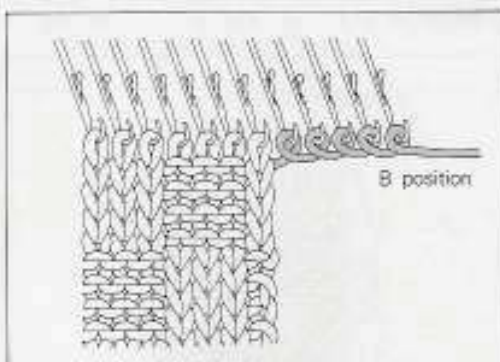
To knit the next row

1. Work your increase or decrease. Then switch the Automatic Return Lever "↔" and set the G-Carriage Direction Lever for the correct direction.
2. Push the Start Button.

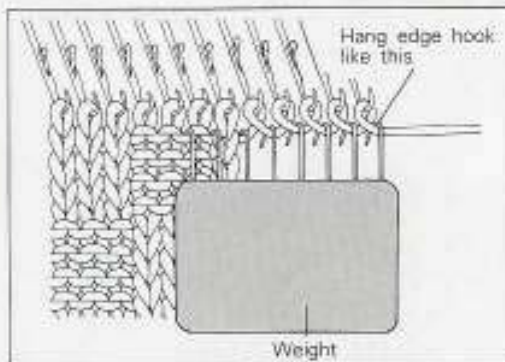
INCREASING



1. On the G-Carriage side, bring the needles to be increased forward to D position and open the latches.

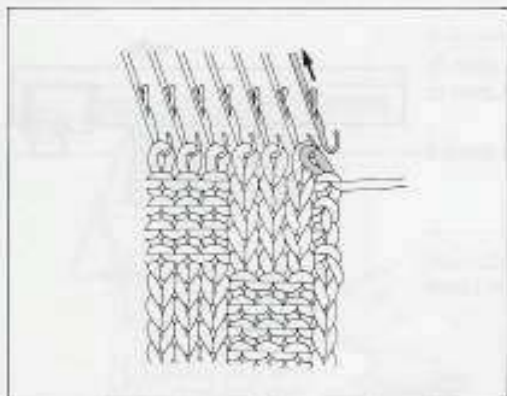


2. Wind the yarn loosely around the hooks as shown, and align the needles in B position.

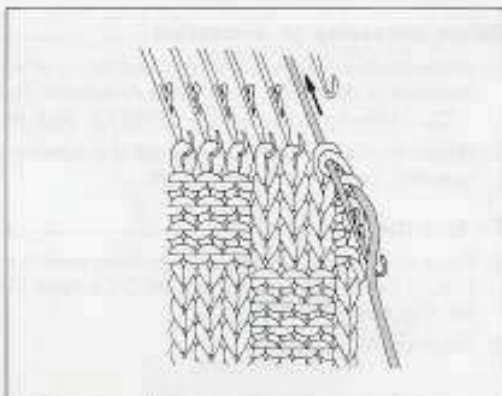


3. Hang the weight onto the loops as illustrated.

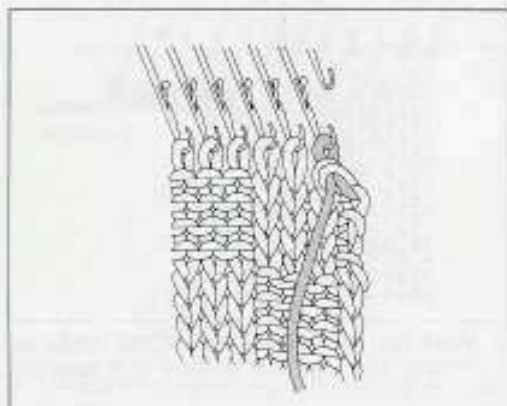
DECREASING



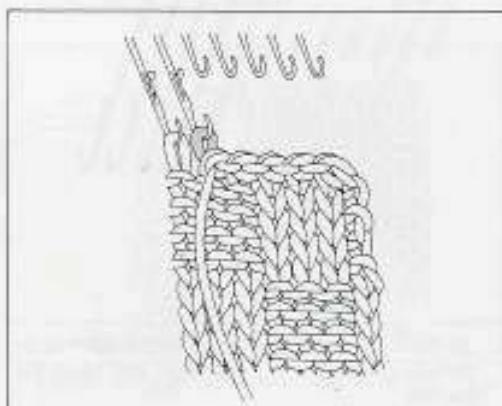
1. Transfer the end stitch onto the adjacent needle, and push the empty needle back to A position.



2. Bring needle forward so that both stitches are behind the latch. Loop yarn over needle hook as shown. Then manually knit the stitch.



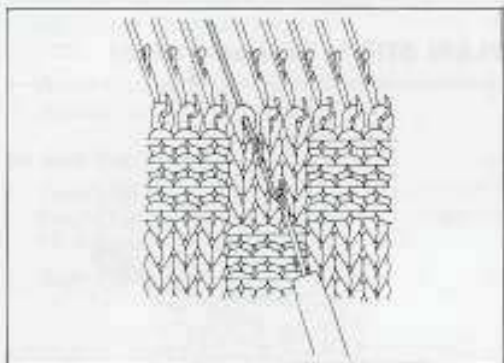
3. You have now decreased one stitch.



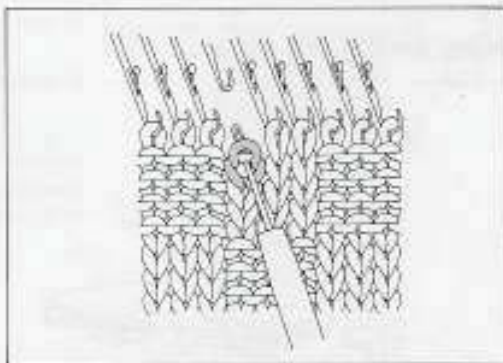
4. Repeat steps. (1~3)

HOW TO UNRAVEL AND PICK UP STITCHES

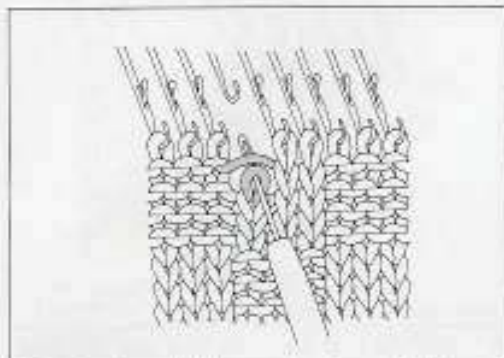
UNRAVELLING (When there are plain and purl stitches in the same row.)



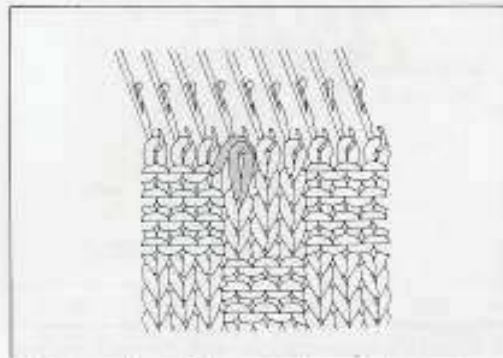
1. Arrange the needles in B position using the Transfer Tool, if necessary.



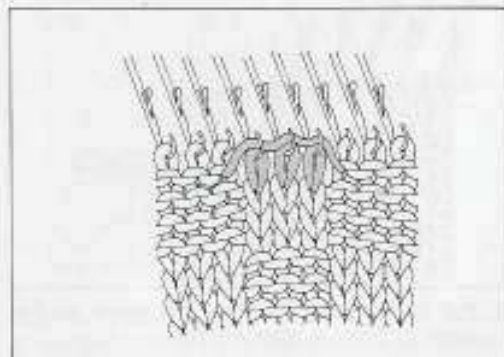
2. Insert the Transfer Tool into the stitch below the plain stitch made by the G-Needle, and take it off onto the Transfer Tool.



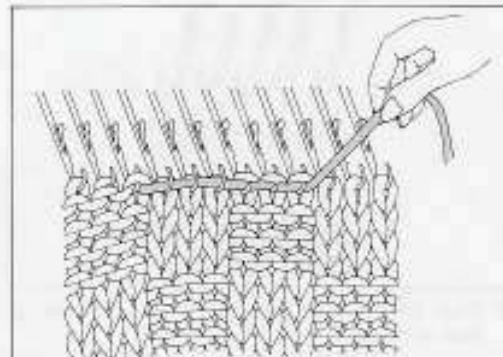
3. Push down slightly on the Transfer Tool and unravel one row.



4. Return the stitches to the needle again as shown in the illustration.



5. Unravel all the plain stitches made by the G-Needle in the row.



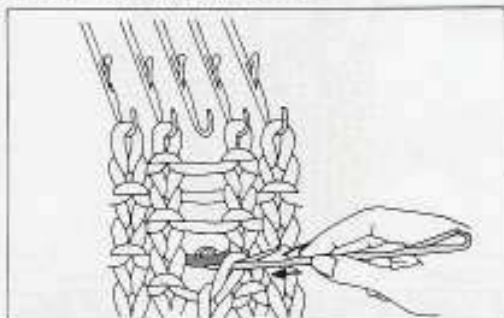
6. To unravel the stitches, pull up the yarn end, at the same time moving it from side to side.

PICKING UP USING THE DOUBLE LATCHET TOOL.

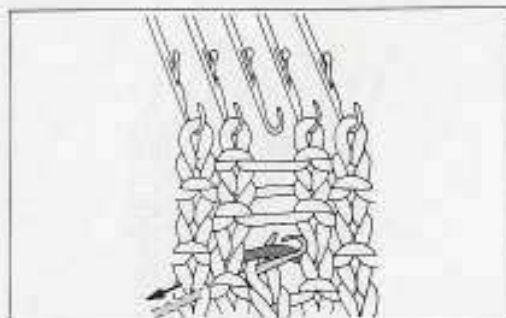


Double Latchet Tool

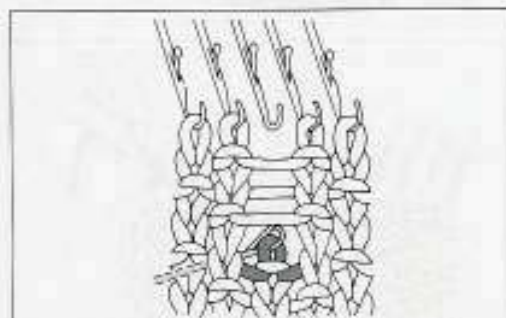
PURL STITCH (KH stitch)



1. Pick up the last stitch that has not dropped using the Double Latchet Tool.

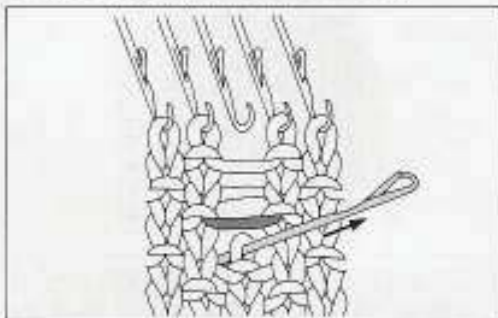


2. Catch the horizontal loop with the hook and pull backwards.

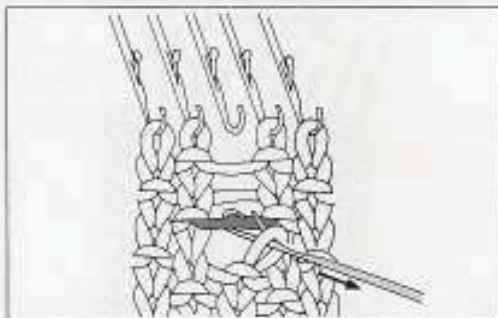


3. Push back the Double Latchet Tool to form a purl stitch.

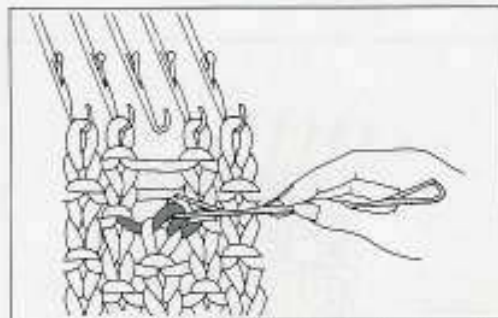
PLAIN STITCH (G-Needle stitch)



4. Insert the Double Latchet Tool and pull it backwards as illustrated.



5. Catch the next horizontal loop with the hook.



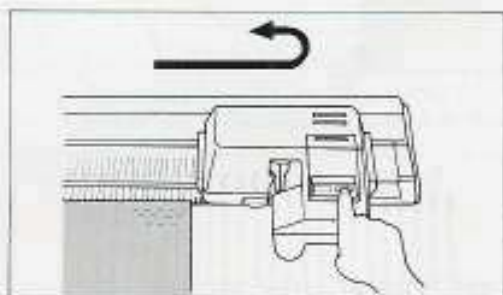
6. Pull the new yarn through the stitch on the stem to form a plain stitch.

HOW TO SHAPE A NECK LINE

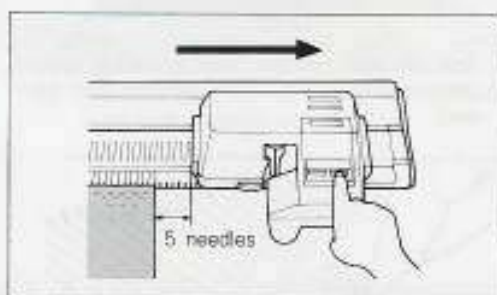


- *It isn't possible to put needles in D (Upper Working Position) or E (Holding Position) when you use the G-Carriage. You must therefore use A position (Non-working Position).
- *If you are making a double length pattern, (the Card Lock Lever at "▼" mark) remember to knit the right side first.

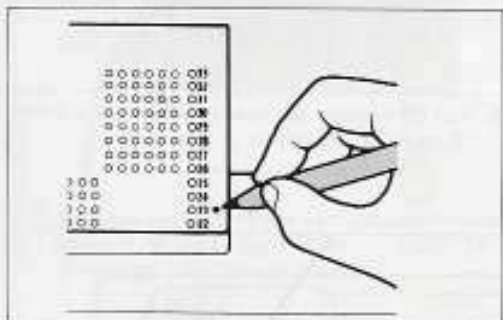
1. Stop the G-Carriage on the row where you want to divide for the neck. (The G-Carriage is on the right of the needlebed.)



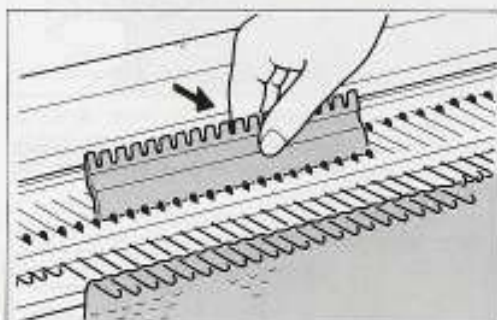
When the Automatic Return Lever is set to "↔", push the Stop Button after the G-Carriage has changed direction.



When the Automatic Return Lever is set to "→", push the Stop Button when the G-carriage has cleared the knitting by at least 5 needles.

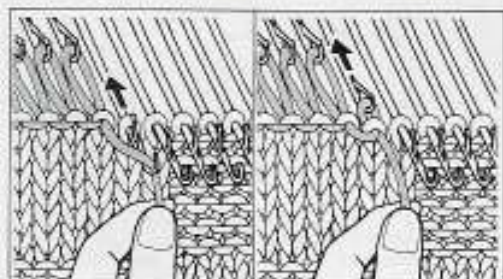


2. Make a mark on the punchcard one row above the row at the Set Line as the card hasn't yet fed down.

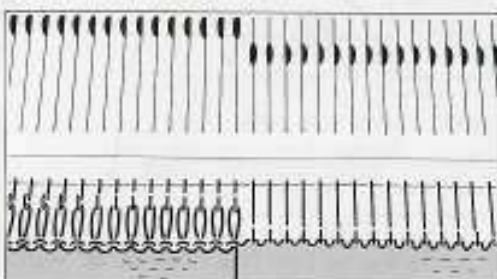


3. Remove the stitches for Parts (2) and (3) using the Cast-on Thread as follows:

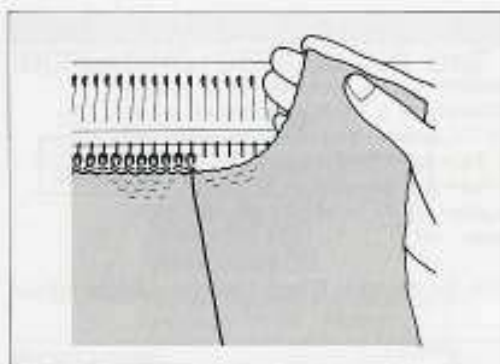
(1) Bring the needles forward to E position.



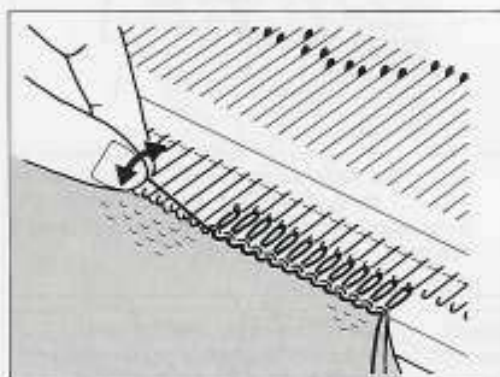
- (2) Hang the Cast-on Thread over the hooks of the needles, and knit them back to A position by hand.



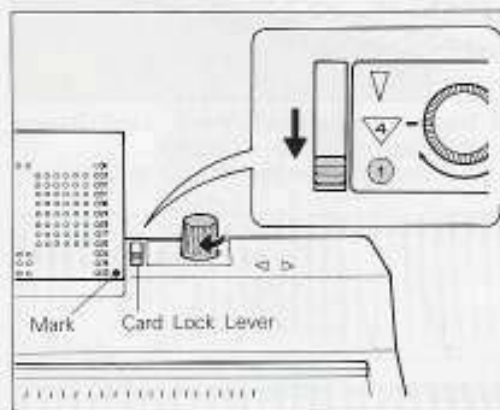
(3) The needles in A position will not knit.



4. Knit the right shoulder first according to your pattern, and return empty needles to A position.

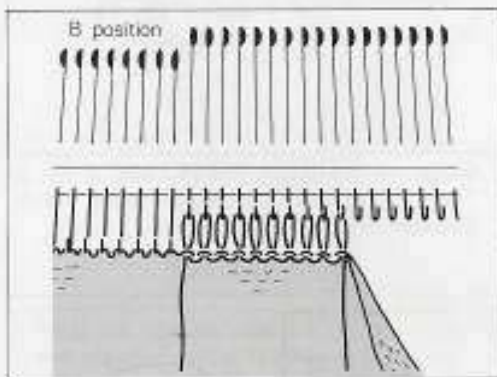


5. Bring needles from Part (2) from A to B position, at the same time replacing the stitches into the needle hooks and removing the Cast-on Thread.

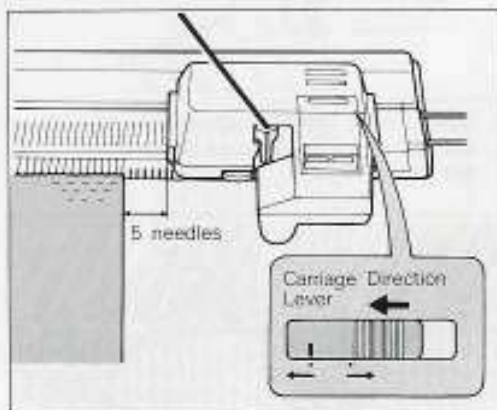


7. Set the Punch Card at the mark you made before and the Card Lock Lever at "1" mark. * Set the Knit-Leader back to the point where the neck division began.

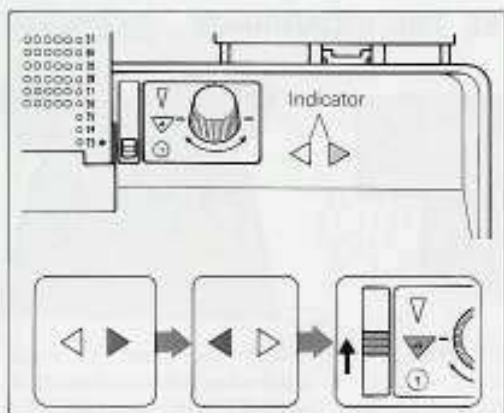
NOTE: When the knitting is narrow it is possible that the Knit-Leader and Row Counter trippers may not be triggered, so you must do this by hand.



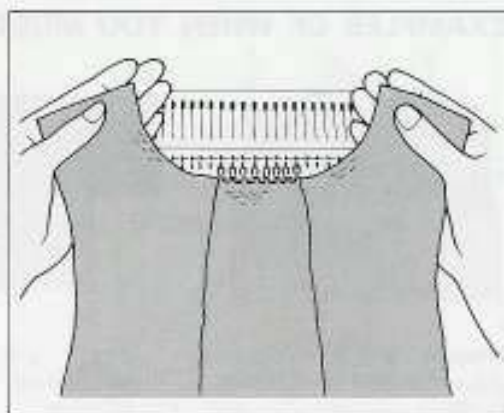
6. Part (2) needles are now in B position and Part (3) needles remain in A position.



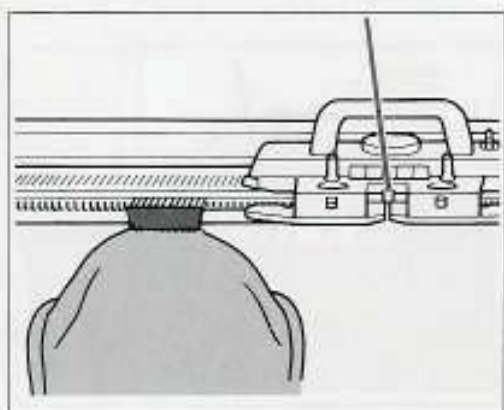
8. Make sure the G-Carnage is on the right and is positioned at least 5 needles away from the edge of the knitting. Thread the Yarn Guide. Switch the Carriage Direction Lever to "←". Now push the Start Button.



9. After the Indicator shows the same direction as the G-Carriage is moving in, set the Card Lock Lever to the "▼" mark.

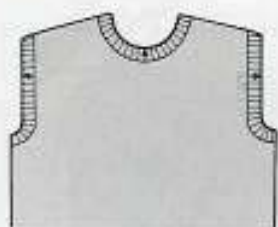


10. Knit the left shoulder to match reversing shapings.



11. Finish Part (3) by knitting several rows of stocking stitch in waste yarn, using the K-Carriage.

EXAMPLES OF WHEN YOU MUST USE THE K-CARRIAGE



When you pick up stitches to knit a neckband or armbands.



When you pick up stitches to knit sleeves.

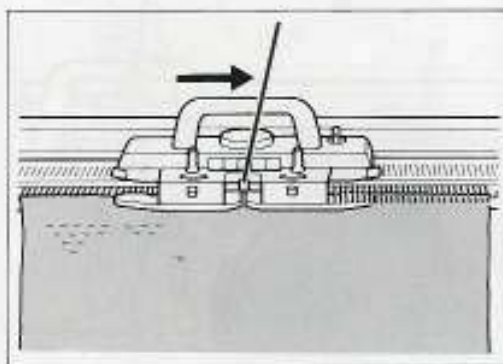


When you want to make gathers or reduce the width of your knitting (e.g. yoke of a dress, cuffs etc.) by placing 2 or more stitches onto one needle.

Bring the needles forward to E position and knit one row from left to right using the K-Carriage. Then continue to knit with the G-Carriage.

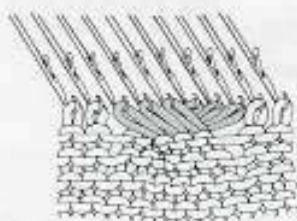
DON'T FORGET!

With some models it is essential that you remove the Racks before using the K or L Carriages. (See page 8.)

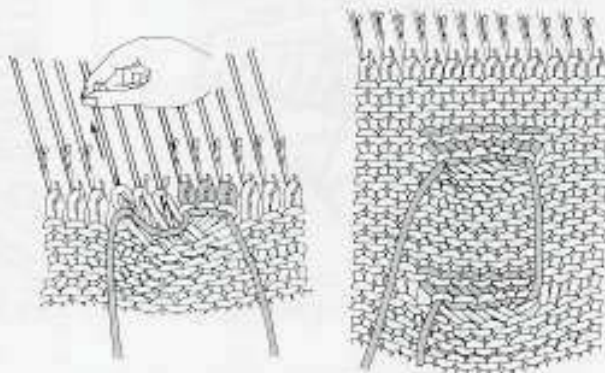


CABLE KNITTING

Cables are made by crossing two sets of stitches using two Transfer Tools.

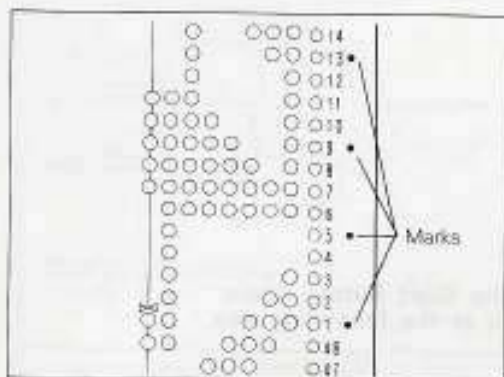


1. Cross the stitches using the Transfer Tools.

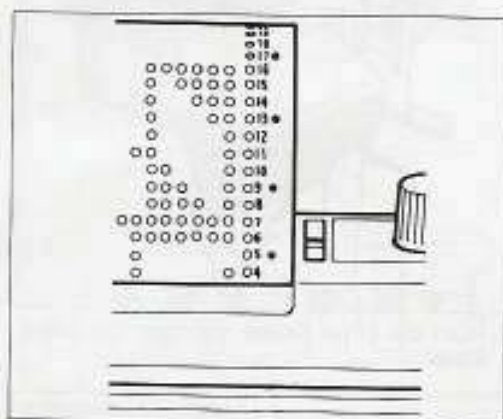


2. Knit the crossed stitches loosely by hand using a separate length of matching yarn as shown. Then continue knitting with the G-Carriage.

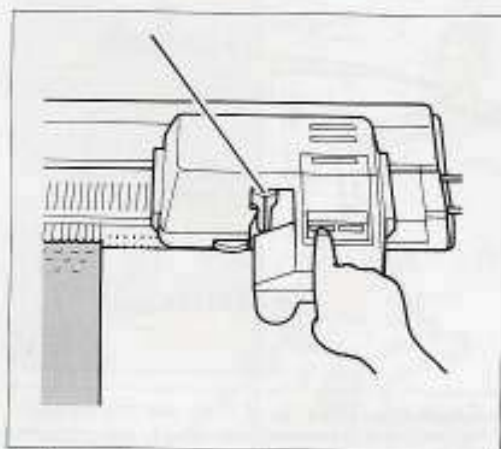
HOW TO CHANGE YARNS DURING KNITTING



1. Make a mark on the punchcard where you want to change yarns (example - every 4 rows).



2. Start knitting. Push the Stop Button one row before the marked row.

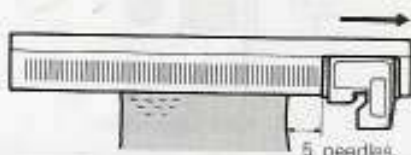


3. Change the yarn and continue knitting.

*The numbers on the righthand edge of the card are printed 7 rows higher than the punched holes to which they refer. This is because the card has to be wound down inside the mechanism. Make sure you mark the correct rows.

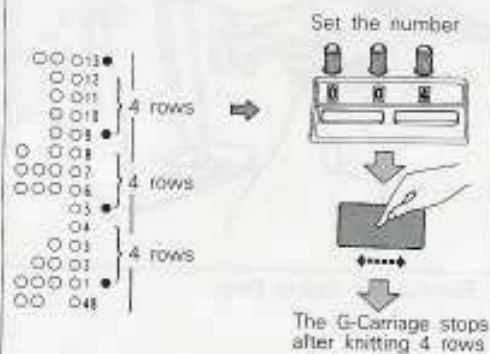


When the Automatic Return Lever is set to "↔", push the Stop Button after the G-Carriage has changed direction.



When the Automatic Return Lever is set to "←", push the Stop Button when the G-Carriage has cleared the knitting by at least 5 needles.

NOTE: If you have set the Automatic Return Lever to "↔", you should set the Row Counter to the required number of rows before the next yarn change. The G-Carriage will then stop automatically at the right place.



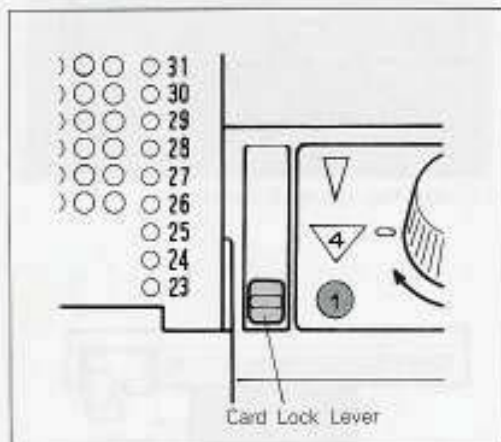
USEFUL HINTS

IF THE G-CARRIAGE SHOULD STOP

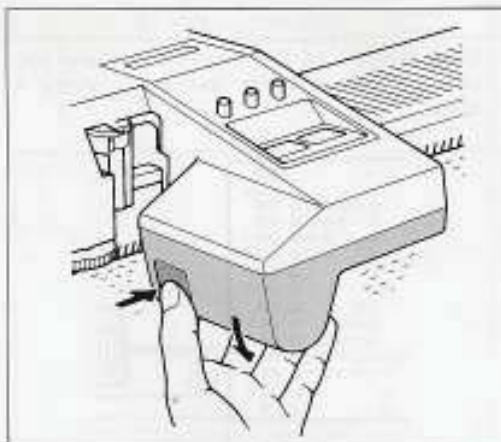
First check the following:

- * Does the Row Counter read 000?
- * Has the yarn run out and the Sensor Lever fallen?
- * Are there any knots or tangles in the yarn?
- * Check the Sinker Plate.
Are there any knots or tangles under the Sinker Plate?
- * Ensure the plug is firmly in position.
- * Ensure the Levers are in the correct position.

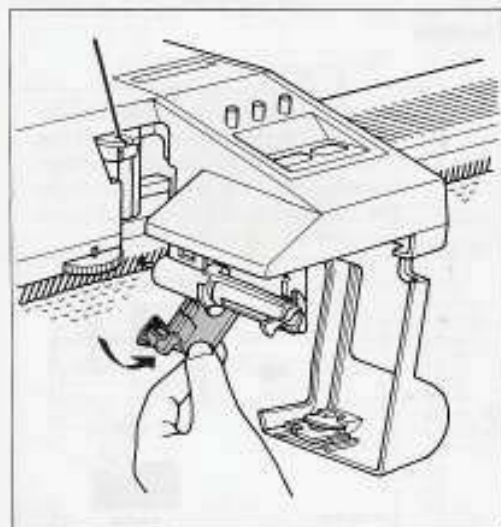
After you have checked those points, push the Start Button again.
If the G-Carriage is still jamming, set it again in the following way.



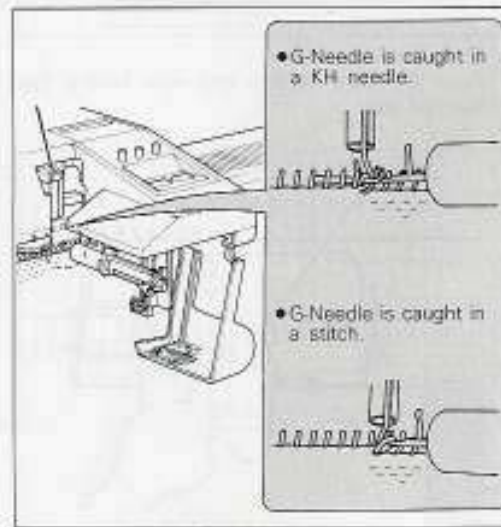
1. Switch the Card Lock Lever at "●" mark.



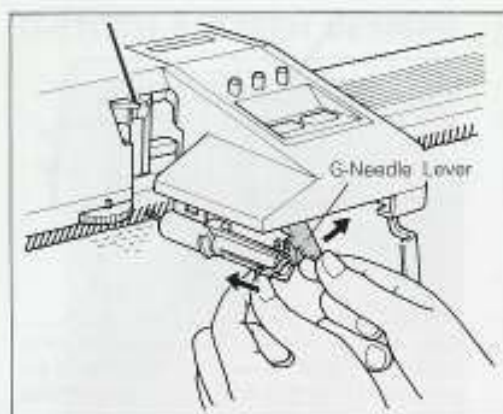
2. Push the Cover Button and open the Lower Cover.



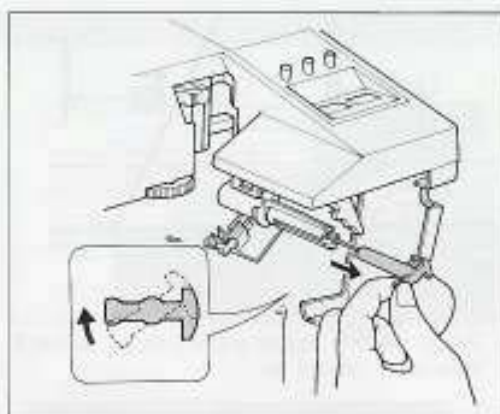
3. Release the Sinker Plate.



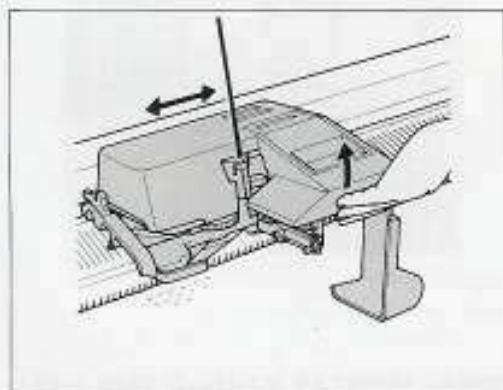
4. Check the G-Needle. If there are any tangles, remove the G-Needle and remedy the problem as follows:



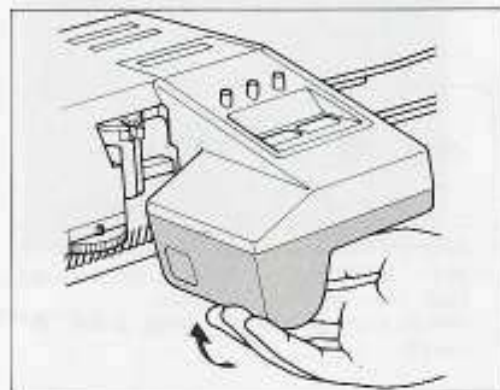
(1) Release the G-Needle Lever from the slot in the end of the G-Needle by pressing the knob. Push the G-Needle forward.



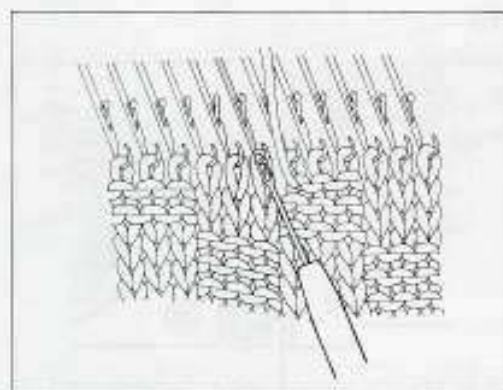
(2) Pull out the G-Needle. Should it catch in a KH needle, revolve the G-Needle to the right and pull it out horizontally. Check the G-Needle isn't damaged (See page 46). Put the G-Needle back.



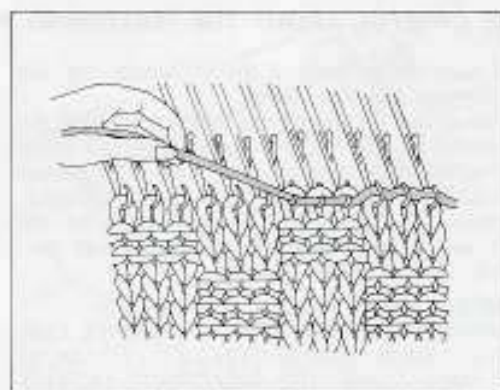
5. Lift up the front part of the G-Carriage and move it back to the start of the row.



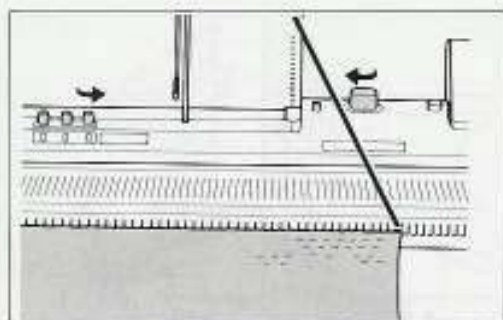
6. Close the Lower Cover.



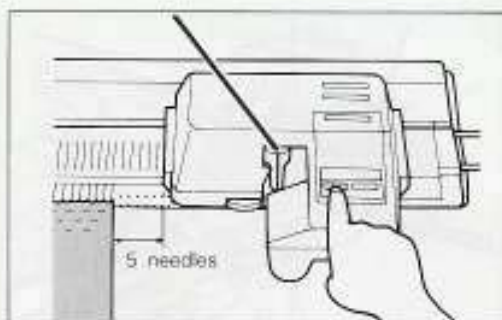
7. Take the yarn out of the Yarn Guide. Check that all the stitches are in the hooks of the needles, and replace any that aren't, using your Transfer Tool.



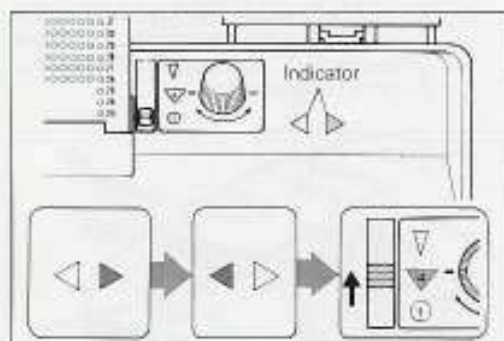
8. Referring to page 35 unravel the row where the G-Carriage jammed. Make sure that all stitches are in the needle hooks and that the needles are aligned in B position.



9. Adjust the Knit Leader and the Row Counter if they have moved on.



10. Place the G-Carriage at least 5 needles away from the edge of the knitting. Now thread the yarn into the Yarn Guide, then push the Start Button.



11. After the Indicator shows the same direction as the G-Carriage is moving in, set the Card Lock Lever to the "▼" mark. (For rib knitting, leave the Lever at the "●" mark.)

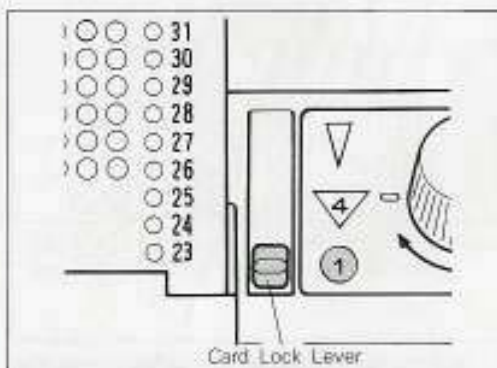
HOW TO UNRAVEL SEVERAL ROWS

BE CAREFUL ABOUT THE FOLLOWING POINTS

- Check the position of the G-Carriage and the Carriage Direction Lever. When the G-Carriage has made the turn at the end of the row and the Carriage Direction Lever has switched over, the punchcard is fed up one row, and the arrow in the Indicator changes.
- When you knit a Double Length Pattern, the card feeds up only when the carriage moves from right to left (every 2 rows).

IMPORTANT!

WHEN YOU UNRAVEL ROWS OR MAKE CORRECTIONS IN YOUR KNITTING, ETC. YOU MUST ALWAYS PLACE THE G-CARRIAGE OUTSIDE THE WORKING NEEDLES. NEVER PLACE IT ONTO WORKING NEEDLES. IF YOU DO SO, YOU WILL CAUSE DAMAGE TO YOUR G-CARRIAGE.



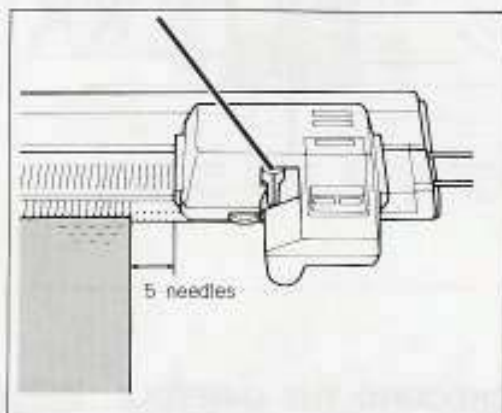
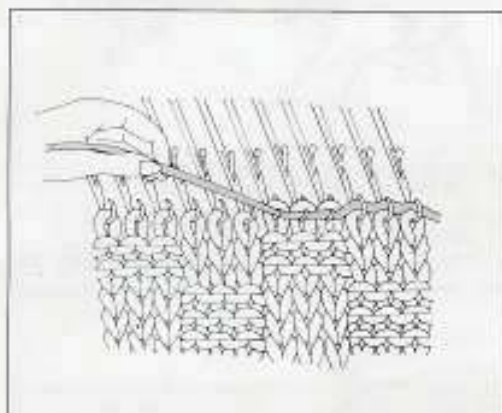
1. Set the Card Lock Lever at "●" mark.

2. You must wind the card back one row if

You don't need to wind the card back one row

G-Carriage has turned at the end and is about to knit the next row.
And Carriage Direction Lever shows the same direction as the Indicator of the main bed.

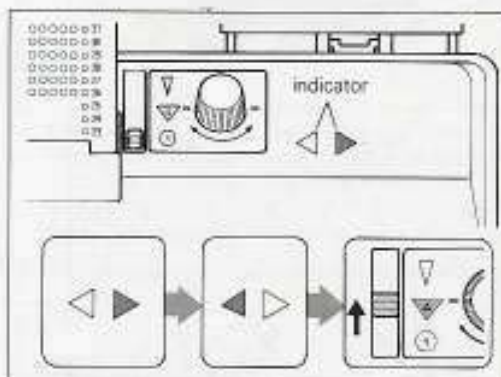
- except the above case
- when the Indicator shows ◀▶ as the direction in the Double Length Pattern



3. Remember the number of rows you have unravelled.

4. Place the G-Carriage at the same side as the yarn end, and at least 5 stitches away from the knitting. Thread up the Yarn Guide.

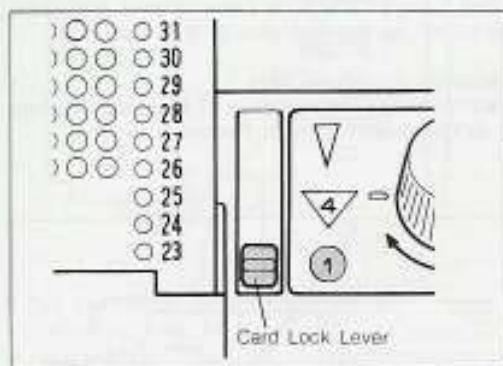
Number of rows unravelled	Number of rows to wind back		
	Normal Pattern	Double Length Pattern	
		The yarn end is at right	The yarn end is at left
1	0	0	0
2	1	0	1
3	2	1	1
4	3	1	2
5	4	2	2
6	5	2	3
7	6	3	3



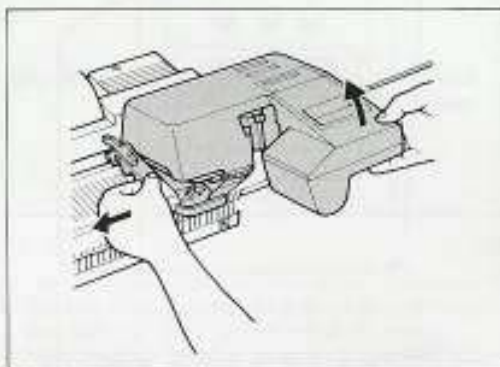
5. Wind the card back according to the above chart.

6. Push the Start Button.
After the Indicator shows the same direction as the G-Carriage is moving in, set the Card Lock Lever to the "V" mark.

HOW TO MOVE THE G-CARRIAGE WITHOUT YARN



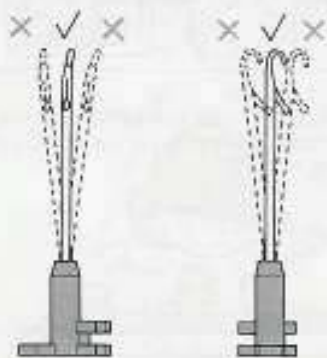
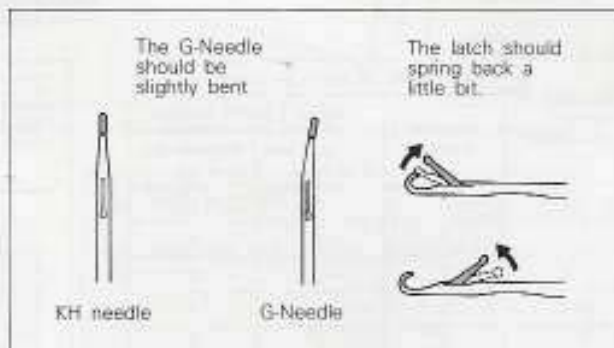
1. Set the Card Lock Lever at "4" mark.



2. Lift the front part of the G-Carriage and move it to at least 5 needles beyond the edge of the knitting.
*NEVER put the G-Carriage down onto the working needles.

CHECKING THE G-NEEDLE

Should the G-Needle become bent it will start to drop stitches so you must replace it.



•Is the stem alright?

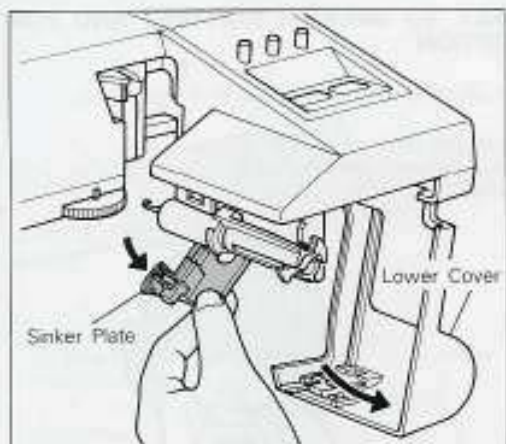


•Is the latch alright?

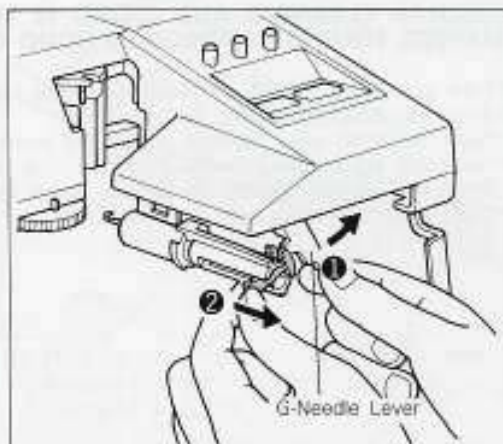


•Is the hook alright?

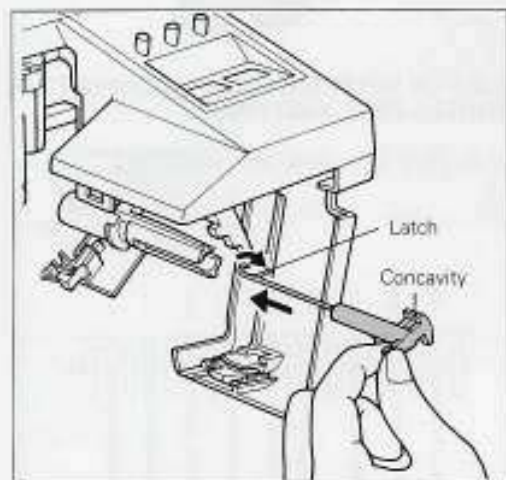
HOW TO CHANGE THE G-NEEDLE



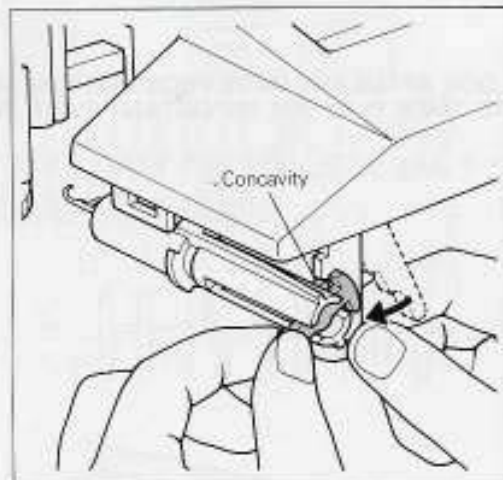
1. Press the Cover Button and open the Lower Cover. Release the Sinker Plate.



2. Release the G-Needle Lever from the slot in the end of the G-Needle by pressing the knob. Remove the G-Needle.



3. Replace the G-Needle, opening the latch as illustrated.



4. Secure the G-Needle by placing the G-Needle Lever into the slot in the stem of the G-Needle.

CLEANING AND MAINTENANCE

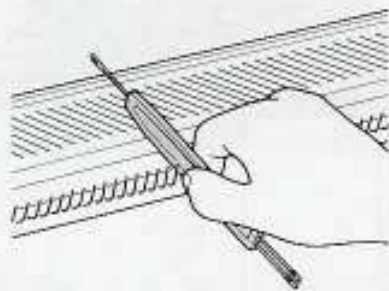
REGULAR CLEANING AND OILING IS THE KEY TO SMOOTH KNITTING AND FOR KEEPING YOUR G-CARRIAGE IN GOOD CONDITION.

- *Take the G-Carriage off the needlebed, and clean away any dust and lint with a soft cloth.
- *Wipe the metal parts with an oiled cloth.
- *Don't forget to wipe the rear rail on the knitting machine as well as the Racks.
- *Clean the plastic parts with a soft cloth and neutral detergent solution only.
- *Don't use alcohol, benzine, thinners or petrol (gasoline).
- *Don't drip oil directly onto the machinery.



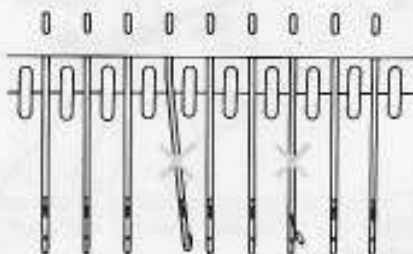
LOOK AFTER THE GATE PEGS AND THE NEEDLES OF YOUR KNITTING MACHINE TOO, AS THEY PLAY AN IMPORTANT PART IN TROUBLE-FREE KNITTING.

IF ANY GATE PEGS ARE BENT . . .



Repair the gate peg using the Transfer Tool as shown in the diagram.

CHECK ALL THE KH NEEDLES . . .



Check all needles by bringing them to E position. Check the latches and hooks too. Refer to the Instruction Manual for your knitting machine and replace any damaged needles with new ones.

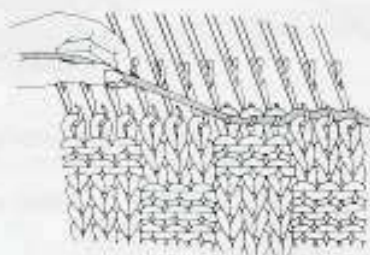
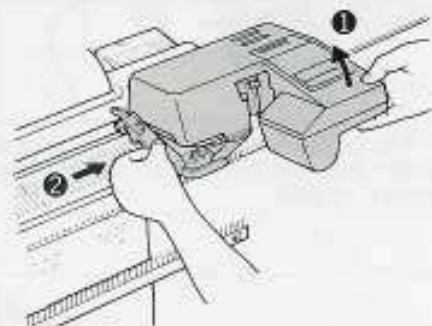
PRECAUTIONS

* Don't lift the front of the G-Carriage whilst knitting is in progress. Don't put the G-Carriage down on working needles or you will damage it.

When you lift the G-Carriage

(1) Set the Card Lock Lever to "●". Lift the front of the G-Carriage and move it in the direction indicated by the Carriage Direction Lever. Position the G-Carriage clear of the knitting.

(2) Unravel the last row and start knitting again. (Refer to page 43.)

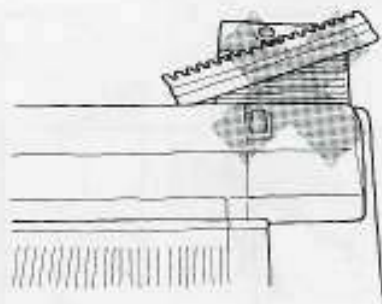


* When you have been using the Adaptor for a long time it will become warm. This is normal, but you must ensure that it remains uncovered and that nothing prevents the free circulation of air around the Adaptor.

* Don't leave your machine or the Adaptor near a source of heat or in direct sunlight.

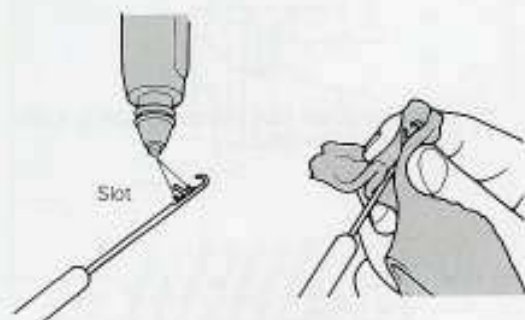
* See that your child does not touch the G-Carriage while you are away from the machine.

* Don't try to pull or force the G-Carriage during knitting as this may cause damage to your machine or the G-Carriage.



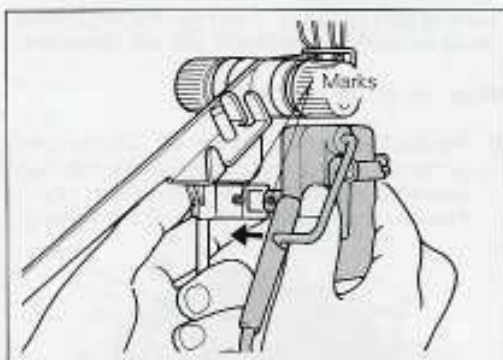
HOW TO USE THE G-CARRIAGE (with modified KH-910)

PREPARATION

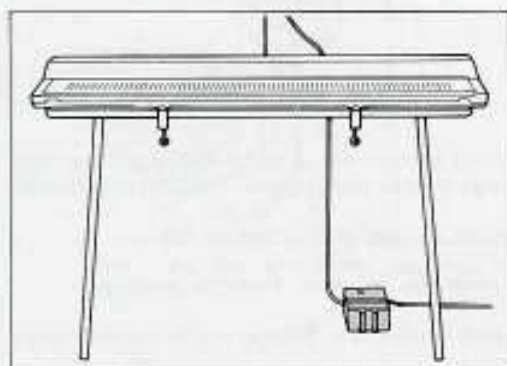


Lightly oil the slot in the stem of the G-Needle, and wipe off any excess.

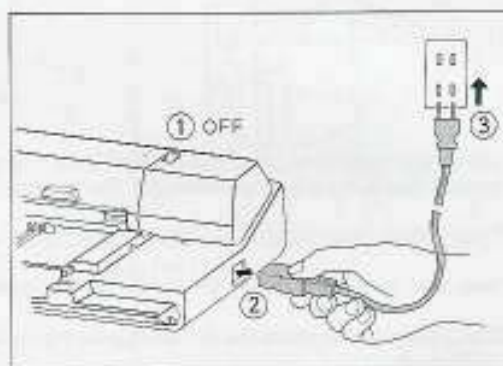
•Remember to check the G-Needle before you begin to knit. (Refer to page 46.)



1. Fix the Sensor, which is attached to the Adaptor, onto the Yarn Tension Unit, placing the marks together.



2. Place the Adaptor at your feet.

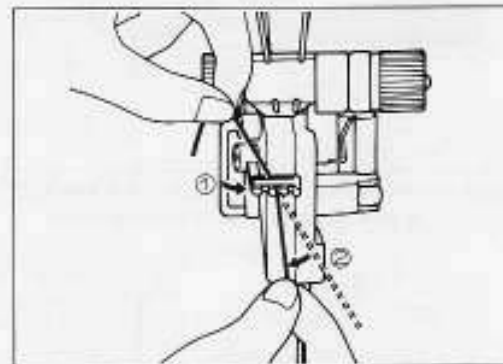


3. Turn off the knitting machine power switch ①. Now plug the cord ② into the inlet, and the other end ③ into the mains outlet.

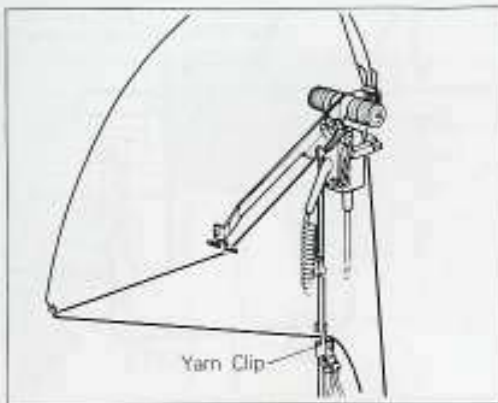
*You should plug in the adaptor cord afterwards.



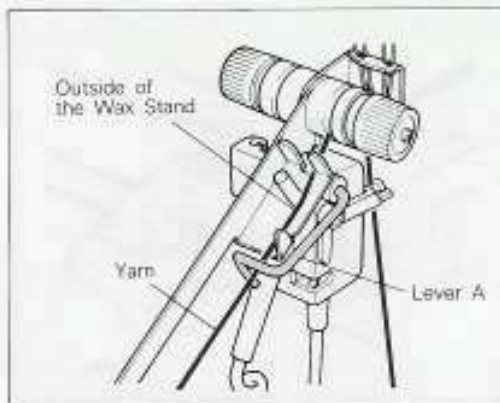
4. Fold down the Rear Yarn Guide.



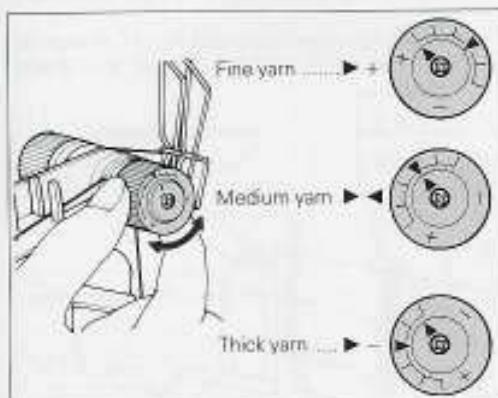
5. Thread the yarn through the Yarn Tension Unit. (1) Check that the yarn is in the correct channel for its weight (See page 12).



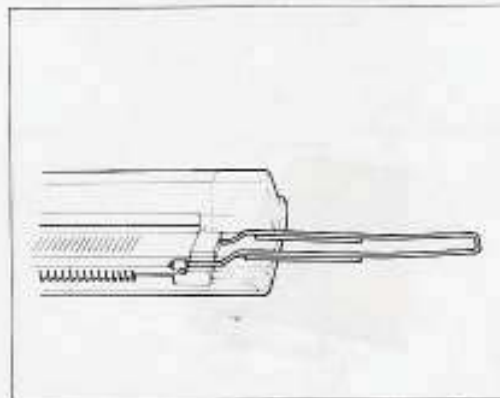
(2) Thread the Yarn Tension Unit and place the yarn under the Yarn Clip.



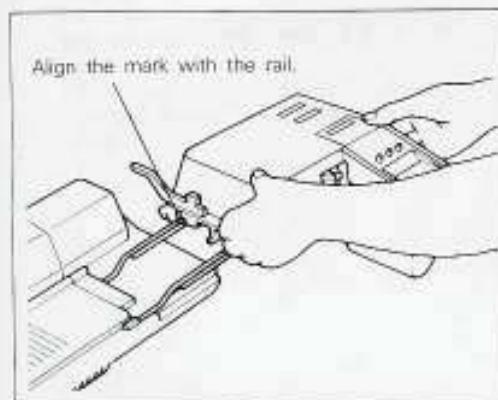
6. Place Sensor Lever (A) so that it rests on the yarn as shown.



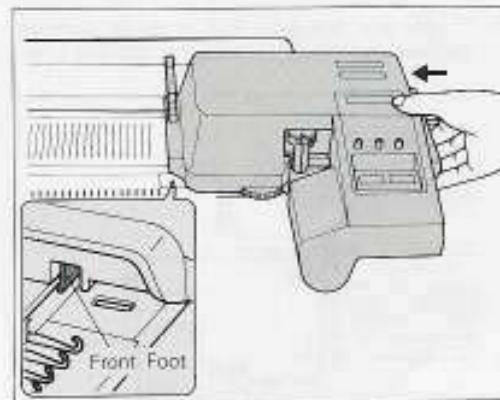
7. Set the arrow mark according to the thickness of the yarn.



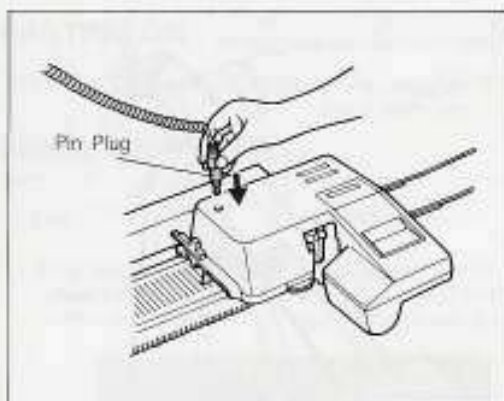
8. Fit the Extension Rails at both sides of the machine.



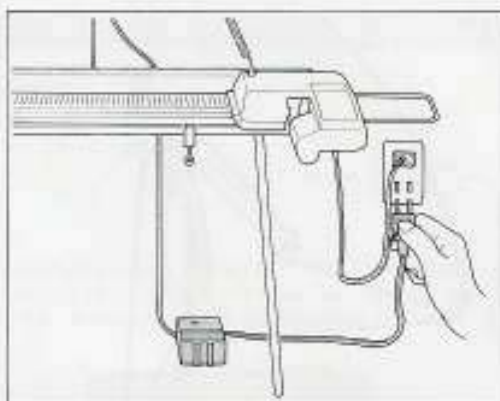
9. Holding the G-Carriage in both hands, place it on the righthand Extension Rail.



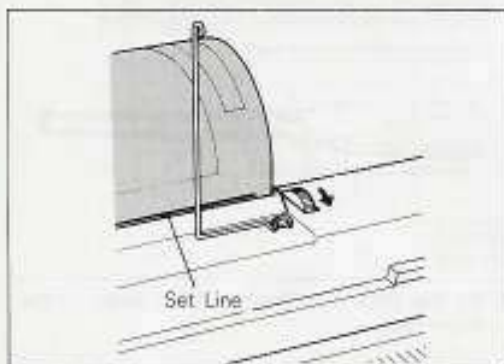
10. Push the G-Carriage to the left until it stops. Make sure that the front foot has engaged the needled.



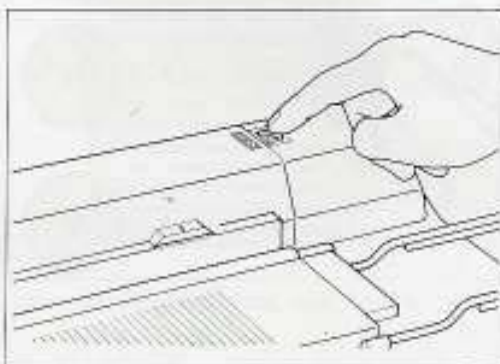
11. Insert the Pin Plug.



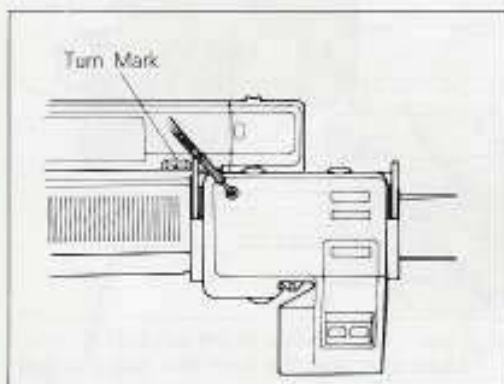
12. Plug the Adaptor cord into the mains outlet. When you put the machine away, always first take out the mains plug, then take out the pin plug.
*When you won't be using the G-Carriage for several hours, always unplug the mains plug.



13. If you are going to knit a rib or G-stitch pattern, set the pattern card at the Set Line.



14. Turn on the Power Switch.



15. Make sure that the G-Carriage is outside the Turn Mark.

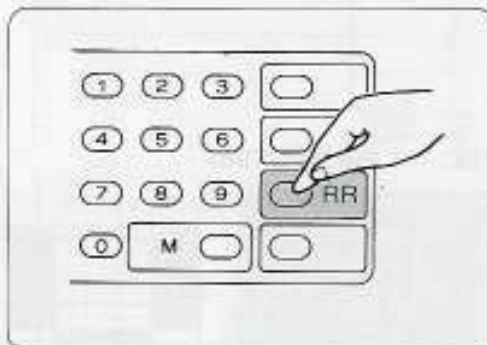
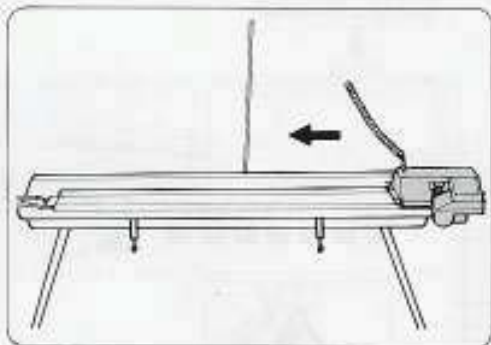
CASTING ON



The G-Carriage casts on automatically using the 'e' wrap method.

BEFORE CASTING ON

- Always start with the G-Carriage at the right as the G-Carriage can only cast on from right to left.
- Push RR Key.



You don't have to use a pattern card, but when you do, the card will go back to the set line.

*The G-Carriage casts on over the needles represented by the blank (white) squares "□" on the pattern card. You can cast on over all the needles regardless of the stitch design by pushing the RR Key.

LET'S CAST ON

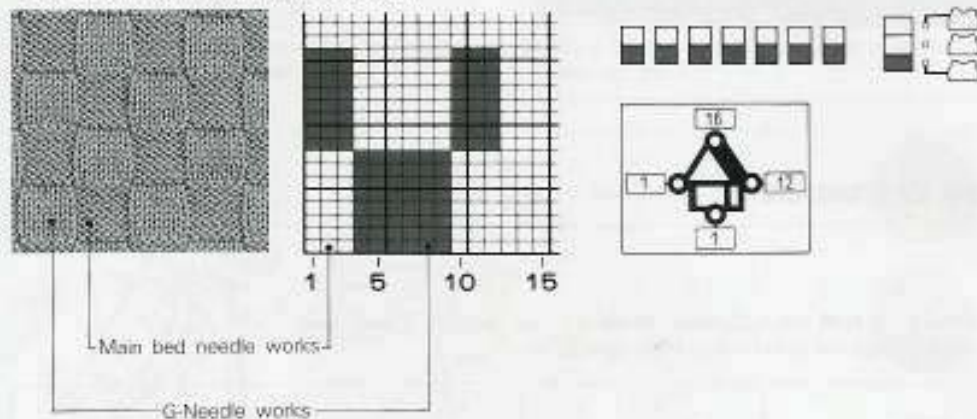
Follow the Steps 2-11 on p.19.

RIB KNITTING AND G-STITCH PATTERN DESIGNS

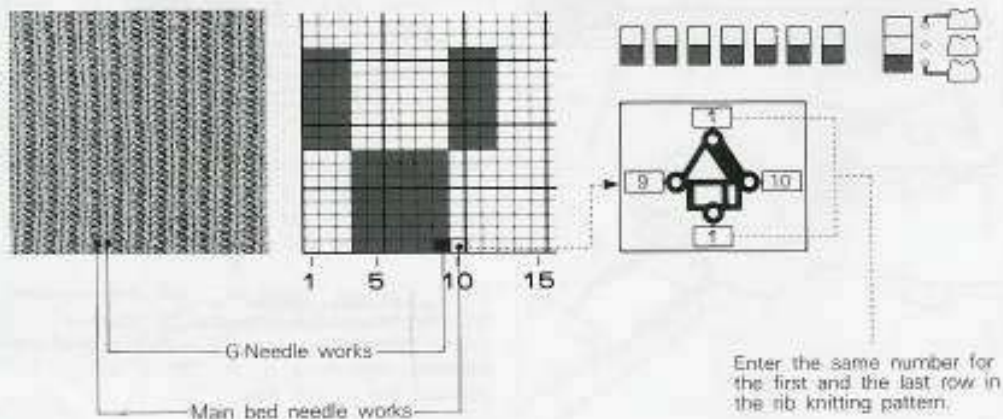
PATTERN CARD AND PATTERN PROGRAM

- Copy the sheets which come with the G-Carriage, or make your own original designs. Remember stitches which correspond to "■" on the sheet will be knitted with the G-Needle, and those corresponding to blank "□" (white) squares will be knitted with main bed needles.
- You can make different rib or stitch patterns by selecting part of another pattern and using that to create a new design.

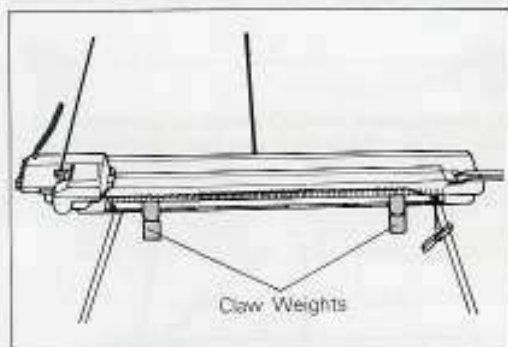
*Ex. G-STITCH PATTERN DESIGN



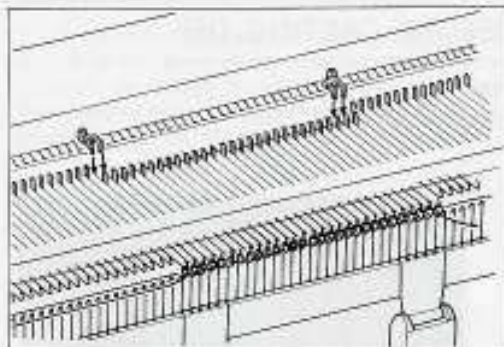
*Ex. 1x1 RIB KNITTING



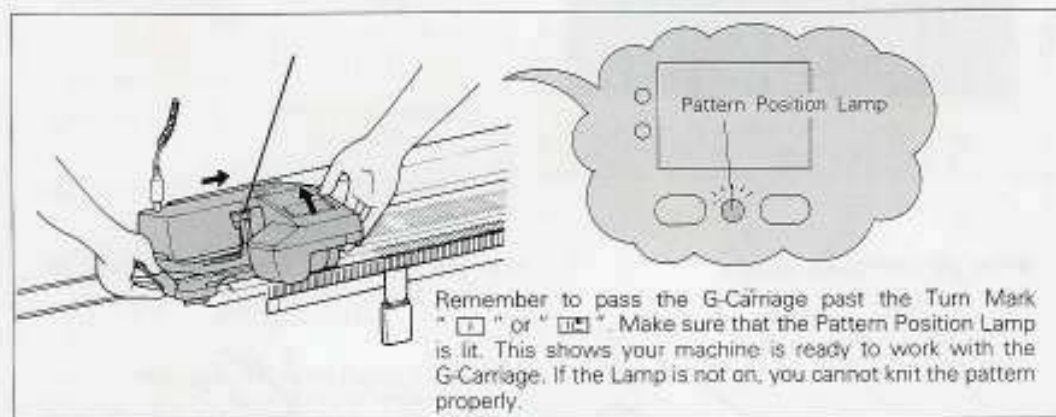
LET'S START KNITTING



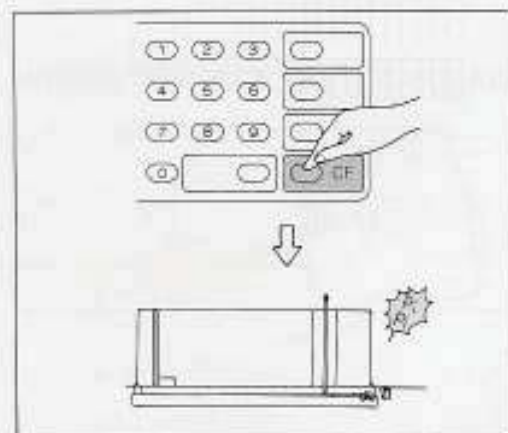
1. After casting on, hang the Claw Weights on the Cast-on Comb.
* Don't hang the Claw Weights directly on the knitting.




2. Place the 1 stitch G-Point Cams in the needle tracks of both end needles.



3. Lift the front part of the G-Carriage with your right hand, and slide the G-Carriage to the right with your left hand away from the edge of the knitting.

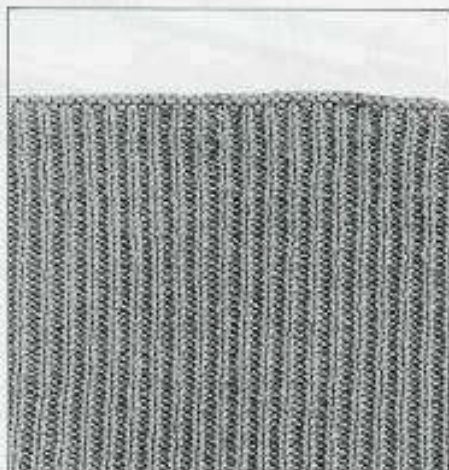


4. Program the pattern into your machine. (Refer to your machine manual.)
Push  CF Key.

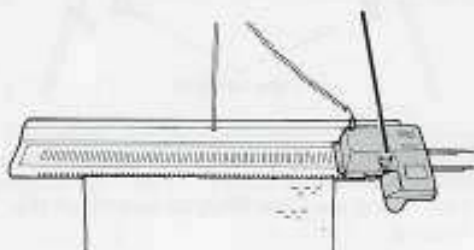
5. Now follow Steps 5-9 starting on page 23.

CASTING OFF

BEFORE CASTING OFF . . .

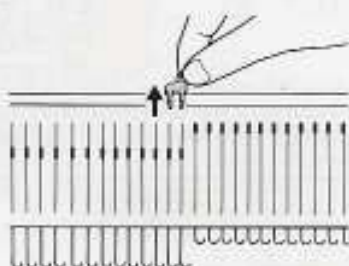
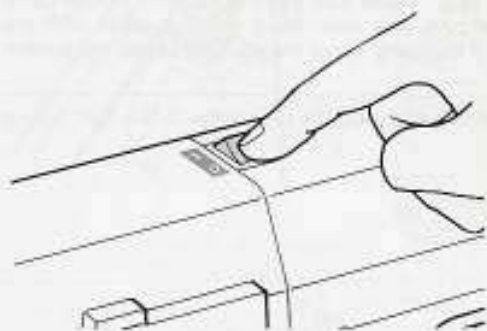


- Be sure to place the G-Carriage on the righthand side, as the G-Carriage can only cast off from right to left.



- Turn off the Power Switch.

- Remove the G-Point Cams when casting off.

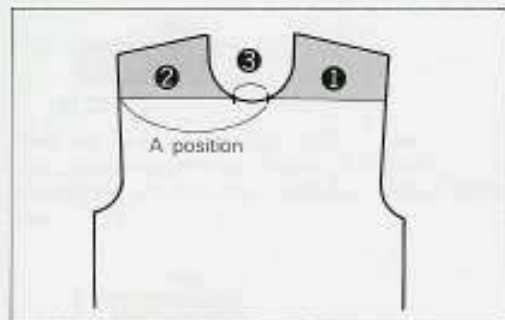


* If the Power Switch is on, the G-Carriage can only cast off stitches corresponding to the "■" squares on the pattern card. Remember to turn the switch off when you want to cast off.

LET'S CAST OFF

Refer to p.29.

HOW TO SHAPE A NECK LINE

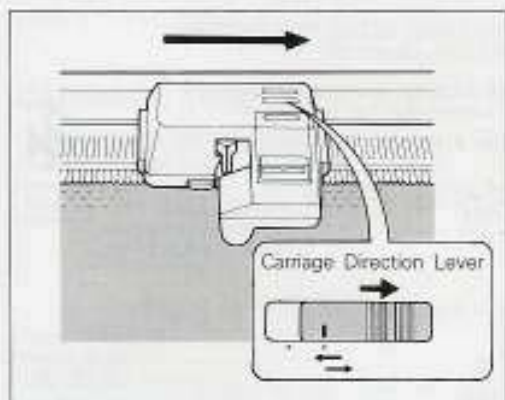


1. Stop the G-Carriage on the row where you want to divide for the neck. (The G-Carriage is on the right of the needlebed.)

* It isn't possible to put needles in D (Upper Working Position) or E (Holding Position) when you use the G-Carriage. You must therefore use A position (Non-working Position).

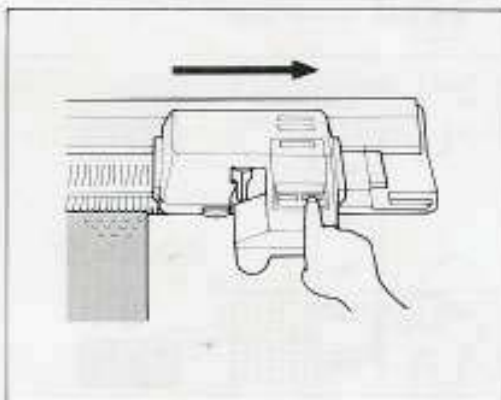
* When you are working in Double Length Pattern (No. 4 Variation Switch), your last row before you separate for the neck should be an even number row.

* When you are knitting a Reflection Pattern (No. 5 Variation Switch) don't forget which direction you are knitting in (i.e. from top to bottom, or bottom to top).

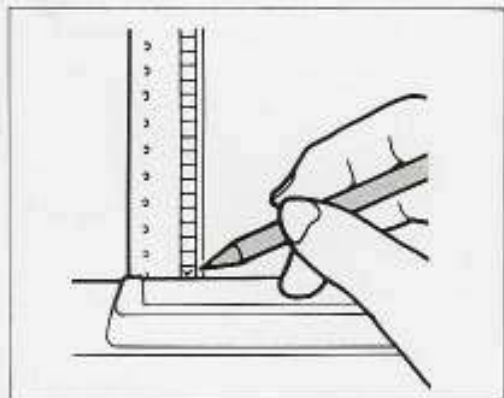


While the G-Carriage is knitting the last row before you must divide for the neck

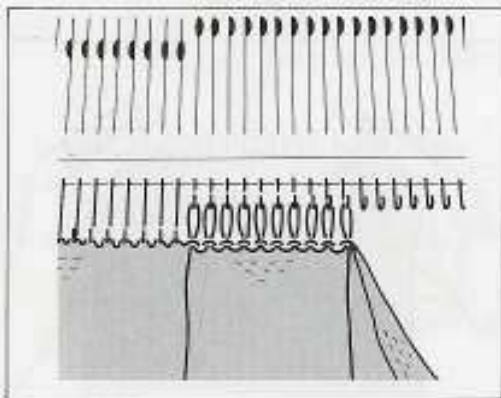
- (1) Switch the Automatic Return Lever to



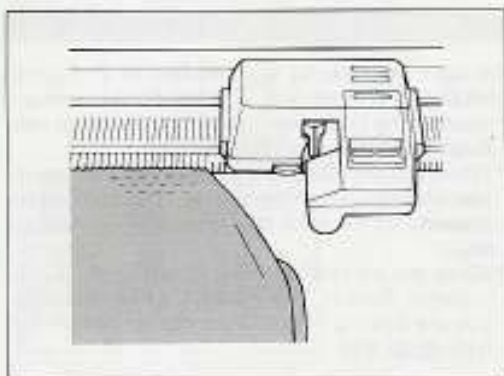
- (2) Stop the G-Carriage.



2. Place a mark in the L-window of the pattern card.

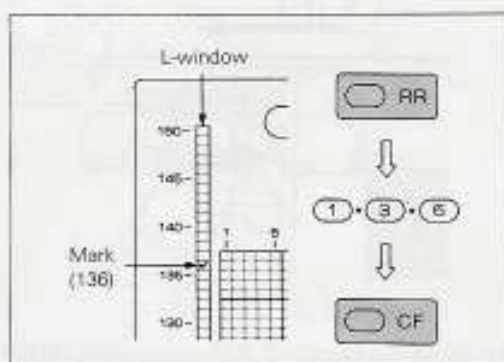


3. Refer to steps 3 to 6 on pages 37-38 and knit the right shoulder (Part 1). Then arrange the Part 2 needles in B position. The Part 3 needles remain in A position.



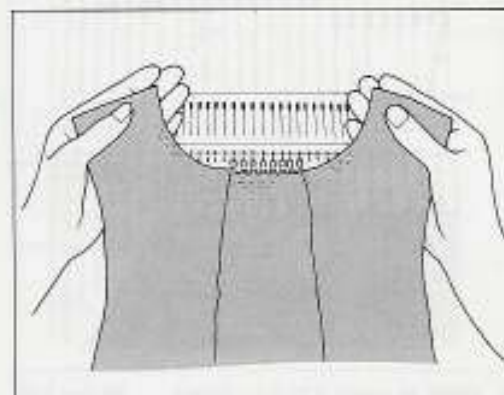
4. Place the G-Carriage on the right edge of the knitting.

*Set the Knitleader back to the point where the neck division began.



5. Now return the pattern card to the mark you made in the L-window:

- (1) Push **RR** Key.
- (2) Enter the number of the row you marked and push **CF** Key.



6. Then knit Part 2 (left shoulder) and finish off Part 3 with waste yam. (Refer to page 39.)

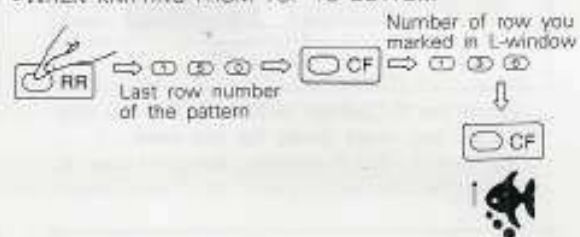
WHEN USING REFLECTION PATTERN VARIATION (Switch No. 5)

Wind the pattern card back according to the pattern direction as follows:

- WHEN KNITTING FROM BOTTOM TO TOP

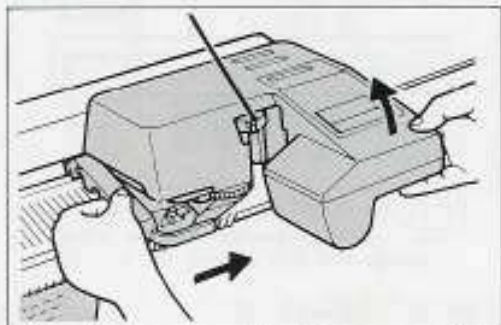


- WHEN KNITTING FROM TOP TO BOTTOM

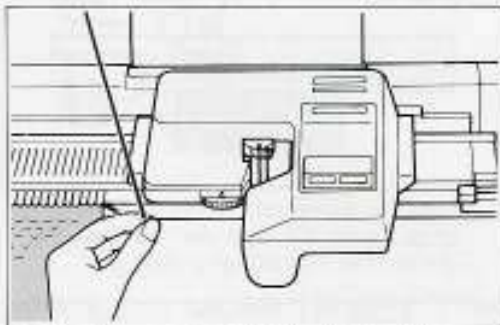


USEFUL HINTS

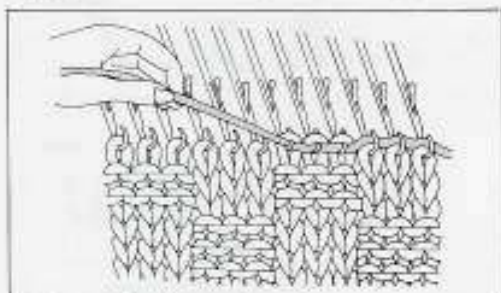
HOW TO UNRAVEL SEVERAL ROWS



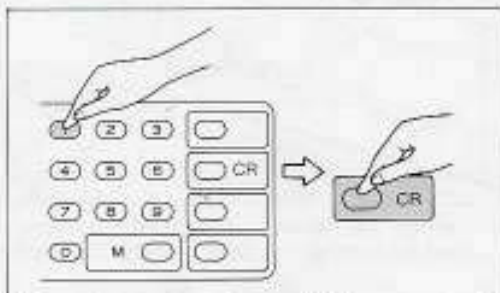
1. Lift the front part of the G-Carriage and slide the G-Carriage in the direction shown by the Carriage Direction Lever. If the G-Carriage should jam, please refer to Step 2-4 starting on page 42 before sliding the G-Carriage.



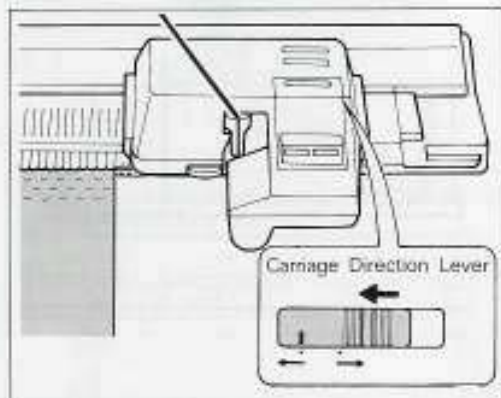
2. Take the yarn out of the Yarn Guide. (If the yarn end is the opposite side of the knitting to the G-Carriage, add one to the number of rows unravelled in Step 4 below.)



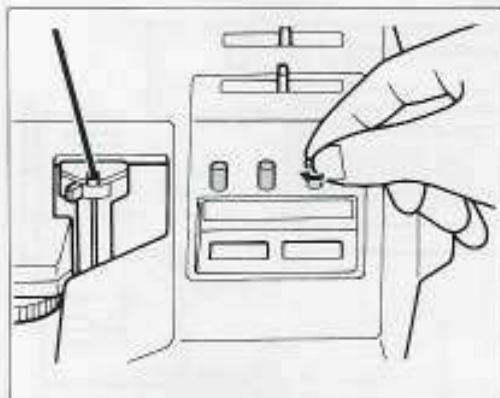
3. Remember the number of rows you unravel.



4. Enter the number of unravelled rows and push the **CR** Key.



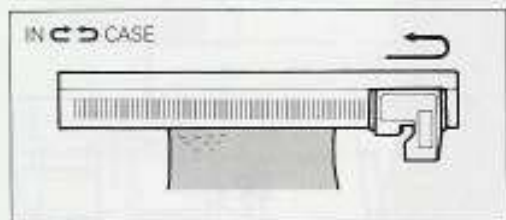
5. Place the G-Carriage on the same side of the needlebed as the yarn end and set the Carriage Direction Lever.



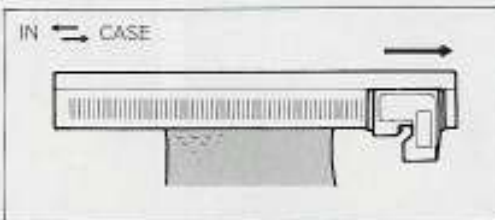
6. Make the appropriate adjustments to the G-Carriage Row Counter and Knit Leader. Now begin knitting again.

WHEN YOU WANT TO TAKE OUT THE PATTERN CARD WHILST KNITTING

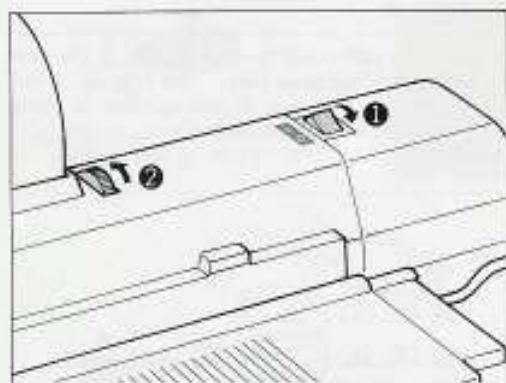
1. Stop the G-Carriage after it has finished knitting the last row you require.



When the Automatic Return Lever is set to "↔", push the Stop Button after the G-Carriage has changed direction.

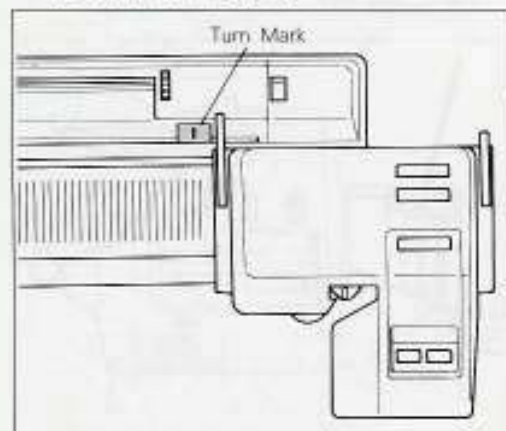


When the Automatic Return Lever is set to "→", push the Stop Button when the G-Carriage has just cleared the knitting.

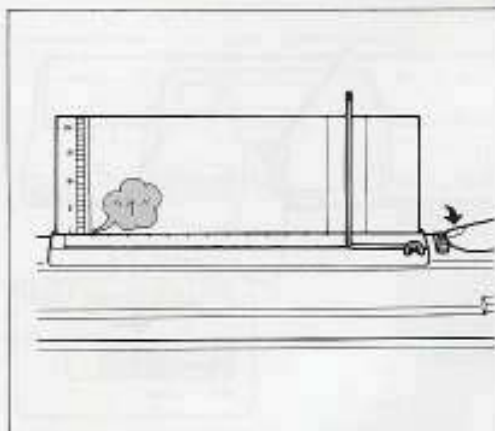


2. Turn off the switch and take out the Pattern Card by turning the Card Feeding Dial back.

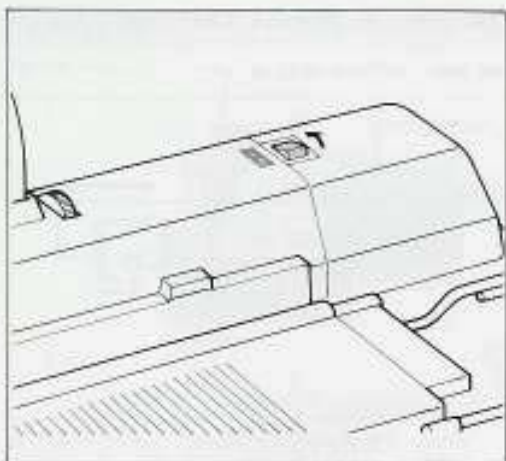
***To start knitting again**



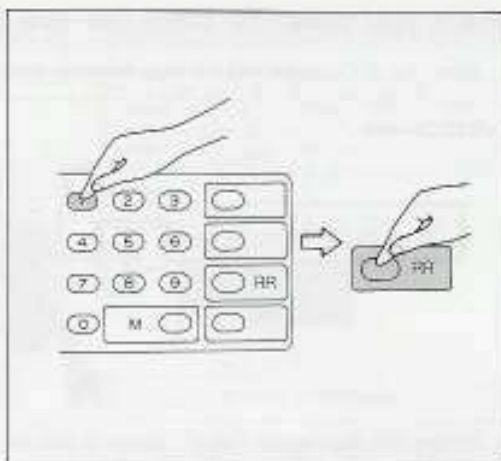
1. Place the G-Carriage outside the Turn Mark



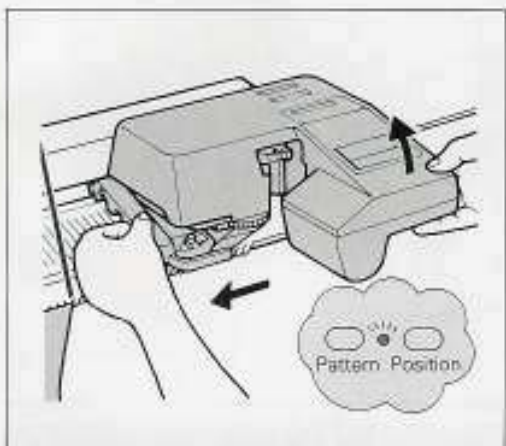
2. Insert the Pattern Card. Turn the Card Feeding Dial and set the Card on the 1st row in the L-window.



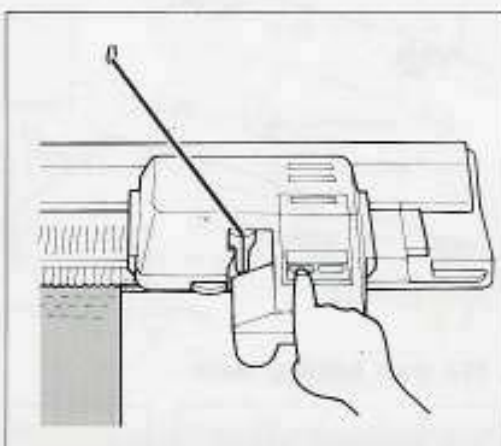
3. Turn on the Power Switch.



4. Enter the number shown in the L-window (1) and push the **CORR** Key. The Card should return to the correct position for you to start knitting again.



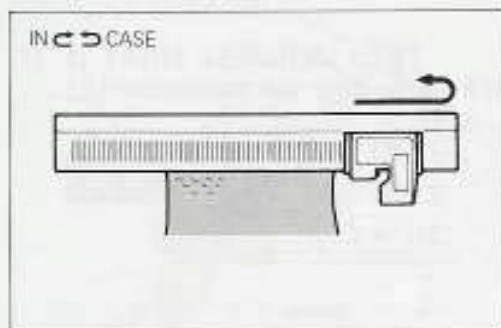
5. Move the G-Carriage to the edge of your knitting. Make sure the Pattern Position Lamp is lit.



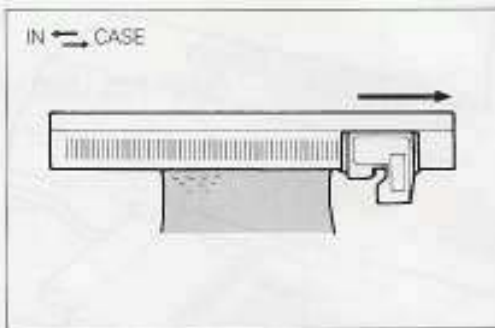
6. Set the Levers and start knitting again.

WHEN YOU WANT TO TURN OFF THE POWER SWITCH WHILST KNITTING

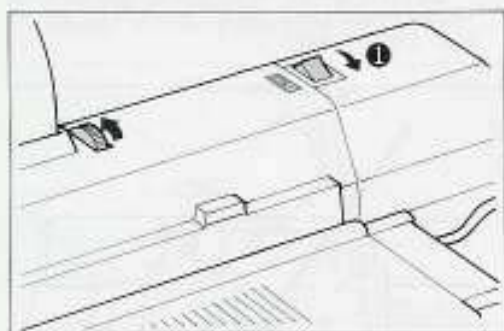
1. Stop the G-Carriage after it has finished knitting the last row you require.



When the Automatic Return Lever is set to "CASE", push the Stop Button after the G-Carriage has changed direction.

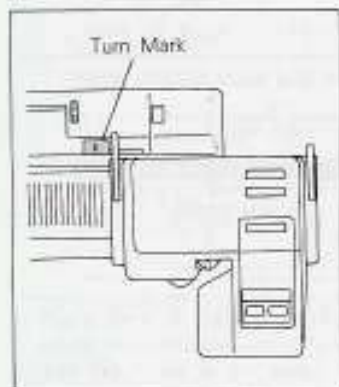


When the Automatic Return Lever is set to "CASE", push the Stop Button when the G-Carriage has just cleared the knitting.

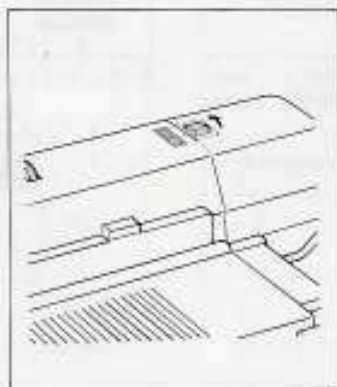


2. Turn off the switch.

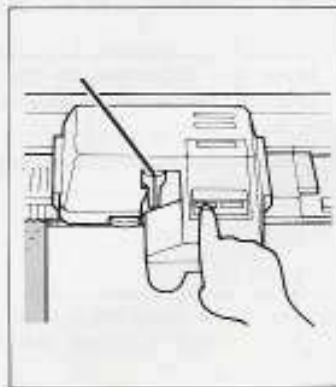
*To start knitting again



1. Put the G-Carriage outside the Turn Mark:



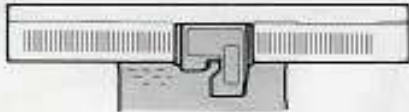
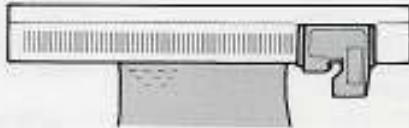
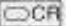


2. Turn the Power Switch on.

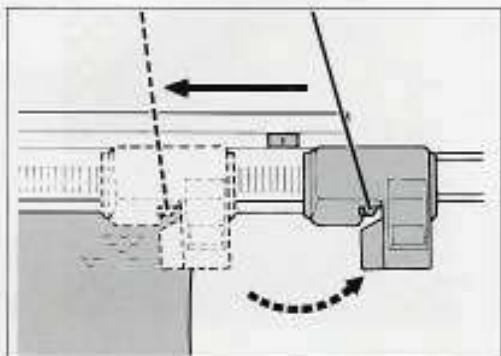


3. Move the G-Carriage to the edge of the knitting and ensure the Pattern Position Lamp is lit. Set the Levers and then start knitting.

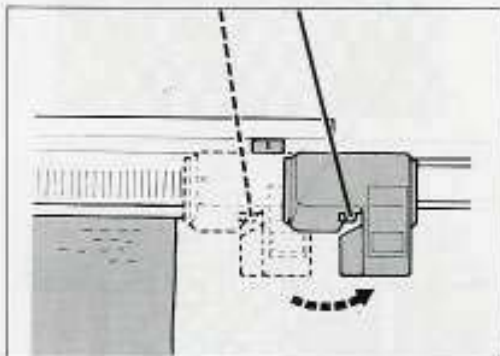
IF ELECTRIC POWER IS CUT OFF WHILST PATTERN KNITTING

First check the position of the G-Carriage.

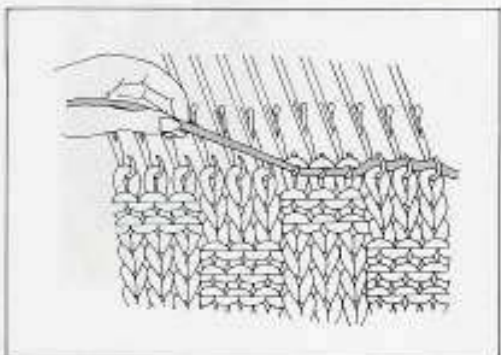
<p>THE PLACE THE G-CARRIAGE HAS STOPPED.</p> <p>OVER KNITTING</p> 	<p>You will have to unravel the row. Follow the instructions given below.</p>
<p>CLEAR OF KNITTING</p> 	<p>You don't have to unravel the row. Omit Steps 2 and 4 below. But when the G-Carriage is moving towards the knitting with the " ← " setting, push  →  →  as explained in Step 4. (The machine may count this as one row.)</p>



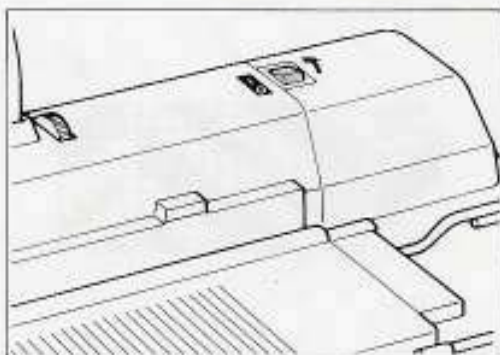
1. Move the G-Carriage to outside the Turn Mark. Should the G-Carriage be over the knitting, take it back to the start of the row. (The opposite direction to what is shown by the Carriage Direction Lever.)



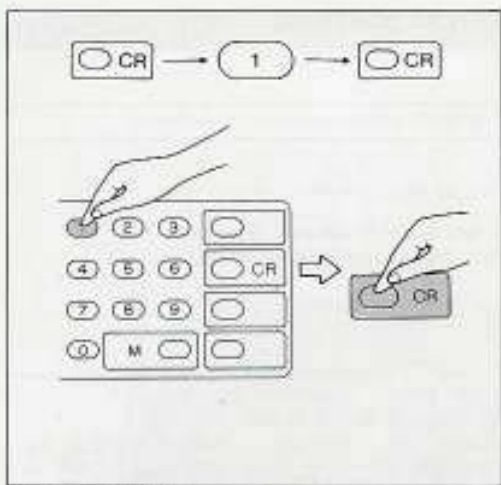
- * Should the G-Carriage be clear of the knitting, move it to outside the Turn Mark regardless of the direction in which it was moving.



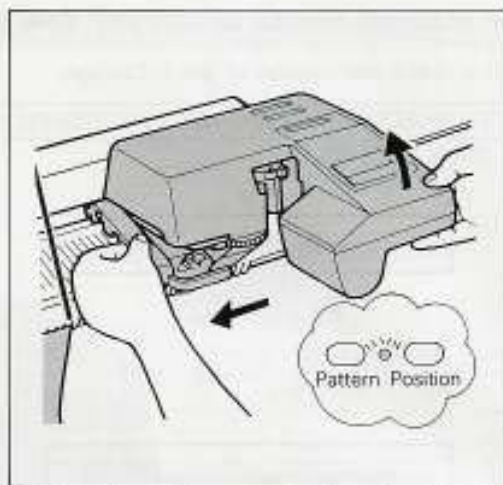
2. Unravel the row.



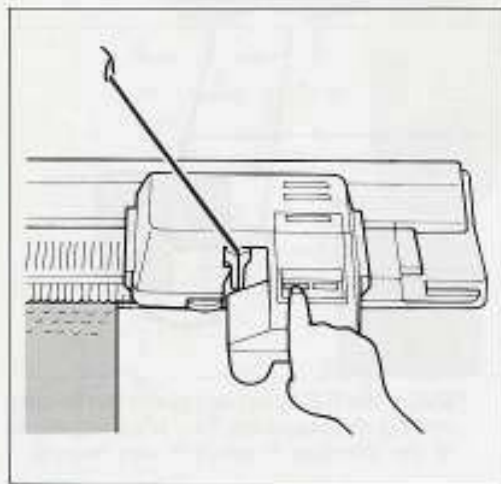
3. Turn the Power Switch on.



4. Push **CR** Key.
 (Error lamp lights up.)
 Enter **1**, then push **CR** Key again.



5. Move the G-Carriage to the edge of the knitting.
 Make sure that the Pattern Position lamp is on.



6. Start knitting again.

VARIOUS PATTERNS



1



2



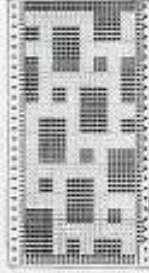
3



4



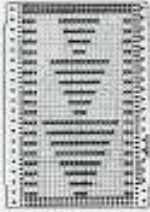
5



6



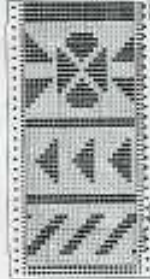
7



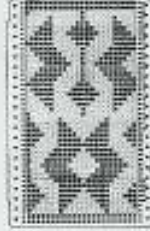
8



9



10



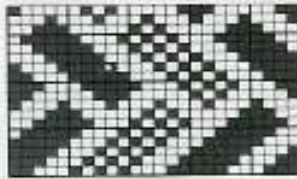
11



12



1



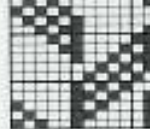
2



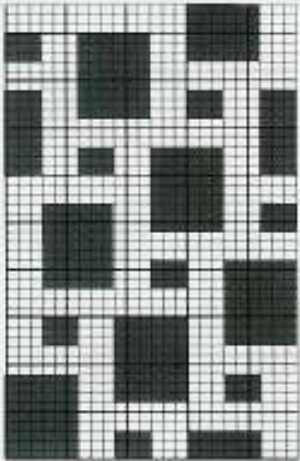
4



3



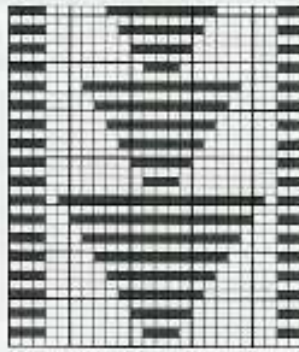
5



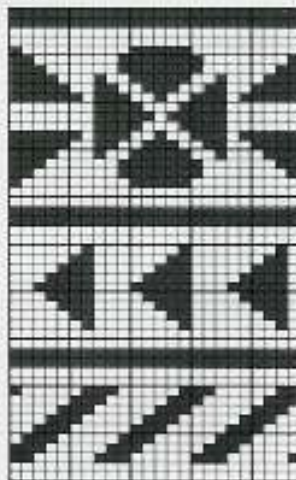
6



7



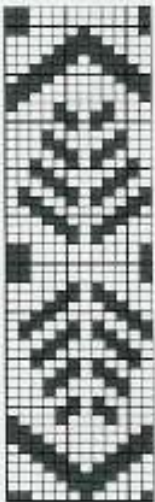
9



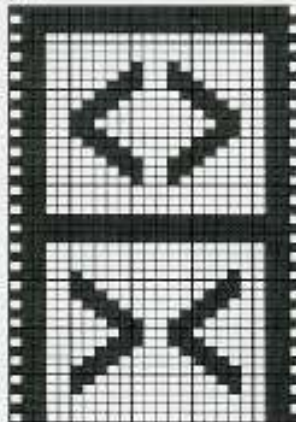
10



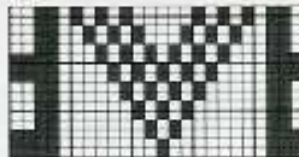
8



11

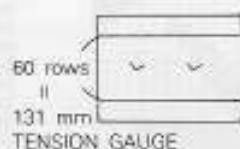
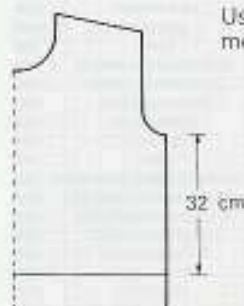


12



COMPARISON CHART

Use the following chart to work out the approximate number of rows to a given measurement, based on your tension swatch.



Example:

If 60 rows measures 131 mm and you want to knit 32 cm . . .

$32 \text{ cm} = 30 \text{ cm} + 2 \text{ cm}$

Find the number of rows for 30 cm and 2 cm at 130 = 132 mm and add them together.

$136 \text{ rows} (= 30 \text{ cm}) + 9 \text{ rows} (= 2 \text{ cm}) = 145 \text{ rows}$.

Set your row counter at 145.

Tension Gauge Measurement	10m	20m	30m	40m	50m	60m	70m	80m	90m	100m	200m	300m	400m	500m
60m	10	20	30	40	50	60	70	80	90	100	200	300	400	500
61	9	19	29	39	49	59	68	78	89	99	196	295	393	491
62	9	19	29	38	48	58	67	77	87	98	193	290	387	483
63	9	19	28	38	47	57	66	76	86	95	190	285	380	476
64	9	18	28	37	46	56	65	75	84	93	187	281	375	468
65	9	18	27	36	46	55	64	73	83	92	184	276	369	461
66	9	18	27	36	45	54	63	72	81	90	181	272	363	454
67	8	17	26	35	44	53	62	71	80	89	179	268	358	447
68	8	17	26	35	44	52	61	70	79	88	176	264	352	441
69	8	17	25	34	43	52	60	69	78	86	173	260	347	434
70	8	17	25	34	42	51	60	68	77	85	171	257	342	428
71	8	16	25	33	42	50	59	67	76	84	169	253	336	422
72	8	16	25	33	41	50	58	66	75	83	166	250	333	416
73	8	16	24	32	41	49	57	65	73	82	164	246	328	410
74	8	16	24	32	40	48	56	64	72	81	162	243	324	405
75	8	16	24	32	40	48	56	64	72	80	160	240	320	400
76	7	15	23	31	39	47	55	63	71	78	157	236	315	394
77	7	15	23	31	38	46	54	62	70	77	155	233	311	389
78	7	15	23	30	38	46	53	61	69	76	153	230	307	384
79	7	15	22	30	37	45	53	60	68	75	151	227	303	379
80	7	15	22	30	37	45	52	60	67	75	150	225	300	375
81	7	14	22	29	37	44	51	58	65	74	148	222	296	370
82	7	14	21	29	36	43	51	58	65	73	146	219	292	365
83	7	14	21	28	36	43	50	57	65	72	144	216	289	361
84	7	14	21	28	35	42	50	57	64	71	142	214	285	357
85 - 86	6	13	20	27	34	41	48	55	62	69	139	209	279	348
87 - 88	6	13	20	27	34	40	47	54	61	68	136	204	272	340
89 - 90	6	13	20	26	33	40	46	53	60	66	133	200	268	333
91 - 92	6	13	19	26	32	39	45	52	59	65	130	195	260	326
93 - 94	6	12	19	25	31	38	44	51	57	63	127	191	255	319
95 - 96	6	12	18	25	31	37	43	50	56	62	125	187	250	312
97 - 98	6	12	18	24	30	36	42	48	55	61	122	183	244	306
99 - 100	6	12	18	24	30	36	42	48	54	60	120	180	240	300
101 - 102	5	11	17	23	29	35	41	47	52	58	117	176	235	294
103 - 104	5	11	17	23	28	34	40	46	51	57	115	173	230	288

IMPORTANT

The wires in this mains lead are coloured in accordance with the following code:

BLUE - NEUTRAL

BROWN - LIVE

NOTE. As the colours of the mains lead of this appliance may not correspond with the coloured markings identifying the terminals in your plug, proceed as follows:

Connect BROWN wire to terminal marked L or coloured RED.

Connect BLUE wire to terminal marked N or coloured BLACK.

WHEN USING A B.S. 1363 FUSED PLUG A 3 AMP. FUSE MUST BE FITTED.

If the terminals of the plug are unmarked consult a qualified electrician before use.

Model	Power Source
KH910/KH950	AC(~) 240V 50HZ 40W
KH930	AC(~) 240V 50HZ 25W
KG88/89/88II/89II/93	AC(~) 240V 50HZ 20W

IMPORTANT

When leaving the machine or when servicing or changing mechanical parts or accessories, the machine or set must be disconnected from the supply by removing the plug from the socket-outlet.

Before removing AC line cord or when unit is not in use always disconnect mains plug from wall socket.

To prevent electric shock DO NOT remove cover, NO user serviceable parts inside. Refer servicing to qualified service personnel.

This product is manufactured to comply with the radio interference requirements of EEC directive, 82/499/EEC.

411167001-c