

Silver Reed-Singer

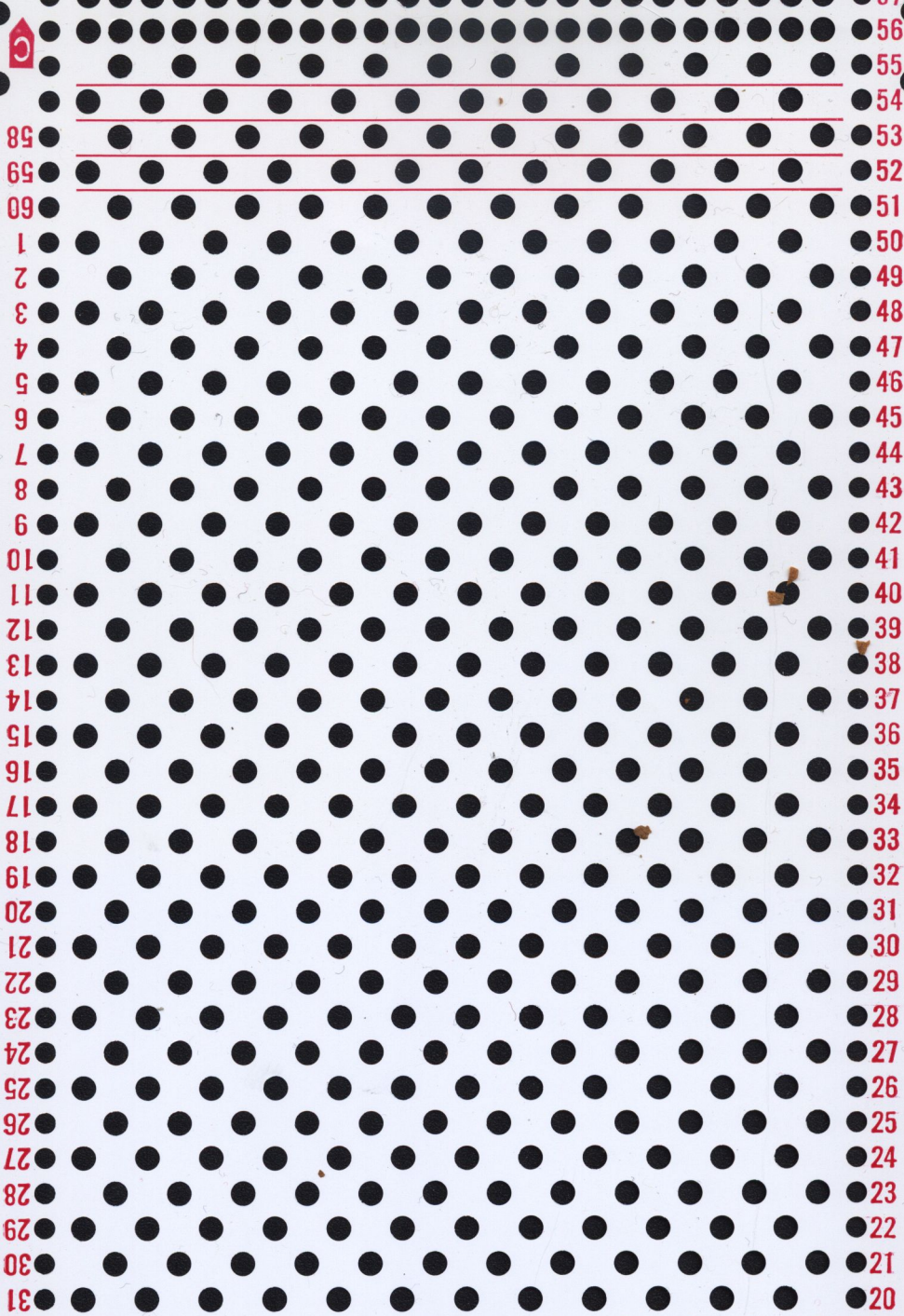
SK700

Standard Punchcards

Application of the Punch Cards
 Aplicación de un diseño de la Tarjeta Perforada
 Application de la Carte Perforée

Applicazione della Scheda perforata
 Verwendung der Lochkarte
 穿孔卡片的用途

Card No. Tarj. No. Carte No. Carta no. Karte Nr. 卡片号码	Tuck Recogido Point Ramasse Punti Tuck Fangmuster 胖花 (打结))	Slip Deslizado Fil tiré Passati Vorlegemuster 滑针花样	Knit-in Entretejido Jacquard Jacquard Norwegermuster 双色提花	Single Motif Diseño Magico Motif placé Motivi Singoli Einzelmotiv 独立花	Weaving Trama Tissage Tessuto Webmuster 镶线花(织花)	Punch Lace Encaje Dentelle Pizzo Spitzenmuster 假挑花(假空花)	Lace(tuck) Calado Point Ramassé ajouré Traforato Fangspitzenmuster 空针胖花
1	○		○		○	○	○
2		○	○		○	○	○
3	○	○	○		○		○
4	○	○	○		○		○
5			○	○			
6			○	○			
7	○	○	○		○	○	
8	○	○	○		○		
9	○	○	○		○		
10	○	○	○				
11	○	○	○		○		
12	○	○	○				
13			○				
14		○	○		○	○	
15			○			○	
16			○			○	
17			○			○	
18			○			○	
19		○	○				
20			○		○	○	



57
56
55
54
53
52
51
50
49
48
47
46
45
44
43
42
41
40
39
38
37
36
35
34
33
32
31
30
29
28
27
26
25
24
23
22
21
20

58
59
60
1
2
3
4
5
6
7
8
9
10
11
12
13
14
15
16
17
18
19
20
21
22
23
24
25
26
27
28
29
30
31

32
33
34
35
36
37
38
39
40
41
42
43
44
45
46
47
48
49
50
51
52
53
54
55
56
57

19
18
17
16
15
14
13
12
11
10
9
8
7
6
5
4
3
2
1
09
59
58

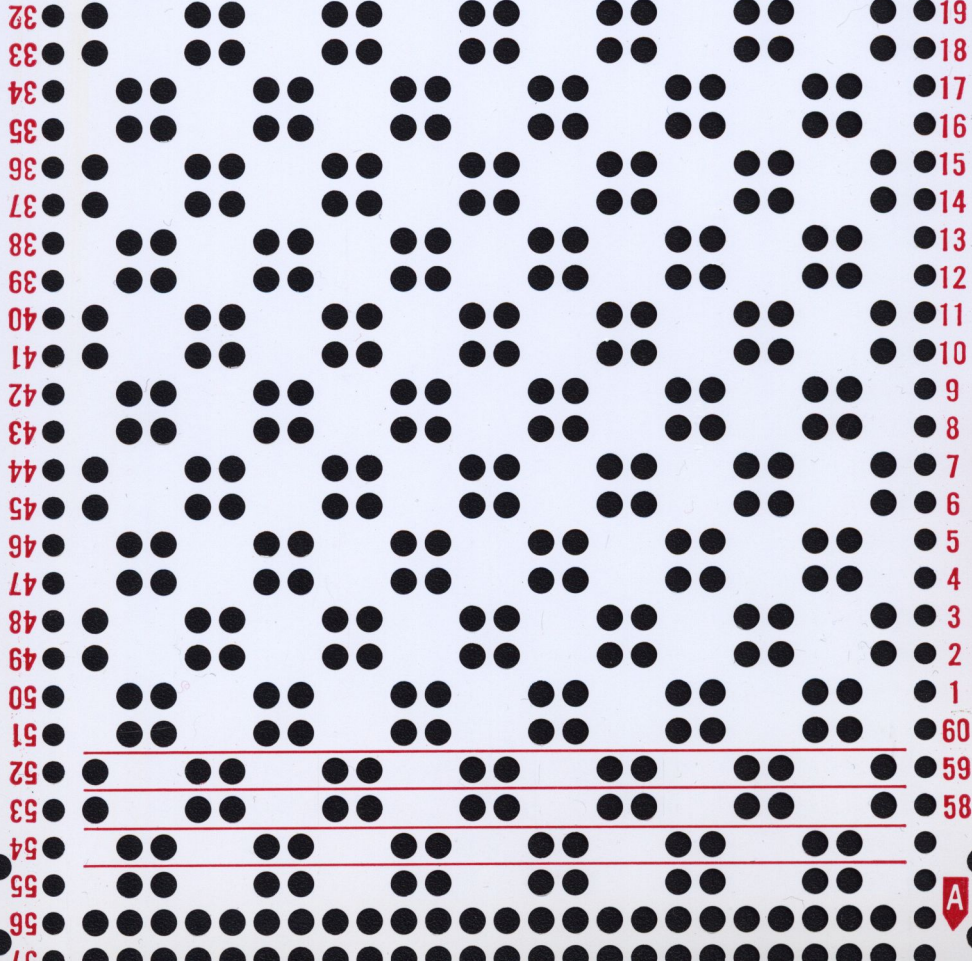
—
o.
N
—

A

A 31x10 dot grid with a red house icon in the top-left corner. The grid contains a pattern of black dots forming a large 'C' shape. Red horizontal lines are drawn across the grid at rows 53, 54, and 55. The numbers 57-60 and 1-31 are listed on the left and right sides of the grid.

57
56
55
54
53
52
51
50
49
48
47
46
45
44
43
42
41
40
39
38
37
36
35
34
33
32
31
30
29
28
27
26
25
24
23
22
21
20

58
59
60
1
2
3
4
5
6
7
8
9
10
11
12
13
14
15
16
17
18
19
20
21
22
23
24
25
26
27
28
29
30
31



32 ● ● ● ● ● ● ● ● ● ● 19

33 ● ● ● ● ● ● ● ● ● ● 18

34 ● ● ● ● ● ● ● ● ● ● 17

35 ● ● ● ● ● ● ● ● ● ● 16

36 ● ● ● ● ● ● ● ● ● ● 15

37 ● ● ● ● ● ● ● ● ● ● 14

38 ● ● ● ● ● ● ● ● ● ● 13

39 ● ● ● ● ● ● ● ● ● ● 12

40 ● ● ● ● ● ● ● ● ● ● 11

41 ● ● ● ● ● ● ● ● ● ● 10

42 ● ● ● ● ● ● ● ● ● ● 9

43 ● ● ● ● ● ● ● ● ● ● 8

44 ● ● ● ● ● ● ● ● ● ● 7

45 ● ● ● ● ● ● ● ● ● ● 6

46 ● ● ● ● ● ● ● ● ● ● 5

47 ● ● ● ● ● ● ● ● ● ● 4

48 ● ● ● ● ● ● ● ● ● ● 3

49 ● ● ● ● ● ● ● ● ● ● 2

50 ● ● ● ● ● ● ● ● ● ● 1

51 ● ● ● ● ● ● ● ● ● ● 60

52 ● ● ● ● ● ● ● ● ● ● 59

53 ● ● ● ● ● ● ● ● ● ● 58

54 ● ● ● ● ● ● ● ● ● ●

55 ● ● ● ● ● ● ● ● ● ●

56 ● ● ● ● ● ● ● ● ● ●

57 ● ● ● ● ● ● ● ● ● ●

No. 2

A

C

54

55

56

1

2

3

4

5

6

7

8

9

10

11

12

13

14

15

16

17

18

19

20

21

22

23

24

25

26

27

28

29

30

31

32

33

34

35

36

37

38

39

40

41

42

43

44

45

46

47

48

49

50

51

52

53

53
52
51
50
49
48
47
46
45
44
43
42
41
40
39
38
37
36
35
34
33
32
31
30
29
28
27
26
25
24
23
22
21
20
19
18
17
16
15
14
13
12
11
10
9
8
7
6
5
4
3
2
1
56
55
54
53

No. 3

A

										57
										56
										55
										54
58										53
59										52
60										51
1										50
2										49
3										48
4										47
5										46
6										45
7										44
8										43
9										42
10										41
11										40
12										39
13										38
14										37
15										36
16										35
17										34
18										33
19										32
20										31
21										30
22										29
23										28
24										27
25										26
26										25
27										24
28										23
29										22
30										21
31										20



32	●	●	●	●	●	●	●	●	●	19
33	●	●	●	●	●	●	●	●	●	18
34	●	●	●	●	●	●	●	●	●	17
35	●	●	●	●	●	●	●	●	●	16
36	●	●	●	●	●	●	●	●	●	15
37	●	●	●	●	●	●	●	●	●	14
38	●	●	●	●	●	●	●	●	●	13
39	●	●	●	●	●	●	●	●	●	12
40	●	●	●	●	●	●	●	●	●	11
41	●	●	●	●	●	●	●	●	●	10
42	●	●	●	●	●	●	●	●	●	9
43	●	●	●	●	●	●	●	●	●	8
44	●	●	●	●	●	●	●	●	●	7
45	●	●	●	●	●	●	●	●	●	6
46	●	●	●	●	●	●	●	●	●	5
47	●	●	●	●	●	●	●	●	●	4
48	●	●	●	●	●	●	●	●	●	3
49	●	●	●	●	●	●	●	●	●	2
50	●	●	●	●	●	●	●	●	●	1
51	●	●	●	●	●	●	●	●	●	19
52	●	●	●	●	●	●	●	●	●	18
53	●	●	●	●	●	●	●	●	●	17
54	●	●	●	●	●	●	●	●	●	16
55	●	●	●	●	●	●	●	●	●	15
56	●	●	●	●	●	●	●	●	●	14
57	●	●	●	●	●	●	●	●	●	13



58

59

60

1

2

3

4

5

6

57

56

55

54

53

52

51

50

49

48

47

46

45

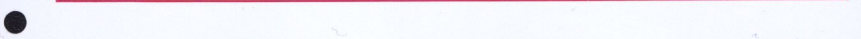
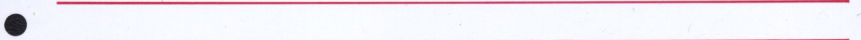
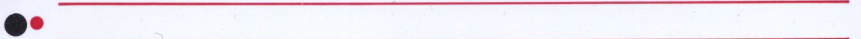
7
8
9
10
11
12
13
14
15
16
17
18
19
20
21
22
23
24
25
26
27
28
29
30
31
32
33
34
35
36
37
38
39
40
41
42
43
44
45
46
47
48
49
50
51
52
53
54
55
56



44
43
42
41
40
39
38
37
36
35
34
33
32
31
30
29
28
27
26
25
24
23
22
21
20
19
18
17
16
15
14
13
12
11
10
9
8
7
6
5
4
3
2
1
09
08
05
04
03
02
01

No. 5





57

56

55

54

53

52

51

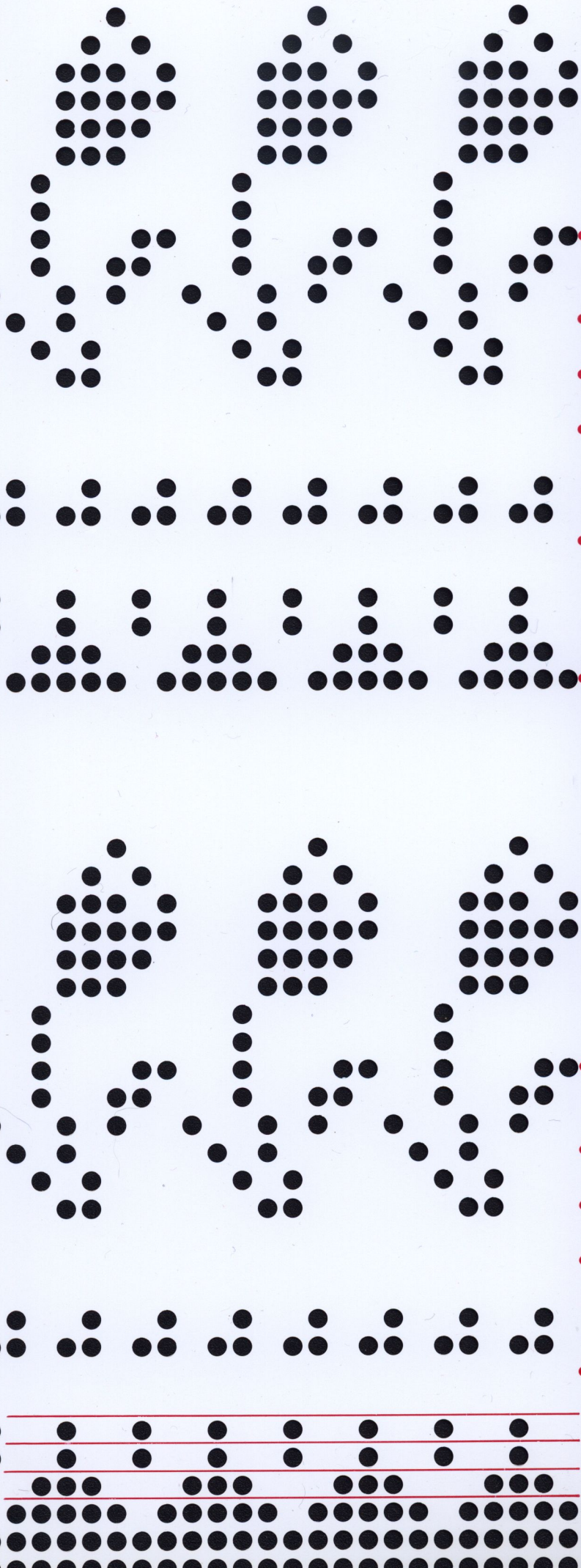
58

59

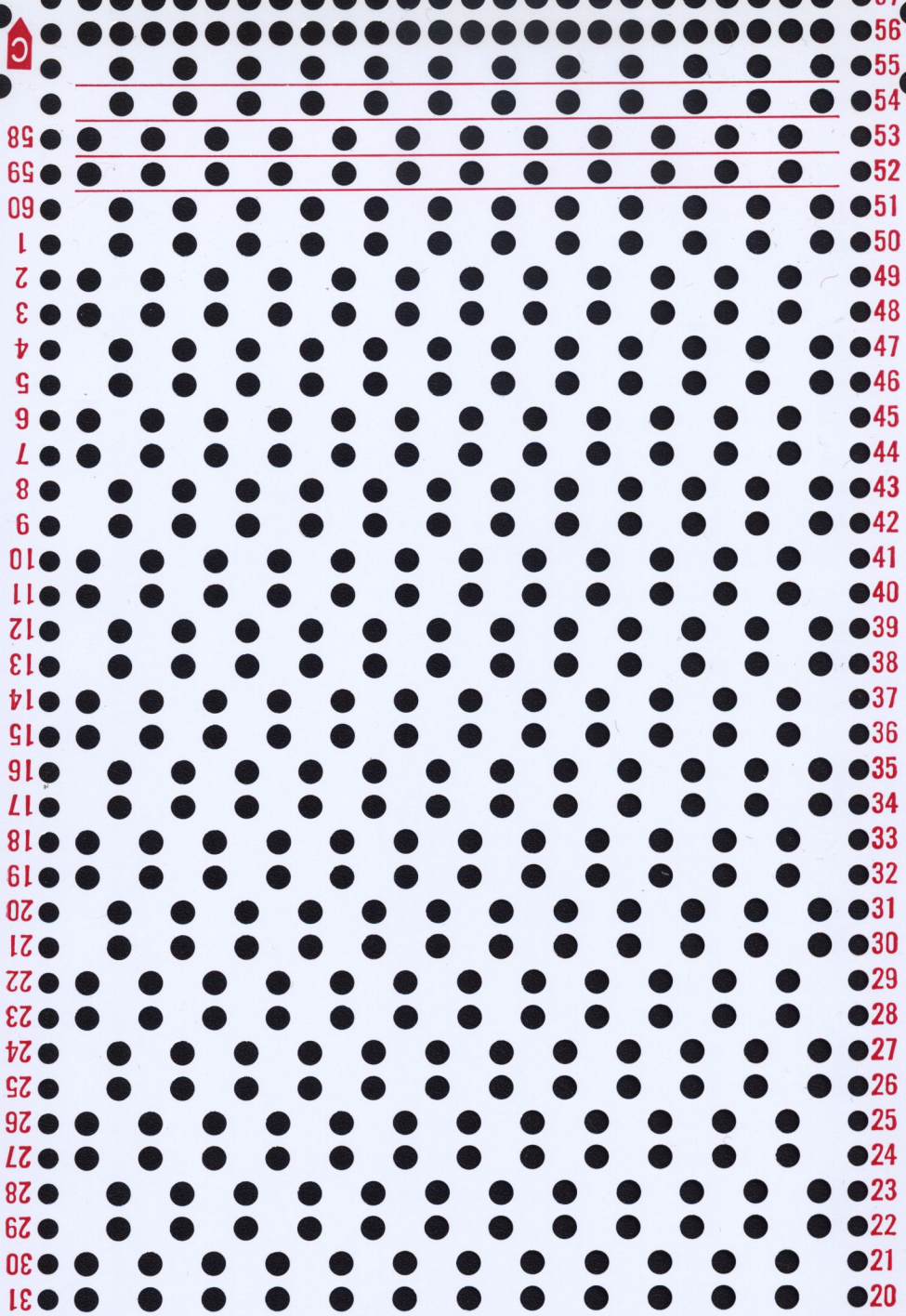
60

Four horizontal red lines spanning the width of the page, serving as a writing area.

1 ●
2 ●
3 ●
4 ●
5 ●
6 ●
7 ●
8 ●
9 ●
10 ●
11 ●
12 ●
13 ●
14 ●
15 ●
16 ●
17 ●
18 ●
19 ●
20 ●
21 ●
22 ●
23 ●
24 ●
25 ●
26 ●
27 ●
28 ●
29 ●
30 ●
31 ●
32 ●
33 ●
34 ●
35 ●
36 ●
37 ●
38 ●
39 ●
40 ●
41 ●
42 ●
43 ●
44 ●
45 ●
46 ●
47 ●
48 ●
49 ●
50 ●
51 ●
52 ●
53 ●
54 ●
55 ●
56 ●
57 ●

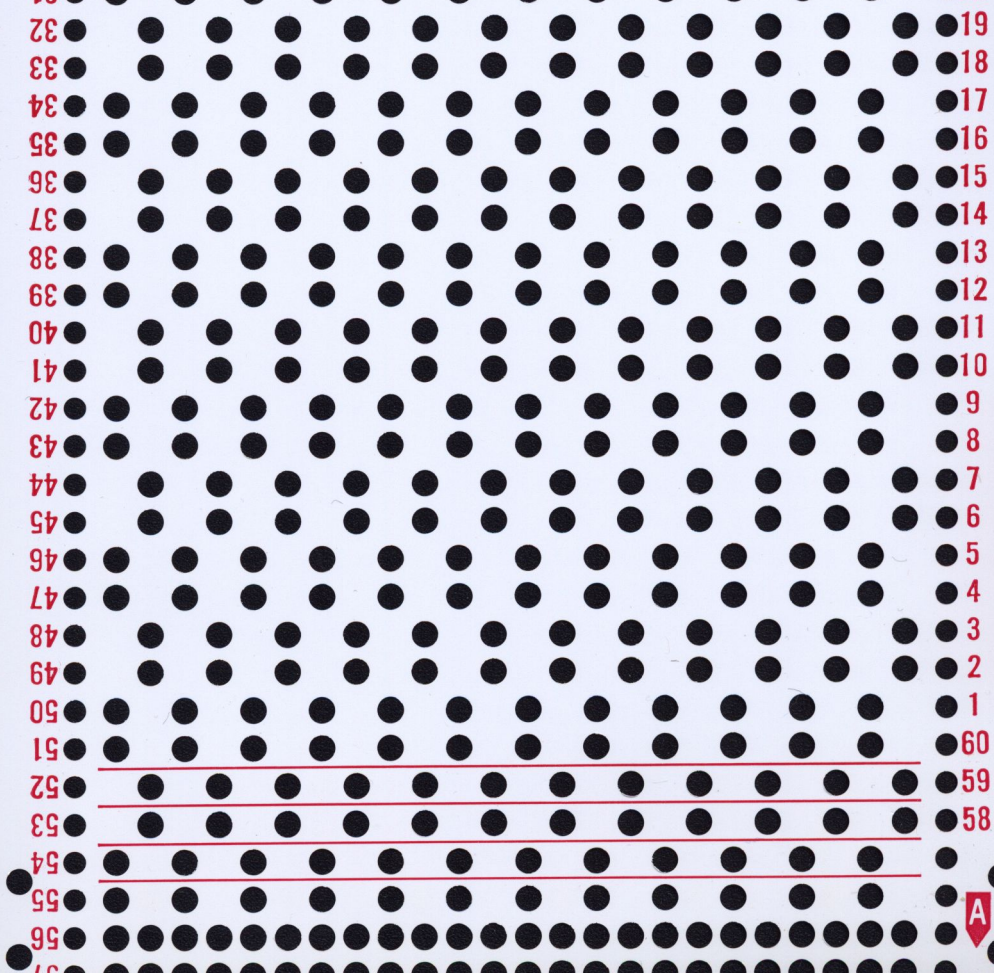


50 ●
49 ●
48 ●
47 ●
46 ●
45 ●
44 ●
43 ●
42 ●
41 ●
40 ●
39 ●
38 ●
37 ●
36 ●
35 ●
34 ●
33 ●
32 ●
31 ●
30 ●
29 ●
28 ●
27 ●
26 ●
25 ●
24 ●
23 ●
22 ●
21 ●
20 ●
19 ●
18 ●
17 ●
16 ●
15 ●
14 ●
13 ●
12 ●
11 ●
10 ●
9 ●
8 ●
7 ●
6 ●
5 ●
4 ●
3 ●
2 ●
1 ●
09 ●
59 ●
58 ●
57 ●
56 ●
55 ●



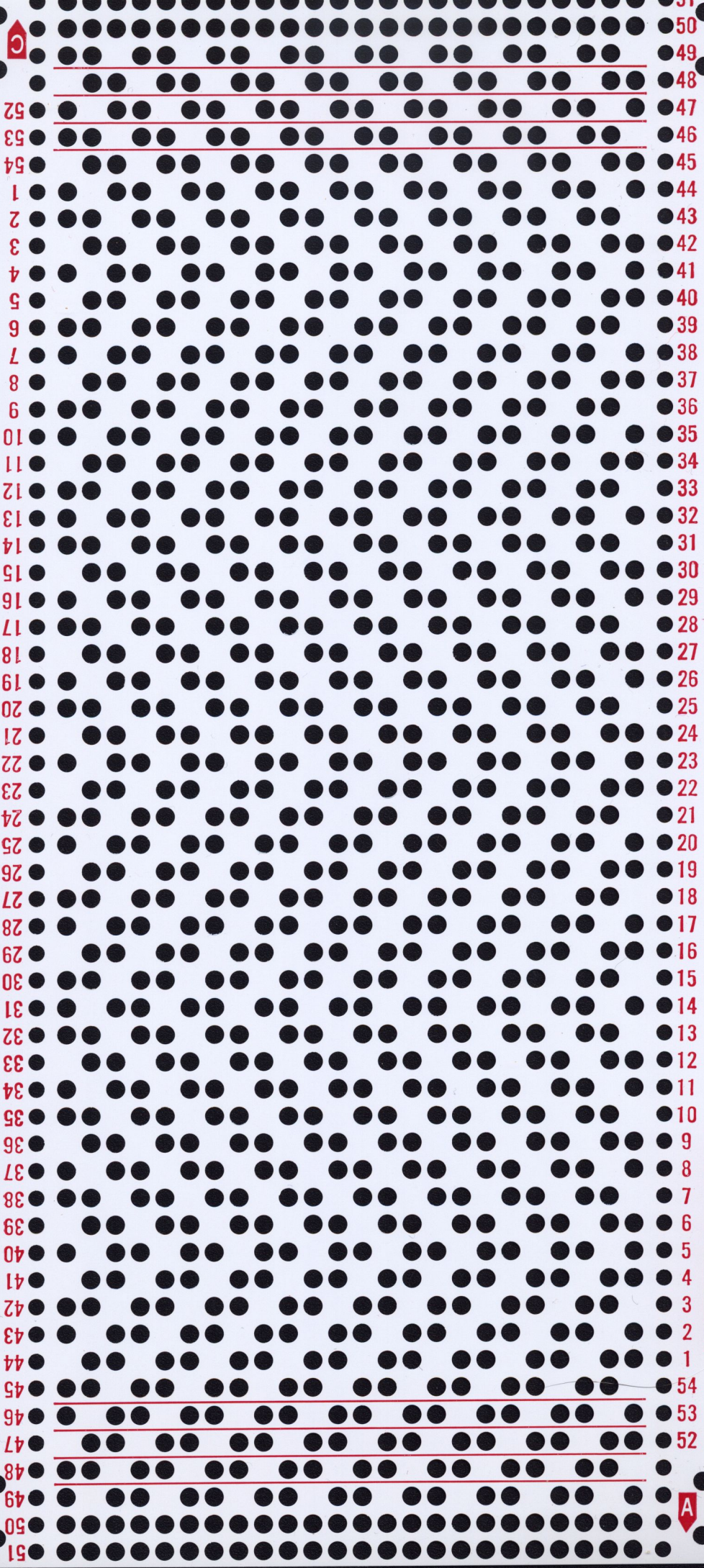
57
56
55
54
53
52
51
50
49
48
47
46
45
44
43
42
41
40
39
38
37
36
35
34
33
32
31
30
29
28
27
26
25
24
23
22
21
20

58
59
60
1
2
3
4
5
6
7
8
9
10
11
12
13
14
15
16
17
18
19
20
21
22
23
24
25
26
27
28
29
30
31



A

G



51
50
49
48
47
52
53
54
1
2
3
4
5
6
7
8
9
10
11
12
13
14
15
16
17
18
19
20
21
22
23
24
25
26
27
28
29
30
31
32
33
34
35
36
37
38
39
40
41
42
43
44
45
46
47
48
49
50
51

51
50
49
48
47
46
45
44
43
42
41
40
39
38
37
36
35
34
33
32
31
30
29
28
27
26
25
24
23
22
21
20
19
18
17
16
15
14
13
12
11
10
9
8
7
6
5
4
3
2
1
54
53
52
51

3
2
1

A

C

No. 6

A

45
44
43
42
41
40
39
38
37
36
35
34
33
32
31
30
29
28
27
26
25
24
23
22
21
20
19
18
17
16
15
14
13
12
11
10
9
8
7
6
5
4
3
2
1
48
47
46
45

58	57
59	56
60	55
1	54
2	53
3	52
4	51
5	50
6	49
7	48
8	47
9	46
10	45
11	44
12	43
13	42
14	41
15	40
16	39
17	38
18	37
19	36
20	35
21	34
22	33
23	32
24	31
25	30
26	29
27	28
28	27
29	26
30	25
31	24
	23
	22
	21
	20

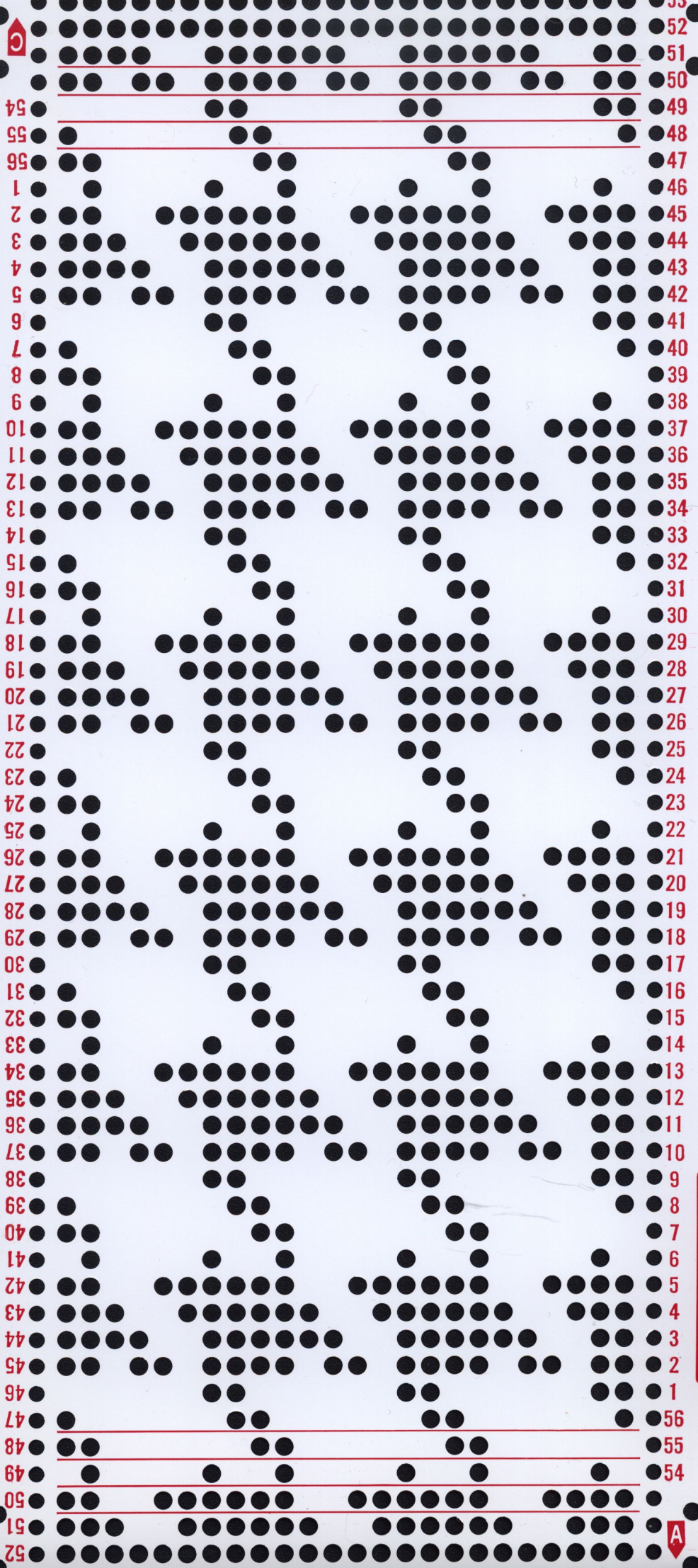


46
47
48
1
2
3
4
5
6
7
8
9
10
11
12
13
14
15
16
17
18
19
20
21
22
23
24
25
26
27
28
29
30
31
32
33
34
35
36
37
38
39
40
41
42
43
44
45

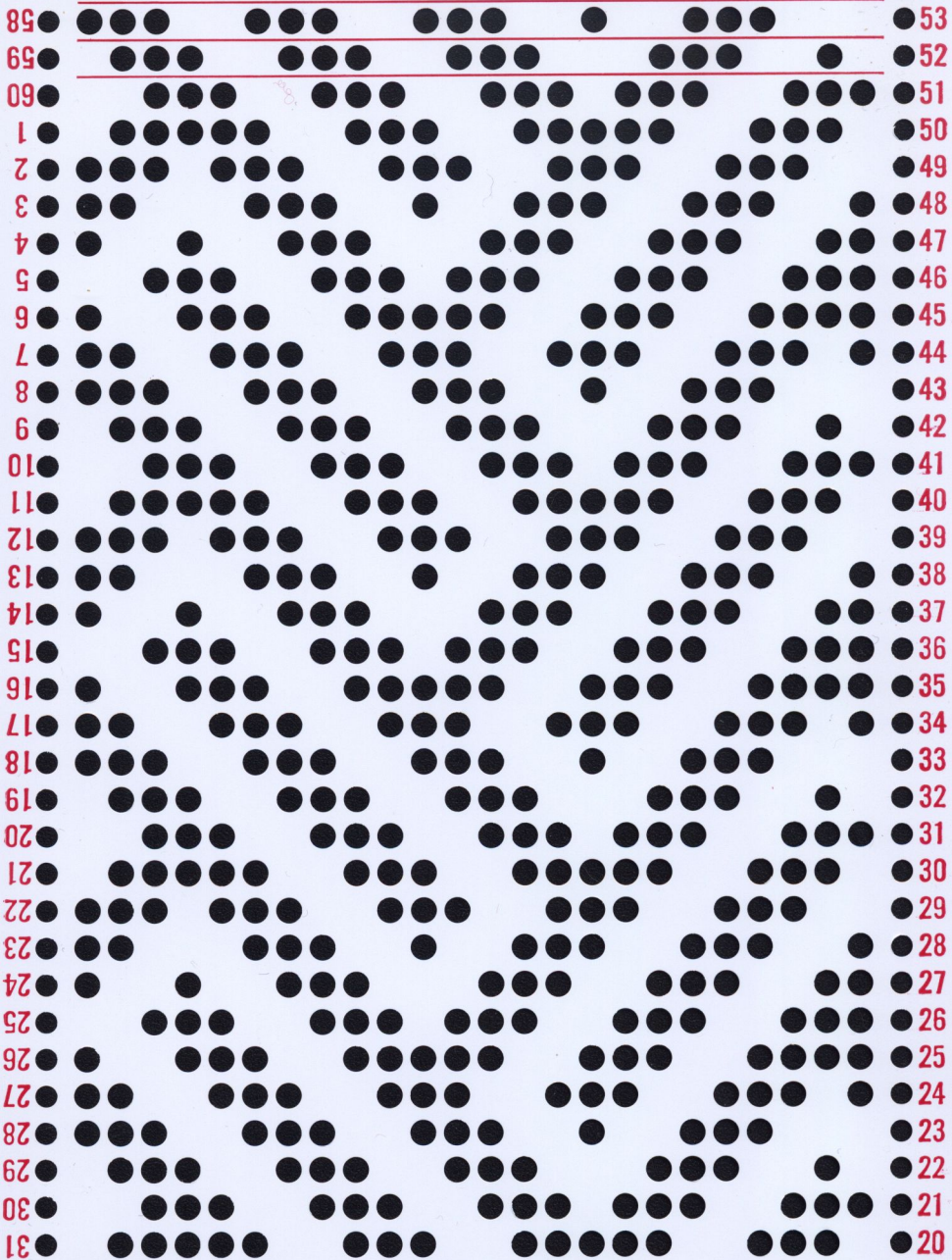
45
44
43
42
41
40
39
38
37
36
35
34
33
32
31
30
29
28
27
26
25
24
23
22
21
20
19
18
17
16
15
14
13
12
11
10
9
8
7
6
5
4
3
2
1
48
47
46
45

C

No. 13

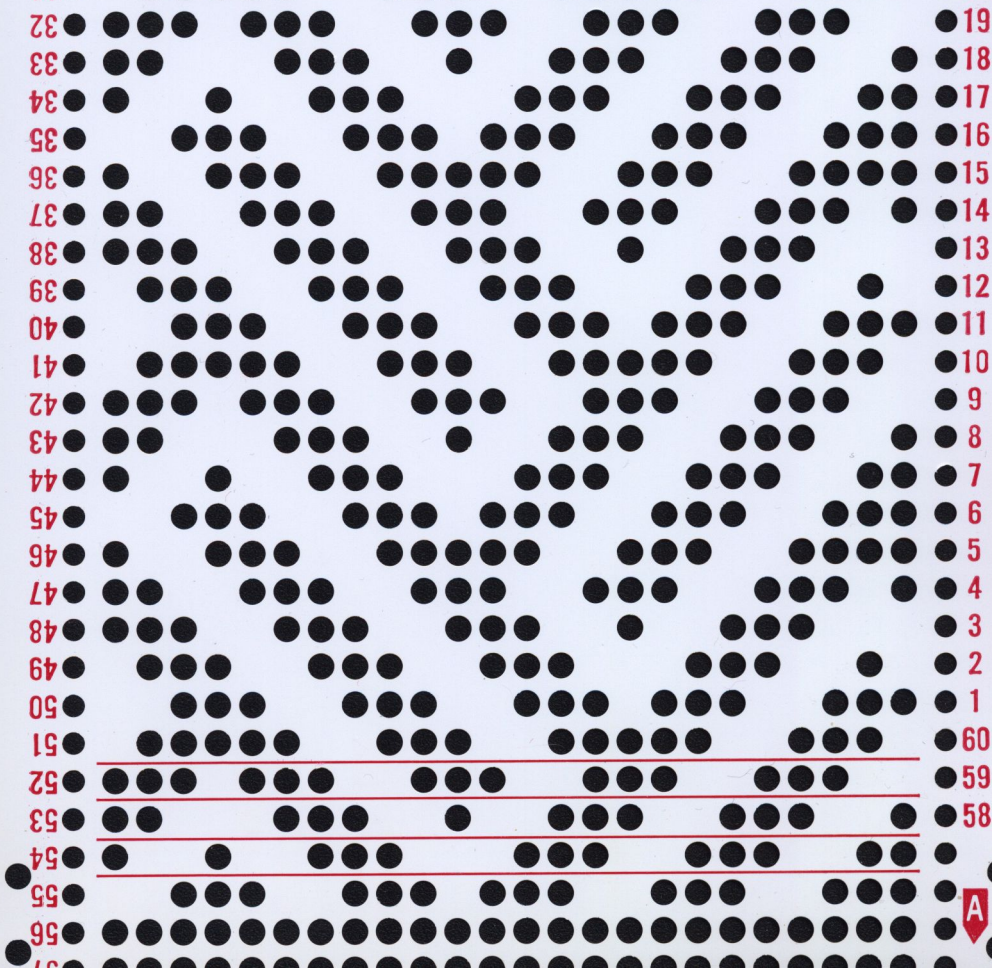


53
52
51
50
49
48
47
46
45
44
43
42
41
40
39
38
37
36
35
34
33
32
31
30
29
28
27
26
25
24
23
22
21
20
19
18
17
16
15
14
13
12
11
10
9
8
7
6
5
4
3
2
1
54
53
52
51
50
49
48
47
46
45
44
43
42
41
40
39
38
37
36
35
34
33
32
31
30
29
28
27
26
25
24
23
22
21
20
19
18
17
16
15
14
13
12
11
10
9
8
7
6
5
4
3
2
1
54
53
52
51
50
49
48
47
46
45
44
43
42
41
40
39
38
37
36
35
34
33
32
31
30
29
28
27
26
25
24
23
22
21
20
19
18
17
16
15
14
13
12
11
10
9
8
7
6
5
4
3
2
1



58
59
60
1
2
3
4
5
6
7
8
9
10
11
12
13
14
15
16
17
18
19
20
21
22
23
24
25
26
27
28
29
30
31

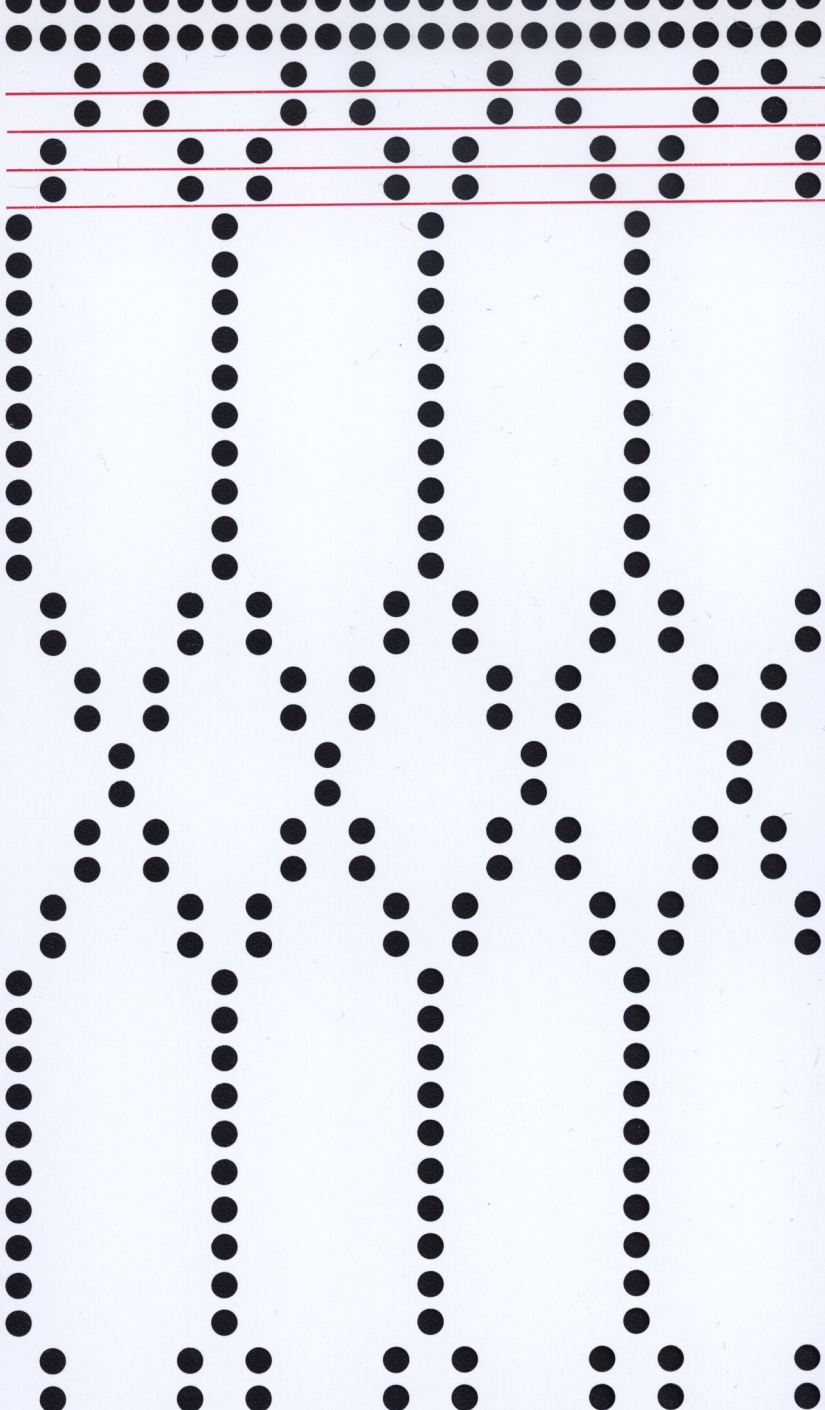
57
56
55
54
53
52
51
50
49
48
47
46
45
44
43
42
41
40
39
38
37
36
35
34
33
32
31
30
29
28
27
26
25
24
23
22
21
20

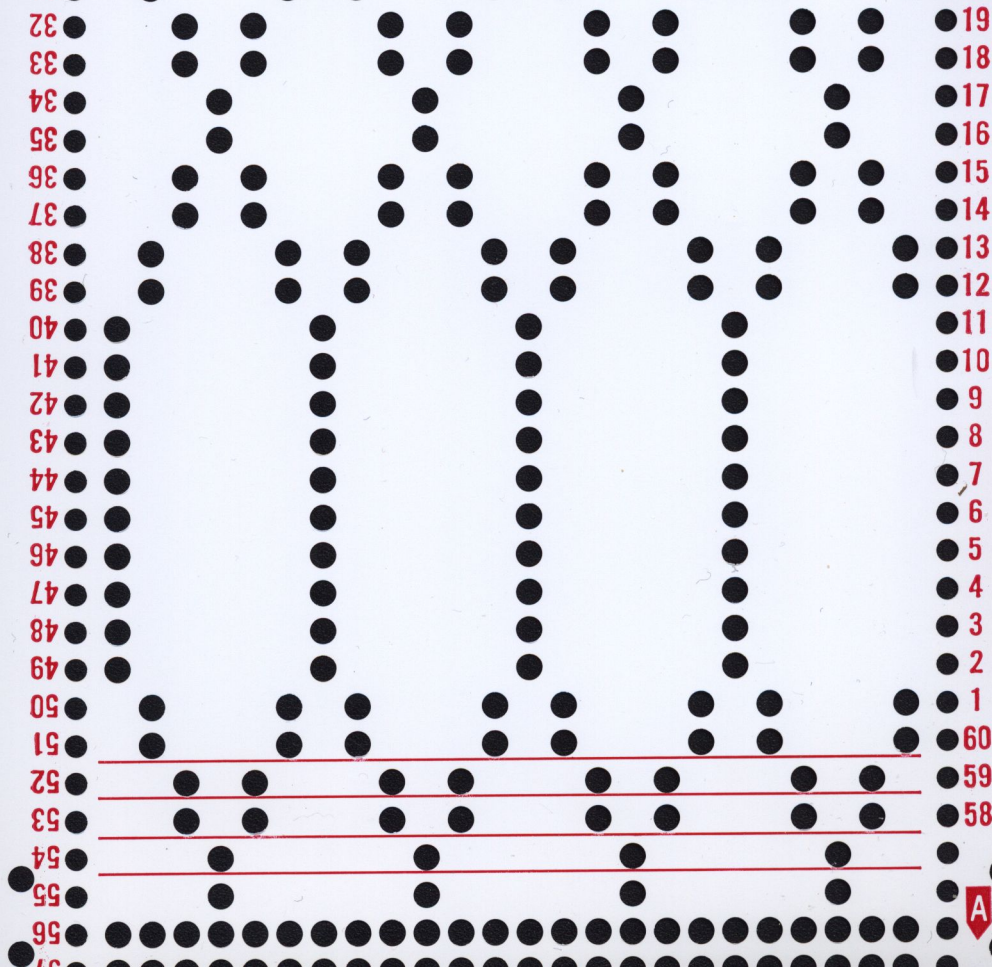




58
59
60
1
2
3
4
5
6
7
8
9
10
11
12
13
14
15
16
17
18
19
20
21
22
23
24
25
26
27
28
29
30
31

57
56
55
54
53
52
51
50
49
48
47
46
45
44
43
42
41
40
39
38
37
36
35
34
33
32
31
30
29
28
27
26
25
24
23
22
21
20





32 ●
33 ●
34 ●
35 ●
36 ●
37 ●
38 ●
39 ●
40 ●
41 ●
42 ●
43 ●
44 ●
45 ●
46 ●
47 ●
48 ●
49 ●
50 ●
51 ●
52 ●
53 ●
54 ●
55 ●
56 ●

19 ●
18 ●
17 ●
16 ●
15 ●
14 ●
13 ●
12 ●
11 ●
10 ●
9 ●
8 ●
7 ●
6 ●
5 ●
4 ●
3 ●
2 ●
1 ●
69 ●
59 ●
58 ●

No. 15 ★

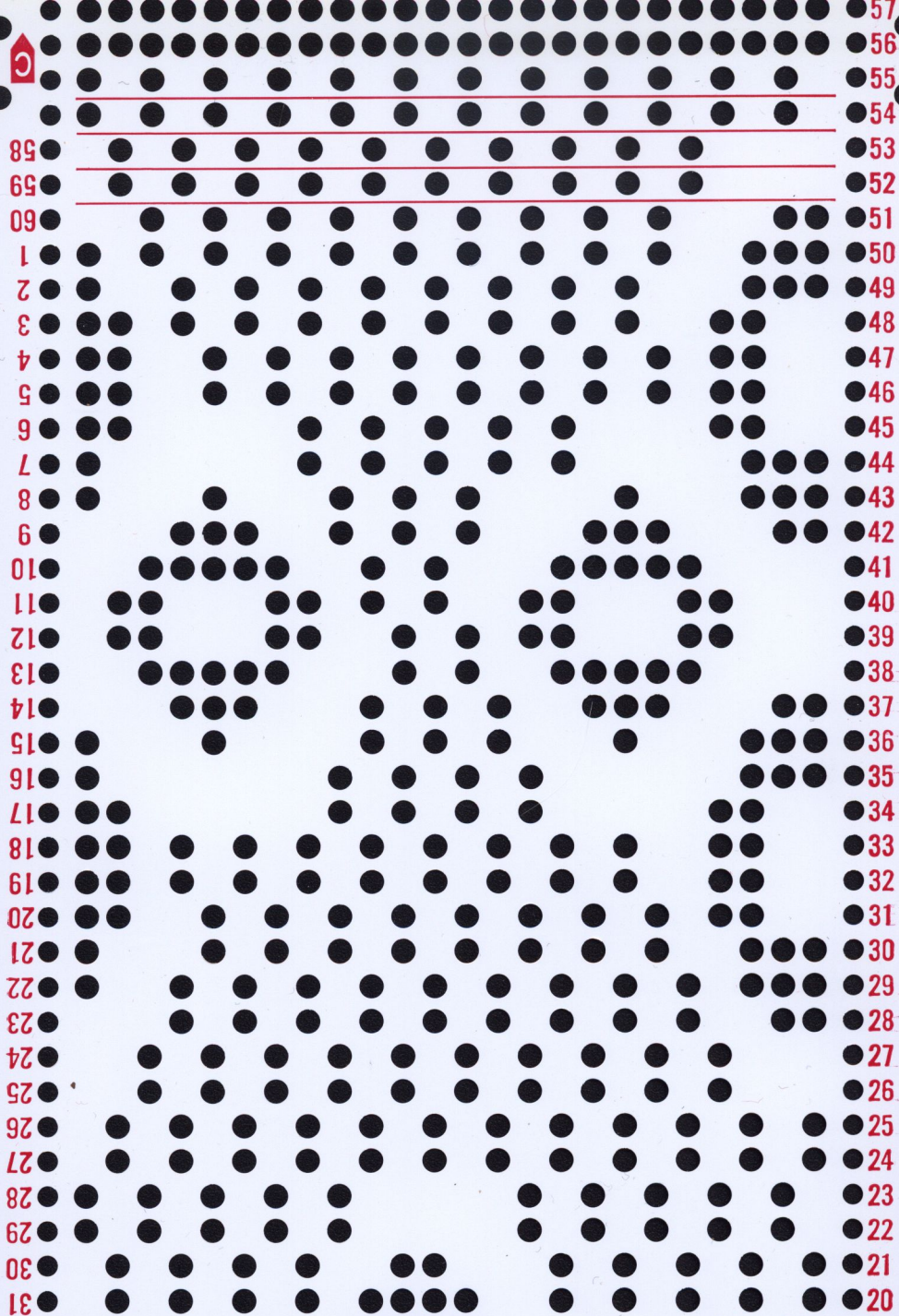
A

C

46
47
48
1
2
3
4
5
6
7
8
9
10
11
12
13
14
15
16
17
18
19
20
21
22
23
24
25
26
27
28
29
30
31
32
33
34
35
36
37
38
39
40
41
42
43
44
45

45
44
43
42
41
40
39
38
37
36
35
34
33
32
31
30
29
28
27
26
25
24
23
22
21
20
19
18
17
16
15
14
13
12
11
10
9
8
7
6
5
4
3
2
1
48
47
46
A

No. 16 *



58 ● 53

59 ● 52

60 ● 51

1 ● 50

2 ● 49

3 ● 48

4 ● 47

5 ● 46

6 ● 45

7 ● 44

8 ● 43

9 ● 42

10 ● 41

11 ● 40

12 ● 39

13 ● 38

14 ● 37

15 ● 36

16 ● 35

17 ● 34

18 ● 33

19 ● 32

20 ● 31

21 ● 30

22 ● 29

23 ● 28

24 ● 27

25 ● 26

26 ● 25

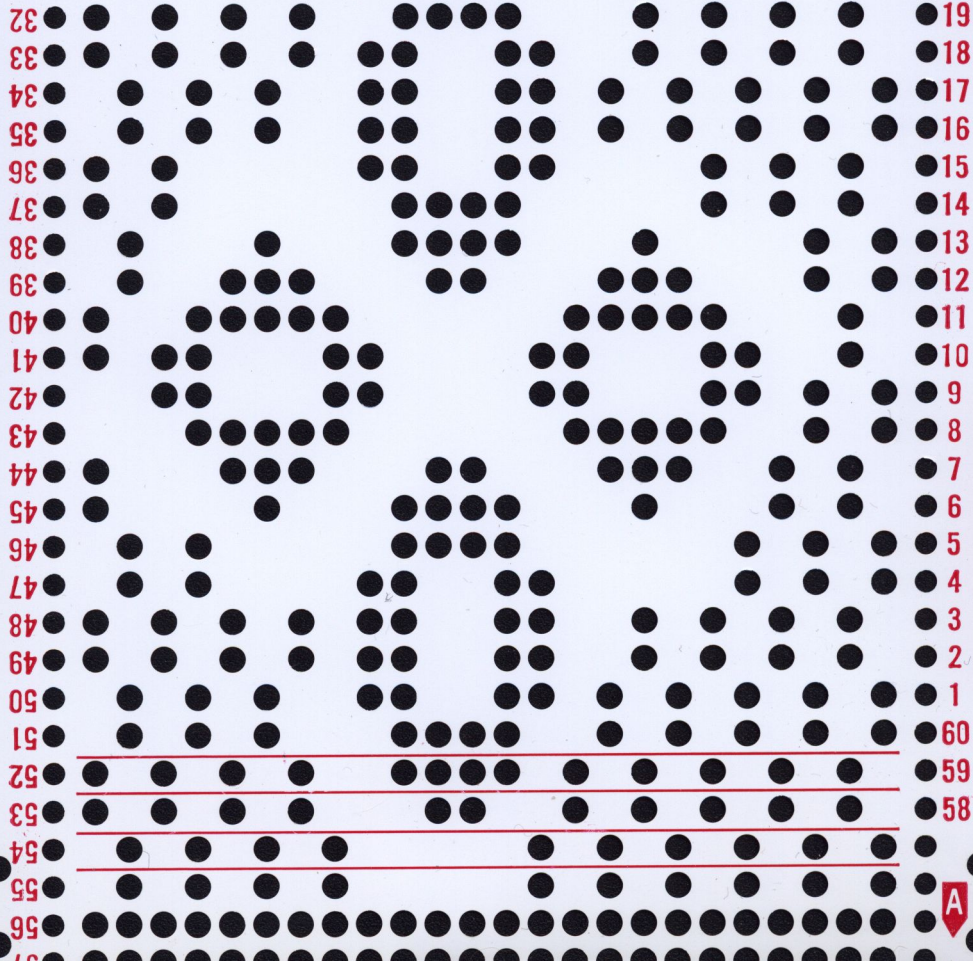
27 ● 24

28 ● 23

29 ● 22

30 ● 21

31 ● 20



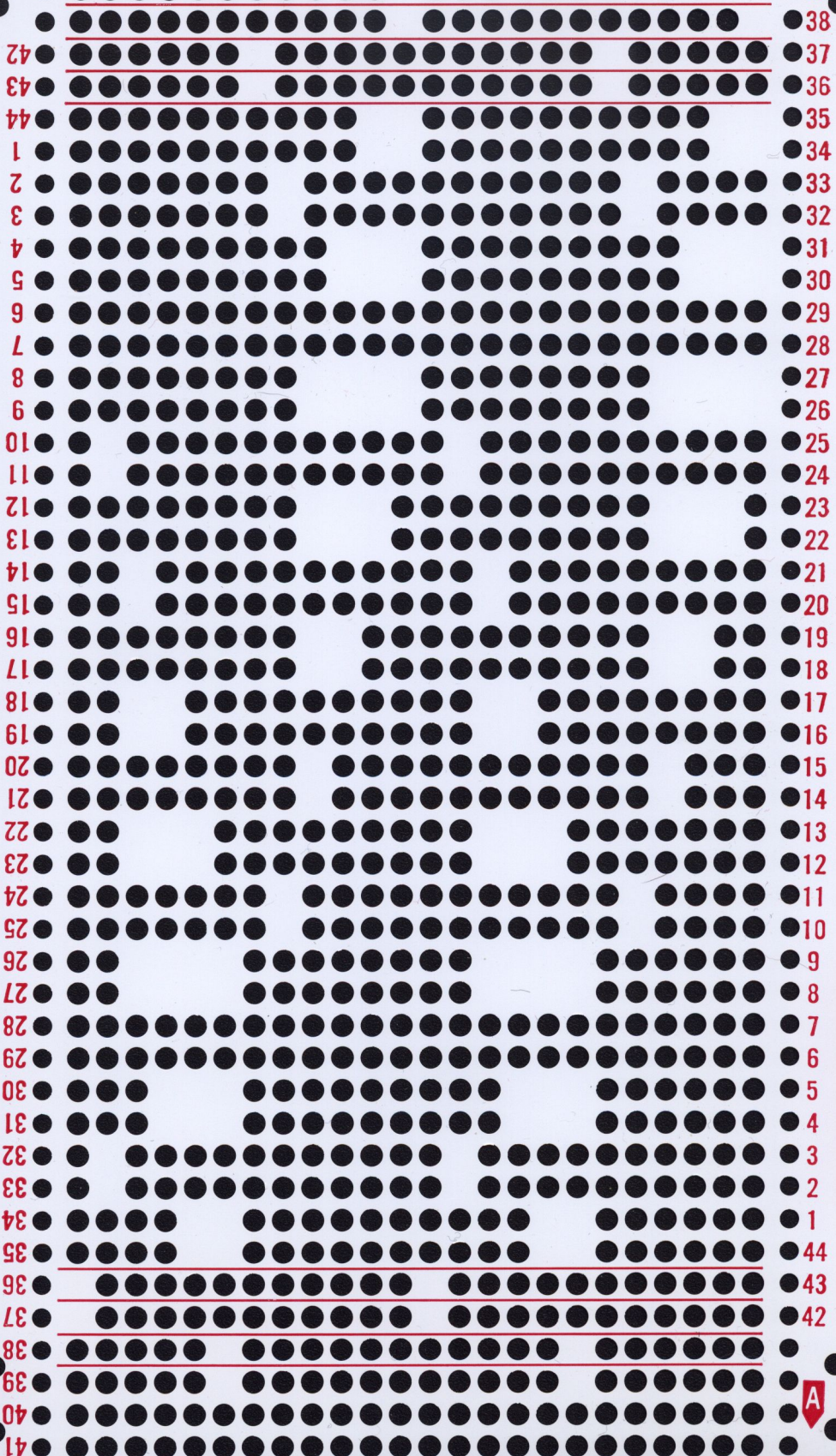
C

46
47
48
1
2
3
4
5
6
7
8
9
10
11
12
13
14
15
16
17
18
19
20
21
22
23
24
25
26
27
28
29
30
31
32
33
34
35
36
37
38
39
40
41
42
43
44
45

45
44
43
42
41
40
39
38
37
36
35
34
33
32
31
30
29
28
27
26
25
24
23
22
21
20
19
18
17
16
15
14
13
12
11
10
9
8
7
6
5
4
3
2
1
48
47
46
A

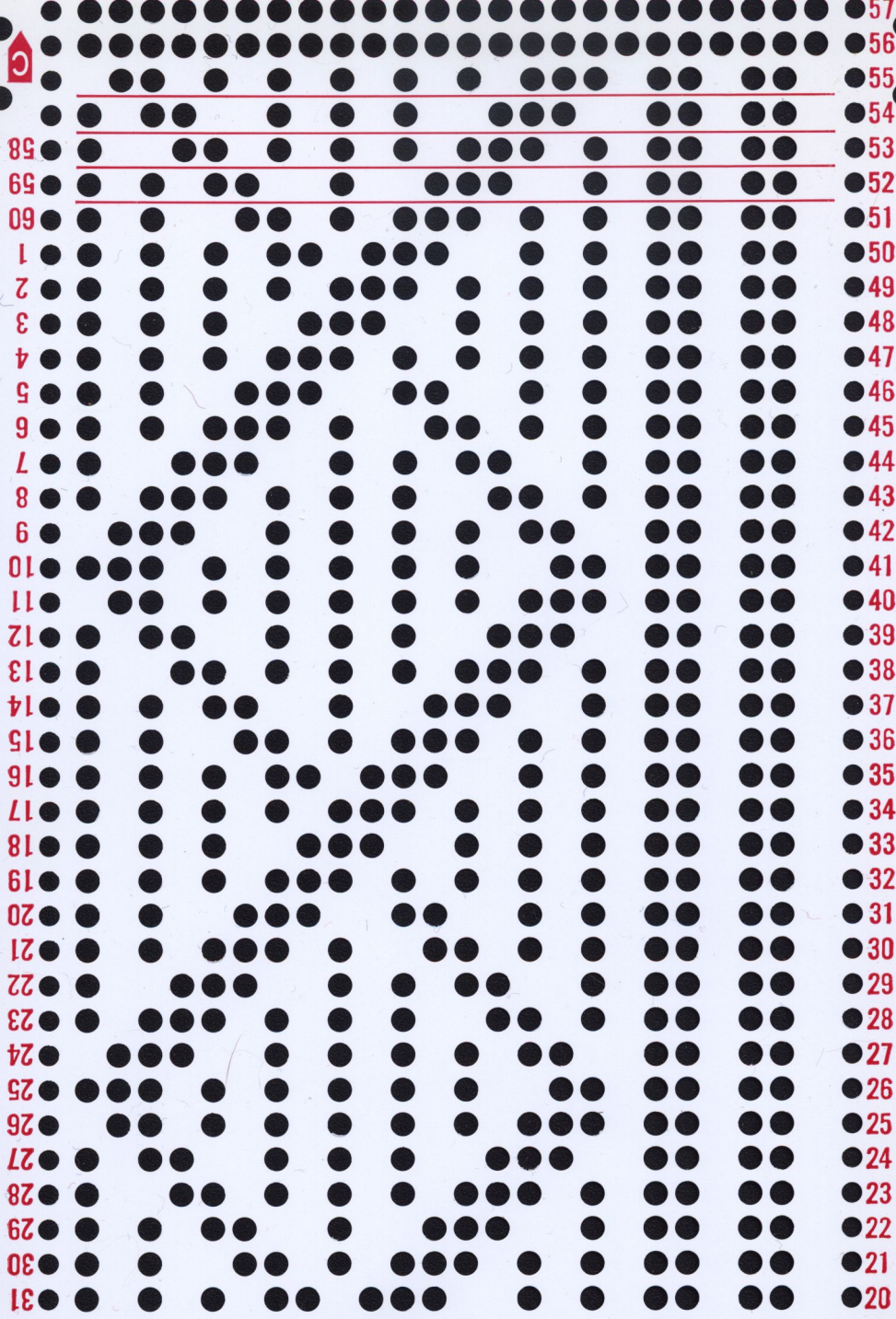
No. 18 *

C

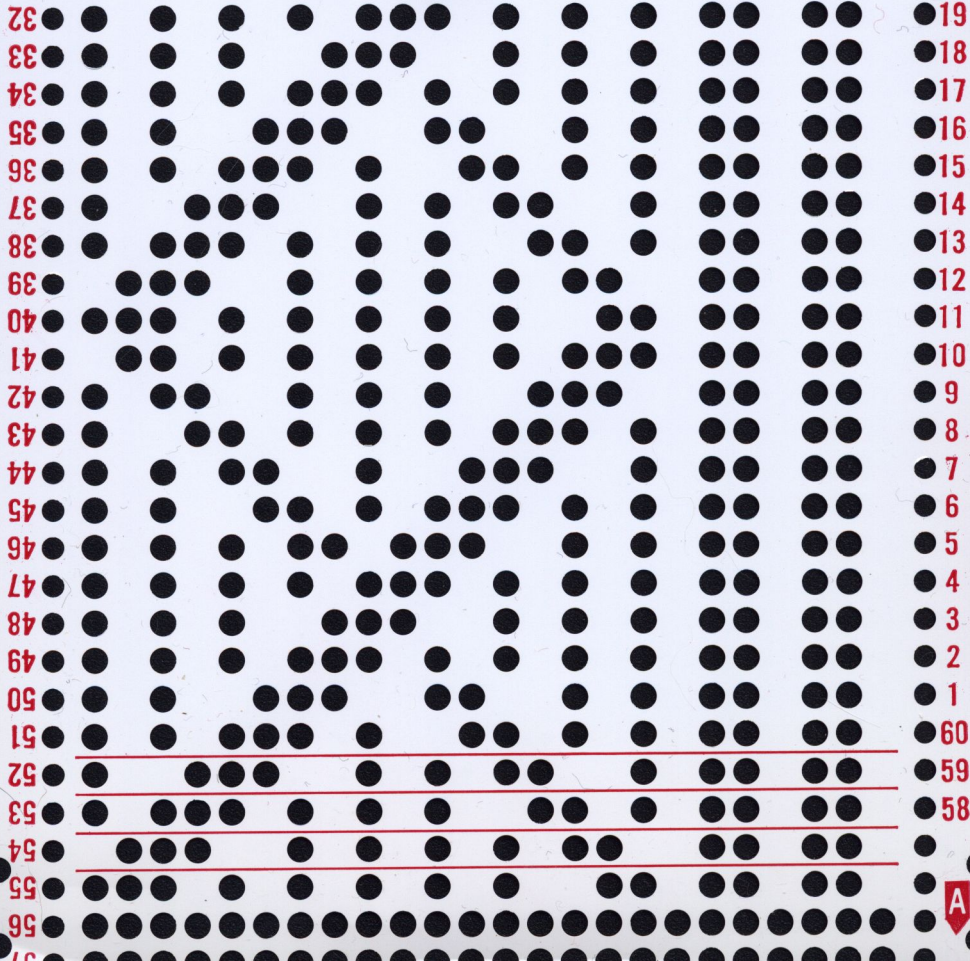


No. 1

A



57
56
55
54
53
52
51
50
49
48
47
46
45
44
43
42
41
40
39
38
37
36
35
34
33
32
31
30
29
28
27
26
25
24
23
22
21
20



No.20 ★

A