

1200

The Bramwell Baby Book



by Eileen Metcalf











The Bramwell Baby Book

Bramwells have a wide variety of yarns suitable for baby garments and knitters have been asking for sometime for a Bramwell Baby Book.

We hope you will find the patterns in this book useful and easy to knit. Notice many of the patterns may be made for premature babies, this size may also prove useful for doll's clothes.

Thank you to the publishers of The Harmony Guide to Machine Knitting Stitches who have generously allowed us to reproduce some of the pattern cards from their very useful book.

Many thanks also to Christina Salisbury and Shirley Ward for their hard work during the preparation of this pattern book.

Abbreviations

carr. = carriage
 cm(s). = centimetre(s)
 dec. = decrease
 H.P. = Holding Position
 inc. = increase
 in(s). = inch(es)
 R.C. = Row Counter
 st(s). = stitch(es)

© All patterns, printed matter and photographs contained in this book are and remain the copyright of Metbury Designs and may not be reproduced in whole or in part without the consent of the copyright holder.

Printed and published in the U.K.

If you have any difficulty in obtaining any yarns used in this pattern book please write to:

F.W. Bramwell & Co. Ltd.,
 Unit 5, Metcalf Drive, Altham Lane, Altham, Accrington, BB5 5TU.

Pattern Number	Page Number
1. Vee Neck Cardigan	1
2. Pants	2
3. Round Neck Cardigan	2
4. Dressing Gown	3
5. Tracksuit	4
6. Pram Suit	5
7. Pram Rug	6
8. Sleeping Bag	6
9. Matinee Coat and Dress	7
10. Circular Shawl in Tuck Stitch.	9
11. Half Fisherman's Rib Bootees, Mittens, Bob Hat, Bonnet.	9
12/13. Lacy Carrying Cape and Bonnet	10
14. Christening Robe	10
15. Circular Shawl in Stocking Stitch.	13
16. Rompers in Duo Magic	13
17. Woven Cot Blanket	14
18. Round Neck Sweater	15
19. Pleated Skirt	15
20. Stocking Stitch and Fairisle Bootees, Mittens, Helmet and Bonnet	16

Whilst every care is taken to ensure the accuracy of the patterns in this book, the publisher accepts no responsibility whatsoever for any damage, loss or the like arising from their use.

1. Vee Neck Cardigan

Knitted in Baby Bramwell.

Two rows of contrast colour may be knitted in the ribs if desired.

Tension

28 stitches, 40 rows = 4 ins (10 cms) using approximately stitch size 7 (T7).

Size ins.	14	16	18	20	22
. cms.	36	41	46	51	56
Finished chest measurement ins.	16	18	20	22	24
. cms.	41	46	51	56	61
Back length ins.	8.5	9	10.5	11	12
. cms.	21	23	26	28	30
Sleeve length to armhole ins.	5	5.5	6	6.5	7
. cms.	12	14	15	16	18

Back and Two Fronts (Knitted in one piece to armhole)

Cast on in main colour	112	128	140	156	168
sts in 1 x 1 rib. T2/2. Knit	12	12	12	12	12
rows. Transfer sts. to main bed. T7.					

R.C.000. Knit in stocking stitch to R.C.	36	40	46	50	56
--	----	----	----	----	----

Armholes and Vee Neck Shaping

Place	87	99	108	120	129
needles at the opposite side to the carr. in H.P. Set the carr. to Hold. Working on the	25	29	32	36	39
sts. on side nearest to carr. Knit 5 rows. Dec. 1 st. on inside edge on next and every following 3rd row	7	5	5	3	7
times then 1 st. every alternate row	7	12	15	20	18
Neck by dec. 1 st. on the outside edge every 3rd row	11	12	12	13	14
times. When all sts. have been dec. take the carr. to the opposite end. Bring back in to Working Position	25	29	32	36	39
needles and shape the second front to match the first, reversing the shaping.					

Back

Place the remaining needles back in to Working Position. Cast off	6	6	6	6	6
sts. at the beginning of the next 2 rows. Dec. 1 st. at each end every 3rd row	7	5	5	3	7
times. Then 1 st. every alternate row	7	12	15	20	18
times. Knit to R.C.	74	82	94	102	114
Cast off the remaining	22	24	24	26	28
sts.					

Sleeves

Cast on	38	44	50	56	60
sts. in 1 x 1 rib. Knit	12	12	12	12	12
rows. Transfer sts. to main bed. T7. R.C.000. Knit to R.C.	40	46	50	56	62
Cast off 3 sts. at the beginning of next					

2 rows. Dec. 1 st. at each end every 3rd row. 7 5 5 3 7
 times. Then 1 st. every alternate row 7 12 15 20 18
 times. Knit to R.C. 78 88 98 108 120
 Cast off the remaining 4 sts.
 Join the raglan seams.

Button Band

Cast on in 1 x 1 rib 68 74 81 87 94
 sts. Knit 8 rows T3/3.
 Transfer the sts. to main bed.
 With wrong side of garment facing pick up front edge and half of back neck on to same needles. T7. Knit 1 row and cast off.

Buttonhole Band

Make the buttonhole band in the same manner, making 4 buttonholes in the lower half.

2. Pants

Knitted in Baby Bramwell.

Instructions are given for a plain garment but 2 or 4 row stripes may be knitted or a small band of Fairisle inserted. They may be knitted with or without the bib and braces.

Tension

28 stitches, 40 rows = 4 ins (10 cms) using approximately stitch size 7 (T7).

Size ins.	14	16	18	20	22
. cms.	36	41	46	51	56
Body length ins.	5.5	6	7	7.5	8.5
. cms.	13	15	18	19	22
Leg length ins.	6	6.5	7	8	9
. cms.	15	16	18	21	23

The Pants (knitted in two pieces from the waist down.)

Cast on in 1 x 1 rib	60	66	74	80	88
sts. Knit 20 rows at T3/3. Transfer sts. to main bed. T7. R.C. 000. Knit in stocking st. to R.C.	32	40	50	60	68
Inc. 1 st. at each end next and every alternate row	10	10	9	8	7
times. R.C.	52	60	68	76	82
Number of sts. in work	80	86	92	96	102
Place a marker thread over each end needle. Knit to R.C.	100	116	132	148	160
Run off on several rows of waste yarn. Knit the Ankle Band . Cast on in 1 x 1 rib	40	43	46	48	51
sts. Knit 12 rows T2/2. Transfer the sts. to the main bed. With the wrong side of the garment facing pick up sts evenly. from last row of main yarn on to the needles holding the rib, placing 2 sts. on to each needle. Knit 1 row T7. Cast off.					

Knit a second piece.

Making Up

Join waist band and front and back seams to marker threads. Join inside leg seams. Turn half of waistband to inside and catch down. Insert elastic.

Optional Bib and Braces

T7. R.C.000. With the wrong side of the front band facing you, pick up from the edge 14 16 18 19 21
 sts. from each side of the seam. Knit in stocking stitch to R.C. 26 32 36 42 46
 Work a buttonhole 5 sts. in from each edge. Knit 6 rows. T9 Knit 1 row. T7 Knit 6 rows. Work second half of buttonhole to match first. Knit to R.C. 65 77 85 97 105
 Cast off.
 Sew side seams of bib. Complete buttonholes and catch edge to pants.

Braces

Cast on in full needle rib, 8 sts. and work 90 100 110 120 130
 rows T4/4. Transfer sts. to main bed.
 Knit 1 row T7 and cast off.
 Sew braces into position on back waist and sew on buttons.

3. Round Neck Cardigan

Knitted in Baby Bramwell. Small amounts of main colour and 1 contrast colour required.

Tension

28 stitches, 40 rows = 4 ins (10 cms) using approximately stitch size 7 (T7).

Size ins.	14	16	18	20	22
. cms.	36	41	46	51	56
Finished chest measurement ins.	16	18	20	22	24
. cms.	41	46	51	56	61
Back length ins.	8.5	9	10.5	11	12
. cms.	21	23	26	28	30
Sleeve length to armhole ins.	5	5.5	6	6.5	7
. cms.	12	14	15	16	18

Back and Two Fronts (Knitted in one piece to armhole)

Cast on in main colour 112 128 140 156 168
 sts in 1 x 1 rib. T2/2. Knit 12 12 12 12 12
 rows. Transfer sts. to main bed. T7.
 R.C.000. Knit in stocking stitch to R.C. 32 36 42 46 52
 Knit 2 rows contrast, 2 rows main colour then change to contrast for the top part of the garment.

Divide for armholes. Place 87 99 108 120 129
 needles at the opposite side to the carr.
 in H.P. Set the carr. to Hold. Working
 on the side nearest to carr. Knit 5 rows.

Dec. 1 st. on inside edge on next and every following 3rd row	.7	5	5	3	7
times then 1 st. every alternate row times.	.7	12	15	20	18
Shape Neck at R.C.	.54	60	70	76	86
by casting off	5	6	6	6	7
sts. on the outside edge. Dec. 1 st. on alternate rows	6	6	6	7	7
times AT THE SAME TIME continue raglan shaping. When all sts. have been dec. take the carr. to the opposite end. Bring back in to Working Position needles and shape the second front to match the first, reversing the shaping.	25	29	32	36	39

Back

Place the remaining needles back in to Working Position. Cast off	6	6	6	6	6
sts. at the beginning of the next 2 rows.					
Dec. 1 st. at each end every 3rd. row	.7	5	5	3	7
times. Then 1 st. every alternate row	.7	12	15	20	18
times. Knit to R.C.	.74	82	94	102	114
Cast off the remaining	.22	24	24	26	28
sts.					

Sleeves

Cast on	.38	44	50	56	60
sts. in 1 x 1 rib. Knit	.12	12	12	12	12
rows. Transfer sts. to main bed. T7					

R.C.000. Knit to R.C.	.36	42	46	52	58
Knit 2 rows contrast, 2 rows main colour then change to contrast colour for the top part of the garment. Cast off 3 sts. at the beginning of next 2 rows.					
Dec. 1 st. at each end every 3rd. row.	.7	5	5	3	7
times. Then 1 st. every alternate row	.7	12	15	20	18
times. Knit to R.C.	.78	88	98	108	120
Cast off the remaining 4 sts.					
Join the raglan seams.					

Button Band

Cast on in 1 x 1 rib	.46	50	56	60	68
sts. Knit 8 rows T3/3. Transfer sts. to main bed. With the wrong side of garment facing, pick up front edge on to same needles. T7. Knit 1 row. Cast off.					

Buttonhole Band

Knit in the same manner as for the Button Band making 6 buttonholes.

Neckband

Make the neckband in the same manner over	.78	85	89	93	97
needles remember to make a buttonhole in the neckband.					

4. Dressing Gown in Rania and Baby Bramwell

One cone of Rania and a small amount of Baby Bramwell will be required.

Tension

2 strands of Rania knitted in stocking stitch, stitch size approximately 7.
26 sts. 50 rows = 4 ins (10 cms.)
The Rania is knitted double throughout giving a warm and comfortable fabric.

Size	ins.	14	16	18	20	22
	cms.	36	41	46	51	56
Finished chest measurement	ins.	16	18	20	22	24
	cms.	41	46	51	56	61
Length	ins.	24.5	25.5	26.5	27.5	28.5
	cms.	62	65	67	70	72

Yoke Back

Cast on in waste yarn over needles. Knit several rows. R.C.000.	.54	60	68	72	80
Change to main yarn. Knit to R.C.	.8	10	12	14	18

Raglan Shaping

Cast off 3 sts. at beg. of next 2 rows.					
Dec. 1 st. at each end of every 3rd row	.1	5	11	7	9
times. Then every 4th row	.11	10	7	12	12
times. Knit to R.C.	.58	68	76	86	96
Cast off the remaining	.24	24	26	28	32
sts.					

Left Front Yoke

Cast on in waste yarn over needles. Knit several rows ending on left.	.28	31	35	37	41
R.C.000. Change to main yarn. Knit to R.C.	.8	10	12	14	18
Cast off 3 sts. at beg of next row. Dec 1 st. on left every 3rd row	.1	5	11	7	9
times. Then 1 st. every 4th row	.11	10	7	12	12
times.					

TAKE CARE TO Shape Neck ON RIGHT AT R.C.

by casting off at right	.6	6	7	7	8
sts. then dec. 1 st at right every alt. row	.6	6	6	7	8
times. Continue raglan shaping until all sts. have been dec.					

Knit Right Front Yoke in the same way reversing shaping.

Sleeves

Cast on in waste yarn over needles. Knit several rows. R.C.000.	.28	28	34	36	40
Change to main yarn. T6. Knit 8 rows.					
T7. Knit 1 row. T6 knit 8 rows. Make a hem by picking up first row knitted in main yarn on to same needles. T7 knit 1 row. R.C.000. Knit in stocking st. inc. 1 st. at each end every	.11th	7th	8th	8th	9th
row	.4	7	7	7	7
times until there are	.36	42	48	50	54
sts. in work. Knit to R.C.	.56	60	64	66	72
Cast off 3 sts. at the beg. of the next 2 rows. Dec. as for the back raglan shaping until 6 sts. remain.					
Knit to R.C.	.106	118	128	138	150
Cast off.					

Skirt Back

Cast on in waste yarn over needles. Change to main yarn and knit a hem as for the sleeve. R.C.000. Knit to R.C.	.204	204	204	204	204
Run off on several rows of waste yarn.					

Skirt Fronts (Knit 2)

Knit as for the back using	.57	63	71	75	83
needles.					

Hood

Cast on in waste yarn over needles. Knit several rows. R.C.000.	.120	124	130	135	140
Change to Baby Bramwell. T6. Knit 10 rows. T7. Knit 1 row. T6. Knit 10 rows.					

Make a hem. R.C.000. Change to Rania. Knit to R.C. 58 60 64 68 72
 Cast off.
 Lightly steam each piece.

Joining the Pieces.

With the right side (purl side) of the back yoke facing you, pick up the sts. from the first row knitted in main yarn on to the needles. With the wrong side (knit side) of the back skirt facing you pick up the sts. from the last row knitted in main yarn on to the same needles, placing two sts. on to each needle. Knit 1 row T7 in Rania and cast off. Join the front pieces to their yokes in the same way.
 Join the raglan seams.

Button Band

Cast on in waste yarn over 120 124 128 134 140
 needles and knit several rows. Change to Baby Bramwell. T6. Knit 8 rows. T7. Knit 1 row. T6. Knit 8 rows. Make a hem by picking up the sts. from the first row knitted in main yarn. With the wrong side of the front facing you, place the front edge on to the same needles. Knit 1 row T7. Cast off.

Buttonhole Band

Proceed as for the button band, making 4 evenly spaced buttonholes in the yoke part of the band.
 Fold the hood to make a seam down the back. Attach the neck edge to the neck of the garment either by sewing or joining on the machine.
 Join the side and underarm seams. Sew on the buttons.

5. Tracksuit in Rania and Baby Bramwell

One cone of Rania and a small amount of Baby Bramwell will be required.

Tension

2 strands of Rania knitted in stocking stitch, stitch size approximately 7.
 26 sts. 50 rows = 4 ins. (10 cms.)
 The Rania is knitted double throughout.

Size ins.	14	16	18	20	22
. cms.	36	41	46	51	56
Finished chest measurement . . . ins.	16	18	20	22	24
. cms.	41	46	51	56	61

Pants

Body length ins.	5.5	6	7	7.5	8.5
. cms.	13	15	18	19	22
Leg length ins.	6	6.5	7	8	9
. cms.	15	16	18	21	23

Pants

(Knitted in two pieces from the waist down)

Cast on in 1 x 1 rib in Baby Bramwell	56	62	68	74	82
sts. Knit 20 rows at T3/3. Transfer sts. to main bed. T7. R.C.000. Change to main yarn. Knit in stocking stitch to R.C.	48	58	68	78	80
Inc. 1 st at the beg of the next rows. R.C.	18	18	16	16	14
.	66	76	84	94	104
Place a marker thread over each end needle. Knit to R.C.	126	146	166	184	202
Run off on waste yarn. Knit the second piece.					

Ankle Rib

Using Baby Bramwell cast on in 1 x 1 rib 40 43 46 48 51
 sts. Knit 12 rows T2/2. Transfer sts. to main bed. With the wrong side (knit side) of the garment facing you, pick up the sts. evenly from the last row knitted in main yarn on to the needles holding the rib. It will be necessary to put 2 sts. on to some of the needles. Knit 1 row T7. Cast off.
 Repeat for the other ankle.
 Join the body seam to the marker thread. Join the leg seams. Fold half of the waist band to the inside and catch down. Insert elastic.

Top

Back and Two Fronts

(Knitted in one piece to armhole)

Using Baby Bramwell cast on in 1 x 1 rib	110	122	138	146	162
sts. T2/2. Knit 12 rows. Transfer sts. to main bed. R.C.000. Change to main yarn. Knit to R.C.	56	58	66	68	72

Divide for Armholes

Place	85	94	106	112	124
needles at the opposite side to carr. in H.P. Set the carr to Hold. Working on the side nearest to the carr. knit 5 rows. Dec 1 st on inside edge on next and every following 3rd. row	1	5	11	7	9
times then 1 st every 4th row	11	10	7	12	12
times AT THE SAME TIME Shape Neck at R.C.	74	84	98	108	118
by casting off on the outside edge	6	6	7	7	8
sts. Then dec. 1 st on alt. rows	6	6	6	7	8
times. When all sts have been dec. take the carr to the opposite end. Bring back to Working Position	25	28	32	34	38
needles and work the second front to match the first, reversing the shaping.					

Back

Place the remaining needles back in to Working Position. Cast off 6 sts. at the beginning of the next 2 rows. * Dec. 1 st. at each end every 3rd. row	1	5	11	7	9
times, then every 4th row	11	10	7	12	12
times**. Knit to R.C.	106	116	130	140	150
Cast off the remaining	24	24	26	28	32
sts.					

Sleeves

Using Baby Bramwell cast on in 1 x 1 rib over	36	42	48	50	54
needles. Knit 12 rows at T2/2. Transfer the sts. to the main bed. R.C.000. Change to main yarn and knit to R.C.	56	60	64	66	72
Cast off 3 sts. at the beg. of the next 2 rows then dec. as for the back from * to **. At R.C.	106	118	128	138	150
cast off the remaining 6 sts. Join the raglan seams.					

Button Band

Cast on in 1 x 1 rib 52 56 62 66 74
 sts. Knit 8 rows T3/3. Transfer sts. to main bed. With wrong side of garment facing you pick up front edge on to same needles. Knit 1 row T7. Cast off.

Buttonhole Band

Knit in the same manner as the Button Band making 5 buttonholes.

Neckband

Work the neckband in the same manner over	92	92	96	98	104
sts. making a buttonhole in the correct side. Join the side and underarm seams.					

6. Pram Suit Knitted in Baby Bramwell

1 cone of main colour required and small amounts of two contrast colours.

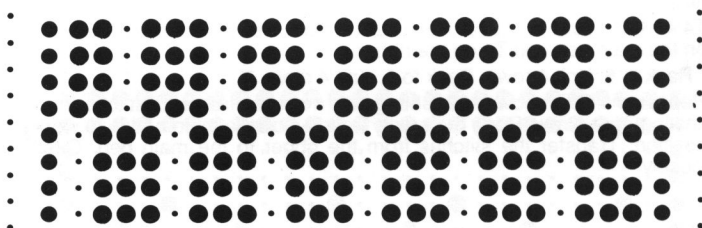
Tension

24 sts. 62 rows = 4 ins (10 cms.) knitted in tuck stitch. Stitch size approximately 9.

Size	ins.	14	16	18	20	22
	cms.	36	41	46	51	56
Finished chest measurement	ins.	18	20	22	24	26
	cms.	46	51	56	61	66

Colour Sequence for border: 4 rows lemon, 4 rows mint, 4 rows white (main colour)

Repeat these 8 rows



Jacket

Back

* Insert pattern card and lock on row 1.

Cast on in waste yarn over 52 58 64 70 76
 needles. Knit several rows ending on left. T9. Using lemon knit 1 row stocking
 stitch. R.C.000. Set Carr. to tuck and work 52 rows repeating colour
 sequence for border. Knit 1 row stocking stitch in lemon. Pick up sts. from
 1st. row knitted in lemon yarn. Knit 1 row stocking stitch in lemon. Border
 complete.

R.C.000. Using white. Knit to R.C. . . . 46 54 70 96 108

Place a marker thread on each end
 needle. **

Knit to R.C. 100 116 146 180 204

Cast off 17 20 20 21 22
 sts. at beginning of next 2 rows. Knit 1
 row stocking stitch. Cast off.

Front

Knit as for the Back from * to ** over . . 26 29 32 35 38
 needles. Knit to R.C. 76 92 122 156 170

Shape Neck by casting off 5 5 6 7 8

sts. at beginning of next row. Dec. 1 st.

at neck edge every 3rd. row until . . . 17 20 20 21 22

sts. remain. Knit to R.C. 100 116 146 180 204

Knit 1 row stocking stitch and cast off.

Knit a second front, reversing the shaping.

Sleeves

Knit the Border as for the Back over . . 30 32 34 36 38
 needles.

R.C.000. Using white. Inc. 1 st. at both

ends of next and every 6th row until . . 42 48 58 66 74

needles are in work. Knit to R.C. . . . 46 54 70 96 100

Knit 1 row stocking stitch and cast off.

Hood

Work the Border as for the Back over . . 88 94 98 100 102
 needles. R.C.000. Using white, dec.

1st. at each end of next and every 5th

row 6 6 6 6 6

times. Number of needles in work . . . 76 82 86 88 90

Knit to R.C. 28 32 34 42 50

Cast off 5 6 6 7 7

sts. at beginning of next 2 6 2 10 8

rows. Cast off 6 7 7 0 8

sts. at beginning of next 8 4 8 0 2

rows. Knit to R.C. 44 48 52 54 58

Inc. 1 st. at each end on next and every

4th row until 28 needles are in work.

Knit to R.C. 76 84 92 106 112

Dec. 1 st. at each end on next and

every 6th row until 18 sts. remain. Knit

to R.C. 122 130 136 148 158

Knit 1 row stocking stitch and cast off.

Sew hood seams.

Button Band

Cast on in waste yarn over 49 56 70 84 90
 needles. Knit several rows. Change to white yarn. T7. Knit 12 rows. T9. Knit
 1 row. T7. Knit 12 rows. Pick the sts. from the first row knitted in main yarn.
 Knit 1 row T9. With wrong side of garment facing you, pick up the edge on
 to the same needles. Knit 1 row T9 and cast off.

Buttonhole Band

Knit as for the Button Band making buttonholes.

Making Up

Sew the shoulder seams. Insert the sleeves between the marker threads.
 Sew the side and underarm seams. Sew the hood to the neck edge omitting
 the bands.

Pants

(Knitted in 2 pieces from the waist down.)

Insert pattern card and lock on row 1.
 Cast on in 1 x 1 rib 52 58 64 70 76

sts. Knit 20 rows T3/3. Transfer sts. to

main bed. T9. Release pattern card.

Set machine to tuck. R.C.000. Knit to

R.C. 58 72 80 94 108

Inc. 1 st. at each end of next and every 3rd 3rd 4th 4th 4th

row until 70 74 78 82 88

needles are in work. Knit to R.C. 82 94 104 116 128

Place a marker thread over each end

needle. Knit to R.C. 156 180 200 224 248

Knit 1 row stocking stitch and run off on several rows of waste yarn.

Ankle Band

Cast on in 1 x 1 rib 40 43 46 48 51

needles. T2/2. Knit 12 rows. Transfer sts. to main bed. With wrong side of

the garment facing you, pick up sts. evenly on to same needles. It will be

necessary to put 2 sts. on to most of the needles. Knit 1 row T7. Cast off.

Making Up

Join the waistband and the front and back seams to the marker threads. Join
 the inside leg seams. Turn half of the waistband to the inside and catch
 down. Insert elastic.

7. Pram Rug

Knitted in Baby Bramwell (255 gm).

Tension swatch not required. Rug measures 25 ins by 36 ins (63 cms by 91 cms) approximately. All needles on the main bed and the ribber must be in good condition as this stitch pattern shows up any irregularities in the needles.

Set the racking handle to 5.

Arrange 140 needles for 1 x 1 rib. Knit zig zag row and two circular rows at T0/0. Change the ribber to Half Pitch. Push the in between needles on the ribber to working position. Lock the card on row 1.

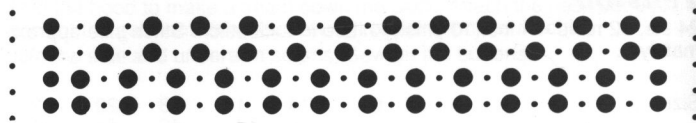
T4/4. Knit 1 row. R.C.000. Release the card. Set the main bed to tuck. T6 on the main bed and T7 on the ribber.

* Rack to 6. Knit 4 rows. Rack to 5. Knit 4 rows. **

Repeat until R.C. shows 432. Change the main bed from tuck stitch to normal knitting. Knit 1 row. Bring the empty needles on the main bed in to working position. Transfer the stitches from the ribber to the main bed. Cast off loosely.

Using three strands of yarn, work 1 row of double crochet and 1 row of crab stitch or any other edging stitch all round the rug.

Repeat these 4 rows



8. Sleeping Bag

Knitted in two colours of Baby Bramwell

Tension

Tension over tuck stitch 26 sts., 62 rows = 4 ins (10cms). Stitch size approximately 7 (T7).

The garment shown is knitted in 2 rows of peach, 4 rows of white throughout the tuck stitch but it may also be knitted in one colour. It is knitted in one piece up to the armhole and there is very little shaping.

Size	ins.	14	16	18
	cms.	36	41	46
Back length	ins.	22	24.5	27
	cms.	56	62	68
Sleeve length	ins.	6.5	7.5	8.5
	cms.	16	19	21

Back and Fronts

Lock the card on row 1.

Cast on using the 'e' wrap or latch tool method	144	156	168
sts. Knit 1 row in stocking st. T7. Release the pattern card. Set machine to tuck. R.C.000. Knit in pattern	280	310	340
rows. Put all sts. into H.P. except	30	33	36
on the side nearest to the carr. Set the machine to Hold. Make a note of the row no. of the card.			
Keeping pattern correct knit to R.C.	312	342	372

Shape Neck

Cast off 6 sts. on the outside edge.

Dec. 1 st. at the neck edge every alternate row	6	7	8
times. Knit in pattern on the remaining sts to R.C.	18	20	22
	342	380	418

Cast off.
Reset the card to the noted row number and lock. Take the carr. to the opposite end. Set R.C. to

280	310	340	
Bring back in to work	30	33	36

needles for the second front. Release card.

Work the second front to match the first, reversing the shaping.

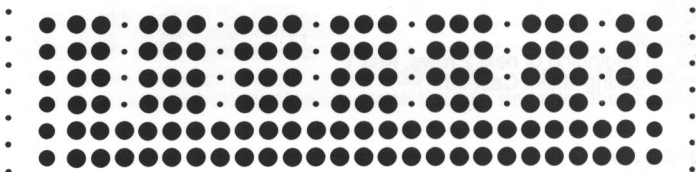
Back

Reset the card to the noted row number and lock. Register the pattern on the carr. Bring the rest of the needles in to work. R.C.

280	310	340	
Release the card. Knit in pattern, casting off 12 sts. at the beginning of the first 2 rows. Knit to R.C.	342	380	418
Mark with a thread needle number	12	13	14

on each side of centre. Cast off.

Repeat these 6 rows



Sleeves

Cast on in 1 x 1 rib	32	40	46
sts. Knit 12 rows. Transfer the sts to the main bed. Knit in pattern. Inc. 1 st. at each end every	6th	8th	9th
row 10 times until there are	52	60	66
needles in work. Knit to R.C.	66	82	96
Mark each end stitch with a contrast thread. Knit to R.C.	82	98	112

Cast off loosely.

Button Band

Cast on in 1 x 1 rib

150	166	180
-----	-----	-----

sts. T4/4. Knit 8 rows of rib. Transfer the sts. to the main bed. With the wrong side of the garment facing, pick up the front edge on to the needles holding the rib. Knit 1 row T7. Cast off.

Buttonhole Band

Knit as for the Button Band, making 8 or 9 evenly spaced buttonholes after the 4th row of the rib.
Join the shoulder seams.

Neckband

Cast on in 1 x 1 rib

76	84	92
----	----	----

sts. T4/4. Knit 4 rows. Make 1 buttonhole at correct side. Knit 4 rows. Transfer sts to main bed. With wrong side of garment facing you, pick up the neck edge on to the needles holding the rib. Knit 1 row T7. Cast off.

Making Up

Sew the sleeve seams. Insert the sleeves in to the garment. Sew the bottom seam. The garment may be gently steamed but do not allow the iron to touch the fabric.

9. Matinee Coat and Dress

Knitted in Baby Bramwell. 1 cone of yarn required.

Tension

Tension piece knitted in lace pattern. 25 st. 40 rows, = 4ins (10 cms) Stitch Size approximately 6.

Tension knitted in stocking stitch. 28 sts. 40 rows = 4 ins. (10 cms.). Stitch Size approximately 7.

We acknowledge with thanks the reproduction of the pattern card taken from the Harmony Guide to Machine Knitting Stitches.

Size	ins.	14	16	18
	cms.	36	41	46
Finished chest size	ins.	16	18	20
	cms.	41	46	51

Matinee Coat

Back Yoke

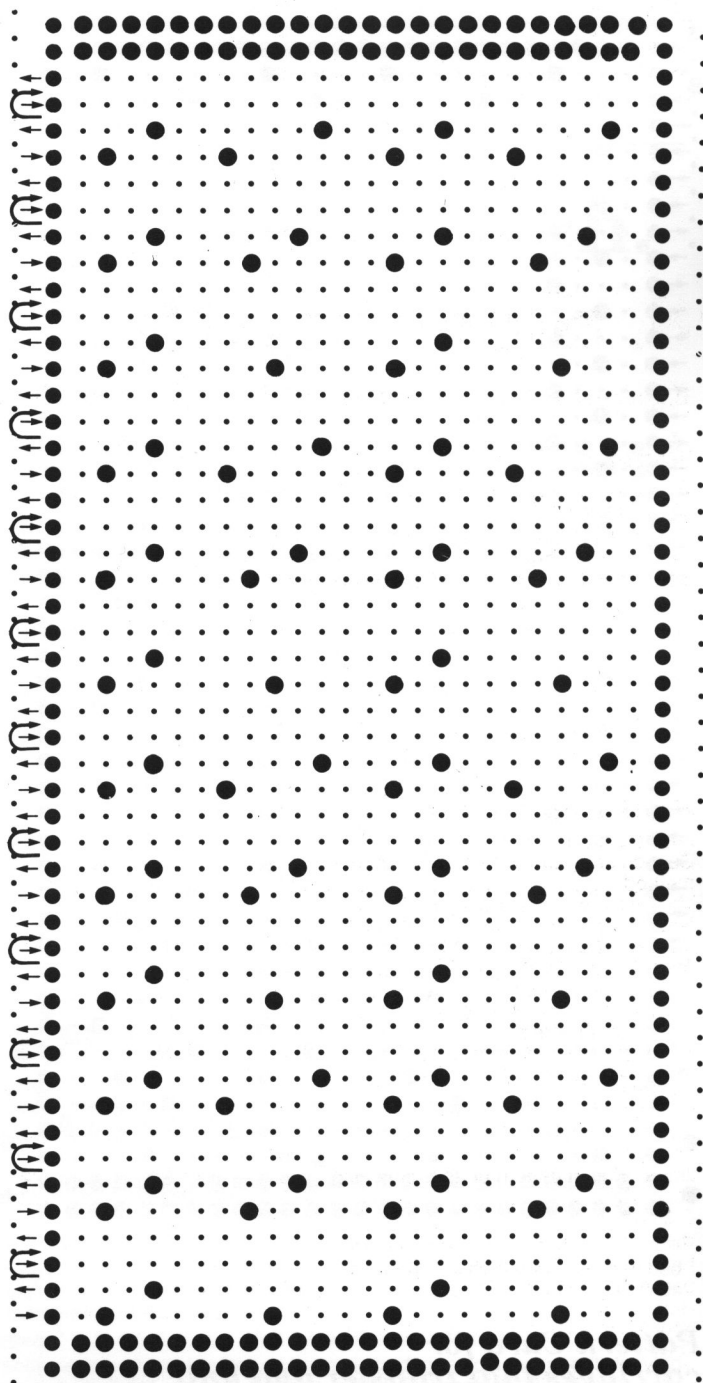
Lock Pattern Card on row 1. Cast on in waste yarn	52	58	66
sts. Knit about 30 rows, ending on left. Change to main yarn. Knit 1 row stocking stitch. R.C.000.			
Release pattern card. Knit in lace to R.C.	6	12	16
* Shape armhole by casting off	2	2	2
sts. at beginning of next	2	2	2
rows. Dec. 1 st. at each end of alt. rows	3	3	4
times. Knit to R.C.	42	52	62
Shape shoulder by casting off	4	4	4
sts. at the beginning of the next 2 rows. Then	3	4	5
sts. at the beginning of the next 4 rows. Cast off the remaining	22	24	26
sts.			

Front Yoke (Knit 2 reversing shaping on second piece)

Cast on and knit as for Back over needles to *	26	29	33
Shape armhole by casting off at armhole edge	2	2	2
sts. at beginning of next row. Knit 1 row. Dec 1 st. at armhole edge on alt. rows	3	3	4
times. Knit to R.C.	29	39	49
Shape neck by casting off	6	7	8
sts. at beginning of next row. Dec. 1 st. at neck edge on alt. rows	5	5	5
times. Knit to R.C.	42	52	62
Shape shoulder by casting off on outside edge on alternate rows	4	4	4
sts.	1	1	1
times. Then	3	4	5
sts.	2	2	2
times.			

Sleeves

* Lock pattern card on row 1. Cast on in waste yarn	28	28	36
sts. Knit about 30 rows ending on right. Change to main yarn. Knit 6 rows. Transfer alt. sts. to adjacent needles. Leave empty needles in work. Knit 6 rows. Pick up the sts. from the first row knitted in main yarn. R.C.000. Release pattern card **. Knit in lace pattern increasing 1 st. at each end every 4th row	9	11	11
times until	46	50	58
sts. are in work. Knit to R.C.	46	54	62
Shape top of sleeve by casting off	3	3	3
sts. at the beginning of the next 2 rows. Then	2	2	2
sts. at each end of alt. rows	4	5	6
times. Then	5	4	5
sts. at the beginning of the next	2	2	2
rows. Cast off the remaining	14	16	18
sts.			



Pattern Card for Carriages that transfer only

Skirt Back

Cast on and knit as for Sleeve from * to
 ** over 100 114 130
 needles. Knit in lace pattern to R.C. . . . 80 80 80
 Knit 1 row stocking stitch. Run off on several rows of waste yarn.

Skirt Front (Knit 2 pieces)

Knit as for Back over 50 56 64
 needles.

With the right side of the back yoke facing you, pick up the sts. from the first row knitted in main yarn on to . . . 52 58 66 needles. With the wrong side of back skirt facing you, pick up sts. from the last row knitted in main yarn on to the same needles evenly. Knit 1 row and cast off.

Join the front pieces in the same way.

Button Band (Knitted in stocking stitch)

Cast on in waste yarn over 70 76 82
 needles. Knit several rows. Change to main yarn. R.C.000. Knit 6 rows. Transfer alt. sts. to adjacent needles, leaving empty needles in work. Knit 6 rows. Pick up the sts. from the first row knitted in main yarn. Knit 1 row. With wrong side of garment facing you, pick up the front edge on to the same needles. Knit 1 row. Cast off.

Buttonhole Band

Knit the Buttonhole Band in the same way, making 4 evenly spaced buttonholes in the yoke section of the band. Join the shoulder seams

Neckband

Cast on in waste yarn over 72 74 76
 needles and knit in the same way as the front band, remembering to make a buttonhole at the appropriate side. Join the sleeve and side seams. Insert the sleeves.

Dress

Front Yoke (Knitted in stocking stitch)

Cast on in waste yarn over 58 64 72
 needles. Knit several rows. Change to main yarn. R.C.000. Knit 4 rows. Transfer every alt. st to its adjacent needle. Leave empty needles in work. Knit to R.C. 6 12 16
 Cast off 2 sts at the beginning of the next 2 rows. Dec. 1 st. at each end on every alt. row 2 2 4
 times. Knit to R.C. 28 38 48
 Cast off centre 12 12 14
 sts.

Working on side nearest carr. dec. 1 st. at neck edge on alt. rows 7 7 7
 times. Knit to R.C. 42 52 62

Shape shoulder by casting off on alt. rows 4 5 5
 sts. 3 3 2
 times. Then 0 0 6
 sts. 0 0 1
 times.

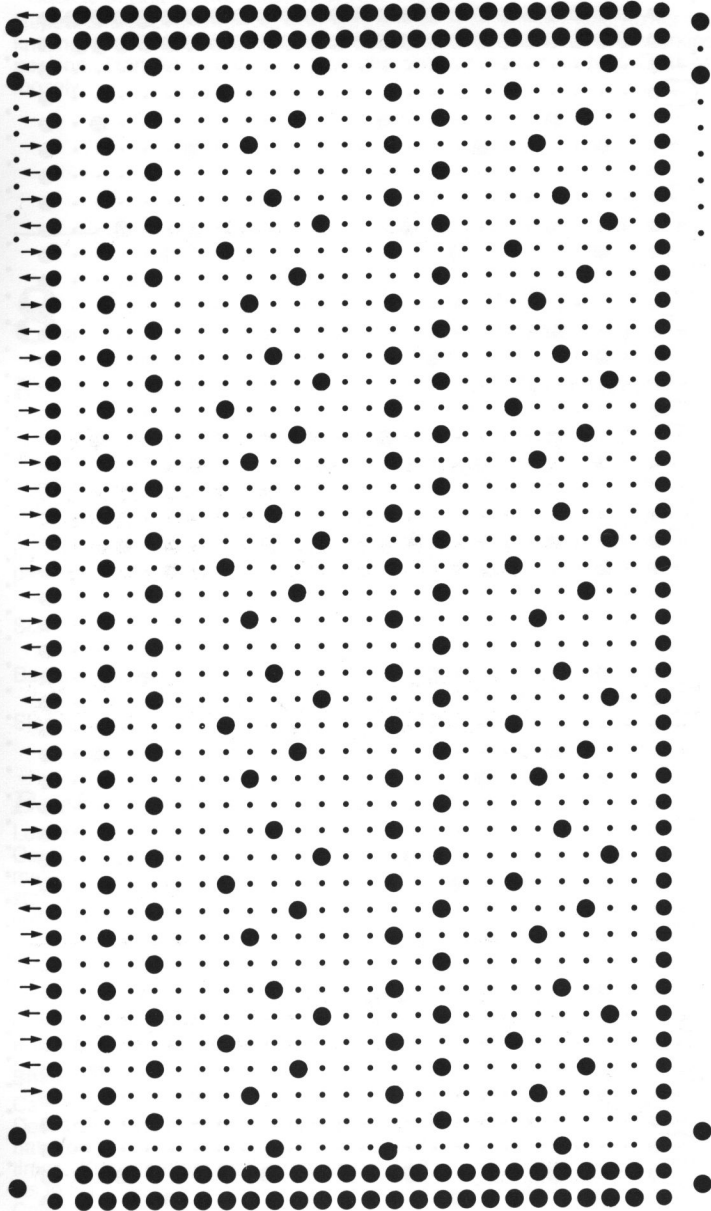
Knit the second side to match the first, reversing the shaping.

Back Yoke (Knit 2 reversing shaping on second piece)

Cast on in waste yarn over 29 32 36
 needles. Knit several rows. Change to main yarn. R.C.000. Knit 4 rows, make eyelets as on the front. Knit to R.C. 6 12 16

Shape armhole by casting off at armhole edge 2 2 2
 sts. at beginning of next row. Knit 1 row. Dec. 1 st. at armhole edge on alt. rows 2 2 4
 times. Knit to R.C. 42 52 62

Shape shoulder by casting off on outside edge on alternate row 4 5 5
 sts. 3 3 2
 times. Then 0 0 6
 sts. 0 0 1
 times. Cast off remaining 13 13 14
 sts.



Pattern Card for carriages that transfer and knit

Sleeves (Knitted in lace pattern)

Cast on in waste yarn over needles. Knit several rows. Change to main yarn.	46	50	58
R.C.000. Knit 6 rows. Transfer alt. sts. to adjacent needles. Leave empty needles in work. Knit 6 rows. Pick up the sts. from the first row knitted in main yarn. Knit to R.C.	10	10	10
Shape top of sleeve by casting off sts. at the beginning of the next 2 rows. Then	2	2	2
sts. at each end of alt. rows	4	5	6
times. Then	5	4	5
sts. at the beginning of the next rows. Cast off the remaining	2	2	2
sts.	14	16	18

Skirt (Knit 2 pieces)

These are knitted in lace pattern following the instructions as for the coat back skirt.

Neckband

Join the shoulder seams.
 Cast on in waste yarn over 66 68 70
 needles and knit in the same way as the Coat Button Band.
 With the right side of the front yoke facing you, pick up the sts. from the first row knitted in main yarn on to . . . 58 64 72
 needles. With the wrong side of the skirt facing you pick up the sts from the last row knitted in main yarn on to the same needles evenly. Knit 1 row and cast off.
 Join the back pieces in the same way.
 Join the sleeve and side seams. Insert sleeves. Crochet around the back neck opening making 4 buttonholes in appropriate places.

10. Circular Shawl in Tuck Stitch.

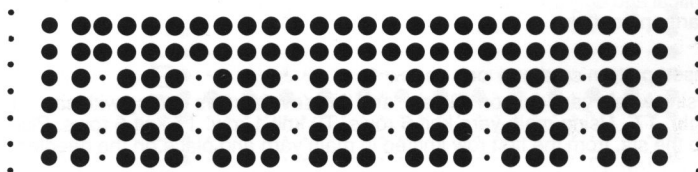
Knitted in Baby Bramwell. Approximately 400 gms required. (2 cones of Baby Bramwell). Stitch Size 9.

Tension Swatch not required. The shawl is approximately 51 ins. (130 cms. in diameter). Either side of the knitting may be used as the right side. Use claw weights, particularly on the right edge and move up regularly.

Insert pattern card and lock on row 1. Bring 77 needles to left of centre and 78 needles to right of centre in to working position. Beginning with the 4th needle on the left push every 4th needle back in to non working position. T7. Using waste yarn cast on and knit several rows ending with carriage on right. Main yarn. T9. Knit 2 rows stocking stitch. R.C.000. Release punchcard. Set machine to tuck and also to Hold.

At left of needle bed push 1 group of 3 needles to Holding Position. Knit 2 rows *. Repeat from * to * until only 1 group of 3 needles remain in working position. R.C. 76. Release Hold and knit 2 rows across all needles. Set machine to Hold. R.C. 78. These 78 rows form 1 section of the circle. Knit a further 27 sections in the same way. The last row of the last section must be knitted in stocking stitch. Knit 10 rows in waste yarn and release from the machine.

Repeat these 6 rows



Graft the two ends together either by hand or on the knitting machine. With a length of yarn run a gathering thread through the edge of the centre hole. Draw together and fasten off securely. Steam lightly but do not allow the iron to touch the fabric.

11. Half Fisherman's Rib Bootees, Mittens, Bob Hat, Bonnet.

These are knitted in a single strand of Bramwell Duo Magic.

The tension is not given as the garments are so small it is easier to knit one of them than to make a tension square. Note that although the garments look very small when made up the stitch pattern allows them to stretch considerably. Use the close knit bar for all the garments and the ribber on Half Pitch unless otherwise stated.

Sizes	1	2	3
To fit chest size ins.	14	16	18
. cms.	36	41	46

Knit 2 rows at T2/2, 2 rows at T3/3, 2 rows at T4/4.
 Change to Half Fisherman's Rib or Half English Rib, by setting the main bed to tuck in one direction. T4/4. Knit 15(17,19) rows. * Dec. 1 st. at both ends of both beds. Knit 2 rows. **
 Repeat * to ** 4(5,6) times. Knit 1 row of every needle rib.
 Transfer every alternate stitch on the main bed to its adjacent needle leaving the empty needles in work. Change to Half Fisherman's Rib but this time leave the main bed to knit normally and set the ribber to tuck in one direction. Knit 30 rows. Knit one row of every needle rib. Cast off very loosely.
 Sew the seam. Thread ribbon through the holes and tie in a bow.

Bootees

Arrange 27(31,35) needles on each bed for every needle rib. T0/0. Knit the zig zag row. Change to circular knitting in the normal way for the cast on.

Mittens

Arrange 19(21,23) needles on each bed for every needle rib.

T0/0. Knit the zig zag row. Change to circular knitting. T0/0. Knit 2 rows. Change to Half Fisherman's Rib or Half English Rib by setting the main bed to tuck in one direction. T4/4. Knit 27(31,35) rows. Knit 1 row of every needle rib. Transfer every alternate stitch on the main bed to its adjacent needle leaving the empty needles in work. Change to Half Fisherman's Rib but this time leave the main bed to knit normally and set the ribber to tuck in one direction. Knit 30 rows. Cast off very loosely. Sew the seam. Thread the ribbon through the holes and tie in a bow.

Bob Hat or Bonnet

Arrange 50(60,70) needles on each bed for every needle rib. T0/0. Knit the

zig zag row. Change to circular knitting T0/0. Knit 2 rows. Change to Half Fisherman's Rib or Half English Rib by setting the ribber to tuck in one direction. T4/4. Knit 30 rows. Change to Half Fisherman's Rib but this time leave the ribber to knit normally and set the main bed to tuck in one direction. Knit 30(40,50) rows. Change to every needle rib. Knit 10 rows. Set the ribber to full pitch. Transfer the sts. to 1 x 1 rib. T2/2. Knit 10 rows. Break off the yarn leaving approx. 18 ins attached to the knitting. Thread a darning needle with this yarn. Take the sts. from the needles on to the darning needle, gather up the stitches and fasten firmly. Sew up half the seam for a bonnet or all the seam for a bob hat. Fold back the brim. Attach ribbons for a bonnet or a bobble for the hat.

12/13. Lacy Carrying Cape and Bonnet

Knitted in Baby Bramwell. One cone of yarn required. Pattern Card shown on page 11.

Carrying Cape

Tension swatch not needed. As this is not a fitted garment the tension is not critical and only one size is given. There is no shaping, making it a very easy garment to make.

Insert pattern card and lock on row 1.

Using waste yarn cast on 130 sts. and knit several rows ending with carr. at right. T7. Using main yarn knit 6 rows. T9 knit 1 row. T7 knit 6 rows. Pick up the sts. from the first row knitted in main yarn and place on the needles. Knit 1 row T7.

Lace Knitting

Release card. T7. Knit 600 rows.

Change to stocking stitch. T7 knit 6 rows. T9 knit 1 row. T7 knit 6 rows. Pick up sts. from first row of stocking stitch. Knit 1 row T7. Cast off.

On the edge of the knitting which has ten complete points, turn down the points on to the right side of the knitting to form the neckline and secure each point with a ribbon bow as shown in the photograph.

Neckband

Bring 170 needles to working position and rehang the neckline evenly on to

these needles. Main yarn. T6 knit 4 rows. Work buttonhole on one edge. Knit 4 rows. T9 knit 1 row. T6 Knit 4 rows. Work second part of buttonhole. Knit 4 rows. Pick up sts. from first row of stocking stitch. T7 knit 1 row. Cast off.

Making Up

Insert elastic in to neckband and catch down at either end. Sew a button to one side of the neckline and crochet a button loop on the other side.

Bonnet

Insert pattern card and lock on row 1. Cast on, using either the 'e' wrap or latch tool method, 25 (30, 35, 40) sts. and knit 2 rows at T7. Release card and work in lace pattern as for the cape working 180 rows. Cast off

Making Up

On the edge of the knitting with 3 complete points, turn back the points on to the right side of the knitting and fasten down with ribbon bows. Join the triangles at the back of the bonnet. Sew on ribbon ties.

14. Christening Robe

Knitted in 1 strand of Duo Magic. One cone of yarn required.

Dress

Use Pattern Cards from 9. Matinee Coat and Dress on pages 7 and 8.

The pattern card is taken from the Harmony Guide to Machine Knitting Stitches.

Tension

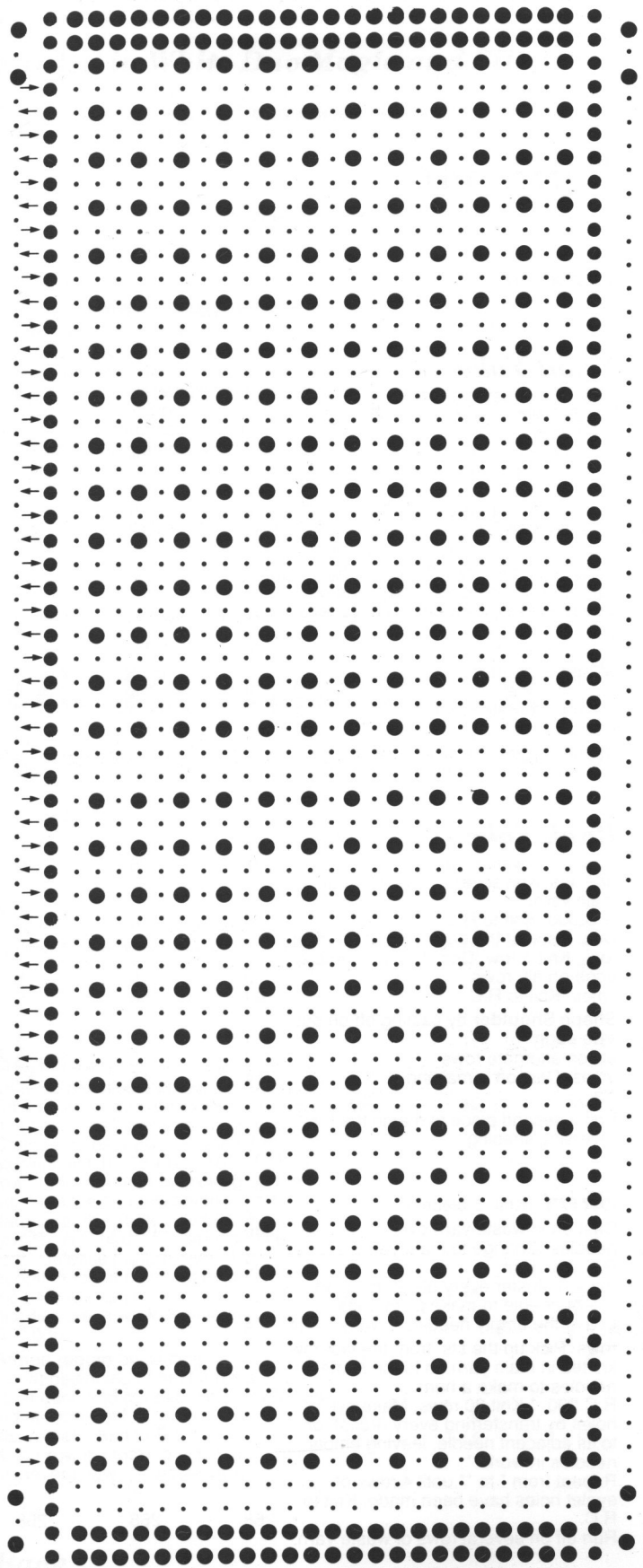
Knitted in lace pattern 32 sts. 44 rows = 4 ins (10 cms) Stitch Size approximately 3.

Sizes	ins.	14	16	18
	cms.	36	41	46
Finished chest size	ins.	16	18	20
	cms	41	46	51

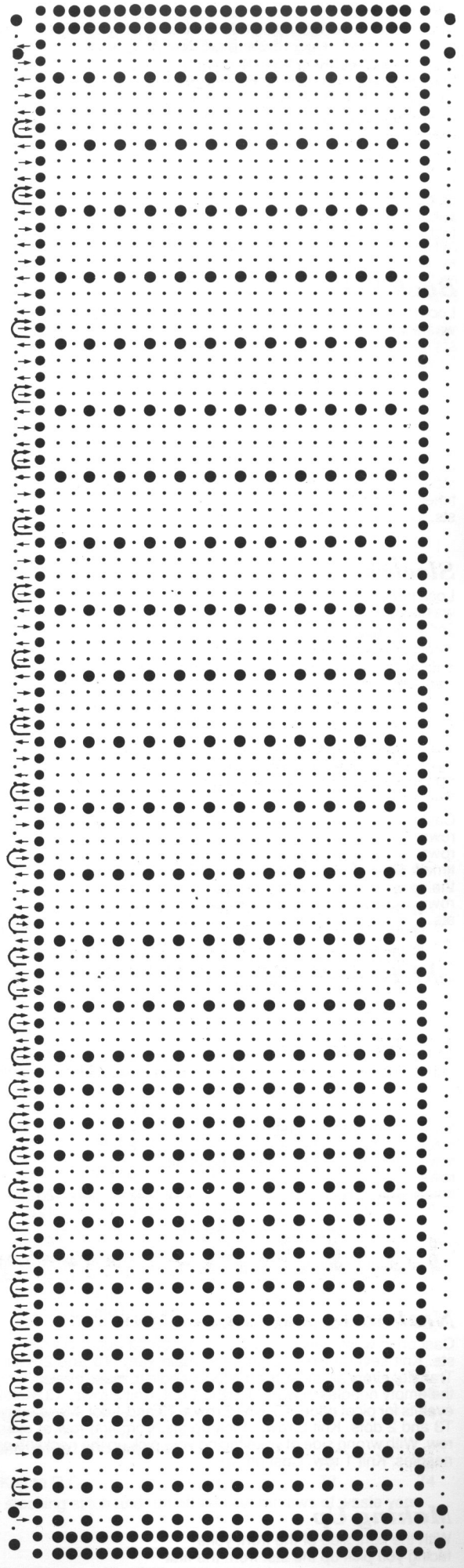
Front Yoke

Lock pattern card on row 1. Cast on in waste yarn	58	64	68
sts. and knit about 30 rows ending on left. Change to main yarn. Knit 1 row stocking stitch. R.C.000.			
Release pattern card. Knit in lace to R.C.	18	22	28

Punchcards for Pattern 12



Pattern Card for carriages that transfer and knit



Pattern Card for carriages that transfer only

Cast off centre	14	16	18
sts. Knit sts. on opposite side to carr. on to ravel cord. Note row number on pattern card. Working on side nearest to carr. dec. 1 st. on alt. rows 7 times at neck edge. Knit to R.C.	32	36	42
Shape shoulder by casting off on outside edge	5	6	6
sts.	3	2	3
times. Then	0	5	0
sts.	0	1	0
times. Bring sts. back in to work for second side and complete to match the first, reversing shaping.			

Back Yoke (Knit 2 reversing shaping on second piece)

Lock pattern card on row 1. Cast on in waste yarn	29	32	34
sts. Knit about 30 rows ending on left. Change to main yarn. Knit 1 row stocking stitch. R.C.000. Release pattern card. Knit in lace to R.C.	32	36	42
Shape shoulder by casting off on outside edge	5	6	6
sts.	3	2	3
times. Then	0	5	0
sts.	0	1	0
times. Cast off remaining	14	15	16
sts.			

Sleeves

Lock pattern card on row 1. Cast on in waste yarn	58	64	72
sts. Knit about 30 rows ending on right. Change to main yarn. "e" wrap the needles in work. Knit 2 rows in stocking stitch. R.C.000. Release pattern card. Knit 6 rows in lace. Make eyelets for ribbon in the following manner. Knit 2 rows stocking stitch. Transfer every 3rd. st. to its adjacent needle leaving the needles in work. Knit two more stocking stitch rows. Continue in lace pattern to R.C.	63	69	73
Cast off 3 sts. at the beg. of the next 2 rows. Cast off 2 sts. at each end of alt. rows	6	7	8
times. Then cast off 4 sts. at the beg. of the next	2	2	2
rows. Cast off the remaining	20	22	26
sts.			

Skirt (Knit 2 pieces)

Cast on as for the Sleeves over	124	138	150
needles using T4. Knit 6 rows in lace. Make eyelets for ribbon as on the sleeve. T4. Knit 26 rows in lace, make eyelets. T3 and 2 dots. Knit 26 rows in lace. Make eyelets. T3 and 1 dot. Knit 26 rows in lace. Make eyelets. T3. Knit 26 rows in lace. Make eyelets. Knit to R.C.in lace.	270	270	270
Shape Armhole by casting off	2	2	2
sts. at the beg. of the next	2	2	2
rows. Then dec. 1 st. at each end of alt. rows	2	3	5
times. Knit to R.C.	282	282	282
Knit 1 row stocking st. over remaining sts. Run off on several rows of waste yarn. Join shoulder seams.	116	128	136

Neckband (Knitted in Stocking Stitch)

Cast on in waste yarn	72	76	80
sts. Knit several rows. Change to main yarn. T3 and 2 dots. Knit 2 rows. Transfer every alt. st. to its adjacent needle to make eyelets for ribbon. Leave the empty needles in work. T3 and 1 dot. Knit 2 rows. T3. Knit 2 rows. Make eyelets for picot edge. T3. Knit 2 rows. T3 and 1 dot. Make eyelets for ribbon. T3 and 2 dots. Knit 2 rows. Pick up sts. from first row of main yarn. Knit 1 row. With wrong side of yoke facing you, pick up the neckline on to the same needles. Knit 1 row. Cast off.			

Making Up

With the right side of the front yoke facing you pick up the sts. from the first row of main yarn on to	58	64	68
needles. With the wrong side of the skirt facing you, pick up the sts of the			

last row knitted in main yarn, placing 2 sts. on each needle. Knit 1 row and cast off. Use the same method for the back placing both pieces of the back yoke on to the needles before picking up the top of the skirt. Sew the side and sleeve seams. Sew in the sleeves. Crochet around the centre back neck opening making 3 buttonholes on one side. Attach buttons. Thread ribbon through eyelet holes on skirt, sleeves and neckband. Sew on bows if desired.

Petticoat

Knitted in 1 strand of Duo Magic in stocking stitch.

Tension

33 sts. 44 rows = 4 ins (10 cms.). Tension Dial approximately 4.

Front Yoke

Cast on in waste yarn over	64	72	80
needles. Knit several rows. Change to main yarn. R.C.000. Knit to R.C.	6	14	18
Cast off 4 sts. at the beginning of the next	2	2	2
rows. Dec. 1 st. at each end of alt. rows	2	5	6
times. Knit to R.C.	30	42	52
Cast off the centre 14 sts. Place the needles on the opposite side to the carr. in Holding Position. Working on side nearest to carr. dec. 1 st. at neck edge on alt. rows	7	8	8
times. Knit to R.C.	44	58	68
Shape Shoulder by casting off on outside edge	4	4	5
sts. on alternate rows	3	3	3
times. Shape the second side to match the first reversing shaping.			

Back Yoke

Cast on in waste yarn over	32	36	40
needles. Knit several rows. Change to main yarn. R.C.000. Knit to R.C.	6	14	18
Dec. 4 sts. at the beginning of the next row. Knit 1 row. Dec. 1 st. at armhole edge on alt. rows	2	5	6
times. Knit to R.C.	44	58	68
Shape Shoulder by casting off on outside edge	4	4	5
sts on alternate rows	3	3	3
times. Cast off remaining	14	15	15
sts. Knit a second piece to match the first reversing shaping.			

Skirt (Knit 2 pieces)

Cast on in waste yarn over	96	108	120
needles. Change to main yarn. R.C.000. Knit	4	4	4
rows. Transfer every alt. st. to its adjacent needle to make picot edge. Leave the empty needles in work. Knit	4	4	4
rows. Pick up the sts. from the first row knitted in main yarn on to the same needles to make a hem. R.C.000. * Knit 20 rows. Make eyelet holes by transferring every 3rd. st. on to its adjacent needle, leaving empty needles in work **. Repeat from * to ** until 4 rows of eyelet holes have been made. Knit to R.C.	268	268	268
Run off on several rows of waste yarn.			

Making Up

Join the yoke to the skirt in the same manner as for the Christening Robe except that when picking up the sts from the skirt place 2 sts on first needle and 1 st. on the next repeating across the needles. Join the shoulder and side seams. Crochet around the armholes, the neck edge, and the back opening making buttonholes as before.

15. Circular Shawl in Stocking Stitch

Knitted in White Duo Magic and Silky.

Tension Swatch not required. Finished measurement of the shawl is approximately 45 ins (114 cms).

Centre Panel

Cast on 68 sts in waste yarn. Knit several rows ending at left. Change to main yarn (i.e. Duo Magic and Silky knitted together). T5. Knit 1 row. Set the carriage to Hold.

(* Bring 4 needles at left to Holding Position. Knit 2 rows *. Repeat * to * until only 4 sts remain in work. Now reverse the procedure taking needles back in to work 4 each time on the right hand side and knitting 2 rows after each group until all needles are back in work.) This completes one section. Repeat until 12 sections have been knitted. Graft the two ends. Draw up the centre and fasten securely. Block and steam press the centre panel to 15 ins (38 cms) diameter.

Shadow Pleating.

Cast on 80 sts in waste yarn. Knit several rows. T3. R.C. 000.

*Using Duo Magic and Silky knit 4 rows. Take the Duo Magic from the feeder, knit 4 rows in Silky only *. These 8 rows form one pleat. Place a marker thread over the right hand needle after every 24 pleats (192 rows). When 288 pleats (2304 rows) have been knitted, graft the 2 ends either by hand or on the knitting machine.

Using a length of waste yarn gather the pleats by tacking through the edges and drawing up the tacking thread until only the thick part of the pleats is showing. Steam press the pleats, pulling them out to 15 ins in length. Allow each section to dry before moving on to the next.

Making Up

Sew 24 pleats to each section of the centre panel. Only the thick part of each pleat need be sewn, the thin part (the shadow) may be ignored. Gently press the seam.

16. Rompers in Duo Magic

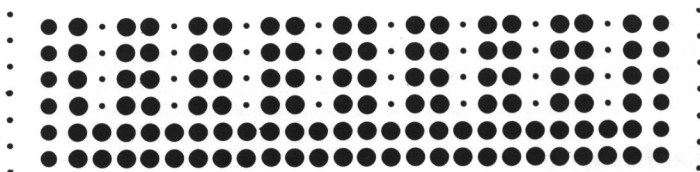
Approximately 60(70,85) gms. of yarn required.

Tension

27 sts. 78 rows = 4 ins (10 cms) knitted in tuck pattern. Stitch Size approximately 7.

Size ins.	14	16	18
. cms.	36	41	46
Finished chest measurement . ins.	16	18	20
. cms.	41	46	51

Repeat these 6 rows



Sleeves

Insert punchcard and lock on row 1. Cast on in waste yarn over 36 40 44 needles. Knit several rows. R.C.000. Change to main yarn. T3 Knit 8 rows in stocking stitch. T5 Knit 1 row. T3 Knit 8 rows. Make a hem by picking up the sts. from the first row knitted in main yarn on to the same needles. Knit 1 row T5. R.C.000. T7. Set machine to tuck. Release pattern card. Inc. 1 st. at both ends of next and every following 24th row until 42 46 52 needles are in work. Knit to R.C. 76 88 94 R.C.000. **Shape raglan** by casting off 3 3 4 sts. at beginning of next 2 rows. Dec. 1 st. at each end of next and every following 4th row until 6 6 6 sts. remain. Knit to R.C. 62 72 74 Knit 1 row in stocking stitch and run off on several rows of waste yarn.

T7 **. Inc. 1 st. at beginning of next	42	52	54
rows. Cast on	3	0	4
sts. at beginning of next	2	0	2
rows. Number of needles now in work	68	76	86
Knit to R.C.	56	58	66
Dec. 1 st. at both end of next and every 6th row until	54	60	68
sts. remain in work. Knit to R.C.	102	118	126
Set carr. to Hold. At opposite end to carr. place	3	3	3
needles to H.P. on every row	12	4	14
times. Then	0	2	0
needles to H.P. on every row	0	10	0
times. At opposite end to carr. bring	18	16	21
needles back to work on next 2 rows. Knit to R.C.	122	138	146
Transfer 3rd and every following 4th st. to its adjacent needle, to form eyelets. Leave empty needles in work. R.C.000. Knit to R.C.	38	46	46
R.C.000. Shape raglan by casting off	3	3	4
sts. at beginning of next 2 rows. Dec. 1 st. at each end of next and every 4th row until	18	20	24
sts. remain. Knit to R.C.	62	72	74

Knit 1 row in stocking stitch and run off on several rows of waste yarn.

Back

*Cast on in waste yarn over 20 22 26 needles. Knit several rows. R.C.000. Change to main yarn. Work in stocking stitch. T3 Knit 10 rows. T5 Knit 1 row. T3 Knit 10 rows. Make a hem as before. T5 Knit 1 row. R.C.000. Set machine to tuck. Release pattern card.

Front

Work as for Back from * to **, making a buttonhole over needles 5 and 6 at each side of centre.

Knit to R.C.	20	22	24
Cast on 1 st. at beginning of next rows. Cast on 3 sts. at beginning of next	16	22	24
rows. Then cast on	4	6	4
sts. at beginning of next 2 rows. There should be	10	7	12
needles in work. Knit to R.C.	68	76	86
Dec. 1 st. at both ends of next and every 6th row until	54	60	68
sts. remain in work. Knit to R.C.	102	118	126
Make eyelet holes as for the Back. R.C.000. Knit to R.C.	38	46	46
R.C.000. Shape raglan by casting off sts. at beginning of next 2 rows. Dec 1 st. at each end of next and every 4th row until	28	32	36
sts. remain.	10	10	12
Shape neck by casting off centre sts. Place needles on side opposite to carr. to H.P. Working on side nearest to carr. continue raglan shaping as before AT THE SAME TIME dec. 1 st. at neck edge every 4th row until only 2 sts. remain. Knit to R.C.	62	72	74
Cast off the two sts.			

Knit second side of neck to match the first, reversing the shaping. Join the two front and one back raglan seams.

Neckband

Cast on in waste yarn over 66 76 82 needles and work several rows. Knit as hem on sleeve. With the wrong side of the garment facing you, pick up the sts. from around the neck on to the same needles. Knit 1 row T7. Cast off loosely.

Leg Bands

Work each leg band as for the Neckband using 78 88 94 needles, working a buttonhole on the front edge of each band.

Making Up

Join the lower half of the 4th raglan seam. Crochet round the opening making three buttonholes. Join side and underarm seams. Thread elastic through the leg bands and fasten off securely. Sew on buttons. Make either a knitted or twisted cord and thread through waist of garment.

17. Woven Cot Blanket

Knitted in Baby Bramwell with one strand as the knitting yarn and two strands as the weaving yarn.

The punchcard and diagram were taken from the Harmony Guide to Machine Knitting Stitches.

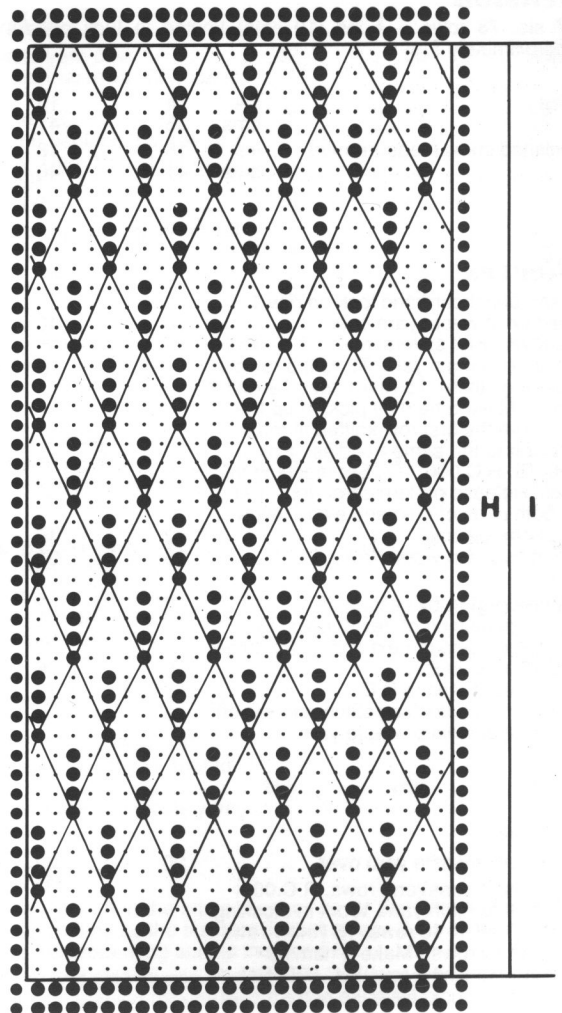
Tension swatch not required. Blanket measures approximately 32 ins by 42 ins (81 cms by 106 cms). Stitch Size 10.

Technique

Knit 4 rows. Pick up the loop of weaving yarn from 1st row and place on centre needle of the 3 woven stitches (see punchcard).

Insert the pattern card and lock on row 1.

Carr. on left. Cast on 190 sts. by the "e" wrap method. Knit 1 row from left to right in stocking stitch to register the pattern. Release the pattern card. Knit according to the diagram to R.C. 432. Cast off behind the sinker posts to avoid a tight cast off.



18. Round Neck Sweater

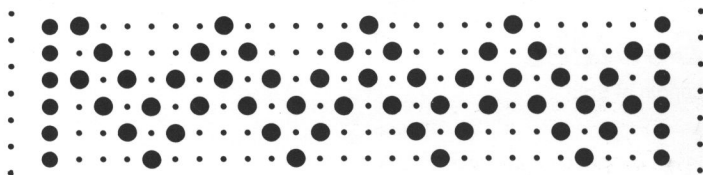
Knitted in Baby Bramwell. 1 cone of main colour and a small amount of contrast colour required.

Tension

28 sts. 40 rows = 4 ins (10 cms). using approximately Stitch Size 7.

Size	ins.	14	16	18	20	22
	cms.	36	41	46	51	56
Finished chest measurement	ins.	16	18	20	22	24
	cms.	41	46	51	56	61
Back length	ins.	8.5	9	10.5	11	12
	cms.	21	23	26	28	30
Sleeve length to armhole	ins.	5	5.5	6	6.5	7
	cms.	12	14	15	16	18

Punch out these 6 rows



Back

Cast on	56	64	70	78	84
sts in 1 x 1 rib. T2/2. Knit	12	12	12	12	12
rows. Transfer sts. to main bed. T7.					
R.C.000. Knit in stocking stitch	2	2	2	2	2
rows. Knit in fairisle	6	6	6	6	6
rows. Knit in stocking stitch to R.C.	36	40	46	50	56
*Cast off 3 sts. at the beginning of the next 2 rows. Dec. 1 st. at each end every 3rd row	7	5	5	3	7
times. Then 1 st. every alternate row	7	12	15	20	18
times. Knit to R.C.	74	82	94	102	114
Cast off remaining sts.	22	24	24	26	28

Front

Work as for the Back to *.

Cast off at the armhole and decrease as for the Back until R.C. shows

54	60	70	76	82
----	----	----	----	----

Shape neck by casting off centre

10	12	12	12	14
----	----	----	----	----

sts. Put the sts. on the side opposite to the carr. in H. P. Set the carr. to Hold. Work on the side nearest to the carr. Continue to dec. as for the Back at the armhole and at the same time dec. 1 st. at the neck edge on alternate rows times. Continue to dec. at the armhole until the are no sts. left.

Work the second side to match the first reversing the shaping.

Sleeves

Cast on	38	44	50	56	60
sts. in 1 x 1 rib. Knit	12	12	12	12	12
rows. Transfer sts. to main bed. T7.					
R.C.000. Knit in stocking stitch	2	2	2	2	2
rows. Knit in fairisle	6	6	6	6	6
rows. Knit in stocking stitch to R.C.	40	46	50	56	62
Cast off 3 sts. at the beginning of next 2 rows. Dec. 1 st. at each end every 3rd. row	7	5	5	3	7
times. Then 1 st. every alternate row	7	12	15	20	18
times. Knit to R.C.	78	88	98	108	120

Cast off the remaining 4 sts.

Join the 2 front and one of the back raglan seams.

Neckband

Cast on	68	72	76	82	94
---------	----	----	----	----	----

sts. in 1 x 1 rib and knit 19 rows T2/2 and 1 row T4/4. Transfer the sts. to the main bed. With the wrong side of the work facing you, pick up the neckline on to the same needles. Knit 1 row T7 and cast off.

Making Up

Join half of the remaining raglan seam. Crochet round the raglan opening making three buttonholes. Join the side and underarm seams. Fold half of the neckband to the inside and catch down.

19. Pleated Skirt

Knitted in Baby Bramwell (Peach) and Duo Magic (White)

Tension

7 pleats = 3 ins. (7.5 cms.) 50 sts = 7.5 ins (18.75 cms) all knitted at approximately Stitch Size 6.

Sizes			
Finished waist measurement	ins.	20	22
	cms.	51	56
Skirt length	ins.	9	10
	cms.	23	25
Cast on in waste yarn over needles. Knit several rows. Change to Duo Magic. Knit 3 rows.		60	66
* Knit 6 rows with Duo Magic and Baby Bramwell together, then 6 rows Duo Magic alone **. * to ** = 1 pleat. Knit pleats, knitting only 3 rows of Duo		52	56

Magic on the last pleat.
Run off on several rows of waste yarn.

Waistband

Bring to Working Position	156	168
---------------------------	-----	-----

needles. With wrong side of work facing you, put 3 sts. from the thick part of each pleat on to the needles. Knit 10 rows T6, 1 row T7, 10 rows T6. Pick up the ridge on to the same needles. Knit 1 row T7. Cast off.

Graft the first and last row of the skirt, either on the machine or by hand. Thread elastic through the waistband. Sew the waistband seam. Lightly steam the skirt to set the pleats.

The bib and braces may be made for the skirt if desired using the pattern from Pants on page 2.

20. Stocking Stitch and Fairisle Bootees, Mittens, Helmet and Bonnet

Knitted in Baby Bramwell. Only small amounts of yarn required.

Tension

28 sts. 40 rows = 4 ins (10 cms). Stitch Size approx. 7 (T7).

Bootees

Length of Sole ins.	2.5	3	3.5	3.75
. cms.	6	7.5	9	9.5

Insert pattern card and lock on row 1. Using waste yarn cast on to left of centre 14 16 17 17 sts. Knit several rows ending on right. Main yarn. T7 knit 1 row. Set carr to Hold.

Shape Heel

* Put 1 needle nearest to carr. into H.P. on every row until only 6 6 7 7 needles remain in working position. Put 1 needle at opposite end to carr. in to Working Position every row until all needles are back in working position*.

Top

Knit, using claw weights on work, . . . 10 12 14 16 rows.

Shape Toe

Work as for Heel from * to*.

Sole

Knit, using claw weights on work, . . . 10 12 14 16 rows. Put 13 15 16 16 needles at right of centre in to working position. Hang the stitches from the beginning of the heel on to these needles. Knit 4 rows. Make eyelet holes by transferring every 4th st. to its adjacent needle leaving the empty needles in working position. Knit 2 rows. Release the pattern card. T8 knit 12 rows in fairisle pattern. T7 knit 2 rows of stocking stitch.

Hem

Mark each end stitch with a contrast thread. T6 knit 5 rows. T8 knit 1 row. T6 knit 5 rows. Pick up the loops from the first row of the hem. (Marked with contrast thread). T8 knit 1 row. Cast off.

Work 2nd bootee by reading right for left and vice versa.

Mittens

Length of hand from wrist to fingertip ins.	2	2.25	2.5	2.75
. cms.	5	5.5	6	7

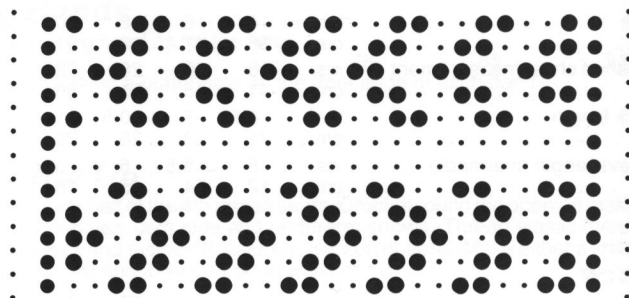
Insert punchcard and lock on row 1. T7. Using waste yarn cast on 28 32 34 34 sts. and knit several rows ending on right. Main yarn. T6 knit 5 rows. T8 knit 1 row. T6 knit 5 rows. Pick up the sts. from the first row of main yarn and make a hem. T7 knit 3 rows. T8 Release card and knit 5 12 12 12 rows of fairisle pattern. T7 knit 3 2 2 4 rows of stocking stitch. Transfer every 3rd stitch to its adjacent needle leaving the empty needles in working position. Knit 10 12 14 16 rows ending with carr. on right.

Shape Top

Set machine to Hold. Put needles to left of centre in to Hold. Ignore these needles to left of centre until all right of centre needles have been cast off.

* Put 1 needle nearest to carr in to H.P. on every row until only 6 6 7 7 needles are left in working position. Put needles at opposite end to carr into work and knit 1 row. Put the remaining needles into working position and knit 1 row. Cast off these 14 16 17 17 sts **. Knit 1 row on the sts. to left of centre and repeat from * to**.

Punch out these 12 rows.



Making Up

Sew up seam and thread ribbon through the eyelet holes.

Helmet

As this is a useful pattern for tiny babies right through to the age of 7 or 8 it is given in six sizes. The sixth size is for approximately 2 years onwards.

Ear Flaps (Knit two flaps before knitting main part)

Using waste yarn cast on 20(20,20,20,24,24) sts. Knit several rows of waste yarn ending with the carriage on the right. Main yarn. T7 knit 1 row. Set carr. to Hold. Put 1 needle at carr. side on every row into H.P. until 4 sts remain in work. Now put 1 needle to working position at the opposite end to the carr. on every row until all needles are in work. Pick up the sts. from the first row of main knitting. Knit 1 row. Run off on several rows of waste yarn.

Main Part

Insert pattern card and lock on row 1. T7. Using waste yarn cast on 96(104,112,120,128,136) sts. and knit several rows ending on right. Main yarn. T6. Knit 4 rows of stocking stitch. T7 knit 12 rows in fairisle. T6 knit 4 rows in stocking stitch. T8 knit 1 row. T6 Knit 20 rows. Pick up the sts. from the first row knitted in main yarn and place on needles. Rehang the ear flaps over needles. Size 1 needles 17 to 36. Size 2 needles 19 to 38. Size 3 needles 23 to 42. Size 4 needles 23 to 46. Size 5 needles 25 to 48. Size 6 needles 29 to 52. i.e. one flap on each side of centre.

T9 Knit 1 row. Knit 36(42,48,54,58,66) rows. Transfer every 3rd st. to its adjacent needle. Leave the empty needles in non working position. Knit 2 rows. Transfer alternate sts to the adjacent needle. Leave the empty needles out of work. Knit 2 rows. Break off the yarn leaving a long length. Thread this end through the sts. on the machine using a darning needle. Gather up the sts. and fasten off securely.

Ties

With the wrong side of the helmet facing you, pick up 4 sts. from one of the earflaps. Set the machine to knit a cord by knitting in one direction and slipping in the other. T7 knit 120 rows. Repeat for the second tie.

Sew up the back seam. Make a pom pom and fix securely to the helmet.

Bonnet

Sizes 14 (16,18,20,22).

Using waste yarn cast on 72(84,92,98,112) sts. and knit several rows. Insert punchcard and lock on row 1. R.C.000. Main yarn. T6 Knit 6 rows. T8 Knit 1 row. T6 Knit 6 rows. Pick up sts. from first row knitted in main yarn. T9 Knit 1 row.

R.C.000. T7 Knit 10 rows. T8 Set machine to Fairisle and release card. Knit Fairisle border of 12 rows. T7 Knit in stocking stitch to R.C. 30(40,46,50,60). Cast off 23(28,30,32,37) sts. at beginning of next 2 rows.

R.C.000. Knit 26(30,34,36,42) rows over remaining 26(28,32,34,38) sts. Dec. 1 st. at each end of alternate rows 5 times. Knit to R.C. 36(40,44,46,52). Run off on several rows of waste yarn.

Making Up

Allow the front hem to turn back. Sew the back seams.

Band and Ties (Knitted in one piece)

Cast on 150(180,190,190,200) sts. in 1 x 1 rib. Knit 4 rows T3/3. Transfer sts to main bed.

With wrong side of bonnet facing you, pick up sts. from last row knitted in main yarn on to centre needles. Pick up 18(24,27,30,36) sts. from each side of bonnet. Knit 1 row T7 and cast off.



12/13









