

Brother Punch Cards

Series 'S'

The Patterns are from the  
Brother KH860 Manual  
Patterns can be printed full  
size. Be sure to select full  
size when printing. Some of the  
patterns are in 2 pieces. Just  
cut out both and place on blank  
card.

# LIST OF PATTERN VARIATION

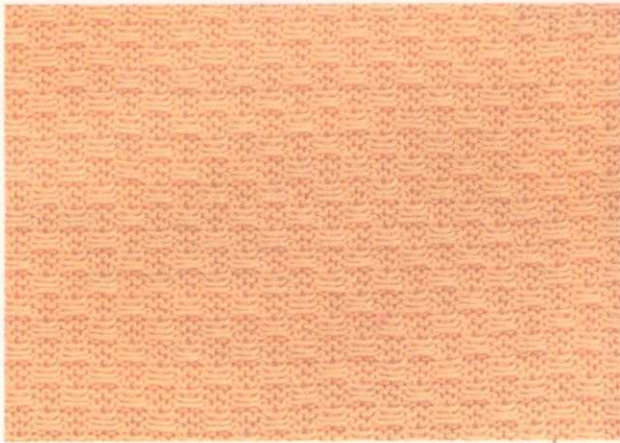
Each punch card can be used for the pattern(s) marked ● in the following column.  
 Punch cards No. 17-20 (inc) are special cards for Lace Pattern and Fine Lace Pattern.

PATTERN	RECOMMENDED PUNCH CARD NO.																			
	1	2	3	4	5	6	7	8	9	10	11	12	13	14	15	16	17	18	19	20
Tuck Stitch Pattern	●	●	●				●	●												
Multi-colour Tuck Stitch Pattern	●	●	●				●	●												
Skip Stitch Pattern	●	●	●		●		●	●			●									
Multi-colour Skip Stitch Pattern	●	●	●		●		●	●			●									
Fairisle Pattern	●	●	●	●	●	●	●	●	●	●	●	●	●	●	●	●				
Weaving Pattern	●	●	●		●		●	●			●									
Plating Tuck Stitch Pattern	●		●					●												
Lace Pattern																	●	●	●	●
Fine Lace Pattern																	●		●	●

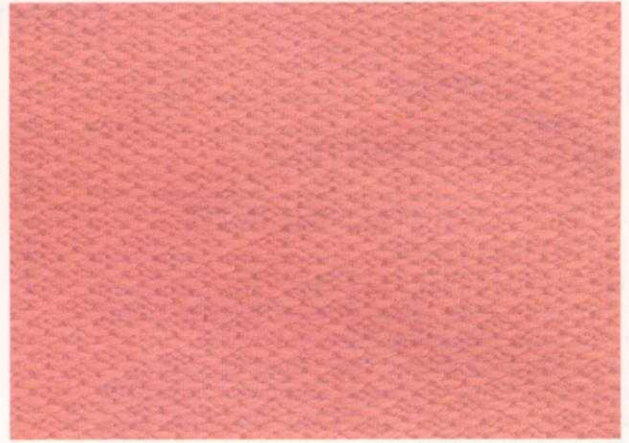
# ORIGINAL PATTERNS

## SKIP STITCH PATTERN

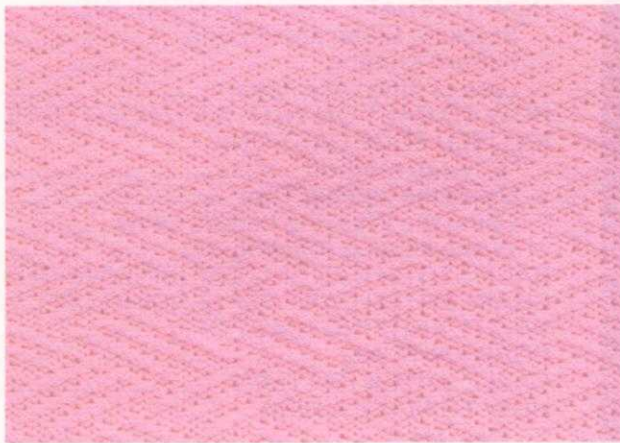
Refer to P.33.



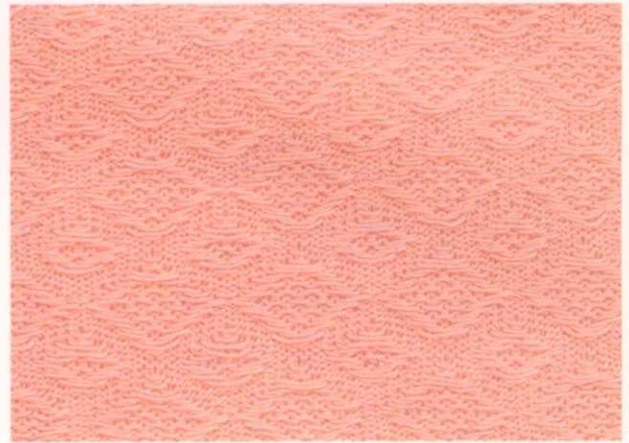
Card No. 2



Card No. 3



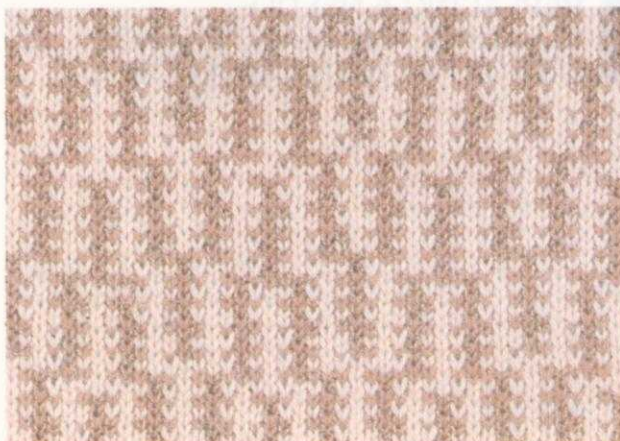
Card No. 5



Card No. 11

## MULTI-COLOUR SKIP STITCH PATTERN

Refer to P.34.



Card No. 5

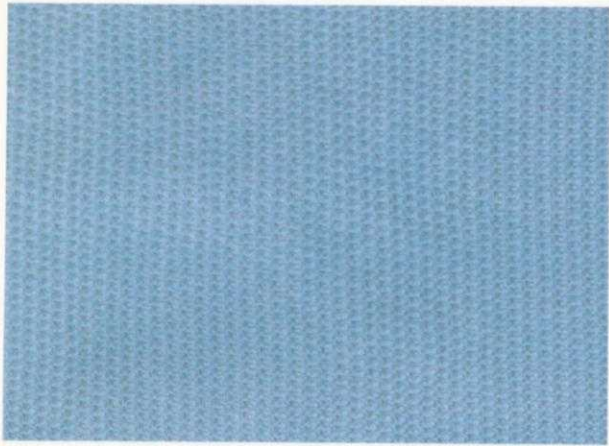


Card No. 7

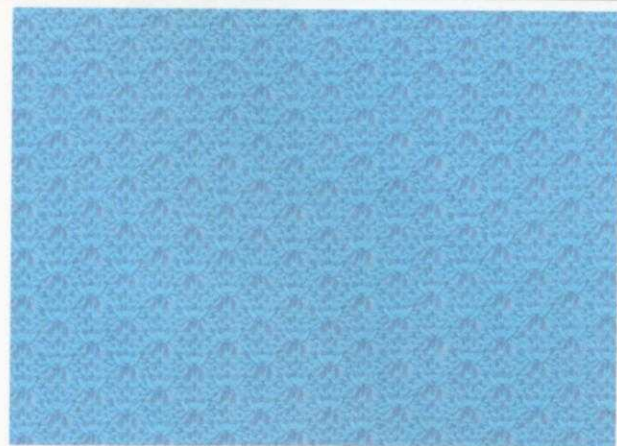


**TUCK STITCH PATTERN**

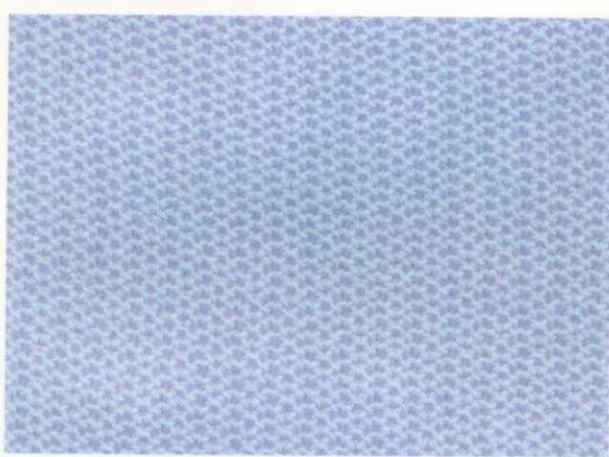
Refer to P.35.



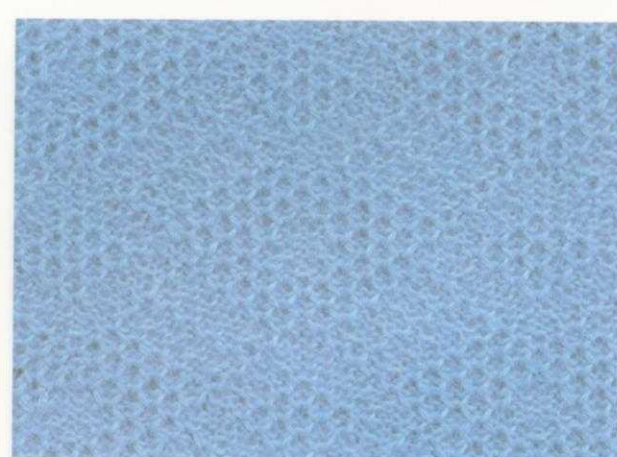
Card No. 1



Card No. 2



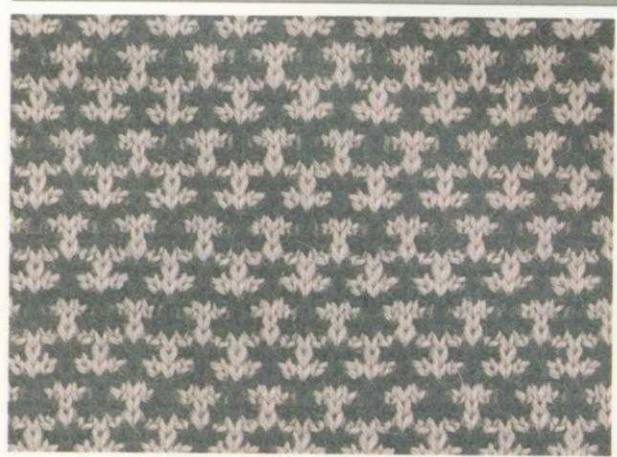
Card No. 3



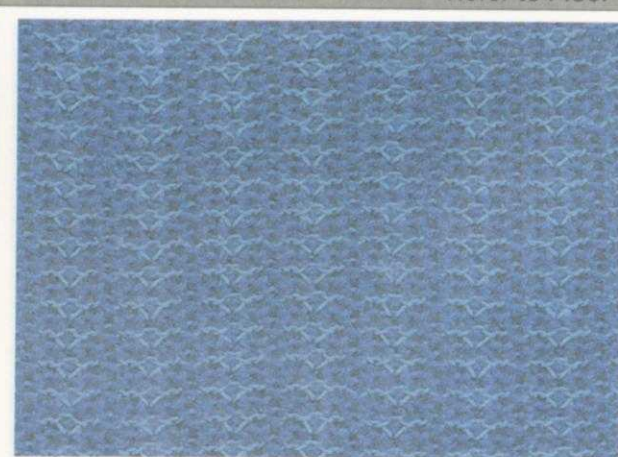
Card No. 7

**MULTI-COLOUR TUCK STITCH PATTERN**

Refer to P.36.



Card No. 2

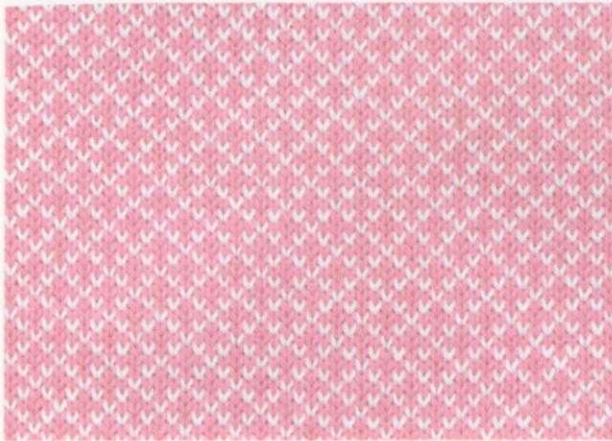


Card No. 3



FAIRISLE PATTERN

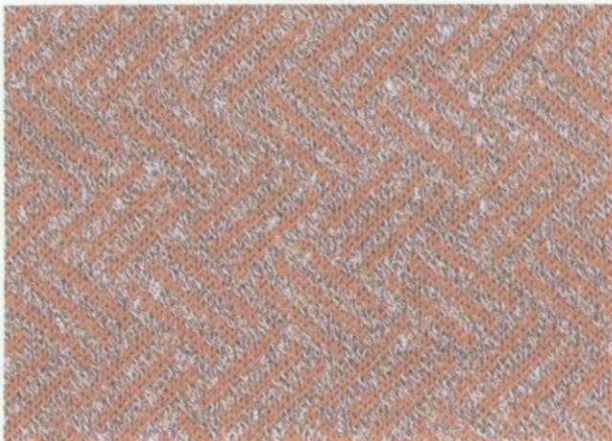
Refer to P.40.



Card No. 3



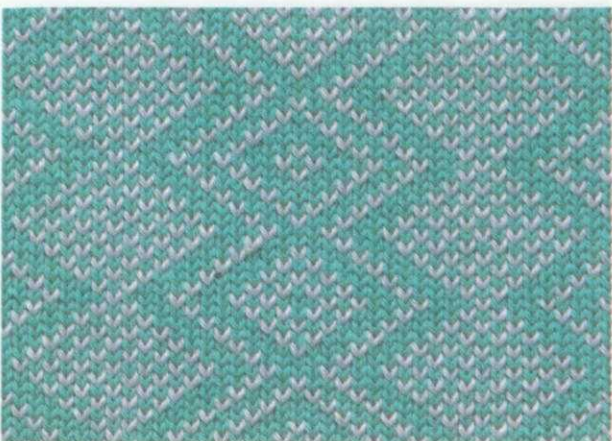
Card No. 4



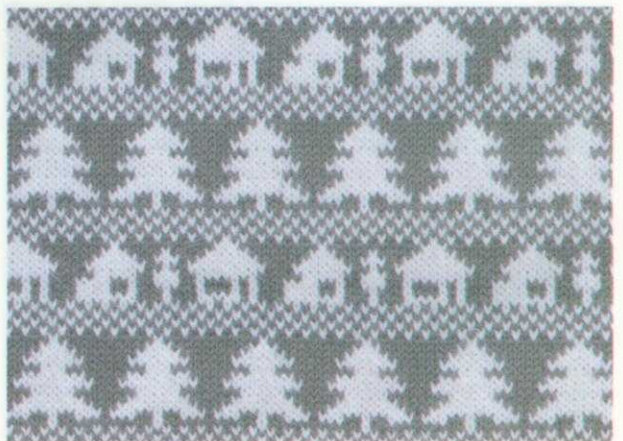
Card No. 5



Card No. 6



Card No. 8



Card No. 9





Card No. 10



Card No. 12



Card No. 14



Card No. 15



Card No. 16

**FAIRISLE MOTIF PATTERN** Refer to P.42.



Card No. 13

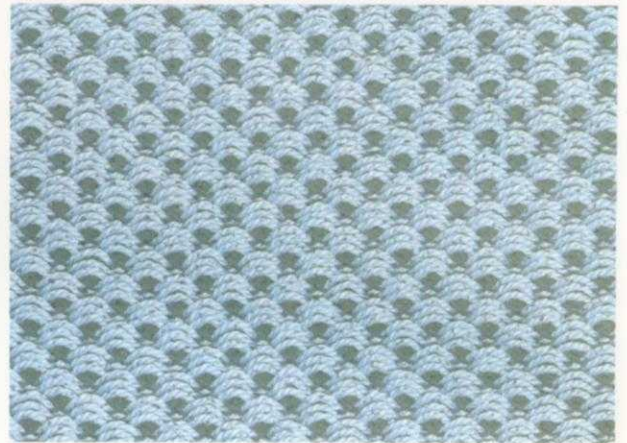


**WEAVING PATTERN**

Refer to P.37.



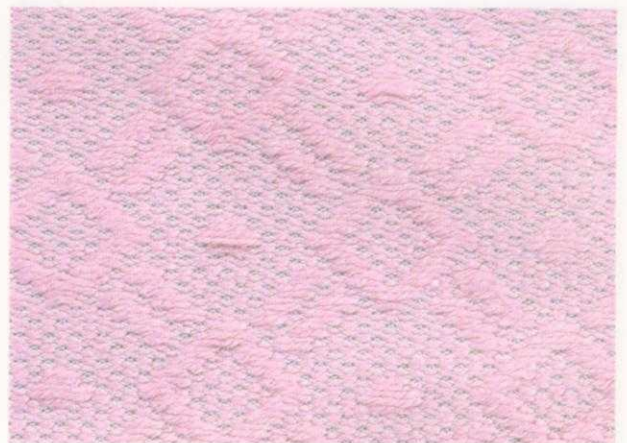
Card No. 1



Card No. 2

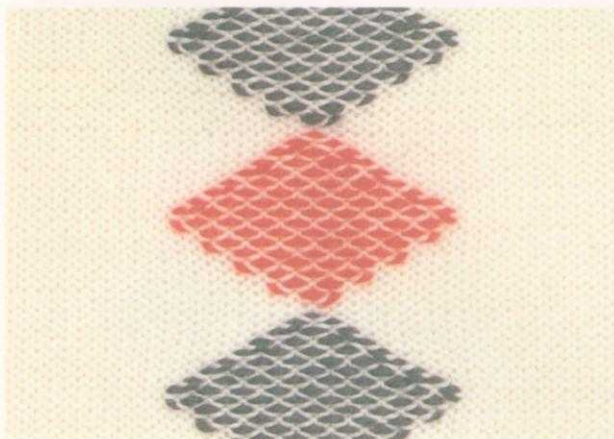


Card No. 5

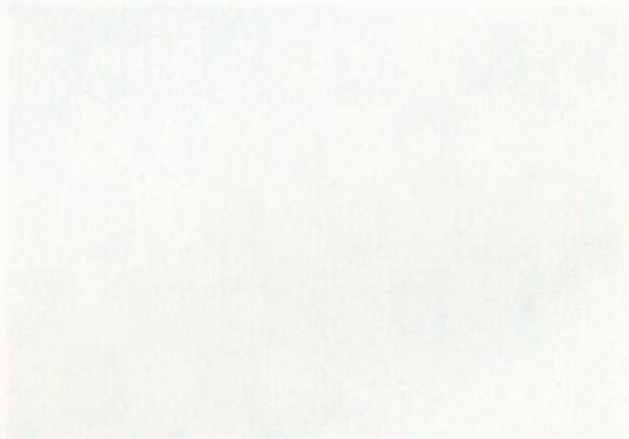


Card No. 7

**WOVEN MOTIF PATTERN** Refer to P.39.



Card No. 1





**PLATED STITCH PATTERN**

Refer to P.53, 55.



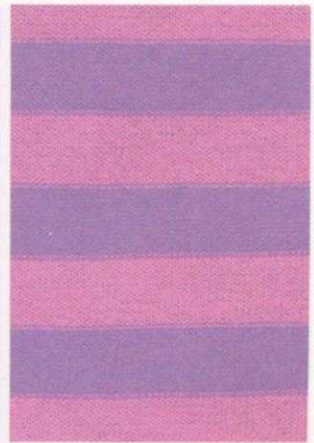
FRONT



BACK



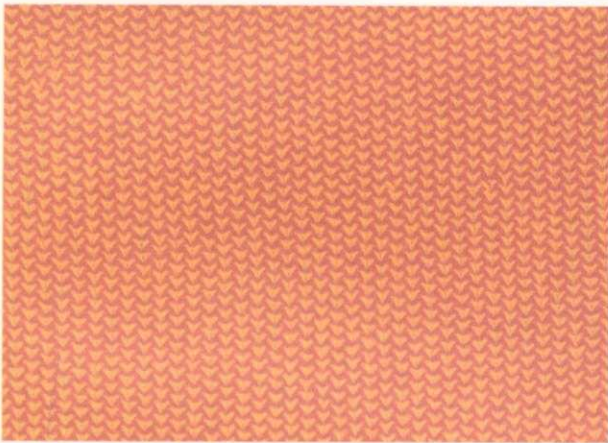
FRONT



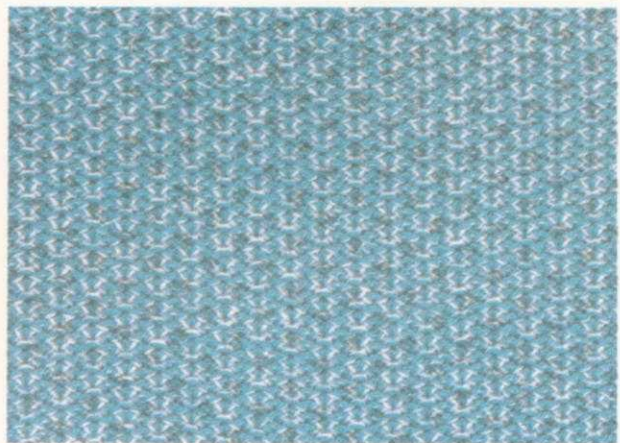
BACK

**PLATED TUCK STITCH PATTERN**

Refer to P.59.



Card No. 1  
BACK



Card No. 3  
BACK



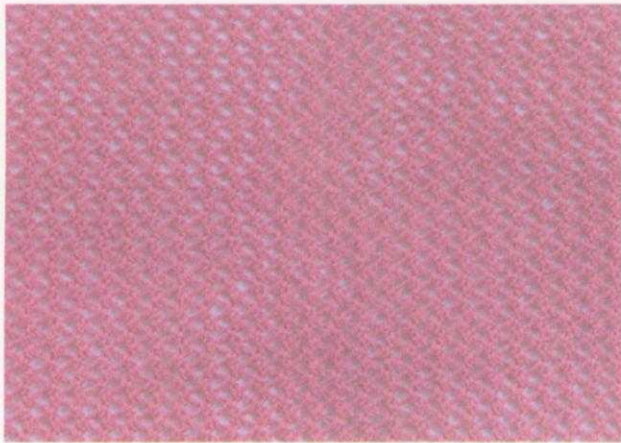
Card No. 8  
BACK



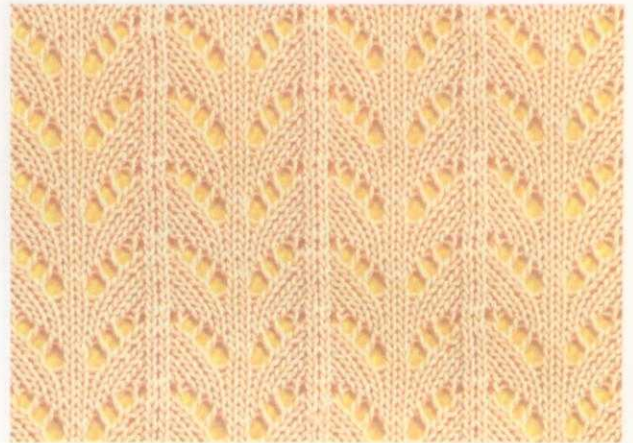


LACE PATTERN

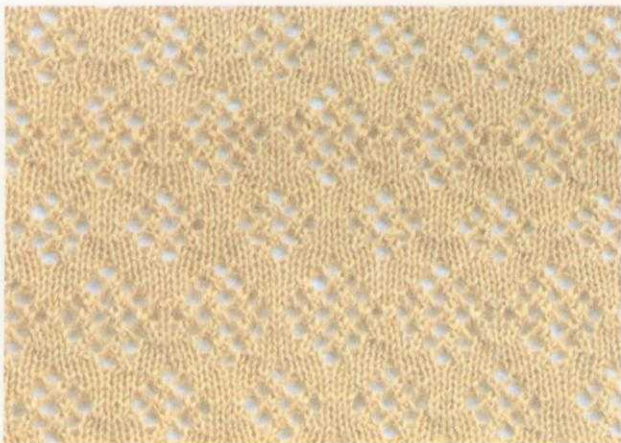
Refer to P.47.



Card No. 17



Card No. 18



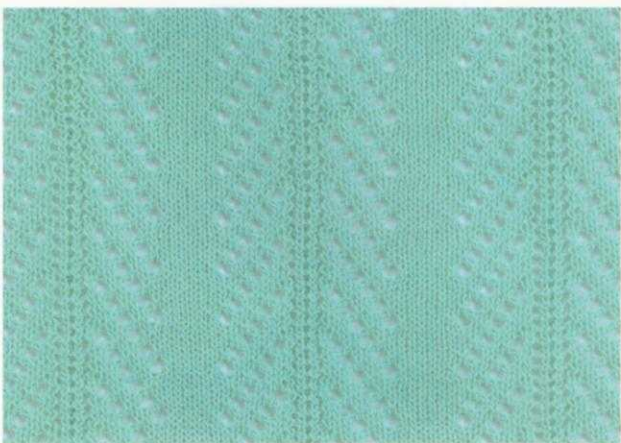
Card No. 19



Card No. 20

ISOLATED LACE PATTERNS

Refer to P.51.



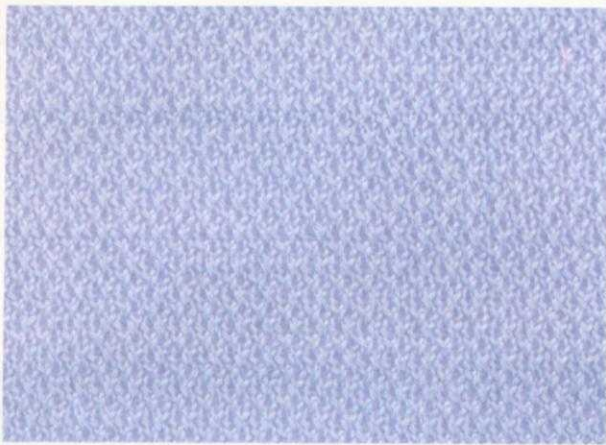
Card No. 20  
<Using L-Point Cam (4-needle)>



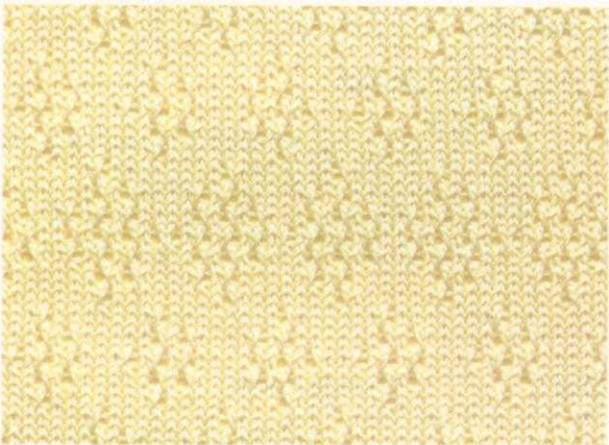
Card No. 20  
<Using L-Point Cam (8-needle)>



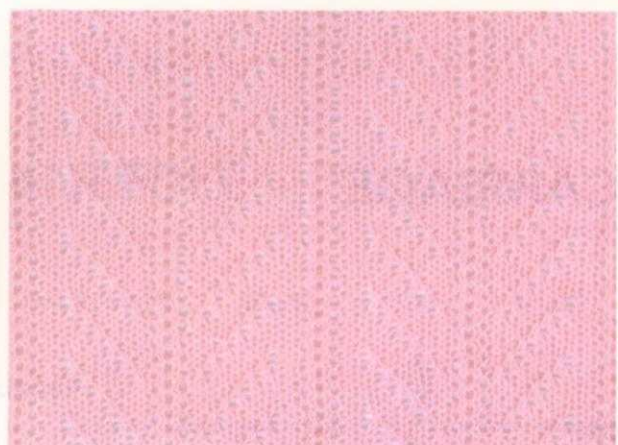
**FINE-LACE PATTERN** Refer to P.47.



Card No. 17



Card No. 19



Card No. 20

**LACE AND FINE-LACE PATTERN MIXED** Refer to P.50.



Card No. 19  
→ N (Normal Lace)  
→ F (Fine Lace)



Card No. 19  
→ F (Fine Lace)  
→ N (Normal Lace)



43  
42  
41  
40  
39  
38  
37  
36  
35  
34  
33  
32  
31  
30  
29  
28  
27  
26  
25  
24  
23  
22  
21  
20  
19  
18  
17  
16  
15  
14  
13  
12  
11  
10  
9  
8  
7  
6  
5  
4  
3  
2  
1

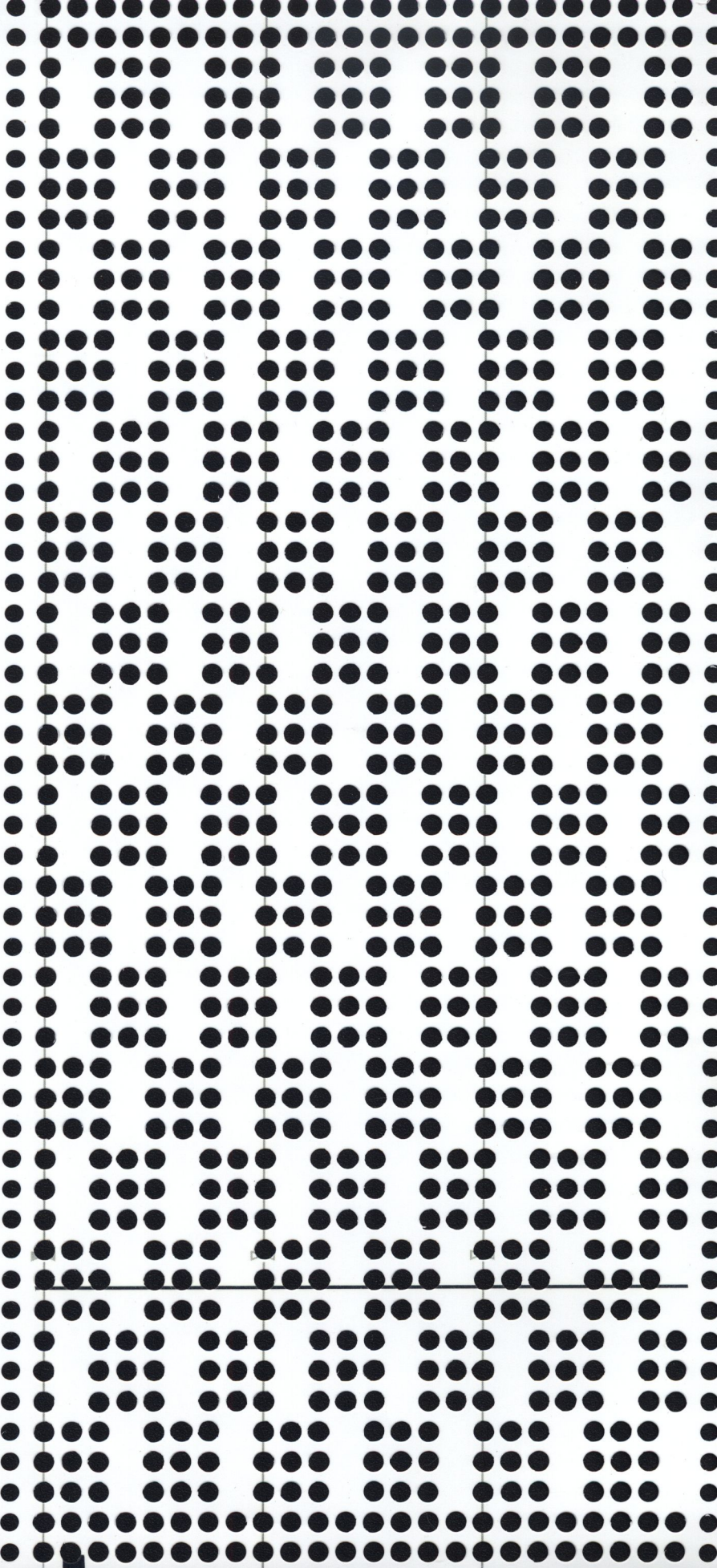
No | s

48  
47  
46  
45  
44



45  
42  
41  
40  
39  
38  
37  
36  
35  
34  
33  
32  
31  
30  
29  
28  
27  
26  
25  
24  
23  
22  
21  
20  
19  
18  
17  
16  
15  
14  
13  
12  
11  
10  
9  
8  
7  
6  
5  
4  
3  
2  
1  
48  
47  
46  
45  
44

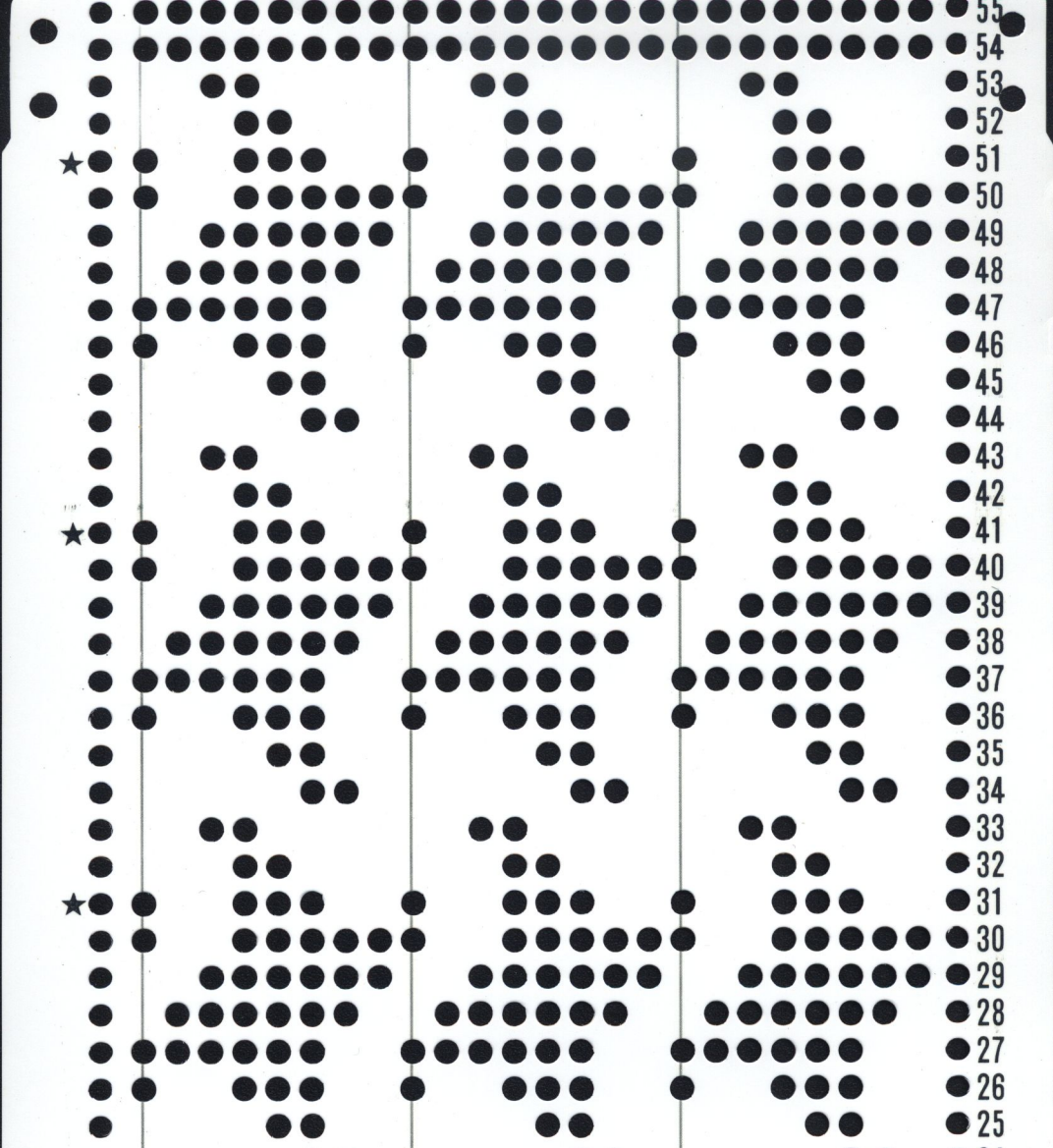
No 2<sup>s</sup>





- 43
- 42
- 41
- 40
- 39
- 38
- 37
- 36
- 35
- 34
- 33
- 32
- 31
- 30
- 29
- 28
- 27
- 26
- 25
- 24
- 23
- 22
- 21
- 20
- 19
- 18
- 17
- 16
- 15
- 14
- 13
- 12
- 11
- 10
- 9
- 8
- 7
- 6
- 5
- 4
- 3
- 2
- 1
- 48
- 47
- 46
- 45
- 44

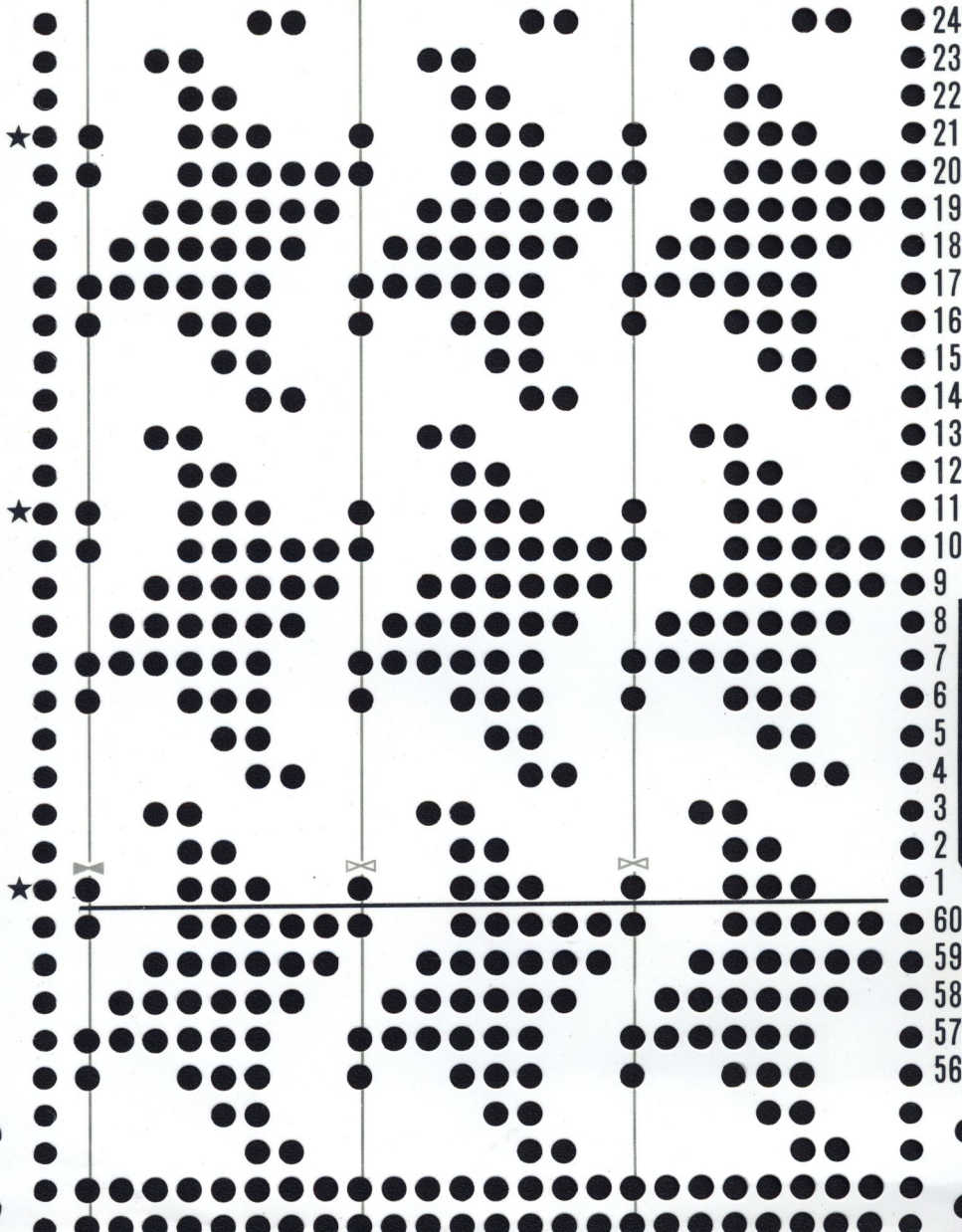




55  
54  
53  
52  
51  
50  
49  
48  
47  
46  
45  
44  
43  
42  
41  
40  
39  
38  
37  
36  
35  
34  
33  
32  
31  
30  
29  
28  
27  
26  
25







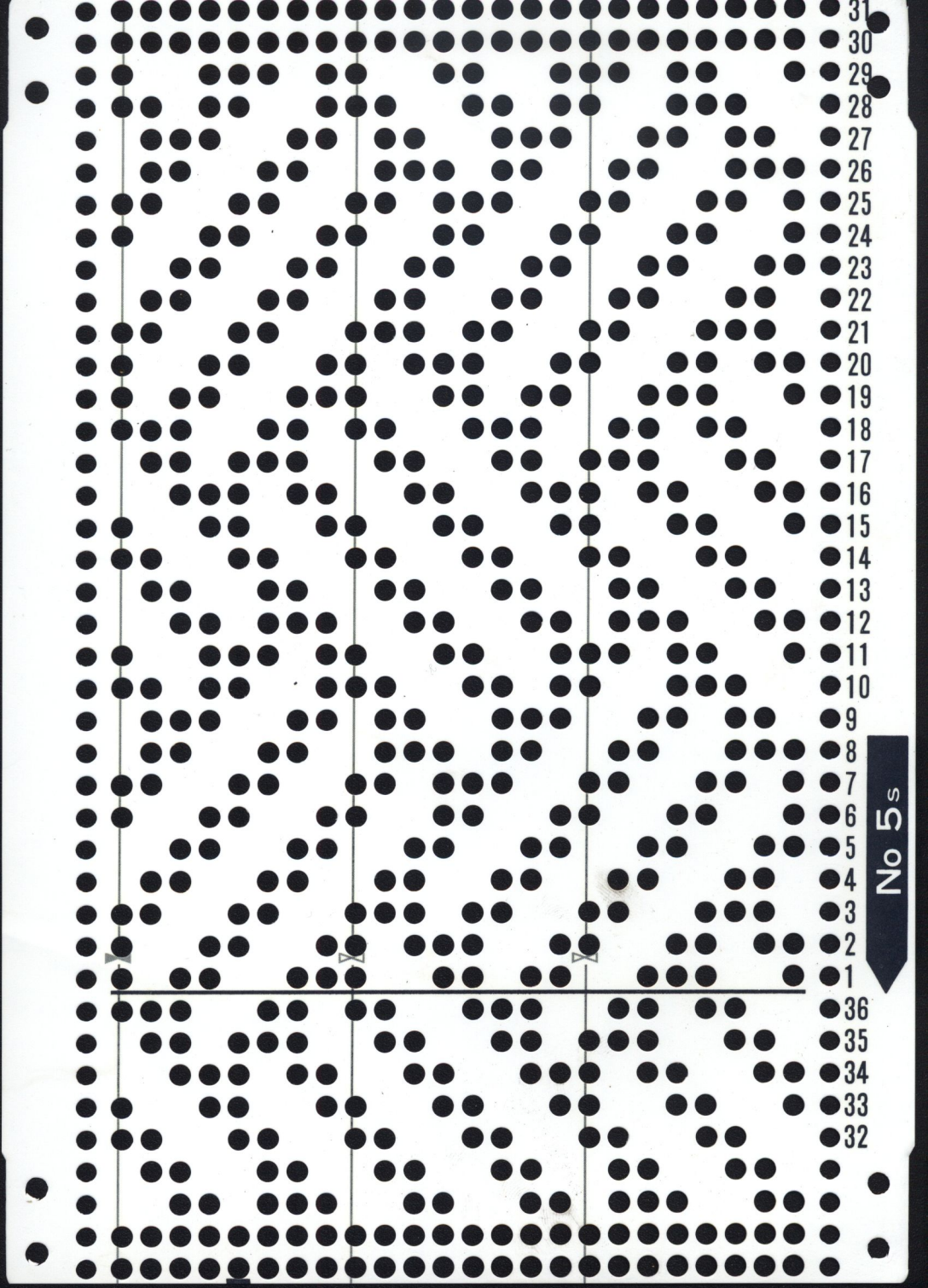
- 24
- 23
- 22
- 21
- 20
- 19
- 18
- 17
- 16
- 15
- 14
- 13
- 12
- 11
- 10
- 9
- 8
- 7
- 6
- 5
- 4
- 3
- 2
- 1
- 60
- 59
- 58
- 57
- 56



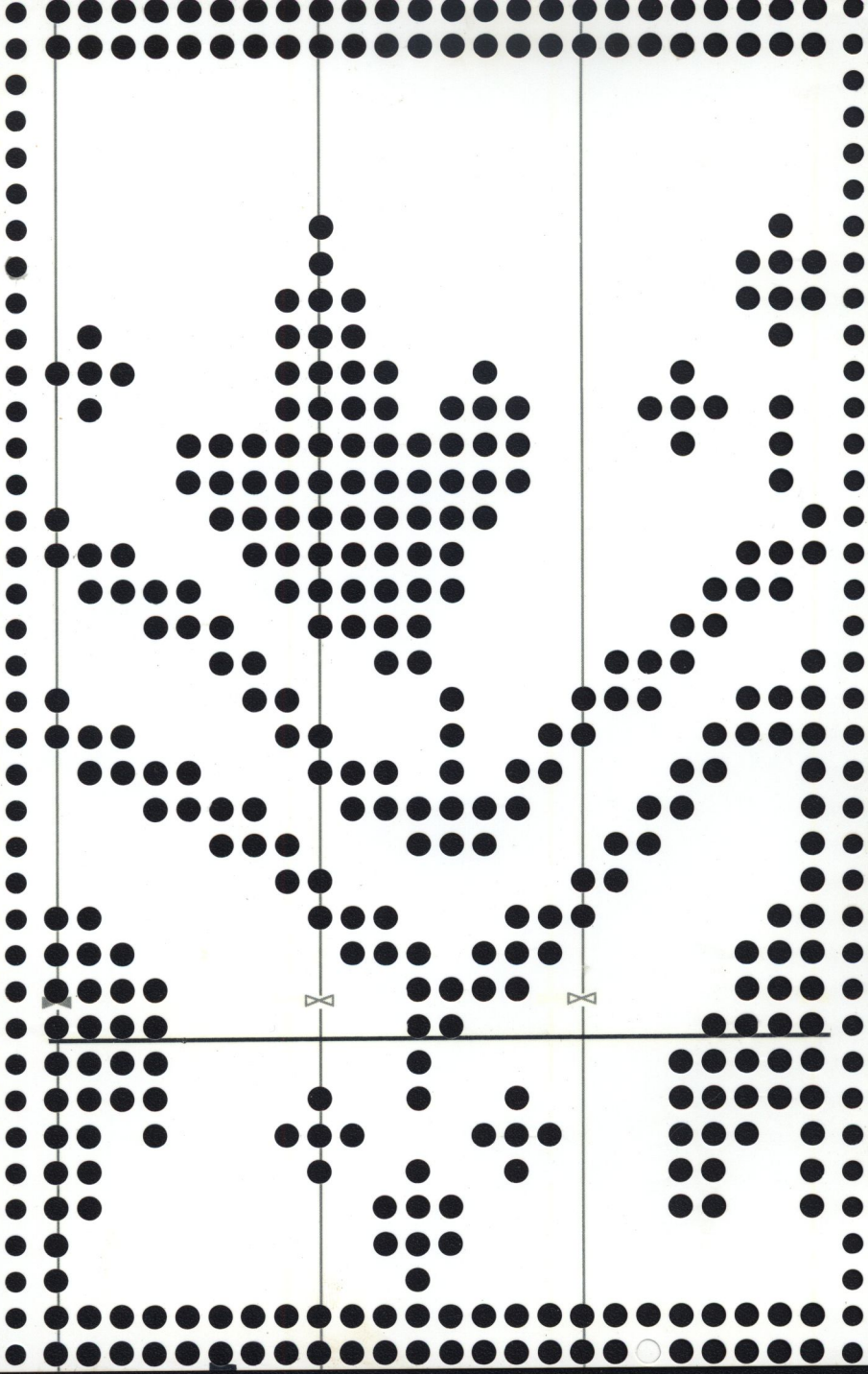
31  
30  
29  
28  
27  
26  
25  
24  
23  
22  
21  
20  
19  
18  
17  
16  
15  
14  
13  
12  
11  
10  
9  
8  
7  
6  
5  
4  
3  
2  
1

No 5s

36  
35  
34  
33  
32

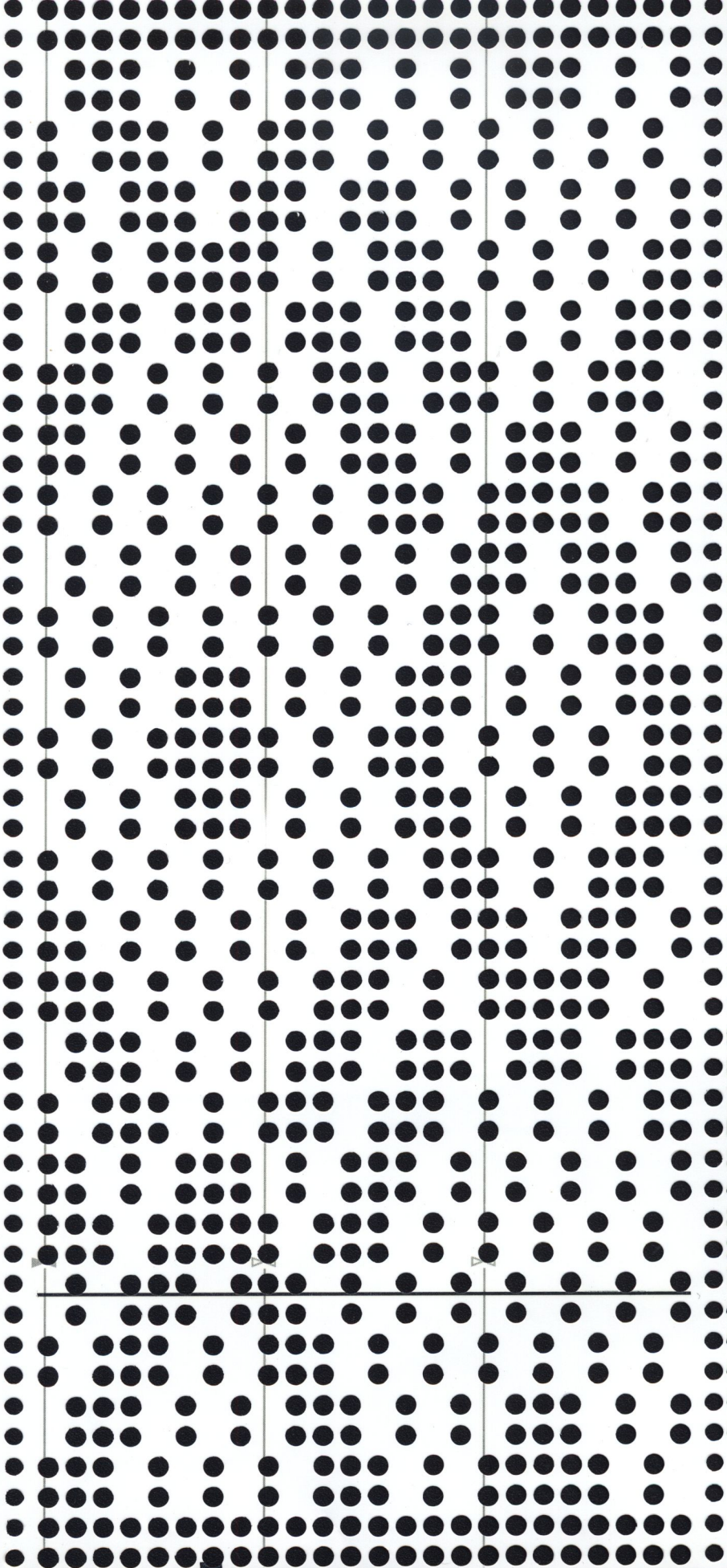


29  
28  
27  
26  
25  
24  
23  
22  
21  
20  
19  
18  
17  
16  
15  
14  
13  
12  
11  
10  
9  
8  
7  
6  
5  
4  
3  
2  
1  
34  
33  
32  
31  
30



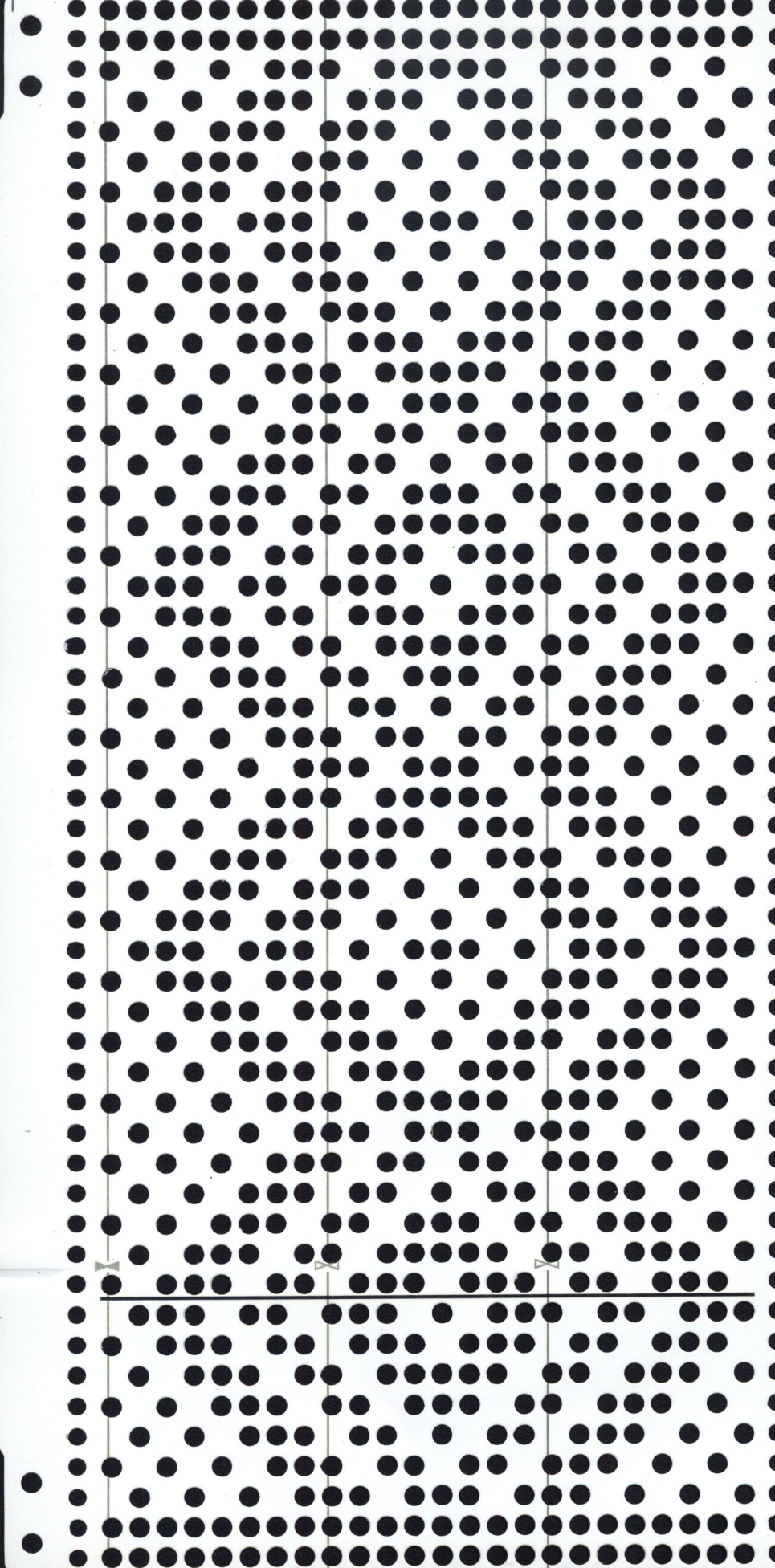


- 43
- 42
- 41
- 40
- 39
- 38
- 37
- 36
- 35
- 34
- 33
- 32
- 31
- 30
- 29
- 28
- 27
- 26
- 25
- 24
- 23
- 22
- 21
- 20
- 19
- 18
- 17
- 16
- 15
- 14
- 13
- 12
- 11
- 10
- 9
- 8
- 7
- 6
- 5
- 4
- 3
- 2
- 1
- 48
- 47
- 46
- 45
- 44

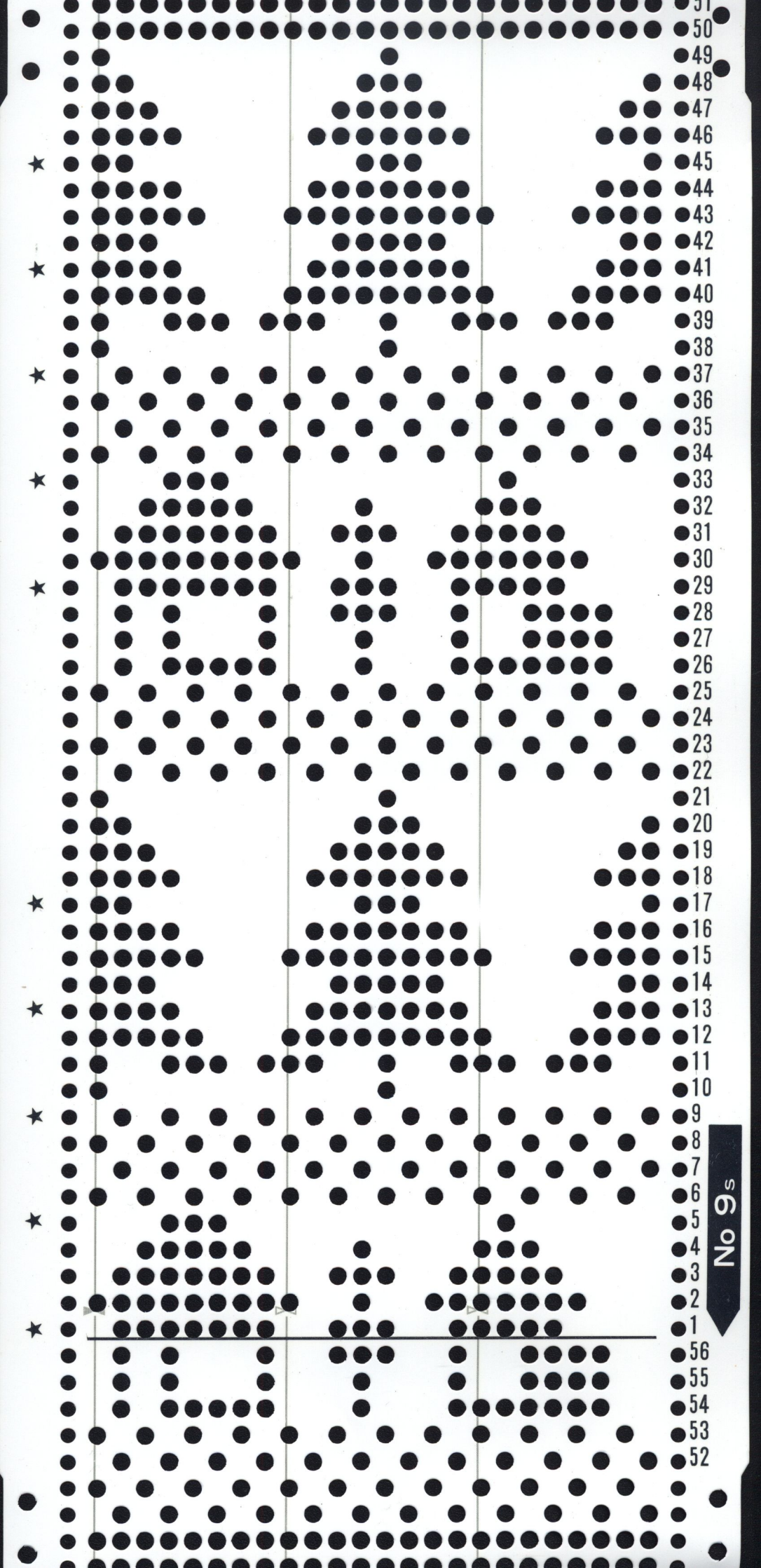




- 43
- 42
- 41
- 40
- 39
- 38
- 37
- 36
- 35
- 34
- 33
- 32
- 31
- 30
- 29
- 28
- 27
- 26
- 25
- 24
- 23
- 22
- 21
- 20
- 19
- 18
- 17
- 16
- 15
- 14
- 13
- 12
- 11
- 10
- 9
- 8
- 7
- 6
- 5
- 4
- 3
- 2
- 1
- 48
- 47
- 46
- 45
- 44







50  
49  
48  
47  
46  
45  
44  
43  
42  
41  
40  
39  
38  
37  
36  
35  
34  
33  
32  
31  
30  
29  
28  
27  
26  
25  
24  
23  
22  
21  
20  
19  
18  
17  
16  
15  
14  
13  
12  
11  
10  
9  
8  
7  
6  
5  
4  
3  
2  
1

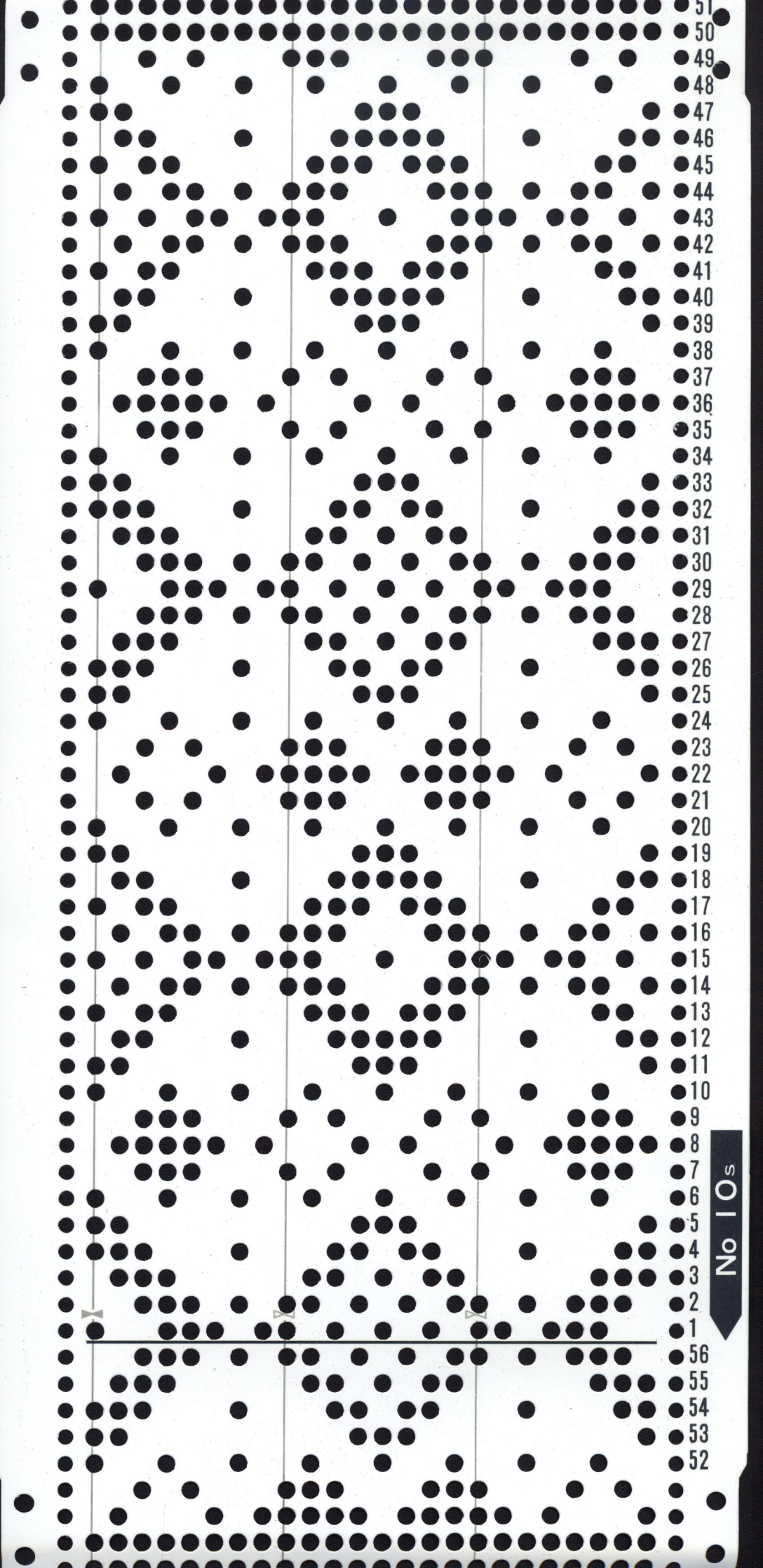
56  
55  
54  
53  
52

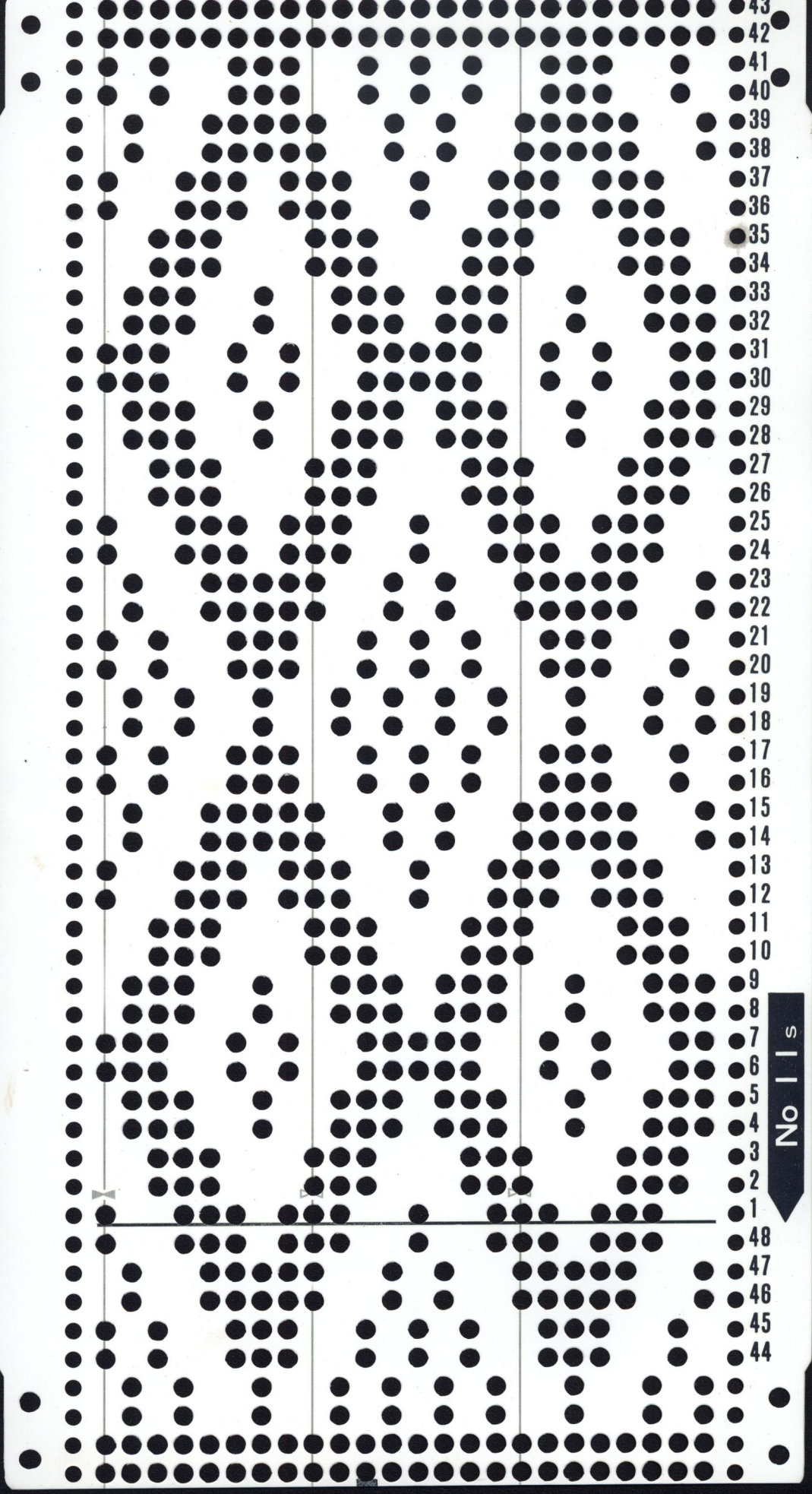


51  
50  
49  
48  
47  
46  
45  
44  
43  
42  
41  
40  
39  
38  
37  
36  
35  
34  
33  
32  
31  
30  
29  
28  
27  
26  
25  
24  
23  
22  
21  
20  
19  
18  
17  
16  
15  
14  
13  
12  
11  
10  
9  
8  
7  
6  
5  
4  
3  
2  
1

No 10s

56  
55  
54  
53  
52

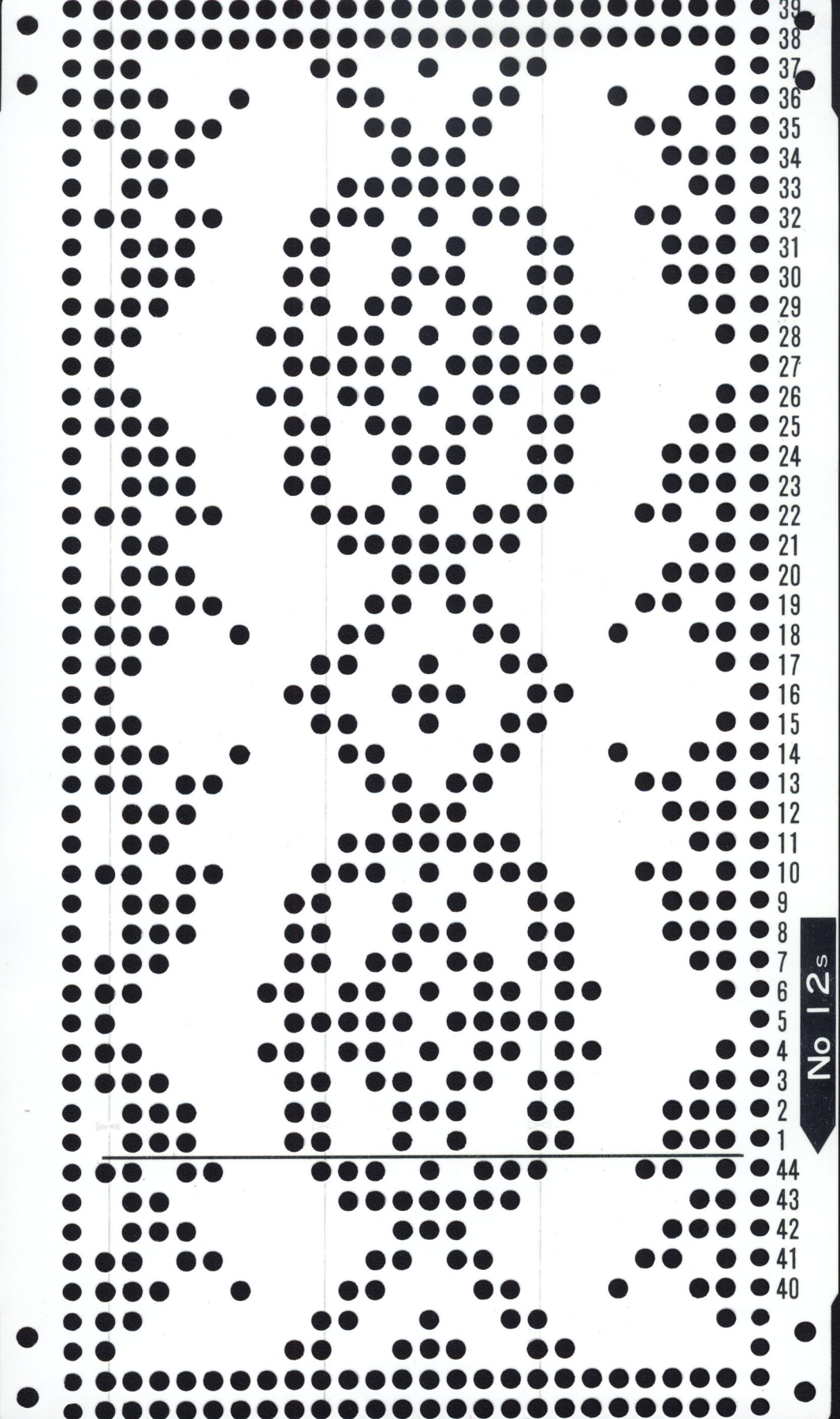




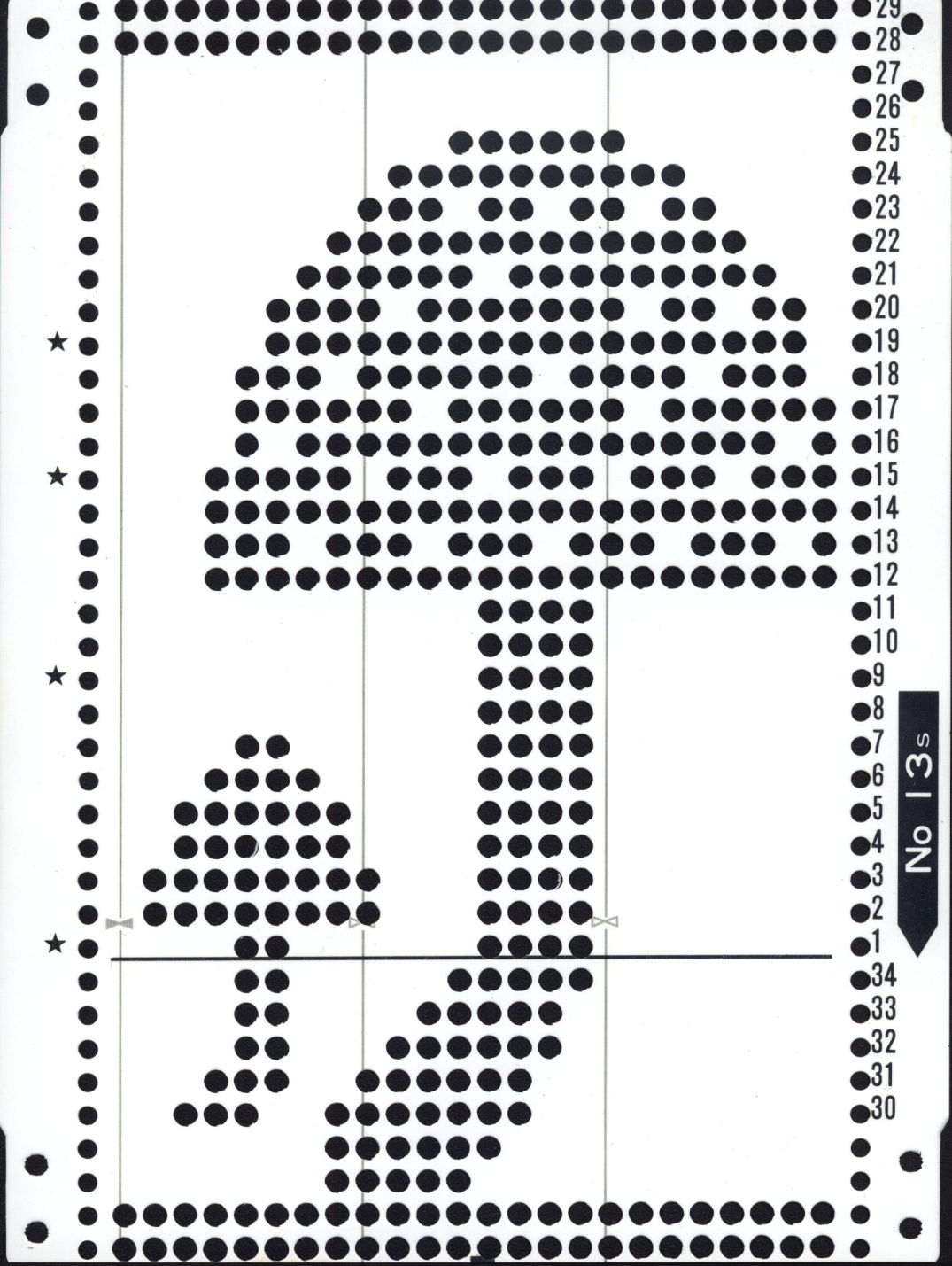
No | s

- 43
- 42
- 41
- 40
- 39
- 38
- 37
- 36
- 35
- 34
- 33
- 32
- 31
- 30
- 29
- 28
- 27
- 26
- 25
- 24
- 23
- 22
- 21
- 20
- 19
- 18
- 17
- 16
- 15
- 14
- 13
- 12
- 11
- 10
- 9
- 8
- 7
- 6
- 5
- 4
- 3
- 2
- 1
- 48
- 47
- 46
- 45
- 44





No 12s



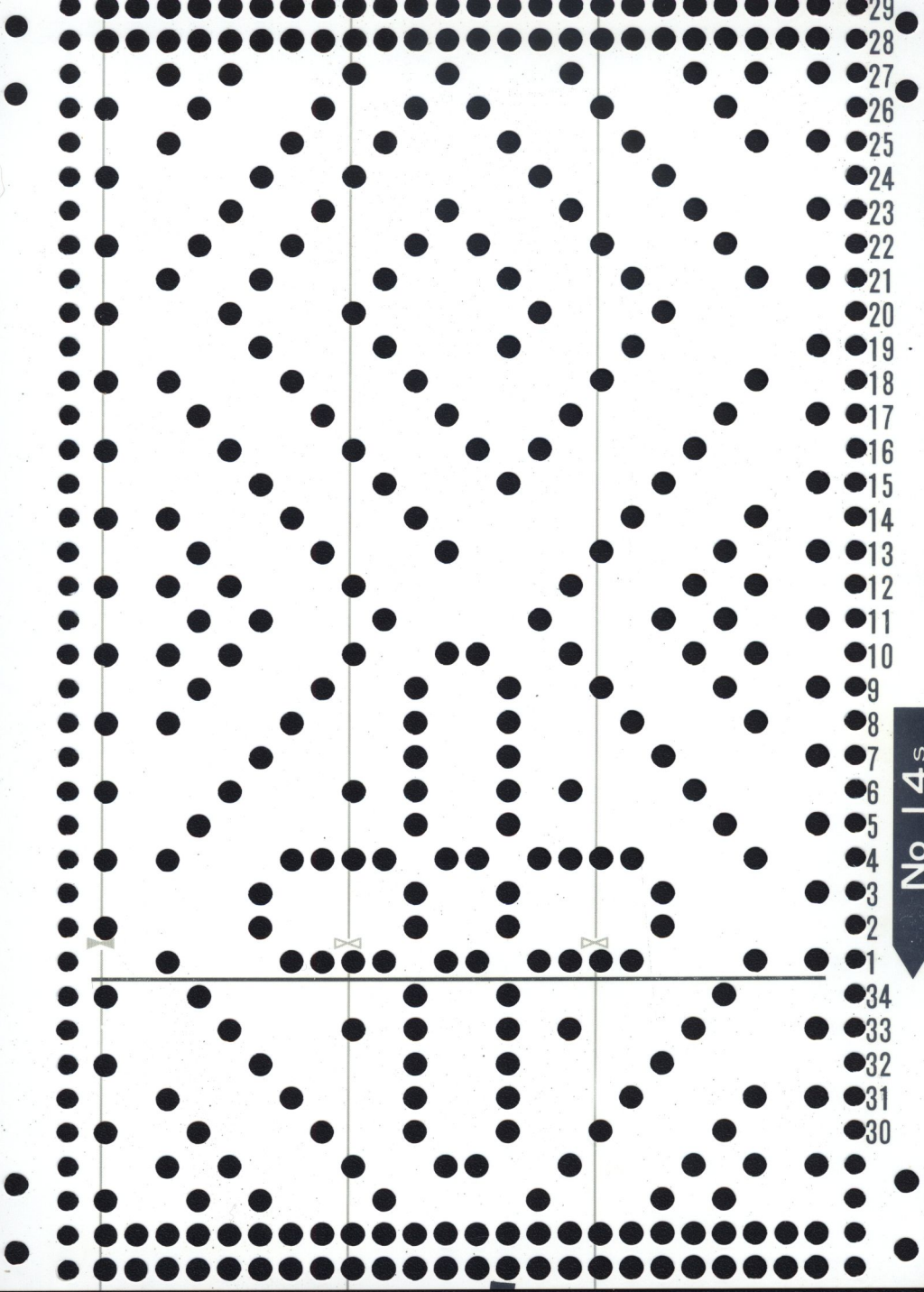
No 13s

- 29
- 28
- 27
- 26
- 25
- 24
- 23
- 22
- 21
- 20
- 19
- 18
- 17
- 16
- 15
- 14
- 13
- 12
- 11
- 10
- 9
- 8
- 7
- 6
- 5
- 4
- 3
- 2
- 1
- 34
- 33
- 32
- 31
- 30

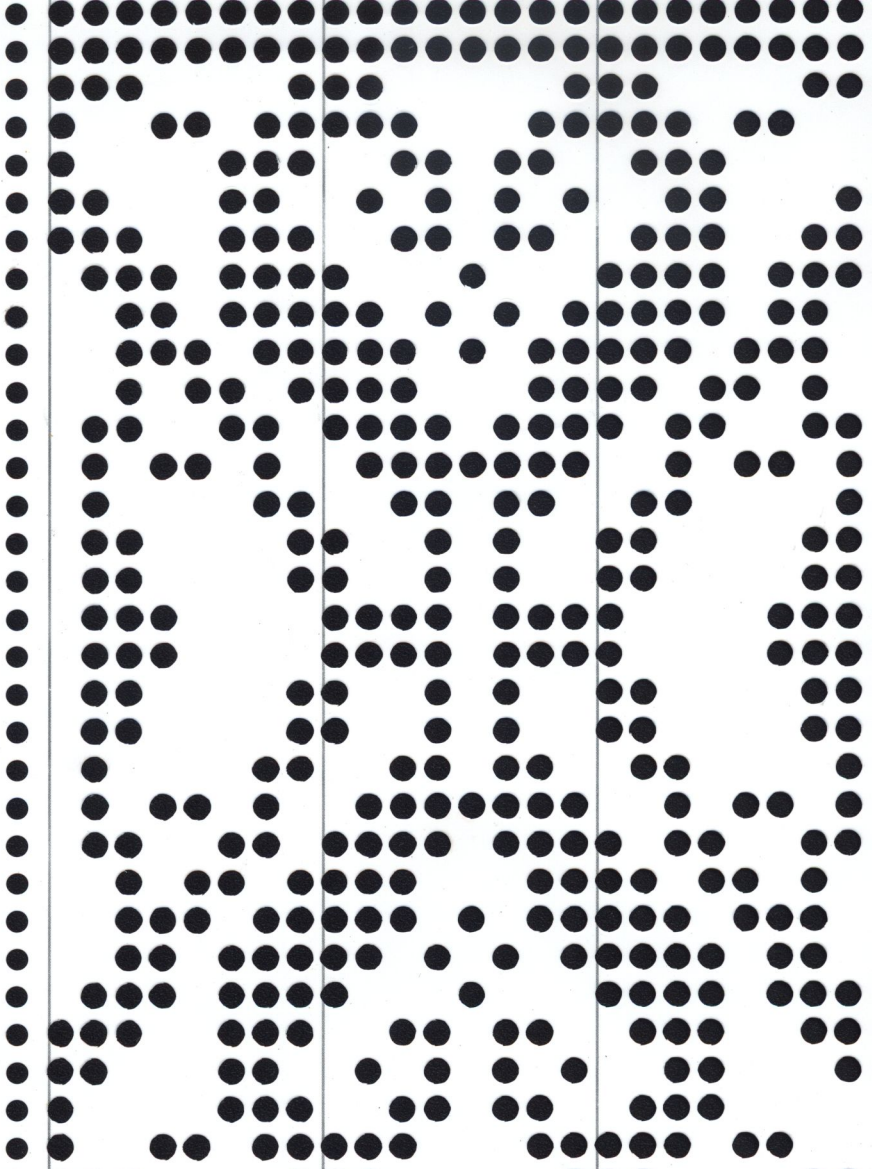




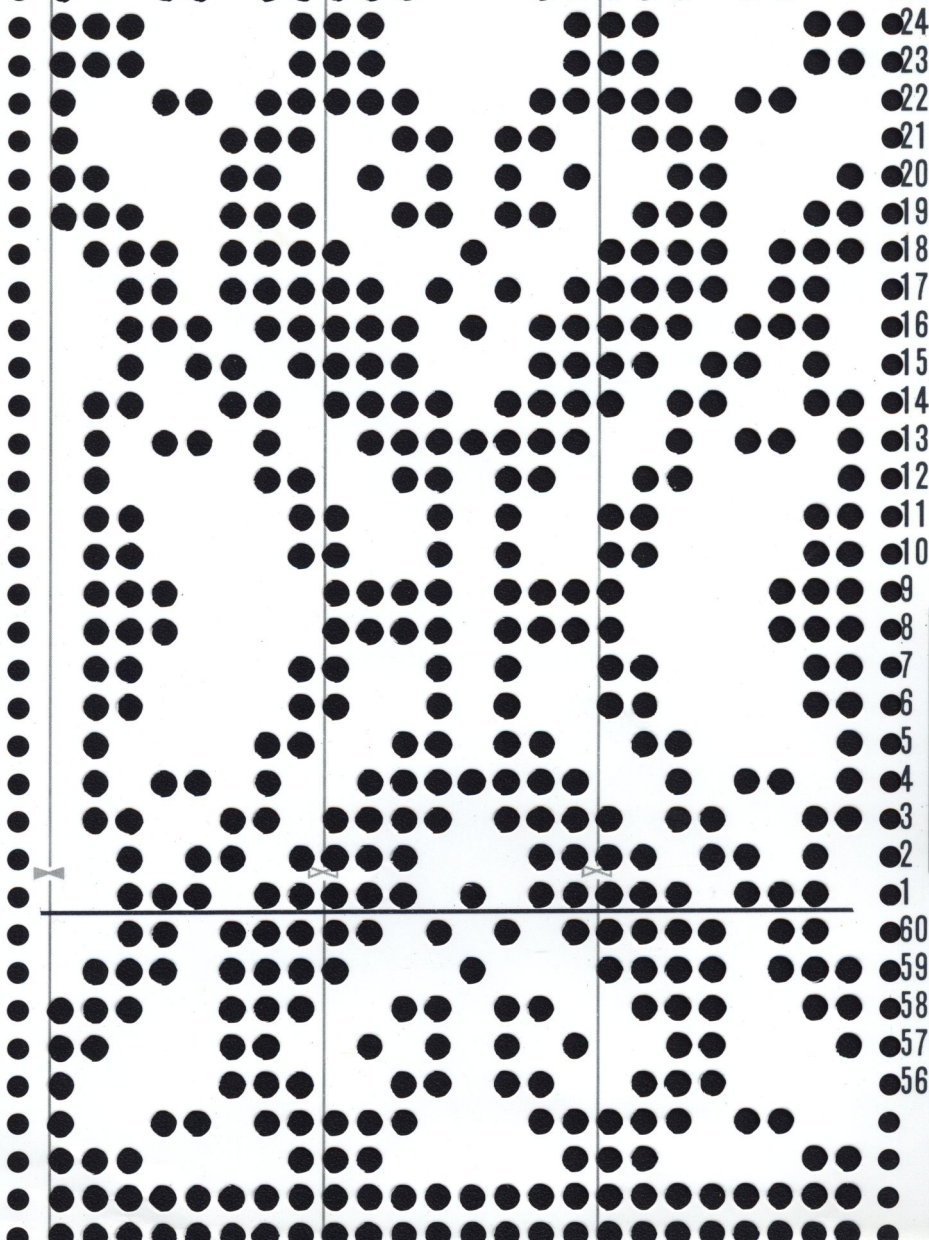
- 29
- 28
- 27
- 26
- 25
- 24
- 23
- 22
- 21
- 20
- 19
- 18
- 17
- 16
- 15
- 14
- 13
- 12
- 11
- 10
- 9
- 8
- 7
- 6
- 5
- 4
- 3
- 2
- 1
- 34
- 33
- 32
- 31
- 30



55  
54  
53  
52  
51  
50  
49  
48  
47  
46  
45  
44  
43  
42  
41  
40  
39  
38  
37  
36  
35  
34  
33  
32  
31  
30  
29  
28  
27  
26  
25

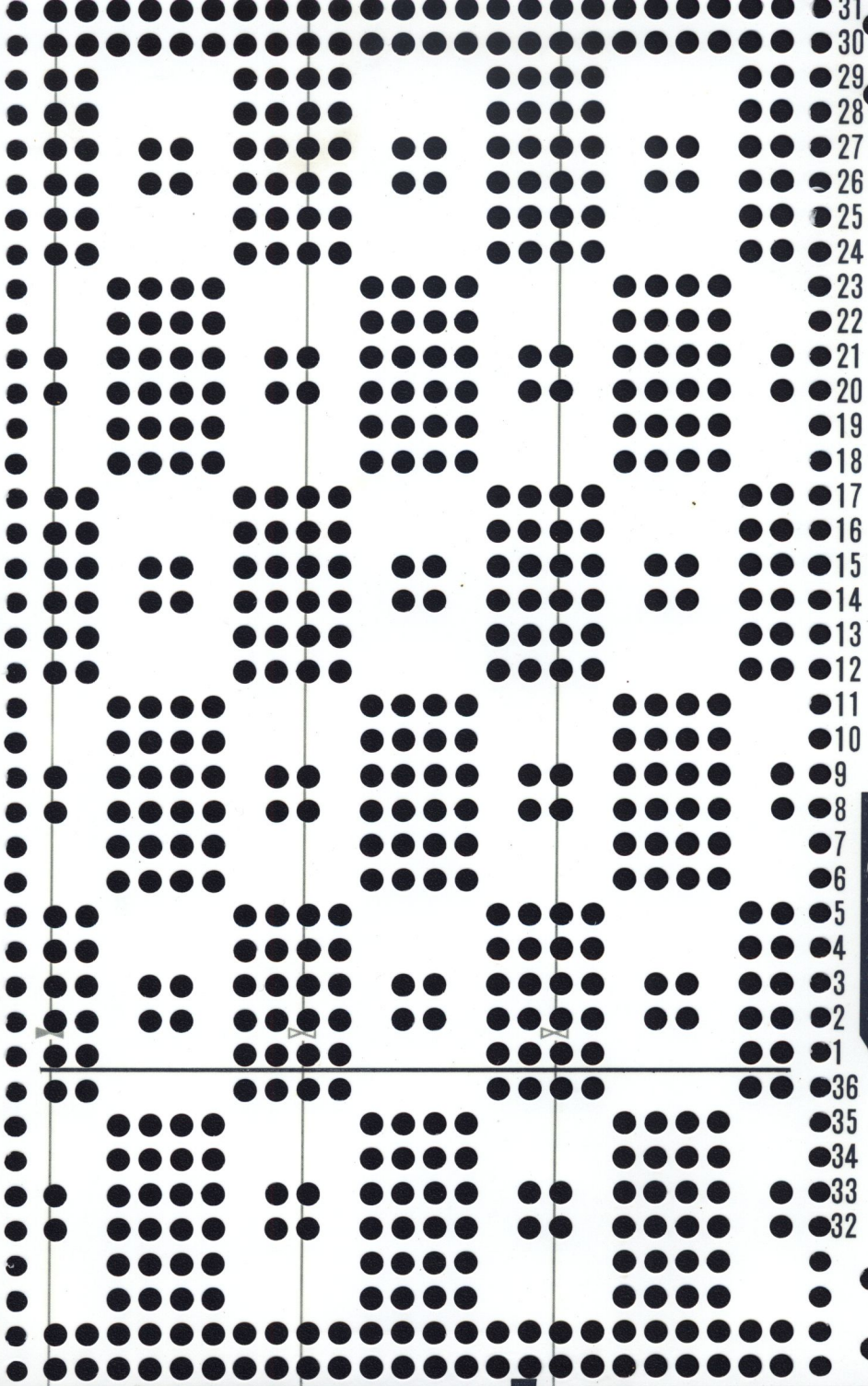






No 15s

- 24
- 23
- 22
- 21
- 20
- 19
- 18
- 17
- 16
- 15
- 14
- 13
- 12
- 11
- 10
- 9
- 8
- 7
- 6
- 5
- 4
- 3
- 2
- 1
- 60
- 59
- 58
- 57
- 56



31  
30  
29  
28  
27  
26  
25  
24  
23  
22  
21  
20  
19  
18  
17  
16  
15  
14  
13  
12  
11  
10  
9  
8  
7  
6  
5  
4  
3  
2  
1

No 16s

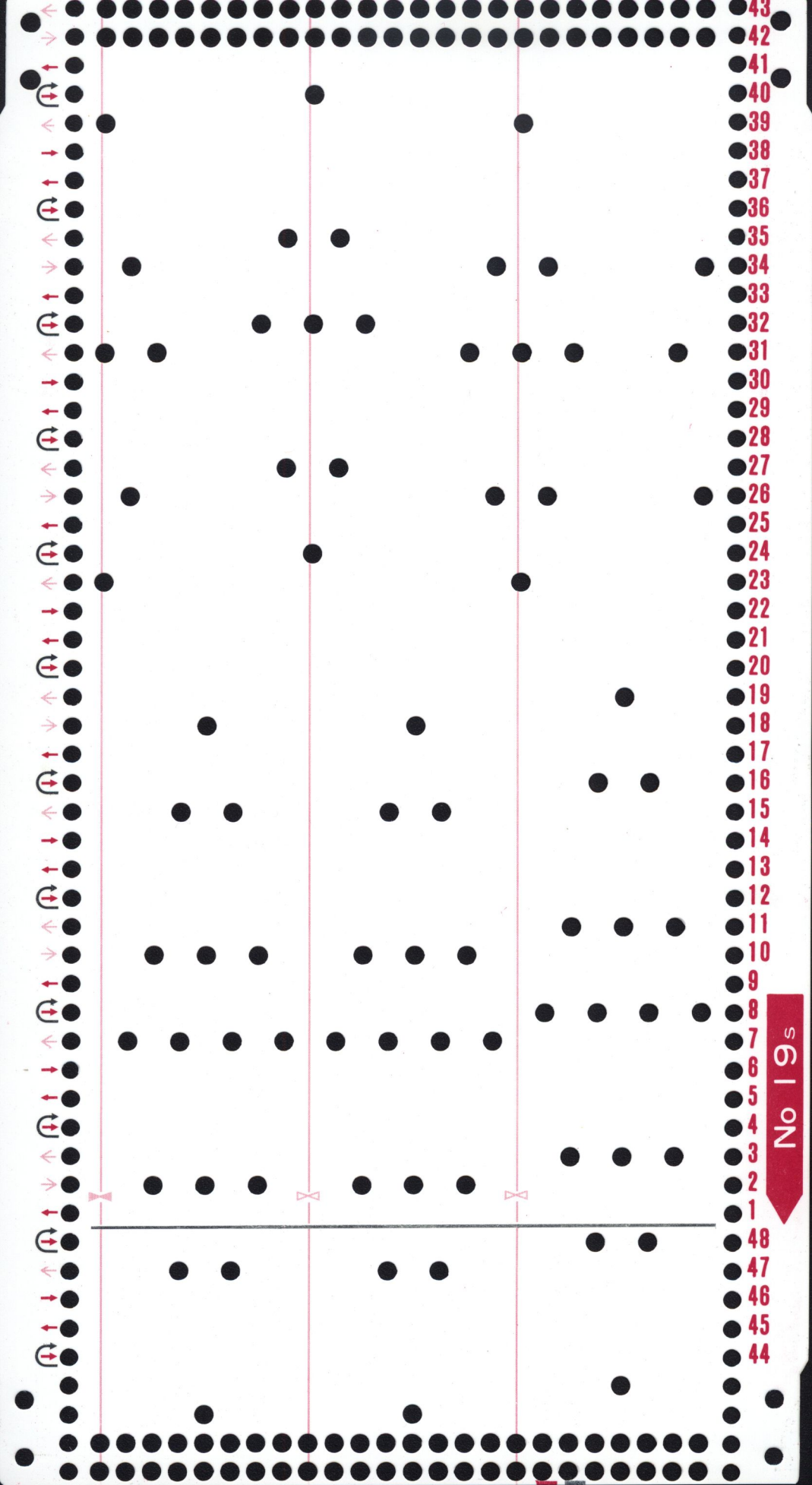
36  
35  
34  
33  
32



43  
42  
41  
40  
39  
38  
37  
36  
35  
34  
33  
32  
31  
30  
29  
28  
27  
26  
25  
24  
23  
22  
21  
20  
19  
18  
17  
16  
15  
14  
13  
12  
11  
10  
9  
8  
7  
6  
5  
4  
3  
2  
1  
48  
47  
46  
45  
44







43  
42  
41  
40  
39  
38  
37  
36  
35  
34  
33  
32  
31  
30  
29  
28  
27  
26  
25  
24  
23  
22  
21  
20  
19  
18  
17  
16  
15  
14  
13  
12  
11  
10  
9  
8  
7  
6  
5  
4  
3  
2  
1  
48  
47  
46  
45  
44

