

TEAMS · DISC 2 TRACK 1

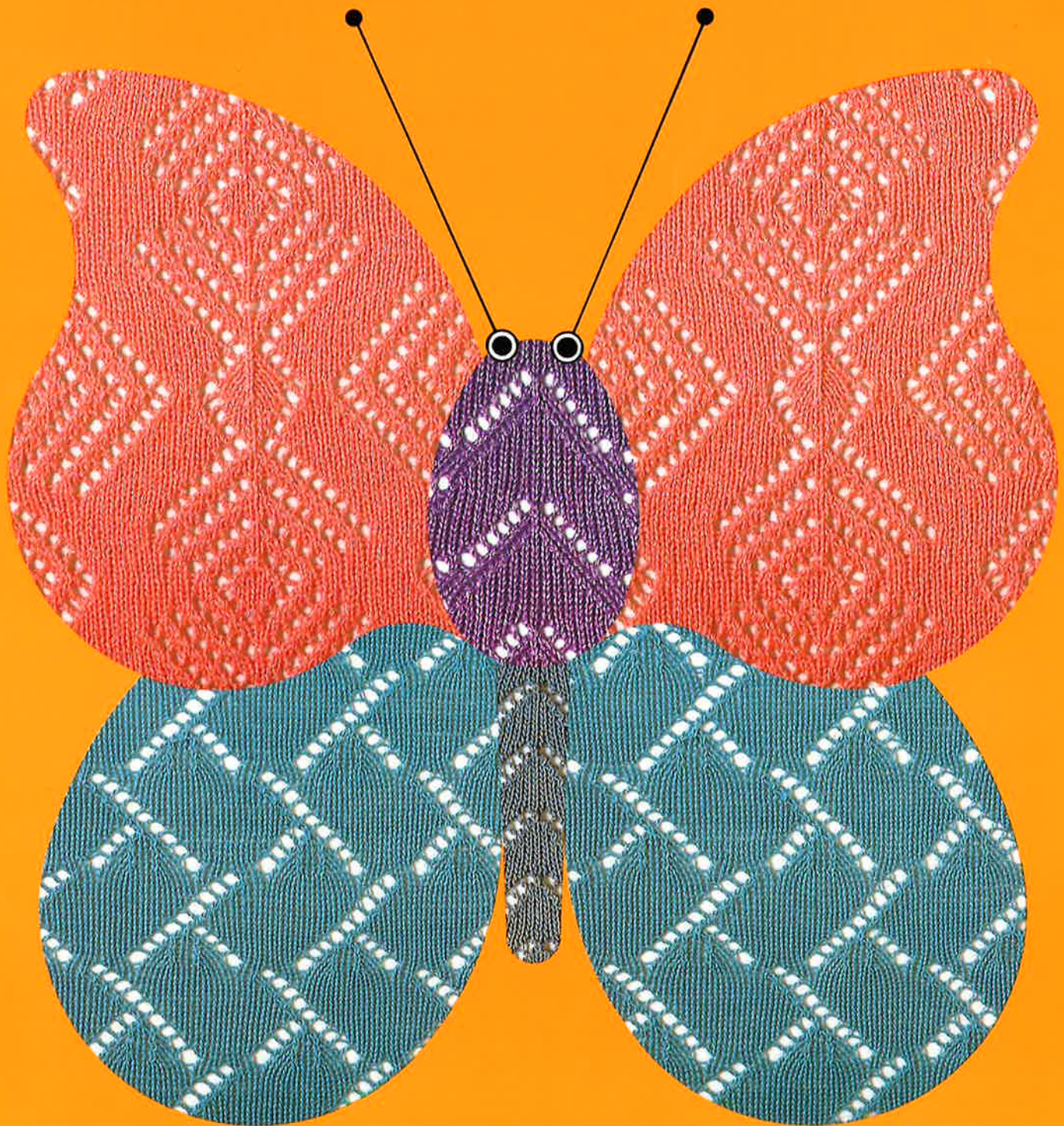
Electroknit® Pattern Cards

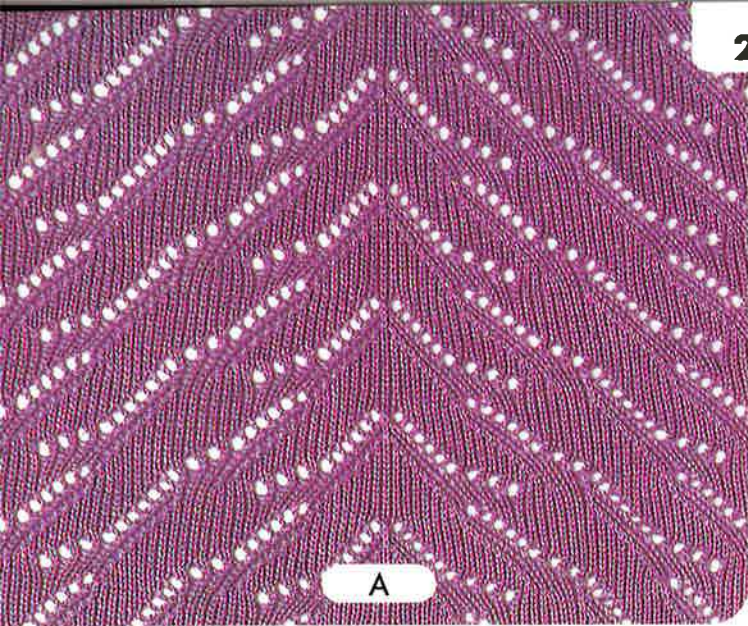
トピカル模様カード集

Vol.2 LACE PATTERNS

第2集 / レース模様

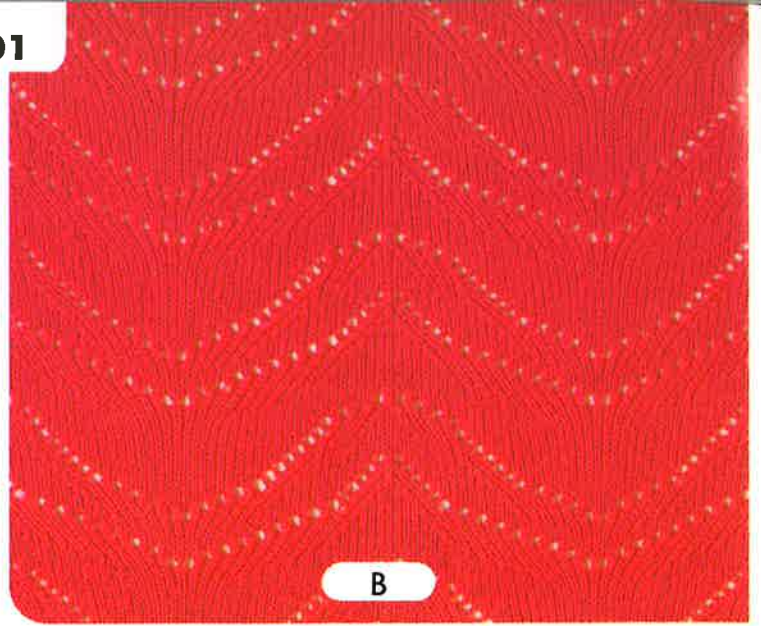
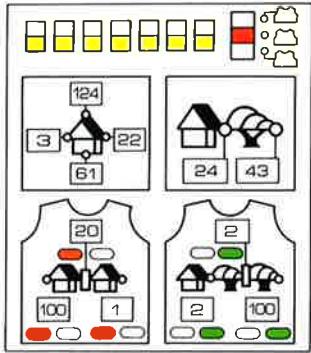
Card Nos. No.201-210





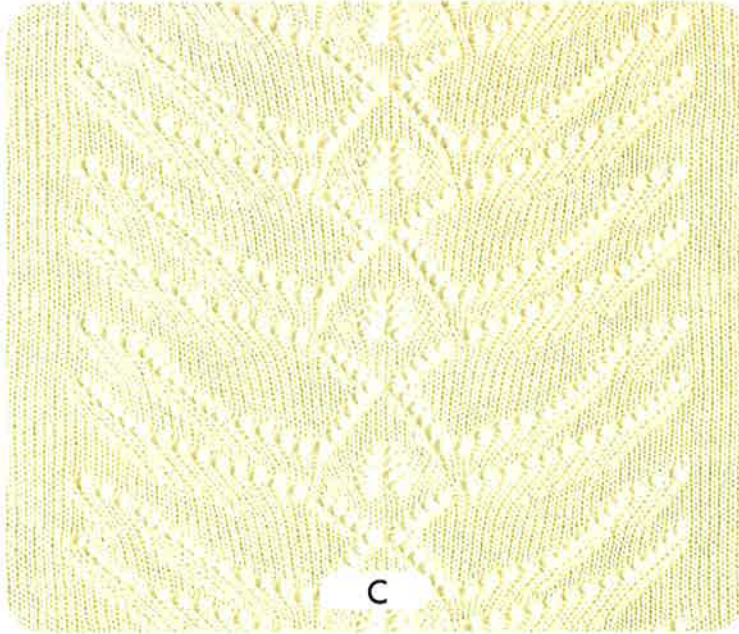
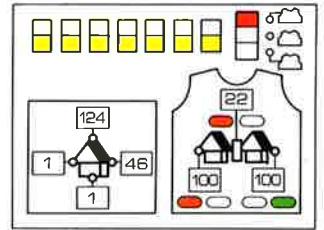
A

A ①



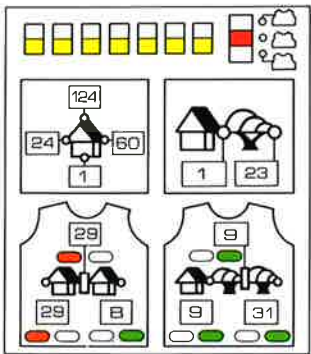
B

B ①

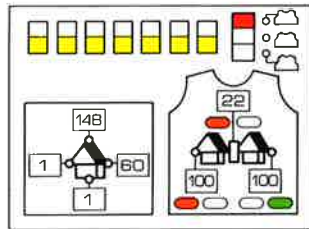


C

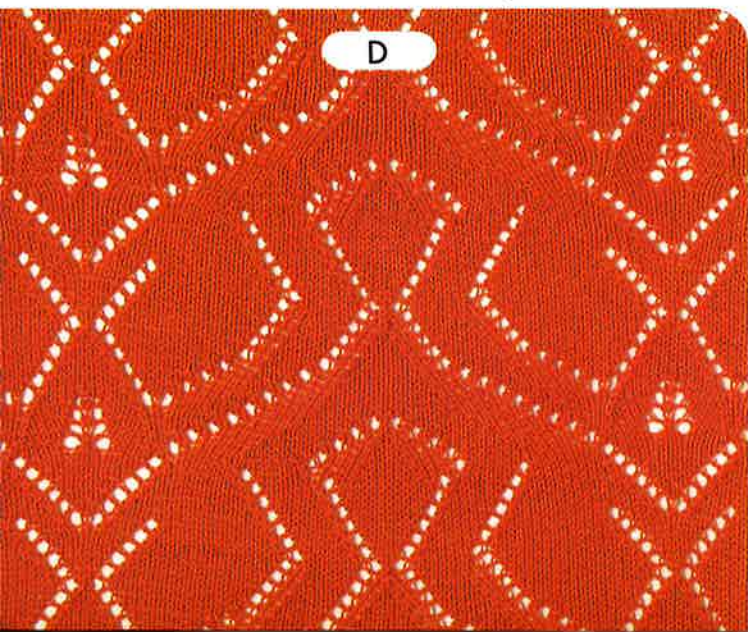
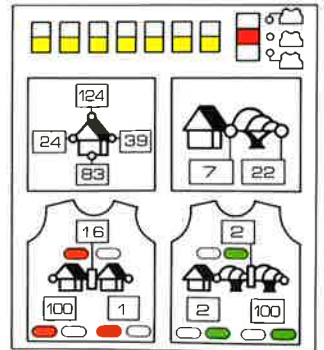
C ①



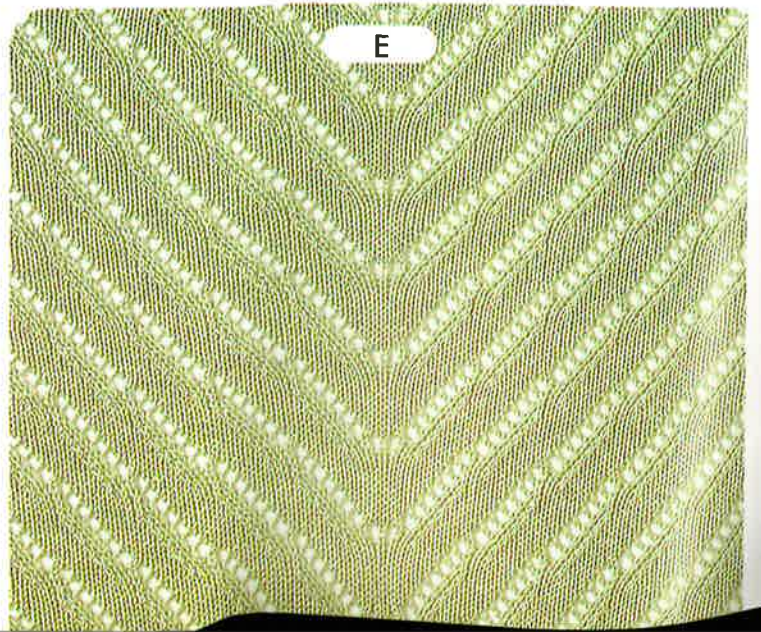
D ①



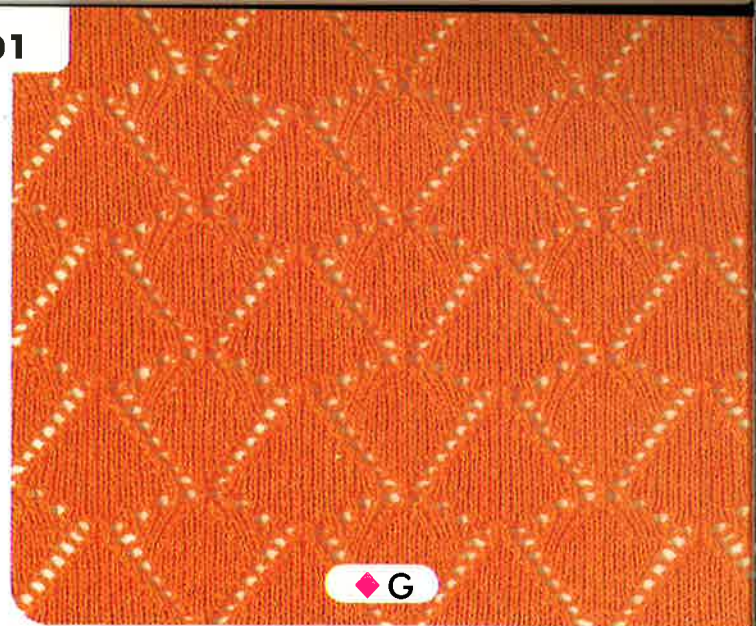
E ①



D

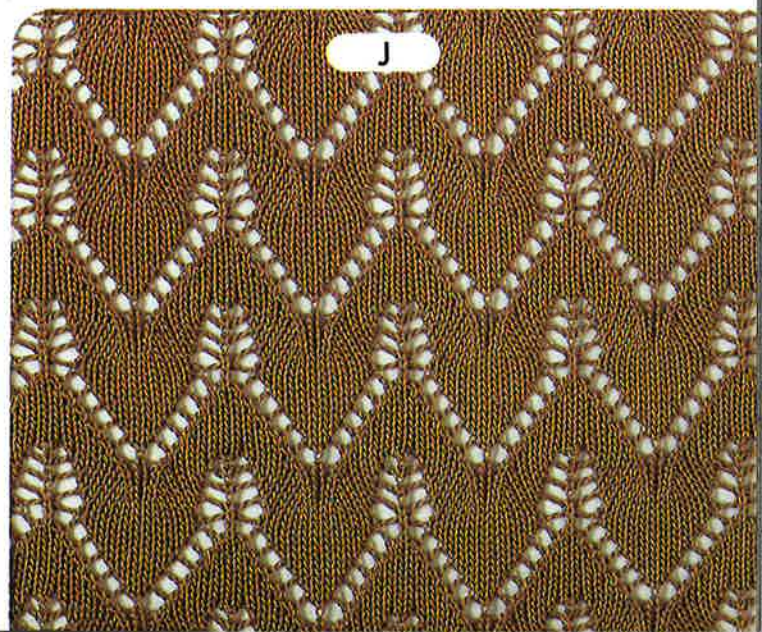
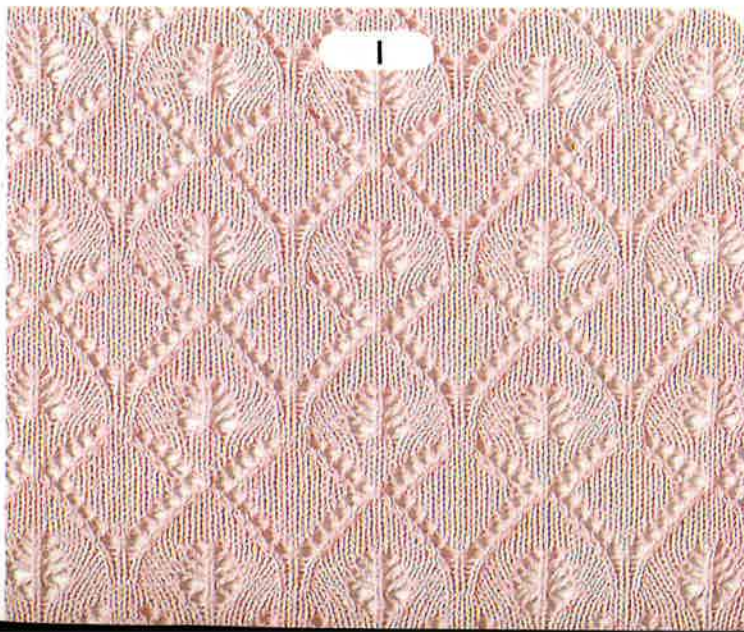
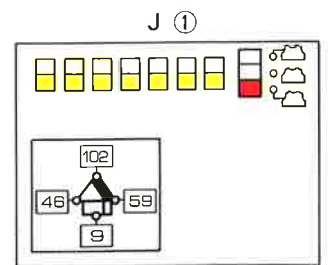
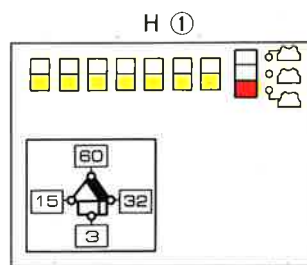
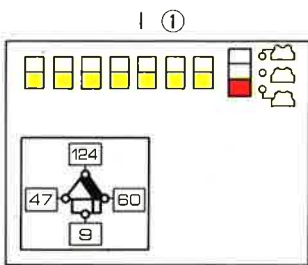
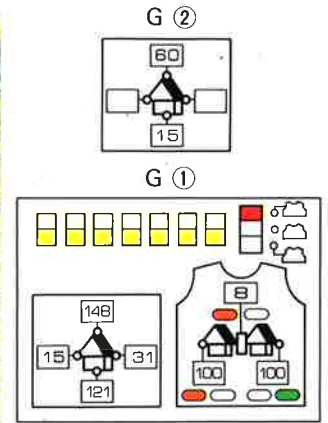
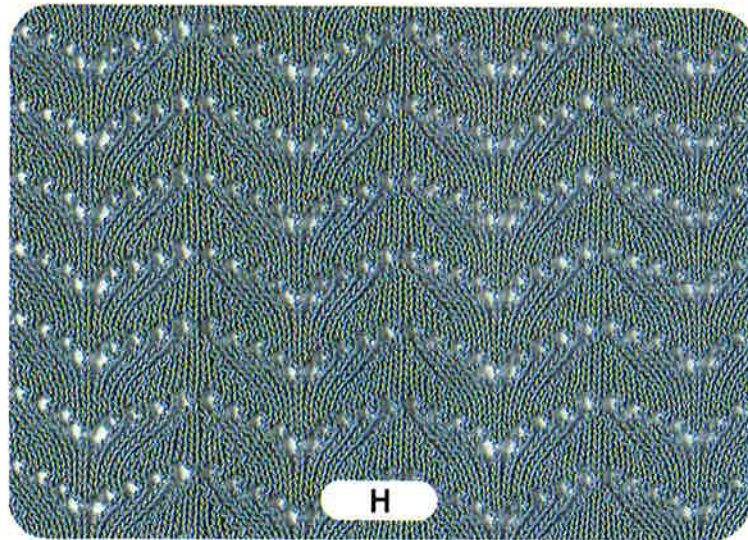
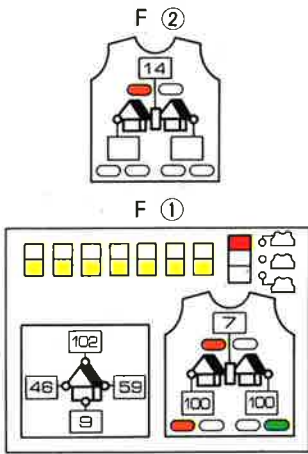


E



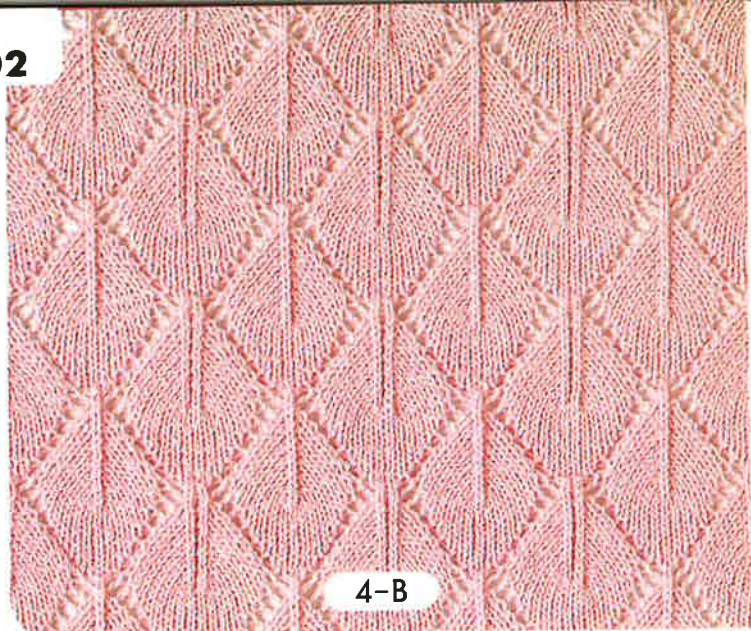
①のプログラムで編みおわたたら(もどし)キーを押し、模様カードをセットラインまでもどします。次に②のプログラムを入れ、(はじめ)キーを押し、つづけて編みます。以後◆印の模様は同様に操作します。

After knitting with Program ①, set the Pattern Card to the SET LINE by pushing (RR) key. Make the Program ②, push (CF) key and continue the knitting. Operate in the same way for the pattern with ◆ mark from this time forth.





◆ 4-A

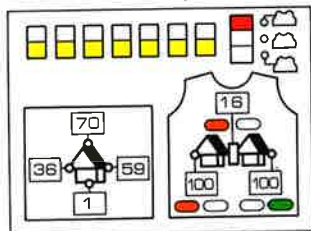


4-B

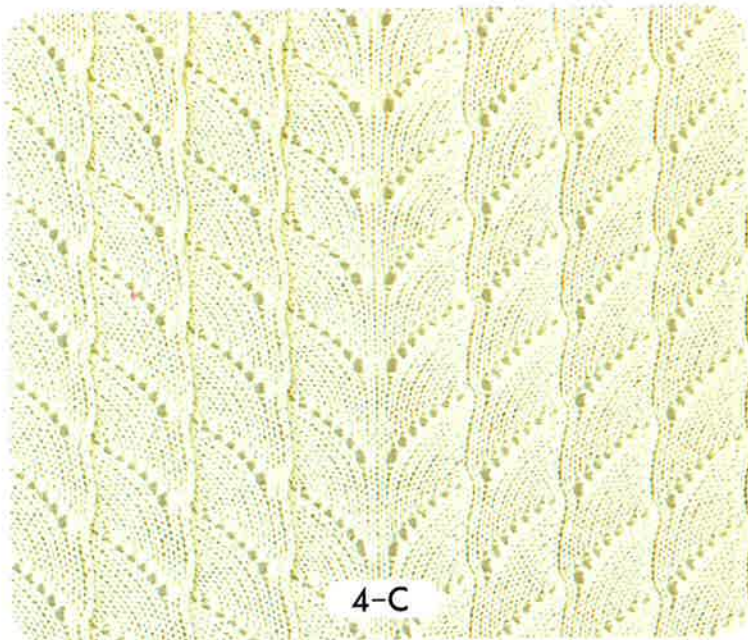
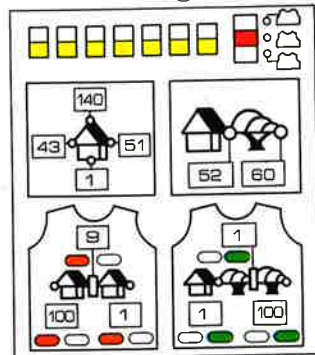
4-A ②



4-A ①

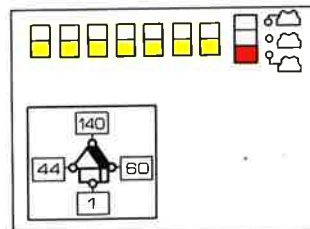


4-D ①

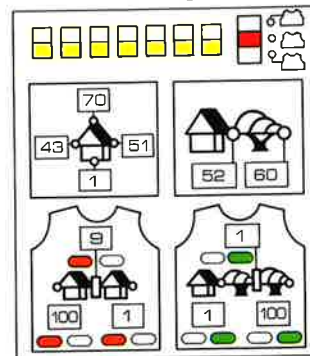


4-C

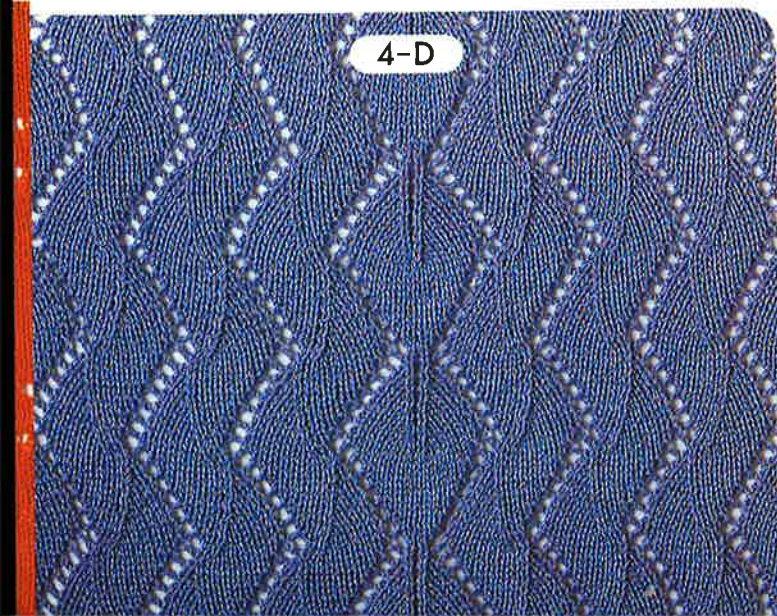
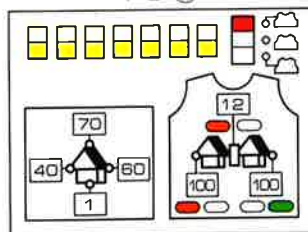
4-B ①



4-C ①



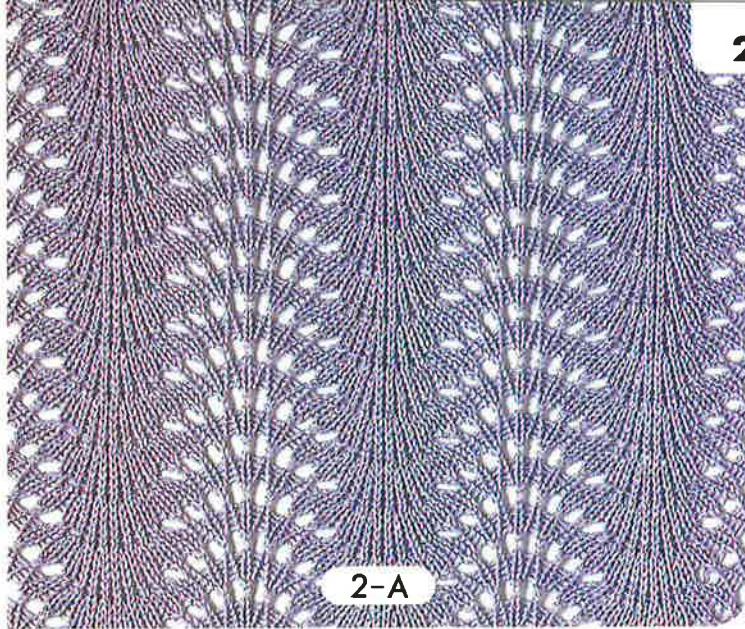
4-E ①



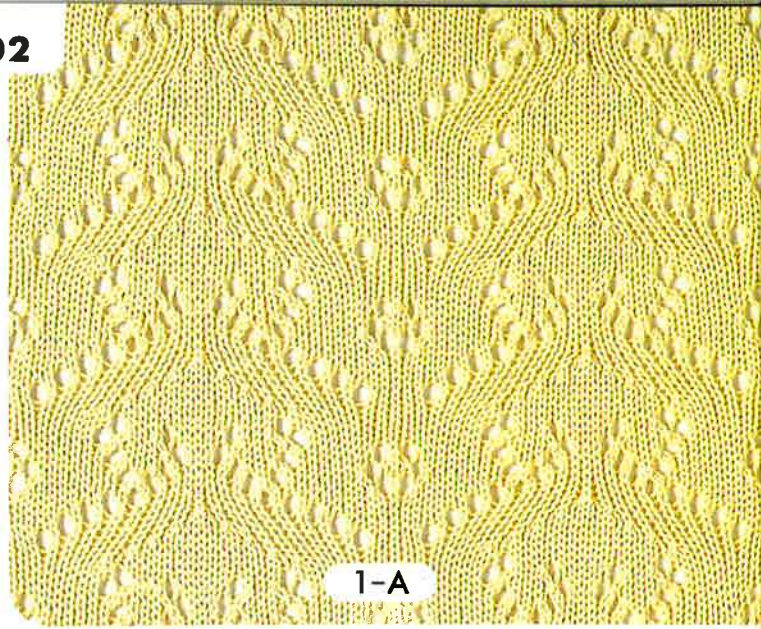
4-D



4-E

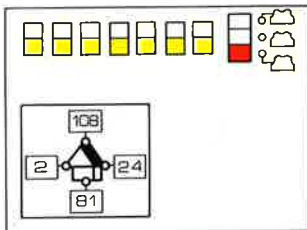


2-A



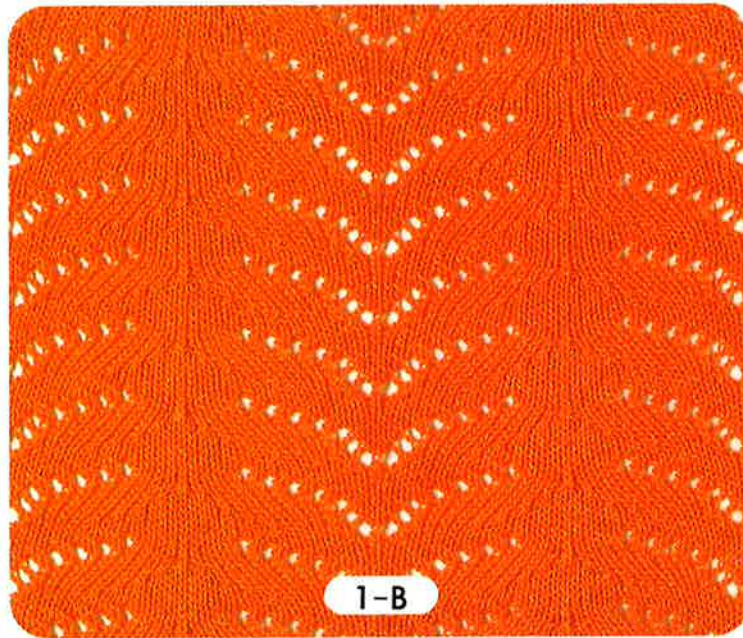
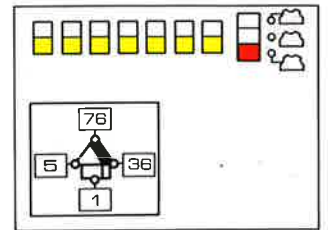
1-A

2-A ①



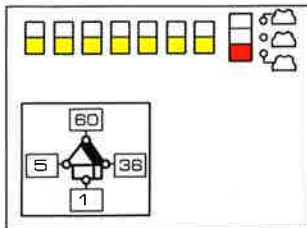
模様の上に平編6段編みます。
Knit 6 rows with Plain stitch
between patterns.

1-A ①

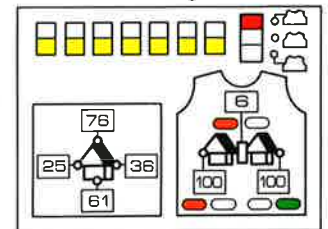


1-B

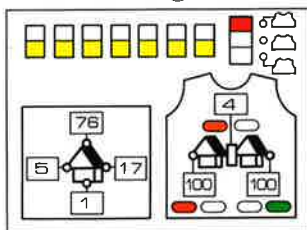
1-B ①



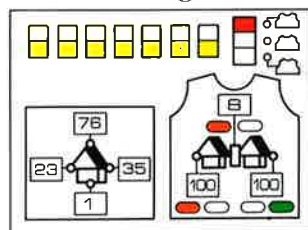
1-D ②



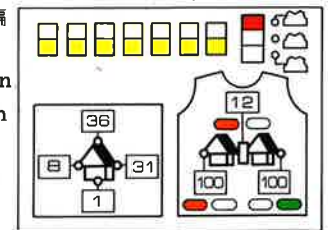
1-C ①



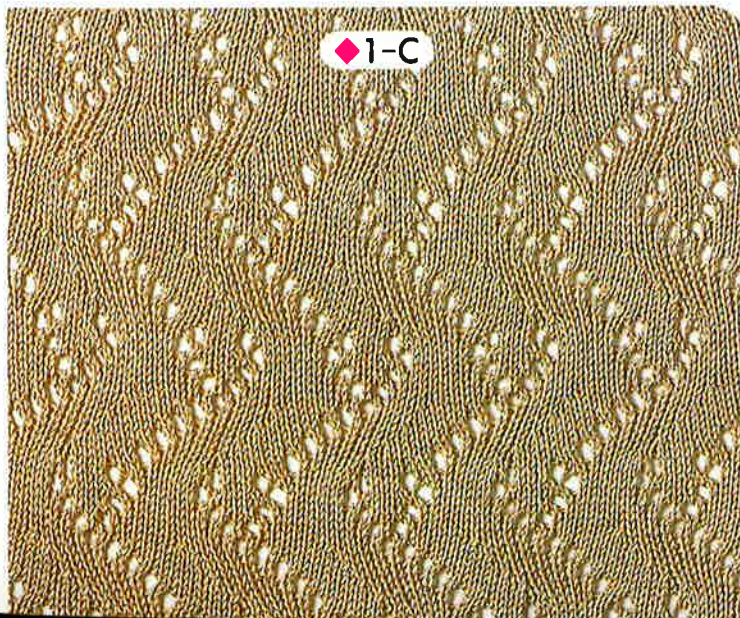
1-C ②



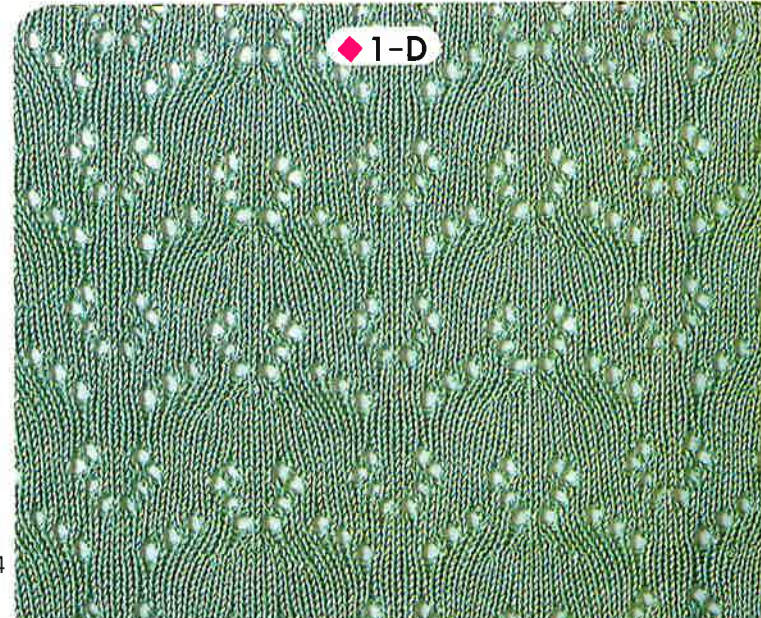
1-D ①



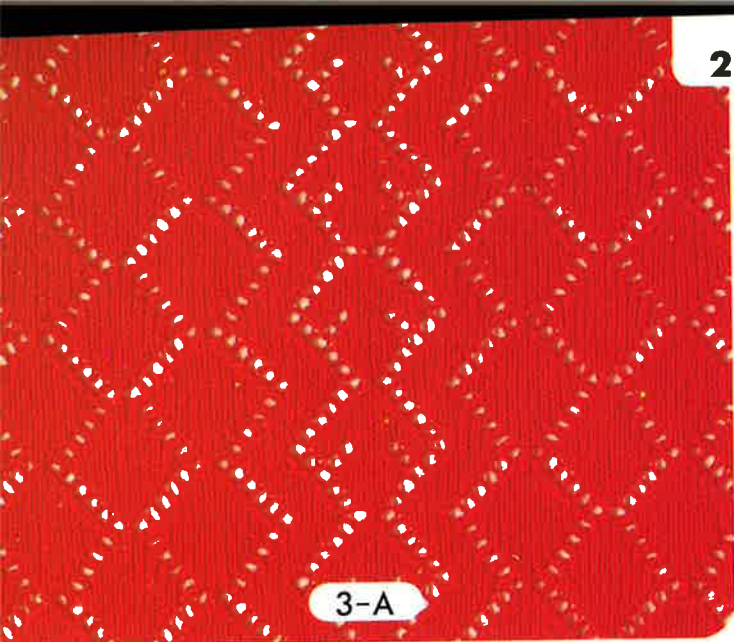
①・②で1模様。模様の上に平編
 8段編みます。
 ①+②=One complete pattern
Knit 8 rows with Plain stitch
between patterns.



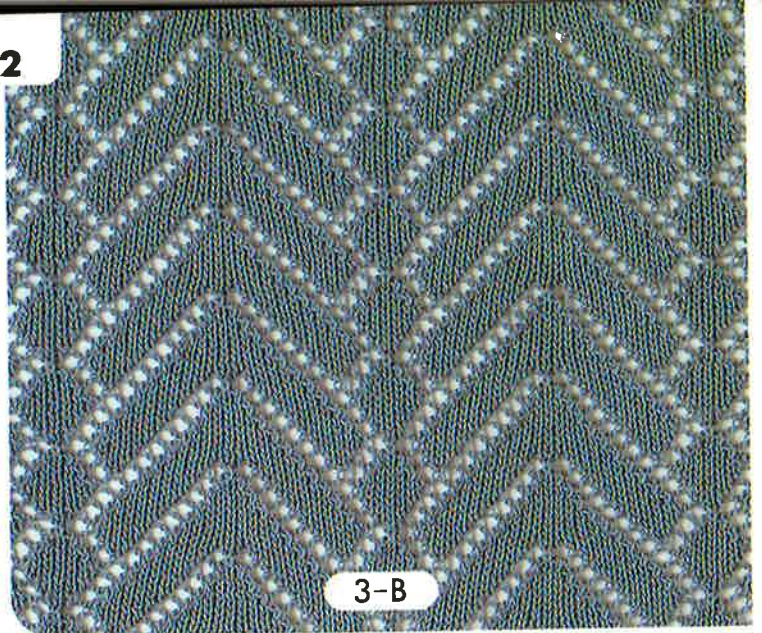
◆1-C



◆1-D

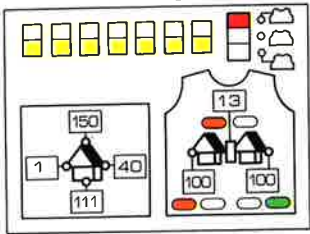


3-A

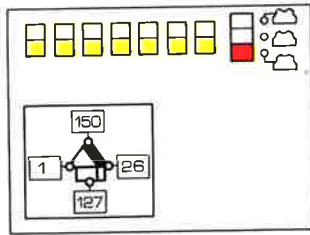


3-B

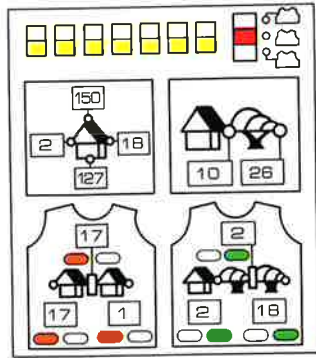
3-A ①



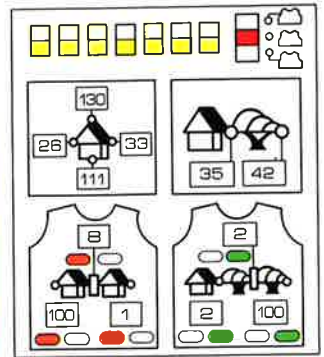
3-B ①



3-D ①

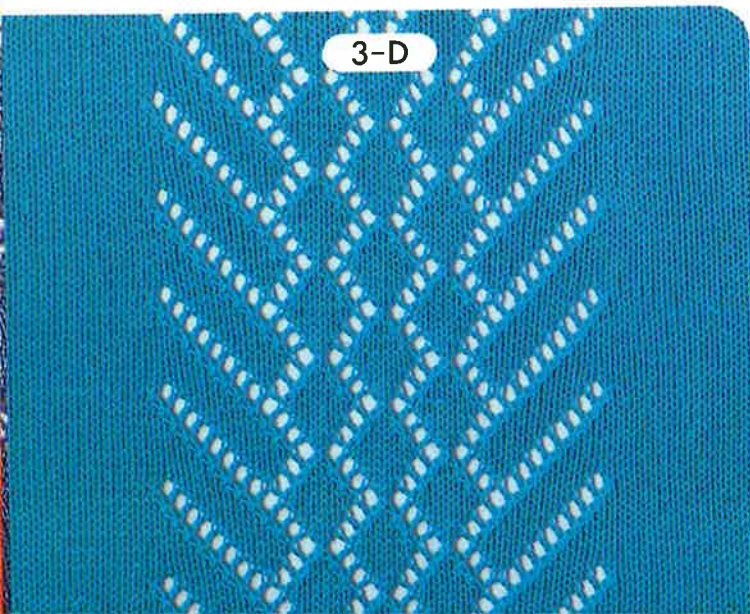
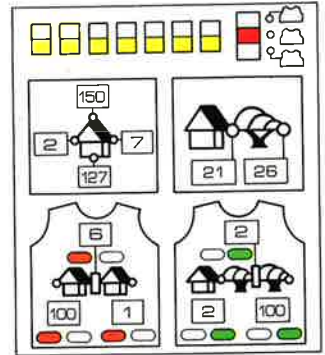


3-C ①

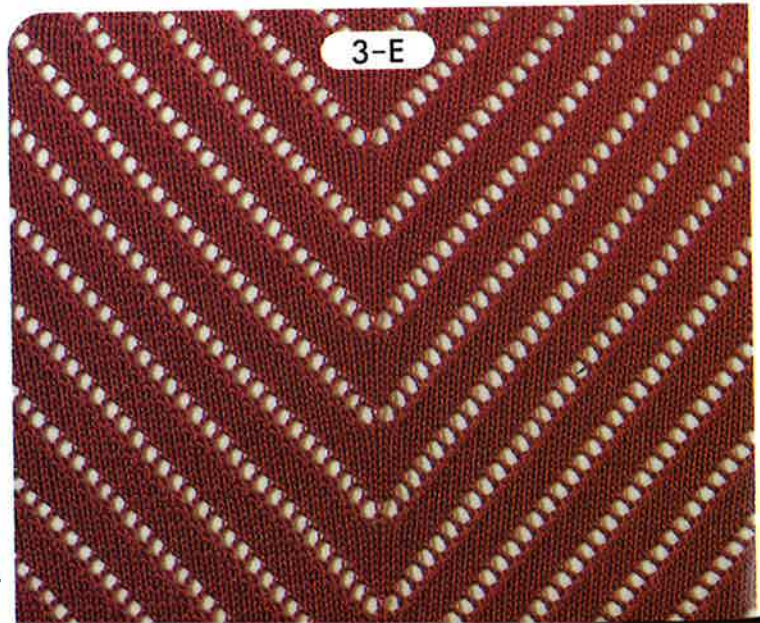


3-C

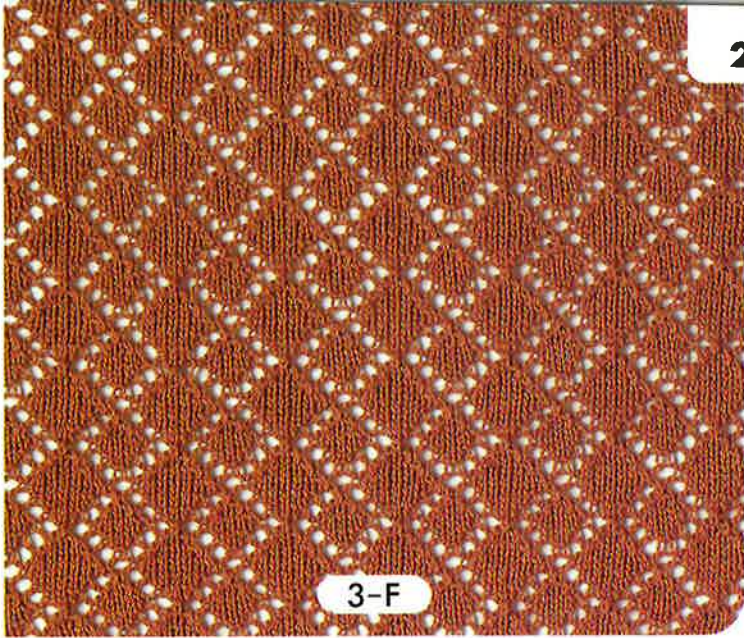
3-E ①



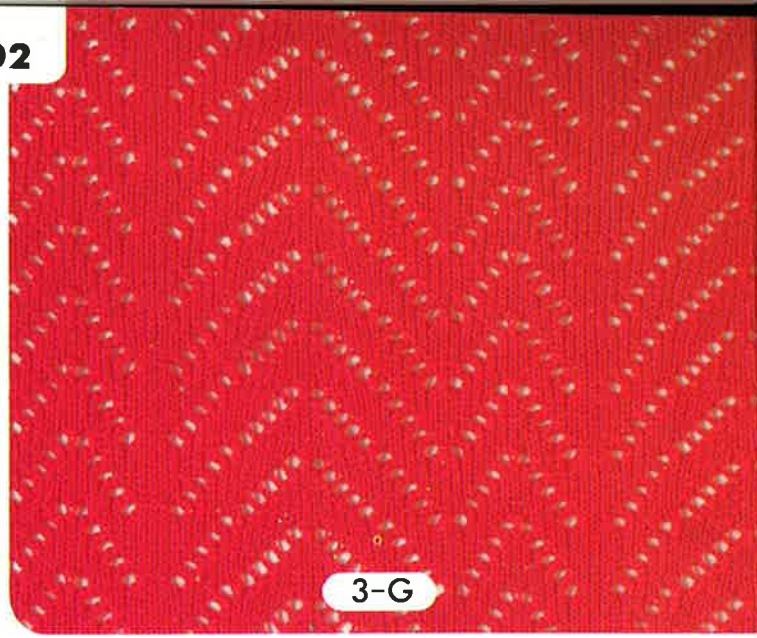
3-D



3-E

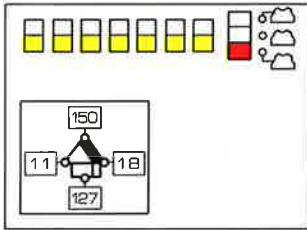


3-F

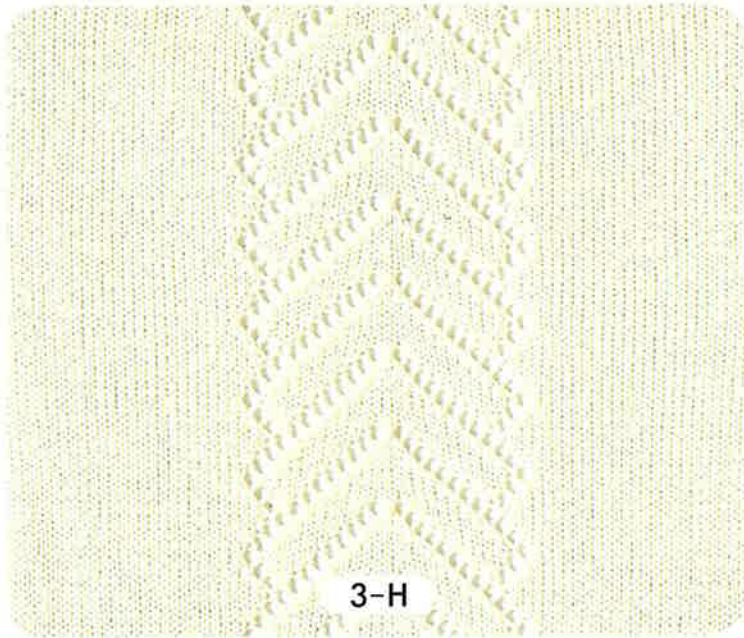
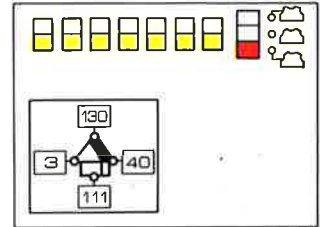


3-G

3-F ①

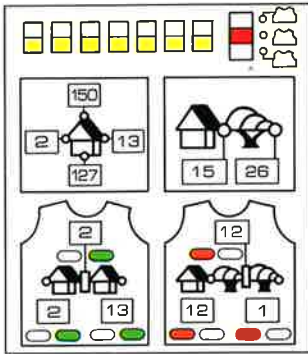


3-G ①

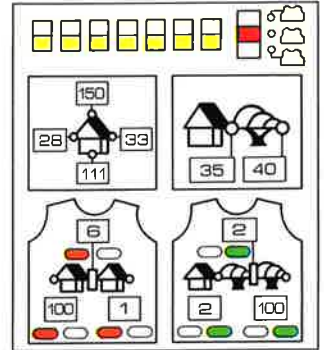


3-H

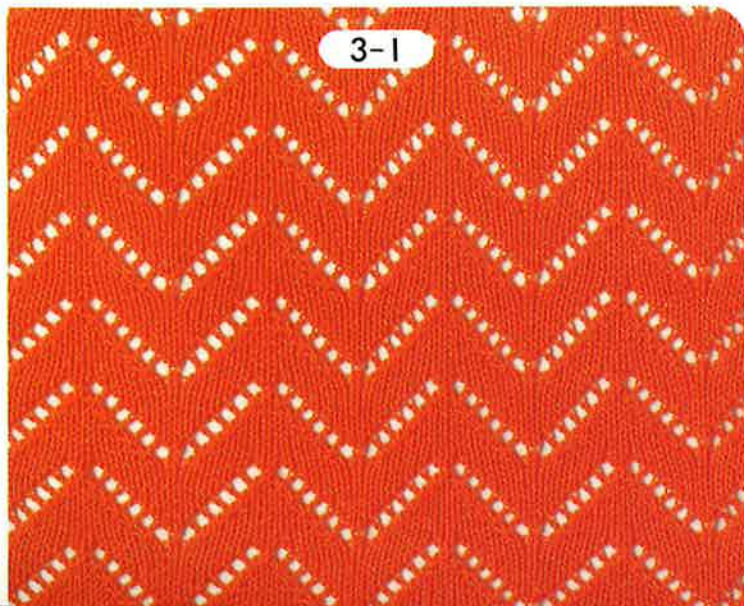
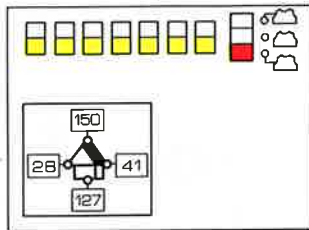
3-H ①



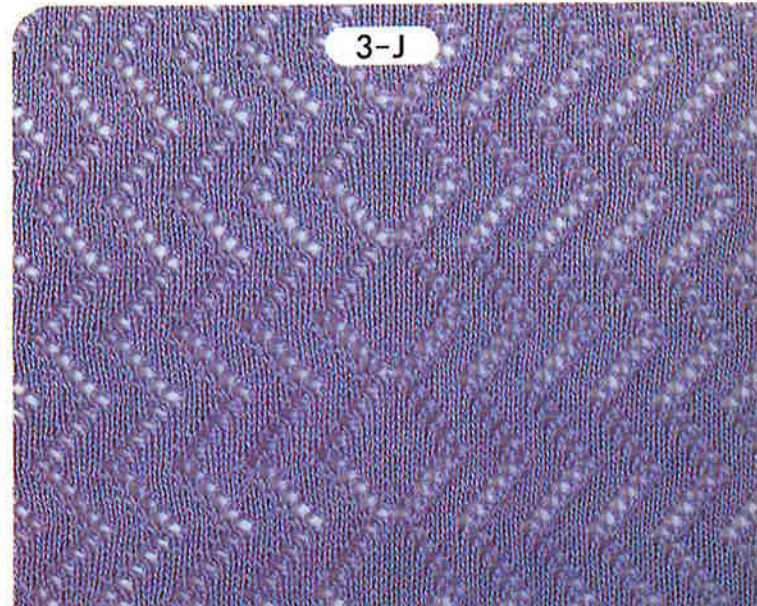
3-J ①



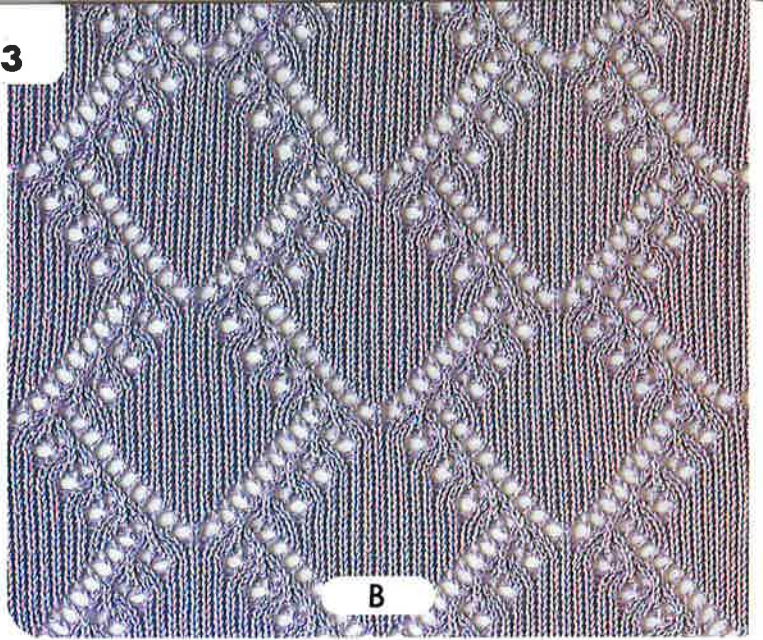
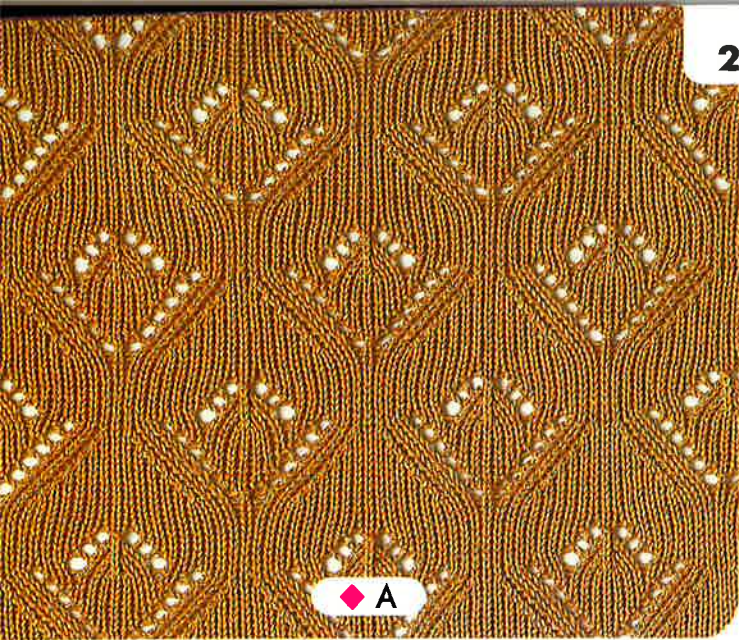
3-I ①



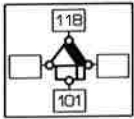
3-I



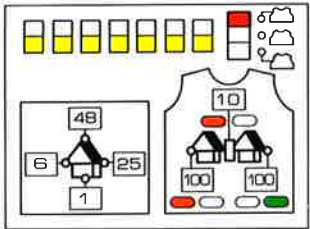
3-J



A ②

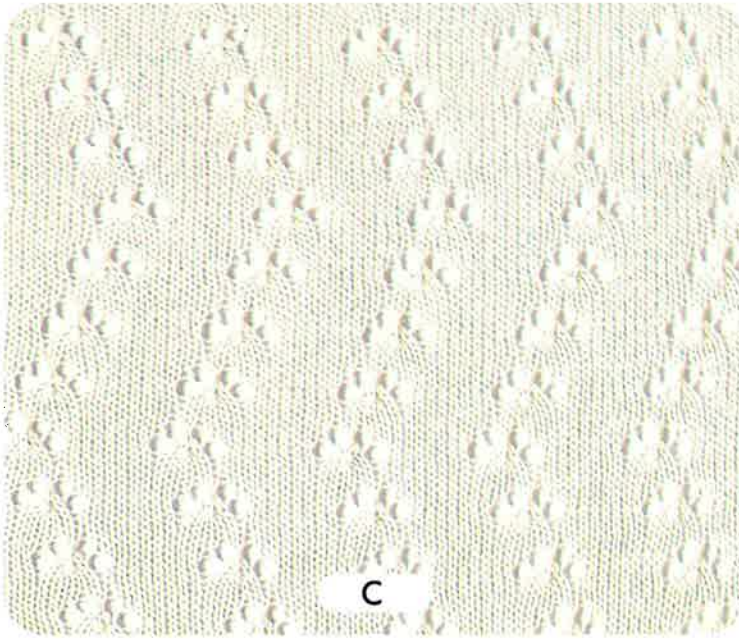


A ①

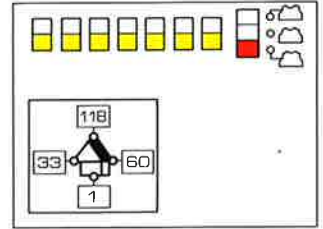


①・②で1模様。2模様めは基準位置黄色20にします(基準位置黄色10と20を交互)。模様の中に平編6段編みます。

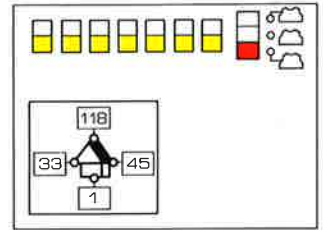
①+②=One complete pattern
Alternate F.N.P. 10 with 20.
(F.N.P.: First Needle Position)
Knit 6 rows with Plain stitch between patterns.



B ①



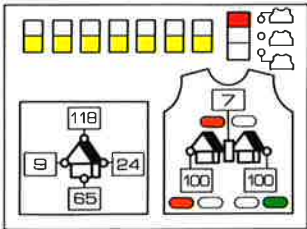
C ①



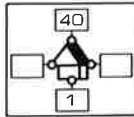
L欄と模様欄の間の数字6は平編で6段編みます。

Knit 6 rows with Plain stitch when "6" is indicated beside the "L-WINDOW".

D ①



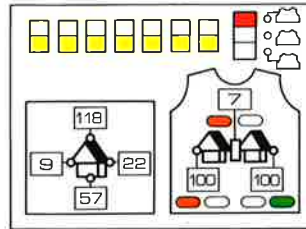
D ②



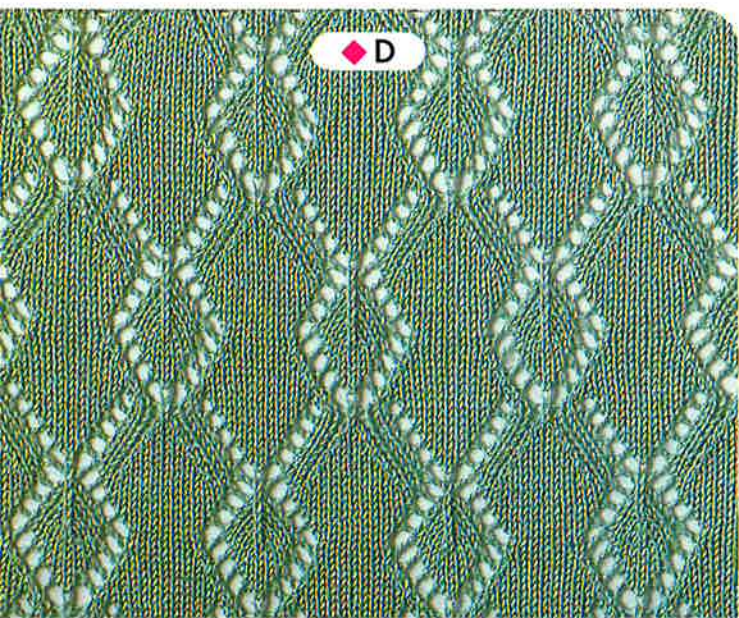
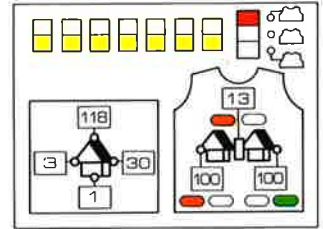
①・②で1模様。2模様めは基準位置黄色15にします(基準位置黄色7と15を交互)。

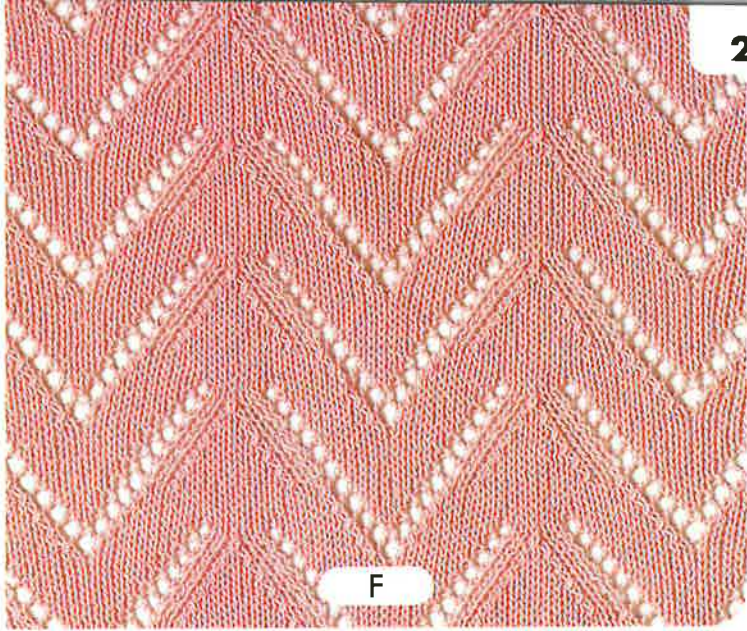
①+②=One complete pattern
Alternate F.N.P. 7 with 15.

E ①



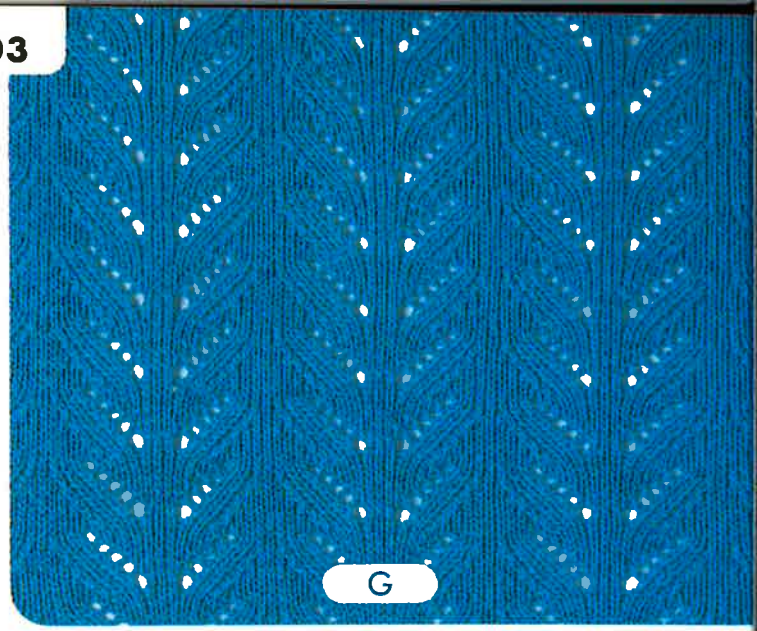
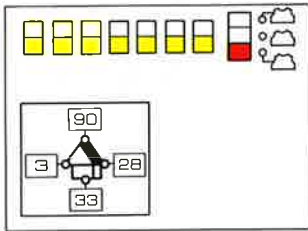
E ②





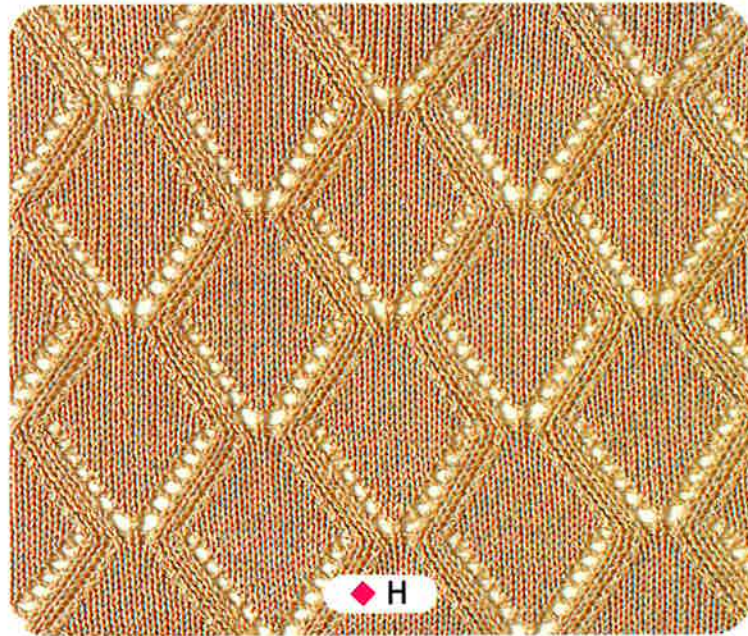
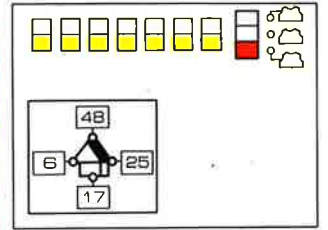
F

F ①



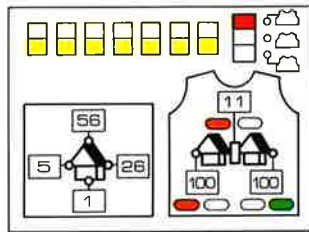
G

G ①



H

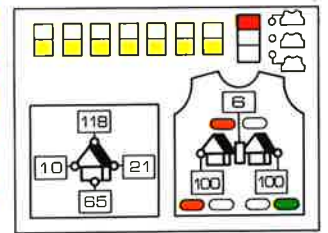
H ①



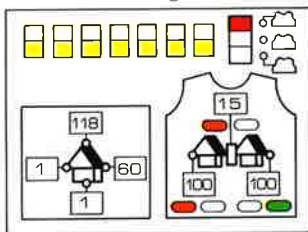
H ②



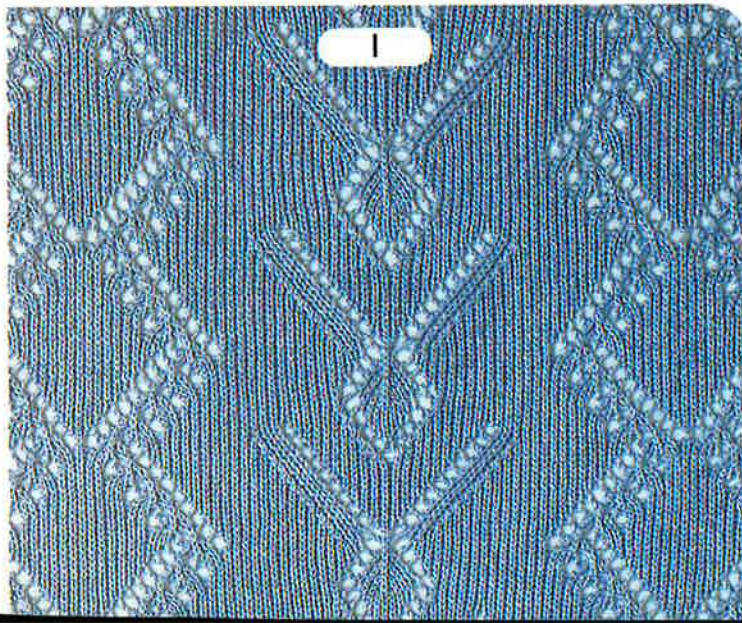
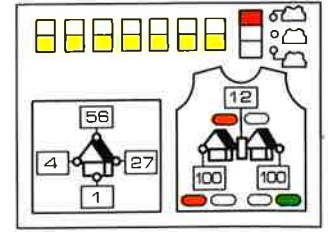
J ②



I ①



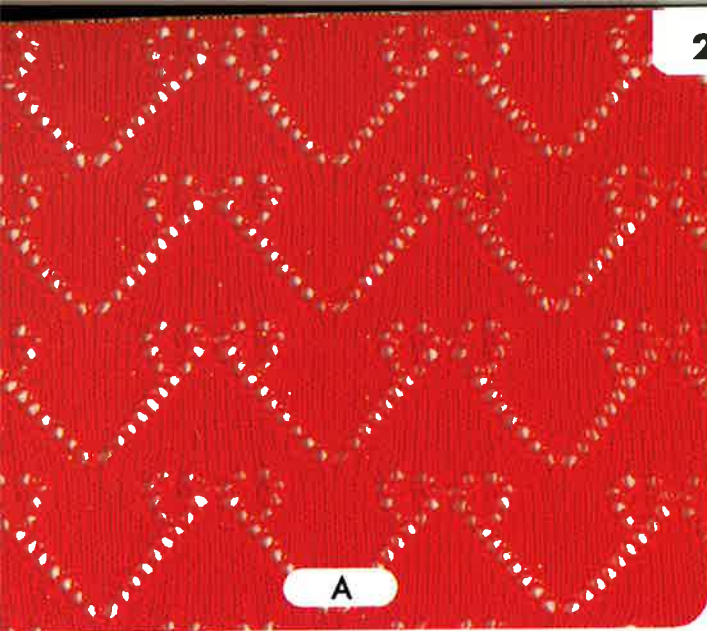
J ①



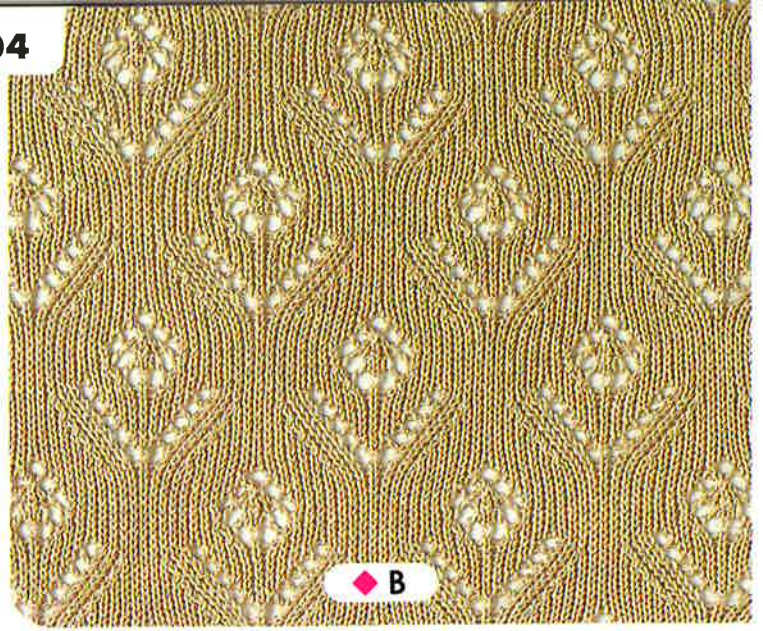
I



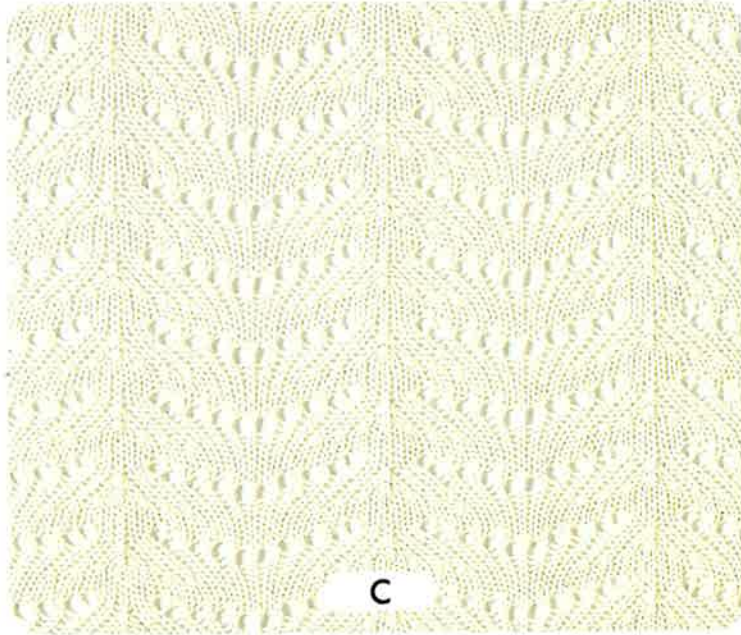
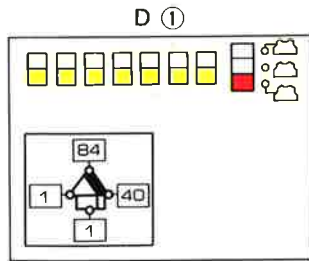
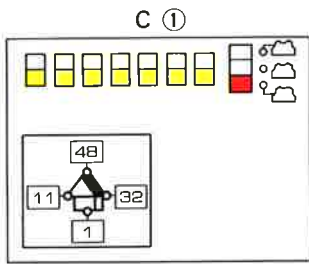
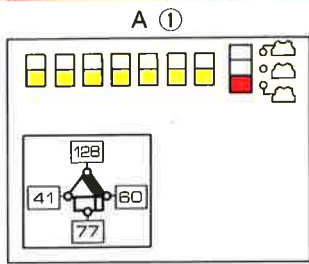
J



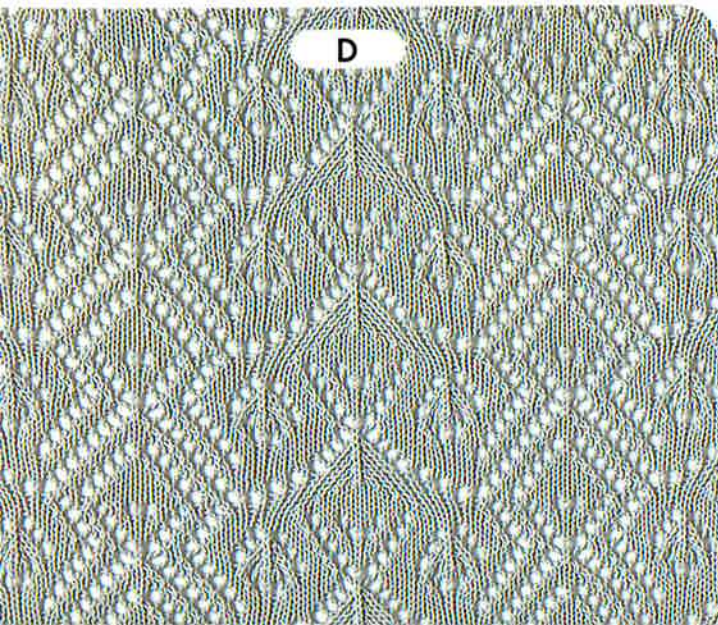
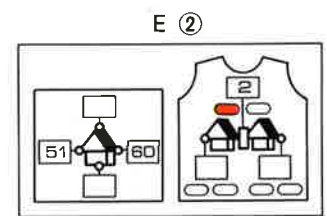
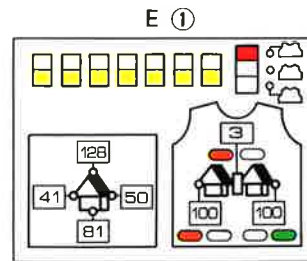
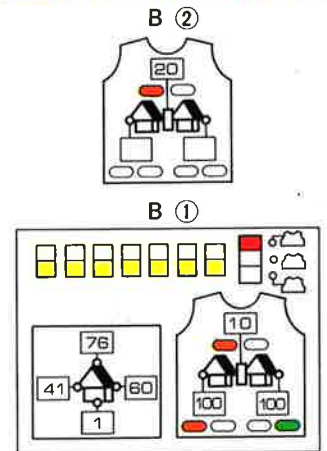
A



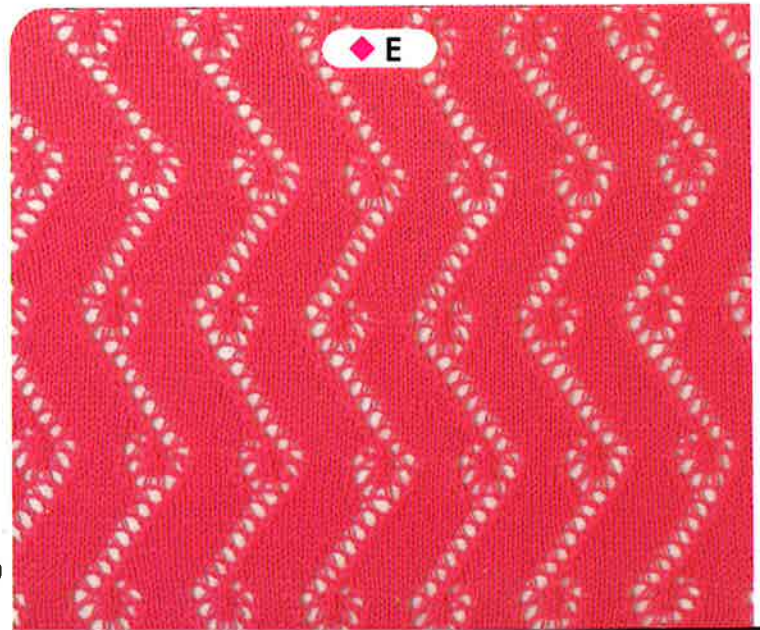
B



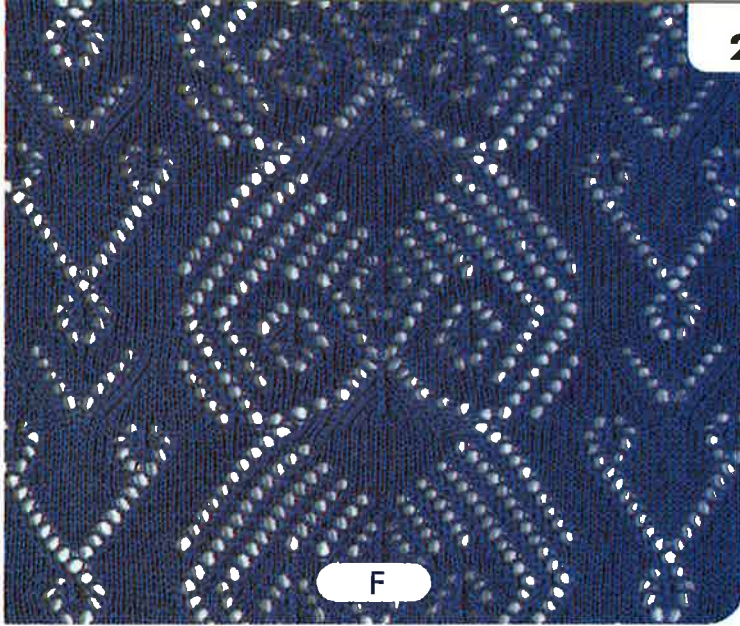
C



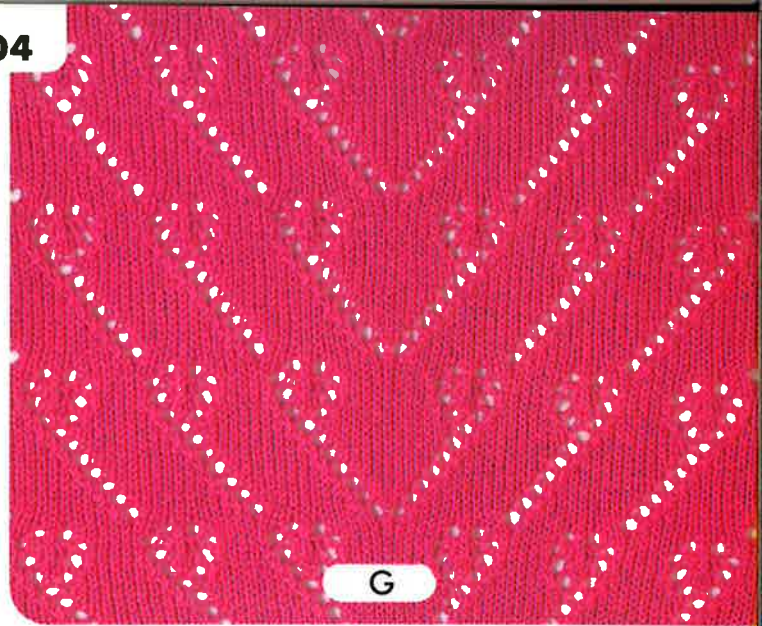
D



E

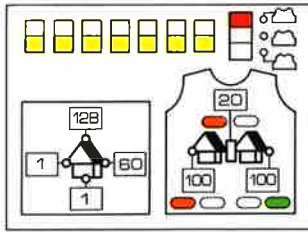


F

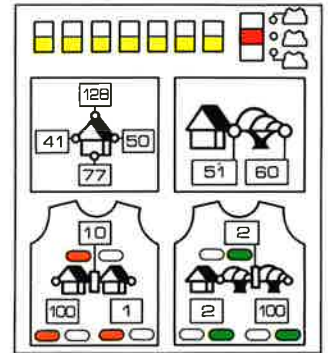


G

F ①

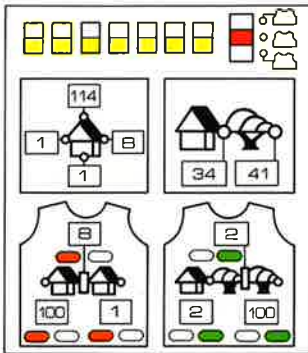


G ①



◆ H

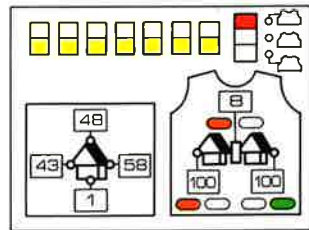
I ①



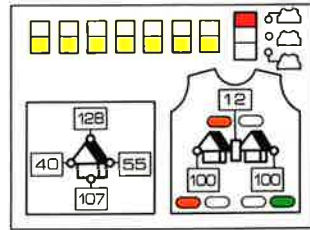
J ②



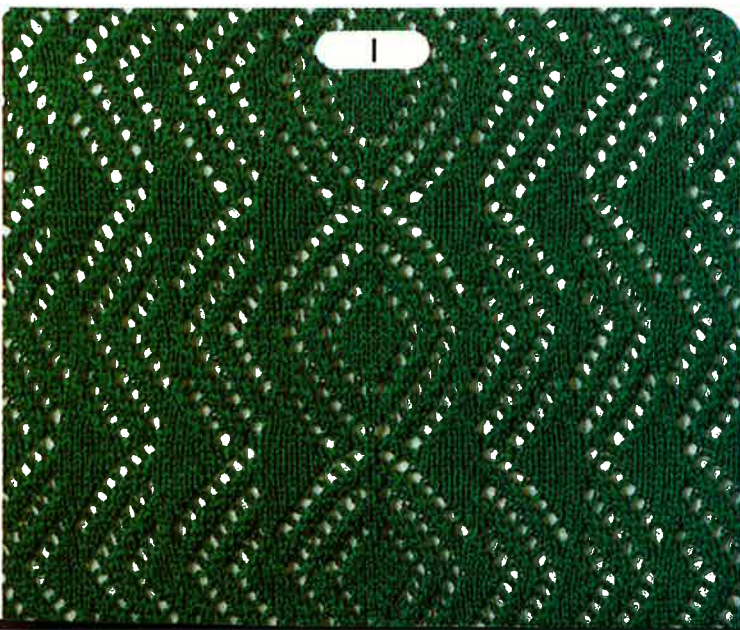
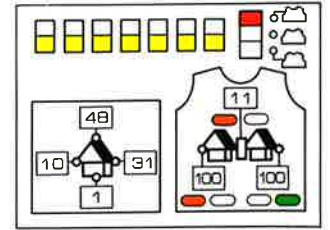
H ①



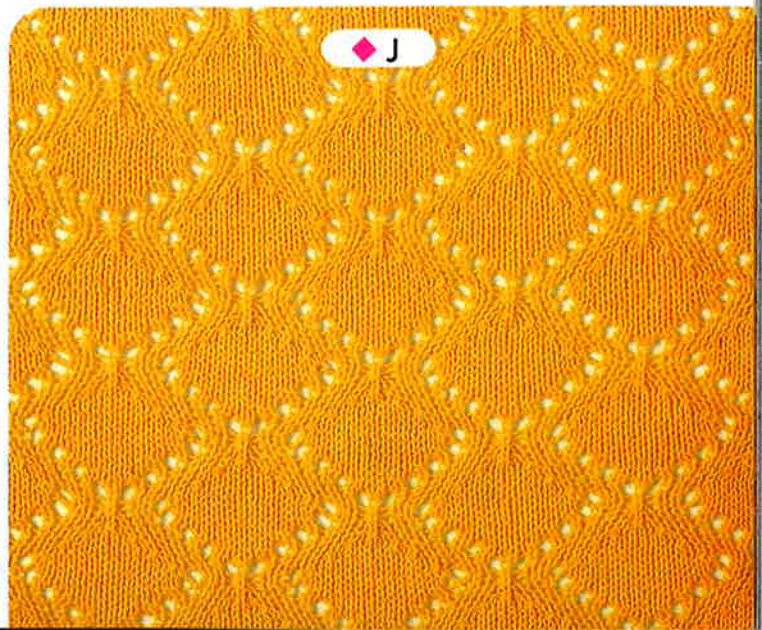
H ②



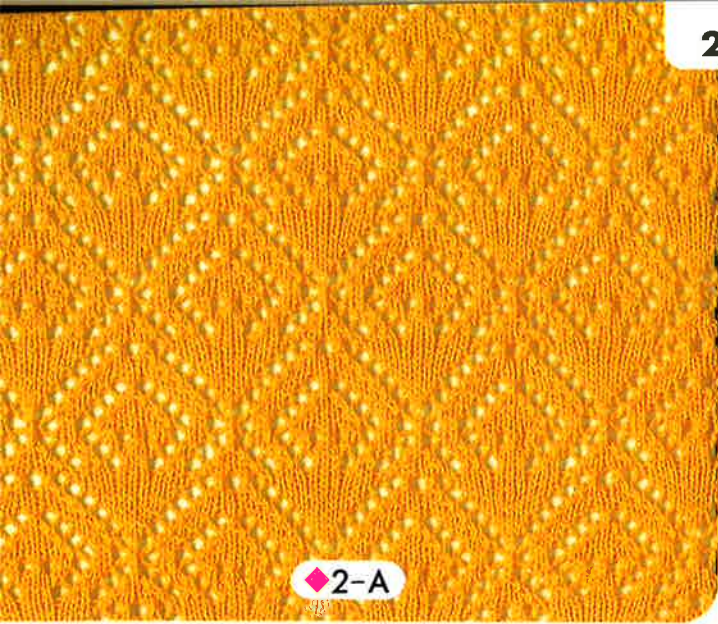
J ①



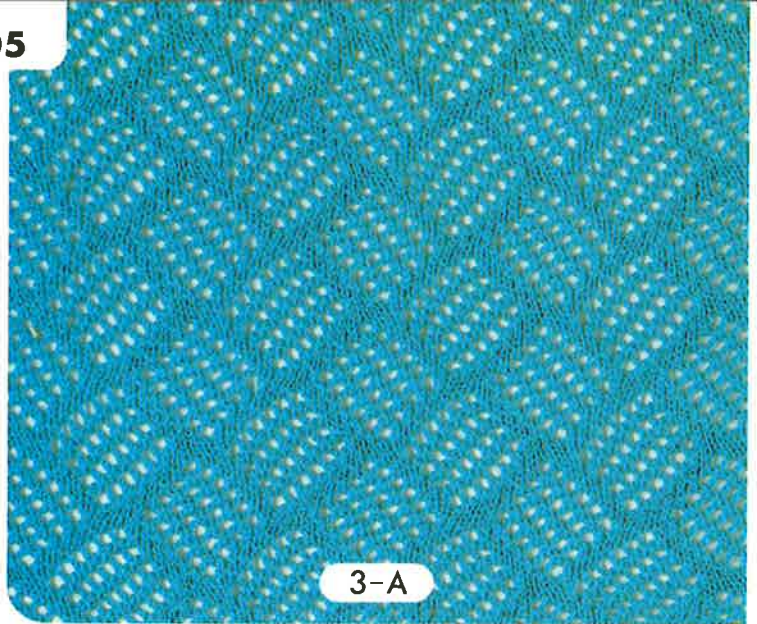
I



◆ J

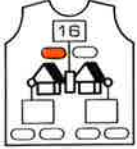


◆ 2-A

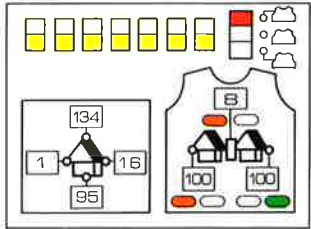


3-A

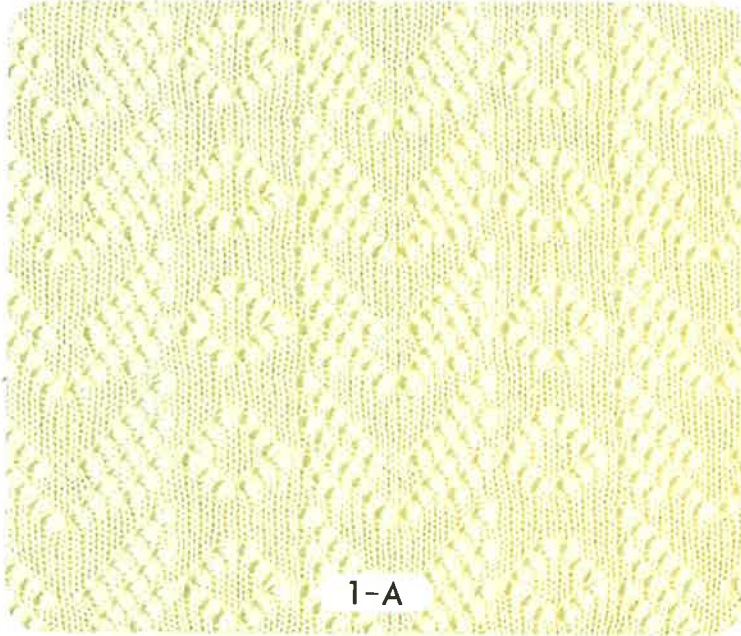
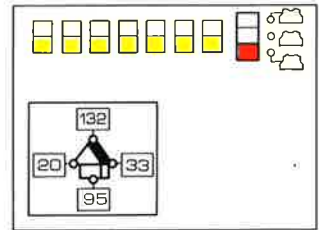
2-A ②



2-A ①

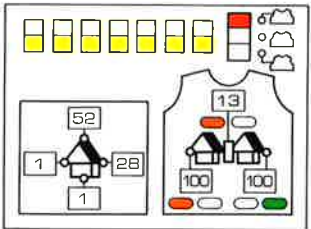


3-A ①

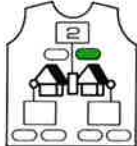


1-A

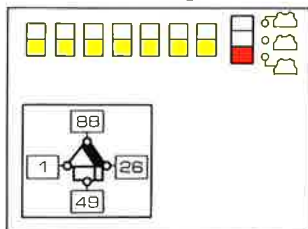
1-B ①



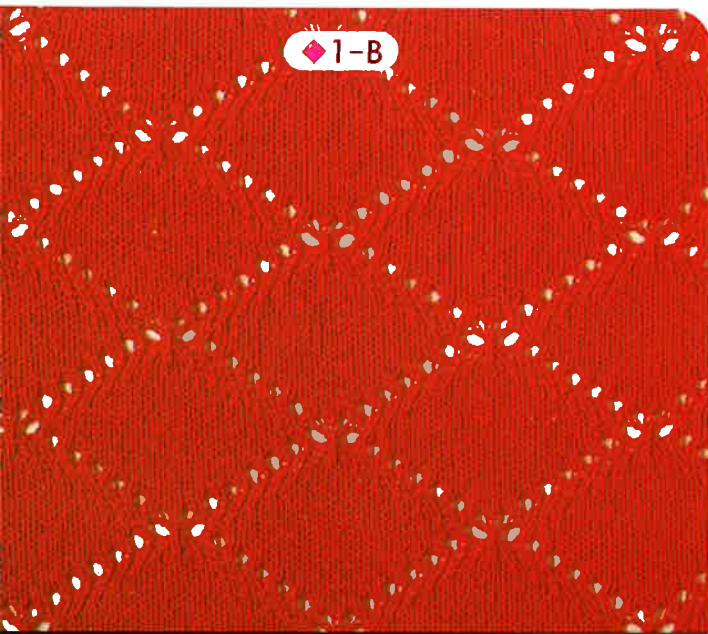
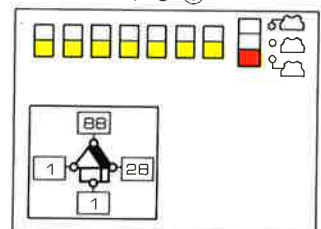
1-B ②



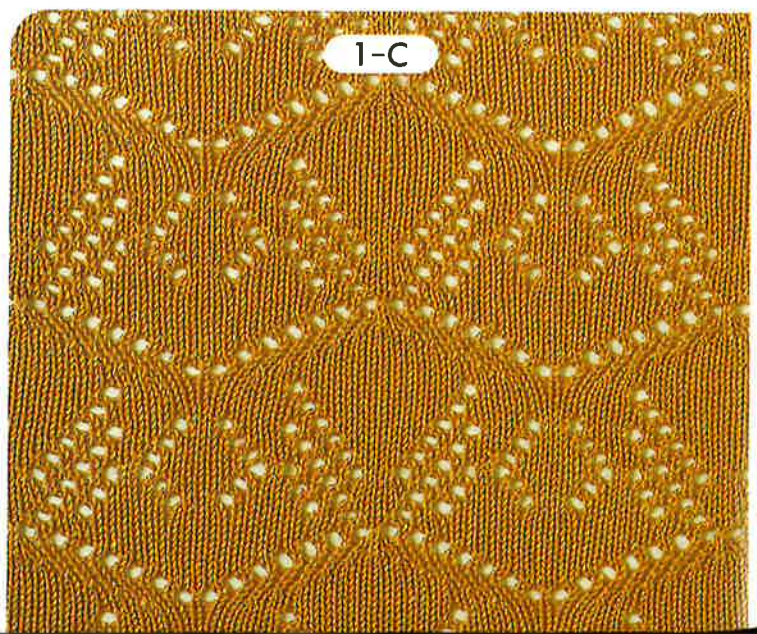
1-A ①



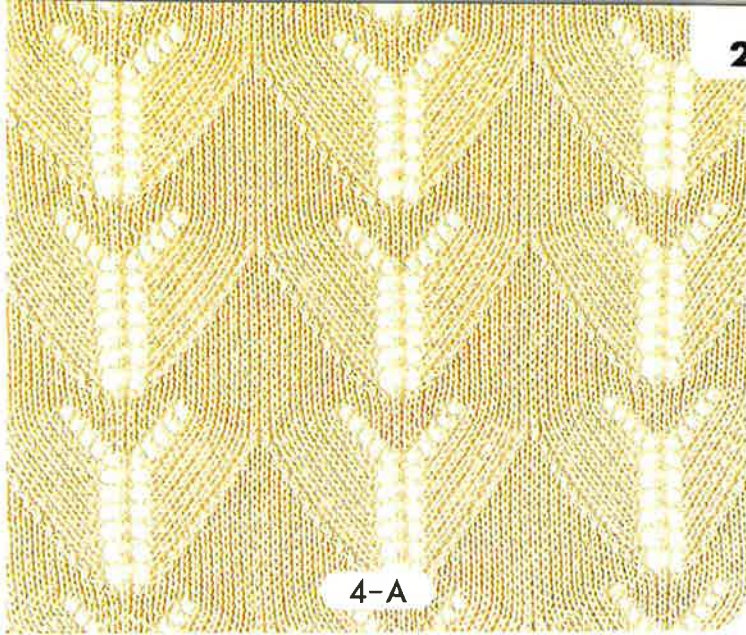
1-C ①



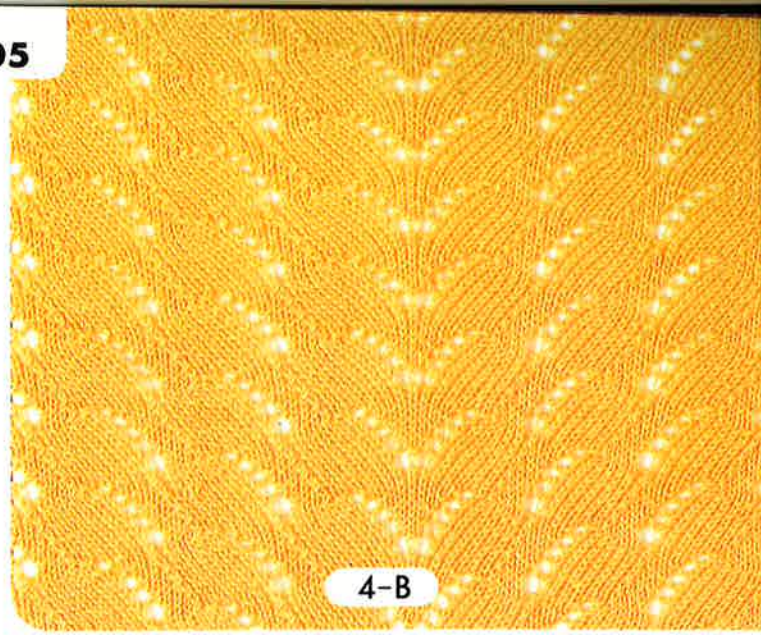
◆ 1-B



1-C

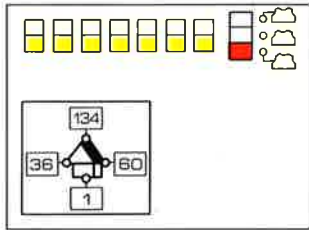


4-A

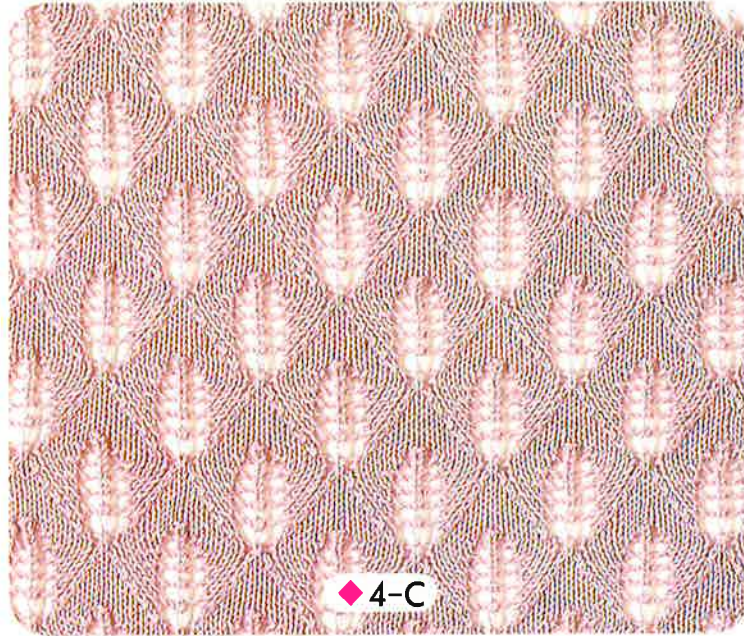
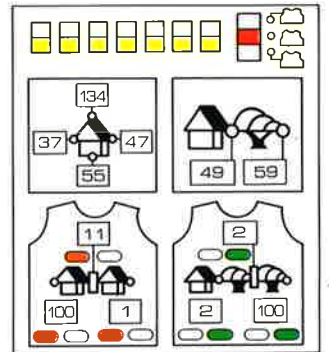


4-B

4-A ①

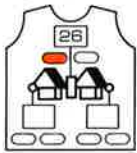


4-B ①



◆ 4-C

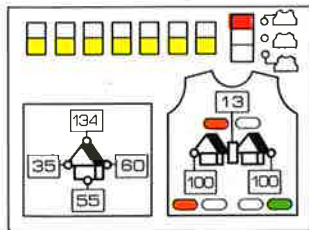
4-D ②



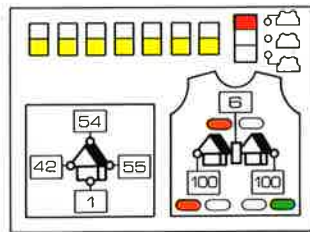
4-E ②



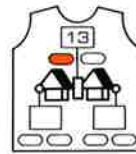
4-D ①



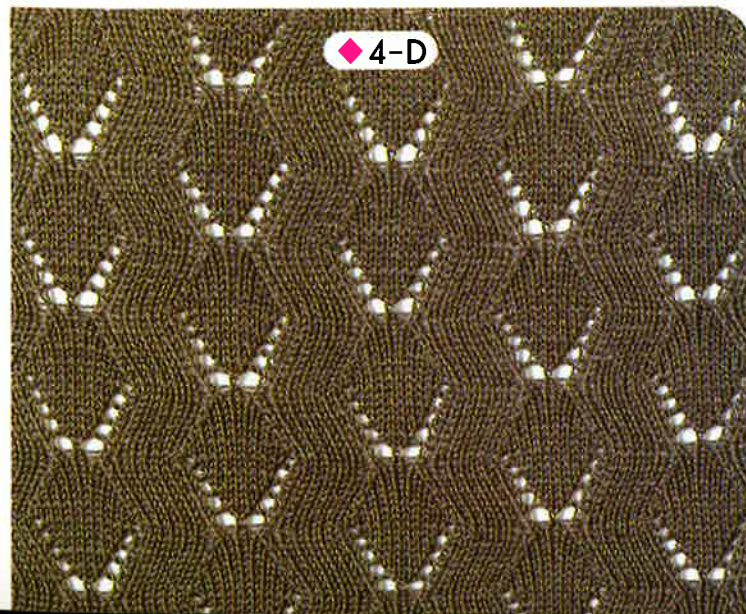
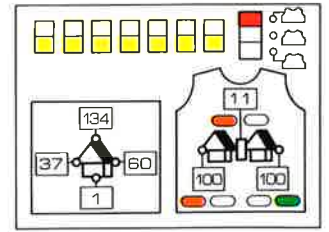
4-C ①



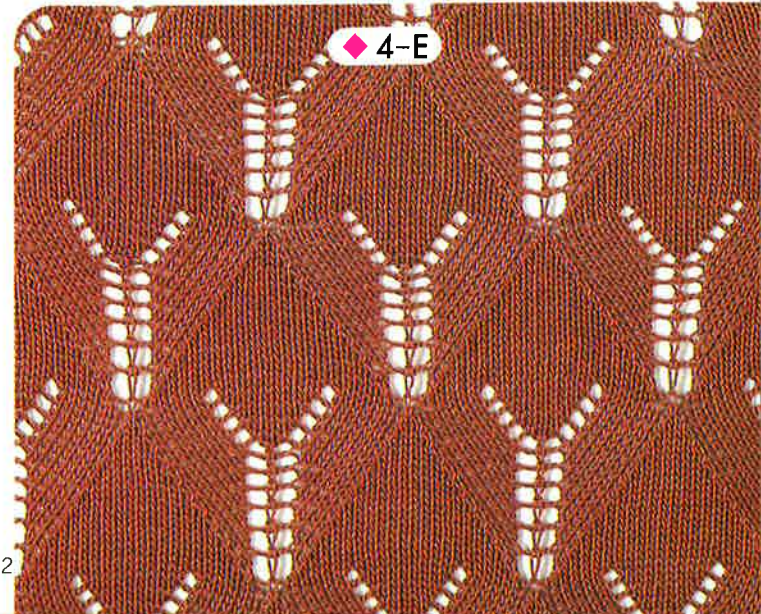
4-C ②



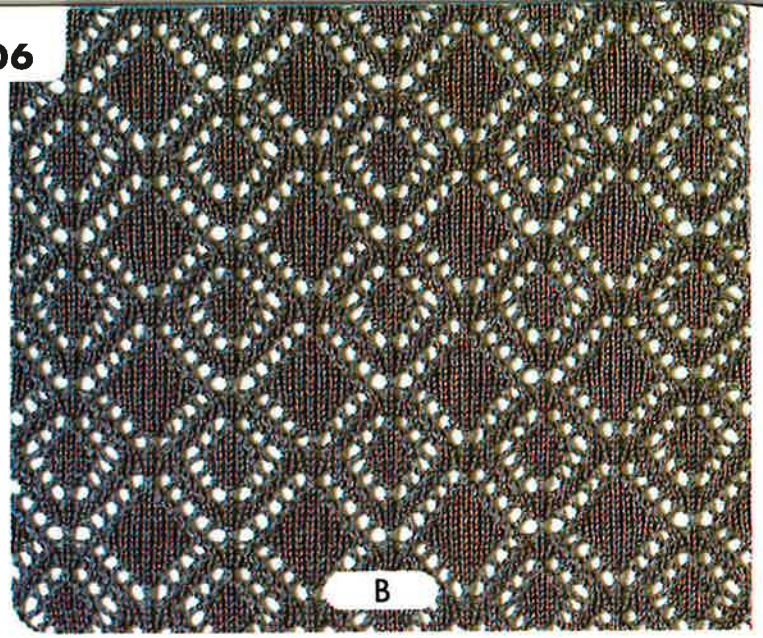
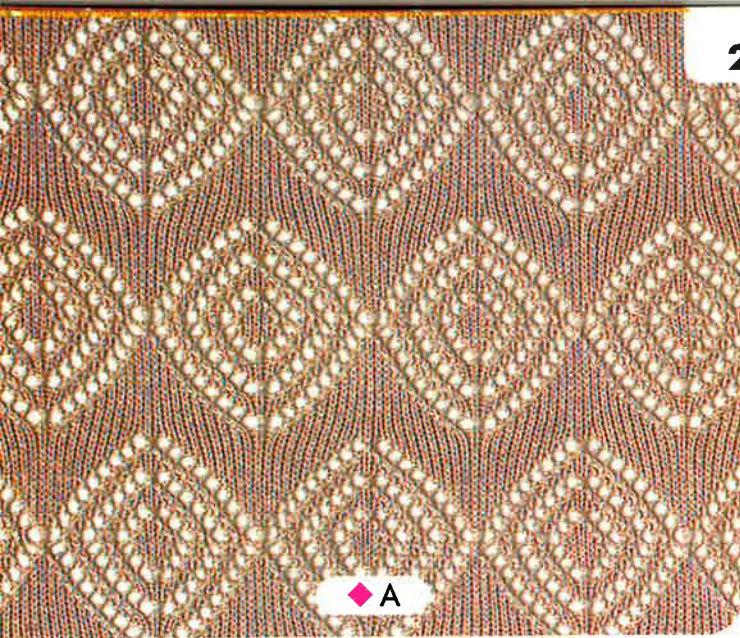
4-E ①



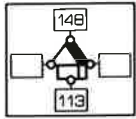
◆ 4-D



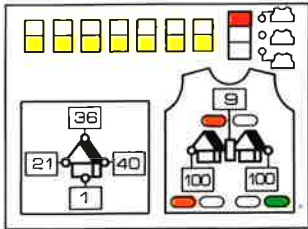
◆ 4-E



A ②

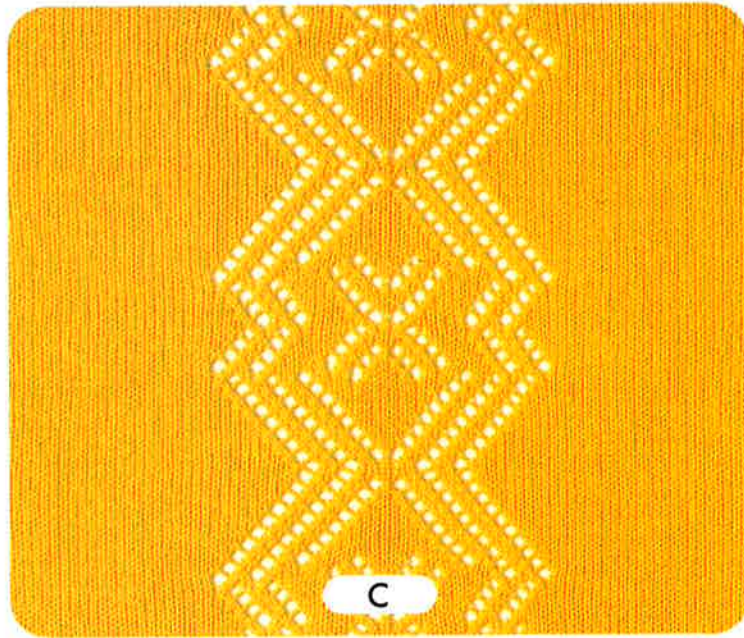


A ①

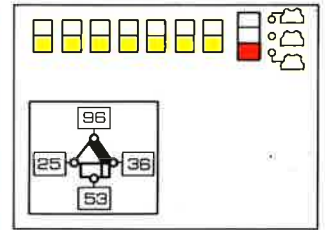


①・②で1模様。2模様めは基準位置黄色19にします(基準位置黄色9と19を交互)。

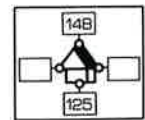
①+②= One complete pattern
Alternate F.N.P. 9 with 19.
Knit 8 rows with Plain stitch
between patterns.



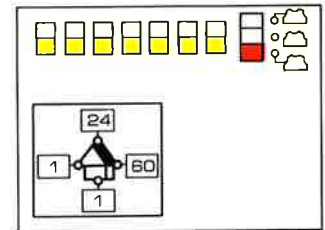
B ①



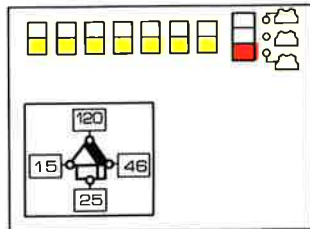
E ②



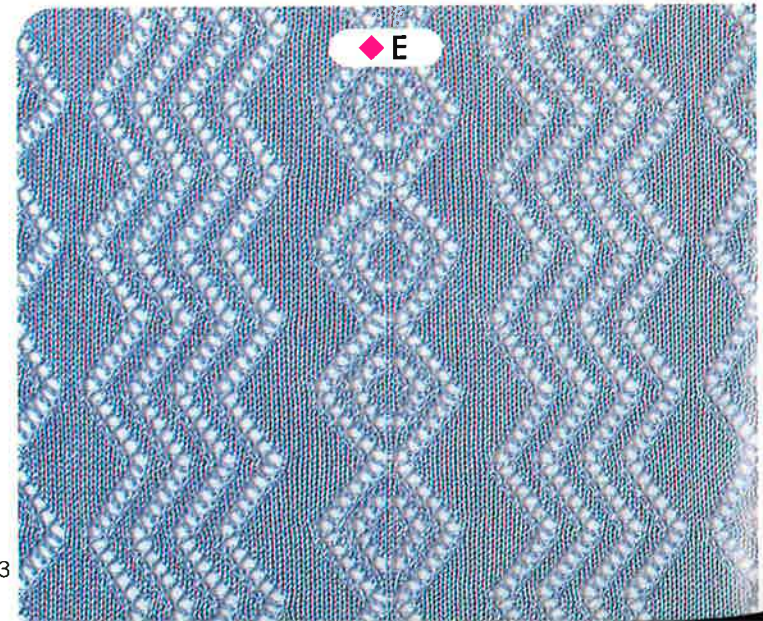
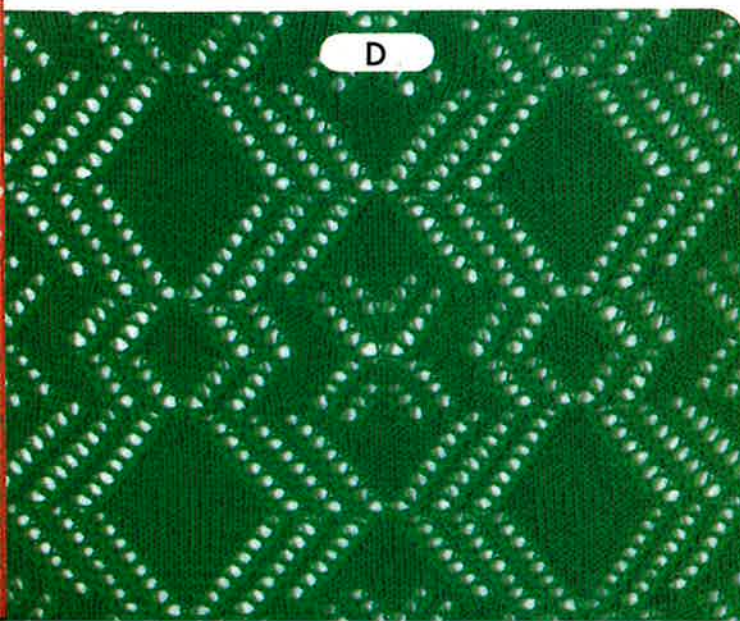
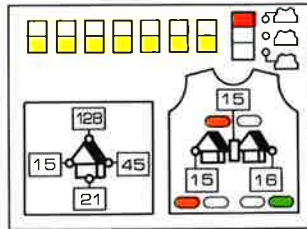
E ①

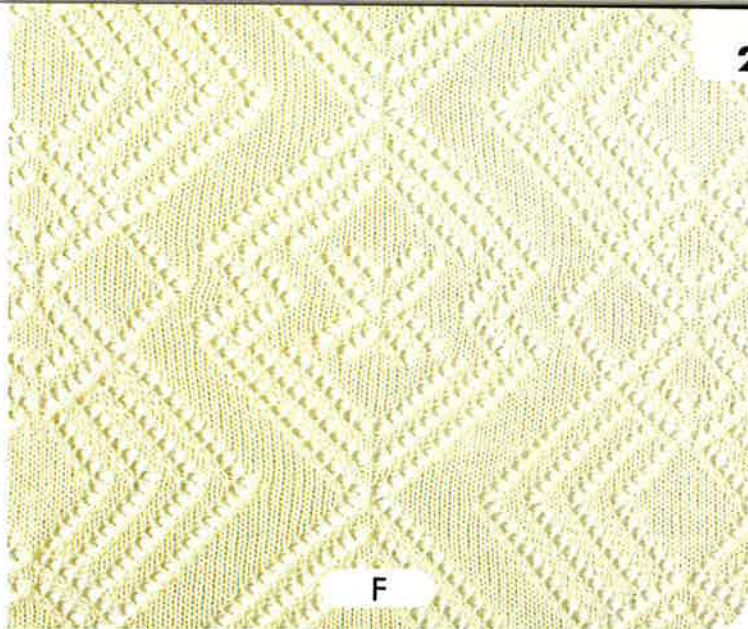


D ①



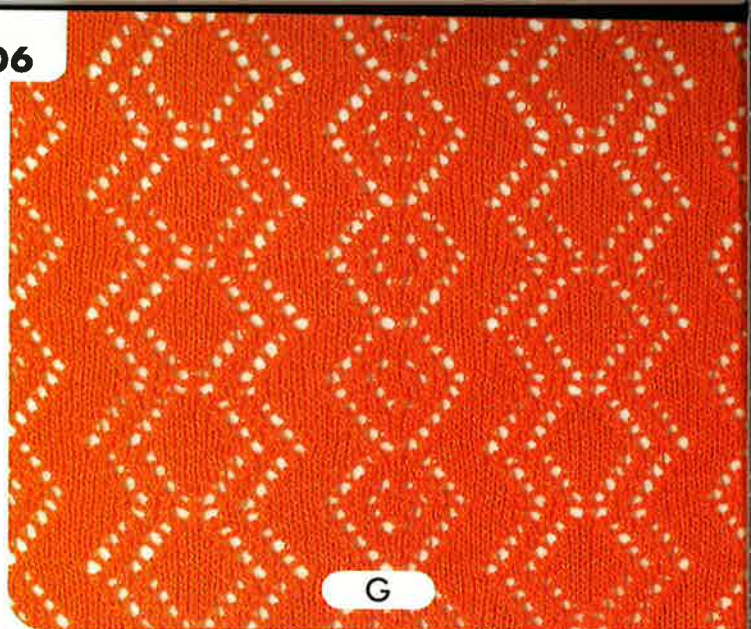
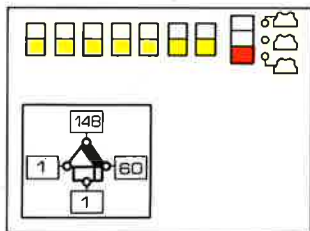
C ①





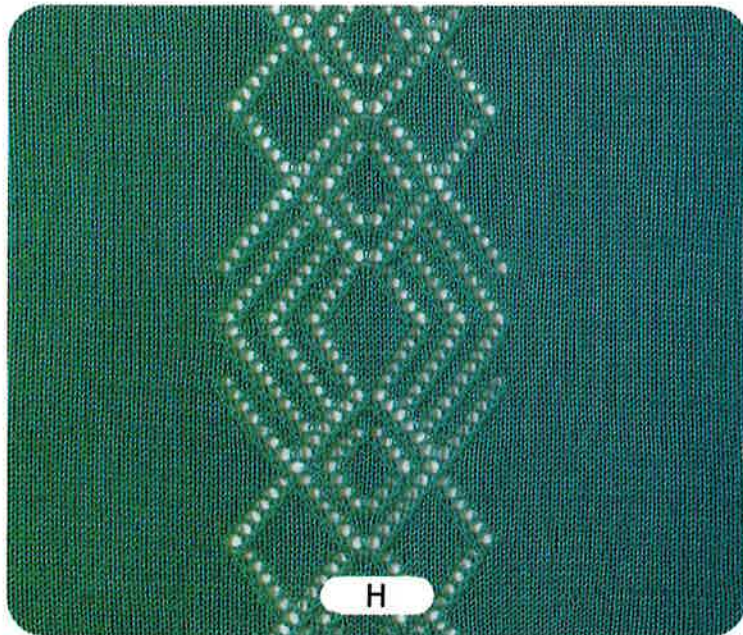
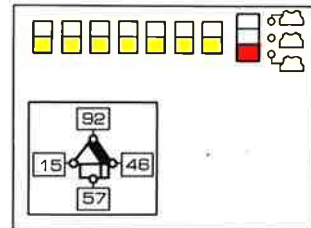
F

F ①



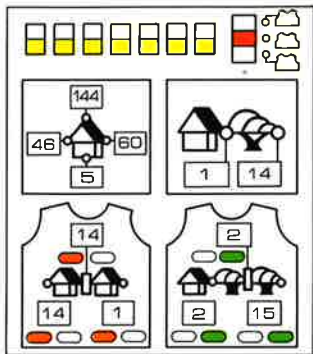
G

G ①

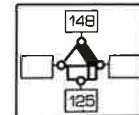


H

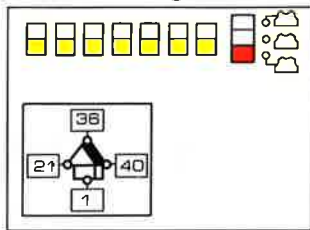
H ①



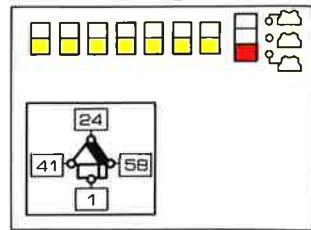
J ②



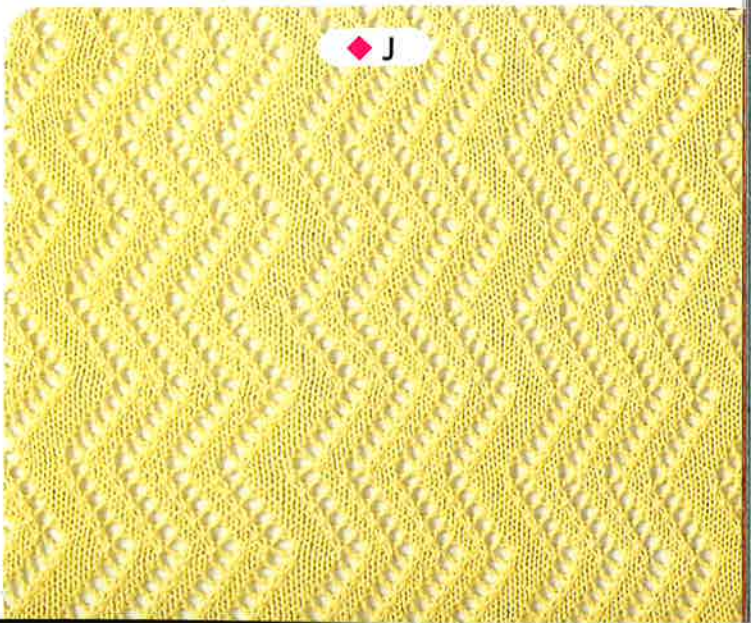
I ①



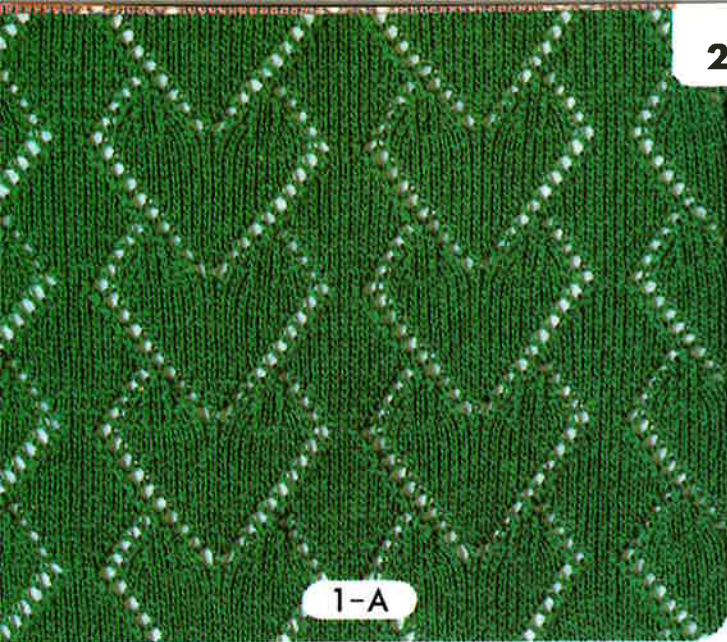
J ①



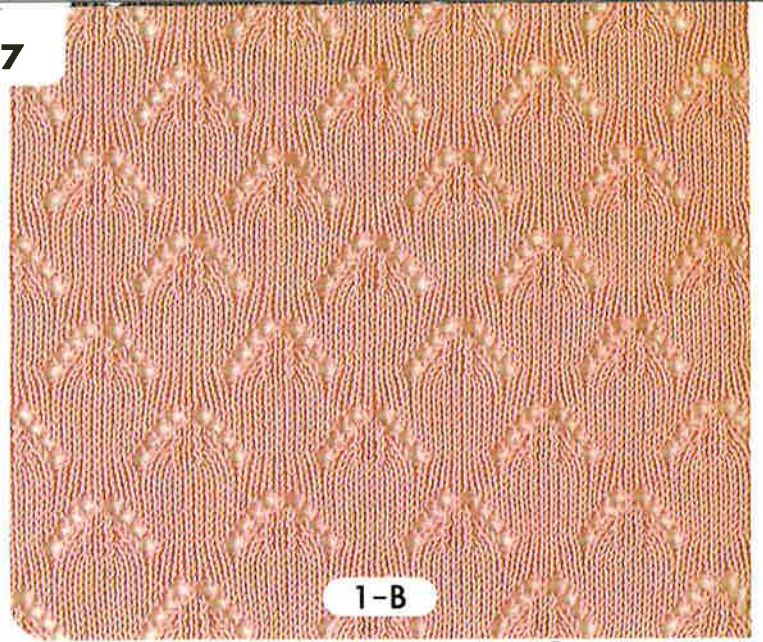
I



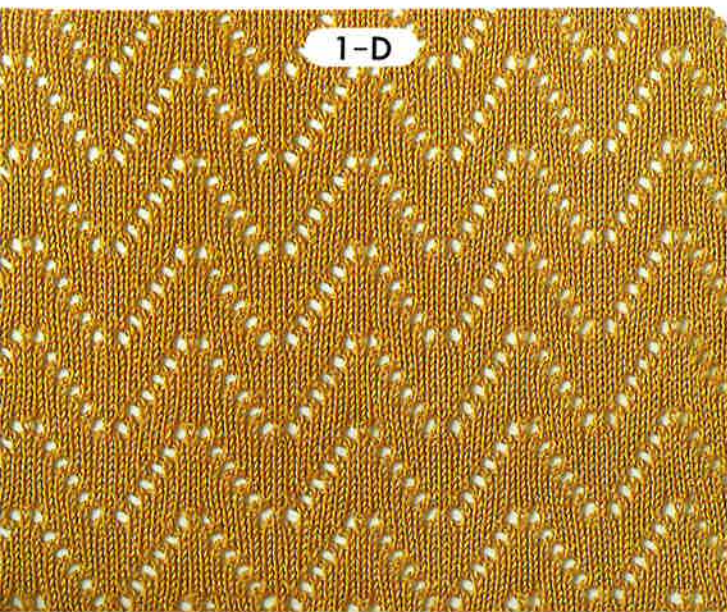
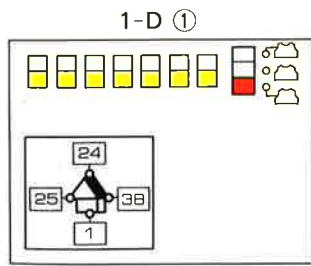
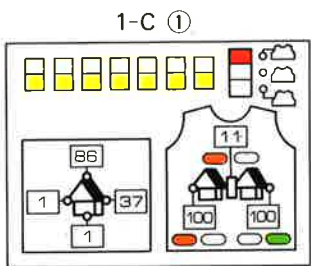
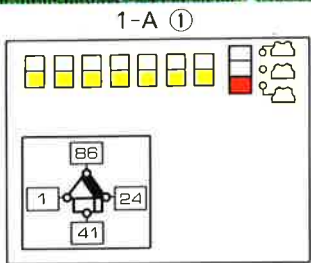
J



1-A



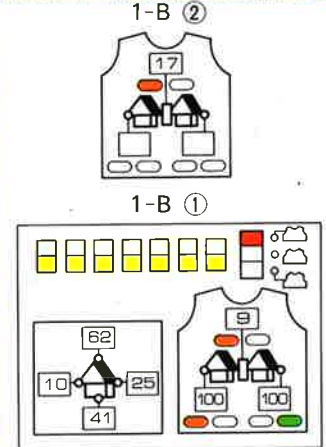
1-B



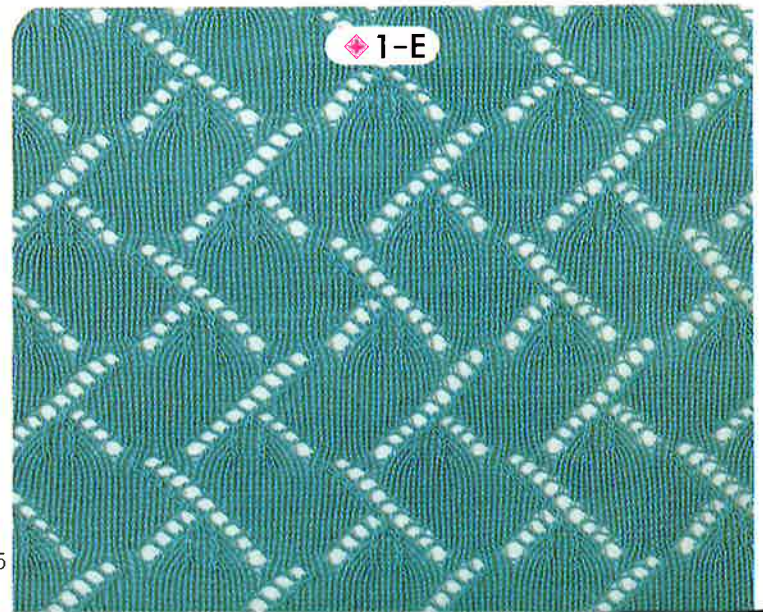
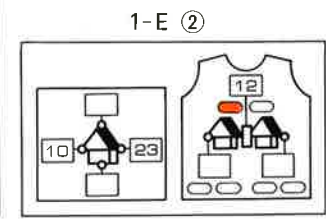
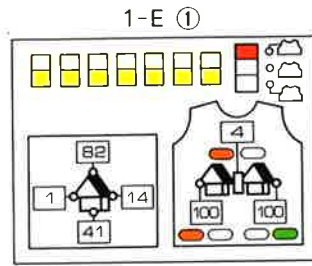
1-D



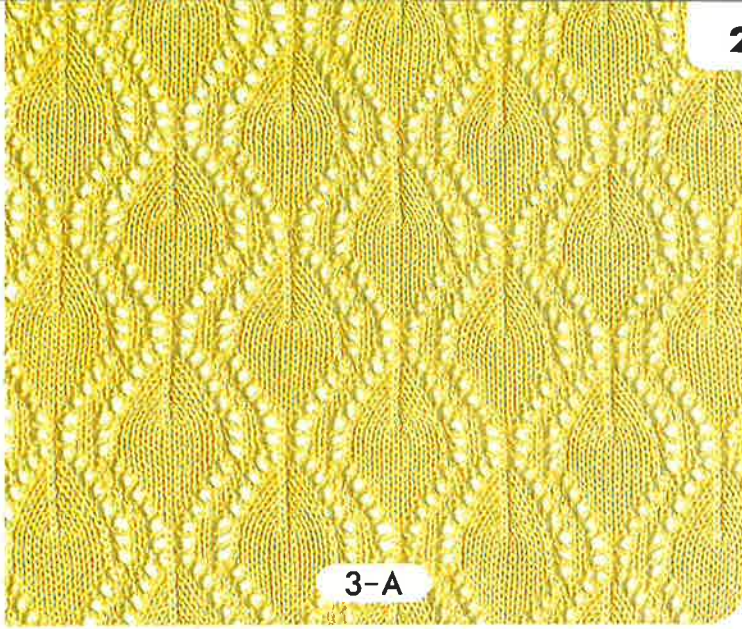
1-C



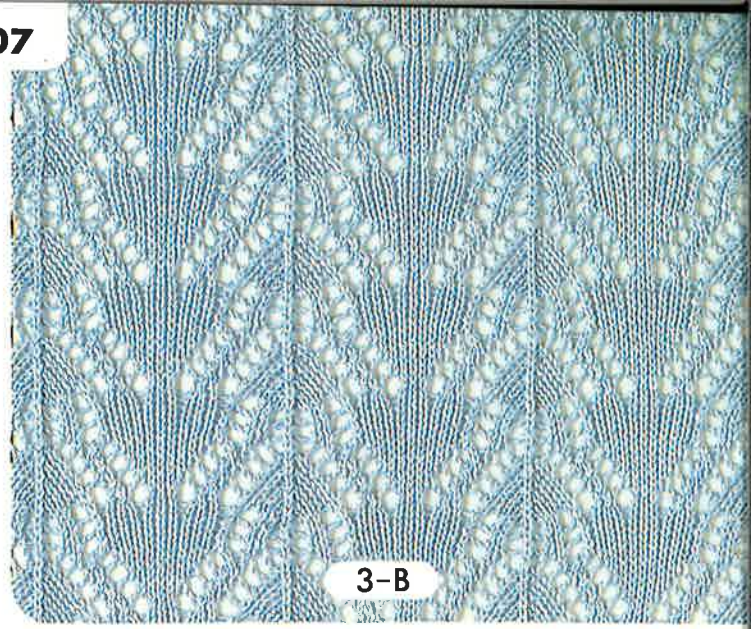
模様の上に平編6段編みます。
Knit 6 rows with Plain stitch
between patterns.



1-E

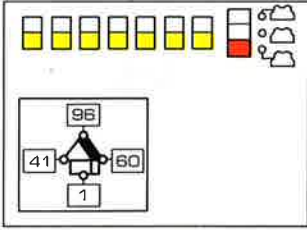


3-A

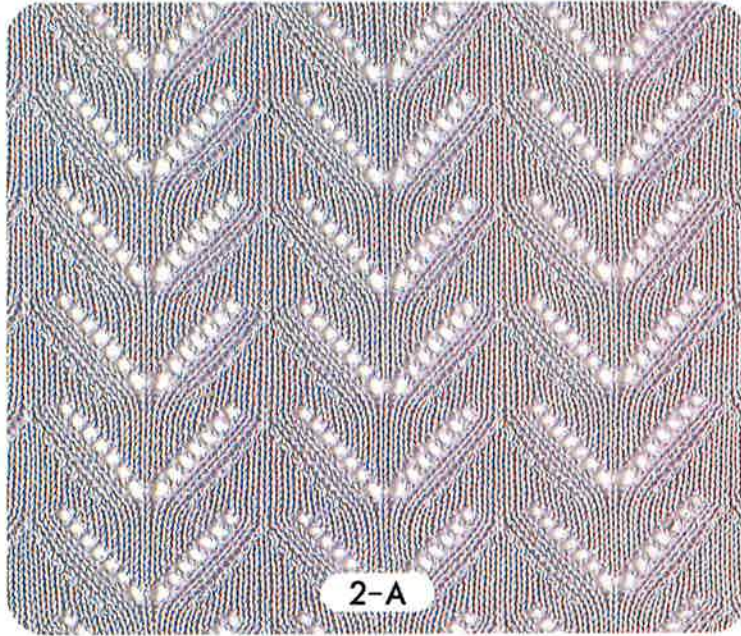
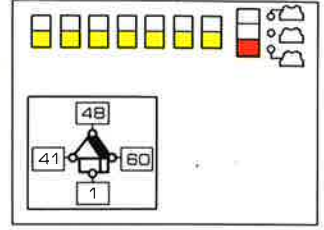


3-B

3-A ①

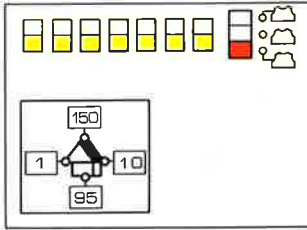


3-B ①

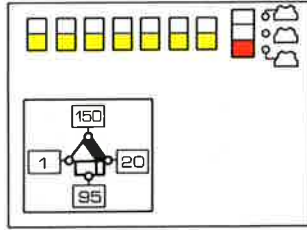


2-A

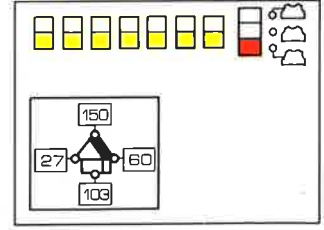
2-B ①



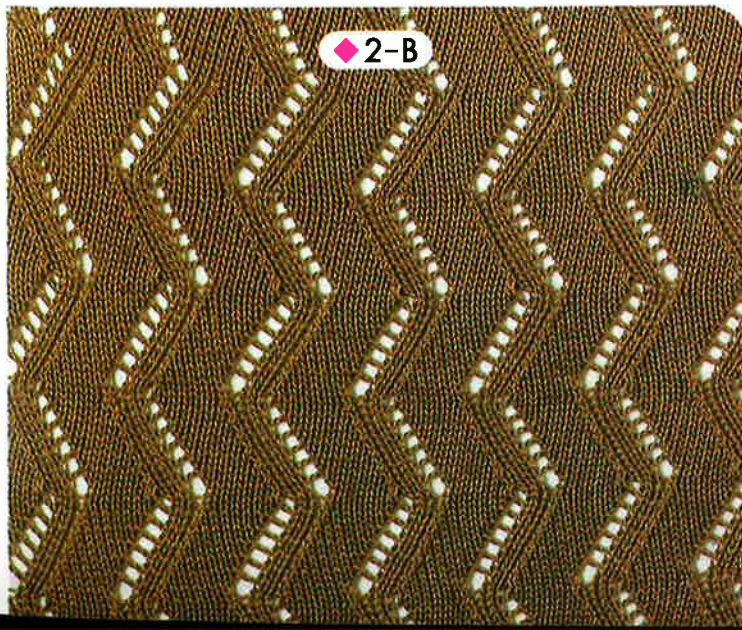
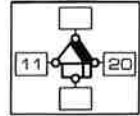
2-A ①



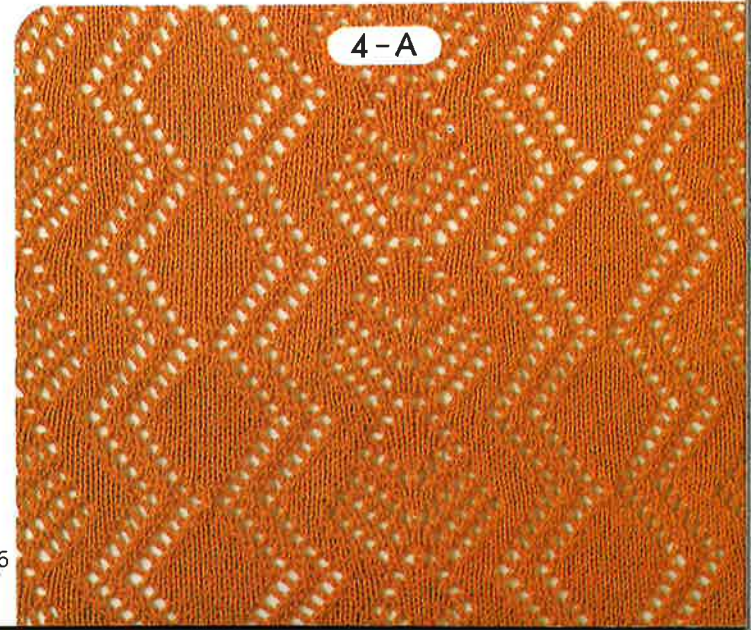
4-A ①



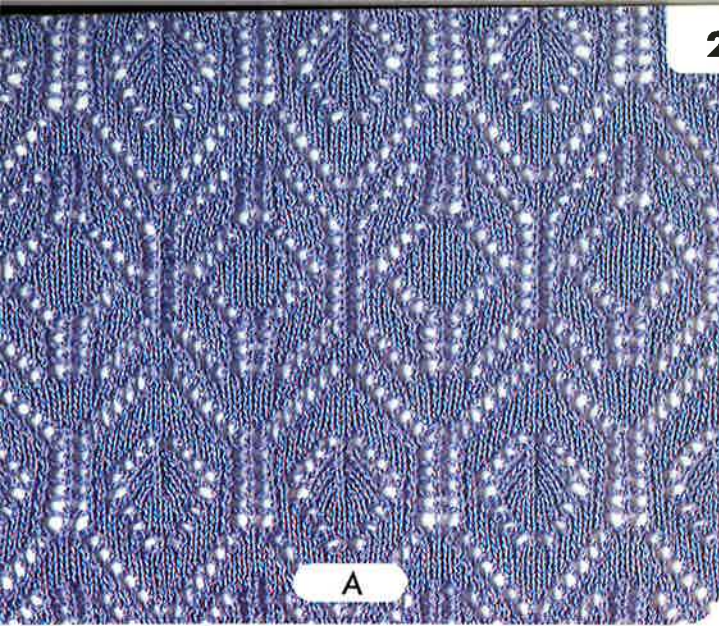
2-B ②



2-B



4-A

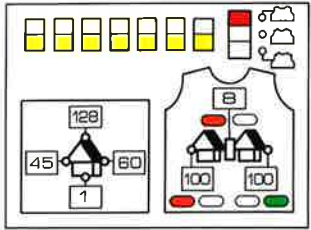


A



B

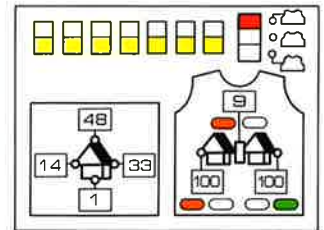
A ①



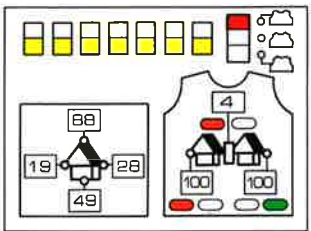
B ②



B ①

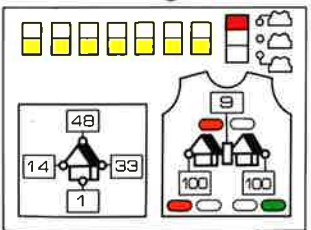


D ②

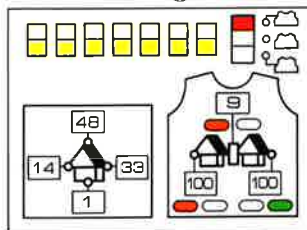


C

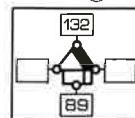
D ①



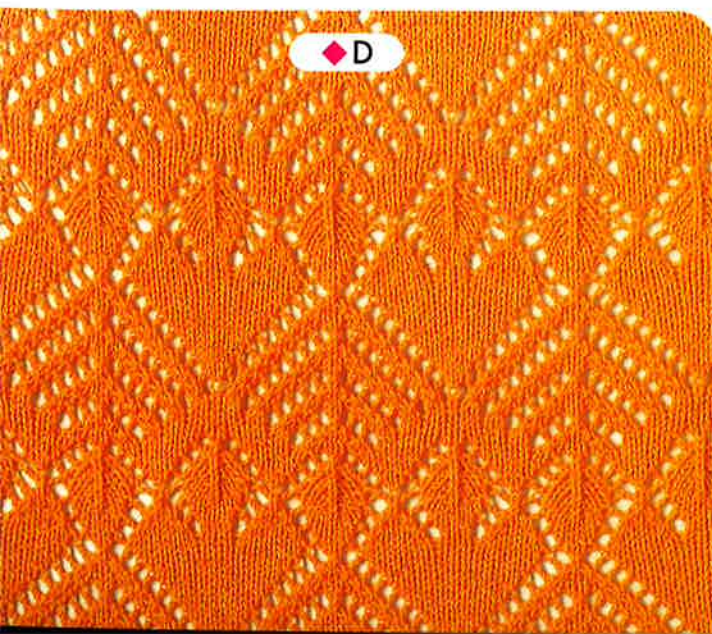
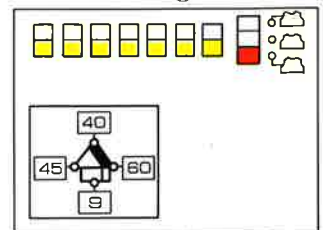
C ①



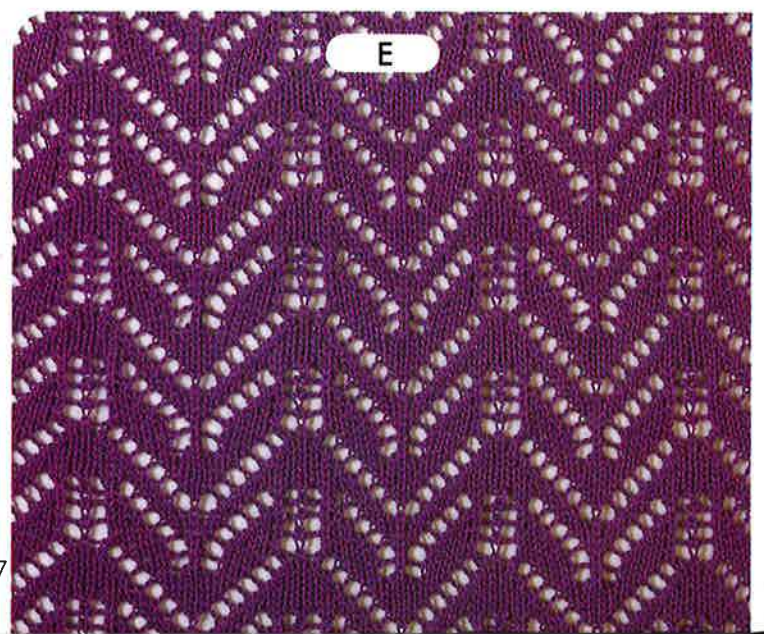
C ②



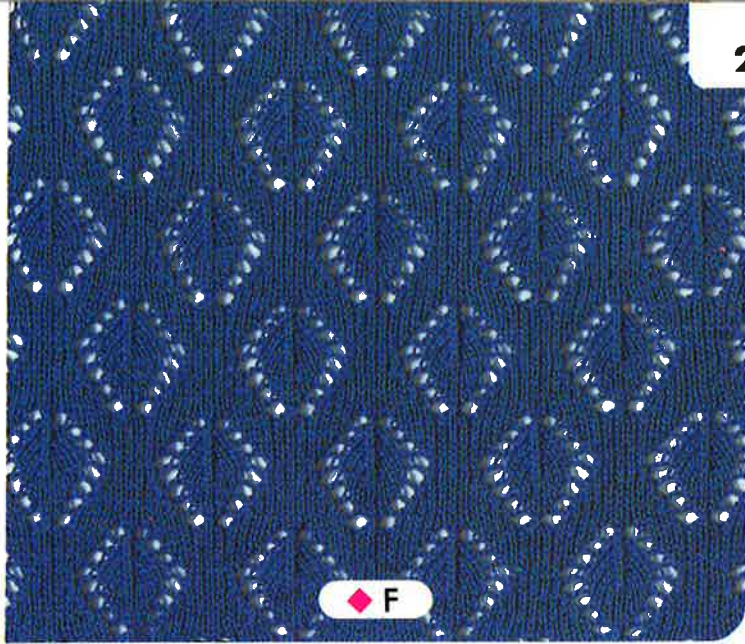
E ①



D



E



F

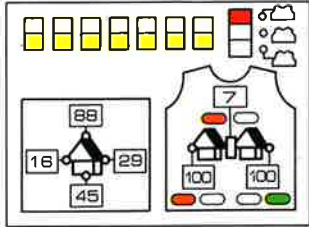


G

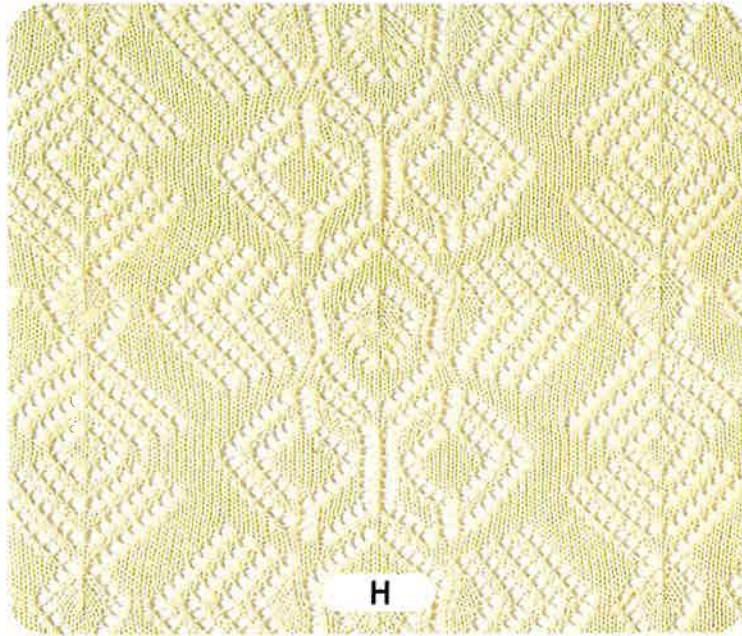
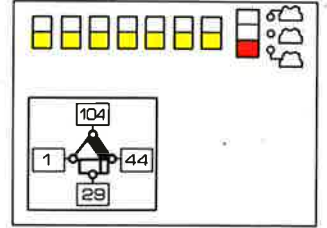
F ②



F ①

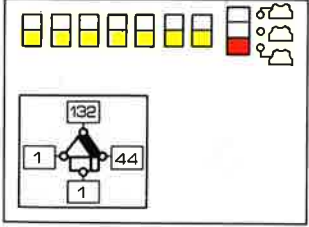


G ①

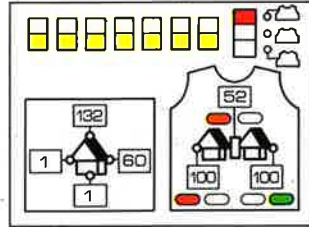


H

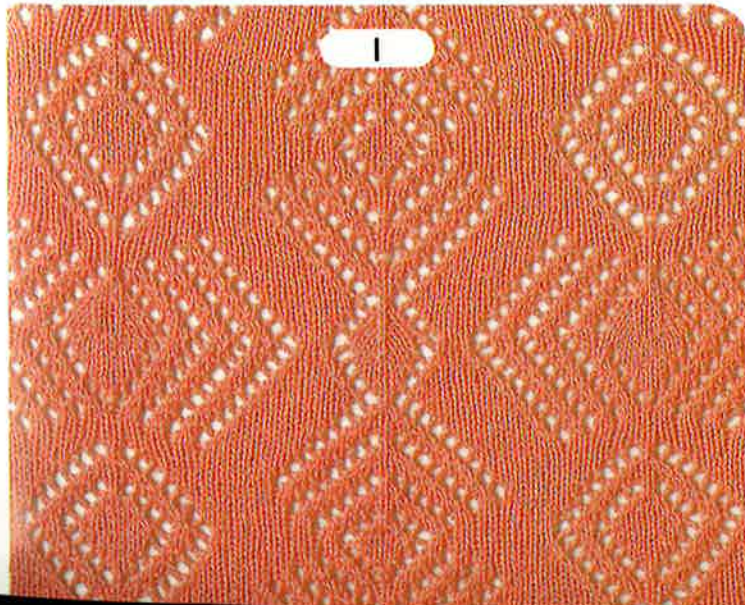
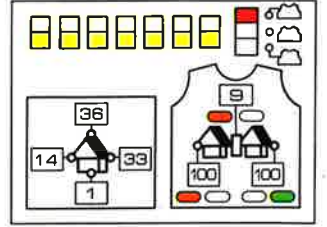
I ①



H ①



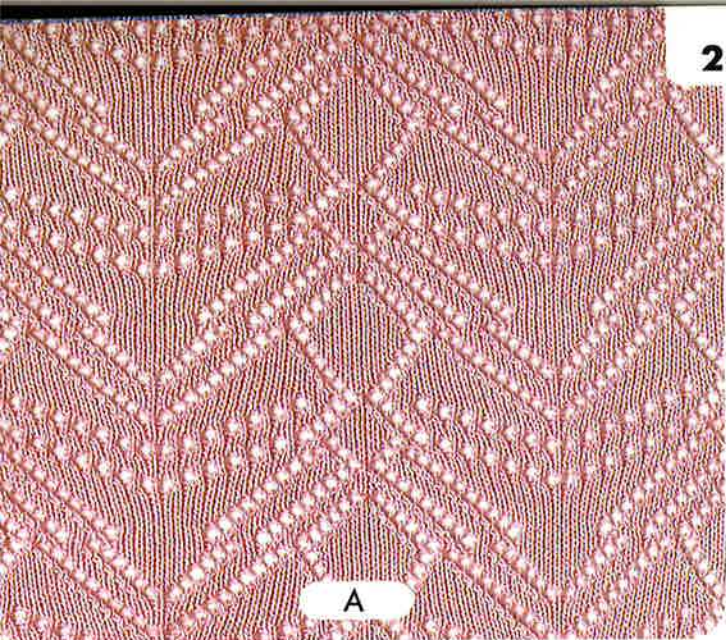
J ①



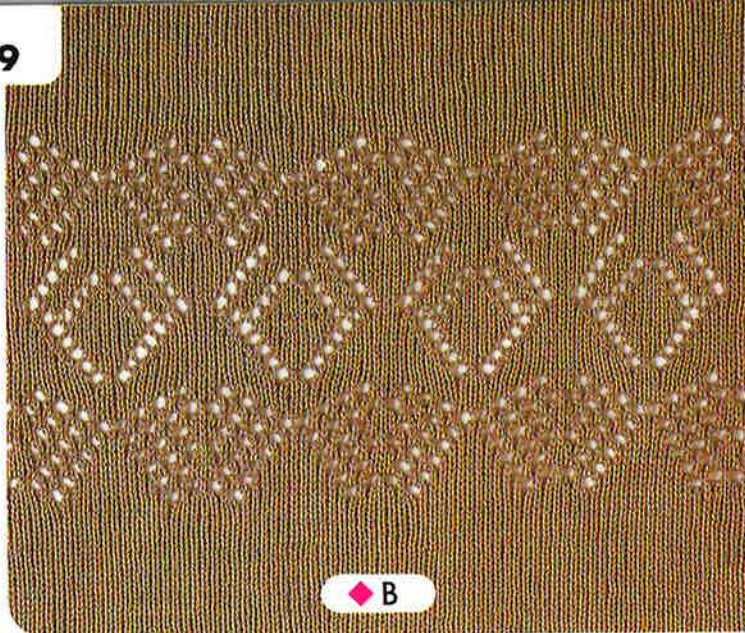
I



J

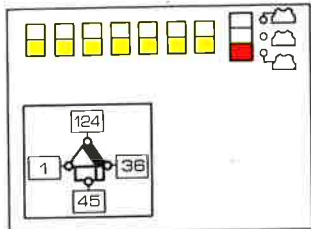


A

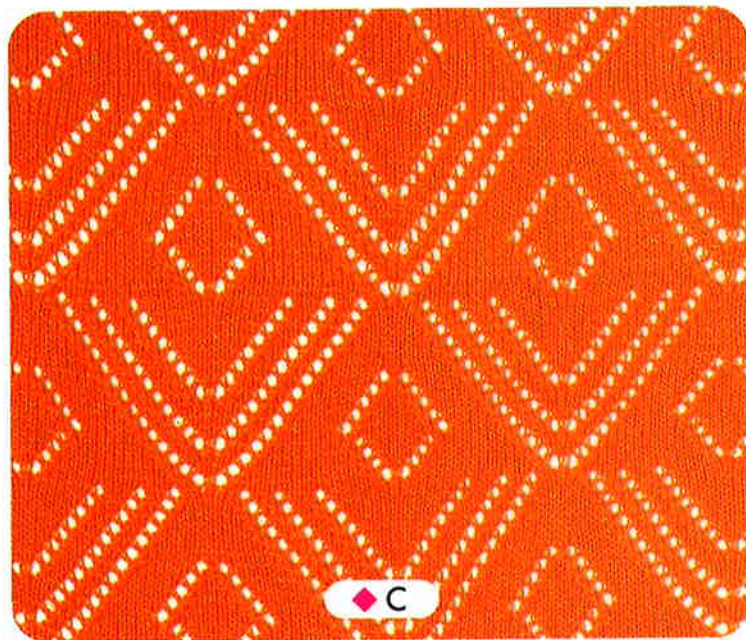
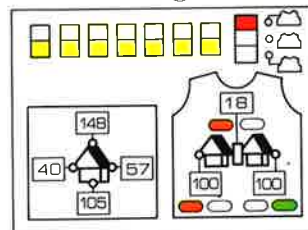


B

A ①

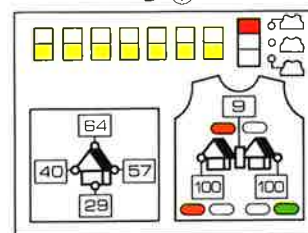


B ②

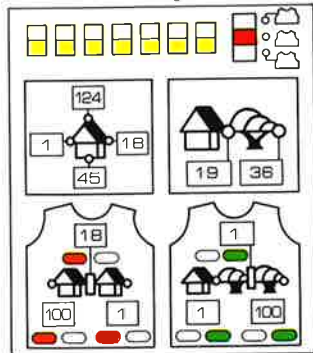


C

B ①

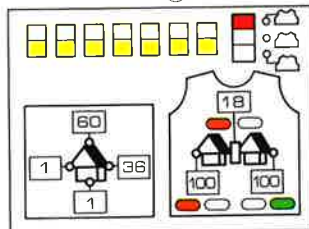


D ①



B ③の操作表はB ①と同じです。
B ③ Programming: same as for B ①.

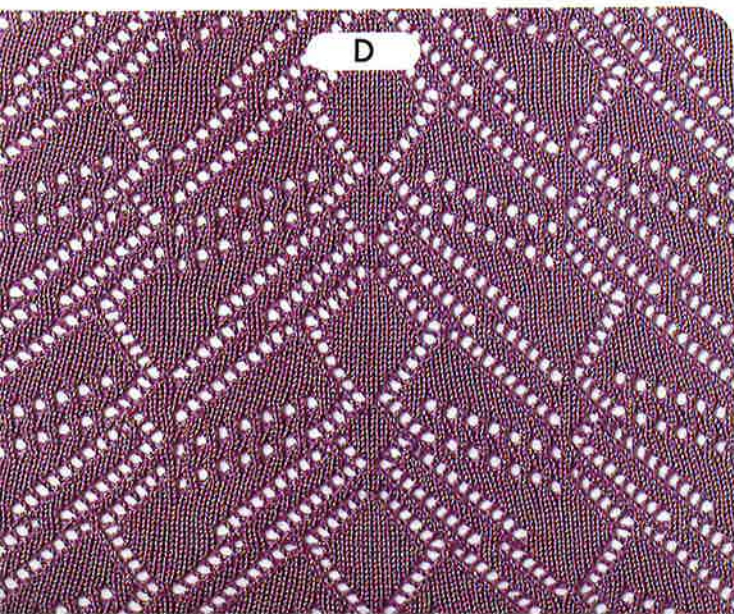
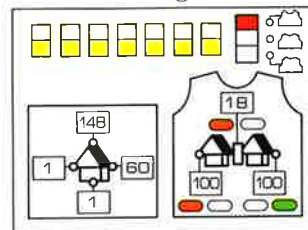
C ①



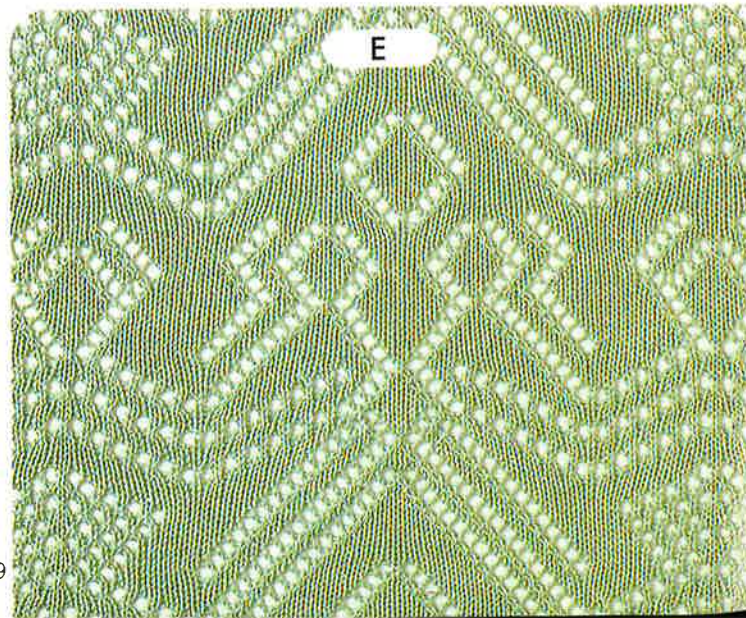
C ②



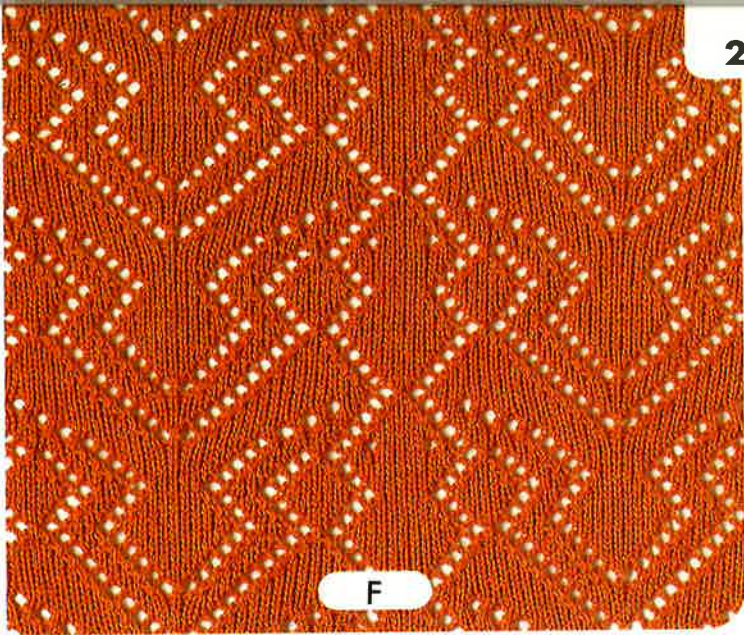
E ①



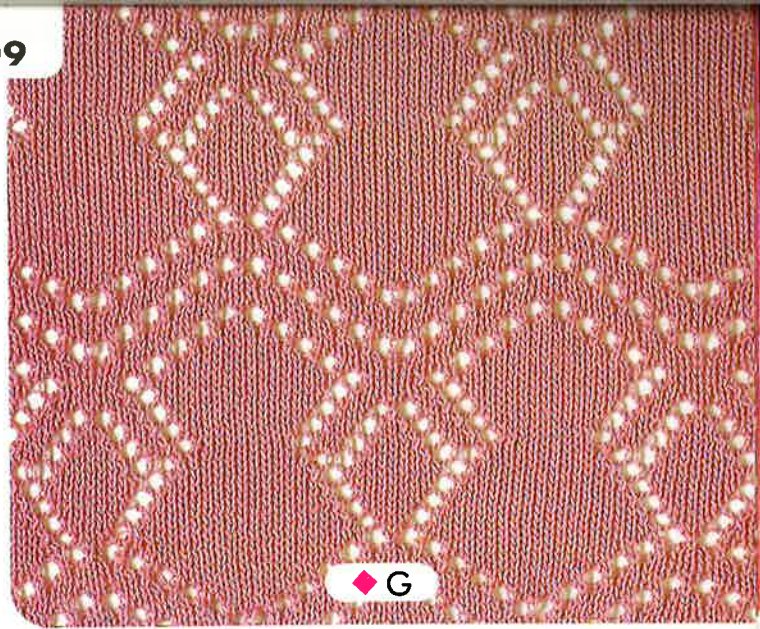
D



E

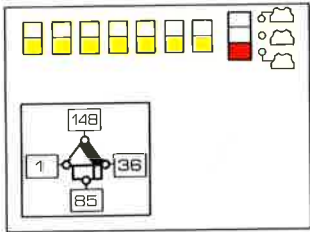


F

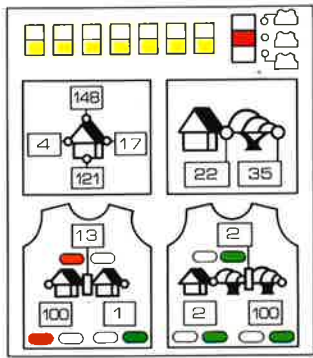


G

F ①

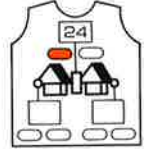


H ①

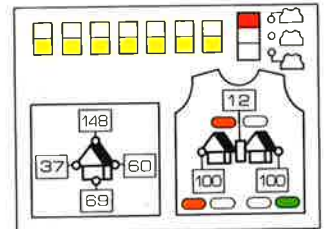


H

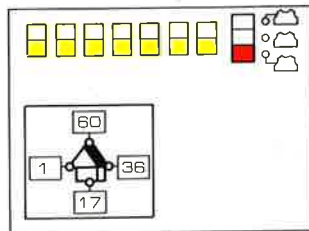
G ②



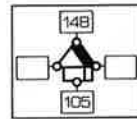
G ①



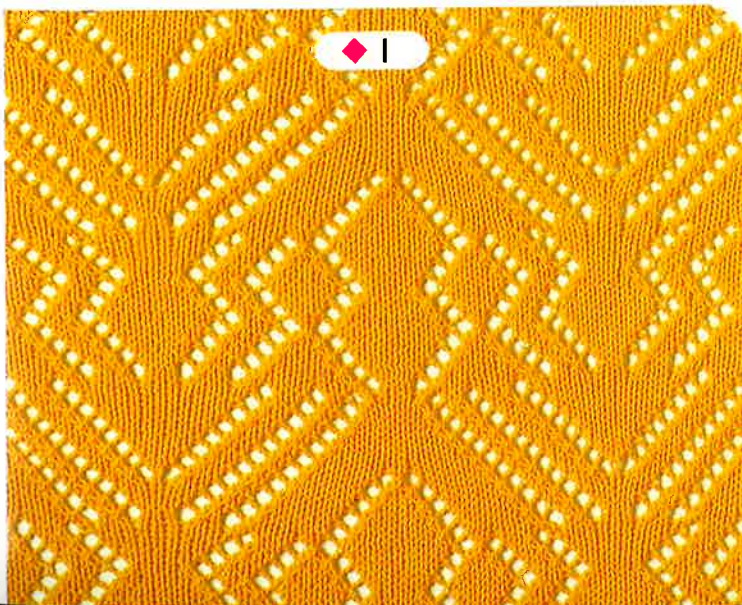
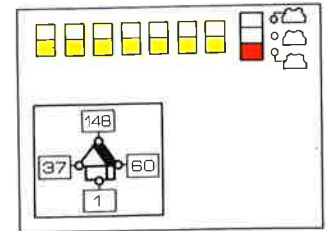
I ①



I ②



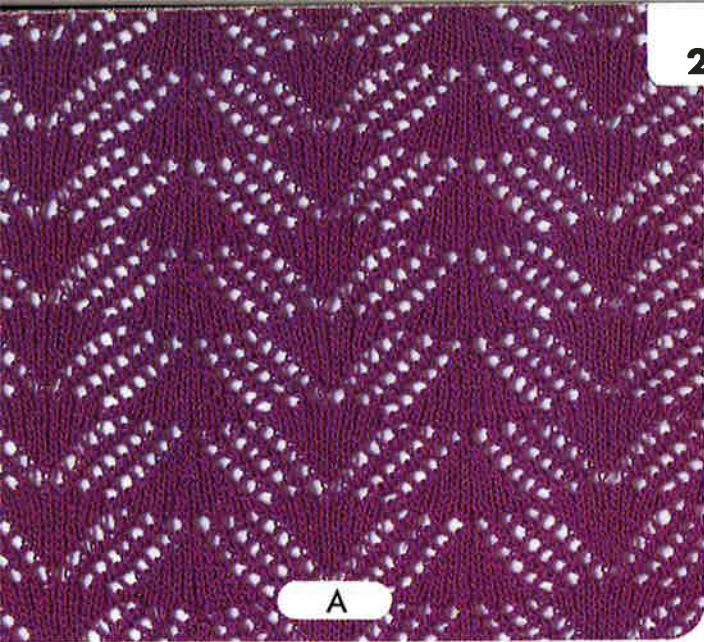
J ①



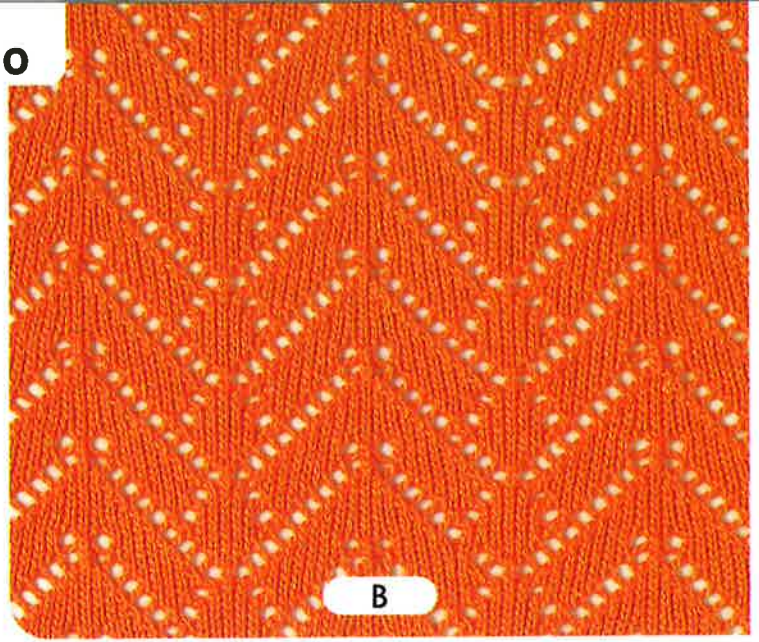
I



J

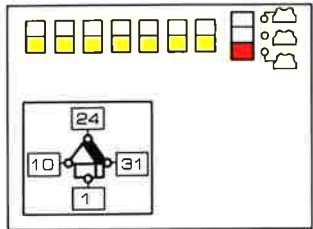


A

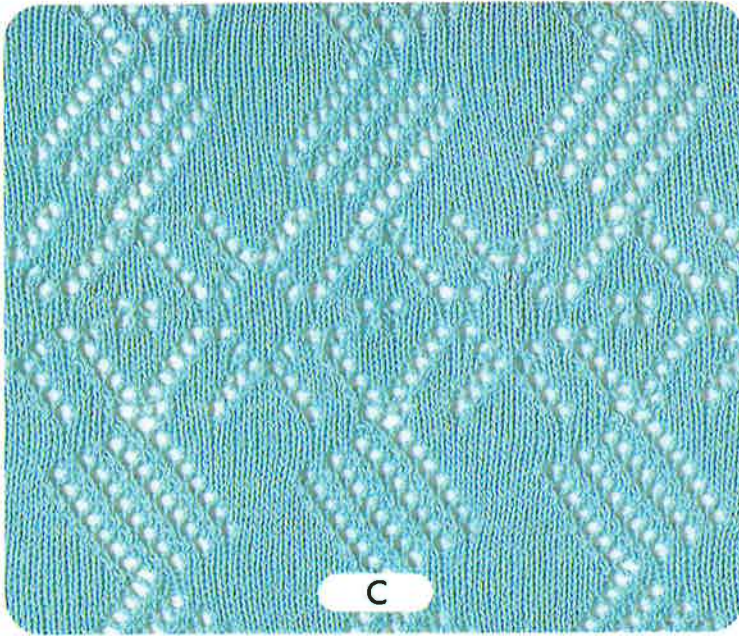
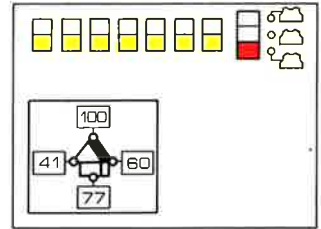


B

A ①

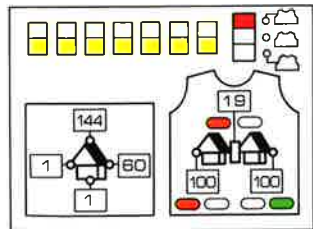


B ①

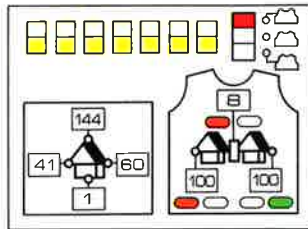


C

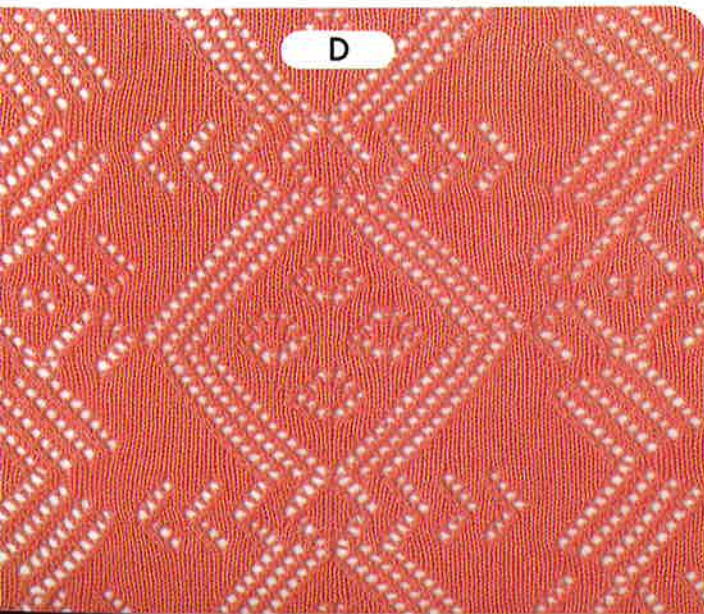
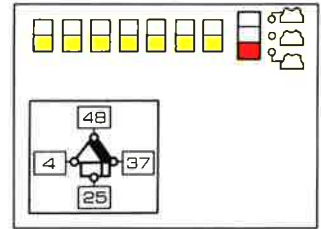
D ①



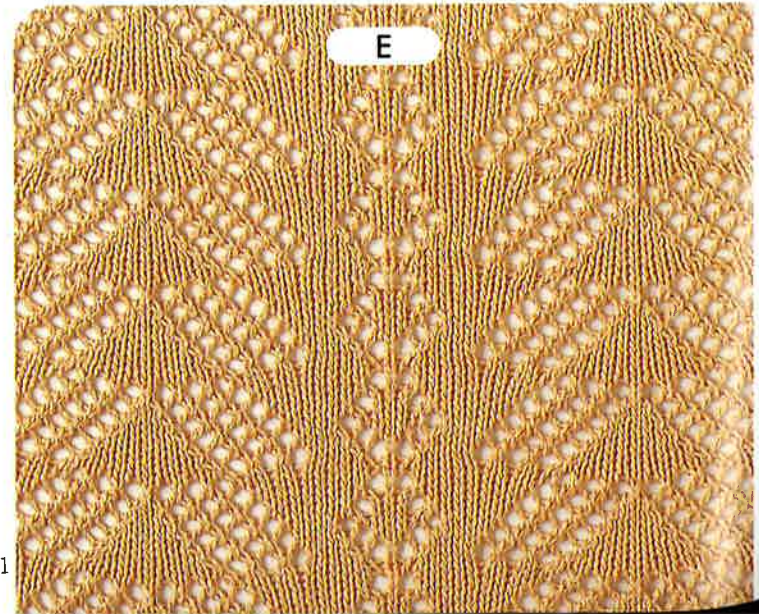
C ①



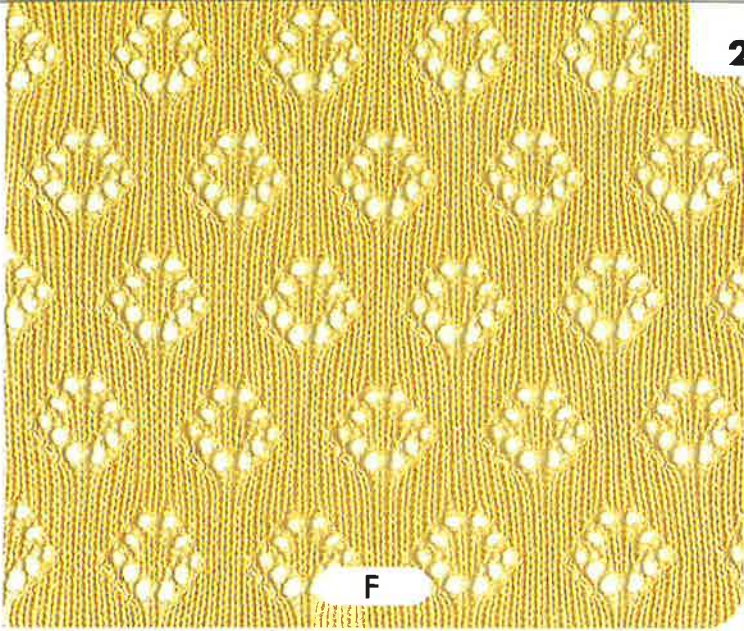
E ①



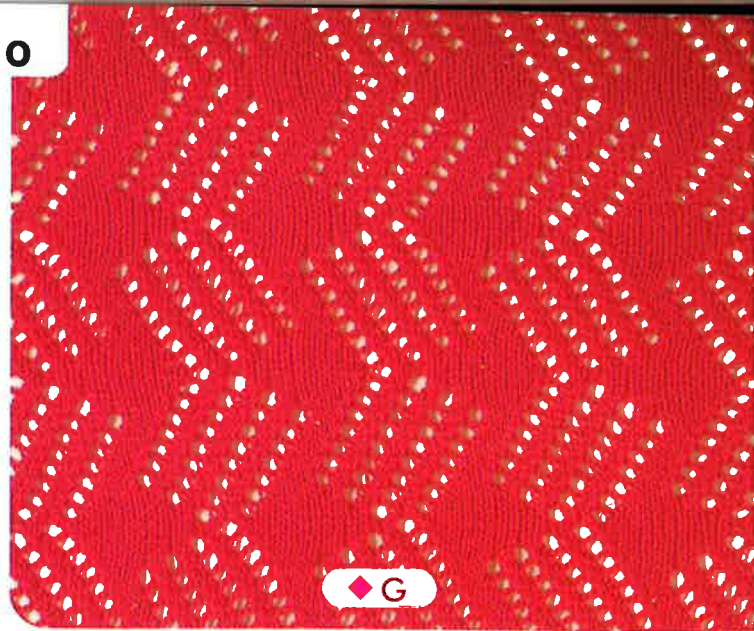
D



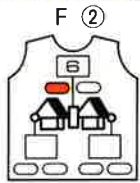
E



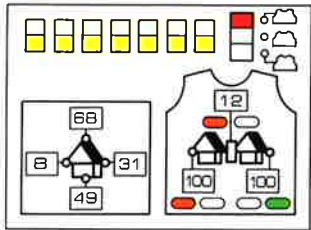
F



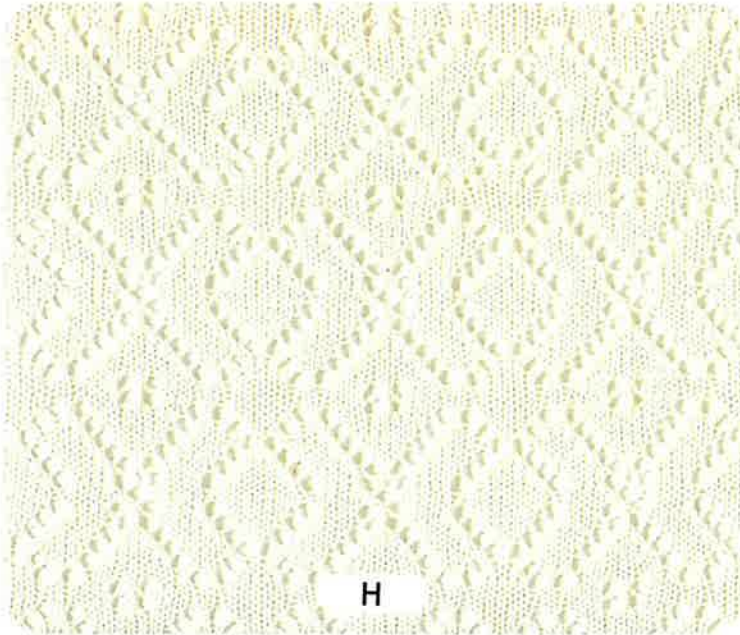
G



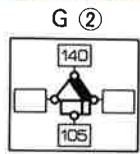
F ①



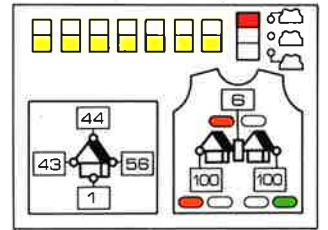
模様の上に平編 8 段編みます。
Knit 8 rows with Plain stitch
between patterns.



H



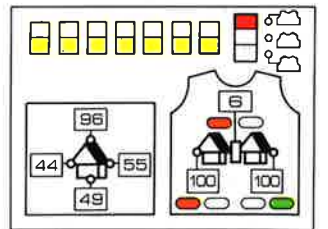
G ①



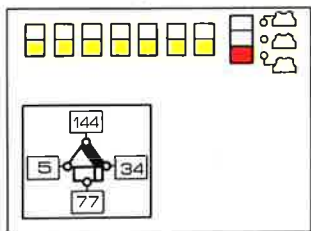
J ②



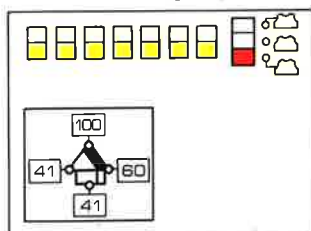
J ①



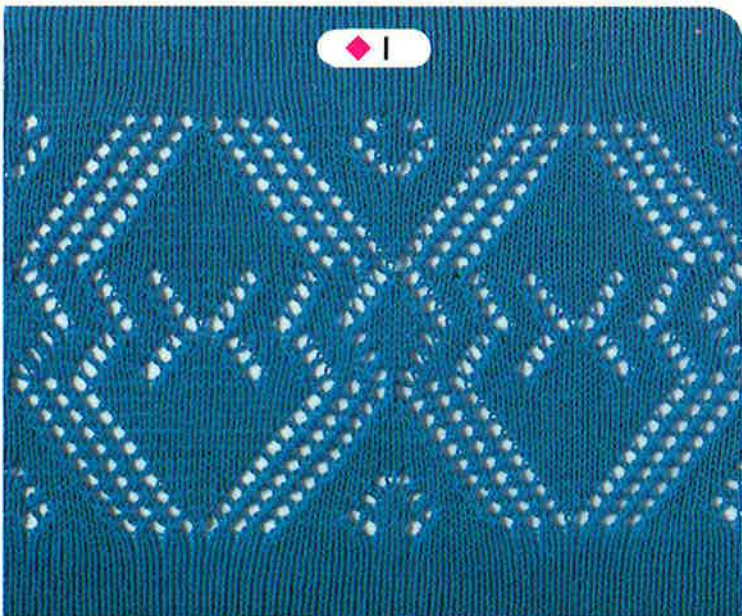
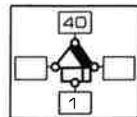
I ①



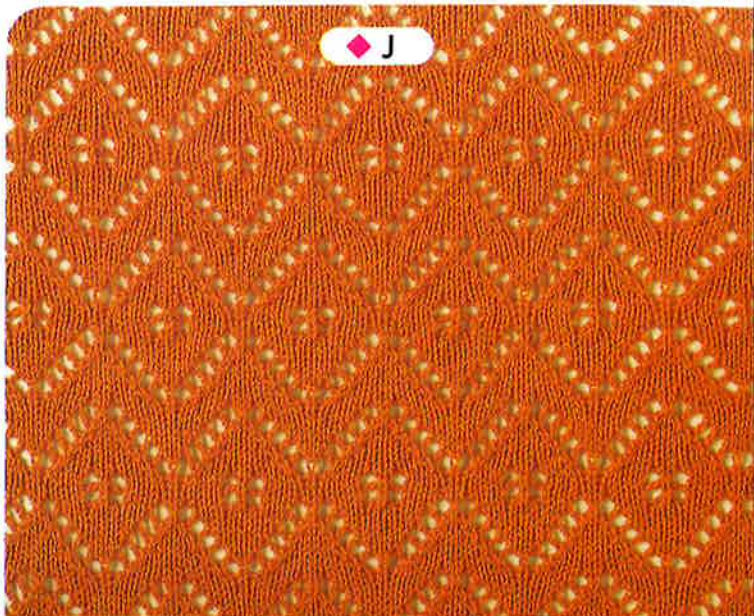
H ①



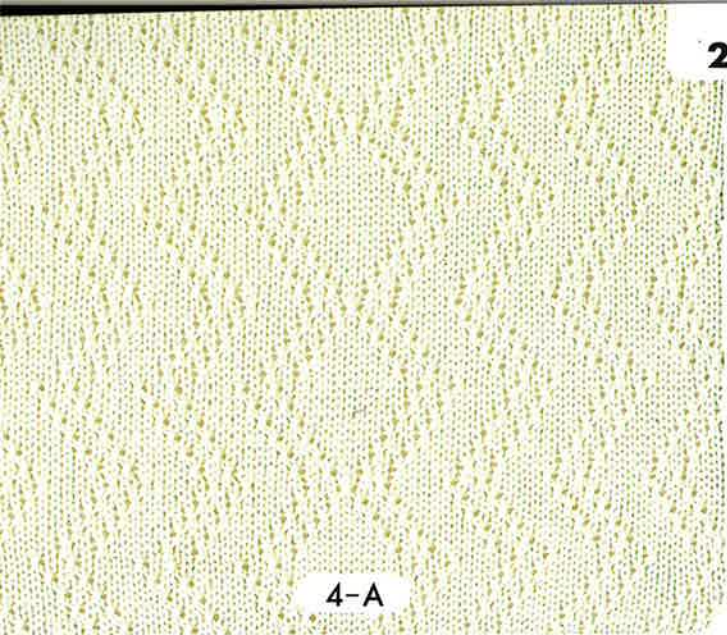
I ②



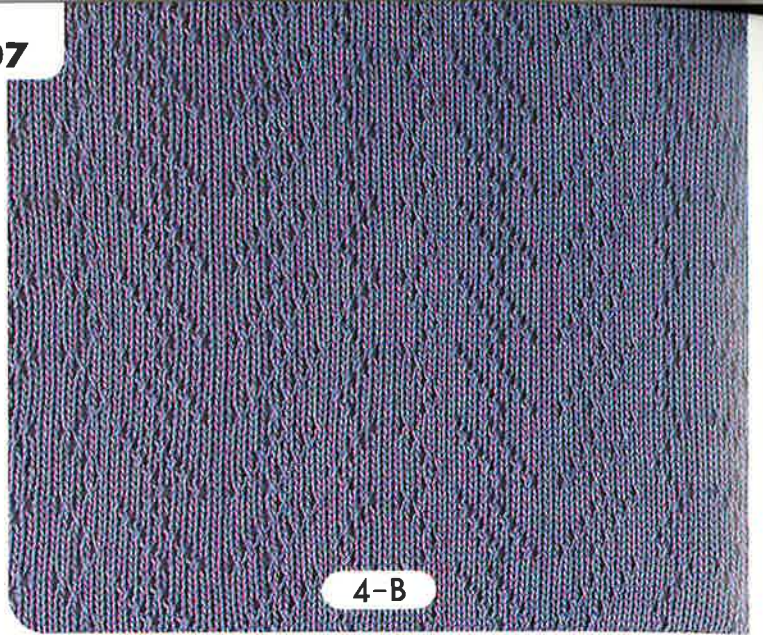
I



J

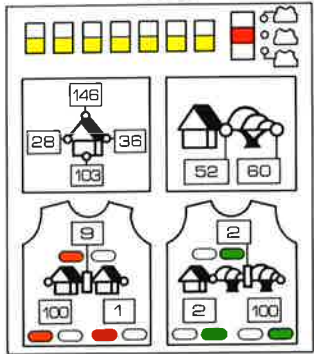


4-A

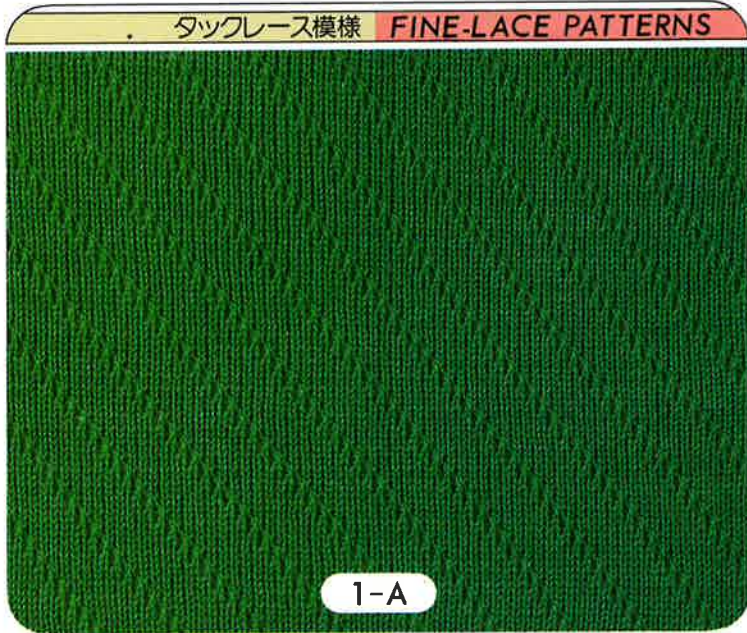
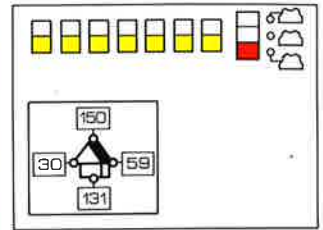


4-B

4-A ①

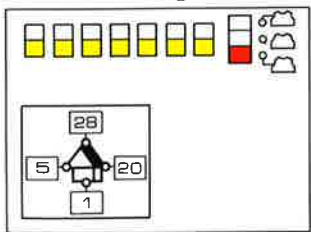


4-B ①

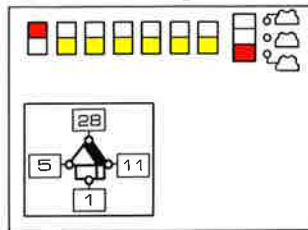


1-A

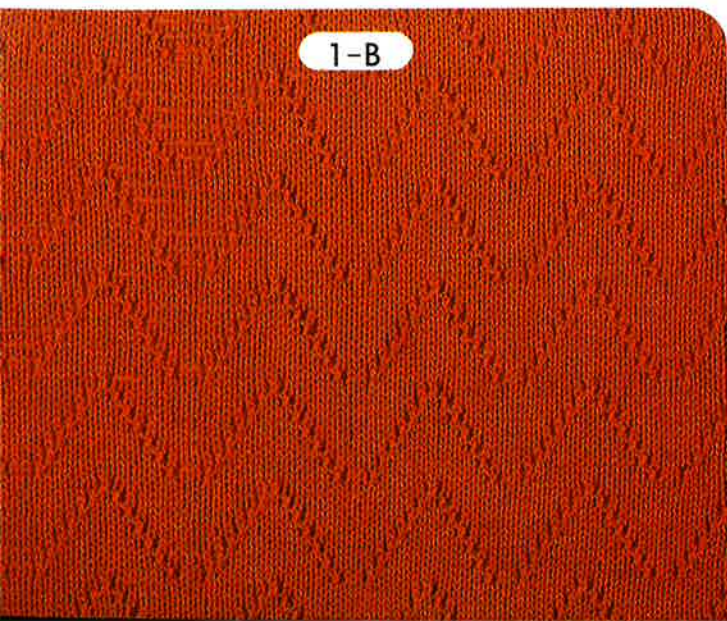
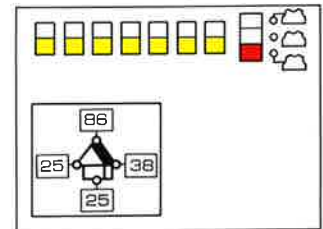
1-B ①



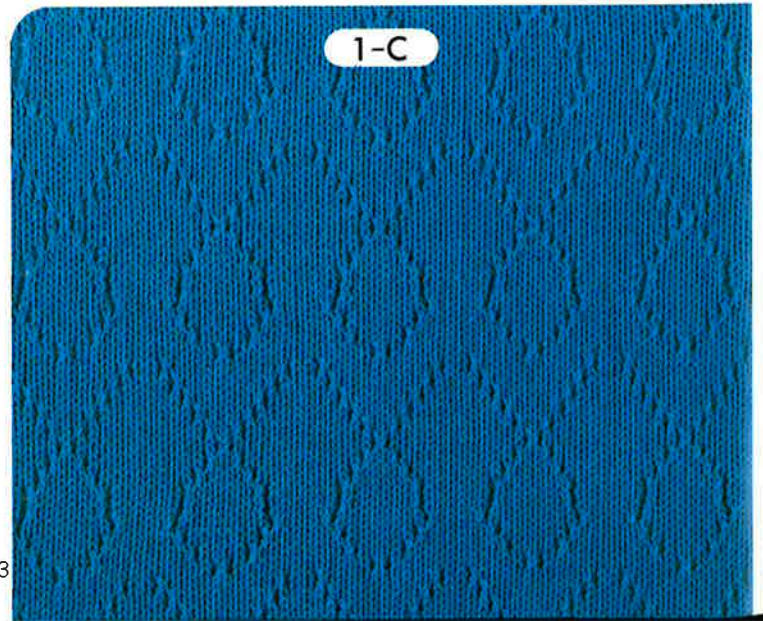
1-A ①



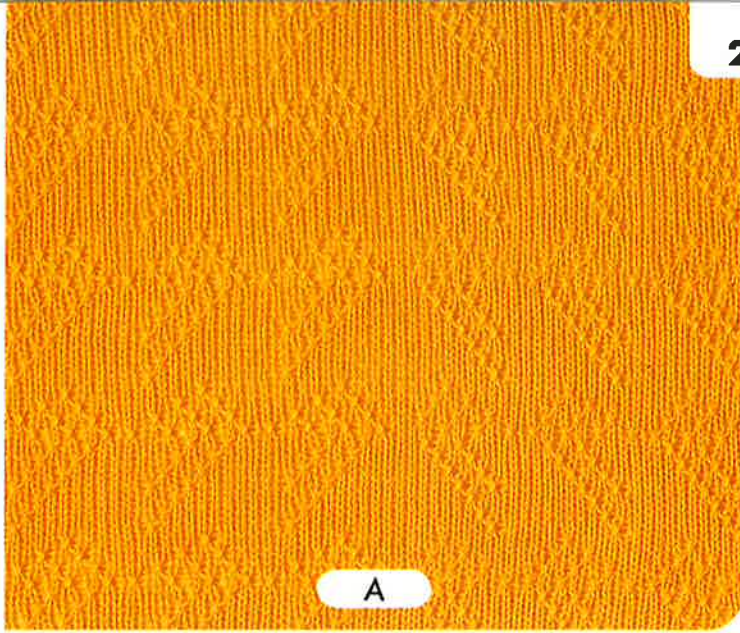
1-C ①



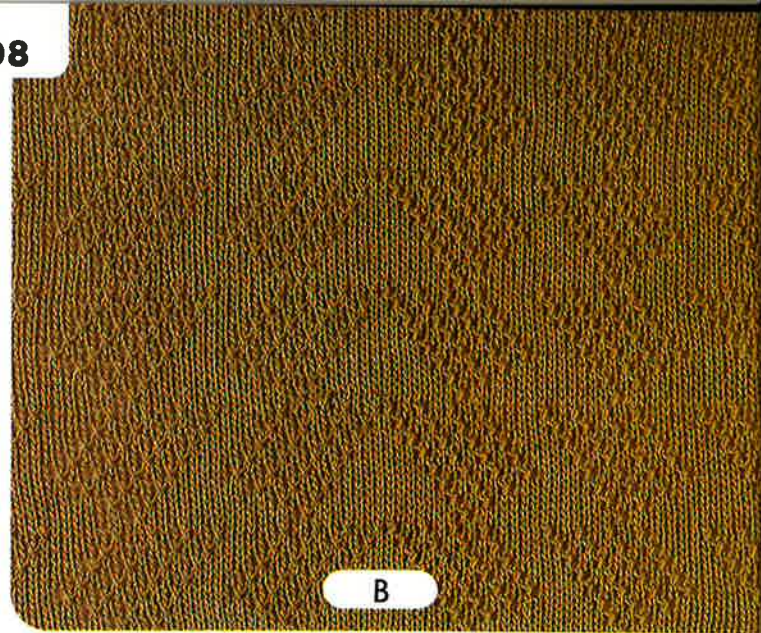
1-B



1-C

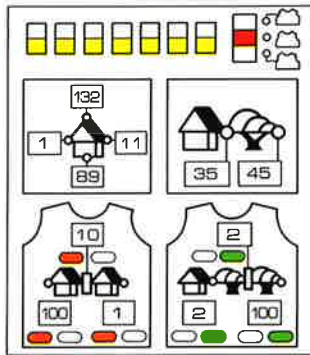


A

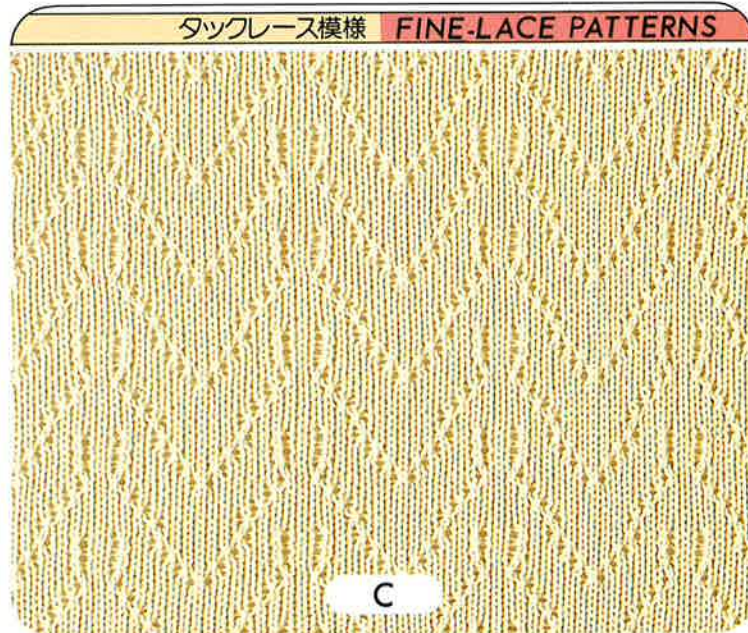
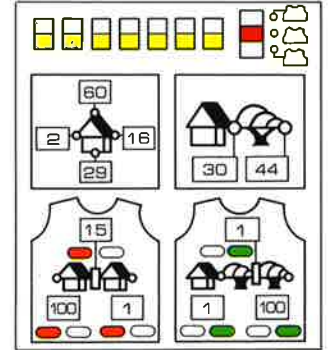


B

A ①

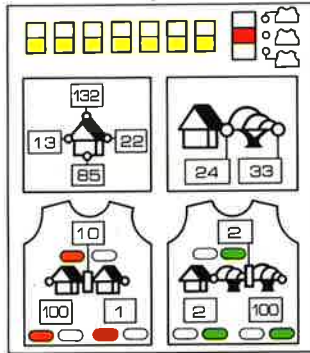


B ①

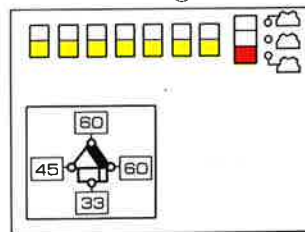


C

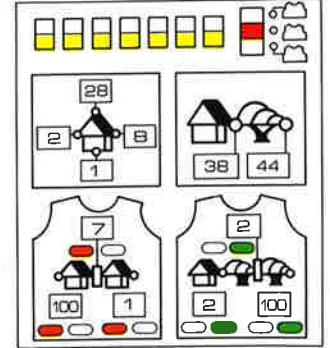
D ①



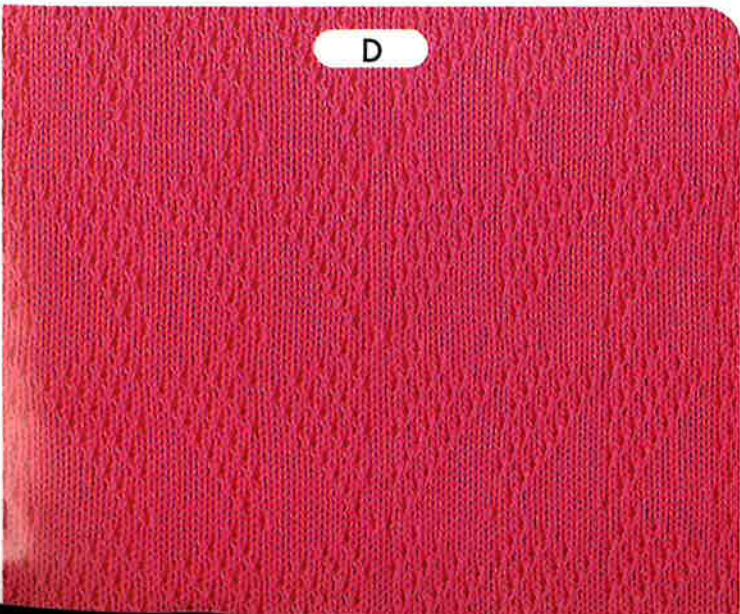
C ①



E ①

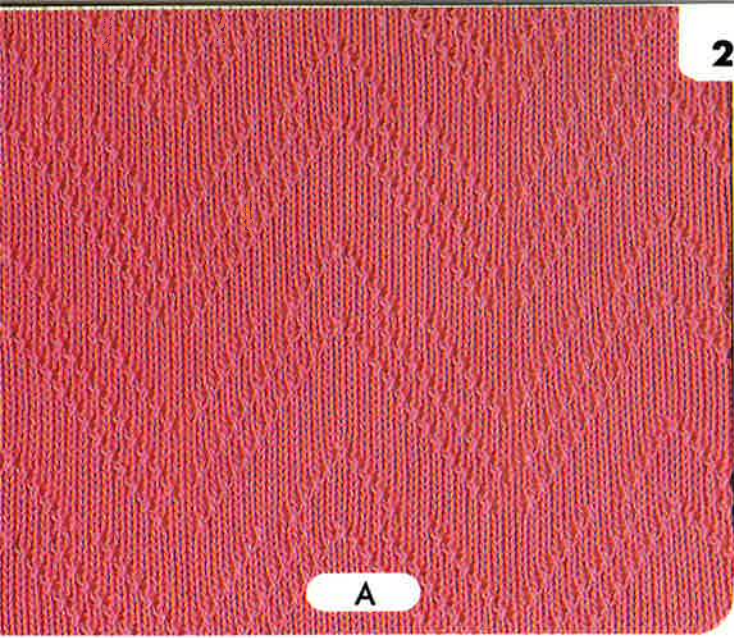


D

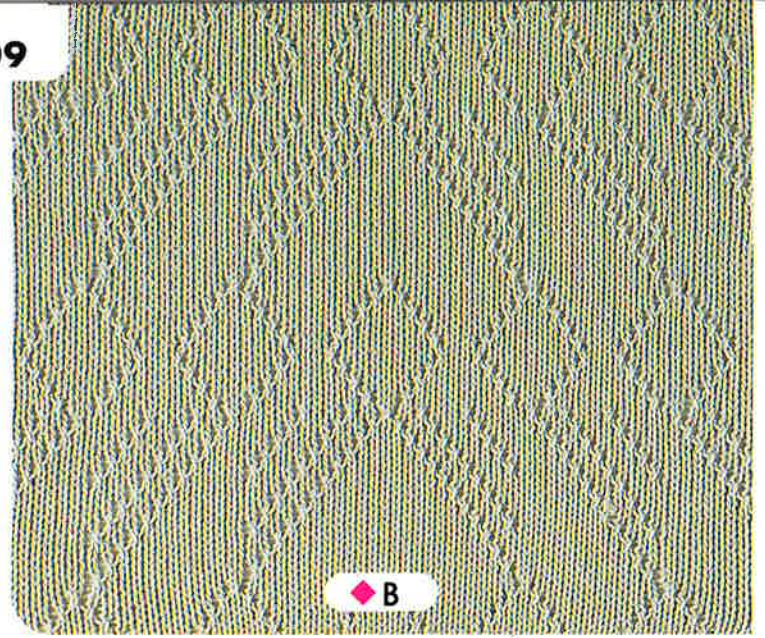


E



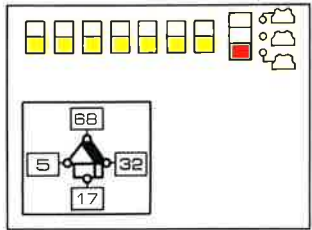


A

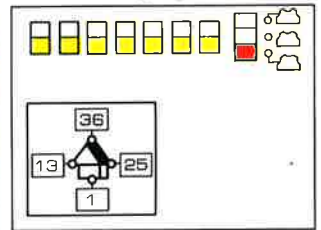


B

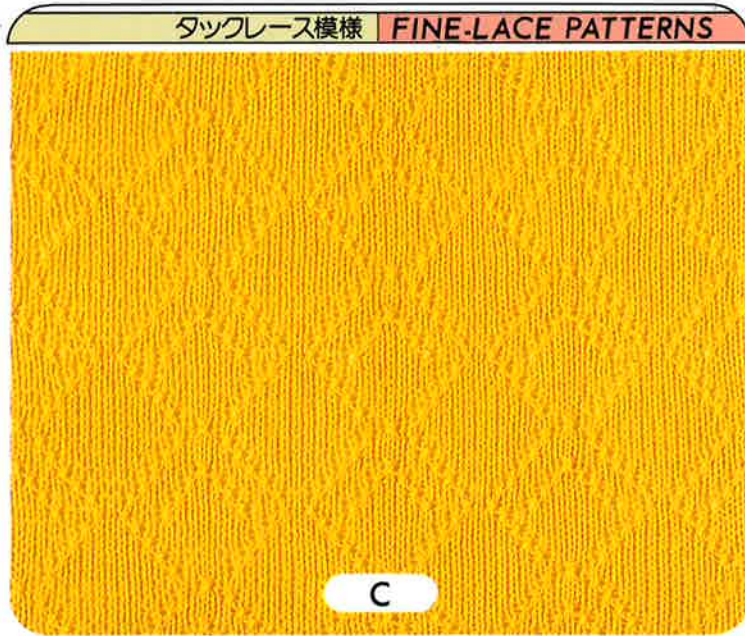
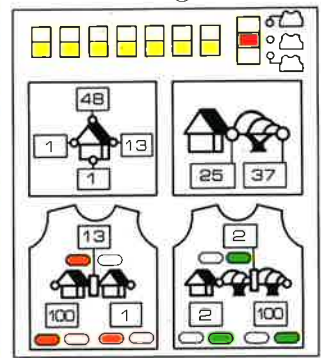
A ①



B ②

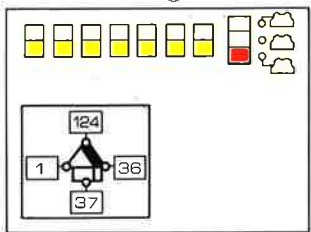


B ①

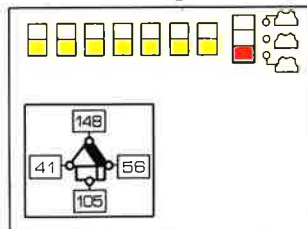


C

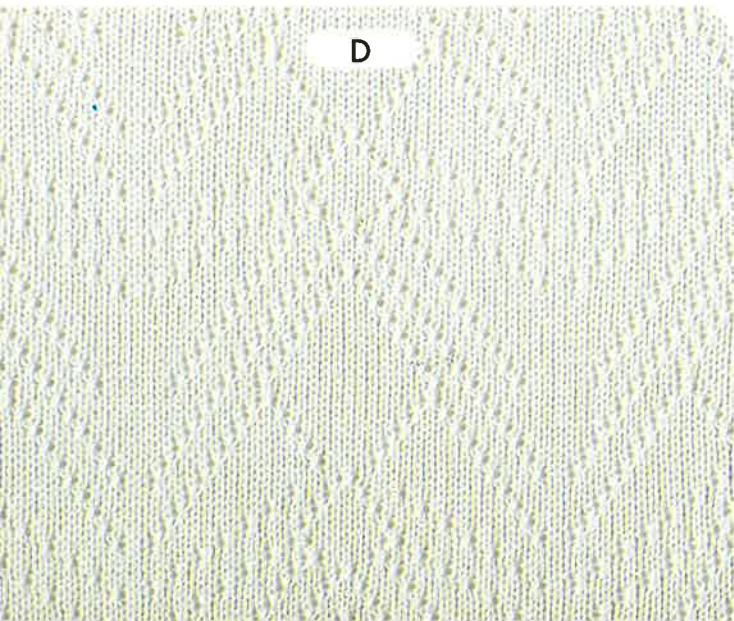
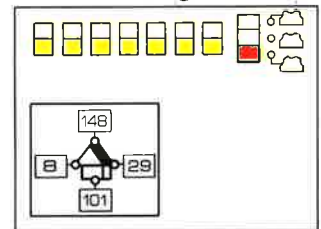
D ①



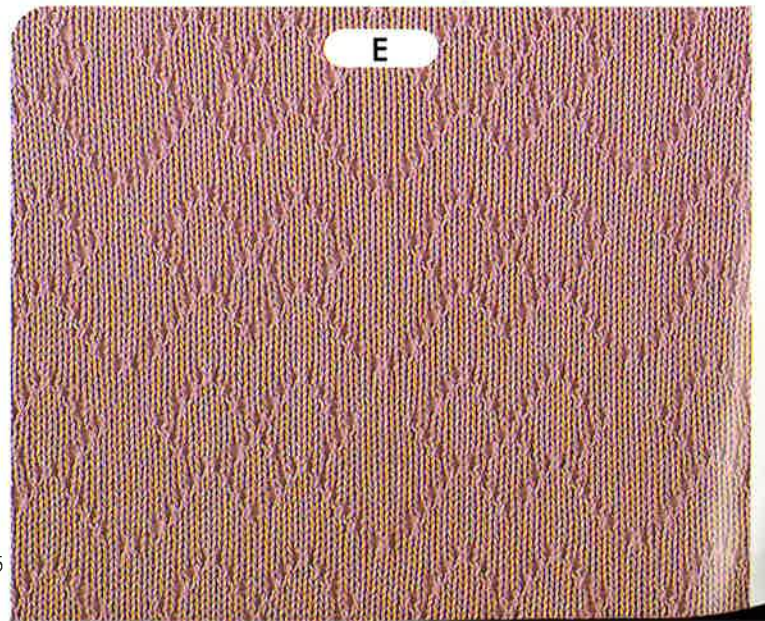
C ①



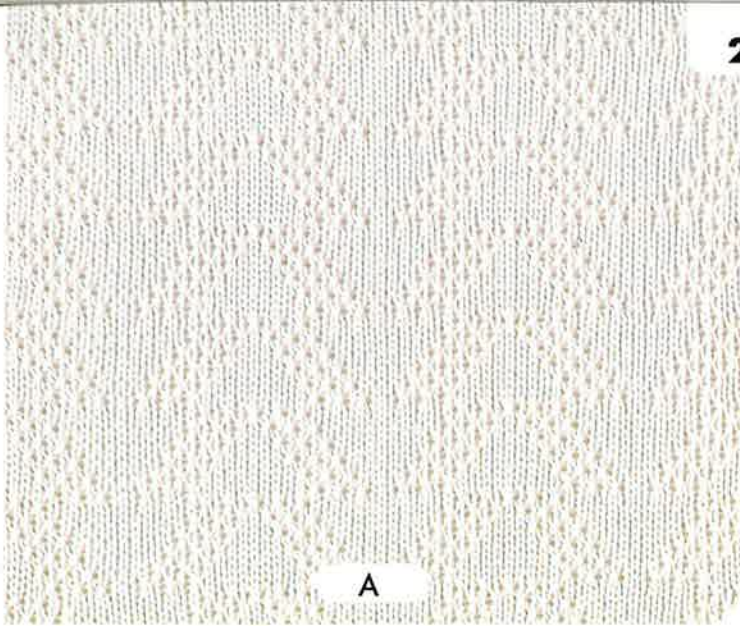
E ①



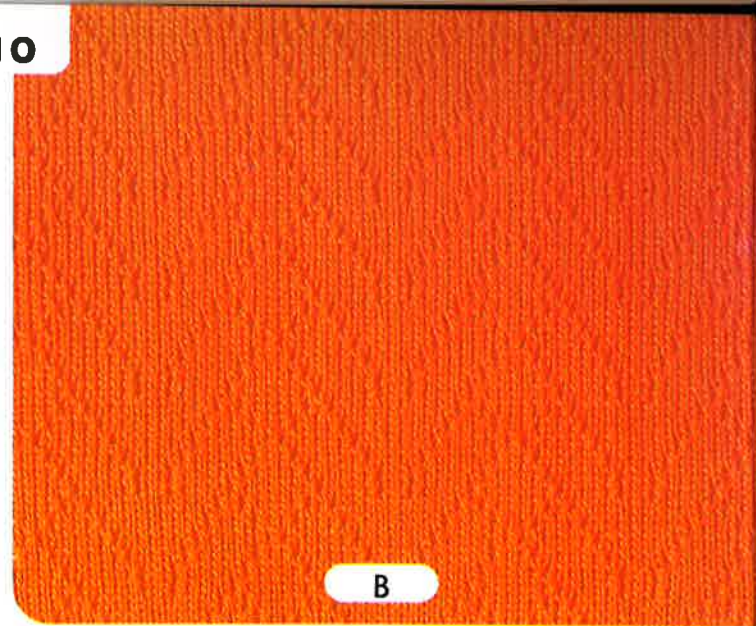
D



E

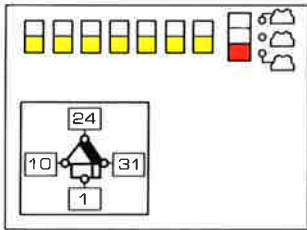


A

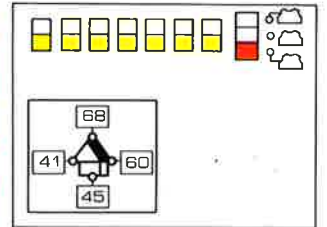


B

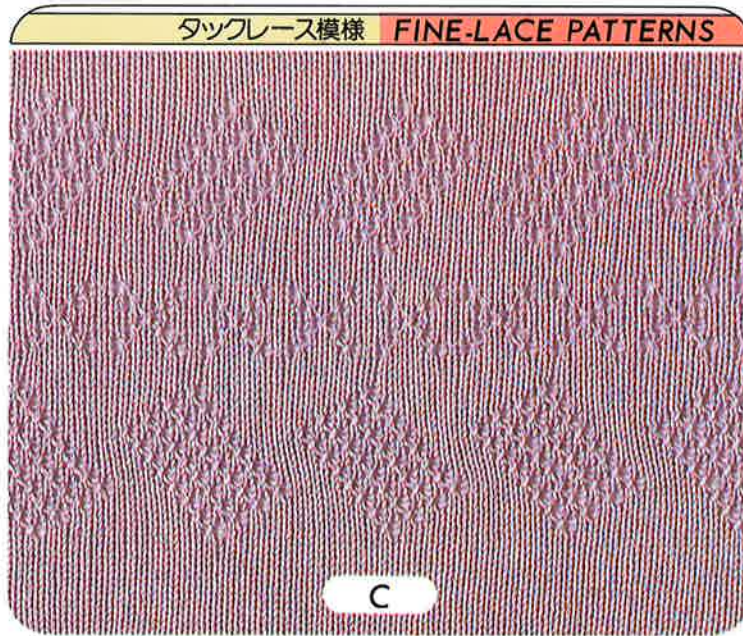
A ①



B ①

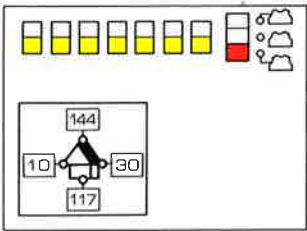


タックレース模様 FINE-LACE PATTERNS

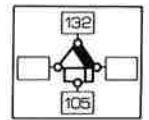


C

D ①



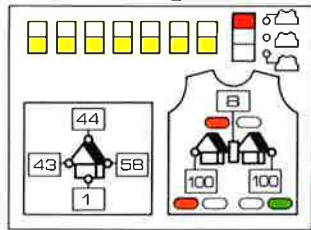
E ②



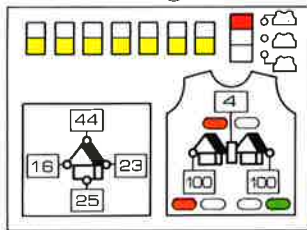
模様の上に平編6段編みます。

Knit 6 rows with Plain stitch between patterns.

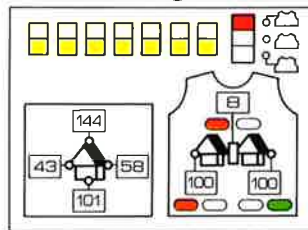
C ①



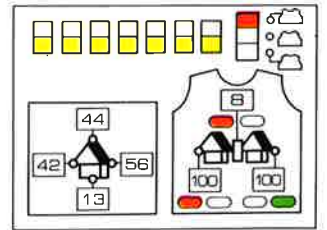
C ②



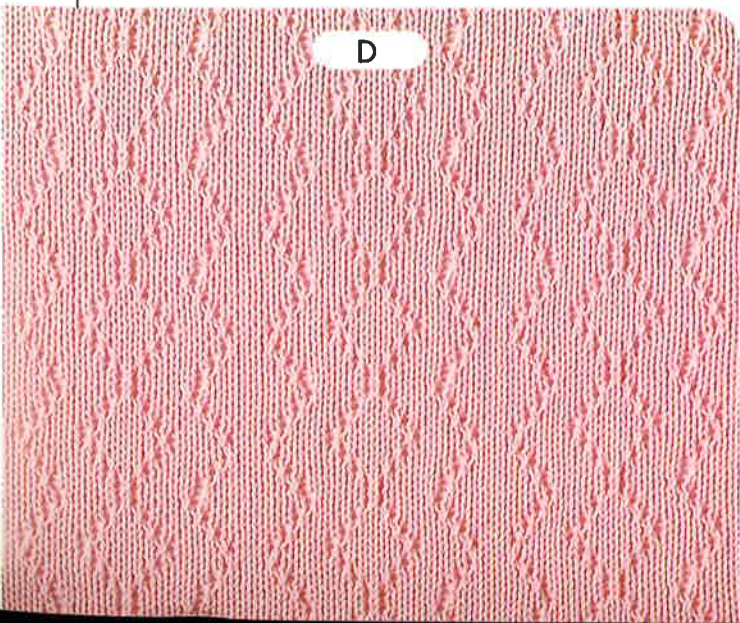
C ③



E ①



D



E

