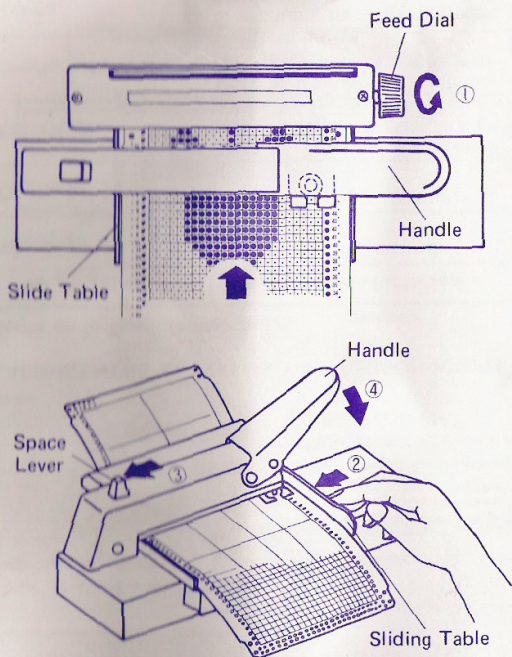
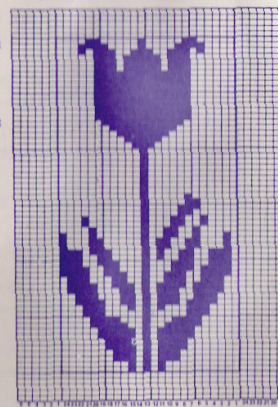


How to use the Punching Machine



1. Place a card, from your side, onto the Sliding Table of the Punching Machine. Turn the Feed Dial and the Card will be fed into the Machine. Stop feeding the Card when the line you require to punch has come in line with the Punching Pin.
2. Push the Sliding Table to the left, as far as it will go.
3. Using the Space Lever, position the portion of the Card to be punched towards the Punching Pin. The Card will move 1 section when you move the Space Lever once.
4. Push the Handle downwards and a hole will be punched in the Card, and it will move automatically section by section, through the movement of the Sliding Table. If you require a section not to be punched, use the Space Lever and it will move without any hole being punched in the Card.
5. After one row has been perforated, move the card one section, in the vertical direction using the Feed Dial.

1. Draw a design on the Graph Paper, use the side which shows 24 x 60.

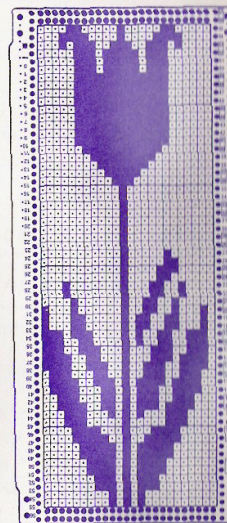


How to make Punch Cards:

(Example - Knit-in)

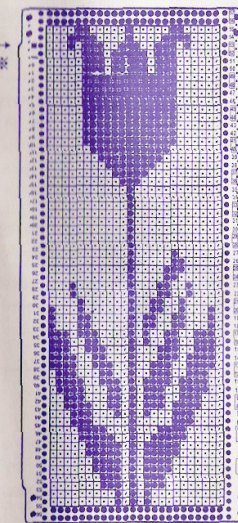
* The only time you use the other side (24 x 30) is when you draw a pattern for Double Jacquard.

2. Transfer the design from the Graph Paper to the N.P. Card.



- * For 320 series, ※ mark should be at top left.
- * For 311-315 series, ※ marks should be at bottom right.

3. Perforate the Card by using the Punching Machine/ Handy Punch.



(Model 320 series)

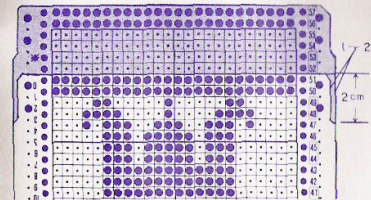
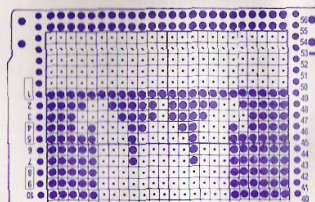
-In case the pattern is less than 60 sections in length-

(In case of for use on Models 311-315)

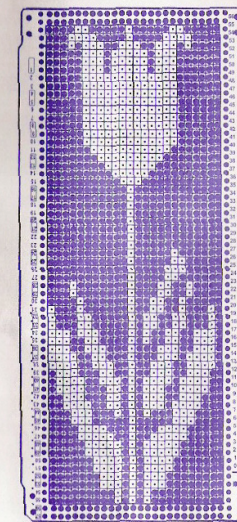
- * Perforate all sections of the horizontal lines following the last lines of the pattern.
- * Mark the stop position. (3 rows from the last perforated holes.)

(In case of for use on Model 320 series)

- * Perforate all holes of the next 2 horizontal lines following the last patterned line.
- * Perforate Card Snapping holes on both sides of the Card.
- * Cut off the remaining portion of the Card forming the side edges as that of the opposite end of the Card.

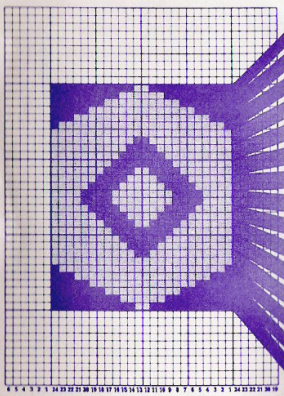


- * The pattern should be at least 36 sections long. If it is less than 36



(Model 311 class)

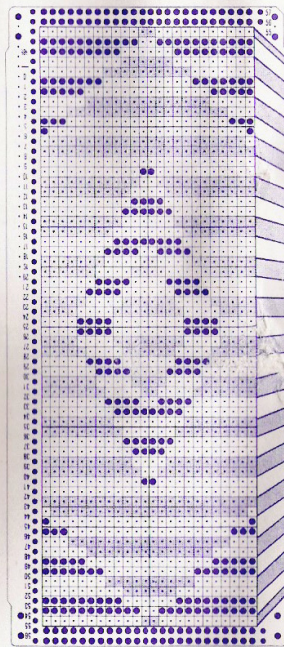
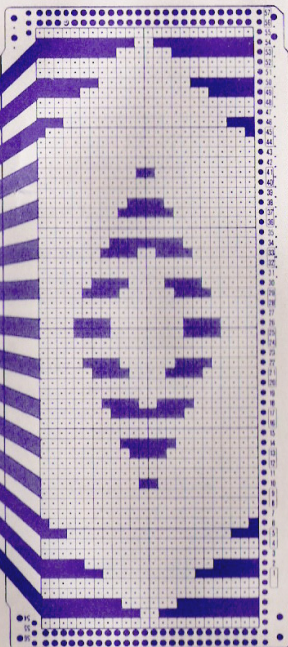
How to make a Punch Card for Double Jacquard Knitting:—



24X30

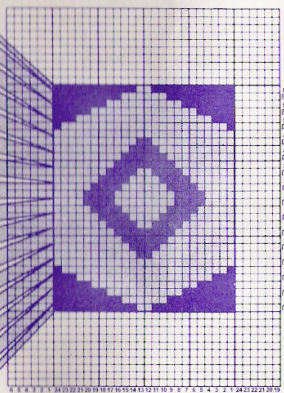
1. Draw a design on the Graph Paper provided, using the 24 x 30 side.

2. Transfer the design for the part of the contrast yarn from the Graph Paper onto the N.P. Card.



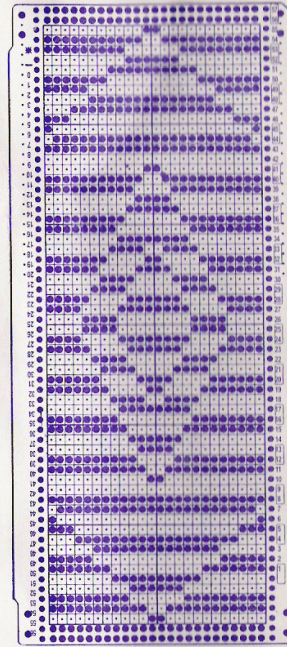
sections, repeat the same pattern on the Card and make it longer than 36 sections.

3. Perforate the part of contrast yarn on the Card.
4. Transfer the design for the part of main yarn from the Graph Paper to the N.P. Card.



24X30

5. Perforate the part of main yarn on the Card.



RELATION BETWEEN PATTERN AND HOLE POSITION

(When using on Main Machine)

Knitting Operation	Hold Position	Non-Punched Position
Tuck Knitting	Knit	Tucked (Non knitted, Yarn is over the hook)
Slip Stitch	Knit	Slipped (Non knitted, Yarn is crossing over.)
Knit-in Stitch	Knit the yarn in Yarn Feeder 2. (Knit the contrast yarn)	Knit the yarn of Yarn Feeder 1. (Knit the main yarn)
Magic Point/One Point Knitting	Knit the yarn in Yarn Feeder 2. (Knit the pointed yarn)	Knit the yarn of Yarn Feeder 1.
Weaving	Weaving yarn is threaded above.	Weaving yarn is threaded below.
Punch Lace Knitting	Knit nylon-thread.	Knit nylon-thread and yarn together.
Lacy Pattern Knitting	Knit	Pulled up.

(When using on Main Machine with Ribber)

Knitting Operation	Hole Position	Non-Punched Position
Double Jacquard Knitting	Knit the main yarn, the row is in parenthesis.	Knit the yarn on the Ribber.
Punch Pile Knitting	Makes pile stitches (loops) *must make holes every other row.	Knit the yarn on the Ribber.
Drive Lace Knitting	Lace pattern *must make holes every other row.	Knit the yarn on the Ribber.
Punch Pin Tuck	1K 1P	Pin Tuck
Tuck Rib Stitch	1K 1P	Tucking of yarn on the Main Machine. (widen the stitches on the Ribber)

Note: In case of for use on Model 311 class:—

- * Perforation of the Card should be done in the opposite way as done for use on 320 series.
- * You are unable to knit with a Punch Card which is for use with the Ribber.

Note that crosses crease:

The pattern should be at least 36 sections long. If it is less than 36 sections, repeat the same pattern on the Card and make it longer than 36 sections.