

INTERNATIONAL  
KNITWEAR  
COLLECTION

# EMPISAL

BOOK AU26



# contents

Page 1	Lady's Cardigan	AU26-1
Page 2	Lady's Cardigan with Fancy Collar	AU26-2
Page 4	Lacy Jumper	AU26-3
Page 5	Jumper with Lace Trim	AU26-4
Page 8	Fair Isle Jumper	AU26-5
Page 9	Lady's Dress	AU26-6
Page 12	Girl or Boy's Striped Vest	AU26-7
Page 13	Fair Isle Jumper – Low Neck	AU26-8
Page 16	Lady's Twin Set (Fair Isle Jumper)	AU26-9
Page 17	Lady's Stripper Jumper	AU26-10
Page 19	Lady's Patterned Jumper	AU26-11
Page 20	Cardigan with Cable Trim	AU26-12

# EMPISAL

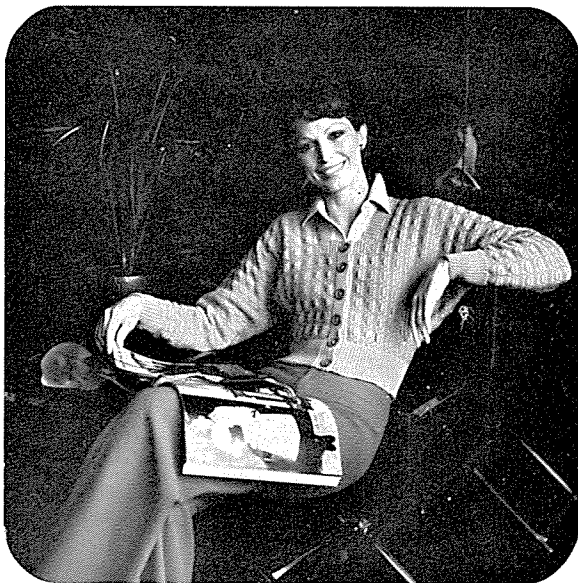
## INTERNATIONAL KNITWEAR COLLECTION

EMPISAL are pleased to present their International Fashion co-ordinator's selection of exciting machine knitted garments as originally featured in Woman's Day.

\*AN EMPISAL PUBLICATION: WORLD COPYRIGHT BY EMPISAL INTERNATIONAL

### LADY'S CARDIGAN

PATTERN No. AU26-1



**MATERIALS:** PATONS Bluebell (25g balls) 11 (12-12) balls Main Colour (MC), 9(10-10) balls Contrast Colour (CC). 6 Buttons.

**MEASUREMENTS:** To fit 86[91-97]cm, 34(36-38) ins. bust. Measures 81[86-91]cm, 32(34-36)ins. Length 43[43-43]cm, 17(17-17)ins.

**TENSION:** T7.1=14sts. and 25 rows to 5cm, (2ins.) over patt. (Please check).

**PATTERN:** \* Cams on III(KH91) on 2 (KH600-610-680L), press button 5, set lever and knit 1 row in CC. Cams on L III on R 1(KH91) on 4 (KH600-610-680L), knit 3 rows in CC. Cams on III(KH91) on 2 (KH600-610-680L), button 5, set, and knit 2 rows in MC then 1 row in CC. Cams on L III R 1(KH91) on 4 (KH600-610-680L) knit 1 row in CC. Cams on III (KH91) on 2 (KH600-610-680L), buttons 4, 6, set and knit 2 rows in MC then 1 row in CC. Cams on L III R 1 (KH91) on 4 (KH600-610-680L), knit 1 row in CC. Cams on III (KH91) on 2 (KH600-610-680L) button 5, set and knit 2 rows in MC. \* Rep. from \* to \* for patt.

**LEFT SIDE:** Using MC cast on 63(65-67)sts. in 1x1 rib (the odd st. on the right side). On T5, knit 31 rows in rib. Carr. on right. Transfer sts. to main bed. R/C on 0. On T7.1, working in patt., knit 4 rows and **SHAPE SLEEVES:** Inc. 1 st. at ea. end of next row and every foll. 6th row until there are 105(111-117) sts. Rep. inc. on every foll. 4th row 11(8-5) more times. Rep. inc. on every foll. alt. row 27 more times. Knit 1 row. \*\* Cast on 8sts. at end of last row. Knit 1 row. \*\* Rep. from \*\* to \*\* once. R/C reads 226. 197sts. Knit to row 292(298-302) and **SHAPE NECK:** Knit off manually in waste yarn 99sts. at opp. end to carr, and push back to "A" pos. Work on rem. 98sts. until R/C reads 324(331-338). Cast off. Carr on R. Bring sts. on waste yarn back to "B" pos. Take next 46sts. off machine on waste yarn. R/C on 292(298-302). Cont. in patt. on rem. 53sts. until R/C reads 312(326-326). Cast off.

**RIGHT SIDE:** Work the same as Left Side reversing neck shaping.

**LOWER FRONT BAND:** With wrong side facing, pick up 53(57-61)sts. evenly along lower front edge. on T7.1, knit 1 row in MC. Transfer sts. for 1x1 rib. R/C on 0. On T5 work 30 rows in rib. Cast off.

**LOWER BACK BAND:** Join centre back seam. With wrong side facing, pick up 111(119-127)sts. evenly along lower back edge. Work the same as Lower Front Band.

**RIGHT FRONT BAND:** Using MC cast on 13sts. in 1x1 rib. R/C on 0. On T5, knit 4 rows in rib and make 1st buttonhole. \* Counting from R side, transfer 6th and 7th sts. to adjacent needles and bring empty needle back to "B" pos. Knit 20 rows. \* Rep. from \* to \* 3 times then make another buttonhole. Knit 14 rows. R/C reads 98. Take off machine on waste yarn.

**LEFT FRONT BAND:** Knit same as Right Front Band omitting buttonholes.

**NECKBAND:** Sew front bands in position. With wrong side facing pick up 175(191-191)sts. evenly around neck edge including sts. on waste yarn and front bands. Arrange sts. for 1x1 rib. making sure to match rib on bands. Using MC, T5, knit 6 rows in rib, make buttonhole, knit 6 more rows in rib. Cast off.

**TO MAKE UP:** Press lightly with a damp cloth, sew up side and sleeve seams. Mitre neckband at front corners. Sew on buttons.

## LADY'S CARDIGAN

PATTERN No. AU26-2



**MATERIALS:** PATONS 5 Ply Harmony, 5 (100g balls); 3.00 (No. 10-11) "Disc" Crochet Hook.

**MEASUREMENTS:** To fit 81 [86-91] cm, 32(34-36) in. bust. Measures 81 [86-91] cm, 32(34-36) ins. Length 38 [39-40] cm, 15(15¼-15½) ins. Sleeves without frill: 38 cm, (15 ins.).

**TENSION:** T8=14sts. and 19 rows to 5cm, (2ins.) over st. st.

**ABBREVIATIONS:** LC=Lace Carriage; L=Left; R=Right.

**BACK:** Cast on 114(121-128)sts. (selvedge edge). T8, work 74 rows st. st. **SHAPE ARMHOLES:** R/C on 0, cast off 7(8-9)sts. at beg. of next 2 rows. Dec. at ea. end of next row and alt. rows until 84(87-90)sts. rem. Cont. until R/C reads 66(70-74). **SHAPE SHOULDERS:** Cast off 8(8-9)sts. at beg. of next 4 rows, then 8(9-8)sts. at beg. of foll. 2 rows. Cast off.

**LEFT FRONT:** Cast on 57(60-64)sts. (selvedge edge). T.8, R/C on 0 and work in st. st. dec. at end of 3rd row and foll. 8th rows 8 times. Work 7 rows. R/C reads 74. **SHAPE ARMHOLE:** Cast off 7(8-9)sts. at beg. and dec. at end of next row. Dec. at armhole edge in alt rows 8(9-10) times at same time dec. at



PATTERN No. AU26-2

front edge in foll 8th rows 8(8-9) times. Work 1(5-1) row/s. **SHAPE SHOULDER:** Cast off 8(8-9)sts. at beg. of next row and foll alt. row. Work 1 row. Cast off.

**RIGHT FRONT:** Work to correspond with Left Front.

**SLEEVES:** Cast on 56(58-60)sts. (selvedge edge). T8. R/C on 0, work in st. st. inc. at ea. end of 5th row and foll. 8th rows until there are 88(90-92)sts. Work 17 rows. R/C reads 142. **SHAPE TOP:** Cast off 4sts. at beg. of next 2 rows. Dec. at ea. end of next row and alt. rows until 40sts. rem., then in every row until 18sts. rem. Cast off.

**WRIST FRILLS:** Cast on 56(58-60)sts. (selvedge edge). \*\* T5 work 2 rows. Transfer every 2nd st. on to alt. needles. Push needles into "A" pos. T3 and knit 8 rows. Bring needles into "B" pos. Work 2 rows. T7. Press buttons 1, 3, 5 and 7, set lever, move LC from L to R, knit 2 rows. Button 2, 4, 6, 8, set, move LC from R to L, knit 2 rows. Rep. last 4 rows 8 times. Cast off very loosely. \*\*

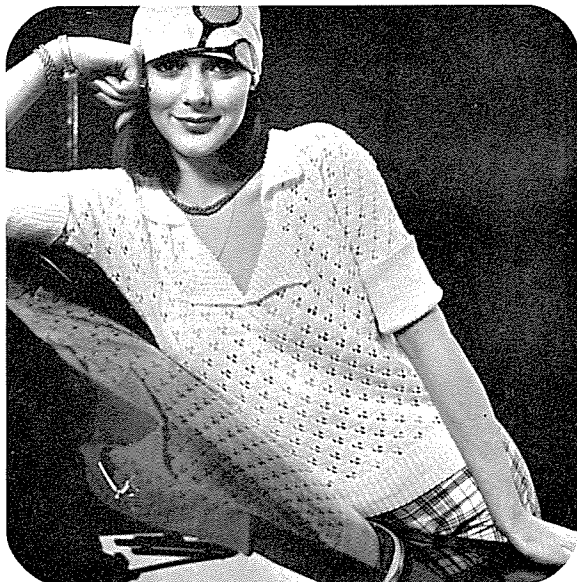
**COLLAR:** (Make 2 pieces). Cast on 146(150-154)sts. (selvedge edge). Rep. from \*\* to \*\* of wrist frills once.

**LOWER BAND AND TIE:** Cast on 44sts. (selvedge edge). T8, and work 210(218-226) rows. Cast off loosely.

**MAKE UP:** With a slightly damp cloth and warm iron, press lightly. Using back stitch join side, shoulder, sleeve, collar and wrist frill seams. Sew collar and wrist frills in position easing in slightly. Sew lower band and tie around lower edge leaving ends to tie, fold in half and stitch in position. Tie knot at centre back. Press seams.

## LADY'S JUMPER

PATTERN No. AU26-3



**MATERIALS:** PATONS 5 Ply Harmony, 4 balls, (100g balls).

**MEASUREMENTS:** To fit 81[86-91]cm, 32(34-36) in. bust. Length: 51[52-53]cm, 20(20¼-20½)ins.

**TENSION:** T8=13sts. and 19 rows to 5cm, (2ins.) over patt.

**ABBREVIATIONS:** LC=Lace Carriage, L=Left; R=Right.

**PATTERN:** Press button 3, set lever, move LC from L to R, knit 2 rows. Button 4, set, move LC from L to R, button 2, set, move LC from R to L, knit 4 rows, button 7, set, move LC from L to R, knit 2 rows, button 8, set, move LC from L to R, button 6, set, move LC from R to L, knit 4 rows. These 12 rows form patt.

**BACK:** Cast on 93(101-109)sts. for K.1, P.1 rib. T4 and work 41 rows rib. Transfers sts. to main bed. T8 and R/C on 0, working in patt. inc. at ea. end of 3rd row, and foll. 4th rows until there are 139(147-155)sts. Work 1 row. \*\* **SHAPE SLEEVES:** Cast on 13sts. at beg. of next 2 rows. Work 54(58-62) rows.

**SHAPE SHOULDERS:** Cast off 10(11-12)sts. at beg. of next 6 rows, then 11sts. at beg. of next 6 rows. R/C reads 160(164-168). Cast off.

**FRONT:** Work as for Back to \*\*. **SHAPE NECK:** Knit 70(74-78)sts. at opp. end to carr. off manually on to waste yarn. Push Needles back into "A" pos. **SHAPE SLEEVES:** Cast on 13sts. at beg. of next row. Dec. at neck edge in alt. rows until 63(66-69) sts. rem. Work 17(19-21) rows. **SHAPE SHOULDER:** Cast off 10(11-12)sts. at beg. of next row and foll. alt. rows twice, then 11sts. at beg. of foll. alt. rows 3 times. Undo waste yarn and return needles into "B" pos. Join yarn to rem. sts. and work to correspond with other side, working a dec. at centre front in first row.

**SLEEVE BANDS:** Cast on 93(95-97)sts. for K.1, P.1 rib. T.4 and work 80 rows rib. Cast off loosely.

**COLLAR:** Cast on 6sts. (selvedge edge) T.7 and work 2 rows. \*\* Press buttons 2, 4, 6 and 8, set lever, move LC from L to R, cast on 1 st. at beg. of row, knit 2 rows. Slide dial on 2 rep. last 2 rows. Rep. last 4 rows 6 times. Keeping patt correct as in last 4 rows dec. at beg. of next row and alt. rows until 6sts. rem. Work 2 rows. \*\* Rep. from \*\* to \*\* 5 times. Cast off.

**MAKE UP:** With a slightly damp cloth and warm iron, press lightly. Using back stitch join shoulder, side, sleeve and sleeve band seams, reversing seams on half of sleeve band for cuffs. Sew sleeve bands and collar in position easing collar around. Fold cuffs up and stitch in position. Catch points of collar on to garment. Press seams.

## LADY'S JUMPER

### PATTERN No. AU26-4



**MATERIALS:** PATONS 5 Ply Harmony, 4(4-5)balls (100g balls). 6 buttons, 3.00 (No. 10-11) "Disc" Crochet Hook.

**MEASUREMENTS:** To fit 81 [86-91] cm, 32(34-36) in. bust. Measures 81 [86-91] cm, 32(34-36)ins. Length 61 [62-62] cm, 24(24¼-24½)ins. Sleeve 43cm, (17ins.)

**TENSION:** T.8=14sts. and 19 rows to 5cm, (2ins.) over st. st.

**ABBREVIATIONS:** LC=Lace Carriage; L=Left; R=Right; ch=chain; dc=double crochet.

**PATTERN:** Press button 5, set lever, move LC from L to R, knit 2 rows. Button 6, set, move LC from L to R, button 4, set, move LC from R to L, knit 2 rows, button 7, set, move LC from L to R, button 3, set, move LC from R to L and knit 2 rows. These 6 rows form patt.

**BACK AND FRONT ALIKE:** Cast on 107(113-119) sts. for 2x1 rib. T.5 work 60 rows rib, dec. (inc.) at ea. end of last row for 1st and 3rd sizes only . . . 105 (113-121)sts. Transfer sts. to main bed. T.8, work 116

PATTERN No. AU26-3





PATTERN No. AU26-4



rows st. st. **SHAPE ARMHOLES:** R/C on 0. Cast off 6(6-8)sts. at beg. of next 2 rows. Dec. at ea. end of next 6(6-8) rows. Work in patt. until R/C reads 69 (73-77). **SHAPE SHOULDERS:** Cast off 10(12-12) sts. at beg. of next 2 rows, then 10(11-11)sts. at beg. of foll. 2 rows. T.6 and work 6 rows st. st. Cast off loosely.

**SLEEVES:** Cast on 56(59-62)sts. for 2x1 rib. T5 and work 60 rows rib. Transfer sts. to main bed. T8 and work in st. st., inc. at ea. end of next row and foll. 8th rows 12 times . . . 82(85-88)sts. Work 19 rows. R/C reads 116. **SHAPE TOP:** Cast off 3(3-4)sts. at beg. of next 2 rows. Dec. at ea. end of next row and alt. rows until 30(31-28)sts. rem, then in every row until 20(21-22)sts. rem. Cast off.

**MAKE UP:** With a slightly damp cloth and warm iron, press lightly. Using back stitch join side and sleeve seams, catch shoulders tog. at armhole edge. Sew in sleeves. Fold 6 rows on Back and Front down and stitch in position. Using hook work 3 rows dc around shoulder openings, work three ch buttonholes evenly spaced along front shoulders in 2nd row. Sew on buttons. Press seams.

## LADY'S JUMPER

### PATTERN No. AU26-5



**MATERIALS:** PATONS Bluebell (25g balls), 15(16-16) balls Main Colour (MC), 6(7-7) balls Contrast Colour (CC).

**MEASUREMENTS:** To fit 81[86-91]cm, 32(34-36) in. bust. Length 51[51-52]cm, 20(20-20½)ins. Sleeves 43 cm, (17ins.).

**TENSION:** T8=15sts. and 20 rows to 5cm, (2ins.) over patt.

**PATTERN:** 1st row: Push buttons 1 and 5, set lever, lay in CC and knit. 2nd row: Buttons 4, 5 and 6, set, lay in CC and knit. 3rd row: Buttons 3, 4, 6 and 7, set, lay in CC and knit. 4th row: Buttons 2, 3, 5, 7 and 8, set, lay in CC and knit. 5th row: Buttons 1, 2, 4, 5, 6 and 8, set, lay in CC and knit. 6th row: As 4th row. 7th row: As 3rd row. 8th row: As 2nd row. Rep. rows 1 to 8 incl.

**BACK:** Using MC, cast on for K.1, P.1 rib 127(135-143) sts. R/C on 0. T.5, knit 27 rows. Transfer to main bed. T.8 and patt. 106 rows. R/C reads 133.

**SHAPE ARMHOLES:** R/C on 0. Cast off 5(6-7)sts. at beg. of next 2 rows. Dec. 1 st. at ea. end of every row 9(10-11) times. \*\* Knit 53(54-55) rows.

**SHAPE SHOULDERS:** Cast off 11(11-12)sts. at beg. of next 4 rows. Cast off 10(11-11)sts. at beg. of next 2 rows. Cast off rem 35(37-37)sts. R/C reads 70(72-74).

**FRONT:** Work as for Back to \*\*. Knit 25(26-25) rows.

**SHAPE NECK:** Note needle selector buttons. Knit 58(60-62)sts. at opp. end of machine off manually in waste yarn and push needles into "A" position. Knit 1 row. Dec. 1 st. at neck edge in next 9(10-10) rows. 32(33-35)sts. Knit 18(17-19) rows.

**SHAPE SHOULDER:** Cast off 11(11-12)sts. at beg. of next row and foll alt. row. Knit 1 row. Cast off. R/C reads 68(70-72). Return needles from "A" into "B" pos. Cast off 17sts. at centre. Select buttons previously noted. R/C on 36(38-38). Knit to correspond with other side.

**SLEEVES:** Using MC, cast on for K.1, P.1 rib 59(59-61)sts. R/C on 0. T.5 knit 21 rows. Transfer to Main Bed. T8 and working in st. st. knit 2 rows. Inc 1st. ea. end of next row and foll 8th(6th-6th) row 13(6-10) times, then in foll 10th(8th-8th) rows 2(11-8) times.

91(95-99)sts. Knit 19 rows. R/C reads 167.

**SHAPE ARMHOLES:** R/C on 0. Cast off 4(5-6)sts. at beg. of next 2 rows, then dec. 1 st. ea. end of next row and alt rows 18(19-20) times, then in every row 15 times. 15sts. Cast off. R/C reads 54(56-58).

**NECKBAND:** Using MC, cast on for K.1, P.1, rib 139(143-147)sts. T.5, knit 31 rows. Cast off loosely.

**MAKE UP:** With a slightly damp cloth and warm iron press lightly. Using back stitch join side, sleeve and shoulder seams, sew in sleeves. Sew cast-off edge of neckband to neck edge making join at centre back, fold in half on to wrong side and slip-stitch in position. Press seams.

## LADY'S DRESS

### PATTERN No. AU26-6



**MATERIALS:** PATONS Bluebell (25g balls), 34(34-35) balls.

**MEASUREMENTS:** To fit 81[86-91]cm, 32(34-36)in. bust. Length 97[97-98]cm, 38(38¼-38½)ins. Sleeve seam: 43[43-43]cm, 17(17-17)ins.

**TENSION:** 14sts. to [5cm] 2ins. and 32 rows to [7.6]cm, 3ins. over patt. (Please check).

**PATTERN:** \* On T10 knit 4 rows, on T3 knit 4 rows \*. Repeat from \* to \* for patt. Smooth side is wrong side of patt.

**RIGHT SLEEVE, BACK AND FRONT:** Using waste yarn cast on 89(93-97)sts. and knit 4 rows. Carr. on right, R/C on 0, using main yarn work in patt. until R/C reads 128 and **CLOSE HEM ON CUFF:** Take work off machine on waste yarn. Bring up 84(88-92) needles to "B" pos. Reverse work and replace first row knitted in main yarn on machine, dec. 5 sts. evenly across row. Place last row knitted on same needles, dec. 5 sts. evenly across row. Remove waste yarn. R/C on 0. Carr. on right. On T10 knit 1 row to close hem, then knit 3 rows T10. Cont. in patt. until R/C reads 152 and **SHAPE SIDES:** Inc. 1 st. ea. end of the next row and every foll 4th row to 98(102-106)sts. Rep. inc. at ea. end of every alt row to 128(132-136)sts. R/C reads 207. Cont. without further shaping until R/C reads 228(230-232).

**SHAPE FRONT:** Knit 65(67-69)sts. at opp end to carr. on to waste yarn and put in "A" pos. Working on rem 63(65-67)sts. Cams on III(KH91) on 2(KH 600-610-680L), \* push 3sts. at opp. end to carr. into E pos, and knit 2 rows (always putting yarn round 1st inner needle in E pos. to avoid making a hole). \* Rep from \* to \* until 3(5-4)sts. rem. in "B" pos. Cams on I(KH91) on 3(KH600-610-680L). Knit 1 row and cast off. Remove waste yarn from rem. sts. and bring back to "B" pos. and knit.

**BACK:** R/C on 228(230-232), keeping continuity of patt, knit 8 rows.

**SHAPE SHOULDER:** Inc. 1 st. at shoulder edge in next row and foll 8th row twice (once-once), then in foll 10th row once (twice-twice). 69(71-73)sts. Cont. until R/C reads 272(276-278). Tie a coloured thread at end of last row to mark beg. of neck edge. Work until R/C reads 294(298-302) and cast off.

**LEFT SLEEVE, BACK AND FRONT:** Work as for Right Sleeve, Back and Front reversing shapings.

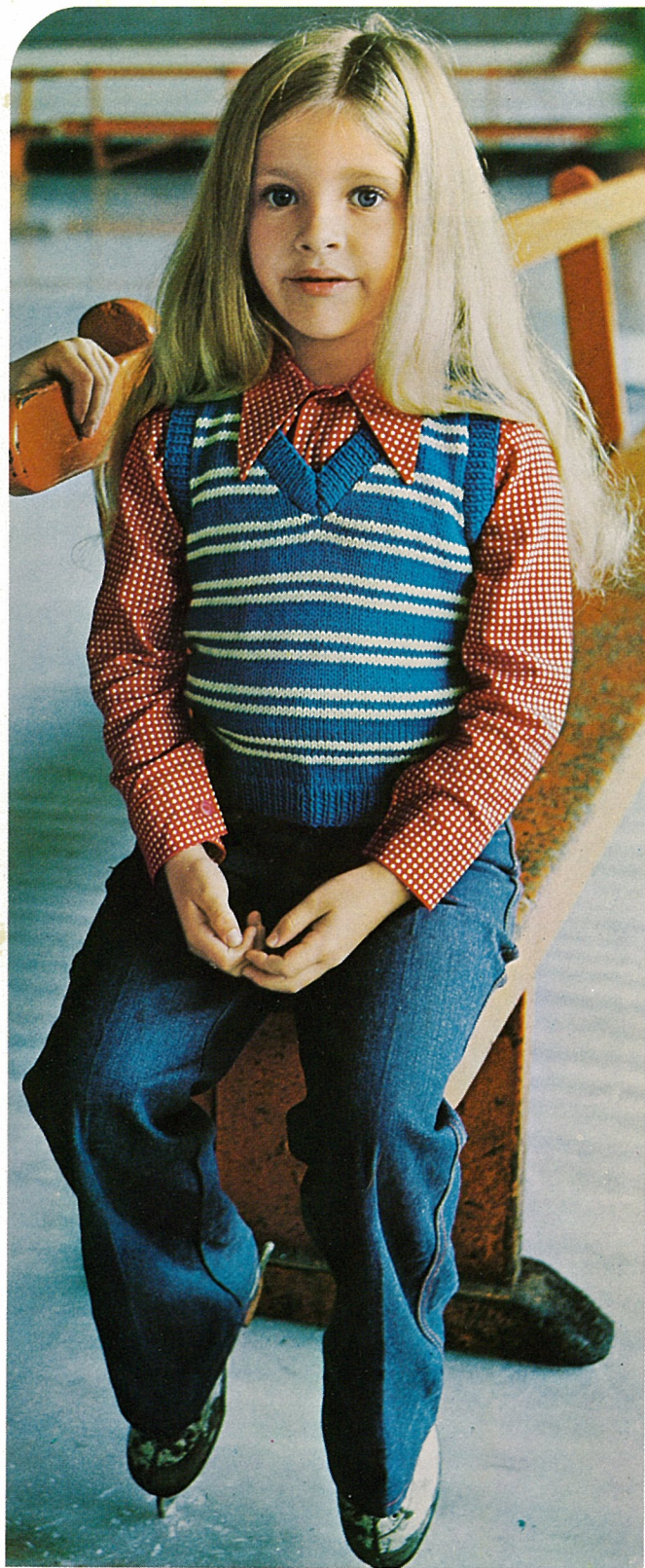
**LEFT FRONT BAND:** Cast on 45(47-49)sts. for 1x1 rib. R/C on 0. On T5 knit 97(99-101) rows and **SHAPE LOWER EDGE:** \* Cams both on II(KH91) on 1(KH600-610-680L), raise 10 needles at opp. end to carr. to E pos, and knit 2 rows (always putting



PATTERN No. AU26-5



PATTERN No. AU26-6



PATTERN No. AU26-7



PATTERN No. AU26-8

yarn round 1st inner needle in "E" pos. to avoid making a hole). \* Rep. from \* to \* until 5(7-9)sts. rem. Return "E" pos. needles to "B" pos. and knit 1 row. Transfer rib sts. to main machine and cast off.

**RIGHT FRONT BAND:** Cast on 45(47-49)sts. for 1x1 rib. On T5 knit 96(98-100) rows. Complete as given for Left Front Band.

**SKIRT (Back and Front alike);** Cast on 107(114-121) sts. with a selvedge edge. R/C on 0. Work in patt. until R/C reads 10. Inc. 1 st. at ea. end of the next row. Rep. inc. on every foll 8th row until there are 129 (136-143)sts. R/C reads 91. Rep. inc. on every foll 16th row until there are 155(162-169)sts. R/C reads 299. Knit to row 304. On T10, knit 1 row (hem line). On T6 knit 12 rows and cast off.

**NECK FACING:** Join centre back seam. Pick up 30 (31-32)sts. along Back Neck (between coloured threads). On T6 knit 12 rows inc. 1 st. at ea. end of every alt row. Cast off loosely.

**MAKE UP:** With a damp cloth and warm iron press very lightly. Sew up cuff, sleeve and side seam. Sew Front Bands in position with cast-on edge at shoulder. Fold back neck facing to inside and slip stitch in position. Sew up side seams on skirt. Join bodice to skirt, matching side seams and lapping right front band over left for 8.2 cm (3¼ ins.). Turn up hem and slip stitch into place.

## GIRL'S VEST

### PATTERN No. AU26-7



**MATERIALS:** PATONS Katie (50g balls), 3(3-4) balls Main Colour (MC), 1 ball Contrast Colour (CC).

**MEASUREMENTS:** To fit underarm 61[66-71]cm, 24(26-28)ins. Measures 61[66-71]cm, 24(26-28)ins. Length 32[36-39]cm, 12½(14-15½)ins.

**TENSION:** T10=12sts. to 5cm. (2ins.) over st. st. T5.2 for rib.

**BACK:** Using MC, cast on 73(79-85)sts. for K.1, P.1 rib. Work in rib until there are 14 rows. Transfer sts. to main bed. Work 68(76-84) rows in stripes of 6 rows M 2 rows ea. CC, MC and CC throughout. **SHAPE ARMHOLES:** Cast off 6(7-8)sts. at beg. of next 2 rows \*\*, dec. at ea. end of next 6 rows. Work 38(44-50) rows. **SHAPE SHOULDERS:** Cast off 9(10-11)sts. at beg. of next 2 rows. Cast off.

**FRONT:** Work as for Back to \*\*. Knit 31(33-35)sts. at opp. end to carr. off manually on to waste yarn, push needles back into "A" pos. Dec. at armhole edge in next row. Dec. at armhole edge in next 5 rows at same time dec. at neck edge in alt rows until 9(10-11) sts. rem. Work 13(17-21) rows. Cast off. Return needles from "A" into "B" pos. Join yarn to rem. sts. and work to correspond with other side working K.2 tog. at centre front of neck.

**ARMHOLE BANDS:** Using MC, cast on 103(113-123)sts. for K.1, P.1 rib. Work 8 rows. Cast off loosely.

**NECKBAND:** Using MC, cast on 133(143-153)sts. for K.1, P.1 rib. Work 8 rows. Cast off loosely.

**MAKE UP:** With a slightly damp cloth and warm iron press lightly. Using back stitch join side, shoulder and armhole band seams. Sew armhole bands and neckband in position, mitring neckband at centre front. Press seams.

## LADY'S JUMPER

### PATTERN No. AU26-8



**MATERIALS:** PATONS Azalea (25g balls), 8(8-9) balls Main Colour (MC), 3 balls Contrast Colour (CC), 2 buttons.

**MEASUREMENTS:** To fit 81[86-91]cm, 32(34-36)in. bust. Measures 81[86-91]cm, 32(34-36)ins. Length 46[46-47]cm, 18(18¼-18½)ins. Sleeves 18cm, 7ins.

**TENSION:** T5=17sts. and 23 rows to 5cm, (2ins.) over patt. T2 for rib.

**ABBREVIATIONS:** MC=Main Colour, CC=Contrast.

**PATTERN:** With carr. on Left place change knob on MC and knit 1 row. Set reverse knob to — and change knob to MC and press 2 part buttons. (Press buttons 4 and 5, set lever, lay in CC and knit row) twice. Buttons 3, 4, 5 and 6, set, lay in CC and knit row. Buttons 2, 3, 4, 5, 6 and 7, set, lay in CC and knit row. Knit 2 rows st. st. Rep. these 6 rows.

**BACK:** Using M, cast on 137(145-153)sts. for K.1 P.1 rib. Work 24 rows rib, inc. once in last row. Transfer sts. to main bed. \*\* Work 92 rows patt.

**SHAPE ARMHOLES:** Cast off 10sts. at beg. of next 2 rows. Dec. 1 st. ea. end of next row and alt. rows until there are 102(106-110)sts. Work 59 rows.

**SHAPE SHOULDERS:** Cast off 11(12-12)sts. at beg. of next 2 rows, then 11(11-12)sts. at beg. of foll 2 rows. Cast off.

**FRONT:** Work as for Back to \*\*. Work 72 rows patt.

**SHAPE NECK:** Knit 98(103-108)sts. at opp. end to carr. off manually on to waste yarn. Push needles back into "A" position. Work 1 row. Work 19 rows patt.

**SHAPE ARMHOLE:** Cast off 10sts. at beg of next row, then dec. 1 st. at armhole edge of alt. rows until 22(23-24)sts. rem. Work 59 rows patt.

**SHAPE SHOULDERS:** Cast off 11(12-12)sts. at beg. of next row. Work 1 row. Cast off. Undo waste yarn and return needles to "B" position. Cast off 58(60-62)sts. and complete to correspond with other side.

**SLEEVES:** Using M, cast on 97(105-105)sts. for K.1 P.1 rib. Work 24 rows rib, inc. once in last row. Transfer sts. to main bed. Work 52 rows patt.

**SHAPE TOP:** Cast off 10sts. at beg. of next 2 rows, then dec. 1 st. ea. end of next row and alt. rows until 26(32-30)sts. rem. Work 1 row. Cast off.

**INSERT:** Using M, cast on 91(95-99)sts. for K.1, P.1 rib. Work 24 rows rib.

**SHAPE NECK:** Knit 46(48-50)sts. at opp. end to carr. on to waste yarn. Push needles into "A" position. Work 1 row. Dec. 1 st. at neck edge in alt.

PATTERN No. AU26-9





PATTERN No. AU26-10



rows until 13sts. rem. Work 12 rows. Cast on 32(34-36)sts. for rib at beg of next row. Work 5 rows rib. Cast off. Return needles from "A" to "B" position. Join yarn to rem. sts. and complete to correspond with other side, working 1 dec. at centre front neck.

**MAKE UP:** With a slightly damp cloth and warm iron, press lightly. Using back stitch join side, shoulder, sleeve and insert seam. Sew in sleeves and insert. Sew 2 buttons at centre front on insert.

## LADY'S TWIN SET

### PATTERN No. AU26-9



**MATERIALS:** PATONS Katie (50g balls), Vest: 4(5-5) balls Main Colour (MC), 4(4-5) balls Contrast Colour (CC). Cardigan: 10(11-12) balls Main Colour, 3 balls Contrast.

**MEASUREMENTS:** To fit 81[86-91] cm, 32(34-36) in. bust. Measures 81[86-91] cm, 32(34-36) ins. Length of Vest: 58[60-61] cm, 23(23½-24) ins. Length of Cardigan: 67[67-68] cm, 26¼(26½-26¾) ins. Sleeve: 43cm, (17ins.).

**TENSION:** T10=13½sts. and 18 rows to 5cm (2ins.) over patt. T9.2=12½sts. and 18 rows to 5cm (2ins.) over st. st.

**PATTERN:** Set machine for Fair Isle and work 1 row. (Press buttons 4 and 5, set lever, lay in CC and knit row) twice. Buttons 3, 4, 5 and 6, set, lay in CC and knit row. Buttons 2, 3, 4, 5, 6 and 7, set, lay in CC and knit row. Press plain button and work 2 rows in MC. Press 2 part buttons. Rep. these 6 rows.

### VEST

**BACK:** T2, using CC, cast on 113(121-129)sts. for K.1, P.1 rib. T5.2 work 30 rows rib. dec. once in last row. Transfer sts. to main bed and using MC, T10, work 106(110-114) rows in patt. **SHAPE ARM-HOLES:** Keeping patt. correct, R/C on 0, cast off 10(12-14)sts. at beg. of next 2 rows \*\*, then dec. at ea. end of every row until 68(72-76)sts. rem. Work until R/C reads 74(78-82). **SHAPE SHOULDERS:** Cast off 10(11-12)sts. at beg. of next 2 rows. Cast off.

**FRONT:** Work as for Back to \*\*. **SHAPE NECK:** Knit 50(52-54)sts. at opp. end to carr. off manually on to waste yarn. Push needles into "A" pos. Dec. at armhole edge in next 12 rows at same time dec. at neck edge in foll 3rd rows until 10(11-12)sts. rem. Work 12(13-14) rows. patt. Cast off. Undo waste yarn and return needles into "B" pos. Cast off 8sts. and work to correspond with other side.

**NECKBAND:** T2, using CC, cast on 189(193-197) sts. for K.1, P.1 rib. T5.2 work 14 rows. Cast off loosely.

**ARMHOLE BANDS:** T2, using CC, cast on 145 (149-153)sts. for K.1, P.1 rib. T5.2 work 14 rows. Cast off loosely.

**MAKE UP:** With a slightly damp cloth and warm iron, press lightly. Using back stitch join side and shoulder seams. Sew armhole bands and neckbands in position overlapping side of neckband on cast off sts. at front. Press seams.

### CARDIGAN

**BACK:** T2, using CC, cast on 109(117-125)sts. for K.1, P.1 rib. T5.2, work 20 rows rib. Transfer sts. to main bed and using MC, T9.2 work 154 rows st. st. **SHAPE ARMHOLES:** R/C on 0. Cast off 4(6-8)sts. at beg. of next 2 rows. Dec. at ea. end of next row and alt. rows until 93(95-97)sts. rem. Knit until R/C reads 66(68-70). **SHAPE SHOULDERS:** Cast off 12 sts. at beg. of next 2 rows, then 11sts. at beg. of foll. 2 rows. Cast off.

**LEFT FRONT:** T2, using CC, cast on 55(59-63)sts.

for K.1, P.1 rib. T5.2, work 20 rows rib. Transfer sts. to main bed and using MC, T9.2 work 154 rows st. st. SHAPE ARMHOLE AND NECK: R/C on 0. Cast off 4(6-8)sts. at beg. of next row. Dec. at armhole edge in alt. rows 4(5-6) times at same time dec. at neck edge in alt rows until 23sts. rem. Knit until R/C reads 66(68-70). SHAPE SHOULDER: Cast off 12sts. at beg. of next row. Work 1 row. Cast off.

**RIGHT FRONT:** Work to correspond with Left Front.

**SLEEVES:** T2, using C, cast on 55(57-59)sts. for K.1, P.1 rib. T5.2, work 20 rows rib. Transfer sts. to main bed and using MC, T9.2 R/C on 0. Work in st. st. inc. at each end of 5th row and foll 8th rows until there are 83(87-91)sts. Work 44(36-24) rows. R/C reads 152. SHAPE TOP: R/C on 0, cast off 4(6-8)sts. at beg. of next 2 rows. Dec. 1 ea. end of next row and alt rows until 29(25-23)sts. rem, then in every row 3(1-0) time/s. R/C reads 50(52-53). Cast off.

**POCKETS:** (Make 2). Using MC, cast on 37sts. for selvedge edge. T9.2 and work 48 rows st. st. Using CC, work 1 row. Transfer sts. down for K.1, P.1 rib. Using CC and T5.2 work 16 rows rib. Cast off loosely.

**FRONT BAND:** T2, using CC, cast on 13sts. for K.1, P.1 rib. T5.2 and work in rib until band is long enough to fit (slightly stretched) along front edges and across back neck. Cast off loosely.

**MAKE UP:** With a slightly damp cloth and warm iron, press lightly. Using back stitch join side, shoulder and sleeve seams, reversing seams on cuffs. Sew in sleeves. Sew front bands in position. Sew on pockets, folding rib down and stitching in position. Fold cuffs up and stitch in position. Press seams.

## LADY'S JUMPER

### PATTERN No. AU26-10



**MATERIALS:** PATONS Katie (50g balls) 5 balls Main Colour (MC), 1 ball each 1st and 2nd Contrast Colour (C1-C2).

**MEASUREMENTS:** To fit 81[86-91]cm, 32(34-36) in. bust. Length: 48[49-50]cm, 19(19¼-19½)ins. Sleeve 15cm, (6ins.).

**TENSION:** T10=12sts. and 16½ rows to 5cm (2ins.) over st. st. T7 for rib.

**BACK:** Using MC, cast on 97(103-109)sts. for K.1, P.1 rib. Cont. in rib until there are 20 rows. Transfer sts. to main bed. Work 80 rows in stripes of 8 rows MC and 2 rows each C1 and C2. SHAPE ARMHOLES: Keeping stripes correct, cast off 7(8-9)sts. at beg. of next 2 rows, then dec. at ea. end of next row and alt. rows until 71(75-79)sts. rem. \*\* Work 45 (47-49) rows. SHAPE SHOULDERS: Cast off 7(8-9)sts. at beg. of next 2 rows, then 8sts. at beg. of foll. 2 rows. Cast off.

**FRONT:** Work as for Back to \*\*. Work 1 row. SHAPE NECK: Knit 46(49-52)sts. at opp. end to carr. on to waste yarn and push needles into "A" pos. Work 1 row on rem. 25(26-27)sts. Dec. at neck edge in alt rows until 15(16-17)sts. rem. Work 23 (25-27) rows. SHAPE SHOULDERS: Cast off 7(8-9) sts. at beg. of next row. Work 1 row. Cast off. Undo

PATTERN No. AU26-11



waste yarn and bring needles back into "B" pos. Cast off 21(23-25)sts. and complete to correspond with other side.

**SLEEVES:** Using MC, cast on 71(75-79)sts. for K.1, P.1 rib. Work 20 rows rib. Transfer sts. to main bed. Work 30 rows st. st. **SHAPE TOP:** Cast off 7(8-9) sts. at beg. of next 2 rows. Dec. at ea. end of next row and alt rows until 17sts. rem. Work 1 row. Cast off.

**NECKBAND:** Using MC, cast on 141(151-161)sts. for K.1, P.1 rib. Work 8 rows rib. Cast off in rib.

**MAKE UP:** With a slightly damp cloth and warm iron press lightly. Using back stitch join side, shoulder and sleeve seams. Sew in sleeves. Join neckband and sew in position. Press seams.

**TENSION:** T8=14½sts. and 26 rows to 5cm, (2ins.) over patt.

**PATTERN:** Cam lever on 2(KH600-610-680L) or III on (KH91) and slide dial on 3, select buttons 1 and 5, set lever and knit 4 rows. Cam lever on 3 (KH600-610-680L) or I on (KH91) and knit 2 rows. Cam lever on 2 (KH600-610-680L) or III on (KH91) and slide dial on 1, knit 4 rows. Cam lever on 3 (KH600-610-680L) or I on (KH91) and knit 2 rows. These 12 rows form patt.

**BACK:** Cast on 105(113-121)sts. for 1x1 rib. T5 and knit 20 rows. Transfer sts. to main bed. T8 and R/C on 0, patt. 132 rows. **SHAPE ARMHOLES:** R/C on 0. Cast off 6(7-8)sts. at beg. of next 2 rows. Dec. 1 st. ea. end of next row and alt. rows until 79(81-83)sts. rem. \*\* Knit until R/C reads 74(80-86). **SHAPE SHOULDERS:** Cast off 12sts. at beg. of next 4 rows. Cast off loosely.

**FRONT:** Work as for Back to \*\*. Knit until R/C reads 50(54-58). **SHAPE NECK:** Note patt. row. Knit 49(51-53)sts. at opp. end to carr. off manually on to waste yarn and push needles into "A" pos. Dec. 1 st. at neck edge in alt. rows until 24sts. rem. Knit 11(13-15) rows. **SHAPE SHOULDER:** Cast off 12sts. at beg. of next row. Work 1 row. Cast off. Return needles from "A" to "B" pos. Cast off 19 (21-23)sts. and keeping patt. correct complete to correspond with other side.

**SLEEVES:** Cast on 51(55-59)sts. for 1x1 rib. T5 and knit 20 rows. Transfer sts. to main bed. T8 R/C on 0 and patt. inc. at ea. end of 5th row and foll. 10th rows until there are 83(87-91)sts. Knit until R/C reads 204 rows. **SHAPE TOP:** Cast off 6(7-8)sts. at beg. of next 2 rows. Dec. 1 st. at ea. end of next row and alt. rows until 21 (23-25)sts. rem. Work 1 row. Cast off loosely.

**NECKBAND:** Cast on 139(143-147)sts. for 1x1 rib. T5 and knit 28 rows. Cast off.

**MAKE UP:** With a slightly damp cloth and warm iron press lightly. Using back-stitch join side, sleeve and shoulder seams, sew in sleeves. Sew cast-off edge of neckband to neck edge making join at centre back, fold in half on to wrong side and slip-stitch in position. Press seams.

## LADY'S SHORT JUMPER

### PATTERN No. AU26-11



**MATERIALS:** PATONS Bluebell, 16(16-17) balls, (25g balls).

**MEASUREMENTS:** To fit 81[86-91]cm, 32(34-36) in. bust. Measures 76[81-86]cm, 30(32-34)ins. Length 43[44-44]cm, 17(17¼-17½)ins. Sleeves 43 cm, (17ins.).

## LADY'S CARDIGAN

### PATTERN No. AU26-12



**MATERIALS:** PATONS Bluebell (25g balls), 8(9-10) balls Main Colour (MC), 1 ball each 1st and 2nd Contrast Colours (C1-C2). 8 Buttons.

**MEASUREMENTS:** To fit 81[86-91]cm, 32(34-36) in. bust. Measures 81[86-91]cm, 32(34-36)ins. Length 48[49-51]cm, 19(19¼-19½)ins. Sleeve 15cm, 6ins.

**TENSION:** T8.1=13½sts. and 19 rows to 5cm, (2ins.) over st. st. T5 for rib.

**PATTERN:** Work 4 rows. Using 3 prong transfer tools, transfer 10th, 11th and 12th sts. at front edge on to 13th, 14th and 15th needles and 13th, 14th and 15th sts. on to 10th, 11th and 12th needles. Work 4 rows. Rep. these 8 rows.

**Note:** Before cast off sts. at neckline, drop 2sts. on each side of cable down to top of rib, then using latchet tool, knit them up again to form purl ribs.

**BACK:** Using C1, cast on 109(115-121)sts. for K.1, P.1 rib. Cont. in rib until there are 22 rows. consisting of 2 rows C1, 8 rows MC, 2 rows C2, 8 rows MC and 2 rows C1. Transfer sts. to main bed. Using MC work 80 rows st. st. **SHAPE ARMHOLES:** Cast off 7sts. at beg. of next 2 rows, then dec. at each end of next row and alt. rows until 81(85-89)

sts. rem. Work 49 rows. **SHAPE SHOULDERS:** Cast off 10(10-11)sts. at beg. of next 2 rows, then 9(10-10)sts. at beg. of foll. 2 rows. Cast off.

**LEFT FRONT:** Using C1, cast on 55(59-63)sts. for K.1, P.1 rib and work 22 rows rib and stripes (as for Back). Transfer sts. to main bed. Using MC, work 80 rows. patt. **SHAPE ARMHOLES:** Cast off 7sts. at beg. of next row. **SHAPE NECK:** Cast off 15sts. at beg. of next row. Dec. at armhole edge in next row and alt. rows 6(7-8) times **AT SAME TIME DEC.** at neck edge in next row and alt. rows 6(8-10) times. Work 49(47-45) rows. **SHAPE SHOULDER:** Cast off 10(10-11)sts. at beg. of next row. Work 1 row. Cast off.

**RIGHT FRONT:** Work to correspond with Left Front.

**SLEEVES:** Using C1, cast on 81(85-89)sts. for K.1, P.1 rib. Work 22 rows in rib and stripes (as before). Transfer sts. to main bed, and MC work 20 rows st. st.

**SHAPE TOP:** Cast off 7sts. at beg. of next 2 rows. Dec. at each end of next row and alt. rows until 31(35-39)sts. rem., then in every row until 21sts. rem. Cast off.

**LEFT FRONT BAND:** Using MC, cast on 9sts. for K.1, P.1 rib. \*\* Work 84 rows. Cast off in rib.

**RIGHT FRONT BAND:** Work as for Left Front Band to \*\*. Work 4 rows. Knit 3 centre sts. off manually on to waste yarn and work 2 rows. Work 12 rows. Rep. last 14 rows 4 times, then buttonhole rows once. Work 8 rows. Cast off in rib.

**NECKBAND:** Using MC, cast on 161(171-181)sts. for K.1, P.1 rib. Work 8 rows rib, working a buttonhole (as before) at beg. of 5th row. Using C1, work 2 rows. Cast off in rib.

**MAKE UP:** With a slightly damp cloth and warm iron, press lightly. Using back stitch join side, shoulder and sleeve seams, sew in sleeves. Sew front bands and neckband in position. Sew on buttons. Press seams.

# EMPISAL

\*AN EMPISAL PUBLICATION: WORLD COPYRIGHT BY EMPISAL INTERNATIONAL

---

---

INTERNATIONAL  
KNITWEAR  
COLLECTION

# EMPISAL

BOOK AU26

