

..... 模様編み全集

3

編込み模様・パンチレース模様

KNIT IN/PUNCH LACE

ENTRETEJIDO/PUNCH LACE

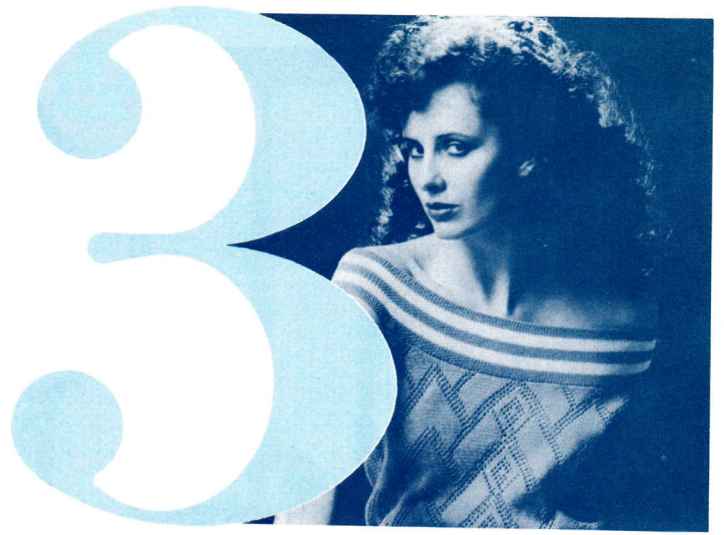


模様編み全集

編込み模様・パンチレース模様

KNIT IN/PUNCH LACE

ENTRETEJIDO/PUNCH LACE



表紙

作品デザイン・製作/シルバー編物研究会

装丁/中村信

カメラ/松本寿信

スタイリスト/泉和美

モデル/マリーナ・ストロング

本紙

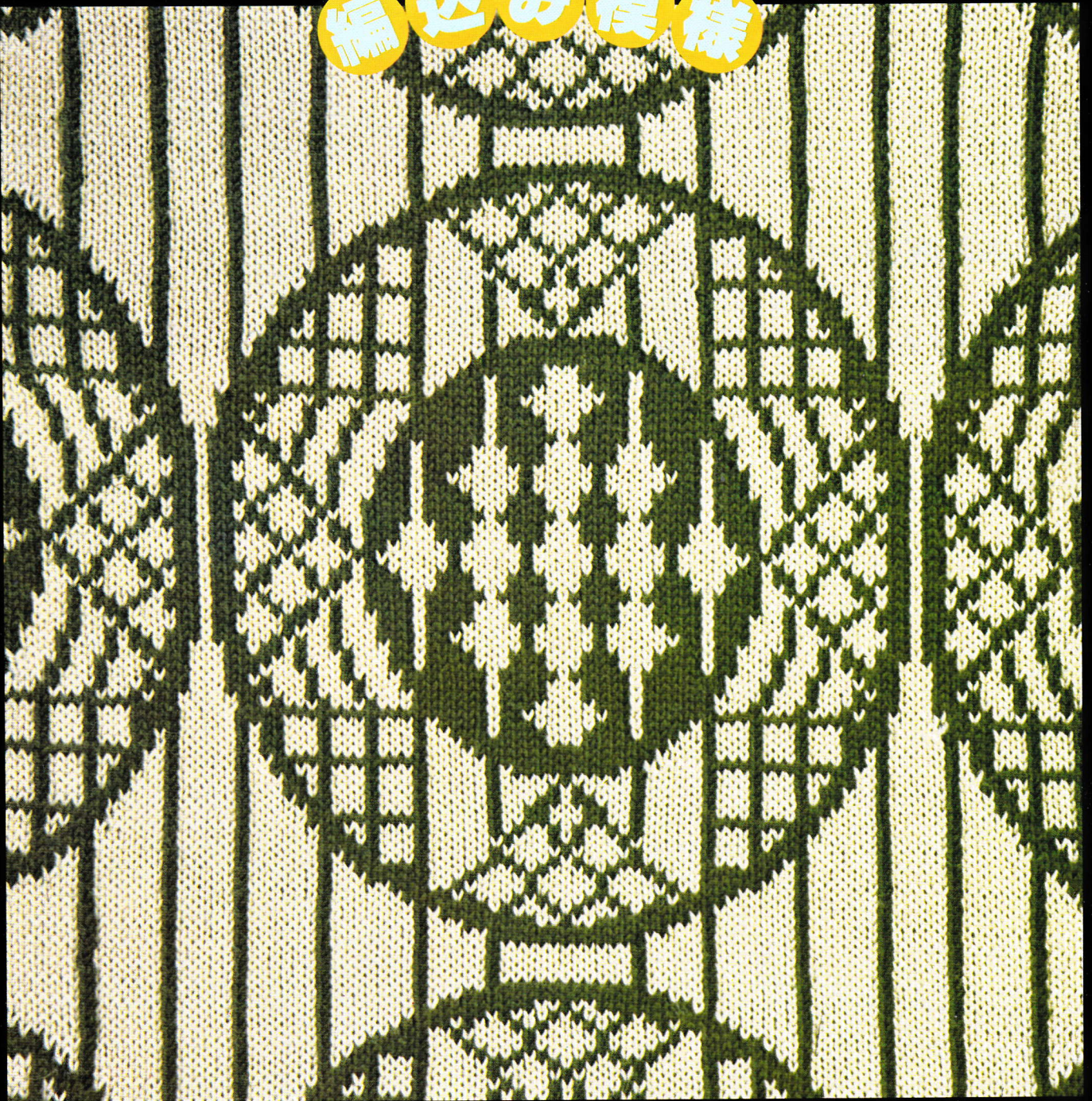
編地製作/シルバー編物研究会

レイアウト/山内たつ糸

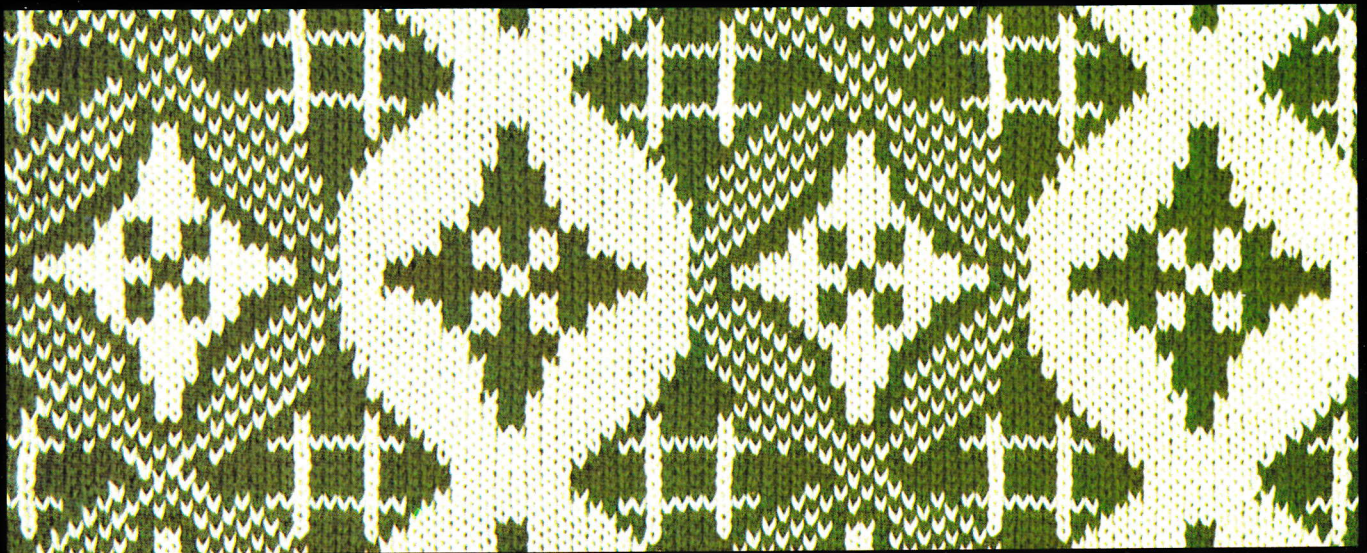
編地写真/手塚スタジオ

素材協力/ダイヤ毛糸(株)

編込み模様



7



2



3



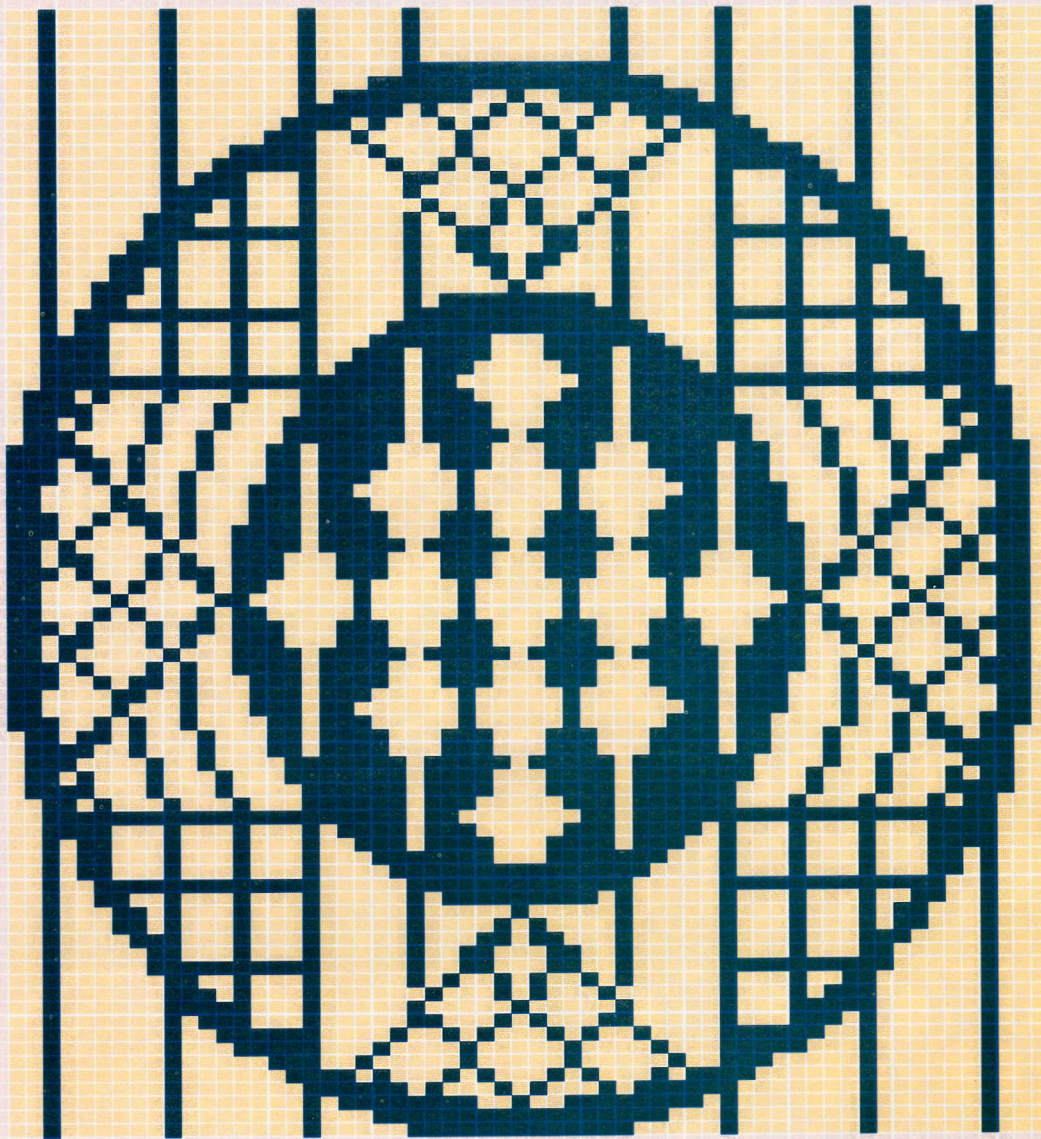
4



5

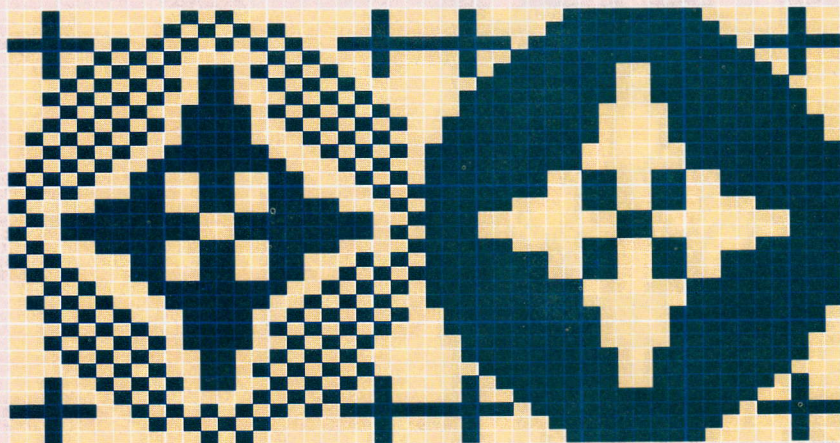


6



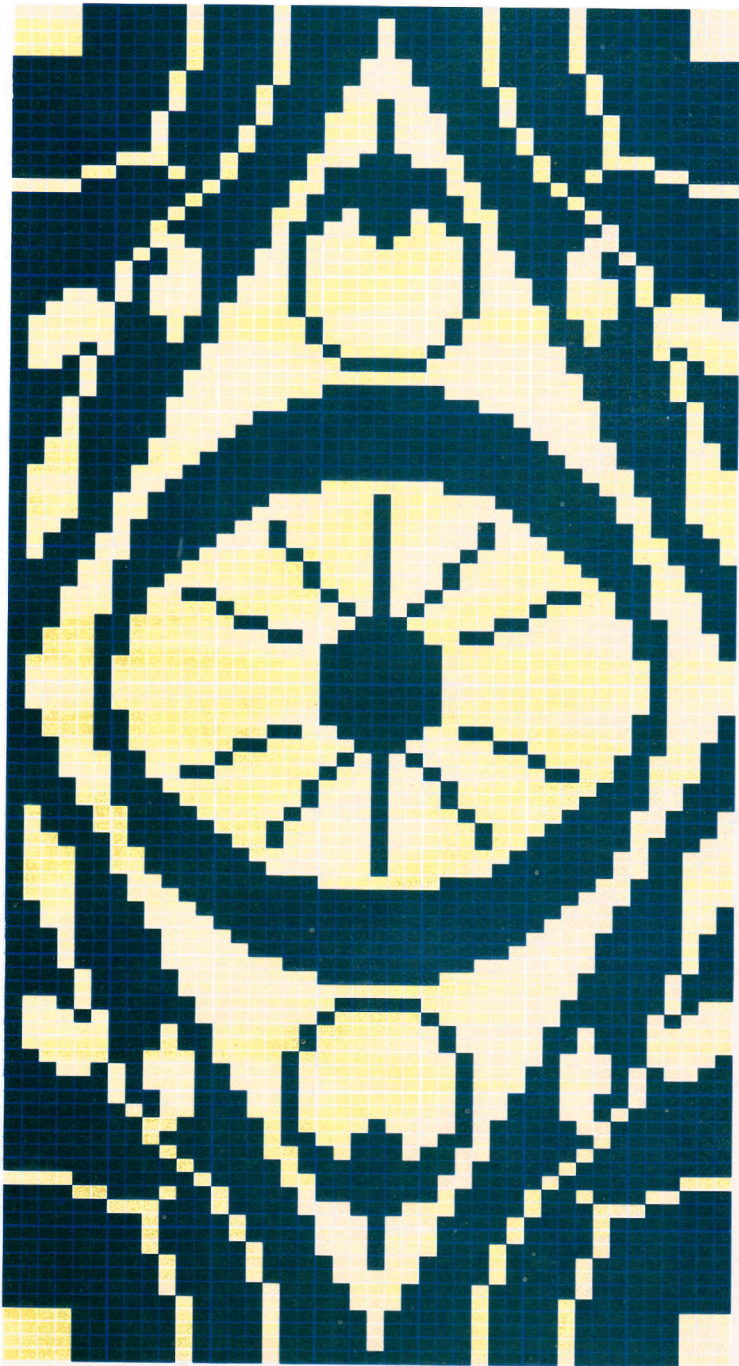
60-83

1

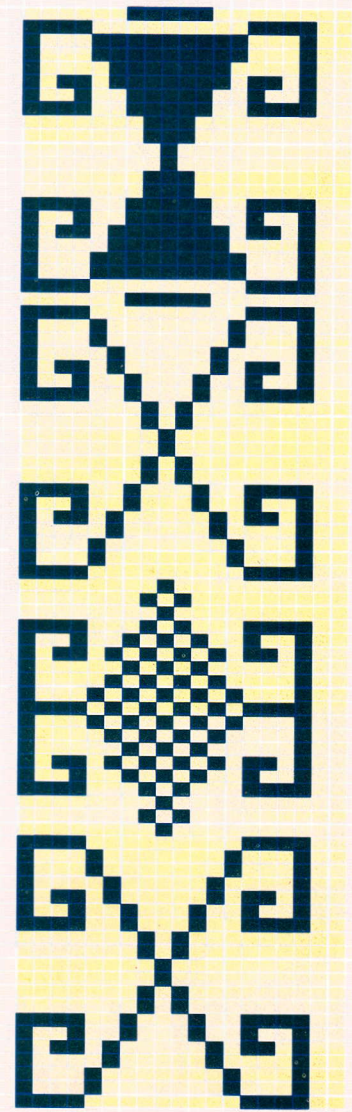


48-32

2



3



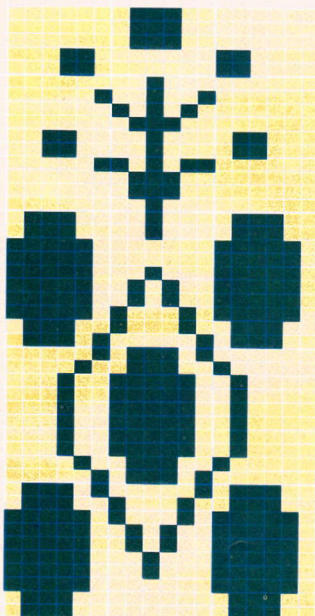
4

42-100

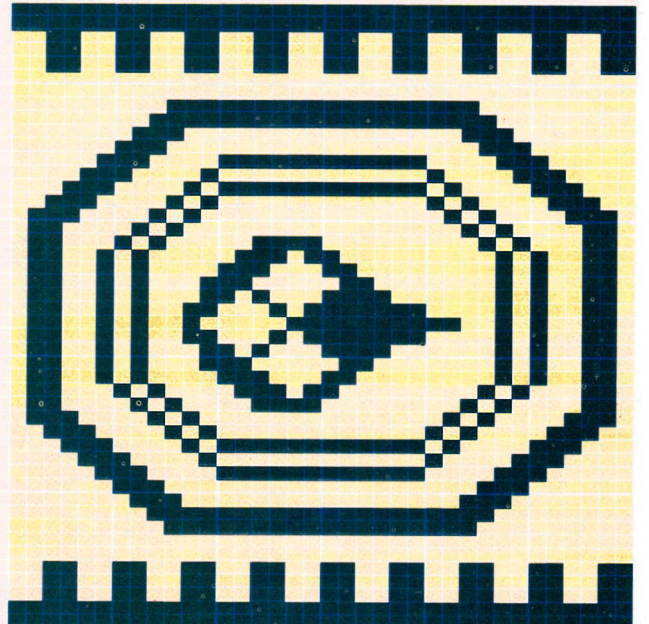
19-01

36-46

18-45



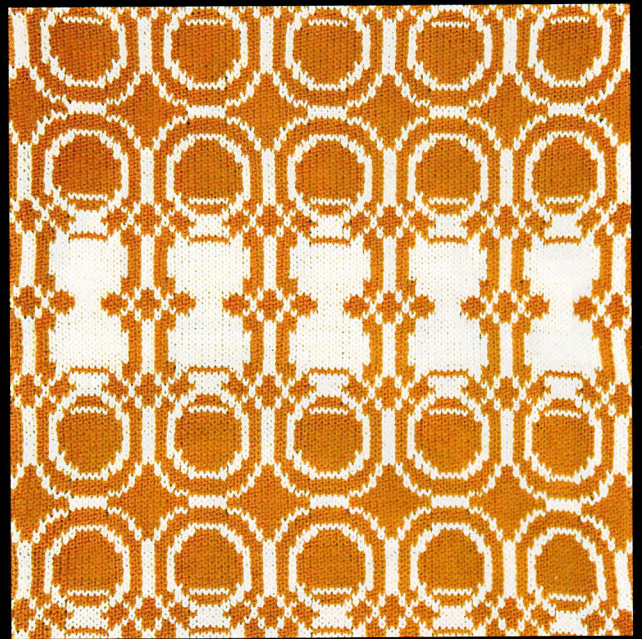
5



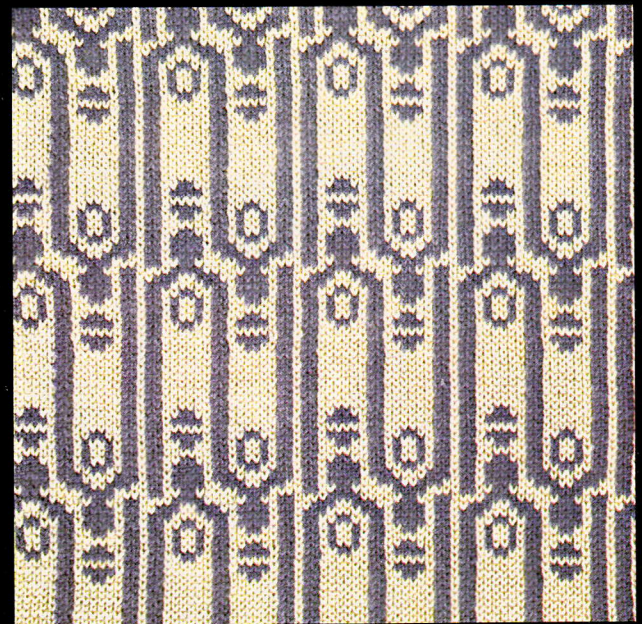
6



7



9



10



8



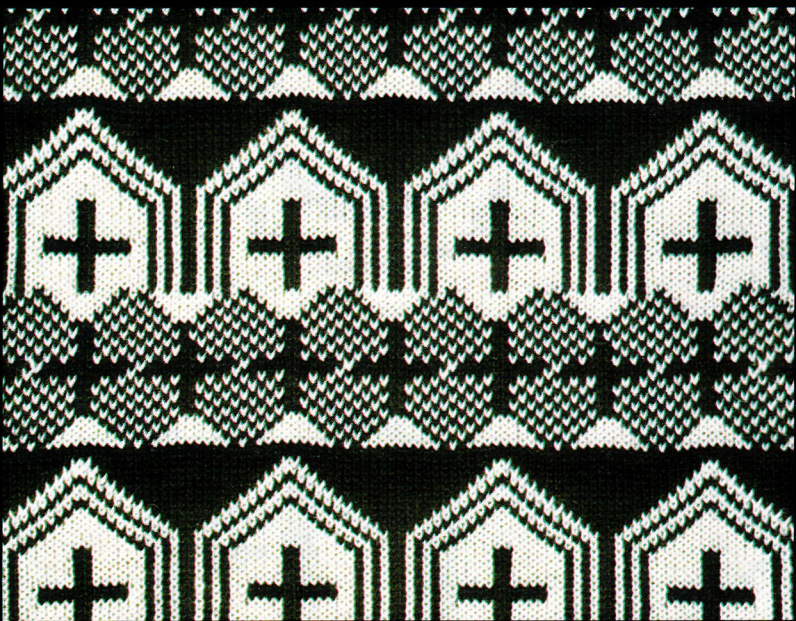
11



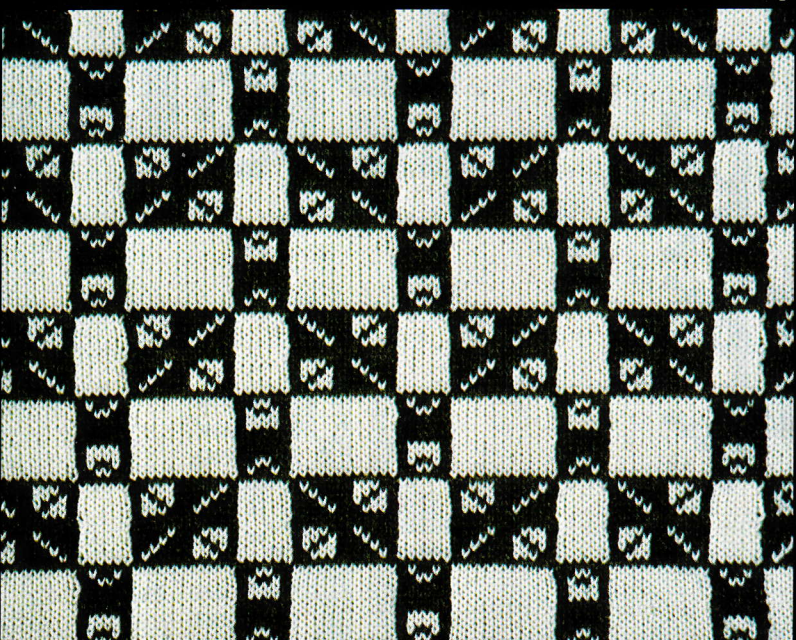
12



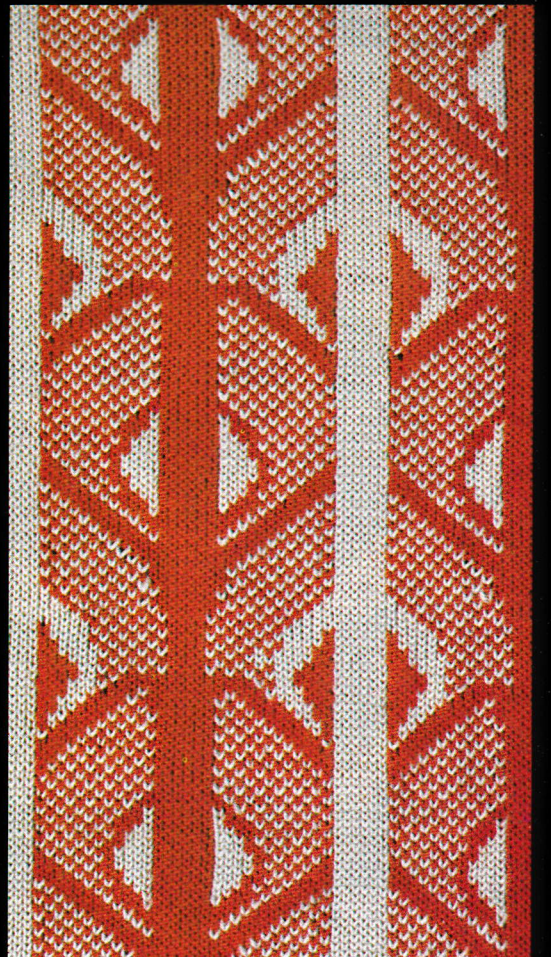
15



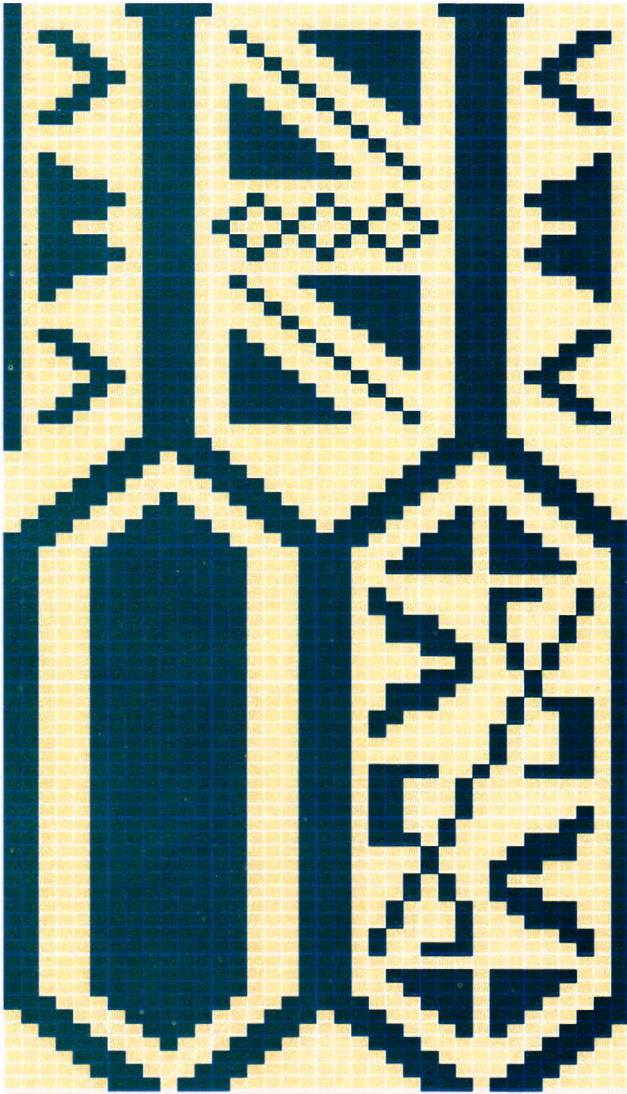
13



14

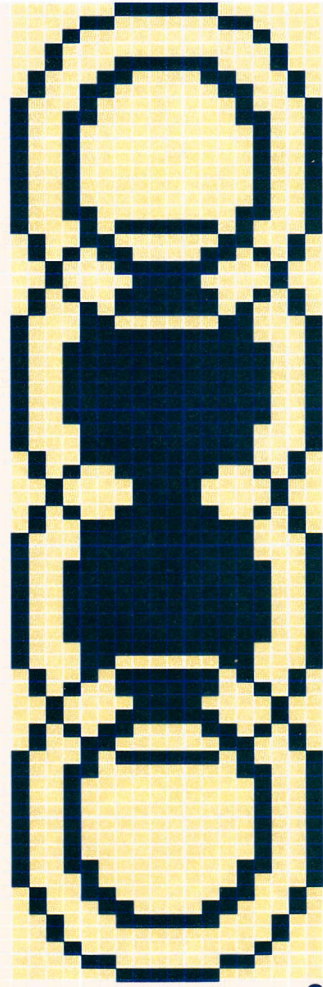


16



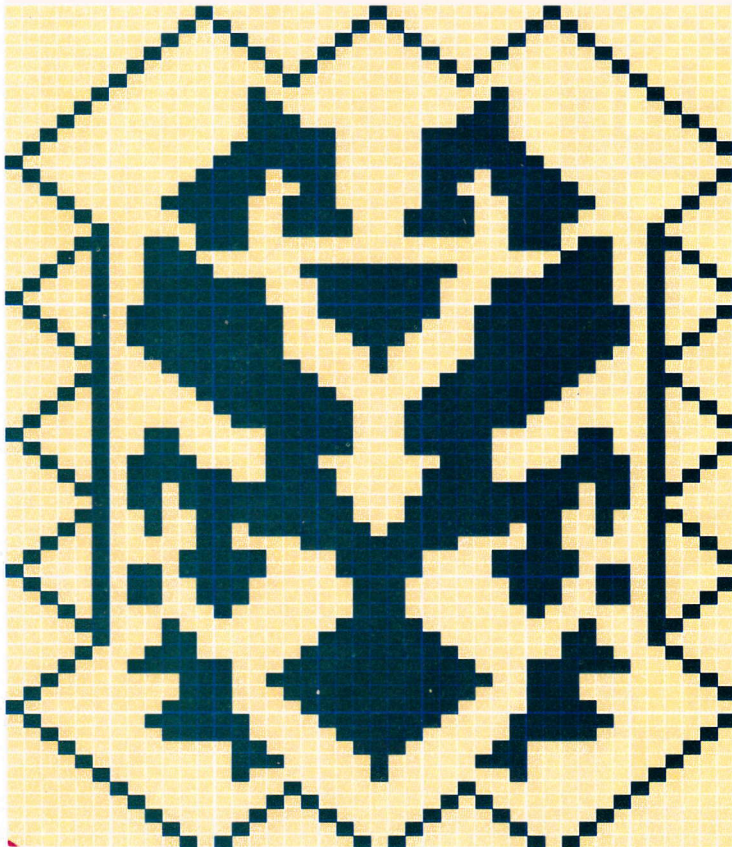
7

36-80



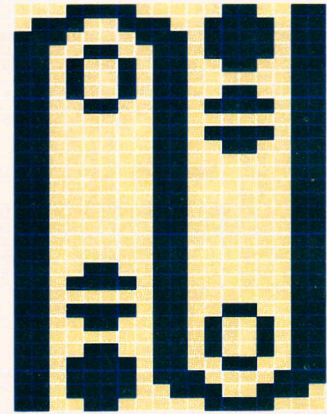
9

18-72



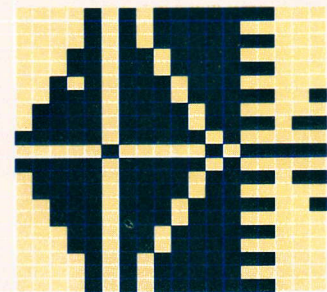
8

42-62



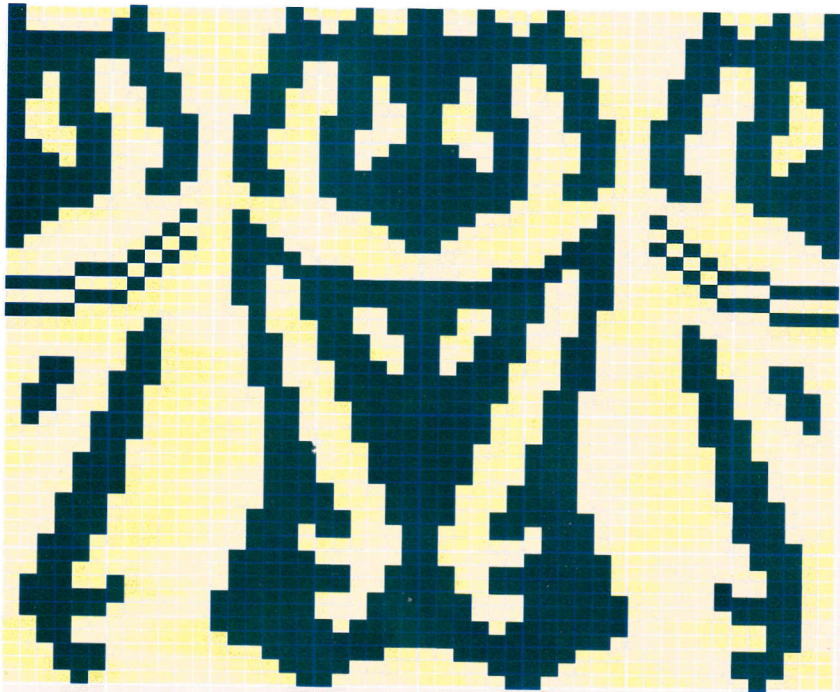
10

18-29



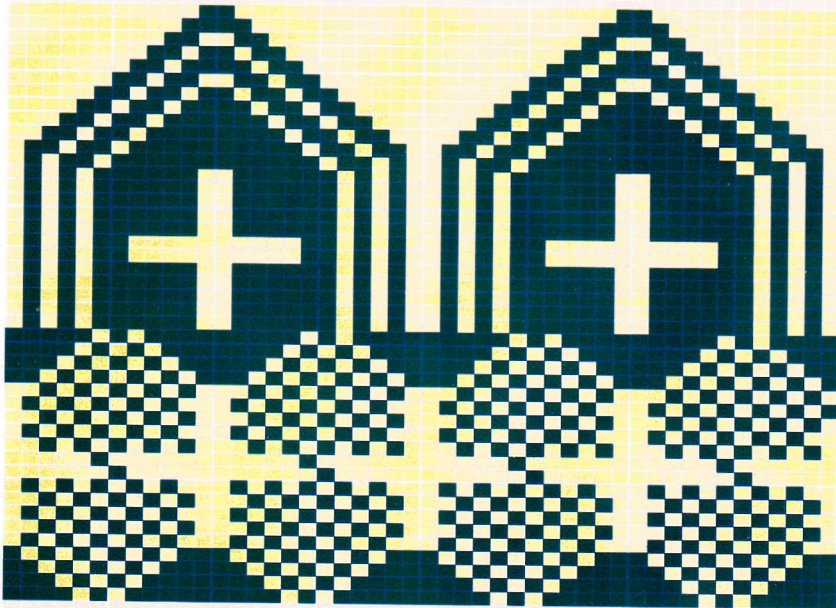
11

18-21



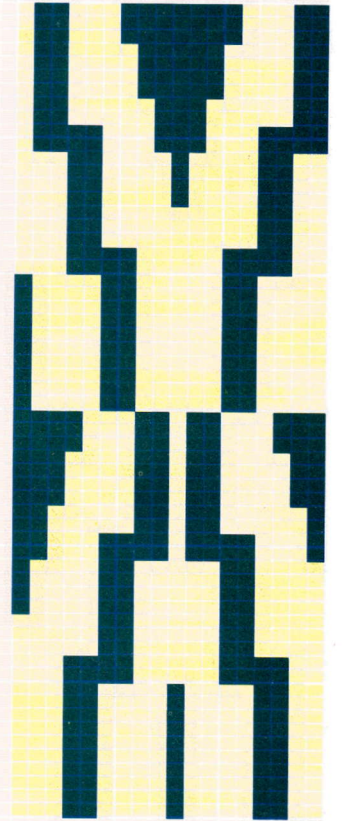
48-50

12

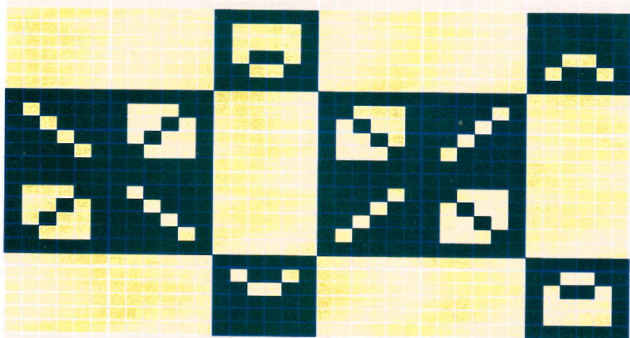


48-44

13

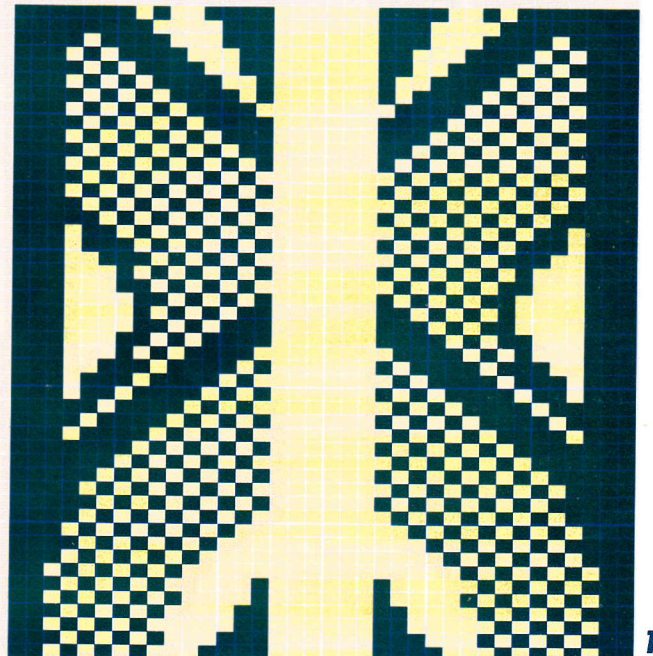


18-60 15



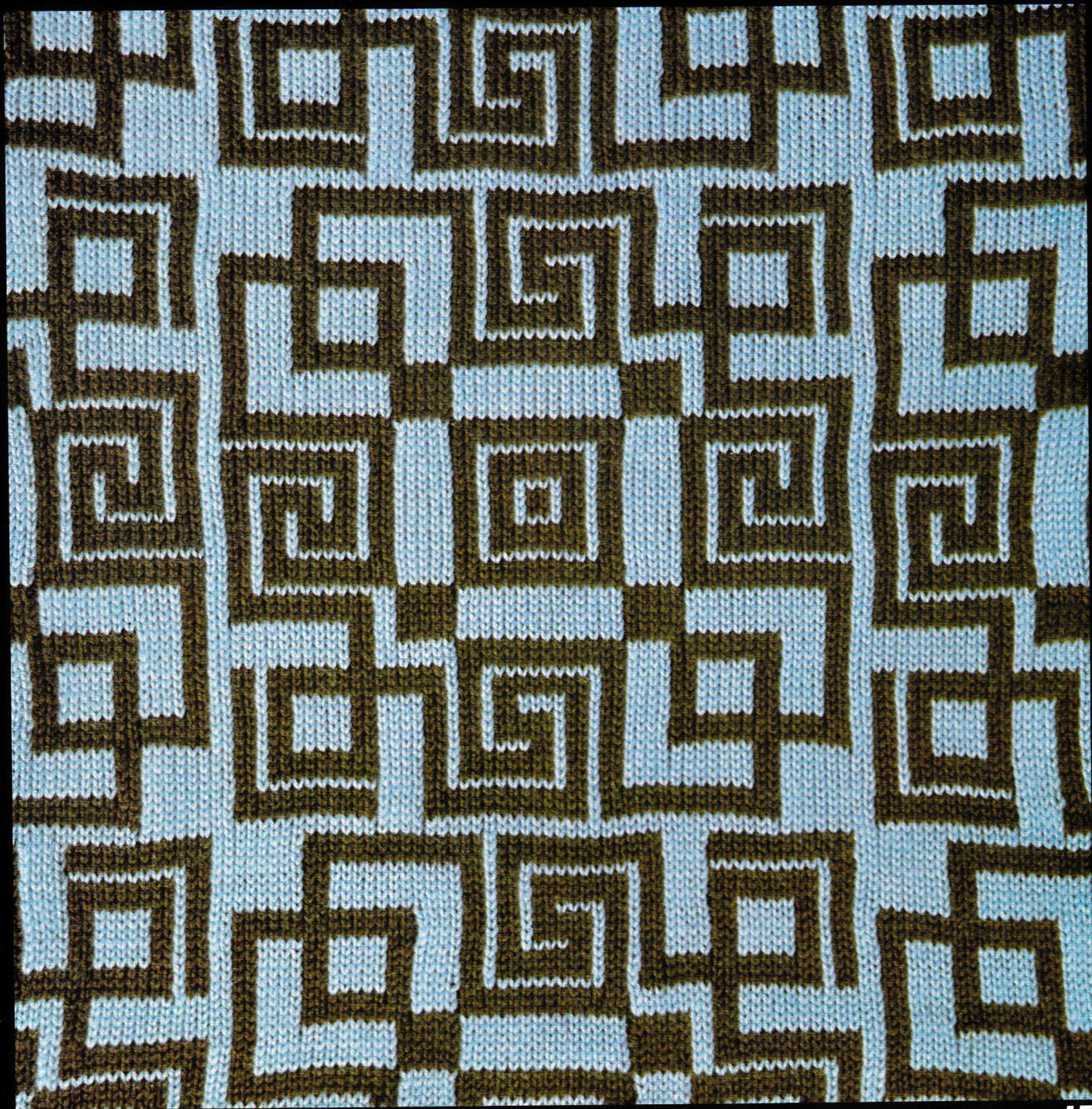
36-24

14

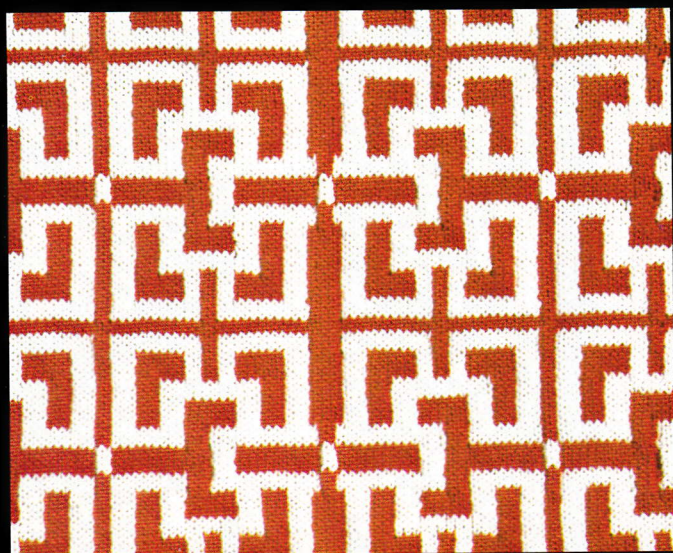


36-48

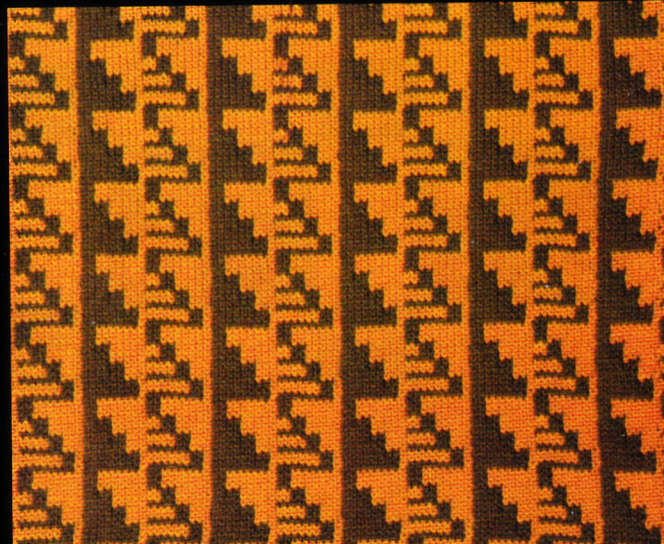
16



17

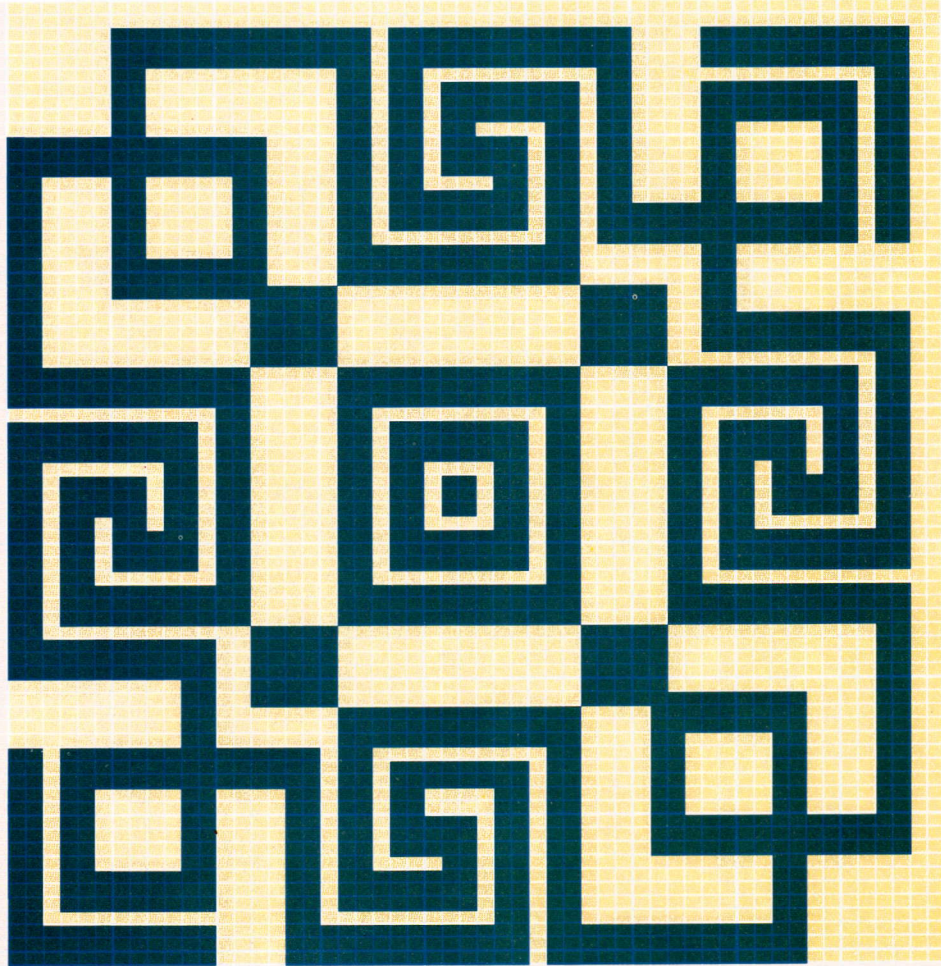


18



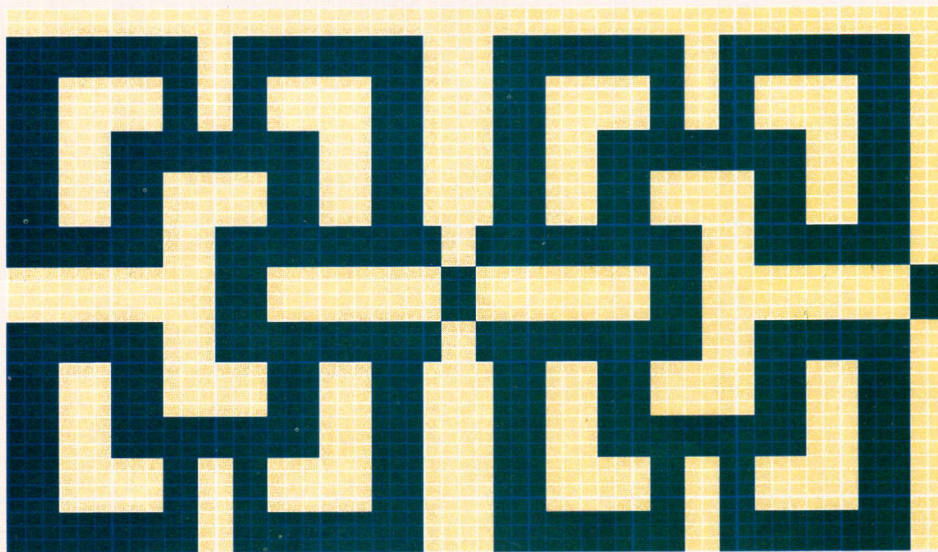
19





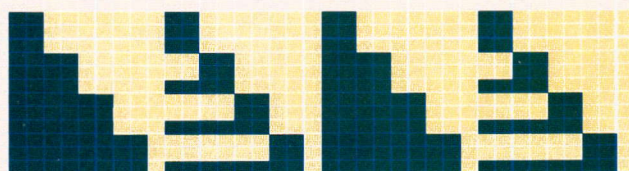
54-71

17



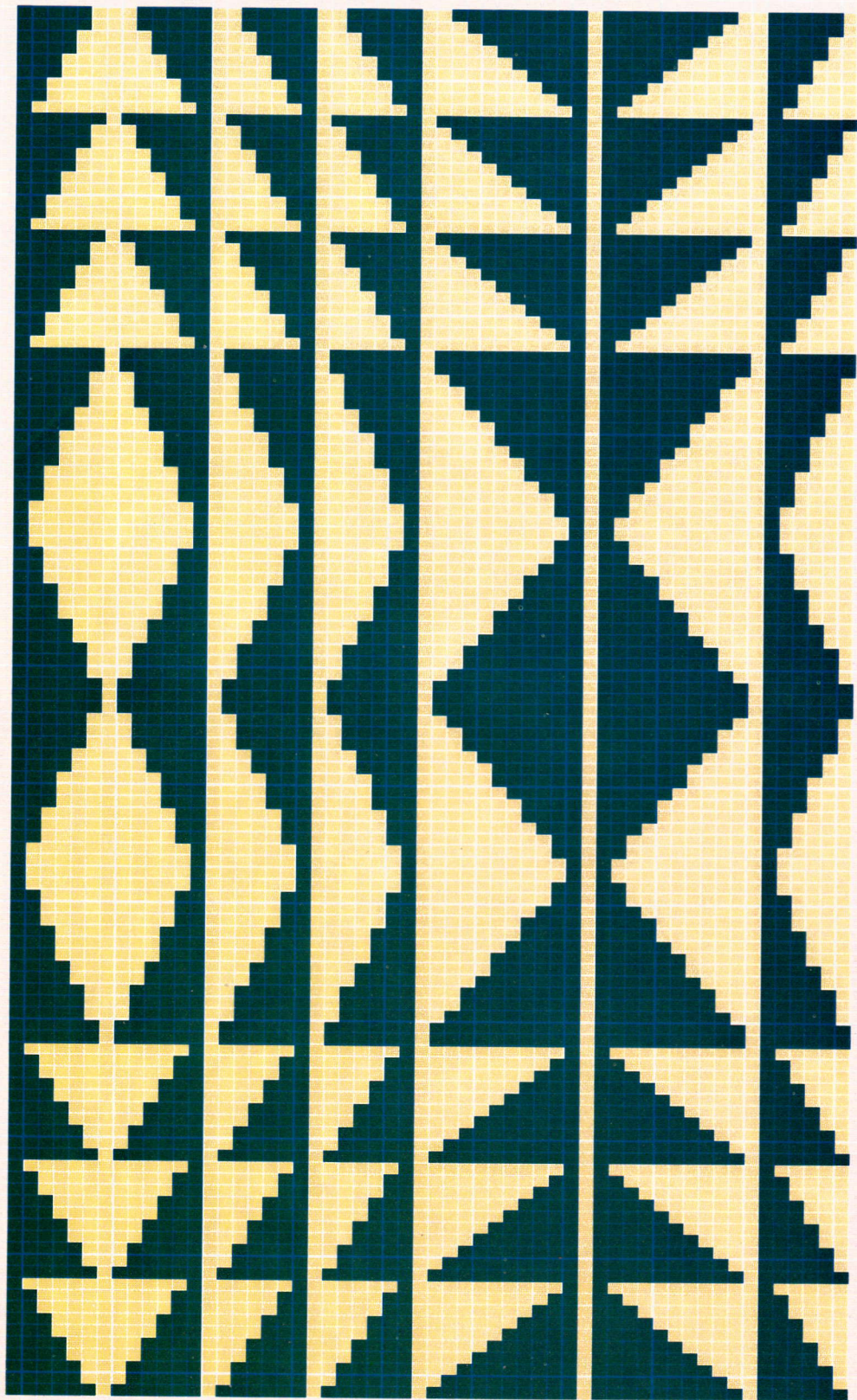
54-40

18



36-12

19



56-118



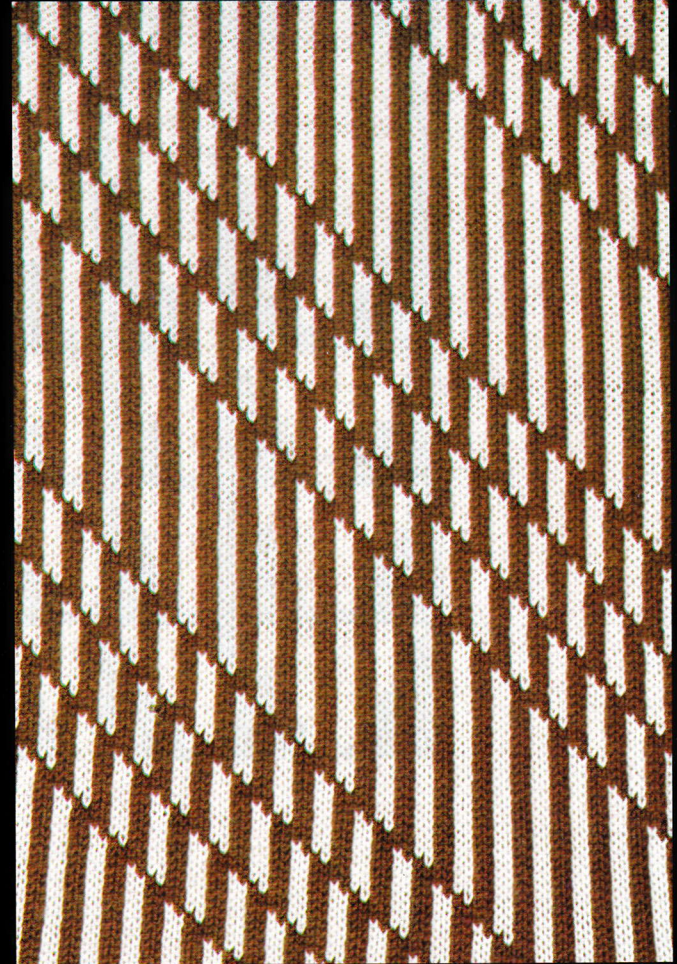
21



22



23



24



25



28



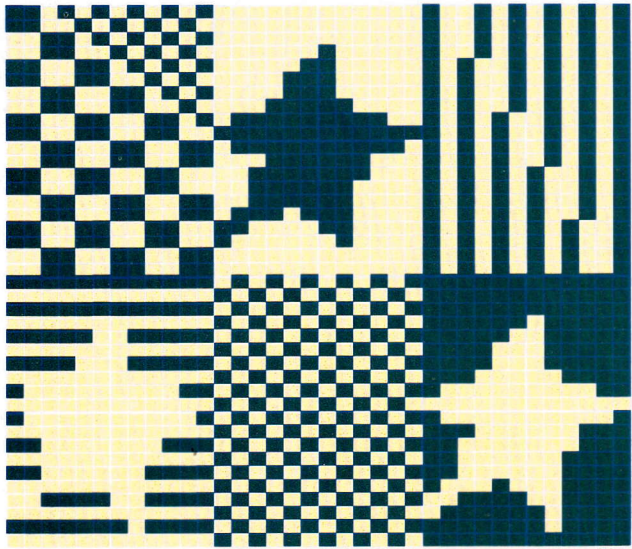
26



29

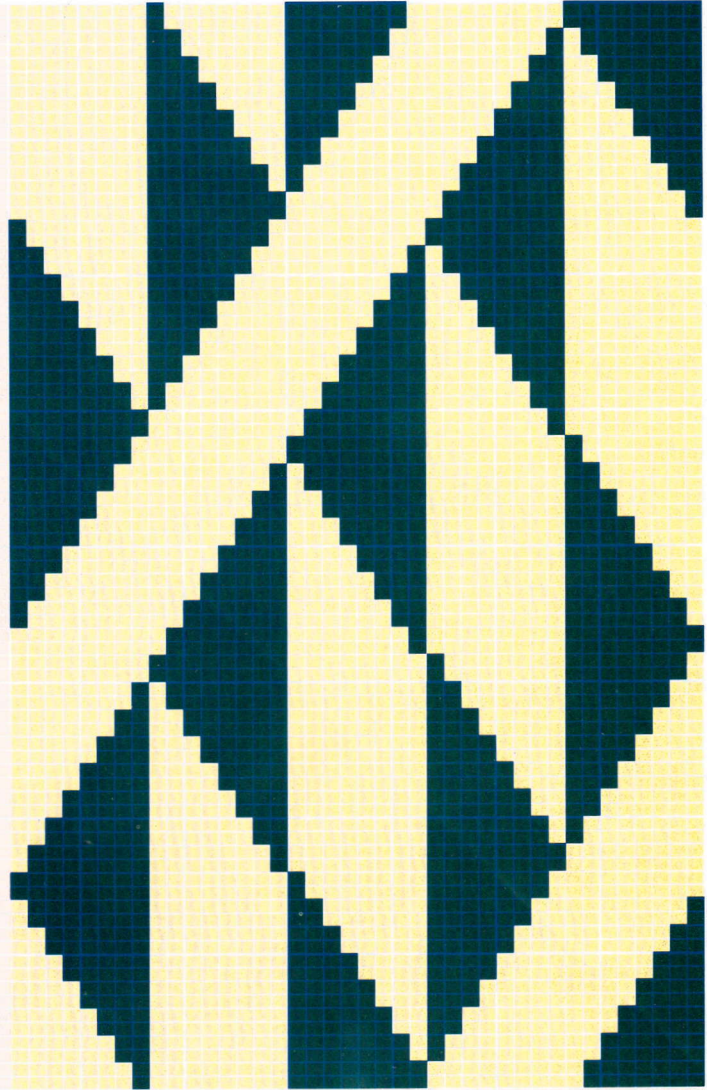


27



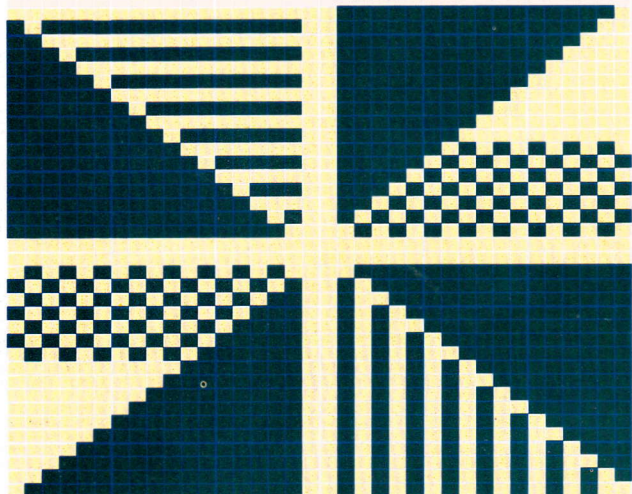
36-40

21



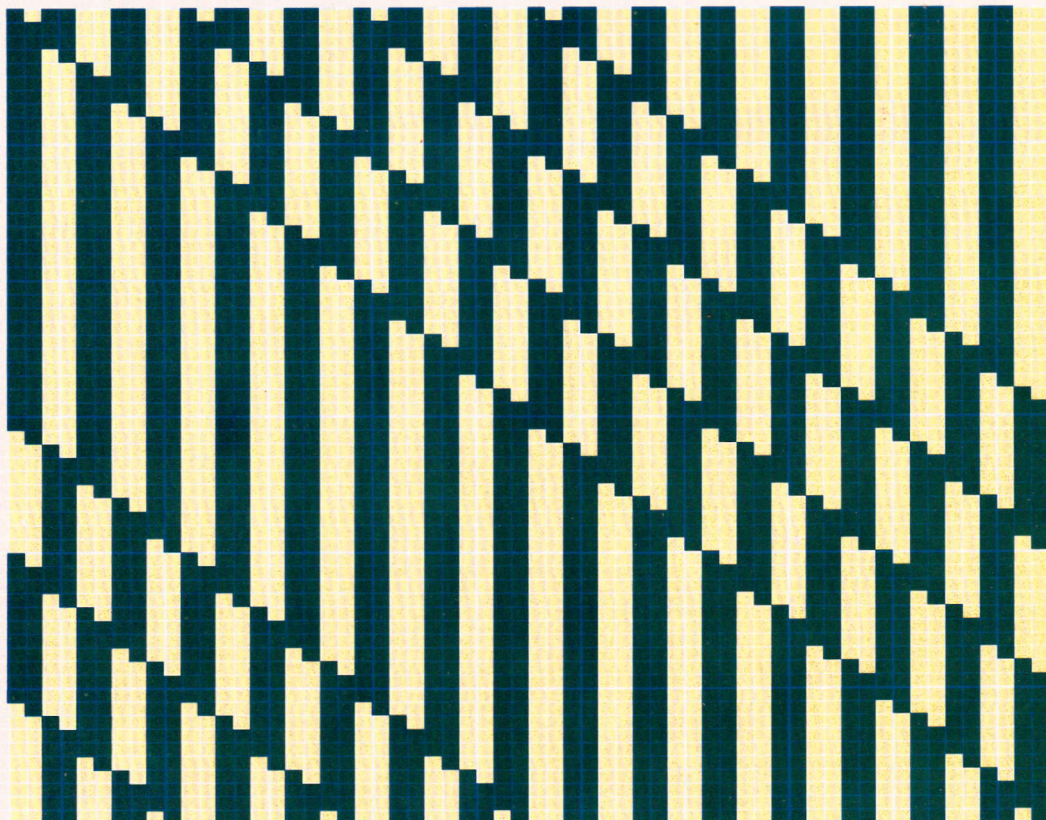
40-80

22



36-36

23



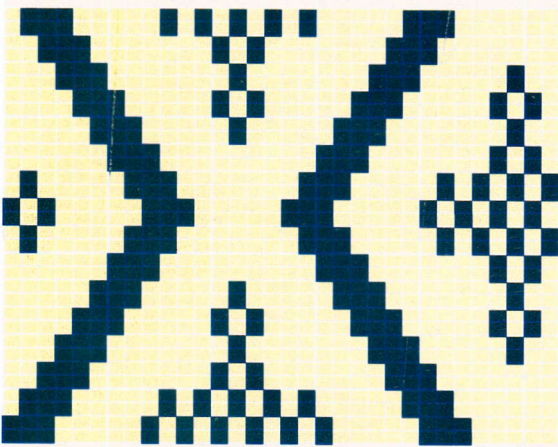
60-60

24



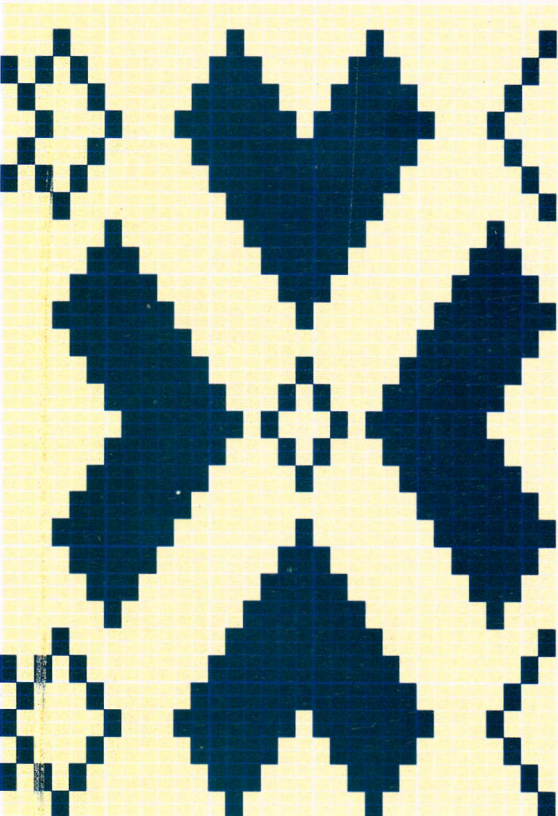
42-46

25



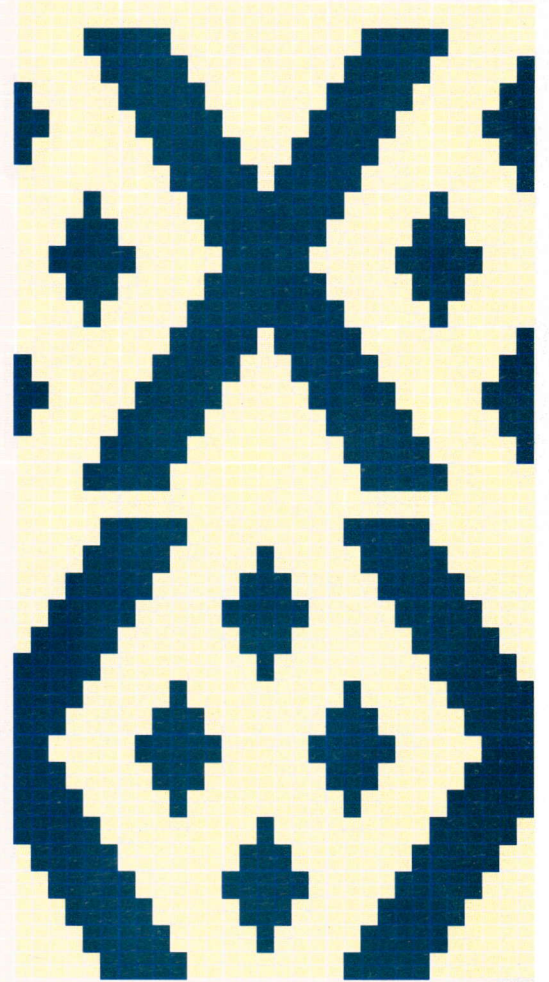
32-32

26



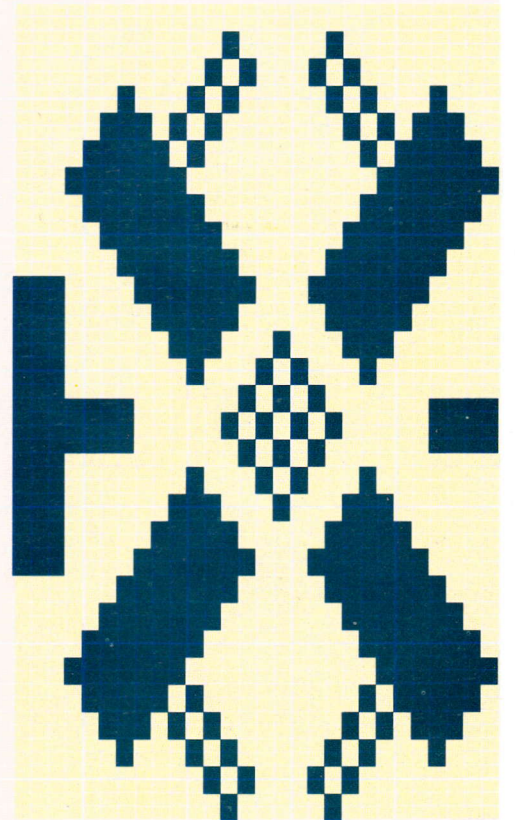
32-60

27



30-72

28



28-60

29



30



31



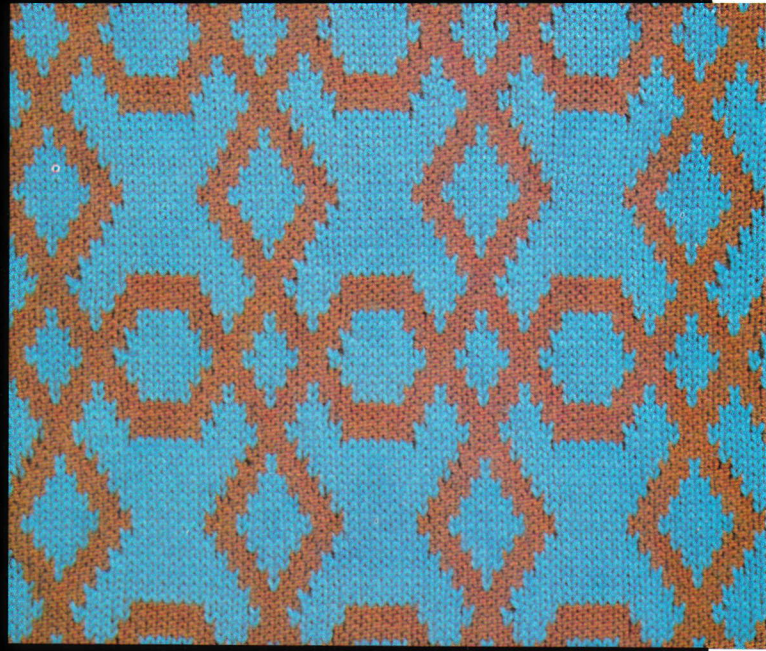
32



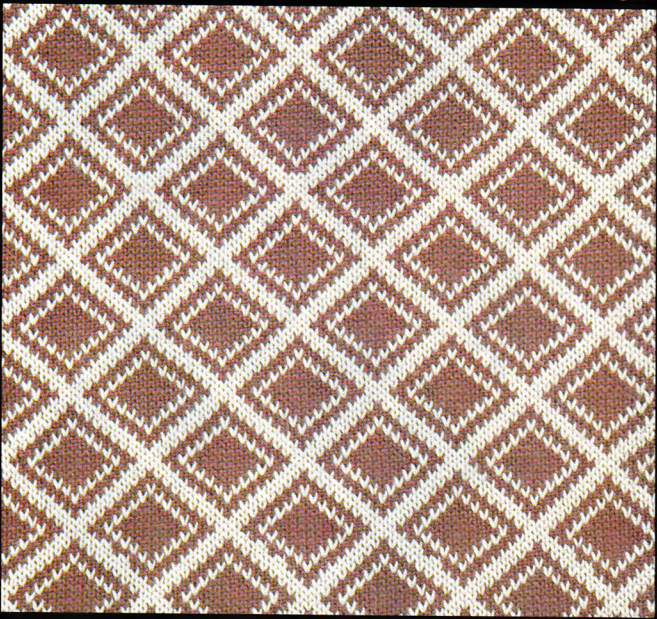
33



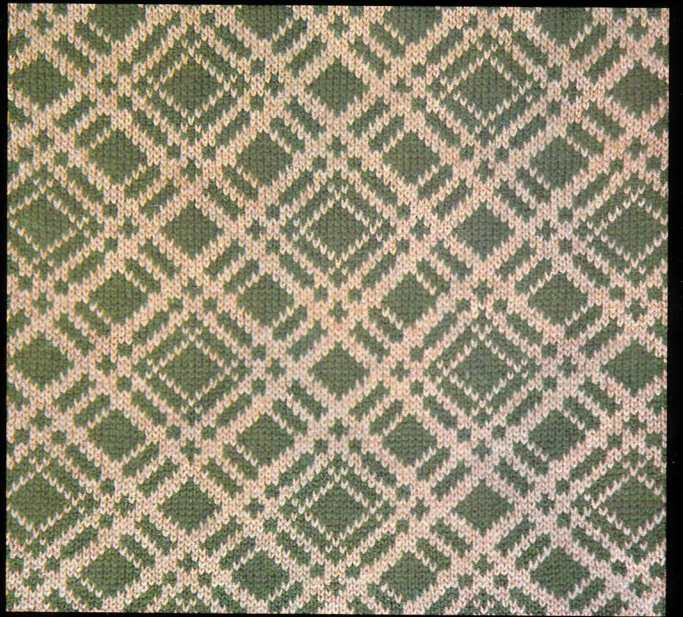
34



35



36



37



38

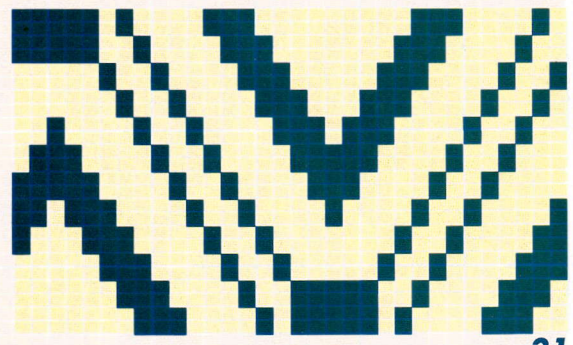


39



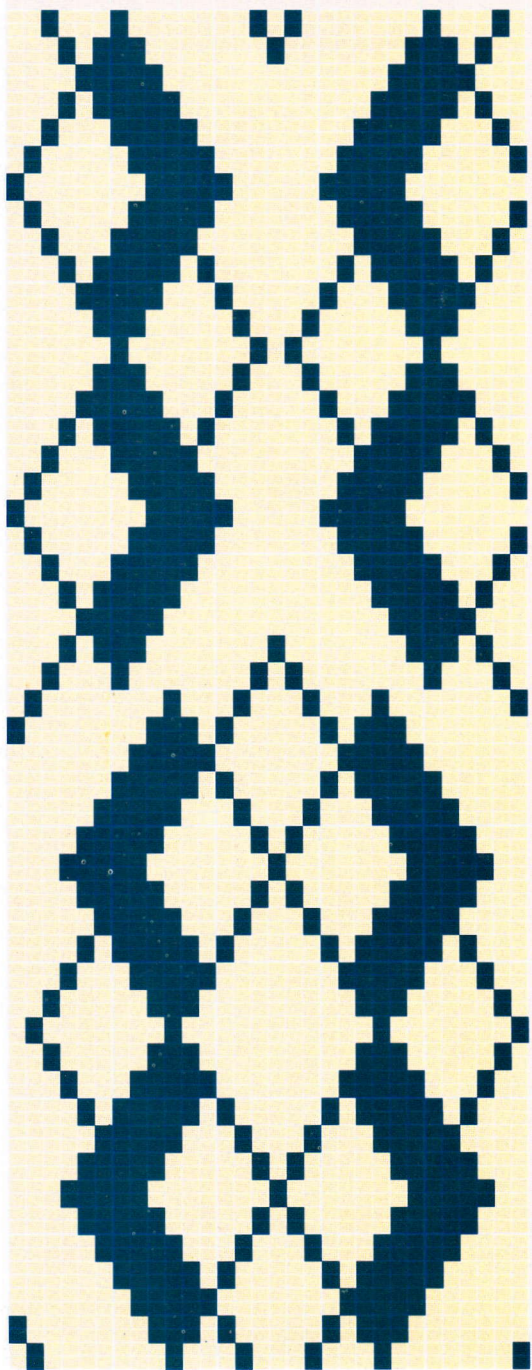
38-44

30



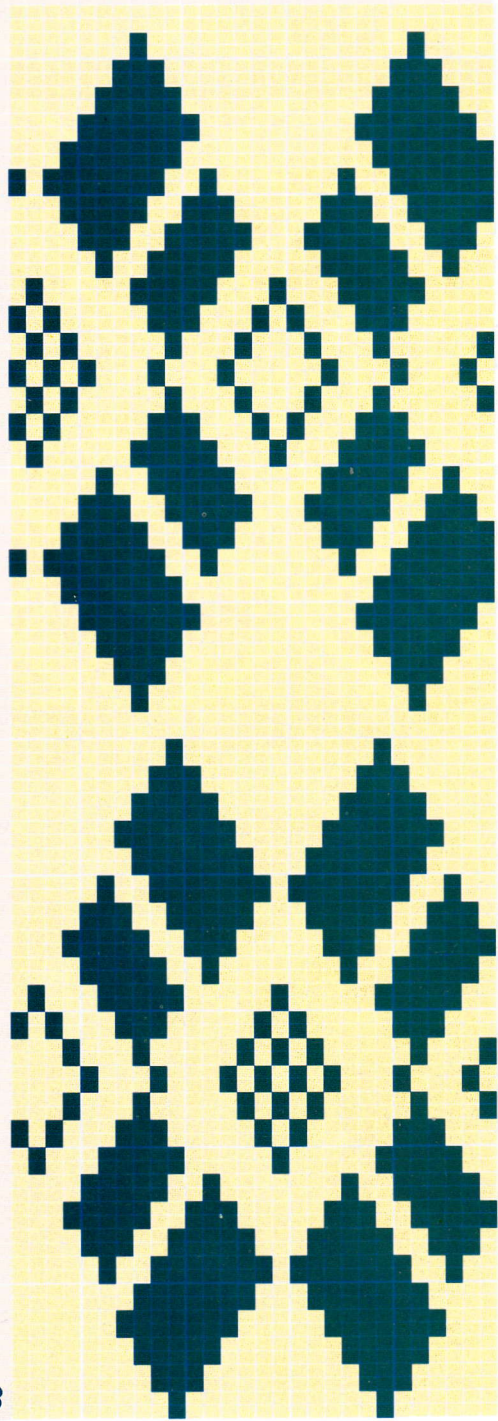
32-24

31



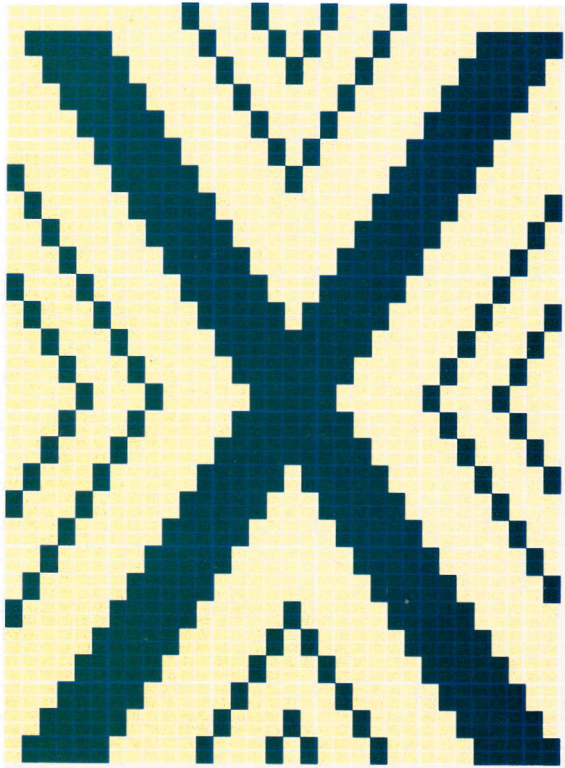
30-100

32



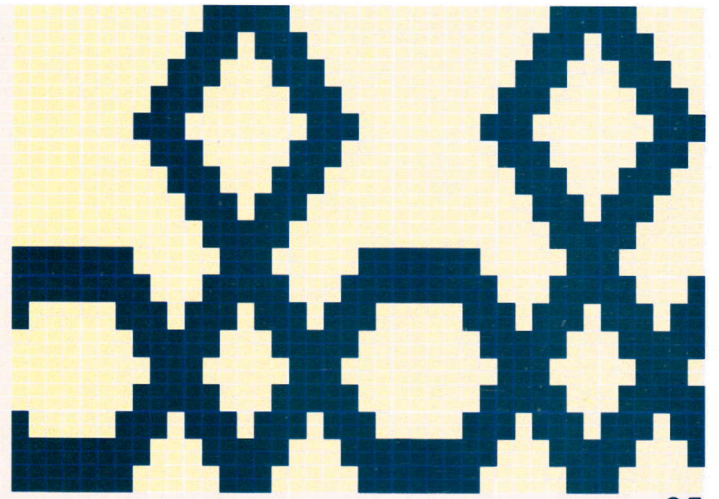
28-104

33



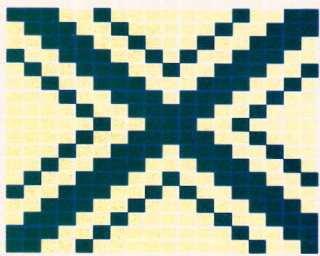
32 - 56

34



40 - 36

35



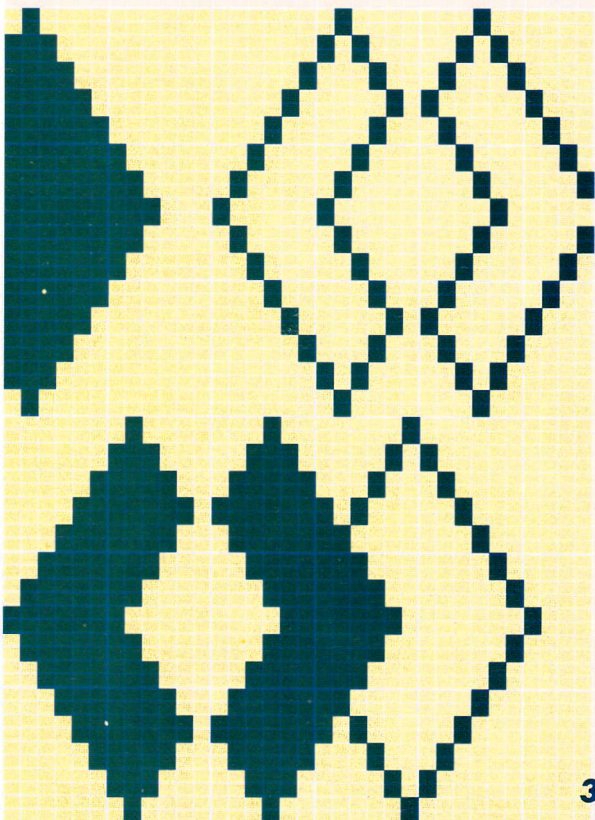
18 - 18

36

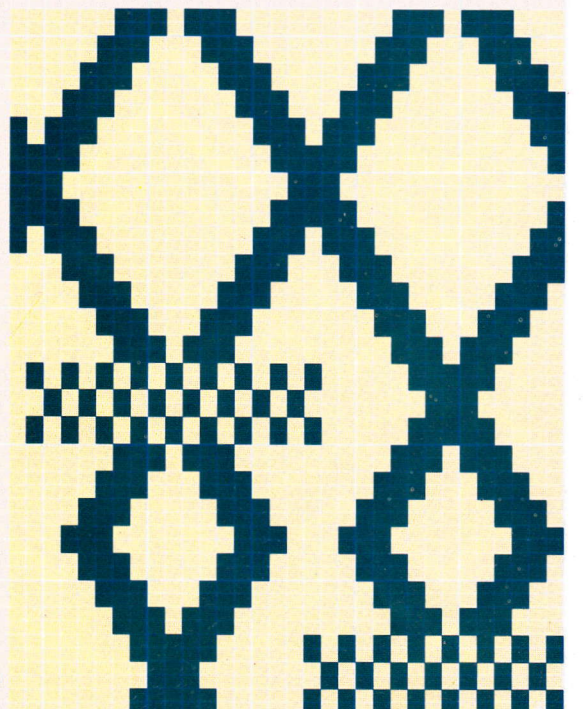


42 - 42

37



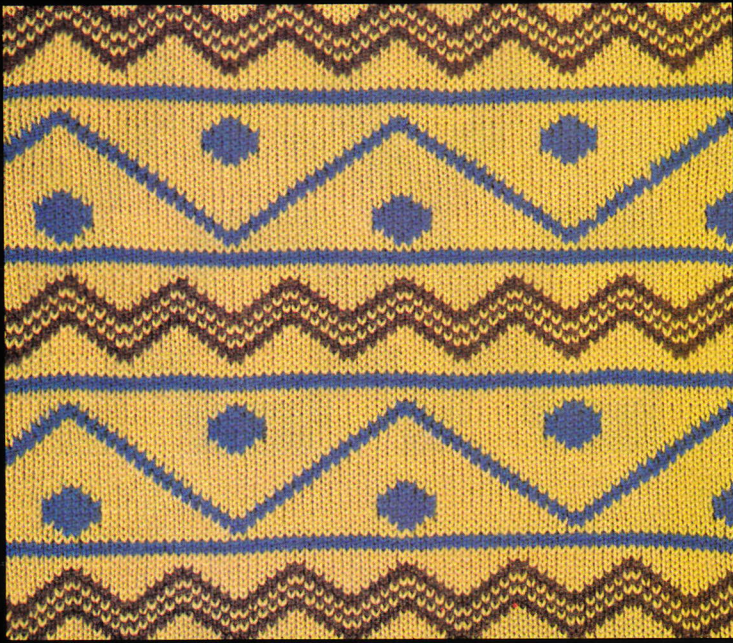
38



39

32 - 52

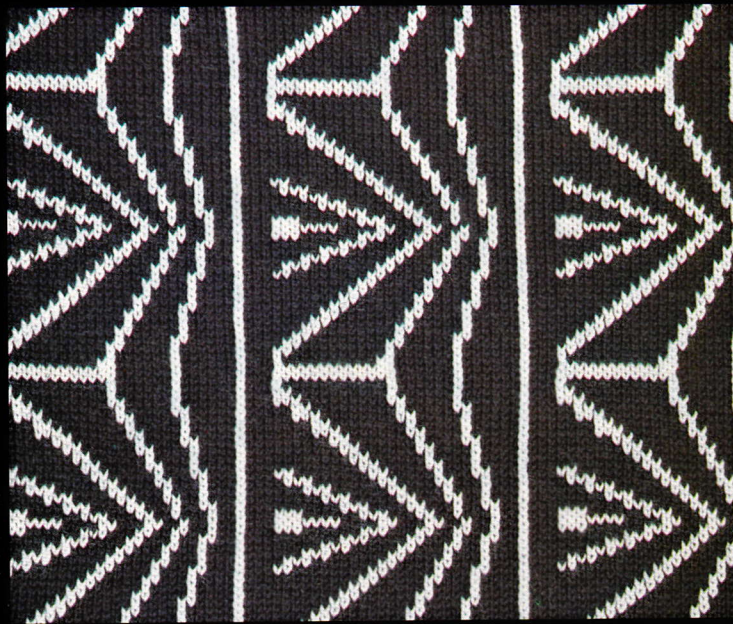
34-60



40



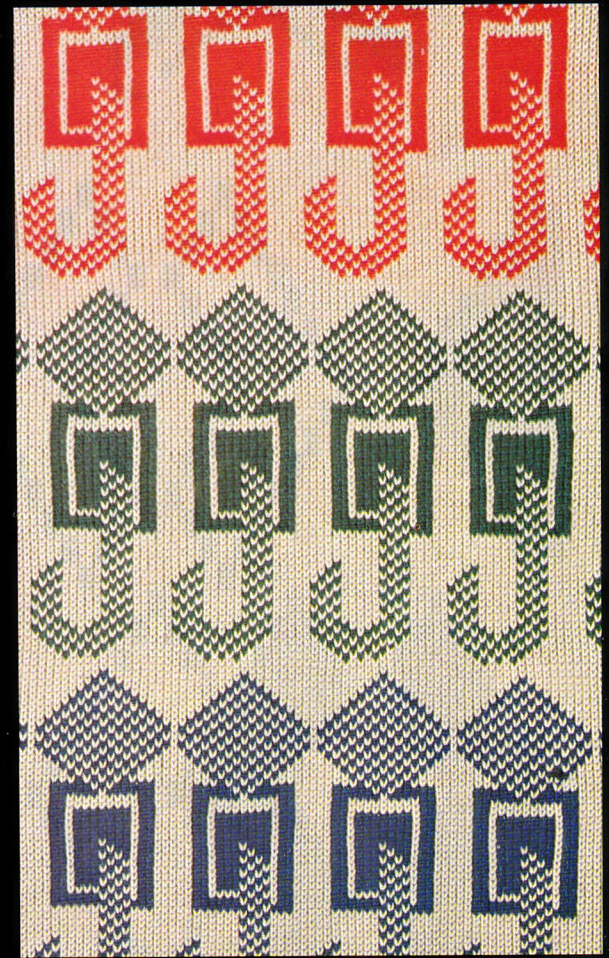
43



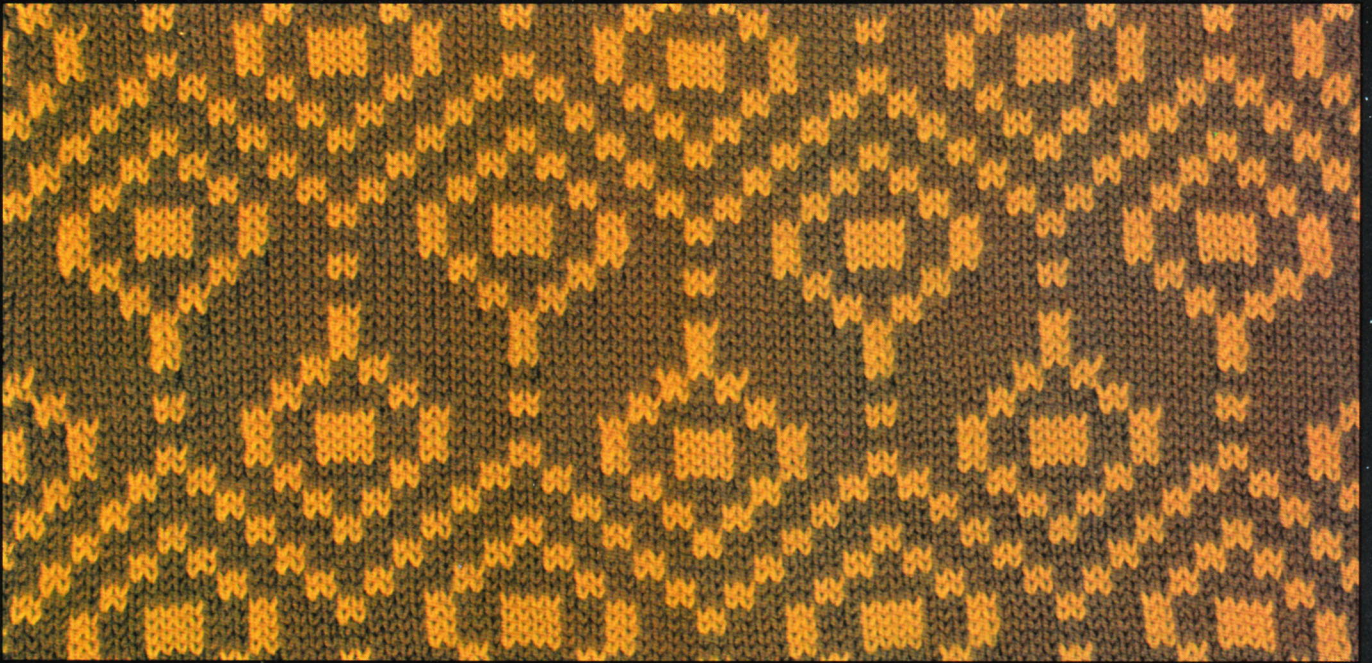
41



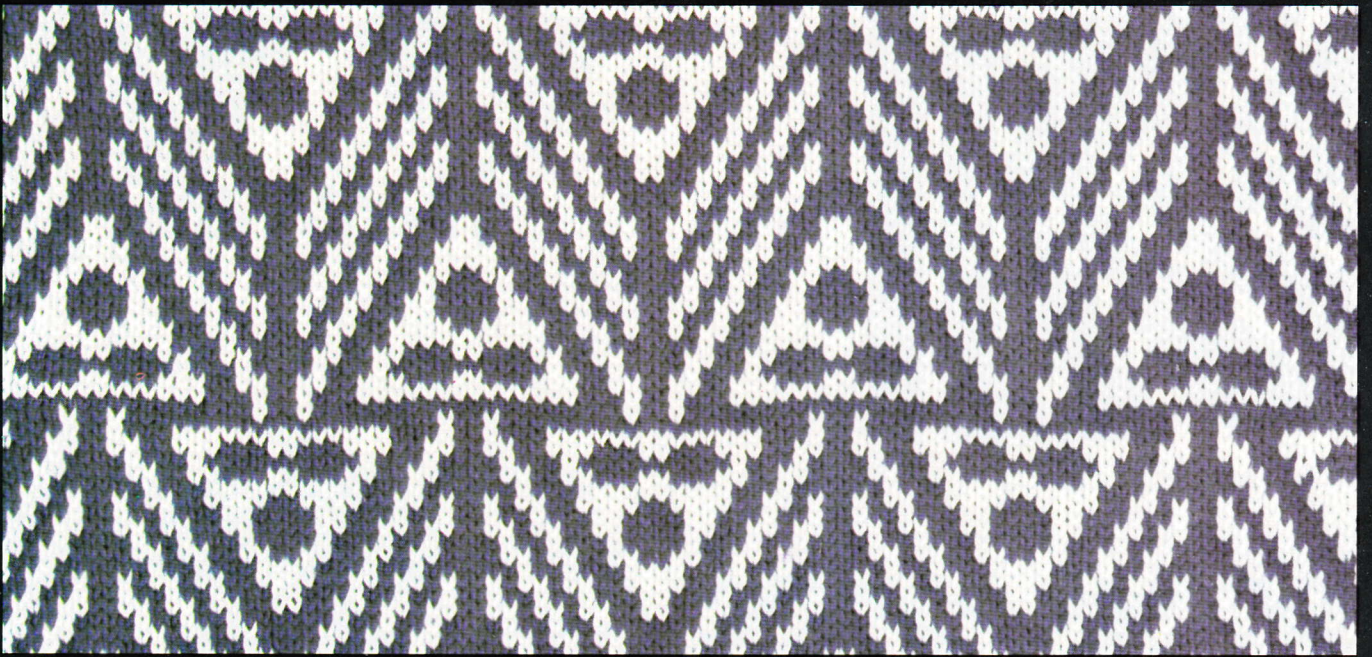
42



44



45



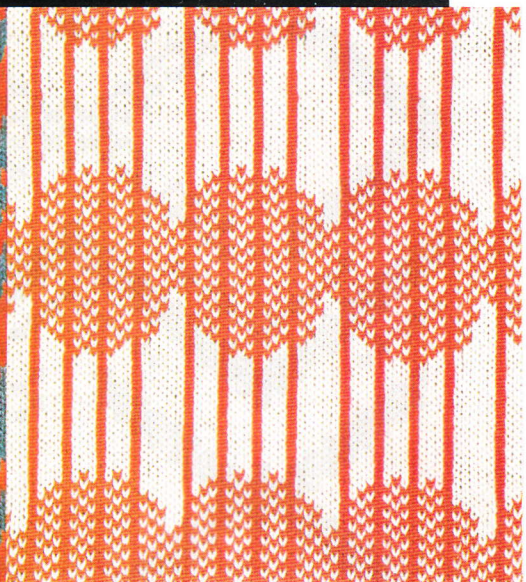
46



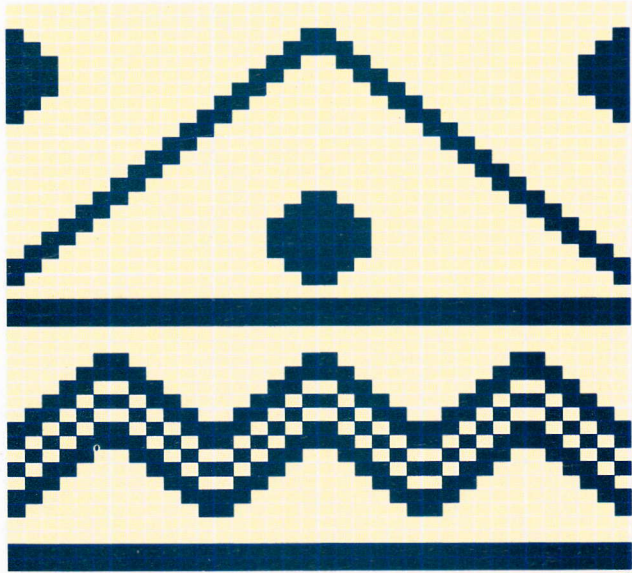
47



48

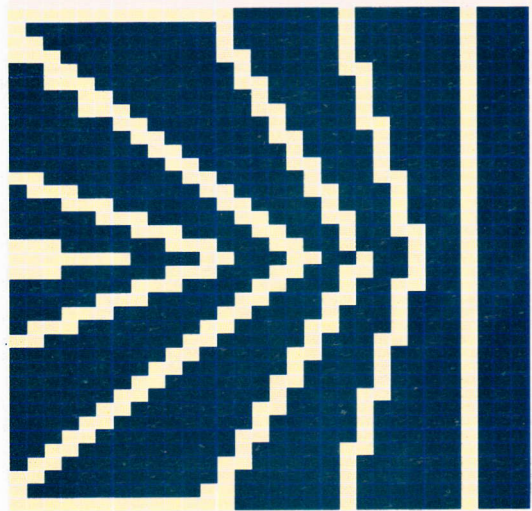


49



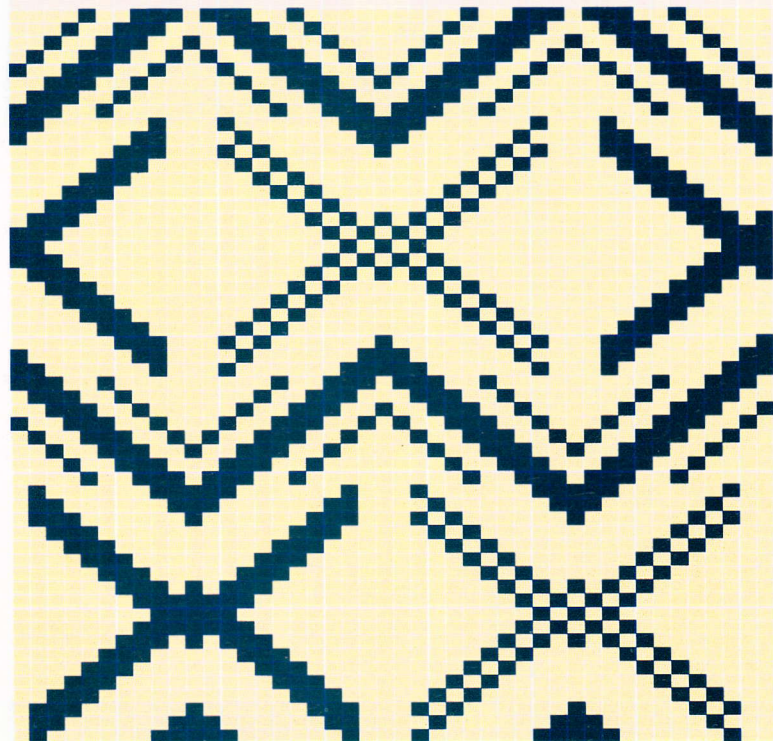
36-42

40

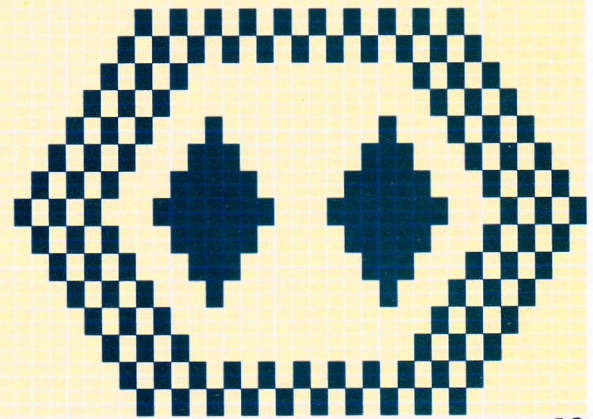
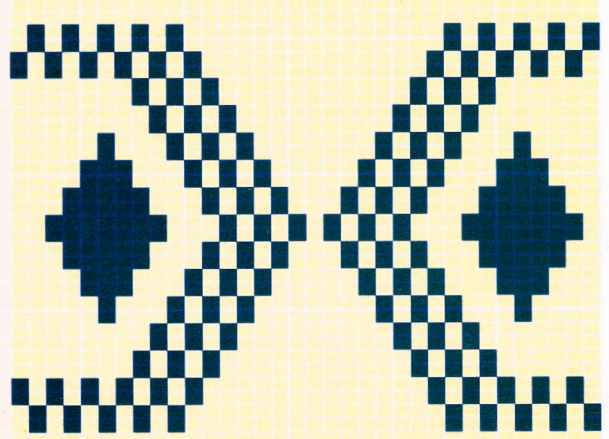


30-37

41

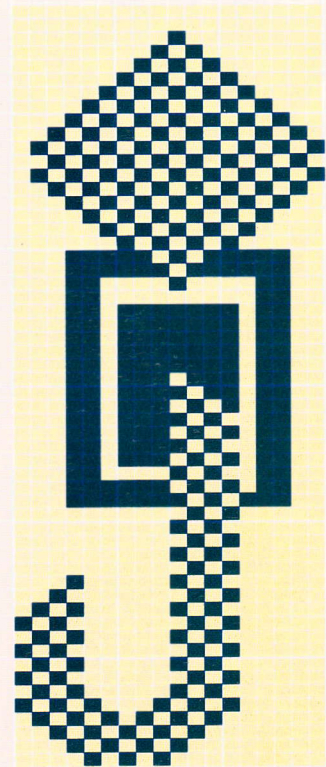


42



34-64

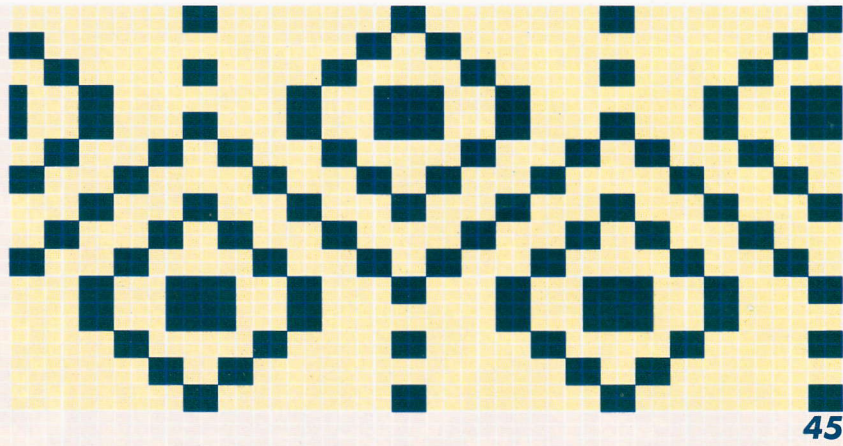
43



44

44-54

18-56



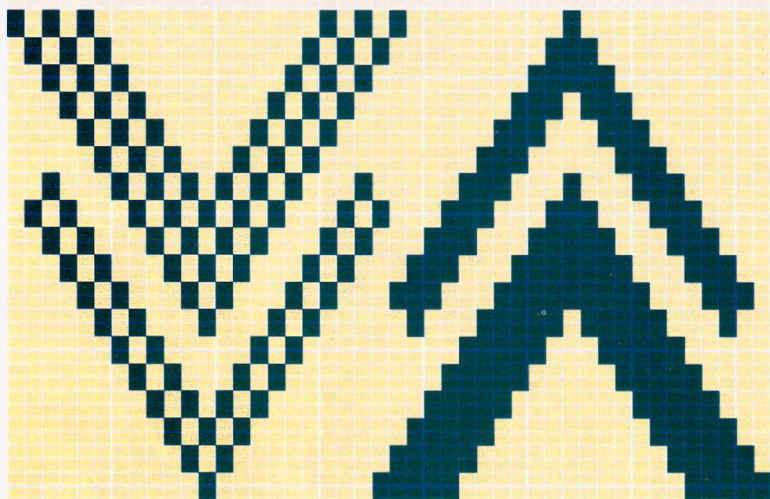
45

48-30



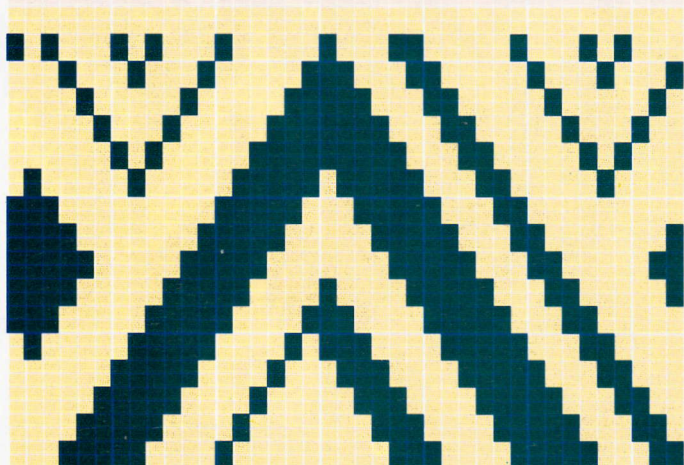
46

48-33



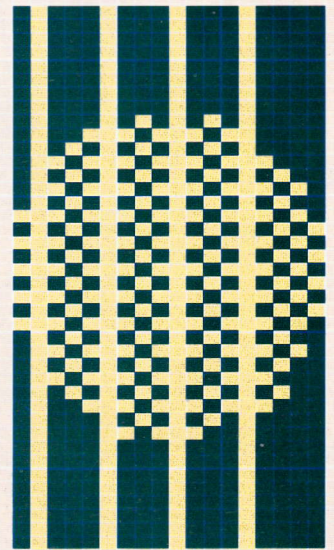
47

44-36



48

39-34



49

10-40



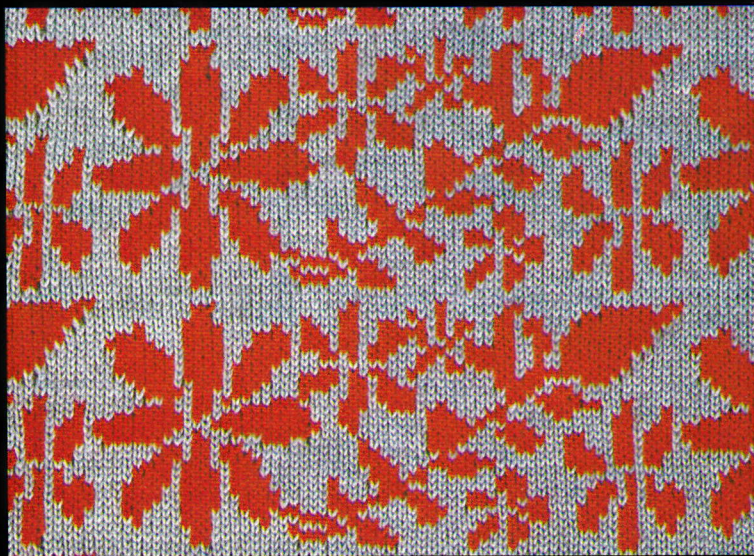
50



51



52

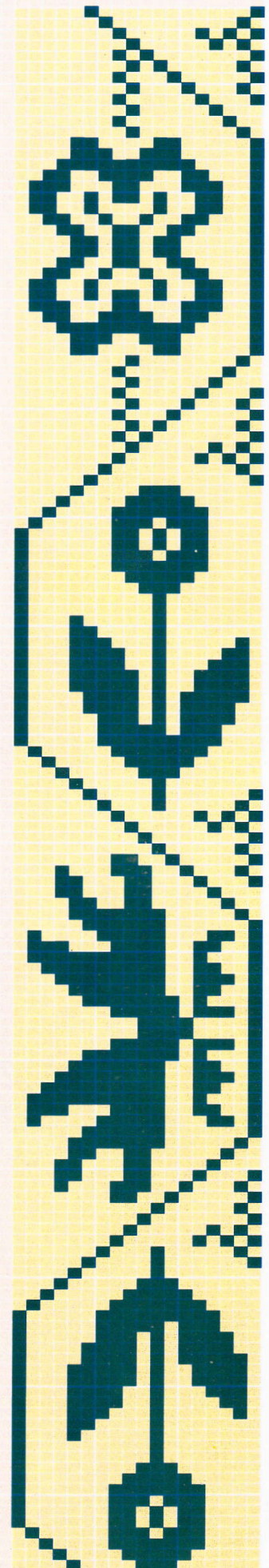


53



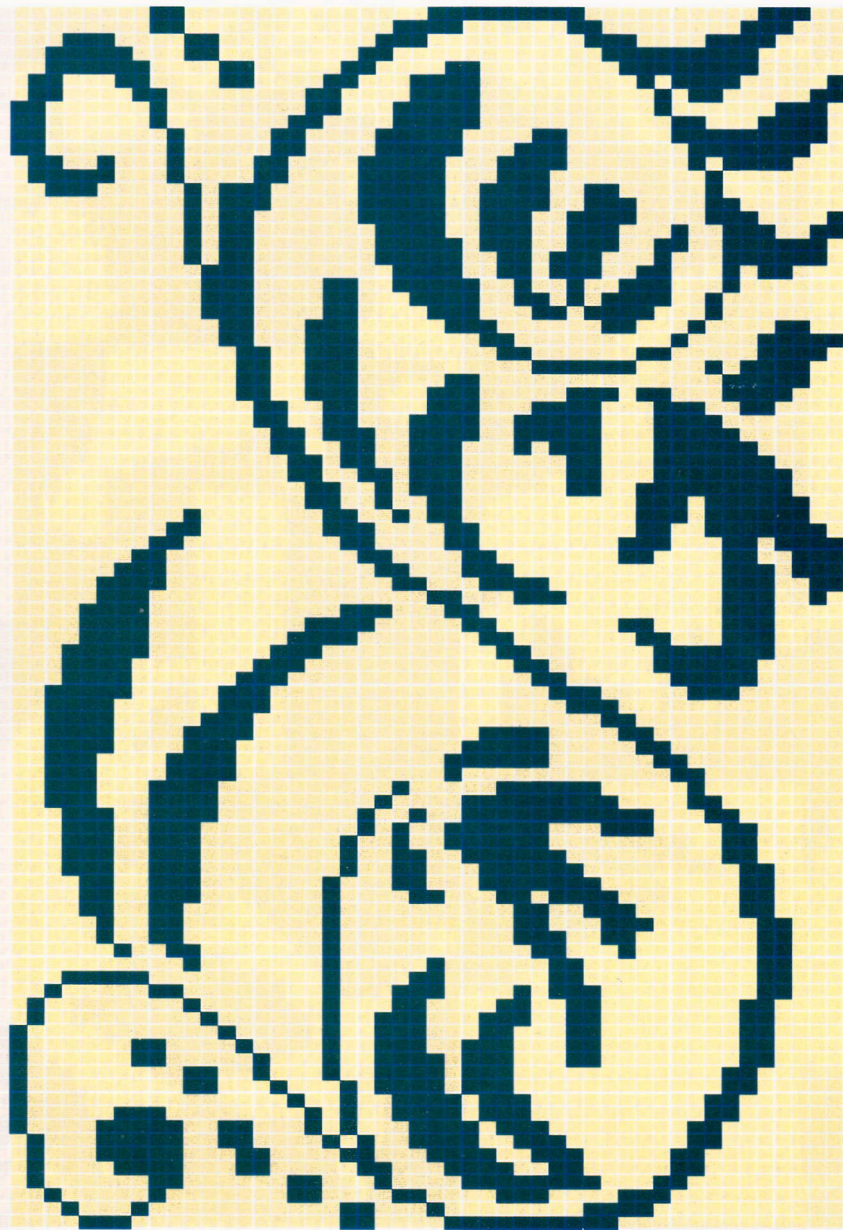
48-107

50



18-
144

51



48-90

52



60-30

53

ダブル編込み模様



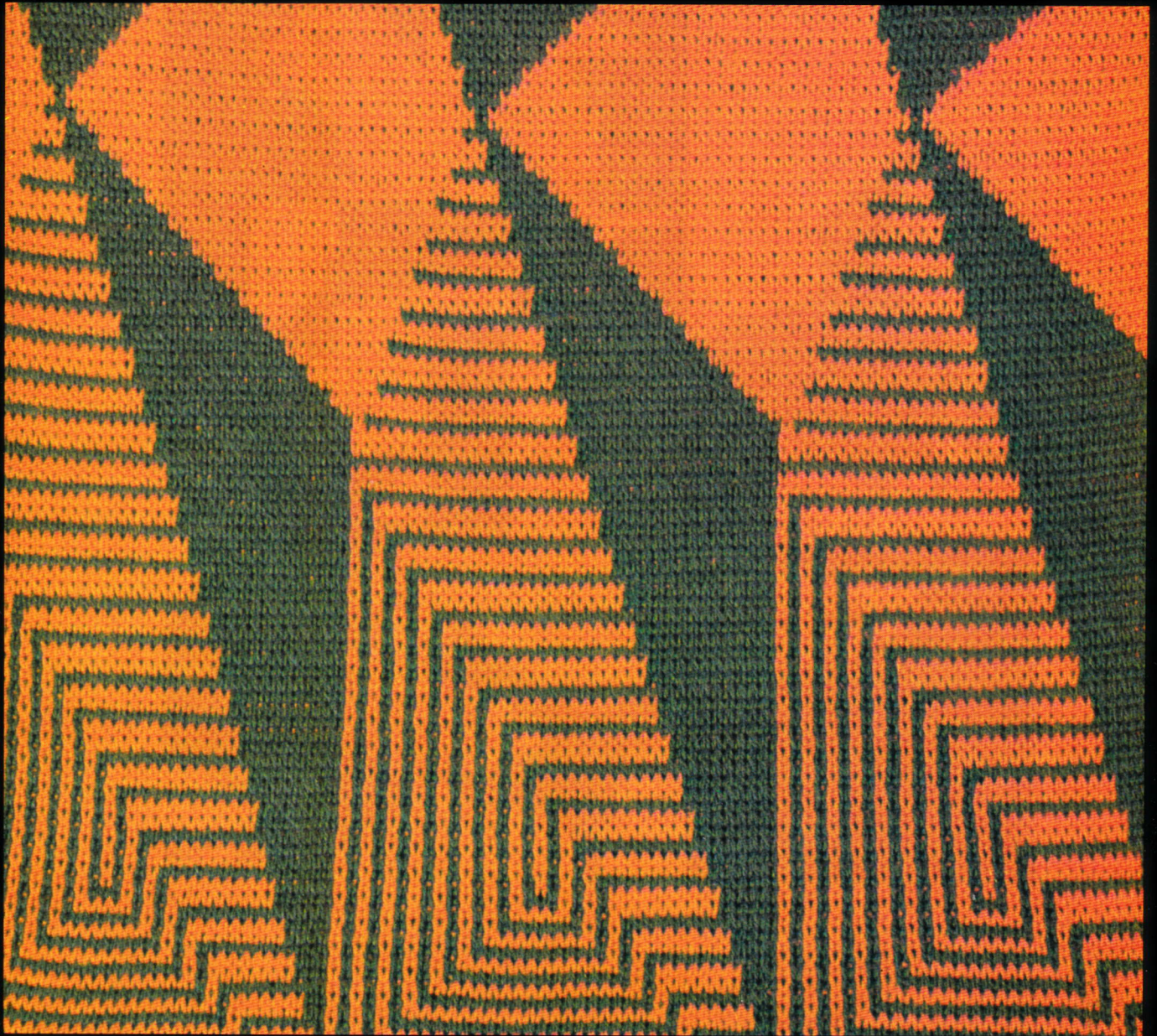
54



55



56



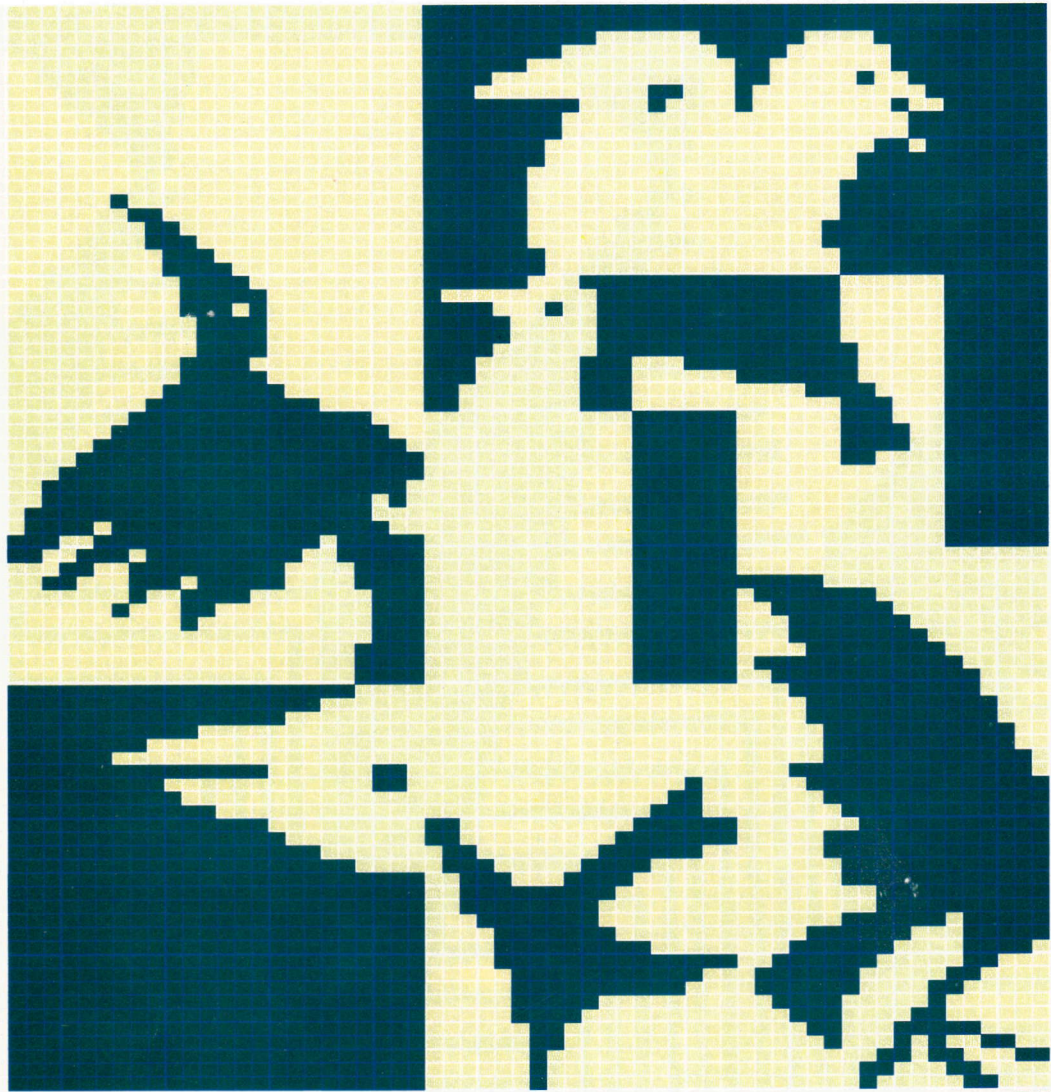
57



58

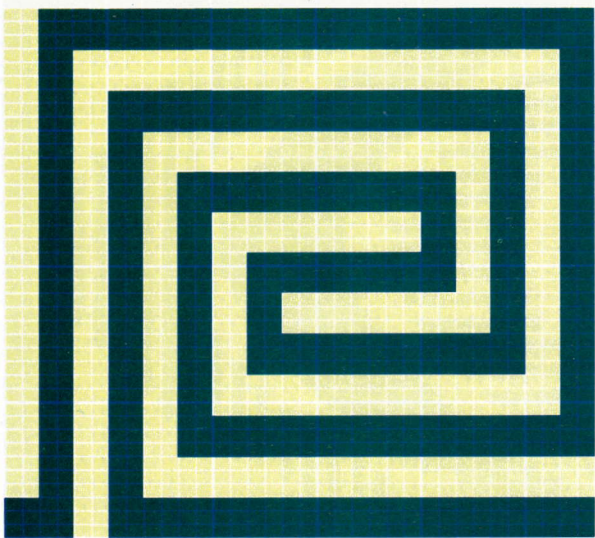


59



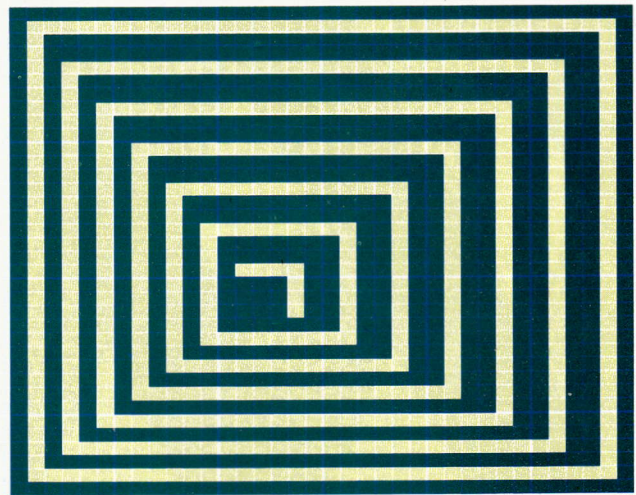
60-80

54



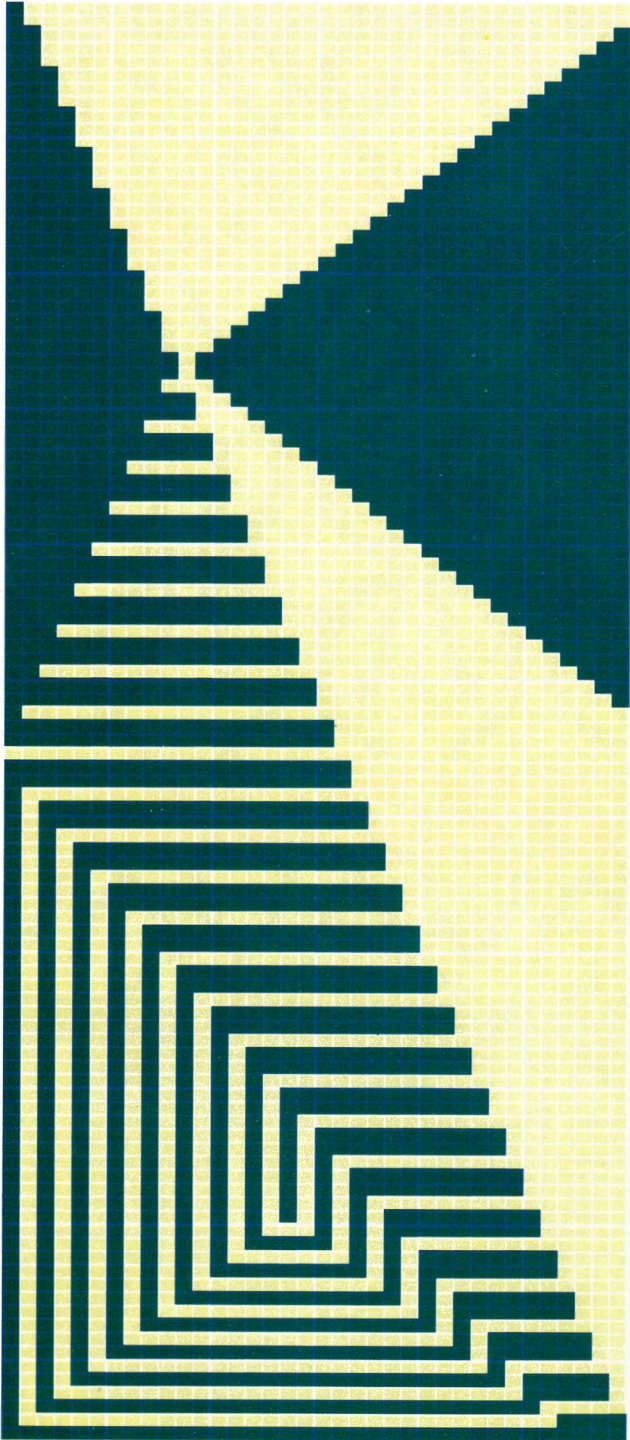
34-39

55



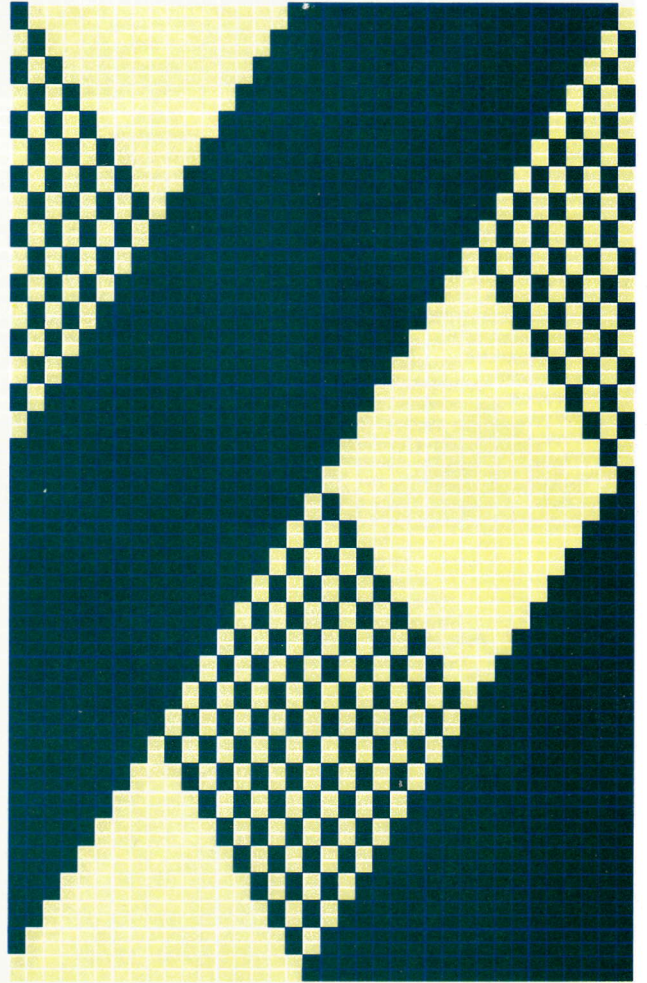
36-36

56



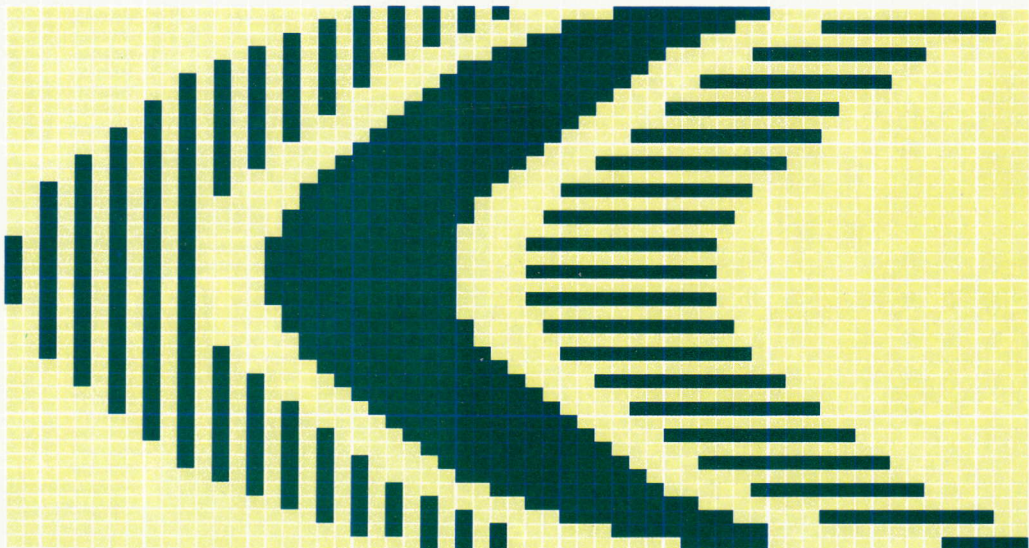
57

36-106



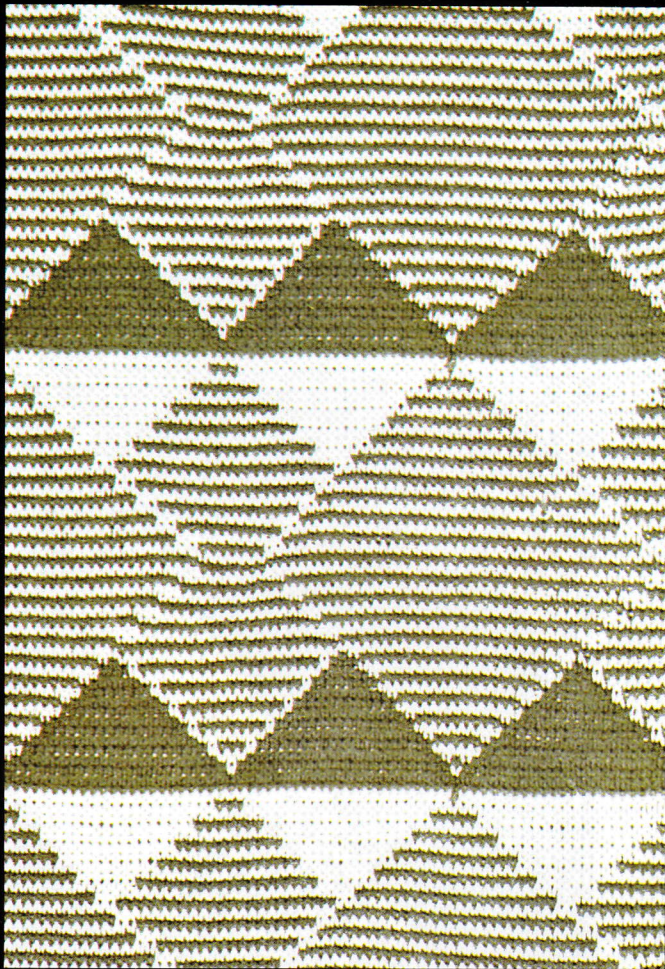
58

36-72



59-40

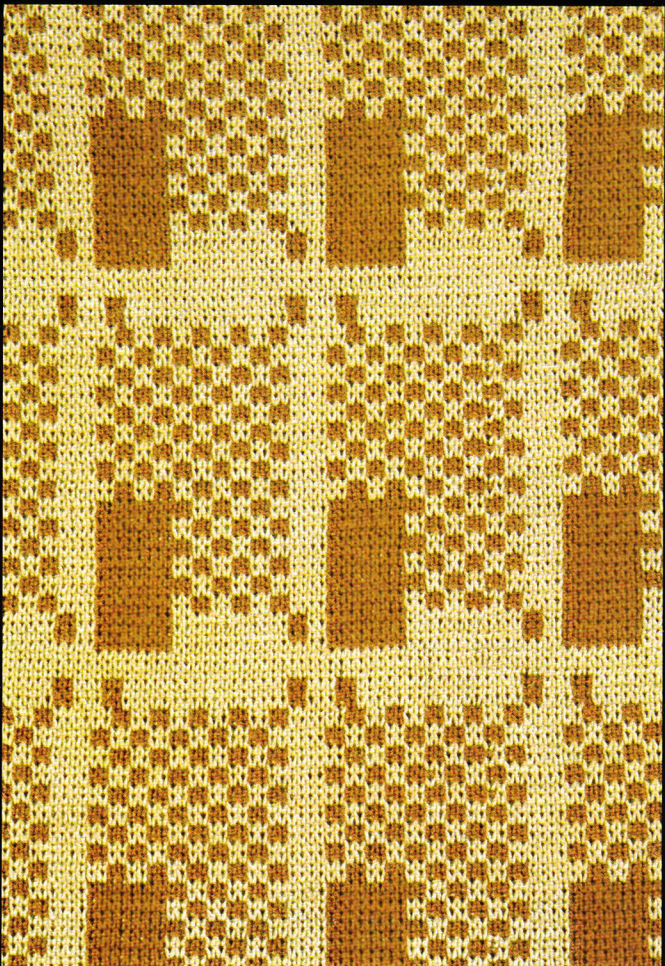
59



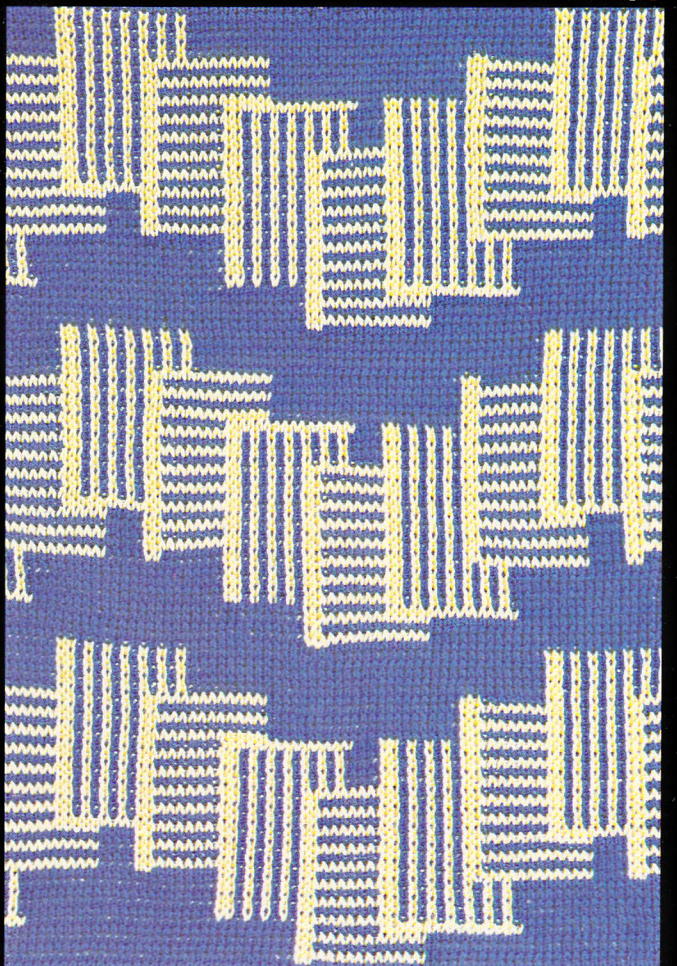
60



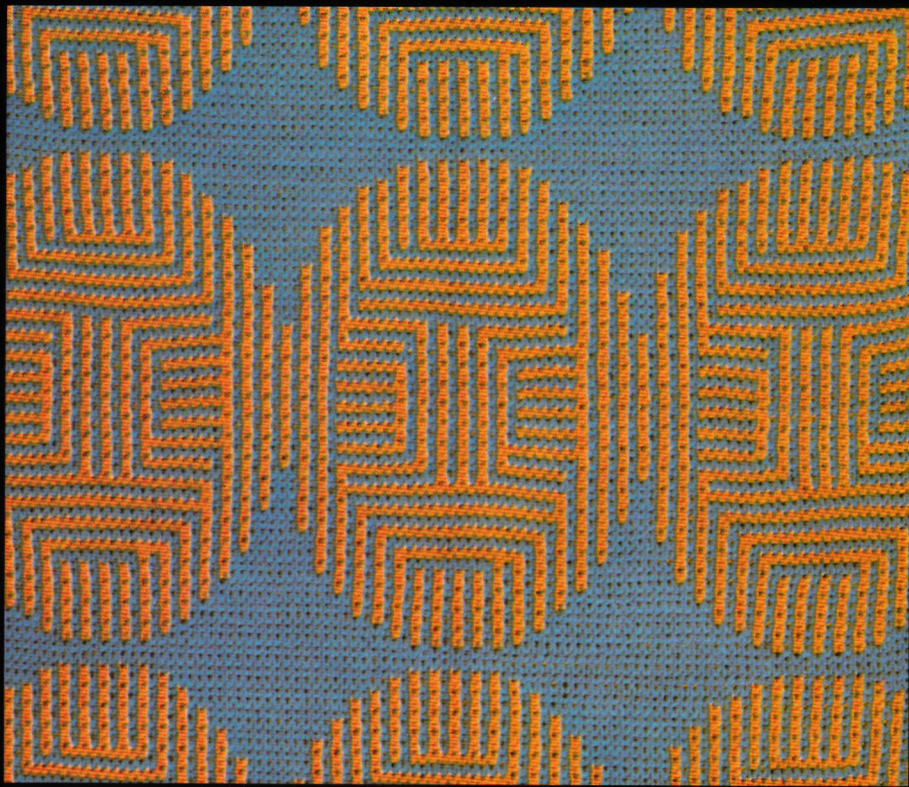
61



62



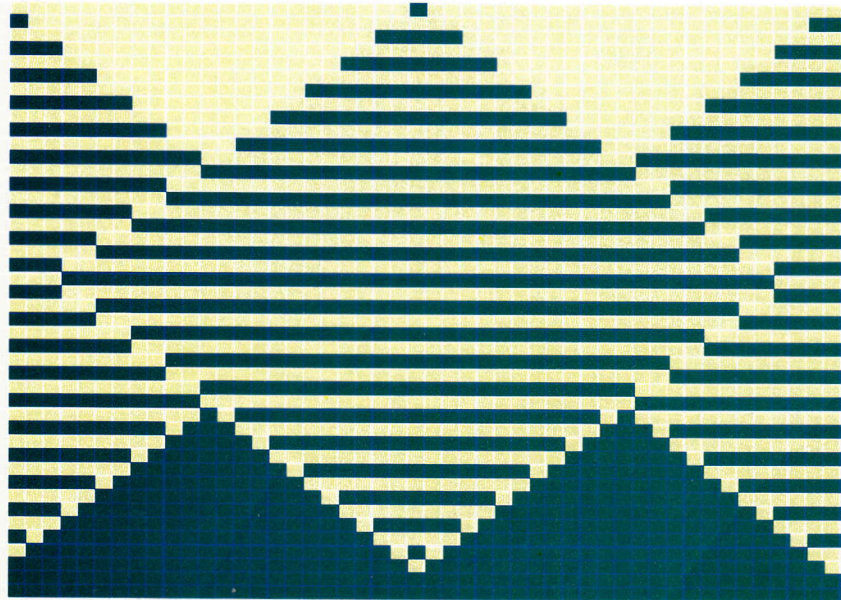
63



64



65



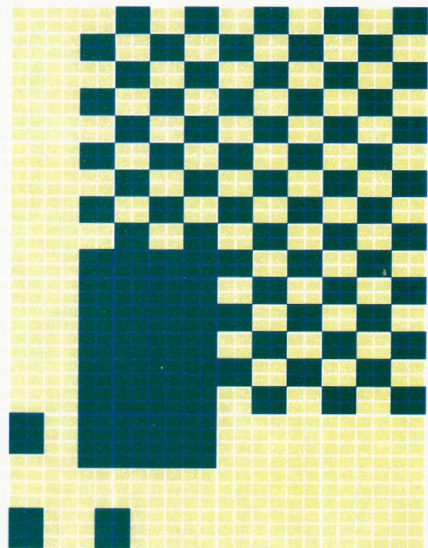
48-44

60



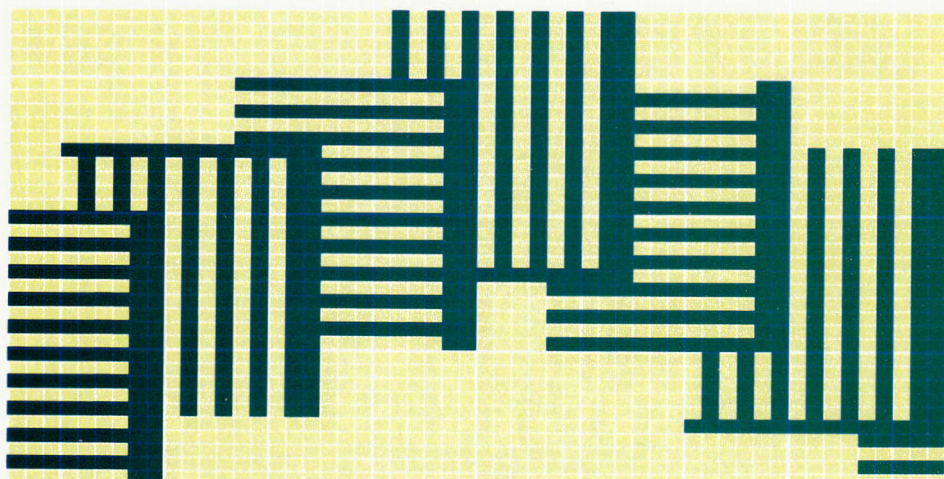
24-60

61



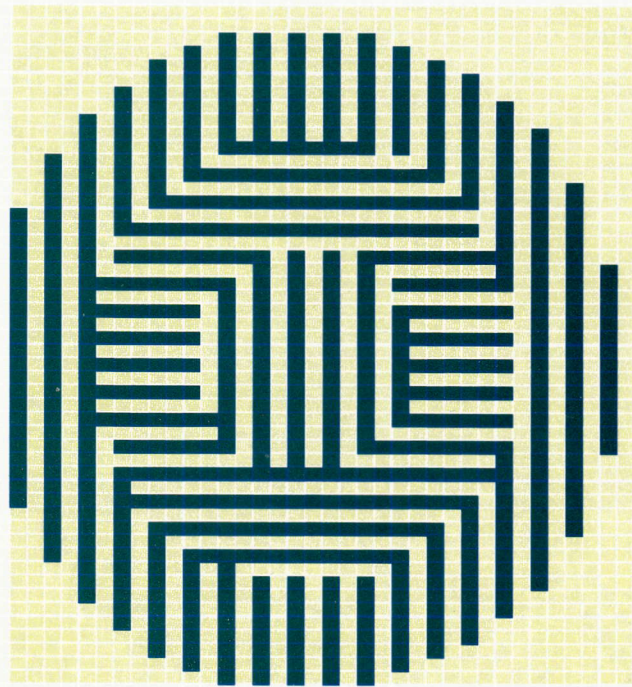
24-40

62



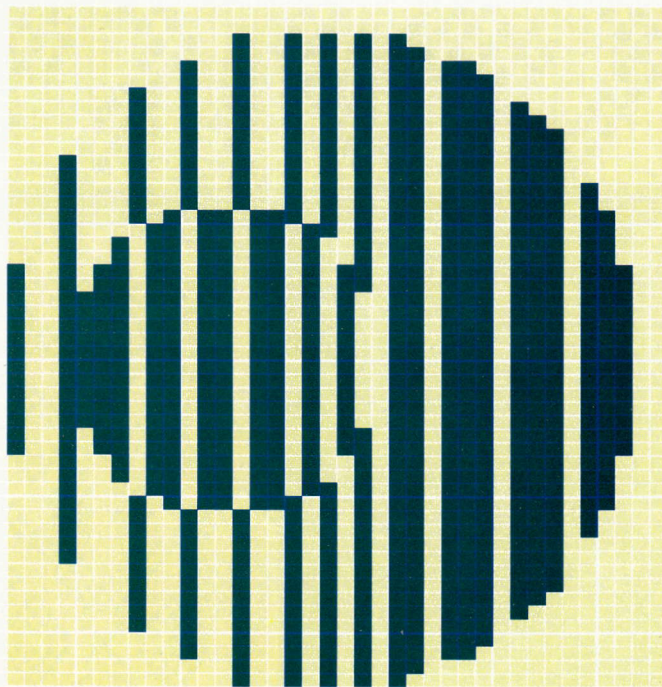
54-35

63



36-50

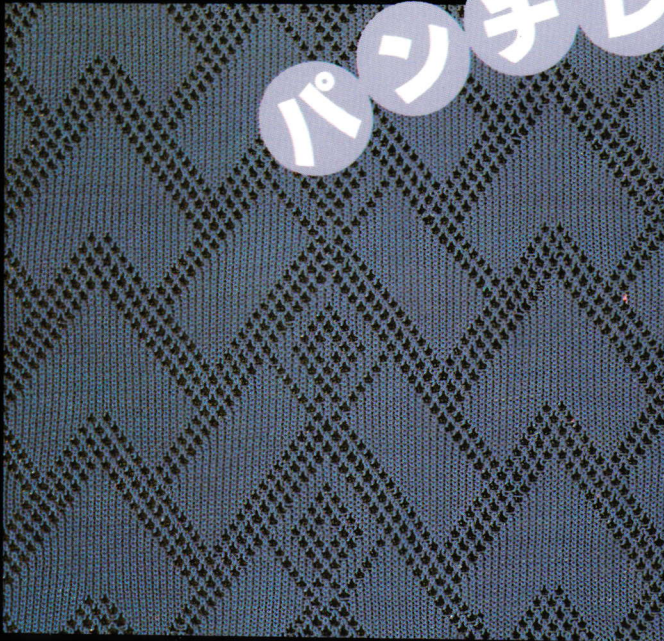
64



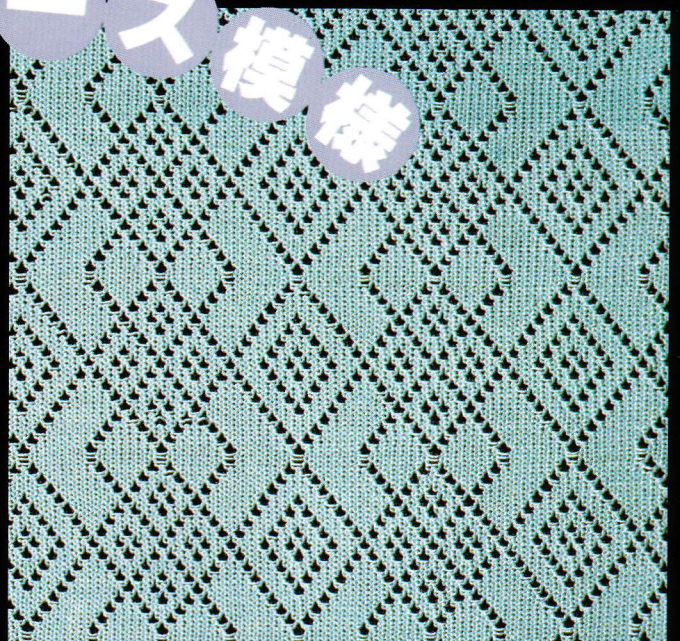
38-50

65

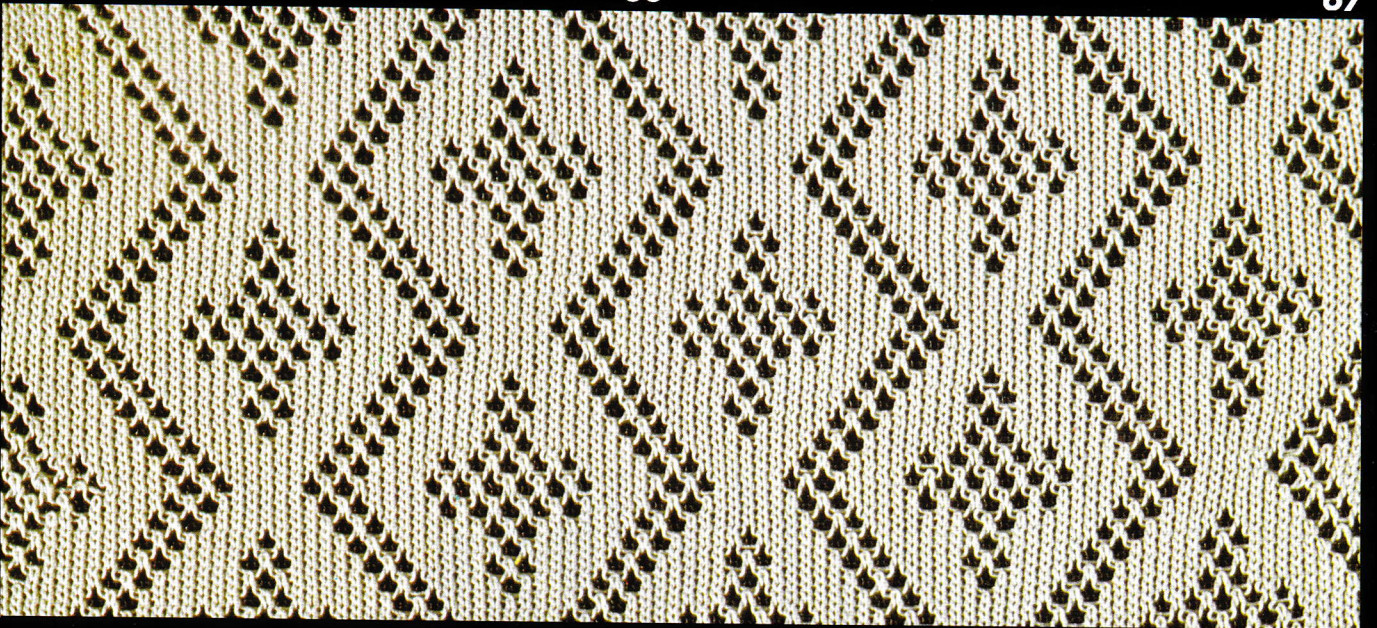
パンチレース模様



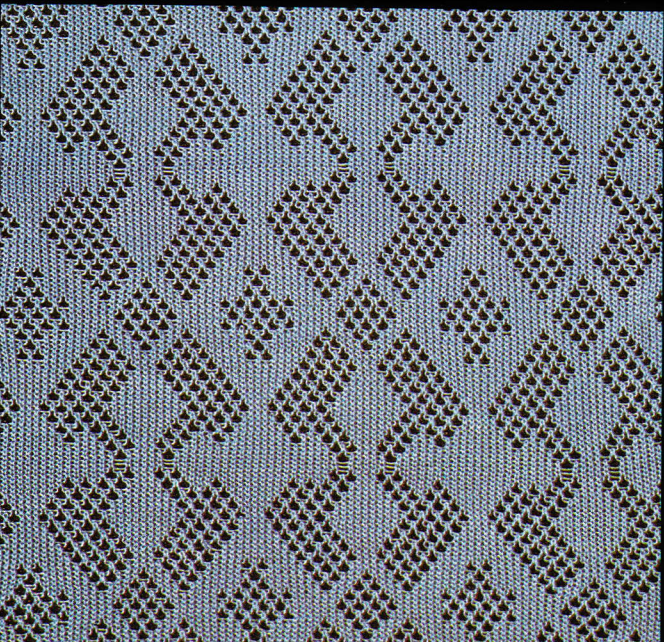
66



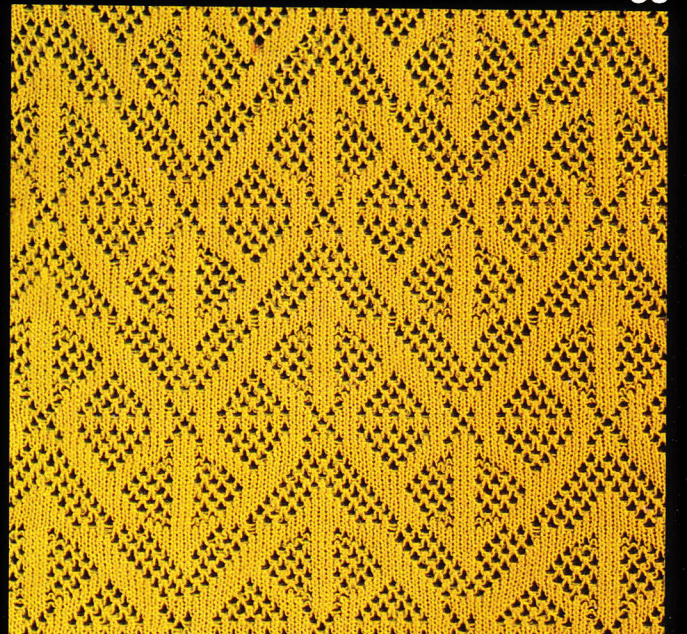
67



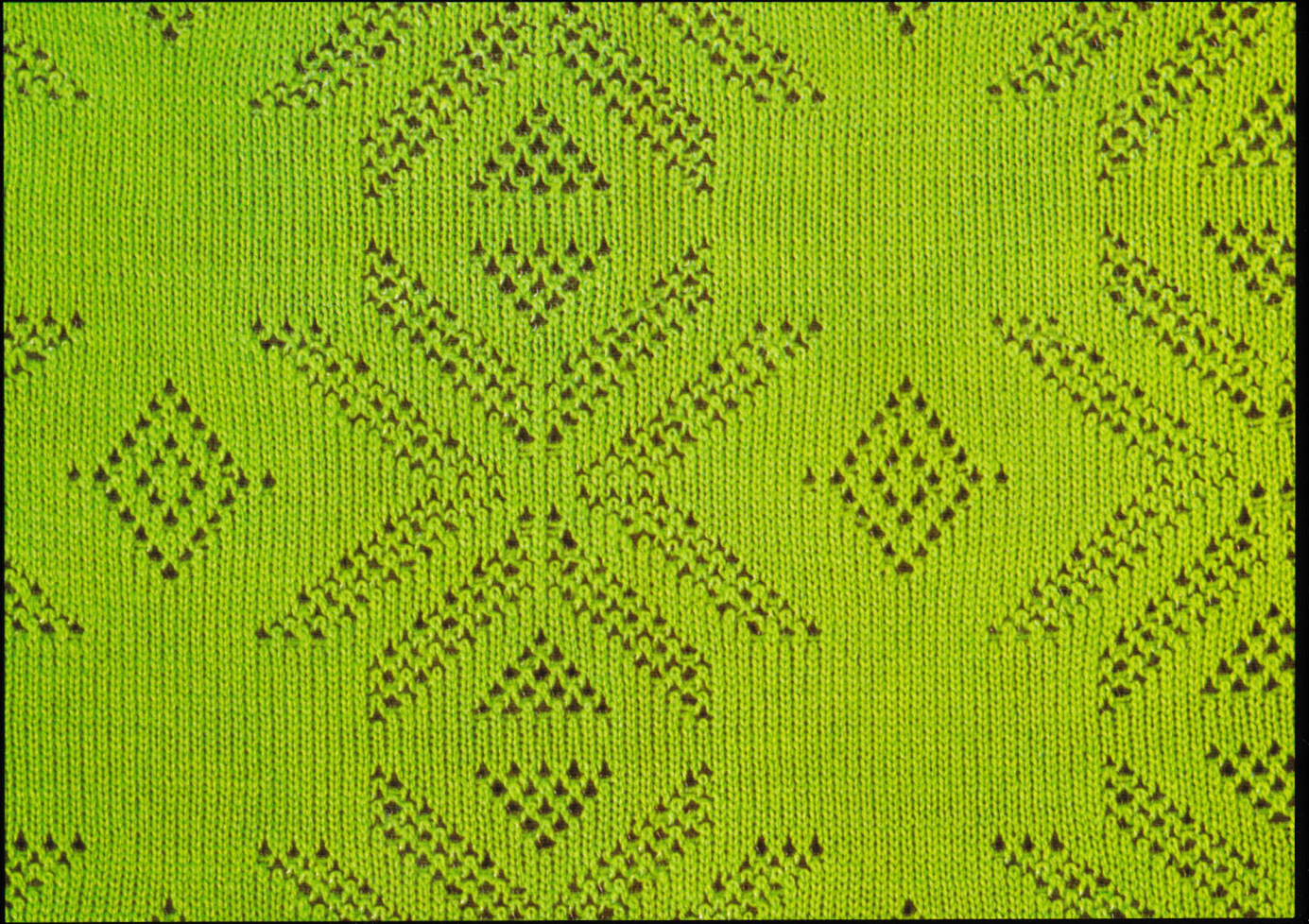
68



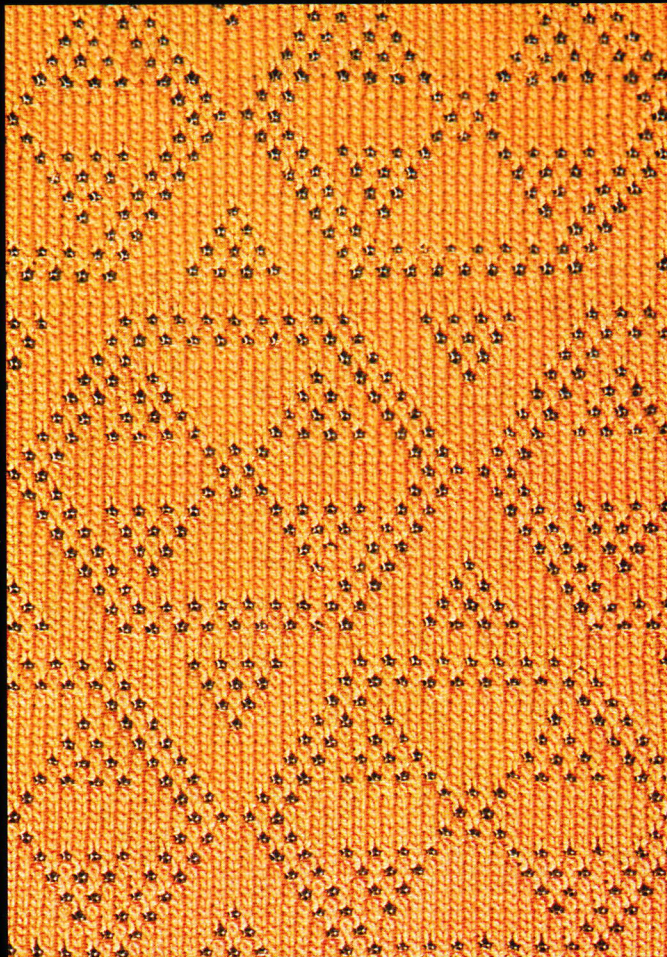
69



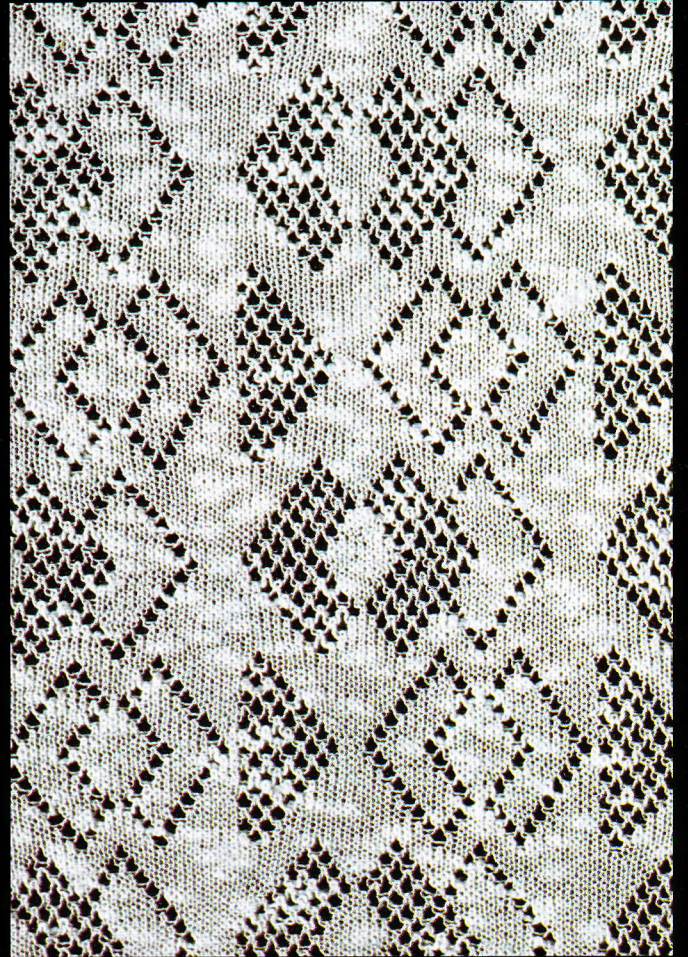
70



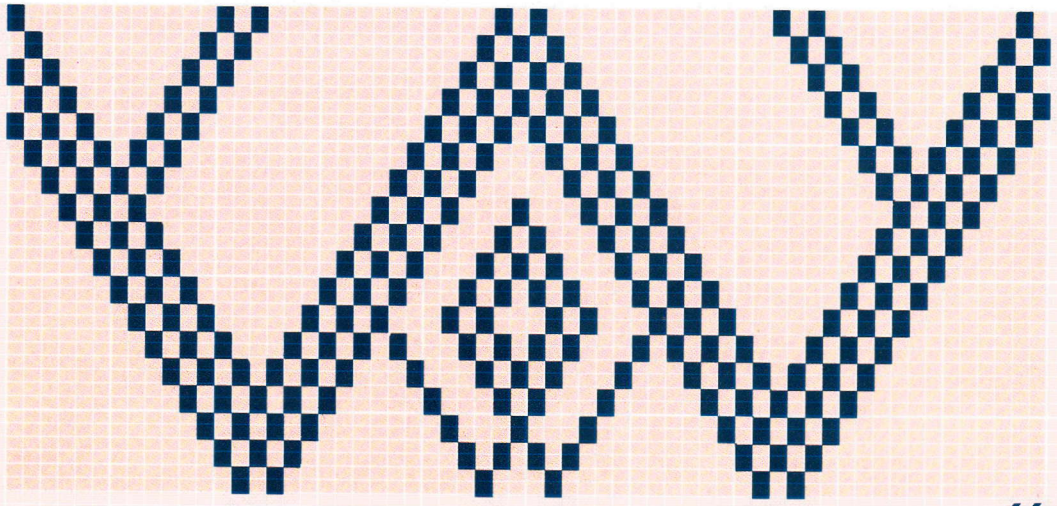
71



72

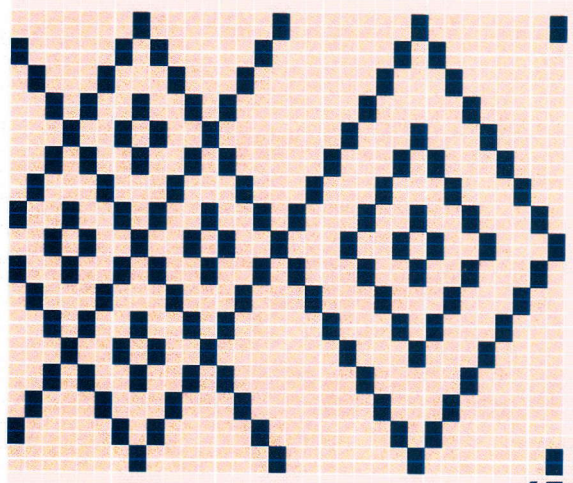


73



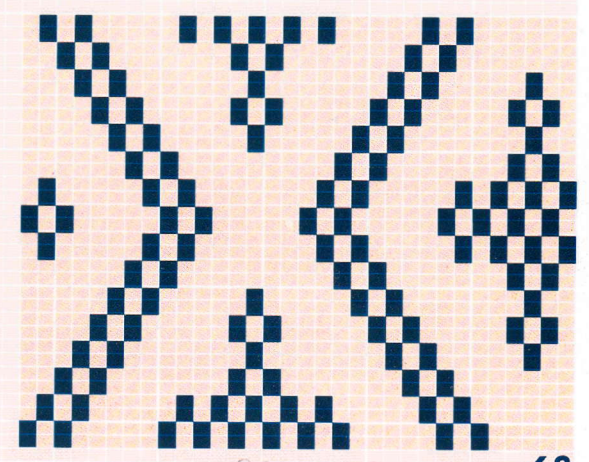
60-36

66



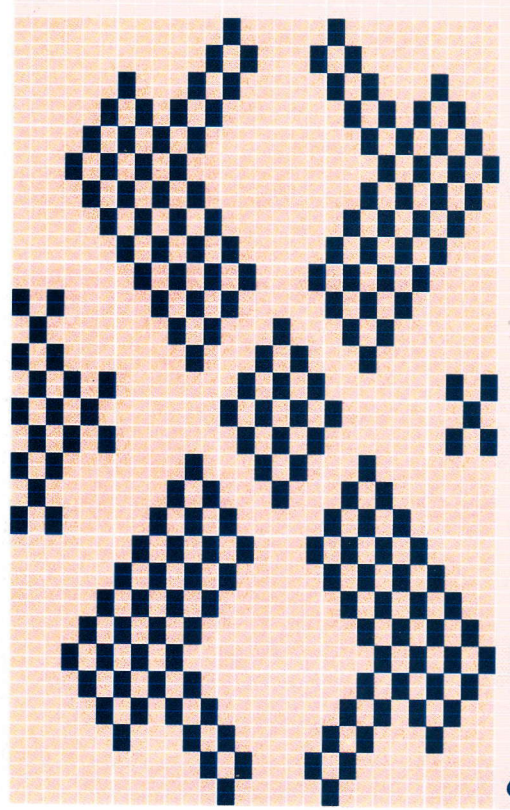
32-34

67



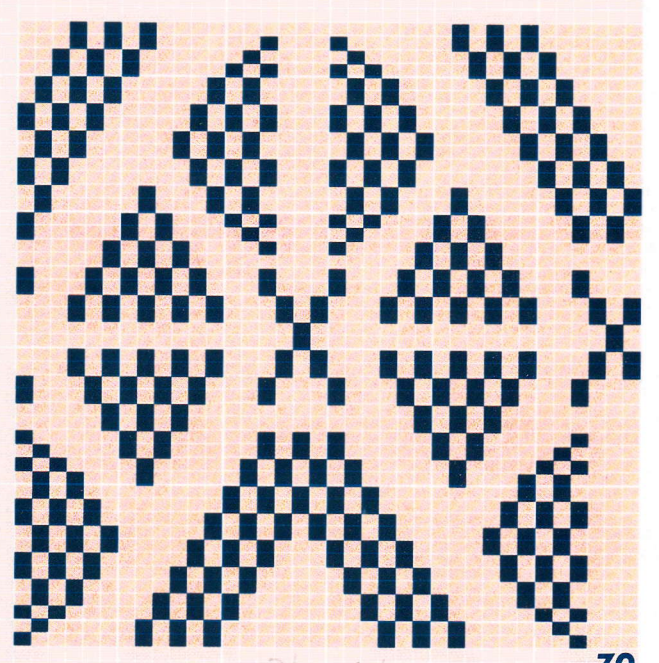
32-32

68



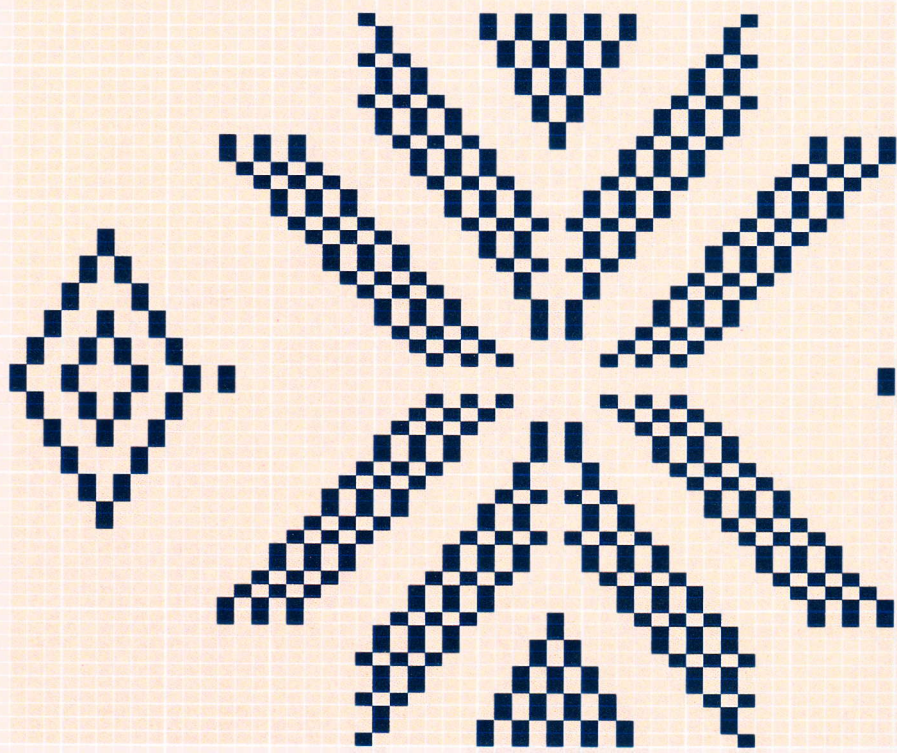
28-58

69



36-46

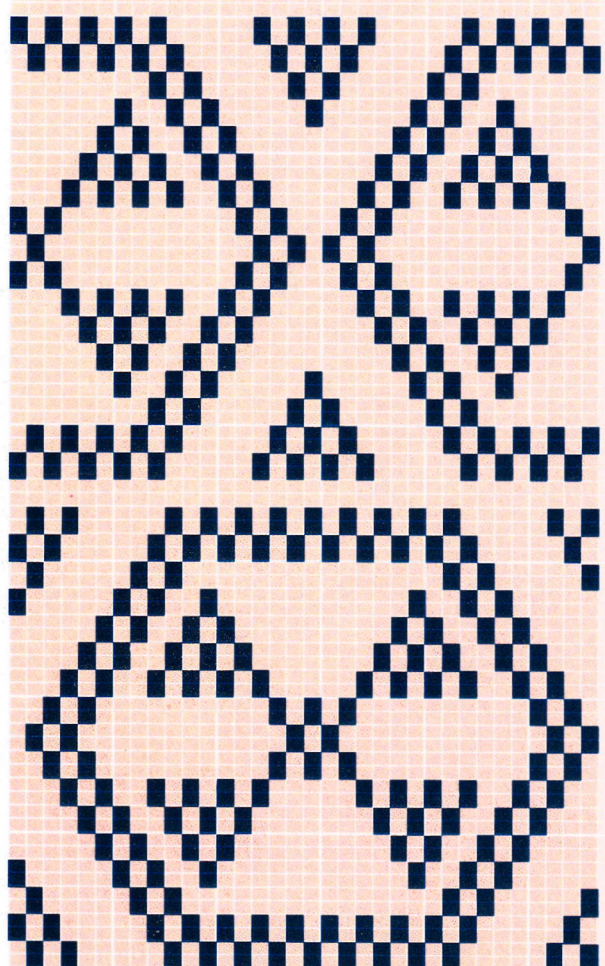
70



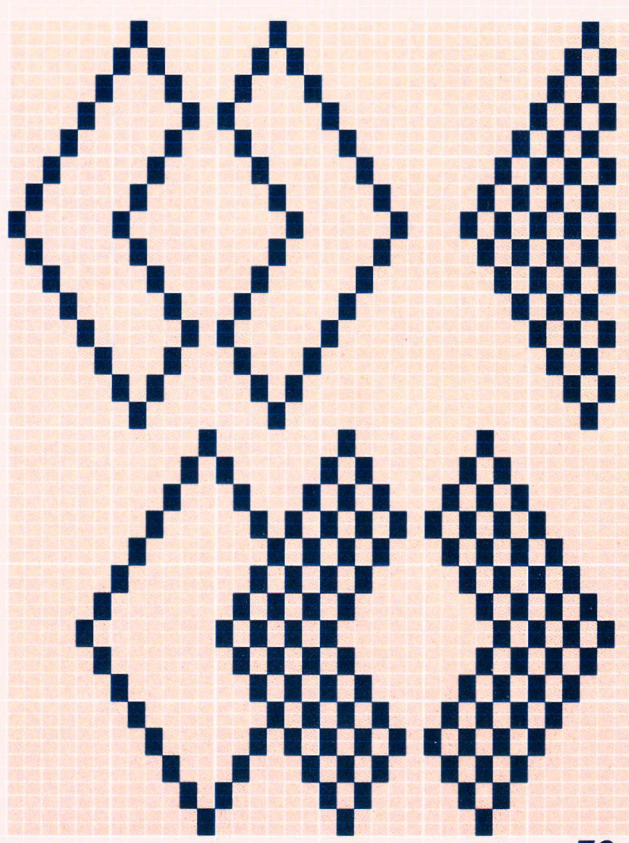
52-60

71

34-72

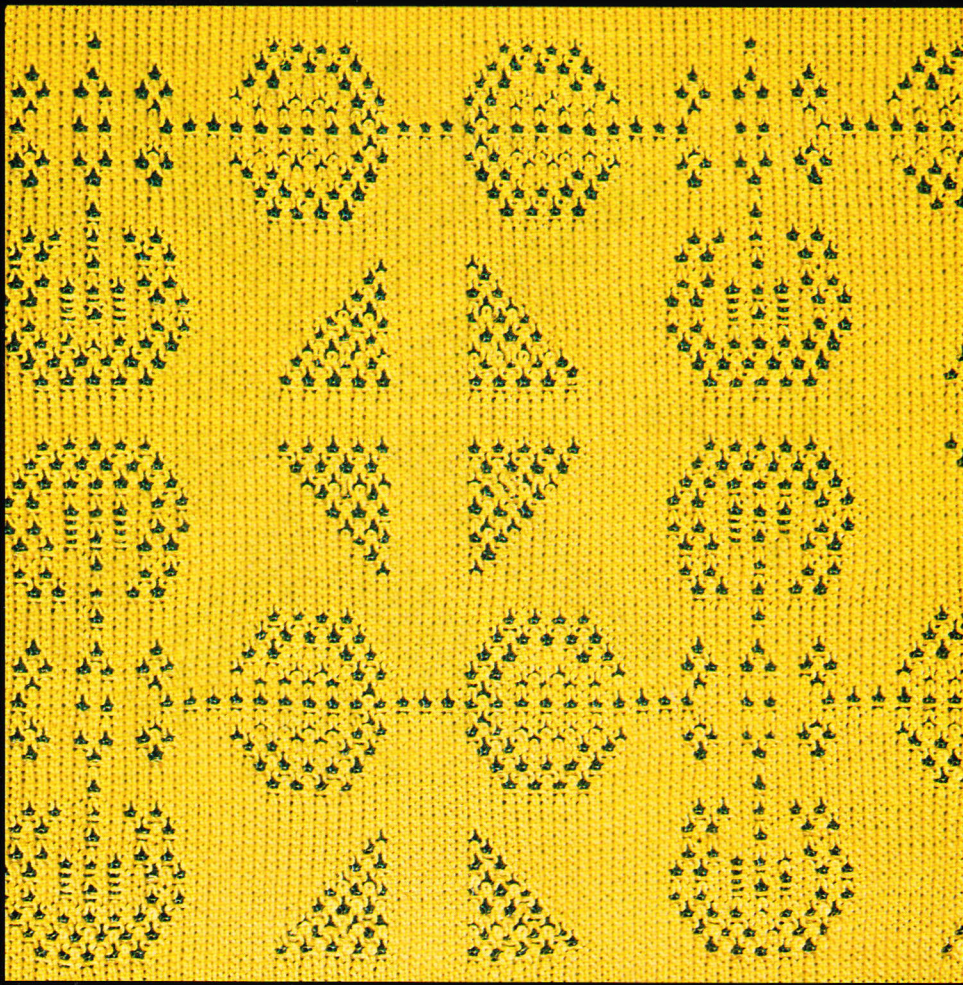


72

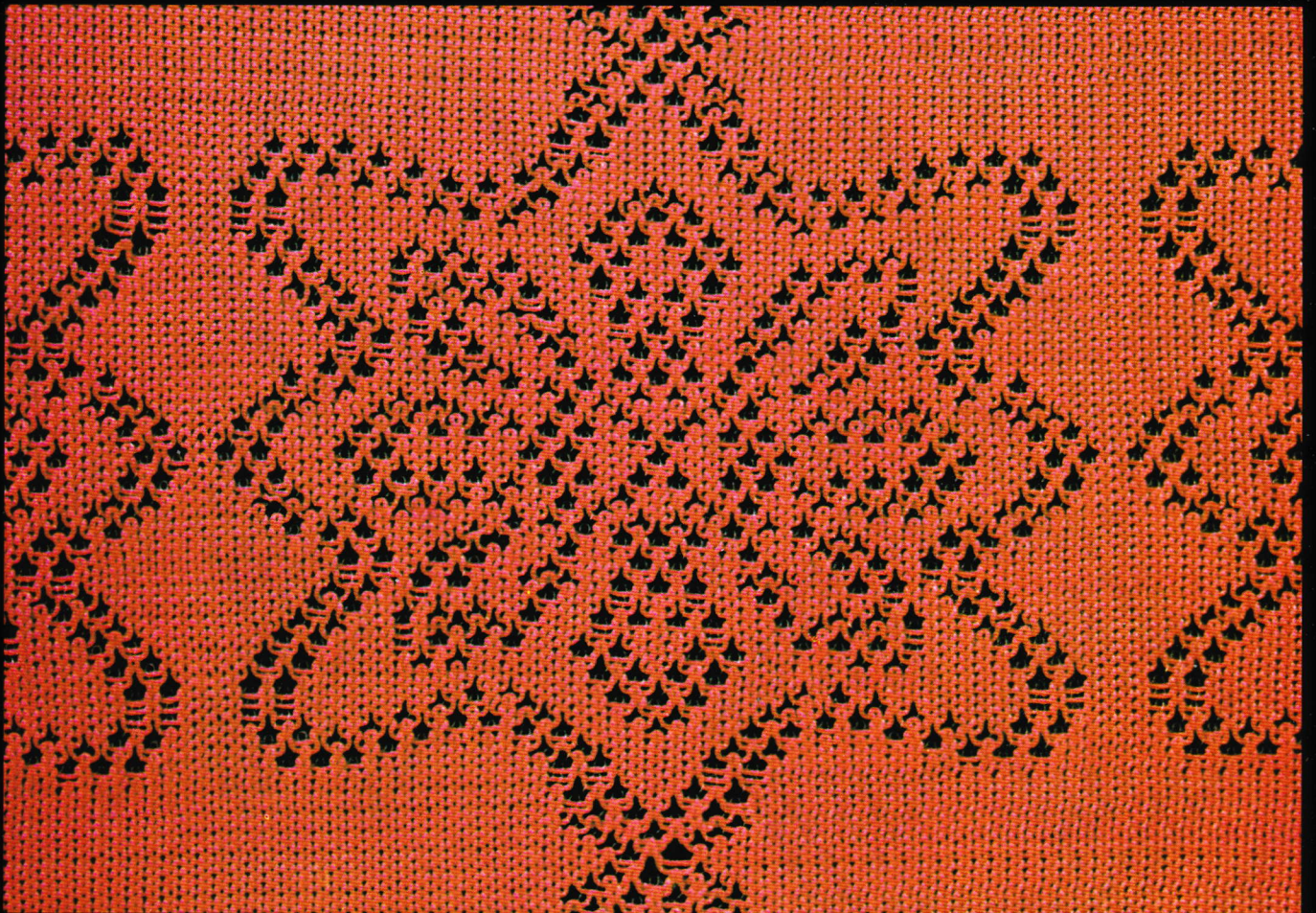


36-60

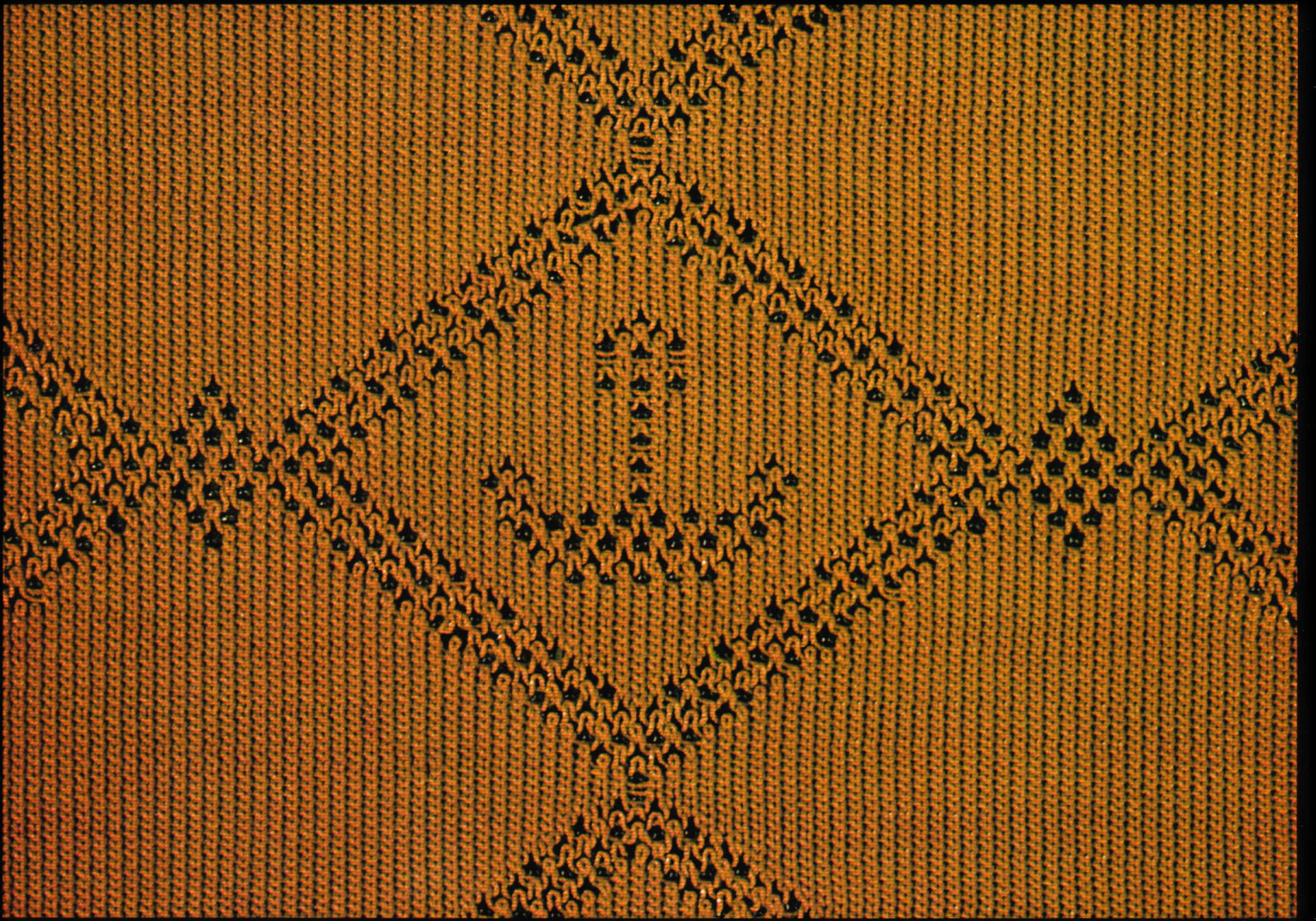
73



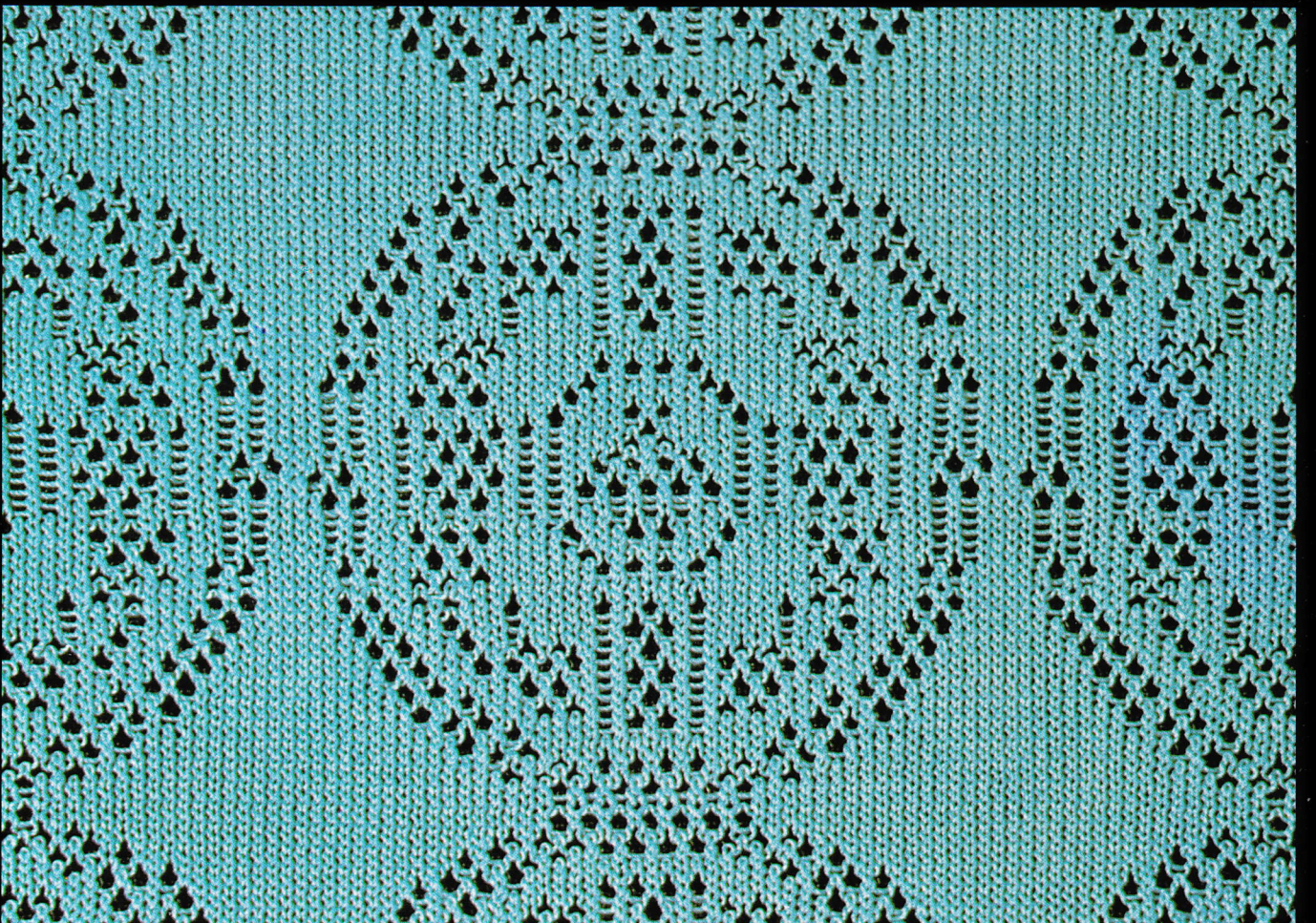
74



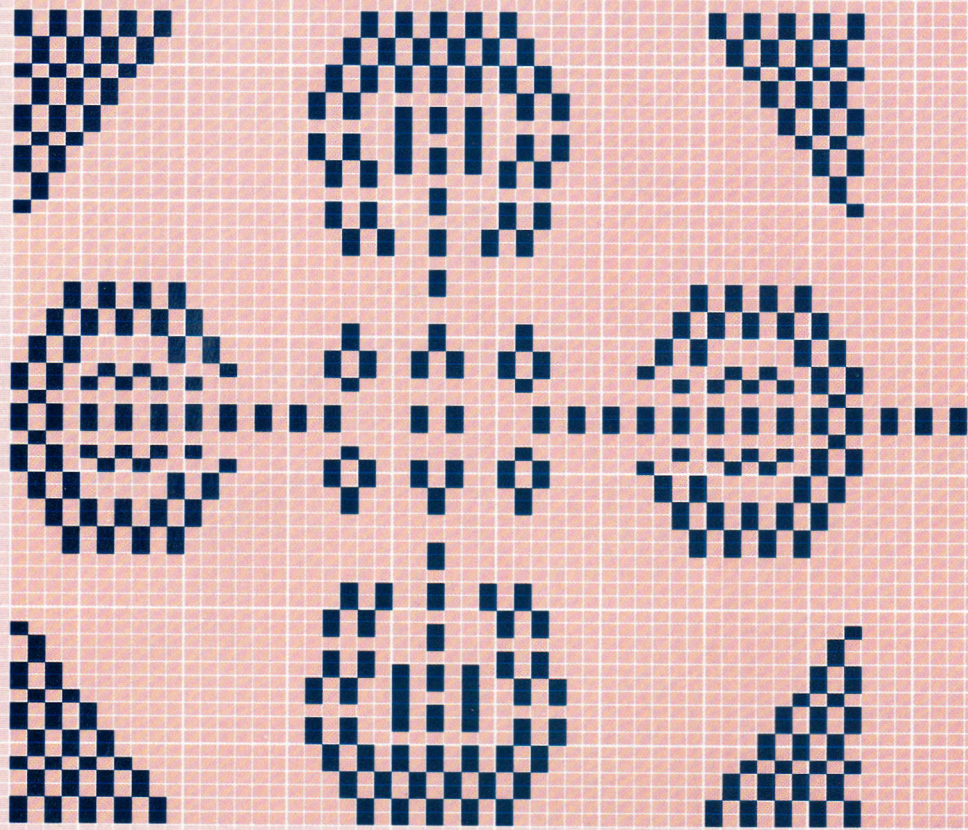
75



76

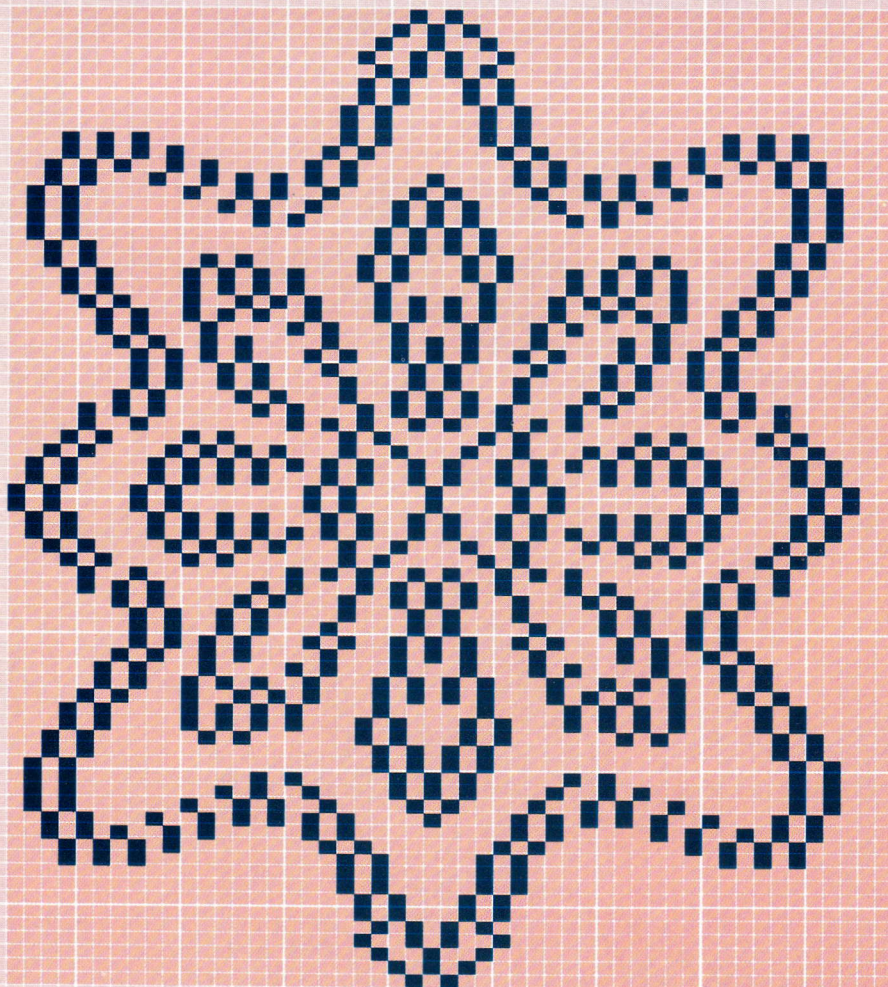


77



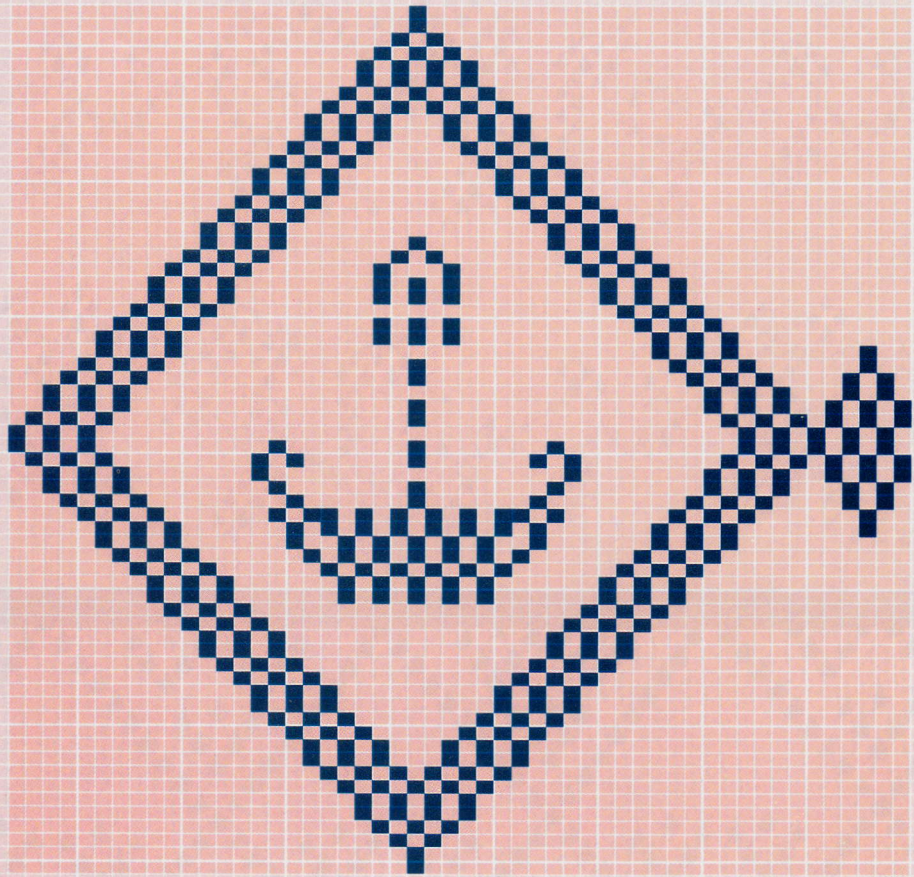
57-66

74



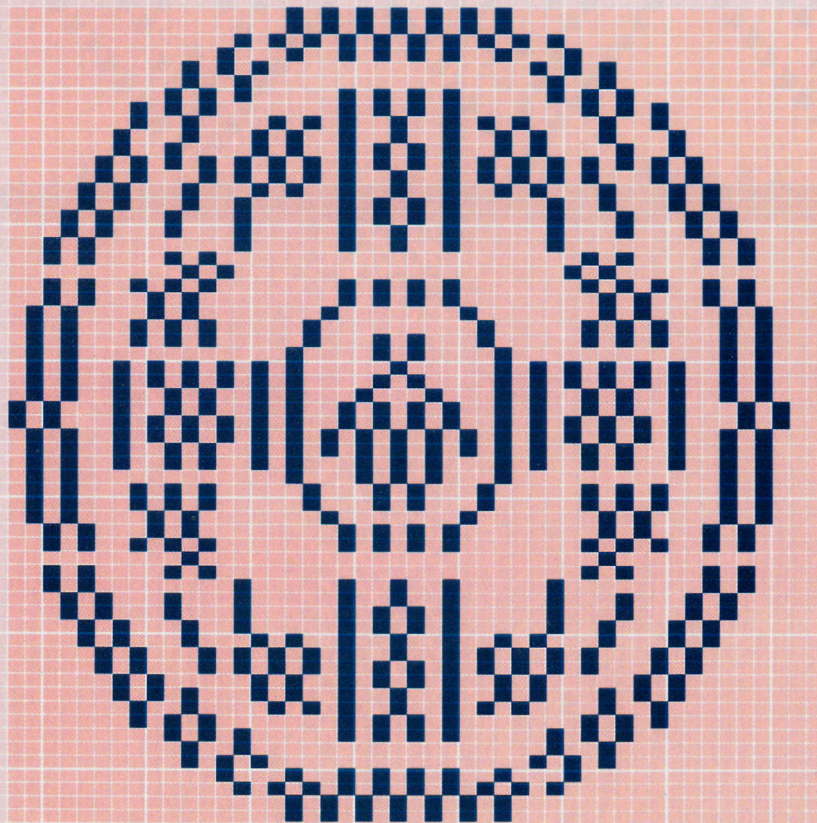
51-72

75



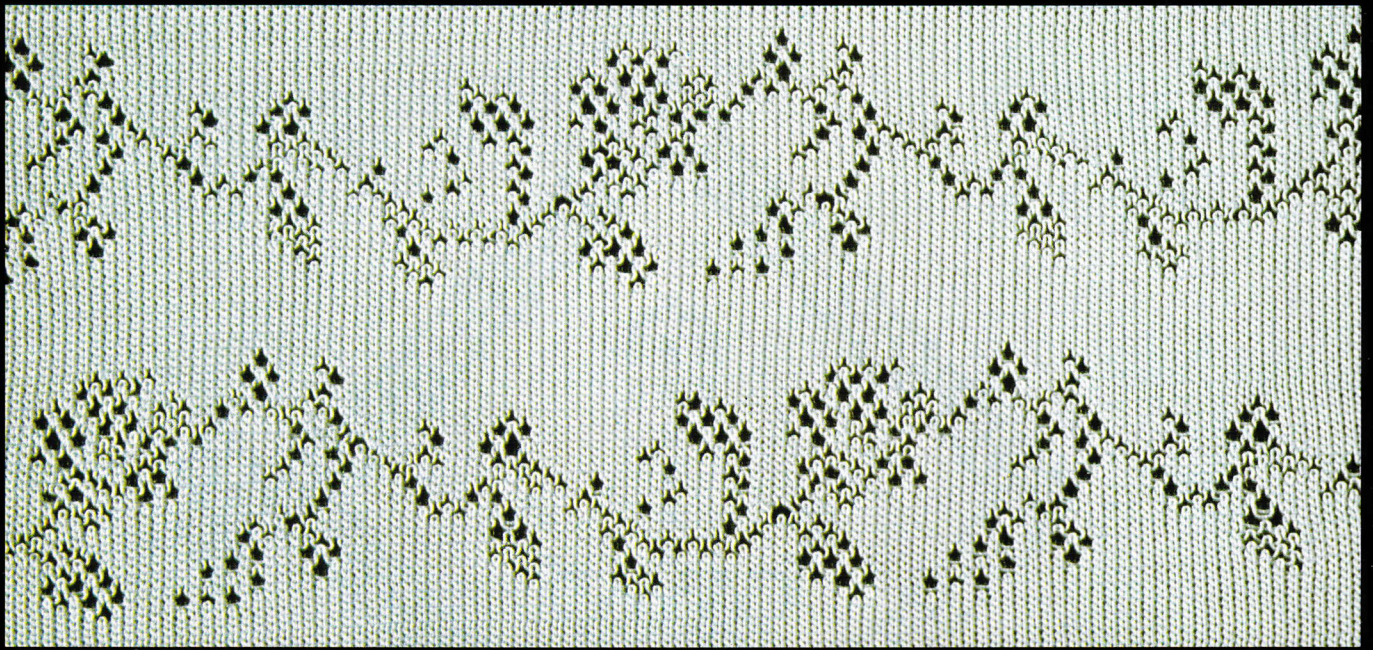
52-64

76

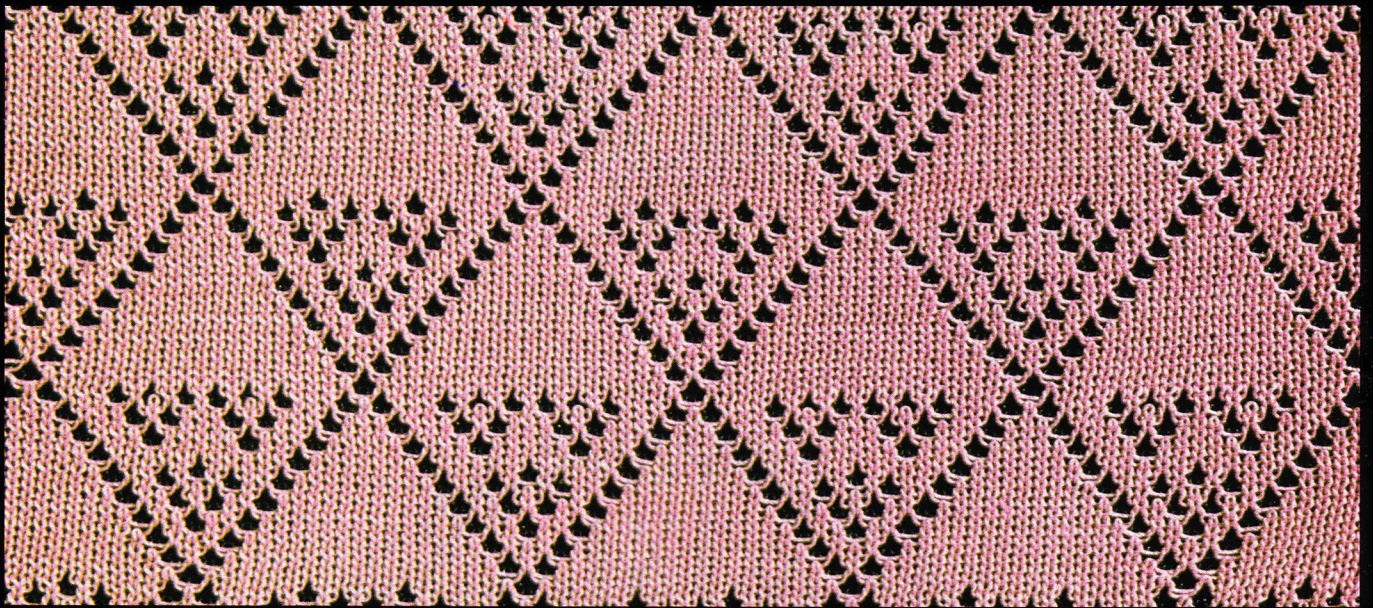


47-60

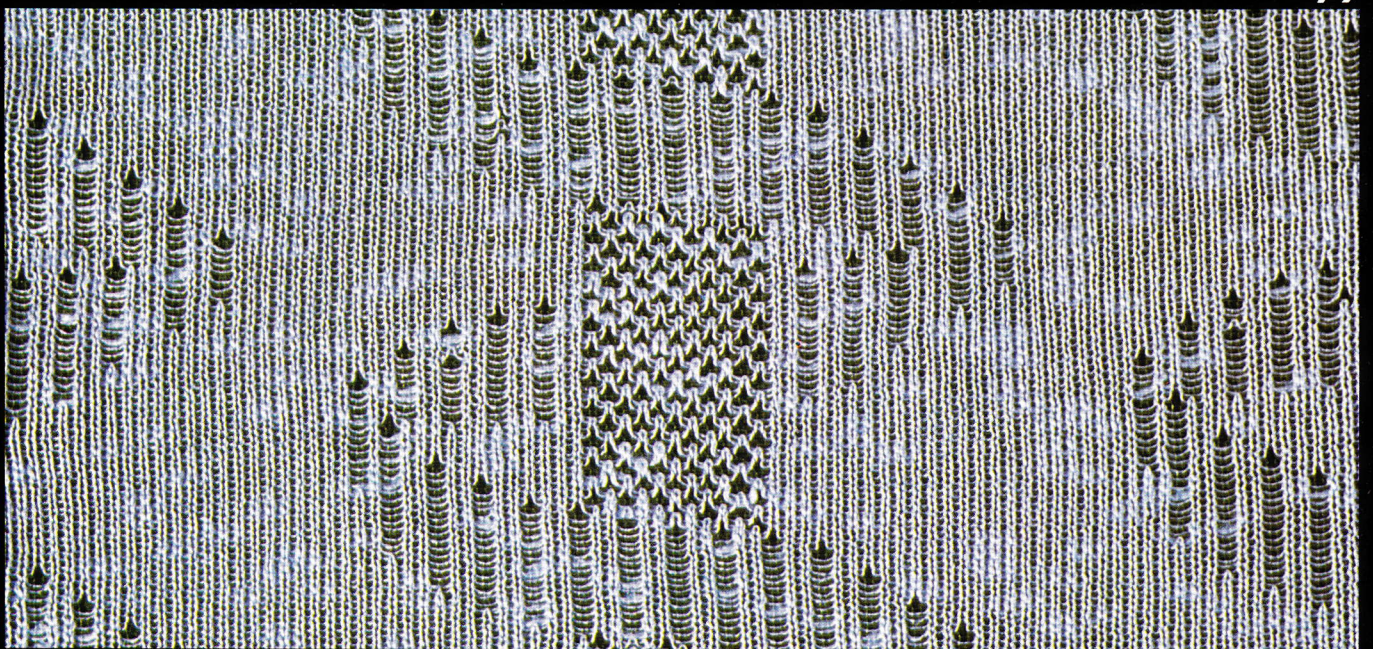
77



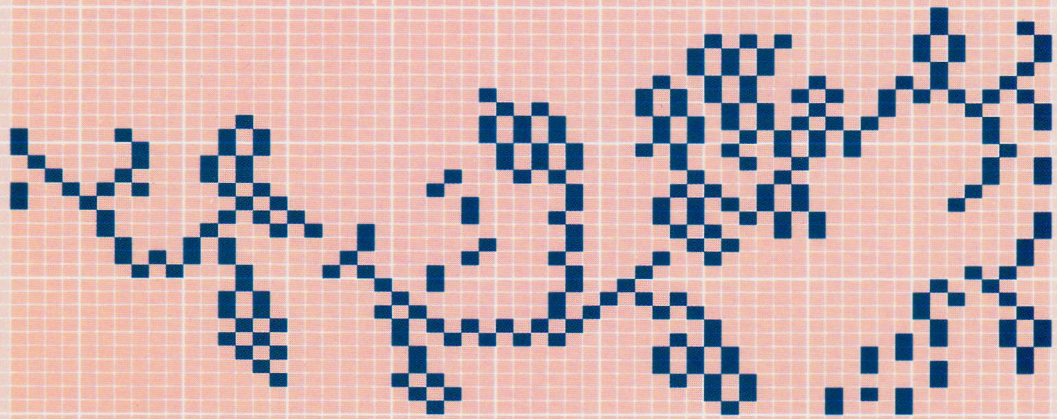
78



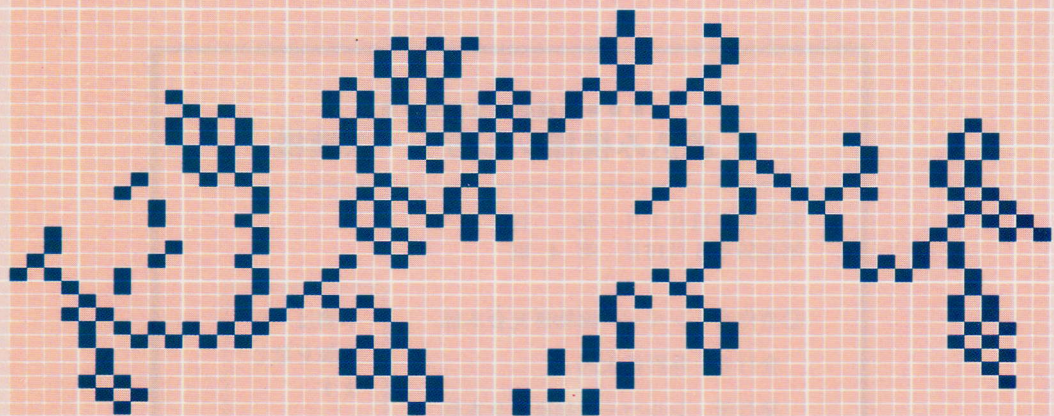
79



80

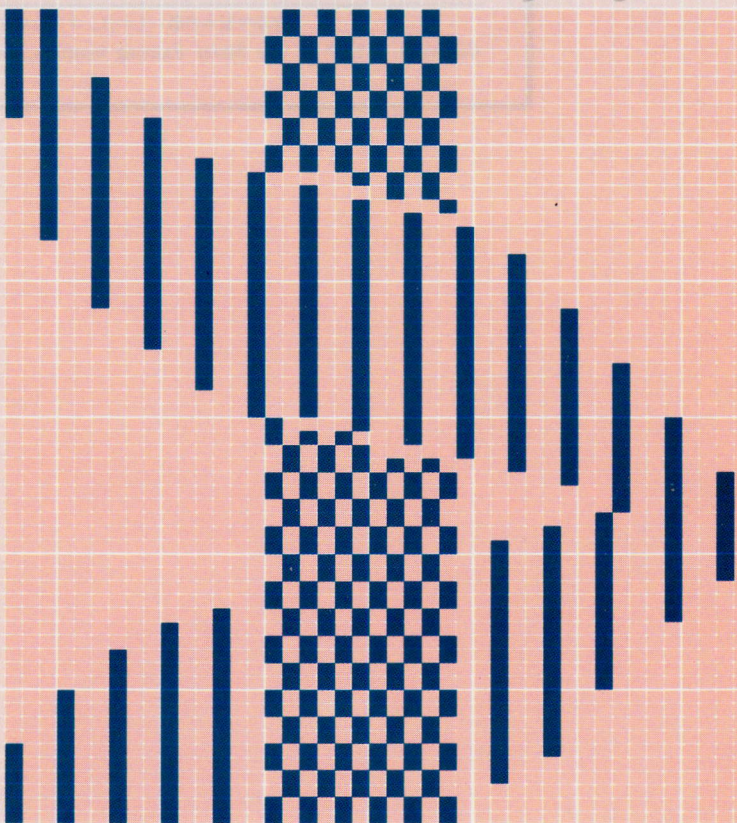


60-80



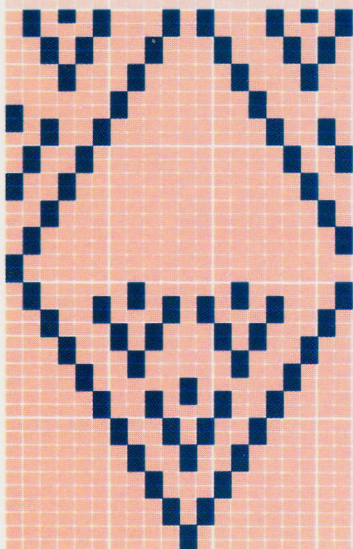
78

51-60



80

20-40



79

●●●模様編み全集●●●

3. 編込み模様・パンチレース模様

昭和52年11月1日 発行
昭和59年6月10日 第4刷

©著作者 シルバー編物研究会本部

発行者 井野総太郎

発行所 シルバー編物研究会本部
東京都新宿区新宿5丁目9-16
TEL(03)356-2651(代表) 振替 東京9-100004

印刷所 大日本印刷株式会社

本書は一切
複製を禁
じます

(印刷や製本の悪いものは、すぐお取り替えいたします)

Copyright ©1977 by The Silver Knitting Institute, Japan.

シルバー編物研究会